

FINAL SCORE**Oklahoma St.****40****TCU****52**

January 11, 2020 • Ed and Rae Schollmaier Arena

FINAL STATISTICS

Official Box Score
Oklahoma St. vs TCU
Game Totals -- Final Statistics
January 11, 2020 at Ed and Rae Schollmaier Arena



Oklahoma St. 40

No.	Player	S	Pts	FG	3FG	FT	OR	DR	TR	PF	A	TO	Blk	Stl	Min	+/-
01	LAURENT, JONATHAN	G	0	0-1	0-1	0-0	0	1	1	1	0	0	0	1	13	-1
04	DZIAGWA, THOMAS	G	0	0-5	0-5	0-0	0	1	1	1	0	1	0	0	16	-12
12	MCGRIFF, CAMERON	F	11	4-9	1-3	2-2	2	4	6	1	1	1	0	2	31	-8
13	LIKEKELE, ISAAC	G	12	5-11	0-0	2-4	1	4	5	1	0	1	0	0	28	-9
21	WATERS, III, LINDY	G	0	0-8	0-5	0-0	0	4	4	2	4	3	0	0	37	-14
00	ANDERSON, III, AVERY	G	8	4-12	0-2	0-0	1	5	6	3	3	5	0	1	28	-9
02	HARRIS JR., CHRIS	G	5	2-4	1-3	0-0	0	1	1	1	1	0	0	0	20	5
14	ANEI, YOR	F	4	1-3	0-0	2-2	3	2	5	4	0	2	3	0	17	-1
22	BOONE, KALIB	F	0	0-0	0-0	0-0	0	1	1	1	1	0	0	1	9	-11
	TEAM						0	2	2	0		0				
TOTALS			40	16-53	2-19	6-8	7	25	32	15	10	13	3	5	199	

Shooting By Period

Period	FG	FG%	3FG	3FG%	FT	FT%
1st Half	7-25	28%	1-9	11%	2-3	67%
2nd Half	9-28	32%	1-10	10%	4-5	80%
Game	16-53	30.2%	2-19	10.5%	6-8	75.0%

Last FG: 2nd-00:10

Largest lead: By 4 at

Technical Fouls: None.

TCU 52

No.	Player	S	Pts	FG	3FG	FT	OR	DR	TR	PF	A	TO	Blk	Stl	Min	+/-
01	BANE, DESMOND	G	20	6-15	4-8	4-4	2	7	9	2	6	2	0	3	37	8
02	DENNIS, EDRIC	G	5	2-7	1-2	0-0	0	3	3	4	0	2	0	2	18	0
05	GRAYER, JAIRE	G	4	1-4	0-3	2-2	2	2	4	2	0	2	1	1	20	10
21	SAMUEL, KEVIN	C	0	0-4	0-0	0-0	3	5	8	0	1	2	3	0	33	5
22	NEMBARD, RJ	G	5	2-6	0-3	1-2	0	3	3	2	0	3	0	0	28	7
03	FARABELLO, FRANCISCO	G	10	3-6	2-4	2-2	1	5	6	0	3	2	0	1	31	16
04	FULLER, PJ	G	3	0-2	0-2	3-4	0	0	0	0	1	0	0	0	15	9
10	SMITH, DIANTE	F	5	2-4	1-3	0-0	0	1	1	0	0	0	0	0	10	-2
23	LEDEE, JAEDON	F	0	0-0	0-0	0-2	0	3	3	4	1	0	0	0	7	7
	TEAM						0	2	2	0		0				
TOTALS			52	16-48	8-25	12-16	8	31	39	14	12	13	4	7	199	

Shooting By Period

Period	FG	FG%	3FG	3FG%	FT	FT%
1st Half	7-24	29%	3-13	23%	7-10	70%
2nd Half	9-24	38%	5-12	42%	5-6	83%
Game	16-48	33.3%	8-25	32.0%	12-16	75.0%

Last FG: 2nd-00:21

Largest lead: By 16 at

Technical Fouls: None.

Game Notes:

Officials: **Doug Sirmons, Kelly Self, Larry Spaulding**
Attendance: **6001**

Start Time: **07:00 PM**

Conference Game;

Score	1st	2nd	TOT
OSU	17	23	40
TCU	24	28	52

OSU led for 3:15. TCU led for 34:49.

Game was tied for 0:0.

Times tied: 0 Lead Changes: 0

Points from	OSU	TCU
In the Paint	18	10
Off Turns	11	11
2nd Chance	2	6
Fast Break	12	3
Bench	17	18

Official Box Score
Oklahoma St. vs TCU
First Half Statistics Only
January 11, 2020 at Ed and Rae Schollmaier Arena



Oklahoma St. 17

No.	Player	S	Pts	FG	3FG	FT	OR	DR	TR	PF	A	TO	Blk	Stl	Min
01	LAURENT, JONATHAN	G	0	0-0	0-0	0-0	0	1	1	0	0	0	0	0	6
04	DZIAGWA, THOMAS	G	0	0-2	0-2	0-0	0	0	0	1	0	0	0	0	7
12	MCGRIFF, CAMERON	F	2	1-3	0-2	0-0	1	1	2	1	1	0	0	0	14
13	LIKEKELE, ISAAC	G	6	2-6	0-0	2-3	0	2	2	0	0	0	0	0	15
21	WATERS, III, LINDY	G	0	0-6	0-3	0-0	0	3	3	2	2	2	0	0	19
00	ANDERSON, III, AVERY	G	6	3-6	0-1	0-0	0	4	4	1	0	3	0	1	16
02	HARRIS JR., CHRIS	G	3	1-1	1-1	0-0	0	0	0	0	0	0	0	0	10
14	ANEI, YOR	F	0	0-1	0-0	0-0	1	0	1	2	0	2	2	0	11
22	BOONE, KALIB	F	0	0-0	0-0	0-0	0	0	0	1	0	0	0	0	3
	TEAM			0-0			0	2	2	0		0			
TOTALS			17	7-25	1-9	2-3	2	13	15	8	3	7	2	1	100

Shooting By Period

Period	FG	FG%	3FG	3FG%	FT	FT%
1st Half	7-25	28%	1-9	11%	2-3	67%
Game	16-53	30.2%	2-19	10.5%	6-8	75.0%

Last FG Half: OSU 2nd-00:10

TCU 24

No.	Player	S	Pts	FG	3FG	FT	OR	DR	TR	PF	A	TO	Blk	Stl	Min
01	BANE, DESMOND	G	14	4-10	2-6	4-4	2	4	6	0	0	0	0	1	18
02	DENNIS, EDRIC	G	0	0-2	0-0	0-0	0	2	2	2	0	2	0	1	8
05	GRAY, JAIRE	G	4	1-3	0-2	2-2	1	2	3	2	0	0	1	0	13
21	SAMUEL, KEVIN	C	0	0-2	0-0	0-0	2	2	4	0	0	1	1	0	15
22	NEMBARD, RJ	G	2	1-4	0-2	0-0	0	1	1	1	0	2	0	0	12
03	FARABELLO, FRANCISCO	G	0	0-0	0-0	0-0	0	2	2	0	1	2	0	1	12
04	FULLER, PJ	G	1	0-1	0-1	1-2	0	0	0	0	1	0	0	0	10
10	SMITH, DIANTE	F	3	1-2	1-2	0-0	0	0	0	0	0	0	0	0	7
23	LEDEE, JAEDON	F	0	0-0	0-0	0-2	0	2	2	2	1	0	0	0	5
	TEAM			0-0			0	1	1	0		0			
TOTALS			24	7-24	3-13	7-10	5	16	21	7	3	7	2	3	100

Shooting By Period

Period	FG	FG%	3FG	3FG%	FT	FT%
1st Half	7-24	29%	3-13	23%	7-10	70%
Game	16-48	33.3%	8-25	32.0%	12-16	75.0%

Last FG Half: TCU 2nd-00:21

Game Notes:

Officials: **Doug Sirmons, Kelly Self, Larry Spaulding**
Attendance: **6001**

Start Time: **07:00 PM**
Conference Game;

Score	1st	2nd	TOT
OSU	17	23	40
TCU	24	28	52

Points from (This Period)	OSU	TCU
In the Paint	6	4
Off Turns	5	5
2nd Chance	0	4
Fast Break	6	3
Bench	9	4

Official Play-By-Play
Oklahoma St. vs TCU
First Half
January 11, 2020 at Ed and Rae Schollmaier Arena



Period 1

Starters:

Oklahoma St.: 1 LAURENT, JONATHAN (G); 4 DZIAGWA, THOMAS (G); 12 MCGRUFF, CAMERON (F); 13 LIKEKELE, ISAAC (G); 21 WATERS, III, LINDY (G);
TCU: 1 BANE, DESMOND (G); 2 DENNIS, EDRIC (G); 5 GRAYER, JAIRE (G); 21 SAMUEL, KEVIN (C); 22 NEMBHARD, RJ (G);

Time	VISITORS: Oklahoma St.	Score	Margin	HOME: TCU
19:38				FOUL by NEMBHARD, RJ
19:38	GOOD! FT by LIKEKELE, ISAAC	0-1	V 1	
19:38	GOOD! FT by LIKEKELE, ISAAC	0-2	V 2	
19:16				MISSED LAYUP by DENNIS, EDRIC [PNT]
19:13	REBOUND (DEF) by LIKEKELE, ISAAC			
19:07	GOOD! JUMPER by MCGRUFF, CAMERON	0-4	V 4	
19:07	ASSIST by WATERS, III, LINDY			
18:49		2-4	V 2	GOOD! JUMPER by GRAYER, JAIRE
18:24	MISSED JUMPER by WATERS, III, LINDY			
18:20				REBOUND (DEF) by SAMUEL, KEVIN
18:15				MISSED 3PTR by GRAYER, JAIRE
18:12	REBOUND (DEF) by LIKEKELE, ISAAC			
18:05	MISSED 3PTR by MCGRUFF, CAMERON			
18:01				REBOUND (DEF) by BANE, DESMOND
17:54		4-4	T	GOOD! LAYUP by BANE, DESMOND
17:35	GOOD! LAYUP by LIKEKELE, ISAAC [PNT]	4-6	V 2	
17:20	FOUL by DZIAGWA, THOMAS			
17:20				SUB OUT: NEMBHARD, RJ
17:20				SUB IN: FULLER, PJ
17:11				TURNOVER by DENNIS, EDRIC [PNT]
17:11				SUB OUT: DENNIS, EDRIC
17:11				SUB IN: FARABELLO, FRANCISCO
16:41	MISSED 3PTR by WATERS, III, LINDY			
16:39	REBOUND (OFF) by MCGRUFF, CAMERON			
16:37	MISSED 3PTR by MCGRUFF, CAMERON			
16:33				REBOUND (DEF) by GRAYER, JAIRE
16:16				MISSED by SAMUEL, KEVIN
16:11				REBOUND (OFF) by SAMUEL, KEVIN
16:11	SUB OUT: LAURENT, JONATHAN			
16:11	SUB OUT: DZIAGWA, THOMAS			
16:11	SUB IN: ANDERSON, III, AVERY			
16:11	SUB IN: ANEI, YOR			
16:04		6-6	T	GOOD! JUMPER by BANE, DESMOND
16:04				ASSIST by FULLER, PJ
15:34	MISSED JUMPER by ANDERSON, III, AVERY [PNT]			
15:30				REBOUND (DEF) by SAMUEL, KEVIN
15:16		9-6	H 3	GOOD! 3PTR by BANE, DESMOND
15:00				FOUL by GRAYER, JAIRE
15:00	TIMEOUT MEDIA			
15:00				SUB OUT: GRAYER, JAIRE
15:00				SUB OUT: SAMUEL, KEVIN
15:00				SUB IN: SMITH, DIANTE
15:00				SUB IN: LEDEE, JAEDON
14:45	MISSED JUMPER by LIKEKELE, ISAAC [PNT]			
14:41				REBOUND (DEF) by BANE, DESMOND
14:36				MISSED LAYUP by BANE, DESMOND [PNT]
14:33	REBOUND (DEF) by ANDERSON, III, AVERY			
14:19	TURNOVER by ANEI, YOR			
14:19				STEAL by BANE, DESMOND
14:05				MISSED 3PTR by SMITH, DIANTE
14:01	REBOUND (DEF) by TEAM			
13:39	MISSED JUMPER by WATERS, III, LINDY			
13:32				REBOUND (DEF) by LEDEE, JAEDON
13:15	SUB OUT: LIKEKELE, ISAAC			
13:15	SUB IN: DZIAGWA, THOMAS			
12:59				TURNOVER by FARABELLO, FRANCISCO
12:47				FOUL by LEDEE, JAEDON
12:34	FOUL by ANEI, YOR			
12:34	TURNOVER by ANEI, YOR			
12:08	FOUL by MCGRUFF, CAMERON			
12:08				MISSED FT by LEDEE, JAEDON
12:08				REBOUND (DEADB) by TEAM
12:08				SUB OUT: BANE, DESMOND
12:08				SUB OUT: FARABELLO, FRANCISCO
12:08				SUB IN: DENNIS, EDRIC
12:08				SUB IN: NEMBHARD, RJ
12:08				MISSED FT by LEDEE, JAEDON
12:06	REBOUND (DEF) by WATERS, III, LINDY			
11:51	MISSED LAYUP by ANEI, YOR [PNT]			
11:48				REBOUND (DEF) by LEDEE, JAEDON

Time	VISITORS: Oklahoma St.	Score	Margin	HOME: TCU
11:31		12-6	H 6	GOOD! 3PTR by SMITH, DIANTE
11:31				ASSIST by LEDEE, JAEDON
11:23	MISSED 3PTR by DZIAGWA, THOMAS			
11:18				REBOUND (DEF) by DENNIS, EDRIC
11:16	FOUL by ANDERSON, III,AVERY [PNT]			
11:16	TIMEOUT MEDIA			
11:16				SUB OUT: LEDEE, JAEDON
11:16				SUB IN: SAMUEL, KEVIN
11:16	SUB OUT: WATERS, III,LINDY			
11:16	SUB IN: LIKEKELE, ISAAC			
11:16				MISSED FT by FULLER, PJ [FB]
11:16				REBOUND (DEADB) by TEAM
11:16		13-6	H 7	GOOD! FT by FULLER, PJ [FB]
10:46	MISSED 3PTR by DZIAGWA, THOMAS			
10:43				REBOUND (DEF) by DENNIS, EDRIC
10:37				MISSED JUMPER by SAMUEL, KEVIN
10:37	BLOCK by ANEI, YOR			
10:32	REBOUND (DEF) by MCGRIFF, CAMERON			
10:31	GOOD! JUMPER by ANDERSON, III,AVERY [FB]	13-8	H 5	
10:09				TIMEOUT 30SEC
10:09				SUB OUT: FULLER, PJ
10:09				SUB OUT: SMITH, DIANTE
10:09				SUB IN: BANE, DESMOND
10:09				SUB IN: GRAYER, JAIRE
10:09	SUB OUT: ANDERSON, III,AVERY			
10:09	SUB OUT: DZIAGWA, THOMAS			
10:09	SUB IN: HARRIS JR., CHRIS			
10:09	SUB IN: WATERS, III,LINDY			
10:06				MISSED LAYUP by DENNIS, EDRIC
10:06	BLOCK by ANEI, YOR			
10:02	REBOUND (DEF) by WATERS, III,LINDY			
10:01	TURNOVER by WATERS, III,LINDY			
09:47				MISSED 3PTR by NEMBHARD, RJ
09:45	REBOUND (DEF) by TEAM			
09:45	SUB OUT: MCGRIFF, CAMERON			
09:45	SUB IN: ANDERSON, III,AVERY			
09:23	MISSED 3PTR by ANDERSON, III,AVERY			
09:19				REBOUND (DEF) by NEMBHARD, RJ
09:13				TURNOVER by NEMBHARD, RJ [PNT]
09:08	GOOD! DUNK by LIKEKELE, ISAAC [FB]	13-10	H 3	
09:08	ASSIST by WATERS, III,LINDY			
08:52				MISSED 3PTR by BANE, DESMOND
08:48				REBOUND (OFF) by SAMUEL, KEVIN
08:39	SUB OUT: ANEI, YOR			
08:39	SUB IN: BOONE, KALIB			
08:28				MISSED 3PTR by BANE, DESMOND
08:24	REBOUND (DEF) by ANDERSON, III,AVERY			
08:22	GOOD! LAYUP by ANDERSON, III,AVERY [FB]	13-12	H 1	
08:06				FOUL by DENNIS, EDRIC
08:06				TURNOVER by DENNIS, EDRIC
08:06				SUB OUT: DENNIS, EDRIC
08:06				SUB IN: FARABELLO, FRANCISCO
07:54	MISSED LAYUP by LIKEKELE, ISAAC			
07:51				REBOUND (DEF) by FARABELLO, FRANCISCO
07:40				TURNOVER by FARABELLO, FRANCISCO
07:40	STEAL by ANDERSON, III,AVERY			
07:35	TURNOVER by ANDERSON, III,AVERY			
07:35				STEAL by FARABELLO, FRANCISCO
07:32		15-12	H 3	GOOD! LAYUP by NEMBHARD, RJ [FB]
07:32				ASSIST by FARABELLO, FRANCISCO
07:01	MISSED JUMPER by WATERS, III,LINDY			
06:58				REBOUND (DEF) by FARABELLO, FRANCISCO
06:51				MISSED 3PTR by GRAYER, JAIRE
06:48				REBOUND (OFF) by BANE, DESMOND
06:44	FOUL by BOONE, KALIB [PNT]			
06:44	TIMEOUT MEDIA			
06:44				SUB OUT: SAMUEL, KEVIN
06:44				SUB IN: LEDEE, JAEDON
06:44	SUB OUT: LIKEKELE, ISAAC			
06:44	SUB OUT: BOONE, KALIB			
06:44	SUB IN: LAURENT, JONATHAN			
06:44	SUB IN: MCGRIFF, CAMERON			
06:44		16-12	H 4	GOOD! FT by GRAYER, JAIRE
06:44		17-12	H 5	GOOD! FT by GRAYER, JAIRE
06:17	MISSED 3PTR by WATERS, III,LINDY			
06:14				REBOUND (DEF) by TEAM
06:04				MISSED LAYUP by NEMBHARD, RJ
06:01	REBOUND (DEF) by WATERS, III,LINDY			
05:56				FOUL by LEDEE, JAEDON
05:56				SUB OUT: LEDEE, JAEDON

Time	VISITORS: Oklahoma St.	Score	Margin	HOME: TCU
05:56				SUB IN: SAMUEL, KEVIN
05:40	GOOD! JUMPER by ANDERSON, III,AVERY	17-14	H 3	
05:10				MISSED 3PTR by NEMBHARD, RJ
05:06				REBOUND (OFF) by BANE, DESMOND
05:04				MISSED 3PTR by BANE, DESMOND
05:01				REBOUND (OFF) by GRAYER, JAIRE
04:50				MISSED 3PTR by BANE, DESMOND
04:47	REBOUND (DEF) by LAURENT, JONATHAN			
04:47				FOUL by GRAYER, JAIRE
04:47				SUB OUT: GRAYER, JAIRE
04:47				SUB IN: SMITH, DIANTE
04:29	TURNOVER by WATERS, III,LINDY			
04:19	FOUL by WATERS, III,LINDY [PNT]			
04:19	SUB OUT: LAURENT, JONATHAN			
04:19	SUB IN: ANEI, YOR			
04:03				TURNOVER by NEMBHARD, RJ
04:03				SUB OUT: NEMBHARD, RJ
04:03				SUB IN: FULLER, PJ
03:46	GOOD! 3PTR by HARRIS JR., CHRIS	17-17	T	
03:46	ASSIST by MCGRIFF, CAMERON			
03:29	FOUL by WATERS, III,LINDY			
03:29	TIMEOUT MEDIA			
03:29	SUB OUT: MCGRIFF, CAMERON			
03:29	SUB IN: LIKEKELE, ISAAC			
03:29		18-17	H 1	GOOD! FT by BANE, DESMOND
03:29		19-17	H 2	GOOD! FT by BANE, DESMOND
03:04	MISSED JUMPER by ANDERSON, III,AVERY			
03:01				REBOUND (DEF) by BANE, DESMOND
02:42				SUB OUT: FARABELLO, FRANCISCO
02:42				SUB IN: DENNIS, EDRIC
02:42				SUB OUT: SMITH, DIANTE
02:42				SUB IN: GRAYER, JAIRE
02:38				MISSED JUMPER by BANE, DESMOND
02:34	REBOUND (DEF) by ANDERSON, III,AVERY			
02:30	TURNOVER by ANDERSON, III,AVERY			
02:30				STEAL by DENNIS, EDRIC
02:12				MISSED 3PTR by FULLER, PJ
02:08	REBOUND (DEF) by ANDERSON, III,AVERY			
01:55	MISSED LAYUP by LIKEKELE, ISAAC [PNT]			
01:55				BLOCK by SAMUEL, KEVIN
01:51				REBOUND (DEF) by BANE, DESMOND
01:40				TURNOVER by SAMUEL, KEVIN
01:40				SUB OUT: FULLER, PJ
01:40				SUB IN: NEMBHARD, RJ
01:19				FOUL by DENNIS, EDRIC
01:19				SUB OUT: DENNIS, EDRIC
01:19				SUB IN: FARABELLO, FRANCISCO
01:19	MISSED FT by LIKEKELE, ISAAC			
01:17	REBOUND (OFF) by ANEI, YOR			
01:13	MISSED LAYUP by LIKEKELE, ISAAC [PNT]			
01:13				BLOCK by GRAYER, JAIRE
01:09				REBOUND (DEF) by GRAYER, JAIRE
00:52	FOUL by ANEI, YOR [PNT]			
00:52		20-17	H 3	GOOD! FT by BANE, DESMOND
00:52		21-17	H 4	GOOD! FT by BANE, DESMOND
00:52	TIMEOUT 30SEC			
00:52	SUB OUT: ANEI, YOR			
00:52	SUB IN: BOONE, KALIB			
00:37	TURNOVER by ANDERSON, III,AVERY			
00:19		24-17	H 7	GOOD! 3PTR by BANE, DESMOND
00:01	MISSED 3PTR by WATERS, III,LINDY			
00:00				REBOUND (DEADB) by TEAM

Oklahoma St. 17, TCU 24

Points from (This Period)	OSU	TCU
In the Paint	6	4
Off Turns	5	5
2nd Chance	0	4
Fast Break	6	3
Bench	9	4

Official Box Score
Oklahoma St. vs TCU
Second Half Statistics Only
January 11, 2020 at Ed and Rae Schollmaier Arena



Oklahoma St. 23

No.	Player	S	Pts	FG	3FG	FT	OR	DR	TR	PF	A	TO	Blk	Stl	Min
01	LAURENT, JONATHAN	G	0	0-1	0-1	0-0	0	0	0	1	0	0	0	1	7
04	DZIAGWA, THOMAS	G	0	0-3	0-3	0-0	0	1	1	0	0	1	0	0	9
12	MCGRIFF, CAMERON	F	9	3-6	1-1	2-2	1	3	4	0	0	1	0	2	17
13	LIKEKELE, ISAAC	G	6	3-5	0-0	0-1	1	2	3	1	0	1	0	0	13
21	WATERS, III, LINDY	G	0	0-2	0-2	0-0	0	1	1	0	2	1	0	0	18
00	ANDERSON, III, AVERY	G	2	1-6	0-1	0-0	1	1	2	2	3	2	0	0	12
02	HARRIS JR., CHRIS	G	2	1-3	0-2	0-0	0	1	1	1	1	0	0	0	10
14	ANEI, YOR	F	4	1-2	0-0	2-2	2	2	4	2	0	0	1	0	6
22	BOONE, KALIB	F	0	0-0	0-0	0-0	0	1	1	0	1	0	0	1	6
	TEAM			0-0			0	0	0	0		0			
TOTALS			23	9-28	1-10	4-5	5	12	17	7	7	6	1	4	99

Shooting By Period

Period	FG	FG%	3FG	3FG%	FT	FT%
2nd Half	9-28	32%	1-10	10%	4-5	80%
Game	16-53	30.2%	2-19	10.5%	6-8	75.0%

Last FG Half: OSU -

TCU 28

No.	Player	S	Pts	FG	3FG	FT	OR	DR	TR	PF	A	TO	Blk	Stl	Min
01	BANE, DESMOND	G	6	2-5	2-2	0-0	0	3	3	2	6	2	0	2	19
02	DENNIS, EDRIC	G	5	2-5	1-2	0-0	0	1	1	2	0	0	0	1	10
05	GRAYER, JAIRE	G	0	0-1	0-1	0-0	1	0	1	0	0	2	0	1	7
21	SAMUEL, KEVIN	C	0	0-2	0-0	0-0	1	3	4	0	1	1	2	0	18
22	NEMBARD, RJ	G	3	1-2	0-1	1-2	0	2	2	1	0	1	0	0	16
03	FARABELLO, FRANCISCO	G	10	3-6	2-4	2-2	1	3	4	0	2	0	0	0	20
04	FULLER, PJ	G	2	0-1	0-1	2-2	0	0	0	0	0	0	0	0	5
10	SMITH, DIANTE	F	2	1-2	0-1	0-0	0	1	1	0	0	0	0	0	4
23	LEDEE, JAEDON	F	0	0-0	0-0	0-0	0	1	1	2	0	0	0	0	2
	TEAM			0-0			0	1	1	0		0			
TOTALS			28	9-24	5-12	5-6	3	15	18	7	9	6	2	4	99

Shooting By Period

Period	FG	FG%	3FG	3FG%	FT	FT%
2nd Half	9-24	38%	5-12	42%	5-6	83%
Game	16-48	33.3%	8-25	32.0%	12-16	75.0%

Last FG Half: TCU -

Game Notes:

Officials: **Doug Sirmons, Kelly Self, Larry Spaulding**

Attendance: **6001**

Start Time: **07:00 PM**

Conference Game;

Score	1st	2nd	TOT
OSU	17	23	40
TCU	24	28	52

Points from (This Period)	OSU	TCU
In the Paint	12	6
Off Turns	6	6
2nd Chance	2	2
Fast Break	6	0
Bench	8	14

**Official Play-By-Play
Oklahoma St. vs TCU**

**Second Half
January 11, 2020 at Ed and Rae Schollmaier Arena**



Period 2

Starters:

Oklahoma St.: 1 LAURENT, JONATHAN (G); 4 DZIAGWA, THOMAS (G); 12 MCGRIFF, CAMERON (F); 13 LIKEKELE, ISAAC (G); 21 WATERS, III, LINDY (G);
TCU: 1 BANE, DESMOND (G); 2 DENNIS, EDRIC (G); 5 GRAYER, JAIRE (G); 21 SAMUEL, KEVIN (C); 22 NEMBHARD, RJ (G);

Time	VISITORS: Oklahoma St.	Score	Margin	HOME: TCU
20:00				SUB OUT: FARABELLO, FRANCISCO
20:00				SUB IN: DENNIS, EDRIC
20:00	SUB OUT: ANDERSON, III, AVERY			
20:00	SUB OUT: HARRIS JR., CHRIS			
20:00	SUB OUT: BOONE, KALIB			
20:00	SUB IN: LAURENT, JONATHAN			
20:00	SUB IN: DZIAGWA, THOMAS			
20:00	SUB IN: MCGRIFF, CAMERON			
19:49				FOUL by DENNIS, EDRIC [PNT]
19:49				SUB OUT: DENNIS, EDRIC
19:49				SUB IN: FARABELLO, FRANCISCO
19:38	MISSED LAYUP by MCGRIFF, CAMERON [PNT]			
19:38				BLOCK by SAMUEL, KEVIN
19:33				REBOUND (DEF) by FARABELLO, FRANCISCO
19:12				MISSED 3PTR by GRAYER, JAIRE
19:09	REBOUND (DEF) by LIKEKELE, ISAAC			
19:05	GOOD! LAYUP by LIKEKELE, ISAAC [FB/PNT]	24-19	H 5	
18:38		26-19	H 7	GOOD! LAYUP by NEMBHARD, RJ
18:38				ASSIST by BANE, DESMOND
18:21	MISSED 3PTR by LAURENT, JONATHAN			
18:16				REBOUND (DEF) by BANE, DESMOND
18:13	FOUL by LAURENT, JONATHAN [PNT]			
17:57		29-19	H 10	GOOD! 3PTR by BANE, DESMOND
17:57				ASSIST by FARABELLO, FRANCISCO
17:39	GOOD! LAYUP by LIKEKELE, ISAAC	29-21	H 8	
17:16		32-21	H 11	GOOD! 3PTR by FARABELLO, FRANCISCO
17:16				ASSIST by BANE, DESMOND
16:52	TURNOVER by MCGRIFF, CAMERON			
16:52				STEAL by GRAYER, JAIRE
16:43				MISSED JUMPER by BANE, DESMOND
16:39				REBOUND (OFF) by FARABELLO, FRANCISCO
16:36				SUB OUT: GRAYER, JAIRE
16:36				SUB IN: SMITH, DIANTE
16:36	SUB OUT: LAURENT, JONATHAN			
16:36	SUB OUT: DZIAGWA, THOMAS			
16:36	SUB OUT: LIKEKELE, ISAAC			
16:36	SUB IN: ANDERSON, III, AVERY			
16:36	SUB IN: HARRIS JR., CHRIS			
16:36	SUB IN: ANEI, YOR			
16:29				MISSED 3PTR by SMITH, DIANTE
16:25	REBOUND (DEF) by ANEI, YOR			
16:19	MISSED LAYUP by ANDERSON, III, AVERY [PNT]			
16:19				REBOUND (DEF) by SMITH, DIANTE
16:19	FOUL by ANEI, YOR			
16:08				MISSED LAYUP by SAMUEL, KEVIN [PNT]
16:08	BLOCK by ANEI, YOR			
16:04				REBOUND (OFF) by SAMUEL, KEVIN
15:56		34-21	H 13	GOOD! LAYUP by SMITH, DIANTE
15:56				ASSIST by BANE, DESMOND
15:48	TIMEOUT 30SEC			
15:48	TIMEOUT MEDIA			
15:41	GOOD! JUMPER by ANEI, YOR	34-23	H 11	
15:41	ASSIST by HARRIS JR., CHRIS			
15:15				TURNOVER by NEMBHARD, RJ
15:15	STEAL by MCGRIFF, CAMERON			
15:10	TURNOVER by ANDERSON, III, AVERY			
15:10	TIMEOUT MEDIA			
14:55	FOUL by HARRIS JR., CHRIS [PNT]			
14:55				MISSED FT by NEMBHARD, RJ
14:55				REBOUND (DEADB) by TEAM
14:55		35-23	H 12	GOOD! FT by NEMBHARD, RJ
14:39	GOOD! 3PTR by MCGRIFF, CAMERON	35-26	H 9	
14:39	ASSIST by ANDERSON, III, AVERY			
14:08				MISSED 3PTR by NEMBHARD, RJ
14:04	REBOUND (DEF) by MCGRIFF, CAMERON			
14:01	MISSED JUMPER by ANDERSON, III, AVERY			
13:57				REBOUND (DEF) by NEMBHARD, RJ
13:44				TURNOVER by BANE, DESMOND
13:44	STEAL by MCGRIFF, CAMERON			
13:35	GOOD! LAYUP by MCGRIFF, CAMERON [FB]	35-28	H 7	

Time	VISITORS: Oklahoma St.	Score	Margin	HOME: TCU
13:35	ASSIST by WATERS, III,LINDY			
13:33				TIMEOUT 30SEC
13:33				SUB OUT: SAMUEL, KEVIN
13:33				SUB OUT: NEMBHARD, RJ
13:33				SUB IN: FULLER, PJ
13:33				SUB IN: LEDEE, JAEDON
13:05	FOUL by ANEI, YOR			
13:05		36-28	H 8	GOOD! FT by FULLER, PJ
13:05				SUB OUT: SMITH, DIANTE
13:05				SUB IN: GRAYER, JAIRE
13:05	SUB OUT: ANEI, YOR			
13:05	SUB IN: BOONE, KALIB			
13:05		37-28	H 9	GOOD! FT by FULLER, PJ
12:50	MISSED 3PTR by HARRIS JR., CHRIS			
12:45	REBOUND (OFF) by MCGRIFF, CAMERON			
12:43	MISSED 3PTR by WATERS, III,LINDY			
12:40				REBOUND (DEF) by LEDEE, JAEDON
12:16	FOUL by ANDERSON, III,AVERY			
12:16	SUB OUT: MCGRIFF, CAMERON			
12:16	SUB IN: LAURENT, JONATHAN			
12:12				MISSED 3PTR by FULLER, PJ
12:07				REBOUND (OFF) by GRAYER, JAIRE
12:07				TURNOVER by GRAYER, JAIRE
12:07	STEAL by LAURENT, JONATHAN			
11:43				FOUL by LEDEE, JAEDON [PNT]
11:43	TIMEOUT MEDIA			
11:43				SUB OUT: LEDEE, JAEDON
11:43				SUB IN: SAMUEL, KEVIN
11:43	SUB OUT: WATERS, III,LINDY			
11:43	SUB IN: LIKEKELE, ISAAC			
11:37	GOOD! JUMPER by HARRIS JR., CHRIS	37-30	H 7	
11:37	ASSIST by ANDERSON, III,AVERY			
11:18		40-30	H 10	GOOD! 3PTR by FARABELLO, FRANCISCO
11:18				ASSIST by BANE, DESMOND
10:46	MISSED LAYUP by ANDERSON, III,AVERY			
10:43				REBOUND (DEF) by BANE, DESMOND
10:19				MISSED JUMPER by FARABELLO, FRANCISCO [PNT]
10:16	REBOUND (DEF) by BOONE, KALIB			
10:08	MISSED 3PTR by HARRIS JR., CHRIS			
10:04				REBOUND (DEF) by SAMUEL, KEVIN
09:46				TURNOVER by GRAYER, JAIRE
09:46	STEAL by BOONE, KALIB			
09:42	GOOD! LAYUP by LIKEKELE, ISAAC [FB/PNT]	40-32	H 8	
09:42	ASSIST by BOONE, KALIB			
09:42				FOUL by BANE, DESMOND [PNT]
09:42				SUB OUT: FULLER, PJ
09:42				SUB OUT: GRAYER, JAIRE
09:42				SUB IN: DENNIS, EDRIC
09:42				SUB IN: NEMBHARD, RJ
09:42	SUB OUT: ANDERSON, III,AVERY			
09:42	SUB OUT: HARRIS JR., CHRIS			
09:42	SUB OUT: BOONE, KALIB			
09:42	SUB IN: DZIAGWA, THOMAS			
09:42	SUB IN: MCGRIFF, CAMERON			
09:42	SUB IN: WATERS, III,LINDY			
09:41	MISSED FT by LIKEKELE, ISAAC [FB]			
09:41				REBOUND (DEF) by NEMBHARD, RJ
09:41	FOUL by LIKEKELE, ISAAC			
09:22				MISSED JUMPER by BANE, DESMOND
09:19	REBOUND (DEF) by WATERS, III,LINDY			
09:01	MISSED LAYUP by MCGRIFF, CAMERON [PNT]			
09:01				REBOUND (DEF) by FARABELLO, FRANCISCO
09:01				BLOCK by SAMUEL, KEVIN
08:54				TURNOVER by BANE, DESMOND
08:54				SUB OUT: BANE, DESMOND
08:54				SUB IN: FULLER, PJ
08:54	SUB OUT: LAURENT, JONATHAN			
08:54	SUB IN: ANDERSON, III,AVERY			
08:34	MISSED LAYUP by LIKEKELE, ISAAC			
08:28	REBOUND (OFF) by ANDERSON, III,AVERY			
08:27	MISSED 3PTR by ANDERSON, III,AVERY			
08:24				REBOUND (DEF) by FARABELLO, FRANCISCO
08:05	FOUL by ANDERSON, III,AVERY			
08:05	SUB OUT: LIKEKELE, ISAAC			
08:05	SUB IN: BOONE, KALIB			
08:05		41-32	H 9	GOOD! FT by FARABELLO, FRANCISCO
08:05		42-32	H 10	GOOD! FT by FARABELLO, FRANCISCO
07:50	TURNOVER by WATERS, III,LINDY [PNT]			
07:50				STEAL by DENNIS, EDRIC
07:33				TURNOVER by SAMUEL, KEVIN

Time	VISITORS: Oklahoma St.	Score	Margin	HOME: TCU
07:33	TIMEOUT MEDIA			
07:33				SUB OUT: FULLER, PJ
07:33				SUB IN: BANE, DESMOND
07:21	TURNOVER by ANDERSON, III,AVERY [PNT]			
07:00		45-32	H 13	GOOD! 3PTR by DENNIS, EDRIC
07:00				ASSIST by BANE, DESMOND
06:41	MISSED by MCGRIFF, CAMERON			
06:38				REBOUND (DEF) by SAMUEL, KEVIN
06:21				MISSED LAYUP by DENNIS, EDRIC [PNT]
06:17	REBOUND (DEF) by ANDERSON, III,AVERY			
06:15	MISSED LAYUP by ANDERSON, III,AVERY			
06:13				REBOUND (DEF) by TEAM
06:13	SUB OUT: ANDERSON, III,AVERY			
06:13	SUB IN: LIKEKELE, ISAAC			
05:49				MISSED 3PTR by FARABELLO, FRANCISCO
05:46	REBOUND (DEF) by DZIAGWA, THOMAS			
05:37	MISSED 3PTR by DZIAGWA, THOMAS			
05:33				REBOUND (DEF) by DENNIS, EDRIC
05:21		48-32	H 16	GOOD! 3PTR by BANE, DESMOND
05:21				ASSIST by FARABELLO, FRANCISCO
05:12	TIMEOUT TEAM			
05:12				SUB OUT: SAMUEL, KEVIN
05:12				SUB IN: LEDEE, JAEDON
05:12	SUB OUT: BOONE, KALIB			
05:12	SUB IN: ANEI, YOR			
04:59	MISSED 3PTR by DZIAGWA, THOMAS			
04:56	REBOUND (OFF) by ANEI, YOR			
04:56				FOUL by LEDEE, JAEDON
04:56				SUB OUT: LEDEE, JAEDON
04:56				SUB IN: SAMUEL, KEVIN
04:50	TURNOVER by DZIAGWA, THOMAS			
04:50				STEAL by BANE, DESMOND
04:20				MISSED LAYUP by DENNIS, EDRIC
04:17	REBOUND (DEF) by MCGRIFF, CAMERON			
04:15	MISSED 3PTR by DZIAGWA, THOMAS			
04:12				REBOUND (DEF) by BANE, DESMOND
03:52				MISSED 3PTR by FARABELLO, FRANCISCO
03:48	REBOUND (DEF) by ANEI, YOR			
03:38				FOUL by BANE, DESMOND [PNT]
03:38	TIMEOUT MEDIA			
03:38	SUB OUT: DZIAGWA, THOMAS			
03:38	SUB IN: HARRIS JR., CHRIS			
03:29	MISSED LAYUP by LIKEKELE, ISAAC [PNT]			
03:26				REBOUND (DEF) by SAMUEL, KEVIN
03:09				MISSED DUNK by SAMUEL, KEVIN
03:00	REBOUND (DEF) by HARRIS JR., CHRIS			
03:00	MISSED 3PTR by WATERS, III,LINDY			
02:57	REBOUND (OFF) by LIKEKELE, ISAAC			
02:56	MISSED LAYUP by ANEI, YOR [PNT]			
02:54	REBOUND (OFF) by ANEI, YOR			
02:54				FOUL by NEMBHARD, RJ
02:54	GOOD! FT by ANEI, YOR	48-33	H 15	
02:54	GOOD! FT by ANEI, YOR	48-34	H 14	
02:54	SUB OUT: ANEI, YOR			
02:54	SUB IN: ANDERSON, III,AVERY			
02:30				MISSED 3PTR by DENNIS, EDRIC
02:27	REBOUND (DEF) by MCGRIFF, CAMERON			
02:12	GOOD! LAYUP by ANDERSON, III,AVERY	48-36	H 12	
02:12	ASSIST by WATERS, III,LINDY			
01:41		50-36	H 14	GOOD! LAYUP by FARABELLO, FRANCISCO [PNT]
01:41				ASSIST by BANE, DESMOND
01:29				FOUL by DENNIS, EDRIC
01:29	GOOD! FT by MCGRIFF, CAMERON	50-37	H 13	
01:29	GOOD! FT by MCGRIFF, CAMERON	50-38	H 12	
01:05				MISSED JUMPER by BANE, DESMOND
01:00	REBOUND (DEF) by LIKEKELE, ISAAC			
00:51	TURNOVER by LIKEKELE, ISAAC			
00:51				STEAL by BANE, DESMOND
00:21		52-38	H 14	GOOD! JUMPER by DENNIS, EDRIC
00:21				ASSIST by SAMUEL, KEVIN
00:10	GOOD! LAYUP by MCGRIFF, CAMERON	52-40	H 12	
00:10	ASSIST by ANDERSON, III,AVERY			

Oklahoma St. 40, TCU 52

Points from (This Period)	OSU	TCU
In the Paint	12	6
Off Turns	6	6
2nd Chance	2	2
Fast Break	6	0
Bench	8	14

Official Scoring/Possession Reference Chart
Oklahoma St. vs TCU
Period 1
January 11, 2020 at Ed and Rae Schollmaier Arena



Period 1

Starters:

Oklahoma St.: 1 LAURENT, JONATHAN (G); 4 DZIAGWA, THOMAS (G); 12 MCGRIFF, CAMERON (F); 13 LIKEKELE, ISAAC (G); 21 WATERS, III, LINDY (G);
TCU: 1 BANE, DESMOND (G); 2 DENNIS, EDRIC (G); 5 GRAYER, JAIRES (G); 21 SAMUEL, KEVIN (C); 22 NEMBHARD, RJ (G);

Time	VISITORS: Oklahoma St.	Score	Margin	HOME: TCU
19:38	GOOD! FT by LIKEKELE, ISAAC	0-1	V 1	
19:38	GOOD! FT by LIKEKELE, ISAAC	0-2	V 2	
19:07	GOOD! JUMPER by MCGRIFF, CAMERON	0-4	V 4	
18:49		2-4	V 2	GOOD! JUMPER by GRAYER, JAIRES
17:54		4-4	T	GOOD! LAYUP by BANE, DESMOND
17:35	GOOD! LAYUP by LIKEKELE, ISAAC [PNT]	4-6	V 2	
16:04		6-6	T	GOOD! JUMPER by BANE, DESMOND
15:16		9-6	H 3	GOOD! 3PTR by BANE, DESMOND
11:31		12-6	H 6	GOOD! 3PTR by SMITH, DIANTE
11:16		13-6	H 7	GOOD! FT by FULLER, PJ [FB]
10:31	GOOD! JUMPER by ANDERSON, III, AVERY [FB]	13-8	H 5	
09:08	GOOD! DUNK by LIKEKELE, ISAAC [FB]	13-10	H 3	
08:22	GOOD! LAYUP by ANDERSON, III, AVERY [FB]	13-12	H 1	
07:32		15-12	H 3	GOOD! LAYUP by NEMBHARD, RJ [FB]
06:44		16-12	H 4	GOOD! FT by GRAYER, JAIRES
06:44		17-12	H 5	GOOD! FT by GRAYER, JAIRES
05:40	GOOD! JUMPER by ANDERSON, III, AVERY	17-14	H 3	
03:46	GOOD! 3PTR by HARRIS JR., CHRIS	17-17	T	
03:29		18-17	H 1	GOOD! FT by BANE, DESMOND
03:29		19-17	H 2	GOOD! FT by BANE, DESMOND
00:52		20-17	H 3	GOOD! FT by BANE, DESMOND
00:52		21-17	H 4	GOOD! FT by BANE, DESMOND
00:19		24-17	H 7	GOOD! 3PTR by BANE, DESMOND

Oklahoma St. 17, TCU 24

Official Scoring/Possession Reference Chart
Oklahoma St. vs TCU
Period 2
January 11, 2020 at Ed and Rae Schollmaier Arena



Period 2

Starters:

Oklahoma St.: 1 LAURENT, JONATHAN (G); 4 DZIAGWA, THOMAS (G); 12 MCGRIFF, CAMERON (F); 13 LIKEKELE, ISAAC (G); 21 WATERS, III, LINDY (G);
TCU: 1 BANE, DESMOND (G); 2 DENNIS, EDRIC (G); 5 GRAYER, JAIRE (G); 21 SAMUEL, KEVIN (C); 22 NEMBHARD, RJ (G);

Time	VISITORS: Oklahoma St.	Score	Margin	HOME: TCU
19:05	GOOD! LAYUP by LIKEKELE, ISAAC [FB/PNT]	24-19	H 5	
18:38		26-19	H 7	GOOD! LAYUP by NEMBHARD, RJ
17:57		29-19	H 10	GOOD! 3PTR by BANE, DESMOND
17:39	GOOD! LAYUP by LIKEKELE, ISAAC	29-21	H 8	
17:16		32-21	H 11	GOOD! 3PTR by FARABELLO, FRANCISCO
15:56		34-21	H 13	GOOD! LAYUP by SMITH, DIANTE
15:41	GOOD! JUMPER by ANEI, YOR	34-23	H 11	
14:55		35-23	H 12	GOOD! FT by NEMBHARD, RJ
14:39	GOOD! 3PTR by MCGRIFF, CAMERON	35-26	H 9	
13:35	GOOD! LAYUP by MCGRIFF, CAMERON [FB]	35-28	H 7	
13:05		36-28	H 8	GOOD! FT by FULLER, PJ
13:05		37-28	H 9	GOOD! FT by FULLER, PJ
11:37	GOOD! JUMPER by HARRIS JR., CHRIS	37-30	H 7	
11:18		40-30	H 10	GOOD! 3PTR by FARABELLO, FRANCISCO
09:42	GOOD! LAYUP by LIKEKELE, ISAAC [FB/PNT]	40-32	H 8	
08:05		41-32	H 9	GOOD! FT by FARABELLO, FRANCISCO
08:05		42-32	H 10	GOOD! FT by FARABELLO, FRANCISCO
07:00		45-32	H 13	GOOD! 3PTR by DENNIS, EDRIC
05:21		48-32	H 16	GOOD! 3PTR by BANE, DESMOND
02:54	GOOD! FT by ANEI, YOR	48-33	H 15	
02:54	GOOD! FT by ANEI, YOR	48-34	H 14	
02:12	GOOD! LAYUP by ANDERSON, III, AVERY	48-36	H 12	
01:41		50-36	H 14	GOOD! LAYUP by FARABELLO, FRANCISCO [PNT]
01:29	GOOD! FT by MCGRIFF, CAMERON	50-37	H 13	
01:29	GOOD! FT by MCGRIFF, CAMERON	50-38	H 12	
00:21		52-38	H 14	GOOD! JUMPER by DENNIS, EDRIC
00:10	GOOD! LAYUP by MCGRIFF, CAMERON	52-40	H 12	

Oklahoma St. 40, TCU 52

Official Substitutions Log
Oklahoma St. vs TCU
Period 1
January 11, 2020 at Ed and Rae Schollmaier Arena



VISITORS: Oklahoma St.	Time	Score	HOME: TCU
1 LAURENT, JONATHAN			1 BANE, DESMOND
4 DZIAGWA, THOMAS			2 DENNIS, EDRIC
12 MCGRIFF, CAMERON			5 GRAYER, JAIRE
13 LIKEKELE, ISAAC			21 SAMUEL, KEVIN
21 WATERS, III, LINDY			22 NEMBHARD, RJ
	17:20	6-4	SUB OUT: NEMBHARD, RJ
	17:20		SUB IN: FULLER, PJ
	17:11	6-4	SUB OUT: DENNIS, EDRIC
	17:11		SUB IN: FARABELLO, FRANCISCO
SUB OUT: 1 LAURENT, JONATHAN	16:11	6-4	
SUB OUT: 4 DZIAGWA, THOMAS	16:11		
SUB IN: 00 ANDERSON, III, AVERY	16:11		
SUB IN: 14 ANEI, YOR	16:11		
	15:00	6-9	SUB OUT: GRAYER, JAIRE
	15:00		SUB OUT: SAMUEL, KEVIN
	15:00		SUB IN: SMITH, DIANTE
	15:00		SUB IN: LEDEE, JAEDON
SUB OUT: 13 LIKEKELE, ISAAC	13:15	6-9	
SUB IN: 4 DZIAGWA, THOMAS	13:15		
	12:08	6-9	SUB OUT: BANE, DESMOND
	12:08		SUB OUT: FARABELLO, FRANCISCO
	12:08		SUB IN: DENNIS, EDRIC
	12:08		SUB IN: NEMBHARD, RJ
	11:16	6-12	SUB OUT: LEDEE, JAEDON
	11:16		SUB IN: SAMUEL, KEVIN
SUB OUT: 21 WATERS, III, LINDY	11:16		
SUB IN: 13 LIKEKELE, ISAAC	11:16		
	10:09	8-13	SUB OUT: FULLER, PJ
	10:09		SUB OUT: SMITH, DIANTE
	10:09		SUB IN: BANE, DESMOND
	10:09		SUB IN: GRAYER, JAIRE
SUB OUT: 00 ANDERSON, III, AVERY	10:09		
SUB OUT: 4 DZIAGWA, THOMAS	10:09		
SUB IN: 2 HARRIS JR., CHRIS	10:09		
SUB IN: 21 WATERS, III, LINDY	10:09		
SUB OUT: 12 MCGRIFF, CAMERON	09:45	8-13	
SUB IN: 00 ANDERSON, III, AVERY	09:45		
SUB OUT: 14 ANEI, YOR	08:39	10-13	
SUB IN: 22 BOONE, KALIB	08:39		
	08:06	12-13	SUB OUT: DENNIS, EDRIC
	08:06		SUB IN: FARABELLO, FRANCISCO
	06:44	12-15	SUB OUT: SAMUEL, KEVIN
	06:44		SUB IN: LEDEE, JAEDON
SUB OUT: 13 LIKEKELE, ISAAC	06:44		
SUB OUT: 22 BOONE, KALIB	06:44		
SUB IN: 1 LAURENT, JONATHAN	06:44		
SUB IN: 12 MCGRIFF, CAMERON	06:44		
	05:56	12-17	SUB OUT: LEDEE, JAEDON
	05:56		SUB IN: SAMUEL, KEVIN
	04:47	14-17	SUB OUT: GRAYER, JAIRE
	04:47		SUB IN: SMITH, DIANTE
SUB OUT: 1 LAURENT, JONATHAN	04:19	14-17	
SUB IN: 14 ANEI, YOR	04:19		
	04:03	14-17	SUB OUT: NEMBHARD, RJ
	04:03		SUB IN: FULLER, PJ
SUB OUT: 12 MCGRIFF, CAMERON	03:29	17-17	
SUB IN: 13 LIKEKELE, ISAAC	03:29		
	02:42	17-19	SUB OUT: FARABELLO, FRANCISCO
	02:42		SUB IN: DENNIS, EDRIC
	02:42		SUB OUT: SMITH, DIANTE
	02:42		SUB IN: GRAYER, JAIRE
	01:40	17-19	SUB OUT: FULLER, PJ
	01:40		SUB IN: NEMBHARD, RJ
	01:19	17-19	SUB OUT: DENNIS, EDRIC
	01:19		SUB IN: FARABELLO, FRANCISCO
SUB OUT: 14 ANEI, YOR	00:52	17-21	
SUB IN: 22 BOONE, KALIB	00:52		

Oklahoma St. 17, TCU 24

Official Substitutions Log
Oklahoma St. vs TCU
Period 2
January 11, 2020 at Ed and Rae Schollmaier Arena



VISITORS: Oklahoma St.	Time	Score	HOME: TCU
1 LAURENT, JONATHAN			1 BANE, DESMOND
4 DZIAGWA, THOMAS			2 DENNIS, EDRIC
12 MCGRUFF, CAMERON			5 GRAYER, JAIRE
13 LIKEKELE, ISAAC			21 SAMUEL, KEVIN
21 WATERS, III, LINDY			22 NEMBHARD, RJ
	20:00	-	SUB OUT: FARABELLO, FRANCISCO
	20:00		SUB IN: DENNIS, EDRIC
SUB OUT: 00 ANDERSON, III, AVERY	20:00		
SUB OUT: 2 HARRIS JR., CHRIS	20:00		
SUB OUT: 22 BOONE, KALIB	20:00		
SUB IN: 1 LAURENT, JONATHAN	20:00		
SUB IN: 4 DZIAGWA, THOMAS	20:00		
SUB IN: 12 MCGRUFF, CAMERON	20:00		
	19:49	-	SUB OUT: DENNIS, EDRIC
	19:49		SUB IN: FARABELLO, FRANCISCO
	16:36	21-32	SUB OUT: GRAYER, JAIRE
	16:36		SUB IN: SMITH, DIANTE
SUB OUT: 1 LAURENT, JONATHAN	16:36		
SUB OUT: 4 DZIAGWA, THOMAS	16:36		
SUB OUT: 13 LIKEKELE, ISAAC	16:36		
SUB IN: 00 ANDERSON, III, AVERY	16:36		
SUB IN: 2 HARRIS JR., CHRIS	16:36		
SUB IN: 14 ANEI, YOR	16:36		
	13:33	28-35	SUB OUT: SAMUEL, KEVIN
	13:33		SUB OUT: NEMBHARD, RJ
	13:33		SUB IN: FULLER, PJ
	13:33		SUB IN: LEDEE, JAEDON
	13:05	28-36	SUB OUT: SMITH, DIANTE
	13:05		SUB IN: GRAYER, JAIRE
SUB OUT: 14 ANEI, YOR	13:05		
SUB IN: 22 BOONE, KALIB	13:05		
SUB OUT: 12 MCGRUFF, CAMERON	12:16	28-37	
SUB IN: 1 LAURENT, JONATHAN	12:16		
	11:43	28-37	SUB OUT: LEDEE, JAEDON
	11:43		SUB IN: SAMUEL, KEVIN
SUB OUT: 21 WATERS, III, LINDY	11:43		
SUB IN: 13 LIKEKELE, ISAAC	11:43		
	09:42	32-40	SUB OUT: FULLER, PJ
	09:42		SUB OUT: GRAYER, JAIRE
	09:42		SUB IN: DENNIS, EDRIC
	09:42		SUB IN: NEMBHARD, RJ
SUB OUT: 00 ANDERSON, III, AVERY	09:42		
SUB OUT: 2 HARRIS JR., CHRIS	09:42		
SUB OUT: 22 BOONE, KALIB	09:42		
SUB IN: 4 DZIAGWA, THOMAS	09:42		
SUB IN: 12 MCGRUFF, CAMERON	09:42		
SUB IN: 21 WATERS, III, LINDY	09:42		
	08:54	32-40	SUB OUT: BANE, DESMOND
	08:54		SUB IN: FULLER, PJ
SUB OUT: 1 LAURENT, JONATHAN	08:54		
SUB IN: 00 ANDERSON, III, AVERY	08:54		
SUB OUT: 13 LIKEKELE, ISAAC	08:05	32-40	
SUB IN: 22 BOONE, KALIB	08:05		
	07:33	32-42	SUB OUT: FULLER, PJ
	07:33		SUB IN: BANE, DESMOND
SUB OUT: 00 ANDERSON, III, AVERY	06:13	32-45	
SUB IN: 13 LIKEKELE, ISAAC	06:13		
	05:12	32-48	SUB OUT: SAMUEL, KEVIN
	05:12		SUB IN: LEDEE, JAEDON
SUB OUT: 22 BOONE, KALIB	05:12		
SUB IN: 14 ANEI, YOR	05:12		
	04:56	32-48	SUB OUT: LEDEE, JAEDON
	04:56		SUB IN: SAMUEL, KEVIN
SUB OUT: 4 DZIAGWA, THOMAS	03:38	32-48	
SUB IN: 2 HARRIS JR., CHRIS	03:38		
SUB OUT: 14 ANEI, YOR	02:54	34-48	
SUB IN: 00 ANDERSON, III, AVERY	02:54		

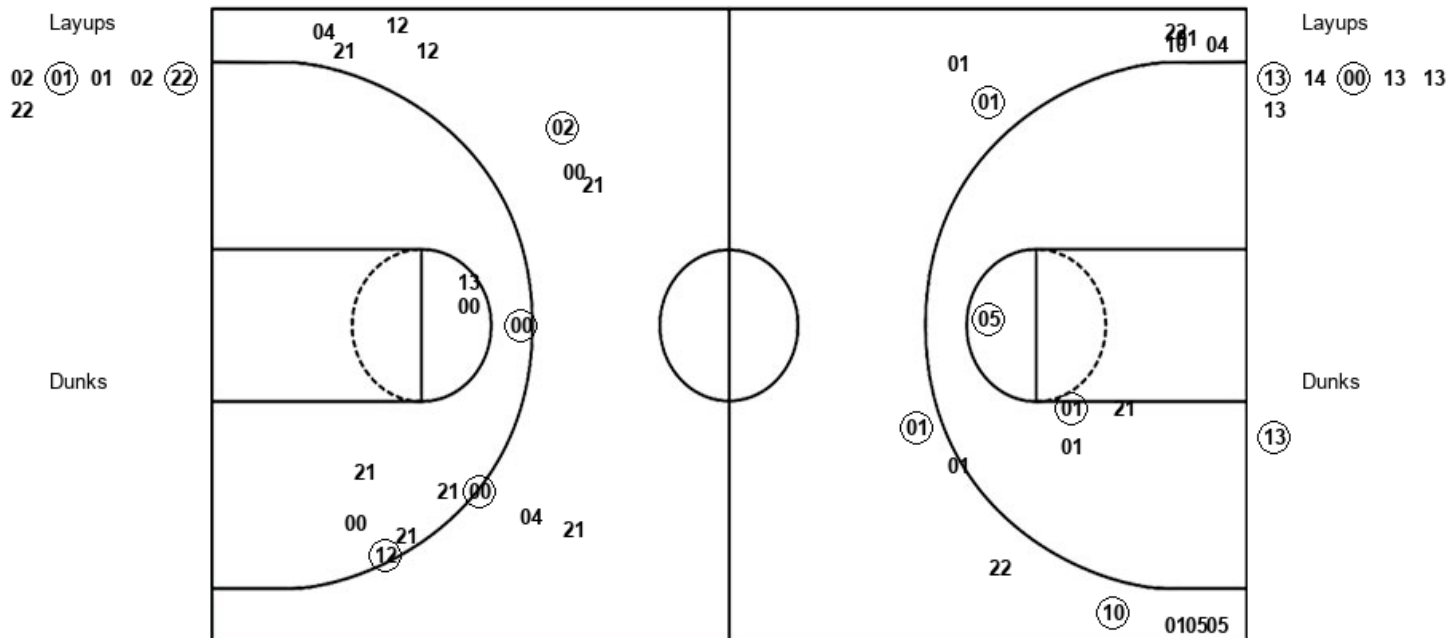
Oklahoma St. 40, TCU 52

Official Shot Chart
Oklahoma St. vs TCU
 PERIOD 1 Shots
 January 11, 2020 at Ed and Rae Schollmaier Arena



TCU

Oklahoma St.



TCU : Period 1	Made	Att	Pct
Layups	2	6	33.3
Dunks	0	0	0
2PT Field Goals	4	11	36.4
3PT Field Goals	3	13	23.1
Total Field Goals	7	24	29.2

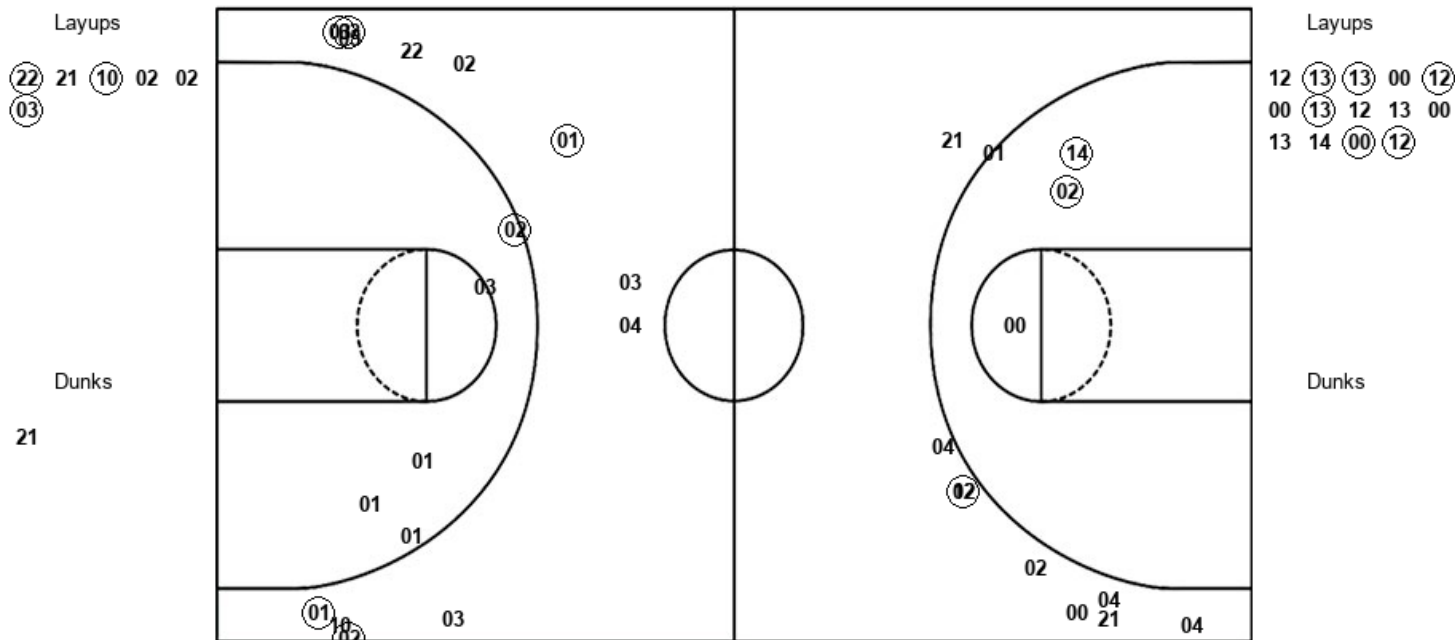
OSU : Period 1	Made	Att	Pct
Layups	2	6	33.3
Dunks	1	1	100.0
2PT Field Goals	6	16	37.5
3PT Field Goals	1	9	11.1
Total Field Goals	7	25	28.0

Official Shot Chart
Oklahoma St. vs TCU
 PERIOD 2 Shots
 January 11, 2020 at Ed and Rae Schollmaier Arena



TCU

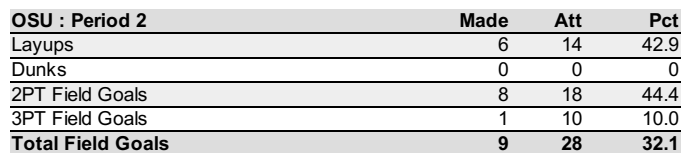
Oklahoma St.



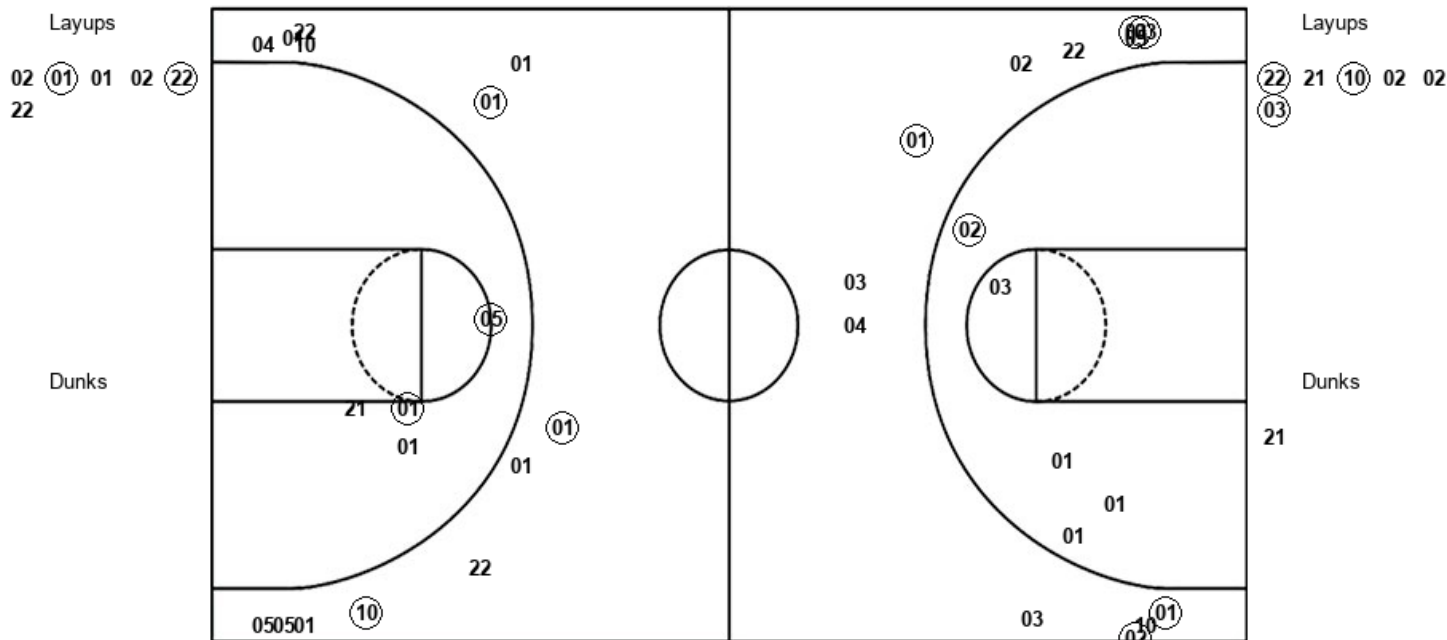
TCU : Period 2	Made	Att	Pct
Layups	3	6	50.0
Dunks	0	1	00.0
2PT Field Goals	4	12	33.3
3PT Field Goals	5	12	41.7
Total Field Goals	9	24	37.5

OSU : Period 2	Made	Att	Pct
Layups	6	14	42.9
Dunks	0	0	0
2PT Field Goals	8	18	44.4
3PT Field Goals	1	10	10.0
Total Field Goals	9	28	32.1

TCU



Official Shot Chart
Oklahoma St. vs TCU
 TCU Team Shots
 January 11, 2020 at Ed and Rae Schollmaier Arena



TCU : Period 1	Made	Att	Pct
Layups	2	6	33.3
Dunks	0	0	0
2PT Field Goals	4	11	36.4
3PT Field Goals	3	13	23.1
Total Field Goals	7	24	29.2

TCU : Period 2	Made	Att	Pct
Layups	3	6	50.0
Dunks	0	1	00.0
2PT Field Goals	4	12	33.3
3PT Field Goals	5	12	41.7
Total Field Goals	9	24	37.5