

FINAL SCORE



Winthrop

60



TCU

70

December 12, 2019 • Ed and Rae Schollmaier Arena

FINAL STATISTICS

Official Box Score
Winthrop vs TCU
Game Totals -- Final Statistics
December 12, 2019 at Ed and Rae Schollmaier Arena



Winthrop 60

No.	Player	S	Pts	FG	3FG	FT	OR	DR	TR	PF	A	TO	Blk	Stl	Min	+/-
03	ANUMBA, MICHEAL	G	8	1-4	1-1	5-5	3	2	5	1	1	1	1	1	26	-2
13	HALE, HUNTER	G	11	4-10	3-9	0-0	0	1	1	4	0	4	0	1	23	1
25	FERGUSON, JOSH	C	14	5-13	1-6	3-5	6	2	8	2	2	2	0	1	27	-7
30	BURNS JR., D.J.	F	3	1-6	0-0	1-2	4	3	7	2	1	3	1	1	17	-2
52	VAUDRIN, CHANDLER	G	4	2-11	0-2	0-2	0	10	10	3	7	1	1	1	35	-6
11	FALDEN, CHARLES	G	9	4-9	1-5	0-0	1	2	3	1	2	1	1	0	21	-2
21	KING, JAMAL	G	0	0-2	0-2	0-0	2	0	2	1	0	2	0	0	10	-10
22	ZUNIC, KYLE	G	6	2-6	2-5	0-0	1	0	1	0	1	2	0	1	15	-10
32	CORBIN, JOSH	G	0	0-1	0-1	0-0	0	0	0	0	0	1	0	0	4	-4
33	CLAXTON, CHASE	F	5	2-3	0-0	1-3	0	2	2	2	0	0	1	0	21	-8
TEAM							1	1	2	0						
TOTALS			60	21-65	8-31	10-17	18	23	41	16	14	17	5	6	199	

Shooting By Period

Period	FG	FG%	3FG	3FG%	FT	FT%
1st Half	9-31	29%	3-16	19%	5-8	63%
2nd Half	12-34	35%	5-15	33%	5-9	56%
Game	21-65	32.3%	8-31	25.8%	10-17	58.8%

Last FG: 2nd-00:08
Largest lead: By 4 at
Technical Fouls: None.

TCU 70

No.	Player	S	Pts	FG	3FG	FT	OR	DR	TR	PF	A	TO	Blk	Stl	Min	+/-
01	BANE, DESMOND	G	11	5-11	1-5	0-0	0	7	7	4	6	2	0	1	31	5
02	DENNIS, EDRIC	G	5	2-9	1-5	0-1	0	0	0	0	7	1	0	1	28	14
05	GRAYER, JAIRE	G	12	4-8	3-6	1-2	2	4	6	2	0	1	0	2	32	-1
21	SAMUEL, KEVIN	C	8	4-5	0-0	0-2	0	3	3	3	0	2	4	0	17	11
22	NEMBARD, RJ	G	15	6-12	1-5	2-2	0	6	6	1	3	2	0	2	31	5
03	FARABELLO, FRANCISCO	G	2	1-2	0-1	0-0	0	1	1	1	1	2	0	2	17	-4
04	FULLER, PJ	G	6	3-4	0-1	0-0	0	4	4	4	0	2	1	0	12	10
10	SMITH, DIANTE	F	0	0-2	0-2	0-0	0	2	2	3	0	0	0	0	8	11
23	LEDEE, JAEDON	F	11	3-5	0-0	5-10	4	2	6	3	0	2	1	2	23	-1
TEAM							5	2	7	0						
TOTALS			70	28-58	6-25	8-17	11	31	42	21	17	16	6	10	199	

Shooting By Period

Period	FG	FG%	3FG	3FG%	FT	FT%
1st Half	11-28	39%	4-13	31%	5-8	63%
2nd Half	17-30	57%	2-12	17%	3-9	33%
Game	28-58	48.3%	6-25	24.0%	8-17	47.1%

Last FG: 2nd-01:13
Largest lead: By 19 at
Technical Fouls: None.

Game Notes:

Officials: Kipp Kissinger, Tony Padilla, Michael Greenstein
 Attendance: 6314

Start Time: 01:00 AM

Score	1st	2nd	TOT
WIN	26	34	60
TCU	31	39	70

WIN led for 1:34. TCU led for 37:59.
 Game was tied for 0:0.
 Times tied: 0 Lead Changes: 0

Points from	WIN	TCU
In the Paint	26	36
Off Turns	11	13
2nd Chance	12	8
Fast Break	12	8
Bench	20	19

Official Box Score
Winthrop vs TCU
First Half Statistics Only
December 12, 2019 at Ed and Rae Schollmaier Arena



Winthrop 26

No.	Player	S	Pts	FG	3FG	FT	OR	DR	TR	PF	A	TO	Blk	Stl	Min
03	ANUMBA, MICHEAL	G	6	1-1	1-1	3-3	1	1	2	0	1	1	1	1	15
13	HALE, HUNTER	G	6	2-5	2-5	0-0	0	1	1	1	0	2	0	1	11
25	FERGUSON, JOSH	C	5	2-6	0-1	1-2	4	0	4	2	0	2	0	0	12
30	BURNS JR., D.J.	F	2	1-2	0-0	0-0	2	2	4	2	1	3	1	1	9
52	VAUDRIN, CHANDLER	G	2	1-6	0-1	0-1	0	6	6	1	3	1	0	0	17
11	FALDEN, CHARLES	G	2	1-5	0-3	0-0	0	0	0	0	0	0	0	0	8
21	KING, JAMAL	G	0	0-1	0-1	0-0	1	0	1	0	0	0	0	0	6
22	ZUNIC, KYLE	G	0	0-3	0-3	0-0	1	0	1	0	1	0	0	0	7
32	CORBIN, JOSH	G	0	0-1	0-1	0-0	0	0	0	0	0	1	0	0	3
33	CLAXTON, CHASE	F	3	1-1	0-0	1-2	0	0	0	1	0	0	1	0	11
TEAM				0-0			1	1	2	0		0			
TOTALS			26	9-31	3-16	5-8	10	11	21	7	6	10	3	3	100

Shooting By Period

Period	FG	FG%	3FG	3FG%	FT	FT%
1st Half	9-31	29%	3-16	19%	5-8	63%
Game	21-65	32.3%	8-31	25.8%	10-17	58.8%

Last FG Half: WIN 2nd-00:08

TCU 31

No.	Player	S	Pts	FG	3FG	FT	OR	DR	TR	PF	A	TO	Blk	Stl	Min
01	BANE, DESMOND	G	5	2-8	1-5	0-0	0	4	4	1	3	2	0	0	18
02	DENNIS, EDRIC	G	0	0-2	0-1	0-0	0	0	0	0	4	1	0	0	13
05	GRAYER, JAIRE	G	7	2-3	2-2	1-2	0	2	2	1	0	0	0	1	17
21	SAMUEL, KEVIN	C	0	0-0	0-0	0-0	0	0	0	2	0	1	0	0	3
22	NEMBHARD, RJ	G	5	2-6	1-3	0-0	0	3	3	1	0	1	0	1	15
03	FARABELLO, FRANCISCO	G	2	1-2	0-1	0-0	0	1	1	1	1	1	0	2	10
04	FULLER, PJ	G	2	1-1	0-0	0-0	0	1	1	2	0	2	1	0	4
10	SMITH, DIANTE	F	0	0-1	0-1	0-0	0	1	1	2	0	0	0	0	3
23	LEDEE, JAEDON	F	10	3-5	0-0	4-6	3	1	4	1	0	2	1	1	17
TEAM				0-0			4	1	5	0		0			
TOTALS			31	11-28	4-13	5-8	7	14	21	11	8	10	2	5	100

Shooting By Period

Period	FG	FG%	3FG	3FG%	FT	FT%
1st Half	11-28	39%	4-13	31%	5-8	63%
Game	28-58	48.3%	6-25	24.0%	8-17	47.1%

Last FG Half: TCU 2nd-01:13

Game Notes:

Officials: Kipp Kissinger, Tony Padilla, Michael Greenstein
Attendance: 6314

Start Time: 01:00 AM

Score	1st	2nd	TOT
WIN	26	34	60
TCU	31	39	70

Points from (This Period)	WIN	TCU
In the Paint	12	10
Off Turns	7	4
2nd Chance	3	4
Fast Break	6	2
Bench	5	14

Official Play-By-Play
Winthrop vs TCU
First Half
December 12, 2019 at Ed and Rae Schollmaier Arena



Period 1

Starters:

Winthrop: 3 ANUMBA, MICHEAL (G); 13 HALE, HUNTER (G); 25 FERGUSON, JOSH (C); 30 BURNS JR., D.J. (F); 52 VAUDRIN, CHANDLER (G);
TCU: 1 BANE, DESMOND (G); 2 DENNIS, EDRIC (G); 5 GRAYER, JAIRE (G); 21 SAMUEL, KEVIN (C); 22 NEMBHARD, RJ (G);

Time	VISITORS: Winthrop	Score	Margin	HOME: TCU
19:49				FOUL by SAMUEL, KEVIN
19:49				TURNOVER by SAMUEL, KEVIN
19:40	GOOD! DUNK by FERGUSON, JOSH	0-2	V 2	
19:40	ASSIST by ANUMBA, MICHEAL			
19:08				MISSED 3PTR by BANE, DESMOND
19:04	REBOUND (DEF) by ANUMBA, MICHEAL			
18:56	GOOD! LAYUP by BURNS JR., D.J.	0-4	V 4	
18:56	ASSIST by VAUDRIN, CHANDLER			
18:32		3-4	V 1	GOOD! 3PTR by BANE, DESMOND
18:32				ASSIST by DENNIS, EDRIC
18:13	TURNOVER by VAUDRIN, CHANDLER			
18:13				STEAL by GRAYER, JAIRE
18:08				MISSED LAYUP by GRAYER, JAIRE
18:08	BLOCK by ANUMBA, MICHEAL			
18:08				REBOUND (OFF) by TEAM
18:08				SUB OUT: SAMUEL, KEVIN
18:08				SUB IN: LEDEE, JAEDON
18:08	SUB OUT: BURNS JR., D.J.			
18:08	SUB IN: CLAXTON, CHASE			
18:06		5-4	H 1	GOOD! JUMPER by BANE, DESMOND
18:06				ASSIST by DENNIS, EDRIC
17:58	FOUL by HALE, HUNTER			
17:58	TURNOVER by HALE, HUNTER			
17:58	SUB OUT: VAUDRIN, CHANDLER			
17:58	SUB IN: ZUNIC, KYLE			
17:48	FOUL by FERGUSON, JOSH			
17:48		6-4	H 2	GOOD! FT by LEDEE, JAEDON
17:48	SUB OUT: HALE, HUNTER			
17:48	SUB IN: FALDEN, CHARLES			
17:48		7-4	H 3	GOOD! FT by LEDEE, JAEDON
17:36	MISSED 3PTR by FALDEN, CHARLES			
17:31	REBOUND (OFF) by ZUNIC, KYLE			
17:20	MISSED LAYUP by FERGUSON, JOSH			
17:17				REBOUND (DEF) by LEDEE, JAEDON
17:09				MISSED 3PTR by DENNIS, EDRIC
17:07				REBOUND (OFF) by TEAM
17:07				SUB OUT: GRAYER, JAIRE
17:07				SUB IN: SMITH, DIANTE
17:07	SUB OUT: ANUMBA, MICHEAL			
17:07	SUB IN: VAUDRIN, CHANDLER			
16:53				MISSED JUMPER by DENNIS, EDRIC
16:51				REBOUND (OFF) by TEAM
16:51				SUB OUT: DENNIS, EDRIC
16:51				SUB IN: FARABELLO, FRANCISCO
16:33				MISSED 3PTR by BANE, DESMOND
16:30	REBOUND (DEF) by VAUDRIN, CHANDLER			
16:19	SUB OUT: FERGUSON, JOSH			
16:19	SUB IN: BURNS JR., D.J.			
16:17				FOUL by BANE, DESMOND
16:08	MISSED JUMPER by VAUDRIN, CHANDLER [PNT]			
16:05				REBOUND (DEF) by NEMBHARD, RJ
15:59		10-4	H 6	GOOD! 3PTR by NEMBHARD, RJ
15:50				FOUL by SMITH, DIANTE
15:50	TIMEOUT MEDIA			
15:50				SUB OUT: BANE, DESMOND
15:50				SUB IN: FULLER, PJ
15:39	TURNOVER by BURNS JR., D.J.			
15:13				MISSED 3PTR by NEMBHARD, RJ
15:09	REBOUND (DEF) by VAUDRIN, CHANDLER			
15:04	MISSED LAYUP by FALDEN, CHARLES			
15:04				BLOCK by FULLER, PJ
15:00	REBOUND (OFF) by BURNS JR., D.J.			
14:59	MISSED 3PTR by ZUNIC, KYLE			
14:57				REBOUND (DEF) by FULLER, PJ
14:51				FOUL by FULLER, PJ
14:51				TURNOVER by FULLER, PJ
14:51	SUB OUT: FALDEN, CHARLES			
14:51	SUB OUT: ZUNIC, KYLE			
14:51	SUB IN: ANUMBA, MICHEAL			
14:51	SUB IN: CORBIN, JOSH			

Time	VISITORS: Winthrop	Score	Margin	HOME: TCU
14:51	SUB OUT: CLAXTON, CHASE			
14:51	SUB IN: FERGUSON, JOSH			
14:41	MISSED 3PTR by FERGUSON, JOSH			
14:37	REBOUND (OFF) by BURNS JR., D.J.			
14:35	TURNOVER by BURNS JR., D.J.			
14:35				STEAL by LEDEE, JAEDON
14:35				TURNOVER by LEDEE, JAEDON
14:32	MISSED LAYUP by FERGUSON, JOSH			
14:29				REBOUND (DEF) by SMITH, DIANTE
14:07				MISSED 3PTR by SMITH, DIANTE
14:05	REBOUND (DEF) by TEAM			
14:03				SUB OUT: SMITH, DIANTE
14:03				SUB OUT: NEMBHARD, RJ
14:03				SUB IN: BANE, DESMOND
14:03				SUB IN: GRAYER, JAIRE
14:03	SUB OUT: BURNS JR., D.J.			
14:03	SUB IN: KING, JAMAL			
13:51	TURNOVER by CORBIN, JOSH			
13:51				STEAL by FARABELLO, FRANCISCO
13:44	FOUL by VAUDRIN, CHANDLER			
13:44	SUB OUT: VAUDRIN, CHANDLER			
13:44	SUB IN: ZUNIC, KYLE			
13:31				MISSED 3PTR by FARABELLO, FRANCISCO
13:29				REBOUND (OFF) by TEAM
13:29				SUB OUT: LEDEE, JAEDON
13:29				SUB IN: SAMUEL, KEVIN
13:29	SUB OUT: CORBIN, JOSH			
13:29	SUB IN: HALE, HUNTER			
13:13				TURNOVER by FARABELLO, FRANCISCO
13:06	MISSED 3PTR by KING, JAMAL			
13:04	REBOUND (OFF) by FERGUSON, JOSH			
13:00				FOUL by GRAYER, JAIRE
12:57	MISSED 3PTR by HALE, HUNTER			
12:55				REBOUND (DEF) by BANE, DESMOND
12:50		12-4	H 8	GOOD! LAYUP by FULLER, PJ [FB]
12:50				ASSIST by BANE, DESMOND
12:36	TURNOVER by FERGUSON, JOSH			
12:36	SUB OUT: HALE, HUNTER			
12:36	SUB OUT: FERGUSON, JOSH			
12:36	SUB IN: BURNS JR., D.J.			
12:36	SUB IN: VAUDRIN, CHANDLER			
12:30				TURNOVER by FULLER, PJ
12:30	STEAL by ANUMBA, MICHEAL			
12:28				FOUL by SAMUEL, KEVIN
12:28				SUB OUT: SAMUEL, KEVIN
12:28				SUB IN: LEDEE, JAEDON
12:28	SUB OUT: ZUNIC, KYLE			
12:28	SUB IN: HALE, HUNTER			
12:10				FOUL by FULLER, PJ
12:10	GOOD! FT by ANUMBA, MICHEAL	12-5	H 7	
12:10	GOOD! FT by ANUMBA, MICHEAL	12-6	H 6	
12:10				SUB OUT: FULLER, PJ
12:10				SUB IN: NEMBHARD, RJ
12:10	GOOD! FT by ANUMBA, MICHEAL	12-7	H 5	
12:10	SUB OUT: ANUMBA, MICHEAL			
12:10	SUB IN: CLAXTON, CHASE			
11:58	TIMEOUT MEDIA			
11:58				SUB OUT: FARABELLO, FRANCISCO
11:58				SUB IN: DENNIS, EDRIC
11:49		14-7	H 7	GOOD! LAYUP by NEMBHARD, RJ
11:38	TURNOVER by BURNS JR., D.J.			
11:38	SUB OUT: KING, JAMAL			
11:38	SUB IN: ANUMBA, MICHEAL			
11:27				MISSED JUMPER by NEMBHARD, RJ [PNT]
11:23				REBOUND (OFF) by LEDEE, JAEDON
11:21				MISSED JUMPER by LEDEE, JAEDON [PNT]
11:18	REBOUND (DEF) by BURNS JR., D.J.			
11:04	GOOD! 3PTR by ANUMBA, MICHEAL	14-10	H 4	
11:04	ASSIST by BURNS JR., D.J.			
10:34		17-10	H 7	GOOD! 3PTR by GRAYER, JAIRE
10:34				ASSIST by BANE, DESMOND
10:26	MISSED LAYUP by BURNS JR., D.J.			
10:23				REBOUND (DEF) by BANE, DESMOND
10:17				MISSED JUMPER by BANE, DESMOND
10:14	REBOUND (DEF) by VAUDRIN, CHANDLER			
10:10	GOOD! 3PTR by HALE, HUNTER [FB]	17-13	H 4	
09:53				MISSED LAYUP by NEMBHARD, RJ [PNT]
09:53	BLOCK by BURNS JR., D.J.			
09:53	REBOUND (DEF) by BURNS JR., D.J.			
09:53				SUB OUT: GRAYER, JAIRE

Time	VISITORS: Winthrop	Score	Margin	HOME: TCU
09:53				SUB IN: SMITH, DIANTE
09:53	SUB OUT: ANUMBA, MICHEAL			
09:53	SUB OUT: BURNS JR., D.J.			
09:53	SUB OUT: CLAXTON, CHASE			
09:53	SUB IN: FALDEN, CHARLES			
09:53	SUB IN: KING, JAMAL			
09:53	SUB IN: FERGUSON, JOSH			
09:38	MISSED 3PTR by FALDEN, CHARLES			
09:37	REBOUND (OFF) by FERGUSON, JOSH			
09:34				FOUL by SMITH, DIANTE
09:34				SUB OUT: SMITH, DIANTE
09:34				SUB IN: GRAYER, JAIRE
09:34	GOOD! FT by FERGUSON, JOSH	17-14	H 3	
09:33	MISSED FT by FERGUSON, JOSH			
09:32				REBOUND (DEF) by NEMBHARD, RJ
09:16		20-14	H 6	GOOD! 3PTR by GRAYER, JAIRE
09:16				ASSIST by BANE, DESMOND
08:59	MISSED 3PTR by FALDEN, CHARLES			
08:54				REBOUND (DEF) by GRAYER, JAIRE
08:49		22-14	H 8	GOOD! LAYUP by LEDEE, JAEDON
08:49				ASSIST by DENNIS, EDRIC
08:28	MISSED 3PTR by HALE, HUNTER			
08:26	REBOUND (OFF) by KING, JAMAL			
08:20	GOOD! LAYUP by FALDEN, CHARLES	22-16	H 6	
08:20	ASSIST by VAUDRIN, CHANDLER			
08:14				TURNOVER by BANE, DESMOND [PNT]
08:14	SUB OUT: HALE, HUNTER			
08:14	SUB OUT: KING, JAMAL			
08:14	SUB IN: ANUMBA, MICHEAL			
08:14	SUB IN: CORBIN, JOSH			
07:59	MISSED LAYUP by VAUDRIN, CHANDLER [PNT]			
07:59				BLOCK by LEDEE, JAEDON
07:59	REBOUND (OFF) by TEAM			
07:58	TIMEOUT MEDIA			
07:43	MISSED 3PTR by VAUDRIN, CHANDLER			
07:41	REBOUND (OFF) by FERGUSON, JOSH			
07:40	FOUL by FERGUSON, JOSH			
07:40	TURNOVER by FERGUSON, JOSH			
07:40	SUB OUT: FALDEN, CHARLES			
07:40	SUB OUT: FERGUSON, JOSH			
07:40	SUB IN: BURNS JR., D.J.			
07:40	SUB IN: CLAXTON, CHASE			
07:25				TURNOVER by DENNIS, EDRIC
07:25	STEAL by BURNS JR., D.J.			
07:11	MISSED 3PTR by CORBIN, JOSH			
07:09				REBOUND (DEF) by BANE, DESMOND
07:04				MISSED 3PTR by NEMBHARD, RJ
07:01	REBOUND (DEF) by VAUDRIN, CHANDLER			
06:52	MISSED JUMPER by VAUDRIN, CHANDLER [PNT]			
06:49				REBOUND (DEF) by NEMBHARD, RJ
06:30	FOUL by BURNS JR., D.J.			
06:30		23-16	H 7	GOOD! FT by GRAYER, JAIRE
06:30				MISSED FT by GRAYER, JAIRE
06:29	REBOUND (DEF) by VAUDRIN, CHANDLER			
06:18	SUB OUT: CORBIN, JOSH			
06:18	SUB IN: HALE, HUNTER			
06:06	TURNOVER by HALE, HUNTER			
06:06				STEAL by NEMBHARD, RJ
05:54				TURNOVER by NEMBHARD, RJ
05:54	STEAL by HALE, HUNTER			
05:50	MISSED LAYUP by VAUDRIN, CHANDLER			
05:46				REBOUND (DEF) by GRAYER, JAIRE
05:27	FOUL by BURNS JR., D.J. [PNT]			
05:27				MISSED FT by LEDEE, JAEDON
05:27				REBOUND (DEADB) by TEAM
05:27	SUB OUT: HALE, HUNTER			
05:27	SUB OUT: BURNS JR., D.J.			
05:27	SUB OUT: CLAXTON, CHASE			
05:27	SUB IN: KING, JAMAL			
05:27	SUB IN: ZUNIC, KYLE			
05:27	SUB IN: FERGUSON, JOSH			
05:27		24-16	H 8	GOOD! FT by LEDEE, JAEDON
05:10	MISSED JUMPER by FERGUSON, JOSH [PNT]			
05:07	REBOUND (OFF) by FERGUSON, JOSH			
05:01				FOUL by NEMBHARD, RJ [PNT]
05:01				SUB OUT: NEMBHARD, RJ
05:01				SUB IN: FARABELLO, FRANCISCO
05:01	MISSED FT by VAUDRIN, CHANDLER			
05:00				REBOUND (DEF) by BANE, DESMOND
04:40				MISSED 3PTR by BANE, DESMOND

Time	VISITORS: Winthrop	Score	Margin	HOME: TCU
04:37	REBOUND (DEF) by VAUDRIN, CHANDLER			
04:15	MISSED 3PTR by ZUNIC, KYLE			
04:12				REBOUND (DEF) by FARABELLO, FRANCISCO
03:53		26-16	H 10	GOOD! LAYUP by FARABELLO, FRANCISCO
03:53				ASSIST by DENNIS, EDRIC
03:38	GOOD! LAYUP by FERGUSON, JOSH	26-18	H 8	
03:38	ASSIST by ZUNIC, KYLE			
03:17		28-18	H 10	GOOD! JUMPER by LEDEE, JAEDON
03:17				ASSIST by FARABELLO, FRANCISCO
03:15				TIMEOUT 30SEC
03:15	TIMEOUT MEDIA			
03:15	SUB OUT: KING, JAMAL			
03:15	SUB OUT: VAUDRIN, CHANDLER			
03:15	SUB IN: FALDEN, CHARLES			
03:15	SUB IN: CLAXTON, CHASE			
02:55	MISSED 3PTR by ZUNIC, KYLE			
02:49	REBOUND (OFF) by ANUMBA, MICHEAL			
02:48	TURNOVER by ANUMBA, MICHEAL [PNT]			
02:48				STEAL by FARABELLO, FRANCISCO
02:36				FOUL by LEDEE, JAEDON
02:36				TURNOVER by LEDEE, JAEDON
02:36	SUB OUT: ZUNIC, KYLE			
02:36	SUB IN: HALE, HUNTER			
02:28	MISSED 3PTR by HALE, HUNTER			
02:26				REBOUND (DEF) by TEAM
02:26	SUB OUT: ANUMBA, MICHEAL			
02:26	SUB IN: VAUDRIN, CHANDLER			
01:54	FOUL by CLAXTON, CHASE [PNT]			
01:54				MISSED FT by LEDEE, JAEDON
01:54				REBOUND (DEADB) by TEAM
01:54	SUB OUT: FERGUSON, JOSH			
01:54	SUB IN: BURNS JR., D.J.			
01:54				SUB OUT: DENNIS, EDRIC
01:54				SUB IN: NEMBARD, RJ
01:54		29-18	H 11	GOOD! FT by LEDEE, JAEDON
01:38				FOUL by FARABELLO, FRANCISCO
01:38	MISSED FT by CLAXTON, CHASE			
01:38	REBOUND (DEADB) by TEAM			
01:38	SUB OUT: BURNS JR., D.J.			
01:38	SUB IN: ANUMBA, MICHEAL			
01:38	GOOD! FT by CLAXTON, CHASE	29-19	H 10	
01:23				TURNOVER by BANE, DESMOND
01:05	GOOD! LAYUP by VAUDRIN, CHANDLER	29-21	H 8	
00:48				MISSED LAYUP by LEDEE, JAEDON
00:48	BLOCK by CLAXTON, CHASE			
00:48				REBOUND (OFF) by LEDEE, JAEDON
00:46	TIMEOUT 30SEC			
00:45				MISSED 3PTR by BANE, DESMOND
00:43				REBOUND (OFF) by LEDEE, JAEDON
00:42		31-21	H 10	GOOD! LAYUP by LEDEE, JAEDON
00:33	GOOD! DUNK by CLAXTON, CHASE	31-23	H 8	
00:33	ASSIST by VAUDRIN, CHANDLER			
00:06				MISSED JUMPER by BANE, DESMOND
00:03	REBOUND (DEF) by HALE, HUNTER			
00:00	GOOD! 3PTR by HALE, HUNTER [FB]	31-26	H 5	

Winthrop 26, TCU 31

Points from (This Period)	WIN	TCU
In the Paint	12	10
Off Turns	7	4
2nd Chance	3	4
Fast Break	6	2
Bench	5	14

Official Box Score
Winthrop vs TCU
Second Half Statistics Only
December 12, 2019 at Ed and Rae Schollmaier Arena



Winthrop 34

No.	Player	S	Pts	FG	3FG	FT	OR	DR	TR	PF	A	TO	Blk	Stl	Min
03	ANUMBA, MICHEAL	G	2	0-3	0-0	2-2	2	1	3	1	0	0	0	0	11
13	HALE, HUNTER	G	5	2-5	1-4	0-0	0	0	0	3	0	2	0	0	12
25	FERGUSON, JOSH	C	9	3-7	1-5	2-3	2	2	4	0	2	0	0	1	15
30	BURNS JR., D.J.	F	1	0-4	0-0	1-2	2	1	3	0	0	0	0	0	7
52	VAUDRIN, CHANDLER	G	2	1-5	0-1	0-1	0	4	4	2	4	0	1	1	18
11	FALDEN, CHARLES	G	7	3-4	1-2	0-0	1	2	3	1	2	1	1	0	13
21	KING, JAMAL	G	0	0-1	0-1	0-0	1	0	1	1	0	2	0	0	3
22	ZUNIC, KYLE	G	6	2-3	2-2	0-0	0	0	0	0	0	2	0	1	8
32	CORBIN, JOSH	G	0	0-0	0-0	0-0	0	0	0	0	0	0	0	0	1
33	CLAXTON, CHASE	F	2	1-2	0-0	0-1	0	2	2	1	0	0	0	0	10
	TEAM			0-0			0	0	0	0		0			
TOTALS			34	12-34	5-15	5-9	8	12	20	9	8	7	2	3	99

Shooting By Period

Period	FG	FG%	3FG	3FG%	FT	FT%
2nd Half	12-34	35%	5-15	33%	5-9	56%
Game	21-65	32.3%	8-31	25.8%	10-17	58.8%

Last FG Half: WIN -

TCU 39

No.	Player	S	Pts	FG	3FG	FT	OR	DR	TR	PF	A	TO	Blk	Stl	Min
01	BANE, DESMOND	G	6	3-3	0-0	0-0	0	3	3	3	3	0	0	1	13
02	DENNIS, EDRIC	G	5	2-7	1-4	0-1	0	0	0	0	3	0	0	1	15
05	GRAYER, JAIRE	G	5	2-5	1-4	0-0	2	2	4	1	0	1	0	1	15
21	SAMUEL, KEVIN	C	8	4-5	0-0	0-2	0	3	3	1	0	1	4	0	14
22	NEMBARD, RJ	G	10	4-6	0-2	2-2	0	3	3	0	3	1	0	1	16
03	FARABELLO, FRANCISCO	G	0	0-0	0-0	0-0	0	0	0	0	0	1	0	0	7
04	FULLER, PJ	G	4	2-3	0-1	0-0	0	3	3	2	0	0	0	0	8
10	SMITH, DIANTE	F	0	0-1	0-1	0-0	0	1	1	1	0	0	0	0	5
23	LEDEE, JAEDON	F	1	0-0	0-0	1-4	1	1	2	2	0	0	0	1	6
	TEAM			0-0			1	1	2	0		2			
TOTALS			39	17-30	2-12	3-9	4	17	21	10	9	6	4	5	99

Shooting By Period

Period	FG	FG%	3FG	3FG%	FT	FT%
2nd Half	17-30	57%	2-12	17%	3-9	33%
Game	28-58	48.3%	6-25	24.0%	8-17	47.1%

Last FG Half: TCU -

Game Notes:

Officials: Kipp Kissinger, Tony Padilla, Michael Greenstein
 Attendance: 6314

Start Time: 01:00 AM

Score	1st	2nd	TOT
WIN	26	34	60
TCU	31	39	70

Points from (This Period)	WIN	TCU
In the Paint	14	26
Off Turns	4	9
2nd Chance	9	4
Fast Break	6	6
Bench	15	5

Official Play-By-Play
Winthrop vs TCU
Second Half
December 12, 2019 at Ed and Rae Schollmaier Arena



Period 2

Starters:

Winthrop: 3 ANUMBA, MICHEAL (G); 13 HALE, HUNTER (G); 25 FERGUSON, JOSH (C); 30 BURNS JR., D.J. (F); 52 VAUDRIN, CHANDLER (G);
TCU: 1 BANE, DESMOND (G); 2 DENNIS, EDRIC (G); 5 GRAYER, JAIRE (G); 21 SAMUEL, KEVIN (C); 22 NEMBHARD, RJ (G);

Time	VISITORS: Winthrop	Score	Margin	HOME: TCU
20:00				SUB OUT: FARABELLO, FRANCISCO
20:00				SUB OUT: LEDEE, JAEDON
20:00				SUB IN: DENNIS, EDRIC
20:00				SUB IN: SAMUEL, KEVIN
20:00	SUB OUT: FALDEN, CHARLES			
20:00	SUB OUT: CLAXTON, CHASE			
20:00	SUB IN: FERGUSON, JOSH			
20:00	SUB IN: BURNS JR., D.J.			
19:49	MISSED 3PTR by HALE, HUNTER			
19:46				REBOUND (DEF) by SAMUEL, KEVIN
19:31				MISSED 3PTR by GRAYER, JAIRE
19:28	REBOUND (DEF) by VAUDRIN, CHANDLER			
19:21	GOOD! 3PTR by HALE, HUNTER	31-29	H 2	
19:21	ASSIST by VAUDRIN, CHANDLER			
18:59		33-29	H 4	GOOD! JUMPER by SAMUEL, KEVIN
18:59				ASSIST by DENNIS, EDRIC
18:44	MISSED JUMPER by BURNS JR., D.J. [PNT]			
18:41	REBOUND (OFF) by FERGUSON, JOSH			
18:39	GOOD! LAYUP by FERGUSON, JOSH	33-31	H 2	
18:39				FOUL by BANE, DESMOND
18:38	MISSED FT by FERGUSON, JOSH			
18:37				REBOUND (DEF) by GRAYER, JAIRE
18:25				MISSED 3PTR by DENNIS, EDRIC
18:21	REBOUND (DEF) by BURNS JR., D.J.			
18:07	MISSED JUMPER by BURNS JR., D.J.			
18:03				REBOUND (DEF) by NEMBHARD, RJ
17:50		36-31	H 5	GOOD! 3PTR by GRAYER, JAIRE
17:50				ASSIST by NEMBHARD, RJ
17:35	SUB OUT: BURNS JR., D.J.			
17:35	SUB OUT: VAUDRIN, CHANDLER			
17:35	SUB IN: ZUNIC, KYLE			
17:35	SUB IN: CLAXTON, CHASE			
17:23	TURNOVER by ZUNIC, KYLE			
17:23				STEAL by NEMBHARD, RJ
17:18	SUB OUT: HALE, HUNTER			
17:18	SUB IN: FALDEN, CHARLES			
16:53		38-31	H 7	GOOD! LAYUP by NEMBHARD, RJ
16:44	MISSED 3PTR by FERGUSON, JOSH			
16:44				BLOCK by SAMUEL, KEVIN
16:40				REBOUND (DEF) by BANE, DESMOND
16:36				MISSED 3PTR by DENNIS, EDRIC
16:34	REBOUND (DEF) by FALDEN, CHARLES			
16:33				FOUL by GRAYER, JAIRE
16:17	TURNOVER by ZUNIC, KYLE			
16:17				SUB OUT: DENNIS, EDRIC
16:17				SUB IN: FARABELLO, FRANCISCO
16:17	SUB OUT: ANUMBA, MICHEAL			
16:17	SUB OUT: FERGUSON, JOSH			
16:17	SUB IN: KING, JAMAL			
16:17	SUB IN: VAUDRIN, CHANDLER			
15:55	TIMEOUT MEDIA			
15:49				MISSED 3PTR by GRAYER, JAIRE
15:49				REBOUND (DEADB) by TEAM
15:49				TURNOVER by TEAM
15:49	SUB OUT: CLAXTON, CHASE			
15:49	SUB IN: BURNS JR., D.J.			
15:35	MISSED JUMPER by BURNS JR., D.J.			
15:32				REBOUND (DEF) by NEMBHARD, RJ
15:19		40-31	H 9	GOOD! LAYUP by SAMUEL, KEVIN
15:19				ASSIST by BANE, DESMOND
15:01	MISSED JUMPER by ZUNIC, KYLE [PNT]			
15:01				BLOCK by SAMUEL, KEVIN
15:00				REBOUND (DEF) by TEAM
14:57				SUB OUT: GRAYER, JAIRE
14:57				SUB IN: SMITH, DIANTE
14:57	SUB OUT: KING, JAMAL			
14:57	SUB OUT: ZUNIC, KYLE			
14:57	SUB IN: ANUMBA, MICHEAL			
14:57	SUB IN: HALE, HUNTER			
14:55		42-31	H 11	GOOD! LAYUP by NEMBHARD, RJ [FB]

Time	VISITORS: Winthrop	Score	Margin	HOME: TCU
14:55				ASSIST by BANE, DESMOND
14:46	TURNOVER by HALE, HUNTER			
14:46				STEAL by BANE, DESMOND
14:28				MISSED LAYUP by SAMUEL, KEVIN [PNT]
14:28	BLOCK by VAUDRIN, CHANDLER			
14:28				REBOUND (OFF) by TEAM
14:11				TURNOVER by TEAM
14:11				SUB OUT: SAMUEL, KEVIN
14:11				SUB IN: LEDEE, JAEDON
14:11	SUB OUT: BURNS JR., D.J.			
14:11	SUB IN: FERGUSON, JOSH			
13:55				FOUL by LEDEE, JAEDON
13:50	MISSED 3PTR by FERGUSON, JOSH			
13:47	REBOUND (OFF) by ANUMBA, MICHEAL			
13:43	MISSED JUMPER by ANUMBA, MICHEAL			
13:39	REBOUND (OFF) by ANUMBA, MICHEAL			
13:38	MISSED LAYUP by ANUMBA, MICHEAL			
13:38	REBOUND (OFF) by FERGUSON, JOSH			
13:37				FOUL by SMITH, DIANTE
13:37	GOOD! FT by FERGUSON, JOSH	42-32	H 10	
13:37				SUB OUT: SMITH, DIANTE
13:37				SUB IN: GRAYER, JAIRE
13:37	GOOD! FT by FERGUSON, JOSH	42-33	H 9	
13:09				MISSED 3PTR by NEMBHARD, RJ
13:06	REBOUND (DEF) by ANUMBA, MICHEAL			
13:06				FOUL by LEDEE, JAEDON
13:06				SUB OUT: LEDEE, JAEDON
13:06				SUB IN: SAMUEL, KEVIN
12:55	GOOD! 3PTR by FERGUSON, JOSH	42-36	H 6	
12:55	ASSIST by FALDEN, CHARLES			
12:31				FOUL by SAMUEL, KEVIN
12:31				TURNOVER by SAMUEL, KEVIN
12:31				SUB OUT: NEMBHARD, RJ
12:31				SUB IN: FULLER, PJ
12:19	MISSED 3PTR by HALE, HUNTER			
12:14				REBOUND (DEF) by FULLER, PJ
12:07		44-36	H 8	GOOD! LAYUP by BANE, DESMOND
11:53	GOOD! LAYUP by HALE, HUNTER	44-38	H 6	
11:53	ASSIST by VAUDRIN, CHANDLER			
11:39				MISSED 3PTR by GRAYER, JAIRE
11:36	REBOUND (DEF) by FALDEN, CHARLES			
11:22	MISSED 3PTR by HALE, HUNTER			
11:19				REBOUND (DEF) by FULLER, PJ
11:16	FOUL by ANUMBA, MICHEAL			
11:16	TIMEOUT MEDIA			
11:16				SUB OUT: FARABELLO, FRANCISCO
11:16				SUB IN: DENNIS, EDRIC
11:16	SUB OUT: ANUMBA, MICHEAL			
11:16	SUB OUT: FALDEN, CHARLES			
11:16	SUB IN: KING, JAMAL			
11:16	SUB IN: CLAXTON, CHASE			
10:58				MISSED LAYUP by DENNIS, EDRIC
10:55	REBOUND (DEF) by VAUDRIN, CHANDLER			
10:38	GOOD! LAYUP by CLAXTON, CHASE	44-40	H 4	
10:38	ASSIST by VAUDRIN, CHANDLER			
10:38				FOUL by BANE, DESMOND
10:37	MISSED FT by CLAXTON, CHASE			
10:36	REBOUND (OFF) by KING, JAMAL			
10:29	MISSED 3PTR by KING, JAMAL			
10:26				REBOUND (DEF) by BANE, DESMOND
10:05		46-40	H 6	GOOD! by SAMUEL, KEVIN
09:48	TURNOVER by KING, JAMAL			
09:48				STEAL by DENNIS, EDRIC
09:40				MISSED 3PTR by FULLER, PJ
09:40				REBOUND (OFF) by GRAYER, JAIRE
09:40	FOUL by HALE, HUNTER			
09:40	SUB OUT: KING, JAMAL			
09:40	SUB IN: FALDEN, CHARLES			
09:40	SUB OUT: HALE, HUNTER			
09:40	SUB IN: ANUMBA, MICHEAL			
09:38		48-40	H 8	GOOD! LAYUP by BANE, DESMOND
09:38				ASSIST by DENNIS, EDRIC
09:22	GOOD! by FERGUSON, JOSH [PNT]	48-42	H 6	
09:22	ASSIST by FALDEN, CHARLES			
09:05		51-42	H 9	GOOD! 3PTR by DENNIS, EDRIC
09:05				ASSIST by BANE, DESMOND
08:50	GOOD! by VAUDRIN, CHANDLER [PNT]	51-44	H 7	
08:26		53-44	H 9	GOOD! JUMPER by BANE, DESMOND
08:17				FOUL by BANE, DESMOND
08:16				SUB OUT: GRAYER, JAIRE

Time	VISITORS: Winthrop	Score	Margin	HOME: TCU
08:16				SUB IN: SMITH, DIANTE
08:16	SUB OUT: FERGUSON, JOSH			
08:16	SUB IN: BURNS JR., D.J.			
08:16				SUB OUT: BANE, DESMOND
08:16				SUB IN: NEMBHARD, RJ
08:15	MISSED FT by VAUDRIN, CHANDLER			
08:13				REBOUND (DEF) by NEMBHARD, RJ
08:02		55-44	H 11	GOOD! LAYUP by SAMUEL, KEVIN [PNT]
08:02				ASSIST by NEMBHARD, RJ
07:55	MISSED LAYUP by ANUMBA, MICHEAL [PNT]			
07:52	REBOUND (OFF) by FALDEN, CHARLES			
07:49	GOOD! LAYUP by FALDEN, CHARLES	55-46	H 9	
07:24				MISSED LAYUP by DENNIS, EDRIC [PNT]
07:24	BLOCK by FALDEN, CHARLES			
07:20	REBOUND (DEF) by CLAXTON, CHASE			
07:16	MISSED JUMPER by VAUDRIN, CHANDLER			
07:16				BLOCK by SAMUEL, KEVIN
07:12				REBOUND (DEF) by FULLER, PJ
07:11		57-46	H 11	GOOD! LAYUP by FULLER, PJ [FB]
07:11				ASSIST by DENNIS, EDRIC
07:09	TIMEOUT 30SEC			
07:09	TIMEOUT MEDIA			
07:09	SUB OUT: CLAXTON, CHASE			
07:09	SUB IN: HALE, HUNTER			
06:56	TURNOVER by FALDEN, CHARLES			
06:56	TIMEOUT MEDIA			
06:56	SUB OUT: ANUMBA, MICHEAL			
06:56	SUB OUT: BURNS JR., D.J.			
06:56	SUB IN: ZUNIC, KYLE			
06:56	SUB IN: CLAXTON, CHASE			
06:38		59-46	H 13	GOOD! LAYUP by NEMBHARD, RJ
06:23	MISSED LAYUP by CLAXTON, CHASE			
06:23				BLOCK by SAMUEL, KEVIN
06:19				REBOUND (DEF) by SMITH, DIANTE
06:16				MISSED 3PTR by SMITH, DIANTE
06:12	REBOUND (DEF) by VAUDRIN, CHANDLER			
05:59	MISSED 3PTR by VAUDRIN, CHANDLER			
05:55				REBOUND (DEF) by SAMUEL, KEVIN
05:55	FOUL by FALDEN, CHARLES			
05:55	SUB OUT: ZUNIC, KYLE			
05:55	SUB IN: FERGUSON, JOSH			
05:40	FOUL by HALE, HUNTER			
05:40				MISSED FT by SAMUEL, KEVIN
05:40				REBOUND (DEADB) by TEAM
05:40				MISSED FT by SAMUEL, KEVIN
05:40	REBOUND (DEF) by VAUDRIN, CHANDLER			
05:36	MISSED LAYUP by VAUDRIN, CHANDLER			
05:35				REBOUND (DEF) by SAMUEL, KEVIN
05:18	FOUL by HALE, HUNTER			
05:18				SUB OUT: SAMUEL, KEVIN
05:18				SUB IN: LEDEE, JAEDON
05:18	SUB OUT: CLAXTON, CHASE			
05:18	SUB IN: KING, JAMAL			
05:18	SUB OUT: FALDEN, CHARLES			
05:18	SUB OUT: HALE, HUNTER			
05:18	SUB IN: ANUMBA, MICHEAL			
05:18	SUB IN: CORBIN, JOSH			
05:10	FOUL by VAUDRIN, CHANDLER			
05:10		60-46	H 14	GOOD! FT by NEMBHARD, RJ
05:10		61-46	H 15	GOOD! FT by NEMBHARD, RJ
05:01	TURNOVER by KING, JAMAL			
05:01				STEAL by LEDEE, JAEDON
04:59	FOUL by KING, JAMAL			
04:59	SUB OUT: KING, JAMAL			
04:59	SUB IN: ZUNIC, KYLE			
04:59		62-46	H 16	GOOD! FT by LEDEE, JAEDON
04:59	SUB OUT: VAUDRIN, CHANDLER			
04:59	SUB IN: BURNS JR., D.J.			
04:59				MISSED FT by LEDEE, JAEDON
04:58	REBOUND (DEF) by FERGUSON, JOSH			
04:48	MISSED JUMPER by BURNS JR., D.J.			
04:45	REBOUND (OFF) by BURNS JR., D.J.			
04:41				FOUL by FULLER, PJ [PNT]
04:41				SUB OUT: SMITH, DIANTE
04:41				SUB IN: GRAYER, JAIRE
04:41	GOOD! FT by ANUMBA, MICHEAL	62-47	H 15	
04:41	GOOD! FT by ANUMBA, MICHEAL	62-48	H 14	
04:41	SUB OUT: ANUMBA, MICHEAL			
04:41	SUB OUT: BURNS JR., D.J.			
04:41	SUB OUT: CORBIN, JOSH			

Time	VISITORS: Winthrop	Score	Margin	HOME: TCU
04:41	SUB IN: HALE, HUNTER			
04:41	SUB IN: CLAXTON, CHASE			
04:41	SUB IN: VAUDRIN, CHANDLER			
04:39				TURNOVER by NEMBHARD, RJ
04:39	STEAL by ZUNIC, KYLE			
04:35	SUB OUT: ZUNIC, KYLE			
04:35	SUB OUT: CLAXTON, CHASE			
04:35	SUB IN: BURNS JR., D.J.			
04:35	SUB IN: CORBIN, JOSH			
04:21	TURNOVER by HALE, HUNTER			
04:21				STEAL by GRAYER, JAIRE
04:15		64-48	H 16	GOOD! LAYUP by FULLER, PJ [FB]
04:05	MISSED LAYUP by VAUDRIN, CHANDLER [PNT]			
04:03	REBOUND (OFF) by BURNS JR., D.J.			
04:02				FOUL by FULLER, PJ
04:02	MISSED FT by BURNS JR., D.J.			
04:02	REBOUND (DEADB) by TEAM			
04:02				SUB OUT: FULLER, PJ
04:02				SUB IN: FARABELLO, FRANCISCO
04:02	SUB OUT: CORBIN, JOSH			
04:02	SUB IN: CLAXTON, CHASE			
04:02	GOOD! FT by BURNS JR., D.J.	64-49	H 15	
04:02	SUB OUT: BURNS JR., D.J.			
04:02	SUB IN: ZUNIC, KYLE			
03:43				MISSED 3PTR by DENNIS, EDRIC
03:40				REBOUND (OFF) by LEDEE, JAEDON
03:23		66-49	H 17	GOOD! LAYUP by NEMBHARD, RJ [PNT]
03:15	MISSED 3PTR by FERGUSON, JOSH			
03:10				REBOUND (DEF) by LEDEE, JAEDON
02:45	FOUL by CLAXTON, CHASE			
02:45	TIMEOUT MEDIA			
02:45	SUB OUT: HALE, HUNTER			
02:45	SUB OUT: CLAXTON, CHASE			
02:45	SUB IN: FALDEN, CHARLES			
02:45	SUB IN: BURNS JR., D.J.			
02:45				MISSED FT by LEDEE, JAEDON
02:45				REBOUND (DEADB) by TEAM
02:45				MISSED FT by LEDEE, JAEDON
02:44				REBOUND (OFF) by GRAYER, JAIRE
02:42				TURNOVER by GRAYER, JAIRE
02:42	STEAL by FERGUSON, JOSH			
02:33	MISSED 3PTR by FALDEN, CHARLES			
02:31				REBOUND (DEF) by GRAYER, JAIRE
02:02		68-49	H 19	GOOD! DUNK by DENNIS, EDRIC
01:55	GOOD! 3PTR by ZUNIC, KYLE [FB]	68-52	H 16	
01:55	ASSIST by FERGUSON, JOSH			
01:43				TURNOVER by FARABELLO, FRANCISCO
01:43	STEAL by VAUDRIN, CHANDLER			
01:38	GOOD! LAYUP by FALDEN, CHARLES	68-54	H 14	
01:38	ASSIST by VAUDRIN, CHANDLER			
01:38	TIMEOUT 30SEC			
01:38				SUB OUT: FARABELLO, FRANCISCO
01:38				SUB IN: BANE, DESMOND
01:38	SUB OUT: BURNS JR., D.J.			
01:38	SUB IN: CLAXTON, CHASE			
01:13		70-54	H 16	GOOD! LAYUP by GRAYER, JAIRE
01:13				ASSIST by NEMBHARD, RJ
00:59	GOOD! 3PTR by ZUNIC, KYLE	70-57	H 13	
00:59	ASSIST by FERGUSON, JOSH			
00:57	TIMEOUT 30SEC			
00:49	FOUL by VAUDRIN, CHANDLER			
00:49				MISSED FT by DENNIS, EDRIC
00:48	REBOUND (DEF) by FERGUSON, JOSH			
00:44	MISSED 3PTR by FERGUSON, JOSH			
00:40				REBOUND (DEF) by BANE, DESMOND
00:16				MISSED 3PTR by NEMBHARD, RJ
00:13	REBOUND (DEF) by CLAXTON, CHASE			
00:08	GOOD! 3PTR by FALDEN, CHARLES [FB]	70-60	H 10	

Winthrop 60, TCU 70

Points from (This Period)	WIN	TCU
In the Paint	14	26
Off Turns	4	9
2nd Chance	9	4
Fast Break	6	6
Bench	15	5

Official Scoring/Possession Reference Chart
Winthrop vs TCU
Period 1
December 12, 2019 at Ed and Rae Schollmaier Arena



Period 1

Starters:

Winthrop: 3 ANUMBA, MICHEAL (G); 13 HALE, HUNTER (G); 25 FERGUSON, JOSH (C); 30 BURNS JR., D.J. (F); 52 VAUDRIN, CHANDLER (G);
TCU: 1 BANE, DESMOND (G); 2 DENNIS, EDRIC (G); 5 GRAYER, JAIRE (G); 21 SAMUEL, KEVIN (C); 22 NEMBHARD, RJ (G);

Time	VISITORS: Winthrop	Score	Margin	HOME: TCU
19:40	GOOD! DUNK by FERGUSON, JOSH	0-2	V 2	
18:56	GOOD! LAYUP by BURNS JR., D.J.	0-4	V 4	
18:32		3-4	V 1	GOOD! 3PTR by BANE, DESMOND
18:06		5-4	H 1	GOOD! JUMPER by BANE, DESMOND
17:48		6-4	H 2	GOOD! FT by LEDEE, JAEDON
17:48		7-4	H 3	GOOD! FT by LEDEE, JAEDON
15:59		10-4	H 6	GOOD! 3PTR by NEMBHARD, RJ
12:50		12-4	H 8	GOOD! LAYUP by FULLER, PJ [FB]
12:10	GOOD! FT by ANUMBA, MICHEAL	12-5	H 7	
12:10	GOOD! FT by ANUMBA, MICHEAL	12-6	H 6	
12:10	GOOD! FT by ANUMBA, MICHEAL	12-7	H 5	
11:49		14-7	H 7	GOOD! LAYUP by NEMBHARD, RJ
11:04	GOOD! 3PTR by ANUMBA, MICHEAL	14-10	H 4	
10:34		17-10	H 7	GOOD! 3PTR by GRAYER, JAIRE
10:10	GOOD! 3PTR by HALE, HUNTER [FB]	17-13	H 4	
09:34	GOOD! FT by FERGUSON, JOSH	17-14	H 3	
09:16		20-14	H 6	GOOD! 3PTR by GRAYER, JAIRE
08:49		22-14	H 8	GOOD! LAYUP by LEDEE, JAEDON
08:20	GOOD! LAYUP by FALDEN, CHARLES	22-16	H 6	
06:30		23-16	H 7	GOOD! FT by GRAYER, JAIRE
05:27		24-16	H 8	GOOD! FT by LEDEE, JAEDON
03:53		26-16	H 10	GOOD! LAYUP by FARABELLO, FRANCISCO
03:38	GOOD! LAYUP by FERGUSON, JOSH	26-18	H 8	
03:17		28-18	H 10	GOOD! JUMPER by LEDEE, JAEDON
01:54		29-18	H 11	GOOD! FT by LEDEE, JAEDON
01:38	GOOD! FT by CLAXTON, CHASE	29-19	H 10	
01:05	GOOD! LAYUP by VAUDRIN, CHANDLER	29-21	H 8	
00:42		31-21	H 10	GOOD! LAYUP by LEDEE, JAEDON
00:33	GOOD! DUNK by CLAXTON, CHASE	31-23	H 8	
00:00	GOOD! 3PTR by HALE, HUNTER [FB]	31-26	H 5	

Winthrop 26, TCU 31

Official Scoring/Possession Reference Chart
Winthrop vs TCU
Period 2
December 12, 2019 at Ed and Rae Schollmaier Arena



Period 2

Starters:

Winthrop: 3 ANUMBA, MICHEAL (G); 13 HALE, HUNTER (G); 25 FERGUSON, JOSH (C); 30 BURNS JR., D.J. (F); 52 VAUDRIN, CHANDLER (G);
TCU: 1 BANE, DESMOND (G); 2 DENNIS, EDRIC (G); 5 GRAYER, JAIRE (G); 21 SAMUEL, KEVIN (C); 22 NEMBHARD, RJ (G);

Time	VISITORS: Winthrop	Score	Margin	HOME: TCU
19:21	GOOD! 3PTR by HALE, HUNTER	31-29	H 2	
18:59		33-29	H 4	GOOD! JUMPER by SAMUEL, KEVIN
18:39	GOOD! LAYUP by FERGUSON, JOSH	33-31	H 2	
17:50		36-31	H 5	GOOD! 3PTR by GRAYER, JAIRE
16:53		38-31	H 7	GOOD! LAYUP by NEMBHARD, RJ
15:19		40-31	H 9	GOOD! LAYUP by SAMUEL, KEVIN
14:55		42-31	H 11	GOOD! LAYUP by NEMBHARD, RJ [FB]
13:37	GOOD! FT by FERGUSON, JOSH	42-32	H 10	
13:37	GOOD! FT by FERGUSON, JOSH	42-33	H 9	
12:55	GOOD! 3PTR by FERGUSON, JOSH	42-36	H 6	
12:07		44-36	H 8	GOOD! LAYUP by BANE, DESMOND
11:53	GOOD! LAYUP by HALE, HUNTER	44-38	H 6	
10:38	GOOD! LAYUP by CLAXTON, CHASE	44-40	H 4	
10:05		46-40	H 6	GOOD! by SAMUEL, KEVIN
09:38		48-40	H 8	GOOD! LAYUP by BANE, DESMOND
09:22	GOOD! by FERGUSON, JOSH [PNT]	48-42	H 6	
09:05		51-42	H 9	GOOD! 3PTR by DENNIS, EDRIC
08:50	GOOD! by VAUDRIN, CHANDLER [PNT]	51-44	H 7	
08:26		53-44	H 9	GOOD! JUMPER by BANE, DESMOND
08:02		55-44	H 11	GOOD! LAYUP by SAMUEL, KEVIN [PNT]
07:49	GOOD! LAYUP by FALDEN, CHARLES	55-46	H 9	
07:11		57-46	H 11	GOOD! LAYUP by FULLER, PJ [FB]
06:38		59-46	H 13	GOOD! LAYUP by NEMBHARD, RJ
05:10		60-46	H 14	GOOD! FT by NEMBHARD, RJ
05:10		61-46	H 15	GOOD! FT by NEMBHARD, RJ
04:59		62-46	H 16	GOOD! FT by LEDEE, JAEDON
04:41	GOOD! FT by ANUMBA, MICHEAL	62-47	H 15	
04:41	GOOD! FT by ANUMBA, MICHEAL	62-48	H 14	
04:15		64-48	H 16	GOOD! LAYUP by FULLER, PJ [FB]
04:02	GOOD! FT by BURNS JR., D.J.	64-49	H 15	
03:23		66-49	H 17	GOOD! LAYUP by NEMBHARD, RJ [PNT]
02:02		68-49	H 19	GOOD! DUNK by DENNIS, EDRIC
01:55	GOOD! 3PTR by ZUNIC, KYLE [FB]	68-52	H 16	
01:38	GOOD! LAYUP by FALDEN, CHARLES	68-54	H 14	
01:13		70-54	H 16	GOOD! LAYUP by GRAYER, JAIRE
00:59	GOOD! 3PTR by ZUNIC, KYLE	70-57	H 13	
00:08	GOOD! 3PTR by FALDEN, CHARLES [FB]	70-60	H 10	

Winthrop 60, TCU 70

Official Substitutions Log
Winthrop vs TCU
Period 1
December 12, 2019 at Ed and Rae Schollmaier Arena



VISITORS: Winthrop	Time	Score	HOME: TCU
3 ANUMBA, MICHEAL			1 BANE, DESMOND
13 HALE, HUNTER			2 DENNIS, EDRIC
25 FERGUSON, JOSH			5 GRAYER, JAIRE
30 BURNS JR., D.J.			21 SAMUEL, KEVIN
52 VAUDRIN, CHANDLER			22 NEMBHARD, RJ
	18:08	4-3	SUB OUT: SAMUEL, KEVIN
	18:08		SUB IN: LEDEE, JAEDON
SUB OUT: 30 BURNS JR., D.J.	18:08		
SUB IN: 33 CLAXTON, CHASE	18:08		
SUB OUT: 52 VAUDRIN, CHANDLER	17:58	4-5	
SUB IN: 22 ZUNIC, KYLE	17:58		
SUB OUT: 13 HALE, HUNTER	17:48	4-6	
SUB IN: 11 FALDEN, CHARLES	17:48		
	17:07	4-7	SUB OUT: GRAYER, JAIRE
	17:07		SUB IN: SMITH, DIANTE
SUB OUT: 3 ANUMBA, MICHEAL	17:07		
SUB IN: 52 VAUDRIN, CHANDLER	17:07		
	16:51	4-7	SUB OUT: DENNIS, EDRIC
	16:51		SUB IN: FARABELLO, FRANCISCO
SUB OUT: 25 FERGUSON, JOSH	16:19	4-7	
SUB IN: 30 BURNS JR., D.J.	16:19		
	15:50	4-10	SUB OUT: BANE, DESMOND
	15:50		SUB IN: FULLER, PJ
SUB OUT: 11 FALDEN, CHARLES	14:51	4-10	
SUB OUT: 22 ZUNIC, KYLE	14:51		
SUB IN: 3 ANUMBA, MICHEAL	14:51		
SUB IN: 32 CORBIN, JOSH	14:51		
SUB OUT: 33 CLAXTON, CHASE	14:51		
SUB IN: 25 FERGUSON, JOSH	14:51		
	14:03	4-10	SUB OUT: SMITH, DIANTE
	14:03		SUB OUT: NEMBHARD, RJ
	14:03		SUB IN: BANE, DESMOND
	14:03		SUB IN: GRAYER, JAIRE
SUB OUT: 30 BURNS JR., D.J.	14:03		
SUB IN: 21 KING, JAMAL	14:03		
SUB OUT: 52 VAUDRIN, CHANDLER	13:44	4-10	
SUB IN: 22 ZUNIC, KYLE	13:44		
	13:29	4-10	SUB OUT: LEDEE, JAEDON
	13:29		SUB IN: SAMUEL, KEVIN
SUB OUT: 32 CORBIN, JOSH	13:29		
SUB IN: 13 HALE, HUNTER	13:29		
SUB OUT: 13 HALE, HUNTER	12:36	4-12	
SUB OUT: 25 FERGUSON, JOSH	12:36		
SUB IN: 30 BURNS JR., D.J.	12:36		
SUB IN: 52 VAUDRIN, CHANDLER	12:36		
	12:28	4-12	SUB OUT: SAMUEL, KEVIN
	12:28		SUB IN: LEDEE, JAEDON
SUB OUT: 22 ZUNIC, KYLE	12:28		
SUB IN: 13 HALE, HUNTER	12:28		
	12:10	6-12	SUB OUT: FULLER, PJ
	12:10		SUB IN: NEMBHARD, RJ
SUB OUT: 3 ANUMBA, MICHEAL	12:10		
SUB IN: 33 CLAXTON, CHASE	12:10		
	11:58	7-12	SUB OUT: FARABELLO, FRANCISCO
	11:58		SUB IN: DENNIS, EDRIC
SUB OUT: 21 KING, JAMAL	11:38	7-14	
SUB IN: 3 ANUMBA, MICHEAL	11:38		
	09:53	13-17	SUB OUT: GRAYER, JAIRE
	09:53		SUB IN: SMITH, DIANTE
SUB OUT: 3 ANUMBA, MICHEAL	09:53		
SUB OUT: 30 BURNS JR., D.J.	09:53		
SUB OUT: 33 CLAXTON, CHASE	09:53		
SUB IN: 11 FALDEN, CHARLES	09:53		
SUB IN: 21 KING, JAMAL	09:53		
SUB IN: 25 FERGUSON, JOSH	09:53		
	09:34	13-17	SUB OUT: SMITH, DIANTE
	09:34		SUB IN: GRAYER, JAIRE
SUB OUT: 13 HALE, HUNTER	08:14	16-22	
SUB OUT: 21 KING, JAMAL	08:14		
SUB IN: 3 ANUMBA, MICHEAL	08:14		
SUB IN: 32 CORBIN, JOSH	08:14		
SUB OUT: 11 FALDEN, CHARLES	07:40	16-22	
SUB OUT: 25 FERGUSON, JOSH	07:40		
SUB IN: 30 BURNS JR., D.J.	07:40		
SUB IN: 33 CLAXTON, CHASE	07:40		

VISITORS: Winthrop	Time	Score	HOME: TCU
SUB OUT: 32 CORBIN, JOSH	06:18	16-23	
SUB IN: 13 HALE, HUNTER	06:18		
SUB OUT: 13 HALE, HUNTER	05:27	16-23	
SUB OUT: 30 BURNS JR., D.J.	05:27		
SUB OUT: 33 CLAXTON, CHASE	05:27		
SUB IN: 21 KING, JAMAL	05:27		
SUB IN: 22 ZUNIC, KYLE	05:27		
SUB IN: 25 FERGUSON, JOSH	05:27		
	05:01	16-24	SUB OUT: NEMBARD, RJ
	05:01		SUB IN: FARABELLO, FRANCISCO
SUB OUT: 21 KING, JAMAL	03:15	18-28	
SUB OUT: 52 VAUDRIN, CHANDLER	03:15		
SUB IN: 11 FALDEN, CHARLES	03:15		
SUB IN: 33 CLAXTON, CHASE	03:15		
SUB OUT: 22 ZUNIC, KYLE	02:36	18-28	
SUB IN: 13 HALE, HUNTER	02:36		
SUB OUT: 3 ANUMBA, MICHEAL	02:26	18-28	
SUB IN: 52 VAUDRIN, CHANDLER	02:26		
SUB OUT: 25 FERGUSON, JOSH	01:54	18-28	
SUB IN: 30 BURNS JR., D.J.	01:54		
	01:54		SUB OUT: DENNIS, EDRIC
	01:54		SUB IN: NEMBARD, RJ
SUB OUT: 30 BURNS JR., D.J.	01:38	18-29	
SUB IN: 3 ANUMBA, MICHEAL	01:38		

Winthrop 26, TCU 31

Official Substitutions Log
Winthrop vs TCU
Period 2
December 12, 2019 at Ed and Rae Schollmaier Arena



VISITORS: Winthrop	Time	Score	HOME: TCU
3 ANUMBA, MICHEAL			1 BANE, DESMOND
13 HALE, HUNTER			2 DENNIS, EDRIC
25 FERGUSON, JOSH			5 GRAYER, JAIRE
30 BURNS JR., D.J.			21 SAMUEL, KEVIN
52 VAUDRIN, CHANDLER			22 NEMBHARD, RJ
	20:00	-	SUB OUT: FARABELLO, FRANCISCO
	20:00		SUB OUT: LEDEE, JAEDON
	20:00		SUB IN: DENNIS, EDRIC
	20:00		SUB IN: SAMUEL, KEVIN
SUB OUT: 11 FALDEN, CHARLES	20:00		
SUB OUT: 33 CLAXTON, CHASE	20:00		
SUB IN: 25 FERGUSON, JOSH	20:00		
SUB IN: 30 BURNS JR., D.J.	20:00		
SUB OUT: 30 BURNS JR., D.J.	17:35	31-36	
SUB OUT: 52 VAUDRIN, CHANDLER	17:35		
SUB IN: 22 ZUNIC, KYLE	17:35		
SUB IN: 33 CLAXTON, CHASE	17:35		
SUB OUT: 13 HALE, HUNTER	17:18	31-36	
SUB IN: 11 FALDEN, CHARLES	17:18		
	16:17	31-38	SUB OUT: DENNIS, EDRIC
	16:17		SUB IN: FARABELLO, FRANCISCO
SUB OUT: 3 ANUMBA, MICHEAL	16:17		
SUB OUT: 25 FERGUSON, JOSH	16:17		
SUB IN: 21 KING, JAMAL	16:17		
SUB IN: 52 VAUDRIN, CHANDLER	16:17		
SUB OUT: 33 CLAXTON, CHASE	15:49	31-38	
SUB IN: 30 BURNS JR., D.J.	15:49		
	14:57	31-40	SUB OUT: GRAYER, JAIRE
	14:57		SUB IN: SMITH, DIANTE
SUB OUT: 21 KING, JAMAL	14:57		
SUB OUT: 22 ZUNIC, KYLE	14:57		
SUB IN: 3 ANUMBA, MICHEAL	14:57		
SUB IN: 13 HALE, HUNTER	14:57		
	14:11	31-42	SUB OUT: SAMUEL, KEVIN
	14:11		SUB IN: LEDEE, JAEDON
SUB OUT: 30 BURNS JR., D.J.	14:11		
SUB IN: 25 FERGUSON, JOSH	14:11		
	13:37	32-42	SUB OUT: SMITH, DIANTE
	13:37		SUB IN: GRAYER, JAIRE
	13:06	33-42	SUB OUT: LEDEE, JAEDON
	13:06		SUB IN: SAMUEL, KEVIN
	12:31	36-42	SUB OUT: NEMBHARD, RJ
	12:31		SUB IN: FULLER, PJ
	11:16	38-44	SUB OUT: FARABELLO, FRANCISCO
	11:16		SUB IN: DENNIS, EDRIC
SUB OUT: 3 ANUMBA, MICHEAL	11:16		
SUB OUT: 11 FALDEN, CHARLES	11:16		
SUB IN: 21 KING, JAMAL	11:16		
SUB IN: 33 CLAXTON, CHASE	11:16		
SUB OUT: 21 KING, JAMAL	09:40	40-46	
SUB IN: 11 FALDEN, CHARLES	09:40		
SUB OUT: 13 HALE, HUNTER	09:40		
SUB IN: 3 ANUMBA, MICHEAL	09:40		
	08:16	44-53	SUB OUT: GRAYER, JAIRE
	08:16		SUB IN: SMITH, DIANTE
SUB OUT: 25 FERGUSON, JOSH	08:16		
SUB IN: 30 BURNS JR., D.J.	08:16		
	08:16		SUB OUT: BANE, DESMOND
	08:16		SUB IN: NEMBHARD, RJ
SUB OUT: 33 CLAXTON, CHASE	07:09	46-57	
SUB IN: 13 HALE, HUNTER	07:09		
SUB OUT: 3 ANUMBA, MICHEAL	06:56	46-57	
SUB OUT: 30 BURNS JR., D.J.	06:56		
SUB IN: 22 ZUNIC, KYLE	06:56		
SUB IN: 33 CLAXTON, CHASE	06:56		
SUB OUT: 22 ZUNIC, KYLE	05:55	46-59	
SUB IN: 25 FERGUSON, JOSH	05:55		
	05:18	46-59	SUB OUT: SAMUEL, KEVIN
	05:18		SUB IN: LEDEE, JAEDON
SUB OUT: 33 CLAXTON, CHASE	05:18		
SUB IN: 21 KING, JAMAL	05:18		
SUB OUT: 11 FALDEN, CHARLES	05:18		
SUB OUT: 13 HALE, HUNTER	05:18		
SUB IN: 3 ANUMBA, MICHEAL	05:18		
SUB IN: 32 CORBIN, JOSH	05:18		

VISITORS: Winthrop	Time	Score	HOME: TCU
SUB OUT: 21 KING, JAMAL	04:59	46-61	
SUB IN: 22 ZUNIC, KYLE	04:59		
SUB OUT: 52 VAUDRIN, CHANDLER	04:59		
SUB IN: 30 BURNS JR., D.J.	04:59		
	04:41	46-62	SUB OUT: SMITH, DIANTE
	04:41		SUB IN: GRAYER, JAIRE
SUB OUT: 3 ANUMBA, MICHEAL	04:41		
SUB OUT: 30 BURNS JR., D.J.	04:41		
SUB OUT: 32 CORBIN, JOSH	04:41		
SUB IN: 13 HALE, HUNTER	04:41		
SUB IN: 33 CLAXTON, CHASE	04:41		
SUB IN: 52 VAUDRIN, CHANDLER	04:41		
SUB OUT: 22 ZUNIC, KYLE	04:35	48-62	
SUB OUT: 33 CLAXTON, CHASE	04:35		
SUB IN: 30 BURNS JR., D.J.	04:35		
SUB IN: 32 CORBIN, JOSH	04:35		
	04:02	48-64	SUB OUT: FULLER, PJ
	04:02		SUB IN: FARABELLO, FRANCISCO
SUB OUT: 32 CORBIN, JOSH	04:02		
SUB IN: 33 CLAXTON, CHASE	04:02		
SUB OUT: 30 BURNS JR., D.J.	04:02		
SUB IN: 22 ZUNIC, KYLE	04:02		
SUB OUT: 13 HALE, HUNTER	02:45	49-66	
SUB OUT: 33 CLAXTON, CHASE	02:45		
SUB IN: 11 FALDEN, CHARLES	02:45		
SUB IN: 30 BURNS JR., D.J.	02:45		
	01:38	54-68	SUB OUT: FARABELLO, FRANCISCO
	01:38		SUB IN: BANE, DESMOND
SUB OUT: 30 BURNS JR., D.J.	01:38		
SUB IN: 33 CLAXTON, CHASE	01:38		

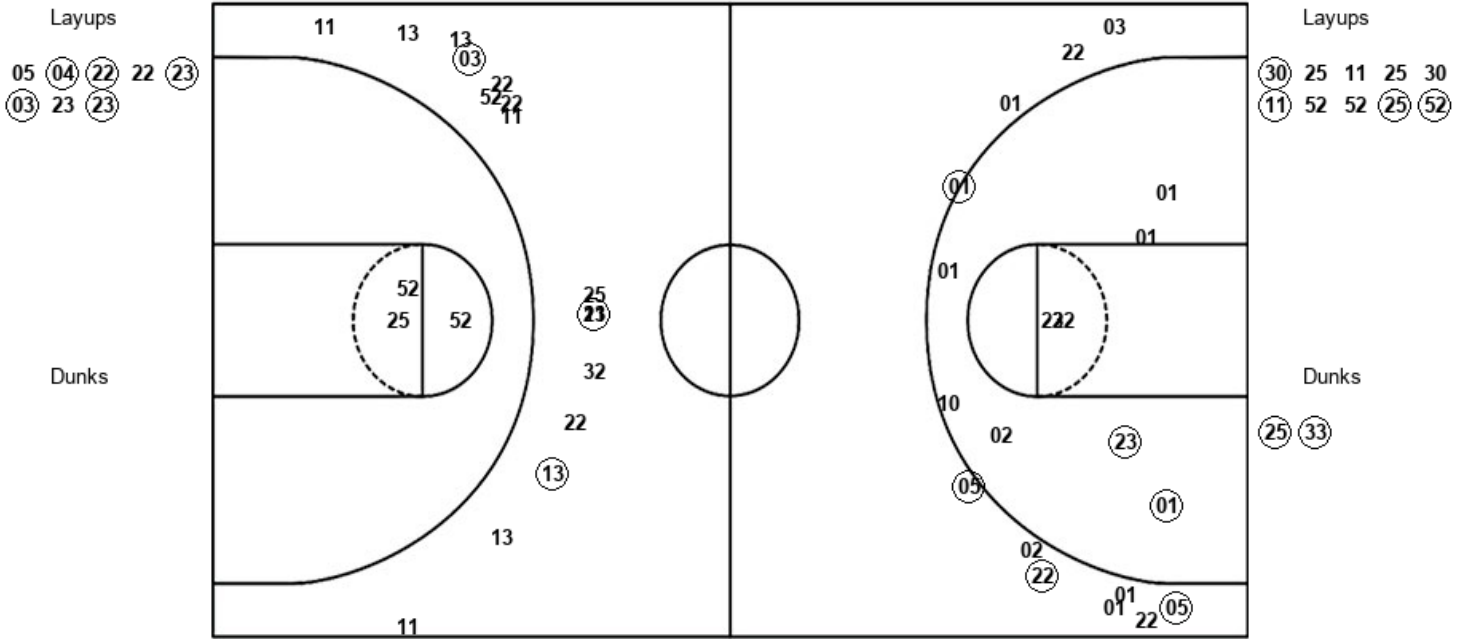
Winthrop 60, TCU 70

Official Shot Chart
Winthrop vs TCU
PERIOD 1 Shots
 December 12, 2019 at Ed and Rae Schollmaier Arena



TCU

Winthrop



TCU : Period 1	Made	Att	Pct
Layups	5	8	62.5
Dunks	0	0	0
2PT Field Goals	7	15	46.7
3PT Field Goals	4	13	30.8
Total Field Goals	11	28	39.3

WIN : Period 1	Made	Att	Pct
Layups	4	10	40.0
Dunks	2	2	100.0
2PT Field Goals	6	15	40.0
3PT Field Goals	3	16	18.8
Total Field Goals	9	31	29.0

Official Shot Chart
Winthrop vs TCU
PERIOD 2 Shots
 December 12, 2019 at Ed and Rae Schollmaier Arena

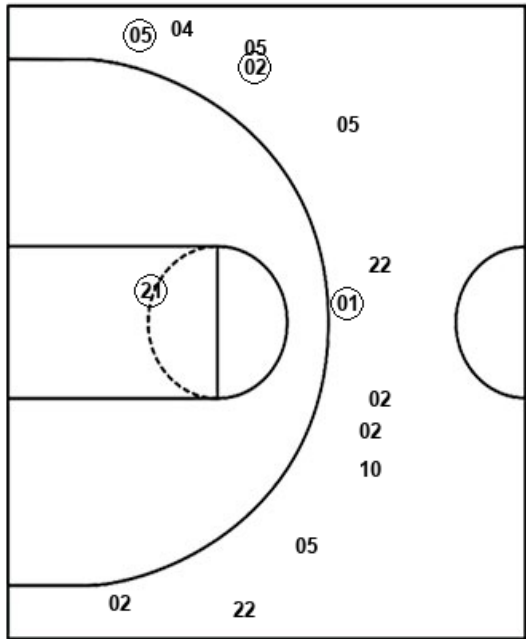


TCU

Winthrop

Layups
 (22) (21) (22) 21 (01)
 02 (01) (21) 02 (04)
 (22) (04) (22) (05)

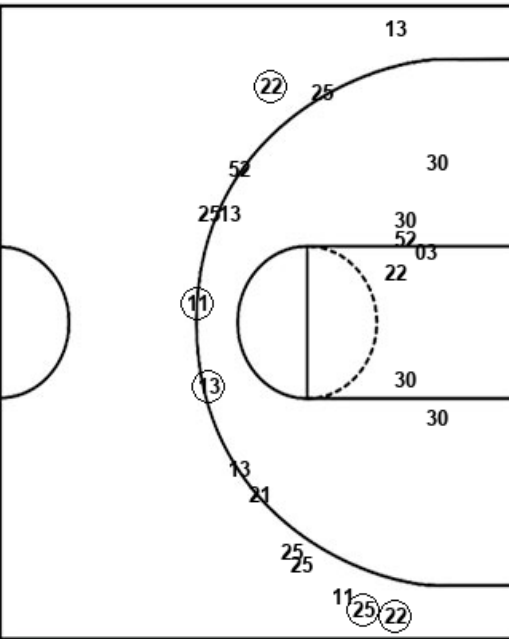
Dunks
 (02)



TCU : Period 2	Made	Att	Pct
Layups	11	14	78.6
Dunks	1	1	100.0
2PT Field Goals	15	18	83.3
3PT Field Goals	2	12	16.7
Total Field Goals	17	30	56.7

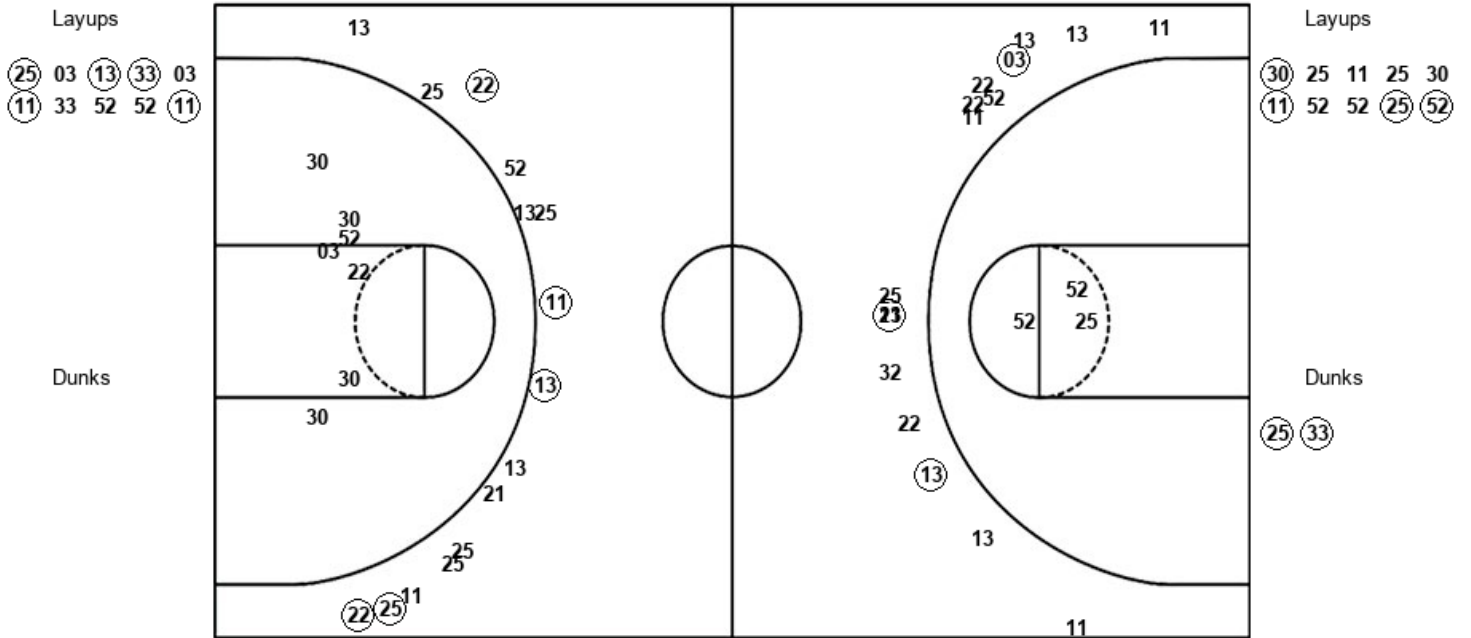
Layups
 (25) 03 (13) (33) 03
 (11) 33 52 52 (11)

Dunks



WIN : Period 2	Made	Att	Pct
Layups	5	10	50.0
Dunks	0	0	0
2PT Field Goals	7	19	36.8
3PT Field Goals	5	15	33.3
Total Field Goals	12	34	35.3

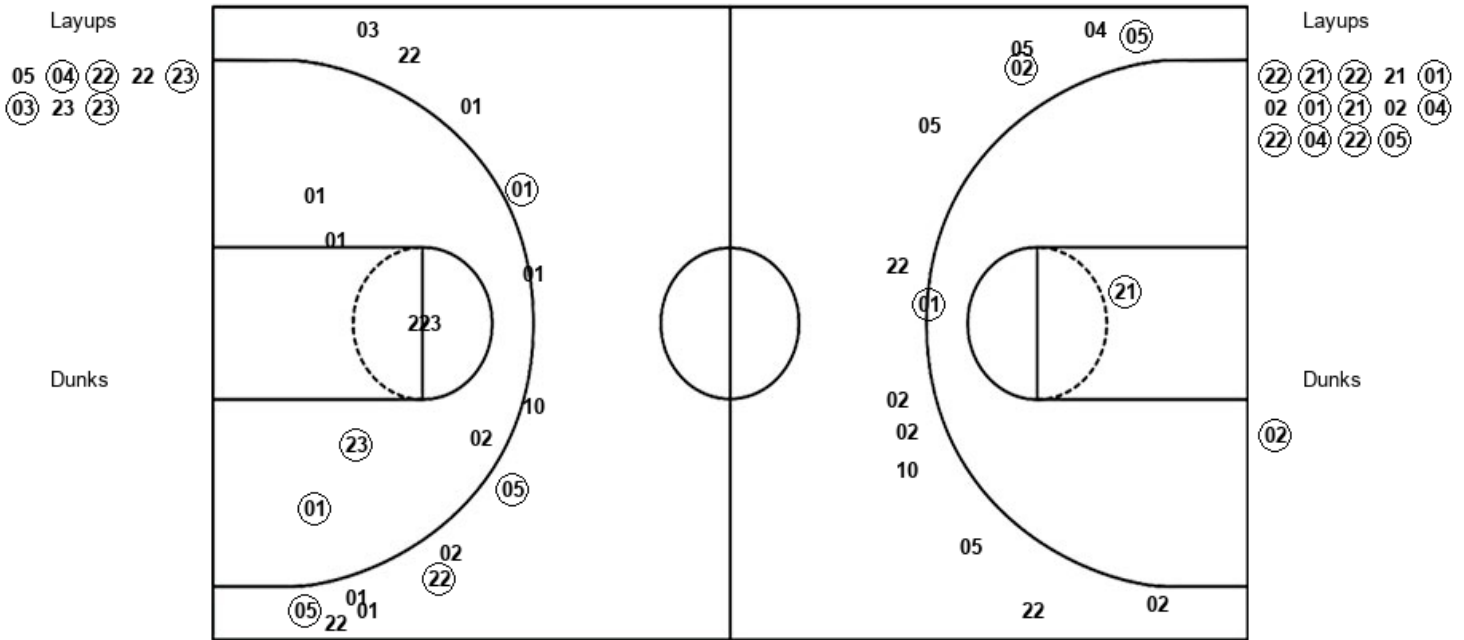
Official Shot Chart
Winthrop vs TCU
Winthrop Team Shots
 December 12, 2019 at Ed and Rae Schollmaier Arena



WIN : Period 1	Made	Att	Pct
Layups	4	10	40.0
Dunks	2	2	100.0
2PT Field Goals	6	15	40.0
3PT Field Goals	3	16	18.8
Total Field Goals	9	31	29.0

WIN : Period 2	Made	Att	Pct
Layups	5	10	50.0
Dunks	0	0	0
2PT Field Goals	7	19	36.8
3PT Field Goals	5	15	33.3
Total Field Goals	12	34	35.3

Official Shot Chart
Winthrop vs TCU
 TCU Team Shots
 December 12, 2019 at Ed and Rae Schollmaier Arena



TCU : Period 1	Made	Att	Pct
Layups	5	8	62.5
Dunks	0	0	0
2PT Field Goals	7	15	46.7
3PT Field Goals	4	13	30.8
Total Field Goals	11	28	39.3

TCU : Period 2	Made	Att	Pct
Layups	11	14	78.6
Dunks	1	1	100.0
2PT Field Goals	15	18	83.3
3PT Field Goals	2	12	16.7
Total Field Goals	17	30	56.7