

FINAL SCORE

UC Irvine

58

TCU



59

November 22, 2019 • Ed and Rae Schollmaier Arena

FINAL STATISTICS

Official Box Score
UC Irvine vs TCU
Game Totals -- Final Statistics
November 22, 2019 at Ed and Rae Schollmaier Arena



UC Irvine 58

No.	Player	S	Pts	FG	3FG	FT	OR	DR	TR	PF	A	TO	Blk	Stl	Min	+/-
11	EDGAR JR., JOHN	F	6	2-8	0-1	2-4	1	8	9	1	0	1	0	1	31	-1
15	ARTEST, JERON	G	7	2-5	1-4	2-2	1	2	3	4	1	1	0	1	28	1
24	WORKU, EYASSU	G	12	5-10	0-1	2-3	0	2	2	1	5	1	0	3	32	-1
42	RUTHERFORD, TOMMY	F	5	2-5	0-0	1-2	0	0	0	2	1	1	0	0	12	0
55	GREENE, BRAD	C	10	4-7	0-0	2-2	3	9	12	3	1	0	1	2	25	10
01	COLE, DEVIN	G	0	0-2	0-0	0-0	0	0	0	0	0	1	0	0	4	-5
04	KRAUSE, AIDEN	G	0	0-0	0-0	0-0	0	1	1	0	0	1	0	0	10	0
05	LEE, ISAIAH	G	0	0-1	0-1	0-0	1	2	3	0	0	4	0	0	15	3
13	JOHNSON, AUSTIN	F	4	1-2	0-0	2-2	1	2	3	2	1	1	5	0	16	-7
40	WELP, COLLIN	F	14	5-12	1-1	3-4	3	1	4	0	1	6	0	0	27	-5
TEAM							5	2	7	0		4				
TOTALS			58	21-52	2-8	14-19	15	29	44	13	10	21	6	7	200	

Shooting By Period

Period	FG	FG%	3FG	3FG%	FT	FT%
1st Half	7-27	26%	1-5	20%	7-8	88%
2nd Half	14-25	56%	1-3	33%	7-11	64%
Game	21-52	40.4%	2-8	25.0%	14-19	73.7%

Last FG: 2nd-01:51

Largest lead: By 5 at

Technical Fouls: None.

TCU 59

No.	Player	S	Pts	FG	3FG	FT	OR	DR	TR	PF	A	TO	Blk	Stl	Min	+/-
01	BANE, DESMOND	G	11	4-10	1-1	2-2	3	4	7	1	1	4	1	1	38	-1
03	FARABELLO, FRANCISCO	G	0	0-5	0-3	0-0	0	0	0	1	0	1	0	0	13	-10
05	GRAYER, JAIRE	G	8	3-7	2-5	0-0	1	2	3	3	0	0	0	0	30	-3
21	SAMUEL, KEVIN	C	4	2-2	0-0	0-4	2	1	3	4	0	0	1	0	14	-1
22	NEMBARD, RJ	G	20	7-18	5-9	1-2	0	1	1	1	1	2	0	2	31	6
02	DENNIS, EDRIC	G	7	2-8	1-3	2-2	0	1	1	2	6	2	0	0	27	11
04	FULLER, PJ	G	2	1-5	0-2	0-0	1	1	2	0	2	2	0	0	11	-3
10	SMITH, DIANTE	F	2	1-3	0-0	0-0	2	2	4	1	0	1	1	0	10	4
23	LEDEE, JAEDON	F	5	1-2	0-0	3-4	2	0	2	3	0	0	1	3	24	3
34	BARLOW, RUSSELL	C	0	0-0	0-0	0-0	0	0	0	1	0	0	0	0	2	-1
TEAM							2	3	5	0		1				
TOTALS			59	21-60	9-23	8-14	13	15	28	17	10	13	4	6	200	

Shooting By Period

Period	FG	FG%	3FG	3FG%	FT	FT%
1st Half	10-29	34%	5-12	42%	3-6	50%
2nd Half	11-31	35%	4-11	36%	5-8	63%
Game	21-60	35.0%	9-23	39.1%	8-14	57.1%

Last FG: 2nd-00:04

Largest lead: By 9 at

Technical Fouls: None.

Game Notes:

Officials: Gary Maxwell, Pat Driscoll, Darron George

Attendance: 5892

Start Time: 01:00 AM

Score	1st	2nd	TOT
UCI	22	36	58
TCU	28	31	59

UCI led for 11:32. TCU led for 22:41.

Game was tied for 0:0.

Times tied: 0 Lead Changes: 0

Points from	UCI	TCU
In the Paint	30	16
Off Turns	19	20
2nd Chance	9	20
Fast Break	11	11
Bench	18	16

Official Box Score
UC Irvine vs TCU
First Half Statistics Only
November 22, 2019 at Ed and Rae Schollmaier Arena



UC Irvine 22

No.	Player	S	Pts	FG	3FG	FT	OR	DR	TR	PF	A	TO	Blk	Stl	Min
11	EDGAR JR., JOHN	F	2	1-3	0-1	0-0	0	2	2	0	0	0	0	0	14
15	ARTEST, JERON	G	4	1-3	0-2	2-2	1	0	1	2	1	1	0	1	14
24	WORKU, EYASSU	G	0	0-4	0-1	0-0	0	2	2	1	2	1	0	1	14
42	RUTHERFORD, TOMMY	F	0	0-2	0-0	0-0	0	0	0	2	0	1	0	0	5
55	GREENE, BRAD	C	4	1-3	0-0	2-2	1	5	6	0	0	0	0	1	11
01	COLE, DEVIN	G	0	0-2	0-0	0-0	0	0	0	0	0	1	0	0	4
04	KRAUSE, AIDEN	G	0	0-0	0-0	0-0	0	1	1	0	0	0	0	0	7
05	LEE, ISAIAH	G	0	0-0	0-0	0-0	1	1	2	0	0	2	0	0	6
13	JOHNSON, AUSTIN	F	4	1-2	0-0	2-2	1	0	1	2	0	1	2	0	10
40	WELP, COLLIN	F	8	3-8	1-1	1-2	3	1	4	0	0	3	0	0	14
TEAM				0-0			3	1	4	0		1			
TOTALS			22	7-27	1-5	7-8	10	13	23	7	3	11	2	3	100

Shooting By Period

Period	FG	FG%	3FG	3FG%	FT	FT%
1st Half	7-27	26%	1-5	20%	7-8	88%
Game	21-52	40.4%	2-8	25.0%	14-19	73.7%

Last FG Half: UCI 2nd-01:51

TCU 28

No.	Player	S	Pts	FG	3FG	FT	OR	DR	TR	PF	A	TO	Blk	Stl	Min
01	BANE, DESMOND	G	7	2-6	1-1	2-2	2	2	4	0	1	2	1	0	19
03	FARABELLO, FRANCISCO	G	0	0-4	0-2	0-0	0	0	0	1	0	1	0	0	10
05	GRAYER, JAIRE	G	8	3-4	2-3	0-0	1	1	2	1	0	0	0	0	16
21	SAMUEL, KEVIN	C	0	0-0	0-0	0-2	1	1	2	2	0	0	1	0	9
22	NEMBHARD, RJ	G	5	2-5	1-2	0-0	0	1	1	1	1	2	0	2	13
02	DENNIS, EDRIC	G	5	2-4	1-2	0-0	0	1	1	1	1	1	0	0	10
04	FULLER, PJ	G	0	0-3	0-2	0-0	1	1	2	0	2	1	0	0	8
10	SMITH, DIANTE	F	0	0-2	0-0	0-0	1	1	2	1	0	0	0	0	4
23	LEDEE, JAEDON	F	3	1-1	0-0	1-2	2	0	2	0	0	0	0	2	11
34	BARLOW, RUSSELL	C	0	0-0	0-0	0-0	0	0	0	0	0	0	0	0	0
TEAM				0-0			0	1	1	0		1			
TOTALS			28	10-29	5-12	3-6	8	9	17	7	5	8	2	4	100

Shooting By Period

Period	FG	FG%	3FG	3FG%	FT	FT%
1st Half	10-29	34%	5-12	42%	3-6	50%
Game	21-60	35.0%	9-23	39.1%	8-14	57.1%

Last FG Half: TCU 2nd-00:04

Game Notes:

Officials: **Gary Maxwell, Pat Driscoll, Darron George**
Attendance: **5892**

Start Time: **01:00 AM**

Score	1st	2nd	TOT
UCI	22	36	58
TCU	28	31	59

Points from (This Period)	UCI	TCU
In the Paint	8	6
Off Turns	9	14
2nd Chance	7	11
Fast Break	2	10
Bench	12	8

Official Play-By-Play
UC Irvine vs TCU
First Half
November 22, 2019 at Ed and Rae Schollmaier Arena



Period 1

Starters:

UC Irvine: 11 EDGAR JR., JOHN (F); 15 ARTEST, JERON (G); 24 WORKU, EYASSU (G); 42 RUTHERFORD, TOMMY (F); 55 GREENE, BRAD (C);
TCU: 1 BANE, DESMOND (G); 3 FARABELLO, FRANCISCO (G); 5 GRAYER, JAIRE (G); 21 SAMUEL, KEVIN (C); 22 NEMBARD, RJ (G);

Time	VISITORS: UC Irvine	Score	Margin	HOME: TCU
19:34				MISSED JUMPER by BANE, DESMOND
19:30				REBOUND (OFF) by SAMUEL, KEVIN
19:21		3-0	H 3	GOOD! 3PTR by GRAYER, JAIRE
19:21				ASSIST by NEMBARD, RJ
19:05	MISSED by RUTHERFORD, TOMMY			
19:02				REBOUND (DEF) by BANE, DESMOND
18:48				MISSED 3PTR by FARABELLO, FRANCISCO
18:44	REBOUND (DEF) by WORKU, EYASSU			
18:35	MISSED JUMPER by WORKU, EYASSU			
18:29				REBOUND (DEF) by TEAM
18:10				MISSED LAYUP by FARABELLO, FRANCISCO
18:06	REBOUND (DEF) by GREENE, BRAD			
18:01	MISSED JUMPER by RUTHERFORD, TOMMY [PNT]			
17:55				REBOUND (DEF) by NEMBARD, RJ
17:55	FOUL by RUTHERFORD, TOMMY [PNT]			
17:55	SUB OUT: RUTHERFORD, TOMMY			
17:55	SUB IN: WELP, COLLIN			
17:55		6-0	H 6	GOOD! 3PTR by BANE, DESMOND [FB]
17:55				MISSED FT by SAMUEL, KEVIN
17:55				REBOUND (DEADB) by TEAM
17:55				MISSED FT by SAMUEL, KEVIN
17:55				REBOUND (OFF) by BANE, DESMOND
17:53	MISSED LAYUP by WORKU, EYASSU [PNT]			
17:53	REBOUND (OFF) by TEAM			
17:53				FOUL by NEMBARD, RJ [PNT]
17:53				SUB OUT: NEMBARD, RJ
17:53				SUB IN: FULLER, PJ
17:53	SUB OUT: WELP, COLLIN			
17:53	SUB IN: RUTHERFORD, TOMMY			
17:49	GOOD! JUMPER by EDGAR JR., JOHN	6-2	H 4	
17:49	ASSIST by WORKU, EYASSU			
17:40				FOUL by FARABELLO, FRANCISCO
17:40				TURNOVER by FARABELLO, FRANCISCO
16:57	TURNOVER by RUTHERFORD, TOMMY			
16:57	SUB OUT: RUTHERFORD, TOMMY			
16:57	SUB IN: WELP, COLLIN			
16:47				TURNOVER by BANE, DESMOND [PNT]
16:22	GOOD! JUMPER by WELP, COLLIN	6-4	H 2	
15:55				MISSED JUMPER by FARABELLO, FRANCISCO
15:52	REBOUND (DEF) by GREENE, BRAD			
15:38	MISSED JUMPER by WELP, COLLIN			
15:35				REBOUND (DEF) by GRAYER, JAIRE
15:23				TURNOVER by FULLER, PJ [PNT]
15:23	STEAL by GREENE, BRAD			
15:12	MISSED 3PTR by ARTEST, JERON			
15:08	REBOUND (OFF) by GREENE, BRAD			
15:08	MISSED JUMPER by GREENE, BRAD [PNT]			
15:08				BLOCK by SAMUEL, KEVIN
15:08	REBOUND (OFF) by TEAM			
15:08	TIMEOUT MEDIA			
15:08				SUB OUT: FARABELLO, FRANCISCO
15:08				SUB OUT: GRAYER, JAIRE
15:08				SUB IN: DENNIS, EDRIC
15:08				SUB IN: SMITH, DIANTE
15:08	SUB OUT: ARTEST, JERON			
15:08	SUB OUT: WORKU, EYASSU			
15:08	SUB OUT: GREENE, BRAD			
15:08	SUB IN: COLE, DEVIN			
15:08	SUB IN: LEE, ISAIAH			
15:08	SUB IN: JOHNSON, AUSTIN			
15:01	MISSED JUMPER by WELP, COLLIN [PNT]			
14:58	REBOUND (OFF) by WELP, COLLIN			
14:57	MISSED LAYUP by WELP, COLLIN [PNT]			
14:53				REBOUND (DEF) by SMITH, DIANTE
14:26				MISSED 3PTR by FULLER, PJ
14:21				REBOUND (OFF) by BANE, DESMOND
14:20				MISSED LAYUP by BANE, DESMOND [PNT]
14:17	REBOUND (DEF) by WELP, COLLIN			
14:16	TURNOVER by LEE, ISAIAH [PNT]			
14:09				MISSED JUMPER by SMITH, DIANTE

Time	VISITORS: UC Irvine	Score	Margin	HOME: TCU
14:06	REBOUND (DEF) by EDGAR JR., JOHN			
13:47				FOUL by SMITH, DIANTE [PNT]
13:47	GOOD! FT by JOHNSON, AUSTIN	6-5	H 1	
13:47				SUB OUT: BANE, DESMOND
13:47				SUB OUT: SAMUEL, KEVIN
13:47				SUB IN: NEMBHARD, RJ
13:47				SUB IN: LEDEE, JAEDON
13:47	SUB OUT: EDGAR JR., JOHN			
13:47	SUB IN: KRAUSE, AIDEN			
13:47	GOOD! FT by JOHNSON, AUSTIN	6-6	T	
13:30				TURNOVER by DENNIS, EDRIC [PNT]
13:19	MISSED JUMPER by COLE, DEVIN			
13:15				REBOUND (DEF) by FULLER, PJ
13:12		9-6	H 3	GOOD! 3PTR by DENNIS, EDRIC [FB]
13:12				ASSIST by FULLER, PJ
12:55	TURNOVER by WELP, COLLIN			
12:55				SUB OUT: FULLER, PJ
12:55				SUB IN: BANE, DESMOND
12:42		11-6	H 5	GOOD! JUMPER by DENNIS, EDRIC
12:19	SUB OUT: WELP, COLLIN			
12:19	SUB IN: RUTHERFORD, TOMMY			
12:10	TURNOVER by COLE, DEVIN			
12:10				STEAL by LEDEE, JAEDON
12:10	SUB OUT: COLE, DEVIN			
12:10	SUB OUT: LEE, ISAIAH			
12:10	SUB IN: ARTEST, JERON			
12:10	SUB IN: WORKU, EYASSU			
11:53		14-6	H 8	GOOD! 3PTR by NEMBHARD, RJ
11:53				ASSIST by DENNIS, EDRIC
11:37	FOUL by JOHNSON, AUSTIN			
11:37	TURNOVER by JOHNSON, AUSTIN			
11:37	TIMEOUT MEDIA			
11:37	SUB OUT: JOHNSON, AUSTIN			
11:37	SUB IN: GREENE, BRAD			
11:22				MISSED 3PTR by DENNIS, EDRIC
11:19				REBOUND (OFF) by SMITH, DIANTE
11:18				MISSED JUMPER by SMITH, DIANTE [PNT]
11:14	REBOUND (DEF) by KRAUSE, AIDEN			
10:59	MISSED JUMPER by GREENE, BRAD [PNT]			
10:55				REBOUND (DEF) by DENNIS, EDRIC
10:50	FOUL by RUTHERFORD, TOMMY			
10:50		15-6	H 9	GOOD! FT by LEDEE, JAEDON
10:50				SUB OUT: DENNIS, EDRIC
10:50				SUB OUT: SMITH, DIANTE
10:50				SUB IN: FARABELLO, FRANCISCO
10:50				SUB IN: GRAYER, JAIRE
10:50	SUB OUT: RUTHERFORD, TOMMY			
10:50	SUB IN: WELP, COLLIN			
10:50				MISSED FT by LEDEE, JAEDON
10:50	REBOUND (DEF) by GREENE, BRAD			
10:29	GOOD! LAYUP by WELP, COLLIN [PNT]	15-8	H 7	
10:14				TURNOVER by BANE, DESMOND [PNT]
10:14	STEAL by WORKU, EYASSU			
09:57	GOOD! LAYUP by GREENE, BRAD [PNT]	15-10	H 5	
09:57	ASSIST by ARTEST, JERON			
09:46	FOUL by ARTEST, JERON			
09:46				SUB OUT: LEDEE, JAEDON
09:46				SUB IN: SAMUEL, KEVIN
09:46	SUB OUT: ARTEST, JERON			
09:46	SUB IN: EDGAR JR., JOHN			
09:45				MISSED JUMPER by BANE, DESMOND
09:40	REBOUND (DEF) by GREENE, BRAD			
09:23	MISSED JUMPER by EDGAR JR., JOHN			
09:19	REBOUND (OFF) by WELP, COLLIN			
09:18	MISSED 3PTR by WORKU, EYASSU			
09:14				REBOUND (DEF) by SAMUEL, KEVIN
09:11				TURNOVER by NEMBHARD, RJ [PNT]
08:59	MISSED LAYUP by WELP, COLLIN [PNT]			
08:59				BLOCK by BANE, DESMOND
08:59	REBOUND (OFF) by TEAM			
08:53	MISSED JUMPER by WORKU, EYASSU			
08:49	REBOUND (OFF) by WELP, COLLIN			
08:43				FOUL by GRAYER, JAIRE
08:43	MISSED FT by WELP, COLLIN			
08:43	REBOUND (DEADB) by TEAM			
08:43	SUB OUT: KRAUSE, AIDEN			
08:43	SUB IN: LEE, ISAIAH			
08:43	GOOD! FT by WELP, COLLIN	15-11	H 4	
08:32				MISSED 3PTR by GRAYER, JAIRE
08:28	REBOUND (DEF) by WORKU, EYASSU			

Time	VISITORS: UC Irvine	Score	Margin	HOME: TCU
08:16				FOUL by SAMUEL, KEVIN
08:16	GOOD! FT by GREENE, BRAD	15-12	H 3	
08:16	SUB OUT: WELP, COLLIN			
08:16	SUB IN: JOHNSON, AUSTIN			
08:16	GOOD! FT by GREENE, BRAD	15-13	H 2	
08:16	SUB OUT: WORKU, EYASSU			
08:16	SUB IN: COLE, DEVIN			
07:59		17-13	H 4	GOOD! JUMPER by GRAYER, JAIRE
07:27	MISSED LAYUP by COLE, DEVIN [PNT]			
07:25	REBOUND (DEADB) by TEAM			
07:25	TURNOVER by TEAM			
07:25	TIMEOUT MEDIA			
07:25	SUB OUT: COLE, DEVIN			
07:25	SUB IN: ARTEST, JERON			
07:12				TURNOVER by NEMBHARD, RJ
07:12	STEAL by ARTEST, JERON			
07:07	GOOD! LAYUP by ARTEST, JERON [FB/PNT]	17-15	H 2	
06:56				MISSED JUMPER by NEMBHARD, RJ
06:55	REBOUND (DEF) by LEE, ISAIAH			
06:55				FOUL by SAMUEL, KEVIN
06:55	SUB OUT: GREENE, BRAD			
06:55	SUB IN: WELP, COLLIN			
06:55				SUB OUT: SAMUEL, KEVIN
06:55				SUB IN: LEDEE, JAEDON
06:43	TURNOVER by ARTEST, JERON			
06:43				STEAL by LEDEE, JAEDON
06:29				MISSED LAYUP by NEMBHARD, RJ [PNT]
06:26				REBOUND (OFF) by LEDEE, JAEDON
06:16				MISSED LAYUP by BANE, DESMOND [PNT]
06:12				REBOUND (OFF) by LEDEE, JAEDON
06:02				MISSED 3PTR by FARABELLO, FRANCISCO
05:58	REBOUND (DEF) by EDGAR JR., JOHN			
05:42	MISSED JUMPER by JOHNSON, AUSTIN			
05:34	REBOUND (OFF) by LEE, ISAIAH			
05:33	TURNOVER by LEE, ISAIAH			
05:33				STEAL by NEMBHARD, RJ
05:33				SUB OUT: FARABELLO, FRANCISCO
05:33				SUB OUT: NEMBHARD, RJ
05:33				SUB IN: DENNIS, EDRIC
05:33				SUB IN: FULLER, PJ
05:33	SUB OUT: LEE, ISAIAH			
05:33	SUB IN: WORKU, EYASSU			
05:19				MISSED 3PTR by FULLER, PJ
05:16				REBOUND (OFF) by GRAYER, JAIRE
05:04		19-15	H 4	GOOD! JUMPER by BANE, DESMOND
04:47	TURNOVER by WELP, COLLIN [PNT]			
04:38	SUB OUT: EDGAR JR., JOHN			
04:38	SUB IN: KRAUSE, AIDEN			
04:26				MISSED LAYUP by DENNIS, EDRIC
04:26				REBOUND (OFF) by FULLER, PJ
04:26	BLOCK by JOHNSON, AUSTIN			
04:19		22-15	H 7	GOOD! 3PTR by GRAYER, JAIRE
04:19				ASSIST by FULLER, PJ
03:51	GOOD! 3PTR by WELP, COLLIN	22-18	H 4	
03:51	ASSIST by WORKU, EYASSU			
03:36				MISSED LAYUP by FULLER, PJ [PNT]
03:36	BLOCK by JOHNSON, AUSTIN			
03:35	REBOUND (DEF) by TEAM			
03:35	TIMEOUT MEDIA			
03:13	MISSED JUMPER by WELP, COLLIN [PNT]			
03:10	REBOUND (OFF) by JOHNSON, AUSTIN			
03:09	GOOD! LAYUP by JOHNSON, AUSTIN [PNT]	22-20	H 2	
02:37				TURNOVER by TEAM
02:37				SUB OUT: FULLER, PJ
02:37				SUB IN: NEMBHARD, RJ
02:37	SUB OUT: KRAUSE, AIDEN			
02:37	SUB OUT: JOHNSON, AUSTIN			
02:37	SUB IN: EDGAR JR., JOHN			
02:37	SUB IN: GREENE, BRAD			
02:10	MISSED 3PTR by ARTEST, JERON			
02:08	REBOUND (OFF) by ARTEST, JERON			
02:08				FOUL by DENNIS, EDRIC
02:08	GOOD! FT by ARTEST, JERON	22-21	H 1	
02:08	GOOD! FT by ARTEST, JERON	22-22	T	
01:53				MISSED 3PTR by NEMBHARD, RJ
01:49	REBOUND (DEF) by GREENE, BRAD			
01:30	MISSED 3PTR by EDGAR JR., JOHN			
01:26				REBOUND (DEF) by BANE, DESMOND
01:21		24-22	H 2	GOOD! LAYUP by LEDEE, JAEDON [FB/PNT]
01:21				ASSIST by BANE, DESMOND

Time	VISITORS: UC Irvine	Score	Margin	HOME: TCU
00:50	FOUL by WORKU, EYASSU [PNT]			
00:50	TURNOVER by WORKU, EYASSU [PNT]			
00:50	SUB OUT: GREENE, BRAD			
00:50	SUB IN: JOHNSON, AUSTIN			
00:38	FOUL by ARTEST, JERON			
00:38	SUB OUT: ARTEST, JERON			
00:38	SUB IN: LEE, ISAIAH			
00:24	FOUL by JOHNSON, AUSTIN [PNT]			
00:24		25-22	H 3	GOOD! FT by BANE, DESMOND
00:24	SUB OUT: JOHNSON, AUSTIN			
00:24	SUB IN: RUTHERFORD, TOMMY			
00:24	TIMEOUT 30SEC			
00:24		26-22	H 4	GOOD! FT by BANE, DESMOND
00:24	SUB OUT: LEE, ISAIAH			
00:24	SUB IN: ARTEST, JERON			
00:03	TURNOVER by WELP, COLLIN			
00:03				STEAL by NEMBHARD, RJ
00:01		28-22	H 6	GOOD! DUNK by NEMBHARD, RJ [FB/PNT]

UC Irvine 22, TCU 28

Points from (This Period)	UCI	TCU
In the Paint	8	6
Off Turns	9	14
2nd Chance	7	11
Fast Break	2	10
Bench	12	8

Official Box Score
UC Irvine vs TCU
Second Half Statistics Only
November 22, 2019 at Ed and Rae Schollmaier Arena



UC Irvine 36

No.	Player	S	Pts	FG	3FG	FT	OR	DR	TR	PF	A	TO	Blk	Stl	Min
11	EDGAR JR., JOHN	F	4	1-5	0-0	2-4	1	6	7	1	0	1	0	1	17
15	ARTEST, JERON	G	3	1-2	1-2	0-0	0	2	2	2	0	0	0	0	14
24	WORKU, EYASSU	G	12	5-6	0-0	2-3	0	0	0	0	3	0	0	2	18
42	RUTHERFORD, TOMMY	F	5	2-3	0-0	1-2	0	0	0	0	1	0	0	0	7
55	GREENE, BRAD	C	6	3-4	0-0	0-0	2	4	6	3	1	0	1	1	14
01	COLE, DEVIN	G	0	0-0	0-0	0-0	0	0	0	0	0	0	0	0	0
04	KRAUSE, AIDEN	G	0	0-0	0-0	0-0	0	0	0	0	0	1	0	0	3
05	LEE, ISAIAH	G	0	0-1	0-1	0-0	0	1	1	0	0	2	0	0	8
13	JOHNSON, AUSTIN	F	0	0-0	0-0	0-0	0	2	2	0	1	0	3	0	6
40	WELP, COLLIN	F	6	2-4	0-0	2-2	0	0	0	0	1	3	0	0	13
	TEAM			0-0			2	1	3	0		3			
TOTALS			36	14-25	1-3	7-11	5	16	21	6	7	10	4	4	100

Shooting By Period

Period	FG	FG%	3FG	3FG%	FT	FT%
2nd Half	14-25	56%	1-3	33%	7-11	64%
Game	21-52	40.4%	2-8	25.0%	14-19	73.7%

Last FG Half: UCI -

TCU 31

No.	Player	S	Pts	FG	3FG	FT	OR	DR	TR	PF	A	TO	Blk	Stl	Min
01	BANE, DESMOND	G	4	2-4	0-0	0-0	1	2	3	1	0	2	0	1	19
03	FARABELLO, FRANCISCO	G	0	0-1	0-1	0-0	0	0	0	0	0	0	0	0	3
05	GRAY, JAIRE	G	0	0-3	0-2	0-0	0	1	1	2	0	0	0	0	14
21	SAMUEL, KEVIN	C	4	2-2	0-0	0-2	1	0	1	2	0	0	0	0	5
22	NEMBARD, RJ	G	15	5-13	4-7	1-2	0	0	0	0	0	0	0	0	18
02	DENNIS, EDRIC	G	2	0-4	0-1	2-2	0	0	0	1	5	1	0	0	17
04	FULLER, PJ	G	2	1-2	0-0	0-0	0	0	0	0	0	1	0	0	4
10	SMITH, DIANTE	F	2	1-1	0-0	0-0	1	1	2	0	0	1	1	0	6
23	LEDEE, JAEDON	F	2	0-1	0-0	2-2	0	0	0	3	0	0	1	1	13
34	BARLOW, RUSSELL	C	0	0-0	0-0	0-0	0	0	0	1	0	0	0	0	2
	TEAM			0-0			2	2	4	0		0			
TOTALS			31	11-31	4-11	5-8	5	6	11	10	5	5	2	2	100

Shooting By Period

Period	FG	FG%	3FG	3FG%	FT	FT%
2nd Half	11-31	35%	4-11	36%	5-8	63%
Game	21-60	35.0%	9-23	39.1%	8-14	57.1%

Last FG Half: TCU -

Game Notes:

Officials: Gary Maxwell, Pat Driscoll, Darron George
Attendance: 5892

Start Time: 01:00 AM

Score	1st	2nd	TOT
UCI	22	36	58
TCU	28	31	59

Points from (This Period)	UCI	TCU
In the Paint	22	10
Off Turns	10	6
2nd Chance	2	9
Fast Break	9	1
Bench	6	8

Official Play-By-Play
UC Irvine vs TCU
Second Half
November 22, 2019 at Ed and Rae Schollmaier Arena



Period 2

Starters:

UC Irvine: 11 EDGAR JR., JOHN (F); 15 ARTEST, JERON (G); 24 WORKU, EYASSU (G); 42 RUTHERFORD, TOMMY (F); 55 GREENE, BRAD (C);
TCU: 1 BANE, DESMOND (G); 3 FARABELLO, FRANCISCO (G); 5 GRAYER, JAIRE (G); 21 SAMUEL, KEVIN (C); 22 NEMBARD, RJ (G);

Time	VISITORS: UC Irvine	Score	Margin	HOME: TCU
20:00				SUB OUT: DENNIS, EDRIC
20:00				SUB OUT: LEDEE, JAEDON
20:00				SUB IN: FARABELLO, FRANCISCO
20:00				SUB IN: SAMUEL, KEVIN
20:00	SUB OUT: WELP, COLLIN			
20:00	SUB IN: GREENE, BRAD			
19:42	GOOD! JUMPER by GREENE, BRAD	28-24	H 4	
19:30				TURNOVER by BANE, DESMOND [PNT]
19:30	STEAL by WORKU, EYASSU			
19:25	MISSED LAYUP by EDGAR JR., JOHN			
19:23	REBOUND (OFF) by GREENE, BRAD			
19:23	MISSED JUMPER by GREENE, BRAD [PNT]			
19:23	REBOUND (OFF) by TEAM			
19:20	GOOD! LAYUP by WORKU, EYASSU [PNT]	28-26	H 2	
19:20	ASSIST by GREENE, BRAD			
19:04		30-26	H 4	GOOD! JUMPER by SAMUEL, KEVIN [PNT]
18:45				FOUL by SAMUEL, KEVIN [PNT]
18:45	GOOD! FT by WORKU, EYASSU	30-27	H 3	
18:45				SUB OUT: SAMUEL, KEVIN
18:45				SUB IN: LEDEE, JAEDON
18:45	GOOD! FT by WORKU, EYASSU	30-28	H 2	
18:20				MISSED 3PTR by FARABELLO, FRANCISCO
18:17	REBOUND (DEF) by TEAM			
17:52	GOOD! JUMPER by WORKU, EYASSU	30-30	T	
17:22	FOUL by GREENE, BRAD			
17:22		31-30	H 1	GOOD! FT by LEDEE, JAEDON
17:22				SUB OUT: FARABELLO, FRANCISCO
17:22				SUB IN: DENNIS, EDRIC
17:22		32-30	H 2	GOOD! FT by LEDEE, JAEDON
16:59	GOOD! LAYUP by RUTHERFORD, TOMMY	32-32	T	
16:44				MISSED 3PTR by DENNIS, EDRIC
16:40	REBOUND (DEF) by GREENE, BRAD			
16:28				FOUL by GRAYER, JAIRE [PNT]
16:28				SUB OUT: GRAYER, JAIRE
16:28				SUB IN: SMITH, DIANTE
16:26	MISSED LAYUP by EDGAR JR., JOHN			
16:26				BLOCK by SMITH, DIANTE
16:20				REBOUND (DEF) by SMITH, DIANTE
16:18				MISSED JUMPER by DENNIS, EDRIC
16:14				REBOUND (OFF) by SMITH, DIANTE
16:13		34-32	H 2	GOOD! JUMPER by SMITH, DIANTE
15:43	GOOD! LAYUP by RUTHERFORD, TOMMY	34-34	T	
15:29				MISSED 3PTR by NEMBARD, RJ
15:25				REBOUND (OFF) by TEAM
15:25	TIMEOUT MEDIA			
15:25	SUB OUT: WORKU, EYASSU			
15:25	SUB OUT: RUTHERFORD, TOMMY			
15:25	SUB OUT: GREENE, BRAD			
15:25	SUB IN: LEE, ISAIAH			
15:25	SUB IN: JOHNSON, AUSTIN			
15:25	SUB IN: WELP, COLLIN			
15:23		36-34	H 2	GOOD! JUMPER by BANE, DESMOND
15:23				ASSIST by DENNIS, EDRIC
15:07	TURNOVER by LEE, ISAIAH			
14:56				MISSED LAYUP by NEMBARD, RJ
14:56	BLOCK by JOHNSON, AUSTIN			
14:51	REBOUND (DEF) by LEE, ISAIAH			
14:31	MISSED by WELP, COLLIN [PNT]			
14:30	REBOUND (OFF) by TEAM			
14:25	TURNOVER by TEAM			
14:12				TURNOVER by BANE, DESMOND [PNT]
13:46	GOOD! JUMPER by WELP, COLLIN	36-36	T	
13:46	ASSIST by JOHNSON, AUSTIN			
13:38				TURNOVER by SMITH, DIANTE
13:38	STEAL by EDGAR JR., JOHN			
13:33	GOOD! DUNK by EDGAR JR., JOHN [FB/PNT]	36-38	V 2	
13:26				TIMEOUT 30SEC
13:26				SUB OUT: SMITH, DIANTE
13:26				SUB OUT: NEMBARD, RJ
13:26				SUB OUT: LEDEE, JAEDON

Time	VISITORS: UC Irvine	Score	Margin	HOME: TCU
13:26				SUB IN: FULLER, PJ
13:26				SUB IN: GRAYER, JAIRE
13:26				SUB IN: SAMUEL, KEVIN
13:26	SUB OUT: ARTEST, JERON			
13:26	SUB IN: WORKU, EYASSU			
13:13				MISSED LAYUP by DENNIS, EDRIC [PNT]
13:05				REBOUND (OFF) by SAMUEL, KEVIN
13:05		38-38	T	GOOD! LAYUP by SAMUEL, KEVIN
12:59	TURNOVER by WELP, COLLIN			
12:48				MISSED JUMPER by FULLER, PJ
12:46	REBOUND (DEF) by JOHNSON, AUSTIN			
12:46				FOUL by SAMUEL, KEVIN
12:46				SUB OUT: SAMUEL, KEVIN
12:46				SUB IN: LEDEE, JAEDON
12:46	SUB OUT: EDGAR JR., JOHN			
12:46	SUB OUT: JOHNSON, AUSTIN			
12:46	SUB IN: KRAUSE, AIDEN			
12:46	SUB IN: GREENE, BRAD			
12:19	GOOD! LAYUP by WELP, COLLIN [PNT]	38-40	V 2	
12:19	ASSIST by WORKU, EYASSU			
11:55				TURNOVER by DENNIS, EDRIC [PNT]
11:55	STEAL by GREENE, BRAD			
11:55	TIMEOUT MEDIA			
11:39	GOOD! LAYUP by GREENE, BRAD [PNT]	38-42	V 4	
11:39	ASSIST by WORKU, EYASSU			
11:14		40-42	V 2	GOOD! LAYUP by FULLER, PJ [PNT]
11:14				ASSIST by DENNIS, EDRIC
11:00	TURNOVER by KRAUSE, AIDEN			
11:00				SUB OUT: BANE, DESMOND
11:00				SUB IN: NEMBHARD, RJ
10:32				TURNOVER by FULLER, PJ
10:32	STEAL by WORKU, EYASSU			
10:28	GOOD! LAYUP by WORKU, EYASSU [FB/PNT]	40-44	V 4	
10:15		42-44	V 2	GOOD! LAYUP by NEMBHARD, RJ
09:55	TURNOVER by LEE, ISAIAH			
09:55	SUB OUT: KRAUSE, AIDEN			
09:55	SUB OUT: LEE, ISAIAH			
09:55	SUB IN: EDGAR JR., JOHN			
09:55	SUB IN: ARTEST, JERON			
09:55				SUB OUT: FULLER, PJ
09:55				SUB IN: BANE, DESMOND
09:47	FOUL by GREENE, BRAD			
09:47		43-44	V 1	GOOD! FT by NEMBHARD, RJ [FB]
09:47				MISSED FT by NEMBHARD, RJ [FB]
09:46	REBOUND (DEF) by EDGAR JR., JOHN			
09:31	GOOD! LAYUP by WORKU, EYASSU	43-46	V 3	
09:31	ASSIST by WELP, COLLIN			
09:20		46-46	T	GOOD! 3PTR by NEMBHARD, RJ
09:20				ASSIST by DENNIS, EDRIC
08:54				SUB OUT: GRAYER, JAIRE
08:54				SUB IN: SMITH, DIANTE
08:51	MISSED JUMPER by EDGAR JR., JOHN			
08:47	REBOUND (OFF) by GREENE, BRAD			
08:33	MISSED LAYUP by WELP, COLLIN [PNT]			
08:30				REBOUND (DEF) by BANE, DESMOND
08:24				MISSED 3PTR by NEMBHARD, RJ
08:23	REBOUND (DEADB) by TEAM			
08:23				FOUL by LEDEE, JAEDON
08:23	SUB OUT: WELP, COLLIN			
08:23	SUB IN: RUTHERFORD, TOMMY			
08:23				SUB OUT: LEDEE, JAEDON
08:23				SUB IN: BARLOW, RUSSELL
08:23	SUB OUT: GREENE, BRAD			
08:23	SUB IN: JOHNSON, AUSTIN			
08:10	GOOD! 3PTR by ARTEST, JERON	46-49	V 3	
08:10	ASSIST by RUTHERFORD, TOMMY			
07:55		48-49	V 1	GOOD! LAYUP by BANE, DESMOND [PNT]
07:21	MISSED JUMPER by WORKU, EYASSU			
07:19	REBOUND (DEADB) by TEAM			
07:19	TURNOVER by TEAM			
07:05	FOUL by ARTEST, JERON			
06:53				MISSED JUMPER by NEMBHARD, RJ
06:51	REBOUND (DEF) by JOHNSON, AUSTIN			
06:51				FOUL by BARLOW, RUSSELL
06:51	SUB OUT: ARTEST, JERON			
06:51	SUB IN: LEE, ISAIAH			
06:51				SUB OUT: BARLOW, RUSSELL
06:51				SUB IN: LEDEE, JAEDON
06:32	MISSED by RUTHERFORD, TOMMY [PNT]			
06:29	REBOUND (OFF) by EDGAR JR., JOHN			

Time	VISITORS: UC Irvine	Score	Margin	HOME: TCU
06:29	MISSED JUMPER by EDGAR JR., JOHN [PNT]			
06:29				BLOCK by LEDEE, JAEDON
06:29				REBOUND (DEF) by TEAM
06:09				MISSED LAYUP by DENNIS, EDRIC
06:09	BLOCK by JOHNSON, AUSTIN			
06:04	REBOUND (DEF) by EDGAR JR., JOHN			
06:01				FOUL by LEDEE, JAEDON [PNT]
06:01	MISSED FT by RUTHERFORD, TOMMY [FB]			
06:01	REBOUND (DEADB) by TEAM			
06:01	SUB OUT: WORKU, EYASSU			
06:01	SUB IN: ARTEST, JERON			
06:01				SUB OUT: SMITH, DIANTE
06:01				SUB IN: GRAYER, JAIRE
06:01	GOOD! FT by RUTHERFORD, TOMMY [FB]	48-50	V 2	
06:01	SUB OUT: RUTHERFORD, TOMMY			
06:01	SUB IN: WELP, COLLIN			
05:49	FOUL by EDGAR JR., JOHN			
05:48				MISSED JUMPER by GRAYER, JAIRE
05:42				REBOUND (OFF) by BANE, DESMOND
05:42				MISSED LAYUP by BANE, DESMOND
05:38	REBOUND (DEF) by EDGAR JR., JOHN			
05:37				FOUL by BANE, DESMOND
05:37	SUB OUT: LEE, ISAIAH			
05:37	SUB IN: WORKU, EYASSU			
05:37	GOOD! FT by EDGAR JR., JOHN [FB]	48-51	V 3	
05:37	GOOD! FT by EDGAR JR., JOHN [FB]	48-52	V 4	
05:20				MISSED JUMPER by LEDEE, JAEDON [PNT]
05:16	REBOUND (DEF) by EDGAR JR., JOHN			
04:55	TURNOVER by WELP, COLLIN			
04:55				STEAL by LEDEE, JAEDON
04:54	FOUL by ARTEST, JERON			
04:54		49-52	V 3	GOOD! FT by DENNIS, EDRIC
04:54		50-52	V 2	GOOD! FT by DENNIS, EDRIC
04:54	SUB OUT: JOHNSON, AUSTIN			
04:54	SUB OUT: ARTEST, JERON			
04:54	SUB IN: LEE, ISAIAH			
04:54	SUB IN: GREENE, BRAD			
04:35				MISSED JUMPER by BANE, DESMOND
04:32	REBOUND (DEF) by GREENE, BRAD			
04:24	GOOD! LAYUP by WORKU, EYASSU [PNT]	50-54	V 4	
04:05				MISSED 3PTR by GRAYER, JAIRE
04:01	REBOUND (DEF) by GREENE, BRAD			
03:38	TIMEOUT MEDIA			
03:38				SUB OUT: LEDEE, JAEDON
03:38				SUB IN: SAMUEL, KEVIN
03:33	MISSED 3PTR by LEE, ISAIAH			
03:30	REBOUND (DEADB) by TEAM			
03:30	TURNOVER by TEAM			
03:16				MISSED JUMPER by NEMBHARD, RJ
03:16	BLOCK by GREENE, BRAD			
03:16				REBOUND (OFF) by TEAM
03:16	SUB OUT: LEE, ISAIAH			
03:16	SUB IN: ARTEST, JERON			
03:06		53-54	V 1	GOOD! 3PTR by NEMBHARD, RJ
03:06				ASSIST by DENNIS, EDRIC
02:47	MISSED 3PTR by ARTEST, JERON			
02:43				REBOUND (DEF) by GRAYER, JAIRE
02:36				MISSED 3PTR by GRAYER, JAIRE
02:32	REBOUND (DEF) by EDGAR JR., JOHN			
02:28				FOUL by GRAYER, JAIRE [PNT]
02:28	GOOD! FT by WELP, COLLIN [FB]	53-55	V 2	
02:28	GOOD! FT by WELP, COLLIN [FB]	53-56	V 3	
02:16				MISSED JUMPER by NEMBHARD, RJ
02:12	REBOUND (DEF) by GREENE, BRAD			
01:51	GOOD! JUMPER by GREENE, BRAD [PNT]	53-58	V 5	
01:51	ASSIST by WORKU, EYASSU			
01:36		56-58	V 2	GOOD! 3PTR by NEMBHARD, RJ
01:36				ASSIST by DENNIS, EDRIC
01:09	TURNOVER by EDGAR JR., JOHN			
01:09				STEAL by BANE, DESMOND
01:04				MISSED 3PTR by NEMBHARD, RJ
01:00	REBOUND (DEF) by ARTEST, JERON			
00:44	TURNOVER by WELP, COLLIN			
00:30	FOUL by GREENE, BRAD [PNT]			
00:30				MISSED FT by SAMUEL, KEVIN
00:30				REBOUND (DEADB) by TEAM
00:30	SUB OUT: WELP, COLLIN			
00:30	SUB IN: RUTHERFORD, TOMMY			
00:30				MISSED FT by SAMUEL, KEVIN
00:29	REBOUND (DEF) by ARTEST, JERON			

Time	VISITORS: UC Irvine	Score	Margin	HOME: TCU
00:22	TIMEOUT 30SEC			
00:22				SUB OUT: SAMUEL, KEVIN
00:22				SUB IN: LEDEE, JAEDON
00:22	SUB OUT: GREENE, BRAD			
00:22	SUB IN: WELP, COLLIN			
00:21				FOUL by DENNIS, EDRIC
00:21	SUB OUT: RUTHERFORD, TOMMY			
00:21	SUB IN: JOHNSON, AUSTIN			
00:21	MISSED FT by WORKU, EYASSU			
00:20				TIMEOUT TEAM
00:19				REBOUND (DEF) by TEAM
00:12				MISSED LAYUP by NEMBHARD, RJ [PNT]
00:12	BLOCK by JOHNSON, AUSTIN			
00:12	REBOUND (DEF) by EDGAR JR., JOHN			
00:12				FOUL by LEDEE, JAEDON
00:12	MISSED FT by EDGAR JR., JOHN [FB]			
00:12	REBOUND (DEADB) by TEAM			
00:10	MISSED FT by EDGAR JR., JOHN [FB]			
00:09				REBOUND (DEF) by BANE, DESMOND
00:04		59-58	H 1	GOOD! 3PTR by NEMBHARD, RJ
00:03	TIMEOUT 30SEC			
00:03				TIMEOUT 30SEC
00:03	SUB OUT: JOHNSON, AUSTIN			
00:03	SUB IN: GREENE, BRAD			
00:01	TIMEOUT 30SEC			
00:01				SUB OUT: DENNIS, EDRIC
00:01				SUB IN: SAMUEL, KEVIN

UC Irvine 58, TCU 59

Points from (This Period)	UCI	TCU
In the Paint	22	10
Off Turns	10	6
2nd Chance	2	9
Fast Break	9	1
Bench	6	8

Official Scoring/Possession Reference Chart
UC Irvine vs TCU
Period 1
November 22, 2019 at Ed and Rae Schollmaier Arena



Period 1

Starters:

UC Irvine: 11 EDGAR JR., JOHN (F); 15 ARTEST, JERON (G); 24 WORKU, EYASSU (G); 42 RUTHERFORD, TOMMY (F); 55 GREENE, BRAD (C);
TCU: 1 BANE, DESMOND (G); 3 FARABELLO, FRANCISCO (G); 5 GRAYER, JAIRE (G); 21 SAMUEL, KEVIN (C); 22 NEMBARD, RJ (G);

Time	VISITORS: UC Irvine	Score	Margin	HOME: TCU
19:21		3-0	H 3	GOOD! 3PTR by GRAYER, JAIRE
17:55		6-0	H 6	GOOD! 3PTR by BANE, DESMOND [FB]
17:49	GOOD! JUMPER by EDGAR JR., JOHN	6-2	H 4	
16:22	GOOD! JUMPER by WELP, COLLIN	6-4	H 2	
13:47	GOOD! FT by JOHNSON, AUSTIN	6-5	H 1	
13:47	GOOD! FT by JOHNSON, AUSTIN	6-6	T	
13:12		9-6	H 3	GOOD! 3PTR by DENNIS, EDRIC [FB]
12:42		11-6	H 5	GOOD! JUMPER by DENNIS, EDRIC
11:53		14-6	H 8	GOOD! 3PTR by NEMBARD, RJ
10:50		15-6	H 9	GOOD! FT by LEDEE, JAEDON
10:29	GOOD! LAYUP by WELP, COLLIN [PNT]	15-8	H 7	
09:57	GOOD! LAYUP by GREENE, BRAD [PNT]	15-10	H 5	
08:43	GOOD! FT by WELP, COLLIN	15-11	H 4	
08:16	GOOD! FT by GREENE, BRAD	15-12	H 3	
08:16	GOOD! FT by GREENE, BRAD	15-13	H 2	
07:59		17-13	H 4	GOOD! JUMPER by GRAYER, JAIRE
07:07	GOOD! LAYUP by ARTEST, JERON [FB/PNT]	17-15	H 2	
05:04		19-15	H 4	GOOD! JUMPER by BANE, DESMOND
04:19		22-15	H 7	GOOD! 3PTR by GRAYER, JAIRE
03:51	GOOD! 3PTR by WELP, COLLIN	22-18	H 4	
03:09	GOOD! LAYUP by JOHNSON, AUSTIN [PNT]	22-20	H 2	
02:08	GOOD! FT by ARTEST, JERON	22-21	H 1	
02:08	GOOD! FT by ARTEST, JERON	22-22	T	
01:21		24-22	H 2	GOOD! LAYUP by LEDEE, JAEDON [FB/PNT]
00:24		25-22	H 3	GOOD! FT by BANE, DESMOND
00:24		26-22	H 4	GOOD! FT by BANE, DESMOND
00:01		28-22	H 6	GOOD! DUNK by NEMBARD, RJ [FB/PNT]

UC Irvine 22, TCU 28

Official Scoring/Possession Reference Chart
UC Irvine vs TCU
Period 2
November 22, 2019 at Ed and Rae Schollmaier Arena



Period 2

Starters:

UC Irvine: 11 EDGAR JR., JOHN (F); 15 ARTEST, JERON (G); 24 WORKU, EYASSU (G); 42 RUTHERFORD, TOMMY (F); 55 GREENE, BRAD (C);
TCU: 1 BANE, DESMOND (G); 3 FARABELLO, FRANCISCO (G); 5 GRAYER, JAIRE (G); 21 SAMUEL, KEVIN (C); 22 NEMBHARD, RJ (G);

Time	VISITORS: UC Irvine	Score	Margin	HOME: TCU
19:42	GOOD! JUMPER by GREENE, BRAD	28-24	H 4	
19:20	GOOD! LAYUP by WORKU, EYASSU [PNT]	28-26	H 2	
19:04		30-26	H 4	GOOD! JUMPER by SAMUEL, KEVIN [PNT]
18:45	GOOD! FT by WORKU, EYASSU	30-27	H 3	
18:45	GOOD! FT by WORKU, EYASSU	30-28	H 2	
17:52	GOOD! JUMPER by WORKU, EYASSU	30-30	T	
17:22		31-30	H 1	GOOD! FT by LEDEE, JAEDON
17:22		32-30	H 2	GOOD! FT by LEDEE, JAEDON
16:59	GOOD! LAYUP by RUTHERFORD, TOMMY	32-32	T	
16:13		34-32	H 2	GOOD! JUMPER by SMITH, DIANTE
15:43	GOOD! LAYUP by RUTHERFORD, TOMMY	34-34	T	
15:23		36-34	H 2	GOOD! JUMPER by BANE, DESMOND
13:46	GOOD! JUMPER by WELP, COLLIN	36-36	T	
13:33	GOOD! DUNK by EDGAR JR., JOHN [FB/PNT]	36-38	V 2	
13:05		38-38	T	GOOD! LAYUP by SAMUEL, KEVIN
12:19	GOOD! LAYUP by WELP, COLLIN [PNT]	38-40	V 2	
11:39	GOOD! LAYUP by GREENE, BRAD [PNT]	38-42	V 4	
11:14		40-42	V 2	GOOD! LAYUP by FULLER, PJ [PNT]
10:28	GOOD! LAYUP by WORKU, EYASSU [FB/PNT]	40-44	V 4	
10:15		42-44	V 2	GOOD! LAYUP by NEMBHARD, RJ
09:47		43-44	V 1	GOOD! FT by NEMBHARD, RJ [FB]
09:31	GOOD! LAYUP by WORKU, EYASSU	43-46	V 3	
09:20		46-46	T	GOOD! 3PTR by NEMBHARD, RJ
08:10	GOOD! 3PTR by ARTEST, JERON	46-49	V 3	
07:55		48-49	V 1	GOOD! LAYUP by BANE, DESMOND [PNT]
06:01	GOOD! FT by RUTHERFORD, TOMMY [FB]	48-50	V 2	
05:37	GOOD! FT by EDGAR JR., JOHN [FB]	48-51	V 3	
05:37	GOOD! FT by EDGAR JR., JOHN [FB]	48-52	V 4	
04:54		49-52	V 3	GOOD! FT by DENNIS, EDRIC
04:54		50-52	V 2	GOOD! FT by DENNIS, EDRIC
04:24	GOOD! LAYUP by WORKU, EYASSU [PNT]	50-54	V 4	
03:06		53-54	V 1	GOOD! 3PTR by NEMBHARD, RJ
02:28	GOOD! FT by WELP, COLLIN [FB]	53-55	V 2	
02:28	GOOD! FT by WELP, COLLIN [FB]	53-56	V 3	
01:51	GOOD! JUMPER by GREENE, BRAD [PNT]	53-58	V 5	
01:36		56-58	V 2	GOOD! 3PTR by NEMBHARD, RJ
00:04		59-58	H 1	GOOD! 3PTR by NEMBHARD, RJ

UC Irvine 58, TCU 59

Official Substitutions Log
UC Irvine vs TCU
Period 1
November 22, 2019 at Ed and Rae Schollmaier Arena



VISITORS: UC Irvine	Time	Score	HOME: TCU
11 EDGAR JR.,JOHN			1 BANE,DESMOND
15 ARTEST,JERON			3 FARABELLO,FRANCISCO
24 WORKU,EYASSU			5 GRAYER,JAIRE
42 RUTHERFORD,TOMMY			21 SAMUEL,KEVIN
55 GREENE,BRAD			22 NEMBHARD,RJ
SUB OUT: 42 RUTHERFORD,TOMMY	17:55	0-3	
SUB IN: 40 WELP,COLLIN	17:55		
	17:53	0-6	SUB OUT: NEMBHARD,RJ
	17:53		SUB IN: FULLER,PJ
SUB OUT: 40 WELP,COLLIN	17:53		
SUB IN: 42 RUTHERFORD,TOMMY	17:53		
SUB OUT: 42 RUTHERFORD,TOMMY	16:57	2-6	
SUB IN: 40 WELP,COLLIN	16:57		
	15:08	4-6	SUB OUT: FARABELLO,FRANCISCO
	15:08		SUB OUT: GRAYER,JAIRE
	15:08		SUB IN: DENNIS,EDRIC
	15:08		SUB IN: SMITH,DIANTE
SUB OUT: 15 ARTEST,JERON	15:08		
SUB OUT: 24 WORKU,EYASSU	15:08		
SUB OUT: 55 GREENE,BRAD	15:08		
SUB IN: 1 COLE,DEVIN	15:08		
SUB IN: 5 LEE,ISIAAH	15:08		
SUB IN: 13 JOHNSON,AUSTIN	15:08		
	13:47	5-6	SUB OUT: BANE,DESMOND
	13:47		SUB OUT: SAMUEL,KEVIN
	13:47		SUB IN: NEMBHARD,RJ
	13:47		SUB IN: LEDEE,JAEDON
SUB OUT: 11 EDGAR JR.,JOHN	13:47		
SUB IN: 4 KRAUSE,AIDEN	13:47		
	12:55	6-9	SUB OUT: FULLER,PJ
	12:55		SUB IN: BANE,DESMOND
SUB OUT: 40 WELP,COLLIN	12:19	6-11	
SUB IN: 42 RUTHERFORD,TOMMY	12:19		
SUB OUT: 1 COLE,DEVIN	12:10	6-11	
SUB OUT: 5 LEE,ISIAAH	12:10		
SUB IN: 15 ARTEST,JERON	12:10		
SUB IN: 24 WORKU,EYASSU	12:10		
SUB OUT: 13 JOHNSON,AUSTIN	11:37	6-14	
SUB IN: 55 GREENE,BRAD	11:37		
	10:50	6-15	SUB OUT: DENNIS,EDRIC
	10:50		SUB OUT: SMITH,DIANTE
	10:50		SUB IN: FARABELLO,FRANCISCO
	10:50		SUB IN: GRAYER,JAIRE
SUB OUT: 42 RUTHERFORD,TOMMY	10:50		
SUB IN: 40 WELP,COLLIN	10:50		
	09:46	10-15	SUB OUT: LEDEE,JAEDON
	09:46		SUB IN: SAMUEL,KEVIN
SUB OUT: 15 ARTEST,JERON	09:46		
SUB IN: 11 EDGAR JR.,JOHN	09:46		
SUB OUT: 4 KRAUSE,AIDEN	08:43	10-15	
SUB IN: 5 LEE,ISIAAH	08:43		
SUB OUT: 40 WELP,COLLIN	08:16	12-15	
SUB IN: 13 JOHNSON,AUSTIN	08:16		
SUB OUT: 24 WORKU,EYASSU	08:16		
SUB IN: 1 COLE,DEVIN	08:16		
SUB OUT: 1 COLE,DEVIN	07:25	13-17	
SUB IN: 15 ARTEST,JERON	07:25		
SUB OUT: 55 GREENE,BRAD	06:55	15-17	
SUB IN: 40 WELP,COLLIN	06:55		
	06:55		SUB OUT: SAMUEL,KEVIN
	06:55		SUB IN: LEDEE,JAEDON
	05:33	15-17	SUB OUT: FARABELLO,FRANCISCO
	05:33		SUB OUT: NEMBHARD,RJ
	05:33		SUB IN: DENNIS,EDRIC
	05:33		SUB IN: FULLER,PJ
SUB OUT: 5 LEE,ISIAAH	05:33		
SUB IN: 24 WORKU,EYASSU	05:33		
SUB OUT: 11 EDGAR JR.,JOHN	04:38	15-19	
SUB IN: 4 KRAUSE,AIDEN	04:38		
	02:37	20-22	SUB OUT: FULLER,PJ
	02:37		SUB IN: NEMBHARD,RJ
SUB OUT: 4 KRAUSE,AIDEN	02:37		
SUB OUT: 13 JOHNSON,AUSTIN	02:37		
SUB IN: 11 EDGAR JR.,JOHN	02:37		
SUB IN: 55 GREENE,BRAD	02:37		

VISITORS: UC Irvine		Time	Score	HOME: TCU
SUB OUT: 55 GREENE,BRAD		00:50	22-24	
SUB IN: 13 JOHNSON,AUSTIN		00:50		
SUB OUT: 15 ARTEST,JERON		00:38	22-24	
SUB IN: 5 LEE,ISAIAH		00:38		
SUB OUT: 13 JOHNSON,AUSTIN		00:24	22-25	
SUB IN: 42 RUTHERFORD,TOMMY		00:24		
SUB OUT: 5 LEE,ISAIAH		00:24		
SUB IN: 15 ARTEST,JERON		00:24		

UC Irvine 22, TCU 28

Official Substitutions Log
UC Irvine vs TCU
Period 2
November 22, 2019 at Ed and Rae Schollmaier Arena



VISITORS: UC Irvine	Time	Score	HOME: TCU
11 EDGAR JR.,JOHN			1 BANE,DESMOND
15 ARTEST,JERON			3 FARABELLO,FRANCISCO
24 WORKU,EYASSU			5 GRAYER,JAIRE
42 RUTHERFORD,TOMMY			21 SAMUEL,KEVIN
55 GREENE,BRAD			22 NEMBHARD,RJ
	20:00	-	SUB OUT: DENNIS,EDRIC
	20:00		SUB OUT: LEDEE,JAEDON
	20:00		SUB IN: FARABELLO,FRANCISCO
	20:00		SUB IN: SAMUEL,KEVIN
SUB OUT: 40 WELP,COLLIN	20:00		
SUB IN: 55 GREENE,BRAD	20:00		
	18:45	27-30	SUB OUT: SAMUEL,KEVIN
	18:45		SUB IN: LEDEE,JAEDON
	17:22	30-31	SUB OUT: FARABELLO,FRANCISCO
	17:22		SUB IN: DENNIS,EDRIC
	16:28	32-32	SUB OUT: GRAYER,JAIRE
	16:28		SUB IN: SMITH,DIANTE
SUB OUT: 24 WORKU,EYASSU	15:25	34-34	
SUB OUT: 42 RUTHERFORD,TOMMY	15:25		
SUB OUT: 55 GREENE,BRAD	15:25		
SUB IN: 5 LEE,ISAIAH	15:25		
SUB IN: 13 JOHNSON,AUSTIN	15:25		
SUB IN: 40 WELP,COLLIN	15:25		
	13:26	38-36	SUB OUT: SMITH,DIANTE
	13:26		SUB OUT: NEMBHARD,RJ
	13:26		SUB OUT: LEDEE,JAEDON
	13:26		SUB IN: FULLER,PJ
	13:26		SUB IN: GRAYER,JAIRE
	13:26		SUB IN: SAMUEL,KEVIN
SUB OUT: 15 ARTEST,JERON	13:26		
SUB IN: 24 WORKU,EYASSU	13:26		
	12:46	38-38	SUB OUT: SAMUEL,KEVIN
	12:46		SUB IN: LEDEE,JAEDON
SUB OUT: 11 EDGAR JR.,JOHN	12:46		
SUB OUT: 13 JOHNSON,AUSTIN	12:46		
SUB IN: 4 KRAUSE,AIDEN	12:46		
SUB IN: 55 GREENE,BRAD	12:46		
	11:00	42-40	SUB OUT: BANE,DESMOND
	11:00		SUB IN: NEMBHARD,RJ
SUB OUT: 4 KRAUSE,AIDEN	09:55	44-42	
SUB OUT: 5 LEE,ISAIAH	09:55		
SUB IN: 11 EDGAR JR.,JOHN	09:55		
SUB IN: 15 ARTEST,JERON	09:55		
	09:55		SUB OUT: FULLER,PJ
	09:55		SUB IN: BANE,DESMOND
	08:54	46-46	SUB OUT: GRAYER,JAIRE
	08:54		SUB IN: SMITH,DIANTE
SUB OUT: 40 WELP,COLLIN	08:23	46-46	
SUB IN: 42 RUTHERFORD,TOMMY	08:23		
	08:23		SUB OUT: LEDEE,JAEDON
	08:23		SUB IN: BARLOW,RUSSELL
SUB OUT: 55 GREENE,BRAD	08:23		
SUB IN: 13 JOHNSON,AUSTIN	08:23		
SUB OUT: 15 ARTEST,JERON	06:51	49-48	
SUB IN: 5 LEE,ISAIAH	06:51		
	06:51		SUB OUT: BARLOW,RUSSELL
	06:51		SUB IN: LEDEE,JAEDON
SUB OUT: 24 WORKU,EYASSU	06:01	49-48	
SUB IN: 15 ARTEST,JERON	06:01		
	06:01		SUB OUT: SMITH,DIANTE
	06:01		SUB IN: GRAYER,JAIRE
SUB OUT: 42 RUTHERFORD,TOMMY	06:01		
SUB IN: 40 WELP,COLLIN	06:01		
SUB OUT: 5 LEE,ISAIAH	05:37	50-48	
SUB IN: 24 WORKU,EYASSU	05:37		
SUB OUT: 13 JOHNSON,AUSTIN	04:54	52-50	
SUB OUT: 15 ARTEST,JERON	04:54		
SUB IN: 5 LEE,ISAIAH	04:54		
SUB IN: 55 GREENE,BRAD	04:54		
	03:38	54-50	SUB OUT: LEDEE,JAEDON
	03:38		SUB IN: SAMUEL,KEVIN
SUB OUT: 5 LEE,ISAIAH	03:16	54-50	
SUB IN: 15 ARTEST,JERON	03:16		
SUB OUT: 40 WELP,COLLIN	00:30	58-56	
SUB IN: 42 RUTHERFORD,TOMMY	00:30		

VISITORS: UC Irvine		Time	Score	HOME: TCU
		00:22	58-56	SUB OUT: SAMUEL,KEVIN
		00:22		SUB IN: LEDEE,JAEDON
SUB OUT: 55 GREENE,BRAD		00:22		
SUB IN: 40 WELP,COLLIN		00:22		
SUB OUT: 42 RUTHERFORD,TOMMY		00:21	58-56	
SUB IN: 13 JOHNSON,AUSTIN		00:21		
SUB OUT: 13 JOHNSON,AUSTIN		00:03	58-59	
SUB IN: 55 GREENE,BRAD		00:03		
		00:01	58-59	SUB OUT: DENNIS,EDRIC
		00:01		SUB IN: SAMUEL,KEVIN

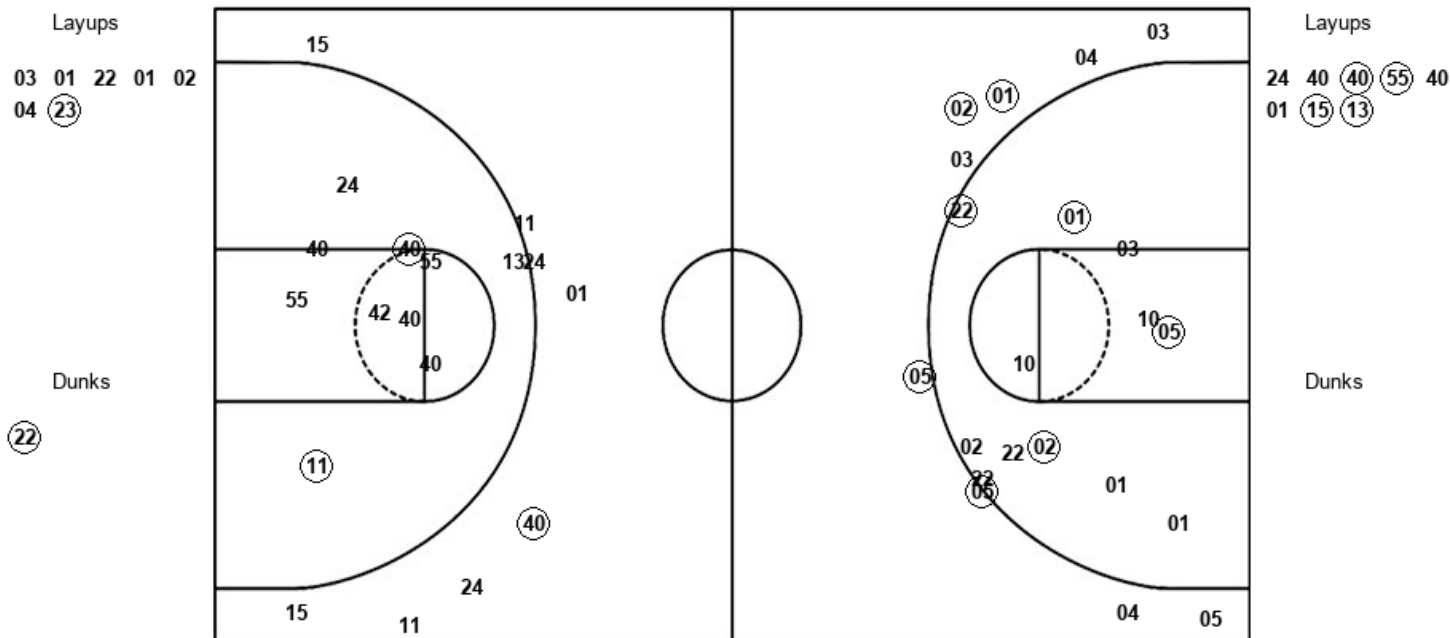
UC Irvine 58, TCU 59

Official Shot Chart
UC Irvine vs TCU
 PERIOD 1 Shots
 November 22, 2019 at Ed and Rae Schollmaier Arena



TCU

UC Irvine



TCU : Period 1	Made	Att	Pct
Layups	1	7	14.3
Dunks	1	1	100.0
2PT Field Goals	5	17	29.4
3PT Field Goals	5	12	41.7
Total Field Goals	10	29	34.5

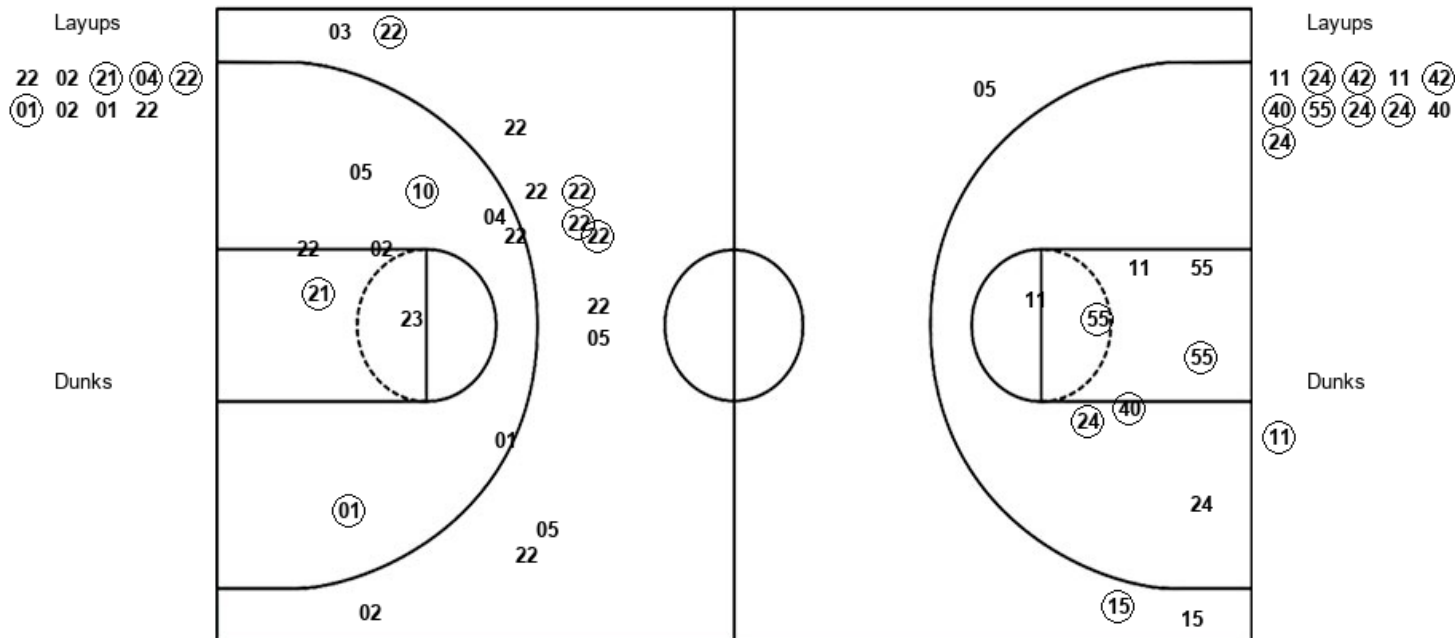
UCI : Period 1	Made	Att	Pct
Layups	4	8	50.0
Dunks	0	0	0
2PT Field Goals	6	22	27.3
3PT Field Goals	1	5	20.0
Total Field Goals	7	27	25.9

Official Shot Chart
UC Irvine vs TCU
 PERIOD 2 Shots
 November 22, 2019 at Ed and Rae Schollmaier Arena



TCU

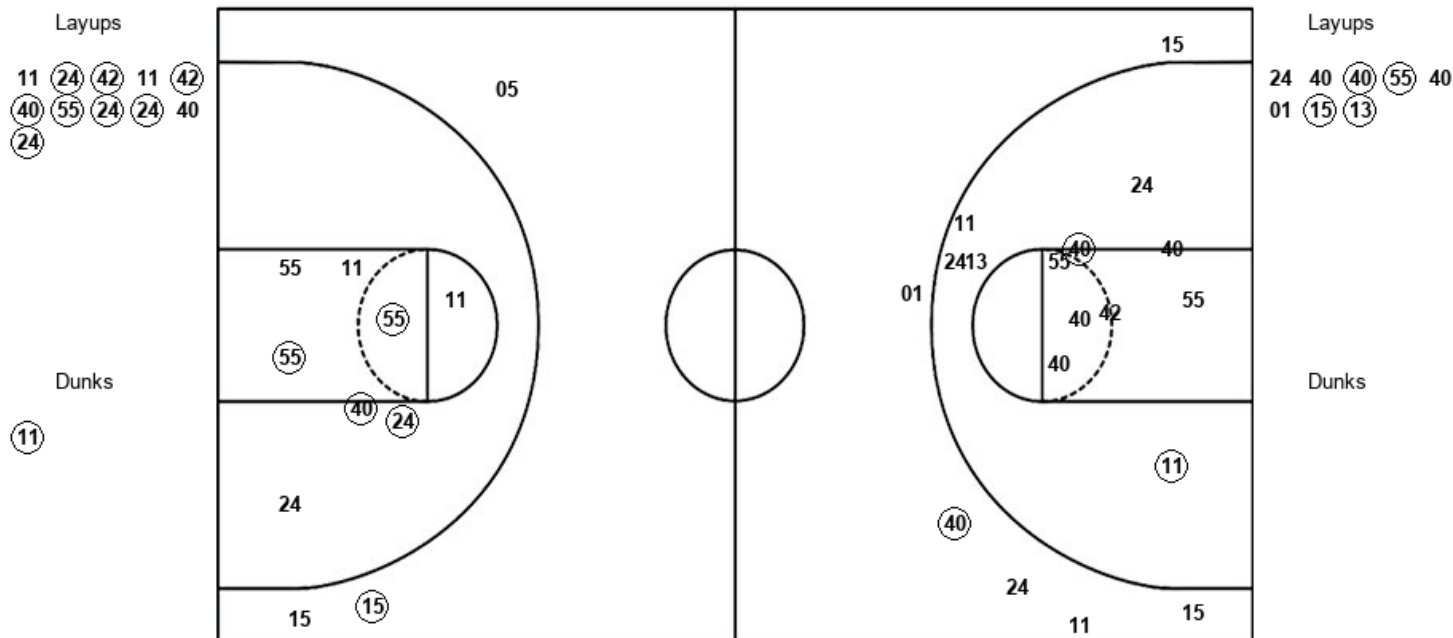
UC Irvine



TCU : Period 2	Made	Att	Pct
Layups	4	9	44.4
Dunks	0	0	0
2PT Field Goals	7	20	35.0
3PT Field Goals	4	11	36.4
Total Field Goals	11	31	35.5

UCI : Period 2	Made	Att	Pct
Layups	8	11	72.7
Dunks	1	1	100.0
2PT Field Goals	13	22	59.1
3PT Field Goals	1	3	33.3
Total Field Goals	14	25	56.0

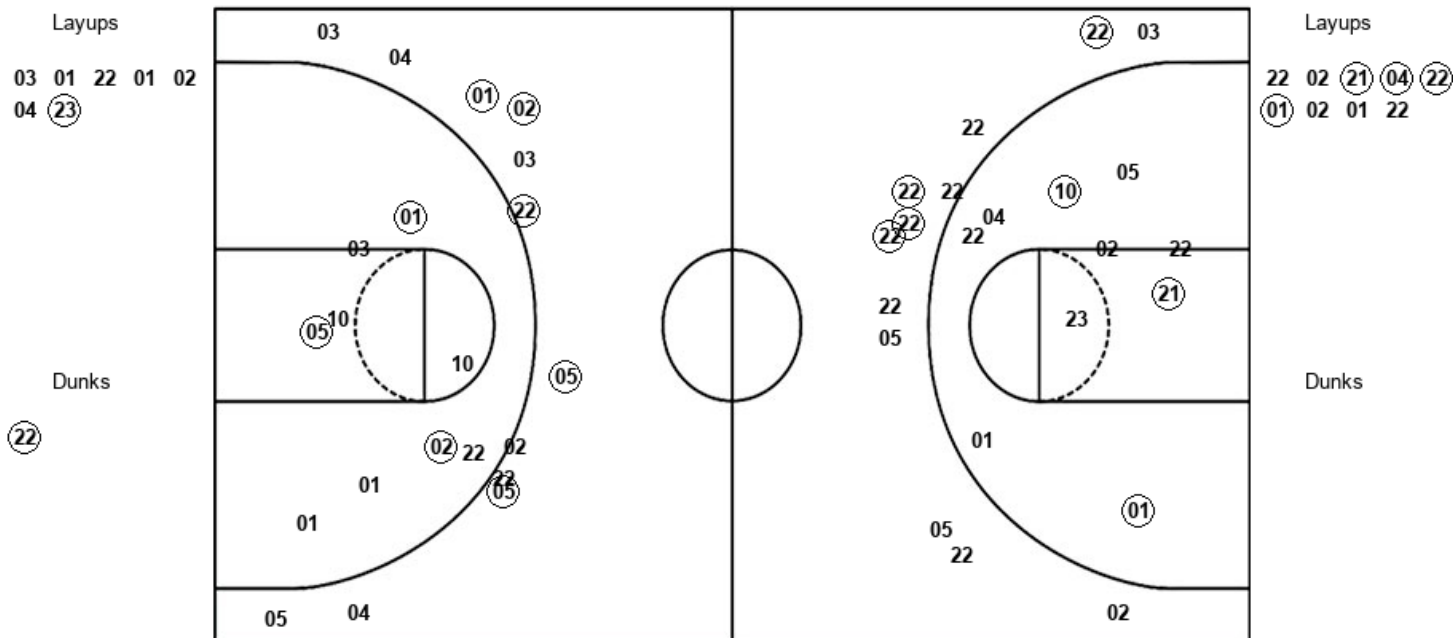
Official Shot Chart
UC Irvine vs TCU
UC Irvine Team Shots
November 22, 2019 at Ed and Rae Schollmaier Arena



UCI : Period 1	Made	Att	Pct
Layups	4	8	50.0
Dunks	0	0	0
2PT Field Goals	6	22	27.3
3PT Field Goals	1	5	20.0
Total Field Goals	7	27	25.9

UCI : Period 2	Made	Att	Pct
Layups	8	11	72.7
Dunks	1	1	100.0
2PT Field Goals	13	22	59.1
3PT Field Goals	1	3	33.3
Total Field Goals	14	25	56.0

Official Shot Chart
UC Irvine vs TCU
TCU Team Shots
November 22, 2019 at Ed and Rae Schollmaier Arena



TCU : Period 1	Made	Att	Pct
Layups	1	7	14.3
Dunks	1	1	100.0
2PT Field Goals	5	17	29.4
3PT Field Goals	5	12	41.7
Total Field Goals	10	29	34.5

TCU : Period 2	Made	Att	Pct
Layups	4	9	44.4
Dunks	0	0	0
2PT Field Goals	7	20	35.0
3PT Field Goals	4	11	36.4
Total Field Goals	11	31	35.5