

## FINAL SCORE



**Morehead St.**

**58**



**Austin Peay**

**67**

February 28, 2020 • Winfield Dunn Center

## FINAL STATISTICS

**Official Box Score**  
**Morehead St. vs Austin Peay**  
**Game Totals -- Final Statistics**  
**February 28, 2020 at Winfield Dunn Center**



**Morehead St. 58**

No.	Player	S	Pts	FG	3FG	FT	OR	DR	TR	PF	A	TO	Blk	Stl	Min	+/-
00	CLAUDE, TYZHAUN	F	15	7-8	0-0	1-2	3	6	9	2	0	3	0	1	27	-8
02	WALKER, JORDAN	G	11	4-10	3-9	0-0	0	3	3	5	1	0	0	1	32	-4
03	BAKER, JAMES	F	12	5-13	2-4	0-1	1	5	6	2	0	0	0	0	32	-8
32	HENSON, DJIMON	G	4	2-9	0-5	0-0	1	3	4	1	0	0	0	0	23	-16
55	COOPER, TA'LON	G	2	1-6	0-5	0-0	0	3	3	1	4	2	1	0	30	0
12	THOMAS, JUSTIN	G	9	4-8	0-0	1-1	0	3	3	2	3	3	0	1	32	-1
22	BRYAN, LJ	F	2	1-2	0-0	0-3	2	1	3	1	0	0	0	0	13	-1
23	RIDDLE, MALIK	G	3	1-2	1-2	0-0	0	0	0	0	0	1	1	0	10	-7
TEAM							1	1	2	0		2				
<b>TOTALS</b>			<b>58</b>	<b>25-58</b>	<b>6-25</b>	<b>2-7</b>	<b>8</b>	<b>25</b>	<b>33</b>	<b>14</b>	<b>8</b>	<b>11</b>	<b>2</b>	<b>3</b>	<b>199</b>	

*Shooting By Period*

Period	FG	FG%	3FG	3FG%	FT	FT%
1st Half	13-30	43%	2-10	20%	0-3	00%
2nd Half	12-28	43%	4-15	27%	2-4	50%
<b>Game</b>	<b>25-58</b>	<b>43.1%</b>	<b>6-25</b>	<b>24.0%</b>	<b>2-7</b>	<b>28.6%</b>

Last FG: 2nd-01:16  
Largest lead: By 7 at  
Technical Fouls: None.

**Austin Peay 67**

No.	Player	S	Pts	FG	3FG	FT	OR	DR	TR	PF	A	TO	Blk	Stl	Min	+/-
00	HINSON, EVAN	G	4	1-5	0-2	2-3	0	3	3	2	0	1	0	0	19	8
04	BUTLER, ANTWUAN	G	0	0-5	0-2	0-0	0	1	1	1	6	1	0	0	31	0
05	ADAMS, JORDYN	G	15	5-14	2-3	3-4	2	6	8	3	0	2	0	1	36	7
14	ABAEV, ELI	F	11	5-10	0-0	1-2	7	4	11	1	1	0	1	1	24	2
21	TAYLOR, TERRY	F	20	9-17	1-4	1-2	3	9	12	2	3	3	0	2	39	9
01	PAEZ, CARLOS	G	3	1-3	1-2	0-0	0	2	2	0	1	1	0	0	16	5
22	WOODARD, ALEC	G	6	2-4	2-3	0-1	1	0	1	0	0	0	0	1	17	9
24	SILVEIRA, MATHEUS	C	8	4-5	0-0	0-1	2	2	4	2	1	2	1	0	17	5
TEAM							1	2	3	0		0				
<b>TOTALS</b>			<b>67</b>	<b>27-63</b>	<b>6-16</b>	<b>7-13</b>	<b>16</b>	<b>29</b>	<b>45</b>	<b>11</b>	<b>12</b>	<b>10</b>	<b>2</b>	<b>5</b>	<b>199</b>	

*Shooting By Period*

Period	FG	FG%	3FG	3FG%	FT	FT%
1st Half	14-32	44%	3-8	38%	4-7	57%
2nd Half	13-31	42%	3-8	38%	3-6	50%
<b>Game</b>	<b>27-63</b>	<b>42.9%</b>	<b>6-16</b>	<b>37.5%</b>	<b>7-13</b>	<b>53.8%</b>

Last FG: 2nd-02:09  
Largest lead: By 12 at  
Technical Fouls: None.

Game Notes:

Officials: **Jeb Hartness, Mick Fieldbinder, Andy Ezzelle**  
Attendance: 1931

Start Time: **02:00 AM**

Conference Game;

Score	1st	2nd	TOT
MSU	28	30	<b>58</b>
APSU	35	32	<b>67</b>

MSU led for 11:07. APSU led for 24:00.  
Game was tied for 0:0.  
Times tied: 0      Lead Changes: 0

Points from	MSU	APSU
In the Paint	36	42
Off Turns	9	12
2nd Chance	9	13
Fast Break	6	3
Bench	14	17

**Official Box Score**  
**Morehead St. vs Austin Peay**  
**First Half Statistics Only**  
**February 28, 2020 at Winfield Dunn Center**



### Morehead St. 28

No.	Player	S	Pts	FG	3FG	FT	OR	DR	TR	PF	A	TO	Blk	Stl	Min
00	CLAUDE, TYZHAUN	F	6	3-4	0-0	0-0	1	2	3	1	0	1	0	0	14
02	WALKER, JORDAN	G	0	0-2	0-2	0-0	0	0	0	1	1	0	0	1	15
03	BAKER, JAMES	F	12	5-11	2-3	0-1	0	4	4	0	0	0	0	0	18
32	HENSON, DJIMON	G	2	1-5	0-3	0-0	0	2	2	0	0	0	0	0	9
55	COOPER, TA'LON	G	2	1-3	0-2	0-0	0	2	2	1	2	1	0	0	17
12	THOMAS, JUSTIN	G	6	3-4	0-0	0-0	0	2	2	1	0	1	0	0	15
22	BRYAN, LJ	F	0	0-1	0-0	0-2	2	0	2	1	0	0	0	0	6
23	RIDDLE, MALIK	G	0	0-0	0-0	0-0	0	0	0	0	0	1	0	0	5
TEAM				0-0			1	1	2	0		1			
<b>TOTALS</b>			<b>28</b>	<b>13-30</b>	<b>2-10</b>	<b>0-3</b>	<b>4</b>	<b>13</b>	<b>17</b>	<b>5</b>	<b>3</b>	<b>5</b>	<b>0</b>	<b>1</b>	<b>100</b>

*Shooting By Period*

Period	FG	FG%	3FG	3FG%	FT	FT%
1st Half	13-30	43%	2-10	20%	0-3	00%
Game	25-58	43.1%	6-25	24.0%	2-7	28.6%

*Last FG Half: MSU 2nd-01:16*

### Austin Peay 35

No.	Player	S	Pts	FG	3FG	FT	OR	DR	TR	PF	A	TO	Blk	Stl	Min
00	HINSON, EVAN	G	2	0-1	0-1	2-2	0	1	1	0	0	0	0	0	6
04	BUTLER, ANTWUAN	G	0	0-3	0-1	0-0	0	1	1	0	3	0	0	0	13
05	ADAMS, JORDYN	G	8	3-6	2-2	0-0	0	0	0	2	0	2	0	0	17
14	ABAEV, ELI	F	5	2-5	0-0	1-2	1	3	4	1	0	0	0	0	8
21	TAYLOR, TERRY	F	11	5-10	0-1	1-2	2	5	7	1	2	2	0	1	20
01	PAEZ, CARLOS	G	3	1-3	1-2	0-0	0	2	2	0	1	0	0	0	14
22	WOODARD, ALEC	G	0	0-1	0-1	0-0	1	0	1	0	0	0	0	0	9
24	SILVEIRA, MATHEUS	C	6	3-3	0-0	0-1	2	2	4	1	0	1	1	0	12
TEAM				0-0			1	1	2	0		0			
<b>TOTALS</b>			<b>35</b>	<b>14-32</b>	<b>3-8</b>	<b>4-7</b>	<b>7</b>	<b>15</b>	<b>22</b>	<b>5</b>	<b>6</b>	<b>5</b>	<b>1</b>	<b>1</b>	<b>100</b>

*Shooting By Period*

Period	FG	FG%	3FG	3FG%	FT	FT%
1st Half	14-32	44%	3-8	38%	4-7	57%
Game	27-63	42.9%	6-16	37.5%	7-13	53.8%

*Last FG Half: APSU 2nd-02:09*

Game Notes:

Officials: **Jeb Hartness, Mick Fieldbinder, Andy Ezzelle**  
Attendance: **1931**

Start Time: **02:00 AM**  
Conference Game;

Score	1st	2nd	TOT
MSU	28	30	<b>58</b>
APSU	35	32	<b>67</b>

Points from (This Period)	MSU	APSU
In the Paint	20	22
Off Turns	3	8
2nd Chance	2	7
Fast Break	0	2
Bench	6	9

**Official Play-By-Play**  
**Morehead St. vs Austin Peay**  
**First Half**  
**February 28, 2020 at Winfield Dunn Center**



**Period 1**

**Starters:**

**Morehead St.:** 00 CLAUDE, TYZHAUN (F); 2 WALKER, JORDAN (G); 3 BAKER, JAMES (F); 32 HENSON, DJIMON (G); 55 COOPER, TA'LON (G);

**Austin Peay:** 0 HINSON, EVAN (G); 4 BUTLER, ANTWUAN (G); 5 ADAMS, JORDYN (G); 14 ABAEV, ELI (F); 21 TAYLOR, TERRY (F);

Time	VISITORS: Morehead St.	Score	Margin	HOME: Austin Peay
19:48	FOUL by WALKER, JORDAN [PNT]			
19:48		1-0	H 1	GOOD! FT by ABAEV, ELI
19:48				MISSED FT by ABAEV, ELI
19:46	REBOUND (DEF) by BAKER, JAMES			
19:26	GOOD! DUNK by CLAUDE, TYZHAUN	1-2	V 1	
19:26	ASSIST by COOPER, TA'LON			
19:08				MISSED JUMPER by TAYLOR, TERRY
19:04	REBOUND (DEF) by HENSON, DJIMON			
18:55	MISSED 3PTR by WALKER, JORDAN			
18:51				REBOUND (DEF) by HINSON, EVAN
18:45				MISSED 3PTR by HINSON, EVAN
18:42				REBOUND (OFF) by TAYLOR, TERRY
18:35				MISSED JUMPER by ABAEV, ELI
18:31	REBOUND (DEF) by BAKER, JAMES			
18:18	MISSED JUMPER by HENSON, DJIMON			
18:14				REBOUND (DEF) by ABAEV, ELI
18:01				MISSED JUMPER by ADAMS, JORDYN [PNT]
18:00	REBOUND (DEF) by COOPER, TA'LON			
18:00				FOUL by ABAEV, ELI
18:00				SUB OUT: ABAEV, ELI
18:00				SUB IN: SILVEIRA, MATHEUS
17:44	MISSED 3PTR by HENSON, DJIMON			
17:40				REBOUND (DEF) by BUTLER, ANTWUAN
17:37				TURNOVER by ADAMS, JORDYN [PNT]
17:37	SUB OUT: HENSON, DJIMON			
17:37	SUB IN: THOMAS, JUSTIN			
17:23	MISSED LAYUP by CLAUDE, TYZHAUN			
17:23				BLOCK by SILVEIRA, MATHEUS
17:22	REBOUND (OFF) by TEAM			
17:20	MISSED 3PTR by COOPER, TA'LON			
17:17				REBOUND (DEF) by TAYLOR, TERRY
17:13				TURNOVER by TAYLOR, TERRY
17:13	STEAL by WALKER, JORDAN			
17:03	GOOD! 3PTR by BAKER, JAMES	1-5	V 4	
17:03	ASSIST by WALKER, JORDAN			
16:54				MISSED LAYUP by ADAMS, JORDYN [PNT]
16:50				REBOUND (OFF) by SILVEIRA, MATHEUS
16:50		3-5	V 2	GOOD! LAYUP by SILVEIRA, MATHEUS
16:28	MISSED 3PTR by BAKER, JAMES			
16:24				REBOUND (DEF) by SILVEIRA, MATHEUS
16:18				TURNOVER by TAYLOR, TERRY [PNT]
16:18				SUB OUT: HINSON, EVAN
16:18				SUB IN: PAEZ, CARLOS
16:18	SUB OUT: CLAUDE, TYZHAUN			
16:18	SUB IN: BRYAN, LJ			
16:02	MISSED 3PTR by COOPER, TA'LON			
15:58	REBOUND (OFF) by BRYAN, LJ			
15:57	MISSED LAYUP by BRYAN, LJ			
15:53				REBOUND (DEF) by TAYLOR, TERRY
15:47		5-5	T	GOOD! LAYUP by TAYLOR, TERRY
15:28	MISSED JUMPER by THOMAS, JUSTIN [PNT]			
15:25				REBOUND (DEF) by SILVEIRA, MATHEUS
15:15				MISSED 3PTR by BUTLER, ANTWUAN
15:11	REBOUND (DEF) by THOMAS, JUSTIN			
15:02	GOOD! LAYUP by BAKER, JAMES	5-7	V 2	
15:02				FOUL by TAYLOR, TERRY
15:02	TIMEOUT MEDIA			
15:02				SUB OUT: SILVEIRA, MATHEUS
15:02				SUB IN: ABAEV, ELI
15:02	SUB OUT: BRYAN, LJ			
15:02	SUB IN: CLAUDE, TYZHAUN			
15:02	MISSED FT by BAKER, JAMES			
15:01				REBOUND (DEF) by TAYLOR, TERRY
14:35				MISSED JUMPER by BUTLER, ANTWUAN
14:32	REBOUND (DEF) by BAKER, JAMES			
14:18	GOOD! JUMPER by BAKER, JAMES	5-9	V 4	
14:02	FOUL by THOMAS, JUSTIN [PNT]			
13:49				MISSED LAYUP by ABAEV, ELI [PNT]
13:47				REBOUND (OFF) by ABAEV, ELI
13:47		7-9	V 2	GOOD! LAYUP by ABAEV, ELI

Time	VISITORS: Morehead St.	Score	Margin	HOME: Austin Peay
13:36	TURNOVER by THOMAS, JUSTIN			
13:36				STEAL by TAYLOR, TERRY
13:31		9-9	T	GOOD! DUNK by TAYLOR, TERRY [FB]
13:31				ASSIST by PAEZ, CARLOS
13:10	GOOD! JUMPER by BAKER, JAMES [PNT]	9-11	V 2	
12:55		12-11	H 1	GOOD! 3PTR by ADAMS, JORDYN
12:55				ASSIST by BUTLER, ANTWUAN
12:33	MISSED LAYUP by BAKER, JAMES			
12:29	REBOUND (OFF) by CLAUDE, TYZHAUN			
12:29	GOOD! LAYUP by CLAUDE, TYZHAUN	12-13	V 1	
12:16				MISSED JUMPER by TAYLOR, TERRY
12:12	REBOUND (DEF) by CLAUDE, TYZHAUN			
12:07	GOOD! LAYUP by THOMAS, JUSTIN	12-15	V 3	
11:48				MISSED JUMPER by ABAEV, ELI
11:45	REBOUND (DEF) by THOMAS, JUSTIN			
11:37	GOOD! LAYUP by CLAUDE, TYZHAUN	12-17	V 5	
11:36				TIMEOUT 30SEC
11:36				SUB OUT: ABAEV, ELI
11:36				SUB IN: SILVEIRA, MATHEUS
11:36	SUB OUT: CLAUDE, TYZHAUN			
11:36	SUB OUT: WALKER, JORDAN			
11:36	SUB OUT: BAKER, JAMES			
11:36	SUB IN: BRYAN, LJ			
11:36	SUB IN: RIDDLE, MALIK			
11:36	SUB IN: HENSON, DJIMON			
11:12				MISSED LAYUP by PAEZ, CARLOS [PNT]
11:08	REBOUND (DEF) by COOPER, TA'LON			
10:55	GOOD! LAYUP by THOMAS, JUSTIN	12-19	V 7	
10:35		15-19	V 4	GOOD! 3PTR by ADAMS, JORDYN
10:35				ASSIST by TAYLOR, TERRY
10:19	GOOD! LAYUP by THOMAS, JUSTIN	15-21	V 6	
10:01		18-21	V 3	GOOD! 3PTR by PAEZ, CARLOS
10:01				ASSIST by BUTLER, ANTWUAN
09:37	GOOD! LAYUP by HENSON, DJIMON	18-23	V 5	
09:22				MISSED JUMPER by BUTLER, ANTWUAN [PNT]
09:21				REBOUND (OFF) by TAYLOR, TERRY
09:21				MISSED LAYUP by TAYLOR, TERRY
09:21				REBOUND (OFF) by TEAM
09:18				SUB OUT: BUTLER, ANTWUAN
09:18				SUB IN: WOODARD, ALEC
09:18	SUB OUT: RIDDLE, MALIK			
09:18	SUB IN: BAKER, JAMES			
09:03	FOUL by BRYAN, LJ [PNT]			
09:03				MISSED FT by TAYLOR, TERRY
09:03				REBOUND (DEADB) by TEAM
09:03	SUB OUT: COOPER, TA'LON			
09:03	SUB IN: WALKER, JORDAN			
09:03		19-23	V 4	GOOD! FT by TAYLOR, TERRY
08:41	MISSED JUMPER by BAKER, JAMES			
08:39	REBOUND (OFF) by BRYAN, LJ			
08:39				FOUL by ADAMS, JORDYN
08:39	MISSED FT by BRYAN, LJ			
08:39	REBOUND (DEADB) by TEAM			
08:39	SUB OUT: HENSON, DJIMON			
08:39	SUB IN: RIDDLE, MALIK			
08:39	MISSED FT by BRYAN, LJ			
08:39				REBOUND (DEF) by TEAM
08:39	SUB OUT: BRYAN, LJ			
08:39	SUB IN: CLAUDE, TYZHAUN			
08:22				TURNOVER by SILVEIRA, MATHEUS [PNT]
07:53	MISSED JUMPER by BAKER, JAMES			
07:50				REBOUND (DEF) by TAYLOR, TERRY
07:44				MISSED LAYUP by ADAMS, JORDYN
07:41				REBOUND (OFF) by SILVEIRA, MATHEUS
07:41		21-23	V 2	GOOD! LAYUP by SILVEIRA, MATHEUS
07:22	TURNOVER by RIDDLE, MALIK			
07:22	TIMEOUT MEDIA			
07:22	SUB OUT: THOMAS, JUSTIN			
07:22	SUB IN: COOPER, TA'LON			
07:00		23-23	T	GOOD! LAYUP by SILVEIRA, MATHEUS
07:00				ASSIST by TAYLOR, TERRY
07:00	FOUL by CLAUDE, TYZHAUN			
07:00				MISSED FT by SILVEIRA, MATHEUS
06:58				REBOUND (OFF) by WOODARD, ALEC
06:40				MISSED 3PTR by PAEZ, CARLOS
06:36	REBOUND (DEF) by CLAUDE, TYZHAUN			
06:17	MISSED 3PTR by WALKER, JORDAN			
06:14				REBOUND (DEF) by PAEZ, CARLOS
06:06		25-23	H 2	GOOD! JUMPER by ADAMS, JORDYN [PNT]
05:42	TURNOVER by CLAUDE, TYZHAUN [PNT]			

Time	VISITORS: Morehead St.	Score	Margin	HOME: Austin Peay
05:42	SUB OUT: RIDDLE, MALIK			
05:42	SUB IN: HENSON, DJIMON			
05:21		27-23	H 4	GOOD! DUNK by TAYLOR, TERRY
05:08	TURNOVER by COOPER, TA'LON			
05:08	SUB OUT: WALKER, JORDAN			
05:08	SUB IN: THOMAS, JUSTIN			
04:42		29-23	H 6	GOOD! LAYUP by TAYLOR, TERRY [PNT]
04:09	TURNOVER by TEAM			
03:49				MISSED 3PTR by WOODARD, ALEC
03:46	REBOUND (DEF) by HENSON, DJIMON			
03:37	MISSED 3PTR by HENSON, DJIMON			
03:34				REBOUND (DEF) by PAEZ, CARLOS
03:26				MISSED JUMPER by TAYLOR, TERRY
03:22	REBOUND (DEF) by BAKER, JAMES			
03:02				FOUL by SILVEIRA, MATHEUS
03:02	TIMEOUT MEDIA			
03:02				SUB OUT: SILVEIRA, MATHEUS
03:02				SUB IN: ABAEV, ELI
03:02	SUB OUT: CLAUDE, TYZHAUN			
03:02	SUB OUT: HENSON, DJIMON			
03:02	SUB IN: WALKER, JORDAN			
03:02	SUB IN: BRYAN, LJ			
02:49	GOOD! LAYUP by COOPER, TA'LON	29-25	H 4	
02:42				FOUL by ADAMS, JORDYN
02:42				TURNOVER by ADAMS, JORDYN
02:42				SUB OUT: PAEZ, CARLOS
02:42				SUB OUT: ADAMS, JORDYN
02:42				SUB IN: HINSON, EVAN
02:42				SUB IN: BUTLER, ANTWUAN
02:24	MISSED LAYUP by BAKER, JAMES			
02:20				REBOUND (DEF) by ABAEV, ELI
02:02		31-25	H 6	GOOD! JUMPER by ABAEV, ELI [PNT]
02:02				ASSIST by BUTLER, ANTWUAN
01:34	GOOD! 3PTR by BAKER, JAMES	31-28	H 3	
01:34	ASSIST by COOPER, TA'LON			
01:24	FOUL by COOPER, TA'LON			
01:24		32-28	H 4	GOOD! FT by HINSON, EVAN
01:24	SUB OUT: BRYAN, LJ			
01:24	SUB OUT: COOPER, TA'LON			
01:24	SUB IN: CLAUDE, TYZHAUN			
01:24	SUB IN: HENSON, DJIMON			
01:24		33-28	H 5	GOOD! FT by HINSON, EVAN
00:58	MISSED 3PTR by HENSON, DJIMON			
00:55				REBOUND (DEF) by TAYLOR, TERRY
00:43		35-28	H 7	GOOD! LAYUP by TAYLOR, TERRY
00:17	MISSED JUMPER by BAKER, JAMES [PNT]			
00:15				REBOUND (DEF) by ABAEV, ELI
00:03				MISSED 3PTR by TAYLOR, TERRY
00:03	REBOUND (DEF) by TEAM			

Morehead St. 28, Austin Peay 35

Points from (This Period)	MSU	APSU
In the Paint	20	22
Off Turns	3	8
2nd Chance	2	7
Fast Break	0	2
Bench	6	9

**Official Box Score**  
**Morehead St. vs Austin Peay**  
**Second Half Statistics Only**  
**February 28, 2020 at Winfield Dunn Center**



### Morehead St. 30

No.	Player	S	Pts	FG	3FG	FT	OR	DR	TR	PF	A	TO	Blk	Stl	Min
00	CLAUDE, TYZHAUN	F	9	4-4	0-0	1-2	2	4	6	1	0	2	0	1	12
02	WALKER, JORDAN	G	11	4-8	3-7	0-0	0	3	3	4	0	0	0	0	17
03	BAKER, JAMES	F	0	0-2	0-1	0-0	1	1	2	2	0	0	0	0	15
32	HENSON, DJIMON	G	2	1-4	0-2	0-0	1	1	2	1	0	0	0	0	13
55	COOPER, TA'LON	G	0	0-3	0-3	0-0	0	1	1	0	2	1	1	0	13
12	THOMAS, JUSTIN	G	3	1-4	0-0	1-1	0	1	1	1	3	2	0	1	16
22	BRYAN, LJ	F	2	1-1	0-0	0-1	0	1	1	0	0	0	0	0	7
23	RIDDLE, MALIK	G	3	1-2	1-2	0-0	0	0	0	0	0	0	1	0	5
	TEAM			0-0			0	0	0	0		1			
<b>TOTALS</b>			<b>30</b>	<b>12-28</b>	<b>4-15</b>	<b>2-4</b>	<b>4</b>	<b>12</b>	<b>16</b>	<b>9</b>	<b>5</b>	<b>6</b>	<b>2</b>	<b>2</b>	<b>99</b>

#### Shooting By Period

Period	FG	FG%	3FG	3FG%	FT	FT%
2nd Half	12-28	43%	4-15	27%	2-4	50%
Game	25-58	43.1%	6-25	24.0%	2-7	28.6%

Last FG Half: MSU -

### Austin Peay 32

No.	Player	S	Pts	FG	3FG	FT	OR	DR	TR	PF	A	TO	Blk	Stl	Min
00	HINSON, EVAN	G	2	1-4	0-1	0-1	0	2	2	2	0	1	0	0	13
04	BUTLER, ANTWUAN	G	0	0-2	0-1	0-0	0	0	0	1	3	1	0	0	17
05	ADAMS, JORDYN	G	7	2-8	0-1	3-4	2	6	8	1	0	0	0	1	19
14	ABAEV, ELI	F	6	3-5	0-0	0-0	6	1	7	0	1	0	1	1	15
21	TAYLOR, TERRY	F	9	4-7	1-3	0-0	1	4	5	1	1	1	0	1	19
01	PAEZ, CARLOS	G	0	0-0	0-0	0-0	0	0	0	0	0	1	0	0	3
22	WOODARD, ALEC	G	6	2-3	2-2	0-1	0	0	0	0	0	0	0	1	8
24	SILVEIRA, MATHEUS	C	2	1-2	0-0	0-0	0	0	0	1	1	1	0	0	6
	TEAM			0-0			0	1	1	0		0			
<b>TOTALS</b>			<b>32</b>	<b>13-31</b>	<b>3-8</b>	<b>3-6</b>	<b>9</b>	<b>14</b>	<b>23</b>	<b>6</b>	<b>6</b>	<b>5</b>	<b>1</b>	<b>4</b>	<b>99</b>

#### Shooting By Period

Period	FG	FG%	3FG	3FG%	FT	FT%
2nd Half	13-31	42%	3-8	38%	3-6	50%
Game	27-63	42.9%	6-16	37.5%	7-13	53.8%

Last FG Half: APSU -

#### Game Notes:

Officials: **Jeb Hartness, Mick Fieldbinder, Andy Ezzelle**  
Attendance: **1931**

Start Time: **02:00 AM**  
Conference Game;

Score	1st	2nd	TOT
MSU	28	30	<b>58</b>
APSU	35	32	<b>67</b>

Points from (This Period)	MSU	APSU
In the Paint	16	20
Off Turns	6	4
2nd Chance	7	6
Fast Break	6	1
Bench	8	8

**Official Play-By-Play**  
**Morehead St. vs Austin Peay**  
**Second Half**  
**February 28, 2020 at Winfield Dunn Center**



**Period 2**

**Starters:**

**Morehead St.:** 00 CLAUDE, TYZHAUN (F); 2 WALKER, JORDAN (G); 3 BAKER, JAMES (F); 32 HENSON, DJIMON (G); 55 COOPER, TA'LON (G);

**Austin Peay:** 0 HINSON, EVAN (G); 4 BUTLER, ANTWUAN (G); 5 ADAMS, JORDYN (G); 14 ABAEV, ELI (F); 21 TAYLOR, TERRY (F);

Time	VISITORS: Morehead St.	Score	Margin	HOME: Austin Peay
20:00				SUB OUT: WOODARD, ALEC
20:00				SUB IN: ADAMS, JORDYN
20:00	SUB OUT: THOMAS, JUSTIN			
20:00	SUB IN: COOPER, TA'LON			
19:45	GOOD! LAYUP by CLAUDE, TYZHAUN	35-30	H 5	
19:39				FOUL by HINSON, EVAN
19:39				TURNOVER by HINSON, EVAN
19:26	MISSED LAYUP by BAKER, JAMES			
19:26				BLOCK by ABAEV, ELI
19:21				REBOUND (DEF) by HINSON, EVAN
19:02				MISSED LAYUP by HINSON, EVAN [PNT]
19:02				REBOUND (OFF) by ABAEV, ELI
19:02	FOUL by CLAUDE, TYZHAUN [PNT]			
18:53				MISSED LAYUP by SILVEIRA, MATHEUS [PNT]
18:47	REBOUND (DEF) by CLAUDE, TYZHAUN			
18:36				SUB OUT: ABAEV, ELI
18:36				SUB IN: SILVEIRA, MATHEUS
18:28	GOOD! 3PTR by WALKER, JORDAN	35-33	H 2	
18:06		37-33	H 4	GOOD! DUNK by SILVEIRA, MATHEUS
18:06				ASSIST by BUTLER, ANTWUAN
17:35	TURNOVER by CLAUDE, TYZHAUN [PNT]			
17:35				SUB OUT: HINSON, EVAN
17:35				SUB IN: WOODARD, ALEC
17:35	SUB OUT: CLAUDE, TYZHAUN			
17:35	SUB OUT: HENSON, DJIMON			
17:35	SUB IN: THOMAS, JUSTIN			
17:35	SUB IN: BRYAN, LJ			
17:10				MISSED JUMPER by ADAMS, JORDYN
17:10				REBOUND (OFF) by TAYLOR, TERRY
17:02				MISSED JUMPER by TAYLOR, TERRY
17:00	REBOUND (DEF) by WALKER, JORDAN			
16:41	MISSED 3PTR by WALKER, JORDAN			
16:39				REBOUND (DEF) by TAYLOR, TERRY
16:32		39-33	H 6	GOOD! LAYUP by ADAMS, JORDYN
16:32				ASSIST by SILVEIRA, MATHEUS
16:08	MISSED 3PTR by COOPER, TA'LON			
16:04				REBOUND (DEF) by TAYLOR, TERRY
15:57	FOUL by WALKER, JORDAN			
15:57	TIMEOUT MEDIA			
15:57				SUB OUT: BUTLER, ANTWUAN
15:57				SUB IN: PAEZ, CARLOS
15:56				TURNOVER by PAEZ, CARLOS
15:56	STEAL by THOMAS, JUSTIN			
15:52	GOOD! LAYUP by THOMAS, JUSTIN [FB]	39-35	H 4	
15:52				FOUL by ADAMS, JORDYN
15:52				SUB OUT: ADAMS, JORDYN
15:52				SUB IN: BUTLER, ANTWUAN
15:52	GOOD! FT by THOMAS, JUSTIN [FB]	39-36	H 3	
15:39				FOUL by SILVEIRA, MATHEUS
15:39				TURNOVER by SILVEIRA, MATHEUS
15:39				SUB OUT: PAEZ, CARLOS
15:39				SUB IN: ADAMS, JORDYN
15:13	GOOD! 3PTR by WALKER, JORDAN	39-39	T	
15:13	ASSIST by COOPER, TA'LON			
14:54				MISSED LAYUP by BUTLER, ANTWUAN [PNT]
14:51	REBOUND (DEF) by BAKER, JAMES			
14:39				SUB OUT: SILVEIRA, MATHEUS
14:39				SUB IN: ABAEV, ELI
14:22	TURNOVER by THOMAS, JUSTIN [PNT]			
14:22				STEAL by WOODARD, ALEC
14:05	FOUL by BAKER, JAMES			
14:05	SUB OUT: WALKER, JORDAN			
14:05	SUB OUT: BAKER, JAMES			
14:05	SUB OUT: BRYAN, LJ			
14:05	SUB IN: CLAUDE, TYZHAUN			
14:05	SUB IN: RIDDLE, MALIK			
14:05	SUB IN: HENSON, DJIMON			
13:56				MISSED LAYUP by ABAEV, ELI
13:53	REBOUND (DEF) by COOPER, TA'LON			
13:48	GOOD! 3PTR by RIDDLE, MALIK [FB]	39-42	V 3	



Time	VISITORS: Morehead St.	Score	Margin	HOME: Austin Peay
13:48	ASSIST by COOPER, TA'LON			
13:35		42-42	T	GOOD! 3PTR by WOODARD, ALEC
13:35				ASSIST by BUTLER, ANTWUAN
13:22	MISSED 3PTR by HENSON, DJIMON			
13:19				REBOUND (DEF) by ADAMS, JORDYN
13:11		45-42	H 3	GOOD! 3PTR by WOODARD, ALEC
13:11				ASSIST by BUTLER, ANTWUAN
12:45	GOOD! LAYUP by HENSON, DJIMON	45-44	H 1	
12:27				MISSED JUMPER by WOODARD, ALEC
12:22				REBOUND (OFF) by ABAEV, ELI
12:22		47-44	H 3	GOOD! LAYUP by ABAEV, ELI
12:01	MISSED LAYUP by HENSON, DJIMON [PNT]			
11:57	REBOUND (OFF) by CLAUDE, TYZHAUN			
11:57	GOOD! LAYUP by CLAUDE, TYZHAUN	47-46	H 1	
11:38				MISSED LAYUP by ABAEV, ELI [PNT]
11:38	BLOCK by RIDDLE, MALIK			
11:34				REBOUND (OFF) by ABAEV, ELI
11:34	TIMEOUT MEDIA			
11:34				SUB OUT: ADAMS, JORDYN
11:34				SUB IN: HINSON, EVAN
11:34	SUB OUT: RIDDLE, MALIK			
11:34	SUB OUT: COOPER, TA'LON			
11:34	SUB IN: WALKER, JORDAN			
11:34	SUB IN: BAKER, JAMES			
11:28				FOUL by TAYLOR, TERRY
11:28				TURNOVER by TAYLOR, TERRY
10:58	TURNOVER by TEAM			
10:58				SUB OUT: WOODARD, ALEC
10:58				SUB IN: ADAMS, JORDYN
10:49				MISSED 3PTR by ADAMS, JORDYN
10:45	REBOUND (DEF) by CLAUDE, TYZHAUN			
10:35				FOUL by BUTLER, ANTWUAN
10:35	GOOD! FT by CLAUDE, TYZHAUN	47-47	T	
10:35	MISSED FT by CLAUDE, TYZHAUN			
10:34				REBOUND (DEF) by ABAEV, ELI
10:19	FOUL by HENSON, DJIMON			
10:12		49-47	H 2	GOOD! LAYUP by ADAMS, JORDYN
10:12				ASSIST by TAYLOR, TERRY
09:49	GOOD! LAYUP by CLAUDE, TYZHAUN	49-49	T	
09:35				MISSED JUMPER by HINSON, EVAN
09:32				REBOUND (OFF) by ABAEV, ELI
09:32		51-49	H 2	GOOD! LAYUP by ABAEV, ELI
09:01	MISSED JUMPER by THOMAS, JUSTIN [PNT]			
08:58				REBOUND (DEF) by TAYLOR, TERRY
08:50		53-49	H 4	GOOD! JUMPER by TAYLOR, TERRY [PNT]
08:30	GOOD! LAYUP by CLAUDE, TYZHAUN	53-51	H 2	
08:30	ASSIST by THOMAS, JUSTIN			
08:06		55-51	H 4	GOOD! LAYUP by TAYLOR, TERRY
07:49	MISSED 3PTR by WALKER, JORDAN			
07:46				REBOUND (DEF) by ADAMS, JORDYN
07:45	FOUL by WALKER, JORDAN			
07:45	TIMEOUT MEDIA			
07:45	SUB OUT: CLAUDE, TYZHAUN			
07:45	SUB OUT: THOMAS, JUSTIN			
07:45	SUB IN: BRYAN, LJ			
07:45	SUB IN: COOPER, TA'LON			
07:45		56-51	H 5	GOOD! FT by ADAMS, JORDYN [FB]
07:45				MISSED FT by ADAMS, JORDYN [FB]
07:44	REBOUND (DEF) by BRYAN, LJ			
07:28	TURNOVER by COOPER, TA'LON			
07:28				STEAL by ABAEV, ELI
07:19		58-51	H 7	GOOD! LAYUP by TAYLOR, TERRY
06:51	MISSED 3PTR by WALKER, JORDAN			
06:49				REBOUND (DEF) by ADAMS, JORDYN
06:36		61-51	H 10	GOOD! 3PTR by TAYLOR, TERRY
06:33	TIMEOUT TEAM			
06:33				SUB OUT: BUTLER, ANTWUAN
06:33				SUB OUT: TAYLOR, TERRY
06:33				SUB IN: PAEZ, CARLOS
06:33				SUB IN: SILVEIRA, MATHEUS
06:33	SUB OUT: BAKER, JAMES			
06:33	SUB OUT: COOPER, TA'LON			
06:33	SUB IN: THOMAS, JUSTIN			
06:33	SUB IN: RIDDLE, MALIK			
06:19	MISSED 3PTR by HENSON, DJIMON			
06:16				REBOUND (DEF) by ADAMS, JORDYN
06:09				MISSED JUMPER by ADAMS, JORDYN [PNT]
06:05	REBOUND (DEF) by HENSON, DJIMON			
05:53	MISSED 3PTR by RIDDLE, MALIK			
05:50				REBOUND (DEF) by HINSON, EVAN

Time	VISITORS: Morehead St.	Score	Margin	HOME: Austin Peay
05:33		63-51	H 12	GOOD! LAYUP by ABAEV, ELI [PNT]
05:14	GOOD! LAYUP by BRYAN, LJ	63-53	H 10	
05:14	ASSIST by THOMAS, JUSTIN			
05:14				FOUL by HINSON, EVAN
05:14				SUB OUT: PAEZ, CARLOS
05:14				SUB OUT: SILVEIRA, MATHEUS
05:14				SUB IN: BUTLER, ANTWUAN
05:14				SUB IN: TAYLOR, TERRY
05:14	MISSED FT by BRYAN, LJ			
05:13				REBOUND (DEF) by TAYLOR, TERRY
04:51				MISSED 3PTR by TAYLOR, TERRY
04:48	REBOUND (DEF) by WALKER, JORDAN			
04:31	MISSED JUMPER by THOMAS, JUSTIN [PNT]			
04:28				REBOUND (DEF) by ADAMS, JORDYN
04:09				MISSED 3PTR by BUTLER, ANTWUAN
04:06	REBOUND (DEF) by THOMAS, JUSTIN			
04:01	MISSED LAYUP by THOMAS, JUSTIN			
03:56	REBOUND (OFF) by HENSON, DJIMON			
03:50	TIMEOUT MEDIA			
03:50	SUB OUT: BRYAN, LJ			
03:50	SUB OUT: RIDDLE, MALIK			
03:50	SUB OUT: HENSON, DJIMON			
03:50	SUB IN: CLAUDE, TYZHAUN			
03:50	SUB IN: BAKER, JAMES			
03:50	SUB IN: COOPER, TA'LON			
03:47	GOOD! 3PTR by WALKER, JORDAN	63-56	H 7	
03:47	ASSIST by THOMAS, JUSTIN			
03:20	FOUL by THOMAS, JUSTIN			
03:04				MISSED 3PTR by HINSON, EVAN
03:01				REBOUND (OFF) by ABAEV, ELI
02:54				MISSED LAYUP by ADAMS, JORDYN [PNT]
02:50				REBOUND (OFF) by ABAEV, ELI
02:42				MISSED 3PTR by TAYLOR, TERRY
02:39	REBOUND (DEF) by WALKER, JORDAN			
02:33	MISSED 3PTR by WALKER, JORDAN			
02:30				REBOUND (DEF) by ADAMS, JORDYN
02:09		65-56	H 9	GOOD! LAYUP by HINSON, EVAN [PNT]
02:09				ASSIST by ABAEV, ELI
02:09	FOUL by WALKER, JORDAN [PNT]			
02:09				MISSED FT by HINSON, EVAN
02:07	REBOUND (DEF) by CLAUDE, TYZHAUN			
01:52	TURNOVER by CLAUDE, TYZHAUN			
01:52				STEAL by TAYLOR, TERRY
01:37				TURNOVER by BUTLER, ANTWUAN
01:37	STEAL by CLAUDE, TYZHAUN			
01:26	MISSED 3PTR by COOPER, TA'LON			
01:21	REBOUND (OFF) by CLAUDE, TYZHAUN			
01:21				SUB OUT: HINSON, EVAN
01:21				SUB IN: WOODARD, ALEC
01:16	GOOD! JUMPER by WALKER, JORDAN [PNT]	65-58	H 7	
01:16	TIMEOUT 30SEC			
01:16				SUB OUT: BUTLER, ANTWUAN
01:16				SUB IN: PAEZ, CARLOS
00:53				MISSED LAYUP by ADAMS, JORDYN [PNT]
00:50				REBOUND (OFF) by ADAMS, JORDYN
00:48	FOUL by WALKER, JORDAN			
00:48	SUB OUT: WALKER, JORDAN			
00:48	SUB IN: HENSON, DJIMON			
00:48				MISSED FT by WOODARD, ALEC
00:46	REBOUND (DEF) by CLAUDE, TYZHAUN			
00:40	MISSED 3PTR by COOPER, TA'LON			
00:37	REBOUND (OFF) by BAKER, JAMES			
00:37				SUB OUT: ABAEV, ELI
00:37				SUB IN: HINSON, EVAN
00:34	TURNOVER by THOMAS, JUSTIN			
00:34				STEAL by ADAMS, JORDYN
00:34				TIMEOUT TEAM
00:28				MISSED LAYUP by ADAMS, JORDYN
00:28	BLOCK by COOPER, TA'LON			
00:25				REBOUND (OFF) by ADAMS, JORDYN
00:25	FOUL by BAKER, JAMES [PNT]			
00:25		66-58	H 8	GOOD! FT by ADAMS, JORDYN
00:25		67-58	H 9	GOOD! FT by ADAMS, JORDYN
00:12	MISSED 3PTR by BAKER, JAMES			
00:11				REBOUND (DEF) by TEAM

Morehead St. 58, Austin Peay 67

Points from (This Period)	MSU	APSU
In the Paint	16	20
Off Turns	6	4
2nd Chance	7	6
Fast Break	6	1
Bench	8	8

**Official Scoring/Possession Reference Chart**  
**Morehead St. vs Austin Peay**  
**Period 1**  
**February 28, 2020 at Winfield Dunn Center**



**Period 1**

**Starters:**

**Morehead St.:** 00 CLAUDE, TYZHAUN (F); 2 WALKER, JORDAN (G); 3 BAKER, JAMES (F); 32 HENSON, DJIMON (G); 55 COOPER, TA'LON (G);

**Austin Peay:** 0 HINSON, EVAN (G); 4 BUTLER, ANTWUAN (G); 5 ADAMS, JORDYN (G); 14 ABAEV, ELI (F); 21 TAYLOR, TERRY (F);

Time	VISITORS: Morehead St.	Score	Margin	HOME: Austin Peay
19:48		1-0	H 1	GOOD! FT by ABAEV, ELI
19:26	GOOD! DUNK by CLAUDE, TYZHAUN	1-2	V 1	
17:03	GOOD! 3PTR by BAKER, JAMES	1-5	V 4	
16:50		3-5	V 2	GOOD! LAYUP by SILVEIRA, MATHEUS
15:47		5-5	T	GOOD! LAYUP by TAYLOR, TERRY
15:02	GOOD! LAYUP by BAKER, JAMES	5-7	V 2	
14:18	GOOD! JUMPER by BAKER, JAMES	5-9	V 4	
13:47		7-9	V 2	GOOD! LAYUP by ABAEV, ELI
13:31		9-9	T	GOOD! DUNK by TAYLOR, TERRY [FB]
13:10	GOOD! JUMPER by BAKER, JAMES [PNT]	9-11	V 2	
12:55		12-11	H 1	GOOD! 3PTR by ADAMS, JORDYN
12:29	GOOD! LAYUP by CLAUDE, TYZHAUN	12-13	V 1	
12:07	GOOD! LAYUP by THOMAS, JUSTIN	12-15	V 3	
11:37	GOOD! LAYUP by CLAUDE, TYZHAUN	12-17	V 5	
10:55	GOOD! LAYUP by THOMAS, JUSTIN	12-19	V 7	
10:35		15-19	V 4	GOOD! 3PTR by ADAMS, JORDYN
10:19	GOOD! LAYUP by THOMAS, JUSTIN	15-21	V 6	
10:01		18-21	V 3	GOOD! 3PTR by PAEZ, CARLOS
09:37	GOOD! LAYUP by HENSON, DJIMON	18-23	V 5	
09:03		19-23	V 4	GOOD! FT by TAYLOR, TERRY
07:41		21-23	V 2	GOOD! LAYUP by SILVEIRA, MATHEUS
07:00		23-23	T	GOOD! LAYUP by SILVEIRA, MATHEUS
06:06		25-23	H 2	GOOD! JUMPER by ADAMS, JORDYN [PNT]
05:21		27-23	H 4	GOOD! DUNK by TAYLOR, TERRY
04:42		29-23	H 6	GOOD! LAYUP by TAYLOR, TERRY [PNT]
02:49	GOOD! LAYUP by COOPER, TA'LON	29-25	H 4	
02:02		31-25	H 6	GOOD! JUMPER by ABAEV, ELI [PNT]
01:34	GOOD! 3PTR by BAKER, JAMES	31-28	H 3	
01:24		32-28	H 4	GOOD! FT by HINSON, EVAN
01:24		33-28	H 5	GOOD! FT by HINSON, EVAN
00:43		35-28	H 7	GOOD! LAYUP by TAYLOR, TERRY

**Morehead St. 28, Austin Peay 35**

**Official Scoring/Possession Reference Chart**  
**Morehead St. vs Austin Peay**  
**Period 2**  
**February 28, 2020 at Winfield Dunn Center**



**Period 2**

**Starters:**

**Morehead St.:** 00 CLAUDE, TYZHAUN (F); 2 WALKER, JORDAN (G); 3 BAKER, JAMES (F); 32 HENSON, DJIMON (G); 55 COOPER, TA'LON (G);

**Austin Peay:** 0 HINSON, EVAN (G); 4 BUTLER, ANTWUAN (G); 5 ADAMS, JORDYN (G); 14 ABAEV, ELI (F); 21 TAYLOR, TERRY (F);

Time	VISITORS: Morehead St.	Score	Margin	HOME: Austin Peay
19:45	GOOD! LAYUP by CLAUDE, TYZHAUN	35-30	H 5	
18:28	GOOD! 3PTR by WALKER, JORDAN	35-33	H 2	
18:06		37-33	H 4	GOOD! DUNK by SILVEIRA, MATHEUS
16:32		39-33	H 6	GOOD! LAYUP by ADAMS, JORDYN
15:52	GOOD! LAYUP by THOMAS, JUSTIN [FB]	39-35	H 4	
15:52	GOOD! FT by THOMAS, JUSTIN [FB]	39-36	H 3	
15:13	GOOD! 3PTR by WALKER, JORDAN	39-39	T	
13:48	GOOD! 3PTR by RIDDLE, MALIK [FB]	39-42	V 3	
13:35		42-42	T	GOOD! 3PTR by WOODARD, ALEC
13:11		45-42	H 3	GOOD! 3PTR by WOODARD, ALEC
12:45	GOOD! LAYUP by HENSON, DJIMON	45-44	H 1	
12:22		47-44	H 3	GOOD! LAYUP by ABAEV, ELI
11:57	GOOD! LAYUP by CLAUDE, TYZHAUN	47-46	H 1	
10:35	GOOD! FT by CLAUDE, TYZHAUN	47-47	T	
10:12		49-47	H 2	GOOD! LAYUP by ADAMS, JORDYN
09:49	GOOD! LAYUP by CLAUDE, TYZHAUN	49-49	T	
09:32		51-49	H 2	GOOD! LAYUP by ABAEV, ELI
08:50		53-49	H 4	GOOD! JUMPER by TAYLOR, TERRY [PNT]
08:30	GOOD! LAYUP by CLAUDE, TYZHAUN	53-51	H 2	
08:06		55-51	H 4	GOOD! LAYUP by TAYLOR, TERRY
07:45		56-51	H 5	GOOD! FT by ADAMS, JORDYN [FB]
07:19		58-51	H 7	GOOD! LAYUP by TAYLOR, TERRY
06:36		61-51	H 10	GOOD! 3PTR by TAYLOR, TERRY
05:33		63-51	H 12	GOOD! LAYUP by ABAEV, ELI [PNT]
05:14	GOOD! LAYUP by BRYAN, LJ	63-53	H 10	
03:47	GOOD! 3PTR by WALKER, JORDAN	63-56	H 7	
02:09		65-56	H 9	GOOD! LAYUP by HINSON, EVAN [PNT]
01:16	GOOD! JUMPER by WALKER, JORDAN [PNT]	65-58	H 7	
00:25		66-58	H 8	GOOD! FT by ADAMS, JORDYN
00:25		67-58	H 9	GOOD! FT by ADAMS, JORDYN

**Morehead St. 58, Austin Peay 67**

**Official Substitutions Log**  
**Morehead St. vs Austin Peay**  
**Period 1**  
**February 28, 2020 at Winfield Dunn Center**



VISITORS: Morehead St.	Time	Score	HOME: Austin Peay
00 CLAUDE, TYZHAUN			0 HINSON, EVAN
2 WALKER, JORDAN			4 BUTLER, ANTWUAN
3 BAKER, JAMES			5 ADAMS, JORDYN
32 HENSON, DJIMON			14 ABAEV, ELI
55 COOPER, TA'LON			21 TAYLOR, TERRY
	18:00	2-1	SUB OUT: ABAEV, ELI
	18:00		SUB IN: SILVEIRA, MATHEUS
SUB OUT: 32 HENSON, DJIMON	17:37	2-1	
SUB IN: 12 THOMAS, JUSTIN	17:37		
	16:18	5-3	SUB OUT: HINSON, EVAN
	16:18		SUB IN: PAEZ, CARLOS
SUB OUT: 00 CLAUDE, TYZHAUN	16:18		
SUB IN: 22 BRYAN, LJ	16:18		
	15:02	7-5	SUB OUT: SILVEIRA, MATHEUS
	15:02		SUB IN: ABAEV, ELI
SUB OUT: 22 BRYAN, LJ	15:02		
SUB IN: 00 CLAUDE, TYZHAUN	15:02		
	11:36	17-12	SUB OUT: ABAEV, ELI
	11:36		SUB IN: SILVEIRA, MATHEUS
SUB OUT: 00 CLAUDE, TYZHAUN	11:36		
SUB OUT: 2 WALKER, JORDAN	11:36		
SUB OUT: 3 BAKER, JAMES	11:36		
SUB IN: 22 BRYAN, LJ	11:36		
SUB IN: 23 RIDDLE, MALIK	11:36		
SUB IN: 32 HENSON, DJIMON	11:36		
	09:18	23-18	SUB OUT: BUTLER, ANTWUAN
	09:18		SUB IN: WOODARD, ALEC
SUB OUT: 23 RIDDLE, MALIK	09:18		
SUB IN: 3 BAKER, JAMES	09:18		
SUB OUT: 55 COOPER, TA'LON	09:03	23-18	
SUB IN: 2 WALKER, JORDAN	09:03		
SUB OUT: 32 HENSON, DJIMON	08:39	23-19	
SUB IN: 23 RIDDLE, MALIK	08:39		
SUB OUT: 22 BRYAN, LJ	08:39		
SUB IN: 00 CLAUDE, TYZHAUN	08:39		
SUB OUT: 12 THOMAS, JUSTIN	07:22	23-21	
SUB IN: 55 COOPER, TA'LON	07:22		
SUB OUT: 23 RIDDLE, MALIK	05:42	23-25	
SUB IN: 32 HENSON, DJIMON	05:42		
SUB OUT: 2 WALKER, JORDAN	05:08	23-27	
SUB IN: 12 THOMAS, JUSTIN	05:08		
	03:02	23-29	SUB OUT: SILVEIRA, MATHEUS
	03:02		SUB IN: ABAEV, ELI
SUB OUT: 00 CLAUDE, TYZHAUN	03:02		
SUB OUT: 32 HENSON, DJIMON	03:02		
SUB IN: 2 WALKER, JORDAN	03:02		
SUB IN: 22 BRYAN, LJ	03:02		
	02:42	25-29	SUB OUT: PAEZ, CARLOS
	02:42		SUB OUT: ADAMS, JORDYN
	02:42		SUB IN: HINSON, EVAN
	02:42		SUB IN: BUTLER, ANTWUAN
SUB OUT: 22 BRYAN, LJ	01:24	28-32	
SUB OUT: 55 COOPER, TA'LON	01:24		
SUB IN: 00 CLAUDE, TYZHAUN	01:24		
SUB IN: 32 HENSON, DJIMON	01:24		

**Morehead St. 28, Austin Peay 35**

**Official Substitutions Log**  
**Morehead St. vs Austin Peay**  
**Period 2**  
**February 28, 2020 at Winfield Dunn Center**



VISITORS: Morehead St.	Time	Score	HOME: Austin Peay
00 CLAUDE, TYZHAUN			0 HINSON, EVAN
2 WALKER, JORDAN			4 BUTLER, ANTWUAN
3 BAKER, JAMES			5 ADAMS, JORDYN
32 HENSON, DJIMON			14 ABAEV, ELI
55 COOPER, TA'LON			21 TAYLOR, TERRY
	20:00	-	SUB OUT: WOODARD, ALEC
	20:00		SUB IN: ADAMS, JORDYN
SUB OUT: 12 THOMAS, JUSTIN	20:00		
SUB IN: 55 COOPER, TA'LON	20:00		
	18:36	30-35	SUB OUT: ABAEV, ELI
	18:36		SUB IN: SILVEIRA, MATHEUS
	17:35	33-37	SUB OUT: HINSON, EVAN
	17:35		SUB IN: WOODARD, ALEC
SUB OUT: 00 CLAUDE, TYZHAUN	17:35		
SUB OUT: 32 HENSON, DJIMON	17:35		
SUB IN: 12 THOMAS, JUSTIN	17:35		
SUB IN: 22 BRYAN, LJ	17:35		
	15:57	33-39	SUB OUT: BUTLER, ANTWUAN
	15:57		SUB IN: PAEZ, CARLOS
	15:52	35-39	SUB OUT: ADAMS, JORDYN
	15:52		SUB IN: BUTLER, ANTWUAN
	15:39	36-39	SUB OUT: PAEZ, CARLOS
	15:39		SUB IN: ADAMS, JORDYN
	14:39	39-39	SUB OUT: SILVEIRA, MATHEUS
	14:39		SUB IN: ABAEV, ELI
SUB OUT: 2 WALKER, JORDAN	14:05	39-39	
SUB OUT: 3 BAKER, JAMES	14:05		
SUB OUT: 22 BRYAN, LJ	14:05		
SUB IN: 00 CLAUDE, TYZHAUN	14:05		
SUB IN: 23 RIDDLE, MALIK	14:05		
SUB IN: 32 HENSON, DJIMON	14:05		
	11:34	46-47	SUB OUT: ADAMS, JORDYN
	11:34		SUB IN: HINSON, EVAN
SUB OUT: 23 RIDDLE, MALIK	11:34		
SUB OUT: 55 COOPER, TA'LON	11:34		
SUB IN: 2 WALKER, JORDAN	11:34		
SUB IN: 3 BAKER, JAMES	11:34		
	10:58	46-47	SUB OUT: WOODARD, ALEC
	10:58		SUB IN: ADAMS, JORDYN
SUB OUT: 00 CLAUDE, TYZHAUN	07:45	51-55	
SUB OUT: 12 THOMAS, JUSTIN	07:45		
SUB IN: 22 BRYAN, LJ	07:45		
SUB IN: 55 COOPER, TA'LON	07:45		
	06:33	51-61	SUB OUT: BUTLER, ANTWUAN
	06:33		SUB OUT: TAYLOR, TERRY
	06:33		SUB IN: PAEZ, CARLOS
	06:33		SUB IN: SILVEIRA, MATHEUS
SUB OUT: 3 BAKER, JAMES	06:33		
SUB OUT: 55 COOPER, TA'LON	06:33		
SUB IN: 12 THOMAS, JUSTIN	06:33		
SUB IN: 23 RIDDLE, MALIK	06:33		
	05:14	53-63	SUB OUT: PAEZ, CARLOS
	05:14		SUB OUT: SILVEIRA, MATHEUS
	05:14		SUB IN: BUTLER, ANTWUAN
	05:14		SUB IN: TAYLOR, TERRY
SUB OUT: 22 BRYAN, LJ	03:50	53-63	
SUB OUT: 23 RIDDLE, MALIK	03:50		
SUB OUT: 32 HENSON, DJIMON	03:50		
SUB IN: 00 CLAUDE, TYZHAUN	03:50		
SUB IN: 3 BAKER, JAMES	03:50		
SUB IN: 55 COOPER, TA'LON	03:50		
	01:21	56-65	SUB OUT: HINSON, EVAN
	01:21		SUB IN: WOODARD, ALEC
	01:16	58-65	SUB OUT: BUTLER, ANTWUAN
	01:16		SUB IN: PAEZ, CARLOS
SUB OUT: 2 WALKER, JORDAN	00:48	58-65	
SUB IN: 32 HENSON, DJIMON	00:48		
	00:37	58-65	SUB OUT: ABAEV, ELI
	00:37		SUB IN: HINSON, EVAN

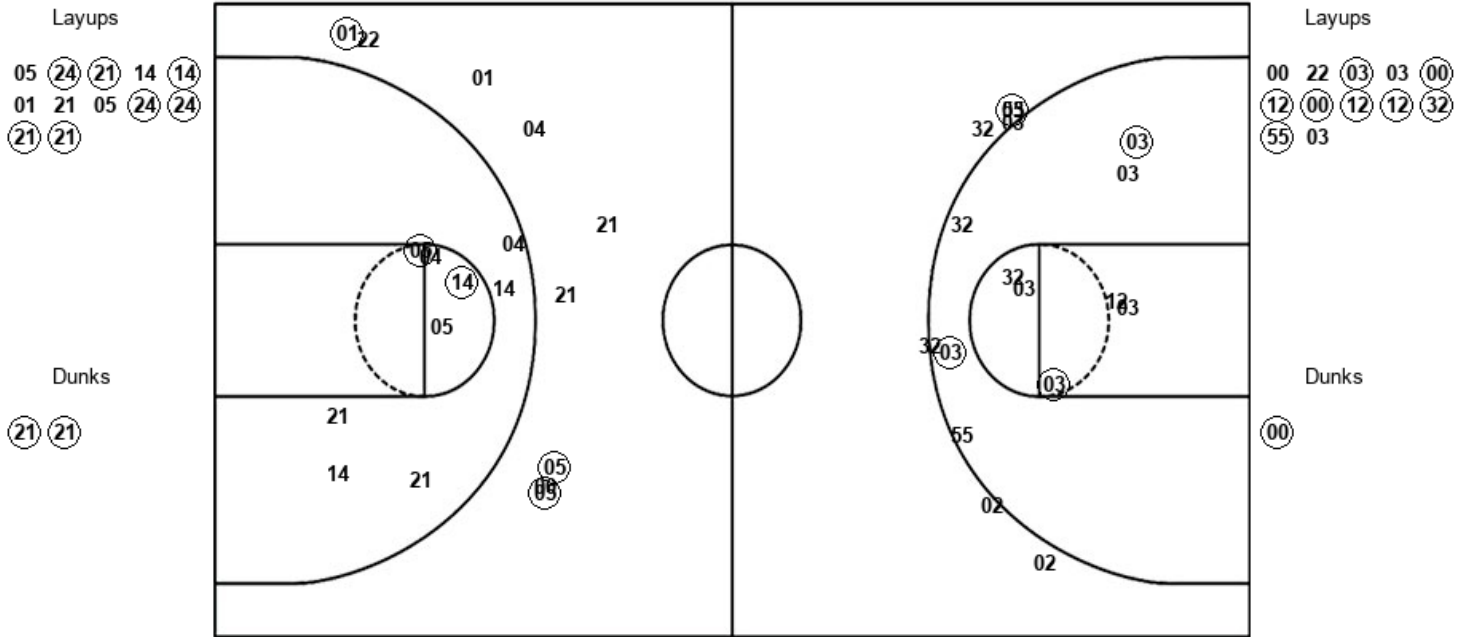
**Morehead St. 58, Austin Peay 67**

Official Shot Chart  
**Morehead St. vs Austin Peay**  
 PERIOD 1 Shots  
 February 28, 2020 at Winfield Dunn Center



**Austin Peay**

**Morehead St.**



APSU : Period 1	Made	Att	Pct
Layups	7	12	58.3
Dunks	2	2	100.0
2PT Field Goals	11	24	45.8
3PT Field Goals	3	8	37.5
<b>Total Field Goals</b>	<b>14</b>	<b>32</b>	<b>43.8</b>

MSU : Period 1	Made	Att	Pct
Layups	8	12	66.7
Dunks	1	1	100.0
2PT Field Goals	11	20	55.0
3PT Field Goals	2	10	20.0
<b>Total Field Goals</b>	<b>13</b>	<b>30</b>	<b>43.3</b>

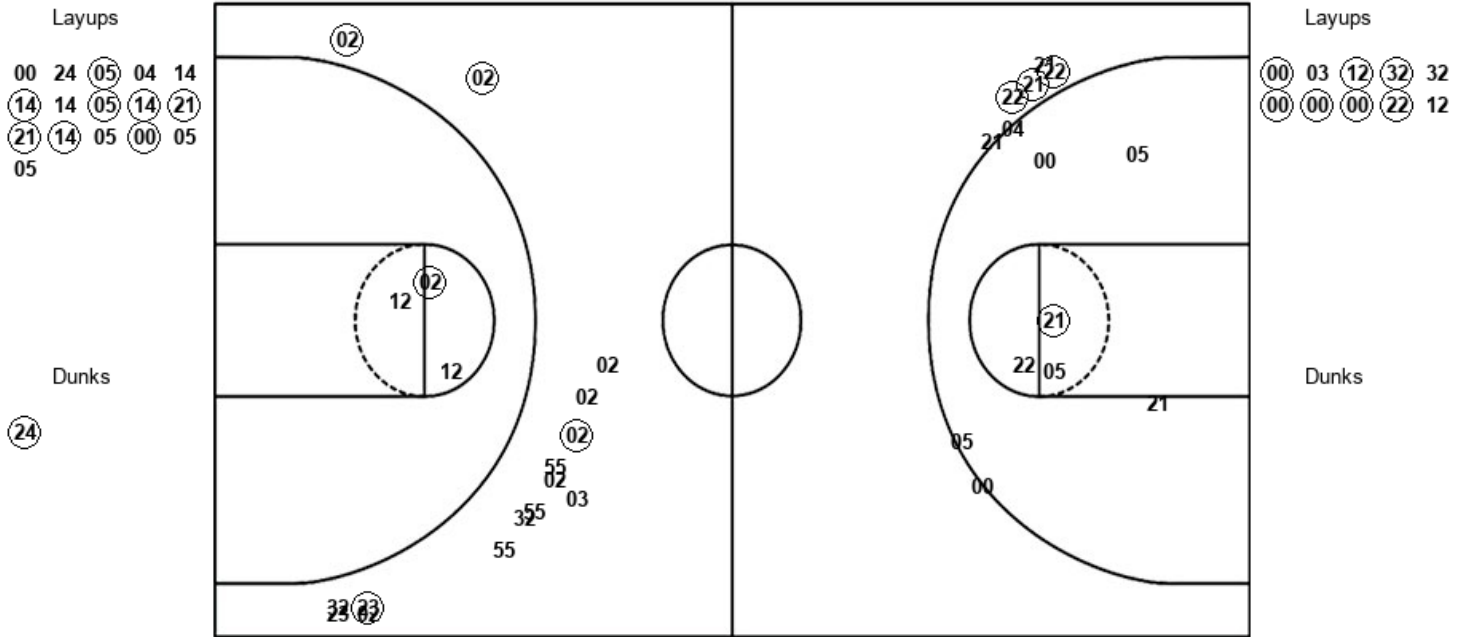


Official Shot Chart  
**Morehead St. vs Austin Peay**  
 PERIOD 2 Shots  
 February 28, 2020 at Winfield Dunn Center



**Austin Peay**

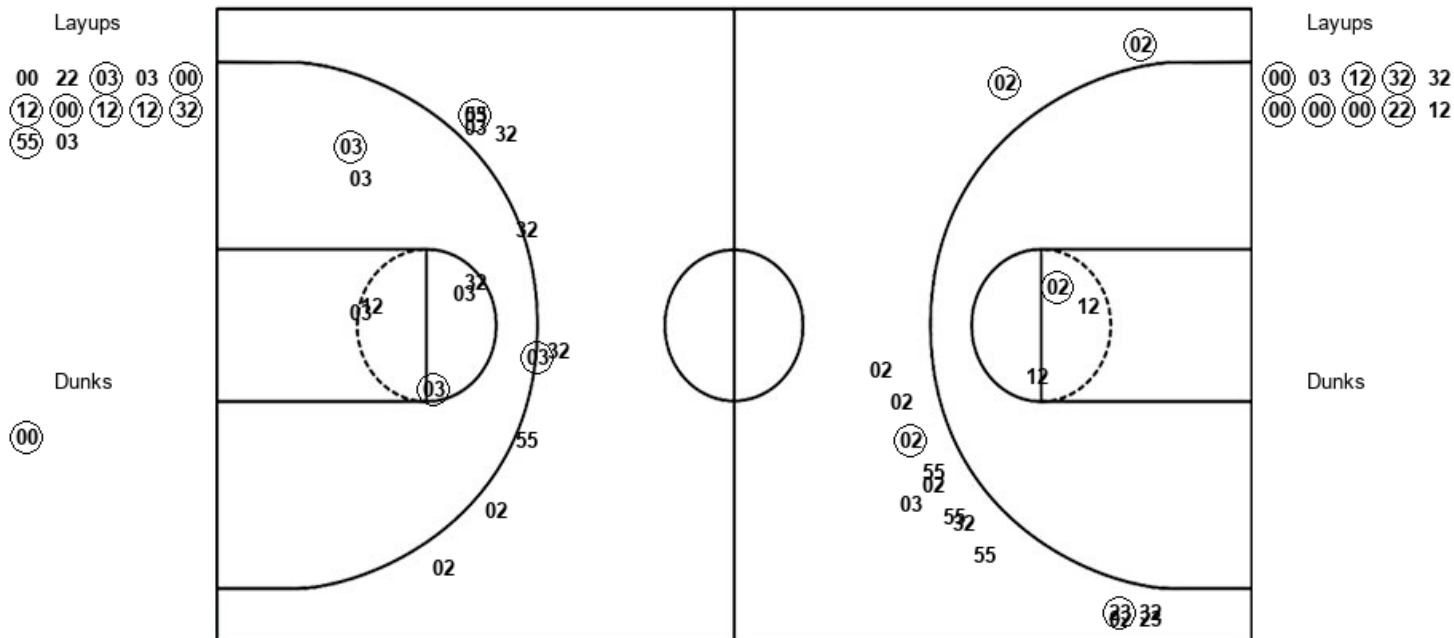
**Morehead St.**



APSU : Period 2	Made	Att	Pct
Layups	8	16	50.0
Dunks	1	1	100.0
2PT Field Goals	10	23	43.5
3PT Field Goals	3	8	37.5
<b>Total Field Goals</b>	<b>13</b>	<b>31</b>	<b>41.9</b>

MSU : Period 2	Made	Att	Pct
Layups	7	10	70.0
Dunks	0	0	0
2PT Field Goals	8	13	61.5
3PT Field Goals	4	15	26.7
<b>Total Field Goals</b>	<b>12</b>	<b>28</b>	<b>42.9</b>

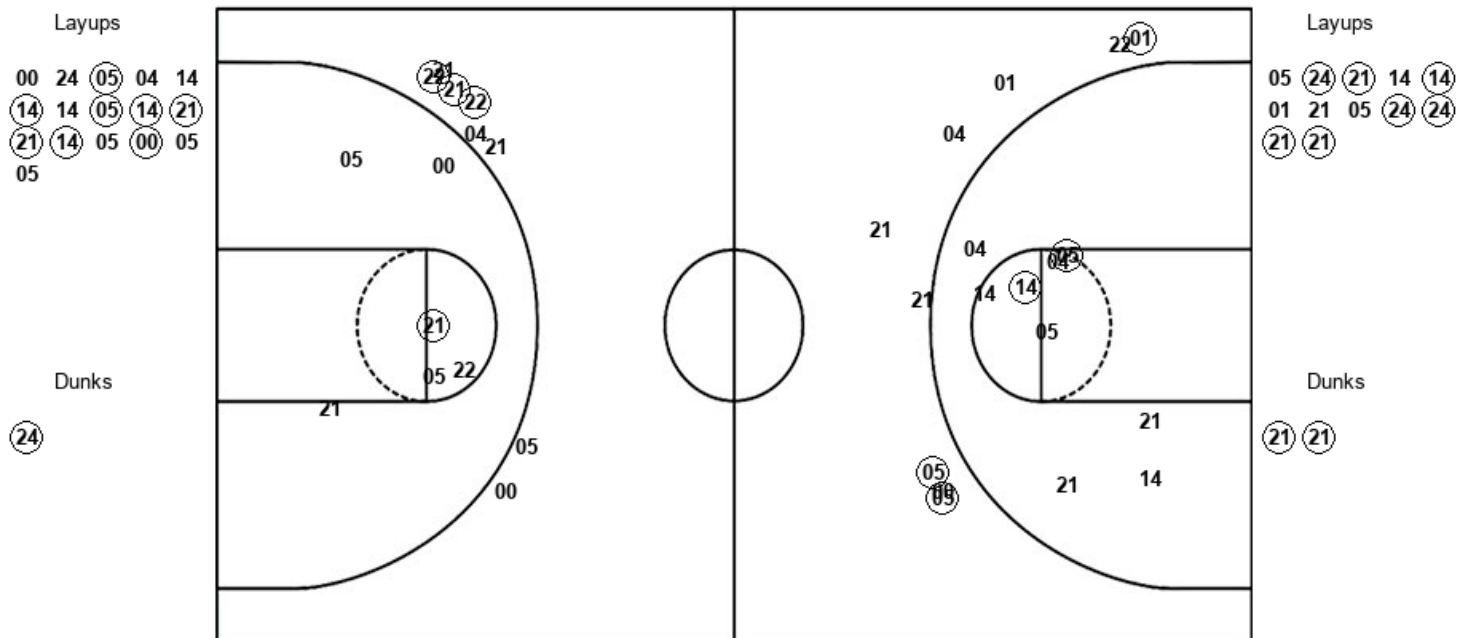
Official Shot Chart  
**Morehead St. vs Austin Peay**  
 Morehead St. Team Shots  
 February 28, 2020 at Winfield Dunn Center



MSU : Period 1	Made	Att	Pct
Layups	8	12	66.7
Dunks	1	1	100.0
2PT Field Goals	11	20	55.0
3PT Field Goals	2	10	20.0
<b>Total Field Goals</b>	<b>13</b>	<b>30</b>	<b>43.3</b>

MSU : Period 2	Made	Att	Pct
Layups	7	10	70.0
Dunks	0	0	0
2PT Field Goals	8	13	61.5
3PT Field Goals	4	15	26.7
<b>Total Field Goals</b>	<b>12</b>	<b>28</b>	<b>42.9</b>

Official Shot Chart  
**Morehead St. vs Austin Peay**  
 Austin Peay Team Shots  
 February 28, 2020 at Winfield Dunn Center



APSU : Period 1	Made	Att	Pct
Layups	7	12	58.3
Dunks	2	2	100.0
2PT Field Goals	11	24	45.8
3PT Field Goals	3	8	37.5
<b>Total Field Goals</b>	<b>14</b>	<b>32</b>	<b>43.8</b>

APSU : Period 2	Made	Att	Pct
Layups	8	16	50.0
Dunks	1	1	100.0
2PT Field Goals	10	23	43.5
3PT Field Goals	3	8	37.5
<b>Total Field Goals</b>	<b>13</b>	<b>31</b>	<b>41.9</b>