

## FINAL SCORE



**Eastern Ill.**

**64**



**Austin Peay**

**68**

February 01, 2020 • Winfield Dunn Center

## FINAL STATISTICS

**Official Box Score**  
**Eastern III. vs Austin Peay**  
**Game Totals -- Final Statistics**  
**February 01, 2020 at Winfield Dunn Center**



**Eastern III. 64**

No.	Player	S	Pts	FG	3FG	FT	OR	DR	TR	PF	A	TO	Blk	Stl	Min	+/-
03	SMITH, MACK	G	13	5-9	3-4	0-0	1	1	2	2	1	1	0	2	32	-10
05	SMITH, SHAREEF	G	10	4-10	2-4	0-0	1	2	3	2	1	2	0	2	23	-4
22	WALLACE, JOSIAH	G	7	3-10	0-1	1-3	0	7	7	1	4	2	0	1	38	2
32	MATLOCK, JAQUALIS	F	10	3-7	1-3	3-4	0	0	0	1	3	0	1	0	31	-13
35	DIXON, GEORGE	G	6	3-5	0-0	0-4	4	8	12	2	1	4	1	0	39	-6
01	CHARLES, KASHAWN	G	2	1-1	0-0	0-0	0	0	0	0	0	1	0	0	4	7
02	SKIPPER-BROWN, JORDAN	F	6	3-3	0-0	0-0	1	0	1	4	1	0	1	0	9	12
04	JOHNSON, MARVIN	G	10	4-4	1-1	1-2	0	4	4	3	2	5	0	1	24	-8
	TEAM						0	0	0	0		2				
<b>TOTALS</b>			<b>64</b>	<b>26-49</b>	<b>7-13</b>	<b>5-13</b>	<b>7</b>	<b>22</b>	<b>29</b>	<b>15</b>	<b>13</b>	<b>17</b>	<b>3</b>	<b>6</b>	<b>200</b>	

*Shooting By Period*

Period	FG	FG%	3FG	3FG%	FT	FT%
1st Half	16-26	62%	4-8	50%	2-8	25%
2nd Half	10-23	43%	3-5	60%	3-5	60%
<b>Game</b>	<b>26-49</b>	<b>53.1%</b>	<b>7-13</b>	<b>53.8%</b>	<b>5-13</b>	<b>38.5%</b>

*Last FG: 2nd-03:48*

*Largest lead: By 13 at*

*Technical Fouls: None.*

**Austin Peay 68**

No.	Player	S	Pts	FG	3FG	FT	OR	DR	TR	PF	A	TO	Blk	Stl	Min	+/-
01	PAEZ, CARLOS	G	11	5-6	0-1	1-3	1	1	2	2	5	2	0	2	31	-1
04	BUTLER, ANTWUAN	G	12	5-7	1-1	1-2	0	0	0	3	4	0	0	4	28	5
05	ADAMS, JORDYN	G	13	5-16	1-3	2-4	0	1	1	2	1	2	0	2	37	3
14	ABAEV, ELI	F	4	2-2	0-0	0-0	0	3	3	3	0	1	0	2	27	6
21	TAYLOR, TERRY	F	16	6-10	1-4	3-3	3	6	9	3	2	5	2	1	39	7
00	HINSON, EVAN	G	8	3-6	1-2	1-2	1	5	6	0	0	1	0	0	16	14
11	CONTEH, SITA	F	4	1-3	1-2	1-2	0	1	1	0	0	2	0	0	10	-6
22	WOODARD, ALEC	G	0	0-0	0-0	0-0	0	1	1	1	0	0	0	0	8	-7
24	SILVEIRA, MATHEUS	C	0	0-0	0-0	0-0	1	1	2	0	0	0	0	0	4	-1
	TEAM						1	2	3	0		3				
<b>TOTALS</b>			<b>68</b>	<b>27-50</b>	<b>5-13</b>	<b>9-16</b>	<b>7</b>	<b>21</b>	<b>28</b>	<b>14</b>	<b>12</b>	<b>16</b>	<b>2</b>	<b>11</b>	<b>200</b>	

*Shooting By Period*

Period	FG	FG%	3FG	3FG%	FT	FT%
1st Half	12-25	48%	1-4	25%	6-10	60%
2nd Half	15-25	60%	4-9	44%	3-6	50%
<b>Game</b>	<b>27-50</b>	<b>54.0%</b>	<b>5-13</b>	<b>38.5%</b>	<b>9-16</b>	<b>56.3%</b>

*Last FG: 2nd-00:07*

*Largest lead: By 4 at*

*Technical Fouls: None.*

Game Notes:

Officials: Kevin Driver, Kenneth Moreland, Greg Gerritsen  
Attendance: 2128

Start Time: 10:00 PM  
Conference Game;

Score	1st	2nd	TOT
EIU	38	26	<b>64</b>
APSU	31	37	<b>68</b>

EIU led for 34:17. APSU led for 3:40.

Game was tied for 0:0.

Times tied: 0      Lead Changes: 0

Points from	EIU	APSU
In the Paint	28	44
Off Turns	15	24
2nd Chance	9	10
Fast Break	5	20
Bench	18	12

**Official Box Score**  
**Eastern Ill. vs Austin Peay**  
**First Half Statistics Only**  
**February 01, 2020 at Winfield Dunn Center**



### Eastern Ill. 38

No.	Player	S	Pts	FG	3FG	FT	OR	DR	TR	PF	A	TO	Blk	Stl	Min
03	SMITH, MACK	G	8	3-5	2-3	0-0	1	0	1	1	1	1	0	0	16
05	SMITH, SHAREEF	G	4	2-5	0-1	0-0	1	1	2	1	1	2	0	2	11
22	WALLACE, JOSIAH	G	5	2-5	0-1	1-2	0	6	6	1	2	0	0	1	19
32	MATLOCK, JAQUALIS	F	5	2-3	1-2	0-0	0	0	0	1	0	0	1	0	12
35	DIXON, GEORGE	G	4	2-3	0-0	0-4	2	6	8	1	1	3	0	0	20
01	CHARLES, KASHAWN	G	2	1-1	0-0	0-0	0	0	0	0	0	1	0	0	4
02	SKIPPER-BROWN, JORDAN	F	6	3-3	0-0	0-0	0	0	0	2	0	0	1	0	7
04	JOHNSON, MARVIN	G	4	1-1	1-1	1-2	0	2	2	1	2	2	0	1	11
	TEAM			0-0			0	0	0	0		0			
<b>TOTALS</b>			<b>38</b>	<b>16-26</b>	<b>4-8</b>	<b>2-8</b>	<b>4</b>	<b>15</b>	<b>19</b>	<b>8</b>	<b>7</b>	<b>9</b>	<b>2</b>	<b>4</b>	<b>100</b>

#### Shooting By Period

Period	FG	FG%	3FG	3FG%	FT	FT%
1st Half	16-26	62%	4-8	50%	2-8	25%
Game	26-49	53.1%	7-13	53.8%	5-13	38.5%

Last FG Half: EIU 2nd-03:48

### Austin Peay 31

No.	Player	S	Pts	FG	3FG	FT	OR	DR	TR	PF	A	TO	Blk	Stl	Min
01	PAEZ, CARLOS	G	9	4-4	0-0	1-3	1	1	2	1	2	1	0	2	16
04	BUTLER, ANTWUAN	G	2	1-2	0-0	0-0	0	0	0	2	2	0	0	3	13
05	ADAMS, JORDYN	G	2	1-6	0-0	0-0	0	0	0	0	0	2	0	1	17
14	ABAEV, ELI	F	2	1-1	0-0	0-0	0	0	0	1	0	1	0	0	9
21	TAYLOR, TERRY	F	7	2-5	0-2	3-3	0	3	3	2	0	2	1	0	20
00	HINSON, EVAN	G	5	2-4	0-0	1-2	0	2	2	0	0	0	0	0	11
11	CONTEH, SITA	F	4	1-3	1-2	1-2	0	1	1	0	0	2	0	0	10
22	WOODARD, ALEC	G	0	0-0	0-0	0-0	0	0	0	1	0	0	0	0	4
24	SILVEIRA, MATHEUS	C	0	0-0	0-0	0-0	0	1	1	0	0	0	0	0	0
	TEAM			0-0			1	2	3	0		0			
<b>TOTALS</b>			<b>31</b>	<b>12-25</b>	<b>1-4</b>	<b>6-10</b>	<b>2</b>	<b>10</b>	<b>12</b>	<b>7</b>	<b>4</b>	<b>8</b>	<b>1</b>	<b>6</b>	<b>100</b>

#### Shooting By Period

Period	FG	FG%	3FG	3FG%	FT	FT%
1st Half	12-25	48%	1-4	25%	6-10	60%
Game	27-50	54.0%	5-13	38.5%	9-16	56.3%

Last FG Half: APSU 2nd-00:07

#### Game Notes:

Officials: Kevin Driver, Kenneth Moreland, Greg Gerritsen  
Attendance: 2128

Start Time: 10:00 PM

Conference Game;

Score	1st	2nd	TOT
EIU	38	26	<b>64</b>
APSU	31	37	<b>68</b>

Points from (This Period)	EIU	APSU
In the Paint	18	22
Off Turns	9	12
2nd Chance	5	3
Fast Break	5	11
Bench	12	9

**Official Play-By-Play**  
**Eastern III. vs Austin Peay**  
**First Half**  
**February 01, 2020 at Winfield Dunn Center**



**Period 1**

**Starters:**

**Eastern III.:** 3 SMITH,MACK (G); 5 SMITH,SHAREEF (G); 22 WALLACE,JOSIAH (G); 32 MATLOCK,JAQUALIS (F); 35 DIXON,GEORGE (G);

**Austin Peay:** 1 PAEZ,CARLOS (G); 4 BUTLER,ANTWUAN (G); 5 ADAMS,JORDYN (G); 14 ABAEV,ELI (F); 21 TAYLOR,TERRY (F);

Time	VISITORS: Eastern III.	Score	Margin	HOME: Austin Peay
19:49				MISSED LAYUP by TAYLOR, TERRY
19:49	BLOCK by MATLOCK, JAQUALIS			
19:42	REBOUND (DEF) by WALLACE, JOSIAH			
19:32	GOOD! JUMPER by SMITH, MACK	0-2	V 2	
19:11				MISSED JUMPER by ADAMS, JORDYN
19:09	REBOUND (DEF) by DIXON, GEORGE			
18:49	GOOD! LAYUP by WALLACE, JOSIAH	0-4	V 4	
18:26				MISSED LAYUP by ADAMS, JORDYN
18:24	REBOUND (DEF) by DIXON, GEORGE			
18:19	MISSED LAYUP by SMITH, SHAREEF			
18:19				BLOCK by TAYLOR, TERRY
18:15				REBOUND (DEF) by TAYLOR, TERRY
18:08		2-4	V 2	GOOD! LAYUP by ABAEV, ELI [PNT]
18:08				ASSIST by PAEZ, CARLOS
17:42	GOOD! JUMPER by MATLOCK, JAQUALIS	2-6	V 4	
17:33				MISSED 3PTR by TAYLOR, TERRY
17:29	REBOUND (DEF) by DIXON, GEORGE			
17:03	MISSED 3PTR by SMITH, SHAREEF			
17:00				REBOUND (DEF) by PAEZ, CARLOS
16:57		4-6	V 2	GOOD! LAYUP by PAEZ, CARLOS [FB]
16:57	FOUL by SMITH, SHAREEF			
16:57	SUB OUT: SMITH, SHAREEF			
16:57	SUB IN: CHARLES, KASHAWN			
16:57				MISSED FT by PAEZ, CARLOS [FB]
16:55	REBOUND (DEF) by WALLACE, JOSIAH			
16:30	TURNOVER by CHARLES, KASHAWN [PNT]			
16:30				STEAL by BUTLER, ANTWUAN
16:26		6-6	T	GOOD! LAYUP by ADAMS, JORDYN [FB]
16:26				ASSIST by BUTLER, ANTWUAN
16:07				FOUL by ABAEV, ELI [PNT]
16:07				SUB OUT: ABAEV, ELI
16:07				SUB IN: CONTEH, SITA
16:07	SUB OUT: MATLOCK, JAQUALIS			
16:07	SUB IN: SKIPPER-BROWN, JORDAN			
16:07	SUB OUT: WALLACE, JOSIAH			
16:07	SUB IN: JOHNSON, MARVIN			
15:56	GOOD! LAYUP by DIXON, GEORGE	6-8	V 2	
15:34				MISSED JUMPER by ADAMS, JORDYN
15:31	REBOUND (DEF) by JOHNSON, MARVIN			
15:30				FOUL by PAEZ, CARLOS [PNT]
15:30	TIMEOUT MEDIA			
15:30				SUB OUT: PAEZ, CARLOS
15:30				SUB IN: WOODARD, ALEC
15:30	SUB OUT: SMITH, MACK			
15:30	SUB IN: WALLACE, JOSIAH			
15:17	GOOD! DUNK by SKIPPER-BROWN, JORDAN	6-10	V 4	
15:17	ASSIST by JOHNSON, MARVIN			
14:55				MISSED LAYUP by ADAMS, JORDYN
14:55	BLOCK by SKIPPER-BROWN, JORDAN			
14:55				REBOUND (OFF) by TEAM
14:55				SUB OUT: CONTEH, SITA
14:55				SUB IN: ABAEV, ELI
14:48				TURNOVER by ADAMS, JORDYN
14:31	GOOD! JUMPER by CHARLES, KASHAWN [PNT]	6-12	V 6	
14:22		8-12	V 4	GOOD! LAYUP by TAYLOR, TERRY
14:22				ASSIST by BUTLER, ANTWUAN
14:00				FOUL by WOODARD, ALEC
13:51	GOOD! LAYUP by SKIPPER-BROWN, JORDAN	8-14	V 6	
13:51	ASSIST by JOHNSON, MARVIN			
13:39				TURNOVER by TAYLOR, TERRY [PNT]
13:39	STEAL by WALLACE, JOSIAH			
13:32	MISSED JUMPER by WALLACE, JOSIAH			
13:31				REBOUND (DEF) by TEAM
13:13	FOUL by SKIPPER-BROWN, JORDAN			
13:05				SUB OUT: ADAMS, JORDYN
13:05				SUB IN: HINSON, EVAN
13:05	SUB OUT: SKIPPER-BROWN, JORDAN			
13:05	SUB IN: MATLOCK, JAQUALIS			
13:01				MISSED 3PTR by TAYLOR, TERRY
12:58	REBOUND (DEF) by WALLACE, JOSIAH			

Time	VISITORS: Eastern Ill.	Score	Margin	HOME: Austin Peay
12:44	GOOD! 3PTR by JOHNSON, MARVIN	8-17	V 9	
12:44	ASSIST by WALLACE, JOSIAH			
12:43				TIMEOUT 30SEC
12:43	SUB OUT: CHARLES, KASHAWN			
12:43	SUB IN: SMITH, MACK			
12:30		10-17	V 7	GOOD! LAYUP by BUTLER, ANTWUAN
12:09	MISSED 3PTR by MATLOCK, JAQUALIS			
12:06				REBOUND (DEF) by HINSON, EVAN
11:56				MISSED JUMPER by HINSON, EVAN
11:53	REBOUND (DEF) by JOHNSON, MARVIN			
11:50	TIMEOUT MEDIA			
11:50				SUB OUT: WOODARD, ALEC
11:50				SUB IN: ADAMS, JORDYN
11:33	TURNOVER by SMITH, MACK			
11:33				STEAL by BUTLER, ANTWUAN
11:25		12-17	V 5	GOOD! LAYUP by HINSON, EVAN [FB/PNT]
11:07	MISSED LAYUP by DIXON, GEORGE			
11:05	REBOUND (OFF) by DIXON, GEORGE			
11:05				FOUL by BUTLER, ANTWUAN
11:05	MISSED FT by DIXON, GEORGE			
11:05	REBOUND (DEADB) by TEAM			
11:05				SUB OUT: BUTLER, ANTWUAN
11:05				SUB OUT: ABAEV, ELI
11:05				SUB IN: PAEZ, CARLOS
11:05				SUB IN: CONTEH, SITA
11:05	MISSED FT by DIXON, GEORGE			
11:04				REBOUND (DEF) by TAYLOR, TERRY
10:56				TURNOVER by PAEZ, CARLOS
10:56	STEAL by JOHNSON, MARVIN			
10:43				FOUL by TAYLOR, TERRY
10:43	MISSED FT by DIXON, GEORGE			
10:43	REBOUND (DEADB) by TEAM			
10:43	MISSED FT by DIXON, GEORGE			
10:41				REBOUND (DEF) by TAYLOR, TERRY
10:28		14-17	V 3	GOOD! DUNK by HINSON, EVAN
10:11	MISSED 3PTR by SMITH, MACK			
10:08				REBOUND (DEF) by CONTEH, SITA
10:02				MISSED 3PTR by CONTEH, SITA
09:58	REBOUND (DEF) by DIXON, GEORGE			
09:40	GOOD! LAYUP by WALLACE, JOSIAH [PNT]	14-19	V 5	
09:10				TURNOVER by CONTEH, SITA [PNT]
09:10				SUB OUT: CONTEH, SITA
09:10				SUB IN: ABAEV, ELI
09:10	SUB OUT: JOHNSON, MARVIN			
09:10	SUB OUT: MATLOCK, JAQUALIS			
09:10	SUB IN: SKIPPER-BROWN, JORDAN			
09:10	SUB IN: SMITH, SHAREEF			
09:10				SUB OUT: HINSON, EVAN
09:10				SUB IN: BUTLER, ANTWUAN
08:57	TURNOVER by DIXON, GEORGE			
08:42				MISSED JUMPER by ADAMS, JORDYN
08:39	REBOUND (DEF) by DIXON, GEORGE			
08:31	MISSED JUMPER by WALLACE, JOSIAH			
08:27	REBOUND (OFF) by DIXON, GEORGE			
08:22	GOOD! LAYUP by DIXON, GEORGE	14-21	V 7	
08:22	ASSIST by SMITH, MACK			
08:00				TURNOVER by ABAEV, ELI [PNT]
08:00	TIMEOUT MEDIA			
08:00				SUB OUT: ABAEV, ELI
08:00				SUB IN: CONTEH, SITA
07:38	GOOD! DUNK by SKIPPER-BROWN, JORDAN [PNT]	14-23	V 9	
07:38	ASSIST by DIXON, GEORGE			
07:21				TURNOVER by ADAMS, JORDYN
07:21	STEAL by SMITH, SHAREEF			
07:14	GOOD! 3PTR by SMITH, MACK	14-26	V 12	
07:14	ASSIST by WALLACE, JOSIAH			
07:12				TIMEOUT 30SEC
07:12				SUB OUT: ADAMS, JORDYN
07:12				SUB IN: HINSON, EVAN
06:52				MISSED JUMPER by BUTLER, ANTWUAN
06:49	REBOUND (DEF) by WALLACE, JOSIAH			
06:41	TURNOVER by SMITH, SHAREEF			
06:41				STEAL by PAEZ, CARLOS
06:34		16-26	V 10	GOOD! LAYUP by PAEZ, CARLOS [FB]
06:19	GOOD! 3PTR by SMITH, MACK	16-29	V 13	
06:19	ASSIST by SMITH, SHAREEF			
05:55				MISSED JUMPER by HINSON, EVAN
05:52				REBOUND (OFF) by PAEZ, CARLOS
05:50		19-29	V 10	GOOD! 3PTR by CONTEH, SITA
05:50				ASSIST by PAEZ, CARLOS

Time	VISITORS: Eastern III.	Score	Margin	HOME: Austin Peay
05:22	TURNOVER by DIXON, GEORGE			
05:22				STEAL by BUTLER, ANTWUAN
05:18	FOUL by SMITH, MACK			
05:18		20-29	V 9	GOOD! FT by HINSON, EVAN [FB]
05:18	SUB OUT: SKIPPER-BROWN, JORDAN			
05:18	SUB IN: MATLOCK, JAQUALIS			
05:18				MISSED FT by HINSON, EVAN [FB]
05:17	REBOUND (DEF) by DIXON, GEORGE			
05:05				FOUL by BUTLER, ANTWUAN [PNT]
05:05	GOOD! FT by WALLACE, JOSIAH	20-30	V 10	
05:05				SUB OUT: BUTLER, ANTWUAN
05:05				SUB IN: ADAMS, JORDYN
05:05	SUB OUT: DIXON, GEORGE			
05:05	SUB IN: SKIPPER-BROWN, JORDAN			
05:05	MISSED FT by WALLACE, JOSIAH			
05:02	REBOUND (OFF) by SMITH, MACK			
04:58	GOOD! 3PTR by MATLOCK, JAQUALIS	20-33	V 13	
04:37		22-33	V 11	GOOD! LAYUP by TAYLOR, TERRY
04:37	FOUL by SKIPPER-BROWN, JORDAN			
04:37	SUB OUT: SKIPPER-BROWN, JORDAN			
04:37	SUB OUT: WALLACE, JOSIAH			
04:37	SUB IN: JOHNSON, MARVIN			
04:37	SUB IN: DIXON, GEORGE			
04:37		23-33	V 10	GOOD! FT by TAYLOR, TERRY
04:15	MISSED JUMPER by SMITH, MACK			
04:15				REBOUND (DEF) by TEAM
04:15	SUB OUT: SMITH, MACK			
04:15	SUB IN: WALLACE, JOSIAH			
04:00				TURNOVER by TAYLOR, TERRY
04:00	STEAL by SMITH, SHAREEF			
03:54	GOOD! JUMPER by SMITH, SHAREEF [FB]	23-35	V 12	
03:42	FOUL by WALLACE, JOSIAH			
03:42	TIMEOUT MEDIA			
03:42		24-35	V 11	GOOD! FT by TAYLOR, TERRY
03:42		25-35	V 10	GOOD! FT by TAYLOR, TERRY
03:21	MISSED JUMPER by SMITH, SHAREEF			
03:18				REBOUND (DEF) by HINSON, EVAN
02:54				TURNOVER by CONTEH, SITA [PNT]
02:54	SUB OUT: SMITH, SHAREEF			
02:54	SUB IN: SMITH, MACK			
02:41	FOUL by JOHNSON, MARVIN			
02:41	TURNOVER by JOHNSON, MARVIN			
02:16	FOUL by DIXON, GEORGE [PNT]			
02:16		26-35	V 9	GOOD! FT by CONTEH, SITA
02:16				MISSED FT by CONTEH, SITA
02:12	REBOUND (DEF) by WALLACE, JOSIAH			
02:02	TURNOVER by DIXON, GEORGE			
02:02				STEAL by PAEZ, CARLOS
01:58		28-35	V 7	GOOD! LAYUP by PAEZ, CARLOS [FB]
01:49	TURNOVER by JOHNSON, MARVIN			
01:49	SUB OUT: JOHNSON, MARVIN			
01:49	SUB IN: SMITH, SHAREEF			
01:32				MISSED JUMPER by CONTEH, SITA
01:29	REBOUND (DEF) by SMITH, SHAREEF			
01:24	GOOD! JUMPER by SMITH, SHAREEF [FB]	28-37	V 9	
00:59				SUB OUT: CONTEH, SITA
00:59				SUB IN: ABAEV, ELI
00:49	FOUL by MATLOCK, JAQUALIS [PNT]			
00:49		29-37	V 8	GOOD! FT by PAEZ, CARLOS
00:49	SUB OUT: MATLOCK, JAQUALIS			
00:49	SUB IN: JOHNSON, MARVIN			
00:49				MISSED FT by PAEZ, CARLOS
00:48	REBOUND (DEF) by WALLACE, JOSIAH			
00:30	MISSED 3PTR by WALLACE, JOSIAH			
00:29	REBOUND (OFF) by SMITH, SHAREEF			
00:29				SUB OUT: ABAEV, ELI
00:29				SUB IN: SILVEIRA, MATHEUS
00:28	TURNOVER by SMITH, SHAREEF			
00:28				STEAL by ADAMS, JORDYN
00:10		31-37	V 6	GOOD! LAYUP by PAEZ, CARLOS
00:04				FOUL by TAYLOR, TERRY
00:04	GOOD! FT by JOHNSON, MARVIN [FB]	31-38	V 7	
00:04	MISSED FT by JOHNSON, MARVIN [FB]			
00:03				REBOUND (DEF) by SILVEIRA, MATHEUS

Eastern III. 38, Austin Peay 31

Points from (This Period)	EIU	APSU
In the Paint	18	22
Off Turns	9	12
2nd Chance	5	3
Fast Break	5	11
Bench	12	9

**Official Box Score**  
**Eastern III. vs Austin Peay**  
**Second Half Statistics Only**  
**February 01, 2020 at Winfield Dunn Center**



### Eastern III. 26

No.	Player	S	Pts	FG	3FG	FT	OR	DR	TR	PF	A	TO	Blk	Stl	Min
03	SMITH, MACK	G	5	2-4	1-1	0-0	0	1	1	1	0	0	0	2	16
05	SMITH, SHAREEF	G	6	2-5	2-3	0-0	0	1	1	1	0	0	0	0	12
22	WALLACE, JOSIAH	G	2	1-5	0-0	0-1	0	1	1	0	2	2	0	0	19
32	MATLOCK, JAQUALIS	F	5	1-4	0-1	3-4	0	0	0	0	3	0	0	0	19
35	DIXON, GEORGE	G	2	1-2	0-0	0-0	2	2	4	1	0	1	1	0	19
01	CHARLES, KASHAWN	G	0	0-0	0-0	0-0	0	0	0	0	0	0	0	0	0
02	SKIPPER-BROWN, JORDAN	F	0	0-0	0-0	0-0	1	0	1	2	1	0	0	0	2
04	JOHNSON, MARVIN	G	6	3-3	0-0	0-0	0	2	2	2	0	3	0	0	14
	TEAM			0-0			0	0	0	0		2			
<b>TOTALS</b>			<b>26</b>	<b>10-23</b>	<b>3-5</b>	<b>3-5</b>	<b>3</b>	<b>7</b>	<b>10</b>	<b>7</b>	<b>6</b>	<b>8</b>	<b>1</b>	<b>2</b>	<b>100</b>

#### Shooting By Period

Period	FG	FG%	3FG	3FG%	FT	FT%
2nd Half	10-23	43%	3-5	60%	3-5	60%
Game	26-49	53.1%	7-13	53.8%	5-13	38.5%

Last FG Half: EIU -

### Austin Peay 37

No.	Player	S	Pts	FG	3FG	FT	OR	DR	TR	PF	A	TO	Blk	Stl	Min
01	PAEZ, CARLOS	G	2	1-2	0-1	0-0	0	0	0	1	3	1	0	0	16
04	BUTLER, ANTWUAN	G	10	4-5	1-1	1-2	0	0	0	1	2	0	0	1	15
05	ADAMS, JORDYN	G	11	4-10	1-3	2-4	0	1	1	2	1	0	0	1	20
14	ABAEV, ELI	F	2	1-1	0-0	0-0	0	3	3	2	0	0	0	2	18
21	TAYLOR, TERRY	F	9	4-5	1-2	0-0	3	3	6	1	2	3	1	1	19
00	HINSON, EVAN	G	3	1-2	1-2	0-0	1	3	4	0	0	1	0	0	5
11	CONTEH, SITA	F	0	0-0	0-0	0-0	0	0	0	0	0	0	0	0	0
22	WOODARD, ALEC	G	0	0-0	0-0	0-0	0	1	1	0	0	0	0	0	5
24	SILVEIRA, MATHEUS	C	0	0-0	0-0	0-0	1	0	1	0	0	0	0	0	4
	TEAM			0-0			0	0	0	0		3			
<b>TOTALS</b>			<b>37</b>	<b>15-25</b>	<b>4-9</b>	<b>3-6</b>	<b>5</b>	<b>11</b>	<b>16</b>	<b>7</b>	<b>8</b>	<b>8</b>	<b>1</b>	<b>5</b>	<b>100</b>

#### Shooting By Period

Period	FG	FG%	3FG	3FG%	FT	FT%
2nd Half	15-25	60%	4-9	44%	3-6	50%
Game	27-50	54.0%	5-13	38.5%	9-16	56.3%

Last FG Half: APSU -

#### Game Notes:

Officials: Kevin Driver, Kenneth Moreland, Greg Gerritsen  
Attendance: 2128

Start Time: 10:00 PM  
Conference Game;

Score	1st	2nd	TOT
EIU	38	26	<b>64</b>
APSU	31	37	<b>68</b>

Points from (This Period)	EIU	APSU
In the Paint	10	22
Off Turns	6	12
2nd Chance	4	7
Fast Break	0	9
Bench	6	3



**Official Play-By-Play**  
**Eastern Ill. vs Austin Peay**  
**Second Half**  
**February 01, 2020 at Winfield Dunn Center**



**Period 2**

**Starters:**

**Eastern Ill.:** 3 SMITH,MACK (G); 5 SMITH,SHAREEF (G); 22 WALLACE,JOSIAH (G); 32 MATLOCK,JAQUALIS (F); 35 DIXON,GEORGE (G);

**Austin Peay:** 1 PAEZ,CARLOS (G); 4 BUTLER,ANTWUAN (G); 5 ADAMS,JORDYN (G); 14 ABAEV,ELI (F); 21 TAYLOR,TERRY (F);

Time	VISITORS: Eastern Ill.	Score	Margin	HOME: Austin Peay
20:00				SUB OUT: HINSON, EVAN
20:00				SUB OUT: SILVEIRA, MATHEUS
20:00				SUB IN: BUTLER, ANTWUAN
20:00				SUB IN: ABAEV, ELI
20:00	SUB OUT: JOHNSON, MARVIN			
20:00	SUB IN: MATLOCK, JAQUALIS			
19:43		33-38	V 5	GOOD! JUMPER by ADAMS, JORDYN [PNT]
19:25	GOOD! 3PTR by SMITH, SHAREEF	33-41	V 8	
19:25	ASSIST by MATLOCK, JAQUALIS			
18:54				MISSED 3PTR by PAEZ, CARLOS
18:52				REBOUND (OFF) by TAYLOR, TERRY
18:50		36-41	V 5	GOOD! 3PTR by BUTLER, ANTWUAN
18:50				ASSIST by TAYLOR, TERRY
18:34	MISSED LAYUP by SMITH, SHAREEF			
18:30	REBOUND (OFF) by DIXON, GEORGE			
18:30	GOOD! LAYUP by DIXON, GEORGE	36-43	V 7	
18:21		38-43	V 5	GOOD! JUMPER by BUTLER, ANTWUAN [PNT]
17:53	MISSED JUMPER by WALLACE, JOSIAH			
17:50				REBOUND (DEF) by ABAEV, ELI
17:46				MISSED 3PTR by ADAMS, JORDYN
17:42				REBOUND (OFF) by TAYLOR, TERRY
17:40		40-43	V 3	GOOD! LAYUP by TAYLOR, TERRY
17:14				FOUL by TAYLOR, TERRY
17:14				SUB OUT: TAYLOR, TERRY
17:14				SUB IN: SILVEIRA, MATHEUS
17:08	GOOD! 3PTR by SMITH, MACK	40-46	V 6	
17:08	ASSIST by MATLOCK, JAQUALIS			
16:54				MISSED JUMPER by ADAMS, JORDYN
16:54	BLOCK by DIXON, GEORGE			
16:51	REBOUND (DEF) by DIXON, GEORGE			
16:44	TURNOVER by WALLACE, JOSIAH			
16:44				STEAL by ABAEV, ELI
16:38		42-46	V 4	GOOD! LAYUP by PAEZ, CARLOS [FB]
16:38				ASSIST by BUTLER, ANTWUAN
16:21				FOUL by ABAEV, ELI [PNT]
16:10	MISSED 3PTR by SMITH, SHAREEF			
16:04	REBOUND (OFF) by DIXON, GEORGE			
16:04				FOUL by BUTLER, ANTWUAN [PNT]
16:03				SUB OUT: BUTLER, ANTWUAN
16:03				SUB IN: WOODARD, ALEC
16:03	SUB OUT: SMITH, SHAREEF			
16:03	SUB OUT: MATLOCK, JAQUALIS			
16:03	SUB IN: SKIPPER-BROWN, JORDAN			
16:03	SUB IN: JOHNSON, MARVIN			
15:51	GOOD! JUMPER by JOHNSON, MARVIN	42-48	V 6	
15:35	FOUL by SKIPPER-BROWN, JORDAN [PNT]			
15:35	TIMEOUT MEDIA			
15:35				SUB OUT: ABAEV, ELI
15:35				SUB IN: TAYLOR, TERRY
15:35				MISSED FT by ADAMS, JORDYN
15:35				REBOUND (DEADB) by TEAM
15:35		43-48	V 5	GOOD! FT by ADAMS, JORDYN
15:22	GOOD! JUMPER by JOHNSON, MARVIN	43-50	V 7	
15:22	ASSIST by SKIPPER-BROWN, JORDAN			
15:15	FOUL by SKIPPER-BROWN, JORDAN			
15:15		44-50	V 6	GOOD! FT by ADAMS, JORDYN [FB]
15:15	SUB OUT: SKIPPER-BROWN, JORDAN			
15:15	SUB IN: MATLOCK, JAQUALIS			
15:15				MISSED FT by ADAMS, JORDYN [FB]
15:13	REBOUND (DEF) by WALLACE, JOSIAH			
14:45	MISSED LAYUP by SMITH, MACK			
14:43				REBOUND (DEF) by TAYLOR, TERRY
14:38		47-50	V 3	GOOD! 3PTR by TAYLOR, TERRY
14:38				ASSIST by PAEZ, CARLOS
14:08	GOOD! DUNK by MATLOCK, JAQUALIS	47-52	V 5	
14:08	ASSIST by WALLACE, JOSIAH			
13:35				MISSED JUMPER by ADAMS, JORDYN [PNT]
13:35				REBOUND (OFF) by SILVEIRA, MATHEUS
13:35				TURNOVER by TEAM [PNT]
13:35				SUB OUT: SILVEIRA, MATHEUS

Time	VISITORS: Eastern Ill.	Score	Margin	HOME: Austin Peay
13:35				SUB IN: ABAEV, ELI
13:13	MISSED 3PTR by MATLOCK, JAQUALIS			
13:10				REBOUND (DEF) by WOODARD, ALEC
13:01	FOUL by JOHNSON, MARVIN [PNT]			
12:39				TURNOVER by TEAM
12:21	GOOD! LAYUP by JOHNSON, MARVIN	47-54	V 7	
12:01				TURNOVER by PAEZ, CARLOS
12:01	TIMEOUT MEDIA			
12:01				SUB OUT: PAEZ, CARLOS
12:01				SUB IN: HINSON, EVAN
12:01				SUB OUT: WOODARD, ALEC
12:01				SUB IN: BUTLER, ANTWUAN
11:39	MISSED JUMPER by WALLACE, JOSIAH			
11:36				REBOUND (DEF) by TAYLOR, TERRY
11:27				TURNOVER by TAYLOR, TERRY [PNT]
11:27	STEAL by SMITH, MACK			
11:22	MISSED LAYUP by SMITH, MACK			
11:19				REBOUND (DEF) by HINSON, EVAN
11:12		50-54	V 4	GOOD! 3PTR by HINSON, EVAN
11:12				ASSIST by BUTLER, ANTWUAN
11:10				SUB OUT: HINSON, EVAN
11:10				SUB IN: WOODARD, ALEC
11:10	SUB OUT: SMITH, MACK			
11:10	SUB IN: SMITH, SHAREEF			
10:49				FOUL by ABAEV, ELI
10:49	MISSED FT by MATLOCK, JAQUALIS			
10:49	REBOUND (DEADB) by TEAM			
10:49	GOOD! FT by MATLOCK, JAQUALIS	50-55	V 5	
10:49				SUB OUT: WOODARD, ALEC
10:49				SUB IN: HINSON, EVAN
10:31	FOUL by DIXON, GEORGE [PNT]			
10:25		53-55	V 2	GOOD! 3PTR by ADAMS, JORDYN
10:25				ASSIST by TAYLOR, TERRY
10:02	MISSED JUMPER by DIXON, GEORGE			
09:55				REBOUND (DEF) by HINSON, EVAN
09:39				TURNOVER by TAYLOR, TERRY
09:39	SUB OUT: WALLACE, JOSIAH			
09:39	SUB IN: SMITH, MACK			
09:17	MISSED LAYUP by MATLOCK, JAQUALIS			
09:14				REBOUND (DEF) by ABAEV, ELI
09:10		55-55	T	GOOD! JUMPER by BUTLER, ANTWUAN [FB/PNT]
09:10	FOUL by SMITH, SHAREEF [PNT]			
09:10		56-55	H 1	GOOD! FT by BUTLER, ANTWUAN
08:55	TURNOVER by JOHNSON, MARVIN			
08:55				STEAL by ADAMS, JORDYN
08:51		58-55	H 3	GOOD! LAYUP by ADAMS, JORDYN [FB]
08:47	TIMEOUT 30SEC			
08:47	SUB OUT: JOHNSON, MARVIN			
08:47	SUB IN: WALLACE, JOSIAH			
08:23	GOOD! LAYUP by WALLACE, JOSIAH [PNT]	58-57	H 1	
07:58				MISSED 3PTR by HINSON, EVAN
07:54	REBOUND (DEF) by DIXON, GEORGE			
07:44	TURNOVER by DIXON, GEORGE			
07:44	TIMEOUT MEDIA			
07:44				SUB OUT: BUTLER, ANTWUAN
07:44				SUB IN: PAEZ, CARLOS
07:27				TURNOVER by TAYLOR, TERRY [PNT]
07:16				FOUL by PAEZ, CARLOS
07:05	MISSED JUMPER by SMITH, SHAREEF [PNT]			
07:05				BLOCK by TAYLOR, TERRY
07:01				REBOUND (DEF) by HINSON, EVAN
06:56				MISSED LAYUP by ADAMS, JORDYN
06:54				REBOUND (OFF) by HINSON, EVAN
06:52				TURNOVER by HINSON, EVAN [PNT]
06:52	STEAL by SMITH, MACK			
06:40	SUB OUT: SMITH, SHAREEF			
06:40	SUB IN: JOHNSON, MARVIN			
06:34				FOUL by ADAMS, JORDYN [PNT]
06:30	GOOD! FT by MATLOCK, JAQUALIS	58-58	T	
06:30				SUB OUT: HINSON, EVAN
06:30				SUB IN: BUTLER, ANTWUAN
06:30	SUB OUT: DIXON, GEORGE			
06:30	SUB IN: SKIPPER-BROWN, JORDAN			
06:30	GOOD! FT by MATLOCK, JAQUALIS	58-59	V 1	
06:19				MISSED 3PTR by ADAMS, JORDYN
06:15	REBOUND (DEF) by SMITH, MACK			
05:47	MISSED JUMPER by MATLOCK, JAQUALIS			
05:47	REBOUND (OFF) by SKIPPER-BROWN, JORDAN			
05:47	TURNOVER by TEAM			
05:44	SUB OUT: MATLOCK, JAQUALIS			

Time	VISITORS: Eastern III.	Score	Margin	HOME: Austin Peay
05:44	SUB IN: DIXON, GEORGE			
05:28		60-59	H 1	GOOD! LAYUP by TAYLOR, TERRY [PNT]
05:28				ASSIST by ADAMS, JORDYN
05:20				FOUL by ADAMS, JORDYN
05:20	MISSED FT by WALLACE, JOSIAH			
05:19				REBOUND (DEF) by TAYLOR, TERRY
05:09				TURNOVER by TEAM
05:09	SUB OUT: SKIPPER-BROWN, JORDAN			
05:09	SUB IN: MATLOCK, JAQUALIS			
04:44	GOOD! LAYUP by SMITH, MACK	60-61	V 1	
04:44	ASSIST by WALLACE, JOSIAH			
04:27	FOUL by SMITH, MACK			
04:27	SUB OUT: SMITH, MACK			
04:27	SUB IN: SMITH, SHAREEF			
04:08				MISSED JUMPER by BUTLER, ANTWUAN [PNT]
04:04	REBOUND (DEF) by JOHNSON, MARVIN			
03:48	GOOD! 3PTR by SMITH, SHAREEF	60-64	V 4	
03:48	ASSIST by MATLOCK, JAQUALIS			
03:19				MISSED 3PTR by TAYLOR, TERRY
03:15	REBOUND (DEF) by JOHNSON, MARVIN			
03:00	TURNOVER by WALLACE, JOSIAH			
03:00				STEAL by ABAEV, ELI
02:54		62-64	V 2	GOOD! LAYUP by BUTLER, ANTWUAN [FB]
02:54				ASSIST by PAEZ, CARLOS
02:20	MISSED JUMPER by WALLACE, JOSIAH			
02:15				REBOUND (DEF) by ADAMS, JORDYN
02:08				MISSED JUMPER by ADAMS, JORDYN
02:05	REBOUND (DEF) by SMITH, SHAREEF			
01:43	TIMEOUT MEDIA			
01:43	SUB OUT: SMITH, SHAREEF			
01:43	SUB IN: SMITH, MACK			
01:38	MISSED JUMPER by WALLACE, JOSIAH [PNT]			
01:36				REBOUND (DEF) by ABAEV, ELI
01:21		64-64	T	GOOD! JUMPER by ADAMS, JORDYN [PNT]
00:45	TURNOVER by TEAM			
00:42				TIMEOUT TEAM
00:42	SUB OUT: WALLACE, JOSIAH			
00:42	SUB IN: SMITH, SHAREEF			
00:18		66-64	H 2	GOOD! LAYUP by ABAEV, ELI
00:18				ASSIST by PAEZ, CARLOS
00:15	TIMEOUT TEAM			
00:15				SUB OUT: ABAEV, ELI
00:15				SUB IN: WOODARD, ALEC
00:15	SUB OUT: SMITH, SHAREEF			
00:15	SUB IN: WALLACE, JOSIAH			
00:08	TURNOVER by JOHNSON, MARVIN			
00:08				STEAL by BUTLER, ANTWUAN
00:08	FOUL by JOHNSON, MARVIN			
00:08	TIMEOUT 30SEC			
00:08	SUB OUT: JOHNSON, MARVIN			
00:08	SUB IN: SMITH, SHAREEF			
00:08				MISSED FT by BUTLER, ANTWUAN [FB]
00:07				REBOUND (OFF) by TAYLOR, TERRY
00:07		68-64	H 4	GOOD! LAYUP by TAYLOR, TERRY
00:02	SUB OUT: SMITH, SHAREEF			
00:02	SUB IN: JOHNSON, MARVIN			
00:01	TURNOVER by JOHNSON, MARVIN			
00:01				STEAL by TAYLOR, TERRY

Eastern III. 64, Austin Peay 68

Points from (This Period)	EIU	APSU
In the Paint	10	22
Off Turns	6	12
2nd Chance	4	7
Fast Break	0	9
Bench	6	3

**Official Scoring/Possession Reference Chart**  
**Eastern III. vs Austin Peay**  
**Period 1**  
**February 01, 2020 at Winfield Dunn Center**



**Period 1**

**Starters:**

**Eastern III.:** 3 SMITH,MACK (G); 5 SMITH,SHAREEF (G); 22 WALLACE,JOSIAH (G); 32 MATLOCK,JAQUALIS (F); 35 DIXON,GEORGE (G);

**Austin Peay:** 1 PAEZ,CARLOS (G); 4 BUTLER,ANTWUAN (G); 5 ADAMS,JORDYN (G); 14 ABAEV,ELI (F); 21 TAYLOR,TERRY (F);

Time	VISITORS: Eastern III.	Score	Margin	HOME: Austin Peay
19:32	GOOD! JUMPER by SMITH, MACK	0-2	V 2	
18:49	GOOD! LAYUP by WALLACE, JOSIAH	0-4	V 4	
18:08		2-4	V 2	GOOD! LAYUP by ABAEV, ELI [PNT]
17:42	GOOD! JUMPER by MATLOCK, JAQUALIS	2-6	V 4	
16:57		4-6	V 2	GOOD! LAYUP by PAEZ, CARLOS [FB]
16:26		6-6	T	GOOD! LAYUP by ADAMS, JORDYN [FB]
15:56	GOOD! LAYUP by DIXON, GEORGE	6-8	V 2	
15:17	GOOD! DUNK by SKIPPER-BROWN, JORDAN	6-10	V 4	
14:31	GOOD! JUMPER by CHARLES, KASHAWN [PNT]	6-12	V 6	
14:22		8-12	V 4	GOOD! LAYUP by TAYLOR, TERRY
13:51	GOOD! LAYUP by SKIPPER-BROWN, JORDAN	8-14	V 6	
12:44	GOOD! 3PTR by JOHNSON, MARVIN	8-17	V 9	
12:30		10-17	V 7	GOOD! LAYUP by BUTLER, ANTWUAN
11:25		12-17	V 5	GOOD! LAYUP by HINSON, EVAN [FB/PNT]
10:28		14-17	V 3	GOOD! DUNK by HINSON, EVAN
09:40	GOOD! LAYUP by WALLACE, JOSIAH [PNT]	14-19	V 5	
08:22	GOOD! LAYUP by DIXON, GEORGE	14-21	V 7	
07:38	GOOD! DUNK by SKIPPER-BROWN, JORDAN [PNT]	14-23	V 9	
07:14	GOOD! 3PTR by SMITH, MACK	14-26	V 12	
06:34		16-26	V 10	GOOD! LAYUP by PAEZ, CARLOS [FB]
06:19	GOOD! 3PTR by SMITH, MACK	16-29	V 13	
05:50		19-29	V 10	GOOD! 3PTR by CONTEH, SITA
05:18		20-29	V 9	GOOD! FT by HINSON, EVAN [FB]
05:05	GOOD! FT by WALLACE, JOSIAH	20-30	V 10	
04:58	GOOD! 3PTR by MATLOCK, JAQUALIS	20-33	V 13	
04:37		22-33	V 11	GOOD! LAYUP by TAYLOR, TERRY
04:37		23-33	V 10	GOOD! FT by TAYLOR, TERRY
03:54	GOOD! JUMPER by SMITH, SHAREEF [FB]	23-35	V 12	
03:42		24-35	V 11	GOOD! FT by TAYLOR, TERRY
03:42		25-35	V 10	GOOD! FT by TAYLOR, TERRY
02:16		26-35	V 9	GOOD! FT by CONTEH, SITA
01:58		28-35	V 7	GOOD! LAYUP by PAEZ, CARLOS [FB]
01:24	GOOD! JUMPER by SMITH, SHAREEF [FB]	28-37	V 9	
00:49		29-37	V 8	GOOD! FT by PAEZ, CARLOS
00:10		31-37	V 6	GOOD! LAYUP by PAEZ, CARLOS
00:04	GOOD! FT by JOHNSON, MARVIN [FB]	31-38	V 7	

**Eastern III. 38, Austin Peay 31**

**Official Scoring/Possession Reference Chart**  
**Eastern III. vs Austin Peay**  
**Period 2**  
**February 01, 2020 at Winfield Dunn Center**



**Period 2**

**Starters:**

**Eastern III.:** 3 SMITH,MACK (G); 5 SMITH,SHAREEF (G); 22 WALLACE,JOSIAH (G); 32 MATLOCK,JAQUALIS (F); 35 DIXON,GEORGE (G);

**Austin Peay:** 1 PAEZ,CARLOS (G); 4 BUTLER,ANTWUAN (G); 5 ADAMS,JORDYN (G); 14 ABAEV,ELI (F); 21 TAYLOR,TERRY (F);

Time	VISITORS: Eastern III.	Score	Margin	HOME: Austin Peay
19:43		33-38	V 5	GOOD! JUMPER by ADAMS, JORDYN [PNT]
19:25	GOOD! 3PTR by SMITH, SHAREEF	33-41	V 8	
18:50		36-41	V 5	GOOD! 3PTR by BUTLER, ANTWUAN
18:30	GOOD! LAYUP by DIXON, GEORGE	36-43	V 7	
18:21		38-43	V 5	GOOD! JUMPER by BUTLER, ANTWUAN [PNT]
17:40		40-43	V 3	GOOD! LAYUP by TAYLOR, TERRY
17:08	GOOD! 3PTR by SMITH, MACK	40-46	V 6	
16:38		42-46	V 4	GOOD! LAYUP by PAEZ, CARLOS [FB]
15:51	GOOD! JUMPER by JOHNSON, MARVIN	42-48	V 6	
15:35		43-48	V 5	GOOD! FT by ADAMS, JORDYN
15:22	GOOD! JUMPER by JOHNSON, MARVIN	43-50	V 7	
15:15		44-50	V 6	GOOD! FT by ADAMS, JORDYN [FB]
14:38		47-50	V 3	GOOD! 3PTR by TAYLOR, TERRY
14:08	GOOD! DUNK by MATLOCK, JAQUALIS	47-52	V 5	
12:21	GOOD! LAYUP by JOHNSON, MARVIN	47-54	V 7	
11:12		50-54	V 4	GOOD! 3PTR by HINSON, EVAN
10:49	GOOD! FT by MATLOCK, JAQUALIS	50-55	V 5	
10:25		53-55	V 2	GOOD! 3PTR by ADAMS, JORDYN
09:10		55-55	T	GOOD! JUMPER by BUTLER, ANTWUAN [FB/PNT]
09:10		56-55	H 1	GOOD! FT by BUTLER, ANTWUAN
08:51		58-55	H 3	GOOD! LAYUP by ADAMS, JORDYN [FB]
08:23	GOOD! LAYUP by WALLACE, JOSIAH [PNT]	58-57	H 1	
06:30	GOOD! FT by MATLOCK, JAQUALIS	58-58	T	
06:30	GOOD! FT by MATLOCK, JAQUALIS	58-59	V 1	
05:28		60-59	H 1	GOOD! LAYUP by TAYLOR, TERRY [PNT]
04:44	GOOD! LAYUP by SMITH, MACK	60-61	V 1	
03:48	GOOD! 3PTR by SMITH, SHAREEF	60-64	V 4	
02:54		62-64	V 2	GOOD! LAYUP by BUTLER, ANTWUAN [FB]
01:21		64-64	T	GOOD! JUMPER by ADAMS, JORDYN [PNT]
00:18		66-64	H 2	GOOD! LAYUP by ABAEV, ELI
00:07		68-64	H 4	GOOD! LAYUP by TAYLOR, TERRY

**Eastern III. 64, Austin Peay 68**

**Official Substitutions Log**  
**Eastern III. vs Austin Peay**  
**Period 1**  
**February 01, 2020 at Winfield Dunn Center**



VISITORS: Eastern III.	Time	Score	HOME: Austin Peay
3 SMITH,MACK			1 PAEZ,CARLOS
5 SMITH,SHAREEF			4 BUTLER,ANTWUAN
22 WALLACE,JOSIAH			5 ADAMS,JORDYN
32 MATLOCK,JAQUALIS			14 ABAEV,ELI
35 DIXON,GEORGE			21 TAYLOR,TERRY
SUB OUT: 5 SMITH,SHAREEF	16:57	6-4	
SUB IN: 1 CHARLES,KASHAWN	16:57		
	16:07	6-6	SUB OUT: ABAEV,ELI
	16:07		SUB IN: CONTEH,SITA
SUB OUT: 32 MATLOCK,JAQUALIS	16:07		
SUB IN: 2 SKIPPER-BROWN,JORDAN	16:07		
SUB OUT: 22 WALLACE,JOSIAH	16:07		
SUB IN: 4 JOHNSON,MARVIN	16:07		
	15:30	8-6	SUB OUT: PAEZ,CARLOS
	15:30		SUB IN: WOODARD,ALEC
SUB OUT: 3 SMITH,MACK	15:30		
SUB IN: 22 WALLACE,JOSIAH	15:30		
	14:55	10-6	SUB OUT: CONTEH,SITA
	14:55		SUB IN: ABAEV,ELI
	13:05	14-8	SUB OUT: ADAMS,JORDYN
	13:05		SUB IN: HINSON,EVAN
SUB OUT: 2 SKIPPER-BROWN,JORDAN	13:05		
SUB IN: 32 MATLOCK,JAQUALIS	13:05		
SUB OUT: 1 CHARLES,KASHAWN	12:43	17-8	
SUB IN: 3 SMITH,MACK	12:43		
	11:50	17-10	SUB OUT: WOODARD,ALEC
	11:50		SUB IN: ADAMS,JORDYN
	11:05	17-12	SUB OUT: BUTLER,ANTWUAN
	11:05		SUB OUT: ABAEV,ELI
	11:05		SUB IN: PAEZ,CARLOS
	11:05		SUB IN: CONTEH,SITA
	09:10	19-14	SUB OUT: CONTEH,SITA
	09:10		SUB IN: ABAEV,ELI
SUB OUT: 4 JOHNSON,MARVIN	09:10		
SUB OUT: 32 MATLOCK,JAQUALIS	09:10		
SUB IN: 2 SKIPPER-BROWN,JORDAN	09:10		
SUB IN: 5 SMITH,SHAREEF	09:10		
	09:10		SUB OUT: HINSON,EVAN
	09:10		SUB IN: BUTLER,ANTWUAN
	08:00	21-14	SUB OUT: ABAEV,ELI
	08:00		SUB IN: CONTEH,SITA
	07:12	26-14	SUB OUT: ADAMS,JORDYN
	07:12		SUB IN: HINSON,EVAN
SUB OUT: 2 SKIPPER-BROWN,JORDAN	05:18	29-20	
SUB IN: 32 MATLOCK,JAQUALIS	05:18		
	05:05	30-20	SUB OUT: BUTLER,ANTWUAN
	05:05		SUB IN: ADAMS,JORDYN
SUB OUT: 35 DIXON,GEORGE	05:05		
SUB IN: 2 SKIPPER-BROWN,JORDAN	05:05		
SUB OUT: 2 SKIPPER-BROWN,JORDAN	04:37	33-22	
SUB OUT: 22 WALLACE,JOSIAH	04:37		
SUB IN: 4 JOHNSON,MARVIN	04:37		
SUB IN: 35 DIXON,GEORGE	04:37		
SUB OUT: 3 SMITH,MACK	04:15	33-23	
SUB IN: 22 WALLACE,JOSIAH	04:15		
SUB OUT: 5 SMITH,SHAREEF	02:54	35-25	
SUB IN: 3 SMITH,MACK	02:54		
SUB OUT: 4 JOHNSON,MARVIN	01:49	35-28	
SUB IN: 5 SMITH,SHAREEF	01:49		
	00:59	37-28	SUB OUT: CONTEH,SITA
	00:59		SUB IN: ABAEV,ELI
SUB OUT: 32 MATLOCK,JAQUALIS	00:49	37-29	
SUB IN: 4 JOHNSON,MARVIN	00:49		
	00:29	37-29	SUB OUT: ABAEV,ELI
	00:29		SUB IN: SILVEIRA,MATHEUS

**Eastern III. 38, Austin Peay 31**

**Official Substitutions Log**  
**Eastern III. vs Austin Peay**  
**Period 2**  
**February 01, 2020 at Winfield Dunn Center**



VISITORS: Eastern III.	Time	Score	HOME: Austin Peay
3 SMITH, MACK			1 PAEZ, CARLOS
5 SMITH, SHAREEF			4 BUTLER, ANTWUAN
22 WALLACE, JOSIAH			5 ADAMS, JORDYN
32 MATLOCK, JAQUALIS			14 ABAEV, ELI
35 DIXON, GEORGE			21 TAYLOR, TERRY
	20:00	-	SUB OUT: HINSON, EVAN
	20:00		SUB OUT: SILVEIRA, MATHEUS
	20:00		SUB IN: BUTLER, ANTWUAN
	20:00		SUB IN: ABAEV, ELI
SUB OUT: 4 JOHNSON, MARVIN	20:00		
SUB IN: 32 MATLOCK, JAQUALIS	20:00		
	17:14	43-40	SUB OUT: TAYLOR, TERRY
	17:14		SUB IN: SILVEIRA, MATHEUS
	16:03	46-42	SUB OUT: BUTLER, ANTWUAN
	16:03		SUB IN: WOODARD, ALEC
SUB OUT: 5 SMITH, SHAREEF	16:03		
SUB OUT: 32 MATLOCK, JAQUALIS	16:03		
SUB IN: 2 SKIPPER-BROWN, JORDAN	16:03		
SUB IN: 4 JOHNSON, MARVIN	16:03		
	15:35	48-42	SUB OUT: ABAEV, ELI
	15:35		SUB IN: TAYLOR, TERRY
SUB OUT: 2 SKIPPER-BROWN, JORDAN	15:15	50-44	
SUB IN: 32 MATLOCK, JAQUALIS	15:15		
	13:35	52-47	SUB OUT: SILVEIRA, MATHEUS
	13:35		SUB IN: ABAEV, ELI
	12:01	54-47	SUB OUT: PAEZ, CARLOS
	12:01		SUB IN: HINSON, EVAN
	12:01		SUB OUT: WOODARD, ALEC
	12:01		SUB IN: BUTLER, ANTWUAN
	11:10	54-50	SUB OUT: HINSON, EVAN
	11:10		SUB IN: WOODARD, ALEC
SUB OUT: 3 SMITH, MACK	11:10		
SUB IN: 5 SMITH, SHAREEF	11:10		
	10:49	55-50	SUB OUT: WOODARD, ALEC
	10:49		SUB IN: HINSON, EVAN
SUB OUT: 22 WALLACE, JOSIAH	09:39	55-53	
SUB IN: 3 SMITH, MACK	09:39		
SUB OUT: 4 JOHNSON, MARVIN	08:47	55-58	
SUB IN: 22 WALLACE, JOSIAH	08:47		
	07:44	57-58	SUB OUT: BUTLER, ANTWUAN
	07:44		SUB IN: PAEZ, CARLOS
SUB OUT: 5 SMITH, SHAREEF	06:40	57-58	
SUB IN: 4 JOHNSON, MARVIN	06:40		
	06:30	58-58	SUB OUT: HINSON, EVAN
	06:30		SUB IN: BUTLER, ANTWUAN
SUB OUT: 35 DIXON, GEORGE	06:30		
SUB IN: 2 SKIPPER-BROWN, JORDAN	06:30		
SUB OUT: 32 MATLOCK, JAQUALIS	05:44	59-58	
SUB IN: 35 DIXON, GEORGE	05:44		
SUB OUT: 2 SKIPPER-BROWN, JORDAN	05:09	59-60	
SUB IN: 32 MATLOCK, JAQUALIS	05:09		
SUB OUT: 3 SMITH, MACK	04:27	61-60	
SUB IN: 5 SMITH, SHAREEF	04:27		
SUB OUT: 5 SMITH, SHAREEF	01:43	64-62	
SUB IN: 3 SMITH, MACK	01:43		
SUB OUT: 22 WALLACE, JOSIAH	00:42	64-64	
SUB IN: 5 SMITH, SHAREEF	00:42		
	00:15	64-66	SUB OUT: ABAEV, ELI
	00:15		SUB IN: WOODARD, ALEC
SUB OUT: 5 SMITH, SHAREEF	00:15		
SUB IN: 22 WALLACE, JOSIAH	00:15		
SUB OUT: 4 JOHNSON, MARVIN	00:08	64-66	
SUB IN: 5 SMITH, SHAREEF	00:08		
SUB OUT: 5 SMITH, SHAREEF	00:02	64-68	
SUB IN: 4 JOHNSON, MARVIN	00:02		

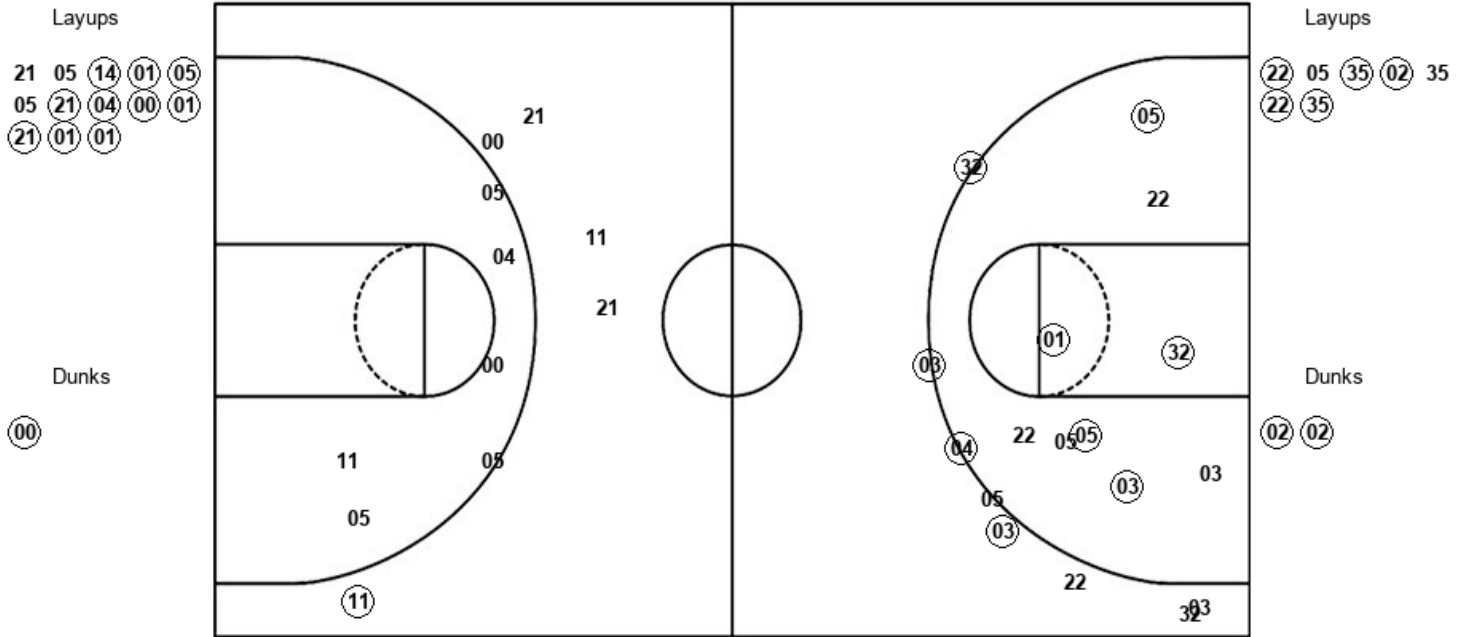
**Eastern III. 64, Austin Peay 68**

Official Shot Chart  
**Eastern Ill. vs Austin Peay**  
 PERIOD 1 Shots  
 February 01, 2020 at Winfield Dunn Center



**Austin Peay**

**Eastern Ill.**



APSU : Period 1	Made	Att	Pct
Layups	10	13	76.9
Dunks	1	1	100.0
2PT Field Goals	11	21	52.4
3PT Field Goals	1	4	25.0
<b>Total Field Goals</b>	<b>12</b>	<b>25</b>	<b>48.0</b>

EIU : Period 1	Made	Att	Pct
Layups	5	7	71.4
Dunks	2	2	100.0
2PT Field Goals	12	18	66.7
3PT Field Goals	4	8	50.0
<b>Total Field Goals</b>	<b>16</b>	<b>26</b>	<b>61.5</b>

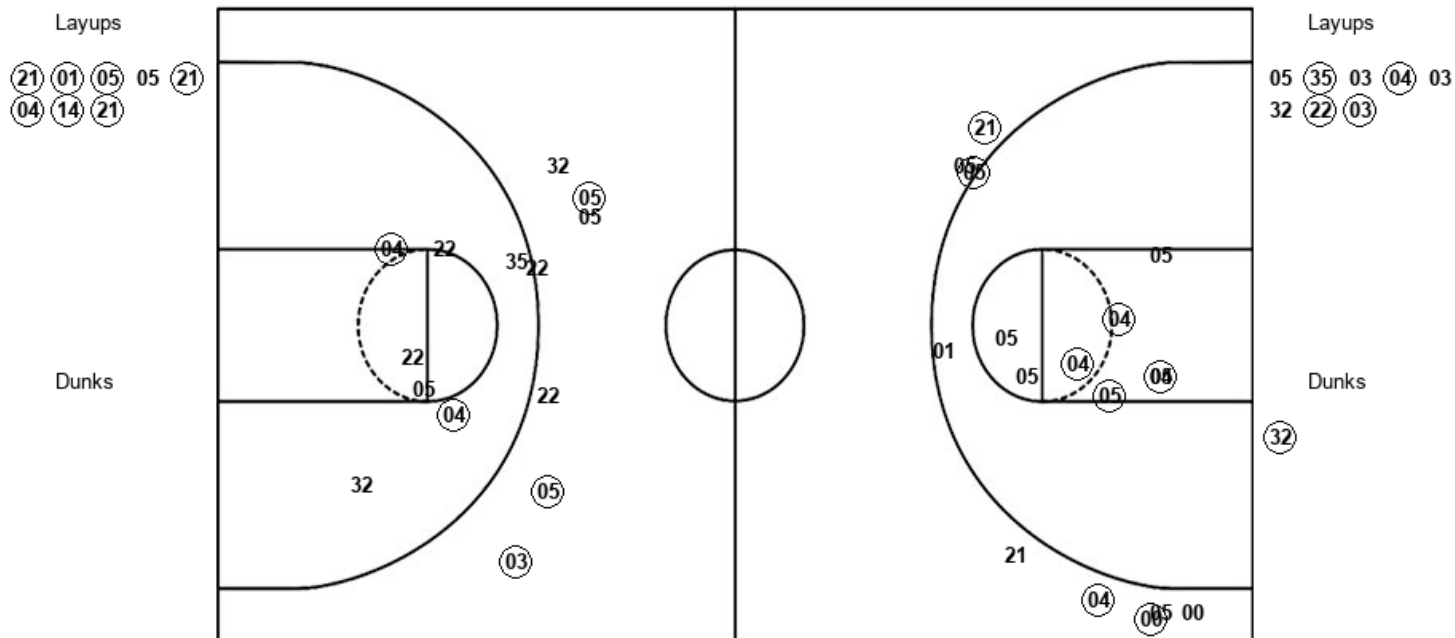


Official Shot Chart  
**Eastern Ill. vs Austin Peay**  
 PERIOD 2 Shots  
 February 01, 2020 at Winfield Dunn Center



**Austin Peay**

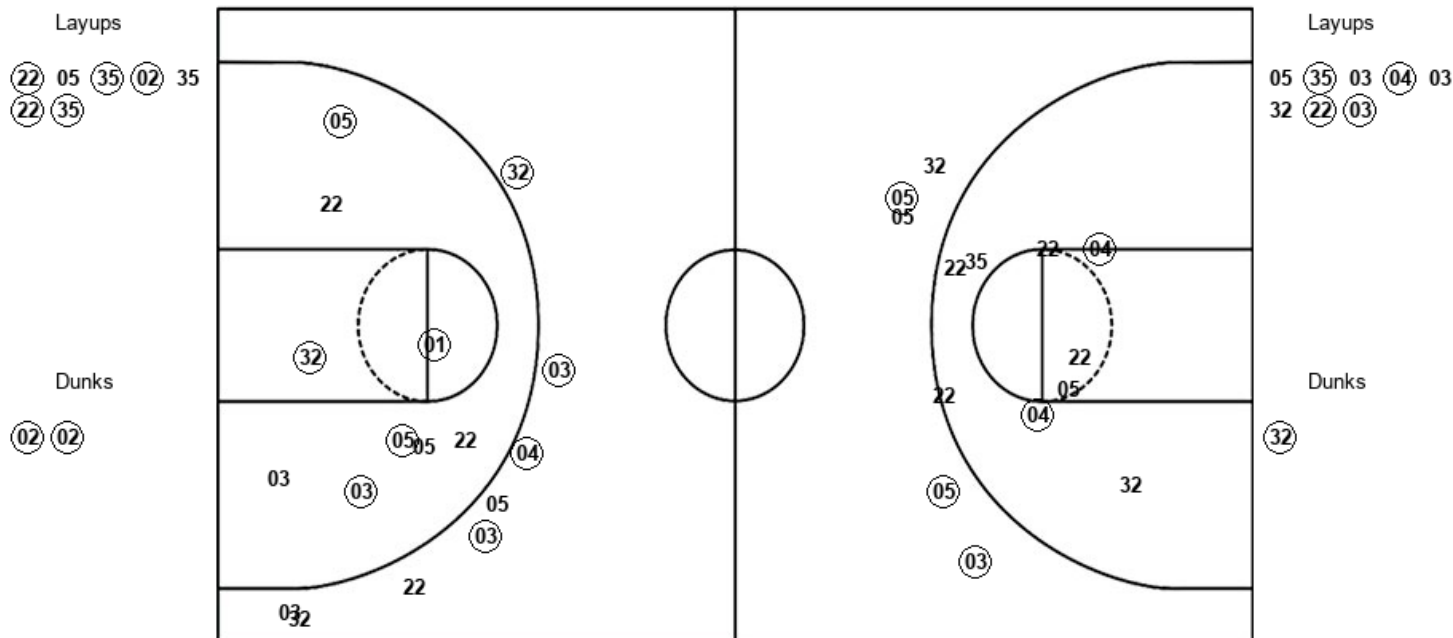
**Eastern Ill.**



APSU : Period 2	Made	Att	Pct
Layups	7	8	87.5
Dunks	0	0	0
2PT Field Goals	11	16	68.8
3PT Field Goals	4	9	44.4
<b>Total Field Goals</b>	<b>15</b>	<b>25</b>	<b>60.0</b>

EIU : Period 2	Made	Att	Pct
Layups	4	8	50.0
Dunks	1	1	100.0
2PT Field Goals	7	18	38.9
3PT Field Goals	3	5	60.0
<b>Total Field Goals</b>	<b>10</b>	<b>23</b>	<b>43.5</b>

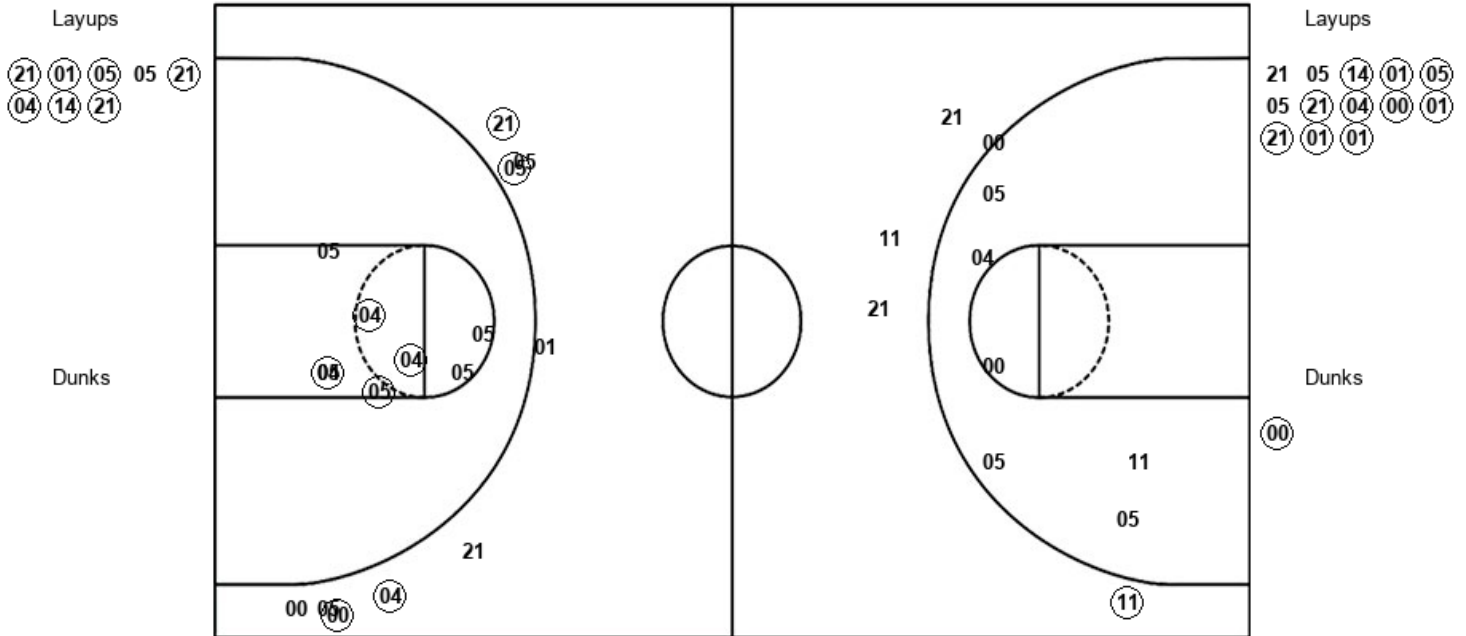
Official Shot Chart  
**Eastern Ill. vs Austin Peay**  
 Eastern Ill. Team Shots  
 February 01, 2020 at Winfield Dunn Center



EIU : Period 1	Made	Att	Pct
Layups	5	7	71.4
Dunks	2	2	100.0
2PT Field Goals	12	18	66.7
3PT Field Goals	4	8	50.0
<b>Total Field Goals</b>	<b>16</b>	<b>26</b>	<b>61.5</b>

EIU : Period 2	Made	Att	Pct
Layups	4	8	50.0
Dunks	1	1	100.0
2PT Field Goals	7	18	38.9
3PT Field Goals	3	5	60.0
<b>Total Field Goals</b>	<b>10</b>	<b>23</b>	<b>43.5</b>

Official Shot Chart  
**Eastern Ill. vs Austin Peay**  
 Austin Peay Team Shots  
 February 01, 2020 at Winfield Dunn Center



APSU : Period 1	Made	Att	Pct
Layups	10	13	76.9
Dunks	1	1	100.0
2PT Field Goals	11	21	52.4
3PT Field Goals	1	4	25.0
<b>Total Field Goals</b>	<b>12</b>	<b>25</b>	<b>48.0</b>

APSU : Period 2	Made	Att	Pct
Layups	7	8	87.5
Dunks	0	0	0
2PT Field Goals	11	16	68.8
3PT Field Goals	4	9	44.4
<b>Total Field Goals</b>	<b>15</b>	<b>25</b>	<b>60.0</b>