

FINAL SCORE

Southeast Mo. St.

63



Austin Peay

78



January 03, 2020 • Winfield Dunn Center

FINAL STATISTICS

Official Box Score
Southeast Mo. St. vs Austin Peay
Game Totals -- Final Statistics
January 03, 2020 at Winfield Dunn Center



Southeast Mo. St. 63

No.	Player	S	Pts	FG	3FG	FT	OR	DR	TR	PF	A	TO	Blk	Stl	Min	+/-
00	CALDWELL, ALEX	G	12	5-10	2-5	0-0	0	0	0	2	2	1	1	1	26	-16
03	HOGAN, SKYLER	G	11	3-11	2-6	3-3	0	2	2	1	2	1	0	0	33	-23
10	WILSON, QUATARRIUS	F	4	2-2	0-0	0-0	2	1	3	4	2	4	0	0	20	-4
23	TOLBERT, SAGE	F	8	3-5	0-0	2-3	1	3	4	2	0	2	2	3	31	-14
25	RUSSELL, NYGAL	G	4	2-6	0-0	0-0	0	3	3	1	1	0	0	0	19	-7
01	CUFFEE, KHALIL	G	5	2-4	0-1	1-2	0	1	1	3	0	1	0	0	7	-3
02	LOVE, JORDAN	G	0	0-1	0-0	0-0	0	1	1	1	1	1	0	0	9	-7
04	KAO, OSCAR	G	3	1-4	1-3	0-0	0	1	1	3	2	1	0	0	11	11
11	NICHOLAS, DQ	G	11	4-7	1-2	2-2	0	1	1	1	2	0	0	2	21	-3
12	MORRISON, EVAN	F	0	0-0	0-0	0-0	0	0	0	0	0	0	0	0	2	2
13	GABLE, ISAIAH	F	5	2-4	1-2	0-0	1	0	1	2	0	0	0	0	18	-11
TEAM							2	2	4	0		0				
TOTALS			63	24-54	7-19	8-10	6	15	21	20	12	11	3	6	197	

Shooting By Period

Period	FG	FG%	3FG	3FG%	FT	FT%
1st Half	8-27	30%	3-10	30%	5-7	71%
2nd Half	16-27	59%	4-9	44%	3-3	100%
Game	24-54	44.4%	7-19	36.8%	8-10	80.0%

Last FG: 2nd-00:32
 Largest lead: By 1 at
 Technical Fouls: None.

Austin Peay 78

No.	Player	S	Pts	FG	3FG	FT	OR	DR	TR	PF	A	TO	Blk	Stl	Min	+/-
01	PAEZ, CARLOS	G	13	5-6	3-4	0-0	0	2	2	3	3	0	0	0	26	12
04	BUTLER, ANTWUAN	G	4	2-7	0-0	0-0	1	2	3	2	6	2	0	1	24	0
05	ADAMS, JORDYN	G	22	8-12	3-4	3-7	1	5	6	1	3	4	1	1	31	21
14	ABAEV, ELI	F	4	1-2	0-0	2-3	3	2	5	3	2	1	1	0	29	13
21	TAYLOR, TERRY	F	22	8-16	4-7	2-2	3	8	11	1	3	1	2	1	31	23
00	HINSON, EVAN	G	4	1-3	0-1	2-2	0	3	3	1	0	2	0	0	16	0
10	DJURISIC, PAVLE	F	4	1-2	0-1	2-2	0	0	0	1	0	0	0	0	7	-8
11	CONTEH, SITA	F	3	1-4	1-4	0-0	0	2	2	1	0	0	0	0	10	6
22	WOODARD, ALEC	G	2	0-2	0-1	2-2	3	2	5	0	0	0	0	0	22	12
41	DEVAULT, SAM	F	0	0-1	0-1	0-0	0	0	0	0	0	0	0	0	1	-4
TEAM							4	0	4	0		2				
TOTALS			78	27-55	11-23	13-18	15	26	41	13	17	12	4	3	197	

Shooting By Period

Period	FG	FG%	3FG	3FG%	FT	FT%
1st Half	14-28	50%	6-11	55%	7-11	64%
2nd Half	13-27	48%	5-12	42%	6-7	86%
Game	27-55	49.1%	11-23	47.8%	13-18	72.2%

Last FG: 2nd-02:23
 Largest lead: By 25 at
 Technical Fouls: None.

Game Notes:

Officials: Kevin Mathis, Kelly Davis, Jason Garretson
 Attendance: 917

Start Time: 02:00 AM
 Conference Game;

Score	1st	2nd	TOT
SEMO	24	39	63
APSU	41	37	78

SEMO led for 0:55. APSU led for 38:12.
 Game was tied for 0:0.
 Times tied: 0 Lead Changes: 0

Points from	SEMO	APSU
In the Paint	26	30
Off Turns	10	14
2nd Chance	7	18
Fast Break	13	10
Bench	24	13

Official Box Score
Southeast Mo. St. vs Austin Peay
First Half Statistics Only
January 03, 2020 at Winfield Dunn Center



Southeast Mo. St. 24

No.	Player	S	Pts	FG	3FG	FT	OR	DR	TR	PF	A	TO	Blk	Stl	Min
00	CALDWELL, ALEX	G	7	3-6	1-3	0-0	0	0	0	2	1	0	1	1	14
03	HOGAN, SKYLER	G	8	2-9	1-4	3-3	0	2	2	0	1	0	0	0	18
10	WILSON, QUATARRIUS	F	2	1-1	0-0	0-0	1	0	1	2	1	2	0	0	11
23	TOLBERT, SAGE	F	3	1-2	0-0	1-2	1	2	3	1	0	2	2	0	17
25	RUSSELL, NYGAL	G	0	0-4	0-0	0-0	0	1	1	1	0	0	0	0	14
01	CUFFEE, KHALIL	G	1	0-1	0-1	1-2	0	1	1	0	0	1	0	0	2
02	LOVE, JORDAN	G	0	0-0	0-0	0-0	0	0	0	1	0	0	0	0	2
04	KAO, OSCAR	G	0	0-1	0-0	0-0	0	0	0	3	1	1	0	0	3
11	NICHOLAS, DQ	G	0	0-2	0-1	0-0	0	0	0	0	0	0	0	0	9
12	MORRISON, EVAN	F	0	0-0	0-0	0-0	0	0	0	0	0	0	0	0	0
13	GABLE, ISAAH	F	3	1-1	1-1	0-0	0	0	0	1	0	0	0	0	9
	TEAM			0-0			2	2	4	0		0			
TOTALS			24	8-27	3-10	5-7	4	8	12	11	4	6	3	1	100

Shooting By Period

Period	FG	FG%	3FG	3FG%	FT	FT%
1st Half	8-27	30%	3-10	30%	5-7	71%
Game	24-54	44.4%	7-19	36.8%	8-10	80.0%

Last FG Half: SEMO 2nd-00:32

Austin Peay 41

No.	Player	S	Pts	FG	3FG	FT	OR	DR	TR	PF	A	TO	Blk	Stl	Min
01	PAEZ, CARLOS	G	7	3-4	1-2	0-0	0	0	0	2	1	0	0	0	12
04	BUTLER, ANTWUAN	G	0	0-2	0-0	0-0	0	2	2	2	4	1	0	0	12
05	ADAMS, JORDYN	G	17	6-8	2-2	3-6	0	4	4	0	1	1	1	1	18
14	ABAEV, ELI	F	2	1-2	0-0	0-1	1	1	2	2	0	1	0	0	13
21	TAYLOR, TERRY	F	8	2-8	2-4	2-2	1	6	7	0	3	0	2	0	19
00	HINSON, EVAN	G	2	1-2	0-1	0-0	0	1	1	1	0	1	0	0	7
10	DJURISIC, PAVLE	F	0	0-0	0-0	0-0	0	0	0	0	0	0	0	0	0
11	CONTEH, SITA	F	3	1-2	1-2	0-0	0	1	1	1	0	0	0	0	8
22	WOODARD, ALEC	G	2	0-0	0-0	2-2	2	2	4	0	0	0	0	0	12
41	DEVAULT, SAM	F	0	0-0	0-0	0-0	0	0	0	0	0	0	0	0	0
	TEAM			0-0			3	0	3	0		1			
TOTALS			41	14-28	6-11	7-11	7	17	24	8	9	5	3	1	100

Shooting By Period

Period	FG	FG%	3FG	3FG%	FT	FT%
1st Half	14-28	50%	6-11	55%	7-11	64%
Game	27-55	49.1%	11-23	47.8%	13-18	72.2%

Last FG Half: APSU 2nd-02:23

Game Notes:

Officials: Kevin Mathis, Kelly Davis, Jason Garretson
 Attendance: 917

Start Time: 02:00 AM
 Conference Game;

Score	1st	2nd	TOT
SEMO	24	39	63
APSU	41	37	78

Points from (This Period)	SEMO	APSU
In the Paint	6	14
Off Turns	2	10
2nd Chance	3	10
Fast Break	0	8
Bench	4	7

Official Play-By-Play
Southeast Mo. St. vs Austin Peay
First Half
January 03, 2020 at Winfield Dunn Center



Period 1

Starters:

Southeast Mo. St.: 00 CALDWELL, ALEX (G); 3 HOGAN, SKYLER (G); 10 WILSON, QUATARRIUS (F); 23 TOLBERT, SAGE (F); 25 RUSSELL, NYGAL (G);
Austin Peay: 1 PAEZ, CARLOS (G); 4 BUTLER, ANTWUAN (G); 5 ADAMS, JORDYN (G); 14 ABAEV, ELI (F); 21 TAYLOR, TERRY (F);

Time	VISITORS: Southeast Mo. St.	Score	Margin	HOME: Austin Peay
19:39		2-0	H 2	GOOD! LAYUP by PAEZ, CARLOS [PNT]
19:20	GOOD! 3PTR by CALDWELL, ALEX	2-3	V 1	
19:20	ASSIST by HOGAN, SKYLER			
18:56				MISSED 3PTR by TAYLOR, TERRY
18:52	REBOUND (DEF) by HOGAN, SKYLER			
18:37	MISSED LAYUP by RUSSELL, NYGAL [PNT]			
18:34				REBOUND (DEF) by TAYLOR, TERRY
18:25		5-3	H 2	GOOD! 3PTR by PAEZ, CARLOS
18:25				ASSIST by TAYLOR, TERRY
18:00	TURNOVER by TOLBERT, SAGE			
17:56		7-3	H 4	GOOD! LAYUP by ADAMS, JORDYN [FB]
17:35	TURNOVER by WILSON, QUATARRIUS			
17:17				FOUL by ABAEV, ELI
17:17				TURNOVER by ABAEV, ELI
17:03	GOOD! DUNK by WILSON, QUATARRIUS	7-5	H 2	
17:03	ASSIST by CALDWELL, ALEX			
16:42				MISSED 3PTR by PAEZ, CARLOS
16:38	REBOUND (DEF) by HOGAN, SKYLER			
16:34	MISSED 3PTR by CALDWELL, ALEX			
16:30	REBOUND (OFF) by WILSON, QUATARRIUS			
16:27	MISSED LAYUP by RUSSELL, NYGAL			
16:24				REBOUND (DEF) by BUTLER, ANTWUAN
16:22				MISSED LAYUP by BUTLER, ANTWUAN
16:22	BLOCK by CALDWELL, ALEX			
16:22				REBOUND (OFF) by TEAM
16:22				SUB OUT: ABAEV, ELI
16:22				SUB IN: CONTEH, SITA
16:20	FOUL by CALDWELL, ALEX			
16:20		8-5	H 3	GOOD! FT by TAYLOR, TERRY
16:20		9-5	H 4	GOOD! FT by TAYLOR, TERRY
16:02	MISSED JUMPER by HOGAN, SKYLER			
15:59				REBOUND (DEF) by TAYLOR, TERRY
15:54		12-5	H 7	GOOD! 3PTR by TAYLOR, TERRY [FB]
15:54				ASSIST by BUTLER, ANTWUAN
15:39				FOUL by PAEZ, CARLOS
15:39	TIMEOUT MEDIA			
15:39	GOOD! FT by HOGAN, SKYLER	12-6	H 6	
15:39	GOOD! FT by HOGAN, SKYLER	12-7	H 5	
15:39	GOOD! FT by HOGAN, SKYLER	12-8	H 4	
15:17		15-8	H 7	GOOD! 3PTR by CONTEH, SITA
15:17				ASSIST by BUTLER, ANTWUAN
14:53	GOOD! 3PTR by HOGAN, SKYLER	15-11	H 4	
14:53	ASSIST by WILSON, QUATARRIUS			
14:40				MISSED JUMPER by TAYLOR, TERRY [PNT]
14:38	REBOUND (DEF) by TEAM			
14:38				SUB OUT: PAEZ, CARLOS
14:38				SUB IN: WOODARD, ALEC
14:24	GOOD! JUMPER by CALDWELL, ALEX	15-13	H 2	
14:11		17-13	H 4	GOOD! JUMPER by ADAMS, JORDYN
14:11				ASSIST by BUTLER, ANTWUAN
13:58				FOUL by BUTLER, ANTWUAN
13:58				SUB OUT: BUTLER, ANTWUAN
13:58				SUB IN: PAEZ, CARLOS
13:58	SUB OUT: RUSSELL, NYGAL			
13:58	SUB IN: KAO, OSCAR			
13:52				FOUL by CONTEH, SITA [PNT]
13:50	MISSED 3PTR by HOGAN, SKYLER			
13:46				REBOUND (DEF) by CONTEH, SITA
13:42	FOUL by KAO, OSCAR			
13:27	FOUL by TOLBERT, SAGE [PNT]			
13:27				MISSED FT by ADAMS, JORDYN
13:27				REBOUND (DEADB) by TEAM
13:27	SUB OUT: TOLBERT, SAGE			
13:27	SUB IN: GABLE, ISAIAH			
13:27		18-13	H 5	GOOD! FT by ADAMS, JORDYN
13:09	GOOD! JUMPER by HOGAN, SKYLER [PNT]	18-15	H 3	
12:51				MISSED 3PTR by CONTEH, SITA
12:48				REBOUND (OFF) by WOODARD, ALEC
12:41	FOUL by KAO, OSCAR			
12:41	SUB OUT: KAO, OSCAR			

Time	VISITORS: Southeast Mo. St.	Score	Margin	HOME: Austin Peay
12:41	SUB IN: NICHOLAS, DQ			
12:33		20-15	H 5	GOOD! LAYUP by ADAMS, JORDYN
12:18	GOOD! JUMPER by CALDWELL, ALEX	20-17	H 3	
11:42		22-17	H 5	GOOD! LAYUP by PAEZ, CARLOS
11:31	TIMEOUT 30SEC			
11:31	TIMEOUT MEDIA			
11:31				SUB OUT: CONTEH, SITA
11:31				SUB IN: ABAEV, ELI
11:10	MISSED 3PTR by NICHOLAS, DQ			
11:09				REBOUND (DEF) by TAYLOR, TERRY
11:09	FOUL by WILSON, QUATARRIUS			
11:09	SUB OUT: WILSON, QUATARRIUS			
11:09	SUB IN: TOLBERT, SAGE			
10:40				MISSED JUMPER by ABAEV, ELI [PNT]
10:37	REBOUND (DEF) by TOLBERT, SAGE			
10:31	MISSED JUMPER by NICHOLAS, DQ			
10:26				REBOUND (DEF) by TAYLOR, TERRY
10:22		24-17	H 7	GOOD! LAYUP by ABAEV, ELI
10:22				ASSIST by PAEZ, CARLOS
10:02				SUB OUT: PAEZ, CARLOS
10:02				SUB IN: BUTLER, ANTWUAN
09:59	MISSED LAYUP by HOGAN, SKYLER			
09:59				BLOCK by TAYLOR, TERRY
09:57	REBOUND (OFF) by TEAM			
09:57	SUB OUT: CALDWELL, ALEX			
09:57	SUB OUT: HOGAN, SKYLER			
09:57	SUB IN: KAO, OSCAR			
09:57	SUB IN: RUSSELL, NYGAL			
09:48	MISSED LAYUP by KAO, OSCAR [PNT]			
09:47	REBOUND (OFF) by TEAM			
09:47				SUB OUT: ADAMS, JORDYN
09:47				SUB IN: HINSON, EVAN
09:42	GOOD! 3PTR by GABLE, ISAIAH	24-20	H 4	
09:42	ASSIST by KAO, OSCAR			
09:15				MISSED LAYUP by BUTLER, ANTWUAN
09:15	BLOCK by TOLBERT, SAGE			
09:11				REBOUND (OFF) by ABAEV, ELI
09:05				MISSED JUMPER by TAYLOR, TERRY [PNT]
09:03	REBOUND (DEF) by TEAM			
08:55	TURNOVER by KAO, OSCAR			
08:38		27-20	H 7	GOOD! 3PTR by TAYLOR, TERRY
08:38				ASSIST by BUTLER, ANTWUAN
08:04	GOOD! LAYUP by TOLBERT, SAGE	27-22	H 5	
07:48	FOUL by KAO, OSCAR			
07:48	TIMEOUT MEDIA			
07:48				SUB OUT: WOODARD, ALEC
07:48				SUB IN: ADAMS, JORDYN
07:48	SUB OUT: KAO, OSCAR			
07:48	SUB OUT: NICHOLAS, DQ			
07:48	SUB OUT: GABLE, ISAIAH			
07:48	SUB IN: CALDWELL, ALEX			
07:48	SUB IN: HOGAN, SKYLER			
07:48	SUB IN: WILSON, QUATARRIUS			
07:33				MISSED 3PTR by HINSON, EVAN
07:29	REBOUND (DEF) by TOLBERT, SAGE			
07:20	MISSED 3PTR by CALDWELL, ALEX			
07:18				REBOUND (DEF) by ABAEV, ELI
07:18				SUB OUT: HINSON, EVAN
07:18				SUB IN: PAEZ, CARLOS
06:48				TURNOVER by TEAM
06:23	MISSED LAYUP by RUSSELL, NYGAL			
06:19				REBOUND (DEF) by TAYLOR, TERRY
06:11				TURNOVER by ADAMS, JORDYN
06:11	STEAL by CALDWELL, ALEX			
06:02	FOUL by WILSON, QUATARRIUS			
06:02	TURNOVER by WILSON, QUATARRIUS			
06:02	SUB OUT: WILSON, QUATARRIUS			
06:02	SUB IN: GABLE, ISAIAH			
05:47	FOUL by GABLE, ISAIAH			
05:47				MISSED FT by ABAEV, ELI
05:46				REBOUND (OFF) by TAYLOR, TERRY
05:43				MISSED JUMPER by TAYLOR, TERRY
05:42				REBOUND (OFF) by TEAM
05:34		30-22	H 8	GOOD! 3PTR by ADAMS, JORDYN
05:34				ASSIST by TAYLOR, TERRY
05:10	MISSED 3PTR by HOGAN, SKYLER			
05:06				REBOUND (DEF) by ADAMS, JORDYN
04:56				TURNOVER by BUTLER, ANTWUAN
04:42				FOUL by PAEZ, CARLOS
04:42				SUB OUT: PAEZ, CARLOS

Time	VISITORS: Southeast Mo. St.	Score	Margin	HOME: Austin Peay
04:42				SUB IN: WOODARD, ALEC
04:34	MISSED JUMPER by CALDWELL, ALEX			
04:33	REBOUND (OFF) by TOLBERT, SAGE			
04:33				FOUL by BUTLER, ANTWUAN [PNT]
04:29	MISSED LAYUP by HOGAN, SKYLER [PNT]			
04:29				BLOCK by TAYLOR, TERRY
04:24				REBOUND (DEF) by BUTLER, ANTWUAN
04:15				MISSED 3PTR by TAYLOR, TERRY
04:13				REBOUND (OFF) by WOODARD, ALEC
04:13	FOUL by CALDWELL, ALEX [PNT]			
04:13	TIMEOUT MEDIA			
04:13				SUB OUT: BUTLER, ANTWUAN
04:13				SUB IN: HINSON, EVAN
04:13	SUB OUT: CALDWELL, ALEX			
04:13	SUB IN: NICHOLAS, DQ			
04:13		31-22	H 9	GOOD! FT by WOODARD, ALEC
04:13		32-22	H 10	GOOD! FT by WOODARD, ALEC
03:58	MISSED LAYUP by RUSSELL, NYGAL			
03:58				BLOCK by ADAMS, JORDYN
03:53				REBOUND (DEF) by WOODARD, ALEC
03:45				MISSED JUMPER by ADAMS, JORDYN
03:42	REBOUND (DEF) by RUSSELL, NYGAL			
03:33	TURNOVER by TOLBERT, SAGE			
03:33				STEAL by ADAMS, JORDYN
03:28		34-22	H 12	GOOD! LAYUP by ADAMS, JORDYN [FB/PNT]
03:24				SUB OUT: ABAEV, ELI
03:24				SUB IN: CONTEH, SITA
02:56	TIMEOUT 30SEC			
02:53	MISSED JUMPER by TOLBERT, SAGE			
02:50				REBOUND (DEF) by ADAMS, JORDYN
02:44		37-22	H 15	GOOD! 3PTR by ADAMS, JORDYN
02:44				ASSIST by TAYLOR, TERRY
02:26				FOUL by HINSON, EVAN
02:26				SUB OUT: TAYLOR, TERRY
02:26				SUB IN: ABAEV, ELI
02:26	GOOD! FT by TOLBERT, SAGE	37-23	H 14	
02:26	MISSED FT by TOLBERT, SAGE			
02:21				REBOUND (DEF) by HINSON, EVAN
02:20	FOUL by RUSSELL, NYGAL			
02:20				MISSED FT by ADAMS, JORDYN [FB]
02:20				REBOUND (DEADB) by TEAM
02:20	SUB OUT: GABLE, ISAIAH			
02:20	SUB IN: CUFFEE, KHALIL			
02:20	SUB OUT: RUSSELL, NYGAL			
02:20	SUB IN: LOVE, JORDAN			
02:20		38-23	H 15	GOOD! FT by ADAMS, JORDYN [FB]
02:00	MISSED 3PTR by HOGAN, SKYLER			
01:56				REBOUND (DEF) by ADAMS, JORDYN
01:50		40-23	H 17	GOOD! LAYUP by HINSON, EVAN
01:50				ASSIST by ADAMS, JORDYN
01:39	MISSED LAYUP by HOGAN, SKYLER			
01:36				REBOUND (DEF) by WOODARD, ALEC
01:31				MISSED LAYUP by ADAMS, JORDYN [PNT]
01:31	BLOCK by TOLBERT, SAGE			
01:31				REBOUND (OFF) by TEAM
01:31				SUB OUT: CONTEH, SITA
01:31				SUB IN: TAYLOR, TERRY
01:21	FOUL by LOVE, JORDAN			
01:21				MISSED FT by ADAMS, JORDYN
01:21				REBOUND (DEADB) by TEAM
01:21		41-23	H 18	GOOD! FT by ADAMS, JORDYN
01:05	MISSED 3PTR by CUFFEE, KHALIL			
01:00				REBOUND (DEF) by ADAMS, JORDYN
00:47				MISSED JUMPER by TAYLOR, TERRY [PNT]
00:45	REBOUND (DEF) by CUFFEE, KHALIL			
00:45				FOUL by ABAEV, ELI
00:45				SUB OUT: ABAEV, ELI
00:45				SUB IN: CONTEH, SITA
00:45	GOOD! FT by CUFFEE, KHALIL	41-24	H 17	
00:45	MISSED FT by CUFFEE, KHALIL			
00:42				REBOUND (DEF) by TAYLOR, TERRY
00:33				TURNOVER by HINSON, EVAN
00:09	TURNOVER by CUFFEE, KHALIL			
00:07				TIMEOUT 30SEC
00:07				SUB OUT: HINSON, EVAN
00:07				SUB IN: PAEZ, CARLOS

Southeast Mo. St. 24, Austin Peay 41

Points from (This Period)	SEMO	APSU
In the Paint	6	14
Off Turns	2	10
2nd Chance	3	10
Fast Break	0	8
Bench	4	7

Official Box Score
Southeast Mo. St. vs Austin Peay
Second Half Statistics Only
January 03, 2020 at Winfield Dunn Center



Southeast Mo. St. 39

No.	Player	S	Pts	FG	3FG	FT	OR	DR	TR	PF	A	TO	Blk	Stl	Min
00	CALDWELL, ALEX	G	5	2-4	1-2	0-0	0	0	0	0	1	1	0	0	12
03	HOGAN, SKYLER	G	3	1-2	1-2	0-0	0	0	0	1	1	1	0	0	15
10	WILSON, QUATARRIUS	F	2	1-1	0-0	0-0	1	1	2	2	1	2	0	0	9
23	TOLBERT, SAGE	F	5	2-3	0-0	1-1	0	1	1	1	0	0	0	3	14
25	RUSSELL, NYGAL	G	4	2-2	0-0	0-0	0	2	2	0	1	0	0	0	5
01	CUFFEE, KHALIL	G	4	2-3	0-0	0-0	0	0	0	3	0	0	0	0	5
02	LOVE, JORDAN	G	0	0-1	0-0	0-0	0	1	1	0	1	1	0	0	7
04	KAO, OSCAR	G	3	1-3	1-3	0-0	0	1	1	0	1	0	0	0	7
11	NICHOLAS, DQ	G	11	4-5	1-1	2-2	0	1	1	1	2	0	0	2	12
12	MORRISON, EVAN	F	0	0-0	0-0	0-0	0	0	0	0	0	0	0	0	2
13	GABLE, ISAAH	F	2	1-3	0-1	0-0	1	0	1	1	0	0	0	0	9
	TEAM			0-0			0	0	0	0		0			
TOTALS			39	16-27	4-9	3-3	2	7	9	9	8	5	0	5	97

Shooting By Period

Period	FG	FG%	3FG	3FG%	FT	FT%
2nd Half	16-27	59%	4-9	44%	3-3	100%
Game	24-54	44.4%	7-19	36.8%	8-10	80.0%

Last FG Half: SEMO -

Austin Peay 37

No.	Player	S	Pts	FG	3FG	FT	OR	DR	TR	PF	A	TO	Blk	Stl	Min
01	PAEZ, CARLOS	G	6	2-2	2-2	0-0	0	2	2	1	2	0	0	0	14
04	BUTLER, ANTWUAN	G	4	2-5	0-0	0-0	1	0	1	0	2	1	0	1	12
05	ADAMS, JORDYN	G	5	2-4	1-2	0-1	1	1	2	1	2	3	0	0	13
14	ABAEV, ELI	F	2	0-0	0-0	2-2	2	1	3	1	2	0	1	0	15
21	TAYLOR, TERRY	F	14	6-8	2-3	0-0	2	2	4	1	0	1	0	1	12
00	HINSON, EVAN	G	2	0-1	0-0	2-2	0	2	2	0	0	1	0	0	9
10	DJURISIC, PAVLE	F	4	1-2	0-1	2-2	0	0	0	1	0	0	0	0	7
11	CONTEH, SITA	F	0	0-2	0-2	0-0	0	1	1	0	0	0	0	0	2
22	WOODARD, ALEC	G	0	0-2	0-1	0-0	1	0	1	0	0	0	0	0	10
41	DEVAULT, SAM	F	0	0-1	0-1	0-0	0	0	0	0	0	0	0	0	1
	TEAM			0-0			1	0	1	0		1			
TOTALS			37	13-27	5-12	6-7	8	9	17	5	8	7	1	2	97

Shooting By Period

Period	FG	FG%	3FG	3FG%	FT	FT%
2nd Half	13-27	48%	5-12	42%	6-7	86%
Game	27-55	49.1%	11-23	47.8%	13-18	72.2%

Last FG Half: APSU -

Game Notes:

Officials: Kevin Mathis, Kelly Davis, Jason Garretson
 Attendance: 917

Start Time: 02:00 AM
 Conference Game;

Score	1st	2nd	TOT
SEMO	24	39	63
APSU	41	37	78

Points from (This Period)	SEMO	APSU
In the Paint	20	16
Off Turns	8	4
2nd Chance	4	8
Fast Break	13	2
Bench	20	6

Official Play-By-Play
Southeast Mo. St. vs Austin Peay
Second Half
January 03, 2020 at Winfield Dunn Center



Period 2

Starters:

Southeast Mo. St.: 00 CALDWELL, ALEX (G); 3 HOGAN, SKYLER (G); 10 WILSON, QUATARRIUS (F); 23 TOLBERT, SAGE (F); 25 RUSSELL, NYGAL (G);
Austin Peay: 1 PAEZ, CARLOS (G); 4 BUTLER, ANTWUAN (G); 5 ADAMS, JORDYN (G); 14 ABAEV, ELI (F); 21 TAYLOR, TERRY (F);

Time	VISITORS: Southeast Mo. St.	Score	Margin	HOME: Austin Peay
20:00				SUB OUT: CONTEH, SITA
20:00				SUB OUT: WOODARD, ALEC
20:00				SUB IN: BUTLER, ANTWUAN
20:00				SUB IN: ABAEV, ELI
20:00	SUB OUT: CUFFEE, KHALIL			
20:00	SUB OUT: LOVE, JORDAN			
20:00	SUB OUT: NICHOLAS, DQ			
20:00	SUB IN: CALDWELL, ALEX			
20:00	SUB IN: WILSON, QUATARRIUS			
20:00	SUB IN: RUSSELL, NYGAL			
19:54				FOUL by TAYLOR, TERRY
19:51	FOUL by WILSON, QUATARRIUS			
19:51	TURNOVER by WILSON, QUATARRIUS			
19:24				MISSED JUMPER by BUTLER, ANTWUAN [PNT]
19:20				REBOUND (OFF) by ABAEV, ELI
19:06				TURNOVER by ADAMS, JORDYN
19:06	STEAL by TOLBERT, SAGE			
18:41	TURNOVER by HOGAN, SKYLER			
18:41				STEAL by BUTLER, ANTWUAN
18:36				MISSED LAYUP by BUTLER, ANTWUAN
18:33	REBOUND (DEF) by RUSSELL, NYGAL			
18:30	GOOD! LAYUP by CALDWELL, ALEX [FB]	41-26	H 15	
18:30	ASSIST by RUSSELL, NYGAL			
18:05		44-26	H 18	GOOD! 3PTR by ADAMS, JORDYN
18:05				ASSIST by PAEZ, CARLOS
17:46	GOOD! LAYUP by TOLBERT, SAGE	44-28	H 16	
17:46	ASSIST by WILSON, QUATARRIUS			
17:46				FOUL by PAEZ, CARLOS
17:46	GOOD! FT by TOLBERT, SAGE	44-29	H 15	
17:27				MISSED JUMPER by ADAMS, JORDYN
17:24				REBOUND (OFF) by TAYLOR, TERRY
17:23				MISSED LAYUP by TAYLOR, TERRY
17:19				REBOUND (OFF) by BUTLER, ANTWUAN
17:18		47-29	H 18	GOOD! 3PTR by PAEZ, CARLOS
17:18				ASSIST by BUTLER, ANTWUAN
16:55	GOOD! LAYUP by RUSSELL, NYGAL	47-31	H 16	
16:40		49-31	H 18	GOOD! LAYUP by ADAMS, JORDYN
16:32	GOOD! 3PTR by HOGAN, SKYLER [FB]	49-34	H 15	
16:32	ASSIST by CALDWELL, ALEX			
16:15				MISSED 3PTR by ADAMS, JORDYN
16:11				REBOUND (OFF) by TAYLOR, TERRY
16:10	FOUL by TOLBERT, SAGE [PNT]			
16:10		50-34	H 16	GOOD! FT by ABAEV, ELI
16:10				SUB OUT: ADAMS, JORDYN
16:10				SUB IN: WOODARD, ALEC
16:10	SUB OUT: WILSON, QUATARRIUS			
16:10	SUB OUT: RUSSELL, NYGAL			
16:10	SUB IN: LOVE, JORDAN			
16:10	SUB IN: GABLE, ISAIAH			
16:10		51-34	H 17	GOOD! FT by ABAEV, ELI
15:59	TURNOVER by LOVE, JORDAN			
15:59				STEAL by TAYLOR, TERRY
15:55		53-34	H 19	GOOD! DUNK by TAYLOR, TERRY
15:34	GOOD! 3PTR by CALDWELL, ALEX	53-37	H 16	
15:14		55-37	H 18	GOOD! LAYUP by TAYLOR, TERRY
15:14				ASSIST by ABAEV, ELI
14:59	MISSED JUMPER by CALDWELL, ALEX			
14:56				REBOUND (DEF) by TAYLOR, TERRY
14:50				MISSED 3PTR by TAYLOR, TERRY
14:45				REBOUND (OFF) by WOODARD, ALEC
14:25				TURNOVER by TEAM
14:23	TIMEOUT MEDIA			
14:23				SUB OUT: BUTLER, ANTWUAN
14:23				SUB IN: ADAMS, JORDYN
14:23	SUB OUT: TOLBERT, SAGE			
14:23	SUB IN: WILSON, QUATARRIUS			
14:08	TURNOVER by WILSON, QUATARRIUS			
13:49		57-37	H 20	GOOD! DUNK by TAYLOR, TERRY [PNT]
13:49				ASSIST by PAEZ, CARLOS
13:30	MISSED 3PTR by CALDWELL, ALEX			

Time	VISITORS: Southeast Mo. St.	Score	Margin	HOME: Austin Peay
13:27				REBOUND (DEF) by PAEZ, CARLOS
13:07				MISSED 3PTR by WOODARD, ALEC
13:03				REBOUND (OFF) by ABAEV, ELI
13:01		60-37	H 23	GOOD! 3PTR by TAYLOR, TERRY
13:01				ASSIST by ABAEV, ELI
12:40	MISSED 3PTR by HOGAN, SKYLER			
12:39	REBOUND (OFF) by WILSON, QUATARRIUS			
12:39				FOUL by ABAEV, ELI [PNT]
12:39				SUB OUT: TAYLOR, TERRY
12:39				SUB IN: CONTEH, SITA
12:39	SUB OUT: LOVE, JORDAN			
12:39	SUB OUT: GABLE, ISAIAH			
12:39	SUB IN: CUFFEE, KHALIL			
12:39	SUB IN: NICHOLAS, DQ			
12:36	GOOD! LAYUP by CUFFEE, KHALIL	60-39	H 21	
12:36	ASSIST by NICHOLAS, DQ			
12:19	FOUL by CUFFEE, KHALIL [PNT]			
12:14				MISSED 3PTR by CONTEH, SITA
12:10				REBOUND (OFF) by ADAMS, JORDYN
11:57	FOUL by WILSON, QUATARRIUS			
11:57	SUB OUT: WILSON, QUATARRIUS			
11:57	SUB IN: TOLBERT, SAGE			
11:57	TIMEOUT MEDIA			
11:57				SUB OUT: CONTEH, SITA
11:57				SUB IN: TAYLOR, TERRY
11:41				TURNOVER by ADAMS, JORDYN
11:21	MISSED LAYUP by TOLBERT, SAGE			
11:19				REBOUND (DEF) by ADAMS, JORDYN
11:13		62-39	H 23	GOOD! LAYUP by TAYLOR, TERRY [FB]
11:13				ASSIST by ADAMS, JORDYN
10:51	GOOD! JUMPER by CUFFEE, KHALIL	62-41	H 21	
10:28		65-41	H 24	GOOD! 3PTR by PAEZ, CARLOS
10:28				ASSIST by ADAMS, JORDYN
10:08	TURNOVER by CALDWELL, ALEX			
10:08				SUB OUT: WOODARD, ALEC
10:08				SUB IN: BUTLER, ANTWUAN
10:06				TURNOVER by TAYLOR, TERRY
10:06	STEAL by TOLBERT, SAGE			
09:59	GOOD! LAYUP by NICHOLAS, DQ [FB]	65-43	H 22	
09:39	FOUL by CUFFEE, KHALIL [PNT]			
09:39				SUB OUT: PAEZ, CARLOS
09:39				SUB IN: HINSON, EVAN
09:28				MISSED LAYUP by HINSON, EVAN [PNT]
09:24	REBOUND (DEF) by NICHOLAS, DQ			
09:19	MISSED LAYUP by NICHOLAS, DQ [PNT]			
09:19				BLOCK by ABAEV, ELI
09:15				REBOUND (DEF) by HINSON, EVAN
09:09				TURNOVER by BUTLER, ANTWUAN
09:09	STEAL by TOLBERT, SAGE			
09:00	GOOD! LAYUP by TOLBERT, SAGE	65-45	H 20	
09:00	ASSIST by HOGAN, SKYLER			
08:36		68-45	H 23	GOOD! 3PTR by TAYLOR, TERRY
08:36				ASSIST by BUTLER, ANTWUAN
08:10	MISSED LAYUP by CUFFEE, KHALIL [PNT]			
08:07				REBOUND (DEF) by TAYLOR, TERRY
07:44	FOUL by CUFFEE, KHALIL [PNT]			
07:44	TIMEOUT MEDIA			
07:44				SUB OUT: ABAEV, ELI
07:44				SUB IN: DJURISIC, PAVLE
07:44	SUB OUT: CALDWELL, ALEX			
07:44	SUB OUT: CUFFEE, KHALIL			
07:44	SUB IN: KAO, OSCAR			
07:44	SUB IN: GABLE, ISAIAH			
07:30		70-45	H 25	GOOD! JUMPER by BUTLER, ANTWUAN [PNT]
07:11	MISSED LAYUP by GABLE, ISAIAH [PNT]			
07:08	REBOUND (OFF) by GABLE, ISAIAH			
07:08	GOOD! LAYUP by GABLE, ISAIAH	70-47	H 23	
06:51	FOUL by HOGAN, SKYLER [PNT]			
06:51				SUB OUT: TAYLOR, TERRY
06:51				SUB IN: ABAEV, ELI
06:51		71-47	H 24	GOOD! FT by HINSON, EVAN
06:51		72-47	H 25	GOOD! FT by HINSON, EVAN
06:38	GOOD! 3PTR by NICHOLAS, DQ	72-50	H 22	
06:38	ASSIST by KAO, OSCAR			
06:25	FOUL by NICHOLAS, DQ			
06:25				MISSED FT by ADAMS, JORDYN
06:23	REBOUND (DEF) by TOLBERT, SAGE			
06:16	MISSED 3PTR by KAO, OSCAR			
06:13				REBOUND (DEF) by ABAEV, ELI
05:52				TURNOVER by ADAMS, JORDYN

Time	VISITORS: Southeast Mo. St.	Score	Margin	HOME: Austin Peay
05:52	STEAL by NICHOLAS, DQ			
05:48	GOOD! LAYUP by NICHOLAS, DQ [FB]	72-52	H 20	
05:25		74-52	H 22	GOOD! LAYUP by BUTLER, ANTWUAN
04:58				FOUL by ADAMS, JORDYN
04:58	GOOD! FT by NICHOLAS, DQ	74-53	H 21	
04:58				SUB OUT: ADAMS, JORDYN
04:58				SUB IN: WOODARD, ALEC
04:58	SUB OUT: HOGAN, SKYLER			
04:58	SUB IN: RUSSELL, NYGAL			
04:58	GOOD! FT by NICHOLAS, DQ	74-54	H 20	
04:32				MISSED JUMPER by BUTLER, ANTWUAN [PNT]
04:29	REBOUND (DEF) by RUSSELL, NYGAL			
04:05	GOOD! JUMPER by RUSSELL, NYGAL	74-56	H 18	
03:44	FOUL by GABLE, ISAIAH [PNT]			
03:44	TIMEOUT MEDIA			
03:44				SUB OUT: BUTLER, ANTWUAN
03:44				SUB OUT: ABAEV, ELI
03:44				SUB IN: PAEZ, CARLOS
03:44				SUB IN: CONTEH, SITA
03:44	SUB OUT: TOLBERT, SAGE			
03:44	SUB OUT: RUSSELL, NYGAL			
03:44	SUB IN: LOVE, JORDAN			
03:44	SUB IN: WILSON, QUATARRIUS			
03:44		75-56	H 19	GOOD! FT by DJURISIC, PAVLE
03:44		76-56	H 20	GOOD! FT by DJURISIC, PAVLE
03:17	MISSED 3PTR by GABLE, ISAIAH			
03:13				REBOUND (DEF) by PAEZ, CARLOS
02:47				MISSED 3PTR by CONTEH, SITA
02:44	REBOUND (DEF) by KAO, OSCAR			
02:34	GOOD! 3PTR by KAO, OSCAR	76-59	H 17	
02:34	ASSIST by LOVE, JORDAN			
02:33	TIMEOUT TEAM			
02:33	SUB OUT: GABLE, ISAIAH			
02:33	SUB IN: MORRISON, EVAN			
02:23		78-59	H 19	GOOD! DUNK by DJURISIC, PAVLE [PNT]
02:07	MISSED JUMPER by LOVE, JORDAN			
02:03				REBOUND (DEF) by CONTEH, SITA
01:59				TIMEOUT 30SEC
01:59				SUB OUT: CONTEH, SITA
01:59				SUB IN: DEVAULT, SAM
01:42				MISSED 3PTR by DJURISIC, PAVLE
01:38	REBOUND (DEF) by LOVE, JORDAN			
01:34	GOOD! LAYUP by WILSON, QUATARRIUS [FB]	78-61	H 17	
01:34	ASSIST by NICHOLAS, DQ			
01:18				MISSED 3PTR by DEVAULT, SAM
01:16	REBOUND (DEF) by WILSON, QUATARRIUS			
01:16				FOUL by DJURISIC, PAVLE
01:07	MISSED 3PTR by KAO, OSCAR			
01:04				REBOUND (DEF) by HINSON, EVAN
00:40				MISSED JUMPER by WOODARD, ALEC [PNT]
00:38				REBOUND (OFF) by TEAM
00:37				TURNOVER by HINSON, EVAN
00:37	STEAL by NICHOLAS, DQ			
00:32	GOOD! LAYUP by NICHOLAS, DQ [FB]	78-63	H 15	

Southeast Mo. St. 63, Austin Peay 78

Points from (This Period)	SEMO	APSU
In the Paint	20	16
Off Turns	8	4
2nd Chance	4	8
Fast Break	13	2
Bench	20	6

Official Scoring/Possession Reference Chart
Southeast Mo. St. vs Austin Peay
Period 1
January 03, 2020 at Winfield Dunn Center



Period 1

Starters:

Southeast Mo. St.: 00 CALDWELL, ALEX (G); 3 HOGAN, SKYLER (G); 10 WILSON, QUATARRIUS (F); 23 TOLBERT, SAGE (F); 25 RUSSELL, NYGAL (G);
Austin Peay: 1 PAEZ, CARLOS (G); 4 BUTLER, ANTWUAN (G); 5 ADAMS, JORDYN (G); 14 ABAEV, ELI (F); 21 TAYLOR, TERRY (F);

Time	VISITORS: Southeast Mo. St.	Score	Margin	HOME: Austin Peay
19:39		2-0	H 2	GOOD! LAYUP by PAEZ, CARLOS [PNT]
19:20	GOOD! 3PTR by CALDWELL, ALEX	2-3	V 1	
18:25		5-3	H 2	GOOD! 3PTR by PAEZ, CARLOS
17:56		7-3	H 4	GOOD! LAYUP by ADAMS, JORDYN [FB]
17:03	GOOD! DUNK by WILSON, QUATARRIUS	7-5	H 2	
16:20		8-5	H 3	GOOD! FT by TAYLOR, TERRY
16:20		9-5	H 4	GOOD! FT by TAYLOR, TERRY
15:54		12-5	H 7	GOOD! 3PTR by TAYLOR, TERRY [FB]
15:39	GOOD! FT by HOGAN, SKYLER	12-6	H 6	
15:39	GOOD! FT by HOGAN, SKYLER	12-7	H 5	
15:39	GOOD! FT by HOGAN, SKYLER	12-8	H 4	
15:17		15-8	H 7	GOOD! 3PTR by CONTEH, SITA
14:53	GOOD! 3PTR by HOGAN, SKYLER	15-11	H 4	
14:24	GOOD! JUMPER by CALDWELL, ALEX	15-13	H 2	
14:11		17-13	H 4	GOOD! JUMPER by ADAMS, JORDYN
13:27		18-13	H 5	GOOD! FT by ADAMS, JORDYN
13:09	GOOD! JUMPER by HOGAN, SKYLER [PNT]	18-15	H 3	
12:33		20-15	H 5	GOOD! LAYUP by ADAMS, JORDYN
12:18	GOOD! JUMPER by CALDWELL, ALEX	20-17	H 3	
11:42		22-17	H 5	GOOD! LAYUP by PAEZ, CARLOS
10:22		24-17	H 7	GOOD! LAYUP by ABAEV, ELI
09:42	GOOD! 3PTR by GABLE, ISAIAH	24-20	H 4	
08:38		27-20	H 7	GOOD! 3PTR by TAYLOR, TERRY
08:04	GOOD! LAYUP by TOLBERT, SAGE	27-22	H 5	
05:34		30-22	H 8	GOOD! 3PTR by ADAMS, JORDYN
04:13		31-22	H 9	GOOD! FT by WOODARD, ALEC
04:13		32-22	H 10	GOOD! FT by WOODARD, ALEC
03:28		34-22	H 12	GOOD! LAYUP by ADAMS, JORDYN [FB/PNT]
02:44		37-22	H 15	GOOD! 3PTR by ADAMS, JORDYN
02:26	GOOD! FT by TOLBERT, SAGE	37-23	H 14	
02:20		38-23	H 15	GOOD! FT by ADAMS, JORDYN [FB]
01:50		40-23	H 17	GOOD! LAYUP by HINSON, EVAN
01:21		41-23	H 18	GOOD! FT by ADAMS, JORDYN
00:45	GOOD! FT by CUFFEE, KHALIL	41-24	H 17	

Southeast Mo. St. 24, Austin Peay 41

Official Scoring/Possession Reference Chart
Southeast Mo. St. vs Austin Peay
Period 2
January 03, 2020 at Winfield Dunn Center



Period 2

Starters:

Southeast Mo. St.: 00 CALDWELL, ALEX (G); 3 HOGAN, SKYLER (G); 10 WILSON, QUATARRIUS (F); 23 TOLBERT, SAGE (F); 25 RUSSELL, NYGAL (G);

Austin Peay: 1 PAEZ, CARLOS (G); 4 BUTLER, ANTWUAN (G); 5 ADAMS, JORDYN (G); 14 ABAEV, ELI (F); 21 TAYLOR, TERRY (F);

Time	VISITORS: Southeast Mo. St.	Score	Margin	HOME: Austin Peay
18:30	GOOD! LAYUP by CALDWELL, ALEX [FB]	41-26	H 15	
18:05		44-26	H 18	GOOD! 3PTR by ADAMS, JORDYN
17:46	GOOD! LAYUP by TOLBERT, SAGE	44-28	H 16	
17:46	GOOD! FT by TOLBERT, SAGE	44-29	H 15	
17:18		47-29	H 18	GOOD! 3PTR by PAEZ, CARLOS
16:55	GOOD! LAYUP by RUSSELL, NYGAL	47-31	H 16	
16:40		49-31	H 18	GOOD! LAYUP by ADAMS, JORDYN
16:32	GOOD! 3PTR by HOGAN, SKYLER [FB]	49-34	H 15	
16:10		50-34	H 16	GOOD! FT by ABAEV, ELI
16:10		51-34	H 17	GOOD! FT by ABAEV, ELI
15:55		53-34	H 19	GOOD! DUNK by TAYLOR, TERRY
15:34	GOOD! 3PTR by CALDWELL, ALEX	53-37	H 16	
15:14		55-37	H 18	GOOD! LAYUP by TAYLOR, TERRY
13:49		57-37	H 20	GOOD! DUNK by TAYLOR, TERRY [PNT]
13:01		60-37	H 23	GOOD! 3PTR by TAYLOR, TERRY
12:36	GOOD! LAYUP by CUFFEE, KHALIL	60-39	H 21	
11:13		62-39	H 23	GOOD! LAYUP by TAYLOR, TERRY [FB]
10:51	GOOD! JUMPER by CUFFEE, KHALIL	62-41	H 21	
10:28		65-41	H 24	GOOD! 3PTR by PAEZ, CARLOS
09:59	GOOD! LAYUP by NICHOLAS, DQ [FB]	65-43	H 22	
09:00	GOOD! LAYUP by TOLBERT, SAGE	65-45	H 20	
08:36		68-45	H 23	GOOD! 3PTR by TAYLOR, TERRY
07:30		70-45	H 25	GOOD! JUMPER by BUTLER, ANTWUAN [PNT]
07:08	GOOD! LAYUP by GABLE, ISAIAH	70-47	H 23	
06:51		71-47	H 24	GOOD! FT by HINSON, EVAN
06:51		72-47	H 25	GOOD! FT by HINSON, EVAN
06:38	GOOD! 3PTR by NICHOLAS, DQ	72-50	H 22	
05:48	GOOD! LAYUP by NICHOLAS, DQ [FB]	72-52	H 20	
05:25		74-52	H 22	GOOD! LAYUP by BUTLER, ANTWUAN
04:58	GOOD! FT by NICHOLAS, DQ	74-53	H 21	
04:58	GOOD! FT by NICHOLAS, DQ	74-54	H 20	
04:05	GOOD! JUMPER by RUSSELL, NYGAL	74-56	H 18	
03:44		75-56	H 19	GOOD! FT by DJURISIC, PAVLE
03:44		76-56	H 20	GOOD! FT by DJURISIC, PAVLE
02:34	GOOD! 3PTR by KAO, OSCAR	76-59	H 17	
02:23		78-59	H 19	GOOD! DUNK by DJURISIC, PAVLE [PNT]
01:34	GOOD! LAYUP by WILSON, QUATARRIUS [FB]	78-61	H 17	
00:32	GOOD! LAYUP by NICHOLAS, DQ [FB]	78-63	H 15	

Southeast Mo. St. 63, Austin Peay 78

Official Substitutions Log
Southeast Mo. St. vs Austin Peay
Period 1
January 03, 2020 at Winfield Dunn Center



VISITORS: Southeast Mo. St.	Time	Score	HOME: Austin Peay
00 CALDWELL, ALEX			1 PAEZ, CARLOS
3 HOGAN, SKYLER			4 BUTLER, ANTWUAN
10 WILSON, QUATARRIUS			5 ADAMS, JORDYN
23 TOLBERT, SAGE			14 ABAEV, ELI
25 RUSSELL, NYGAL			21 TAYLOR, TERRY
	16:22	5-7	SUB OUT: ABAEV, ELI
	16:22		SUB IN: CONTEH, SITA
	14:38	11-15	SUB OUT: PAEZ, CARLOS
	14:38		SUB IN: WOODARD, ALEC
	13:58	13-17	SUB OUT: BUTLER, ANTWUAN
	13:58		SUB IN: PAEZ, CARLOS
SUB OUT: 25 RUSSELL, NYGAL	13:58		
SUB IN: 4 KAO, OSCAR	13:58		
SUB OUT: 23 TOLBERT, SAGE	13:27	13-17	
SUB IN: 13 GABLE, ISAIAH	13:27		
SUB OUT: 4 KAO, OSCAR	12:41	15-18	
SUB IN: 11 NICHOLAS, DQ	12:41		
	11:31	17-22	SUB OUT: CONTEH, SITA
	11:31		SUB IN: ABAEV, ELI
SUB OUT: 10 WILSON, QUATARRIUS	11:09	17-22	
SUB IN: 23 TOLBERT, SAGE	11:09		
	10:02	17-24	SUB OUT: PAEZ, CARLOS
	10:02		SUB IN: BUTLER, ANTWUAN
SUB OUT: 00 CALDWELL, ALEX	09:57	17-24	
SUB OUT: 3 HOGAN, SKYLER	09:57		
SUB IN: 4 KAO, OSCAR	09:57		
SUB IN: 25 RUSSELL, NYGAL	09:57		
	09:47	17-24	SUB OUT: ADAMS, JORDYN
	09:47		SUB IN: HINSON, EVAN
	07:48	22-27	SUB OUT: WOODARD, ALEC
	07:48		SUB IN: ADAMS, JORDYN
SUB OUT: 4 KAO, OSCAR	07:48		
SUB OUT: 11 NICHOLAS, DQ	07:48		
SUB OUT: 13 GABLE, ISAIAH	07:48		
SUB IN: 00 CALDWELL, ALEX	07:48		
SUB IN: 3 HOGAN, SKYLER	07:48		
SUB IN: 10 WILSON, QUATARRIUS	07:48		
	07:18	22-27	SUB OUT: HINSON, EVAN
	07:18		SUB IN: PAEZ, CARLOS
SUB OUT: 10 WILSON, QUATARRIUS	06:02	22-27	
SUB IN: 13 GABLE, ISAIAH	06:02		
	04:42	22-30	SUB OUT: PAEZ, CARLOS
	04:42		SUB IN: WOODARD, ALEC
	04:13	22-30	SUB OUT: BUTLER, ANTWUAN
	04:13		SUB IN: HINSON, EVAN
SUB OUT: 00 CALDWELL, ALEX	04:13		
SUB IN: 11 NICHOLAS, DQ	04:13		
	03:24	22-34	SUB OUT: ABAEV, ELI
	03:24		SUB IN: CONTEH, SITA
	02:26	22-37	SUB OUT: TAYLOR, TERRY
	02:26		SUB IN: ABAEV, ELI
SUB OUT: 13 GABLE, ISAIAH	02:20	23-37	
SUB IN: 1 CUFFEE, KHALIL	02:20		
SUB OUT: 25 RUSSELL, NYGAL	02:20		
SUB IN: 2 LOVE, JORDAN	02:20		
	01:31	23-40	SUB OUT: CONTEH, SITA
	01:31		SUB IN: TAYLOR, TERRY
	00:45	23-41	SUB OUT: ABAEV, ELI
	00:45		SUB IN: CONTEH, SITA
	00:07	24-41	SUB OUT: HINSON, EVAN
	00:07		SUB IN: PAEZ, CARLOS

Southeast Mo. St. 24, Austin Peay 41

Official Substitutions Log
Southeast Mo. St. vs Austin Peay
Period 2
January 03, 2020 at Winfield Dunn Center



VISITORS: Southeast Mo. St.	Time	Score	HOME: Austin Peay
00 CALDWELL, ALEX			1 PAEZ, CARLOS
3 HOGAN, SKYLER			4 BUTLER, ANTWUAN
10 WILSON, QUATARRIUS			5 ADAMS, JORDYN
23 TOLBERT, SAGE			14 ABAEV, ELI
25 RUSSELL, NYGAL			21 TAYLOR, TERRY
	20:00	-	SUB OUT: CONTEH, SITA
	20:00		SUB OUT: WOODARD, ALEC
	20:00		SUB IN: BUTLER, ANTWUAN
	20:00		SUB IN: ABAEV, ELI
SUB OUT: 1 CUFFEE, KHALIL	20:00		
SUB OUT: 2 LOVE, JORDAN	20:00		
SUB OUT: 11 NICHOLAS, DQ	20:00		
SUB IN: 00 CALDWELL, ALEX	20:00		
SUB IN: 10 WILSON, QUATARRIUS	20:00		
SUB IN: 25 RUSSELL, NYGAL	20:00		
	16:10	34-50	SUB OUT: ADAMS, JORDYN
	16:10		SUB IN: WOODARD, ALEC
SUB OUT: 10 WILSON, QUATARRIUS	16:10		
SUB OUT: 25 RUSSELL, NYGAL	16:10		
SUB IN: 2 LOVE, JORDAN	16:10		
SUB IN: 13 GABLE, ISAIAH	16:10		
	14:23	37-55	SUB OUT: BUTLER, ANTWUAN
	14:23		SUB IN: ADAMS, JORDYN
SUB OUT: 23 TOLBERT, SAGE	14:23		
SUB IN: 10 WILSON, QUATARRIUS	14:23		
	12:39	37-60	SUB OUT: TAYLOR, TERRY
	12:39		SUB IN: CONTEH, SITA
SUB OUT: 2 LOVE, JORDAN	12:39		
SUB OUT: 13 GABLE, ISAIAH	12:39		
SUB IN: 1 CUFFEE, KHALIL	12:39		
SUB IN: 11 NICHOLAS, DQ	12:39		
SUB OUT: 10 WILSON, QUATARRIUS	11:57	39-60	
SUB IN: 23 TOLBERT, SAGE	11:57		
	11:57		SUB OUT: CONTEH, SITA
	11:57		SUB IN: TAYLOR, TERRY
	10:08	41-65	SUB OUT: WOODARD, ALEC
	10:08		SUB IN: BUTLER, ANTWUAN
	09:39	43-65	SUB OUT: PAEZ, CARLOS
	09:39		SUB IN: HINSON, EVAN
	07:44	45-68	SUB OUT: ABAEV, ELI
	07:44		SUB IN: DJURISIC, PAVLE
SUB OUT: 00 CALDWELL, ALEX	07:44		
SUB OUT: 1 CUFFEE, KHALIL	07:44		
SUB IN: 4 KAO, OSCAR	07:44		
SUB IN: 13 GABLE, ISAIAH	07:44		
	06:51	47-70	SUB OUT: TAYLOR, TERRY
	06:51		SUB IN: ABAEV, ELI
	04:58	53-74	SUB OUT: ADAMS, JORDYN
	04:58		SUB IN: WOODARD, ALEC
SUB OUT: 3 HOGAN, SKYLER	04:58		
SUB IN: 25 RUSSELL, NYGAL	04:58		
	03:44	56-74	SUB OUT: BUTLER, ANTWUAN
	03:44		SUB OUT: ABAEV, ELI
	03:44		SUB IN: PAEZ, CARLOS
	03:44		SUB IN: CONTEH, SITA
SUB OUT: 23 TOLBERT, SAGE	03:44		
SUB OUT: 25 RUSSELL, NYGAL	03:44		
SUB IN: 2 LOVE, JORDAN	03:44		
SUB IN: 10 WILSON, QUATARRIUS	03:44		
SUB OUT: 13 GABLE, ISAIAH	02:33	59-76	
SUB IN: 12 MORRISON, EVAN	02:33		
	01:59	59-78	SUB OUT: CONTEH, SITA
	01:59		SUB IN: DEVAULT, SAM

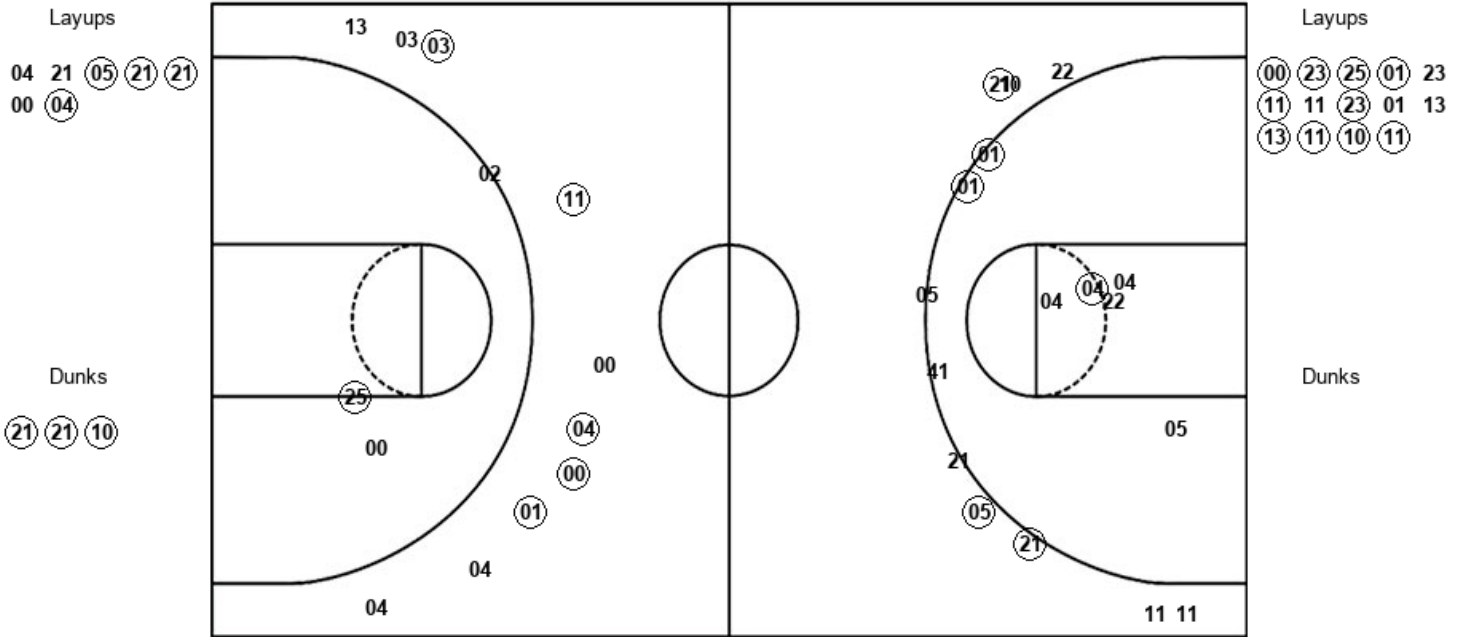
Southeast Mo. St. 63, Austin Peay 78

Official Shot Chart
Southeast Mo. St. vs Austin Peay
PERIOD 2 Shots
January 03, 2020 at Winfield Dunn Center



Austin Peay

Southeast Mo. St.



APSU : Period 2	Made	Att	Pct
Layups	4	7	57.1
Dunks	3	3	100.0
2PT Field Goals	8	15	53.3
3PT Field Goals	5	12	41.7
Total Field Goals	13	27	48.1

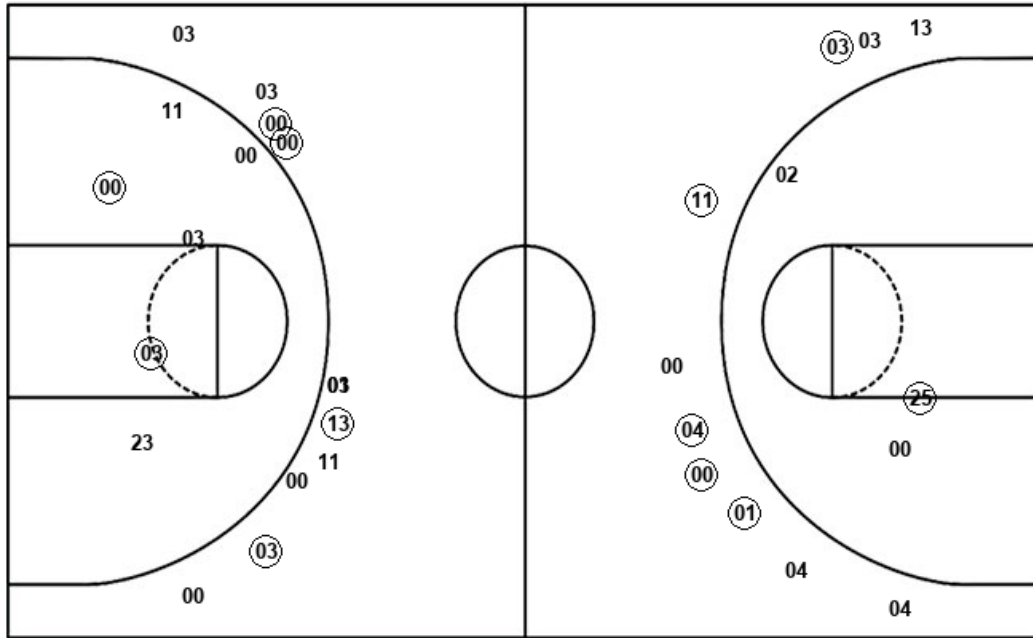
SEMO : Period 2	Made	Att	Pct
Layups	10	14	71.4
Dunks	0	0	0
2PT Field Goals	12	18	66.7
3PT Field Goals	4	9	44.4
Total Field Goals	16	27	59.3

Official Shot Chart
Southeast Mo. St. vs Austin Peay
Southeast Mo. St. Team Shots
January 03, 2020 at Winfield Dunn Center



Layups
 25 25 03 04 (23)
 25 03 25 03

Dunks
 (10)



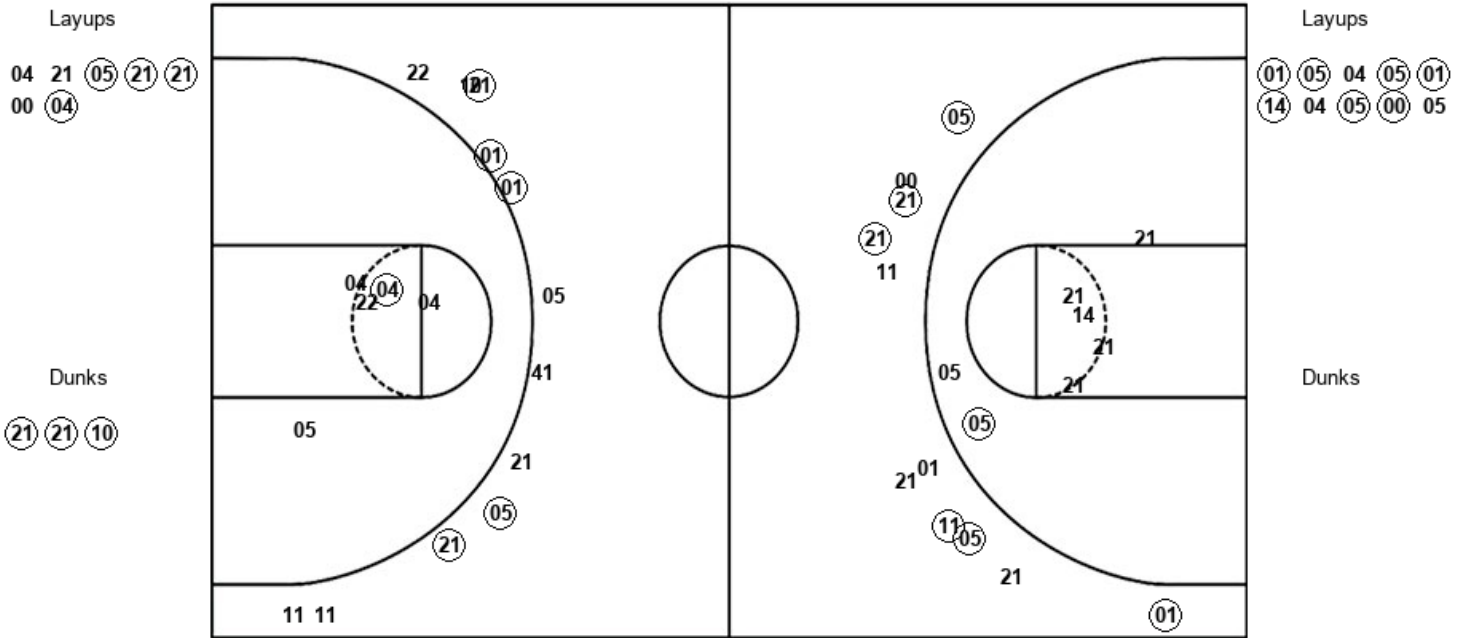
Layups
 (00) (23) (25) (01) 23
 (11) 11 (23) 01 13
 (13) (11) (10) (11)

Dunks

SEMO : Period 1	Made	Att	Pct
Layups	1	9	11.1
Dunks	1	1	100.0
2PT Field Goals	5	17	29.4
3PT Field Goals	3	10	30.0
Total Field Goals	8	27	29.6

SEMO : Period 2	Made	Att	Pct
Layups	10	14	71.4
Dunks	0	0	0
2PT Field Goals	12	18	66.7
3PT Field Goals	4	9	44.4
Total Field Goals	16	27	59.3

Official Shot Chart
Southeast Mo. St. vs Austin Peay
Austin Peay Team Shots
January 03, 2020 at Winfield Dunn Center



APSU : Period 1	Made	Att	Pct
Layups	7	10	70.0
Dunks	0	0	0
2PT Field Goals	8	17	47.1
3PT Field Goals	6	11	54.5
Total Field Goals	14	28	50.0

APSU : Period 2	Made	Att	Pct
Layups	4	7	57.1
Dunks	3	3	100.0
2PT Field Goals	8	15	53.3
3PT Field Goals	5	12	41.7
Total Field Goals	13	27	48.1