

## FINAL SCORE

**LSU**



**74**

**FGCU**



**63**

December 19, 2019 • Alico Arena - Fort Myers, Fla.

## FINAL STATISTICS

**Official Box Score**  
**LSU vs FGCU**  
**Game Totals -- Final Statistics**  
**December 19, 2019 at Alico Arena - Fort Myers, Fla.**



## LSU 74

No.	Player	S	Pts	FG	3FG	FT	OR	DR	TR	PF	A	TO	Blk	Stl	Min	+/-
01	CHERRY, JAILIN	G	6	3-7	0-1	0-0	1	1	2	0	0	4	2	0	17	-17
03	POINTER, KHAYLA	G	30	10-17	1-4	9-10	1	10	11	3	6	2	0	1	36	10
05	MITCHELL, AYANA	F	13	6-9	0-0	1-4	2	7	9	0	0	1	0	0	30	7
12	BROOKS, MERCEDES	G	0	0-3	0-1	0-0	0	2	2	0	0	0	0	0	17	-9
24	AIFUWA, FAUSTINE	C	8	2-8	0-0	4-4	1	8	9	3	2	4	3	0	27	2
00	TRASI, AWA	F	11	5-8	1-2	0-1	1	3	4	3	2	2	0	0	23	13
13	RICHARD-HARRIS, JAELYN	G	2	1-2	0-1	0-0	0	2	2	3	0	0	0	1	31	20
23	SEAY, KARLI	G	4	2-4	0-1	0-0	1	0	1	3	1	2	1	3	19	29
TEAM							1	2	3	0		0				
<b>TOTALS</b>			<b>74</b>	<b>29-58</b>	<b>2-10</b>	<b>14-19</b>	<b>8</b>	<b>35</b>	<b>43</b>	<b>15</b>	<b>11</b>	<b>15</b>	<b>6</b>	<b>5</b>	<b>199</b>	

### Shooting By Period

Period	FG	FG%	3FG	3FG%	FT	FT%
1st Qtr	7-16	44%	1-2	50%	0-2	00%
2nd Qtr	8-13	62%	0-1	00%	0-1	00%
3rd Qtr	8-16	50%	1-3	33%	3-4	75%
4th Qtr	6-13	46%	0-4	00%	11-12	92%
1st Half	15-29	52%	1-3	33%	0-3	00%
2nd Half	14-29	48%	1-7	14%	14-16	88%
<b>Game</b>	<b>29-58</b>	<b>50.0%</b>	<b>2-10</b>	<b>20.0%</b>	<b>14-19</b>	<b>73.7%</b>

Deadball Rebounds: 2,0

Last FG: 4th-00:51

Biggest Run: 17-0

Largest lead: By 11 at 4-00

Technical Fouls: None.

## FGCU 63

No.	Player	S	Pts	FG	3FG	FT	OR	DR	TR	PF	A	TO	Blk	Stl	Min	+/-
00	WINGATE, DAVION	G	8	3-11	1-5	1-2	1	3	4	2	0	1	0	1	29	-11
03	JEWETT-GILES, KERI	G	35	12-20	5-7	6-9	1	3	4	2	5	4	0	2	37	-5
13	PHILLS, KERSTIE	G	4	2-6	0-1	0-0	2	4	6	1	0	1	0	0	28	-9
31	ULEL, NASRIN	G	5	2-11	1-8	0-0	0	2	2	4	1	2	1	1	33	-2
42	ADDERLY, TYTIONIA	F	3	1-7	1-2	0-0	1	9	10	4	4	1	0	3	36	-3
02	BLAIR, ALYSSA	G	0	0-2	0-2	0-0	0	1	1	1	0	0	1	0	16	-5
05	MARINKOVIC, ANJA	G	0	0-2	0-2	0-0	0	0	0	0	0	0	0	1	2	-11
32	LIST, EMMA	G	0	0-0	0-0	0-0	0	0	0	1	0	0	0	0	0	-1
34	O'NEAL, ASHLI	G	8	3-4	2-3	0-0	0	0	0	2	2	1	0	0	17	-8
TEAM							1	2	3	0		0				
<b>TOTALS</b>			<b>63</b>	<b>23-63</b>	<b>10-30</b>	<b>7-11</b>	<b>6</b>	<b>24</b>	<b>30</b>	<b>17</b>	<b>12</b>	<b>10</b>	<b>2</b>	<b>8</b>	<b>199</b>	

### Shooting By Period

Period	FG	FG%	3FG	3FG%	FT	FT%
1st Qtr	5-20	25%	3-12	25%	0-0	0%
2nd Qtr	3-12	25%	2-7	29%	3-4	75%
3rd Qtr	8-14	57%	4-5	80%	3-5	60%
4th Qtr	7-17	41%	1-6	17%	1-2	50%
1st Half	8-32	25%	5-19	26%	3-4	75%
2nd Half	15-31	48%	5-11	45%	4-7	57%
<b>Game</b>	<b>23-63</b>	<b>36.5%</b>	<b>10-30</b>	<b>33.3%</b>	<b>7-11</b>	<b>63.6%</b>

Deadball Rebounds: 3,0

Last FG: 4th-00:18

Biggest Run: 13-0

Largest lead: By 13 at 1-04

Technical Fouls: None.

### Game Notes:

Officials: Kylie Galloway, Ed Sidlasky, Chastity Taylor  
Attendance: 2335

Start Time: 07:02 PM ET

End Time: 08:54 PM ET

Game Duration: 1:52

Score	1st	2nd	3rd	4th	TOT
LSU	15	16	20	23	<b>74</b>
FGC	13	11	23	16	<b>63</b>

LSU led for 27:19. FGC led for 10:06.

Game was tied for 2:21.

Times tied: 4

Lead Changes: 3

Points from	LSU	FGC
In the Paint	34	26
Off Turns	10	13
2nd Chance	8	2
Fast Break	14	16
Bench	17	8

**Official Box Score**  
**LSU vs FGCU**  
**First Half Statistics Only**  
**December 19, 2019 at Alico Arena - Fort Myers, Fla.**



## LSU 31

No.	Player	S	Pts	FG	3FG	FT	OR	DR	TR	PF	A	TO	Blk	Stl	Min	+/-
00	TRASI, AWA	F	9	4-5	1-1	0-1	1	2	3	1	2	1	0	0	12	13
12	BROOKS, MERCEDES	G	0	0-3	0-1	0-0	0	1	1	0	0	0	0	0	10	-9
13	RICHARD-HARRIS, JAELYN	G	0	0-0	0-0	0-0	0	2	2	1	0	0	0	0	14	15
23	SEAY, KARLI	G	0	0-1	0-0	0-0	0	0	0	1	1	2	0	0	11	18
24	AIFUWA, FAUSTINE	C	2	1-3	0-0	0-0	0	5	5	1	2	2	2	0	13	-3
01	CHERRY, JAILIN	G	2	1-3	0-1	0-0	0	0	0	0	0	2	1	0	7	-12
03	POINTER, KHAYLA	G	10	5-8	0-0	0-0	0	8	8	1	4	0	0	0	18	9
05	MITCHELL, AYANA	F	8	4-6	0-0	0-2	1	3	4	0	0	1	0	0	15	4
	TEAM		0	0-0	0-0	0-0	0	0	0	0	0	0	0	0	0	
<b>TOTALS</b>			<b>31</b>	<b>15-29</b>	<b>1-3</b>	<b>0-3</b>	<b>2</b>	<b>21</b>	<b>23</b>	<b>5</b>	<b>9</b>	<b>8</b>	<b>3</b>	<b>0</b>	<b>100</b>	

### Shooting By Period

Period	FG	FG%	3FG	3FG%	FT	FT%
1st Qtr	7-16	44%	1-2	50%	0-2	00%
2nd Qtr	8-13	62%	0-1	00%	0-1	00%
1st Half	15-29	52%	1-3	33%	0-3	00%
Game	29-58	50.0%	2-10	20.0%	14-19	73.7%

Deadball Rebounds: 2,0

Last FG Half: LSU 2nd-01:08

## FGCU 24

No.	Player	S	Pts	FG	3FG	FT	OR	DR	TR	PF	A	TO	Blk	Stl	Min	+/-
00	WINGATE, DAVION	G	0	0-4	0-2	0-0	0	1	1	0	0	0	0	1	13	-13
02	BLAIR, ALYSSA	G	0	0-2	0-2	0-0	0	1	1	0	0	0	1	0	6	-2
03	JEWETT-GILES, KERI	G	16	5-8	3-3	3-4	1	1	2	1	1	1	0	1	18	-1
05	MARINKOVIC, ANJA	G	0	0-2	0-2	0-0	0	0	0	0	0	0	0	1	2	-7
13	PHILLS, KERSTIE	G	2	1-5	0-1	0-0	2	2	4	0	0	0	0	0	14	-5
31	ULEL, NASRIN	G	0	0-6	0-5	0-0	0	1	1	1	0	1	0	1	17	2
32	LIST, EMMA	G	0	0-0	0-0	0-0	0	0	0	0	0	0	0	0	0	0
34	O'NEAL, ASHLI	G	3	1-2	1-2	0-0	0	0	0	1	2	1	0	0	10	-2
42	ADDERLY, TYTIONIA	F	3	1-3	1-2	0-0	1	7	8	1	3	1	0	1	20	-7
	TEAM		0	0-0	0-0	0-0	0	1	1	0	0	0	0	0	0	
<b>TOTALS</b>			<b>24</b>	<b>8-32</b>	<b>5-19</b>	<b>3-4</b>	<b>4</b>	<b>14</b>	<b>18</b>	<b>4</b>	<b>6</b>	<b>4</b>	<b>1</b>	<b>5</b>	<b>100</b>	

### Shooting By Period

Period	FG	FG%	3FG	3FG%	FT	FT%
1st Qtr	5-20	25%	3-12	25%	0-0	0%
2nd Qtr	3-12	25%	2-7	29%	3-4	75%
1st Half	8-32	25%	5-19	26%	3-4	75%
Game	23-63	36.5%	10-30	33.3%	7-11	63.6%

Deadball Rebounds: 3,0

Last FG Half: FGCU 2nd-02:09

### Game Notes:

Officials: Kylie Galloway, Ed Sidlasky, Chastity Taylor  
Attendance: 2335

Start Time: 07:02 PM ET

End Time: 08:54 PM ET

Game Duration: 1:52

Score	1st	2nd	3rd	4th	TOT
LSU	15	16	20	23	<b>74</b>
FGC	13	11	23	16	<b>63</b>

Points from (This Period)	LSU	FGC
In the Paint	20	6
Off Turns	2	3
2nd Chance	4	0
Fast Break	4	6
Bench	9	3

**Official Box Score**  
**LSU vs FGCU**  
**First Quarter Statistics Only**  
**December 19, 2019 at Alico Arena - Fort Myers, Fla.**



### LSU 15

No.	Player	S	Pts	FG	3FG	FT	OR	DR	TR	PF	A	TO	Blk	Stl	Min	+/-
01	CHERRY, JAILIN	G	2	1-2	0-0	0-0	0	0	0	0	0	2	1	0	6	-11
03	POINTER, KHAYLA	G	4	2-4	0-0	0-0	0	4	4	0	3	0	0	0	10	2
05	MITCHELL, AYANA	F	0	0-2	0-0	0-2	0	2	2	0	0	0	0	0	7	-3
12	BROOKS, MERCEDES	G	0	0-2	0-1	0-0	0	1	1	0	0	0	0	0	5	-10
24	AIFUWA, FAUSTINE	C	2	1-3	0-0	0-0	0	3	3	0	1	1	1	0	8	-5
00	TRASI, AWA	F	7	3-3	1-1	0-0	1	2	3	0	1	0	0	0	5	12
13	RICHARD-HARRIS, JAELYN	G	0	0-0	0-0	0-0	0	0	0	0	0	0	0	0	5	12
23	SEAY, KARLI	G	0	0-0	0-0	0-0	0	0	0	0	0	1	0	0	4	13
TEAM							0	0	0	0		0				
<b>TOTALS</b>			<b>15</b>	<b>7-16</b>	<b>1-2</b>	<b>0-2</b>	<b>1</b>	<b>12</b>	<b>13</b>	<b>0</b>	<b>5</b>	<b>4</b>	<b>2</b>	<b>0</b>	<b>50</b>	

#### Shooting By Period

Period	FG	FG%	3FG	3FG%	FT	FT%
1st Qtr	7-16	44%	1-2	50%	0-2	00%
2nd Qtr	8-13	62%	0-1	00%	0-1	00%
1st Half	7-16	44%	1-2	50%	0-2	00%
1st Half	15-29	52%	1-3	33%	0-3	00%
Game	29-58	50.0%	2-10	20.0%	14-19	73.7%

Deadball Rebounds: 2,0

### FGCU 13

No.	Player	S	Pts	FG	3FG	FT	OR	DR	TR	PF	A	TO	Blk	Stl	Min	+/-
00	WINGATE, DAVION	G	0	0-2	0-1	0-0	0	1	1	0	0	0	0	1	8	-8
03	JEWETT-GILES, KERI	G	8	3-6	2-2	0-0	1	0	1	0	1	0	0	1	8	4
13	PHILLS, KERSTIE	G	2	1-4	0-1	0-0	1	1	2	0	0	0	0	0	5	-2
31	ULEL, NASRIN	G	0	0-3	0-3	0-0	0	1	1	1	0	1	0	0	8	5
42	ADDERLY, TYTIONIA	F	3	1-2	1-2	0-0	1	4	5	1	1	0	0	1	10	-2
02	BLAIR, ALYSSA	G	0	0-1	0-1	0-0	0	1	1	0	0	0	1	0	5	0
05	MARINKOVIC, ANJA	G	0	0-2	0-2	0-0	0	0	0	0	0	0	0	1	2	-7
32	LIST, EMMA	G	0	0-0	0-0	0-0	0	0	0	0	0	0	0	0	0	0
34	O'NEAL, ASHLI	G	0	0-0	0-0	0-0	0	0	0	1	2	1	0	0	4	0
TEAM							0	1	1	0		0				
<b>TOTALS</b>			<b>13</b>	<b>5-20</b>	<b>3-12</b>	<b>0-0</b>	<b>3</b>	<b>9</b>	<b>12</b>	<b>3</b>	<b>4</b>	<b>2</b>	<b>1</b>	<b>4</b>	<b>50</b>	

#### Shooting By Period

Period	FG	FG%	3FG	3FG%	FT	FT%
1st Qtr	5-20	25%	3-12	25%	0-0	0%
2nd Qtr	3-12	25%	2-7	29%	3-4	75%
1st Half	5-20	25%	3-12	25%	0-0	0%
1st Half	8-32	25%	5-19	26%	3-4	75%
Game	23-63	36.5%	10-30	33.3%	7-11	63.6%

Deadball Rebounds: 3,0

#### Game Notes:

Officials: Kylie Galloway, Ed Sidlasky, Chastity Taylor  
Attendance: 2335

Start Time: 07:02 PM ET

End Time: 08:54 PM ET

Game Duration: 1:52

Score	1st	2nd	3rd	4th	TOT
LSU	15	16	20	23	<b>74</b>
FGC	13	11	23	16	<b>63</b>

Points from (This Period)	LSU	FGC
In the Paint	8	4
Off Turns	2	3
2nd Chance	2	0
Fast Break	2	2
Bench	7	0

**Official Play-By-Play**  
**LSU vs FGCU**  
**First Quarter**  
**December 19, 2019 at Alico Arena - Fort Myers, Fla.**



**Period 1**

**Starters:**

**LSU:** 12 BROOKS, MERCEDES (G); 24 AIFUWA, FAUSTINE (C); 1 CHERRY, JAILIN (G); 3 POINTER, KHAYLA (G); 5 MITCHELL, AYANA (F);  
**FGCU:** 0 WINGATE, DAVION (G); 3 JEWETT-GILES, KERI (G); 13 PHILLS, KERSTIE (G); 31 ULEL, NASRIN (G); 42 ADDERLY, TYTIONIA (F);

Time	VISITORS: LSU	Score	Margin	HOME: FGCU
09:38	MISSED JUMPER by CHERRY, JAILIN			
09:33				REBOUND (DEF) by WINGATE, DAVION
09:26		3-0	H 3	GOOD! 3PTR by JEWETT-GILES, KERI
09:26				ASSIST by ADDERLY, TYTIONIA
09:15	TURNOVER (BADPASS) by CHERRY, JAILIN			
09:15				STEAL by WINGATE, DAVION
08:59				MISSED LAYUP by JEWETT-GILES, KERI
08:59	BLOCK by AIFUWA, FAUSTINE			
08:55	REBOUND (DEF) by POINTER, KHAYLA			
08:46	MISSED JUMPER by MITCHELL, AYANA			
08:44				REBOUND (DEF) by PHILLS, KERSTIE
08:40				MISSED LAYUP by JEWETT-GILES, KERI
08:37	REBOUND (DEF) by BROOKS, MERCEDES			
08:21	MISSED LAYUP by AIFUWA, FAUSTINE			
08:18				REBOUND (DEF) by ADDERLY, TYTIONIA
08:13		5-0	H 5	GOOD! LAYUP by PHILLS, KERSTIE [FB]
08:13				ASSIST by JEWETT-GILES, KERI
07:55	TURNOVER (BADPASS) by AIFUWA, FAUSTINE			
07:55				STEAL by JEWETT-GILES, KERI
07:51				MISSED JUMPER by JEWETT-GILES, KERI
07:51	BLOCK by CHERRY, JAILIN			
07:44				REBOUND (OFF) by JEWETT-GILES, KERI
07:42				MISSED JUMPER by PHILLS, KERSTIE
07:39				REBOUND (OFF) by ADDERLY, TYTIONIA
07:37				MISSED 3PTR by ULEL, NASRIN
07:30	REBOUND (DEF) by POINTER, KHAYLA			
07:18	MISSED JUMPER by MITCHELL, AYANA			
07:16				REBOUND (DEF) by TEAM
07:10				MISSED 3PTR by PHILLS, KERSTIE
07:07	REBOUND (DEF) by AIFUWA, FAUSTINE			
06:57				FOUL (PERSONAL) by ADDERLY, TYTIONIA
06:57				SUB OUT: PHILLS, KERSTIE
06:57				SUB IN: BLAIR, ALYSSA
06:57	MISSED FT by MITCHELL, AYANA			
06:57	REBOUND (OFF) by TEAM			
06:57	MISSED FT by MITCHELL, AYANA			
06:57				REBOUND (DEF) by ADDERLY, TYTIONIA
06:50				MISSED 3PTR by ULEL, NASRIN
06:47	REBOUND (DEF) by MITCHELL, AYANA			
06:38	MISSED 3PTR by BROOKS, MERCEDES			
06:35				REBOUND (DEF) by ULEL, NASRIN
06:15				FOUL (OFF) by ULEL, NASRIN
06:15				TURNOVER (OFFENSIVE) by ULEL, NASRIN
06:15				SUB OUT: WINGATE, DAVION
06:15				SUB IN: O'NEAL, ASHLI
06:03	MISSED JUMPER by BROOKS, MERCEDES			
06:01				REBOUND (DEF) by ADDERLY, TYTIONIA
05:41		7-0	H 7	GOOD! JUMPER by JEWETT-GILES, KERI [PNT]
05:31	MISSED LAYUP by POINTER, KHAYLA			
05:31				BLOCK by BLAIR, ALYSSA
05:25				REBOUND (DEF) by BLAIR, ALYSSA
05:22		10-0	H 10	GOOD! 3PTR by JEWETT-GILES, KERI
05:22				ASSIST by O'NEAL, ASHLI
05:18				
05:18	SUB OUT: MITCHELL, AYANA			
05:18	SUB OUT: BROOKS, MERCEDES			
05:18	SUB IN: TRASI, AWA			
05:18	SUB IN: RICHARD-HARRIS, JAELYN			
05:08	TURNOVER (BADPASS) by CHERRY, JAILIN			
05:08				STEAL by ADDERLY, TYTIONIA
04:42		13-0	H 13	GOOD! 3PTR by ADDERLY, TYTIONIA
04:42				ASSIST by O'NEAL, ASHLI
04:19	GOOD! LAYUP by CHERRY, JAILIN [PNT]	13-2	H 11	
04:19	ASSIST by AIFUWA, FAUSTINE			
04:10				MISSED 3PTR by ULEL, NASRIN
04:09	REBOUND (DEF) by AIFUWA, FAUSTINE			
04:09				SUB OUT: JEWETT-GILES, KERI
04:09				SUB IN: WINGATE, DAVION
04:09	SUB OUT: CHERRY, JAILIN			
04:09	SUB IN: SEAY, KARLI			

Time	VISITORS: LSU	Score	Margin	HOME: FGCU
03:55	GOOD! JUMPER by POINTER, KHAYLA	13-4	H 9	
03:41				MISSED LAYUP by WINGATE, DAVION
03:38	REBOUND (DEF) by AIFUWA, FAUSTINE			
03:34	GOOD! LAYUP by TRASI, AWA [FB/PNT]	13-6	H 7	
03:34	ASSIST by POINTER, KHAYLA			
03:04				MISSED 3PTR by BLAIR, ALYSSA
03:01	REBOUND (DEF) by POINTER, KHAYLA			
02:44	GOOD! JUMPER by AIFUWA, FAUSTINE [PNT]	13-8	H 5	
02:44	ASSIST by POINTER, KHAYLA			
02:24				MISSED 3PTR by ADDERLY, TYTIONIA
02:21	REBOUND (DEF) by TRASI, AWA			
02:00	MISSED JUMPER by AIFUWA, FAUSTINE			
01:58				REBOUND (DEF) by ADDERLY, TYTIONIA
01:54				FOUL (OFF) by O'NEAL, ASHLI
01:54				TURNOVER (OFFENSIVE) by O'NEAL, ASHLI
01:52				SUB OUT: BLAIR, ALYSSA
01:52				SUB OUT: ULEL, NASRIN
01:52				SUB OUT: O'NEAL, ASHLI
01:52				SUB IN: JEWETT-GILES, KERI
01:52				SUB IN: MARINKOVIC, ANJA
01:52				SUB IN: PHILLS, KERSTIE
01:52	SUB OUT: AIFUWA, FAUSTINE			
01:52	SUB IN: MITCHELL, AYANA			
01:48	GOOD! JUMPER by POINTER, KHAYLA	13-10	H 3	
01:48	ASSIST by TRASI, AWA			
01:29				MISSED 3PTR by WINGATE, DAVION
01:23				REBOUND (OFF) by PHILLS, KERSTIE
01:23				MISSED LAYUP by PHILLS, KERSTIE
01:19	REBOUND (DEF) by MITCHELL, AYANA			
01:18	TURNOVER (BADPASS) by SEAY, KARLI			
01:18				STEAL by MARINKOVIC, ANJA
01:10				MISSED 3PTR by MARINKOVIC, ANJA
01:07	REBOUND (DEF) by POINTER, KHAYLA			
00:42	GOOD! 3PTR by TRASI, AWA	13-13	T	
00:42	ASSIST by POINTER, KHAYLA			
00:32				MISSED 3PTR by MARINKOVIC, ANJA
00:28	REBOUND (DEF) by TRASI, AWA			
00:02	MISSED JUMPER by POINTER, KHAYLA			
00:00	REBOUND (OFF) by TRASI, AWA			
00:00	GOOD! JUMPER by TRASI, AWA [PNT]	13-15	V 2	

LSU 15, FGCU 13

Points from (This Period)	LSU	FGC
In the Paint	8	4
Off Turns	2	3
2nd Chance	2	0
Fast Break	2	2
Bench	7	0

**Official Box Score**  
**LSU vs FGCU**  
**Second Quarter Statistics Only**  
**December 19, 2019 at Alico Arena - Fort Myers, Fla.**



## LSU 16

No.	Player	S	Pts	FG	3FG	FT	OR	DR	TR	PF	A	TO	Blk	Stl	Min	+/-
01	CHERRY, JAILIN	G	0	0-1	0-1	0-0	0	0	0	0	0	0	0	0	1	-1
03	POINTER, KHAYLA	G	6	3-4	0-0	0-0	0	4	4	1	1	0	0	0	8	7
05	MITCHELL, AYANA	F	8	4-4	0-0	0-0	1	1	2	0	0	1	0	0	8	7
12	BROOKS, MERCEDES	G	0	0-1	0-0	0-0	0	0	0	0	0	0	0	0	5	1
24	AIFUWA, FAUSTINE	C	0	0-0	0-0	0-0	0	2	2	1	1	1	1	0	5	2
00	TRASI, AWA	F	2	1-2	0-0	0-1	0	0	0	1	1	1	0	0	7	1
13	RICHARD-HARRIS, JAELYN	G	0	0-0	0-0	0-0	0	2	2	1	0	0	0	0	9	3
23	SEAY, KARLI	G	0	0-1	0-0	0-0	0	0	0	1	1	1	0	0	7	5
TEAM							0	0	0	0		0				
<b>TOTALS</b>			<b>16</b>	<b>8-13</b>	<b>0-1</b>	<b>0-1</b>	<b>1</b>	<b>9</b>	<b>10</b>	<b>5</b>	<b>4</b>	<b>4</b>	<b>1</b>	<b>0</b>	<b>50</b>	

### Shooting By Period

Period	FG	FG%	3FG	3FG%	FT	FT%
3rd Qtr	8-16	50%	1-3	33%	3-4	75%
4th Qtr	6-13	46%	0-4	00%	11-12	92%
2nd Half	8-13	62%	0-1	00%	0-1	00%
2nd Half	14-29	48%	1-7	14%	14-16	88%
Game	29-58	50.0%	2-10	20.0%	14-19	73.7%

Deadball Rebounds: 2,0

## FGCU 11

No.	Player	S	Pts	FG	3FG	FT	OR	DR	TR	PF	A	TO	Blk	Stl	Min	+/-
00	WINGATE, DAVION	G	0	0-2	0-1	0-0	0	0	0	0	0	0	0	0	5	-5
03	JEWETT-GILES, KERI	G	8	2-2	1-1	3-4	0	1	1	1	0	1	0	0	10	-5
13	PHILLS, KERSTIE	G	0	0-1	0-0	0-0	1	1	2	0	0	0	0	0	9	-3
31	ULEL, NASRIN	G	0	0-3	0-2	0-0	0	0	0	0	0	0	0	1	9	-3
42	ADDERLY, TYTIONIA	F	0	0-1	0-0	0-0	0	3	3	0	2	1	0	0	10	-5
02	BLAIR, ALYSSA	G	0	0-1	0-1	0-0	0	0	0	0	0	0	0	0	1	-2
05	MARINKOVIC, ANJA	G	0	0-0	0-0	0-0	0	0	0	0	0	0	0	0	0	0
32	LIST, EMMA	G	0	0-0	0-0	0-0	0	0	0	0	0	0	0	0	0	0
34	O'NEAL, ASHLI	G	3	1-2	1-2	0-0	0	0	0	0	0	0	0	0	6	-2
TEAM							0	0	0	0		0				
<b>TOTALS</b>			<b>11</b>	<b>3-12</b>	<b>2-7</b>	<b>3-4</b>	<b>1</b>	<b>5</b>	<b>6</b>	<b>1</b>	<b>2</b>	<b>2</b>	<b>0</b>	<b>1</b>	<b>50</b>	

### Shooting By Period

Period	FG	FG%	3FG	3FG%	FT	FT%
3rd Qtr	8-14	57%	4-5	80%	3-5	60%
4th Qtr	7-17	41%	1-6	17%	1-2	50%
2nd Half	3-12	25%	2-7	29%	3-4	75%
2nd Half	15-31	48%	5-11	45%	4-7	57%
Game	23-63	36.5%	10-30	33.3%	7-11	63.6%

Deadball Rebounds: 3,0

### Game Notes:

Officials: Kylie Galloway, Ed Sidlasky, Chastity Taylor  
Attendance: 2335

Start Time: 07:02 PM ET

End Time: 08:54 PM ET

Game Duration: 1:52

Score	1st	2nd	3rd	4th	TOT
LSU	15	16	20	23	<b>74</b>
FGC	13	11	23	16	<b>63</b>

Points from (This Period)	LSU	FGC
In the Paint	12	2
Off Turns	0	0
2nd Chance	2	0
Fast Break	2	4
Bench	2	3

**Official Play-By-Play**  
**LSU vs FGCU**  
**Second Quarter**  
**December 19, 2019 at Alico Arena - Fort Myers, Fla.**



**Period 2**

**Starters:**

LSU: 12 BROOKS, MERCEDES (G); 24 AIFUWA, FAUSTINE (C); 1 CHERRY, JAILIN (G); 3 POINTER, KHAYLA (G); 5 MITCHELL, AYANA (F);  
FGCU: 0 WINGATE, DAVION (G); 3 JEWETT-GILES, KERI (G); 13 PHILLS, KERSTIE (G); 31 ULEL, NASRIN (G); 42 ADDERLY, TYTIONIA (F);

Time	VISITORS: LSU	Score	Margin	HOME: FGCU
10:00				SUB OUT: MARINKOVIC, ANJA
10:00				SUB IN: ULEL, NASRIN
09:43	GOOD! LAYUP by TRASI, AWA [PNT]	13-17	V 4	
09:43	ASSIST by SEAY, KARLI			
09:43				FOUL (PERSONAL) by JEWETT-GILES, KERI
09:43	MISSED FT by TRASI, AWA			
09:43				REBOUND (DEF) by ADDERLY, TYTIONIA
09:43		16-17	V 1	GOOD! 3PTR by JEWETT-GILES, KERI
09:43				ASSIST by ADDERLY, TYTIONIA
09:13	GOOD! LAYUP by MITCHELL, AYANA	16-19	V 3	
09:13	ASSIST by TRASI, AWA			
08:54				MISSED LAYUP by WINGATE, DAVION
08:52	REBOUND (DEF) by POINTER, KHAYLA			
08:39	GOOD! JUMPER by POINTER, KHAYLA	16-21	V 5	
08:32				TURNOVER (BADPASS) by JEWETT-GILES, KERI
08:28				SUB OUT: WINGATE, DAVION
08:28				SUB IN: O'NEAL, ASHLI
08:08	FOUL (OFF) by TRASI, AWA			
08:08	TURNOVER (OFFENSIVE) by TRASI, AWA			
08:08	SUB OUT: TRASI, AWA			
08:08	SUB IN: AIFUWA, FAUSTINE			
07:52				MISSED 3PTR by ULEL, NASRIN
07:49	REBOUND (DEF) by MITCHELL, AYANA			
07:35	GOOD! JUMPER by POINTER, KHAYLA	16-23	V 7	
07:15				MISSED 3PTR by ULEL, NASRIN
07:12	REBOUND (DEF) by RICHARD-HARRIS, JAELYN			
06:44	TURNOVER (LOSTBALL) by AIFUWA, FAUSTINE			
06:44				STEAL by ULEL, NASRIN
06:32				MISSED LAYUP by ULEL, NASRIN
06:32	BLOCK by AIFUWA, FAUSTINE			
06:26	REBOUND (DEF) by POINTER, KHAYLA			
06:12	TURNOVER (TRAVEL) by MITCHELL, AYANA			
06:12				SUB OUT: PHILLS, KERSTIE
06:12				SUB OUT: ULEL, NASRIN
06:12				SUB IN: WINGATE, DAVION
06:12				SUB IN: BLAIR, ALYSSA
06:12	SUB OUT: RICHARD-HARRIS, JAELYN			
06:12	SUB IN: BROOKS, MERCEDES			
05:47				MISSED 3PTR by BLAIR, ALYSSA
05:45	REBOUND (DEF) by POINTER, KHAYLA			
05:19	GOOD! LAYUP by MITCHELL, AYANA [PNT]	16-25	V 9	
05:19	ASSIST by AIFUWA, FAUSTINE			
05:07				MISSED 3PTR by O'NEAL, ASHLI
05:04	REBOUND (DEF) by AIFUWA, FAUSTINE			
04:45	FOUL (OFF) by SEAY, KARLI			
04:45	TURNOVER (OFFENSIVE) by SEAY, KARLI			
04:45				
04:45				SUB OUT: BLAIR, ALYSSA
04:45				SUB OUT: O'NEAL, ASHLI
04:45				SUB IN: PHILLS, KERSTIE
04:45				SUB IN: ULEL, NASRIN
04:45	SUB OUT: POINTER, KHAYLA			
04:45	SUB OUT: MITCHELL, AYANA			
04:45	SUB IN: TRASI, AWA			
04:45	SUB IN: RICHARD-HARRIS, JAELYN			
04:21				MISSED LAYUP by PHILLS, KERSTIE
04:18	REBOUND (DEF) by AIFUWA, FAUSTINE			
03:50	MISSED JUMPER by BROOKS, MERCEDES			
03:47				REBOUND (DEF) by ADDERLY, TYTIONIA
03:42		18-25	V 7	GOOD! LAYUP by JEWETT-GILES, KERI [FB]
03:17	MISSED JUMPER by SEAY, KARLI			
03:14				REBOUND (DEF) by PHILLS, KERSTIE
03:06				MISSED 3PTR by WINGATE, DAVION
03:02				REBOUND (OFF) by PHILLS, KERSTIE
03:02	FOUL (PERSONAL) by AIFUWA, FAUSTINE			
03:02	SUB OUT: SEAY, KARLI			
03:02	SUB OUT: AIFUWA, FAUSTINE			
03:02	SUB IN: POINTER, KHAYLA			
03:02	SUB IN: MITCHELL, AYANA			
02:42				MISSED JUMPER by ADDERLY, TYTIONIA

Time	VISITORS: LSU	Score	Margin	HOME: FGCU
02:39	REBOUND (DEF) by POINTER, KHAYLA			
02:36	GOOD! LAYUP by MITCHELL, AYANA [FB/PNT]	18-27	V 9	
02:36	ASSIST by POINTER, KHAYLA			
02:32				TIMEOUT 30SEC
02:32				SUB OUT: WINGATE, DAVION
02:32				SUB IN: O'NEAL, ASHLI
02:09		21-27	V 6	GOOD! 3PTR by O'NEAL, ASHLI
02:09				ASSIST by ADDERLY, TYTIONIA
01:43	GOOD! LAYUP by POINTER, KHAYLA [PNT]	21-29	V 8	
01:25	FOUL (PERSONAL) by RICHARD-HARRIS, JAELYN			
01:25	SUB OUT: BROOKS, MERCEDES			
01:25	SUB IN: CHERRY, JAILIN			
01:25		22-29	V 7	GOOD! FT by JEWETT-GILES, KERI
01:25				MISSED FT by JEWETT-GILES, KERI
01:25	REBOUND (DEF) by RICHARD-HARRIS, JAELYN			
01:12	MISSED JUMPER by TRASI, AWA			
01:09	REBOUND (OFF) by MITCHELL, AYANA			
01:08	GOOD! LAYUP by MITCHELL, AYANA [PNT]	22-31	V 9	
00:39				TURNOVER (OTHER) by ADDERLY, TYTIONIA
00:12	MISSED 3PTR by CHERRY, JAILIN			
00:10				REBOUND (DEF) by JEWETT-GILES, KERI
00:06	FOUL (PERSONAL) by POINTER, KHAYLA			
00:06		23-31	V 8	GOOD! FT by JEWETT-GILES, KERI [FB]
00:06		24-31	V 7	GOOD! FT by JEWETT-GILES, KERI [FB]
00:00	MISSED LAYUP by POINTER, KHAYLA			
00:00				REBOUND (DEF) by ADDERLY, TYTIONIA

LSU 31, FGCU 24

Points from (This Period)	LSU	FGC
In the Paint	12	2
Off Turns	0	0
2nd Chance	2	0
Fast Break	2	4
Bench	2	3

**Official Box Score**  
**LSU vs FGCU**  
**Second Half Statistics Only**  
**December 19, 2019 at Alico Arena - Fort Myers, Fla.**



**LSU 43**

No.	Player	S	Pts	FG	3FG	FT	OR	DR	TR	PF	A	TO	Blk	Stl	Min	+/-
00	TRASI, AWA	F	2	1-3	0-1	0-0	0	1	1	2	0	1	0	0	11	0
12	BROOKS, MERCEDES	G	0	0-0	0-0	0-0	0	1	1	0	0	0	0	0	7	0
13	RICHARD-HARRIS, JAEALYN	G	2	1-2	0-1	0-0	0	0	0	2	0	0	0	1	17	5
23	SEAY, KARLI	G	4	2-3	0-1	0-0	1	0	1	2	0	0	1	3	7	11
24	AIFUWA, FAUSTINE	C	6	1-5	0-0	4-4	1	3	4	2	0	2	1	0	13	5
01	CHERRY, JAILIN	G	4	2-4	0-0	0-0	1	1	2	0	0	2	1	0	10	-5
03	POINTER, KHAYLA	G	20	5-9	1-4	9-10	1	2	3	2	2	2	0	1	18	1
05	MITCHELL, AYANA	F	5	2-3	0-0	1-2	1	4	5	0	0	0	0	0	15	3
	TEAM		0	0-0	0-0	0-0	1	2	3	0	0	0	0	0	0	
<b>TOTALS</b>			<b>43</b>	<b>14-29</b>	<b>1-7</b>	<b>14-16</b>	<b>6</b>	<b>14</b>	<b>20</b>	<b>10</b>	<b>2</b>	<b>7</b>	<b>3</b>	<b>5</b>	<b>99</b>	

*Shooting By Period*

Period	FG	FG%	3FG	3FG%	FT	FT%
3rd Qtr	8-16	50%	1-3	33%	3-4	75%
4th Qtr	6-13	46%	0-4	00%	11-12	92%
2nd Half	14-29	48%	1-7	14%	14-16	88%
Game	29-58	50.0%	2-10	20.0%	14-19	73.7%

*Deadball Rebounds: 2,0*  
*Last FG Half: LSU 4th-00:51*

**FGCU 39**

No.	Player	S	Pts	FG	3FG	FT	OR	DR	TR	PF	A	TO	Blk	Stl	Min	+/-
00	WINGATE, DAVION	G	8	3-7	1-3	1-2	1	2	3	2	0	1	0	0	16	2
02	BLAIR, ALYSSA	G	0	0-0	0-0	0-0	0	0	0	1	0	0	0	0	9	-3
03	JEWETT-GILES, KERI	G	19	7-12	2-4	3-5	0	2	2	1	4	3	0	1	20	-4
05	MARINKOVIC, ANJA	G	0	0-0	0-0	0-0	0	0	0	0	0	0	0	0	0	-4
13	PHILLS, KERSTIE	G	2	1-1	0-0	0-0	0	2	2	1	0	1	0	0	14	-4
31	ULEL, NASRIN	G	5	2-5	1-3	0-0	0	1	1	3	1	1	1	0	17	-4
32	LIST, EMMA	G	0	0-0	0-0	0-0	0	0	0	1	0	0	0	0	0	-1
34	O'NEAL, ASHLI	G	5	2-2	1-1	0-0	0	0	0	1	0	0	0	0	7	-6
42	ADDERLY, TYTIONIA	F	0	0-4	0-0	0-0	0	2	2	3	1	0	0	2	16	4
	TEAM		0	0-0	0-0	0-0	1	1	2	0	0	0	0	0	0	
<b>TOTALS</b>			<b>39</b>	<b>15-31</b>	<b>5-11</b>	<b>4-7</b>	<b>2</b>	<b>10</b>	<b>12</b>	<b>13</b>	<b>6</b>	<b>6</b>	<b>1</b>	<b>3</b>	<b>99</b>	

*Shooting By Period*

Period	FG	FG%	3FG	3FG%	FT	FT%
3rd Qtr	8-14	57%	4-5	80%	3-5	60%
4th Qtr	7-17	41%	1-6	17%	1-2	50%
2nd Half	15-31	48%	5-11	45%	4-7	57%
Game	23-63	36.5%	10-30	33.3%	7-11	63.6%

*Deadball Rebounds: 3,0*  
*Last FG Half: FGCU 4th-00:18*

*Game Notes:*

Officials: *Kylie Galloway, Ed Sidlasky, Chastity Taylor*  
Attendance: **2335**

Start Time: **07:02 PM ET**  
End Time: **08:54 PM ET**  
Game Duration: **1:52**

Score	1st	2nd	3rd	4th	TOT
LSU	15	16	20	23	<b>74</b>
FGCU	13	11	23	16	<b>63</b>

Points from (This Period)	LSU	FGCU
In the Paint	14	20
Off Turns	8	10
2nd Chance	4	2
Fast Break	10	10
Bench	8	5

**Official Box Score**  
**LSU vs FGCU**  
**Third Quarter Statistics Only**  
**December 19, 2019 at Alico Arena - Fort Myers, Fla.**



### LSU 43

No.	Player	S	Pts	FG	3FG	FT	OR	DR	TR	PF	A	TO	Blk	Stl	Min	+/-
01	CHERRY, JAILIN	G	4	2-4	0-0	0-0	1	1	2	0	0	1	1	0	8	-6
03	POINTER, KHAYLA	G	10	4-4	1-1	1-2	0	1	1	1	0	1	0	0	8	-6
05	MITCHELL, AYANA	F	4	2-3	0-0	0-0	1	2	3	0	0	0	0	0	8	-7
12	BROOKS, MERCEDES	G	0	0-0	0-0	0-0	0	0	0	0	0	0	0	0	2	3
24	AIFUWA, FAUSTINE	C	2	0-3	0-0	2-2	1	0	1	0	0	1	0	0	5	0
00	TRASI, AWA	F	0	0-1	0-1	0-0	0	1	1	1	0	1	0	0	7	1
13	RICHARD-HARRIS, JAELYN	G	0	0-1	0-1	0-0	0	0	0	2	0	0	0	0	7	-2
23	SEAY, KARLI	G	0	0-0	0-0	0-0	1	0	1	2	0	0	0	1	5	2
TEAM							1	1	2	0		0				
<b>TOTALS</b>			<b>20</b>	<b>8-16</b>	<b>1-3</b>	<b>3-4</b>	<b>5</b>	<b>6</b>	<b>11</b>	<b>6</b>	<b>0</b>	<b>4</b>	<b>1</b>	<b>1</b>	<b>50</b>	

#### Shooting By Period

Period	FG	FG%	3FG	3FG%	FT	FT%
2nd Half	0-0	0%	0-0	0%	0-0	0%
Game	29-58	50.0%	2-10	20.0%	14-19	73.7%

Deadball Rebounds: 2,0

### FGCU 39

No.	Player	S	Pts	FG	3FG	FT	OR	DR	TR	PF	A	TO	Blk	Stl	Min	+/-
00	WINGATE, DAVION	G	0	0-1	0-0	0-0	0	0	0	0	0	0	0	0	8	7
03	JEWETT-GILES, KERI	G	17	6-7	2-3	3-5	0	1	1	0	1	1	0	0	10	3
13	PHILLS, KERSTIE	G	0	0-0	0-0	0-0	0	2	2	1	0	0	0	0	7	4
31	ULEL, NASRIN	G	3	1-2	1-1	0-0	0	0	0	0	1	0	0	0	7	3
42	ADDERLY, TYTIONIA	F	0	0-3	0-0	0-0	0	0	0	2	1	0	0	2	8	6
02	BLAIR, ALYSSA	G	0	0-0	0-0	0-0	0	0	0	1	0	0	0	0	5	-4
05	MARINKOVIC, ANJA	G	0	0-0	0-0	0-0	0	0	0	0	0	0	0	0	0	0
32	LIST, EMMA	G	0	0-0	0-0	0-0	0	0	0	0	0	0	0	0	0	0
34	O'NEAL, ASHLI	G	3	1-1	1-1	0-0	0	0	0	0	0	0	0	0	5	-4
TEAM							0	0	0	0		0				
<b>TOTALS</b>			<b>23</b>	<b>8-14</b>	<b>4-5</b>	<b>3-5</b>	<b>0</b>	<b>3</b>	<b>3</b>	<b>4</b>	<b>3</b>	<b>1</b>	<b>0</b>	<b>2</b>	<b>50</b>	

#### Shooting By Period

Period	FG	FG%	3FG	3FG%	FT	FT%
2nd Half	0-0	0%	0-0	0%	0-0	0%
Game	23-63	36.5%	10-30	33.3%	7-11	63.6%

Deadball Rebounds: 3,0

#### Game Notes:

Officials: **Kylie Galloway, Ed Sidlasky, Chastity Taylor**  
Attendance: **2335**

Start Time: **07:02 PM ET**  
End Time: **08:54 PM ET**  
Game Duration: **1:52**

Score	1st	2nd	3rd	4th	TOT
LSU	15	16	20	23	<b>74</b>
FGC	13	11	23	16	<b>63</b>

Points from (This Period)	LSU	FGC
In the Paint	6	8
Off Turns	2	8
2nd Chance	4	0
Fast Break	0	5
Bench	0	3

**Official Play-By-Play**  
**LSU vs FGCU**  
**Third Quarter**  
**December 19, 2019 at Alico Arena - Fort Myers, Fla.**



**Period 3**

**Starters:**

LSU: 12 BROOKS, MERCEDES (G); 24 AIFUWA, FAUSTINE (C); 1 CHERRY, JAILIN (G); 3 POINTER, KHAYLA (G); 5 MITCHELL, AYANA (F);  
 FGCU: 0 WINGATE, DAVION (G); 3 JEWETT-GILES, KERI (G); 13 PHILLS, KERSTIE (G); 31 ULEL, NASRIN (G); 42 ADDERLY, TYTIONIA (F);

Time	VISITORS: LSU	Score	Margin	HOME: FGCU
10:00				SUB OUT: O'NEAL, ASHLI
10:00				SUB IN: WINGATE, DAVION
10:00	SUB OUT: TRASI, AWA			
10:00	SUB IN: AIFUWA, FAUSTINE			
09:37				MISSED JUMPER by ADDERLY, TYTIONIA
09:37	BLOCK by CHERRY, JAILIN			
09:33	REBOUND (DEF) by CHERRY, JAILIN			
09:21	TURNOVER (LOSTBALL) by AIFUWA, FAUSTINE			
09:21				STEAL by ADDERLY, TYTIONIA
09:15		27-31	V 4	GOOD! 3PTR by ULEL, NASRIN [FB]
09:15				ASSIST by JEWETT-GILES, KERI
08:55	MISSED 3PTR by RICHARD-HARRIS, JAELYN			
08:52	REBOUND (OFF) by AIFUWA, FAUSTINE			
08:51	MISSED LAYUP by AIFUWA, FAUSTINE			
08:46				REBOUND (DEF) by PHILLS, KERSTIE
08:44		29-31	V 2	GOOD! LAYUP by JEWETT-GILES, KERI [FB]
08:21	GOOD! JUMPER by CHERRY, JAILIN	29-33	V 4	
08:10		31-33	V 2	GOOD! LAYUP by JEWETT-GILES, KERI
08:10	FOUL (PERSONAL) by RICHARD-HARRIS, JAELYN			
08:10	SUB OUT: RICHARD-HARRIS, JAELYN			
08:10	SUB IN: SEAY, KARLI			
08:10		32-33	V 1	GOOD! FT by JEWETT-GILES, KERI
07:54	MISSED JUMPER by CHERRY, JAILIN			
07:52	REBOUND (OFF) by TEAM			
07:51	MISSED JUMPER by MITCHELL, AYANA			
07:49	REBOUND (OFF) by SEAY, KARLI			
07:40	MISSED JUMPER by AIFUWA, FAUSTINE			
07:38	REBOUND (OFF) by MITCHELL, AYANA			
07:36	GOOD! JUMPER by MITCHELL, AYANA	32-35	V 3	
07:25		34-35	V 1	GOOD! LAYUP by JEWETT-GILES, KERI [PNT]
07:25				ASSIST by ULEL, NASRIN
07:10	GOOD! JUMPER by POINTER, KHAYLA [PNT]	34-37	V 3	
07:00				MISSED LAYUP by ULEL, NASRIN
06:56	REBOUND (DEF) by POINTER, KHAYLA			
06:53	FOUL (OFF) by POINTER, KHAYLA			
06:53	TURNOVER (OFFENSIVE) by POINTER, KHAYLA			
06:37	SUB OUT: AIFUWA, FAUSTINE			
06:37	SUB IN: TRASI, AWA			
06:27		36-37	V 1	GOOD! LAYUP by JEWETT-GILES, KERI [PNT]
06:05	GOOD! JUMPER by POINTER, KHAYLA	36-39	V 3	
05:48				MISSED LAYUP by ADDERLY, TYTIONIA
05:45	REBOUND (DEF) by MITCHELL, AYANA			
05:42	MISSED LAYUP by CHERRY, JAILIN			
05:38				REBOUND (DEF) by PHILLS, KERSTIE
05:29		39-39	T	GOOD! 3PTR by JEWETT-GILES, KERI
05:12				FOUL (PERSONAL) by PHILLS, KERSTIE
05:12				SUB OUT: WINGATE, DAVION
05:12				SUB OUT: PHILLS, KERSTIE
05:12				SUB IN: BLAIR, ALYSSA
05:12				SUB IN: O'NEAL, ASHLI
05:12	SUB OUT: MITCHELL, AYANA			
05:12	SUB IN: AIFUWA, FAUSTINE			
05:12	MISSED FT by POINTER, KHAYLA			
05:12	REBOUND (OFF) by TEAM			
05:12	GOOD! FT by POINTER, KHAYLA	39-40	V 1	
05:12	SUB OUT: POINTER, KHAYLA			
05:12	SUB IN: RICHARD-HARRIS, JAELYN			
04:58	FOUL (PERSONAL) by SEAY, KARLI			
04:58				
04:58				MISSED FT by JEWETT-GILES, KERI
04:58				REBOUND (OFF) by TEAM
04:58		40-40	T	GOOD! FT by JEWETT-GILES, KERI
04:36				FOUL (PERSONAL) by ADDERLY, TYTIONIA
04:36	GOOD! FT by AIFUWA, FAUSTINE	40-41	V 1	
04:36	GOOD! FT by AIFUWA, FAUSTINE	40-42	V 2	
04:15				MISSED LAYUP by ADDERLY, TYTIONIA
04:13	REBOUND (DEF) by TRASI, AWA			
03:50	TURNOVER (BADPASS) by CHERRY, JAILIN			
03:50				STEAL by ADDERLY, TYTIONIA
03:41				TURNOVER (BADPASS) by JEWETT-GILES, KERI

Time	VISITORS: LSU	Score	Margin	HOME: FGCU
03:41	STEAL by SEAY, KARLI			
03:32	MISSED JUMPER by AIFUWA, FAUSTINE			
03:30	REBOUND (OFF) by CHERRY, JAILIN			
03:28	GOOD! JUMPER by CHERRY, JAILIN	40-44	V 4	
03:06	FOUL (PERSONAL) by SEAY, KARLI			
03:06				SUB OUT: ULEL, NASRIN
03:06				SUB IN: WINGATE, DAVION
03:06	SUB OUT: SEAY, KARLI			
03:06	SUB OUT: AIFUWA, FAUSTINE			
03:06	SUB IN: POINTER, KHAYLA			
03:06	SUB IN: MITCHELL, AYANA			
03:06				MISSED 3PTR by JEWETT-GILES, KERI
03:04	REBOUND (DEF) by TEAM			
02:52	FOUL (OFF) by TRASI, AWA			
02:52	TURNOVER (OFFENSIVE) by TRASI, AWA			
02:28		43-44	V 1	GOOD! 3PTR by O'NEAL, ASHLI
02:28				ASSIST by ADDERLY, TYTIONIA
02:12				FOUL (PERSONAL) by ADDERLY, TYTIONIA
02:12				SUB OUT: ADDERLY, TYTIONIA
02:12				SUB IN: PHILLS, KERSTIE
02:12	SUB OUT: CHERRY, JAILIN			
02:12	SUB IN: BROOKS, MERCEDES			
02:08				FOUL (PERSONAL) by BLAIR, ALYSSA
02:08	GOOD! LAYUP by MITCHELL, AYANA [PNT]	43-46	V 3	
01:44	FOUL (PERSONAL) by RICHARD-HARRIS, JAELYN			
01:44				MISSED FT by JEWETT-GILES, KERI
01:44				REBOUND (OFF) by TEAM
01:44		44-46	V 2	GOOD! FT by JEWETT-GILES, KERI
01:23	GOOD! LAYUP by POINTER, KHAYLA	44-48	V 4	
01:04				MISSED LAYUP by WINGATE, DAVION
01:01	REBOUND (DEF) by MITCHELL, AYANA			
00:40	MISSED 3PTR by TRASI, AWA			
00:37				REBOUND (DEF) by JEWETT-GILES, KERI
00:13		47-48	V 1	GOOD! 3PTR by JEWETT-GILES, KERI
00:04	GOOD! 3PTR by POINTER, KHAYLA	47-51	V 4	

LSU 51, FGCU 47

Points from (This Period)	LSU	FGC
In the Paint	6	8
Off Turns	2	8
2nd Chance	4	0
Fast Break	0	5
Bench	0	3

**Official Box Score**  
**LSU vs FGCU**  
**Fourth Quarter Statistics Only**  
**December 19, 2019 at Alico Arena - Fort Myers, Fla.**



### LSU 23

No.	Player	S	Pts	FG	3FG	FT	OR	DR	TR	PF	A	TO	Blk	Stl	Min	+/-
01	CHERRY, JAILIN	G	0	0-0	0-0	0-0	0	0	0	0	0	1	0	0	2	1
03	POINTER, KHAYLA	G	10	1-5	0-3	8-8	1	1	2	1	2	1	0	1	10	7
05	MITCHELL, AYANA	F	1	0-0	0-0	1-2	0	2	2	0	0	0	0	0	7	10
12	BROOKS, MERCEDES	G	0	0-0	0-0	0-0	0	1	1	0	0	0	0	0	5	-3
24	AIFUWA, FAUSTINE	C	4	1-2	0-0	2-2	0	3	3	2	0	1	1	0	8	5
00	TRASI, AWA	F	2	1-2	0-0	0-0	0	0	0	1	0	0	0	0	4	-1
13	RICHARD-HARRIS, JAELYN	G	2	1-1	0-0	0-0	0	0	0	0	0	0	0	1	10	7
23	SEAY, KARLI	G	4	2-3	0-1	0-0	0	0	0	0	0	0	1	2	2	9
	TEAM						0	1	1	0		0				
<b>TOTALS</b>			<b>23</b>	<b>6-13</b>	<b>0-4</b>	<b>11-12</b>	<b>1</b>	<b>8</b>	<b>9</b>	<b>4</b>	<b>2</b>	<b>3</b>	<b>2</b>	<b>4</b>	<b>49</b>	

#### Shooting By Period

Period	FG	FG%	3FG	3FG%	FT	FT%
Game	29-58	50.0%	2-10	20.0%	14-19	73.7%

Deadball Rebounds: 2,0

### FGCU 16

No.	Player	S	Pts	FG	3FG	FT	OR	DR	TR	PF	A	TO	Blk	Stl	Min	+/-
00	WINGATE, DAVION	G	8	3-6	1-3	1-2	1	2	3	2	0	1	0	0	8	-5
03	JEWETT-GILES, KERI	G	2	1-5	0-1	0-0	0	1	1	1	3	2	0	1	10	-7
13	PHILLS, KERSTIE	G	2	1-1	0-0	0-0	0	0	0	0	0	1	0	0	7	-8
31	ULEL, NASRIN	G	2	1-3	0-2	0-0	0	1	1	3	0	1	1	0	10	-7
42	ADDERLY, TYTIONIA	F	0	0-1	0-0	0-0	0	2	2	1	0	0	0	0	8	-2
02	BLAIR, ALYSSA	G	0	0-0	0-0	0-0	0	0	0	0	0	0	0	0	4	1
05	MARINKOVIC, ANJA	G	0	0-0	0-0	0-0	0	0	0	0	0	0	0	0	0	-4
32	LIST, EMMA	G	0	0-0	0-0	0-0	0	0	0	1	0	0	0	0	0	-1
34	O'NEAL, ASHLI	G	2	1-1	0-0	0-0	0	0	0	1	0	0	0	0	2	-2
	TEAM						1	1	2	0		0				
<b>TOTALS</b>			<b>16</b>	<b>7-17</b>	<b>1-6</b>	<b>1-2</b>	<b>2</b>	<b>7</b>	<b>9</b>	<b>9</b>	<b>3</b>	<b>5</b>	<b>1</b>	<b>1</b>	<b>49</b>	

#### Shooting By Period

Period	FG	FG%	3FG	3FG%	FT	FT%
Game	23-63	36.5%	10-30	33.3%	7-11	63.6%

Deadball Rebounds: 3,0

#### Game Notes:

Officials: **Kylie Galloway**, **Ed Sidlasky**, **Chastity Taylor**  
Attendance: **2335**

Start Time: **07:02 PM ET**  
End Time: **08:54 PM ET**  
Game Duration: **1:52**

Score	1st	2nd	3rd	4th	TOT
LSU	15	16	20	23	<b>74</b>
FGC	13	11	23	16	<b>63</b>

Points from (This Period)	LSU	FGC
In the Paint	8	12
Off Turns	6	2
2nd Chance	0	2
Fast Break	10	5
Bench	8	2

**Official Play-By-Play**  
**LSU vs FGCU**  
**Fourth Quarter**  
**December 19, 2019 at Alico Arena - Fort Myers, Fla.**



**Period 4**

**Starters:**

LSU: 12 BROOKS, MERCEDES (G); 24 AIFUWA, FAUSTINE (C); 1 CHERRY, JAILIN (G); 3 POINTER, KHAYLA (G); 5 MITCHELL, AYANA (F);  
FGCU: 0 WINGATE, DAVION (G); 3 JEWETT-GILES, KERI (G); 13 PHILLS, KERSTIE (G); 31 ULEL, NASRIN (G); 42 ADDERLY, TYTIONIA (F);

Time	VISITORS: LSU	Score	Margin	HOME: FGCU
10:00				SUB OUT: WINGATE, DAVION
10:00				SUB OUT: BLAIR, ALYSSA
10:00				SUB IN: ULEL, NASRIN
10:00				SUB IN: ADDERLY, TYTIONIA
09:53				FOUL (PERSONAL) by ADDERLY, TYTIONIA
09:53				SUB OUT: ADDERLY, TYTIONIA
09:53				SUB IN: BLAIR, ALYSSA
09:50				FOUL (PERSONAL) by O'NEAL, ASHLI
09:45	GOOD! LAYUP by POINTER, KHAYLA [PNT]	47-53	V 6	
09:36				MISSED LAYUP by JEWETT-GILES, KERI
09:30	REBOUND (DEF) by MITCHELL, AYANA			
09:27	GOOD! LAYUP by TRASI, AWA	47-55	V 8	
09:27	ASSIST by POINTER, KHAYLA			
09:16				TURNOVER (OTHER) by ULEL, NASRIN
08:48	MISSED LAYUP by TRASI, AWA			
08:44				REBOUND (DEF) by ULEL, NASRIN
08:35		49-55	V 6	GOOD! LAYUP by O'NEAL, ASHLI [PNT]
08:35				ASSIST by JEWETT-GILES, KERI
08:22	FOUL (OFF) by POINTER, KHAYLA			
08:22	TURNOVER (OFFENSIVE) by POINTER, KHAYLA			
08:22				SUB OUT: PHILLS, KERSTIE
08:22				SUB OUT: O'NEAL, ASHLI
08:22				SUB IN: WINGATE, DAVION
08:22				SUB IN: ADDERLY, TYTIONIA
08:22	SUB OUT: MITCHELL, AYANA			
08:22	SUB IN: AIFUWA, FAUSTINE			
08:13				MISSED LAYUP by JEWETT-GILES, KERI
08:13	BLOCK by AIFUWA, FAUSTINE			
08:13				REBOUND (OFF) by TEAM
08:13				MISSED 3PTR by ULEL, NASRIN
08:13	REBOUND (DEF) by AIFUWA, FAUSTINE			
07:42	MISSED JUMPER by AIFUWA, FAUSTINE			
07:41				REBOUND (DEF) by WINGATE, DAVION
07:32		52-55	V 3	GOOD! 3PTR by WINGATE, DAVION
07:32				ASSIST by JEWETT-GILES, KERI
07:19	MISSED 3PTR by POINTER, KHAYLA			
07:14				REBOUND (DEF) by WINGATE, DAVION
07:14	FOUL (PERSONAL) by TRASI, AWA			
06:48		54-55	V 1	GOOD! LAYUP by ULEL, NASRIN [PNT]
06:27	GOOD! LAYUP by AIFUWA, FAUSTINE [PNT]	54-57	V 3	
06:27	ASSIST by POINTER, KHAYLA			
06:13				MISSED 3PTR by ULEL, NASRIN
06:11	REBOUND (DEF) by BROOKS, MERCEDES			
05:41	MISSED 3PTR by POINTER, KHAYLA			
05:41				REBOUND (DEF) by TEAM
05:41				SUB OUT: BLAIR, ALYSSA
05:41				SUB IN: PHILLS, KERSTIE
05:41	SUB OUT: TRASI, AWA			
05:41	SUB IN: MITCHELL, AYANA			
05:19		56-57	V 1	GOOD! LAYUP by WINGATE, DAVION [PNT]
05:03				FOUL (PERSONAL) by JEWETT-GILES, KERI
05:03				
04:58	SUB OUT: BROOKS, MERCEDES			
04:58	SUB IN: CHERRY, JAILIN			
04:37	MISSED 3PTR by POINTER, KHAYLA			
04:35				REBOUND (DEF) by JEWETT-GILES, KERI
04:31		58-57	H 1	GOOD! JUMPER by JEWETT-GILES, KERI [FB/PNT]
04:22	TURNOVER (BADPASS) by CHERRY, JAILIN			
04:22				STEAL by JEWETT-GILES, KERI
04:17		60-57	H 3	GOOD! LAYUP by PHILLS, KERSTIE [FB]
04:17				ASSIST by JEWETT-GILES, KERI
03:59	MISSED JUMPER by POINTER, KHAYLA			
03:59				BLOCK by ULEL, NASRIN
03:53	REBOUND (OFF) by POINTER, KHAYLA			
03:45	FOUL (OFF) by AIFUWA, FAUSTINE			
03:45	TURNOVER (OFFENSIVE) by AIFUWA, FAUSTINE			
03:42				MISSED 3PTR by JEWETT-GILES, KERI
03:39	REBOUND (DEF) by AIFUWA, FAUSTINE			
03:33				FOUL (PERSONAL) by WINGATE, DAVION
03:33	GOOD! FT by MITCHELL, AYANA	60-58	H 2	

Time	VISITORS: LSU	Score	Margin	HOME: FGCU
03:33	MISSED FT by MITCHELL, AYANA			
03:33				REBOUND (DEF) by ADDERLY, TYTIONIA
03:13				TURNOVER (BADPASS) by PHILLS, KERSTIE
03:13	STEAL by POINTER, KHAYLA			
03:09				FOUL (PERSONAL) by WINGATE, DAVION
03:09	GOOD! FT by POINTER, KHAYLA	60-59	H 1	
03:09	GOOD! FT by POINTER, KHAYLA	60-60	T	
02:57				TURNOVER (LOSTBALL) by JEWETT-GILES, KERI
02:57	STEAL by RICHARD-HARRIS, JAELYN			
02:43	GOOD! JUMPER by RICHARD-HARRIS, JAELYN	60-62	V 2	
02:35	SUB OUT: CHERRY, JAILIN			
02:35	SUB IN: SEAY, KARLI			
02:29				TURNOVER (BADPASS) by JEWETT-GILES, KERI
02:29	STEAL by SEAY, KARLI			
02:22	GOOD! JUMPER by SEAY, KARLI [FB/PNT]	60-64	V 4	
02:22				
01:55				MISSED LAYUP by ADDERLY, TYTIONIA
01:52	REBOUND (DEF) by POINTER, KHAYLA			
01:23	MISSED 3PTR by SEAY, KARLI			
01:21				REBOUND (DEF) by ADDERLY, TYTIONIA
01:16				MISSED 3PTR by WINGATE, DAVION
01:13	REBOUND (DEF) by MITCHELL, AYANA			
00:51	GOOD! JUMPER by SEAY, KARLI	60-66	V 6	
00:51				TIMEOUT 30SEC
00:45				MISSED LAYUP by JEWETT-GILES, KERI
00:42	REBOUND (DEF) by AIFUWA, FAUSTINE			
00:41				FOUL (PERSONAL) by ULEL, NASRIN
00:41	GOOD! FT by POINTER, KHAYLA [FB]	60-67	V 7	
00:41	GOOD! FT by POINTER, KHAYLA [FB]	60-68	V 8	
00:33				MISSED 3PTR by WINGATE, DAVION
00:31	REBOUND (DEF) by TEAM			
00:33	TIMEOUT 30SEC			
00:33				SUB OUT: ADDERLY, TYTIONIA
00:33				SUB IN: LIST, EMMA
00:32				FOUL (PERSONAL) by LIST, EMMA
00:32				SUB OUT: LIST, EMMA
00:32				SUB IN: MARINKOVIC, ANJA
00:32	GOOD! FT by AIFUWA, FAUSTINE [FB]	60-69	V 9	
00:32	GOOD! FT by AIFUWA, FAUSTINE [FB]	60-70	V 10	
00:29	FOUL (PERSONAL) by AIFUWA, FAUSTINE			
00:29				SUB OUT: MARINKOVIC, ANJA
00:29				SUB IN: LIST, EMMA
00:29				MISSED FT by WINGATE, DAVION
00:29				REBOUND (OFF) by TEAM
00:29		61-70	V 9	GOOD! FT by WINGATE, DAVION [FB]
00:29	TIMEOUT 30SEC			
00:28				FOUL (PERSONAL) by ULEL, NASRIN
00:28	GOOD! FT by POINTER, KHAYLA [FB]	61-71	V 10	
00:28	GOOD! FT by POINTER, KHAYLA [FB]	61-72	V 11	
00:28				SUB OUT: LIST, EMMA
00:28				SUB IN: ADDERLY, TYTIONIA
00:28				TIMEOUT TEAM
00:23				MISSED JUMPER by WINGATE, DAVION
00:23	BLOCK by SEAY, KARLI			
00:18				REBOUND (OFF) by WINGATE, DAVION
00:18		63-72	V 9	GOOD! LAYUP by WINGATE, DAVION
00:15				FOUL (PERSONAL) by ULEL, NASRIN
00:15				SUB OUT: PHILLS, KERSTIE
00:15				SUB IN: MARINKOVIC, ANJA
00:15	GOOD! FT by POINTER, KHAYLA [FB]	63-73	V 10	
00:15	GOOD! FT by POINTER, KHAYLA [FB]	63-74	V 11	
00:15				TURNOVER (BADPASS) by WINGATE, DAVION
00:15	STEAL by SEAY, KARLI			

LSU 74, FGCU 63

Points from (This Period)	LSU	FGC
In the Paint	8	12
Off Turns	6	2
2nd Chance	0	2
Fast Break	10	5
Bench	8	2

**Official Scoring/Possession Reference Chart**  
**LSU vs FGCU**  
**Period 1**  
**December 19, 2019 at Alico Arena - Fort Myers, Fla.**



**Period 1**

**Starters:**

LSU: 12 BROOKS, MERCEDES (G); 24 AIFUWA, FAUSTINE (C); 1 CHERRY, JAILIN (G); 3 POINTER, KHAYLA (G); 5 MITCHELL, AYANA (F);  
 FGCU: 0 WINGATE, DAVION (G); 3 JEWETT-GILES, KERI (G); 13 PHILLS, KERSTIE (G); 31 ULEL, NASRIN (G); 42 ADDERLY, TYTIONIA (F);

Time	VISITORS: LSU	Score	Margin	HOME: FGCU
09:26		3-0	H 3	GOOD! 3PTR by JEWETT-GILES, KERI
08:13		5-0	H 5	GOOD! LAYUP by PHILLS, KERSTIE [FB]
05:41		7-0	H 7	GOOD! JUMPER by JEWETT-GILES, KERI [PNT]
05:22		10-0	H 10	GOOD! 3PTR by JEWETT-GILES, KERI
04:42		13-0	H 13	GOOD! 3PTR by ADDERLY, TYTIONIA
04:19	GOOD! LAYUP by CHERRY, JAILIN [PNT]	13-2	H 11	
03:55	GOOD! JUMPER by POINTER, KHAYLA	13-4	H 9	
03:34	GOOD! LAYUP by TRASI, AWA [FB/PNT]	13-6	H 7	
02:44	GOOD! JUMPER by AIFUWA, FAUSTINE [PNT]	13-8	H 5	
01:48	GOOD! JUMPER by POINTER, KHAYLA	13-10	H 3	
00:42	GOOD! 3PTR by TRASI, AWA	13-13	T	
00:00	GOOD! JUMPER by TRASI, AWA [PNT]	13-15	V 2	

**LSU 15, FGCU 13**

**Official Scoring/Possession Reference Chart**  
**LSU vs FGCU**  
**Period 2**  
**December 19, 2019 at Alico Arena - Fort Myers, Fla.**



**Period 2**

**Starters:**

LSU: 12 BROOKS, MERCEDES (G); 24 AIFUWA, FAUSTINE (C); 1 CHERRY, JAILIN (G); 3 POINTER, KHAYLA (G); 5 MITCHELL, AYANA (F);  
FGCU: 0 WINGATE, DAVION (G); 3 JEWETT-GILES, KERI (G); 13 PHILLS, KERSTIE (G); 31 ULEL, NASRIN (G); 42 ADDERLY, TYTONIA (F);

Time	VISITORS: LSU	Score	Margin	HOME: FGCU
09:43	GOOD! LAYUP by TRASI, AWA [PNT]	13-17	V 4	
09:43		16-17	V 1	GOOD! 3PTR by JEWETT-GILES, KERI
09:13	GOOD! LAYUP by MITCHELL, AYANA	16-19	V 3	
08:39	GOOD! JUMPER by POINTER, KHAYLA	16-21	V 5	
07:35	GOOD! JUMPER by POINTER, KHAYLA	16-23	V 7	
05:19	GOOD! LAYUP by MITCHELL, AYANA [PNT]	16-25	V 9	
03:42		18-25	V 7	GOOD! LAYUP by JEWETT-GILES, KERI [FB]
02:36	GOOD! LAYUP by MITCHELL, AYANA [FB/PNT]	18-27	V 9	
02:09		21-27	V 6	GOOD! 3PTR by O'NEAL, ASHLI
01:43	GOOD! LAYUP by POINTER, KHAYLA [PNT]	21-29	V 8	
01:25		22-29	V 7	GOOD! FT by JEWETT-GILES, KERI
01:08	GOOD! LAYUP by MITCHELL, AYANA [PNT]	22-31	V 9	
00:06		23-31	V 8	GOOD! FT by JEWETT-GILES, KERI [FB]
00:06		24-31	V 7	GOOD! FT by JEWETT-GILES, KERI [FB]

**LSU 31, FGCU 24**

**Official Scoring/Possession Reference Chart**  
**LSU vs FGCU**  
**Period 3**  
**December 19, 2019 at Alico Arena - Fort Myers, Fla.**



**Period 3**

**Starters:**

LSU: 12 BROOKS, MERCEDES (G); 24 AIFUWA, FAUSTINE (C); 1 CHERRY, JAILIN (G); 3 POINTER, KHAYLA (G); 5 MITCHELL, AYANA (F);  
 FGCU: 0 WINGATE, DAVION (G); 3 JEWETT-GILES, KERI (G); 13 PHILLS, KERSTIE (G); 31 ULEL, NASRIN (G); 42 ADDERLY, TYTONIA (F);

Time	VISITORS: LSU	Score	Margin	HOME: FGCU
09:15		27-31	V 4	GOOD! 3PTR by ULEL, NASRIN [FB]
08:44		29-31	V 2	GOOD! LAYUP by JEWETT-GILES, KERI [FB]
08:21	GOOD! JUMPER by CHERRY, JAILIN	29-33	V 4	
08:10		31-33	V 2	GOOD! LAYUP by JEWETT-GILES, KERI
08:10		32-33	V 1	GOOD! FT by JEWETT-GILES, KERI
07:36	GOOD! JUMPER by MITCHELL, AYANA	32-35	V 3	
07:25		34-35	V 1	GOOD! LAYUP by JEWETT-GILES, KERI [PNT]
07:10	GOOD! JUMPER by POINTER, KHAYLA [PNT]	34-37	V 3	
06:27		36-37	V 1	GOOD! LAYUP by JEWETT-GILES, KERI [PNT]
06:05	GOOD! JUMPER by POINTER, KHAYLA	36-39	V 3	
05:29		39-39	T	GOOD! 3PTR by JEWETT-GILES, KERI
05:12	GOOD! FT by POINTER, KHAYLA	39-40	V 1	
04:58		40-40	T	GOOD! FT by JEWETT-GILES, KERI
04:36	GOOD! FT by AIFUWA, FAUSTINE	40-41	V 1	
04:36	GOOD! FT by AIFUWA, FAUSTINE	40-42	V 2	
03:28	GOOD! JUMPER by CHERRY, JAILIN	40-44	V 4	
02:28		43-44	V 1	GOOD! 3PTR by O'NEAL, ASHLI
02:08	GOOD! LAYUP by MITCHELL, AYANA [PNT]	43-46	V 3	
01:44		44-46	V 2	GOOD! FT by JEWETT-GILES, KERI
01:23	GOOD! LAYUP by POINTER, KHAYLA	44-48	V 4	
00:13		47-48	V 1	GOOD! 3PTR by JEWETT-GILES, KERI
00:04	GOOD! 3PTR by POINTER, KHAYLA	47-51	V 4	

**LSU 51, FGCU 47**

**Official Scoring/Possession Reference Chart**  
**LSU vs FGCU**  
**Period 4**  
**December 19, 2019 at Alico Arena - Fort Myers, Fla.**



**Period 4**

**Starters:**

LSU: 12 BROOKS, MERCEDES (G); 24 AIFUWA, FAUSTINE (C); 1 CHERRY, JAILIN (G); 3 POINTER, KHAYLA (G); 5 MITCHELL, AYANA (F);  
 FGCU: 0 WINGATE, DAVION (G); 3 JEWETT-GILES, KERI (G); 13 PHILLS, KERSTIE (G); 31 ULEL, NASRIN (G); 42 ADDERLY, TYTONIA (F);

Time	VISITORS: LSU	Score	Margin	HOME: FGCU
09:45	GOOD! LAYUP by POINTER, KHAYLA [PNT]	47-53	V 6	
09:27	GOOD! LAYUP by TRASI, AWA	47-55	V 8	
08:35		49-55	V 6	GOOD! LAYUP by O'NEAL, ASHLI [PNT]
07:32		52-55	V 3	GOOD! 3PTR by WINGATE, DAVION
06:48		54-55	V 1	GOOD! LAYUP by ULEL, NASRIN [PNT]
06:27	GOOD! LAYUP by AIFUWA, FAUSTINE [PNT]	54-57	V 3	
05:19		56-57	V 1	GOOD! LAYUP by WINGATE, DAVION [PNT]
04:31		58-57	H 1	GOOD! JUMPER by JEWETT-GILES, KERI [FB/PNT]
04:17		60-57	H 3	GOOD! LAYUP by PHILLS, KERSTIE [FB]
03:33	GOOD! FT by MITCHELL, AYANA	60-58	H 2	
03:09	GOOD! FT by POINTER, KHAYLA	60-59	H 1	
03:09	GOOD! FT by POINTER, KHAYLA	60-60	T	
02:43	GOOD! JUMPER by RICHARD-HARRIS, JAELYN	60-62	V 2	
02:22	GOOD! JUMPER by SEAY, KARLI [FB/PNT]	60-64	V 4	
00:51	GOOD! JUMPER by SEAY, KARLI	60-66	V 6	
00:41	GOOD! FT by POINTER, KHAYLA [FB]	60-67	V 7	
00:41	GOOD! FT by POINTER, KHAYLA [FB]	60-68	V 8	
00:32	GOOD! FT by AIFUWA, FAUSTINE [FB]	60-69	V 9	
00:32	GOOD! FT by AIFUWA, FAUSTINE [FB]	60-70	V 10	
00:29		61-70	V 9	GOOD! FT by WINGATE, DAVION [FB]
00:28	GOOD! FT by POINTER, KHAYLA [FB]	61-71	V 10	
00:28	GOOD! FT by POINTER, KHAYLA [FB]	61-72	V 11	
00:18		63-72	V 9	GOOD! LAYUP by WINGATE, DAVION
00:15	GOOD! FT by POINTER, KHAYLA [FB]	63-73	V 10	
00:15	GOOD! FT by POINTER, KHAYLA [FB]	63-74	V 11	

**LSU 74, FGCU 63**

**Official Substitutions Log**  
**LSU vs FGCU**  
**Period 1**  
**December 19, 2019 at Alico Arena - Fort Myers, Fla.**



VISITORS: LSU	Time	Score	HOME: FGCU
12 BROOKS, MERCEDES			0 WINGATE, DAVION
24 AIFUWA, FAUSTINE			3 JEWETT-GILES, KERI
1 CHERRY, JAILIN			13 PHILLS, KERSTIE
3 POINTER, KHAYLA			31 ULEL, NASRIN
5 MITCHELL, AYANA			42 ADDERLY, TYTIONIA
	06:57	0-5	SUB OUT: PHILLS, KERSTIE
	06:57		SUB IN: BLAIR, ALYSSA
	06:15	0-5	SUB OUT: WINGATE, DAVION
	06:15		SUB IN: O'NEAL, ASHLI
SUB OUT: 5 MITCHELL, AYANA	05:18	0-10	
SUB OUT: 12 BROOKS, MERCEDES	05:18		
SUB IN: 0 TRASI, AWA	05:18		
SUB IN: 13 RICHARD-HARRIS, JAELYN	05:18		
	04:09	2-13	SUB OUT: JEWETT-GILES, KERI
	04:09		SUB IN: WINGATE, DAVION
SUB OUT: 1 CHERRY, JAILIN	04:09		
SUB IN: 23 SEAY, KARLI	04:09		
	01:52	8-13	SUB OUT: BLAIR, ALYSSA
	01:52		SUB OUT: ULEL, NASRIN
	01:52		SUB OUT: O'NEAL, ASHLI
	01:52		SUB IN: JEWETT-GILES, KERI
	01:52		SUB IN: MARINKOVIC, ANJA
	01:52		SUB IN: PHILLS, KERSTIE
SUB OUT: 24 AIFUWA, FAUSTINE	01:52		
SUB IN: 5 MITCHELL, AYANA	01:52		

**LSU 15, FGCU 13**

**Official Substitutions Log**  
**LSU vs FGCU**  
**Period 2**  
**December 19, 2019 at Alico Arena - Fort Myers, Fla.**



VISITORS: LSU	Time	Score	HOME: FGCU
12 BROOKS, MERCEDES			0 WINGATE, DAVION
24 AIFUWA, FAUSTINE			3 JEWETT-GILES, KERI
1 CHERRY, JAILIN			13 PHILLS, KERSTIE
3 POINTER, KHAYLA			31 ULEL, NASRIN
5 MITCHELL, AYANA			42 ADDERLY, TYTIONIA
	10:00	-	SUB OUT: MARINKOVIC, ANJA
	10:00		SUB IN: ULEL, NASRIN
	08:28	21-16	SUB OUT: WINGATE, DAVION
	08:28		SUB IN: O'NEAL, ASHLI
SUB OUT: 0 TRASI, AWA	08:08	21-16	
SUB IN: 24 AIFUWA, FAUSTINE	08:08		
	06:12	23-16	SUB OUT: PHILLS, KERSTIE
	06:12		SUB OUT: ULEL, NASRIN
	06:12		SUB IN: WINGATE, DAVION
	06:12		SUB IN: BLAIR, ALYSSA
SUB OUT: 13 RICHARD-HARRIS, JAELYN	06:12		
SUB IN: 12 BROOKS, MERCEDES	06:12		
	04:45	25-16	SUB OUT: BLAIR, ALYSSA
	04:45		SUB OUT: O'NEAL, ASHLI
	04:45		SUB IN: PHILLS, KERSTIE
	04:45		SUB IN: ULEL, NASRIN
SUB OUT: 3 POINTER, KHAYLA	04:45		
SUB OUT: 5 MITCHELL, AYANA	04:45		
SUB IN: 0 TRASI, AWA	04:45		
SUB IN: 13 RICHARD-HARRIS, JAELYN	04:45		
SUB OUT: 23 SEAY, KARLI	03:02	25-18	
SUB OUT: 24 AIFUWA, FAUSTINE	03:02		
SUB IN: 3 POINTER, KHAYLA	03:02		
SUB IN: 5 MITCHELL, AYANA	03:02		
	02:32	27-18	SUB OUT: WINGATE, DAVION
	02:32		SUB IN: O'NEAL, ASHLI
SUB OUT: 12 BROOKS, MERCEDES	01:25	29-21	
SUB IN: 1 CHERRY, JAILIN	01:25		

**LSU 31, FGCU 24**

**Official Substitutions Log**  
**LSU vs FGCU**  
**Period 3**  
**December 19, 2019 at Alico Arena - Fort Myers, Fla.**



VISITORS: LSU	Time	Score	HOME: FGCU
12 BROOKS, MERCEDES			0 WINGATE, DAVION
24 AIFUWA, FAUSTINE			3 JEWETT-GILES, KERI
1 CHERRY, JAILIN			13 PHILLS, KERSTIE
3 POINTER, KHAYLA			31 ULEL, NASRIN
5 MITCHELL, AYANA			42 ADDERLY, TYTIONIA
	10:00	-	SUB OUT: O'NEAL, ASHLI
	10:00		SUB IN: WINGATE, DAVION
SUB OUT: 0 TRASI, AWA	10:00		
SUB IN: 24 AIFUWA, FAUSTINE	10:00		
SUB OUT: 13 RICHARD-HARRIS, JAELYN	08:10	33-31	
SUB IN: 23 SEAY, KARLI	08:10		
SUB OUT: 24 AIFUWA, FAUSTINE	06:37	37-34	
SUB IN: 0 TRASI, AWA	06:37		
	05:12	39-39	SUB OUT: WINGATE, DAVION
	05:12		SUB OUT: PHILLS, KERSTIE
	05:12		SUB IN: BLAIR, ALYSSA
	05:12		SUB IN: O'NEAL, ASHLI
SUB OUT: 5 MITCHELL, AYANA	05:12		
SUB IN: 24 AIFUWA, FAUSTINE	05:12		
SUB OUT: 3 POINTER, KHAYLA	05:12		
SUB IN: 13 RICHARD-HARRIS, JAELYN	05:12		
	03:06	44-40	SUB OUT: ULEL, NASRIN
	03:06		SUB IN: WINGATE, DAVION
SUB OUT: 23 SEAY, KARLI	03:06		
SUB OUT: 24 AIFUWA, FAUSTINE	03:06		
SUB IN: 3 POINTER, KHAYLA	03:06		
SUB IN: 5 MITCHELL, AYANA	03:06		
	02:12	44-43	SUB OUT: ADDERLY, TYTIONIA
	02:12		SUB IN: PHILLS, KERSTIE
SUB OUT: 1 CHERRY, JAILIN	02:12		
SUB IN: 12 BROOKS, MERCEDES	02:12		

**LSU 51, FGCU 47**

**Official Substitutions Log**  
**LSU vs FGCU**  
**Period 4**  
**December 19, 2019 at Alico Arena - Fort Myers, Fla.**



VISITORS: LSU	Time	Score	HOME: FGCU
12 BROOKS, MERCEDES			0 WINGATE, DAVION
24 AIFUWA, FAUSTINE			3 JEWETT-GILES, KERI
1 CHERRY, JAILIN			13 PHILLS, KERSTIE
3 POINTER, KHAYLA			31 ULEL, NASRIN
5 MITCHELL, AYANA			42 ADDERLY, TYTIONIA
	10:00	-	SUB OUT: WINGATE, DAVION
	10:00		SUB OUT: BLAIR, ALYSSA
	10:00		SUB IN: ULEL, NASRIN
	10:00		SUB IN: ADDERLY, TYTIONIA
	09:53	-	SUB OUT: ADDERLY, TYTIONIA
	09:53		SUB IN: BLAIR, ALYSSA
	08:22	55-49	SUB OUT: PHILLS, KERSTIE
	08:22		SUB OUT: O'NEAL, ASHLI
	08:22		SUB IN: WINGATE, DAVION
	08:22		SUB IN: ADDERLY, TYTIONIA
SUB OUT: 5 MITCHELL, AYANA	08:22		
SUB IN: 24 AIFUWA, FAUSTINE	08:22		
	05:41	57-54	SUB OUT: BLAIR, ALYSSA
	05:41		SUB IN: PHILLS, KERSTIE
SUB OUT: 0 TRASI, AWA	05:41		
SUB IN: 5 MITCHELL, AYANA	05:41		
SUB OUT: 12 BROOKS, MERCEDES	04:58	57-56	
SUB IN: 1 CHERRY, JAILIN	04:58		
SUB OUT: 1 CHERRY, JAILIN	02:35	62-60	
SUB IN: 23 SEAY, KARLI	02:35		
	00:33	68-60	SUB OUT: ADDERLY, TYTIONIA
	00:33		SUB IN: LIST, EMMA
	00:32	68-60	SUB OUT: LIST, EMMA
	00:32		SUB IN: MARINKOVIC, ANJA
	00:29	70-60	SUB OUT: MARINKOVIC, ANJA
	00:29		SUB IN: LIST, EMMA
	00:28	72-61	SUB OUT: LIST, EMMA
	00:28		SUB IN: ADDERLY, TYTIONIA
	00:15	72-63	SUB OUT: PHILLS, KERSTIE
	00:15		SUB IN: MARINKOVIC, ANJA

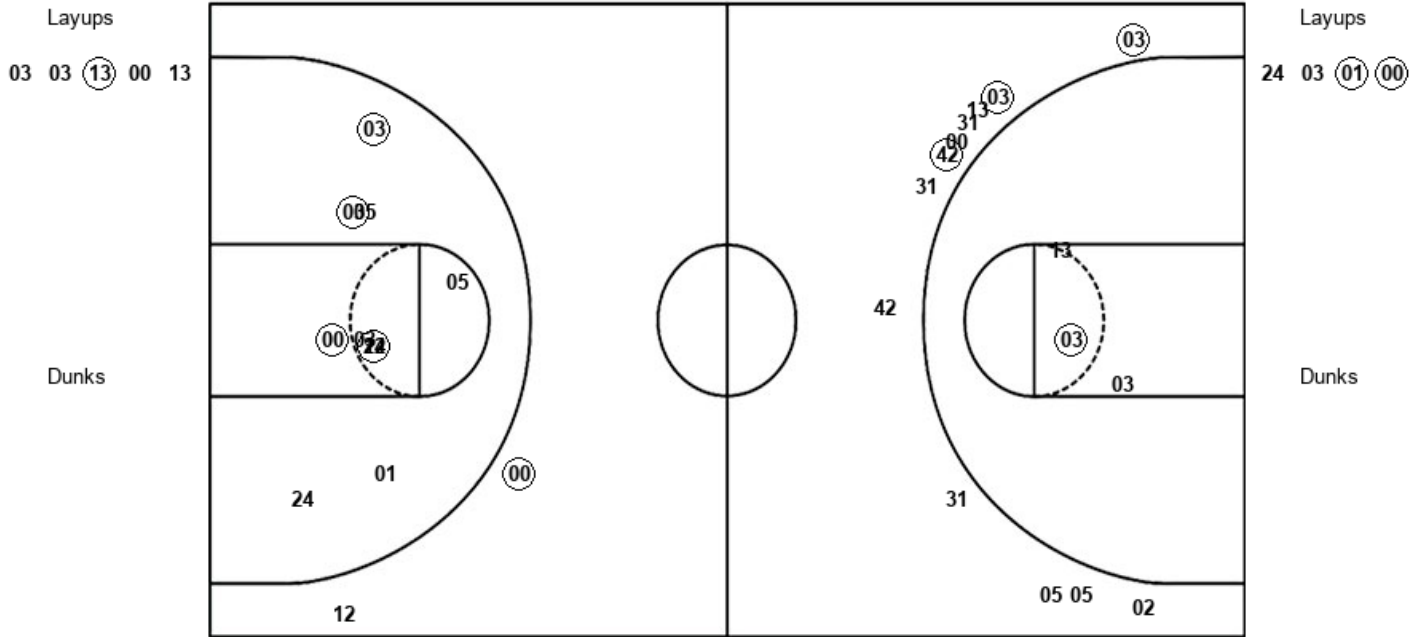
**LSU 74, FGCU 63**

Official Shot Chart  
**LSU vs FGCU**  
 PERIOD 1 Shots  
 December 19, 2019 at Alico Arena - Fort Myers, Fla.



**FGCU**

**LSU**



FGC : Period 1	Made	Att	Pct
Layups	1	5	20.0
Dunks	0	0	0
2PT Field Goals	2	8	25.0
3PT Field Goals	3	12	25.0
<b>Total Field Goals</b>	<b>5</b>	<b>20</b>	<b>25.0</b>

LSU : Period 1	Made	Att	Pct
Layups	2	4	50.0
Dunks	0	0	0
2PT Field Goals	6	14	42.9
3PT Field Goals	1	2	50.0
<b>Total Field Goals</b>	<b>7</b>	<b>16</b>	<b>43.8</b>

Official Shot Chart  
**LSU vs FGCU**  
 PERIOD 2 Shots  
 December 19, 2019 at Alico Arena - Fort Myers, Fla.

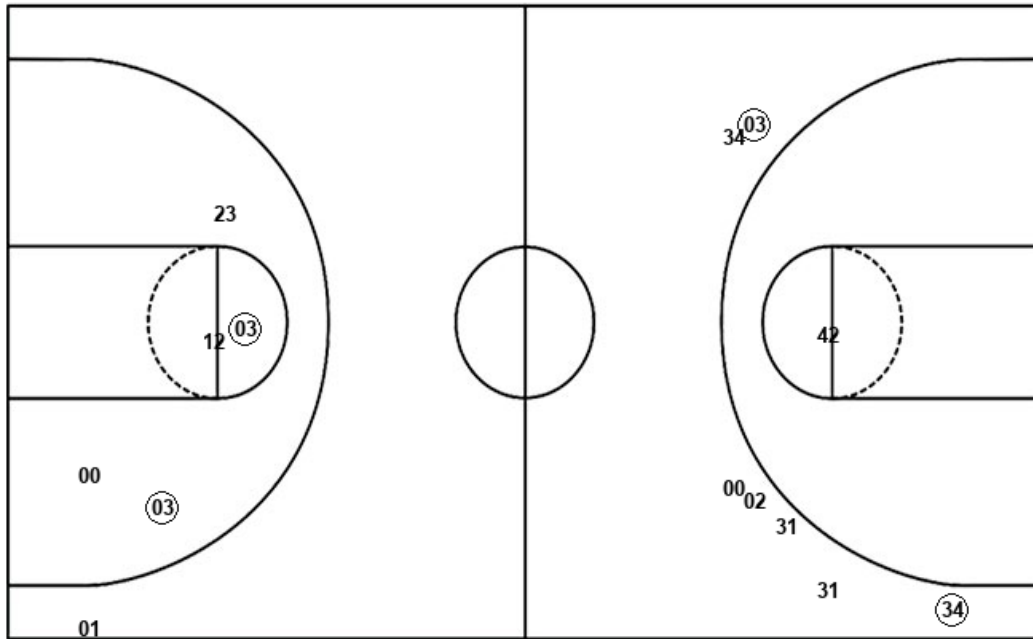


**FGCU**

**LSU**

Layups  
 00 31 13 (03)

Dunks



Layups  
 (00) (05) (05) (05) (03)  
 (05) 03

Dunks

FGC : Period 2	Made	Att	Pct
Layups	1	4	25.0
Dunks	0	0	0
2PT Field Goals	1	5	20.0
3PT Field Goals	2	7	28.6
<b>Total Field Goals</b>	<b>3</b>	<b>12</b>	<b>25.0</b>

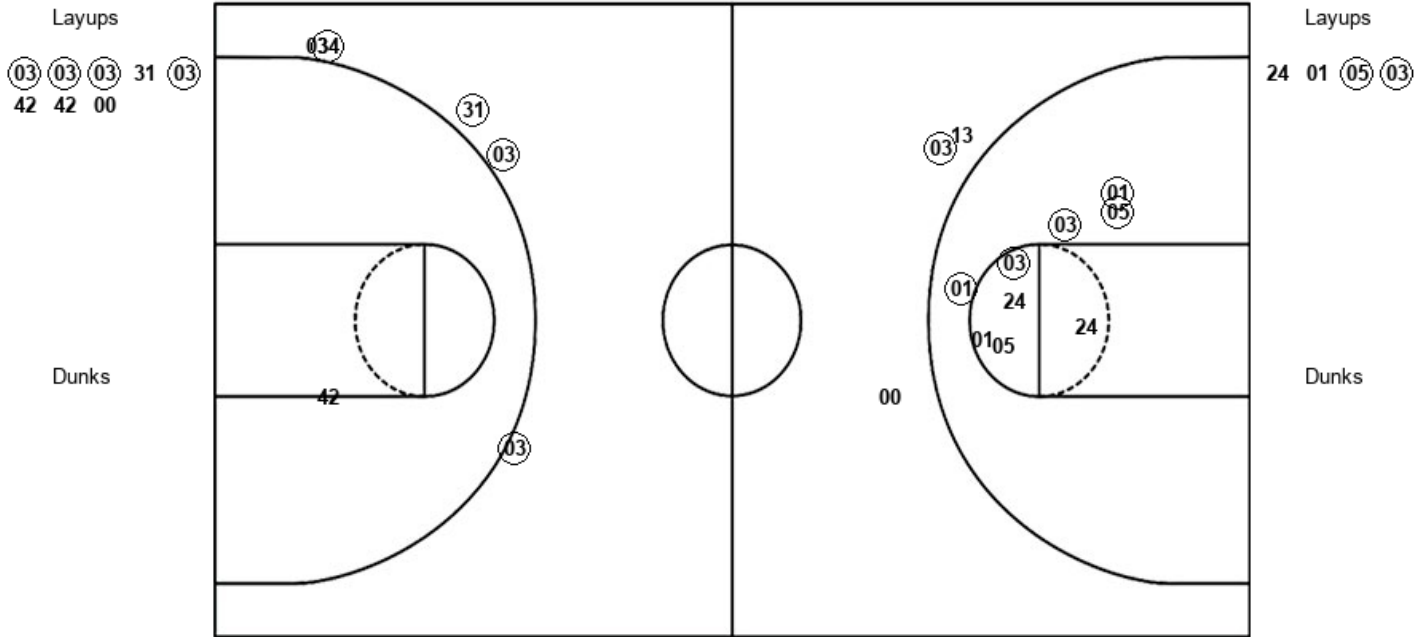
LSU : Period 2	Made	Att	Pct
Layups	6	7	85.7
Dunks	0	0	0
2PT Field Goals	8	12	66.7
3PT Field Goals	0	1	00.0
<b>Total Field Goals</b>	<b>8</b>	<b>13</b>	<b>61.5</b>

Official Shot Chart  
**LSU vs FGCU**  
 PERIOD 3 Shots  
 December 19, 2019 at Alico Arena - Fort Myers, Fla.



**FGCU**

**LSU**



FGC : Period 3	Made	Att	Pct
Layups	4	8	50.0
Dunks	0	0	0
2PT Field Goals	4	9	44.4
3PT Field Goals	4	5	80.0
<b>Total Field Goals</b>	<b>8</b>	<b>14</b>	<b>57.1</b>

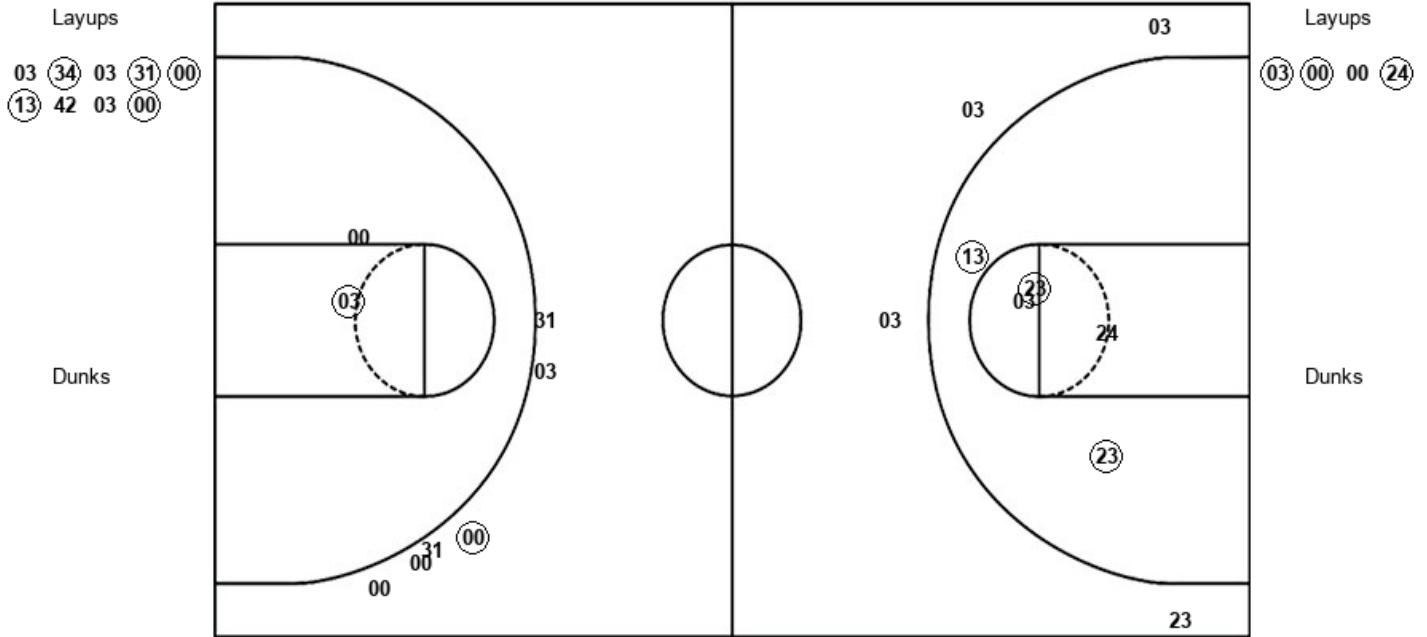
LSU : Period 3	Made	Att	Pct
Layups	2	4	50.0
Dunks	0	0	0
2PT Field Goals	7	13	53.8
3PT Field Goals	1	3	33.3
<b>Total Field Goals</b>	<b>8</b>	<b>16</b>	<b>50.0</b>

Official Shot Chart  
**LSU vs FGCU**  
 PERIOD 4 Shots  
 December 19, 2019 at Alico Arena - Fort Myers, Fla.



**FGCU**

**LSU**



FGC : Period 4	Made	Att	Pct
Layups	5	9	55.6
Dunks	0	0	0
2PT Field Goals	6	11	54.5
3PT Field Goals	1	6	16.7
<b>Total Field Goals</b>	<b>7</b>	<b>17</b>	<b>41.2</b>

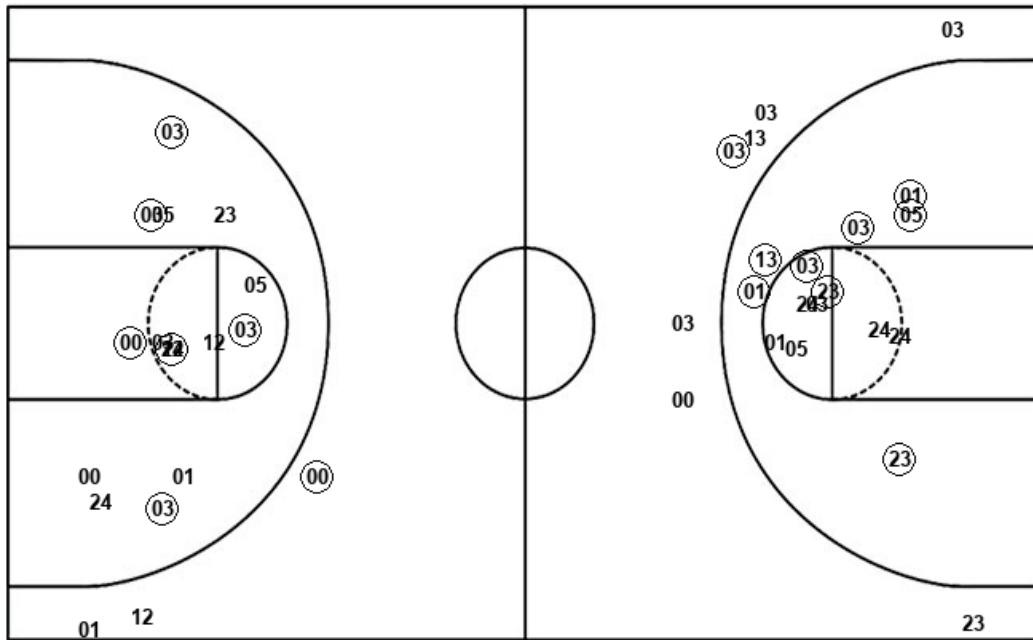
LSU : Period 4	Made	Att	Pct
Layups	3	4	75.0
Dunks	0	0	0
2PT Field Goals	6	9	66.7
3PT Field Goals	0	4	00.0
<b>Total Field Goals</b>	<b>6</b>	<b>13</b>	<b>46.2</b>

Official Shot Chart  
**LSU vs FGCU**  
 LSU Team Shots  
 December 19, 2019 at Alico Arena - Fort Myers, Fla.



Layups

Dunks



Layups

Dunks

24 03 01 00 00  
 05 05 05 03 05  
 03 24 01 05 03  
 03 00 00 24

LSU : Period 1	Made	Att	Pct
Layups	2	4	50.0
Dunks	0	0	0
2PT Field Goals	6	14	42.9
3PT Field Goals	1	2	50.0
<b>Total Field Goals</b>	<b>7</b>	<b>16</b>	<b>43.8</b>

LSU : Period 3	Made	Att	Pct
Layups	2	4	50.0
Dunks	0	0	0
2PT Field Goals	7	13	53.8
3PT Field Goals	1	3	33.3
<b>Total Field Goals</b>	<b>8</b>	<b>16</b>	<b>50.0</b>

LSU : Period 2	Made	Att	Pct
Layups	6	7	85.7
Dunks	0	0	0
2PT Field Goals	8	12	66.7
3PT Field Goals	0	1	00.0
<b>Total Field Goals</b>	<b>8</b>	<b>13</b>	<b>61.5</b>

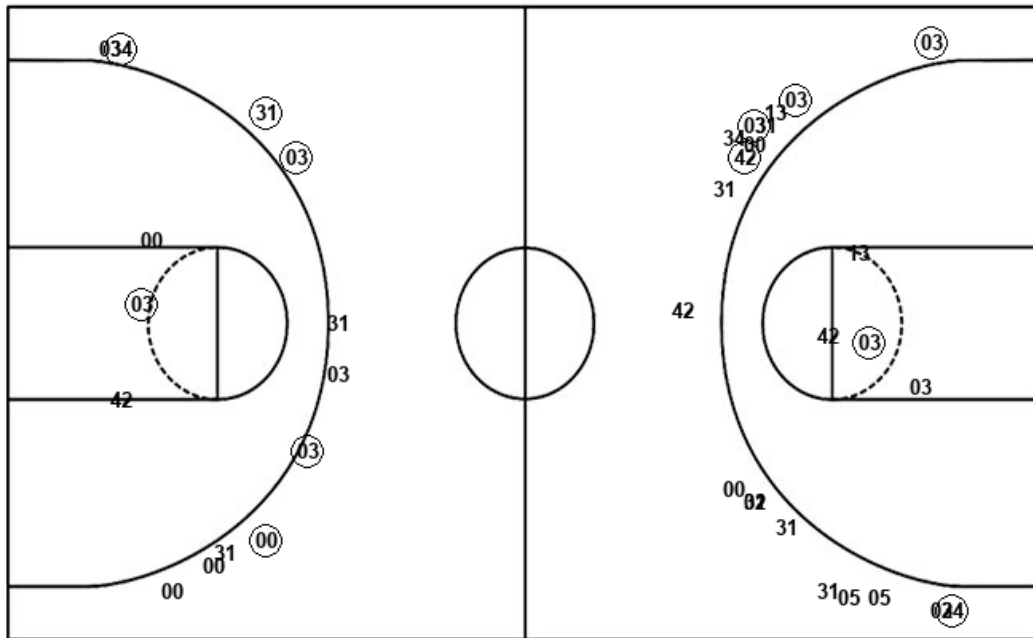
LSU : Period 4	Made	Att	Pct
Layups	3	4	75.0
Dunks	0	0	0
2PT Field Goals	6	9	66.7
3PT Field Goals	0	4	00.0
<b>Total Field Goals</b>	<b>6</b>	<b>13</b>	<b>46.2</b>

**Official Shot Chart**  
**LSU vs FGCU**  
**FGCU Team Shots**  
**December 19, 2019 at Alico Arena - Fort Myers, Fla.**



Layups

Dunks



Layups

Dunks

03 03 (13) 00 13  
 00 31 13 (03) (03)  
 (03) (03) 31 (03) 42  
 42 00 03 (34) 03  
 (31) (00) (13) 42 03  
 (00)

FGC : Period 1	Made	Att	Pct
Layups	1	5	20.0
Dunks	0	0	0
2PT Field Goals	2	8	25.0
3PT Field Goals	3	12	25.0
<b>Total Field Goals</b>	<b>5</b>	<b>20</b>	<b>25.0</b>

FGC : Period 3	Made	Att	Pct
Layups	4	8	50.0
Dunks	0	0	0
2PT Field Goals	4	9	44.4
3PT Field Goals	4	5	80.0
<b>Total Field Goals</b>	<b>8</b>	<b>14</b>	<b>57.1</b>

FGC : Period 2	Made	Att	Pct
Layups	1	4	25.0
Dunks	0	0	0
2PT Field Goals	1	5	20.0
3PT Field Goals	2	7	28.6
<b>Total Field Goals</b>	<b>3</b>	<b>12</b>	<b>25.0</b>

FGC : Period 4	Made	Att	Pct
Layups	5	9	55.6
Dunks	0	0	0
2PT Field Goals	6	11	54.5
3PT Field Goals	1	6	16.7
<b>Total Field Goals</b>	<b>7</b>	<b>17</b>	<b>41.2</b>