

FINAL SCORE

Central Conn. St.

60



FGCU

94



December 17, 2019 • Alico Arena - Fort Myers, Fla.

FINAL STATISTICS

Official Box Score
Central Conn. St. vs FGCU
Game Totals -- Final Statistics
December 17, 2019 at Alico Arena - Fort Myers, Fla.



Central Conn. St. 60

No.	Player	S	Pts	FG	3FG	FT	OR	DR	TR	PF	A	TO	Blk	Stl	Min	+/-
05	VILA ARTIGUES, BRUNA	G	0	0-3	0-1	0-0	1	0	1	1	0	0	0	0	20	-28
14	FORKER, ASHLEY	F	11	4-9	0-3	3-4	1	2	3	1	2	1	0	1	29	-34
15	MCCAMUS, EMMA	G	10	3-7	0-1	4-5	2	4	6	3	3	2	0	1	32	-29
22	CHIN, ASHLEY	F	6	3-6	0-0	0-0	1	0	1	3	1	1	0	1	29	-20
33	BERUBE, ASHLEY	C	15	6-12	0-0	3-4	1	4	5	0	1	4	1	0	24	-23
01	TOPPIN, FOREVER	G	3	0-2	0-1	3-4	0	3	3	3	0	4	0	0	12	-4
11	JENKINS, DEJAH	G	12	5-12	2-4	0-0	0	4	4	1	0	3	0	1	19	-11
12	PORTER, JEWEL	F	1	0-1	0-0	1-2	1	1	2	2	0	1	0	0	7	-2
20	NAPOLEON, JAMEY	F	2	0-1	0-0	2-2	0	4	4	0	0	0	1	0	12	-9
21	SUTHERLAND-CASE, CLAIRE	F	0	0-1	0-1	0-2	0	3	3	2	0	1	1	0	8	-2
23	DELANO, DANIELLE	G	0	0-1	0-1	0-0	0	0	0	0	0	1	0	0	4	-6
30	REYNOLDS, CARLY	C	0	0-0	0-0	0-0	0	1	1	1	0	0	0	0	1	-2
TEAM							2	1	3	0		1				
TOTALS			60	21-55	2-12	16-23	9	27	36	17	7	19	3	4	196	

Shooting By Period

Period	FG	FG%	3FG	3FG%	FT	FT%
1st Qtr	8-15	53%	0-1	00%	2-3	67%
2nd Qtr	2-12	17%	0-4	00%	8-10	80%
3rd Qtr	5-12	42%	1-2	50%	3-4	75%
4th Qtr	6-16	38%	1-5	20%	3-6	50%
1st Half	10-27	37%	0-5	00%	10-13	77%
2nd Half	11-28	39%	2-7	29%	6-10	60%
Game	21-55	38.2%	2-12	16.7%	16-23	69.6%

Deadball Rebounds: 5,0
 Last FG: 4th-02:03
 Biggest Run: 6-0
 Largest lead: By 2 at 1-07
 Technical Fouls: None.

FGCU 94

No.	Player	S	Pts	FG	3FG	FT	OR	DR	TR	PF	A	TO	Blk	Stl	Min	+/-
00	WINGATE, DAVION	G	15	7-10	1-2	0-0	1	1	2	3	0	1	0	1	19	20
03	JEWETT-GILES, KERI	G	14	6-14	1-6	1-2	2	1	3	2	1	2	0	6	25	27
13	PHILLS, KERSTIE	G	14	6-6	1-1	1-2	3	5	8	0	0	0	1	0	21	28
31	ULEL, NASRIN	G	23	9-15	2-7	3-3	0	1	1	1	4	0	1	0	25	32
42	ADDERLY, TYTONIA	F	7	3-4	1-2	0-0	2	5	7	3	5	1	0	1	20	19
01	NORMIL, ERNA	G	0	0-2	0-0	0-0	1	0	1	1	1	0	0	0	9	4
02	BLAIR, ALYSSA	G	0	0-3	0-2	0-0	0	1	1	0	0	0	0	0	13	5
04	RYAN, CHANDLER	G	1	0-3	0-3	1-2	0	2	2	0	0	0	0	0	6	0
05	MARINKOVIC, ANJA	G	3	1-3	1-3	0-0	0	0	0	0	2	0	0	1	9	-1
10	DOWLING, SHEAHEN	G	0	0-3	0-2	0-0	0	3	3	0	3	0	0	0	11	6
20	BRYANT, TANNER	G	7	2-3	0-1	3-3	1	0	1	2	0	1	0	0	8	5
23	PANEM, ASHLEY	G	0	0-2	0-2	0-0	0	1	1	0	0	0	0	0	6	2
32	LIST, EMMA	G	7	1-1	0-0	5-5	0	2	2	3	0	0	0	0	10	9
34	O'NEAL, ASHLI	G	3	1-4	0-3	1-2	0	1	1	2	3	0	0	2	15	14
TEAM							2	4	6	0		0				
TOTALS			94	36-73	7-34	15-19	12	27	39	17	17	7	2	11	196	

Shooting By Period

Period	FG	FG%	3FG	3FG%	FT	FT%
1st Qtr	9-18	50%	2-9	22%	2-4	50%
2nd Qtr	12-19	63%	3-8	38%	2-3	67%
3rd Qtr	10-19	53%	1-7	14%	4-4	100%
4th Qtr	5-17	29%	1-10	10%	7-8	88%
1st Half	21-37	57%	5-17	29%	4-7	57%
2nd Half	15-36	42%	2-17	12%	11-12	92%
Game	36-73	49.3%	7-34	20.6%	15-19	78.9%

Deadball Rebounds: 2,0
 Last FG: 4th-02:54
 Biggest Run: 10-0
 Largest lead: By 37 at 4-05
 Technical Fouls: None.

Game Notes:

Officials: , ,
 Attendance: 1708

Start Time: 07:02 PM ET
 End Time: 08:57 PM ET
 Game Duration: 1:54

Score	1st	2nd	3rd	4th	TOT
CCS	18	12	14	16	60
FGC	22	29	25	18	94

CCS led for 0:32. FGC led for 38:25.
 Game was tied for 0:19.
 Times tied: 0 Lead Changes: 4

Points from	CCS	FGC
In the Paint	30	56
Off Turns	11	23
2nd Chance	3	13
Fast Break	2	29
Bench	18	21

Official Box Score
Central Conn. St. vs FGCU
First Half Statistics Only
December 17, 2019 at Alico Arena - Fort Myers, Fla.



Central Conn. St. 30

No.	Player	S	Pts	FG	3FG	FT	OR	DR	TR	PF	A	TO	Blk	Stl	Min	+/-
01	TOPPIN, FOREVER	G	3	0-2	0-1	3-4	0	3	3	2	0	2	0	0	8	0
05	VILA ARTIGUES, BRUNA	G	0	0-3	0-1	0-0	1	0	1	1	0	0	0	0	12	-21
11	JENKINS, DEJAH	G	4	2-5	0-1	0-0	0	1	1	0	0	1	0	0	5	-8
12	PORTER, JEWEL	F	0	0-0	0-0	0-0	0	0	0	0	0	0	0	0	0	0
14	FORKER, ASHLEY	F	5	1-4	0-2	3-4	0	0	0	0	2	0	0	0	16	-21
15	MCCAMUS, EMMA	G	3	1-2	0-0	1-1	0	2	2	2	1	0	0	1	17	-17
20	NAPOLEON, JAMEY	F	0	0-0	0-0	0-0	0	2	2	0	0	0	1	0	7	-8
21	SUTHERLAND-CASE, CLAIRE	F	0	0-0	0-0	0-0	0	0	0	0	0	0	0	0	0	0
22	CHIN, ASHLEY	F	4	2-4	0-0	0-0	1	0	1	1	0	1	0	1	17	-15
23	DELANO, DANIELLE	G	0	0-0	0-0	0-0	0	0	0	0	0	0	0	0	0	0
30	REYNOLDS, CARLY	C	0	0-0	0-0	0-0	0	1	1	1	0	0	0	0	1	-2
33	BERUBE, ASHLEY	C	11	4-7	0-0	3-4	1	3	4	0	1	4	0	0	17	-13
	TEAM		0	0-0	0-0	0-0	1	0	1	0	0	1	0	0	0	0
	TOTALS		30	10-27	0-5	10-13	4	12	16	7	4	9	1	2	100	

Shooting By Period

Period	FG	FG%	3FG	3FG%	FT	FT%
1st Qtr	8-15	53%	0-1	00%	2-3	67%
2nd Qtr	2-12	17%	0-4	00%	8-10	80%
1st Half	10-27	37%	0-5	00%	10-13	77%
Game	21-55	38.2%	2-12	16.7%	16-23	69.6%

Deadball Rebounds: 5,0
 Last FG Half: CCS 2nd-03:56

FGCU 51

No.	Player	S	Pts	FG	3FG	FT	OR	DR	TR	PF	A	TO	Blk	Stl	Min	+/-
00	WINGATE, DAVION	G	13	6-7	1-1	0-0	0	1	1	3	0	1	0	1	14	15
01	NORMIL, ERNA	G	0	0-0	0-0	0-0	0	0	0	0	0	0	0	0	0	0
02	BLAIR, ALYSSA	G	0	0-2	0-2	0-0	0	1	1	0	0	0	0	0	10	5
03	JEWETT-GILES, KERI	G	3	1-7	0-3	1-2	2	0	2	1	0	2	0	1	16	13
04	RYAN, CHANDLER	G	0	0-0	0-0	0-0	0	0	0	0	0	0	0	0	0	0
05	MARINKOVIC, ANJA	G	0	0-1	0-1	0-0	0	0	0	0	0	0	0	0	2	2
10	DOWLING, SHEAHEN	G	0	0-0	0-0	0-0	0	0	0	0	0	0	0	0	0	0
13	PHILLS, KERSTIE	G	10	4-4	1-1	1-2	1	4	5	0	0	0	1	0	16	16
20	BRYANT, TANNER	G	0	0-0	0-0	0-0	0	0	0	0	0	0	0	0	0	0
23	PANEM, ASHLEY	G	0	0-0	0-0	0-0	0	0	0	0	0	0	0	0	0	0
31	ULEL, NASRIN	G	19	8-11	2-5	1-1	0	1	1	1	4	0	1	0	19	22
32	LIST, EMMA	G	0	0-0	0-0	0-0	0	2	2	0	0	0	0	0	2	5
34	O'NEAL, ASHLI	G	1	0-3	0-3	1-2	0	1	1	2	2	0	0	1	11	15
42	ADDERLY, TYTIONIA	F	5	2-2	1-1	0-0	2	2	4	3	3	0	0	0	12	12
	TEAM		0	0-0	0-0	0-0	0	2	2	0	0	0	0	0	0	0
	TOTALS		51	21-37	5-17	4-7	5	14	19	10	9	3	2	3	100	

Shooting By Period

Period	FG	FG%	3FG	3FG%	FT	FT%
1st Qtr	9-18	50%	2-9	22%	2-4	50%
2nd Qtr	12-19	63%	3-8	38%	2-3	67%
1st Half	21-37	57%	5-17	29%	4-7	57%
Game	36-73	49.3%	7-34	20.6%	15-19	78.9%

Deadball Rebounds: 2,0
 Last FG Half: FGC 2nd-00:08

Game Notes:

Officials: , ,
 Attendance: 1708

Start Time: 07:02 PM ET
 End Time: 08:57 PM ET
 Game Duration: 1:54

Score	1st	2nd	3rd	4th	TOT
CCS	18	12	14	16	60
FGC	22	29	25	18	94

Points from (This Period)	CCS	FGC
In the Paint	16	30
Off Turns	5	11
2nd Chance	0	4
Fast Break	2	13
Bench	7	1

Official Box Score
Central Conn. St. vs FGCU
First Quarter Statistics Only
December 17, 2019 at Alico Arena - Fort Myers, Fla.



Central Conn. St. 18

No.	Player	S	Pts	FG	3FG	FT	OR	DR	TR	PF	A	TO	Blk	Stl	Min	+/-
05	VILA ARTIGUES, BRUNA	G	0	0-2	0-0	0-0	0	0	0	0	0	0	0	0	6	-5
14	FORKER, ASHLEY	F	2	1-1	0-0	0-0	0	0	0	0	2	0	0	0	7	-6
15	MCCAMUS, EMMA	G	3	1-2	0-0	1-1	0	1	1	1	0	0	0	1	9	-2
22	CHIN, ASHLEY	F	4	2-2	0-0	0-0	0	0	0	1	0	0	0	0	9	-2
33	BERUBE, ASHLEY	C	7	3-4	0-0	1-2	0	3	3	0	1	3	0	0	9	-2
01	TOPPIN, FOREVER	G	0	0-2	0-1	0-0	0	1	1	1	0	1	0	0	4	1
11	JENKINS, DEJAH	G	2	1-2	0-0	0-0	0	0	0	0	0	0	0	0	1	-2
12	PORTER, JEWEL	F	0	0-0	0-0	0-0	0	0	0	0	0	0	0	0	0	0
20	NAPOLEON, JAMEY	F	0	0-0	0-0	0-0	0	2	2	0	0	0	1	0	4	0
21	SUTHERLAND-CASE, CLAIRE	F	0	0-0	0-0	0-0	0	0	0	0	0	0	0	0	0	0
23	DELANO, DANIELLE	G	0	0-0	0-0	0-0	0	0	0	0	0	0	0	0	0	0
30	REYNOLDS, CARLY	C	0	0-0	0-0	0-0	0	1	1	1	0	0	0	0	1	-2
TEAM							0	0	0	0		0				
TOTALS			18	8-15	0-1	2-3	0	8	8	4	3	4	1	1	50	

Shooting By Period

Period	FG	FG%	3FG	3FG%	FT	FT%
1st Qtr	8-15	53%	0-1	00%	2-3	67%
2nd Qtr	2-12	17%	0-4	00%	8-10	80%
1st Half	8-15	53%	0-1	00%	2-3	67%
1st Half	10-27	37%	0-5	00%	10-13	77%
Game	21-55	38.2%	2-12	16.7%	16-23	69.6%

Deadball Rebounds: 5.0

FGCU 22

No.	Player	S	Pts	FG	3FG	FT	OR	DR	TR	PF	A	TO	Blk	Stl	Min	+/-
00	WINGATE, DAVION	G	11	5-6	1-1	0-0	0	1	1	1	0	1	0	1	8	4
03	JEWETT-GILES, KERI	G	3	1-4	0-2	1-2	0	0	0	0	0	1	0	1	7	-2
13	PHILLS, KERSTIE	G	2	1-1	0-0	0-0	0	1	1	0	0	0	0	0	8	2
31	ULEL, NASRIN	G	5	2-4	1-3	0-0	0	1	1	0	1	0	0	0	9	5
42	ADDERLY, TYTIONIA	F	0	0-0	0-0	0-0	1	1	2	1	2	0	0	0	7	6
01	NORMIL, ERNA	G	0	0-0	0-0	0-0	0	0	0	0	0	0	0	0	0	0
02	BLAIR, ALYSSA	G	0	0-1	0-1	0-0	0	1	1	0	0	0	0	0	5	-3
04	RYAN, CHANDLER	G	0	0-0	0-0	0-0	0	0	0	0	0	0	0	0	0	0
05	MARINKOVIC, ANJA	G	0	0-1	0-1	0-0	0	0	0	0	0	0	0	0	1	1
10	DOWLING, SHEAHEN	G	0	0-0	0-0	0-0	0	0	0	0	0	0	0	0	0	0
20	BRYANT, TANNER	G	0	0-0	0-0	0-0	0	0	0	0	0	0	0	0	0	0
23	PANEM, ASHLEY	G	0	0-0	0-0	0-0	0	0	0	0	0	0	0	0	0	0
32	LIST, EMMA	G	0	0-0	0-0	0-0	0	0	0	0	0	0	0	0	0	0
34	O'NEAL, ASHLI	G	1	0-1	0-1	1-2	0	1	1	1	1	0	0	0	5	7
TEAM							0	1	1	0		0				
TOTALS			22	9-18	2-9	2-4	1	7	8	3	4	2	0	2	50	

Shooting By Period

Period	FG	FG%	3FG	3FG%	FT	FT%
1st Qtr	9-18	50%	2-9	22%	2-4	50%
2nd Qtr	12-19	63%	3-8	38%	2-3	67%
1st Half	9-18	50%	2-9	22%	2-4	50%
1st Half	21-37	57%	5-17	29%	4-7	57%
Game	36-73	49.3%	7-34	20.6%	15-19	78.9%

Deadball Rebounds: 2.0

Game Notes:

Officials: , ,
Attendance: 1708

Start Time: 07:02 PM ET
End Time: 08:57 PM ET
Game Duration: 1:54

Score	1st	2nd	3rd	4th	TOT
CCS	18	12	14	16	60
FGC	22	29	25	18	94

Points from (This Period)	CCS	FGC
In the Paint	12	14
Off Turns	4	5
2nd Chance	0	0
Fast Break	0	8
Bench	2	1

Official Play-By-Play
Central Conn. St. vs FGCU
First Quarter
December 17, 2019 at Alico Arena - Fort Myers, Fla.



Period 1

Starters:

Central Conn. St.: 5 VILA ARTIGUES, BRUNA (G); 14 FORKER, ASHLEY (F); 15 MCCAMUS, EMMA (G); 22 CHIN, ASHLEY (F); 33 BERUBE, ASHLEY (C);
FGCU: 0 WINGATE, DAVION (G); 3 JEWETT-GILES, KERI (G); 13 PHILLS, KERSTIE (G); 31 ULEL, NASRIN (G); 42 ADDERLY, TYTIONIA (F);

Time	VISITORS: Central Conn. St.	Score	Margin	HOME: FGCU
09:41		2-0	H 2	GOOD! LAYUP by WINGATE, DAVION
09:14	TURNOVER (LOSTBALL) by BERUBE, ASHLEY			
09:14				STEAL by JEWETT-GILES, KERI
09:04		5-0	H 5	GOOD! 3PTR by ULEL, NASRIN
09:04				ASSIST by ADDERLY, TYTIONIA
08:44	GOOD! JUMPER by FORKER, ASHLEY	5-2	H 3	
08:38				TURNOVER (BADPASS) by JEWETT-GILES, KERI
08:38	STEAL by MCCAMUS, EMMA			
08:24	GOOD! JUMPER by BERUBE, ASHLEY	5-4	H 1	
08:24	ASSIST by FORKER, ASHLEY			
08:14				MISSED 3PTR by JEWETT-GILES, KERI
08:10	REBOUND (DEF) by BERUBE, ASHLEY			
07:47	GOOD! JUMPER by BERUBE, ASHLEY [PNT]	5-6	V 1	
07:47	ASSIST by FORKER, ASHLEY			
07:32	FOUL (PERSONAL) by CHIN, ASHLEY			
07:32				SUB OUT: JEWETT-GILES, KERI
07:32				SUB IN: O'NEAL, ASHLI
07:25		7-6	H 1	GOOD! LAYUP by ULEL, NASRIN
07:14	GOOD! JUMPER by MCCAMUS, EMMA [PNT]	7-8	V 1	
07:14				FOUL (PERSONAL) by WINGATE, DAVION
07:14	GOOD! FT by MCCAMUS, EMMA	7-9	V 2	
07:04		10-9	H 1	GOOD! 3PTR by WINGATE, DAVION
07:04				ASSIST by ULEL, NASRIN
06:48	MISSED JUMPER by BERUBE, ASHLEY			
06:45				REBOUND (DEF) by O'NEAL, ASHLI
06:43		12-9	H 3	GOOD! LAYUP by WINGATE, DAVION [FB]
06:43				ASSIST by O'NEAL, ASHLI
06:29	MISSED LAYUP by VILA ARTIGUES, BRUNA			
06:26				REBOUND (DEF) by ADDERLY, TYTIONIA
06:22		14-9	H 5	GOOD! LAYUP by PHILLS, KERSTIE [FB]
06:22				ASSIST by ADDERLY, TYTIONIA
05:58				FOUL (PERSONAL) by ADDERLY, TYTIONIA
05:58				SUB OUT: WINGATE, DAVION
05:58				SUB OUT: PHILLS, KERSTIE
05:58				SUB IN: BLAIR, ALYSSA
05:58				SUB IN: JEWETT-GILES, KERI
05:58	MISSED FT by BERUBE, ASHLEY			
05:58	REBOUND (OFF) by TEAM			
05:58	GOOD! FT by BERUBE, ASHLEY	14-10	H 4	
05:48				MISSED 3PTR by O'NEAL, ASHLI
05:45				REBOUND (OFF) by ADDERLY, TYTIONIA
05:42				MISSED 3PTR by ULEL, NASRIN
05:39	REBOUND (DEF) by BERUBE, ASHLEY			
05:32	MISSED LAYUP by MCCAMUS, EMMA			
05:28				REBOUND (DEF) by BLAIR, ALYSSA
05:15		16-10	H 6	GOOD! LAYUP by JEWETT-GILES, KERI
05:00	GOOD! JUMPER by BERUBE, ASHLEY [PNT]	16-12	H 4	
04:51				MISSED LAYUP by JEWETT-GILES, KERI
04:45	REBOUND (DEF) by BERUBE, ASHLEY			
04:24	MISSED JUMPER by VILA ARTIGUES, BRUNA			
04:24				REBOUND (DEF) by TEAM
04:24				SUB OUT: ADDERLY, TYTIONIA
04:24				SUB IN: PHILLS, KERSTIE
04:24	SUB OUT: VILA ARTIGUES, BRUNA			
04:24	SUB OUT: FORKER, ASHLEY			
04:24	SUB IN: TOPPIN, FOREVER			
04:24	SUB IN: NAPOLEON, JAMEY			
04:14				MISSED 3PTR by ULEL, NASRIN
04:12	REBOUND (DEF) by NAPOLEON, JAMEY			
03:56	TURNOVER (3SEC) by BERUBE, ASHLEY			
03:56				SUB OUT: O'NEAL, ASHLI
03:56				SUB IN: WINGATE, DAVION
03:43				TURNOVER (TRAVEL) by WINGATE, DAVION
03:15	GOOD! JUMPER by CHIN, ASHLEY	16-14	H 2	
02:59				MISSED LAYUP by WINGATE, DAVION
02:59	BLOCK by NAPOLEON, JAMEY			
02:55	REBOUND (DEF) by NAPOLEON, JAMEY			
02:50	MISSED JUMPER by TOPPIN, FOREVER			
02:47				REBOUND (DEF) by ULEL, NASRIN

Time	VISITORS: Central Conn. St.	Score	Margin	HOME: FGCU
02:36		18-14	H 4	GOOD! LAYUP by WINGATE, DAVION [PNT]
02:18	GOOD! LAYUP by CHIN, ASHLEY	18-16	H 2	
02:18	ASSIST by BERUBE, ASHLEY			
01:58				MISSED 3PTR by JEWETT-GILES, KERI
01:54	REBOUND (DEF) by MCCAMUS, EMMA			
01:44	MISSED 3PTR by TOPPIN, FOREVER			
01:42				REBOUND (DEF) by PHILLS, KERSTIE
01:36				MISSED 3PTR by BLAIR, ALYSSA
01:34	REBOUND (DEF) by TOPPIN, FOREVER			
01:23	TURNOVER (LOSTBALL) by BERUBE, ASHLEY			
01:23				STEAL by WINGATE, DAVION
01:16	FOUL (PERSONAL) by MCCAMUS, EMMA			
01:16				SUB OUT: BLAIR, ALYSSA
01:16				SUB OUT: ULEL, NASRIN
01:16				SUB IN: O'NEAL, ASHLI
01:16				SUB IN: ADDERLY, TYTIONIA
01:16	SUB OUT: MCCAMUS, EMMA			
01:16	SUB OUT: CHIN, ASHLEY			
01:16	SUB OUT: BERUBE, ASHLEY			
01:16	SUB IN: JENKINS, DEJAH			
01:16	SUB IN: FORKER, ASHLEY			
01:16	SUB IN: REYNOLDS, CARLY			
01:16				MISSED FT by JEWETT-GILES, KERI
01:16				REBOUND (OFF) by TEAM
01:16		19-16	H 3	GOOD! FT by JEWETT-GILES, KERI [FB]
01:16				SUB OUT: JEWETT-GILES, KERI
01:16				SUB IN: MARINKOVIC, ANJA
00:59	GOOD! JUMPER by JENKINS, DEJAH [PNT]	19-18	H 1	
00:52				MISSED 3PTR by MARINKOVIC, ANJA
00:49	REBOUND (DEF) by REYNOLDS, CARLY			
00:40				FOUL (PERSONAL) by O'NEAL, ASHLI
00:33				SUB OUT: PHILLS, KERSTIE
00:33				SUB IN: ULEL, NASRIN
00:22	MISSED JUMPER by JENKINS, DEJAH			
00:18				REBOUND (DEF) by WINGATE, DAVION
00:15		21-18	H 3	GOOD! LAYUP by WINGATE, DAVION [FB]
00:04	FOUL (OFF) by TOPPIN, FOREVER			
00:04	TURNOVER (OFFENSIVE) by TOPPIN, FOREVER			
00:04				SUB OUT: WINGATE, DAVION
00:04				SUB IN: JEWETT-GILES, KERI
00:03	FOUL (PERSONAL) by REYNOLDS, CARLY			
00:00	SUB OUT: TOPPIN, FOREVER			
00:00	SUB IN: VILA ARTIGUES, BRUNA			
00:00				MISSED FT by O'NEAL, ASHLI
00:00				REBOUND (OFF) by TEAM
00:00		22-18	H 4	GOOD! FT by O'NEAL, ASHLI [FB]

Central Conn. St. 18, FGCU 22

Points from (This Period)	CCS	FGC
In the Paint	12	14
Off Turns	4	5
2nd Chance	0	0
Fast Break	0	8
Bench	2	1

Official Box Score
Central Conn. St. vs FGCU
Second Quarter Statistics Only
December 17, 2019 at Alico Arena - Fort Myers, Fla.



Central Conn. St. 12

No.	Player	S	Pts	FG	3FG	FT	OR	DR	TR	PF	A	TO	Blk	Stl	Min	+/-
05	VILA ARTIGUES, BRUNA	G	0	0-1	0-1	0-0	1	0	1	1	0	0	0	0	6	-16
14	FORKER, ASHLEY	F	3	0-3	0-2	3-4	0	0	0	0	0	0	0	0	9	-15
15	MCCAMUS, EMMA	G	0	0-0	0-0	0-0	0	1	1	1	1	0	0	0	8	-15
22	CHIN, ASHLEY	F	0	0-2	0-0	0-0	1	0	1	0	0	1	0	1	8	-13
33	BERUBE, ASHLEY	C	4	1-3	0-0	2-2	1	0	1	0	0	1	0	0	8	-11
01	TOPPIN, FOREVER	G	3	0-0	0-0	3-4	0	2	2	1	0	1	0	0	4	-1
11	JENKINS, DEJAH	G	2	1-3	0-1	0-0	0	1	1	0	0	1	0	0	4	-6
12	PORTER, JEWEL	F	0	0-0	0-0	0-0	0	0	0	0	0	0	0	0	0	0
20	NAPOLEON, JAMEY	F	0	0-0	0-0	0-0	0	0	0	0	0	0	0	0	3	-8
21	SUTHERLAND-CASE, CLAIRE	F	0	0-0	0-0	0-0	0	0	0	0	0	0	0	0	0	0
23	DELANO, DANIELLE	G	0	0-0	0-0	0-0	0	0	0	0	0	0	0	0	0	0
30	REYNOLDS, CARLY	C	0	0-0	0-0	0-0	0	0	0	0	0	0	0	0	0	0
TEAM							1	0	1	0	1					
TOTALS			12	2-12	0-4	8-10	4	4	8	3	1	5	0	1	50	

Shooting By Period

Period	FG	FG%	3FG	3FG%	FT	FT%
3rd Qtr	5-12	42%	1-2	50%	3-4	75%
4th Qtr	6-16	38%	1-5	20%	3-6	50%
2nd Half	2-12	17%	0-4	00%	8-10	80%
2nd Half	11-28	39%	2-7	29%	6-10	60%
Game	21-55	38.2%	2-12	16.7%	16-23	69.6%

Deadball Rebounds: 5,0

FGCU 29

No.	Player	S	Pts	FG	3FG	FT	OR	DR	TR	PF	A	TO	Blk	Stl	Min	+/-
00	WINGATE, DAVION	G	2	1-1	0-0	0-0	0	0	0	2	0	0	0	0	6	11
03	JEWETT-GILES, KERI	G	0	0-3	0-1	0-0	2	0	2	1	0	1	0	0	9	15
13	PHILLS, KERSTIE	G	8	3-3	1-1	1-2	1	3	4	0	0	0	1	0	8	14
31	ULEL, NASRIN	G	14	6-7	1-2	1-1	0	0	0	1	3	0	1	0	10	17
42	ADDERLY, TYTIONIA	F	5	2-2	1-1	0-0	1	1	2	2	1	0	0	0	5	6
01	NORMIL, ERNA	G	0	0-0	0-0	0-0	0	0	0	0	0	0	0	0	0	0
02	BLAIR, ALYSSA	G	0	0-1	0-1	0-0	0	0	0	0	0	0	0	0	5	8
04	RYAN, CHANDLER	G	0	0-0	0-0	0-0	0	0	0	0	0	0	0	0	0	0
05	MARINKOVIC, ANJA	G	0	0-0	0-0	0-0	0	0	0	0	0	0	0	0	1	1
10	DOWLING, SHEAHEN	G	0	0-0	0-0	0-0	0	0	0	0	0	0	0	0	0	0
20	BRYANT, TANNER	G	0	0-0	0-0	0-0	0	0	0	0	0	0	0	0	0	0
23	PANEM, ASHLEY	G	0	0-0	0-0	0-0	0	0	0	0	0	0	0	0	0	0
32	LIST, EMMA	G	0	0-0	0-0	0-0	0	2	2	0	0	0	0	0	2	5
34	O'NEAL, ASHLI	G	0	0-2	0-2	0-0	0	0	0	1	1	0	0	1	6	8
TEAM							0	1	1	0	0					
TOTALS			29	12-19	3-8	2-3	4	7	11	7	5	1	2	1	50	

Shooting By Period

Period	FG	FG%	3FG	3FG%	FT	FT%
3rd Qtr	10-19	53%	1-7	14%	4-4	100%
4th Qtr	5-17	29%	1-10	10%	7-8	88%
2nd Half	12-19	63%	3-8	38%	2-3	67%
2nd Half	15-36	42%	2-17	12%	11-12	92%
Game	36-73	49.3%	7-34	20.6%	15-19	78.9%

Deadball Rebounds: 2,0

Game Notes:

Officials: , ,
Attendance: 1708

Start Time: 07:02 PM ET
End Time: 08:57 PM ET
Game Duration: 1:54

Score	1st	2nd	3rd	4th	TOT
CCS	18	12	14	16	60
FGC	22	29	25	18	94

Points from (This Period)	CCS	FGC
In the Paint	4	16
Off Turns	1	6
2nd Chance	0	4
Fast Break	2	5
Bench	5	0

Official Play-By-Play
Central Conn. St. vs FGCU
Second Quarter
December 17, 2019 at Alico Arena - Fort Myers, Fla.



Period 2

Starters:

Central Conn. St.: 5 VILA ARTIGUES, BRUNA (G); 14 FORKER, ASHLEY (F); 15 MCCAMUS, EMMA (G); 22 CHIN, ASHLEY (F); 33 BERUBE, ASHLEY (C);
FGCU: 0 WINGATE, DAVION (G); 3 JEWETT-GILES, KERI (G); 13 PHILLS, KERSTIE (G); 31 ULEL, NASRIN (G); 42 ADDERLY, TYTIONIA (F);

Time	VISITORS: Central Conn. St.	Score	Margin	HOME: FGCU
10:00	SUB OUT: JENKINS, DEJAH			
10:00	SUB OUT: NAPOLEON, JAMEY			
10:00	SUB OUT: REYNOLDS, CARLY			
10:00	SUB IN: MCCAMUS, EMMA			
10:00	SUB IN: CHIN, ASHLEY			
10:00	SUB IN: BERUBE, ASHLEY			
09:42	GOOD! JUMPER by BERUBE, ASHLEY [PNT]	22-20	H 2	
09:42	ASSIST by MCCAMUS, EMMA			
09:30				MISSED 3PTR by ULEL, NASRIN
09:26				REBOUND (OFF) by ADDERLY, TYTIONIA
09:18		25-20	H 5	GOOD! 3PTR by ADDERLY, TYTIONIA
09:18				ASSIST by ULEL, NASRIN
09:02	TURNOVER (LOSTBALL) by CHIN, ASHLEY			
09:02				STEAL by O'NEAL, ASHLI
08:56				TURNOVER (BADPASS) by JEWETT-GILES, KERI
08:56	STEAL by CHIN, ASHLEY			
08:56				FOUL (PERSONAL) by O'NEAL, ASHLI
08:56				SUB OUT: MARINKOVIC, ANJA
08:56				SUB OUT: O'NEAL, ASHLI
08:56				SUB IN: WINGATE, DAVION
08:56				SUB IN: PHILLS, KERSTIE
08:30				FOUL (PERSONAL) by ULEL, NASRIN
08:30	MISSED FT by FORKER, ASHLEY			
08:30	REBOUND (OFF) by TEAM			
08:30	GOOD! FT by FORKER, ASHLEY	25-21	H 4	
08:09		27-21	H 6	GOOD! LAYUP by ADDERLY, TYTIONIA [PNT]
08:09				ASSIST by ULEL, NASRIN
07:52	TURNOVER (3SEC) by BERUBE, ASHLEY			
07:37		29-21	H 8	GOOD! LAYUP by ULEL, NASRIN
07:23				FOUL (PERSONAL) by WINGATE, DAVION
07:10	SUB OUT: VILA ARTIGUES, BRUNA			
07:10	SUB IN: TOPPIN, FOREVER			
07:05				FOUL (PERSONAL) by ADDERLY, TYTIONIA
07:05	GOOD! FT by BERUBE, ASHLEY	29-22	H 7	
07:05	GOOD! FT by BERUBE, ASHLEY	29-23	H 6	
07:05	SUB OUT: MCCAMUS, EMMA			
07:05	SUB IN: JENKINS, DEJAH			
06:45		31-23	H 8	GOOD! LAYUP by WINGATE, DAVION [PNT]
06:31	TURNOVER (TRAVEL) by JENKINS, DEJAH			
06:31				SUB OUT: WINGATE, DAVION
06:31				SUB OUT: ADDERLY, TYTIONIA
06:31				SUB IN: BLAIR, ALYSSA
06:31				SUB IN: O'NEAL, ASHLI
06:16				MISSED 3PTR by BLAIR, ALYSSA
06:13	REBOUND (DEF) by TOPPIN, FOREVER			
06:09				FOUL (PERSONAL) by JEWETT-GILES, KERI
06:09	GOOD! FT by TOPPIN, FOREVER [FB]	31-24	H 7	
06:09	GOOD! FT by TOPPIN, FOREVER [FB]	31-25	H 6	
05:59				MISSED 3PTR by O'NEAL, ASHLI
05:54	REBOUND (DEF) by JENKINS, DEJAH			
05:51	TURNOVER (TRAVEL) by TOPPIN, FOREVER			
05:38		33-25	H 8	GOOD! LAYUP by PHILLS, KERSTIE [PNT]
05:12	MISSED 3PTR by FORKER, ASHLEY			
05:12	REBOUND (OFF) by CHIN, ASHLEY			
05:03	MISSED JUMPER by CHIN, ASHLEY			
05:03	REBOUND (OFF) by TEAM			
05:03				SUB OUT: JEWETT-GILES, KERI
05:03				SUB OUT: PHILLS, KERSTIE
05:03				SUB IN: WINGATE, DAVION
05:03				SUB IN: ADDERLY, TYTIONIA
05:03	SUB OUT: FORKER, ASHLEY			
05:03	SUB OUT: CHIN, ASHLEY			
05:03	SUB IN: MCCAMUS, EMMA			
05:03	SUB IN: NAPOLEON, JAMEY			
05:01	TURNOVER (SHOTCLOCK) by TEAM			
04:44		35-25	H 10	GOOD! LAYUP by ULEL, NASRIN [PNT]
04:22	MISSED 3PTR by JENKINS, DEJAH			
04:20	REBOUND (OFF) by BERUBE, ASHLEY			
04:19	MISSED JUMPER by BERUBE, ASHLEY			
04:15				REBOUND (DEF) by ADDERLY, TYTIONIA

Time	VISITORS: Central Conn. St.	Score	Margin	HOME: FGCU
05:12				BLOCK by ULEL, NASRIN
04:13	FOUL (PERSONAL) by MCCAMUS, EMMA			
04:12		37-25	H 12	GOOD! LAYUP by ULEL, NASRIN [FB]
04:12				ASSIST by ADDERLY, TYTIONIA
03:56	GOOD! LAYUP by JENKINS, DEJAH	37-27	H 10	
03:43				MISSED 3PTR by O'NEAL, ASHLI
03:41	REBOUND (DEF) by TOPPIN, FOREVER			
03:41				FOUL (PERSONAL) by ADDERLY, TYTIONIA
03:41				SUB OUT: O'NEAL, ASHLI
03:41				SUB OUT: ADDERLY, TYTIONIA
03:41				SUB IN: JEWETT-GILES, KERI
03:41				SUB IN: PHILLS, KERSTIE
03:41	SUB OUT: BERUBE, ASHLEY			
03:41	SUB IN: FORKER, ASHLEY			
03:41	GOOD! FT by TOPPIN, FOREVER	37-28	H 9	
03:41	MISSED FT by TOPPIN, FOREVER			
03:41				REBOUND (DEF) by PHILLS, KERSTIE
03:28				MISSED JUMPER by JEWETT-GILES, KERI
03:26				REBOUND (OFF) by JEWETT-GILES, KERI
03:22				MISSED LAYUP by JEWETT-GILES, KERI
03:21				REBOUND (OFF) by JEWETT-GILES, KERI
03:19				MISSED 3PTR by JEWETT-GILES, KERI
03:17				REBOUND (OFF) by PHILLS, KERSTIE
03:16	FOUL (PERSONAL) by TOPPIN, FOREVER			
03:16	SUB OUT: TOPPIN, FOREVER			
03:16	SUB IN: VILA ARTIGUES, BRUNA			
03:16		38-28	H 10	GOOD! FT by PHILLS, KERSTIE
03:16				MISSED FT by PHILLS, KERSTIE
03:16	REBOUND (DEF) by MCCAMUS, EMMA			
03:08	MISSED LAYUP by JENKINS, DEJAH			
03:08				BLOCK by PHILLS, KERSTIE
03:03				REBOUND (DEF) by PHILLS, KERSTIE
02:51		40-28	H 12	GOOD! JUMPER by ULEL, NASRIN
02:51	FOUL (PERSONAL) by VILA ARTIGUES, BRUNA			
02:51	SUB OUT: JENKINS, DEJAH			
02:51	SUB IN: CHIN, ASHLEY			
02:51		41-28	H 13	GOOD! FT by ULEL, NASRIN
02:23	MISSED 3PTR by VILA ARTIGUES, BRUNA			
02:20	REBOUND (OFF) by VILA ARTIGUES, BRUNA			
02:18	MISSED JUMPER by CHIN, ASHLEY			
02:16				REBOUND (DEF) by PHILLS, KERSTIE
02:10		44-28	H 16	GOOD! 3PTR by PHILLS, KERSTIE [FB]
02:10				ASSIST by ULEL, NASRIN
01:52				FOUL (PERSONAL) by WINGATE, DAVION
01:52				SUB OUT: WINGATE, DAVION
01:52				SUB OUT: BLAIR, ALYSSA
01:52				SUB IN: LIST, EMMA
01:52				SUB IN: O'NEAL, ASHLI
01:52	SUB OUT: NAPOLEON, JAMEY			
01:52	SUB IN: BERUBE, ASHLEY			
01:52	GOOD! FT by FORKER, ASHLEY	44-29	H 15	
01:52	GOOD! FT by FORKER, ASHLEY	44-30	H 14	
01:42		46-30	H 16	GOOD! LAYUP by ULEL, NASRIN [PNT]
01:12	MISSED JUMPER by BERUBE, ASHLEY			
01:08				REBOUND (DEF) by LIST, EMMA
01:02		49-30	H 19	GOOD! 3PTR by ULEL, NASRIN
01:02				ASSIST by O'NEAL, ASHLI
00:58	TIMEOUT 30SEC			
00:37	MISSED JUMPER by FORKER, ASHLEY			
00:35				REBOUND (DEF) by LIST, EMMA
00:08		51-30	H 21	GOOD! LAYUP by PHILLS, KERSTIE [PNT]
00:00	MISSED 3PTR by FORKER, ASHLEY			
00:00				REBOUND (DEF) by TEAM

Central Conn. St. 30, FGCU 51

Points from (This Period)	CCS	FGC
In the Paint	4	16
Off Turns	1	6
2nd Chance	0	4
Fast Break	2	5
Bench	5	0

Official Box Score
Central Conn. St. vs FGCU
Second Half Statistics Only
December 17, 2019 at Alico Arena - Fort Myers, Fla.



Central Conn. St. 30

No.	Player	S	Pts	FG	3FG	FT	OR	DR	TR	PF	A	TO	Blk	Stl	Min	+/-
01	TOPPIN, FOREVER	G	0	0-0	0-0	0-0	0	0	0	1	0	2	0	0	4	-4
05	VILA ARTIGUES, BRUNA	G	0	0-0	0-0	0-0	0	0	0	0	0	0	0	0	8	-7
11	JENKINS, DEJAH	G	8	3-7	2-3	0-0	0	3	3	1	0	2	0	1	13	-3
12	PORTER, JEWEL	F	1	0-1	0-0	1-2	1	1	2	2	0	1	0	0	7	-2
14	FORKER, ASHLEY	F	6	3-5	0-1	0-0	1	2	3	1	0	1	0	1	13	-13
15	MCCAMUS, EMMA	G	7	2-5	0-1	3-4	2	2	4	1	2	2	0	0	15	-12
20	NAPOLEON, JAMEY	F	2	0-1	0-0	2-2	0	2	2	0	0	0	0	0	4	-1
21	SUTHERLAND-CASE, CLAIRE	F	0	0-1	0-1	0-2	0	3	3	2	0	1	1	0	8	-2
22	CHIN, ASHLEY	F	2	1-2	0-0	0-0	0	0	0	2	1	0	0	0	12	-5
23	DELANO, DANIELLE	G	0	0-1	0-1	0-0	0	0	0	0	0	1	0	0	4	-6
30	REYNOLDS, CARLY	C	0	0-0	0-0	0-0	0	0	0	0	0	0	0	0	0	0
33	BERUBE, ASHLEY	C	4	2-5	0-0	0-0	0	1	1	0	0	0	1	0	8	-10
	TEAM		0	0-0	0-0	0-0	1	1	2	0	0	0	0	0	0	0
	TOTALS		30	11-28	2-7	6-10	5	15	20	10	3	10	2	2	96	

Shooting By Period

Period	FG	FG%	3FG	3FG%	FT	FT%
3rd Qtr	5-12	42%	1-2	50%	3-4	75%
4th Qtr	6-16	38%	1-5	20%	3-6	50%
2nd Half	11-28	39%	2-7	29%	6-10	60%
Game	21-55	38.2%	2-12	16.7%	16-23	69.6%

Deadball Rebounds: 5,0
 Last FG Half: CCS 4th-02:03

FGCU 43

No.	Player	S	Pts	FG	3FG	FT	OR	DR	TR	PF	A	TO	Blk	Stl	Min	+/-
00	WINGATE, DAVION	G	2	1-3	0-1	0-0	1	0	1	0	0	0	0	0	6	5
01	NORMIL, ERNA	G	0	0-2	0-0	0-0	1	0	1	1	1	0	0	0	8	4
02	BLAIR, ALYSSA	G	0	0-1	0-0	0-0	0	0	0	0	0	0	0	0	4	0
03	JEWETT-GILES, KERI	G	11	5-7	1-3	0-0	0	1	1	1	1	0	0	5	9	14
04	RYAN, CHANDLER	G	1	0-3	0-3	1-2	0	2	2	0	0	0	0	0	6	0
05	MARINKOVIC, ANJA	G	3	1-2	1-2	0-0	0	0	0	0	0	2	0	1	7	-3
10	DOWLING, SHEAHEN	G	0	0-3	0-2	0-0	0	3	3	0	3	0	0	0	11	6
13	PHILLS, KERSTIE	G	4	2-2	0-0	0-0	2	1	3	0	0	0	0	0	6	12
20	BRYANT, TANNER	G	7	2-3	0-1	3-3	1	0	1	2	0	1	0	0	8	5
23	PANEM, ASHLEY	G	0	0-2	0-2	0-0	0	1	1	0	0	0	0	0	6	2
31	ULEL, NASRIN	G	4	1-4	0-2	2-2	0	0	0	0	0	0	0	0	6	10
32	LIST, EMMA	G	7	1-1	0-0	5-5	0	0	0	3	0	0	0	0	8	4
34	O'NEAL, ASHLI	G	2	1-1	0-0	0-0	0	0	0	0	1	0	0	1	4	-1
42	ADDERLY, TYTIONIA	F	2	1-2	0-1	0-0	0	3	3	0	2	1	0	1	8	7
	TEAM		0	0-0	0-0	0-0	2	2	4	0	0	0	0	0	0	0
	TOTALS		43	15-36	2-17	11-12	7	13	20	7	8	4	0	8	96	

Shooting By Period

Period	FG	FG%	3FG	3FG%	FT	FT%
3rd Qtr	10-19	53%	1-7	14%	4-4	100%
4th Qtr	5-17	29%	1-10	10%	7-8	88%
2nd Half	15-36	42%	2-17	12%	11-12	92%
Game	36-73	49.3%	7-34	20.6%	15-19	78.9%

Deadball Rebounds: 2,0
 Last FG Half: FGC 4th-02:54

Game Notes:

Officials: , ,
 Attendance: 1708

Start Time: 07:02 PM ET
 End Time: 08:57 PM ET
 Game Duration: 1:54

Score	1st	2nd	3rd	4th	TOT
CCS	18	12	14	16	60
FGC	22	29	25	18	94

Points from (This Period)	CCS	FGC
In the Paint	14	26
Off Turns	6	12
2nd Chance	3	9
Fast Break	0	16
Bench	11	20

Official Box Score
Central Conn. St. vs FGCU
Third Quarter Statistics Only
December 17, 2019 at Alico Arena - Fort Myers, Fla.



Central Conn. St. 30

No.	Player	S	Pts	FG	3FG	FT	OR	DR	TR	PF	A	TO	Blk	Stl	Min	+/-
05	VILA ARTIGUES, BRUNA	G	0	0-0	0-0	0-0	0	0	0	0	0	0	0	0	8	-7
14	FORKER, ASHLEY	F	4	2-2	0-0	0-0	0	2	2	1	0	1	0	1	10	-11
15	MCCAMUS, EMMA	G	1	0-1	0-0	1-2	0	1	1	0	1	2	0	0	6	-10
22	CHIN, ASHLEY	F	0	0-0	0-0	0-0	0	0	0	2	0	0	0	0	6	-5
33	BERUBE, ASHLEY	C	2	1-4	0-0	0-0	0	0	0	0	0	0	1	0	6	-10
01	TOPPIN, FOREVER	G	0	0-0	0-0	0-0	0	0	0	0	0	0	0	0	2	-4
11	JENKINS, DEJAH	G	5	2-3	1-1	0-0	0	0	0	0	0	2	0	1	4	-1
12	PORTER, JEWEL	F	0	0-0	0-0	0-0	0	0	0	0	0	0	0	0	0	0
20	NAPOLEON, JAMEY	F	2	0-1	0-0	2-2	0	2	2	0	0	0	0	0	4	-1
21	SUTHERLAND-CASE, CLAIRE	F	0	0-0	0-0	0-0	0	0	0	0	0	0	0	0	0	0
23	DELANO, DANIELLE	G	0	0-1	0-1	0-0	0	0	0	0	0	1	0	0	4	-6
30	REYNOLDS, CARLY	C	0	0-0	0-0	0-0	0	0	0	0	0	0	0	0	0	0
	TEAM						0	0	0	0		0				
TOTALS			14	5-12	1-2	3-4	0	5	5	3	1	6	1	2	50	

Shooting By Period

Period	FG	FG%	3FG	3FG%	FT	FT%
2nd Half	0-0	0%	0-0	0%	0-0	0%
Game	21-55	38.2%	2-12	16.7%	16-23	69.6%

Deadball Rebounds: 5,0

FGCU 43

No.	Player	S	Pts	FG	3FG	FT	OR	DR	TR	PF	A	TO	Blk	Stl	Min	+/-
00	WINGATE, DAVION	G	2	1-3	0-1	0-0	1	0	1	0	0	0	0	0	6	5
03	JEWETT-GILES, KERI	G	9	4-5	1-2	0-0	0	1	1	1	1	0	0	4	8	14
13	PHILLS, KERSTIE	G	4	2-2	0-0	0-0	2	1	3	0	0	0	0	0	6	12
31	ULEL, NASRIN	G	4	1-4	0-2	2-2	0	0	0	0	0	0	0	0	6	10
42	ADDERLY, TYTIONIA	F	2	1-2	0-1	0-0	0	3	3	0	2	1	0	1	8	7
01	NORMIL, ERNA	G	0	0-1	0-0	0-0	0	0	0	0	1	0	0	0	1	2
02	BLAIR, ALYSSA	G	0	0-0	0-0	0-0	0	0	0	0	0	0	0	0	0	0
04	RYAN, CHANDLER	G	0	0-0	0-0	0-0	0	0	0	0	0	0	0	0	0	0
05	MARINKOVIC, ANJA	G	0	0-0	0-0	0-0	0	0	0	0	0	1	0	0	3	-1
10	DOWLING, SHEAHEN	G	0	0-1	0-1	0-0	0	1	1	0	0	0	0	0	2	4
20	BRYANT, TANNER	G	2	0-0	0-0	2-2	0	0	0	0	0	1	0	0	4	1
23	PANEM, ASHLEY	G	0	0-0	0-0	0-0	0	0	0	0	0	0	0	0	0	0
32	LIST, EMMA	G	0	0-0	0-0	0-0	0	0	0	1	0	0	0	0	2	2
34	O'NEAL, ASHLI	G	2	1-1	0-0	0-0	0	0	0	0	1	0	0	1	4	-1
	TEAM						1	1	2	0		0				
TOTALS			25	10-19	1-7	4-4	4	7	11	2	5	3	0	6	50	

Shooting By Period

Period	FG	FG%	3FG	3FG%	FT	FT%
2nd Half	0-0	0%	0-0	0%	0-0	0%
Game	36-73	49.3%	7-34	20.6%	15-19	78.9%

Deadball Rebounds: 2,0

Game Notes:

Officials: , ,
 Attendance: 1708

Start Time: 07:02 PM ET
 End Time: 08:57 PM ET
 Game Duration: 1:54

Score	1st	2nd	3rd	4th	TOT
CCS	18	12	14	16	60
FGC	22	29	25	18	94

Points from (This Period)	CCS	FGC
In the Paint	8	18
Off Turns	4	9
2nd Chance	0	7
Fast Break	0	13
Bench	7	4

Official Play-By-Play
Central Conn. St. vs FGCU
Third Quarter
December 17, 2019 at Alico Arena - Fort Myers, Fla.



Period 3

Starters:

Central Conn. St.: 5 VILA ARTIGUES, BRUNA (G); 14 FORKER, ASHLEY (F); 15 MCCAMUS, EMMA (G); 22 CHIN, ASHLEY (F); 33 BERUBE, ASHLEY (C);
FGCU: 0 WINGATE, DAVION (G); 3 JEWETT-GILES, KERI (G); 13 PHILLS, KERSTIE (G); 31 ULEL, NASRIN (G); 42 ADDERLY, TYTIONIA (F);

Time	VISITORS: Central Conn. St.	Score	Margin	HOME: FGCU
10:00				SUB OUT: LIST, EMMA
10:00				SUB OUT: O'NEAL, ASHLI
10:00				SUB IN: WINGATE, DAVION
10:00				SUB IN: ADDERLY, TYTIONIA
09:46	TURNOVER (LOSTBALL) by MCCAMUS, EMMA			
09:46				STEAL by JEWETT-GILES, KERI
09:24				MISSED 3PTR by ULEL, NASRIN
09:20				REBOUND (OFF) by PHILLS, KERSTIE
09:16		54-30	H 24	GOOD! 3PTR by JEWETT-GILES, KERI [FB]
09:16				ASSIST by ADDERLY, TYTIONIA
08:44				FOUL (PERSONAL) by JEWETT-GILES, KERI
08:44	MISSED FT by MCCAMUS, EMMA			
08:44	REBOUND (OFF) by TEAM			
08:44	GOOD! FT by MCCAMUS, EMMA	54-31	H 23	
08:34				MISSED LAYUP by ULEL, NASRIN
08:34	BLOCK by BERUBE, ASHLEY			
08:34				REBOUND (OFF) by TEAM
08:26	FOUL (PERSONAL) by CHIN, ASHLEY			
08:26		55-31	H 24	GOOD! FT by ULEL, NASRIN
08:26		56-31	H 25	GOOD! FT by ULEL, NASRIN
08:14	MISSED JUMPER by MCCAMUS, EMMA			
08:11				REBOUND (DEF) by ADDERLY, TYTIONIA
07:55	FOUL (PERSONAL) by CHIN, ASHLEY			
07:55	SUB OUT: CHIN, ASHLEY			
07:55	SUB IN: DELANO, DANIELLE			
07:53		58-31	H 27	GOOD! JUMPER by JEWETT-GILES, KERI [PNT]
07:53				ASSIST by ADDERLY, TYTIONIA
07:36	MISSED LAYUP by BERUBE, ASHLEY			
07:33				REBOUND (DEF) by PHILLS, KERSTIE
07:29				TURNOVER (TRAVEL) by ADDERLY, TYTIONIA
07:17	GOOD! LAYUP by BERUBE, ASHLEY [PNT]	58-33	H 25	
07:17	ASSIST by MCCAMUS, EMMA			
07:12		60-33	H 27	GOOD! LAYUP by PHILLS, KERSTIE [FB/PNT]
07:12				ASSIST by JEWETT-GILES, KERI
07:00	GOOD! LAYUP by FORKER, ASHLEY	60-35	H 25	
06:51				MISSED LAYUP by WINGATE, DAVION
06:49				REBOUND (OFF) by WINGATE, DAVION
06:48		62-35	H 27	GOOD! LAYUP by WINGATE, DAVION
06:25	TURNOVER (BADPASS) by FORKER, ASHLEY			
06:25				STEAL by JEWETT-GILES, KERI
06:21		64-35	H 29	GOOD! LAYUP by JEWETT-GILES, KERI [FB/PNT]
06:18				SUB OUT: WINGATE, DAVION
06:18				SUB OUT: PHILLS, KERSTIE
06:18				SUB IN: BRYANT, TANNER
06:18				SUB IN: O'NEAL, ASHLI
06:08	MISSED JUMPER by BERUBE, ASHLEY			
06:04				REBOUND (DEF) by ADDERLY, TYTIONIA
05:58				MISSED 3PTR by ADDERLY, TYTIONIA
05:55	REBOUND (DEF) by FORKER, ASHLEY			
05:49	MISSED 3PTR by DELANO, DANIELLE			
05:45				REBOUND (DEF) by JEWETT-GILES, KERI
05:43				TURNOVER (BADPASS) by BRYANT, TANNER
05:43	STEAL by FORKER, ASHLEY			
05:29	TURNOVER (BADPASS) by MCCAMUS, EMMA			
05:29				STEAL by JEWETT-GILES, KERI
05:18				MISSED 3PTR by JEWETT-GILES, KERI
05:15	REBOUND (DEF) by FORKER, ASHLEY			
05:10	MISSED JUMPER by BERUBE, ASHLEY			
05:06				REBOUND (DEF) by ADDERLY, TYTIONIA
04:55				MISSED 3PTR by ULEL, NASRIN
04:50	REBOUND (DEF) by MCCAMUS, EMMA			
04:37	TURNOVER (BADPASS) by DELANO, DANIELLE			
04:37				STEAL by O'NEAL, ASHLI
04:31		66-35	H 31	GOOD! LAYUP by ULEL, NASRIN [FB/PNT]
04:31				ASSIST by O'NEAL, ASHLI
04:18				SUB OUT: JEWETT-GILES, KERI
04:18				SUB OUT: ULEL, NASRIN
04:18				SUB IN: WINGATE, DAVION

Time	VISITORS: Central Conn. St.	Score	Margin	HOME: FGCU
04:18				SUB IN: MARINKOVIC, ANJA
04:18	SUB OUT: MCCAMUS, EMMA			
04:18	SUB OUT: DELANO, DANIELLE			
04:18	SUB OUT: BERUBE, ASHLEY			
04:18	SUB IN: JENKINS, DEJAH			
04:18	SUB IN: NAPOLEON, JAMEY			
04:18	SUB IN: CHIN, ASHLEY			
04:08	GOOD! JUMPER by FORKER, ASHLEY [PNT]	66-37	H 29	
03:53		68-37	H 31	GOOD! LAYUP by O'NEAL, ASHLI [PNT]
03:26	TURNOVER (BADPASS) by JENKINS, DEJAH			
03:26				STEAL by ADDERLY, TYTIONIA
03:14				MISSED 3PTR by WINGATE, DAVION
03:10	REBOUND (DEF) by NAPOLEON, JAMEY			
02:53	GOOD! 3PTR by JENKINS, DEJAH	68-40	H 28	
02:39		70-40	H 30	GOOD! LAYUP by ADDERLY, TYTIONIA [PNT]
02:17	GOOD! LAYUP by JENKINS, DEJAH [PNT]	70-42	H 28	
02:08	FOUL (PERSONAL) by FORKER, ASHLEY			
02:08				SUB OUT: WINGATE, DAVION
02:08				SUB OUT: O'NEAL, ASHLI
02:08				SUB OUT: ADDERLY, TYTIONIA
02:08				SUB IN: JEWETT-GILES, KERI
02:08				SUB IN: DOWLING, SHEAHEN
02:08				SUB IN: PHILLS, KERSTIE
02:08	SUB OUT: VILA ARTIGUES, BRUNA			
02:08	SUB IN: TOPPIN, FOREVER			
02:08		71-42	H 29	GOOD! FT by BRYANT, TANNER [FB]
02:08		72-42	H 30	GOOD! FT by BRYANT, TANNER [FB]
02:08				SUB OUT: BRYANT, TANNER
02:08				SUB IN: LIST, EMMA
01:53	MISSED JUMPER by JENKINS, DEJAH			
01:53				REBOUND (DEF) by TEAM
01:37				TURNOVER (BADPASS) by MARINKOVIC, ANJA
01:37	STEAL by JENKINS, DEJAH			
01:27				FOUL (PERSONAL) by LIST, EMMA
01:27				SUB OUT: MARINKOVIC, ANJA
01:27				SUB IN: NORMIL, ERNA
01:27	GOOD! FT by NAPOLEON, JAMEY	72-43	H 29	
01:27	GOOD! FT by NAPOLEON, JAMEY	72-44	H 28	
01:11		74-44	H 30	GOOD! LAYUP by JEWETT-GILES, KERI
00:54	MISSED JUMPER by NAPOLEON, JAMEY			
00:51				REBOUND (DEF) by DOWLING, SHEAHEN
00:39				MISSED 3PTR by DOWLING, SHEAHEN
00:37				REBOUND (OFF) by PHILLS, KERSTIE
00:16				MISSED LAYUP by NORMIL, ERNA
00:13	REBOUND (DEF) by NAPOLEON, JAMEY			
00:08	TURNOVER (LOSTBALL) by JENKINS, DEJAH			
00:08				STEAL by JEWETT-GILES, KERI
00:01		76-44	H 32	GOOD! LAYUP by PHILLS, KERSTIE [FB]
00:01				ASSIST by NORMIL, ERNA

Central Conn. St. 44, FGCU 76

Points from (This Period)	CCS	FGC
In the Paint	8	18
Off Turns	4	9
2nd Chance	0	7
Fast Break	0	13
Bench	7	4

Official Box Score
Central Conn. St. vs FGCU
Fourth Quarter Statistics Only
December 17, 2019 at Alico Arena - Fort Myers, Fla.



Central Conn. St. 16

No.	Player	S	Pts	FG	3FG	FT	OR	DR	TR	PF	A	TO	Blk	Stl	Min	+/-
05	VILA ARTIGUES, BRUNA	G	0	0-0	0-0	0-0	0	0	0	0	0	0	0	0	0	0
14	FORKER, ASHLEY	F	2	1-3	0-1	0-0	1	0	1	0	0	0	0	0	3	-2
15	MCCAMUS, EMMA	G	6	2-4	0-1	2-2	2	1	3	1	1	0	0	0	9	-2
22	CHIN, ASHLEY	F	2	1-2	0-0	0-0	0	0	0	0	1	0	0	0	6	0
33	BERUBE, ASHLEY	C	2	1-1	0-0	0-0	0	1	1	0	0	0	0	0	2	0
01	TOPPIN, FOREVER	G	0	0-0	0-0	0-0	0	0	0	1	0	2	0	0	2	0
11	JENKINS, DEJAH	G	3	1-4	1-2	0-0	0	3	3	1	0	0	0	0	9	-2
12	PORTER, JEWEL	F	1	0-1	0-0	1-2	1	1	2	2	0	1	0	0	7	-2
20	NAPOLEON, JAMEY	F	0	0-0	0-0	0-0	0	0	0	0	0	0	0	0	0	0
21	SUTHERLAND-CASE, CLAIRE	F	0	0-1	0-1	0-2	0	3	3	2	0	1	1	0	8	-2
23	DELANO, DANIELLE	G	0	0-0	0-0	0-0	0	0	0	0	0	0	0	0	0	0
30	REYNOLDS, CARLY	C	0	0-0	0-0	0-0	0	0	0	0	0	0	0	0	0	0
TEAM							1	1	2	0	0	0	0	0	0	0
TOTALS			16	6-16	1-5	3-6	5	10	15	7	2	4	1	0	46	

Shooting By Period

Period	FG	FG%	3FG	3FG%	FT	FT%	Deadball Rebounds: 5,0
Game	21-55	38.2%	2-12	16.7%	16-23	69.6%	

FGCU 18

No.	Player	S	Pts	FG	3FG	FT	OR	DR	TR	PF	A	TO	Blk	Stl	Min	+/-
00	WINGATE, DAVION	G	0	0-0	0-0	0-0	0	0	0	0	0	0	0	0	0	0
03	JEWETT-GILES, KERI	G	2	1-2	0-1	0-0	0	0	0	0	0	0	0	1	1	0
13	PHILLS, KERSTIE	G	0	0-0	0-0	0-0	0	0	0	0	0	0	0	0	0	0
31	ULEL, NASRIN	G	0	0-0	0-0	0-0	0	0	0	0	0	0	0	0	0	0
42	ADDERLY, TYTIONIA	F	0	0-0	0-0	0-0	0	0	0	0	0	0	0	0	0	0
01	NORMIL, ERNA	G	0	0-1	0-0	0-0	1	0	1	1	0	0	0	0	7	2
02	BLAIR, ALYSSA	G	0	0-1	0-0	0-0	0	0	0	0	0	0	0	0	4	0
04	RYAN, CHANDLER	G	1	0-3	0-3	1-2	0	2	2	0	0	0	0	0	6	0
05	MARINKOVIC, ANJA	G	3	1-2	1-2	0-0	0	0	0	0	0	1	0	1	4	-2
10	DOWLING, SHEAHEN	G	0	0-2	0-1	0-0	0	2	2	0	3	0	0	0	9	2
20	BRYANT, TANNER	G	5	2-3	0-1	1-1	1	0	1	2	0	0	0	0	4	4
23	PANEM, ASHLEY	G	0	0-2	0-2	0-0	0	1	1	0	0	0	0	0	6	2
32	LIST, EMMA	G	7	1-1	0-0	5-5	0	0	0	2	0	0	0	0	6	2
34	O'NEAL, ASHLI	G	0	0-0	0-0	0-0	0	0	0	0	0	0	0	0	0	0
TEAM							1	1	2	0	0	0	0	0	0	
TOTALS			18	5-17	1-10	7-8	3	6	9	5	3	1	0	2	46	

Shooting By Period

Period	FG	FG%	3FG	3FG%	FT	FT%	Deadball Rebounds: 2,0
Game	36-73	49.3%	7-34	20.6%	15-19	78.9%	

Game Notes:

Officials: , ,
Attendance: 1708

Start Time: 07:02 PM ET
End Time: 08:57 PM ET
Game Duration: 1:54

Score	1st	2nd	3rd	4th	TOT
CCS	18	12	14	16	60
FGC	22	29	25	18	94

Points from (This Period)	CCS	FGC
In the Paint	6	8
Off Turns	2	3
2nd Chance	3	2
Fast Break	0	3
Bench	4	16

Official Play-By-Play
Central Conn. St. vs FGCU
Fourth Quarter
December 17, 2019 at Alico Arena - Fort Myers, Fla.



Period 4

Starters:

Central Conn. St.: 5 VILA ARTIGUES, BRUNA (G); 14 FORKER, ASHLEY (F); 15 MCCAMUS, EMMA (G); 22 CHIN, ASHLEY (F); 33 BERUBE, ASHLEY (C);
FGCU: 0 WINGATE, DAVION (G); 3 JEWETT-GILES, KERI (G); 13 PHILLS, KERSTIE (G); 31 ULEL, NASRIN (G); 42 ADDERLY, TYTTONIA (F);

Time	VISITORS: Central Conn. St.	Score	Margin	HOME: FGCU
10:00				SUB OUT: PHILLS, KERSTIE
10:00				SUB IN: BLAIR, ALYSSA
10:00	SUB OUT: FORKER, ASHLEY			
10:00	SUB OUT: NAPOLEON, JAMEY			
10:00	SUB IN: MCCAMUS, EMMA			
10:00	SUB IN: BERUBE, ASHLEY			
09:51				MISSED 3PTR by JEWETT-GILES, KERI
09:48	REBOUND (DEF) by BERUBE, ASHLEY			
09:42	TURNOVER (LOSTBALL) by TOPPIN, FOREVER			
09:42				STEAL by JEWETT-GILES, KERI
09:37		78-44	H 34	GOOD! LAYUP by JEWETT-GILES, KERI [FB]
09:27				FOUL (PERSONAL) by LIST, EMMA
09:17	GOOD! JUMPER by MCCAMUS, EMMA [PNT]	78-46	H 32	
09:06				MISSED LAYUP by DOWLING, SHEAHEN
09:03				REBOUND (OFF) by TEAM
09:03				SUB OUT: JEWETT-GILES, KERI
09:03				SUB IN: MARINKOVIC, ANJA
08:59				MISSED 3PTR by MARINKOVIC, ANJA
08:53	REBOUND (DEF) by TEAM			
08:43	TURNOVER (BADPASS) by TOPPIN, FOREVER			
08:43				STEAL by MARINKOVIC, ANJA
08:37				TURNOVER (TRAVEL) by MARINKOVIC, ANJA
08:37	SUB OUT: JENKINS, DEJAH			
08:37	SUB IN: SUTHERLAND-CASE, CLAIRE			
08:24	GOOD! LAYUP by BERUBE, ASHLEY [PNT]	78-48	H 30	
08:24	ASSIST by CHIN, ASHLEY			
08:08		80-48	H 32	GOOD! LAYUP by LIST, EMMA
08:08				ASSIST by DOWLING, SHEAHEN
08:08	FOUL (PERSONAL) by TOPPIN, FOREVER			
08:08	SUB OUT: TOPPIN, FOREVER			
08:08	SUB OUT: BERUBE, ASHLEY			
08:08	SUB IN: JENKINS, DEJAH			
08:08	SUB IN: PORTER, JEWEL			
08:08		81-48	H 33	GOOD! FT by LIST, EMMA
08:08	MISSED 3PTR by MCCAMUS, EMMA			
08:08				REBOUND (DEF) by TEAM
07:37		84-48	H 36	GOOD! 3PTR by MARINKOVIC, ANJA
07:37				ASSIST by DOWLING, SHEAHEN
07:21	GOOD! JUMPER by CHIN, ASHLEY	84-50	H 34	
06:58				MISSED LAYUP by BLAIR, ALYSSA
06:55	REBOUND (DEF) by JENKINS, DEJAH			
06:52	MISSED LAYUP by JENKINS, DEJAH			
06:49	REBOUND (OFF) by MCCAMUS, EMMA			
06:49	GOOD! JUMPER by MCCAMUS, EMMA	84-52	H 32	
06:25	FOUL (PERSONAL) by MCCAMUS, EMMA			
06:25				SUB OUT: BLAIR, ALYSSA
06:25				SUB OUT: MARINKOVIC, ANJA
06:25				SUB IN: BRYANT, TANNER
06:25				SUB IN: PANEM, ASHLEY
06:25		85-52	H 33	GOOD! FT by LIST, EMMA
06:25		86-52	H 34	GOOD! FT by LIST, EMMA
06:25				SUB OUT: NORMIL, ERNA
06:25				SUB IN: RYAN, CHANDLER
06:09	MISSED JUMPER by JENKINS, DEJAH			
06:06				REBOUND (DEF) by RYAN, CHANDLER
05:50	FOUL (PERSONAL) by JENKINS, DEJAH			
05:50		87-52	H 35	GOOD! FT by LIST, EMMA
05:50		88-52	H 36	GOOD! FT by LIST, EMMA
05:50				SUB OUT: LIST, EMMA
05:50				SUB IN: NORMIL, ERNA
05:40				FOUL (PERSONAL) by NORMIL, ERNA
05:40	GOOD! FT by MCCAMUS, EMMA	88-53	H 35	
05:40	GOOD! FT by MCCAMUS, EMMA	88-54	H 34	
05:40	SUB OUT: CHIN, ASHLEY			
05:40	SUB IN: FORKER, ASHLEY			
05:27		90-54	H 36	GOOD! LAYUP by BRYANT, TANNER
05:27				ASSIST by DOWLING, SHEAHEN
05:27	FOUL (PERSONAL) by PORTER, JEWEL			
05:27		91-54	H 37	GOOD! FT by BRYANT, TANNER
05:13	MISSED 3PTR by SUTHERLAND-CASE, CLAIRE			

Time	VISITORS: Central Conn. St.	Score	Margin	HOME: FGCU
05:11	REBOUND (OFF) by PORTER, JEWEL			
05:11				FOUL (PERSONAL) by BRYANT, TANNER
04:55				FOUL (PERSONAL) by BRYANT, TANNER
04:55				
04:55	MISSED FT by PORTER, JEWEL			
04:55	REBOUND (OFF) by TEAM			
04:55	GOOD! FT by PORTER, JEWEL	91-55	H 36	
04:48				MISSED 3PTR by BRYANT, TANNER
04:42	REBOUND (DEF) by PORTER, JEWEL			
04:34	GOOD! LAYUP by FORKER, ASHLEY	91-57	H 34	
04:13				MISSED 3PTR by RYAN, CHANDLER
04:10	REBOUND (DEF) by SUTHERLAND-CASE, CLAIRE			
03:57	MISSED JUMPER by MCCAMUS, EMMA			
03:54				REBOUND (DEF) by DOWLING, SHEAHEN
03:43				MISSED LAYUP by NORMIL, ERNA
03:43	BLOCK by SUTHERLAND-CASE, CLAIRE			
03:28				REBOUND (OFF) by NORMIL, ERNA
03:24				MISSED 3PTR by PANEM, ASHLEY
03:15	REBOUND (DEF) by JENKINS, DEJAH			
03:13	MISSED LAYUP by FORKER, ASHLEY			
03:09				REBOUND (DEF) by RYAN, CHANDLER
02:57				MISSED 3PTR by DOWLING, SHEAHEN
02:54				REBOUND (OFF) by BRYANT, TANNER
02:54		93-57	H 36	GOOD! LAYUP by BRYANT, TANNER
02:35	MISSED 3PTR by FORKER, ASHLEY			
02:31	REBOUND (OFF) by FORKER, ASHLEY			
02:25	MISSED 3PTR by JENKINS, DEJAH			
02:20	REBOUND (OFF) by TEAM			
02:18				SUB OUT: NORMIL, ERNA
02:18				SUB OUT: BRYANT, TANNER
02:18				SUB IN: MARINKOVIC, ANJA
02:18				SUB IN: LIST, EMMA
02:18	FOUL (OFF) by SUTHERLAND-CASE, CLAIRE			
02:18	TURNOVER (OFFENSIVE) by SUTHERLAND-CASE, CLAIRE			
02:18	SUB OUT: FORKER, ASHLEY			
02:18	SUB IN: CHIN, ASHLEY			
02:18				MISSED 3PTR by RYAN, CHANDLER
02:18	REBOUND (DEF) by MCCAMUS, EMMA			
02:03	GOOD! 3PTR by JENKINS, DEJAH	93-60	H 33	
02:03	ASSIST by MCCAMUS, EMMA			
01:44				MISSED 3PTR by RYAN, CHANDLER
01:41	REBOUND (DEF) by SUTHERLAND-CASE, CLAIRE			
01:29	FOUL (OFF) by PORTER, JEWEL			
01:29	TURNOVER (OFFENSIVE) by PORTER, JEWEL			
01:24	FOUL (PERSONAL) by SUTHERLAND-CASE, CLAIRE			
01:07		94-60	H 34	GOOD! FT by RYAN, CHANDLER [FB]
01:07				MISSED FT by RYAN, CHANDLER
01:07	REBOUND (DEF) by SUTHERLAND-CASE, CLAIRE			
01:07				FOUL (PERSONAL) by LIST, EMMA
01:07	MISSED FT by SUTHERLAND-CASE, CLAIRE			
01:07	REBOUND (OFF) by TEAM			
01:07	MISSED FT by SUTHERLAND-CASE, CLAIRE			
01:07	REBOUND (OFF) by MCCAMUS, EMMA			
01:07	MISSED JUMPER by PORTER, JEWEL			
01:07				REBOUND (DEF) by PANEM, ASHLEY
01:05				MISSED 3PTR by PANEM, ASHLEY
01:02	REBOUND (DEF) by JENKINS, DEJAH			
00:47	MISSED JUMPER by CHIN, ASHLEY			
00:44				REBOUND (DEF) by DOWLING, SHEAHEN

Central Conn. St. 60, FGCU 94

Points from (This Period)	CCS	FGC
In the Paint	6	8
Off Turns	2	3
2nd Chance	3	2
Fast Break	0	3
Bench	4	16

Official Scoring/Possession Reference Chart
Central Conn. St. vs FGCU
Period 1
December 17, 2019 at Alico Arena - Fort Myers, Fla.



Period 1

Starters:

Central Conn. St.: 5 VILA, ARTIGUES, BRUNA (G); 14 FORKER, ASHLEY (F); 15 MCCAMUS, EMMA (G); 22 CHIN, ASHLEY (F); 33 BERUBE, ASHLEY (C);
 FGCU: 0 WINGATE, DAVION (G); 3 JEWETT-GILES, KERI (G); 13 PHILLS, KERSTIE (G); 31 ULEL, NASRIN (G); 42 ADDERLY, TYTONIA (F);

Time	VISITORS: Central Conn. St.	Score	Margin	HOME: FGCU
09:41		2-0	H 2	GOOD! LAYUP by WINGATE, DAVION
09:04		5-0	H 5	GOOD! 3PTR by ULEL, NASRIN
08:44	GOOD! JUMPER by FORKER, ASHLEY	5-2	H 3	
08:24	GOOD! JUMPER by BERUBE, ASHLEY	5-4	H 1	
07:47	GOOD! JUMPER by BERUBE, ASHLEY [PNT]	5-6	V 1	
07:25		7-6	H 1	GOOD! LAYUP by ULEL, NASRIN
07:14	GOOD! JUMPER by MCCAMUS, EMMA [PNT]	7-8	V 1	
07:14	GOOD! FT by MCCAMUS, EMMA	7-9	V 2	
07:04		10-9	H 1	GOOD! 3PTR by WINGATE, DAVION
06:43		12-9	H 3	GOOD! LAYUP by WINGATE, DAVION [FB]
06:22		14-9	H 5	GOOD! LAYUP by PHILLS, KERSTIE [FB]
05:58	GOOD! FT by BERUBE, ASHLEY	14-10	H 4	
05:15		16-10	H 6	GOOD! LAYUP by JEWETT-GILES, KERI
05:00	GOOD! JUMPER by BERUBE, ASHLEY [PNT]	16-12	H 4	
03:15	GOOD! JUMPER by CHIN, ASHLEY	16-14	H 2	
02:36		18-14	H 4	GOOD! LAYUP by WINGATE, DAVION [PNT]
02:18	GOOD! LAYUP by CHIN, ASHLEY	18-16	H 2	
01:16		19-16	H 3	GOOD! FT by JEWETT-GILES, KERI [FB]
00:59	GOOD! JUMPER by JENKINS, DEJAH [PNT]	19-18	H 1	
00:15		21-18	H 3	GOOD! LAYUP by WINGATE, DAVION [FB]
00:00		22-18	H 4	GOOD! FT by O'NEAL, ASHLI [FB]

Central Conn. St. 18, FGCU 22

Official Scoring/Possession Reference Chart
Central Conn. St. vs FGCU
Period 2
December 17, 2019 at Alico Arena - Fort Myers, Fla.



Period 2

Starters:

Central Conn. St.: 5 VILA, ARTIGUES, BRUNA (G); 14 FORKER, ASHLEY (F); 15 MCCAMUS, EMMA (G); 22 CHIN, ASHLEY (F); 33 BERUBE, ASHLEY (C);
 FGCU: 0 WINGATE, DAVION (G); 3 JEWETT-GILES, KERI (G); 13 PHILLS, KERSTIE (G); 31 ULEL, NASRIN (G); 42 ADDERLY, TYTIONIA (F);

Time	VISITORS: Central Conn. St.	Score	Margin	HOME: FGCU
09:42	GOOD! JUMPER by BERUBE, ASHLEY [PNT]	22-20	H 2	
09:18		25-20	H 5	GOOD! 3PTR by ADDERLY, TYTIONIA
08:30	GOOD! FT by FORKER, ASHLEY	25-21	H 4	
08:09		27-21	H 6	GOOD! LAYUP by ADDERLY, TYTIONIA [PNT]
07:37		29-21	H 8	GOOD! LAYUP by ULEL, NASRIN
07:05	GOOD! FT by BERUBE, ASHLEY	29-22	H 7	
07:05	GOOD! FT by BERUBE, ASHLEY	29-23	H 6	
06:45		31-23	H 8	GOOD! LAYUP by WINGATE, DAVION [PNT]
06:09	GOOD! FT by TOPPIN, FOREVER [FB]	31-24	H 7	
06:09	GOOD! FT by TOPPIN, FOREVER [FB]	31-25	H 6	
05:38		33-25	H 8	GOOD! LAYUP by PHILLS, KERSTIE [PNT]
04:44		35-25	H 10	GOOD! LAYUP by ULEL, NASRIN [PNT]
04:12		37-25	H 12	GOOD! LAYUP by ULEL, NASRIN [FB]
03:56	GOOD! LAYUP by JENKINS, DEJAH	37-27	H 10	
03:41	GOOD! FT by TOPPIN, FOREVER	37-28	H 9	
03:16		38-28	H 10	GOOD! FT by PHILLS, KERSTIE
02:51		40-28	H 12	GOOD! JUMPER by ULEL, NASRIN
02:51		41-28	H 13	GOOD! FT by ULEL, NASRIN
02:10		44-28	H 16	GOOD! 3PTR by PHILLS, KERSTIE [FB]
01:52	GOOD! FT by FORKER, ASHLEY	44-29	H 15	
01:52	GOOD! FT by FORKER, ASHLEY	44-30	H 14	
01:42		46-30	H 16	GOOD! LAYUP by ULEL, NASRIN [PNT]
01:02		49-30	H 19	GOOD! 3PTR by ULEL, NASRIN
00:08		51-30	H 21	GOOD! LAYUP by PHILLS, KERSTIE [PNT]

Central Conn. St. 30, FGCU 51

Official Scoring/Possession Reference Chart
Central Conn. St. vs FGCU
Period 3
December 17, 2019 at Alico Arena - Fort Myers, Fla.



Period 3

Starters:

Central Conn. St.: 5 VILA, ARTIGUES, BRUNA (G); 14 FORKER, ASHLEY (F); 15 MCCAMUS, EMMA (G); 22 CHIN, ASHLEY (F); 33 BERUBE, ASHLEY (C);
 FGCU: 0 WINGATE, DAVION (G); 3 JEWETT-GILES, KERI (G); 13 PHILLS, KERSTIE (G); 31 ULEL, NASRIN (G); 42 ADDERLY, TYTIONIA (F);

Time	VISITORS: Central Conn. St.	Score	Margin	HOME: FGCU
09:16		54-30	H 24	GOOD! 3PTR by JEWETT-GILES, KERI [FB]
08:44	GOOD! FT by MCCAMUS, EMMA	54-31	H 23	
08:26		55-31	H 24	GOOD! FT by ULEL, NASRIN
08:26		56-31	H 25	GOOD! FT by ULEL, NASRIN
07:53		58-31	H 27	GOOD! JUMPER by JEWETT-GILES, KERI [PNT]
07:17	GOOD! LAYUP by BERUBE, ASHLEY [PNT]	58-33	H 25	
07:12		60-33	H 27	GOOD! LAYUP by PHILLS, KERSTIE [FB/PNT]
07:00	GOOD! LAYUP by FORKER, ASHLEY	60-35	H 25	
06:48		62-35	H 27	GOOD! LAYUP by WINGATE, DAVION
06:21		64-35	H 29	GOOD! LAYUP by JEWETT-GILES, KERI [FB/PNT]
04:31		66-35	H 31	GOOD! LAYUP by ULEL, NASRIN [FB/PNT]
04:08	GOOD! JUMPER by FORKER, ASHLEY [PNT]	66-37	H 29	
03:53		68-37	H 31	GOOD! LAYUP by O'NEAL, ASHLI [PNT]
02:53	GOOD! 3PTR by JENKINS, DEJAH	68-40	H 28	
02:39		70-40	H 30	GOOD! LAYUP by ADDERLY, TYTIONIA [PNT]
02:17	GOOD! LAYUP by JENKINS, DEJAH [PNT]	70-42	H 28	
02:08		71-42	H 29	GOOD! FT by BRYANT, TANNER [FB]
02:08		72-42	H 30	GOOD! FT by BRYANT, TANNER [FB]
01:27	GOOD! FT by NAPOLEON, JAMEY	72-43	H 29	
01:27	GOOD! FT by NAPOLEON, JAMEY	72-44	H 28	
01:11		74-44	H 30	GOOD! LAYUP by JEWETT-GILES, KERI
00:01		76-44	H 32	GOOD! LAYUP by PHILLS, KERSTIE [FB]

Central Conn. St. 44, FGCU 76

Official Scoring/Possession Reference Chart
Central Conn. St. vs FGCU
Period 4
December 17, 2019 at Alico Arena - Fort Myers, Fla.



Period 4

Starters:

Central Conn. St.: 5 VILA, ARTIGUES, BRUNA (G); 14 FORKER, ASHLEY (F); 15 MCCAMUS, EMMA (G); 22 CHIN, ASHLEY (F); 33 BERUBE, ASHLEY (C);
 FGCU: 0 WINGATE, DAVION (G); 3 JEWETT-GILES, KERI (G); 13 PHILLS, KERSTIE (G); 31 ULEL, NASRIN (G); 42 ADDERLY, TYTONIA (F);

Time	VISITORS: Central Conn. St.	Score	Margin	HOME: FGCU
09:37		78-44	H 34	GOOD! LAYUP by JEWETT-GILES, KERI [FB]
09:17	GOOD! JUMPER by MCCAMUS, EMMA [PNT]	78-46	H 32	
08:24	GOOD! LAYUP by BERUBE, ASHLEY [PNT]	78-48	H 30	
08:08		80-48	H 32	GOOD! LAYUP by LIST, EMMA
08:08		81-48	H 33	GOOD! FT by LIST, EMMA
07:37		84-48	H 36	GOOD! 3PTR by MARINKOVIC, ANJA
07:21	GOOD! JUMPER by CHIN, ASHLEY	84-50	H 34	
06:49	GOOD! JUMPER by MCCAMUS, EMMA	84-52	H 32	
06:25		85-52	H 33	GOOD! FT by LIST, EMMA
06:25		86-52	H 34	GOOD! FT by LIST, EMMA
05:50		87-52	H 35	GOOD! FT by LIST, EMMA
05:50		88-52	H 36	GOOD! FT by LIST, EMMA
05:40	GOOD! FT by MCCAMUS, EMMA	88-53	H 35	
05:40	GOOD! FT by MCCAMUS, EMMA	88-54	H 34	
05:27		90-54	H 36	GOOD! LAYUP by BRYANT, TANNER
05:27		91-54	H 37	GOOD! FT by BRYANT, TANNER
04:55	GOOD! FT by PORTER, JEWEL	91-55	H 36	
04:34	GOOD! LAYUP by FORKER, ASHLEY	91-57	H 34	
02:54		93-57	H 36	GOOD! LAYUP by BRYANT, TANNER
02:03	GOOD! 3PTR by JENKINS, DEJAH	93-60	H 33	
01:07		94-60	H 34	GOOD! FT by RYAN, CHANDLER [FB]

Central Conn. St. 60, FGCU 94

Official Substitutions Log
Central Conn. St. vs FGCU
Period 1
December 17, 2019 at Alico Arena - Fort Myers, Fla.



VISITORS: Central Conn. St.	Time	Score	HOME: FGCU
5 VILA ARTIGUES,BRUNA			0 WINGATE,DAVION
14 FORKER,ASHLEY			3 JEWETT-GILES,KERI
15 MCCAMUS,EMMA			13 PHILLS,KERSTIE
22 CHIN,ASHLEY			31 ULEL,NASRIN
33 BERUBE,ASHLEY			42 ADDERLY,TYTIONIA
	07:32	6-5	SUB OUT: JEWETT-GILES,KERI
	07:32		SUB IN: O'NEAL,ASHLI
	05:58	9-14	SUB OUT: WINGATE,DAVION
	05:58		SUB OUT: PHILLS,KERSTIE
	05:58		SUB IN: BLAIR,ALYSSA
	05:58		SUB IN: JEWETT-GILES,KERI
	04:24	12-16	SUB OUT: ADDERLY,TYTIONIA
	04:24		SUB IN: PHILLS,KERSTIE
SUB OUT: 5 VILA ARTIGUES,BRUNA	04:24		
SUB OUT: 14 FORKER,ASHLEY	04:24		
SUB IN: 1 TOPPIN,FOREVER	04:24		
SUB IN: 20 NAPOLEON,JAMEY	04:24		
	03:56	12-16	SUB OUT: O'NEAL,ASHLI
	03:56		SUB IN: WINGATE,DAVION
	01:16	16-18	SUB OUT: BLAIR,ALYSSA
	01:16		SUB OUT: ULEL,NASRIN
	01:16		SUB IN: O'NEAL,ASHLI
	01:16		SUB IN: ADDERLY,TYTIONIA
SUB OUT: 15 MCCAMUS,EMMA	01:16		
SUB OUT: 22 CHIN,ASHLEY	01:16		
SUB OUT: 33 BERUBE,ASHLEY	01:16		
SUB IN: 11 JENKINS,DEJAH	01:16		
SUB IN: 14 FORKER,ASHLEY	01:16		
SUB IN: 30 REYNOLDS,CARLY	01:16		
	01:16		SUB OUT: JEWETT-GILES,KERI
	01:16		SUB IN: MARINKOVIC,ANJA
	00:33	18-19	SUB OUT: PHILLS,KERSTIE
	00:33		SUB IN: ULEL,NASRIN
	00:04	18-21	SUB OUT: WINGATE,DAVION
	00:04		SUB IN: JEWETT-GILES,KERI
SUB OUT: 1 TOPPIN,FOREVER	00:00	18-21	
SUB IN: 5 VILA ARTIGUES,BRUNA	00:00		

Central Conn. St. 18, FGCU 22

Official Substitutions Log
Central Conn. St. vs FGCU
Period 2
December 17, 2019 at Alico Arena - Fort Myers, Fla.



VISITORS: Central Conn. St.	Time	Score	HOME: FGCU
5 VILA ARTIGUES,BRUNA			0 WINGATE,DAVION
14 FORKER,ASHLEY			3 JEWETT-GILES,KERI
15 MCCAMUS,EMMA			13 PHILLS,KERSTIE
22 CHIN,ASHLEY			31 ULEL,NASRIN
33 BERUBE,ASHLEY			42 ADDERLY,TYTIONIA
SUB OUT: 11 JENKINS,DEJAH	10:00	-	
SUB OUT: 20 NAPOLEON,JAMEY	10:00		
SUB OUT: 30 REYNOLDS,CARLY	10:00		
SUB IN: 15 MCCAMUS,EMMA	10:00		
SUB IN: 22 CHIN,ASHLEY	10:00		
SUB IN: 33 BERUBE,ASHLEY	10:00		
	08:56	20-25	SUB OUT: MARINKOVIC,ANJA
	08:56		SUB OUT: O'NEAL,ASHLI
	08:56		SUB IN: WINGATE,DAVION
	08:56		SUB IN: PHILLS,KERSTIE
SUB OUT: 5 VILA ARTIGUES,BRUNA	07:10	21-29	
SUB IN: 1 TOPPIN,FOREVER	07:10		
SUB OUT: 15 MCCAMUS,EMMA	07:05	23-29	
SUB IN: 11 JENKINS,DEJAH	07:05		
	06:31	23-31	SUB OUT: WINGATE,DAVION
	06:31		SUB OUT: ADDERLY,TYTIONIA
	06:31		SUB IN: BLAIR,ALYSSA
	06:31		SUB IN: O'NEAL,ASHLI
	05:03	25-33	SUB OUT: JEWETT-GILES,KERI
	05:03		SUB OUT: PHILLS,KERSTIE
	05:03		SUB IN: WINGATE,DAVION
	05:03		SUB IN: ADDERLY,TYTIONIA
SUB OUT: 14 FORKER,ASHLEY	05:03		
SUB OUT: 22 CHIN,ASHLEY	05:03		
SUB IN: 15 MCCAMUS,EMMA	05:03		
SUB IN: 20 NAPOLEON,JAMEY	05:03		
	03:41	27-37	SUB OUT: O'NEAL,ASHLI
	03:41		SUB OUT: ADDERLY,TYTIONIA
	03:41		SUB IN: JEWETT-GILES,KERI
	03:41		SUB IN: PHILLS,KERSTIE
SUB OUT: 33 BERUBE,ASHLEY	03:41		
SUB IN: 14 FORKER,ASHLEY	03:41		
SUB OUT: 1 TOPPIN,FOREVER	03:16	28-37	
SUB IN: 5 VILA ARTIGUES,BRUNA	03:16		
SUB OUT: 11 JENKINS,DEJAH	02:51	28-40	
SUB IN: 22 CHIN,ASHLEY	02:51		
	01:52	28-44	SUB OUT: WINGATE,DAVION
	01:52		SUB OUT: BLAIR,ALYSSA
	01:52		SUB IN: LIST,EMMA
	01:52		SUB IN: O'NEAL,ASHLI
SUB OUT: 20 NAPOLEON,JAMEY	01:52		
SUB IN: 33 BERUBE,ASHLEY	01:52		

Central Conn. St. 30, FGCU 51

Official Substitutions Log
Central Conn. St. vs FGCU
Period 3
December 17, 2019 at Alico Arena - Fort Myers, Fla.



VISITORS: Central Conn. St.	Time	Score	HOME: FGCU
5 VILA ARTIGUES,BRUNA			0 WINGATE,DAVION
14 FORKER,ASHLEY			3 JEWETT-GILES,KERI
15 MCCAMUS,EMMA			13 PHILLS,KERSTIE
22 CHIN,ASHLEY			31 ULEL,NASRIN
33 BERUBE,ASHLEY			42 ADDERLY,TYTIONIA
	10:00	-	SUB OUT: LIST,EMMA
	10:00		SUB OUT: O'NEAL,ASHLI
	10:00		SUB IN: WINGATE,DAVION
	10:00		SUB IN: ADDERLY,TYTIONIA
SUB OUT: 22 CHIN,ASHLEY	07:55	31-56	
SUB IN: 23 DELANO,DANIELLE	07:55		
	06:18	35-64	SUB OUT: WINGATE,DAVION
	06:18		SUB OUT: PHILLS,KERSTIE
	06:18		SUB IN: BRYANT,TANNER
	06:18		SUB IN: O'NEAL,ASHLI
	04:18	35-66	SUB OUT: JEWETT-GILES,KERI
	04:18		SUB OUT: ULEL,NASRIN
	04:18		SUB IN: WINGATE,DAVION
	04:18		SUB IN: MARINKOVIC,ANJA
SUB OUT: 15 MCCAMUS,EMMA	04:18		
SUB OUT: 23 DELANO,DANIELLE	04:18		
SUB OUT: 33 BERUBE,ASHLEY	04:18		
SUB IN: 11 JENKINS,DEJAH	04:18		
SUB IN: 20 NAPOLEON,JAMEY	04:18		
SUB IN: 22 CHIN,ASHLEY	04:18		
	02:08	42-70	SUB OUT: WINGATE,DAVION
	02:08		SUB OUT: O'NEAL,ASHLI
	02:08		SUB OUT: ADDERLY,TYTIONIA
	02:08		SUB IN: JEWETT-GILES,KERI
	02:08		SUB IN: DOWLING,SHEAHEN
	02:08		SUB IN: PHILLS,KERSTIE
SUB OUT: 5 VILA ARTIGUES,BRUNA	02:08		
SUB IN: 1 TOPPIN,FOREVER	02:08		
	02:08		SUB OUT: BRYANT,TANNER
	02:08		SUB IN: LIST,EMMA
	01:27	42-72	SUB OUT: MARINKOVIC,ANJA
	01:27		SUB IN: NORMIL,ERNA

Central Conn. St. 44, FGCU 76

Official Substitutions Log
Central Conn. St. vs FGCU
Period 4
December 17, 2019 at Alico Arena - Fort Myers, Fla.



VISITORS: Central Conn. St.	Time	Score	HOME: FGCU
5 VILA ARTIGUES, BRUNA			0 WINGATE, DAVION
14 FORKER, ASHLEY			3 JEWETT-GILES, KERI
15 MCCAMUS, EMMA			13 PHILLS, KERSTIE
22 CHIN, ASHLEY			31 ULEL, NASRIN
33 BERUBE, ASHLEY			42 ADDERLY, TYTIONIA
	10:00	-	SUB OUT: PHILLS, KERSTIE
	10:00		SUB IN: BLAIR, ALYSSA
SUB OUT: 14 FORKER, ASHLEY	10:00		
SUB OUT: 20 NAPOLEON, JAMEY	10:00		
SUB IN: 15 MCCAMUS, EMMA	10:00		
SUB IN: 33 BERUBE, ASHLEY	10:00		
	09:03	46-78	SUB OUT: JEWETT-GILES, KERI
	09:03		SUB IN: MARINKOVIC, ANJA
SUB OUT: 11 JENKINS, DEJAH	08:37	46-78	
SUB IN: 21 SUTHERLAND-CASE, CLAIRE	08:37		
SUB OUT: 1 TOPPIN, FOREVER	08:08	48-80	
SUB OUT: 33 BERUBE, ASHLEY	08:08		
SUB IN: 11 JENKINS, DEJAH	08:08		
SUB IN: 12 PORTER, JEWEL	08:08		
	06:25	52-84	SUB OUT: BLAIR, ALYSSA
	06:25		SUB OUT: MARINKOVIC, ANJA
	06:25		SUB IN: BRYANT, TANNER
	06:25		SUB IN: PANEM, ASHLEY
	06:25		SUB OUT: NORMIL, ERNA
	06:25		SUB IN: RYAN, CHANDLER
	05:50	52-88	SUB OUT: LIST, EMMA
	05:50		SUB IN: NORMIL, ERNA
SUB OUT: 22 CHIN, ASHLEY	05:40	54-88	
SUB IN: 14 FORKER, ASHLEY	05:40		
	02:18	57-93	SUB OUT: NORMIL, ERNA
	02:18		SUB OUT: BRYANT, TANNER
	02:18		SUB IN: MARINKOVIC, ANJA
	02:18		SUB IN: LIST, EMMA
SUB OUT: 14 FORKER, ASHLEY	02:18		
SUB IN: 22 CHIN, ASHLEY	02:18		

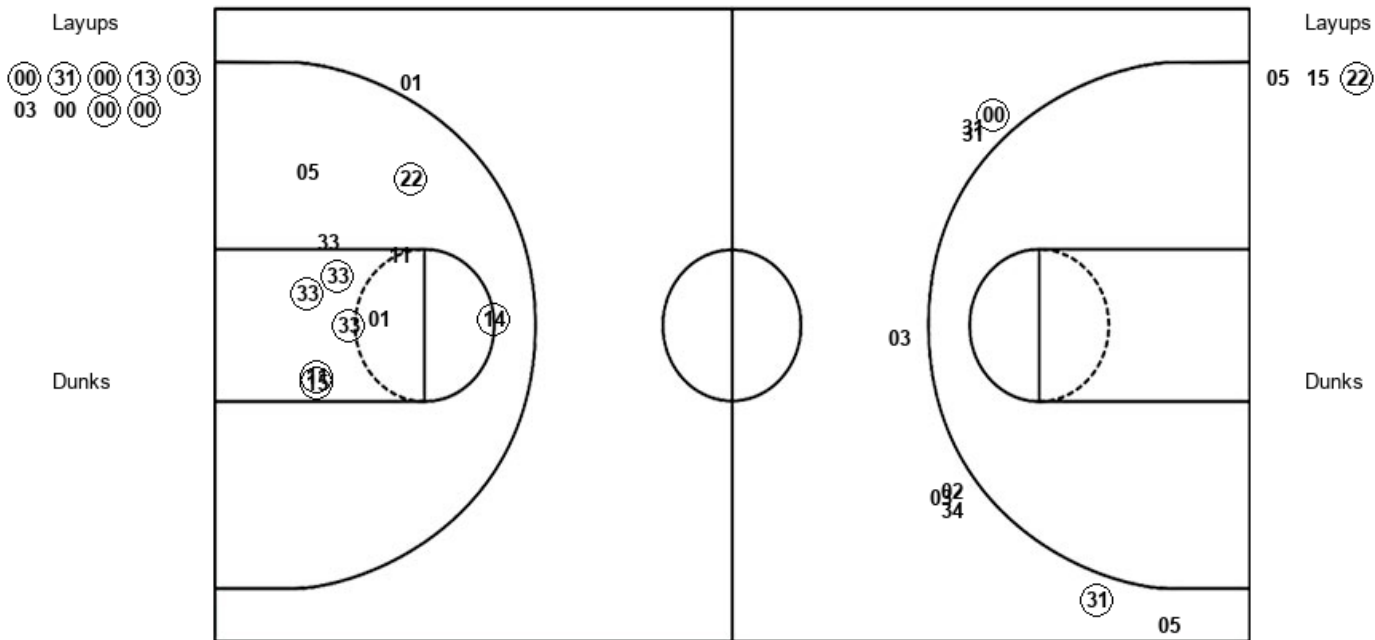
Central Conn. St. 60, FGCU 94

Official Shot Chart
Central Conn. St. vs FGCU
PERIOD 1 Shots
 December 17, 2019 at Alico Arena - Fort Myers, Fla.



FGCU

Central Conn. St.



FGC : Period 1	Made	Att	Pct
Layups	7	9	77.8
Dunks	0	0	0
2PT Field Goals	7	9	77.8
3PT Field Goals	2	9	22.2
Total Field Goals	9	18	50.0

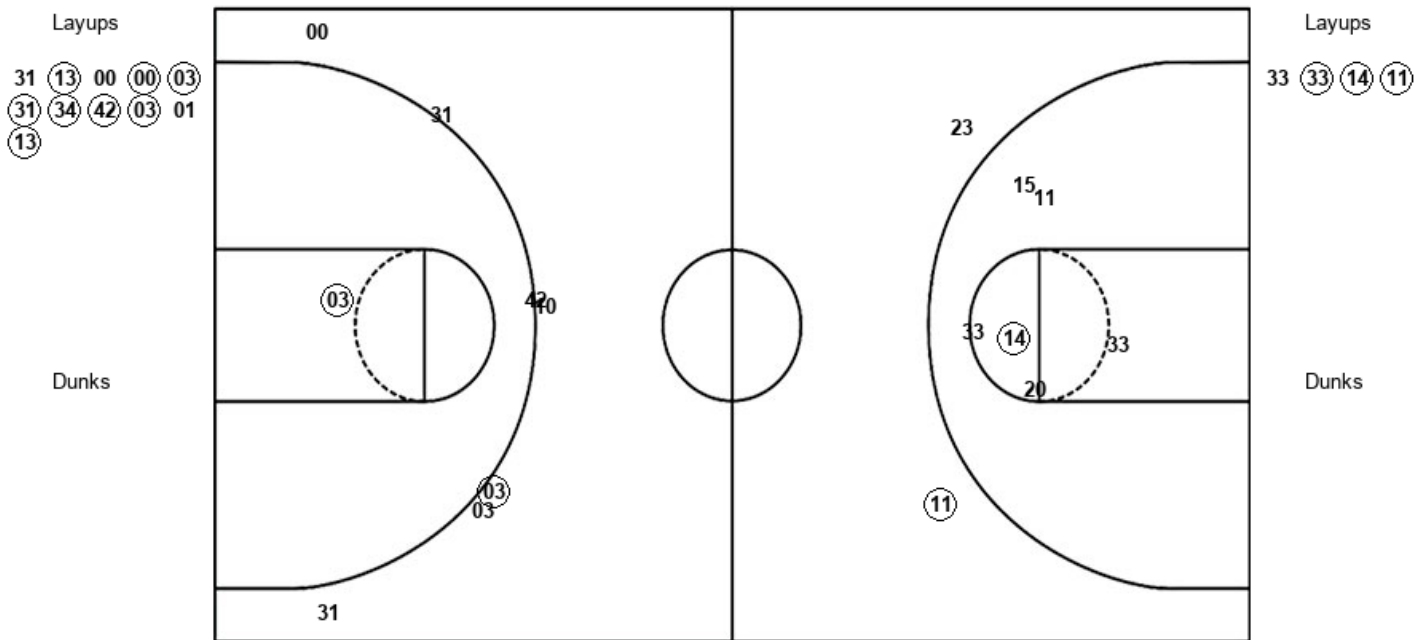
CCS : Period 1	Made	Att	Pct
Layups	1	3	33.3
Dunks	0	0	0
2PT Field Goals	8	14	57.1
3PT Field Goals	0	1	00.0
Total Field Goals	8	15	53.3

Official Shot Chart
Central Conn. St. vs FGCU
PERIOD 3 Shots
 December 17, 2019 at Alico Arena - Fort Myers, Fla.



FGCU

Central Conn. St.



FGC : Period 3	Made	Att	Pct
Layups	8	11	72.7
Dunks	0	0	0
2PT Field Goals	9	12	75.0
3PT Field Goals	1	7	14.3
Total Field Goals	10	19	52.6

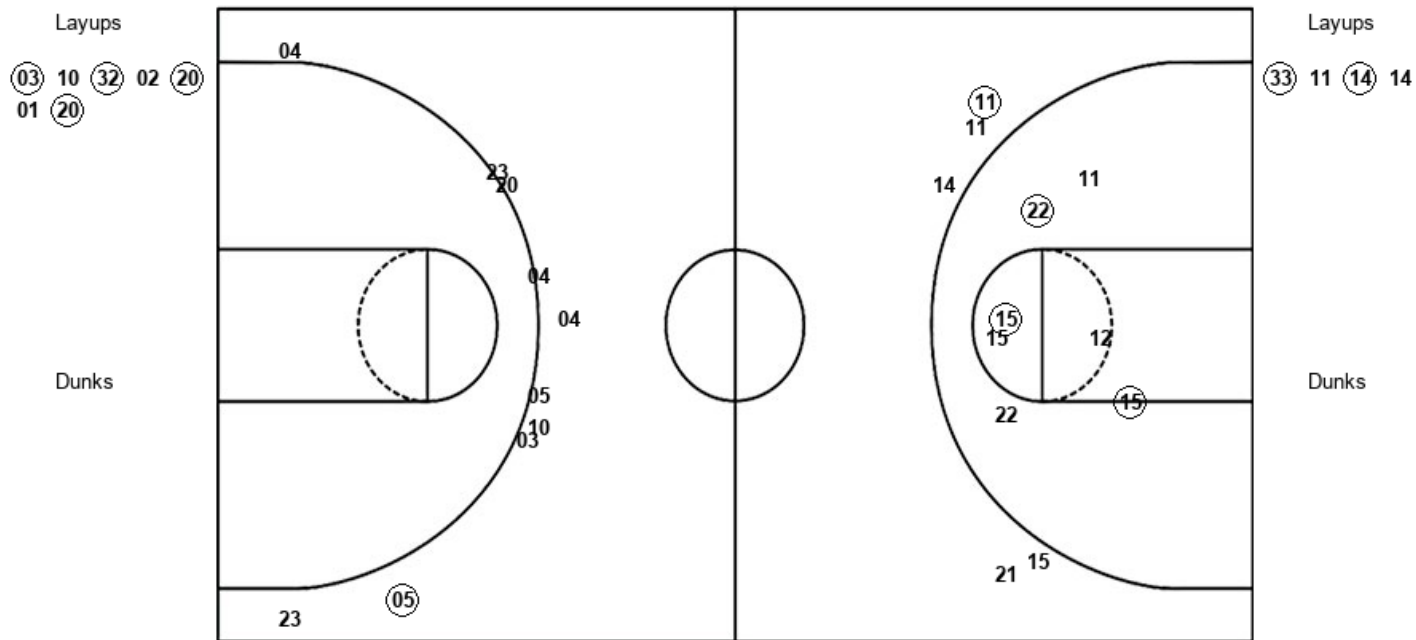
CCS : Period 3	Made	Att	Pct
Layups	3	4	75.0
Dunks	0	0	0
2PT Field Goals	4	10	40.0
3PT Field Goals	1	2	50.0
Total Field Goals	5	12	41.7

Official Shot Chart
Central Conn. St. vs FGCU
PERIOD 4 Shots
 December 17, 2019 at Alico Arena - Fort Myers, Fla.



FGCU

Central Conn. St.



FGC : Period 4	Made	Att	Pct
Layups	4	7	57.1
Dunks	0	0	0
2PT Field Goals	4	7	57.1
3PT Field Goals	1	10	10.0
Total Field Goals	5	17	29.4

CCS : Period 4	Made	Att	Pct
Layups	2	4	50.0
Dunks	0	0	0
2PT Field Goals	5	11	45.5
3PT Field Goals	1	5	20.0
Total Field Goals	6	16	37.5

