

## FINAL SCORE



**Towson**

**53**



**Rutgers**

**67**

December 08, 2019 • Rutgers Athletic Center - Piscataway, N.J.

## FINAL STATISTICS

**Official Box Score**  
**Towson vs Rutgers**  
**Game Totals -- Final Statistics**  
**December 08, 2019 at Rutgers Athletic Center - Piscataway, N.J.**



**Towson 53**

| No.           | Player                 | S | Pts       | FG           | 3FG         | FT          | OR        | DR        | TR        | PF        | A        | TO        | Blk      | Stl       | Min        | +/- |
|---------------|------------------------|---|-----------|--------------|-------------|-------------|-----------|-----------|-----------|-----------|----------|-----------|----------|-----------|------------|-----|
| 01            | MAYO, NUKIYA           | F | 14        | 5-15         | 3-7         | 1-4         | 1         | 4         | 5         | 4         | 0        | 3         | 2        | 1         | 28         | -9  |
| 11            | MURRAY, QIERRA         | G | 9         | 4-7          | 0-1         | 1-4         | 0         | 3         | 3         | 1         | 5        | 2         | 0        | 1         | 37         | -10 |
| 21            | JETER, KIONNA          | G | 23        | 8-21         | 4-9         | 3-4         | 2         | 5         | 7         | 1         | 3        | 2         | 0        | 8         | 37         | -13 |
| 24            | BORGOSZ, TESS          | F | 2         | 1-3          | 0-1         | 0-0         | 2         | 2         | 4         | 4         | 0        | 2         | 0        | 2         | 25         | -11 |
| 32            | HOLDER, RYAN           | G | 3         | 1-5          | 0-1         | 1-2         | 1         | 2         | 3         | 5         | 0        | 1         | 1        | 0         | 26         | -6  |
| 03            | SHARP, MAGGIE          | G | 0         | 0-1          | 0-1         | 0-0         | 0         | 0         | 0         | 0         | 0        | 0         | 0        | 0         | 1          | -2  |
| 05            | BARBOUR, RAYNA         | G | 0         | 0-1          | 0-0         | 0-0         | 1         | 0         | 1         | 1         | 0        | 0         | 0        | 0         | 1          | -2  |
| 12            | DAVIS, JENNIFER        | G | 0         | 0-0          | 0-0         | 0-0         | 0         | 0         | 0         | 0         | 0        | 0         | 0        | 0         | 1          | 0   |
| 13            | SCHWARTAU, WIEBKE      | C | 0         | 0-1          | 0-0         | 0-0         | 1         | 0         | 1         | 0         | 0        | 0         | 1        | 0         | 13         | -1  |
| 15            | GRAY, MARIAH           | G | 0         | 0-1          | 0-1         | 0-0         | 0         | 0         | 0         | 0         | 0        | 0         | 0        | 0         | 5          | -1  |
| 20            | JOHNSON-MATTHEWS, MYKA | G | 0         | 0-0          | 0-0         | 0-0         | 0         | 1         | 1         | 0         | 0        | 0         | 0        | 0         | 4          | -3  |
| 22            | WRIGHT, LAKAITLIN      | C | 0         | 0-1          | 0-0         | 0-0         | 0         | 0         | 0         | 5         | 0        | 3         | 0        | 0         | 8          | -2  |
| 23            | SMITH, SHAVONNE        | G | 2         | 1-3          | 0-0         | 0-0         | 1         | 1         | 2         | 2         | 0        | 1         | 0        | 0         | 14         | -10 |
|               | TEAM                   |   |           |              |             |             | 3         | 1         | 4         | 0         |          | 2         |          |           |            |     |
| <b>TOTALS</b> |                        |   | <b>53</b> | <b>20-59</b> | <b>7-21</b> | <b>6-14</b> | <b>12</b> | <b>19</b> | <b>31</b> | <b>23</b> | <b>8</b> | <b>16</b> | <b>4</b> | <b>12</b> | <b>200</b> |     |

*Shooting By Period*

| Period      | FG           | FG%          | 3FG         | 3FG%         | FT          | FT%          |
|-------------|--------------|--------------|-------------|--------------|-------------|--------------|
| 1st Qtr     | 3-11         | 27%          | 0-5         | 00%          | 0-0         | 0%           |
| 2nd Qtr     | 6-17         | 35%          | 3-6         | 50%          | 5-8         | 63%          |
| 3rd Qtr     | 6-13         | 46%          | 2-3         | 67%          | 0-4         | 00%          |
| 4th Qtr     | 5-18         | 28%          | 2-7         | 29%          | 1-2         | 50%          |
| 1st Half    | 9-28         | 32%          | 3-11        | 27%          | 5-8         | 63%          |
| 2nd Half    | 11-31        | 35%          | 4-10        | 40%          | 1-6         | 17%          |
| <b>Game</b> | <b>20-59</b> | <b>33.9%</b> | <b>7-21</b> | <b>33.3%</b> | <b>6-14</b> | <b>42.9%</b> |

*Deadball Rebounds: 5,0*  
*Last FG: 4th-01:30*  
*Biggest Run: 8-0*  
*Largest lead: By 4 at 1-07*  
*Technical Fouls: #11 MURRAY @ 4th - 05:22;*

**Rutgers 67**

| No.           | Player              | S | Pts       | FG           | 3FG         | FT           | OR        | DR        | TR        | PF        | A        | TO        | Blk      | Stl      | Min        | +/- |
|---------------|---------------------|---|-----------|--------------|-------------|--------------|-----------|-----------|-----------|-----------|----------|-----------|----------|----------|------------|-----|
| 12            | SANDERS, KHADAIZHA  | G | 10        | 4-9          | 1-4         | 1-2          | 1         | 4         | 5         | 1         | 1        | 6         | 1        | 1        | 34         | 8   |
| 13            | GILLES, MAEL        | F | 17        | 6-12         | 1-3         | 4-4          | 3         | 4         | 7         | 0         | 0        | 1         | 1        | 1        | 29         | 8   |
| 24            | GUIRANTES, ARELLA   | G | 17        | 3-12         | 0-3         | 11-14        | 2         | 6         | 8         | 4         | 5        | 1         | 1        | 1        | 34         | 20  |
| 31            | MACK, TEKIA         | G | 8         | 3-9          | 0-1         | 2-2          | 3         | 3         | 6         | 2         | 1        | 2         | 1        | 3        | 27         | 11  |
| 44            | WALLACE, JORDAN     | C | 3         | 1-4          | 0-0         | 1-6          | 6         | 5         | 11        | 1         | 0        | 1         | 0        | 1        | 28         | 5   |
| 01            | BROUGHTON, ZIPPORAH | G | 7         | 2-4          | 1-3         | 2-2          | 0         | 2         | 2         | 2         | 1        | 5         | 0        | 0        | 15         | 5   |
| 02            | PELEG PELC, NOGA    | G | 0         | 0-2          | 0-2         | 0-0          | 0         | 0         | 0         | 0         | 0        | 0         | 0        | 0        | 6          | 2   |
| 05            | MIGLIORE, DANIELLE  | G | 0         | 0-1          | 0-1         | 0-0          | 0         | 0         | 0         | 0         | 0        | 0         | 0        | 0        | 2          | 3   |
| 15            | DAVENPORT, MAORI    | C | 2         | 1-2          | 0-0         | 0-0          | 0         | 1         | 1         | 1         | 0        | 0         | 0        | 0        | 10         | 9   |
| 20            | MADDOX, JOIYA       | G | 1         | 0-0          | 0-0         | 1-2          | 0         | 0         | 0         | 0         | 0        | 0         | 0        | 0        | 5          | -3  |
| 22            | SINGLETON, TYIA     | F | 2         | 1-1          | 0-0         | 0-0          | 1         | 1         | 2         | 2         | 0        | 1         | 1        | 0        | 10         | 2   |
|               | TEAM                |   |           |              |             |              | 2         | 4         | 6         | 0         |          | 1         |          |          |            |     |
| <b>TOTALS</b> |                     |   | <b>67</b> | <b>21-56</b> | <b>3-17</b> | <b>22-32</b> | <b>18</b> | <b>30</b> | <b>48</b> | <b>13</b> | <b>8</b> | <b>18</b> | <b>5</b> | <b>7</b> | <b>200</b> |     |

*Shooting By Period*

| Period      | FG           | FG%          | 3FG         | 3FG%         | FT           | FT%          |
|-------------|--------------|--------------|-------------|--------------|--------------|--------------|
| 1st Qtr     | 4-17         | 24%          | 1-6         | 17%          | 4-6          | 67%          |
| 2nd Qtr     | 7-18         | 39%          | 1-9         | 11%          | 4-6          | 67%          |
| 3rd Qtr     | 8-12         | 67%          | 1-2         | 50%          | 5-8          | 63%          |
| 4th Qtr     | 2-9          | 22%          | 0-0         | 0%           | 9-12         | 75%          |
| 1st Half    | 11-35        | 31%          | 2-15        | 13%          | 8-12         | 67%          |
| 2nd Half    | 10-21        | 48%          | 1-2         | 50%          | 14-20        | 70%          |
| <b>Game</b> | <b>21-56</b> | <b>37.5%</b> | <b>3-17</b> | <b>17.6%</b> | <b>22-32</b> | <b>68.8%</b> |

*Deadball Rebounds: 8,0*  
*Last FG: 4th-03:18*  
*Biggest Run: 9-0*  
*Largest lead: By 17 at 4-03*  
*Technical Fouls: None.*

*Game Notes:*

*Officials: Jesse Dickerson, Nykesha Thompson, Bob Enterline*  
*Attendance: 1292*

*Start Time: 02:00 PM ET*  
*End Time: 04:02 PM ET*  
*Game Duration: 2:01*

| Score | 1st | 2nd | 3rd | 4th | TOT       |
|-------|-----|-----|-----|-----|-----------|
| TOW   | 6   | 20  | 14  | 13  | <b>53</b> |
| RUT   | 13  | 19  | 22  | 13  | <b>67</b> |

*TOW led for 3:38. RUT led for 32:33.*  
*Game was tied for 3:49.*  
*Times tied: 3      Lead Changes: 3*

| Points from  | TOW | RUT |
|--------------|-----|-----|
| In the Paint | 18  | 24  |
| Off Turns    | 15  | 18  |
| 2nd Chance   | 4   | 21  |
| Fast Break   | 21  | 13  |
| Bench        | 2   | 12  |

**Official Box Score**  
**Towson vs Rutgers**  
**First Half Statistics Only**  
 December 08, 2019 at Rutgers Athletic Center - Piscataway, N.J.



**Towson 26**

| No.           | Player                 | S | Pts       | FG          | 3FG         | FT         | OR       | DR        | TR        | PF        | A        | TO       | Blk      | Stl      | Min        | +/- |
|---------------|------------------------|---|-----------|-------------|-------------|------------|----------|-----------|-----------|-----------|----------|----------|----------|----------|------------|-----|
| 01            | MAYO, NUKIYA           | F | 5         | 2-7         | 1-3         | 0-0        | 0        | 3         | 3         | 2         | 0        | 3        | 1        | 0        | 15         | -7  |
| 03            | SHARP, MAGGIE          | G | 0         | 0-0         | 0-0         | 0-0        | 0        | 0         | 0         | 0         | 0        | 0        | 0        | 0        | 0          | 0   |
| 11            | MURRAY, QIERRA         | G | 3         | 1-2         | 0-1         | 1-2        | 0        | 2         | 2         | 0         | 3        | 0        | 0        | 0        | 18         | -4  |
| 12            | DAVIS, JENNIFER        | G | 0         | 0-0         | 0-0         | 0-0        | 0        | 0         | 0         | 0         | 0        | 0        | 0        | 0        | 0          | 0   |
| 13            | SCHWARTAU, WIEBKE      | C | 0         | 0-1         | 0-0         | 0-0        | 1        | 0         | 1         | 0         | 0        | 0        | 1        | 0        | 10         | 1   |
| 15            | GRAY, MARIAH           | G | 0         | 0-0         | 0-0         | 0-0        | 0        | 0         | 0         | 0         | 0        | 0        | 0        | 0        | 3          | 1   |
| 20            | JOHNSON-MATTHEWS, MYKA | G | 0         | 0-0         | 0-0         | 0-0        | 0        | 1         | 1         | 0         | 0        | 0        | 0        | 0        | 4          | -1  |
| 21            | JETER, KIONNA          | G | 15        | 5-14        | 2-6         | 3-4        | 2        | 2         | 4         | 0         | 0        | 0        | 0        | 2        | 20         | -6  |
| 22            | WRIGHT, LAKAITLIN      | C | 0         | 0-0         | 0-0         | 0-0        | 0        | 0         | 0         | 2         | 0        | 1        | 0        | 0        | 2          | 0   |
| 23            | SMITH, SHAVONNE        | G | 0         | 0-1         | 0-0         | 0-0        | 0        | 1         | 1         | 2         | 0        | 1        | 0        | 0        | 9          | -9  |
| 24            | BORGOSZ, TESS          | F | 2         | 1-2         | 0-1         | 0-0        | 1        | 0         | 1         | 2         | 0        | 2        | 0        | 1        | 9          | -9  |
| 32            | HOLDER, RYAN           | G | 1         | 0-1         | 0-0         | 1-2        | 1        | 1         | 2         | 2         | 0        | 0        | 0        | 0        | 9          | 4   |
| 05            | BARBOUR, RAYNA         | G | 0         | 0-0         | 0-0         | 0-0        | 0        | 0         | 0         | 0         | 0        | 0        | 0        | 0        | 0          | 0   |
|               | TEAM                   |   | 0         | 0-0         | 0-0         | 0-0        | 3        | 1         | 4         | 0         | 0        | 1        | 0        | 0        | 0          | 0   |
| <b>TOTALS</b> |                        |   | <b>26</b> | <b>9-28</b> | <b>3-11</b> | <b>5-8</b> | <b>8</b> | <b>11</b> | <b>19</b> | <b>10</b> | <b>3</b> | <b>8</b> | <b>2</b> | <b>3</b> | <b>100</b> |     |

*Shooting By Period*

| Period   | FG    | FG%   | 3FG  | 3FG%  | FT   | FT%   |
|----------|-------|-------|------|-------|------|-------|
| 1st Qtr  | 3-11  | 27%   | 0-5  | 00%   | 0-0  | 0%    |
| 2nd Qtr  | 6-17  | 35%   | 3-6  | 50%   | 5-8  | 63%   |
| 1st Half | 9-28  | 32%   | 3-11 | 27%   | 5-8  | 63%   |
| Game     | 20-59 | 33.9% | 7-21 | 33.3% | 6-14 | 42.9% |

Deadball Rebounds: 5,0  
 Last FG Half: TOW 2nd-02:28

**Rutgers 32**

| No.           | Player              | S | Pts       | FG           | 3FG         | FT          | OR        | DR        | TR        | PF       | A        | TO       | Blk      | Stl      | Min        | +/- |
|---------------|---------------------|---|-----------|--------------|-------------|-------------|-----------|-----------|-----------|----------|----------|----------|----------|----------|------------|-----|
| 01            | BROUGHTON, ZIPPORAH | G | 5         | 2-4          | 1-3         | 0-0         | 0         | 0         | 0         | 0        | 1        | 1        | 0        | 0        | 8          | -2  |
| 02            | PELEG PELC, NOGA    | G | 0         | 0-2          | 0-2         | 0-0         | 0         | 0         | 0         | 0        | 0        | 0        | 0        | 0        | 6          | 2   |
| 05            | MIGLIORE, DANIELLE  | G | 0         | 0-1          | 0-1         | 0-0         | 0         | 0         | 0         | 0        | 0        | 0        | 0        | 0        | 1          | 1   |
| 12            | SANDERS, KHADAIZHA  | G | 7         | 3-7          | 1-4         | 0-0         | 1         | 2         | 3         | 0        | 1        | 3        | 1        | 1        | 16         | 6   |
| 13            | GILLES, MAEL        | F | 4         | 1-6          | 0-2         | 2-2         | 2         | 1         | 3         | 0        | 0        | 0        | 1        | 0        | 13         | 6   |
| 15            | DAVENPORT, MAORI    | C | 2         | 1-2          | 0-0         | 0-0         | 0         | 0         | 0         | 1        | 0        | 0        | 0        | 0        | 9          | 7   |
| 20            | MADDOX, JOIYA       | G | 0         | 0-0          | 0-0         | 0-0         | 0         | 0         | 0         | 0        | 0        | 0        | 0        | 0        | 2          | 0   |
| 22            | SINGLETON, TYIA     | F | 2         | 1-1          | 0-0         | 0-0         | 1         | 1         | 2         | 1        | 0        | 0        | 0        | 0        | 8          | 0   |
| 24            | GUIRANTES, ARELLA   | G | 9         | 2-7          | 0-3         | 5-6         | 1         | 3         | 4         | 2        | 1        | 0        | 1        | 0        | 19         | 6   |
| 31            | MACK, TEKIA         | G | 0         | 0-2          | 0-0         | 0-0         | 1         | 1         | 2         | 2        | 1        | 0        | 0        | 2        | 8          | 5   |
| 44            | WALLACE, JORDAN     | C | 3         | 1-3          | 0-0         | 1-4         | 5         | 0         | 5         | 1        | 0        | 0        | 0        | 0        | 10         | -1  |
|               | TEAM                |   | 0         | 0-0          | 0-0         | 0-0         | 2         | 3         | 5         | 0        | 0        | 1        | 0        | 0        | 0          | 0   |
| <b>TOTALS</b> |                     |   | <b>32</b> | <b>11-35</b> | <b>2-15</b> | <b>8-12</b> | <b>13</b> | <b>11</b> | <b>24</b> | <b>7</b> | <b>4</b> | <b>5</b> | <b>3</b> | <b>3</b> | <b>100</b> |     |

*Shooting By Period*

| Period   | FG    | FG%   | 3FG  | 3FG%  | FT    | FT%   |
|----------|-------|-------|------|-------|-------|-------|
| 1st Qtr  | 4-17  | 24%   | 1-6  | 17%   | 4-6   | 67%   |
| 2nd Qtr  | 7-18  | 39%   | 1-9  | 11%   | 4-6   | 67%   |
| 1st Half | 11-35 | 31%   | 2-15 | 13%   | 8-12  | 67%   |
| Game     | 21-56 | 37.5% | 3-17 | 17.6% | 22-32 | 68.8% |

Deadball Rebounds: 8,0  
 Last FG Half: RUT 2nd-00:44

Game Notes:

Officials: Jesse Dickerson, Nykesha Thompson, Bob Enterline  
 Attendance: 1292

Start Time: 02:00 PM ET  
 End Time: 04:02 PM ET  
 Game Duration: 2:01

| Score | 1st | 2nd | 3rd | 4th | TOT |
|-------|-----|-----|-----|-----|-----|
| TOW   | 6   | 20  | 14  | 13  | 53  |
| RUT   | 13  | 19  | 22  | 13  | 67  |

| Points from (This Period) | TOW | RUT |
|---------------------------|-----|-----|
| In the Paint              | 6   | 10  |
| Off Turns                 | 2   | 8   |
| 2nd Chance                | 4   | 12  |
| Fast Break                | 12  | 6   |
| Bench                     | 0   | 9   |

**Official Box Score**  
**Towson vs Rutgers**  
**First Quarter Statistics Only**  
**December 08, 2019 at Rutgers Athletic Center - Piscataway, N.J.**



**Towson 6**

| No.           | Player                 | S | Pts      | FG          | 3FG        | FT         | OR       | DR       | TR       | PF       | A        | TO       | Blk      | Stl      | Min       | +/- |
|---------------|------------------------|---|----------|-------------|------------|------------|----------|----------|----------|----------|----------|----------|----------|----------|-----------|-----|
| 01            | MAYO, NUKIYA           | F | 2        | 1-3         | 0-1        | 0-0        | 0        | 2        | 2        | 0        | 0        | 2        | 1        | 0        | 9         | -7  |
| 11            | MURRAY, QIERRA         | G | 2        | 1-2         | 0-1        | 0-0        | 0        | 2        | 2        | 0        | 1        | 0        | 0        | 0        | 8         | -5  |
| 21            | JETER, KIONNA          | G | 0        | 0-3         | 0-2        | 0-0        | 1        | 0        | 1        | 0        | 0        | 0        | 0        | 1        | 10        | -7  |
| 24            | BORGOSZ, TESS          | F | 2        | 1-2         | 0-1        | 0-0        | 0        | 0        | 0        | 1        | 0        | 1        | 0        | 1        | 7         | -7  |
| 32            | HOLDER, RYAN           | G | 0        | 0-0         | 0-0        | 0-0        | 0        | 0        | 0        | 1        | 0        | 0        | 0        | 0        | 5         | 2   |
| 03            | SHARP, MAGGIE          | G | 0        | 0-0         | 0-0        | 0-0        | 0        | 0        | 0        | 0        | 0        | 0        | 0        | 0        | 0         | 0   |
| 05            | BARBOUR, RAYNA         | G | 0        | 0-0         | 0-0        | 0-0        | 0        | 0        | 0        | 0        | 0        | 0        | 0        | 0        | 0         | 0   |
| 12            | DAVIS, JENNIFER        | G | 0        | 0-0         | 0-0        | 0-0        | 0        | 0        | 0        | 0        | 0        | 0        | 0        | 0        | 0         | 0   |
| 13            | SCHWARTAU, WIEBKE      | C | 0        | 0-0         | 0-0        | 0-0        | 0        | 0        | 0        | 0        | 0        | 0        | 1        | 0        | 1         | 0   |
| 15            | GRAY, MARIAH           | G | 0        | 0-0         | 0-0        | 0-0        | 0        | 0        | 0        | 0        | 0        | 0        | 0        | 0        | 0         | 0   |
| 20            | JOHNSON-MATTHEWS, MYKA | G | 0        | 0-0         | 0-0        | 0-0        | 0        | 0        | 0        | 0        | 0        | 0        | 0        | 0        | 2         | -2  |
| 22            | WRIGHT, LAKAITLIN      | C | 0        | 0-0         | 0-0        | 0-0        | 0        | 0        | 0        | 2        | 0        | 1        | 0        | 0        | 2         | 0   |
| 23            | SMITH, SHAVONNE        | G | 0        | 0-1         | 0-0        | 0-0        | 0        | 0        | 0        | 1        | 0        | 1        | 0        | 0        | 5         | -9  |
| <b>TEAM</b>   |                        |   |          |             |            |            | 1        | 1        | 2        | 0        |          | 0        |          |          |           |     |
| <b>TOTALS</b> |                        |   | <b>6</b> | <b>3-11</b> | <b>0-5</b> | <b>0-0</b> | <b>2</b> | <b>5</b> | <b>7</b> | <b>5</b> | <b>1</b> | <b>5</b> | <b>2</b> | <b>2</b> | <b>50</b> |     |

*Shooting By Period*

| Period   | FG    | FG%   | 3FG  | 3FG%  | FT   | FT%   |
|----------|-------|-------|------|-------|------|-------|
| 1st Qtr  | 3-11  | 27%   | 0-5  | 00%   | 0-0  | 0%    |
| 2nd Qtr  | 6-17  | 35%   | 3-6  | 50%   | 5-8  | 63%   |
| 1st Half | 3-11  | 27%   | 0-5  | 00%   | 0-0  | 0%    |
| 1st Half | 9-28  | 32%   | 3-11 | 27%   | 5-8  | 63%   |
| Game     | 20-59 | 33.9% | 7-21 | 33.3% | 6-14 | 42.9% |

*Deadball Rebounds: 5,0*

**Rutgers 13**

| No.           | Player              | S | Pts       | FG          | 3FG        | FT         | OR       | DR       | TR        | PF       | A        | TO       | Blk      | Stl      | Min       | +/- |
|---------------|---------------------|---|-----------|-------------|------------|------------|----------|----------|-----------|----------|----------|----------|----------|----------|-----------|-----|
| 12            | SANDERS, KHADAIZHA  | G | 7         | 3-5         | 1-2        | 0-0        | 1        | 1        | 2         | 0        | 0        | 2        | 0        | 1        | 10        | 7   |
| 13            | GILLES, MAEL        | F | 2         | 0-2         | 0-2        | 2-2        | 1        | 0        | 1         | 0        | 0        | 0        | 1        | 0        | 10        | 7   |
| 24            | GUIRANTES, ARELLA   | G | 4         | 1-5         | 0-2        | 2-2        | 0        | 2        | 2         | 0        | 0        | 0        | 0        | 0        | 10        | 7   |
| 31            | MACK, TEKIA         | G | 0         | 0-2         | 0-0        | 0-0        | 1        | 1        | 2         | 2        | 1        | 0        | 0        | 2        | 8         | 5   |
| 44            | WALLACE, JORDAN     | C | 0         | 0-2         | 0-0        | 0-2        | 4        | 0        | 4         | 0        | 0        | 0        | 0        | 0        | 5         | -2  |
| 01            | BROUGHTON, ZIPPORAH | G | 0         | 0-0         | 0-0        | 0-0        | 0        | 0        | 0         | 0        | 0        | 0        | 0        | 0        | 0         | 0   |
| 02            | PELEG PELC, NOGA    | G | 0         | 0-0         | 0-0        | 0-0        | 0        | 0        | 0         | 0        | 0        | 0        | 0        | 0        | 2         | 2   |
| 05            | MIGLIORE, DANIELLE  | G | 0         | 0-0         | 0-0        | 0-0        | 0        | 0        | 0         | 0        | 0        | 0        | 0        | 0        | 0         | 0   |
| 15            | DAVENPORT, MAORI    | C | 0         | 0-1         | 0-0        | 0-0        | 0        | 0        | 0         | 0        | 0        | 0        | 0        | 0        | 5         | 9   |
| 20            | MADDOX, JOIYA       | G | 0         | 0-0         | 0-0        | 0-0        | 0        | 0        | 0         | 0        | 0        | 0        | 0        | 0        | 0         | 0   |
| 22            | SINGLETON, TYIA     | F | 0         | 0-0         | 0-0        | 0-0        | 0        | 0        | 0         | 0        | 0        | 0        | 0        | 0        | 0         | 0   |
| <b>TEAM</b>   |                     |   |           |             |            |            | 1        | 2        | 3         | 0        |          | 1        |          |          |           |     |
| <b>TOTALS</b> |                     |   | <b>13</b> | <b>4-17</b> | <b>1-6</b> | <b>4-6</b> | <b>8</b> | <b>6</b> | <b>14</b> | <b>2</b> | <b>1</b> | <b>3</b> | <b>1</b> | <b>3</b> | <b>50</b> |     |

*Shooting By Period*

| Period   | FG    | FG%   | 3FG  | 3FG%  | FT    | FT%   |
|----------|-------|-------|------|-------|-------|-------|
| 1st Qtr  | 4-17  | 24%   | 1-6  | 17%   | 4-6   | 67%   |
| 2nd Qtr  | 7-18  | 39%   | 1-9  | 11%   | 4-6   | 67%   |
| 1st Half | 4-17  | 24%   | 1-6  | 17%   | 4-6   | 67%   |
| 1st Half | 11-35 | 31%   | 2-15 | 13%   | 8-12  | 67%   |
| Game     | 21-56 | 37.5% | 3-17 | 17.6% | 22-32 | 68.8% |

*Deadball Rebounds: 8,0*

*Game Notes:*

Officials: Jesse Dickerson, Nykesha Thompson, Bob Enterline  
Attendance: 1292

Start Time: 02:00 PM ET  
End Time: 04:02 PM ET  
Game Duration: 2:01

| Score | 1st | 2nd | 3rd | 4th | TOT       |
|-------|-----|-----|-----|-----|-----------|
| TOW   | 6   | 20  | 14  | 13  | <b>53</b> |
| RUT   | 13  | 19  | 22  | 13  | <b>67</b> |

| Points from (This Period) | TOW | RUT |
|---------------------------|-----|-----|
| In the Paint              | 4   | 2   |
| Off Turns                 | 0   | 4   |
| 2nd Chance                | 2   | 5   |
| Fast Break                | 2   | 4   |
| Bench                     | 0   | 0   |

**Official Play-By-Play  
Towson vs Rutgers  
First Quarter  
December 08, 2019 at Rutgers Athletic Center - Piscataway, N.J.**



**Period 1**

**Starters:**

**Towson:** 1 MAYO, NUKIYA (F); 11 MURRAY, QIERRA (G); 21 JETER, KIONNA (G); 24 BORGOSZ, TESS (F); 32 HOLDER, RYAN (G);

**Rutgers:** 12 SANDERS, KHADAIZHA (G); 13 GILLES, MAEL (F); 24 GUIRANTES, ARELLA (G); 31 MACK, TEKIA (G); 44 WALLACE, JORDAN (C);

| Time  | VISITORS: Towson                          | Score | Margin | HOME: Rutgers                            |
|-------|---|-------|--------|--|
| 09:43 | TURNOVER (TRAVEL) by BORGOSZ, TESS        |       |        |  |
| 09:16 |   |       |        | TURNOVER (BADPASS) by SANDERS, KHADAIZHA |
| 09:16 | STEAL by BORGOSZ, TESS                    |       |        |  |
| 09:06 | MISSED 3PTR by BORGOSZ, TESS              |       |        |  |
| 08:56 |   |       |        | REBOUND (DEF) by GUIRANTES, ARELLA       |
| 08:35 |   |       |        | MISSED 3PTR by GILLES, MAEL              |
| 08:31 |   |       |        | REBOUND (OFF) by WALLACE, JORDAN         |
| 08:17 |   |       |        | MISSED 3PTR by GILLES, MAEL              |
| 08:13 | REBOUND (DEF) by MURRAY, QIERRA           |       |        |  |
| 08:08 | GOOD! JUMPER by MURRAY, QIERRA [FB]       | 0-2   | V 2    |  |
| 07:53 |   |       |        | MISSED JUMPER by WALLACE, JORDAN         |
| 07:51 | REBOUND (DEF) by MURRAY, QIERRA           |       |        |  |
| 07:51 |   |       |        | FOUL (PERSONAL) by MACK, TEKIA           |
| 07:39 | MISSED JUMPER by MAYO, NUKIYA             |       |        |  |
| 07:39 |   |       |        | BLOCK by GILLES, MAEL                    |
| 07:39 | REBOUND (OFF) by TEAM                     |       |        |  |
| 07:35 | GOOD! LAYUP by MAYO, NUKIYA               | 0-4   | V 4    |  |
| 07:24 |   | 2-4   | V 2    | GOOD! JUMPER by GUIRANTES, ARELLA        |
| 06:48 | MISSED 3PTR by MAYO, NUKIYA               |       |        |  |
| 06:45 |   |       |        | REBOUND (DEF) by TEAM                    |
| 06:45 | SUB OUT: BORGOSZ, TESS                    |       |        |  |
| 06:45 | SUB IN: WRIGHT, LAKAITLIN                 |       |        |  |
| 06:29 |   |       |        | MISSED JUMPER by GUIRANTES, ARELLA       |
| 06:25 |   |       |        | REBOUND (OFF) by WALLACE, JORDAN         |
| 06:17 |   |       |        | MISSED 3PTR by SANDERS, KHADAIZHA        |
| 06:14 |   |       |        | REBOUND (OFF) by WALLACE, JORDAN         |
| 06:11 |   |       |        | MISSED 3PTR by GUIRANTES, ARELLA         |
| 06:06 |   |       |        | REBOUND (OFF) by SANDERS, KHADAIZHA      |
| 06:00 |   |       |        | MISSED JUMPER by WALLACE, JORDAN         |
| 05:56 |   |       |        | REBOUND (OFF) by WALLACE, JORDAN         |
| 05:43 | FOUL (PERSONAL) by WRIGHT, LAKAITLIN      |       |        |  |
| 05:43 |   |       |        | MISSED FT by WALLACE, JORDAN             |
| 05:43 |   |       |        | REBOUND (OFF) by TEAM                    |
| 05:43 |   |       |        | MISSED FT by WALLACE, JORDAN             |
| 05:41 |   |       |        | REBOUND (OFF) by TEAM                    |
| 05:31 |   |       |        | MISSED LAYUP by MACK, TEKIA              |
| 05:31 | BLOCK by MAYO, NUKIYA                     |       |        |  |
| 05:28 | REBOUND (DEF) by TEAM                     |       |        |  |
| 05:28 |   |       |        | SUB OUT: WALLACE, JORDAN                 |
| 05:28 |   |       |        | SUB IN: DAVENPORT, MAORI                 |
| 05:25 | MISSED 3PTR by JETER, KIONNA              |       |        |  |
| 05:21 |   |       |        | REBOUND (DEF) by MACK, TEKIA             |
| 05:15 | FOUL (PERSONAL) by HOLDER, RYAN           |       |        |  |
| 05:15 | SUB OUT: HOLDER, RYAN                     |       |        |  |
| 05:15 | SUB IN: SMITH, SHAVONNE                   |       |        |  |
| 05:03 |   |       |        | MISSED JUMPER by SANDERS, KHADAIZHA      |
| 04:59 | REBOUND (DEF) by MAYO, NUKIYA             |       |        |  |
| 04:56 | FOUL (OFF) by WRIGHT, LAKAITLIN           |       |        |  |
| 04:56 | TURNOVER (OFFENSIVE) by WRIGHT, LAKAITLIN |       |        |  |
| 04:56 |   |       |        |  |
| 04:56 | SUB OUT: WRIGHT, LAKAITLIN                |       |        |  |
| 04:56 | SUB IN: BORGOSZ, TESS                     |       |        |  |
| 04:48 | FOUL (PERSONAL) by BORGOSZ, TESS          |       |        |  |
| 04:48 |   | 3-4   | V 1    | GOOD! FT by GUIRANTES, ARELLA [FB]       |
| 04:48 |   | 4-4   | T      | GOOD! FT by GUIRANTES, ARELLA [FB]       |
| 04:39 | TURNOVER (LOSTBALL) by SMITH, SHAVONNE    |       |        |  |
| 04:39 |   |       |        | STEAL by MACK, TEKIA                     |
| 04:20 |   | 6-4   | H 2    | GOOD! JUMPER by SANDERS, KHADAIZHA       |
| 03:58 | TURNOVER (LOSTBALL) by MAYO, NUKIYA       |       |        |  |
| 03:58 |   |       |        | STEAL by SANDERS, KHADAIZHA              |
| 03:53 |   |       |        | TURNOVER (BADPASS) by SANDERS, KHADAIZHA |
| 03:53 | STEAL by JETER, KIONNA                    |       |        |  |
| 03:47 | MISSED 3PTR by MURRAY, QIERRA             |       |        |  |
| 03:45 |   |       |        | REBOUND (DEF) by TEAM                    |
| 03:25 |   |       |        | MISSED 3PTR by GUIRANTES, ARELLA         |
| 03:23 |   |       |        | REBOUND (OFF) by TEAM                    |
| 03:23 | FOUL (PERSONAL) by SMITH, SHAVONNE        |       |        |  |
| 03:23 |   | 7-4   | H 3    | GOOD! FT by GILLES, MAEL                 |
| 03:23 |   | 8-4   | H 4    | GOOD! FT by GILLES, MAEL                 |
| 03:10 | GOOD! LAYUP by BORGOSZ, TESS              | 8-6   | H 2    |  |

| Time  | VISITORS: Towson                    | Score | Margin | HOME: Rutgers                          |
|-------|-------------------------------------|-------|--------|--|
| 03:10 | ASSIST by MURRAY, QIERRA            |       |        |  |
| 02:40 |                                     |       |        | MISSED LAYUP by DAVENPORT, MAORI       |
| 02:37 |                                     |       |        | REBOUND (OFF) by MACK, TEKIA           |
| 02:23 |                                     | 11-6  | H 5    | GOOD! 3PTR by SANDERS, KHADAIZHA       |
| 02:23 |                                     |       |        | ASSIST by MACK, TEKIA                  |
| 01:58 | TURNOVER (LOSTBALL) by MAYO, NUKIYA |       |        |  |
| 01:58 |                                     |       |        | STEAL by MACK, TEKIA                   |
| 01:53 |                                     |       |        | MISSED LAYUP by MACK, TEKIA            |
| 01:51 | REBOUND (DEF) by MAYO, NUKIYA       |       |        |  |
| 01:51 |                                     |       |        | FOUL (PERSONAL) by MACK, TEKIA         |
| 01:51 |                                     |       |        | SUB OUT: MACK, TEKIA                   |
| 01:51 |                                     |       |        | SUB IN: PELEG PELC, NOGA               |
| 01:51 | SUB OUT: MURRAY, QIERRA             |       |        |  |
| 01:51 | SUB IN: JOHNSON-MATTHEWS, MYKA      |       |        |  |
| 01:38 | MISSED JUMPER by JETER, KIONNA      |       |        |  |
| 01:34 | REBOUND (OFF) by JETER, KIONNA      |       |        |  |
| 01:25 | MISSED JUMPER by SMITH, SHAVONNE    |       |        |  |
| 01:21 |                                     |       |        | REBOUND (DEF) by SANDERS, KHADAIZHA    |
| 01:17 |                                     | 13-6  | H 7    | GOOD! LAYUP by SANDERS, KHADAIZHA [FB] |
| 00:43 | SUB OUT: MAYO, NUKIYA               |       |        |  |
| 00:43 | SUB OUT: BORGOSZ, TESS              |       |        |  |
| 00:43 | SUB IN: SCHWARTAU, WIEBKE           |       |        |  |
| 00:43 | SUB IN: HOLDER, RYAN                |       |        |  |
| 00:32 |                                     |       |        | MISSED LAYUP by GUIRANTES, ARELLA      |
| 00:32 | BLOCK by SCHWARTAU, WIEBKE          |       |        |  |
| 00:26 |                                     |       |        | REBOUND (OFF) by GILLES, MAEL          |
| 00:15 |                                     |       |        | TURNOVER (SHOTCLOCK) by TEAM           |

### Towson 6, Rutgers 13

| Points from (This Period) | TOW | RUT |
|---------------------------|-----|-----|
| In the Paint              | 4   | 2   |
| Off Turns                 | 0   | 4   |
| 2nd Chance                | 2   | 5   |
| Fast Break                | 2   | 4   |
| Bench                     | 0   | 0   |

**Official Box Score**  
**Towson vs Rutgers**  
**Second Quarter Statistics Only**  
**December 08, 2019 at Rutgers Athletic Center - Piscataway, N.J.**



**Towson 20**

| No.           | Player                 | S | Pts       | FG          | 3FG        | FT         | OR       | DR       | TR        | PF       | A        | TO       | Blk      | Stl      | Min       | +/- |
|---------------|------------------------|---|-----------|-------------|------------|------------|----------|----------|-----------|----------|----------|----------|----------|----------|-----------|-----|
| 01            | MAYO, NUKIYA           | F | 3         | 1-4         | 1-2        | 0-0        | 0        | 1        | 1         | 2        | 0        | 1        | 0        | 0        | 6         | 0   |
| 11            | MURRAY, QIERRA         | G | 1         | 0-0         | 0-0        | 1-2        | 0        | 0        | 0         | 0        | 2        | 0        | 0        | 0        | 10        | 1   |
| 21            | JETER, KIONNA          | G | 15        | 5-11        | 2-4        | 3-4        | 1        | 2        | 3         | 0        | 0        | 0        | 0        | 1        | 10        | 1   |
| 24            | BORGOSZ, TESS          | F | 0         | 0-0         | 0-0        | 0-0        | 1        | 0        | 1         | 1        | 0        | 1        | 0        | 0        | 2         | -2  |
| 32            | HOLDER, RYAN           | G | 1         | 0-1         | 0-0        | 1-2        | 1        | 1        | 2         | 1        | 0        | 0        | 0        | 0        | 4         | 2   |
| 03            | SHARP, MAGGIE          | G | 0         | 0-0         | 0-0        | 0-0        | 0        | 0        | 0         | 0        | 0        | 0        | 0        | 0        | 0         | 0   |
| 05            | BARBOUR, RAYNA         | G | 0         | 0-0         | 0-0        | 0-0        | 0        | 0        | 0         | 0        | 0        | 0        | 0        | 0        | 0         | 0   |
| 12            | DAVIS, JENNIFER        | G | 0         | 0-0         | 0-0        | 0-0        | 0        | 0        | 0         | 0        | 0        | 0        | 0        | 0        | 0         | 0   |
| 13            | SCHWARTAU, WIEBKE      | C | 0         | 0-1         | 0-0        | 0-0        | 1        | 0        | 1         | 0        | 0        | 0        | 0        | 0        | 9         | 1   |
| 15            | GRAY, MARIAH           | G | 0         | 0-0         | 0-0        | 0-0        | 0        | 0        | 0         | 0        | 0        | 0        | 0        | 0        | 3         | 1   |
| 20            | JOHNSON-MATTHEWS, MYKA | G | 0         | 0-0         | 0-0        | 0-0        | 0        | 1        | 1         | 0        | 0        | 0        | 0        | 0        | 2         | 1   |
| 22            | WRIGHT, LAKAITLIN      | C | 0         | 0-0         | 0-0        | 0-0        | 0        | 0        | 0         | 0        | 0        | 0        | 0        | 0        | 0         | 0   |
| 23            | SMITH, SHAVONNE        | G | 0         | 0-0         | 0-0        | 0-0        | 0        | 1        | 1         | 1        | 0        | 0        | 0        | 0        | 4         | 0   |
| <b>TEAM</b>   |                        |   |           |             |            |            | 2        | 0        | 2         | 0        |          | 1        |          |          |           |     |
| <b>TOTALS</b> |                        |   | <b>20</b> | <b>6-17</b> | <b>3-6</b> | <b>5-8</b> | <b>6</b> | <b>6</b> | <b>12</b> | <b>5</b> | <b>2</b> | <b>3</b> | <b>0</b> | <b>1</b> | <b>50</b> |     |

*Shooting By Period*

| Period   | FG    | FG%   | 3FG  | 3FG%  | FT   | FT%   |
|----------|-------|-------|------|-------|------|-------|
| 3rd Qtr  | 6-13  | 46%   | 2-3  | 67%   | 0-4  | 00%   |
| 4th Qtr  | 5-18  | 28%   | 2-7  | 29%   | 1-2  | 50%   |
| 2nd Half | 6-17  | 35%   | 3-6  | 50%   | 5-8  | 63%   |
| 2nd Half | 11-31 | 35%   | 4-10 | 40%   | 1-6  | 17%   |
| Game     | 20-59 | 33.9% | 7-21 | 33.3% | 6-14 | 42.9% |

Deadball Rebounds: 5,0

**Rutgers 19**

| No.           | Player              | S | Pts       | FG          | 3FG        | FT         | OR       | DR       | TR        | PF       | A        | TO       | Blk      | Stl      | Min       | +/- |
|---------------|---------------------|---|-----------|-------------|------------|------------|----------|----------|-----------|----------|----------|----------|----------|----------|-----------|-----|
| 12            | SANDERS, KHADAIZHA  | G | 0         | 0-2         | 0-2        | 0-0        | 0        | 1        | 1         | 0        | 1        | 1        | 1        | 0        | 6         | -1  |
| 13            | GILLES, MAEL        | F | 2         | 1-4         | 0-0        | 0-0        | 1        | 1        | 2         | 0        | 0        | 0        | 0        | 0        | 3         | -1  |
| 24            | GUIRANTES, ARELLA   | G | 5         | 1-2         | 0-1        | 3-4        | 1        | 1        | 2         | 2        | 1        | 0        | 1        | 0        | 9         | -1  |
| 31            | MACK, TEKIA         | G | 0         | 0-0         | 0-0        | 0-0        | 0        | 0        | 0         | 0        | 0        | 0        | 0        | 0        | 0         | 0   |
| 44            | WALLACE, JORDAN     | C | 3         | 1-1         | 0-0        | 1-2        | 1        | 0        | 1         | 1        | 0        | 0        | 0        | 0        | 5         | 1   |
| 01            | BROUGHTON, ZIPPORAH | G | 5         | 2-4         | 1-3        | 0-0        | 0        | 0        | 0         | 0        | 1        | 1        | 0        | 0        | 8         | -2  |
| 02            | PELEG PELC, NOGA    | G | 0         | 0-2         | 0-2        | 0-0        | 0        | 0        | 0         | 0        | 0        | 0        | 0        | 0        | 4         | 0   |
| 05            | MIGLIORE, DANIELLE  | G | 0         | 0-1         | 0-1        | 0-0        | 0        | 0        | 0         | 0        | 0        | 0        | 0        | 0        | 1         | 1   |
| 15            | DAVENPORT, MAORI    | C | 2         | 1-1         | 0-0        | 0-0        | 0        | 0        | 0         | 1        | 0        | 0        | 0        | 0        | 4         | -2  |
| 20            | MADDOX, JOIYA       | G | 0         | 0-0         | 0-0        | 0-0        | 0        | 0        | 0         | 0        | 0        | 0        | 0        | 0        | 2         | 0   |
| 22            | SINGLETON, TYIA     | F | 2         | 1-1         | 0-0        | 0-0        | 1        | 1        | 2         | 1        | 0        | 0        | 0        | 0        | 8         | 0   |
| <b>TEAM</b>   |                     |   |           |             |            |            | 1        | 1        | 2         | 0        |          | 0        |          |          |           |     |
| <b>TOTALS</b> |                     |   | <b>19</b> | <b>7-18</b> | <b>1-9</b> | <b>4-6</b> | <b>5</b> | <b>5</b> | <b>10</b> | <b>5</b> | <b>3</b> | <b>2</b> | <b>2</b> | <b>0</b> | <b>50</b> |     |

*Shooting By Period*

| Period   | FG    | FG%   | 3FG  | 3FG%  | FT    | FT%   |
|----------|-------|-------|------|-------|-------|-------|
| 3rd Qtr  | 8-12  | 67%   | 1-2  | 50%   | 5-8   | 63%   |
| 4th Qtr  | 2-9   | 22%   | 0-0  | 0%    | 9-12  | 75%   |
| 2nd Half | 7-18  | 39%   | 1-9  | 11%   | 4-6   | 67%   |
| 2nd Half | 10-21 | 48%   | 1-2  | 50%   | 14-20 | 70%   |
| Game     | 21-56 | 37.5% | 3-17 | 17.6% | 22-32 | 68.8% |

Deadball Rebounds: 8,0

Game Notes:

Officials: Jesse Dickerson, Nykesha Thompson, Bob Enterline  
Attendance: 1292

Start Time: 02:00 PM ET  
End Time: 04:02 PM ET  
Game Duration: 2:01

| Score | 1st | 2nd | 3rd | 4th | TOT |
|-------|-----|-----|-----|-----|-----|
| TOW   | 6   | 20  | 14  | 13  | 53  |
| RUT   | 13  | 19  | 22  | 13  | 67  |

| Points from (This Period) | TOW | RUT |
|---------------------------|-----|-----|
| In the Paint              | 2   | 8   |
| Off Turns                 | 2   | 4   |
| 2nd Chance                | 2   | 7   |
| Fast Break                | 10  | 2   |
| Bench                     | 0   | 9   |

**Official Play-By-Play**  
**Towson vs Rutgers**  
**Second Quarter**  
**December 08, 2019 at Rutgers Athletic Center - Piscataway, N.J.**



**Period 2**

**Starters:**

**Towson:** 1 MAYO, NUKIYA (F); 11 MURRAY, QIERRA (G); 21 JETER, KIONNA (G); 24 BORGOSZ, TESS (F); 32 HOLDER, RYAN (G);

**Rutgers:** 12 SANDERS, KHADAIZHA (G); 13 GILLES, MAEL (F); 24 GUIRANTES, ARELLA (G); 31 MACK, TEKIA (G); 44 WALLACE, JORDAN (C);

| Time  | VISITORS: Towson                        | Score | Margin | HOME: Rutgers                             |
|-------|---|-------|--------|---|
| 10:00 | SUB OUT: SMITH, SHAVONNE                |       |        |   |
| 10:00 | SUB IN: MURRAY, QIERRA                  |       |        |   |
| 09:46 | MISSED LAYUP by JETER, KIONNA           |       |        |   |
| 09:42 | REBOUND (OFF) by HOLDER, RYAN           |       |        |   |
| 09:40 | MISSED LAYUP by HOLDER, RYAN            |       |        |   |
| 09:40 |   |       |        | BLOCK by SANDERS, KHADAIZHA               |
| 09:33 | REBOUND (OFF) by JETER, KIONNA          |       |        |   |
| 09:32 | MISSED JUMPER by JETER, KIONNA          |       |        |   |
| 09:29 |   |       |        | REBOUND (DEF) by GILLES, MAEL             |
| 09:18 |   |       |        | MISSED 3PTR by SANDERS, KHADAIZHA         |
| 09:14 |   |       |        | REBOUND (OFF) by GUIRANTES, ARELLA        |
| 09:14 |   |       |        | SUB OUT: SANDERS, KHADAIZHA               |
| 09:14 |   |       |        | SUB IN: BROUGHTON, ZIPPORAH               |
| 09:08 |   | 15-6  | H 9    | GOOD! LAYUP by DAVENPORT, MAORI [PNT]     |
| 09:08 |   |       |        | ASSIST by BROUGHTON, ZIPPORAH             |
| 08:41 | GOOD! 3PTR by JETER, KIONNA             | 15-9  | H 6    |   |
| 08:30 |   |       |        | MISSED JUMPER by GILLES, MAEL             |
| 08:26 | REBOUND (DEF) by JOHNSON-MATTHEWS, MYKA |       |        |   |
| 08:21 |   |       |        | FOUL (PERSONAL) by GUIRANTES, ARELLA      |
| 08:20 |   |       |        | SUB OUT: GILLES, MAEL                     |
| 08:20 |   |       |        | SUB IN: SINGLETON, TYIA                   |
| 08:20 | SUB OUT: JOHNSON-MATTHEWS, MYKA         |       |        |   |
| 08:20 | SUB IN: MAYO, NUKIYA                    |       |        |   |
| 08:20 | MISSED FT by HOLDER, RYAN               |       |        |   |
| 08:20 | REBOUND (OFF) by TEAM                   |       |        |   |
| 08:20 | GOOD! FT by HOLDER, RYAN [FB]           | 15-10 | H 5    |   |
| 08:09 |   |       |        | MISSED 3PTR by PELEG PELC, NOGA           |
| 08:05 | REBOUND (DEF) by HOLDER, RYAN           |       |        |   |
| 08:01 | MISSED 3PTR by JETER, KIONNA            |       |        |   |
| 07:58 |   |       |        | REBOUND (DEF) by GUIRANTES, ARELLA        |
| 07:58 | FOUL (PERSONAL) by HOLDER, RYAN         |       |        |   |
| 07:58 | SUB OUT: HOLDER, RYAN                   |       |        |   |
| 07:58 | SUB IN: SMITH, SHAVONNE                 |       |        |   |
| 07:35 |   | 18-10 | H 8    | GOOD! 3PTR by BROUGHTON, ZIPPORAH         |
| 07:35 |   |       |        | ASSIST by GUIRANTES, ARELLA               |
| 07:28 |   |       |        | FOUL (PERSONAL) by DAVENPORT, MAORI       |
| 07:22 | MISSED JUMPER by MAYO, NUKIYA           |       |        |   |
| 07:19 | REBOUND (OFF) by TEAM                   |       |        |   |
| 07:16 | GOOD! JUMPER by JETER, KIONNA           | 18-12 | H 6    |   |
| 07:03 |   | 20-12 | H 8    | GOOD! JUMPER by GUIRANTES, ARELLA [FB]    |
| 06:49 | GOOD! 3PTR by MAYO, NUKIYA              | 20-15 | H 5    |   |
| 06:49 | ASSIST by MURRAY, QIERRA                |       |        |   |
| 06:38 |   |       |        | TURNOVER (BADPASS) by BROUGHTON, ZIPPORAH |
| 06:38 | SUB OUT: SCHWARTAU, WIEBKE              |       |        |   |
| 06:38 | SUB IN: BORGOSZ, TESS                   |       |        |   |
| 06:26 | TURNOVER (TRAVEL) by MAYO, NUKIYA       |       |        |   |
| 06:26 |   |       |        | SUB OUT: DAVENPORT, MAORI                 |
| 06:26 |   |       |        | SUB IN: WALLACE, JORDAN                   |
| 06:01 |   |       |        | MISSED 3PTR by PELEG PELC, NOGA           |
| 05:58 |   |       |        | REBOUND (OFF) by TEAM                     |
| 05:56 | FOUL (PERSONAL) by SMITH, SHAVONNE      |       |        |   |
| 05:56 | SUB OUT: SMITH, SHAVONNE                |       |        |   |
| 05:56 | SUB IN: SCHWARTAU, WIEBKE               |       |        |   |
| 05:56 |   | 21-15 | H 6    | GOOD! FT by GUIRANTES, ARELLA             |
| 05:56 |   | 22-15 | H 7    | GOOD! FT by GUIRANTES, ARELLA             |
| 05:44 | MISSED JUMPER by MAYO, NUKIYA           |       |        |   |
| 05:42 | REBOUND (OFF) by TEAM                   |       |        |   |
| 05:42 |   |       |        | SUB OUT: PELEG PELC, NOGA                 |
| 05:42 |   |       |        | SUB IN: SANDERS, KHADAIZHA                |
| 05:25 | FOUL (OFF) by BORGOSZ, TESS             |       |        |   |
| 05:25 | TURNOVER (OFFENSIVE) by BORGOSZ, TESS   |       |        |   |
| 05:10 |   |       |        | MISSED 3PTR by BROUGHTON, ZIPPORAH        |
| 05:06 | REBOUND (DEF) by JETER, KIONNA          |       |        |   |
| 05:04 | MISSED JUMPER by JETER, KIONNA          |       |        |   |
| 05:00 | REBOUND (OFF) by BORGOSZ, TESS          |       |        |   |
| 04:39 | TURNOVER (SHOTCLOCK) by TEAM            |       |        |   |
| 04:39 |   |       |        |   |
| 04:39 | SUB OUT: BORGOSZ, TESS                  |       |        |   |
| 04:39 | SUB IN: GRAY, MARIAH                    |       |        |   |
| 04:25 |   | 24-15 | H 9    | GOOD! JUMPER by WALLACE, JORDAN [PNT]     |



| Time  | VISITORS: Towson                   | Score | Margin | HOME: Rutgers                            |
|-------|------------------------------------|-------|--------|--|
| 04:25 |                                    |       |        | ASSIST by SANDERS, KHADAIZHA             |
| 04:00 | MISSED 3PTR by MAYO, NUKIYA        |       |        |  |
| 03:55 |                                    |       |        | REBOUND (DEF) by SINGLETON, TYIA         |
| 03:53 |                                    |       |        | TURNOVER (BADPASS) by SANDERS, KHADAIZHA |
| 03:53 | STEAL by JETER, KIONNA             |       |        |  |
| 03:48 | GOOD! LAYUP by JETER, KIONNA [FB]  | 24-17 | H 7    |  |
| 03:21 | FOUL (PERSONAL) by MAYO, NUKIYA    |       |        |  |
| 03:21 |                                    | 25-17 | H 8    | GOOD! FT by WALLACE, JORDAN              |
| 03:21 |                                    |       |        | MISSED FT by WALLACE, JORDAN             |
| 03:21 |                                    |       |        | REBOUND (OFF) by SINGLETON, TYIA         |
| 03:21 |                                    | 27-17 | H 10   | GOOD! LAYUP by SINGLETON, TYIA           |
| 03:08 | GOOD! JUMPER by JETER, KIONNA      | 27-19 | H 8    |  |
| 03:08 | ASSIST by MURRAY, QIERRA           |       |        |  |
| 02:40 |                                    |       |        | MISSED 3PTR by BROUGHTON, ZIPPORAH       |
| 02:36 | REBOUND (DEF) by MAYO, NUKIYA      |       |        |  |
| 02:28 | GOOD! 3PTR by JETER, KIONNA [FB]   | 27-22 | H 5    |  |
| 02:25 |                                    |       |        | TIMEOUT 30SEC                            |
| 02:07 |                                    |       |        | MISSED 3PTR by SANDERS, KHADAIZHA        |
| 02:03 |                                    |       |        | REBOUND (OFF) by WALLACE, JORDAN         |
| 01:59 | FOUL (PERSONAL) by MAYO, NUKIYA    |       |        |  |
| 01:59 |                                    |       |        | MISSED FT by GUIRANTES, ARELLA           |
| 01:59 |                                    |       |        | REBOUND (OFF) by TEAM                    |
| 01:59 |                                    | 28-22 | H 6    | GOOD! FT by GUIRANTES, ARELLA            |
| 01:59 | SUB OUT: MAYO, NUKIYA              |       |        |  |
| 01:59 | SUB IN: SMITH, SHAVONNE            |       |        |  |
| 01:49 | MISSED 3PTR by JETER, KIONNA       |       |        |  |
| 01:42 | REBOUND (OFF) by SCHWARTAU, WIEBKE |       |        |  |
| 01:42 | MISSED LAYUP by SCHWARTAU, WIEBKE  |       |        |  |
| 01:42 |                                    |       |        | REBOUND (DEF) by SANDERS, KHADAIZHA      |
| 01:34 |                                    |       |        | MISSED 3PTR by GUIRANTES, ARELLA         |
| 01:30 | REBOUND (DEF) by SMITH, SHAVONNE   |       |        |  |
| 01:30 |                                    |       |        | FOUL (PERSONAL) by GUIRANTES, ARELLA     |
| 01:30 |                                    |       |        | SUB OUT: GUIRANTES, ARELLA               |
| 01:30 |                                    |       |        | SUB IN: MADDOX, JOIYA                    |
| 01:30 | SUB OUT: GRAY, MARIAH              |       |        |  |
| 01:30 | SUB IN: HOLDER, RYAN               |       |        |  |
| 01:30 | GOOD! FT by JETER, KIONNA [FB]     | 28-23 | H 5    |  |
| 01:30 | GOOD! FT by JETER, KIONNA [FB]     | 28-24 | H 4    |  |
| 01:09 |                                    | 30-24 | H 6    | GOOD! JUMPER by BROUGHTON, ZIPPORAH      |
| 01:02 |                                    |       |        | FOUL (PERSONAL) by WALLACE, JORDAN       |
| 01:02 |                                    |       |        | SUB OUT: WALLACE, JORDAN                 |
| 01:02 |                                    |       |        | SUB IN: GILLES, MAEL                     |
| 01:02 | MISSED FT by JETER, KIONNA         |       |        |  |
| 01:02 | REBOUND (OFF) by TEAM              |       |        |  |
| 01:02 | GOOD! FT by JETER, KIONNA [FB]     | 30-25 | H 5    |  |
| 01:02 |                                    |       |        | SUB OUT: BROUGHTON, ZIPPORAH             |
| 01:02 |                                    |       |        | SUB IN: MIGLIORE, DANIELLE               |
| 00:44 |                                    | 32-25 | H 7    | GOOD! JUMPER by GILLES, MAEL [PNT]       |
| 00:40 |                                    |       |        | FOUL (PERSONAL) by SINGLETON, TYIA       |
| 00:40 | MISSED FT by MURRAY, QIERRA        |       |        |  |
| 00:40 | REBOUND (OFF) by TEAM              |       |        |  |
| 00:40 | GOOD! FT by MURRAY, QIERRA [FB]    | 32-26 | H 6    |  |
| 00:31 |                                    |       |        | MISSED 3PTR by MIGLIORE, DANIELLE        |
| 00:27 | REBOUND (DEF) by JETER, KIONNA     |       |        |  |
| 00:08 | MISSED JUMPER by JETER, KIONNA     |       |        |  |
| 00:06 |                                    |       |        | REBOUND (DEF) by TEAM                    |
| 00:02 |                                    |       |        | MISSED JUMPER by GILLES, MAEL            |
| 00:00 |                                    |       |        | REBOUND (OFF) by GILLES, MAEL            |
| 00:00 |                                    |       |        | MISSED LAYUP by GILLES, MAEL             |
| 00:00 |                                    |       |        | REBOUND (OFF) by TEAM                    |

### Towson 26, Rutgers 32

| Points from (This Period) | TOW | RUT |
|---------------------------|-----|-----|
| In the Paint              | 2   | 8   |
| Off Turns                 | 2   | 4   |
| 2nd Chance                | 2   | 7   |
| Fast Break                | 10  | 2   |
| Bench                     | 0   | 9   |

**Official Box Score**  
**Towson vs Rutgers**  
**Second Half Statistics Only**  
**December 08, 2019 at Rutgers Athletic Center - Piscataway, N.J.**



**Towson 27**

| No. | Player                 | S | Pts       | FG           | 3FG         | FT         | OR       | DR       | TR        | PF        | A        | TO       | Blk      | Stl      | Min        | +/- |
|-----|------------------------|---|-----------|--------------|-------------|------------|----------|----------|-----------|-----------|----------|----------|----------|----------|------------|-----|
| 01  | MAYO, NUKIYA           | F | 9         | 3-8          | 2-4         | 1-4        | 1        | 1        | 2         | 2         | 0        | 0        | 1        | 1        | 12         | -2  |
| 03  | SHARP, MAGGIE          | G | 0         | 0-1          | 0-1         | 0-0        | 0        | 0        | 0         | 0         | 0        | 0        | 0        | 0        | 1          | -2  |
| 11  | MURRAY, QIERRA         | G | 6         | 3-5          | 0-0         | 0-2        | 0        | 1        | 1         | 1         | 2        | 2        | 0        | 1        | 19         | -6  |
| 12  | DAVIS, JENNIFER        | G | 0         | 0-0          | 0-0         | 0-0        | 0        | 0        | 0         | 0         | 0        | 0        | 0        | 0        | 1          | 0   |
| 13  | SCHWARTAU, WIEBKE      | C | 0         | 0-0          | 0-0         | 0-0        | 0        | 0        | 0         | 0         | 0        | 0        | 0        | 0        | 3          | -2  |
| 15  | GRAY, MARIAH           | G | 0         | 0-1          | 0-1         | 0-0        | 0        | 0        | 0         | 0         | 0        | 0        | 0        | 0        | 1          | -2  |
| 20  | JOHNSON-MATTHEWS, MYKA | G | 0         | 0-0          | 0-0         | 0-0        | 0        | 0        | 0         | 0         | 0        | 0        | 0        | 0        | 1          | -2  |
| 21  | JETER, KIONNA          | G | 8         | 3-7          | 2-3         | 0-0        | 0        | 3        | 3         | 1         | 3        | 2        | 0        | 6        | 17         | -7  |
| 22  | WRIGHT, LAKAITLIN      | C | 0         | 0-1          | 0-0         | 0-0        | 0        | 0        | 0         | 3         | 0        | 2        | 0        | 0        | 7          | -2  |
| 23  | SMITH, SHAVONNE        | G | 2         | 1-2          | 0-0         | 0-0        | 1        | 0        | 1         | 0         | 0        | 0        | 0        | 0        | 5          | -1  |
| 24  | BORGOSZ, TESS          | F | 0         | 0-1          | 0-0         | 0-0        | 1        | 2        | 3         | 2         | 0        | 0        | 0        | 1        | 16         | -2  |
| 32  | HOLDER, RYAN           | G | 2         | 1-4          | 0-1         | 0-0        | 0        | 1        | 1         | 3         | 0        | 1        | 1        | 0        | 17         | -10 |
| 05  | BARBOUR, RAYNA         | G | 0         | 0-1          | 0-0         | 0-0        | 1        | 0        | 1         | 1         | 0        | 0        | 0        | 0        | 1          | -2  |
|     | TEAM                   |   | 0         | 0-0          | 0-0         | 0-0        | 0        | 0        | 0         | 0         | 0        | 1        | 0        | 0        | 0          |     |
|     | <b>TOTALS</b>          |   | <b>27</b> | <b>11-31</b> | <b>4-10</b> | <b>1-6</b> | <b>4</b> | <b>8</b> | <b>12</b> | <b>13</b> | <b>5</b> | <b>8</b> | <b>2</b> | <b>9</b> | <b>100</b> |     |

*Shooting By Period*

| Period   | FG    | FG%   | 3FG  | 3FG%  | FT   | FT%   |
|----------|-------|-------|------|-------|------|-------|
| 3rd Qtr  | 6-13  | 46%   | 2-3  | 67%   | 0-4  | 00%   |
| 4th Qtr  | 5-18  | 28%   | 2-7  | 29%   | 1-2  | 50%   |
| 2nd Half | 11-31 | 35%   | 4-10 | 40%   | 1-6  | 17%   |
| Game     | 20-59 | 33.9% | 7-21 | 33.3% | 6-14 | 42.9% |

Deadball Rebounds: 5,0  
 Last FG Half: TOW 4th-01:30

**Rutgers 35**

| No. | Player              | S | Pts       | FG           | 3FG        | FT           | OR       | DR        | TR        | PF       | A        | TO        | Blk      | Stl      | Min        | +/- |
|-----|---------------------|---|-----------|--------------|------------|--------------|----------|-----------|-----------|----------|----------|-----------|----------|----------|------------|-----|
| 01  | BROUGHTON, ZIPPORAH | G | 2         | 0-0          | 0-0        | 2-2          | 0        | 2         | 2         | 2        | 0        | 4         | 0        | 0        | 6          | 7   |
| 02  | PELEG PELC, NOGA    | G | 0         | 0-0          | 0-0        | 0-0          | 0        | 0         | 0         | 0        | 0        | 0         | 0        | 0        | 0          | 0   |
| 05  | MIGLIORE, DANIELLE  | G | 0         | 0-0          | 0-0        | 0-0          | 0        | 0         | 0         | 0        | 0        | 0         | 0        | 0        | 1          | 2   |
| 12  | SANDERS, KHADAIZHA  | G | 3         | 1-2          | 0-0        | 1-2          | 0        | 2         | 2         | 1        | 0        | 3         | 0        | 0        | 17         | 2   |
| 13  | GILLES, MAEL        | F | 13        | 5-6          | 1-1        | 2-2          | 1        | 3         | 4         | 0        | 0        | 1         | 0        | 1        | 16         | 2   |
| 15  | DAVENPORT, MAORI    | C | 0         | 0-0          | 0-0        | 0-0          | 0        | 1         | 1         | 0        | 0        | 0         | 0        | 0        | 1          | 2   |
| 20  | MADDOX, JOIYA       | G | 1         | 0-0          | 0-0        | 1-2          | 0        | 0         | 0         | 0        | 0        | 0         | 0        | 0        | 3          | -3  |
| 22  | SINGLETON, TYIA     | F | 0         | 0-0          | 0-0        | 0-0          | 0        | 0         | 0         | 1        | 0        | 1         | 1        | 0        | 1          | 2   |
| 24  | GUIRANTES, ARELLA   | G | 8         | 1-5          | 0-0        | 6-8          | 1        | 3         | 4         | 2        | 4        | 1         | 0        | 1        | 16         | 14  |
| 31  | MACK, TEKIA         | G | 8         | 3-7          | 0-1        | 2-2          | 2        | 2         | 4         | 0        | 0        | 2         | 1        | 1        | 19         | 6   |
| 44  | WALLACE, JORDAN     | C | 0         | 0-1          | 0-0        | 0-2          | 1        | 5         | 6         | 0        | 0        | 1         | 0        | 1        | 19         | 6   |
|     | TEAM                |   | 0         | 0-0          | 0-0        | 0-0          | 0        | 1         | 1         | 0        | 0        | 0         | 0        | 0        | 0          |     |
|     | <b>TOTALS</b>       |   | <b>35</b> | <b>10-21</b> | <b>1-2</b> | <b>14-20</b> | <b>5</b> | <b>19</b> | <b>24</b> | <b>6</b> | <b>4</b> | <b>13</b> | <b>2</b> | <b>4</b> | <b>100</b> |     |

*Shooting By Period*

| Period   | FG    | FG%   | 3FG  | 3FG%  | FT    | FT%   |
|----------|-------|-------|------|-------|-------|-------|
| 3rd Qtr  | 8-12  | 67%   | 1-2  | 50%   | 5-8   | 63%   |
| 4th Qtr  | 2-9   | 22%   | 0-0  | 0%    | 9-12  | 75%   |
| 2nd Half | 10-21 | 48%   | 1-2  | 50%   | 14-20 | 70%   |
| Game     | 21-56 | 37.5% | 3-17 | 17.6% | 22-32 | 68.8% |

Deadball Rebounds: 8,0  
 Last FG Half: RUT 4th-03:18

*Game Notes:*

Officials: Jesse Dickerson, Nykesha Thompson, Bob Enterline  
 Attendance: 1292

Start Time: 02:00 PM ET  
 End Time: 04:02 PM ET  
 Game Duration: 2:01

| Score | 1st | 2nd | 3rd | 4th | TOT |
|-------|-----|-----|-----|-----|-----|
| TOW   | 6   | 20  | 14  | 13  | 53  |
| RUT   | 13  | 19  | 22  | 13  | 67  |

| Points from (This Period) | TOW | RUT |
|---------------------------|-----|-----|
| In the Paint              | 12  | 14  |
| Off Turns                 | 13  | 10  |
| 2nd Chance                | 0   | 9   |
| Fast Break                | 9   | 7   |
| Bench                     | 2   | 3   |

**Official Box Score**  
**Towson vs Rutgers**  
**Third Quarter Statistics Only**  
**December 08, 2019 at Rutgers Athletic Center - Piscataway, N.J.**



**Towson 27**

| No.           | Player                 | S | Pts       | FG          | 3FG        | FT         | OR       | DR       | TR       | PF       | A        | TO       | Blk      | Stl      | Min       | +/- |
|---------------|------------------------|---|-----------|-------------|------------|------------|----------|----------|----------|----------|----------|----------|----------|----------|-----------|-----|
| 01            | MAYO, NUKIYA           | F | 0         | 0-3         | 0-1        | 0-2        | 0        | 0        | 0        | 2        | 0        | 0        | 1        | 0        | 3         | -4  |
| 11            | MURRAY, QIERRA         | G | 2         | 1-1         | 0-0        | 0-2        | 0        | 0        | 0        | 0        | 0        | 1        | 0        | 1        | 10        | -8  |
| 21            | JETER, KIONNA          | G | 8         | 3-3         | 2-2        | 0-0        | 0        | 1        | 1        | 1        | 2        | 1        | 0        | 4        | 10        | -8  |
| 24            | BORGOSZ, TESS          | F | 0         | 0-1         | 0-0        | 0-0        | 0        | 1        | 1        | 1        | 0        | 0        | 0        | 0        | 9         | -6  |
| 32            | HOLDER, RYAN           | G | 2         | 1-2         | 0-0        | 0-0        | 0        | 0        | 0        | 1        | 0        | 1        | 0        | 0        | 10        | -8  |
| 03            | SHARP, MAGGIE          | G | 0         | 0-0         | 0-0        | 0-0        | 0        | 0        | 0        | 0        | 0        | 0        | 0        | 0        | 0         | 0   |
| 05            | BARBOUR, RAYNA         | G | 0         | 0-0         | 0-0        | 0-0        | 0        | 0        | 0        | 0        | 0        | 0        | 0        | 0        | 0         | 0   |
| 12            | DAVIS, JENNIFER        | G | 0         | 0-0         | 0-0        | 0-0        | 0        | 0        | 0        | 0        | 0        | 0        | 0        | 0        | 0         | 0   |
| 13            | SCHWARTAU, WIEBKE      | C | 0         | 0-0         | 0-0        | 0-0        | 0        | 0        | 0        | 0        | 0        | 0        | 0        | 0        | 2         | 0   |
| 15            | GRAY, MARIAH           | G | 0         | 0-0         | 0-0        | 0-0        | 0        | 0        | 0        | 0        | 0        | 0        | 0        | 0        | 0         | 0   |
| 20            | JOHNSON-MATTHEWS, MYKA | G | 0         | 0-0         | 0-0        | 0-0        | 0        | 0        | 0        | 0        | 0        | 0        | 0        | 0        | 0         | 0   |
| 22            | WRIGHT, LAKAITLIN      | C | 0         | 0-1         | 0-0        | 0-0        | 0        | 0        | 0        | 1        | 0        | 2        | 0        | 0        | 5         | 0   |
| 23            | SMITH, SHAVONNE        | G | 2         | 1-2         | 0-0        | 0-0        | 0        | 0        | 0        | 0        | 0        | 0        | 0        | 0        | 2         | -6  |
| <b>TEAM</b>   |                        |   |           |             |            |            | 0        | 0        | 0        | 0        | 0        | 0        |          |          |           |     |
| <b>TOTALS</b> |                        |   | <b>14</b> | <b>6-13</b> | <b>2-3</b> | <b>0-4</b> | <b>0</b> | <b>2</b> | <b>2</b> | <b>6</b> | <b>2</b> | <b>5</b> | <b>1</b> | <b>5</b> | <b>50</b> |     |

*Shooting By Period*

| Period   | FG    | FG%   | 3FG  | 3FG%  | FT   | FT%   |
|----------|-------|-------|------|-------|------|-------|
| 2nd Half | 0-0   | 0%    | 0-0  | 0%    | 0-0  | 0%    |
| Game     | 20-59 | 33.9% | 7-21 | 33.3% | 6-14 | 42.9% |

*Deadball Rebounds: 5,0*

**Rutgers 35**

| No.           | Player              | S | Pts       | FG          | 3FG        | FT         | OR       | DR       | TR        | PF       | A        | TO       | Blk      | Stl      | Min       | +/- |
|---------------|---------------------|---|-----------|-------------|------------|------------|----------|----------|-----------|----------|----------|----------|----------|----------|-----------|-----|
| 12            | SANDERS, KHADAIZHA  | G | 3         | 1-1         | 0-0        | 1-2        | 0        | 1        | 1         | 1        | 0        | 2        | 0        | 0        | 8         | 4   |
| 13            | GILLES, MAEL        | F | 11        | 4-5         | 1-1        | 2-2        | 1        | 3        | 4         | 0        | 0        | 0        | 0        | 0        | 10        | 8   |
| 24            | GUIRANTES, ARELLA   | G | 2         | 1-2         | 0-0        | 0-0        | 0        | 1        | 1         | 1        | 2        | 0        | 0        | 1        | 9         | 11  |
| 31            | MACK, TEKIA         | G | 6         | 2-4         | 0-1        | 2-2        | 1        | 1        | 2         | 0        | 0        | 2        | 0        | 0        | 10        | 8   |
| 44            | WALLACE, JORDAN     | C | 0         | 0-0         | 0-0        | 0-2        | 1        | 2        | 3         | 0        | 0        | 0        | 0        | 1        | 10        | 8   |
| 01            | BROUGHTON, ZIPPORAH | G | 0         | 0-0         | 0-0        | 0-0        | 0        | 1        | 1         | 1        | 0        | 4        | 0        | 0        | 3         | 1   |
| 02            | PELEG PELC, NOGA    | G | 0         | 0-0         | 0-0        | 0-0        | 0        | 0        | 0         | 0        | 0        | 0        | 0        | 0        | 0         | 0   |
| 05            | MIGLIORE, DANIELLE  | G | 0         | 0-0         | 0-0        | 0-0        | 0        | 0        | 0         | 0        | 0        | 0        | 0        | 0        | 0         | 0   |
| 15            | DAVENPORT, MAORI    | C | 0         | 0-0         | 0-0        | 0-0        | 0        | 0        | 0         | 0        | 0        | 0        | 0        | 0        | 0         | 0   |
| 20            | MADDOX, JOIYA       | G | 0         | 0-0         | 0-0        | 0-0        | 0        | 0        | 0         | 0        | 0        | 0        | 0        | 0        | 0         | 0   |
| 22            | SINGLETON, TYIA     | F | 0         | 0-0         | 0-0        | 0-0        | 0        | 0        | 0         | 0        | 0        | 0        | 0        | 0        | 0         | 0   |
| <b>TEAM</b>   |                     |   |           |             |            |            | 0        | 0        | 0         | 0        | 0        | 0        |          |          |           |     |
| <b>TOTALS</b> |                     |   | <b>22</b> | <b>8-12</b> | <b>1-2</b> | <b>5-8</b> | <b>3</b> | <b>9</b> | <b>12</b> | <b>3</b> | <b>2</b> | <b>8</b> | <b>0</b> | <b>2</b> | <b>50</b> |     |

*Shooting By Period*

| Period   | FG    | FG%   | 3FG  | 3FG%  | FT    | FT%   |
|----------|-------|-------|------|-------|-------|-------|
| 2nd Half | 0-0   | 0%    | 0-0  | 0%    | 0-0   | 0%    |
| Game     | 21-56 | 37.5% | 3-17 | 17.6% | 22-32 | 68.8% |

*Deadball Rebounds: 8,0*

*Game Notes:*

Officials: Jesse Dickerson, Nykesha Thompson, Bob Enterline  
 Attendance: 1292

Start Time: 02:00 PM ET  
 End Time: 04:02 PM ET  
 Game Duration: 2:01

| Score | 1st | 2nd | 3rd | 4th | TOT |
|-------|-----|-----|-----|-----|-----|
| TOW   | 6   | 20  | 14  | 13  | 53  |
| RUT   | 13  | 19  | 22  | 13  | 67  |

| Points from (This Period) | TOW | RUT |
|---------------------------|-----|-----|
| In the Paint              | 8   | 10  |
| Off Turns                 | 10  | 7   |
| 2nd Chance                | 0   | 4   |
| Fast Break                | 6   | 4   |
| Bench                     | 2   | 0   |

**Official Play-By-Play**  
**Towson vs Rutgers**  
**Third Quarter**  
**December 08, 2019 at Rutgers Athletic Center - Piscataway, N.J.**



**Period 3**

**Starters:**

**Towson:** 1 MAYO, NUKIYA (F); 11 MURRAY, QIERRA (G); 21 JETER, KIONNA (G); 24 BORGOSZ, TESS (F); 32 HOLDER, RYAN (G);

**Rutgers:** 12 SANDERS, KHADAIZHA (G); 13 GILLES, MAEL (F); 24 GUIRANTES, ARELLA (G); 31 MACK, TEKIA (G); 44 WALLACE, JORDAN (C);

| Time  | VISITORS: Towson                          | Score | Margin | HOME: Rutgers                              |
|-------|---|-------|--------|--|
| 01:42 |   |       |        | BLOCK by GUIRANTES, ARELLA                 |
| 00:45 | MISSED 3PTR by JETER, KIONNA              |       |        |  |
| 00:45 |   |       |        | REBOUND (DEF) by GUIRANTES, ARELLA         |
| 10:00 |   |       |        | SUB OUT: MIGLIORE, DANIELLE                |
| 10:00 |   |       |        | SUB OUT: MADDOX, JOIYA                     |
| 10:00 |   |       |        | SUB OUT: SINGLETON, TYIA                   |
| 10:00 |   |       |        | SUB IN: GUIRANTES, ARELLA                  |
| 10:00 |   |       |        | SUB IN: MACK, TEKIA                        |
| 10:00 |   |       |        | SUB IN: WALLACE, JORDAN                    |
| 10:00 | SUB OUT: SCHWARTAU, WIEBKE                |       |        |  |
| 10:00 | SUB OUT: SMITH, SHAVONNE                  |       |        |  |
| 10:00 | SUB IN: MAYO, NUKIYA                      |       |        |  |
| 10:00 | SUB IN: BORGOSZ, TESS                     |       |        |  |
| 09:37 |   |       |        | MISSED LAYUP by GILLES, MAEL               |
| 09:37 | BLOCK by MAYO, NUKIYA                     |       |        |  |
| 09:32 | REBOUND (DEF) by JETER, KIONNA            |       |        |  |
| 09:06 | GOOD! LAYUP by HOLDER, RYAN [PNT]         | 32-28 | H 4    |  |
| 08:48 |   |       |        | MISSED LAYUP by MACK, TEKIA                |
| 08:42 |   |       |        | REBOUND (OFF) by MACK, TEKIA               |
| 08:42 |   | 34-28 | H 6    | GOOD! LAYUP by MACK, TEKIA                 |
| 08:24 | MISSED JUMPER by MAYO, NUKIYA             |       |        |  |
| 08:20 |   |       |        | REBOUND (DEF) by MACK, TEKIA               |
| 08:12 | FOUL (PERSONAL) by MAYO, NUKIYA           |       |        |  |
| 08:12 | SUB OUT: MAYO, NUKIYA                     |       |        |  |
| 08:12 | SUB IN: WRIGHT, LAKAITLIN                 |       |        |  |
| 08:12 |   |       |        | MISSED FT by WALLACE, JORDAN               |
| 08:12 |   |       |        | REBOUND (OFF) by TEAM                      |
| 08:12 |   |       |        | MISSED FT by WALLACE, JORDAN               |
| 08:11 | REBOUND (DEF) by BORGOSZ, TESS            |       |        |  |
| 07:50 | TURNOVER (BADPASS) by HOLDER, RYAN        |       |        |  |
| 07:32 |   |       |        | MISSED JUMPER by GUIRANTES, ARELLA         |
| 07:29 |   |       |        | REBOUND (OFF) by WALLACE, JORDAN           |
| 07:20 |   |       |        | TURNOVER (LOSTBALL) by MACK, TEKIA         |
| 07:05 | GOOD! 3PTR by JETER, KIONNA               | 34-31 | H 3    |  |
| 06:49 |   |       |        | TURNOVER (BADPASS) by MACK, TEKIA          |
| 06:49 | STEAL by JETER, KIONNA                    |       |        |  |
| 06:45 |   |       |        | SUB OUT: GUIRANTES, ARELLA                 |
| 06:45 |   |       |        | SUB IN: BROUGHTON, ZIPPORAH                |
| 06:36 | GOOD! 3PTR by JETER, KIONNA               | 34-34 | T      |  |
| 06:26 |   |       |        | TIMEOUT 30SEC                              |
| 06:26 |   |       |        |  |
| 06:14 |   |       |        | TURNOVER (BADPASS) by BROUGHTON, ZIPPORAH  |
| 06:14 | STEAL by JETER, KIONNA                    |       |        |  |
| 06:09 | GOOD! LAYUP by JETER, KIONNA [FB]         | 34-36 | V 2    |  |
| 05:51 |   | 36-36 | T      | GOOD! JUMPER by GILLES, MAEL [PNT]         |
| 05:24 | MISSED LAYUP by WRIGHT, LAKAITLIN         |       |        |  |
| 05:20 |   |       |        | REBOUND (DEF) by BROUGHTON, ZIPPORAH       |
| 05:18 |   |       |        | TURNOVER (LOSTBALL) by BROUGHTON, ZIPPORAH |
| 05:18 | STEAL by MURRAY, QIERRA                   |       |        |  |
| 05:18 |   |       |        | SUB OUT: BROUGHTON, ZIPPORAH               |
| 05:18 |   |       |        | SUB IN: GUIRANTES, ARELLA                  |
| 05:12 | MISSED JUMPER by BORGOSZ, TESS            |       |        |  |
| 05:08 |   |       |        | REBOUND (DEF) by GUIRANTES, ARELLA         |
| 04:49 |   | 38-36 | H 2    | GOOD! JUMPER by SANDERS, KHADAIZHA [PNT]   |
| 04:44 |   |       |        |  |
| 04:21 |   |       |        | FOUL (PERSONAL) by SANDERS, KHADAIZHA      |
| 04:19 | TURNOVER (LOSTBALL) by WRIGHT, LAKAITLIN  |       |        |  |
| 04:19 |   |       |        | STEAL by GUIRANTES, ARELLA                 |
| 04:13 |   | 41-36 | H 5    | GOOD! 3PTR by GILLES, MAEL                 |
| 04:13 |   |       |        | ASSIST by GUIRANTES, ARELLA                |
| 03:50 | FOUL (OFF) by WRIGHT, LAKAITLIN           |       |        |  |
| 03:50 | TURNOVER (OFFENSIVE) by WRIGHT, LAKAITLIN |       |        |  |
| 03:50 | SUB OUT: WRIGHT, LAKAITLIN                |       |        |  |
| 03:50 | SUB IN: SCHWARTAU, WIEBKE                 |       |        |  |
| 03:38 |   |       |        | TURNOVER (BADPASS) by SANDERS, KHADAIZHA   |
| 03:38 | STEAL by JETER, KIONNA                    |       |        |  |
| 03:28 | GOOD! LAYUP by MURRAY, QIERRA [FB]        | 41-38 | H 3    |  |
| 03:28 | ASSIST by JETER, KIONNA                   |       |        |  |
| 03:26 |   |       |        | TURNOVER (DRIBBLING) by SANDERS, KHADAIZHA |
| 03:26 |   |       |        | SUB OUT: SANDERS, KHADAIZHA                |

| Time  | VISITORS: Towson                     | Score | Margin | HOME: Rutgers                             |
|-------|--------------------------------------|-------|--------|---|
| 03:26 |                                      |       |        | SUB IN: BROUGHTON, ZIPPORAH               |
| 03:26 | SUB OUT: BORGOSZ, TESS               |       |        |   |
| 03:26 | SUB IN: MAYO, NUKIYA                 |       |        |   |
| 03:02 | MISSED LAYUP by MAYO, NUKIYA         |       |        |   |
| 02:57 |                                      |       |        | REBOUND (DEF) by WALLACE, JORDAN          |
| 02:56 | FOUL (PERSONAL) by JETER, KIONNA     |       |        |   |
| 02:54 |                                      |       |        | TURNOVER (BADPASS) by BROUGHTON, ZIPPORAH |
| 02:31 | MISSED 3PTR by MAYO, NUKIYA          |       |        |   |
| 02:27 |                                      |       |        | REBOUND (DEF) by WALLACE, JORDAN          |
| 02:23 |                                      | 43-38 | H 5    | GOOD! LAYUP by GILLES, MAEL [FB]          |
| 02:13 | TURNOVER (BADPASS) by JETER, KIONNA  |       |        |   |
| 02:13 |                                      |       |        | STEAL by WALLACE, JORDAN                  |
| 02:09 | FOUL (PERSONAL) by HOLDER, RYAN      |       |        |   |
| 02:09 | TIMEOUT 30SEC                        |       |        |   |
| 02:09 | SUB OUT: SCHWARTAU, WIEBKE           |       |        |   |
| 02:09 | SUB IN: BORGOSZ, TESS                |       |        |   |
| 02:09 |                                      | 44-38 | H 6    | GOOD! FT by MACK, TEKIA [FB]              |
| 02:09 |                                      | 45-38 | H 7    | GOOD! FT by MACK, TEKIA [FB]              |
| 02:01 |                                      |       |        | FOUL (PERSONAL) by GUIRANTES, ARELLA      |
| 02:01 | MISSED FT by MAYO, NUKIYA            |       |        |   |
| 02:01 | REBOUND (OFF) by TEAM                |       |        |   |
| 02:01 | MISSED FT by MAYO, NUKIYA            |       |        |   |
| 02:00 |                                      |       |        | REBOUND (DEF) by GILLES, MAEL             |
| 01:56 |                                      |       |        | TURNOVER (BADPASS) by BROUGHTON, ZIPPORAH |
| 01:56 | STEAL by JETER, KIONNA               |       |        |   |
| 01:52 |                                      |       |        | FOUL (PERSONAL) by BROUGHTON, ZIPPORAH    |
| 01:52 |                                      |       |        | SUB OUT: BROUGHTON, ZIPPORAH              |
| 01:52 |                                      |       |        | SUB IN: SANDERS, KHADAIZHA                |
| 01:52 | MISSED FT by MURRAY, QIERRA          |       |        |   |
| 01:52 | REBOUND (OFF) by TEAM                |       |        |   |
| 01:52 | MISSED FT by MURRAY, QIERRA          |       |        |   |
| 01:51 |                                      |       |        | REBOUND (DEF) by GILLES, MAEL             |
| 01:51 | FOUL (PERSONAL) by MAYO, NUKIYA      |       |        |   |
| 01:51 | SUB OUT: MAYO, NUKIYA                |       |        |   |
| 01:51 | SUB IN: SMITH, SHAVONNE              |       |        |   |
| 01:51 |                                      | 46-38 | H 8    | GOOD! FT by GILLES, MAEL                  |
| 01:51 |                                      | 47-38 | H 9    | GOOD! FT by GILLES, MAEL                  |
| 01:44 | GOOD! LAYUP by SMITH, SHAVONNE [FB]  | 47-40 | H 7    |   |
| 01:44 | ASSIST by JETER, KIONNA              |       |        |   |
| 01:20 |                                      | 49-40 | H 9    | GOOD! LAYUP by MACK, TEKIA                |
| 01:20 |                                      |       |        | ASSIST by GUIRANTES, ARELLA               |
| 01:11 | TURNOVER (BADPASS) by MURRAY, QIERRA |       |        |   |
| 00:45 |                                      |       |        | MISSED 3PTR by MACK, TEKIA                |
| 00:38 |                                      |       |        | REBOUND (OFF) by GILLES, MAEL             |
| 00:38 |                                      | 51-40 | H 11   | GOOD! LAYUP by GILLES, MAEL               |
| 00:34 | MISSED JUMPER by SMITH, SHAVONNE     |       |        |   |
| 00:30 |                                      |       |        | REBOUND (DEF) by GILLES, MAEL             |
| 00:22 |                                      | 53-40 | H 13   | GOOD! JUMPER by GUIRANTES, ARELLA         |
| 00:08 | SUB IN: WRIGHT, LAKAITLIN            |       |        |   |
| 00:08 | SUB OUT: SMITH, SHAVONNE             |       |        |   |
| 00:05 | MISSED LAYUP by HOLDER, RYAN         |       |        |   |
| 00:04 |                                      |       |        | REBOUND (DEF) by SANDERS, KHADAIZHA       |
| 00:04 | FOUL (PERSONAL) by BORGOSZ, TESS     |       |        |   |
| 00:04 |                                      |       |        | MISSED FT by SANDERS, KHADAIZHA           |
| 00:04 |                                      |       |        | REBOUND (OFF) by TEAM                     |
| 00:04 |                                      | 54-40 | H 14   | GOOD! FT by SANDERS, KHADAIZHA            |

### Towson 40, Rutgers 54

| Points from (This Period) | TOW | RUT |
|---------------------------|-----|-----|
| In the Paint              | 8   | 10  |
| Off Turns                 | 10  | 7   |
| 2nd Chance                | 0   | 4   |
| Fast Break                | 6   | 4   |
| Bench                     | 2   | 0   |

**Official Box Score**  
**Towson vs Rutgers**  
**Fourth Quarter Statistics Only**  
**December 08, 2019 at Rutgers Athletic Center - Piscataway, N.J.**



**Towson 13**

| No.           | Player                 | S | Pts       | FG          | 3FG        | FT         | OR       | DR       | TR        | PF       | A        | TO       | Blk      | Stl      | Min       | +/- |
|---------------|------------------------|---|-----------|-------------|------------|------------|----------|----------|-----------|----------|----------|----------|----------|----------|-----------|-----|
| 01            | MAYO, NUKIYA           | F | 9         | 3-5         | 2-3        | 1-2        | 1        | 1        | 2         | 0        | 0        | 0        | 0        | 1        | 9         | 2   |
| 11            | MURRAY, QIERRA         | G | 4         | 2-4         | 0-0        | 0-0        | 0        | 1        | 1         | 1        | 2        | 1        | 0        | 0        | 9         | 2   |
| 21            | JETER, KIONNA          | G | 0         | 0-4         | 0-1        | 0-0        | 0        | 2        | 2         | 0        | 1        | 1        | 0        | 2        | 7         | 1   |
| 24            | BORGOSZ, TESS          | F | 0         | 0-0         | 0-0        | 0-0        | 1        | 1        | 2         | 1        | 0        | 0        | 0        | 1        | 7         | 4   |
| 32            | HOLDER, RYAN           | G | 0         | 0-2         | 0-1        | 0-0        | 0        | 1        | 1         | 2        | 0        | 0        | 1        | 0        | 7         | -2  |
| 03            | SHARP, MAGGIE          | G | 0         | 0-1         | 0-1        | 0-0        | 0        | 0        | 0         | 0        | 0        | 0        | 0        | 0        | 1         | -2  |
| 05            | BARBOUR, RAYNA         | G | 0         | 0-1         | 0-0        | 0-0        | 1        | 0        | 1         | 1        | 0        | 0        | 0        | 0        | 1         | -2  |
| 12            | DAVIS, JENNIFER        | G | 0         | 0-0         | 0-0        | 0-0        | 0        | 0        | 0         | 0        | 0        | 0        | 0        | 0        | 1         | 0   |
| 13            | SCHWARTAU, WIEBKE      | C | 0         | 0-0         | 0-0        | 0-0        | 0        | 0        | 0         | 0        | 0        | 0        | 0        | 0        | 1         | -2  |
| 15            | GRAY, MARIAH           | G | 0         | 0-1         | 0-1        | 0-0        | 0        | 0        | 0         | 0        | 0        | 0        | 0        | 0        | 1         | -2  |
| 20            | JOHNSON-MATTHEWS, MYKA | G | 0         | 0-0         | 0-0        | 0-0        | 0        | 0        | 0         | 0        | 0        | 0        | 0        | 0        | 1         | -2  |
| 22            | WRIGHT, LAKAITLIN      | C | 0         | 0-0         | 0-0        | 0-0        | 0        | 0        | 0         | 2        | 0        | 0        | 0        | 0        | 2         | -2  |
| 23            | SMITH, SHAVONNE        | G | 0         | 0-0         | 0-0        | 0-0        | 1        | 0        | 1         | 0        | 0        | 0        | 0        | 0        | 3         | 5   |
| <b>TEAM</b>   |                        |   |           |             |            |            | 0        | 0        | 0         | 0        |          | 1        |          |          |           |     |
| <b>TOTALS</b> |                        |   | <b>13</b> | <b>5-18</b> | <b>2-7</b> | <b>1-2</b> | <b>4</b> | <b>6</b> | <b>10</b> | <b>7</b> | <b>3</b> | <b>3</b> | <b>1</b> | <b>4</b> | <b>50</b> |     |

*Shooting By Period*

| Period | FG    | FG%   | 3FG  | 3FG%  | FT   | FT%   |
|--------|-------|-------|------|-------|------|-------|
| Game   | 20-59 | 33.9% | 7-21 | 33.3% | 6-14 | 42.9% |

*Deadball Rebounds: 5,0*

**Rutgers 13**

| No.           | Player              | S | Pts       | FG         | 3FG        | FT          | OR       | DR        | TR        | PF       | A        | TO       | Blk      | Stl      | Min       | +/- |
|---------------|---------------------|---|-----------|------------|------------|-------------|----------|-----------|-----------|----------|----------|----------|----------|----------|-----------|-----|
| 12            | SANDERS, KHADAIZHA  | G | 0         | 0-1        | 0-0        | 0-0         | 0        | 1         | 1         | 0        | 0        | 1        | 0        | 0        | 9         | -2  |
| 13            | GILLES, MAEL        | F | 2         | 1-1        | 0-0        | 0-0         | 0        | 0         | 0         | 0        | 0        | 1        | 0        | 1        | 6         | -6  |
| 24            | GUIRANTES, ARELLA   | G | 6         | 0-3        | 0-0        | 6-8         | 1        | 2         | 3         | 1        | 2        | 1        | 0        | 0        | 7         | 3   |
| 31            | MACK, TEKIA         | G | 2         | 1-3        | 0-0        | 0-0         | 1        | 1         | 2         | 0        | 0        | 0        | 1        | 1        | 9         | -2  |
| 44            | WALLACE, JORDAN     | C | 0         | 0-1        | 0-0        | 0-0         | 0        | 3         | 3         | 0        | 0        | 1        | 0        | 0        | 9         | -2  |
| 01            | BROUGHTON, ZIPPORAH | G | 2         | 0-0        | 0-0        | 2-2         | 0        | 1         | 1         | 1        | 0        | 0        | 0        | 0        | 3         | 6   |
| 02            | PELEG PELC, NOGA    | G | 0         | 0-0        | 0-0        | 0-0         | 0        | 0         | 0         | 0        | 0        | 0        | 0        | 0        | 0         | 0   |
| 05            | MIGLIORE, DANIELLE  | G | 0         | 0-0        | 0-0        | 0-0         | 0        | 0         | 0         | 0        | 0        | 0        | 0        | 0        | 1         | 2   |
| 15            | DAVENPORT, MAORI    | C | 0         | 0-0        | 0-0        | 0-0         | 0        | 1         | 1         | 0        | 0        | 0        | 0        | 0        | 1         | 2   |
| 20            | MADDOX, JOIYA       | G | 1         | 0-0        | 0-0        | 1-2         | 0        | 0         | 0         | 0        | 0        | 0        | 0        | 0        | 3         | -3  |
| 22            | SINGLETON, TYIA     | F | 0         | 0-0        | 0-0        | 0-0         | 0        | 0         | 0         | 1        | 0        | 1        | 1        | 0        | 1         | 2   |
| <b>TEAM</b>   |                     |   |           |            |            |             | 0        | 1         | 1         | 0        |          | 0        |          |          |           |     |
| <b>TOTALS</b> |                     |   | <b>13</b> | <b>2-9</b> | <b>0-0</b> | <b>9-12</b> | <b>2</b> | <b>10</b> | <b>12</b> | <b>3</b> | <b>2</b> | <b>5</b> | <b>2</b> | <b>2</b> | <b>50</b> |     |

*Shooting By Period*

| Period | FG    | FG%   | 3FG  | 3FG%  | FT    | FT%   |
|--------|-------|-------|------|-------|-------|-------|
| Game   | 21-56 | 37.5% | 3-17 | 17.6% | 22-32 | 68.8% |

*Deadball Rebounds: 8,0*

Game Notes:

Officials: Jesse Dickerson, Nykesha Thompson, Bob Enterline  
 Attendance: 1292

Start Time: 02:00 PM ET  
 End Time: 04:02 PM ET  
 Game Duration: 2:01

| Score | 1st | 2nd | 3rd | 4th | TOT       |
|-------|-----|-----|-----|-----|-----------|
| TOW   | 6   | 20  | 14  | 13  | <b>53</b> |
| RUT   | 13  | 19  | 22  | 13  | <b>67</b> |

| Points from (This Period) | TOW | RUT |
|---------------------------|-----|-----|
| In the Paint              | 4   | 4   |
| Off Turns                 | 3   | 3   |
| 2nd Chance                | 0   | 5   |
| Fast Break                | 3   | 3   |
| Bench                     | 0   | 3   |

**Official Play-By-Play  
Towson vs Rutgers  
Fourth Quarter  
December 08, 2019 at Rutgers Athletic Center - Piscataway, N.J.**



**Period 4**

**Starters:**

**Towson:** 1 MAYO, NUKIYA (F); 11 MURRAY, QIERRA (G); 21 JETER, KIONNA (G); 24 BORGOSZ, TESS (F); 32 HOLDER, RYAN (G);

**Rutgers:** 12 SANDERS, KHADAIZHA (G); 13 GILLES, MAEL (F); 24 GUIRANTES, ARELLA (G); 31 MACK, TEKIA (G); 44 WALLACE, JORDAN (C);

| Time  | VISITORS: Towson                     | Score | Margin | HOME: Rutgers                            |
|-------|--------------------------------------|-------|--------|--|
| 10:00 | SUB OUT: BORGOSZ, TESS               |       |        |  |
| 10:00 | SUB IN: MAYO, NUKIYA                 |       |        |  |
| 09:47 | MISSED LAYUP by HOLDER, RYAN         |       |        |  |
| 09:43 |                                      |       |        | REBOUND (DEF) by GUIRANTES, ARELLA       |
| 09:29 |                                      |       |        | TURNOVER (BADPASS) by GILLES, MAEL       |
| 09:29 | STEAL by MAYO, NUKIYA                |       |        |  |
| 09:21 | TURNOVER (BADPASS) by JETER, KIONNA  |       |        |  |
| 09:21 |                                      |       |        | STEAL by MACK, TEKIA                     |
| 09:15 |                                      |       |        | MISSED JUMPER by MACK, TEKIA             |
| 09:11 |                                      |       |        | REBOUND (OFF) by MACK, TEKIA             |
| 08:57 |                                      | 56-40 | H 16   | GOOD! LAYUP by GILLES, MAEL              |
| 08:57 |                                      |       |        | ASSIST by GUIRANTES, ARELLA              |
| 08:46 | TIMEOUT 30SEC                        |       |        |  |
| 08:46 |                                      |       |        |  |
| 08:46 | SUB OUT: WRIGHT, LAKAITLIN           |       |        |  |
| 08:46 | SUB IN: BORGOSZ, TESS                |       |        |  |
| 08:33 | MISSED JUMPER by MAYO, NUKIYA        |       |        |  |
| 08:33 |                                      |       |        | BLOCK by MACK, TEKIA                     |
| 08:27 | REBOUND (OFF) by MAYO, NUKIYA        |       |        |  |
| 08:26 | MISSED JUMPER by JETER, KIONNA       |       |        |  |
| 08:17 |                                      |       |        | REBOUND (DEF) by WALLACE, JORDAN         |
| 08:03 |                                      |       |        | TURNOVER (LOSTBALL) by WALLACE, JORDAN   |
| 08:03 | STEAL by JETER, KIONNA               |       |        |  |
| 07:58 | MISSED JUMPER by JETER, KIONNA       |       |        |  |
| 07:54 |                                      |       |        | REBOUND (DEF) by SANDERS, KHADAIZHA      |
| 07:51 |                                      |       |        | TURNOVER (BADPASS) by SANDERS, KHADAIZHA |
| 07:51 | STEAL by JETER, KIONNA               |       |        |  |
| 07:35 | GOOD! 3PTR by MAYO, NUKIYA           | 56-43 | H 13   |  |
| 07:35 | ASSIST by MURRAY, QIERRA             |       |        |  |
| 07:03 |                                      |       |        | TURNOVER (BADPASS) by GUIRANTES, ARELLA  |
| 07:03 | STEAL by BORGOSZ, TESS               |       |        |  |
| 06:44 | TURNOVER (BADPASS) by MURRAY, QIERRA |       |        |  |
| 06:44 |                                      |       |        | STEAL by GILLES, MAEL                    |
| 06:39 |                                      |       |        | MISSED LAYUP by MACK, TEKIA              |
| 06:36 |                                      |       |        | REBOUND (OFF) by GUIRANTES, ARELLA       |
| 06:36 | FOUL (PERSONAL) by BORGOSZ, TESS     |       |        |  |
| 06:36 |                                      |       |        | MISSED FT by GUIRANTES, ARELLA           |
| 06:36 |                                      |       |        | REBOUND (OFF) by TEAM                    |
| 06:36 |                                      | 57-43 | H 14   | GOOD! FT by GUIRANTES, ARELLA [FB]       |
| 06:36 | SUB OUT: JETER, KIONNA               |       |        |  |
| 06:36 | SUB IN: SMITH, SHAVONNE              |       |        |  |
| 06:36 | TURNOVER (5SEC) by TEAM              |       |        |  |
| 06:32 |                                      |       |        | MISSED JUMPER by GUIRANTES, ARELLA       |
| 06:29 | REBOUND (DEF) by MURRAY, QIERRA      |       |        |  |
| 06:23 | GOOD! LAYUP by MURRAY, QIERRA [PNT]  | 57-45 | H 12   |  |
| 05:55 |                                      |       |        | MISSED LAYUP by GUIRANTES, ARELLA        |
| 05:55 | BLOCK by HOLDER, RYAN                |       |        |  |
| 05:51 | REBOUND (DEF) by HOLDER, RYAN        |       |        |  |
| 05:47 | MISSED 3PTR by MAYO, NUKIYA          |       |        |  |
| 05:40 | REBOUND (OFF) by SMITH, SHAVONNE     |       |        |  |
| 05:29 | MISSED JUMPER by MURRAY, QIERRA      |       |        |  |
| 05:26 |                                      |       |        | REBOUND (DEF) by WALLACE, JORDAN         |
| 05:22 | FOUL (TECH) by MURRAY, QIERRA        |       |        |  |
| 05:22 |                                      | 58-45 | H 13   | GOOD! FT by GUIRANTES, ARELLA            |
| 05:22 |                                      |       |        | MISSED FT by GUIRANTES, ARELLA           |
| 05:22 |                                      |       |        | REBOUND (OFF) by TEAM                    |
| 05:22 |                                      |       |        | SUB OUT: GILLES, MAEL                    |
| 05:22 |                                      |       |        | SUB IN: BROUGHTON, ZIPPORAH              |
| 05:22 | SUB OUT: SMITH, SHAVONNE             |       |        |  |
| 05:22 | SUB OUT: BORGOSZ, TESS               |       |        |  |
| 05:22 | SUB IN: JETER, KIONNA                |       |        |  |
| 05:22 | SUB IN: WRIGHT, LAKAITLIN            |       |        |  |
| 05:06 | FOUL (PERSONAL) by WRIGHT, LAKAITLIN |       |        |  |
| 05:06 | SUB OUT: WRIGHT, LAKAITLIN           |       |        |  |
| 05:06 | SUB IN: BORGOSZ, TESS                |       |        |  |
| 05:06 | FOUL (PERSONAL) by WRIGHT, LAKAITLIN |       |        |  |
| 05:06 |                                      | 59-45 | H 14   | GOOD! FT by GUIRANTES, ARELLA            |
| 05:06 |                                      | 60-45 | H 15   | GOOD! FT by GUIRANTES, ARELLA            |
| 04:45 | MISSED 3PTR by HOLDER, RYAN          |       |        |  |
| 04:42 |                                      |       |        | REBOUND (DEF) by BROUGHTON, ZIPPORAH     |

| Time  | VISITORS: Towson                   | Score | Margin | HOME: Rutgers                           |
|-------|------------------------------------|-------|--------|---|
| 04:13 | FOUL (PERSONAL) by HOLDER, RYAN    |       |        |   |
| 04:13 |                                    | 61-45 | H 16   | GOOD! FT by GUIRANTES, ARELLA           |
| 04:13 |                                    | 62-45 | H 17   | GOOD! FT by GUIRANTES, ARELLA           |
| 04:09 |                                    |       |        | FOUL (PERSONAL) by BROUGHTON, ZIPPORAH  |
| 04:05 | GOOD! JUMPER by MAYO, NUKIYA       | 62-47 | H 15   |   |
| 03:37 |                                    |       |        | MISSED JUMPER by GUIRANTES, ARELLA      |
| 03:33 | REBOUND (DEF) by MAYO, NUKIYA      |       |        |   |
| 03:26 | MISSED JUMPER by JETER, KIONNA     |       |        |   |
| 03:22 |                                    |       |        | REBOUND (DEF) by GUIRANTES, ARELLA      |
| 03:18 |                                    | 64-47 | H 17   | GOOD! LAYUP by MACK, TEKIA [FB]         |
| 03:18 |                                    |       |        | ASSIST by GUIRANTES, ARELLA             |
| 03:10 |                                    |       |        | FOUL (PERSONAL) by GUIRANTES, ARELLA    |
| 03:10 |                                    |       |        | SUB OUT: BROUGHTON, ZIPPORAH            |
| 03:10 |                                    |       |        | SUB OUT: GUIRANTES, ARELLA              |
| 03:10 |                                    |       |        | SUB IN: GILLES, MAEL                    |
| 03:10 |                                    |       |        | SUB IN: MADDOX, JOIYA                   |
| 03:10 | GOOD! FT by MAYO, NUKIYA [FB]      | 64-48 | H 16   |   |
| 03:10 | MISSED FT by MAYO, NUKIYA          |       |        |   |
| 03:09 |                                    |       |        | REBOUND (DEF) by WALLACE, JORDAN        |
| 03:02 | FOUL (PERSONAL) by HOLDER, RYAN    |       |        |   |
| 03:02 | SUB OUT: HOLDER, RYAN              |       |        |   |
| 03:02 | SUB IN: SMITH, SHAVONNE            |       |        |   |
| 03:02 |                                    | 65-48 | H 17   | GOOD! FT by MADDOX, JOIYA               |
| 03:02 |                                    |       |        | MISSED FT by MADDOX, JOIYA              |
| 03:01 | REBOUND (DEF) by JETER, KIONNA     |       |        |   |
| 02:56 | MISSED 3PTR by JETER, KIONNA       |       |        |   |
| 02:53 | REBOUND (OFF) by BORGOSZ, TESS     |       |        |   |
| 02:43 | MISSED JUMPER by MURRAY, QIERRA    |       |        |   |
| 02:40 |                                    |       |        | REBOUND (DEF) by MACK, TEKIA            |
| 02:14 |                                    |       |        | MISSED JUMPER by SANDERS, KHADAIZHA     |
| 02:09 | REBOUND (DEF) by JETER, KIONNA     |       |        |   |
| 02:05 | GOOD! LAYUP by MURRAY, QIERRA [FB] | 65-50 | H 15   |   |
| 02:05 | ASSIST by JETER, KIONNA            |       |        |   |
| 01:38 |                                    |       |        | MISSED JUMPER by WALLACE, JORDAN        |
| 01:34 | REBOUND (DEF) by BORGOSZ, TESS     |       |        |   |
| 01:30 | GOOD! 3PTR by MAYO, NUKIYA         | 65-53 | H 12   |   |
| 01:30 | ASSIST by MURRAY, QIERRA           |       |        |   |
| 01:27 | TIMEOUT 30SEC                      |       |        |   |
| 01:27 |                                    |       |        | SUB OUT: GILLES, MAEL                   |
| 01:27 |                                    |       |        | SUB OUT: MACK, TEKIA                    |
| 01:27 |                                    |       |        | SUB OUT: WALLACE, JORDAN                |
| 01:27 |                                    |       |        | SUB IN: MIGLIORE, DANIELLE              |
| 01:27 |                                    |       |        | SUB IN: DAVENPORT, MAORI                |
| 01:27 |                                    |       |        | SUB IN: SINGLETON, TYIA                 |
| 01:27 | SUB OUT: MAYO, NUKIYA              |       |        |   |
| 01:27 | SUB OUT: MURRAY, QIERRA            |       |        |   |
| 01:27 | SUB OUT: JETER, KIONNA             |       |        |   |
| 01:27 | SUB OUT: SMITH, SHAVONNE           |       |        |   |
| 01:27 | SUB OUT: BORGOSZ, TESS             |       |        |   |
| 01:27 | SUB IN: SHARP, MAGGIE              |       |        |   |
| 01:27 | SUB IN: BARBOUR, RAYNA             |       |        |   |
| 01:27 | SUB IN: SCHWARTAU, WIEBKE          |       |        |   |
| 01:27 | SUB IN: GRAY, MARIAH               |       |        |   |
| 01:27 | SUB IN: JOHNSON-MATTHEWS, MYKA     |       |        |   |
| 01:10 |                                    |       |        | FOUL (OFF) by SINGLETON, TYIA           |
| 01:10 |                                    |       |        | TURNOVER (OFFENSIVE) by SINGLETON, TYIA |
| 01:10 |                                    |       |        | SUB OUT: SANDERS, KHADAIZHA             |
| 01:10 |                                    |       |        | SUB IN: BROUGHTON, ZIPPORAH             |
| 00:58 | MISSED 3PTR by SHARP, MAGGIE       |       |        |   |
| 00:55 |                                    |       |        | REBOUND (DEF) by DAVENPORT, MAORI       |
| 00:46 | FOUL (PERSONAL) by BARBOUR, RAYNA  |       |        |   |
| 00:46 |                                    | 66-53 | H 13   | GOOD! FT by BROUGHTON, ZIPPORAH         |
| 00:46 |                                    | 67-53 | H 14   | GOOD! FT by BROUGHTON, ZIPPORAH         |
| 00:46 | SUB OUT: JOHNSON-MATTHEWS, MYKA    |       |        |   |
| 00:46 | SUB IN: DAVIS, JENNIFER            |       |        |   |
| 00:35 | MISSED 3PTR by GRAY, MARIAH        |       |        |   |
| 00:30 | REBOUND (OFF) by BARBOUR, RAYNA    |       |        |   |
| 00:29 | MISSED LAYUP by BARBOUR, RAYNA     |       |        |   |
| 00:29 |                                    |       |        | BLOCK by SINGLETON, TYIA                |
| 00:27 |                                    |       |        | REBOUND (DEF) by TEAM                   |

### Towson 53, Rutgers 67

| Points from (This Period) | TOW | RUT |
|---------------------------|-----|-----|
| In the Paint              | 4   | 4   |
| Off Turns                 | 3   | 3   |
| 2nd Chance                | 0   | 5   |
| Fast Break                | 3   | 3   |
| Bench                     | 0   | 3   |





**Official Scoring/Possession Reference Chart**  
**Towson vs Rutgers**  
**Period 1**  
**December 08, 2019 at Rutgers Athletic Center - Piscataway, N.J.**



**Period 1**

**Starters:**

**Towson:** 1 MAYO, NUKIYA (F); 11 MURRAY, QIERRA (G); 21 JETER, KIONNA (G); 24 BORGOSZ, TESS (F); 32 HOLDER, RYAN (G);

**Rutgers:** 12 SANDERS, KHADAIZHA (G); 13 GILLES, MAEL (F); 24 GUIRANTES, ARELLA (G); 31 MACK, TEKIA (G); 44 WALLACE, JORDAN (C);

| Time  | VISITORS: Towson                    | Score | Margin | HOME: Rutgers                          |
|-------|-------------------------------------|-------|--------|--|
| 08:08 | GOOD! JUMPER by MURRAY, QIERRA [FB] | 0-2   | V 2    |  |
| 07:35 | GOOD! LAYUP by MAYO, NUKIYA         | 0-4   | V 4    |  |
| 07:24 |                                     | 2-4   | V 2    | GOOD! JUMPER by GUIRANTES, ARELLA      |
| 04:48 |                                     | 3-4   | V 1    | GOOD! FT by GUIRANTES, ARELLA [FB]     |
| 04:48 |                                     | 4-4   | T      | GOOD! FT by GUIRANTES, ARELLA [FB]     |
| 04:20 |                                     | 6-4   | H 2    | GOOD! JUMPER by SANDERS, KHADAIZHA     |
| 03:23 |                                     | 7-4   | H 3    | GOOD! FT by GILLES, MAEL               |
| 03:23 |                                     | 8-4   | H 4    | GOOD! FT by GILLES, MAEL               |
| 03:10 | GOOD! LAYUP by BORGOSZ, TESS        | 8-6   | H 2    |  |
| 02:23 |                                     | 11-6  | H 5    | GOOD! 3PTR by SANDERS, KHADAIZHA       |
| 01:17 |                                     | 13-6  | H 7    | GOOD! LAYUP by SANDERS, KHADAIZHA [FB] |

**Towson 6, Rutgers 13**

**Official Scoring/Possession Reference Chart**  
**Towson vs Rutgers**  
**Period 2**  
**December 08, 2019 at Rutgers Athletic Center - Piscataway, N.J.**



**Period 2**

**Starters:**

**Towson:** 1 MAYO, NUKIYA (F); 11 MURRAY, QIERRA (G); 21 JETER, KIONNA (G); 24 BORGOSZ, TESS (F); 32 HOLDER, RYAN (G);

**Rutgers:** 12 SANDERS, KHADAIZHA (G); 13 GILLES, MAEL (F); 24 GUIRANTES, ARELLA (G); 31 MACK, TEKIA (G); 44 WALLACE, JORDAN (C);

| Time  | VISITORS: Towson                  | Score | Margin | HOME: Rutgers                          |
|-------|-----------------------------------|-------|--------|--|
| 09:08 |                                   | 15-6  | H 9    | GOOD! LAYUP by DAVENPORT, MAORI [PNT]  |
| 08:41 | GOOD! 3PTR by JETER, KIONNA       | 15-9  | H 6    |  |
| 08:20 | GOOD! FT by HOLDER, RYAN [FB]     | 15-10 | H 5    |  |
| 07:35 |                                   | 18-10 | H 8    | GOOD! 3PTR by BROUGHTON, ZIPPORAH      |
| 07:16 | GOOD! JUMPER by JETER, KIONNA     | 18-12 | H 6    |  |
| 07:03 |                                   | 20-12 | H 8    | GOOD! JUMPER by GUIRANTES, ARELLA [FB] |
| 06:49 | GOOD! 3PTR by MAYO, NUKIYA        | 20-15 | H 5    |  |
| 05:56 |                                   | 21-15 | H 6    | GOOD! FT by GUIRANTES, ARELLA          |
| 05:56 |                                   | 22-15 | H 7    | GOOD! FT by GUIRANTES, ARELLA          |
| 04:25 |                                   | 24-15 | H 9    | GOOD! JUMPER by WALLACE, JORDAN [PNT]  |
| 03:48 | GOOD! LAYUP by JETER, KIONNA [FB] | 24-17 | H 7    |  |
| 03:21 |                                   | 25-17 | H 8    | GOOD! FT by WALLACE, JORDAN            |
| 03:21 |                                   | 27-17 | H 10   | GOOD! LAYUP by SINGLETON, TYIA         |
| 03:08 | GOOD! JUMPER by JETER, KIONNA     | 27-19 | H 8    |  |
| 02:28 | GOOD! 3PTR by JETER, KIONNA [FB]  | 27-22 | H 5    |  |
| 01:59 |                                   | 28-22 | H 6    | GOOD! FT by GUIRANTES, ARELLA          |
| 01:30 | GOOD! FT by JETER, KIONNA [FB]    | 28-23 | H 5    |  |
| 01:30 | GOOD! FT by JETER, KIONNA [FB]    | 28-24 | H 4    |  |
| 01:09 |                                   | 30-24 | H 6    | GOOD! JUMPER by BROUGHTON, ZIPPORAH    |
| 01:02 | GOOD! FT by JETER, KIONNA [FB]    | 30-25 | H 5    |  |
| 00:44 |                                   | 32-25 | H 7    | GOOD! JUMPER by GILLES, MAEL [PNT]     |
| 00:40 | GOOD! FT by MURRAY, QIERRA [FB]   | 32-26 | H 6    |  |

**Towson 26, Rutgers 32**

**Official Scoring/Possession Reference Chart**  
**Towson vs Rutgers**  
**Period 3**  
**December 08, 2019 at Rutgers Athletic Center - Piscataway, N.J.**



**Period 3**

**Starters:**

**Towson:** 1 MAYO, NUKIYA (F); 11 MURRAY, QIERRA (G); 21 JETER, KIONNA (G); 24 BORGOSZ, TESS (F); 32 HOLDER, RYAN (G);

**Rutgers:** 12 SANDERS, KHADAIZHA (G); 13 GILLES, MAEL (F); 24 GUIRANTES, ARELLA (G); 31 MACK, TEKIA (G); 44 WALLACE, JORDAN (C);

| Time  | VISITORS: Towson                    | Score | Margin | HOME: Rutgers                            |
|-------|-------------------------------------|-------|--------|--|
| 09:06 | GOOD! LAYUP by HOLDER, RYAN [PNT]   | 32-28 | H 4    |  |
| 08:42 |                                     | 34-28 | H 6    | GOOD! LAYUP by MACK, TEKIA               |
| 07:05 | GOOD! 3PTR by JETER, KIONNA         | 34-31 | H 3    |  |
| 06:36 | GOOD! 3PTR by JETER, KIONNA         | 34-34 | T      |  |
| 06:09 | GOOD! LAYUP by JETER, KIONNA [FB]   | 34-36 | V 2    |  |
| 05:51 |                                     | 36-36 | T      | GOOD! JUMPER by GILLES, MAEL [PNT]       |
| 04:49 |                                     | 38-36 | H 2    | GOOD! JUMPER by SANDERS, KHADAIZHA [PNT] |
| 04:13 |                                     | 41-36 | H 5    | GOOD! 3PTR by GILLES, MAEL               |
| 03:28 | GOOD! LAYUP by MURRAY, QIERRA [FB]  | 41-38 | H 3    |  |
| 02:23 |                                     | 43-38 | H 5    | GOOD! LAYUP by GILLES, MAEL [FB]         |
| 02:09 |                                     | 44-38 | H 6    | GOOD! FT by MACK, TEKIA [FB]             |
| 02:09 |                                     | 45-38 | H 7    | GOOD! FT by MACK, TEKIA [FB]             |
| 01:51 |                                     | 46-38 | H 8    | GOOD! FT by GILLES, MAEL                 |
| 01:51 |                                     | 47-38 | H 9    | GOOD! FT by GILLES, MAEL                 |
| 01:44 | GOOD! LAYUP by SMITH, SHAVONNE [FB] | 47-40 | H 7    |  |
| 01:20 |                                     | 49-40 | H 9    | GOOD! LAYUP by MACK, TEKIA               |
| 00:38 |                                     | 51-40 | H 11   | GOOD! LAYUP by GILLES, MAEL              |
| 00:22 |                                     | 53-40 | H 13   | GOOD! JUMPER by GUIRANTES, ARELLA        |
| 00:04 |                                     | 54-40 | H 14   | GOOD! FT by SANDERS, KHADAIZHA           |

**Towson 40, Rutgers 54**

**Official Scoring/Possession Reference Chart**  
**Towson vs Rutgers**  
**Period 4**  
**December 08, 2019 at Rutgers Athletic Center - Piscataway, N.J.**



**Period 4**

**Starters:**

**Towson:** 1 MAYO, NUKIYA (F); 11 MURRAY, QIERRA (G); 21 JETER, KIONNA (G); 24 BORGOSZ, TESS (F); 32 HOLDER, RYAN (G);

**Rutgers:** 12 SANDERS, KHADAIZHA (G); 13 GILLES, MAEL (F); 24 GUIRANTES, ARELLA (G); 31 MACK, TEKIA (G); 44 WALLACE, JORDAN (C);

| Time  | VISITORS: Towson                    | Score | Margin | HOME: Rutgers                      |
|-------|-------------------------------------|-------|--------|------------------------------------|
| 08:57 |                                     | 56-40 | H 16   | GOOD! LAYUP by GILLES, MAEL        |
| 07:35 | GOOD! 3PTR by MAYO, NUKIYA          | 56-43 | H 13   |                                    |
| 06:36 |                                     | 57-43 | H 14   | GOOD! FT by GUIRANTES, ARELLA [FB] |
| 06:23 | GOOD! LAYUP by MURRAY, QIERRA [PNT] | 57-45 | H 12   |                                    |
| 05:22 |                                     | 58-45 | H 13   | GOOD! FT by GUIRANTES, ARELLA      |
| 05:06 |                                     | 59-45 | H 14   | GOOD! FT by GUIRANTES, ARELLA      |
| 05:06 |                                     | 60-45 | H 15   | GOOD! FT by GUIRANTES, ARELLA      |
| 04:13 |                                     | 61-45 | H 16   | GOOD! FT by GUIRANTES, ARELLA      |
| 04:13 |                                     | 62-45 | H 17   | GOOD! FT by GUIRANTES, ARELLA      |
| 04:05 | GOOD! JUMPER by MAYO, NUKIYA        | 62-47 | H 15   |                                    |
| 03:18 |                                     | 64-47 | H 17   | GOOD! LAYUP by MACK, TEKIA [FB]    |
| 03:10 | GOOD! FT by MAYO, NUKIYA [FB]       | 64-48 | H 16   |                                    |
| 03:02 |                                     | 65-48 | H 17   | GOOD! FT by MADDOX, JOIYA          |
| 02:05 | GOOD! LAYUP by MURRAY, QIERRA [FB]  | 65-50 | H 15   |                                    |
| 01:30 | GOOD! 3PTR by MAYO, NUKIYA          | 65-53 | H 12   |                                    |
| 00:46 |                                     | 66-53 | H 13   | GOOD! FT by BROUGHTON, ZIPPORAH    |
| 00:46 |                                     | 67-53 | H 14   | GOOD! FT by BROUGHTON, ZIPPORAH    |

**Towson 53, Rutgers 67**

**Official Substitutions Log**  
**Towson vs Rutgers**  
**Period 1**  
**December 08, 2019 at Rutgers Athletic Center - Piscataway, N.J.**



| VISITORS: Towson                  | Time  | Score | HOME: Rutgers            |
|-----------------------------------|-------|-------|--------------------------|
| 1 MAYO, NUKIYA                    |       |       | 12 SANDERS, KHADAIZHA    |
| 11 MURRAY, QIERRA                 |       |       | 13 GILLES, MAEL          |
| 21 JETER, KIONNA                  |       |       | 24 GUIRANTES, ARELLA     |
| 24 BORGOSZ, TESS                  |       |       | 31 MACK, TEKIA           |
| 32 HOLDER, RYAN                   |       |       | 44 WALLACE, JORDAN       |
| SUB OUT: 24 BORGOSZ, TESS         | 06:45 | 4-2   |                          |
| SUB IN: 22 WRIGHT, LAKAITLIN      | 06:45 |       |                          |
|                                   | 05:28 | 4-2   | SUB OUT: WALLACE, JORDAN |
|                                   | 05:28 |       | SUB IN: DAVENPORT, MAORI |
| SUB OUT: 32 HOLDER, RYAN          | 05:15 | 4-2   |                          |
| SUB IN: 23 SMITH, SHAVONNE        | 05:15 |       |                          |
| SUB OUT: 22 WRIGHT, LAKAITLIN     | 04:56 | 4-2   |                          |
| SUB IN: 24 BORGOSZ, TESS          | 04:56 |       |                          |
|                                   | 01:51 | 6-11  | SUB OUT: MACK, TEKIA     |
|                                   | 01:51 |       | SUB IN: PELEG PELC, NOGA |
| SUB OUT: 11 MURRAY, QIERRA        | 01:51 |       |                          |
| SUB IN: 20 JOHNSON-MATTHEWS, MYKA | 01:51 |       |                          |
| SUB OUT: 1 MAYO, NUKIYA           | 00:43 | 6-13  |                          |
| SUB OUT: 24 BORGOSZ, TESS         | 00:43 |       |                          |
| SUB IN: 13 SCHWARTAU, WIEBKE      | 00:43 |       |                          |
| SUB IN: 32 HOLDER, RYAN           | 00:43 |       |                          |

**Towson 6, Rutgers 13**

**Official Substitutions Log**  
**Towson vs Rutgers**  
**Period 2**  
**December 08, 2019 at Rutgers Athletic Center - Piscataway, N.J.**



| VISITORS: Towson                  | Time  | Score | HOME: Rutgers               |
|-----------------------------------|-------|-------|-----------------------------|
| 1 MAYO,NUKIYA                     |       |       | 12 SANDERS,KHADAIZHA        |
| 11 MURRAY,QIERRA                  |       |       | 13 GILLES,MAEL              |
| 21 JETER,KIONNA                   |       |       | 24 GUIRANTES,ARELLA         |
| 24 BORGOSZ,TESS                   |       |       | 31 MACK,TEKIA               |
| 32 HOLDER,RYAN                    |       |       | 44 WALLACE,JORDAN           |
| SUB OUT: 23 SMITH,SHAVONNE        | 10:00 | -     |                             |
| SUB IN: 11 MURRAY,QIERRA          | 10:00 |       |                             |
|                                   | 09:14 | -     | SUB OUT: SANDERS,KHADAIZHA  |
|                                   | 09:14 |       | SUB IN: BROUGHTON,ZIPPORAH  |
|                                   | 08:20 | 9-15  | SUB OUT: GILLES,MAEL        |
|                                   | 08:20 |       | SUB IN: SINGLETON,TYIA      |
| SUB OUT: 20 JOHNSON-MATTHEWS,MYKA | 08:20 |       |                             |
| SUB IN: 1 MAYO,NUKIYA             | 08:20 |       |                             |
| SUB OUT: 32 HOLDER,RYAN           | 07:58 | 10-15 |                             |
| SUB IN: 23 SMITH,SHAVONNE         | 07:58 |       |                             |
| SUB OUT: 13 SCHWARTAU,WIEBKE      | 06:38 | 15-20 |                             |
| SUB IN: 24 BORGOSZ,TESS           | 06:38 |       |                             |
|                                   | 06:26 | 15-20 | SUB OUT: DAVENPORT,MAORI    |
|                                   | 06:26 |       | SUB IN: WALLACE,JORDAN      |
| SUB OUT: 23 SMITH,SHAVONNE        | 05:56 | 15-20 |                             |
| SUB IN: 13 SCHWARTAU,WIEBKE       | 05:56 |       |                             |
|                                   | 05:42 | 15-22 | SUB OUT: PELEG PELC,NOGA    |
|                                   | 05:42 |       | SUB IN: SANDERS,KHADAIZHA   |
| SUB OUT: 24 BORGOSZ,TESS          | 04:39 | 15-22 |                             |
| SUB IN: 15 GRAY,MARIAH            | 04:39 |       |                             |
| SUB OUT: 1 MAYO,NUKIYA            | 01:59 | 22-28 |                             |
| SUB IN: 23 SMITH,SHAVONNE         | 01:59 |       |                             |
|                                   | 01:30 | 22-28 | SUB OUT: GUIRANTES,ARELLA   |
|                                   | 01:30 |       | SUB IN: MADDOX,JOIYA        |
| SUB OUT: 15 GRAY,MARIAH           | 01:30 |       |                             |
| SUB IN: 32 HOLDER,RYAN            | 01:30 |       |                             |
|                                   | 01:02 | 24-30 | SUB OUT: WALLACE,JORDAN     |
|                                   | 01:02 |       | SUB IN: GILLES,MAEL         |
|                                   | 01:02 |       | SUB OUT: BROUGHTON,ZIPPORAH |
|                                   | 01:02 |       | SUB IN: MIGLIORE,DANIELLE   |

**Towson 26, Rutgers 32**

**Official Substitutions Log**  
**Towson vs Rutgers**  
**Period 3**  
**December 08, 2019 at Rutgers Athletic Center - Piscataway, N.J.**



| VISITORS: Towson              | Time  | Score | HOME: Rutgers                |
|-------------------------------|-------|-------|------------------------------|
| 1 MAYO, NUKIYA                |       |       | 12 SANDERS, KHADAIZHA        |
| 11 MURRAY, QIERRA             |       |       | 13 GILLES, MAEL              |
| 21 JETER, KIONNA              |       |       | 24 GUIRANTES, ARELLA         |
| 24 BORGOSZ, TESS              |       |       | 31 MACK, TEKIA               |
| 32 HOLDER, RYAN               |       |       | 44 WALLACE, JORDAN           |
|                               | 10:00 | -     | SUB OUT: MIGLIORE, DANIELLE  |
|                               | 10:00 |       | SUB OUT: MADDOX, JOIYA       |
|                               | 10:00 |       | SUB OUT: SINGLETON, TYIA     |
|                               | 10:00 |       | SUB IN: GUIRANTES, ARELLA    |
|                               | 10:00 |       | SUB IN: MACK, TEKIA          |
|                               | 10:00 |       | SUB IN: WALLACE, JORDAN      |
| SUB OUT: 13 SCHWARTAU, WIEBKE | 10:00 |       |                              |
| SUB OUT: 23 SMITH, SHAVONNE   | 10:00 |       |                              |
| SUB IN: 1 MAYO, NUKIYA        | 10:00 |       |                              |
| SUB IN: 24 BORGOSZ, TESS      | 10:00 |       |                              |
| SUB OUT: 1 MAYO, NUKIYA       | 08:12 | 28-34 |                              |
| SUB IN: 22 WRIGHT, LAKAITLIN  | 08:12 |       |                              |
|                               | 06:45 | 31-34 | SUB OUT: GUIRANTES, ARELLA   |
|                               | 06:45 |       | SUB IN: BROUGHTON, ZIPPORAH  |
|                               | 05:18 | 36-36 | SUB OUT: BROUGHTON, ZIPPORAH |
|                               | 05:18 |       | SUB IN: GUIRANTES, ARELLA    |
| SUB OUT: 22 WRIGHT, LAKAITLIN | 03:50 | 36-41 |                              |
| SUB IN: 13 SCHWARTAU, WIEBKE  | 03:50 |       |                              |
|                               | 03:26 | 38-41 | SUB OUT: SANDERS, KHADAIZHA  |
|                               | 03:26 |       | SUB IN: BROUGHTON, ZIPPORAH  |
| SUB OUT: 24 BORGOSZ, TESS     | 03:26 |       |                              |
| SUB IN: 1 MAYO, NUKIYA        | 03:26 |       |                              |
| SUB OUT: 13 SCHWARTAU, WIEBKE | 02:09 | 38-43 |                              |
| SUB IN: 24 BORGOSZ, TESS      | 02:09 |       |                              |
|                               | 01:52 | 38-45 | SUB OUT: BROUGHTON, ZIPPORAH |
|                               | 01:52 |       | SUB IN: SANDERS, KHADAIZHA   |
| SUB OUT: 1 MAYO, NUKIYA       | 01:51 | 38-45 |                              |
| SUB IN: 23 SMITH, SHAVONNE    | 01:51 |       |                              |
| SUB IN: 22 WRIGHT, LAKAITLIN  | 00:08 | 40-53 |                              |
| SUB OUT: 23 SMITH, SHAVONNE   | 00:08 |       |                              |

**Towson 40, Rutgers 54**



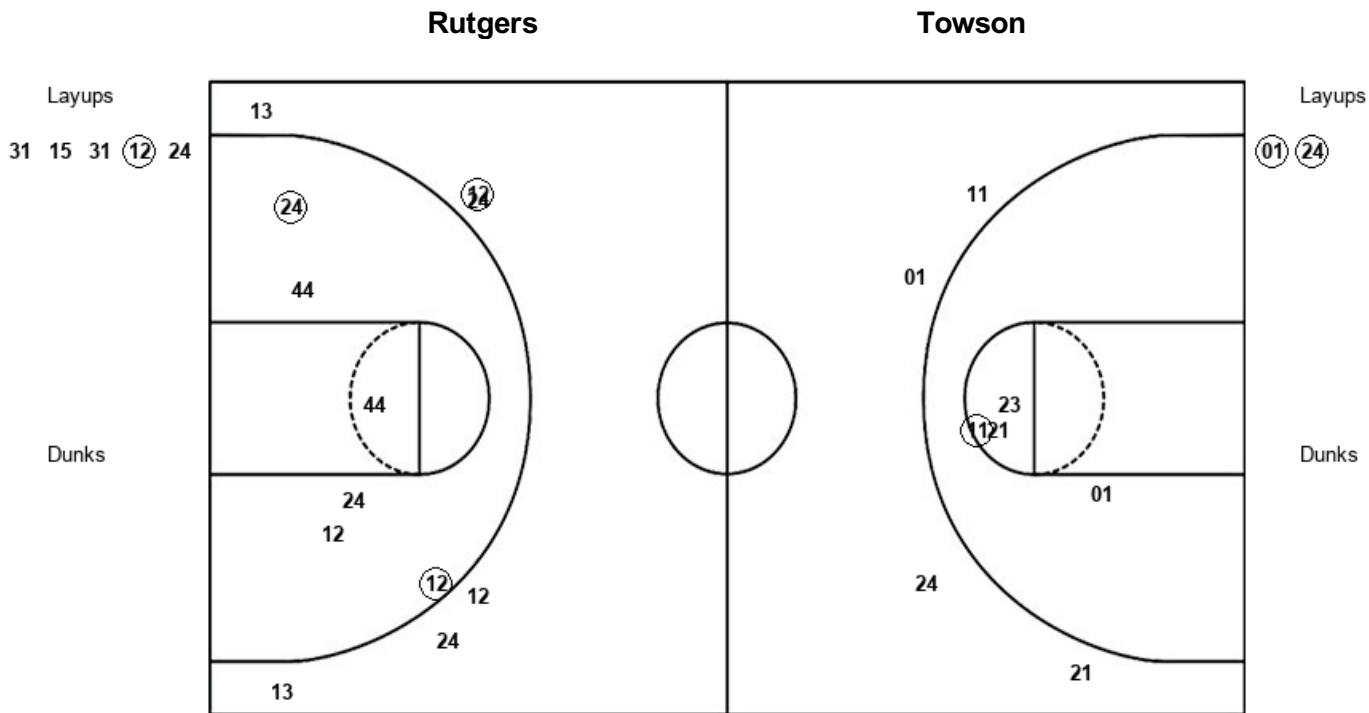
**Official Substitutions Log**  
**Towson vs Rutgers**  
**Period 4**  
**December 08, 2019 at Rutgers Athletic Center - Piscataway, N.J.**



| VISITORS: Towson                   | Time  | Score | HOME: Rutgers                |
|------------------------------------|-------|-------|------------------------------|
| 1 MAYO, NUKIYA                     |       |       | 12 SANDERS, KHADAIZHA        |
| 11 MURRAY, QIERRA                  |       |       | 13 GILLES, MAEL              |
| 21 JETER, KIONNA                   |       |       | 24 GUIRANTES, ARELLA         |
| 24 BORGOSZ, TESS                   |       |       | 31 MACK, TEKIA               |
| 32 HOLDER, RYAN                    |       |       | 44 WALLACE, JORDAN           |
| SUB OUT: 24 BORGOSZ, TESS          | 10:00 | -     |                              |
| SUB IN: 1 MAYO, NUKIYA             | 10:00 |       |                              |
| SUB OUT: 22 WRIGHT, LAKAITLIN      | 08:46 | 40-56 |                              |
| SUB IN: 24 BORGOSZ, TESS           | 08:46 |       |                              |
| SUB OUT: 21 JETER, KIONNA          | 06:36 | 43-57 |                              |
| SUB IN: 23 SMITH, SHAVONNE         | 06:36 |       |                              |
|                                    | 05:22 | 45-58 | SUB OUT: GILLES, MAEL        |
|                                    | 05:22 |       | SUB IN: BROUGHTON, ZIPPORAH  |
| SUB OUT: 23 SMITH, SHAVONNE        | 05:22 |       |                              |
| SUB OUT: 24 BORGOSZ, TESS          | 05:22 |       |                              |
| SUB IN: 21 JETER, KIONNA           | 05:22 |       |                              |
| SUB IN: 22 WRIGHT, LAKAITLIN       | 05:22 |       |                              |
| SUB OUT: 22 WRIGHT, LAKAITLIN      | 05:06 | 45-58 |                              |
| SUB IN: 24 BORGOSZ, TESS           | 05:06 |       |                              |
|                                    | 03:10 | 47-64 | SUB OUT: BROUGHTON, ZIPPORAH |
|                                    | 03:10 |       | SUB OUT: GUIRANTES, ARELLA   |
|                                    | 03:10 |       | SUB IN: GILLES, MAEL         |
|                                    | 03:10 |       | SUB IN: MADDOX, JOIYA        |
| SUB OUT: 32 HOLDER, RYAN           | 03:02 | 48-64 |                              |
| SUB IN: 23 SMITH, SHAVONNE         | 03:02 |       |                              |
|                                    | 01:27 | 53-65 | SUB OUT: GILLES, MAEL        |
|                                    | 01:27 |       | SUB OUT: MACK, TEKIA         |
|                                    | 01:27 |       | SUB OUT: WALLACE, JORDAN     |
|                                    | 01:27 |       | SUB IN: MIGLIORE, DANIELLE   |
|                                    | 01:27 |       | SUB IN: DAVENPORT, MAORI     |
|                                    | 01:27 |       | SUB IN: SINGLETON, TYIA      |
| SUB OUT: 1 MAYO, NUKIYA            | 01:27 |       |                              |
| SUB OUT: 11 MURRAY, QIERRA         | 01:27 |       |                              |
| SUB OUT: 21 JETER, KIONNA          | 01:27 |       |                              |
| SUB OUT: 23 SMITH, SHAVONNE        | 01:27 |       |                              |
| SUB OUT: 24 BORGOSZ, TESS          | 01:27 |       |                              |
| SUB IN: 3 SHARP, MAGGIE            | 01:27 |       |                              |
| SUB IN: 5 BARBOUR, RAYNA           | 01:27 |       |                              |
| SUB IN: 13 SCHWARTAU, WIEBKE       | 01:27 |       |                              |
| SUB IN: 15 GRAY, MARIAH            | 01:27 |       |                              |
| SUB IN: 20 JOHNSON-MATTHEWS, MYKA  | 01:27 |       |                              |
|                                    | 01:10 | 53-65 | SUB OUT: SANDERS, KHADAIZHA  |
|                                    | 01:10 |       | SUB IN: BROUGHTON, ZIPPORAH  |
| SUB OUT: 20 JOHNSON-MATTHEWS, MYKA | 00:46 | 53-67 |                              |
| SUB IN: 12 DAVIS, JENNIFER         | 00:46 |       |                              |

**Towson 53, Rutgers 67**

**Official Shot Chart**  
**Towson vs Rutgers**  
**PERIOD 1 Shots**  
 December 08, 2019 at Rutgers Athletic Center - Piscataway, N.J.



| RUT : Period 1           | Made     | Att       | Pct         |
|--------------------------|----------|-----------|-------------|
| Layups                   | 1        | 5         | 20.0        |
| Dunks                    | 0        | 0         | 0           |
| 2PT Field Goals          | 3        | 11        | 27.3        |
| 3PT Field Goals          | 1        | 6         | 16.7        |
| <b>Total Field Goals</b> | <b>4</b> | <b>17</b> | <b>23.5</b> |

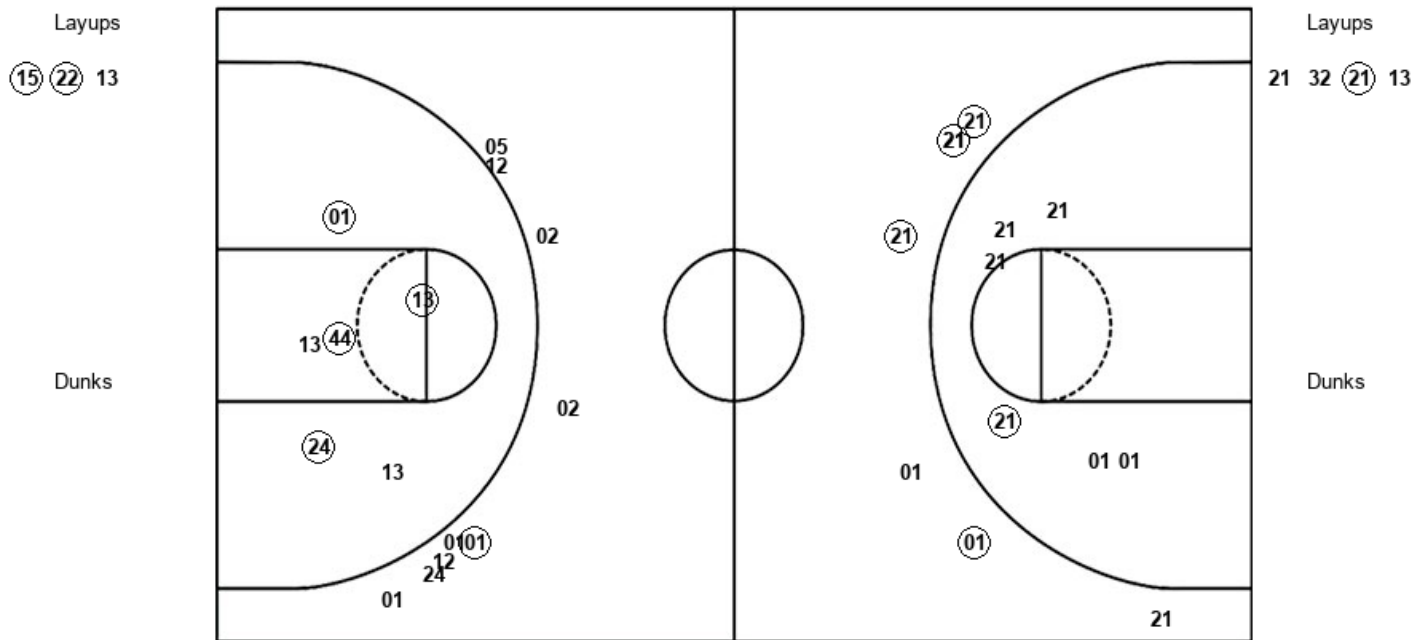
| TOW : Period 1           | Made     | Att       | Pct         |
|--------------------------|----------|-----------|-------------|
| Layups                   | 2        | 2         | 100.0       |
| Dunks                    | 0        | 0         | 0           |
| 2PT Field Goals          | 3        | 6         | 50.0        |
| 3PT Field Goals          | 0        | 5         | 00.0        |
| <b>Total Field Goals</b> | <b>3</b> | <b>11</b> | <b>27.3</b> |

**Official Shot Chart**  
**Towson vs Rutgers**  
**PERIOD 2 Shots**  
 December 08, 2019 at Rutgers Athletic Center - Piscataway, N.J.



**Rutgers**

**Towson**



| RUT : Period 2           | Made     | Att       | Pct         |
|--------------------------|----------|-----------|-------------|
| Layups                   | 2        | 3         | 66.7        |
| Dunks                    | 0        | 0         | 0           |
| 2PT Field Goals          | 6        | 9         | 66.7        |
| 3PT Field Goals          | 1        | 9         | 11.1        |
| <b>Total Field Goals</b> | <b>7</b> | <b>18</b> | <b>38.9</b> |

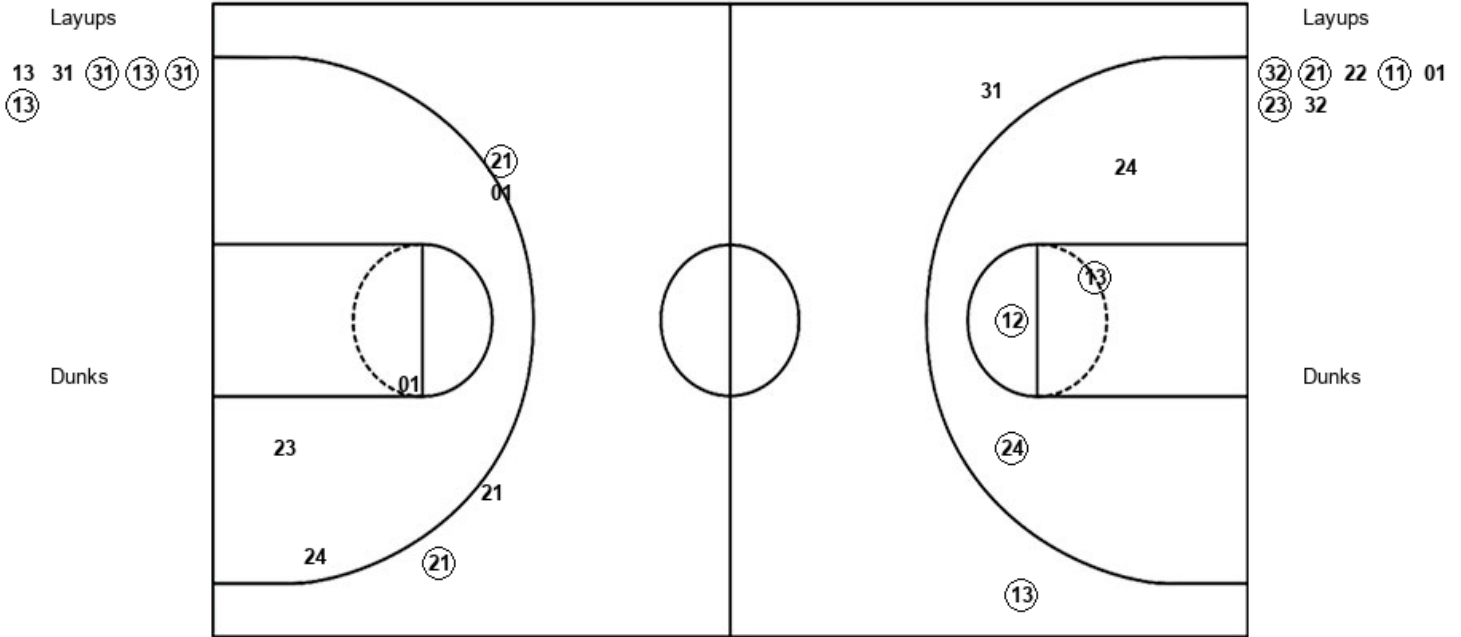
| TOW : Period 2           | Made     | Att       | Pct         |
|--------------------------|----------|-----------|-------------|
| Layups                   | 1        | 4         | 25.0        |
| Dunks                    | 0        | 0         | 0           |
| 2PT Field Goals          | 3        | 11        | 27.3        |
| 3PT Field Goals          | 3        | 6         | 50.0        |
| <b>Total Field Goals</b> | <b>6</b> | <b>17</b> | <b>35.3</b> |

**Official Shot Chart**  
**Towson vs Rutgers**  
**PERIOD 3 Shots**  
 December 08, 2019 at Rutgers Athletic Center - Piscataway, N.J.



**Rutgers**

**Towson**



| <b>RUT : Period 3</b>    | <b>Made</b> | <b>Att</b> | <b>Pct</b>  |
|--------------------------|-------------|------------|-------------|
| Layups                   | 4           | 6          | 66.7        |
| Dunks                    | 0           | 0          | 0           |
| 2PT Field Goals          | 7           | 10         | 70.0        |
| 3PT Field Goals          | 1           | 2          | 50.0        |
| <b>Total Field Goals</b> | <b>8</b>    | <b>12</b>  | <b>66.7</b> |

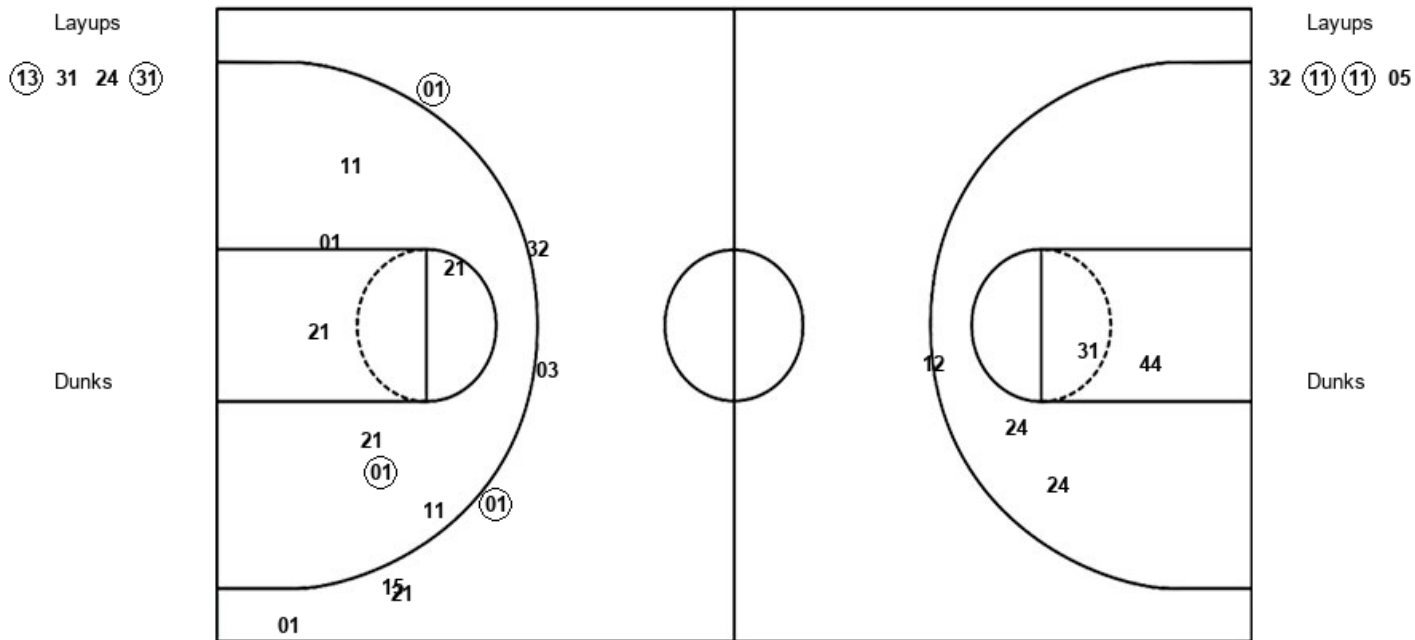
| <b>TOW : Period 3</b>    | <b>Made</b> | <b>Att</b> | <b>Pct</b>  |
|--------------------------|-------------|------------|-------------|
| Layups                   | 4           | 7          | 57.1        |
| Dunks                    | 0           | 0          | 0           |
| 2PT Field Goals          | 4           | 10         | 40.0        |
| 3PT Field Goals          | 2           | 3          | 66.7        |
| <b>Total Field Goals</b> | <b>6</b>    | <b>13</b>  | <b>46.2</b> |

**Official Shot Chart**  
**Towson vs Rutgers**  
**PERIOD 4 Shots**  
 December 08, 2019 at Rutgers Athletic Center - Piscataway, N.J.



**Rutgers**

**Towson**



| RUT : Period 4           | Made     | Att      | Pct         |
|--------------------------|----------|----------|-------------|
| Layups                   | 2        | 4        | 50.0        |
| Dunks                    | 0        | 0        | 0           |
| 2PT Field Goals          | 2        | 9        | 22.2        |
| 3PT Field Goals          | 0        | 0        | 0           |
| <b>Total Field Goals</b> | <b>2</b> | <b>9</b> | <b>22.2</b> |

| TOW : Period 4           | Made     | Att       | Pct         |
|--------------------------|----------|-----------|-------------|
| Layups                   | 2        | 4         | 50.0        |
| Dunks                    | 0        | 0         | 0           |
| 2PT Field Goals          | 3        | 11        | 27.3        |
| 3PT Field Goals          | 2        | 7         | 28.6        |
| <b>Total Field Goals</b> | <b>5</b> | <b>18</b> | <b>27.8</b> |

**Official Shot Chart**  
**Towson vs Rutgers**  
**Towson Team Shots**  
 December 08, 2019 at Rutgers Athletic Center - Piscataway, N.J.

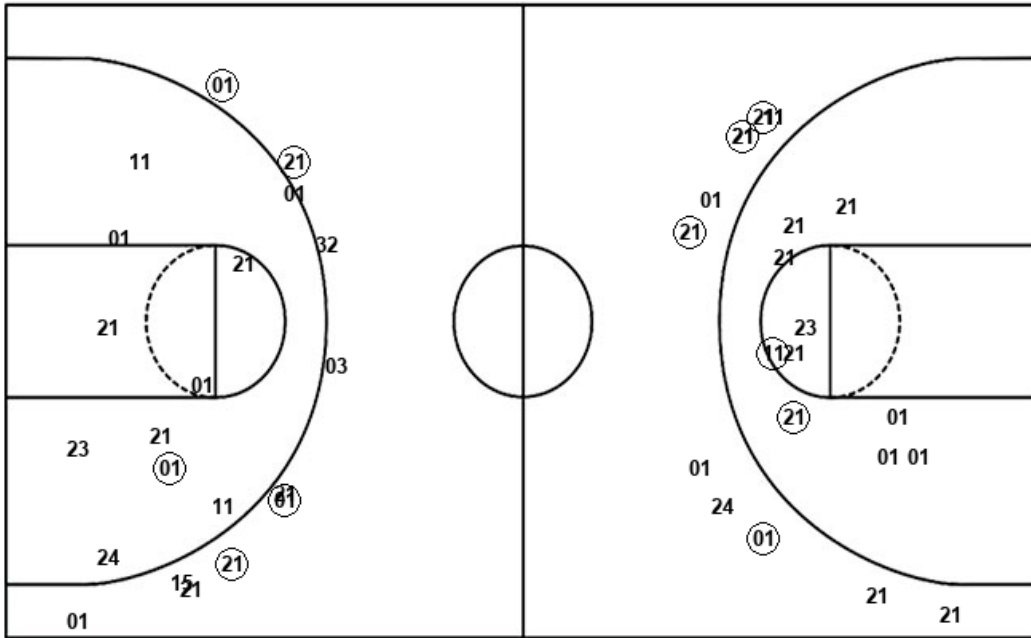


Layups

Layups

Dunks

Dunks



(01) (24) 21 32 (21)  
 13 (32) (21) 22 (11)  
 01 (23) 32 32 (11)  
 (11) 05

| TOW : Period 1           | Made     | Att       | Pct         |
|--------------------------|----------|-----------|-------------|
| Layups                   | 2        | 2         | 100.0       |
| Dunks                    | 0        | 0         | 0           |
| 2PT Field Goals          | 3        | 6         | 50.0        |
| 3PT Field Goals          | 0        | 5         | 00.0        |
| <b>Total Field Goals</b> | <b>3</b> | <b>11</b> | <b>27.3</b> |

| TOW : Period 2           | Made     | Att       | Pct         |
|--------------------------|----------|-----------|-------------|
| Layups                   | 1        | 4         | 25.0        |
| Dunks                    | 0        | 0         | 0           |
| 2PT Field Goals          | 3        | 11        | 27.3        |
| 3PT Field Goals          | 3        | 6         | 50.0        |
| <b>Total Field Goals</b> | <b>6</b> | <b>17</b> | <b>35.3</b> |

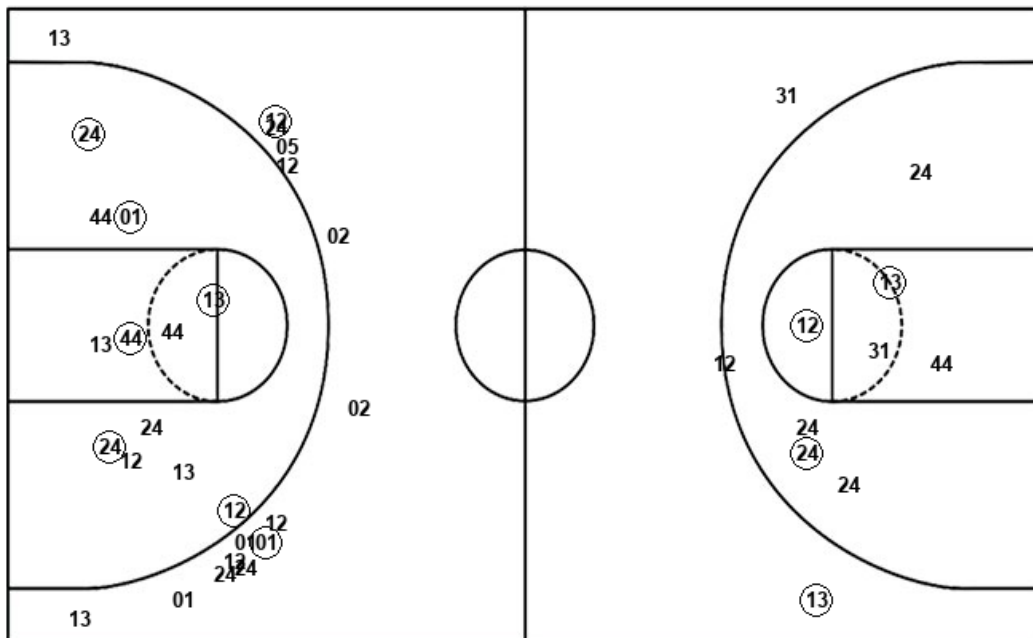
| TOW : Period 3           | Made     | Att       | Pct         |
|--------------------------|----------|-----------|-------------|
| Layups                   | 4        | 7         | 57.1        |
| Dunks                    | 0        | 0         | 0           |
| 2PT Field Goals          | 4        | 10        | 40.0        |
| 3PT Field Goals          | 2        | 3         | 66.7        |
| <b>Total Field Goals</b> | <b>6</b> | <b>13</b> | <b>46.2</b> |

| TOW : Period 4           | Made     | Att       | Pct         |
|--------------------------|----------|-----------|-------------|
| Layups                   | 2        | 4         | 50.0        |
| Dunks                    | 0        | 0         | 0           |
| 2PT Field Goals          | 3        | 11        | 27.3        |
| 3PT Field Goals          | 2        | 7         | 28.6        |
| <b>Total Field Goals</b> | <b>5</b> | <b>18</b> | <b>27.8</b> |

**Official Shot Chart**  
**Towson vs Rutgers**  
**Rutgers Team Shots**  
 December 08, 2019 at Rutgers Athletic Center - Piscataway, N.J.



Layups



Layups

- 31 15 31 (12) 24
- (15) (22) 13 13 31
- (31) (13) (31) (13) (13)
- 31 24 (31)

Dunks

Dunks

| RUT : Period 1           | Made     | Att       | Pct         |
|--------------------------|----------|-----------|-------------|
| Layups                   | 1        | 5         | 20.0        |
| Dunks                    | 0        | 0         | 0           |
| 2PT Field Goals          | 3        | 11        | 27.3        |
| 3PT Field Goals          | 1        | 6         | 16.7        |
| <b>Total Field Goals</b> | <b>4</b> | <b>17</b> | <b>23.5</b> |

| RUT : Period 2           | Made     | Att       | Pct         |
|--------------------------|----------|-----------|-------------|
| Layups                   | 2        | 3         | 66.7        |
| Dunks                    | 0        | 0         | 0           |
| 2PT Field Goals          | 6        | 9         | 66.7        |
| 3PT Field Goals          | 1        | 9         | 11.1        |
| <b>Total Field Goals</b> | <b>7</b> | <b>18</b> | <b>38.9</b> |

| RUT : Period 3           | Made     | Att       | Pct         |
|--------------------------|----------|-----------|-------------|
| Layups                   | 4        | 6         | 66.7        |
| Dunks                    | 0        | 0         | 0           |
| 2PT Field Goals          | 7        | 10        | 70.0        |
| 3PT Field Goals          | 1        | 2         | 50.0        |
| <b>Total Field Goals</b> | <b>8</b> | <b>12</b> | <b>66.7</b> |

| RUT : Period 4           | Made     | Att      | Pct         |
|--------------------------|----------|----------|-------------|
| Layups                   | 2        | 4        | 50.0        |
| Dunks                    | 0        | 0        | 0           |
| 2PT Field Goals          | 2        | 9        | 22.2        |
| 3PT Field Goals          | 0        | 0        | 0           |
| <b>Total Field Goals</b> | <b>2</b> | <b>9</b> | <b>22.2</b> |