

FINAL SCORE



Mississippi St.

62



Kentucky

73

February 16, 2020 • Memorial Coliseum - Lexington

FINAL STATISTICS

Official Box Score
Mississippi St. vs Kentucky
Game Totals -- Final Statistics
February 16, 2020 at Memorial Coliseum - Lexington



Mississippi St. 62

No.	Player	S	Pts	FG	3FG	FT	OR	DR	TR	PF	A	TO	Blk	Stl	Min	+/-
01	TAYLOR, MYAH	G	2	1-7	0-0	0-0	0	2	2	2	9	3	0	2	25	0
04	CARTER, JESSIKA	F	18	6-8	0-0	6-7	3	3	6	2	2	3	0	0	32	-9
05	JACKSON, RICKEA	F	16	8-20	0-0	0-0	3	4	7	2	1	3	1	0	36	-5
24	DANBERRY, JORDAN	G	6	3-6	0-0	0-0	1	1	2	3	1	2	0	0	13	0
55	BIBBY, CHLOE	F	3	1-4	1-2	0-0	2	2	4	0	0	0	0	0	21	-15
00	HEMINGWAY, JAYLA	G	1	0-2	0-0	1-2	1	2	3	4	2	0	0	0	17	0
02	ESPINOZA-HUNTER, ANDRA	G	12	4-8	2-6	2-2	1	3	4	0	0	0	0	0	17	4
03	MATHARU, ALIYAH	G	4	2-6	0-1	0-0	1	3	4	1	0	1	0	0	9	-11
10	MINGO-YOUNG, JAMYA	G	0	0-2	0-0	0-0	0	2	2	4	1	2	1	0	12	-6
11	WIGGINS, XARIA	G	0	0-2	0-0	0-0	0	0	0	1	0	2	1	0	11	-12
20	MORRIS, YEMIIYAH	C	0	0-0	0-0	0-2	0	2	2	1	0	1	1	0	8	-1
TEAM							0	0	0	1		0				
TOTALS			62	25-65	3-9	9-13	12	24	36	21	16	17	4	2	200	

Shooting By Period

Period	FG	FG%	3FG	3FG%	FT	FT%
1st Qtr	4-18	22%	0-1	00%	1-2	50%
2nd Qtr	9-18	50%	2-4	50%	3-4	75%
3rd Qtr	3-8	38%	0-0	0%	3-3	100%
4th Qtr	9-21	43%	1-4	25%	2-4	50%
1st Half	13-36	36%	2-5	40%	4-6	67%
2nd Half	12-29	41%	1-4	25%	5-7	71%
Game	25-65	38.5%	3-9	33.3%	9-13	69.2%

Deadball Rebounds: 3,1

Last FG: 4th-01:13

Biggest Run: 6-0

Largest lead: By 6 at 1st-08:33

Technical Fouls: #0 TEAM (Coach Technical) @ 1st - 03:24;

Kentucky 73

No.	Player	S	Pts	FG	3FG	FT	OR	DR	TR	PF	A	TO	Blk	Stl	Min	+/-
01	HAINES, SABRINA	G	3	1-7	1-5	0-0	1	2	3	2	0	1	1	3	23	3
03	MCKINNEY, KEKE	F	0	0-1	0-0	0-0	1	1	2	1	4	0	1	0	31	17
10	HOWARD, RHYNE	G	26	10-22	3-9	3-4	3	7	10	3	2	4	1	2	36	14
21	ANYAGALIGBO, OGECHI	F	4	2-3	0-0	0-0	1	2	3	2	0	1	0	1	16	3
32	ROPER, JAIDA	G	14	3-8	1-2	7-8	1	1	2	1	5	5	0	0	23	-3
05	GREEN, BLAIR	G	0	0-0	0-0	0-0	0	1	1	1	0	0	0	0	9	-8
12	PASCHAL, AMANDA	G	3	1-4	1-1	0-0	0	1	1	3	0	1	0	0	18	13
14	WYATT, TATYANA	F	8	4-6	0-1	0-0	0	6	6	3	0	0	1	0	21	15
15	PATTERSON, CHASITY	G	15	6-11	0-2	3-4	1	2	3	1	1	2	0	0	19	6
44	COLE, NAE NAE	C	0	0-0	0-0	0-0	0	0	0	0	0	0	0	0	3	-5
TEAM							1	3	4	0		1				
TOTALS			73	27-62	6-20	13-16	9	26	35	17	12	15	4	6	200	

Shooting By Period

Period	FG	FG%	3FG	3FG%	FT	FT%
1st Qtr	6-17	35%	2-7	29%	5-6	83%
2nd Qtr	7-18	39%	1-4	25%	1-2	50%
3rd Qtr	9-17	53%	3-7	43%	1-2	50%
4th Qtr	5-10	50%	0-2	00%	6-6	100%
1st Half	13-35	37%	3-11	27%	6-8	75%
2nd Half	14-27	52%	3-9	33%	7-8	88%
Game	27-62	43.5%	6-20	30.0%	13-16	81.3%

Deadball Rebounds: 3,3

Last FG: 4th-01:30

Biggest Run: 12-0

Largest lead: By 20 at 4th-09:18

Technical Fouls: None.

Game Notes:

Officials: Denise Brooks, Douglas Knight, Brian Garland

Attendance: 5317

Start Time: 05:02 PM ET

End Time: 07:05 PM ET

Game Duration: 2:03

Conference Game;

Score	1st	2nd	3rd	4th	TOT
MSU	9	23	9	21	62
UK	19	16	22	16	73

MSU led for 3:31. UK led for 36:21.

Game was tied for 0:08.

Times tied: 1 Lead Changes: 1

Points from	MSU	UK
In the Paint	38	24
Off Turns	14	20
2nd Chance	13	7
Fast Break	4	7
Bench	17	26

Official Box Score
Mississippi St. vs Kentucky
First Half Statistics Only
February 16, 2020 at Memorial Coliseum - Lexington



Mississippi St. 32

No.	Player	S	Pts	FG	3FG	FT	OR	DR	TR	PF	A	TO	Blk	Stl	Min	+/-
00	HEMINGWAY, JAYLA	G	1	0-1	0-0	1-2	1	2	3	1	0	0	0	0	6	1
01	TAYLOR, MYAH	G	2	1-3	0-0	0-0	0	0	0	0	6	2	0	1	12	0
02	ESPINOZA-HUNTER, ANDRA	G	3	1-2	1-2	0-0	0	1	1	0	0	0	0	0	4	5
03	MATHARU, ALIYAH	G	2	1-5	0-1	0-0	1	3	4	1	0	1	0	0	6	-4
04	CARTER, JESSIKA	F	13	5-6	0-0	3-4	2	3	5	1	1	0	0	0	20	-3
05	JACKSON, RICKEA	F	2	1-8	0-0	0-0	0	4	4	1	1	2	0	0	20	-3
10	MINGO-YOUNG, JAMYA	G	0	0-2	0-0	0-0	0	1	1	1	1	2	0	0	10	-5
11	WIGGINS, XARIA	G	0	0-0	0-0	0-0	0	0	0	0	0	0	0	0	5	-5
20	MORRIS, YEMIIYAH	C	0	0-0	0-0	0-0	0	0	0	0	0	0	0	0	0	0
24	DANBERRY, JORDAN	G	6	3-5	0-0	0-0	1	1	2	3	0	0	0	0	5	7
55	BIBBY, CHLOE	F	3	1-4	1-2	0-0	2	1	3	0	0	0	0	0	14	-8
	TEAM		0	0-0	0-0	0-0	0	0	0	1	0	0	0	0	0	0
TOTALS			32	13-36	2-5	4-6	7	16	23	9	9	7	0	1	100	

Shooting By Period

Period	FG	FG%	3FG	3FG%	FT	FT%
1st Qtr	4-18	22%	0-1	00%	1-2	50%
2nd Qtr	9-18	50%	2-4	50%	3-4	75%
1st Half	13-36	36%	2-5	40%	4-6	67%
Game	25-65	38.5%	3-9	33.3%	9-13	69.2%

Deadball Rebounds: 3,1
 Last FG Half: MSU 2nd-00:50

Kentucky 35

No.	Player	S	Pts	FG	3FG	FT	OR	DR	TR	PF	A	TO	Blk	Stl	Min	+/-
01	HAINES, SABRINA	G	3	1-5	1-4	0-0	0	2	2	1	0	0	1	1	14	5
03	MCKINNEY, KEKE	F	0	0-0	0-0	0-0	1	0	1	0	1	0	0	0	12	5
05	GREEN, BLAIR	G	0	0-0	0-0	0-0	0	1	1	0	0	0	0	0	9	-4
10	HOWARD, RHYNE	G	13	5-12	2-6	1-2	2	2	4	1	2	1	0	2	17	2
12	PASCHAL, AMANDA	G	0	0-3	0-0	0-0	0	1	1	2	0	1	0	0	7	3
14	WYATT, TATYANA	F	4	2-2	0-0	0-0	0	2	2	2	0	0	1	0	6	13
15	PATTERSON, CHASITY	G	11	4-7	0-0	3-4	0	2	2	0	1	1	0	0	12	4
21	ANYAGALIGBO, OGECHI	F	2	1-2	0-0	0-0	0	2	2	1	0	1	0	0	10	-3
32	ROPER, JAIDA	G	2	0-4	0-1	2-2	1	1	2	1	2	2	0	0	10	-5
44	COLE, NAE NAE	C	0	0-0	0-0	0-0	0	0	0	0	0	0	0	0	3	-5
	TEAM		0	0-0	0-0	0-0	1	1	2	0	0	1	0	0	0	0
TOTALS			35	13-35	3-11	6-8	5	14	19	8	6	7	2	3	100	

Shooting By Period

Period	FG	FG%	3FG	3FG%	FT	FT%
1st Qtr	6-17	35%	2-7	29%	5-6	83%
2nd Qtr	7-18	39%	1-4	25%	1-2	50%
1st Half	13-35	37%	3-11	27%	6-8	75%
Game	27-62	43.5%	6-20	30.0%	13-16	81.3%

Deadball Rebounds: 3,3
 Last FG Half: UK 2nd-02:48

Game Notes:

Officials: Denise Brooks, Douglas Knight, Brian Garland
 Attendance: 5317

Start Time: 05:02 PM ET
 End Time: 07:05 PM ET
 Game Duration: 2:03
 Conference Game;

Score	1st	2nd	3rd	4th	TOT
MSU	9	23	9	21	62
UK	19	16	22	16	73

Points from (This Period)	MSU	UK
In the Paint	18	12
Off Turns	6	8
2nd Chance	5	5
Fast Break	4	4
Bench	6	15

Official Box Score
Mississippi St. vs Kentucky
First Quarter Statistics Only
February 16, 2020 at Memorial Coliseum - Lexington



Mississippi St. 9

No.	Player	S	Pts	FG	3FG	FT	OR	DR	TR	PF	A	TO	Blk	Stl	Min	+/-
01	TAYLOR, MYAH	G	2	1-2	0-0	0-0	0	0	0	0	2	1	0	1	6	-5
04	CARTER, JESSIKA	F	1	0-0	0-0	1-2	1	2	3	1	0	0	0	0	10	-10
05	JACKSON, RICKEA	F	2	1-6	0-0	0-0	0	2	2	1	0	2	0	0	10	-10
24	DANBERRY, JORDAN	G	2	1-2	0-0	0-0	0	1	1	2	0	0	0	0	4	1
55	BIBBY, CHLOE	F	0	0-2	0-0	0-0	1	0	1	0	0	0	0	0	10	-10
00	HEMINGWAY, JAYLA	G	0	0-0	0-0	0-0	0	0	0	0	0	0	0	0	0	0
02	ESPINOZA-HUNTER, ANDRA	G	0	0-0	0-0	0-0	0	0	0	0	0	0	0	0	0	0
03	MATHARU, ALIYAH	G	2	1-5	0-1	0-0	1	3	4	1	0	1	0	0	5	-6
10	MINGO-YOUNG, JAMYA	G	0	0-1	0-0	0-0	0	1	1	1	0	1	0	0	6	-7
11	WIGGINS, XARIA	G	0	0-0	0-0	0-0	0	0	0	0	0	0	0	0	1	-3
20	MORRIS, YEMIIYAH	C	0	0-0	0-0	0-0	0	0	0	0	0	0	0	0	0	0
	TEAM						0	0	0	1		0				
TOTALS			9	4-18	0-1	1-2	3	9	12	7	2	5	0	1	50	

Shooting By Period

Period	FG	FG%	3FG	3FG%	FT	FT%
1st Qtr	4-18	22%	0-1	00%	1-2	50%
2nd Qtr	9-18	50%	2-4	50%	3-4	75%
1st Half	4-18	22%	0-1	00%	1-2	50%
1st Half	13-36	36%	2-5	40%	4-6	67%
Game	25-65	38.5%	3-9	33.3%	9-13	69.2%

Deadball Rebounds: 3,1

Kentucky 19

No.	Player	S	Pts	FG	3FG	FT	OR	DR	TR	PF	A	TO	Blk	Stl	Min	+/-
01	HAINES, SABRINA	G	3	1-5	1-4	0-0	0	1	1	1	0	0	1	0	8	6
03	MCKINNEY, KEKE	F	0	0-0	0-0	0-0	0	0	0	0	0	0	0	0	6	5
10	HOWARD, RHYNE	G	3	1-3	1-2	0-0	2	1	3	1	1	1	0	1	7	9
21	ANYAGALIGBO, OGECHI	F	2	1-1	0-0	0-0	0	0	0	0	0	0	0	0	5	1
32	ROPER, JAIDA	G	2	0-1	0-1	2-2	0	1	1	1	1	2	0	0	4	1
05	GREEN, BLAIR	G	0	0-0	0-0	0-0	0	1	1	0	0	0	0	0	4	5
12	PASCHAL, AMANDA	G	0	0-2	0-0	0-0	0	1	1	1	0	1	0	0	4	5
14	WYATT, TATYANA	F	2	1-1	0-0	0-0	0	2	2	1	0	0	1	0	5	9
15	PATTERSON, CHASITY	G	7	2-4	0-0	3-4	0	2	2	0	1	0	0	0	6	9
44	COLE, NAE NAE	C	0	0-0	0-0	0-0	0	0	0	0	0	0	0	0	0	0
	TEAM						0	0	0	0		0				
TOTALS			19	6-17	2-7	5-6	2	9	11	5	3	4	2	1	50	

Shooting By Period

Period	FG	FG%	3FG	3FG%	FT	FT%
1st Qtr	6-17	35%	2-7	29%	5-6	83%
2nd Qtr	7-18	39%	1-4	25%	1-2	50%
1st Half	6-17	35%	2-7	29%	5-6	83%
1st Half	13-35	37%	3-11	27%	6-8	75%
Game	27-62	43.5%	6-20	30.0%	13-16	81.3%

Deadball Rebounds: 3,3

Game Notes:

Officials: Denise Brooks, Douglas Knight, Brian Garland
 Attendance: 5317

Start Time: 05:02 PM ET
 End Time: 07:05 PM ET
 Game Duration: 2:03
 Conference Game;

Score	1st	2nd	3rd	4th	TOT
MSU	9	23	9	21	62
UK	19	16	22	16	73

Points from (This Period)	MSU	UK
In the Paint	8	4
Off Turns	2	6
2nd Chance	1	5
Fast Break	4	4
Bench	2	9

Official Play-By-Play
Mississippi St. vs Kentucky
First Quarter
February 16, 2020 at Memorial Coliseum - Lexington



Period 1

Starters:

Mississippi St.: 1 TAYLOR,MYAH (G); 4 CARTER,JESSIKA (F); 5 JACKSON,RICKEA (F); 24 DANBERRY,JORDAN (G); 55 BIBBY,CHLOE (F);
Kentucky: 1 HAINES,SABRINA (G); 3 MCKINNEY,KEKE (F); 10 HOWARD,RHYNE (G); 21 ANYAGALIGBO,OGECHI (F); 32 ROPER,JAIDA (G);

Time	VISITORS: Mississippi St.	Score	Margin	HOME: Kentucky
09:52	GOOD! LAYUP by TAYLOR, MYAH [PNT]	0-2	V 2	
09:19				TURNOVER (LOSTBALL) by ROPER, JAIDA
09:19	STEAL by TAYLOR, MYAH			
09:15	GOOD! LAYUP by DANBERRY, JORDAN [FB/PNT]	0-4	V 4	
09:15	ASSIST by TAYLOR, MYAH			
08:45				MISSED 3PTR by HAINES, SABRINA
08:42	REBOUND (DEF) by CARTER, JESSIKA			
08:33	GOOD! JUMPER by JACKSON, RICKEA [PNT]	0-6	V 6	
08:33	ASSIST by TAYLOR, MYAH			
08:31				TIMEOUT 30SEC
08:16				MISSED 3PTR by HOWARD, RHYNE
08:13				REBOUND (OFF) by HOWARD, RHYNE
08:00		2-6	V 4	GOOD! JUMPER by ANYAGALIGBO, OGECHI
08:00				ASSIST by ROPER, JAIDA
07:44	MISSED JUMPER by TAYLOR, MYAH			
07:44				REBOUND (DEF) by TEAM
07:44	FOUL (PERSONAL) by CARTER, JESSIKA			
07:26				MISSED LAYUP by HOWARD, RHYNE
07:23				REBOUND (OFF) by HOWARD, RHYNE
07:22		5-6	V 1	GOOD! 3PTR by HAINES, SABRINA
07:22				ASSIST by HOWARD, RHYNE
07:00	MISSED JUMPER by JACKSON, RICKEA			
06:56				REBOUND (DEF) by HOWARD, RHYNE
06:50	FOUL (PERSONAL) by DANBERRY, JORDAN			
06:39				MISSED 3PTR by ROPER, JAIDA
06:36	REBOUND (DEF) by DANBERRY, JORDAN			
06:28	MISSED JUMPER by DANBERRY, JORDAN			
06:25				REBOUND (DEF) by TEAM
06:21	FOUL (PERSONAL) by DANBERRY, JORDAN			
06:21	SUB OUT: DANBERRY, JORDAN			
06:21	SUB IN: MINGO-YOUNG, JAMYA			
06:21		6-6	T	GOOD! FT by ROPER, JAIDA
06:21		7-6	H 1	GOOD! FT by ROPER, JAIDA
05:58	MISSED JUMPER by JACKSON, RICKEA			
05:55				REBOUND (DEF) by ROPER, JAIDA
05:50				FOUL (OFF) by ROPER, JAIDA
05:50				TURNOVER (OFFENSIVE) by ROPER, JAIDA
05:50				SUB OUT: ROPER, JAIDA
05:50				SUB IN: PATTERSON, CHASITY
05:38	TURNOVER (BADPASS) by TAYLOR, MYAH			
05:33				MISSED 3PTR by HAINES, SABRINA
05:29	REBOUND (DEF) by CARTER, JESSIKA			
05:11	TURNOVER (TRAVEL) by MINGO-YOUNG, JAMYA			
05:11				SUB OUT: ANYAGALIGBO, OGECHI
05:11				SUB IN: WYATT, TATYANA
05:11	SUB OUT: MINGO-YOUNG, JAMYA			
05:11	SUB IN: MATHARU, ALIYAH			
05:05		9-6	H 3	GOOD! LAYUP by PATTERSON, CHASITY [FB/PNT]
04:38	MISSED JUMPER by BIBBY, CHLOE			
04:33	REBOUND (OFF) by MATHARU, ALIYAH			
04:33	MISSED LAYUP by MATHARU, ALIYAH			
04:33				BLOCK by HAINES, SABRINA
04:31				REBOUND (DEF) by PATTERSON, CHASITY
04:27		11-6	H 5	GOOD! JUMPER by PATTERSON, CHASITY [FB]
04:23	TIMEOUT 30SEC			
04:23				SUB OUT: HAINES, SABRINA
04:23				SUB IN: PASCHAL, AMANDA
04:23	SUB OUT: TAYLOR, MYAH			
04:23	SUB IN: MINGO-YOUNG, JAMYA			
04:05	MISSED JUMPER by MATHARU, ALIYAH			
04:05	FOUL (PERSONAL) by MATHARU, ALIYAH			
04:03				REBOUND (DEF) by TEAM
03:42				MISSED LAYUP by PASCHAL, AMANDA
03:39	REBOUND (DEF) by MATHARU, ALIYAH			
03:38	TURNOVER (BADPASS) by MATHARU, ALIYAH			
03:38				STEAL by HOWARD, RHYNE
03:35				FOUL (OFF) by HOWARD, RHYNE
03:35				TURNOVER (OFFENSIVE) by HOWARD, RHYNE
03:35				SUB OUT: MCKINNEY, KEKE
03:35				SUB IN: GREEN, BLAIR

Time	VISITORS: Mississippi St.	Score	Margin	HOME: Kentucky
03:24	FOUL (OFF) by JACKSON, RICKEA			
03:24	TURNOVER (OFFENSIVE) by JACKSON, RICKEA			
03:24	FOUL (TECH) by TEAM			
03:24		12-6	H 6	GOOD! FT by PATTERSON, CHASITY
03:24				MISSED FT by PATTERSON, CHASITY
03:24				SUB OUT: HOWARD, RHYNE
03:24				SUB IN: HAINES, SABRINA
03:12				MISSED 3PTR by HAINES, SABRINA
03:09	REBOUND (DEF) by MATHARU, ALIYAH			
03:05	GOOD! JUMPER by MATHARU, ALIYAH [FB/PNT]	12-8	H 4	
03:00	FOUL (PERSONAL) by MINGO-YOUNG, JAMYA			
03:00		13-8	H 5	GOOD! FT by PATTERSON, CHASITY
03:00		14-8	H 6	GOOD! FT by PATTERSON, CHASITY
02:48	MISSED JUMPER by JACKSON, RICKEA			
02:47	REBOUND (OFF) by CARTER, JESSIKA			
02:47				FOUL (PERSONAL) by WYATT, TATYANA
02:47	GOOD! FT by CARTER, JESSIKA	14-9	H 5	
02:47	MISSED FT by CARTER, JESSIKA			
02:46				REBOUND (DEF) by WYATT, TATYANA
02:40				MISSED JUMPER by PASCHAL, AMANDA
02:37	REBOUND (DEF) by MINGO-YOUNG, JAMYA			
02:26	MISSED JUMPER by MINGO-YOUNG, JAMYA			
02:23				REBOUND (DEF) by GREEN, BLAIR
02:10		16-9	H 7	GOOD! LAYUP by WYATT, TATYANA [PNT]
02:10				ASSIST by PATTERSON, CHASITY
01:52				FOUL (PERSONAL) by HAINES, SABRINA
01:45	MISSED 3PTR by MATHARU, ALIYAH			
01:41	REBOUND (OFF) by BIBBY, CHLOE			
01:41	MISSED LAYUP by BIBBY, CHLOE			
01:41				BLOCK by WYATT, TATYANA
01:39				REBOUND (DEF) by PASCHAL, AMANDA
01:36				FOUL (OFF) by PASCHAL, AMANDA
01:36				TURNOVER (OFFENSIVE) by PASCHAL, AMANDA
01:22	MISSED JUMPER by JACKSON, RICKEA			
01:19				REBOUND (DEF) by WYATT, TATYANA
00:59				MISSED JUMPER by PATTERSON, CHASITY
00:56	REBOUND (DEF) by MATHARU, ALIYAH			
00:50	MISSED LAYUP by MATHARU, ALIYAH			
00:47				REBOUND (DEF) by HAINES, SABRINA
00:42				MISSED LAYUP by HAINES, SABRINA
00:40	REBOUND (DEF) by JACKSON, RICKEA			
00:36				SUB OUT: HAINES, SABRINA
00:36				SUB IN: HOWARD, RHYNE
00:36	SUB OUT: MATHARU, ALIYAH			
00:36	SUB IN: WIGGINS, XARIA			
00:26	MISSED JUMPER by JACKSON, RICKEA			
00:23				REBOUND (DEF) by PATTERSON, CHASITY
00:18				MISSED JUMPER by PATTERSON, CHASITY
00:15	REBOUND (DEF) by JACKSON, RICKEA			
00:12	TURNOVER (BADPASS) by JACKSON, RICKEA			
00:05		19-9	H 10	GOOD! 3PTR by HOWARD, RHYNE

Mississippi St. 9, Kentucky 19

Points from (This Period)	MSU	UK
In the Paint	8	4
Off Turns	2	6
2nd Chance	1	5
Fast Break	4	4
Bench	2	9

Official Box Score
Mississippi St. vs Kentucky
Second Quarter Statistics Only
February 16, 2020 at Memorial Coliseum - Lexington



Mississippi St. 23

No.	Player	S	Pts	FG	3FG	FT	OR	DR	TR	PF	A	TO	Blk	Stl	Min	+/-
01	TAYLOR, MYAH	G	0	0-1	0-0	0-0	0	0	0	0	4	1	0	0	6	5
04	CARTER, JESSIKA	F	12	5-6	0-0	2-2	1	1	2	0	1	0	0	0	10	7
05	JACKSON, RICKEA	F	0	0-2	0-0	0-0	0	2	2	0	1	0	0	0	10	7
24	DANBERRY, JORDAN	G	4	2-3	0-0	0-0	1	0	1	1	0	0	0	0	1	6
55	BIBBY, CHLOE	F	3	1-2	1-2	0-0	1	1	2	0	0	0	0	0	4	2
00	HEMINGWAY, JAYLA	G	1	0-1	0-0	1-2	1	2	3	1	0	0	0	0	6	1
02	ESPINOZA-HUNTER, ANDRA	G	3	1-2	1-2	0-0	0	1	1	0	0	0	0	0	4	5
03	MATHARU, ALIYAH	G	0	0-0	0-0	0-0	0	0	0	0	0	0	0	0	1	2
10	MINGO-YOUNG, JAMYA	G	0	0-1	0-0	0-0	0	0	0	0	1	1	0	0	4	2
11	WIGGINS, XARIA	G	0	0-0	0-0	0-0	0	0	0	0	0	0	0	0	4	-2
20	MORRIS, YEMIIYAH	C	0	0-0	0-0	0-0	0	0	0	0	0	0	0	0	0	0
	TEAM						0	0	0	0	0	0	0	0		
TOTALS			23	9-18	2-4	3-4	4	7	11	2	7	2	0	0	50	

Shooting By Period

Period	FG	FG%	3FG	3FG%	FT	FT%
3rd Qtr	3-8	38%	0-0	0%	3-3	100%
4th Qtr	9-21	43%	1-4	25%	2-4	50%
2nd Half	9-18	50%	2-4	50%	3-4	75%
2nd Half	12-29	41%	1-4	25%	5-7	71%
Game	25-65	38.5%	3-9	33.3%	9-13	69.2%

Deadball Rebounds: 3,1

Kentucky 16

No.	Player	S	Pts	FG	3FG	FT	OR	DR	TR	PF	A	TO	Blk	Stl	Min	+/-
01	HAINES, SABRINA	G	0	0-0	0-0	0-0	0	1	1	0	0	0	0	1	6	-1
03	MCKINNEY, KEKE	F	0	0-0	0-0	0-0	1	0	1	0	1	0	0	0	6	0
10	HOWARD, RHYNE	G	10	4-9	1-4	1-2	0	1	1	0	1	0	0	1	10	-7
21	ANYAGALIGBO, OGECHI	F	0	0-1	0-0	0-0	0	2	2	1	0	1	0	0	5	-4
32	ROPER, JAIDA	G	0	0-3	0-0	0-0	1	0	1	0	1	0	0	0	6	-6
05	GREEN, BLAIR	G	0	0-0	0-0	0-0	0	0	0	0	0	0	0	0	5	-9
12	PASCHAL, AMANDA	G	0	0-1	0-0	0-0	0	0	0	1	0	0	0	0	3	-2
14	WYATT, TATYANA	F	2	1-1	0-0	0-0	0	0	0	1	0	0	0	0	1	4
15	PATTERSON, CHASITY	G	4	2-3	0-0	0-0	0	0	0	0	0	1	0	0	6	-5
44	COLE, NAE NAE	C	0	0-0	0-0	0-0	0	0	0	0	0	0	0	0	3	-5
	TEAM						1	1	2	0		1				
TOTALS			16	7-18	1-4	1-2	3	5	8	3	3	3	0	2	50	

Shooting By Period

Period	FG	FG%	3FG	3FG%	FT	FT%
3rd Qtr	9-17	53%	3-7	43%	1-2	50%
4th Qtr	5-10	50%	0-2	00%	6-6	100%
2nd Half	7-18	39%	1-4	25%	1-2	50%
2nd Half	14-27	52%	3-9	33%	7-8	88%
Game	27-62	43.5%	6-20	30.0%	13-16	81.3%

Deadball Rebounds: 3,3

Game Notes:

Officials: Denise Brooks, Douglas Knight, Brian Garland
 Attendance: 5317

Start Time: 05:02 PM ET
 End Time: 07:05 PM ET
 Game Duration: 2:03
 Conference Game;

Score	1st	2nd	3rd	4th	TOT
MSU	9	23	9	21	62
UK	19	16	22	16	73

Points from (This Period)	MSU	UK
In the Paint	10	8
Off Turns	4	2
2nd Chance	4	0
Fast Break	0	0
Bench	4	6

Official Play-By-Play
Mississippi St. vs Kentucky
Second Quarter
February 16, 2020 at Memorial Coliseum - Lexington



Period 2

Starters:

Mississippi St.: 1 TAYLOR,MYAH (G); 4 CARTER,JESSIKA (F); 5 JACKSON,RICKEA (F); 24 DANBERRY,JORDAN (G); 55 BIBBY,CHLOE (F);
Kentucky: 1 HAINES,SABRINA (G); 3 MCKINNEY,KEKE (F); 10 HOWARD,RHYNE (G); 21 ANYAGALIGBO,OGECHE (F); 32 ROPER,JAIDA (G);

Time	VISITORS: Mississippi St.	Score	Margin	HOME: Kentucky
10:00				SUB OUT: GREEN, BLAIR
10:00				SUB OUT: WYATT, TATYANA
10:00				SUB OUT: PATTERSON, CHASITY
10:00				SUB IN: MCKINNEY, KEKE
10:00				SUB IN: ANYAGALIGBO, OGECHE
10:00				SUB IN: ROPER, JAIDA
09:45				MISSED JUMPER by PASCHAL, AMANDA
09:42	REBOUND (DEF) by JACKSON, RICKEA			
09:19	GOOD! 3PTR by BIBBY, CHLOE	19-12	H 7	
09:19	ASSIST by MINGO-YOUNG, JAMYA			
09:05				MISSED LAYUP by ROPER, JAIDA
09:02				REBOUND (OFF) by MCKINNEY, KEKE
09:00				MISSED JUMPER by ANYAGALIGBO, OGECHE
08:57	REBOUND (DEF) by CARTER, JESSIKA			
08:48	MISSED JUMPER by MINGO-YOUNG, JAMYA			
08:45				REBOUND (DEF) by ANYAGALIGBO, OGECHE
08:23		21-12	H 9	GOOD! LAYUP by HOWARD, RHYNE [PNT]
08:07	SUB OUT: MINGO-YOUNG, JAMYA			
08:07	SUB IN: TAYLOR, MYAH			
08:05	GOOD! JUMPER by CARTER, JESSIKA	21-14	H 7	
08:05	ASSIST by TAYLOR, MYAH			
07:50		24-14	H 10	GOOD! 3PTR by HOWARD, RHYNE
07:50				ASSIST by MCKINNEY, KEKE
07:31	GOOD! JUMPER by CARTER, JESSIKA [PNT]	24-16	H 8	
07:31	ASSIST by TAYLOR, MYAH			
07:18				MISSED LAYUP by ROPER, JAIDA
07:18				REBOUND (OFF) by TEAM
07:18	SUB OUT: WIGGINS, XARIA			
07:18	SUB IN: HEMINGWAY, JAYLA			
07:12				MISSED 3PTR by HOWARD, RHYNE
07:09	REBOUND (DEF) by BIBBY, CHLOE			
07:00	MISSED LAYUP by JACKSON, RICKEA			
06:59	REBOUND (OFF) by BIBBY, CHLOE			
06:59				FOUL (PERSONAL) by PASCHAL, AMANDA
06:59				SUB OUT: PASCHAL, AMANDA
06:59				SUB IN: HAINES, SABRINA
06:53	MISSED 3PTR by BIBBY, CHLOE			
06:50	REBOUND (OFF) by HEMINGWAY, JAYLA			
06:38	MISSED LAYUP by TAYLOR, MYAH			
06:35				REBOUND (DEF) by ANYAGALIGBO, OGECHE
06:28		26-16	H 10	GOOD! JUMPER by HOWARD, RHYNE
06:28				ASSIST by ROPER, JAIDA
06:06	GOOD! LAYUP by CARTER, JESSIKA [PNT]	26-18	H 8	
06:06	ASSIST by JACKSON, RICKEA			
05:49	FOUL (PERSONAL) by HEMINGWAY, JAYLA			
05:49				SUB OUT: ANYAGALIGBO, OGECHE
05:49				SUB OUT: ROPER, JAIDA
05:49				SUB IN: WYATT, TATYANA
05:49				SUB IN: PATTERSON, CHASITY
05:49	SUB OUT: BIBBY, CHLOE			
05:49	SUB IN: WIGGINS, XARIA			
05:49				TURNOVER (5SEC) by TEAM
05:36	TURNOVER (BADPASS) by TAYLOR, MYAH			
05:36				STEAL by HOWARD, RHYNE
05:28		28-18	H 10	GOOD! LAYUP by WYATT, TATYANA [PNT]
05:28				ASSIST by HOWARD, RHYNE
05:08	MISSED JUMPER by CARTER, JESSIKA			
05:05				REBOUND (DEF) by HOWARD, RHYNE
04:59		30-18	H 12	GOOD! JUMPER by HOWARD, RHYNE
04:36				FOUL (PERSONAL) by WYATT, TATYANA
04:36				
04:36				SUB OUT: MCKINNEY, KEKE
04:36				SUB OUT: WYATT, TATYANA
04:36				SUB IN: GREEN, BLAIR
04:36				SUB IN: COLE, NAE NAE
04:36	SUB OUT: WIGGINS, XARIA			
04:36	SUB IN: DANBERRY, JORDAN			
04:36	MISSED FT by HEMINGWAY, JAYLA			
04:36	REBOUND (OFF) by TEAM			
04:36	GOOD! FT by HEMINGWAY, JAYLA	30-19	H 11	

Time	VISITORS: Mississippi St.	Score	Margin	HOME: Kentucky
04:36				TURNOVER (TRAVEL) by PATTERSON, CHASITY
04:29	MISSED LAYUP by DANBERRY, JORDAN			
04:26	REBOUND (OFF) by DANBERRY, JORDAN			
04:26	GOOD! LAYUP by DANBERRY, JORDAN	30-21	H 9	
04:17	FOUL (PERSONAL) by DANBERRY, JORDAN			
04:17				MISSED FT by HOWARD, RHYNE
04:17				REBOUND (OFF) by TEAM
04:17		31-21	H 10	GOOD! FT by HOWARD, RHYNE
04:05	GOOD! JUMPER by DANBERRY, JORDAN	31-23	H 8	
04:05	ASSIST by TAYLOR, MYAH			
03:56				MISSED JUMPER by PATTERSON, CHASITY
03:53	REBOUND (DEF) by JACKSON, RICKEA			
03:44	SUB OUT: TAYLOR, MYAH			
03:44	SUB OUT: DANBERRY, JORDAN			
03:44	SUB IN: ESPINOZA-HUNTER, ANDRA			
03:44	SUB IN: MINGO-YOUNG, JAMYA			
03:40	GOOD! 3PTR by ESPINOZA-HUNTER, ANDRA	31-26	H 5	
03:40	ASSIST by CARTER, JESSIKA			
03:29		33-26	H 7	GOOD! JUMPER by PATTERSON, CHASITY [PNT]
03:05	MISSED 3PTR by ESPINOZA-HUNTER, ANDRA			
03:03				REBOUND (DEF) by TEAM
02:48		35-26	H 9	GOOD! LAYUP by PATTERSON, CHASITY [PNT]
02:25	MISSED JUMPER by JACKSON, RICKEA			
02:22				REBOUND (DEF) by HAINES, SABRINA
02:16				MISSED 3PTR by HOWARD, RHYNE
02:13	REBOUND (DEF) by HEMINGWAY, JAYLA			
01:57	MISSED LAYUP by HEMINGWAY, JAYLA			
01:53	REBOUND (OFF) by CARTER, JESSIKA			
01:53	GOOD! LAYUP by CARTER, JESSIKA	35-28	H 7	
01:42				MISSED 3PTR by HOWARD, RHYNE
01:40	REBOUND (DEF) by HEMINGWAY, JAYLA			
01:29	TURNOVER (LOSTBALL) by MINGO-YOUNG, JAMYA			
01:29				STEAL by HAINES, SABRINA
01:29				SUB OUT: HAINES, SABRINA
01:29				SUB OUT: COLE, NAE NAE
01:29				SUB IN: ANYAGALIGBO, OGECHI
01:29				SUB IN: ROPER, JAIDA
01:29	SUB OUT: HEMINGWAY, JAYLA			
01:29	SUB OUT: MINGO-YOUNG, JAMYA			
01:29	SUB IN: TAYLOR, MYAH			
01:29	SUB IN: MATHARU, ALIYAH			
01:17				TURNOVER (TRAVEL) by ANYAGALIGBO, OGECHI
00:50	GOOD! LAYUP by CARTER, JESSIKA [PNT]	35-30	H 5	
00:50	ASSIST by TAYLOR, MYAH			
00:39				MISSED JUMPER by HOWARD, RHYNE
00:36	REBOUND (DEF) by ESPINOZA-HUNTER, ANDRA			
00:13				FOUL (PERSONAL) by ANYAGALIGBO, OGECHI
00:13				SUB OUT: ANYAGALIGBO, OGECHI
00:13				SUB IN: MCKINNEY, KEKE
00:13	SUB OUT: MATHARU, ALIYAH			
00:13	SUB IN: DANBERRY, JORDAN			
00:13	GOOD! FT by CARTER, JESSIKA	35-31	H 4	
00:13	GOOD! FT by CARTER, JESSIKA	35-32	H 3	
00:04				MISSED JUMPER by HOWARD, RHYNE
00:00				REBOUND (OFF) by ROPER, JAIDA
00:00				MISSED LAYUP by ROPER, JAIDA
00:00				REBOUND (OFF) by TEAM

Mississippi St. 32, Kentucky 35

Points from (This Period)	MSU	UK
In the Paint	10	8
Off Turns	4	2
2nd Chance	4	0
Fast Break	0	0
Bench	4	6

Official Box Score
Mississippi St. vs Kentucky
Second Half Statistics Only
February 16, 2020 at Memorial Coliseum - Lexington



Mississippi St. 30

No.	Player	S	Pts	FG	3FG	FT	OR	DR	TR	PF	A	TO	Blk	Stl	Min	+/-
00	HEMINGWAY, JAYLA	G	0	0-1	0-0	0-0	0	0	0	3	2	0	0	0	11	-1
01	TAYLOR, MYAH	G	0	0-4	0-0	0-0	0	2	2	2	3	1	0	1	14	0
02	ESPINOZA-HUNTER, ANDRA	G	9	3-6	1-4	2-2	1	2	3	0	0	0	0	0	14	-1
03	MATHARU, ALIYAH	G	2	1-1	0-0	0-0	0	0	0	0	0	0	0	0	3	-7
04	CARTER, JESSIKA	F	5	1-2	0-0	3-3	1	0	1	1	1	3	0	0	12	-6
05	JACKSON, RICKEA	F	14	7-12	0-0	0-0	3	0	3	1	0	1	1	0	16	-2
10	MINGO-YOUNG, JAMYA	G	0	0-0	0-0	0-0	0	1	1	3	0	0	1	0	2	-1
11	WIGGINS, XARIA	G	0	0-2	0-0	0-0	0	0	0	1	0	2	1	0	6	-7
20	MORRIS, YEMIAH	C	0	0-0	0-0	0-2	0	2	2	1	0	1	1	0	8	-1
24	DANBERRY, JORDAN	G	0	0-1	0-0	0-0	0	0	0	0	1	2	0	0	8	-7
55	BIBBY, CHLOE	F	0	0-0	0-0	0-0	0	1	1	0	0	0	0	0	7	-7
	TEAM		0	0-0	0-0	0-0	0	0	0	0	0	0	0	0	0	
TOTALS			30	12-29	1-4	5-7	5	8	13	12	7	10	4	1	100	

Shooting By Period

Period	FG	FG%	3FG	3FG%	FT	FT%
3rd Qtr	3-8	38%	0-0	0%	3-3	100%
4th Qtr	9-21	43%	1-4	25%	2-4	50%
2nd Half	12-29	41%	1-4	25%	5-7	71%
Game	25-65	38.5%	3-9	33.3%	9-13	69.2%

Deadball Rebounds: 3,1
Last FG Half: MSU 4th-01:13

Kentucky 38

No.	Player	S	Pts	FG	3FG	FT	OR	DR	TR	PF	A	TO	Blk	Stl	Min	+/-
01	HAINES, SABRINA	G	0	0-2	0-1	0-0	1	0	1	1	0	1	0	2	9	-2
03	MCKINNEY, KEKE	F	0	0-1	0-0	0-0	0	1	1	1	3	0	1	0	19	12
05	GREEN, BLAIR	G	0	0-0	0-0	0-0	0	0	0	1	0	0	0	0	1	-4
10	HOWARD, RHYNE	G	13	5-10	1-3	2-2	1	5	6	2	0	3	1	0	19	12
12	PASCHAL, AMANDA	G	3	1-1	1-1	0-0	0	0	0	1	0	0	0	0	11	10
14	WYATT, TATYANA	F	4	2-4	0-1	0-0	0	4	4	1	0	0	0	0	15	2
15	PATTERSON, CHASITY	G	4	2-4	0-2	0-0	1	0	1	1	0	1	0	0	7	2
21	ANYAGALIGBO, OGECHI	F	2	1-1	0-0	0-0	1	0	1	1	0	0	0	1	5	6
32	ROPER, JAIDA	G	12	3-4	1-1	5-6	0	0	0	0	3	3	0	0	14	2
44	COLE, NAE NAE	C	0	0-0	0-0	0-0	0	0	0	0	0	0	0	0	0	0
	TEAM		0	0-0	0-0	0-0	0	2	2	0	0	0	0	0	0	
TOTALS			38	14-27	3-9	7-8	4	12	16	9	6	8	2	3	100	

Shooting By Period

Period	FG	FG%	3FG	3FG%	FT	FT%
3rd Qtr	9-17	53%	3-7	43%	1-2	50%
4th Qtr	5-10	50%	0-2	00%	6-6	100%
2nd Half	14-27	52%	3-9	33%	7-8	88%
Game	27-62	43.5%	6-20	30.0%	13-16	81.3%

Deadball Rebounds: 3,3
Last FG Half: UK 4th-01:30

Game Notes:

Officials: Denise Brooks, Douglas Knight, Brian Garland
Attendance: 5317

Start Time: 05:02 PM ET
End Time: 07:05 PM ET
Game Duration: 2:03
Conference Game;

Score	1st	2nd	3rd	4th	TOT
MSU	9	23	9	21	62
UK	19	16	22	16	73

Points from (This Period)	MSU	UK
In the Paint	20	12
Off Turns	8	12
2nd Chance	8	2
Fast Break	0	3
Bench	11	11

Official Box Score
Mississippi St. vs Kentucky
Third Quarter Statistics Only
February 16, 2020 at Memorial Coliseum - Lexington



Mississippi St. 30

No.	Player	S	Pts	FG	3FG	FT	OR	DR	TR	PF	A	TO	Blk	Stl	Min	+/-
01	TAYLOR, MYAH	G	0	0-1	0-0	0-0	0	0	0	1	1	1	0	0	4	-5
04	CARTER, JESSIKA	F	5	1-1	0-0	3-3	0	0	0	1	0	3	0	0	7	-12
05	JACKSON, RICKEA	F	0	0-1	0-0	0-0	0	0	0	0	0	0	1	0	6	-6
24	DANBERRY, JORDAN	G	0	0-1	0-0	0-0	0	0	0	0	1	2	0	0	8	-7
55	BIBBY, CHLOE	F	0	0-0	0-0	0-0	0	1	1	0	0	0	0	0	7	-7
00	HEMINGWAY, JAYLA	G	0	0-0	0-0	0-0	0	0	0	0	0	0	0	0	2	-6
02	ESPINOZA-HUNTER, ANDRA	G	2	1-1	0-0	0-0	0	1	1	0	0	0	0	0	4	-6
03	MATHARU, ALIYAH	G	2	1-1	0-0	0-0	0	0	0	0	0	0	0	0	2	-7
10	MINGO-YOUNG, JAMYA	G	0	0-0	0-0	0-0	0	1	1	2	0	0	1	0	2	-1
11	WIGGINS, XARIA	G	0	0-2	0-0	0-0	0	0	0	1	0	2	1	0	6	-7
20	MORRIS, YEMIIYAH	C	0	0-0	0-0	0-0	0	1	1	1	0	1	0	0	3	-1
	TEAM						0	0	0	0		0				
TOTALS			9	3-8	0-0	3-3	0	4	4	6	2	9	3	0	50	

Shooting By Period

Period	FG	FG%	3FG	3FG%	FT	FT%
2nd Half	0-0	0%	0-0	0%	0-0	0%
Game	25-65	38.5%	3-9	33.3%	9-13	69.2%

Deadball Rebounds: 3,1

Kentucky 38

No.	Player	S	Pts	FG	3FG	FT	OR	DR	TR	PF	A	TO	Blk	Stl	Min	+/-
01	HAINES, SABRINA	G	0	0-1	0-0	0-0	1	0	1	0	0	0	0	2	5	6
03	MCKINNEY, KEKE	F	0	0-1	0-0	0-0	0	0	0	1	1	0	0	0	10	13
10	HOWARD, RHYNE	G	11	5-8	1-3	0-0	1	3	4	1	0	1	0	0	10	13
21	ANYAGALIGBO, OGECHI	F	2	1-1	0-0	0-0	1	0	1	1	0	0	0	1	5	6
32	ROPER, JAIDA	G	4	1-2	1-1	1-2	0	0	0	0	3	2	0	0	8	7
05	GREEN, BLAIR	G	0	0-0	0-0	0-0	0	0	0	0	0	0	0	0	0	0
12	PASCHAL, AMANDA	G	3	1-1	1-1	0-0	0	0	0	0	0	0	0	0	5	7
14	WYATT, TATYANA	F	0	0-1	0-1	0-0	0	0	0	0	0	0	0	0	5	7
15	PATTERSON, CHASITY	G	2	1-2	0-1	0-0	1	0	1	0	0	0	0	0	2	6
44	COLE, NAE NAE	C	0	0-0	0-0	0-0	0	0	0	0	0	0	0	0	0	0
	TEAM						0	2	2	0		0				
TOTALS			22	9-17	3-7	1-2	4	5	9	3	4	3	0	3	50	

Shooting By Period

Period	FG	FG%	3FG	3FG%	FT	FT%
2nd Half	0-0	0%	0-0	0%	0-0	0%
Game	27-62	43.5%	6-20	30.0%	13-16	81.3%

Deadball Rebounds: 3,3

Game Notes:

Officials: Denise Brooks, Douglas Knight, Brian Garland
 Attendance: 5317

Start Time: 05:02 PM ET
 End Time: 07:05 PM ET
 Game Duration: 2:03
 Conference Game;

Score	1st	2nd	3rd	4th	TOT
MSU	9	23	9	21	62
UK	19	16	22	16	73

Points from (This Period)	MSU	UK
In the Paint	4	8
Off Turns	0	12
2nd Chance	0	2
Fast Break	0	1
Bench	4	5

Official By-By-Play
Mississippi St. vs Kentucky
Third Quarter
February 16, 2020 at Memorial Coliseum - Lexington



Period 3

Starters:

Mississippi St.: 1 TAYLOR,MYAH (G); 4 CARTER,JESSIKA (F); 5 JACKSON,RICKEA (F); 24 DANBERRY,JORDAN (G); 55 BIBBY,CHLOE (F);
Kentucky: 1 HAINES,SABRINA (G); 3 MCKINNEY,KEKE (F); 10 HOWARD,RHYNE (G); 21 ANYAGALIGBO,OGECHE (F); 32 ROPER,JAIDA (G);

Time	VISITORS: Mississippi St.	Score	Margin	HOME: Kentucky
10:00				SUB OUT: GREEN, BLAIR
10:00				SUB OUT: PATTERSON, CHASITY
10:00				SUB IN: HAINES, SABRINA
10:00				SUB IN: ANYAGALIGBO, OGECHE
10:00	SUB OUT: ESPINOZA-HUNTER, ANDRA			
10:00	SUB IN: BIBBY, CHLOE			
09:47	TURNOVER (TRAVEL) by CARTER, JESSIKA			
09:36		37-32	H 5	GOOD! LAYUP by HOWARD, RHYNE [PNT]
09:36				ASSIST by ROPER, JAIDA
09:21				FOUL (PERSONAL) by ANYAGALIGBO, OGECHE
09:21	GOOD! FT by CARTER, JESSIKA	37-33	H 4	
09:21	GOOD! FT by CARTER, JESSIKA	37-34	H 3	
09:04				FOUL (OFF) by HOWARD, RHYNE
09:04				TURNOVER (OFFENSIVE) by HOWARD, RHYNE
08:51	TURNOVER (BADPASS) by TAYLOR, MYAH			
08:42				MISSED JUMPER by HAINES, SABRINA
08:40				REBOUND (OFF) by HAINES, SABRINA
08:28				MISSED LAYUP by ROPER, JAIDA
08:28	BLOCK by JACKSON, RICKEA			
08:24				REBOUND (OFF) by HOWARD, RHYNE
08:21				MISSED LAYUP by MCKINNEY, KEKE
08:17				REBOUND (OFF) by ANYAGALIGBO, OGECHE
08:17		39-34	H 5	GOOD! LAYUP by ANYAGALIGBO, OGECHE
07:54	GOOD! LAYUP by CARTER, JESSIKA [PNT]	39-36	H 3	
07:54	ASSIST by TAYLOR, MYAH			
07:53				FOUL (PERSONAL) by MCKINNEY, KEKE
07:53	SUB OUT: JACKSON, RICKEA			
07:53	SUB IN: WIGGINS, XARIA			
07:53	GOOD! FT by CARTER, JESSIKA	39-37	H 2	
07:35	FOUL (PERSONAL) by TAYLOR, MYAH			
07:35	SUB OUT: TAYLOR, MYAH			
07:35	SUB IN: MINGO-YOUNG, JAMYA			
07:30				MISSED 3PTR by HOWARD, RHYNE
07:28	REBOUND (DEF) by MINGO-YOUNG, JAMYA			
07:08	TURNOVER (BADPASS) by DANBERRY, JORDAN			
07:08				STEAL by ANYAGALIGBO, OGECHE
07:00	FOUL (PERSONAL) by MINGO-YOUNG, JAMYA			
07:00				MISSED FT by ROPER, JAIDA
07:00				REBOUND (OFF) by TEAM
07:00		40-37	H 3	GOOD! FT by ROPER, JAIDA [FB]
07:00				SUB OUT: ROPER, JAIDA
07:00				SUB IN: PATTERSON, CHASITY
06:43	TURNOVER (LOSTBALL) by WIGGINS, XARIA			
06:38				MISSED LAYUP by HOWARD, RHYNE
06:38	BLOCK by WIGGINS, XARIA			
06:34				REBOUND (OFF) by PATTERSON, CHASITY
06:15				MISSED 3PTR by PATTERSON, CHASITY
06:15	BLOCK by MINGO-YOUNG, JAMYA			
06:11	REBOUND (DEF) by BIBBY, CHLOE			
06:07	MISSED LAYUP by WIGGINS, XARIA			
06:05				REBOUND (DEF) by TEAM
05:58	FOUL (PERSONAL) by MINGO-YOUNG, JAMYA			
05:58	SUB OUT: MINGO-YOUNG, JAMYA			
05:58	SUB IN: MATHARU, ALIYAH			
05:40		42-37	H 5	GOOD! JUMPER by HOWARD, RHYNE
05:21	TURNOVER (BADPASS) by CARTER, JESSIKA			
05:21				STEAL by HAINES, SABRINA
05:08		44-37	H 7	GOOD! LAYUP by PATTERSON, CHASITY [PNT]
04:53	TURNOVER (BADPASS) by DANBERRY, JORDAN			
04:53				STEAL by HAINES, SABRINA
04:42		46-37	H 9	GOOD! LAYUP by HOWARD, RHYNE [PNT]
04:41	TIMEOUT 30SEC			
04:41				SUB OUT: HAINES, SABRINA
04:41				SUB OUT: PATTERSON, CHASITY
04:41				SUB OUT: ANYAGALIGBO, OGECHE
04:41				SUB IN: PASCHAL, AMANDA
04:41				SUB IN: WYATT, TATYANA
04:41				SUB IN: ROPER, JAIDA
04:41	SUB OUT: CARTER, JESSIKA			
04:41	SUB IN: MORRIS, YEMIYAH			

Time	VISITORS: Mississippi St.	Score	Margin	HOME: Kentucky
04:23	GOOD! LAYUP by MATHARU, ALIYAH [PNT]	46-39	H 7	
04:00		49-39	H 10	GOOD! 3PTR by ROPER, JAIDA
04:00				ASSIST by MCKINNEY, KEKE
03:38	MISSED JUMPER by WIGGINS, XARIA			
03:35				REBOUND (DEF) by HOWARD, RHYNE
03:30				TURNOVER (OTHER) by ROPER, JAIDA
03:30				
03:30	SUB OUT: MATHARU, ALIYAH			
03:30	SUB OUT: BIBBY, CHLOE			
03:30	SUB IN: ESPINOZA-HUNTER, ANDRA			
03:30	SUB IN: JACKSON, RICKEA			
03:19	FOUL (OFF) by MORRIS, YEMIYAH			
03:19	TURNOVER (OFFENSIVE) by MORRIS, YEMIYAH			
02:53				MISSED 3PTR by HOWARD, RHYNE
02:50	REBOUND (DEF) by ESPINOZA-HUNTER, ANDRA			
02:42	MISSED JUMPER by DANBERRY, JORDAN			
02:39				REBOUND (DEF) by HOWARD, RHYNE
02:32				MISSED 3PTR by WYATT, TATYANA
02:29	REBOUND (DEF) by MORRIS, YEMIYAH			
02:22	GOOD! JUMPER by ESPINOZA-HUNTER, ANDRA	49-41	H 8	
02:22	ASSIST by DANBERRY, JORDAN			
02:06		51-41	H 10	GOOD! JUMPER by HOWARD, RHYNE
02:06				ASSIST by ROPER, JAIDA
01:50	FOUL (OFF) by WIGGINS, XARIA			
01:50	TURNOVER (OFFENSIVE) by WIGGINS, XARIA			
01:50	SUB OUT: WIGGINS, XARIA			
01:50	SUB OUT: MORRIS, YEMIYAH			
01:50	SUB OUT: DANBERRY, JORDAN			
01:50	SUB IN: HEMINGWAY, JAYLA			
01:50	SUB IN: TAYLOR, MYAH			
01:50	SUB IN: CARTER, JESSIKA			
01:33				TURNOVER (BADPASS) by ROPER, JAIDA
01:23	FOUL (OFF) by CARTER, JESSIKA			
01:23	TURNOVER (OFFENSIVE) by CARTER, JESSIKA			
01:07		54-41	H 13	GOOD! 3PTR by PASCHAL, AMANDA
01:07				ASSIST by ROPER, JAIDA
00:54	TIMEOUT 30SEC			
00:38	MISSED JUMPER by JACKSON, RICKEA			
00:36				REBOUND (DEF) by TEAM
00:13		57-41	H 16	GOOD! 3PTR by HOWARD, RHYNE
00:02	MISSED JUMPER by TAYLOR, MYAH			
00:00				REBOUND (DEF) by HOWARD, RHYNE

Mississippi St. 41, Kentucky 57

Points from (This Period)	MSU	UK
In the Paint	4	8
Off Turns	0	12
2nd Chance	0	2
Fast Break	0	1
Bench	4	5

Official Box Score
Mississippi St. vs Kentucky
Fourth Quarter Statistics Only
February 16, 2020 at Memorial Coliseum - Lexington



Mississippi St. 21

No.	Player	S	Pts	FG	3FG	FT	OR	DR	TR	PF	A	TO	Blk	Stl	Min	+/-
01	TAYLOR, MYAH	G	0	0-3	0-0	0-0	0	2	2	1	2	0	0	1	10	5
04	CARTER, JESSIKA	F	0	0-1	0-0	0-0	1	0	1	0	1	0	0	0	5	6
05	JACKSON, RICKEA	F	14	7-11	0-0	0-0	3	0	3	1	0	1	0	0	10	4
24	DANBERRY, JORDAN	G	0	0-0	0-0	0-0	0	0	0	0	0	0	0	0	0	0
55	BIBBY, CHLOE	F	0	0-0	0-0	0-0	0	0	0	0	0	0	0	0	0	0
00	HEMINGWAY, JAYLA	G	0	0-1	0-0	0-0	0	0	0	3	2	0	0	0	9	5
02	ESPINOZA-HUNTER, ANDRA	G	7	2-5	1-4	2-2	1	1	2	0	0	0	0	0	10	5
03	MATHARU, ALIYAH	G	0	0-0	0-0	0-0	0	0	0	0	0	0	0	0	1	0
10	MINGO-YOUNG, JAMYA	G	0	0-0	0-0	0-0	0	0	0	1	0	0	0	0	0	0
11	WIGGINS, XARIA	G	0	0-0	0-0	0-0	0	0	0	0	0	0	0	0	0	0
20	MORRIS, YEMIIYAH	C	0	0-0	0-0	0-2	0	1	1	0	0	0	1	0	5	0
	TEAM						0	0	0	0		0				
TOTALS			21	9-21	1-4	2-4	5	4	9	6	5	1	1	1	50	

Shooting By Period

Period	FG	FG%	3FG	3FG%	FT	FT%
Game	25-65	38.5%	3-9	33.3%	9-13	69.2%

Deadball Rebounds: 3,1

Kentucky 16

No.	Player	S	Pts	FG	3FG	FT	OR	DR	TR	PF	A	TO	Blk	Stl	Min	+/-
01	HAINES, SABRINA	G	0	0-1	0-1	0-0	0	0	0	1	0	1	0	0	4	-8
03	MCKINNEY, KEKE	F	0	0-0	0-0	0-0	0	1	1	0	2	0	1	0	9	-1
10	HOWARD, RHYNE	G	2	0-2	0-0	2-2	0	2	2	1	0	2	1	0	9	-1
21	ANYAGALIGBO, OGECHI	F	0	0-0	0-0	0-0	0	0	0	0	0	0	0	0	0	0
32	ROPER, JAIDA	G	8	2-2	0-0	4-4	0	0	0	0	0	1	0	0	6	-5
05	GREEN, BLAIR	G	0	0-0	0-0	0-0	0	0	0	1	0	0	0	0	1	-4
12	PASCHAL, AMANDA	G	0	0-0	0-0	0-0	0	0	0	1	0	0	0	0	6	3
14	WYATT, TATYANA	F	4	2-3	0-0	0-0	0	4	4	1	0	0	0	0	10	-5
15	PATTERSON, CHASITY	G	2	1-2	0-1	0-0	0	0	0	1	0	1	0	0	5	-4
44	COLE, NAE NAE	C	0	0-0	0-0	0-0	0	0	0	0	0	0	0	0	0	0
	TEAM						0	0	0	0		0				
TOTALS			16	5-10	0-2	6-6	0	7	7	6	2	5	2	0	50	

Shooting By Period

Period	FG	FG%	3FG	3FG%	FT	FT%
Game	27-62	43.5%	6-20	30.0%	13-16	81.3%

Deadball Rebounds: 3,3

Game Notes:

Officials: Denise Brooks, Douglas Knight, Brian Garland
Attendance: 5317

Start Time: 05:02 PM ET
End Time: 07:05 PM ET
Game Duration: 2:03
Conference Game;

Score	1st	2nd	3rd	4th	TOT
MSU	9	23	9	21	62
UK	19	16	22	16	73

Points from (This Period)	MSU	UK
In the Paint	16	4
Off Turns	8	0
2nd Chance	8	0
Fast Break	0	2
Bench	7	6

Official Play-By-Play
Mississippi St. vs Kentucky
Fourth Quarter
February 16, 2020 at Memorial Coliseum - Lexington



Period 4

Starters:

Mississippi St.: 1 TAYLOR,MYAH (G); 4 CARTER,JESSIKA (F); 5 JACKSON,RICKEA (F); 24 DANBERRY,JORDAN (G); 55 BIBBY,CHLOE (F);
Kentucky: 1 HAINES,SABRINA (G); 3 MCKINNEY,KEKE (F); 10 HOWARD,RHYNE (G); 21 ANYAGALIGBO,OGECHEI (F); 32 ROPER,JAIDA (G);

Time	VISITORS: Mississippi St.	Score	Margin	HOME: Kentucky
10:00				SUB OUT: ROPER, JAIDA
10:00				SUB IN: PATTERSON, CHASITY
09:46		59-41	H 18	GOOD! JUMPER by PATTERSON, CHASITY
09:29	MISSED LAYUP by TAYLOR, MYAH			
09:26				REBOUND (DEF) by WYATT, TATYANA
09:18		61-41	H 20	GOOD! JUMPER by WYATT, TATYANA
09:18				ASSIST by MCKINNEY, KEKE
08:49	MISSED JUMPER by JACKSON, RICKEA			
08:47	REBOUND (OFF) by TEAM			
08:47				FOUL (PERSONAL) by PASCHAL, AMANDA
08:47				SUB OUT: PASCHAL, AMANDA
08:47				SUB IN: HAINES, SABRINA
08:43	GOOD! LAYUP by JACKSON, RICKEA [PNT]	61-43	H 18	
08:35				MISSED LAYUP by WYATT, TATYANA
08:33	REBOUND (DEF) by ESPINOZA-HUNTER, ANDRA			
08:27	MISSED 3PTR by ESPINOZA-HUNTER, ANDRA			
08:24				REBOUND (DEF) by WYATT, TATYANA
08:16				FOUL (OFF) by HOWARD, RHYNE
08:16				TURNOVER (OFFENSIVE) by HOWARD, RHYNE
08:16				SUB OUT: MCKINNEY, KEKE
08:16				SUB IN: GREEN, BLAIR
08:16				SUB OUT: HOWARD, RHYNE
08:16				SUB IN: ROPER, JAIDA
08:02				FOUL (PERSONAL) by GREEN, BLAIR
08:00	GOOD! DUNK by JACKSON, RICKEA [PNT]	61-45	H 16	
08:00	ASSIST by TAYLOR, MYAH			
07:47	FOUL (PERSONAL) by HEMINGWAY, JAYLA			
07:45				FOUL (OFF) by PATTERSON, CHASITY
07:45				TURNOVER (OFFENSIVE) by PATTERSON, CHASITY
07:28	GOOD! JUMPER by JACKSON, RICKEA [PNT]	61-47	H 14	
07:28	ASSIST by CARTER, JESSIKA			
07:28				TIMEOUT 30SEC
07:28				SUB OUT: GREEN, BLAIR
07:28				SUB IN: MCKINNEY, KEKE
07:28				SUB OUT: ROPER, JAIDA
07:28				SUB IN: HOWARD, RHYNE
07:01				TURNOVER (TRAVEL) by HAINES, SABRINA
06:41	MISSED JUMPER by JACKSON, RICKEA			
06:38				REBOUND (DEF) by WYATT, TATYANA
06:14		63-47	H 16	GOOD! JUMPER by WYATT, TATYANA [PNT]
06:14				ASSIST by MCKINNEY, KEKE
05:55	MISSED 3PTR by ESPINOZA-HUNTER, ANDRA			
05:51	REBOUND (OFF) by JACKSON, RICKEA			
05:51	MISSED LAYUP by JACKSON, RICKEA			
05:51				BLOCK by HOWARD, RHYNE
05:48	REBOUND (OFF) by JACKSON, RICKEA			
05:48	GOOD! LAYUP by JACKSON, RICKEA	63-49	H 14	
05:39				MISSED 3PTR by HAINES, SABRINA
05:36	REBOUND (DEF) by TAYLOR, MYAH			
05:29	MISSED LAYUP by TAYLOR, MYAH			
05:26	REBOUND (OFF) by CARTER, JESSIKA			
05:26	MISSED LAYUP by CARTER, JESSIKA			
05:26				BLOCK by MCKINNEY, KEKE
05:23	REBOUND (OFF) by JACKSON, RICKEA			
05:23	GOOD! LAYUP by JACKSON, RICKEA	63-51	H 12	
05:09				MISSED 3PTR by PATTERSON, CHASITY
05:06	REBOUND (DEF) by TAYLOR, MYAH			
05:01	MISSED LAYUP by TAYLOR, MYAH			
04:59	REBOUND (OFF) by ESPINOZA-HUNTER, ANDRA			
04:59				FOUL (PERSONAL) by HAINES, SABRINA
04:59				SUB OUT: HAINES, SABRINA
04:59				SUB OUT: PATTERSON, CHASITY
04:59				SUB IN: PASCHAL, AMANDA
04:59				SUB IN: ROPER, JAIDA
04:59	GOOD! FT by ESPINOZA-HUNTER, ANDRA	63-52	H 11	
04:59	SUB OUT: JACKSON, RICKEA			
04:59	SUB IN: MORRIS, YEMIYAH			
04:59	GOOD! FT by ESPINOZA-HUNTER, ANDRA	63-53	H 10	
04:59	SUB OUT: CARTER, JESSIKA			
04:59	SUB IN: JACKSON, RICKEA			

Time	VISITORS: Mississippi St.	Score	Margin	HOME: Kentucky
04:37	FOUL (PERSONAL) by HEMINGWAY, JAYLA			
04:35	FOUL (PERSONAL) by HEMINGWAY, JAYLA			
04:26				MISSED JUMPER by HOWARD, RHYNE
04:26	BLOCK by MORRIS, YEMIYAH			
04:21	REBOUND (DEF) by MORRIS, YEMIYAH			
04:14	MISSED LAYUP by HEMINGWAY, JAYLA			
04:11				REBOUND (DEF) by HOWARD, RHYNE
04:08	FOUL (PERSONAL) by TAYLOR, MYAH			
04:08		64-53	H 11	GOOD! FT by ROPER, JAIDA [FB]
04:08		65-53	H 12	GOOD! FT by ROPER, JAIDA [FB]
03:48	TURNOVER (TRAVEL) by JACKSON, RICKEA			
03:44				TURNOVER (BADPASS) by HOWARD, RHYNE
03:44	STEAL by TAYLOR, MYAH			
03:36	GOOD! JUMPER by JACKSON, RICKEA [PNT]	65-55	H 10	
03:32				TIMEOUT 30SEC
03:32				TIMEOUT TEAM
03:07		67-55	H 12	GOOD! LAYUP by ROPER, JAIDA [PNT]
02:51	GOOD! LAYUP by JACKSON, RICKEA [PNT]	67-57	H 10	
02:51	ASSIST by HEMINGWAY, JAYLA			
02:29				TURNOVER (BADPASS) by ROPER, JAIDA
02:29	SUB OUT: TAYLOR, MYAH			
02:29	SUB IN: MINGO-YOUNG, JAMYA			
02:11	GOOD! JUMPER by ESPINOZA-HUNTER, ANDRA [PNT]	67-59	H 8	
02:11	ASSIST by HEMINGWAY, JAYLA			
02:07	FOUL (PERSONAL) by MINGO-YOUNG, JAMYA			
02:07		68-59	H 9	GOOD! FT by ROPER, JAIDA
02:07		69-59	H 10	GOOD! FT by ROPER, JAIDA
02:07	SUB OUT: MINGO-YOUNG, JAMYA			
02:07	SUB IN: TAYLOR, MYAH			
01:55	MISSED JUMPER by JACKSON, RICKEA			
01:52				REBOUND (DEF) by MCKINNEY, KEKE
01:30		71-59	H 12	GOOD! JUMPER by ROPER, JAIDA
01:13	GOOD! 3PTR by ESPINOZA-HUNTER, ANDRA	71-62	H 9	
01:13	ASSIST by TAYLOR, MYAH			
01:12	TIMEOUT TEAM			
00:45				MISSED LAYUP by HOWARD, RHYNE
00:45	REBOUND (DEF) by TEAM			
00:44				FOUL (PERSONAL) by WYATT, TATYANA
00:44	MISSED FT by MORRIS, YEMIYAH			
00:44	REBOUND (OFF) by TEAM			
00:44	MISSED FT by MORRIS, YEMIYAH			
00:43				REBOUND (DEF) by HOWARD, RHYNE
00:33	FOUL (PERSONAL) by JACKSON, RICKEA			
00:33		72-62	H 10	GOOD! FT by HOWARD, RHYNE
00:33		73-62	H 11	GOOD! FT by HOWARD, RHYNE
00:33	SUB OUT: HEMINGWAY, JAYLA			
00:33	SUB IN: MATHARU, ALIYAH			
00:26	MISSED 3PTR by ESPINOZA-HUNTER, ANDRA			
00:23				REBOUND (DEF) by WYATT, TATYANA

Mississippi St. 62, Kentucky 73

Points from (This Period)	MSU	UK
In the Paint	16	4
Off Turns	8	0
2nd Chance	8	0
Fast Break	0	2
Bench	7	6

Official Scoring/Possession Reference Chart
Mississippi St. vs Kentucky
Period 1
February 16, 2020 at Memorial Coliseum - Lexington



Period 1

Starters:

Mississippi St.: 1 TAYLOR,MYAH (G); 4 CARTER,JESSIKA (F); 5 JACKSON,RICKEA (F); 24 DANBERRY,JORDAN (G); 55 BIBBY,CHLOE (F);
Kentucky: 1 HAINES,SABRINA (G); 3 MCKINNEY,KEKE (F); 10 HOWARD,RHYNE (G); 21 ANYAGALIGBO,OGECHI (F); 32 ROPER,JAIDA (G);

Time	VISITORS: Mississippi St.	Score	Margin	HOME: Kentucky
09:52	GOOD! LAYUP by TAYLOR, MYAH [PNT]	0-2	V 2	
09:15	GOOD! LAYUP by DANBERRY, JORDAN [FB/PNT]	0-4	V 4	
08:33	GOOD! JUMPER by JACKSON, RICKEA [PNT]	0-6	V 6	
08:00		2-6	V 4	GOOD! JUMPER by ANYAGALIGBO, OGECHI
07:22		5-6	V 1	GOOD! 3PTR by HAINES, SABRINA
06:21		6-6	T	GOOD! FT by ROPER, JAIDA
06:21		7-6	H 1	GOOD! FT by ROPER, JAIDA
05:05		9-6	H 3	GOOD! LAYUP by PATTERSON, CHASITY [FB/PNT]
04:27		11-6	H 5	GOOD! JUMPER by PATTERSON, CHASITY [FB]
03:24		12-6	H 6	GOOD! FT by PATTERSON, CHASITY
03:05	GOOD! JUMPER by MATHARU, ALIYAH [FB/PNT]	12-8	H 4	
03:00		13-8	H 5	GOOD! FT by PATTERSON, CHASITY
03:00		14-8	H 6	GOOD! FT by PATTERSON, CHASITY
02:47	GOOD! FT by CARTER, JESSIKA	14-9	H 5	
02:10		16-9	H 7	GOOD! LAYUP by WYATT, TATYANA [PNT]
00:05		19-9	H 10	GOOD! 3PTR by HOWARD, RHYNE

Mississippi St. 9, Kentucky 19

Official Scoring/Possession Reference Chart
Mississippi St. vs Kentucky
Period 2
February 16, 2020 at Memorial Coliseum - Lexington



Period 2

Starters:

Mississippi St.: 1 TAYLOR,MYAH (G); 4 CARTER,JESSIKA (F); 5 JACKSON,RICKEA (F); 24 DANBERRY,JORDAN (G); 55 BIBBY,CHLOE (F);
Kentucky: 1 HAINES,SABRINA (G); 3 MCKINNEY,KEKE (F); 10 HOWARD,RHYNE (G); 21 ANYAGALIGBO,OGECHI (F); 32 ROPER,JAIDA (G);

Time	VISITORS: Mississippi St.	Score	Margin	HOME: Kentucky
09:19	GOOD! 3PTR by BIBBY, CHLOE	19-12	H 7	
08:23		21-12	H 9	GOOD! LAYUP by HOWARD, RHYNE [PNT]
08:05	GOOD! JUMPER by CARTER, JESSIKA	21-14	H 7	
07:50		24-14	H 10	GOOD! 3PTR by HOWARD, RHYNE
07:31	GOOD! JUMPER by CARTER, JESSIKA [PNT]	24-16	H 8	
06:28		26-16	H 10	GOOD! JUMPER by HOWARD, RHYNE
06:06	GOOD! LAYUP by CARTER, JESSIKA [PNT]	26-18	H 8	
05:28		28-18	H 10	GOOD! LAYUP by WYATT, TATYANA [PNT]
04:59		30-18	H 12	GOOD! JUMPER by HOWARD, RHYNE
04:36	GOOD! FT by HEMINGWAY, JAYLA	30-19	H 11	
04:26	GOOD! LAYUP by DANBERRY, JORDAN	30-21	H 9	
04:17		31-21	H 10	GOOD! FT by HOWARD, RHYNE
04:05	GOOD! JUMPER by DANBERRY, JORDAN	31-23	H 8	
03:40	GOOD! 3PTR by ESPINOZA-HUNTER, ANDRA	31-26	H 5	
03:29		33-26	H 7	GOOD! JUMPER by PATTERSON, CHASITY [PNT]
02:48		35-26	H 9	GOOD! LAYUP by PATTERSON, CHASITY [PNT]
01:53	GOOD! LAYUP by CARTER, JESSIKA	35-28	H 7	
00:50	GOOD! LAYUP by CARTER, JESSIKA [PNT]	35-30	H 5	
00:13	GOOD! FT by CARTER, JESSIKA	35-31	H 4	
00:13	GOOD! FT by CARTER, JESSIKA	35-32	H 3	

Mississippi St. 32, Kentucky 35

Official Scoring/Possession Reference Chart
Mississippi St. vs Kentucky
Period 3
February 16, 2020 at Memorial Coliseum - Lexington



Period 3

Starters:

Mississippi St.: 1 TAYLOR,MYAH (G); 4 CARTER,JESSIKA (F); 5 JACKSON,RICKEA (F); 24 DANBERRY,JORDAN (G); 55 BIBBY,CHLOE (F);
Kentucky: 1 HAINES,SABRINA (G); 3 MCKINNEY,KEKE (F); 10 HOWARD,RHYNE (G); 21 ANYAGALIGBO,OGECHI (F); 32 ROPER,JAIDA (G);

Time	VISITORS: Mississippi St.	Score	Margin	HOME: Kentucky
09:36		37-32	H 5	GOOD! LAYUP by HOWARD, RHYNE [PNT]
09:21	GOOD! FT by CARTER, JESSIKA	37-33	H 4	
09:21	GOOD! FT by CARTER, JESSIKA	37-34	H 3	
08:17		39-34	H 5	GOOD! LAYUP by ANYAGALIGBO, OGECHI
07:54	GOOD! LAYUP by CARTER, JESSIKA [PNT]	39-36	H 3	
07:53	GOOD! FT by CARTER, JESSIKA	39-37	H 2	
07:00		40-37	H 3	GOOD! FT by ROPER, JAIDA [FB]
05:40		42-37	H 5	GOOD! JUMPER by HOWARD, RHYNE
05:08		44-37	H 7	GOOD! LAYUP by PATTERSON, CHASITY [PNT]
04:42		46-37	H 9	GOOD! LAYUP by HOWARD, RHYNE [PNT]
04:23	GOOD! LAYUP by MATHARU, ALIYAH [PNT]	46-39	H 7	
04:00		49-39	H 10	GOOD! 3PTR by ROPER, JAIDA
02:22	GOOD! JUMPER by ESPINOZA-HUNTER, ANDRA	49-41	H 8	
02:06		51-41	H 10	GOOD! JUMPER by HOWARD, RHYNE
01:07		54-41	H 13	GOOD! 3PTR by PASCHAL, AMANDA
00:13		57-41	H 16	GOOD! 3PTR by HOWARD, RHYNE

Mississippi St. 41, Kentucky 57

Official Scoring/Possession Reference Chart
Mississippi St. vs Kentucky
Period 4
February 16, 2020 at Memorial Coliseum - Lexington



Period 4

Starters:

Mississippi St.: 1 TAYLOR,MYAH (G); 4 CARTER,JESSIKA (F); 5 JACKSON,RICKEA (F); 24 DANBERRY,JORDAN (G); 55 BIBBY,CHLOE (F);
Kentucky: 1 HAINES,SABRINA (G); 3 MCKINNEY,KEKE (F); 10 HOWARD,RHYNE (G); 21 ANYAGALIGBO,OGECHI (F); 32 ROPER,JAIDA (G);

Time	VISITORS: Mississippi St.	Score	Margin	HOME: Kentucky
09:46		59-41	H 18	GOOD! JUMPER by PATTERSON, CHASITY
09:18		61-41	H 20	GOOD! JUMPER by WYATT, TATYANA
08:43	GOOD! LAYUP by JACKSON, RICKEA [PNT]	61-43	H 18	
08:00	GOOD! DUNK by JACKSON, RICKEA [PNT]	61-45	H 16	
07:28	GOOD! JUMPER by JACKSON, RICKEA [PNT]	61-47	H 14	
06:14		63-47	H 16	GOOD! JUMPER by WYATT, TATYANA [PNT]
05:48	GOOD! LAYUP by JACKSON, RICKEA	63-49	H 14	
05:23	GOOD! LAYUP by JACKSON, RICKEA	63-51	H 12	
04:59	GOOD! FT by ESPINOZA-HUNTER, ANDRA	63-52	H 11	
04:59	GOOD! FT by ESPINOZA-HUNTER, ANDRA	63-53	H 10	
04:08		64-53	H 11	GOOD! FT by ROPER, JAIDA [FB]
04:08		65-53	H 12	GOOD! FT by ROPER, JAIDA [FB]
03:36	GOOD! JUMPER by JACKSON, RICKEA [PNT]	65-55	H 10	
03:07		67-55	H 12	GOOD! LAYUP by ROPER, JAIDA [PNT]
02:51	GOOD! LAYUP by JACKSON, RICKEA [PNT]	67-57	H 10	
02:11	GOOD! JUMPER by ESPINOZA-HUNTER, ANDRA [PNT]	67-59	H 8	
02:07		68-59	H 9	GOOD! FT by ROPER, JAIDA
02:07		69-59	H 10	GOOD! FT by ROPER, JAIDA
01:30		71-59	H 12	GOOD! JUMPER by ROPER, JAIDA
01:13	GOOD! 3PTR by ESPINOZA-HUNTER, ANDRA	71-62	H 9	
00:33		72-62	H 10	GOOD! FT by HOWARD, RHYNE
00:33		73-62	H 11	GOOD! FT by HOWARD, RHYNE

Mississippi St. 62, Kentucky 73

Official Substitutions Log
Mississippi St. vs Kentucky
Period 1
February 16, 2020 at Memorial Coliseum - Lexington



VISITORS: Mississippi St.	Time	Score	HOME: Kentucky
1 TAYLOR,MYAH			1 HAINES,SABRINA
4 CARTER,JESSIKA			3 MCKINNEY,KEKE
5 JACKSON,RICKEA			10 HOWARD,RHYNE
24 DANBERRY,JORDAN			21 ANYAGALIGBO,OGECHI
55 BIBBY,CHLOE			32 ROPER,JAIDA
SUB OUT: 24 DANBERRY,JORDAN	06:21	6-5	
SUB IN: 10 MINGO-YOUNG,JAMYA	06:21		
	05:50	6-7	SUB OUT: ROPER,JAIDA
	05:50		SUB IN: PATTERSON,CHASITY
	05:11	6-7	SUB OUT: ANYAGALIGBO,OGECHI
	05:11		SUB IN: WYATT,TATYANA
SUB OUT: 10 MINGO-YOUNG,JAMYA	05:11		
SUB IN: 3 MATHARU,ALIYAH	05:11		
	04:23	6-11	SUB OUT: HAINES,SABRINA
	04:23		SUB IN: PASCHAL,AMANDA
SUB OUT: 1 TAYLOR,MYAH	04:23		
SUB IN: 10 MINGO-YOUNG,JAMYA	04:23		
	03:35	6-11	SUB OUT: MCKINNEY,KEKE
	03:35		SUB IN: GREEN,BLAIR
	03:24	6-12	SUB OUT: HOWARD,RHYNE
	03:24		SUB IN: HAINES,SABRINA
	00:36	9-16	SUB OUT: HAINES,SABRINA
	00:36		SUB IN: HOWARD,RHYNE
SUB OUT: 3 MATHARU,ALIYAH	00:36		
SUB IN: 11 WIGGINS,XARIA	00:36		

Mississippi St. 9, Kentucky 19

Official Substitutions Log
Mississippi St. vs Kentucky
Period 2
February 16, 2020 at Memorial Coliseum - Lexington



VISITORS: Mississippi St.	Time	Score	HOME: Kentucky
1 TAYLOR,MYAH			1 HAINES,SABRINA
4 CARTER,JESSIKA			3 MCKINNEY,KEKE
5 JACKSON,RICKEA			10 HOWARD,RHYNE
24 DANBERRY,JORDAN			21 ANYAGALIGBO,OGECHI
55 BIBBY,CHLOE			32 ROPER,JAIDA
	10:00	-	SUB OUT: GREEN,BLAIR
	10:00		SUB OUT: WYATT,TATYANA
	10:00		SUB OUT: PATTERSON,CHASITY
	10:00		SUB IN: MCKINNEY,KEKE
	10:00		SUB IN: ANYAGALIGBO,OGECHI
	10:00		SUB IN: ROPER,JAIDA
SUB OUT: 10 MINGO-YOUNG,JAMYA	08:07	12-21	
SUB IN: 1 TAYLOR,MYAH	08:07		
SUB OUT: 11 WIGGINS,XARIA	07:18	16-24	
SUB IN: 00 HEMINGWAY,JAYLA	07:18		
	06:59	16-24	SUB OUT: PASCHAL,AMANDA
	06:59		SUB IN: HAINES,SABRINA
	05:49	18-26	SUB OUT: ANYAGALIGBO,OGECHI
	05:49		SUB OUT: ROPER,JAIDA
	05:49		SUB IN: WYATT,TATYANA
	05:49		SUB IN: PATTERSON,CHASITY
SUB OUT: 55 BIBBY,CHLOE	05:49		
SUB IN: 11 WIGGINS,XARIA	05:49		
	04:36	18-30	SUB OUT: MCKINNEY,KEKE
	04:36		SUB OUT: WYATT,TATYANA
	04:36		SUB IN: GREEN,BLAIR
	04:36		SUB IN: COLE,NAE NAE
SUB OUT: 11 WIGGINS,XARIA	04:36		
SUB IN: 24 DANBERRY,JORDAN	04:36		
SUB OUT: 1 TAYLOR,MYAH	03:44	23-31	
SUB OUT: 24 DANBERRY,JORDAN	03:44		
SUB IN: 2 ESPINOZA-HUNTER,ANDRA	03:44		
SUB IN: 10 MINGO-YOUNG,JAMYA	03:44		
	01:29	28-35	SUB OUT: HAINES,SABRINA
	01:29		SUB OUT: COLE,NAE NAE
	01:29		SUB IN: ANYAGALIGBO,OGECHI
	01:29		SUB IN: ROPER,JAIDA
SUB OUT: 00 HEMINGWAY,JAYLA	01:29		
SUB OUT: 10 MINGO-YOUNG,JAMYA	01:29		
SUB IN: 1 TAYLOR,MYAH	01:29		
SUB IN: 3 MATHARU,ALIYAH	01:29		
	00:13	30-35	SUB OUT: ANYAGALIGBO,OGECHI
	00:13		SUB IN: MCKINNEY,KEKE
SUB OUT: 3 MATHARU,ALIYAH	00:13		
SUB IN: 24 DANBERRY,JORDAN	00:13		

Mississippi St. 32, Kentucky 35

Official Substitutions Log
Mississippi St. vs Kentucky
Period 3
February 16, 2020 at Memorial Coliseum - Lexington



VISITORS: Mississippi St.	Time	Score	HOME: Kentucky
1 TAYLOR,MYAH			1 HAINES,SABRINA
4 CARTER,JESSIKA			3 MCKINNEY,KEKE
5 JACKSON,RICKEA			10 HOWARD,RHYNE
24 DANBERRY,JORDAN			21 ANYAGALIGBO,OGECHE
55 BIBBY,CHLOE			32 ROPER,JAIDA
	10:00	-	SUB OUT: GREEN,BLAIR
	10:00		SUB OUT: PATTERSON,CHASITY
	10:00		SUB IN: HAINES,SABRINA
	10:00		SUB IN: ANYAGALIGBO,OGECHE
SUB OUT: 2 ESPINOZA-HUNTER,ANDRA	10:00		
SUB IN: 55 BIBBY,CHLOE	10:00		
SUB OUT: 5 JACKSON,RICKEA	07:53	36-39	
SUB IN: 11 WIGGINS,XARIA	07:53		
SUB OUT: 1 TAYLOR,MYAH	07:35	37-39	
SUB IN: 10 MINGO-YOUNG,JAMYA	07:35		
	07:00	37-40	SUB OUT: ROPER,JAIDA
	07:00		SUB IN: PATTERSON,CHASITY
SUB OUT: 10 MINGO-YOUNG,JAMYA	05:58	37-40	
SUB IN: 3 MATHARU,ALIYAH	05:58		
	04:41	37-46	SUB OUT: HAINES,SABRINA
	04:41		SUB OUT: PATTERSON,CHASITY
	04:41		SUB OUT: ANYAGALIGBO,OGECHE
	04:41		SUB IN: PASCHAL,AMANDA
	04:41		SUB IN: WYATT,TATYANA
	04:41		SUB IN: ROPER,JAIDA
SUB OUT: 4 CARTER,JESSIKA	04:41		
SUB IN: 20 MORRIS,YEMIYAH	04:41		
SUB OUT: 3 MATHARU,ALIYAH	03:30	39-49	
SUB OUT: 55 BIBBY,CHLOE	03:30		
SUB IN: 2 ESPINOZA-HUNTER,ANDRA	03:30		
SUB IN: 5 JACKSON,RICKEA	03:30		
SUB OUT: 11 WIGGINS,XARIA	01:50	41-51	
SUB OUT: 20 MORRIS,YEMIYAH	01:50		
SUB OUT: 24 DANBERRY,JORDAN	01:50		
SUB IN: 00 HEMINGWAY,JAYLA	01:50		
SUB IN: 1 TAYLOR,MYAH	01:50		
SUB IN: 4 CARTER,JESSIKA	01:50		

Mississippi St. 41, Kentucky 57

Official Substitutions Log
Mississippi St. vs Kentucky
Period 4
February 16, 2020 at Memorial Coliseum - Lexington



VISITORS: Mississippi St.	Time	Score	HOME: Kentucky
1 TAYLOR,MYAH			1 HAINES,SABRINA
4 CARTER,JESSIKA			3 MCKINNEY,KEKE
5 JACKSON,RICKEA			10 HOWARD,RHYNE
24 DANBERRY,JORDAN			21 ANYAGALIGBO,OGECHI
55 BIBBY,CHLOE			32 ROPER,JAIDA
	10:00	-	SUB OUT: ROPER,JAIDA
	10:00		SUB IN: PATTERSON,CHASITY
	08:47	41-61	SUB OUT: PASCHAL,AMANDA
	08:47		SUB IN: HAINES,SABRINA
	08:16	43-61	SUB OUT: MCKINNEY,KEKE
	08:16		SUB IN: GREEN,BLAIR
	08:16		SUB OUT: HOWARD,RHYNE
	08:16		SUB IN: ROPER,JAIDA
	07:28	47-61	SUB OUT: GREEN,BLAIR
	07:28		SUB IN: MCKINNEY,KEKE
	07:28		SUB OUT: ROPER,JAIDA
	07:28		SUB IN: HOWARD,RHYNE
	04:59	51-63	SUB OUT: HAINES,SABRINA
	04:59		SUB OUT: PATTERSON,CHASITY
	04:59		SUB IN: PASCHAL,AMANDA
	04:59		SUB IN: ROPER,JAIDA
SUB OUT: 5 JACKSON,RICKEA	04:59		
SUB IN: 20 MORRIS,YEMIYAH	04:59		
SUB OUT: 4 CARTER,JESSIKA	04:59		
SUB IN: 5 JACKSON,RICKEA	04:59		
SUB OUT: 1 TAYLOR,MYAH	02:29	57-67	
SUB IN: 10 MINGO-YOUNG,JAMYA	02:29		
SUB OUT: 10 MINGO-YOUNG,JAMYA	02:07	59-69	
SUB IN: 1 TAYLOR,MYAH	02:07		
SUB OUT: 00 HEMINGWAY,JAYLA	00:33	62-73	
SUB IN: 3 MATHARU,ALIYAH	00:33		

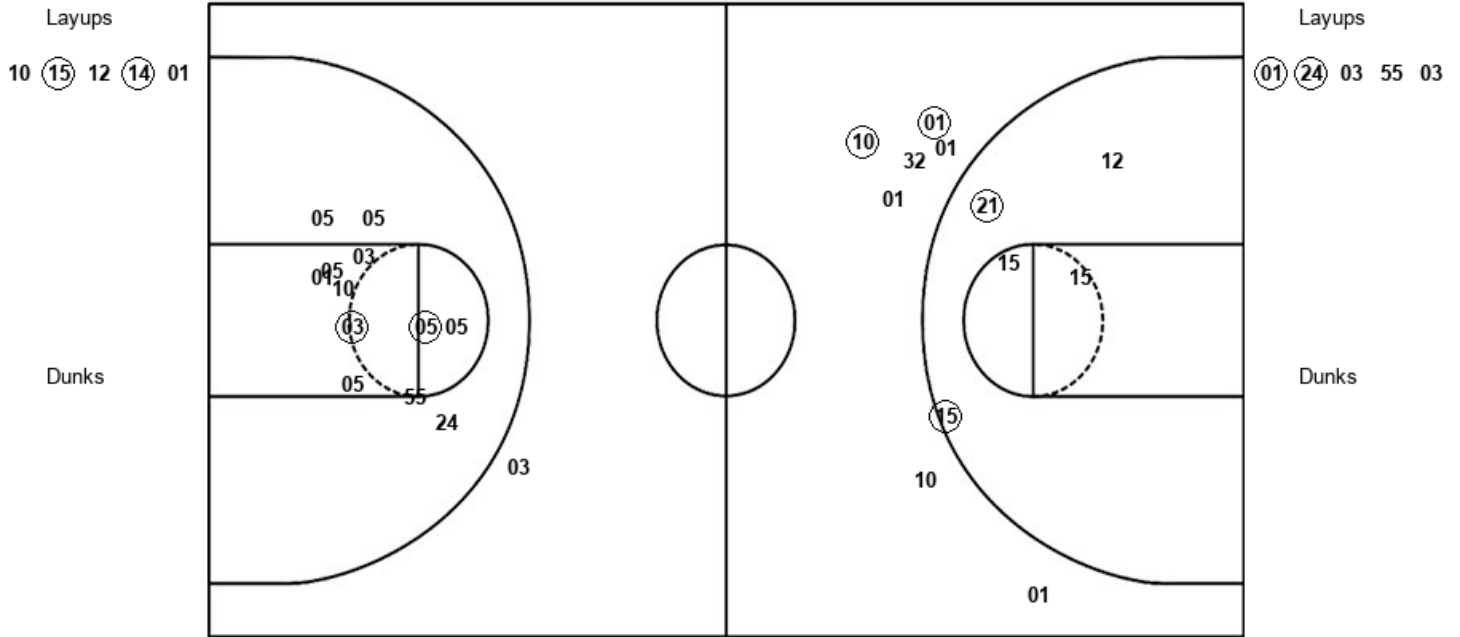
Mississippi St. 62, Kentucky 73

Official Shot Chart
Mississippi St. vs Kentucky
PERIOD 1 Shots
 February 16, 2020 at Memorial Coliseum - Lexington



Kentucky

Mississippi St.



UK : Period 1	Made	Att	Pct
Layups	2	5	40.0
Dunks	0	0	0
2PT Field Goals	4	10	40.0
3PT Field Goals	2	7	28.6
Total Field Goals	6	17	35.3

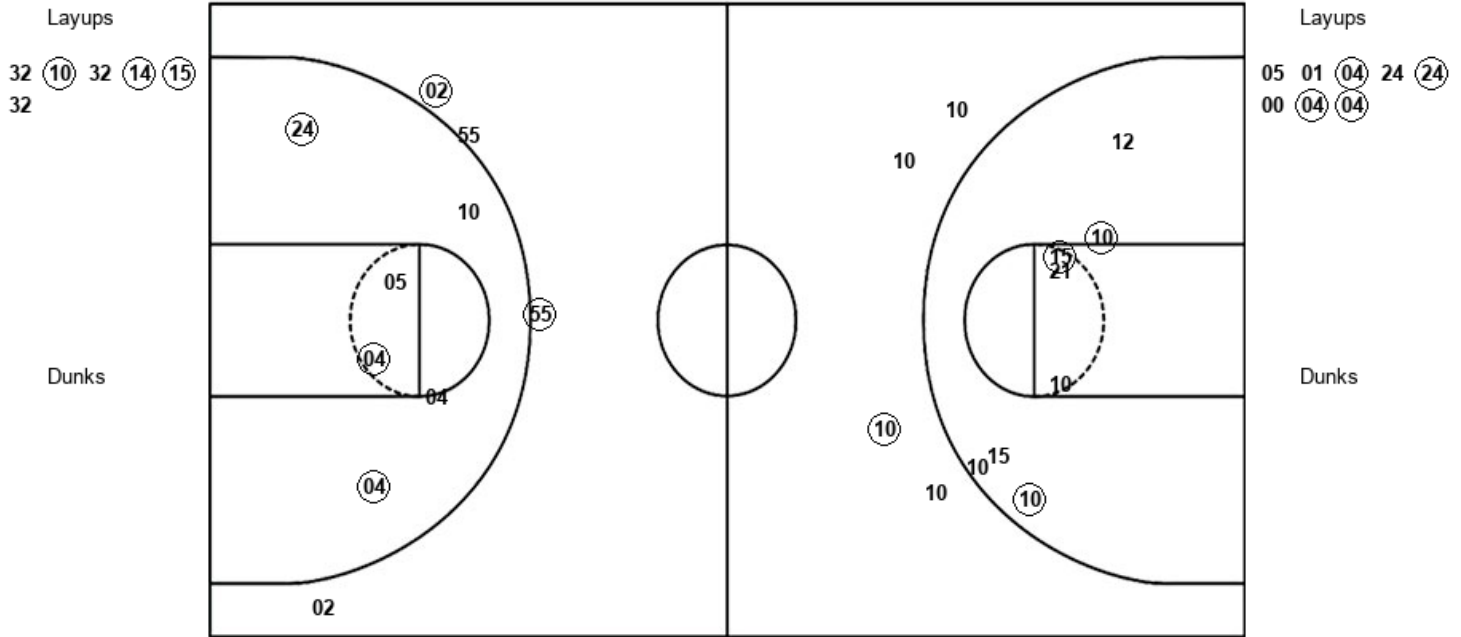
MSU : Period 1	Made	Att	Pct
Layups	2	5	40.0
Dunks	0	0	0
2PT Field Goals	4	17	23.5
3PT Field Goals	0	1	00.0
Total Field Goals	4	18	22.2

Official Shot Chart
Mississippi St. vs Kentucky
PERIOD 2 Shots
 February 16, 2020 at Memorial Coliseum - Lexington



Kentucky

Mississippi St.



UK : Period 2	Made	Att	Pct
Layups	3	6	50.0
Dunks	0	0	0
2PT Field Goals	6	14	42.9
3PT Field Goals	1	4	25.0
Total Field Goals	7	18	38.9

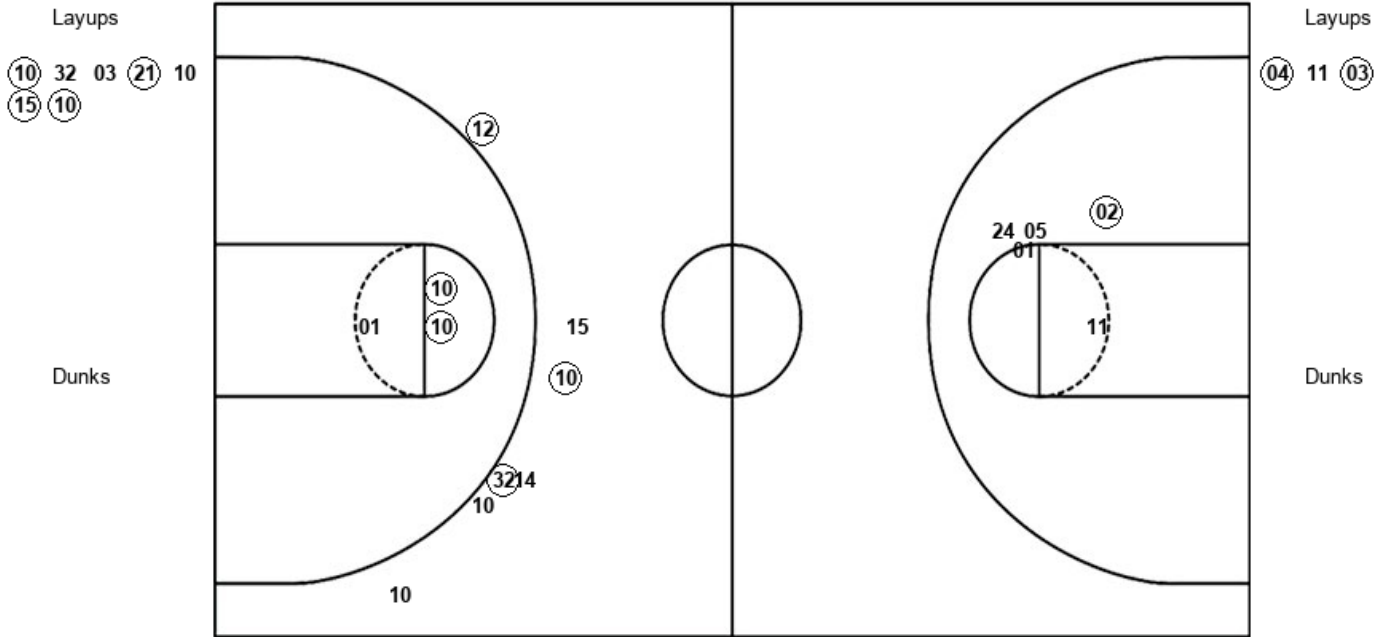
MSU : Period 2	Made	Att	Pct
Layups	4	8	50.0
Dunks	0	0	0
2PT Field Goals	7	14	50.0
3PT Field Goals	2	4	50.0
Total Field Goals	9	18	50.0

Official Shot Chart
Mississippi St. vs Kentucky
 PERIOD 3 Shots
 February 16, 2020 at Memorial Coliseum - Lexington



Kentucky

Mississippi St.



UK : Period 3	Made	Att	Pct
Layups	4	7	57.1
Dunks	0	0	0
2PT Field Goals	6	10	60.0
3PT Field Goals	3	7	42.9
Total Field Goals	9	17	52.9

MSU : Period 3	Made	Att	Pct
Layups	2	3	66.7
Dunks	0	0	0
2PT Field Goals	3	8	37.5
3PT Field Goals	0	0	0
Total Field Goals	3	8	37.5

Official Shot Chart
Mississippi St. vs Kentucky
 PERIOD 4 Shots
 February 16, 2020 at Memorial Coliseum - Lexington



Kentucky

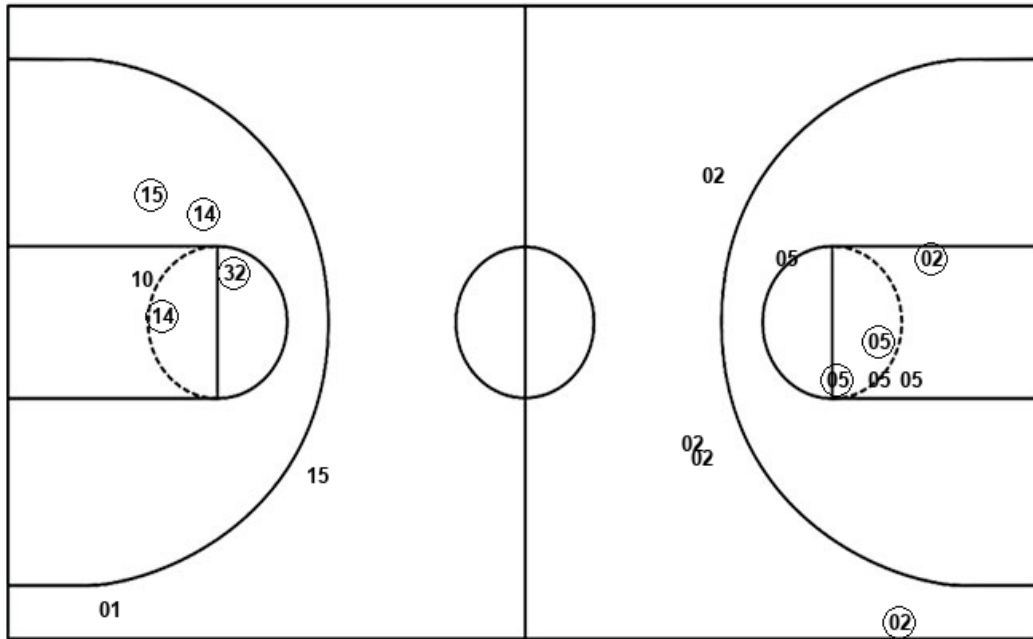
Mississippi St.

Layups
 14 (32) 10

Layups
 01 (05) 05 (05) 01
 04 (05) 01 00 (05)

Dunks

Dunks



UK : Period 4	Made	Att	Pct
Layups	1	3	33.3
Dunks	0	0	0
2PT Field Goals	5	8	62.5
3PT Field Goals	0	2	00.0
Total Field Goals	5	10	50.0

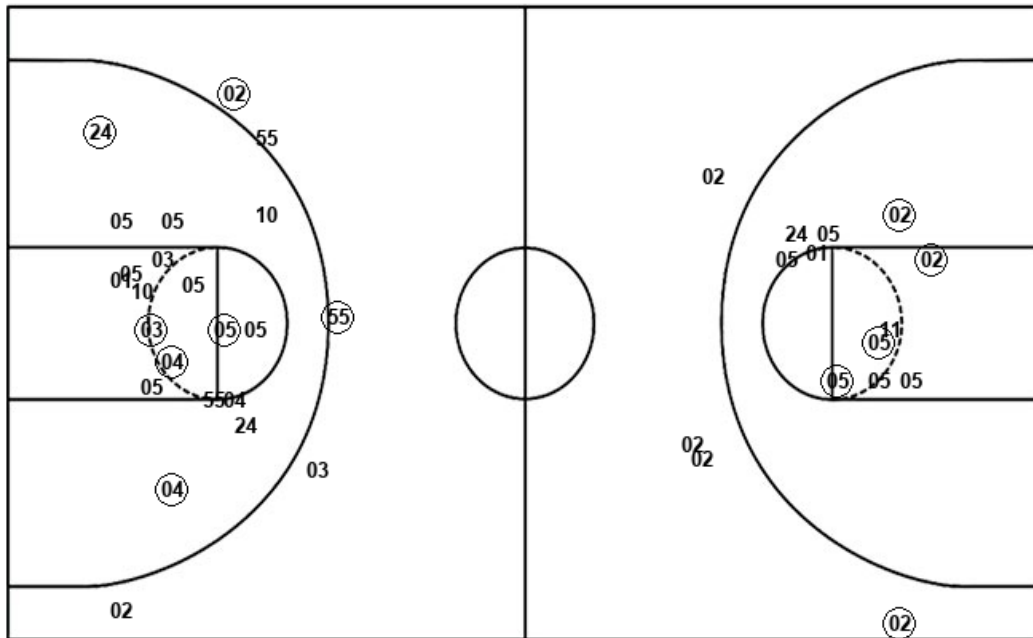
MSU : Period 4	Made	Att	Pct
Layups	4	10	40.0
Dunks	1	1	100.0
2PT Field Goals	8	17	47.1
3PT Field Goals	1	4	25.0
Total Field Goals	9	21	42.9

Official Shot Chart
Mississippi St. vs Kentucky
Mississippi St. Team Shots
 February 16, 2020 at Memorial Coliseum - Lexington



Layups

Layups



(01) (24) 03 55 03
 05 01 (04) 24 (24)
 00 (04) (04) (04) 11
 (03) 01 (05) 05 (05)
 01 04 (05) 01 00
 (05)

Dunks

Dunks

MSU : Period 1	Made	Att	Pct
Layups	2	5	40.0
Dunks	0	0	0
2PT Field Goals	4	17	23.5
3PT Field Goals	0	1	00.0
Total Field Goals	4	18	22.2

MSU : Period 2	Made	Att	Pct
Layups	4	8	50.0
Dunks	0	0	0
2PT Field Goals	7	14	50.0
3PT Field Goals	2	4	50.0
Total Field Goals	9	18	50.0

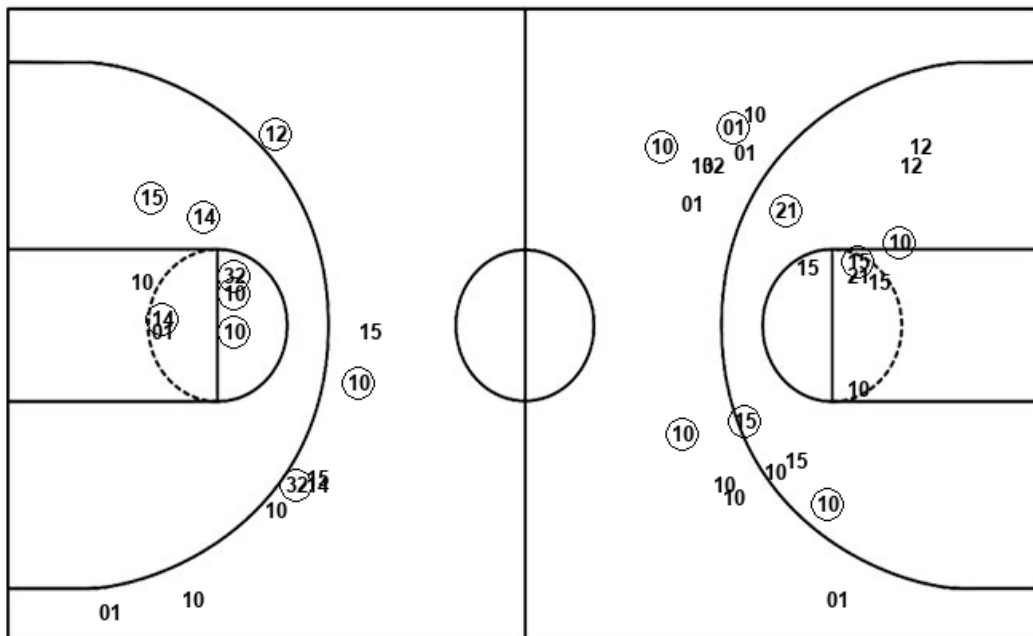
MSU : Period 3	Made	Att	Pct
Layups	2	3	66.7
Dunks	0	0	0
2PT Field Goals	3	8	37.5
3PT Field Goals	0	0	0
Total Field Goals	3	8	37.5

MSU : Period 4	Made	Att	Pct
Layups	4	10	40.0
Dunks	1	1	100.0
2PT Field Goals	8	17	47.1
3PT Field Goals	1	4	25.0
Total Field Goals	9	21	42.9

Official Shot Chart
Mississippi St. vs Kentucky
Kentucky Team Shots
February 16, 2020 at Memorial Coliseum - Lexington



Layups



Layups

10 (15) 12 (14) 01
 32 (10) 32 (14) (15)
 32 (10) 32 03 (21)
 10 (15) (10) 14 (32)
 10

Dunks

Dunks

UK : Period 1	Made	Att	Pct
Layups	2	5	40.0
Dunks	0	0	0
2PT Field Goals	4	10	40.0
3PT Field Goals	2	7	28.6
Total Field Goals	6	17	35.3

UK : Period 2	Made	Att	Pct
Layups	3	6	50.0
Dunks	0	0	0
2PT Field Goals	6	14	42.9
3PT Field Goals	1	4	25.0
Total Field Goals	7	18	38.9

UK : Period 3	Made	Att	Pct
Layups	4	7	57.1
Dunks	0	0	0
2PT Field Goals	6	10	60.0
3PT Field Goals	3	7	42.9
Total Field Goals	9	17	52.9

UK : Period 4	Made	Att	Pct
Layups	1	3	33.3
Dunks	0	0	0
2PT Field Goals	5	8	62.5
3PT Field Goals	0	2	00.0
Total Field Goals	5	10	50.0