

FINAL SCORE



Louisville

67



Kentucky

66

December 15, 2019 • Rupp Arena - Lexington

FINAL STATISTICS

Official Box Score
Louisville vs Kentucky
Game Totals -- Final Statistics
December 15, 2019 at Rupp Arena - Lexington



Louisville 67

No.	Player	S	Pts	FG	3FG	FT	OR	DR	TR	PF	A	TO	Blk	Stl	Min	+/-
01	EVANS, DANA	G	18	7-14	1-6	3-3	1	2	3	3	10	3	0	0	38	6
04	BALOGUN, ELIZABETH	G	2	1-5	0-3	0-0	1	0	1	2	1	1	0	0	20	-11
21	SHOOK, KYLEE	F	11	4-9	3-5	0-0	3	10	13	2	1	2	5	1	33	8
23	JONES, JAZMINE	G	10	5-9	0-0	0-0	1	4	5	4	4	3	0	0	39	6
33	DUNHAM, BIONCA	F	10	5-5	0-0	0-0	2	1	3	4	0	1	1	1	37	3
02	DIOP, YACINE	G	8	3-6	1-1	1-1	3	3	6	2	2	3	0	0	19	5
05	ROBINSON, MYKASA	G	2	1-2	0-0	0-0	0	0	0	0	0	1	0	0	4	-8
11	KONNO, NORIKA	G	0	0-0	0-0	0-0	0	0	0	0	0	0	0	0	3	2
22	DIXON, ELIZABETH	F	6	3-6	0-0	0-0	1	0	1	2	0	1	0	0	8	-6
TEAM							3	2	5	0		0				
TOTALS			67	29-56	5-15	4-4	15	22	37	19	18	15	6	2	200	

Shooting By Period

Period	FG	FG%	3FG	3FG%	FT	FT%
1st Qtr	9-16	56%	0-4	00%	3-3	100%
2nd Qtr	5-11	45%	0-1	00%	0-0	0%
3rd Qtr	11-17	65%	4-6	67%	1-1	100%
4th Qtr	4-12	33%	1-4	25%	0-0	0%
1st Half	14-27	52%	0-5	00%	3-3	100%
2nd Half	15-29	52%	5-10	50%	1-1	100%
Game	29-56	51.8%	5-15	33.3%	4-4	100.0%

Deadball Rebounds: 1,1
Last FG: 4th-01:51
Biggest Run: 13-0
Largest lead: By 6 at 1-04
Technical Fouls: None.

Kentucky 66

No.	Player	S	Pts	FG	3FG	FT	OR	DR	TR	PF	A	TO	Blk	Stl	Min	+/-
01	HAINES, SABRINA	G	12	3-8	3-6	3-4	0	1	1	2	4	0	0	1	35	0
03	MCKINNEY, KEKE	F	9	3-5	3-4	0-0	0	1	1	1	0	0	1	1	35	2
10	HOWARD, RHYNE	G	26	9-23	1-5	7-8	1	3	4	3	2	5	0	2	38	-1
12	PASCHAL, AMANDA	G	0	0-2	0-0	0-0	1	1	2	1	2	1	1	1	18	-9
14	WYATT, TATYANA	F	12	5-8	2-3	0-0	3	2	5	0	0	0	0	0	28	-4
05	GREEN, BLAIR	G	3	1-1	1-1	0-0	0	0	0	0	0	0	0	0	10	-3
21	ANYAGALIGBO, OGECHI	F	0	0-0	0-0	0-0	1	0	1	0	0	1	0	2	8	3
32	ROPER, JAIDA	G	4	1-3	0-0	2-3	0	1	1	2	3	1	0	0	29	7
TEAM							1	1	2	0		0				
TOTALS			66	22-50	10-19	12-15	7	10	17	9	11	8	2	7	200	

Shooting By Period

Period	FG	FG%	3FG	3FG%	FT	FT%
1st Qtr	6-16	38%	4-7	57%	0-0	0%
2nd Qtr	8-12	67%	2-5	40%	6-6	100%
3rd Qtr	5-12	42%	3-5	60%	2-2	100%
4th Qtr	3-10	30%	1-2	50%	4-7	57%
1st Half	14-28	50%	6-12	50%	6-6	100%
2nd Half	8-22	36%	4-7	57%	6-9	67%
Game	22-50	44.0%	10-19	52.6%	12-15	80.0%

Deadball Rebounds: 1,1
Last FG: 4th-02:12
Biggest Run: 8-0
Largest lead: By 10 at 3-03
Technical Fouls: None.

Game Notes:

Officials: **Mark Zentz, Billy Smith, Pulani Spurlock**
Attendance: **11256**

Start Time: **01:03 PM ET**
End Time: **02:58 PM ET**
Game Duration: **1:55**

Score	1st	2nd	3rd	4th	TOT
UL	21	10	27	9	67
UK	16	24	15	11	66

UL led for 21:52. UK led for 14:58.
Game was tied for 3:11.
Times tied: 5 Lead Changes: 6

Points from	UL	UK
In the Paint	36	16
Off Turns	9	14
2nd Chance	11	6
Fast Break	6	2
Bench	16	7

Official Box Score
Louisville vs Kentucky
First Half Statistics Only
December 15, 2019 at Rupp Arena - Lexington



Louisville 31

No.	Player	S	Pts	FG	3FG	FT	OR	DR	TR	PF	A	TO	Blk	Stl	Min	+/-
01	EVANS, DANA	G	11	4-6	0-2	3-3	0	1	1	2	4	1	0	0	18	-4
02	DIOP, YACINE	G	0	0-0	0-0	0-0	1	0	1	0	1	1	0	0	1	-5
04	BALOGUN, ELIZABETH	G	2	1-4	0-2	0-0	1	0	1	1	1	1	0	0	17	-11
05	ROBINSON, MYKASA	G	2	1-2	0-0	0-0	0	0	0	0	0	1	0	0	4	-8
11	KONNO, NORIKA	G	0	0-0	0-0	0-0	0	0	0	0	0	0	0	0	3	2
21	SHOOK, KYLEE	F	0	0-3	0-1	0-0	1	3	4	2	0	1	1	0	13	-2
22	DIXON, ELIZABETH	F	6	3-6	0-0	0-0	1	0	1	2	0	1	0	0	8	-6
23	JONES, JAZMINE	G	4	2-3	0-0	0-0	1	3	4	2	1	1	0	0	19	-4
33	DUNHAM, BIONCA	F	6	3-3	0-0	0-0	0	1	1	1	0	1	1	1	17	-7
	TEAM		0	0-0	0-0	0-0	1	1	2	0	0	0	0	0	0	0
TOTALS			31	14-27	0-5	3-3	6	9	15	10	7	8	2	1	100	

Shooting By Period

Period	FG	FG%	3FG	3FG%	FT	FT%
1st Qtr	9-16	56%	0-4	00%	3-3	100%
2nd Qtr	5-11	45%	0-1	00%	0-0	0%
1st Half	14-27	52%	0-5	00%	3-3	100%
Game	29-56	51.8%	5-15	33.3%	4-4	100.0%

Deadball Rebounds: 1,1
Last FG Half: UL 2nd-00:14

Kentucky 40

No.	Player	S	Pts	FG	3FG	FT	OR	DR	TR	PF	A	TO	Blk	Stl	Min	+/-
01	HAINES, SABRINA	G	7	2-3	2-3	1-1	0	1	1	1	1	0	0	0	17	11
03	MCKINNEY, KEKE	F	6	2-3	2-3	0-0	0	1	1	0	0	0	0	0	17	4
05	GREEN, BLAIR	G	3	1-1	1-1	0-0	0	0	0	0	0	0	0	0	7	5
10	HOWARD, RHYNE	G	20	7-15	1-4	5-5	0	1	1	0	1	2	0	2	20	9
12	PASCHAL, AMANDA	G	0	0-1	0-0	0-0	1	1	2	1	2	1	1	0	10	-7
14	WYATT, TATYANA	F	2	1-4	0-1	0-0	2	1	3	0	0	0	0	0	14	6
21	ANYAGALIGBO, OGECHI	F	0	0-0	0-0	0-0	0	0	0	0	0	0	0	1	2	3
32	ROPER, JAIDA	G	2	1-1	0-0	0-0	0	0	0	0	3	1	0	0	13	14
	TEAM		0	0-0	0-0	0-0	1	1	2	0	0	0	0	0	0	0
TOTALS			40	14-28	6-12	6-6	4	6	10	2	7	4	1	3	100	

Shooting By Period

Period	FG	FG%	3FG	3FG%	FT	FT%
1st Qtr	6-16	38%	4-7	57%	0-0	0%
2nd Qtr	8-12	67%	2-5	40%	6-6	100%
1st Half	14-28	50%	6-12	50%	6-6	100%
Game	22-50	44.0%	10-19	52.6%	12-15	80.0%

Deadball Rebounds: 1,1
Last FG Half: UK 2nd-00:03

Game Notes:

Officials: Mark Zentz, Billy Smith, Pulani Spurlock
Attendance: 11256

Start Time: 01:03 PM ET
End Time: 02:58 PM ET
Game Duration: 1:55

Score	1st	2nd	3rd	4th	TOT
UL	21	10	27	9	67
UK	16	24	15	11	66

Points from (This Period)	UL	UK
In the Paint	22	10
Off Turns	4	10
2nd Chance	5	2
Fast Break	4	0
Bench	8	5

Official Box Score
Louisville vs Kentucky
First Quarter Statistics Only
December 15, 2019 at Rupp Arena - Lexington



Louisville 21

No.	Player	S	Pts	FG	3FG	FT	OR	DR	TR	PF	A	TO	Blk	Stl	Min	+/-	
01	EVANS, DANA	G	9	3-4	0-1	3-3	0	0	0	1	2	0	0	0	10	5	
04	BALOGUN, ELIZABETH	G	0	0-2	0-2	0-0	0	0	0	0	1	0	0	0	7	3	
21	SHOOK, KYLEE	F	0	0-2	0-1	0-0	1	3	4	1	0	1	1	0	6	5	
23	JONES, JAZMINE	G	4	2-3	0-0	0-0	1	1	2	0	1	0	0	0	10	5	
33	DUNHAM, BIONCA	F	2	1-1	0-0	0-0	0	1	1	0	0	0	1	1	10	5	
02	DIOP, YACINE	G	0	0-0	0-0	0-0	0	0	0	0	0	0	0	0	0	0	
05	ROBINSON, MYKASA	G	0	0-0	0-0	0-0	0	0	0	0	0	1	0	0	0	0	
11	KONNO, NORIKA	G	0	0-0	0-0	0-0	0	0	0	0	0	0	0	0	3	2	
22	DIXON, ELIZABETH	F	6	3-4	0-0	0-0	1	0	1	0	0	0	0	0	4	0	
TEAM							0	1	1	0	0						
TOTALS			21	9-16	0-4	3-3	3	6	9	2	4	2	2	1	50		

Shooting By Period

Period	FG	FG%	3FG	3FG%	FT	FT%
1st Qtr	9-16	56%	0-4	00%	3-3	100%
2nd Qtr	5-11	45%	0-1	00%	0-0	0%
1st Half	9-16	56%	0-4	00%	3-3	100%
1st Half	14-27	52%	0-5	00%	3-3	100%
Game	29-56	51.8%	5-15	33.3%	4-4	100.0%

Deadball Rebounds: 1,1

Kentucky 16

No.	Player	S	Pts	FG	3FG	FT	OR	DR	TR	PF	A	TO	Blk	Stl	Min	+/-	
01	HAINES, SABRINA	G	3	1-1	1-1	0-0	0	1	1	1	0	0	0	0	7	-3	
03	MCKINNEY, KEKE	F	6	2-3	2-3	0-0	0	0	0	0	0	0	0	0	9	-5	
10	HOWARD, RHYNE	G	5	2-8	1-2	0-0	0	1	1	0	0	2	0	1	10	-5	
12	PASCHAL, AMANDA	G	0	0-1	0-0	0-0	1	1	2	1	1	1	0	0	7	-7	
14	WYATT, TATYANA	F	0	0-2	0-1	0-0	2	1	3	0	0	0	0	0	6	-5	
05	GREEN, BLAIR	G	0	0-0	0-0	0-0	0	0	0	0	0	0	0	0	5	0	
21	ANYAGALIGBO, OGECHI	F	0	0-0	0-0	0-0	0	0	0	0	0	0	0	0	0	0	
32	ROPER, JAIDA	G	2	1-1	0-0	0-0	0	0	0	0	3	0	0	0	6	0	
TEAM							1	0	1	0	0						
TOTALS			16	6-16	4-7	0-0	4	4	8	2	4	3	0	1	50		

Shooting By Period

Period	FG	FG%	3FG	3FG%	FT	FT%
1st Qtr	6-16	38%	4-7	57%	0-0	0%
2nd Qtr	8-12	67%	2-5	40%	6-6	100%
1st Half	6-16	38%	4-7	57%	0-0	0%
1st Half	14-28	50%	6-12	50%	6-6	100%
Game	22-50	44.0%	10-19	52.6%	12-15	80.0%

Deadball Rebounds: 1,1

Game Notes:

Officials: Mark Zentz, Billy Smith, Pulani Spurlock
 Attendance: 11256

Start Time: 01:03 PM ET
 End Time: 02:58 PM ET
 Game Duration: 1:55

Score	1st	2nd	3rd	4th	TOT
UL	21	10	27	9	67
UK	16	24	15	11	66

Points from (This Period)	UL	UK
In the Paint	14	4
Off Turns	4	0
2nd Chance	5	2
Fast Break	4	0
Bench	6	2

Official Play-By-Play
Louisville vs Kentucky
First Quarter
December 15, 2019 at Rupp Arena - Lexington



Period 1

Starters:

Louisville: 1 EVANS, DANA (G); 4 BALOGUN, ELIZABETH (G); 21 SHOOK, KYLEE (F); 23 JONES, JAZMINE (G); 33 DUNHAM, BIONCA (F);
Kentucky: 1 HAINES, SABRINA (G); 3 MCKINNEY, KEKE (F); 10 HOWARD, RHYNE (G); 12 PASCHAL, AMANDA (G); 14 WYATT, TATYANA (F);

Time	VISITORS: Louisville	Score	Margin	HOME: Kentucky
09:42	MISSED JUMPER by JONES, JAZMINE			
09:39				REBOUND (DEF) by PASCHAL, AMANDA
09:28				MISSED JUMPER by HOWARD, RHYNE
09:25	REBOUND (DEF) by SHOOK, KYLEE			
09:14	GOOD! LAYUP by DUNHAM, BIONCA [PNT]	0-2	V 2	
08:42		3-2	H 1	GOOD! 3PTR by HAINES, SABRINA
08:42				ASSIST by PASCHAL, AMANDA
08:17	TURNOVER (TRAVEL) by SHOOK, KYLEE			
08:05				MISSED LAYUP by HOWARD, RHYNE
08:02	REBOUND (DEF) by SHOOK, KYLEE			
07:59	GOOD! LAYUP by JONES, JAZMINE [FB]	3-4	V 1	
07:59	ASSIST by EVANS, DANA			
07:49				MISSED LAYUP by HOWARD, RHYNE
07:49	BLOCK by SHOOK, KYLEE			
07:45				REBOUND (OFF) by TEAM
07:35				TURNOVER (LOSTBALL) by HOWARD, RHYNE
07:19	GOOD! LAYUP by JONES, JAZMINE [PNT]	3-6	V 3	
07:19	ASSIST by EVANS, DANA			
07:01	FOUL (PERSONAL) by SHOOK, KYLEE			
06:50				MISSED JUMPER by PASCHAL, AMANDA
06:46	REBOUND (DEF) by DUNHAM, BIONCA			
06:28	MISSED 3PTR by SHOOK, KYLEE			
06:25				REBOUND (DEF) by HOWARD, RHYNE
06:20				MISSED 3PTR by HOWARD, RHYNE
06:15				REBOUND (OFF) by WYATT, TATYANA
06:15				MISSED LAYUP by WYATT, TATYANA
06:15	BLOCK by DUNHAM, BIONCA			
06:13	REBOUND (DEF) by SHOOK, KYLEE			
06:05	GOOD! JUMPER by EVANS, DANA	3-8	V 5	
05:36				MISSED 3PTR by WYATT, TATYANA
05:34	REBOUND (DEF) by TEAM			
05:34				SUB OUT: PASCHAL, AMANDA
05:34				SUB IN: ROPER, JAIDA
05:24	MISSED 3PTR by BALOGUN, ELIZABETH			
05:21	REBOUND (OFF) by SHOOK, KYLEE			
05:21	MISSED LAYUP by SHOOK, KYLEE			
05:20				REBOUND (DEF) by WYATT, TATYANA
04:57				MISSED LAYUP by HOWARD, RHYNE
04:54				REBOUND (OFF) by WYATT, TATYANA
04:52	FOUL (PERSONAL) by EVANS, DANA			
04:52				
04:52				SUB OUT: MCKINNEY, KEKE
04:52				SUB IN: GREEN, BLAIR
04:38		5-8	V 3	GOOD! JUMPER by ROPER, JAIDA [PNT]
04:28	MISSED 3PTR by EVANS, DANA			
04:25	REBOUND (OFF) by JONES, JAZMINE			
04:08	GOOD! LAYUP by EVANS, DANA [PNT]	5-10	V 5	
04:08				FOUL (PERSONAL) by HAINES, SABRINA
04:08				SUB OUT: WYATT, TATYANA
04:08				SUB IN: MCKINNEY, KEKE
04:08	SUB OUT: SHOOK, KYLEE			
04:08	SUB IN: DIXON, ELIZABETH			
04:08	GOOD! FT by EVANS, DANA	5-11	V 6	
03:52		8-11	V 3	GOOD! 3PTR by MCKINNEY, KEKE
03:52				ASSIST by ROPER, JAIDA
03:39	MISSED 3PTR by BALOGUN, ELIZABETH			
03:36				REBOUND (DEF) by HAINES, SABRINA
03:18		10-11	V 1	GOOD! LAYUP by HOWARD, RHYNE [PNT]
03:02	GOOD! LAYUP by DIXON, ELIZABETH	10-13	V 3	
03:02	ASSIST by BALOGUN, ELIZABETH			
02:43				SUB OUT: HAINES, SABRINA
02:43				SUB IN: PASCHAL, AMANDA
02:43	SUB OUT: BALOGUN, ELIZABETH			
02:43	SUB IN: KONNO, NORIKA			
02:36		13-13	T	GOOD! 3PTR by HOWARD, RHYNE
02:36				ASSIST by ROPER, JAIDA
02:22	GOOD! LAYUP by DIXON, ELIZABETH [PNT]	13-15	V 2	
02:22	ASSIST by JONES, JAZMINE			
02:10		16-15	H 1	GOOD! 3PTR by MCKINNEY, KEKE
02:10				ASSIST by ROPER, JAIDA

Time	VISITORS: Louisville	Score	Margin	HOME: Kentucky
01:36	MISSED JUMPER by DIXON, ELIZABETH			
01:32	REBOUND (OFF) by DIXON, ELIZABETH			
01:32	GOOD! LAYUP by DIXON, ELIZABETH	16-17	V 1	
01:13				TURNOVER (LOSTBALL) by HOWARD, RHYNE
00:51	GOOD! JUMPER by EVANS, DANA	16-19	V 3	
00:29				MISSED LAYUP by HOWARD, RHYNE
00:26	REBOUND (DEF) by JONES, JAZMINE			
00:25				FOUL (PERSONAL) by PASCHAL, AMANDA
00:25	GOOD! FT by EVANS, DANA [FB]	16-20	V 4	
00:25	GOOD! FT by EVANS, DANA [FB]	16-21	V 5	
00:25	SUB OUT: EVANS, DANA			
00:25	SUB IN: ROBINSON, MYKASA			
00:06				MISSED 3PTR by MCKINNEY, KEKE
00:02				REBOUND (OFF) by PASCHAL, AMANDA
00:02				TURNOVER (LOSTBALL) by PASCHAL, AMANDA
00:02	STEAL by DUNHAM, BIONCA			
00:02	SUB OUT: KONNO, NORIKA			
00:02	SUB OUT: DIXON, ELIZABETH			
00:02	SUB IN: EVANS, DANA			
00:02	SUB IN: BALOGUN, ELIZABETH			
00:01	TURNOVER (BADPASS) by ROBINSON, MYKASA			
00:01				STEAL by HOWARD, RHYNE

Louisville 21, Kentucky 16

Points from (This Period)	UL	UK
In the Paint	14	4
Off Turns	4	0
2nd Chance	5	2
Fast Break	4	0
Bench	6	2

Official Box Score
Louisville vs Kentucky
Second Quarter Statistics Only
December 15, 2019 at Rupp Arena - Lexington



Louisville 10

No.	Player	S	Pts	FG	3FG	FT	OR	DR	TR	PF	A	TO	Blk	Stl	Min	+/-
01	EVANS, DANA	G	2	1-2	0-1	0-0	0	1	1	1	2	1	0	0	8	-9
04	BALOGUN, ELIZABETH	G	2	1-2	0-0	0-0	1	0	1	1	0	1	0	0	10	-14
21	SHOOK, KYLEE	F	0	0-1	0-0	0-0	0	0	0	1	0	0	0	0	7	-7
23	JONES, JAZMINE	G	0	0-0	0-0	0-0	0	2	2	2	0	1	0	0	9	-9
33	DUNHAM, BIONCA	F	4	2-2	0-0	0-0	0	0	0	1	0	1	0	0	7	-12
02	DIOP, YACINE	G	0	0-0	0-0	0-0	1	0	1	0	1	1	0	0	1	-5
05	ROBINSON, MYKASA	G	2	1-2	0-0	0-0	0	0	0	0	0	0	0	0	4	-8
11	KONNO, NORIKA	G	0	0-0	0-0	0-0	0	0	0	0	0	0	0	0	0	0
22	DIXON, ELIZABETH	F	0	0-2	0-0	0-0	0	0	0	2	0	1	0	0	4	-6
TEAM							1	0	1	0	0					
TOTALS			10	5-11	0-1	0-0	3	3	6	8	3	6	0	0	50	

Shooting By Period

Period	FG	FG%	3FG	3FG%	FT	FT%
3rd Qtr	11-17	65%	4-6	67%	1-1	100%
4th Qtr	4-12	33%	1-4	25%	0-0	0%
2nd Half	5-11	45%	0-1	00%	0-0	0%
2nd Half	15-29	52%	5-10	50%	1-1	100%
Game	29-56	51.8%	5-15	33.3%	4-4	100.0%

Deadball Rebounds: 1,1

Kentucky 24

No.	Player	S	Pts	FG	3FG	FT	OR	DR	TR	PF	A	TO	Blk	Stl	Min	+/-
01	HAINES, SABRINA	G	4	1-2	1-2	1-1	0	0	0	0	1	0	0	0	10	14
03	MCKINNEY, KEKE	F	0	0-0	0-0	0-0	0	1	1	0	0	0	0	0	8	9
10	HOWARD, RHYNE	G	15	5-7	0-2	5-5	0	0	0	0	1	0	0	1	10	14
12	PASCHAL, AMANDA	G	0	0-0	0-0	0-0	0	0	0	0	1	0	1	0	3	0
14	WYATT, TATYANA	F	2	1-2	0-0	0-0	0	0	0	0	0	0	0	0	8	11
05	GREEN, BLAIR	G	3	1-1	1-1	0-0	0	0	0	0	0	0	0	0	2	5
21	ANYAGALIGBO, OGECHI	F	0	0-0	0-0	0-0	0	0	0	0	0	0	0	1	2	3
32	ROPER, JAIDA	G	0	0-0	0-0	0-0	0	0	0	0	0	1	0	0	7	14
TEAM							0	1	1	0	0					
TOTALS			24	8-12	2-5	6-6	0	2	2	0	3	1	1	2	50	

Shooting By Period

Period	FG	FG%	3FG	3FG%	FT	FT%
3rd Qtr	5-12	42%	3-5	60%	2-2	100%
4th Qtr	3-10	30%	1-2	50%	4-7	57%
2nd Half	8-12	67%	2-5	40%	6-6	100%
2nd Half	8-22	36%	4-7	57%	6-9	67%
Game	22-50	44.0%	10-19	52.6%	12-15	80.0%

Deadball Rebounds: 1,1

Game Notes:

Officials: **Mark Zentz, Billy Smith, Pulani Spurlock**
 Attendance: **11256**

Start Time: **01:03 PM ET**
 End Time: **02:58 PM ET**
 Game Duration: **1:55**

Score	1st	2nd	3rd	4th	TOT
UL	21	10	27	9	67
UK	16	24	15	11	66

Points from (This Period)	UL	UK
In the Paint	8	6
Off Turns	0	10
2nd Chance	0	0
Fast Break	0	0
Bench	2	3

Official Play-By-Play
Louisville vs Kentucky
Second Quarter
December 15, 2019 at Rupp Arena - Lexington



Period 2

Starters:

Louisville: 1 EVANS, DANA (G); 4 BALOGUN, ELIZABETH (G); 21 SHOOK, KYLEE (F); 23 JONES, JAZMINE (G); 33 DUNHAM, BIONCA (F);
Kentucky: 1 HAINES, SABRINA (G); 3 MCKINNEY, KEKE (F); 10 HOWARD, RHYNE (G); 12 PASCHAL, AMANDA (G); 14 WYATT, TATYANA (F);

Time	VISITORS: Louisville	Score	Margin	HOME: Kentucky
10:00				SUB OUT: GREEN, BLAIR
10:00				SUB OUT: PASCHAL, AMANDA
10:00				SUB IN: HAINES, SABRINA
10:00				SUB IN: WYATT, TATYANA
09:50		18-21	V 3	GOOD! LAYUP by HOWARD, RHYNE [PNT]
09:28	GOOD! JUMPER by DUNHAM, BIONCA	18-23	V 5	
09:28	ASSIST by EVANS, DANA			
09:04				TURNOVER (DRIBBLING) by ROPER, JAIDA
08:43	FOUL (OFF) by DUNHAM, BIONCA			
08:43	TURNOVER (OFFENSIVE) by DUNHAM, BIONCA			
08:27		20-23	V 3	GOOD! JUMPER by HOWARD, RHYNE [PNT]
08:27	FOUL (PERSONAL) by BALOGUN, ELIZABETH			
08:27		21-23	V 2	GOOD! FT by HOWARD, RHYNE
08:05	TURNOVER (OTHER) by BALOGUN, ELIZABETH			
08:05	SUB OUT: ROBINSON, MYKASA			
08:05	SUB OUT: DUNHAM, BIONCA			
08:05	SUB IN: SHOOK, KYLEE			
08:05	SUB IN: DIXON, ELIZABETH			
07:37		23-23	T	GOOD! JUMPER by HOWARD, RHYNE
07:37				ASSIST by HAINES, SABRINA
07:08	GOOD! LAYUP by EVANS, DANA [PNT]	23-25	V 2	
06:33				MISSED 3PTR by HOWARD, RHYNE
06:31	REBOUND (DEF) by TEAM			
06:17	MISSED LAYUP by BALOGUN, ELIZABETH			
06:13				REBOUND (DEF) by TEAM
06:00	FOUL (PERSONAL) by DIXON, ELIZABETH			
05:49		25-25	T	GOOD! JUMPER by HOWARD, RHYNE
05:29	MISSED JUMPER by DIXON, ELIZABETH			
05:26				REBOUND (DEF) by MCKINNEY, KEKE
05:13	FOUL (PERSONAL) by SHOOK, KYLEE			
05:13	SUB OUT: SHOOK, KYLEE			
05:13	SUB IN: DUNHAM, BIONCA			
05:07		28-25	H 3	GOOD! 3PTR by HAINES, SABRINA
05:07	FOUL (PERSONAL) by JONES, JAZMINE			
05:07		29-25	H 4	GOOD! FT by HAINES, SABRINA
04:46	FOUL (OFF) by DIXON, ELIZABETH			
04:46	TURNOVER (OFFENSIVE) by DIXON, ELIZABETH			
04:46				SUB OUT: ROPER, JAIDA
04:46				SUB IN: PASCHAL, AMANDA
04:32				MISSED 3PTR by HAINES, SABRINA
04:28	REBOUND (DEF) by JONES, JAZMINE			
04:14	MISSED 3PTR by EVANS, DANA			
04:11	REBOUND (OFF) by BALOGUN, ELIZABETH			
03:51	MISSED JUMPER by DIXON, ELIZABETH			
03:51				BLOCK by PASCHAL, AMANDA
03:51				REBOUND (DEF) by TEAM
03:51	SUB OUT: DIXON, ELIZABETH			
03:51	SUB IN: SHOOK, KYLEE			
03:35		31-25	H 6	GOOD! JUMPER by WYATT, TATYANA [PNT]
03:35				ASSIST by PASCHAL, AMANDA
03:20	GOOD! LAYUP by DUNHAM, BIONCA [PNT]	31-27	H 4	
03:20	ASSIST by EVANS, DANA			
02:59				MISSED 3PTR by HOWARD, RHYNE
02:56	REBOUND (DEF) by EVANS, DANA			
02:49	TURNOVER (LOSTBALL) by EVANS, DANA			
02:22				MISSED JUMPER by WYATT, TATYANA
02:18	REBOUND (DEF) by JONES, JAZMINE			
02:15	TURNOVER (BADPASS) by JONES, JAZMINE			
02:15				STEAL by HOWARD, RHYNE
02:06	FOUL (PERSONAL) by EVANS, DANA			
02:06				SUB OUT: MCKINNEY, KEKE
02:06				SUB OUT: PASCHAL, AMANDA
02:06				SUB IN: GREEN, BLAIR
02:06				SUB IN: ROPER, JAIDA
02:06	SUB OUT: EVANS, DANA			
02:06	SUB IN: ROBINSON, MYKASA			
02:06		32-27	H 5	GOOD! FT by HOWARD, RHYNE
02:06		33-27	H 6	GOOD! FT by HOWARD, RHYNE
02:06				TIMEOUT 30SEC

Time	VISITORS: Louisville	Score	Margin	HOME: Kentucky
02:06				SUB OUT: WYATT, TATYANA
02:06				SUB IN: ANYAGALIGBO, OGECHI
01:46	GOOD! LAYUP by ROBINSON, MYKASA [PNT]	33-29	H 4	
01:15	FOUL (PERSONAL) by JONES, JAZMINE			
01:15	SUB OUT: JONES, JAZMINE			
01:15	SUB IN: DIOP, YACINE			
01:15		34-29	H 5	GOOD! FT by HOWARD, RHYNE
01:15		35-29	H 6	GOOD! FT by HOWARD, RHYNE
00:56	MISSED JUMPER by ROBINSON, MYKASA			
00:53	REBOUND (OFF) by TEAM			
00:48	MISSED LAYUP by SHOOK, KYLEE			
00:45	REBOUND (OFF) by DIOP, YACINE			
00:44	TURNOVER (LOSTBALL) by DIOP, YACINE			
00:44				STEAL by ANYAGALIGBO, OGECHI
00:33		38-29	H 9	GOOD! 3PTR by GREEN, BLAIR
00:33				ASSIST by HOWARD, RHYNE
00:14	GOOD! LAYUP by BALOGUN, ELIZABETH [PNT]	38-31	H 7	
00:14	ASSIST by DIOP, YACINE			
00:03		40-31	H 9	GOOD! JUMPER by HOWARD, RHYNE

Louisville 31, Kentucky 40

Points from (This Period)	UL	UK
In the Paint	8	6
Off Turns	0	10
2nd Chance	0	0
Fast Break	0	0
Bench	2	3

Official Box Score
Louisville vs Kentucky
Second Half Statistics Only
December 15, 2019 at Rupp Arena - Lexington



Louisville 36

No.	Player	S	Pts	FG	3FG	FT	OR	DR	TR	PF	A	TO	Blk	Stl	Min	+/-
01	EVANS, DANA	G	7	3-8	1-4	0-0	1	1	2	1	6	2	0	0	20	10
02	DIOP, YACINE	G	8	3-6	1-1	1-1	2	3	5	2	1	2	0	0	18	10
04	BALOGUN, ELIZABETH	G	0	0-1	0-1	0-0	0	0	0	1	0	0	0	0	2	0
05	ROBINSON, MYKASA	G	0	0-0	0-0	0-0	0	0	0	0	0	0	0	0	0	0
11	KONNO, NORIKA	G	0	0-0	0-0	0-0	0	0	0	0	0	0	0	0	0	0
21	SHOOK, KYLEE	F	11	4-6	3-4	0-0	2	7	9	0	1	1	4	1	20	10
22	DIXON, ELIZABETH	F	0	0-0	0-0	0-0	0	0	0	0	0	0	0	0	0	0
23	JONES, JAZMINE	G	6	3-6	0-0	0-0	0	1	1	2	3	2	0	0	20	10
33	DUNHAM, BIONCA	F	4	2-2	0-0	0-0	2	0	2	3	0	0	0	0	20	10
	TEAM		0	0-0	0-0	0-0	2	1	3	0	0	0	0	0	0	0
TOTALS			36	15-29	5-10	1-1	9	13	22	9	11	7	4	1	100	

Shooting By Period

Period	FG	FG%	3FG	3FG%	FT	FT%
3rd Qtr	11-17	65%	4-6	67%	1-1	100%
4th Qtr	4-12	33%	1-4	25%	0-0	0%
2nd Half	15-29	52%	5-10	50%	1-1	100%
Game	29-56	51.8%	5-15	33.3%	4-4	100.0%

Deadball Rebounds: 1,1
Last FG Half: UL 4th-01:51

Kentucky 26

No.	Player	S	Pts	FG	3FG	FT	OR	DR	TR	PF	A	TO	Blk	Stl	Min	+/-
01	HAINES, SABRINA	G	5	1-5	1-3	2-3	0	0	0	1	3	0	0	1	18	-11
03	MCKINNEY, KEKE	F	3	1-2	1-1	0-0	0	0	0	1	0	0	1	1	17	-2
05	GREEN, BLAIR	G	0	0-0	0-0	0-0	0	0	0	0	0	0	0	0	3	-8
10	HOWARD, RHYNE	G	6	2-8	0-1	2-3	1	2	3	3	1	3	0	0	18	-10
12	PASCHAL, AMANDA	G	0	0-1	0-0	0-0	0	0	0	0	0	0	0	1	8	-2
14	WYATT, TATYANA	F	10	4-4	2-2	0-0	1	1	2	0	0	0	0	0	14	-10
21	ANYAGALIGBO, OGECHI	F	0	0-0	0-0	0-0	1	0	1	0	0	1	0	1	6	0
32	ROPER, JAIDA	G	2	0-2	0-0	2-3	0	1	1	2	0	0	0	0	16	-7
	TEAM		0	0-0	0-0	0-0	0	0	0	0	0	0	0	0	0	0
TOTALS			26	8-22	4-7	6-9	3	4	7	7	4	4	1	4	100	

Shooting By Period

Period	FG	FG%	3FG	3FG%	FT	FT%
3rd Qtr	5-12	42%	3-5	60%	2-2	100%
4th Qtr	3-10	30%	1-2	50%	4-7	57%
2nd Half	8-22	36%	4-7	57%	6-9	67%
Game	22-50	44.0%	10-19	52.6%	12-15	80.0%

Deadball Rebounds: 1,1
Last FG Half: UK 4th-02:12

Game Notes:

Officials: **Mark Zentz, Billy Smith, Pulani Spurlock**
 Attendance: **11256**

Start Time: **01:03 PM ET**
 End Time: **02:58 PM ET**
 Game Duration: **1:55**

Score	1st	2nd	3rd	4th	TOT
UL	21	10	27	9	67
UK	16	24	15	11	66

Points from (This Period)	UL	UK
In the Paint	14	6
Off Turns	5	4
2nd Chance	6	4
Fast Break	2	2
Bench	8	2

Official Box Score
Louisville vs Kentucky
Third Quarter Statistics Only
December 15, 2019 at Rupp Arena - Lexington



Louisville 36

No.	Player	S	Pts	FG	3FG	FT	OR	DR	TR	PF	A	TO	Blk	Stl	Min	+/-
01	EVANS, DANA	G	7	3-5	1-2	0-0	0	1	1	0	5	0	0	0	10	12
04	BALOGUN, ELIZABETH	G	0	0-1	0-1	0-0	0	0	0	1	0	0	0	0	2	0
21	SHOOK, KYLEE	F	6	2-3	2-2	0-0	2	4	6	0	1	1	1	1	10	12
23	JONES, JAZMINE	G	4	2-3	0-0	0-0	0	0	0	0	2	0	0	0	10	12
33	DUNHAM, BIONCA	F	4	2-2	0-0	0-0	0	0	0	2	0	0	0	0	10	12
02	DIOP, YACINE	G	6	2-3	1-1	1-1	0	1	1	1	0	1	0	0	8	12
05	ROBINSON, MYKASA	G	0	0-0	0-0	0-0	0	0	0	0	0	0	0	0	0	0
11	KONNO, NORIKA	G	0	0-0	0-0	0-0	0	0	0	0	0	0	0	0	0	0
22	DIXON, ELIZABETH	F	0	0-0	0-0	0-0	0	0	0	0	0	0	0	0	0	0
TEAM							1	0	1	0						
TOTALS			27	11-17	4-6	1-1	3	6	9	4	8	2	1	1	50	

Shooting By Period

Period	FG	FG%	3FG	3FG%	FT	FT%
2nd Half	0-0	0%	0-0	0%	0-0	0%
Game	29-56	51.8%	5-15	33.3%	4-4	100.0%

Deadball Rebounds: 1,1

Kentucky 26

No.	Player	S	Pts	FG	3FG	FT	OR	DR	TR	PF	A	TO	Blk	Stl	Min	+/-
01	HAINES, SABRINA	G	3	1-4	1-3	0-0	0	0	0	1	3	0	0	0	10	-12
03	MCKINNEY, KEKE	F	0	0-0	0-0	0-0	0	0	0	0	0	0	0	1	7	-4
10	HOWARD, RHYNE	G	2	0-1	0-0	2-2	0	2	2	2	0	2	0	0	10	-12
12	PASCHAL, AMANDA	G	0	0-1	0-0	0-0	0	0	0	0	0	0	0	0	4	-3
14	WYATT, TATYANA	F	10	4-4	2-2	0-0	1	0	1	0	0	0	0	0	10	-12
05	GREEN, BLAIR	G	0	0-0	0-0	0-0	0	0	0	0	0	0	0	0	3	-8
21	ANYAGALIGBO, OGECHI	F	0	0-0	0-0	0-0	0	0	0	0	0	0	0	0	0	0
32	ROPER, JAIDA	G	0	0-2	0-0	0-0	0	0	0	1	0	0	0	0	6	-9
TEAM							0	0	0	0						
TOTALS			15	5-12	3-5	2-2	1	2	3	4	3	2	0	1	50	

Shooting By Period

Period	FG	FG%	3FG	3FG%	FT	FT%
2nd Half	0-0	0%	0-0	0%	0-0	0%
Game	22-50	44.0%	10-19	52.6%	12-15	80.0%

Deadball Rebounds: 1,1

Game Notes:

Officials: **Mark Zentz, Billy Smith, Pulani Spurlock**
 Attendance: 11256

Start Time: **01:03 PM ET**
 End Time: **02:58 PM ET**
 Game Duration: 1:55

Score	1st	2nd	3rd	4th	TOT
UL	21	10	27	9	67
UK	16	24	15	11	66

Points from (This Period)	UL	UK
In the Paint	14	4
Off Turns	3	0
2nd Chance	4	2
Fast Break	2	2
Bench	6	0

Official Play-By-Play
Louisville vs Kentucky
Third Quarter
December 15, 2019 at Rupp Arena - Lexington



Period 3

Starters:

Louisville: 1 EVANS, DANA (G); 4 BALOGUN, ELIZABETH (G); 21 SHOOK, KYLEE (F); 23 JONES, JAZMINE (G); 33 DUNHAM, BIONCA (F);
Kentucky: 1 HAINES, SABRINA (G); 3 MCKINNEY, KEKE (F); 10 HOWARD, RHYNE (G); 12 PASCHAL, AMANDA (G); 14 WYATT, TATYANA (F);

Time	VISITORS: Louisville	Score	Margin	HOME: Kentucky
10:00				SUB OUT: GREEN, BLAIR
10:00				SUB OUT: ANYAGALIGBO, OGECHI
10:00				SUB OUT: ROPER, JAIDA
10:00				SUB IN: MCKINNEY, KEKE
10:00				SUB IN: PASCHAL, AMANDA
10:00				SUB IN: WYATT, TATYANA
10:00	SUB OUT: DIOP, YACINE			
10:00	SUB OUT: ROBINSON, MYKASA			
10:00	SUB IN: EVANS, DANA			
10:00	SUB IN: JONES, JAZMINE			
09:35	GOOD! 3PTR by EVANS, DANA	40-34	H 6	
09:11		43-34	H 9	GOOD! 3PTR by WYATT, TATYANA
09:11				ASSIST by HAINES, SABRINA
08:53	TIMEOUT 30SEC			
08:38	GOOD! LAYUP by DUNHAM, BIONCA [PNT]	43-36	H 7	
08:38	ASSIST by EVANS, DANA			
08:13	FOUL (PERSONAL) by DUNHAM, BIONCA			
08:13		44-36	H 8	GOOD! FT by HOWARD, RHYNE
08:13		45-36	H 9	GOOD! FT by HOWARD, RHYNE
07:58	MISSED 3PTR by BALOGUN, ELIZABETH			
07:55				REBOUND (DEF) by HOWARD, RHYNE
07:35	FOUL (PERSONAL) by BALOGUN, ELIZABETH			
07:35	SUB OUT: BALOGUN, ELIZABETH			
07:35	SUB IN: DIOP, YACINE			
07:17				MISSED JUMPER by HAINES, SABRINA
07:15	REBOUND (DEF) by SHOOK, KYLEE			
07:09	GOOD! LAYUP by JONES, JAZMINE [FB/PNT]	45-38	H 7	
07:09	ASSIST by EVANS, DANA			
06:37				MISSED JUMPER by PASCHAL, AMANDA
06:32				REBOUND (OFF) by WYATT, TATYANA
06:32		47-38	H 9	GOOD! LAYUP by WYATT, TATYANA
06:17	GOOD! 3PTR by SHOOK, KYLEE	47-41	H 6	
06:17	ASSIST by JONES, JAZMINE			
05:51				TURNOVER (LOSTBALL) by HOWARD, RHYNE
05:51	STEAL by SHOOK, KYLEE			
05:40	TURNOVER (LOSTBALL) by SHOOK, KYLEE			
05:40				STEAL by MCKINNEY, KEKE
05:40				SUB OUT: PASCHAL, AMANDA
05:40				SUB IN: ROPER, JAIDA
05:21				MISSED 3PTR by HAINES, SABRINA
05:18	REBOUND (DEF) by SHOOK, KYLEE			
05:01	GOOD! LAYUP by EVANS, DANA [PNT]	47-43	H 4	
04:54		49-43	H 6	GOOD! LAYUP by WYATT, TATYANA [FB]
04:54				ASSIST by HAINES, SABRINA
04:40	MISSED 3PTR by EVANS, DANA			
04:36	REBOUND (OFF) by SHOOK, KYLEE			
04:34	GOOD! JUMPER by JONES, JAZMINE [PNT]	49-45	H 4	
04:34	ASSIST by SHOOK, KYLEE			
04:12		52-45	H 7	GOOD! 3PTR by WYATT, TATYANA
04:12				ASSIST by HAINES, SABRINA
03:49				
03:48				SUB OUT: MCKINNEY, KEKE
03:48				SUB IN: GREEN, BLAIR
03:38	MISSED JUMPER by JONES, JAZMINE			
03:35				REBOUND (DEF) by HOWARD, RHYNE
03:14		55-45	H 10	GOOD! 3PTR by HAINES, SABRINA
03:00	GOOD! LAYUP by EVANS, DANA [PNT]	55-47	H 8	
02:39				MISSED LAYUP by ROPER, JAIDA
02:36	REBOUND (DEF) by SHOOK, KYLEE			
02:32	GOOD! JUMPER by DIOP, YACINE [PNT]	55-49	H 6	
02:32	ASSIST by JONES, JAZMINE			
02:32				FOUL (PERSONAL) by HOWARD, RHYNE
02:32	GOOD! FT by DIOP, YACINE	55-50	H 5	
02:08				MISSED JUMPER by HOWARD, RHYNE
02:08	BLOCK by SHOOK, KYLEE			
02:03	REBOUND (DEF) by EVANS, DANA			
01:59	GOOD! 3PTR by DIOP, YACINE	55-53	H 2	
01:59	ASSIST by EVANS, DANA			
01:55				TIMEOUT 30SEC
01:44	FOUL (PERSONAL) by DIOP, YACINE			

Time	VISITORS: Louisville	Score	Margin	HOME: Kentucky
01:44				FOUL (OFF) by HOWARD, RHYNE
01:44				TURNOVER (OFFENSIVE) by HOWARD, RHYNE
01:31	GOOD! 3PTR by SHOOK, KYLEE	55-56	V 1	
01:31	ASSIST by EVANS, DANA			
01:16	FOUL (PERSONAL) by DUNHAM, BIONCA			
01:16				SUB OUT: GREEN, BLAIR
01:16				SUB IN: MCKINNEY, KEKE
01:01				MISSED 3PTR by HAINES, SABRINA
00:57	REBOUND (DEF) by DIOP, YACINE			
00:55	TURNOVER (LOSTBALL) by DIOP, YACINE			
00:26				MISSED LAYUP by ROPER, JAIDA
00:23	REBOUND (DEF) by SHOOK, KYLEE			
00:20	MISSED LAYUP by DIOP, YACINE			
00:20	REBOUND (OFF) by TEAM			
00:20				FOUL (PERSONAL) by HAINES, SABRINA
00:20				FOUL (PERSONAL) by ROPER, JAIDA
00:18	MISSED JUMPER by SHOOK, KYLEE			
00:14	REBOUND (OFF) by SHOOK, KYLEE			
00:04	MISSED JUMPER by EVANS, DANA			
00:01	REBOUND (OFF) by TEAM			
00:00	GOOD! JUMPER by DUNHAM, BIONCA [PNT]	55-58	V 3	
00:00	ASSIST by EVANS, DANA			

Louisville 58, Kentucky 55

Points from (This Period)	UL	UK
In the Paint	14	4
Off Turns	3	0
2nd Chance	4	2
Fast Break	2	2
Bench	6	0

Official Box Score
Louisville vs Kentucky
Fourth Quarter Statistics Only
December 15, 2019 at Rupp Arena - Lexington



Louisville 9

No.	Player	S	Pts	FG	3FG	FT	OR	DR	TR	PF	A	TO	Blk	Stl	Min	+/-
01	EVANS, DANA	G	0	0-3	0-2	0-0	1	0	1	1	1	2	0	0	10	-2
04	BALOGUN, ELIZABETH	G	0	0-0	0-0	0-0	0	0	0	0	0	0	0	0	0	0
21	SHOOK, KYLEE	F	5	2-3	1-2	0-0	0	3	3	0	0	0	3	0	10	-2
23	JONES, JAZMINE	G	2	1-3	0-0	0-0	0	1	1	2	1	2	0	0	10	-2
33	DUNHAM, BIONCA	F	0	0-0	0-0	0-0	2	0	2	1	0	0	0	0	10	-2
02	DIOP, YACINE	G	2	1-3	0-0	0-0	2	2	4	1	1	1	0	0	10	-2
05	ROBINSON, MYKASA	G	0	0-0	0-0	0-0	0	0	0	0	0	0	0	0	0	0
11	KONNO, NORIKA	G	0	0-0	0-0	0-0	0	0	0	0	0	0	0	0	0	0
22	DIXON, ELIZABETH	F	0	0-0	0-0	0-0	0	0	0	0	0	0	0	0	0	0
	TEAM						1	1	2	0		0				
TOTALS			9	4-12	1-4	0-0	6	7	13	5	3	5	3	0	50	

Shooting By Period

Period	FG	FG%	3FG	3FG%	FT	FT%
Game	29-56	51.8%	5-15	33.3%	4-4	100.0%

Deadball Rebounds: 1,1

Kentucky 11

No.	Player	S	Pts	FG	3FG	FT	OR	DR	TR	PF	A	TO	Blk	Stl	Min	+/-
01	HAINES, SABRINA	G	2	0-1	0-0	2-3	0	0	0	0	0	0	0	1	8	1
03	MCKINNEY, KEKE	F	3	1-2	1-1	0-0	0	0	0	1	0	0	1	0	10	2
10	HOWARD, RHYNE	G	4	2-7	0-1	0-1	1	0	1	1	1	1	0	0	8	2
12	PASCHAL, AMANDA	G	0	0-0	0-0	0-0	0	0	0	0	0	0	0	1	4	1
14	WYATT, TATYANA	F	0	0-0	0-0	0-0	0	1	1	0	0	0	0	0	4	2
05	GREEN, BLAIR	G	0	0-0	0-0	0-0	0	0	0	0	0	0	0	0	0	0
21	ANYAGALIGBO, OGECHI	F	0	0-0	0-0	0-0	1	0	1	0	0	1	0	1	6	0
32	ROPER, JAIDA	G	2	0-0	0-0	2-3	0	1	1	1	0	0	0	0	10	2
	TEAM						0	0	0	0		0				
TOTALS			11	3-10	1-2	4-7	2	2	4	3	1	2	1	3	50	

Shooting By Period

Period	FG	FG%	3FG	3FG%	FT	FT%
Game	22-50	44.0%	10-19	52.6%	12-15	80.0%

Deadball Rebounds: 1,1

Game Notes:

Officials: Mark Zentz, Billy Smith, Pulani Spurlock

Attendance: 11256

Start Time: 01:03 PM ET

End Time: 02:58 PM ET

Game Duration: 1:55

Score	1st	2nd	3rd	4th	TOT
UL	21	10	27	9	67
UK	16	24	15	11	66

Points from (This Period)	UL	UK
In the Paint	0	2
Off Turns	2	4
2nd Chance	2	2
Fast Break	0	0
Bench	2	2

Official Play-By-Play
Louisville vs Kentucky
Fourth Quarter
December 15, 2019 at Rupp Arena - Lexington



Period 4

Starters:

Louisville: 1 EVANS, DANA (G); 4 BALOGUN, ELIZABETH (G); 21 SHOOK, KYLEE (F); 23 JONES, JAZMINE (G); 33 DUNHAM, BIONCA (F);
Kentucky: 1 HAINES, SABRINA (G); 3 MCKINNEY, KEKE (F); 10 HOWARD, RHYNE (G); 12 PASCHAL, AMANDA (G); 14 WYATT, TATYANA (F);

Time	VISITORS: Louisville	Score	Margin	HOME: Kentucky
09:39				MISSED LAYUP by HOWARD, RHYNE
09:39	BLOCK by SHOOK, KYLEE			
09:35	REBOUND (DEF) by SHOOK, KYLEE			
09:31	MISSED LAYUP by DIOP, YACINE			
09:31				BLOCK by MCKINNEY, KEKE
09:26	REBOUND (OFF) by DIOP, YACINE			
09:18	MISSED 3PTR by SHOOK, KYLEE			
09:14	REBOUND (OFF) by EVANS, DANA			
09:03	MISSED 3PTR by EVANS, DANA			
08:59				REBOUND (DEF) by ROPER, JAIDA
08:32				MISSED JUMPER by HAINES, SABRINA
08:32	BLOCK by SHOOK, KYLEE			
08:28	REBOUND (DEF) by SHOOK, KYLEE			
08:03	MISSED JUMPER by JONES, JAZMINE			
08:00	REBOUND (OFF) by DIOP, YACINE			
07:47	TURNOVER (LOSTBALL) by EVANS, DANA			
07:47				STEAL by HAINES, SABRINA
07:17	FOUL (PERSONAL) by EVANS, DANA			
07:17				SUB OUT: HOWARD, RHYNE
07:17				SUB OUT: WYATT, TATYANA
07:17				SUB IN: PASCHAL, AMANDA
07:17				SUB IN: ANYAGALIGBO, OGECHI
07:01	FOUL (PERSONAL) by DIOP, YACINE			
07:01		56-58	V 2	GOOD! FT by ROPER, JAIDA
07:01		57-58	V 1	GOOD! FT by ROPER, JAIDA
07:01				MISSED FT by ROPER, JAIDA
07:00	REBOUND (DEF) by DIOP, YACINE			
06:44				FOUL (PERSONAL) by MCKINNEY, KEKE
06:42	TURNOVER (BADPASS) by JONES, JAZMINE			
06:42				STEAL by ANYAGALIGBO, OGECHI
06:22				MISSED JUMPER by MCKINNEY, KEKE
06:22	BLOCK by SHOOK, KYLEE			
06:20	REBOUND (DEF) by TEAM			
06:04	GOOD! JUMPER by DIOP, YACINE	57-60	V 3	
06:04	ASSIST by JONES, JAZMINE			
05:40				TURNOVER (TRAVEL) by ANYAGALIGBO, OGECHI
05:40				SUB OUT: HAINES, SABRINA
05:40				SUB IN: HOWARD, RHYNE
05:21	GOOD! JUMPER by JONES, JAZMINE	57-62	V 5	
04:52		60-62	V 2	GOOD! 3PTR by MCKINNEY, KEKE
04:52				ASSIST by HOWARD, RHYNE
04:32	TURNOVER (LOSTBALL) by EVANS, DANA			
04:32				STEAL by PASCHAL, AMANDA
04:09				MISSED JUMPER by HOWARD, RHYNE
04:06	REBOUND (DEF) by SHOOK, KYLEE			
03:44	TURNOVER (DRIBBLING) by DIOP, YACINE			
03:43				
03:43				SUB OUT: PASCHAL, AMANDA
03:43				SUB IN: HAINES, SABRINA
03:27				MISSED JUMPER by HOWARD, RHYNE
03:23				REBOUND (OFF) by ANYAGALIGBO, OGECHI
03:21				MISSED JUMPER by HOWARD, RHYNE
03:16				REBOUND (OFF) by HOWARD, RHYNE
03:16		62-62	T	GOOD! LAYUP by HOWARD, RHYNE
03:15	FOUL (PERSONAL) by DUNHAM, BIONCA			
03:15				MISSED FT by HOWARD, RHYNE
03:15	REBOUND (DEF) by DIOP, YACINE			
02:56	MISSED JUMPER by DIOP, YACINE			
02:53	REBOUND (OFF) by DUNHAM, BIONCA			
02:40	MISSED JUMPER by EVANS, DANA			
02:38	REBOUND (OFF) by DUNHAM, BIONCA			
02:39				FOUL (PERSONAL) by ROPER, JAIDA
02:37	GOOD! JUMPER by SHOOK, KYLEE	62-64	V 2	
02:37	ASSIST by DIOP, YACINE			
02:12		64-64	T	GOOD! JUMPER by HOWARD, RHYNE
01:51	GOOD! 3PTR by SHOOK, KYLEE	64-67	V 3	
01:51	ASSIST by EVANS, DANA			
01:33	FOUL (PERSONAL) by JONES, JAZMINE			
01:33				SUB OUT: ANYAGALIGBO, OGECHI
01:33				SUB IN: WYATT, TATYANA

Time	VISITORS: Louisville	Score	Margin	HOME: Kentucky
01:33				MISSED FT by HAINES, SABRINA
01:33				REBOUND (OFF) by TEAM
01:33		65-67	V 2	GOOD! FT by HAINES, SABRINA
01:33		66-67	V 1	GOOD! FT by HAINES, SABRINA
01:20				FOUL (PERSONAL) by HOWARD, RHYNE
01:08	MISSED JUMPER by JONES, JAZMINE			
01:06	REBOUND (OFF) by TEAM			
01:02	FOUL (OFF) by JONES, JAZMINE			
01:02	TURNOVER (OFFENSIVE) by JONES, JAZMINE			
00:39				TURNOVER (BADPASS) by HOWARD, RHYNE
00:15	MISSED 3PTR by EVANS, DANA			
00:11				REBOUND (DEF) by WYATT, TATYANA
00:03				MISSED 3PTR by HOWARD, RHYNE
00:00	REBOUND (DEF) by JONES, JAZMINE			

Louisville 67, Kentucky 66

Points from (This Period)	UL	UK
In the Paint	0	2
Off Turns	2	4
2nd Chance	2	2
Fast Break	0	0
Bench	2	2

Official Scoring/Possession Reference Chart
Louisville vs Kentucky
Period 1
December 15, 2019 at Rupp Arena - Lexington



Period 1

Starters:

Louisville: 1 EVANS, DANA (G); 4 BALOGUN, ELIZABETH (G); 21 SHOOK, KYLEE (F); 23 JONES, JAZMINE (G); 33 DUNHAM, BIONCA (F);
Kentucky: 1 HAINES, SABRINA (G); 3 MCKINNEY, KEKE (F); 10 HOWARD, RHYNE (G); 12 PASCHAL, AMANDA (G); 14 WYATT, TATYANA (F);

Time	VISITORS: Louisville	Score	Margin	HOME: Kentucky
09:14	GOOD! LAYUP by DUNHAM, BIONCA [PNT]	0-2	V 2	
08:42		3-2	H 1	GOOD! 3PTR by HAINES, SABRINA
07:59	GOOD! LAYUP by JONES, JAZMINE [FB]	3-4	V 1	
07:19	GOOD! LAYUP by JONES, JAZMINE [PNT]	3-6	V 3	
06:05	GOOD! JUMPER by EVANS, DANA	3-8	V 5	
04:38		5-8	V 3	GOOD! JUMPER by ROPER, JAIDA [PNT]
04:08	GOOD! LAYUP by EVANS, DANA [PNT]	5-10	V 5	
04:08	GOOD! FT by EVANS, DANA	5-11	V 6	
03:52		8-11	V 3	GOOD! 3PTR by MCKINNEY, KEKE
03:18		10-11	V 1	GOOD! LAYUP by HOWARD, RHYNE [PNT]
03:02	GOOD! LAYUP by DIXON, ELIZABETH	10-13	V 3	
02:36		13-13	T	GOOD! 3PTR by HOWARD, RHYNE
02:22	GOOD! LAYUP by DIXON, ELIZABETH [PNT]	13-15	V 2	
02:10		16-15	H 1	GOOD! 3PTR by MCKINNEY, KEKE
01:32	GOOD! LAYUP by DIXON, ELIZABETH	16-17	V 1	
00:51	GOOD! JUMPER by EVANS, DANA	16-19	V 3	
00:25	GOOD! FT by EVANS, DANA [FB]	16-20	V 4	
00:25	GOOD! FT by EVANS, DANA [FB]	16-21	V 5	

Louisville 21, Kentucky 16

Official Scoring/Possession Reference Chart
Louisville vs Kentucky
Period 2
December 15, 2019 at Rupp Arena - Lexington



Period 2

Starters:

Louisville: 1 EVANS, DANA (G); 4 BALOGUN, ELIZABETH (G); 21 SHOOK, KYLEE (F); 23 JONES, JAZMINE (G); 33 DUNHAM, BIONCA (F);
Kentucky: 1 HAINES, SABRINA (G); 3 MCKINNEY, KEKE (F); 10 HOWARD, RHYNE (G); 12 PASCHAL, AMANDA (G); 14 WYATT, TATYANA (F);

Time	VISITORS: Louisville	Score	Margin	HOME: Kentucky
09:50		18-21	V 3	GOOD! LAYUP by HOWARD, RHYNE [PNT]
09:28	GOOD! JUMPER by DUNHAM, BIONCA	18-23	V 5	
08:27		20-23	V 3	GOOD! JUMPER by HOWARD, RHYNE [PNT]
08:27		21-23	V 2	GOOD! FT by HOWARD, RHYNE
07:37		23-23	T	GOOD! JUMPER by HOWARD, RHYNE
07:08	GOOD! LAYUP by EVANS, DANA [PNT]	23-25	V 2	
05:49		25-25	T	GOOD! JUMPER by HOWARD, RHYNE
05:07		28-25	H 3	GOOD! 3PTR by HAINES, SABRINA
05:07		29-25	H 4	GOOD! FT by HAINES, SABRINA
03:35		31-25	H 6	GOOD! JUMPER by WYATT, TATYANA [PNT]
03:20	GOOD! LAYUP by DUNHAM, BIONCA [PNT]	31-27	H 4	
02:06		32-27	H 5	GOOD! FT by HOWARD, RHYNE
02:06		33-27	H 6	GOOD! FT by HOWARD, RHYNE
01:46	GOOD! LAYUP by ROBINSON, MYKASA [PNT]	33-29	H 4	
01:15		34-29	H 5	GOOD! FT by HOWARD, RHYNE
01:15		35-29	H 6	GOOD! FT by HOWARD, RHYNE
00:33		38-29	H 9	GOOD! 3PTR by GREEN, BLAIR
00:14	GOOD! LAYUP by BALOGUN, ELIZABETH [PNT]	38-31	H 7	
00:03		40-31	H 9	GOOD! JUMPER by HOWARD, RHYNE

Louisville 31, Kentucky 40

Official Scoring/Possession Reference Chart
Louisville vs Kentucky
Period 3
December 15, 2019 at Rupp Arena - Lexington



Period 3

Starters:

Louisville: 1 EVANS, DANA (G); 4 BALOGUN, ELIZABETH (G); 21 SHOOK, KYLEE (F); 23 JONES, JAZMINE (G); 33 DUNHAM, BIONCA (F);
Kentucky: 1 HAINES, SABRINA (G); 3 MCKINNEY, KEKE (F); 10 HOWARD, RHYNE (G); 12 PASCHAL, AMANDA (G); 14 WYATT, TATYANA (F);

Time	VISITORS: Louisville	Score	Margin	HOME: Kentucky
09:35	GOOD! 3PTR by EVANS, DANA	40-34	H 6	
09:11		43-34	H 9	GOOD! 3PTR by WYATT, TATYANA
08:38	GOOD! LAYUP by DUNHAM, BIONCA [PNT]	43-36	H 7	
08:13		44-36	H 8	GOOD! FT by HOWARD, RHYNE
08:13		45-36	H 9	GOOD! FT by HOWARD, RHYNE
07:09	GOOD! LAYUP by JONES, JAZMINE [FB/PNT]	45-38	H 7	
06:32		47-38	H 9	GOOD! LAYUP by WYATT, TATYANA
06:17	GOOD! 3PTR by SHOOK, KYLEE	47-41	H 6	
05:01	GOOD! LAYUP by EVANS, DANA [PNT]	47-43	H 4	
04:54		49-43	H 6	GOOD! LAYUP by WYATT, TATYANA [FB]
04:34	GOOD! JUMPER by JONES, JAZMINE [PNT]	49-45	H 4	
04:12		52-45	H 7	GOOD! 3PTR by WYATT, TATYANA
03:14		55-45	H 10	GOOD! 3PTR by HAINES, SABRINA
03:00	GOOD! LAYUP by EVANS, DANA [PNT]	55-47	H 8	
02:32	GOOD! JUMPER by DIOP, YACINE [PNT]	55-49	H 6	
02:32	GOOD! FT by DIOP, YACINE	55-50	H 5	
01:59	GOOD! 3PTR by DIOP, YACINE	55-53	H 2	
01:31	GOOD! 3PTR by SHOOK, KYLEE	55-56	V 1	
00:00	GOOD! JUMPER by DUNHAM, BIONCA [PNT]	55-58	V 3	

Louisville 58, Kentucky 55

**Official Scoring/Possession Reference Chart
Louisville vs Kentucky
Period 4
December 15, 2019 at Rupp Arena - Lexington**



Period 4

Starters:

Louisville: 1 EVANS, DANA (G); 4 BALOGUN, ELIZABETH (G); 21 SHOOK, KYLEE (F); 23 JONES, JAZMINE (G); 33 DUNHAM, BIONCA (F);
Kentucky: 1 HAINES, SABRINA (G); 3 MCKINNEY, KEKE (F); 10 HOWARD, RHYNE (G); 12 PASCHAL, AMANDA (G); 14 WYATT, TATYANA (F);

Time	VISITORS: Louisville	Score	Margin	HOME: Kentucky
07:01		56-58	V 2	GOOD! FT by ROPER, JAIDA
07:01		57-58	V 1	GOOD! FT by ROPER, JAIDA
06:04	GOOD! JUMPER by DIOP, YACINE	57-60	V 3	
05:21	GOOD! JUMPER by JONES, JAZMINE	57-62	V 5	
04:52		60-62	V 2	GOOD! 3PTR by MCKINNEY, KEKE
03:16		62-62	T	GOOD! LAYUP by HOWARD, RHYNE
02:37	GOOD! JUMPER by SHOOK, KYLEE	62-64	V 2	
02:12		64-64	T	GOOD! JUMPER by HOWARD, RHYNE
01:51	GOOD! 3PTR by SHOOK, KYLEE	64-67	V 3	
01:33		65-67	V 2	GOOD! FT by HAINES, SABRINA
01:33		66-67	V 1	GOOD! FT by HAINES, SABRINA

Louisville 67, Kentucky 66

Official Substitutions Log
Louisville vs Kentucky
Period 1
December 15, 2019 at Rupp Arena - Lexington



VISITORS: Louisville	Time	Score	HOME: Kentucky
1 EVANS,DANA			1 HAINES,SABRINA
4 BALOGUN,ELIZABETH			3 MCKINNEY,KEKE
21 SHOOK,KYLEE			10 HOWARD,RHYNE
23 JONES,JAZMINE			12 PASCHAL,AMANDA
33 DUNHAM,BIONCA			14 WYATT,TATYANA
	05:34	8-3	SUB OUT: PASCHAL,AMANDA
	05:34		SUB IN: ROPER,JAIDA
	04:52	8-3	SUB OUT: MCKINNEY,KEKE
	04:52		SUB IN: GREEN,BLAIR
	04:08	10-5	SUB OUT: WYATT,TATYANA
	04:08		SUB IN: MCKINNEY,KEKE
SUB OUT: 21 SHOOK,KYLEE	04:08		
SUB IN: 22 DIXON,ELIZABETH	04:08		
	02:43	13-10	SUB OUT: HAINES,SABRINA
	02:43		SUB IN: PASCHAL,AMANDA
SUB OUT: 4 BALOGUN,ELIZABETH	02:43		
SUB IN: 11 KONNO,NORIKI	02:43		
SUB OUT: 1 EVANS,DANA	00:25	21-16	
SUB IN: 5 ROBINSON,MYKASA	00:25		
SUB OUT: 11 KONNO,NORIKI	00:02	21-16	
SUB OUT: 22 DIXON,ELIZABETH	00:02		
SUB IN: 1 EVANS,DANA	00:02		
SUB IN: 4 BALOGUN,ELIZABETH	00:02		

Louisville 21, Kentucky 16

**Official Substitutions Log
Louisville vs Kentucky
Period 2
December 15, 2019 at Rupp Arena - Lexington**



VISITORS: Louisville	Time	Score	HOME: Kentucky
1 EVANS,DANA			1 HAINES,SABRINA
4 BALOGUN,ELIZABETH			3 MCKINNEY,KEKE
21 SHOOK,KYLEE			10 HOWARD,RHYNE
23 JONES,JAZMINE			12 PASCHAL,AMANDA
33 DUNHAM,BIONCA			14 WYATT,TATYANA
	10:00	-	SUB OUT: GREEN,BLAIR
	10:00		SUB OUT: PASCHAL,AMANDA
	10:00		SUB IN: HAINES,SABRINA
	10:00		SUB IN: WYATT,TATYANA
SUB OUT: 5 ROBINSON,MYKASA	08:05	23-21	
SUB OUT: 33 DUNHAM,BIONCA	08:05		
SUB IN: 21 SHOOK,KYLEE	08:05		
SUB IN: 22 DIXON,ELIZABETH	08:05		
SUB OUT: 21 SHOOK,KYLEE	05:13	25-25	
SUB IN: 33 DUNHAM,BIONCA	05:13		
	04:46	25-29	SUB OUT: ROPER,JAIDA
	04:46		SUB IN: PASCHAL,AMANDA
SUB OUT: 22 DIXON,ELIZABETH	03:51	25-29	
SUB IN: 21 SHOOK,KYLEE	03:51		
	02:06	27-31	SUB OUT: MCKINNEY,KEKE
	02:06		SUB OUT: PASCHAL,AMANDA
	02:06		SUB IN: GREEN,BLAIR
	02:06		SUB IN: ROPER,JAIDA
SUB OUT: 1 EVANS,DANA	02:06		
SUB IN: 5 ROBINSON,MYKASA	02:06		
	02:06		SUB OUT: WYATT,TATYANA
	02:06		SUB IN: ANYAGALIGBO,OGECHI
SUB OUT: 23 JONES,JAZMINE	01:15	29-33	
SUB IN: 2 DIOP,YACINE	01:15		

Louisville 31, Kentucky 40

**Official Substitutions Log
Louisville vs Kentucky
Period 3
December 15, 2019 at Rupp Arena - Lexington**



VISITORS: Louisville	Time	Score	HOME: Kentucky
1 EVANS,DANA			1 HAINES,SABRINA
4 BALOGUN,ELIZABETH			3 MCKINNEY,KEKE
21 SHOOK,KYLEE			10 HOWARD,RHYNE
23 JONES,JAZMINE			12 PASCHAL,AMANDA
33 DUNHAM,BIONCA			14 WYATT,TATYANA
	10:00	-	SUB OUT: GREEN,BLAIR
	10:00		SUB OUT: ANYAGALIGBO,OGECHE
	10:00		SUB OUT: ROPER,JAIDA
	10:00		SUB IN: MCKINNEY,KEKE
	10:00		SUB IN: PASCHAL,AMANDA
	10:00		SUB IN: WYATT,TATYANA
SUB OUT: 2 DIOP,YACINE	10:00		
SUB OUT: 5 ROBINSON,MYKASA	10:00		
SUB IN: 1 EVANS,DANA	10:00		
SUB IN: 23 JONES,JAZMINE	10:00		
SUB OUT: 4 BALOGUN,ELIZABETH	07:35	36-45	
SUB IN: 2 DIOP,YACINE	07:35		
	05:40	41-47	SUB OUT: PASCHAL,AMANDA
	05:40		SUB IN: ROPER,JAIDA
	03:48	45-52	SUB OUT: MCKINNEY,KEKE
	03:48		SUB IN: GREEN,BLAIR
	01:16	56-55	SUB OUT: GREEN,BLAIR
	01:16		SUB IN: MCKINNEY,KEKE

Louisville 58, Kentucky 55

Official Substitutions Log
Louisville vs Kentucky
Period 4
December 15, 2019 at Rupp Arena - Lexington



VISITORS: Louisville	Time	Score	HOME: Kentucky
1 EVANS,DANA			1 HAINES,SABRINA
4 BALOGUN,ELIZABETH			3 MCKINNEY,KEKE
21 SHOOK,KYLEE			10 HOWARD,RHYNE
23 JONES,JAZMINE			12 PASCHAL,AMANDA
33 DUNHAM,BIONCA			14 WYATT,TATYANA
	07:17	-	SUB OUT: HOWARD,RHYNE
	07:17		SUB OUT: WYATT,TATYANA
	07:17		SUB IN: PASCHAL,AMANDA
	07:17		SUB IN: ANYAGALIGBO,OGECHE
	05:40	60-57	SUB OUT: HAINES,SABRINA
	05:40		SUB IN: HOWARD,RHYNE
	03:43	62-60	SUB OUT: PASCHAL,AMANDA
	03:43		SUB IN: HAINES,SABRINA
	01:33	67-64	SUB OUT: ANYAGALIGBO,OGECHE
	01:33		SUB IN: WYATT,TATYANA

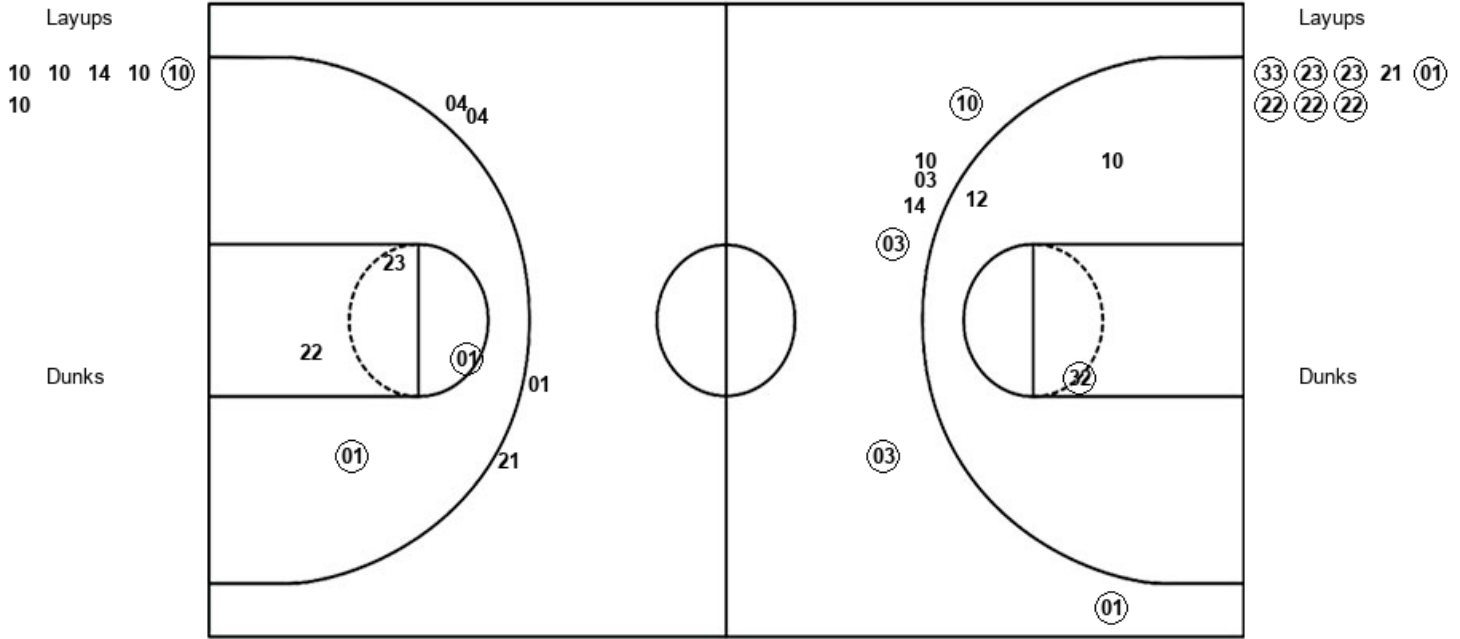
Louisville 67, Kentucky 66

Official Shot Chart
Louisville vs Kentucky
PERIOD 1 Shots
 December 15, 2019 at Rupp Arena - Lexington



Kentucky

Louisville



UK : Period 1	Made	Att	Pct
Layups	1	6	16.7
Dunks	0	0	0
2PT Field Goals	2	9	22.2
3PT Field Goals	4	7	57.1
Total Field Goals	6	16	37.5

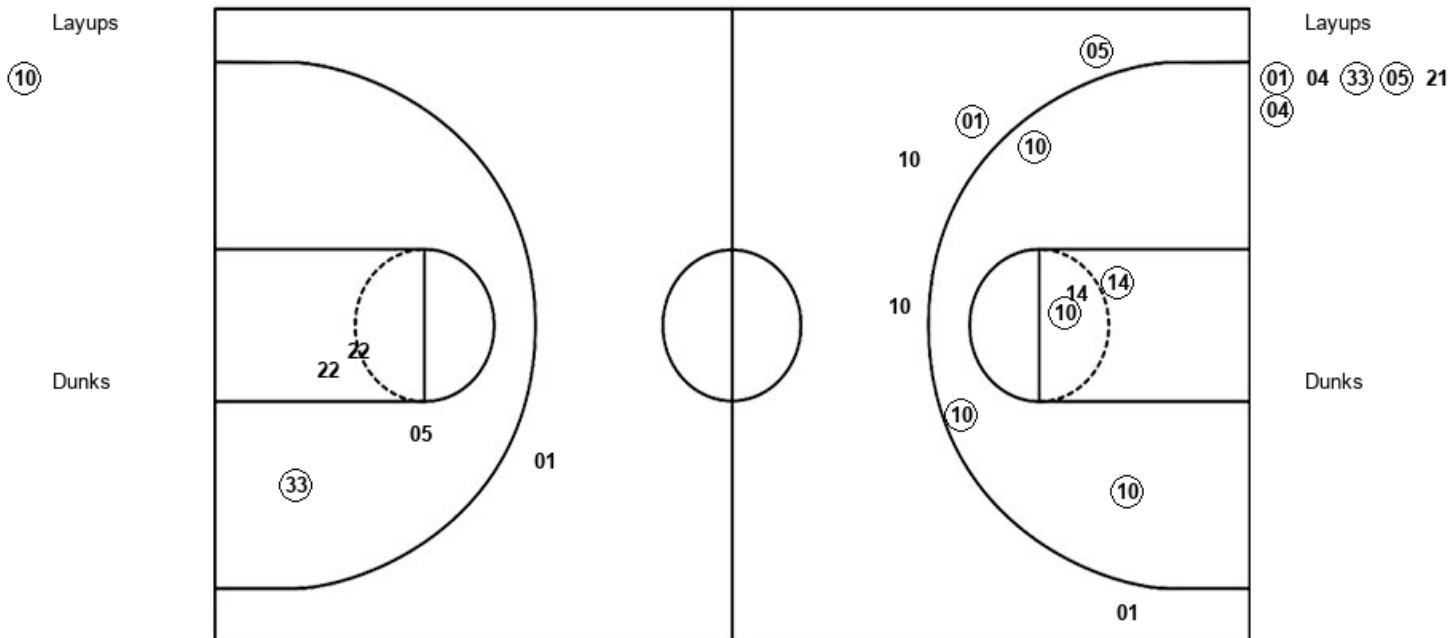
UL : Period 1	Made	Att	Pct
Layups	7	8	87.5
Dunks	0	0	0
2PT Field Goals	9	12	75.0
3PT Field Goals	0	4	00.0
Total Field Goals	9	16	56.3

Official Shot Chart
Louisville vs Kentucky
PERIOD 2 Shots
 December 15, 2019 at Rupp Arena - Lexington



Kentucky

Louisville



UK : Period 2	Made	Att	Pct
Layups	1	1	100.0
Dunks	0	0	0
2PT Field Goals	6	7	85.7
3PT Field Goals	2	5	40.0
Total Field Goals	8	12	66.7

UL : Period 2	Made	Att	Pct
Layups	4	6	66.7
Dunks	0	0	0
2PT Field Goals	5	10	50.0
3PT Field Goals	0	1	00.0
Total Field Goals	5	11	45.5

Official Shot Chart
Louisville vs Kentucky
PERIOD 3 Shots
 December 15, 2019 at Rupp Arena - Lexington



Kentucky

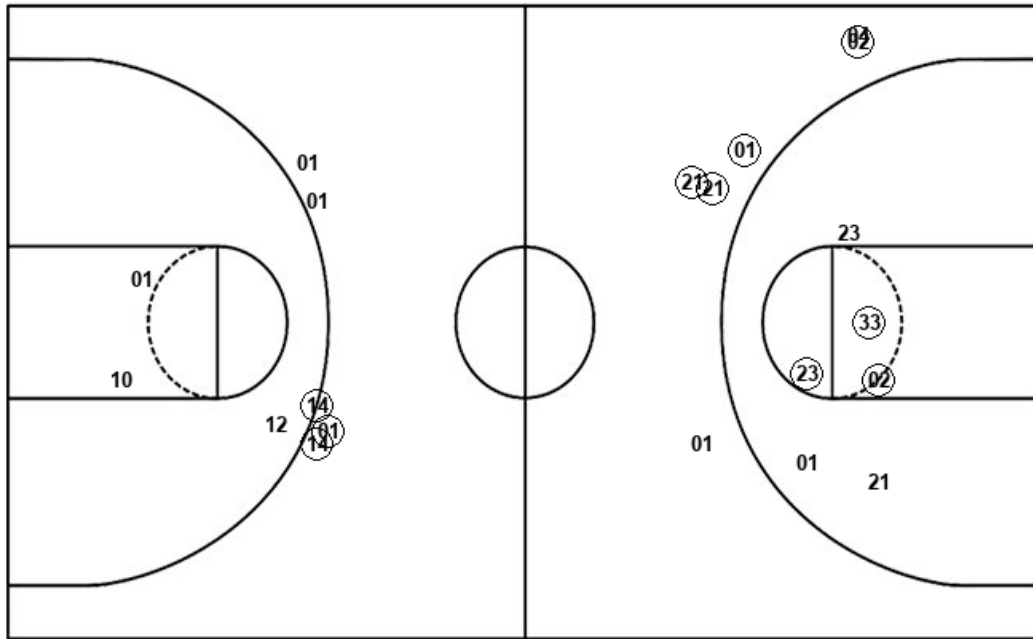
Louisville

Layups
 (14) (14) 32 32

Layups
 (33) (23) (01) (01) 02

Dunks

Dunks



UK : Period 3	Made	Att	Pct
Layups	2	4	50.0
Dunks	0	0	0
2PT Field Goals	2	7	28.6
3PT Field Goals	3	5	60.0
Total Field Goals	5	12	41.7

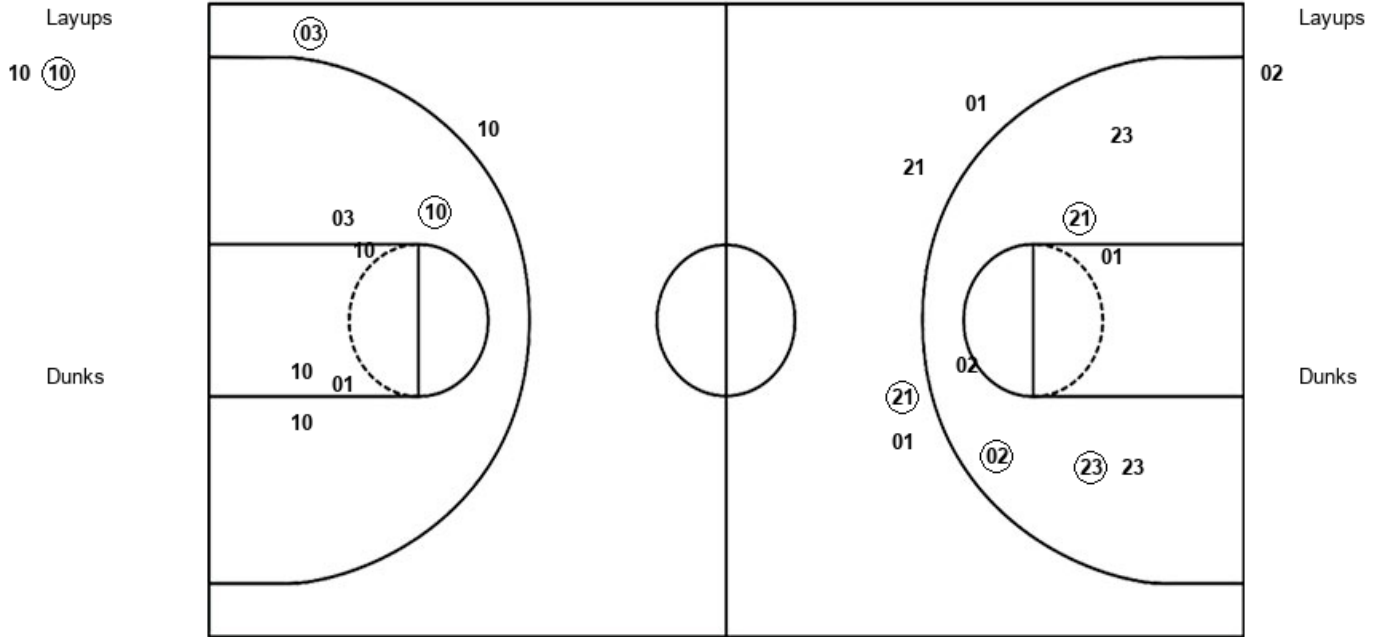
UL : Period 3	Made	Att	Pct
Layups	4	5	80.0
Dunks	0	0	0
2PT Field Goals	7	11	63.6
3PT Field Goals	4	6	66.7
Total Field Goals	11	17	64.7

Official Shot Chart
Louisville vs Kentucky
PERIOD 4 Shots
 December 15, 2019 at Rupp Arena - Lexington



Kentucky

Louisville



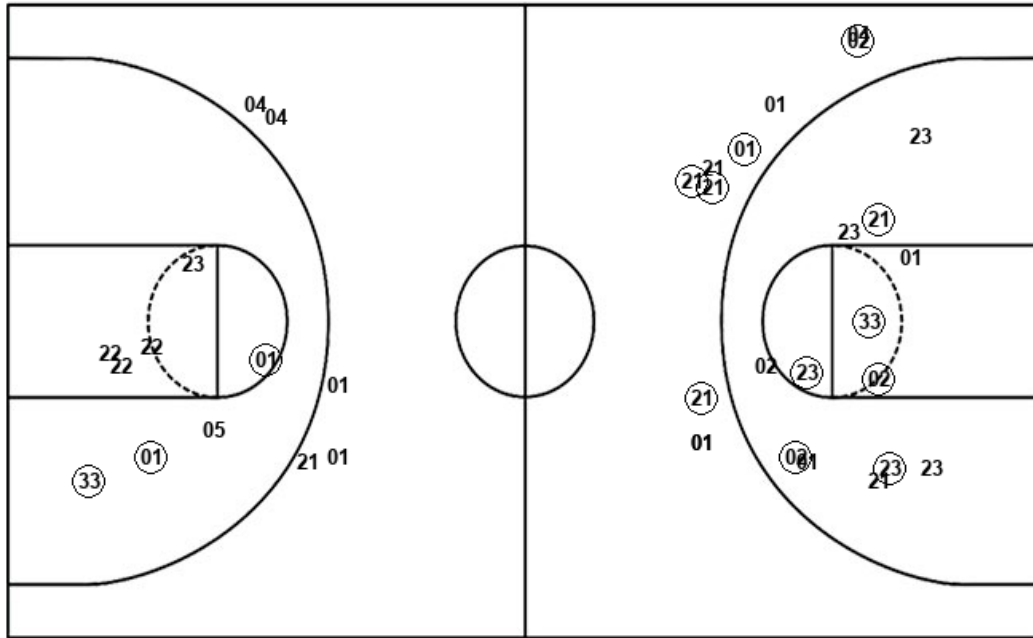
UK : Period 4	Made	Att	Pct
Layups	1	2	50.0
Dunks	0	0	0
2PT Field Goals	2	8	25.0
3PT Field Goals	1	2	50.0
Total Field Goals	3	10	30.0

UL : Period 4	Made	Att	Pct
Layups	0	1	00.0
Dunks	0	0	0
2PT Field Goals	3	8	37.5
3PT Field Goals	1	4	25.0
Total Field Goals	4	12	33.3

Official Shot Chart
Louisville vs Kentucky
 Louisville Team Shots
 December 15, 2019 at Rupp Arena - Lexington



Layups



Layups

(33)	(23)	(23)	21	(01)
(22)	(22)	(22)	(01)	04
(33)	05	21	04	(33)
(23)	(01)	(01)	02	02

Dunks

Dunks

UL : Period 1	Made	Att	Pct
Layups	7	8	87.5
Dunks	0	0	0
2PT Field Goals	9	12	75.0
3PT Field Goals	0	4	00.0
Total Field Goals	9	16	56.3

UL : Period 3	Made	Att	Pct
Layups	4	5	80.0
Dunks	0	0	0
2PT Field Goals	7	11	63.6
3PT Field Goals	4	6	66.7
Total Field Goals	11	17	64.7

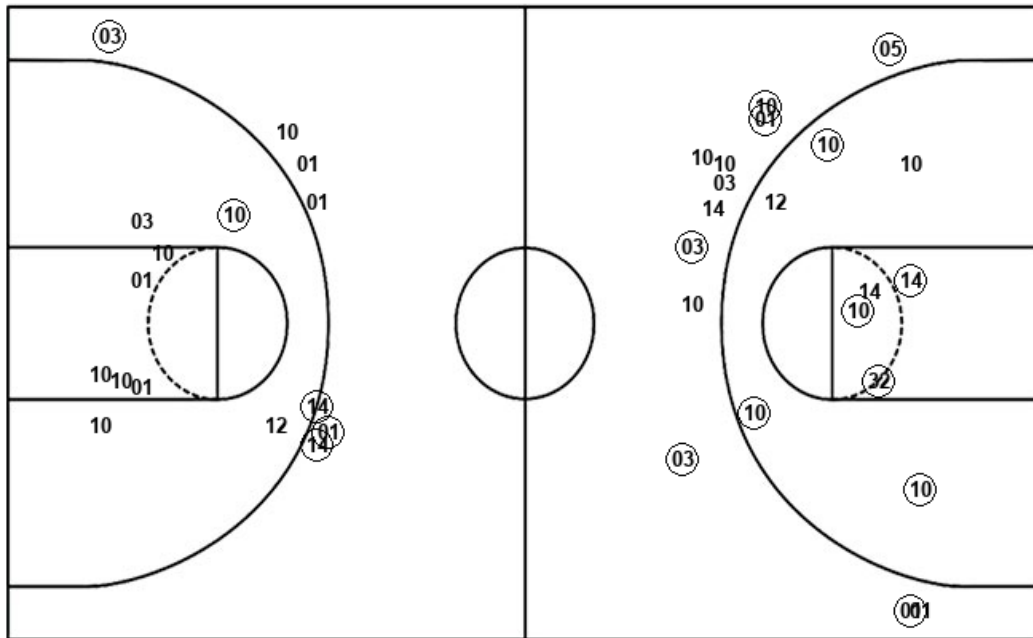
UL : Period 2	Made	Att	Pct
Layups	4	6	66.7
Dunks	0	0	0
2PT Field Goals	5	10	50.0
3PT Field Goals	0	1	00.0
Total Field Goals	5	11	45.5

UL : Period 4	Made	Att	Pct
Layups	0	1	00.0
Dunks	0	0	0
2PT Field Goals	3	8	37.5
3PT Field Goals	1	4	25.0
Total Field Goals	4	12	33.3

Official Shot Chart
Louisville vs Kentucky
Kentucky Team Shots
December 15, 2019 at Rupp Arena - Lexington



Layups



Layups

10 10 14 10 (10)
 10 (10) (14) (14) 32
 32 10 (10)

Dunks

Dunks

UK : Period 1	Made	Att	Pct
Layups	1	6	16.7
Dunks	0	0	0
2PT Field Goals	2	9	22.2
3PT Field Goals	4	7	57.1
Total Field Goals	6	16	37.5

UK : Period 3	Made	Att	Pct
Layups	2	4	50.0
Dunks	0	0	0
2PT Field Goals	2	7	28.6
3PT Field Goals	3	5	60.0
Total Field Goals	5	12	41.7

UK : Period 2	Made	Att	Pct
Layups	1	1	100.0
Dunks	0	0	0
2PT Field Goals	6	7	85.7
3PT Field Goals	2	5	40.0
Total Field Goals	8	12	66.7

UK : Period 4	Made	Att	Pct
Layups	1	2	50.0
Dunks	0	0	0
2PT Field Goals	2	8	25.0
3PT Field Goals	1	2	50.0
Total Field Goals	3	10	30.0