

FINAL SCORE

Samford

49



Kentucky

79



December 08, 2019 • Memorial Coliseum - Lexington

FINAL STATISTICS

Official Box Score
Samford vs Kentucky
Game Totals -- Final Statistics
December 08, 2019 at Memorial Coliseum - Lexington



Samford 49

No.	Player	S	Pts	FG	3FG	FT	OR	DR	TR	PF	A	TO	Blk	Stl	Min	+/-
03	BATTLE, SHAUNTAI	G	9	3-7	3-3	0-0	0	2	2	2	3	0	0	0	30	-23
11	SERUP, PAIGE	G	8	3-3	2-2	0-0	0	0	0	1	2	2	0	0	24	-11
12	BROWN, CHARITY	G	2	1-3	0-1	0-0	1	3	4	3	8	7	0	0	32	-15
25	MYERS, SARAH	G	7	3-9	1-4	0-4	1	5	6	2	0	2	0	0	32	-24
45	ARMSTRONG, NATALIE	C	6	3-9	0-2	0-0	1	1	2	2	3	1	0	0	19	-8
04	LEIPOLD, AUDRA	G	0	0-1	0-0	0-0	0	1	1	2	0	3	0	0	4	-6
15	HILL, TA'NAISHA	G	5	0-2	0-2	5-6	0	0	0	1	0	1	0	0	13	-16
21	ALLEN, KATIE	G	0	0-2	0-2	0-0	0	1	1	1	0	0	1	0	12	-12
32	CROZER, OLIVIA	F	6	2-7	0-1	2-2	0	3	3	1	0	1	0	0	21	-24
33	WOOLARD, MAKAILA	F	1	0-0	0-0	1-4	0	1	1	0	0	0	0	1	3	-2
35	FITZGERALD, SAMANTHA	F	5	2-3	1-2	0-0	0	2	2	1	0	1	0	0	10	-9
TEAM							2	2	4	0		0				
TOTALS			49	17-46	7-19	8-16	5	21	26	16	16	18	1	1	199	

Shooting By Period

Period	FG	FG%	3FG	3FG%	FT	FT%
1st Qtr	5-12	42%	4-8	50%	0-0	0%
2nd Qtr	2-13	15%	0-4	00%	2-4	50%
3rd Qtr	7-14	50%	2-3	67%	0-2	00%
4th Qtr	3-7	43%	1-4	25%	6-10	60%
1st Half	7-25	28%	4-12	33%	2-4	50%
2nd Half	10-21	48%	3-7	43%	6-12	50%
Game	17-46	37.0%	7-19	36.8%	8-16	50.0%

Deadball Rebounds: 5,2
Last FG: 4th-05:31
Biggest Run: 6-0
Largest lead: By 1 at 1-02
Technical Fouls: None.

Kentucky 79

No.	Player	S	Pts	FG	3FG	FT	OR	DR	TR	PF	A	TO	Blk	Stl	Min	+/-
01	HAINES, SABRINA	G	12	3-10	2-6	4-4	1	3	4	2	1	3	0	2	30	10
03	MCKINNEY, KEKE	F	7	3-5	1-2	0-0	1	2	3	1	3	2	2	1	26	21
10	HOWARD, RHYNE	G	30	11-19	5-8	3-4	1	5	6	1	3	1	0	3	31	19
12	PASCHAL, AMANDA	G	9	4-6	0-1	1-2	1	3	4	1	5	1	0	0	22	21
14	WYATT, TATYANA	F	0	0-2	0-0	0-0	0	2	2	4	1	1	1	0	12	17
05	GREEN, BLAIR	G	9	4-6	1-2	0-0	1	3	4	2	1	0	0	1	21	19
21	ANYAGALIGBO, OGECHI	F	6	3-4	0-0	0-5	2	3	5	2	0	0	1	2	18	6
32	ROPER, JAIDA	G	3	1-4	1-3	0-0	0	6	6	1	7	1	0	1	29	23
34	KING, EMMA	G	3	1-1	1-1	0-0	0	0	0	2	2	1	0	0	10	14
TEAM							1	0	1	0		0				
TOTALS			79	30-57	11-23	8-15	8	27	35	16	23	10	4	10	199	

Shooting By Period

Period	FG	FG%	3FG	3FG%	FT	FT%
1st Qtr	8-15	53%	6-9	67%	0-0	0%
2nd Qtr	9-14	64%	0-3	00%	1-4	25%
3rd Qtr	7-14	50%	2-5	40%	3-5	60%
4th Qtr	6-14	43%	3-6	50%	4-6	67%
1st Half	17-29	59%	6-12	50%	1-4	25%
2nd Half	13-28	46%	5-11	45%	7-11	64%
Game	30-57	52.6%	11-23	47.8%	8-15	53.3%

Deadball Rebounds: 3,0
Last FG: 4th-01:13
Biggest Run: 11-0
Largest lead: By 31 at 4-01
Technical Fouls: None.

Game Notes:

Officials: **Doug Knight, Missy Brooks, Darren McClure**
 Attendance: **3795**

Start Time: **02:02 PM ET**
 End Time: **03:59 PM ET**
 Game Duration: **1:56**

Score	1st	2nd	3rd	4th	TOT
SAM	14	6	16	13	49
UK	22	19	19	19	79

SAM led for 0:45. UK led for 38:58.
Game was tied for 0:08.
 Times tied: **0** Lead Changes: **4**

Points from	SAM	UK
In the Paint	14	22
Off Turns	10	21
2nd Chance	2	11
Fast Break	4	1
Bench	17	21

Official Box Score
Samford vs Kentucky
First Half Statistics Only
December 08, 2019 at Memorial Coliseum - Lexington



Samford 20

No.	Player	S	Pts	FG	3FG	FT	OR	DR	TR	PF	A	TO	Blk	Stl	Min	+/-
03	BATTLE, SHAUNTAI	G	6	2-4	2-2	0-0	0	1	1	1	1	0	0	0	17	-17
04	LEIPOLD, AUDRA	G	0	0-0	0-0	0-0	0	0	0	0	0	0	0	0	0	0
11	SERUP, PAIGE	G	8	3-3	2-2	0-0	0	0	0	0	2	1	0	0	13	-6
12	BROWN, CHARITY	G	0	0-1	0-1	0-0	1	2	3	2	2	5	0	0	18	-16
15	HILL, TA'NAISHA	G	2	0-1	0-1	2-2	0	0	0	0	0	0	0	0	5	-13
21	ALLEN, KATIE	G	0	0-1	0-1	0-0	0	1	1	0	0	0	0	0	5	-5
25	MYERS, SARAH	G	2	1-5	0-2	0-2	1	2	3	1	0	1	0	0	18	-21
32	CROZER, OLIVIA	F	2	1-5	0-1	0-0	0	1	1	0	0	1	0	0	11	-16
33	WOOLARD, MAKAILA	F	0	0-0	0-0	0-0	0	0	0	0	0	0	0	0	0	0
35	FITZGERALD, SAMANTHA	F	0	0-0	0-0	0-0	0	1	1	1	0	0	0	0	2	-4
45	ARMSTRONG, NATALIE	C	0	0-5	0-2	0-0	1	0	1	2	2	1	0	0	10	-7
	TEAM		0	0-0	0-0	0-0	1	1	2	0	0	0	0	0	0	0
TOTALS			20	7-25	4-12	2-4	4	9	13	7	7	9	0	0	100	

Shooting By Period

Period	FG	FG%	3FG	3FG%	FT	FT%
1st Qtr	5-12	42%	4-8	50%	0-0	0%
2nd Qtr	2-13	15%	0-4	00%	2-4	50%
1st Half	7-25	28%	4-12	33%	2-4	50%
Game	17-46	37.0%	7-19	36.8%	8-16	50.0%

Deadball Rebounds: 5,2
Last FG Half: SAM 2nd-05:42

Kentucky 41

No.	Player	S	Pts	FG	3FG	FT	OR	DR	TR	PF	A	TO	Blk	Stl	Min	+/-
01	HAINES, SABRINA	G	3	1-5	1-3	0-0	0	1	1	2	0	1	0	1	13	4
03	MCKINNEY, KEKE	F	7	3-5	1-2	0-0	0	1	1	0	1	0	1	1	15	22
05	GREEN, BLAIR	G	3	1-1	1-1	0-0	0	2	2	1	1	0	0	0	8	7
10	HOWARD, RHYNE	G	16	6-9	3-5	1-2	0	2	2	0	3	0	0	1	16	11
12	PASCHAL, AMANDA	G	8	4-4	0-0	0-0	0	3	3	1	4	1	0	0	14	22
14	WYATT, TATYANA	F	0	0-1	0-0	0-0	0	2	2	2	1	1	1	0	8	16
21	ANYAGALIGBO, OGECHI	F	4	2-3	0-0	0-2	2	1	3	1	0	0	1	1	8	3
32	ROPER, JAIDA	G	0	0-1	0-1	0-0	0	3	3	0	3	1	0	0	12	11
34	KING, EMMA	G	0	0-0	0-0	0-0	0	0	0	0	1	0	0	0	5	9
	TEAM		0	0-0	0-0	0-0	0	0	0	0	0	0	0	0	0	0
TOTALS			41	17-29	6-12	1-4	2	15	17	7	14	4	3	4	100	

Shooting By Period

Period	FG	FG%	3FG	3FG%	FT	FT%
1st Qtr	8-15	53%	6-9	67%	0-0	0%
2nd Qtr	9-14	64%	0-3	00%	1-4	25%
1st Half	17-29	59%	6-12	50%	1-4	25%
Game	30-57	52.6%	11-23	47.8%	8-15	53.3%

Deadball Rebounds: 3,0
Last FG Half: UK 2nd-00:01

Game Notes:

Officials: Doug Knight, Missy Brooks, Darren McClure
 Attendance: 3795

Start Time: 02:02 PM ET
 End Time: 03:59 PM ET
 Game Duration: 1:56

Score	1st	2nd	3rd	4th	TOT
SAM	14	6	16	13	49
UK	22	19	19	19	79

Points from (This Period)	SAM	UK
In the Paint	4	14
Off Turns	3	14
2nd Chance	0	4
Fast Break	2	0
Bench	4	7

Official Box Score
Samford vs Kentucky
First Quarter Statistics Only
December 08, 2019 at Memorial Coliseum - Lexington



Samford 14

No.	Player	S	Pts	FG	3FG	FT	OR	DR	TR	PF	A	TO	Blk	Stl	Min	+/-
03	BATTLE, SHAUNTAI	G	6	2-4	2-2	0-0	0	1	1	0	1	0	0	0	10	-8
11	SERUP, PAIGE	G	6	2-2	2-2	0-0	0	0	0	0	1	1	0	0	8	-2
12	BROWN, CHARITY	G	0	0-0	0-0	0-0	0	1	1	1	2	2	0	0	9	-5
25	MYERS, SARAH	G	2	1-3	0-2	0-0	0	2	2	1	0	1	0	0	10	-8
45	ARMSTRONG, NATALIE	C	0	0-2	0-1	0-0	0	0	0	2	1	1	0	0	5	-2
04	LEIPOLD, AUDRA	G	0	0-0	0-0	0-0	0	0	0	0	0	0	0	0	0	0
15	HILL, TANAISHA	G	0	0-1	0-1	0-0	0	0	0	0	0	0	0	0	2	-9
21	ALLEN, KATIE	G	0	0-0	0-0	0-0	0	0	0	0	0	0	0	0	0	0
32	CROZER, OLIVIA	F	0	0-0	0-0	0-0	0	1	1	0	0	0	0	0	5	-6
33	WOOLARD, MAKAILA	F	0	0-0	0-0	0-0	0	0	0	0	0	0	0	0	0	0
35	FITZGERALD, SAMANTHA	F	0	0-0	0-0	0-0	0	0	0	0	0	0	0	0	0	0
	TEAM						0	1	1	0		0				
TOTALS			14	5-12	4-8	0-0	0	6	6	4	5	5	0	0	50	

Shooting By Period

Period	FG	FG%	3FG	3FG%	FT	FT%
1st Qtr	5-12	42%	4-8	50%	0-0	0%
2nd Qtr	2-13	15%	0-4	00%	2-4	50%
1st Half	5-12	42%	4-8	50%	0-0	0%
1st Half	7-25	28%	4-12	33%	2-4	50%
Game	17-46	37.0%	7-19	36.8%	8-16	50.0%

Deadball Rebounds: 5,2

Kentucky 22

No.	Player	S	Pts	FG	3FG	FT	OR	DR	TR	PF	A	TO	Blk	Stl	Min	+/-
01	HAINES, SABRINA	G	3	1-3	1-2	0-0	0	0	0	0	0	0	0	1	8	-1
03	MCKINNEY, KEKE	F	3	1-1	1-1	0-0	0	0	0	0	0	0	0	1	6	11
10	HOWARD, RHYNE	G	9	3-5	3-4	0-0	0	0	0	0	0	0	0	0	8	2
12	PASCHAL, AMANDA	G	2	1-1	0-0	0-0	0	1	1	0	4	1	0	0	7	14
14	WYATT, TATYANA	F	0	0-1	0-0	0-0	0	2	2	1	1	1	1	0	7	14
05	GREEN, BLAIR	G	3	1-1	1-1	0-0	0	2	2	1	0	0	0	0	5	3
21	ANYAGALIGBO, OGECHI	F	2	1-2	0-0	0-0	0	1	1	0	0	0	0	1	3	-6
32	ROPER, JAIDA	G	0	0-1	0-1	0-0	0	1	1	0	2	0	0	0	5	3
34	KING, EMMA	G	0	0-0	0-0	0-0	0	0	0	0	0	0	0	0	0	0
	TEAM						0	0	0	0		0				
TOTALS			22	8-15	6-9	0-0	0	7	7	2	7	2	1	3	50	

Shooting By Period

Period	FG	FG%	3FG	3FG%	FT	FT%
1st Qtr	8-15	53%	6-9	67%	0-0	0%
2nd Qtr	9-14	64%	0-3	00%	1-4	25%
1st Half	8-15	53%	6-9	67%	0-0	0%
1st Half	17-29	59%	6-12	50%	1-4	25%
Game	30-57	52.6%	11-23	47.8%	8-15	53.3%

Deadball Rebounds: 3,0

Game Notes:

Officials: **Doug Knight, Missy Brooks, Darren McClure**
 Attendance: **3795**

Start Time: **02:02 PM ET**
 End Time: **03:59 PM ET**
 Game Duration: **1:56**

Score	1st	2nd	3rd	4th	TOT
SAM	14	6	16	13	49
UK	22	19	19	19	79

Points from (This Period)	SAM	UK
In the Paint	2	2
Off Turns	3	9
2nd Chance	0	0
Fast Break	0	0
Bench	0	5

**Official Play-By-Play
Samford vs Kentucky
First Quarter
December 08, 2019 at Memorial Coliseum - Lexington**



Period 1

Starters:

Samford: 3 BATTLE,SHAUNTAI (G); 11 SERUP,PAIGE (G); 12 BROWN,CHARITY (G); 25 MYERS,SARAH (G); 45 ARMSTRONG,NATALIE (C);
Kentucky: 1 HAINES,SABRINA (G); 3 MCKINNEY,KEKE (F); 10 HOWARD,RHYNE (G); 12 PASCHAL,AMANDA (G); 14 WYATT,TATYANA (F);

Time	VISITORS: Samford	Score	Margin	HOME: Kentucky
09:52		3-0	H 3	GOOD! 3PTR by HOWARD, RHYNE
09:52				ASSIST by PASCHAL, AMANDA
09:22				FOUL (PERSONAL) by WYATT, TATYANA
09:22	FOUL (OFF) by ARMSTRONG, NATALIE			
09:22	TURNOVER (OFFENSIVE) by ARMSTRONG, NATALIE			
09:09		6-0	H 6	GOOD! 3PTR by HOWARD, RHYNE
09:09				ASSIST by WYATT, TATYANA
08:36	MISSED JUMPER by ARMSTRONG, NATALIE			
08:32				REBOUND (DEF) by WYATT, TATYANA
08:23	FOUL (PERSONAL) by MYERS, SARAH			
08:19				TURNOVER (OTHER) by PASCHAL, AMANDA
07:58	FOUL (OFF) by BROWN, CHARITY			
07:58	TURNOVER (OFFENSIVE) by BROWN, CHARITY			
07:36		9-0	H 9	GOOD! 3PTR by HAINES, SABRINA
07:36				ASSIST by PASCHAL, AMANDA
07:11	GOOD! 3PTR by SERUP, PAIGE	9-3	H 6	
07:11	ASSIST by ARMSTRONG, NATALIE			
06:47				MISSED LAYUP by HOWARD, RHYNE
06:45	REBOUND (DEF) by MYERS, SARAH			
06:39	TURNOVER (LOSTBALL) by MYERS, SARAH			
06:39				STEAL by HAINES, SABRINA
06:34				MISSED LAYUP by HAINES, SABRINA
06:31	REBOUND (DEF) by BATTLE, SHAUNTAI			
06:26	GOOD! 3PTR by SERUP, PAIGE	9-6	H 3	
06:26	ASSIST by BATTLE, SHAUNTAI			
05:58		11-6	H 5	GOOD! JUMPER by PASCHAL, AMANDA
05:37	MISSED 3PTR by ARMSTRONG, NATALIE			
05:33				REBOUND (DEF) by PASCHAL, AMANDA
05:24				TURNOVER (OTHER) by WYATT, TATYANA
05:24				SUB OUT: MCKINNEY, KEKE
05:24				SUB OUT: PASCHAL, AMANDA
05:24				SUB OUT: WYATT, TATYANA
05:24				SUB IN: GREEN, BLAIR
05:24				SUB IN: ANYAGALIGBO, OGECHI
05:24				SUB IN: ROPER, JAIDA
05:14	GOOD! 3PTR by BATTLE, SHAUNTAI	11-9	H 2	
05:14	ASSIST by SERUP, PAIGE			
04:55	FOUL (PERSONAL) by ARMSTRONG, NATALIE			
04:55				
04:55	SUB OUT: ARMSTRONG, NATALIE			
04:55	SUB IN: CROZER, OLIVIA			
04:46				MISSED LAYUP by ANYAGALIGBO, OGECHI
04:44	REBOUND (DEF) by CROZER, OLIVIA			
04:29	MISSED LAYUP by BATTLE, SHAUNTAI			
04:26				REBOUND (DEF) by ANYAGALIGBO, OGECHI
04:22				MISSED 3PTR by HOWARD, RHYNE
04:19	REBOUND (DEF) by TEAM			
04:19				FOUL (PERSONAL) by GREEN, BLAIR
04:08	MISSED 3PTR by MYERS, SARAH			
04:05				REBOUND (DEF) by GREEN, BLAIR
03:43				MISSED 3PTR by HAINES, SABRINA
03:40	REBOUND (DEF) by MYERS, SARAH			
03:32	GOOD! 3PTR by BATTLE, SHAUNTAI	11-12	V 1	
03:32	ASSIST by BROWN, CHARITY			
03:15		13-12	H 1	GOOD! LAYUP by ANYAGALIGBO, OGECHI [PNT]
03:15				ASSIST by ROPER, JAIDA
03:04	TURNOVER (BADPASS) by SERUP, PAIGE			
03:04				STEAL by ANYAGALIGBO, OGECHI
02:55				MISSED 3PTR by ROPER, JAIDA
02:51	REBOUND (DEF) by BROWN, CHARITY			
02:31	GOOD! LAYUP by MYERS, SARAH [PNT]	13-14	V 1	
02:31	ASSIST by BROWN, CHARITY			
02:26				TIMEOUT 30SEC
02:26				SUB OUT: HAINES, SABRINA
02:26				SUB OUT: HOWARD, RHYNE
02:26				SUB OUT: ANYAGALIGBO, OGECHI
02:26				SUB IN: MCKINNEY, KEKE
02:26				SUB IN: PASCHAL, AMANDA
02:26				SUB IN: WYATT, TATYANA
02:15	SUB OUT: SERUP, PAIGE			

Time	VISITORS: Samford	Score	Margin	HOME: Kentucky
02:15	SUB IN: HILL, TA'NAISHA			
02:03		16-14	H 2	GOOD! 3PTR by GREEN, BLAIR
02:03				ASSIST by PASCHAL, AMANDA
01:45	TURNOVER (LOSTBALL) by BROWN, CHARITY			
01:45				STEAL by MCKINNEY, KEKE
01:20		19-14	H 5	GOOD! 3PTR by MCKINNEY, KEKE
01:20				ASSIST by PASCHAL, AMANDA
01:04	MISSED 3PTR by HILL, TA'NAISHA			
01:01				REBOUND (DEF) by ROPER, JAIDA
00:49				MISSED JUMPER by WYATT, TATYANA
00:47	REBOUND (DEF) by TEAM			
00:45				SUB OUT: MCKINNEY, KEKE
00:45				SUB IN: HOWARD, RHYNE
00:45	SUB OUT: BROWN, CHARITY			
00:45	SUB IN: SERUP, PAIGE			
00:23	MISSED 3PTR by MYERS, SARAH			
00:20				REBOUND (DEF) by WYATT, TATYANA
00:15		22-14	H 8	GOOD! 3PTR by HOWARD, RHYNE
00:15				ASSIST by ROPER, JAIDA
00:01	MISSED JUMPER by BATTLE, SHAUNTAI			
00:01				BLOCK by WYATT, TATYANA
00:01				REBOUND (DEF) by GREEN, BLAIR

Samford 14, Kentucky 22

Points from (This Period)	SAM	UK
In the Paint	2	2
Off Turns	3	9
2nd Chance	0	0
Fast Break	0	0
Bench	0	5

Official Box Score
Samford vs Kentucky
Second Quarter Statistics Only
December 08, 2019 at Memorial Coliseum - Lexington



Samford 6

No.	Player	S	Pts	FG	3FG	FT	OR	DR	TR	PF	A	TO	Blk	Stl	Min	+/-
03	BATTLE, SHAUNTAI	G	0	0-0	0-0	0-0	0	0	0	1	0	0	0	0	7	-9
11	SERUP, PAIGE	G	2	1-1	0-0	0-0	0	0	0	0	1	0	0	0	5	-4
12	BROWN, CHARITY	G	0	0-1	0-1	0-0	1	1	2	1	0	3	0	0	9	-11
25	MYERS, SARAH	G	0	0-2	0-0	0-2	1	0	1	0	0	0	0	0	8	-13
45	ARMSTRONG, NATALIE	C	0	0-3	0-1	0-0	1	0	1	0	1	0	0	0	5	-5
04	LEIPOLD, AUDRA	G	0	0-0	0-0	0-0	0	0	0	0	0	0	0	0	0	0
15	HILL, T'NAISHA	G	2	0-0	0-0	2-2	0	0	0	0	0	0	0	0	3	-4
21	ALLEN, KATIE	G	0	0-1	0-1	0-0	0	1	1	0	0	0	0	0	5	-5
32	CROZER, OLIVIA	F	2	1-5	0-1	0-0	0	0	0	0	0	1	0	0	6	-10
33	WOOLARD, MAKAILA	F	0	0-0	0-0	0-0	0	0	0	0	0	0	0	0	0	0
35	FITZGERALD, SAMANTHA	F	0	0-0	0-0	0-0	0	1	1	1	0	0	0	0	2	-4
	TEAM						1	0	1	0		0				
TOTALS			6	2-13	0-4	2-4	4	3	7	3	2	4	0	0	50	

Shooting By Period

Period	FG	FG%	3FG	3FG%	FT	FT%
3rd Qtr	7-14	50%	2-3	67%	0-2	00%
4th Qtr	3-7	43%	1-4	25%	6-10	60%
2nd Half	2-13	15%	0-4	00%	2-4	50%
2nd Half	10-21	48%	3-7	43%	6-12	50%
Game	17-46	37.0%	7-19	36.8%	8-16	50.0%

Deadball Rebounds: 5,2

Kentucky 19

No.	Player	S	Pts	FG	3FG	FT	OR	DR	TR	PF	A	TO	Blk	Stl	Min	+/-
01	HAINES, SABRINA	G	0	0-2	0-1	0-0	0	1	1	2	0	1	0	0	5	5
03	MCKINNEY, KEKE	F	4	2-4	0-1	0-0	0	1	1	0	1	0	1	0	9	11
10	HOWARD, RHYNE	G	7	3-4	0-1	1-2	0	2	2	0	3	0	0	1	8	9
12	PASCHAL, AMANDA	G	6	3-3	0-0	0-0	0	2	2	1	0	0	0	0	7	8
14	WYATT, TATYANA	F	0	0-0	0-0	0-0	0	0	0	1	0	0	0	0	1	2
05	GREEN, BLAIR	G	0	0-0	0-0	0-0	0	0	0	0	1	0	0	0	3	4
21	ANYAGALIGBO, OGECHI	F	2	1-1	0-0	0-2	2	0	2	1	0	0	1	0	5	9
32	ROPER, JAIDA	G	0	0-0	0-0	0-0	0	2	2	0	1	1	0	0	7	8
34	KING, EMMA	G	0	0-0	0-0	0-0	0	0	0	0	1	0	0	0	5	9
	TEAM						0	0	0	0		0				
TOTALS			19	9-14	0-3	1-4	2	8	10	5	7	2	2	1	50	

Shooting By Period

Period	FG	FG%	3FG	3FG%	FT	FT%
3rd Qtr	7-14	50%	2-5	40%	3-5	60%
4th Qtr	6-14	43%	3-6	50%	4-6	67%
2nd Half	9-14	64%	0-3	00%	1-4	25%
2nd Half	13-28	46%	5-11	45%	7-11	64%
Game	30-57	52.6%	11-23	47.8%	8-15	53.3%

Deadball Rebounds: 3,0

Game Notes:

Officials: **Doug Knight, Missy Brooks, Darren McClure**
 Attendance: **3795**

Start Time: **02:02 PM ET**
 End Time: **03:59 PM ET**
 Game Duration: **1:56**

Score	1st	2nd	3rd	4th	TOT
SAM	14	6	16	13	49
UK	22	19	19	19	79

Points from (This Period)	SAM	UK
In the Paint	2	12
Off Turns	0	5
2nd Chance	0	4
Fast Break	2	0
Bench	4	2

**Official Play-By-Play
Samford vs Kentucky
Second Quarter
December 08, 2019 at Memorial Coliseum - Lexington**



Period 2

Starters:

Samford: 3 BATTLE,SHAUNTAI (G); 11 SERUP,PAIGE (G); 12 BROWN,CHARITY (G); 25 MYERS,SARAH (G); 45 ARMSTRONG,NATALIE (C);
Kentucky: 1 HAINES,SABRINA (G); 3 MCKINNEY,KEKE (F); 10 HOWARD,RHYNE (G); 12 PASCHAL,AMANDA (G); 14 WYATT,TATYANA (F);

Time	VISITORS: Samford	Score	Margin	HOME: Kentucky
10:00	SUB OUT: BATTLE, SHAUNTAI			
10:00	SUB IN: BROWN, CHARITY			
09:48		24-14	H 10	GOOD! LAYUP by PASCHAL, AMANDA [PNT]
09:27				FOUL (PERSONAL) by WYATT, TATYANA
09:27				SUB OUT: WYATT, TATYANA
09:27				SUB IN: MCKINNEY, KEKE
09:27	GOOD! FT by HILL, TA'NAISHA [FB]	24-15	H 9	
09:27	GOOD! FT by HILL, TA'NAISHA [FB]	24-16	H 8	
09:18		26-16	H 10	GOOD! LAYUP by HOWARD, RHYNE [PNT]
09:18				ASSIST by MCKINNEY, KEKE
09:01	TURNOVER (BADPASS) by CROZER, OLIVIA			
09:01				STEAL by HOWARD, RHYNE
08:43		28-16	H 12	GOOD! JUMPER by HOWARD, RHYNE
08:43				ASSIST by GREEN, BLAIR
08:14	GOOD! JUMPER by CROZER, OLIVIA [PNT]	28-18	H 10	
08:14	ASSIST by SERUP, PAIGE			
07:56				MISSED JUMPER by MCKINNEY, KEKE
07:53	REBOUND (DEF) by BROWN, CHARITY			
07:27	MISSED 3PTR by CROZER, OLIVIA			
07:24				REBOUND (DEF) by PASCHAL, AMANDA
07:15		30-18	H 12	GOOD! LAYUP by MCKINNEY, KEKE [PNT]
07:15				ASSIST by HOWARD, RHYNE
06:53	MISSED JUMPER by CROZER, OLIVIA			
06:50	REBOUND (OFF) by MYERS, SARAH			
06:47	MISSED 3PTR by BROWN, CHARITY			
06:44				REBOUND (DEF) by ROPER, JAIDA
06:39				TURNOVER (BADPASS) by ROPER, JAIDA
06:39				SUB OUT: GREEN, BLAIR
06:39				SUB IN: HAINES, SABRINA
06:39	SUB OUT: BROWN, CHARITY			
06:39	SUB OUT: HILL, TA'NAISHA			
06:39	SUB OUT: MYERS, SARAH			
06:39	SUB IN: BATTLE, SHAUNTAI			
06:39	SUB IN: ALLEN, KATIE			
06:39	SUB IN: ARMSTRONG, NATALIE			
06:19	MISSED 3PTR by ALLEN, KATIE			
06:16				REBOUND (DEF) by ROPER, JAIDA
06:09		32-18	H 14	GOOD! JUMPER by PASCHAL, AMANDA
06:09				ASSIST by HOWARD, RHYNE
05:53	SUB OUT: CROZER, OLIVIA			
05:53	SUB IN: BROWN, CHARITY			
05:42	GOOD! JUMPER by SERUP, PAIGE	32-20	H 12	
05:42	ASSIST by ARMSTRONG, NATALIE			
05:20				MISSED 3PTR by HAINES, SABRINA
05:17	REBOUND (DEF) by ALLEN, KATIE			
05:03	TURNOVER (BADPASS) by BROWN, CHARITY			
05:02				SUB OUT: HAINES, SABRINA
05:02				SUB OUT: ROPER, JAIDA
05:02				SUB IN: ANYAGALIGBO, OGECHI
05:02				SUB IN: KING, EMMA
04:38	FOUL (PERSONAL) by BATTLE, SHAUNTAI			
04:38				
04:38				SUB OUT: PASCHAL, AMANDA
04:38				SUB IN: HAINES, SABRINA
04:38	SUB OUT: SERUP, PAIGE			
04:38	SUB IN: MYERS, SARAH			
04:38				MISSED FT by HOWARD, RHYNE
04:38				REBOUND (OFF) by TEAM
04:38		33-20	H 13	GOOD! FT by HOWARD, RHYNE
04:18	MISSED JUMPER by ARMSTRONG, NATALIE			
04:14	REBOUND (OFF) by ARMSTRONG, NATALIE			
04:14	MISSED LAYUP by ARMSTRONG, NATALIE			
04:14				REBOUND (DEF) by MCKINNEY, KEKE
04:07				MISSED JUMPER by HAINES, SABRINA
04:05	REBOUND (DEF) by TEAM			
04:05				FOUL (PERSONAL) by ANYAGALIGBO, OGECHI
03:56	MISSED JUMPER by MYERS, SARAH			
03:53				REBOUND (DEF) by HOWARD, RHYNE
03:46				MISSED 3PTR by MCKINNEY, KEKE
03:42				REBOUND (OFF) by ANYAGALIGBO, OGECHI

Time	VISITORS: Samford	Score	Margin	HOME: Kentucky
03:10		35-20	H 15	GOOD! LAYUP by HOWARD, RHYNE
02:53	MISSED JUMPER by MYERS, SARAH			
02:53				BLOCK by MCKINNEY, KEKE
02:48				REBOUND (DEF) by HAINES, SABRINA
02:39				MISSED 3PTR by HOWARD, RHYNE
02:34				REBOUND (OFF) by ANYAGALIGBO, OGECHI
02:33		37-20	H 17	GOOD! LAYUP by MCKINNEY, KEKE [PNT]
02:33				ASSIST by HOWARD, RHYNE
02:18	MISSED 3PTR by ARMSTRONG, NATALIE			
02:14				REBOUND (DEF) by HOWARD, RHYNE
02:07	FOUL (PERSONAL) by BROWN, CHARITY			
02:07				SUB OUT: HOWARD, RHYNE
02:07				SUB IN: ROPER, JAIDA
02:07	SUB OUT: ALLEN, KATIE			
02:07	SUB OUT: ARMSTRONG, NATALIE			
02:07	SUB IN: CROZER, OLIVIA			
02:07	SUB IN: FITZGERALD, SAMANTHA			
02:07				FOUL (OFF) by HAINES, SABRINA
02:07				TURNOVER (OFFENSIVE) by HAINES, SABRINA
01:52	MISSED JUMPER by CROZER, OLIVIA			
01:52				BLOCK by ANYAGALIGBO, OGECHI
01:52	REBOUND (OFF) by TEAM			
01:40				FOUL (PERSONAL) by HAINES, SABRINA
01:40				SUB OUT: HAINES, SABRINA
01:40				SUB IN: PASCHAL, AMANDA
01:32	MISSED JUMPER by CROZER, OLIVIA			
01:29	REBOUND (OFF) by BROWN, CHARITY			
01:28	TURNOVER (BADPASS) by BROWN, CHARITY			
01:07		39-20	H 19	GOOD! LAYUP by ANYAGALIGBO, OGECHI
01:07				ASSIST by KING, EMMA
00:54	TURNOVER (BADPASS) by BROWN, CHARITY			
00:34	FOUL (PERSONAL) by FITZGERALD, SAMANTHA			
00:34				MISSED FT by ANYAGALIGBO, OGECHI
00:34				REBOUND (OFF) by TEAM
00:34				MISSED FT by ANYAGALIGBO, OGECHI
00:32	REBOUND (DEF) by FITZGERALD, SAMANTHA			
00:23				FOUL (PERSONAL) by PASCHAL, AMANDA
00:23	MISSED FT by MYERS, SARAH			
00:23	REBOUND (OFF) by TEAM			
00:23	MISSED FT by MYERS, SARAH			
00:22				REBOUND (DEF) by PASCHAL, AMANDA
00:01		41-20	H 21	GOOD! JUMPER by PASCHAL, AMANDA
00:01				ASSIST by ROPER, JAIDA

Samford 20, Kentucky 41

Points from (This Period)	SAM	UK
In the Paint	2	12
Off Turns	0	5
2nd Chance	0	4
Fast Break	2	0
Bench	4	2

Official Box Score
Samford vs Kentucky
Second Half Statistics Only
December 08, 2019 at Memorial Coliseum - Lexington



Samford 29

No.	Player	S	Pts	FG	3FG	FT	OR	DR	TR	PF	A	TO	Blk	Stl	Min	+/-
03	BATTLE, SHAUNTAI	G	3	1-3	1-1	0-0	0	1	1	1	2	0	0	0	13	-6
04	LEIPOLD, AUDRA	G	0	0-1	0-0	0-0	0	1	1	2	0	3	0	0	4	-6
11	SERUP, PAIGE	G	0	0-0	0-0	0-0	0	0	0	1	0	1	0	0	10	-5
12	BROWN, CHARITY	G	2	1-2	0-0	0-0	0	1	1	1	6	2	0	0	13	1
15	HILL, TA'NAISHA	G	3	0-1	0-1	3-4	0	0	0	1	0	1	0	0	7	-3
21	ALLEN, KATIE	G	0	0-1	0-1	0-0	0	0	0	1	0	0	1	0	8	-7
25	MYERS, SARAH	G	5	2-4	1-2	0-2	0	3	3	1	0	1	0	0	14	-3
32	CROZER, OLIVIA	F	4	1-2	0-0	2-2	0	2	2	1	0	0	0	0	10	-8
33	WOOLARD, MAKAILA	F	1	0-0	0-0	1-4	0	1	1	0	0	0	0	1	3	-2
35	FITZGERALD, SAMANTHA	F	5	2-3	1-2	0-0	0	1	1	0	0	1	0	0	8	-5
45	ARMSTRONG, NATALIE	C	6	3-4	0-0	0-0	0	1	1	0	1	0	0	0	9	-1
	TEAM		0	0-0	0-0	0-0	1	1	2	0	0	0	0	0	0	
TOTALS			29	10-21	3-7	6-12	1	12	13	9	9	9	1	1	99	

Shooting By Period

Period	FG	FG%	3FG	3FG%	FT	FT%
3rd Qtr	7-14	50%	2-3	67%	0-2	00%
4th Qtr	3-7	43%	1-4	25%	6-10	60%
2nd Half	10-21	48%	3-7	43%	6-12	50%
Game	17-46	37.0%	7-19	36.8%	8-16	50.0%

Deadball Rebounds: 5,2

Last FG Half: SAM 4th-05:31

Kentucky 38

No.	Player	S	Pts	FG	3FG	FT	OR	DR	TR	PF	A	TO	Blk	Stl	Min	+/-
01	HAINES, SABRINA	G	9	2-5	1-3	4-4	1	2	3	0	1	2	0	1	18	6
03	MCKINNEY, KEKE	F	0	0-0	0-0	0-0	1	1	2	1	2	2	1	0	11	-1
05	GREEN, BLAIR	G	6	3-5	0-1	0-0	1	1	2	1	0	0	0	1	12	12
10	HOWARD, RHYNE	G	14	5-10	2-3	2-2	1	3	4	1	0	1	0	2	15	8
12	PASCHAL, AMANDA	G	1	0-2	0-1	1-2	1	0	1	0	1	0	0	0	8	-1
14	WYATT, TATYANA	F	0	0-1	0-0	0-0	0	0	0	2	0	0	0	0	5	1
21	ANYAGALIGBO, OGECHI	F	2	1-1	0-0	0-3	0	2	2	1	0	0	0	1	10	3
32	ROPER, JAIDA	G	3	1-3	1-2	0-0	0	3	3	1	4	0	0	1	16	12
34	KING, EMMA	G	3	1-1	1-1	0-0	0	0	0	2	1	1	0	0	5	5
	TEAM		0	0-0	0-0	0-0	1	0	1	0	0	0	0	0	0	
TOTALS			38	13-28	5-11	7-11	6	12	18	9	9	6	1	6	99	

Shooting By Period

Period	FG	FG%	3FG	3FG%	FT	FT%
3rd Qtr	7-14	50%	2-5	40%	3-5	60%
4th Qtr	6-14	43%	3-6	50%	4-6	67%
2nd Half	13-28	46%	5-11	45%	7-11	64%
Game	30-57	52.6%	11-23	47.8%	8-15	53.3%

Deadball Rebounds: 3,0

Last FG Half: UK 4th-01:13

Game Notes:

Officials: **Doug Knight, Missy Brooks, Darren McClure**

Attendance: **3795**

Start Time: **02:02 PM ET**

End Time: **03:59 PM ET**

Game Duration: **1:56**

Score	1st	2nd	3rd	4th	TOT
SAM	14	6	16	13	49
UK	22	19	19	19	79

Points from (This Period)	SAM	UK
In the Paint	10	8
Off Turns	7	7
2nd Chance	2	7
Fast Break	2	1
Bench	13	14

Official Box Score
Samford vs Kentucky
Third Quarter Statistics Only
December 08, 2019 at Memorial Coliseum - Lexington



Samford 29

No.	Player	S	Pts	FG	3FG	FT	OR	DR	TR	PF	A	TO	Blk	Stl	Min	+/-
03	BATTLE, SHAUNTAI	G	3	1-3	1-1	0-0	0	1	1	1	2	0	0	0	10	-3
11	SERUP, PAIGE	G	0	0-0	0-0	0-0	0	0	0	1	0	0	0	0	8	-2
12	BROWN, CHARITY	G	2	1-2	0-0	0-0	0	1	1	0	3	2	0	0	9	-2
25	MYERS, SARAH	G	5	2-4	1-2	0-2	0	2	2	1	0	1	0	0	9	-2
45	ARMSTRONG, NATALIE	C	4	2-3	0-0	0-0	0	1	1	0	1	0	0	0	5	-1
04	LEIPOLD, AUDRA	G	0	0-0	0-0	0-0	0	0	0	0	0	0	0	0	0	0
15	HILL, TANAISHA	G	0	0-0	0-0	0-0	0	0	0	0	0	0	0	0	0	0
21	ALLEN, KATIE	G	0	0-0	0-0	0-0	0	0	0	0	0	0	0	0	3	-2
32	CROZER, OLIVIA	F	2	1-2	0-0	0-0	0	2	2	1	0	0	0	0	5	-2
33	WOOLARD, MAKAILA	F	0	0-0	0-0	0-0	0	0	0	0	0	0	0	0	0	0
35	FITZGERALD, SAMANTHA	F	0	0-0	0-0	0-0	0	0	0	0	0	1	0	0	1	-1
	TEAM						1	1	2	0		0				
TOTALS			16	7-14	2-3	0-2	1	8	9	4	6	4	0	0	50	

Shooting By Period

Period	FG	FG%	3FG	3FG%	FT	FT%
2nd Half	0-0	0%	0-0	0%	0-0	0%
Game	17-46	37.0%	7-19	36.8%	8-16	50.0%

Deadball Rebounds: 5,2

Kentucky 38

No.	Player	S	Pts	FG	3FG	FT	OR	DR	TR	PF	A	TO	Blk	Stl	Min	+/-
01	HAINES, SABRINA	G	4	1-3	0-1	2-2	1	1	2	0	0	1	0	1	10	3
03	MCKINNEY, KEKE	F	0	0-0	0-0	0-0	0	1	1	1	0	1	1	0	6	-2
10	HOWARD, RHYNE	G	8	3-5	2-3	0-0	0	2	2	0	0	0	0	1	8	4
12	PASCHAL, AMANDA	G	1	0-2	0-1	1-2	0	0	0	0	1	0	0	0	6	-4
14	WYATT, TATYANA	F	0	0-0	0-0	0-0	0	0	0	1	0	0	0	0	0	0
05	GREEN, BLAIR	G	4	2-2	0-0	0-0	0	0	0	1	0	0	0	0	7	7
21	ANYAGALIGBO, OGECHI	F	2	1-1	0-0	0-1	0	2	2	0	0	0	0	1	7	1
32	ROPER, JAIDA	G	0	0-1	0-0	0-0	0	1	1	0	2	0	0	0	6	6
34	KING, EMMA	G	0	0-0	0-0	0-0	0	0	0	0	0	0	0	0	0	0
	TEAM						0	0	0	0	0	0	0	0		
TOTALS			19	7-14	2-5	3-5	1	7	8	3	3	2	1	3	50	

Shooting By Period

Period	FG	FG%	3FG	3FG%	FT	FT%
2nd Half	0-0	0%	0-0	0%	0-0	0%
Game	30-57	52.6%	11-23	47.8%	8-15	53.3%

Deadball Rebounds: 3,0

Game Notes:

Officials: Doug Knight, Missy Brooks, Darren McClure
Attendance: 3795

Start Time: 02:02 PM ET
End Time: 03:59 PM ET
Game Duration: 1:56

Score	1st	2nd	3rd	4th	TOT
SAM	14	6	16	13	49
UK	22	19	19	19	79

Points from (This Period)	SAM	UK
In the Paint	6	6
Off Turns	4	2
2nd Chance	2	2
Fast Break	2	1
Bench	2	6

Official Play-By-Play
Samford vs Kentucky
Third Quarter
December 08, 2019 at Memorial Coliseum - Lexington



Period 3

Starters:

Samford: 3 BATTLE,SHAUNTAI (G); 11 SERUP,PAIGE (G); 12 BROWN,CHARITY (G); 25 MYERS,SARAH (G); 45 ARMSTRONG,NATALIE (C);
Kentucky: 1 HAINES,SABRINA (G); 3 MCKINNEY,KEKE (F); 10 HOWARD,RHYNE (G); 12 PASCHAL,AMANDA (G); 14 WYATT,TATYANA (F);

Time	VISITORS: Samford	Score	Margin	HOME: Kentucky
10:00				SUB OUT: ANYAGALIGBO, OGECHI
10:00				SUB OUT: ROPER, JAIDA
10:00				SUB OUT: KING, EMMA
10:00				SUB IN: HAINES, SABRINA
10:00				SUB IN: HOWARD, RHYNE
10:00				SUB IN: WYATT, TATYANA
10:00	SUB OUT: CROZER, OLIVIA			
10:00	SUB OUT: FITZGERALD, SAMANTHA			
10:00	SUB IN: SERUP, PAIGE			
10:00	SUB IN: ARMSTRONG, NATALIE			
09:53				FOUL (PERSONAL) by WYATT, TATYANA
09:53				SUB OUT: WYATT, TATYANA
09:53				SUB IN: ANYAGALIGBO, OGECHI
09:34	MISSED LAYUP by BATTLE, SHAUNTAI			
09:31				REBOUND (DEF) by ANYAGALIGBO, OGECHI
09:18				FOUL (OFF) by MCKINNEY, KEKE
09:18				TURNOVER (OFFENSIVE) by MCKINNEY, KEKE
09:01	GOOD! JUMPER by ARMSTRONG, NATALIE [PNT]	41-22	H 19	
09:01	ASSIST by BATTLE, SHAUNTAI			
08:37		43-22	H 21	GOOD! LAYUP by HOWARD, RHYNE [PNT]
08:19	TURNOVER (LOSTBALL) by MYERS, SARAH			
08:19				STEAL by HOWARD, RHYNE
08:08				MISSED JUMPER by HAINES, SABRINA
08:05	REBOUND (DEF) by MYERS, SARAH			
07:59	GOOD! 3PTR by MYERS, SARAH	43-25	H 18	
07:59	ASSIST by BROWN, CHARITY			
07:30				MISSED 3PTR by PASCHAL, AMANDA
07:27				REBOUND (OFF) by HAINES, SABRINA
07:27	FOUL (PERSONAL) by SERUP, PAIGE			
07:27		44-25	H 19	GOOD! FT by HAINES, SABRINA
07:27		45-25	H 20	GOOD! FT by HAINES, SABRINA
07:10	GOOD! 3PTR by BATTLE, SHAUNTAI	45-28	H 17	
07:10	ASSIST by ARMSTRONG, NATALIE			
06:52				SUB OUT: MCKINNEY, KEKE
06:52				SUB IN: GREEN, BLAIR
06:49		48-28	H 20	GOOD! 3PTR by HOWARD, RHYNE
06:49				ASSIST by PASCHAL, AMANDA
06:25	GOOD! LAYUP by ARMSTRONG, NATALIE [PNT]	48-30	H 18	
06:25	ASSIST by BROWN, CHARITY			
06:16				TIMEOUT 30SEC
06:16				SUB OUT: PASCHAL, AMANDA
06:16				SUB IN: ROPER, JAIDA
06:08		50-30	H 20	GOOD! JUMPER by GREEN, BLAIR
05:50	MISSED LAYUP by MYERS, SARAH			
05:47				REBOUND (DEF) by ANYAGALIGBO, OGECHI
05:40		52-30	H 22	GOOD! JUMPER by HAINES, SABRINA [PNT]
05:15	MISSED JUMPER by ARMSTRONG, NATALIE			
05:11				REBOUND (DEF) by HOWARD, RHYNE
05:03				MISSED JUMPER by HOWARD, RHYNE
05:01	REBOUND (DEF) by ARMSTRONG, NATALIE			
04:48	TURNOVER (LOSTBALL) by BROWN, CHARITY			
04:48				STEAL by ANYAGALIGBO, OGECHI
04:48				
04:48	SUB OUT: ARMSTRONG, NATALIE			
04:48	SUB IN: CROZER, OLIVIA			
04:29		54-30	H 24	GOOD! JUMPER by GREEN, BLAIR
04:29				ASSIST by ROPER, JAIDA
04:05	TURNOVER (BADPASS) by BROWN, CHARITY			
04:05				STEAL by HAINES, SABRINA
03:55				TURNOVER (LOSTBALL) by HAINES, SABRINA
03:49	GOOD! LAYUP by MYERS, SARAH [FB/PNT]	54-32	H 22	
03:49	ASSIST by BATTLE, SHAUNTAI			
03:32				MISSED 3PTR by HOWARD, RHYNE
03:28	REBOUND (DEF) by BROWN, CHARITY			
03:15	GOOD! JUMPER by BROWN, CHARITY	54-34	H 20	
02:53		56-34	H 22	GOOD! LAYUP by ANYAGALIGBO, OGECHI [PNT]
02:53				ASSIST by ROPER, JAIDA
02:53	FOUL (PERSONAL) by CROZER, OLIVIA			
02:53				MISSED FT by ANYAGALIGBO, OGECHI
02:53	REBOUND (DEF) by MYERS, SARAH			

Time	VISITORS: Samford	Score	Margin	HOME: Kentucky
02:36				FOUL (PERSONAL) by GREEN, BLAIR
02:36				SUB OUT: ANYAGALIGBO, OGECHI
02:36				SUB IN: MCKINNEY, KEKE
02:36	SUB OUT: SERUP, PAIGE			
02:36	SUB IN: ALLEN, KATIE			
02:36	MISSED FT by MYERS, SARAH			
02:36	REBOUND (OFF) by TEAM			
02:36	MISSED FT by MYERS, SARAH			
02:36				REBOUND (DEF) by HOWARD, RHYNE
02:17		59-34	H 25	GOOD! 3PTR by HOWARD, RHYNE
02:00	MISSED JUMPER by CROZER, OLIVIA			
02:00				BLOCK by MCKINNEY, KEKE
01:57	REBOUND (OFF) by TEAM			
01:55				SUB OUT: HOWARD, RHYNE
01:55				SUB IN: PASCHAL, AMANDA
01:41	GOOD! JUMPER by CROZER, OLIVIA	59-36	H 23	
01:41	ASSIST by BROWN, CHARITY			
01:32				MISSED JUMPER by ROPER, JAIDA
01:30	REBOUND (DEF) by BATTLE, SHAUNTAI			
01:19	MISSED JUMPER by BROWN, CHARITY			
01:16				REBOUND (DEF) by MCKINNEY, KEKE
01:05				MISSED LAYUP by PASCHAL, AMANDA
01:01	REBOUND (DEF) by CROZER, OLIVIA			
00:52	MISSED 3PTR by MYERS, SARAH			
00:49				REBOUND (DEF) by ROPER, JAIDA
00:46	FOUL (PERSONAL) by MYERS, SARAH			
00:46	SUB OUT: BROWN, CHARITY			
00:46	SUB OUT: MYERS, SARAH			
00:46	SUB IN: SERUP, PAIGE			
00:46	SUB IN: FITZGERALD, SAMANTHA			
00:46		60-36	H 24	GOOD! FT by PASCHAL, AMANDA [FB]
00:46				MISSED FT by PASCHAL, AMANDA
00:45	REBOUND (DEF) by CROZER, OLIVIA			
00:32	TURNOVER (BADPASS) by FITZGERALD, SAMANTHA			
00:11	FOUL (PERSONAL) by BATTLE, SHAUNTAI			
00:05				MISSED 3PTR by HAINES, SABRINA
00:02	REBOUND (DEF) by TEAM			
00:00	MISSED JUMPER by BATTLE, SHAUNTAI			
00:00				REBOUND (DEF) by HAINES, SABRINA

Samford 36, Kentucky 60

Points from (This Period)	SAM	UK
In the Paint	6	6
Off Turns	4	2
2nd Chance	2	2
Fast Break	2	1
Bench	2	6

Official Box Score
Samford vs Kentucky
Fourth Quarter Statistics Only
December 08, 2019 at Memorial Coliseum - Lexington



Samford 13

No.	Player	S	Pts	FG	3FG	FT	OR	DR	TR	PF	A	TO	Blk	Stl	Min	+/-
03	BATTLE, SHAUNTAI	G	0	0-0	0-0	0-0	0	0	0	0	0	0	0	0	3	-3
11	SERUP, PAIGE	G	0	0-0	0-0	0-0	0	0	0	0	0	1	0	0	2	-3
12	BROWN, CHARITY	G	0	0-0	0-0	0-0	0	0	0	1	3	0	0	0	4	3
25	MYERS, SARAH	G	0	0-0	0-0	0-0	0	1	1	0	0	0	0	0	5	-1
45	ARMSTRONG, NATALIE	C	2	1-1	0-0	0-0	0	0	0	0	0	0	0	0	4	0
04	LEIPOLD, AUDRA	G	0	0-1	0-0	0-0	0	1	1	2	0	3	0	0	4	-6
15	HILL, TA'NAISHA	G	3	0-1	0-1	3-4	0	0	0	1	0	1	0	0	7	-3
21	ALLEN, KATIE	G	0	0-1	0-1	0-0	0	0	0	1	0	0	1	0	5	-5
32	CROZER, OLIVIA	F	2	0-0	0-0	2-2	0	0	0	0	0	0	0	0	5	-6
33	WOOLARD, MAKAILA	F	1	0-0	0-0	1-4	0	1	1	0	0	0	0	1	3	-2
35	FITZGERALD, SAMANTHA	F	5	2-3	1-2	0-0	0	1	1	0	0	0	0	0	7	-4
TEAM							0	0	0	0	0	0				
TOTALS			13	3-7	1-4	6-10	0	4	4	5	3	5	1	1	49	

Shooting By Period

Period	FG	FG%	3FG	3FG%	FT	FT%
Game	17-46	37.0%	7-19	36.8%	8-16	50.0%

Deadball Rebounds: 5,2

Kentucky 19

No.	Player	S	Pts	FG	3FG	FT	OR	DR	TR	PF	A	TO	Blk	Stl	Min	+/-
01	HAINES, SABRINA	G	5	1-2	1-2	2-2	0	1	1	0	1	1	0	0	8	3
03	MCKINNEY, KEKE	F	0	0-0	0-0	0-0	1	0	1	0	2	1	0	0	5	1
10	HOWARD, RHYNE	G	6	2-5	0-0	2-2	1	1	2	1	0	1	0	1	7	4
12	PASCHAL, AMANDA	G	0	0-0	0-0	0-0	1	0	1	0	0	0	0	0	2	3
14	WYATT, TATYANA	F	0	0-1	0-0	0-0	0	0	0	1	0	0	0	0	5	1
05	GREEN, BLAIR	G	2	1-3	0-1	0-0	1	1	2	0	0	0	0	1	5	5
21	ANYAGALIGBO, OGECHI	F	0	0-0	0-0	0-2	0	0	0	1	0	0	0	0	3	2
32	ROPER, JAIDA	G	3	1-2	1-2	0-0	0	2	2	1	2	0	0	1	10	6
34	KING, EMMA	G	3	1-1	1-1	0-0	0	0	0	2	1	1	0	0	5	5
TEAM							1	0	1	0	0	0				
TOTALS			19	6-14	3-6	4-6	5	5	10	6	6	4	0	3	49	

Shooting By Period

Period	FG	FG%	3FG	3FG%	FT	FT%
Game	30-57	52.6%	11-23	47.8%	8-15	53.3%

Deadball Rebounds: 3,0

Game Notes:

Officials: Doug Knight, Missy Brooks, Darren McClure
 Attendance: 3795

Start Time: 02:02 PM ET
 End Time: 03:59 PM ET
 Game Duration: 1:56

Score	1st	2nd	3rd	4th	TOT
SAM	14	6	16	13	49
UK	22	19	19	19	79

Points from (This Period)	SAM	UK
In the Paint	4	2
Off Turns	3	5
2nd Chance	0	5
Fast Break	0	0
Bench	11	8

Official Play-By-Play
Samford vs Kentucky
Fourth Quarter
December 08, 2019 at Memorial Coliseum - Lexington



Period 4

Starters:

Samford: 3 BATTLE,SHAUNTAI (G); 11 SERUP,PAIGE (G); 12 BROWN,CHARITY (G); 25 MYERS,SARAH (G); 45 ARMSTRONG,NATALIE (C);
Kentucky: 1 HAINES,SABRINA (G); 3 MCKINNEY,KEKE (F); 10 HOWARD,RHYNE (G); 12 PASCHAL,AMANDA (G); 14 WYATT,TATYANA (F);

Time	VISITORS: Samford	Score	Margin	HOME: Kentucky
10:00				SUB OUT: GREEN, BLAIR
10:00				SUB OUT: PASCHAL, AMANDA
10:00				SUB IN: HOWARD, RHYNE
10:00				SUB IN: WYATT, TATYANA
10:00	SUB OUT: BATTLE, SHAUNTAI			
10:00	SUB IN: MYERS, SARAH			
09:45	MISSED 3PTR by ALLEN, KATIE			
09:42				REBOUND (DEF) by HOWARD, RHYNE
09:37				MISSED LAYUP by HOWARD, RHYNE
09:37	BLOCK by ALLEN, KATIE			
09:33				REBOUND (OFF) by MCKINNEY, KEKE
09:32		63-36	H 27	GOOD! 3PTR by ROPER, JAIDA
09:32				ASSIST by MCKINNEY, KEKE
09:09				FOUL (PERSONAL) by WYATT, TATYANA
09:09	GOOD! FT by CROZER, OLIVIA	63-37	H 26	
09:09	GOOD! FT by CROZER, OLIVIA	63-38	H 25	
09:09	SUB OUT: CROZER, OLIVIA			
09:09	SUB IN: ARMSTRONG, NATALIE			
08:49	FOUL (PERSONAL) by ALLEN, KATIE			
08:49		64-38	H 26	GOOD! FT by HAINES, SABRINA
08:49		65-38	H 27	GOOD! FT by HAINES, SABRINA
08:41	TURNOVER (BADPASS) by SERUP, PAIGE			
08:24				TURNOVER (TRAVEL) by HOWARD, RHYNE
08:06	MISSED 3PTR by FITZGERALD, SAMANTHA			
08:03				REBOUND (DEF) by ROPER, JAIDA
07:37				MISSED LAYUP by HOWARD, RHYNE
07:37				REBOUND (OFF) by TEAM
07:30				MISSED JUMPER by WYATT, TATYANA
07:29	REBOUND (DEF) by MYERS, SARAH			
07:25	MISSED 3PTR by HILL, TA'NAISHA			
07:24				REBOUND (DEF) by ROPER, JAIDA
07:37	SUB OUT: SERUP, PAIGE			
07:37	SUB OUT: ALLEN, KATIE			
07:37	SUB IN: BROWN, CHARITY			
07:37	SUB IN: HILL, TA'NAISHA			
07:10				TURNOVER (BADPASS) by MCKINNEY, KEKE
06:51	GOOD! 3PTR by FITZGERALD, SAMANTHA	65-41	H 24	
06:51	ASSIST by BROWN, CHARITY			
06:29		67-41	H 26	GOOD! JUMPER by HOWARD, RHYNE
06:29				ASSIST by MCKINNEY, KEKE
06:13	GOOD! LAYUP by ARMSTRONG, NATALIE [PNT]	67-43	H 24	
06:13	ASSIST by BROWN, CHARITY			
05:51		70-43	H 27	GOOD! 3PTR by HAINES, SABRINA
05:51				ASSIST by ROPER, JAIDA
05:31	GOOD! LAYUP by FITZGERALD, SAMANTHA [PNT]	70-45	H 25	
05:31	ASSIST by BROWN, CHARITY			
05:20				TIMEOUT 30SEC
05:20				SUB OUT: HAINES, SABRINA
05:20				SUB OUT: MCKINNEY, KEKE
05:20				SUB OUT: WYATT, TATYANA
05:20				SUB IN: GREEN, BLAIR
05:20				SUB IN: PASCHAL, AMANDA
05:20				SUB IN: KING, EMMA
05:20	SUB OUT: MYERS, SARAH			
05:20	SUB IN: BATTLE, SHAUNTAI			
05:09				MISSED JUMPER by GREEN, BLAIR
05:05				REBOUND (OFF) by HOWARD, RHYNE
05:03				MISSED JUMPER by HOWARD, RHYNE
05:00	REBOUND (DEF) by FITZGERALD, SAMANTHA			
04:48				FOUL (PERSONAL) by KING, EMMA
04:48	SUB OUT: ARMSTRONG, NATALIE			
04:48	SUB IN: CROZER, OLIVIA			
04:48	MISSED FT by HILL, TA'NAISHA			
04:48	REBOUND (OFF) by TEAM			
04:48	GOOD! FT by HILL, TA'NAISHA	70-46	H 24	
04:25				MISSED 3PTR by ROPER, JAIDA
04:21				REBOUND (OFF) by GREEN, BLAIR
04:04				MISSED 3PTR by GREEN, BLAIR
04:01				REBOUND (OFF) by PASCHAL, AMANDA
03:51	FOUL (PERSONAL) by BROWN, CHARITY			

Time	VISITORS: Samford	Score	Margin	HOME: Kentucky
03:51	SUB OUT: BROWN, CHARITY			
03:51	SUB IN: LEIPOLD, AUDRA			
03:51		71-46	H 25	GOOD! FT by HOWARD, RHYNE
03:51		72-46	H 26	GOOD! FT by HOWARD, RHYNE
03:38	TURNOVER (LOSTBALL) by LEIPOLD, AUDRA			
03:38				STEAL by HOWARD, RHYNE
03:36	FOUL (PERSONAL) by LEIPOLD, AUDRA			
03:19		74-46	H 28	GOOD! JUMPER by HOWARD, RHYNE [PNT]
03:19				ASSIST by KING, EMMA
03:05				FOUL (PERSONAL) by HOWARD, RHYNE
03:05				SUB OUT: HOWARD, RHYNE
03:05				SUB IN: HAINES, SABRINA
03:05	SUB OUT: FITZGERALD, SAMANTHA			
03:05	SUB IN: WOOLARD, MAKAILA			
03:05				SUB OUT: PASCHAL, AMANDA
03:05				SUB IN: ANYAGALIGBO, OGECHI
02:52				FOUL (PERSONAL) by ROPER, JAIDA
02:52	MISSED FT by WOOLARD, MAKAILA			
02:52	REBOUND (OFF) by TEAM			
02:52	MISSED FT by WOOLARD, MAKAILA			
02:52				REBOUND (DEF) by HAINES, SABRINA
02:32				TURNOVER (LOSTBALL) by KING, EMMA
02:25	SUB OUT: BATTLE, SHAUNTAI			
02:25	SUB IN: ALLEN, KATIE			
02:25	FOUL (OFF) by LEIPOLD, AUDRA			
02:25	TURNOVER (OFFENSIVE) by LEIPOLD, AUDRA			
02:05		77-46	H 31	GOOD! 3PTR by KING, EMMA
02:05				ASSIST by ROPER, JAIDA
01:47	MISSED LAYUP by LEIPOLD, AUDRA			
01:44				REBOUND (DEF) by GREEN, BLAIR
01:37				MISSED 3PTR by HAINES, SABRINA
01:34	REBOUND (DEF) by WOOLARD, MAKAILA			
01:29				FOUL (PERSONAL) by KING, EMMA
01:29	GOOD! FT by HILL, TA'NAISHA	77-47	H 30	
01:29	GOOD! FT by HILL, TA'NAISHA	77-48	H 29	
01:13		79-48	H 31	GOOD! JUMPER by GREEN, BLAIR
01:13				ASSIST by HAINES, SABRINA
00:58				FOUL (PERSONAL) by ANYAGALIGBO, OGECHI
00:58	MISSED FT by WOOLARD, MAKAILA			
00:58	REBOUND (OFF) by TEAM			
00:58	GOOD! FT by WOOLARD, MAKAILA	79-49	H 30	
00:43				TURNOVER (BADPASS) by HAINES, SABRINA
00:43	STEAL by WOOLARD, MAKAILA			
00:39	TURNOVER (LOSTBALL) by HILL, TA'NAISHA			
00:39				STEAL by ROPER, JAIDA
00:18	FOUL (PERSONAL) by HILL, TA'NAISHA			
00:18				MISSED FT by ANYAGALIGBO, OGECHI
00:18				REBOUND (OFF) by TEAM
00:18				MISSED FT by ANYAGALIGBO, OGECHI
00:17	REBOUND (DEF) by LEIPOLD, AUDRA			
00:13	TURNOVER (LOSTBALL) by LEIPOLD, AUDRA			
00:13				STEAL by GREEN, BLAIR

Samford 49, Kentucky 79

Points from (This Period)	SAM	UK
In the Paint	4	2
Off Turns	3	5
2nd Chance	0	5
Fast Break	0	0
Bench	11	8

Official Scoring/Possession Reference Chart
Samford vs Kentucky
Period 1
December 08, 2019 at Memorial Coliseum - Lexington



Period 1

Starters:

Samford: 3 BATTLE,SHAUNTAI (G); 11 SERUP,PAIGE (G); 12 BROWN,CHARITY (G); 25 MYERS,SARAH (G); 45 ARMSTRONG,NATALIE (C);
Kentucky: 1 HAINES,SABRINA (G); 3 MCKINNEY,KEKE (F); 10 HOWARD,RHYNE (G); 12 PASCHAL,AMANDA (G); 14 WYATT,TATYANA (F);

Time	VISITORS: Samford	Score	Margin	HOME: Kentucky
09:52		3-0	H 3	GOOD! 3PTR by HOWARD, RHYNE
09:09		6-0	H 6	GOOD! 3PTR by HOWARD, RHYNE
07:36		9-0	H 9	GOOD! 3PTR by HAINES, SABRINA
07:11	GOOD! 3PTR by SERUP, PAIGE	9-3	H 6	
06:26	GOOD! 3PTR by SERUP, PAIGE	9-6	H 3	
05:58		11-6	H 5	GOOD! JUMPER by PASCHAL, AMANDA
05:14	GOOD! 3PTR by BATTLE, SHAUNTAI	11-9	H 2	
03:32	GOOD! 3PTR by BATTLE, SHAUNTAI	11-12	V 1	
03:15		13-12	H 1	GOOD! LAYUP by ANYAGALIGBO, OGECHI [PNT]
02:31	GOOD! LAYUP by MYERS, SARAH [PNT]	13-14	V 1	
02:03		16-14	H 2	GOOD! 3PTR by GREEN, BLAIR
01:20		19-14	H 5	GOOD! 3PTR by MCKINNEY, KEKE
00:15		22-14	H 8	GOOD! 3PTR by HOWARD, RHYNE

Samford 14, Kentucky 22

Official Scoring/Possession Reference Chart
Samford vs Kentucky
Period 2
December 08, 2019 at Memorial Coliseum - Lexington



Period 2

Starters:

Samford: 3 BATTLE,SHAUNTAI (G); 11 SERUP,PAIGE (G); 12 BROWN,CHARITY (G); 25 MYERS,SARAH (G); 45 ARMSTRONG,NATALIE (C);
Kentucky: 1 HAINES,SABRINA (G); 3 MCKINNEY,KEKE (F); 10 HOWARD,RHYNE (G); 12 PASCHAL,AMANDA (G); 14 WYATT,TATYANA (F);

Time	VISITORS: Samford	Score	Margin	HOME: Kentucky
09:48		24-14	H 10	GOOD! LAYUP by PASCHAL, AMANDA [PNT]
09:27	GOOD! FT by HILL, TA'NAISHA [FB]	24-15	H 9	
09:27	GOOD! FT by HILL, TA'NAISHA [FB]	24-16	H 8	
09:18		26-16	H 10	GOOD! LAYUP by HOWARD, RHYNE [PNT]
08:43		28-16	H 12	GOOD! JUMPER by HOWARD, RHYNE
08:14	GOOD! JUMPER by CROZER, OLIVIA [PNT]	28-18	H 10	
07:15		30-18	H 12	GOOD! LAYUP by MCKINNEY, KEKE [PNT]
06:09		32-18	H 14	GOOD! JUMPER by PASCHAL, AMANDA
05:42	GOOD! JUMPER by SERUP, PAIGE	32-20	H 12	
04:38		33-20	H 13	GOOD! FT by HOWARD, RHYNE
03:10		35-20	H 15	GOOD! LAYUP by HOWARD, RHYNE
02:33		37-20	H 17	GOOD! LAYUP by MCKINNEY, KEKE [PNT]
01:07		39-20	H 19	GOOD! LAYUP by ANYAGALIGBO, OGECHI
00:01		41-20	H 21	GOOD! JUMPER by PASCHAL, AMANDA

Samford 20, Kentucky 41

Official Scoring/Possession Reference Chart
Samford vs Kentucky
Period 3
December 08, 2019 at Memorial Coliseum - Lexington



Period 3

Starters:

Samford: 3 BATTLE,SHAUNTAI (G); 11 SERUP,PAIGE (G); 12 BROWN,CHARITY (G); 25 MYERS,SARAH (G); 45 ARMSTRONG,NATALIE (C);
Kentucky: 1 HAINES,SABRINA (G); 3 MCKINNEY,KEKE (F); 10 HOWARD,RHYNE (G); 12 PASCHAL,AMANDA (G); 14 WYATT,TATYANA (F);

Time	VISITORS: Samford	Score	Margin	HOME: Kentucky
09:01	GOOD! JUMPER by ARMSTRONG, NATALIE [PNT]	41-22	H 19	
08:37		43-22	H 21	GOOD! LAYUP by HOWARD, RHYNE [PNT]
07:59	GOOD! 3PTR by MYERS, SARAH	43-25	H 18	
07:27		44-25	H 19	GOOD! FT by HAINES, SABRINA
07:27		45-25	H 20	GOOD! FT by HAINES, SABRINA
07:10	GOOD! 3PTR by BATTLE, SHAUNTAI	45-28	H 17	
06:49		48-28	H 20	GOOD! 3PTR by HOWARD, RHYNE
06:25	GOOD! LAYUP by ARMSTRONG, NATALIE [PNT]	48-30	H 18	
06:08		50-30	H 20	GOOD! JUMPER by GREEN, BLAIR
05:40		52-30	H 22	GOOD! JUMPER by HAINES, SABRINA [PNT]
04:29		54-30	H 24	GOOD! JUMPER by GREEN, BLAIR
03:49	GOOD! LAYUP by MYERS, SARAH [FB/PNT]	54-32	H 22	
03:15	GOOD! JUMPER by BROWN, CHARITY	54-34	H 20	
02:53		56-34	H 22	GOOD! LAYUP by ANYAGALIGBO, OGECHI [PNT]
02:17		59-34	H 25	GOOD! 3PTR by HOWARD, RHYNE
01:41	GOOD! JUMPER by CROZER, OLIVIA	59-36	H 23	
00:46		60-36	H 24	GOOD! FT by PASCHAL, AMANDA [FB]

Samford 36, Kentucky 60

Official Scoring/Possession Reference Chart
Samford vs Kentucky
Period 4
December 08, 2019 at Memorial Coliseum - Lexington



Period 4

Starters:

Samford: 3 BATTLE,SHAUNTAI (G); 11 SERUP,PAIGE (G); 12 BROWN,CHARITY (G); 25 MYERS,SARAH (G); 45 ARMSTRONG,NATALIE (C);
Kentucky: 1 HAINES,SABRINA (G); 3 MCKINNEY,KEKE (F); 10 HOWARD,RHYNE (G); 12 PASCHAL,AMANDA (G); 14 WYATT,TATYANA (F);

Time	VISITORS: Samford	Score	Margin	HOME: Kentucky
09:32		63-36	H 27	GOOD! 3PTR by ROPER, JAIDA
09:09	GOOD! FT by CROZER, OLIVIA	63-37	H 26	
09:09	GOOD! FT by CROZER, OLIVIA	63-38	H 25	
08:49		64-38	H 26	GOOD! FT by HAINES, SABRINA
08:49		65-38	H 27	GOOD! FT by HAINES, SABRINA
06:51	GOOD! 3PTR by FITZGERALD, SAMANTHA	65-41	H 24	
06:29		67-41	H 26	GOOD! JUMPER by HOWARD, RHYNE
06:13	GOOD! LAYUP by ARMSTRONG, NATALIE [PNT]	67-43	H 24	
05:51		70-43	H 27	GOOD! 3PTR by HAINES, SABRINA
05:31	GOOD! LAYUP by FITZGERALD, SAMANTHA [PNT]	70-45	H 25	
04:48	GOOD! FT by HILL, TA'NAISHA	70-46	H 24	
03:51		71-46	H 25	GOOD! FT by HOWARD, RHYNE
03:51		72-46	H 26	GOOD! FT by HOWARD, RHYNE
03:19		74-46	H 28	GOOD! JUMPER by HOWARD, RHYNE [PNT]
02:05		77-46	H 31	GOOD! 3PTR by KING, EMMA
01:29	GOOD! FT by HILL, TA'NAISHA	77-47	H 30	
01:29	GOOD! FT by HILL, TA'NAISHA	77-48	H 29	
01:13		79-48	H 31	GOOD! JUMPER by GREEN, BLAIR
00:58	GOOD! FT by WOOLARD, MAKAILA	79-49	H 30	

Samford 49, Kentucky 79

**Official Substitutions Log
Samford vs Kentucky
Period 1
December 08, 2019 at Memorial Coliseum - Lexington**



VISITORS: Samford	Time	Score	HOME: Kentucky
3 BATTLE,SHAUNTAI			1 HAINES,SABRINA
11 SERUP,PAIGE			3 MCKINNEY,KEKE
12 BROWN,CHARITY			10 HOWARD,RHYNE
25 MYERS,SARAH			12 PASCHAL,AMANDA
45 ARMSTRONG,NATALIE			14 WYATT,TATYANA
	05:24	6-11	SUB OUT: MCKINNEY,KEKE
	05:24		SUB OUT: PASCHAL,AMANDA
	05:24		SUB OUT: WYATT,TATYANA
	05:24		SUB IN: GREEN,BLAIR
	05:24		SUB IN: ANYAGALIGBO,OGECHI
	05:24		SUB IN: ROPER,JAIDA
SUB OUT: 45 ARMSTRONG,NATALIE	04:55	9-11	
SUB IN: 32 CROZER,OLIVIA	04:55		
	02:26	14-13	SUB OUT: HAINES,SABRINA
	02:26		SUB OUT: HOWARD,RHYNE
	02:26		SUB OUT: ANYAGALIGBO,OGECHI
	02:26		SUB IN: MCKINNEY,KEKE
	02:26		SUB IN: PASCHAL,AMANDA
	02:26		SUB IN: WYATT,TATYANA
SUB OUT: 11 SERUP,PAIGE	02:15	14-13	
SUB IN: 15 HILL,TA'NAISHA	02:15		
	00:45	14-19	SUB OUT: MCKINNEY,KEKE
	00:45		SUB IN: HOWARD,RHYNE
SUB OUT: 12 BROWN,CHARITY	00:45		
SUB IN: 11 SERUP,PAIGE	00:45		

Samford 14, Kentucky 22

Official Substitutions Log
Samford vs Kentucky
Period 2
December 08, 2019 at Memorial Coliseum - Lexington



VISITORS: Samford	Time	Score	HOME: Kentucky
3 BATTLE,SHAUNTAI			1 HAINES,SABRINA
11 SERUP,PAIGE			3 MCKINNEY,KEKE
12 BROWN,CHARITY			10 HOWARD,RHYNE
25 MYERS,SARAH			12 PASCHAL,AMANDA
45 ARMSTRONG,NATALIE			14 WYATT,TATYANA
SUB OUT: 3 BATTLE,SHAUNTAI	10:00	-	
SUB IN: 12 BROWN,CHARITY	10:00		
	09:27	14-24	SUB OUT: WYATT,TATYANA
	09:27		SUB IN: MCKINNEY,KEKE
	06:39	18-30	SUB OUT: GREEN,BLAIR
	06:39		SUB IN: HAINES,SABRINA
SUB OUT: 12 BROWN,CHARITY	06:39		
SUB OUT: 15 HILL,TA'NAISHA	06:39		
SUB OUT: 25 MYERS,SARAH	06:39		
SUB IN: 3 BATTLE,SHAUNTAI	06:39		
SUB IN: 21 ALLEN,KATIE	06:39		
SUB IN: 45 ARMSTRONG,NATALIE	06:39		
SUB OUT: 32 CROZER,OLIVIA	05:53	18-32	
SUB IN: 12 BROWN,CHARITY	05:53		
	05:02	20-32	SUB OUT: HAINES,SABRINA
	05:02		SUB OUT: ROPER,JAIDA
	05:02		SUB IN: ANYAGALIGBO,OGECHE
	05:02		SUB IN: KING,EMMA
	04:38	20-32	SUB OUT: PASCHAL,AMANDA
	04:38		SUB IN: HAINES,SABRINA
SUB OUT: 11 SERUP,PAIGE	04:38		
SUB IN: 25 MYERS,SARAH	04:38		
	02:07	20-37	SUB OUT: HOWARD,RHYNE
	02:07		SUB IN: ROPER,JAIDA
SUB OUT: 21 ALLEN,KATIE	02:07		
SUB OUT: 45 ARMSTRONG,NATALIE	02:07		
SUB IN: 32 CROZER,OLIVIA	02:07		
SUB IN: 35 FITZGERALD,SAMANTHA	02:07		
	01:40	20-37	SUB OUT: HAINES,SABRINA
	01:40		SUB IN: PASCHAL,AMANDA

Samford 20, Kentucky 41

Official Substitutions Log
Samford vs Kentucky
Period 3
December 08, 2019 at Memorial Coliseum - Lexington



VISITORS: Samford	Time	Score	HOME: Kentucky
3 BATTLE,SHAUNTAI			1 HAINES,SABRINA
11 SERUP,PAIGE			3 MCKINNEY,KEKE
12 BROWN,CHARITY			10 HOWARD,RHYNE
25 MYERS,SARAH			12 PASCHAL,AMANDA
45 ARMSTRONG,NATALIE			14 WYATT,TATYANA
	10:00	-	SUB OUT: ANYAGALIGBO,OGECHE
	10:00		SUB OUT: ROPER,JAIDA
	10:00		SUB OUT: KING,EMMA
	10:00		SUB IN: HAINES,SABRINA
	10:00		SUB IN: HOWARD,RHYNE
	10:00		SUB IN: WYATT,TATYANA
SUB OUT: 32 CROZER,OLIVIA	10:00		
SUB OUT: 35 FITZGERALD,SAMANTHA	10:00		
SUB IN: 11 SERUP,PAIGE	10:00		
SUB IN: 45 ARMSTRONG,NATALIE	10:00		
	09:53	-	SUB OUT: WYATT,TATYANA
	09:53		SUB IN: ANYAGALIGBO,OGECHE
	06:52	28-45	SUB OUT: MCKINNEY,KEKE
	06:52		SUB IN: GREEN,BLAIR
	06:16	30-48	SUB OUT: PASCHAL,AMANDA
	06:16		SUB IN: ROPER,JAIDA
SUB OUT: 45 ARMSTRONG,NATALIE	04:48	30-52	
SUB IN: 32 CROZER,OLIVIA	04:48		
	02:36	34-56	SUB OUT: ANYAGALIGBO,OGECHE
	02:36		SUB IN: MCKINNEY,KEKE
SUB OUT: 11 SERUP,PAIGE	02:36		
SUB IN: 21 ALLEN,KATIE	02:36		
	01:55	34-59	SUB OUT: HOWARD,RHYNE
	01:55		SUB IN: PASCHAL,AMANDA
SUB OUT: 12 BROWN,CHARITY	00:46	36-59	
SUB OUT: 25 MYERS,SARAH	00:46		
SUB IN: 11 SERUP,PAIGE	00:46		
SUB IN: 35 FITZGERALD,SAMANTHA	00:46		

Samford 36, Kentucky 60

Official Substitutions Log
Samford vs Kentucky
Period 4
December 08, 2019 at Memorial Coliseum - Lexington



VISITORS: Samford	Time	Score	HOME: Kentucky
3 BATTLE,SHAUNTAI			1 HAINES,SABRINA
11 SERUP,PAIGE			3 MCKINNEY,KEKE
12 BROWN,CHARITY			10 HOWARD,RHYNE
25 MYERS,SARAH			12 PASCHAL,AMANDA
45 ARMSTRONG,NATALIE			14 WYATT,TATYANA
	10:00	-	SUB OUT: GREEN,BLAIR
	10:00		SUB OUT: PASCHAL,AMANDA
	10:00		SUB IN: HOWARD,RHYNE
	10:00		SUB IN: WYATT,TATYANA
SUB OUT: 3 BATTLE,SHAUNTAI	10:00		
SUB IN: 25 MYERS,SARAH	10:00		
SUB OUT: 32 CROZER,OLIVIA	09:09	38-63	
SUB IN: 45 ARMSTRONG,NATALIE	09:09		
SUB OUT: 11 SERUP,PAIGE	07:37	38-65	
SUB OUT: 21 ALLEN,KATIE	07:37		
SUB IN: 12 BROWN,CHARITY	07:37		
SUB IN: 15 HILL,TA'NAISHA	07:37		
	05:20	45-70	SUB OUT: HAINES,SABRINA
	05:20		SUB OUT: MCKINNEY,KEKE
	05:20		SUB OUT: WYATT,TATYANA
	05:20		SUB IN: GREEN,BLAIR
	05:20		SUB IN: PASCHAL,AMANDA
	05:20		SUB IN: KING,EMMA
SUB OUT: 25 MYERS,SARAH	05:20		
SUB IN: 3 BATTLE,SHAUNTAI	05:20		
SUB OUT: 45 ARMSTRONG,NATALIE	04:48	45-70	
SUB IN: 32 CROZER,OLIVIA	04:48		
SUB OUT: 12 BROWN,CHARITY	03:51	46-70	
SUB IN: 4 LEIPOLD,AUDRA	03:51		
	03:05	46-74	SUB OUT: HOWARD,RHYNE
	03:05		SUB IN: HAINES,SABRINA
SUB OUT: 35 FITZGERALD,SAMANTHA	03:05		
SUB IN: 33 WOOLARD,MAKAILA	03:05		
	03:05		SUB OUT: PASCHAL,AMANDA
	03:05		SUB IN: ANYAGALIGBO,OGECHE
SUB OUT: 3 BATTLE,SHAUNTAI	02:25	46-74	
SUB IN: 21 ALLEN,KATIE	02:25		

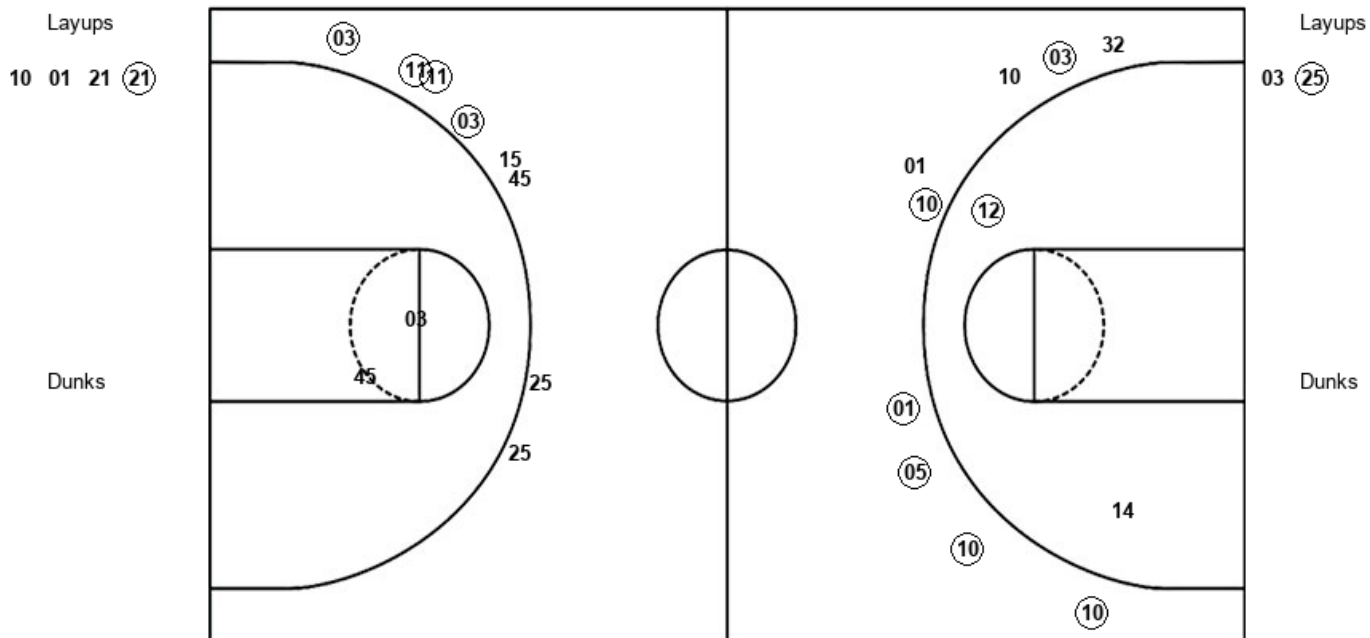
Samford 49, Kentucky 79

Official Shot Chart
Samford vs Kentucky
PERIOD 1 Shots
 December 08, 2019 at Memorial Coliseum - Lexington



Kentucky

Samford



UK : Period 1	Made	Att	Pct
Layups	1	4	25.0
Dunks	0	0	0
2PT Field Goals	2	6	33.3
3PT Field Goals	6	9	66.7
Total Field Goals	8	15	53.3

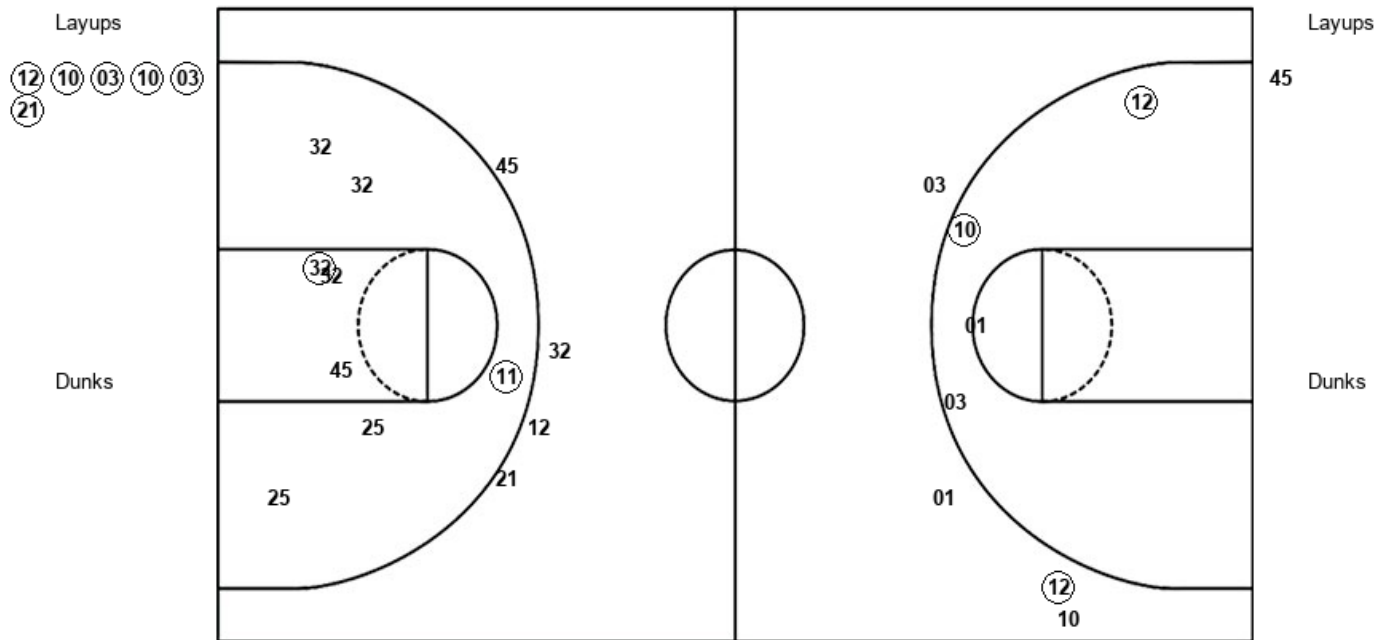
SAM : Period 1	Made	Att	Pct
Layups	1	2	50.0
Dunks	0	0	0
2PT Field Goals	1	4	25.0
3PT Field Goals	4	8	50.0
Total Field Goals	5	12	41.7

Official Shot Chart
Samford vs Kentucky
PERIOD 2 Shots
 December 08, 2019 at Memorial Coliseum - Lexington



Kentucky

Samford



UK : Period 2	Made	Att	Pct
Layups	6	6	100.0
Dunks	0	0	0
2PT Field Goals	9	11	81.8
3PT Field Goals	0	3	00.0
Total Field Goals	9	14	64.3

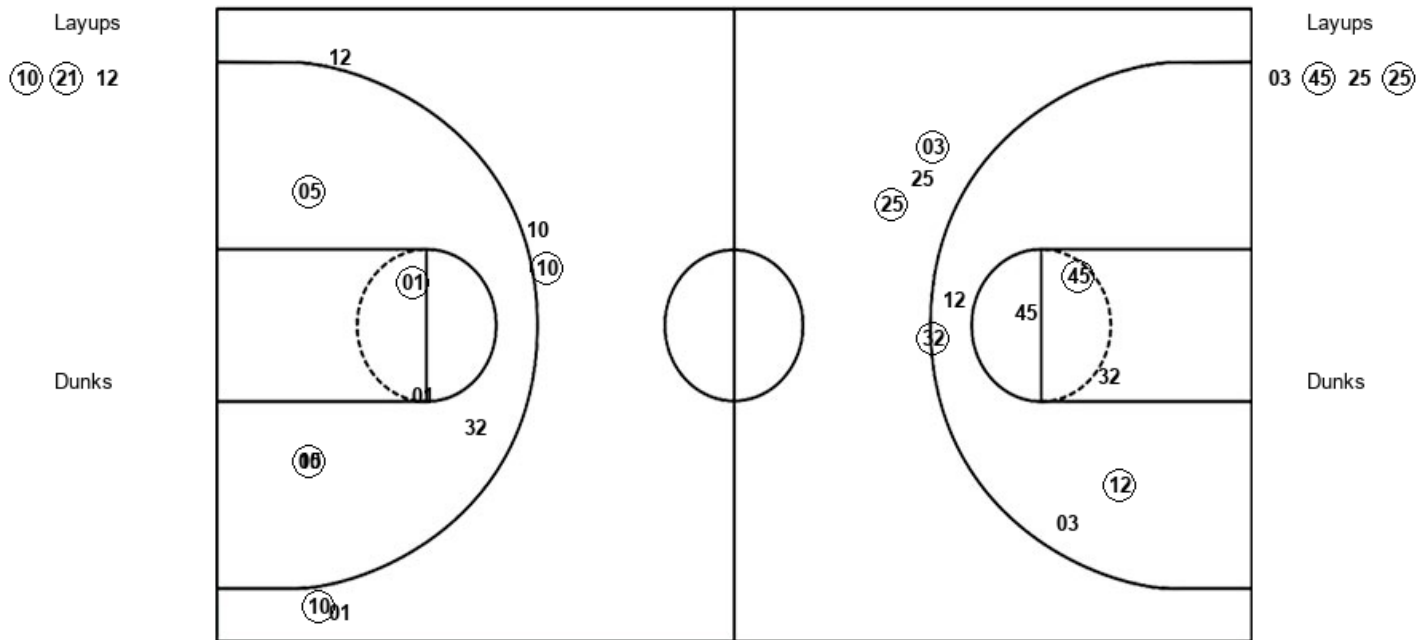
SAM : Period 2	Made	Att	Pct
Layups	0	1	00.0
Dunks	0	0	0
2PT Field Goals	2	9	22.2
3PT Field Goals	0	4	00.0
Total Field Goals	2	13	15.4

Official Shot Chart
Samford vs Kentucky
PERIOD 3 Shots
 December 08, 2019 at Memorial Coliseum - Lexington



Kentucky

Samford



UK : Period 3	Made	Att	Pct
Layups	2	3	66.7
Dunks	0	0	0
2PT Field Goals	5	9	55.6
3PT Field Goals	2	5	40.0
Total Field Goals	7	14	50.0

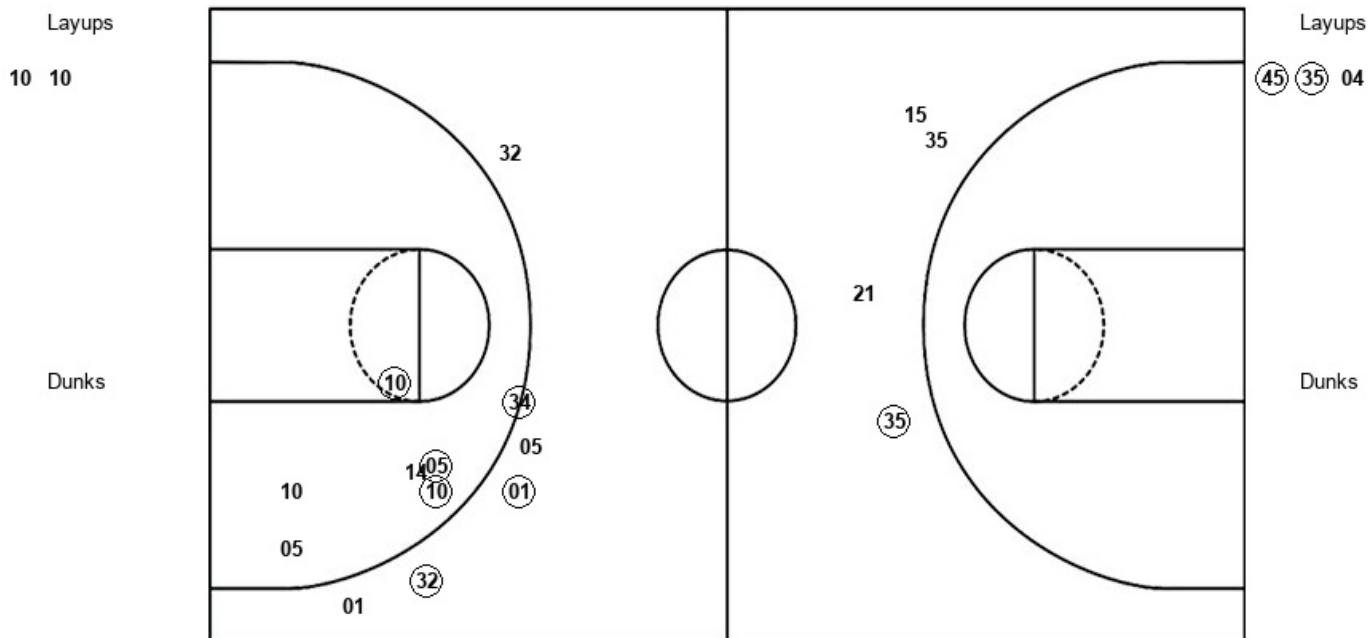
SAM : Period 3	Made	Att	Pct
Layups	2	4	50.0
Dunks	0	0	0
2PT Field Goals	5	11	45.5
3PT Field Goals	2	3	66.7
Total Field Goals	7	14	50.0

Official Shot Chart
Samford vs Kentucky
PERIOD 4 Shots
 December 08, 2019 at Memorial Coliseum - Lexington



Kentucky

Samford



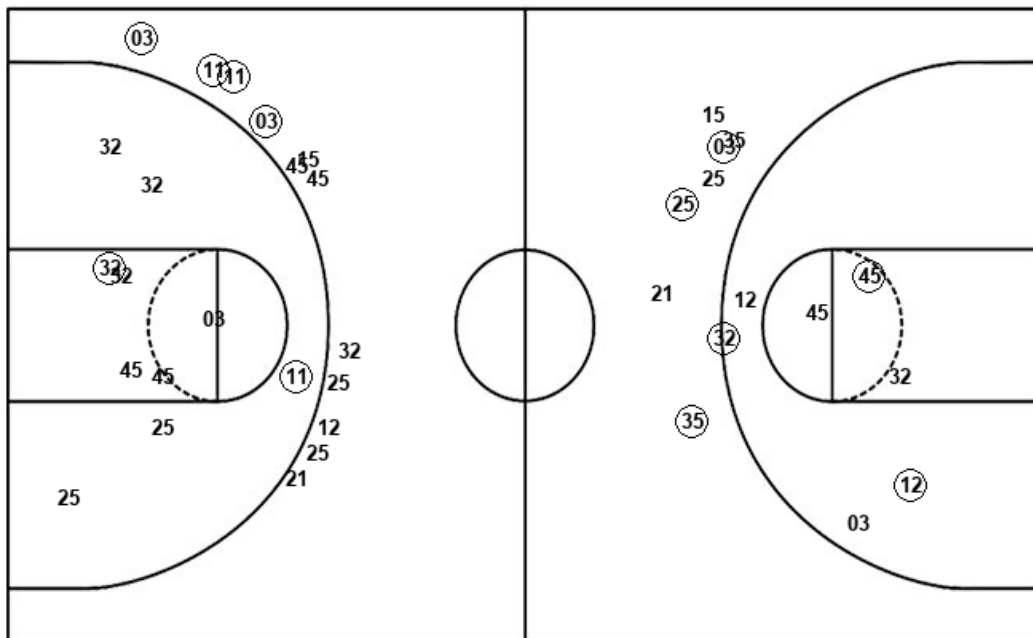
UK : Period 4	Made	Att	Pct
Layups	0	2	00.0
Dunks	0	0	0
2PT Field Goals	3	8	37.5
3PT Field Goals	3	6	50.0
Total Field Goals	6	14	42.9

SAM : Period 4	Made	Att	Pct
Layups	2	3	66.7
Dunks	0	0	0
2PT Field Goals	2	3	66.7
3PT Field Goals	1	4	25.0
Total Field Goals	3	7	42.9

Official Shot Chart
Samford vs Kentucky
Samford Team Shots
 December 08, 2019 at Memorial Coliseum - Lexington



Layups



Layups

03 (25) 45 03 (45)
 25 (25) (45) (35) 04

Dunks

Dunks

SAM : Period 1	Made	Att	Pct
Layups	1	2	50.0
Dunks	0	0	0
2PT Field Goals	1	4	25.0
3PT Field Goals	4	8	50.0
Total Field Goals	5	12	41.7

SAM : Period 2	Made	Att	Pct
Layups	0	1	00.0
Dunks	0	0	0
2PT Field Goals	2	9	22.2
3PT Field Goals	0	4	00.0
Total Field Goals	2	13	15.4

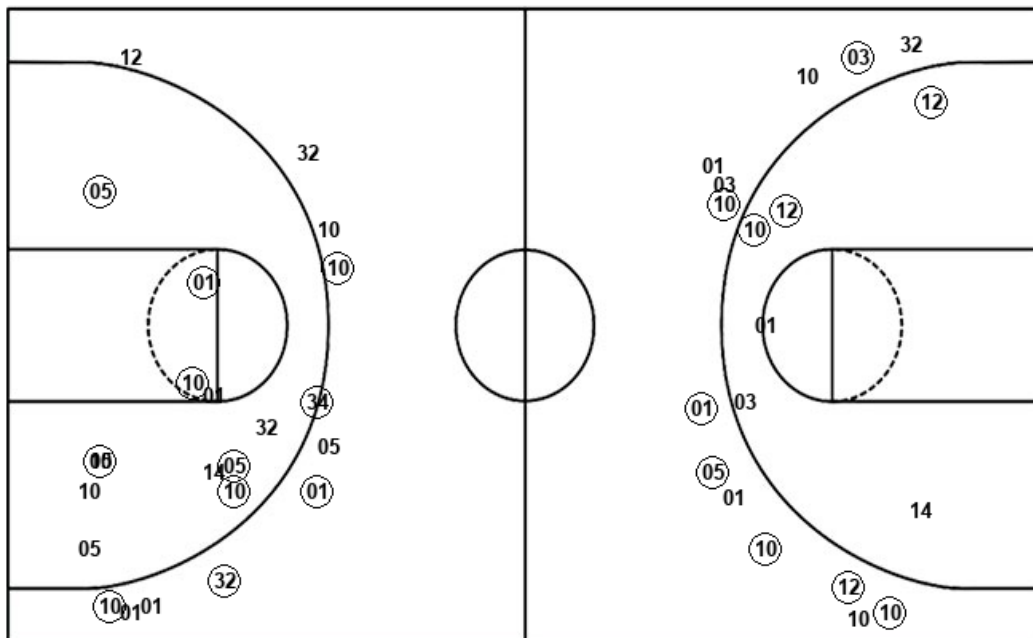
SAM : Period 3	Made	Att	Pct
Layups	2	4	50.0
Dunks	0	0	0
2PT Field Goals	5	11	45.5
3PT Field Goals	2	3	66.7
Total Field Goals	7	14	50.0

SAM : Period 4	Made	Att	Pct
Layups	2	3	66.7
Dunks	0	0	0
2PT Field Goals	2	3	66.7
3PT Field Goals	1	4	25.0
Total Field Goals	3	7	42.9

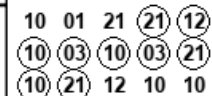
Official Shot Chart
Samford vs Kentucky
Kentucky Team Shots
 December 08, 2019 at Memorial Coliseum - Lexington



Layups



Layups



Dunks

Dunks

UK : Period 1	Made	Att	Pct
Layups	1	4	25.0
Dunks	0	0	0
2PT Field Goals	2	6	33.3
3PT Field Goals	6	9	66.7
Total Field Goals	8	15	53.3

UK : Period 2	Made	Att	Pct
Layups	6	6	100.0
Dunks	0	0	0
2PT Field Goals	9	11	81.8
3PT Field Goals	0	3	00.0
Total Field Goals	9	14	64.3

UK : Period 3	Made	Att	Pct
Layups	2	3	66.7
Dunks	0	0	0
2PT Field Goals	5	9	55.6
3PT Field Goals	2	5	40.0
Total Field Goals	7	14	50.0

UK : Period 4	Made	Att	Pct
Layups	0	2	00.0
Dunks	0	0	0
2PT Field Goals	3	8	37.5
3PT Field Goals	3	6	50.0
Total Field Goals	6	14	42.9