

FINAL SCORE



Austin Peay

52



Kentucky

81

December 01, 2019 • Memorial Coliseum - Lexington

FINAL STATISTICS

Official Box Score
Austin Peay vs Kentucky
Game Totals -- Final Statistics
December 01, 2019 at Memorial Coliseum - Lexington



Austin Peay 52

No.	Player	S	Pts	FG	3FG	FT	OR	DR	TR	PF	A	TO	Blk	Stl	Min	+/-
00	BENNEL, TAHANEE	G	3	1-7	1-5	0-0	0	2	2	4	3	4	0	2	18	-20
04	GONZALEZ-VARNER, ARIELLI	F	2	1-4	0-0	0-0	3	1	4	4	2	1	0	1	20	-27
14	SAWYER, ELLA	G	2	1-4	0-1	0-0	0	2	2	3	2	4	0	0	22	-16
15	KIDWELL, KASEY	G	4	1-4	1-2	1-2	1	2	3	2	3	4	0	1	21	-20
23	KNOWLES, MAGGIE	G	11	4-6	3-4	0-0	0	2	2	1	0	2	0	1	24	-27
02	CRAWFORD, NIEJA	G	2	1-3	0-0	0-0	0	0	0	1	0	1	0	0	6	-7
05	LEFLORE, MYAH	F	2	1-3	0-2	0-0	0	1	1	0	0	0	0	0	6	1
11	BOOKER, D'SHARA	F	2	1-4	0-0	0-1	2	3	5	0	0	0	0	0	10	-7
22	KIRBY, SHAY-LEE	G	2	1-5	0-4	0-0	0	2	2	2	0	2	0	1	22	-14
24	KENOL, KELEN	F	3	1-3	0-0	1-2	2	1	3	2	1	1	0	0	13	4
32	FERBY, BRIANAH	G	13	6-13	1-5	0-0	2	0	2	0	1	0	0	1	16	-6
33	FERBY, BRANDI	G	6	2-8	1-3	1-2	1	1	2	2	2	2	0	1	21	-6
TEAM							1	2	3	0		1				
TOTALS			52	21-64	7-26	3-7	12	19	31	21	14	22	0	8	200	

Shooting By Period

Period	FG	FG%	3FG	3FG%	FT	FT%
1st Qtr	7-18	39%	3-5	60%	0-0	0%
2nd Qtr	3-16	19%	0-6	00%	0-0	0%
3rd Qtr	3-13	23%	2-9	22%	2-4	50%
4th Qtr	8-17	47%	2-6	33%	1-3	33%
1st Half	10-34	29%	3-11	27%	0-0	0%
2nd Half	11-30	37%	4-15	27%	3-7	43%
Game	21-64	32.8%	7-26	26.9%	3-7	42.9%

Deadball Rebounds: 2,0

Last FG: 4th-00:20

Biggest Run: 7-0

Largest lead: By 0 at -

Technical Fouls: None.

Kentucky 81

No.	Player	S	Pts	FG	3FG	FT	OR	DR	TR	PF	A	TO	Blk	Stl	Min	+/-
01	HAINES, SABRINA	G	10	4-7	1-3	1-2	3	6	9	1	3	2	0	3	28	34
03	MCKINNEY, KEKE	F	12	5-7	0-2	2-5	1	3	4	2	2	3	0	1	29	16
10	HOWARD, RHYNE	G	14	6-14	2-6	0-0	1	3	4	1	3	2	3	2	30	22
12	PASCHAL, AMANDA	G	7	2-8	0-1	3-4	3	6	9	0	6	0	1	0	28	31
21	ANYAGALIGBO, OGECHI	F	10	5-9	0-0	0-0	1	7	8	1	1	4	1	1	23	20
05	GREEN, BLAIR	G	8	4-6	0-0	0-0	0	1	1	1	2	2	0	0	22	9
32	ROPER, JAIDA	G	10	4-4	1-1	1-3	0	1	1	1	4	3	0	1	24	3
34	KING, EMMA	G	3	1-1	0-0	1-1	0	0	0	1	0	0	0	0	8	4
44	COLE, NAE NAE	C	7	3-4	0-0	1-2	0	1	1	3	0	1	0	0	8	6
TEAM							0	3	3	0		1				
TOTALS			81	34-60	4-13	9-17	9	31	40	11	21	18	5	8	200	

Shooting By Period

Period	FG	FG%	3FG	3FG%	FT	FT%
1st Qtr	10-20	50%	1-3	33%	3-5	60%
2nd Qtr	9-16	56%	2-5	40%	1-1	100%
3rd Qtr	6-12	50%	1-4	25%	3-7	43%
4th Qtr	9-12	75%	0-1	00%	2-4	50%
1st Half	19-36	53%	3-8	38%	4-6	67%
2nd Half	15-24	63%	1-5	20%	5-11	45%
Game	34-60	56.7%	4-13	30.8%	9-17	52.9%

Deadball Rebounds: 6,2

Last FG: 4th-00:17

Biggest Run: 11-0

Largest lead: By 35 at 4-06

Technical Fouls: None.

Game Notes:

Officials: Felicia Grinter, Eric Baker, Blanca Burns

Attendance: 3902

Start Time: 04:02 PM ET

End Time: 05:54 PM ET

Game Duration: 1:51

Score	1st	2nd	3rd	4th	TOT
AP	17	6	10	19	52
UK	24	21	16	20	81

AP led for 0:00. UK led for 39:27.

Game was tied for 0:28.

Times tied: 0 Lead Changes: 0

Points from	AP	UK
In the Paint	22	48
Off Turns	10	22
2nd Chance	22	10
Fast Break	2	10
Bench	30	28

Official Box Score
Austin Peay vs Kentucky
First Half Statistics Only
December 01, 2019 at Memorial Coliseum - Lexington



Austin Peay 23

No.	Player	S	Pts	FG	3FG	FT	OR	DR	TR	PF	A	TO	Blk	Stl	Min	+/-
00	BENNELL, TAHANEE	G	3	1-5	1-3	0-0	0	1	1	2	2	3	0	2	11	-18
04	GONZALEZ-VARNER, ARIELLI	F	0	0-2	0-0	0-0	2	0	2	2	1	1	0	0	10	-20
05	LEFLORE, MYAH	F	0	0-0	0-0	0-0	0	1	1	0	0	0	0	0	1	0
11	BOOKER, D'SHARA	F	0	0-2	0-0	0-0	0	2	2	0	0	0	0	0	6	-8
14	SAWYER, ELLA	G	2	1-2	0-0	0-0	0	2	2	2	2	3	0	0	10	-12
15	KIDWELL, KASEY	G	0	0-2	0-0	0-0	1	2	3	1	1	3	0	0	11	-15
22	KIRBY, SHAY-LEE	G	0	0-2	0-2	0-0	0	2	2	1	0	2	0	1	9	-13
23	KNOWLES, MAGGIE	G	5	2-2	1-1	0-0	0	0	0	0	0	2	0	0	15	-18
24	KENOL, KELEN	F	2	1-3	0-0	0-0	0	1	1	1	1	0	0	0	7	5
32	FERBY, BRIANAH	G	9	4-8	1-3	0-0	1	0	1	0	0	0	0	0	7	-2
33	FERBY, BRANDI	G	2	1-5	0-2	0-0	0	1	1	0	0	0	0	0	9	-5
02	CRAWFORD, NIEJA	G	0	0-1	0-0	0-0	0	0	0	0	0	1	0	0	4	-4
	TEAM		0	0-0	0-0	0-0	0	1	1	0	0	0	0	0	0	0
TOTALS			23	10-34	3-11	0-0	4	13	17	9	7	15	0	3	100	

Shooting By Period

Period	FG	FG%	3FG	3FG%	FT	FT%
1st Qtr	7-18	39%	3-5	60%	0-0	0%
2nd Qtr	3-16	19%	0-6	00%	0-0	0%
1st Half	10-34	29%	3-11	27%	0-0	0%
Game	21-64	32.8%	7-26	26.9%	3-7	42.9%

Deadball Rebounds: 2,0
Last FG Half: AP 2nd-00:23

Kentucky 45

No.	Player	S	Pts	FG	3FG	FT	OR	DR	TR	PF	A	TO	Blk	Stl	Min	+/-
01	HAINES, SABRINA	G	8	3-6	1-3	1-2	1	2	3	1	2	2	0	3	15	26
03	MCKINNEY, KEKE	F	8	3-4	0-1	2-3	0	2	2	0	2	2	0	1	16	16
05	GREEN, BLAIR	G	4	2-4	0-0	0-0	0	1	1	0	0	0	0	0	8	6
10	HOWARD, RHYNE	G	7	3-6	1-2	0-0	1	1	2	0	1	1	2	2	16	18
12	PASCHAL, AMANDA	G	2	1-6	0-1	0-0	3	2	5	0	2	0	1	0	15	16
21	ANYAGALIGBO, OGECHI	F	4	2-5	0-0	0-0	0	5	5	1	1	1	0	0	10	10
32	ROPER, JAIDA	G	7	3-3	1-1	0-0	0	1	1	0	2	2	0	0	11	4
34	KING, EMMA	G	3	1-1	0-0	1-1	0	0	0	1	0	0	0	0	6	7
44	COLE, NAE NAE	C	2	1-1	0-0	0-0	0	0	0	1	0	1	0	0	3	7
	TEAM		0	0-0	0-0	0-0	0	3	3	0	0	1	0	0	0	0
TOTALS			45	19-36	3-8	4-6	5	17	22	4	10	10	3	6	100	

Shooting By Period

Period	FG	FG%	3FG	3FG%	FT	FT%
1st Qtr	10-20	50%	1-3	33%	3-5	60%
2nd Qtr	9-16	56%	2-5	40%	1-1	100%
1st Half	19-36	53%	3-8	38%	4-6	67%
Game	34-60	56.7%	4-13	30.8%	9-17	52.9%

Deadball Rebounds: 6,2
Last FG Half: UK 2nd-00:06

Game Notes:

Officials: Felicia Grinter, Eric Baker, Blanca Burns
 Attendance: 3902

Start Time: 04:02 PM ET
 End Time: 05:54 PM ET
 Game Duration: 1:51

Score	1st	2nd	3rd	4th	TOT
AP	17	6	10	19	52
UK	24	21	16	20	81

Points from (This Period)	AP	UK
In the Paint	10	28
Off Turns	2	16
2nd Chance	9	7
Fast Break	0	6
Bench	13	16

Official Box Score
Austin Peay vs Kentucky
First Quarter Statistics Only
December 01, 2019 at Memorial Coliseum - Lexington



Austin Peay 17

No.	Player	S	Pts	FG	3FG	FT	OR	DR	TR	PF	A	TO	Blk	Stl	Min	+/-
00	BENNELL, TAHANEE	G	3	1-4	1-2	0-0	0	1	1	0	2	1	0	0	5	-6
04	GONZALEZ-VARNER, ARIELLI	F	0	0-0	0-0	0-0	0	0	0	2	0	1	0	0	4	-14
14	SAWYER, ELLA	G	0	0-1	0-0	0-0	0	0	0	2	2	2	0	0	6	-8
15	KIDWELL, KASEY	G	0	0-1	0-0	0-0	1	1	2	1	1	0	0	0	7	-3
23	KNOWLES, MAGGIE	G	5	2-2	1-1	0-0	0	0	0	0	0	2	0	0	9	-5
02	CRAWFORD, NIEJA	G	0	0-0	0-0	0-0	0	0	0	0	0	0	0	0	2	-4
05	LEFLORE, MYAH	F	0	0-0	0-0	0-0	0	0	0	0	0	0	0	0	0	0
11	BOOKER, D'SHARA	F	0	0-1	0-0	0-0	0	1	1	0	0	0	0	0	2	1
22	KIRBY, SHAY-LEE	G	0	0-0	0-0	0-0	0	1	1	0	0	1	0	0	4	-1
24	KENOL, KELEN	F	2	1-3	0-0	0-0	0	1	1	1	0	0	0	0	4	6
32	FERBY, BRIANAH	G	5	2-3	1-2	0-0	1	0	1	0	0	0	0	0	3	1
33	FERBY, BRANDI	G	2	1-3	0-0	0-0	0	1	1	0	0	0	0	0	5	-2
TEAM							0	1	1	0						
TOTALS			17	7-18	3-5	0-0	2	7	9	6	5	7	0	0	50	

Shooting By Period

Period	FG	FG%	3FG	3FG%	FT	FT%
1st Qtr	7-18	39%	3-5	60%	0-0	0%
2nd Qtr	3-16	19%	0-6	00%	0-0	0%
1st Half	7-18	39%	3-5	60%	0-0	0%
1st Half	10-34	29%	3-11	27%	0-0	0%
Game	21-64	32.8%	7-26	26.9%	3-7	42.9%

Deadball Rebounds: 2,0

Kentucky 24

No.	Player	S	Pts	FG	3FG	FT	OR	DR	TR	PF	A	TO	Blk	Stl	Min	+/-
01	HAINES, SABRINA	G	4	1-2	1-2	1-2	0	1	1	0	1	0	0	1	5	11
03	MCKINNEY, KEKE	F	6	2-2	0-0	2-3	0	2	2	0	0	1	0	0	9	3
10	HOWARD, RHYNE	G	4	2-4	0-0	0-0	1	0	1	0	0	1	2	1	9	5
12	PASCHAL, AMANDA	G	2	1-4	0-1	0-0	3	0	3	0	2	0	1	0	9	4
21	ANYAGALIGBO, OGECHI	F	4	2-4	0-0	0-0	0	2	2	1	1	1	0	0	7	8
05	GREEN, BLAIR	G	2	1-3	0-0	0-0	0	1	1	0	0	0	0	0	4	3
32	ROPER, JAIDA	G	2	1-1	0-0	0-0	0	0	0	0	2	1	0	0	7	1
34	KING, EMMA	G	0	0-0	0-0	0-0	0	0	0	0	0	0	0	0	0	0
44	COLE, NAE NAE	C	0	0-0	0-0	0-0	0	0	0	0	0	0	0	0	0	0
TEAM							0	2	2	0						
TOTALS			24	10-20	1-3	3-5	4	8	12	1	6	5	3	2	50	

Shooting By Period

Period	FG	FG%	3FG	3FG%	FT	FT%
1st Qtr	10-20	50%	1-3	33%	3-5	60%
2nd Qtr	9-16	56%	2-5	40%	1-1	100%
1st Half	10-20	50%	1-3	33%	3-5	60%
1st Half	19-36	53%	3-8	38%	4-6	67%
Game	34-60	56.7%	4-13	30.8%	9-17	52.9%

Deadball Rebounds: 6,2

Game Notes:

Officials: Felicia Grinter, Eric Baker, Blanca Burns
 Attendance: 3902

Start Time: 04:02 PM ET
 End Time: 05:54 PM ET
 Game Duration: 1:51

Score	1st	2nd	3rd	4th	TOT
AP	17	6	10	19	52
UK	24	21	16	20	81

Points from (This Period)	AP	UK
In the Paint	6	14
Off Turns	2	4
2nd Chance	5	5
Fast Break	0	4
Bench	9	4

Official Play-By-Play
Austin Peay vs Kentucky
First Quarter
December 01, 2019 at Memorial Coliseum - Lexington



Period 1

Starters:

Austin Peay: 00 BENNELL, TAHANEE (G); 4 GONZALEZ-VARNER, ARIELLE (F); 14 SAWYER, ELLA (G); 15 KIDWELL, KASEY (G); 23 KNOWLES, MAGGIE (G);

Kentucky: 1 HAINES, SABRINA (G); 3 MCKINNEY, KEKE (F); 10 HOWARD, RHYNE (G); 12 PASCHAL, AMANDA (G); 21 ANYAGALIGBO, OGECHI (F);

Time	VISITORS: Austin Peay	Score	Margin	HOME: Kentucky
09:32		2-0	H 2	GOOD! LAYUP by MCKINNEY, KEKE [PNT]
09:32				ASSIST by HAINES, SABRINA
09:32	FOUL (PERSONAL) by SAWYER, ELLA			
09:32		3-0	H 3	GOOD! FT by MCKINNEY, KEKE
09:14	GOOD! LAYUP by KNOWLES, MAGGIE [PNT]	3-2	H 1	
09:14	ASSIST by BENNELL, TAHANEE			
09:07				TURNOVER (BADPASS) by HOWARD, RHYNE
09:05	TURNOVER (LOSTBALL) by KNOWLES, MAGGIE			
09:05				STEAL by HOWARD, RHYNE
08:58		5-2	H 3	GOOD! LAYUP by HOWARD, RHYNE [FB/PNT]
08:52	MISSED JUMPER by BENNELL, TAHANEE			
08:52				BLOCK by HOWARD, RHYNE
08:47				REBOUND (DEF) by HAINES, SABRINA
08:39				MISSED JUMPER by PASCHAL, AMANDA
08:35				REBOUND (OFF) by PASCHAL, AMANDA
08:35		7-2	H 5	GOOD! LAYUP by ANYAGALIGBO, OGECHI
08:13	MISSED JUMPER by BENNELL, TAHANEE			
08:13				BLOCK by PASCHAL, AMANDA
08:12				REBOUND (DEF) by TEAM
08:04	FOUL (PERSONAL) by KIDWELL, KASEY			
08:04		8-2	H 6	GOOD! FT by HAINES, SABRINA
08:04				MISSED FT by HAINES, SABRINA
08:03				REBOUND (OFF) by PASCHAL, AMANDA
07:59		11-2	H 9	GOOD! 3PTR by HAINES, SABRINA
07:59				ASSIST by ANYAGALIGBO, OGECHI
07:55	TIMEOUT 30SEC			
07:55	SUB OUT: BENNELL, TAHANEE			
07:55	SUB OUT: GONZALEZ-VARNER, ARIELLE			
07:55	SUB IN: BOOKER, D'SHARA			
07:55	SUB IN: KIRBY, SHAY-LEE			
07:31	MISSED LAYUP by BOOKER, D'SHARA			
07:29				REBOUND (DEF) by TEAM
07:29	SUB OUT: BOOKER, D'SHARA			
07:29	SUB IN: KENOL, KELEN			
07:21				MISSED JUMPER by ANYAGALIGBO, OGECHI
07:17	REBOUND (DEF) by KIDWELL, KASEY			
07:06	GOOD! 3PTR by KNOWLES, MAGGIE	11-5	H 6	
07:06	ASSIST by SAWYER, ELLA			
06:52	FOUL (PERSONAL) by KENOL, KELEN			
06:52				SUB OUT: PASCHAL, AMANDA
06:52				SUB IN: ROPER, JAIDA
06:52	SUB OUT: KIDWELL, KASEY			
06:52	SUB OUT: KENOL, KELEN			
06:52	SUB IN: GONZALEZ-VARNER, ARIELLE			
06:52	SUB IN: FERBY, BRANDI			
06:52				MISSED FT by MCKINNEY, KEKE
06:52				REBOUND (OFF) by TEAM
06:52		12-5	H 7	GOOD! FT by MCKINNEY, KEKE
06:48	TURNOVER (BADPASS) by SAWYER, ELLA			
06:44				MISSED JUMPER by HOWARD, RHYNE
06:40				REBOUND (OFF) by HOWARD, RHYNE
06:40				MISSED LAYUP by HOWARD, RHYNE
06:38	REBOUND (DEF) by FERBY, BRANDI			
06:28	MISSED LAYUP by SAWYER, ELLA			
06:26				REBOUND (DEF) by TEAM
06:26	FOUL (PERSONAL) by GONZALEZ-VARNER, ARIELLE			
06:26				SUB OUT: MCKINNEY, KEKE
06:26				SUB IN: GREEN, BLAIR
06:26	SUB OUT: SAWYER, ELLA			
06:26	SUB IN: CRAWFORD, NIEJA			
06:19				FOUL (OFF) by ANYAGALIGBO, OGECHI
06:19				TURNOVER (OFFENSIVE) by ANYAGALIGBO, OGECHI
06:10	TURNOVER (BADPASS) by KNOWLES, MAGGIE			
06:10				STEAL by HAINES, SABRINA
06:06		14-5	H 9	GOOD! LAYUP by GREEN, BLAIR [FB/PNT]
06:06				ASSIST by ROPER, JAIDA
05:56				SUB OUT: HAINES, SABRINA
05:56				SUB IN: PASCHAL, AMANDA
05:56				SUB OUT: HOWARD, RHYNE
05:56				SUB IN: HAINES, SABRINA

Time	VISITORS: Austin Peay	Score	Margin	HOME: Kentucky
05:56	SUB OUT: KNOWLES, MAGGIE			
05:56	SUB IN: BENNELL, TAHANEE			
05:45	TURNOVER (BADPASS) by BENNELL, TAHANEE			
05:39				TURNOVER (BADPASS) by ROPER, JAIDA
05:39	SUB OUT: BENNELL, TAHANEE			
05:39	SUB IN: SAWYER, ELLA			
05:35	MISSED LAYUP by FERBY, BRANDI			
05:32				REBOUND (DEF) by ANYAGALIGBO, OGECHI
05:23		16-5	H 11	GOOD! JUMPER by ANYAGALIGBO, OGECHI
05:23				ASSIST by ROPER, JAIDA
05:04	FOUL (OFF) by GONZALEZ-VARNER, ARIELLE			
05:04	TURNOVER (OFFENSIVE) by GONZALEZ-VARNER, ARIELLE			
05:04				SUB OUT: ANYAGALIGBO, OGECHI
05:04				SUB IN: MCKINNEY, KEKE
05:04	SUB OUT: GONZALEZ-VARNER, ARIELLE			
05:04	SUB OUT: FERBY, BRANDI			
05:04	SUB IN: BOOKER, D'SHARA			
05:04	SUB IN: FERBY, BRIANAH			
04:41				MISSED 3PTR by HAINES, SABRINA
04:37	REBOUND (DEF) by TEAM			
04:37				SUB OUT: HAINES, SABRINA
04:37				SUB IN: HOWARD, RHYNE
04:37	SUB OUT: CRAWFORD, NIEJA			
04:37	SUB IN: KNOWLES, MAGGIE			
04:29	FOUL (OFF) by SAWYER, ELLA			
04:29	TURNOVER (OFFENSIVE) by SAWYER, ELLA			
04:19				MISSED JUMPER by GREEN, BLAIR
04:17	REBOUND (DEF) by BOOKER, D'SHARA			
04:10	GOOD! 3PTR by FERBY, BRIANAH	16-8	H 8	
04:10	ASSIST by SAWYER, ELLA			
03:59		18-8	H 10	GOOD! LAYUP by ROPER, JAIDA
03:59				ASSIST by PASCHAL, AMANDA
03:43	MISSED 3PTR by FERBY, BRIANAH			
03:40				REBOUND (DEF) by MCKINNEY, KEKE
03:36				MISSED LAYUP by GREEN, BLAIR
03:33				REBOUND (OFF) by PASCHAL, AMANDA
03:31				MISSED JUMPER by PASCHAL, AMANDA
03:28	REBOUND (DEF) by KIRBY, SHAY-LEE			
03:26	TURNOVER (LOSTBALL) by KIRBY, SHAY-LEE			
03:26	SUB OUT: BOOKER, D'SHARA			
03:26	SUB OUT: SAWYER, ELLA			
03:26	SUB OUT: KIRBY, SHAY-LEE			
03:26	SUB IN: KIDWELL, KASEY			
03:26	SUB IN: KENOL, KELEN			
03:26	SUB IN: FERBY, BRANDI			
03:26				TURNOVER (5SEC) by TEAM
03:18	MISSED JUMPER by KENOL, KELEN			
03:14	REBOUND (OFF) by FERBY, BRIANAH			
03:14	GOOD! LAYUP by FERBY, BRIANAH	18-10	H 8	
02:56		20-10	H 10	GOOD! LAYUP by PASCHAL, AMANDA [PNT]
02:40	MISSED LAYUP by KENOL, KELEN			
02:40				BLOCK by HOWARD, RHYNE
02:35				REBOUND (DEF) by GREEN, BLAIR
02:31				SUB OUT: GREEN, BLAIR
02:31				SUB IN: ANYAGALIGBO, OGECHI
02:31	SUB OUT: FERBY, BRIANAH			
02:31	SUB IN: BENNELL, TAHANEE			
02:28		22-10	H 12	GOOD! JUMPER by HOWARD, RHYNE
02:28				ASSIST by PASCHAL, AMANDA
02:02	MISSED JUMPER by FERBY, BRANDI			
01:58	REBOUND (OFF) by KIDWELL, KASEY			
01:56	GOOD! 3PTR by BENNELL, TAHANEE	22-13	H 9	
01:56	ASSIST by KIDWELL, KASEY			
01:44				MISSED 3PTR by PASCHAL, AMANDA
01:40	REBOUND (DEF) by KENOL, KELEN			
01:35	MISSED LAYUP by KIDWELL, KASEY			
01:31				REBOUND (DEF) by ANYAGALIGBO, OGECHI
01:20		24-13	H 11	GOOD! JUMPER by MCKINNEY, KEKE [PNT]
01:03	GOOD! JUMPER by KENOL, KELEN	24-15	H 9	
01:03	ASSIST by BENNELL, TAHANEE			
00:47				TURNOVER (BADPASS) by MCKINNEY, KEKE
00:37	MISSED 3PTR by BENNELL, TAHANEE			
00:34				REBOUND (DEF) by MCKINNEY, KEKE
00:16				MISSED JUMPER by ANYAGALIGBO, OGECHI
00:13	REBOUND (DEF) by BENNELL, TAHANEE			
00:01	GOOD! LAYUP by FERBY, BRANDI [PNT]	24-17	H 7	

Austin Peay 17, Kentucky 24

Points from (This Period)	AP	UK
In the Paint	6	14
Off Turns	2	4
2nd Chance	5	5
Fast Break	0	4
Bench	9	4

Official Box Score
Austin Peay vs Kentucky
Second Quarter Statistics Only
December 01, 2019 at Memorial Coliseum - Lexington



Austin Peay 6

No.	Player	S	Pts	FG	3FG	FT	OR	DR	TR	PF	A	TO	Blk	Stl	Min	+/-
00	BENNELL, TAHANEE	G	0	0-1	0-1	0-0	0	0	0	2	0	2	0	2	6	-12
04	GONZALEZ-VARNER, ARIELLI	F	0	0-2	0-0	0-0	2	0	2	0	1	0	0	0	6	-6
14	SAWYER, ELLA	G	2	1-1	0-0	0-0	0	2	2	0	0	1	0	0	4	-4
15	KIDWELL, KASEY	G	0	0-1	0-0	0-0	0	1	1	0	0	3	0	0	4	-12
23	KNOWLES, MAGGIE	G	0	0-0	0-0	0-0	0	0	0	0	0	0	0	0	6	-13
02	CRAWFORD, NIEJA	G	0	0-1	0-0	0-0	0	0	0	0	0	1	0	0	2	0
05	LEFLORE, MYAH	F	0	0-0	0-0	0-0	0	1	1	0	0	0	0	0	1	0
11	BOOKER, D'SHARA	F	0	0-1	0-0	0-0	0	1	1	0	0	0	0	0	4	-9
22	KIRBY, SHAY-LEE	G	0	0-2	0-2	0-0	0	1	1	1	0	1	0	1	5	-12
24	KENOL, KELEN	F	0	0-0	0-0	0-0	0	0	0	0	1	0	0	0	3	-1
32	FERBY, BRIANAH	G	4	2-5	0-1	0-0	0	0	0	0	0	0	0	0	4	-3
33	FERBY, BRANDI	G	0	0-2	0-2	0-0	0	0	0	0	0	0	0	0	4	-3
	TEAM						0	0	0	0		0				
	TOTALS		6	3-16	0-6	0-0	2	6	8	3	2	8	0	3	50	

Shooting By Period

Period	FG	FG%	3FG	3FG%	FT	FT%
3rd Qtr	3-13	23%	2-9	22%	2-4	50%
4th Qtr	8-17	47%	2-6	33%	1-3	33%
2nd Half	3-16	19%	0-6	00%	0-0	0%
2nd Half	11-30	37%	4-15	27%	3-7	43%
Game	21-64	32.8%	7-26	26.9%	3-7	42.9%

Deadball Rebounds: 2,0

Kentucky 21

No.	Player	S	Pts	FG	3FG	FT	OR	DR	TR	PF	A	TO	Blk	Stl	Min	+/-
01	HAINES, SABRINA	G	4	2-4	0-1	0-0	1	1	2	1	1	2	0	2	10	15
03	MCKINNEY, KEKE	F	2	1-2	0-1	0-0	0	0	0	0	2	1	0	1	7	13
10	HOWARD, RHYNE	G	3	1-2	1-2	0-0	0	1	1	0	1	0	0	1	7	13
12	PASCHAL, AMANDA	G	0	0-2	0-0	0-0	0	2	2	0	0	0	0	0	6	12
21	ANYAGALIGBO, OGECHI	F	0	0-1	0-0	0-0	0	3	3	0	0	0	0	0	3	2
05	GREEN, BLAIR	G	2	1-1	0-0	0-0	0	0	0	0	0	0	0	0	4	3
32	ROPER, JAIDA	G	5	2-2	1-1	0-0	0	1	1	0	0	1	0	0	4	3
34	KING, EMMA	G	3	1-1	0-0	1-1	0	0	0	1	0	0	0	0	6	7
44	COLE, NAE NAE	C	2	1-1	0-0	0-0	0	0	0	1	0	1	0	0	3	7
	TEAM						0	1	1	0		0				
	TOTALS		21	9-16	2-5	1-1	1	9	10	3	4	5	0	4	50	

Shooting By Period

Period	FG	FG%	3FG	3FG%	FT	FT%
3rd Qtr	6-12	50%	1-4	25%	3-7	43%
4th Qtr	9-12	75%	0-1	00%	2-4	50%
2nd Half	9-16	56%	2-5	40%	1-1	100%
2nd Half	15-24	63%	1-5	20%	5-11	45%
Game	34-60	56.7%	4-13	30.8%	9-17	52.9%

Deadball Rebounds: 6,2

Game Notes:

Officials: Felicia Grinter, Eric Baker, Blanca Burns
Attendance: 3902

Start Time: 04:02 PM ET
End Time: 05:54 PM ET
Game Duration: 1:51

Score	1st	2nd	3rd	4th	TOT
AP	17	6	10	19	52
UK	24	21	16	20	81

Points from (This Period)	AP	UK
In the Paint	4	14
Off Turns	0	12
2nd Chance	4	2
Fast Break	0	2
Bench	4	12

Official Play-By-Play
Austin Peay vs Kentucky
Second Quarter
December 01, 2019 at Memorial Coliseum - Lexington



Period 2

Starters:

Austin Peay: 00 BENNELL, TAHANEE (G); 4 GONZALEZ-VARNER, ARIELLE (F); 14 SAWYER, ELLA (G); 15 KIDWELL, KASEY (G); 23 KNOWLES, MAGGIE (G);

Kentucky: 1 HAINES, SABRINA (G); 3 MCKINNEY, KEKE (F); 10 HOWARD, RHYNE (G); 12 PASCHAL, AMANDA (G); 21 ANYAGALIGBO, OGECHI (F);

Time	VISITORS: Austin Peay	Score	Margin	HOME: Kentucky
10:00				SUB OUT: ANYAGALIGBO, OGECHI
10:00				SUB OUT: ROPER, JAIDA
10:00				SUB IN: HAINES, SABRINA
10:00				SUB IN: COLE, NAE NAE
10:00	SUB OUT: KIDWELL, KASEY			
10:00	SUB OUT: FERBY, BRANDI			
10:00	SUB IN: CRAWFORD, NIEJA			
10:00	SUB IN: LEFLORE, MYAH			
09:44	MISSED JUMPER by CRAWFORD, NIEJA			
09:41				REBOUND (DEF) by PASCHAL, AMANDA
09:33				MISSED 3PTR by HAINES, SABRINA
09:29	REBOUND (DEF) by LEFLORE, MYAH			
09:12	TURNOVER (TRAVEL) by CRAWFORD, NIEJA			
09:12	SUB OUT: CRAWFORD, NIEJA			
09:12	SUB IN: KIRBY, SHAY-LEE			
08:46				FOUL (OFF) by COLE, NAE NAE
08:46				TURNOVER (OFFENSIVE) by COLE, NAE NAE
08:46	SUB OUT: LEFLORE, MYAH			
08:46	SUB IN: KIDWELL, KASEY			
08:41	MISSED LAYUP by KIDWELL, KASEY			
08:38				REBOUND (DEF) by TEAM
08:38	SUB OUT: KENOL, KELEN			
08:38	SUB IN: BOOKER, D'SHARA			
08:22		26-17	H 9	GOOD! JUMPER by COLE, NAE NAE [PNT]
08:22				ASSIST by MCKINNEY, KEKE
08:08	TURNOVER (LOSTBALL) by KIRBY, SHAY-LEE			
08:08				STEAL by HAINES, SABRINA
08:04		28-17	H 11	GOOD! LAYUP by HAINES, SABRINA [FB/PNT]
07:53	MISSED 3PTR by BENNELL, TAHANEE			
07:50				REBOUND (DEF) by PASCHAL, AMANDA
07:41				MISSED JUMPER by PASCHAL, AMANDA
07:38	REBOUND (DEF) by KIDWELL, KASEY			
07:33	MISSED 3PTR by KIRBY, SHAY-LEE			
07:29				REBOUND (DEF) by HOWARD, RHYNE
07:18				TURNOVER (BADPASS) by HAINES, SABRINA
07:18	STEAL by BENNELL, TAHANEE			
07:12	TURNOVER (LOSTBALL) by KIDWELL, KASEY			
07:09		31-17	H 14	GOOD! 3PTR by HOWARD, RHYNE
07:09	TIMEOUT 30SEC			
07:09				SUB OUT: MCKINNEY, KEKE
07:09				SUB OUT: HOWARD, RHYNE
07:09				SUB OUT: PASCHAL, AMANDA
07:09				SUB OUT: COLE, NAE NAE
07:09				SUB IN: GREEN, BLAIR
07:09				SUB IN: ANYAGALIGBO, OGECHI
07:09				SUB IN: ROPER, JAIDA
07:09				SUB IN: KING, EMMA
07:09	SUB OUT: BENNELL, TAHANEE			
07:09	SUB OUT: KIDWELL, KASEY			
07:09	SUB OUT: KIRBY, SHAY-LEE			
07:09	SUB OUT: KNOWLES, MAGGIE			
07:09	SUB IN: GONZALEZ-VARNER, ARIELLE			
07:09	SUB IN: SAWYER, ELLA			
07:09	SUB IN: FERBY, BRIANAH			
07:09	SUB IN: FERBY, BRANDI			
06:51	MISSED LAYUP by FERBY, BRIANAH			
06:49				REBOUND (DEF) by ANYAGALIGBO, OGECHI
06:40				FOUL (OFF) by HAINES, SABRINA
06:40				TURNOVER (OFFENSIVE) by HAINES, SABRINA
06:30	MISSED LAYUP by GONZALEZ-VARNER, ARIELLE			
06:27				REBOUND (DEF) by ANYAGALIGBO, OGECHI
06:15				MISSED LAYUP by ANYAGALIGBO, OGECHI
06:12	REBOUND (DEF) by SAWYER, ELLA			
06:00	MISSED 3PTR by FERBY, BRANDI			
05:57	REBOUND (OFF) by GONZALEZ-VARNER, ARIELLE			
05:53	GOOD! LAYUP by FERBY, BRIANAH [PNT]	31-19	H 12	
05:53	ASSIST by GONZALEZ-VARNER, ARIELLE			
05:42		33-19	H 14	GOOD! LAYUP by GREEN, BLAIR [PNT]
05:25	MISSED 3PTR by FERBY, BRIANAH			
05:22				REBOUND (DEF) by ROPER, JAIDA

Time	VISITORS: Austin Peay	Score	Margin	HOME: Kentucky
05:16		35-19	H 16	GOOD! JUMPER by ROPER, JAIDA [PNT]
04:55	MISSED JUMPER by BOOKER, D'SHARA			
04:52				REBOUND (DEF) by ANYAGALIGBO, OGECHI
04:46				MISSED LAYUP by HAINES, SABRINA
04:43	REBOUND (DEF) by BOOKER, D'SHARA			
04:33	MISSED 3PTR by FERBY, BRANDI			
04:31	REBOUND (OFF) by TEAM			
04:31				FOUL (PERSONAL) by KING, EMMA
04:31				SUB OUT: GREEN, BLAIR
04:31				SUB OUT: ANYAGALIGBO, OGECHI
04:31				SUB OUT: ROPER, JAIDA
04:31				SUB IN: MCKINNEY, KEKE
04:31				SUB IN: HOWARD, RHYNE
04:31				SUB IN: PASCHAL, AMANDA
04:31	SUB OUT: BOOKER, D'SHARA			
04:31	SUB OUT: SAWYER, ELLA			
04:31	SUB OUT: FERBY, BRIANAH			
04:31	SUB OUT: FERBY, BRANDI			
04:31	SUB IN: BENNELL, TAHANEE			
04:31	SUB IN: KIDWELL, KASEY			
04:31	SUB IN: KIRBY, SHAY-LEE			
04:31	SUB IN: KNOWLES, MAGGIE			
04:16	TURNOVER (BADPASS) by KIDWELL, KASEY			
04:16				STEAL by MCKINNEY, KEKE
04:03		37-19	H 18	GOOD! LAYUP by MCKINNEY, KEKE [PNT]
04:03				ASSIST by HOWARD, RHYNE
03:49	TURNOVER (BADPASS) by KIDWELL, KASEY			
03:38				MISSED 3PTR by HOWARD, RHYNE
03:33				REBOUND (OFF) by HAINES, SABRINA
03:33		39-19	H 20	GOOD! LAYUP by HAINES, SABRINA
03:11	TURNOVER (BADPASS) by BENNELL, TAHANEE			
03:11				STEAL by HAINES, SABRINA
03:11	FOUL (PERSONAL) by BENNELL, TAHANEE			
03:11	SUB OUT: GONZALEZ-VARNER, ARIELLE			
03:11	SUB OUT: KIRBY, SHAY-LEE			
03:11	SUB IN: SAWYER, ELLA			
03:11	SUB IN: KENOL, KELEN			
02:42				SUB OUT: KING, EMMA
02:42				SUB IN: ROPER, JAIDA
02:42		42-19	H 23	GOOD! 3PTR by ROPER, JAIDA
02:42				ASSIST by HAINES, SABRINA
02:42	FOUL (OFF) by BENNELL, TAHANEE			
02:42	TURNOVER (OFFENSIVE) by BENNELL, TAHANEE			
02:30				MISSED JUMPER by PASCHAL, AMANDA
02:25	REBOUND (DEF) by SAWYER, ELLA			
02:16	GOOD! JUMPER by SAWYER, ELLA [PNT]	42-21	H 21	
02:16	ASSIST by KENOL, KELEN			
02:06				TURNOVER (BADPASS) by ROPER, JAIDA
02:06	STEAL by BENNELL, TAHANEE			
01:48	TURNOVER (LOSTBALL) by SAWYER, ELLA			
01:48				STEAL by HOWARD, RHYNE
01:48				SUB OUT: PASCHAL, AMANDA
01:48				SUB OUT: ROPER, JAIDA
01:48				SUB IN: GREEN, BLAIR
01:48				SUB IN: KING, EMMA
01:48	SUB OUT: BENNELL, TAHANEE			
01:48	SUB OUT: SAWYER, ELLA			
01:48	SUB OUT: KIDWELL, KASEY			
01:48	SUB OUT: KNOWLES, MAGGIE			
01:48	SUB OUT: KENOL, KELEN			
01:48	SUB IN: CRAWFORD, NIEJA			
01:48	SUB IN: GONZALEZ-VARNER, ARIELLE			
01:48	SUB IN: KIRBY, SHAY-LEE			
01:48	SUB IN: FERBY, BRIANAH			
01:48	SUB IN: FERBY, BRANDI			
01:48				TIMEOUT 30SEC
01:31				MISSED 3PTR by MCKINNEY, KEKE
01:28	REBOUND (DEF) by KIRBY, SHAY-LEE			
01:09	MISSED JUMPER by FERBY, BRIANAH			
01:06				REBOUND (DEF) by HAINES, SABRINA
00:45				TURNOVER (LOSTBALL) by MCKINNEY, KEKE
00:45	STEAL by KIRBY, SHAY-LEE			
00:38	MISSED LAYUP by GONZALEZ-VARNER, ARIELLE			
00:36	REBOUND (OFF) by GONZALEZ-VARNER, ARIELLE			
00:23	GOOD! JUMPER by FERBY, BRIANAH	42-23	H 19	
00:06		44-23	H 21	GOOD! LAYUP by KING, EMMA [PNT]
00:06				ASSIST by MCKINNEY, KEKE
00:06	FOUL (PERSONAL) by KIRBY, SHAY-LEE			
00:06	SUB OUT: CRAWFORD, NIEJA			
00:06	SUB OUT: GONZALEZ-VARNER, ARIELLE			

Time	VISITORS: Austin Peay	Score	Margin	HOME: Kentucky
00:06	SUB IN: SAWYER, ELLA			
00:06	SUB IN: KNOWLES, MAGGIE			
00:06		45-23	H 22	GOOD! FT by KING, EMMA
00:02	MISSED 3PTR by KIRBY, SHAY-LEE			
00:00	REBOUND (OFF) by TEAM			

Austin Peay 23, Kentucky 45

Points from (This Period)	AP	UK
In the Paint	4	14
Off Turns	0	12
2nd Chance	4	2
Fast Break	0	2
Bench	4	12

Official Box Score
Austin Peay vs Kentucky
Second Half Statistics Only
December 01, 2019 at Memorial Coliseum - Lexington



Austin Peay 29

No.	Player	S	Pts	FG	3FG	FT	OR	DR	TR	PF	A	TO	Blk	Stl	Min	+/-
00	BENNEL, TAHANEE	G	0	0-2	0-2	0-0	0	1	1	2	1	1	0	0	7	-2
04	GONZALEZ-VARNER, ARIELLI	F	2	1-2	0-0	0-0	1	1	2	2	1	0	0	1	10	-7
05	LEFLORE, MYAH	F	2	1-3	0-2	0-0	0	0	0	0	0	0	0	0	6	1
11	BOOKER, D'SHARA	F	2	1-2	0-0	0-1	2	1	3	0	0	0	0	0	4	1
14	SAWYER, ELLA	G	0	0-2	0-1	0-0	0	0	0	1	0	1	0	0	12	-4
15	KIDWELL, KASEY	G	4	1-2	1-2	1-2	0	0	0	1	2	1	0	1	10	-5
22	KIRBY, SHAY-LEE	G	2	1-3	0-2	0-0	0	0	0	1	0	0	0	0	13	-1
23	KNOWLES, MAGGIE	G	6	2-4	2-3	0-0	0	2	2	1	0	0	0	1	10	-9
24	KENOL, KELEN	F	1	0-0	0-0	1-2	2	0	2	1	0	1	0	0	7	-1
32	FERBY, BRIANAH	G	4	2-5	0-2	0-0	1	0	1	0	1	0	0	1	9	-4
33	FERBY, BRANDI	G	4	1-3	1-1	1-2	1	0	1	2	2	2	0	1	12	-1
02	CRAWFORD, NIEJA	G	2	1-2	0-0	0-0	0	0	0	1	0	0	0	0	2	-3
	TEAM		0	0-0	0-0	0-0	1	1	2	0	0	1	0	0	0	0
TOTALS			29	11-30	4-15	3-7	8	6	14	12	7	7	0	5	100	

Shooting By Period

Period	FG	FG%	3FG	3FG%	FT	FT%
3rd Qtr	3-13	23%	2-9	22%	2-4	50%
4th Qtr	8-17	47%	2-6	33%	1-3	33%
2nd Half	11-30	37%	4-15	27%	3-7	43%
Game	21-64	32.8%	7-26	26.9%	3-7	42.9%

Deadball Rebounds: 2,0
Last FG Half: AP 4th-00:20

Kentucky 36

No.	Player	S	Pts	FG	3FG	FT	OR	DR	TR	PF	A	TO	Blk	Stl	Min	+/-
01	HAINES, SABRINA	G	2	1-1	0-0	0-0	2	4	6	0	1	0	0	0	13	8
03	MCKINNEY, KEKE	F	4	2-3	0-1	0-2	1	1	2	2	0	1	0	0	13	0
05	GREEN, BLAIR	G	4	2-2	0-0	0-0	0	0	0	1	2	2	0	0	14	3
10	HOWARD, RHYNE	G	7	3-8	1-4	0-0	0	2	2	1	2	1	1	0	14	4
12	PASCHAL, AMANDA	G	5	1-2	0-0	3-4	0	4	4	0	4	0	0	0	14	15
21	ANYAGALIGBO, OGECHI	F	6	3-4	0-0	0-0	1	2	3	0	0	3	1	1	13	10
32	ROPER, JAIDA	G	3	1-1	0-0	1-3	0	0	0	1	2	1	0	1	13	-1
34	KING, EMMA	G	0	0-0	0-0	0-0	0	0	0	0	0	0	0	0	2	-3
44	COLE, NAE NAE	C	5	2-3	0-0	1-2	0	1	1	2	0	0	0	0	5	-1
	TEAM		0	0-0	0-0	0-0	0	0	0	0	0	0	0	0	0	0
TOTALS			36	15-24	1-5	5-11	4	14	18	7	11	8	2	2	100	

Shooting By Period

Period	FG	FG%	3FG	3FG%	FT	FT%
3rd Qtr	6-12	50%	1-4	25%	3-7	43%
4th Qtr	9-12	75%	0-1	00%	2-4	50%
2nd Half	15-24	63%	1-5	20%	5-11	45%
Game	34-60	56.7%	4-13	30.8%	9-17	52.9%

Deadball Rebounds: 6,2
Last FG Half: UK 4th-00:17

Game Notes:

Officials: Felicia Grinter, Eric Baker, Blanca Burns
 Attendance: 3902

Start Time: 04:02 PM ET
 End Time: 05:54 PM ET
 Game Duration: 1:51

Score	1st	2nd	3rd	4th	TOT
AP	17	6	10	19	52
UK	24	21	16	20	81

Points from (This Period)	AP	UK
In the Paint	12	20
Off Turns	8	6
2nd Chance	13	3
Fast Break	2	4
Bench	17	12

Official Box Score
Austin Peay vs Kentucky
Third Quarter Statistics Only
December 01, 2019 at Memorial Coliseum - Lexington



Austin Peay 29

No.	Player	S	Pts	FG	3FG	FT	OR	DR	TR	PF	A	TO	Blk	Stl	Min	+/-
00	BENNELL, TAHANEE	G	0	0-1	0-1	0-0	0	0	0	2	0	0	0	0	3	-7
04	GONZALEZ-VARNER, ARIELLI	F	2	1-2	0-0	0-0	1	1	2	1	1	0	0	1	8	-4
14	SAWYER, ELLA	G	0	0-1	0-1	0-0	0	0	0	1	0	0	0	0	6	-5
15	KIDWELL, KASEY	G	0	0-0	0-0	0-0	0	0	0	0	0	0	0	0	4	-4
23	KNOWLES, MAGGIE	G	6	2-4	2-3	0-0	0	2	2	1	0	0	0	1	8	-7
02	CRAWFORD, NIEJA	G	0	0-0	0-0	0-0	0	0	0	0	0	0	0	0	0	0
05	LEFLORE, MYAH	F	0	0-0	0-0	0-0	0	0	0	0	0	0	0	0	1	0
11	BOOKER, D'SHARA	F	0	0-0	0-0	0-0	0	0	0	0	0	0	0	0	0	0
22	KIRBY, SHAY-LEE	G	0	0-2	0-2	0-0	0	0	0	1	0	0	0	0	8	-2
24	KENOL, KELEN	F	1	0-0	0-0	1-2	1	0	1	0	0	0	0	0	2	-2
32	FERBY, BRIANAH	G	0	0-2	0-2	0-0	0	0	0	0	0	0	0	1	4	0
33	FERBY, BRANDI	G	1	0-1	0-0	1-2	0	0	0	1	1	1	0	1	7	1
TEAM							0	1	1	0		1				
TOTALS			10	3-13	2-9	2-4	2	4	6	7	2	2	0	4	50	

Shooting By Period

Period	FG	FG%	3FG	3FG%	FT	FT%
2nd Half	0-0	0%	0-0	0%	0-0	0%
Game	21-64	32.8%	7-26	26.9%	3-7	42.9%

Deadball Rebounds: 2,0

Kentucky 36

No.	Player	S	Pts	FG	3FG	FT	OR	DR	TR	PF	A	TO	Blk	Stl	Min	+/-
01	HAINES, SABRINA	G	0	0-0	0-0	0-0	2	4	6	0	1	0	0	0	10	6
03	MCKINNEY, KEKE	F	4	2-2	0-0	0-2	1	1	2	2	0	1	0	0	8	1
10	HOWARD, RHYNE	G	3	1-6	1-4	0-0	0	1	1	1	1	1	1	0	9	2
12	PASCHAL, AMANDA	G	2	0-0	0-0	2-2	0	3	3	0	2	0	0	0	7	8
21	ANYAGALIGBO, OGECHI	F	4	2-3	0-0	0-0	1	0	1	0	0	1	0	0	6	11
05	GREEN, BLAIR	G	0	0-0	0-0	0-0	0	0	0	0	0	1	0	0	4	2
32	ROPER, JAIDA	G	3	1-1	0-0	1-3	0	0	0	0	1	1	0	0	6	0
34	KING, EMMA	G	0	0-0	0-0	0-0	0	0	0	0	0	0	0	0	0	0
44	COLE, NAE NAE	C	0	0-0	0-0	0-0	0	0	0	0	0	0	0	0	0	0
TEAM							0	0	0	0		0				
TOTALS			16	6-12	1-4	3-7	4	9	13	3	5	5	1	0	50	

Shooting By Period

Period	FG	FG%	3FG	3FG%	FT	FT%
2nd Half	0-0	0%	0-0	0%	0-0	0%
Game	34-60	56.7%	4-13	30.8%	9-17	52.9%

Deadball Rebounds: 6,2

Game Notes:

Officials: Felicia Grinter, Eric Baker, Blanca Burns
 Attendance: 3902

Start Time: 04:02 PM ET
 End Time: 05:54 PM ET
 Game Duration: 1:51

Score	1st	2nd	3rd	4th	TOT
AP	17	6	10	19	52
UK	24	21	16	20	81

Points from (This Period)	AP	UK
In the Paint	2	10
Off Turns	5	0
2nd Chance	3	1
Fast Break	0	4
Bench	2	3

Official Play-By-Play
Austin Peay vs Kentucky
Third Quarter
December 01, 2019 at Memorial Coliseum - Lexington



Period 3

Starters:

Austin Peay: 00 BENNELL, TAHANEE (G); 4 GONZALEZ-VARNER, ARIELLE (F); 14 SAWYER, ELLA (G); 15 KIDWELL, KASEY (G); 23 KNOWLES, MAGGIE (G);

Kentucky: 1 HAINES, SABRINA (G); 3 MCKINNEY, KEKE (F); 10 HOWARD, RHYNE (G); 12 PASCHAL, AMANDA (G); 21 ANYAGALIGBO, OGECHI (F);

Time	VISITORS: Austin Peay	Score	Margin	HOME: Kentucky
10:00				SUB OUT: GREEN, BLAIR
10:00				SUB OUT: KING, EMMA
10:00				SUB IN: PASCHAL, AMANDA
10:00				SUB IN: ANYAGALIGBO, OGECHI
10:00	SUB OUT: KIRBY, SHAY-LEE			
10:00	SUB OUT: FERBY, BRIANAH			
10:00	SUB OUT: FERBY, BRANDI			
10:00	SUB IN: BENNELL, TAHANEE			
10:00	SUB IN: GONZALEZ-VARNER, ARIELLE			
10:00	SUB IN: KIDWELL, KASEY			
09:43				FOUL (OFF) by MCKINNEY, KEKE
09:43				TURNOVER (OFFENSIVE) by MCKINNEY, KEKE
09:14	MISSED 3PTR by KNOWLES, MAGGIE			
09:10				REBOUND (DEF) by PASCHAL, AMANDA
08:58		47-23	H 24	GOOD! JUMPER by ANYAGALIGBO, OGECHI [PNT]
08:58				ASSIST by HOWARD, RHYNE
08:33	MISSED 3PTR by BENNELL, TAHANEE			
08:30				REBOUND (DEF) by PASCHAL, AMANDA
08:07		49-23	H 26	GOOD! LAYUP by ANYAGALIGBO, OGECHI [PNT]
08:07				ASSIST by PASCHAL, AMANDA
07:51	MISSED 3PTR by SAWYER, ELLA			
07:48				REBOUND (DEF) by PASCHAL, AMANDA
07:43	FOUL (PERSONAL) by BENNELL, TAHANEE			
07:43	SUB OUT: BENNELL, TAHANEE			
07:43	SUB OUT: GONZALEZ-VARNER, ARIELLE			
07:43	SUB OUT: KIDWELL, KASEY			
07:43	SUB IN: KIRBY, SHAY-LEE			
07:43	SUB IN: KENOL, KELEN			
07:43	SUB IN: FERBY, BRANDI			
07:39		52-23	H 29	GOOD! 3PTR by HOWARD, RHYNE
07:39				ASSIST by PASCHAL, AMANDA
07:07	MISSED 3PTR by KIRBY, SHAY-LEE			
07:03	REBOUND (OFF) by KENOL, KELEN			
07:03				FOUL (PERSONAL) by HOWARD, RHYNE
07:03	GOOD! FT by KENOL, KELEN	52-24	H 28	
07:03	MISSED FT by KENOL, KELEN			
07:02				REBOUND (DEF) by MCKINNEY, KEKE
06:51				MISSED 3PTR by HOWARD, RHYNE
06:47				REBOUND (OFF) by ANYAGALIGBO, OGECHI
06:46				TURNOVER (LOSTBALL) by ANYAGALIGBO, OGECHI
06:46	STEAL by KNOWLES, MAGGIE			
06:33	MISSED LAYUP by KNOWLES, MAGGIE			
06:29				REBOUND (DEF) by HAINES, SABRINA
06:12				MISSED 3PTR by HOWARD, RHYNE
06:09				REBOUND (OFF) by MCKINNEY, KEKE
06:09	FOUL (PERSONAL) by SAWYER, ELLA			
06:09				SUB OUT: PASCHAL, AMANDA
06:09				SUB OUT: ANYAGALIGBO, OGECHI
06:09				SUB IN: GREEN, BLAIR
06:09				SUB IN: ROPER, JAIDA
06:09	SUB OUT: SAWYER, ELLA			
06:09	SUB OUT: KENOL, KELEN			
06:09	SUB IN: GONZALEZ-VARNER, ARIELLE			
06:09	SUB IN: FERBY, BRIANAH			
06:09				MISSED FT by MCKINNEY, KEKE
06:09				REBOUND (OFF) by TEAM
06:09				MISSED FT by MCKINNEY, KEKE
06:09	REBOUND (DEF) by KNOWLES, MAGGIE			
05:48	GOOD! 3PTR by KNOWLES, MAGGIE	52-27	H 25	
05:48	ASSIST by GONZALEZ-VARNER, ARIELLE			
05:36				TURNOVER (LOSTBALL) by GREEN, BLAIR
05:36	STEAL by FERBY, BRIANAH			
05:19	GOOD! 3PTR by KNOWLES, MAGGIE	52-30	H 22	
05:19	ASSIST by FERBY, BRANDI			
05:03		54-30	H 24	GOOD! LAYUP by MCKINNEY, KEKE [PNT]
05:03				ASSIST by ROPER, JAIDA
04:37	MISSED 3PTR by FERBY, BRIANAH			
04:34				REBOUND (DEF) by TEAM
04:34	FOUL (PERSONAL) by GONZALEZ-VARNER, ARIELLE			
04:34				

Time	VISITORS: Austin Peay	Score	Margin	HOME: Kentucky
04:34	SUB OUT: KNOWLES, MAGGIE			
04:34	SUB IN: LEFLORE, MYAH			
04:18	FOUL (PERSONAL) by FERBY, BRANDI			
04:09				MISSED LAYUP by HOWARD, RHYNE
04:06	REBOUND (DEF) by TEAM			
03:57	TIMEOUT 30SEC			
03:57	SUB OUT: LEFLORE, MYAH			
03:57	SUB IN: SAWYER, ELLA			
03:48	TURNOVER (BADPASS) by FERBY, BRANDI			
03:43				TURNOVER (BADPASS) by HOWARD, RHYNE
03:43	STEAL by FERBY, BRANDI			
03:37	MISSED JUMPER by FERBY, BRANDI			
03:37				BLOCK by HOWARD, RHYNE
03:33				REBOUND (DEF) by HAINES, SABRINA
03:32		56-30	H 26	GOOD! LAYUP by MCKINNEY, KEKE [FB/PNT]
03:32				ASSIST by HAINES, SABRINA
03:05				FOUL (PERSONAL) by MCKINNEY, KEKE
03:05				SUB OUT: GREEN, BLAIR
03:05				SUB IN: PASCHAL, AMANDA
03:05	SUB OUT: FERBY, BRIANAH			
03:05	SUB IN: KIDWELL, KASEY			
03:05	GOOD! FT by FERBY, BRANDI	56-31	H 25	
03:05	MISSED FT by FERBY, BRANDI			
03:04				REBOUND (DEF) by HOWARD, RHYNE
02:51				TURNOVER (BADPASS) by ROPER, JAIDA
02:51	STEAL by GONZALEZ-VARNER, ARIELLE			
02:41	MISSED 3PTR by KIRBY, SHAY-LEE			
02:38	REBOUND (OFF) by GONZALEZ-VARNER, ARIELLE			
02:35	GOOD! JUMPER by GONZALEZ-VARNER, ARIELLE [PNT]	56-33	H 23	
02:10				MISSED 3PTR by HOWARD, RHYNE
02:06				REBOUND (OFF) by HAINES, SABRINA
02:06				SUB OUT: MCKINNEY, KEKE
02:06				SUB IN: ANYAGALIGBO, OGECHI
02:06	SUB OUT: SAWYER, ELLA			
02:06	SUB OUT: FERBY, BRANDI			
02:06	SUB IN: BENNELL, TAHANEE			
02:06	SUB IN: KNOWLES, MAGGIE			
01:49				MISSED JUMPER by HOWARD, RHYNE
01:45				REBOUND (OFF) by HAINES, SABRINA
01:32	FOUL (PERSONAL) by KNOWLES, MAGGIE			
01:32				MISSED FT by ROPER, JAIDA
01:32				REBOUND (OFF) by TEAM
01:32		57-33	H 24	GOOD! FT by ROPER, JAIDA
01:14	MISSED JUMPER by GONZALEZ-VARNER, ARIELLE			
01:10				REBOUND (DEF) by HAINES, SABRINA
01:06	FOUL (PERSONAL) by BENNELL, TAHANEE			
01:06				SUB OUT: HOWARD, RHYNE
01:06				SUB IN: GREEN, BLAIR
01:06		58-33	H 25	GOOD! FT by PASCHAL, AMANDA [FB]
01:06		59-33	H 26	GOOD! FT by PASCHAL, AMANDA [FB]
00:56	TURNOVER (10SEC) by TEAM			
00:56	SUB OUT: BENNELL, TAHANEE			
00:56	SUB OUT: KIDWELL, KASEY			
00:56	SUB IN: FERBY, BRIANAH			
00:56	SUB IN: FERBY, BRANDI			
00:44				MISSED JUMPER by ANYAGALIGBO, OGECHI
00:40	REBOUND (DEF) by KNOWLES, MAGGIE			
00:16	MISSED 3PTR by FERBY, BRIANAH			
00:13				REBOUND (DEF) by HAINES, SABRINA
00:03		61-33	H 28	GOOD! LAYUP by ROPER, JAIDA [PNT]
00:01	FOUL (PERSONAL) by KIRBY, SHAY-LEE			
00:01				MISSED FT by ROPER, JAIDA
00:00	REBOUND (DEF) by GONZALEZ-VARNER, ARIELLE			

Austin Peay 33, Kentucky 61

Points from (This Period)	AP	UK
In the Paint	2	10
Off Turns	5	0
2nd Chance	3	1
Fast Break	0	4
Bench	2	3

Official Box Score
Austin Peay vs Kentucky
Fourth Quarter Statistics Only
December 01, 2019 at Memorial Coliseum - Lexington



Austin Peay 19

No.	Player	S	Pts	FG	3FG	FT	OR	DR	TR	PF	A	TO	Blk	Stl	Min	+/-
00	BENNELL, TAHANEE	G	0	0-1	0-1	0-0	0	1	1	0	1	1	0	0	4	5
04	GONZALEZ-VARNER, ARIELLI	F	0	0-0	0-0	0-0	0	0	0	1	0	0	0	0	2	-3
14	SAWYER, ELLA	G	0	0-1	0-0	0-0	0	0	0	0	0	1	0	0	6	1
15	KIDWELL, KASEY	G	4	1-2	1-2	1-2	0	0	0	1	2	1	0	1	6	-1
23	KNOWLES, MAGGIE	G	0	0-0	0-0	0-0	0	0	0	0	0	0	0	0	2	-2
02	CRAWFORD, NIEJA	G	2	1-2	0-0	0-0	0	0	0	1	0	0	0	0	2	-3
05	LEFLORE, MYAH	F	2	1-3	0-2	0-0	0	0	0	0	0	0	0	0	5	1
11	BOOKER, D'SHARA	F	2	1-2	0-0	0-1	2	1	3	0	0	0	0	0	4	1
22	KIRBY, SHAY-LEE	G	2	1-1	0-0	0-0	0	0	0	0	0	0	0	0	5	1
24	KENOL, KELEN	F	0	0-0	0-0	0-0	1	0	1	1	0	1	0	0	5	1
32	FERBY, BRIANAH	G	4	2-3	0-0	0-0	1	0	1	0	1	0	0	0	5	-4
33	FERBY, BRANDI	G	3	1-2	1-1	0-0	1	0	1	1	1	1	0	0	5	-2
TEAM							1	0	1	0						
TOTALS			19	8-17	2-6	1-3	6	2	8	5	5	5	0	1	50	

Shooting By Period

Period	FG	FG%	3FG	3FG%	FT	FT%
Game	21-64	32.8%	7-26	26.9%	3-7	42.9%

Deadball Rebounds: 2,0

Kentucky 20

No.	Player	S	Pts	FG	3FG	FT	OR	DR	TR	PF	A	TO	Blk	Stl	Min	+/-
01	HAINES, SABRINA	G	2	1-1	0-0	0-0	0	0	0	0	0	0	0	0	3	2
03	MCKINNEY, KEKE	F	0	0-1	0-1	0-0	0	0	0	0	0	0	0	0	5	-1
10	HOWARD, RHYNE	G	4	2-2	0-0	0-0	0	1	1	0	1	0	0	0	5	2
12	PASCHAL, AMANDA	G	3	1-2	0-0	1-2	0	1	1	0	2	0	0	0	7	7
21	ANYAGALIGBO, OGECHI	F	2	1-1	0-0	0-0	0	2	2	0	0	2	1	1	7	-1
05	GREEN, BLAIR	G	4	2-2	0-0	0-0	0	0	0	1	2	1	0	0	10	1
32	ROPER, JAIDA	G	0	0-0	0-0	0-0	0	0	0	1	1	0	0	1	7	-1
34	KING, EMMA	G	0	0-0	0-0	0-0	0	0	0	0	0	0	0	0	2	-3
44	COLE, NAE NAE	C	5	2-3	0-0	1-2	0	1	1	2	0	0	0	0	5	-1
TEAM							0	0	0	0						
TOTALS			20	9-12	0-1	2-4	0	5	5	4	6	3	1	2	50	

Shooting By Period

Period	FG	FG%	3FG	3FG%	FT	FT%
Game	34-60	56.7%	4-13	30.8%	9-17	52.9%

Deadball Rebounds: 6,2

Game Notes:

Officials: Felicia Grinter, Eric Baker, Blanca Burns
 Attendance: 3902

Start Time: 04:02 PM ET
 End Time: 05:54 PM ET
 Game Duration: 1:51

Score	1st	2nd	3rd	4th	TOT
AP	17	6	10	19	52
UK	24	21	16	20	81

Points from (This Period)	AP	UK
In the Paint	10	10
Off Turns	3	6
2nd Chance	10	2
Fast Break	2	0
Bench	15	9

Official Play-By-Play
Austin Peay vs Kentucky
Fourth Quarter
December 01, 2019 at Memorial Coliseum - Lexington



Period 4

Starters:

Austin Peay: 00 BENNELL, TAHANEE (G); 4 GONZALEZ-VARNER, ARIELLE (F); 14 SAWYER, ELLA (G); 15 KIDWELL, KASEY (G); 23 KNOWLES, MAGGIE (G);

Kentucky: 1 HAINES, SABRINA (G); 3 MCKINNEY, KEKE (F); 10 HOWARD, RHYNE (G); 12 PASCHAL, AMANDA (G); 21 ANYAGALIGBO, OGECHI (F);

Time	VISITORS: Austin Peay	Score	Margin	HOME: Kentucky
10:00				SUB OUT: HAINES, SABRINA
10:00				SUB IN: HOWARD, RHYNE
10:00	SUB OUT: GONZALEZ-VARNER, ARIELLE			
10:00	SUB OUT: KIRBY, SHAY-LEE			
10:00	SUB IN: BOOKER, D'SHARA			
10:00	SUB IN: SAWYER, ELLA			
09:45	MISSED JUMPER by BOOKER, D'SHARA			
09:45				BLOCK by ANYAGALIGBO, OGECHI
09:41	REBOUND (OFF) by BOOKER, D'SHARA			
09:36	MISSED JUMPER by FERBY, BRANDI			
09:32				REBOUND (DEF) by HOWARD, RHYNE
09:17		63-33	H 30	GOOD! JUMPER by GREEN, BLAIR
09:17				ASSIST by PASCHAL, AMANDA
09:01	TURNOVER (BADPASS) by SAWYER, ELLA			
08:52		65-33	H 32	GOOD! LAYUP by HOWARD, RHYNE [PNT]
08:52				ASSIST by ROPER, JAIDA
08:25	MISSED JUMPER by FERBY, BRIANAH			
08:20	REBOUND (OFF) by FERBY, BRIANAH			
08:20	GOOD! LAYUP by FERBY, BRIANAH	65-35	H 30	
08:05	SUB OUT: BOOKER, D'SHARA			
08:05	SUB OUT: KNOWLES, MAGGIE			
08:05	SUB OUT: FERBY, BRIANAH			
08:05	SUB IN: CRAWFORD, NIEJA			
08:05	SUB IN: GONZALEZ-VARNER, ARIELLE			
08:05	SUB IN: KIDWELL, KASEY			
07:50		67-35	H 32	GOOD! LAYUP by ANYAGALIGBO, OGECHI [PNT]
07:50				ASSIST by PASCHAL, AMANDA
07:34	FOUL (OFF) by FERBY, BRANDI			
07:34	TURNOVER (OFFENSIVE) by FERBY, BRANDI			
07:10	FOUL (PERSONAL) by CRAWFORD, NIEJA			
07:10	SUB OUT: KIDWELL, KASEY			
07:10	SUB IN: BENNELL, TAHANEE			
07:10				MISSED FT by PASCHAL, AMANDA
07:10				REBOUND (OFF) by TEAM
07:10		68-35	H 33	GOOD! FT by PASCHAL, AMANDA
06:58	GOOD! LAYUP by CRAWFORD, NIEJA	68-37	H 31	
06:58	ASSIST by FERBY, BRANDI			
06:46		70-37	H 33	GOOD! LAYUP by HOWARD, RHYNE [PNT]
06:31	TURNOVER (LOSTBALL) by BENNELL, TAHANEE			
06:31				STEAL by ROPER, JAIDA
06:25				MISSED JUMPER by PASCHAL, AMANDA
06:25				REBOUND (OFF) by TEAM
06:25	FOUL (PERSONAL) by GONZALEZ-VARNER, ARIELLE			
06:25				SUB OUT: PASCHAL, AMANDA
06:25				SUB IN: MCKINNEY, KEKE
06:25	SUB OUT: CRAWFORD, NIEJA			
06:25	SUB OUT: GONZALEZ-VARNER, ARIELLE			
06:25	SUB IN: LEFLORE, MYAH			
06:25	SUB IN: KENOL, KELEN			
06:23		72-37	H 35	GOOD! JUMPER by GREEN, BLAIR
06:23				ASSIST by HOWARD, RHYNE
06:08	MISSED 3PTR by LEFLORE, MYAH			
06:05	REBOUND (OFF) by FERBY, BRANDI			
06:04	GOOD! 3PTR by FERBY, BRANDI	72-40	H 32	
05:32				MISSED 3PTR by MCKINNEY, KEKE
05:28	REBOUND (DEF) by BENNELL, TAHANEE			
05:24	GOOD! LAYUP by LEFLORE, MYAH [FB/PNT]	72-42	H 30	
05:24	ASSIST by BENNELL, TAHANEE			
04:54				FOUL (OFF) by GREEN, BLAIR
04:54				TURNOVER (OFFENSIVE) by GREEN, BLAIR
04:54				SUB OUT: HOWARD, RHYNE
04:54				SUB OUT: ANYAGALIGBO, OGECHI
04:54				SUB OUT: ROPER, JAIDA
04:54				SUB IN: HAINES, SABRINA
04:54				SUB IN: PASCHAL, AMANDA
04:54				SUB IN: COLE, NAE NAE
04:54	SUB OUT: BENNELL, TAHANEE			
04:54	SUB OUT: SAWYER, ELLA			
04:54	SUB OUT: FERBY, BRANDI			

Time	VISITORS: Austin Peay	Score	Margin	HOME: Kentucky
04:54	SUB IN: KIDWELL, KASEY			
04:54	SUB IN: KIRBY, SHAY-LEE			
04:54	SUB IN: FERBY, BRIANAH			
04:46	FOUL (OFF) by KENOL, KELEN			
04:46	TURNOVER (OFFENSIVE) by KENOL, KELEN			
04:14	FOUL (PERSONAL) by KIDWELL, KASEY			
04:14				MISSED FT by COLE, NAE NAE
04:14				REBOUND (OFF) by TEAM
04:14		73-42	H 31	GOOD! FT by COLE, NAE NAE
03:53	MISSED 3PTR by KIDWELL, KASEY			
03:50	REBOUND (OFF) by KENOL, KELEN			
03:50				FOUL (PERSONAL) by COLE, NAE NAE
03:38	GOOD! 3PTR by KIDWELL, KASEY	73-45	H 28	
03:38	ASSIST by FERBY, BRIANAH			
03:06		75-45	H 30	GOOD! JUMPER by PASCHAL, AMANDA
02:46	GOOD! JUMPER by FERBY, BRIANAH	75-47	H 28	
02:46	ASSIST by KIDWELL, KASEY			
02:32		77-47	H 30	GOOD! LAYUP by COLE, NAE NAE [PNT]
02:32				ASSIST by GREEN, BLAIR
02:17	MISSED 3PTR by LEFLORE, MYAH			
02:13				REBOUND (DEF) by PASCHAL, AMANDA
01:54		79-47	H 32	GOOD! JUMPER by HAINES, SABRINA
01:49	TIMEOUT 30SEC			
01:49				SUB OUT: HAINES, SABRINA
01:49				SUB OUT: MCKINNEY, KEKE
01:49				SUB OUT: PASCHAL, AMANDA
01:49				SUB IN: ANYAGALIGBO, OGECHI
01:49				SUB IN: ROPER, JAIDA
01:49				SUB IN: KING, EMMA
01:49	SUB OUT: LEFLORE, MYAH			
01:49	SUB OUT: KENOL, KELEN			
01:49	SUB OUT: FERBY, BRIANAH			
01:49	SUB IN: BENNELL, TAHANEE			
01:49	SUB IN: BOOKER, D'SHARA			
01:49	SUB IN: SAWYER, ELLA			
01:36	MISSED 3PTR by BENNELL, TAHANEE			
01:34	REBOUND (OFF) by BOOKER, D'SHARA			
01:34	GOOD! LAYUP by BOOKER, D'SHARA	79-49	H 30	
01:34				FOUL (PERSONAL) by COLE, NAE NAE
01:34	MISSED FT by BOOKER, D'SHARA			
01:32				REBOUND (DEF) by COLE, NAE NAE
01:14				MISSED JUMPER by COLE, NAE NAE
01:11	REBOUND (DEF) by BOOKER, D'SHARA			
01:03	MISSED JUMPER by SAWYER, ELLA			
00:56				REBOUND (DEF) by ANYAGALIGBO, OGECHI
00:36				TURNOVER (LOSTBALL) by ANYAGALIGBO, OGECHI
00:36	STEAL by KIDWELL, KASEY			
00:30				FOUL (PERSONAL) by ROPER, JAIDA
00:30	GOOD! FT by KIDWELL, KASEY	79-50	H 29	
00:30	MISSED FT by KIDWELL, KASEY			
00:29	REBOUND (OFF) by TEAM			
00:29	SUB OUT: SAWYER, ELLA			
00:29	SUB IN: CRAWFORD, NIEJA			
00:27	TURNOVER (LOSTBALL) by KIDWELL, KASEY			
00:27				STEAL by ANYAGALIGBO, OGECHI
00:25				TURNOVER (BADPASS) by ANYAGALIGBO, OGECHI
00:20	GOOD! LAYUP by KIRBY, SHAY-LEE	79-52	H 27	
00:20	ASSIST by KIDWELL, KASEY			
00:17		81-52	H 29	GOOD! LAYUP by COLE, NAE NAE [PNT]
00:17				ASSIST by GREEN, BLAIR
00:08	MISSED JUMPER by CRAWFORD, NIEJA			
00:05				REBOUND (DEF) by ANYAGALIGBO, OGECHI

Austin Peay 52, Kentucky 81

Points from (This Period)	AP	UK
In the Paint	10	10
Off Turns	3	6
2nd Chance	10	2
Fast Break	2	0
Bench	15	9

Official Scoring/Possession Reference Chart
Austin Peay vs Kentucky
Period 1
December 01, 2019 at Memorial Coliseum - Lexington



Period 1

Starters:

Austin Peay: 00 BENNELL, TAHANEE (G); 4 GONZALEZ-VARNER, ARIELLE (F); 14 SAWYER, ELLA (G); 15 KIDWELL, KASEY (G); 23 KNOWLES, MAGGIE (G);

Kentucky: 1 HAINES, SABRINA (G); 3 MCKINNEY, KEKE (F); 10 HOWARD, RHYNE (G); 12 PASCHAL, AMANDA (G); 21 ANYAGALIGBO, OGECHI (F);

Time	VISITORS: Austin Peay	Score	Margin	HOME: Kentucky
09:32		2-0	H 2	GOOD! LAYUP by MCKINNEY, KEKE [PNT]
09:32		3-0	H 3	GOOD! FT by MCKINNEY, KEKE
09:14	GOOD! LAYUP by KNOWLES, MAGGIE [PNT]	3-2	H 1	
08:58		5-2	H 3	GOOD! LAYUP by HOWARD, RHYNE [FB/PNT]
08:35		7-2	H 5	GOOD! LAYUP by ANYAGALIGBO, OGECHI
08:04		8-2	H 6	GOOD! FT by HAINES, SABRINA
07:59		11-2	H 9	GOOD! 3PTR by HAINES, SABRINA
07:06	GOOD! 3PTR by KNOWLES, MAGGIE	11-5	H 6	
06:52		12-5	H 7	GOOD! FT by MCKINNEY, KEKE
06:06		14-5	H 9	GOOD! LAYUP by GREEN, BLAIR [FB/PNT]
05:23		16-5	H 11	GOOD! JUMPER by ANYAGALIGBO, OGECHI
04:10	GOOD! 3PTR by FERBY, BRIANAH	16-8	H 8	
03:59		18-8	H 10	GOOD! LAYUP by ROPER, JAIDA
03:14	GOOD! LAYUP by FERBY, BRIANAH	18-10	H 8	
02:56		20-10	H 10	GOOD! LAYUP by PASCHAL, AMANDA [PNT]
02:28		22-10	H 12	GOOD! JUMPER by HOWARD, RHYNE
01:56	GOOD! 3PTR by BENNELL, TAHANEE	22-13	H 9	
01:20		24-13	H 11	GOOD! JUMPER by MCKINNEY, KEKE [PNT]
01:03	GOOD! JUMPER by KENOL, KELEN	24-15	H 9	
00:01	GOOD! LAYUP by FERBY, BRANDI [PNT]	24-17	H 7	

Austin Peay 17, Kentucky 24

Official Scoring/Possession Reference Chart
Austin Peay vs Kentucky
Period 2
December 01, 2019 at Memorial Coliseum - Lexington



Period 2

Starters:

Austin Peay: 00 BENNELL, TAHANEE (G); 4 GONZALEZ-VARNER, ARIELLE (F); 14 SAWYER, ELLA (G); 15 KIDWELL, KASEY (G); 23 KNOWLES, MAGGIE (G);

Kentucky: 1 HAINES, SABRINA (G); 3 MCKINNEY, KEKE (F); 10 HOWARD, RHYNE (G); 12 PASCHAL, AMANDA (G); 21 ANYAGALIGBO, OGECHI (F);

Time	VISITORS: Austin Peay	Score	Margin	HOME: Kentucky
08:22		26-17	H 9	GOOD! JUMPER by COLE, NAE NAE [PNT]
08:04		28-17	H 11	GOOD! LAYUP by HAINES, SABRINA [FB/PNT]
07:09		31-17	H 14	GOOD! 3PTR by HOWARD, RHYNE
05:53	GOOD! LAYUP by FERBY, BRIANAH [PNT]	31-19	H 12	
05:42		33-19	H 14	GOOD! LAYUP by GREEN, BLAIR [PNT]
05:16		35-19	H 16	GOOD! JUMPER by ROPER, JAIDA [PNT]
04:03		37-19	H 18	GOOD! LAYUP by MCKINNEY, KEKE [PNT]
03:33		39-19	H 20	GOOD! LAYUP by HAINES, SABRINA
02:42		42-19	H 23	GOOD! 3PTR by ROPER, JAIDA
02:16	GOOD! JUMPER by SAWYER, ELLA [PNT]	42-21	H 21	
00:23	GOOD! JUMPER by FERBY, BRIANAH	42-23	H 19	
00:06		44-23	H 21	GOOD! LAYUP by KING, EMMA [PNT]
00:06		45-23	H 22	GOOD! FT by KING, EMMA

Austin Peay 23, Kentucky 45

Official Scoring/Possession Reference Chart
Austin Peay vs Kentucky
Period 3
December 01, 2019 at Memorial Coliseum - Lexington



Period 3

Starters:

Austin Peay: 00 BENNELL, TAHANEE (G); 4 GONZALEZ-VARNER, ARIELLE (F); 14 SAWYER, ELLA (G); 15 KIDWELL, KASEY (G); 23 KNOWLES, MAGGIE (G);

Kentucky: 1 HAINES, SABRINA (G); 3 MCKINNEY, KEKE (F); 10 HOWARD, RHYNE (G); 12 PASCHAL, AMANDA (G); 21 ANYAGALIGBO, OGECHI (F);

Time	VISITORS: Austin Peay	Score	Margin	HOME: Kentucky
08:58		47-23	H 24	GOOD! JUMPER by ANYAGALIGBO, OGECHI [PNT]
08:07		49-23	H 26	GOOD! LAYUP by ANYAGALIGBO, OGECHI [PNT]
07:39		52-23	H 29	GOOD! 3PTR by HOWARD, RHYNE
07:03	GOOD! FT by KENOL, KELEN	52-24	H 28	
05:48	GOOD! 3PTR by KNOWLES, MAGGIE	52-27	H 25	
05:19	GOOD! 3PTR by KNOWLES, MAGGIE	52-30	H 22	
05:03		54-30	H 24	GOOD! LAYUP by MCKINNEY, KEKE [PNT]
03:32		56-30	H 26	GOOD! LAYUP by MCKINNEY, KEKE [FB/PNT]
03:05	GOOD! FT by FERBY, BRANDI	56-31	H 25	
02:35	GOOD! JUMPER by GONZALEZ-VARNER, ARIELLE [PNT]	56-33	H 23	
01:32		57-33	H 24	GOOD! FT by ROPER, JAIDA
01:06		58-33	H 25	GOOD! FT by PASCHAL, AMANDA [FB]
01:06		59-33	H 26	GOOD! FT by PASCHAL, AMANDA [FB]
00:03		61-33	H 28	GOOD! LAYUP by ROPER, JAIDA [PNT]

Austin Peay 33, Kentucky 61

Official Scoring/Possession Reference Chart
Austin Peay vs Kentucky
Period 4
December 01, 2019 at Memorial Coliseum - Lexington



Period 4

Starters:

Austin Peay: 00 BENNELL, TAHANEE (G); 4 GONZALEZ-VARNER, ARIELLE (F); 14 SAWYER, ELLA (G); 15 KIDWELL, KASEY (G); 23 KNOWLES, MAGGIE (G);

Kentucky: 1 HAINES, SABRINA (G); 3 MCKINNEY, KEKE (F); 10 HOWARD, RHYNE (G); 12 PASCHAL, AMANDA (G); 21 ANYAGALIGBO, OGECHI (F);

Time	VISITORS: Austin Peay	Score	Margin	HOME: Kentucky
09:17		63-33	H 30	GOOD! JUMPER by GREEN, BLAIR
08:52		65-33	H 32	GOOD! LAYUP by HOWARD, RHYNE [PNT]
08:20	GOOD! LAYUP by FERBY, BRIANAH	65-35	H 30	
07:50		67-35	H 32	GOOD! LAYUP by ANYAGALIGBO, OGECHI [PNT]
07:10		68-35	H 33	GOOD! FT by PASCHAL, AMANDA
06:58	GOOD! LAYUP by CRAWFORD, NIEJA	68-37	H 31	
06:46		70-37	H 33	GOOD! LAYUP by HOWARD, RHYNE [PNT]
06:23		72-37	H 35	GOOD! JUMPER by GREEN, BLAIR
06:04	GOOD! 3PTR by FERBY, BRANDI	72-40	H 32	
05:24	GOOD! LAYUP by LEFLORE, MYAH [FB/PNT]	72-42	H 30	
04:14		73-42	H 31	GOOD! FT by COLE, NAE NAE
03:38	GOOD! 3PTR by KIDWELL, KASEY	73-45	H 28	
03:06		75-45	H 30	GOOD! JUMPER by PASCHAL, AMANDA
02:46	GOOD! JUMPER by FERBY, BRIANAH	75-47	H 28	
02:32		77-47	H 30	GOOD! LAYUP by COLE, NAE NAE [PNT]
01:54		79-47	H 32	GOOD! JUMPER by HAINES, SABRINA
01:34	GOOD! LAYUP by BOOKER, D'SHARA	79-49	H 30	
00:30	GOOD! FT by KIDWELL, KASEY	79-50	H 29	
00:20	GOOD! LAYUP by KIRBY, SHAY-LEE	79-52	H 27	
00:17		81-52	H 29	GOOD! LAYUP by COLE, NAE NAE [PNT]

Austin Peay 52, Kentucky 81

Official Substitutions Log
Austin Peay vs Kentucky
Period 1
December 01, 2019 at Memorial Coliseum - Lexington



VISITORS: Austin Peay	Time	Score	HOME: Kentucky
00 BENNELL, TAHANEE			1 HAINES, SABRINA
4 GONZALEZ-VARNER, ARIELLE			3 MCKINNEY, KEKE
14 SAWYER, ELLA			10 HOWARD, RHYNE
15 KIDWELL, KASEY			12 PASCHAL, AMANDA
23 KNOWLES, MAGGIE			21 ANYAGALIGBO, OGECHI
SUB OUT: 00 BENNELL, TAHANEE	07:55	2-11	
SUB OUT: 4 GONZALEZ-VARNER, ARIELLE	07:55		
SUB IN: 11 BOOKER, D'SHARA	07:55		
SUB IN: 22 KIRBY, SHAY-LEE	07:55		
SUB OUT: 11 BOOKER, D'SHARA	07:29	2-11	
SUB IN: 24 KENOL, KELEN	07:29		
	06:52	5-11	SUB OUT: PASCHAL, AMANDA
	06:52		SUB IN: ROPER, JAIDA
SUB OUT: 15 KIDWELL, KASEY	06:52		
SUB OUT: 24 KENOL, KELEN	06:52		
SUB IN: 4 GONZALEZ-VARNER, ARIELLE	06:52		
SUB IN: 33 FERBY, BRANDI	06:52		
	06:26	5-12	SUB OUT: MCKINNEY, KEKE
	06:26		SUB IN: GREEN, BLAIR
SUB OUT: 14 SAWYER, ELLA	06:26		
SUB IN: 2 CRAWFORD, NIEJA	06:26		
	05:56	5-14	SUB OUT: HAINES, SABRINA
	05:56		SUB IN: PASCHAL, AMANDA
	05:56		SUB OUT: HOWARD, RHYNE
	05:56		SUB IN: HAINES, SABRINA
SUB OUT: 23 KNOWLES, MAGGIE	05:56		
SUB IN: 00 BENNELL, TAHANEE	05:56		
SUB OUT: 00 BENNELL, TAHANEE	05:39	5-14	
SUB IN: 14 SAWYER, ELLA	05:39		
	05:04	5-16	SUB OUT: ANYAGALIGBO, OGECHI
	05:04		SUB IN: MCKINNEY, KEKE
SUB OUT: 4 GONZALEZ-VARNER, ARIELLE	05:04		
SUB OUT: 33 FERBY, BRANDI	05:04		
SUB IN: 11 BOOKER, D'SHARA	05:04		
SUB IN: 32 FERBY, BRIANAH	05:04		
	04:37	5-16	SUB OUT: HAINES, SABRINA
	04:37		SUB IN: HOWARD, RHYNE
SUB OUT: 2 CRAWFORD, NIEJA	04:37		
SUB IN: 23 KNOWLES, MAGGIE	04:37		
SUB OUT: 11 BOOKER, D'SHARA	03:26	8-18	
SUB OUT: 14 SAWYER, ELLA	03:26		
SUB OUT: 22 KIRBY, SHAY-LEE	03:26		
SUB IN: 15 KIDWELL, KASEY	03:26		
SUB IN: 24 KENOL, KELEN	03:26		
SUB IN: 33 FERBY, BRANDI	03:26		
	02:31	10-20	SUB OUT: GREEN, BLAIR
	02:31		SUB IN: ANYAGALIGBO, OGECHI
SUB OUT: 32 FERBY, BRIANAH	02:31		
SUB IN: 00 BENNELL, TAHANEE	02:31		

Austin Peay 17, Kentucky 24

Official Substitutions Log
Austin Peay vs Kentucky
Period 2
December 01, 2019 at Memorial Coliseum - Lexington



VISITORS: Austin Peay	Time	Score	HOME: Kentucky
00 BENNELL, TAHANEE			1 HAINES, SABRINA
4 GONZALEZ-VARNER, ARIELLE			3 MCKINNEY, KEKE
14 SAWYER, ELLA			10 HOWARD, RHYNE
15 KIDWELL, KASEY			12 PASCHAL, AMANDA
23 KNOWLES, MAGGIE			21 ANYAGALIGBO, OGECHI
	10:00	-	SUB OUT: ANYAGALIGBO, OGECHI
	10:00		SUB OUT: ROPER, JAIDA
	10:00		SUB IN: HAINES, SABRINA
	10:00		SUB IN: COLE, NAE NAE
SUB OUT: 15 KIDWELL, KASEY	10:00		
SUB OUT: 33 FERBY, BRANDI	10:00		
SUB IN: 2 CRAWFORD, NIEJA	10:00		
SUB IN: 5 LEFLORE, MYAH	10:00		
SUB OUT: 2 CRAWFORD, NIEJA	09:12	-	
SUB IN: 22 KIRBY, SHAY-LEE	09:12		
SUB OUT: 5 LEFLORE, MYAH	08:46	-	
SUB IN: 15 KIDWELL, KASEY	08:46		
SUB OUT: 24 KENOL, KELEN	08:38	-	
SUB IN: 11 BOOKER, D'SHARA	08:38		
	07:09	17-31	SUB OUT: MCKINNEY, KEKE
	07:09		SUB OUT: HOWARD, RHYNE
	07:09		SUB OUT: PASCHAL, AMANDA
	07:09		SUB OUT: COLE, NAE NAE
	07:09		SUB IN: GREEN, BLAIR
	07:09		SUB IN: ANYAGALIGBO, OGECHI
	07:09		SUB IN: ROPER, JAIDA
	07:09		SUB IN: KING, EMMA
SUB OUT: 00 BENNELL, TAHANEE	07:09		
SUB OUT: 15 KIDWELL, KASEY	07:09		
SUB OUT: 22 KIRBY, SHAY-LEE	07:09		
SUB OUT: 23 KNOWLES, MAGGIE	07:09		
SUB IN: 4 GONZALEZ-VARNER, ARIELLE	07:09		
SUB IN: 14 SAWYER, ELLA	07:09		
SUB IN: 32 FERBY, BRIANAH	07:09		
SUB IN: 33 FERBY, BRANDI	07:09		
	04:31	19-35	SUB OUT: GREEN, BLAIR
	04:31		SUB OUT: ANYAGALIGBO, OGECHI
	04:31		SUB OUT: ROPER, JAIDA
	04:31		SUB IN: MCKINNEY, KEKE
	04:31		SUB IN: HOWARD, RHYNE
	04:31		SUB IN: PASCHAL, AMANDA
SUB OUT: 11 BOOKER, D'SHARA	04:31		
SUB OUT: 14 SAWYER, ELLA	04:31		
SUB OUT: 32 FERBY, BRIANAH	04:31		
SUB OUT: 33 FERBY, BRANDI	04:31		
SUB IN: 00 BENNELL, TAHANEE	04:31		
SUB IN: 15 KIDWELL, KASEY	04:31		
SUB IN: 22 KIRBY, SHAY-LEE	04:31		
SUB IN: 23 KNOWLES, MAGGIE	04:31		
SUB OUT: 4 GONZALEZ-VARNER, ARIELLE	03:11	19-39	
SUB OUT: 22 KIRBY, SHAY-LEE	03:11		
SUB IN: 14 SAWYER, ELLA	03:11		
SUB IN: 24 KENOL, KELEN	03:11		
	02:42	19-39	SUB OUT: KING, EMMA
	02:42		SUB IN: ROPER, JAIDA
	01:48	21-42	SUB OUT: PASCHAL, AMANDA
	01:48		SUB OUT: ROPER, JAIDA
	01:48		SUB IN: GREEN, BLAIR
	01:48		SUB IN: KING, EMMA
SUB OUT: 00 BENNELL, TAHANEE	01:48		
SUB OUT: 14 SAWYER, ELLA	01:48		
SUB OUT: 15 KIDWELL, KASEY	01:48		
SUB OUT: 23 KNOWLES, MAGGIE	01:48		
SUB OUT: 24 KENOL, KELEN	01:48		
SUB IN: 2 CRAWFORD, NIEJA	01:48		
SUB IN: 4 GONZALEZ-VARNER, ARIELLE	01:48		
SUB IN: 22 KIRBY, SHAY-LEE	01:48		
SUB IN: 32 FERBY, BRIANAH	01:48		
SUB IN: 33 FERBY, BRANDI	01:48		
SUB OUT: 2 CRAWFORD, NIEJA	00:06	23-44	
SUB OUT: 4 GONZALEZ-VARNER, ARIELLE	00:06		
SUB IN: 14 SAWYER, ELLA	00:06		
SUB IN: 23 KNOWLES, MAGGIE	00:06		

Official Substitutions Log
Austin Peay vs Kentucky
Period 3
December 01, 2019 at Memorial Coliseum - Lexington



VISITORS: Austin Peay	Time	Score	HOME: Kentucky
00 BENNELL, TAHANEE			1 HAINES, SABRINA
4 GONZALEZ-VARNER, ARIELLE			3 MCKINNEY, KEKE
14 SAWYER, ELLA			10 HOWARD, RHYNE
15 KIDWELL, KASEY			12 PASCHAL, AMANDA
23 KNOWLES, MAGGIE			21 ANYAGALIGBO, OGECHI
	10:00	-	SUB OUT: GREEN, BLAIR
	10:00		SUB OUT: KING, EMMA
	10:00		SUB IN: PASCHAL, AMANDA
	10:00		SUB IN: ANYAGALIGBO, OGECHI
SUB OUT: 22 KIRBY, SHAY-LEE	10:00		
SUB OUT: 32 FERBY, BRIANAH	10:00		
SUB OUT: 33 FERBY, BRANDI	10:00		
SUB IN: 00 BENNELL, TAHANEE	10:00		
SUB IN: 4 GONZALEZ-VARNER, ARIELLE	10:00		
SUB IN: 15 KIDWELL, KASEY	10:00		
SUB OUT: 00 BENNELL, TAHANEE	07:43	23-49	
SUB OUT: 4 GONZALEZ-VARNER, ARIELLE	07:43		
SUB OUT: 15 KIDWELL, KASEY	07:43		
SUB IN: 22 KIRBY, SHAY-LEE	07:43		
SUB IN: 24 KENOL, KELEN	07:43		
SUB IN: 33 FERBY, BRANDI	07:43		
	06:09	24-52	SUB OUT: PASCHAL, AMANDA
	06:09		SUB OUT: ANYAGALIGBO, OGECHI
	06:09		SUB IN: GREEN, BLAIR
	06:09		SUB IN: ROPER, JAIDA
SUB OUT: 14 SAWYER, ELLA	06:09		
SUB OUT: 24 KENOL, KELEN	06:09		
SUB IN: 4 GONZALEZ-VARNER, ARIELLE	06:09		
SUB IN: 32 FERBY, BRIANAH	06:09		
SUB OUT: 23 KNOWLES, MAGGIE	04:34	30-54	
SUB IN: 5 LEFLORE, MYAH	04:34		
SUB OUT: 5 LEFLORE, MYAH	03:57	30-54	
SUB IN: 14 SAWYER, ELLA	03:57		
	03:05	30-56	SUB OUT: GREEN, BLAIR
	03:05		SUB IN: PASCHAL, AMANDA
SUB OUT: 32 FERBY, BRIANAH	03:05		
SUB IN: 15 KIDWELL, KASEY	03:05		
	02:06	33-56	SUB OUT: MCKINNEY, KEKE
	02:06		SUB IN: ANYAGALIGBO, OGECHI
SUB OUT: 14 SAWYER, ELLA	02:06		
SUB OUT: 33 FERBY, BRANDI	02:06		
SUB IN: 00 BENNELL, TAHANEE	02:06		
SUB IN: 23 KNOWLES, MAGGIE	02:06		
	01:06	33-57	SUB OUT: HOWARD, RHYNE
	01:06		SUB IN: GREEN, BLAIR
SUB OUT: 00 BENNELL, TAHANEE	00:56	33-59	
SUB OUT: 15 KIDWELL, KASEY	00:56		
SUB IN: 32 FERBY, BRIANAH	00:56		
SUB IN: 33 FERBY, BRANDI	00:56		

Austin Peay 33, Kentucky 61

Official Substitutions Log
Austin Peay vs Kentucky
Period 4
December 01, 2019 at Memorial Coliseum - Lexington



VISITORS: Austin Peay	Time	Score	HOME: Kentucky
00 BENNELL, TAHANEE			1 HAINES, SABRINA
4 GONZALEZ-VARNER, ARIELLE			3 MCKINNEY, KEKE
14 SAWYER, ELLA			10 HOWARD, RHYNE
15 KIDWELL, KASEY			12 PASCHAL, AMANDA
23 KNOWLES, MAGGIE			21 ANYAGALIGBO, OGECHI
	10:00	-	SUB OUT: HAINES, SABRINA
	10:00		SUB IN: HOWARD, RHYNE
SUB OUT: 4 GONZALEZ-VARNER, ARIELLE	10:00		
SUB OUT: 22 KIRBY, SHAY-LEE	10:00		
SUB IN: 11 BOOKER, D'SHARA	10:00		
SUB IN: 14 SAWYER, ELLA	10:00		
SUB OUT: 11 BOOKER, D'SHARA	08:05	35-65	
SUB OUT: 23 KNOWLES, MAGGIE	08:05		
SUB OUT: 32 FERBY, BRIANAH	08:05		
SUB IN: 2 CRAWFORD, NIEJA	08:05		
SUB IN: 4 GONZALEZ-VARNER, ARIELLE	08:05		
SUB IN: 15 KIDWELL, KASEY	08:05		
SUB OUT: 15 KIDWELL, KASEY	07:10	35-67	
SUB IN: 00 BENNELL, TAHANEE	07:10		
	06:25	37-70	SUB OUT: PASCHAL, AMANDA
	06:25		SUB IN: MCKINNEY, KEKE
SUB OUT: 2 CRAWFORD, NIEJA	06:25		
SUB OUT: 4 GONZALEZ-VARNER, ARIELLE	06:25		
SUB IN: 5 LEFLORE, MYAH	06:25		
SUB IN: 24 KENOL, KELEN	06:25		
	04:54	42-72	SUB OUT: HOWARD, RHYNE
	04:54		SUB OUT: ANYAGALIGBO, OGECHI
	04:54		SUB OUT: ROPER, JAIDA
	04:54		SUB IN: HAINES, SABRINA
	04:54		SUB IN: PASCHAL, AMANDA
	04:54		SUB IN: COLE, NAE NAE
SUB OUT: 00 BENNELL, TAHANEE	04:54		
SUB OUT: 14 SAWYER, ELLA	04:54		
SUB OUT: 33 FERBY, BRANDI	04:54		
SUB IN: 15 KIDWELL, KASEY	04:54		
SUB IN: 22 KIRBY, SHAY-LEE	04:54		
SUB IN: 32 FERBY, BRIANAH	04:54		
	01:49	47-79	SUB OUT: HAINES, SABRINA
	01:49		SUB OUT: MCKINNEY, KEKE
	01:49		SUB OUT: PASCHAL, AMANDA
	01:49		SUB IN: ANYAGALIGBO, OGECHI
	01:49		SUB IN: ROPER, JAIDA
	01:49		SUB IN: KING, EMMA
SUB OUT: 5 LEFLORE, MYAH	01:49		
SUB OUT: 24 KENOL, KELEN	01:49		
SUB OUT: 32 FERBY, BRIANAH	01:49		
SUB IN: 00 BENNELL, TAHANEE	01:49		
SUB IN: 11 BOOKER, D'SHARA	01:49		
SUB IN: 14 SAWYER, ELLA	01:49		
SUB OUT: 14 SAWYER, ELLA	00:29	50-79	
SUB IN: 2 CRAWFORD, NIEJA	00:29		

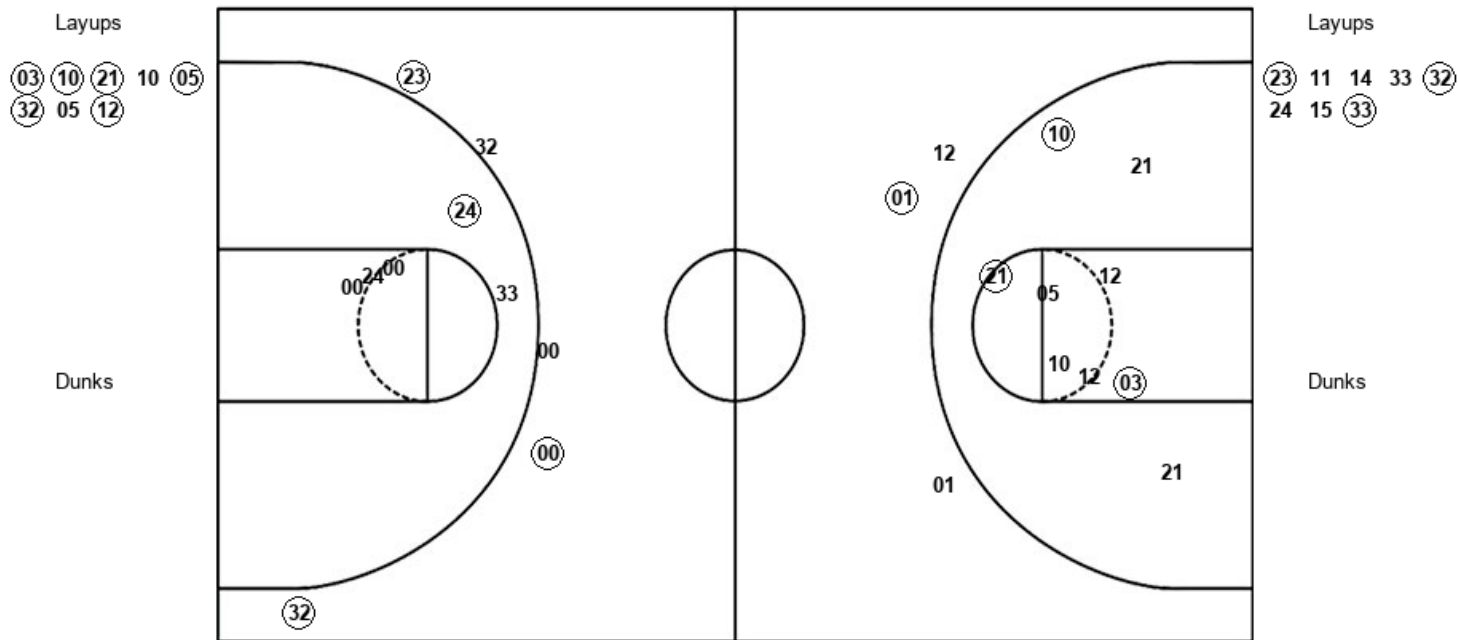
Austin Peay 52, Kentucky 81

Official Shot Chart
Austin Peay vs Kentucky
PERIOD 1 Shots
 December 01, 2019 at Memorial Coliseum - Lexington



Kentucky

Austin Peay



UK : Period 1	Made	Att	Pct
Layups	6	8	75.0
Dunks	0	0	0
2PT Field Goals	9	17	52.9
3PT Field Goals	1	3	33.3
Total Field Goals	10	20	50.0

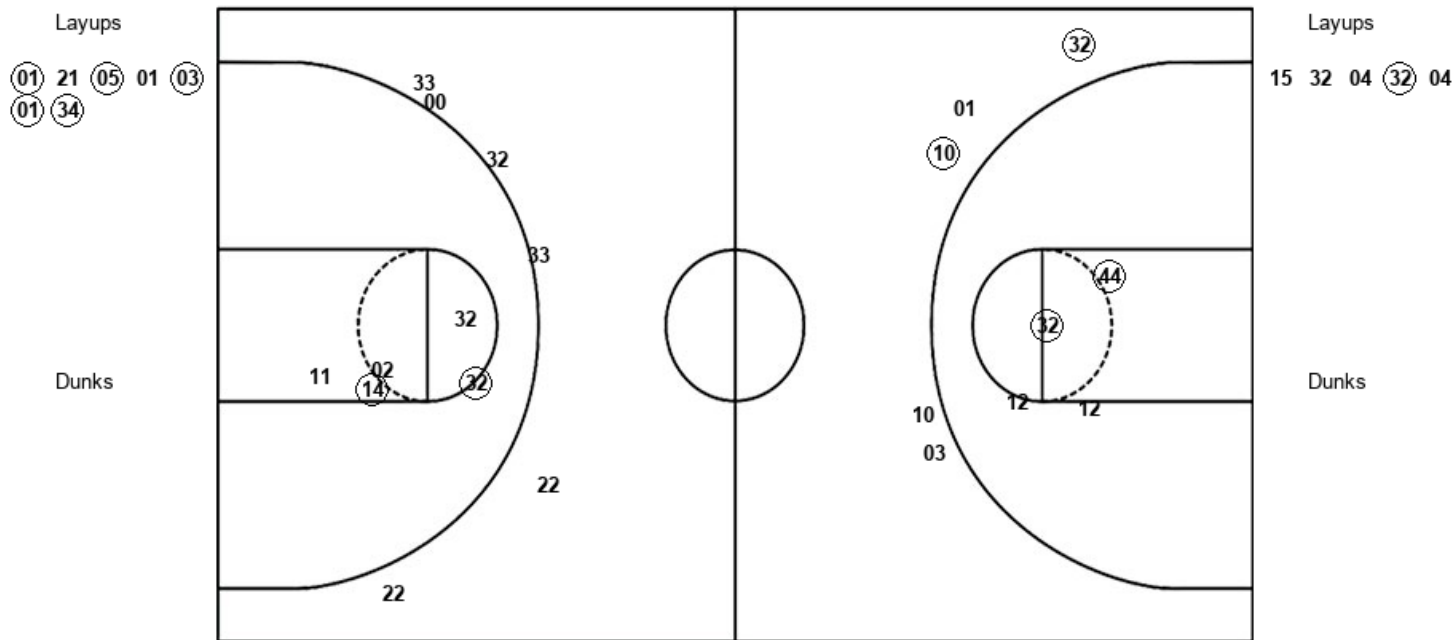
AP : Period 1	Made	Att	Pct
Layups	3	8	37.5
Dunks	0	0	0
2PT Field Goals	4	13	30.8
3PT Field Goals	3	5	60.0
Total Field Goals	7	18	38.9

Official Shot Chart
Austin Peay vs Kentucky
PERIOD 2 Shots
 December 01, 2019 at Memorial Coliseum - Lexington



Kentucky

Austin Peay



UK : Period 2	Made	Att	Pct
Layups	5	7	71.4
Dunks	0	0	0
2PT Field Goals	7	11	63.6
3PT Field Goals	2	5	40.0
Total Field Goals	9	16	56.3

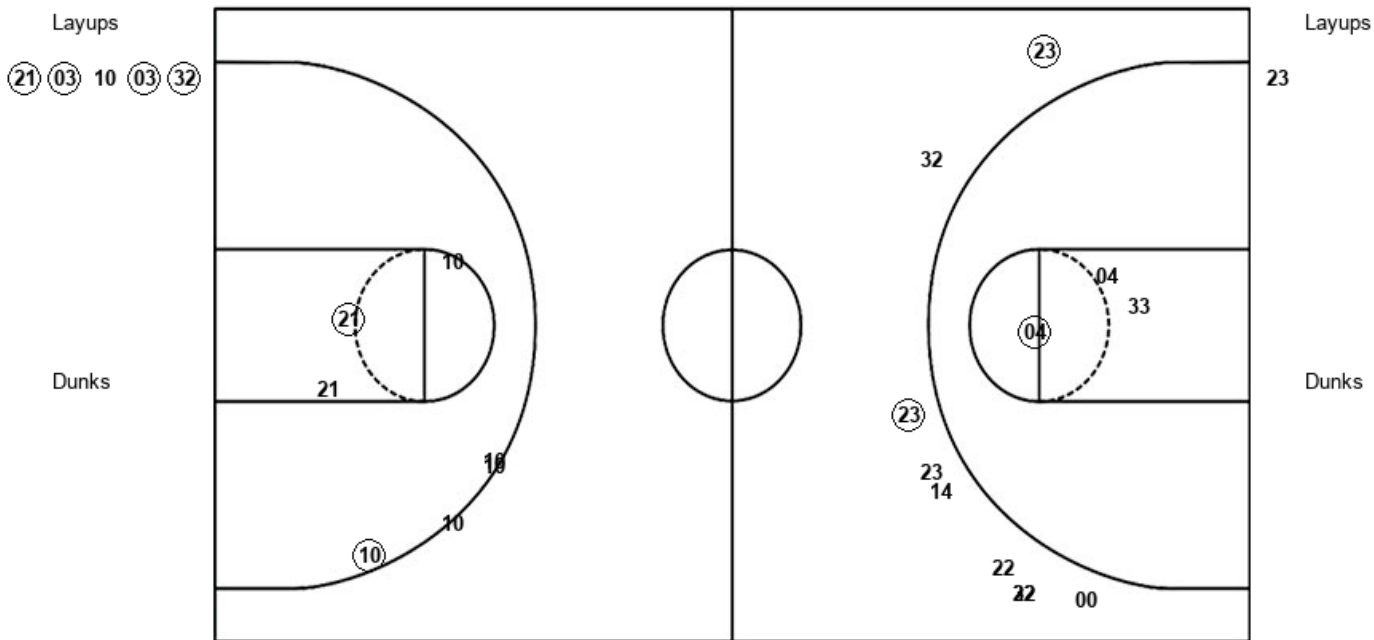
AP : Period 2	Made	Att	Pct
Layups	1	5	20.0
Dunks	0	0	0
2PT Field Goals	3	10	30.0
3PT Field Goals	0	6	00.0
Total Field Goals	3	16	18.8

Official Shot Chart
Austin Peay vs Kentucky
PERIOD 3 Shots
 December 01, 2019 at Memorial Coliseum - Lexington



Kentucky

Austin Peay



UK : Period 3	Made	Att	Pct
Layups	4	5	80.0
Dunks	0	0	0
2PT Field Goals	5	8	62.5
3PT Field Goals	1	4	25.0
Total Field Goals	6	12	50.0

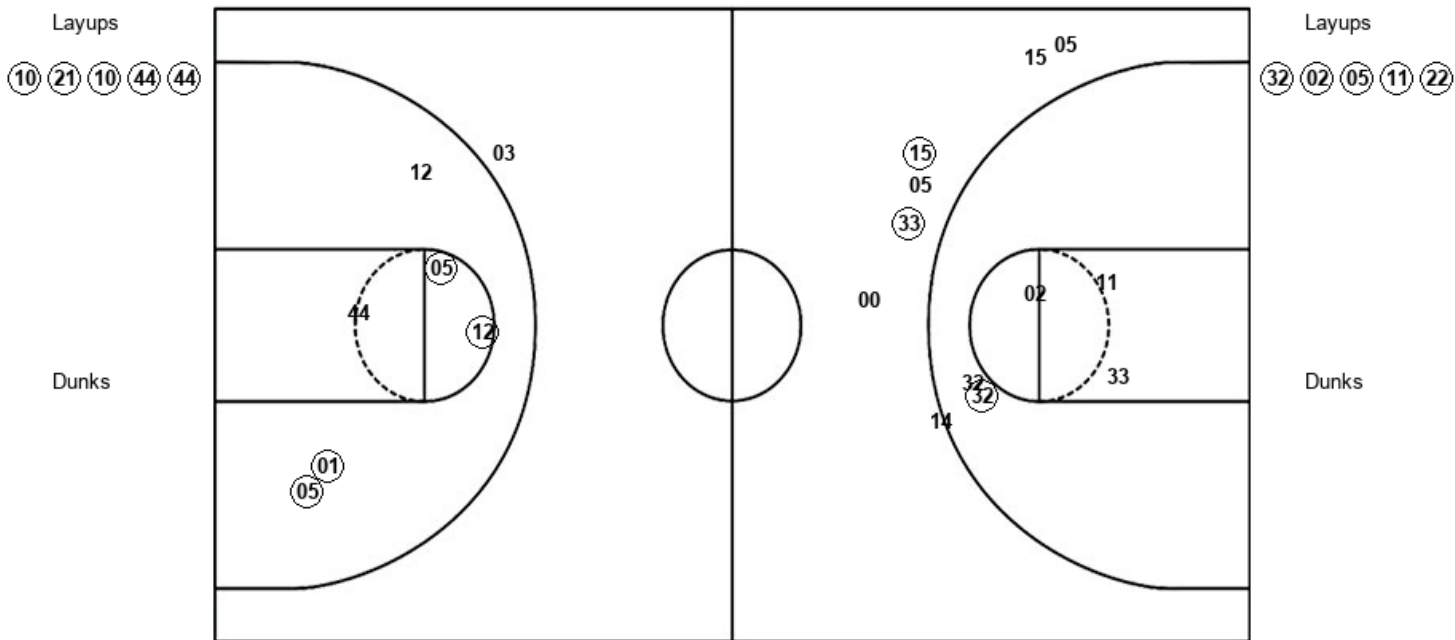
AP : Period 3	Made	Att	Pct
Layups	0	1	00.0
Dunks	0	0	0
2PT Field Goals	1	4	25.0
3PT Field Goals	2	9	22.2
Total Field Goals	3	13	23.1

Official Shot Chart
Austin Peay vs Kentucky
PERIOD 4 Shots
 December 01, 2019 at Memorial Coliseum - Lexington



Kentucky

Austin Peay



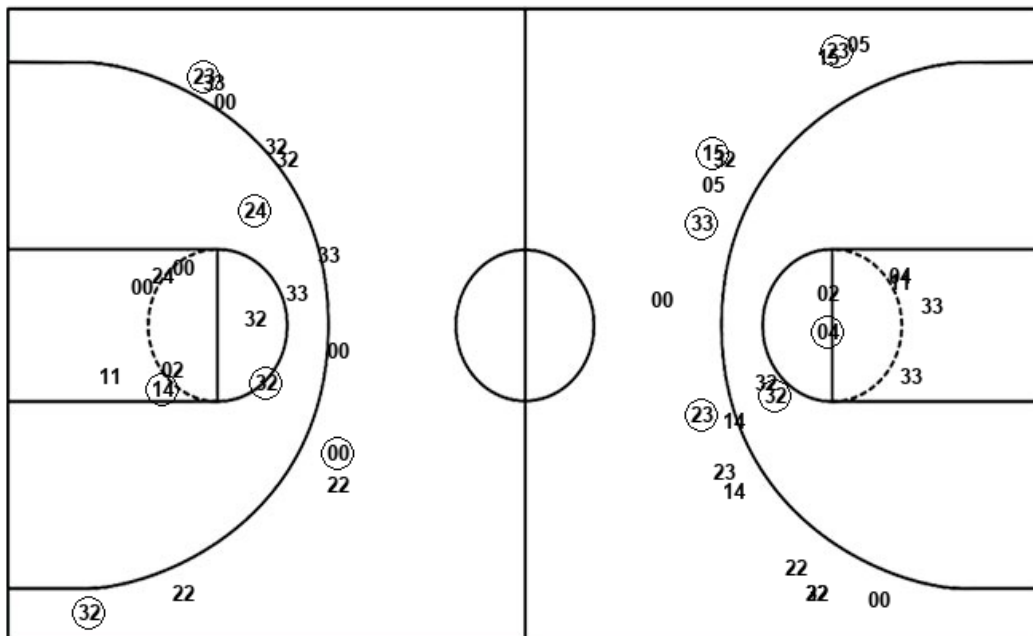
UK : Period 4	Made	Att	Pct
Layups	5	5	100.0
Dunks	0	0	0
2PT Field Goals	9	11	81.8
3PT Field Goals	0	1	00.0
Total Field Goals	9	12	75.0

AP : Period 4	Made	Att	Pct
Layups	5	5	100.0
Dunks	0	0	0
2PT Field Goals	6	11	54.5
3PT Field Goals	2	6	33.3
Total Field Goals	8	17	47.1

Official Shot Chart
Austin Peay vs Kentucky
Austin Peay Team Shots
December 01, 2019 at Memorial Coliseum - Lexington



Layups



Layups

(23) 11 14 33 (32)
 24 15 (33) 15 32
 04 (32) 04 23 (32)
 (02) (05) (11) (22)

Dunks

Dunks

AP : Period 1	Made	Att	Pct
Layups	3	8	37.5
Dunks	0	0	0
2PT Field Goals	4	13	30.8
3PT Field Goals	3	5	60.0
Total Field Goals	7	18	38.9

AP : Period 2	Made	Att	Pct
Layups	1	5	20.0
Dunks	0	0	0
2PT Field Goals	3	10	30.0
3PT Field Goals	0	6	00.0
Total Field Goals	3	16	18.8

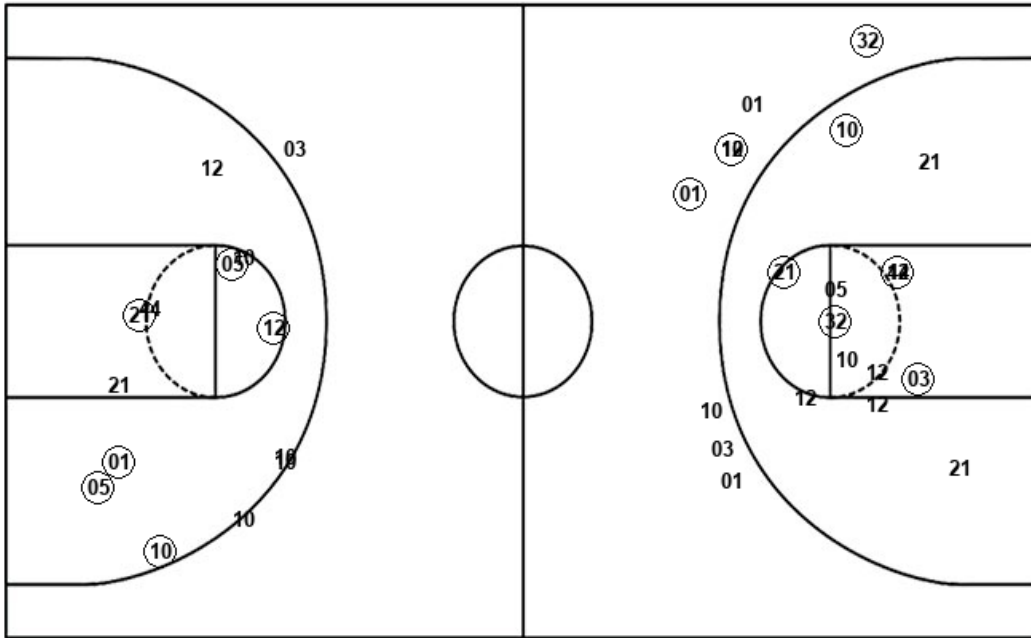
AP : Period 3	Made	Att	Pct
Layups	0	1	00.0
Dunks	0	0	0
2PT Field Goals	1	4	25.0
3PT Field Goals	2	9	22.2
Total Field Goals	3	13	23.1

AP : Period 4	Made	Att	Pct
Layups	5	5	100.0
Dunks	0	0	0
2PT Field Goals	6	11	54.5
3PT Field Goals	2	6	33.3
Total Field Goals	8	17	47.1

Official Shot Chart
 Austin Peay vs Kentucky
 Kentucky Team Shots
 December 01, 2019 at Memorial Coliseum - Lexington



Layups



Dunks

Layups

- (03) (10) (21) (10) (05)
- (32) (05) (12) (01) (21)
- (05) (01) (03) (01) (34)
- (21) (03) (10) (03) (32)
- (10) (21) (10) (44) (44)

Dunks

UK : Period 1	Made	Att	Pct
Layups	6	8	75.0
Dunks	0	0	0
2PT Field Goals	9	17	52.9
3PT Field Goals	1	3	33.3
Total Field Goals	10	20	50.0

UK : Period 2	Made	Att	Pct
Layups	5	7	71.4
Dunks	0	0	0
2PT Field Goals	7	11	63.6
3PT Field Goals	2	5	40.0
Total Field Goals	9	16	56.3

UK : Period 3	Made	Att	Pct
Layups	4	5	80.0
Dunks	0	0	0
2PT Field Goals	5	8	62.5
3PT Field Goals	1	4	25.0
Total Field Goals	6	12	50.0

UK : Period 4	Made	Att	Pct
Layups	5	5	100.0
Dunks	0	0	0
2PT Field Goals	9	11	81.8
3PT Field Goals	0	1	00.0
Total Field Goals	9	12	75.0