

**FINAL SCORE**

**Southeastern Okla.**

**64**



**Tex. A&M-Commerce**

**70**



November 26, 2019 • The Field House - Commerce, TX

**FINAL STATISTICS**

**Official Box Score**  
**Southeastern Okla. vs Tex. A&M-Commerce**  
**Game Totals -- Final Statistics**  
**November 26, 2019 at The Field House - Commerce, TX**



**Southeastern Okla. 64**

No.	Player	S	Pts	FG	3FG	FT	OR	DR	TR	PF	A	TO	Blk	Stl	Min	+/-
05	CANTWELL, KAMRYN	G	16	6-12	2-3	2-2	0	2	2	1	3	5	0	3	30	5
13	MOON, BRILEY	G	11	3-5	2-3	3-4	1	7	8	4	0	2	0	4	32	5
20	OESTREICH, LOGAN	F	5	2-4	1-1	0-0	0	2	2	2	3	3	1	1	23	-2
22	KEMP, CHANDLER	G	7	3-4	0-0	1-1	0	3	3	3	1	2	0	0	27	-7
24	WEBB, KATIE	G	18	8-15	0-0	2-3	0	8	8	2	5	3	1	0	36	2
10	GOMEZ, JAYNA	G	0	0-0	0-0	0-0	0	0	0	0	0	0	0	0	2	-4
11	NOEL, NEELY	G	2	1-6	0-4	0-0	0	2	2	1	1	1	0	0	15	-3
12	JOHNSON, TRACY	G	0	0-0	0-0	0-0	0	0	0	1	0	1	0	0	8	-4
23	BENSON, JORDAN	G	5	1-1	1-1	2-2	0	2	2	3	1	2	0	0	11	-6
25	WILLIAMS, HAIDEN	F	0	0-2	0-1	0-0	1	0	1	2	1	1	0	1	10	-5
32	BRANAM, KATIE	F	0	0-2	0-1	0-0	0	0	0	1	0	0	0	0	4	-11
<b>TEAM</b>							1	1	2	0		0				
<b>TOTALS</b>			<b>64</b>	<b>24-51</b>	<b>6-14</b>	<b>10-12</b>	<b>3</b>	<b>27</b>	<b>30</b>	<b>20</b>	<b>15</b>	<b>20</b>	<b>2</b>	<b>9</b>	<b>199</b>	

*Shooting By Period*

Period	FG	FG%	3FG	3FG%	FT	FT%
1st Qtr	3-10	30%	2-4	50%	2-2	100%
2nd Qtr	6-12	50%	2-5	40%	4-5	80%
3rd Qtr	6-14	43%	1-1	100%	4-5	80%
4th Qtr	9-15	60%	1-4	25%	0-0	0%
1st Half	9-22	41%	4-9	44%	6-7	86%
2nd Half	15-29	52%	2-5	40%	4-5	80%
<b>Game</b>	<b>24-51</b>	<b>47.1%</b>	<b>6-14</b>	<b>42.9%</b>	<b>10-12</b>	<b>83.3%</b>

*Deadball Rebounds: 2,0*  
*Last FG: 4th-00:08*  
*Biggest Run: 6-0*  
*Largest lead: By 1 at 1-06*  
*Technical Fouls: None.*

**Tex. A&M-Commerce 70**

No.	Player	S	Pts	FG	3FG	FT	OR	DR	TR	PF	A	TO	Blk	Stl	Min	+/-
01	JONES, ALEXUS	G	7	2-5	1-3	2-3	1	3	4	1	1	0	0	0	19	-7
03	WRIGHT, CHANIA	G	10	4-11	2-8	0-0	1	0	1	2	2	0	0	0	25	-4
04	GLASS, MADDISON	G	13	5-9	0-1	3-8	0	3	3	0	2	6	0	2	28	-4
21	LOUIS, JULIANA	F	3	1-5	0-0	1-2	2	3	5	4	4	3	0	2	20	3
42	BRYANT, ALEXIS	F	8	3-7	0-0	2-2	4	5	9	3	1	3	2	0	29	1
10	KERNAL, DESIRAY	F	8	2-4	1-1	3-4	3	6	9	1	0	1	1	2	17	11
11	BURLESON, MYKIEL	G	12	3-9	1-4	5-6	1	2	3	0	1	1	1	0	21	12
12	ROBINSON, DYANI	G	7	3-8	0-2	1-1	0	0	0	1	2	0	0	2	18	10
20	NOWLIN, KEEKEE	G	0	0-1	0-1	0-0	0	0	0	0	0	0	0	0	5	3
23	TAC, AGANG	F	2	1-2	0-1	0-0	0	0	0	4	0	1	0	1	14	7
30	PIERCE, JOCELYN	F	0	0-1	0-0	0-0	0	0	0	0	0	0	0	0	4	-2
<b>TEAM</b>							3	2	5	0		1				
<b>TOTALS</b>			<b>70</b>	<b>24-62</b>	<b>5-21</b>	<b>17-26</b>	<b>15</b>	<b>24</b>	<b>39</b>	<b>16</b>	<b>13</b>	<b>16</b>	<b>4</b>	<b>9</b>	<b>199</b>	

*Shooting By Period*

Period	FG	FG%	3FG	3FG%	FT	FT%
1st Qtr	8-18	44%	1-6	17%	7-9	78%
2nd Qtr	6-18	33%	0-4	00%	4-5	80%
3rd Qtr	7-17	41%	3-6	50%	0-0	0%
4th Qtr	3-9	33%	1-5	20%	6-12	50%
1st Half	14-36	39%	1-10	10%	11-14	79%
2nd Half	10-26	38%	4-11	36%	6-12	50%
<b>Game</b>	<b>24-62</b>	<b>38.7%</b>	<b>5-21</b>	<b>23.8%</b>	<b>17-26</b>	<b>65.4%</b>

*Deadball Rebounds: 5,0*  
*Last FG: 4th-02:36*  
*Biggest Run: 10-0*  
*Largest lead: By 18 at 2-04*  
*Technical Fouls: None.*

Game Notes:

Officials: Chaney Muench, Gator Parrish, Britton Sherry  
 Attendance: 512

Start Time: 07:02 PM ET  
 End Time: 08:46 PM ET  
 Game Duration: 1:43

Score	1st	2nd	3rd	4th	TOT
SEO	10	18	17	19	<b>64</b>
AMC	24	16	17	13	<b>70</b>

SEO led for 0:27. AMC led for 39:08.  
 Game was tied for 0:17.  
 Times tied: 1      Lead Changes: 2

Points from	SEO	AMC
In the Paint	28	24
Off Turns	17	17
2nd Chance	2	11
Fast Break	5	15
Bench	7	29

**Official Box Score**  
**Southeastern Okla. vs Tex. A&M-Commerce**  
**First Half Statistics Only**  
**November 26, 2019 at The Field House - Commerce, TX**



**Southeastern Okla. 28**

No.	Player	S	Pts	FG	3FG	FT	OR	DR	TR	PF	A	TO	Blk	Stl	Min	+/-
10	GOMEZ, JAYNA	G	0	0-0	0-0	0-0	0	0	0	0	0	0	0	0	2	-4
11	NOEL, NEELY	G	2	1-4	0-3	0-0	0	0	0	1	1	1	0	0	10	-6
12	JOHNSON, TRACY	G	0	0-0	0-0	0-0	0	0	0	1	0	0	0	0	7	-5
13	MOON, BRILEY	G	6	1-3	1-2	3-4	0	3	3	1	0	2	0	2	17	1
20	OESTREICH, LOGAN	F	3	1-2	1-1	0-0	0	1	1	2	1	3	1	0	7	-4
22	KEMP, CHANDLER	G	3	1-1	0-0	1-1	0	3	3	1	1	2	0	0	12	-10
23	BENSON, JORDAN	G	3	1-1	1-1	0-0	0	1	1	1	1	0	0	0	6	-7
24	WEBB, KATIE	G	6	3-6	0-0	0-0	0	4	4	1	4	0	0	0	17	-5
25	WILLIAMS, HAIDEN	F	0	0-1	0-0	0-0	1	0	1	1	1	1	0	1	5	-7
32	BRANAM, KATIE	F	0	0-2	0-1	0-0	0	0	0	1	0	0	0	0	4	-11
05	CANTWELL, KAMRYN	G	5	1-2	1-1	2-2	0	1	1	0	0	5	0	2	13	-2
	TEAM		0	0-0	0-0	0-0	1	1	2	0	0	0	0	0	0	0
<b>TOTALS</b>			<b>28</b>	<b>9-22</b>	<b>4-9</b>	<b>6-7</b>	<b>2</b>	<b>14</b>	<b>16</b>	<b>10</b>	<b>9</b>	<b>14</b>	<b>1</b>	<b>5</b>	<b>100</b>	

*Shooting By Period*

Period	FG	FG%	3FG	3FG%	FT	FT%
1st Qtr	3-10	30%	2-4	50%	2-2	100%
2nd Qtr	6-12	50%	2-5	40%	4-5	80%
1st Half	9-22	41%	4-9	44%	6-7	86%
Game	24-51	47.1%	6-14	42.9%	10-12	83.3%

*Deadball Rebounds: 2,0*  
*Last FG Half: SEO 2nd-01:35*

**Tex. A&M-Commerce 40**

No.	Player	S	Pts	FG	3FG	FT	OR	DR	TR	PF	A	TO	Blk	Stl	Min	+/-
01	JONES, ALEXUS	G	4	1-4	0-2	2-3	0	1	1	0	0	0	0	0	11	-5
03	WRIGHT, CHANIA	G	2	1-5	0-4	0-0	0	0	0	1	1	0	0	0	13	-1
04	GLASS, MADDISON	G	4	2-4	0-0	0-0	0	1	1	0	1	2	0	1	11	-1
10	KERNAL, DESIRAY	F	6	1-1	1-1	3-4	1	4	5	1	0	0	0	2	8	13
11	BURLESON, MYKIEL	G	4	1-3	0-1	2-2	1	0	1	0	1	1	0	0	10	17
12	ROBINSON, DYANI	G	7	3-7	0-1	1-1	0	0	0	0	2	0	0	1	10	14
20	NOWLIN, KEEKEE	G	0	0-0	0-0	0-0	0	0	0	0	0	0	0	0	3	2
21	LOUIS, JULIANA	F	3	1-4	0-0	1-2	2	2	4	2	3	2	0	2	12	8
23	TAC, AGANG	F	2	1-2	0-1	0-0	0	0	0	2	0	0	0	1	10	8
30	PIERCE, JOCELYN	F	0	0-1	0-0	0-0	0	0	0	0	0	0	0	0	2	-3
42	BRYANT, ALEXIS	F	8	3-5	0-0	2-2	2	2	4	2	0	1	1	0	12	8
	TEAM		0	0-0	0-0	0-0	2	1	3	0	0	0	0	0	0	0
<b>TOTALS</b>			<b>40</b>	<b>14-36</b>	<b>1-10</b>	<b>11-14</b>	<b>8</b>	<b>11</b>	<b>19</b>	<b>8</b>	<b>8</b>	<b>6</b>	<b>1</b>	<b>7</b>	<b>100</b>	

*Shooting By Period*

Period	FG	FG%	3FG	3FG%	FT	FT%
1st Qtr	8-18	44%	1-6	17%	7-9	78%
2nd Qtr	6-18	33%	0-4	00%	4-5	80%
1st Half	14-36	39%	1-10	10%	11-14	79%
Game	24-62	38.7%	5-21	23.8%	17-26	65.4%

*Deadball Rebounds: 5,0*  
*Last FG Half: AMC 2nd-02:54*

*Game Notes:*

Officials: Chaney Muench, Gator Parrish, Britton Sherry  
 Attendance: 512

Start Time: 07:02 PM ET  
 End Time: 08:46 PM ET  
 Game Duration: 1:43

Score	1st	2nd	3rd	4th	TOT
SEO	10	18	17	19	<b>64</b>
AMC	24	16	17	13	<b>70</b>

Points from (This Period)	SEO	AMC
In the Paint	6	16
Off Turns	6	15
2nd Chance	2	7
Fast Break	2	9
Bench	5	19

**Official Box Score**  
**Southeastern Okla. vs Tex. A&M-Commerce**  
**First Quarter Statistics Only**  
**November 26, 2019 at The Field House - Commerce, TX**



**Southeastern Okla. 10**

No.	Player	S	Pts	FG	3FG	FT	OR	DR	TR	PF	A	TO	Blk	Stl	Min	+/-
05	CANTWELL, KAMRYN	G	2	0-1	0-0	2-2	0	0	0	0	0	3	0	0	7	-5
13	MOON, BRILEY	G	3	1-2	1-2	0-0	0	1	1	0	0	0	0	2	7	-1
20	OESTREICH, LOGAN	F	3	1-2	1-1	0-0	0	1	1	2	1	3	1	0	7	-4
22	KEMP, CHANDLER	G	0	0-0	0-0	0-0	0	1	1	0	0	1	0	0	8	-14
24	WEBB, KATIE	G	2	1-3	0-0	0-0	0	2	2	1	1	0	0	0	7	-7
10	GOMEZ, JAYNA	G	0	0-0	0-0	0-0	0	0	0	0	0	0	0	0	2	-4
11	NOEL, NEELY	G	0	0-1	0-1	0-0	0	0	0	0	0	1	0	0	3	-8
12	JOHNSON, TRACY	G	0	0-0	0-0	0-0	0	0	0	0	0	0	0	0	3	-4
23	BENSON, JORDAN	G	0	0-0	0-0	0-0	0	0	0	0	0	0	0	0	3	-7
25	WILLIAMS, HAIDEN	F	0	0-1	0-0	0-0	1	0	1	1	1	1	0	1	3	-11
32	BRANAM, KATIE	F	0	0-0	0-0	0-0	0	0	0	1	0	0	0	0	0	-5
	TEAM						0	1	1	0		0				
<b>TOTALS</b>			<b>10</b>	<b>3-10</b>	<b>2-4</b>	<b>2-2</b>	<b>1</b>	<b>6</b>	<b>7</b>	<b>5</b>	<b>3</b>	<b>9</b>	<b>1</b>	<b>3</b>	<b>50</b>	

*Shooting By Period*

Period	FG	FG%	3FG	3FG%	FT	FT%
1st Qtr	3-10	30%	2-4	50%	2-2	100%
2nd Qtr	6-12	50%	2-5	40%	4-5	80%
1st Half	3-10	30%	2-4	50%	2-2	100%
1st Half	9-22	41%	4-9	44%	6-7	86%
Game	24-51	47.1%	6-14	42.9%	10-12	83.3%

*Deadball Rebounds: 2,0*

**Tex. A&M-Commerce 24**

No.	Player	S	Pts	FG	3FG	FT	OR	DR	TR	PF	A	TO	Blk	Stl	Min	+/-
01	JONES, ALEXUS	G	4	1-2	0-1	2-3	0	0	0	0	0	0	0	0	7	4
03	WRIGHT, CHANIA	G	0	0-2	0-2	0-0	0	0	0	1	1	0	0	0	6	3
04	GLASS, MADDISON	G	0	0-0	0-0	0-0	0	0	0	0	0	1	0	0	4	1
21	LOUIS, JULIANA	F	3	1-4	0-0	1-2	1	2	3	1	2	1	0	2	9	6
42	BRYANT, ALEXIS	F	5	2-3	0-0	1-1	0	2	2	0	0	0	1	0	7	9
10	KERNAL, DESIRAY	F	5	1-1	1-1	2-2	0	1	1	0	0	0	0	0	3	10
11	BURLESON, MYKIEL	G	0	0-1	0-0	0-0	1	0	1	0	1	1	0	0	5	11
12	ROBINSON, DYANI	G	7	3-4	0-1	1-1	0	0	0	0	2	0	0	1	6	13
20	NOWLIN, KEEKEE	G	0	0-0	0-0	0-0	0	0	0	0	0	0	0	0	0	0
23	TAC, AGANG	F	0	0-1	0-1	0-0	0	0	0	0	0	0	0	1	5	13
30	PIERCE, JOCELYN	F	0	0-0	0-0	0-0	0	0	0	0	0	0	0	0	0	0
	TEAM						2	1	3	0		0				
<b>TOTALS</b>			<b>24</b>	<b>8-18</b>	<b>1-6</b>	<b>7-9</b>	<b>4</b>	<b>6</b>	<b>10</b>	<b>2</b>	<b>6</b>	<b>3</b>	<b>1</b>	<b>4</b>	<b>50</b>	

*Shooting By Period*

Period	FG	FG%	3FG	3FG%	FT	FT%
1st Qtr	8-18	44%	1-6	17%	7-9	78%
2nd Qtr	6-18	33%	0-4	00%	4-5	80%
1st Half	8-18	44%	1-6	17%	7-9	78%
1st Half	14-36	39%	1-10	10%	11-14	79%
Game	24-62	38.7%	5-21	23.8%	17-26	65.4%

*Deadball Rebounds: 5,0*

*Game Notes:*

Officials: Chaney Muench, Gator Parrish, Britton Sherry  
 Attendance: 512

Start Time: 07:02 PM ET  
 End Time: 08:46 PM ET  
 Game Duration: 1:43

Score	1st	2nd	3rd	4th	TOT
SEO	10	18	17	19	<b>64</b>
AMC	24	16	17	13	<b>70</b>

Points from (This Period)	SEO	AMC
In the Paint	2	12
Off Turns	3	11
2nd Chance	0	6
Fast Break	2	7
Bench	0	12

**Official Play-By-Play**  
**Southeastern Okla. vs Tex. A&M-Commerce**  
**First Quarter**  
**November 26, 2019 at The Field House - Commerce, TX**



**Period 1**

**Starters:**

**Southeastern Okla.:** 13 MOON,BRILEY (G); 20 OESTREICH,LOGAN (F); 22 KEMP,CHANDLER (G); 24 WEBB,KATIE (G); 5 CANTWELL,KAMRYN (G);

**Tex. A&M-Commerce:** 1 JONES,ALEXUS (G); 3 WRIGHT,CHANIA (G); 4 GLASS,MADDISON (G); 21 LOUIS,JULIANA (F); 42 BRYANT,ALEXIS (F);

Time	VISITORS: Southeastern Okla.	Score	Margin	HOME: Tex. A&M-Commerce
09:50				MISSED LAYUP by BRYANT, ALEXIS
09:50	BLOCK by OESTREICH, LOGAN			
09:49				REBOUND (OFF) by TEAM
09:43		2-0	H 2	GOOD! LAYUP by JONES, ALEXUS
09:43				ASSIST by LOUIS, JULIANA
09:28	TURNOVER (TRAVEL) by OESTREICH, LOGAN			
09:17				MISSED 3PTR by WRIGHT, CHANIA
09:12	REBOUND (DEF) by KEMP, CHANDLER			
09:04	MISSED JUMPER by OESTREICH, LOGAN			
09:00				REBOUND (DEF) by LOUIS, JULIANA
08:55				TURNOVER (LOSTBALL) by GLASS, MADDISON
08:55	STEAL by MOON, BRILEY			
08:50	MISSED JUMPER by CANTWELL, KAMRYN			
08:45				REBOUND (DEF) by BRYANT, ALEXIS
08:30				MISSED 3PTR by JONES, ALEXUS
08:26	REBOUND (DEF) by MOON, BRILEY			
08:15	TURNOVER (BADPASS) by OESTREICH, LOGAN			
08:00		4-0	H 4	GOOD! LAYUP by BRYANT, ALEXIS
08:00				ASSIST by WRIGHT, CHANIA
07:46				FOUL (PERSONAL) by WRIGHT, CHANIA
07:46	GOOD! FT by CANTWELL, KAMRYN	4-1	H 3	
07:46	GOOD! FT by CANTWELL, KAMRYN	4-2	H 2	
07:34				MISSED 3PTR by WRIGHT, CHANIA
07:29	REBOUND (DEF) by OESTREICH, LOGAN			
07:16	TURNOVER (BADPASS) by CANTWELL, KAMRYN			
07:16				STEAL by LOUIS, JULIANA
07:12				MISSED LAYUP by LOUIS, JULIANA
07:08	REBOUND (DEF) by WEBB, KATIE			
07:03	MISSED 3PTR by MOON, BRILEY			
06:58				REBOUND (DEF) by BRYANT, ALEXIS
06:39				TURNOVER (LOSTBALL) by LOUIS, JULIANA
06:39	STEAL by MOON, BRILEY			
06:17	GOOD! 3PTR by OESTREICH, LOGAN	4-5	V 1	
06:17	ASSIST by WEBB, KATIE			
05:51	FOUL (PERSONAL) by WEBB, KATIE			
05:50				SUB OUT: LOUIS, JULIANA
05:50				SUB IN: TAC, AGANG
05:50	SUB OUT: MOON, BRILEY			
05:50	SUB OUT: OESTREICH, LOGAN			
05:50	SUB IN: NOEL, NEELY			
05:50	SUB IN: WILLIAMS, HAIDEN			
05:50				MISSED FT by JONES, ALEXUS
05:50				REBOUND (OFF) by TEAM
05:50		5-5	T	GOOD! FT by JONES, ALEXUS
05:50		6-5	H 1	GOOD! FT by JONES, ALEXUS
05:50				SUB OUT: JONES, ALEXUS
05:50				SUB IN: BURLESON, MYKIEL
05:45	TURNOVER (BADPASS) by CANTWELL, KAMRYN			
05:45				SUB OUT: WRIGHT, CHANIA
05:45				SUB OUT: GLASS, MADDISON
05:45				SUB IN: KERNAL, DESIRAY
05:45				SUB IN: ROBINSON, DYANI
05:35				MISSED LAYUP by BURLESON, MYKIEL
05:34				REBOUND (OFF) by TEAM
05:30		8-5	H 3	GOOD! LAYUP by BRYANT, ALEXIS [PNT]
05:30				ASSIST by BURLESON, MYKIEL
05:30	FOUL (PERSONAL) by WILLIAMS, HAIDEN			
05:30	SUB OUT: CANTWELL, KAMRYN			
05:30	SUB IN: JOHNSON, TRACY			
05:30		9-5	H 4	GOOD! FT by BRYANT, ALEXIS
05:16	MISSED LAYUP by WILLIAMS, HAIDEN			
05:16				BLOCK by BRYANT, ALEXIS
05:13	REBOUND (OFF) by WILLIAMS, HAIDEN			
05:05	TURNOVER (BADPASS) by WILLIAMS, HAIDEN			
05:05				STEAL by TAC, AGANG
04:59				TURNOVER (BADPASS) by BURLESON, MYKIEL
04:59	STEAL by WILLIAMS, HAIDEN			
04:50	MISSED JUMPER by WEBB, KATIE			
04:45				REBOUND (DEF) by KERNAL, DESIRAY
04:36		12-5	H 7	GOOD! 3PTR by KERNAL, DESIRAY

Time	VISITORS: Southeastern Okla.	Score	Margin	HOME: Tex. A&M-Commerce
04:36				ASSIST by ROBINSON, DYANI
04:24	MISSED 3PTR by NOEL, NEELY			
04:21				REBOUND (DEF) by TEAM
04:21				
04:21				SUB OUT: BRYANT, ALEXIS
04:21				SUB IN: LOUIS, JULIANA
04:21	SUB OUT: KEMP, CHANDLER			
04:21	SUB OUT: WILLIAMS, HAIDEN			
04:21	SUB IN: GOMEZ, JAYNA			
04:21	SUB IN: OESTREICH, LOGAN			
04:20				MISSED 3PTR by TAC, AGANG
04:18	REBOUND (DEF) by TEAM			
03:59	TURNOVER (TRAVEL) by NOEL, NEELY			
03:45				MISSED JUMPER by LOUIS, JULIANA
03:42	REBOUND (DEF) by WEBB, KATIE			
03:16	MISSED LAYUP by WEBB, KATIE			
03:13				REBOUND (DEF) by LOUIS, JULIANA
03:08		14-5	H 9	GOOD! LAYUP by LOUIS, JULIANA [FB]
03:08				ASSIST by ROBINSON, DYANI
02:59	GOOD! LAYUP by WEBB, KATIE [FB]	14-7	H 7	
02:59	ASSIST by OESTREICH, LOGAN			
02:45	FOUL (PERSONAL) by BRANAM, KATIE			
02:45	SUB OUT: NOEL, NEELY			
02:45	SUB OUT: JOHNSON, TRACY			
02:45	SUB IN: KEMP, CHANDLER			
02:45	SUB IN: BENSON, JORDAN			
02:45		15-7	H 8	GOOD! FT by KERNAL, DESIRAY
02:45		16-7	H 9	GOOD! FT by KERNAL, DESIRAY
02:37				FOUL (PERSONAL) by LOUIS, JULIANA
02:26	TURNOVER (BADPASS) by OESTREICH, LOGAN			
02:26				STEAL by LOUIS, JULIANA
02:21		18-7	H 11	GOOD! LAYUP by ROBINSON, DYANI [FB]
02:21				ASSIST by LOUIS, JULIANA
02:21	FOUL (PERSONAL) by OESTREICH, LOGAN			
02:21				SUB OUT: KERNAL, DESIRAY
02:21				SUB IN: JONES, ALEXUS
02:21	TIMEOUT 30SEC			
02:21		19-7	H 12	GOOD! FT by ROBINSON, DYANI [FB]
02:21	SUB OUT: BRANAM, KATIE			
02:21	SUB IN: MOON, BRILEY			
02:03	TURNOVER (TRAVEL) by CANTWELL, KAMRYN			
01:35				MISSED 3PTR by ROBINSON, DYANI
01:31				REBOUND (OFF) by BURLESON, MYKIEL
01:17				MISSED LAYUP by LOUIS, JULIANA
01:17				REBOUND (OFF) by LOUIS, JULIANA
01:17	FOUL (PERSONAL) by OESTREICH, LOGAN			
01:17				SUB OUT: BURLESON, MYKIEL
01:17				SUB OUT: TAC, AGANG
01:17				SUB IN: WRIGHT, CHANIA
01:17				SUB IN: BRYANT, ALEXIS
01:17	SUB OUT: OESTREICH, LOGAN			
01:17	SUB IN: WILLIAMS, HAIDEN			
01:17				MISSED FT by LOUIS, JULIANA
01:17				REBOUND (OFF) by TEAM
01:17		20-7	H 13	GOOD! FT by LOUIS, JULIANA
00:57	TURNOVER (BADPASS) by KEMP, CHANDLER			
00:57				STEAL by ROBINSON, DYANI
00:53		22-7	H 15	GOOD! LAYUP by ROBINSON, DYANI [FB]
00:34	GOOD! 3PTR by MOON, BRILEY	22-10	H 12	
00:34	ASSIST by WILLIAMS, HAIDEN			
00:03		24-10	H 14	GOOD! JUMPER by ROBINSON, DYANI

### Southeastern Okla. 10, Tex. A&M-Commerce 24

Points from (This Period)	SEO	AMC
In the Paint	2	12
Off Turns	3	11
2nd Chance	0	6
Fast Break	2	7
Bench	0	12

**Official Box Score**  
**Southeastern Okla. vs Tex. A&M-Commerce**  
**Second Quarter Statistics Only**  
**November 26, 2019 at The Field House - Commerce, TX**



**Southeastern Okla. 18**

No.	Player	S	Pts	FG	3FG	FT	OR	DR	TR	PF	A	TO	Blk	Stl	Min	+/-
05	CANTWELL, KAMRYN	G	3	1-1	1-1	0-0	0	1	1	0	0	2	0	2	6	3
13	MOON, BRILEY	G	3	0-1	0-0	3-4	0	2	2	1	0	2	0	0	10	2
20	OESTREICH, LOGAN	F	0	0-0	0-0	0-0	0	0	0	0	0	0	0	0	0	0
22	KEMP, CHANDLER	G	3	1-1	0-0	1-1	0	2	2	1	1	1	0	0	4	4
24	WEBB, KATIE	G	4	2-3	0-0	0-0	0	2	2	0	3	0	0	0	10	2
10	GOMEZ, JAYNA	G	0	0-0	0-0	0-0	0	0	0	0	0	0	0	0	0	0
11	NOEL, NEELY	G	2	1-3	0-2	0-0	0	0	0	1	1	0	0	0	7	2
12	JOHNSON, TRACY	G	0	0-0	0-0	0-0	0	0	0	1	0	0	0	0	4	-1
23	BENSON, JORDAN	G	3	1-1	1-1	0-0	0	1	1	1	1	0	0	0	3	0
25	WILLIAMS, HAIDEN	F	0	0-0	0-0	0-0	0	0	0	0	0	0	0	0	2	4
32	BRANAM, KATIE	F	0	0-2	0-1	0-0	0	0	0	0	0	0	0	0	4	-6
	TEAM						1	0	1	0		0				
<b>TOTALS</b>			<b>18</b>	<b>6-12</b>	<b>2-5</b>	<b>4-5</b>	<b>1</b>	<b>8</b>	<b>9</b>	<b>5</b>	<b>6</b>	<b>5</b>	<b>0</b>	<b>2</b>	<b>50</b>	

*Shooting By Period*

Period	FG	FG%	3FG	3FG%	FT	FT%
3rd Qtr	6-14	43%	1-1	100%	4-5	80%
4th Qtr	9-15	60%	1-4	25%	0-0	0%
2nd Half	6-12	50%	2-5	40%	4-5	80%
2nd Half	15-29	52%	2-5	40%	4-5	80%
Game	24-51	47.1%	6-14	42.9%	10-12	83.3%

*Deadball Rebounds: 2,0*

**Tex. A&M-Commerce 16**

No.	Player	S	Pts	FG	3FG	FT	OR	DR	TR	PF	A	TO	Blk	Stl	Min	+/-
01	JONES, ALEXUS	G	0	0-2	0-1	0-0	0	1	1	0	0	0	0	0	4	-9
03	WRIGHT, CHANIA	G	2	1-3	0-2	0-0	0	0	0	0	0	0	0	0	7	-4
04	GLASS, MADDISON	G	4	2-4	0-0	0-0	0	1	1	0	1	1	0	1	7	-2
21	LOUIS, JULIANA	F	0	0-0	0-0	0-0	1	0	1	1	1	1	0	0	3	2
42	BRYANT, ALEXIS	F	3	1-2	0-0	1-1	2	0	2	2	0	1	0	0	5	-1
10	KERNAL, DESIRAY	F	1	0-0	0-0	1-2	1	3	4	1	0	0	0	2	5	3
11	BURLESON, MYKIEL	G	4	1-2	0-1	2-2	0	0	0	0	0	0	0	0	5	6
12	ROBINSON, DYANI	G	0	0-3	0-0	0-0	0	0	0	0	0	0	0	0	4	1
20	NOWLIN, KEEKEE	G	0	0-0	0-0	0-0	0	0	0	0	0	0	0	0	3	2
23	TAC, AGANG	F	2	1-1	0-0	0-0	0	0	0	2	0	0	0	0	5	-5
30	PIERCE, JOCELYN	F	0	0-1	0-0	0-0	0	0	0	0	0	0	0	0	2	-3
	TEAM						0	0	0	0		0				
<b>TOTALS</b>			<b>16</b>	<b>6-18</b>	<b>0-4</b>	<b>4-5</b>	<b>4</b>	<b>5</b>	<b>9</b>	<b>6</b>	<b>2</b>	<b>3</b>	<b>0</b>	<b>3</b>	<b>50</b>	

*Shooting By Period*

Period	FG	FG%	3FG	3FG%	FT	FT%
3rd Qtr	7-17	41%	3-6	50%	0-0	0%
4th Qtr	3-9	33%	1-5	20%	6-12	50%
2nd Half	6-18	33%	0-4	00%	4-5	80%
2nd Half	10-26	38%	4-11	36%	6-12	50%
Game	24-62	38.7%	5-21	23.8%	17-26	65.4%

*Deadball Rebounds: 5,0*

*Game Notes:*

Officials: Chaney Muench, Gator Parrish, Britton Sherry  
 Attendance: 512

Start Time: 07:02 PM ET  
 End Time: 08:46 PM ET  
 Game Duration: 1:43

Score	1st	2nd	3rd	4th	TOT
SEO	10	18	17	19	<b>64</b>
AMC	24	16	17	13	<b>70</b>

Points from (This Period)	SEO	AMC
In the Paint	4	4
Off Turns	3	4
2nd Chance	2	1
Fast Break	0	2
Bench	5	7

**Official Play-By-Play**  
**Southeastern Okla. vs Tex. A&M-Commerce**  
**Second Quarter**  
**November 26, 2019 at The Field House - Commerce, TX**



**Period 2**

**Starters:**

**Southeastern Okla.:** 13 MOON,BRILEY (G); 20 OESTREICH,LOGAN (F); 22 KEMP,CHANDLER (G); 24 WEBB,KATIE (G); 5 CANTWELL,KAMRYN (G);  
**Tex. A&M-Commerce:** 1 JONES,ALEXUS (G); 3 WRIGHT,CHANIA (G); 4 GLASS,MADDISON (G); 21 LOUIS,JULIANA (F); 42 BRYANT,ALEXIS (F);

Time	VISITORS: Southeastern Okla.	Score	Margin	HOME: Tex. A&M-Commerce
02:45	SUB OUT: WEBB, KATIE			
02:45	SUB IN: BRANAM, KATIE			
02:21	SUB OUT: GOMEZ, JAYNA			
02:21	SUB IN: WILLIAMS, HAIDEN			
10:00				SUB OUT: ROBINSON, DYANI
10:00				SUB OUT: LOUIS, JULIANA
10:00				SUB IN: GLASS, MADDISON
10:00				SUB IN: TAC, AGANG
10:00	SUB OUT: KEMP, CHANDLER			
10:00	SUB IN: WEBB, KATIE			
09:50		26-10	H 16	
09:36	GOOD! 3PTR by CANTWELL, KAMRYN	26-13	H 13	GOOD! JUMPER by TAC, AGANG
09:36	ASSIST by BENSON, JORDAN			
09:16				TURNOVER (LOSTBALL) by BRYANT, ALEXIS
09:16	STEAL by CANTWELL, KAMRYN			
09:03	GOOD! 3PTR by BENSON, JORDAN	26-16	H 10	
09:03	ASSIST by WEBB, KATIE			
08:39				MISSED 3PTR by WRIGHT, CHANIA
08:36				REBOUND (OFF) by BRYANT, ALEXIS
08:34				MISSED LAYUP by BRYANT, ALEXIS
08:30	REBOUND (DEF) by BENSON, JORDAN			
08:24				FOUL (PERSONAL) by TAC, AGANG
08:24	SUB OUT: WILLIAMS, HAIDEN			
08:24	SUB IN: BRANAM, KATIE			
08:17	MISSED 3PTR by BRANAM, KATIE			
08:13				REBOUND (DEF) by JONES, ALEXUS
07:48				MISSED LAYUP by GLASS, MADDISON
07:45				REBOUND (OFF) by BRYANT, ALEXIS
07:45	FOUL (PERSONAL) by BENSON, JORDAN			
07:45				SUB OUT: JONES, ALEXUS
07:45				SUB IN: BURLESON, MYKIEL
07:41				TURNOVER (BADPASS) by GLASS, MADDISON
07:41	STEAL by CANTWELL, KAMRYN			
07:37	TURNOVER (BADPASS) by CANTWELL, KAMRYN			
07:37				STEAL by GLASS, MADDISON
07:27		28-16	H 12	GOOD! JUMPER by WRIGHT, CHANIA
07:11	MISSED JUMPER by WEBB, KATIE			
07:08				REBOUND (DEF) by GLASS, MADDISON
07:04		30-16	H 14	GOOD! JUMPER by GLASS, MADDISON [FB]
06:41				FOUL (PERSONAL) by BRYANT, ALEXIS
06:41				SUB OUT: TAC, AGANG
06:41				SUB OUT: BRYANT, ALEXIS
06:41				SUB IN: KERNAL, DESIRAY
06:41				SUB IN: LOUIS, JULIANA
06:41	SUB OUT: CANTWELL, KAMRYN			
06:41	SUB OUT: BENSON, JORDAN			
06:41	SUB IN: NOEL, NEELY			
06:41	SUB IN: JOHNSON, TRACY			
06:21	MISSED LAYUP by BRANAM, KATIE			
06:18				REBOUND (DEF) by KERNAL, DESIRAY
06:16	FOUL (PERSONAL) by JOHNSON, TRACY			
06:16				SUB OUT: WRIGHT, CHANIA
06:16				SUB IN: NOWLIN, KEEKEE
05:59		32-16	H 16	GOOD! JUMPER by GLASS, MADDISON
05:46	MISSED LAYUP by MOON, BRILEY			
05:46	REBOUND (OFF) by TEAM			
05:46				SUB OUT: GLASS, MADDISON
05:46				SUB IN: ROBINSON, DYANI
05:44	GOOD! JUMPER by WEBB, KATIE	32-18	H 14	
05:44	ASSIST by NOEL, NEELY			
05:13		34-18	H 16	GOOD! LAYUP by BURLESON, MYKIEL
05:13				ASSIST by LOUIS, JULIANA
04:53	MISSED 3PTR by NOEL, NEELY			
04:50				REBOUND (DEF) by KERNAL, DESIRAY
04:45				MISSED 3PTR by BURLESON, MYKIEL
04:41	REBOUND (DEF) by MOON, BRILEY			
04:31	TURNOVER (BADPASS) by MOON, BRILEY			
04:31				
04:28	SUB OUT: BRANAM, KATIE			
04:28	SUB IN: KEMP, CHANDLER			



Time	VISITORS: Southeastern Okla.	Score	Margin	HOME: Tex. A&M-Commerce
04:10	FOUL (PERSONAL) by NOEL, NEELY			
04:10		35-18	H 17	GOOD! FT by BURLESON, MYKIEL
04:10		36-18	H 18	GOOD! FT by BURLESON, MYKIEL
03:57	GOOD! JUMPER by WEBB, KATIE [PNT]	36-20	H 16	
03:57	ASSIST by KEMP, CHANDLER			
03:38				MISSED LAYUP by ROBINSON, DYANI
03:36				REBOUND (OFF) by LOUIS, JULIANA
03:36				FOUL (OFF) by LOUIS, JULIANA
03:36				TURNOVER (OFFENSIVE) by LOUIS, JULIANA
03:36				SUB OUT: LOUIS, JULIANA
03:36				SUB IN: BRYANT, ALEXIS
03:24	TURNOVER (BADPASS) by KEMP, CHANDLER			
03:24				STEAL by KERNAL, DESIRAY
03:19				MISSED LAYUP by ROBINSON, DYANI
03:16	REBOUND (DEF) by KEMP, CHANDLER			
03:04				FOUL (PERSONAL) by KERNAL, DESIRAY
03:04				SUB OUT: KERNAL, DESIRAY
03:04				SUB OUT: BURLESON, MYKIEL
03:04				SUB OUT: ROBINSON, DYANI
03:04				SUB OUT: NOWLIN, KEEKEE
03:04				SUB IN: JONES, ALEXUS
03:04				SUB IN: WRIGHT, CHANIA
03:04				SUB IN: GLASS, MADDISON
03:04				SUB IN: TAC, AGANG
03:04	GOOD! FT by MOON, BRILEY	36-21	H 15	
03:04	GOOD! FT by MOON, BRILEY	36-22	H 14	
02:54		38-22	H 16	GOOD! LAYUP by BRYANT, ALEXIS
02:54				ASSIST by GLASS, MADDISON
02:54	FOUL (PERSONAL) by MOON, BRILEY			
02:54		39-22	H 17	GOOD! FT by BRYANT, ALEXIS
02:41	GOOD! JUMPER by NOEL, NEELY	39-24	H 15	
02:41	ASSIST by WEBB, KATIE			
02:16				MISSED JUMPER by JONES, ALEXUS
02:16	REBOUND (DEF) by MOON, BRILEY			
02:16				FOUL (PERSONAL) by BRYANT, ALEXIS
02:16				SUB OUT: BRYANT, ALEXIS
02:16				SUB IN: PIERCE, JOCELYN
02:16	SUB OUT: JOHNSON, TRACY			
02:16	SUB IN: CANTWELL, KAMRYN			
02:16	MISSED FT by MOON, BRILEY			
02:16	REBOUND (OFF) by TEAM			
02:16	GOOD! FT by MOON, BRILEY	39-25	H 14	
01:47				MISSED JUMPER by PIERCE, JOCELYN
01:42	REBOUND (DEF) by WEBB, KATIE			
01:35	GOOD! LAYUP by KEMP, CHANDLER	39-27	H 12	
01:35	ASSIST by WEBB, KATIE			
01:35				FOUL (PERSONAL) by TAC, AGANG
01:35	GOOD! FT by KEMP, CHANDLER	39-28	H 11	
01:35				SUB OUT: TAC, AGANG
01:35				SUB IN: KERNAL, DESIRAY
01:25				MISSED 3PTR by JONES, ALEXUS
01:21	REBOUND (DEF) by KEMP, CHANDLER			
01:15	TURNOVER (TRAVEL) by CANTWELL, KAMRYN			
01:15				SUB OUT: JONES, ALEXUS
01:15				SUB IN: ROBINSON, DYANI
01:04				MISSED JUMPER by ROBINSON, DYANI
00:59	REBOUND (DEF) by CANTWELL, KAMRYN			
00:51	TURNOVER (LOSTBALL) by MOON, BRILEY			
00:51				STEAL by KERNAL, DESIRAY
00:43				MISSED LAYUP by GLASS, MADDISON
00:40	REBOUND (DEF) by WEBB, KATIE			
00:35	MISSED 3PTR by NOEL, NEELY			
00:32				REBOUND (DEF) by KERNAL, DESIRAY
00:03				MISSED 3PTR by WRIGHT, CHANIA
00:00				REBOUND (OFF) by KERNAL, DESIRAY
00:01	FOUL (PERSONAL) by KEMP, CHANDLER			
00:01				MISSED FT by KERNAL, DESIRAY
00:01				REBOUND (OFF) by TEAM
00:01		40-28	H 12	GOOD! FT by KERNAL, DESIRAY

### Southeastern Okla. 28, Tex. A&M-Commerce 40

Points from (This Period)	SEO	AMC
In the Paint	4	4
Off Turns	3	4
2nd Chance	2	1
Fast Break	0	2
Bench	5	7

**Official Box Score**  
**Southeastern Okla. vs Tex. A&M-Commerce**  
**Second Half Statistics Only**  
**November 26, 2019 at The Field House - Commerce, TX**



**Southeastern Okla. 36**

No.	Player	S	Pts	FG	3FG	FT	OR	DR	TR	PF	A	TO	Blk	Stl	Min	+/-
10	GOMEZ, JAYNA	G	0	0-0	0-0	0-0	0	0	0	0	0	0	0	0	0	0
11	NOEL, NEELY	G	0	0-2	0-1	0-0	0	2	2	0	0	0	0	0	6	3
12	JOHNSON, TRACY	G	0	0-0	0-0	0-0	0	0	0	0	0	1	0	0	1	1
13	MOON, BRILEY	G	5	2-2	1-1	0-0	1	4	5	3	0	0	0	2	16	4
20	OESTREICH, LOGAN	F	2	1-2	0-0	0-0	0	1	1	0	2	0	0	1	16	2
22	KEMP, CHANDLER	G	4	2-3	0-0	0-0	0	0	0	2	0	0	0	0	15	3
23	BENSON, JORDAN	G	2	0-0	0-0	2-2	0	1	1	2	0	2	0	0	5	1
24	WEBB, KATIE	G	12	5-9	0-0	2-3	0	4	4	1	1	3	1	0	18	7
25	WILLIAMS, HAIDEN	F	0	0-1	0-1	0-0	0	0	0	1	0	0	0	0	5	2
32	BRANAM, KATIE	F	0	0-0	0-0	0-0	0	0	0	0	0	0	0	0	0	0
05	CANTWELL, KAMRYN	G	11	5-10	1-2	0-0	0	1	1	1	3	0	0	1	18	7
	TEAM		0	0-0	0-0	0-0	0	0	0	0	0	0	0	0	0	0
<b>TOTALS</b>			<b>36</b>	<b>15-29</b>	<b>2-5</b>	<b>4-5</b>	<b>1</b>	<b>13</b>	<b>14</b>	<b>10</b>	<b>6</b>	<b>6</b>	<b>1</b>	<b>4</b>	<b>99</b>	

*Shooting By Period*

Period	FG	FG%	3FG	3FG%	FT	FT%
3rd Qtr	6-14	43%	1-1	100%	4-5	80%
4th Qtr	9-15	60%	1-4	25%	0-0	0%
2nd Half	15-29	52%	2-5	40%	4-5	80%
Game	24-51	47.1%	6-14	42.9%	10-12	83.3%

*Deadball Rebounds: 2,0*  
*Last FG Half: SEO 4th-00:08*

**Tex. A&M-Commerce 30**

No.	Player	S	Pts	FG	3FG	FT	OR	DR	TR	PF	A	TO	Blk	Stl	Min	+/-
01	JONES, ALEXUS	G	3	1-1	1-1	0-0	1	2	3	1	1	0	0	0	8	-2
03	WRIGHT, CHANIA	G	8	3-6	2-4	0-0	1	0	1	1	1	0	0	0	13	-3
04	GLASS, MADDISON	G	9	3-5	0-1	3-8	0	2	2	0	1	4	0	1	17	-3
10	KERNAL, DESIRAY	F	2	1-3	0-0	0-0	2	2	4	0	0	1	1	0	8	-2
11	BURLESON, MYKIEL	G	8	2-6	1-3	3-4	0	2	2	0	0	0	1	0	11	-5
12	ROBINSON, DYANI	G	0	0-1	0-1	0-0	0	0	0	1	0	0	0	1	8	-4
20	NOWLIN, KEEKEE	G	0	0-1	0-1	0-0	0	0	0	0	0	0	0	0	2	1
21	LOUIS, JULIANA	F	0	0-1	0-0	0-0	0	1	1	2	1	1	0	0	9	-5
23	TAC, AGANG	F	0	0-0	0-0	0-0	0	0	0	2	0	1	0	0	5	-1
30	PIERCE, JOCELYN	F	0	0-0	0-0	0-0	0	0	0	0	0	0	0	0	2	1
42	BRYANT, ALEXIS	F	0	0-2	0-0	0-0	2	3	5	1	1	2	1	0	17	-7
	TEAM		0	0-0	0-0	0-0	1	1	2	0	0	1	0	0	0	0
<b>TOTALS</b>			<b>30</b>	<b>10-26</b>	<b>4-11</b>	<b>6-12</b>	<b>7</b>	<b>13</b>	<b>20</b>	<b>8</b>	<b>5</b>	<b>10</b>	<b>3</b>	<b>2</b>	<b>99</b>	

*Shooting By Period*

Period	FG	FG%	3FG	3FG%	FT	FT%
3rd Qtr	7-17	41%	3-6	50%	0-0	0%
4th Qtr	3-9	33%	1-5	20%	6-12	50%
2nd Half	10-26	38%	4-11	36%	6-12	50%
Game	24-62	38.7%	5-21	23.8%	17-26	65.4%

*Deadball Rebounds: 5,0*  
*Last FG Half: AMC 4th-02:36*

*Game Notes:*

Officials: Chaney Muench, Gator Parrish, Britton Sherry  
 Attendance: 512

Start Time: 07:02 PM ET  
 End Time: 08:46 PM ET  
 Game Duration: 1:43

Score	1st	2nd	3rd	4th	TOT
SEO	10	18	17	19	<b>64</b>
AMC	24	16	17	13	<b>70</b>

Points from (This Period)	SEO	AMC
In the Paint	22	8
Off Turns	11	2
2nd Chance	0	4
Fast Break	3	6
Bench	2	10

**Official Box Score**  
**Southeastern Okla. vs Tex. A&M-Commerce**  
**Third Quarter Statistics Only**  
**November 26, 2019 at The Field House - Commerce, TX**



**Southeastern Okla. 36**

No.	Player	S	Pts	FG	3FG	FT	OR	DR	TR	PF	A	TO	Blk	Stl	Min	+/-
05	CANTWELL, KAMRYN	G	7	3-5	1-1	0-0	0	1	1	0	0	0	0	0	8	1
13	MOON, BRILEY	G	0	0-0	0-0	0-0	1	1	2	0	0	0	0	1	6	-2
20	OESTREICH, LOGAN	F	0	0-1	0-0	0-0	0	0	0	0	1	0	0	1	10	0
22	KEMP, CHANDLER	G	2	1-2	0-0	0-0	0	0	0	1	0	0	0	0	7	1
24	WEBB, KATIE	G	6	2-5	0-0	2-3	0	3	3	0	1	1	1	0	10	0
10	GOMEZ, JAYNA	G	0	0-0	0-0	0-0	0	0	0	0	0	0	0	0	0	0
11	NOEL, NEELY	G	0	0-1	0-0	0-0	0	1	1	0	0	0	0	0	3	-1
12	JOHNSON, TRACY	G	0	0-0	0-0	0-0	0	0	0	0	0	0	0	0	0	0
23	BENSON, JORDAN	G	2	0-0	0-0	2-2	0	0	0	1	0	2	0	0	4	2
25	WILLIAMS, HAIDEN	F	0	0-0	0-0	0-0	0	0	0	0	0	0	0	0	2	-1
32	BRANAM, KATIE	F	0	0-0	0-0	0-0	0	0	0	0	0	0	0	0	0	0
	TEAM						0	0	0	0		0				
<b>TOTALS</b>			<b>17</b>	<b>6-14</b>	<b>1-1</b>	<b>4-5</b>	<b>1</b>	<b>6</b>	<b>7</b>	<b>2</b>	<b>2</b>	<b>3</b>	<b>1</b>	<b>2</b>	<b>50</b>	

*Shooting By Period*

Period	FG	FG%	3FG	3FG%	FT	FT%
2nd Half	0-0	0%	0-0	0%	0-0	0%
Game	24-51	47.1%	6-14	42.9%	10-12	83.3%

*Deadball Rebounds: 2,0*

**Tex. A&M-Commerce 30**

No.	Player	S	Pts	FG	3FG	FT	OR	DR	TR	PF	A	TO	Blk	Stl	Min	+/-
01	JONES, ALEXUS	G	0	0-0	0-0	0-0	0	1	1	1	1	0	0	0	3	1
03	WRIGHT, CHANIA	G	6	2-3	2-2	0-0	1	0	1	1	1	0	0	0	6	2
04	GLASS, MADDISON	G	6	3-5	0-1	0-0	0	1	1	0	0	1	0	0	7	3
21	LOUIS, JULIANA	F	0	0-0	0-0	0-0	0	1	1	1	1	0	0	0	3	1
42	BRYANT, ALEXIS	F	0	0-2	0-0	0-0	1	2	3	0	1	1	0	0	8	-1
10	KERNAL, DESIRAY	F	0	0-2	0-0	0-0	2	1	3	0	0	1	1	0	5	-3
11	BURLESON, MYKIEL	G	5	2-3	1-1	0-0	0	1	1	0	0	0	1	0	5	-2
12	ROBINSON, DYANI	G	0	0-1	0-1	0-0	0	0	0	1	0	0	0	1	6	-3
20	NOWLIN, KEEKEE	G	0	0-1	0-1	0-0	0	0	0	0	0	0	0	0	2	1
23	TAC, AGANG	F	0	0-0	0-0	0-0	0	0	0	2	0	1	0	0	3	0
30	PIERCE, JOCELYN	F	0	0-0	0-0	0-0	0	0	0	0	0	0	0	0	2	1
	TEAM						0	0	0	0		1				
<b>TOTALS</b>			<b>17</b>	<b>7-17</b>	<b>3-6</b>	<b>0-0</b>	<b>4</b>	<b>7</b>	<b>11</b>	<b>6</b>	<b>4</b>	<b>5</b>	<b>2</b>	<b>1</b>	<b>50</b>	

*Shooting By Period*

Period	FG	FG%	3FG	3FG%	FT	FT%
2nd Half	0-0	0%	0-0	0%	0-0	0%
Game	24-62	38.7%	5-21	23.8%	17-26	65.4%

*Deadball Rebounds: 5,0*

Game Notes:

Officials: **Chaney Muench, Gator Parrish, Britton Sherry**  
 Attendance: **512**

Start Time: **07:02 PM ET**  
 End Time: **08:46 PM ET**  
 Game Duration: **1:43**

Score	1st	2nd	3rd	4th	TOT
SEO	10	18	17	19	<b>64</b>
AMC	24	16	17	13	<b>70</b>

Points from (This Period)	SEO	AMC
In the Paint	10	6
Off Turns	4	2
2nd Chance	0	3
Fast Break	0	5
Bench	2	5

**Official Play-By-Play**  
**Southeastern Okla. vs Tex. A&M-Commerce**  
**Third Quarter**  
**November 26, 2019 at The Field House - Commerce, TX**



**Period 3**

**Starters:**

**Southeastern Okla.:** 13 MOON,BRILEY (G); 20 OESTREICH,LOGAN (F); 22 KEMP,CHANDLER (G); 24 WEBB,KATIE (G); 5 CANTWELL,KAMRYN (G);  
**Tex. A&M-Commerce:** 1 JONES,ALEXUS (G); 3 WRIGHT,CHANIA (G); 4 GLASS,MADDISON (G); 21 LOUIS,JULIANA (F); 42 BRYANT,ALEXIS (F);

Time	VISITORS: Southeastern Okla.	Score	Margin	HOME: Tex. A&M-Commerce
02:21	SUB OUT: WILLIAMS, HAIDEN			
02:21	SUB IN: CANTWELL, KAMRYN			
10:00				SUB OUT: KERNAL, DESIRAY
10:00				SUB OUT: ROBINSON, DYANI
10:00				SUB OUT: PIERCE, JOCELYN
10:00				SUB IN: JONES, ALEXUS
10:00				SUB IN: LOUIS, JULIANA
10:00				SUB IN: BRYANT, ALEXIS
10:00	SUB OUT: NOEL, NEELY			
10:00	SUB IN: OESTREICH, LOGAN			
09:50	MISSED JUMPER by WEBB, KATIE			
09:46				REBOUND (DEF) by JONES, ALEXUS
09:43		43-28	H 15	GOOD! 3PTR by WRIGHT, CHANIA [FB]
09:43				ASSIST by JONES, ALEXUS
09:24	GOOD! 3PTR by CANTWELL, KAMRYN	43-31	H 12	
09:24	ASSIST by OESTREICH, LOGAN			
08:59				MISSED 3PTR by GLASS, MADDISON
08:56	REBOUND (DEF) by WEBB, KATIE			
08:48	MISSED LAYUP by CANTWELL, KAMRYN			
08:45				REBOUND (DEF) by BRYANT, ALEXIS
08:26				TURNOVER (BADPASS) by GLASS, MADDISON
08:26	STEAL by MOON, BRILEY			
08:12	MISSED LAYUP by OESTREICH, LOGAN			
08:09				REBOUND (DEF) by LOUIS, JULIANA
08:07		45-31	H 14	GOOD! JUMPER by GLASS, MADDISON [FB/PNT]
07:55				FOUL (PERSONAL) by JONES, ALEXUS
07:55				SUB OUT: GLASS, MADDISON
07:55				SUB IN: ROBINSON, DYANI
07:45	GOOD! LAYUP by KEMP, CHANDLER [PNT]	45-33	H 12	
07:26		48-33	H 15	GOOD! 3PTR by WRIGHT, CHANIA
07:26				ASSIST by LOUIS, JULIANA
07:10	GOOD! LAYUP by WEBB, KATIE	48-35	H 13	
07:10				FOUL (PERSONAL) by LOUIS, JULIANA
07:10				SUB OUT: JONES, ALEXUS
07:10				SUB IN: BURLESON, MYKIEL
07:10				SUB OUT: LOUIS, JULIANA
07:10				SUB IN: TAC, AGANG
07:10	GOOD! FT by WEBB, KATIE	48-36	H 12	
06:58				MISSED JUMPER by BURLESON, MYKIEL
06:55	REBOUND (DEF) by WEBB, KATIE			
06:49				FOUL (PERSONAL) by WRIGHT, CHANIA
06:37	MISSED JUMPER by KEMP, CHANDLER			
06:33				REBOUND (DEF) by BRYANT, ALEXIS
06:27				MISSED LAYUP by WRIGHT, CHANIA
06:21				REBOUND (OFF) by BRYANT, ALEXIS
06:21				MISSED LAYUP by BRYANT, ALEXIS
06:20				REBOUND (OFF) by WRIGHT, CHANIA
06:18		51-36	H 15	GOOD! 3PTR by BURLESON, MYKIEL
06:18				ASSIST by WRIGHT, CHANIA
06:01	GOOD! LAYUP by WEBB, KATIE	51-38	H 13	
05:47				TURNOVER (LOSTBALL) by BRYANT, ALEXIS
05:47				SUB OUT: WRIGHT, CHANIA
05:47				SUB IN: KERNAL, DESIRAY
05:47	SUB OUT: MOON, BRILEY			
05:47	SUB IN: BENSON, JORDAN			
05:29	GOOD! JUMPER by CANTWELL, KAMRYN [PNT]	51-40	H 11	
05:08				TURNOVER (LOSTBALL) by TAC, AGANG
05:08	STEAL by OESTREICH, LOGAN			
04:55				FOUL (PERSONAL) by TAC, AGANG
04:55				
04:55				SUB OUT: TAC, AGANG
04:55				SUB IN: GLASS, MADDISON
04:43				FOUL (PERSONAL) by ROBINSON, DYANI
04:43	GOOD! FT by BENSON, JORDAN	51-41	H 10	
04:43	GOOD! FT by BENSON, JORDAN	51-42	H 9	
04:25		53-42	H 11	GOOD! JUMPER by BURLESON, MYKIEL [PNT]
04:12	MISSED LAYUP by CANTWELL, KAMRYN			
04:12				BLOCK by BURLESON, MYKIEL
04:12				REBOUND (DEF) by GLASS, MADDISON
04:12	FOUL (PERSONAL) by KEMP, CHANDLER			

Time	VISITORS: Southeastern Okla.	Score	Margin	HOME: Tex. A&M-Commerce
04:01	FOUL (PERSONAL) by BENSON, JORDAN			
03:56		55-42	H 13	GOOD! JUMPER by GLASS, MADDISON
03:56				ASSIST by BRYANT, ALEXIS
03:46	TURNOVER (LOSTBALL) by BENSON, JORDAN			
03:46				STEAL by ROBINSON, DYANI
03:32				MISSED JUMPER by GLASS, MADDISON
03:26	REBOUND (DEF) by WEBB, KATIE			
03:24	GOOD! JUMPER by CANTWELL, KAMRYN [PNT]	55-44	H 11	
03:24	ASSIST by WEBB, KATIE			
03:01				TURNOVER (3SEC) by KERNAL, DESIRAY
03:01	SUB OUT: KEMP, CHANDLER			
03:01	SUB IN: NOEL, NEELY			
02:50	TURNOVER (TRAVEL) by BENSON, JORDAN			
02:32				MISSED JUMPER by BRYANT, ALEXIS
02:28	REBOUND (DEF) by CANTWELL, KAMRYN			
02:08	MISSED JUMPER by WEBB, KATIE			
02:05				REBOUND (DEF) by BURLESON, MYKIEL
01:59				MISSED 3PTR by ROBINSON, DYANI
01:54	REBOUND (DEF) by NOEL, NEELY			
01:45	TURNOVER (BADPASS) by WEBB, KATIE			
01:45				SUB OUT: KERNAL, DESIRAY
01:45				SUB OUT: BURLESON, MYKIEL
01:45				SUB OUT: ROBINSON, DYANI
01:45				SUB OUT: BRYANT, ALEXIS
01:45				SUB IN: WRIGHT, CHANIA
01:45				SUB IN: NOWLIN, KEEKKEE
01:45				SUB IN: TAC, AGANG
01:45				SUB IN: PIERCE, JOCELYN
01:45	SUB OUT: CANTWELL, KAMRYN			
01:45	SUB OUT: BENSON, JORDAN			
01:45	SUB IN: MOON, BRILEY			
01:45	SUB IN: WILLIAMS, HAIDEN			
01:37		57-44	H 13	GOOD! LAYUP by GLASS, MADDISON
01:23				FOUL (PERSONAL) by TAC, AGANG
01:23				SUB OUT: TAC, AGANG
01:23				SUB IN: KERNAL, DESIRAY
01:23	MISSED FT by WEBB, KATIE			
01:23	REBOUND (OFF) by TEAM			
01:22	GOOD! FT by WEBB, KATIE	57-45	H 12	
01:10				MISSED LAYUP by KERNAL, DESIRAY
01:06				REBOUND (OFF) by KERNAL, DESIRAY
01:05				MISSED LAYUP by KERNAL, DESIRAY
01:05	BLOCK by WEBB, KATIE			
01:00				REBOUND (OFF) by KERNAL, DESIRAY
00:50				TURNOVER (SHOTCLOCK) by TEAM
00:39	MISSED JUMPER by WEBB, KATIE			
00:36				REBOUND (DEF) by KERNAL, DESIRAY
00:12				MISSED 3PTR by NOWLIN, KEEKKEE
00:09	REBOUND (DEF) by MOON, BRILEY			
00:02	MISSED JUMPER by NOEL, NEELY			
00:02				BLOCK by KERNAL, DESIRAY
00:00	REBOUND (OFF) by MOON, BRILEY			

### Southeastern Okla. 45, Tex. A&M-Commerce 57

Points from (This Period)	SEO	AMC
In the Paint	10	6
Off Turns	4	2
2nd Chance	0	3
Fast Break	0	5
Bench	2	5

**Official Box Score**  
**Southeastern Okla. vs Tex. A&M-Commerce**  
**Fourth Quarter Statistics Only**  
**November 26, 2019 at The Field House - Commerce, TX**



**Southeastern Okla. 19**

No.	Player	S	Pts	FG	3FG	FT	OR	DR	TR	PF	A	TO	Blk	Stl	Min	+/-
05	CANTWELL, KAMRYN	G	4	2-5	0-1	0-0	0	0	0	1	3	0	0	1	10	6
13	MOON, BRILEY	G	5	2-2	1-1	0-0	0	3	3	3	0	0	0	1	10	6
20	OESTREICH, LOGAN	F	2	1-1	0-0	0-0	0	1	1	0	1	0	0	0	6	2
22	KEMP, CHANDLER	G	2	1-1	0-0	0-0	0	0	0	1	0	0	0	0	8	2
24	WEBB, KATIE	G	6	3-4	0-0	0-0	0	1	1	1	0	2	0	0	8	7
10	GOMEZ, JAYNA	G	0	0-0	0-0	0-0	0	0	0	0	0	0	0	0	0	0
11	NOEL, NEELY	G	0	0-1	0-1	0-0	0	1	1	0	0	0	0	0	3	4
12	JOHNSON, TRACY	G	0	0-0	0-0	0-0	0	0	0	0	0	1	0	0	1	1
23	BENSON, JORDAN	G	0	0-0	0-0	0-0	0	1	1	1	0	0	0	0	1	-1
25	WILLIAMS, HAIDEN	F	0	0-1	0-1	0-0	0	0	0	1	0	0	0	0	3	3
32	BRANAM, KATIE	F	0	0-0	0-0	0-0	0	0	0	0	0	0	0	0	0	0
	TEAM						0	0	0	0		0				
<b>TOTALS</b>			<b>19</b>	<b>9-15</b>	<b>1-4</b>	<b>0-0</b>	<b>0</b>	<b>7</b>	<b>7</b>	<b>8</b>	<b>4</b>	<b>3</b>	<b>0</b>	<b>2</b>	<b>49</b>	

*Shooting By Period*

Period	FG	FG%	3FG	3FG%	FT	FT%
Game	24-51	47.1%	6-14	42.9%	10-12	83.3%

Deadball Rebounds: 2,0

**Tex. A&M-Commerce 13**

No.	Player	S	Pts	FG	3FG	FT	OR	DR	TR	PF	A	TO	Blk	Stl	Min	+/-
01	JONES, ALEXUS	G	3	1-1	1-1	0-0	1	1	2	0	0	0	0	0	5	-3
03	WRIGHT, CHANIA	G	2	1-3	0-2	0-0	0	0	0	0	0	0	0	0	7	-5
04	GLASS, MADDISON	G	3	0-0	0-0	3-8	0	1	1	0	1	3	0	1	10	-6
21	LOUIS, JULIANA	F	0	0-1	0-0	0-0	0	0	0	1	0	1	0	0	6	-6
42	BRYANT, ALEXIS	F	0	0-0	0-0	0-0	1	1	2	1	0	1	1	0	9	-6
10	KERNAL, DESIRAY	F	2	1-1	0-0	0-0	0	1	1	0	0	0	0	0	3	1
11	BURLESON, MYKIEL	G	3	0-3	0-2	3-4	0	1	1	0	0	0	0	0	6	-3
12	ROBINSON, DYANI	G	0	0-0	0-0	0-0	0	0	0	0	0	0	0	0	2	-1
20	NOWLIN, KEEKEE	G	0	0-0	0-0	0-0	0	0	0	0	0	0	0	0	0	0
23	TAC, AGANG	F	0	0-0	0-0	0-0	0	0	0	0	0	0	0	0	2	-1
30	PIERCE, JOCELYN	F	0	0-0	0-0	0-0	0	0	0	0	0	0	0	0	0	0
	TEAM						1	1	2	0		0				
<b>TOTALS</b>			<b>13</b>	<b>3-9</b>	<b>1-5</b>	<b>6-12</b>	<b>3</b>	<b>6</b>	<b>9</b>	<b>2</b>	<b>1</b>	<b>5</b>	<b>1</b>	<b>1</b>	<b>49</b>	

*Shooting By Period*

Period	FG	FG%	3FG	3FG%	FT	FT%
Game	24-62	38.7%	5-21	23.8%	17-26	65.4%

Deadball Rebounds: 5,0

Game Notes:

Officials: Chaney Muench, Gator Parrish, Britton Sherry  
 Attendance: 512

Start Time: 07:02 PM ET  
 End Time: 08:46 PM ET  
 Game Duration: 1:43

Score	1st	2nd	3rd	4th	TOT
SEO	10	18	17	19	<b>64</b>
AMC	24	16	17	13	<b>70</b>

Points from (This Period)	SEO	AMC
In the Paint	12	2
Off Turns	7	0
2nd Chance	0	1
Fast Break	3	1
Bench	0	5

**Official Play-By-Play**  
**Southeastern Okla. vs Tex. A&M-Commerce**  
**Fourth Quarter**  
**November 26, 2019 at The Field House - Commerce, TX**



**Period 4**

**Starters:**

**Southeastern Okla.:** 13 MOON,BRILEY (G); 20 OESTREICH,LOGAN (F); 22 KEMP,CHANDLER (G); 24 WEBB,KATIE (G); 5 CANTWELL,KAMRYN (G);  
**Tex. A&M-Commerce:** 1 JONES,ALEXUS (G); 3 WRIGHT,CHANIA (G); 4 GLASS,MADDISON (G); 21 LOUIS,JULIANA (F); 42 BRYANT,ALEXIS (F);

Time	VISITORS: Southeastern Okla.	Score	Margin	HOME: Tex. A&M-Commerce
10:00				SUB OUT: KERNAL, DESIRAY
10:00				SUB OUT: NOWLIN, KEEKIE
10:00				SUB OUT: PIERCE, JOCELYN
10:00				SUB IN: JONES, ALEXUS
10:00				SUB IN: LOUIS, JULIANA
10:00				SUB IN: BRYANT, ALEXIS
10:00	SUB OUT: OESTREICH, LOGAN			
10:00	SUB IN: JOHNSON, TRACY			
09:51	TURNOVER (TRAVEL) by JOHNSON, TRACY			
09:51	SUB OUT: JOHNSON, TRACY			
09:51	SUB IN: CANTWELL, KAMRYN			
09:33				TURNOVER (BADPASS) by GLASS, MADDISON
09:33	STEAL by CANTWELL, KAMRYN			
09:21	GOOD! LAYUP by CANTWELL, KAMRYN	57-47	H 10	
08:59				MISSED JUMPER by LOUIS, JULIANA
08:55	REBOUND (DEF) by WEBB, KATIE			
08:40	GOOD! LAYUP by WEBB, KATIE	57-49	H 8	
08:13				MISSED 3PTR by WRIGHT, CHANIA
08:10				REBOUND (OFF) by JONES, ALEXUS
08:10	SUB OUT: WILLIAMS, HAIDEN			
08:10	SUB IN: KEMP, CHANDLER			
08:05				MISSED 3PTR by WRIGHT, CHANIA
08:02	REBOUND (DEF) by MOON, BRILEY			
07:53	MISSED JUMPER by WEBB, KATIE			
07:52				REBOUND (DEF) by TEAM
07:52	SUB OUT: NOEL, NEELY			
07:52	SUB IN: WILLIAMS, HAIDEN			
07:41				FOUL (OFF) by LOUIS, JULIANA
07:41				TURNOVER (OFFENSIVE) by LOUIS, JULIANA
07:41				SUB OUT: LOUIS, JULIANA
07:41				SUB IN: KERNAL, DESIRAY
07:25	MISSED 3PTR by WILLIAMS, HAIDEN			
07:22				REBOUND (DEF) by KERNAL, DESIRAY
07:00		60-49	H 11	GOOD! 3PTR by JONES, ALEXUS
06:42	GOOD! LAYUP by MOON, BRILEY	60-51	H 9	
06:24	FOUL (PERSONAL) by WILLIAMS, HAIDEN			
06:24				SUB OUT: WRIGHT, CHANIA
06:24				SUB IN: BURLESON, MYKIEL
06:24	SUB OUT: WEBB, KATIE			
06:24	SUB IN: OESTREICH, LOGAN			
06:16	FOUL (PERSONAL) by MOON, BRILEY			
06:16				MISSED FT by GLASS, MADDISON
06:16				REBOUND (OFF) by TEAM
06:16				MISSED FT by GLASS, MADDISON
06:13	REBOUND (DEF) by BENSON, JORDAN			
06:02	SUB OUT: WILLIAMS, HAIDEN			
06:02	SUB IN: BENSON, JORDAN			
05:47	GOOD! LAYUP by KEMP, CHANDLER	60-53	H 7	
05:47	ASSIST by OESTREICH, LOGAN			
05:34		62-53	H 9	GOOD! LAYUP by KERNAL, DESIRAY
05:22	MISSED 3PTR by CANTWELL, KAMRYN			
05:18				REBOUND (DEF) by JONES, ALEXUS
05:34				ASSIST by GLASS, MADDISON
05:08	FOUL (PERSONAL) by BENSON, JORDAN			
05:08				SUB OUT: JONES, ALEXUS
05:08				SUB OUT: KERNAL, DESIRAY
05:08				SUB IN: ROBINSON, DYANI
05:08				SUB IN: TAC, AGANG
05:08				MISSED FT by BURLESON, MYKIEL
05:08				REBOUND (OFF) by TEAM
05:08		63-53	H 10	GOOD! FT by BURLESON, MYKIEL
04:58				FOUL (PERSONAL) by BRYANT, ALEXIS
04:58				
04:58	SUB OUT: BENSON, JORDAN			
04:58	SUB IN: WEBB, KATIE			
04:45	GOOD! JUMPER by WEBB, KATIE	63-55	H 8	
04:45	ASSIST by CANTWELL, KAMRYN			
04:21	FOUL (PERSONAL) by KEMP, CHANDLER			
04:18	FOUL (PERSONAL) by WEBB, KATIE			
04:18		64-55	H 9	GOOD! FT by BURLESON, MYKIEL

Time	VISITORS: Southeastern Okla.	Score	Margin	HOME: Tex. A&M-Commerce
04:18		65-55	H 10	GOOD! FT by BURLESON, MYKIEL
04:07	TURNOVER (OTHER) by WEBB, KATIE			
03:50				TURNOVER (TRAVEL) by GLASS, MADDISON
03:37	GOOD! LAYUP by OESTREICH, LOGAN	65-57	H 8	
03:37	ASSIST by CANTWELL, KAMRYN			
03:27				SUB OUT: ROBINSON, DYANI
03:27				SUB OUT: TAC, AGANG
03:27				SUB IN: WRIGHT, CHANIA
03:27				SUB IN: LOUIS, JULIANA
03:11				MISSED 3PTR by BURLESON, MYKIEL
03:07	REBOUND (DEF) by MOON, BRILEY			
02:57	GOOD! LAYUP by CANTWELL, KAMRYN	65-59	H 6	
02:36		67-59	H 8	GOOD! JUMPER by WRIGHT, CHANIA
02:26	TURNOVER (LOSTBALL) by WEBB, KATIE			
02:26				STEAL by GLASS, MADDISON
02:26				TIMEOUT 30SEC
02:04				MISSED 3PTR by BURLESON, MYKIEL
02:00				REBOUND (OFF) by TEAM
01:56				TURNOVER (BADPASS) by GLASS, MADDISON
01:34	MISSED LAYUP by CANTWELL, KAMRYN			
01:34				BLOCK by BRYANT, ALEXIS
01:29				REBOUND (DEF) by BRYANT, ALEXIS
01:28				TURNOVER (BADPASS) by BRYANT, ALEXIS
01:28	STEAL by MOON, BRILEY			
01:27	GOOD! 3PTR by MOON, BRILEY [FB]	67-62	H 5	
01:27	TIMEOUT 30SEC			
00:57				MISSED JUMPER by BURLESON, MYKIEL
00:53				REBOUND (OFF) by BRYANT, ALEXIS
00:48	FOUL (PERSONAL) by CANTWELL, KAMRYN			
00:48		68-62	H 6	GOOD! FT by GLASS, MADDISON
00:48				MISSED FT by GLASS, MADDISON
00:46	REBOUND (DEF) by OESTREICH, LOGAN			
00:34	MISSED JUMPER by CANTWELL, KAMRYN			
00:31				REBOUND (DEF) by BURLESON, MYKIEL
00:31	FOUL (PERSONAL) by MOON, BRILEY			
00:31				SUB OUT: WRIGHT, CHANIA
00:31				SUB OUT: BRYANT, ALEXIS
00:31				SUB IN: JONES, ALEXUS
00:31				SUB IN: KERNAL, DESIRAY
00:31	SUB OUT: KEMP, CHANDLER			
00:31	SUB IN: NOEL, NEELY			
00:31		69-62	H 7	GOOD! FT by GLASS, MADDISON [FB]
00:31				MISSED FT by GLASS, MADDISON
00:29	REBOUND (DEF) by MOON, BRILEY			
00:29	SUB OUT: OESTREICH, LOGAN			
00:29	SUB IN: JOHNSON, TRACY			
00:22	MISSED 3PTR by NOEL, NEELY			
00:20				REBOUND (DEF) by GLASS, MADDISON
00:18	FOUL (PERSONAL) by MOON, BRILEY			
00:18		70-62	H 8	GOOD! FT by GLASS, MADDISON
00:17				MISSED FT by GLASS, MADDISON
00:15	REBOUND (DEF) by NOEL, NEELY			
00:08	GOOD! JUMPER by WEBB, KATIE	70-64	H 6	
00:08	ASSIST by CANTWELL, KAMRYN			
00:08	TIMEOUT 30SEC			
00:08				TIMEOUT 30SEC
00:08				SUB OUT: KERNAL, DESIRAY
00:08				SUB IN: WRIGHT, CHANIA

### Southeastern Okla. 64, Tex. A&M-Commerce 70

Points from (This Period)	SEO	AMC
In the Paint	12	2
Off Turns	7	0
2nd Chance	0	1
Fast Break	3	1
Bench	0	5



**Official Scoring/Possession Reference Chart**  
**Southeastern Okla. vs Tex. A&M-Commerce**  
**Period 1**  
**November 26, 2019 at The Field House - Commerce, TX**



**Period 1**

**Starters:**

**Southeastern Okla.:** 13 MOON,BRILEY (G); 20 OESTREICH,LOGAN (F); 22 KEMP,CHANDLER (G); 24 WEBB,KATIE (G); 5 CANTWELL,KAMRYN (G);  
**Tex. A&M-Commerce:** 1 JONES,ALEXUS (G); 3 WRIGHT,CHANIA (G); 4 GLASS,MADDISON (G); 21 LOUIS,JULIANA (F); 42 BRYANT,ALEXIS (F);

Time	VISITORS: Southeastern Okla.	Score	Margin	HOME: Tex. A&M-Commerce
09:43		2-0	H 2	GOOD! LAYUP by JONES, ALEXUS
08:00		4-0	H 4	GOOD! LAYUP by BRYANT, ALEXIS
07:46	GOOD! FT by CANTWELL, KAMRYN	4-1	H 3	
07:46	GOOD! FT by CANTWELL, KAMRYN	4-2	H 2	
06:17	GOOD! 3PTR by OESTREICH, LOGAN	4-5	V 1	
05:50		5-5	T	GOOD! FT by JONES, ALEXUS
05:50		6-5	H 1	GOOD! FT by JONES, ALEXUS
05:30		8-5	H 3	GOOD! LAYUP by BRYANT, ALEXIS [PNT]
05:30		9-5	H 4	GOOD! FT by BRYANT, ALEXIS
04:36		12-5	H 7	GOOD! 3PTR by KERNAL, DESIRAY
03:08		14-5	H 9	GOOD! LAYUP by LOUIS, JULIANA [FB]
02:59	GOOD! LAYUP by WEBB, KATIE [FB]	14-7	H 7	
02:45		15-7	H 8	GOOD! FT by KERNAL, DESIRAY
02:45		16-7	H 9	GOOD! FT by KERNAL, DESIRAY
02:21		18-7	H 11	GOOD! LAYUP by ROBINSON, DYANI [FB]
02:21		19-7	H 12	GOOD! FT by ROBINSON, DYANI [FB]
01:17		20-7	H 13	GOOD! FT by LOUIS, JULIANA
00:53		22-7	H 15	GOOD! LAYUP by ROBINSON, DYANI [FB]
00:34	GOOD! 3PTR by MOON, BRILEY	22-10	H 12	
00:03		24-10	H 14	GOOD! JUMPER by ROBINSON, DYANI

**Southeastern Okla. 10, Tex. A&M-Commerce 24**

**Official Scoring/Possession Reference Chart**  
**Southeastern Okla. vs Tex. A&M-Commerce**  
**Period 2**  
**November 26, 2019 at The Field House - Commerce, TX**



**Period 2**

**Starters:**

**Southeastern Okla.:** 13 MOON,BRILEY (G); 20 OESTREICH,LOGAN (F); 22 KEMP,CHANDLER (G); 24 WEBB,KATIE (G); 5 CANTWELL,KAMRYN (G);  
**Tex. A&M-Commerce:** 1 JONES,ALEXUS (G); 3 WRIGHT,CHANIA (G); 4 GLASS,MADDISON (G); 21 LOUIS,JULIANA (F); 42 BRYANT,ALEXIS (F);

Time	VISITORS: Southeastern Okla.	Score	Margin	HOME: Tex. A&M-Commerce
09:50		26-10	H 16	GOOD! JUMPER by TAC, AGANG
09:36	GOOD! 3PTR by CANTWELL, KAMRYN	26-13	H 13	
09:03	GOOD! 3PTR by BENSON, JORDAN	26-16	H 10	
07:27		28-16	H 12	GOOD! JUMPER by WRIGHT, CHANIA
07:04		30-16	H 14	GOOD! JUMPER by GLASS, MADDISON [FB]
05:59		32-16	H 16	GOOD! JUMPER by GLASS, MADDISON
05:44	GOOD! JUMPER by WEBB, KATIE	32-18	H 14	
05:13		34-18	H 16	GOOD! LAYUP by BURLESON, MYKIEL
04:10		35-18	H 17	GOOD! FT by BURLESON, MYKIEL
04:10		36-18	H 18	GOOD! FT by BURLESON, MYKIEL
03:57	GOOD! JUMPER by WEBB, KATIE [PNT]	36-20	H 16	
03:04	GOOD! FT by MOON, BRILEY	36-21	H 15	
03:04	GOOD! FT by MOON, BRILEY	36-22	H 14	
02:54		38-22	H 16	GOOD! LAYUP by BRYANT, ALEXIS
02:54		39-22	H 17	GOOD! FT by BRYANT, ALEXIS
02:41	GOOD! JUMPER by NOEL, NEELY	39-24	H 15	
02:16	GOOD! FT by MOON, BRILEY	39-25	H 14	
01:35	GOOD! LAYUP by KEMP, CHANDLER	39-27	H 12	
01:35	GOOD! FT by KEMP, CHANDLER	39-28	H 11	
00:01		40-28	H 12	GOOD! FT by KERNAL, DESIRAY

**Southeastern Okla. 28, Tex. A&M-Commerce 40**

**Official Scoring/Possession Reference Chart**  
**Southeastern Okla. vs Tex. A&M-Commerce**  
**Period 3**  
**November 26, 2019 at The Field House - Commerce, TX**



**Period 3**

**Starters:**

**Southeastern Okla.:** 13 MOON,BRILEY (G); 20 OESTREICH,LOGAN (F); 22 KEMP,CHANDLER (G); 24 WEBB,KATIE (G); 5 CANTWELL,KAMRYN (G);  
**Tex. A&M-Commerce:** 1 JONES,ALEXUS (G); 3 WRIGHT,CHANIA (G); 4 GLASS,MADDISON (G); 21 LOUIS,JULIANA (F); 42 BRYANT,ALEXIS (F);

Time	VISITORS: Southeastern Okla.	Score	Margin	HOME: Tex. A&M-Commerce
09:43		43-28	H 15	GOOD! 3PTR by WRIGHT, CHANIA [FB]
09:24	GOOD! 3PTR by CANTWELL, KAMRYN	43-31	H 12	
08:07		45-31	H 14	GOOD! JUMPER by GLASS, MADDISON [FB/PNT]
07:45	GOOD! LAYUP by KEMP, CHANDLER [PNT]	45-33	H 12	
07:26		48-33	H 15	GOOD! 3PTR by WRIGHT, CHANIA
07:10	GOOD! LAYUP by WEBB, KATIE	48-35	H 13	
07:10	GOOD! FT by WEBB, KATIE	48-36	H 12	
06:18		51-36	H 15	GOOD! 3PTR by BURLESON, MYKIEL
06:01	GOOD! LAYUP by WEBB, KATIE	51-38	H 13	
05:29	GOOD! JUMPER by CANTWELL, KAMRYN [PNT]	51-40	H 11	
04:43	GOOD! FT by BENSON, JORDAN	51-41	H 10	
04:43	GOOD! FT by BENSON, JORDAN	51-42	H 9	
04:25		53-42	H 11	GOOD! JUMPER by BURLESON, MYKIEL [PNT]
03:56		55-42	H 13	GOOD! JUMPER by GLASS, MADDISON
03:24	GOOD! JUMPER by CANTWELL, KAMRYN [PNT]	55-44	H 11	
01:37		57-44	H 13	GOOD! LAYUP by GLASS, MADDISON
01:22	GOOD! FT by WEBB, KATIE	57-45	H 12	

**Southeastern Okla. 45, Tex. A&M-Commerce 57**

**Official Scoring/Possession Reference Chart**  
**Southeastern Okla. vs Tex. A&M-Commerce**  
**Period 4**  
**November 26, 2019 at The Field House - Commerce, TX**



**Period 4**

**Starters:**

**Southeastern Okla.:** 13 MOON,BRILEY (G); 20 OESTREICH,LOGAN (F); 22 KEMP,CHANDLER (G); 24 WEBB,KATIE (G); 5 CANTWELL,KAMRYN (G);  
**Tex. A&M-Commerce:** 1 JONES,ALEXUS (G); 3 WRIGHT,CHANIA (G); 4 GLASS,MADDISON (G); 21 LOUIS,JULIANA (F); 42 BRYANT,ALEXIS (F);

Time	VISITORS: Southeastern Okla.	Score	Margin	HOME: Tex. A&M-Commerce
09:21	GOOD! LAYUP by CANTWELL, KAMRYN	57-47	H 10	
08:40	GOOD! LAYUP by WEBB, KATIE	57-49	H 8	
07:00		60-49	H 11	GOOD! 3PTR by JONES, ALEXUS
06:42	GOOD! LAYUP by MOON, BRILEY	60-51	H 9	
05:47	GOOD! LAYUP by KEMP, CHANDLER	60-53	H 7	
05:34		62-53	H 9	GOOD! LAYUP by KERNAL, DESIRAY
05:08		63-53	H 10	GOOD! FT by BURLESON, MYKIEL
04:45	GOOD! JUMPER by WEBB, KATIE	63-55	H 8	
04:18		64-55	H 9	GOOD! FT by BURLESON, MYKIEL
04:18		65-55	H 10	GOOD! FT by BURLESON, MYKIEL
03:37	GOOD! LAYUP by OESTREICH, LOGAN	65-57	H 8	
02:57	GOOD! LAYUP by CANTWELL, KAMRYN	65-59	H 6	
02:36		67-59	H 8	GOOD! JUMPER by WRIGHT, CHANIA
01:27	GOOD! 3PTR by MOON, BRILEY [FB]	67-62	H 5	
00:48		68-62	H 6	GOOD! FT by GLASS, MADDISON
00:31		69-62	H 7	GOOD! FT by GLASS, MADDISON [FB]
00:18		70-62	H 8	GOOD! FT by GLASS, MADDISON
00:08	GOOD! JUMPER by WEBB, KATIE	70-64	H 6	

**Southeastern Okla. 64, Tex. A&M-Commerce 70**

**Official Substitutions Log**  
**Southeastern Okla. vs Tex. A&M-Commerce**  
**Period 1**  
**November 26, 2019 at The Field House - Commerce, TX**



<b>VISITORS: Southeastern Okla.</b>	<b>Time</b>	<b>Score</b>	<b>HOME: Tex. A&amp;M-Commerce</b>
13 MOON,BRILEY			1 JONES,ALEXUS
20 OESTREICH,LOGAN			3 WRIGHT,CHANIA
22 KEMP,CHANDLER			4 GLASS,MADDISON
24 WEBB,KATIE			21 LOUIS,JULIANA
5 CANTWELL,KAMRYN			42 BRYANT,ALEXIS
	05:50	5-4	SUB OUT: LOUIS,JULIANA
	05:50		SUB IN: TAC,AGANG
SUB OUT: 13 MOON,BRILEY	05:50		
SUB OUT: 20 OESTREICH,LOGAN	05:50		
SUB IN: 11 NOEL,NEELY	05:50		
SUB IN: 25 WILLIAMS,HAIDEN	05:50		
	05:50		SUB OUT: JONES,ALEXUS
	05:50		SUB IN: BURLESON,MYKIEL
	05:45	5-6	SUB OUT: WRIGHT,CHANIA
	05:45		SUB OUT: GLASS,MADDISON
	05:45		SUB IN: KERNAL,DESIRAY
	05:45		SUB IN: ROBINSON,DYANI
SUB OUT: 5 CANTWELL,KAMRYN	05:30	5-8	
SUB IN: 12 JOHNSON,TRACY	05:30		
	04:21	5-12	SUB OUT: BRYANT,ALEXIS
	04:21		SUB IN: LOUIS,JULIANA
SUB OUT: 22 KEMP,CHANDLER	04:21		
SUB OUT: 25 WILLIAMS,HAIDEN	04:21		
SUB IN: 10 GOMEZ,JAYNA	04:21		
SUB IN: 20 OESTREICH,LOGAN	04:21		
SUB OUT: 11 NOEL,NEELY	02:45	7-14	
SUB OUT: 12 JOHNSON,TRACY	02:45		
SUB IN: 22 KEMP,CHANDLER	02:45		
SUB IN: 23 BENSON,JORDAN	02:45		
	02:21	7-18	SUB OUT: KERNAL,DESIRAY
	02:21		SUB IN: JONES,ALEXUS
SUB OUT: 32 BRANAM,KATIE	02:21		
SUB IN: 13 MOON,BRILEY	02:21		
	01:17	7-19	SUB OUT: BURLESON,MYKIEL
	01:17		SUB OUT: TAC,AGANG
	01:17		SUB IN: WRIGHT,CHANIA
	01:17		SUB IN: BRYANT,ALEXIS
SUB OUT: 20 OESTREICH,LOGAN	01:17		
SUB IN: 25 WILLIAMS,HAIDEN	01:17		

**Southeastern Okla. 10, Tex. A&M-Commerce 24**

**Official Substitutions Log**  
**Southeastern Okla. vs Tex. A&M-Commerce**  
**Period 2**  
**November 26, 2019 at The Field House - Commerce, TX**



VISITORS: Southeastern Okla.	Time	Score	HOME: Tex. A&M-Commerce
13 MOON,BRILEY			1 JONES,ALEXUS
20 OESTREICH,LOGAN			3 WRIGHT,CHANIA
22 KEMP,CHANDLER			4 GLASS,MADDISON
24 WEBB,KATIE			21 LOUIS,JULIANA
5 CANTWELL,KAMRYN			42 BRYANT,ALEXIS
SUB OUT: 24 WEBB,KATIE	02:45	-	
SUB IN: 32 BRANAM,KATIE	02:45		
SUB OUT: 10 GOMEZ,JAYNA	02:21	-	
SUB IN: 25 WILLIAMS,HAIDEN	02:21		
	10:00	-	SUB OUT: ROBINSON,DYANI
	10:00		SUB OUT: LOUIS,JULIANA
	10:00		SUB IN: GLASS,MADDISON
	10:00		SUB IN: TAC,AGANG
SUB OUT: 22 KEMP,CHANDLER	10:00		
SUB IN: 24 WEBB,KATIE	10:00		
SUB OUT: 25 WILLIAMS,HAIDEN	08:24	16-26	
SUB IN: 32 BRANAM,KATIE	08:24		
	07:45	16-26	SUB OUT: JONES,ALEXUS
	07:45		SUB IN: BURLESON,MYKIEL
	06:41	16-30	SUB OUT: TAC,AGANG
	06:41		SUB OUT: BRYANT,ALEXIS
	06:41		SUB IN: KERNAL,DESIRAY
	06:41		SUB IN: LOUIS,JULIANA
SUB OUT: 5 CANTWELL,KAMRYN	06:41		
SUB OUT: 23 BENSON,JORDAN	06:41		
SUB IN: 11 NOEL,NEELY	06:41		
SUB IN: 12 JOHNSON,TRACY	06:41		
	06:16	16-30	SUB OUT: WRIGHT,CHANIA
	06:16		SUB IN: NOWLIN,KEEKEE
	05:46	16-32	SUB OUT: GLASS,MADDISON
	05:46		SUB IN: ROBINSON,DYANI
SUB OUT: 32 BRANAM,KATIE	04:28	18-34	
SUB IN: 22 KEMP,CHANDLER	04:28		
	03:36	20-36	SUB OUT: LOUIS,JULIANA
	03:36		SUB IN: BRYANT,ALEXIS
	03:04	20-36	SUB OUT: KERNAL,DESIRAY
	03:04		SUB OUT: BURLESON,MYKIEL
	03:04		SUB OUT: ROBINSON,DYANI
	03:04		SUB OUT: NOWLIN,KEEKEE
	03:04		SUB IN: JONES,ALEXUS
	03:04		SUB IN: WRIGHT,CHANIA
	03:04		SUB IN: GLASS,MADDISON
	03:04		SUB IN: TAC,AGANG
	02:16	24-39	SUB OUT: BRYANT,ALEXIS
	02:16		SUB IN: PIERCE,JOCELYN
SUB OUT: 12 JOHNSON,TRACY	02:16		
SUB IN: 5 CANTWELL,KAMRYN	02:16		
	01:35	28-39	SUB OUT: TAC,AGANG
	01:35		SUB IN: KERNAL,DESIRAY
	01:15	28-39	SUB OUT: JONES,ALEXUS
	01:15		SUB IN: ROBINSON,DYANI

**Southeastern Okla. 28, Tex. A&M-Commerce 40**

**Official Substitutions Log**  
**Southeastern Okla. vs Tex. A&M-Commerce**  
**Period 3**  
**November 26, 2019 at The Field House - Commerce, TX**



VISITORS: Southeastern Okla.	Time	Score	HOME: Tex. A&M-Commerce
13 MOON,BRILEY			1 JONES,ALEXUS
20 OESTREICH,LOGAN			3 WRIGHT,CHANIA
22 KEMP,CHANDLER			4 GLASS,MADDISON
24 WEBB,KATIE			21 LOUIS,JULIANA
5 CANTWELL,KAMRYN			42 BRYANT,ALEXIS
SUB OUT: 25 WILLIAMS,HAIDEN	02:21	-	
SUB IN: 5 CANTWELL,KAMRYN	02:21		
	10:00	-	SUB OUT: KERNAL,DESIRAY
	10:00		SUB OUT: ROBINSON,DYANI
	10:00		SUB OUT: PIERCE,JOCELYN
	10:00		SUB IN: JONES,ALEXUS
	10:00		SUB IN: LOUIS,JULIANA
	10:00		SUB IN: BRYANT,ALEXIS
SUB OUT: 11 NOEL,NEELY	10:00		
SUB IN: 20 OESTREICH,LOGAN	10:00		
	07:55	31-45	SUB OUT: GLASS,MADDISON
	07:55		SUB IN: ROBINSON,DYANI
	07:10	35-48	SUB OUT: JONES,ALEXUS
	07:10		SUB IN: BURLESON,MYKIEL
	07:10		SUB OUT: LOUIS,JULIANA
	07:10		SUB IN: TAC,AGANG
	05:47	38-51	SUB OUT: WRIGHT,CHANIA
	05:47		SUB IN: KERNAL,DESIRAY
SUB OUT: 13 MOON,BRILEY	05:47		
SUB IN: 23 BENSON,JORDAN	05:47		
	04:55	40-51	SUB OUT: TAC,AGANG
	04:55		SUB IN: GLASS,MADDISON
SUB OUT: 22 KEMP,CHANDLER	03:01	44-55	
SUB IN: 11 NOEL,NEELY	03:01		
	01:45	44-55	SUB OUT: KERNAL,DESIRAY
	01:45		SUB OUT: BURLESON,MYKIEL
	01:45		SUB OUT: ROBINSON,DYANI
	01:45		SUB OUT: BRYANT,ALEXIS
	01:45		SUB IN: WRIGHT,CHANIA
	01:45		SUB IN: NOWLIN,KEEKEE
	01:45		SUB IN: TAC,AGANG
	01:45		SUB IN: PIERCE,JOCELYN
SUB OUT: 5 CANTWELL,KAMRYN	01:45		
SUB OUT: 23 BENSON,JORDAN	01:45		
SUB IN: 13 MOON,BRILEY	01:45		
SUB IN: 25 WILLIAMS,HAIDEN	01:45		
	01:23	44-57	SUB OUT: TAC,AGANG
	01:23		SUB IN: KERNAL,DESIRAY

**Southeastern Okla. 45, Tex. A&M-Commerce 57**

**Official Substitutions Log**  
**Southeastern Okla. vs Tex. A&M-Commerce**  
**Period 4**  
**November 26, 2019 at The Field House - Commerce, TX**



VISITORS: Southeastern Okla.	Time	Score	HOME: Tex. A&M-Commerce
13 MOON,BRILEY			1 JONES,ALEXUS
20 OESTREICH,LOGAN			3 WRIGHT,CHANIA
22 KEMP,CHANDLER			4 GLASS,MADDISON
24 WEBB,KATIE			21 LOUIS,JULIANA
5 CANTWELL,KAMRYN			42 BRYANT,ALEXIS
	10:00	-	SUB OUT: KERNAL,DESIRAY
	10:00		SUB OUT: NOWLIN,KEEKEE
	10:00		SUB OUT: PIERCE,JOCELYN
	10:00		SUB IN: JONES,ALEXUS
	10:00		SUB IN: LOUIS,JULIANA
	10:00		SUB IN: BRYANT,ALEXIS
SUB OUT: 20 OESTREICH,LOGAN	10:00		
SUB IN: 12 JOHNSON,TRACY	10:00		
SUB OUT: 12 JOHNSON,TRACY	09:51	-	
SUB IN: 5 CANTWELL,KAMRYN	09:51		
SUB OUT: 25 WILLIAMS,HAIDEN	08:10	49-57	
SUB IN: 22 KEMP,CHANDLER	08:10		
SUB OUT: 11 NOEL,NEELY	07:52	49-57	
SUB IN: 25 WILLIAMS,HAIDEN	07:52		
	07:41	49-57	SUB OUT: LOUIS,JULIANA
	07:41		SUB IN: KERNAL,DESIRAY
	06:24	51-60	SUB OUT: WRIGHT,CHANIA
	06:24		SUB IN: BURLESON,MYKIEL
SUB OUT: 24 WEBB,KATIE	06:24		
SUB IN: 20 OESTREICH,LOGAN	06:24		
SUB OUT: 25 WILLIAMS,HAIDEN	06:02	51-60	
SUB IN: 23 BENSON,JORDAN	06:02		
	05:08	53-62	SUB OUT: JONES,ALEXUS
	05:08		SUB OUT: KERNAL,DESIRAY
	05:08		SUB IN: ROBINSON,DYANI
	05:08		SUB IN: TAC,AGANG
SUB OUT: 23 BENSON,JORDAN	04:58	53-63	
SUB IN: 24 WEBB,KATIE	04:58		
	03:27	57-65	SUB OUT: ROBINSON,DYANI
	03:27		SUB OUT: TAC,AGANG
	03:27		SUB IN: WRIGHT,CHANIA
	03:27		SUB IN: LOUIS,JULIANA
	00:31	62-68	SUB OUT: WRIGHT,CHANIA
	00:31		SUB OUT: BRYANT,ALEXIS
	00:31		SUB IN: JONES,ALEXUS
	00:31		SUB IN: KERNAL,DESIRAY
SUB OUT: 22 KEMP,CHANDLER	00:31		
SUB IN: 11 NOEL,NEELY	00:31		
SUB OUT: 20 OESTREICH,LOGAN	00:29	62-69	
SUB IN: 12 JOHNSON,TRACY	00:29		
	00:08	64-70	SUB OUT: KERNAL,DESIRAY
	00:08		SUB IN: WRIGHT,CHANIA

**Southeastern Okla. 64, Tex. A&M-Commerce 70**

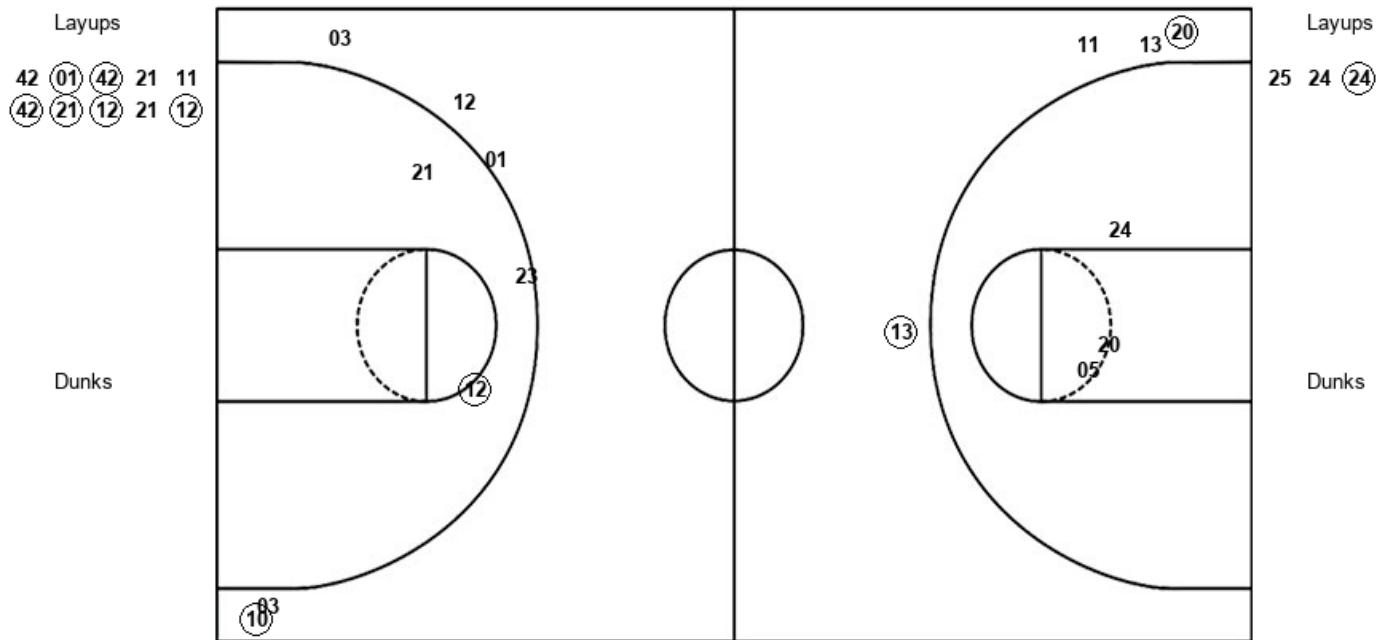


Official Shot Chart  
 Southeastern Okla. vs Tex. A&M-Commerce  
 PERIOD 1 Shots  
 November 26, 2019 at The Field House - Commerce, TX



Tex. A&M-Commerce

Southeastern Okla.



AMC : Period 1	Made	Att	Pct
Layups	6	10	60.0
Dunks	0	0	0
2PT Field Goals	7	12	58.3
3PT Field Goals	1	6	16.7
<b>Total Field Goals</b>	<b>8</b>	<b>18</b>	<b>44.4</b>

SEO : Period 1	Made	Att	Pct
Layups	1	3	33.3
Dunks	0	0	0
2PT Field Goals	1	6	16.7
3PT Field Goals	2	4	50.0
<b>Total Field Goals</b>	<b>3</b>	<b>10</b>	<b>30.0</b>

**Official Shot Chart**  
**Southeastern Okla. vs Tex. A&M-Commerce**  
**PERIOD 2 Shots**  
 November 26, 2019 at The Field House - Commerce, TX



**Tex. A&M-Commerce**

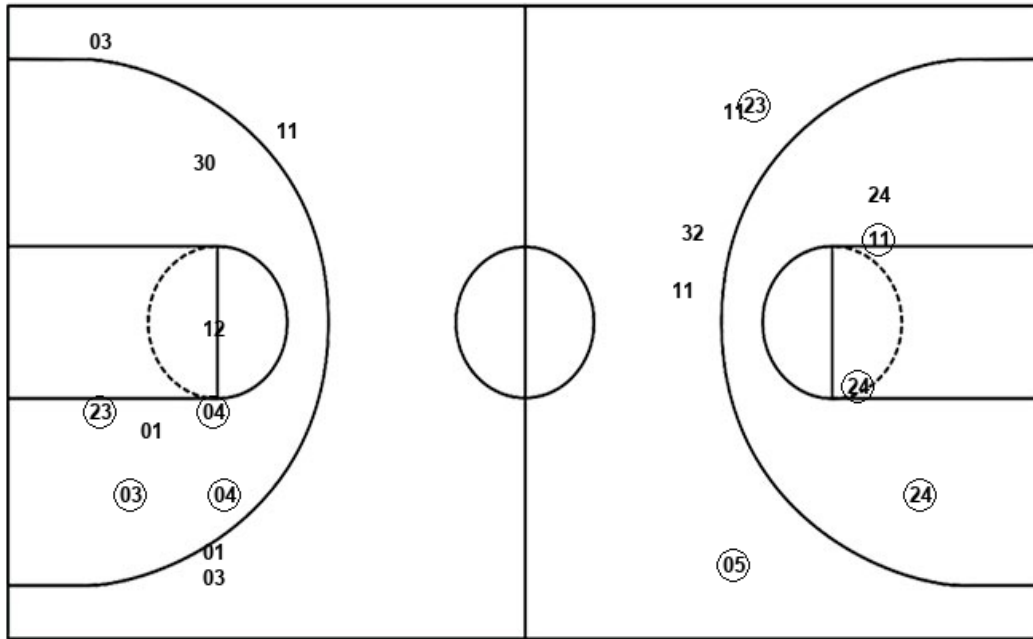
**Southeastern Okla.**

Layups  
 42 04 (11) 12 12  
 (42) 04

Layups  
 32 13 (22)

Dunks

Dunks



AMC : Period 2	Made	Att	Pct
Layups	2	7	28.6
Dunks	0	0	0
2PT Field Goals	6	14	42.9
3PT Field Goals	0	4	00.0
<b>Total Field Goals</b>	<b>6</b>	<b>18</b>	<b>33.3</b>

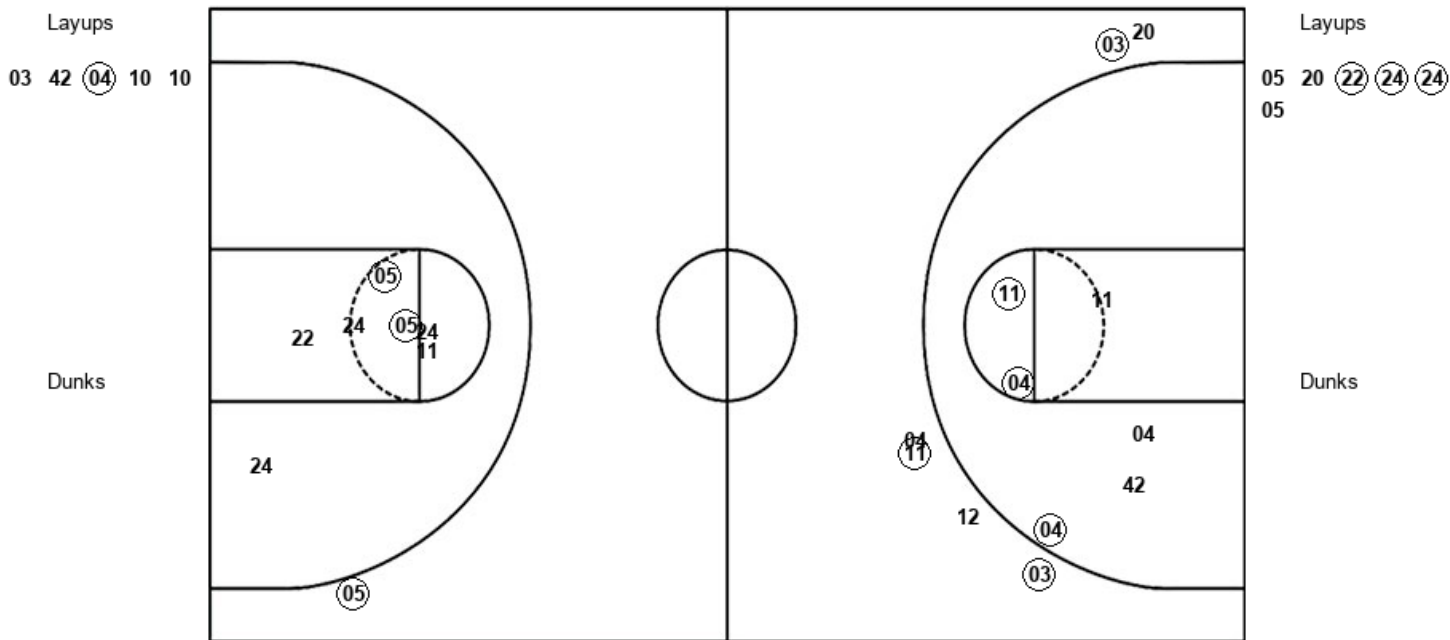
SEO : Period 2	Made	Att	Pct
Layups	1	3	33.3
Dunks	0	0	0
2PT Field Goals	4	7	57.1
3PT Field Goals	2	5	40.0
<b>Total Field Goals</b>	<b>6</b>	<b>12</b>	<b>50.0</b>

**Official Shot Chart**  
**Southeastern Okla. vs Tex. A&M-Commerce**  
**PERIOD 3 Shots**  
 November 26, 2019 at The Field House - Commerce, TX



**Tex. A&M-Commerce**

**Southeastern Okla.**



AMC : Period 3	Made	Att	Pct
Layups	1	5	20.0
Dunks	0	0	0
2PT Field Goals	4	11	36.4
3PT Field Goals	3	6	50.0
<b>Total Field Goals</b>	<b>7</b>	<b>17</b>	<b>41.2</b>

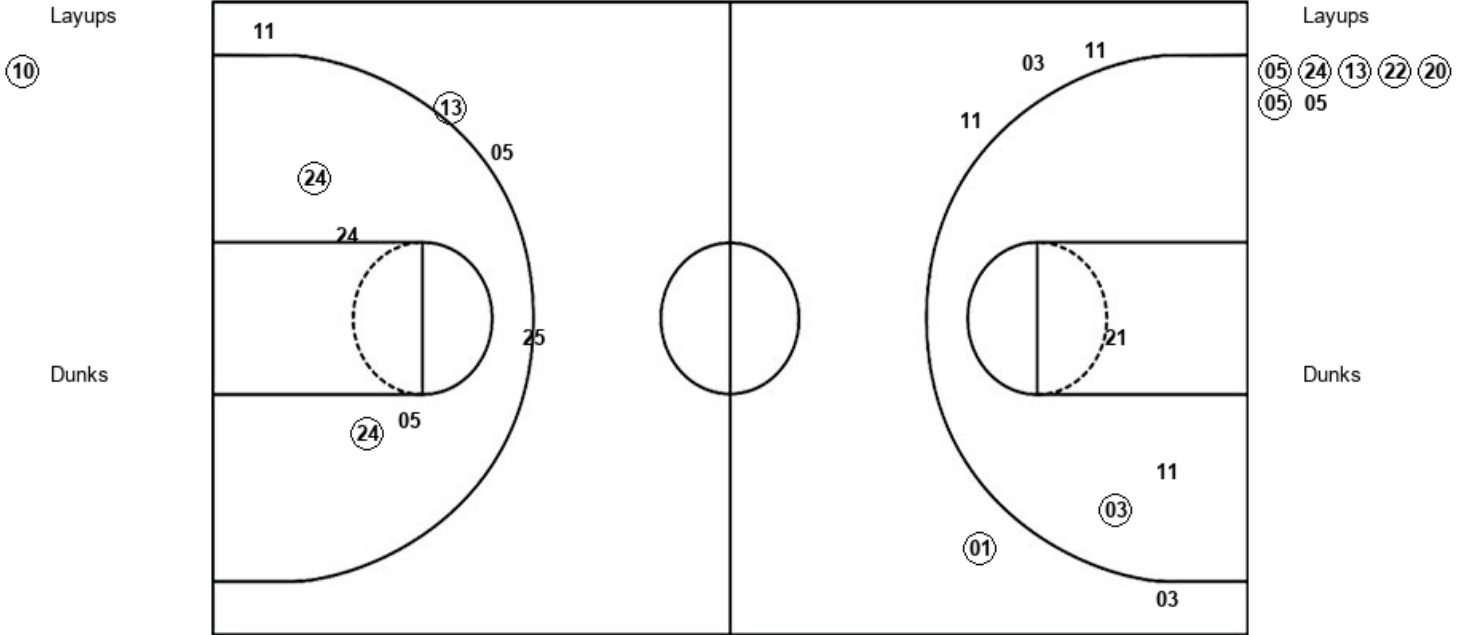
SEO : Period 3	Made	Att	Pct
Layups	3	6	50.0
Dunks	0	0	0
2PT Field Goals	5	13	38.5
3PT Field Goals	1	1	100.0
<b>Total Field Goals</b>	<b>6</b>	<b>14</b>	<b>42.9</b>

**Official Shot Chart**  
**Southeastern Okla. vs Tex. A&M-Commerce**  
**PERIOD 4 Shots**  
 November 26, 2019 at The Field House - Commerce, TX



**Tex. A&M-Commerce**

**Southeastern Okla.**



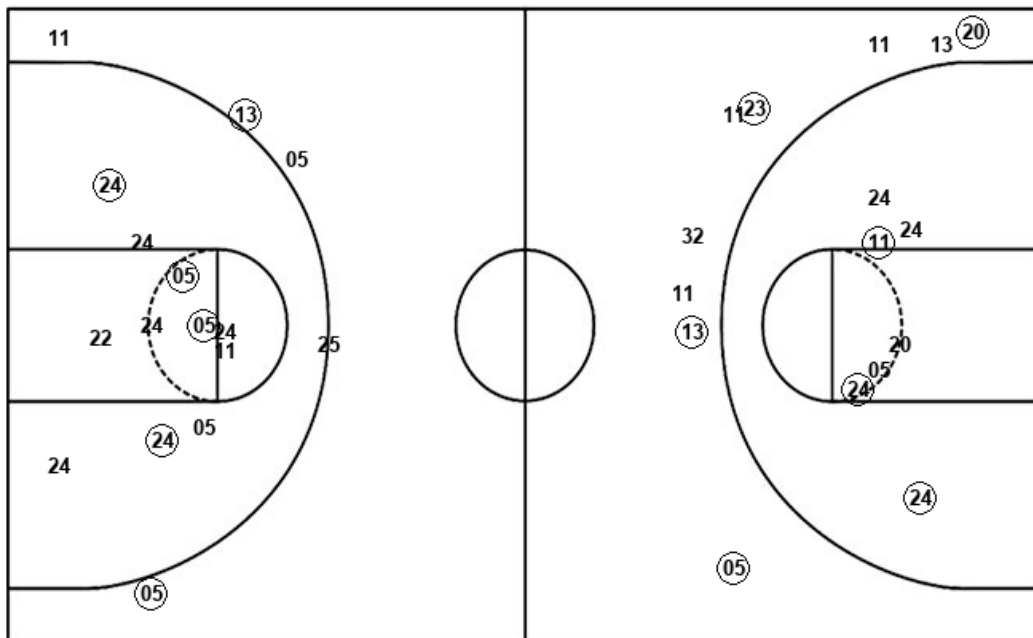
AMC : Period 4	Made	Att	Pct
Layups	1	1	100.0
Dunks	0	0	0
2PT Field Goals	2	4	50.0
3PT Field Goals	1	5	20.0
<b>Total Field Goals</b>	<b>3</b>	<b>9</b>	<b>33.3</b>

SEO : Period 4	Made	Att	Pct
Layups	6	7	85.7
Dunks	0	0	0
2PT Field Goals	8	11	72.7
3PT Field Goals	1	4	25.0
<b>Total Field Goals</b>	<b>9</b>	<b>15</b>	<b>60.0</b>

**Official Shot Chart**  
**Southeastern Okla. vs Tex. A&M-Commerce**  
 Southeastern Okla. Team Shots  
 November 26, 2019 at The Field House - Commerce, TX



Layups



Layups

25 24 (24) 32 13  
 (22) 05 20 (22) (24)  
 (24) 05 (05) (24) (13)  
 (22) (20) (05) 05

Dunks

Dunks

SEO : Period 1	Made	Att	Pct
Layups	1	3	33.3
Dunks	0	0	0
2PT Field Goals	1	6	16.7
3PT Field Goals	2	4	50.0
<b>Total Field Goals</b>	<b>3</b>	<b>10</b>	<b>30.0</b>

SEO : Period 2	Made	Att	Pct
Layups	1	3	33.3
Dunks	0	0	0
2PT Field Goals	4	7	57.1
3PT Field Goals	2	5	40.0
<b>Total Field Goals</b>	<b>6</b>	<b>12</b>	<b>50.0</b>

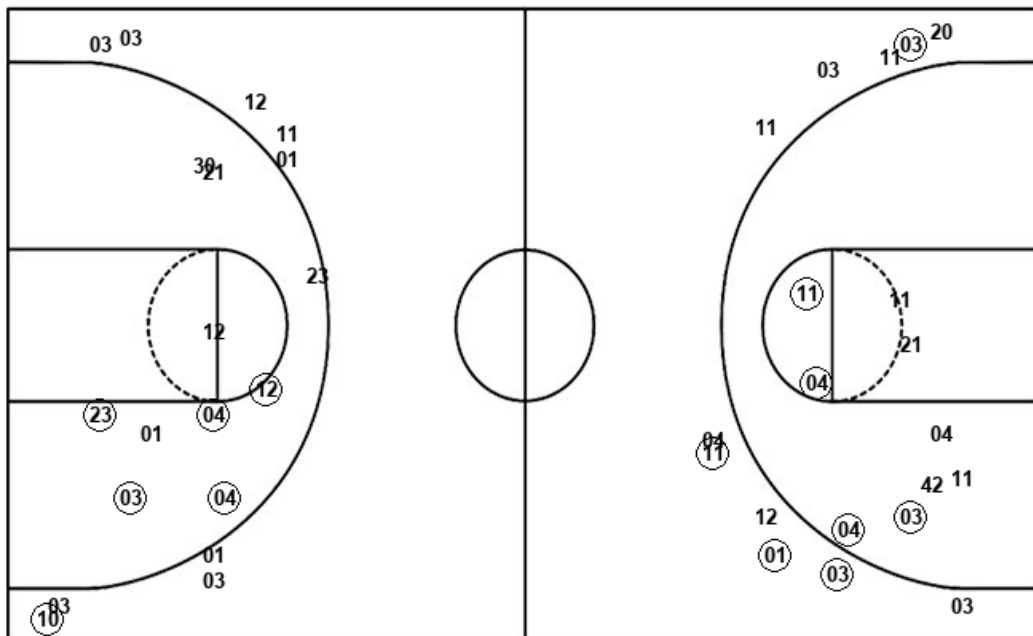
SEO : Period 3	Made	Att	Pct
Layups	3	6	50.0
Dunks	0	0	0
2PT Field Goals	5	13	38.5
3PT Field Goals	1	1	100.0
<b>Total Field Goals</b>	<b>6</b>	<b>14</b>	<b>42.9</b>

SEO : Period 4	Made	Att	Pct
Layups	6	7	85.7
Dunks	0	0	0
2PT Field Goals	8	11	72.7
3PT Field Goals	1	4	25.0
<b>Total Field Goals</b>	<b>9</b>	<b>15</b>	<b>60.0</b>

**Official Shot Chart**  
**Southeastern Okla. vs Tex. A&M-Commerce**  
 Tex. A&M-Commerce Team Shots  
 November 26, 2019 at The Field House - Commerce, TX



Layups



Layups

42 (01) (42) 21 11  
 (42) (21) (12) 21 (12)  
 42 04 (11) 12 12  
 (42) 04 03 42 (04)  
 10 10 (10)

Dunks

Dunks

AMC : Period 1	Made	Att	Pct
Layups	6	10	60.0
Dunks	0	0	0
2PT Field Goals	7	12	58.3
3PT Field Goals	1	6	16.7
<b>Total Field Goals</b>	<b>8</b>	<b>18</b>	<b>44.4</b>

AMC : Period 2	Made	Att	Pct
Layups	2	7	28.6
Dunks	0	0	0
2PT Field Goals	6	14	42.9
3PT Field Goals	0	4	00.0
<b>Total Field Goals</b>	<b>6</b>	<b>18</b>	<b>33.3</b>

AMC : Period 3	Made	Att	Pct
Layups	1	5	20.0
Dunks	0	0	0
2PT Field Goals	4	11	36.4
3PT Field Goals	3	6	50.0
<b>Total Field Goals</b>	<b>7</b>	<b>17</b>	<b>41.2</b>

AMC : Period 4	Made	Att	Pct
Layups	1	1	100.0
Dunks	0	0	0
2PT Field Goals	2	4	50.0
3PT Field Goals	1	5	20.0
<b>Total Field Goals</b>	<b>3</b>	<b>9</b>	<b>33.3</b>