

**FINAL SCORE****Northern N.M.****41****Angelo State****108**

November 26, 2019 • Junell Center/Stephens Arena - San Angelo

**FINAL STATISTICS**

**Official Box Score**  
**Northern N.M. vs Angelo State**  
**Game Totals -- Final Statistics**  
**November 26, 2019 at Junell Center/Stephens Arena - San Angelo**



**Northern N.M. 41**

No.	Player	S	Pts	FG	3FG	FT	OR	DR	TR	PF	A	TO	Blk	Stl	Min	+/-
04	DAVIS, KRISTEN	*	0	0-6	0-0	0-0	2	0	2	2	0	1	0	1	30	-37
11	EAVES, HALEY	*	3	1-13	1-9	0-0	0	2	2	2	1	4	0	2	28	-53
15	SMITH, AHMAYA	*	14	6-19	0-1	2-2	3	9	12	4	0	4	0	3	30	-42
22	PATTERSON, CHRIS'ALEE	*	9	4-15	1-5	0-0	1	4	5	1	2	5	0	1	34	-57
25	LEWIS, ZHANE	*	6	3-7	0-0	0-2	3	0	3	1	0	3	1	1	16	-21
01	WILKERSON, DESTINY		5	2-4	0-0	1-1	1	2	3	0	0	4	0	0	26	-49
23	SAMUEL, TELYSSA		0	0-2	0-0	0-0	3	0	3	1	0	0	0	0	11	-28
33	EVANS-COLLINS, SEE'ARRAI		2	1-3	0-0	0-2	0	2	2	2	1	0	0	0	14	-37
35	KING, MACKENZIE		2	1-1	0-0	0-2	0	1	1	1	0	1	0	0	11	-11
<b>TEAM</b>							2	3	5	0		0				
<b>TOTALS</b>			<b>41</b>	<b>18-70</b>	<b>2-15</b>	<b>3-9</b>	<b>15</b>	<b>23</b>	<b>38</b>	<b>14</b>	<b>4</b>	<b>22</b>	<b>1</b>	<b>8</b>	<b>199</b>	

*Shooting By Period*

Period	FG	FG%	3FG	3FG%	FT	FT%
1st Qtr	5-16	31%	0-6	00%	0-2	00%
2nd Qtr	4-15	27%	1-2	50%	2-2	100%
3rd Qtr	4-18	22%	1-3	33%	0-2	00%
4th Qtr	5-21	24%	0-4	00%	1-3	33%
1st Half	9-31	29%	1-8	13%	2-4	50%
2nd Half	9-39	23%	1-7	14%	1-5	20%
<b>Game</b>	<b>18-70</b>	<b>25.7%</b>	<b>2-15</b>	<b>13.3%</b>	<b>3-9</b>	<b>33.3%</b>

Deadball Rebounds: 3.0  
 Last FG: 4th-02:10  
 Biggest Run: 5-0  
 Largest lead: By 2 at 1-09  
 Technical Fouls: None.

**Angelo State 108**

No.	Player	S	Pts	FG	3FG	FT	OR	DR	TR	PF	A	TO	Blk	Stl	Min	+/-
02	SAMUEL, CATARA	G	11	5-6	1-2	0-0	1	4	5	1	6	2	0	1	19	37
03	DAVIS, ASIA	G	10	4-7	0-0	2-2	0	4	4	1	2	4	0	0	20	25
10	LLOYD, SAWYER	G	14	5-10	4-6	0-0	3	7	10	0	2	3	0	2	21	37
13	GUADIAN, MEGAN	G	0	0-4	0-3	0-0	0	3	3	0	0	1	0	1	17	17
32	MOORE, DE'ANIRA	F	16	5-6	1-1	5-6	0	3	3	1	1	1	1	0	15	35
05	MAROV, LANA	G	12	4-9	4-9	0-0	1	2	3	0	2	0	1	2	19	47
12	WATSON, DEARRIA	F	1	0-0	0-0	1-2	2	2	4	0	1	0	0	2	10	11
15	BROWN, KINLEY	G	17	5-8	3-5	4-6	0	4	4	0	2	1	0	1	16	22
20	TORRES, MIA	G	2	0-1	0-1	2-2	0	3	3	2	2	1	0	1	13	18
22	ROCHA, SAMANTHA	F	11	5-7	0-0	1-3	2	1	3	5	0	0	0	1	18	27
23	HAYDEN, ANGEL	G	8	4-5	0-1	0-0	2	5	7	2	5	1	0	1	24	50
24	FRENCH, PATRICIA	G	6	2-7	2-5	0-0	0	0	0	0	0	0	0	0	7	9
<b>TEAM</b>							1	2	3	0		0				
<b>TOTALS</b>			<b>108</b>	<b>39-70</b>	<b>15-33</b>	<b>15-21</b>	<b>12</b>	<b>40</b>	<b>52</b>	<b>12</b>	<b>23</b>	<b>14</b>	<b>2</b>	<b>12</b>	<b>199</b>	

*Shooting By Period*

Period	FG	FG%	3FG	3FG%	FT	FT%
1st Qtr	11-20	55%	5-11	45%	0-0	0%
2nd Qtr	8-15	53%	4-9	44%	9-12	75%
3rd Qtr	14-21	67%	3-5	60%	0-0	0%
4th Qtr	6-14	43%	3-8	38%	6-9	67%
1st Half	19-35	54%	9-20	45%	9-12	75%
2nd Half	20-35	57%	6-13	46%	6-9	67%
<b>Game</b>	<b>39-70</b>	<b>55.7%</b>	<b>15-33</b>	<b>45.5%</b>	<b>15-21</b>	<b>71.4%</b>

Deadball Rebounds: 2.0  
 Last FG: 4th-03:22  
 Biggest Run: 18-0  
 Largest lead: By 69 at 4-03  
 Technical Fouls: None.

Game Notes:

Officials: , ,  
 Attendance: 232

Start Time: 06:34 PM ET  
 End Time: 08:12 PM ET  
 Game Duration: 1:37

Score	1st	2nd	3rd	4th	TOT
NNM	10	11	9	11	<b>41</b>
ASU	27	29	31	21	<b>108</b>

NNM led for 0:46. ASU led for 38:34.  
 Game was tied for 0:28.  
 Times tied: 0      Lead Changes: 3

Points from	NNM	ASU
In the Paint	26	40
Off Turns	10	24
2nd Chance	8	13
Fast Break	4	21
Bench	9	57

**Official Box Score**  
**Northern N.M. vs Angelo State**  
**First Half Statistics Only**  
**November 26, 2019 at Junell Center/Stephens Arena - San Angelo**



**Northern N.M. 21**

No.	Player	S	Pts	FG	3FG	FT	OR	DR	TR	PF	A	TO	Blk	Stl	Min	+/-
01	WILKERSON, DESTINY		2	1-2	0-0	0-0	0	1	1	0	0	2	0	0	13	-28
04	DAVIS, KRISTEN	*	0	0-3	0-0	0-0	1	0	1	2	0	1	0	1	16	-19
11	EAVES, HALEY	*	3	1-9	1-6	0-0	0	0	0	0	0	3	0	2	19	-36
15	SMITH, AHMAYA	*	10	4-8	0-0	2-2	1	4	5	3	0	2	0	2	12	-13
22	PATTERSON, CHRIS'ALEE	*	0	0-5	0-2	0-0	0	2	2	0	2	4	0	1	16	-28
23	SAMUEL, TELYSSA		0	0-0	0-0	0-0	0	0	0	0	0	0	0	0	4	-16
25	LEWIS, ZHANE	*	2	1-1	0-0	0-0	1	0	1	1	0	1	0	1	7	-5
33	EVANS-COLLINS, SEE'AIRRAI		2	1-2	0-0	0-2	0	0	0	1	1	0	0	0	8	-25
35	KING, MACKENZIE		2	1-1	0-0	0-0	0	1	1	0	0	0	0	0	4	-5
	TEAM		0	0-0	0-0	0-0	1	2	3	0	0	0	0	0	0	0
<b>TOTALS</b>			<b>21</b>	<b>9-31</b>	<b>1-8</b>	<b>2-4</b>	<b>4</b>	<b>10</b>	<b>14</b>	<b>7</b>	<b>3</b>	<b>13</b>	<b>0</b>	<b>7</b>	<b>100</b>	

*Shooting By Period*

Period	FG	FG%	3FG	3FG%	FT	FT%
1st Qtr	5-16	31%	0-6	00%	0-2	00%
2nd Qtr	4-15	27%	1-2	50%	2-2	100%
1st Half	9-31	29%	1-8	13%	2-4	50%
Game	18-70	25.7%	2-15	13.3%	3-9	33.3%

*Deadball Rebounds: 3,0*  
*Last FG Half: NNM 2nd-00:49*

**Angelo State 56**

No.	Player	S	Pts	FG	3FG	FT	OR	DR	TR	PF	A	TO	Blk	Stl	Min	+/-
10	LLOYD, SAWYER	G	11	4-7	3-4	0-0	3	6	9	0	2	3	0	2	13	26
12	WATSON, DEARRIA	F	0	0-0	0-0	0-0	1	0	1	0	1	0	0	0	2	4
13	GUADIAN, MEGAN	G	0	0-2	0-2	0-0	0	2	2	0	0	1	0	1	9	4
15	BROWN, KINLEY	G	6	2-3	1-2	1-2	0	0	0	0	1	0	0	0	5	6
20	TORRES, MIA	G	0	0-0	0-0	0-0	0	1	1	0	0	1	0	0	3	6
22	ROCHA, SAMANTHA	F	1	0-0	0-0	1-2	1	1	2	2	0	0	0	1	9	7
23	HAYDEN, ANGEL	G	4	2-3	0-1	0-0	1	3	4	1	4	0	0	0	12	28
24	FRENCH, PATRICIA	G	3	1-2	1-2	0-0	0	0	0	0	0	0	0	0	1	3
32	MOORE, DE'ANIRA	F	14	4-5	1-1	5-6	0	2	2	0	0	0	0	0	9	24
02	SAMUEL, CATARA	G	2	1-2	0-1	0-0	1	1	2	0	6	1	0	1	13	29
03	DAVIS, ASIA	G	6	2-4	0-0	2-2	0	2	2	1	1	4	0	0	12	10
05	MAROV, LANA	G	9	3-7	3-7	0-0	1	1	2	0	0	0	1	2	12	28
	TEAM		0	0-0	0-0	0-0	0	0	0	0	0	0	0	0	0	0
<b>TOTALS</b>			<b>56</b>	<b>19-35</b>	<b>9-20</b>	<b>9-12</b>	<b>8</b>	<b>19</b>	<b>27</b>	<b>4</b>	<b>15</b>	<b>10</b>	<b>1</b>	<b>7</b>	<b>100</b>	

*Shooting By Period*

Period	FG	FG%	3FG	3FG%	FT	FT%
1st Qtr	11-20	55%	5-11	45%	0-0	0%
2nd Qtr	8-15	53%	4-9	44%	9-12	75%
1st Half	19-35	54%	9-20	45%	9-12	75%
Game	39-70	55.7%	15-33	45.5%	15-21	71.4%

*Deadball Rebounds: 2,0*  
*Last FG Half: ASU 2nd-00:06*

*Game Notes:*

Officials: , ,  
 Attendance: 232

Start Time: 06:34 PM ET  
 End Time: 08:12 PM ET  
 Game Duration: 1:37

Score	1st	2nd	3rd	4th	TOT
NNM	10	11	9	11	<b>41</b>
ASU	27	29	31	21	<b>108</b>

Points from (This Period)	NNM	ASU
In the Paint	12	14
Off Turns	10	16
2nd Chance	2	7
Fast Break	4	8
Bench	6	23

**Official Box Score**  
**Northern N.M. vs Angelo State**  
**First Quarter Statistics Only**  
**November 26, 2019 at Junell Center/Stephens Arena - San Angelo**



**Northern N.M. 10**

No.	Player	S	Pts	FG	3FG	FT	OR	DR	TR	PF	A	TO	Blk	Stl	Min	+/-
04	DAVIS, KRISTEN	*	0	0-1	0-0	0-0	0	0	0	0	0	1	0	1	6	-1
11	EAVES, HALEY	*	0	0-7	0-4	0-0	0	0	0	0	0	0	0	0	10	-17
15	SMITH, AHMAYA	*	6	3-4	0-0	0-0	1	2	3	0	0	1	0	0	6	-1
22	PATTERSON, CHRIS'ALEE	*	0	0-2	0-2	0-0	0	0	0	0	1	3	0	1	8	-19
25	LEWIS, ZHANE	*	2	1-1	0-0	0-0	1	0	1	0	0	1	0	1	5	-1
01	WILKERSON, DESTINY		0	0-0	0-0	0-0	0	0	0	0	0	0	0	0	5	-14
23	SAMUEL, TELYSSA		0	0-0	0-0	0-0	0	0	0	0	0	0	0	0	4	-16
33	EVANS-COLLINS, SEE'AIRRAI		2	1-1	0-0	0-2	0	0	0	0	0	0	0	0	5	-16
35	KING, MACKENZIE		0	0-0	0-0	0-0	0	0	0	0	0	0	0	0	0	0
	TEAM						0	2	2	0		0				
<b>TOTALS</b>			<b>10</b>	<b>5-16</b>	<b>0-6</b>	<b>0-2</b>	<b>2</b>	<b>4</b>	<b>6</b>	<b>0</b>	<b>1</b>	<b>6</b>	<b>0</b>	<b>3</b>	<b>50</b>	

*Shooting By Period*

Period	FG	FG%	3FG	3FG%	FT	FT%
1st Qtr	5-16	31%	0-6	00%	0-2	00%
2nd Qtr	4-15	27%	1-2	50%	2-2	100%
1st Half	5-16	31%	0-6	00%	0-2	00%
1st Half	9-31	29%	1-8	13%	2-4	50%
Game	18-70	25.7%	2-15	13.3%	3-9	33.3%

*Deadball Rebounds: 3,0*

**Angelo State 27**

No.	Player	S	Pts	FG	3FG	FT	OR	DR	TR	PF	A	TO	Blk	Stl	Min	+/-
02	SAMUEL, CATARA	G	0	0-0	0-0	0-0	1	0	1	0	5	0	0	0	8	17
03	DAVIS, ASIA	G	2	1-2	0-0	0-0	0	1	1	0	0	2	0	0	5	1
10	LLOYD, SAWYER	G	8	3-5	2-3	0-0	1	4	5	0	2	3	0	1	8	17
13	GUADIAN, MEGAN	G	0	0-2	0-2	0-0	0	1	1	0	0	1	0	1	5	1
32	MOORE, DE'ANIRA	F	9	4-5	1-1	0-0	0	2	2	0	0	0	0	0	7	17
05	MAROV, LANA	G	6	2-4	2-4	0-0	1	1	2	0	0	0	1	1	7	16
12	WATSON, DEARRIA	F	0	0-0	0-0	0-0	0	0	0	0	0	0	0	0	0	0
15	BROWN, KINLEY	G	0	0-0	0-0	0-0	0	0	0	0	0	0	0	0	0	0
20	TORRES, MIA	G	0	0-0	0-0	0-0	0	0	0	0	0	0	0	0	0	0
22	ROCHA, SAMANTHA	F	0	0-0	0-0	0-0	0	0	0	1	0	0	0	1	3	0
23	HAYDEN, ANGEL	G	2	1-2	0-1	0-0	1	1	2	0	3	0	0	0	7	16
24	FRENCH, PATRICIA	G	0	0-0	0-0	0-0	0	0	0	0	0	0	0	0	0	0
	TEAM						0	0	0	0		0				
<b>TOTALS</b>			<b>27</b>	<b>11-20</b>	<b>5-11</b>	<b>0-0</b>	<b>4</b>	<b>10</b>	<b>14</b>	<b>1</b>	<b>10</b>	<b>6</b>	<b>1</b>	<b>4</b>	<b>50</b>	

*Shooting By Period*

Period	FG	FG%	3FG	3FG%	FT	FT%
1st Qtr	11-20	55%	5-11	45%	0-0	0%
2nd Qtr	8-15	53%	4-9	44%	9-12	75%
1st Half	11-20	55%	5-11	45%	0-0	0%
1st Half	19-35	54%	9-20	45%	9-12	75%
Game	39-70	55.7%	15-33	45.5%	15-21	71.4%

*Deadball Rebounds: 2,0*

*Game Notes:*

Officials: , ,  
Attendance: 232

Start Time: 06:34 PM ET  
End Time: 08:12 PM ET  
Game Duration: 1:37

Score	1st	2nd	3rd	4th	TOT
NNM	10	11	9	11	<b>41</b>
ASU	27	29	31	21	<b>108</b>

Points from (This Period)	NNM	ASU
In the Paint	8	8
Off Turns	4	4
2nd Chance	2	3
Fast Break	0	2
Bench	2	8

**Official Play-By-Play**  
**Northern N.M. vs Angelo State**  
**First Quarter**  
**November 26, 2019 at Junell Center/Stephens Arena - San Angelo**



**Period 1**

**Starters:**

**Northern N.M.:** 4 DAVIS, KRISTEN; 11 EAVES, HALEY; 15 SMITH, AHMAYA; 22 PATTERSON, CHRIS'ALEE; 25 LEWIS, ZHANE;

**Angelo State:** 10 LLOYD, SAWYER (G); 13 GUADIAN, MEGAN (G); 32 MOORE, DE'ANIRA (F); 2 SAMUEL, CATARA (G); 3 DAVIS, ASIA (G);

Time	VISITORS: Northern N.M.	Score	Margin	HOME: Angelo State
09:43				TURNOVER (BADPASS) by LLOYD, SAWYER
09:43	STEAL by DAVIS, KRISTEN			
09:32	GOOD! LAYUP by LEWIS, ZHANE	0-2	V 2	
09:32	ASSIST by PATTERSON, CHRIS'ALEE			
09:21		3-2	H 1	GOOD! 3PTR by LLOYD, SAWYER
09:21				ASSIST by SAMUEL, CATARA
09:00	MISSED 3PTR by EAVES, HALEY			
08:56				REBOUND (DEF) by LLOYD, SAWYER
08:53				TURNOVER (BADPASS) by LLOYD, SAWYER
08:35	MISSED JUMPER by EAVES, HALEY			
08:32				REBOUND (DEF) by GUADIAN, MEGAN
08:30				TURNOVER (BADPASS) by GUADIAN, MEGAN
08:30	STEAL by PATTERSON, CHRIS'ALEE			
08:29	TURNOVER (OTHER) by PATTERSON, CHRIS'ALEE			
08:20				MISSED LAYUP by MOORE, DE'ANIRA
08:17	REBOUND (DEF) by SMITH, AHMAYA			
08:13	TURNOVER (LOSTBALL) by SMITH, AHMAYA			
08:13				STEAL by LLOYD, SAWYER
08:09				TURNOVER (TRAVEL) by DAVIS, ASIA
07:47	MISSED JUMPER by EAVES, HALEY			
07:43				REBOUND (DEF) by DAVIS, ASIA
07:39				MISSED 3PTR by LLOYD, SAWYER
07:35				REBOUND (OFF) by SAMUEL, CATARA
07:32				MISSED 3PTR by GUADIAN, MEGAN
07:28				REBOUND (OFF) by LLOYD, SAWYER
07:28				TURNOVER (LOSTBALL) by LLOYD, SAWYER
07:23	TURNOVER (BADPASS) by DAVIS, KRISTEN			
07:23				STEAL by GUADIAN, MEGAN
07:17		5-2	H 3	GOOD! LAYUP by MOORE, DE'ANIRA [FB/PNT]
07:17				ASSIST by SAMUEL, CATARA
06:49	MISSED 3PTR by PATTERSON, CHRIS'ALEE			
06:44	REBOUND (OFF) by SMITH, AHMAYA			
06:39	GOOD! JUMPER by SMITH, AHMAYA	5-4	H 1	
06:38				
06:38				SUB OUT: SAMUEL, CATARA
06:38				SUB OUT: LLOYD, SAWYER
06:38				SUB OUT: MOORE, DE'ANIRA
06:38				SUB IN: MAROV, LANA
06:38				SUB IN: ROCHA, SAMANTHA
06:38				SUB IN: HAYDEN, ANGEL
06:23		7-4	H 3	GOOD! LAYUP by DAVIS, ASIA [PNT]
05:59	MISSED LAYUP by DAVIS, KRISTEN			
05:55	REBOUND (OFF) by LEWIS, ZHANE			
05:54	TURNOVER (LOSTBALL) by LEWIS, ZHANE			
05:54				STEAL by ROCHA, SAMANTHA
05:46				MISSED 3PTR by GUADIAN, MEGAN
05:43	REBOUND (DEF) by TEAM			
05:24	TURNOVER (TRAVEL) by PATTERSON, CHRIS'ALEE			
05:24	SUB OUT: PATTERSON, CHRIS'ALEE			
05:24	SUB IN: WILKERSON, DESTINY			
05:15				TURNOVER (LOSTBALL) by DAVIS, ASIA
05:15	STEAL by LEWIS, ZHANE			
05:10	GOOD! LAYUP by SMITH, AHMAYA [PNT]	7-6	H 1	
05:02				MISSED JUMPER by DAVIS, ASIA
05:00	REBOUND (DEF) by TEAM			
04:58				SUB OUT: DAVIS, ASIA
04:58				SUB OUT: GUADIAN, MEGAN
04:58				SUB IN: SAMUEL, CATARA
04:58				SUB IN: LLOYD, SAWYER
04:58	SUB OUT: LEWIS, ZHANE			
04:58	SUB IN: EVANS-COLLINS, SEE'ARRAH			
04:45	GOOD! LAYUP by SMITH, AHMAYA [PNT]	7-8	V 1	
04:31				MISSED 3PTR by MAROV, LANA
04:24	REBOUND (DEF) by SMITH, AHMAYA			
04:20	MISSED JUMPER by SMITH, AHMAYA			
04:16				REBOUND (DEF) by LLOYD, SAWYER
04:10		9-8	H 1	GOOD! JUMPER by HAYDEN, ANGEL
04:10				ASSIST by SAMUEL, CATARA
03:51				FOUL (PERSONAL) by ROCHA, SAMANTHA
03:50				SUB OUT: ROCHA, SAMANTHA

Time	VISITORS: Northern N.M.	Score	Margin	HOME: Angelo State
03:50				SUB IN: MOORE, DE'ANIRA
03:50	SUB OUT: DAVIS, KRISTEN			
03:50	SUB OUT: SMITH, AHMAYA			
03:50	SUB IN: PATTERSON, CHRIS'ALEE			
03:50	SUB IN: SAMUEL, TELYSSA			
03:50	MISSED FT by EVANS-COLLINS, SEE'AIRRAH			
03:50	REBOUND (OFF) by TEAM			
03:50	MISSED FT by EVANS-COLLINS, SEE'AIRRAH			
03:49				REBOUND (DEF) by MOORE, DE'ANIRA
03:38		11-8	H 3	GOOD! LAYUP by MOORE, DE'ANIRA
03:38				ASSIST by SAMUEL, CATARA
03:29	TURNOVER (LOSTBALL) by PATTERSON, CHRIS'ALEE			
03:29				STEAL by MAROV, LANA
03:23		13-8	H 5	GOOD! JUMPER by LLOYD, SAWYER
03:23				ASSIST by HAYDEN, ANGEL
02:52	MISSED 3PTR by PATTERSON, CHRIS'ALEE			
02:50				REBOUND (DEF) by MOORE, DE'ANIRA
02:38		16-8	H 8	GOOD! 3PTR by LLOYD, SAWYER
02:38				ASSIST by SAMUEL, CATARA
02:25	MISSED 3PTR by EAVES, HALEY			
02:20				REBOUND (DEF) by LLOYD, SAWYER
02:15				MISSED JUMPER by LLOYD, SAWYER
02:12				REBOUND (OFF) by MAROV, LANA
02:09		19-8	H 11	GOOD! 3PTR by MAROV, LANA
02:09				ASSIST by HAYDEN, ANGEL
01:46	MISSED 3PTR by EAVES, HALEY			
01:42				REBOUND (DEF) by LLOYD, SAWYER
01:36		22-8	H 14	GOOD! 3PTR by MOORE, DE'ANIRA
01:36				ASSIST by LLOYD, SAWYER
01:15	MISSED 3PTR by EAVES, HALEY			
01:15				BLOCK by MAROV, LANA
01:06				REBOUND (DEF) by MAROV, LANA
01:06		25-8	H 17	GOOD! 3PTR by MAROV, LANA
01:06				ASSIST by HAYDEN, ANGEL
00:51	GOOD! LAYUP by EVANS-COLLINS, SEE'AIRRAH	25-10	H 15	
00:38		27-10	H 17	GOOD! LAYUP by MOORE, DE'ANIRA
00:38				ASSIST by LLOYD, SAWYER
00:17	MISSED LAYUP by EAVES, HALEY			
00:17				REBOUND (DEF) by HAYDEN, ANGEL
00:07				MISSED 3PTR by MAROV, LANA
00:04				REBOUND (OFF) by HAYDEN, ANGEL
00:00				MISSED 3PTR by HAYDEN, ANGEL
00:00				REBOUND (OFF) by TEAM

### Northern N.M. 10, Angelo State 27

Points from (This Period)	NNM	ASU
In the Paint	8	8
Off Turns	4	4
2nd Chance	2	3
Fast Break	0	2
Bench	2	8

**Official Box Score**  
**Northern N.M. vs Angelo State**  
**Second Quarter Statistics Only**  
**November 26, 2019 at Junell Center/Stephens Arena - San Angelo**



**Northern N.M. 11**

No.	Player	S	Pts	FG	3FG	FT	OR	DR	TR	PF	A	TO	Blk	Stl	Min	+/-
04	DAVIS, KRISTEN	*	0	0-2	0-0	0-0	1	0	1	2	0	0	0	0	10	-18
11	EAVES, HALEY	*	3	1-2	1-2	0-0	0	0	0	0	0	3	0	2	9	-19
15	SMITH, AHMAYA	*	4	1-4	0-0	2-2	0	2	2	3	0	1	0	2	6	-12
22	PATTERSON, CHRIS'ALEE	*	0	0-3	0-0	0-0	0	2	2	0	1	1	0	0	8	-9
25	LEWIS, ZHANE	*	0	0-0	0-0	0-0	0	0	0	1	0	0	0	0	2	-4
01	WILKERSON, DESTINY		2	1-2	0-0	0-0	0	1	1	0	0	2	0	0	8	-14
23	SAMUEL, TELYSSA		0	0-0	0-0	0-0	0	0	0	0	0	0	0	0	0	0
33	EVANS-COLLINS, SEE'AIRRAI		0	0-1	0-0	0-0	0	0	0	1	1	0	0	0	3	-9
35	KING, MACKENZIE		2	1-1	0-0	0-0	0	1	1	0	0	0	0	0	4	-5
TEAM							1	0	1	0	0	0	0	0	0	0
<b>TOTALS</b>			<b>11</b>	<b>4-15</b>	<b>1-2</b>	<b>2-2</b>	<b>2</b>	<b>6</b>	<b>8</b>	<b>7</b>	<b>2</b>	<b>7</b>	<b>0</b>	<b>4</b>	<b>50</b>	

*Shooting By Period*

Period	FG	FG%	3FG	3FG%	FT	FT%
3rd Qtr	4-18	22%	1-3	33%	0-2	00%
4th Qtr	5-21	24%	0-4	00%	1-3	33%
2nd Half	4-15	27%	1-2	50%	2-2	100%
2nd Half	9-39	23%	1-7	14%	1-5	20%
Game	18-70	25.7%	2-15	13.3%	3-9	33.3%

*Deadball Rebounds: 3,0*

**Angelo State 29**

No.	Player	S	Pts	FG	3FG	FT	OR	DR	TR	PF	A	TO	Blk	Stl	Min	+/-
02	SAMUEL, CATARA	G	2	1-2	0-1	0-0	0	1	1	0	1	1	0	1	5	12
03	DAVIS, ASIA	G	4	1-2	0-0	2-2	0	1	1	1	1	2	0	0	7	9
10	LLOYD, SAWYER	G	3	1-2	1-1	0-0	2	2	4	0	0	0	0	1	5	9
13	GUADIAN, MEGAN	G	0	0-0	0-0	0-0	0	1	1	0	0	0	0	0	4	3
32	MOORE, DE'ANIRA	F	5	0-0	0-0	5-6	0	0	0	0	0	0	0	0	2	7
05	MAROV, LANA	G	3	1-3	1-3	0-0	0	0	0	0	0	0	0	1	5	12
12	WATSON, DEARRIA	F	0	0-0	0-0	0-0	1	0	1	0	1	0	0	0	2	4
15	BROWN, KINLEY	G	6	2-3	1-2	1-2	0	0	0	0	1	0	0	0	5	6
20	TORRES, MIA	G	0	0-0	0-0	0-0	0	1	1	0	0	1	0	0	3	6
22	ROCHA, SAMANTHA	F	1	0-0	0-0	1-2	1	1	2	1	0	0	0	0	6	7
23	HAYDEN, ANGEL	G	2	1-1	0-0	0-0	0	2	2	1	1	0	0	0	5	12
24	FRENCH, PATRICIA	G	3	1-2	1-2	0-0	0	0	0	0	0	0	0	0	1	3
TEAM							0	0	0	0	0	0	0	0	0	
<b>TOTALS</b>			<b>29</b>	<b>8-15</b>	<b>4-9</b>	<b>9-12</b>	<b>4</b>	<b>9</b>	<b>13</b>	<b>3</b>	<b>5</b>	<b>4</b>	<b>0</b>	<b>3</b>	<b>50</b>	

*Shooting By Period*

Period	FG	FG%	3FG	3FG%	FT	FT%
3rd Qtr	14-21	67%	3-5	60%	0-0	0%
4th Qtr	6-14	43%	3-8	38%	6-9	67%
2nd Half	8-15	53%	4-9	44%	9-12	75%
2nd Half	20-35	57%	6-13	46%	6-9	67%
Game	39-70	55.7%	15-33	45.5%	15-21	71.4%

*Deadball Rebounds: 2,0*

*Game Notes:*

Officials: , ,  
Attendance: 232

Start Time: 06:34 PM ET  
End Time: 08:12 PM ET  
Game Duration: 1:37

Score	1st	2nd	3rd	4th	TOT
NNM	10	11	9	11	<b>41</b>
ASU	27	29	31	21	<b>108</b>

Points from (This Period)	NNM	ASU
In the Paint	4	6
Off Turns	6	12
2nd Chance	0	4
Fast Break	4	6
Bench	4	15

**Official Play-By-Play**  
**Northern N.M. vs Angelo State**  
**Second Quarter**  
**November 26, 2019 at Junell Center/Stephens Arena - San Angelo**



**Period 2**

**Starters:**

**Northern N.M.:** 4 DAVIS, KRISTEN; 11 EAVES, HALEY; 15 SMITH, AHMAYA; 22 PATTERSON, CHRIS'ALEE; 25 LEWIS, ZHANE;

**Angelo State:** 10 LLOYD, SAWYER (G); 13 GUADIAN, MEGAN (G); 32 MOORE, DE'ANIRA (F); 2 SAMUEL, CATARA (G); 3 DAVIS, ASIA (G);

Time	VISITORS: Northern N.M.	Score	Margin	HOME: Angelo State
10:00				SUB OUT: SAMUEL, CATARA
10:00				SUB OUT: MAROV, LANA
10:00				SUB OUT: HAYDEN, ANGEL
10:00				SUB OUT: MOORE, DE'ANIRA
10:00				SUB IN: DAVIS, ASIA
10:00				SUB IN: GUADIAN, MEGAN
10:00				SUB IN: BROWN, KINLEY
10:00				SUB IN: ROCHA, SAMANTHA
10:00	SUB OUT: EAVES, HALEY			
10:00	SUB OUT: SAMUEL, TELYSSA			
10:00	SUB OUT: EVANS-COLLINS, SEE'AIRRAH			
10:00	SUB IN: DAVIS, KRISTEN			
10:00	SUB IN: SMITH, AHMAYA			
10:00	SUB IN: KING, MACKENZIE			
09:53	MISSED JUMPER by DAVIS, KRISTEN			
09:50				REBOUND (DEF) by LLOYD, SAWYER
09:43	FOUL (PERSONAL) by DAVIS, KRISTEN			
09:41		28-10	H 18	GOOD! FT by BROWN, KINLEY
09:41				MISSED FT by BROWN, KINLEY
09:39	REBOUND (DEF) by KING, MACKENZIE			
09:38	TURNOVER (TRAVEL) by PATTERSON, CHRIS'ALEE			
09:36		30-10	H 20	GOOD! JUMPER by BROWN, KINLEY
09:36				ASSIST by DAVIS, ASIA
09:16	MISSED LAYUP by PATTERSON, CHRIS'ALEE			
09:12				REBOUND (DEF) by DAVIS, ASIA
09:07				TURNOVER (LOSTBALL) by DAVIS, ASIA
09:07	STEAL by SMITH, AHMAYA			
09:01	GOOD! LAYUP by SMITH, AHMAYA [FB/PNT]	30-12	H 18	
08:46				TURNOVER (LOSTBALL) by DAVIS, ASIA
08:46	STEAL by SMITH, AHMAYA			
08:41				FOUL (PERSONAL) by DAVIS, ASIA
08:41	GOOD! FT by SMITH, AHMAYA [FB]	30-13	H 17	
08:41	GOOD! FT by SMITH, AHMAYA [FB]	30-14	H 16	
08:41	SUB OUT: WILKERSON, DESTINY			
08:41	SUB OUT: KING, MACKENZIE			
08:41	SUB IN: EAVES, HALEY			
08:41	SUB IN: LEWIS, ZHANE			
08:27				MISSED JUMPER by DAVIS, ASIA
08:25				REBOUND (OFF) by ROCHA, SAMANTHA
08:25	FOUL (PERSONAL) by SMITH, AHMAYA			
08:25		31-14	H 17	GOOD! FT by ROCHA, SAMANTHA
08:25				MISSED FT by ROCHA, SAMANTHA
08:24				REBOUND (OFF) by LLOYD, SAWYER
08:18				MISSED 3PTR by BROWN, KINLEY
08:15				REBOUND (OFF) by LLOYD, SAWYER
08:14				MISSED LAYUP by LLOYD, SAWYER
08:10	REBOUND (DEF) by SMITH, AHMAYA			
08:02	MISSED JUMPER by SMITH, AHMAYA			
07:58	REBOUND (OFF) by DAVIS, KRISTEN			
07:54	MISSED JUMPER by PATTERSON, CHRIS'ALEE			
07:51				REBOUND (DEF) by GUADIAN, MEGAN
07:45	FOUL (PERSONAL) by LEWIS, ZHANE			
07:45				SUB OUT: LLOYD, SAWYER
07:45				SUB OUT: GUADIAN, MEGAN
07:45				SUB OUT: BROWN, KINLEY
07:45				SUB OUT: ROCHA, SAMANTHA
07:45				SUB IN: SAMUEL, CATARA
07:45				SUB IN: MAROV, LANA
07:45				SUB IN: HAYDEN, ANGEL
07:45				SUB IN: MOORE, DE'ANIRA
07:42	FOUL (PERSONAL) by SMITH, AHMAYA			
07:41		32-14	H 18	GOOD! FT by MOORE, DE'ANIRA
07:41		33-14	H 19	GOOD! FT by MOORE, DE'ANIRA
07:16	TURNOVER (TRAVEL) by EAVES, HALEY			
07:00	FOUL (PERSONAL) by DAVIS, KRISTEN			
07:00		34-14	H 20	GOOD! FT by MOORE, DE'ANIRA
07:00				MISSED FT by MOORE, DE'ANIRA
06:59	REBOUND (DEF) by PATTERSON, CHRIS'ALEE			
06:44	MISSED JUMPER by SMITH, AHMAYA			
06:41				REBOUND (DEF) by HAYDEN, ANGEL



Time	VISITORS: Northern N.M.	Score	Margin	HOME: Angelo State
06:27				MISSED 3PTR by SAMUEL, CATARA
06:22	REBOUND (DEF) by SMITH, AHMAYA			
06:18				FOUL (PERSONAL) by HAYDEN, ANGEL
06:17	SUB OUT: PATTERSON, CHRIS'ALEE			
06:17	SUB OUT: LEWIS, ZHANE			
06:17	SUB IN: WILKERSON, DESTINY			
06:17	SUB IN: EVANS-COLLINS, SEE'AIRRAH			
06:07	TURNOVER (DRIBBLING) by SMITH, AHMAYA			
05:56	FOUL (PERSONAL) by EVANS-COLLINS, SEE'AIRRAH			
05:55				SUB OUT: DAVIS, ASIA
05:55				SUB IN: LLOYD, SAWYER
05:55		35-14	H 21	GOOD! FT by MOORE, DE'ANIRA
05:55		36-14	H 22	GOOD! FT by MOORE, DE'ANIRA
05:39	TURNOVER (LOSTBALL) by WILKERSON, DESTINY			
05:39				STEAL by SAMUEL, CATARA
05:35		38-14	H 24	GOOD! LAYUP by SAMUEL, CATARA [FB/PNT]
05:32				
05:32				SUB OUT: MOORE, DE'ANIRA
05:32				SUB IN: ROCHA, SAMANTHA
05:22	MISSED LAYUP by EVANS-COLLINS, SEE'AIRRAH			
05:17				REBOUND (DEF) by LLOYD, SAWYER
05:12		41-14	H 27	GOOD! 3PTR by MAROV, LANA
05:12				ASSIST by SAMUEL, CATARA
04:54	MISSED LAYUP by SMITH, AHMAYA			
04:53	REBOUND (OFF) by TEAM			
04:53	SUB OUT: SMITH, AHMAYA			
04:53	SUB IN: PATTERSON, CHRIS'ALEE			
04:43	MISSED 3PTR by EAVES, HALEY			
04:41				REBOUND (DEF) by SAMUEL, CATARA
04:35				MISSED 3PTR by MAROV, LANA
04:29	REBOUND (DEF) by WILKERSON, DESTINY			
04:25	MISSED LAYUP by WILKERSON, DESTINY			
04:23				REBOUND (DEF) by HAYDEN, ANGEL
04:18		43-14	H 29	GOOD! LAYUP by HAYDEN, ANGEL [FB]
03:55	GOOD! 3PTR by EAVES, HALEY	43-17	H 26	
03:55	ASSIST by EVANS-COLLINS, SEE'AIRRAH			
03:40				TURNOVER (BADPASS) by SAMUEL, CATARA
03:40	STEAL by EAVES, HALEY			
03:36	TURNOVER (BADPASS) by EAVES, HALEY			
03:36				STEAL by LLOYD, SAWYER
03:27		46-17	H 29	GOOD! 3PTR by LLOYD, SAWYER
03:27				ASSIST by HAYDEN, ANGEL
03:10	TURNOVER (BADPASS) by EAVES, HALEY			
03:10				STEAL by MAROV, LANA
03:03				MISSED 3PTR by MAROV, LANA
02:59	REBOUND (DEF) by PATTERSON, CHRIS'ALEE			
02:52				FOUL (PERSONAL) by ROCHA, SAMANTHA
02:51				SUB OUT: SAMUEL, CATARA
02:51				SUB OUT: MAROV, LANA
02:51				SUB OUT: LLOYD, SAWYER
02:51				SUB OUT: HAYDEN, ANGEL
02:51				SUB IN: DAVIS, ASIA
02:51				SUB IN: GUADIAN, MEGAN
02:51				SUB IN: BROWN, KINLEY
02:51				SUB IN: TORRES, MIA
02:51	SUB OUT: PATTERSON, CHRIS'ALEE			
02:51	SUB OUT: EVANS-COLLINS, SEE'AIRRAH			
02:51	SUB IN: SMITH, AHMAYA			
02:51	SUB IN: KING, MACKENZIE			
02:50	TURNOVER (TRAVEL) by WILKERSON, DESTINY			
02:41		48-17	H 31	GOOD! LAYUP by DAVIS, ASIA
02:22	MISSED JUMPER by DAVIS, KRISTEN			
02:20				REBOUND (DEF) by ROCHA, SAMANTHA
02:16	FOUL (PERSONAL) by SMITH, AHMAYA			
02:16				SUB OUT: ROCHA, SAMANTHA
02:16				SUB IN: WATSON, DEARRIA
02:16	SUB OUT: SMITH, AHMAYA			
02:16	SUB IN: PATTERSON, CHRIS'ALEE			
02:16		49-17	H 32	GOOD! FT by DAVIS, ASIA [FB]
02:16		50-17	H 33	GOOD! FT by DAVIS, ASIA [FB]
02:00	MISSED LAYUP by PATTERSON, CHRIS'ALEE			
01:55				REBOUND (DEF) by TORRES, MIA
01:52				TURNOVER (BADPASS) by TORRES, MIA
01:52	STEAL by EAVES, HALEY			
01:32	GOOD! LAYUP by WILKERSON, DESTINY	50-19	H 31	
01:15		53-19	H 34	GOOD! 3PTR by BROWN, KINLEY
01:15				ASSIST by WATSON, DEARRIA
00:49	GOOD! JUMPER by KING, MACKENZIE	53-21	H 32	
00:49	ASSIST by PATTERSON, CHRIS'ALEE			
00:45				TIMEOUT 30SEC

Time	VISITORS: Northern N.M.	Score	Margin	HOME: Angelo State
00:45				SUB IN: FRENCH, PATRICIA
00:29				MISSED 3PTR by FRENCH, PATRICIA
00:24				REBOUND (OFF) by WATSON, DEARRIA
00:06		56-21	H 35	GOOD! 3PTR by FRENCH, PATRICIA
00:06				ASSIST by BROWN, KINLEY

**Northern N.M. 21, Angelo State 56**

Points from (This Period)	NNM	ASU
In the Paint	4	6
Off Turns	6	12
2nd Chance	0	4
Fast Break	4	6
Bench	4	15

**Official Box Score**  
**Northern N.M. vs Angelo State**  
**Second Half Statistics Only**  
**November 26, 2019 at Junell Center/Stephens Arena - San Angelo**



**Northern N.M. 20**

No.	Player	S	Pts	FG	3FG	FT	OR	DR	TR	PF	A	TO	Blk	Stl	Min	+/-
01	WILKERSON, DESTINY		3	1-2	0-0	1-1	1	1	2	0	0	2	0	0	13	-21
04	DAVIS, KRISTEN	*	0	0-3	0-0	0-0	1	0	1	0	0	0	0	0	14	-18
11	EAVES, HALEY	*	0	0-4	0-3	0-0	0	2	2	2	1	1	0	0	10	-17
15	SMITH, AHMAYA	*	4	2-11	0-1	0-0	2	5	7	1	0	2	0	1	18	-29
22	PATTERSON, CHRIS'ALEE	*	9	4-10	1-3	0-0	1	2	3	1	0	1	0	0	17	-29
23	SAMUEL, TELYSSA		0	0-2	0-0	0-0	3	0	3	1	0	0	0	0	8	-12
25	LEWIS, ZHANE	*	4	2-6	0-0	0-2	2	0	2	0	0	2	1	0	9	-16
33	EVANS-COLLINS, SEE'AIRRAI		0	0-1	0-0	0-0	0	2	2	1	0	0	0	0	5	-12
35	KING, MACKENZIE		0	0-0	0-0	0-2	0	0	0	1	0	1	0	0	6	-6
	TEAM		0	0-0	0-0	0-0	1	1	2	0	0	0	0	0	0	0
<b>TOTALS</b>			<b>20</b>	<b>9-39</b>	<b>1-7</b>	<b>1-5</b>	<b>11</b>	<b>13</b>	<b>24</b>	<b>7</b>	<b>1</b>	<b>9</b>	<b>1</b>	<b>1</b>	<b>99</b>	

*Shooting By Period*

Period	FG	FG%	3FG	3FG%	FT	FT%
3rd Qtr	4-18	22%	1-3	33%	0-2	00%
4th Qtr	5-21	24%	0-4	00%	1-3	33%
2nd Half	9-39	23%	1-7	14%	1-5	20%
Game	18-70	25.7%	2-15	13.3%	3-9	33.3%

*Deadball Rebounds: 3,0*  
*Last FG Half: NNM 4th-02:10*

**Angelo State 52**

No.	Player	S	Pts	FG	3FG	FT	OR	DR	TR	PF	A	TO	Blk	Stl	Min	+/-
10	LLOYD, SAWYER	G	3	1-3	1-2	0-0	0	1	1	0	0	0	0	0	7	11
12	WATSON, DEARRIA	F	1	0-0	0-0	1-2	1	2	3	0	0	0	0	2	8	7
13	GUADIAN, MEGAN	G	0	0-2	0-1	0-0	0	1	1	0	0	0	0	0	8	13
15	BROWN, KINLEY	G	11	3-5	2-3	3-4	0	4	4	0	1	1	0	1	12	16
20	TORRES, MIA	G	2	0-1	0-1	2-2	0	2	2	2	2	0	0	1	10	12
22	ROCHA, SAMANTHA	F	10	5-7	0-0	0-1	1	0	1	3	0	0	0	0	10	20
23	HAYDEN, ANGEL	G	4	2-2	0-0	0-0	1	2	3	1	1	1	0	1	12	22
24	FRENCH, PATRICIA	G	3	1-5	1-3	0-0	0	0	0	0	0	0	0	0	6	6
32	MOORE, DE'ANIRA	F	2	1-1	0-0	0-0	0	1	1	1	1	1	1	0	6	11
02	SAMUEL, CATARA	G	9	4-4	1-1	0-0	0	3	3	1	0	1	0	0	5	8
03	DAVIS, ASIA	G	4	2-3	0-0	0-0	0	2	2	0	1	0	0	0	8	15
05	MAROV, LANA	G	3	1-2	1-2	0-0	0	1	1	0	2	0	0	0	8	19
	TEAM		0	0-0	0-0	0-0	1	2	3	0	0	0	0	0	0	0
<b>TOTALS</b>			<b>52</b>	<b>20-35</b>	<b>6-13</b>	<b>6-9</b>	<b>4</b>	<b>21</b>	<b>25</b>	<b>8</b>	<b>8</b>	<b>4</b>	<b>1</b>	<b>5</b>	<b>99</b>	

*Shooting By Period*

Period	FG	FG%	3FG	3FG%	FT	FT%
3rd Qtr	14-21	67%	3-5	60%	0-0	0%
4th Qtr	6-14	43%	3-8	38%	6-9	67%
2nd Half	20-35	57%	6-13	46%	6-9	67%
Game	39-70	55.7%	15-33	45.5%	15-21	71.4%

*Deadball Rebounds: 2,0*  
*Last FG Half: ASU 4th-03:22*

*Game Notes:*

Officials: , ,  
 Attendance: 232

Start Time: 06:34 PM ET  
 End Time: 08:12 PM ET  
 Game Duration: 1:37

Score	1st	2nd	3rd	4th	TOT
NNM	10	11	9	11	41
ASU	27	29	31	21	108

Points from (This Period)	NNM	ASU
In the Paint	14	26
Off Turns	0	8
2nd Chance	6	6
Fast Break	0	13
Bench	3	34

**Official Box Score**  
**Northern N.M. vs Angelo State**  
**Third Quarter Statistics Only**  
**November 26, 2019 at Junell Center/Stephens Arena - San Angelo**



**Northern N.M. 20**

No.	Player	S	Pts	FG	3FG	FT	OR	DR	TR	PF	A	TO	Blk	Stl	Min	+/-
04	DAVIS, KRISTEN	*	0	0-2	0-0	0-0	0	0	0	0	0	0	0	0	6	-9
11	EAVES, HALEY	*	0	0-0	0-0	0-0	0	1	1	0	0	0	0	0	4	-8
15	SMITH, AHMAYA	*	2	1-5	0-1	0-0	0	3	3	0	0	2	0	1	10	-22
22	PATTERSON, CHRIS'ALEE	*	5	2-5	1-2	0-0	0	0	0	0	0	0	0	0	9	-20
25	LEWIS, ZHANE	*	2	1-4	0-0	0-0	2	0	2	0	0	2	1	0	7	-13
01	WILKERSON, DESTINY		0	0-0	0-0	0-0	1	0	1	0	0	1	0	0	5	-16
23	SAMUEL, TELYSSA		0	0-1	0-0	0-0	1	0	1	0	0	0	0	0	6	-11
33	EVANS-COLLINS, SEE'AIRRAI		0	0-1	0-0	0-0	0	0	0	1	0	0	0	0	1	-4
35	KING, MACKENZIE		0	0-0	0-0	0-2	0	0	0	0	0	0	0	0	2	-7
	TEAM						0	0	0	0		0				
<b>TOTALS</b>			<b>9</b>	<b>4-18</b>	<b>1-3</b>	<b>0-2</b>	<b>4</b>	<b>4</b>	<b>8</b>	<b>1</b>	<b>0</b>	<b>5</b>	<b>1</b>	<b>1</b>	<b>50</b>	

*Shooting By Period*

Period	FG	FG%	3FG	3FG%	FT	FT%
2nd Half	0-0	0%	0-0	0%	0-0	0%
Game	18-70	25.7%	2-15	13.3%	3-9	33.3%

*Deadball Rebounds: 3,0*

**Angelo State 52**

No.	Player	S	Pts	FG	3FG	FT	OR	DR	TR	PF	A	TO	Blk	Stl	Min	+/-
02	SAMUEL, CATARA	G	9	4-4	1-1	0-0	0	3	3	1	0	1	0	0	5	8
03	DAVIS, ASIA	G	4	2-3	0-0	0-0	0	2	2	0	1	0	0	0	8	15
10	LLOYD, SAWYER	G	3	1-2	1-1	0-0	0	0	0	0	0	0	0	0	6	11
13	GUADIAN, MEGAN	G	0	0-2	0-1	0-0	0	0	0	0	0	0	0	0	6	9
32	MOORE, DE'ANIRA	F	2	1-1	0-0	0-0	0	1	1	1	1	1	1	0	6	11
05	MAROV, LANA	G	0	0-1	0-1	0-0	0	1	1	0	2	0	0	0	5	14
12	WATSON, DEARRIA	F	0	0-0	0-0	0-0	0	0	0	0	0	0	0	0	0	0
15	BROWN, KINLEY	G	5	2-2	1-1	0-0	0	1	1	0	0	0	0	1	4	11
20	TORRES, MIA	G	0	0-0	0-0	0-0	0	0	0	0	0	0	0	0	1	2
22	ROCHA, SAMANTHA	F	6	3-5	0-0	0-0	1	0	1	1	0	0	0	0	5	13
23	HAYDEN, ANGEL	G	2	1-1	0-0	0-0	1	1	2	0	1	0	0	1	5	16
24	FRENCH, PATRICIA	G	0	0-0	0-0	0-0	0	0	0	0	0	0	0	0	0	0
	TEAM						1	2	3	0		0				
<b>TOTALS</b>			<b>31</b>	<b>14-21</b>	<b>3-5</b>	<b>0-0</b>	<b>3</b>	<b>11</b>	<b>14</b>	<b>3</b>	<b>5</b>	<b>2</b>	<b>1</b>	<b>2</b>	<b>50</b>	

*Shooting By Period*

Period	FG	FG%	3FG	3FG%	FT	FT%
2nd Half	0-0	0%	0-0	0%	0-0	0%
Game	39-70	55.7%	15-33	45.5%	15-21	71.4%

*Deadball Rebounds: 2,0*

*Game Notes:*

Officials: , ,  
 Attendance: 232

Start Time: 06:34 PM ET  
 End Time: 08:12 PM ET  
 Game Duration: 1:37

Score	1st	2nd	3rd	4th	TOT
NNM	10	11	9	11	<b>41</b>
ASU	27	29	31	21	<b>108</b>

Points from (This Period)	NNM	ASU
In the Paint	4	20
Off Turns	0	6
2nd Chance	2	6
Fast Break	0	6
Bench	0	13

**Official Play-By-Play**  
**Northern N.M. vs Angelo State**  
**Third Quarter**  
**November 26, 2019 at Junell Center/Stephens Arena - San Angelo**



**Period 3**

**Starters:**

**Northern N.M.:** 4 DAVIS, KRISTEN; 11 EAVES, HALEY; 15 SMITH, AHMAYA; 22 PATTERSON, CHRIS'ALEE; 25 LEWIS, ZHANE;

**Angelo State:** 10 LLOYD, SAWYER (G); 13 GUADIAN, MEGAN (G); 32 MOORE, DE'ANIRA (F); 2 SAMUEL, CATARA (G); 3 DAVIS, ASIA (G);

Time	VISITORS: Northern N.M.	Score	Margin	HOME: Angelo State
00:45				SUB OUT: GUADIAN, MEGAN
10:00				SUB OUT: WATSON, DEARRIA
10:00				SUB OUT: BROWN, KINLEY
10:00				SUB OUT: TORRES, MIA
10:00				SUB OUT: FRENCH, PATRICIA
10:00				SUB IN: SAMUEL, CATARA
10:00				SUB IN: LLOYD, SAWYER
10:00				SUB IN: GUADIAN, MEGAN
10:00				SUB IN: MOORE, DE'ANIRA
10:00	SUB OUT: WILKERSON, DESTINY			
10:00	SUB IN: SAMUEL, TELYSSA			
09:51		58-21	H 37	GOOD! LAYUP by MOORE, DE'ANIRA
09:32	MISSED JUMPER by LEWIS, ZHANE			
09:22				REBOUND (DEF) by SAMUEL, CATARA
09:15				MISSED JUMPER by GUADIAN, MEGAN
09:11	REBOUND (DEF) by SMITH, AHMAYA			
09:09	GOOD! 3PTR by PATTERSON, CHRIS'ALEE	58-24	H 34	
09:07				FOUL (PERSONAL) by MOORE, DE'ANIRA
10:00	SUB OUT: KING, MACKENZIE			
10:00	SUB IN: LEWIS, ZHANE			
08:57	MISSED LAYUP by LEWIS, ZHANE			
08:54				REBOUND (DEF) by MOORE, DE'ANIRA
08:44				MISSED LAYUP by DAVIS, ASIA
08:38	REBOUND (DEF) by SMITH, AHMAYA			
08:34	GOOD! LAYUP by SMITH, AHMAYA [PNT]	58-26	H 32	
10:00	SUB OUT: EAVES, HALEY			
10:00	SUB IN: SMITH, AHMAYA			
08:23		61-26	H 35	GOOD! 3PTR by SAMUEL, CATARA
08:23				TIMEOUT 30SEC
08:23	SUB OUT: SAMUEL, TELYSSA			
08:23	SUB IN: EAVES, HALEY			
08:06	TURNOVER (BADPASS) by SMITH, AHMAYA			
07:50		63-26	H 37	GOOD! JUMPER by DAVIS, ASIA
07:34	MISSED LAYUP by PATTERSON, CHRIS'ALEE			
07:33				REBOUND (DEF) by TEAM
07:22				MISSED 3PTR by GUADIAN, MEGAN
07:20	REBOUND (DEF) by EAVES, HALEY			
07:14	TURNOVER (TRAVEL) by SMITH, AHMAYA			
07:14				SUB OUT: MOORE, DE'ANIRA
07:14				SUB IN: ROCHA, SAMANTHA
06:56				MISSED JUMPER by ROCHA, SAMANTHA
06:56	BLOCK by LEWIS, ZHANE			
06:54				REBOUND (OFF) by TEAM
06:52		65-26	H 39	GOOD! JUMPER by SAMUEL, CATARA
06:52				ASSIST by DAVIS, ASIA
06:31	MISSED JUMPER by DAVIS, KRISTEN			
06:28	REBOUND (OFF) by LEWIS, ZHANE			
06:26	GOOD! LAYUP by LEWIS, ZHANE	65-28	H 37	
06:10		67-28	H 39	GOOD! LAYUP by SAMUEL, CATARA
05:52	MISSED JUMPER by DAVIS, KRISTEN			
05:50	REBOUND (OFF) by LEWIS, ZHANE			
05:49	MISSED JUMPER by LEWIS, ZHANE			
05:47				REBOUND (DEF) by SAMUEL, CATARA
05:42		69-28	H 41	GOOD! LAYUP by DAVIS, ASIA [FB]
05:32	MISSED LAYUP by SMITH, AHMAYA			
05:29				REBOUND (DEF) by DAVIS, ASIA
05:24				SUB OUT: SAMUEL, CATARA
05:24				SUB OUT: DAVIS, ASIA
05:24				SUB IN: MAROV, LANA
05:24				SUB IN: HAYDEN, ANGEL
05:24	SUB OUT: EAVES, HALEY			
05:24	SUB OUT: LEWIS, ZHANE			
05:24	SUB IN: WILKERSON, DESTINY			
05:24	SUB IN: KING, MACKENZIE			
05:17		72-28	H 44	GOOD! 3PTR by LLOYD, SAWYER
05:17				ASSIST by MAROV, LANA
04:59	GOOD! JUMPER by PATTERSON, CHRIS'ALEE	72-30	H 42	
04:49		74-30	H 44	GOOD! LAYUP by ROCHA, SAMANTHA [PNT]
04:25				FOUL (PERSONAL) by ROCHA, SAMANTHA
04:23				

Time	VISITORS: Northern N.M.	Score	Margin	HOME: Angelo State
04:23				SUB OUT: GUADIAN, MEGAN
04:23				SUB IN: BROWN, KINLEY
04:23	SUB OUT: DAVIS, KRISTEN			
04:23	SUB IN: EVANS-COLLINS, SEE'AIRRAH			
04:23	MISSED FT by KING, MACKENZIE			
04:23	REBOUND (OFF) by TEAM			
04:23	MISSED FT by KING, MACKENZIE			
04:21				REBOUND (DEF) by MAROV, LANA
04:15				MISSED LAYUP by ROCHA, SAMANTHA
04:12				REBOUND (OFF) by ROCHA, SAMANTHA
04:11		76-30	H 46	GOOD! LAYUP by ROCHA, SAMANTHA
03:57	MISSED 3PTR by PATTERSON, CHRIS'ALEE			
03:54				REBOUND (DEF) by TEAM
03:54	SUB OUT: KING, MACKENZIE			
03:54	SUB IN: SAMUEL, TELYSSA			
03:44				MISSED JUMPER by LLOYD, SAWYER
03:42	REBOUND (DEF) by SMITH, AHMAYA			
03:38				SUB OUT: LLOYD, SAWYER
03:38				SUB IN: DAVIS, ASIA
03:34	MISSED LAYUP by EVANS-COLLINS, SEE'AIRRAH			
03:32				REBOUND (DEF) by BROWN, KINLEY
03:32	FOUL (PERSONAL) by EVANS-COLLINS, SEE'AIRRAH			
03:17		78-30	H 48	GOOD! JUMPER by ROCHA, SAMANTHA [PNT]
03:17				ASSIST by MAROV, LANA
03:06				SUB OUT: ROCHA, SAMANTHA
03:06				SUB IN: MOORE, DE'ANIRA
03:06	SUB OUT: EVANS-COLLINS, SEE'AIRRAH			
03:06	SUB IN: LEWIS, ZHANE			
02:51	MISSED JUMPER by SMITH, AHMAYA			
02:48				REBOUND (DEF) by DAVIS, ASIA
02:40				MISSED 3PTR by MAROV, LANA
02:37				REBOUND (OFF) by HAYDEN, ANGEL
02:36		80-30	H 50	GOOD! LAYUP by HAYDEN, ANGEL
02:17	MISSED JUMPER by PATTERSON, CHRIS'ALEE			
02:13				REBOUND (DEF) by HAYDEN, ANGEL
02:07		83-30	H 53	GOOD! 3PTR by BROWN, KINLEY
02:07				ASSIST by MOORE, DE'ANIRA
01:42	MISSED JUMPER by SAMUEL, TELYSSA			
01:42				BLOCK by MOORE, DE'ANIRA
01:35	REBOUND (OFF) by WILKERSON, DESTINY			
01:31	TURNOVER (LOSTBALL) by LEWIS, ZHANE			
01:31				STEAL by BROWN, KINLEY
01:26		85-30	H 55	GOOD! LAYUP by BROWN, KINLEY [FB]
01:26				ASSIST by HAYDEN, ANGEL
00:58	TURNOVER (BADPASS) by LEWIS, ZHANE			
00:42				SUB OUT: DAVIS, ASIA
00:42				SUB OUT: MAROV, LANA
00:42				SUB OUT: BROWN, KINLEY
00:42				SUB IN: SAMUEL, CATARA
00:42				SUB IN: TORRES, MIA
00:42				SUB IN: ROCHA, SAMANTHA
00:42	SUB OUT: PATTERSON, CHRIS'ALEE			
00:42	SUB OUT: SAMUEL, TELYSSA			
00:42	SUB IN: EAVES, HALEY			
00:42	SUB IN: KING, MACKENZIE			
00:42				TURNOVER (3SEC) by MOORE, DE'ANIRA
00:42	SUB OUT: LEWIS, ZHANE			
00:42	SUB IN: SAMUEL, TELYSSA			
00:26	TURNOVER (LOSTBALL) by WILKERSON, DESTINY			
00:26				STEAL by HAYDEN, ANGEL
00:19				TURNOVER (LOSTBALL) by SAMUEL, CATARA
00:19	STEAL by SMITH, AHMAYA			
00:14	MISSED LAYUP by SMITH, AHMAYA			
00:13	REBOUND (OFF) by SAMUEL, TELYSSA			
00:13				FOUL (PERSONAL) by SAMUEL, CATARA
00:11	MISSED 3PTR by SMITH, AHMAYA			
00:08				REBOUND (DEF) by SAMUEL, CATARA
00:04		87-30	H 57	GOOD! LAYUP by SAMUEL, CATARA [FB]

### Northern N.M. 30, Angelo State 87

Points from (This Period)	NNM	ASU
In the Paint	4	20
Off Turns	0	6
2nd Chance	2	6
Fast Break	0	6
Bench	0	13

**Official Box Score**  
**Northern N.M. vs Angelo State**  
**Fourth Quarter Statistics Only**  
**November 26, 2019 at Junell Center/Stephens Arena - San Angelo**



**Northern N.M. 11**

No.	Player	S	Pts	FG	3FG	FT	OR	DR	TR	PF	A	TO	Blk	Stl	Min	+/-
04	DAVIS, KRISTEN	*	0	0-1	0-0	0-0	1	0	1	0	0	0	0	0	8	-9
11	EAVES, HALEY	*	0	0-4	0-3	0-0	0	1	1	2	1	1	0	0	6	-9
15	SMITH, AHMAYA	*	2	1-6	0-0	0-0	2	2	4	1	0	0	0	0	8	-7
22	PATTERSON, CHRIS'ALEE	*	4	2-5	0-1	0-0	1	2	3	1	0	1	0	0	8	-9
25	LEWIS, ZHANE	*	2	1-2	0-0	0-2	0	0	0	0	0	0	0	0	2	-3
01	WILKERSON, DESTINY		3	1-2	0-0	1-1	0	1	1	0	0	1	0	0	8	-5
23	SAMUEL, TELYSSA		0	0-1	0-0	0-0	2	0	2	1	0	0	0	0	2	-1
33	EVANS-COLLINS, SEE'AIRRAI		0	0-0	0-0	0-0	0	2	2	0	0	0	0	0	4	-8
35	KING, MACKENZIE		0	0-0	0-0	0-0	0	0	0	1	0	1	0	0	4	1
<b>TEAM</b>							1	1	2	0		0				
<b>TOTALS</b>			<b>11</b>	<b>5-21</b>	<b>0-4</b>	<b>1-3</b>	<b>7</b>	<b>9</b>	<b>16</b>	<b>6</b>	<b>1</b>	<b>4</b>	<b>0</b>	<b>0</b>	<b>49</b>	

*Shooting By Period*

Period	FG	FG%	3FG	3FG%	FT	FT%
Game	18-70	25.7%	2-15	13.3%	3-9	33.3%

*Deadball Rebounds: 3,0*

**Angelo State 21**

No.	Player	S	Pts	FG	3FG	FT	OR	DR	TR	PF	A	TO	Blk	Stl	Min	+/-
02	SAMUEL, CATARA	G	0	0-0	0-0	0-0	0	0	0	0	0	0	0	0	0	0
03	DAVIS, ASIA	G	0	0-0	0-0	0-0	0	0	0	0	0	0	0	0	0	0
10	LLOYD, SAWYER	G	0	0-1	0-1	0-0	0	1	1	0	0	0	0	0	1	0
13	GUADIAN, MEGAN	G	0	0-0	0-0	0-0	0	1	1	0	0	0	0	0	2	4
32	MOORE, DE'ANIRA	F	0	0-0	0-0	0-0	0	0	0	0	0	0	0	0	0	0
05	MAROV, LANA	G	3	1-1	1-1	0-0	0	0	0	0	0	0	0	0	3	5
12	WATSON, DEARRIA	F	1	0-0	0-0	1-2	1	2	3	0	0	0	0	2	8	7
15	BROWN, KINLEY	G	6	1-3	1-2	3-4	0	3	3	0	1	1	0	0	8	5
20	TORRES, MIA	G	2	0-1	0-1	2-2	0	2	2	2	2	0	0	1	9	10
22	ROCHA, SAMANTHA	F	4	2-2	0-0	0-1	0	0	0	2	0	0	0	0	5	7
23	HAYDEN, ANGEL	G	2	1-1	0-0	0-0	0	1	1	1	0	1	0	0	7	6
24	FRENCH, PATRICIA	G	3	1-5	1-3	0-0	0	0	0	0	0	0	0	0	6	6
<b>TEAM</b>							0	0	0	0		0				
<b>TOTALS</b>			<b>21</b>	<b>6-14</b>	<b>3-8</b>	<b>6-9</b>	<b>1</b>	<b>10</b>	<b>11</b>	<b>5</b>	<b>3</b>	<b>2</b>	<b>0</b>	<b>3</b>	<b>49</b>	

*Shooting By Period*

Period	FG	FG%	3FG	3FG%	FT	FT%
Game	39-70	55.7%	15-33	45.5%	15-21	71.4%

*Deadball Rebounds: 2,0*

Game Notes:

Officials: , ,  
Attendance: 232

Start Time: 06:34 PM ET  
End Time: 08:12 PM ET  
Game Duration: 1:37

Score	1st	2nd	3rd	4th	TOT
NNM	10	11	9	11	<b>41</b>
ASU	27	29	31	21	<b>108</b>

Points from (This Period)	NNM	ASU
In the Paint	10	6
Off Turns	0	2
2nd Chance	4	0
Fast Break	0	7
Bench	3	21

**Official Play-By-Play**  
**Northern N.M. vs Angelo State**  
**Fourth Quarter**  
**November 26, 2019 at Junell Center/Stephens Arena - San Angelo**



**Period 4**

**Starters:**

**Northern N.M.:** 4 DAVIS, KRISTEN; 11 EAVES, HALEY; 15 SMITH, AHMAYA; 22 PATTERSON, CHRIS'ALEE; 25 LEWIS, ZHANE;

**Angelo State:** 10 LLOYD, SAWYER (G); 13 GUADIAN, MEGAN (G); 32 MOORE, DE'ANIRA (F); 2 SAMUEL, CATARA (G); 3 DAVIS, ASIA (G);

Time	VISITORS: Northern N.M.	Score	Margin	HOME: Angelo State
10:00				SUB OUT: SAMUEL, CATARA
10:00				SUB OUT: HAYDEN, ANGEL
10:00				SUB OUT: MOORE, DE'ANIRA
10:00				SUB IN: WATSON, DEARRIA
10:00				SUB IN: GUADIAN, MEGAN
10:00				SUB IN: BROWN, KINLEY
09:48				TURNOVER (TRAVEL) by BROWN, KINLEY
09:32	MISSED 3PTR by EAVES, HALEY			
09:28	REBOUND (OFF) by SAMUEL, TELYSSA			
09:16	MISSED JUMPER by SAMUEL, TELYSSA			
09:13				REBOUND (DEF) by BROWN, KINLEY
09:10	FOUL (PERSONAL) by KING, MACKENZIE			
09:10		88-30	H 58	GOOD! FT by BROWN, KINLEY [FB]
09:10				MISSED FT by BROWN, KINLEY
09:09	REBOUND (DEF) by SMITH, AHMAYA			
09:05	MISSED JUMPER by SMITH, AHMAYA			
09:01	REBOUND (OFF) by SAMUEL, TELYSSA			
08:54				FOUL (PERSONAL) by TORRES, MIA
08:42	MISSED JUMPER by WILKERSON, DESTINY			
08:39	REBOUND (OFF) by SMITH, AHMAYA			
08:38	MISSED LAYUP by SMITH, AHMAYA			
08:27	REBOUND (OFF) by TEAM			
08:22	GOOD! LAYUP by SMITH, AHMAYA [PNT]	88-32	H 56	
08:22	ASSIST by EAVES, HALEY			
08:18		90-32	H 58	GOOD! LAYUP by ROCHA, SAMANTHA [FB]
08:18	FOUL (PERSONAL) by SAMUEL, TELYSSA			
08:18	SUB OUT: SMITH, AHMAYA			
08:18	SUB OUT: KING, MACKENZIE			
08:18	SUB IN: DAVIS, KRISTEN			
08:18	SUB IN: EVANS-COLLINS, SEE'AIRRAH			
08:18				MISSED FT by ROCHA, SAMANTHA
08:16	REBOUND (DEF) by EVANS-COLLINS, SEE'AIRRAH			
08:03	MISSED 3PTR by PATTERSON, CHRIS'ALEE			
07:57				REBOUND (DEF) by GUADIAN, MEGAN
07:49		93-32	H 61	GOOD! 3PTR by BROWN, KINLEY
07:49				ASSIST by TORRES, MIA
08:18	SUB OUT: SAMUEL, TELYSSA			
08:18	SUB IN: PATTERSON, CHRIS'ALEE			
07:34				FOUL (PERSONAL) by ROCHA, SAMANTHA
07:33				SUB OUT: WATSON, DEARRIA
07:33				SUB OUT: GUADIAN, MEGAN
07:33				SUB IN: MAROV, LANA
07:33				SUB IN: HAYDEN, ANGEL
07:31	FOUL (OFF) by EAVES, HALEY			
07:31	TURNOVER (OFFENSIVE) by EAVES, HALEY			
07:03				MISSED 3PTR by BROWN, KINLEY
06:59	REBOUND (DEF) by EAVES, HALEY			
06:49	MISSED 3PTR by EAVES, HALEY			
06:46				REBOUND (DEF) by TORRES, MIA
06:39	FOUL (PERSONAL) by EAVES, HALEY			
06:39				SUB OUT: BROWN, KINLEY
06:39				SUB OUT: ROCHA, SAMANTHA
06:39				SUB IN: WATSON, DEARRIA
06:39				SUB IN: FRENCH, PATRICIA
06:39	SUB OUT: WILKERSON, DESTINY			
06:39	SUB IN: SMITH, AHMAYA			
06:39		94-32	H 62	GOOD! FT by TORRES, MIA
06:39		95-32	H 63	GOOD! FT by TORRES, MIA
06:39				SUB OUT: TORRES, MIA
06:39				SUB IN: LLOYD, SAWYER
06:30	MISSED LAYUP by SMITH, AHMAYA			
06:27				REBOUND (DEF) by LLOYD, SAWYER
06:15				MISSED 3PTR by LLOYD, SAWYER
06:13				REBOUND (OFF) by WATSON, DEARRIA
06:11				MISSED 3PTR by FRENCH, PATRICIA
06:07	REBOUND (DEF) by EVANS-COLLINS, SEE'AIRRAH			
05:59				SUB OUT: LLOYD, SAWYER
05:59				SUB IN: TORRES, MIA
05:59				FOUL (PERSONAL) by HAYDEN, ANGEL



Time	VISITORS: Northern N.M.	Score	Margin	HOME: Angelo State
05:51	MISSED 3PTR by EAVES, HALEY			
05:48	REBOUND (OFF) by DAVIS, KRISTEN			
05:34	TURNOVER (BADPASS) by PATTERSON, CHRIS'ALEE			
05:34				STEAL by WATSON, DEARRIA
05:26		97-32	H 65	GOOD! LAYUP by HAYDEN, ANGEL [FB/PNT]
05:13	GOOD! LAYUP by PATTERSON, CHRIS'ALEE	97-34	H 63	
05:04		100-34	H 66	GOOD! 3PTR by MAROV, LANA
05:04				ASSIST by TORRES, MIA
04:41	MISSED JUMPER by EAVES, HALEY			
04:38				REBOUND (DEF) by TORRES, MIA
04:25				MISSED JUMPER by FRENCH, PATRICIA
04:23	REBOUND (DEF) by TEAM			
04:23				SUB OUT: MAROV, LANA
04:23				SUB OUT: WATSON, DEARRIA
04:23				SUB IN: BROWN, KINLEY
04:23				SUB IN: ROCHA, SAMANTHA
04:23	SUB OUT: EAVES, HALEY			
04:23	SUB OUT: EVANS-COLLINS, SEE'AIRRAH			
04:23	SUB IN: WILKERSON, DESTINY			
04:23	SUB IN: LEWIS, ZHANE			
03:58	GOOD! JUMPER by LEWIS, ZHANE [PNT]	100-36	H 64	
03:46		103-36	H 67	GOOD! 3PTR by FRENCH, PATRICIA
03:29	MISSED LAYUP by LEWIS, ZHANE			
03:26				REBOUND (DEF) by BROWN, KINLEY
03:22		105-36	H 69	GOOD! LAYUP by ROCHA, SAMANTHA [FB]
03:22				ASSIST by BROWN, KINLEY
03:13				FOUL (PERSONAL) by ROCHA, SAMANTHA
03:13				SUB OUT: ROCHA, SAMANTHA
03:13				SUB IN: WATSON, DEARRIA
03:13	MISSED FT by LEWIS, ZHANE			
03:13	REBOUND (OFF) by TEAM			
03:13	MISSED FT by LEWIS, ZHANE			
03:12				REBOUND (DEF) by WATSON, DEARRIA
03:06				MISSED 3PTR by FRENCH, PATRICIA
03:03	REBOUND (DEF) by WILKERSON, DESTINY			
02:54	TURNOVER (LOSTBALL) by WILKERSON, DESTINY			
02:54				STEAL by TORRES, MIA
02:50				MISSED LAYUP by BROWN, KINLEY
02:47	REBOUND (DEF) by SMITH, AHMAYA			
02:47	SUB OUT: LEWIS, ZHANE			
02:47	SUB IN: KING, MACKENZIE			
02:37	MISSED JUMPER by DAVIS, KRISTEN			
02:34	REBOUND (OFF) by SMITH, AHMAYA			
02:32	MISSED JUMPER by SMITH, AHMAYA			
02:28	REBOUND (OFF) by PATTERSON, CHRIS'ALEE			
02:27	GOOD! LAYUP by PATTERSON, CHRIS'ALEE	105-38	H 67	
02:17				MISSED 3PTR by TORRES, MIA
02:14	REBOUND (DEF) by PATTERSON, CHRIS'ALEE			
02:10	GOOD! LAYUP by WILKERSON, DESTINY	105-40	H 65	
02:10				FOUL (PERSONAL) by TORRES, MIA
02:10	GOOD! FT by WILKERSON, DESTINY	105-41	H 64	
01:55	FOUL (PERSONAL) by PATTERSON, CHRIS'ALEE			
01:55		106-41	H 65	GOOD! FT by BROWN, KINLEY
01:55		107-41	H 66	GOOD! FT by BROWN, KINLEY
01:37	MISSED LAYUP by SMITH, AHMAYA			
01:34				REBOUND (DEF) by BROWN, KINLEY
01:30				MISSED LAYUP by FRENCH, PATRICIA
01:27	REBOUND (DEF) by PATTERSON, CHRIS'ALEE			
01:22	MISSED JUMPER by PATTERSON, CHRIS'ALEE			
01:19				REBOUND (DEF) by WATSON, DEARRIA
01:08	FOUL (PERSONAL) by SMITH, AHMAYA			
01:07				MISSED FT by WATSON, DEARRIA
01:07				REBOUND (OFF) by TEAM
01:07		108-41	H 67	GOOD! FT by WATSON, DEARRIA
00:42	TURNOVER (LOSTBALL) by KING, MACKENZIE			
00:42				STEAL by WATSON, DEARRIA
00:31				TURNOVER (OTHER) by HAYDEN, ANGEL
00:31	SUB OUT: SMITH, AHMAYA			
00:31	SUB IN: EAVES, HALEY			
00:14	MISSED JUMPER by PATTERSON, CHRIS'ALEE			
00:12				REBOUND (DEF) by HAYDEN, ANGEL

### Northern N.M. 41, Angelo State 108

Points from (This Period)	NNM	ASU
In the Paint	10	6
Off Turns	0	2
2nd Chance	4	0
Fast Break	0	7
Bench	3	21



**Official Scoring/Possession Reference Chart**  
**Northern N.M. vs Angelo State**  
**Period 1**  
**November 26, 2019 at Junell Center/Stephens Arena - San Angelo**



**Period 1**

**Starters:**

**Northern N.M.:** 4 DAVIS, KRISTEN; 11 EAVES, HALEY; 15 SMITH, AHMAYA; 22 PATTERSON, CHRIS'ALEE; 25 LEWIS, ZHANE;

**Angelo State:** 10 LLOYD, SAWYER (G); 13 GUADIAN, MEGAN (G); 32 MOORE, DE'ANIRA (F); 2 SAMUEL, CATARA (G); 3 DAVIS, ASIA (G);

Time	VISITORS: Northern N.M.	Score	Margin	HOME: Angelo State
09:32	GOOD! LAYUP by LEWIS, ZHANE	0-2	V 2	
09:21		3-2	H 1	GOOD! 3PTR by LLOYD, SAWYER
07:17		5-2	H 3	GOOD! LAYUP by MOORE, DE'ANIRA [FB/PNT]
06:39	GOOD! JUMPER by SMITH, AHMAYA	5-4	H 1	
06:23		7-4	H 3	GOOD! LAYUP by DAVIS, ASIA [PNT]
05:10	GOOD! LAYUP by SMITH, AHMAYA [PNT]	7-6	H 1	
04:45	GOOD! LAYUP by SMITH, AHMAYA [PNT]	7-8	V 1	
04:10		9-8	H 1	GOOD! JUMPER by HAYDEN, ANGEL
03:38		11-8	H 3	GOOD! LAYUP by MOORE, DE'ANIRA
03:23		13-8	H 5	GOOD! JUMPER by LLOYD, SAWYER
02:38		16-8	H 8	GOOD! 3PTR by LLOYD, SAWYER
02:09		19-8	H 11	GOOD! 3PTR by MAROV, LANA
01:36		22-8	H 14	GOOD! 3PTR by MOORE, DE'ANIRA
01:06		25-8	H 17	GOOD! 3PTR by MAROV, LANA
00:51	GOOD! LAYUP by EVANS-COLLINS, SEE'AIRRAH	25-10	H 15	
00:38		27-10	H 17	GOOD! LAYUP by MOORE, DE'ANIRA

**Northern N.M. 10, Angelo State 27**

**Official Scoring/Possession Reference Chart**  
**Northern N.M. vs Angelo State**  
**Period 2**  
**November 26, 2019 at Junell Center/Stephens Arena - San Angelo**



**Period 2**

**Starters:**

**Northern N.M.:** 4 DAVIS, KRISTEN; 11 EAVES, HALEY; 15 SMITH, AHMAYA; 22 PATTERSON, CHRIS'ALEE; 25 LEWIS, ZHANE;

**Angelo State:** 10 LLOYD, SAWYER (G); 13 GUADIAN, MEGAN (G); 32 MOORE, DE'ANIRA (F); 2 SAMUEL, CATARA (G); 3 DAVIS, ASIA (G);

Time	VISITORS: Northern N.M.	Score	Margin	HOME: Angelo State
09:41		28-10	H 18	GOOD! FT by BROWN, KINLEY
09:36		30-10	H 20	GOOD! JUMPER by BROWN, KINLEY
09:01	GOOD! LAYUP by SMITH, AHMAYA [FB/PNT]	30-12	H 18	
08:41	GOOD! FT by SMITH, AHMAYA [FB]	30-13	H 17	
08:41	GOOD! FT by SMITH, AHMAYA [FB]	30-14	H 16	
08:25		31-14	H 17	GOOD! FT by ROCHA, SAMANTHA
07:41		32-14	H 18	GOOD! FT by MOORE, DE'ANIRA
07:41		33-14	H 19	GOOD! FT by MOORE, DE'ANIRA
07:00		34-14	H 20	GOOD! FT by MOORE, DE'ANIRA
05:55		35-14	H 21	GOOD! FT by MOORE, DE'ANIRA
05:55		36-14	H 22	GOOD! FT by MOORE, DE'ANIRA
05:35		38-14	H 24	GOOD! LAYUP by SAMUEL, CATARA [FB/PNT]
05:12		41-14	H 27	GOOD! 3PTR by MAROV, LANA
04:18		43-14	H 29	GOOD! LAYUP by HAYDEN, ANGEL [FB]
03:55	GOOD! 3PTR by EAVES, HALEY	43-17	H 26	
03:27		46-17	H 29	GOOD! 3PTR by LLOYD, SAWYER
02:41		48-17	H 31	GOOD! LAYUP by DAVIS, ASIA
02:16		49-17	H 32	GOOD! FT by DAVIS, ASIA [FB]
02:16		50-17	H 33	GOOD! FT by DAVIS, ASIA [FB]
01:32	GOOD! LAYUP by WILKERSON, DESTINY	50-19	H 31	
01:15		53-19	H 34	GOOD! 3PTR by BROWN, KINLEY
00:49	GOOD! JUMPER by KING, MACKENZIE	53-21	H 32	
00:06		56-21	H 35	GOOD! 3PTR by FRENCH, PATRICIA

**Northern N.M. 21, Angelo State 56**

**Official Scoring/Possession Reference Chart**  
**Northern N.M. vs Angelo State**  
**Period 3**  
**November 26, 2019 at Junell Center/Stephens Arena - San Angelo**



**Period 3**

**Starters:**

**Northern N.M.:** 4 DAVIS, KRISTEN; 11 EAVES, HALEY; 15 SMITH, AHMAYA; 22 PATTERSON, CHRIS'ALEE; 25 LEWIS, ZHANE;

**Angelo State:** 10 LLOYD, SAWYER (G); 13 GUADIAN, MEGAN (G); 32 MOORE, DE'ANIRA (F); 2 SAMUEL, CATARA (G); 3 DAVIS, ASIA (G);

Time	VISITORS: Northern N.M.	Score	Margin	HOME: Angelo State
09:51		58-21	H 37	GOOD! LAYUP by MOORE, DE'ANIRA
09:09	GOOD! 3PTR by PATTERSON, CHRIS'ALEE	58-24	H 34	
08:34	GOOD! LAYUP by SMITH, AHMAYA [PNT]	58-26	H 32	
08:23		61-26	H 35	GOOD! 3PTR by SAMUEL, CATARA
07:50		63-26	H 37	GOOD! JUMPER by DAVIS, ASIA
06:52		65-26	H 39	GOOD! JUMPER by SAMUEL, CATARA
06:26	GOOD! LAYUP by LEWIS, ZHANE	65-28	H 37	
06:10		67-28	H 39	GOOD! LAYUP by SAMUEL, CATARA
05:42		69-28	H 41	GOOD! LAYUP by DAVIS, ASIA [FB]
05:17		72-28	H 44	GOOD! 3PTR by LLOYD, SAWYER
04:59	GOOD! JUMPER by PATTERSON, CHRIS'ALEE	72-30	H 42	
04:49		74-30	H 44	GOOD! LAYUP by ROCHA, SAMANTHA [PNT]
04:11		76-30	H 46	GOOD! LAYUP by ROCHA, SAMANTHA
03:17		78-30	H 48	GOOD! JUMPER by ROCHA, SAMANTHA [PNT]
02:36		80-30	H 50	GOOD! LAYUP by HAYDEN, ANGEL
02:07		83-30	H 53	GOOD! 3PTR by BROWN, KINLEY
01:26		85-30	H 55	GOOD! LAYUP by BROWN, KINLEY [FB]
00:04		87-30	H 57	GOOD! LAYUP by SAMUEL, CATARA [FB]

**Northern N.M. 30, Angelo State 87**

**Official Scoring/Possession Reference Chart**  
**Northern N.M. vs Angelo State**  
**Period 4**  
**November 26, 2019 at Junell Center/Stephens Arena - San Angelo**



**Period 4**

**Starters:**

**Northern N.M.:** 4 DAVIS, KRISTEN; 11 EAVES, HALEY; 15 SMITH, AHMAYA; 22 PATTERSON, CHRIS'ALEE; 25 LEWIS, ZHANE;

**Angelo State:** 10 LLOYD, SAWYER (G); 13 GUADIAN, MEGAN (G); 32 MOORE, DE'ANIRA (F); 2 SAMUEL, CATARA (G); 3 DAVIS, ASIA (G);

Time	VISITORS: Northern N.M.	Score	Margin	HOME: Angelo State
09:10		88-30	H 58	GOOD! FT by BROWN, KINLEY [FB]
08:22	GOOD! LAYUP by SMITH, AHMAYA [PNT]	88-32	H 56	
08:18		90-32	H 58	GOOD! LAYUP by ROCHA, SAMANTHA [FB]
07:49		93-32	H 61	GOOD! 3PTR by BROWN, KINLEY
06:39		94-32	H 62	GOOD! FT by TORRES, MIA
06:39		95-32	H 63	GOOD! FT by TORRES, MIA
05:26		97-32	H 65	GOOD! LAYUP by HAYDEN, ANGEL [FB/PNT]
05:13	GOOD! LAYUP by PATTERSON, CHRIS'ALEE	97-34	H 63	
05:04		100-34	H 66	GOOD! 3PTR by MAROV, LANA
03:58	GOOD! JUMPER by LEWIS, ZHANE [PNT]	100-36	H 64	
03:46		103-36	H 67	GOOD! 3PTR by FRENCH, PATRICIA
03:22		105-36	H 69	GOOD! LAYUP by ROCHA, SAMANTHA [FB]
02:27	GOOD! LAYUP by PATTERSON, CHRIS'ALEE	105-38	H 67	
02:10	GOOD! LAYUP by WILKERSON, DESTINY	105-40	H 65	
02:10	GOOD! FT by WILKERSON, DESTINY	105-41	H 64	
01:55		106-41	H 65	GOOD! FT by BROWN, KINLEY
01:55		107-41	H 66	GOOD! FT by BROWN, KINLEY
01:07		108-41	H 67	GOOD! FT by WATSON, DEARRIA

**Northern N.M. 41, Angelo State 108**

**Official Substitutions Log**  
**Northern N.M. vs Angelo State**  
**Period 1**  
**November 26, 2019 at Junell Center/Stephens Arena - San Angelo**



VISITORS: Northern N.M.	Time	Score	HOME: Angelo State
4 DAVIS, KRISTEN			10 LLOYD, SAWYER
11 EAVES, HALEY			13 GUADIAN, MEGAN
15 SMITH, AHMAYA			32 MOORE, DE'ANIRA
22 PATTERSON, CHRIS'ALEE			2 SAMUEL, CATARA
25 LEWIS, ZHANE			3 DAVIS, ASIA
	06:38	4-5	SUB OUT: SAMUEL, CATARA
	06:38		SUB OUT: LLOYD, SAWYER
	06:38		SUB OUT: MOORE, DE'ANIRA
	06:38		SUB IN: MAROV, LANA
	06:38		SUB IN: ROCHA, SAMANTHA
	06:38		SUB IN: HAYDEN, ANGEL
SUB OUT: 22 PATTERSON, CHRIS'ALEE	05:24	4-7	
SUB IN: 1 WILKERSON, DESTINY	05:24		
	04:58	6-7	SUB OUT: DAVIS, ASIA
	04:58		SUB OUT: GUADIAN, MEGAN
	04:58		SUB IN: SAMUEL, CATARA
	04:58		SUB IN: LLOYD, SAWYER
SUB OUT: 25 LEWIS, ZHANE	04:58		
SUB IN: 33 EVANS-COLLINS, SEE'ARRAH	04:58		
	03:50	8-9	SUB OUT: ROCHA, SAMANTHA
	03:50		SUB IN: MOORE, DE'ANIRA
SUB OUT: 4 DAVIS, KRISTEN	03:50		
SUB OUT: 15 SMITH, AHMAYA	03:50		
SUB IN: 22 PATTERSON, CHRIS'ALEE	03:50		
SUB IN: 23 SAMUEL, TELYSSA	03:50		

**Northern N.M. 10, Angelo State 27**

**Official Substitutions Log**  
**Northern N.M. vs Angelo State**  
**Period 2**  
**November 26, 2019 at Junell Center/Stephens Arena - San Angelo**



VISITORS: Northern N.M.	Time	Score	HOME: Angelo State
4 DAVIS, KRISTEN			10 LLOYD, SAWYER
11 EAVES, HALEY			13 GUADIAN, MEGAN
15 SMITH, AHMAYA			32 MOORE, DE'ANIRA
22 PATTERSON, CHRIS'ALEE			2 SAMUEL, CATARA
25 LEWIS, ZHANE			3 DAVIS, ASIA
	10:00	-	SUB OUT: SAMUEL, CATARA
	10:00		SUB OUT: MAROV, LANA
	10:00		SUB OUT: HAYDEN, ANGEL
	10:00		SUB OUT: MOORE, DE'ANIRA
	10:00		SUB IN: DAVIS, ASIA
	10:00		SUB IN: GUADIAN, MEGAN
	10:00		SUB IN: BROWN, KINLEY
	10:00		SUB IN: ROCHA, SAMANTHA
SUB OUT: 11 EAVES, HALEY	10:00		
SUB OUT: 23 SAMUEL, TELYSSA	10:00		
SUB OUT: 33 EVANS-COLLINS, SEE'AIRRAH	10:00		
SUB IN: 4 DAVIS, KRISTEN	10:00		
SUB IN: 15 SMITH, AHMAYA	10:00		
SUB IN: 35 KING, MACKENZIE	10:00		
SUB OUT: 1 WILKERSON, DESTINY	08:41	14-30	
SUB OUT: 35 KING, MACKENZIE	08:41		
SUB IN: 11 EAVES, HALEY	08:41		
SUB IN: 25 LEWIS, ZHANE	08:41		
	07:45	14-31	SUB OUT: LLOYD, SAWYER
	07:45		SUB OUT: GUADIAN, MEGAN
	07:45		SUB OUT: BROWN, KINLEY
	07:45		SUB OUT: ROCHA, SAMANTHA
	07:45		SUB IN: SAMUEL, CATARA
	07:45		SUB IN: MAROV, LANA
	07:45		SUB IN: HAYDEN, ANGEL
	07:45		SUB IN: MOORE, DE'ANIRA
SUB OUT: 22 PATTERSON, CHRIS'ALEE	06:17	14-34	
SUB OUT: 25 LEWIS, ZHANE	06:17		
SUB IN: 1 WILKERSON, DESTINY	06:17		
SUB IN: 33 EVANS-COLLINS, SEE'AIRRAH	06:17		
	05:55	14-34	SUB OUT: DAVIS, ASIA
	05:55		SUB IN: LLOYD, SAWYER
	05:32	14-38	SUB OUT: MOORE, DE'ANIRA
	05:32		SUB IN: ROCHA, SAMANTHA
SUB OUT: 15 SMITH, AHMAYA	04:53	14-41	
SUB IN: 22 PATTERSON, CHRIS'ALEE	04:53		
	02:51	17-46	SUB OUT: SAMUEL, CATARA
	02:51		SUB OUT: MAROV, LANA
	02:51		SUB OUT: LLOYD, SAWYER
	02:51		SUB OUT: HAYDEN, ANGEL
	02:51		SUB IN: DAVIS, ASIA
	02:51		SUB IN: GUADIAN, MEGAN
	02:51		SUB IN: BROWN, KINLEY
	02:51		SUB IN: TORRES, MIA
SUB OUT: 22 PATTERSON, CHRIS'ALEE	02:51		
SUB OUT: 33 EVANS-COLLINS, SEE'AIRRAH	02:51		
SUB IN: 15 SMITH, AHMAYA	02:51		
SUB IN: 35 KING, MACKENZIE	02:51		
	02:16	17-48	SUB OUT: ROCHA, SAMANTHA
	02:16		SUB IN: WATSON, DEARRIA
SUB OUT: 15 SMITH, AHMAYA	02:16		
SUB IN: 22 PATTERSON, CHRIS'ALEE	02:16		
	00:45	21-53	SUB IN: FRENCH, PATRICIA

**Northern N.M. 21, Angelo State 56**



**Official Substitutions Log**  
**Northern N.M. vs Angelo State**  
**Period 3**  
**November 26, 2019 at Junell Center/Stephens Arena - San Angelo**



VISITORS: Northern N.M.	Time	Score	HOME: Angelo State
4 DAVIS, KRISTEN			10 LLOYD, SAWYER
11 EAVES, HALEY			13 GUADIAN, MEGAN
15 SMITH, AHMAYA			32 MOORE, DE'ANIRA
22 PATTERSON, CHRIS'ALEE			2 SAMUEL, CATARA
25 LEWIS, ZHANE			3 DAVIS, ASIA
	00:45	-	SUB OUT: GUADIAN, MEGAN
	10:00	-	SUB OUT: WATSON, DEARRIA
	10:00		SUB OUT: BROWN, KINLEY
	10:00		SUB OUT: TORRES, MIA
	10:00		SUB OUT: FRENCH, PATRICIA
	10:00		SUB IN: SAMUEL, CATARA
	10:00		SUB IN: LLOYD, SAWYER
	10:00		SUB IN: GUADIAN, MEGAN
	10:00		SUB IN: MOORE, DE'ANIRA
SUB OUT: 1 WILKERSON, DESTINY	10:00		
SUB IN: 23 SAMUEL, TELYSSA	10:00		
SUB OUT: 35 KING, MACKENZIE	10:00		
SUB IN: 25 LEWIS, ZHANE	10:00		
SUB OUT: 11 EAVES, HALEY	10:00		
SUB IN: 15 SMITH, AHMAYA	10:00		
SUB OUT: 23 SAMUEL, TELYSSA	08:23	26-61	
SUB IN: 11 EAVES, HALEY	08:23		
	07:14	26-63	SUB OUT: MOORE, DE'ANIRA
	07:14		SUB IN: ROCHA, SAMANTHA
	05:24	28-69	SUB OUT: SAMUEL, CATARA
	05:24		SUB OUT: DAVIS, ASIA
	05:24		SUB IN: MAROV, LANA
	05:24		SUB IN: HAYDEN, ANGEL
SUB OUT: 11 EAVES, HALEY	05:24		
SUB OUT: 25 LEWIS, ZHANE	05:24		
SUB IN: 1 WILKERSON, DESTINY	05:24		
SUB IN: 35 KING, MACKENZIE	05:24		
	04:23	30-74	SUB OUT: GUADIAN, MEGAN
	04:23		SUB IN: BROWN, KINLEY
SUB OUT: 4 DAVIS, KRISTEN	04:23		
SUB IN: 33 EVANS-COLLINS, SEE'AIRRAH	04:23		
SUB OUT: 35 KING, MACKENZIE	03:54	30-76	
SUB IN: 23 SAMUEL, TELYSSA	03:54		
	03:38	30-76	SUB OUT: LLOYD, SAWYER
	03:38		SUB IN: DAVIS, ASIA
	03:06	30-78	SUB OUT: ROCHA, SAMANTHA
	03:06		SUB IN: MOORE, DE'ANIRA
SUB OUT: 33 EVANS-COLLINS, SEE'AIRRAH	03:06		
SUB IN: 25 LEWIS, ZHANE	03:06		
	00:42	30-85	SUB OUT: DAVIS, ASIA
	00:42		SUB OUT: MAROV, LANA
	00:42		SUB OUT: BROWN, KINLEY
	00:42		SUB IN: SAMUEL, CATARA
	00:42		SUB IN: TORRES, MIA
	00:42		SUB IN: ROCHA, SAMANTHA
SUB OUT: 22 PATTERSON, CHRIS'ALEE	00:42		
SUB OUT: 23 SAMUEL, TELYSSA	00:42		
SUB IN: 11 EAVES, HALEY	00:42		
SUB IN: 35 KING, MACKENZIE	00:42		
SUB OUT: 25 LEWIS, ZHANE	00:42		
SUB IN: 23 SAMUEL, TELYSSA	00:42		

**Northern N.M. 30, Angelo State 87**

**Official Substitutions Log**  
**Northern N.M. vs Angelo State**  
**Period 4**  
**November 26, 2019 at Junell Center/Stephens Arena - San Angelo**



VISITORS: Northern N.M.	Time	Score	HOME: Angelo State
4 DAVIS, KRISTEN			10 LLOYD, SAWYER
11 EAVES, HALEY			13 GUADIAN, MEGAN
15 SMITH, AHMAYA			32 MOORE, DE'ANIRA
22 PATTERSON, CHRIS'ALEE			2 SAMUEL, CATARA
25 LEWIS, ZHANE			3 DAVIS, ASIA
	10:00	-	SUB OUT: SAMUEL, CATARA
	10:00		SUB OUT: HAYDEN, ANGEL
	10:00		SUB OUT: MOORE, DE'ANIRA
	10:00		SUB IN: WATSON, DEARRIA
	10:00		SUB IN: GUADIAN, MEGAN
	10:00		SUB IN: BROWN, KINLEY
SUB OUT: 15 SMITH, AHMAYA	08:18	32-90	
SUB OUT: 35 KING, MACKENZIE	08:18		
SUB IN: 4 DAVIS, KRISTEN	08:18		
SUB IN: 33 EVANS-COLLINS, SEE'AIRRAH	08:18		
SUB OUT: 23 SAMUEL, TELYSSA	08:18		
SUB IN: 22 PATTERSON, CHRIS'ALEE	08:18		
	07:33	32-93	SUB OUT: WATSON, DEARRIA
	07:33		SUB OUT: GUADIAN, MEGAN
	07:33		SUB IN: MAROV, LANA
	07:33		SUB IN: HAYDEN, ANGEL
	06:39	32-93	SUB OUT: BROWN, KINLEY
	06:39		SUB OUT: ROCHA, SAMANTHA
	06:39		SUB IN: WATSON, DEARRIA
	06:39		SUB IN: FRENCH, PATRICIA
SUB OUT: 1 WILKERSON, DESTINY	06:39		
SUB IN: 15 SMITH, AHMAYA	06:39		
	06:39		SUB OUT: TORRES, MIA
	06:39		SUB IN: LLOYD, SAWYER
	05:59	32-95	SUB OUT: LLOYD, SAWYER
	05:59		SUB IN: TORRES, MIA
	04:23	34-100	SUB OUT: MAROV, LANA
	04:23		SUB OUT: WATSON, DEARRIA
	04:23		SUB IN: BROWN, KINLEY
	04:23		SUB IN: ROCHA, SAMANTHA
SUB OUT: 11 EAVES, HALEY	04:23		
SUB OUT: 33 EVANS-COLLINS, SEE'AIRRAH	04:23		
SUB IN: 1 WILKERSON, DESTINY	04:23		
SUB IN: 25 LEWIS, ZHANE	04:23		
	03:13	36-105	SUB OUT: ROCHA, SAMANTHA
	03:13		SUB IN: WATSON, DEARRIA
SUB OUT: 25 LEWIS, ZHANE	02:47	36-105	
SUB IN: 35 KING, MACKENZIE	02:47		
SUB OUT: 15 SMITH, AHMAYA	00:31	41-108	
SUB IN: 11 EAVES, HALEY	00:31		

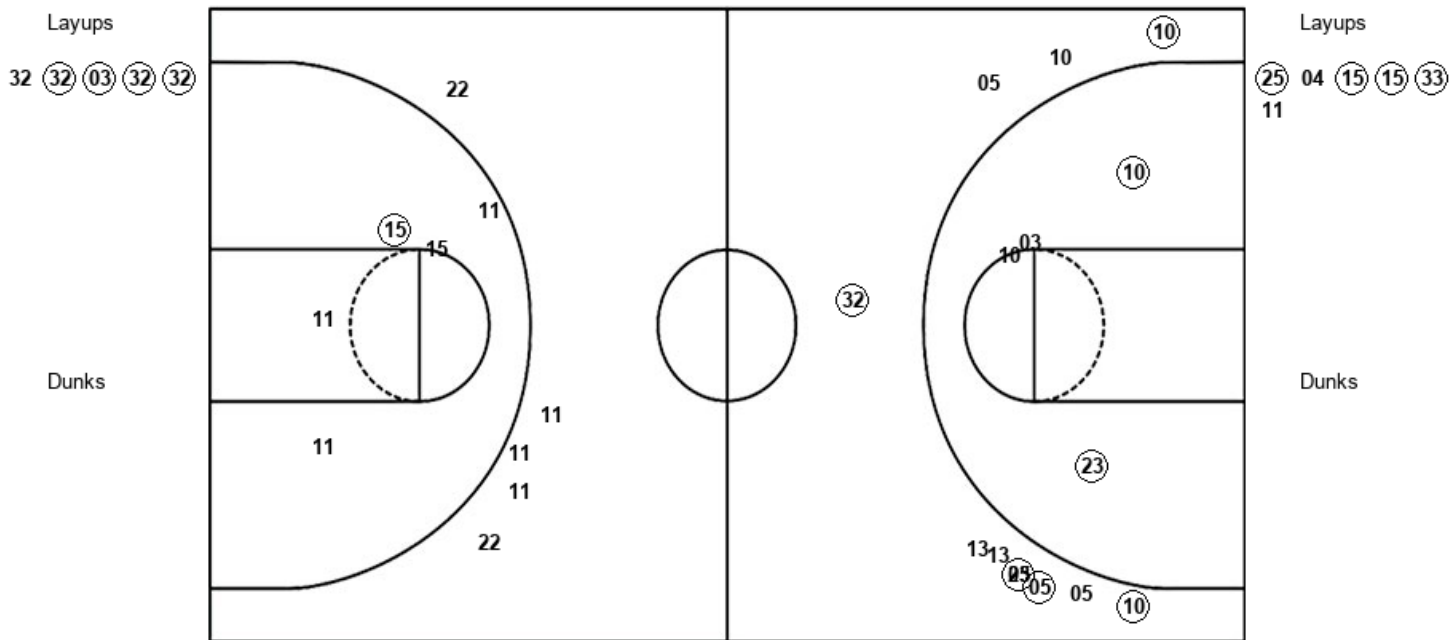
**Northern N.M. 41, Angelo State 108**

**Official Shot Chart**  
**Northern N.M. vs Angelo State**  
**PERIOD 1 Shots**  
 November 26, 2019 at Junell Center/Stephens Arena - San Angelo



**Angelo State**

**Northern N.M.**



ASU : Period 1	Made	Att	Pct
Layups	4	5	80.0
Dunks	0	0	0
2PT Field Goals	6	9	66.7
3PT Field Goals	5	11	45.5
<b>Total Field Goals</b>	<b>11</b>	<b>20</b>	<b>55.0</b>

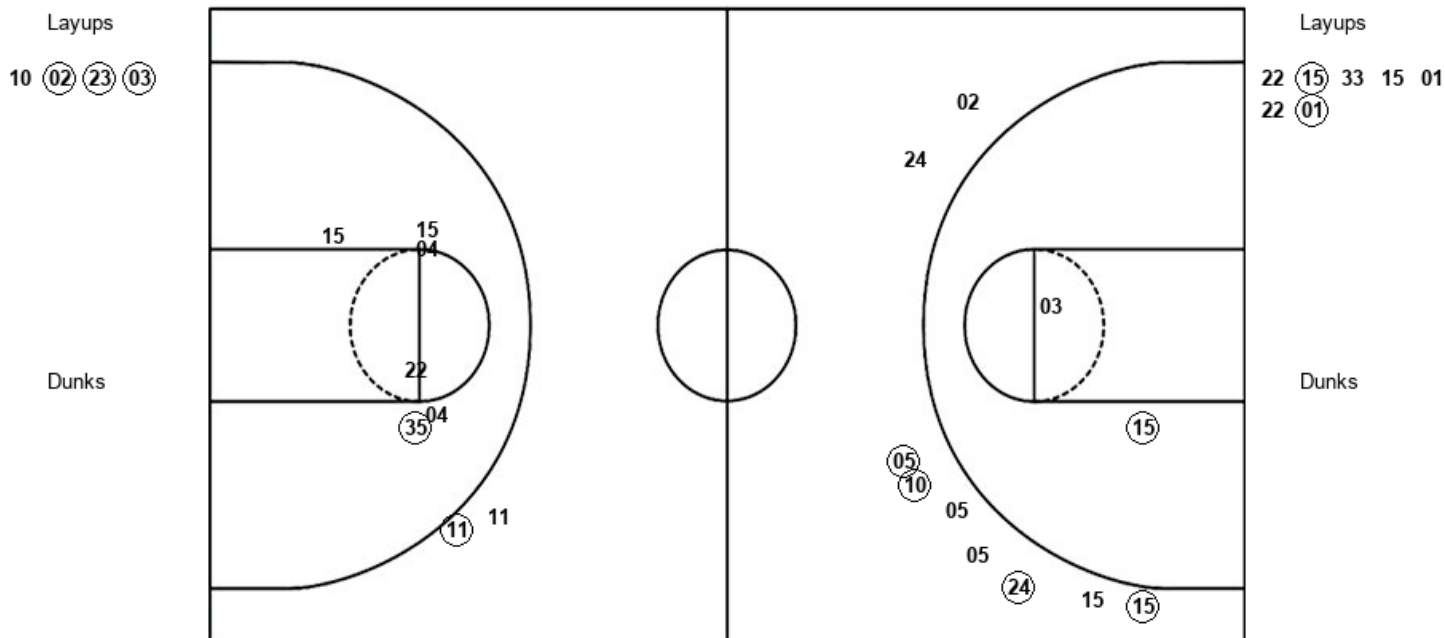
NNM : Period 1	Made	Att	Pct
Layups	4	6	66.7
Dunks	0	0	0
2PT Field Goals	5	10	50.0
3PT Field Goals	0	6	00.0
<b>Total Field Goals</b>	<b>5</b>	<b>16</b>	<b>31.3</b>

**Official Shot Chart**  
**Northern N.M. vs Angelo State**  
**PERIOD 2 Shots**  
 November 26, 2019 at Junell Center/Stephens Arena - San Angelo



**Angelo State**

**Northern N.M.**



ASU : Period 2	Made	Att	Pct
Layups	3	4	75.0
Dunks	0	0	0
2PT Field Goals	4	6	66.7
3PT Field Goals	4	9	44.4
<b>Total Field Goals</b>	<b>8</b>	<b>15</b>	<b>53.3</b>

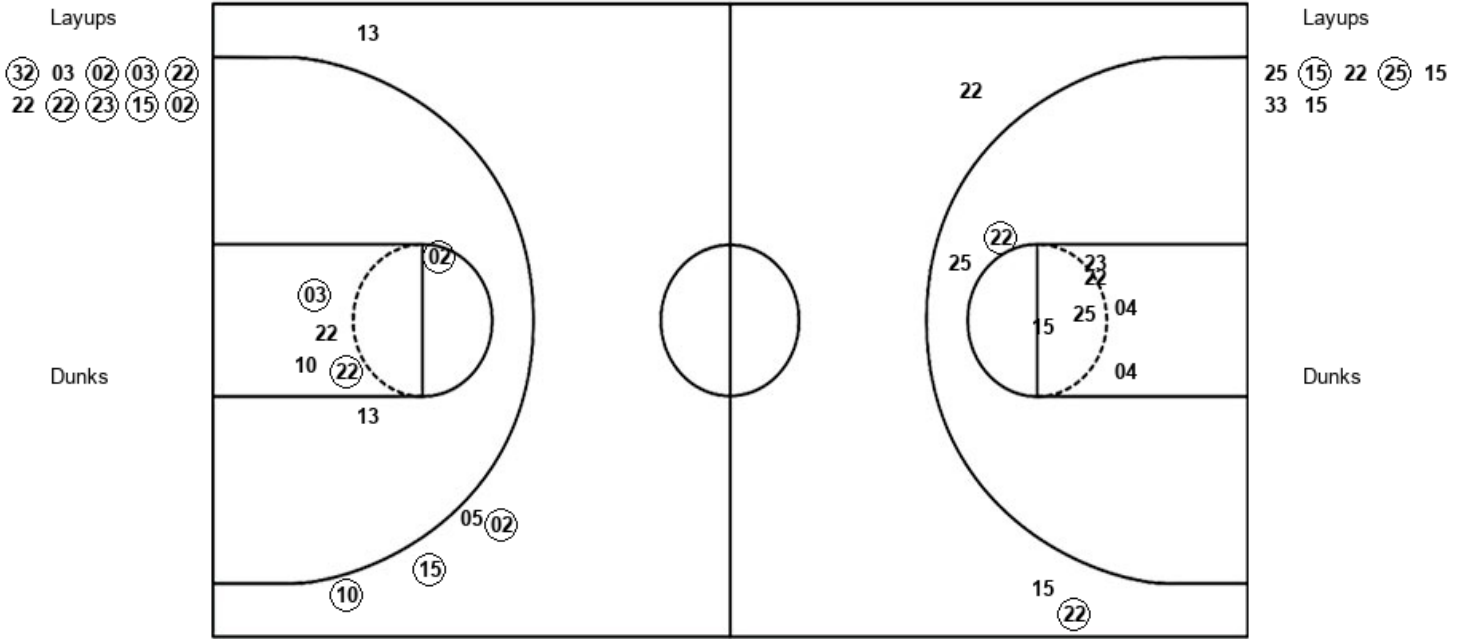
NNM : Period 2	Made	Att	Pct
Layups	2	7	28.6
Dunks	0	0	0
2PT Field Goals	3	13	23.1
3PT Field Goals	1	2	50.0
<b>Total Field Goals</b>	<b>4</b>	<b>15</b>	<b>26.7</b>

**Official Shot Chart**  
**Northern N.M. vs Angelo State**  
**PERIOD 3 Shots**  
 November 26, 2019 at Junell Center/Stephens Arena - San Angelo



**Angelo State**

**Northern N.M.**



ASU : Period 3	Made	Att	Pct
Layups	8	10	80.0
Dunks	0	0	0
2PT Field Goals	11	16	68.8
3PT Field Goals	3	5	60.0
<b>Total Field Goals</b>	<b>14</b>	<b>21</b>	<b>66.7</b>

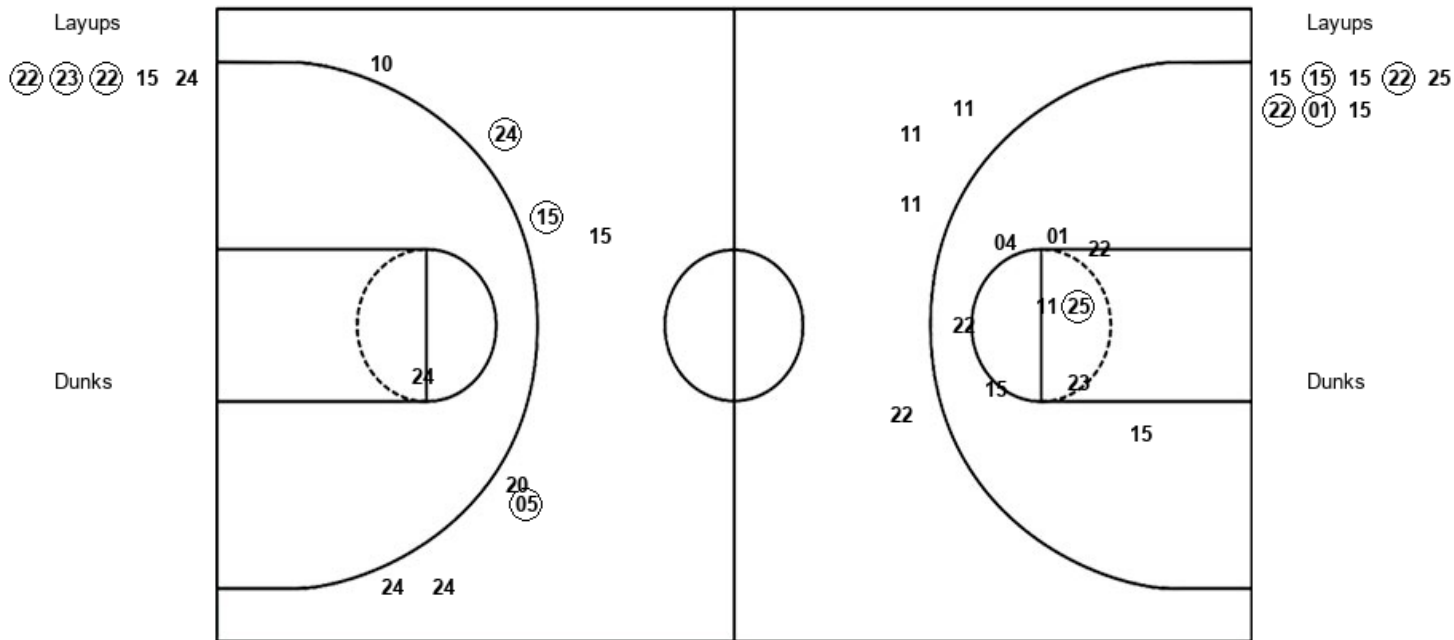
NNM : Period 3	Made	Att	Pct
Layups	2	7	28.6
Dunks	0	0	0
2PT Field Goals	3	15	20.0
3PT Field Goals	1	3	33.3
<b>Total Field Goals</b>	<b>4</b>	<b>18</b>	<b>22.2</b>

**Official Shot Chart**  
**Northern N.M. vs Angelo State**  
**PERIOD 4 Shots**  
 November 26, 2019 at Junell Center/Stephens Arena - San Angelo



**Angelo State**

**Northern N.M.**



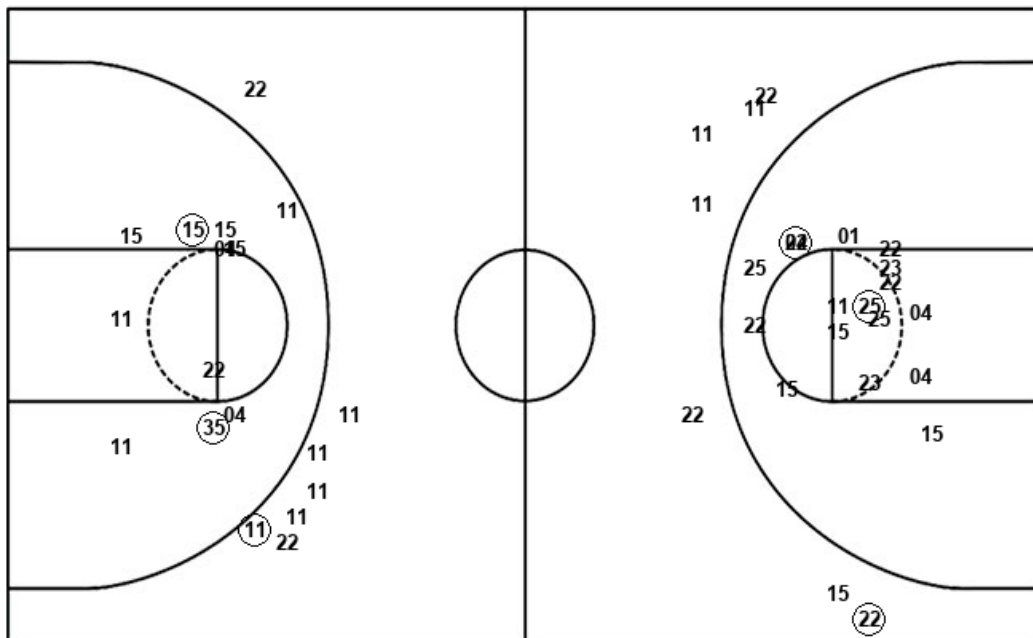
ASU : Period 4	Made	Att	Pct
Layups	3	5	60.0
Dunks	0	0	0
2PT Field Goals	3	6	50.0
3PT Field Goals	3	8	37.5
<b>Total Field Goals</b>	<b>6</b>	<b>14</b>	<b>42.9</b>

NNM : Period 4	Made	Att	Pct
Layups	4	8	50.0
Dunks	0	0	0
2PT Field Goals	5	17	29.4
3PT Field Goals	0	4	00.0
<b>Total Field Goals</b>	<b>5</b>	<b>21</b>	<b>23.8</b>

**Official Shot Chart**  
**Northern N.M. vs Angelo State**  
 Northern N.M. Team Shots  
 November 26, 2019 at Junell Center/Stephens Arena - San Angelo



Layups



Layups

(25)	04	(15)	(15)	(33)
11	22	(15)	33	15
01	22	(01)	25	(15)
22	(25)	15	33	15
15	(15)	15	(22)	25
(22)	(01)	15		

Dunks

Dunks

NNM : Period 1		Made	Att	Pct
Layups		4	6	66.7
Dunks		0	0	0
2PT Field Goals		5	10	50.0
3PT Field Goals		0	6	00.0
<b>Total Field Goals</b>		<b>5</b>	<b>16</b>	<b>31.3</b>

NNM : Period 3		Made	Att	Pct
Layups		2	7	28.6
Dunks		0	0	0
2PT Field Goals		3	15	20.0
3PT Field Goals		1	3	33.3
<b>Total Field Goals</b>		<b>4</b>	<b>18</b>	<b>22.2</b>

NNM : Period 2		Made	Att	Pct
Layups		2	7	28.6
Dunks		0	0	0
2PT Field Goals		3	13	23.1
3PT Field Goals		1	2	50.0
<b>Total Field Goals</b>		<b>4</b>	<b>15</b>	<b>26.7</b>

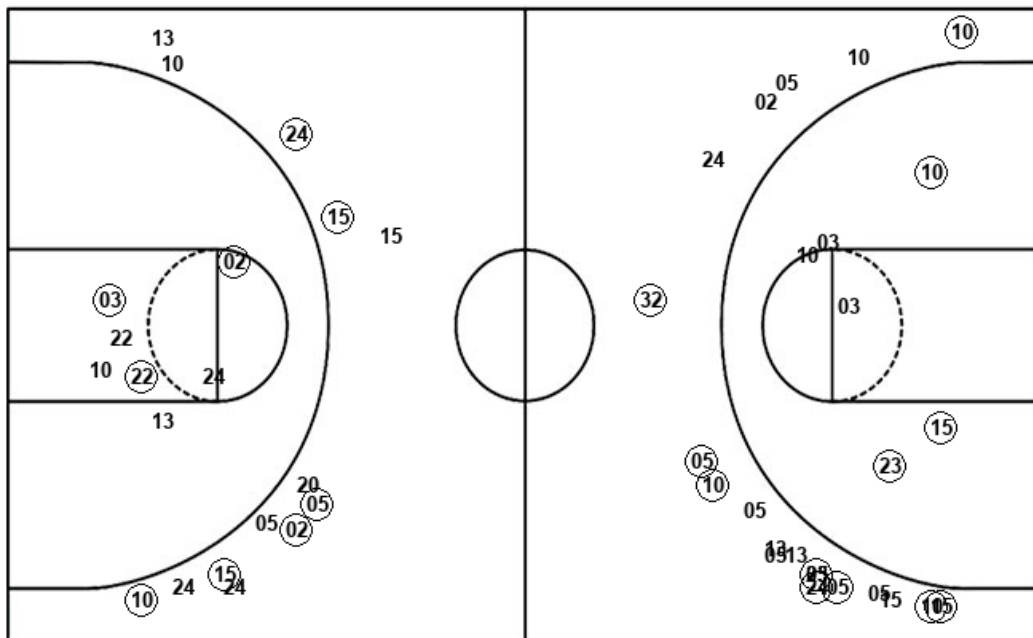
  

NNM : Period 4		Made	Att	Pct
Layups		4	8	50.0
Dunks		0	0	0
2PT Field Goals		5	17	29.4
3PT Field Goals		0	4	00.0
<b>Total Field Goals</b>		<b>5</b>	<b>21</b>	<b>23.8</b>

**Official Shot Chart**  
**Northern N.M. vs Angelo State**  
**Angelo State Team Shots**  
 November 26, 2019 at Junell Center/Stephens Arena - San Angelo



Layups



Layups

32	32	03	32	32
10	02	23	03	32
03	02	03	22	22
22	23	15	02	22
23	22	15	24	

Dunks

Dunks

ASU : Period 1	Made	Att	Pct
Layups	4	5	80.0
Dunks	0	0	0
2PT Field Goals	6	9	66.7
3PT Field Goals	5	11	45.5
<b>Total Field Goals</b>	<b>11</b>	<b>20</b>	<b>55.0</b>

ASU : Period 2	Made	Att	Pct
Layups	3	4	75.0
Dunks	0	0	0
2PT Field Goals	4	6	66.7
3PT Field Goals	4	9	44.4
<b>Total Field Goals</b>	<b>8</b>	<b>15</b>	<b>53.3</b>

ASU : Period 3	Made	Att	Pct
Layups	8	10	80.0
Dunks	0	0	0
2PT Field Goals	11	16	68.8
3PT Field Goals	3	5	60.0
<b>Total Field Goals</b>	<b>14</b>	<b>21</b>	<b>66.7</b>

ASU : Period 4	Made	Att	Pct
Layups	3	5	60.0
Dunks	0	0	0
2PT Field Goals	3	6	50.0
3PT Field Goals	3	8	37.5
<b>Total Field Goals</b>	<b>6</b>	<b>14</b>	<b>42.9</b>