

FINAL SCORE



St. Edward's

46



Tex. A&M-Commerce

69

November 23, 2019 • A&M-C Field House - Commerce

FINAL STATISTICS

Official Box Score
St. Edward's vs Tex. A&M-Commerce
Game Totals -- Final Statistics
November 23, 2019 at A&M-C Field House - Commerce



St. Edward's 46

No.	Player	S	Pts	FG	3FG	FT	OR	DR	TR	PF	A	TO	Blk	Stl	Min	+/-
10	MAGAZINE, D'AVIYON	G	9	4-10	1-5	0-0	0	3	3	3	2	4	0	3	26	-7
12	MASON, CHRISTINA	G	0	0-3	0-0	0-0	0	2	2	1	0	5	0	0	24	-17
13	DUFEK, SAMMIE	C	8	4-5	0-0	0-0	1	6	7	2	0	0	2	0	26	-8
14	WILCHER, MARYAM	G	5	1-7	1-2	2-2	2	2	4	3	0	0	0	1	23	-7
31	BLANKS, DEIJAH	G	15	3-10	0-0	9-9	1	2	3	1	1	6	1	1	32	-13
02	CUNNINGHAM, LEXI	G	0	0-4	0-2	0-0	0	0	0	1	0	1	0	0	15	-21
03	SUTTON, FAIREN	G	0	0-2	0-2	0-0	0	0	0	1	1	1	0	1	15	-6
15	BECKER, CHARLI	G	5	1-3	1-1	2-2	0	1	1	1	1	2	0	0	16	-11
21	JACKSON, JAZMINE	G	4	2-3	0-0	0-2	1	4	5	3	0	0	0	2	14	-15
22	TAYLOR, FALYN	G	0	0-0	0-0	0-0	0	0	0	0	0	1	0	0	8	-10
TEAM							0	2	2	0		0				
TOTALS			46	15-47	3-12	13-15	5	22	27	16	5	20	3	8	200	

Shooting By Period

Period	FG	FG%	3FG	3FG%	FT	FT%
1st Qtr	2-11	18%	1-3	33%	4-4	100%
2nd Qtr	4-12	33%	2-4	50%	2-2	100%
3rd Qtr	5-14	36%	0-3	00%	3-5	60%
4th Qtr	4-10	40%	0-2	00%	4-4	100%
1st Half	6-23	26%	3-7	43%	6-6	100%
2nd Half	9-24	38%	0-5	00%	7-9	78%
Game	15-47	31.9%	3-12	25.0%	13-15	86.7%

Deadball Rebounds: 1,1
 Last FG: 4th-02:05
 Biggest Run: 10-0
 Largest lead: By 3 at 1-06
 Technical Fouls: None.

Tex. A&M-Commerce 69

No.	Player	S	Pts	FG	3FG	FT	OR	DR	TR	PF	A	TO	Blk	Stl	Min	+/-
01	JONES, ALEXUS	G	9	2-8	1-3	4-5	1	1	2	3	2	1	0	2	24	7
03	WRIGHT, CHANIA	G	7	3-11	1-7	0-0	0	3	3	0	1	2	0	1	27	13
04	GLASS, MADDISON	G	5	2-4	0-1	1-2	0	2	2	2	3	0	0	2	20	7
21	LOUIS, JULIANA	F	6	3-9	0-1	0-0	4	3	7	3	1	3	0	2	21	13
42	BRYANT, ALEXIS	F	14	5-8	0-0	4-5	2	6	8	3	1	5	4	2	27	16
10	KERNAL, DESIRAY	F	6	3-5	0-1	0-0	1	1	2	1	0	1	0	1	18	14
11	BURLESON, MYKIEL	G	9	3-7	1-2	2-2	2	6	8	0	3	1	0	0	24	15
12	ROBINSON, DYANI	G	7	3-8	1-3	0-0	1	1	2	4	1	3	0	1	21	20
20	NOWLIN, KEEKEE	G	2	0-1	0-1	2-2	1	1	2	1	0	0	2	0	9	6
30	PIERCE, JOCELYN	F	4	2-2	0-0	0-1	1	2	3	0	2	1	0	2	9	4
TEAM							4	2	6	0		1				
TOTALS			69	26-63	4-19	13-17	17	28	45	17	14	18	6	13	200	

Shooting By Period

Period	FG	FG%	3FG	3FG%	FT	FT%
1st Qtr	5-18	28%	1-5	20%	3-4	75%
2nd Qtr	8-19	42%	1-8	13%	1-2	50%
3rd Qtr	7-14	50%	0-2	00%	0-1	00%
4th Qtr	6-12	50%	2-4	50%	9-10	90%
1st Half	13-37	35%	2-13	15%	4-6	67%
2nd Half	13-26	50%	2-6	33%	9-11	82%
Game	26-63	41.3%	4-19	21.1%	13-17	76.5%

Deadball Rebounds: 1,0
 Last FG: 4th-02:36
 Biggest Run: 9-0
 Largest lead: By 23 at 4-00
 Technical Fouls: None.

Game Notes:

Officials: , ,
 Attendance: 267

Start Time: 07:37 PM ET
 End Time: 09:18 PM ET
 Game Duration: 1:40
 Conference Game;

Score	1st	2nd	3rd	4th	TOT
SEU	9	12	13	12	46
AMC	14	18	14	23	69

SEU led for 2:35. AMC led for 32:48.
 Game was tied for 4:37.
 Times tied: 3 Lead Changes: 1

Points from	SEU	AMC
In the Paint	16	36
Off Turns	13	18
2nd Chance	6	21
Fast Break	7	7
Bench	9	28

Official Box Score
St. Edward's vs Tex. A&M-Commerce
First Half Statistics Only
November 23, 2019 at A&M-C Field House - Commerce



St. Edward's 21

No.	Player	S	Pts	FG	3FG	FT	OR	DR	TR	PF	A	TO	Blk	Stl	Min	+/-
10	MAGAZINE, D'AVIYON	G	5	2-6	1-3	0-0	0	2	2	1	1	2	0	1	14	-2
12	MASON, CHRISTINA	G	0	0-3	0-0	0-0	0	1	1	0	0	1	0	0	12	-12
13	DUFEK, SAMMIE	C	0	0-1	0-0	0-0	0	3	3	1	0	0	1	0	14	-4
14	WILCHER, MARYAM	G	3	1-2	1-2	0-0	0	2	2	2	0	0	0	1	7	0
15	BECKER, CHARLI	G	5	1-3	1-1	2-2	0	1	1	0	1	1	0	0	12	-6
21	JACKSON, JAZMINE	G	0	0-1	0-0	0-0	0	1	1	1	0	0	0	0	6	-7
22	TAYLOR, FALYN	G	0	0-0	0-0	0-0	0	0	0	0	0	0	0	0	4	-4
31	BLANKS, DEIJAH	G	8	2-4	0-0	4-4	0	2	2	1	1	3	0	0	16	-7
02	CUNNINGHAM, LEXI	G	0	0-2	0-0	0-0	0	0	0	0	0	1	0	0	7	-14
03	SUTTON, FAIREN	G	0	0-1	0-1	0-0	0	0	0	0	0	0	0	1	8	1
	TEAM		0	0-0	0-0	0-0	0	1	1	0	0	0	0	0	0	
TOTALS			21	6-23	3-7	6-6	0	13	13	6	3	8	1	3	100	

Shooting By Period

Period	FG	FG%	3FG	3FG%	FT	FT%
1st Qtr	2-11	18%	1-3	33%	4-4	100%
2nd Qtr	4-12	33%	2-4	50%	2-2	100%
1st Half	6-23	26%	3-7	43%	6-6	100%
Game	15-47	31.9%	3-12	25.0%	13-15	86.7%

Deadball Rebounds: 1,1

Last FG Half: SEU 2nd-02:41

Tex. A&M-Commerce 32

No.	Player	S	Pts	FG	3FG	FT	OR	DR	TR	PF	A	TO	Blk	Stl	Min	+/-
01	JONES, ALEXUS	G	4	1-6	0-2	2-3	1	0	1	0	0	1	0	1	15	4
03	WRIGHT, CHANIA	G	4	2-8	0-5	0-0	0	3	3	0	0	1	0	1	17	6
04	GLASS, MADDISON	G	0	0-1	0-1	0-0	0	1	1	1	1	0	0	0	3	-3
10	KERNAL, DESIRAY	F	4	2-4	0-1	0-0	1	0	1	1	0	1	0	1	10	13
11	BURLESON, MYKIEL	G	7	2-5	1-2	2-2	2	2	4	0	2	0	0	0	11	8
12	ROBINSON, DYANI	G	5	2-4	1-1	0-0	0	0	0	1	0	0	0	1	10	13
20	NOWLIN, KEEKEE	G	0	0-1	0-1	0-0	1	0	1	0	0	0	2	0	7	4
21	LOUIS, JULIANA	F	2	1-5	0-0	0-0	2	2	4	3	0	3	0	0	8	4
30	PIERCE, JOCELYN	F	4	2-2	0-0	0-1	1	2	3	0	2	0	0	1	7	2
42	BRYANT, ALEXIS	F	2	1-1	0-0	0-0	1	5	6	2	1	2	3	0	10	4
	TEAM		0	0-0	0-0	0-0	3	2	5	0	0	1	0	0	0	
TOTALS			32	13-37	2-13	4-6	12	17	29	8	6	9	5	5	100	

Shooting By Period

Period	FG	FG%	3FG	3FG%	FT	FT%
1st Qtr	5-18	28%	1-5	20%	3-4	75%
2nd Qtr	8-19	42%	1-8	13%	1-2	50%
1st Half	13-37	35%	2-13	15%	4-6	67%
Game	26-63	41.3%	4-19	21.1%	13-17	76.5%

Deadball Rebounds: 1,0

Last FG Half: AMC 2nd-00:50

Game Notes:

Officials: , ,
Attendance: 267

Start Time: 07:37 PM ET
End Time: 09:18 PM ET
Game Duration: 1:40
Conference Game;

Score	1st	2nd	3rd	4th	TOT
SEU	9	12	13	12	46
AMC	14	18	14	23	69

Points from (This Period)	SEU	AMC
In the Paint	4	20
Off Turns	9	9
2nd Chance	0	13
Fast Break	7	2
Bench	5	20

Official Box Score
St. Edward's vs Tex. A&M-Commerce
First Quarter Statistics Only
November 23, 2019 at A&M-C Field House - Commerce



St. Edward's 9

No.	Player	S	Pts	FG	3FG	FT	OR	DR	TR	PF	A	TO	Blk	Stl	Min	+/-
10	MAGAZINE, D'AVIYON	G	0	0-2	0-1	0-0	0	1	1	0	0	1	0	1	7	0
12	MASON, CHRISTINA	G	0	0-2	0-0	0-0	0	1	1	0	0	1	0	0	10	-5
13	DUFEK, SAMMIE	C	0	0-1	0-0	0-0	0	2	2	0	0	0	1	0	10	-5
14	WILCHER, MARYAM	G	3	1-2	1-2	0-0	0	2	2	2	0	0	0	1	7	0
31	BLANKS, DEIJAH	G	6	1-2	0-0	4-4	0	0	0	1	1	2	0	0	9	-5
02	CUNNINGHAM, LEXI	G	0	0-1	0-0	0-0	0	0	0	0	0	0	0	0	3	-5
03	SUTTON, FAIREN	G	0	0-0	0-0	0-0	0	0	0	0	0	0	0	0	0	0
15	BECKER, CHARLI	G	0	0-1	0-0	0-0	0	0	0	0	0	0	0	0	3	-5
21	JACKSON, JAZMINE	G	0	0-0	0-0	0-0	0	0	0	0	0	0	0	0	0	0
22	TAYLOR, FALYN	G	0	0-0	0-0	0-0	0	0	0	0	0	0	0	0	1	0
TEAM							0	1	1	0		0				
TOTALS			9	2-11	1-3	4-4	0	7	7	3	1	4	1	2	50	

Shooting By Period

Period	FG	FG%	3FG	3FG%	FT	FT%
1st Qtr	2-11	18%	1-3	33%	4-4	100%
2nd Qtr	4-12	33%	2-4	50%	2-2	100%
1st Half	2-11	18%	1-3	33%	4-4	100%
1st Half	6-23	26%	3-7	43%	6-6	100%
Game	15-47	31.9%	3-12	25.0%	13-15	86.7%

Deadball Rebounds: 1,1

Tex. A&M-Commerce 14

No.	Player	S	Pts	FG	3FG	FT	OR	DR	TR	PF	A	TO	Blk	Stl	Min	+/-
01	JONES, ALEXUS	G	1	0-1	0-1	1-2	0	0	0	0	0	0	0	0	5	-2
03	WRIGHT, CHANIA	G	0	0-2	0-1	0-0	0	1	1	0	0	1	0	1	7	0
04	GLASS, MADDISON	G	0	0-1	0-1	0-0	0	1	1	1	1	0	0	0	3	-3
21	LOUIS, JULIANA	F	2	1-5	0-0	0-0	1	2	3	2	0	2	0	0	7	2
42	BRYANT, ALEXIS	F	2	1-1	0-0	0-0	1	3	4	1	0	1	2	0	7	0
10	KERNAL, DESIRAY	F	2	1-3	0-1	0-0	1	0	1	1	0	1	0	1	6	8
11	BURLESON, MYKIEL	G	5	1-2	1-1	2-2	1	1	2	0	1	0	0	0	5	7
12	ROBINSON, DYANI	G	2	1-3	0-0	0-0	0	0	0	0	0	0	0	0	6	8
20	NOWLIN, KEEKEE	G	0	0-0	0-0	0-0	0	0	0	0	0	0	0	0	3	5
30	PIERCE, JOCELYN	F	0	0-0	0-0	0-0	0	0	0	0	0	0	0	0	0	0
TEAM							2	1	3	0		0				
TOTALS			14	5-18	1-5	3-4	6	9	15	5	2	5	2	2	50	

Shooting By Period

Period	FG	FG%	3FG	3FG%	FT	FT%
1st Qtr	5-18	28%	1-5	20%	3-4	75%
2nd Qtr	8-19	42%	1-8	13%	1-2	50%
1st Half	5-18	28%	1-5	20%	3-4	75%
1st Half	13-37	35%	2-13	15%	4-6	67%
Game	26-63	41.3%	4-19	21.1%	13-17	76.5%

Deadball Rebounds: 1,0

Game Notes:

Officials: , ,
Attendance: 267

Start Time: 07:37 PM ET
End Time: 09:18 PM ET
Game Duration: 1:40
Conference Game;

Score	1st	2nd	3rd	4th	TOT
SEU	9	12	13	12	46
AMC	14	18	14	23	69

Points from (This Period)	SEU	AMC
In the Paint	2	6
Off Turns	5	2
2nd Chance	0	7
Fast Break	2	2
Bench	0	9

Official Play-By-Play
St. Edward's vs Tex. A&M-Commerce
First Quarter
November 23, 2019 at A&M-C Field House - Commerce



Period 1

Starters:

St. Edward's: 10 MAGAZINE, D'AVIYON (G); 12 MASON, CHRISTINA (G); 13 DUFEK, SAMMIE (C); 14 WILCHER, MARYAM (G); 31 BLANKS, DEIJAH (G);

Tex. A&M-Commerce: 1 JONES, ALEXUS (G); 3 WRIGHT, CHANIA (G); 4 GLASS, MADDISON (G); 21 LOUIS, JULIANA (F); 42 BRYANT, ALEXIS (F);

Time	VISITORS: St. Edward's	Score	Margin	HOME: Tex. A&M-Commerce
09:45				MISSED LAYUP by LOUIS, JULIANA
09:42				REBOUND (OFF) by TEAM
09:36				MISSED 3PTR by JONES, ALEXUS
09:29	REBOUND (DEF) by DUFEK, SAMMIE			
09:13	TURNOVER (3SEC) by BLANKS, DEIJAH			
09:02	FOUL (PERSONAL) by BLANKS, DEIJAH			
08:43				MISSED 3PTR by GLASS, MADDISON
08:42	REBOUND (DEF) by TEAM			
08:32	TURNOVER (LOSTBALL) by BLANKS, DEIJAH			
08:32				STEAL by WRIGHT, CHANIA
08:28				TURNOVER (BADPASS) by WRIGHT, CHANIA
08:28	STEAL by WILCHER, MARYAM			
08:15				FOUL (PERSONAL) by LOUIS, JULIANA
08:15	GOOD! FT by BLANKS, DEIJAH	0-1	V 1	
08:15	GOOD! FT by BLANKS, DEIJAH	0-2	V 2	
08:06				MISSED JUMPER by LOUIS, JULIANA
08:01	REBOUND (DEF) by WILCHER, MARYAM			
07:56	TURNOVER (BADPASS) by MASON, CHRISTINA			
07:46		2-2	T	GOOD! LAYUP by BRYANT, ALEXIS
07:46				ASSIST by GLASS, MADDISON
07:30				FOUL (PERSONAL) by GLASS, MADDISON
07:20	MISSED JUMPER by BLANKS, DEIJAH			
07:16				REBOUND (DEF) by GLASS, MADDISON
07:13				FOUL (OFF) by LOUIS, JULIANA
07:13				TURNOVER (OFFENSIVE) by LOUIS, JULIANA
06:44	GOOD! 3PTR by WILCHER, MARYAM	2-5	V 3	
06:44	ASSIST by BLANKS, DEIJAH			
06:34	FOUL (PERSONAL) by WILCHER, MARYAM			
06:34				SUB OUT: GLASS, MADDISON
06:34				SUB OUT: LOUIS, JULIANA
06:34				SUB IN: KERNAL, DESIRAY
06:34				SUB IN: ROBINSON, DYANI
06:34		3-5	V 2	GOOD! FT by JONES, ALEXUS
06:34				MISSED FT by JONES, ALEXUS
06:33	REBOUND (DEF) by MAGAZINE, D'AVIYON			
06:24	MISSED 3PTR by MAGAZINE, D'AVIYON			
06:21				REBOUND (DEF) by TEAM
05:58				MISSED 3PTR by WRIGHT, CHANIA
05:53	REBOUND (DEF) by WILCHER, MARYAM			
05:33	TURNOVER (BADPASS) by MAGAZINE, D'AVIYON			
05:33				STEAL by KERNAL, DESIRAY
05:28				FOUL (OFF) by KERNAL, DESIRAY
05:28				TURNOVER (OFFENSIVE) by KERNAL, DESIRAY
05:28				SUB OUT: JONES, ALEXUS
05:28				SUB IN: BURLESON, MYKIEL
05:09	MISSED LAYUP by DUFEK, SAMMIE			
05:06				REBOUND (DEF) by WRIGHT, CHANIA
05:03				MISSED LAYUP by BURLESON, MYKIEL
04:58				REBOUND (OFF) by BURLESON, MYKIEL
04:58		5-5	T	GOOD! LAYUP by KERNAL, DESIRAY
04:33				FOUL (PERSONAL) by BRYANT, ALEXIS
04:33				
04:33	GOOD! FT by BLANKS, DEIJAH [FB]	5-6	V 1	
04:33	GOOD! FT by BLANKS, DEIJAH [FB]	5-7	V 2	
04:13		7-7	T	GOOD! JUMPER by ROBINSON, DYANI
03:52	MISSED JUMPER by MAGAZINE, D'AVIYON			
03:52				BLOCK by BRYANT, ALEXIS
03:48				REBOUND (DEF) by BRYANT, ALEXIS
03:45				MISSED 3PTR by KERNAL, DESIRAY
03:41				REBOUND (OFF) by BRYANT, ALEXIS
03:39				TURNOVER (LOSTBALL) by BRYANT, ALEXIS
03:39	STEAL by MAGAZINE, D'AVIYON			
03:33	MISSED 3PTR by WILCHER, MARYAM			
03:30				REBOUND (DEF) by BRYANT, ALEXIS
03:19				MISSED LAYUP by ROBINSON, DYANI
03:19	REBOUND (DEF) by DUFEK, SAMMIE			
03:14				SUB OUT: WRIGHT, CHANIA
03:14				SUB OUT: BRYANT, ALEXIS
03:14				SUB IN: NOWLIN, KEEKEE
03:14				SUB IN: LOUIS, JULIANA

Time	VISITORS: St. Edward's	Score	Margin	HOME: Tex. A&M-Commerce
03:14	SUB OUT: MAGAZINE, D'AVIYON			
03:14	SUB IN: CUNNINGHAM, LEXI			
03:05				MISSED JUMPER by KERNAL, DESIRAY
03:02	REBOUND (DEF) by MASON, CHRISTINA			
02:58	MISSED LAYUP by MASON, CHRISTINA			
02:51				REBOUND (DEF) by BURLESON, MYKIEL
02:48	FOUL (PERSONAL) by WILCHER, MARYAM			
02:48	SUB OUT: WILCHER, MARYAM			
02:48	SUB IN: BECKER, CHARLI			
02:48		8-7	H 1	GOOD! FT by BURLESON, MYKIEL [FB]
02:48		9-7	H 2	GOOD! FT by BURLESON, MYKIEL [FB]
02:31	MISSED JUMPER by CUNNINGHAM, LEXI			
02:28				REBOUND (DEF) by LOUIS, JULIANA
02:26				MISSED LAYUP by LOUIS, JULIANA
02:23				REBOUND (OFF) by TEAM
02:04		12-7	H 5	GOOD! 3PTR by BURLESON, MYKIEL
01:39	GOOD! JUMPER by BLANKS, DEIJAH [PNT]	12-9	H 3	
01:22				MISSED LAYUP by ROBINSON, DYANI
01:19				REBOUND (OFF) by KERNAL, DESIRAY
01:12				MISSED JUMPER by LOUIS, JULIANA
01:05				REBOUND (OFF) by LOUIS, JULIANA
00:48		14-9	H 5	GOOD! LAYUP by LOUIS, JULIANA
00:48				ASSIST by BURLESON, MYKIEL
00:38	MISSED JUMPER by BECKER, CHARLI			
00:35				REBOUND (DEF) by LOUIS, JULIANA
00:32				TURNOVER (BADPASS) by LOUIS, JULIANA
00:31				SUB OUT: KERNAL, DESIRAY
00:31				SUB OUT: ROBINSON, DYANI
00:31				SUB OUT: NOWLIN, KEEKEE
00:31				SUB IN: JONES, ALEXUS
00:31				SUB IN: WRIGHT, CHANIA
00:31				SUB IN: BRYANT, ALEXIS
00:31	SUB OUT: BLANKS, DEIJAH			
00:31	SUB IN: TAYLOR, FALYN			
00:09	MISSED LAYUP by MASON, CHRISTINA			
00:09				BLOCK by BRYANT, ALEXIS
00:03				REBOUND (DEF) by BRYANT, ALEXIS
00:00				MISSED JUMPER by WRIGHT, CHANIA
00:00	REBOUND (DEF) by TEAM			

St. Edward's 9, Tex. A&M-Commerce 14

Points from (This Period)	SEU	AMC
In the Paint	2	6
Off Turns	5	2
2nd Chance	0	7
Fast Break	2	2
Bench	0	9

Official Box Score
St. Edward's vs Tex. A&M-Commerce
 Second Quarter Statistics Only
 November 23, 2019 at A&M-C Field House - Commerce



St. Edward's 12

No.	Player	S	Pts	FG	3FG	FT	OR	DR	TR	PF	A	TO	Blk	Stl	Min	+/-
10	MAGAZINE, D'AVIYON	G	5	2-4	1-2	0-0	0	1	1	1	1	1	0	0	7	-2
12	MASON, CHRISTINA	G	0	0-1	0-0	0-0	0	0	0	0	0	0	0	0	2	-7
13	DUFEK, SAMMIE	C	0	0-0	0-0	0-0	0	1	1	1	0	0	0	0	4	1
14	WILCHER, MARYAM	G	0	0-0	0-0	0-0	0	0	0	0	0	0	0	0	0	0
31	BLANKS, DEIJAH	G	2	1-2	0-0	0-0	0	2	2	0	0	1	0	0	7	-2
02	CUNNINGHAM, LEXI	G	0	0-1	0-0	0-0	0	0	0	0	0	1	0	0	4	-9
03	SUTTON, FAIREN	G	0	0-1	0-1	0-0	0	0	0	0	0	0	0	1	8	1
15	BECKER, CHARLI	G	5	1-2	1-1	2-2	0	1	1	0	1	1	0	0	9	-1
21	JACKSON, JAZMINE	G	0	0-1	0-0	0-0	0	1	1	1	0	0	0	0	6	-7
22	TAYLOR, FALYN	G	0	0-0	0-0	0-0	0	0	0	0	0	0	0	0	3	-4
TEAM							0	0	0	0		0				
TOTALS			12	4-12	2-4	2-2	0	6	6	3	2	4	0	1	50	

Shooting By Period

Period	FG	FG%	3FG	3FG%	FT	FT%
3rd Qtr	5-14	36%	0-3	00%	3-5	60%
4th Qtr	4-10	40%	0-2	00%	4-4	100%
2nd Half	4-12	33%	2-4	50%	2-2	100%
2nd Half	9-24	38%	0-5	00%	7-9	78%
Game	15-47	31.9%	3-12	25.0%	13-15	86.7%

Deadball Rebounds: 1,1

Tex. A&M-Commerce 18

No.	Player	S	Pts	FG	3FG	FT	OR	DR	TR	PF	A	TO	Blk	Stl	Min	+/-
01	JONES, ALEXUS	G	3	1-5	0-1	1-1	1	0	1	0	0	1	0	1	10	6
03	WRIGHT, CHANIA	G	4	2-6	0-4	0-0	0	2	2	0	0	0	0	0	10	6
04	GLASS, MADDISON	G	0	0-0	0-0	0-0	0	0	0	0	0	0	0	0	0	0
21	LOUIS, JULIANA	F	0	0-0	0-0	0-0	1	0	1	1	0	1	0	0	1	2
42	BRYANT, ALEXIS	F	0	0-0	0-0	0-0	0	2	2	1	1	1	1	0	3	4
10	KERNAL, DESIRAY	F	2	1-1	0-0	0-0	0	0	0	0	0	0	0	0	4	5
11	BURLESON, MYKIEL	G	2	1-3	0-1	0-0	1	1	2	0	1	0	0	0	6	1
12	ROBINSON, DYANI	G	3	1-1	1-1	0-0	0	0	0	1	0	0	0	1	4	5
20	NOWLIN, KEEKEE	G	0	0-1	0-1	0-0	1	0	1	0	0	0	2	0	4	-1
30	PIERCE, JOCELYN	F	4	2-2	0-0	0-1	1	2	3	0	2	0	0	1	7	2
TEAM							1	1	2	0		1				
TOTALS			18	8-19	1-8	1-2	6	8	14	3	4	4	3	3	50	

Shooting By Period

Period	FG	FG%	3FG	3FG%	FT	FT%
3rd Qtr	7-14	50%	0-2	00%	0-1	00%
4th Qtr	6-12	50%	2-4	50%	9-10	90%
2nd Half	8-19	42%	1-8	13%	1-2	50%
2nd Half	13-26	50%	2-6	33%	9-11	82%
Game	26-63	41.3%	4-19	21.1%	13-17	76.5%

Deadball Rebounds: 1,0

Game Notes:

Officials: , ,
 Attendance: 267

Start Time: 07:37 PM ET
 End Time: 09:18 PM ET
 Game Duration: 1:40
 Conference Game;

Score	1st	2nd	3rd	4th	TOT
SEU	9	12	13	12	46
AMC	14	18	14	23	69

Points from (This Period)	SEU	AMC
In the Paint	2	14
Off Turns	4	7
2nd Chance	0	6
Fast Break	5	0
Bench	5	11

Official Play-By-Play
St. Edward's vs Tex. A&M-Commerce
Second Quarter
November 23, 2019 at A&M-C Field House - Commerce



Period 2

Starters:

St. Edward's: 10 MAGAZINE, D'AVIYON (G); 12 MASON, CHRISTINA (G); 13 DUFEK, SAMMIE (C); 14 WILCHER, MARYAM (G); 31 BLANKS, DEIJAH (G);

Tex. A&M-Commerce: 1 JONES, ALEXUS (G); 3 WRIGHT, CHANIA (G); 4 GLASS, MADDISON (G); 21 LOUIS, JULIANA (F); 42 BRYANT, ALEXIS (F);

Time	VISITORS: St. Edward's	Score	Margin	HOME: Tex. A&M-Commerce
10:00	SUB OUT: MASON, CHRISTINA			
10:00	SUB OUT: DUFEK, SAMMIE			
10:00	SUB IN: SUTTON, FAIREN			
10:00	SUB IN: JACKSON, JAZMINE			
09:40	MISSED JUMPER by JACKSON, JAZMINE			
09:33				REBOUND (DEF) by BRYANT, ALEXIS
09:13		16-9	H 7	GOOD! LAYUP by WRIGHT, CHANIA [PNT]
08:57	MISSED JUMPER by CUNNINGHAM, LEXI			
08:57				BLOCK by BRYANT, ALEXIS
08:50				REBOUND (DEF) by BRYANT, ALEXIS
08:40				MISSED 3PTR by WRIGHT, CHANIA
08:36				REBOUND (OFF) by LOUIS, JULIANA
08:36				FOUL (OFF) by LOUIS, JULIANA
08:36				TURNOVER (OFFENSIVE) by LOUIS, JULIANA
08:36				SUB OUT: LOUIS, JULIANA
08:36				SUB IN: KERNAL, DESIRAY
08:10	TURNOVER (LOSTBALL) by CUNNINGHAM, LEXI			
08:10				STEAL by JONES, ALEXUS
08:05				MISSED LAYUP by JONES, ALEXUS
08:03				REBOUND (OFF) by TEAM
08:03				SUB OUT: BURLESON, MYKIEL
08:03				SUB IN: ROBINSON, DYANI
08:03	SUB OUT: CUNNINGHAM, LEXI			
08:03	SUB IN: MAGAZINE, D'AVIYON			
07:56		18-9	H 9	GOOD! LAYUP by KERNAL, DESIRAY
07:56				ASSIST by BRYANT, ALEXIS
07:40	MISSED 3PTR by SUTTON, FAIREN			
07:37				REBOUND (DEF) by WRIGHT, CHANIA
07:28				FOUL (OFF) by BRYANT, ALEXIS
07:28				SUB OUT: BRYANT, ALEXIS
07:28				SUB IN: PIERCE, JOCELYN
07:28	SUB OUT: TAYLOR, FALYN			
07:28	SUB IN: BLANKS, DEIJAH			
07:28				TURNOVER (OFFENSIVE) by BRYANT, ALEXIS
07:09	GOOD! JUMPER by MAGAZINE, D'AVIYON	18-11	H 7	
06:45				MISSED JUMPER by JONES, ALEXUS
06:41				REBOUND (OFF) by PIERCE, JOCELYN
06:40		20-11	H 9	GOOD! LAYUP by PIERCE, JOCELYN [PNT]
06:40	FOUL (PERSONAL) by JACKSON, JAZMINE			
06:40				MISSED FT by PIERCE, JOCELYN
06:40	REBOUND (DEF) by BLANKS, DEIJAH			
06:40	TURNOVER (LOSTBALL) by MAGAZINE, D'AVIYON			
06:40				STEAL by ROBINSON, DYANI
06:38		22-11	H 11	GOOD! LAYUP by WRIGHT, CHANIA
06:38				ASSIST by PIERCE, JOCELYN
06:23	TIMEOUT 30SEC			
06:23				
06:03	TURNOVER (TRAVEL) by BLANKS, DEIJAH			
05:49				MISSED LAYUP by JONES, ALEXUS
05:45	REBOUND (DEF) by BECKER, CHARLI			
05:39	TURNOVER (BADPASS) by BECKER, CHARLI			
05:39				STEAL by PIERCE, JOCELYN
05:19		25-11	H 14	GOOD! 3PTR by ROBINSON, DYANI
05:19				ASSIST by PIERCE, JOCELYN
04:54	GOOD! JUMPER by BLANKS, DEIJAH [PNT]	25-13	H 12	
04:36				MISSED 3PTR by JONES, ALEXUS
04:33	REBOUND (DEF) by JACKSON, JAZMINE			
04:24	MISSED LAYUP by BLANKS, DEIJAH			
04:21				REBOUND (DEF) by PIERCE, JOCELYN
04:13				TURNOVER (LOSTBALL) by JONES, ALEXUS
04:13	STEAL by SUTTON, FAIREN			
04:09				FOUL (PERSONAL) by ROBINSON, DYANI
04:09				SUB OUT: KERNAL, DESIRAY
04:09				SUB OUT: ROBINSON, DYANI
04:09				SUB IN: BURLESON, MYKIEL
04:09				SUB IN: NOWLIN, KEEKEE
04:09	SUB OUT: JACKSON, JAZMINE			
04:09	SUB IN: DUFEK, SAMMIE			
04:09	GOOD! FT by BECKER, CHARLI [FB]	25-14	H 11	
04:09	GOOD! FT by BECKER, CHARLI [FB]	25-15	H 10	

Time	VISITORS: St. Edward's	Score	Margin	HOME: Tex. A&M-Commerce
04:00				MISSED 3PTR by WRIGHT, CHANIA
03:56	REBOUND (DEF) by DUFEK, SAMMIE			
03:43	GOOD! 3PTR by MAGAZINE, D'AVIYON	25-18	H 7	
03:43	ASSIST by BECKER, CHARLI			
03:20				MISSED 3PTR by BURLESON, MYKIEL
03:17				REBOUND (OFF) by NOWLIN, KEEKEE
03:14				MISSED 3PTR by WRIGHT, CHANIA
03:09	REBOUND (DEF) by BLANKS, DEIJAH			
03:06	MISSED 3PTR by MAGAZINE, D'AVIYON			
03:01				REBOUND (DEF) by WRIGHT, CHANIA
02:48				MISSED 3PTR by NOWLIN, KEEKEE
02:44	REBOUND (DEF) by MAGAZINE, D'AVIYON			
02:41	GOOD! 3PTR by BECKER, CHARLI [FB]	25-21	H 4	
02:41	ASSIST by MAGAZINE, D'AVIYON			
02:37				TIMEOUT 30SEC
02:29	SUB OUT: SUTTON, FAIREN			
02:29	SUB OUT: BECKER, CHARLI			
02:29	SUB IN: CUNNINGHAM, LEXI			
02:29	SUB IN: MASON, CHRISTINA			
02:25		27-21	H 6	GOOD! LAYUP by JONES, ALEXUS
02:24	FOUL (PERSONAL) by DUFEK, SAMMIE			
02:24		28-21	H 7	GOOD! FT by JONES, ALEXUS
01:59	MISSED JUMPER by MAGAZINE, D'AVIYON			
01:59				REBOUND (DEF) by PIERCE, JOCELYN
01:59				BLOCK by NOWLIN, KEEKEE
01:27	FOUL (PERSONAL) by MAGAZINE, D'AVIYON			
01:25				MISSED LAYUP by BURLESON, MYKIEL
01:18				REBOUND (OFF) by BURLESON, MYKIEL
01:18		30-21	H 9	GOOD! LAYUP by BURLESON, MYKIEL
01:07	MISSED JUMPER by MASON, CHRISTINA			
01:05				REBOUND (DEF) by TEAM
01:05	SUB OUT: MAGAZINE, D'AVIYON			
01:05	SUB IN: BECKER, CHARLI			
00:50		32-21	H 11	GOOD! LAYUP by PIERCE, JOCELYN
00:50				ASSIST by BURLESON, MYKIEL
00:34	MISSED LAYUP by BECKER, CHARLI			
00:34				BLOCK by NOWLIN, KEEKEE
00:28				REBOUND (DEF) by BURLESON, MYKIEL
00:23				MISSED 3PTR by WRIGHT, CHANIA
00:19				REBOUND (OFF) by JONES, ALEXUS
00:01				TURNOVER (SHOTCLOCK) by TEAM

St. Edward's 21, Tex. A&M-Commerce 32

Points from (This Period)	SEU	AMC
In the Paint	2	14
Off Turns	4	7
2nd Chance	0	6
Fast Break	5	0
Bench	5	11

Official Box Score
St. Edward's vs Tex. A&M-Commerce
Second Half Statistics Only
November 23, 2019 at A&M-C Field House - Commerce



St. Edward's 25

No.	Player	S	Pts	FG	3FG	FT	OR	DR	TR	PF	A	TO	Blk	Stl	Min	+/-
10	MAGAZINE, D'AVIYON	G	4	2-4	0-2	0-0	0	1	1	2	1	2	0	2	13	-5
12	MASON, CHRISTINA	G	0	0-0	0-0	0-0	0	1	1	1	0	4	0	0	12	-5
13	DUFEK, SAMMIE	C	8	4-4	0-0	0-0	1	3	4	1	0	0	1	0	12	-4
14	WILCHER, MARYAM	G	2	0-5	0-0	2-2	2	0	2	1	0	0	0	0	16	-7
15	BECKER, CHARLI	G	0	0-0	0-0	0-0	0	0	0	1	0	1	0	0	4	-5
21	JACKSON, JAZMINE	G	4	2-2	0-0	0-2	1	3	4	2	0	0	0	2	8	-8
22	TAYLOR, FALYN	G	0	0-0	0-0	0-0	0	0	0	0	0	1	0	0	6	-6
31	BLANKS, DEIJAH	G	7	1-6	0-0	5-5	1	0	1	0	0	3	1	1	14	-6
02	CUNNINGHAM, LEXI	G	0	0-2	0-2	0-0	0	0	0	1	0	0	0	0	8	-7
03	SUTTON, FAIREN	G	0	0-1	0-1	0-0	0	0	0	1	1	1	0	0	8	-7
	TEAM		0	0-0	0-0	0-0	0	1	1	0	0	0	0	0	0	
TOTALS			25	9-24	0-5	7-9	5	9	14	10	2	12	2	5	100	

Shooting By Period

Period	FG	FG%	3FG	3FG%	FT	FT%
3rd Qtr	5-14	36%	0-3	00%	3-5	60%
4th Qtr	4-10	40%	0-2	00%	4-4	100%
2nd Half	9-24	38%	0-5	00%	7-9	78%
Game	15-47	31.9%	3-12	25.0%	13-15	86.7%

Deadball Rebounds: 1,1

Last FG Half: SEU 4th-02:05

Tex. A&M-Commerce 37

No.	Player	S	Pts	FG	3FG	FT	OR	DR	TR	PF	A	TO	Blk	Stl	Min	+/-
01	JONES, ALEXUS	G	5	1-2	1-1	2-2	0	1	1	3	2	0	0	1	9	3
03	WRIGHT, CHANIA	G	3	1-3	1-2	0-0	0	0	0	0	1	1	0	0	10	7
04	GLASS, MADDISON	G	5	2-3	0-0	1-2	0	1	1	1	2	0	0	2	17	10
10	KERNAL, DESIRAY	F	2	1-1	0-0	0-0	0	1	1	0	0	0	0	0	7	1
11	BURLESON, MYKIEL	G	2	1-2	0-0	0-0	0	4	4	0	1	1	0	0	12	7
12	ROBINSON, DYANI	G	2	1-4	0-2	0-0	1	1	2	3	1	3	0	0	11	7
20	NOWLIN, KEEKEE	G	2	0-0	0-0	2-2	0	1	1	1	0	0	0	0	2	2
21	LOUIS, JULIANA	F	4	2-4	0-1	0-0	2	1	3	0	1	0	0	2	13	9
30	PIERCE, JOCELYN	F	0	0-0	0-0	0-0	0	0	0	0	0	1	0	1	2	2
42	BRYANT, ALEXIS	F	12	4-7	0-0	4-5	1	1	2	1	0	3	1	2	17	12
	TEAM		0	0-0	0-0	0-0	1	0	1	0	0	0	0	0	0	
TOTALS			37	13-26	2-6	9-11	5	11	16	9	8	9	1	8	100	

Shooting By Period

Period	FG	FG%	3FG	3FG%	FT	FT%
3rd Qtr	7-14	50%	0-2	00%	0-1	00%
4th Qtr	6-12	50%	2-4	50%	9-10	90%
2nd Half	13-26	50%	2-6	33%	9-11	82%
Game	26-63	41.3%	4-19	21.1%	13-17	76.5%

Deadball Rebounds: 1,0

Last FG Half: AMC 4th-02:36

Game Notes:

Officials: , ,
Attendance: 267

Start Time: 07:37 PM ET
End Time: 09:18 PM ET
Game Duration: 1:40
Conference Game;

Score	1st	2nd	3rd	4th	TOT
SEU	9	12	13	12	46
AMC	14	18	14	23	69

Points from (This Period)	SEU	AMC
In the Paint	12	16
Off Turns	4	9
2nd Chance	6	8
Fast Break	0	5
Bench	4	8

Official Box Score
St. Edward's vs Tex. A&M-Commerce
Third Quarter Statistics Only
November 23, 2019 at A&M-C Field House - Commerce



St. Edward's 25

No.	Player	S	Pts	FG	3FG	FT	OR	DR	TR	PF	A	TO	Blk	Stl	Min	+/-
10	MAGAZINE, D'AVIYON	G	4	2-3	0-1	0-0	0	1	1	1	0	1	0	1	6	1
12	MASON, CHRISTINA	G	0	0-0	0-0	0-0	0	1	1	0	0	1	0	0	6	2
13	DUFEK, SAMMIE	C	2	1-1	0-0	0-0	0	1	1	0	0	0	0	0	5	2
14	WILCHER, MARYAM	G	2	0-4	0-0	2-2	2	0	2	0	0	0	0	0	9	-1
31	BLANKS, DEIJAH	G	3	1-3	0-0	1-1	0	0	0	0	0	2	1	1	7	1
02	CUNNINGHAM, LEXI	G	0	0-2	0-2	0-0	0	0	0	0	0	0	0	0	4	-2
03	SUTTON, FAIREN	G	0	0-0	0-0	0-0	0	0	0	1	0	1	0	0	4	-3
15	BECKER, CHARLI	G	0	0-0	0-0	0-0	0	0	0	0	0	0	0	0	1	0
21	JACKSON, JAZMINE	G	2	1-1	0-0	0-2	1	3	4	0	0	0	0	1	5	-3
22	TAYLOR, FALYN	G	0	0-0	0-0	0-0	0	0	0	0	0	0	0	0	3	-2
TEAM							0	0	0	0		0				
TOTALS			13	5-14	0-3	3-5	3	6	9	2	0	5	1	3	50	

Shooting By Period

Period	FG	FG%	3FG	3FG%	FT	FT%
2nd Half	0-0	0%	0-0	0%	0-0	0%
Game	15-47	31.9%	3-12	25.0%	13-15	86.7%

Deadball Rebounds: 1,1

Tex. A&M-Commerce 37

No.	Player	S	Pts	FG	3FG	FT	OR	DR	TR	PF	A	TO	Blk	Stl	Min	+/-
01	JONES, ALEXUS	G	0	0-0	0-0	0-0	0	1	1	2	1	0	0	1	5	-2
03	WRIGHT, CHANIA	G	0	0-2	0-1	0-0	0	0	0	0	1	1	0	0	4	0
04	GLASS, MADDISON	G	4	2-2	0-0	0-0	0	1	1	1	1	0	0	0	10	1
21	LOUIS, JULIANA	F	2	1-3	0-1	0-0	1	1	2	0	0	0	0	0	7	2
42	BRYANT, ALEXIS	F	6	3-5	0-0	0-1	1	0	1	0	0	1	1	1	9	3
10	KERNAL, DESIRAY	F	2	1-1	0-0	0-0	0	1	1	0	0	0	0	0	3	-3
11	BURLESON, MYKIEL	G	0	0-1	0-0	0-0	0	2	2	0	1	1	0	0	6	1
12	ROBINSON, DYANI	G	0	0-0	0-0	0-0	0	1	1	2	0	3	0	0	5	3
20	NOWLIN, KEEKEE	G	0	0-0	0-0	0-0	0	0	0	0	0	0	0	0	0	0
30	PIERCE, JOCELYN	F	0	0-0	0-0	0-0	0	0	0	0	0	0	0	0	0	0
TEAM							0	0	0	0		0				
TOTALS			14	7-14	0-2	0-1	2	7	9	5	4	6	1	2	50	

Shooting By Period

Period	FG	FG%	3FG	3FG%	FT	FT%
2nd Half	0-0	0%	0-0	0%	0-0	0%
Game	26-63	41.3%	4-19	21.1%	13-17	76.5%

Deadball Rebounds: 1,0

Game Notes:

Officials: , ,
Attendance: 267

Start Time: 07:37 PM ET
End Time: 09:18 PM ET
Game Duration: 1:40
Conference Game;

Score	1st	2nd	3rd	4th	TOT
SEU	9	12	13	12	46
AMC	14	18	14	23	69

Points from (This Period)	SEU	AMC
In the Paint	6	10
Off Turns	2	4
2nd Chance	2	2
Fast Break	0	2
Bench	2	2

Official Play-By-Play
St. Edward's vs Tex. A&M-Commerce
Third Quarter
November 23, 2019 at A&M-C Field House - Commerce



Period 3

Starters:

St. Edward's: 10 MAGAZINE, D'AVIYON (G); 12 MASON, CHRISTINA (G); 13 DUFEK, SAMMIE (C); 14 WILCHER, MARYAM (G); 31 BLANKS, DEIJAH (G);

Tex. A&M-Commerce: 1 JONES, ALEXUS (G); 3 WRIGHT, CHANIA (G); 4 GLASS, MADDISON (G); 21 LOUIS, JULIANA (F); 42 BRYANT, ALEXIS (F);

Time	VISITORS: St. Edward's	Score	Margin	HOME: Tex. A&M-Commerce
03:19	BLOCK by DUFEK, SAMMIE			
09:58				SUB OUT: BURLESON, MYKIEL
09:58				SUB OUT: NOWLIN, KEEKEE
09:58				SUB OUT: PIERCE, JOCELYN
09:58				SUB IN: GLASS, MADDISON
09:58				SUB IN: LOUIS, JULIANA
09:58				SUB IN: BRYANT, ALEXIS
09:58	SUB OUT: CUNNINGHAM, LEXI			
09:58	SUB OUT: BECKER, CHARLI			
09:58	SUB IN: MAGAZINE, D'AVIYON			
09:58	SUB IN: WILCHER, MARYAM			
09:51				MISSED LAYUP by BRYANT, ALEXIS
09:51	BLOCK by BLANKS, DEIJAH			
09:44	REBOUND (DEF) by DUFEK, SAMMIE			
09:44	FOUL (OFF) by MAGAZINE, D'AVIYON			
09:44	TURNOVER (OFFENSIVE) by MAGAZINE, D'AVIYON			
09:33		34-21	H 13	GOOD! LAYUP by BRYANT, ALEXIS [PNT]
09:33				ASSIST by WRIGHT, CHANIA
09:10	GOOD! JUMPER by MAGAZINE, D'AVIYON	34-23	H 11	
08:40				MISSED 3PTR by WRIGHT, CHANIA
08:36	REBOUND (DEF) by MASON, CHRISTINA			
08:32	TURNOVER (LOSTBALL) by MASON, CHRISTINA			
08:32				STEAL by JONES, ALEXUS
08:26				TURNOVER (BADPASS) by WRIGHT, CHANIA
08:26	STEAL by MAGAZINE, D'AVIYON			
08:20	MISSED JUMPER by WILCHER, MARYAM			
08:17				REBOUND (DEF) by LOUIS, JULIANA
08:06				TURNOVER (TRAVEL) by BRYANT, ALEXIS
07:43	GOOD! LAYUP by DUFEK, SAMMIE [PNT]	34-25	H 9	
07:32		36-25	H 11	GOOD! LAYUP by BRYANT, ALEXIS [PNT]
07:15	TURNOVER (BADPASS) by BLANKS, DEIJAH			
06:45				MISSED LAYUP by BRYANT, ALEXIS
06:41				REBOUND (OFF) by BRYANT, ALEXIS
06:25				MISSED JUMPER by WRIGHT, CHANIA
06:22	REBOUND (DEF) by MAGAZINE, D'AVIYON			
06:18				FOUL (PERSONAL) by JONES, ALEXUS
06:18				SUB OUT: WRIGHT, CHANIA
06:18				SUB OUT: LOUIS, JULIANA
06:18				SUB IN: KERNAL, DESIRAY
06:18				SUB IN: BURLESON, MYKIEL
06:05	GOOD! JUMPER by MAGAZINE, D'AVIYON	36-27	H 9	
05:36		38-27	H 11	GOOD! JUMPER by GLASS, MADDISON
05:36				ASSIST by JONES, ALEXUS
05:07	GOOD! JUMPER by BLANKS, DEIJAH [PNT]	38-29	H 9	
05:05				FOUL (PERSONAL) by JONES, ALEXUS
05:05				SUB OUT: JONES, ALEXUS
05:05				SUB IN: ROBINSON, DYANI
05:05	SUB OUT: MASON, CHRISTINA			
05:05	SUB OUT: DUFEK, SAMMIE			
05:05	SUB IN: SUTTON, FAIREN			
05:05	SUB IN: JACKSON, JAZMINE			
05:05	GOOD! FT by BLANKS, DEIJAH	38-30	H 8	
04:50		40-30	H 10	GOOD! JUMPER by KERNAL, DESIRAY
04:50				ASSIST by BURLESON, MYKIEL
04:30	MISSED 3PTR by MAGAZINE, D'AVIYON			
04:27				REBOUND (DEF) by BURLESON, MYKIEL
04:20				MISSED JUMPER by BURLESON, MYKIEL
04:16	REBOUND (DEF) by JACKSON, JAZMINE			
04:06	MISSED JUMPER by BLANKS, DEIJAH			
03:57	REBOUND (OFF) by WILCHER, MARYAM			
03:57	MISSED LAYUP by WILCHER, MARYAM			
03:56				REBOUND (DEF) by KERNAL, DESIRAY
03:53				TURNOVER (LOSTBALL) by ROBINSON, DYANI
03:53	STEAL by BLANKS, DEIJAH			
03:48	TURNOVER (BADPASS) by BLANKS, DEIJAH			
03:48				
03:48				SUB OUT: BRYANT, ALEXIS
03:48				SUB IN: LOUIS, JULIANA
03:48	SUB OUT: MAGAZINE, D'AVIYON			
03:48	SUB OUT: BLANKS, DEIJAH			

Time	VISITORS: St. Edward's	Score	Margin	HOME: Tex. A&M-Commerce
03:48	SUB IN: CUNNINGHAM, LEXI			
03:48	SUB IN: TAYLOR, FALYN			
03:24				MISSED LAYUP by LOUIS, JULIANA
03:18	REBOUND (DEF) by JACKSON, JAZMINE			
03:14				FOUL (PERSONAL) by ROBINSON, DYANI
03:14	GOOD! FT by WILCHER, MARYAM	40-31	H 9	
03:14	GOOD! FT by WILCHER, MARYAM	40-32	H 8	
02:56				TURNOVER (LOSTBALL) by ROBINSON, DYANI
02:56	STEAL by JACKSON, JAZMINE			
02:55				FOUL (PERSONAL) by ROBINSON, DYANI
02:55				SUB OUT: KERNAL, DESIRAY
02:55				SUB IN: BRYANT, ALEXIS
02:42	TURNOVER (BADPASS) by SUTTON, FAIREN			
02:42				STEAL by BRYANT, ALEXIS
02:35		42-32	H 10	GOOD! LAYUP by GLASS, MADDISON [FB]
02:08	MISSED JUMPER by WILCHER, MARYAM			
02:08				BLOCK by BRYANT, ALEXIS
01:59	REBOUND (OFF) by WILCHER, MARYAM			
01:59	MISSED LAYUP by WILCHER, MARYAM			
01:58				REBOUND (DEF) by ROBINSON, DYANI
01:44				TURNOVER (LOSTBALL) by BURLESON, MYKIEL
01:26	MISSED 3PTR by CUNNINGHAM, LEXI			
01:23				REBOUND (DEF) by GLASS, MADDISON
01:16		44-32	H 12	GOOD! LAYUP by BRYANT, ALEXIS [PNT]
01:16				ASSIST by GLASS, MADDISON
01:16	FOUL (PERSONAL) by SUTTON, FAIREN			
01:16	SUB OUT: SUTTON, FAIREN			
01:16	SUB OUT: WILCHER, MARYAM			
01:16	SUB OUT: TAYLOR, FALYN			
01:16	SUB IN: MASON, CHRISTINA			
01:16	SUB IN: BECKER, CHARLI			
01:16	SUB IN: BLANKS, DEIJAH			
01:16				MISSED FT by BRYANT, ALEXIS
01:16				REBOUND (OFF) by LOUIS, JULIANA
01:16		46-32	H 14	GOOD! LAYUP by LOUIS, JULIANA
01:04	MISSED 3PTR by CUNNINGHAM, LEXI			
01:00	REBOUND (OFF) by JACKSON, JAZMINE			
00:57	GOOD! LAYUP by JACKSON, JAZMINE [PNT]	46-34	H 12	
00:35				MISSED 3PTR by LOUIS, JULIANA
00:31	REBOUND (DEF) by JACKSON, JAZMINE			
00:15	MISSED JUMPER by BLANKS, DEIJAH			
00:12				REBOUND (DEF) by BURLESON, MYKIEL
00:09				TURNOVER (TRAVEL) by ROBINSON, DYANI
00:09				SUB OUT: BURLESON, MYKIEL
00:09				SUB IN: JONES, ALEXUS
00:03				FOUL (PERSONAL) by GLASS, MADDISON
00:03				SUB OUT: GLASS, MADDISON
00:03				SUB IN: WRIGHT, CHANIA
00:03	MISSED FT by JACKSON, JAZMINE			
00:03	REBOUND (OFF) by TEAM			
00:02	MISSED FT by JACKSON, JAZMINE			
00:00				REBOUND (DEF) by JONES, ALEXUS

St. Edward's 34, Tex. A&M-Commerce 46

Points from (This Period)	SEU	AMC
In the Paint	6	10
Off Turns	2	4
2nd Chance	2	2
Fast Break	0	2
Bench	2	2

Official Box Score
St. Edward's vs Tex. A&M-Commerce
Fourth Quarter Statistics Only
November 23, 2019 at A&M-C Field House - Commerce



St. Edward's 12

No.	Player	S	Pts	FG	3FG	FT	OR	DR	TR	PF	A	TO	Blk	Stl	Min	+/-
10	MAGAZINE, D'AVIYON	G	0	0-1	0-1	0-0	0	0	0	1	1	1	0	1	7	-6
12	MASON, CHRISTINA	G	0	0-0	0-0	0-0	0	0	0	1	0	3	0	0	6	-7
13	DUFEK, SAMMIE	C	6	3-3	0-0	0-0	1	2	3	1	0	0	1	0	7	-6
14	WILCHER, MARYAM	G	0	0-1	0-0	0-0	0	0	0	1	0	0	0	0	7	-6
31	BLANKS, DEIJAH	G	4	0-3	0-0	4-4	1	0	1	0	0	1	0	0	7	-7
02	CUNNINGHAM, LEXI	G	0	0-0	0-0	0-0	0	0	0	1	0	0	0	0	4	-5
03	SUTTON, FAIREN	G	0	0-1	0-1	0-0	0	0	0	0	1	0	0	0	4	-4
15	BECKER, CHARLI	G	0	0-0	0-0	0-0	0	0	0	1	0	1	0	0	3	-5
21	JACKSON, JAZMINE	G	2	1-1	0-0	0-0	0	0	0	2	0	0	0	1	3	-5
22	TAYLOR, FALYN	G	0	0-0	0-0	0-0	0	0	0	0	0	1	0	0	3	-4
TEAM							0	1	1	0		0				
TOTALS			12	4-10	0-2	4-4	2	3	5	8	2	7	1	2	50	

Shooting By Period

Period	FG	FG%	3FG	3FG%	FT	FT%
Game	15-47	31.9%	3-12	25.0%	13-15	86.7%

Deadball Rebounds: 1,1

Tex. A&M-Commerce 23

No.	Player	S	Pts	FG	3FG	FT	OR	DR	TR	PF	A	TO	Blk	Stl	Min	+/-
01	JONES, ALEXUS	G	5	1-2	1-1	2-2	0	0	0	1	1	0	0	0	4	5
03	WRIGHT, CHANIA	G	3	1-1	1-1	0-0	0	0	0	0	0	0	0	0	6	7
04	GLASS, MADDISON	G	1	0-1	0-0	1-2	0	0	0	0	1	0	0	2	7	9
21	LOUIS, JULIANA	F	2	1-1	0-0	0-0	1	0	1	0	1	0	0	2	6	7
42	BRYANT, ALEXIS	F	6	1-2	0-0	4-4	0	1	1	1	0	2	0	1	8	9
10	KERNAL, DESIRAY	F	0	0-0	0-0	0-0	0	0	0	0	0	0	0	0	4	4
11	BURLESON, MYKIEL	G	2	1-1	0-0	0-0	0	2	2	0	0	0	0	0	6	6
12	ROBINSON, DYANI	G	2	1-4	0-2	0-0	1	0	1	1	1	0	0	0	6	4
20	NOWLIN, KEEKEE	G	2	0-0	0-0	2-2	0	1	1	1	0	0	0	0	2	2
30	PIERCE, JOCELYN	F	0	0-0	0-0	0-0	0	0	0	0	0	1	0	1	2	2
TEAM							1	0	1	0		0				
TOTALS			23	6-12	2-4	9-10	3	4	7	4	4	3	0	6	50	

Shooting By Period

Period	FG	FG%	3FG	3FG%	FT	FT%
Game	26-63	41.3%	4-19	21.1%	13-17	76.5%

Deadball Rebounds: 1,0

Game Notes:

Officials: , ,

Attendance: 267

Start Time: 07:37 PM ET

End Time: 09:18 PM ET

Game Duration: 1:40

Conference Game;

Score	1st	2nd	3rd	4th	TOT
SEU	9	12	13	12	46
AMC	14	18	14	23	69

Points from (This Period)	SEU	AMC
In the Paint	6	6
Off Turns	2	5
2nd Chance	4	6
Fast Break	0	3
Bench	2	6

Official Play-By-Play
St. Edward's vs Tex. A&M-Commerce
Fourth Quarter
November 23, 2019 at A&M-C Field House - Commerce



Period 4

Starters:

St. Edward's: 10 MAGAZINE, D'AVIYON (G); 12 MASON, CHRISTINA (G); 13 DUFEK, SAMMIE (C); 14 WILCHER, MARYAM (G); 31 BLANKS, DEIJAH (G);

Tex. A&M-Commerce: 1 JONES, ALEXUS (G); 3 WRIGHT, CHANIA (G); 4 GLASS, MADDISON (G); 21 LOUIS, JULIANA (F); 42 BRYANT, ALEXIS (F);

Time	VISITORS: St. Edward's	Score	Margin	HOME: Tex. A&M-Commerce
10:00				SUB OUT: ROBINSON, DYANI
10:00				SUB IN: GLASS, MADDISON
09:55	TURNOVER (LOSTBALL) by BECKER, CHARLI			
09:55				STEAL by GLASS, MADDISON
09:52	FOUL (PERSONAL) by MASON, CHRISTINA			
09:52				MISSED FT by GLASS, MADDISON
09:52				REBOUND (OFF) by TEAM
09:52		47-34	H 13	GOOD! FT by GLASS, MADDISON [FB]
09:38	GOOD! LAYUP by JACKSON, JAZMINE	47-36	H 11	
09:15				TURNOVER (BADPASS) by BRYANT, ALEXIS
09:15	STEAL by JACKSON, JAZMINE			
09:05				FOUL (PERSONAL) by BRYANT, ALEXIS
09:05	GOOD! FT by BLANKS, DEIJAH	47-37	H 10	
09:05	GOOD! FT by BLANKS, DEIJAH	47-38	H 9	
08:49	FOUL (PERSONAL) by CUNNINGHAM, LEXI			
08:44		50-38	H 12	GOOD! 3PTR by WRIGHT, CHANIA
08:44				ASSIST by JONES, ALEXUS
08:29	TURNOVER (BADPASS) by MASON, CHRISTINA			
08:29				STEAL by LOUIS, JULIANA
08:28	FOUL (PERSONAL) by JACKSON, JAZMINE			
08:28	TIMEOUT 30SEC			
08:28				
08:17	FOUL (PERSONAL) by JACKSON, JAZMINE			
08:09				MISSED LAYUP by JONES, ALEXUS
08:09				REBOUND (OFF) by TEAM
08:02	FOUL (PERSONAL) by BECKER, CHARLI			
08:02		51-38	H 13	GOOD! FT by JONES, ALEXUS
08:02		52-38	H 14	GOOD! FT by JONES, ALEXUS
07:50	MISSED LAYUP by BLANKS, DEIJAH			
07:47				REBOUND (DEF) by BRYANT, ALEXIS
07:25		55-38	H 17	GOOD! 3PTR by JONES, ALEXUS
07:25				ASSIST by GLASS, MADDISON
07:00				FOUL (PERSONAL) by JONES, ALEXUS
07:00	SUB OUT: BECKER, CHARLI			
07:00	SUB OUT: JACKSON, JAZMINE			
07:00	SUB IN: DUFEK, SAMMIE			
07:00	SUB IN: WILCHER, MARYAM			
07:00	GOOD! FT by BLANKS, DEIJAH	55-39	H 16	
07:00	GOOD! FT by BLANKS, DEIJAH	55-40	H 15	
07:00	SUB OUT: BLANKS, DEIJAH			
07:00	SUB IN: TAYLOR, FALYN			
06:39				MISSED LAYUP by BRYANT, ALEXIS
06:39				REBOUND (OFF) by LOUIS, JULIANA
06:33		57-40	H 17	GOOD! LAYUP by LOUIS, JULIANA
06:39	BLOCK by DUFEK, SAMMIE			
06:24	TURNOVER (BADPASS) by MAGAZINE, D'AVIYON			
06:14	SUB OUT: MASON, CHRISTINA			
06:14	SUB IN: MAGAZINE, D'AVIYON			
06:10				TURNOVER (BADPASS) by BRYANT, ALEXIS
06:10	STEAL by MAGAZINE, D'AVIYON			
06:08	FOUL (PERSONAL) by WILCHER, MARYAM			
06:08				SUB OUT: JONES, ALEXUS
06:08				SUB IN: BURLESON, MYKIEL
06:08	SUB OUT: CUNNINGHAM, LEXI			
06:08	SUB IN: MASON, CHRISTINA			
06:08		58-40	H 18	GOOD! FT by BRYANT, ALEXIS
06:08		59-40	H 19	GOOD! FT by BRYANT, ALEXIS
05:41	TURNOVER (BADPASS) by MASON, CHRISTINA			
05:41				STEAL by GLASS, MADDISON
05:36				MISSED LAYUP by GLASS, MADDISON
05:35	REBOUND (DEF) by TEAM			
05:35				SUB OUT: GLASS, MADDISON
05:35				SUB IN: ROBINSON, DYANI
05:13	TURNOVER (BADPASS) by MASON, CHRISTINA			
05:13				STEAL by LOUIS, JULIANA
05:09		61-40	H 21	GOOD! LAYUP by ROBINSON, DYANI [FB/PNT]
05:09				ASSIST by LOUIS, JULIANA
04:42	GOOD! LAYUP by DUFEK, SAMMIE	61-42	H 19	
04:42	ASSIST by MAGAZINE, D'AVIYON			
04:19				MISSED 3PTR by ROBINSON, DYANI

Time	VISITORS: St. Edward's	Score	Margin	HOME: Tex. A&M-Commerce
04:16	REBOUND (DEF) by DUFEK, SAMMIE			
04:10	TURNOVER (LOSTBALL) by TAYLOR, FALYN			
04:10				STEAL by BRYANT, ALEXIS
04:10				
04:07				SUB OUT: WRIGHT, CHANIA
04:07				SUB OUT: LOUIS, JULIANA
04:07				SUB IN: GLASS, MADDISON
04:07				SUB IN: KERNAL, DESIRAY
04:07	SUB OUT: MASON, CHRISTINA			
04:07	SUB OUT: TAYLOR, FALYN			
04:07	SUB IN: SUTTON, FAIREN			
04:07	SUB IN: BLANKS, DEIJAH			
03:53	FOUL (PERSONAL) by DUFEK, SAMMIE			
03:53		62-42	H 20	GOOD! FT by BRYANT, ALEXIS
03:53		63-42	H 21	GOOD! FT by BRYANT, ALEXIS
03:32	MISSED 3PTR by SUTTON, FAIREN			
03:29				REBOUND (DEF) by BURLESON, MYKIEL
03:21		65-42	H 23	GOOD! LAYUP by BRYANT, ALEXIS [PNT]
03:21				ASSIST by ROBINSON, DYANI
03:05	MISSED JUMPER by BLANKS, DEIJAH			
03:01	REBOUND (OFF) by BLANKS, DEIJAH			
02:56	GOOD! JUMPER by DUFEK, SAMMIE	65-44	H 21	
02:56	ASSIST by SUTTON, FAIREN			
02:36		67-44	H 23	GOOD! JUMPER by BURLESON, MYKIEL
02:10	MISSED JUMPER by BLANKS, DEIJAH			
02:05	REBOUND (OFF) by DUFEK, SAMMIE			
02:05	GOOD! LAYUP by DUFEK, SAMMIE	67-46	H 21	
01:56				TIMEOUT 30SEC
01:56				SUB OUT: GLASS, MADDISON
01:56				SUB OUT: BRYANT, ALEXIS
01:56				SUB IN: NOWLIN, KEEKEE
01:56				SUB IN: PIERCE, JOCELYN
01:54				TURNOVER (TRAVEL) by PIERCE, JOCELYN
01:35				FOUL (PERSONAL) by NOWLIN, KEEKEE
01:16	MISSED 3PTR by MAGAZINE, D'AVIYON			
01:12				REBOUND (DEF) by NOWLIN, KEEKEE
00:58				MISSED JUMPER by ROBINSON, DYANI
00:54	REBOUND (DEF) by DUFEK, SAMMIE			
00:50	MISSED LAYUP by WILCHER, MARYAM			
00:46				REBOUND (DEF) by BURLESON, MYKIEL
00:24				MISSED 3PTR by ROBINSON, DYANI
00:21				REBOUND (OFF) by ROBINSON, DYANI
00:20	FOUL (PERSONAL) by MAGAZINE, D'AVIYON			
00:20		68-46	H 22	GOOD! FT by NOWLIN, KEEKEE
00:20		69-46	H 23	GOOD! FT by NOWLIN, KEEKEE
00:14				FOUL (PERSONAL) by ROBINSON, DYANI
00:06	TURNOVER (BADPASS) by BLANKS, DEIJAH			
00:06				STEAL by PIERCE, JOCELYN

St. Edward's 46, Tex. A&M-Commerce 69

Points from (This Period)	SEU	AMC
In the Paint	6	6
Off Turns	2	5
2nd Chance	4	6
Fast Break	0	3
Bench	2	6

Official Scoring/Possession Reference Chart
St. Edward's vs Tex. A&M-Commerce
Period 1
November 23, 2019 at A&M-C Field House - Commerce



Period 1

Starters:

St. Edward's: 10 MAGAZINE,D'AVIYON (G); 12 MASON,CHRISTINA (G); 13 DUFEK,SAMMIE (C); 14 WILCHER,MARYAM (G); 31 BLANKS,DEIJAH (G);

Tex. A&M-Commerce: 1 JONES,ALEXUS (G); 3 WRIGHT,CHANIA (G); 4 GLASS,MADDISON (G); 21 LOUIS,JULIANA (F); 42 BRYANT,ALEXIS (F);

Time	VISITORS: St. Edward's	Score	Margin	HOME: Tex. A&M-Commerce
08:15	GOOD! FT by BLANKS, DEIJAH	0-1	V 1	
08:15	GOOD! FT by BLANKS, DEIJAH	0-2	V 2	
07:46		2-2	T	GOOD! LAYUP by BRYANT, ALEXIS
06:44	GOOD! 3PTR by WILCHER, MARYAM	2-5	V 3	
06:34		3-5	V 2	GOOD! FT by JONES, ALEXUS
04:58		5-5	T	GOOD! LAYUP by KERNAL, DESIRAY
04:33	GOOD! FT by BLANKS, DEIJAH [FB]	5-6	V 1	
04:33	GOOD! FT by BLANKS, DEIJAH [FB]	5-7	V 2	
04:13		7-7	T	GOOD! JUMPER by ROBINSON, DYANI
02:48		8-7	H 1	GOOD! FT by BURLESON, MYKIEL [FB]
02:48		9-7	H 2	GOOD! FT by BURLESON, MYKIEL [FB]
02:04		12-7	H 5	GOOD! 3PTR by BURLESON, MYKIEL
01:39	GOOD! JUMPER by BLANKS, DEIJAH [PNT]	12-9	H 3	
00:48		14-9	H 5	GOOD! LAYUP by LOUIS, JULIANA

St. Edward's 9, Tex. A&M-Commerce 14

Official Scoring/Possession Reference Chart
St. Edward's vs Tex. A&M-Commerce
Period 2
November 23, 2019 at A&M-C Field House - Commerce



Period 2

Starters:

St. Edward's: 10 MAGAZINE, D'AVIYON (G); 12 MASON, CHRISTINA (G); 13 DUFEK, SAMMIE (C); 14 WILCHER, MARYAM (G); 31 BLANKS, DEIJAH (G);

Tex. A&M-Commerce: 1 JONES, ALEXUS (G); 3 WRIGHT, CHANIA (G); 4 GLASS, MADDISON (G); 21 LOUIS, JULIANA (F); 42 BRYANT, ALEXIS (F);

Time	VISITORS: St. Edward's	Score	Margin	HOME: Tex. A&M-Commerce
09:13		16-9	H 7	GOOD! LAYUP by WRIGHT, CHANIA [PNT]
07:56		18-9	H 9	GOOD! LAYUP by KERNAL, DESIRAY
07:09	GOOD! JUMPER by MAGAZINE, D'AVIYON	18-11	H 7	
06:40		20-11	H 9	GOOD! LAYUP by PIERCE, JOCELYN [PNT]
06:38		22-11	H 11	GOOD! LAYUP by WRIGHT, CHANIA
05:19		25-11	H 14	GOOD! 3PTR by ROBINSON, DYANI
04:54	GOOD! JUMPER by BLANKS, DEIJAH [PNT]	25-13	H 12	
04:09	GOOD! FT by BECKER, CHARLI [FB]	25-14	H 11	
04:09	GOOD! FT by BECKER, CHARLI [FB]	25-15	H 10	
03:43	GOOD! 3PTR by MAGAZINE, D'AVIYON	25-18	H 7	
02:41	GOOD! 3PTR by BECKER, CHARLI [FB]	25-21	H 4	
02:25		27-21	H 6	GOOD! LAYUP by JONES, ALEXUS
02:24		28-21	H 7	GOOD! FT by JONES, ALEXUS
01:18		30-21	H 9	GOOD! LAYUP by BURLESON, MYKIEL
00:50		32-21	H 11	GOOD! LAYUP by PIERCE, JOCELYN

St. Edward's 21, Tex. A&M-Commerce 32

Official Scoring/Possession Reference Chart
St. Edward's vs Tex. A&M-Commerce
Period 3
November 23, 2019 at A&M-C Field House - Commerce



Period 3

Starters:

St. Edward's: 10 MAGAZINE,D'AVIYON (G); 12 MASON,CHRISTINA (G); 13 DUFEK,SAMMIE (C); 14 WILCHER,MARYAM (G); 31 BLANKS,DEIJAH (G);

Tex. A&M-Commerce: 1 JONES,ALEXUS (G); 3 WRIGHT,CHANIA (G); 4 GLASS,MADDISON (G); 21 LOUIS,JULIANA (F); 42 BRYANT,ALEXIS (F);

Time	VISITORS: St. Edward's	Score	Margin	HOME: Tex. A&M-Commerce
09:33		34-21	H 13	GOOD! LAYUP by BRYANT, ALEXIS [PNT]
09:10	GOOD! JUMPER by MAGAZINE, D'AVIYON	34-23	H 11	
07:43	GOOD! LAYUP by DUFEK, SAMMIE [PNT]	34-25	H 9	
07:32		36-25	H 11	GOOD! LAYUP by BRYANT, ALEXIS [PNT]
06:05	GOOD! JUMPER by MAGAZINE, D'AVIYON	36-27	H 9	
05:36		38-27	H 11	GOOD! JUMPER by GLASS, MADDISON
05:07	GOOD! JUMPER by BLANKS, DEIJAH [PNT]	38-29	H 9	
05:05	GOOD! FT by BLANKS, DEIJAH	38-30	H 8	
04:50		40-30	H 10	GOOD! JUMPER by KERNAL, DESIRAY
03:14	GOOD! FT by WILCHER, MARYAM	40-31	H 9	
03:14	GOOD! FT by WILCHER, MARYAM	40-32	H 8	
02:35		42-32	H 10	GOOD! LAYUP by GLASS, MADDISON [FB]
01:16		44-32	H 12	GOOD! LAYUP by BRYANT, ALEXIS [PNT]
01:16		46-32	H 14	GOOD! LAYUP by LOUIS, JULIANA
00:57	GOOD! LAYUP by JACKSON, JAZMINE [PNT]	46-34	H 12	

St. Edward's 34, Tex. A&M-Commerce 46

Official Scoring/Possession Reference Chart
St. Edward's vs Tex. A&M-Commerce
Period 4
November 23, 2019 at A&M-C Field House - Commerce



Period 4

Starters:

St. Edward's: 10 MAGAZINE,D'AVIYON (G); 12 MASON,CHRISTINA (G); 13 DUFEK,SAMMIE (C); 14 WILCHER,MARYAM (G); 31 BLANKS,DEIJAH (G);

Tex. A&M-Commerce: 1 JONES,ALEXUS (G); 3 WRIGHT,CHANIA (G); 4 GLASS,MADDISON (G); 21 LOUIS,JULIANA (F); 42 BRYANT,ALEXIS (F);

Time	VISITORS: St. Edward's	Score	Margin	HOME: Tex. A&M-Commerce
09:52		47-34	H 13	GOOD! FT by GLASS, MADDISON [FB]
09:38	GOOD! LAYUP by JACKSON, JAZMINE	47-36	H 11	
09:05	GOOD! FT by BLANKS, DEIJAH	47-37	H 10	
09:05	GOOD! FT by BLANKS, DEIJAH	47-38	H 9	
08:44		50-38	H 12	GOOD! 3PTR by WRIGHT, CHANIA
08:02		51-38	H 13	GOOD! FT by JONES, ALEXUS
08:02		52-38	H 14	GOOD! FT by JONES, ALEXUS
07:25		55-38	H 17	GOOD! 3PTR by JONES, ALEXUS
07:00	GOOD! FT by BLANKS, DEIJAH	55-39	H 16	
07:00	GOOD! FT by BLANKS, DEIJAH	55-40	H 15	
06:33		57-40	H 17	GOOD! LAYUP by LOUIS, JULIANA
06:08		58-40	H 18	GOOD! FT by BRYANT, ALEXIS
06:08		59-40	H 19	GOOD! FT by BRYANT, ALEXIS
05:09		61-40	H 21	GOOD! LAYUP by ROBINSON, DYANI [FB/PNT]
04:42	GOOD! LAYUP by DUFEK, SAMMIE	61-42	H 19	
03:53		62-42	H 20	GOOD! FT by BRYANT, ALEXIS
03:53		63-42	H 21	GOOD! FT by BRYANT, ALEXIS
03:21		65-42	H 23	GOOD! LAYUP by BRYANT, ALEXIS [PNT]
02:56	GOOD! JUMPER by DUFEK, SAMMIE	65-44	H 21	
02:36		67-44	H 23	GOOD! JUMPER by BURLESON, MYKIEL
02:05	GOOD! LAYUP by DUFEK, SAMMIE	67-46	H 21	
00:20		68-46	H 22	GOOD! FT by NOWLIN, KEEKEE
00:20		69-46	H 23	GOOD! FT by NOWLIN, KEEKEE

St. Edward's 46, Tex. A&M-Commerce 69

Official Substitutions Log
St. Edward's vs Tex. A&M-Commerce
Period 1
November 23, 2019 at A&M-C Field House - Commerce



VISITORS: St. Edward's	Time	Score	HOME: Tex. A&M-Commerce
10 MAGAZINE,D'AVIYON			1 JONES,ALEXUS
12 MASON,CHRISTINA			3 WRIGHT,CHANIA
13 DUFEK,SAMMIE			4 GLASS,MADDISON
14 WILCHER,MARYAM			21 LOUIS,JULIANA
31 BLANKS,DEIJAH			42 BRYANT,ALEXIS
	06:34	5-2	SUB OUT: GLASS,MADDISON
	06:34		SUB OUT: LOUIS,JULIANA
	06:34		SUB IN: KERNAL,DESIRAY
	06:34		SUB IN: ROBINSON,DYANI
	05:28	5-3	SUB OUT: JONES,ALEXUS
	05:28		SUB IN: BURLESON,MYKIEL
	03:14	7-7	SUB OUT: WRIGHT,CHANIA
	03:14		SUB OUT: BRYANT,ALEXIS
	03:14		SUB IN: NOWLIN,KEEKEE
	03:14		SUB IN: LOUIS,JULIANA
SUB OUT: 10 MAGAZINE,D'AVIYON	03:14		
SUB IN: 2 CUNNINGHAM,LEXI	03:14		
SUB OUT: 14 WILCHER,MARYAM	02:48	7-7	
SUB IN: 15 BECKER,CHARLI	02:48		
	00:31	9-14	SUB OUT: KERNAL,DESIRAY
	00:31		SUB OUT: ROBINSON,DYANI
	00:31		SUB OUT: NOWLIN,KEEKEE
	00:31		SUB IN: JONES,ALEXUS
	00:31		SUB IN: WRIGHT,CHANIA
	00:31		SUB IN: BRYANT,ALEXIS
SUB OUT: 31 BLANKS,DEIJAH	00:31		
SUB IN: 22 TAYLOR,FALYN	00:31		

St. Edward's 9, Tex. A&M-Commerce 14

Official Substitutions Log
St. Edward's vs Tex. A&M-Commerce
Period 2
November 23, 2019 at A&M-C Field House - Commerce



VISITORS: St. Edward's	Time	Score	HOME: Tex. A&M-Commerce
10 MAGAZINE,D'AVIYON			1 JONES,ALEXUS
12 MASON,CHRISTINA			3 WRIGHT,CHANIA
13 DUFEK,SAMMIE			4 GLASS,MADDISON
14 WILCHER,MARYAM			21 LOUIS,JULIANA
31 BLANKS,DEIJAH			42 BRYANT,ALEXIS
SUB OUT: 12 MASON,CHRISTINA	10:00	-	
SUB OUT: 13 DUFEK,SAMMIE	10:00		
SUB IN: 3 SUTTON,FAIREN	10:00		
SUB IN: 21 JACKSON,JAZMINE	10:00		
	08:36	9-16	SUB OUT: LOUIS,JULIANA
	08:36		SUB IN: KERNAL,DESIRAY
	08:03	9-16	SUB OUT: BURLESON,MYKIEL
	08:03		SUB IN: ROBINSON,DYANI
SUB OUT: 2 CUNNINGHAM,LEXI	08:03		
SUB IN: 10 MAGAZINE,D'AVIYON	08:03		
	07:28	9-18	SUB OUT: BRYANT,ALEXIS
	07:28		SUB IN: PIERCE,JOCELYN
SUB OUT: 22 TAYLOR,FALYN	07:28		
SUB IN: 31 BLANKS,DEIJAH	07:28		
	04:09	13-25	SUB OUT: KERNAL,DESIRAY
	04:09		SUB OUT: ROBINSON,DYANI
	04:09		SUB IN: BURLESON,MYKIEL
	04:09		SUB IN: NOWLIN,KEEKEE
SUB OUT: 21 JACKSON,JAZMINE	04:09		
SUB IN: 13 DUFEK,SAMMIE	04:09		
SUB OUT: 3 SUTTON,FAIREN	02:29	21-25	
SUB OUT: 15 BECKER,CHARLI	02:29		
SUB IN: 2 CUNNINGHAM,LEXI	02:29		
SUB IN: 12 MASON,CHRISTINA	02:29		
SUB OUT: 10 MAGAZINE,D'AVIYON	01:05	21-30	
SUB IN: 15 BECKER,CHARLI	01:05		

St. Edward's 21, Tex. A&M-Commerce 32

Official Substitutions Log
St. Edward's vs Tex. A&M-Commerce
Period 3
November 23, 2019 at A&M-C Field House - Commerce



VISITORS: St. Edward's	Time	Score	HOME: Tex. A&M-Commerce
10 MAGAZINE, D'AVIYON			1 JONES, ALEXUS
12 MASON, CHRISTINA			3 WRIGHT, CHANIA
13 DUFEK, SAMMIE			4 GLASS, MADDISON
14 WILCHER, MARYAM			21 LOUIS, JULIANA
31 BLANKS, DEIJA			42 BRYANT, ALEXIS
	09:58	-	SUB OUT: BURLESON, MYKIEL
	09:58		SUB OUT: NOWLIN, KEEKEE
	09:58		SUB OUT: PIERCE, JOCELYN
	09:58		SUB IN: GLASS, MADDISON
	09:58		SUB IN: LOUIS, JULIANA
	09:58		SUB IN: BRYANT, ALEXIS
SUB OUT: 2 CUNNINGHAM, LEXI	09:58		
SUB OUT: 15 BECKER, CHARLI	09:58		
SUB IN: 10 MAGAZINE, D'AVIYON	09:58		
SUB IN: 14 WILCHER, MARYAM	09:58		
	06:18	25-36	SUB OUT: WRIGHT, CHANIA
	06:18		SUB OUT: LOUIS, JULIANA
	06:18		SUB IN: KERNAL, DESIRAY
	06:18		SUB IN: BURLESON, MYKIEL
	05:05	29-38	SUB OUT: JONES, ALEXUS
	05:05		SUB IN: ROBINSON, DYANI
SUB OUT: 12 MASON, CHRISTINA	05:05		
SUB OUT: 13 DUFEK, SAMMIE	05:05		
SUB IN: 3 SUTTON, FAIREN	05:05		
SUB IN: 21 JACKSON, JAZMINE	05:05		
	03:48	30-40	SUB OUT: BRYANT, ALEXIS
	03:48		SUB IN: LOUIS, JULIANA
SUB OUT: 10 MAGAZINE, D'AVIYON	03:48		
SUB OUT: 31 BLANKS, DEIJA	03:48		
SUB IN: 2 CUNNINGHAM, LEXI	03:48		
SUB IN: 22 TAYLOR, FALYN	03:48		
	02:55	32-40	SUB OUT: KERNAL, DESIRAY
	02:55		SUB IN: BRYANT, ALEXIS
SUB OUT: 3 SUTTON, FAIREN	01:16	32-44	
SUB OUT: 14 WILCHER, MARYAM	01:16		
SUB OUT: 22 TAYLOR, FALYN	01:16		
SUB IN: 12 MASON, CHRISTINA	01:16		
SUB IN: 15 BECKER, CHARLI	01:16		
SUB IN: 31 BLANKS, DEIJA	01:16		
	00:09	34-46	SUB OUT: BURLESON, MYKIEL
	00:09		SUB IN: JONES, ALEXUS
	00:03	34-46	SUB OUT: GLASS, MADDISON
	00:03		SUB IN: WRIGHT, CHANIA

St. Edward's 34, Tex. A&M-Commerce 46

Official Substitutions Log
St. Edward's vs Tex. A&M-Commerce
Period 4
November 23, 2019 at A&M-C Field House - Commerce



VISITORS: St. Edward's	Time	Score	HOME: Tex. A&M-Commerce
10 MAGAZINE,D'AVIYON			1 JONES,ALEXUS
12 MASON,CHRISTINA			3 WRIGHT,CHANIA
13 DUFEK,SAMMIE			4 GLASS,MADDISON
14 WILCHER,MARYAM			21 LOUIS,JULIANA
31 BLANKS,DEIJAH			42 BRYANT,ALEXIS
	10:00	-	SUB OUT: ROBINSON,DYANI
	10:00		SUB IN: GLASS,MADDISON
SUB OUT: 15 BECKER,CHARLI	07:00	38-55	
SUB OUT: 21 JACKSON,JAZMINE	07:00		
SUB IN: 13 DUFEK,SAMMIE	07:00		
SUB IN: 14 WILCHER,MARYAM	07:00		
SUB OUT: 31 BLANKS,DEIJAH	07:00		
SUB IN: 22 TAYLOR,FALYN	07:00		
SUB OUT: 12 MASON,CHRISTINA	06:14	40-57	
SUB IN: 10 MAGAZINE,D'AVIYON	06:14		
	06:08	40-57	SUB OUT: JONES,ALEXUS
	06:08		SUB IN: BURLESON,MYKIEL
SUB OUT: 2 CUNNINGHAM,LEXI	06:08		
SUB IN: 12 MASON,CHRISTINA	06:08		
	05:35	40-59	SUB OUT: GLASS,MADDISON
	05:35		SUB IN: ROBINSON,DYANI
	04:07	42-61	SUB OUT: WRIGHT,CHANIA
	04:07		SUB OUT: LOUIS,JULIANA
	04:07		SUB IN: GLASS,MADDISON
	04:07		SUB IN: KERNAL,DESIRAY
SUB OUT: 12 MASON,CHRISTINA	04:07		
SUB OUT: 22 TAYLOR,FALYN	04:07		
SUB IN: 3 SUTTON,FAIREN	04:07		
SUB IN: 31 BLANKS,DEIJAH	04:07		
	01:56	46-67	SUB OUT: GLASS,MADDISON
	01:56		SUB OUT: BRYANT,ALEXIS
	01:56		SUB IN: NOWLIN,KEEKEE
	01:56		SUB IN: PIERCE,JOCELYN

St. Edward's 46, Tex. A&M-Commerce 69

Official Shot Chart
St. Edward's vs Tex. A&M-Commerce
 PERIOD 1 Shots
 November 23, 2019 at A&M-C Field House - Commerce



Tex. A&M-Commerce

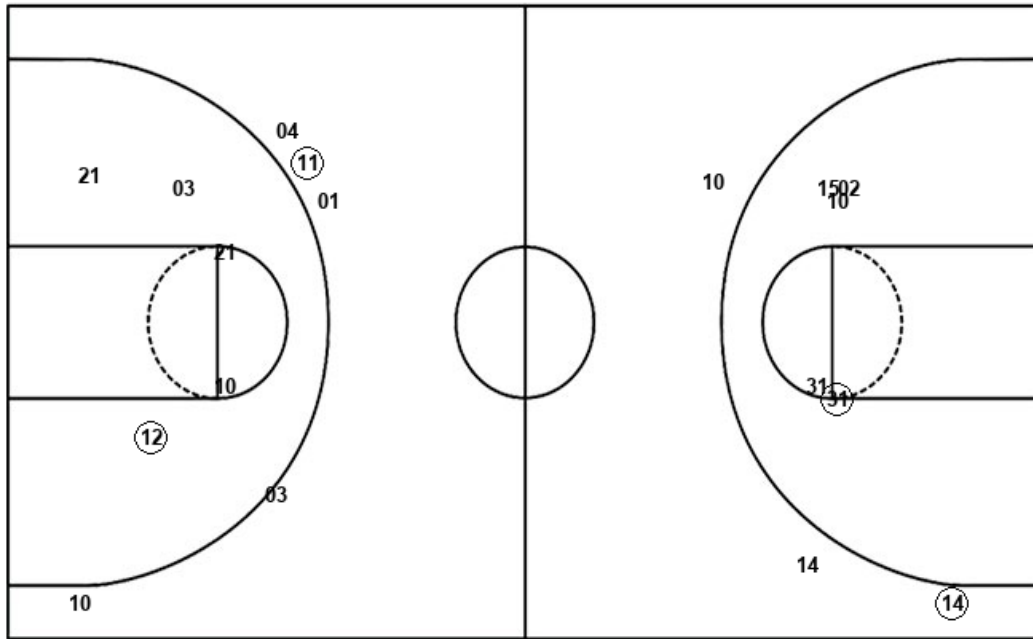
St. Edward's

Layups
 21 (42) 11 (10) 12
 21 12 (21)

Layups
 13 12 12

Dunks

Dunks



AMC : Period 1	Made	Att	Pct
Layups	3	8	37.5
Dunks	0	0	0
2PT Field Goals	4	13	30.8
3PT Field Goals	1	5	20.0
Total Field Goals	5	18	27.8

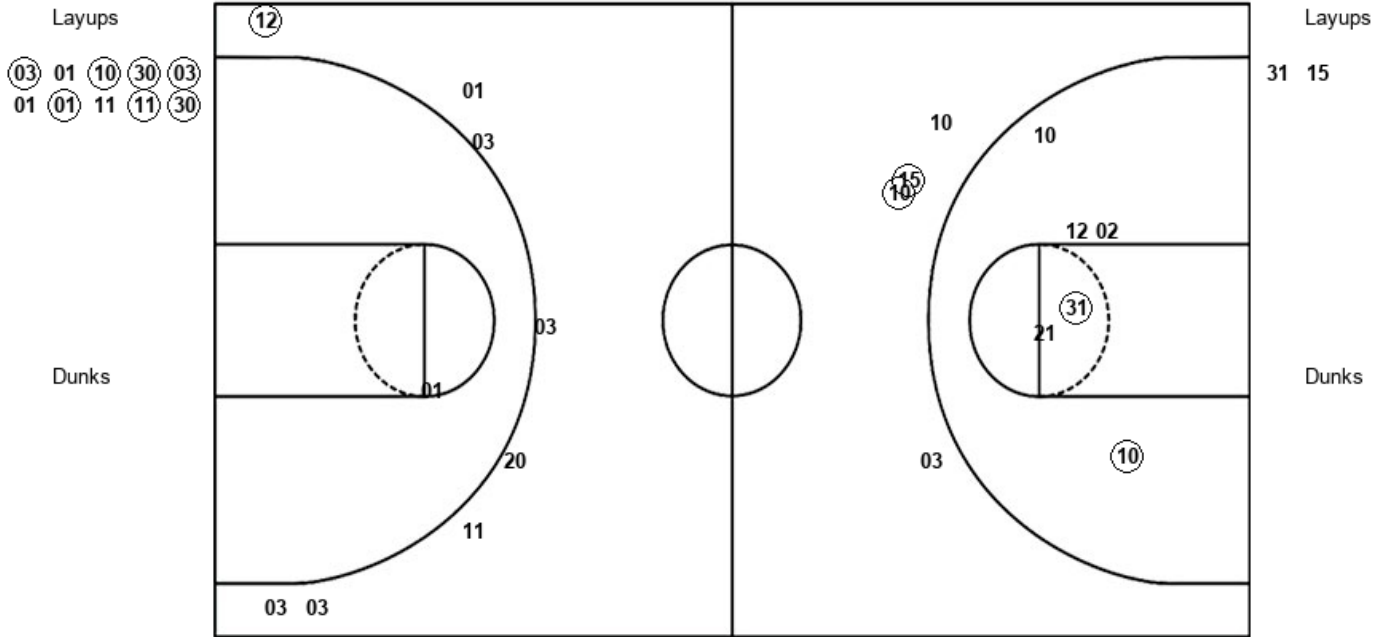
SEU : Period 1	Made	Att	Pct
Layups	0	3	00.0
Dunks	0	0	0
2PT Field Goals	1	8	12.5
3PT Field Goals	1	3	33.3
Total Field Goals	2	11	18.2

Official Shot Chart
St. Edward's vs Tex. A&M-Commerce
 PERIOD 2 Shots
 November 23, 2019 at A&M-C Field House - Commerce



Tex. A&M-Commerce

St. Edward's



AMC : Period 2	Made	Att	Pct
Layups	7	10	70.0
Dunks	0	0	0
2PT Field Goals	7	11	63.6
3PT Field Goals	1	8	12.5
Total Field Goals	8	19	42.1

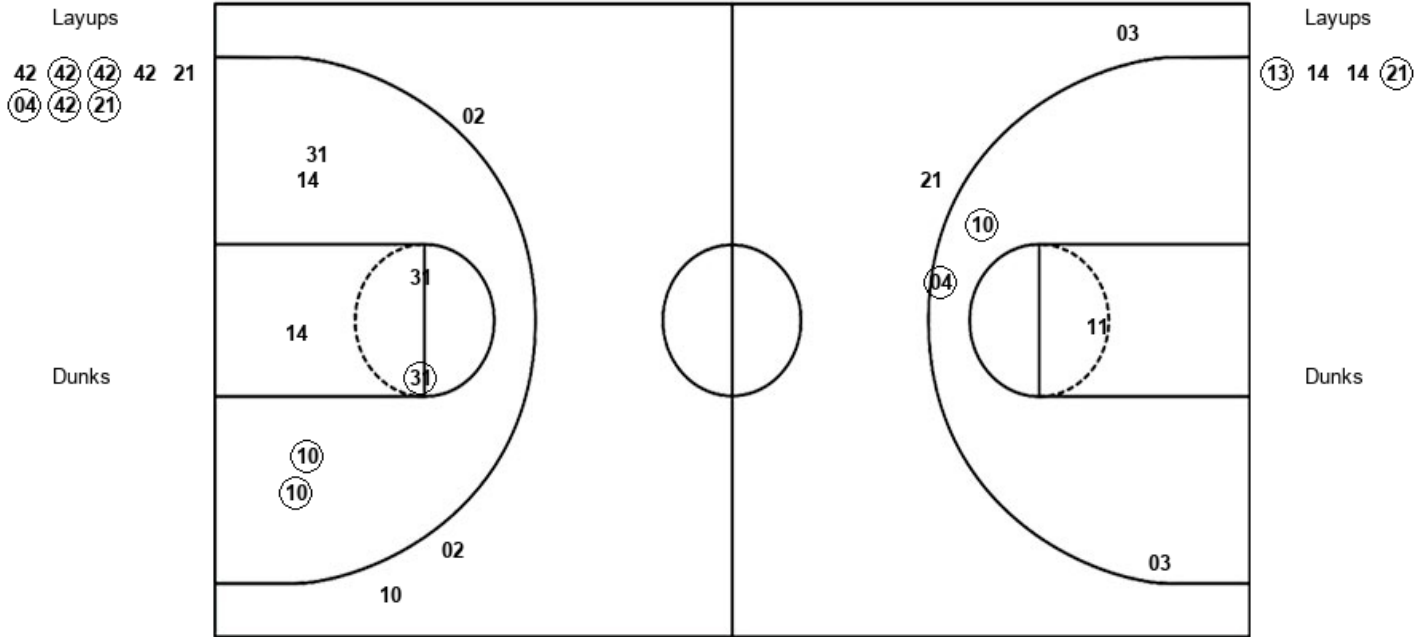
SEU : Period 2	Made	Att	Pct
Layups	0	2	00.0
Dunks	0	0	0
2PT Field Goals	2	8	25.0
3PT Field Goals	2	4	50.0
Total Field Goals	4	12	33.3

Official Shot Chart
St. Edward's vs Tex. A&M-Commerce
 PERIOD 3 Shots
 November 23, 2019 at A&M-C Field House - Commerce



Tex. A&M-Commerce

St. Edward's



AMC : Period 3	Made	Att	Pct
Layups	5	8	62.5
Dunks	0	0	0
2PT Field Goals	7	12	58.3
3PT Field Goals	0	2	00.0
Total Field Goals	7	14	50.0

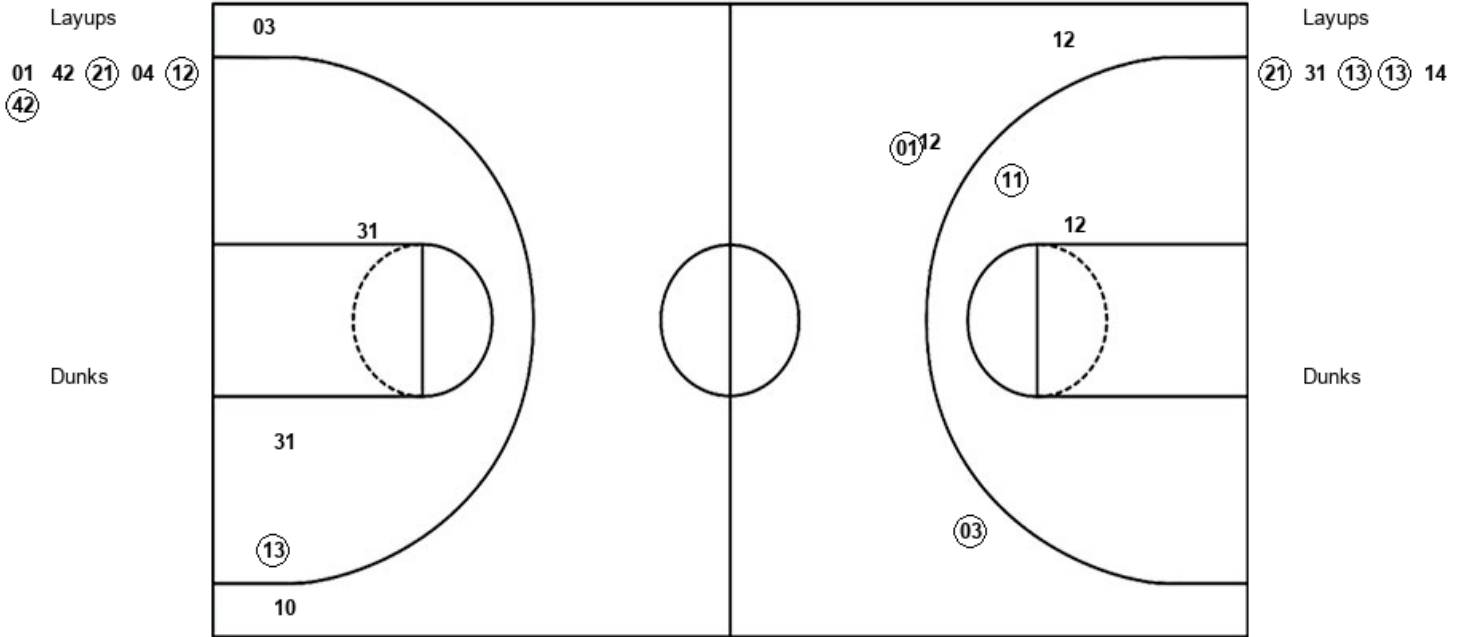
SEU : Period 3	Made	Att	Pct
Layups	2	4	50.0
Dunks	0	0	0
2PT Field Goals	5	11	45.5
3PT Field Goals	0	3	00.0
Total Field Goals	5	14	35.7

Official Shot Chart
St. Edward's vs Tex. A&M-Commerce
 PERIOD 4 Shots
 November 23, 2019 at A&M-C Field House - Commerce



Tex. A&M-Commerce

St. Edward's



AMC : Period 4	Made	Att	Pct
Layups	3	6	50.0
Dunks	0	0	0
2PT Field Goals	4	8	50.0
3PT Field Goals	2	4	50.0
Total Field Goals	6	12	50.0

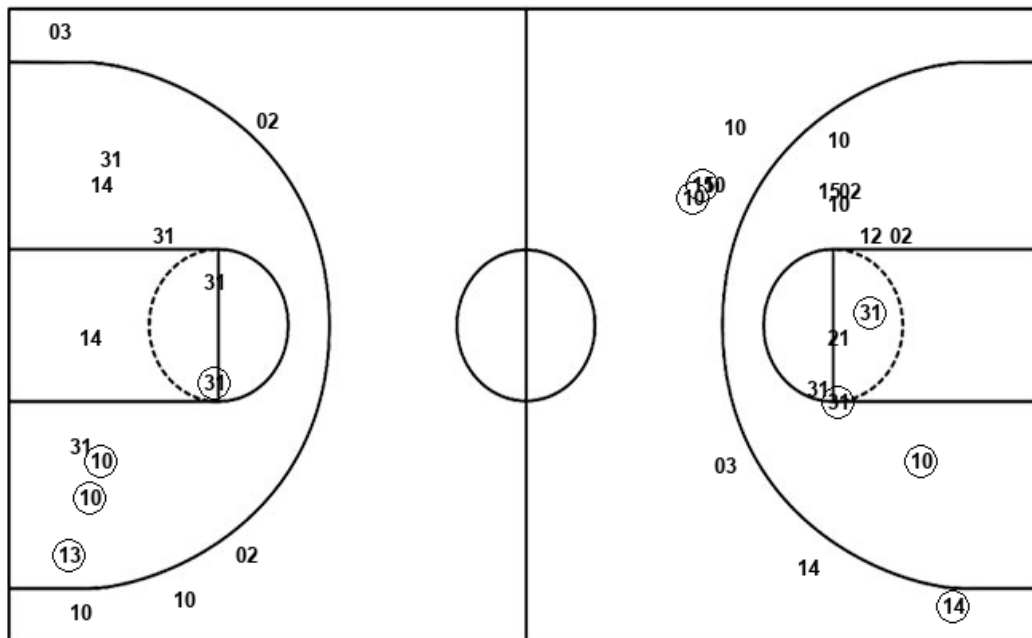
SEU : Period 4	Made	Att	Pct
Layups	3	5	60.0
Dunks	0	0	0
2PT Field Goals	4	8	50.0
3PT Field Goals	0	2	00.0
Total Field Goals	4	10	40.0

Official Shot Chart
St. Edward's vs Tex. A&M-Commerce
 St. Edward's Team Shots
 November 23, 2019 at A&M-C Field House - Commerce



Layups

Dunks



Layups

Dunks

SEU : Period 1	Made	Att	Pct
Layups	0	3	00.0
Dunks	0	0	0
2PT Field Goals	1	8	12.5
3PT Field Goals	1	3	33.3
Total Field Goals	2	11	18.2

SEU : Period 3	Made	Att	Pct
Layups	2	4	50.0
Dunks	0	0	0
2PT Field Goals	5	11	45.5
3PT Field Goals	0	3	00.0
Total Field Goals	5	14	35.7

SEU : Period 2	Made	Att	Pct
Layups	0	2	00.0
Dunks	0	0	0
2PT Field Goals	2	8	25.0
3PT Field Goals	2	4	50.0
Total Field Goals	4	12	33.3

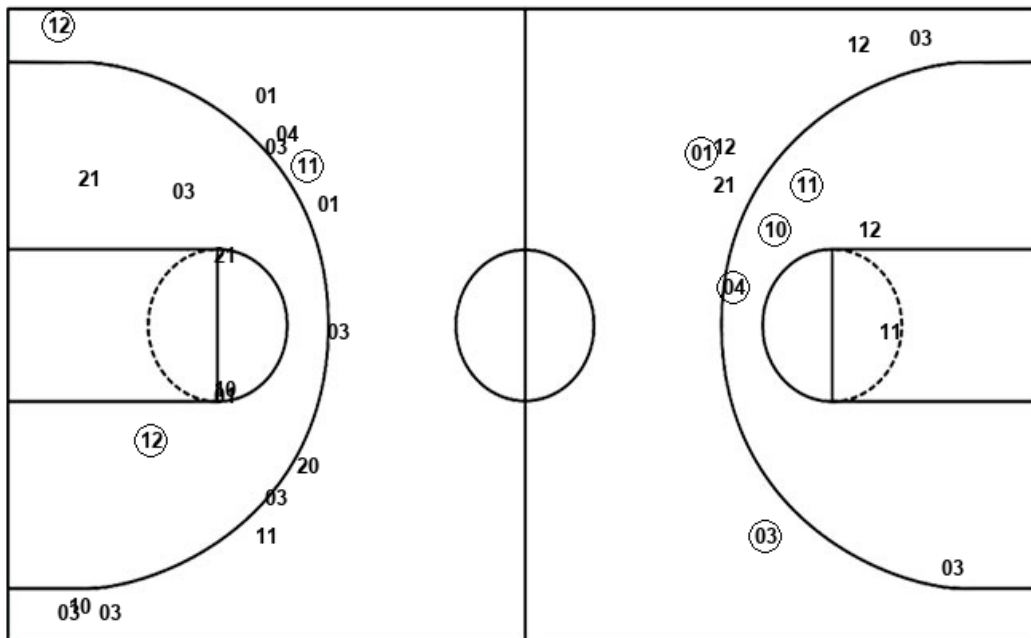
SEU : Period 4	Made	Att	Pct
Layups	3	5	60.0
Dunks	0	0	0
2PT Field Goals	4	8	50.0
3PT Field Goals	0	2	00.0
Total Field Goals	4	10	40.0

Official Shot Chart
St. Edward's vs Tex. A&M-Commerce
 Tex. A&M-Commerce Team Shots
 November 23, 2019 at A&M-C Field House - Commerce



Layups

Dunks



Layups

Dunks

21 (42) 11 (10) 12
 21 12 (21) (03) 01
 (10) (30) (03) 01 (01)
 11 (11) (30) 42 (42)
 (42) 42 21 (04) (42)
 (21) 01 42 (21) 04
 (12) (42)

AMC : Period 1	Made	Att	Pct
Layups	3	8	37.5
Dunks	0	0	0
2PT Field Goals	4	13	30.8
3PT Field Goals	1	5	20.0
Total Field Goals	5	18	27.8

AMC : Period 3	Made	Att	Pct
Layups	5	8	62.5
Dunks	0	0	0
2PT Field Goals	7	12	58.3
3PT Field Goals	0	2	00.0
Total Field Goals	7	14	50.0

AMC : Period 2	Made	Att	Pct
Layups	7	10	70.0
Dunks	0	0	0
2PT Field Goals	7	11	63.6
3PT Field Goals	1	8	12.5
Total Field Goals	8	19	42.1

AMC : Period 4	Made	Att	Pct
Layups	3	6	50.0
Dunks	0	0	0
2PT Field Goals	4	8	50.0
3PT Field Goals	2	4	50.0
Total Field Goals	6	12	50.0