

FINAL SCORE

Western N.M.

93



St. Mary's (TX)

101



February 14, 2020 • Bill Greehey Arena

FINAL STATISTICS

Official Box Score
Western N.M. vs St. Mary's (TX)
Game Totals -- Final Statistics
February 14, 2020 at Bill Greehey Arena



Western N.M. 93

No.	Player	S	Pts	FG	3FG	FT	OR	DR	TR	PF	A	TO	Blk	Stl	Min	+/-
03	SANDERS , MALIK	G	10	4-8	1-4	1-2	0	1	1	3	6	5	0	1	30	-22
12	HOLIFIELD, ELIJAH	G	33	12-18	7-11	2-3	1	1	2	4	2	2	0	1	36	-16
14	VANBEEKUM, CJ	G	9	4-6	0-0	1-1	0	3	3	0	0	0	0	1	32	-3
32	GIRON, EDDIE	G	5	1-2	1-2	2-2	0	2	2	4	1	3	0	3	19	0
34	SIMON , RODNEY	F	12	6-6	0-0	0-0	0	1	1	5	0	0	0	0	12	-7
04	AVALOS , TONY	G	17	5-10	0-1	7-9	2	0	2	5	4	2	0	2	24	11
11	LEONARD , ANDREW	G	3	1-3	1-3	0-0	0	0	0	0	1	0	0	1	11	3
21	MOSIALOS, GEORGE	G	0	0-0	0-0	0-1	0	0	0	1	0	0	0	0	3	-8
22	PELISSIER, NATHAN	F	0	0-0	0-0	0-0	1	0	1	0	1	0	1	0	4	3
30	HOHENSTEIN, IAN	F	4	1-2	0-0	2-4	2	1	3	4	1	3	0	3	29	-1
TEAM							0	2	2	0						
TOTALS			93	34-55	10-21	15-22	6	11	17	26	16	15	1	12	200	

Shooting By Period

Period	FG	FG%	3FG	3FG%	FT	FT%
1st Half	20-29	69%	8-13	62%	10-13	77%
2nd Half	14-26	54%	2-8	25%	5-9	56%
Game	34-55	61.8%	10-21	47.6%	15-22	68.2%

Last FG: 2nd-00:25
Largest lead: By 10 at
Technical Fouls: None.

St. Mary's (TX) 101

No.	Player	S	Pts	FG	3FG	FT	OR	DR	TR	PF	A	TO	Blk	Stl	Min	+/-
01	JORDAN, CALEB	G	7	3-7	0-0	1-2	0	1	1	5	4	3	0	0	20	9
04	HOUSTON, MARKQUES	G	20	6-12	4-8	4-6	2	1	3	3	1	2	0	1	34	18
15	MAGEE, KOBE	G	16	4-11	1-5	7-8	1	1	2	1	3	3	0	1	37	6
32	EWUZIE, EMMANUEL	F	7	3-3	0-0	1-4	3	8	11	2	0	1	0	0	19	11
45	TRAYLOR, LAMONT	F	6	2-2	0-0	2-2	2	2	4	2	1	1	0	0	12	1
12	PRESLEY, JARON	G	6	2-3	1-2	1-2	0	1	1	3	0	0	0	0	3	5
21	ISENHOWER, DYLAN	G	13	4-9	2-3	3-3	5	1	6	2	4	6	2	2	31	6
25	LAING, NOAH	F	0	0-2	0-0	0-0	2	0	2	1	1	0	0	0	9	-12
30	KELLER, ZACH	G	15	5-5	3-3	2-2	0	3	3	3	1	0	0	0	20	0
40	GASPERT, MATEJ	F	11	4-11	0-1	3-3	6	2	8	4	0	4	1	2	15	2
TEAM							3	0	3	0						
TOTALS			101	33-65	11-22	24-32	24	20	44	26	15	20	3	6	200	

Shooting By Period

Period	FG	FG%	3FG	3FG%	FT	FT%
1st Half	17-34	50%	8-12	67%	7-9	78%
2nd Half	16-31	52%	3-10	30%	17-23	74%
Game	33-65	50.8%	11-22	50.0%	24-32	75.0%

Last FG: 2nd-01:07
Largest lead: By 10 at
Technical Fouls: None.

Game Notes:

Officials:
Attendance: 395

Start Time: 01:30 AM
Conference Game;

Score	1st	2nd	TOT
WNMU	58	35	93
StMU	49	52	101

WNMU led for 28:34. StMU led for 9:19.
Game was tied for 0:0.
Times tied: 0 Lead Changes: 0

Points from	WNMU	StMU
In the Paint	38	36
Off Turns	19	22
2nd Chance	12	22
Fast Break	21	13
Bench	24	45

Official Box Score
Western N.M. vs St. Mary's (TX)
First Half Statistics Only
February 14, 2020 at Bill Greehey Arena



Western N.M. 58

No.	Player	S	Pts	FG	3FG	FT	OR	DR	TR	PF	A	TO	Blk	Stl	Min
03	SANDERS , MALIK	G	0	0-0	0-0	0-0	0	0	0	2	5	2	0	0	10
12	HOLIFIELD, ELIJAH	G	28	11-15	6-9	0-0	0	0	0	1	1	1	0	1	20
14	VANBEEKUM, CJ	G	3	1-2	0-0	1-1	0	2	2	0	0	0	0	0	12
32	GIRON, EDDIE	G	5	1-1	1-1	2-2	0	2	2	1	1	2	0	3	12
34	SIMON , RODNEY	F	10	5-5	0-0	0-0	0	0	0	2	0	0	0	0	6
04	AVALOS , TONY	G	7	1-4	0-1	5-6	1	0	1	1	2	2	0	1	14
11	LEONARD , ANDREW	G	3	1-2	1-2	0-0	0	0	0	0	1	0	0	1	8
21	MOSIALOS, GEORGE	G	0	0-0	0-0	0-0	0	0	0	0	0	0	0	0	0
22	PELLISSIER, NATHAN	F	0	0-0	0-0	0-0	1	0	1	0	1	0	1	0	4
30	HOHENSTEIN, IAN	F	2	0-0	0-0	2-4	1	1	2	2	1	0	0	2	14
	TEAM			0-0			0	1	1	0		0			
TOTALS			58	20-29	8-13	10-13	3	6	9	9	12	7	1	8	100

Shooting By Period

Period	FG	FG%	3FG	3FG%	FT	FT%
1st Half	20-29	69%	8-13	62%	10-13	77%
Game	34-55	61.8%	10-21	47.6%	15-22	68.2%

Last FG Half: WNMU 2nd-00:25

St. Mary's (TX) 49

No.	Player	S	Pts	FG	3FG	FT	OR	DR	TR	PF	A	TO	Blk	Stl	Min
01	JORDAN, CALEB	G	4	2-4	0-0	0-0	0	0	0	2	2	2	0	0	12
04	HOUSTON, MARKQUES	G	13	4-8	3-5	2-4	1	1	2	2	0	2	0	0	18
15	MAGEE, KOBE	G	3	1-5	1-3	0-0	0	0	0	0	2	1	0	1	17
32	EWUZIE, EMMANUEL	F	0	0-0	0-0	0-0	1	3	4	1	0	1	0	0	8
45	TRAYLOR, LAMONT	F	4	1-1	0-0	2-2	1	0	1	2	0	0	0	0	5
12	PRESLEY, JARON	G	0	0-0	0-0	0-0	0	0	0	2	0	0	0	0	1
21	ISENHOWER, DYLAN	G	5	2-5	1-1	0-0	3	0	3	0	4	5	1	1	14
25	LAING, NOAH	F	0	0-2	0-0	0-0	2	0	2	0	1	0	0	0	6
30	KELLER, ZACH	G	11	4-4	3-3	0-0	0	3	3	2	0	0	0	0	9
40	GASPERT, MATEJ	F	9	3-5	0-0	3-3	3	0	3	2	0	2	1	2	9
	TEAM			0-0			1	0	1	0		0			
TOTALS			49	17-34	8-12	7-9	12	7	19	13	9	13	2	4	100

Shooting By Period

Period	FG	FG%	3FG	3FG%	FT	FT%
1st Half	17-34	50%	8-12	67%	7-9	78%
Game	33-65	50.8%	11-22	50.0%	24-32	75.0%

Last FG Half: StMU 2nd-01:07

Game Notes:

Officials:
 Attendance: 395

Start Time: 01:30 AM
 Conference Game;

Score	1st	2nd	TOT
WNMU	58	35	93
StMU	49	52	101

Points from (This Period)	WNMU	StMU
In the Paint	16	16
Off Turns	11	9
2nd Chance	7	10
Fast Break	16	2
Bench	12	25

Official Play-By-Play
Western N.M. vs St. Mary's (TX)
First Half
February 14, 2020 at Bill Greehey Arena



Period 1

Starters:

Western N.M.: 3 SANDERS ,MALIK (G); 12 HOLIFIELD,ELIJAH (G); 14 VANBEEKUM,CJ (G); 32 GIRON,EDDIE (G); 34 SIMON ,RODNEY (F);

St. Mary's (TX): 1 JORDAN,CALEB (G); 4 HOUSTON,MARKQUES (G); 15 MAGEE,KOBE (G); 32 EWUZIE,EMMANUEL (F); 45 TRAYLOR,LAMONT (F);

Time	VISITORS: Western N.M.	Score	Margin	HOME: St. Mary's (TX)
19:37				MISSED JUMPER by JORDAN, CALEB
19:34	REBOUND (DEF) by VANBEEKUM, CJ			
19:16	GOOD! 3PTR by HOLIFIELD, ELIJAH	0-3	V 3	
19:16	ASSIST by SANDERS , MALIK			
18:53	FOUL by HOLIFIELD, ELIJAH			
18:53		1-3	V 2	GOOD! FT by TRAYLOR, LAMONT
18:53		2-3	V 1	GOOD! FT by TRAYLOR, LAMONT
18:43	GOOD! LAYUP by SIMON , RODNEY	2-5	V 3	
18:43	ASSIST by GIRON, EDDIE			
18:16		4-5	V 1	GOOD! JUMPER by JORDAN, CALEB
17:43	MISSED 3PTR by HOLIFIELD, ELIJAH			
17:43				REBOUND (DEF) by EWUZIE, EMMANUEL
17:43	FOUL by SIMON , RODNEY			
17:43				SUB OUT: TRAYLOR, LAMONT
17:43				SUB IN: ISENHOWER, DYLAN
17:28				MISSED 3PTR by HOUSTON, MARKQUES
17:23				REBOUND (OFF) by ISENHOWER, DYLAN
17:23				MISSED JUMPER by JORDAN, CALEB
17:19				REBOUND (OFF) by EWUZIE, EMMANUEL
17:19				TURNOVER by ISENHOWER, DYLAN
17:05	TURNOVER by HOLIFIELD, ELIJAH			
16:53				TURNOVER by ISENHOWER, DYLAN [PNT]
16:53	STEAL by GIRON, EDDIE			
16:45	GOOD! JUMPER by HOLIFIELD, ELIJAH [FB]	4-7	V 3	
16:35		6-7	V 1	GOOD! JUMPER by HOUSTON, MARKQUES
16:25	GOOD! 3PTR by GIRON, EDDIE	6-10	V 4	
16:16		9-10	V 1	GOOD! 3PTR by MAGEE, KOBE
16:06				FOUL by EWUZIE, EMMANUEL
16:06				SUB OUT: EWUZIE, EMMANUEL
16:06				SUB IN: GASPERT, MATEJ
15:56	TURNOVER by SANDERS , MALIK			
15:56				STEAL by GASPERT, MATEJ
15:51				MISSED LAYUP by MAGEE, KOBE
15:47	REBOUND (DEF) by GIRON, EDDIE			
15:37	GOOD! by SIMON , RODNEY [PNT]	9-12	V 3	
15:37	ASSIST by SANDERS , MALIK			
15:25		11-12	V 1	GOOD! LAYUP by JORDAN, CALEB
15:11	GOOD! LAYUP by SIMON , RODNEY	11-14	V 3	
15:11	ASSIST by HOLIFIELD, ELIJAH			
14:58				MISSED LAYUP by GASPERT, MATEJ
14:54				REBOUND (OFF) by GASPERT, MATEJ
14:54		13-14	V 1	GOOD! LAYUP by GASPERT, MATEJ
14:45	GOOD! JUMPER by SIMON , RODNEY	13-16	V 3	
14:45	ASSIST by SANDERS , MALIK			
14:26		15-16	V 1	GOOD! JUMPER by GASPERT, MATEJ [PNT]
14:12	GOOD! LAYUP by SIMON , RODNEY	15-18	V 3	
14:12	ASSIST by SANDERS , MALIK			
13:45				MISSED by GASPERT, MATEJ [PNT]
13:45				REBOUND (OFF) by HOUSTON, MARKQUES
13:45	FOUL by SANDERS , MALIK			
13:45	TIMEOUT MEDIA			
13:45	SUB OUT: GIRON, EDDIE			
13:45	SUB IN: AVALOS , TONY			
13:45				MISSED FT by HOUSTON, MARKQUES
13:45	TURNOVER by SANDERS , MALIK			
13:45				STEAL by GASPERT, MATEJ
13:45				TURNOVER by ISENHOWER, DYLAN
13:45				REBOUND (OFF) by TEAM
13:39	FOUL by SIMON , RODNEY [PNT]			
13:34	SUB OUT: HOLIFIELD, ELIJAH			
13:34	SUB OUT: VANBEEKUM, CJ			
13:34	SUB OUT: SIMON , RODNEY			
13:34	SUB IN: LEONARD , ANDREW			
13:34	SUB IN: PELISSIER, NATHAN			
13:34	SUB IN: HOHENSTEIN, IAN			
13:29				MISSED LAYUP by ISENHOWER, DYLAN
13:29	BLOCK by PELISSIER, NATHAN			
13:24				REBOUND (OFF) by ISENHOWER, DYLAN
13:22				MISSED LAYUP by ISENHOWER, DYLAN
13:22	SUB IN: HOLIFIELD, ELIJAH			

Time	VISITORS: Western N.M.	Score	Margin	HOME: St. Mary's (TX)
13:22	SUB OUT: SANDERS , MALIK			
13:16				REBOUND (OFF) by GASPERT, MATEJ
13:16		17-18	V 1	GOOD! LAYUP by GASPERT, MATEJ
13:08	GOOD! JUMPER by HOLIFIELD, ELIJAH	17-20	V 3	
12:55		20-20	T	GOOD! 3PTR by HOUSTON, MARKQUES
12:55				ASSIST by MAGEE, KOBE
12:43	GOOD! 3PTR by HOLIFIELD, ELIJAH	20-23	V 3	
12:43	ASSIST by AVALOS , TONY			
12:20				MISSED LAYUP by ISENHOWER, DYLAN [PNT]
12:20				REBOUND (OFF) by GASPERT, MATEJ
12:20	FOUL by HOHENSTEIN, IAN			
12:20		21-23	V 2	GOOD! FT by GASPERT, MATEJ
12:16				TURNOVER by ISENHOWER, DYLAN
11:52	GOOD! 3PTR by HOLIFIELD, ELIJAH	21-26	V 5	
11:52	ASSIST by LEONARD , ANDREW			
11:36		24-26	V 2	GOOD! 3PTR by HOUSTON, MARKQUES
11:36				ASSIST by JORDAN, CALEB
11:17	MISSED LAYUP by HOLIFIELD, ELIJAH			
11:10	REBOUND (OFF) by PELISSIER, NATHAN			
11:08	GOOD! 3PTR by HOLIFIELD, ELIJAH	24-29	V 5	
11:08	ASSIST by PELISSIER, NATHAN			
11:01	FOUL by HOHENSTEIN, IAN [PNT]			
11:01	TIMEOUT MEDIA			
10:55				SUB OUT: JORDAN, CALEB
10:55				SUB OUT: GASPERT, MATEJ
10:55				SUB IN: KELLER, ZACH
10:55				SUB IN: TRAYLOR, LAMONT
10:52				FOUL by KELLER, ZACH
10:46	MISSED FT by AVALOS , TONY [FB]			
10:46	REBOUND (DEADB) by TEAM			
10:46				SUB OUT: HOUSTON, MARKQUES
10:46				SUB IN: PRESLEY, JARON
10:46	GOOD! FT by AVALOS , TONY [FB]	24-30	V 6	
10:25				MISSED 3PTR by MAGEE, KOBE
10:20				REBOUND (OFF) by TRAYLOR, LAMONT
10:07		27-30	V 3	GOOD! 3PTR by ISENHOWER, DYLAN
10:07				ASSIST by MAGEE, KOBE
10:03				FOUL by PRESLEY, JARON
09:48	MISSED 3PTR by HOLIFIELD, ELIJAH			
09:44	REBOUND (OFF) by HOHENSTEIN, IAN			
09:43	GOOD! 3PTR by LEONARD , ANDREW	27-33	V 6	
09:43	ASSIST by HOHENSTEIN, IAN			
09:26				MISSED JUMPER by MAGEE, KOBE
09:24	REBOUND (DEF) by TEAM			
09:24	SUB OUT: PELISSIER, NATHAN			
09:24	SUB IN: SANDERS , MALIK			
09:24				FOUL by PRESLEY, JARON
09:24				SUB OUT: PRESLEY, JARON
09:24				SUB IN: HOUSTON, MARKQUES
09:14	TURNOVER by AVALOS , TONY			
09:14				STEAL by ISENHOWER, DYLAN
09:06		29-33	V 4	GOOD! LAYUP by KELLER, ZACH [FB]
09:06				ASSIST by ISENHOWER, DYLAN
08:44	MISSED JUMPER by AVALOS , TONY [PNT]			
08:41	REBOUND (OFF) by AVALOS , TONY			
08:41	TURNOVER by AVALOS , TONY			
08:27		31-33	V 2	GOOD! JUMPER by TRAYLOR, LAMONT
08:27				ASSIST by ISENHOWER, DYLAN
08:16				FOUL by TRAYLOR, LAMONT
08:16	MISSED FT by HOHENSTEIN, IAN			
08:16	REBOUND (DEADB) by TEAM			
08:16				SUB OUT: MAGEE, KOBE
08:16				SUB IN: JORDAN, CALEB
08:16				SUB OUT: TRAYLOR, LAMONT
08:16				SUB IN: EWUZIE, EMMANUEL
08:16	MISSED FT by HOHENSTEIN, IAN			
08:14				REBOUND (DEF) by EWUZIE, EMMANUEL
07:59				TURNOVER by HOUSTON, MARKQUES
07:59	STEAL by LEONARD , ANDREW			
07:50	GOOD! LAYUP by AVALOS , TONY	31-35	V 4	
07:41				TURNOVER by JORDAN, CALEB
07:41	STEAL by HOHENSTEIN, IAN			
07:40				FOUL by JORDAN, CALEB
07:40	TIMEOUT MEDIA			
07:39				SUB OUT: EWUZIE, EMMANUEL
07:39				SUB IN: GASPERT, MATEJ
07:27	MISSED JUMPER by AVALOS , TONY [PNT]			
07:24				REBOUND (DEF) by KELLER, ZACH
07:15	FOUL by SANDERS , MALIK			
07:15		32-35	V 3	GOOD! FT by GASPERT, MATEJ

Time	VISITORS: Western N.M.	Score	Margin	HOME: St. Mary's (TX)
07:15		33-35	V 2	GOOD! FT by GASPert, MATEJ
06:59	GOOD! JUMPER by HOLIFIELD, ELIJAH	33-37	V 4	
06:59	ASSIST by SANDERS , MALIK			
06:43				TURNOVER by JORDAN, CALEB [PNT]
06:43	STEAL by AVALOS , TONY			
06:35	MISSED 3PTR by AVALOS , TONY			
06:31				REBOUND (DEF) by KELLER, ZACH
06:21		36-37	V 1	GOOD! 3PTR by HOUSTON, MARKQUES
06:21				ASSIST by JORDAN, CALEB
05:59	MISSED 3PTR by LEONARD , ANDREW			
05:59				BLOCK by ISENHOWER, DYLAN
05:55				REBOUND (DEF) by HOUSTON, MARKQUES
05:47		39-37	H 2	GOOD! 3PTR by KELLER, ZACH
05:47				ASSIST by ISENHOWER, DYLAN
05:46	TIMEOUT 30SEC			
05:46	SUB OUT: SANDERS , MALIK			
05:46	SUB OUT: LEONARD , ANDREW			
05:46	SUB IN: VANBEEKUM, CJ			
05:46	SUB IN: GIRON, EDDIE			
05:39				FOUL by GASPert, MATEJ
05:39	GOOD! FT by GIRON, EDDIE [FB]	39-38	H 1	
05:39	GOOD! FT by GIRON, EDDIE [FB]	39-39	T	
05:30				FOUL by GASPert, MATEJ
05:30				TURNOVER by GASPert, MATEJ
05:30				FOUL by JORDAN, CALEB
05:30				SUB OUT: JORDAN, CALEB
05:30				SUB IN: MAGEE, KOBE
05:30	GOOD! FT by AVALOS , TONY [FB]	39-40	V 1	
05:30				SUB OUT: KELLER, ZACH
05:30				SUB IN: LAING, NOAH
05:30	GOOD! FT by AVALOS , TONY [FB]	39-41	V 2	
05:17				TURNOVER by ISENHOWER, DYLAN
05:17	STEAL by HOLIFIELD, ELIJAH			
05:12	GOOD! LAYUP by HOLIFIELD, ELIJAH [FB]	39-43	V 4	
04:48				MISSED JUMPER by HOUSTON, MARKQUES
04:44	REBOUND (DEF) by GIRON, EDDIE			
04:41	GOOD! 3PTR by HOLIFIELD, ELIJAH [FB]	39-46	V 7	
04:41	ASSIST by AVALOS , TONY			
04:25				MISSED 3PTR by HOUSTON, MARKQUES
04:21				REBOUND (OFF) by ISENHOWER, DYLAN
04:19		41-46	V 5	GOOD! LAYUP by ISENHOWER, DYLAN
04:02	FOUL by GIRON, EDDIE			
04:02	TURNOVER by GIRON, EDDIE			
04:02				SUB OUT: ISENHOWER, DYLAN
04:02				SUB IN: KELLER, ZACH
03:52				FOUL by HOUSTON, MARKQUES
03:52				TURNOVER by HOUSTON, MARKQUES
03:52	TIMEOUT MEDIA			
03:47	MISSED LAYUP by VANBEEKUM, CJ			
03:47				BLOCK by GASPert, MATEJ
03:40				REBOUND (DEF) by KELLER, ZACH
03:32				TURNOVER by GASPert, MATEJ [PNT]
03:32	STEAL by HOHENSTEIN, IAN			
03:21				SUB OUT: GASPert, MATEJ
03:21				SUB IN: TRAYLOR, LAMONT
03:21	FOUL by AVALOS , TONY			
03:21				MISSED FT by HOUSTON, MARKQUES
03:21				REBOUND (DEADB) by TEAM
03:21		42-46	V 4	GOOD! FT by HOUSTON, MARKQUES
03:21		43-46	V 3	GOOD! FT by HOUSTON, MARKQUES
03:19				FOUL by KELLER, ZACH
03:19	GOOD! FT by AVALOS , TONY [FB]	43-47	V 4	
03:19	GOOD! FT by AVALOS , TONY [FB]	43-48	V 5	
03:07				MISSED JUMPER by LAING, NOAH
03:05	REBOUND (DEF) by HOHENSTEIN, IAN			
03:05				FOUL by TRAYLOR, LAMONT
03:05	GOOD! FT by HOHENSTEIN, IAN [FB]	43-49	V 6	
03:05				SUB OUT: TRAYLOR, LAMONT
03:05				SUB IN: EWUZIE, EMMANUEL
03:05	GOOD! FT by HOHENSTEIN, IAN [FB]	43-50	V 7	
02:35				MISSED JUMPER by HOUSTON, MARKQUES [PNT]
02:31				REBOUND (OFF) by LAING, NOAH
02:31				MISSED LAYUP by LAING, NOAH
02:31	REBOUND (DEF) by VANBEEKUM, CJ			
02:13	GOOD! 3PTR by HOLIFIELD, ELIJAH	43-53	V 10	
01:49				MISSED 3PTR by MAGEE, KOBE
01:48				REBOUND (OFF) by LAING, NOAH
01:29				TURNOVER by EWUZIE, EMMANUEL
01:29	STEAL by GIRON, EDDIE			
01:22	MISSED 3PTR by HOLIFIELD, ELIJAH			

Time	VISITORS: Western N.M.	Score	Margin	HOME: St. Mary's (TX)
01:17				REBOUND (DEF) by EWUZIJE, EMMANUEL
01:10				TURNOVER by MAGEE, KOBE
01:10	STEAL by GIRON, EDDIE			
00:52	TURNOVER by GIRON, EDDIE			
00:52				STEAL by MAGEE, KOBE
00:46		46-53	V 7	GOOD! 3PTR by KELLER, ZACH
00:46				ASSIST by LAING, NOAH
00:46	GOOD! LAYUP by VANBEEKUM, CJ	46-55	V 9	
00:46				FOUL by HOUSTON, MARKQUES
00:46	GOOD! FT by VANBEEKUM, CJ	46-56	V 10	
00:46				SUB OUT: HOUSTON, MARKQUES
00:46				SUB IN: ISENHOWER, DYLAN
00:27		49-56	V 7	GOOD! 3PTR by KELLER, ZACH
00:27				ASSIST by ISENHOWER, DYLAN
00:17	GOOD! JUMPER by HOLIFIELD, ELIJAH	49-58	V 9	

Western N.M. 58, St. Mary's (TX) 49

Points from (This Period)	WNMU	StMU
In the Paint	16	16
Off Turns	11	9
2nd Chance	7	10
Fast Break	16	2
Bench	12	25

Official Box Score
Western N.M. vs St. Mary's (TX)
Second Half Statistics Only
February 14, 2020 at Bill Greehey Arena



Western N.M. 35

No.	Player	S	Pts	FG	3FG	FT	OR	DR	TR	PF	A	TO	Blk	Stl	Min
03	SANDERS , MALIK	G	10	4-8	1-4	1-2	0	1	1	1	1	3	0	1	20
12	HOLIFIELD, ELIJAH	G	5	1-3	1-2	2-3	1	1	2	3	1	1	0	0	16
14	VANBEEKUM, CJ	G	6	3-4	0-0	0-0	0	1	1	0	0	0	0	1	20
32	GIRON, EDDIE	G	0	0-1	0-1	0-0	0	0	0	3	0	1	0	0	7
34	SIMON , RODNEY	F	2	1-1	0-0	0-0	0	1	1	3	0	0	0	0	5
04	AVALOS , TONY	G	10	4-6	0-0	2-3	1	0	1	4	2	0	0	1	10
11	LEONARD , ANDREW	G	0	0-1	0-1	0-0	0	0	0	0	0	0	0	0	4
21	MOSIALOS, GEORGE	G	0	0-0	0-0	0-1	0	0	0	1	0	0	0	0	3
22	PELLISSIER, NATHAN	F	0	0-0	0-0	0-0	0	0	0	0	0	0	0	0	0
30	HOHENSTEIN, IAN	F	2	1-2	0-0	0-0	1	0	1	2	0	3	0	1	15
	TEAM			0-0			0	1	1	0		0			
TOTALS			35	14-26	2-8	5-9	3	5	8	17	4	8	0	4	100

Shooting By Period

Period	FG	FG%	3FG	3FG%	FT	FT%
2nd Half	14-26	54%	2-8	25%	5-9	56%
Game	34-55	61.8%	10-21	47.6%	15-22	68.2%

Last FG Half: WNMU -

St. Mary's (TX) 52

No.	Player	S	Pts	FG	3FG	FT	OR	DR	TR	PF	A	TO	Blk	Stl	Min
01	JORDAN, CALEB	G	3	1-3	0-0	1-2	0	1	1	3	2	1	0	0	8
04	HOUSTON, MARKQUES	G	7	2-4	1-3	2-2	1	0	1	1	1	0	0	1	17
15	MAGEE, KOBE	G	13	3-6	0-2	7-8	1	1	2	1	1	2	0	0	20
32	EWUZIE, EMMANUEL	F	7	3-3	0-0	1-4	2	5	7	1	0	0	0	0	11
45	TRAYLOR, LAMONT	F	2	1-1	0-0	0-0	1	2	3	0	1	1	0	0	7
12	PRESLEY, JARON	G	6	2-3	1-2	1-2	0	1	1	1	0	0	0	0	2
21	ISENHOWER, DYLAN	G	8	2-4	1-2	3-3	2	1	3	2	0	1	1	1	16
25	LAING, NOAH	F	0	0-0	0-0	0-0	0	0	0	1	0	0	0	0	3
30	KELLER, ZACH	G	4	1-1	0-0	2-2	0	0	0	1	1	0	0	0	10
40	GASPERT, MATEJ	F	2	1-6	0-1	0-0	3	2	5	2	0	2	0	0	5
	TEAM			0-0			2	0	2	0		0			
TOTALS			52	16-31	3-10	17-23	12	13	25	13	6	7	1	2	100

Shooting By Period

Period	FG	FG%	3FG	3FG%	FT	FT%
2nd Half	16-31	52%	3-10	30%	17-23	74%
Game	33-65	50.8%	11-22	50.0%	24-32	75.0%

Last FG Half: StMU -

Game Notes:

Officials:
Attendance: 395

Start Time: 01:30 AM
Conference Game;

Score	1st	2nd	TOT
WNMU	58	35	93
StMU	49	52	101

Points from (This Period)	WNMU	StMU
In the Paint	22	20
Off Turns	8	13
2nd Chance	5	12
Fast Break	5	11
Bench	12	20

Official Play-By-Play
Western N.M. vs St. Mary's (TX)
Second Half
February 14, 2020 at Bill Greehey Arena



Period 2

Starters:

Western N.M.: 3 SANDERS ,MALIK (G); 12 HOLIFIELD,ELIJAH (G); 14 VANBEEKUM,CJ (G); 32 GIRON,EDDIE (G); 34 SIMON ,RODNEY (F);

St. Mary's (TX): 1 JORDAN,CALEB (G); 4 HOUSTON,MARKQUES (G); 15 MAGEE,KOBE (G); 32 EWUZIE,EMMANUEL (F); 45 TRAYLOR,LAMONT (F);

Time	VISITORS: Western N.M.	Score	Margin	HOME: St. Mary's (TX)
20:00				SUB OUT: ISENHOWER, DYLAN
20:00				SUB OUT: LAING, NOAH
20:00				SUB OUT: KELLER, ZACH
20:00				SUB IN: JORDAN, CALEB
20:00				SUB IN: HOUSTON, MARKQUES
20:00				SUB IN: TRAYLOR, LAMONT
20:00	SUB OUT: AVALOS , TONY			
20:00	SUB OUT: HOHENSTEIN, IAN			
20:00	SUB IN: SANDERS , MALIK			
20:00	SUB IN: SIMON , RODNEY			
19:47		52-58	V 6	GOOD! 3PTR by HOUSTON, MARKQUES
19:47				ASSIST by JORDAN, CALEB
19:21	GOOD! LAYUP by SIMON , RODNEY	52-60	V 8	
19:21	ASSIST by SANDERS , MALIK			
19:07				MISSED 3PTR by HOUSTON, MARKQUES
19:04				REBOUND (OFF) by MAGEE, KOBE
18:45				MISSED JUMPER by JORDAN, CALEB
18:41				REBOUND (OFF) by TRAYLOR, LAMONT
18:41		54-60	V 6	GOOD! LAYUP by TRAYLOR, LAMONT
18:41				SUB OUT: EWUZIE, EMMANUEL
18:41				SUB IN: GASPERT, MATEJ
18:33				FOUL by JORDAN, CALEB
18:23	TURNOVER by SANDERS , MALIK			
18:23				SUB OUT: JORDAN, CALEB
18:23				SUB IN: PRESLEY, JARON
18:09		57-60	V 3	GOOD! 3PTR by PRESLEY, JARON
18:09				ASSIST by TRAYLOR, LAMONT
17:51	MISSED 3PTR by GIRON, EDDIE			
17:49	REBOUND (OFF) by HOLIFIELD, ELIJAH			
17:43				FOUL by GASPERT, MATEJ
17:43	SUB OUT: SIMON , RODNEY			
17:43	SUB IN: HOHENSTEIN, IAN			
17:43	FOUL by HOHENSTEIN, IAN			
17:43	TURNOVER by HOHENSTEIN, IAN			
17:20				MISSED LAYUP by GASPERT, MATEJ [PNT]
17:15				REBOUND (OFF) by GASPERT, MATEJ
17:15				MISSED LAYUP by GASPERT, MATEJ
17:13				REBOUND (OFF) by GASPERT, MATEJ
17:13				MISSED LAYUP by GASPERT, MATEJ
17:12				REBOUND (OFF) by GASPERT, MATEJ
17:11				MISSED 3PTR by PRESLEY, JARON
17:09	REBOUND (DEF) by HOLIFIELD, ELIJAH			
17:04	TURNOVER by GIRON, EDDIE [PNT]			
17:04				STEAL by HOUSTON, MARKQUES
16:59		59-60	V 1	GOOD! LAYUP by PRESLEY, JARON [FB]
16:59				ASSIST by HOUSTON, MARKQUES
16:39				FOUL by PRESLEY, JARON [PNT]
16:39				SUB OUT: PRESLEY, JARON
16:39				SUB IN: KELLER, ZACH
16:23	TURNOVER by SANDERS , MALIK [PNT]			
16:23				SUB OUT: TRAYLOR, LAMONT
16:23				SUB IN: ISENHOWER, DYLAN
16:23	SUB OUT: GIRON, EDDIE			
16:23	SUB IN: AVALOS , TONY			
16:11				TURNOVER by GASPERT, MATEJ
16:11	STEAL by SANDERS , MALIK			
16:06	TURNOVER by HOHENSTEIN, IAN			
15:55		61-60	H 1	GOOD! LAYUP by GASPERT, MATEJ [PNT]
15:55				ASSIST by KELLER, ZACH
15:40	MISSED JUMPER by AVALOS , TONY			
15:39				REBOUND (DEF) by GASPERT, MATEJ
15:39	FOUL by AVALOS , TONY			
15:39	TIMEOUT MEDIA			
15:15				MISSED 3PTR by GASPERT, MATEJ
15:12	REBOUND (DEF) by TEAM			
14:50	MISSED LAYUP by SANDERS , MALIK [PNT]			
14:46				REBOUND (DEF) by GASPERT, MATEJ
14:37				MISSED by GASPERT, MATEJ [PNT]
14:33				REBOUND (OFF) by HOUSTON, MARKQUES
14:33		63-60	H 3	GOOD! LAYUP by HOUSTON, MARKQUES

Time	VISITORS: Western N.M.	Score	Margin	HOME: St. Mary's (TX)
14:28	GOOD! JUMPER by AVALOS , TONY [PNT]	63-62	H 1	
13:58		65-62	H 3	GOOD! JUMPER by MAGEE, KOBE
13:49				SUB OUT: HOUSTON, MARKQUES
13:49				SUB IN: LAING, NOAH
13:43	GOOD! LAYUP by VANBEEKUM, CJ	65-64	H 1	
13:31				FOUL by GASPERT, MATEJ
13:31				TURNOVER by GASPERT, MATEJ
13:31	SUB OUT: HOLIFIELD, ELIJAH			
13:31	SUB IN: LEONARD , ANDREW			
13:31				SUB OUT: GASPERT, MATEJ
13:31				SUB IN: TRAYLOR, LAMONT
13:17	GOOD! LAYUP by VANBEEKUM, CJ	65-66	V 1	
13:17	ASSIST by AVALOS , TONY			
12:59				MISSED 3PTR by MAGEE, KOBE
12:55	REBOUND (DEF) by SANDERS , MALIK			
12:53				FOUL by LAING, NOAH
12:53	SUB OUT: HOHENSTEIN, IAN			
12:53	SUB IN: SIMON , RODNEY			
12:45	GOOD! JUMPER by AVALOS , TONY [PNT]	65-68	V 3	
12:45				FOUL by KELLER, ZACH [PNT]
12:45	MISSED FT by AVALOS , TONY			
12:44				REBOUND (DEF) by TRAYLOR, LAMONT
12:38	FOUL by SIMON , RODNEY [PNT]			
12:28				TURNOVER by MAGEE, KOBE [PNT]
12:28	STEAL by VANBEEKUM, CJ			
12:19	MISSED 3PTR by LEONARD , ANDREW			
12:16				REBOUND (DEF) by TRAYLOR, LAMONT
11:58	FOUL by AVALOS , TONY			
11:58	TIMEOUT MEDIA			
11:44	FOUL by SIMON , RODNEY			
11:44		66-68	V 2	GOOD! FT by KELLER, ZACH
11:44		67-68	V 1	GOOD! FT by KELLER, ZACH
11:44	SUB OUT: SIMON , RODNEY			
11:44	SUB IN: HOHENSTEIN, IAN			
11:29				SUB OUT: HOUSTON, MARKQUES
11:29				SUB IN: LAING, NOAH
11:17	MISSED LAYUP by VANBEEKUM, CJ			
11:14	REBOUND (OFF) by AVALOS , TONY			
11:03	GOOD! JUMPER by AVALOS , TONY [PNT]	67-70	V 3	
10:43				TURNOVER by TRAYLOR, LAMONT
10:43	STEAL by HOHENSTEIN, IAN			
10:24	GOOD! LAYUP by SANDERS , MALIK	67-72	V 5	
10:13				SUB OUT: LAING, NOAH
10:13				SUB IN: HOUSTON, MARKQUES
09:58				TURNOVER by MAGEE, KOBE
09:58	STEAL by AVALOS , TONY			
09:52	GOOD! LAYUP by SANDERS , MALIK [FB/PNT]	67-74	V 7	
09:52	ASSIST by AVALOS , TONY			
09:52				TIMEOUT 30SEC
09:52				SUB OUT: LAING, NOAH
09:52				SUB OUT: KELLER, ZACH
09:52				SUB OUT: TRAYLOR, LAMONT
09:52				SUB IN: JORDAN, CALEB
09:52				SUB IN: HOUSTON, MARKQUES
09:52				SUB IN: EWUZIE, EMMANUEL
09:52	SUB OUT: LEONARD , ANDREW			
09:52	SUB IN: HOLIFIELD, ELIJAH			
09:41		69-74	V 5	GOOD! JUMPER by JORDAN, CALEB
09:25	GOOD! JUMPER by HOHENSTEIN, IAN	69-76	V 7	
09:25	ASSIST by HOLIFIELD, ELIJAH			
09:12	FOUL by AVALOS , TONY			
09:12				MISSED FT by EWUZIE, EMMANUEL
09:12				REBOUND (DEADB) by TEAM
09:12	SUB OUT: AVALOS , TONY			
09:12	SUB IN: MOSIALOS, GEORGE			
09:12				MISSED FT by EWUZIE, EMMANUEL
09:10	REBOUND (DEF) by VANBEEKUM, CJ			
09:01				FOUL by HOUSTON, MARKQUES
09:01	MISSED FT by HOLIFIELD, ELIJAH			
09:00				REBOUND (DEF) by EWUZIE, EMMANUEL
08:48		72-76	V 4	GOOD! 3PTR by ISENHOWER, DYLAN
08:48				ASSIST by JORDAN, CALEB
08:16	MISSED JUMPER by HOLIFIELD, ELIJAH [PNT]			
08:13				REBOUND (DEF) by ISENHOWER, DYLAN
07:58				MISSED 3PTR by HOUSTON, MARKQUES
07:56				REBOUND (OFF) by TEAM
07:56	FOUL by MOSIALOS, GEORGE			
07:56	TIMEOUT MEDIA			
07:56		73-76	V 3	GOOD! FT by ISENHOWER, DYLAN
07:56		74-76	V 2	GOOD! FT by ISENHOWER, DYLAN

Time	VISITORS: Western N.M.	Score	Margin	HOME: St. Mary's (TX)
07:46	MISSED 3PTR by SANDERS , MALIK			
07:43				REBOUND (DEF) by JORDAN, CALEB
07:35		76-76	T	GOOD! JUMPER by MAGEE, KOBE
07:33				TIMEOUT 30SEC
07:25				FOUL by MAGEE, KOBE
07:24	MISSED FT by MOSIALOS, GEORGE			
07:23				REBOUND (DEF) by EWUZIE, EMMANUEL
07:08				MISSED 3PTR by ISENHOWER, DYLAN
07:07				REBOUND (OFF) by TEAM
06:56				MISSED 3PTR by MAGEE, KOBE
06:51				REBOUND (OFF) by EWUZIE, EMMANUEL
06:51		78-76	H 2	GOOD! LAYUP by EWUZIE, EMMANUEL
06:36	GOOD! LAYUP by SANDERS , MALIK	78-78	T	
06:18	FOUL by HOHENSTEIN, IAN			
06:18		79-78	H 1	GOOD! FT by JORDAN, CALEB
06:18	SUB OUT: MOSIALOS, GEORGE			
06:18	SUB OUT: HOHENSTEIN, IAN			
06:18	SUB IN: AVALOS , TONY			
06:18	SUB IN: SIMON , RODNEY			
06:18				MISSED FT by JORDAN, CALEB
06:18				REBOUND (OFF) by ISENHOWER, DYLAN
06:18				MISSED LAYUP by ISENHOWER, DYLAN [PNT]
06:18	REBOUND (DEF) by SIMON , RODNEY			
06:16	FOUL by HOLIFIELD, ELIJAH			
06:16	TURNOVER by HOLIFIELD, ELIJAH			
05:59		81-78	H 3	GOOD! JUMPER by EWUZIE, EMMANUEL [PNT]
05:39	TURNOVER by SANDERS , MALIK			
05:16				MISSED JUMPER by JORDAN, CALEB
05:11				REBOUND (OFF) by EWUZIE, EMMANUEL
05:11		83-78	H 5	GOOD! LAYUP by EWUZIE, EMMANUEL
04:49				FOUL by EWUZIE, EMMANUEL
04:49	GOOD! FT by HOLIFIELD, ELIJAH	83-79	H 4	
04:49	GOOD! FT by HOLIFIELD, ELIJAH	83-80	H 3	
04:24		85-80	H 5	GOOD! LAYUP by ISENHOWER, DYLAN
04:24	FOUL by SIMON , RODNEY			
04:24	SUB OUT: SIMON , RODNEY			
04:24	SUB IN: HOHENSTEIN, IAN			
04:24		86-80	H 6	GOOD! FT by ISENHOWER, DYLAN
04:11	GOOD! LAYUP by AVALOS , TONY	86-82	H 4	
03:56	TIMEOUT MEDIA			
03:42				FOUL by ISENHOWER, DYLAN
03:42				TURNOVER by ISENHOWER, DYLAN
03:37				FOUL by JORDAN, CALEB
03:37	GOOD! FT by AVALOS , TONY [FB]	86-83	H 3	
03:37	GOOD! FT by AVALOS , TONY [FB]	86-84	H 2	
03:17				FOUL by JORDAN, CALEB
03:17				TURNOVER by JORDAN, CALEB
03:17				SUB OUT: JORDAN, CALEB
03:17				SUB IN: KELLER, ZACH
03:01	MISSED LAYUP by AVALOS , TONY			
03:01				REBOUND (DEF) by EWUZIE, EMMANUEL
03:01	FOUL by AVALOS , TONY			
03:01	SUB OUT: AVALOS , TONY			
03:01	SUB IN: GIRON, EDDIE			
03:01				MISSED FT by EWUZIE, EMMANUEL [FB]
03:01				REBOUND (DEADB) by TEAM
03:01		87-84	H 3	GOOD! FT by EWUZIE, EMMANUEL [FB]
02:43	MISSED LAYUP by HOHENSTEIN, IAN			
02:43				BLOCK by ISENHOWER, DYLAN
02:38				REBOUND (DEF) by MAGEE, KOBE
02:37		89-84	H 5	GOOD! LAYUP by MAGEE, KOBE [FB]
02:28	TURNOVER by HOHENSTEIN, IAN [PNT]			
02:28				STEAL by ISENHOWER, DYLAN
02:23	FOUL by HOLIFIELD, ELIJAH [PNT]			
02:23		90-84	H 6	GOOD! FT by MAGEE, KOBE [FB]
02:23		91-84	H 7	GOOD! FT by MAGEE, KOBE [FB]
02:13	MISSED 3PTR by HOLIFIELD, ELIJAH			
02:10				REBOUND (DEF) by EWUZIE, EMMANUEL
01:48				MISSED JUMPER by MAGEE, KOBE
01:45				REBOUND (OFF) by ISENHOWER, DYLAN
01:31	FOUL by GIRON, EDDIE			
01:31		92-84	H 8	GOOD! FT by MAGEE, KOBE
01:31		93-84	H 9	GOOD! FT by MAGEE, KOBE
01:31	TIMEOUT 30SEC			
01:25				FOUL by ISENHOWER, DYLAN
01:25	GOOD! FT by SANDERS , MALIK [FB]	93-85	H 8	
01:24	MISSED FT by SANDERS , MALIK [FB]			
01:23				REBOUND (DEF) by EWUZIE, EMMANUEL
01:07		95-85	H 10	GOOD! LAYUP by KELLER, ZACH
01:07				ASSIST by MAGEE, KOBE

Time	VISITORS: Western N.M.	Score	Margin	HOME: St. Mary's (TX)
00:58	GOOD! LAYUP by VANBEEKUM, CJ	95-87	H 8	
00:55	FOUL by SANDERS , MALIK			
00:55				MISSED FT by MAGEE, KOBE [FB]
00:55				REBOUND (DEADB) by TEAM
00:55		96-87	H 9	GOOD! FT by MAGEE, KOBE [FB]
00:40	MISSED 3PTR by SANDERS , MALIK			
00:36	REBOUND (OFF) by HOHENSTEIN, IAN			
00:34	GOOD! 3PTR by HOLIFIELD, ELIJAH	96-90	H 6	
00:33	FOUL by HOLIFIELD, ELIJAH			
00:33		97-90	H 7	GOOD! FT by MAGEE, KOBE [FB]
00:33		98-90	H 8	GOOD! FT by MAGEE, KOBE [FB]
00:25	GOOD! 3PTR by SANDERS , MALIK	98-93	H 5	
00:14	FOUL by GIRON, EDDIE			
00:14		99-93	H 6	GOOD! FT by HOUSTON, MARKQUES
00:14		100-93	H 7	GOOD! FT by HOUSTON, MARKQUES
00:14				TIMEOUT TEAM
00:13				SUB OUT: EWUZIE, EMMANUEL
00:13				SUB IN: PRESLEY, JARON
00:05	MISSED 3PTR by SANDERS , MALIK			
00:04				REBOUND (DEF) by PRESLEY, JARON
00:04	FOUL by GIRON, EDDIE			
00:04				MISSED FT by PRESLEY, JARON [FB]
00:04				REBOUND (DEADB) by TEAM
00:04		101-93	H 8	GOOD! FT by PRESLEY, JARON [FB]

Western N.M. 93, St. Mary's (TX) 101

Points from (This Period)	WNMU	StMU
In the Paint	22	20
Off Turns	8	13
2nd Chance	5	12
Fast Break	5	11
Bench	12	20

Official Scoring/Possession Reference Chart
Western N.M. vs St. Mary's (TX)
Period 1
February 14, 2020 at Bill Greehey Arena



Period 1

Starters:

Western N.M.: 3 SANDERS ,MALIK (G); 12 HOLIFIELD,ELIJAH (G); 14 VANBEEKUM,CJ (G); 32 GIRON,EDDIE (G); 34 SIMON ,RODNEY (F);
St. Mary's (TX): 1 JORDAN,CALEB (G); 4 HOUSTON,MARKQUES (G); 15 MAGEE,KOBE (G); 32 EWUZIE,EMMANUEL (F); 45 TRAYLOR,LAMONT (F);

Time	VISITORS: Western N.M.	Score	Margin	HOME: St. Mary's (TX)
19:16	GOOD! 3PTR by HOLIFIELD, ELIJAH	0-3	V 3	
18:53		1-3	V 2	GOOD! FT by TRAYLOR, LAMONT
18:53		2-3	V 1	GOOD! FT by TRAYLOR, LAMONT
18:43	GOOD! LAYUP by SIMON , RODNEY	2-5	V 3	
18:16		4-5	V 1	GOOD! JUMPER by JORDAN, CALEB
16:45	GOOD! JUMPER by HOLIFIELD, ELIJAH [FB]	4-7	V 3	
16:35		6-7	V 1	GOOD! JUMPER by HOUSTON, MARKQUES
16:25	GOOD! 3PTR by GIRON, EDDIE	6-10	V 4	
16:16		9-10	V 1	GOOD! 3PTR by MAGEE, KOBE
15:37	GOOD! by SIMON , RODNEY [PNT]	9-12	V 3	
15:25		11-12	V 1	GOOD! LAYUP by JORDAN, CALEB
15:11	GOOD! LAYUP by SIMON , RODNEY	11-14	V 3	
14:54		13-14	V 1	GOOD! LAYUP by GASPERT, MATEJ
14:45	GOOD! JUMPER by SIMON , RODNEY	13-16	V 3	
14:26		15-16	V 1	GOOD! JUMPER by GASPERT, MATEJ [PNT]
14:12	GOOD! LAYUP by SIMON , RODNEY	15-18	V 3	
13:16		17-18	V 1	GOOD! LAYUP by GASPERT, MATEJ
13:08	GOOD! JUMPER by HOLIFIELD, ELIJAH	17-20	V 3	
12:55		20-20	T	GOOD! 3PTR by HOUSTON, MARKQUES
12:43	GOOD! 3PTR by HOLIFIELD, ELIJAH	20-23	V 3	
12:20		21-23	V 2	GOOD! FT by GASPERT, MATEJ
11:52	GOOD! 3PTR by HOLIFIELD, ELIJAH	21-26	V 5	
11:36		24-26	V 2	GOOD! 3PTR by HOUSTON, MARKQUES
11:08	GOOD! 3PTR by HOLIFIELD, ELIJAH	24-29	V 5	
10:46	GOOD! FT by AVALOS , TONY [FB]	24-30	V 6	
10:07		27-30	V 3	GOOD! 3PTR by ISENHOWER, DYLAN
09:43	GOOD! 3PTR by LEONARD , ANDREW	27-33	V 6	
09:06		29-33	V 4	GOOD! LAYUP by KELLER, ZACH [FB]
08:27		31-33	V 2	GOOD! JUMPER by TRAYLOR, LAMONT
07:50	GOOD! LAYUP by AVALOS , TONY	31-35	V 4	
07:15		32-35	V 3	GOOD! FT by GASPERT, MATEJ
07:15		33-35	V 2	GOOD! FT by GASPERT, MATEJ
06:59	GOOD! JUMPER by HOLIFIELD, ELIJAH	33-37	V 4	
06:21		36-37	V 1	GOOD! 3PTR by HOUSTON, MARKQUES
05:47		39-37	H 2	GOOD! 3PTR by KELLER, ZACH
05:39	GOOD! FT by GIRON, EDDIE [FB]	39-38	H 1	
05:39	GOOD! FT by GIRON, EDDIE [FB]	39-39	T	
05:30	GOOD! FT by AVALOS , TONY [FB]	39-40	V 1	
05:30	GOOD! FT by AVALOS , TONY [FB]	39-41	V 2	
05:12	GOOD! LAYUP by HOLIFIELD, ELIJAH [FB]	39-43	V 4	
04:41	GOOD! 3PTR by HOLIFIELD, ELIJAH [FB]	39-46	V 7	
04:19		41-46	V 5	GOOD! LAYUP by ISENHOWER, DYLAN
03:21		42-46	V 4	GOOD! FT by HOUSTON, MARKQUES
03:21		43-46	V 3	GOOD! FT by HOUSTON, MARKQUES
03:19	GOOD! FT by AVALOS , TONY [FB]	43-47	V 4	
03:19	GOOD! FT by AVALOS , TONY [FB]	43-48	V 5	
03:05	GOOD! FT by HOHENSTEIN, IAN [FB]	43-49	V 6	
03:05	GOOD! FT by HOHENSTEIN, IAN [FB]	43-50	V 7	
02:13	GOOD! 3PTR by HOLIFIELD, ELIJAH	43-53	V 10	
00:46		46-53	V 7	GOOD! 3PTR by KELLER, ZACH
00:46	GOOD! LAYUP by VANBEEKUM, CJ	46-55	V 9	
00:46	GOOD! FT by VANBEEKUM, CJ	46-56	V 10	

Time	VISITORS: Western N.M.	Score	Margin	HOME: St. Mary's (TX)
00:27		49-56	V 7	GOOD! 3PTR by KELLER, ZACH
00:17	GOOD! JUMPER by HOLIFIELD, ELIJAH	49-58	V 9	

Western N.M. 58, St. Mary's (TX) 49

Official Scoring/Possession Reference Chart
Western N.M. vs St. Mary's (TX)
Period 2
February 14, 2020 at Bill Greehey Arena



Period 2

Starters:

Western N.M.: 3 SANDERS ,MALIK (G); 12 HOLIFIELD,ELIJAH (G); 14 VANBEEKUM,CJ (G); 32 GIRON,EDDIE (G); 34 SIMON ,RODNEY (F);

St. Mary's (TX): 1 JORDAN,CALEB (G); 4 HOUSTON,MARKQUES (G); 15 MAGEE,KOBE (G); 32 EWUZIE,EMMANUEL (F); 45 TRAYLOR,LAMONT (F);

Time	VISITORS: Western N.M.	Score	Margin	HOME: St. Mary's (TX)
19:47		52-58	V 6	GOOD! 3PTR by HOUSTON, MARKQUES
19:21	GOOD! LAYUP by SIMON , RODNEY	52-60	V 8	
18:41		54-60	V 6	GOOD! LAYUP by TRAYLOR, LAMONT
18:09		57-60	V 3	GOOD! 3PTR by PRESLEY, JARON
16:59		59-60	V 1	GOOD! LAYUP by PRESLEY, JARON [FB]
15:55		61-60	H 1	GOOD! LAYUP by GASPERT, MATEJ [PNT]
14:33		63-60	H 3	GOOD! LAYUP by HOUSTON, MARKQUES
14:28	GOOD! JUMPER by AVALOS , TONY [PNT]	63-62	H 1	
13:58		65-62	H 3	GOOD! JUMPER by MAGEE, KOBE
13:43	GOOD! LAYUP by VANBEEKUM, CJ	65-64	H 1	
13:17	GOOD! LAYUP by VANBEEKUM, CJ	65-66	V 1	
12:45	GOOD! JUMPER by AVALOS , TONY [PNT]	65-68	V 3	
11:44		66-68	V 2	GOOD! FT by KELLER, ZACH
11:44		67-68	V 1	GOOD! FT by KELLER, ZACH
11:03	GOOD! JUMPER by AVALOS , TONY [PNT]	67-70	V 3	
10:24	GOOD! LAYUP by SANDERS , MALIK	67-72	V 5	
09:52	GOOD! LAYUP by SANDERS , MALIK [FB/PNT]	67-74	V 7	
09:41		69-74	V 5	GOOD! JUMPER by JORDAN, CALEB
09:25	GOOD! JUMPER by HOHENSTEIN, IAN	69-76	V 7	
08:48		72-76	V 4	GOOD! 3PTR by ISENHOWER, DYLAN
07:56		73-76	V 3	GOOD! FT by ISENHOWER, DYLAN
07:56		74-76	V 2	GOOD! FT by ISENHOWER, DYLAN
07:35		76-76	T	GOOD! JUMPER by MAGEE, KOBE
06:51		78-76	H 2	GOOD! LAYUP by EWUZIE, EMMANUEL
06:36	GOOD! LAYUP by SANDERS , MALIK	78-78	T	
06:18		79-78	H 1	GOOD! FT by JORDAN, CALEB
05:59		81-78	H 3	GOOD! JUMPER by EWUZIE, EMMANUEL [PNT]
05:11		83-78	H 5	GOOD! LAYUP by EWUZIE, EMMANUEL
04:49	GOOD! FT by HOLIFIELD, ELIJAH	83-79	H 4	
04:49	GOOD! FT by HOLIFIELD, ELIJAH	83-80	H 3	
04:24		85-80	H 5	GOOD! LAYUP by ISENHOWER, DYLAN
04:24		86-80	H 6	GOOD! FT by ISENHOWER, DYLAN
04:11	GOOD! LAYUP by AVALOS , TONY	86-82	H 4	
03:37	GOOD! FT by AVALOS , TONY [FB]	86-83	H 3	
03:37	GOOD! FT by AVALOS , TONY [FB]	86-84	H 2	
03:01		87-84	H 3	GOOD! FT by EWUZIE, EMMANUEL [FB]
02:37		89-84	H 5	GOOD! LAYUP by MAGEE, KOBE [FB]
02:23		90-84	H 6	GOOD! FT by MAGEE, KOBE [FB]
02:23		91-84	H 7	GOOD! FT by MAGEE, KOBE [FB]
01:31		92-84	H 8	GOOD! FT by MAGEE, KOBE
01:31		93-84	H 9	GOOD! FT by MAGEE, KOBE
01:25	GOOD! FT by SANDERS , MALIK [FB]	93-85	H 8	
01:07		95-85	H 10	GOOD! LAYUP by KELLER, ZACH
00:58	GOOD! LAYUP by VANBEEKUM, CJ	95-87	H 8	
00:55		96-87	H 9	GOOD! FT by MAGEE, KOBE [FB]
00:34	GOOD! 3PTR by HOLIFIELD, ELIJAH	96-90	H 6	
00:33		97-90	H 7	GOOD! FT by MAGEE, KOBE [FB]
00:33		98-90	H 8	GOOD! FT by MAGEE, KOBE [FB]
00:25	GOOD! 3PTR by SANDERS , MALIK	98-93	H 5	
00:14		99-93	H 6	GOOD! FT by HOUSTON, MARKQUES
00:14		100-93	H 7	GOOD! FT by HOUSTON, MARKQUES
00:04		101-93	H 8	GOOD! FT by PRESLEY, JARON [FB]

Official Substitutions Log
Western N.M. vs St. Mary's (TX)
Period 1
February 14, 2020 at Bill Greehey Arena



VISITORS: Western N.M.	Time	Score	HOME: St. Mary's (TX)
3 SANDERS ,MALIK			1 JORDAN,CALEB
12 HOLIFIELD,ELIJAH			4 HOUSTON,MARKQUES
14 VANBEEKUM,CJ			15 MAGEE,KOBE
32 GIRON,EDDIE			32 EWUZIE,EMMANUEL
34 SIMON ,RODNEY			45 TRAYLOR,LAMONT
	17:43	5-4	SUB OUT: TRAYLOR,LAMONT
	17:43		SUB IN: ISENHOWER,DYLAN
	16:06	10-9	SUB OUT: EWUZIE,EMMANUEL
	16:06		SUB IN: GASPERT,MATEJ
SUB OUT: 32 GIRON,EDDIE	13:45	18-15	
SUB IN: 4 AVALOS , TONY	13:45		
SUB OUT: 12 HOLIFIELD,ELIJAH	13:34	18-15	
SUB OUT: 14 VANBEEKUM,CJ	13:34		
SUB OUT: 34 SIMON ,RODNEY	13:34		
SUB IN: 11 LEONARD ,ANDREW	13:34		
SUB IN: 22 PELISSIER,NATHAN	13:34		
SUB IN: 30 HOHENSTEIN,IAN	13:34		
SUB IN: 12 HOLIFIELD,ELIJAH	13:22	18-15	
SUB OUT: 3 SANDERS ,MALIK	13:22		
	10:55	29-24	SUB OUT: JORDAN,CALEB
	10:55		SUB OUT: GASPERT,MATEJ
	10:55		SUB IN: KELLER,ZACH
	10:55		SUB IN: TRAYLOR,LAMONT
	10:46	29-24	SUB OUT: HOUSTON,MARKQUES
	10:46		SUB IN: PRESLEY,JARON
SUB OUT: 22 PELISSIER,NATHAN	09:24	33-27	
SUB IN: 3 SANDERS ,MALIK	09:24		
	09:24		SUB OUT: PRESLEY,JARON
	09:24		SUB IN: HOUSTON,MARKQUES
	08:16	33-31	SUB OUT: MAGEE,KOBE
	08:16		SUB IN: JORDAN,CALEB
	08:16		SUB OUT: TRAYLOR,LAMONT
	08:16		SUB IN: EWUZIE,EMMANUEL
	07:39	35-31	SUB OUT: EWUZIE,EMMANUEL
	07:39		SUB IN: GASPERT,MATEJ
SUB OUT: 3 SANDERS ,MALIK	05:46	37-39	
SUB OUT: 11 LEONARD ,ANDREW	05:46		
SUB IN: 14 VANBEEKUM,CJ	05:46		
SUB IN: 32 GIRON,EDDIE	05:46		
	05:30	39-39	SUB OUT: JORDAN,CALEB
	05:30		SUB IN: MAGEE,KOBE
	05:30		SUB OUT: KELLER,ZACH
	05:30		SUB IN: LAING,NOAH
	04:02	46-41	SUB OUT: ISENHOWER,DYLAN
	04:02		SUB IN: KELLER,ZACH
	03:21	46-41	SUB OUT: GASPERT,MATEJ
	03:21		SUB IN: TRAYLOR,LAMONT
	03:05	49-43	SUB OUT: TRAYLOR,LAMONT
	03:05		SUB IN: EWUZIE,EMMANUEL
	00:46	56-46	SUB OUT: HOUSTON,MARKQUES
	00:46		SUB IN: ISENHOWER,DYLAN

Western N.M. 58, St. Mary's (TX) 49

Official Substitutions Log
Western N.M. vs St. Mary's (TX)
Period 2
February 14, 2020 at Bill Greehey Arena



VISITORS: Western N.M.	Time	Score	HOME: St. Mary's (TX)
3 SANDERS ,MALIK			1 JORDAN,CALEB
12 HOLIFIELD,ELIJAH			4 HOUSTON,MARKQUES
14 VANBEEKUM,CJ			15 MAGEE,KOBE
32 GIRON,EDDIE			32 EWUZIE,EMMANUEL
34 SIMON ,RODNEY			45 TRAYLOR,LAMONT
	20:00	-	SUB OUT: ISENHOWER,DYLAN
	20:00		SUB OUT: LAING,NOAH
	20:00		SUB OUT: KELLER,ZACH
	20:00		SUB IN: JORDAN,CALEB
	20:00		SUB IN: HOUSTON,MARKQUES
	20:00		SUB IN: TRAYLOR,LAMONT
SUB OUT: 4 AVALOS ,TONY	20:00		
SUB OUT: 30 HOHENSTEIN,IAN	20:00		
SUB IN: 3 SANDERS ,MALIK	20:00		
SUB IN: 34 SIMON ,RODNEY	20:00		
	18:41	60-54	SUB OUT: EWUZIE,EMMANUEL
	18:41		SUB IN: GASPERT,MATEJ
	18:23	60-54	SUB OUT: JORDAN,CALEB
	18:23		SUB IN: PRESLEY,JARON
SUB OUT: 34 SIMON ,RODNEY	17:43	60-57	
SUB IN: 30 HOHENSTEIN,IAN	17:43		
	16:39	60-59	SUB OUT: PRESLEY,JARON
	16:39		SUB IN: KELLER,ZACH
	16:23	60-59	SUB OUT: TRAYLOR,LAMONT
	16:23		SUB IN: ISENHOWER,DYLAN
SUB OUT: 32 GIRON,EDDIE	16:23		
SUB IN: 4 AVALOS ,TONY	16:23		
	13:49	62-65	SUB OUT: HOUSTON,MARKQUES
	13:49		SUB IN: LAING,NOAH
SUB OUT: 12 HOLIFIELD,ELIJAH	13:31	64-65	
SUB IN: 11 LEONARD ,ANDREW	13:31		
	13:31		SUB OUT: GASPERT,MATEJ
	13:31		SUB IN: TRAYLOR,LAMONT
SUB OUT: 30 HOHENSTEIN,IAN	12:53	66-65	
SUB IN: 34 SIMON ,RODNEY	12:53		
SUB OUT: 34 SIMON ,RODNEY	11:44	68-67	
SUB IN: 30 HOHENSTEIN,IAN	11:44		
	11:29	68-67	SUB OUT: HOUSTON,MARKQUES
	11:29		SUB IN: LAING,NOAH
	10:13	72-67	SUB OUT: LAING,NOAH
	10:13		SUB IN: HOUSTON,MARKQUES
	09:52	74-67	SUB OUT: LAING,NOAH
	09:52		SUB OUT: KELLER,ZACH
	09:52		SUB OUT: TRAYLOR,LAMONT
	09:52		SUB IN: JORDAN,CALEB
	09:52		SUB IN: HOUSTON,MARKQUES
	09:52		SUB IN: EWUZIE,EMMANUEL
SUB OUT: 11 LEONARD ,ANDREW	09:52		
SUB IN: 12 HOLIFIELD,ELIJAH	09:52		
SUB OUT: 4 AVALOS ,TONY	09:12	76-69	
SUB IN: 21 MOSIALOS,GEORGE	09:12		
SUB OUT: 21 MOSIALOS,GEORGE	06:18	78-79	
SUB OUT: 30 HOHENSTEIN,IAN	06:18		
SUB IN: 4 AVALOS ,TONY	06:18		
SUB IN: 34 SIMON ,RODNEY	06:18		
SUB OUT: 34 SIMON ,RODNEY	04:24	80-85	
SUB IN: 30 HOHENSTEIN,IAN	04:24		
	03:17	84-86	SUB OUT: JORDAN,CALEB
	03:17		SUB IN: KELLER,ZACH
SUB OUT: 4 AVALOS ,TONY	03:01	84-86	
SUB IN: 32 GIRON,EDDIE	03:01		
	00:13	93-100	SUB OUT: EWUZIE,EMMANUEL
	00:13		SUB IN: PRESLEY,JARON

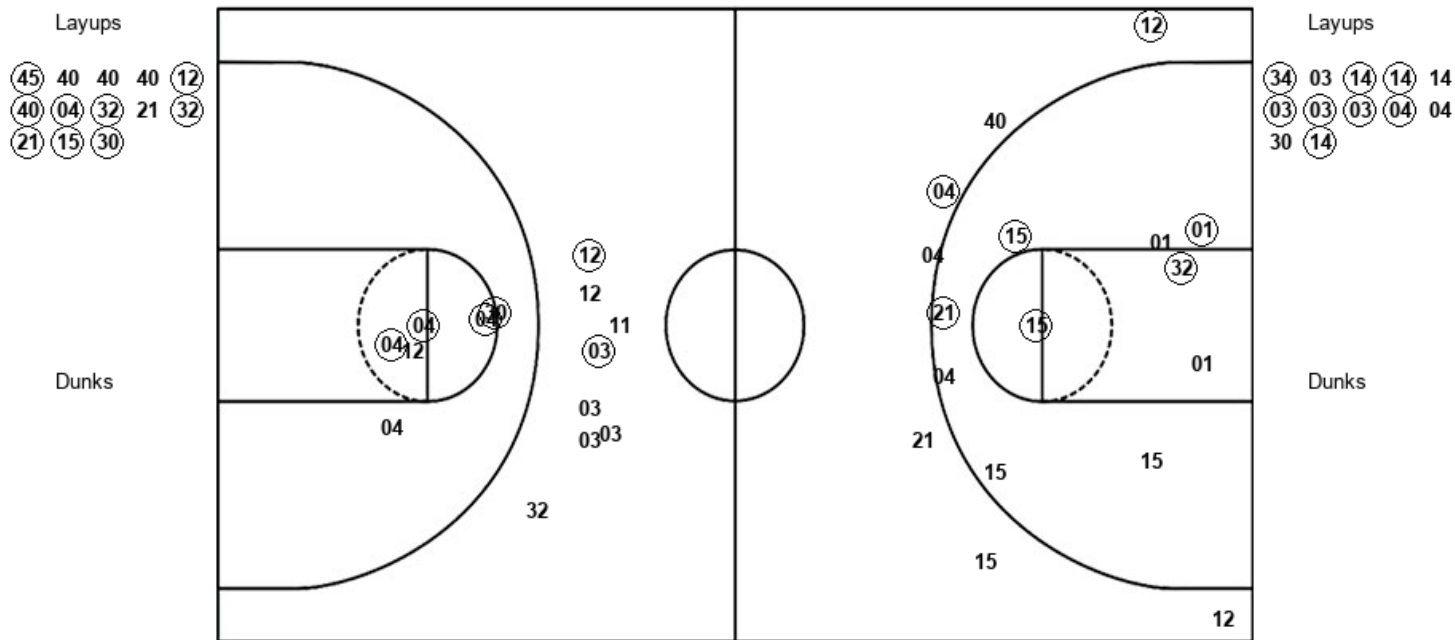
Western N.M. 93, St. Mary's (TX) 101

Official Shot Chart
 Western N.M. vs St. Mary's (TX)
 PERIOD 2 Shots
 February 14, 2020 at Bill Greehey Arena



St. Mary's (TX)

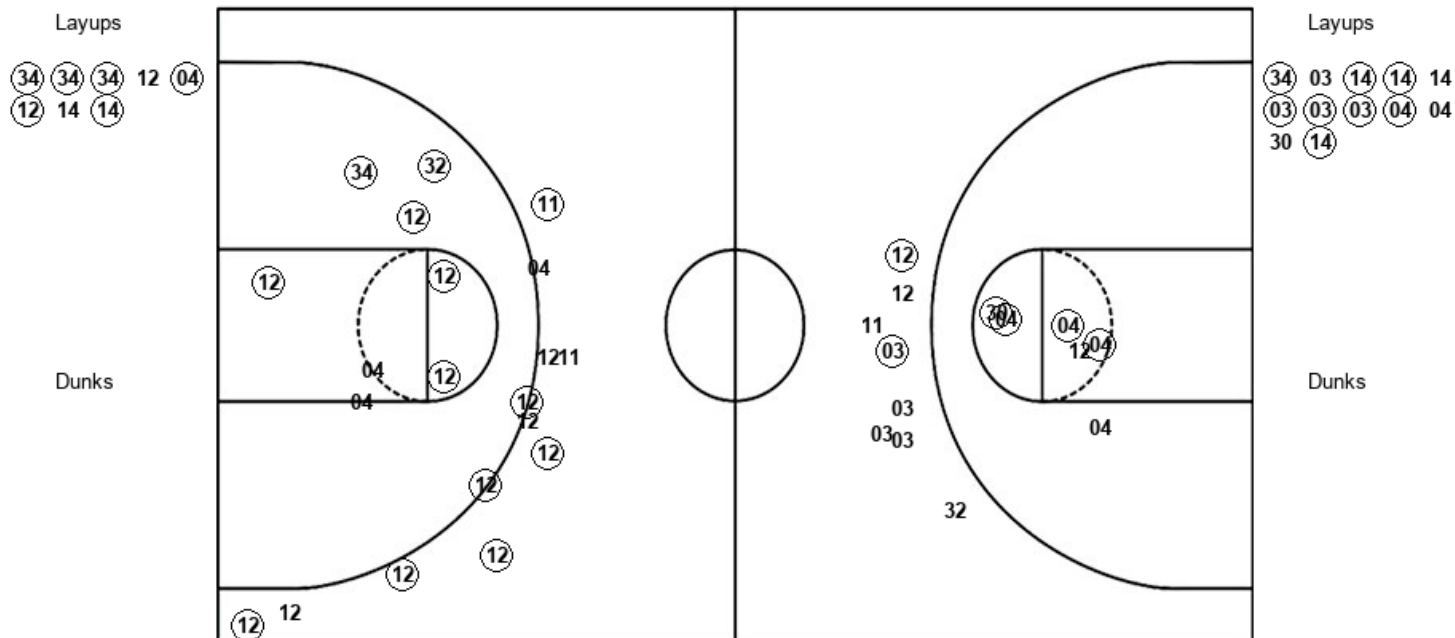
Western N.M.



StMU : Period 2	Made	Att	Pct
Layups	9	13	69.2
Dunks	0	0	0
2PT Field Goals	13	21	61.9
3PT Field Goals	3	10	30.0
Total Field Goals	16	31	51.6

WNMU : Period 2	Made	Att	Pct
Layups	8	12	66.7
Dunks	0	0	0
2PT Field Goals	12	18	66.7
3PT Field Goals	2	8	25.0
Total Field Goals	14	26	53.8

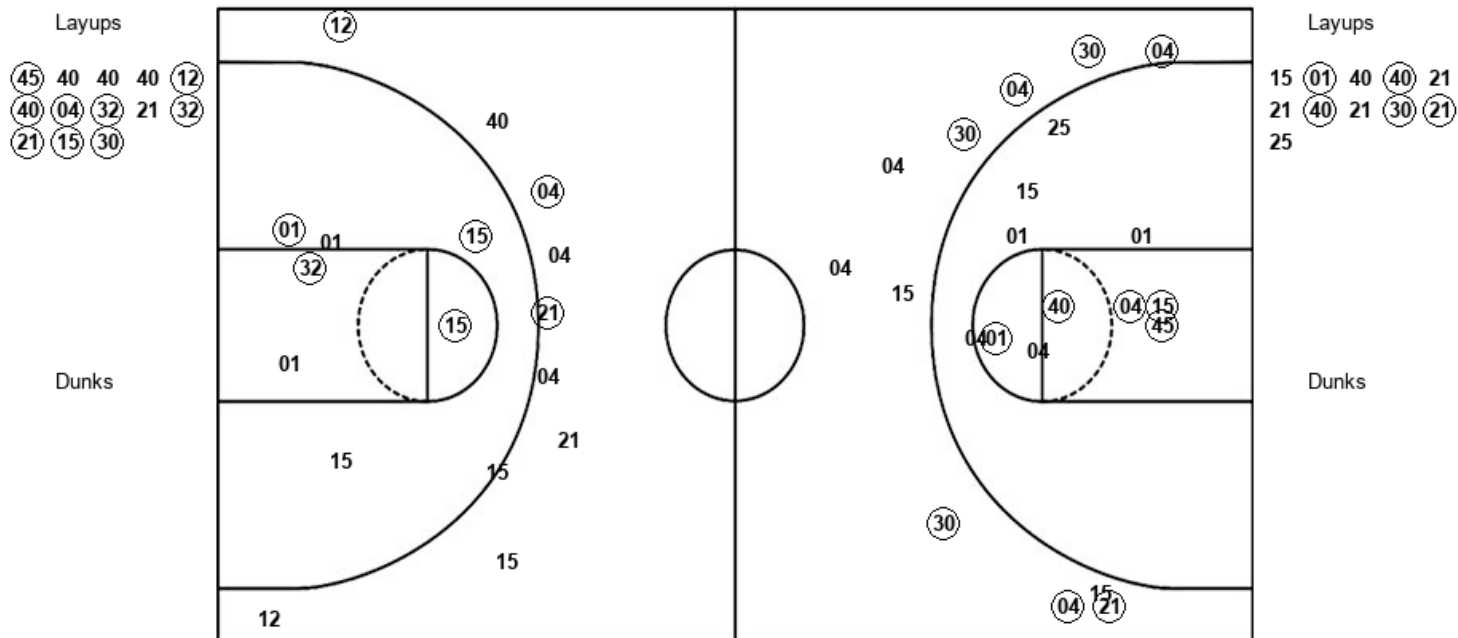
Official Shot Chart
Western N.M. vs St. Mary's (TX)
Western N.M. Team Shots
February 14, 2020 at Bill Greehey Arena



WNMU : Period 1	Made	Att	Pct
Layups	6	8	75.0
Dunks	0	0	0
2PT Field Goals	12	16	75.0
3PT Field Goals	8	13	61.5
Total Field Goals	20	29	69.0

WNMU : Period 2	Made	Att	Pct
Layups	8	12	66.7
Dunks	0	0	0
2PT Field Goals	12	18	66.7
3PT Field Goals	2	8	25.0
Total Field Goals	14	26	53.8

Official Shot Chart
Western N.M. vs St. Mary's (TX)
St. Mary's (TX) Team Shots
February 14, 2020 at Bill Greehey Arena



StMU : Period 1	Made	Att	Pct
Layups	5	11	45.5
Dunks	0	0	0
2PT Field Goals	9	22	40.9
3PT Field Goals	8	12	66.7
Total Field Goals	17	34	50.0

StMU : Period 2	Made	Att	Pct
Layups	9	13	69.2
Dunks	0	0	0
2PT Field Goals	13	21	61.9
3PT Field Goals	3	10	30.0
Total Field Goals	16	31	51.6