

FINAL SCORE

St. Mary's (TX)

73



Angelo St.

80



January 25, 2020 • Junell Center/Stephens Arena (Stephens Arena) - San Angelo

FINAL STATISTICS

Official Box Score
St. Mary's (TX) vs Angelo St.
Game Totals -- Final Statistics

January 25, 2020 at Junell Center/Stephens Arena (Stephens Arena) - San Angelo



St. Mary's (TX) 73

No.	Player	S	Pts	FG	3FG	FT	OR	DR	TR	PF	A	TO	Blk	Stl	Min	+/-	
01	JORDAN, CALEB	G	16	4-12	1-3	7-8	2	0	2	3	3	2	0	4	38	-3	
04	HOUSTON, MARKQUES	G	12	4-19	2-11	2-2	0	7	7	2	2	3	0	1	39	-7	
15	MAGEE, KOBE	G	19	6-11	4-8	3-3	1	3	4	2	3	3	0	3	37	-7	
32	EWUZIE, EMMANUEL	F	0	0-1	0-0	0-0	0	4	4	4	0	1	2	0	20	-7	
45	TRAYLOR, LAMONT	F	8	4-5	0-0	0-0	4	3	7	1	0	0	1	0	15	0	
02	WESLEY, CURTLON	F	6	3-4	0-0	0-0	0	2	2	4	1	2	0	0	11	1	
12	PRESLEY, JARON	G	0	0-0	0-0	0-0	0	0	0	3	0	1	0	0	1	2	
21	ISENHOWER, DYLAN	G	8	4-7	0-1	0-0	1	7	8	2	0	2	0	1	20	-6	
25	LAING, NOAH	F	2	1-1	0-0	0-0	1	0	1	1	0	0	0	0	6	-7	
40	GASPERT, MATEJ	F	2	1-5	0-1	0-0	0	2	2	4	0	1	0	0	14	-1	
TEAM							3	1	4	0	2						
TOTALS				73	27-65	7-24	12-13	12	29	41	26	9	17	3	9	200	

Shooting By Period

Period	FG	FG%	3FG	3FG%	FT	FT%
1st Half	11-30	37%	3-10	30%	10-11	91%
2nd Half	16-35	46%	4-14	29%	2-2	100%
Game	27-65	41.5%	7-24	29.2%	12-13	92.3%

Deadball Rebounds: 0,0
Last FG: 2nd-00:03
Biggest Run: 10-0
Largest lead: By 13 at 1st-07:50
Technical Fouls: None.

Angelo St. 80

No.	Player	S	Pts	FG	3FG	FT	OR	DR	TR	PF	A	TO	Blk	Stl	Min	+/-	
03	HAYES, JEREMY	G	11	3-10	0-3	5-6	0	3	3	1	2	4	0	0	30	-7	
04	BELL, RONALD	G	11	3-6	0-2	5-6	0	1	1	1	2	1	0	1	23	-1	
11	IBARGUEN, ANDRES	F	8	3-5	0-0	2-3	3	0	3	2	0	1	0	2	18	7	
12	PETTWAY, MARCEL	F	6	2-4	0-0	2-2	3	4	7	2	0	2	0	0	27	2	
23	TURNER, COLLIN	G	11	3-9	1-5	4-6	0	2	2	3	1	0	1	0	23	6	
02	REEDUS, CAMRON	G	16	6-12	1-5	3-5	1	7	8	0	4	2	0	1	27	6	
05	EDWARDS, BURONE	G	8	3-10	1-3	1-2	5	7	12	2	0	1	1	0	20	12	
10	WILLIAMS, PAUL	G	5	2-7	1-2	0-0	2	3	5	0	5	1	0	1	23	8	
21	YAHAYA, SALISU	F	2	1-2	0-0	0-2	0	0	0	0	0	0	0	0	4	-2	
32	GLADNEY, RJ	F	2	1-1	0-0	0-0	0	0	0	0	0	0	0	0	5	4	
TEAM							2	0	2	0	0						
TOTALS				80	27-66	4-20	22-32	16	27	43	11	14	12	2	5	200	

Shooting By Period

Period	FG	FG%	3FG	3FG%	FT	FT%
1st Half	11-37	30%	2-12	17%	7-11	64%
2nd Half	16-29	55%	2-8	25%	15-21	71%
Game	27-66	40.9%	4-20	20.0%	22-32	68.8%

Deadball Rebounds: 4,0
Last FG: 2nd-00:45
Biggest Run: 13-0
Largest lead: By 12 at 2nd-05:25
Technical Fouls: None.

Game Notes:

Officials: , ,
Attendance: 873

Start Time: 05:09 PM ET
End Time: 07:02 PM ET
Game Duration: 1:52
Conference Game;

Score	1st	2nd	TOT
SMU	35	38	73
ASU	31	49	80

SMU led for 24:40. ASU led for 12:23.
Game was tied for 2:57.
Times tied: 3 Lead Changes: 3

Points from	SMU	ASU
In the Paint	34	42
Off Turns	14	21
2nd Chance	16	17
Fast Break	20	18
Bench	18	33

Official Box Score
St. Mary's (TX) vs Angelo St.
First Half Statistics Only

January 25, 2020 at Junell Center/Stephens Arena (Stephens Arena) - San Angelo



St. Mary's (TX) 35

No.	Player	S	Pts	FG	3FG	FT	OR	DR	TR	PF	A	TO	Blk	Stl	Min	+/-
01	JORDAN, CALEB	G	16	4-7	1-1	7-8	0	0	0	0	1	1	0	2	18	8
04	HOUSTON, MARKQUES	G	7	3-10	1-5	0-0	0	5	5	1	0	0	0	1	19	4
15	MAGEE, KOBE	G	6	1-3	1-2	3-3	1	2	3	0	1	1	0	1	17	4
32	EWUZIE, EMMANUEL	F	0	0-1	0-0	0-0	0	4	4	2	0	1	2	0	12	3
45	TRAYLOR, LAMONT	F	2	1-2	0-0	0-0	1	2	3	1	0	0	1	0	7	2
02	WESLEY, CURTLON	F	0	0-1	0-0	0-0	0	0	0	2	0	1	0	0	3	1
12	PRESLEY, JARON	G	0	0-0	0-0	0-0	0	0	0	2	0	0	0	0	1	3
21	ISENHOWER, DYLAN	G	2	1-2	0-1	0-0	0	4	4	1	0	2	0	1	8	1
25	LAING, NOAH	F	2	1-1	0-0	0-0	1	0	1	1	0	0	0	0	6	-7
40	GASPERT, MATEJ	F	0	0-3	0-1	0-0	0	1	1	1	0	1	0	0	10	1
TEAM							2	0	2	0		1				
TOTALS			35	11-30	3-10	10-11	5	18	23	11	2	8	3	5	100	

Shooting By Period

Period	FG	FG%	3FG	3FG%	FT	FT%
1st Half	11-30	37%	3-10	30%	10-11	91%
Game	27-65	41.5%	7-24	29.2%	12-13	92.3%

Deadball Rebounds: 0,0
 Last FG Half: SMU 2nd-00:03

Angelo St. 31

No.	Player	S	Pts	FG	3FG	FT	OR	DR	TR	PF	A	TO	Blk	Stl	Min	+/-
03	HAYES, JEREMY	G	4	1-6	0-2	2-2	0	2	2	1	1	2	0	0	16	-5
04	BELL, RONALD	G	7	2-5	0-2	3-4	0	1	1	1	2	1	0	0	17	0
11	IBARGUEN, ANDRES	F	0	0-0	0-0	0-0	0	0	0	2	0	1	0	0	1	-3
12	PETTWAY, MARCEL	F	2	1-3	0-0	0-0	2	3	5	2	0	2	0	0	16	-1
23	TURNER, COLLIN	G	0	0-2	0-1	0-0	0	0	0	2	0	0	1	0	8	-6
02	REEDUS, CAMRON	G	6	2-7	1-4	1-1	1	5	6	0	1	1	0	0	13	-1
05	EDWARDS, BURONE	G	8	3-7	1-3	1-2	3	3	6	0	0	1	1	0	11	-2
10	WILLIAMS, PAUL	G	0	0-4	0-0	0-0	2	1	3	0	1	0	0	0	10	-4
21	YAHAYA, SALISU	F	2	1-2	0-0	0-2	0	0	0	0	0	0	0	0	4	-2
32	GLADNEY, RJ	F	2	1-1	0-0	0-0	0	0	0	0	0	0	0	0	5	4
TEAM							2	0	2	0		0				
TOTALS			31	11-37	2-12	7-11	10	15	25	8	5	8	2	0	100	

Shooting By Period

Period	FG	FG%	3FG	3FG%	FT	FT%
1st Half	11-37	30%	2-12	17%	7-11	64%
Game	27-66	40.9%	4-20	20.0%	22-32	68.8%

Deadball Rebounds: 4,0
 Last FG Half: ASU 2nd-00:45

Game Notes:
 Officials: , , ,
 Attendance: 873

Start Time: 05:09 PM ET
 End Time: 07:02 PM ET
 Game Duration: 1:52
 Conference Game;

Score	1st	2nd	TOT
SMU	35	38	73
ASU	31	49	80

Points from (This Period)	SMU	ASU
In the Paint	14	18
Off Turns	5	11
2nd Chance	4	12
Fast Break	11	4
Bench	4	18

Official Play-By-Play
St. Mary's (TX) vs Angelo St.
First Half

January 25, 2020 at Junell Center/Stephens Arena (Stephens Arena) - San Angelo



Period 1

Starters:

St. Mary's (TX): 1 JORDAN, CALEB (G); 4 HOUSTON, MARKQUES (G); 15 MAGEE, KOBE (G); 32 EWUZIE, EMMANUEL (F); 45 TRAYLOR, LAMONT (F);
Angelo St.: 3 HAYES, JEREMY (G); 4 BELL, RONALD (G); 11 IBARGUEN, ANDRES (F); 12 PETTWAY, MARCEL (F); 23 TURNER, COLLIN (G);

Time	VISITORS: St. Mary's (TX)	Score	Margin	HOME: Angelo St.
19:41				MISSED JUMPER by HAYES, JEREMY
19:37	REBOUND (DEF) by EWUZIE, EMMANUEL			
19:13	MISSED JUMPER by EWUZIE, EMMANUEL			
19:11				REBOUND (DEF) by PETTWAY, MARCEL
19:00				MISSED 3PTR by TURNER, COLLIN
18:56	REBOUND (DEF) by TRAYLOR, LAMONT			
18:51				FOUL (PERSONAL) by IBARGUEN, ANDRES
18:51	GOOD! FT by MAGEE, KOBE	0-1	V 1	
18:51	GOOD! FT by MAGEE, KOBE	0-2	V 2	
18:51	GOOD! FT by MAGEE, KOBE	0-3	V 3	
18:34				FOUL (OFF) by IBARGUEN, ANDRES
18:34				TURNOVER (OFFENSIVE) by IBARGUEN, ANDRES
18:34				SUB OUT: IBARGUEN, ANDRES
18:34				SUB IN: REEDUS, CAMRON
18:24	MISSED JUMPER by HOUSTON, MARKQUES			
18:21				REBOUND (DEF) by REEDUS, CAMRON
18:04				MISSED 3PTR by REEDUS, CAMRON
18:02	REBOUND (DEF) by EWUZIE, EMMANUEL			
17:55	MISSED LAYUP by JORDAN, CALEB			
17:55				BLOCK by TURNER, COLLIN
17:50				REBOUND (DEF) by HAYES, JEREMY
17:47				MISSED LAYUP by HAYES, JEREMY
17:47	BLOCK by EWUZIE, EMMANUEL			
17:42	REBOUND (DEF) by EWUZIE, EMMANUEL			
17:32	MISSED 3PTR by HOUSTON, MARKQUES			
17:29				REBOUND (DEF) by HAYES, JEREMY
17:24				TURNOVER (TRAVEL) by HAYES, JEREMY
17:24	SUB OUT: TRAYLOR, LAMONT			
17:24	SUB IN: WESLEY, CURTLON			
17:14	TURNOVER (OTHER) by MAGEE, KOBE			
17:08				TURNOVER (BADPASS) by BELL, RONALD
17:08	STEAL by JORDAN, CALEB			
16:59				FOUL (PERSONAL) by TURNER, COLLIN
16:59	GOOD! FT by JORDAN, CALEB	0-4	V 4	
16:59	SUB OUT: EWUZIE, EMMANUEL			
16:59	SUB IN: GASPert, MATEJ			
16:59	MISSED FT by JORDAN, CALEB			
16:57				REBOUND (DEF) by BELL, RONALD
16:43		3-4	V 1	GOOD! 3PTR by REEDUS, CAMRON
16:43				ASSIST by BELL, RONALD
16:31	TURNOVER (TRAVEL) by WESLEY, CURTLON			
16:23				MISSED 3PTR by BELL, RONALD
16:20	REBOUND (DEF) by HOUSTON, MARKQUES			
16:11	GOOD! 3PTR by MAGEE, KOBE	3-7	V 4	
16:11	ASSIST by JORDAN, CALEB			
15:58				MISSED JUMPER by HAYES, JEREMY
15:56	REBOUND (DEF) by GASPert, MATEJ			
15:39	GOOD! JUMPER by JORDAN, CALEB	3-9	V 6	
15:30				MISSED JUMPER by TURNER, COLLIN
15:27				REBOUND (OFF) by PETTWAY, MARCEL
15:27				FOUL (OFF) by PETTWAY, MARCEL
15:27				TURNOVER (OFFENSIVE) by PETTWAY, MARCEL
15:27				SUB OUT: BELL, RONALD
15:27				SUB OUT: TURNER, COLLIN
15:27				SUB IN: EDWARDS, BURONE
15:27				SUB IN: WILLIAMS, PAUL
15:07	MISSED JUMPER by WESLEY, CURTLON			
15:05				REBOUND (DEF) by EDWARDS, BURONE
15:00	FOUL (PERSONAL) by WESLEY, CURTLON			
14:51				MISSED LAYUP by REEDUS, CAMRON
14:49				REBOUND (OFF) by REEDUS, CAMRON
14:49		5-9	V 4	GOOD! LAYUP by REEDUS, CAMRON
14:49	FOUL (PERSONAL) by WESLEY, CURTLON			
14:49				SUB OUT: REEDUS, CAMRON
14:49				SUB IN: YAHAYA, SALISU
14:49				SUB OUT: YAHAYA, SALISU
14:49				SUB IN: REEDUS, CAMRON
14:49	SUB OUT: WESLEY, CURTLON			
14:49	SUB IN: ISENHOWER, DYLAN			

Time	VISITORS: St. Mary's (TX)	Score	Margin	HOME: Angelo St.
14:49		6-9	V 3	GOOD! FT by REEDUS, CAMRON
14:26	GOOD! LAYUP by ISENHOWER, DYLAN	6-11	V 5	
14:10				MISSED JUMPER by WILLIAMS, PAUL
14:07	REBOUND (DEF) by HOUSTON, MARKQUES			
13:58	MISSED JUMPER by GASPERT, MATEJ			
13:54				REBOUND (DEF) by EDWARDS, BURONE
13:49				TURNOVER (LOSTBALL) by EDWARDS, BURONE
13:49	STEAL by HOUSTON, MARKQUES			
13:44	GOOD! LAYUP by HOUSTON, MARKQUES [FB]	6-13	V 7	
13:26				TURNOVER (LOSTBALL) by PETTWAY, MARCEL
13:26	STEAL by ISENHOWER, DYLAN			
13:20	MISSED 3PTR by MAGEE, KOBE			
13:16				REBOUND (DEF) by PETTWAY, MARCEL
13:08				MISSED JUMPER by WILLIAMS, PAUL
13:04	REBOUND (DEF) by ISENHOWER, DYLAN			
12:58	MISSED 3PTR by HOUSTON, MARKQUES			
12:56				REBOUND (DEF) by REEDUS, CAMRON
12:51				MISSED 3PTR by REEDUS, CAMRON
12:47	REBOUND (DEF) by ISENHOWER, DYLAN			
12:28	MISSED LAYUP by GASPERT, MATEJ			
12:28				BLOCK by EDWARDS, BURONE
12:18				REBOUND (DEF) by REEDUS, CAMRON
12:18				MISSED LAYUP by REEDUS, CAMRON
12:14	REBOUND (DEF) by ISENHOWER, DYLAN			
12:12	GOOD! 3PTR by HOUSTON, MARKQUES [FB]	6-16	V 10	
12:10				SUB OUT: REEDUS, CAMRON
12:10				SUB OUT: HAYES, JEREMY
12:10				SUB OUT: PETTWAY, MARCEL
12:10				SUB IN: BELL, RONALD
12:10				SUB IN: YAHAYA, SALISU
12:10				SUB IN: TURNER, COLLIN
12:10	SUB OUT: MAGEE, KOBE			
12:10	SUB IN: PRESLEY, JARON			
11:55				
11:55	FOUL (PERSONAL) by GASPERT, MATEJ			
11:55				MISSED FT by YAHAYA, SALISU
11:55				REBOUND (OFF) by TEAM
11:55				MISSED FT by YAHAYA, SALISU
11:55	REBOUND (DEF) by HOUSTON, MARKQUES			
11:55	SUB OUT: GASPERT, MATEJ			
11:55	SUB IN: EWUZIE, EMMANUEL			
11:42	GOOD! 3PTR by JORDAN, CALEB	6-19	V 13	
11:26				MISSED LAYUP by WILLIAMS, PAUL
11:23				REBOUND (OFF) by EDWARDS, BURONE
11:22				MISSED LAYUP by EDWARDS, BURONE
11:22	BLOCK by EWUZIE, EMMANUEL			
11:18				REBOUND (OFF) by WILLIAMS, PAUL
11:18	FOUL (PERSONAL) by PRESLEY, JARON			
11:14	FOUL (PERSONAL) by PRESLEY, JARON			
11:14	SUB OUT: PRESLEY, JARON			
11:14	SUB IN: LAING, NOAH			
11:02		8-19	V 11	GOOD! LAYUP by EDWARDS, BURONE
10:38	GOOD! LAYUP by JORDAN, CALEB	8-21	V 13	
10:18		10-21	V 11	GOOD! JUMPER by YAHAYA, SALISU
10:18				ASSIST by BELL, RONALD
09:50	MISSED JUMPER by HOUSTON, MARKQUES			
09:47	REBOUND (OFF) by LAING, NOAH			
09:37	TURNOVER (TRAVEL) by ISENHOWER, DYLAN			
09:24				MISSED JUMPER by WILLIAMS, PAUL
09:24				REBOUND (OFF) by TEAM
09:24	SUB OUT: ISENHOWER, DYLAN			
09:24	SUB IN: TRAYLOR, LAMONT			
09:15				MISSED 3PTR by EDWARDS, BURONE
09:11				REBOUND (OFF) by TEAM
09:05				MISSED JUMPER by EDWARDS, BURONE
09:02				REBOUND (OFF) by WILLIAMS, PAUL
08:54		12-21	V 9	GOOD! LAYUP by BELL, RONALD [PNT]
08:54	FOUL (PERSONAL) by LAING, NOAH			
08:54				SUB OUT: WILLIAMS, PAUL
08:54				SUB IN: REEDUS, CAMRON
08:54				MISSED FT by BELL, RONALD
08:49	REBOUND (DEF) by EWUZIE, EMMANUEL			
08:46				FOUL (PERSONAL) by TURNER, COLLIN
08:45	GOOD! FT by JORDAN, CALEB [FB]	12-22	V 10	
08:45				SUB OUT: TURNER, COLLIN
08:45				SUB IN: HAYES, JEREMY
08:45	SUB OUT: LAING, NOAH			
08:45	SUB IN: MAGEE, KOBE			
08:45	GOOD! FT by JORDAN, CALEB [FB]	12-23	V 11	
08:22				MISSED LAYUP by YAHAYA, SALISU

Time	VISITORS: St. Mary's (TX)	Score	Margin	HOME: Angelo St.
08:22	BLOCK by TRAYLOR, LAMONT			
08:17	REBOUND (DEF) by TRAYLOR, LAMONT			
08:15	GOOD! LAYUP by JORDAN, CALEB [FB]	12-25	V 13	
08:03	FOUL (PERSONAL) by TRAYLOR, LAMONT			
08:03				SUB OUT: YAHAYA, SALISU
08:03				SUB IN: PETTWAY, MARCEL
08:03	SUB OUT: HOUSTON, MARKQUES			
08:03	SUB IN: LAING, NOAH			
08:03		13-25	V 12	GOOD! FT by HAYES, JEREMY
08:03		14-25	V 11	GOOD! FT by HAYES, JEREMY
08:03				SUB OUT: EDWARDS, BURONE
08:03				SUB IN: GLADNEY, RJ
07:53	MISSED JUMPER by JORDAN, CALEB			
07:51	REBOUND (OFF) by TRAYLOR, LAMONT			
07:50	GOOD! LAYUP by LAING, NOAH	14-27	V 13	
07:28				MISSED LAYUP by PETTWAY, MARCEL
07:24				REBOUND (OFF) by PETTWAY, MARCEL
07:22				MISSED LAYUP by PETTWAY, MARCEL
07:19	REBOUND (DEF) by MAGEE, KOBE			
06:58	MISSED LAYUP by JORDAN, CALEB			
06:55				REBOUND (DEF) by PETTWAY, MARCEL
06:50				TURNOVER (BADPASS) by HAYES, JEREMY
06:50	STEAL by MAGEE, KOBE			
06:45	TURNOVER (OTHER) by JORDAN, CALEB			
06:45				
06:33	SUB OUT: LAING, NOAH			
06:33	SUB IN: HOUSTON, MARKQUES			
06:23		16-27	V 11	GOOD! LAYUP by GLADNEY, RJ
06:23				ASSIST by REEDUS, CAMRON
05:57	MISSED JUMPER by TRAYLOR, LAMONT			
05:55	REBOUND (OFF) by TEAM			
05:55	SUB OUT: TRAYLOR, LAMONT			
05:55	SUB IN: ISENHOWER, DYLAN			
05:49	MISSED 3PTR by HOUSTON, MARKQUES			
05:46				REBOUND (DEF) by REEDUS, CAMRON
05:34		18-27	V 9	GOOD! LAYUP by HAYES, JEREMY
05:12	FOUL (OFF) by EWUZIE, EMMANUEL			
05:12	TURNOVER (OFFENSIVE) by EWUZIE, EMMANUEL			
05:12	SUB OUT: EWUZIE, EMMANUEL			
05:12	SUB IN: GASPRT, MATEJ			
05:12	SUB OUT: JORDAN, CALEB			
05:12	SUB IN: LAING, NOAH			
04:54				MISSED 3PTR by HAYES, JEREMY
04:50	REBOUND (DEF) by HOUSTON, MARKQUES			
04:34	TURNOVER (BADPASS) by GASPRT, MATEJ			
04:22	FOUL (PERSONAL) by ISENHOWER, DYLAN			
04:22		19-27	V 8	GOOD! FT by BELL, RONALD
04:22		20-27	V 7	GOOD! FT by BELL, RONALD
04:12	MISSED JUMPER by MAGEE, KOBE			
04:12	REBOUND (OFF) by TEAM			
04:12				FOUL (PERSONAL) by BELL, RONALD
04:02	GOOD! LAYUP by HOUSTON, MARKQUES	20-29	V 9	
03:45		22-29	V 7	GOOD! LAYUP by PETTWAY, MARCEL
03:45				ASSIST by HAYES, JEREMY
03:36	MISSED 3PTR by ISENHOWER, DYLAN			
03:32				REBOUND (DEF) by REEDUS, CAMRON
03:26				MISSED LAYUP by BELL, RONALD
03:24	REBOUND (DEF) by ISENHOWER, DYLAN			
03:22	TURNOVER (BADPASS) by ISENHOWER, DYLAN			
03:22				
03:22				SUB IN: EDWARDS, BURONE
03:22				SUB OUT: GLADNEY, RJ
03:17				MISSED 3PTR by HAYES, JEREMY
03:12				REBOUND (OFF) by EDWARDS, BURONE
03:04		24-29	V 5	GOOD! LAYUP by BELL, RONALD
03:04	FOUL (PERSONAL) by HOUSTON, MARKQUES			
03:04	SUB OUT: ISENHOWER, DYLAN			
03:04	SUB OUT: LAING, NOAH			
03:04	SUB IN: JORDAN, CALEB			
03:04	SUB IN: TRAYLOR, LAMONT			
03:04		25-29	V 4	GOOD! FT by BELL, RONALD
03:04				SUB IN: WILLIAMS, PAUL
03:04	GOOD! DUNK by TRAYLOR, LAMONT [FB]	25-31	V 6	
03:04	ASSIST by MAGEE, KOBE			
03:04		28-31	V 3	GOOD! 3PTR by EDWARDS, BURONE [FB]
03:04				ASSIST by WILLIAMS, PAUL
03:04	MISSED 3PTR by HOUSTON, MARKQUES			
03:04				REBOUND (DEF) by WILLIAMS, PAUL
03:04				MISSED 3PTR by EDWARDS, BURONE
03:04	REBOUND (DEF) by MAGEE, KOBE			

Time	VISITORS: St. Mary's (TX)	Score	Margin	HOME: Angelo St.
03:04				SUB OUT: REEDUS, CAMRON
02:09				FOUL (PERSONAL) by HAYES, JEREMY
02:09	GOOD! FT by JORDAN, CALEB	28-32	V 4	
02:09	SUB OUT: TRAYLOR, LAMONT			
02:09	SUB IN: EWUZIE, EMMANUEL			
02:09	GOOD! FT by JORDAN, CALEB	28-33	V 5	
01:49				MISSED 3PTR by BELL, RONALD
01:47	REBOUND (DEF) by HOUSTON, MARKQUES			
01:31	MISSED 3PTR by GASPERT, MATEJ			
01:25	REBOUND (OFF) by MAGEE, KOBE			
01:04				SUB OUT: HAYES, JEREMY
01:04				SUB IN: REEDUS, CAMRON
01:04	TURNOVER (SHOTCLOCK) by TEAM			
00:55				MISSED 3PTR by REEDUS, CAMRON
00:51				REBOUND (OFF) by EDWARDS, BURONE
00:50		30-33	V 3	GOOD! LAYUP by EDWARDS, BURONE
00:41	MISSED LAYUP by HOUSTON, MARKQUES			
00:36				REBOUND (DEF) by EDWARDS, BURONE
00:30				TURNOVER (BADPASS) by REEDUS, CAMRON
00:30	STEAL by JORDAN, CALEB			
00:06				FOUL (PERSONAL) by PETTWAY, MARCEL
00:06	GOOD! FT by JORDAN, CALEB	30-34	V 4	
00:06	TIMEOUT 30SEC			
00:06	GOOD! FT by JORDAN, CALEB	30-35	V 5	
00:01	FOUL (PERSONAL) by EWUZIE, EMMANUEL			
00:01				MISSED FT by EDWARDS, BURONE
00:01				REBOUND (OFF) by TEAM
00:01				SUB OUT: WILLIAMS, PAUL
00:01				SUB IN: YAHAYA, SALISU
00:01		31-35	V 4	GOOD! FT by EDWARDS, BURONE [FB]
00:01				SUB OUT: PETTWAY, MARCEL
00:01				SUB IN: HAYES, JEREMY
00:01				SUB OUT: HAYES, JEREMY
00:01				SUB IN: PETTWAY, MARCEL

St. Mary's (TX) 35, Angelo St. 31

Points from (This Period)	SMU	ASU
In the Paint	14	18
Off Turns	5	11
2nd Chance	4	12
Fast Break	11	4
Bench	4	18

Official Box Score
St. Mary's (TX) vs Angelo St.
Second Half Statistics Only

January 25, 2020 at Junell Center/Stephens Arena (Stephens Arena) - San Angelo



St. Mary's (TX) 38

No.	Player	S	Pts	FG	3FG	FT	OR	DR	TR	PF	A	TO	Blk	Stl	Min	+/-
01	JORDAN, CALEB	G	0	0-5	0-2	0-0	2	0	2	3	2	1	0	2	20	-11
04	HOUSTON, MARKQUES	G	5	1-9	1-6	2-2	0	2	2	1	2	3	0	0	20	-11
15	MAGEE, KOBE	G	13	5-8	3-6	0-0	0	1	1	2	2	2	0	2	20	-11
32	EWUZIE, EMMANUEL	F	0	0-0	0-0	0-0	0	0	0	2	0	0	0	0	8	-10
45	TRAYLOR, LAMONT	F	6	3-3	0-0	0-0	3	1	4	0	0	0	0	0	8	-2
02	WESLEY, CURTLON	F	6	3-3	0-0	0-0	0	2	2	2	1	1	0	0	8	0
12	PRESLEY, JARON	G	0	0-0	0-0	0-0	0	0	0	1	0	1	0	0	0	-1
21	ISENHOWER, DYLAN	G	6	3-5	0-0	0-0	1	3	4	1	0	0	0	0	12	-7
25	LAING, NOAH	F	0	0-0	0-0	0-0	0	0	0	0	0	0	0	0	0	0
40	GASPERT, MATEJ	F	2	1-2	0-0	0-0	0	1	1	3	0	0	0	0	4	-2
	TEAM						1	1	2	0		1				
TOTALS			38	16-35	4-14	2-2	7	11	18	15	7	9	0	4	100	

Shooting By Period

Period	FG	FG%	3FG	3FG%	FT	FT%
2nd Half	16-35	46%	4-14	29%	2-2	100%
Game	27-65	41.5%	7-24	29.2%	12-13	92.3%

Deadball Rebounds: 0,0

Last FG Half: SMU -

Angelo St. 49

No.	Player	S	Pts	FG	3FG	FT	OR	DR	TR	PF	A	TO	Blk	Stl	Min	+/-
03	HAYES, JEREMY	G	7	2-4	0-1	3-4	0	1	1	0	1	2	0	0	14	-2
04	BELL, RONALD	G	4	1-1	0-0	2-2	0	0	0	0	0	0	0	1	7	-1
11	IBARGUEN, ANDRES	F	8	3-5	0-0	2-3	3	0	3	0	0	0	0	2	16	10
12	PETTWAY, MARCEL	F	4	1-1	0-0	2-2	1	1	2	0	0	0	0	0	11	3
23	TURNER, COLLIN	G	11	3-7	1-4	4-6	0	2	2	1	1	0	0	0	15	12
02	REEDUS, CAMRON	G	10	4-5	0-1	2-4	0	2	2	0	3	1	0	1	14	7
05	EDWARDS, BURONE	G	0	0-3	0-0	0-0	2	4	6	2	0	0	0	0	10	14
10	WILLIAMS, PAUL	G	5	2-3	1-2	0-0	0	2	2	0	4	1	0	1	13	12
21	YAHAYA, SALISU	F	0	0-0	0-0	0-0	0	0	0	0	0	0	0	0	0	0
32	GLADNEY, RJ	F	0	0-0	0-0	0-0	0	0	0	0	0	0	0	0	0	0
	TEAM						0	0	0	0		0				
TOTALS			49	16-29	2-8	15-21	6	12	18	3	9	4	0	5	100	

Shooting By Period

Period	FG	FG%	3FG	3FG%	FT	FT%
2nd Half	16-29	55%	2-8	25%	15-21	71%
Game	27-66	40.9%	4-20	20.0%	22-32	68.8%

Deadball Rebounds: 4,0

Last FG Half: ASU -

Game Notes:

Officials: , ,
 Attendance: 873

Start Time: 05:09 PM ET
 End Time: 07:02 PM ET
 Game Duration: 1:52
 Conference Game;

Score	1st	2nd	TOT
SMU	35	38	73
ASU	31	49	80

Points from (This Period)	SMU	ASU
In the Paint	20	24
Off Turns	9	10
2nd Chance	12	5
Fast Break	9	14
Bench	14	15

Official Play-By-Play
St. Mary's (TX) vs Angelo St.
Second Half

January 25, 2020 at Junell Center/Stephens Arena (Stephens Arena) - San Angelo



Period 2

Starters:

St. Mary's (TX): 1 JORDAN, CALEB (G); 4 HOUSTON, MARKQUES (G); 15 MAGEE, KOBE (G); 32 EWUZIE, EMMANUEL (F); 45 TRAYLOR, LAMONT (F);

Angelo St.: 3 HAYES, JEREMY (G); 4 BELL, RONALD (G); 11 IBARGUEN, ANDRES (F); 12 PETTWAY, MARCEL (F); 23 TURNER, COLLIN (G);

Time	VISITORS: St. Mary's (TX)	Score	Margin	HOME: Angelo St.
20:00				SUB OUT: REEDUS, CAMRON
20:00				SUB OUT: EDWARDS, BURONE
20:00				SUB OUT: YAHAYA, SALISU
20:00				SUB IN: HAYES, JEREMY
20:00				SUB IN: IBARGUEN, ANDRES
20:00				SUB IN: TURNER, COLLIN
20:00	SUB OUT: GASPERT, MATEJ			
20:00	SUB IN: TRAYLOR, LAMONT			
19:50	TURNOVER (BADPASS) by HOUSTON, MARKQUES			
19:50				STEAL by IBARGUEN, ANDRES
19:31				MISSED 3PTR by TURNER, COLLIN
19:27	REBOUND (DEF) by TRAYLOR, LAMONT			
19:15	GOOD! JUMPER by MAGEE, KOBE	31-37	V 6	
18:56		33-37	V 4	GOOD! JUMPER by HAYES, JEREMY
18:30	TURNOVER (BADPASS) by MAGEE, KOBE			
18:17				MISSED JUMPER by HAYES, JEREMY
18:13				REBOUND (OFF) by PETTWAY, MARCEL
17:57				TURNOVER (LOSTBALL) by HAYES, JEREMY
17:57	STEAL by MAGEE, KOBE			
17:53	MISSED 3PTR by HOUSTON, MARKQUES			
17:49	REBOUND (OFF) by TRAYLOR, LAMONT			
17:48	GOOD! LAYUP by TRAYLOR, LAMONT	33-39	V 6	
17:26		35-39	V 4	GOOD! LAYUP by TURNER, COLLIN
16:56	MISSED LAYUP by JORDAN, CALEB			
16:54	REBOUND (OFF) by JORDAN, CALEB			
16:42	TURNOVER (BADPASS) by MAGEE, KOBE			
16:42	SUB OUT: TRAYLOR, LAMONT			
16:42	SUB IN: WESLEY, CURTLON			
16:32	FOUL (PERSONAL) by MAGEE, KOBE			
16:24		37-39	V 2	GOOD! LAYUP by BELL, RONALD
15:50	TURNOVER (SHOTCLOCK) by TEAM			
15:50	SUB OUT: EWUZIE, EMMANUEL			
15:50	SUB IN: GASPERT, MATEJ			
15:50				
15:23		39-39	T	GOOD! JUMPER by TURNER, COLLIN
15:02	TURNOVER (LOSTBALL) by JORDAN, CALEB			
15:02				STEAL by IBARGUEN, ANDRES
14:56				MISSED 3PTR by TURNER, COLLIN
14:53	REBOUND (DEF) by WESLEY, CURTLON			
14:50	TURNOVER (BADPASS) by WESLEY, CURTLON			
14:50				STEAL by BELL, RONALD
14:41	FOUL (PERSONAL) by WESLEY, CURTLON			
14:41		40-39	H 1	GOOD! FT by BELL, RONALD
14:41		41-39	H 2	GOOD! FT by BELL, RONALD
14:24	MISSED 3PTR by HOUSTON, MARKQUES			
14:21	REBOUND (OFF) by JORDAN, CALEB			
14:16	GOOD! JUMPER by GASPERT, MATEJ	41-41	T	
14:16	ASSIST by JORDAN, CALEB			
14:01	FOUL (PERSONAL) by WESLEY, CURTLON			
14:01				SUB OUT: PETTWAY, MARCEL
14:01				SUB IN: REEDUS, CAMRON
14:01	SUB OUT: WESLEY, CURTLON			
14:01	SUB IN: TRAYLOR, LAMONT			
13:57				MISSED 3PTR by REEDUS, CAMRON
13:53	REBOUND (DEF) by MAGEE, KOBE			
13:48	GOOD! 3PTR by HOUSTON, MARKQUES	41-44	V 3	
13:48	ASSIST by MAGEE, KOBE			
13:39				MISSED LAYUP by TURNER, COLLIN
13:36				REBOUND (OFF) by IBARGUEN, ANDRES
13:35				MISSED JUMPER by IBARGUEN, ANDRES
13:31	REBOUND (DEF) by GASPERT, MATEJ			
13:27	GOOD! LAYUP by MAGEE, KOBE [FB]	41-46	V 5	
13:17	FOUL (PERSONAL) by MAGEE, KOBE			
13:17				SUB OUT: HAYES, JEREMY
13:17				SUB OUT: BELL, RONALD
13:17				SUB IN: EDWARDS, BURONE
13:17				SUB IN: WILLIAMS, PAUL
13:10				MISSED LAYUP by IBARGUEN, ANDRES
13:07				REBOUND (OFF) by EDWARDS, BURONE
13:06				MISSED JUMPER by EDWARDS, BURONE

Time	VISITORS: St. Mary's (TX)	Score	Margin	HOME: Angelo St.
13:06				REBOUND (OFF) by IBARGUEN, ANDRES
13:06	FOUL (PERSONAL) by GASPERT, MATEJ			
13:02	FOUL (PERSONAL) by GASPERT, MATEJ			
13:02		42-46	V 4	GOOD! FT by TURNER, COLLIN
13:02		43-46	V 3	GOOD! FT by TURNER, COLLIN
12:51	MISSED JUMPER by HOUSTON, MARKQUES			
12:47				REBOUND (DEF) by EDWARDS, BURONE
12:41				MISSED 3PTR by TURNER, COLLIN
12:38				REBOUND (OFF) by IBARGUEN, ANDRES
12:36		46-46	T	GOOD! 3PTR by TURNER, COLLIN
12:36				ASSIST by REEDUS, CAMRON
12:06	MISSED JUMPER by GASPERT, MATEJ			
12:03				REBOUND (DEF) by TURNER, COLLIN
11:58	FOUL (PERSONAL) by GASPERT, MATEJ			
11:58				
11:58	SUB OUT: GASPERT, MATEJ			
11:58	SUB OUT: TRAYLOR, LAMONT			
11:58	SUB IN: ISENHOWER, DYLAN			
11:58	SUB IN: EWUZIE, EMMANUEL			
11:58		47-46	H 1	GOOD! FT by REEDUS, CAMRON [FB]
11:58				MISSED FT by REEDUS, CAMRON
11:56	REBOUND (DEF) by ISENHOWER, DYLAN			
11:40				FOUL (PERSONAL) by EDWARDS, BURONE
11:38	MISSED JUMPER by HOUSTON, MARKQUES			
11:35				REBOUND (DEF) by WILLIAMS, PAUL
11:27		50-46	H 4	GOOD! 3PTR by WILLIAMS, PAUL
11:27				ASSIST by REEDUS, CAMRON
11:05	MISSED LAYUP by ISENHOWER, DYLAN			
11:02				REBOUND (DEF) by EDWARDS, BURONE
10:57		52-46	H 6	GOOD! LAYUP by REEDUS, CAMRON [FB]
10:48	TIMEOUT 30SEC			
10:48				
10:22	MISSED JUMPER by JORDAN, CALEB			
10:18				REBOUND (DEF) by EDWARDS, BURONE
10:13	FOUL (PERSONAL) by EWUZIE, EMMANUEL			
10:13				MISSED FT by TURNER, COLLIN
10:13				REBOUND (OFF) by TEAM
10:13		53-46	H 7	GOOD! FT by TURNER, COLLIN
09:54	MISSED 3PTR by JORDAN, CALEB			
09:51				REBOUND (DEF) by WILLIAMS, PAUL
09:41	FOUL (PERSONAL) by EWUZIE, EMMANUEL			
09:41	SUB OUT: EWUZIE, EMMANUEL			
09:41	SUB IN: TRAYLOR, LAMONT			
09:41				MISSED FT by IBARGUEN, ANDRES
09:39	REBOUND (DEF) by ISENHOWER, DYLAN			
09:34	MISSED 3PTR by HOUSTON, MARKQUES			
09:31				REBOUND (DEF) by REEDUS, CAMRON
09:31	FOUL (PERSONAL) by JORDAN, CALEB			
09:31		54-46	H 8	GOOD! FT by REEDUS, CAMRON [FB]
09:31				MISSED FT by REEDUS, CAMRON
09:30	REBOUND (DEF) by HOUSTON, MARKQUES			
09:09	MISSED LAYUP by JORDAN, CALEB			
09:03	REBOUND (OFF) by TRAYLOR, LAMONT			
09:03	GOOD! LAYUP by TRAYLOR, LAMONT	54-48	H 6	
08:49		56-48	H 8	GOOD! DUNK by IBARGUEN, ANDRES
08:49				ASSIST by WILLIAMS, PAUL
08:33	MISSED LAYUP by ISENHOWER, DYLAN			
08:29	REBOUND (OFF) by TRAYLOR, LAMONT			
08:29	GOOD! LAYUP by TRAYLOR, LAMONT	56-50	H 6	
08:11		58-50	H 8	GOOD! LAYUP by IBARGUEN, ANDRES
08:11				ASSIST by WILLIAMS, PAUL
07:53	MISSED JUMPER by HOUSTON, MARKQUES			
07:49				REBOUND (DEF) by EDWARDS, BURONE
07:42		60-50	H 10	GOOD! LAYUP by WILLIAMS, PAUL
07:20				FOUL (PERSONAL) by TURNER, COLLIN
07:20				
07:20				SUB OUT: IBARGUEN, ANDRES
07:20				SUB OUT: TURNER, COLLIN
07:20				SUB IN: HAYES, JEREMY
07:20				SUB IN: PETTWAY, MARCEL
07:20	GOOD! FT by HOUSTON, MARKQUES	60-51	H 9	
07:20	GOOD! FT by HOUSTON, MARKQUES	60-52	H 8	
06:57	FOUL (PERSONAL) by HOUSTON, MARKQUES			
06:57		61-52	H 9	GOOD! FT by PETTWAY, MARCEL [FB]
06:57	SUB OUT: TRAYLOR, LAMONT			
06:57	SUB IN: EWUZIE, EMMANUEL			
06:57		62-52	H 10	GOOD! FT by PETTWAY, MARCEL [FB]
06:36	TURNOVER (BADPASS) by HOUSTON, MARKQUES			
06:36				STEAL by WILLIAMS, PAUL
06:31		64-52	H 12	GOOD! LAYUP by REEDUS, CAMRON [FB]

Time	VISITORS: St. Mary's (TX)	Score	Margin	HOME: Angelo St.
06:31				ASSIST by WILLIAMS, PAUL
06:15	TURNOVER (BADPASS) by HOUSTON, MARKQUES			
06:15				STEAL by REEDUS, CAMRON
06:09				MISSED 3PTR by WILLIAMS, PAUL
06:05				REBOUND (OFF) by EDWARDS, BURONE
06:05				MISSED DUNK by EDWARDS, BURONE
06:02	REBOUND (DEF) by HOUSTON, MARKQUES			
05:44	MISSED 3PTR by MAGEE, KOBE			
05:42	REBOUND (OFF) by ISENHOWER, DYLAN			
05:39	GOOD! LAYUP by ISENHOWER, DYLAN	64-54	H 10	
05:38	TIMEOUT TEAM			
05:38	SUB OUT: EWUZIE, EMMANUEL			
05:38	SUB IN: WESLEY, CURTLON			
05:25		66-54	H 12	GOOD! LAYUP by PETTWAY, MARCEL
05:25				ASSIST by REEDUS, CAMRON
05:01	GOOD! JUMPER by WESLEY, CURTLON	66-56	H 10	
05:01	ASSIST by HOUSTON, MARKQUES			
04:45				MISSED JUMPER by EDWARDS, BURONE
04:42	REBOUND (DEF) by TEAM			
04:25				FOUL (PERSONAL) by EDWARDS, BURONE
04:24	MISSED 3PTR by HOUSTON, MARKQUES			
04:20				REBOUND (DEF) by REEDUS, CAMRON
04:13				TURNOVER (BADPASS) by REEDUS, CAMRON
04:13	STEAL by JORDAN, CALEB			
04:05	GOOD! LAYUP by WESLEY, CURTLON [FB]	66-58	H 8	
04:05	ASSIST by HOUSTON, MARKQUES			
03:49		68-58	H 10	GOOD! LAYUP by HAYES, JEREMY
03:49				ASSIST by WILLIAMS, PAUL
03:48				TIMEOUT 30SEC
03:48				
03:48				SUB OUT: EDWARDS, BURONE
03:48				SUB IN: IBARGUEN, ANDRES
03:31	GOOD! JUMPER by WESLEY, CURTLON [PNT]	68-60	H 8	
03:31	ASSIST by MAGEE, KOBE			
03:11				MISSED 3PTR by HAYES, JEREMY
03:08	REBOUND (DEF) by WESLEY, CURTLON			
02:50	MISSED 3PTR by HOUSTON, MARKQUES			
02:46				REBOUND (DEF) by PETTWAY, MARCEL
02:31		70-60	H 10	GOOD! LAYUP by REEDUS, CAMRON
02:20	GOOD! 3PTR by MAGEE, KOBE	70-63	H 7	
02:18	TIMEOUT 30SEC			
02:18				SUB OUT: PETTWAY, MARCEL
02:18				SUB IN: TURNER, COLLIN
02:10				TURNOVER (BADPASS) by WILLIAMS, PAUL
02:10	STEAL by JORDAN, CALEB			
02:05	GOOD! 3PTR by MAGEE, KOBE [FB]	70-66	H 4	
02:05	ASSIST by JORDAN, CALEB			
01:53	FOUL (PERSONAL) by JORDAN, CALEB			
01:53				MISSED FT by TURNER, COLLIN
01:53				REBOUND (OFF) by TEAM
01:53		71-66	H 5	GOOD! FT by TURNER, COLLIN
01:37	MISSED 3PTR by MAGEE, KOBE			
01:35	REBOUND (OFF) by TEAM			
01:24	GOOD! LAYUP by ISENHOWER, DYLAN	71-68	H 3	
01:24	ASSIST by WESLEY, CURTLON			
01:08		73-68	H 5	GOOD! DUNK by IBARGUEN, ANDRES [PNT]
01:08				ASSIST by HAYES, JEREMY
00:53	MISSED 3PTR by JORDAN, CALEB			
00:50				REBOUND (DEF) by TURNER, COLLIN
00:45		75-68	H 7	GOOD! LAYUP by REEDUS, CAMRON [FB]
00:45				ASSIST by TURNER, COLLIN
00:40	MISSED 3PTR by MAGEE, KOBE			
00:35				REBOUND (DEF) by HAYES, JEREMY
00:33				TURNOVER (LOSTBALL) by HAYES, JEREMY
00:33	STEAL by MAGEE, KOBE			
00:27	GOOD! LAYUP by ISENHOWER, DYLAN [FB]	75-70	H 5	
00:19	FOUL (PERSONAL) by JORDAN, CALEB			
00:19		76-70	H 6	GOOD! FT by HAYES, JEREMY
00:19	SUB OUT: WESLEY, CURTLON			
00:19	SUB IN: PRESLEY, JARON			
00:19				MISSED FT by HAYES, JEREMY
00:17	REBOUND (DEF) by ISENHOWER, DYLAN			
00:12	TURNOVER (OTHER) by PRESLEY, JARON			
00:09	FOUL (PERSONAL) by ISENHOWER, DYLAN			
00:09		77-70	H 7	GOOD! FT by IBARGUEN, ANDRES [FB]
00:09		78-70	H 8	GOOD! FT by IBARGUEN, ANDRES [FB]
00:09				SUB OUT: IBARGUEN, ANDRES
00:09				SUB IN: EDWARDS, BURONE
00:03	GOOD! 3PTR by MAGEE, KOBE	78-73	H 5	
00:00	FOUL (PERSONAL) by PRESLEY, JARON			

Time	VISITORS: St. Mary's (TX)	Score	Margin	HOME: Angelo St.
00:00		79-73	H 6	GOOD! FT by HAYES, JEREMY [FB]
00:00		80-73	H 7	GOOD! FT by HAYES, JEREMY [FB]

St. Mary's (TX) 73, Angelo St. 80

Points from (This Period)	SMU	ASU
In the Paint	20	24
Off Turns	9	10
2nd Chance	12	5
Fast Break	9	14
Bench	14	15

**Official Scoring/Possession Reference Chart
St. Mary's (TX) vs Angelo St.
Period 1**

January 25, 2020 at Junell Center/Stephens Arena (Stephens Arena) - San Angelo



Period 1

Starters:

St. Mary's (TX): 1 JORDAN, CALEB (G); 4 HOUSTON, MARKQUES (G); 15 MAGEE, KOBE (G); 32 EWUZIE, EMMANUEL (F); 45 TRAYLOR, LAMONT (F);
Angelo St.: 3 HAYES, JEREMY (G); 4 BELL, RONALD (G); 11 IBARGUEN, ANDRES (F); 12 PETTWAY, MARCEL (F); 23 TURNER, COLLIN (G);

Time	VISITORS: St. Mary's (TX)	Score	Margin	HOME: Angelo St.
18:51	GOOD! FT by MAGEE, KOBE	0-1	V 1	
18:51	GOOD! FT by MAGEE, KOBE	0-2	V 2	
18:51	GOOD! FT by MAGEE, KOBE	0-3	V 3	
16:59	GOOD! FT by JORDAN, CALEB	0-4	V 4	
16:43		3-4	V 1	GOOD! 3PTR by REEDUS, CAMRON
16:11	GOOD! 3PTR by MAGEE, KOBE	3-7	V 4	
15:39	GOOD! JUMPER by JORDAN, CALEB	3-9	V 6	
14:49		5-9	V 4	GOOD! LAYUP by REEDUS, CAMRON
14:49		6-9	V 3	GOOD! FT by REEDUS, CAMRON
14:26	GOOD! LAYUP by ISENHOWER, DYLAN	6-11	V 5	
13:44	GOOD! LAYUP by HOUSTON, MARKQUES [FB]	6-13	V 7	
12:12	GOOD! 3PTR by HOUSTON, MARKQUES [FB]	6-16	V 10	
11:42	GOOD! 3PTR by JORDAN, CALEB	6-19	V 13	
11:02		8-19	V 11	GOOD! LAYUP by EDWARDS, BURONE
10:38	GOOD! LAYUP by JORDAN, CALEB	8-21	V 13	
10:18		10-21	V 11	GOOD! JUMPER by YAHAYA, SALISU
08:54		12-21	V 9	GOOD! LAYUP by BELL, RONALD [PNT]
08:45	GOOD! FT by JORDAN, CALEB [FB]	12-22	V 10	
08:45	GOOD! FT by JORDAN, CALEB [FB]	12-23	V 11	
08:15	GOOD! LAYUP by JORDAN, CALEB [FB]	12-25	V 13	
08:03		13-25	V 12	GOOD! FT by HAYES, JEREMY
08:03		14-25	V 11	GOOD! FT by HAYES, JEREMY
07:50	GOOD! LAYUP by LAING, NOAH	14-27	V 13	
06:23		16-27	V 11	GOOD! LAYUP by GLADNEY, RJ
05:34		18-27	V 9	GOOD! LAYUP by HAYES, JEREMY
04:22		19-27	V 8	GOOD! FT by BELL, RONALD
04:22		20-27	V 7	GOOD! FT by BELL, RONALD
04:02	GOOD! LAYUP by HOUSTON, MARKQUES	20-29	V 9	
03:45		22-29	V 7	GOOD! LAYUP by PETTWAY, MARCEL
03:04		24-29	V 5	GOOD! LAYUP by BELL, RONALD
03:04		25-29	V 4	GOOD! FT by BELL, RONALD
03:04	GOOD! DUNK by TRAYLOR, LAMONT [FB]	25-31	V 6	
03:04		28-31	V 3	GOOD! 3PTR by EDWARDS, BURONE [FB]
02:09	GOOD! FT by JORDAN, CALEB	28-32	V 4	
02:09	GOOD! FT by JORDAN, CALEB	28-33	V 5	
00:50		30-33	V 3	GOOD! LAYUP by EDWARDS, BURONE
00:06	GOOD! FT by JORDAN, CALEB	30-34	V 4	
00:06	GOOD! FT by JORDAN, CALEB	30-35	V 5	
00:01		31-35	V 4	GOOD! FT by EDWARDS, BURONE [FB]

St. Mary's (TX) 35, Angelo St. 31

**Official Scoring/Possession Reference Chart
St. Mary's (TX) vs Angelo St.
Period 2**



January 25, 2020 at Junell Center/Stephens Arena (Stephens Arena) - San Angelo

Period 2

Starters:

St. Mary's (TX): 1 JORDAN, CALEB (G); 4 HOUSTON, MARKQUES (G); 15 MAGEE, KOBE (G); 32 EWUZIE, EMMANUEL (F); 45 TRAYLOR, LAMONT (F);
Angelo St.: 3 HAYES, JEREMY (G); 4 BELL, RONALD (G); 11 IBARGUEN, ANDRES (F); 12 PETTWAY, MARCEL (F); 23 TURNER, COLLIN (G);

Time	VISITORS: St. Mary's (TX)	Score	Margin	HOME: Angelo St.
19:15	GOOD! JUMPER by MAGEE, KOBE	31-37	V 6	
18:56		33-37	V 4	GOOD! JUMPER by HAYES, JEREMY
17:48	GOOD! LAYUP by TRAYLOR, LAMONT	33-39	V 6	
17:26		35-39	V 4	GOOD! LAYUP by TURNER, COLLIN
16:24		37-39	V 2	GOOD! LAYUP by BELL, RONALD
15:23		39-39	T	GOOD! JUMPER by TURNER, COLLIN
14:41		40-39	H 1	GOOD! FT by BELL, RONALD
14:41		41-39	H 2	GOOD! FT by BELL, RONALD
14:16	GOOD! JUMPER by GASPERT, MATEJ	41-41	T	
13:48	GOOD! 3PTR by HOUSTON, MARKQUES	41-44	V 3	
13:27	GOOD! LAYUP by MAGEE, KOBE [FB]	41-46	V 5	
13:02		42-46	V 4	GOOD! FT by TURNER, COLLIN
13:02		43-46	V 3	GOOD! FT by TURNER, COLLIN
12:36		46-46	T	GOOD! 3PTR by TURNER, COLLIN
11:58		47-46	H 1	GOOD! FT by REEDUS, CAMRON [FB]
11:27		50-46	H 4	GOOD! 3PTR by WILLIAMS, PAUL
10:57		52-46	H 6	GOOD! LAYUP by REEDUS, CAMRON [FB]
10:13		53-46	H 7	GOOD! FT by TURNER, COLLIN
09:31		54-46	H 8	GOOD! FT by REEDUS, CAMRON [FB]
09:03	GOOD! LAYUP by TRAYLOR, LAMONT	54-48	H 6	
08:49		56-48	H 8	GOOD! DUNK by IBARGUEN, ANDRES
08:29	GOOD! LAYUP by TRAYLOR, LAMONT	56-50	H 6	
08:11		58-50	H 8	GOOD! LAYUP by IBARGUEN, ANDRES
07:42		60-50	H 10	GOOD! LAYUP by WILLIAMS, PAUL
07:20	GOOD! FT by HOUSTON, MARKQUES	60-51	H 9	
07:20	GOOD! FT by HOUSTON, MARKQUES	60-52	H 8	
06:57		61-52	H 9	GOOD! FT by PETTWAY, MARCEL [FB]
06:57		62-52	H 10	GOOD! FT by PETTWAY, MARCEL [FB]
06:31		64-52	H 12	GOOD! LAYUP by REEDUS, CAMRON [FB]
05:39	GOOD! LAYUP by ISENHOWER, DYLAN	64-54	H 10	
05:25		66-54	H 12	GOOD! LAYUP by PETTWAY, MARCEL
05:01	GOOD! JUMPER by WESLEY, CURTLON	66-56	H 10	
04:05	GOOD! LAYUP by WESLEY, CURTLON [FB]	66-58	H 8	
03:49		68-58	H 10	GOOD! LAYUP by HAYES, JEREMY
03:31	GOOD! JUMPER by WESLEY, CURTLON [PNT]	68-60	H 8	
02:31		70-60	H 10	GOOD! LAYUP by REEDUS, CAMRON
02:20	GOOD! 3PTR by MAGEE, KOBE	70-63	H 7	
02:05	GOOD! 3PTR by MAGEE, KOBE [FB]	70-66	H 4	
01:53		71-66	H 5	GOOD! FT by TURNER, COLLIN
01:24	GOOD! LAYUP by ISENHOWER, DYLAN	71-68	H 3	
01:08		73-68	H 5	GOOD! DUNK by IBARGUEN, ANDRES [PNT]
00:45		75-68	H 7	GOOD! LAYUP by REEDUS, CAMRON [FB]
00:27	GOOD! LAYUP by ISENHOWER, DYLAN [FB]	75-70	H 5	
00:19		76-70	H 6	GOOD! FT by HAYES, JEREMY
00:09		77-70	H 7	GOOD! FT by IBARGUEN, ANDRES [FB]
00:09		78-70	H 8	GOOD! FT by IBARGUEN, ANDRES [FB]
00:03	GOOD! 3PTR by MAGEE, KOBE	78-73	H 5	
00:00		79-73	H 6	GOOD! FT by HAYES, JEREMY [FB]
00:00		80-73	H 7	GOOD! FT by HAYES, JEREMY [FB]

St. Mary's (TX) 73, Angelo St. 80

**Official Substitutions Log
St. Mary's (TX) vs Angelo St.
Period 1**

January 25, 2020 at Junell Center/Stephens Arena (Stephens Arena) - San Angelo



VISITORS: St. Mary's (TX)	Time	Score	HOME: Angelo St.
1 JORDAN, CALEB			3 HAYES, JEREMY
4 HOUSTON, MARKQUES			4 BELL, RONALD
15 MAGEE, KOBE			11 IBARGUEN, ANDRES
32 EWUZIE, EMMANUEL			12 PETTWAY, MARCEL
45 TRAYLOR, LAMONT			23 TURNER, COLLIN
	18:34	3-0	SUB OUT: IBARGUEN, ANDRES
	18:34		SUB IN: REEDUS, CAMRON
SUB OUT: 45 TRAYLOR, LAMONT	17:24	3-0	
SUB IN: 2 WESLEY, CURTLON	17:24		
SUB OUT: 32 EWUZIE, EMMANUEL	16:59	4-0	
SUB IN: 40 GASPRT, MATEJ	16:59		
	15:27	9-3	SUB OUT: BELL, RONALD
	15:27		SUB OUT: TURNER, COLLIN
	15:27		SUB IN: EDWARDS, BURONE
	15:27		SUB IN: WILLIAMS, PAUL
	14:49	9-5	SUB OUT: REEDUS, CAMRON
	14:49		SUB IN: YAHAYA, SALISU
	14:49		SUB OUT: YAHAYA, SALISU
	14:49		SUB IN: REEDUS, CAMRON
SUB OUT: 2 WESLEY, CURTLON	14:49		
SUB IN: 21 ISENHOWER, DYLAN	14:49		
	12:10	16-6	SUB OUT: REEDUS, CAMRON
	12:10		SUB OUT: HAYES, JEREMY
	12:10		SUB OUT: PETTWAY, MARCEL
	12:10		SUB IN: BELL, RONALD
	12:10		SUB IN: YAHAYA, SALISU
	12:10		SUB IN: TURNER, COLLIN
SUB OUT: 15 MAGEE, KOBE	12:10		
SUB IN: 12 PRESLEY, JARON	12:10		
SUB OUT: 40 GASPRT, MATEJ	11:55	16-6	
SUB IN: 32 EWUZIE, EMMANUEL	11:55		
SUB OUT: 12 PRESLEY, JARON	11:14	19-6	
SUB IN: 25 LAING, NOAH	11:14		
SUB OUT: 21 ISENHOWER, DYLAN	09:24	21-10	
SUB IN: 45 TRAYLOR, LAMONT	09:24		
	08:54	21-12	SUB OUT: WILLIAMS, PAUL
	08:54		SUB IN: REEDUS, CAMRON
	08:45	22-12	SUB OUT: TURNER, COLLIN
	08:45		SUB IN: HAYES, JEREMY
SUB OUT: 25 LAING, NOAH	08:45		
SUB IN: 15 MAGEE, KOBE	08:45		
	08:03	25-12	SUB OUT: YAHAYA, SALISU
	08:03		SUB IN: PETTWAY, MARCEL
SUB OUT: 4 HOUSTON, MARKQUES	08:03		
SUB IN: 25 LAING, NOAH	08:03		
	08:03		SUB OUT: EDWARDS, BURONE
	08:03		SUB IN: GLADNEY, RJ
SUB OUT: 25 LAING, NOAH	06:33	27-14	
SUB IN: 4 HOUSTON, MARKQUES	06:33		
SUB OUT: 45 TRAYLOR, LAMONT	05:55	27-16	
SUB IN: 21 ISENHOWER, DYLAN	05:55		
SUB OUT: 32 EWUZIE, EMMANUEL	05:12	27-18	
SUB IN: 40 GASPRT, MATEJ	05:12		
SUB OUT: 1 JORDAN, CALEB	05:12		
SUB IN: 25 LAING, NOAH	05:12		
	03:22	29-22	SUB IN: EDWARDS, BURONE
	03:22		SUB OUT: GLADNEY, RJ
SUB OUT: 21 ISENHOWER, DYLAN	03:04	29-24	
SUB OUT: 25 LAING, NOAH	03:04		
SUB IN: 1 JORDAN, CALEB	03:04		
SUB IN: 45 TRAYLOR, LAMONT	03:04		
	03:04		SUB IN: WILLIAMS, PAUL
	03:04		SUB OUT: REEDUS, CAMRON
SUB OUT: 45 TRAYLOR, LAMONT	02:09	32-28	
SUB IN: 32 EWUZIE, EMMANUEL	02:09		
	01:04	33-28	SUB OUT: HAYES, JEREMY
	01:04		SUB IN: REEDUS, CAMRON
	00:01	35-30	SUB OUT: WILLIAMS, PAUL
	00:01		SUB IN: YAHAYA, SALISU
	00:01		SUB OUT: PETTWAY, MARCEL
	00:01		SUB IN: HAYES, JEREMY
	00:01		SUB OUT: HAYES, JEREMY
	00:01		SUB IN: PETTWAY, MARCEL

St. Mary's (TX) 35, Angelo St. 31

**Official Substitutions Log
St. Mary's (TX) vs Angelo St.
Period 2**

January 25, 2020 at Junell Center/Stephens Arena (Stephens Arena) - San Angelo



VISITORS: St. Mary's (TX)	Time	Score	HOME: Angelo St.
1 JORDAN, CALEB			3 HAYES, JEREMY
4 HOUSTON, MARKQUES			4 BELL, RONALD
15 MAGEE, KOBE			11 IBARGUEN, ANDRES
32 EWUZIE, EMMANUEL			12 PETTWAY, MARCEL
45 TRAYLOR, LAMONT			23 TURNER, COLLIN
	20:00	-	SUB OUT: REEDUS, CAMRON
	20:00		SUB OUT: EDWARDS, BURONE
	20:00		SUB OUT: YAHAYA, SALISU
	20:00		SUB IN: HAYES, JEREMY
	20:00		SUB IN: IBARGUEN, ANDRES
	20:00		SUB IN: TURNER, COLLIN
SUB OUT: 40 GASPERT, MATEJ	20:00		
SUB IN: 45 TRAYLOR, LAMONT	20:00		
SUB OUT: 45 TRAYLOR, LAMONT	16:42	39-35	
SUB IN: 2 WESLEY, CURTLON	16:42		
SUB OUT: 32 EWUZIE, EMMANUEL	15:50	39-37	
SUB IN: 40 GASPERT, MATEJ	15:50		
	14:01	41-41	
	14:01		SUB OUT: PETTWAY, MARCEL
	14:01		SUB IN: REEDUS, CAMRON
SUB OUT: 2 WESLEY, CURTLON	14:01		
SUB IN: 45 TRAYLOR, LAMONT	14:01		
	13:17	46-41	
	13:17		SUB OUT: HAYES, JEREMY
	13:17		SUB OUT: BELL, RONALD
	13:17		SUB IN: EDWARDS, BURONE
	13:17		SUB IN: WILLIAMS, PAUL
SUB OUT: 40 GASPERT, MATEJ	11:58	46-46	
SUB OUT: 45 TRAYLOR, LAMONT	11:58		
SUB IN: 21 ISENHOWER, DYLAN	11:58		
SUB IN: 32 EWUZIE, EMMANUEL	11:58		
SUB OUT: 32 EWUZIE, EMMANUEL	09:41	46-53	
SUB IN: 45 TRAYLOR, LAMONT	09:41		
	07:20	50-60	
	07:20		SUB OUT: IBARGUEN, ANDRES
	07:20		SUB OUT: TURNER, COLLIN
	07:20		SUB IN: HAYES, JEREMY
	07:20		SUB IN: PETTWAY, MARCEL
SUB OUT: 45 TRAYLOR, LAMONT	06:57	52-61	
SUB IN: 32 EWUZIE, EMMANUEL	06:57		
SUB OUT: 32 EWUZIE, EMMANUEL	05:38	54-64	
SUB IN: 2 WESLEY, CURTLON	05:38		
	03:48	58-68	
	03:48		SUB OUT: EDWARDS, BURONE
	02:18	63-70	
	02:18		SUB IN: IBARGUEN, ANDRES
	02:18		SUB OUT: PETTWAY, MARCEL
	02:18		SUB IN: TURNER, COLLIN
SUB OUT: 2 WESLEY, CURTLON	00:19	70-76	
SUB IN: 12 PRESLEY, JARON	00:19		
	00:09	70-78	
	00:09		SUB OUT: IBARGUEN, ANDRES
	00:09		SUB IN: EDWARDS, BURONE

St. Mary's (TX) 73, Angelo St. 80

Official Shot Chart
 St. Mary's (TX) vs Angelo St.
 PERIOD 1 Shots

January 25, 2020 at Junell Center/Stephens Arena (Stephens Arena) - San Angelo

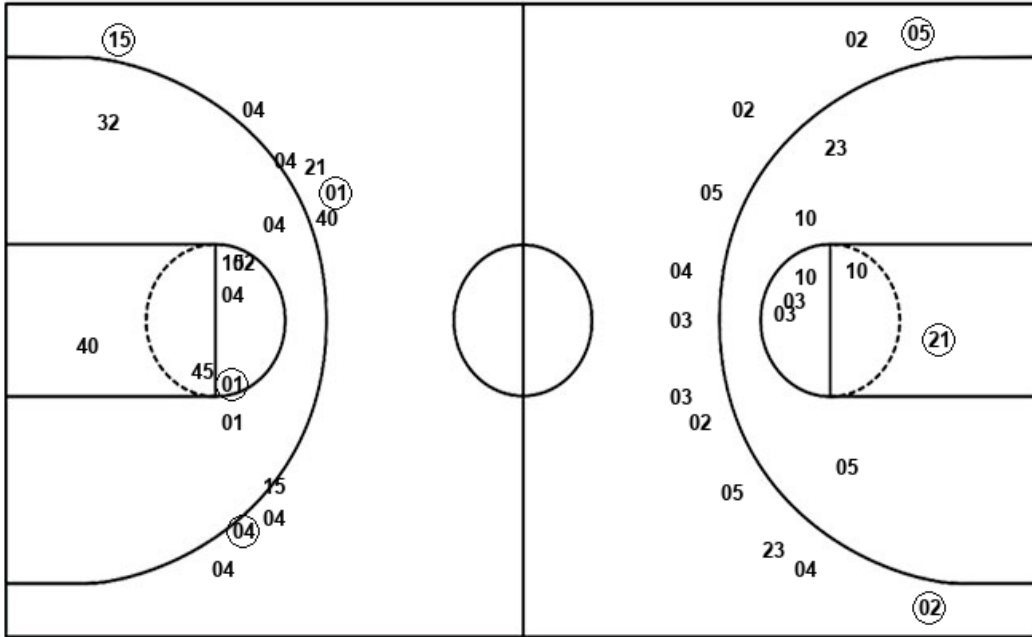


Angelo St.

St. Mary's (TX)

Layups
 03 02 (02) 02 10
 05 (05) (04) 21 12
 12 (32) (03) (12) 04
 (04) (05)

Layups
 01 (21) (04) 40 (01)
 (01) (25) 01 (04) 04



Dunks

Dunks

ASU : Period 1	Made	Att	Pct
Layups	8	17	47.1
Dunks	0	0	0
2PT Field Goals	9	25	36.0
3PT Field Goals	2	12	16.7
Total Field Goals	11	37	29.7

SMU : Period 1	Made	Att	Pct
Layups	6	10	60.0
Dunks	1	1	100.0
2PT Field Goals	8	20	40.0
3PT Field Goals	3	10	30.0
Total Field Goals	11	30	36.7

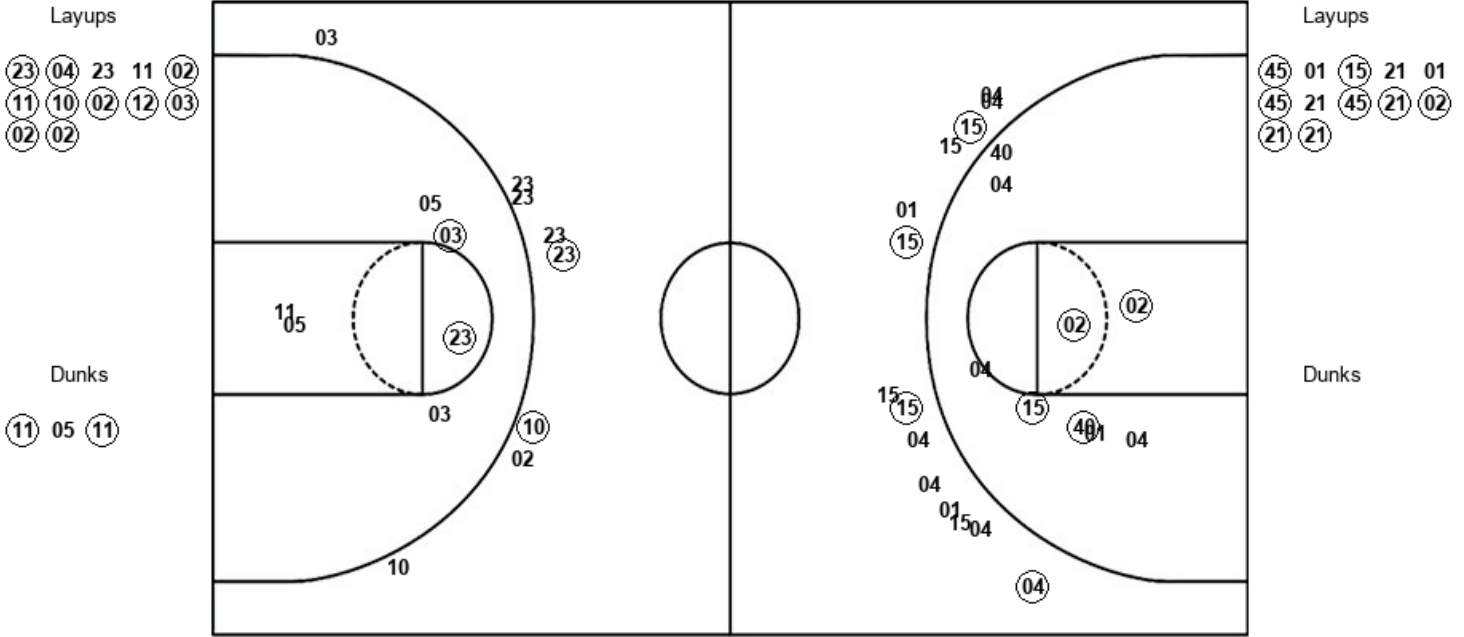
Official Shot Chart
 St. Mary's (TX) vs Angelo St.
 PERIOD 2 Shots

January 25, 2020 at Junell Center/Stephens Arena (Stephens Arena) - San Angelo



Angelo St.

St. Mary's (TX)



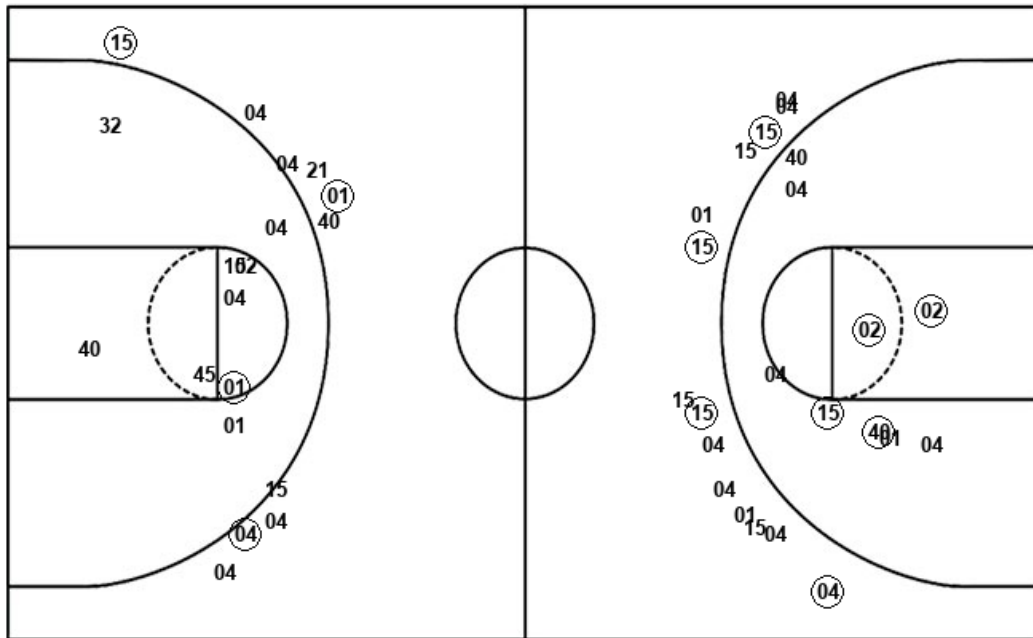
ASU : Period 2	Made	Att	Pct
Layups	10	12	83.3
Dunks	2	3	66.7
2PT Field Goals	14	21	66.7
3PT Field Goals	2	8	25.0
Total Field Goals	16	29	55.2

SMU : Period 2	Made	Att	Pct
Layups	8	12	66.7
Dunks	0	0	0
2PT Field Goals	12	21	57.1
3PT Field Goals	4	14	28.6
Total Field Goals	16	35	45.7

Official Shot Chart
St. Mary's (TX) vs Angelo St.
St. Mary's (TX) Team Shots
 January 25, 2020 at Junell Center/Stephens Arena (Stephens Arena) - San Angelo



Layups



Layups

01 (21) (04) 40 (01)
 (01) (25) 01 (04) 04
 (45) 01 (15) 21 01
 (45) 21 (45) (21) (02)
 (21) (21)

Dunks

Dunks

(45)

SMU : Period 1	Made	Att	Pct
Layups	6	10	60.0
Dunks	1	1	100.0
2PT Field Goals	8	20	40.0
3PT Field Goals	3	10	30.0
Total Field Goals	11	30	36.7

SMU : Period 2	Made	Att	Pct
Layups	8	12	66.7
Dunks	0	0	0
2PT Field Goals	12	21	57.1
3PT Field Goals	4	14	28.6
Total Field Goals	16	35	45.7

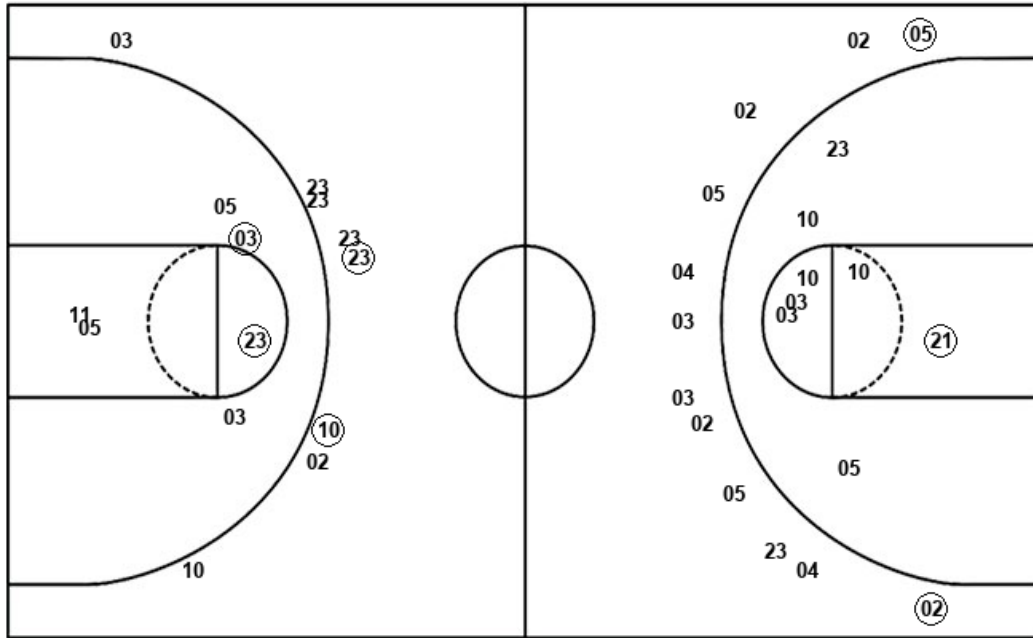
Official Shot Chart
 St. Mary's (TX) vs Angelo St.
 Angelo St. Team Shots

January 25, 2020 at Junell Center/Stephens Arena (Stephens Arena) - San Angelo



Layups

Dunks



Layups

03 02 (02) 02 10
 05 (05) (04) 21 12
 12 (32) (03) (12) 04
 (04) (05) (23) (04) 23
 11 (02) (11) (10) (02)
 (12) (03) (02) (02)

Dunks

(11) 05 (11)

ASU : Period 1	Made	Att	Pct
Layups	8	17	47.1
Dunks	0	0	0
2PT Field Goals	9	25	36.0
3PT Field Goals	2	12	16.7
Total Field Goals	11	37	29.7

ASU : Period 2	Made	Att	Pct
Layups	10	12	83.3
Dunks	2	3	66.7
2PT Field Goals	14	21	66.7
3PT Field Goals	2	8	25.0
Total Field Goals	16	29	55.2