

FINAL SCORE



Tex. Permian Basin

77



Angelo St.

85

January 02, 2020 • Junell Center/Stephens Arena - San Angelo

FINAL STATISTICS

Official Box Score
Tex. Permian Basin vs Angelo St.
Game Totals -- Final Statistics
January 02, 2020 at Junell Center/Stephens Arena - San Angelo



Tex. Permian Basin 77

No.	Player	S	Pts	FG	3FG	FT	OR	DR	TR	PF	A	TO	Blk	Stl	Min	+/-
02	DEMBLEY, PAT	G	28	8-20	4-11	8-11	1	1	2	4	1	3	0	0	34	-3
11	NEWSOME, CARSON	F	17	7-15	1-3	2-6	0	10	10	2	4	3	0	2	35	-12
13	WASHINGTON, MILES	F	4	2-6	0-1	0-0	1	3	4	5	0	1	0	0	18	0
15	CARLISLE, DONOVEN	F	2	1-6	0-4	0-2	2	2	4	2	0	1	0	1	28	-14
25	RIVERA, ADAM	F	5	2-7	1-6	0-0	1	3	4	2	0	1	2	1	17	-3
00	ANDERSON, MALIK	G	4	1-3	0-2	2-2	0	0	0	3	2	1	0	1	14	-4
01	DERAVINE, BRANDON	F	1	0-0	0-0	1-2	0	0	0	0	0	0	0	0	2	4
03	JONES, FERMANDEZ	G	0	0-0	0-0	0-0	0	0	0	0	0	0	0	0	1	-1
05	RODRIGUEZ, ELVIN	G	14	5-9	2-4	2-2	1	1	2	5	0	0	0	1	25	-11
10	HERNANDEZ, ISAAC	G	0	0-2	0-2	0-0	0	1	1	1	2	0	0	0	11	4
34	SANOE, MINFEKE	F	2	1-2	0-0	0-1	2	7	9	4	0	2	0	0	15	0
	TEAM						2	2	4	0		0				
TOTALS			77	27-70	8-33	15-26	10	30	40	28	9	12	2	6	200	

Shooting By Period

Period	FG	FG%	3FG	3FG%	FT	FT%
1st Half	12-33	36%	5-16	31%	5-13	38%
2nd Half	15-37	41%	3-17	18%	10-13	77%
Game	27-70	38.6%	8-33	24.2%	15-26	57.7%

Deadball Rebounds: 3,0
Last FG: 2nd-00:09
Biggest Run: 5-0
Largest lead: By 8 at 1st-09:29
Technical Fouls: None.

Angelo St. 85

No.	Player	S	Pts	FG	3FG	FT	OR	DR	TR	PF	A	TO	Blk	Stl	Min	+/-
03	HAYES, JEREMY	G	18	4-14	1-5	9-10	1	3	4	4	2	6	0	0	31	3
10	WILLIAMS, PAUL	G	11	2-10	2-9	5-6	0	4	4	4	2	1	0	0	32	12
11	IBARGUEN, ANDRES	F	13	5-8	0-0	3-6	6	9	15	3	0	1	1	0	32	19
12	PETTWAY, MARCEL	F	4	2-3	0-0	0-0	2	5	7	1	0	2	1	1	27	11
23	TURNER, COLLIN	G	27	8-19	3-11	8-10	1	8	9	4	4	3	0	3	37	10
02	REEDUS, CAMRON	G	4	1-6	1-5	1-2	0	1	1	3	3	2	0	0	15	-1
05	EDWARDS, BURONE	G	6	2-4	0-2	2-6	1	7	8	1	0	0	0	0	17	-8
21	YAHAYA, SALISU	F	0	0-0	0-0	0-0	0	1	1	1	0	0	0	0	6	-5
32	GLADNEY, RJ	F	2	1-1	0-0	0-0	0	2	2	1	1	0	0	0	3	-1
	TEAM						2	1	3	0		0				
TOTALS			85	25-65	7-32	28-40	13	41	54	22	12	15	2	4	200	

Shooting By Period

Period	FG	FG%	3FG	3FG%	FT	FT%
1st Half	11-33	33%	2-16	13%	7-12	58%
2nd Half	14-32	44%	5-16	31%	21-28	75%
Game	25-65	38.5%	7-32	21.9%	28-40	70.0%

Deadball Rebounds: 9,0
Last FG: 2nd-00:54
Biggest Run: 10-0
Largest lead: By 13 at 2nd-00:40
Technical Fouls: None.

Game Notes:
 Officials: , ,
 Attendance: 843

Start Time: 08:43 PM ET
 End Time: 10:40 PM ET
 Game Duration: 1:57
 Conference Game;

Score	1st	2nd	TOT
UTP	34	43	77
ASU	31	54	85

UTP led for 20:06. ASU led for 17:52.
 Game was tied for 2:02.
 Times tied: 4 Lead Changes: 1

Points from	UTP	ASU
In the Paint	34	32
Off Turns	16	11
2nd Chance	6	17
Fast Break	19	21
Bench	21	12

Official Box Score
Tex. Permian Basin vs Angelo St.
First Half Statistics Only
January 02, 2020 at Junell Center/Stephens Arena - San Angelo



Tex. Permian Basin 34

No.	Player	S	Pts	FG	3FG	FT	OR	DR	TR	PF	A	TO	Blk	Stl	Min	+/-
02	DEMBLEY, PAT	G	8	3-9	2-5	0-2	0	1	1	2	0	2	0	0	14	8
11	NEWSOME, CARSON	F	11	4-7	1-3	2-6	0	7	7	1	4	1	0	1	19	2
13	WASHINGTON, MILES	F	4	2-6	0-1	0-0	1	2	3	0	0	0	0	0	14	3
15	CARLISLE, DONOVEN	F	0	0-2	0-2	0-0	2	1	3	1	0	1	0	1	16	6
25	RIVERA, ADAM	F	0	0-1	0-1	0-0	0	0	0	2	0	0	0	0	4	-2
00	ANDERSON, MALIK	G	0	0-0	0-0	0-0	0	0	0	0	0	0	0	0	1	1
01	DERAVINE, BRANDON	F	1	0-0	0-0	1-2	0	0	0	0	0	0	0	0	2	4
03	JONES, FERMANDEZ	G	0	0-0	0-0	0-0	0	0	0	0	0	0	0	0	1	-1
05	RODRIGUEZ, ELVIN	G	8	2-5	2-3	2-2	0	1	1	1	0	0	0	1	12	0
10	HERNANDEZ, ISAAC	G	0	0-1	0-1	0-0	0	1	1	1	1	0	0	0	7	-4
34	SANOE, MINFEKE	F	2	1-2	0-0	0-1	2	5	7	3	0	1	0	0	10	-2
	TEAM						1	0	1	0		0				
TOTALS			34	12-33	5-16	5-13	6	18	24	11	5	5	0	3	100	

Shooting By Period

Period	FG	FG%	3FG	3FG%	FT	FT%
1st Half	12-33	36%	5-16	31%	5-13	38%
Game	27-70	38.6%	8-33	24.2%	15-26	57.7%

Deadball Rebounds: 3,0
Last FG Half: UTP 2nd-00:09

Angelo St. 31

No.	Player	S	Pts	FG	3FG	FT	OR	DR	TR	PF	A	TO	Blk	Stl	Min	+/-
03	HAYES, JEREMY	G	6	2-5	0-1	2-2	0	1	1	3	1	2	0	0	11	-8
10	WILLIAMS, PAUL	G	5	1-6	1-6	2-2	0	1	1	1	1	1	0	0	17	1
11	IBARGUEN, ANDRES	F	7	2-4	0-0	3-6	3	8	11	1	0	1	1	0	15	2
12	PETTWAY, MARCEL	F	4	2-3	0-0	0-0	2	3	5	0	0	1	0	1	14	1
23	TURNER, COLLIN	G	7	3-9	1-5	0-0	0	1	1	1	2	1	0	1	20	-3
02	REEDUS, CAMRON	G	0	0-3	0-2	0-0	0	0	0	2	1	2	0	0	7	2
05	EDWARDS, BURONE	G	0	0-2	0-2	0-2	0	3	3	0	0	0	0	0	9	-5
21	YAHAYA, SALISU	F	0	0-0	0-0	0-0	0	1	1	1	0	0	0	0	4	-4
32	GLADNEY, RJ	F	2	1-1	0-0	0-0	0	2	2	1	1	0	0	0	3	-1
	TEAM						1	1	2	0		0				
TOTALS			31	11-33	2-16	7-12	6	21	27	10	6	8	1	2	100	

Shooting By Period

Period	FG	FG%	3FG	3FG%	FT	FT%
1st Half	11-33	33%	2-16	13%	7-12	58%
Game	25-65	38.5%	7-32	21.9%	28-40	70.0%

Deadball Rebounds: 9,0
Last FG Half: ASU 2nd-00:54

Game Notes:
 Officials: , ,
 Attendance: 843

Start Time: 08:43 PM ET
 End Time: 10:40 PM ET
 Game Duration: 1:57
 Conference Game;

Score	1st	2nd	TOT
UTP	34	43	77
ASU	31	54	85

Points from (This Period)	UTP	ASU
In the Paint	12	14
Off Turns	7	7
2nd Chance	4	5
Fast Break	7	3
Bench	11	2

Official Play-By-Play
Tex. Permian Basin vs Angelo St.
First Half
January 02, 2020 at Junell Center/Stephens Arena - San Angelo



Period 1

Starters:

Tex. Permian Basin: 2 DEMBLEY, PAT (G); 11 NEWSOME, CARSON (F); 13 WASHINGTON, MILES (F); 15 CARLISLE, DONOVEN (F); 25 RIVERA, ADAM (F);
Angelo St.: 3 HAYES, JEREMY (G); 10 WILLIAMS, PAUL (G); 11 IBARGUEN, ANDRES (F); 12 PETTWAY, MARCEL (F); 23 TURNER, COLLIN (G);

Time	VISITORS: Tex. Permian Basin	Score	Margin	HOME: Angelo St.
19:42	MISSED 3PTR by NEWSOME, CARSON			
19:39				REBOUND (DEF) by IBARGUEN, ANDRES
19:34				MISSED 3PTR by WILLIAMS, PAUL
19:30	REBOUND (DEF) by NEWSOME, CARSON			
19:17	GOOD! JUMPER by NEWSOME, CARSON	0-2	V 2	
19:02				MISSED 3PTR by TURNER, COLLIN
18:59	REBOUND (DEF) by DEMBLEY, PAT			
18:59	FOUL (PERSONAL) by RIVERA, ADAM			
18:50				MISSED 3PTR by HAYES, JEREMY
18:46	REBOUND (DEF) by NEWSOME, CARSON			
18:37	MISSED 3PTR by RIVERA, ADAM			
18:32				REBOUND (DEF) by WILLIAMS, PAUL
18:18	FOUL (PERSONAL) by RIVERA, ADAM			
18:18				MISSED FT by IBARGUEN, ANDRES
18:18				REBOUND (OFF) by TEAM
18:18	SUB OUT: RIVERA, ADAM			
18:18	SUB IN: SANOE, MINFEKE			
18:18		1-2	V 1	GOOD! FT by IBARGUEN, ANDRES
18:08	MISSED 3PTR by DEMBLEY, PAT			
18:05	REBOUND (OFF) by CARLISLE, DONOVEN			
17:51	GOOD! LAYUP by WASHINGTON, MILES	1-4	V 3	
17:51	ASSIST by NEWSOME, CARSON			
17:36	FOUL (PERSONAL) by SANOE, MINFEKE			
17:36		2-4	V 2	GOOD! FT by HAYES, JEREMY
17:36		3-4	V 1	GOOD! FT by HAYES, JEREMY
17:25	MISSED JUMPER by WASHINGTON, MILES			
17:22				REBOUND (DEF) by IBARGUEN, ANDRES
17:21	FOUL (PERSONAL) by DEMBLEY, PAT			
17:06				MISSED 3PTR by WILLIAMS, PAUL
17:04	REBOUND (DEF) by SANOE, MINFEKE			
17:00	GOOD! 3PTR by DEMBLEY, PAT [FB]	3-7	V 4	
17:00	ASSIST by NEWSOME, CARSON			
16:38		6-7	V 1	GOOD! 3PTR by WILLIAMS, PAUL
16:38				ASSIST by TURNER, COLLIN
16:23	MISSED LAYUP by DEMBLEY, PAT			
16:21				REBOUND (DEF) by IBARGUEN, ANDRES
16:10				TURNOVER (LOSTBALL) by IBARGUEN, ANDRES
16:10	STEAL by CARLISLE, DONOVEN			
16:04				FOUL (PERSONAL) by HAYES, JEREMY
16:01	MISSED JUMPER by WASHINGTON, MILES			
15:58				REBOUND (DEF) by HAYES, JEREMY
15:54				MISSED LAYUP by HAYES, JEREMY
15:51	REBOUND (DEF) by WASHINGTON, MILES			
15:47	GOOD! LAYUP by NEWSOME, CARSON [FB]	6-9	V 3	
15:33				MISSED 3PTR by WILLIAMS, PAUL
15:30	REBOUND (DEF) by SANOE, MINFEKE			
15:24	MISSED LAYUP by DEMBLEY, PAT			
15:21	REBOUND (OFF) by SANOE, MINFEKE			
15:20	MISSED LAYUP by SANOE, MINFEKE			
15:16				REBOUND (DEF) by IBARGUEN, ANDRES
15:08		8-9	V 1	GOOD! LAYUP by PETTWAY, MARCEL
15:08				ASSIST by TURNER, COLLIN
14:47	MISSED 3PTR by CARLISLE, DONOVEN			
14:44	REBOUND (OFF) by SANOE, MINFEKE			
14:43	GOOD! LAYUP by SANOE, MINFEKE	8-11	V 3	
14:25				TURNOVER (LOSTBALL) by HAYES, JEREMY
14:25				
14:25				SUB OUT: IBARGUEN, ANDRES
14:25				SUB IN: YAHAYA, SALISU
14:25	SUB OUT: DEMBLEY, PAT			
14:25	SUB OUT: NEWSOME, CARSON			
14:25	SUB OUT: WASHINGTON, MILES			
14:25	SUB OUT: CARLISLE, DONOVEN			
14:25	SUB IN: ANDERSON, MALIK			
14:25	SUB IN: DERAVINE, BRANDON			
14:25	SUB IN: RODRIGUEZ, ELVIN			
14:25	SUB IN: HERNANDEZ, ISAAC			
14:05	TURNOVER (TRAVEL) by SANOE, MINFEKE			
14:05				SUB OUT: WILLIAMS, PAUL
14:05				SUB IN: REEDUS, CAMRON

Time	VISITORS: Tex. Permian Basin	Score	Margin	HOME: Angelo St.
13:55				MISSED 3PTR by TURNER, COLLIN
13:52				REBOUND (OFF) by PETTWAY, MARCEL
13:51				MISSED 3PTR by REEDUS, CAMRON
13:48	REBOUND (DEF) by SANOE, MINFEKE			
13:42	GOOD! 3PTR by RODRIGUEZ, ELVIN	8-14	V 6	
13:26		10-14	V 4	GOOD! JUMPER by HAYES, JEREMY
13:26				ASSIST by REEDUS, CAMRON
13:00				FOUL (PERSONAL) by YAHAYA, SALISU
13:00	GOOD! FT by DERAIVINE, BRANDON	10-15	V 5	
13:00	MISSED FT by DERAIVINE, BRANDON			
13:00				TURNOVER (LOSTBALL) by REEDUS, CAMRON
13:00	STEAL by RODRIGUEZ, ELVIN			
12:59				REBOUND (DEF) by EDWARDS, BURONE
12:53				SUB OUT: PETTWAY, MARCEL
12:53				SUB IN: EDWARDS, BURONE
12:53	SUB OUT: ANDERSON, MALIK			
12:53	SUB OUT: HERNANDEZ, ISAAC			
12:53	SUB OUT: SANOE, MINFEKE			
12:53	SUB IN: DEMBLEY, PAT			
12:53	SUB IN: NEWSOME, CARSON			
12:53	SUB IN: CARLISLE, DONOVEN			
12:53				FOUL (PERSONAL) by TURNER, COLLIN
12:53	GOOD! FT by RODRIGUEZ, ELVIN	10-16	V 6	
12:53	GOOD! FT by RODRIGUEZ, ELVIN	10-17	V 7	
12:31				MISSED LAYUP by REEDUS, CAMRON
12:28	REBOUND (DEF) by NEWSOME, CARSON			
12:19				FOUL (PERSONAL) by REEDUS, CAMRON
12:19	MISSED FT by NEWSOME, CARSON			
12:19	REBOUND (OFF) by TEAM			
12:19	SUB OUT: DERAIVINE, BRANDON			
12:19	SUB IN: WASHINGTON, MILES			
12:19				SUB OUT: YAHAYA, SALISU
12:19				SUB IN: GLADNEY, RJ
12:19	MISSED FT by NEWSOME, CARSON			
12:17				REBOUND (DEF) by GLADNEY, RJ
12:14				TURNOVER (BADPASS) by TURNER, COLLIN
12:14	STEAL by NEWSOME, CARSON			
11:36				FOUL (OFF) by HAYES, JEREMY
11:36				TURNOVER (OFFENSIVE) by HAYES, JEREMY
11:19				SUB OUT: HAYES, JEREMY
11:19				SUB IN: WILLIAMS, PAUL
11:15	MISSED 3PTR by WASHINGTON, MILES			
11:09				REBOUND (DEF) by GLADNEY, RJ
11:05		12-17	V 5	GOOD! JUMPER by TURNER, COLLIN
10:58	MISSED 3PTR by DEMBLEY, PAT			
10:55				REBOUND (DEF) by TEAM
10:42				TURNOVER (BADPASS) by REEDUS, CAMRON
10:37				SUB OUT: REEDUS, CAMRON
10:37				SUB IN: HAYES, JEREMY
10:21	GOOD! 3PTR by NEWSOME, CARSON	12-20	V 8	
10:09		14-20	V 6	GOOD! DUNK by GLADNEY, RJ
10:09				ASSIST by HAYES, JEREMY
10:02	GOOD! LAYUP by NEWSOME, CARSON [FB]	14-22	V 8	
10:02				FOUL (PERSONAL) by GLADNEY, RJ
10:02	SUB OUT: CARLISLE, DONOVEN			
10:02	SUB IN: RIVERA, ADAM			
10:02	MISSED FT by NEWSOME, CARSON			
10:01	REBOUND (OFF) by WASHINGTON, MILES			
09:53	TURNOVER (LOSTBALL) by DEMBLEY, PAT			
09:53				STEAL by TURNER, COLLIN
09:47		17-22	V 5	GOOD! 3PTR by TURNER, COLLIN [FB]
09:47				ASSIST by GLADNEY, RJ
09:29	GOOD! 3PTR by RODRIGUEZ, ELVIN	17-25	V 8	
09:29	ASSIST by NEWSOME, CARSON			
09:14				MISSED LAYUP by HAYES, JEREMY
09:13				REBOUND (OFF) by TEAM
09:13				SUB OUT: EDWARDS, BURONE
09:13				SUB OUT: GLADNEY, RJ
09:13				SUB IN: IBARGUEN, ANDRES
09:13				SUB IN: PETTWAY, MARCEL
09:13	SUB OUT: DEMBLEY, PAT			
09:13	SUB IN: HERNANDEZ, ISAAC			
09:07				MISSED 3PTR by WILLIAMS, PAUL
09:05	REBOUND (DEF) by NEWSOME, CARSON			
09:00	TURNOVER (LOSTBALL) by NEWSOME, CARSON			
09:00				STEAL by PETTWAY, MARCEL
08:54		19-25	V 6	GOOD! LAYUP by HAYES, JEREMY
08:34	MISSED JUMPER by WASHINGTON, MILES			
08:34	REBOUND (OFF) by TEAM			
08:34				FOUL (PERSONAL) by HAYES, JEREMY

Time	VISITORS: Tex. Permian Basin	Score	Margin	HOME: Angelo St.
08:34	SUB OUT: WASHINGTON, MILES			
08:34	SUB IN: SANOE, MINFEKE			
08:34				SUB OUT: HAYES, JEREMY
08:34				SUB IN: REEDUS, CAMRON
08:34	MISSED FT by NEWSOME, CARSON			
08:33				REBOUND (DEF) by PETTWAY, MARCEL
08:23		21-25	V 4	GOOD! LAYUP by TURNER, COLLIN
08:15	MISSED LAYUP by RODRIGUEZ, ELVIN			
08:09				REBOUND (DEF) by PETTWAY, MARCEL
08:05	FOUL (PERSONAL) by RODRIGUEZ, ELVIN			
08:05	SUB OUT: RODRIGUEZ, ELVIN			
08:05	SUB IN: DEMBLEY, PAT			
08:05	SUB OUT: RIVERA, ADAM			
08:05	SUB IN: CARLISLE, DONOVEN			
07:54	FOUL (PERSONAL) by SANOE, MINFEKE			
07:54				
07:46				MISSED 3PTR by REEDUS, CAMRON
07:43	REBOUND (DEF) by HERNANDEZ, ISAAC			
07:39	GOOD! 3PTR by DEMBLEY, PAT	21-28	V 7	
07:39	ASSIST by HERNANDEZ, ISAAC			
07:30				MISSED 3PTR by TURNER, COLLIN
07:25	REBOUND (DEF) by SANOE, MINFEKE			
07:10	MISSED 3PTR by DEMBLEY, PAT			
07:08				REBOUND (DEF) by IBARGUEN, ANDRES
06:53				MISSED LAYUP by PETTWAY, MARCEL
06:51	REBOUND (DEF) by SANOE, MINFEKE			
06:46	MISSED LAYUP by DEMBLEY, PAT			
06:44	REBOUND (OFF) by CARLISLE, DONOVEN			
06:42	MISSED 3PTR by HERNANDEZ, ISAAC			
06:38				REBOUND (DEF) by TURNER, COLLIN
06:31		23-28	V 5	GOOD! LAYUP by IBARGUEN, ANDRES
06:31				ASSIST by WILLIAMS, PAUL
06:30	SUB OUT: DEMBLEY, PAT			
06:30	SUB IN: RODRIGUEZ, ELVIN			
06:11	TURNOVER (BADPASS) by CARLISLE, DONOVEN			
06:03				MISSED 3PTR by WILLIAMS, PAUL
05:58				REBOUND (OFF) by IBARGUEN, ANDRES
05:53				MISSED 3PTR by TURNER, COLLIN
05:51				REBOUND (OFF) by PETTWAY, MARCEL
05:50		25-28	V 3	GOOD! LAYUP by PETTWAY, MARCEL
05:27				FOUL (PERSONAL) by IBARGUEN, ANDRES
05:27	SUB OUT: HERNANDEZ, ISAAC			
05:27	SUB IN: DEMBLEY, PAT			
05:27	MISSED FT by SANOE, MINFEKE			
05:26				REBOUND (DEF) by IBARGUEN, ANDRES
05:15				MISSED LAYUP by TURNER, COLLIN
05:11				REBOUND (OFF) by IBARGUEN, ANDRES
05:11		27-28	V 1	GOOD! LAYUP by IBARGUEN, ANDRES
04:59				FOUL (PERSONAL) by REEDUS, CAMRON
04:59	GOOD! FT by NEWSOME, CARSON	27-29	V 2	
04:59				SUB OUT: REEDUS, CAMRON
04:59				SUB IN: EDWARDS, BURONE
04:59	SUB OUT: CARLISLE, DONOVEN			
04:59	SUB IN: WASHINGTON, MILES			
04:59	GOOD! FT by NEWSOME, CARSON	27-30	V 3	
04:38				TURNOVER (BADPASS) by PETTWAY, MARCEL
04:25	MISSED 3PTR by NEWSOME, CARSON			
04:23				REBOUND (DEF) by PETTWAY, MARCEL
04:15				MISSED LAYUP by IBARGUEN, ANDRES
04:13				REBOUND (OFF) by IBARGUEN, ANDRES
04:13	FOUL (PERSONAL) by SANOE, MINFEKE			
04:13		28-30	V 2	GOOD! FT by IBARGUEN, ANDRES
04:13	SUB OUT: SANOE, MINFEKE			
04:13	SUB IN: CARLISLE, DONOVEN			
04:13				MISSED FT by IBARGUEN, ANDRES
04:12	REBOUND (DEF) by CARLISLE, DONOVEN			
04:05	MISSED 3PTR by CARLISLE, DONOVEN			
04:01				REBOUND (DEF) by EDWARDS, BURONE
03:51	FOUL (PERSONAL) by NEWSOME, CARSON			
03:51				
03:51				MISSED FT by EDWARDS, BURONE
03:51				REBOUND (OFF) by TEAM
03:51				MISSED FT by EDWARDS, BURONE
03:48	REBOUND (DEF) by NEWSOME, CARSON			
03:23	GOOD! LAYUP by DEMBLEY, PAT	28-32	V 4	
03:04				MISSED 3PTR by EDWARDS, BURONE
03:02	REBOUND (DEF) by RODRIGUEZ, ELVIN			
02:52	MISSED LAYUP by RODRIGUEZ, ELVIN			
02:50				REBOUND (DEF) by IBARGUEN, ANDRES
02:46				MISSED LAYUP by TURNER, COLLIN

Time	VISITORS: Tex. Permian Basin	Score	Margin	HOME: Angelo St.
02:42	REBOUND (DEF) by WASHINGTON, MILES			
02:39				FOUL (PERSONAL) by WILLIAMS, PAUL
02:39	MISSED FT by DEMBLEY, PAT			
02:39	REBOUND (OFF) by TEAM			
02:39	MISSED FT by DEMBLEY, PAT			
02:37				REBOUND (DEF) by IBARGUEN, ANDRES
02:23	FOUL (PERSONAL) by CARLISLE, DONOVEN			
02:23				MISSED FT by IBARGUEN, ANDRES
02:23				REBOUND (OFF) by TEAM
02:23		29-32	V 3	GOOD! FT by IBARGUEN, ANDRES
02:09				SUB OUT: PETTWAY, MARCEL
02:09				SUB IN: YAHAYA, SALISU
02:02	FOUL (OFF) by DEMBLEY, PAT			
02:02	TURNOVER (OFFENSIVE) by DEMBLEY, PAT			
02:02	SUB OUT: DEMBLEY, PAT			
02:02	SUB IN: HERNANDEZ, ISAAC			
01:48				TURNOVER (TRAVEL) by WILLIAMS, PAUL
01:33	GOOD! LAYUP by WASHINGTON, MILES [PNT]	29-34	V 5	
01:33	ASSIST by NEWSOME, CARSON			
01:16				MISSED 3PTR by EDWARDS, BURONE
01:14	REBOUND (DEF) by NEWSOME, CARSON			
00:57	MISSED 3PTR by RODRIGUEZ, ELVIN			
00:53				REBOUND (DEF) by YAHAYA, SALISU
00:36	FOUL (PERSONAL) by HERNANDEZ, ISAAC			
00:36		30-34	V 4	GOOD! FT by WILLIAMS, PAUL
00:36	SUB OUT: RODRIGUEZ, ELVIN			
00:36	SUB IN: JONES, FERMANDEZ			
00:36		31-34	V 3	GOOD! FT by WILLIAMS, PAUL
00:31				TIMEOUT 30SEC
00:26	MISSED LAYUP by NEWSOME, CARSON			
00:26				BLOCK by IBARGUEN, ANDRES
00:21				REBOUND (DEF) by EDWARDS, BURONE
00:01				MISSED LAYUP by IBARGUEN, ANDRES
00:00	REBOUND (DEF) by NEWSOME, CARSON			

Tex. Permian Basin 34, Angelo St. 31

Points from (This Period)	UTP	ASU
In the Paint	12	14
Off Turns	7	7
2nd Chance	4	5
Fast Break	7	3
Bench	11	2

Official Box Score
Tex. Permian Basin vs Angelo St.
Second Half Statistics Only
January 02, 2020 at Junell Center/Stephens Arena - San Angelo



Tex. Permian Basin 43

No.	Player	S	Pts	FG	3FG	FT	OR	DR	TR	PF	A	TO	Blk	Stl	Min	+/-
02	DEMBLEY, PAT	G	20	5-11	2-6	8-9	1	0	1	2	1	1	0	0	20	-11
11	NEWSOME, CARSON	F	6	3-8	0-0	0-0	0	3	3	1	0	2	0	1	17	-14
13	WASHINGTON, MILES	F	0	0-0	0-0	0-0	0	1	1	5	0	1	0	0	4	-3
15	CARLISLE, DONOVEN	F	2	1-4	0-2	0-2	0	1	1	1	0	0	0	0	12	-20
25	RIVERA, ADAM	F	5	2-6	1-5	0-0	1	3	4	0	0	1	2	1	13	-1
00	ANDERSON, MALIK	G	4	1-3	0-2	2-2	0	0	0	3	2	1	0	1	12	-5
01	DERAVINE, BRANDON	F	0	0-0	0-0	0-0	0	0	0	0	0	0	0	0	0	0
03	JONES, FERNANDEZ	G	0	0-0	0-0	0-0	0	0	0	0	0	0	0	0	0	0
05	RODRIGUEZ, ELVIN	G	6	3-4	0-1	0-0	1	0	1	4	0	0	0	0	13	-11
10	HERNANDEZ, ISAAC	G	0	0-1	0-1	0-0	0	0	0	0	1	0	0	0	4	8
34	SANOE, MINFEKE	F	0	0-0	0-0	0-0	0	2	2	1	0	1	0	0	5	2
TEAM							1	2	3	0		0				
TOTALS			43	15-37	3-17	10-13	4	12	16	17	4	7	2	3	100	

Shooting By Period

Period	FG	FG%	3FG	3FG%	FT	FT%
2nd Half	15-37	41%	3-17	18%	10-13	77%
Game	27-70	38.6%	8-33	24.2%	15-26	57.7%

Deadball Rebounds: 3,0
 Last FG Half: UTP -

Angelo St. 54

No.	Player	S	Pts	FG	3FG	FT	OR	DR	TR	PF	A	TO	Blk	Stl	Min	+/-
03	HAYES, JEREMY	G	12	2-9	1-4	7-8	1	2	3	1	1	4	0	0	20	11
10	WILLIAMS, PAUL	G	6	1-4	1-3	3-4	0	3	3	3	1	0	0	0	15	11
11	IBARGUEN, ANDRES	F	6	3-4	0-0	0-0	3	1	4	2	0	0	0	0	17	17
12	PETTWAY, MARCEL	F	0	0-0	0-0	0-0	0	2	2	1	0	1	1	0	13	10
23	TURNER, COLLIN	G	20	5-10	2-6	8-10	1	7	8	3	2	2	0	2	17	13
02	REEDUS, CAMRON	G	4	1-3	1-3	1-2	0	1	1	1	2	0	0	0	8	-3
05	EDWARDS, BURONE	G	6	2-2	0-0	2-4	1	4	5	1	0	0	0	0	8	-3
21	YAHAYA, SALISU	F	0	0-0	0-0	0-0	0	0	0	0	0	0	0	0	2	-1
32	GLADNEY, RJ	F	0	0-0	0-0	0-0	0	0	0	0	0	0	0	0	0	0
TEAM							1	0	1	0		0				
TOTALS			54	14-32	5-16	21-28	7	20	27	12	6	7	1	2	100	

Shooting By Period

Period	FG	FG%	3FG	3FG%	FT	FT%
2nd Half	14-32	44%	5-16	31%	21-28	75%
Game	25-65	38.5%	7-32	21.9%	28-40	70.0%

Deadball Rebounds: 9,0
 Last FG Half: ASU -

Game Notes:

Officials: , ,
 Attendance: 843

Start Time: 08:43 PM ET
 End Time: 10:40 PM ET
 Game Duration: 1:57
 Conference Game;

Score	1st	2nd	TOT
UTP	34	43	77
ASU	31	54	85

Points from (This Period)	UTP	ASU
In the Paint	22	18
Off Turns	9	4
2nd Chance	2	12
Fast Break	12	18
Bench	10	10

Official Play-By-Play
Tex. Permian Basin vs Angelo St.
Second Half
January 02, 2020 at Junell Center/Stephens Arena - San Angelo



Period 2

Starters:

Tex. Permian Basin: 2 DEMBLEY, PAT (G); 11 NEWSOME, CARSON (F); 13 WASHINGTON, MILES (F); 15 CARLISLE, DONOVEN (F); 25 RIVERA, ADAM (F);
Angelo St.: 3 HAYES, JEREMY (G); 10 WILLIAMS, PAUL (G); 11 IBARGUEN, ANDRES (F); 12 PETTWAY, MARCEL (F); 23 TURNER, COLLIN (G);

Time	VISITORS: Tex. Permian Basin	Score	Margin	HOME: Angelo St.
20:00				SUB OUT: EDWARDS, BURONE
20:00				SUB OUT: YAHAYA, SALISU
20:00				SUB IN: HAYES, JEREMY
20:00				SUB IN: PETTWAY, MARCEL
20:00	SUB OUT: JONES, FERMANDEZ			
20:00	SUB OUT: HERNANDEZ, ISAAC			
20:00	SUB IN: DEMBLEY, PAT			
20:00	SUB IN: RIVERA, ADAM			
19:45		33-34	V 1	GOOD! LAYUP by TURNER, COLLIN
19:26	MISSED 3PTR by CARLISLE, DONOVEN			
19:22				REBOUND (DEF) by WILLIAMS, PAUL
19:11	FOUL (PERSONAL) by WASHINGTON, MILES			
19:11		34-34	T	GOOD! FT by WILLIAMS, PAUL
19:11		35-34	H 1	GOOD! FT by WILLIAMS, PAUL
19:01	TURNOVER (OTHER) by NEWSOME, CARSON			
18:46				MISSED LAYUP by TURNER, COLLIN
18:46	REBOUND (DEF) by TEAM			
18:41				FOUL (PERSONAL) by IBARGUEN, ANDRES
18:38				FOUL (PERSONAL) by WILLIAMS, PAUL
18:35	MISSED LAYUP by NEWSOME, CARSON			
18:33				REBOUND (DEF) by TURNER, COLLIN
18:20				MISSED LAYUP by HAYES, JEREMY
18:18				REBOUND (OFF) by IBARGUEN, ANDRES
18:17	FOUL (PERSONAL) by WASHINGTON, MILES			
18:17	TIMEOUT 30SEC			
18:17				
18:17		36-34	H 2	GOOD! FT by HAYES, JEREMY
18:17		37-34	H 3	GOOD! FT by HAYES, JEREMY
17:55	MISSED JUMPER by DEMBLEY, PAT			
17:53				REBOUND (DEF) by PETTWAY, MARCEL
17:49	FOUL (PERSONAL) by WASHINGTON, MILES			
17:49		38-34	H 4	GOOD! FT by TURNER, COLLIN [FB]
17:49		39-34	H 5	GOOD! FT by TURNER, COLLIN [FB]
17:34	FOUL (OFF) by WASHINGTON, MILES			
17:34	TURNOVER (OFFENSIVE) by WASHINGTON, MILES			
17:34	SUB OUT: WASHINGTON, MILES			
17:34	SUB IN: SANOE, MINFEKE			
17:17				MISSED LAYUP by IBARGUEN, ANDRES
17:17	BLOCK by RIVERA, ADAM			
17:11				REBOUND (OFF) by HAYES, JEREMY
17:09				TURNOVER (TRAVEL) by HAYES, JEREMY
16:56	SUB OUT: CARLISLE, DONOVEN			
16:56	SUB IN: RODRIGUEZ, ELVIN			
16:54	MISSED 3PTR by RODRIGUEZ, ELVIN			
16:51				REBOUND (DEF) by WILLIAMS, PAUL
16:44				MISSED 3PTR by TURNER, COLLIN
16:41	REBOUND (DEF) by RIVERA, ADAM			
16:28	GOOD! LAYUP by NEWSOME, CARSON	39-36	H 3	
16:05				MISSED 3PTR by TURNER, COLLIN
16:03	REBOUND (DEF) by NEWSOME, CARSON			
15:52	MISSED JUMPER by NEWSOME, CARSON			
15:49	REBOUND (OFF) by RODRIGUEZ, ELVIN			
15:44	MISSED LAYUP by NEWSOME, CARSON			
15:44				BLOCK by PETTWAY, MARCEL
15:44	REBOUND (OFF) by TEAM			
15:35	MISSED JUMPER by DEMBLEY, PAT			
15:34				REBOUND (DEF) by PETTWAY, MARCEL
15:34	FOUL (PERSONAL) by SANOE, MINFEKE			
15:23				FOUL (OFF) by HAYES, JEREMY
15:23				TURNOVER (OFFENSIVE) by HAYES, JEREMY
15:08	GOOD! 3PTR by RIVERA, ADAM	39-39	T	
15:08	ASSIST by DEMBLEY, PAT			
14:54				MISSED JUMPER by HAYES, JEREMY
14:52				REBOUND (OFF) by IBARGUEN, ANDRES
14:52	FOUL (PERSONAL) by NEWSOME, CARSON			
14:44				MISSED JUMPER by WILLIAMS, PAUL
14:40	REBOUND (DEF) by SANOE, MINFEKE			
14:38	TURNOVER (LOSTBALL) by SANOE, MINFEKE			
14:38				STEAL by TURNER, COLLIN
14:34		41-39	H 2	GOOD! LAYUP by TURNER, COLLIN [FB]

Time	VISITORS: Tex. Permian Basin	Score	Margin	HOME: Angelo St.
14:26	TURNOVER (BADPASS) by NEWSOME, CARSON			
14:13	SUB OUT: NEWSOME, CARSON			
14:13	SUB IN: CARLISLE, DONOVEN			
14:09				TURNOVER (BADPASS) by HAYES, JEREMY
13:56	MISSED 3PTR by RIVERA, ADAM			
13:53				REBOUND (DEF) by TURNER, COLLIN
13:47		44-39	H 5	GOOD! 3PTR by WILLIAMS, PAUL
13:47				ASSIST by TURNER, COLLIN
13:38				FOUL (PERSONAL) by WILLIAMS, PAUL
13:38	GOOD! FT by DEMBLEY, PAT	44-40	H 4	
13:38				SUB OUT: TURNER, COLLIN
13:38				SUB IN: REEDUS, CAMRON
13:38	SUB OUT: RIVERA, ADAM			
13:38	SUB IN: ANDERSON, MALIK			
13:38	GOOD! FT by DEMBLEY, PAT	44-41	H 3	
13:24		46-41	H 5	GOOD! LAYUP by HAYES, JEREMY
13:17	GOOD! LAYUP by RODRIGUEZ, ELVIN [FB]	46-43	H 3	
12:58				MISSED 3PTR by WILLIAMS, PAUL
12:55	REBOUND (DEF) by SANOE, MINFEKE			
12:48	MISSED LAYUP by CARLISLE, DONOVEN			
12:45				REBOUND (DEF) by HAYES, JEREMY
12:42	FOUL (PERSONAL) by RODRIGUEZ, ELVIN			
12:42				SUB OUT: WILLIAMS, PAUL
12:42				SUB OUT: PETTWAY, MARCEL
12:42				SUB IN: EDWARDS, BURONE
12:42				SUB IN: YAHAYA, SALISU
12:42	SUB OUT: SANOE, MINFEKE			
12:42	SUB IN: NEWSOME, CARSON			
12:42		47-43	H 4	GOOD! FT by HAYES, JEREMY [FB]
12:42				SUB OUT: IBARGUEN, ANDRES
12:42				SUB IN: WILLIAMS, PAUL
12:42		48-43	H 5	GOOD! FT by HAYES, JEREMY [FB]
12:28	GOOD! LAYUP by CARLISLE, DONOVEN	48-45	H 3	
12:28	ASSIST by ANDERSON, MALIK			
12:06				MISSED 3PTR by HAYES, JEREMY
12:01	REBOUND (DEF) by NEWSOME, CARSON			
11:54	GOOD! 3PTR by DEMBLEY, PAT	48-48	T	
11:54	ASSIST by ANDERSON, MALIK			
11:33		51-48	H 3	GOOD! 3PTR by HAYES, JEREMY
11:33				ASSIST by WILLIAMS, PAUL
11:16	GOOD! LAYUP by RODRIGUEZ, ELVIN	51-50	H 1	
11:01	FOUL (PERSONAL) by CARLISLE, DONOVEN			
11:01				
11:01		52-50	H 2	GOOD! FT by REEDUS, CAMRON
11:01				MISSED FT by REEDUS, CAMRON
10:58	REBOUND (DEF) by CARLISLE, DONOVEN			
10:58	TURNOVER (TRAVEL) by ANDERSON, MALIK			
10:57				SUB OUT: WILLIAMS, PAUL
10:57				SUB OUT: YAHAYA, SALISU
10:57				SUB IN: IBARGUEN, ANDRES
10:57				SUB IN: TURNER, COLLIN
10:53				MISSED JUMPER by HAYES, JEREMY
10:51	REBOUND (DEF) by TEAM			
10:34	MISSED 3PTR by CARLISLE, DONOVEN			
10:29	REBOUND (OFF) by DEMBLEY, PAT			
10:22	MISSED LAYUP by NEWSOME, CARSON			
10:17				REBOUND (DEF) by EDWARDS, BURONE
10:16	FOUL (PERSONAL) by ANDERSON, MALIK			
10:16				MISSED FT by EDWARDS, BURONE
10:16				REBOUND (OFF) by TEAM
10:16		53-50	H 3	GOOD! FT by EDWARDS, BURONE [FB]
10:04	GOOD! JUMPER by ANDERSON, MALIK	53-52	H 1	
09:52	FOUL (PERSONAL) by ANDERSON, MALIK			
09:52		54-52	H 2	GOOD! FT by TURNER, COLLIN
09:52		55-52	H 3	GOOD! FT by TURNER, COLLIN
09:49	GOOD! LAYUP by NEWSOME, CARSON [FB]	55-54	H 1	
09:32				MISSED 3PTR by REEDUS, CAMRON
09:29				REBOUND (OFF) by TURNER, COLLIN
09:26		58-54	H 4	GOOD! 3PTR by REEDUS, CAMRON
09:15	MISSED 3PTR by DEMBLEY, PAT			
09:13				REBOUND (DEF) by REEDUS, CAMRON
09:08				MISSED 3PTR by HAYES, JEREMY
09:06				REBOUND (OFF) by EDWARDS, BURONE
09:04		60-54	H 6	GOOD! LAYUP by EDWARDS, BURONE
08:54				FOUL (PERSONAL) by EDWARDS, BURONE
08:54	SUB OUT: RODRIGUEZ, ELVIN			
08:54	SUB OUT: NEWSOME, CARSON			
08:54	SUB IN: HERNANDEZ, ISAAC			
08:54	SUB IN: RIVERA, ADAM			
08:51	MISSED 3PTR by ANDERSON, MALIK			

Time	VISITORS: Tex. Permian Basin	Score	Margin	HOME: Angelo St.
08:49				REBOUND (DEF) by TURNER, COLLIN
08:49	FOUL (PERSONAL) by DEMBLEY, PAT			
08:49				MISSED FT by TURNER, COLLIN
08:49				REBOUND (OFF) by TEAM
08:49		61-54	H 7	GOOD! FT by TURNER, COLLIN [FB]
08:41	SUB OUT: CARLISLE, DONOVEN			
08:41	SUB IN: WASHINGTON, MILES			
08:35				FOUL (PERSONAL) by TURNER, COLLIN
08:35				FOUL (PERSONAL) by REEDUS, CAMRON
08:35	GOOD! FT by ANDERSON, MALIK	61-55	H 6	
08:35	GOOD! FT by ANDERSON, MALIK	61-56	H 5	
08:29		63-56	H 7	GOOD! DUNK by IBARGUEN, ANDRES [FB]
08:29				ASSIST by REEDUS, CAMRON
08:20	TURNOVER (TRAVEL) by RIVERA, ADAM			
08:11				TURNOVER (LOSTBALL) by TURNER, COLLIN
08:11	STEAL by ANDERSON, MALIK			
08:04	GOOD! LAYUP by DEMBLEY, PAT [FB]	63-58	H 5	
07:57				MISSED 3PTR by HAYES, JEREMY
07:53	REBOUND (DEF) by RIVERA, ADAM			
07:47	GOOD! 3PTR by DEMBLEY, PAT	63-61	H 2	
07:47	ASSIST by HERNANDEZ, ISAAC			
07:32				MISSED LAYUP by HAYES, JEREMY
07:32	BLOCK by RIVERA, ADAM			
07:28	REBOUND (DEF) by WASHINGTON, MILES			
07:21	MISSED 3PTR by DEMBLEY, PAT			
07:19				REBOUND (DEF) by EDWARDS, BURONE
07:15	FOUL (PERSONAL) by WASHINGTON, MILES			
07:15				
07:15	SUB OUT: WASHINGTON, MILES			
07:15	SUB IN: NEWSOME, CARSON			
07:15				MISSED FT by EDWARDS, BURONE
07:15				REBOUND (OFF) by TEAM
07:15		64-61	H 3	GOOD! FT by EDWARDS, BURONE [FB]
07:06	GOOD! LAYUP by DEMBLEY, PAT	64-63	H 1	
07:06				FOUL (PERSONAL) by TURNER, COLLIN
07:06				SUB OUT: EDWARDS, BURONE
07:06				SUB IN: PETTWAY, MARCEL
07:06	GOOD! FT by DEMBLEY, PAT	64-64	T	
06:53				MISSED 3PTR by REEDUS, CAMRON
06:49				REBOUND (OFF) by TEAM
06:42		67-64	H 3	GOOD! 3PTR by TURNER, COLLIN
06:42				ASSIST by REEDUS, CAMRON
06:27	GOOD! LAYUP by DEMBLEY, PAT	67-66	H 1	
06:02				MISSED 3PTR by TURNER, COLLIN
06:00	REBOUND (DEF) by RIVERA, ADAM			
05:50	MISSED 3PTR by HERNANDEZ, ISAAC			
05:48				REBOUND (DEF) by TURNER, COLLIN
05:43				SUB OUT: REEDUS, CAMRON
05:43				SUB IN: WILLIAMS, PAUL
05:43	SUB OUT: HERNANDEZ, ISAAC			
05:43	SUB OUT: RIVERA, ADAM			
05:43	SUB IN: RODRIGUEZ, ELVIN			
05:43	SUB IN: CARLISLE, DONOVEN			
05:31	FOUL (PERSONAL) by RODRIGUEZ, ELVIN			
05:31				MISSED FT by TURNER, COLLIN
05:31				REBOUND (OFF) by TEAM
05:31		68-66	H 2	GOOD! FT by TURNER, COLLIN
05:17	TURNOVER (LOSTBALL) by DEMBLEY, PAT			
05:17				STEAL by TURNER, COLLIN
05:14		70-66	H 4	GOOD! LAYUP by TURNER, COLLIN [FB]
05:02	MISSED 3PTR by DEMBLEY, PAT			
04:58				REBOUND (DEF) by IBARGUEN, ANDRES
04:36				MISSED 3PTR by WILLIAMS, PAUL
04:33				REBOUND (OFF) by IBARGUEN, ANDRES
04:31		72-66	H 6	GOOD! LAYUP by IBARGUEN, ANDRES [PNT]
04:12	MISSED JUMPER by NEWSOME, CARSON			
04:10				REBOUND (DEF) by HAYES, JEREMY
04:04		75-66	H 9	GOOD! 3PTR by TURNER, COLLIN
04:04				ASSIST by HAYES, JEREMY
03:53				FOUL (PERSONAL) by TURNER, COLLIN
03:53				
03:53	SUB OUT: ANDERSON, MALIK			
03:53	SUB IN: RIVERA, ADAM			
03:53	MISSED FT by CARLISLE, DONOVEN			
03:53	REBOUND (OFF) by TEAM			
03:53	MISSED FT by CARLISLE, DONOVEN			
03:53				REBOUND (DEF) by TURNER, COLLIN
03:43				TURNOVER (LOSTBALL) by PETTWAY, MARCEL
03:43	STEAL by RIVERA, ADAM			
03:34	MISSED 3PTR by RIVERA, ADAM			

Time	VISITORS: Tex. Permian Basin	Score	Margin	HOME: Angelo St.
03:32				REBOUND (DEF) by TURNER, COLLIN
03:16				MISSED 3PTR by TURNER, COLLIN
03:13	REBOUND (DEF) by NEWSOME, CARSON			
03:05	MISSED 3PTR by RIVERA, ADAM			
03:01				REBOUND (DEF) by WILLIAMS, PAUL
02:46				TURNOVER (BADPASS) by HAYES, JEREMY
02:35				FOUL (PERSONAL) by IBARGUEN, ANDRES
02:35	GOOD! FT by DEMBLEY, PAT	75-67	H 8	
02:35	SUB OUT: CARLISLE, DONOVEN			
02:35	SUB IN: ANDERSON, MALIK			
02:35	GOOD! FT by DEMBLEY, PAT	75-68	H 7	
02:32	FOUL (PERSONAL) by RODRIGUEZ, ELVIN			
02:32		76-68	H 8	GOOD! FT by TURNER, COLLIN [FB]
02:32		77-68	H 9	GOOD! FT by TURNER, COLLIN [FB]
02:32				SUB OUT: PETTWAY, MARCEL
02:32				SUB IN: EDWARDS, BURONE
02:24	MISSED 3PTR by RIVERA, ADAM			
02:20				REBOUND (DEF) by TURNER, COLLIN
01:55		79-68	H 11	GOOD! DUNK by IBARGUEN, ANDRES
01:43	MISSED 3PTR by DEMBLEY, PAT			
01:40				REBOUND (DEF) by EDWARDS, BURONE
01:16	FOUL (PERSONAL) by DEMBLEY, PAT			
01:16				MISSED FT by HAYES, JEREMY
01:16				REBOUND (OFF) by TEAM
01:16		80-68	H 12	GOOD! FT by HAYES, JEREMY
01:16				SUB OUT: IBARGUEN, ANDRES
01:16				SUB IN: PETTWAY, MARCEL
01:07				FOUL (PERSONAL) by PETTWAY, MARCEL
01:07	GOOD! FT by DEMBLEY, PAT	80-69	H 11	
01:07	MISSED FT by DEMBLEY, PAT			
01:05				REBOUND (DEF) by EDWARDS, BURONE
01:00	TIMEOUT 30SEC			
00:54		82-69	H 13	GOOD! LAYUP by EDWARDS, BURONE
00:54				ASSIST by TURNER, COLLIN
00:47	MISSED 3PTR by ANDERSON, MALIK			
00:43	REBOUND (OFF) by RIVERA, ADAM			
00:43	GOOD! LAYUP by RIVERA, ADAM	82-71	H 11	
00:43	TIMEOUT TEAM			
00:40	FOUL (PERSONAL) by ANDERSON, MALIK			
00:40		83-71	H 12	GOOD! FT by HAYES, JEREMY [FB]
00:40		84-71	H 13	GOOD! FT by HAYES, JEREMY [FB]
00:36	GOOD! LAYUP by RODRIGUEZ, ELVIN [FB]	84-73	H 11	
00:30	FOUL (PERSONAL) by RODRIGUEZ, ELVIN			
00:30	SUB OUT: RODRIGUEZ, ELVIN			
00:30	SUB IN: HERNANDEZ, ISAAC			
00:30				MISSED FT by WILLIAMS, PAUL
00:30				REBOUND (OFF) by TEAM
00:30		85-73	H 12	GOOD! FT by WILLIAMS, PAUL [FB]
00:27				FOUL (PERSONAL) by WILLIAMS, PAUL
00:27	GOOD! FT by DEMBLEY, PAT [FB]	85-74	H 11	
00:27	GOOD! FT by DEMBLEY, PAT [FB]	85-75	H 10	
00:12				TURNOVER (LOSTBALL) by TURNER, COLLIN
00:12	STEAL by NEWSOME, CARSON			
00:09	GOOD! LAYUP by NEWSOME, CARSON [FB]	85-77	H 8	

Tex. Permian Basin 77, Angelo St. 85

Points from (This Period)	UTP	ASU
In the Paint	22	18
Off Turns	9	4
2nd Chance	2	12
Fast Break	12	18
Bench	10	10

Official Scoring/Possession Reference Chart
Tex. Permian Basin vs Angelo St.
Period 1
January 02, 2020 at Junell Center/Stephens Arena - San Angelo



Period 1

Starters:

Tex. Permian Basin: 2 DEMBLEY, PAT (G); 11 NEWSOME, CARSON (F); 13 WASHINGTON, MILES (F); 15 CARLISLE, DONOVEN (F); 25 RIVERA, ADAM (F);
Angelo St.: 3 HAYES, JEREMY (G); 10 WILLIAMS, PAUL (G); 11 IBARGUEN, ANDRES (F); 12 PETTWAY, MARCEL (F); 23 TURNER, COLLIN (G);

Time	VISITORS: Tex. Permian Basin	Score	Margin	HOME: Angelo St.
19:17	GOOD! JUMPER by NEWSOME, CARSON	0-2	V 2	
18:18		1-2	V 1	GOOD! FT by IBARGUEN, ANDRES
17:51	GOOD! LAYUP by WASHINGTON, MILES	1-4	V 3	
17:36		2-4	V 2	GOOD! FT by HAYES, JEREMY
17:36		3-4	V 1	GOOD! FT by HAYES, JEREMY
17:00	GOOD! 3PTR by DEMBLEY, PAT [FB]	3-7	V 4	
16:38		6-7	V 1	GOOD! 3PTR by WILLIAMS, PAUL
15:47	GOOD! LAYUP by NEWSOME, CARSON [FB]	6-9	V 3	
15:08		8-9	V 1	GOOD! LAYUP by PETTWAY, MARCEL
14:43	GOOD! LAYUP by SANOE, MINFEKE	8-11	V 3	
13:42	GOOD! 3PTR by RODRIGUEZ, ELVIN	8-14	V 6	
13:26		10-14	V 4	GOOD! JUMPER by HAYES, JEREMY
13:00	GOOD! FT by DERAVINE, BRANDON	10-15	V 5	
12:53	GOOD! FT by RODRIGUEZ, ELVIN	10-16	V 6	
12:53	GOOD! FT by RODRIGUEZ, ELVIN	10-17	V 7	
11:05		12-17	V 5	GOOD! JUMPER by TURNER, COLLIN
10:21	GOOD! 3PTR by NEWSOME, CARSON	12-20	V 8	
10:09		14-20	V 6	GOOD! DUNK by GLADNEY, RJ
10:02	GOOD! LAYUP by NEWSOME, CARSON [FB]	14-22	V 8	
09:47		17-22	V 5	GOOD! 3PTR by TURNER, COLLIN [FB]
09:29	GOOD! 3PTR by RODRIGUEZ, ELVIN	17-25	V 8	
08:54		19-25	V 6	GOOD! LAYUP by HAYES, JEREMY
08:23		21-25	V 4	GOOD! LAYUP by TURNER, COLLIN
07:39	GOOD! 3PTR by DEMBLEY, PAT	21-28	V 7	
06:31		23-28	V 5	GOOD! LAYUP by IBARGUEN, ANDRES
05:50		25-28	V 3	GOOD! LAYUP by PETTWAY, MARCEL
05:11		27-28	V 1	GOOD! LAYUP by IBARGUEN, ANDRES
04:59	GOOD! FT by NEWSOME, CARSON	27-29	V 2	
04:59	GOOD! FT by NEWSOME, CARSON	27-30	V 3	
04:13		28-30	V 2	GOOD! FT by IBARGUEN, ANDRES
03:23	GOOD! LAYUP by DEMBLEY, PAT	28-32	V 4	
02:23		29-32	V 3	GOOD! FT by IBARGUEN, ANDRES
01:33	GOOD! LAYUP by WASHINGTON, MILES [PNT]	29-34	V 5	
00:36		30-34	V 4	GOOD! FT by WILLIAMS, PAUL
00:36		31-34	V 3	GOOD! FT by WILLIAMS, PAUL

Tex. Permian Basin 34, Angelo St. 31

Official Scoring/Possession Reference Chart
Tex. Permian Basin vs Angelo St.
Period 2
January 02, 2020 at Junell Center/Stephens Arena - San Angelo



Period 2

Starters:

Tex. Permian Basin: 2 DEMBLEY, PAT (G); 11 NEWSOME, CARSON (F); 13 WASHINGTON, MILES (F); 15 CARLISLE, DONOVEN (F); 25 RIVERA, ADAM (F);
Angelo St.: 3 HAYES, JEREMY (G); 10 WILLIAMS, PAUL (G); 11 IBARGUEN, ANDRES (F); 12 PETTWAY, MARCEL (F); 23 TURNER, COLLIN (G);

Time	VISITORS: Tex. Permian Basin	Score	Margin	HOME: Angelo St.
19:45		33-34	V 1	GOOD! LAYUP by TURNER, COLLIN
19:11		34-34	T	GOOD! FT by WILLIAMS, PAUL
19:11		35-34	H 1	GOOD! FT by WILLIAMS, PAUL
18:17		36-34	H 2	GOOD! FT by HAYES, JEREMY
18:17		37-34	H 3	GOOD! FT by HAYES, JEREMY
17:49		38-34	H 4	GOOD! FT by TURNER, COLLIN [FB]
17:49		39-34	H 5	GOOD! FT by TURNER, COLLIN [FB]
16:28	GOOD! LAYUP by NEWSOME, CARSON	39-36	H 3	
15:08	GOOD! 3PTR by RIVERA, ADAM	39-39	T	
14:34		41-39	H 2	GOOD! LAYUP by TURNER, COLLIN [FB]
13:47		44-39	H 5	GOOD! 3PTR by WILLIAMS, PAUL
13:38	GOOD! FT by DEMBLEY, PAT	44-40	H 4	
13:38	GOOD! FT by DEMBLEY, PAT	44-41	H 3	
13:24		46-41	H 5	GOOD! LAYUP by HAYES, JEREMY
13:17	GOOD! LAYUP by RODRIGUEZ, ELVIN [FB]	46-43	H 3	
12:42		47-43	H 4	GOOD! FT by HAYES, JEREMY [FB]
12:42		48-43	H 5	GOOD! FT by HAYES, JEREMY [FB]
12:28	GOOD! LAYUP by CARLISLE, DONOVEN	48-45	H 3	
11:54	GOOD! 3PTR by DEMBLEY, PAT	48-48	T	
11:33		51-48	H 3	GOOD! 3PTR by HAYES, JEREMY
11:16	GOOD! LAYUP by RODRIGUEZ, ELVIN	51-50	H 1	
11:01		52-50	H 2	GOOD! FT by REEDUS, CAMRON
10:16		53-50	H 3	GOOD! FT by EDWARDS, BURONE [FB]
10:04	GOOD! JUMPER by ANDERSON, MALIK	53-52	H 1	
09:52		54-52	H 2	GOOD! FT by TURNER, COLLIN
09:52		55-52	H 3	GOOD! FT by TURNER, COLLIN
09:49	GOOD! LAYUP by NEWSOME, CARSON [FB]	55-54	H 1	
09:26		58-54	H 4	GOOD! 3PTR by REEDUS, CAMRON
09:04		60-54	H 6	GOOD! LAYUP by EDWARDS, BURONE
08:49		61-54	H 7	GOOD! FT by TURNER, COLLIN [FB]
08:35	GOOD! FT by ANDERSON, MALIK	61-55	H 6	
08:35	GOOD! FT by ANDERSON, MALIK	61-56	H 5	
08:29		63-56	H 7	GOOD! DUNK by IBARGUEN, ANDRES [FB]
08:04	GOOD! LAYUP by DEMBLEY, PAT [FB]	63-58	H 5	
07:47	GOOD! 3PTR by DEMBLEY, PAT	63-61	H 2	
07:15		64-61	H 3	GOOD! FT by EDWARDS, BURONE [FB]
07:06	GOOD! LAYUP by DEMBLEY, PAT	64-63	H 1	
07:06	GOOD! FT by DEMBLEY, PAT	64-64	T	
06:42		67-64	H 3	GOOD! 3PTR by TURNER, COLLIN
06:27	GOOD! LAYUP by DEMBLEY, PAT	67-66	H 1	
05:31		68-66	H 2	GOOD! FT by TURNER, COLLIN
05:14		70-66	H 4	GOOD! LAYUP by TURNER, COLLIN [FB]
04:31		72-66	H 6	GOOD! LAYUP by IBARGUEN, ANDRES [PNT]
04:04		75-66	H 9	GOOD! 3PTR by TURNER, COLLIN
02:35	GOOD! FT by DEMBLEY, PAT	75-67	H 8	
02:35	GOOD! FT by DEMBLEY, PAT	75-68	H 7	
02:32		76-68	H 8	GOOD! FT by TURNER, COLLIN [FB]
02:32		77-68	H 9	GOOD! FT by TURNER, COLLIN [FB]
01:55		79-68	H 11	GOOD! DUNK by IBARGUEN, ANDRES
01:16		80-68	H 12	GOOD! FT by HAYES, JEREMY
01:07	GOOD! FT by DEMBLEY, PAT	80-69	H 11	
00:54		82-69	H 13	GOOD! LAYUP by EDWARDS, BURONE

Time	VISITORS: Tex. Permian Basin	Score	Margin	HOME: Angelo St.
00:43	GOOD! LAYUP by RIVERA, ADAM	82-71	H 11	
00:40		83-71	H 12	GOOD! FT by HAYES, JEREMY [FB]
00:40		84-71	H 13	GOOD! FT by HAYES, JEREMY [FB]
00:36	GOOD! LAYUP by RODRIGUEZ, ELVIN [FB]	84-73	H 11	
00:30		85-73	H 12	GOOD! FT by WILLIAMS, PAUL [FB]
00:27	GOOD! FT by DEMBLEY, PAT [FB]	85-74	H 11	
00:27	GOOD! FT by DEMBLEY, PAT [FB]	85-75	H 10	
00:09	GOOD! LAYUP by NEWSOME, CARSON [FB]	85-77	H 8	

Tex. Permian Basin 77, Angelo St. 85

Official Substitutions Log
Tex. Permian Basin vs Angelo St.
Period 1
January 02, 2020 at Junell Center/Stephens Arena - San Angelo



VISITORS: Tex. Permian Basin	Time	Score	HOME: Angelo St.
2 DEMBLEY,PAT			3 HAYES,JEREMY
11 NEWSOME,CARSON			10 WILLIAMS,PAUL
13 WASHINGTON,MILES			11 IBARGUEN,ANDRES
15 CARLISLE,DONOVEN			12 PETTWAY,MARCEL
25 RIVERA,ADAM			23 TURNER,COLLIN
SUB OUT: 25 RIVERA,ADAM	18:18	2-0	
SUB IN: 34 SANOE,MINFEKE	18:18		
	14:25	11-8	SUB OUT: IBARGUEN,ANDRES
	14:25		SUB IN: YAHAYA,SALISU
SUB OUT: 2 DEMBLEY,PAT	14:25		
SUB OUT: 11 NEWSOME,CARSON	14:25		
SUB OUT: 13 WASHINGTON,MILES	14:25		
SUB OUT: 15 CARLISLE,DONOVEN	14:25		
SUB IN: 00 ANDERSON,MALIK	14:25		
SUB IN: 1 DERAVINE,BRANDON	14:25		
SUB IN: 5 RODRIGUEZ,ELVIN	14:25		
SUB IN: 10 HERNANDEZ,ISAAC	14:25		
	14:05	11-8	SUB OUT: WILLIAMS,PAUL
	14:05		SUB IN: REEDUS,CAMRON
	12:53	15-10	SUB OUT: PETTWAY,MARCEL
	12:53		SUB IN: EDWARDS,BURONE
SUB OUT: 00 ANDERSON,MALIK	12:53		
SUB OUT: 10 HERNANDEZ,ISAAC	12:53		
SUB OUT: 34 SANOE,MINFEKE	12:53		
SUB IN: 2 DEMBLEY,PAT	12:53		
SUB IN: 11 NEWSOME,CARSON	12:53		
SUB IN: 15 CARLISLE,DONOVEN	12:53		
SUB OUT: 1 DERAVINE,BRANDON	12:19	17-10	
SUB IN: 13 WASHINGTON,MILES	12:19		
	12:19		SUB OUT: YAHAYA,SALISU
	12:19		SUB IN: GLADNEY,RJ
	11:19	17-10	SUB OUT: HAYES,JEREMY
	11:19		SUB IN: WILLIAMS,PAUL
	10:37	17-12	SUB OUT: REEDUS,CAMRON
	10:37		SUB IN: HAYES,JEREMY
SUB OUT: 15 CARLISLE,DONOVEN	10:02	22-14	
SUB IN: 25 RIVERA,ADAM	10:02		
	09:13	25-17	SUB OUT: EDWARDS,BURONE
	09:13		SUB OUT: GLADNEY,RJ
	09:13		SUB IN: IBARGUEN,ANDRES
	09:13		SUB IN: PETTWAY,MARCEL
SUB OUT: 2 DEMBLEY,PAT	09:13		
SUB IN: 10 HERNANDEZ,ISAAC	09:13		
SUB OUT: 13 WASHINGTON,MILES	08:34	25-19	
SUB IN: 34 SANOE,MINFEKE	08:34		
	08:34		SUB OUT: HAYES,JEREMY
	08:34		SUB IN: REEDUS,CAMRON
SUB OUT: 5 RODRIGUEZ,ELVIN	08:05	25-21	
SUB IN: 2 DEMBLEY,PAT	08:05		
SUB OUT: 25 RIVERA,ADAM	08:05		
SUB IN: 15 CARLISLE,DONOVEN	08:05		
SUB OUT: 2 DEMBLEY,PAT	06:30	28-23	
SUB IN: 5 RODRIGUEZ,ELVIN	06:30		
SUB OUT: 10 HERNANDEZ,ISAAC	05:27	28-25	
SUB IN: 2 DEMBLEY,PAT	05:27		
	04:59	29-27	SUB OUT: REEDUS,CAMRON
	04:59		SUB IN: EDWARDS,BURONE
SUB OUT: 15 CARLISLE,DONOVEN	04:59		
SUB IN: 13 WASHINGTON,MILES	04:59		
SUB OUT: 34 SANOE,MINFEKE	04:13	30-28	
SUB IN: 15 CARLISLE,DONOVEN	04:13		
	02:09	32-29	SUB OUT: PETTWAY,MARCEL
	02:09		SUB IN: YAHAYA,SALISU
SUB OUT: 2 DEMBLEY,PAT	02:02	32-29	
SUB IN: 10 HERNANDEZ,ISAAC	02:02		
SUB OUT: 5 RODRIGUEZ,ELVIN	00:36	34-30	
SUB IN: 3 JONES,FERMANDEZ	00:36		

Official Substitutions Log
Tex. Permian Basin vs Angelo St.
Period 2
January 02, 2020 at Junell Center/Stephens Arena - San Angelo



VISITORS: Tex. Permian Basin	Time	Score	HOME: Angelo St.
2 DEMBLEY, PAT			3 HAYES, JEREMY
11 NEWSOME, CARSON			10 WILLIAMS, PAUL
13 WASHINGTON, MILES			11 IBARGUEN, ANDRES
15 CARLISLE, DONOVEN			12 PETTWAY, MARCEL
25 RIVERA, ADAM			23 TURNER, COLLIN
	20:00	-	SUB OUT: EDWARDS, BURONE
	20:00		SUB OUT: YAHAYA, SALISU
	20:00		SUB IN: HAYES, JEREMY
	20:00		SUB IN: PETTWAY, MARCEL
SUB OUT: 3 JONES, FERNANDEZ	20:00		
SUB OUT: 10 HERNANDEZ, ISAAC	20:00		
SUB IN: 2 DEMBLEY, PAT	20:00		
SUB IN: 25 RIVERA, ADAM	20:00		
SUB OUT: 13 WASHINGTON, MILES	17:34	34-39	
SUB IN: 34 SANOE, MINFEKE	17:34		
SUB OUT: 15 CARLISLE, DONOVEN	16:56	34-39	
SUB IN: 5 RODRIGUEZ, ELVIN	16:56		
SUB OUT: 11 NEWSOME, CARSON	14:13	39-41	
SUB IN: 15 CARLISLE, DONOVEN	14:13		
	13:38	40-44	SUB OUT: TURNER, COLLIN
	13:38		SUB IN: REEDUS, CAMRON
SUB OUT: 25 RIVERA, ADAM	13:38		
SUB IN: 00 ANDERSON, MALIK	13:38		
	12:42	43-46	SUB OUT: WILLIAMS, PAUL
	12:42		SUB OUT: PETTWAY, MARCEL
	12:42		SUB IN: EDWARDS, BURONE
	12:42		SUB IN: YAHAYA, SALISU
SUB OUT: 34 SANOE, MINFEKE	12:42		
SUB IN: 11 NEWSOME, CARSON	12:42		
	12:42		SUB OUT: IBARGUEN, ANDRES
	12:42		SUB IN: WILLIAMS, PAUL
	10:57	50-52	SUB OUT: WILLIAMS, PAUL
	10:57		SUB OUT: YAHAYA, SALISU
	10:57		SUB IN: IBARGUEN, ANDRES
	10:57		SUB IN: TURNER, COLLIN
SUB OUT: 5 RODRIGUEZ, ELVIN	08:54	54-60	
SUB OUT: 11 NEWSOME, CARSON	08:54		
SUB IN: 10 HERNANDEZ, ISAAC	08:54		
SUB IN: 25 RIVERA, ADAM	08:54		
SUB OUT: 15 CARLISLE, DONOVEN	08:41	54-61	
SUB IN: 13 WASHINGTON, MILES	08:41		
SUB OUT: 13 WASHINGTON, MILES	07:15	61-63	
SUB IN: 11 NEWSOME, CARSON	07:15		
	07:06	63-64	SUB OUT: EDWARDS, BURONE
	07:06		SUB IN: PETTWAY, MARCEL
	05:43	66-67	SUB OUT: REEDUS, CAMRON
	05:43		SUB IN: WILLIAMS, PAUL
SUB OUT: 10 HERNANDEZ, ISAAC	05:43		
SUB OUT: 25 RIVERA, ADAM	05:43		
SUB IN: 5 RODRIGUEZ, ELVIN	05:43		
SUB IN: 15 CARLISLE, DONOVEN	05:43		
SUB OUT: 00 ANDERSON, MALIK	03:53	66-75	
SUB IN: 25 RIVERA, ADAM	03:53		
SUB OUT: 15 CARLISLE, DONOVEN	02:35	67-75	
SUB IN: 00 ANDERSON, MALIK	02:35		
	02:32	68-77	SUB OUT: PETTWAY, MARCEL
	02:32		SUB IN: EDWARDS, BURONE
	01:16	68-80	SUB OUT: IBARGUEN, ANDRES
	01:16		SUB IN: PETTWAY, MARCEL
SUB OUT: 5 RODRIGUEZ, ELVIN	00:30	73-84	
SUB IN: 10 HERNANDEZ, ISAAC	00:30		

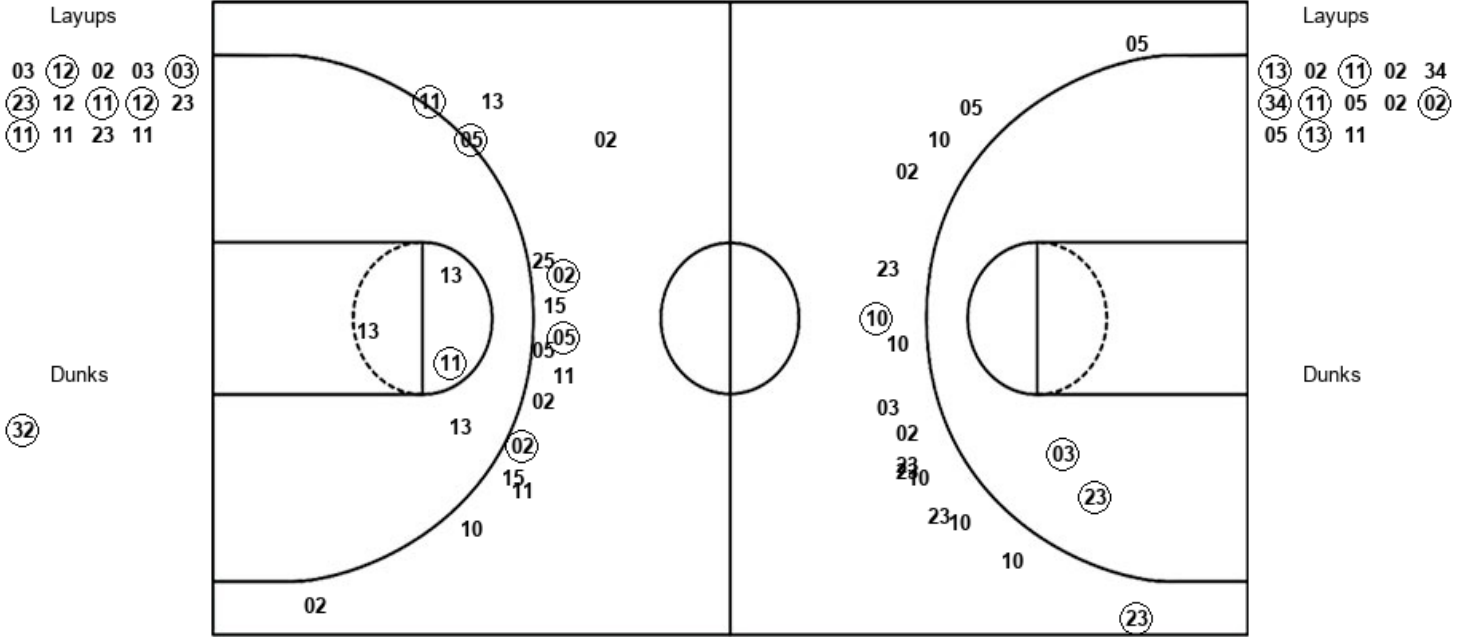
Tex. Permian Basin 77, Angelo St. 85

Official Shot Chart
Tex. Permian Basin vs Angelo St.
PERIOD 1 Shots
 January 02, 2020 at Junell Center/Stephens Arena - San Angelo



Angelo St.

Tex. Permian Basin



ASU : Period 1	Made	Att	Pct
Layups	6	14	42.9
Dunks	1	1	100.0
2PT Field Goals	9	17	52.9
3PT Field Goals	2	16	12.5
Total Field Goals	11	33	33.3

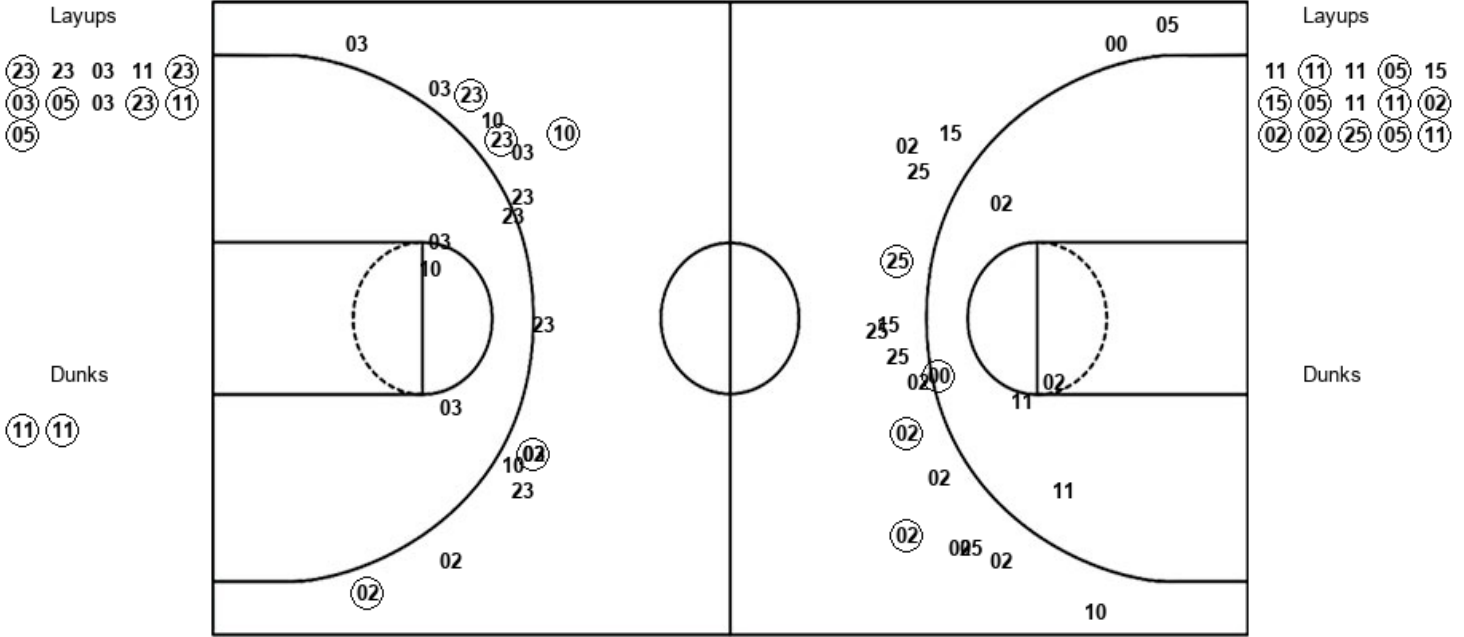
UTP : Period 1	Made	Att	Pct
Layups	6	13	46.2
Dunks	0	0	0
2PT Field Goals	7	17	41.2
3PT Field Goals	5	16	31.3
Total Field Goals	12	33	36.4

Official Shot Chart
Tex. Permian Basin vs Angelo St.
PERIOD 2 Shots
 January 02, 2020 at Junell Center/Stephens Arena - San Angelo



Angelo St.

Tex. Permian Basin



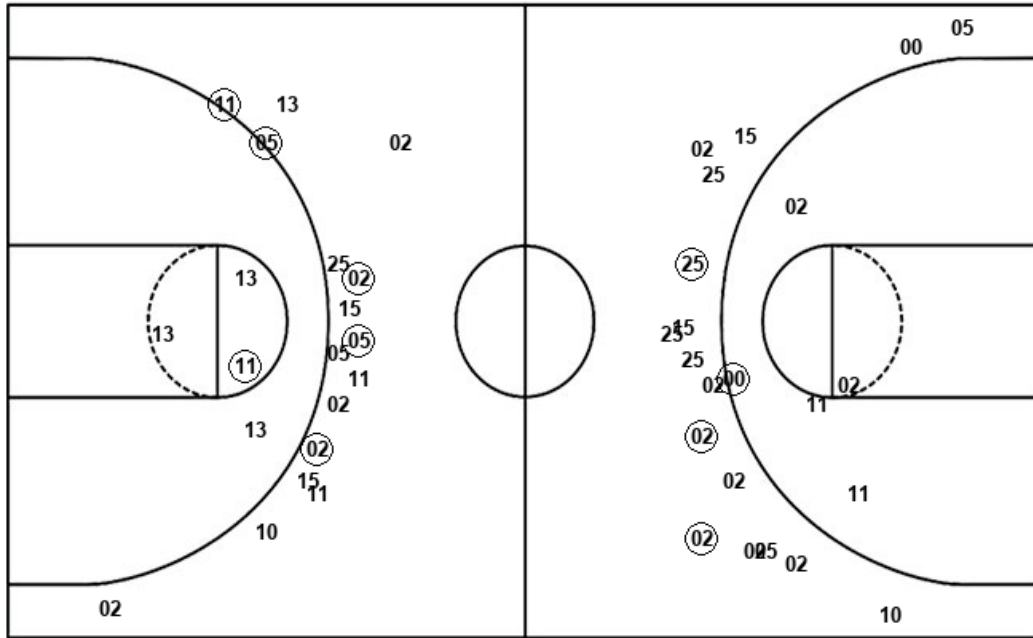
ASU : Period 2	Made	Att	Pct
Layups	7	11	63.6
Dunks	2	2	100.0
2PT Field Goals	9	16	56.3
3PT Field Goals	5	16	31.3
Total Field Goals	14	32	43.8

UTP : Period 2	Made	Att	Pct
Layups	11	15	73.3
Dunks	0	0	0
2PT Field Goals	12	20	60.0
3PT Field Goals	3	17	17.6
Total Field Goals	15	37	40.5

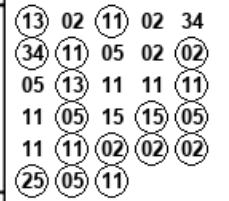
Official Shot Chart
Tex. Permian Basin vs Angelo St.
 Tex. Permian Basin Team Shots
 January 02, 2020 at Junell Center/Stephens Arena - San Angelo



Layups



Layups



Dunks

Dunks

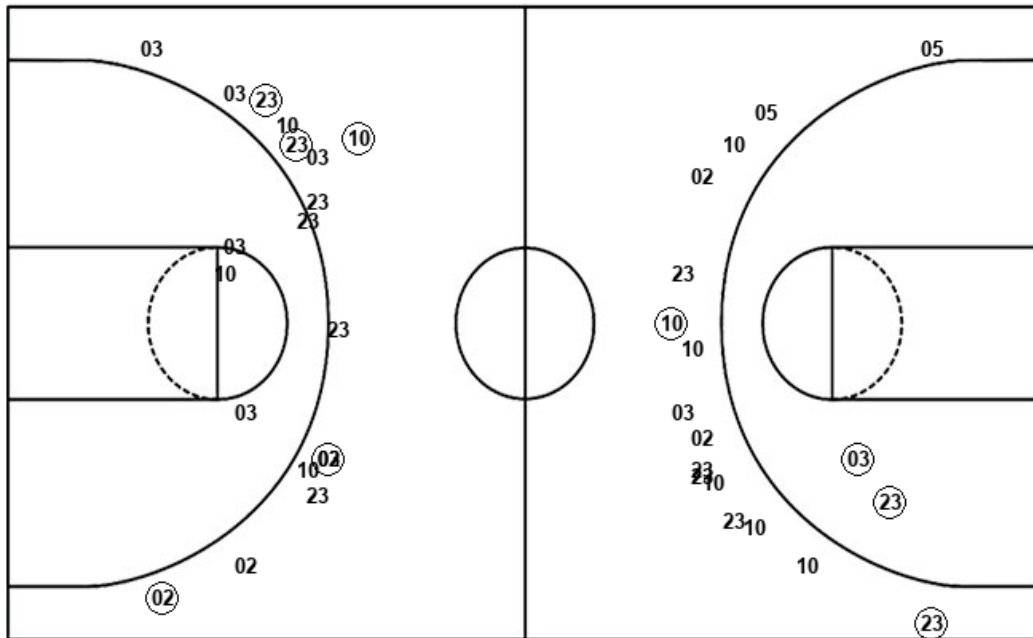
UTP : Period 1	Made	Att	Pct
Layups	6	13	46.2
Dunks	0	0	0
2PT Field Goals	7	17	41.2
3PT Field Goals	5	16	31.3
Total Field Goals	12	33	36.4

UTP : Period 2	Made	Att	Pct
Layups	11	15	73.3
Dunks	0	0	0
2PT Field Goals	12	20	60.0
3PT Field Goals	3	17	17.6
Total Field Goals	15	37	40.5

Official Shot Chart
Tex. Permian Basin vs Angelo St.
Angelo St. Team Shots
 January 02, 2020 at Junell Center/Stephens Arena - San Angelo



Layups



Layups

- 03 (12) 02 03 (03)
- (23) 12 (11) (12) 23
- (11) 11 23 11 (23)
- 23 03 11 (23) (03)
- (05) 03 (23) (11) (05)

Dunks

Dunks

- (32) (11) (11)

ASU : Period 1	Made	Att	Pct
Layups	6	14	42.9
Dunks	1	1	100.0
2PT Field Goals	9	17	52.9
3PT Field Goals	2	16	12.5
Total Field Goals	11	33	33.3

ASU : Period 2	Made	Att	Pct
Layups	7	11	63.6
Dunks	2	2	100.0
2PT Field Goals	9	16	56.3
3PT Field Goals	5	16	31.3
Total Field Goals	14	32	43.8