

FINAL SCORE

Eastern N.M.

76



St. Mary's (TX)

69



December 13, 2019 • Bill Greehey Arena

FINAL STATISTICS

Official Box Score
Eastern N.M. vs St. Mary's (TX)
Game Totals -- Final Statistics
December 13, 2019 at Bill Greehey Arena



Eastern N.M. 76

No.	Player	S	Pts	FG	3FG	FT	OR	DR	TR	PF	A	TO	Blk	Stl	Min	+/-
05	MURPHY, ISAIAH	G	2	0-7	0-4	2-3	1	1	2	3	0	4	0	0	31	14
10	PULLUM, DEVIN	G	23	8-13	2-2	5-6	0	3	3	2	1	2	0	3	26	12
20	KUANY, DENG	F	11	3-8	1-2	4-6	5	1	6	3	0	1	1	0	22	3
21	ZAID, IBN	G	8	2-9	0-3	4-6	0	3	3	2	3	3	0	4	29	18
24	COBAS, YOSNIER	F	9	3-5	0-0	3-3	6	7	13	2	2	3	2	1	27	11
00	SERRANO, JOSE	G	6	2-5	0-2	2-3	2	5	7	3	1	2	0	0	12	1
01	MEADOWS, BRANDON	G	0	0-1	0-0	0-0	0	0	0	0	0	0	0	0	2	-2
02	SHERROD, GARRICK	G	6	3-5	0-0	0-0	1	0	1	1	1	1	0	1	9	-9
04	SAWYER, DARIUS	G	2	1-2	0-0	0-0	0	1	1	1	0	1	1	1	13	-10
14	MAPAGA, MARVIN	F	9	4-8	0-0	1-2	2	0	2	4	0	0	0	0	13	1
25	MAZIQUE, MATHEW	F	0	0-2	0-1	0-0	1	1	2	1	0	2	1	1	16	-4
TEAM							2	1	3	0		0				
TOTALS			76	26-65	3-14	21-29	20	23	43	22	8	19	5	11	200	

Shooting By Period

Period	FG	FG%	3FG	3FG%	FT	FT%
1st Half	13-35	37%	1-7	14%	8-10	80%
2nd Half	13-30	43%	2-7	29%	13-19	68%
Game	26-65	40.0%	3-14	21.4%	21-29	72.4%

Last FG: 2nd-02:35
 Largest lead: By 15 at
 Technical Fouls: None.

St. Mary's (TX) 69

No.	Player	S	Pts	FG	3FG	FT	OR	DR	TR	PF	A	TO	Blk	Stl	Min	+/-
01	JORDAN, CALEB	G	14	6-14	0-4	2-5	1	3	4	5	5	2	0	1	39	-5
04	HOUSTON, MARKQUES	G	18	5-12	4-9	4-6	0	3	3	2	2	1	0	3	38	-6
15	MAGEE, KOBE	G	7	3-11	1-9	0-0	1	5	6	0	6	6	0	3	40	-7
32	EWUZIE, EMMANUEL	F	2	1-3	0-0	0-1	3	4	7	3	1	2	0	0	18	1
40	GASPERT, MATEJ	F	10	4-7	0-1	2-4	4	3	7	3	0	5	1	0	26	4
02	WESLEY, CURTLON	F	10	3-4	0-0	4-4	2	2	4	5	0	4	0	1	18	-9
12	PRESLEY, JARON	G	3	1-1	1-1	0-0	0	0	0	3	0	1	0	0	3	-3
21	ISENHOWER, DYLAN	G	5	1-5	0-1	3-4	2	2	4	3	0	3	0	1	18	-10
TEAM							2	1	3	0		0				
TOTALS			69	24-57	6-25	15-24	15	23	38	24	14	24	1	9	200	

Shooting By Period

Period	FG	FG%	3FG	3FG%	FT	FT%
1st Half	11-30	37%	1-12	08%	5-11	45%
2nd Half	13-27	48%	5-13	38%	10-13	77%
Game	24-57	42.1%	6-25	24.0%	15-24	62.5%

Last FG: 2nd-00:39
 Largest lead: By 2 at
 Technical Fouls: None.

Game Notes:

Officials:
 Attendance: 147

Start Time: 01:30 AM
 Conference Game;

Score	1st	2nd	TOT
ENMU	35	41	76
StMU	28	41	69

ENMU led for 36:27. StMU led for 0:16.
 Game was tied for 0:0.
 Times tied: 0 Lead Changes: 0

Points from	ENMU	StMU
In the Paint	42	32
Off Turns	22	23
2nd Chance	12	11
Fast Break	25	16
Bench	23	18

Official Box Score
Eastern N.M. vs St. Mary's (TX)
First Half Statistics Only
December 13, 2019 at Bill Greehey Arena



Eastern N.M. 35

No.	Player	S	Pts	FG	3FG	FT	OR	DR	TR	PF	A	TO	Blk	Stl	Min
05	MURPHY, ISAIAH	G	0	0-4	0-2	0-0	1	0	1	2	0	2	0	0	15
10	PULLUM, DEVIN	G	7	3-4	1-1	0-0	0	3	3	2	1	1	0	2	9
20	KUANY, DENG	F	5	1-6	0-1	3-4	5	0	5	2	0	0	1	0	12
21	ZAID, IBN	G	3	1-7	0-2	1-1	0	0	0	1	1	1	0	0	15
24	COBAS, YOSNIER	F	6	2-3	0-0	2-2	3	3	6	0	1	1	1	1	15
00	SERRANO, JOSE	G	6	2-4	0-1	2-3	2	5	7	2	1	2	0	0	9
01	MEADOWS, BRANDON	G	0	0-1	0-0	0-0	0	0	0	0	0	0	0	0	2
02	SHERROD, GARRICK	G	4	2-3	0-0	0-0	0	0	0	0	0	0	0	1	4
04	SAWYER, DARIUS	G	0	0-0	0-0	0-0	0	0	0	1	0	1	0	1	9
14	MAPAGA, MARVIN	F	4	2-3	0-0	0-0	0	0	0	2	0	0	0	0	6
25	MAZIQUE, MATHEW	F	0	0-0	0-0	0-0	0	0	0	0	0	2	1	1	5
	TEAM			0-0			1	1	2	0		0			
TOTALS			35	13-35	1-7	8-10	12	12	24	12	4	10	3	6	100

Shooting By Period

Period	FG	FG%	3FG	3FG%	FT	FT%
1st Half	13-35	37%	1-7	14%	8-10	80%
Game	26-65	40.0%	3-14	21.4%	21-29	72.4%

Last FG Half: ENMU 2nd-02:35

St. Mary's (TX) 28

No.	Player	S	Pts	FG	3FG	FT	OR	DR	TR	PF	A	TO	Blk	Stl	Min
01	JORDAN, CALEB	G	5	2-7	0-2	1-3	1	2	3	0	2	1	0	0	20
04	HOUSTON, MARKQUES	G	5	1-5	1-4	2-4	0	1	1	1	2	0	0	1	18
15	MAGEE, KOBE	G	2	1-6	0-5	0-0	1	3	4	0	2	3	0	2	20
32	EWUZIE, EMMANUEL	F	2	1-2	0-0	0-0	2	0	2	2	1	1	0	0	10
40	GASPERT, MATEJ	F	8	3-4	0-0	2-4	3	1	4	2	0	3	0	0	11
02	WESLEY, CURTLON	F	6	3-3	0-0	0-0	0	2	2	2	0	1	0	0	9
12	PRESLEY, JARON	G	0	0-0	0-0	0-0	0	0	0	1	0	1	0	0	3
21	ISENHOWER, DYLAN	G	0	0-3	0-1	0-0	1	1	2	1	0	2	0	0	10
	TEAM			0-0			2	0	2	0		0			
TOTALS			28	11-30	1-12	5-11	10	10	20	9	7	12	0	3	100

Shooting By Period

Period	FG	FG%	3FG	3FG%	FT	FT%
1st Half	11-30	37%	1-12	08%	5-11	45%
Game	24-57	42.1%	6-25	24.0%	15-24	62.5%

Last FG Half: StMU 2nd-00:39

Game Notes:

Officials:
Attendance: 147

Start Time: 01:30 AM
Conference Game;

Score	1st	2nd	TOT
ENMU	35	41	76
StMU	28	41	69

Points from (This Period)	ENMU	StMU
In the Paint	22	18
Off Turns	10	12
2nd Chance	9	5
Fast Break	9	8
Bench	14	6

Official Play-By-Play
Eastern N.M. vs St. Mary's (TX)
First Half
December 13, 2019 at Bill Greehey Arena



Period 1

Starters:

Eastern N.M.: 5 MURPHY, ISAIAH (G); 10 PULLUM, DEVIN (G); 20 KUANY , DENG (F); 21 ZAID, IBN (G); 24 COBAS, YOSNIER (F);

St. Mary's (TX): 1 JORDAN, CALEB (G); 4 HOUSTON, MARKQUES (G); 15 MAGEE, KOBE (G); 32 EWUZIE, EMMANUEL (F); 40 GASPert, MATEJ (F);

Time	VISITORS: Eastern N.M.	Score	Margin	HOME: St. Mary's (TX)
19:51				TURNOVER by GASPert, MATEJ
19:51	STEAL by PULLUM, DEVIN			
19:44				FOUL by GASPert, MATEJ
19:44	GOOD! FT by KUANY , DENG [FB]	0-1	V 1	
19:44	GOOD! FT by KUANY , DENG [FB]	0-2	V 2	
19:21		2-2	T	GOOD! LAYUP by GASPert, MATEJ
19:21				ASSIST by EWUZIE, EMMANUEL
19:11	MISSED JUMPER by ZAID, IBN [PNT]			
19:11	REBOUND (OFF) by TEAM			
19:11				SUB OUT: GASPert, MATEJ
19:11				SUB IN: WESLEY, CURTLON
19:03	MISSED 3PTR by MURPHY, ISAIAH			
19:03				REBOUND (DEF) by JORDAN, CALEB
19:03	FOUL by ZAID, IBN			
18:49				TURNOVER by WESLEY, CURTLON
18:41	MISSED LAYUP by ZAID, IBN			
18:34	REBOUND (OFF) by KUANY , DENG			
18:34	MISSED LAYUP by KUANY , DENG			
18:33				REBOUND (DEF) by WESLEY, CURTLON
18:29				MISSED 3PTR by MAGEE, KOBE
18:23	REBOUND (DEF) by TEAM			
18:23	GOOD! JUMPER by PULLUM, DEVIN	2-4	V 2	
17:41		4-4	T	GOOD! JUMPER by MAGEE, KOBE
17:41				ASSIST by JORDAN, CALEB
17:21	MISSED LAYUP by KUANY , DENG			
17:14	REBOUND (OFF) by COBAS, YOSNIER			
17:14	MISSED LAYUP by COBAS, YOSNIER			
17:11	REBOUND (OFF) by COBAS, YOSNIER			
17:11	GOOD! LAYUP by COBAS, YOSNIER	4-6	V 2	
17:03				TURNOVER by JORDAN, CALEB
16:49				FOUL by WESLEY, CURTLON
16:49	SUB OUT: KUANY , DENG			
16:49	SUB OUT: ZAID, IBN			
16:49	SUB OUT: COBAS, YOSNIER			
16:49	SUB IN: SHERROD, GARRICK			
16:49	SUB IN: MAPAGA, MARVIN			
16:49	SUB IN: MAZIQUE, MATHEW			
16:43	MISSED JUMPER by MAPAGA, MARVIN			
16:40				REBOUND (DEF) by JORDAN, CALEB
16:32		6-6	T	GOOD! LAYUP by WESLEY, CURTLON
16:32				ASSIST by JORDAN, CALEB
16:27	TURNOVER by MAZIQUE, MATHEW			
16:27				STEAL by MAGEE, KOBE
16:16		8-6	H 2	GOOD! LAYUP by WESLEY, CURTLON
16:16				ASSIST by MAGEE, KOBE
16:00	GOOD! JUMPER by SHERROD, GARRICK [PNT]	8-8	T	
15:48				MISSED 3PTR by HOUSTON, MARKQUES
15:44	REBOUND (DEF) by PULLUM, DEVIN			
15:40	GOOD! LAYUP by MAPAGA, MARVIN [FB]	8-10	V 2	
15:40	ASSIST by PULLUM, DEVIN			
15:30	FOUL by PULLUM, DEVIN			
15:30	TIMEOUT MEDIA			
15:30				SUB OUT: WESLEY, CURTLON
15:30				SUB IN: GASPert, MATEJ
15:30	SUB OUT: MURPHY, ISAIAH			
15:30	SUB OUT: PULLUM, DEVIN			
15:30	SUB IN: SERRANO, JOSE			
15:30	SUB IN: SAWYER, DARIUS			
15:28	FOUL by SERRANO, JOSE			
15:18				MISSED 3PTR by JORDAN, CALEB
15:14				REBOUND (OFF) by EWUZIE, EMMANUEL
15:14				MISSED LAYUP by EWUZIE, EMMANUEL
15:14	BLOCK by MAZIQUE, MATHEW			
15:14				REBOUND (OFF) by TEAM
15:02				MISSED JUMPER by JORDAN, CALEB
14:59	REBOUND (DEF) by SERRANO, JOSE			
14:48	TURNOVER by SAWYER, DARIUS			
14:36				MISSED 3PTR by MAGEE, KOBE
14:32				REBOUND (OFF) by GASPert, MATEJ
14:20		10-10	T	GOOD! LAYUP by EWUZIE, EMMANUEL

Time	VISITORS: Eastern N.M.	Score	Margin	HOME: St. Mary's (TX)
14:20				ASSIST by HOUSTON, MARKQUES
14:01				FOUL by HOUSTON, MARKQUES [PNT]
14:01				SUB OUT: HOUSTON, MARKQUES
14:01				SUB IN: PRESLEY, JARON
14:01	SUB OUT: MAPAGA, MARVIN			
14:01	SUB OUT: MAZIQUE, MATHEW			
14:01	SUB IN: KUANY , DENG			
14:01	SUB IN: COBAS, YOSNIER			
13:55	GOOD! by KUANY , DENG [PNT]	10-12	V 2	
13:43				TURNOVER by MAGEE, KOBE
13:43	STEAL by SHERROD, GARRICK			
13:38	GOOD! LAYUP by SHERROD, GARRICK [FB]	10-14	V 4	
13:38	ASSIST by SERRANO, JOSE			
13:28				MISSED JUMPER by JORDAN, CALEB [PNT]
13:28	BLOCK by KUANY , DENG			
13:23	REBOUND (DEF) by COBAS, YOSNIER			
13:23	TURNOVER by SERRANO, JOSE			
13:23	SUB OUT: SHERROD, GARRICK			
13:23	SUB IN: ZAID, IBN			
13:23				SUB OUT: EWUZIE, EMMANUEL
13:23				SUB IN: ISENHOWER, DYLAN
12:58		12-14	V 2	GOOD! by GASPERT, MATEJ [PNT]
12:40	TURNOVER by SERRANO, JOSE			
12:35		14-14	T	GOOD! LAYUP by JORDAN, CALEB [FB]
12:18	MISSED 3PTR by ZAID, IBN			
12:14	REBOUND (OFF) by SERRANO, JOSE			
12:14				FOUL by PRESLEY, JARON [PNT]
12:14	MISSED FT by SERRANO, JOSE			
12:14	REBOUND (DEADB) by TEAM			
12:14	GOOD! FT by SERRANO, JOSE	14-15	V 1	
12:14	SUB OUT: SERRANO, JOSE			
12:14	SUB IN: PULLUM, DEVIN			
11:52				MISSED 3PTR by MAGEE, KOBE
11:49				REBOUND (OFF) by JORDAN, CALEB
11:38				MISSED by GASPERT, MATEJ [PNT]
11:35	REBOUND (DEF) by PULLUM, DEVIN			
11:31	MISSED LAYUP by PULLUM, DEVIN [PNT]			
11:28				REBOUND (DEF) by GASPERT, MATEJ
11:26				TURNOVER by PRESLEY, JARON
11:26	TIMEOUT MEDIA			
11:26				SUB OUT: PRESLEY, JARON
11:26				SUB IN: HOUSTON, MARKQUES
11:26	SUB OUT: SAWYER, DARIUS			
11:26	SUB OUT: KUANY , DENG			
11:26	SUB OUT: COBAS, YOSNIER			
11:26	SUB IN: MURPHY, ISAIAH			
11:26	SUB IN: MAZIQUE, MATHEW			
11:26	SUB IN: MAPAGA, MARVIN			
11:13	MISSED JUMPER by ZAID, IBN			
11:08				REBOUND (DEF) by HOUSTON, MARKQUES
11:00	FOUL by MAPAGA, MARVIN [PNT]			
10:52				TURNOVER by GASPERT, MATEJ
10:52	STEAL by MAZIQUE, MATHEW			
10:49	TURNOVER by MAZIQUE, MATHEW			
10:46				SUB OUT: GASPERT, MATEJ
10:46				SUB IN: WESLEY, CURTLON
10:40				FOUL by ISENHOWER, DYLAN
10:40				TURNOVER by ISENHOWER, DYLAN
10:15	TURNOVER by PULLUM, DEVIN [PNT]			
10:01				MISSED 3PTR by HOUSTON, MARKQUES
09:58				REBOUND (OFF) by TEAM
09:42	FOUL by MURPHY, ISAIAH			
09:41				MISSED FT by HOUSTON, MARKQUES
09:41				REBOUND (DEADB) by TEAM
09:41		15-15	T	GOOD! FT by HOUSTON, MARKQUES
09:30	GOOD! JUMPER by MAPAGA, MARVIN [PNT]	15-17	V 2	
09:30	ASSIST by ZAID, IBN			
09:13				TURNOVER by ISENHOWER, DYLAN
09:13	STEAL by PULLUM, DEVIN			
09:09	GOOD! 3PTR by PULLUM, DEVIN [FB]	15-20	V 5	
08:54	FOUL by PULLUM, DEVIN			
08:54	SUB OUT: PULLUM, DEVIN			
08:54	SUB OUT: MAPAGA, MARVIN			
08:54	SUB OUT: MAZIQUE, MATHEW			
08:54	SUB IN: SERRANO, JOSE			
08:54	SUB IN: KUANY , DENG			
08:54	SUB IN: COBAS, YOSNIER			
08:52				TURNOVER by MAGEE, KOBE
08:43	MISSED 3PTR by SERRANO, JOSE			
08:39	REBOUND (OFF) by COBAS, YOSNIER			

Time	VISITORS: Eastern N.M.	Score	Margin	HOME: St. Mary's (TX)
08:39	GOOD! LAYUP by SERRANO, JOSE	15-22	V 7	
08:39	ASSIST by COBAS, YOSNIER			
08:39				FOUL by WESLEY, CURTLON
08:39				SUB OUT: ISENHOWER, DYLAN
08:39				SUB IN: EWUZIE, EMMANUEL
08:39	GOOD! FT by SERRANO, JOSE	15-23	V 8	
08:24	FOUL by SERRANO, JOSE			
08:23				MISSED FT by JORDAN, CALEB
08:21	REBOUND (DEF) by COBAS, YOSNIER			
08:05	MISSED JUMPER by MURPHY, ISAIAH			
08:01				REBOUND (DEF) by MAGEE, KOBE
07:51		17-23	V 6	GOOD! DUNK by WESLEY, CURTLON
07:51				ASSIST by HOUSTON, MARKQUES
07:23	GOOD! by COBAS, YOSNIER	17-25	V 8	
07:07				MISSED 3PTR by HOUSTON, MARKQUES
07:03	REBOUND (DEF) by SERRANO, JOSE			
06:45	MISSED JUMPER by ZAID, IBN			
06:40	REBOUND (OFF) by KUANY , DENG			
06:29	MISSED 3PTR by ZAID, IBN			
06:27	REBOUND (OFF) by KUANY , DENG			
06:27	MISSED LAYUP by KUANY , DENG			
06:27	REBOUND (OFF) by KUANY , DENG			
06:27				FOUL by EWUZIE, EMMANUEL [PNT]
06:27	TIMEOUT MEDIA			
06:27	SUB OUT: ZAID, IBN			
06:27	SUB IN: SAWYER, DARIUS			
06:27	MISSED FT by KUANY , DENG			
06:27	REBOUND (DEADB) by TEAM			
06:27	GOOD! FT by KUANY , DENG	17-26	V 9	
06:08				MISSED 3PTR by MAGEE, KOBE
06:03				REBOUND (OFF) by EWUZIE, EMMANUEL
06:02				TURNOVER by EWUZIE, EMMANUEL
06:02	STEAL by SAWYER, DARIUS			
05:45	MISSED 3PTR by KUANY , DENG			
05:41				REBOUND (DEF) by MAGEE, KOBE
05:35				TURNOVER by MAGEE, KOBE
05:35	STEAL by COBAS, YOSNIER			
05:29	MISSED LAYUP by SHERROD, GARRICK [PNT]			
05:29	SUB OUT: SERRANO, JOSE			
05:29	SUB IN: SHERROD, GARRICK			
05:19	REBOUND (OFF) by KUANY , DENG			
05:19	MISSED LAYUP by KUANY , DENG			
05:19				REBOUND (DEF) by WESLEY, CURTLON
05:19	FOUL by SAWYER, DARIUS [PNT]			
05:19		18-26	V 8	GOOD! FT by HOUSTON, MARKQUES [FB]
05:19				SUB OUT: WESLEY, CURTLON
05:19				SUB IN: GASPERT, MATEJ
05:19	SUB OUT: SHERROD, GARRICK			
05:19	SUB IN: SERRANO, JOSE			
05:18				MISSED FT by HOUSTON, MARKQUES [FB]
05:16				REBOUND (OFF) by GASPERT, MATEJ
05:01		20-26	V 6	GOOD! by GASPERT, MATEJ [PNT]
04:47				FOUL by EWUZIE, EMMANUEL [PNT]
04:47				SUB OUT: EWUZIE, EMMANUEL
04:47				SUB IN: ISENHOWER, DYLAN
04:47	SUB OUT: SERRANO, JOSE			
04:47	SUB OUT: SAWYER, DARIUS			
04:47	SUB OUT: KUANY , DENG			
04:47	SUB IN: MEADOWS, BRANDON			
04:47	SUB IN: MAPAGA, MARVIN			
04:47	SUB IN: ZAID, IBN			
04:47	GOOD! FT by COBAS, YOSNIER	20-27	V 7	
04:47	GOOD! FT by COBAS, YOSNIER	20-28	V 8	
04:35				TURNOVER by GASPERT, MATEJ [PNT]
04:21	MISSED 3PTR by MURPHY, ISAIAH			
04:18				REBOUND (DEF) by ISENHOWER, DYLAN
04:12	FOUL by MAPAGA, MARVIN			
04:12				MISSED FT by JORDAN, CALEB
04:12				REBOUND (DEADB) by TEAM
04:12	SUB OUT: MAPAGA, MARVIN			
04:12	SUB IN: KUANY , DENG			
04:12		21-28	V 7	GOOD! FT by JORDAN, CALEB
03:48	TIMEOUT MEDIA			
03:36	TURNOVER by ZAID, IBN			
03:36				STEAL by MAGEE, KOBE
03:30		23-28	V 5	GOOD! LAYUP by JORDAN, CALEB [FB]
03:18	MISSED JUMPER by MEADOWS, BRANDON			
03:13	REBOUND (OFF) by MURPHY, ISAIAH			
03:12	FOUL by MURPHY, ISAIAH			
03:12	TURNOVER by MURPHY, ISAIAH			

Time	VISITORS: Eastern N.M.	Score	Margin	HOME: St. Mary's (TX)
02:55	FOUL by KUANY , DENG [PNT]			
02:55				MISSED FT by GASPERT, MATEJ
02:55				REBOUND (DEADB) by TEAM
02:55	SUB OUT: MURPHY, ISAIAH			
02:55	SUB IN: SAWYER, DARIUS			
02:55		24-28	V 4	GOOD! FT by GASPERT, MATEJ
02:55	SUB OUT: MEADOWS, BRANDON			
02:55	SUB IN: PULLUM, DEVIN			
02:39	TURNOVER by COBAS, YOSNIER [PNT]			
02:39				STEAL by HOUSTON, MARKQUES
02:32				MISSED LAYUP by JORDAN, CALEB [PNT]
02:32	BLOCK by COBAS, YOSNIER			
02:27	REBOUND (DEF) by PULLUM, DEVIN			
02:24	GOOD! LAYUP by PULLUM, DEVIN [PNT]	24-30	V 6	
02:07	FOUL by KUANY , DENG			
02:07		25-30	V 5	GOOD! FT by GASPERT, MATEJ
02:07	SUB OUT: KUANY , DENG			
02:07	SUB IN: SERRANO, JOSE			
02:05				MISSED FT by GASPERT, MATEJ
02:02				REBOUND (OFF) by ISENHOWER, DYLAN
02:02				MISSED LAYUP by ISENHOWER, DYLAN
02:00	REBOUND (DEF) by SERRANO, JOSE			
01:52	GOOD! LAYUP by ZAID, IBN	25-32	V 7	
01:52				FOUL by GASPERT, MATEJ
01:52	GOOD! FT by ZAID, IBN	25-33	V 8	
01:52	SUB OUT: PULLUM, DEVIN			
01:52	SUB IN: MURPHY, ISAIAH			
01:41				MISSED 3PTR by ISENHOWER, DYLAN
01:36				REBOUND (OFF) by GASPERT, MATEJ
01:32				MISSED JUMPER by ISENHOWER, DYLAN
01:29	REBOUND (DEF) by SERRANO, JOSE			
01:14	TURNOVER by MURPHY, ISAIAH			
00:56				MISSED 3PTR by JORDAN, CALEB
00:50	REBOUND (DEF) by SERRANO, JOSE			
00:48	MISSED LAYUP by MURPHY, ISAIAH			
00:42	REBOUND (OFF) by SERRANO, JOSE			
00:42	GOOD! LAYUP by SERRANO, JOSE	25-35	V 10	
00:27				MISSED JUMPER by HOUSTON, MARKQUES
00:20				REBOUND (OFF) by MAGEE, KOBE
00:18				MISSED 3PTR by MAGEE, KOBE
00:14	REBOUND (DEF) by COBAS, YOSNIER			
00:06	MISSED JUMPER by SERRANO, JOSE			
00:02				REBOUND (DEF) by MAGEE, KOBE
00:00		28-35	V 7	GOOD! 3PTR by HOUSTON, MARKQUES [FB]
00:00				ASSIST by MAGEE, KOBE

Eastern N.M. 35, St. Mary's (TX) 28

Points from (This Period)	ENMU	StMU
In the Paint	22	18
Off Turns	10	12
2nd Chance	9	5
Fast Break	9	8
Bench	14	6

Official Box Score
Eastern N.M. vs St. Mary's (TX)
Second Half Statistics Only
December 13, 2019 at Bill Greehey Arena



Eastern N.M. 41

No.	Player	S	Pts	FG	3FG	FT	OR	DR	TR	PF	A	TO	Blk	Stl	Min
05	MURPHY, ISAIAH	G	2	0-3	0-2	2-3	0	1	1	1	0	2	0	0	16
10	PULLUM, DEVIN	G	16	5-9	1-1	5-6	0	0	0	0	0	1	0	1	17
20	KUANY, DENG	F	6	2-2	1-1	1-2	0	1	1	1	0	1	0	0	10
21	ZAID, IBN	G	5	1-2	0-1	3-5	0	3	3	1	2	2	0	4	15
24	COBAS, YOSNIER	F	3	1-2	0-0	1-1	3	4	7	2	1	2	1	0	12
00	SERRANO, JOSE	G	0	0-1	0-1	0-0	0	0	0	1	0	0	0	0	3
01	MEADOWS, BRANDON	G	0	0-0	0-0	0-0	0	0	0	0	0	0	0	0	0
02	SHERROD, GARRICK	G	2	1-2	0-0	0-0	1	0	1	1	1	1	0	0	5
04	SAWYER, DARIUS	G	2	1-2	0-0	0-0	0	1	1	0	0	0	1	0	4
14	MAPAGA, MARVIN	F	5	2-5	0-0	1-2	2	0	2	2	0	0	0	0	7
25	MAZIQUE, MATHEW	F	0	0-2	0-1	0-0	1	1	2	1	0	0	0	0	10
	TEAM			0-0			1	0	1	0		0			
TOTALS			41	13-30	2-7	13-19	8	11	19	10	4	9	2	5	100

Shooting By Period

Period	FG	FG%	3FG	3FG%	FT	FT%
2nd Half	13-30	43%	2-7	29%	13-19	68%
Game	26-65	40.0%	3-14	21.4%	21-29	72.4%

Last FG Half: ENMU -

St. Mary's (TX) 41

No.	Player	S	Pts	FG	3FG	FT	OR	DR	TR	PF	A	TO	Blk	Stl	Min
01	JORDAN, CALEB	G	9	4-7	0-2	1-2	0	1	1	5	3	1	0	1	19
04	HOUSTON, MARKQUES	G	13	4-7	3-5	2-2	0	2	2	1	0	1	0	2	20
15	MAGEE, KOBE	G	5	2-5	1-4	0-0	0	2	2	0	4	3	0	1	20
32	EWUZIE, EMMANUEL	F	0	0-1	0-0	0-1	1	4	5	1	0	1	0	0	8
40	GASPERT, MATEJ	F	2	1-3	0-1	0-0	1	2	3	1	0	2	1	0	15
02	WESLEY, CURTLON	F	4	0-1	0-0	4-4	2	0	2	3	0	3	0	1	9
12	PRESLEY, JARON	G	3	1-1	1-1	0-0	0	0	0	2	0	0	0	0	1
21	ISENHOWER, DYLAN	G	5	1-2	0-0	3-4	1	1	2	2	0	1	0	1	9
	TEAM			0-0			0	1	1	0		0			
TOTALS			41	13-27	5-13	10-13	5	13	18	15	7	12	1	6	100

Shooting By Period

Period	FG	FG%	3FG	3FG%	FT	FT%
2nd Half	13-27	48%	5-13	38%	10-13	77%
Game	24-57	42.1%	6-25	24.0%	15-24	62.5%

Last FG Half: StMU -

Game Notes:

Officials:
Attendance: 147

Start Time: 01:30 AM
Conference Game;

Score	1st	2nd	TOT
ENMU	35	41	76
StMU	28	41	69

Points from (This Period)	ENMU	StMU
In the Paint	20	14
Off Turns	12	11
2nd Chance	3	6
Fast Break	16	8
Bench	9	12

Official Play-By-Play
Eastern N.M. vs St. Mary's (TX)
Second Half
December 13, 2019 at Bill Greehey Arena



Period 2

Starters:

Eastern N.M.: 5 MURPHY, ISAAH (G); 10 PULLUM, DEVIN (G); 20 KUANY , DENG (F); 21 ZAID, IBN (G); 24 COBAS, YOSNIER (F);

St. Mary's (TX): 1 JORDAN, CALEB (G); 4 HOUSTON, MARKQUES (G); 15 MAGEE, KOBE (G); 32 EWUZIE, EMMANUEL (F); 40 GASPERT, MATEJ (F);

Time	VISITORS: Eastern N.M.	Score	Margin	HOME: St. Mary's (TX)
20:00				SUB OUT: ISENHOWER, DYLAN
20:00				SUB IN: EWUZIE, EMMANUEL
20:00	SUB OUT: SERRANO, JOSE			
20:00	SUB OUT: SAWYER, DARIUS			
20:00	SUB IN: PULLUM, DEVIN			
20:00	SUB IN: KUANY , DENG			
19:48	TURNOVER by MURPHY, ISAAH			
19:42		30-35	V 5	GOOD! LAYUP by HOUSTON, MARKQUES
19:42				ASSIST by JORDAN, CALEB
19:31				FOUL by GASPERT, MATEJ
19:31	GOOD! FT by KUANY , DENG	30-36	V 6	
19:31				SUB OUT: GASPERT, MATEJ
19:31				SUB IN: WESLEY, CURTLON
19:30	MISSED FT by KUANY , DENG			
19:28				REBOUND (DEF) by EWUZIE, EMMANUEL
19:05		32-36	V 4	GOOD! JUMPER by JORDAN, CALEB [PNT]
18:49	GOOD! 3PTR by KUANY , DENG	32-39	V 7	
18:49	ASSIST by ZAID, IBN			
18:29				MISSED 3PTR by JORDAN, CALEB
18:25				REBOUND (OFF) by EWUZIE, EMMANUEL
18:13				TURNOVER by MAGEE, KOBE
18:09	GOOD! LAYUP by PULLUM, DEVIN [FB]	32-41	V 9	
18:09	ASSIST by COBAS, YOSNIER			
17:48				MISSED LAYUP by EWUZIE, EMMANUEL [PNT]
17:43	REBOUND (DEF) by COBAS, YOSNIER			
17:41	SUB OUT: KUANY , DENG			
17:41	SUB OUT: COBAS, YOSNIER			
17:41	SUB IN: MAPAGA, MARVIN			
17:41	SUB IN: MAZIQUE, MATHEW			
17:36	MISSED LAYUP by PULLUM, DEVIN			
17:31	REBOUND (OFF) by MAZIQUE, MATHEW			
17:31	MISSED LAYUP by MAZIQUE, MATHEW			
17:30	REBOUND (OFF) by MAPAGA, MARVIN			
17:30	MISSED LAYUP by MAPAGA, MARVIN			
17:30	REBOUND (OFF) by TEAM			
17:25	MISSED JUMPER by MAPAGA, MARVIN [PNT]			
17:22				REBOUND (DEF) by HOUSTON, MARKQUES
17:16				TURNOVER by MAGEE, KOBE
17:16	STEAL by PULLUM, DEVIN			
17:11	GOOD! LAYUP by PULLUM, DEVIN [FB]	32-43	V 11	
17:01				FOUL by WESLEY, CURTLON
17:01				TURNOVER by WESLEY, CURTLON
17:01				SUB OUT: EWUZIE, EMMANUEL
17:01				SUB IN: ISENHOWER, DYLAN
16:52				FOUL by WESLEY, CURTLON [PNT]
16:52	GOOD! FT by MAPAGA, MARVIN	32-44	V 12	
16:52				SUB OUT: WESLEY, CURTLON
16:52				SUB IN: GASPERT, MATEJ
16:51	MISSED FT by MAPAGA, MARVIN			
16:49				REBOUND (DEF) by MAGEE, KOBE
16:35				TURNOVER by GASPERT, MATEJ
16:35	STEAL by ZAID, IBN			
16:20	MISSED 3PTR by ZAID, IBN			
16:16				REBOUND (DEF) by ISENHOWER, DYLAN
16:04	FOUL by MAPAGA, MARVIN			
16:04		33-44	V 11	GOOD! FT by ISENHOWER, DYLAN
16:04	SUB OUT: PULLUM, DEVIN			
16:04	SUB OUT: ZAID, IBN			
16:04	SUB IN: SERRANO, JOSE			
16:04	SUB IN: SHERROD, GARRICK			
16:03				MISSED FT by ISENHOWER, DYLAN
16:01				REBOUND (OFF) by GASPERT, MATEJ
15:54		35-44	V 9	GOOD! LAYUP by GASPERT, MATEJ
15:54				ASSIST by JORDAN, CALEB
15:32	GOOD! LAYUP by MAPAGA, MARVIN	35-46	V 11	
15:32	ASSIST by SHERROD, GARRICK			
15:17		37-46	V 9	GOOD! LAYUP by ISENHOWER, DYLAN
14:57	TURNOVER by MURPHY, ISAAH [PNT]			
14:57				STEAL by ISENHOWER, DYLAN
14:52		39-46	V 7	GOOD! LAYUP by JORDAN, CALEB [FB]

Time	VISITORS: Eastern N.M.	Score	Margin	HOME: St. Mary's (TX)
14:31	MISSED 3PTR by MAZIQUE, MATHEW			
14:28	REBOUND (OFF) by MAPAGA, MARVIN			
14:28	GOOD! LAYUP by MAPAGA, MARVIN	39-48	V 9	
14:28	TIMEOUT 30SEC			
14:28	SUB OUT: MURPHY, ISAIAH			
14:28	SUB OUT: MAPAGA, MARVIN			
14:28	SUB IN: SAWYER, DARIUS			
14:28	SUB IN: KUANY , DENG			
14:05				MISSED 3PTR by HOUSTON, MARKQUES
14:01	REBOUND (DEF) by SAWYER, DARIUS			
13:58	GOOD! LAYUP by SAWYER, DARIUS [FB]	39-50	V 11	
13:41		41-50	V 9	GOOD! JUMPER by MAGEE, KOBE
13:33	MISSED 3PTR by SERRANO, JOSE			
13:30				REBOUND (DEF) by JORDAN, CALEB
13:24	FOUL by KUANY , DENG [PNT]			
13:24	TIMEOUT MEDIA			
13:19	FOUL by SERRANO, JOSE			
13:19				MISSED FT by JORDAN, CALEB
13:19				REBOUND (DEADB) by TEAM
13:19	SUB OUT: SERRANO, JOSE			
13:19	SUB IN: PULLUM, DEVIN			
13:19		42-50	V 8	GOOD! FT by JORDAN, CALEB
13:03	MISSED JUMPER by PULLUM, DEVIN [PNT]			
13:03				BLOCK by GASPERT, MATEJ
12:57	REBOUND (OFF) by SHERROD, GARRICK			
12:56	TURNOVER by SHERROD, GARRICK			
12:56				STEAL by JORDAN, CALEB
12:52		44-50	V 6	GOOD! LAYUP by JORDAN, CALEB [FB]
12:34	GOOD! LAYUP by PULLUM, DEVIN	44-52	V 8	
12:18		47-52	V 5	GOOD! 3PTR by HOUSTON, MARKQUES
12:18				ASSIST by MAGEE, KOBE
12:16				TIMEOUT 30SEC
12:16	TIMEOUT MEDIA			
12:16	SUB OUT: SHERROD, GARRICK			
12:16	SUB OUT: SAWYER, DARIUS			
12:16	SUB OUT: MAZIQUE, MATHEW			
12:16	SUB IN: MURPHY, ISAIAH			
12:16	SUB IN: ZAID, IBN			
12:16	SUB IN: COBAS, YOSNIER			
12:01	GOOD! JUMPER by PULLUM, DEVIN	47-54	V 7	
11:40				TURNOVER by GASPERT, MATEJ
11:15	GOOD! 3PTR by PULLUM, DEVIN	47-57	V 10	
11:10				TURNOVER by ISENHOWER, DYLAN
11:10	STEAL by ZAID, IBN			
11:05	GOOD! LAYUP by ZAID, IBN [FB]	47-59	V 12	
10:52				MISSED 3PTR by JORDAN, CALEB
10:47	REBOUND (DEF) by COBAS, YOSNIER			
10:29	GOOD! LAYUP by COBAS, YOSNIER	47-61	V 14	
10:29				FOUL by ISENHOWER, DYLAN
10:29	GOOD! FT by COBAS, YOSNIER	47-62	V 15	
10:13				MISSED JUMPER by GASPERT, MATEJ [PNT]
10:09	REBOUND (DEF) by MURPHY, ISAIAH			
09:54	TURNOVER by KUANY , DENG			
09:54	SUB OUT: KUANY , DENG			
09:54	SUB IN: MAPAGA, MARVIN			
09:41				MISSED LAYUP by ISENHOWER, DYLAN
09:41	BLOCK by COBAS, YOSNIER			
09:35	REBOUND (DEF) by ZAID, IBN			
09:24	MISSED DUNK by MAPAGA, MARVIN			
09:24				REBOUND (DEF) by MAGEE, KOBE
09:24	FOUL by MURPHY, ISAIAH			
09:24				SUB OUT: ISENHOWER, DYLAN
09:24				SUB IN: WESLEY, CURTLON
09:24	SUB OUT: MURPHY, ISAIAH			
09:24	SUB IN: SAWYER, DARIUS			
09:09				MISSED JUMPER by HOUSTON, MARKQUES
09:09	BLOCK by SAWYER, DARIUS			
09:08				REBOUND (OFF) by WESLEY, CURTLON
09:08	FOUL by MAPAGA, MARVIN			
09:08		48-62	V 14	GOOD! FT by WESLEY, CURTLON
09:08	SUB OUT: MAPAGA, MARVIN			
09:08	SUB IN: KUANY , DENG			
09:08		49-62	V 13	GOOD! FT by WESLEY, CURTLON
08:55	GOOD! LAYUP by KUANY , DENG	49-64	V 15	
08:55	ASSIST by ZAID, IBN			
08:44	FOUL by ZAID, IBN			
08:38	FOUL by COBAS, YOSNIER			
08:38		50-64	V 14	GOOD! FT by WESLEY, CURTLON
08:38				SUB OUT: GASPERT, MATEJ
08:38				SUB IN: EWUZIE, EMMANUEL

Time	VISITORS: Eastern N.M.	Score	Margin	HOME: St. Mary's (TX)
08:38		51-64	V 13	GOOD! FT by WESLEY, CURTLON
08:30				FOUL by HOUSTON, MARKQUES
08:25	TURNOVER by PULLUM, DEVIN [PNT]			
08:18		54-64	V 10	GOOD! 3PTR by MAGEE, KOBE
08:06	MISSED JUMPER by SAWYER, DARIUS [PNT]			
08:06				REBOUND (DEF) by TEAM
07:55				TURNOVER by WESLEY, CURTLON
07:55	TIMEOUT MEDIA			
07:28	TURNOVER by COBAS, YOSNIER [PNT]			
07:28				STEAL by HOUSTON, MARKQUES
07:18	SUB OUT: SAWYER, DARIUS			
07:18	SUB IN: MURPHY, ISAIAH			
07:11				MISSED LAYUP by WESLEY, CURTLON
07:09	REBOUND (DEF) by KUANY , DENG			
06:57	TURNOVER by ZAID, IBN			
06:57				STEAL by WESLEY, CURTLON
06:30				TURNOVER by EWUZIE, EMMANUEL
06:30	STEAL by ZAID, IBN			
06:30				FOUL by JORDAN, CALEB
06:30				SUB OUT: WESLEY, CURTLON
06:30				SUB IN: GASPERT, MATEJ
06:25	MISSED 3PTR by MURPHY, ISAIAH			
06:23				REBOUND (DEF) by EWUZIE, EMMANUEL
06:23	FOUL by COBAS, YOSNIER			
06:21				MISSED FT by EWUZIE, EMMANUEL [FB]
06:20	REBOUND (DEF) by ZAID, IBN			
05:53	MISSED LAYUP by COBAS, YOSNIER [PNT]			
05:50				REBOUND (DEF) by EWUZIE, EMMANUEL
05:46		56-64	V 8	GOOD! LAYUP by JORDAN, CALEB [FB]
05:46				ASSIST by MAGEE, KOBE
05:41	TIMEOUT 30SEC			
05:41	SUB OUT: KUANY , DENG			
05:41	SUB IN: MAPAGA, MARVIN			
05:14	MISSED 3PTR by MURPHY, ISAIAH			
05:11				REBOUND (DEF) by EWUZIE, EMMANUEL
04:59				MISSED 3PTR by MAGEE, KOBE
04:55	REBOUND (DEF) by COBAS, YOSNIER			
04:53				FOUL by EWUZIE, EMMANUEL
04:53				SUB OUT: EWUZIE, EMMANUEL
04:53				SUB IN: WESLEY, CURTLON
04:53	SUB OUT: COBAS, YOSNIER			
04:53	SUB IN: MAZIQUE, MATHEW			
04:53	GOOD! FT by ZAID, IBN [FB]	56-65	V 9	
04:53	GOOD! FT by ZAID, IBN [FB]	56-66	V 10	
04:46				TURNOVER by MAGEE, KOBE
04:46	STEAL by ZAID, IBN			
04:31	TURNOVER by ZAID, IBN			
04:31				STEAL by MAGEE, KOBE
04:20				MISSED JUMPER by JORDAN, CALEB
04:17				REBOUND (OFF) by WESLEY, CURTLON
04:05				MISSED 3PTR by MAGEE, KOBE
04:00	REBOUND (DEF) by ZAID, IBN			
03:37	MISSED LAYUP by MURPHY, ISAIAH [PNT]			
03:34				REBOUND (DEF) by GASPERT, MATEJ
03:30				TURNOVER by HOUSTON, MARKQUES
03:30	TIMEOUT MEDIA			
03:30	SUB OUT: ZAID, IBN			
03:30	SUB IN: SHERROD, GARRICK			
03:16	MISSED LAYUP by SHERROD, GARRICK			
03:13				REBOUND (DEF) by GASPERT, MATEJ
03:05		59-66	V 7	GOOD! 3PTR by HOUSTON, MARKQUES
03:05				ASSIST by MAGEE, KOBE
02:35	GOOD! LAYUP by SHERROD, GARRICK	59-68	V 9	
02:20		62-68	V 6	GOOD! 3PTR by HOUSTON, MARKQUES
02:20				ASSIST by JORDAN, CALEB
02:18				TIMEOUT 30SEC
02:18				SUB OUT: WESLEY, CURTLON
02:18				SUB IN: EWUZIE, EMMANUEL
02:18	SUB OUT: MAPAGA, MARVIN			
02:18	SUB IN: COBAS, YOSNIER			
01:59	MISSED LAYUP by PULLUM, DEVIN			
01:57	REBOUND (OFF) by COBAS, YOSNIER			
01:57				FOUL by JORDAN, CALEB
01:55	MISSED FT by MURPHY, ISAIAH			
01:54	REBOUND (OFF) by COBAS, YOSNIER			
01:52	TURNOVER by COBAS, YOSNIER			
01:52				STEAL by HOUSTON, MARKQUES
01:52	FOUL by SHERROD, GARRICK			
01:52		63-68	V 5	GOOD! FT by HOUSTON, MARKQUES [FB]
01:52	SUB OUT: SHERROD, GARRICK			

Time	VISITORS: Eastern N.M.	Score	Margin	HOME: St. Mary's (TX)
01:52	SUB IN: ZAID, IBN			
01:52		64-68	V 4	GOOD! FT by HOUSTON, MARKQUES [FB]
01:32	MISSED JUMPER by PULLUM, DEVIN			
01:28				REBOUND (DEF) by HOUSTON, MARKQUES
01:19				TURNOVER by JORDAN, CALEB
01:13				FOUL by JORDAN, CALEB
01:11	MISSED FT by ZAID, IBN [FB]			
01:10	REBOUND (OFF) by COBAS, YOSNIER			
01:08				FOUL by JORDAN, CALEB
01:08	MISSED FT by ZAID, IBN			
01:08	REBOUND (DEADB) by TEAM			
01:08				SUB OUT: EWUZIE, EMMANUEL
01:08				SUB IN: WESLEY, CURTLON
01:08	GOOD! FT by ZAID, IBN	64-69	V 5	
00:56				FOUL by WESLEY, CURTLON
00:56				TURNOVER by WESLEY, CURTLON
00:56				SUB OUT: WESLEY, CURTLON
00:56				SUB IN: ISENHOWER, DYLAN
00:48				FOUL by JORDAN, CALEB
00:48				SUB OUT: JORDAN, CALEB
00:48				SUB IN: PRESLEY, JARON
00:48	MISSED FT by PULLUM, DEVIN			
00:48	REBOUND (DEADB) by TEAM			
00:48	GOOD! FT by PULLUM, DEVIN	64-70	V 6	
00:39		67-70	V 3	GOOD! 3PTR by PRESLEY, JARON
00:39				ASSIST by MAGEE, KOBE
00:39				TIMEOUT TEAM
00:39	SUB OUT: MAZIQUE, MATHEW			
00:39	SUB IN: SHERROD, GARRICK			
00:38				FOUL by PRESLEY, JARON
00:38	GOOD! FT by MURPHY, ISAIAH [FB]	67-71	V 4	
00:38	SUB OUT: SHERROD, GARRICK			
00:38	SUB IN: MAZIQUE, MATHEW			
00:38	GOOD! FT by MURPHY, ISAIAH [FB]	67-72	V 5	
00:23				MISSED 3PTR by GASPERT, MATEJ
00:21				REBOUND (OFF) by ISENHOWER, DYLAN
00:21	FOUL by MAZIQUE, MATHEW			
00:21		68-72	V 4	GOOD! FT by ISENHOWER, DYLAN
00:21	SUB OUT: MAZIQUE, MATHEW			
00:21	SUB IN: SHERROD, GARRICK			
00:21		69-72	V 3	GOOD! FT by ISENHOWER, DYLAN
00:20				FOUL by PRESLEY, JARON
00:20	GOOD! FT by PULLUM, DEVIN [FB]	69-73	V 4	
00:20	SUB OUT: SHERROD, GARRICK			
00:20	SUB IN: MAZIQUE, MATHEW			
00:20	GOOD! FT by PULLUM, DEVIN [FB]	69-74	V 5	
00:13				MISSED 3PTR by MAGEE, KOBE
00:09	REBOUND (DEF) by MAZIQUE, MATHEW			
00:09				FOUL by ISENHOWER, DYLAN
00:09	GOOD! FT by PULLUM, DEVIN [FB]	69-75	V 6	
00:09	GOOD! FT by PULLUM, DEVIN [FB]	69-76	V 7	
00:03				MISSED 3PTR by HOUSTON, MARKQUES
00:00	REBOUND (DEF) by COBAS, YOSNIER			

Eastern N.M. 76, St. Mary's (TX) 69

Points from (This Period)	ENMU	StMU
In the Paint	20	14
Off Turns	12	11
2nd Chance	3	6
Fast Break	16	8
Bench	9	12

Official Scoring/Possession Reference Chart
Eastern N.M. vs St. Mary's (TX)
Period 1
December 13, 2019 at Bill Greehey Arena



Period 1

Starters:

Eastern N.M.: 5 MURPHY, ISAAH (G); 10 PULLUM, DEVIN (G); 20 KUANY , DENG (F); 21 ZAID, IBN (G); 24 COBAS, YOSNIER (F);

St. Mary's (TX): 1 JORDAN, CALEB (G); 4 HOUSTON, MARKQUES (G); 15 MAGEE, KOBE (G); 32 EWUZIE, EMMANUEL (F); 40 GASPERT, MATEJ (F);

Time	VISITORS: Eastern N.M.	Score	Margin	HOME: St. Mary's (TX)
19:44	GOOD! FT by KUANY , DENG [FB]	0-1	V 1	
19:44	GOOD! FT by KUANY , DENG [FB]	0-2	V 2	
19:21		2-2	T	GOOD! LAYUP by GASPERT, MATEJ
18:23	GOOD! JUMPER by PULLUM, DEVIN	2-4	V 2	
17:41		4-4	T	GOOD! JUMPER by MAGEE, KOBE
17:11	GOOD! LAYUP by COBAS, YOSNIER	4-6	V 2	
16:32		6-6	T	GOOD! LAYUP by WESLEY, CURTLON
16:16		8-6	H 2	GOOD! LAYUP by WESLEY, CURTLON
16:00	GOOD! JUMPER by SHERROD, GARRICK [PNT]	8-8	T	
15:40	GOOD! LAYUP by MAPAGA, MARVIN [FB]	8-10	V 2	
14:20		10-10	T	GOOD! LAYUP by EWUZIE, EMMANUEL
13:55	GOOD! by KUANY , DENG [PNT]	10-12	V 2	
13:38	GOOD! LAYUP by SHERROD, GARRICK [FB]	10-14	V 4	
12:58		12-14	V 2	GOOD! by GASPERT, MATEJ [PNT]
12:35		14-14	T	GOOD! LAYUP by JORDAN, CALEB [FB]
12:14	GOOD! FT by SERRANO, JOSE	14-15	V 1	
09:41		15-15	T	GOOD! FT by HOUSTON, MARKQUES
09:30	GOOD! JUMPER by MAPAGA, MARVIN [PNT]	15-17	V 2	
09:09	GOOD! 3PTR by PULLUM, DEVIN [FB]	15-20	V 5	
08:39	GOOD! LAYUP by SERRANO, JOSE	15-22	V 7	
08:39	GOOD! FT by SERRANO, JOSE	15-23	V 8	
07:51		17-23	V 6	GOOD! DUNK by WESLEY, CURTLON
07:23	GOOD! by COBAS, YOSNIER	17-25	V 8	
06:27	GOOD! FT by KUANY , DENG	17-26	V 9	
05:19		18-26	V 8	GOOD! FT by HOUSTON, MARKQUES [FB]
05:01		20-26	V 6	GOOD! by GASPERT, MATEJ [PNT]
04:47	GOOD! FT by COBAS, YOSNIER	20-27	V 7	
04:47	GOOD! FT by COBAS, YOSNIER	20-28	V 8	
04:12		21-28	V 7	GOOD! FT by JORDAN, CALEB
03:30		23-28	V 5	GOOD! LAYUP by JORDAN, CALEB [FB]
02:55		24-28	V 4	GOOD! FT by GASPERT, MATEJ
02:24	GOOD! LAYUP by PULLUM, DEVIN [PNT]	24-30	V 6	
02:07		25-30	V 5	GOOD! FT by GASPERT, MATEJ
01:52	GOOD! LAYUP by ZAID, IBN	25-32	V 7	
01:52	GOOD! FT by ZAID, IBN	25-33	V 8	
00:42	GOOD! LAYUP by SERRANO, JOSE	25-35	V 10	
00:00		28-35	V 7	GOOD! 3PTR by HOUSTON, MARKQUES [FB]

Eastern N.M. 35, St. Mary's (TX) 28

Official Scoring/Possession Reference Chart
Eastern N.M. vs St. Mary's (TX)
Period 2
December 13, 2019 at Bill Greehey Arena



Period 2

Starters:

Eastern N.M.: 5 MURPHY, ISAIAH (G); 10 PULLUM, DEVIN (G); 20 KUANY , DENG (F); 21 ZAID, IBN (G); 24 COBAS, YOSNIER (F);

St. Mary's (TX): 1 JORDAN, CALEB (G); 4 HOUSTON, MARKQUES (G); 15 MAGEE, KOBE (G); 32 EWUZIE, EMMANUEL (F); 40 GASPERT, MATEJ (F);

Time	VISITORS: Eastern N.M.	Score	Margin	HOME: St. Mary's (TX)
19:42		30-35	V 5	GOOD! LAYUP by HOUSTON, MARKQUES
19:31	GOOD! FT by KUANY , DENG	30-36	V 6	
19:05		32-36	V 4	GOOD! JUMPER by JORDAN, CALEB [PNT]
18:49	GOOD! 3PTR by KUANY , DENG	32-39	V 7	
18:09	GOOD! LAYUP by PULLUM, DEVIN [FB]	32-41	V 9	
17:11	GOOD! LAYUP by PULLUM, DEVIN [FB]	32-43	V 11	
16:52	GOOD! FT by MAPAGA, MARVIN	32-44	V 12	
16:04		33-44	V 11	GOOD! FT by ISENHOWER, DYLAN
15:54		35-44	V 9	GOOD! LAYUP by GASPERT, MATEJ
15:32	GOOD! LAYUP by MAPAGA, MARVIN	35-46	V 11	
15:17		37-46	V 9	GOOD! LAYUP by ISENHOWER, DYLAN
14:52		39-46	V 7	GOOD! LAYUP by JORDAN, CALEB [FB]
14:28	GOOD! LAYUP by MAPAGA, MARVIN	39-48	V 9	
13:58	GOOD! LAYUP by SAWYER, DARIUS [FB]	39-50	V 11	
13:41		41-50	V 9	GOOD! JUMPER by MAGEE, KOBE
13:19		42-50	V 8	GOOD! FT by JORDAN, CALEB
12:52		44-50	V 6	GOOD! LAYUP by JORDAN, CALEB [FB]
12:34	GOOD! LAYUP by PULLUM, DEVIN	44-52	V 8	
12:18		47-52	V 5	GOOD! 3PTR by HOUSTON, MARKQUES
12:01	GOOD! JUMPER by PULLUM, DEVIN	47-54	V 7	
11:15	GOOD! 3PTR by PULLUM, DEVIN	47-57	V 10	
11:05	GOOD! LAYUP by ZAID, IBN [FB]	47-59	V 12	
10:29	GOOD! LAYUP by COBAS, YOSNIER	47-61	V 14	
10:29	GOOD! FT by COBAS, YOSNIER	47-62	V 15	
09:08		48-62	V 14	GOOD! FT by WESLEY, CURTLON
09:08		49-62	V 13	GOOD! FT by WESLEY, CURTLON
08:55	GOOD! LAYUP by KUANY , DENG	49-64	V 15	
08:38		50-64	V 14	GOOD! FT by WESLEY, CURTLON
08:38		51-64	V 13	GOOD! FT by WESLEY, CURTLON
08:18		54-64	V 10	GOOD! 3PTR by MAGEE, KOBE
05:46		56-64	V 8	GOOD! LAYUP by JORDAN, CALEB [FB]
04:53	GOOD! FT by ZAID, IBN [FB]	56-65	V 9	
04:53	GOOD! FT by ZAID, IBN [FB]	56-66	V 10	
03:05		59-66	V 7	GOOD! 3PTR by HOUSTON, MARKQUES
02:35	GOOD! LAYUP by SHERROD, GARRICK	59-68	V 9	
02:20		62-68	V 6	GOOD! 3PTR by HOUSTON, MARKQUES
01:52		63-68	V 5	GOOD! FT by HOUSTON, MARKQUES [FB]
01:52		64-68	V 4	GOOD! FT by HOUSTON, MARKQUES [FB]
01:08	GOOD! FT by ZAID, IBN	64-69	V 5	
00:48	GOOD! FT by PULLUM, DEVIN	64-70	V 6	
00:39		67-70	V 3	GOOD! 3PTR by PRESLEY, JARON
00:38	GOOD! FT by MURPHY, ISAIAH [FB]	67-71	V 4	
00:38	GOOD! FT by MURPHY, ISAIAH [FB]	67-72	V 5	
00:21		68-72	V 4	GOOD! FT by ISENHOWER, DYLAN
00:21		69-72	V 3	GOOD! FT by ISENHOWER, DYLAN
00:20	GOOD! FT by PULLUM, DEVIN [FB]	69-73	V 4	
00:20	GOOD! FT by PULLUM, DEVIN [FB]	69-74	V 5	
00:09	GOOD! FT by PULLUM, DEVIN [FB]	69-75	V 6	
00:09	GOOD! FT by PULLUM, DEVIN [FB]	69-76	V 7	

Eastern N.M. 76, St. Mary's (TX) 69

Official Substitutions Log
Eastern N.M. vs St. Mary's (TX)
Period 1
December 13, 2019 at Bill Greehey Arena



VISITORS: Eastern N.M.	Time	Score	HOME: St. Mary's (TX)
5 MURPHY, ISAIAH			1 JORDAN, CALEB
10 PULLUM, DEVIN			4 HOUSTON, MARKQUES
20 KUANY, DENG			15 MAGEE, KOBE
21 ZAID, IBN			32 EWUZIE, EMMANUEL
24 COBAS, YOSNIER			40 GASPERT, MATEJ
	19:11	2-2	SUB OUT: GASPERT, MATEJ
	19:11		SUB IN: WESLEY, CURTLON
SUB OUT: 20 KUANY, DENG	16:49	6-4	
SUB OUT: 21 ZAID, IBN	16:49		
SUB OUT: 24 COBAS, YOSNIER	16:49		
SUB IN: 2 SHERROD, GARRICK	16:49		
SUB IN: 14 MAPAGA, MARVIN	16:49		
SUB IN: 25 MAZIQUE, MATHEW	16:49		
	15:30	10-8	SUB OUT: WESLEY, CURTLON
	15:30		SUB IN: GASPERT, MATEJ
SUB OUT: 5 MURPHY, ISAIAH	15:30		
SUB OUT: 10 PULLUM, DEVIN	15:30		
SUB IN: 00 SERRANO, JOSE	15:30		
SUB IN: 4 SAWYER, DARIUS	15:30		
	14:01	10-10	SUB OUT: HOUSTON, MARKQUES
	14:01		SUB IN: PRESLEY, JARON
SUB OUT: 14 MAPAGA, MARVIN	14:01		
SUB OUT: 25 MAZIQUE, MATHEW	14:01		
SUB IN: 20 KUANY, DENG	14:01		
SUB IN: 24 COBAS, YOSNIER	14:01		
SUB OUT: 2 SHERROD, GARRICK	13:23	14-10	
SUB IN: 21 ZAID, IBN	13:23		
	13:23		SUB OUT: EWUZIE, EMMANUEL
	13:23		SUB IN: ISENHOWER, DYLAN
SUB OUT: 00 SERRANO, JOSE	12:14	15-14	
SUB IN: 10 PULLUM, DEVIN	12:14		
	11:26	15-14	SUB OUT: PRESLEY, JARON
	11:26		SUB IN: HOUSTON, MARKQUES
SUB OUT: 4 SAWYER, DARIUS	11:26		
SUB OUT: 20 KUANY, DENG	11:26		
SUB OUT: 24 COBAS, YOSNIER	11:26		
SUB IN: 5 MURPHY, ISAIAH	11:26		
SUB IN: 25 MAZIQUE, MATHEW	11:26		
SUB IN: 14 MAPAGA, MARVIN	11:26		
	10:46	15-14	SUB OUT: GASPERT, MATEJ
	10:46		SUB IN: WESLEY, CURTLON
SUB OUT: 10 PULLUM, DEVIN	08:54	20-15	
SUB OUT: 14 MAPAGA, MARVIN	08:54		
SUB OUT: 25 MAZIQUE, MATHEW	08:54		
SUB IN: 00 SERRANO, JOSE	08:54		
SUB IN: 20 KUANY, DENG	08:54		
SUB IN: 24 COBAS, YOSNIER	08:54		
	08:39	22-15	SUB OUT: ISENHOWER, DYLAN
	08:39		SUB IN: EWUZIE, EMMANUEL
SUB OUT: 21 ZAID, IBN	06:27	25-17	
SUB IN: 4 SAWYER, DARIUS	06:27		
SUB OUT: 00 SERRANO, JOSE	05:29	26-17	
SUB IN: 2 SHERROD, GARRICK	05:29		
	05:19	26-18	SUB OUT: WESLEY, CURTLON
	05:19		SUB IN: GASPERT, MATEJ
SUB OUT: 2 SHERROD, GARRICK	05:19		
SUB IN: 00 SERRANO, JOSE	05:19		
	04:47	26-20	SUB OUT: EWUZIE, EMMANUEL
	04:47		SUB IN: ISENHOWER, DYLAN
SUB OUT: 00 SERRANO, JOSE	04:47		
SUB OUT: 4 SAWYER, DARIUS	04:47		
SUB OUT: 20 KUANY, DENG	04:47		
SUB IN: 1 MEADOWS, BRANDON	04:47		
SUB IN: 14 MAPAGA, MARVIN	04:47		
SUB IN: 21 ZAID, IBN	04:47		
SUB OUT: 14 MAPAGA, MARVIN	04:12	28-20	
SUB IN: 20 KUANY, DENG	04:12		
SUB OUT: 5 MURPHY, ISAIAH	02:55	28-23	
SUB IN: 4 SAWYER, DARIUS	02:55		
SUB OUT: 1 MEADOWS, BRANDON	02:55		
SUB IN: 10 PULLUM, DEVIN	02:55		
SUB OUT: 20 KUANY, DENG	02:07	30-25	
SUB IN: 00 SERRANO, JOSE	02:07		
SUB OUT: 10 PULLUM, DEVIN	01:52	33-25	
SUB IN: 5 MURPHY, ISAIAH	01:52		

Official Substitutions Log
Eastern N.M. vs St. Mary's (TX)
Period 2
December 13, 2019 at Bill Greehey Arena



VISITORS: Eastern N.M.	Time	Score	HOME: St. Mary's (TX)
5 MURPHY, ISAIAH			1 JORDAN, CALEB
10 PULLUM, DEVIN			4 HOUSTON, MARKQUES
20 KUANY, DENG			15 MAGEE, KOBE
21 ZAID, IBN			32 EWUZIE, EMMANUEL
24 COBAS, YOSNIER			40 GASPERT, MATEJ
	20:00	-	SUB OUT: ISENHOWER, DYLAN
	20:00		SUB IN: EWUZIE, EMMANUEL
SUB OUT: 00 SERRANO, JOSE	20:00		
SUB OUT: 4 SAWYER, DARIUS	20:00		
SUB IN: 10 PULLUM, DEVIN	20:00		
SUB IN: 20 KUANY, DENG	20:00		
	19:31	36-30	SUB OUT: GASPERT, MATEJ
	19:31		SUB IN: WESLEY, CURTLON
SUB OUT: 20 KUANY, DENG	17:41	41-32	
SUB OUT: 24 COBAS, YOSNIER	17:41		
SUB IN: 14 MAPAGA, MARVIN	17:41		
SUB IN: 25 MAZIQUE, MATHEW	17:41		
	17:01	43-32	SUB OUT: EWUZIE, EMMANUEL
	17:01		SUB IN: ISENHOWER, DYLAN
	16:52	44-32	SUB OUT: WESLEY, CURTLON
	16:52		SUB IN: GASPERT, MATEJ
SUB OUT: 10 PULLUM, DEVIN	16:04	44-33	
SUB OUT: 21 ZAID, IBN	16:04		
SUB IN: 00 SERRANO, JOSE	16:04		
SUB IN: 2 SHERROD, GARRICK	16:04		
SUB OUT: 5 MURPHY, ISAIAH	14:28	48-39	
SUB OUT: 14 MAPAGA, MARVIN	14:28		
SUB IN: 4 SAWYER, DARIUS	14:28		
SUB IN: 20 KUANY, DENG	14:28		
SUB OUT: 00 SERRANO, JOSE	13:19	50-41	
SUB IN: 10 PULLUM, DEVIN	13:19		
SUB OUT: 2 SHERROD, GARRICK	12:16	52-47	
SUB OUT: 4 SAWYER, DARIUS	12:16		
SUB OUT: 25 MAZIQUE, MATHEW	12:16		
SUB IN: 5 MURPHY, ISAIAH	12:16		
SUB IN: 21 ZAID, IBN	12:16		
SUB IN: 24 COBAS, YOSNIER	12:16		
SUB OUT: 20 KUANY, DENG	09:54	62-47	
SUB IN: 14 MAPAGA, MARVIN	09:54		
	09:24	62-47	SUB OUT: ISENHOWER, DYLAN
	09:24		SUB IN: WESLEY, CURTLON
SUB OUT: 5 MURPHY, ISAIAH	09:24		
SUB IN: 4 SAWYER, DARIUS	09:24		
SUB OUT: 14 MAPAGA, MARVIN	09:08	62-48	
SUB IN: 20 KUANY, DENG	09:08		
	08:38	64-50	SUB OUT: GASPERT, MATEJ
	08:38		SUB IN: EWUZIE, EMMANUEL
SUB OUT: 4 SAWYER, DARIUS	07:18	64-54	
SUB IN: 5 MURPHY, ISAIAH	07:18		
	06:30	64-54	SUB OUT: WESLEY, CURTLON
	06:30		SUB IN: GASPERT, MATEJ
SUB OUT: 20 KUANY, DENG	05:41	64-56	
SUB IN: 14 MAPAGA, MARVIN	05:41		
	04:53	64-56	SUB OUT: EWUZIE, EMMANUEL
	04:53		SUB IN: WESLEY, CURTLON
SUB OUT: 24 COBAS, YOSNIER	04:53		
SUB IN: 25 MAZIQUE, MATHEW	04:53		
SUB OUT: 21 ZAID, IBN	03:30	66-56	
SUB IN: 2 SHERROD, GARRICK	03:30		
	02:18	68-62	SUB OUT: WESLEY, CURTLON
	02:18		SUB IN: EWUZIE, EMMANUEL
SUB OUT: 14 MAPAGA, MARVIN	02:18		
SUB IN: 24 COBAS, YOSNIER	02:18		
SUB OUT: 2 SHERROD, GARRICK	01:52	68-63	
SUB IN: 21 ZAID, IBN	01:52		
	01:08	68-64	SUB OUT: EWUZIE, EMMANUEL
	01:08		SUB IN: WESLEY, CURTLON
	00:56	69-64	SUB OUT: WESLEY, CURTLON
	00:56		SUB IN: ISENHOWER, DYLAN
	00:48	69-64	SUB OUT: JORDAN, CALEB
	00:48		SUB IN: PRESLEY, JARON
SUB OUT: 25 MAZIQUE, MATHEW	00:39	70-67	
SUB IN: 2 SHERROD, GARRICK	00:39		
SUB OUT: 2 SHERROD, GARRICK	00:38	71-67	
SUB IN: 25 MAZIQUE, MATHEW	00:38		

VISITORS: Eastern N.M.	Time	Score	HOME: St. Mary's (TX)
SUB OUT: 25 MAZIQUE, MATHEW	00:21	72-68	
SUB IN: 2 SHERROD, GARRICK	00:21		
SUB OUT: 2 SHERROD, GARRICK	00:20	73-69	
SUB IN: 25 MAZIQUE, MATHEW	00:20		

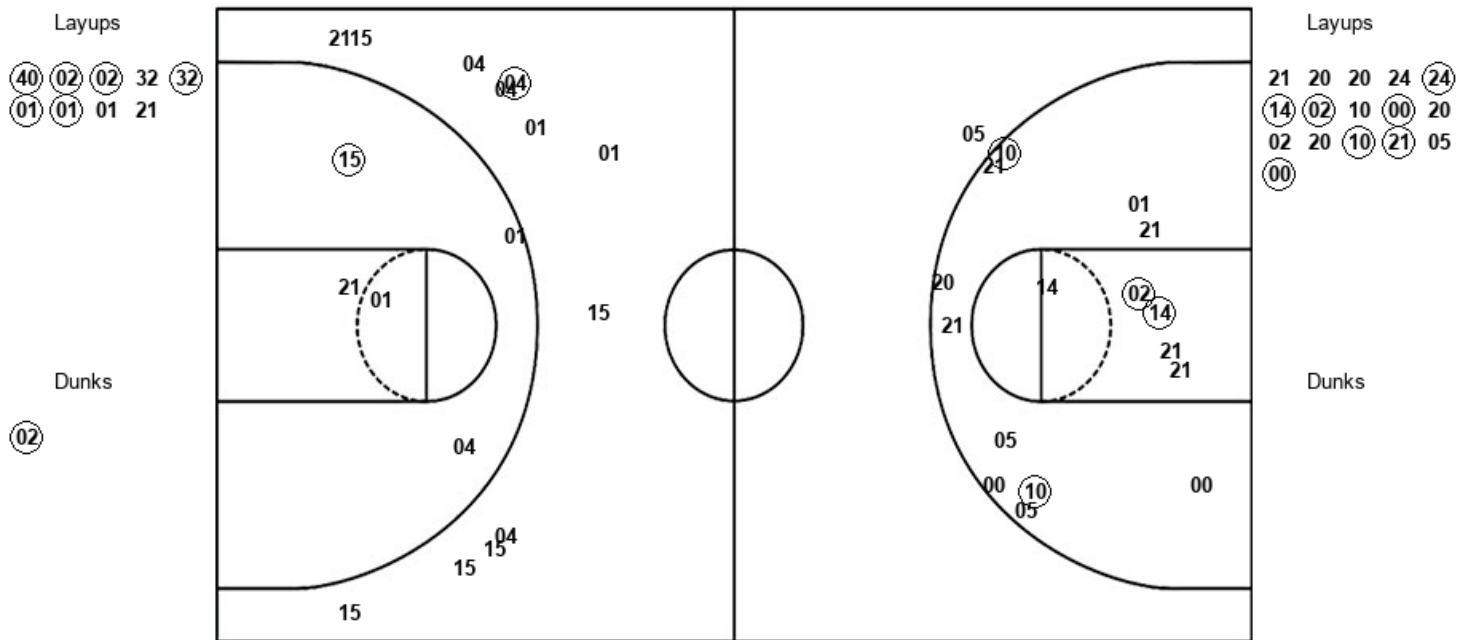
Eastern N.M. 76, St. Mary's (TX) 69

Official Shot Chart
Eastern N.M. vs St. Mary's (TX)
PERIOD 1 Shots
December 13, 2019 at Bill Greehey Arena



St. Mary's (TX)

Eastern N.M.



StMU : Period 1	Made	Att	Pct
Layups	6	9	66.7
Dunks	1	1	100.0
2PT Field Goals	10	18	55.6
3PT Field Goals	1	12	08.3
Total Field Goals	11	30	36.7

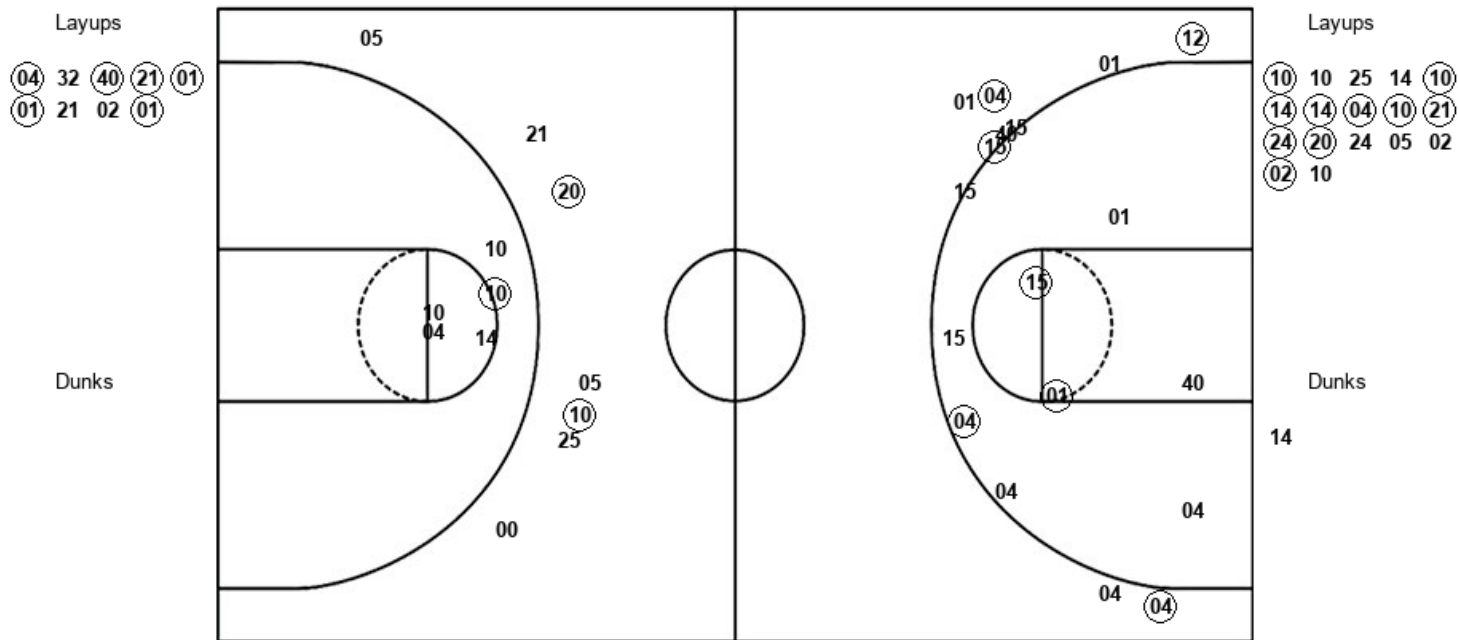
ENMU : Period 1	Made	Att	Pct
Layups	7	16	43.8
Dunks	0	0	0
2PT Field Goals	12	28	42.9
3PT Field Goals	1	7	14.3
Total Field Goals	13	35	37.1

Official Shot Chart
Eastern N.M. vs St. Mary's (TX)
PERIOD 2 Shots
December 13, 2019 at Bill Greehey Arena



St. Mary's (TX)

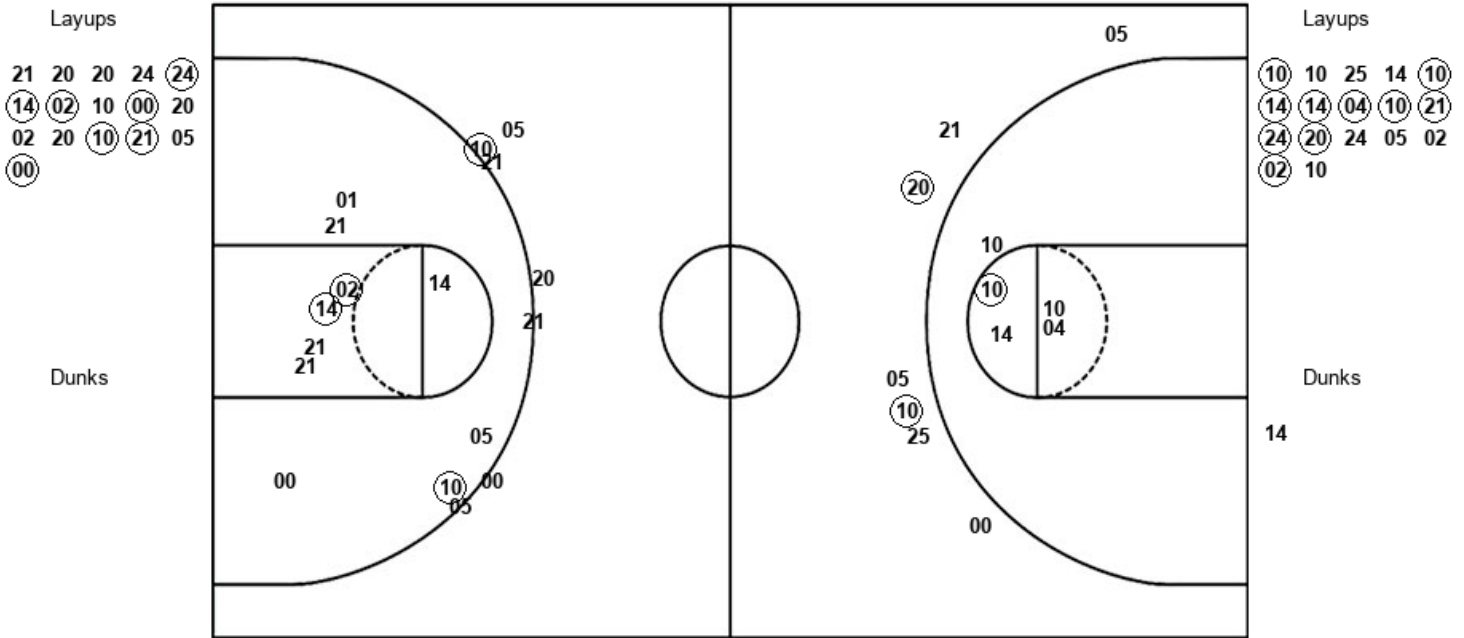
Eastern N.M.



StMU : Period 2	Made	Att	Pct
Layups	6	9	66.7
Dunks	0	0	0
2PT Field Goals	8	14	57.1
3PT Field Goals	5	13	38.5
Total Field Goals	13	27	48.1

ENMU : Period 2	Made	Att	Pct
Layups	10	17	58.8
Dunks	0	1	00.0
2PT Field Goals	11	23	47.8
3PT Field Goals	2	7	28.6
Total Field Goals	13	30	43.3

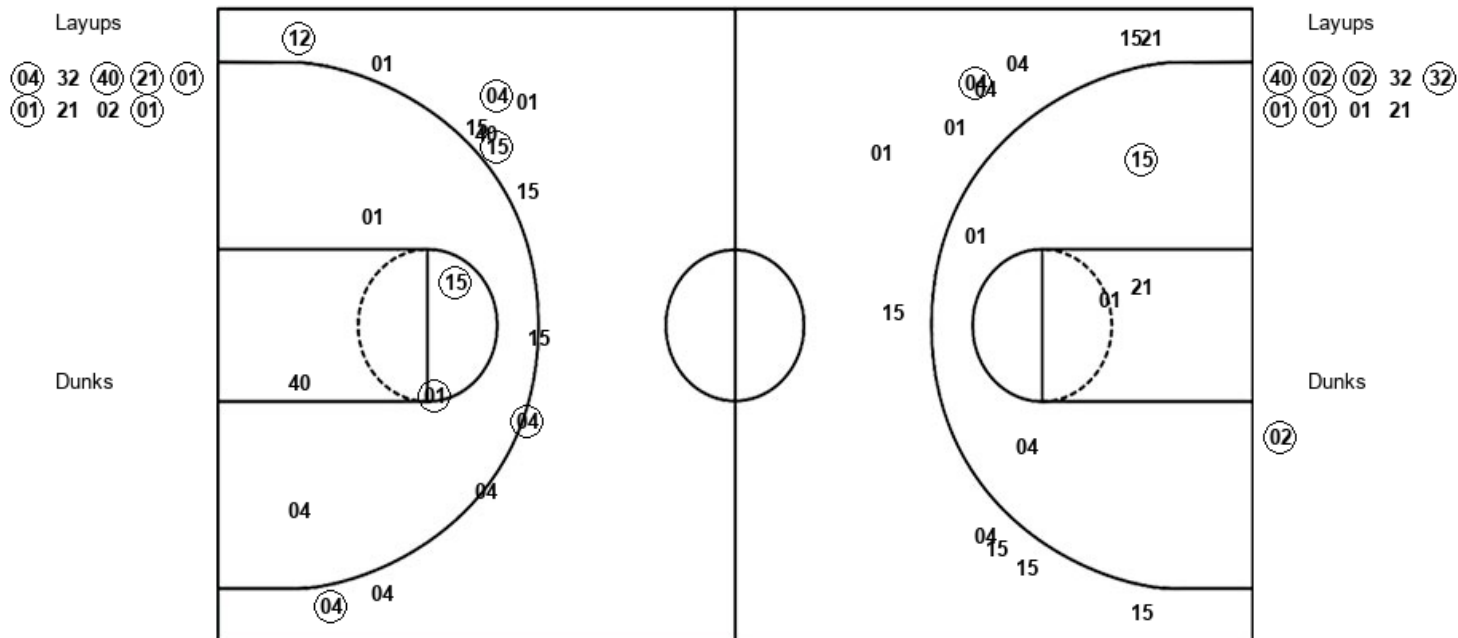
Official Shot Chart
 Eastern N.M. vs St. Mary's (TX)
 Eastern N.M. Team Shots
 December 13, 2019 at Bill Greehey Arena



ENMU : Period 1	Made	Att	Pct
Layups	7	16	43.8
Dunks	0	0	0
2PT Field Goals	12	28	42.9
3PT Field Goals	1	7	14.3
Total Field Goals	13	35	37.1

ENMU : Period 2	Made	Att	Pct
Layups	10	17	58.8
Dunks	0	1	00.0
2PT Field Goals	11	23	47.8
3PT Field Goals	2	7	28.6
Total Field Goals	13	30	43.3

Official Shot Chart
Eastern N.M. vs St. Mary's (TX)
St. Mary's (TX) Team Shots
December 13, 2019 at Bill Greehey Arena



StMU : Period 1	Made	Att	Pct
Layups	6	9	66.7
Dunks	1	1	100.0
2PT Field Goals	10	18	55.6
3PT Field Goals	1	12	08.3
Total Field Goals	11	30	36.7

StMU : Period 2	Made	Att	Pct
Layups	6	9	66.7
Dunks	0	0	0
2PT Field Goals	8	14	57.1
3PT Field Goals	5	13	38.5
Total Field Goals	13	27	48.1