

FINAL SCORE

DBU



84

Angelo St.



82

December 07, 2019 • Junell Center/Stephens Arena - San Angelo

FINAL STATISTICS

Official Box Score
DBU vs Angelo St.
Game Totals -- Final Statistics
December 07, 2019 at Junell Center/Stephens Arena - San Angelo



DBU 84

| No. | Player | S | Pts | FG | 3FG | FT | OR | DR | TR | PF | A | TO | Blk | Stl | Min | +/- |
|---------------|----------------------|---|-----------|--------------|-------------|--------------|----------|-----------|-----------|-----------|-----------|-----------|----------|----------|------------|-----|
| 02 | DEAN, TYLAN | G | 13 | 3-8 | 1-4 | 6-10 | 0 | 7 | 7 | 5 | 2 | 2 | 0 | 2 | 41 | -5 |
| 03 | BROWN, CARTER | G | 19 | 6-10 | 0-2 | 7-10 | 2 | 5 | 7 | 3 | 3 | 5 | 1 | 2 | 41 | 5 |
| 04 | WASHINGTON, JONATHYN | F | 2 | 1-4 | 0-0 | 0-0 | 0 | 2 | 2 | 5 | 0 | 1 | 1 | 0 | 11 | 1 |
| 13 | JACOBS, CHANDLER | G | 6 | 3-6 | 0-0 | 0-0 | 0 | 5 | 5 | 1 | 1 | 5 | 0 | 1 | 25 | -5 |
| 22 | LIDIAK, CONNER | G | 16 | 5-11 | 3-9 | 3-3 | 0 | 4 | 4 | 3 | 1 | 3 | 1 | 2 | 35 | 11 |
| 10 | HEATHER, WILLIAM | F | 17 | 8-11 | 1-3 | 0-0 | 0 | 4 | 4 | 4 | 1 | 2 | 1 | 1 | 30 | 1 |
| 11 | HUGHES, CARSON | G | 11 | 4-8 | 1-5 | 2-4 | 0 | 2 | 2 | 3 | 2 | 2 | 0 | 0 | 34 | 2 |
| 25 | OGUNLADE, JOSH | G | 0 | 0-0 | 0-0 | 0-0 | 0 | 0 | 0 | 0 | 0 | 0 | 0 | 0 | 2 | 0 |
| 35 | WHITE, JALEN | G | 0 | 0-0 | 0-0 | 0-0 | 0 | 3 | 3 | 4 | 0 | 0 | 0 | 0 | 6 | 0 |
| TEAM | | | | | | | 1 | 1 | 2 | 0 | | 0 | | | | |
| TOTALS | | | 84 | 30-58 | 6-23 | 18-27 | 3 | 33 | 36 | 28 | 10 | 20 | 4 | 8 | 225 | |

Shooting By Period

| Period | FG | FG% | 3FG | 3FG% | FT | FT% |
|-------------|--------------|--------------|-------------|--------------|--------------|--------------|
| 1st Half | 12-28 | 43% | 2-13 | 15% | 3-4 | 75% |
| 2nd Half | 15-27 | 56% | 3-9 | 33% | 8-9 | 89% |
| 3rd Half | 3-3 | 100% | 1-1 | 100% | 7-14 | 50% |
| Game | 30-58 | 51.7% | 6-23 | 26.1% | 18-27 | 66.7% |

Deadball Rebounds: 2,0
 Last FG: 3rd-01:53
 Biggest Run: 6-0
 Largest lead: By 7 at 2-03
 Technical Fouls: None.

Angelo St. 82

| No. | Player | S | Pts | FG | 3FG | FT | OR | DR | TR | PF | A | TO | Blk | Stl | Min | +/- |
|---------------|------------------|---|-----------|--------------|-------------|--------------|-----------|-----------|-----------|-----------|-----------|-----------|----------|-----------|------------|-----|
| 03 | HAYES, JEREMY | G | 13 | 5-13 | 1-3 | 2-3 | 3 | 2 | 5 | 5 | 1 | 5 | 0 | 0 | 25 | 2 |
| 04 | BELL, RONALD | G | 16 | 6-14 | 2-6 | 2-6 | 5 | 4 | 9 | 4 | 2 | 3 | 0 | 1 | 37 | 0 |
| 10 | WILLIAMS, PAUL | G | 3 | 1-9 | 0-6 | 1-2 | 0 | 2 | 2 | 4 | 3 | 4 | 0 | 1 | 33 | -5 |
| 11 | IBARGUEN, ANDRES | F | 14 | 4-7 | 0-0 | 6-9 | 4 | 5 | 9 | 2 | 1 | 0 | 2 | 2 | 30 | 1 |
| 23 | TURNER, COLLIN | G | 21 | 7-13 | 4-8 | 3-3 | 2 | 7 | 9 | 4 | 3 | 5 | 0 | 4 | 42 | 1 |
| 02 | REEDUS, CAMRON | G | 7 | 2-8 | 0-4 | 3-6 | 0 | 5 | 5 | 3 | 2 | 1 | 0 | 2 | 26 | -7 |
| 05 | EDWARDS, BURONE | G | 4 | 2-7 | 0-1 | 0-2 | 3 | 3 | 6 | 1 | 0 | 1 | 0 | 1 | 14 | 1 |
| 12 | PETTWAY, MARCEL | F | 4 | 2-4 | 0-0 | 0-1 | 4 | 2 | 6 | 1 | 0 | 1 | 0 | 2 | 18 | -3 |
| TEAM | | | | | | | 0 | 1 | 1 | 0 | | 0 | | | | |
| TOTALS | | | 82 | 29-75 | 7-28 | 17-32 | 21 | 31 | 52 | 24 | 12 | 20 | 2 | 13 | 225 | |

Shooting By Period

| Period | FG | FG% | 3FG | 3FG% | FT | FT% |
|-------------|--------------|--------------|-------------|--------------|--------------|--------------|
| 1st Half | 12-32 | 38% | 2-10 | 20% | 4-8 | 50% |
| 2nd Half | 13-36 | 36% | 4-16 | 25% | 10-16 | 63% |
| 3rd Half | 4-7 | 57% | 1-2 | 50% | 3-8 | 38% |
| Game | 29-75 | 38.7% | 7-28 | 25.0% | 17-32 | 53.1% |

Deadball Rebounds: 7,1
 Last FG: 3rd-00:15
 Biggest Run: 5-0
 Largest lead: By 2 at 1-19
 Technical Fouls: None.

Game Notes:
 Officials: , ,
 Attendance: 843

Start Time: 05:16 PM ET
 End Time: 07:38 PM ET
 Game Duration: 2:22
 Conference Game;

| Score | 1st | 2nd | 3rd | TOT |
|-------|-----|-----|-----|-----------|
| DBU | 29 | 41 | 14 | 84 |
| ASU | 30 | 40 | 12 | 82 |

DBU led for 34:55. ASU led for 4:29.
 Game was tied for 5:37.
 Times tied: 10 Lead Changes: 11

| Points from | DBU | ASU |
|--------------|-----|-----|
| In the Paint | 48 | 38 |
| Off Turns | 19 | 19 |
| 2nd Chance | 4 | 23 |
| Fast Break | 9 | 13 |
| Bench | 28 | 15 |

Official Box Score
DBU vs Angelo St.
First Half Statistics Only
December 07, 2019 at Junell Center/Stephens Arena - San Angelo



DBU 29

| No. | Player | S | Pts | FG | 3FG | FT | OR | DR | TR | PF | A | TO | Blk | Stl | Min | +/- |
|---------------|----------------------|---|-----------|--------------|-------------|------------|----------|-----------|-----------|-----------|----------|-----------|----------|----------|------------|-----|
| 02 | DEAN, TYLAN | G | 0 | 0-3 | 0-2 | 0-0 | 0 | 3 | 3 | 0 | 1 | 1 | 0 | 0 | 18 | -4 |
| 03 | BROWN, CARTER | G | 11 | 4-7 | 0-1 | 3-4 | 2 | 2 | 4 | 1 | 0 | 1 | 0 | 0 | 18 | 0 |
| 04 | WASHINGTON, JONATHYN | F | 0 | 0-0 | 0-0 | 0-0 | 0 | 0 | 0 | 2 | 0 | 0 | 0 | 0 | 1 | 0 |
| 13 | JACOBS, CHANDLER | G | 4 | 2-4 | 0-0 | 0-0 | 0 | 3 | 3 | 0 | 1 | 5 | 0 | 1 | 16 | -8 |
| 22 | LIDIAK, CONNER | G | 10 | 4-7 | 2-5 | 0-0 | 0 | 1 | 1 | 1 | 0 | 3 | 0 | 1 | 14 | 6 |
| 10 | HEATHER, WILLIAM | F | 4 | 2-3 | 0-1 | 0-0 | 0 | 2 | 2 | 2 | 1 | 2 | 1 | 1 | 14 | -1 |
| 11 | HUGHES, CARSON | G | 0 | 0-4 | 0-4 | 0-0 | 0 | 1 | 1 | 1 | 1 | 1 | 0 | 0 | 13 | 0 |
| 25 | OGUNLADE, JOSH | G | 0 | 0-0 | 0-0 | 0-0 | 0 | 0 | 0 | 0 | 0 | 0 | 0 | 0 | 0 | 0 |
| 35 | WHITE, JALEN | G | 0 | 0-0 | 0-0 | 0-0 | 0 | 3 | 3 | 3 | 0 | 0 | 0 | 0 | 5 | 2 |
| TEAM | | | | | | | 1 | 0 | 1 | 0 | | 0 | | | | |
| TOTALS | | | 29 | 12-28 | 2-13 | 3-4 | 3 | 15 | 18 | 10 | 4 | 13 | 1 | 3 | 100 | |

Shooting By Period

| Period | FG | FG% | 3FG | 3FG% | FT | FT% |
|----------|-------|-------|------|-------|-------|-------|
| 1st Half | 12-28 | 43% | 2-13 | 15% | 3-4 | 75% |
| Game | 30-58 | 51.7% | 6-23 | 26.1% | 18-27 | 66.7% |

Deadball Rebounds: 2,0

Last FG Half: DBU 2nd-01:49

Angelo St. 30

| No. | Player | S | Pts | FG | 3FG | FT | OR | DR | TR | PF | A | TO | Blk | Stl | Min | +/- |
|---------------|------------------|---|-----------|--------------|-------------|------------|----------|-----------|-----------|----------|----------|----------|----------|----------|------------|-----|
| 03 | HAYES, JEREMY | G | 7 | 3-5 | 0-0 | 1-2 | 1 | 2 | 3 | 2 | 1 | 3 | 0 | 0 | 16 | 1 |
| 04 | BELL, RONALD | G | 11 | 4-9 | 1-3 | 2-3 | 4 | 2 | 6 | 2 | 1 | 1 | 0 | 1 | 20 | 1 |
| 10 | WILLIAMS, PAUL | G | 0 | 0-3 | 0-3 | 0-0 | 0 | 1 | 1 | 1 | 0 | 2 | 0 | 0 | 13 | 3 |
| 11 | IBARGUEN, ANDRES | F | 2 | 1-3 | 0-0 | 0-0 | 0 | 2 | 2 | 2 | 0 | 0 | 1 | 1 | 10 | 2 |
| 23 | TURNER, COLLIN | G | 7 | 3-5 | 1-2 | 0-0 | 0 | 3 | 3 | 0 | 1 | 2 | 0 | 2 | 17 | 3 |
| 02 | REEDUS, CAMRON | G | 1 | 0-3 | 0-1 | 1-2 | 0 | 1 | 1 | 1 | 1 | 1 | 0 | 2 | 10 | -4 |
| 05 | EDWARDS, BURONE | G | 0 | 0-3 | 0-1 | 0-0 | 0 | 0 | 0 | 0 | 0 | 0 | 0 | 1 | 4 | 0 |
| 12 | PETTWAY, MARCEL | F | 2 | 1-1 | 0-0 | 0-1 | 2 | 0 | 2 | 0 | 0 | 0 | 0 | 2 | 10 | -1 |
| TEAM | | | | | | | 0 | 1 | 1 | 0 | | 0 | | | | |
| TOTALS | | | 30 | 12-32 | 2-10 | 4-8 | 7 | 12 | 19 | 8 | 4 | 9 | 1 | 9 | 100 | |

Shooting By Period

| Period | FG | FG% | 3FG | 3FG% | FT | FT% |
|----------|-------|-------|------|-------|-------|-------|
| 1st Half | 12-32 | 38% | 2-10 | 20% | 4-8 | 50% |
| Game | 29-75 | 38.7% | 7-28 | 25.0% | 17-32 | 53.1% |

Deadball Rebounds: 7,1

Last FG Half: ASU 2nd-00:51

Game Notes:

Officials: , ,
Attendance: 843

Start Time: 05:16 PM ET
End Time: 07:38 PM ET
Game Duration: 2:22
Conference Game;

| Score | 1st | 2nd | 3rd | TOT |
|-------|-----|-----|-----|-----------|
| DBU | 29 | 41 | 14 | 84 |
| ASU | 30 | 40 | 12 | 82 |

| Points from (This Period) | DBU | ASU |
|---------------------------|-----|-----|
| In the Paint | 20 | 20 |
| Off Turns | 2 | 13 |
| 2nd Chance | 4 | 12 |
| Fast Break | 0 | 7 |
| Bench | 4 | 3 |

**Official Play-By-Play
DBU vs Angelo St.
First Half**

December 07, 2019 at Junell Center/Stephens Arena - San Angelo



Period 1

Starters:

DBU: 13 JACOBS, CHANDLER (G); 22 LIDIAK, CONNER (G); 2 DEAN, TYLAN (G); 3 BROWN, CARTER (G); 4 WASHINGTON, JONATHYN (F);

Angelo St.: 3 HAYES, JEREMY (G); 4 BELL, RONALD (G); 10 WILLIAMS, PAUL (G); 11 IBARGUEN, ANDRES (F); 23 TURNER, COLLIN (G);

| Time | VISITORS: DBU | Score | Margin | HOME: Angelo St. |
|-------|---|-------|--------|---------------------------------------|
| 19:55 | TURNOVER (LOSTBALL) by JACOBS, CHANDLER | | | |
| 19:55 | | | | STEAL by BELL, RONALD |
| 19:45 | | 2-0 | H 2 | GOOD! DUNK by IBARGUEN, ANDRES |
| 19:45 | | | | ASSIST by HAYES, JEREMY |
| 19:23 | MISSED 3PTR by LIDIAK, CONNER | | | |
| 19:20 | | | | REBOUND (DEF) by WILLIAMS, PAUL |
| 19:17 | | | | MISSED 3PTR by BELL, RONALD |
| 19:13 | REBOUND (DEF) by DEAN, TYLAN | | | |
| 19:06 | GOOD! LAYUP by LIDIAK, CONNER | 2-2 | T | |
| 18:52 | FOUL (PERSONAL) by WASHINGTON, JONATHYN | | | |
| 18:50 | FOUL (PERSONAL) by WASHINGTON, JONATHYN | | | |
| 18:50 | SUB OUT: WASHINGTON, JONATHYN | | | |
| 18:50 | SUB IN: HEATHER, WILLIAM | | | |
| 18:36 | | | | MISSED JUMPER by HAYES, JEREMY |
| 18:34 | REBOUND (DEF) by HEATHER, WILLIAM | | | |
| 18:25 | TURNOVER (LOSTBALL) by LIDIAK, CONNER | | | |
| 18:25 | | | | STEAL by TURNER, COLLIN |
| 18:24 | | | | TURNOVER (OTHER) by TURNER, COLLIN |
| 18:08 | MISSED 3PTR by DEAN, TYLAN | | | |
| 18:05 | | | | REBOUND (DEF) by HAYES, JEREMY |
| 17:58 | | | | MISSED JUMPER by HAYES, JEREMY |
| 17:55 | REBOUND (DEF) by JACOBS, CHANDLER | | | |
| 17:55 | | | | FOUL (PERSONAL) by WILLIAMS, PAUL |
| 17:43 | MISSED LAYUP by BROWN, CARTER | | | |
| 17:41 | REBOUND (OFF) by BROWN, CARTER | | | |
| 17:40 | GOOD! LAYUP by BROWN, CARTER | 2-4 | V 2 | |
| 17:25 | | | | TURNOVER (LOSTBALL) by WILLIAMS, PAUL |
| 17:25 | STEAL by LIDIAK, CONNER | | | |
| 17:11 | MISSED LAYUP by JACOBS, CHANDLER | | | |
| 17:10 | REBOUND (OFF) by TEAM | | | |
| 17:06 | TURNOVER (TRAVEL) by JACOBS, CHANDLER | | | |
| 16:54 | | | | TURNOVER (TRAVEL) by TURNER, COLLIN |
| 16:38 | TURNOVER (TRAVEL) by HEATHER, WILLIAM | | | |
| 16:25 | | | | MISSED JUMPER by IBARGUEN, ANDRES |
| 16:22 | | | | REBOUND (OFF) by BELL, RONALD |
| 16:16 | | 4-4 | T | GOOD! LAYUP by TURNER, COLLIN |
| 15:57 | GOOD! LAYUP by LIDIAK, CONNER | 4-6 | V 2 | |
| 15:57 | ASSIST by HEATHER, WILLIAM | | | |
| 15:46 | FOUL (PERSONAL) by LIDIAK, CONNER | | | |
| 15:46 | | | | |
| 15:46 | SUB OUT: LIDIAK, CONNER | | | |
| 15:46 | SUB IN: HUGHES, CARSON | | | |
| 15:31 | | | | MISSED 3PTR by WILLIAMS, PAUL |
| 15:28 | | | | REBOUND (OFF) by BELL, RONALD |
| 15:26 | | 7-6 | H 1 | GOOD! 3PTR by TURNER, COLLIN |
| 15:26 | | | | ASSIST by BELL, RONALD |
| 15:07 | TURNOVER (TRAVEL) by HEATHER, WILLIAM | | | |
| 15:07 | SUB OUT: JACOBS, CHANDLER | | | |
| 15:07 | SUB IN: WHITE, JALEN | | | |
| 14:45 | FOUL (PERSONAL) by HEATHER, WILLIAM | | | |
| 14:33 | | | | MISSED LAYUP by IBARGUEN, ANDRES |
| 14:31 | REBOUND (DEF) by WHITE, JALEN | | | |
| 14:13 | MISSED 3PTR by DEAN, TYLAN | | | |
| 14:11 | | | | REBOUND (DEF) by BELL, RONALD |
| 14:02 | | | | MISSED 3PTR by WILLIAMS, PAUL |
| 13:59 | REBOUND (DEF) by BROWN, CARTER | | | |
| 13:54 | MISSED 3PTR by HUGHES, CARSON | | | |
| 13:52 | | | | REBOUND (DEF) by HAYES, JEREMY |
| 13:48 | | | | TURNOVER (OTHER) by WILLIAMS, PAUL |
| 13:44 | | | | SUB OUT: WILLIAMS, PAUL |
| 13:44 | | | | SUB OUT: IBARGUEN, ANDRES |
| 13:44 | | | | SUB IN: REEDUS, CAMRON |
| 13:44 | | | | SUB IN: PETTWAY, MARCEL |
| 13:44 | SUB OUT: DEAN, TYLAN | | | |
| 13:44 | SUB OUT: HEATHER, WILLIAM | | | |
| 13:44 | SUB IN: JACOBS, CHANDLER | | | |
| 13:44 | SUB IN: LIDIAK, CONNER | | | |
| 13:34 | GOOD! LAYUP by BROWN, CARTER | 7-8 | V 1 | |
| 13:09 | | | | MISSED LAYUP by BELL, RONALD |
| 13:07 | REBOUND (DEF) by WHITE, JALEN | | | |

| Time | VISITORS: DBU | Score | Margin | HOME: Angelo St. |
|-------|---|-------|--------|--------------------------------------|
| 12:58 | TURNOVER (LOSTBALL) by JACOBS, CHANDLER | | | |
| 12:58 | | | | STEAL by TURNER, COLLIN |
| 12:54 | | 9-8 | H 1 | GOOD! LAYUP by TURNER, COLLIN [FB] |
| 12:34 | | | | FOUL (PERSONAL) by REEDUS, CAMRON |
| 12:34 | | | | SUB OUT: TURNER, COLLIN |
| 12:34 | | | | SUB IN: WILLIAMS, PAUL |
| 12:21 | GOOD! 3PTR by LIDIAK, CONNER | 9-11 | V 2 | |
| 12:21 | ASSIST by JACOBS, CHANDLER | | | |
| 11:54 | | | | TURNOVER (BADPASS) by REEDUS, CAMRON |
| 11:54 | STEAL by JACOBS, CHANDLER | | | |
| 11:45 | MISSED 3PTR by BROWN, CARTER | | | |
| 11:42 | | | | REBOUND (DEF) by TEAM |
| 11:42 | | | | |
| 11:42 | SUB OUT: BROWN, CARTER | | | |
| 11:42 | SUB IN: DEAN, TYLAN | | | |
| 11:22 | | | | MISSED JUMPER by REEDUS, CAMRON |
| 11:19 | REBOUND (DEF) by JACOBS, CHANDLER | | | |
| 11:06 | GOOD! LAYUP by JACOBS, CHANDLER | 9-13 | V 4 | |
| 10:58 | | | | TURNOVER (OTHER) by HAYES, JEREMY |
| 10:58 | | | | SUB OUT: HAYES, JEREMY |
| 10:58 | | | | SUB IN: EDWARDS, BURONE |
| 10:42 | TURNOVER (BADPASS) by JACOBS, CHANDLER | | | |
| 10:42 | | | | STEAL by EDWARDS, BURONE |
| 10:38 | | | | MISSED LAYUP by EDWARDS, BURONE |
| 10:33 | REBOUND (DEF) by HUGHES, CARSON | | | |
| 10:25 | MISSED 3PTR by HUGHES, CARSON | | | |
| 10:22 | | | | REBOUND (DEF) by BELL, RONALD |
| 10:11 | FOUL (PERSONAL) by WHITE, JALEN | | | |
| 10:01 | | 11-13 | V 2 | GOOD! LAYUP by BELL, RONALD [PNT] |
| 10:01 | FOUL (PERSONAL) by WHITE, JALEN | | | |
| 10:01 | | 12-13 | V 1 | GOOD! FT by BELL, RONALD |
| 10:01 | | | | SUB OUT: WILLIAMS, PAUL |
| 10:01 | | | | SUB IN: TURNER, COLLIN |
| 10:01 | SUB OUT: JACOBS, CHANDLER | | | |
| 10:01 | SUB OUT: WHITE, JALEN | | | |
| 10:01 | SUB IN: BROWN, CARTER | | | |
| 10:01 | SUB IN: HEATHER, WILLIAM | | | |
| 09:44 | GOOD! LAYUP by HEATHER, WILLIAM [PNT] | 12-15 | V 3 | |
| 09:23 | | | | MISSED 3PTR by EDWARDS, BURONE |
| 09:20 | REBOUND (DEF) by DEAN, TYLAN | | | |
| 09:14 | GOOD! 3PTR by LIDIAK, CONNER | 12-18 | V 6 | |
| 09:14 | ASSIST by HUGHES, CARSON | | | |
| 08:55 | | | | MISSED LAYUP by REEDUS, CAMRON |
| 08:52 | REBOUND (DEF) by LIDIAK, CONNER | | | |
| 08:44 | TURNOVER (BADPASS) by HUGHES, CARSON | | | |
| 08:44 | | | | STEAL by REEDUS, CAMRON |
| 08:40 | | 14-18 | V 4 | GOOD! LAYUP by BELL, RONALD [FB] |
| 08:40 | | | | ASSIST by REEDUS, CAMRON |
| 08:27 | MISSED LAYUP by BROWN, CARTER | | | |
| 08:24 | | | | REBOUND (DEF) by REEDUS, CAMRON |
| 08:12 | | | | MISSED LAYUP by BELL, RONALD |
| 08:10 | REBOUND (DEF) by BROWN, CARTER | | | |
| 08:05 | MISSED 3PTR by LIDIAK, CONNER | | | |
| 08:01 | REBOUND (OFF) by BROWN, CARTER | | | |
| 08:01 | GOOD! LAYUP by BROWN, CARTER | 14-20 | V 6 | |
| 07:40 | FOUL (PERSONAL) by HEATHER, WILLIAM | | | |
| 07:40 | | | | SUB OUT: EDWARDS, BURONE |
| 07:40 | | | | SUB IN: HAYES, JEREMY |
| 07:40 | SUB OUT: HEATHER, WILLIAM | | | |
| 07:40 | SUB OUT: HUGHES, CARSON | | | |
| 07:40 | SUB IN: JACOBS, CHANDLER | | | |
| 07:40 | SUB IN: WHITE, JALEN | | | |
| 07:39 | | | | MISSED FT by PETTWAY, MARCEL |
| 07:37 | REBOUND (DEF) by WHITE, JALEN | | | |
| 07:18 | TURNOVER (BADPASS) by DEAN, TYLAN | | | |
| 07:18 | | | | STEAL by REEDUS, CAMRON |
| 07:18 | FOUL (PERSONAL) by WHITE, JALEN | | | |
| 07:18 | | | | SUB OUT: PETTWAY, MARCEL |
| 07:18 | | | | SUB IN: IBARGUEN, ANDRES |
| 07:18 | SUB OUT: WHITE, JALEN | | | |
| 07:18 | SUB IN: HEATHER, WILLIAM | | | |
| 07:18 | | 15-20 | V 5 | GOOD! FT by REEDUS, CAMRON [FB] |
| 07:18 | | | | MISSED FT by REEDUS, CAMRON |
| 07:17 | REBOUND (DEF) by HEATHER, WILLIAM | | | |
| 06:56 | | | | FOUL (PERSONAL) by HAYES, JEREMY |
| 06:54 | TURNOVER (LOSTBALL) by LIDIAK, CONNER | | | |
| 06:38 | | | | MISSED 3PTR by REEDUS, CAMRON |
| 06:34 | REBOUND (DEF) by JACOBS, CHANDLER | | | |
| 06:34 | | | | FOUL (PERSONAL) by IBARGUEN, ANDRES |
| 06:17 | TURNOVER (LOSTBALL) by BROWN, CARTER | | | |

| Time | VISITORS: DBU | Score | Margin | HOME: Angelo St. |
|-------|---|-------|--------|---------------------------------------|
| 06:17 | | | | STEAL by IBARGUEN, ANDRES |
| 05:58 | | | | TURNOVER (LOSTBALL) by HAYES, JEREMY |
| 05:58 | STEAL by HEATHER, WILLIAM | | | |
| 05:42 | MISSED 3PTR by HEATHER, WILLIAM | | | |
| 05:39 | | | | REBOUND (DEF) by TURNER, COLLIN |
| 05:24 | | | | MISSED 3PTR by TURNER, COLLIN |
| 05:22 | | | | REBOUND (OFF) by HAYES, JEREMY |
| 05:20 | | 17-20 | V 3 | GOOD! LAYUP by HAYES, JEREMY |
| 05:14 | TIMEOUT 30SEC | | | |
| 05:14 | SUB OUT: LIDIAK, CONNER | | | |
| 05:14 | SUB IN: HUGHES, CARSON | | | |
| 05:04 | MISSED 3PTR by HUGHES, CARSON | | | |
| 05:01 | | | | REBOUND (DEF) by IBARGUEN, ANDRES |
| 04:46 | | | | MISSED LAYUP by BELL, RONALD |
| 04:46 | BLOCK by HEATHER, WILLIAM | | | |
| 04:36 | REBOUND (DEF) by DEAN, TYLAN | | | |
| 04:35 | GOOD! LAYUP by JACOBS, CHANDLER | 17-22 | V 5 | |
| 04:21 | | 19-22 | V 3 | GOOD! LAYUP by HAYES, JEREMY |
| 04:01 | MISSED LAYUP by DEAN, TYLAN | | | |
| 04:01 | | | | BLOCK by IBARGUEN, ANDRES |
| 03:56 | | | | REBOUND (DEF) by IBARGUEN, ANDRES |
| 03:45 | FOUL (PERSONAL) by HUGHES, CARSON | | | |
| 03:45 | | | | |
| 03:45 | | | | SUB OUT: REEDUS, CAMRON |
| 03:45 | | | | SUB IN: WILLIAMS, PAUL |
| 03:45 | | | | MISSED FT by HAYES, JEREMY |
| 03:45 | | | | REBOUND (OFF) by TEAM |
| 03:45 | | 20-22 | V 2 | GOOD! FT by HAYES, JEREMY |
| 03:31 | GOOD! LAYUP by BROWN, CARTER | 20-24 | V 4 | |
| 03:30 | | | | FOUL (PERSONAL) by IBARGUEN, ANDRES |
| 03:30 | | | | SUB OUT: IBARGUEN, ANDRES |
| 03:30 | | | | SUB IN: PETTWAY, MARCEL |
| 03:30 | MISSED FT by BROWN, CARTER | | | |
| 03:30 | GOOD! FT by BROWN, CARTER | 20-25 | V 5 | |
| 03:09 | | | | MISSED 3PTR by BELL, RONALD |
| 03:06 | | | | REBOUND (OFF) by PETTWAY, MARCEL |
| 03:03 | | | | MISSED 3PTR by WILLIAMS, PAUL |
| 02:59 | | | | REBOUND (OFF) by BELL, RONALD |
| 02:57 | FOUL (PERSONAL) by BROWN, CARTER | | | |
| 02:57 | | | | MISSED FT by BELL, RONALD |
| 02:57 | | | | REBOUND (OFF) by TEAM |
| 02:57 | | 21-25 | V 4 | GOOD! FT by BELL, RONALD |
| 03:30 | REBOUND (OFF) by TEAM | | | |
| 02:40 | MISSED LAYUP by JACOBS, CHANDLER | | | |
| 02:31 | | | | REBOUND (DEF) by TURNER, COLLIN |
| 02:29 | | | | FOUL (OFF) by BELL, RONALD |
| 02:29 | | | | TURNOVER (OFFENSIVE) by BELL, RONALD |
| 02:11 | MISSED 3PTR by HUGHES, CARSON | | | |
| 02:09 | | | | REBOUND (DEF) by TURNER, COLLIN |
| 02:00 | | | | MISSED LAYUP by TURNER, COLLIN |
| 01:58 | | | | REBOUND (OFF) by BELL, RONALD |
| 01:57 | | 23-25 | V 2 | GOOD! LAYUP by BELL, RONALD |
| 01:38 | TURNOVER (LOSTBALL) by JACOBS, CHANDLER | | | |
| 01:38 | | | | STEAL by PETTWAY, MARCEL |
| 01:32 | | 25-25 | T | GOOD! LAYUP by HAYES, JEREMY [FB] |
| 01:13 | GOOD! JUMPER by HEATHER, WILLIAM [PNT] | 25-27 | V 2 | |
| 01:13 | ASSIST by DEAN, TYLAN | | | |
| 01:02 | | 28-27 | H 1 | GOOD! 3PTR by BELL, RONALD |
| 01:02 | | | | ASSIST by TURNER, COLLIN |
| 00:46 | | | | FOUL (PERSONAL) by BELL, RONALD |
| 00:46 | SUB OUT: JACOBS, CHANDLER | | | |
| 00:46 | SUB IN: LIDIAK, CONNER | | | |
| 00:46 | GOOD! FT by BROWN, CARTER | 28-28 | T | |
| 00:46 | GOOD! FT by BROWN, CARTER | 28-29 | V 1 | |
| 00:46 | | | | TIMEOUT 30SEC |
| 00:40 | | | | FOUL (OFF) by HAYES, JEREMY |
| 00:40 | | | | TURNOVER (OFFENSIVE) by HAYES, JEREMY |
| 00:40 | | | | SUB OUT: HAYES, JEREMY |
| 00:40 | | | | SUB IN: EDWARDS, BURONE |
| 00:40 | SUB OUT: HEATHER, WILLIAM | | | |
| 00:40 | SUB IN: JACOBS, CHANDLER | | | |
| 00:28 | TURNOVER (LOSTBALL) by LIDIAK, CONNER | | | |
| 00:28 | | | | STEAL by PETTWAY, MARCEL |
| 00:13 | | | | MISSED JUMPER by EDWARDS, BURONE |
| 00:11 | | | | REBOUND (OFF) by PETTWAY, MARCEL |
| 00:10 | | 30-29 | H 1 | GOOD! LAYUP by PETTWAY, MARCEL |
| 00:02 | MISSED 3PTR by LIDIAK, CONNER | | | |
| 00:00 | | | | REBOUND (DEF) by TEAM |

| Points from (This Period) | DBU | ASU |
|---------------------------|-----|-----|
| In the Paint | 20 | 20 |
| Off Turns | 2 | 13 |
| 2nd Chance | 4 | 12 |
| Fast Break | 0 | 7 |
| Bench | 4 | 3 |

Official Box Score
DBU vs Angelo St.
Second Half Statistics Only
December 07, 2019 at Junell Center/Stephens Arena - San Angelo



DBU 41

| No. | Player | S | Pts | FG | 3FG | FT | OR | DR | TR | PF | A | TO | Blk | Stl | Min | +/- |
|---------------|----------------------|---|-----------|--------------|------------|------------|----------|-----------|-----------|-----------|----------|----------|----------|----------|------------|-----|
| 02 | DEAN, TYLAN | G | 7 | 1-3 | 0-1 | 5-6 | 0 | 4 | 4 | 3 | 1 | 1 | 0 | 0 | 18 | -3 |
| 03 | BROWN, CARTER | G | 2 | 1-2 | 0-1 | 0-0 | 0 | 2 | 2 | 2 | 2 | 3 | 1 | 2 | 18 | 1 |
| 04 | WASHINGTON, JONATHYN | F | 2 | 1-4 | 0-0 | 0-0 | 0 | 2 | 2 | 3 | 0 | 1 | 1 | 0 | 10 | 1 |
| 13 | JACOBS, CHANDLER | G | 2 | 1-2 | 0-0 | 0-0 | 0 | 2 | 2 | 1 | 0 | 0 | 0 | 0 | 9 | 5 |
| 22 | LIDIAK, CONNER | G | 6 | 1-4 | 1-4 | 3-3 | 0 | 2 | 2 | 1 | 1 | 0 | 1 | 1 | 17 | 3 |
| 10 | HEATHER, WILLIAM | F | 13 | 6-8 | 1-2 | 0-0 | 0 | 2 | 2 | 1 | 0 | 0 | 0 | 0 | 10 | 0 |
| 11 | HUGHES, CARSON | G | 9 | 4-4 | 1-1 | 0-0 | 0 | 1 | 1 | 1 | 1 | 1 | 0 | 0 | 15 | 0 |
| 25 | OGUNLADE, JOSH | G | 0 | 0-0 | 0-0 | 0-0 | 0 | 0 | 0 | 0 | 0 | 0 | 0 | 0 | 2 | 0 |
| 35 | WHITE, JALEN | G | 0 | 0-0 | 0-0 | 0-0 | 0 | 0 | 0 | 1 | 0 | 0 | 0 | 0 | 1 | -2 |
| TEAM | | | | | | | 0 | 0 | 0 | 0 | | 0 | | | | |
| TOTALS | | | 41 | 15-27 | 3-9 | 8-9 | 0 | 15 | 15 | 13 | 5 | 6 | 3 | 3 | 100 | |

Shooting By Period

| Period | FG | FG% | 3FG | 3FG% | FT | FT% |
|----------|-------|-------|------|-------|-------|-------|
| 2nd Half | 15-27 | 56% | 3-9 | 33% | 8-9 | 89% |
| Game | 30-58 | 51.7% | 6-23 | 26.1% | 18-27 | 66.7% |

Deadball Rebounds: 2,0

Last FG Half: DBU 3rd-01:53

Angelo St. 40

| No. | Player | S | Pts | FG | 3FG | FT | OR | DR | TR | PF | A | TO | Blk | Stl | Min | +/- |
|---------------|------------------|---|-----------|--------------|-------------|--------------|-----------|-----------|-----------|----------|----------|----------|----------|----------|------------|-----|
| 03 | HAYES, JEREMY | G | 6 | 2-8 | 1-3 | 1-1 | 2 | 0 | 2 | 3 | 0 | 2 | 0 | 0 | 9 | 1 |
| 04 | BELL, RONALD | G | 3 | 1-4 | 1-3 | 0-0 | 0 | 2 | 2 | 0 | 1 | 1 | 0 | 0 | 12 | 1 |
| 10 | WILLIAMS, PAUL | G | 2 | 1-4 | 0-3 | 0-0 | 0 | 1 | 1 | 1 | 2 | 1 | 0 | 0 | 16 | -7 |
| 11 | IBARGUEN, ANDRES | F | 10 | 2-3 | 0-0 | 6-9 | 4 | 2 | 6 | 0 | 1 | 0 | 1 | 1 | 16 | 3 |
| 23 | TURNER, COLLIN | G | 10 | 3-7 | 2-5 | 2-2 | 1 | 2 | 3 | 2 | 1 | 3 | 0 | 2 | 19 | 0 |
| 02 | REEDUS, CAMRON | G | 3 | 1-3 | 0-2 | 1-2 | 0 | 1 | 1 | 1 | 1 | 0 | 0 | 0 | 12 | 0 |
| 05 | EDWARDS, BURONE | G | 4 | 2-4 | 0-0 | 0-2 | 3 | 3 | 6 | 1 | 0 | 0 | 0 | 0 | 8 | -1 |
| 12 | PETTWAY, MARCEL | F | 2 | 1-3 | 0-0 | 0-0 | 2 | 2 | 4 | 1 | 0 | 1 | 0 | 0 | 8 | -2 |
| TEAM | | | | | | | 0 | 0 | 0 | 0 | | 0 | | | | |
| TOTALS | | | 40 | 13-36 | 4-16 | 10-16 | 12 | 13 | 25 | 9 | 6 | 8 | 1 | 3 | 100 | |

Shooting By Period

| Period | FG | FG% | 3FG | 3FG% | FT | FT% |
|----------|-------|-------|------|-------|-------|-------|
| 2nd Half | 13-36 | 36% | 4-16 | 25% | 10-16 | 63% |
| Game | 29-75 | 38.7% | 7-28 | 25.0% | 17-32 | 53.1% |

Deadball Rebounds: 7,1

Last FG Half: ASU 3rd-00:15

Game Notes:

Officials: , ,

Attendance: 843

Start Time: 05:16 PM ET

End Time: 07:38 PM ET

Game Duration: 2:22

Conference Game;

| Score | 1st | 2nd | 3rd | TOT |
|-------|-----|-----|-----|-----------|
| DBU | 29 | 41 | 14 | 84 |
| ASU | 30 | 40 | 12 | 82 |

| Points from (This Period) | DBU | ASU |
|---------------------------|-----|-----|
| In the Paint | 24 | 14 |
| Off Turns | 12 | 5 |
| 2nd Chance | 0 | 9 |
| Fast Break | 6 | 6 |
| Bench | 22 | 9 |

**Official Play-By-Play
DBU vs Angelo St.
Second Half**

December 07, 2019 at Junell Center/Stephens Arena - San Angelo



Period 2

Starters:

DBU: 13 JACOBS, CHANDLER (G); 22 LIDIAK, CONNER (G); 2 DEAN, TYLAN (G); 3 BROWN, CARTER (G); 4 WASHINGTON, JONATHYN (F);

Angelo St.: 3 HAYES, JEREMY (G); 4 BELL, RONALD (G); 10 WILLIAMS, PAUL (G); 11 IBARGUEN, ANDRES (F); 23 TURNER, COLLIN (G);

| Time | VISITORS: DBU | Score | Margin | HOME: Angelo St. |
|-------|---|-------|--------|---------------------------------------|
| 20:00 | | | | SUB OUT: EDWARDS, BURONE |
| 20:00 | | | | SUB OUT: PETTWAY, MARCEL |
| 20:00 | | | | SUB IN: HAYES, JEREMY |
| 20:00 | | | | SUB IN: IBARGUEN, ANDRES |
| 20:00 | SUB OUT: HUGHES, CARSON | | | |
| 20:00 | SUB IN: WASHINGTON, JONATHYN | | | |
| 19:43 | | | | TURNOVER (BADPASS) by BELL, RONALD |
| 19:27 | GOOD! 3PTR by LIDIAK, CONNER | 30-32 | V 2 | |
| 19:27 | ASSIST by BROWN, CARTER | | | |
| 19:07 | | | | TURNOVER (LOSTBALL) by TURNER, COLLIN |
| 19:07 | STEAL by LIDIAK, CONNER | | | |
| 19:01 | TURNOVER (BADPASS) by BROWN, CARTER | | | |
| 19:01 | | | | SUB OUT: BELL, RONALD |
| 19:01 | | | | SUB IN: PETTWAY, MARCEL |
| 18:49 | | | | MISSED 3PTR by HAYES, JEREMY |
| 18:47 | | | | REBOUND (OFF) by IBARGUEN, ANDRES |
| 18:45 | | | | MISSED LAYUP by IBARGUEN, ANDRES |
| 18:41 | | | | REBOUND (OFF) by PETTWAY, MARCEL |
| 18:40 | | | | MISSED LAYUP by PETTWAY, MARCEL |
| 18:40 | BLOCK by LIDIAK, CONNER | | | |
| 18:33 | REBOUND (DEF) by JACOBS, CHANDLER | | | |
| 18:26 | MISSED 3PTR by DEAN, TYLAN | | | |
| 18:24 | | | | REBOUND (DEF) by WILLIAMS, PAUL |
| 18:15 | | | | TURNOVER (BADPASS) by WILLIAMS, PAUL |
| 18:15 | STEAL by BROWN, CARTER | | | |
| 18:03 | MISSED 3PTR by LIDIAK, CONNER | | | |
| 18:00 | | | | REBOUND (DEF) by PETTWAY, MARCEL |
| 17:44 | FOUL (PERSONAL) by LIDIAK, CONNER | | | |
| 17:42 | | | | MISSED LAYUP by HAYES, JEREMY |
| 17:39 | | | | REBOUND (OFF) by HAYES, JEREMY |
| 17:38 | | | | MISSED LAYUP by HAYES, JEREMY |
| 17:33 | | | | REBOUND (OFF) by HAYES, JEREMY |
| 17:33 | | | | MISSED LAYUP by HAYES, JEREMY |
| 17:33 | REBOUND (DEF) by BROWN, CARTER | | | |
| 17:32 | | | | FOUL (PERSONAL) by WILLIAMS, PAUL |
| 17:22 | GOOD! LAYUP by WASHINGTON, JONATHYN | 30-34 | V 4 | |
| 17:08 | | 32-34 | V 2 | GOOD! JUMPER by WILLIAMS, PAUL |
| 16:44 | GOOD! LAYUP by JACOBS, CHANDLER | 32-36 | V 4 | |
| 16:19 | | 35-36 | V 1 | GOOD! 3PTR by TURNER, COLLIN |
| 16:19 | | | | ASSIST by IBARGUEN, ANDRES |
| 16:03 | MISSED LAYUP by WASHINGTON, JONATHYN | | | |
| 16:00 | | | | REBOUND (DEF) by TURNER, COLLIN |
| 15:57 | | | | MISSED 3PTR by WILLIAMS, PAUL |
| 15:55 | | | | REBOUND (OFF) by IBARGUEN, ANDRES |
| 15:44 | | | | MISSED LAYUP by TURNER, COLLIN |
| 15:44 | BLOCK by BROWN, CARTER | | | |
| 15:40 | REBOUND (DEF) by DEAN, TYLAN | | | |
| 15:36 | TURNOVER (TRAVEL) by WASHINGTON, JONATHYN | | | |
| 15:36 | | | | |
| 15:19 | | | | MISSED 3PTR by HAYES, JEREMY |
| 15:17 | | | | REBOUND (OFF) by IBARGUEN, ANDRES |
| 15:16 | FOUL (PERSONAL) by JACOBS, CHANDLER | | | |
| 15:16 | | 36-36 | T | GOOD! FT by IBARGUEN, ANDRES |
| 15:16 | SUB OUT: JACOBS, CHANDLER | | | |
| 15:16 | SUB IN: HUGHES, CARSON | | | |
| 15:16 | | | | MISSED FT by IBARGUEN, ANDRES |
| 15:15 | REBOUND (DEF) by WASHINGTON, JONATHYN | | | |
| 14:52 | MISSED JUMPER by WASHINGTON, JONATHYN | | | |
| 14:50 | | | | REBOUND (DEF) by PETTWAY, MARCEL |
| 14:38 | FOUL (PERSONAL) by WASHINGTON, JONATHYN | | | |
| 14:38 | | | | SUB OUT: PETTWAY, MARCEL |
| 14:38 | | | | SUB IN: EDWARDS, BURONE |
| 14:35 | | | | TURNOVER (LOSTBALL) by HAYES, JEREMY |
| 14:35 | STEAL by BROWN, CARTER | | | |
| 14:15 | | | | FOUL (PERSONAL) by TURNER, COLLIN |
| 14:15 | GOOD! FT by DEAN, TYLAN | 36-37 | V 1 | |
| 14:15 | GOOD! FT by DEAN, TYLAN | 36-38 | V 2 | |
| 14:00 | | 38-38 | T | GOOD! LAYUP by IBARGUEN, ANDRES |
| 14:00 | FOUL (PERSONAL) by DEAN, TYLAN | | | |
| 14:00 | | | | ASSIST by TURNER, COLLIN |

| Time | VISITORS: DBU | Score | Margin | HOME: Angelo St. |
|-------|---------------------------------------|-------|--------|--|
| 14:00 | | | | MISSED FT by IBARGUEN, ANDRES |
| 14:00 | REBOUND (DEF) by WASHINGTON, JONATHYN | | | |
| 13:53 | TURNOVER (LOSTBALL) by BROWN, CARTER | | | |
| 13:53 | | | | STEAL by IBARGUEN, ANDRES |
| 13:41 | | | | MISSED LAYUP by HAYES, JEREMY |
| 13:38 | REBOUND (DEF) by DEAN, TYLAN | | | |
| 13:29 | GOOD! JUMPER by HUGHES, CARSON [PNT] | 38-40 | V 2 | |
| 13:15 | | | | MISSED 3PTR by WILLIAMS, PAUL |
| 13:13 | REBOUND (DEF) by LIDIAK, CONNER | | | |
| 13:01 | MISSED 3PTR by LIDIAK, CONNER | | | |
| 12:59 | | | | REBOUND (DEF) by IBARGUEN, ANDRES |
| 12:53 | FOUL (PERSONAL) by DEAN, TYLAN | | | |
| 12:53 | | | | SUB OUT: HAYES, JEREMY |
| 12:53 | | | | SUB OUT: IBARGUEN, ANDRES |
| 12:53 | | | | SUB IN: REEDUS, CAMRON |
| 12:53 | | | | SUB IN: PETTWAY, MARCEL |
| 12:53 | SUB OUT: WASHINGTON, JONATHYN | | | |
| 12:53 | SUB OUT: LIDIAK, CONNER | | | |
| 12:53 | SUB IN: HEATHER, WILLIAM | | | |
| 12:53 | SUB IN: WHITE, JALEN | | | |
| 12:50 | | | | MISSED LAYUP by PETTWAY, MARCEL |
| 12:46 | | | | REBOUND (OFF) by PETTWAY, MARCEL |
| 12:46 | | 40-40 | T | GOOD! LAYUP by PETTWAY, MARCEL |
| 12:28 | GOOD! LAYUP by HEATHER, WILLIAM | 40-42 | V 2 | |
| 12:28 | ASSIST by HUGHES, CARSON | | | |
| 12:08 | | | | MISSED 3PTR by REEDUS, CAMRON |
| 12:07 | | | | REBOUND (OFF) by EDWARDS, BURONE |
| 12:07 | FOUL (PERSONAL) by WHITE, JALEN | | | |
| 12:07 | | | | MISSED FT by EDWARDS, BURONE |
| 12:07 | | | | REBOUND (OFF) by TEAM |
| 12:07 | | | | SUB OUT: PETTWAY, MARCEL |
| 12:07 | | | | SUB IN: BELL, RONALD |
| 12:07 | SUB OUT: BROWN, CARTER | | | |
| 12:07 | SUB OUT: WHITE, JALEN | | | |
| 12:07 | SUB IN: JACOBS, CHANDLER | | | |
| 12:07 | SUB IN: OGUNLADE, JOSH | | | |
| 12:07 | | | | MISSED FT by EDWARDS, BURONE |
| 12:03 | REBOUND (DEF) by JACOBS, CHANDLER | | | |
| 11:50 | GOOD! LAYUP by HEATHER, WILLIAM | 40-44 | V 4 | |
| 11:31 | | | | MISSED 3PTR by TURNER, COLLIN |
| 11:28 | | | | REBOUND (OFF) by EDWARDS, BURONE |
| 11:28 | | 42-44 | V 2 | GOOD! LAYUP by EDWARDS, BURONE |
| 11:10 | MISSED JUMPER by HEATHER, WILLIAM | | | |
| 11:03 | | | | REBOUND (DEF) by EDWARDS, BURONE |
| 11:00 | | | | SUB OUT: BELL, RONALD |
| 11:00 | | | | SUB IN: PETTWAY, MARCEL |
| 10:58 | | | | MISSED LAYUP by EDWARDS, BURONE |
| 10:37 | REBOUND (DEF) by HEATHER, WILLIAM | | | |
| 10:36 | GOOD! LAYUP by HEATHER, WILLIAM | 42-46 | V 4 | |
| 10:19 | | | | SUB OUT: WILLIAMS, PAUL |
| 10:19 | | | | SUB IN: BELL, RONALD |
| 10:18 | | | | MISSED LAYUP by EDWARDS, BURONE |
| 10:14 | | | | REBOUND (OFF) by EDWARDS, BURONE |
| 10:14 | | 44-46 | V 2 | GOOD! LAYUP by EDWARDS, BURONE |
| 10:05 | | | | |
| 10:05 | | | | SUB OUT: TURNER, COLLIN |
| 10:05 | | | | SUB IN: HAYES, JEREMY |
| 09:57 | SUB OUT: DEAN, TYLAN | | | |
| 09:57 | SUB OUT: OGUNLADE, JOSH | | | |
| 09:57 | SUB IN: BROWN, CARTER | | | |
| 09:57 | SUB IN: LIDIAK, CONNER | | | |
| 09:57 | GOOD! LAYUP by HUGHES, CARSON [PNT] | 44-48 | V 4 | |
| 09:57 | ASSIST by LIDIAK, CONNER | | | |
| 09:43 | | 47-48 | V 1 | GOOD! 3PTR by HAYES, JEREMY |
| 09:43 | | | | ASSIST by REEDUS, CAMRON |
| 09:30 | MISSED 3PTR by HEATHER, WILLIAM | | | |
| 09:29 | | | | REBOUND (DEF) by EDWARDS, BURONE |
| 09:29 | | | | TURNOVER (OTHER) by HAYES, JEREMY |
| 09:29 | | | | FOUL (PERSONAL) by HAYES, JEREMY |
| 09:26 | | | | FOUL (PERSONAL) by HAYES, JEREMY |
| 09:26 | GOOD! FT by LIDIAK, CONNER [FB] | 47-49 | V 2 | |
| 09:26 | GOOD! FT by LIDIAK, CONNER [FB] | 47-50 | V 3 | |
| 09:26 | | | | SUB OUT: HAYES, JEREMY |
| 09:26 | | | | SUB IN: TURNER, COLLIN |
| 09:26 | SUB OUT: HEATHER, WILLIAM | | | |
| 09:26 | SUB IN: WASHINGTON, JONATHYN | | | |
| 09:26 | GOOD! FT by LIDIAK, CONNER [FB] | 47-51 | V 4 | |
| 09:01 | | | | FOUL (OFF) by TURNER, COLLIN |
| 09:01 | | | | TURNOVER (OFFENSIVE) by TURNER, COLLIN |
| 08:39 | GOOD! LAYUP by BROWN, CARTER | 47-53 | V 6 | |

| Time | VISITORS: DBU | Score | Margin | HOME: Angelo St. |
|-------|---|-------|--------|---|
| 08:24 | | | | FOUL (OFF) by PETTWAY, MARCEL |
| 08:24 | | | | TURNOVER (OFFENSIVE) by PETTWAY, MARCEL |
| 08:24 | | | | SUB OUT: PETTWAY, MARCEL |
| 08:24 | | | | SUB IN: IBARGUEN, ANDRES |
| 08:11 | MISSED LAYUP by JACOBS, CHANDLER | | | |
| 08:07 | | | | REBOUND (DEF) by BELL, RONALD |
| 08:06 | | | | MISSED LAYUP by BELL, RONALD |
| 08:06 | BLOCK by WASHINGTON, JONATHYN | | | |
| 08:03 | REBOUND (DEF) by BROWN, CARTER | | | |
| 08:03 | SUB OUT: JACOBS, CHANDLER | | | |
| 08:03 | SUB IN: DEAN, TYLAN | | | |
| 07:58 | MISSED LAYUP by WASHINGTON, JONATHYN | | | |
| 07:58 | | | | BLOCK by IBARGUEN, ANDRES |
| 07:52 | | | | REBOUND (DEF) by BELL, RONALD |
| 07:49 | | 50-53 | V 3 | GOOD! 3PTR by BELL, RONALD |
| 07:26 | FOUL (PERSONAL) by WASHINGTON, JONATHYN | | | |
| 07:26 | | | | |
| 07:18 | | | | SUB OUT: REEDUS, CAMRON |
| 07:18 | | | | SUB IN: WILLIAMS, PAUL |
| 07:13 | | | | SUB OUT: EDWARDS, BURONE |
| 07:13 | | | | SUB IN: REEDUS, CAMRON |
| 07:07 | | | | MISSED 3PTR by REEDUS, CAMRON |
| 07:04 | | | | REBOUND (OFF) by IBARGUEN, ANDRES |
| 07:00 | | | | MISSED 3PTR by TURNER, COLLIN |
| 06:57 | REBOUND (DEF) by HEATHER, WILLIAM | | | |
| 06:50 | SUB OUT: WASHINGTON, JONATHYN | | | |
| 06:50 | SUB IN: HEATHER, WILLIAM | | | |
| 06:38 | MISSED JUMPER by DEAN, TYLAN | | | |
| 06:35 | | | | REBOUND (DEF) by IBARGUEN, ANDRES |
| 06:33 | | 52-53 | V 1 | GOOD! LAYUP by REEDUS, CAMRON [FB] |
| 06:06 | GOOD! LAYUP by HEATHER, WILLIAM | 52-55 | V 3 | |
| 05:49 | | | | MISSED 3PTR by WILLIAMS, PAUL |
| 05:46 | | | | REBOUND (OFF) by TURNER, COLLIN |
| 05:35 | | 54-55 | V 1 | GOOD! LAYUP by IBARGUEN, ANDRES |
| 05:35 | | | | ASSIST by WILLIAMS, PAUL |
| 05:04 | GOOD! JUMPER by HEATHER, WILLIAM [PNT] | 54-57 | V 3 | |
| 04:54 | | 56-57 | V 1 | GOOD! JUMPER by TURNER, COLLIN |
| 04:54 | | | | ASSIST by BELL, RONALD |
| 04:45 | MISSED 3PTR by LIDIAK, CONNER | | | |
| 04:43 | | | | REBOUND (DEF) by TURNER, COLLIN |
| 04:39 | | | | MISSED 3PTR by TURNER, COLLIN |
| 04:36 | REBOUND (DEF) by LIDIAK, CONNER | | | |
| 04:16 | GOOD! 3PTR by HEATHER, WILLIAM | 56-60 | V 4 | |
| 04:16 | ASSIST by DEAN, TYLAN | | | |
| 04:05 | | | | MISSED 3PTR by BELL, RONALD |
| 04:02 | REBOUND (DEF) by DEAN, TYLAN | | | |
| 03:46 | GOOD! 3PTR by HUGHES, CARSON | 56-63 | V 7 | |
| 03:46 | ASSIST by BROWN, CARTER | | | |
| 03:41 | | | | |
| 03:41 | | | | SUB OUT: WILLIAMS, PAUL |
| 03:41 | | | | SUB IN: HAYES, JEREMY |
| 03:41 | SUB OUT: HEATHER, WILLIAM | | | |
| 03:41 | SUB OUT: LIDIAK, CONNER | | | |
| 03:41 | SUB IN: WASHINGTON, JONATHYN | | | |
| 03:41 | SUB IN: WHITE, JALEN | | | |
| 03:34 | | 58-63 | V 5 | GOOD! JUMPER by HAYES, JEREMY [PNT] |
| 03:34 | FOUL (PERSONAL) by WASHINGTON, JONATHYN | | | |
| 03:34 | SUB OUT: WASHINGTON, JONATHYN | | | |
| 03:34 | SUB IN: HEATHER, WILLIAM | | | |
| 03:34 | SUB OUT: WHITE, JALEN | | | |
| 03:34 | SUB IN: LIDIAK, CONNER | | | |
| 03:34 | | 59-63 | V 4 | GOOD! FT by HAYES, JEREMY |
| 03:08 | GOOD! LAYUP by DEAN, TYLAN | 59-65 | V 6 | |
| 02:53 | FOUL (PERSONAL) by BROWN, CARTER | | | |
| 02:53 | | 60-65 | V 5 | GOOD! FT by IBARGUEN, ANDRES |
| 02:53 | | 61-65 | V 4 | GOOD! FT by IBARGUEN, ANDRES |
| 02:44 | TURNOVER (LOSTBALL) by BROWN, CARTER | | | |
| 02:44 | | | | STEAL by TURNER, COLLIN |
| 02:41 | FOUL (PERSONAL) by BROWN, CARTER | | | |
| 02:41 | | 62-65 | V 3 | GOOD! FT by TURNER, COLLIN [FB] |
| 02:41 | | 63-65 | V 2 | GOOD! FT by TURNER, COLLIN [FB] |
| 02:33 | TURNOVER (BADPASS) by HUGHES, CARSON | | | |
| 02:17 | | | | FOUL (OFF) by HAYES, JEREMY |
| 02:17 | | | | TURNOVER (OFFENSIVE) by TURNER, COLLIN |
| 02:17 | | | | SUB OUT: HAYES, JEREMY |
| 02:17 | | | | SUB IN: WILLIAMS, PAUL |
| 01:49 | GOOD! LAYUP by HUGHES, CARSON | 63-67 | V 4 | |
| 01:37 | FOUL (PERSONAL) by DEAN, TYLAN | | | |
| 01:37 | | 64-67 | V 3 | GOOD! FT by REEDUS, CAMRON |
| 01:37 | | | | MISSED FT by REEDUS, CAMRON |

| Time | VISITORS: DBU | Score | Margin | HOME: Angelo St. |
|-------|-------------------------------------|-------|--------|------------------------------------|
| 01:36 | REBOUND (DEF) by HUGHES, CARSON | | | |
| 01:32 | | | | FOUL (PERSONAL) by REEDUS, CAMRON |
| 01:32 | GOOD! FT by DEAN, TYLAN [FB] | 64-68 | V 4 | |
| 01:32 | MISSED FT by DEAN, TYLAN | | | |
| 01:31 | | | | REBOUND (DEF) by REEDUS, CAMRON |
| 01:18 | FOUL (PERSONAL) by HUGHES, CARSON | | | |
| 01:18 | | | | MISSED FT by IBARGUEN, ANDRES |
| 01:18 | | | | REBOUND (OFF) by TEAM |
| 01:18 | | | | SUB OUT: REEDUS, CAMRON |
| 01:18 | | | | SUB IN: EDWARDS, BURONE |
| 01:18 | | 65-68 | V 3 | GOOD! FT by IBARGUEN, ANDRES |
| 01:14 | TURNOVER (LOSTBALL) by DEAN, TYLAN | | | |
| 01:14 | | | | STEAL by TURNER, COLLIN |
| 01:07 | FOUL (PERSONAL) by HEATHER, WILLIAM | | | |
| 01:07 | | 66-68 | V 2 | GOOD! FT by IBARGUEN, ANDRES [FB] |
| 01:07 | | 67-68 | V 1 | GOOD! FT by IBARGUEN, ANDRES [FB] |
| 01:04 | | | | FOUL (PERSONAL) by EDWARDS, BURONE |
| 01:04 | GOOD! FT by DEAN, TYLAN [FB] | 67-69 | V 2 | |
| 01:04 | | | | SUB OUT: EDWARDS, BURONE |
| 01:04 | | | | SUB IN: REEDUS, CAMRON |
| 01:04 | GOOD! FT by DEAN, TYLAN [FB] | 67-70 | V 3 | |
| 00:51 | | 70-70 | T | GOOD! 3PTR by TURNER, COLLIN |
| 00:51 | | | | ASSIST by WILLIAMS, PAUL |
| 00:44 | TIMEOUT TEAM | | | |
| 00:42 | | | | SUB OUT: REEDUS, CAMRON |
| 00:42 | | | | SUB IN: EDWARDS, BURONE |
| 00:22 | MISSED 3PTR by BROWN, CARTER | | | |
| 00:19 | | | | REBOUND (DEF) by EDWARDS, BURONE |
| 00:02 | | | | MISSED 3PTR by BELL, RONALD |
| 00:00 | REBOUND (DEF) by DEAN, TYLAN | | | |

DBU 70, Angelo St. 70

| Points from (This Period) | DBU | ASU |
|---------------------------|-----|-----|
| In the Paint | 24 | 14 |
| Off Turns | 12 | 5 |
| 2nd Chance | 0 | 9 |
| Fast Break | 6 | 6 |
| Bench | 22 | 9 |

Official Play-By-Play
DBU vs Angelo St.
Overtime
December 07, 2019 at Junell Center/Stephens Arena - San Angelo



Period 3

Starters:

DBU: 13 JACOBS, CHANDLER (G); 22 LIDIAK, CONNER (G); 2 DEAN, TYLAN (G); 3 BROWN, CARTER (G); 4 WASHINGTON, JONATHYN (F);

Angelo St.: 3 HAYES, JEREMY (G); 4 BELL, RONALD (G); 10 WILLIAMS, PAUL (G); 11 IBARGUEN, ANDRES (F); 23 TURNER, COLLIN (G);

| Time | VISITORS: DBU | Score | Margin | HOME: Angelo St. |
|-------|--------------------------------------|-------|--------|---------------------------------------|
| 04:45 | | | | FOUL (PERSONAL) by WILLIAMS, PAUL |
| 04:45 | MISSED FT by DEAN, TYLAN | | | |
| 04:45 | REBOUND (OFF) by TEAM | | | |
| 04:45 | | | | SUB OUT: EDWARDS, BURONE |
| 04:45 | | | | SUB IN: REEDUS, CAMRON |
| 04:45 | MISSED FT by DEAN, TYLAN | | | |
| 04:43 | | | | REBOUND (DEF) by REEDUS, CAMRON |
| 04:27 | | | | TURNOVER (LOSTBALL) by BELL, RONALD |
| 04:27 | STEAL by DEAN, TYLAN | | | |
| 04:26 | | | | FOUL (PERSONAL) by REEDUS, CAMRON |
| 04:26 | GOOD! FT by DEAN, TYLAN [FB] | 70-71 | V 1 | |
| 04:26 | MISSED FT by DEAN, TYLAN | | | |
| 04:25 | | | | REBOUND (DEF) by IBARGUEN, ANDRES |
| 04:04 | | 72-71 | H 1 | GOOD! LAYUP by IBARGUEN, ANDRES |
| 04:04 | | | | ASSIST by TURNER, COLLIN |
| 03:38 | | | | FOUL (PERSONAL) by TURNER, COLLIN |
| 03:38 | GOOD! FT by BROWN, CARTER | 72-72 | T | |
| 03:38 | GOOD! FT by BROWN, CARTER | 72-73 | V 1 | |
| 03:22 | FOUL (PERSONAL) by HEATHER, WILLIAM | | | |
| 03:22 | | | | MISSED FT by BELL, RONALD |
| 03:22 | | | | REBOUND (OFF) by TEAM |
| 03:22 | | | | SUB OUT: REEDUS, CAMRON |
| 03:22 | | | | SUB IN: EDWARDS, BURONE |
| 03:22 | | | | MISSED FT by BELL, RONALD |
| 03:21 | | | | REBOUND (OFF) by TURNER, COLLIN |
| 03:13 | | | | TURNOVER (TRAVEL) by EDWARDS, BURONE |
| 02:55 | GOOD! 3PTR by DEAN, TYLAN | 72-76 | V 4 | |
| 02:55 | ASSIST by BROWN, CARTER | | | |
| 02:39 | | 75-76 | V 1 | GOOD! 3PTR by TURNER, COLLIN |
| 02:39 | | | | ASSIST by WILLIAMS, PAUL |
| 02:38 | FOUL (PERSONAL) by LIDIAK, CONNER | | | |
| 02:38 | | 76-76 | T | GOOD! FT by TURNER, COLLIN |
| 02:38 | | | | SUB OUT: EDWARDS, BURONE |
| 02:38 | | | | SUB IN: REEDUS, CAMRON |
| 02:35 | GOOD! LAYUP by DEAN, TYLAN [FB] | 76-78 | V 2 | |
| 02:06 | | | | MISSED JUMPER by WILLIAMS, PAUL |
| 02:03 | REBOUND (DEF) by LIDIAK, CONNER | | | |
| 01:53 | GOOD! LAYUP by BROWN, CARTER | 76-80 | V 4 | |
| 01:39 | | | | MISSED 3PTR by REEDUS, CAMRON |
| 01:35 | | | | REBOUND (OFF) by BELL, RONALD |
| 01:35 | | 78-80 | V 2 | GOOD! LAYUP by BELL, RONALD |
| 01:35 | FOUL (PERSONAL) by HUGHES, CARSON | | | |
| 01:35 | | | | MISSED FT by BELL, RONALD |
| 01:34 | REBOUND (DEF) by BROWN, CARTER | | | |
| 01:25 | | | | FOUL (PERSONAL) by TURNER, COLLIN |
| 01:25 | GOOD! FT by BROWN, CARTER | 78-81 | V 3 | |
| 01:25 | MISSED FT by BROWN, CARTER | | | |
| 01:25 | | | | REBOUND (DEF) by TURNER, COLLIN |
| 01:12 | FOUL (PERSONAL) by DEAN, TYLAN | | | |
| 01:12 | | | | MISSED FT by REEDUS, CAMRON |
| 01:12 | | | | REBOUND (OFF) by TEAM |
| 01:12 | | 79-81 | V 2 | GOOD! FT by REEDUS, CAMRON |
| 00:46 | | | | FOUL (PERSONAL) by BELL, RONALD |
| 00:46 | GOOD! FT by BROWN, CARTER | 79-82 | V 3 | |
| 00:46 | MISSED FT by BROWN, CARTER | | | |
| 00:45 | | | | REBOUND (DEF) by REEDUS, CAMRON |
| 00:36 | | | | TURNOVER (LOSTBALL) by WILLIAMS, PAUL |
| 00:36 | STEAL by DEAN, TYLAN | | | |
| 00:22 | | | | FOUL (PERSONAL) by WILLIAMS, PAUL |
| 00:22 | GOOD! FT by HUGHES, CARSON | 79-83 | V 4 | |
| 00:22 | SUB OUT: BROWN, CARTER | | | |
| 00:22 | SUB IN: JACOBS, CHANDLER | | | |
| 00:22 | | | | TIMEOUT 30SEC |
| 00:22 | | | | SUB OUT: IBARGUEN, ANDRES |
| 00:22 | | | | SUB IN: EDWARDS, BURONE |
| 00:22 | MISSED FT by HUGHES, CARSON | | | |
| 00:21 | | | | REBOUND (DEF) by REEDUS, CAMRON |
| 00:15 | | 81-83 | V 2 | GOOD! JUMPER by REEDUS, CAMRON |
| 00:15 | | | | TIMEOUT 30SEC |
| 00:15 | SUB OUT: HEATHER, WILLIAM | | | |
| 00:15 | SUB IN: BROWN, CARTER | | | |
| 00:14 | TIMEOUT 30SEC | | | |
| 00:11 | TURNOVER (LOSTBALL) by BROWN, CARTER | | | |
| 00:11 | | | | STEAL by WILLIAMS, PAUL |
| 00:11 | | | | TIMEOUT TEAM |
| 00:11 | | | | SUB OUT: EDWARDS, BURONE |

| Time | VISITORS: DBU | Score | Margin | HOME: Angelo St. |
|-------|--------------------------------|-------|--------|---------------------------------|
| 00:11 | | | | SUB IN: IBARGUEN, ANDRES |
| 00:11 | SUB OUT: HUGHES, CARSON | | | |
| 00:11 | SUB IN: HEATHER, WILLIAM | | | |
| 00:07 | FOUL (PERSONAL) by DEAN, TYLAN | | | |
| 00:07 | SUB OUT: DEAN, TYLAN | | | |
| 00:07 | SUB IN: HUGHES, CARSON | | | |
| 00:07 | | | | MISSED FT by WILLIAMS, PAUL |
| 00:07 | | | | REBOUND (OFF) by TEAM |
| 00:07 | | 82-83 | V 1 | GOOD! FT by WILLIAMS, PAUL |
| 00:07 | | | | SUB OUT: WILLIAMS, PAUL |
| 00:07 | | | | SUB IN: EDWARDS, BURONE |
| 00:05 | | | | FOUL (PERSONAL) by BELL, RONALD |
| 00:05 | GOOD! FT by HUGHES, CARSON | 82-84 | V 2 | |
| 00:05 | | | | SUB OUT: EDWARDS, BURONE |
| 00:05 | | | | SUB IN: WILLIAMS, PAUL |
| 00:05 | MISSED FT by HUGHES, CARSON | | | |
| 00:05 | | | | REBOUND (DEF) by TURNER, COLLIN |
| 00:00 | | | | MISSED JUMPER by WILLIAMS, PAUL |
| 00:00 | REBOUND (DEF) by TEAM | | | |

DBU 84, Angelo St. 82

| Points from (This Period) | DBU | ASU |
|---------------------------|-----|-----|
| In the Paint | 4 | 4 |
| Off Turns | 5 | 1 |
| 2nd Chance | 0 | 2 |
| Fast Break | 3 | 0 |
| Bench | 2 | 3 |

Official Scoring/Possession Reference Chart

DBU vs Angelo St.

Period 1

December 07, 2019 at Junell Center/Stephens Arena - San Angelo



Period 1

Starters:

DBU: 13 JACOBS, CHANDLER (G); 22 LIDIAK, CONNER (G); 2 DEAN, TYLAN (G); 3 BROWN, CARTER (G); 4 WASHINGTON, JONATHYN (F);

Angelo St.: 3 HAYES, JEREMY (G); 4 BELL, RONALD (G); 10 WILLIAMS, PAUL (G); 11 IBARGUEN, ANDRES (F); 23 TURNER, COLLIN (G);

| Time | VISITORS: DBU | Score | Margin | HOME: Angelo St. |
|-------|--|-------|--------|------------------------------------|
| 19:45 | | 2-0 | H 2 | GOOD! DUNK by IBARGUEN, ANDRES |
| 19:06 | GOOD! LAYUP by LIDIAK, CONNER | 2-2 | T | |
| 17:40 | GOOD! LAYUP by BROWN, CARTER | 2-4 | V 2 | |
| 16:16 | | 4-4 | T | GOOD! LAYUP by TURNER, COLLIN |
| 15:57 | GOOD! LAYUP by LIDIAK, CONNER | 4-6 | V 2 | |
| 15:26 | | 7-6 | H 1 | GOOD! 3PTR by TURNER, COLLIN |
| 13:34 | GOOD! LAYUP by BROWN, CARTER | 7-8 | V 1 | |
| 12:54 | | 9-8 | H 1 | GOOD! LAYUP by TURNER, COLLIN [FB] |
| 12:21 | GOOD! 3PTR by LIDIAK, CONNER | 9-11 | V 2 | |
| 11:06 | GOOD! LAYUP by JACOBS, CHANDLER | 9-13 | V 4 | |
| 10:01 | | 11-13 | V 2 | GOOD! LAYUP by BELL, RONALD [PNT] |
| 10:01 | | 12-13 | V 1 | GOOD! FT by BELL, RONALD |
| 09:44 | GOOD! LAYUP by HEATHER, WILLIAM [PNT] | 12-15 | V 3 | |
| 09:14 | GOOD! 3PTR by LIDIAK, CONNER | 12-18 | V 6 | |
| 08:40 | | 14-18 | V 4 | GOOD! LAYUP by BELL, RONALD [FB] |
| 08:01 | GOOD! LAYUP by BROWN, CARTER | 14-20 | V 6 | |
| 07:18 | | 15-20 | V 5 | GOOD! FT by REEDUS, CAMRON [FB] |
| 05:20 | | 17-20 | V 3 | GOOD! LAYUP by HAYES, JEREMY |
| 04:35 | GOOD! LAYUP by JACOBS, CHANDLER | 17-22 | V 5 | |
| 04:21 | | 19-22 | V 3 | GOOD! LAYUP by HAYES, JEREMY |
| 03:45 | | 20-22 | V 2 | GOOD! FT by HAYES, JEREMY |
| 03:31 | GOOD! LAYUP by BROWN, CARTER | 20-24 | V 4 | |
| 03:30 | GOOD! FT by BROWN, CARTER | 20-25 | V 5 | |
| 02:57 | | 21-25 | V 4 | GOOD! FT by BELL, RONALD |
| 01:57 | | 23-25 | V 2 | GOOD! LAYUP by BELL, RONALD |
| 01:32 | | 25-25 | T | GOOD! LAYUP by HAYES, JEREMY [FB] |
| 01:13 | GOOD! JUMPER by HEATHER, WILLIAM [PNT] | 25-27 | V 2 | |
| 01:02 | | 28-27 | H 1 | GOOD! 3PTR by BELL, RONALD |
| 00:46 | GOOD! FT by BROWN, CARTER | 28-28 | T | |
| 00:46 | GOOD! FT by BROWN, CARTER | 28-29 | V 1 | |
| 00:10 | | 30-29 | H 1 | GOOD! LAYUP by PETTWAY, MARCEL |

DBU 29, Angelo St. 30

Official Scoring/Possession Reference Chart
DBU vs Angelo St.
Period 2
December 07, 2019 at Junell Center/Stephens Arena - San Angelo



Period 2

Starters:

DBU: 13 JACOBS, CHANDLER (G); 22 LIDIAK, CONNER (G); 2 DEAN, TYLAN (G); 3 BROWN, CARTER (G); 4 WASHINGTON, JONATHYN (F);

Angelo St.: 3 HAYES, JEREMY (G); 4 BELL, RONALD (G); 10 WILLIAMS, PAUL (G); 11 IBARGUEN, ANDRES (F); 23 TURNER, COLLIN (G);

| Time | VISITORS: DBU | Score | Margin | HOME: Angelo St. |
|-------|--|-------|--------|-------------------------------------|
| 19:27 | GOOD! 3PTR by LIDIAK, CONNER | 30-32 | V 2 | |
| 17:22 | GOOD! LAYUP by WASHINGTON, JONATHYN | 30-34 | V 4 | |
| 17:08 | | 32-34 | V 2 | GOOD! JUMPER by WILLIAMS, PAUL |
| 16:44 | GOOD! LAYUP by JACOBS, CHANDLER | 32-36 | V 4 | |
| 16:19 | | 35-36 | V 1 | GOOD! 3PTR by TURNER, COLLIN |
| 15:16 | | 36-36 | T | GOOD! FT by IBARGUEN, ANDRES |
| 14:15 | GOOD! FT by DEAN, TYLAN | 36-37 | V 1 | |
| 14:15 | GOOD! FT by DEAN, TYLAN | 36-38 | V 2 | |
| 14:00 | | 38-38 | T | GOOD! LAYUP by IBARGUEN, ANDRES |
| 13:29 | GOOD! JUMPER by HUGHES, CARSON [PNT] | 38-40 | V 2 | |
| 12:46 | | 40-40 | T | GOOD! LAYUP by PETTWAY, MARCEL |
| 12:28 | GOOD! LAYUP by HEATHER, WILLIAM | 40-42 | V 2 | |
| 11:50 | GOOD! LAYUP by HEATHER, WILLIAM | 40-44 | V 4 | |
| 11:28 | | 42-44 | V 2 | GOOD! LAYUP by EDWARDS, BURONE |
| 10:36 | GOOD! LAYUP by HEATHER, WILLIAM | 42-46 | V 4 | |
| 10:14 | | 44-46 | V 2 | GOOD! LAYUP by EDWARDS, BURONE |
| 09:57 | GOOD! LAYUP by HUGHES, CARSON [PNT] | 44-48 | V 4 | |
| 09:43 | | 47-48 | V 1 | GOOD! 3PTR by HAYES, JEREMY |
| 09:26 | GOOD! FT by LIDIAK, CONNER [FB] | 47-49 | V 2 | |
| 09:26 | GOOD! FT by LIDIAK, CONNER [FB] | 47-50 | V 3 | |
| 09:26 | GOOD! FT by LIDIAK, CONNER [FB] | 47-51 | V 4 | |
| 08:39 | GOOD! LAYUP by BROWN, CARTER | 47-53 | V 6 | |
| 07:49 | | 50-53 | V 3 | GOOD! 3PTR by BELL, RONALD |
| 06:33 | | 52-53 | V 1 | GOOD! LAYUP by REEDUS, CAMRON [FB] |
| 06:06 | GOOD! LAYUP by HEATHER, WILLIAM | 52-55 | V 3 | |
| 05:35 | | 54-55 | V 1 | GOOD! LAYUP by IBARGUEN, ANDRES |
| 05:04 | GOOD! JUMPER by HEATHER, WILLIAM [PNT] | 54-57 | V 3 | |
| 04:54 | | 56-57 | V 1 | GOOD! JUMPER by TURNER, COLLIN |
| 04:16 | GOOD! 3PTR by HEATHER, WILLIAM | 56-60 | V 4 | |
| 03:46 | GOOD! 3PTR by HUGHES, CARSON | 56-63 | V 7 | |
| 03:34 | | 58-63 | V 5 | GOOD! JUMPER by HAYES, JEREMY [PNT] |
| 03:34 | | 59-63 | V 4 | GOOD! FT by HAYES, JEREMY |
| 03:08 | GOOD! LAYUP by DEAN, TYLAN | 59-65 | V 6 | |
| 02:53 | | 60-65 | V 5 | GOOD! FT by IBARGUEN, ANDRES |
| 02:53 | | 61-65 | V 4 | GOOD! FT by IBARGUEN, ANDRES |
| 02:41 | | 62-65 | V 3 | GOOD! FT by TURNER, COLLIN [FB] |
| 02:41 | | 63-65 | V 2 | GOOD! FT by TURNER, COLLIN [FB] |
| 01:49 | GOOD! LAYUP by HUGHES, CARSON | 63-67 | V 4 | |
| 01:37 | | 64-67 | V 3 | GOOD! FT by REEDUS, CAMRON |
| 01:32 | GOOD! FT by DEAN, TYLAN [FB] | 64-68 | V 4 | |
| 01:18 | | 65-68 | V 3 | GOOD! FT by IBARGUEN, ANDRES |
| 01:07 | | 66-68 | V 2 | GOOD! FT by IBARGUEN, ANDRES [FB] |
| 01:07 | | 67-68 | V 1 | GOOD! FT by IBARGUEN, ANDRES [FB] |
| 01:04 | GOOD! FT by DEAN, TYLAN [FB] | 67-69 | V 2 | |
| 01:04 | GOOD! FT by DEAN, TYLAN [FB] | 67-70 | V 3 | |
| 00:51 | | 70-70 | T | GOOD! 3PTR by TURNER, COLLIN |

DBU 70, Angelo St. 70

Official Scoring/Possession Reference Chart
DBU vs Angelo St.
Period 3
December 07, 2019 at Junell Center/Stephens Arena - San Angelo



Period 3

Starters:

DBU: 13 JACOBS, CHANDLER (G); 22 LIDIAK, CONNER (G); 2 DEAN, TYLAN (G); 3 BROWN, CARTER (G); 4 WASHINGTON, JONATHYN (F);

Angelo St.: 3 HAYES, JEREMY (G); 4 BELL, RONALD (G); 10 WILLIAMS, PAUL (G); 11 IBARGUEN, ANDRES (F); 23 TURNER, COLLIN (G);

| Time | VISITORS: DBU | Score | Margin | HOME: Angelo St. |
|-------|---------------------------------|-------|--------|---------------------------------|
| 04:26 | GOOD! FT by DEAN, TYLAN [FB] | 70-71 | V 1 | |
| 04:04 | | 72-71 | H 1 | GOOD! LAYUP by IBARGUEN, ANDRES |
| 03:38 | GOOD! FT by BROWN, CARTER | 72-72 | T | |
| 03:38 | GOOD! FT by BROWN, CARTER | 72-73 | V 1 | |
| 02:55 | GOOD! 3PTR by DEAN, TYLAN | 72-76 | V 4 | |
| 02:39 | | 75-76 | V 1 | GOOD! 3PTR by TURNER, COLLIN |
| 02:38 | | 76-76 | T | GOOD! FT by TURNER, COLLIN |
| 02:35 | GOOD! LAYUP by DEAN, TYLAN [FB] | 76-78 | V 2 | |
| 01:53 | GOOD! LAYUP by BROWN, CARTER | 76-80 | V 4 | |
| 01:35 | | 78-80 | V 2 | GOOD! LAYUP by BELL, RONALD |
| 01:25 | GOOD! FT by BROWN, CARTER | 78-81 | V 3 | |
| 01:12 | | 79-81 | V 2 | GOOD! FT by REEDUS, CAMRON |
| 00:46 | GOOD! FT by BROWN, CARTER | 79-82 | V 3 | |
| 00:22 | GOOD! FT by HUGHES, CARSON | 79-83 | V 4 | |
| 00:15 | | 81-83 | V 2 | GOOD! JUMPER by REEDUS, CAMRON |
| 00:07 | | 82-83 | V 1 | GOOD! FT by WILLIAMS, PAUL |
| 00:05 | GOOD! FT by HUGHES, CARSON | 82-84 | V 2 | |

DBU 84, Angelo St. 82

Official Substitutions Log
DBU vs Angelo St.
Period 1
December 07, 2019 at Junell Center/Stephens Arena - San Angelo



| VISITORS: DBU | Time | Score | HOME: Angelo St. |
|---------------------------------|-------|-------|---------------------------|
| 13 JACOBS, CHANDLER | | | 3 HAYES, JEREMY |
| 22 LIDIAK, CONNER | | | 4 BELL, RONALD |
| 2 DEAN, TYLAN | | | 10 WILLIAMS, PAUL |
| 3 BROWN, CARTER | | | 11 IBARGUEN, ANDRES |
| 4 WASHINGTON, JONATHYN | | | 23 TURNER, COLLIN |
| SUB OUT: 4 WASHINGTON, JONATHYN | 18:50 | 2-2 | |
| SUB IN: 10 HEATHER, WILLIAM | 18:50 | | |
| SUB OUT: 22 LIDIAK, CONNER | 15:46 | 6-4 | |
| SUB IN: 11 HUGHES, CARSON | 15:46 | | |
| SUB OUT: 13 JACOBS, CHANDLER | 15:07 | 6-7 | |
| SUB IN: 35 WHITE, JALEN | 15:07 | | |
| | 13:44 | 6-7 | SUB OUT: WILLIAMS, PAUL |
| | 13:44 | | SUB OUT: IBARGUEN, ANDRES |
| | 13:44 | | SUB IN: REEDUS, CAMRON |
| | 13:44 | | SUB IN: PETTWAY, MARCEL |
| SUB OUT: 2 DEAN, TYLAN | 13:44 | | |
| SUB OUT: 10 HEATHER, WILLIAM | 13:44 | | |
| SUB IN: 13 JACOBS, CHANDLER | 13:44 | | |
| SUB IN: 22 LIDIAK, CONNER | 13:44 | | |
| | 12:34 | 8-9 | SUB OUT: TURNER, COLLIN |
| | 12:34 | | SUB IN: WILLIAMS, PAUL |
| SUB OUT: 3 BROWN, CARTER | 11:42 | 11-9 | |
| SUB IN: 2 DEAN, TYLAN | 11:42 | | |
| | 10:58 | 13-9 | SUB OUT: HAYES, JEREMY |
| | 10:58 | | SUB IN: EDWARDS, BURONE |
| | 10:01 | 13-12 | SUB OUT: WILLIAMS, PAUL |
| | 10:01 | | SUB IN: TURNER, COLLIN |
| SUB OUT: 13 JACOBS, CHANDLER | 10:01 | | |
| SUB OUT: 35 WHITE, JALEN | 10:01 | | |
| SUB IN: 3 BROWN, CARTER | 10:01 | | |
| SUB IN: 10 HEATHER, WILLIAM | 10:01 | | |
| | 07:40 | 20-14 | SUB OUT: EDWARDS, BURONE |
| | 07:40 | | SUB IN: HAYES, JEREMY |
| SUB OUT: 10 HEATHER, WILLIAM | 07:40 | | |
| SUB OUT: 11 HUGHES, CARSON | 07:40 | | |
| SUB IN: 13 JACOBS, CHANDLER | 07:40 | | |
| SUB IN: 35 WHITE, JALEN | 07:40 | | |
| | 07:18 | 20-14 | SUB OUT: PETTWAY, MARCEL |
| | 07:18 | | SUB IN: IBARGUEN, ANDRES |
| SUB OUT: 35 WHITE, JALEN | 07:18 | | |
| SUB IN: 10 HEATHER, WILLIAM | 07:18 | | |
| SUB OUT: 22 LIDIAK, CONNER | 05:14 | 20-17 | |
| SUB IN: 11 HUGHES, CARSON | 05:14 | | |
| | 03:45 | 22-19 | SUB OUT: REEDUS, CAMRON |
| | 03:45 | | SUB IN: WILLIAMS, PAUL |
| | 03:30 | 24-20 | SUB OUT: IBARGUEN, ANDRES |
| | 03:30 | | SUB IN: PETTWAY, MARCEL |
| SUB OUT: 13 JACOBS, CHANDLER | 00:46 | 27-28 | |
| SUB IN: 22 LIDIAK, CONNER | 00:46 | | |
| | 00:40 | 29-28 | SUB OUT: HAYES, JEREMY |
| | 00:40 | | SUB IN: EDWARDS, BURONE |
| SUB OUT: 10 HEATHER, WILLIAM | 00:40 | | |
| SUB IN: 13 JACOBS, CHANDLER | 00:40 | | |

DBU 29, Angelo St. 30

Official Substitutions Log
DBU vs Angelo St.
Period 2
December 07, 2019 at Junell Center/Stephens Arena - San Angelo



| VISITORS: DBU | Time | Score | HOME: Angelo St. |
|--------------------------------|-------|-------|--------------------------|
| 13 JACOBS,CHANDLER | | | 3 HAYES,JEREMY |
| 22 LIDIAK,CONNER | | | 4 BELL,RONALD |
| 2 DEAN,TYLAN | | | 10 WILLIAMS,PAUL |
| 3 BROWN,CARTER | | | 11 IBARGUEN,ANDRES |
| 4 WASHINGTON,JONATHYN | | | 23 TURNER,COLLIN |
| | 20:00 | - | SUB OUT: EDWARDS,BURONE |
| | 20:00 | | SUB OUT: PETTWAY,MARCEL |
| | 20:00 | | SUB IN: HAYES,JEREMY |
| | 20:00 | | SUB IN: IBARGUEN,ANDRES |
| SUB OUT: 11 HUGHES,CARSON | 20:00 | | |
| SUB IN: 4 WASHINGTON,JONATHYN | 20:00 | | |
| | 19:01 | 32-30 | SUB OUT: BELL,RONALD |
| | 19:01 | | SUB IN: PETTWAY,MARCEL |
| SUB OUT: 13 JACOBS,CHANDLER | 15:16 | 36-36 | |
| SUB IN: 11 HUGHES,CARSON | 15:16 | | |
| | 14:38 | 36-36 | SUB OUT: PETTWAY,MARCEL |
| | 14:38 | | SUB IN: EDWARDS,BURONE |
| | 12:53 | 40-38 | SUB OUT: HAYES,JEREMY |
| | 12:53 | | SUB OUT: IBARGUEN,ANDRES |
| | 12:53 | | SUB IN: REEDUS,CAMRON |
| | 12:53 | | SUB IN: PETTWAY,MARCEL |
| SUB OUT: 4 WASHINGTON,JONATHYN | 12:53 | | |
| SUB OUT: 22 LIDIAK,CONNER | 12:53 | | |
| SUB IN: 10 HEATHER,WILLIAM | 12:53 | | |
| SUB IN: 35 WHITE,JALEN | 12:53 | | |
| | 12:07 | 42-40 | SUB OUT: PETTWAY,MARCEL |
| | 12:07 | | SUB IN: BELL,RONALD |
| SUB OUT: 3 BROWN,CARTER | 12:07 | | |
| SUB OUT: 35 WHITE,JALEN | 12:07 | | |
| SUB IN: 13 JACOBS,CHANDLER | 12:07 | | |
| SUB IN: 25 OGUNLADE,JOSH | 12:07 | | |
| | 11:00 | 44-42 | SUB OUT: BELL,RONALD |
| | 11:00 | | SUB IN: PETTWAY,MARCEL |
| | 10:19 | 46-42 | SUB OUT: WILLIAMS,PAUL |
| | 10:19 | | SUB IN: BELL,RONALD |
| | 10:05 | 46-44 | SUB OUT: TURNER,COLLIN |
| | 10:05 | | SUB IN: HAYES,JEREMY |
| SUB OUT: 2 DEAN,TYLAN | 09:57 | 46-44 | |
| SUB OUT: 25 OGUNLADE,JOSH | 09:57 | | |
| SUB IN: 3 BROWN,CARTER | 09:57 | | |
| SUB IN: 22 LIDIAK,CONNER | 09:57 | | |
| | 09:26 | 50-47 | SUB OUT: HAYES,JEREMY |
| | 09:26 | | SUB IN: TURNER,COLLIN |
| SUB OUT: 10 HEATHER,WILLIAM | 09:26 | | |
| SUB IN: 4 WASHINGTON,JONATHYN | 09:26 | | |
| | 08:24 | 53-47 | SUB OUT: PETTWAY,MARCEL |
| | 08:24 | | SUB IN: IBARGUEN,ANDRES |
| SUB OUT: 13 JACOBS,CHANDLER | 08:03 | 53-47 | |
| SUB IN: 2 DEAN,TYLAN | 08:03 | | |
| | 07:18 | 53-50 | SUB OUT: REEDUS,CAMRON |
| | 07:18 | | SUB IN: WILLIAMS,PAUL |
| | 07:13 | 53-50 | SUB OUT: EDWARDS,BURONE |
| | 07:13 | | SUB IN: REEDUS,CAMRON |
| SUB OUT: 4 WASHINGTON,JONATHYN | 06:50 | 53-50 | |
| SUB IN: 10 HEATHER,WILLIAM | 06:50 | | |
| | 03:41 | 63-56 | SUB OUT: WILLIAMS,PAUL |
| | 03:41 | | SUB IN: HAYES,JEREMY |
| SUB OUT: 10 HEATHER,WILLIAM | 03:41 | | |
| SUB OUT: 22 LIDIAK,CONNER | 03:41 | | |
| SUB IN: 4 WASHINGTON,JONATHYN | 03:41 | | |
| SUB IN: 35 WHITE,JALEN | 03:41 | | |
| SUB OUT: 4 WASHINGTON,JONATHYN | 03:34 | 63-58 | |
| SUB IN: 10 HEATHER,WILLIAM | 03:34 | | |
| SUB OUT: 35 WHITE,JALEN | 03:34 | | |
| SUB IN: 22 LIDIAK,CONNER | 03:34 | | |
| | 02:17 | 65-63 | SUB OUT: HAYES,JEREMY |
| | 02:17 | | SUB IN: WILLIAMS,PAUL |
| | 01:18 | 68-64 | SUB OUT: REEDUS,CAMRON |
| | 01:18 | | SUB IN: EDWARDS,BURONE |
| | 01:04 | 69-67 | SUB OUT: EDWARDS,BURONE |
| | 01:04 | | SUB IN: REEDUS,CAMRON |
| | 00:42 | 70-70 | SUB OUT: REEDUS,CAMRON |
| | 00:42 | | SUB IN: EDWARDS,BURONE |

DBU 70, Angelo St. 70

Official Substitutions Log
DBU vs Angelo St.
Period 3
December 07, 2019 at Junell Center/Stephens Arena - San Angelo



| VISITORS: DBU | Time | Score | HOME: Angelo St. |
|------------------------------|-------|-------|---------------------------|
| 13 JACOBS, CHANDLER | | | 3 HAYES, JEREMY |
| 22 LIDIAK, CONNER | | | 4 BELL, RONALD |
| 2 DEAN, TYLAN | | | 10 WILLIAMS, PAUL |
| 3 BROWN, CARTER | | | 11 IBARGUEN, ANDRES |
| 4 WASHINGTON, JONATHYN | | | 23 TURNER, COLLIN |
| | 04:45 | - | SUB OUT: EDWARDS, BURONE |
| | 04:45 | | SUB IN: REEDUS, CAMRON |
| | 03:22 | 73-72 | SUB OUT: REEDUS, CAMRON |
| | 03:22 | | SUB IN: EDWARDS, BURONE |
| | 02:38 | 76-76 | SUB OUT: EDWARDS, BURONE |
| | 02:38 | | SUB IN: REEDUS, CAMRON |
| SUB OUT: 3 BROWN, CARTER | 00:22 | 83-79 | |
| SUB IN: 13 JACOBS, CHANDLER | 00:22 | | |
| | 00:22 | | SUB OUT: IBARGUEN, ANDRES |
| | 00:22 | | SUB IN: EDWARDS, BURONE |
| SUB OUT: 10 HEATHER, WILLIAM | 00:15 | 83-81 | |
| SUB IN: 3 BROWN, CARTER | 00:15 | | |
| | 00:11 | 83-81 | SUB OUT: EDWARDS, BURONE |
| | 00:11 | | SUB IN: IBARGUEN, ANDRES |
| SUB OUT: 11 HUGHES, CARSON | 00:11 | | |
| SUB IN: 10 HEATHER, WILLIAM | 00:11 | | |
| SUB OUT: 2 DEAN, TYLAN | 00:07 | 83-81 | |
| SUB IN: 11 HUGHES, CARSON | 00:07 | | |
| | 00:07 | | SUB OUT: WILLIAMS, PAUL |
| | 00:07 | | SUB IN: EDWARDS, BURONE |
| | 00:05 | 84-82 | SUB OUT: EDWARDS, BURONE |
| | 00:05 | | SUB IN: WILLIAMS, PAUL |

DBU 84, Angelo St. 82

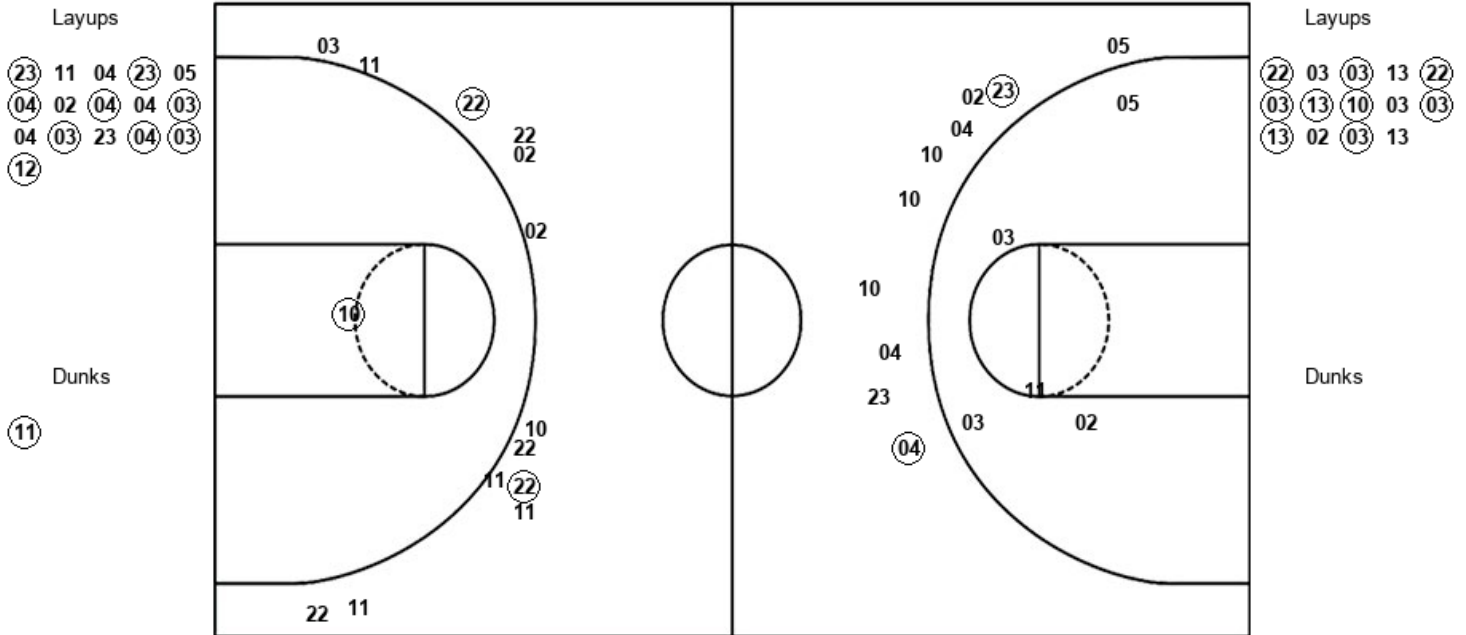
Official Shot Chart
DBU vs Angelo St.
PERIOD 1 Shots

December 07, 2019 at Junell Center/Stephens Arena - San Angelo



Angelo St.

DBU



| ASU : Period 1 | Made | Att | Pct |
|--------------------------|-----------|-----------|-------------|
| Layups | 9 | 16 | 56.3 |
| Dunks | 1 | 1 | 100.0 |
| 2PT Field Goals | 10 | 22 | 45.5 |
| 3PT Field Goals | 2 | 10 | 20.0 |
| Total Field Goals | 12 | 32 | 37.5 |

| DBU : Period 1 | Made | Att | Pct |
|--------------------------|-----------|-----------|-------------|
| Layups | 9 | 14 | 64.3 |
| Dunks | 0 | 0 | 0 |
| 2PT Field Goals | 10 | 15 | 66.7 |
| 3PT Field Goals | 2 | 13 | 15.4 |
| Total Field Goals | 12 | 28 | 42.9 |

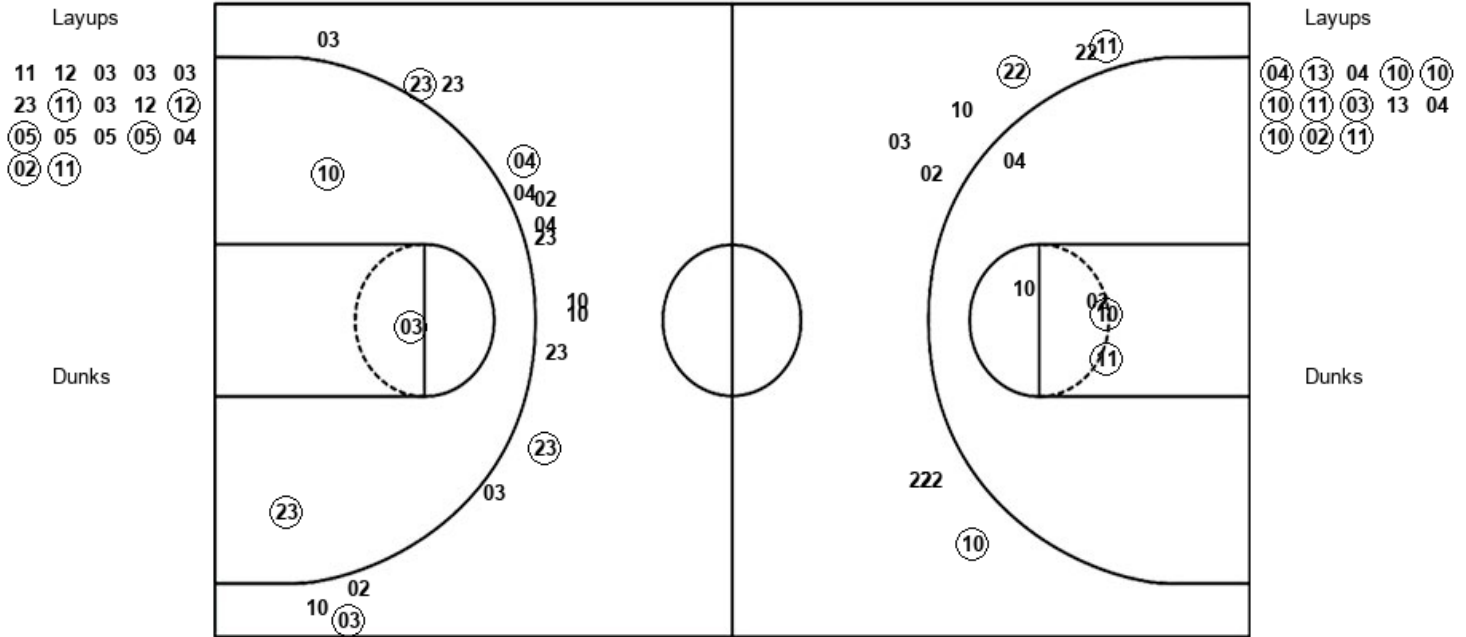
Official Shot Chart
DBU vs Angelo St.
PERIOD 2 Shots

December 07, 2019 at Junell Center/Stephens Arena - San Angelo



Angelo St.

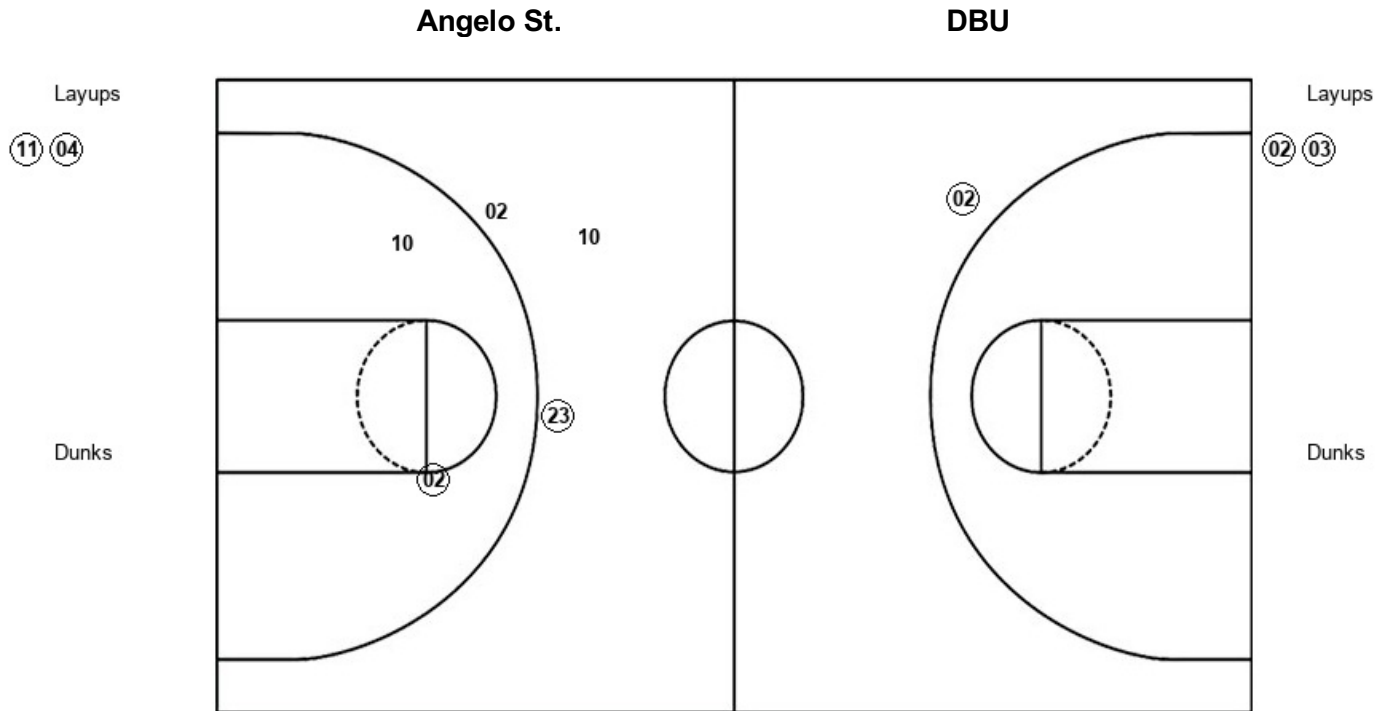
DBU



| ASU : Period 2 | Made | Att | Pct |
|--------------------------|-----------|-----------|-------------|
| Layups | 6 | 17 | 35.3 |
| Dunks | 0 | 0 | 0 |
| 2PT Field Goals | 9 | 20 | 45.0 |
| 3PT Field Goals | 4 | 16 | 25.0 |
| Total Field Goals | 13 | 36 | 36.1 |

| DBU : Period 2 | Made | Att | Pct |
|--------------------------|-----------|-----------|-------------|
| Layups | 10 | 13 | 76.9 |
| Dunks | 0 | 0 | 0 |
| 2PT Field Goals | 12 | 18 | 66.7 |
| 3PT Field Goals | 3 | 9 | 33.3 |
| Total Field Goals | 15 | 27 | 55.6 |

Official Shot Chart
DBU vs Angelo St.
 PERIOD 3 Shots
 December 07, 2019 at Junell Center/Stephens Arena - San Angelo



| ASU : Period 3 | Made | Att | Pct |
|--------------------------|----------|----------|-------------|
| Layups | 2 | 2 | 100.0 |
| Dunks | 0 | 0 | 0 |
| 2PT Field Goals | 3 | 5 | 60.0 |
| 3PT Field Goals | 1 | 2 | 50.0 |
| Total Field Goals | 4 | 7 | 57.1 |

| DBU : Period 3 | Made | Att | Pct |
|--------------------------|----------|----------|--------------|
| Layups | 2 | 2 | 100.0 |
| Dunks | 0 | 0 | 0 |
| 2PT Field Goals | 2 | 2 | 100.0 |
| 3PT Field Goals | 1 | 1 | 100.0 |
| Total Field Goals | 3 | 3 | 100.0 |

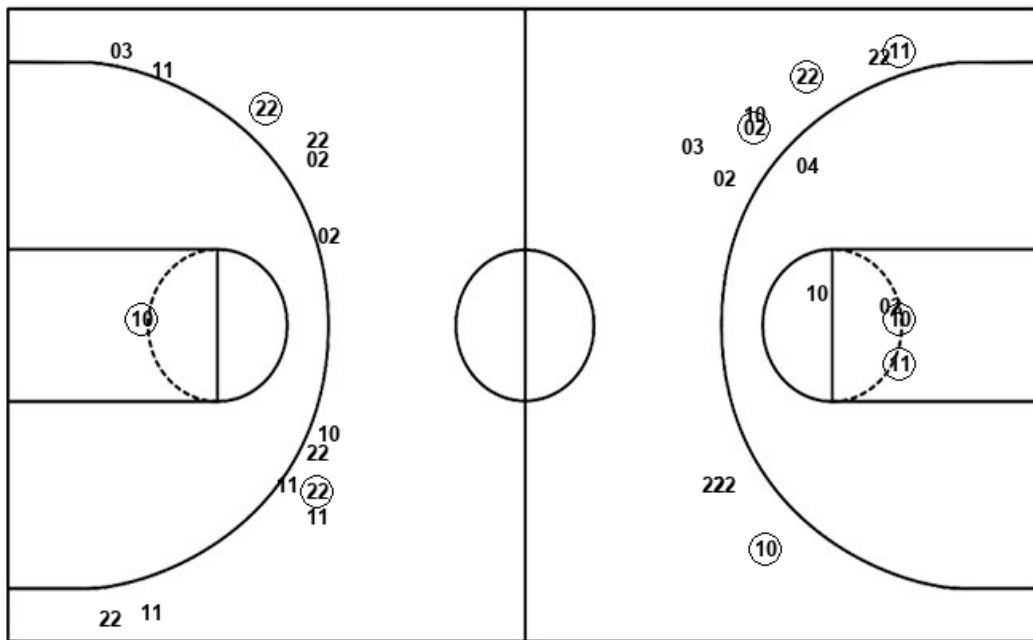
Official Shot Chart
DBU vs Angelo St.
DBU Team Shots

December 07, 2019 at Junell Center/Stephens Arena - San Angelo



Layups

Dunks



Layups

Dunks

(22) 03 (03) 13 (22)
 (03) (13) (10) 03 (03)
 (13) 02 (03) 13 (04)
 (13) 04 (10) (10) (10)
 (11) (03) 13 04 (10)
 (02) (11) (02) (03)

| DBU : Period 1 | Made | Att | Pct |
|--------------------------|-----------|-----------|-------------|
| Layups | 9 | 14 | 64.3 |
| Dunks | 0 | 0 | 0 |
| 2PT Field Goals | 10 | 15 | 66.7 |
| 3PT Field Goals | 2 | 13 | 15.4 |
| Total Field Goals | 12 | 28 | 42.9 |

| DBU : Period 3 | Made | Att | Pct |
|--------------------------|----------|----------|--------------|
| Layups | 2 | 2 | 100.0 |
| Dunks | 0 | 0 | 0 |
| 2PT Field Goals | 2 | 2 | 100.0 |
| 3PT Field Goals | 1 | 1 | 100.0 |
| Total Field Goals | 3 | 3 | 100.0 |

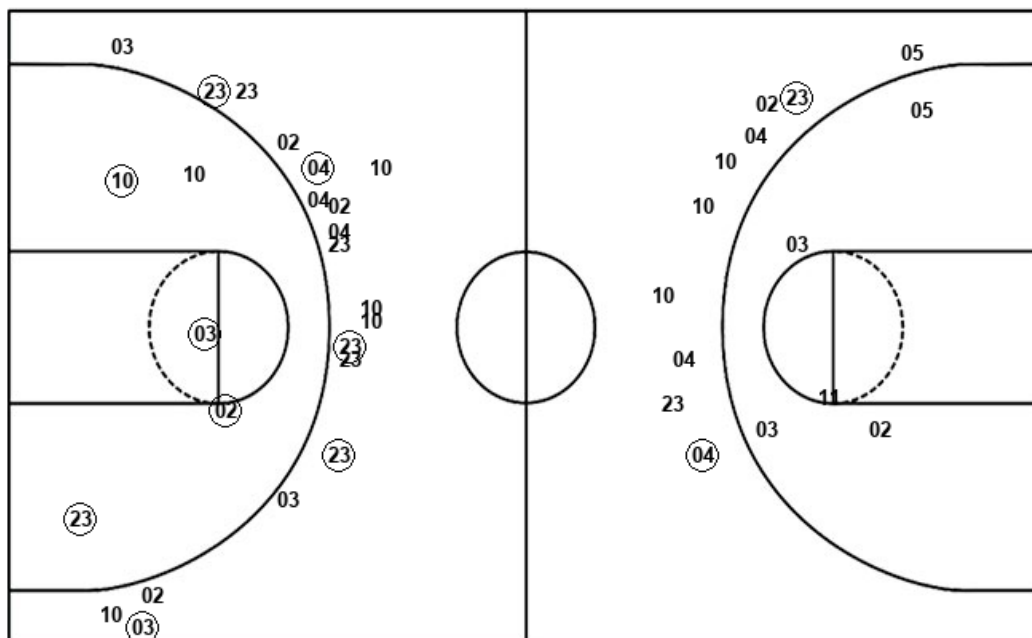
| DBU : Period 2 | Made | Att | Pct |
|--------------------------|-----------|-----------|-------------|
| Layups | 10 | 13 | 76.9 |
| Dunks | 0 | 0 | 0 |
| 2PT Field Goals | 12 | 18 | 66.7 |
| 3PT Field Goals | 3 | 9 | 33.3 |
| Total Field Goals | 15 | 27 | 55.6 |

Official Shot Chart
DBU vs Angelo St.
 Angelo St. Team Shots
 December 07, 2019 at Junell Center/Stephens Arena - San Angelo



Layups

Dunks



Layups

Dunks

| ASU : Period 1 | Made | Att | Pct |
|--------------------------|-----------|-----------|-------------|
| Layups | 9 | 16 | 56.3 |
| Dunks | 1 | 1 | 100.0 |
| 2PT Field Goals | 10 | 22 | 45.5 |
| 3PT Field Goals | 2 | 10 | 20.0 |
| Total Field Goals | 12 | 32 | 37.5 |

| ASU : Period 3 | Made | Att | Pct |
|--------------------------|----------|----------|-------------|
| Layups | 2 | 2 | 100.0 |
| Dunks | 0 | 0 | 0 |
| 2PT Field Goals | 3 | 5 | 60.0 |
| 3PT Field Goals | 1 | 2 | 50.0 |
| Total Field Goals | 4 | 7 | 57.1 |

| ASU : Period 2 | Made | Att | Pct |
|--------------------------|-----------|-----------|-------------|
| Layups | 6 | 17 | 35.3 |
| Dunks | 0 | 0 | 0 |
| 2PT Field Goals | 9 | 20 | 45.0 |
| 3PT Field Goals | 4 | 16 | 25.0 |
| Total Field Goals | 13 | 36 | 36.1 |