

## FINAL SCORE

**St. Edward's**

**78**



**Tex. A&M-Commerce**

**86**



November 23, 2019 • A&M-C Field House - Commerce

## FINAL STATISTICS

**Official Box Score**  
**St. Edward's vs Tex. A&M-Commerce**  
**Game Totals -- Final Statistics**  
**November 23, 2019 at A&M-C Field House - Commerce**



**St. Edward's 78**

No.	Player	S	Pts	FG	3FG	FT	OR	DR	TR	PF	A	TO	Blk	Stl	Min	+/-
04	LOPEZ, DORIAN	F	5	2-8	0-4	1-1	2	3	5	3	2	1	1	2	24	-7
05	KRAFKA, JAKE	F	12	5-8	0-1	2-3	1	5	6	5	0	0	1	0	30	-7
13	HAAS, AUGUST	G	6	2-2	0-0	2-4	1	4	5	2	8	4	2	0	30	3
21	PHILLIPS, SEAN	F	3	1-4	1-3	0-0	0	1	1	1	1	1	0	0	21	0
34	SPEARS, ASHTON	G	42	15-24	9-13	3-4	0	2	2	1	1	4	0	1	39	-5
10	DORIA, LUCAS	F	2	1-1	0-0	0-0	2	1	3	4	0	1	2	0	9	1
20	GARZA, RYAN	G	8	2-6	2-5	2-4	1	0	1	3	0	1	0	1	20	-9
24	SHERVILL, COREY	F	0	0-7	0-5	0-0	1	0	1	0	1	2	0	1	19	-5
45	PLUYMEN, LUKE	G	0	0-1	0-0	0-0	0	1	1	0	0	3	0	1	9	-11
<b>TEAM</b>							2	4	6	0		0				
<b>TOTALS</b>			<b>78</b>	<b>28-61</b>	<b>12-31</b>	<b>10-16</b>	<b>10</b>	<b>21</b>	<b>31</b>	<b>19</b>	<b>13</b>	<b>17</b>	<b>6</b>	<b>6</b>	<b>200</b>	

*Shooting By Period*

Period	FG	FG%	3FG	3FG%	FT	FT%
1st Half	13-25	52%	8-13	62%	0-4	00%
2nd Half	15-36	42%	4-18	22%	10-12	83%
<b>Game</b>	<b>28-61</b>	<b>45.9%</b>	<b>12-31</b>	<b>38.7%</b>	<b>10-16</b>	<b>62.5%</b>

Deadball Rebounds: 3,0  
 Last FG: 2nd-00:15  
 Biggest Run: 12-0  
 Largest lead: By 13 at 1-10  
 Technical Fouls: None.

**Tex. A&M-Commerce 86**

No.	Player	S	Pts	FG	3FG	FT	OR	DR	TR	PF	A	TO	Blk	Stl	Min	+/-
03	TERRELL, DEONTA	G	12	5-7	1-2	1-2	1	0	1	3	4	7	0	7	31	11
10	WRIGHT, DARNELL	F	10	4-7	1-2	1-3	1	4	5	3	2	0	1	1	26	14
12	STEWART, WAYNE	G	11	3-6	1-2	4-4	0	3	3	3	1	0	1	0	25	-4
30	LARA, LEO	G	3	1-5	1-4	0-0	1	2	3	1	1	1	0	0	24	1
55	EVANS, CLARENCE	G	0	0-2	0-2	0-0	0	3	3	1	1	1	0	0	6	-5
01	BARRETT, DEON	G	24	5-12	4-9	10-10	1	6	7	3	7	2	0	0	34	13
04	WINBUSH, JOSH	F	2	1-4	0-0	0-0	0	3	3	1	1	1	1	0	14	-6
11	WIGGINS, ISAIAH	G	2	1-2	0-0	0-0	1	0	1	1	1	1	0	2	10	12
23	PEAVY, ALEX	F	3	1-1	1-1	0-0	1	0	1	1	0	1	2	0	12	6
32	GRANDSTAFF, AUSTIN	G	19	6-8	6-8	1-2	1	4	5	1	1	1	0	0	17	-2
<b>TEAM</b>							2	1	3	0		1				
<b>TOTALS</b>			<b>86</b>	<b>27-54</b>	<b>15-30</b>	<b>17-21</b>	<b>9</b>	<b>26</b>	<b>35</b>	<b>18</b>	<b>19</b>	<b>16</b>	<b>5</b>	<b>10</b>	<b>200</b>	

*Shooting By Period*

Period	FG	FG%	3FG	3FG%	FT	FT%
1st Half	14-31	45%	7-18	39%	1-2	50%
2nd Half	13-23	57%	8-12	67%	16-19	84%
<b>Game</b>	<b>27-54</b>	<b>50.0%</b>	<b>15-30</b>	<b>50.0%</b>	<b>17-21</b>	<b>81.0%</b>

Deadball Rebounds: 1,0  
 Last FG: 2nd-01:43  
 Biggest Run: 13-0  
 Largest lead: By 12 at 2-05  
 Technical Fouls: #03 TERRELL (Class A) @ 1st - 11:53; #01 BARRETT (Class A) @ 2nd - 00:00;

Game Notes:

Officials: , ,  
 Attendance: 523

Start Time: 09:43 PM ET  
 End Time: 11:41 PM ET  
 Game Duration: 1:57  
 Conference Game;

Score	1st	2nd	TOT
SEU	34	44	<b>78</b>
AMC	36	50	<b>86</b>

SEU led for 13:00. AMC led for 22:56.  
 Game was tied for 4:04.  
 Times tied: 4      Lead Changes: 3

Points from	SEU	AMC
In the Paint	30	24
Off Turns	13	22
2nd Chance	4	4
Fast Break	17	14
Bench	10	50

**Official Box Score**  
**St. Edward's vs Tex. A&M-Commerce**  
**First Half Statistics Only**  
**November 23, 2019 at A&M-C Field House - Commerce**



**St. Edward's 34**

No.	Player	S	Pts	FG	3FG	FT	OR	DR	TR	PF	A	TO	Blk	Stl	Min	+/-
04	LOPEZ, DORIAN	F	0	0-3	0-2	0-0	1	3	4	1	2	1	1	1	15	-2
05	KRAFKA, JAKE	F	4	2-3	0-0	0-1	0	0	0	0	0	0	0	0	14	-2
13	HAAS, AUGUST	G	2	1-1	0-0	0-1	0	4	4	0	6	2	2	0	15	10
21	PHILLIPS, SEAN	F	3	1-3	1-2	0-0	0	0	0	1	0	1	0	0	13	-1
34	SPEARS, ASHTON	G	17	6-9	5-5	0-0	0	0	0	0	0	3	0	0	19	1
10	DORIA, LUCAS	F	2	1-1	0-0	0-0	2	0	2	1	0	0	1	0	6	0
20	GARZA, RYAN	G	6	2-3	2-3	0-2	1	0	1	1	0	1	0	0	7	-1
24	SHERVILL, COREY	F	0	0-1	0-1	0-0	0	0	0	0	0	2	0	0	5	-3
45	PLUYMEN, LUKE	G	0	0-1	0-0	0-0	0	0	0	0	0	2	0	0	5	-12
<b>TEAM</b>							0	4	4	0		0				
<b>TOTALS</b>			<b>34</b>	<b>13-25</b>	<b>8-13</b>	<b>0-4</b>	<b>4</b>	<b>11</b>	<b>15</b>	<b>4</b>	<b>8</b>	<b>12</b>	<b>4</b>	<b>1</b>	<b>100</b>	

*Shooting By Period*

Period	FG	FG%	3FG	3FG%	FT	FT%
1st Half	13-25	52%	8-13	62%	0-4	00%
Game	28-61	45.9%	12-31	38.7%	10-16	62.5%

*Deadball Rebounds: 3,0*

*Last FG Half: SEU 2nd-00:15*

**Tex. A&M-Commerce 36**

No.	Player	S	Pts	FG	3FG	FT	OR	DR	TR	PF	A	TO	Blk	Stl	Min	+/-
03	TERRELL, DEONTA	G	4	2-4	0-1	0-0	1	0	1	2	1	2	0	4	16	6
10	WRIGHT, DARNELL	F	5	2-2	0-0	1-2	1	2	3	0	2	0	1	1	12	10
12	STEWART, WAYNE	G	5	2-3	1-2	0-0	0	1	1	1	0	0	0	0	11	-8
30	LARA, LEO	G	0	0-3	0-2	0-0	1	1	2	0	0	1	0	0	14	-1
55	EVANS, CLARENCE	G	0	0-2	0-2	0-0	0	1	1	1	1	0	0	0	4	-5
01	BARRETT, DEON	G	11	4-8	3-6	0-0	1	1	2	2	3	1	0	0	16	7
04	WINBUSH, JOSH	F	2	1-3	0-0	0-0	0	3	3	1	1	1	1	0	8	-8
11	WIGGINS, ISAIAH	G	0	0-1	0-0	0-0	1	0	1	0	1	0	0	1	4	6
23	PEAVY, ALEX	F	3	1-1	1-1	0-0	0	0	0	1	0	0	2	0	7	4
32	GRANDSTAFF, AUSTIN	G	6	2-4	2-4	0-0	0	1	1	1	0	1	0	0	8	-1
<b>TEAM</b>							1	0	1	0		1				
<b>TOTALS</b>			<b>36</b>	<b>14-31</b>	<b>7-18</b>	<b>1-2</b>	<b>6</b>	<b>10</b>	<b>16</b>	<b>9</b>	<b>9</b>	<b>7</b>	<b>4</b>	<b>6</b>	<b>100</b>	

*Shooting By Period*

Period	FG	FG%	3FG	3FG%	FT	FT%
1st Half	14-31	45%	7-18	39%	1-2	50%
Game	27-54	50.0%	15-30	50.0%	17-21	81.0%

*Deadball Rebounds: 1,0*

*Last FG Half: AMC 2nd-01:43*

**Game Notes:**

Officials: , ,  
Attendance: 523

Start Time: 09:43 PM ET  
End Time: 11:41 PM ET  
Game Duration: 1:57  
Conference Game;

Score	1st	2nd	TOT
SEU	34	44	78
AMC	36	50	86

Points from (This Period)	SEU	AMC
In the Paint	10	14
Off Turns	5	15
2nd Chance	0	4
Fast Break	3	3
Bench	8	22

**Official Play-By-Play**  
**St. Edward's vs Tex. A&M-Commerce**  
**First Half**  
**November 23, 2019 at A&M-C Field House - Commerce**



**Period 1**

**Starters:**

**St. Edward's:** 5 KRAFKA, JAKE (F); 13 HAAS, AUGUST (G); 21 PHILLIPS, SEAN (F); 34 SPEARS, ASHTON (G); 4 LOPEZ, DORIAN (F);

**Tex. A&M-Commerce:** 3 TERRELL, DEONTA (G); 10 WRIGHT, DARNELL (F); 12 STEWART, WAYNE (G); 30 LARA, LEO (G); 55 EVANS, CLARENCE (G);

Time	VISITORS: St. Edward's	Score	Margin	HOME: Tex. A&M-Commerce
19:50	TURNOVER (LOSTBALL) by SPEARS, ASHTON			
19:50				STEAL by TERRELL, DEONTA
19:47				MISSED LAYUP by TERRELL, DEONTA
19:47	BLOCK by LOPEZ, DORIAN			
19:47	REBOUND (DEF) by TEAM			
19:32	GOOD! LAYUP by KRAFKA, JAKE [PNT]	0-2	V 2	
19:32	ASSIST by HAAS, AUGUST			
19:08		3-2	H 1	GOOD! 3PTR by STEWART, WAYNE
19:08				ASSIST by EVANS, CLARENCE
18:49	GOOD! 3PTR by SPEARS, ASHTON	3-5	V 2	
18:49	ASSIST by HAAS, AUGUST			
18:23				MISSED 3PTR by EVANS, CLARENCE
18:23	BLOCK by HAAS, AUGUST			
18:23				REBOUND (OFF) by TEAM
18:17				MISSED 3PTR by EVANS, CLARENCE
18:13	REBOUND (DEF) by LOPEZ, DORIAN			
18:05	MISSED 3PTR by PHILLIPS, SEAN			
18:00				REBOUND (DEF) by WRIGHT, DARNELL
17:39				MISSED 3PTR by LARA, LEO
17:39	BLOCK by HAAS, AUGUST			
17:35				REBOUND (OFF) by LARA, LEO
17:32				MISSED 3PTR by TERRELL, DEONTA
17:29	REBOUND (DEF) by HAAS, AUGUST			
17:15	GOOD! 3PTR by SPEARS, ASHTON	3-8	V 5	
17:15	ASSIST by LOPEZ, DORIAN			
16:43				TURNOVER (SHOTCLOCK) by TEAM
16:43				SUB OUT: TERRELL, DEONTA
16:43				SUB OUT: WRIGHT, DARNELL
16:43				SUB OUT: EVANS, CLARENCE
16:43				SUB IN: BARRETT, DEON
16:43				SUB IN: WINBUSH, JOSH
16:43				SUB IN: GRANDSTAFF, AUSTIN
16:32	MISSED JUMPER by PHILLIPS, SEAN			
16:32				BLOCK by WINBUSH, JOSH
16:26				REBOUND (DEF) by WINBUSH, JOSH
16:25				TURNOVER (LOSTBALL) by WINBUSH, JOSH
16:25	STEAL by LOPEZ, DORIAN			
16:18	MISSED 3PTR by LOPEZ, DORIAN			
16:15				REBOUND (DEF) by STEWART, WAYNE
16:12				MISSED JUMPER by BARRETT, DEON
16:08	REBOUND (DEF) by HAAS, AUGUST			
16:03	GOOD! 3PTR by PHILLIPS, SEAN	3-11	V 8	
16:03	ASSIST by HAAS, AUGUST			
15:37				MISSED JUMPER by LARA, LEO
15:34	REBOUND (DEF) by HAAS, AUGUST			
15:29	GOOD! 3PTR by SPEARS, ASHTON [FB]	3-14	V 11	
15:20				TIMEOUT 30SEC
15:20				
15:04				SUB OUT: STEWART, WAYNE
15:04				SUB IN: PEAVY, ALEX
15:04	SUB OUT: HAAS, AUGUST			
15:04	SUB IN: PLUYMEN, LUKE			
15:00				MISSED 3PTR by GRANDSTAFF, AUSTIN
14:57	REBOUND (DEF) by TEAM			
14:57				FOUL (PERSONAL) by PEAVY, ALEX
14:45	MISSED JUMPER by SPEARS, ASHTON			
14:43				REBOUND (DEF) by GRANDSTAFF, AUSTIN
14:23				MISSED 3PTR by BARRETT, DEON
14:20	REBOUND (DEF) by LOPEZ, DORIAN			
14:14	TURNOVER (TRAVEL) by PLUYMEN, LUKE			
13:50		5-14	V 9	GOOD! LAYUP by WINBUSH, JOSH
13:50				ASSIST by BARRETT, DEON
13:35				FOUL (PERSONAL) by GRANDSTAFF, AUSTIN
13:32				SUB OUT: PEAVY, ALEX
13:32				SUB OUT: LARA, LEO
13:32				SUB IN: TERRELL, DEONTA
13:32				SUB IN: STEWART, WAYNE
13:32	SUB OUT: KRAFKA, JAKE			
13:32	SUB OUT: PHILLIPS, SEAN			
13:32	SUB OUT: PLUYMEN, LUKE			

Time	VISITORS: St. Edward's	Score	Margin	HOME: Tex. A&M-Commerce
13:32	SUB IN: DORIA, LUCAS			
13:32	SUB IN: HAAS, AUGUST			
13:32	SUB IN: GARZA, RYAN			
13:28	TURNOVER (BADPASS) by SPEARS, ASHTON			
13:27				MISSED LAYUP by WINBUSH, JOSH
13:27	BLOCK by DORIA, LUCAS			
13:22	REBOUND (DEF) by TEAM			
13:20	SUB OUT: LOPEZ, DORIAN			
13:20	SUB IN: SHERVILL, COREY			
13:04	GOOD! 3PTR by GARZA, RYAN	5-17	V 12	
13:04	ASSIST by HAAS, AUGUST			
12:38				TURNOVER (BADPASS) by TERRELL, DEONTA
12:15	MISSED 3PTR by GARZA, RYAN			
12:14	REBOUND (OFF) by GARZA, RYAN			
12:14				FOUL (PERSONAL) by WINBUSH, JOSH
12:12				SUB OUT: WINBUSH, JOSH
12:12				SUB OUT: GRANDSTAFF, AUSTIN
12:12				SUB IN: WRIGHT, DARNELL
12:12				SUB IN: WIGGINS, ISAIAH
11:59	TURNOVER (BADPASS) by HAAS, AUGUST			
11:59				STEAL by WIGGINS, ISAIAH
11:54		7-17	V 10	GOOD! DUNK by TERRELL, DEONTA [FB]
11:54				ASSIST by WIGGINS, ISAIAH
11:53				FOUL (TECH) by TERRELL, DEONTA
11:53	MISSED FT by GARZA, RYAN			
11:53	REBOUND (OFF) by TEAM			
11:53	MISSED FT by GARZA, RYAN			
11:53	REBOUND (OFF) by TEAM			
11:39	MISSED 3PTR by SHERVILL, COREY			
11:34	REBOUND (OFF) by DORIA, LUCAS			
11:27	TURNOVER (BADPASS) by GARZA, RYAN			
11:27				STEAL by TERRELL, DEONTA
11:25				TURNOVER (BADPASS) by TERRELL, DEONTA
11:11	TURNOVER (BADPASS) by HAAS, AUGUST			
11:11				STEAL by TERRELL, DEONTA
11:01		10-17	V 7	GOOD! 3PTR by BARRETT, DEON
11:01				ASSIST by TERRELL, DEONTA
10:41	GOOD! 3PTR by SPEARS, ASHTON	10-20	V 10	
10:26				MISSED JUMPER by WIGGINS, ISAIAH
10:22				REBOUND (OFF) by WIGGINS, ISAIAH
10:22				FOUL (OFF) by BARRETT, DEON
10:22				TURNOVER (OFFENSIVE) by BARRETT, DEON
10:22	SUB OUT: DORIA, LUCAS			
10:22	SUB OUT: HAAS, AUGUST			
10:22	SUB IN: KRAFKA, JAKE			
10:22	SUB IN: PLUYMEN, LUKE			
10:09	GOOD! 3PTR by SPEARS, ASHTON	10-23	V 13	
09:40		12-23	V 11	GOOD! LAYUP by TERRELL, DEONTA
09:32	TURNOVER (BADPASS) by SPEARS, ASHTON			
09:19				MISSED 3PTR by STEWART, WAYNE
09:12				REBOUND (OFF) by TERRELL, DEONTA
09:03				MISSED 3PTR by BARRETT, DEON
08:59				REBOUND (OFF) by WRIGHT, DARNELL
08:59		14-23	V 9	GOOD! LAYUP by WRIGHT, DARNELL
08:46				FOUL (PERSONAL) by STEWART, WAYNE
08:46	SUB OUT: SPEARS, ASHTON			
08:46	SUB IN: LOPEZ, DORIAN			
08:38	TURNOVER (LOSTBALL) by SHERVILL, COREY			
08:38				STEAL by WRIGHT, DARNELL
08:35	FOUL (PERSONAL) by GARZA, RYAN			
08:35				MISSED FT by WRIGHT, DARNELL
08:35				REBOUND (OFF) by TEAM
08:35		15-23	V 8	GOOD! FT by WRIGHT, DARNELL [FB]
08:24	TURNOVER (BADPASS) by PLUYMEN, LUKE			
08:24				STEAL by TERRELL, DEONTA
08:17				MISSED 3PTR by BARRETT, DEON
08:13				REBOUND (OFF) by BARRETT, DEON
08:08		17-23	V 6	GOOD! JUMPER by STEWART, WAYNE
08:08				ASSIST by WRIGHT, DARNELL
08:00	TURNOVER (LOSTBALL) by SHERVILL, COREY			
07:58				
07:58	SUB OUT: GARZA, RYAN			
07:58	SUB OUT: SHERVILL, COREY			
07:58	SUB IN: PHILLIPS, SEAN			
07:58	SUB IN: SPEARS, ASHTON			
07:50				SUB OUT: WIGGINS, ISAIAH
07:50				SUB OUT: STEWART, WAYNE
07:50				SUB IN: LARA, LEO
07:50				SUB IN: GRANDSTAFF, AUSTIN
07:46		20-23	V 3	GOOD! 3PTR by GRANDSTAFF, AUSTIN

Time	VISITORS: St. Edward's	Score	Margin	HOME: Tex. A&M-Commerce
07:46				ASSIST by BARRETT, DEON
07:19	MISSED LAYUP by PLUYMEN, LUKE			
07:15				REBOUND (DEF) by BARRETT, DEON
07:06		23-23	T	GOOD! 3PTR by GRANDSTAFF, AUSTIN
07:06				ASSIST by BARRETT, DEON
06:57	FOUL (OFF) by PHILLIPS, SEAN			
06:57	TURNOVER (OFFENSIVE) by PHILLIPS, SEAN			
06:57	SUB OUT: PLUYMEN, LUKE			
06:57	SUB IN: HAAS, AUGUST			
06:40				MISSED 3PTR by LARA, LEO
06:35	REBOUND (DEF) by HAAS, AUGUST			
06:22	GOOD! LAYUP by KRAFKA, JAKE	23-25	V 2	
06:22				FOUL (PERSONAL) by TERRELL, DEONTA
06:22	MISSED FT by KRAFKA, JAKE			
06:20				REBOUND (DEF) by WRIGHT, DARNELL
06:00		25-25	T	GOOD! LAYUP by BARRETT, DEON [PNT]
05:47	GOOD! LAYUP by HAAS, AUGUST	25-27	V 2	
05:16		27-27	T	GOOD! LAYUP by WRIGHT, DARNELL
05:02	FOUL (OFF) by LOPEZ, DORIAN			
05:02	TURNOVER (OFFENSIVE) by LOPEZ, DORIAN			
05:01				SUB OUT: BARRETT, DEON
05:01				SUB OUT: TERRELL, DEONTA
05:01				SUB IN: PEAVY, ALEX
05:01				SUB IN: EVANS, CLARENCE
04:49				MISSED 3PTR by GRANDSTAFF, AUSTIN
04:47	REBOUND (DEF) by TEAM			
04:33	MISSED LAYUP by SPEARS, ASHTON			
04:33				BLOCK by WRIGHT, DARNELL
04:26				REBOUND (DEF) by EVANS, CLARENCE
04:23				TURNOVER (TRAVEL) by GRANDSTAFF, AUSTIN
04:07				FOUL (PERSONAL) by EVANS, CLARENCE
04:07	MISSED FT by HAAS, AUGUST			
04:06	REBOUND (OFF) by LOPEZ, DORIAN			
04:03				SUB OUT: GRANDSTAFF, AUSTIN
04:03				SUB OUT: EVANS, CLARENCE
04:03				SUB IN: BARRETT, DEON
04:03				SUB IN: TERRELL, DEONTA
03:49	MISSED JUMPER by KRAFKA, JAKE			
03:49				BLOCK by PEAVY, ALEX
03:41				REBOUND (DEF) by LARA, LEO
03:38		30-27	H 3	GOOD! 3PTR by PEAVY, ALEX
03:38				ASSIST by WRIGHT, DARNELL
03:30	TIMEOUT 30SEC			
03:30				SUB OUT: WRIGHT, DARNELL
03:30				SUB IN: WINBUSH, JOSH
03:30	SUB OUT: KRAFKA, JAKE			
03:30	SUB IN: DORIA, LUCAS			
03:12	MISSED JUMPER by LOPEZ, DORIAN			
03:08				REBOUND (DEF) by WINBUSH, JOSH
02:55		33-27	H 6	GOOD! 3PTR by BARRETT, DEON
02:55				ASSIST by WINBUSH, JOSH
02:26	GOOD! LAYUP by DORIA, LUCAS [PNT]	33-29	H 4	
02:26	ASSIST by HAAS, AUGUST			
02:06				MISSED JUMPER by WINBUSH, JOSH
02:02	REBOUND (DEF) by LOPEZ, DORIAN			
01:41	MISSED JUMPER by SPEARS, ASHTON			
01:41	REBOUND (OFF) by DORIA, LUCAS			
01:37	MISSED 3PTR by LOPEZ, DORIAN			
01:36				REBOUND (DEF) by WINBUSH, JOSH
01:36	FOUL (PERSONAL) by DORIA, LUCAS			
01:36	SUB OUT: PHILLIPS, SEAN			
01:36	SUB IN: GARZA, RYAN			
01:41				BLOCK by PEAVY, ALEX
01:08				TURNOVER (TRAVEL) by LARA, LEO
01:06	SUB OUT: DORIA, LUCAS			
01:06	SUB IN: KRAFKA, JAKE			
00:51	GOOD! LAYUP by SPEARS, ASHTON	33-31	H 2	
00:51	ASSIST by LOPEZ, DORIAN			
00:26		36-31	H 5	GOOD! 3PTR by BARRETT, DEON
00:06	GOOD! 3PTR by GARZA, RYAN	36-34	H 2	
00:06	ASSIST by HAAS, AUGUST			

St. Edward's 34, Tex. A&M-Commerce 36

<b>Points from (This Period)</b>	<b>SEU</b>	<b>AMC</b>
In the Paint	10	14
Off Turns	5	15
2nd Chance	0	4
Fast Break	3	3
Bench	8	22

**Official Box Score**  
**St. Edward's vs Tex. A&M-Commerce**  
**Second Half Statistics Only**  
**November 23, 2019 at A&M-C Field House - Commerce**



**St. Edward's 44**

No.	Player	S	Pts	FG	3FG	FT	OR	DR	TR	PF	A	TO	Blk	Stl	Min	+/-
04	LOPEZ, DORIAN	F	5	2-5	0-2	1-1	1	0	1	2	0	0	0	1	9	-5
05	KRAFKA, JAKE	F	8	3-5	0-1	2-2	1	5	6	5	0	0	1	0	16	-5
13	HAAS, AUGUST	G	4	1-1	0-0	2-3	1	0	1	2	2	2	0	0	14	-7
21	PHILLIPS, SEAN	F	0	0-1	0-1	0-0	0	1	1	0	1	0	0	0	8	1
34	SPEARS, ASHTON	G	25	9-15	4-8	3-4	0	2	2	1	1	1	0	1	20	-6
10	DORIA, LUCAS	F	0	0-0	0-0	0-0	0	1	1	3	0	1	1	0	4	1
20	GARZA, RYAN	G	2	0-3	0-2	2-2	0	0	0	2	0	0	0	1	12	-8
24	SHERVILL, COREY	F	0	0-6	0-4	0-0	1	0	1	0	1	0	0	1	13	-2
45	PLUYMEN, LUKE	G	0	0-0	0-0	0-0	0	1	1	0	0	1	0	1	4	1
<b>TEAM</b>							2	0	2	0	0					
<b>TOTALS</b>			<b>44</b>	<b>15-36</b>	<b>4-18</b>	<b>10-12</b>	<b>6</b>	<b>10</b>	<b>16</b>	<b>15</b>	<b>5</b>	<b>5</b>	<b>2</b>	<b>5</b>	<b>100</b>	

*Shooting By Period*

Period	FG	FG%	3FG	3FG%	FT	FT%
2nd Half	15-36	42%	4-18	22%	10-12	83%
Game	28-61	45.9%	12-31	38.7%	10-16	62.5%

*Deadball Rebounds: 3,0*

*Last FG Half: SEU -*

**Tex. A&M-Commerce 50**

No.	Player	S	Pts	FG	3FG	FT	OR	DR	TR	PF	A	TO	Blk	Stl	Min	+/-
03	TERRELL, DEONTA	G	8	3-3	1-1	1-2	0	0	0	1	3	5	0	3	16	5
10	WRIGHT, DARNELL	F	5	2-5	1-2	0-1	0	2	2	3	0	0	0	0	14	4
12	STEWART, WAYNE	G	6	1-3	0-0	4-4	0	2	2	2	1	0	1	0	14	4
30	LARA, LEO	G	3	1-2	1-2	0-0	0	1	1	1	1	0	0	0	10	2
55	EVANS, CLARENCE	G	0	0-0	0-0	0-0	0	2	2	0	0	1	0	0	1	0
01	BARRETT, DEON	G	13	1-4	1-3	10-10	0	5	5	1	4	1	0	0	19	6
04	WINBUSH, JOSH	F	0	0-1	0-0	0-0	0	0	0	0	0	0	0	0	6	2
11	WIGGINS, ISAIAH	G	2	1-1	0-0	0-0	0	0	0	1	0	1	0	1	6	6
23	PEAVY, ALEX	F	0	0-0	0-0	0-0	1	0	1	0	0	1	0	0	6	2
32	GRANDSTAFF, AUSTIN	G	13	4-4	4-4	1-2	1	3	4	0	1	0	0	0	9	-1
<b>TEAM</b>							1	1	2	0	0					
<b>TOTALS</b>			<b>50</b>	<b>13-23</b>	<b>8-12</b>	<b>16-19</b>	<b>3</b>	<b>16</b>	<b>19</b>	<b>9</b>	<b>10</b>	<b>9</b>	<b>1</b>	<b>4</b>	<b>100</b>	

*Shooting By Period*

Period	FG	FG%	3FG	3FG%	FT	FT%
2nd Half	13-23	57%	8-12	67%	16-19	84%
Game	27-54	50.0%	15-30	50.0%	17-21	81.0%

*Deadball Rebounds: 1,0*

*Last FG Half: AMC -*

Game Notes:

Officials: , ,  
Attendance: 523

Start Time: 09:43 PM ET  
End Time: 11:41 PM ET  
Game Duration: 1:57  
Conference Game;

Score	1st	2nd	TOT
SEU	34	44	<b>78</b>
AMC	36	50	<b>86</b>

Points from (This Period)	SEU	AMC
In the Paint	20	10
Off Turns	8	7
2nd Chance	4	0
Fast Break	14	11
Bench	2	28



**Official Play-By-Play**  
**St. Edward's vs Tex. A&M-Commerce**  
**Second Half**  
**November 23, 2019 at A&M-C Field House - Commerce**



**Period 2**

**Starters:**

**St. Edward's:** 5 KRAFKA, JAKE (F); 13 HAAS, AUGUST (G); 21 PHILLIPS, SEAN (F); 34 SPEARS, ASHTON (G); 4 LOPEZ, DORIAN (F);

**Tex. A&M-Commerce:** 3 TERRELL, DEONTA (G); 10 WRIGHT, DARNELL (F); 12 STEWART, WAYNE (G); 30 LARA, LEO (G); 55 EVANS, CLARENCE (G);

Time	VISITORS: St. Edward's	Score	Margin	HOME: Tex. A&M-Commerce
00:00				FOUL (TECH) by BARRETT, DEON
20:00				SUB OUT: WINBUSH, JOSH
20:00				SUB OUT: PEAVY, ALEX
20:00				SUB IN: WRIGHT, DARNELL
20:00				SUB IN: STEWART, WAYNE
20:00	SUB OUT: GARZA, RYAN			
20:00	SUB IN: PHILLIPS, SEAN			
20:00	MISSED FT by SPEARS, ASHTON			
20:00	REBOUND (OFF) by TEAM			
20:00	GOOD! FT by SPEARS, ASHTON	36-35	H 1	
19:44		39-35	H 4	GOOD! 3PTR by LARA, LEO
19:44				ASSIST by TERRELL, DEONTA
19:27	GOOD! LAYUP by KRAFKA, JAKE [PNT]	39-37	H 2	
19:27	ASSIST by SPEARS, ASHTON			
19:27				FOUL (PERSONAL) by WRIGHT, DARNELL
19:27	GOOD! FT by KRAFKA, JAKE	39-38	H 1	
19:11		42-38	H 4	GOOD! 3PTR by WRIGHT, DARNELL
19:11				ASSIST by TERRELL, DEONTA
18:56	MISSED 3PTR by PHILLIPS, SEAN			
18:53				REBOUND (DEF) by LARA, LEO
18:44		44-38	H 6	GOOD! LAYUP by TERRELL, DEONTA
18:44				ASSIST by BARRETT, DEON
18:30	GOOD! LAYUP by LOPEZ, DORIAN	44-40	H 4	
18:30				FOUL (PERSONAL) by WRIGHT, DARNELL
18:30	GOOD! FT by LOPEZ, DORIAN	44-41	H 3	
18:18	FOUL (PERSONAL) by LOPEZ, DORIAN			
18:18		45-41	H 4	GOOD! FT by STEWART, WAYNE
18:18		46-41	H 5	GOOD! FT by STEWART, WAYNE
17:57	GOOD! LAYUP by SPEARS, ASHTON	46-43	H 3	
17:33		49-43	H 6	GOOD! 3PTR by TERRELL, DEONTA
17:33				ASSIST by LARA, LEO
17:19	TURNOVER (BADPASS) by HAAS, AUGUST			
17:19				STEAL by TERRELL, DEONTA
17:13				MISSED 3PTR by BARRETT, DEON
17:09	REBOUND (DEF) by KRAFKA, JAKE			
17:07	MISSED 3PTR by LOPEZ, DORIAN			
17:02				REBOUND (DEF) by STEWART, WAYNE
16:35				MISSED LAYUP by WRIGHT, DARNELL
16:35				REBOUND (OFF) by TEAM
16:35	BLOCK by KRAFKA, JAKE			
16:20	FOUL (PERSONAL) by KRAFKA, JAKE			
16:11				TURNOVER (BADPASS) by TERRELL, DEONTA
16:11	STEAL by LOPEZ, DORIAN			
16:07				FOUL (PERSONAL) by WRIGHT, DARNELL
16:07	GOOD! FT by SPEARS, ASHTON	49-44	H 5	
16:07	GOOD! FT by SPEARS, ASHTON	49-45	H 4	
15:57				SUB OUT: TERRELL, DEONTA
15:57				SUB OUT: WRIGHT, DARNELL
15:57				SUB OUT: STEWART, WAYNE
15:57				SUB IN: WINBUSH, JOSH
15:57				SUB IN: PEAVY, ALEX
15:57				SUB IN: GRANDSTAFF, AUSTIN
15:55				MISSED 3PTR by LARA, LEO
15:51				REBOUND (OFF) by GRANDSTAFF, AUSTIN
15:44				MISSED 3PTR by BARRETT, DEON
15:40	REBOUND (DEF) by SPEARS, ASHTON			
15:36				FOUL (PERSONAL) by LARA, LEO
15:36				
15:24	SUB OUT: PHILLIPS, SEAN			
15:24	SUB IN: SHERVILL, COREY			
15:23	GOOD! 3PTR by SPEARS, ASHTON	49-48	H 1	
15:23	ASSIST by SHERVILL, COREY			
15:05				TURNOVER (TRAVEL) by PEAVY, ALEX
15:05				SUB OUT: LARA, LEO
15:05				SUB IN: TERRELL, DEONTA
14:56	MISSED 3PTR by SHERVILL, COREY			
14:51				REBOUND (DEF) by BARRETT, DEON
14:36				MISSED LAYUP by BARRETT, DEON
14:34	REBOUND (DEF) by KRAFKA, JAKE			
14:27	MISSED JUMPER by SPEARS, ASHTON			

Time	VISITORS: St. Edward's	Score	Margin	HOME: Tex. A&M-Commerce
14:22				REBOUND (DEF) by GRANDSTAFF, AUSTIN
14:18		52-48	H 4	GOOD! 3PTR by GRANDSTAFF, AUSTIN
14:18				ASSIST by BARRETT, DEON
13:57	MISSED 3PTR by KRAFKA, JAKE			
13:54				REBOUND (DEF) by TEAM
13:52	SUB OUT: LOPEZ, DORIAN			
13:52	SUB IN: GARZA, RYAN			
13:29		55-48	H 7	GOOD! 3PTR by GRANDSTAFF, AUSTIN
13:29				ASSIST by BARRETT, DEON
13:05	GOOD! JUMPER by SPEARS, ASHTON	55-50	H 5	
12:52	FOUL (PERSONAL) by GARZA, RYAN			
12:52				SUB OUT: WINBUSH, JOSH
12:52				SUB OUT: PEAVY, ALEX
12:52				SUB IN: WRIGHT, DARNELL
12:52				SUB IN: STEWART, WAYNE
12:52	SUB OUT: KRAFKA, JAKE			
12:52	SUB OUT: HAAS, AUGUST			
12:52	SUB IN: DORIA, LUCAS			
12:52	SUB IN: PLUYMEN, LUKE			
12:43				TURNOVER (BADPASS) by BARRETT, DEON
12:43	STEAL by SHERVILL, COREY			
12:35	GOOD! LAYUP by SPEARS, ASHTON [FB]	55-52	H 3	
12:12				MISSED LAYUP by STEWART, WAYNE
12:07	REBOUND (DEF) by DORIA, LUCAS			
12:05	GOOD! 3PTR by SPEARS, ASHTON [FB]	55-55	T	
11:52				MISSED 3PTR by WRIGHT, DARNELL
11:47	REBOUND (DEF) by SPEARS, ASHTON			
11:41	MISSED 3PTR by SPEARS, ASHTON			
11:35				REBOUND (DEF) by WRIGHT, DARNELL
11:35	FOUL (PERSONAL) by DORIA, LUCAS			
11:35				SUB OUT: GRANDSTAFF, AUSTIN
11:35				SUB IN: WIGGINS, ISAIAH
11:25				TURNOVER (TRAVEL) by TERRELL, DEONTA
11:12	TURNOVER (BADPASS) by PLUYMEN, LUKE			
11:12				STEAL by WIGGINS, ISAIAH
11:04		57-55	H 2	GOOD! LAYUP by WIGGINS, ISAIAH [FB/PNT]
10:47	TURNOVER (BADPASS) by SPEARS, ASHTON			
10:47				STEAL by TERRELL, DEONTA
10:43		59-55	H 4	GOOD! LAYUP by TERRELL, DEONTA [FB]
10:20	MISSED LAYUP by SHERVILL, COREY			
10:17				REBOUND (DEF) by BARRETT, DEON
10:16	FOUL (PERSONAL) by DORIA, LUCAS			
10:06				MISSED LAYUP by WRIGHT, DARNELL
10:06	BLOCK by DORIA, LUCAS			
10:02	REBOUND (DEF) by PLUYMEN, LUKE			
09:49	TURNOVER (LOSTBALL) by DORIA, LUCAS			
09:49				STEAL by TERRELL, DEONTA
09:43				TURNOVER (LOSTBALL) by TERRELL, DEONTA
09:43	STEAL by PLUYMEN, LUKE			
09:34	MISSED 3PTR by SPEARS, ASHTON			
09:29				REBOUND (DEF) by BARRETT, DEON
09:13	FOUL (PERSONAL) by DORIA, LUCAS			
09:13	SUB OUT: DORIA, LUCAS			
09:13	SUB OUT: PLUYMEN, LUKE			
09:13	SUB IN: KRAFKA, JAKE			
09:13	SUB IN: HAAS, AUGUST			
09:01	FOUL (PERSONAL) by KRAFKA, JAKE			
09:01				MISSED FT by WRIGHT, DARNELL
09:01	REBOUND (DEF) by KRAFKA, JAKE			
08:57				FOUL (PERSONAL) by STEWART, WAYNE
08:51				SUB OUT: BARRETT, DEON
08:51				SUB OUT: TERRELL, DEONTA
08:51				SUB OUT: WRIGHT, DARNELL
08:51				SUB OUT: STEWART, WAYNE
08:51				SUB IN: WINBUSH, JOSH
08:51				SUB IN: PEAVY, ALEX
08:51				SUB IN: LARA, LEO
08:51				SUB IN: EVANS, CLARENCE
08:37	MISSED 3PTR by GARZA, RYAN			
08:34	REBOUND (OFF) by SHERVILL, COREY			
08:24	MISSED JUMPER by GARZA, RYAN			
08:20				REBOUND (DEF) by EVANS, CLARENCE
08:05				TURNOVER (TRAVEL) by EVANS, CLARENCE
07:50	MISSED 3PTR by SHERVILL, COREY			
07:46				REBOUND (DEF) by EVANS, CLARENCE
07:33				MISSED DUNK by WINBUSH, JOSH
07:29				REBOUND (OFF) by PEAVY, ALEX
07:23				TURNOVER (TRAVEL) by WIGGINS, ISAIAH
07:23				
07:23				SUB OUT: EVANS, CLARENCE

Time	VISITORS: St. Edward's	Score	Margin	HOME: Tex. A&M-Commerce
07:23				SUB IN: BARRETT, DEON
07:23	SUB OUT: SHERVILL, COREY			
07:23	SUB IN: LOPEZ, DORIAN			
07:16	TURNOVER (BADPASS) by HAAS, AUGUST			
07:16				SUB OUT: LARA, LEO
07:16				SUB IN: GRANDSTAFF, AUSTIN
06:58		62-55	H 7	GOOD! 3PTR by GRANDSTAFF, AUSTIN
06:44	GOOD! 3PTR by SPEARS, ASHTON	62-58	H 4	
06:22	FOUL (PERSONAL) by SPEARS, ASHTON			
06:22		63-58	H 5	GOOD! FT by BARRETT, DEON
06:22				SUB OUT: WINBUSH, JOSH
06:22				SUB OUT: WIGGINS, ISAIAH
06:22				SUB OUT: PEAVY, ALEX
06:22				SUB IN: TERRELL, DEONTA
06:22				SUB IN: WRIGHT, DARNELL
06:22				SUB IN: STEWART, WAYNE
06:22	SUB OUT: LOPEZ, DORIAN			
06:22	SUB IN: SHERVILL, COREY			
06:22		64-58	H 6	GOOD! FT by BARRETT, DEON
05:59	MISSED JUMPER by SHERVILL, COREY			
05:53				REBOUND (DEF) by GRANDSTAFF, AUSTIN
05:41		67-58	H 9	GOOD! 3PTR by BARRETT, DEON
05:41				ASSIST by GRANDSTAFF, AUSTIN
05:31	TIMEOUT 30SEC			
05:31				
05:26	MISSED 3PTR by SPEARS, ASHTON			
05:22				REBOUND (DEF) by GRANDSTAFF, AUSTIN
05:08		70-58	H 12	GOOD! 3PTR by GRANDSTAFF, AUSTIN
05:08				ASSIST by STEWART, WAYNE
04:44	GOOD! 3PTR by SPEARS, ASHTON	70-61	H 9	
04:44	ASSIST by PHILLIPS, SEAN			
04:26	SUB OUT: GARZA, RYAN			
04:26	SUB IN: PHILLIPS, SEAN			
04:17		72-61	H 11	GOOD! DUNK by STEWART, WAYNE
04:17				ASSIST by TERRELL, DEONTA
04:03				FOUL (PERSONAL) by BARRETT, DEON
04:03	GOOD! FT by HAAS, AUGUST [FB]	72-62	H 10	
04:03	GOOD! FT by HAAS, AUGUST [FB]	72-63	H 9	
03:53				TURNOVER (BADPASS) by TERRELL, DEONTA
03:53	STEAL by SPEARS, ASHTON			
03:43	GOOD! LAYUP by KRAFKA, JAKE	72-65	H 7	
03:43	ASSIST by HAAS, AUGUST			
03:20	FOUL (PERSONAL) by KRAFKA, JAKE			
03:20				
03:20		73-65	H 8	GOOD! FT by BARRETT, DEON
03:20	SUB OUT: PHILLIPS, SEAN			
03:20	SUB IN: GARZA, RYAN			
03:20		74-65	H 9	GOOD! FT by BARRETT, DEON
03:12	GOOD! LAYUP by KRAFKA, JAKE [FB]	74-67	H 7	
03:12				FOUL (PERSONAL) by STEWART, WAYNE
03:12	SUB OUT: HAAS, AUGUST			
03:12	SUB IN: PHILLIPS, SEAN			
03:12	GOOD! FT by KRAFKA, JAKE [FB]	74-68	H 6	
03:03				TURNOVER (BADPASS) by TERRELL, DEONTA
03:03	STEAL by GARZA, RYAN			
03:03				FOUL (PERSONAL) by TERRELL, DEONTA
03:03	GOOD! FT by GARZA, RYAN [FB]	74-69	H 5	
03:03				SUB OUT: GRANDSTAFF, AUSTIN
03:03				SUB IN: LARA, LEO
03:03	GOOD! FT by GARZA, RYAN [FB]	74-70	H 4	
03:03				TIMEOUT 30SEC
02:47				MISSED LAYUP by STEWART, WAYNE
02:43	REBOUND (DEF) by KRAFKA, JAKE			
02:39	TIMEOUT 30SEC			
02:33	MISSED 3PTR by SHERVILL, COREY			
02:29				REBOUND (DEF) by BARRETT, DEON
02:07	FOUL (PERSONAL) by KRAFKA, JAKE			
02:07		75-70	H 5	GOOD! FT by BARRETT, DEON
02:07		76-70	H 6	GOOD! FT by BARRETT, DEON
01:57	MISSED 3PTR by SPEARS, ASHTON			
01:53				REBOUND (DEF) by BARRETT, DEON
01:43		78-70	H 8	GOOD! DUNK by WRIGHT, DARNELL
01:43				ASSIST by BARRETT, DEON
01:28	MISSED 3PTR by SHERVILL, COREY			
01:24	REBOUND (OFF) by HAAS, AUGUST			
01:24	GOOD! LAYUP by HAAS, AUGUST	78-72	H 6	
01:24	TIMEOUT TEAM			
01:24				SUB OUT: TERRELL, DEONTA
01:24				SUB IN: GRANDSTAFF, AUSTIN
01:24	SUB OUT: KRAFKA, JAKE			

Time	VISITORS: St. Edward's	Score	Margin	HOME: Tex. A&M-Commerce
01:24	SUB IN: LOPEZ, DORIAN			
01:20	FOUL (PERSONAL) by GARZA, RYAN			
01:20		79-72	H 7	GOOD! FT by GRANDSTAFF, AUSTIN [FB]
01:20	SUB OUT: PHILLIPS, SEAN			
01:20	SUB OUT: SHERVILL, COREY			
01:20	SUB IN: KRAFKA, JAKE			
01:20	SUB IN: HAAS, AUGUST			
01:20				MISSED FT by GRANDSTAFF, AUSTIN
01:20	REBOUND (DEF) by KRAFKA, JAKE			
01:20	MISSED 3PTR by LOPEZ, DORIAN			
01:19	REBOUND (OFF) by KRAFKA, JAKE			
01:19	MISSED LAYUP by KRAFKA, JAKE			
01:16				REBOUND (DEF) by STEWART, WAYNE
01:05	FOUL (PERSONAL) by LOPEZ, DORIAN			
01:05		80-72	H 8	GOOD! FT by STEWART, WAYNE [FB]
01:05				SUB OUT: GRANDSTAFF, AUSTIN
01:05				SUB IN: WIGGINS, ISIAH
01:05		81-72	H 9	GOOD! FT by STEWART, WAYNE [FB]
00:49	GOOD! LAYUP by LOPEZ, DORIAN	81-74	H 7	
00:49	ASSIST by HAAS, AUGUST			
00:40	FOUL (PERSONAL) by HAAS, AUGUST			
00:40		82-74	H 8	GOOD! FT by BARRETT, DEON [FB]
00:40		83-74	H 9	GOOD! FT by BARRETT, DEON [FB]
00:33	GOOD! LAYUP by SPEARS, ASHTON [FB/PNT]	83-76	H 7	
00:23	FOUL (PERSONAL) by HAAS, AUGUST			
00:23		84-76	H 8	GOOD! FT by BARRETT, DEON [FB]
00:23		85-76	H 9	GOOD! FT by BARRETT, DEON [FB]
00:23				TIMEOUT 30SEC
00:23				FOUL (PERSONAL) by WIGGINS, ISIAH
00:23				SUB OUT: WIGGINS, ISIAH
00:23				SUB IN: TERRELL, DEONTA
00:23	MISSED FT by HAAS, AUGUST			
00:23	REBOUND (OFF) by LOPEZ, DORIAN			
00:22	MISSED LAYUP by LOPEZ, DORIAN			
00:22				BLOCK by STEWART, WAYNE
00:20	REBOUND (OFF) by TEAM			
00:15	GOOD! LAYUP by SPEARS, ASHTON	85-78	H 7	
00:13	FOUL (PERSONAL) by KRAFKA, JAKE			
00:13	SUB OUT: KRAFKA, JAKE			
00:13	SUB IN: PHILLIPS, SEAN			
00:13		86-78	H 8	GOOD! FT by TERRELL, DEONTA
00:13				MISSED FT by TERRELL, DEONTA
00:12	REBOUND (DEF) by PHILLIPS, SEAN			
00:09	MISSED 3PTR by GARZA, RYAN			
00:05	REBOUND (OFF) by TEAM			
00:01	MISSED JUMPER by SPEARS, ASHTON			
00:01				REBOUND (DEF) by WRIGHT, DARNELL

### St. Edward's 78, Tex. A&M-Commerce 86

Points from (This Period)	SEU	AMC
In the Paint	20	10
Off Turns	8	7
2nd Chance	4	0
Fast Break	14	11
Bench	2	28

**Official Scoring/Possession Reference Chart**  
**St. Edward's vs Tex. A&M-Commerce**  
**Period 1**  
**November 23, 2019 at A&M-C Field House - Commerce**



**Period 1**

**Starters:**

**St. Edward's:** 5 KRAFKA, JAKE (F); 13 HAAS, AUGUST (G); 21 PHILLIPS, SEAN (F); 34 SPEARS, ASHTON (G); 4 LOPEZ, DORIAN (F);

**Tex. A&M-Commerce:** 3 TERRELL, DEONTA (G); 10 WRIGHT, DARNELL (F); 12 STEWART, WAYNE (G); 30 LARA, LEO (G); 55 EVANS, CLARENCE (G);

Time	VISITORS: St. Edward's	Score	Margin	HOME: Tex. A&M-Commerce
19:32	GOOD! LAYUP by KRAFKA, JAKE [PNT]	0-2	V 2	
19:08		3-2	H 1	GOOD! 3PTR by STEWART, WAYNE
18:49	GOOD! 3PTR by SPEARS, ASHTON	3-5	V 2	
17:15	GOOD! 3PTR by SPEARS, ASHTON	3-8	V 5	
16:03	GOOD! 3PTR by PHILLIPS, SEAN	3-11	V 8	
15:29	GOOD! 3PTR by SPEARS, ASHTON [FB]	3-14	V 11	
13:50		5-14	V 9	GOOD! LAYUP by WINBUSH, JOSH
13:04	GOOD! 3PTR by GARZA, RYAN	5-17	V 12	
11:54		7-17	V 10	GOOD! DUNK by TERRELL, DEONTA [FB]
11:01		10-17	V 7	GOOD! 3PTR by BARRETT, DEON
10:41	GOOD! 3PTR by SPEARS, ASHTON	10-20	V 10	
10:09	GOOD! 3PTR by SPEARS, ASHTON	10-23	V 13	
09:40		12-23	V 11	GOOD! LAYUP by TERRELL, DEONTA
08:59		14-23	V 9	GOOD! LAYUP by WRIGHT, DARNELL
08:35		15-23	V 8	GOOD! FT by WRIGHT, DARNELL [FB]
08:08		17-23	V 6	GOOD! JUMPER by STEWART, WAYNE
07:46		20-23	V 3	GOOD! 3PTR by GRANDSTAFF, AUSTIN
07:06		23-23	T	GOOD! 3PTR by GRANDSTAFF, AUSTIN
06:22	GOOD! LAYUP by KRAFKA, JAKE	23-25	V 2	
06:00		25-25	T	GOOD! LAYUP by BARRETT, DEON [PNT]
05:47	GOOD! LAYUP by HAAS, AUGUST	25-27	V 2	
05:16		27-27	T	GOOD! LAYUP by WRIGHT, DARNELL
03:38		30-27	H 3	GOOD! 3PTR by PEAVY, ALEX
02:55		33-27	H 6	GOOD! 3PTR by BARRETT, DEON
02:26	GOOD! LAYUP by DORIA, LUCAS [PNT]	33-29	H 4	
00:51	GOOD! LAYUP by SPEARS, ASHTON	33-31	H 2	
00:26		36-31	H 5	GOOD! 3PTR by BARRETT, DEON
00:06	GOOD! 3PTR by GARZA, RYAN	36-34	H 2	

**St. Edward's 34, Tex. A&M-Commerce 36**

**Official Scoring/Possession Reference Chart**  
**St. Edward's vs Tex. A&M-Commerce**  
**Period 2**  
**November 23, 2019 at A&M-C Field House - Commerce**



**Period 2**

**Starters:**

**St. Edward's:** 5 KRAFKA, JAKE (F); 13 HAAS, AUGUST (G); 21 PHILLIPS, SEAN (F); 34 SPEARS, ASHTON (G); 4 LOPEZ, DORIAN (F);

**Tex. A&M-Commerce:** 3 TERRELL, DEONTA (G); 10 WRIGHT, DARNELL (F); 12 STEWART, WAYNE (G); 30 LARA, LEO (G); 55 EVANS, CLARENCE (G);

Time	VISITORS: St. Edward's	Score	Margin	HOME: Tex. A&M-Commerce
20:00	GOOD! FT by SPEARS, ASHTON	36-35	H 1	
19:44		39-35	H 4	GOOD! 3PTR by LARA, LEO
19:27	GOOD! LAYUP by KRAFKA, JAKE [PNT]	39-37	H 2	
19:27	GOOD! FT by KRAFKA, JAKE	39-38	H 1	
19:11		42-38	H 4	GOOD! 3PTR by WRIGHT, DARNELL
18:44		44-38	H 6	GOOD! LAYUP by TERRELL, DEONTA
18:30	GOOD! LAYUP by LOPEZ, DORIAN	44-40	H 4	
18:30	GOOD! FT by LOPEZ, DORIAN	44-41	H 3	
18:18		45-41	H 4	GOOD! FT by STEWART, WAYNE
18:18		46-41	H 5	GOOD! FT by STEWART, WAYNE
17:57	GOOD! LAYUP by SPEARS, ASHTON	46-43	H 3	
17:33		49-43	H 6	GOOD! 3PTR by TERRELL, DEONTA
16:07	GOOD! FT by SPEARS, ASHTON	49-44	H 5	
16:07	GOOD! FT by SPEARS, ASHTON	49-45	H 4	
15:23	GOOD! 3PTR by SPEARS, ASHTON	49-48	H 1	
14:18		52-48	H 4	GOOD! 3PTR by GRANDSTAFF, AUSTIN
13:29		55-48	H 7	GOOD! 3PTR by GRANDSTAFF, AUSTIN
13:05	GOOD! JUMPER by SPEARS, ASHTON	55-50	H 5	
12:35	GOOD! LAYUP by SPEARS, ASHTON [FB]	55-52	H 3	
12:05	GOOD! 3PTR by SPEARS, ASHTON [FB]	55-55	T	
11:04		57-55	H 2	GOOD! LAYUP by WIGGINS, ISAIAH [FB/PNT]
10:43		59-55	H 4	GOOD! LAYUP by TERRELL, DEONTA [FB]
06:58		62-55	H 7	GOOD! 3PTR by GRANDSTAFF, AUSTIN
06:44	GOOD! 3PTR by SPEARS, ASHTON	62-58	H 4	
06:22		63-58	H 5	GOOD! FT by BARRETT, DEON
06:22		64-58	H 6	GOOD! FT by BARRETT, DEON
05:41		67-58	H 9	GOOD! 3PTR by BARRETT, DEON
05:08		70-58	H 12	GOOD! 3PTR by GRANDSTAFF, AUSTIN
04:44	GOOD! 3PTR by SPEARS, ASHTON	70-61	H 9	
04:17		72-61	H 11	GOOD! DUNK by STEWART, WAYNE
04:03	GOOD! FT by HAAS, AUGUST [FB]	72-62	H 10	
04:03	GOOD! FT by HAAS, AUGUST [FB]	72-63	H 9	
03:43	GOOD! LAYUP by KRAFKA, JAKE	72-65	H 7	
03:20		73-65	H 8	GOOD! FT by BARRETT, DEON
03:20		74-65	H 9	GOOD! FT by BARRETT, DEON
03:12	GOOD! LAYUP by KRAFKA, JAKE [FB]	74-67	H 7	
03:12	GOOD! FT by KRAFKA, JAKE [FB]	74-68	H 6	
03:03	GOOD! FT by GARZA, RYAN [FB]	74-69	H 5	
03:03	GOOD! FT by GARZA, RYAN [FB]	74-70	H 4	
02:07		75-70	H 5	GOOD! FT by BARRETT, DEON
02:07		76-70	H 6	GOOD! FT by BARRETT, DEON
01:43		78-70	H 8	GOOD! DUNK by WRIGHT, DARNELL
01:24	GOOD! LAYUP by HAAS, AUGUST	78-72	H 6	
01:20		79-72	H 7	GOOD! FT by GRANDSTAFF, AUSTIN [FB]
01:05		80-72	H 8	GOOD! FT by STEWART, WAYNE [FB]
01:05		81-72	H 9	GOOD! FT by STEWART, WAYNE [FB]
00:49	GOOD! LAYUP by LOPEZ, DORIAN	81-74	H 7	
00:40		82-74	H 8	GOOD! FT by BARRETT, DEON [FB]
00:40		83-74	H 9	GOOD! FT by BARRETT, DEON [FB]
00:33	GOOD! LAYUP by SPEARS, ASHTON [FB/PNT]	83-76	H 7	
00:23		84-76	H 8	GOOD! FT by BARRETT, DEON [FB]
00:23		85-76	H 9	GOOD! FT by BARRETT, DEON [FB]

Time	VISITORS: St. Edward's	Score	Margin	HOME: Tex. A&M-Commerce
00:15	GOOD! LAYUP by SPEARS, ASHTON	85-78	H 7	
00:13		86-78	H 8	GOOD! FT by TERRELL, DEONTA

**St. Edward's 78, Tex. A&M-Commerce 86**

**Official Substitutions Log**  
**St. Edward's vs Tex. A&M-Commerce**  
**Period 1**  
**November 23, 2019 at A&M-C Field House - Commerce**



VISITORS: St. Edward's	Time	Score	HOME: Tex. A&M-Commerce
5 KRAFKA, JAKE			3 TERRELL, DEONTA
13 HAAS, AUGUST			10 WRIGHT, DARNELL
21 PHILLIPS, SEAN			12 STEWART, WAYNE
34 SPEARS, ASHTON			30 LARA, LEO
4 LOPEZ, DORIAN			55 EVANS, CLARENCE
	16:43	8-3	SUB OUT: TERRELL, DEONTA
	16:43		SUB OUT: WRIGHT, DARNELL
	16:43		SUB OUT: EVANS, CLARENCE
	16:43		SUB IN: BARRETT, DEON
	16:43		SUB IN: WINBUSH, JOSH
	16:43		SUB IN: GRANDSTAFF, AUSTIN
	15:04	14-3	SUB OUT: STEWART, WAYNE
	15:04		SUB IN: PEAVY, ALEX
SUB OUT: 13 HAAS, AUGUST	15:04		
SUB IN: 45 PLUYMEN, LUKE	15:04		
	13:32	14-5	SUB OUT: PEAVY, ALEX
	13:32		SUB OUT: LARA, LEO
	13:32		SUB IN: TERRELL, DEONTA
	13:32		SUB IN: STEWART, WAYNE
SUB OUT: 5 KRAFKA, JAKE	13:32		
SUB OUT: 21 PHILLIPS, SEAN	13:32		
SUB OUT: 45 PLUYMEN, LUKE	13:32		
SUB IN: 10 DORIA, LUCAS	13:32		
SUB IN: 13 HAAS, AUGUST	13:32		
SUB IN: 20 GARZA, RYAN	13:32		
SUB OUT: 4 LOPEZ, DORIAN	13:20	14-5	
SUB IN: 24 SHERVILL, COREY	13:20		
	12:12	17-5	SUB OUT: WINBUSH, JOSH
	12:12		SUB OUT: GRANDSTAFF, AUSTIN
	12:12		SUB IN: WRIGHT, DARNELL
	12:12		SUB IN: WIGGINS, ISAIAH
SUB OUT: 10 DORIA, LUCAS	10:22	20-10	
SUB OUT: 13 HAAS, AUGUST	10:22		
SUB IN: 5 KRAFKA, JAKE	10:22		
SUB IN: 45 PLUYMEN, LUKE	10:22		
SUB OUT: 34 SPEARS, ASHTON	08:46	23-14	
SUB IN: 4 LOPEZ, DORIAN	08:46		
SUB OUT: 20 GARZA, RYAN	07:58	23-17	
SUB OUT: 24 SHERVILL, COREY	07:58		
SUB IN: 21 PHILLIPS, SEAN	07:58		
SUB IN: 34 SPEARS, ASHTON	07:58		
	07:50	23-17	SUB OUT: WIGGINS, ISAIAH
	07:50		SUB OUT: STEWART, WAYNE
	07:50		SUB IN: LARA, LEO
	07:50		SUB IN: GRANDSTAFF, AUSTIN
SUB OUT: 45 PLUYMEN, LUKE	06:57	23-23	
SUB IN: 13 HAAS, AUGUST	06:57		
	05:01	27-27	SUB OUT: BARRETT, DEON
	05:01		SUB OUT: TERRELL, DEONTA
	05:01		SUB IN: PEAVY, ALEX
	05:01		SUB IN: EVANS, CLARENCE
	04:03	27-27	SUB OUT: GRANDSTAFF, AUSTIN
	04:03		SUB OUT: EVANS, CLARENCE
	04:03		SUB IN: BARRETT, DEON
	04:03		SUB IN: TERRELL, DEONTA
	03:30	27-30	SUB OUT: WRIGHT, DARNELL
	03:30		SUB IN: WINBUSH, JOSH
SUB OUT: 5 KRAFKA, JAKE	03:30		
SUB IN: 10 DORIA, LUCAS	03:30		
SUB OUT: 21 PHILLIPS, SEAN	01:36	29-33	
SUB IN: 20 GARZA, RYAN	01:36		
SUB OUT: 10 DORIA, LUCAS	01:06	29-33	
SUB IN: 5 KRAFKA, JAKE	01:06		

**St. Edward's 34, Tex. A&M-Commerce 36**



**Official Substitutions Log**  
**St. Edward's vs Tex. A&M-Commerce**  
**Period 2**  
**November 23, 2019 at A&M-C Field House - Commerce**



VISITORS: St. Edward's	Time	Score	HOME: Tex. A&M-Commerce
5 KRAFKA, JAKE			3 TERRELL, DEONTA
13 HAAS, AUGUST			10 WRIGHT, DARNELL
21 PHILLIPS, SEAN			12 STEWART, WAYNE
34 SPEARS, ASHTON			30 LARA, LEO
4 LOPEZ, DORIAN			55 EVANS, CLARENCE
	20:00	-	SUB OUT: WINBUSH, JOSH
	20:00		SUB OUT: PEAVY, ALEX
	20:00		SUB IN: WRIGHT, DARNELL
	20:00		SUB IN: STEWART, WAYNE
SUB OUT: 20 GARZA, RYAN	20:00		
SUB IN: 21 PHILLIPS, SEAN	20:00		
	15:57	45-49	SUB OUT: TERRELL, DEONTA
	15:57		SUB OUT: WRIGHT, DARNELL
	15:57		SUB OUT: STEWART, WAYNE
	15:57		SUB IN: WINBUSH, JOSH
	15:57		SUB IN: PEAVY, ALEX
	15:57		SUB IN: GRANDSTAFF, AUSTIN
SUB OUT: 21 PHILLIPS, SEAN	15:24	45-49	
SUB IN: 24 SHERVILL, COREY	15:24		
	15:05	48-49	SUB OUT: LARA, LEO
	15:05		SUB IN: TERRELL, DEONTA
SUB OUT: 4 LOPEZ, DORIAN	13:52	48-52	
SUB IN: 20 GARZA, RYAN	13:52		
	12:52	50-55	SUB OUT: WINBUSH, JOSH
	12:52		SUB OUT: PEAVY, ALEX
	12:52		SUB IN: WRIGHT, DARNELL
	12:52		SUB IN: STEWART, WAYNE
SUB OUT: 5 KRAFKA, JAKE	12:52		
SUB OUT: 13 HAAS, AUGUST	12:52		
SUB IN: 10 DORIA, LUCAS	12:52		
SUB IN: 45 PLUYMEN, LUKE	12:52		
	11:35	55-55	SUB OUT: GRANDSTAFF, AUSTIN
	11:35		SUB IN: WIGGINS, ISAIAH
SUB OUT: 10 DORIA, LUCAS	09:13	55-59	
SUB OUT: 45 PLUYMEN, LUKE	09:13		
SUB IN: 5 KRAFKA, JAKE	09:13		
SUB IN: 13 HAAS, AUGUST	09:13		
	08:51	55-59	SUB OUT: BARRETT, DEON
	08:51		SUB OUT: TERRELL, DEONTA
	08:51		SUB OUT: WRIGHT, DARNELL
	08:51		SUB OUT: STEWART, WAYNE
	08:51		SUB IN: WINBUSH, JOSH
	08:51		SUB IN: PEAVY, ALEX
	08:51		SUB IN: LARA, LEO
	08:51		SUB IN: EVANS, CLARENCE
	07:23	55-59	SUB OUT: EVANS, CLARENCE
	07:23		SUB IN: BARRETT, DEON
SUB OUT: 24 SHERVILL, COREY	07:23		
SUB IN: 4 LOPEZ, DORIAN	07:23		
	07:16	55-59	SUB OUT: LARA, LEO
	07:16		SUB IN: GRANDSTAFF, AUSTIN
	06:22	58-63	SUB OUT: WINBUSH, JOSH
	06:22		SUB OUT: WIGGINS, ISAIAH
	06:22		SUB OUT: PEAVY, ALEX
	06:22		SUB IN: TERRELL, DEONTA
	06:22		SUB IN: WRIGHT, DARNELL
	06:22		SUB IN: STEWART, WAYNE
SUB OUT: 4 LOPEZ, DORIAN	06:22		
SUB IN: 24 SHERVILL, COREY	06:22		
SUB OUT: 20 GARZA, RYAN	04:26	61-70	
SUB IN: 21 PHILLIPS, SEAN	04:26		
SUB OUT: 21 PHILLIPS, SEAN	03:20	65-73	
SUB IN: 20 GARZA, RYAN	03:20		
SUB OUT: 13 HAAS, AUGUST	03:12	67-74	
SUB IN: 21 PHILLIPS, SEAN	03:12		
	03:03	69-74	SUB OUT: GRANDSTAFF, AUSTIN
	03:03		SUB IN: LARA, LEO
	01:24	72-78	SUB OUT: TERRELL, DEONTA
	01:24		SUB IN: GRANDSTAFF, AUSTIN
SUB OUT: 5 KRAFKA, JAKE	01:24		
SUB IN: 4 LOPEZ, DORIAN	01:24		
SUB OUT: 21 PHILLIPS, SEAN	01:20	72-79	
SUB OUT: 24 SHERVILL, COREY	01:20		
SUB IN: 5 KRAFKA, JAKE	01:20		
SUB IN: 13 HAAS, AUGUST	01:20		

VISITORS: St. Edward's	Time	Score	HOME: Tex. A&M-Commerce
	01:05	72-80	SUB OUT: GRANDSTAFF,AUSTIN
	01:05		SUB IN: WIGGINS,ISAIAH
	00:23	76-85	SUB OUT: WIGGINS,ISAIAH
	00:23		SUB IN: TERRELL,DEONTA
SUB OUT: 5 KRAFKA,JAKE	00:13	78-85	
SUB IN: 21 PHILLIPS,SEAN	00:13		

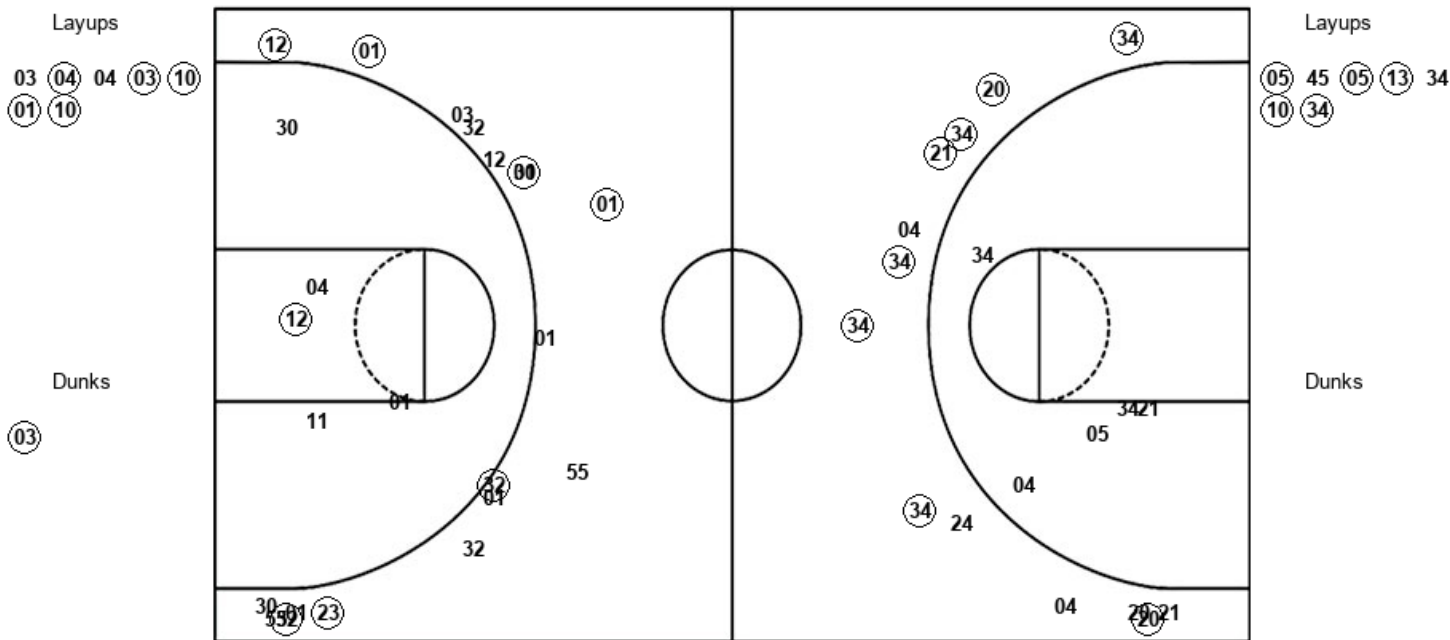
**St. Edward's 78, Tex. A&M-Commerce 86**

Official Shot Chart  
**St. Edward's vs Tex. A&M-Commerce**  
 PERIOD 1 Shots  
 November 23, 2019 at A&M-C Field House - Commerce



**Tex. A&M-Commerce**

**St. Edward's**



AMC : Period 1	Made	Att	Pct
Layups	5	7	71.4
Dunks	1	1	100.0
2PT Field Goals	7	13	53.8
3PT Field Goals	7	18	38.9
<b>Total Field Goals</b>	<b>14</b>	<b>31</b>	<b>45.2</b>

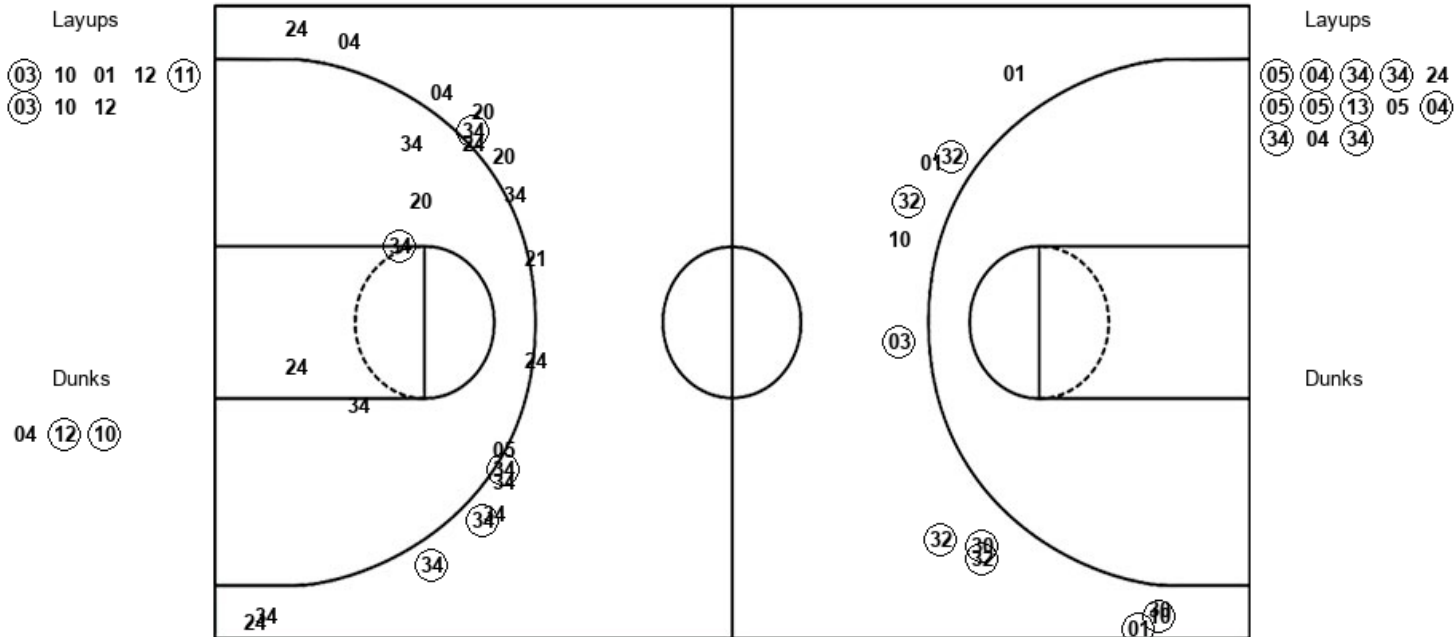
SEU : Period 1	Made	Att	Pct
Layups	5	7	71.4
Dunks	0	0	0
2PT Field Goals	5	12	41.7
3PT Field Goals	8	13	61.5
<b>Total Field Goals</b>	<b>13</b>	<b>25</b>	<b>52.0</b>

**Official Shot Chart**  
**St. Edward's vs Tex. A&M-Commerce**  
**PERIOD 2 Shots**  
 November 23, 2019 at A&M-C Field House - Commerce



**Tex. A&M-Commerce**

**St. Edward's**



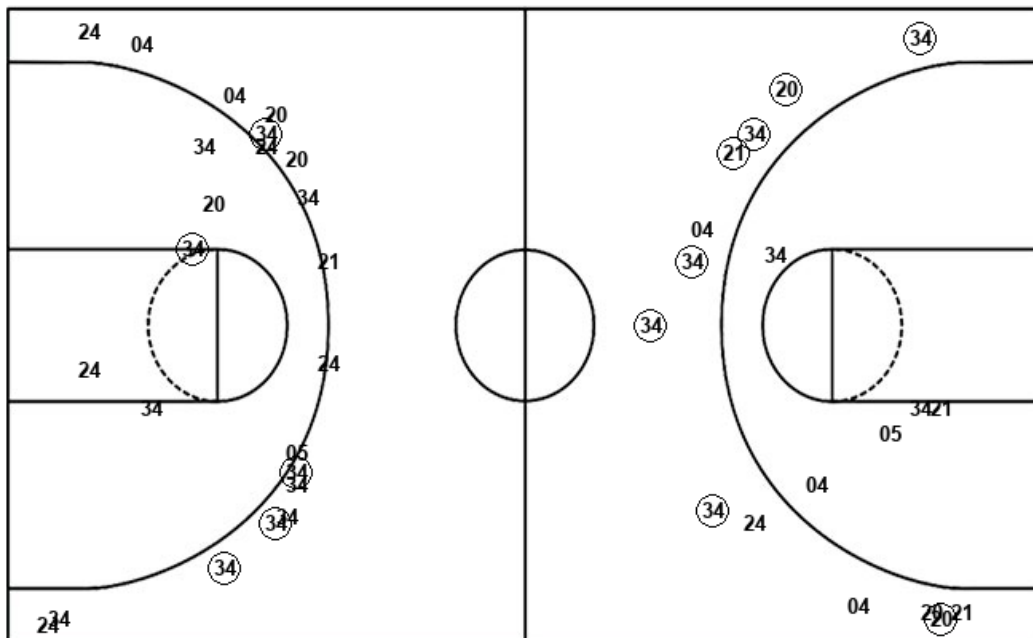
AMC : Period 2	Made	Att	Pct
Layups	3	8	37.5
Dunks	2	3	66.7
2PT Field Goals	5	11	45.5
3PT Field Goals	8	12	66.7
<b>Total Field Goals</b>	<b>13</b>	<b>23</b>	<b>56.5</b>

SEU : Period 2	Made	Att	Pct
Layups	10	13	76.9
Dunks	0	0	0
2PT Field Goals	11	18	61.1
3PT Field Goals	4	18	22.2
<b>Total Field Goals</b>	<b>15</b>	<b>36</b>	<b>41.7</b>

**Official Shot Chart**  
**St. Edward's vs Tex. A&M-Commerce**  
**St. Edward's Team Shots**  
**November 23, 2019 at A&M-C Field House - Commerce**



Layups



Layups

(05)	45	(05)	(13)	34
(10)	(34)	(05)	(04)	(34)
(34)	24	(05)	(05)	(13)
05	(04)	(34)	04	(34)

Dunks

Dunks

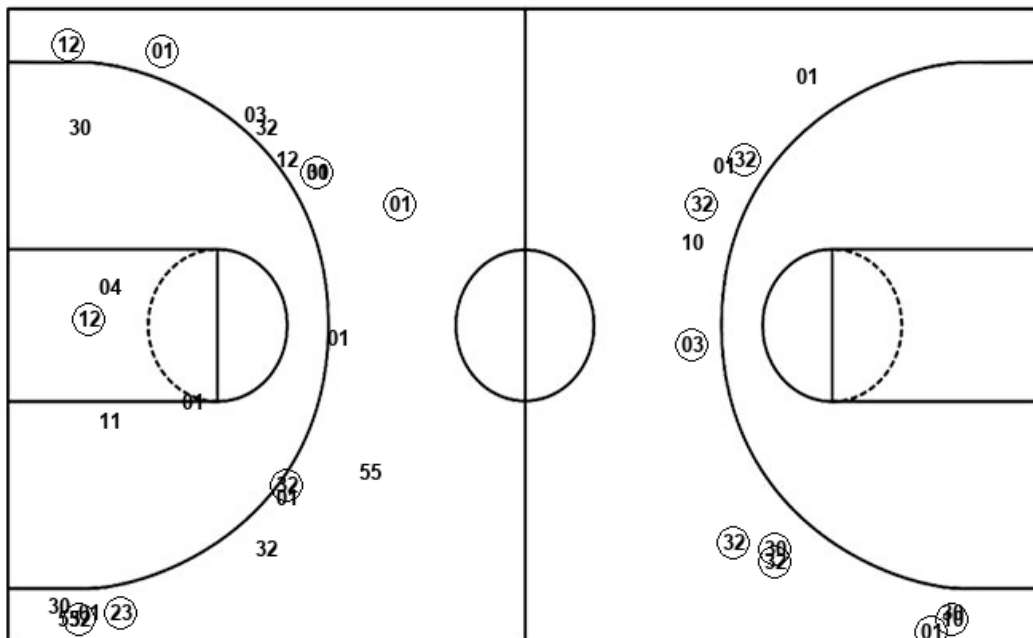
SEU : Period 1	Made	Att	Pct
Layups	5	7	71.4
Dunks	0	0	0
2PT Field Goals	5	12	41.7
3PT Field Goals	8	13	61.5
<b>Total Field Goals</b>	<b>13</b>	<b>25</b>	<b>52.0</b>

SEU : Period 2	Made	Att	Pct
Layups	10	13	76.9
Dunks	0	0	0
2PT Field Goals	11	18	61.1
3PT Field Goals	4	18	22.2
<b>Total Field Goals</b>	<b>15</b>	<b>36</b>	<b>41.7</b>

**Official Shot Chart**  
**St. Edward's vs Tex. A&M-Commerce**  
 Tex. A&M-Commerce Team Shots  
 November 23, 2019 at A&M-C Field House - Commerce



Layups



Layups

03 (04) 04 (03) (10)  
 (01) (10) (03) 10 01  
 12 (11) (03) 10 12

Dunks

Dunks

(03) 04 (12) (10)

AMC : Period 1	Made	Att	Pct
Layups	5	7	71.4
Dunks	1	1	100.0
2PT Field Goals	7	13	53.8
3PT Field Goals	7	18	38.9
<b>Total Field Goals</b>	<b>14</b>	<b>31</b>	<b>45.2</b>

AMC : Period 2	Made	Att	Pct
Layups	3	8	37.5
Dunks	2	3	66.7
2PT Field Goals	5	11	45.5
3PT Field Goals	8	12	66.7
<b>Total Field Goals</b>	<b>13</b>	<b>23</b>	<b>56.5</b>