

FINAL SCORE

Huston-Tillotson

60

Prairie View

79



December 30, 2019 • William Nicks Building - Prairie View

FINAL STATISTICS

Official Box Score
Huston-Tillotson vs Prairie View
Game Totals -- Final Statistics
December 30, 2019 at William Nicks Building - Prairie View



Huston-Tillotson 60

No.	Player	S	Pts	FG	3FG	FT	OR	DR	TR	PF	A	TO	Blk	Stl	Min	+/-
01	HENRY, DAIJAH	*	11	4-7	0-0	3-5	0	1	1	2	2	4	0	1	24	-12
11	CARTER, KRYSHONA	*	19	6-10	5-7	2-2	0	1	1	2	0	5	0	0	32	-15
12	SANFORD, ILANA	*	6	2-5	0-1	2-4	0	2	2	1	3	4	0	4	33	-11
22	BARBER, KAYLA	*	17	6-8	2-4	3-4	0	3	3	3	0	7	1	1	31	-18
33	CALHOUN, TRAEI	*	4	2-7	0-1	0-0	3	5	8	2	0	4	1	1	30	-20
03	BELL, CASSIE		1	0-1	0-0	1-2	0	2	2	1	1	0	1	2	11	1
15	ALHAMBRA, GEMMA		2	1-2	0-0	0-0	0	1	1	2	1	4	0	1	18	-17
21	PLUMMER, DAIZJA		0	0-3	0-2	0-0	0	1	1	1	0	3	0	0	11	-4
25	WALKER, SAMARIA		0	0-0	0-0	0-0	0	0	0	0	0	0	0	0	10	1
	TEAM						0	1	1	0		1				
TOTALS			60	21-43	7-15	11-17	3	17	20	14	7	32	3	10	200	

Shooting By Period

Period	FG	FG%	3FG	3FG%	FT	FT%
1st Qtr	1-8	13%	0-3	00%	3-6	50%
2nd Qtr	4-12	33%	3-5	60%	1-2	50%
3rd Qtr	7-10	70%	1-2	50%	5-6	83%
4th Qtr	9-13	69%	3-5	60%	2-3	67%
1st Half	5-20	25%	3-8	38%	4-8	50%
2nd Half	16-23	70%	4-7	57%	7-9	78%
Game	21-43	48.8%	7-15	46.7%	11-17	64.7%

Deadball Rebounds: 6,5
 Last FG: 4th-00:22
 Biggest Run: 9-0
 Largest lead: By 2 at 1st-08:19
 Technical Fouls: None.

Prairie View 79

No.	Player	S	Pts	FG	3FG	FT	OR	DR	TR	PF	A	TO	Blk	Stl	Min	+/-
01	PETERS, BERNESHA	G	5	2-6	1-2	0-0	0	0	0	1	7	5	0	4	27	13
11	ROSENTAL, DIANA	G	27	11-17	0-2	5-7	3	4	7	1	1	5	0	2	27	18
14	HEARD, KENNEDI	F	6	3-3	0-0	0-0	0	1	1	1	0	0	0	0	15	-5
20	WILLIAMS, KE'ASIA	F	12	5-6	0-0	2-2	1	2	3	2	4	1	1	4	22	12
23	PAUL, KENNEDY	F	6	3-6	0-0	0-0	0	1	1	2	0	0	0	1	20	4
02	PEREZ, TATYANA	G	5	1-4	1-3	2-2	0	1	1	0	4	0	0	4	17	28
04	TOLBERT, KEAYNNA	G	0	0-2	0-1	0-2	0	2	2	2	2	0	0	1	17	14
05	MARTIN, JADAH	G	0	0-2	0-2	0-0	1	0	1	2	1	0	0	0	9	2
10	GREEN, KENNEDI	G	2	1-3	0-1	0-0	0	1	1	2	1	2	0	1	13	-2
12	NEWMAN, DOMINIQUE	G	4	2-5	0-2	0-1	3	1	4	1	0	1	0	1	10	-6
22	WILLIAMS, RACHEL	F	8	4-7	0-0	0-0	1	0	1	2	0	0	1	0	9	8
32	COBB, JHYRAH	F	0	0-1	0-0	0-0	0	0	0	1	0	0	0	0	2	-7
40	CAMPBELL, MARIAH	F	4	2-2	0-0	0-0	0	4	4	2	1	2	0	0	11	16
	TEAM						0	0	0	0		1				
TOTALS			79	34-64	2-13	9-14	9	17	26	19	21	17	2	18	200	

Shooting By Period

Period	FG	FG%	3FG	3FG%	FT	FT%
1st Qtr	11-19	58%	0-3	00%	3-3	100%
2nd Qtr	7-11	64%	0-2	00%	3-6	50%
3rd Qtr	8-16	50%	2-5	40%	2-2	100%
4th Qtr	8-18	44%	0-3	00%	1-3	33%
1st Half	18-30	60%	0-5	00%	6-9	67%
2nd Half	16-34	47%	2-8	25%	3-5	60%
Game	34-64	53.1%	2-13	15.4%	9-14	64.3%

Deadball Rebounds: 4,2
 Last FG: 4th-00:26
 Biggest Run: 12-0
 Largest lead: By 29 at 4th-08:24
 Technical Fouls: None.

Game Notes:

Officials: D'Lynn Schertz, Angela Garland, LaTanya Martin

Start Time: 03:00 PM ET

Score	1st	2nd	3rd	4th	TOT
HTU	5	12	20	23	60
PVU	25	17	20	17	79

HTU led for 0:08. PVU led for 37:19.
 Game was tied for 2:34.
 Times tied: 1 Lead Changes: 1

Points from	HTU	PVU
In the Paint	26	36
Off Turns	17	36
2nd Chance	2	11
Fast Break	20	28
Bench	3	23

Official Box Score
Huston-Tillotson vs Prairie View
First Half Statistics Only
December 30, 2019 at William Nicks Building - Prairie View



Huston-Tillotson 17

No.	Player	S	Pts	FG	3FG	FT	OR	DR	TR	PF	A	TO	Blk	Stl	Min	+/-
01	HENRY, DAIJAH	*	2	0-2	0-0	2-4	0	0	0	1	0	2	0	1	10	-15
03	BELL, CASSIE		1	0-1	0-0	1-2	0	0	0	1	0	0	1	1	3	-6
11	CARTER, KRYSHONA	*	3	1-4	1-3	0-0	0	1	1	1	0	4	0	0	16	-22
12	SANFORD, ILANA	*	1	0-2	0-0	1-2	0	0	0	0	2	2	0	2	19	-23
15	ALHAMBRA, GEMMA		0	0-1	0-0	0-0	0	1	1	1	1	3	0	0	11	-11
21	PLUMMER, DAIZJA		0	0-2	0-1	0-0	0	0	0	0	0	1	0	0	4	-4
22	BARBER, KAYLA	*	8	3-4	2-3	0-0	0	2	2	2	0	4	0	1	17	-19
25	WALKER, SAMARIA		0	0-0	0-0	0-0	0	0	0	0	0	0	0	0	5	-1
33	CALHOUN, TRAEELI	*	2	1-4	0-1	0-0	3	2	5	2	0	3	0	0	15	-24
	TEAM		0	0-0	0-0	0-0	0	0	0	0	0	1	0	0	0	
TOTALS			17	5-20	3-8	4-8	3	6	9	8	3	20	1	5	100	

Shooting By Period

Period	FG	FG%	3FG	3FG%	FT	FT%
1st Qtr	1-8	13%	0-3	00%	3-6	50%
2nd Qtr	4-12	33%	3-5	60%	1-2	50%
1st Half	5-20	25%	3-8	38%	4-8	50%
Game	21-43	48.8%	7-15	46.7%	11-17	64.7%

Deadball Rebounds: 6,5

Last FG Half: HTU 2nd-01:54

Prairie View 42

No.	Player	S	Pts	FG	3FG	FT	OR	DR	TR	PF	A	TO	Blk	Stl	Min	+/-
01	PETERS, BERNESHA	G	0	0-3	0-0	0-0	0	0	0	1	7	3	0	4	16	18
02	PEREZ, TATYANA	G	2	0-1	0-1	2-2	0	1	1	0	2	0	0	2	9	19
04	TOLBERT, KEAYNNA	G	0	0-1	0-1	0-2	0	2	2	1	1	0	0	1	13	9
05	MARTIN, JADAH	G	0	0-0	0-0	0-0	0	0	0	1	0	0	0	0	3	7
10	GREEN, KENNEDI	G	2	1-2	0-1	0-0	0	0	0	1	1	1	0	1	6	-2
11	ROSENTAL, DIANA	G	16	7-9	0-2	2-3	2	2	4	1	0	2	0	1	12	24
12	NEWMAN, DOMINIQUE	G	0	0-0	0-0	0-0	0	0	0	0	0	0	0	0	0	0
14	HEARD, KENNEDI	F	4	2-2	0-0	0-0	0	1	1	1	0	0	0	0	8	3
20	WILLIAMS, KE'ASIA	F	8	3-4	0-0	2-2	0	1	1	0	2	1	0	2	10	16
22	WILLIAMS, RACHEL	F	6	3-4	0-0	0-0	0	0	0	0	0	0	1	0	5	9
23	PAUL, KENNEDY	F	0	0-1	0-0	0-0	0	0	0	1	0	0	0	1	8	16
32	COBB, JHYRAH	F	0	0-1	0-0	0-0	0	0	0	1	0	0	0	0	2	-7
40	CAMPBELL, MARIAH	F	4	2-2	0-0	0-0	0	3	3	1	0	1	0	0	8	13
	TEAM		0	0-0	0-0	0-0	0	0	0	0	0	1	0	0	0	
TOTALS			42	18-30	0-5	6-9	2	10	12	9	13	9	1	12	100	

Shooting By Period

Period	FG	FG%	3FG	3FG%	FT	FT%
1st Qtr	11-19	58%	0-3	00%	3-3	100%
2nd Qtr	7-11	64%	0-2	00%	3-6	50%
1st Half	18-30	60%	0-5	00%	6-9	67%
Game	34-64	53.1%	2-13	15.4%	9-14	64.3%

Deadball Rebounds: 4,2

Last FG Half: PVU 2nd-00:33

Game Notes:

Officials: D'Lynn Schertz, Angela Garland, LaTanya Martin

Start Time: 03:00 PM ET

Score	1st	2nd	3rd	4th	TOT
HTU	5	12	20	23	60
PVU	25	17	20	17	79

Points from (This Period)	HTU	PVU
In the Paint	4	22
Off Turns	7	26
2nd Chance	2	3
Fast Break	2	19
Bench	1	14

Official Box Score
Huston-Tillotson vs Prairie View
First Quarter Statistics Only
December 30, 2019 at William Nicks Building - Prairie View



Huston-Tillotson 5

No.	Player	S	Pts	FG	3FG	FT	OR	DR	TR	PF	A	TO	Blk	Stl	Min	+/-
01	HENRY, DAIJAH	*	2	0-0	0-0	2-4	0	0	0	0	0	1	0	1	6	-12
11	CARTER, KRYSHONA	*	0	0-2	0-1	0-0	0	1	1	1	0	3	0	0	10	-20
12	SANFORD, ILANA	*	1	0-1	0-0	1-2	0	0	0	0	0	2	0	1	9	-18
22	BARBER, KAYLA	*	2	1-2	0-1	0-0	0	0	0	0	0	3	0	0	8	-13
33	CALHOUN, TRAEI	*	0	0-2	0-1	0-0	2	2	4	1	0	2	0	0	10	-20
03	BELL, CASSIE		0	0-1	0-0	0-0	0	0	0	1	0	0	1	1	2	-7
15	ALHAMBRA, GEMMA		0	0-0	0-0	0-0	0	0	0	1	0	1	0	0	4	-8
21	PLUMMER, DAIZJA		0	0-0	0-0	0-0	0	0	0	0	0	0	0	0	1	-2
25	WALKER, SAMARIA		0	0-0	0-0	0-0	0	0	0	0	0	0	0	0	0	0
TEAM							0	0	0	0		1				
TOTALS			5	1-8	0-3	3-6	2	3	5	4	0	13	1	3	50	

Shooting By Period

Period	FG	FG%	3FG	3FG%	FT	FT%
1st Qtr	1-8	13%	0-3	00%	3-6	50%
2nd Qtr	4-12	33%	3-5	60%	1-2	50%
1st Half	1-8	13%	0-3	00%	3-6	50%
1st Half	5-20	25%	3-8	38%	4-8	50%
Game	21-43	48.8%	7-15	46.7%	11-17	64.7%

Deadball Rebounds: 6.5

Prairie View 25

No.	Player	S	Pts	FG	3FG	FT	OR	DR	TR	PF	A	TO	Blk	Stl	Min	+/-
01	PETERS, BERNESHA	G	0	0-3	0-0	0-0	0	0	0	1	4	2	0	2	8	16
11	ROSENTAL, DIANA	G	13	6-7	0-1	1-1	2	0	2	0	0	1	0	0	7	18
14	HEARD, KENNEDI	F	0	0-0	0-0	0-0	0	1	1	1	0	0	0	0	5	3
20	WILLIAMS, KE'ASIA	F	4	2-2	0-0	0-0	0	0	0	0	1	1	0	2	4	10
23	PAUL, KENNEDY	F	0	0-1	0-0	0-0	0	0	0	0	0	0	0	1	6	13
02	PEREZ, TATYANA	G	2	0-1	0-1	2-2	0	1	1	0	2	0	0	1	4	10
04	TOLBERT, KEAYNNA	G	0	0-0	0-0	0-0	0	0	0	1	1	0	0	1	6	11
05	MARTIN, JADAH	G	0	0-0	0-0	0-0	0	0	0	1	0	0	0	0	1	4
10	GREEN, KENNEDI	G	2	1-2	0-1	0-0	0	0	0	1	0	0	0	1	2	1
12	NEWMAN, DOMINIQUE	G	0	0-0	0-0	0-0	0	0	0	0	0	0	0	0	0	0
22	WILLIAMS, RACHEL	F	4	2-3	0-0	0-0	0	0	0	0	0	0	0	0	3	5
32	COBB, JHYRAH	F	0	0-0	0-0	0-0	0	0	0	0	0	0	0	0	0	0
40	CAMPBELL, MARIAH	F	0	0-0	0-0	0-0	0	1	1	1	0	1	0	0	3	9
TEAM							0	0	0	0		0				
TOTALS			25	11-19	0-3	3-3	2	3	5	6	8	5	0	8	50	

Shooting By Period

Period	FG	FG%	3FG	3FG%	FT	FT%
1st Qtr	11-19	58%	0-3	00%	3-3	100%
2nd Qtr	7-11	64%	0-2	00%	3-6	50%
1st Half	11-19	58%	0-3	00%	3-3	100%
1st Half	18-30	60%	0-5	00%	6-9	67%
Game	34-64	53.1%	2-13	15.4%	9-14	64.3%

Deadball Rebounds: 4.2

Game Notes:

Officials: D'Lynn Schertz, Angela Garland, LaTanya Martin

Start Time: 03:00 PM ET

Score	1st	2nd	3rd	4th	TOT
HTU	5	12	20	23	60
PVU	25	17	20	17	79

Points from (This Period)	HTU	PVU
In the Paint	2	14
Off Turns	2	19
2nd Chance	2	3
Fast Break	1	10
Bench	0	8

Official Play-By-Play
Huston-Tillotson vs Prairie View
First Quarter
December 30, 2019 at William Nicks Building - Prairie View



Period 1

Starters:

Huston-Tillotson: 1 HENRY,DAIJAH; 11 CARTER,KRYSHONA; 12 SANFORD,ILANA; 22 BARBER,KAYLA; 33 CALHOUN,TRAEI;

Prairie View: 1 PETERS,BERNESHA (G); 11 ROSENTAL,DIANA (G); 14 HEARD,KENNEDI (F); 20 WILLIAMS,KE'ASIA (F); 23 PAUL,KENNEDI (F);

Time	VISITORS: Huston-Tillotson	Score	Margin	HOME: Prairie View
09:41				TURNOVER (BADPASS) by WILLIAMS, KE'ASIA
09:41	STEAL by SANFORD, ILANA			
09:21	MISSED 3PTR by BARBER, KAYLA			
09:11				REBOUND (DEF) by HEARD, KENNEDI
09:09				MISSED LAYUP by PETERS, BERNESHA
08:59				REBOUND (OFF) by ROSENTAL, DIANA
08:57				TURNOVER (TRAVEL) by ROSENTAL, DIANA
08:51				FOUL (PERSONAL) by HEARD, KENNEDI
08:51				SUB OUT: HEARD, KENNEDI
08:51				SUB IN: PEREZ, TATYANA
08:28	MISSED 3PTR by CALHOUN, TRAEI			
08:23	REBOUND (OFF) by CALHOUN, TRAEI			
08:19	GOOD! LAYUP by BARBER, KAYLA [PNT]	0-2	V 2	
08:11		2-2	T	GOOD! LAYUP by WILLIAMS, KE'ASIA [FB/PNT]
08:11				ASSIST by PETERS, BERNESHA
07:53	TURNOVER (OTHER) by CARTER, KRYSHONA			
07:53				MISSED 3PTR by PEREZ, TATYANA
07:53	REBOUND (DEF) by TEAM			
07:44	TURNOVER (BADPASS) by BARBER, KAYLA			
07:44				STEAL by PAUL, KENNEDI
07:35				TURNOVER (LOSTBALL) by PETERS, BERNESHA
07:35	STEAL by HENRY, DAJAH			
07:27	TURNOVER (LOSTBALL) by HENRY, DAJAH			
07:18		4-2	H 2	GOOD! JUMPER by WILLIAMS, KE'ASIA
07:10	TURNOVER (LOSTBALL) by SANFORD, ILANA			
07:10				STEAL by PETERS, BERNESHA
06:58		6-2	H 4	GOOD! LAYUP by ROSENTAL, DIANA [PNT]
06:58				ASSIST by PETERS, BERNESHA
06:51	TURNOVER (BADPASS) by CARTER, KRYSHONA			
06:51				STEAL by WILLIAMS, KE'ASIA
06:47		8-2	H 6	GOOD! LAYUP by ROSENTAL, DIANA [FB/PNT]
06:47				ASSIST by WILLIAMS, KE'ASIA
06:47	TIMEOUT 30SEC			
06:47				SUB OUT: PETERS, BERNESHA
06:47				SUB OUT: PAUL, KENNEDI
06:47				SUB IN: MARTIN, JADAH
06:47				SUB IN: WILLIAMS, RACHEL
06:44	TURNOVER (LOSTBALL) by SANFORD, ILANA			
06:44				STEAL by PEREZ, TATYANA
06:36	FOUL (PERSONAL) by CARTER, KRYSHONA			
06:36		9-2	H 7	GOOD! FT by PEREZ, TATYANA [FB]
06:36		10-2	H 8	GOOD! FT by PEREZ, TATYANA [FB]
06:36				SUB OUT: WILLIAMS, KE'ASIA
06:36				SUB IN: CAMPBELL, MARIAH
06:30	MISSED LAYUP by SANFORD, ILANA			
06:25				REBOUND (DEF) by PEREZ, TATYANA
06:19		12-2	H 10	GOOD! JUMPER by WILLIAMS, RACHEL
06:19				ASSIST by PEREZ, TATYANA
06:10				FOUL (PERSONAL) by MARTIN, JADAH
06:10	MISSED FT by HENRY, DAJAH			
06:10	REBOUND (OFF) by TEAM			
06:10	GOOD! FT by HENRY, DAJAH	12-3	H 9	
06:10				SUB OUT: ROSENTAL, DIANA
06:10				SUB IN: TOLBERT, KEAYNNA
05:59		14-3	H 11	GOOD! JUMPER by WILLIAMS, RACHEL
05:59				ASSIST by PEREZ, TATYANA
05:49				FOUL (PERSONAL) by CAMPBELL, MARIAH
05:49	MISSED FT by HENRY, DAJAH			
05:49	REBOUND (OFF) by TEAM			
05:49	GOOD! FT by HENRY, DAJAH	14-4	H 10	
05:49				SUB OUT: MARTIN, JADAH
05:49				SUB OUT: CAMPBELL, MARIAH
05:49				SUB IN: GREEN, KENNEDI
05:49				SUB IN: HEARD, KENNEDI
05:04				MISSED JUMPER by WILLIAMS, RACHEL
04:54	REBOUND (DEF) by TEAM			
04:53				FOUL (PERSONAL) by TOLBERT, KEAYNNA
04:53	SUB OUT: SANFORD, ILANA			
04:53	SUB IN: ALHAMBRA, GEMMA			
04:46	TURNOVER (BADPASS) by CALHOUN, TRAEI			

Time	VISITORS: Huston-Tillotson	Score	Margin	HOME: Prairie View
04:46				SUB OUT: PEREZ, TATYANA
04:46				SUB IN: PETERS, BERNESHA
04:42				FOUL (OFF) by PETERS, BERNESHA
04:42				TURNOVER (OFFENSIVE) by PETERS, BERNESHA
04:40	TURNOVER (BADPASS) by BARBER, KAYLA			
04:40				STEAL by GREEN, KENNEDI
04:30		16-4	H 12	GOOD! LAYUP by GREEN, KENNEDI [PNT]
04:30				ASSIST by PETERS, BERNESHA
04:22	SUB OUT: HENRY, DAIJAH			
04:22	SUB IN: SANFORD, ILANA			
04:21	MISSED 3PTR by CARTER, KRYSHONA			
04:13				REBOUND (DEF) by TEAM
03:36				MISSED 3PTR by GREEN, KENNEDI
03:29	REBOUND (DEF) by CALHOUN, TRAEI			
03:28				FOUL (PERSONAL) by GREEN, KENNEDI
03:28	MISSED FT by SANFORD, ILANA			
03:28	REBOUND (OFF) by TEAM			
03:28	GOOD! FT by SANFORD, ILANA [FB]	16-5	H 11	
03:28				SUB OUT: GREEN, KENNEDI
03:28				SUB OUT: WILLIAMS, RACHEL
03:28				SUB IN: ROSENAL, DIANA
03:28				SUB IN: WILLIAMS, KE'ASIA
03:27				MISSED JUMPER by PETERS, BERNESHA
03:21	REBOUND (DEF) by CARTER, KRYSHONA			
03:19	TURNOVER (LOSTBALL) by BARBER, KAYLA			
03:19				STEAL by WILLIAMS, KE'ASIA
03:11		18-5	H 13	GOOD! LAYUP by ROSENAL, DIANA [FB/PNT]
03:11				ASSIST by PETERS, BERNESHA
02:56	MISSED LAYUP by CARTER, KRYSHONA			
02:50	REBOUND (OFF) by CALHOUN, TRAEI			
02:44	TURNOVER (LOSTBALL) by CALHOUN, TRAEI			
02:44				STEAL by PETERS, BERNESHA
02:37				MISSED 3PTR by ROSENAL, DIANA
02:28	REBOUND (DEF) by TEAM			
02:27				SUB OUT: HEARD, KENNEDI
02:27				SUB OUT: WILLIAMS, KE'ASIA
02:27				SUB IN: PAUL, KENNEDY
02:27				SUB IN: CAMPBELL, MARIAH
02:27	SUB OUT: BARBER, KAYLA			
02:27	SUB IN: BELL, CASSIE			
02:15	TURNOVER (BADPASS) by CARTER, KRYSHONA			
02:15				STEAL by TOLBERT, KEAYNNA
02:08		20-5	H 15	GOOD! LAYUP by ROSENAL, DIANA [FB/PNT]
02:08				ASSIST by TOLBERT, KEAYNNA
01:55	FOUL (OFF) by ALHAMBRA, GEMMA			
01:55	TURNOVER (OFFENSIVE) by ALHAMBRA, GEMMA			
01:39				MISSED LAYUP by PAUL, KENNEDY
01:34				REBOUND (OFF) by ROSENAL, DIANA
01:30		22-5	H 17	GOOD! JUMPER by ROSENAL, DIANA
01:27	FOUL (PERSONAL) by BELL, CASSIE			
01:27		23-5	H 18	GOOD! FT by ROSENAL, DIANA
01:22	MISSED JUMPER by BELL, CASSIE			
01:15				REBOUND (DEF) by TEAM
01:05				MISSED JUMPER by PETERS, BERNESHA
01:05	BLOCK by BELL, CASSIE			
01:05	REBOUND (DEF) by CALHOUN, TRAEI			
01:05	SUB OUT: ALHAMBRA, GEMMA			
01:05	SUB IN: PLUMMER, DAIZJA			
01:05	TURNOVER (OTHER) by TEAM			
01:03	FOUL (PERSONAL) by CALHOUN, TRAEI			
00:42		25-5	H 20	GOOD! LAYUP by ROSENAL, DIANA [PNT]
00:30	MISSED JUMPER by CALHOUN, TRAEI			
00:25				REBOUND (DEF) by CAMPBELL, MARIAH
00:08				TURNOVER (LOSTBALL) by CAMPBELL, MARIAH
00:08	STEAL by BELL, CASSIE			

Huston-Tillotson 5, Prairie View 25

Points from (This Period)	HTU	PVU
In the Paint	2	14
Off Turns	2	19
2nd Chance	2	3
Fast Break	1	10
Bench	0	8

Official Box Score
Huston-Tillotson vs Prairie View
Second Quarter Statistics Only
December 30, 2019 at William Nicks Building - Prairie View



Huston-Tillotson 12

No.	Player	S	Pts	FG	3FG	FT	OR	DR	TR	PF	A	TO	Blk	Stl	Min	+/-
01	HENRY, DAIJAH	*	0	0-2	0-0	0-0	0	0	0	1	0	1	0	0	4	-3
11	CARTER, KRYSHONA	*	3	1-2	1-2	0-0	0	0	0	0	0	1	0	0	6	-2
12	SANFORD, ILANA	*	0	0-1	0-0	0-0	0	0	0	0	2	0	0	1	10	-5
22	BARBER, KAYLA	*	6	2-2	2-2	0-0	0	2	2	2	0	1	0	1	9	-6
33	CALHOUN, TRAEI	*	2	1-2	0-0	0-0	1	0	1	1	0	1	0	0	5	-4
03	BELL, CASSIE		1	0-0	0-0	1-2	0	0	0	0	0	0	0	0	1	1
15	ALHAMBRA, GEMMA		0	0-1	0-0	0-0	0	1	1	0	1	2	0	0	7	-3
21	PLUMMER, DAIZJA		0	0-2	0-1	0-0	0	0	0	0	0	1	0	0	3	-2
25	WALKER, SAMARIA		0	0-0	0-0	0-0	0	0	0	0	0	0	0	0	5	-1
TEAM							0	0	0	0	0	0	0	0		
TOTALS			12	4-12	3-5	1-2	1	3	4	4	3	7	0	2	50	

Shooting By Period

Period	FG	FG%	3FG	3FG%	FT	FT%
3rd Qtr	7-10	70%	1-2	50%	5-6	83%
4th Qtr	9-13	69%	3-5	60%	2-3	67%
2nd Half	4-12	33%	3-5	60%	1-2	50%
2nd Half	16-23	70%	4-7	57%	7-9	78%
Game	21-43	48.8%	7-15	46.7%	11-17	64.7%

Deadball Rebounds: 6,5

Prairie View 17

No.	Player	S	Pts	FG	3FG	FT	OR	DR	TR	PF	A	TO	Blk	Stl	Min	+/-
01	PETERS, BERNESHA	G	0	0-0	0-0	0-0	0	0	0	0	3	1	0	2	8	2
11	ROSENTAL, DIANA	G	3	1-2	0-1	1-2	0	2	2	1	0	1	0	1	5	6
14	HEARD, KENNEDI	F	4	2-2	0-0	0-0	0	0	0	0	0	0	0	0	3	0
20	WILLIAMS, KE'ASIA	F	4	1-2	0-0	2-2	0	1	1	0	1	0	0	0	6	6
23	PAUL, KENNEDY	F	0	0-0	0-0	0-0	0	0	0	1	0	0	0	0	2	3
02	PEREZ, TATYANA	G	0	0-0	0-0	0-0	0	0	0	0	0	0	0	1	5	9
04	TOLBERT, KEAYNNA	G	0	0-1	0-1	0-2	0	2	2	0	0	0	0	0	7	-2
05	MARTIN, JADAH	G	0	0-0	0-0	0-0	0	0	0	0	0	0	0	0	2	3
10	GREEN, KENNEDI	G	0	0-0	0-0	0-0	0	0	0	0	1	1	0	0	4	-3
12	NEWMAN, DOMINIQUE	G	0	0-0	0-0	0-0	0	0	0	0	0	0	0	0	0	0
22	WILLIAMS, RACHEL	F	2	1-1	0-0	0-0	0	0	0	0	0	0	1	0	2	4
32	COBB, JHYRAH	F	0	0-1	0-0	0-0	0	0	0	1	0	0	0	0	2	-7
40	CAMPBELL, MARIAH	F	4	2-2	0-0	0-0	0	2	2	0	0	0	0	0	5	4
TEAM							0	0	0	0	1	1	0	0		
TOTALS			17	7-11	0-2	3-6	0	7	7	3	5	4	1	4	50	

Shooting By Period

Period	FG	FG%	3FG	3FG%	FT	FT%
3rd Qtr	8-16	50%	2-5	40%	2-2	100%
4th Qtr	8-18	44%	0-3	00%	1-3	33%
2nd Half	7-11	64%	0-2	00%	3-6	50%
2nd Half	16-34	47%	2-8	25%	3-5	60%
Game	34-64	53.1%	2-13	15.4%	9-14	64.3%

Deadball Rebounds: 4,2

Game Notes:

Officials: D'Lynn Schertz, Angela Garland, LaTanya Martin

Start Time: 03:00 PM ET

Score	1st	2nd	3rd	4th	TOT
HTU	5	12	20	23	60
PVU	25	17	20	17	79

Points from (This Period)	HTU	PVU
In the Paint	2	8
Off Turns	5	7
2nd Chance	0	0
Fast Break	1	9
Bench	1	6

Official Play-By-Play
Huston-Tillotson vs Prairie View
Second Quarter
December 30, 2019 at William Nicks Building - Prairie View



Period 2

Starters:

Huston-Tillotson: 1 HENRY,DAIJAH; 11 CARTER,KRYSHONA; 12 SANFORD,ILANA; 22 BARBER,KAYLA; 33 CALHOUN,TRAEI;

Prairie View: 1 PETERS,BERNESH (G); 11 ROSENAL,DIANA (G); 14 HEARD,KENNEDI (F); 20 WILLIAMS,KE'ASIA (F); 23 PAUL,KENNEDY (F);

Time	VISITORS: Huston-Tillotson	Score	Margin	HOME: Prairie View
10:00				FOUL (PERSONAL) by PAUL, KENNEDY
09:48	MISSED FT by BELL, CASSIE			
09:48	REBOUND (OFF) by TEAM			
09:47	GOOD! FT by BELL, CASSIE [FB]	25-6	H 19	
09:16				TURNOVER (OTHER) by TEAM
09:05	GOOD! LAYUP by CALHOUN, TRAEI [PNT]	25-8	H 17	
09:05				FOUL (PERSONAL) by ROSENAL, DIANA
08:58				TURNOVER (LOSTBALL) by ROSENAL, DIANA
08:58	STEAL by SANFORD, ILANA			
08:58	MISSED LAYUP by SANFORD, ILANA			
08:58				REBOUND (DEF) by ROSENAL, DIANA
08:58		27-8	H 19	GOOD! JUMPER by CAMPBELL, MARIAH [FB]
08:58	MISSED 3PTR by CARTER, KRYSHONA			
08:58	REBOUND (OFF) by CALHOUN, TRAEI			
08:58	TURNOVER (TRAVEL) by PLUMMER, DAIZJA			
08:58				SUB OUT: PAUL, KENNEDY
08:58				SUB IN: WILLIAMS, KE'ASIA
08:58	SUB OUT: BELL, CASSIE			
08:58	SUB IN: BARBER, KAYLA			
08:55				SUB OUT: PETERS, BERNESHA
08:55				SUB OUT: TOLBERT, KEAYNNA
08:55				SUB IN: PEREZ, TATYANA
08:55				SUB IN: MARTIN, JADAH
08:50	FOUL (PERSONAL) by BARBER, KAYLA			
08:48				MISSED FT by ROSENAL, DIANA
08:48				REBOUND (OFF) by TEAM
08:48		28-8	H 20	GOOD! FT by ROSENAL, DIANA [FB]
08:36	MISSED JUMPER by PLUMMER, DAIZJA			
08:31				REBOUND (DEF) by CAMPBELL, MARIAH
08:18		30-8	H 22	GOOD! LAYUP by CAMPBELL, MARIAH [PNT]
08:18				ASSIST by WILLIAMS, KE'ASIA
07:05	MISSED 3PTR by PLUMMER, DAIZJA			
07:00				REBOUND (DEF) by ROSENAL, DIANA
06:44				MISSED 3PTR by ROSENAL, DIANA
06:36	REBOUND (DEF) by TEAM			
06:35				SUB OUT: MARTIN, JADAH
06:35				SUB OUT: ROSENAL, DIANA
06:35				SUB IN: PETERS, BERNESHA
06:35				SUB IN: TOLBERT, KEAYNNA
06:35	SUB OUT: CARTER, KRYSHONA			
06:35	SUB OUT: PLUMMER, DAIZJA			
06:35	SUB IN: HENRY, DAIJAH			
06:35	SUB IN: ALHAMBRA, GEMMA			
06:27	MISSED LAYUP by HENRY, DAIJAH			
06:17				REBOUND (DEF) by CAMPBELL, MARIAH
06:14				MISSED LAYUP by WILLIAMS, KE'ASIA
06:14	REBOUND (DEF) by TEAM			
06:14	TURNOVER (BADPASS) by CALHOUN, TRAEI			
06:14				STEAL by PEREZ, TATYANA
06:10				MISSED 3PTR by TOLBERT, KEAYNNA
06:04	REBOUND (DEF) by BARBER, KAYLA			
05:45	MISSED JUMPER by CALHOUN, TRAEI			
05:36				REBOUND (DEF) by TOLBERT, KEAYNNA
05:27	FOUL (PERSONAL) by CALHOUN, TRAEI			
05:27		31-8	H 23	GOOD! FT by WILLIAMS, KE'ASIA
05:27		32-8	H 24	GOOD! FT by WILLIAMS, KE'ASIA
05:27				SUB OUT: PEREZ, TATYANA
05:27				SUB OUT: CAMPBELL, MARIAH
05:27				SUB IN: GREEN, KENNEDI
05:27				SUB IN: WILLIAMS, RACHEL
05:27	SUB OUT: CALHOUN, TRAEI			
05:27	SUB IN: WALKER, SAMARIA			
05:22	MISSED JUMPER by ALHAMBRA, GEMMA			
05:17				REBOUND (DEF) by WILLIAMS, KE'ASIA
04:53		34-8	H 26	GOOD! JUMPER by WILLIAMS, RACHEL [PNT]
04:53				ASSIST by GREEN, KENNEDI
04:19	MISSED LAYUP by HENRY, DAIJAH			
04:19				BLOCK by WILLIAMS, RACHEL
04:05				REBOUND (DEF) by TOLBERT, KEAYNNA
04:03				TURNOVER (BADPASS) by PETERS, BERNESHA

Time	VISITORS: Huston-Tillotson	Score	Margin	HOME: Prairie View
04:03	STEAL by BARBER, KAYLA			
03:32	FOUL (OFF) by HENRY, DAIJAH			
03:32	TURNOVER (OFFENSIVE) by HENRY, DAIJAH			
03:26		36-8	H 28	GOOD! JUMPER by WILLIAMS, KE'ASIA [FB]
03:26				ASSIST by PETERS, BERNESHA
03:13	TURNOVER (BADPASS) by ALHAMBRA, GEMMA			
03:13				STEAL by PETERS, BERNESHA
03:08	FOUL (PERSONAL) by BARBER, KAYLA			
03:08				MISSED FT by TOLBERT, KEAYNNA
03:08				REBOUND (OFF) by TEAM
03:08				MISSED FT by TOLBERT, KEAYNNA
03:08	REBOUND (DEF) by BARBER, KAYLA			
03:02				SUB OUT: WILLIAMS, RACHEL
03:02				SUB IN: COBB, JHYRAH
02:58	GOOD! 3PTR by BARBER, KAYLA	36-11	H 25	
02:58	ASSIST by SANFORD, ILANA			
02:43				TURNOVER (BADPASS) by GREEN, KENNEDI
02:43				SUB OUT: WILLIAMS, KE'ASIA
02:43				SUB IN: HEARD, KENNEDI
02:15	SUB OUT: HENRY, DAIJAH			
02:15	SUB IN: CARTER, KRYSHONA			
02:13	GOOD! 3PTR by CARTER, KRYSHONA	36-14	H 22	
02:13	ASSIST by SANFORD, ILANA			
02:04				MISSED LAYUP by COBB, JHYRAH
01:58	REBOUND (DEF) by ALHAMBRA, GEMMA			
01:54	GOOD! 3PTR by BARBER, KAYLA	36-17	H 19	
01:54	ASSIST by ALHAMBRA, GEMMA			
01:27		38-17	H 21	GOOD! JUMPER by HEARD, KENNEDI
01:27				ASSIST by PETERS, BERNESHA
01:09				FOUL (PERSONAL) by COBB, JHYRAH
01:09				SUB OUT: TOLBERT, KEAYNNA
01:09				SUB OUT: GREEN, KENNEDI
01:09				SUB OUT: COBB, JHYRAH
01:09				SUB IN: PEREZ, TATYANA
01:09				SUB IN: ROSENAL, DIANA
01:09				SUB IN: PAUL, KENNEDY
00:57	TURNOVER (BADPASS) by BARBER, KAYLA			
00:57				STEAL by PETERS, BERNESHA
00:50		40-17	H 23	GOOD! LAYUP by HEARD, KENNEDI [FB/PNT]
00:50				ASSIST by PETERS, BERNESHA
00:40	TURNOVER (BADPASS) by ALHAMBRA, GEMMA			
00:40				STEAL by ROSENAL, DIANA
00:33		42-17	H 25	GOOD! LAYUP by ROSENAL, DIANA [FB/PNT]
00:24	TURNOVER (LOSTBALL) by CARTER, KRYSHONA			

Huston-Tillotson 17, Prairie View 42

Points from (This Period)	HTU	PVU
In the Paint	2	8
Off Turns	5	7
2nd Chance	0	0
Fast Break	1	9
Bench	1	6

Official Box Score
Huston-Tillotson vs Prairie View
Second Half Statistics Only
December 30, 2019 at William Nicks Building - Prairie View



Huston-Tillotson 43

No.	Player	S	Pts	FG	3FG	FT	OR	DR	TR	PF	A	TO	Blk	Stl	Min	+/-
01	HENRY, DAIJAH	*	9	4-5	0-0	1-1	0	1	1	1	2	2	0	0	14	3
03	BELL, CASSIE		0	0-0	0-0	0-0	0	2	2	0	1	0	0	1	7	7
11	CARTER, KRYSHONA	*	16	5-6	4-4	2-2	0	0	0	1	0	1	0	0	17	7
12	SANFORD, ILANA	*	5	2-3	0-1	1-2	0	2	2	1	1	2	0	2	14	12
15	ALHAMBRA, GEMMA		2	1-1	0-0	0-0	0	0	0	1	0	1	0	1	7	-6
21	PLUMMER, DAIZJA		0	0-1	0-1	0-0	0	1	1	1	0	2	0	0	6	0
22	BARBER, KAYLA	*	9	3-4	0-1	3-4	0	1	1	1	0	3	1	0	15	1
25	WALKER, SAMARIA		0	0-0	0-0	0-0	0	0	0	0	0	0	0	0	5	2
33	CALHOUN, TRAEI	*	2	1-3	0-0	0-0	0	3	3	0	0	1	1	1	15	4
	TEAM		0	0-0	0-0	0-0	0	1	1	0	0	0	0	0	0	0
TOTALS			43	16-23	4-7	7-9	0	11	11	6	4	12	2	5	100	

Shooting By Period

Period	FG	FG%	3FG	3FG%	FT	FT%
3rd Qtr	7-10	70%	1-2	50%	5-6	83%
4th Qtr	9-13	69%	3-5	60%	2-3	67%
2nd Half	16-23	70%	4-7	57%	7-9	78%
Game	21-43	48.8%	7-15	46.7%	11-17	64.7%

Deadball Rebounds: 6,5
Last FG Half: HTU 4th-00:22

Prairie View 37

No.	Player	S	Pts	FG	3FG	FT	OR	DR	TR	PF	A	TO	Blk	Stl	Min	+/-
01	PETERS, BERNESHA	G	5	2-3	1-2	0-0	0	0	0	0	0	2	0	0	12	-5
02	PEREZ, TATYANA	G	3	1-3	1-2	0-0	0	0	0	0	2	0	0	2	9	9
04	TOLBERT, KEAYNNA	G	0	0-1	0-0	0-0	0	0	0	1	1	0	0	0	5	5
05	MARTIN, JADAH	G	0	0-2	0-2	0-0	1	0	1	1	1	0	0	0	6	-5
10	GREEN, KENNEDI	G	0	0-1	0-0	0-0	0	1	1	1	0	1	0	0	6	0
11	ROSENTAL, DIANA	G	11	4-8	0-0	3-4	1	2	3	0	1	3	0	1	15	-6
12	NEWMAN, DOMINIQUE	G	4	2-5	0-2	0-1	3	1	4	1	0	1	0	1	10	-6
14	HEARD, KENNEDI	F	2	1-1	0-0	0-0	0	0	0	0	0	0	0	0	8	-8
20	WILLIAMS, KE'ASIA	F	4	2-2	0-0	0-0	1	1	2	2	2	0	1	2	12	-4
22	WILLIAMS, RACHEL	F	2	1-3	0-0	0-0	1	0	1	2	0	0	0	0	4	-1
23	PAUL, KENNEDY	F	6	3-5	0-0	0-0	0	1	1	1	0	0	0	0	12	-12
32	COBB, JHYRAH	F	0	0-0	0-0	0-0	0	0	0	0	0	0	0	0	0	0
40	CAMPBELL, MARIAH	F	0	0-0	0-0	0-0	0	1	1	1	1	1	0	0	3	3
	TEAM		0	0-0	0-0	0-0	0	0	0	0	0	0	0	0	0	0
TOTALS			37	16-34	2-8	3-5	7	7	14	10	8	8	1	6	100	

Shooting By Period

Period	FG	FG%	3FG	3FG%	FT	FT%
3rd Qtr	8-16	50%	2-5	40%	2-2	100%
4th Qtr	8-18	44%	0-3	00%	1-3	33%
2nd Half	16-34	47%	2-8	25%	3-5	60%
Game	34-64	53.1%	2-13	15.4%	9-14	64.3%

Deadball Rebounds: 4,2
Last FG Half: PVU 4th-00:26

Game Notes:

Officials: D'Lynn Schertz, Angela Garland, LaTanya Martin

Start Time: 03:00 PM ET

Score	1st	2nd	3rd	4th	TOT
HTU	5	12	20	23	60
PVU	25	17	20	17	79

Points from (This Period)	HTU	PVU
In the Paint	22	14
Off Turns	10	10
2nd Chance	0	8
Fast Break	18	9
Bench	2	9

Official Box Score
Huston-Tillotson vs Prairie View
Third Quarter Statistics Only
December 30, 2019 at William Nicks Building - Prairie View



Huston-Tillotson 43

No.	Player	S	Pts	FG	3FG	FT	OR	DR	TR	PF	A	TO	Blk	Stl	Min	+/-
01	HENRY, DAIJAH	*	4	2-3	0-0	0-0	0	1	1	0	2	2	0	0	9	0
11	CARTER, KRYSHONA	*	5	1-1	1-1	2-2	0	0	0	0	0	0	0	0	8	3
12	SANFORD, ILANA	*	0	0-0	0-0	0-0	0	0	0	0	0	0	0	0	6	5
22	BARBER, KAYLA	*	7	2-3	0-1	3-4	0	0	0	1	0	0	1	0	9	-2
33	CALHOUN, TRAEI	*	2	1-2	0-0	0-0	0	1	1	0	0	1	1	1	9	0
03	BELL, CASSIE		0	0-0	0-0	0-0	0	0	0	0	0	0	0	0	1	2
15	ALHAMBRA, GEMMA		2	1-1	0-0	0-0	0	0	0	0	0	1	0	1	5	-5
21	PLUMMER, DAIZJA		0	0-0	0-0	0-0	0	1	1	0	0	2	0	0	2	-3
25	WALKER, SAMARIA		0	0-0	0-0	0-0	0	0	0	0	0	0	0	0	1	0
TEAM							0	1	1	0		0				
TOTALS			20	7-10	1-2	5-6	0	4	4	1	2	6	2	2	50	

Shooting By Period

Period	FG	FG%	3FG	3FG%	FT	FT%
2nd Half	0-0	0%	0-0	0%	0-0	0%
Game	21-43	48.8%	7-15	46.7%	11-17	64.7%

Deadball Rebounds: 6,5

Prairie View 37

No.	Player	S	Pts	FG	3FG	FT	OR	DR	TR	PF	A	TO	Blk	Stl	Min	+/-
01	PETERS, BERNESHA	G	5	2-3	1-2	0-0	0	0	0	0	0	0	0	0	7	-1
11	ROSENTAL, DIANA	G	6	2-3	0-0	2-2	0	1	1	0	1	1	0	1	8	-2
14	HEARD, KENNEDI	F	2	1-1	0-0	0-0	0	0	0	0	0	0	0	0	4	-5
20	WILLIAMS, KE'ASIA	F	2	1-1	0-0	0-0	1	1	2	2	1	0	1	0	6	-1
23	PAUL, KENNEDY	F	0	0-0	0-0	0-0	0	0	0	0	0	0	0	0	2	-4
02	PEREZ, TATYANA	G	3	1-3	1-2	0-0	0	0	0	0	2	0	0	2	9	7
04	TOLBERT, KEAYNNA	G	0	0-0	0-0	0-0	0	0	0	0	1	0	0	0	4	7
05	MARTIN, JADAH	G	0	0-1	0-1	0-0	0	0	0	0	0	0	0	0	1	-2
10	GREEN, KENNEDI	G	0	0-1	0-0	0-0	0	0	0	1	0	0	0	0	3	1
12	NEWMAN, DOMINIQUE	G	0	0-0	0-0	0-0	1	0	1	0	0	1	0	0	1	-2
22	WILLIAMS, RACHEL	F	2	1-3	0-0	0-0	1	0	1	2	0	0	0	0	4	-1
32	COBB, JHYRAH	F	0	0-0	0-0	0-0	0	0	0	0	0	0	0	0	0	0
40	CAMPBELL, MARIAH	F	0	0-0	0-0	0-0	0	1	1	1	1	1	0	0	3	3
TEAM							0	0	0	0		0				
TOTALS			20	8-16	2-5	2-2	3	3	6	6	6	3	1	3	50	

Shooting By Period

Period	FG	FG%	3FG	3FG%	FT	FT%
2nd Half	0-0	0%	0-0	0%	0-0	0%
Game	34-64	53.1%	2-13	15.4%	9-14	64.3%

Deadball Rebounds: 4,2

Game Notes:

Officials: D'Lynn Schertz, Angela Garland, LaTanya Martin

Start Time: 03:00 PM ET

Score	1st	2nd	3rd	4th	TOT
HTU	5	12	20	23	60
PVU	25	17	20	17	79

Points from (This Period)	HTU	PVU
In the Paint	10	6
Off Turns	6	6
2nd Chance	0	2
Fast Break	9	5
Bench	2	5

Official Play-By-Play
Huston-Tillotson vs Prairie View
Third Quarter
December 30, 2019 at William Nicks Building - Prairie View



Period 3

Starters:

Huston-Tillotson: 1 HENRY,DAIJAH; 11 CARTER,KRYSHONA; 12 SANFORD,ILANA; 22 BARBER,KAYLA; 33 CALHOUN,TRAEI;

Prairie View: 1 PETERS,BERNESH (G); 11 ROSENAL,DIANA (G); 14 HEARD,KENNEDI (F); 20 WILLIAMS,KE'ASIA (F); 23 PAUL,KENNEDI (F);

Time	VISITORS: Huston-Tillotson	Score	Margin	HOME: Prairie View
09:04	SUB OUT: ALHAMBRA, GEMMA			
09:04	SUB OUT: WALKER, SAMARIA			
09:04	SUB IN: HENRY, DAIJAH			
09:04	SUB IN: CALHOUN, TRAEI			
09:03	TURNOVER (LOSTBALL) by CALHOUN, TRAEI			
08:43				SUB OUT: PEREZ, TATYANA
08:43				SUB IN: WILLIAMS, KE'ASIA
08:43				FOUL (PERSONAL) by WILLIAMS, KE'ASIA
08:43	GOOD! JUMPER by CALHOUN, TRAEI [FB]	42-19	H 23	
08:43		45-19	H 26	GOOD! 3PTR by PETERS, BERNESHA [FB]
08:43				ASSIST by WILLIAMS, KE'ASIA
08:41	GOOD! 3PTR by CARTER, KRYSHONA [FB]	45-22	H 23	
08:41	ASSIST by HENRY, DAIJAH			
08:29				TURNOVER (BADPASS) by ROSENAL, DIANA
08:29	STEAL by CALHOUN, TRAEI			
08:20	GOOD! LAYUP by HENRY, DAIJAH [PNT]	45-24	H 21	
07:57				TIMEOUT 30SEC
07:57				SUB OUT: PAUL, KENNEDY
07:57				SUB IN: WILLIAMS, RACHEL
07:47				MISSED LAYUP by WILLIAMS, RACHEL
07:39				REBOUND (OFF) by WILLIAMS, RACHEL
07:38				MISSED LAYUP by WILLIAMS, RACHEL
07:33	REBOUND (DEF) by CALHOUN, TRAEI			
07:29	GOOD! LAYUP by BARBER, KAYLA [PNT]	45-26	H 19	
07:29	ASSIST by HENRY, DAIJAH			
07:21				FOUL (PERSONAL) by WILLIAMS, RACHEL
07:21	GOOD! FT by BARBER, KAYLA	45-27	H 18	
07:17				SUB OUT: HEARD, KENNEDI
07:17				SUB IN: PEREZ, TATYANA
07:16		47-27	H 20	GOOD! JUMPER by ROSENAL, DIANA [FB]
07:04	MISSED 3PTR by BARBER, KAYLA			
06:58				REBOUND (DEF) by ROSENAL, DIANA
06:34		50-27	H 23	GOOD! 3PTR by PEREZ, TATYANA
06:34				ASSIST by ROSENAL, DIANA
06:17	GOOD! LAYUP by HENRY, DAIJAH [PNT]	50-29	H 21	
05:56				MISSED LAYUP by ROSENAL, DIANA
05:56	BLOCK by CALHOUN, TRAEI			
05:44				REBOUND (OFF) by TEAM
05:29				MISSED 3PTR by PEREZ, TATYANA
05:24	REBOUND (DEF) by HENRY, DAIJAH			
05:21				FOUL (PERSONAL) by WILLIAMS, KE'ASIA
05:09	MISSED LAYUP by CALHOUN, TRAEI			
05:09				BLOCK by WILLIAMS, KE'ASIA
04:59				REBOUND (DEF) by WILLIAMS, KE'ASIA
04:56		52-29	H 23	GOOD! JUMPER by WILLIAMS, RACHEL [PNT]
04:56				ASSIST by PEREZ, TATYANA
04:24	GOOD! LAYUP by BARBER, KAYLA [PNT]	52-31	H 21	
04:17				FOUL (PERSONAL) by WILLIAMS, RACHEL
04:17	GOOD! FT by BARBER, KAYLA	52-32	H 20	
04:17				SUB OUT: ROSENAL, DIANA
04:17				SUB OUT: WILLIAMS, RACHEL
04:17				SUB IN: TOLBERT, KEAYNNA
04:17				SUB IN: CAMPBELL, MARIAH
04:17	SUB OUT: SANFORD, ILANA			
04:17	SUB IN: ALHAMBRA, GEMMA			
04:15				MISSED 3PTR by PETERS, BERNESHA
04:09				REBOUND (OFF) by WILLIAMS, KE'ASIA
04:07		54-32	H 22	GOOD! JUMPER by PETERS, BERNESHA
04:00	TURNOVER (LOSTBALL) by HENRY, DAIJAH			
04:00				STEAL by PEREZ, TATYANA
03:45				MISSED JUMPER by PEREZ, TATYANA
03:45	BLOCK by BARBER, KAYLA			
03:36	REBOUND (DEF) by TEAM			
03:28	TURNOVER (LOSTBALL) by HENRY, DAIJAH			
03:07		56-32	H 24	GOOD! LAYUP by WILLIAMS, KE'ASIA [PNT]
03:07				ASSIST by CAMPBELL, MARIAH
02:43				SUB OUT: PETERS, BERNESHA
02:43				SUB OUT: WILLIAMS, KE'ASIA
02:43				SUB IN: GREEN, KENNEDI
02:43				SUB IN: ROSENAL, DIANA

Time	VISITORS: Huston-Tillotson	Score	Margin	HOME: Prairie View
02:29	MISSED LAYUP by HENRY, DAIJAH			
02:24				REBOUND (DEF) by CAMPBELL, MARIAH
02:21				TURNOVER (TRAVEL) by CAMPBELL, MARIAH
02:21				FOUL (PERSONAL) by GREEN, KENNEDI
02:21	GOOD! FT by CARTER, KRYSHONA [FB]	56-33	H 23	
02:21	GOOD! FT by CARTER, KRYSHONA [FB]	56-34	H 22	
02:21	SUB OUT: CARTER, KRYSHONA			
02:21	SUB IN: PLUMMER, DAIZJA			
02:08		58-34	H 24	GOOD! LAYUP by ROSENTAL, DIANA [PNT]
02:08				ASSIST by TOLBERT, KEAYNNA
01:55	TIMEOUT 30SEC			
01:39				FOUL (PERSONAL) by CAMPBELL, MARIAH
01:39	MISSED FT by BARBER, KAYLA			
01:39	REBOUND (OFF) by TEAM			
01:39	GOOD! FT by BARBER, KAYLA	58-35	H 23	
01:20				MISSED JUMPER by GREEN, KENNEDI
01:15	REBOUND (DEF) by PLUMMER, DAIZJA			
01:13	TURNOVER (LOSTBALL) by PLUMMER, DAIZJA			
01:13				STEAL by PEREZ, TATYANA
00:57				SUB OUT: CAMPBELL, MARIAH
00:57				SUB IN: HEARD, KENNEDI
00:57		60-35	H 25	GOOD! JUMPER by HEARD, KENNEDI
00:57				ASSIST by PEREZ, TATYANA
00:55	TURNOVER (BADPASS) by ALHAMBRA, GEMMA			
00:55				STEAL by ROSENTAL, DIANA
00:47	FOUL (PERSONAL) by BARBER, KAYLA			
00:47		61-35	H 26	GOOD! FT by ROSENTAL, DIANA
00:47		62-35	H 27	GOOD! FT by ROSENTAL, DIANA
00:47				SUB OUT: TOLBERT, KEAYNNA
00:47				SUB IN: MARTIN, JADAH
00:47	SUB OUT: BARBER, KAYLA			
00:47	SUB IN: BELL, CASSIE			
00:46	TURNOVER (BADPASS) by PLUMMER, DAIZJA			
00:46				SUB OUT: ROSENTAL, DIANA
00:46				SUB IN: NEWMAN, DOMINIQUE
00:36				TURNOVER (BADPASS) by NEWMAN, DOMINIQUE
00:36	STEAL by ALHAMBRA, GEMMA			
00:29	GOOD! LAYUP by ALHAMBRA, GEMMA [FB/PNT]	62-37	H 25	
00:02				MISSED 3PTR by MARTIN, JADAH
00:00				REBOUND (OFF) by NEWMAN, DOMINIQUE

Huston-Tillotson 37, Prairie View 62

Points from (This Period)	HTU	PVU
In the Paint	10	6
Off Turns	6	6
2nd Chance	0	2
Fast Break	9	5
Bench	2	5

Official Box Score
Huston-Tillotson vs Prairie View
Fourth Quarter Statistics Only
December 30, 2019 at William Nicks Building - Prairie View



Huston-Tillotson 23

No.	Player	S	Pts	FG	3FG	FT	OR	DR	TR	PF	A	TO	Blk	Stl	Min	+/-
01	HENRY, DAIJAH	*	5	2-2	0-0	1-1	0	0	0	1	0	0	0	0	5	3
11	CARTER, KRYSHONA	*	11	4-5	3-3	0-0	0	0	0	1	0	1	0	0	9	4
12	SANFORD, ILANA	*	5	2-3	0-1	1-2	0	2	2	1	1	2	0	2	8	7
22	BARBER, KAYLA	*	2	1-1	0-0	0-0	0	1	1	0	0	3	0	0	6	3
33	CALHOUN, TRAEI	*	0	0-1	0-0	0-0	0	2	2	0	0	0	0	0	6	4
03	BELL, CASSIE		0	0-0	0-0	0-0	0	2	2	0	1	0	0	1	6	5
15	ALHAMBRA, GEMMA		0	0-0	0-0	0-0	0	0	0	1	0	0	0	0	2	-1
21	PLUMMER, DAIZJA		0	0-1	0-1	0-0	0	0	0	1	0	0	0	0	4	3
25	WALKER, SAMARIA		0	0-0	0-0	0-0	0	0	0	0	0	0	0	0	4	2
TEAM							0	0	0	0	0	0	0	0		
TOTALS			23	9-13	3-5	2-3	0	7	7	5	2	6	0	3	50	

Shooting By Period

Period	FG	FG%	3FG	3FG%	FT	FT%
Game	21-43	48.8%	7-15	46.7%	11-17	64.7%

Deadball Rebounds: 6,5

Prairie View 17

No.	Player	S	Pts	FG	3FG	FT	OR	DR	TR	PF	A	TO	Blk	Stl	Min	+/-
01	PETERS, BERNESHA	G	0	0-0	0-0	0-0	0	0	0	0	0	2	0	0	5	-4
11	ROSENTAL, DIANA	G	5	2-5	0-0	1-2	1	1	2	0	0	2	0	0	7	-4
14	HEARD, KENNEDI	F	0	0-0	0-0	0-0	0	0	0	0	0	0	0	0	4	-3
20	WILLIAMS, KE'ASIA	F	2	1-1	0-0	0-0	0	0	0	0	1	0	0	2	6	-3
23	PAUL, KENNEDY	F	6	3-5	0-0	0-0	0	1	1	1	0	0	0	0	10	-8
02	PEREZ, TATYANA	G	0	0-0	0-0	0-0	0	0	0	0	0	0	0	0	0	2
04	TOLBERT, KEAYNNA	G	0	0-1	0-0	0-0	0	0	0	1	0	0	0	0	1	-2
05	MARTIN, JADAH	G	0	0-1	0-1	0-0	1	0	1	1	1	0	0	0	5	-3
10	GREEN, KENNEDI	G	0	0-0	0-0	0-0	0	1	1	0	0	1	0	0	3	-1
12	NEWMAN, DOMINIQUE	G	4	2-5	0-2	0-1	2	1	3	1	0	0	0	1	9	-4
22	WILLIAMS, RACHEL	F	0	0-0	0-0	0-0	0	0	0	0	0	0	0	0	0	0
32	COBB, JHYRAH	F	0	0-0	0-0	0-0	0	0	0	0	0	0	0	0	0	0
40	CAMPBELL, MARIAH	F	0	0-0	0-0	0-0	0	0	0	0	0	0	0	0	0	0
TEAM							0	0	0	0	0	0	0	0		
TOTALS			17	8-18	0-3	1-3	4	4	8	4	2	5	0	3	50	

Shooting By Period

Period	FG	FG%	3FG	3FG%	FT	FT%
Game	34-64	53.1%	2-13	15.4%	9-14	64.3%

Deadball Rebounds: 4,2

Game Notes:

Officials: D'Lynn Schertz, Angela Garland, LaTanya Martin

Start Time: 03:00 PM ET

Score	1st	2nd	3rd	4th	TOT
HTU	5	12	20	23	60
PVU	25	17	20	17	79

Points from (This Period)	HTU	PVU
In the Paint	12	8
Off Turns	4	4
2nd Chance	0	6
Fast Break	9	4
Bench	0	4

Official Play-By-Play
Huston-Tillotson vs Prairie View
Fourth Quarter
December 30, 2019 at William Nicks Building - Prairie View



Period 4

Starters:

Huston-Tillotson: 1 HENRY, DAIJAH; 11 CARTER, KRYSHONA; 12 SANFORD, ILANA; 22 BARBER, KAYLA; 33 CALHOUN, TRAEI;

Prairie View: 1 PETERS, BERNESHA (G); 11 ROSENTAL, DIANA (G); 14 HEARD, KENNEDI (F); 20 WILLIAMS, KE'ASIA (F); 23 PAUL, KENNEDY (F);

Time	VISITORS: Huston-Tillotson	Score	Margin	HOME: Prairie View
10:00		64-37	H 27	GOOD! LAYUP by NEWMAN, DOMINIQUE [FB/PNT]
10:00	FOUL (PERSONAL) by HENRY, DAIJAH			
10:00				MISSED FT by NEWMAN, DOMINIQUE
10:00	REBOUND (DEF) by CALHOUN, TRAEI			
09:59	SUB OUT: HENRY, DAIJAH			
09:59	SUB IN: SANFORD, ILANA			
09:56				SUB OUT: PEREZ, TATYANA
09:56				SUB IN: PAUL, KENNEDY
09:56	SUB OUT: ALHAMBRA, GEMMA			
09:56	SUB IN: CARTER, KRYSHONA			
09:53	TURNOVER (OFFENSIVE) by SANFORD, ILANA			
09:53		66-37	H 29	GOOD! JUMPER by PAUL, KENNEDY
09:53				ASSIST by MARTIN, JADAH
09:53	FOUL (OFF) by SANFORD, ILANA			
09:34	MISSED JUMPER by CARTER, KRYSHONA			
09:28				REBOUND (DEF) by GREEN, KENNEDI
09:27				TURNOVER (BADPASS) by GREEN, KENNEDI
09:27	STEAL by BELL, CASSIE			
09:22	GOOD! LAYUP by CARTER, KRYSHONA [FB/PNT]	66-39	H 27	
09:22	ASSIST by BELL, CASSIE			
09:12				MISSED JUMPER by PAUL, KENNEDY
09:04	REBOUND (DEF) by SANFORD, ILANA			
09:03				FOUL (PERSONAL) by MARTIN, JADAH
08:51	MISSED JUMPER by CALHOUN, TRAEI			
08:46				REBOUND (DEF) by PAUL, KENNEDY
08:30				MISSED 3PTR by NEWMAN, DOMINIQUE
08:26				REBOUND (OFF) by NEWMAN, DOMINIQUE
08:24		68-39	H 29	GOOD! LAYUP by NEWMAN, DOMINIQUE [PNT]
08:12	GOOD! 3PTR by CARTER, KRYSHONA	68-42	H 26	
08:12	ASSIST by SANFORD, ILANA			
07:54				MISSED 3PTR by MARTIN, JADAH
07:49	REBOUND (DEF) by CALHOUN, TRAEI			
07:46	GOOD! 3PTR by CARTER, KRYSHONA [FB]	68-45	H 23	
07:17				TIMEOUT 30SEC
07:17				SUB OUT: MARTIN, JADAH
07:17				SUB IN: ROSENTAL, DIANA
06:54	FOUL (PERSONAL) by PLUMMER, DAIZJA			
06:54				MISSED FT by ROSENTAL, DIANA
06:54				REBOUND (OFF) by TEAM
06:54		69-45	H 24	GOOD! FT by ROSENTAL, DIANA
06:48	MISSED 3PTR by PLUMMER, DAIZJA			
06:44				REBOUND (DEF) by NEWMAN, DOMINIQUE
06:36				SUB OUT: GREEN, KENNEDI
06:36				SUB IN: PETERS, BERNESHA
06:34				TURNOVER (BADPASS) by ROSENTAL, DIANA
06:34	STEAL by SANFORD, ILANA			
06:16	TURNOVER (LOSTBALL) by CARTER, KRYSHONA			
06:05				MISSED JUMPER by ROSENTAL, DIANA
05:58	REBOUND (DEF) by BELL, CASSIE			
05:56	GOOD! LAYUP by SANFORD, ILANA [PNT]	69-47	H 22	
05:51				MISSED JUMPER by NEWMAN, DOMINIQUE
05:42	REBOUND (DEF) by BELL, CASSIE			
05:41	TIMEOUT 30SEC			
05:41				SUB OUT: NEWMAN, DOMINIQUE
05:41				SUB OUT: HEARD, KENNEDI
05:41				SUB IN: TOLBERT, KEAYNNA
05:41				SUB IN: WILLIAMS, KE'ASIA
05:41	SUB OUT: PLUMMER, DAIZJA			
05:41	SUB OUT: CALHOUN, TRAEI			
05:41	SUB IN: BARBER, KAYLA			
05:41	SUB IN: WALKER, SAMARIA			
05:38	MISSED 3PTR by SANFORD, ILANA			
05:32				REBOUND (DEF) by ROSENTAL, DIANA
05:17				MISSED JUMPER by TOLBERT, KEAYNNA
05:13				REBOUND (OFF) by ROSENTAL, DIANA
05:12		71-47	H 24	GOOD! JUMPER by ROSENTAL, DIANA
04:53	SUB OUT: CARTER, KRYSHONA			
04:53	SUB IN: HENRY, DAIJAH			
04:53	GOOD! LAYUP by HENRY, DAIJAH [PNT]	71-49	H 22	
04:53				FOUL (PERSONAL) by PAUL, KENNEDY

Time	VISITORS: Huston-Tillotson	Score	Margin	HOME: Prairie View
04:53	GOOD! FT by HENRY, DAIJAH	71-50	H 21	
04:45				MISSED JUMPER by PAUL, KENNEDY
04:38	REBOUND (DEF) by BARBER, KAYLA			
04:37				FOUL (PERSONAL) by TOLBERT, KEAYNNA
04:37	MISSED FT by SANFORD, ILANA			
04:37	REBOUND (OFF) by TEAM			
04:37	GOOD! FT by SANFORD, ILANA [FB]	71-51	H 20	
04:37				SUB OUT: TOLBERT, KEAYNNA
04:08				SUB IN: NEWMAN, DOMINIQUE
04:05	TURNOVER (BADPASS) by BARBER, KAYLA			TURNOVER (3SEC) by ROSENTAL, DIANA
04:05				STEAL by WILLIAMS, KE'ASIA
03:51				MISSED JUMPER by ROSENTAL, DIANA
03:45				REBOUND (OFF) by NEWMAN, DOMINIQUE
03:44	SUB OUT: BELL, CASSIE			
03:44	SUB IN: CARTER, KRYSHONA			
03:44	FOUL (PERSONAL) by CARTER, KRYSHONA			
03:36				TURNOVER (OTHER) by PETERS, BERNESHA
03:12	TURNOVER (BADPASS) by SANFORD, ILANA			
03:12				STEAL by NEWMAN, DOMINIQUE
03:01				TURNOVER (LOSTBALL) by PETERS, BERNESHA
03:01	STEAL by SANFORD, ILANA			
02:50	GOOD! LAYUP by SANFORD, ILANA [PNT]	71-53	H 18	
02:41		73-53	H 20	GOOD! JUMPER by PAUL, KENNEDY
02:30	TURNOVER (LOSTBALL) by BARBER, KAYLA			
02:09				MISSED 3PTR by NEWMAN, DOMINIQUE
02:05	REBOUND (DEF) by SANFORD, ILANA			
02:04				FOUL (PERSONAL) by NEWMAN, DOMINIQUE
02:04				SUB OUT: PETERS, BERNESHA
02:04				SUB IN: MARTIN, JADAH
02:04	SUB OUT: SANFORD, ILANA			
02:04	SUB OUT: WALKER, SAMARIA			
02:04	SUB IN: ALHAMBRA, GEMMA			
02:04	SUB IN: CALHOUN, TRAEI			
02:01	GOOD! LAYUP by HENRY, DAIJAH [PNT]	73-55	H 18	
01:32		75-55	H 20	GOOD! LAYUP by PAUL, KENNEDY [PNT]
01:32				ASSIST by WILLIAMS, KE'ASIA
01:07	GOOD! LAYUP by BARBER, KAYLA [PNT]	75-57	H 18	
00:44				MISSED JUMPER by ROSENTAL, DIANA
00:40				REBOUND (OFF) by MARTIN, JADAH
00:35		77-57	H 20	GOOD! LAYUP by WILLIAMS, KE'ASIA [PNT]
00:26	TURNOVER (BADPASS) by BARBER, KAYLA			
00:26				STEAL by WILLIAMS, KE'ASIA
00:26		79-57	H 22	GOOD! JUMPER by ROSENTAL, DIANA [FB]
00:22	GOOD! 3PTR by CARTER, KRYSHONA [FB]	79-60	H 19	
00:22	FOUL (PERSONAL) by ALHAMBRA, GEMMA			
00:09	TIMEOUT TEAM			

Huston-Tillotson 60, Prairie View 79

Points from (This Period)	HTU	PVU
In the Paint	12	8
Off Turns	4	4
2nd Chance	0	6
Fast Break	9	4
Bench	0	4

**Official Scoring/Possession Reference Chart
Huston-Tillotson vs Prairie View**

Period 1

December 30, 2019 at William Nicks Building - Prairie View



Period 1

Starters:

Huston-Tillotson: 1 HENRY, DAIJAH; 11 CARTER, KRYSHONA; 12 SANFORD, ILANA; 22 BARBER, KAYLA; 33 CALHOUN, TRAE LI;

Prairie View: 1 PETERS, BERNESHA (G); 11 ROSENTAL, DIANA (G); 14 HEARD, KENNEDI (F); 20 WILLIAMS, KE'ASIA (F); 23 PAUL, KENNEDY (F);

Time	VISITORS: Huston-Tillotson	Score	Margin	HOME: Prairie View
08:19	GOOD! LAYUP by BARBER, KAYLA [PNT]	0-2	V 2	
08:11		2-2	T	GOOD! LAYUP by WILLIAMS, KE'ASIA [FB/PNT]
07:18		4-2	H 2	GOOD! JUMPER by WILLIAMS, KE'ASIA
06:58		6-2	H 4	GOOD! LAYUP by ROSENTAL, DIANA [PNT]
06:47		8-2	H 6	GOOD! LAYUP by ROSENTAL, DIANA [FB/PNT]
06:36		9-2	H 7	GOOD! FT by PEREZ, TATYANA [FB]
06:36		10-2	H 8	GOOD! FT by PEREZ, TATYANA [FB]
06:19		12-2	H 10	GOOD! JUMPER by WILLIAMS, RACHEL
06:10	GOOD! FT by HENRY, DAIJAH	12-3	H 9	
05:59		14-3	H 11	GOOD! JUMPER by WILLIAMS, RACHEL
05:49	GOOD! FT by HENRY, DAIJAH	14-4	H 10	
04:30		16-4	H 12	GOOD! LAYUP by GREEN, KENNEDI [PNT]
03:28	GOOD! FT by SANFORD, ILANA [FB]	16-5	H 11	
03:11		18-5	H 13	GOOD! LAYUP by ROSENTAL, DIANA [FB/PNT]
02:08		20-5	H 15	GOOD! LAYUP by ROSENTAL, DIANA [FB/PNT]
01:30		22-5	H 17	GOOD! JUMPER by ROSENTAL, DIANA
01:27		23-5	H 18	GOOD! FT by ROSENTAL, DIANA
00:42		25-5	H 20	GOOD! LAYUP by ROSENTAL, DIANA [PNT]

Huston-Tillotson 5, Prairie View 25

Official Scoring/Possession Reference Chart
Huston-Tillotson vs Prairie View
Period 2
December 30, 2019 at William Nicks Building - Prairie View



Period 2

Starters:

Huston-Tillotson: 1 HENRY, DAIJAH; 11 CARTER, KRYSHONA; 12 SANFORD, ILANA; 22 BARBER, KAYLA; 33 CALHOUN, TRAEI;

Prairie View: 1 PETERS, BERNESHA (G); 11 ROSENTAL, DIANA (G); 14 HEARD, KENNEDI (F); 20 WILLIAMS, KE'ASIA (F); 23 PAUL, KENNEDY (F);

Time	VISITORS: Huston-Tillotson	Score	Margin	HOME: Prairie View
09:47	GOOD! FT by BELL, CASSIE [FB]	25-6	H 19	
09:05	GOOD! LAYUP by CALHOUN, TRAEI [PNT]	25-8	H 17	
08:58		27-8	H 19	GOOD! JUMPER by CAMPBELL, MARIAH [FB]
08:48		28-8	H 20	GOOD! FT by ROSENTAL, DIANA [FB]
08:18		30-8	H 22	GOOD! LAYUP by CAMPBELL, MARIAH [PNT]
05:27		31-8	H 23	GOOD! FT by WILLIAMS, KE'ASIA
05:27		32-8	H 24	GOOD! FT by WILLIAMS, KE'ASIA
04:53		34-8	H 26	GOOD! JUMPER by WILLIAMS, RACHEL [PNT]
03:26		36-8	H 28	GOOD! JUMPER by WILLIAMS, KE'ASIA [FB]
02:58	GOOD! 3PTR by BARBER, KAYLA	36-11	H 25	
02:13	GOOD! 3PTR by CARTER, KRYSHONA	36-14	H 22	
01:54	GOOD! 3PTR by BARBER, KAYLA	36-17	H 19	
01:27		38-17	H 21	GOOD! JUMPER by HEARD, KENNEDI
00:50		40-17	H 23	GOOD! LAYUP by HEARD, KENNEDI [FB/PNT]
00:33		42-17	H 25	GOOD! LAYUP by ROSENTAL, DIANA [FB/PNT]

Huston-Tillotson 17, Prairie View 42

Official Scoring/Possession Reference Chart
Huston-Tillotson vs Prairie View
Period 3
December 30, 2019 at William Nicks Building - Prairie View



Period 3

Starters:

Huston-Tillotson: 1 HENRY, DAIJAH; 11 CARTER, KRYSHONA; 12 SANFORD, ILANA; 22 BARBER, KAYLA; 33 CALHOUN, TRAELEI;

Prairie View: 1 PETERS, BERNESHA (G); 11 ROSENTAL, DIANA (G); 14 HEARD, KENNEDI (F); 20 WILLIAMS, KE'ASIA (F); 23 PAUL, KENNEDY (F);

Time	VISITORS: Huston-Tillotson	Score	Margin	HOME: Prairie View
08:43	GOOD! JUMPER by CALHOUN, TRAELEI [FB]	42-19	H 23	
08:43		45-19	H 26	GOOD! 3PTR by PETERS, BERNESHA [FB]
08:41	GOOD! 3PTR by CARTER, KRYSHONA [FB]	45-22	H 23	
08:20	GOOD! LAYUP by HENRY, DAIJAH [PNT]	45-24	H 21	
07:29	GOOD! LAYUP by BARBER, KAYLA [PNT]	45-26	H 19	
07:21	GOOD! FT by BARBER, KAYLA	45-27	H 18	
07:16		47-27	H 20	GOOD! JUMPER by ROSENTAL, DIANA [FB]
06:34		50-27	H 23	GOOD! 3PTR by PEREZ, TATYANA
06:17	GOOD! LAYUP by HENRY, DAIJAH [PNT]	50-29	H 21	
04:56		52-29	H 23	GOOD! JUMPER by WILLIAMS, RACHEL [PNT]
04:24	GOOD! LAYUP by BARBER, KAYLA [PNT]	52-31	H 21	
04:17	GOOD! FT by BARBER, KAYLA	52-32	H 20	
04:07		54-32	H 22	GOOD! JUMPER by PETERS, BERNESHA
03:07		56-32	H 24	GOOD! LAYUP by WILLIAMS, KE'ASIA [PNT]
02:21	GOOD! FT by CARTER, KRYSHONA [FB]	56-33	H 23	
02:21	GOOD! FT by CARTER, KRYSHONA [FB]	56-34	H 22	
02:08		58-34	H 24	GOOD! LAYUP by ROSENTAL, DIANA [PNT]
01:39	GOOD! FT by BARBER, KAYLA	58-35	H 23	
00:57		60-35	H 25	GOOD! JUMPER by HEARD, KENNEDI
00:47		61-35	H 26	GOOD! FT by ROSENTAL, DIANA
00:47		62-35	H 27	GOOD! FT by ROSENTAL, DIANA
00:29	GOOD! LAYUP by ALHAMBRA, GEMMA [FB/PNT]	62-37	H 25	

Huston-Tillotson 37, Prairie View 62

Official Scoring/Possession Reference Chart
Huston-Tillotson vs Prairie View
Period 4
December 30, 2019 at William Nicks Building - Prairie View



Period 4

Starters:

Huston-Tillotson: 1 HENRY, DAIJAH; 11 CARTER, KRYSHONA; 12 SANFORD, ILANA; 22 BARBER, KAYLA; 33 CALHOUN, TRAE LI;

Prairie View: 1 PETERS, BERNESHA (G); 11 ROSENTAL, DIANA (G); 14 HEARD, KENNEDI (F); 20 WILLIAMS, KE'ASIA (F); 23 PAUL, KENNEDY (F);

Time	VISITORS: Huston-Tillotson	Score	Margin	HOME: Prairie View
10:00		64-37	H 27	GOOD! LAYUP by NEWMAN, DOMINIQUE [FB/PNT]
09:53		66-37	H 29	GOOD! JUMPER by PAUL, KENNEDY
09:22	GOOD! LAYUP by CARTER, KRYSHONA [FB/PNT]	66-39	H 27	
08:24		68-39	H 29	GOOD! LAYUP by NEWMAN, DOMINIQUE [PNT]
08:12	GOOD! 3PTR by CARTER, KRYSHONA	68-42	H 26	
07:46	GOOD! 3PTR by CARTER, KRYSHONA [FB]	68-45	H 23	
06:54		69-45	H 24	GOOD! FT by ROSENTAL, DIANA
05:56	GOOD! LAYUP by SANFORD, ILANA [PNT]	69-47	H 22	
05:12		71-47	H 24	GOOD! JUMPER by ROSENTAL, DIANA
04:53	GOOD! LAYUP by HENRY, DAIJAH [PNT]	71-49	H 22	
04:53	GOOD! FT by HENRY, DAIJAH	71-50	H 21	
04:37	GOOD! FT by SANFORD, ILANA [FB]	71-51	H 20	
02:50	GOOD! LAYUP by SANFORD, ILANA [PNT]	71-53	H 18	
02:41		73-53	H 20	GOOD! JUMPER by PAUL, KENNEDY
02:01	GOOD! LAYUP by HENRY, DAIJAH [PNT]	73-55	H 18	
01:32		75-55	H 20	GOOD! LAYUP by PAUL, KENNEDY [PNT]
01:07	GOOD! LAYUP by BARBER, KAYLA [PNT]	75-57	H 18	
00:35		77-57	H 20	GOOD! LAYUP by WILLIAMS, KE'ASIA [PNT]
00:26		79-57	H 22	GOOD! JUMPER by ROSENTAL, DIANA [FB]
00:22	GOOD! 3PTR by CARTER, KRYSHONA [FB]	79-60	H 19	

Huston-Tillotson 60, Prairie View 79

Official Substitutions Log
Huston-Tillotson vs Prairie View
Period 1
December 30, 2019 at William Nicks Building - Prairie View



VISITORS: Huston-Tillotson	Time	Score	HOME: Prairie View
1 HENRY,DAIJAH			1 PETERS,BERNESHA
11 CARTER,KRYSHONA			11 ROSENTAL,DIANA
12 SANFORD,ILANA			14 HEARD,KENNEDI
22 BARBER,KAYLA			20 WILLIAMS,KE'ASIA
33 CALHOUN,TRAEI			23 PAUL,KENNEDY
	08:51	-	SUB OUT: HEARD,KENNEDI
	08:51		SUB IN: PEREZ,TATYANA
	06:47	2-8	SUB OUT: PETERS,BERNESHA
	06:47		SUB OUT: PAUL,KENNEDY
	06:47		SUB IN: MARTIN,JADAH
	06:47		SUB IN: WILLIAMS,RACHEL
	06:36	2-10	SUB OUT: WILLIAMS,KE'ASIA
	06:36		SUB IN: CAMPBELL,MARIAH
	06:10	3-12	SUB OUT: ROSENTAL,DIANA
	06:10		SUB IN: TOLBERT,KEAYNNA
	05:49	4-14	SUB OUT: MARTIN,JADAH
	05:49		SUB OUT: CAMPBELL,MARIAH
	05:49		SUB IN: GREEN,KENNEDI
	05:49		SUB IN: HEARD,KENNEDI
SUB OUT: 12 SANFORD,ILANA	04:53	4-14	
SUB IN: 15 ALHAMBRA,GEMMA	04:53		
	04:46	4-14	SUB OUT: PEREZ,TATYANA
	04:46		SUB IN: PETERS,BERNESHA
SUB OUT: 1 HENRY,DAIJAH	04:22	4-16	
SUB IN: 12 SANFORD,ILANA	04:22		
	03:28	5-16	SUB OUT: GREEN,KENNEDI
	03:28		SUB OUT: WILLIAMS,RACHEL
	03:28		SUB IN: ROSENTAL,DIANA
	03:28		SUB IN: WILLIAMS,KE'ASIA
	02:27	5-18	SUB OUT: HEARD,KENNEDI
	02:27		SUB OUT: WILLIAMS,KE'ASIA
	02:27		SUB IN: PAUL,KENNEDY
	02:27		SUB IN: CAMPBELL,MARIAH
SUB OUT: 22 BARBER,KAYLA	02:27		
SUB IN: 3 BELL,CASSIE	02:27		
SUB OUT: 15 ALHAMBRA,GEMMA	01:05	5-23	
SUB IN: 21 PLUMMER,DAIZJA	01:05		

Huston-Tillotson 5, Prairie View 25

Official Substitutions Log
Huston-Tillotson vs Prairie View
Period 2
December 30, 2019 at William Nicks Building - Prairie View



VISITORS: Huston-Tillotson	Time	Score	HOME: Prairie View
1 HENRY,DAIJAH			1 PETERS,BERNESHA
11 CARTER,KRYSHONA			11 ROSENTAL,DIANA
12 SANFORD,ILANA			14 HEARD,KENNEDI
22 BARBER,KAYLA			20 WILLIAMS,KE'ASIA
33 CALHOUN,TRAEI			23 PAUL,KENNEDY
	08:58	8-27	SUB OUT: PAUL,KENNEDY
	08:58		SUB IN: WILLIAMS,KE'ASIA
SUB OUT: 3 BELL,CASSIE	08:58		
SUB IN: 22 BARBER,KAYLA	08:58		
	08:55	8-27	SUB OUT: PETERS,BERNESHA
	08:55		SUB OUT: TOLBERT,KEAYNNA
	08:55		SUB IN: PEREZ,TATYANA
	08:55		SUB IN: MARTIN,JADAH
	06:35	8-30	SUB OUT: MARTIN,JADAH
	06:35		SUB OUT: ROSENTAL,DIANA
	06:35		SUB IN: PETERS,BERNESHA
	06:35		SUB IN: TOLBERT,KEAYNNA
SUB OUT: 11 CARTER,KRYSHONA	06:35		
SUB OUT: 21 PLUMMER,DAIZJA	06:35		
SUB IN: 1 HENRY,DAIJAH	06:35		
SUB IN: 15 ALHAMBRA,GEMMA	06:35		
	05:27	8-32	SUB OUT: PEREZ,TATYANA
	05:27		SUB OUT: CAMPBELL,MARIAH
	05:27		SUB IN: GREEN,KENNEDI
	05:27		SUB IN: WILLIAMS,RACHEL
SUB OUT: 33 CALHOUN,TRAEI	05:27		
SUB IN: 25 WALKER,SAMARIA	05:27		
	03:02	8-36	SUB OUT: WILLIAMS,RACHEL
	03:02		SUB IN: COBB,JHYRAH
	02:43	11-36	SUB OUT: WILLIAMS,KE'ASIA
	02:43		SUB IN: HEARD,KENNEDI
SUB OUT: 1 HENRY,DAIJAH	02:15	11-36	
SUB IN: 11 CARTER,KRYSHONA	02:15		
	01:09	17-38	SUB OUT: TOLBERT,KEAYNNA
	01:09		SUB OUT: GREEN,KENNEDI
	01:09		SUB OUT: COBB,JHYRAH
	01:09		SUB IN: PEREZ,TATYANA
	01:09		SUB IN: ROSENTAL,DIANA
	01:09		SUB IN: PAUL,KENNEDY

Huston-Tillotson 17, Prairie View 42

Official Substitutions Log
Huston-Tillotson vs Prairie View
Period 3
December 30, 2019 at William Nicks Building - Prairie View



VISITORS: Huston-Tillotson	Time	Score	HOME: Prairie View
1 HENRY,DAIJAH			1 PETERS,BERNESHA
11 CARTER,KRYSHONA			11 ROSENTAL,DIANA
12 SANFORD,ILANA			14 HEARD,KENNEDI
22 BARBER,KAYLA			20 WILLIAMS,KE'ASIA
33 CALHOUN,TRAEI			23 PAUL,KENNEDY
SUB OUT: 15 ALHAMBRA,GEMMA	09:04	-	
SUB OUT: 25 WALKER,SAMARIA	09:04		
SUB IN: 1 HENRY,DAIJAH	09:04		
SUB IN: 33 CALHOUN,TRAEI	09:04		
	08:43	-	SUB OUT: PEREZ,TATYANA
	08:43		SUB IN: WILLIAMS,KE'ASIA
	07:57	24-45	SUB OUT: PAUL,KENNEDY
	07:57		SUB IN: WILLIAMS,RACHEL
	07:17	27-45	SUB OUT: HEARD,KENNEDI
	07:17		SUB IN: PEREZ,TATYANA
	04:17	32-52	SUB OUT: ROSENTAL,DIANA
	04:17		SUB OUT: WILLIAMS,RACHEL
	04:17		SUB IN: TOLBERT,KEAYNNA
	04:17		SUB IN: CAMPBELL,MARIAH
SUB OUT: 12 SANFORD,ILANA	04:17		
SUB IN: 15 ALHAMBRA,GEMMA	04:17		
	02:43	32-56	SUB OUT: PETERS,BERNESHA
	02:43		SUB OUT: WILLIAMS,KE'ASIA
	02:43		SUB IN: GREEN,KENNEDI
	02:43		SUB IN: ROSENTAL,DIANA
SUB OUT: 11 CARTER,KRYSHONA	02:21	34-56	
SUB IN: 21 PLUMMER,DAIZJA	02:21		
	00:57	35-58	SUB OUT: CAMPBELL,MARIAH
	00:57		SUB IN: HEARD,KENNEDI
	00:47	35-62	SUB OUT: TOLBERT,KEAYNNA
	00:47		SUB IN: MARTIN,JADAH
SUB OUT: 22 BARBER,KAYLA	00:47		
SUB IN: 3 BELL,CASSIE	00:47		
	00:46	35-62	SUB OUT: ROSENTAL,DIANA
	00:46		SUB IN: NEWMAN,DOMINIQUE

Huston-Tillotson 37, Prairie View 62

Official Substitutions Log
Huston-Tillotson vs Prairie View
Period 4
December 30, 2019 at William Nicks Building - Prairie View



VISITORS: Huston-Tillotson	Time	Score	HOME: Prairie View
1 HENRY,DAIJAH			1 PETERS,BERNESHA
11 CARTER,KRYSHONA			11 ROSENAL,DIANA
12 SANFORD,ILANA			14 HEARD,KENNEDI
22 BARBER,KAYLA			20 WILLIAMS,KE'ASIA
33 CALHOUN,TRAEI			23 PAUL,KENNEDY
SUB OUT: 1 HENRY,DAIJAH	09:59	37-64	
SUB IN: 12 SANFORD,ILANA	09:59		
	09:56	37-64	SUB OUT: PEREZ,TATYANA
	09:56		SUB IN: PAUL,KENNEDY
SUB OUT: 15 ALHAMBRA,GEMMA	09:56		
SUB IN: 11 CARTER,KRYSHONA	09:56		
	07:17	45-68	SUB OUT: MARTIN,JADAH
	07:17		SUB IN: ROSENAL,DIANA
	06:36	45-69	SUB OUT: GREEN,KENNEDI
	06:36		SUB IN: PETERS,BERNESHA
	05:41	47-69	SUB OUT: NEWMAN,DOMINIQUE
	05:41		SUB OUT: HEARD,KENNEDI
	05:41		SUB IN: TOLBERT,KEAYNNA
	05:41		SUB IN: WILLIAMS,KE'ASIA
SUB OUT: 21 PLUMMER,DAIZJA	05:41		
SUB OUT: 33 CALHOUN,TRAEI	05:41		
SUB IN: 22 BARBER,KAYLA	05:41		
SUB IN: 25 WALKER,SAMARIA	05:41		
SUB OUT: 11 CARTER,KRYSHONA	04:53	47-71	
SUB IN: 1 HENRY,DAIJAH	04:53		
	04:37	51-71	SUB OUT: TOLBERT,KEAYNNA
	04:37		SUB IN: NEWMAN,DOMINIQUE
SUB OUT: 3 BELL,CASSIE	03:44	51-71	
SUB IN: 11 CARTER,KRYSHONA	03:44		
	02:04	53-73	SUB OUT: PETERS,BERNESHA
	02:04		SUB IN: MARTIN,JADAH
SUB OUT: 12 SANFORD,ILANA	02:04		
SUB OUT: 25 WALKER,SAMARIA	02:04		
SUB IN: 15 ALHAMBRA,GEMMA	02:04		
SUB IN: 33 CALHOUN,TRAEI	02:04		

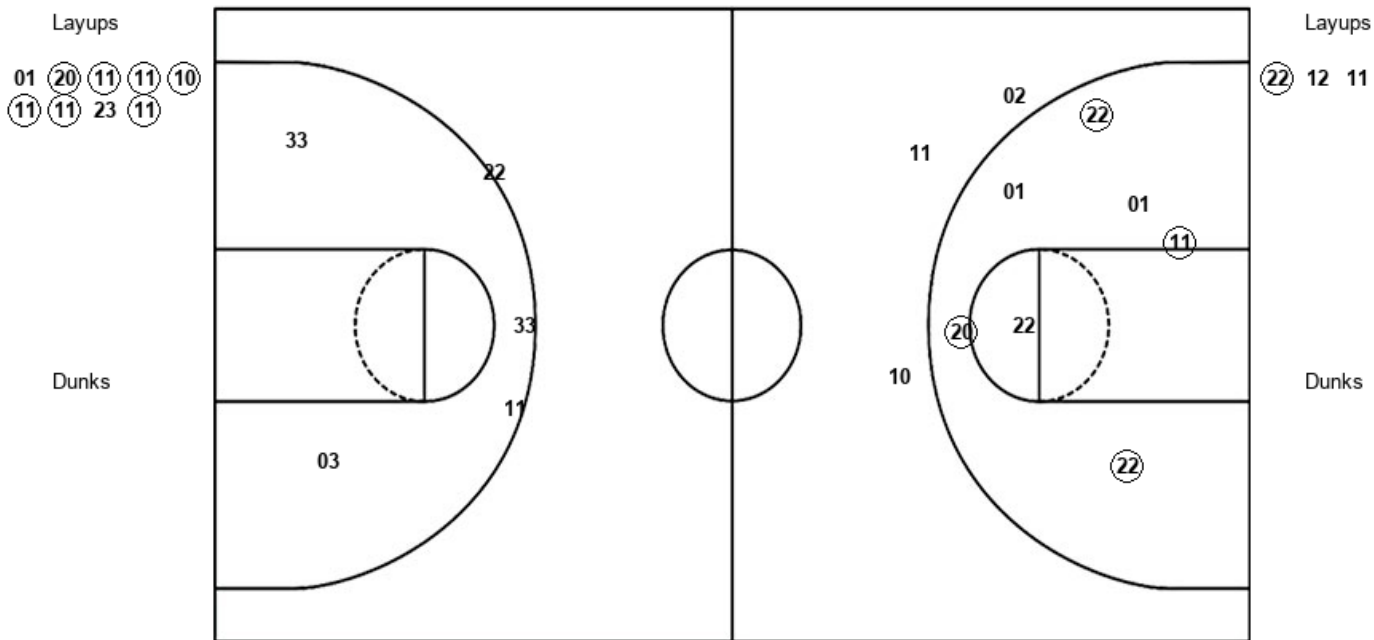
Huston-Tillotson 60, Prairie View 79

Official Shot Chart
Huston-Tillotson vs Prairie View
PERIOD 1 Shots
 December 30, 2019 at William Nicks Building - Prairie View



Prairie View

Huston-Tillotson



PVU : Period 1	Made	Att	Pct
Layups	7	9	77.8
Dunks	0	0	0
2PT Field Goals	11	16	68.8
3PT Field Goals	0	3	00.0
Total Field Goals	11	19	57.9

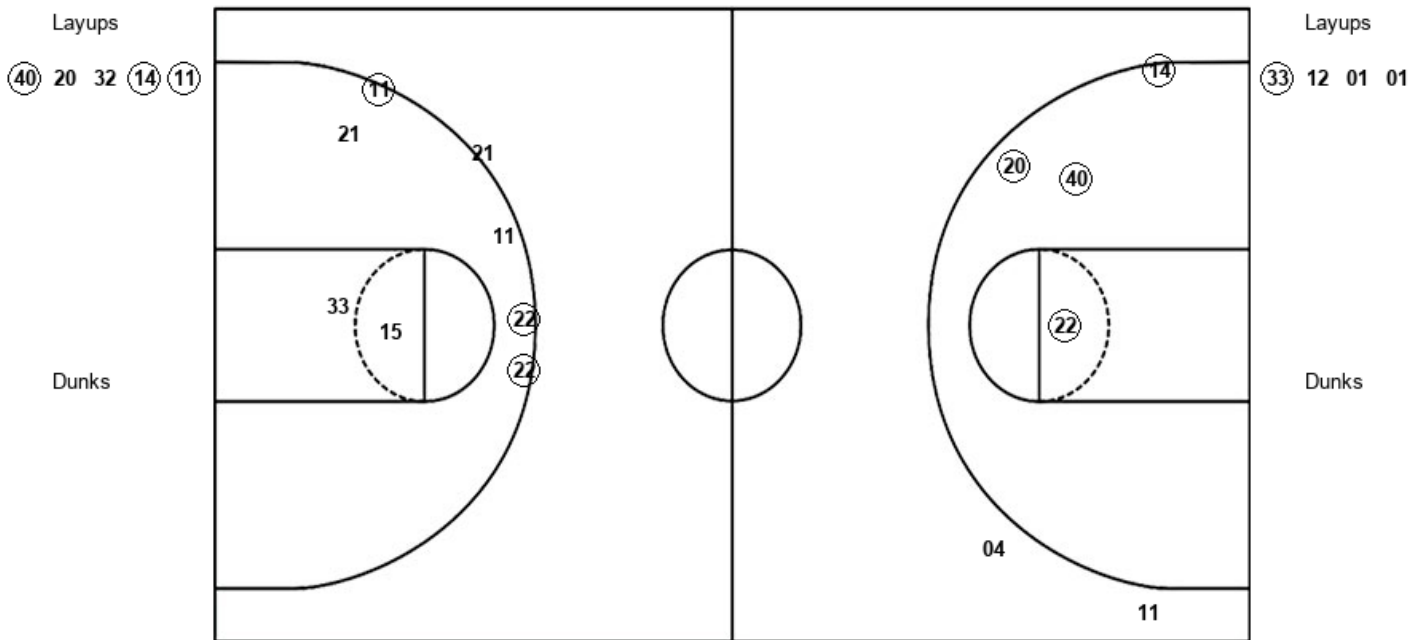
HTU : Period 1	Made	Att	Pct
Layups	1	3	33.3
Dunks	0	0	0
2PT Field Goals	1	5	20.0
3PT Field Goals	0	3	00.0
Total Field Goals	1	8	12.5

Official Shot Chart
Huston-Tillotson vs Prairie View
PERIOD 2 Shots
 December 30, 2019 at William Nicks Building - Prairie View



Prairie View

Huston-Tillotson



PVU : Period 2	Made	Att	Pct
Layups	3	5	60.0
Dunks	0	0	0
2PT Field Goals	7	9	77.8
3PT Field Goals	0	2	00.0
Total Field Goals	7	11	63.6

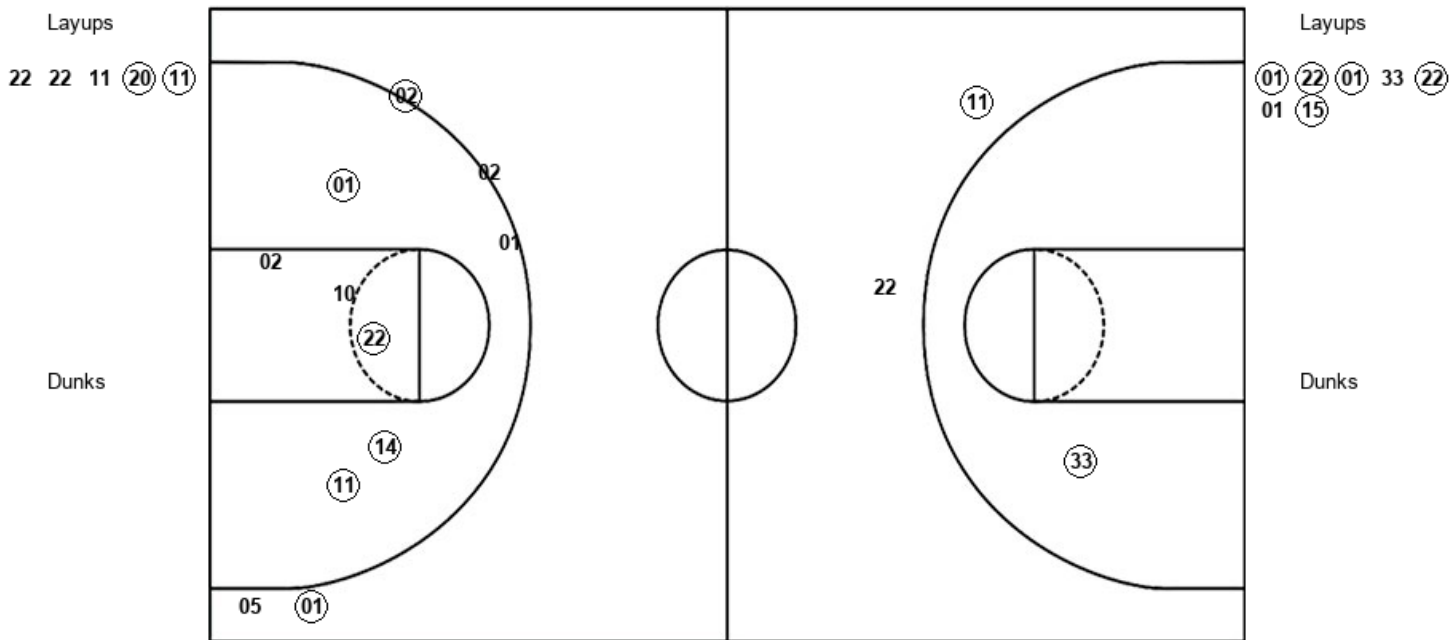
HTU : Period 2	Made	Att	Pct
Layups	1	4	25.0
Dunks	0	0	0
2PT Field Goals	1	7	14.3
3PT Field Goals	3	5	60.0
Total Field Goals	4	12	33.3

Official Shot Chart
Huston-Tillotson vs Prairie View
PERIOD 3 Shots
 December 30, 2019 at William Nicks Building - Prairie View



Prairie View

Huston-Tillotson



PVU : Period 3	Made	Att	Pct
Layups	2	5	40.0
Dunks	0	0	0
2PT Field Goals	6	11	54.5
3PT Field Goals	2	5	40.0
Total Field Goals	8	16	50.0

HTU : Period 3	Made	Att	Pct
Layups	5	7	71.4
Dunks	0	0	0
2PT Field Goals	6	8	75.0
3PT Field Goals	1	2	50.0
Total Field Goals	7	10	70.0

Official Shot Chart
Huston-Tillotson vs Prairie View
PERIOD 4 Shots
 December 30, 2019 at William Nicks Building - Prairie View



Prairie View

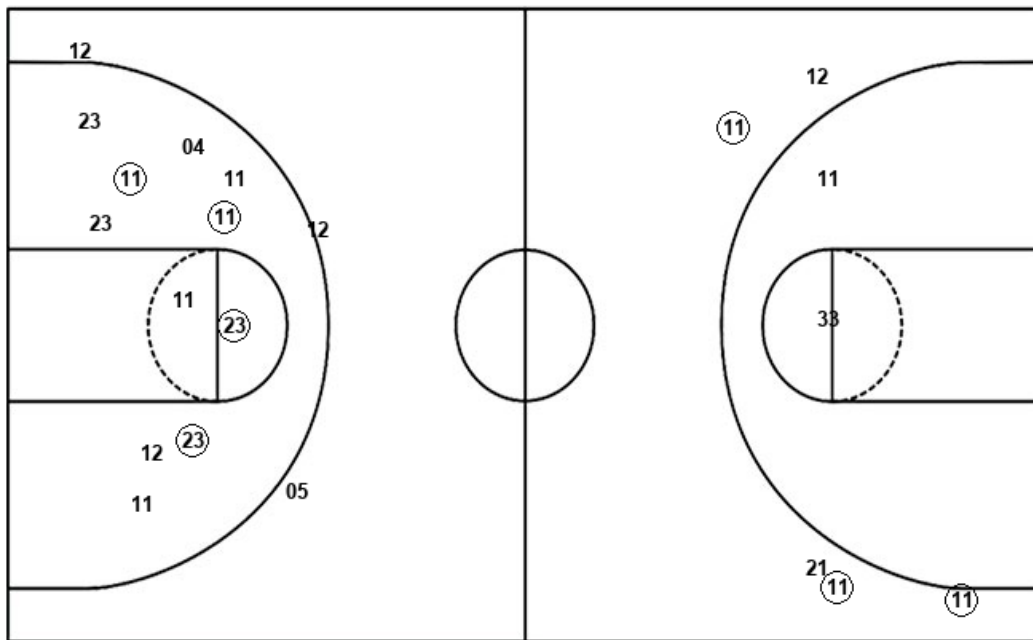
Huston-Tillotson

Layups
 (12) (12) (23) (20)

Layups
 (11) (12) (01) (12) (01)
 (22)

Dunks

Dunks



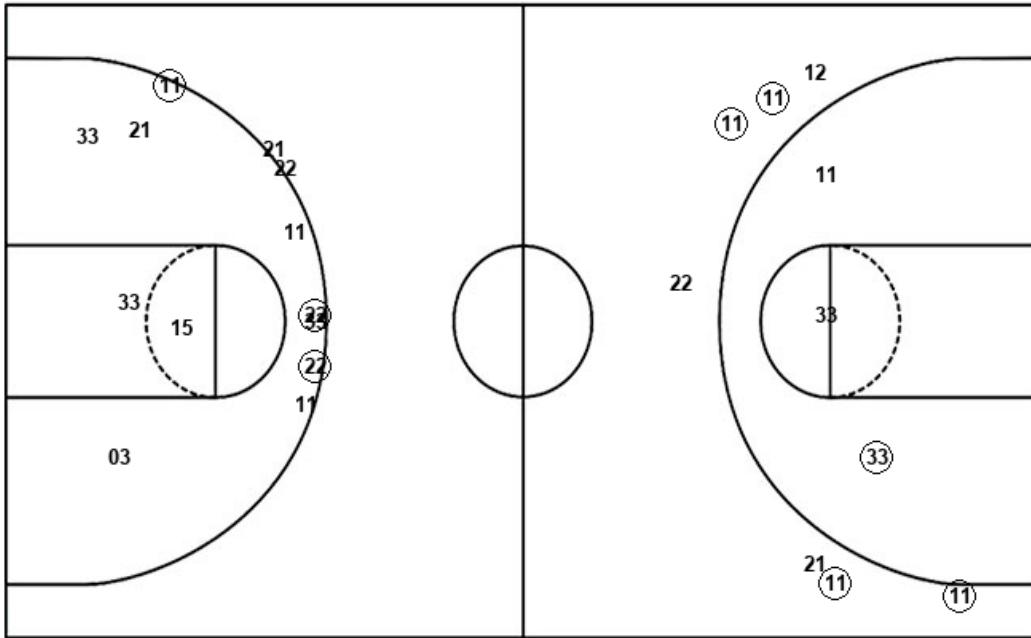
PVU : Period 4	Made	Att	Pct
Layups	4	4	100.0
Dunks	0	0	0
2PT Field Goals	8	15	53.3
3PT Field Goals	0	3	00.0
Total Field Goals	8	18	44.4

HTU : Period 4	Made	Att	Pct
Layups	6	6	100.0
Dunks	0	0	0
2PT Field Goals	6	8	75.0
3PT Field Goals	3	5	60.0
Total Field Goals	9	13	69.2

Official Shot Chart
Huston-Tillotson vs Prairie View
Huston-Tillotson Team Shots
December 30, 2019 at William Nicks Building - Prairie View



Layups



Layups

(22) 12 11 (33) 12
 01 01 (01) (22) (01)
 33 (22) 01 15 (11)
 (12) (01) (12) (01) (22)

Dunks

Dunks

HTU : Period 1	Made	Att	Pct
Layups	1	3	33.3
Dunks	0	0	0
2PT Field Goals	1	5	20.0
3PT Field Goals	0	3	00.0
Total Field Goals	1	8	12.5

HTU : Period 2	Made	Att	Pct
Layups	1	4	25.0
Dunks	0	0	0
2PT Field Goals	1	7	14.3
3PT Field Goals	3	5	60.0
Total Field Goals	4	12	33.3

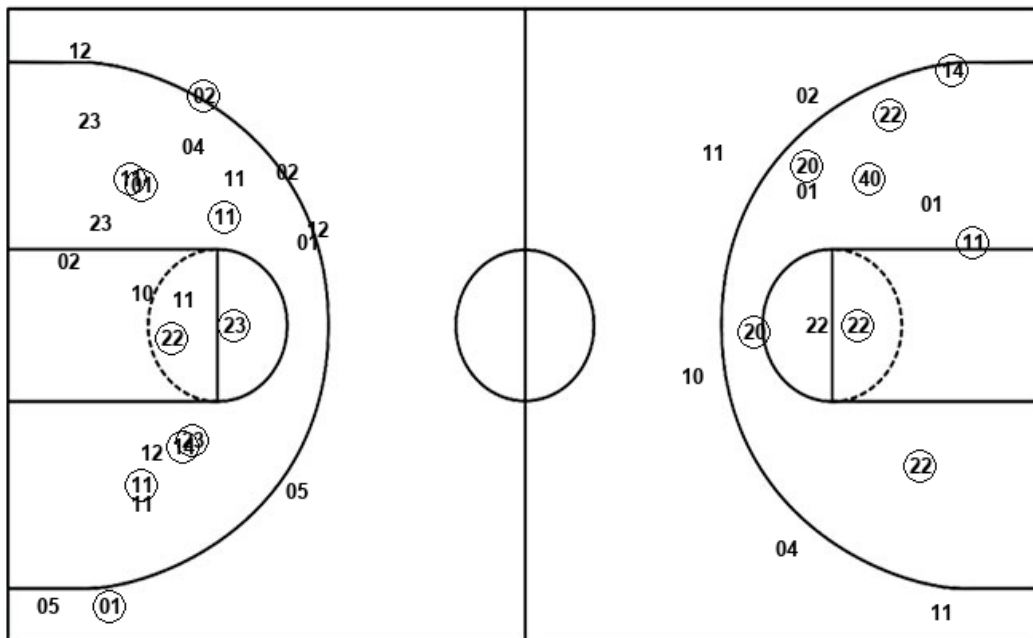
HTU : Period 3	Made	Att	Pct
Layups	5	7	71.4
Dunks	0	0	0
2PT Field Goals	6	8	75.0
3PT Field Goals	1	2	50.0
Total Field Goals	7	10	70.0

HTU : Period 4	Made	Att	Pct
Layups	6	6	100.0
Dunks	0	0	0
2PT Field Goals	6	8	75.0
3PT Field Goals	3	5	60.0
Total Field Goals	9	13	69.2

Official Shot Chart
Huston-Tillotson vs Prairie View
Prairie View Team Shots
 December 30, 2019 at William Nicks Building - Prairie View



Layups



Layups



Dunks

Dunks

PVU : Period 1	Made	Att	Pct
Layups	7	9	77.8
Dunks	0	0	0
2PT Field Goals	11	16	68.8
3PT Field Goals	0	3	00.0
Total Field Goals	11	19	57.9

PVU : Period 2	Made	Att	Pct
Layups	3	5	60.0
Dunks	0	0	0
2PT Field Goals	7	9	77.8
3PT Field Goals	0	2	00.0
Total Field Goals	7	11	63.6

PVU : Period 3	Made	Att	Pct
Layups	2	5	40.0
Dunks	0	0	0
2PT Field Goals	6	11	54.5
3PT Field Goals	2	5	40.0
Total Field Goals	8	16	50.0

PVU : Period 4	Made	Att	Pct
Layups	4	4	100.0
Dunks	0	0	0
2PT Field Goals	8	15	53.3
3PT Field Goals	0	3	00.0
Total Field Goals	8	18	44.4