

## FINAL SCORE



**Alabama AM**

**62**



**Prairie View**

**73**

March 02, 2020 • William J. Nicks Building - Prairie View

## FINAL STATISTICS

**Official Box Score**  
**Alabama AM vs Prairie View**  
**Game Totals -- Final Statistics**  
**March 02, 2020 at William J. Nicks Building - Prairie View**



**Alabama AM 62**

No.	Player	S	Pts	FG	3FG	FT	OR	DR	TR	PF	A	TO	Blk	Stl	Min	+/-
03	TUCKER, CAMERON	G	10	2-6	1-3	5-8	1	0	1	4	4	4	0	1	28	-3
05	JOHNSON, JALEN	F	8	3-4	0-0	2-4	0	1	1	1	0	1	0	0	24	-9
10	HICKS, GARRETT	G	18	7-15	2-5	2-2	0	2	2	0	1	1	0	0	32	-13
13	ALFORD, CAMERON	G	6	2-9	0-2	2-2	0	7	7	1	2	1	0	2	20	-13
24	WILEY, EVAN	F	2	1-2	0-1	0-0	1	0	1	3	0	0	1	0	13	-7
00	PARHAM, TJ	F	12	2-8	1-4	7-8	0	2	2	4	1	2	0	0	30	2
01	ELLISON, MASON	F	0	0-0	0-0	0-0	0	0	0	0	0	0	0	0	0	0
02	MILLER, BRANDON	G	0	0-1	0-0	0-0	2	2	4	1	2	3	0	2	32	1
12	POWELL, BRANDON	G	2	1-1	0-0	0-0	1	2	3	2	0	0	0	0	7	-4
15	WILLIAMS, EJ	C	2	1-1	0-0	0-1	0	4	4	2	0	0	0	0	7	-2
30	HOUSTON, BRANDON	F	2	0-2	0-0	2-2	0	0	0	0	0	0	0	0	6	-7
<b>TEAM</b>							0	0	0	0		4				
<b>TOTALS</b>			<b>62</b>	<b>19-49</b>	<b>4-15</b>	<b>20-27</b>	<b>5</b>	<b>20</b>	<b>25</b>	<b>18</b>	<b>10</b>	<b>16</b>	<b>1</b>	<b>5</b>	<b>200</b>	

*Shooting By Period*

Period	FG	FG%	3FG	3FG%	FT	FT%
1st Half	12-27	44%	2-7	29%	6-9	67%
2nd Half	7-22	32%	2-8	25%	14-18	78%
<b>Game</b>	<b>19-49</b>	<b>38.8%</b>	<b>4-15</b>	<b>26.7%</b>	<b>20-27</b>	<b>74.1%</b>

*Deadball Rebounds: 4,3*  
*Last FG: 2nd-02:05*  
*Biggest Run: 7-0*  
*Largest lead: By 6 at 1st-08:27*  
*Technical Fouls: None.*

**Prairie View 73**

No.	Player	S	Pts	FG	3FG	FT	OR	DR	TR	PF	A	TO	Blk	Stl	Min	+/-
03	ELLIS, CHANCELLOR	G	9	3-7	3-7	0-0	1	1	2	2	0	0	0	0	23	24
04	LISTER, ANTIONE	G	3	1-7	0-5	1-2	0	3	3	3	1	1	1	1	26	5
14	SNEED, LEON	G	6	3-3	0-0	0-0	1	0	1	2	6	5	2	1	27	6
15	ANDRUS, GERARD	G	21	9-11	0-0	3-3	0	7	7	3	5	1	0	1	29	16
23	PATTERSON, DEVONTE	F	13	6-13	0-0	1-5	1	10	11	4	7	4	0	1	39	13
00	HENRY, LENELL	F	0	0-0	0-0	0-0	0	1	1	1	0	0	0	0	3	-4
02	WILLIAMS, DARIUS	G	8	3-8	1-5	1-2	0	1	1	2	0	1	0	2	17	7
05	BYNUM, TAMIR	G	0	0-0	0-0	0-0	1	1	2	0	0	0	1	0	2	1
11	COX, DEWAYNE	G	7	3-5	0-1	1-2	3	1	4	1	0	1	0	1	14	-16
12	WILLIAMS, FAITE	G	6	2-2	1-1	1-2	0	1	1	4	2	2	0	0	15	2
35	JACKSON, JONATHAN	F	0	0-0	0-0	0-0	0	0	0	0	1	1	0	0	3	1
<b>TEAM</b>							0	0	0	0		1				
<b>TOTALS</b>			<b>73</b>	<b>30-56</b>	<b>5-19</b>	<b>8-16</b>	<b>7</b>	<b>26</b>	<b>33</b>	<b>22</b>	<b>22</b>	<b>17</b>	<b>4</b>	<b>7</b>	<b>200</b>	

*Shooting By Period*

Period	FG	FG%	3FG	3FG%	FT	FT%
1st Half	14-30	47%	3-14	21%	3-7	43%
2nd Half	16-26	62%	2-5	40%	5-9	56%
<b>Game</b>	<b>30-56</b>	<b>53.6%</b>	<b>5-19</b>	<b>26.3%</b>	<b>8-16</b>	<b>50.0%</b>

*Deadball Rebounds: 4,2*  
*Last FG: 2nd-01:29*  
*Biggest Run: 8-0*  
*Largest lead: By 17 at 2nd-07:09*  
*Technical Fouls: None.*

Game Notes:

Officials: **Rod Dixon, Marques Pettigrew, Brian Hagedorn**  
Attendance: **796**

Start Time: **09:23 PM ET**  
End Time: **11:39 PM ET**  
Game Duration: **2:15**  
Conference Game;

Score	1st	2nd	TOT
AAM	32	30	<b>62</b>
PVU	34	39	<b>73</b>

**AAM led for 6:07. PVU led for 31:57.**  
**Game was tied for 1:54.**  
Times tied: **6**      Lead Changes: **2**

Points from	AAM	PVU
In the Paint	22	42
Off Turns	17	16
2nd Chance	5	11
Fast Break	17	15
Bench	18	21

**Official Box Score**  
**Alabama AM vs Prairie View**  
**First Half Statistics Only**  
**March 02, 2020 at William J. Nicks Building - Prairie View**



**Alabama AM 32**

No.	Player	S	Pts	FG	3FG	FT	OR	DR	TR	PF	A	TO	Blk	Stl	Min	+/-
03	TUCKER, CAMERON	G	3	1-3	0-1	1-2	1	0	1	1	3	3	0	0	14	1
05	JOHNSON, JALEN	F	5	2-2	0-0	1-2	0	0	0	1	0	0	0	0	6	-3
10	HICKS, GARRETT	G	5	2-4	1-1	0-0	0	0	0	0	0	1	0	0	14	-5
13	ALFORD, CAMERON	G	6	2-9	0-2	2-2	0	6	6	0	2	0	0	2	13	-7
24	WILEY, EVAN	F	2	1-2	0-1	0-0	1	0	1	1	0	0	0	0	7	3
00	PARHAM, TJ	F	7	2-4	1-2	2-2	0	2	2	2	1	1	0	0	12	4
01	ELLISON, MASON	F	0	0-0	0-0	0-0	0	0	0	0	0	0	0	0	0	0
02	MILLER, BRANDON	G	0	0-0	0-0	0-0	1	1	2	1	1	2	0	1	18	1
12	POWELL, BRANDON	G	2	1-1	0-0	0-0	0	2	2	1	0	0	0	0	5	-1
15	WILLIAMS, EJ	C	2	1-1	0-0	0-1	0	4	4	1	0	0	0	0	6	3
30	HOUSTON, BRANDON	F	0	0-1	0-0	0-0	0	0	0	0	0	0	0	0	4	-6
	TEAM						0	0	0	0		2				
<b>TOTALS</b>			<b>32</b>	<b>12-27</b>	<b>2-7</b>	<b>6-9</b>	<b>3</b>	<b>15</b>	<b>18</b>	<b>8</b>	<b>7</b>	<b>9</b>	<b>0</b>	<b>3</b>	<b>100</b>	

*Shooting By Period*

Period	FG	FG%	3FG	3FG%	FT	FT%
1st Half	12-27	44%	2-7	29%	6-9	67%
Game	19-49	38.8%	4-15	26.7%	20-27	74.1%

Deadball Rebounds: 4,3  
 Last FG Half: AAM 2nd-02:05

**Prairie View 34**

No.	Player	S	Pts	FG	3FG	FT	OR	DR	TR	PF	A	TO	Blk	Stl	Min	+/-
03	ELLIS, CHANCELLOR	G	6	2-6	2-6	0-0	0	1	1	0	0	0	0	0	15	12
04	LISTER, ANTIONE	G	2	1-4	0-3	0-0	0	1	1	3	1	0	0	0	9	-1
14	SNEED, LEON	G	4	2-2	0-0	0-0	1	0	1	0	1	2	1	1	12	3
15	ANDRUS, GERARD	G	6	3-3	0-0	0-0	0	3	3	2	3	0	0	1	12	3
23	PATTERSON, DEVONTE	F	5	2-6	0-0	1-3	0	5	5	1	4	2	0	0	20	2
00	HENRY, LENELL	F	0	0-0	0-0	0-0	0	1	1	1	0	0	0	0	3	-4
02	WILLIAMS, DARIUS	G	8	3-7	1-4	1-2	0	1	1	0	0	1	0	1	12	4
05	BYNUM, TAMIR	G	0	0-0	0-0	0-0	1	1	2	0	0	0	1	0	2	1
11	COX, DEWAYNE	G	2	1-2	0-1	0-0	0	0	0	0	0	1	0	1	6	-10
12	WILLIAMS, FAITE	G	1	0-0	0-0	1-2	0	0	0	2	2	1	0	0	8	0
35	JACKSON, JONATHAN	F	0	0-0	0-0	0-0	0	0	0	0	0	0	0	0	0	0
	TEAM						0	0	0	0		0				
<b>TOTALS</b>			<b>34</b>	<b>14-30</b>	<b>3-14</b>	<b>3-7</b>	<b>2</b>	<b>13</b>	<b>15</b>	<b>9</b>	<b>11</b>	<b>7</b>	<b>2</b>	<b>4</b>	<b>100</b>	

*Shooting By Period*

Period	FG	FG%	3FG	3FG%	FT	FT%
1st Half	14-30	47%	3-14	21%	3-7	43%
Game	30-56	53.6%	5-19	26.3%	8-16	50.0%

Deadball Rebounds: 4,2  
 Last FG Half: PVU 2nd-01:29

Game Notes:

Officials: Rod Dixon, Marques Pettigrew, Brian Hagedorn  
 Attendance: 796

Start Time: 09:23 PM ET  
 End Time: 11:39 PM ET  
 Game Duration: 2:15  
 Conference Game;

Score	1st	2nd	TOT
AAM	32	30	62
PVU	34	39	73

Points from (This Period)	AAM	PVU
In the Paint	16	18
Off Turns	6	9
2nd Chance	5	0
Fast Break	5	10
Bench	11	11

**Official Play-By-Play  
Alabama AM vs Prairie View  
First Half**

**March 02, 2020 at William J. Nicks Building - Prairie View**



**Period 1**

**Starters:**

**Alabama AM:** 3 TUCKER,CAMERON (G); 5 JOHNSON,JALEN (F); 10 HICKS,GARRETT (G); 13 ALFORD,CAMERON (G); 24 WILEY,EVAN (F);

**Prairie View:** 3 ELLIS,CHANCELLOR (G); 4 LISTER,ANTIONE (G); 14 SNEED,LEON (G); 15 ANDRUS,GERARD (G); 23 PATTERSON,DEVONTE (F);

Time	VISITORS: Alabama AM	Score	Margin	HOME: Prairie View
19:44	TURNOVER (LOSTBALL) by TUCKER, CAMERON			
19:44				STEAL by ANDRUS, GERARD
19:36		2-0	H 2	GOOD! LAYUP by PATTERSON, DEVONTE [FB/PNT]
19:36				ASSIST by ANDRUS, GERARD
19:36	FOUL (PERSONAL) by WILEY, EVAN			
19:36				MISSED FT by PATTERSON, DEVONTE
19:36				REBOUND (OFF) by SNEED, LEON
19:36				MISSED 3PTR by ELLIS, CHANCELLOR
19:36	REBOUND (DEF) by ALFORD, CAMERON			
19:36	GOOD! JUMPER by JOHNSON, JALEN [PNT]	2-2	T	
19:36	ASSIST by ALFORD, CAMERON			
19:36		4-2	H 2	GOOD! LAYUP by SNEED, LEON [PNT]
19:36	TURNOVER (TRAVEL) by TUCKER, CAMERON			
19:17	SUB OUT: TUCKER, CAMERON			
19:17	SUB IN: MILLER, BRANDON			
19:15		6-2	H 4	GOOD! JUMPER by ANDRUS, GERARD
19:15				ASSIST by PATTERSON, DEVONTE
18:55	MISSED LAYUP by HICKS, GARRETT			
18:51				REBOUND (DEF) by ANDRUS, GERARD
18:46				MISSED 3PTR by LISTER, ANTIONE
18:42	REBOUND (DEF) by ALFORD, CAMERON			
18:40				FOUL (PERSONAL) by LISTER, ANTIONE
18:40	MISSED FT by JOHNSON, JALEN			
18:40	REBOUND (OFF) by TEAM			
18:40	GOOD! FT by JOHNSON, JALEN [FB]	6-3	H 3	
18:39	SUB OUT: WILEY, EVAN			
18:39	SUB IN: PARHAM, TJ			
18:27				TURNOVER (BADPASS) by SNEED, LEON
18:04	MISSED JUMPER by PARHAM, TJ			
18:00				REBOUND (DEF) by LISTER, ANTIONE
17:57		8-3	H 5	GOOD! LAYUP by SNEED, LEON [FB/PNT]
17:35	GOOD! JUMPER by HICKS, GARRETT [PNT]	8-5	H 3	
17:35	ASSIST by PARHAM, TJ			
17:19				MISSED JUMPER by PATTERSON, DEVONTE
17:16	REBOUND (DEF) by MILLER, BRANDON			
17:03				SUB OUT: ANDRUS, GERARD
17:03				SUB IN: COX, DEWAYNE
17:03	SUB OUT: JOHNSON, JALEN			
17:03	SUB IN: TUCKER, CAMERON			
17:02	TURNOVER (LOSTBALL) by HICKS, GARRETT			
17:02				STEAL by COX, DEWAYNE
16:54		10-5	H 5	GOOD! LAYUP by COX, DEWAYNE [FB/PNT]
16:44	MISSED LAYUP by ALFORD, CAMERON			
16:40	REBOUND (OFF) by TUCKER, CAMERON			
16:39	GOOD! 3PTR by PARHAM, TJ	10-8	H 2	
16:39	ASSIST by ALFORD, CAMERON			
16:19	SUB OUT: TUCKER, CAMERON			
16:19	SUB IN: WILLIAMS, EJ			
16:17				MISSED 3PTR by LISTER, ANTIONE
16:14	REBOUND (DEF) by WILLIAMS, EJ			
16:12	GOOD! LAYUP by ALFORD, CAMERON [FB/PNT]	10-10	T	
15:55		12-10	H 2	GOOD! JUMPER by LISTER, ANTIONE
15:55				ASSIST by SNEED, LEON
15:20				SUB OUT: ELLIS, CHANCELLOR
15:20				SUB IN: ANDRUS, GERARD
15:19	MISSED JUMPER by ALFORD, CAMERON			
15:15				REBOUND (DEF) by ANDRUS, GERARD
15:11				MISSED 3PTR by COX, DEWAYNE
15:08	REBOUND (DEF) by ALFORD, CAMERON			
14:24				FOUL (PERSONAL) by LISTER, ANTIONE
14:23				
14:08	SUB OUT: ALFORD, CAMERON			
14:08	SUB IN: WILEY, EVAN			
13:41	SUB OUT: HICKS, GARRETT			
13:41	SUB IN: TUCKER, CAMERON			
13:40	MISSED LAYUP by TUCKER, CAMERON			
13:18	REBOUND (OFF) by WILEY, EVAN			
13:18	GOOD! LAYUP by WILEY, EVAN	12-12	T	
13:15				MISSED 3PTR by LISTER, ANTIONE
13:11	REBOUND (DEF) by WILLIAMS, EJ			

Time	VISITORS: Alabama AM	Score	Margin	HOME: Prairie View
12:56	GOOD! JUMPER by TUCKER, CAMERON	12-14	V 2	
12:56				FOUL (PERSONAL) by PATTERSON, DEVONTE
12:56	GOOD! FT by TUCKER, CAMERON	12-15	V 3	
12:53				MISSED LAYUP by PATTERSON, DEVONTE
12:48	REBOUND (DEF) by WILLIAMS, EJ			
12:45	MISSED 3PTR by WILEY, EVAN			
12:35	REBOUND (OFF) by TEAM			
12:35				FOUL (PERSONAL) by ANDRUS, GERARD
12:35				SUB OUT: SNEED, LEON
12:35				SUB OUT: ANDRUS, GERARD
12:35				SUB IN: HENRY, LENELL
12:35				SUB IN: WILLIAMS, FAITE
12:34	FOUL (PERSONAL) by WILLIAMS, EJ			
12:19				SUB OUT: LISTER, ANTIONE
12:19				SUB OUT: COX, DEWAYNE
12:19				SUB IN: WILLIAMS, DARIUS
12:19				SUB IN: ELLIS, CHANCELLOR
12:12				TURNOVER (BADPASS) by PATTERSON, DEVONTE
11:34	SUB OUT: WILLIAMS, EJ			
11:34	SUB IN: ALFORD, CAMERON			
11:32	MISSED JUMPER by ALFORD, CAMERON			
11:27				REBOUND (DEF) by HENRY, LENELL
11:26				MISSED 3PTR by ELLIS, CHANCELLOR
11:14	REBOUND (DEF) by ALFORD, CAMERON			
11:10	SUB OUT: WILEY, EVAN			
11:10	SUB IN: WILLIAMS, EJ			
11:07	MISSED JUMPER by ALFORD, CAMERON			
11:02				REBOUND (DEF) by PATTERSON, DEVONTE
11:00		14-15	V 1	GOOD! LAYUP by WILLIAMS, DARIUS [PNT]
11:00				ASSIST by PATTERSON, DEVONTE
10:46	MISSED 3PTR by PARHAM, TJ			
10:42				REBOUND (DEF) by ELLIS, CHANCELLOR
10:37				MISSED 3PTR by ELLIS, CHANCELLOR
10:34	REBOUND (DEF) by WILLIAMS, EJ			
10:28				
10:25	SUB OUT: WILLIAMS, EJ			
10:25	SUB IN: JOHNSON, JALEN			
10:24	GOOD! JUMPER by JOHNSON, JALEN	14-17	V 3	
10:07				SUB OUT: ELLIS, CHANCELLOR
10:07				SUB IN: COX, DEWAYNE
10:06				TURNOVER (LOSTBALL) by COX, DEWAYNE
10:06	STEAL by MILLER, BRANDON			
09:58	GOOD! LAYUP by PARHAM, TJ [PNT]	14-19	V 5	
09:58	ASSIST by TUCKER, CAMERON			
09:28				SUB OUT: HENRY, LENELL
09:28				SUB OUT: COX, DEWAYNE
09:28				SUB IN: ELLIS, CHANCELLOR
09:28				SUB IN: ANDRUS, GERARD
09:28	SUB OUT: PARHAM, TJ			
09:28	SUB IN: HOUSTON, BRANDON			
09:23		16-19	V 3	GOOD! LAYUP by ANDRUS, GERARD [PNT]
09:23				ASSIST by PATTERSON, DEVONTE
08:39	GOOD! LAYUP by ALFORD, CAMERON	16-21	V 5	
08:27		18-21	V 3	GOOD! LAYUP by ANDRUS, GERARD [PNT]
08:27				ASSIST by WILLIAMS, FAITE
08:27	SUB OUT: ALFORD, CAMERON			
08:27	SUB IN: HICKS, GARRETT			
08:27	GOOD! 3PTR by HICKS, GARRETT	18-24	V 6	
08:27	ASSIST by TUCKER, CAMERON			
08:27		21-24	V 3	GOOD! 3PTR by ELLIS, CHANCELLOR
08:27				ASSIST by ANDRUS, GERARD
08:07	TURNOVER (SHOTCLOCK) by TEAM			
07:57	SUB OUT: JOHNSON, JALEN			
07:57	SUB IN: ALFORD, CAMERON			
07:50		23-24	V 1	GOOD! LAYUP by WILLIAMS, DARIUS [PNT]
07:50				ASSIST by WILLIAMS, FAITE
07:31				FOUL (PERSONAL) by WILLIAMS, FAITE
07:12				SUB OUT: ELLIS, CHANCELLOR
07:12				SUB IN: LISTER, ANTIONE
07:12	SUB OUT: TUCKER, CAMERON			
07:12	SUB IN: PARHAM, TJ			
07:10	FOUL (OFF) by PARHAM, TJ			
07:10	TURNOVER (OFFENSIVE) by PARHAM, TJ			
07:00				TURNOVER (BADPASS) by WILLIAMS, DARIUS
07:00	STEAL by ALFORD, CAMERON			
06:54				FOUL (PERSONAL) by ANDRUS, GERARD
06:54	GOOD! FT by ALFORD, CAMERON [FB]	23-25	V 2	
06:54	GOOD! FT by ALFORD, CAMERON [FB]	23-26	V 3	
06:53				SUB OUT: WILLIAMS, FAITE
06:53				SUB OUT: ANDRUS, GERARD

Time	VISITORS: Alabama AM	Score	Margin	HOME: Prairie View
06:53				SUB IN: ELLIS, CHANCELLOR
06:53				SUB IN: SNEED, LEON
06:50		26-26	T	GOOD! 3PTR by WILLIAMS, DARIUS
06:50				ASSIST by LISTER, ANTIONE
06:26	MISSED LAYUP by HOUSTON, BRANDON			
06:22				REBOUND (DEF) by PATTERSON, DEVONTE
06:18		29-26	H 3	GOOD! 3PTR by ELLIS, CHANCELLOR [FB]
06:18				ASSIST by PATTERSON, DEVONTE
05:51	MISSED 3PTR by ALFORD, CAMERON			
05:48				REBOUND (DEF) by PATTERSON, DEVONTE
05:43				MISSED 3PTR by WILLIAMS, DARIUS
05:39	REBOUND (DEF) by PARHAM, TJ			
05:38				FOUL (PERSONAL) by LISTER, ANTIONE
05:38				SUB OUT: LISTER, ANTIONE
05:38				SUB IN: BYNUM, TAMIR
05:38	SUB OUT: HOUSTON, BRANDON			
05:38	SUB IN: TUCKER, CAMERON			
05:38	GOOD! FT by PARHAM, TJ	29-27	H 2	
05:38	GOOD! FT by PARHAM, TJ	29-28	H 1	
05:38	SUB OUT: PARHAM, TJ			
05:38	SUB IN: POWELL, BRANDON			
05:23				MISSED JUMPER by PATTERSON, DEVONTE
05:20	REBOUND (DEF) by ALFORD, CAMERON			
05:03	MISSED JUMPER by HICKS, GARRETT			
05:03				BLOCK by BYNUM, TAMIR
04:57				REBOUND (DEF) by PATTERSON, DEVONTE
04:53				MISSED JUMPER by WILLIAMS, DARIUS
04:49				REBOUND (OFF) by BYNUM, TAMIR
04:48	FOUL (PERSONAL) by TUCKER, CAMERON			
04:33				MISSED LAYUP by PATTERSON, DEVONTE
04:26	REBOUND (DEF) by ALFORD, CAMERON			
04:23	TURNOVER (LOSTBALL) by TUCKER, CAMERON			
04:23				SUB OUT: WILLIAMS, DARIUS
04:23				SUB IN: ANDRUS, GERARD
04:16				MISSED 3PTR by ELLIS, CHANCELLOR
04:13	REBOUND (DEF) by POWELL, BRANDON			
03:57	MISSED 3PTR by ALFORD, CAMERON			
03:53				REBOUND (DEF) by BYNUM, TAMIR
03:53	SUB OUT: ALFORD, CAMERON			
03:53	SUB IN: PARHAM, TJ			
03:46	SUB OUT: MILLER, BRANDON			
03:46	SUB IN: JOHNSON, JALEN			
03:46	FOUL (PERSONAL) by JOHNSON, JALEN			
03:45	FOUL (PERSONAL) by POWELL, BRANDON			
03:45		30-28	H 2	GOOD! FT by PATTERSON, DEVONTE
03:45				MISSED FT by PATTERSON, DEVONTE
03:45	REBOUND (DEF) by PARHAM, TJ			
03:38				SUB OUT: ELLIS, CHANCELLOR
03:38				SUB OUT: ANDRUS, GERARD
03:38				SUB IN: WILLIAMS, DARIUS
03:38				SUB IN: COX, DEWAYNE
03:38	SUB OUT: JOHNSON, JALEN			
03:38	SUB IN: WILEY, EVAN			
03:36				SUB OUT: SNEED, LEON
03:36				SUB IN: ANDRUS, GERARD
03:22				SUB OUT: BYNUM, TAMIR
03:22				SUB IN: ELLIS, CHANCELLOR
03:22				TURNOVER (TRAVEL) by PATTERSON, DEVONTE
03:14				SUB OUT: ELLIS, CHANCELLOR
03:14				SUB IN: SNEED, LEON
03:12				SUB OUT: SNEED, LEON
03:12				SUB IN: WILLIAMS, FAITE
03:12				FOUL (PERSONAL) by WILLIAMS, FAITE
03:12	MISSED FT by TUCKER, CAMERON			
03:11				REBOUND (DEF) by WILLIAMS, DARIUS
02:55				SUB OUT: COX, DEWAYNE
02:55				SUB IN: ELLIS, CHANCELLOR
02:52				MISSED 3PTR by WILLIAMS, DARIUS
02:48	REBOUND (DEF) by POWELL, BRANDON			
02:26	SUB OUT: PARHAM, TJ			
02:26	SUB IN: MILLER, BRANDON			
02:21	GOOD! JUMPER by POWELL, BRANDON	30-30	T	
02:21	ASSIST by MILLER, BRANDON			
02:12	SUB OUT: HICKS, GARRETT			
02:12	SUB IN: PARHAM, TJ			
02:10	FOUL (PERSONAL) by PARHAM, TJ			
02:03				MISSED FT by WILLIAMS, FAITE
02:03				REBOUND (OFF) by TEAM
02:03		31-30	H 1	GOOD! FT by WILLIAMS, FAITE
01:55	SUB OUT: PARHAM, TJ			

Time	VISITORS: Alabama AM	Score	Margin	HOME: Prairie View
01:55	SUB IN: JOHNSON, JALEN			
01:42				SUB OUT: ELLIS, CHANCELLOR
01:42				SUB IN: SNEED, LEON
01:41	TURNOVER (BADPASS) by MILLER, BRANDON			
01:41				STEAL by SNEED, LEON
01:21	SUB OUT: WILEY, EVAN			
01:21	SUB IN: ALFORD, CAMERON			
01:20				TURNOVER (LOSTBALL) by SNEED, LEON
01:20	STEAL by ALFORD, CAMERON			
01:14	MISSED LAYUP by ALFORD, CAMERON			
01:14				BLOCK by SNEED, LEON
01:11	REBOUND (OFF) by MILLER, BRANDON			
01:07	TURNOVER (LOSTBALL) by MILLER, BRANDON			
01:07				STEAL by WILLIAMS, DARIUS
01:06	FOUL (PERSONAL) by MILLER, BRANDON			
01:05				MISSED FT by WILLIAMS, DARIUS
01:05				REBOUND (OFF) by TEAM
01:05		32-30	H 2	GOOD! FT by WILLIAMS, DARIUS [FB]
01:05				SUB OUT: SNEED, LEON
01:05				SUB OUT: ANDRUS, GERARD
01:05				SUB IN: HENRY, LENELL
01:05				SUB IN: COX, DEWAYNE
01:05	SUB OUT: JOHNSON, JALEN			
01:05	SUB OUT: ALFORD, CAMERON			
01:05	SUB IN: HICKS, GARRETT			
01:05	SUB IN: HOUSTON, BRANDON			
00:56	TIMEOUT 30SEC			
00:56	TURNOVER (5SEC) by TEAM			
00:55				SUB OUT: HENRY, LENELL
00:55				SUB OUT: COX, DEWAYNE
00:55				SUB IN: ELLIS, CHANCELLOR
00:55				SUB IN: ANDRUS, GERARD
00:50				TURNOVER (LOSTBALL) by WILLIAMS, FAITE
00:46				SUB OUT: ELLIS, CHANCELLOR
00:46				SUB OUT: WILLIAMS, FAITE
00:46				SUB OUT: ANDRUS, GERARD
00:46				SUB IN: HENRY, LENELL
00:46				SUB IN: COX, DEWAYNE
00:46				SUB IN: SNEED, LEON
00:46	SUB OUT: POWELL, BRANDON			
00:46	SUB OUT: HOUSTON, BRANDON			
00:46	SUB IN: WILLIAMS, EJ			
00:46	SUB IN: WILEY, EVAN			
00:42	GOOD! LAYUP by WILLIAMS, EJ	32-32	T	
00:42	ASSIST by TUCKER, CAMERON			
00:41				FOUL (PERSONAL) by HENRY, LENELL
00:41	MISSED FT by WILLIAMS, EJ			
00:41				REBOUND (DEF) by PATTERSON, DEVONTE
00:39				SUB OUT: HENRY, LENELL
00:39				SUB OUT: COX, DEWAYNE
00:39				SUB IN: ELLIS, CHANCELLOR
00:39				SUB IN: ANDRUS, GERARD
00:38		34-32	H 2	GOOD! LAYUP by PATTERSON, DEVONTE [PNT]
00:38				ASSIST by ANDRUS, GERARD
00:27	MISSED 3PTR by TUCKER, CAMERON			
00:22				REBOUND (DEF) by ANDRUS, GERARD
00:11				MISSED 3PTR by WILLIAMS, DARIUS
00:00	REBOUND (DEF) by TEAM			

### Alabama AM 32, Prairie View 34

Points from (This Period)	AAM	PVU
In the Paint	16	18
Off Turns	6	9
2nd Chance	5	0
Fast Break	5	10
Bench	11	11

**Official Box Score**  
**Alabama AM vs Prairie View**  
**Second Half Statistics Only**  
**March 02, 2020 at William J. Nicks Building - Prairie View**



**Alabama AM 30**

No.	Player	S	Pts	FG	3FG	FT	OR	DR	TR	PF	A	TO	Blk	Stl	Min	+/-
03	TUCKER, CAMERON	G	7	1-3	1-2	4-6	0	0	0	3	1	1	0	1	14	-4
05	JOHNSON, JALEN	F	3	1-2	0-0	1-2	0	1	1	0	0	1	0	0	17	-6
10	HICKS, GARRETT	G	13	5-11	1-4	2-2	0	2	2	0	1	0	0	0	19	-8
13	ALFORD, CAMERON	G	0	0-0	0-0	0-0	0	1	1	1	0	1	0	0	7	-6
24	WILEY, EVAN	F	0	0-0	0-0	0-0	0	0	0	2	0	0	1	0	6	-10
00	PARHAM, TJ	F	5	0-4	0-2	5-6	0	0	0	2	0	1	0	0	17	-2
01	ELLISON, MASON	F	0	0-0	0-0	0-0	0	0	0	0	0	0	0	0	0	0
02	MILLER, BRANDON	G	0	0-1	0-0	0-0	1	1	2	0	1	1	0	1	14	0
12	POWELL, BRANDON	G	0	0-0	0-0	0-0	1	0	1	1	0	0	0	0	3	-3
15	WILLIAMS, EJ	C	0	0-0	0-0	0-0	0	0	0	1	0	0	0	0	1	-5
30	HOUSTON, BRANDON	F	2	0-1	0-0	2-2	0	0	0	0	0	0	0	0	2	-1
	TEAM						0	0	0	0		2				
<b>TOTALS</b>			<b>30</b>	<b>7-22</b>	<b>2-8</b>	<b>14-18</b>	<b>2</b>	<b>5</b>	<b>7</b>	<b>10</b>	<b>3</b>	<b>7</b>	<b>1</b>	<b>2</b>	<b>100</b>	

*Shooting By Period*

Period	FG	FG%	3FG	3FG%	FT	FT%
2nd Half	7-22	32%	2-8	25%	14-18	78%
Game	19-49	38.8%	4-15	26.7%	20-27	74.1%

Deadball Rebounds: 4,3  
 Last FG Half: AAM -

**Prairie View 39**

No.	Player	S	Pts	FG	3FG	FT	OR	DR	TR	PF	A	TO	Blk	Stl	Min	+/-
03	ELLIS, CHANCELLOR	G	3	1-1	1-1	0-0	1	0	1	2	0	0	0	0	8	12
04	LISTER, ANTIONE	G	1	0-3	0-2	1-2	0	2	2	0	0	1	1	1	17	6
14	SNEED, LEON	G	2	1-1	0-0	0-0	0	0	0	2	5	3	1	0	15	3
15	ANDRUS, GERARD	G	15	6-8	0-0	3-3	0	4	4	1	2	1	0	0	17	13
23	PATTERSON, DEVONTE	F	8	4-7	0-0	0-2	1	5	6	3	3	2	0	1	19	11
00	HENRY, LENELL	F	0	0-0	0-0	0-0	0	0	0	0	0	0	0	0	0	0
02	WILLIAMS, DARIUS	G	0	0-1	0-1	0-0	0	0	0	2	0	0	0	1	6	3
05	BYNUM, TAMIR	G	0	0-0	0-0	0-0	0	0	0	0	0	0	0	0	0	0
11	COX, DEWAYNE	G	5	2-3	0-0	1-2	3	1	4	1	0	0	0	0	8	-6
12	WILLIAMS, FAITE	G	5	2-2	1-1	0-0	0	1	1	2	0	1	0	0	7	2
35	JACKSON, JONATHAN	F	0	0-0	0-0	0-0	0	0	0	0	1	1	0	0	3	1
	TEAM						0	0	0	0		1				
<b>TOTALS</b>			<b>39</b>	<b>16-26</b>	<b>2-5</b>	<b>5-9</b>	<b>5</b>	<b>13</b>	<b>18</b>	<b>13</b>	<b>11</b>	<b>10</b>	<b>2</b>	<b>3</b>	<b>100</b>	

*Shooting By Period*

Period	FG	FG%	3FG	3FG%	FT	FT%
2nd Half	16-26	62%	2-5	40%	5-9	56%
Game	30-56	53.6%	5-19	26.3%	8-16	50.0%

Deadball Rebounds: 4,2  
 Last FG Half: PVU -

*Game Notes:*

Officials: Rod Dixon, Marques Pettigrew, Brian Hagedorn  
 Attendance: 796

Start Time: 09:23 PM ET  
 End Time: 11:39 PM ET  
 Game Duration: 2:15  
 Conference Game;

Score	1st	2nd	TOT
AAM	32	30	62
PVU	34	39	73

Points from (This Period)	AAM	PVU
In the Paint	6	24
Off Turns	11	7
2nd Chance	0	11
Fast Break	12	5
Bench	7	10



**Official Play-By-Play**  
**Alabama AM vs Prairie View**  
**Second Half**  
**March 02, 2020 at William J. Nicks Building - Prairie View**



**Period 2**

**Starters:**

**Alabama AM:** 3 TUCKER, CAMERON (G); 5 JOHNSON, JALEN (F); 10 HICKS, GARRETT (G); 13 ALFORD, CAMERON (G); 24 WILEY, EVAN (F);

**Prairie View:** 3 ELLIS, CHANCELLOR (G); 4 LISTER, ANTIONE (G); 14 SNEED, LEON (G); 15 ANDRUS, GERARD (G); 23 PATTERSON, DEVONTE (F);

Time	VISITORS: Alabama AM	Score	Margin	HOME: Prairie View
20:00				SUB OUT: WILLIAMS, DARIUS
20:00				SUB IN: LISTER, ANTIONE
20:00	SUB OUT: MILLER, BRANDON			
20:00	SUB IN: JOHNSON, JALEN			
19:59		36-32	H 4	GOOD! JUMPER by PATTERSON, DEVONTE [PNT]
19:59				ASSIST by SNEED, LEON
19:51	FOUL (OFF) by TUCKER, CAMERON			
19:51	TURNOVER (OFFENSIVE) by TUCKER, CAMERON			
19:27				MISSED JUMPER by ANDRUS, GERARD
19:22				REBOUND (OFF) by PATTERSON, DEVONTE
19:21		38-32	H 6	GOOD! LAYUP by PATTERSON, DEVONTE [PNT]
19:21	SUB OUT: WILLIAMS, EJ			
19:21	SUB IN: ALFORD, CAMERON			
19:21	FOUL (PERSONAL) by ALFORD, CAMERON			
19:21				MISSED FT by PATTERSON, DEVONTE
19:21	REBOUND (DEF) by ALFORD, CAMERON			
19:14	SUB OUT: ALFORD, CAMERON			
19:14	SUB IN: PARHAM, TJ			
19:12	FOUL (OFF) by PARHAM, TJ			
19:12	TURNOVER (OFFENSIVE) by PARHAM, TJ			
19:10		40-32	H 8	GOOD! JUMPER by ANDRUS, GERARD [PNT]
19:10				ASSIST by PATTERSON, DEVONTE
18:58				FOUL (PERSONAL) by SNEED, LEON
18:58	MISSED FT by TUCKER, CAMERON			
18:58	REBOUND (OFF) by TEAM			
18:58	GOOD! FT by TUCKER, CAMERON	40-33	H 7	
18:45				MISSED JUMPER by PATTERSON, DEVONTE
18:45	BLOCK by WILEY, EVAN			
18:34	REBOUND (DEF) by TEAM			
18:12				FOUL (PERSONAL) by ELLIS, CHANCELLOR
17:46	MISSED 3PTR by HICKS, GARRETT			
17:43				REBOUND (DEF) by PATTERSON, DEVONTE
17:36		42-33	H 9	GOOD! JUMPER by ANDRUS, GERARD
17:36				ASSIST by SNEED, LEON
17:12				FOUL (PERSONAL) by ELLIS, CHANCELLOR
17:12	GOOD! FT by PARHAM, TJ	42-34	H 8	
17:12	GOOD! FT by PARHAM, TJ	42-35	H 7	
16:54				TURNOVER (TRAVEL) by SNEED, LEON
16:43				FOUL (PERSONAL) by SNEED, LEON
16:17				SUB OUT: ELLIS, CHANCELLOR
16:17				SUB IN: COX, DEWAYNE
16:16	MISSED LAYUP by JOHNSON, JALEN			
16:11				REBOUND (DEF) by COX, DEWAYNE
16:07				MISSED LAYUP by ANDRUS, GERARD
15:57				REBOUND (OFF) by COX, DEWAYNE
15:47		44-35	H 9	GOOD! JUMPER by ANDRUS, GERARD
15:47				ASSIST by SNEED, LEON
15:41	FOUL (PERSONAL) by WILEY, EVAN			
15:41		45-35	H 10	GOOD! FT by ANDRUS, GERARD
15:40				SUB OUT: ANDRUS, GERARD
15:40				SUB IN: WILLIAMS, FAITE
15:13	SUB OUT: TUCKER, CAMERON			
15:13	SUB OUT: HICKS, GARRETT			
15:13	SUB OUT: WILEY, EVAN			
15:13	SUB IN: MILLER, BRANDON			
15:13	SUB IN: ALFORD, CAMERON			
15:13	SUB IN: HOUSTON, BRANDON			
15:08				FOUL (PERSONAL) by COX, DEWAYNE
15:08	GOOD! FT by HOUSTON, BRANDON [FB]	45-36	H 9	
15:08	GOOD! FT by HOUSTON, BRANDON [FB]	45-37	H 8	
15:08				SUB OUT: COX, DEWAYNE
15:08				SUB OUT: SNEED, LEON
15:08				SUB IN: ELLIS, CHANCELLOR
15:08				SUB IN: ANDRUS, GERARD
14:57				MISSED 3PTR by LISTER, ANTIONE
14:51				REBOUND (OFF) by ELLIS, CHANCELLOR
14:40		48-37	H 11	GOOD! 3PTR by ELLIS, CHANCELLOR
14:40				ASSIST by PATTERSON, DEVONTE
14:17	MISSED JUMPER by MILLER, BRANDON			
14:14				REBOUND (DEF) by PATTERSON, DEVONTE

Time	VISITORS: Alabama AM	Score	Margin	HOME: Prairie View
14:07				FOUL (OFF) by PATTERSON, DEVONTE
14:07				TURNOVER (OFFENSIVE) by PATTERSON, DEVONTE
14:00				SUB OUT: ELLIS, CHANCELLOR
14:00				SUB OUT: ANDRUS, GERARD
14:00				SUB IN: COX, DEWAYNE
14:00				SUB IN: SNEED, LEON
14:00	SUB OUT: MILLER, BRANDON			
14:00	SUB OUT: HOUSTON, BRANDON			
14:00	SUB IN: TUCKER, CAMERON			
14:00	SUB IN: HICKS, GARRETT			
13:44	SUB OUT: JOHNSON, JALEN			
13:44	SUB IN: HOUSTON, BRANDON			
13:41	FOUL (PERSONAL) by WILEY, EVAN			
13:38	MISSED LAYUP by HOUSTON, BRANDON			
13:34				REBOUND (DEF) by LISTER, ANTIONE
13:32				TURNOVER (TRAVEL) by LISTER, ANTIONE
13:25	SUB OUT: HOUSTON, BRANDON			
13:25	SUB IN: WILLIAMS, EJ			
13:25	MISSED 3PTR by PARHAM, TJ			
13:25				REBOUND (DEF) by PATTERSON, DEVONTE
13:05				MISSED LAYUP by PATTERSON, DEVONTE
13:01				REBOUND (OFF) by COX, DEWAYNE
13:00	FOUL (PERSONAL) by WILLIAMS, EJ			
13:00				MISSED FT by COX, DEWAYNE
13:00				REBOUND (OFF) by TEAM
13:00		49-37	H 12	GOOD! FT by COX, DEWAYNE
13:00				SUB OUT: SNEED, LEON
13:00				SUB IN: WILLIAMS, DARIUS
13:00	SUB OUT: PARHAM, TJ			
13:00	SUB OUT: ALFORD, CAMERON			
13:00	SUB OUT: WILLIAMS, EJ			
13:00	SUB IN: MILLER, BRANDON			
13:00	SUB IN: JOHNSON, JALEN			
13:00	SUB IN: WILEY, EVAN			
12:59	TURNOVER (LOSTBALL) by MILLER, BRANDON			
12:59				STEAL by LISTER, ANTIONE
12:32				SUB OUT: LISTER, ANTIONE
12:32				SUB OUT: COX, DEWAYNE
12:32				SUB IN: ELLIS, CHANCELLOR
12:32				SUB IN: ANDRUS, GERARD
12:32	SUB OUT: TUCKER, CAMERON			
12:32	SUB IN: ALFORD, CAMERON			
12:31				TURNOVER (LOSTBALL) by PATTERSON, DEVONTE
12:31	STEAL by MILLER, BRANDON			
12:20	TURNOVER (BADPASS) by ALFORD, CAMERON			
12:20				STEAL by PATTERSON, DEVONTE
12:08		51-37	H 14	GOOD! LAYUP by WILLIAMS, FAITE [PNT]
12:03				SUB OUT: ELLIS, CHANCELLOR
12:03				SUB OUT: PATTERSON, DEVONTE
12:03				SUB IN: COX, DEWAYNE
12:03				SUB IN: JACKSON, JONATHAN
12:03	SUB OUT: WILEY, EVAN			
12:03	SUB IN: PARHAM, TJ			
11:40	MISSED JUMPER by PARHAM, TJ			
11:32	REBOUND (OFF) by TEAM			
11:23	TURNOVER (SHOTCLOCK) by TEAM			
11:17				FOUL (OFF) by WILLIAMS, FAITE
11:17				TURNOVER (OFFENSIVE) by WILLIAMS, FAITE
11:05				FOUL (PERSONAL) by WILLIAMS, DARIUS
11:05	GOOD! FT by PARHAM, TJ	51-38	H 13	
11:05	GOOD! FT by PARHAM, TJ	51-39	H 12	
11:05				SUB OUT: COX, DEWAYNE
11:05				SUB IN: PATTERSON, DEVONTE
10:54		53-39	H 14	GOOD! LAYUP by ANDRUS, GERARD [PNT]
10:54				ASSIST by PATTERSON, DEVONTE
10:36	GOOD! LAYUP by JOHNSON, JALEN [PNT]	53-41	H 12	
10:36	ASSIST by MILLER, BRANDON			
10:08		56-41	H 15	GOOD! 3PTR by WILLIAMS, FAITE
10:08				ASSIST by JACKSON, JONATHAN
09:52	MISSED JUMPER by PARHAM, TJ			
09:48				REBOUND (DEF) by ANDRUS, GERARD
09:35				TURNOVER (TRAVEL) by JACKSON, JONATHAN
09:27				SUB OUT: WILLIAMS, FAITE
09:27				SUB OUT: JACKSON, JONATHAN
09:27				SUB IN: SNEED, LEON
09:27	SUB OUT: ALFORD, CAMERON			
09:27	SUB IN: TUCKER, CAMERON			
09:13				SUB IN: LISTER, ANTIONE
09:12	TURNOVER (LOSTBALL) by JOHNSON, JALEN			

Time	VISITORS: Alabama AM	Score	Margin	HOME: Prairie View
09:12				STEAL by WILLIAMS, DARIUS
08:52				MISSED 3PTR by WILLIAMS, DARIUS
08:47	REBOUND (DEF) by TEAM			
08:34				FOUL (PERSONAL) by WILLIAMS, DARIUS
08:34	GOOD! FT by TUCKER, CAMERON	56-42	H 14	
08:34	MISSED FT by TUCKER, CAMERON			
08:34				REBOUND (DEF) by ANDRUS, GERARD
08:32				TURNOVER (LOSTBALL) by ANDRUS, GERARD
08:32	STEAL by TUCKER, CAMERON			
08:25				FOUL (PERSONAL) by ANDRUS, GERARD
08:25	GOOD! FT by TUCKER, CAMERON [FB]	56-43	H 13	
08:25	GOOD! FT by TUCKER, CAMERON [FB]	56-44	H 12	
08:02		58-44	H 14	GOOD! JUMPER by PATTERSON, DEVONTE [PNT]
08:02				ASSIST by ANDRUS, GERARD
07:41				FOUL (PERSONAL) by PATTERSON, DEVONTE
07:41	GOOD! FT by JOHNSON, JALEN	58-45	H 13	
07:41	MISSED FT by JOHNSON, JALEN			
07:41				REBOUND (DEF) by ANDRUS, GERARD
07:34		60-45	H 15	GOOD! JUMPER by ANDRUS, GERARD [FB/PNT]
07:21	MISSED JUMPER by TUCKER, CAMERON			
07:18				REBOUND (DEF) by LISTER, ANTIONE
07:10				SUB OUT: WILLIAMS, DARIUS
07:10				SUB IN: ELLIS, CHANCELLOR
07:09		62-45	H 17	GOOD! LAYUP by ANDRUS, GERARD [PNT]
07:09				ASSIST by SNEED, LEON
07:05	GOOD! JUMPER by HICKS, GARRETT	62-47	H 15	
06:54				TURNOVER (BADPASS) by SNEED, LEON
06:44				SUB OUT: ELLIS, CHANCELLOR
06:44				SUB IN: COX, DEWAYNE
06:30	GOOD! JUMPER by HICKS, GARRETT	62-49	H 13	
06:14				MISSED JUMPER by PATTERSON, DEVONTE
06:08				REBOUND (OFF) by TEAM
06:07	FOUL (PERSONAL) by TUCKER, CAMERON			
05:33	FOUL (PERSONAL) by PARHAM, TJ			
05:32				MISSED FT by PATTERSON, DEVONTE
05:32	REBOUND (DEF) by HICKS, GARRETT			
05:26				SUB OUT: COX, DEWAYNE
05:26				SUB IN: ELLIS, CHANCELLOR
05:18	MISSED 3PTR by PARHAM, TJ			
05:12				REBOUND (DEF) by TEAM
05:12				SUB OUT: ANDRUS, GERARD
05:12				SUB IN: WILLIAMS, FAITE
05:09				FOUL (PERSONAL) by WILLIAMS, FAITE
05:09	GOOD! FT by PARHAM, TJ [FB]	62-50	H 12	
05:09	MISSED FT by PARHAM, TJ			
05:09				REBOUND (DEF) by WILLIAMS, FAITE
05:05	SUB OUT: TUCKER, CAMERON			
05:05	SUB IN: ALFORD, CAMERON			
04:37				TURNOVER (SHOTCLOCK) by TEAM
04:33				SUB OUT: ELLIS, CHANCELLOR
04:33				SUB IN: COX, DEWAYNE
04:33	SUB OUT: PARHAM, TJ			
04:33	SUB IN: POWELL, BRANDON			
04:29				FOUL (PERSONAL) by PATTERSON, DEVONTE
04:29	GOOD! FT by HICKS, GARRETT [FB]	62-51	H 11	
04:29	GOOD! FT by HICKS, GARRETT [FB]	62-52	H 10	
04:19				SUB OUT: COX, DEWAYNE
04:19				SUB OUT: WILLIAMS, FAITE
04:19				SUB IN: ELLIS, CHANCELLOR
04:19				SUB IN: ANDRUS, GERARD
04:18		64-52	H 12	GOOD! LAYUP by SNEED, LEON [PNT]
03:46	TURNOVER (SHOTCLOCK) by TEAM			
03:46	FOUL (PERSONAL) by POWELL, BRANDON			
03:46		65-52	H 13	GOOD! FT by LISTER, ANTIONE [FB]
03:46				MISSED FT by LISTER, ANTIONE
03:46	REBOUND (DEF) by JOHNSON, JALEN			
03:45				SUB OUT: ELLIS, CHANCELLOR
03:45				SUB IN: COX, DEWAYNE
03:45	SUB OUT: MILLER, BRANDON			
03:45	SUB OUT: POWELL, BRANDON			
03:45	SUB IN: PARHAM, TJ			
03:45	SUB IN: TUCKER, CAMERON			
03:41	GOOD! LAYUP by HICKS, GARRETT [PNT]	65-54	H 11	
03:30	FOUL (PERSONAL) by TUCKER, CAMERON			
03:30		66-54	H 12	GOOD! FT by ANDRUS, GERARD
03:30		67-54	H 13	GOOD! FT by ANDRUS, GERARD
03:30	SUB OUT: ALFORD, CAMERON			
03:30	SUB IN: MILLER, BRANDON			
03:27	GOOD! 3PTR by TUCKER, CAMERON [FB]	67-57	H 10	
03:27	ASSIST by HICKS, GARRETT			

Time	VISITORS: Alabama AM	Score	Margin	HOME: Prairie View
03:17		69-57	H 12	GOOD! LAYUP by COX, DEWAYNE [PNT]
03:17				ASSIST by SNEED, LEON
03:06	MISSED 3PTR by HICKS, GARRETT			
03:04				REBOUND (DEF) by TEAM
03:04				SUB OUT: COX, DEWAYNE
03:04				SUB IN: ELLIS, CHANCELLOR
03:02		71-57	H 14	GOOD! LAYUP by PATTERSON, DEVONTE [FB/PNT]
03:02				ASSIST by ANDRUS, GERARD
02:45	MISSED LAYUP by HICKS, GARRETT			
02:45				BLOCK by LISTER, ANTIONE
02:36				REBOUND (DEF) by PATTERSON, DEVONTE
02:33				MISSED 3PTR by LISTER, ANTIONE
02:28	REBOUND (DEF) by HICKS, GARRETT			
02:25	GOOD! LAYUP by HICKS, GARRETT [FB/PNT]	71-59	H 12	
02:19				TIMEOUT 30SEC
02:19				TURNOVER (LOSTBALL) by SNEED, LEON
02:19				SUB OUT: ELLIS, CHANCELLOR
02:19				SUB IN: COX, DEWAYNE
02:19	SUB OUT: PARHAM, TJ			
02:19	SUB IN: ELLISON, MASON			
02:17	SUB OUT: ELLISON, MASON			
02:17	SUB IN: PARHAM, TJ			
02:05	GOOD! 3PTR by HICKS, GARRETT	71-62	H 9	
02:05	ASSIST by TUCKER, CAMERON			
01:49	SUB OUT: JOHNSON, JALEN			
01:49	SUB IN: POWELL, BRANDON			
01:34				MISSED LAYUP by COX, DEWAYNE
01:30				REBOUND (OFF) by COX, DEWAYNE
01:29		73-62	H 11	GOOD! LAYUP by COX, DEWAYNE [PNT]
01:09	MISSED JUMPER by HICKS, GARRETT			
01:09				BLOCK by SNEED, LEON
00:56				REBOUND (DEF) by ANDRUS, GERARD
00:53				MISSED JUMPER by LISTER, ANTIONE
00:50	REBOUND (DEF) by MILLER, BRANDON			
00:47	MISSED LAYUP by HICKS, GARRETT			
00:43	REBOUND (OFF) by POWELL, BRANDON			
00:38	MISSED 3PTR by TUCKER, CAMERON			
00:34	REBOUND (OFF) by MILLER, BRANDON			
00:33	MISSED 3PTR by HICKS, GARRETT			
00:28				REBOUND (DEF) by PATTERSON, DEVONTE

### Alabama AM 62, Prairie View 73

Points from (This Period)	AAM	PVU
In the Paint	6	24
Off Turns	11	7
2nd Chance	0	11
Fast Break	12	5
Bench	7	10

**Official Scoring/Possession Reference Chart**  
**Alabama AM vs Prairie View**  
**Period 1**  
**March 02, 2020 at William J. Nicks Building - Prairie View**



**Period 1**

**Starters:**

**Alabama AM:** 3 TUCKER, CAMERON (G); 5 JOHNSON, JALEN (F); 10 HICKS, GARRETT (G); 13 ALFORD, CAMERON (G); 24 WILEY, EVAN (F);

**Prairie View:** 3 ELLIS, CHANCELLOR (G); 4 LISTER, ANTIONE (G); 14 SNEED, LEON (G); 15 ANDRUS, GERARD (G); 23 PATTERSON, DEVONTE (F);

Time	VISITORS: Alabama AM	Score	Margin	HOME: Prairie View
19:36		2-0	H 2	GOOD! LAYUP by PATTERSON, DEVONTE [FB/PNT]
19:36	GOOD! JUMPER by JOHNSON, JALEN [PNT]	2-2	T	
19:36		4-2	H 2	GOOD! LAYUP by SNEED, LEON [PNT]
19:15		6-2	H 4	GOOD! JUMPER by ANDRUS, GERARD
18:40	GOOD! FT by JOHNSON, JALEN [FB]	6-3	H 3	
17:57		8-3	H 5	GOOD! LAYUP by SNEED, LEON [FB/PNT]
17:35	GOOD! JUMPER by HICKS, GARRETT [PNT]	8-5	H 3	
16:54		10-5	H 5	GOOD! LAYUP by COX, DEWAYNE [FB/PNT]
16:39	GOOD! 3PTR by PARHAM, TJ	10-8	H 2	
16:12	GOOD! LAYUP by ALFORD, CAMERON [FB/PNT]	10-10	T	
15:55		12-10	H 2	GOOD! JUMPER by LISTER, ANTIONE
13:18	GOOD! LAYUP by WILEY, EVAN	12-12	T	
12:56	GOOD! JUMPER by TUCKER, CAMERON	12-14	V 2	
12:56	GOOD! FT by TUCKER, CAMERON	12-15	V 3	
11:00		14-15	V 1	GOOD! LAYUP by WILLIAMS, DARIUS [PNT]
10:24	GOOD! JUMPER by JOHNSON, JALEN	14-17	V 3	
09:58	GOOD! LAYUP by PARHAM, TJ [PNT]	14-19	V 5	
09:23		16-19	V 3	GOOD! LAYUP by ANDRUS, GERARD [PNT]
08:39	GOOD! LAYUP by ALFORD, CAMERON	16-21	V 5	
08:27		18-21	V 3	GOOD! LAYUP by ANDRUS, GERARD [PNT]
08:27	GOOD! 3PTR by HICKS, GARRETT	18-24	V 6	
08:27		21-24	V 3	GOOD! 3PTR by ELLIS, CHANCELLOR
07:50		23-24	V 1	GOOD! LAYUP by WILLIAMS, DARIUS [PNT]
06:54	GOOD! FT by ALFORD, CAMERON [FB]	23-25	V 2	
06:54	GOOD! FT by ALFORD, CAMERON [FB]	23-26	V 3	
06:50		26-26	T	GOOD! 3PTR by WILLIAMS, DARIUS
06:18		29-26	H 3	GOOD! 3PTR by ELLIS, CHANCELLOR [FB]
05:38	GOOD! FT by PARHAM, TJ	29-27	H 2	
05:38	GOOD! FT by PARHAM, TJ	29-28	H 1	
03:45		30-28	H 2	GOOD! FT by PATTERSON, DEVONTE
02:21	GOOD! JUMPER by POWELL, BRANDON	30-30	T	
02:03		31-30	H 1	GOOD! FT by WILLIAMS, FAITE
01:05		32-30	H 2	GOOD! FT by WILLIAMS, DARIUS [FB]
00:42	GOOD! LAYUP by WILLIAMS, EJ	32-32	T	
00:38		34-32	H 2	GOOD! LAYUP by PATTERSON, DEVONTE [PNT]

**Alabama AM 32, Prairie View 34**

**Official Scoring/Possession Reference Chart**  
**Alabama AM vs Prairie View**  
**Period 2**  
**March 02, 2020 at William J. Nicks Building - Prairie View**



**Period 2**

**Starters:**

**Alabama AM:** 3 TUCKER,CAMERON (G); 5 JOHNSON,JALEN (F); 10 HICKS,GARRETT (G); 13 ALFORD,CAMERON (G); 24 WILEY,EVAN (F);

**Prairie View:** 3 ELLIS,CHANCELLOR (G); 4 LISTER,ANTIONE (G); 14 SNEED,LEON (G); 15 ANDRUS,GERARD (G); 23 PATTERSON,DEVONTE (F);

Time	VISITORS: Alabama AM	Score	Margin	HOME: Prairie View
19:59		36-32	H 4	GOOD! JUMPER by PATTERSON, DEVONTE [PNT]
19:21		38-32	H 6	GOOD! LAYUP by PATTERSON, DEVONTE [PNT]
19:10		40-32	H 8	GOOD! JUMPER by ANDRUS, GERARD [PNT]
18:58	GOOD! FT by TUCKER, CAMERON	40-33	H 7	
17:36		42-33	H 9	GOOD! JUMPER by ANDRUS, GERARD
17:12	GOOD! FT by PARHAM, TJ	42-34	H 8	
17:12	GOOD! FT by PARHAM, TJ	42-35	H 7	
15:47		44-35	H 9	GOOD! JUMPER by ANDRUS, GERARD
15:41		45-35	H 10	GOOD! FT by ANDRUS, GERARD
15:08	GOOD! FT by HOUSTON, BRANDON [FB]	45-36	H 9	
15:08	GOOD! FT by HOUSTON, BRANDON [FB]	45-37	H 8	
14:40		48-37	H 11	GOOD! 3PTR by ELLIS, CHANCELLOR
13:00		49-37	H 12	GOOD! FT by COX, DEWAYNE
12:08		51-37	H 14	GOOD! LAYUP by WILLIAMS, FAITE [PNT]
11:05	GOOD! FT by PARHAM, TJ	51-38	H 13	
11:05	GOOD! FT by PARHAM, TJ	51-39	H 12	
10:54		53-39	H 14	GOOD! LAYUP by ANDRUS, GERARD [PNT]
10:36	GOOD! LAYUP by JOHNSON, JALEN [PNT]	53-41	H 12	
10:08		56-41	H 15	GOOD! 3PTR by WILLIAMS, FAITE
08:34	GOOD! FT by TUCKER, CAMERON	56-42	H 14	
08:25	GOOD! FT by TUCKER, CAMERON [FB]	56-43	H 13	
08:25	GOOD! FT by TUCKER, CAMERON [FB]	56-44	H 12	
08:02		58-44	H 14	GOOD! JUMPER by PATTERSON, DEVONTE [PNT]
07:41	GOOD! FT by JOHNSON, JALEN	58-45	H 13	
07:34		60-45	H 15	GOOD! JUMPER by ANDRUS, GERARD [FB/PNT]
07:09		62-45	H 17	GOOD! LAYUP by ANDRUS, GERARD [PNT]
07:05	GOOD! JUMPER by HICKS, GARRETT	62-47	H 15	
06:30	GOOD! JUMPER by HICKS, GARRETT	62-49	H 13	
05:09	GOOD! FT by PARHAM, TJ [FB]	62-50	H 12	
04:29	GOOD! FT by HICKS, GARRETT [FB]	62-51	H 11	
04:29	GOOD! FT by HICKS, GARRETT [FB]	62-52	H 10	
04:18		64-52	H 12	GOOD! LAYUP by SNEED, LEON [PNT]
03:46		65-52	H 13	GOOD! FT by LISTER, ANTIONE [FB]
03:41	GOOD! LAYUP by HICKS, GARRETT [PNT]	65-54	H 11	
03:30		66-54	H 12	GOOD! FT by ANDRUS, GERARD
03:30		67-54	H 13	GOOD! FT by ANDRUS, GERARD
03:27	GOOD! 3PTR by TUCKER, CAMERON [FB]	67-57	H 10	
03:17		69-57	H 12	GOOD! LAYUP by COX, DEWAYNE [PNT]
03:02		71-57	H 14	GOOD! LAYUP by PATTERSON, DEVONTE [FB/PNT]
02:25	GOOD! LAYUP by HICKS, GARRETT [FB/PNT]	71-59	H 12	
02:05	GOOD! 3PTR by HICKS, GARRETT	71-62	H 9	
01:29		73-62	H 11	GOOD! LAYUP by COX, DEWAYNE [PNT]

**Alabama AM 62, Prairie View 73**

**Official Substitutions Log  
Alabama AM vs Prairie View  
Period 1**

**March 02, 2020 at William J. Nicks Building - Prairie View**



<b>VISITORS: Alabama AM</b>	<b>Time</b>	<b>Score</b>	<b>HOME: Prairie View</b>
3 TUCKER,CAMERON			3 ELLIS,CHANCELLOR
5 JOHNSON,JALEN			4 LISTER,ANTIONE
10 HICKS,GARRETT			14 SNEED,LEON
13 ALFORD,CAMERON			15 ANDRUS,GERARD
24 WILEY,EVAN			23 PATTERSON,DEVONTE
SUB OUT: 3 TUCKER,CAMERON	19:17	2-4	
SUB IN: 2 MILLER,BRANDON	19:17		
SUB OUT: 24 WILEY,EVAN	18:39	3-6	
SUB IN: 00 PARHAM,TJ	18:39		
	17:03	5-8	SUB OUT: ANDRUS,GERARD
	17:03		SUB IN: COX,DEWAYNE
SUB OUT: 5 JOHNSON,JALEN	17:03		
SUB IN: 3 TUCKER,CAMERON	17:03		
SUB OUT: 3 TUCKER,CAMERON	16:19	8-10	
SUB IN: 15 WILLIAMS,EJ	16:19		
	15:20	10-12	SUB OUT: ELLIS,CHANCELLOR
	15:20		SUB IN: ANDRUS,GERARD
SUB OUT: 13 ALFORD,CAMERON	14:08	10-12	
SUB IN: 24 WILEY,EVAN	14:08		
SUB OUT: 10 HICKS,GARRETT	13:41	10-12	
SUB IN: 3 TUCKER,CAMERON	13:41		
	12:35	15-12	SUB OUT: SNEED,LEON
	12:35		SUB OUT: ANDRUS,GERARD
	12:35		SUB IN: HENRY,LENELL
	12:35		SUB IN: WILLIAMS,FAITE
	12:19	15-12	SUB OUT: LISTER,ANTIONE
	12:19		SUB OUT: COX,DEWAYNE
	12:19		SUB IN: WILLIAMS,DARIUS
	12:19		SUB IN: ELLIS,CHANCELLOR
SUB OUT: 15 WILLIAMS,EJ	11:34	15-12	
SUB IN: 13 ALFORD,CAMERON	11:34		
SUB OUT: 24 WILEY,EVAN	11:10	15-12	
SUB IN: 15 WILLIAMS,EJ	11:10		
SUB OUT: 15 WILLIAMS,EJ	10:25	15-14	
SUB IN: 5 JOHNSON,JALEN	10:25		
	10:07	17-14	SUB OUT: ELLIS,CHANCELLOR
	10:07		SUB IN: COX,DEWAYNE
	09:28	19-14	SUB OUT: HENRY,LENELL
	09:28		SUB OUT: COX,DEWAYNE
	09:28		SUB IN: ELLIS,CHANCELLOR
	09:28		SUB IN: ANDRUS,GERARD
SUB OUT: 00 PARHAM,TJ	09:28		
SUB IN: 30 HOUSTON,BRANDON	09:28		
SUB OUT: 13 ALFORD,CAMERON	08:27	21-18	
SUB IN: 10 HICKS,GARRETT	08:27		
SUB OUT: 5 JOHNSON,JALEN	07:57	24-21	
SUB IN: 13 ALFORD,CAMERON	07:57		
	07:12	24-23	SUB OUT: ELLIS,CHANCELLOR
	07:12		SUB IN: LISTER,ANTIONE
SUB OUT: 3 TUCKER,CAMERON	07:12		
SUB IN: 00 PARHAM,TJ	07:12		
	06:53	26-23	SUB OUT: WILLIAMS,FAITE
	06:53		SUB OUT: ANDRUS,GERARD
	06:53		SUB IN: ELLIS,CHANCELLOR
	06:53		SUB IN: SNEED,LEON
	05:38	26-29	SUB OUT: LISTER,ANTIONE
	05:38		SUB IN: BYNUM,TAMIR
SUB OUT: 30 HOUSTON,BRANDON	05:38		
SUB IN: 3 TUCKER,CAMERON	05:38		
SUB OUT: 00 PARHAM,TJ	05:38		
SUB IN: 12 POWELL,BRANDON	05:38		
	04:23	28-29	SUB OUT: WILLIAMS,DARIUS
	04:23		SUB IN: ANDRUS,GERARD
SUB OUT: 13 ALFORD,CAMERON	03:53	28-29	
SUB IN: 00 PARHAM,TJ	03:53		
SUB OUT: 2 MILLER,BRANDON	03:46	28-29	
SUB IN: 5 JOHNSON,JALEN	03:46		
	03:38	28-30	SUB OUT: ELLIS,CHANCELLOR
	03:38		SUB OUT: ANDRUS,GERARD
	03:38		SUB IN: WILLIAMS,DARIUS
	03:38		SUB IN: COX,DEWAYNE
SUB OUT: 5 JOHNSON,JALEN	03:38		
SUB IN: 24 WILEY,EVAN	03:38		
	03:36	28-30	SUB OUT: SNEED,LEON
	03:36		SUB IN: ANDRUS,GERARD

VISITORS: Alabama AM	Time	Score	HOME: Prairie View
	03:22	28-30	SUB OUT: BYNUM,TAMIR
	03:22		SUB IN: ELLIS,CHANCELLOR
	03:14	28-30	SUB OUT: ELLIS,CHANCELLOR
	03:14		SUB IN: SNEED,LEON
	03:12	28-30	SUB OUT: SNEED,LEON
	03:12		SUB IN: WILLIAMS,FAITE
	02:55	28-30	SUB OUT: COX,DEWAYNE
	02:55		SUB IN: ELLIS,CHANCELLOR
SUB OUT: 00 PARHAM,TJ	02:26	28-30	
SUB IN: 2 MILLER,BRANDON	02:26		
SUB OUT: 10 HICKS,GARRETT	02:12	30-30	
SUB IN: 00 PARHAM,TJ	02:12		
SUB OUT: 00 PARHAM,TJ	01:55	30-31	
SUB IN: 5 JOHNSON,JALEN	01:55		
	01:42	30-31	SUB OUT: ELLIS,CHANCELLOR
	01:42		SUB IN: SNEED,LEON
SUB OUT: 24 WILEY,EVAN	01:21	30-31	
SUB IN: 13 ALFORD,CAMERON	01:21		
	01:05	30-32	SUB OUT: SNEED,LEON
	01:05		SUB OUT: ANDRUS,GERARD
	01:05		SUB IN: HENRY,LENELL
	01:05		SUB IN: COX,DEWAYNE
SUB OUT: 5 JOHNSON,JALEN	01:05		
SUB OUT: 13 ALFORD,CAMERON	01:05		
SUB IN: 10 HICKS,GARRETT	01:05		
SUB IN: 30 HOUSTON,BRANDON	01:05		
	00:55	30-32	SUB OUT: HENRY,LENELL
	00:55		SUB OUT: COX,DEWAYNE
	00:55		SUB IN: ELLIS,CHANCELLOR
	00:55		SUB IN: ANDRUS,GERARD
	00:46	30-32	SUB OUT: ELLIS,CHANCELLOR
	00:46		SUB OUT: WILLIAMS,FAITE
	00:46		SUB OUT: ANDRUS,GERARD
	00:46		SUB IN: HENRY,LENELL
	00:46		SUB IN: COX,DEWAYNE
	00:46		SUB IN: SNEED,LEON
SUB OUT: 12 POWELL,BRANDON	00:46		
SUB OUT: 30 HOUSTON,BRANDON	00:46		
SUB IN: 15 WILLIAMS,EJ	00:46		
SUB IN: 24 WILEY,EVAN	00:46		
	00:39	32-32	SUB OUT: HENRY,LENELL
	00:39		SUB OUT: COX,DEWAYNE
	00:39		SUB IN: ELLIS,CHANCELLOR
	00:39		SUB IN: ANDRUS,GERARD

Alabama AM 32, Prairie View 34



**Official Substitutions Log  
Alabama AM vs Prairie View  
Period 2**

**March 02, 2020 at William J. Nicks Building - Prairie View**



VISITORS: Alabama AM	Time	Score	HOME: Prairie View
3 TUCKER,CAMERON			3 ELLIS,CHANCELLOR
5 JOHNSON,JALEN			4 LISTER,ANTIONE
10 HICKS,GARRETT			14 SNEED,LEON
13 ALFORD,CAMERON			15 ANDRUS,GERARD
24 WILEY,EVAN			23 PATTERSON,DEVONTE
	20:00	-	SUB OUT: WILLIAMS,DARIUS
	20:00		SUB IN: LISTER,ANTIONE
SUB OUT: 2 MILLER,BRANDON	20:00		
SUB IN: 5 JOHNSON,JALEN	20:00		
SUB OUT: 15 WILLIAMS,EJ	19:21	32-38	
SUB IN: 13 ALFORD,CAMERON	19:21		
SUB OUT: 13 ALFORD,CAMERON	19:14	32-38	
SUB IN: 00 PARHAM,TJ	19:14		
	16:17	35-42	SUB OUT: ELLIS,CHANCELLOR
	16:17		SUB IN: COX,DEWAYNE
	15:40	35-45	SUB OUT: ANDRUS,GERARD
	15:40		SUB IN: WILLIAMS,FAITE
SUB OUT: 3 TUCKER,CAMERON	15:13	35-45	
SUB OUT: 10 HICKS,GARRETT	15:13		
SUB OUT: 24 WILEY,EVAN	15:13		
SUB IN: 2 MILLER,BRANDON	15:13		
SUB IN: 13 ALFORD,CAMERON	15:13		
SUB IN: 30 HOUSTON,BRANDON	15:13		
	15:08	37-45	SUB OUT: COX,DEWAYNE
	15:08		SUB OUT: SNEED,LEON
	15:08		SUB IN: ELLIS,CHANCELLOR
	15:08		SUB IN: ANDRUS,GERARD
	14:00	37-48	SUB OUT: ELLIS,CHANCELLOR
	14:00		SUB OUT: ANDRUS,GERARD
	14:00		SUB IN: COX,DEWAYNE
	14:00		SUB IN: SNEED,LEON
SUB OUT: 2 MILLER,BRANDON	14:00		
SUB OUT: 30 HOUSTON,BRANDON	14:00		
SUB IN: 3 TUCKER,CAMERON	14:00		
SUB IN: 10 HICKS,GARRETT	14:00		
SUB OUT: 5 JOHNSON,JALEN	13:44	37-48	
SUB IN: 30 HOUSTON,BRANDON	13:44		
SUB OUT: 30 HOUSTON,BRANDON	13:25	37-48	
SUB IN: 15 WILLIAMS,EJ	13:25		
	13:00	37-49	SUB OUT: SNEED,LEON
	13:00		SUB IN: WILLIAMS,DARIUS
SUB OUT: 00 PARHAM,TJ	13:00		
SUB OUT: 13 ALFORD,CAMERON	13:00		
SUB OUT: 15 WILLIAMS,EJ	13:00		
SUB IN: 2 MILLER,BRANDON	13:00		
SUB IN: 5 JOHNSON,JALEN	13:00		
SUB IN: 24 WILEY,EVAN	13:00		
	12:32	37-49	SUB OUT: LISTER,ANTIONE
	12:32		SUB OUT: COX,DEWAYNE
	12:32		SUB IN: ELLIS,CHANCELLOR
	12:32		SUB IN: ANDRUS,GERARD
SUB OUT: 3 TUCKER,CAMERON	12:32		
SUB IN: 13 ALFORD,CAMERON	12:32		
	12:03	37-51	SUB OUT: ELLIS,CHANCELLOR
	12:03		SUB OUT: PATTERSON,DEVONTE
	12:03		SUB IN: COX,DEWAYNE
	12:03		SUB IN: JACKSON,JONATHAN
SUB OUT: 24 WILEY,EVAN	12:03		
SUB IN: 00 PARHAM,TJ	12:03		
	11:05	39-51	SUB OUT: COX,DEWAYNE
	11:05		SUB IN: PATTERSON,DEVONTE
	09:27	41-56	SUB OUT: WILLIAMS,FAITE
	09:27		SUB OUT: JACKSON,JONATHAN
	09:27		SUB IN: SNEED,LEON
SUB OUT: 13 ALFORD,CAMERON	09:27		
SUB IN: 3 TUCKER,CAMERON	09:27		
	09:13	41-56	SUB IN: LISTER,ANTIONE
	07:10	45-60	SUB OUT: WILLIAMS,DARIUS
	07:10		SUB IN: ELLIS,CHANCELLOR
	06:44	47-62	SUB OUT: ELLIS,CHANCELLOR
	06:44		SUB IN: COX,DEWAYNE
	05:26	49-62	SUB OUT: COX,DEWAYNE
	05:26		SUB IN: ELLIS,CHANCELLOR
	05:12	49-62	SUB OUT: ANDRUS,GERARD
	05:12		SUB IN: WILLIAMS,FAITE

VISITORS: Alabama AM	Time	Score	HOME: Prairie View
SUB OUT: 3 TUCKER,CAMERON	05:05	50-62	
SUB IN: 13 ALFORD,CAMERON	05:05		
	04:33	50-62	SUB OUT: ELLIS,CHANCELLOR
	04:33		SUB IN: COX,DEWAYNE
SUB OUT: 00 PARHAM,TJ	04:33		
SUB IN: 12 POWELL,BRANDON	04:33		
	04:19	52-62	SUB OUT: COX,DEWAYNE
	04:19		SUB OUT: WILLIAMS,FAITE
	04:19		SUB IN: ELLIS,CHANCELLOR
	04:19		SUB IN: ANDRUS,GERARD
	03:45	52-65	SUB OUT: ELLIS,CHANCELLOR
	03:45		SUB IN: COX,DEWAYNE
SUB OUT: 2 MILLER,BRANDON	03:45		
SUB OUT: 12 POWELL,BRANDON	03:45		
SUB IN: 00 PARHAM,TJ	03:45		
SUB IN: 3 TUCKER,CAMERON	03:45		
SUB OUT: 13 ALFORD,CAMERON	03:30	54-67	
SUB IN: 2 MILLER,BRANDON	03:30		
	03:04	57-69	SUB OUT: COX,DEWAYNE
	03:04		SUB IN: ELLIS,CHANCELLOR
	02:19	59-71	SUB OUT: ELLIS,CHANCELLOR
	02:19		SUB IN: COX,DEWAYNE
SUB OUT: 00 PARHAM,TJ	02:19		
SUB IN: 1 ELLISON,MASON	02:19		
SUB OUT: 1 ELLISON,MASON	02:17	59-71	
SUB IN: 00 PARHAM,TJ	02:17		
SUB OUT: 5 JOHNSON,JALEN	01:49	62-71	
SUB IN: 12 POWELL,BRANDON	01:49		

Alabama AM 62, Prairie View 73

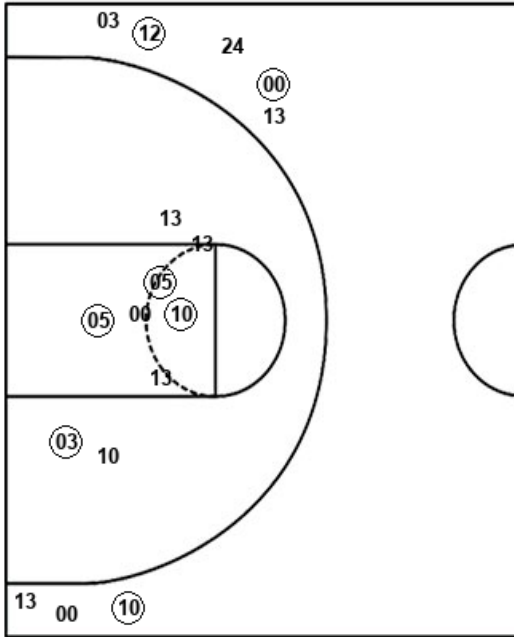
**Official Shot Chart**  
**Alabama AM vs Prairie View**  
**PERIOD 1 Shots**  
 March 02, 2020 at William J. Nicks Building - Prairie View



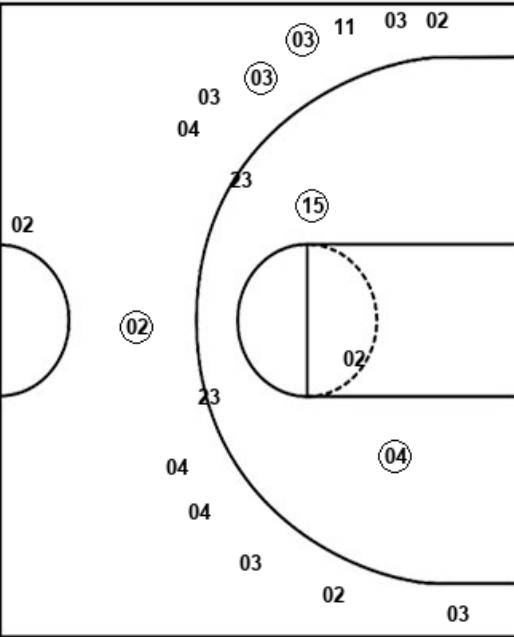
**Prairie View**

**Alabama AM**

Layups  
 (23) (14) (14) (11) 23  
 (02) (15) (15) (02) 23  
 (23)



Layups  
 10 13 (13) 03 (24)  
 (00) (13) 30 13 (15)



Dunks

PVU : Period 1	Made	Att	Pct
Layups	9	11	81.8
Dunks	0	0	0
2PT Field Goals	11	16	68.8
3PT Field Goals	3	14	21.4
<b>Total Field Goals</b>	<b>14</b>	<b>30</b>	<b>46.7</b>

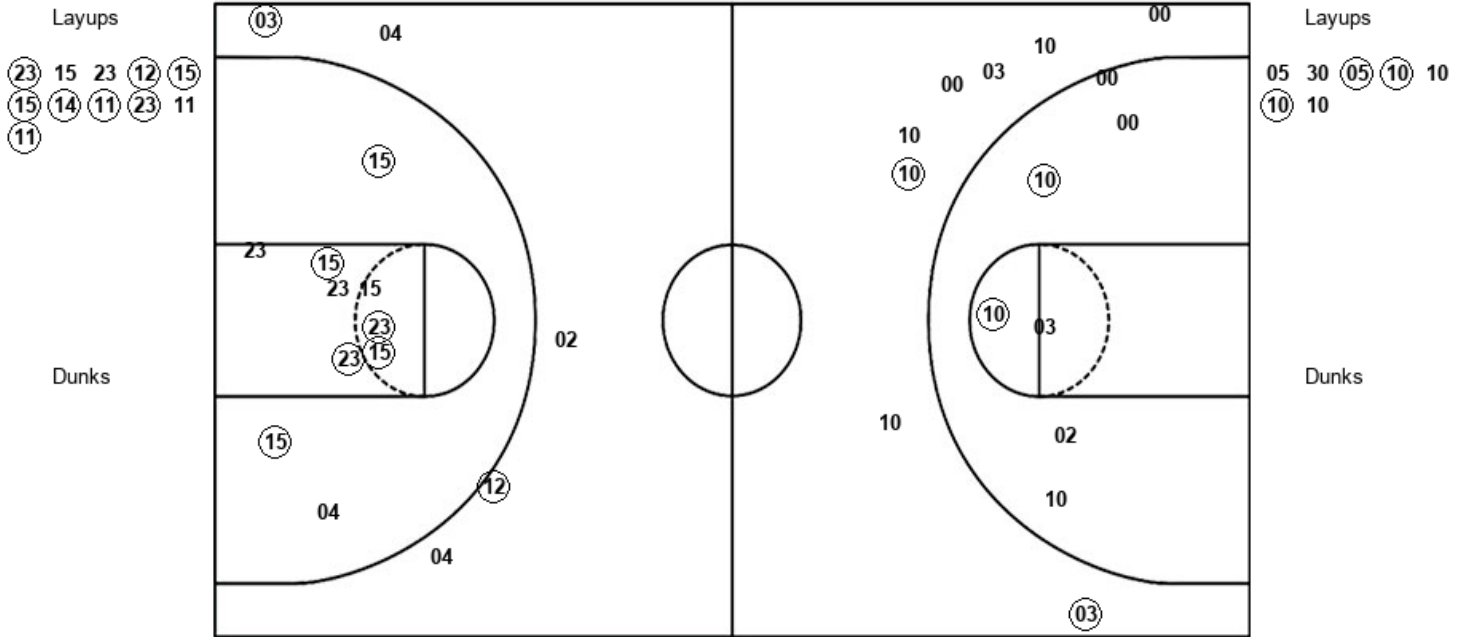
AAM : Period 1	Made	Att	Pct
Layups	5	10	50.0
Dunks	0	0	0
2PT Field Goals	10	20	50.0
3PT Field Goals	2	7	28.6
<b>Total Field Goals</b>	<b>12</b>	<b>27</b>	<b>44.4</b>

**Official Shot Chart**  
**Alabama AM vs Prairie View**  
**PERIOD 2 Shots**  
 March 02, 2020 at William J. Nicks Building - Prairie View



**Prairie View**

**Alabama AM**



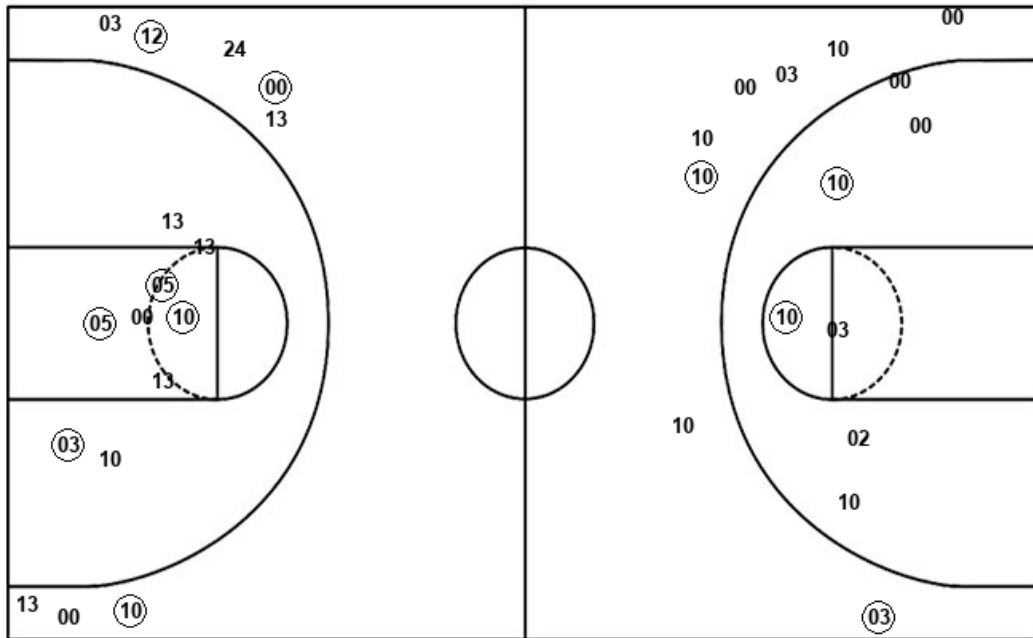
PVU : Period 2	Made	Att	Pct
Layups	8	11	72.7
Dunks	0	0	0
2PT Field Goals	14	21	66.7
3PT Field Goals	2	5	40.0
<b>Total Field Goals</b>	<b>16</b>	<b>26</b>	<b>61.5</b>

AAM : Period 2	Made	Att	Pct
Layups	3	7	42.9
Dunks	0	0	0
2PT Field Goals	5	14	35.7
3PT Field Goals	2	8	25.0
<b>Total Field Goals</b>	<b>7</b>	<b>22</b>	<b>31.8</b>

**Official Shot Chart**  
**Alabama AM vs Prairie View**  
**Alabama AM Team Shots**  
**March 02, 2020 at William J. Nicks Building - Prairie View**



Layups



Layups

- 10 13 (13) 03 (24)
- (00) (13) 30 13 (15)
- 05 30 (05) (10) 10
- (10) 10

Dunks

Dunks

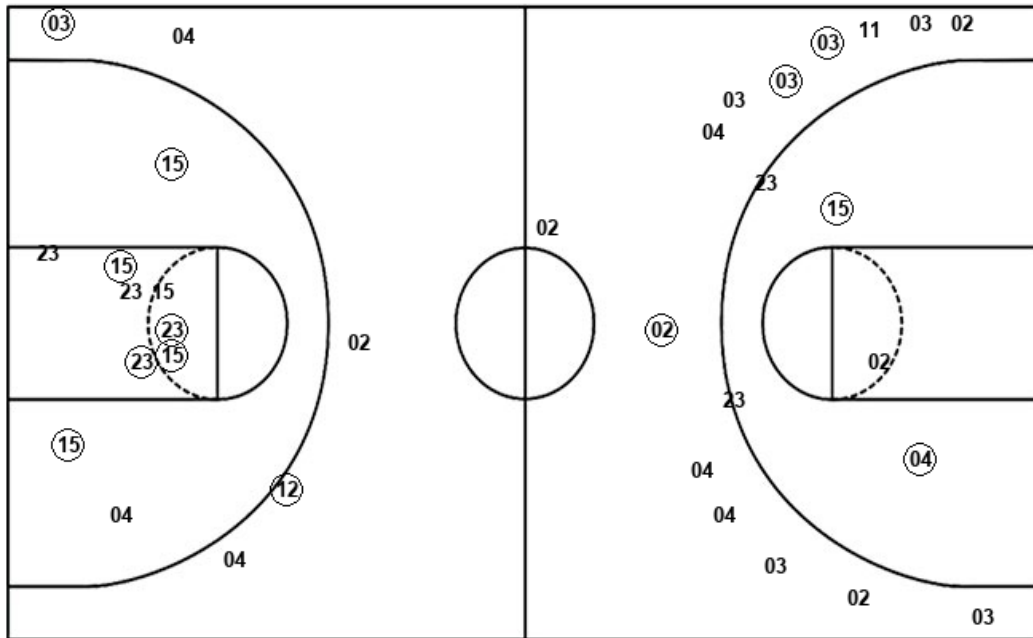
AAM : Period 1	Made	Att	Pct
Layups	5	10	50.0
Dunks	0	0	0
2PT Field Goals	10	20	50.0
3PT Field Goals	2	7	28.6
<b>Total Field Goals</b>	<b>12</b>	<b>27</b>	<b>44.4</b>

AAM : Period 2	Made	Att	Pct
Layups	3	7	42.9
Dunks	0	0	0
2PT Field Goals	5	14	35.7
3PT Field Goals	2	8	25.0
<b>Total Field Goals</b>	<b>7</b>	<b>22</b>	<b>31.8</b>

**Official Shot Chart**  
**Alabama AM vs Prairie View**  
**Prairie View Team Shots**  
**March 02, 2020 at William J. Nicks Building - Prairie View**



Layups



Layups



Dunks

Dunks

PVU : Period 1	Made	Att	Pct
Layups	9	11	81.8
Dunks	0	0	0
2PT Field Goals	11	16	68.8
3PT Field Goals	3	14	21.4
<b>Total Field Goals</b>	<b>14</b>	<b>30</b>	<b>46.7</b>

PVU : Period 2	Made	Att	Pct
Layups	8	11	72.7
Dunks	0	0	0
2PT Field Goals	14	21	66.7
3PT Field Goals	2	5	40.0
<b>Total Field Goals</b>	<b>16</b>	<b>26</b>	<b>61.5</b>