

FINAL SCORE

Alabama St.

58



Prairie View

65



February 29, 2020 • William J. Nicks Building - Prairie View

FINAL STATISTICS

Official Box Score
Alabama St. vs Prairie View
Game Totals -- Final Statistics
February 29, 2020 at William J. Nicks Building - Prairie View



Alabama St. 58

No.	Player	S	Pts	FG	3FG	FT	OR	DR	TR	PF	A	TO	Blk	Stl	Min	+/-
00	HEATH, DJ	G	10	4-8	2-3	0-0	0	1	1	1	3	3	1	1	35	1
05	EWUOSHO, TOBI	G	9	4-9	1-3	0-3	0	4	4	3	2	1	0	1	27	-8
10	ROSS, JACOBY	G	7	2-5	0-1	3-4	0	1	1	3	7	4	0	1	24	3
11	ROGERS, AUSTIN	G	12	5-8	2-4	0-2	0	0	0	1	1	2	1	3	30	-1
35	ROBINSON, TYRESE	F	3	1-7	0-3	1-2	3	12	15	2	0	3	1	0	30	-3
01	DANIELS, LEON	F	6	2-3	2-2	0-0	1	2	3	4	2	3	0	0	16	-9
02	HOLSTON, KEVIN	G	0	0-3	0-0	0-2	0	1	1	1	1	0	0	0	5	-8
04	HAMILTON, JEREMY	G	7	2-3	1-1	2-2	0	0	0	1	1	0	0	0	16	-3
13	FARRAR, AJ	F	0	0-1	0-0	0-0	0	1	1	0	0	2	0	0	3	-2
14	BATTLE, BRANDON	F	2	0-1	0-0	2-2	0	1	1	1	0	0	1	0	6	-4
24	STEWART, KEVION	G	2	1-4	0-2	0-0	0	1	1	1	0	0	0	0	7	-1
TEAM							1	0	1	0		1				
TOTALS			58	21-52	8-19	8-17	5	24	29	18	17	19	4	6	200	

Shooting By Period

Period	FG	FG%	3FG	3FG%	FT	FT%
1st Half	13-27	48%	5-10	50%	4-9	44%
2nd Half	8-25	32%	3-9	33%	4-8	50%
Game	21-52	40.4%	8-19	42.1%	8-17	47.1%

Deadball Rebounds: 6,5
Last FG: 2nd-00:00
Biggest Run: 5-0
Largest lead: By 4 at 1st-14:43
Technical Fouls: None.

Prairie View 65

No.	Player	S	Pts	FG	3FG	FT	OR	DR	TR	PF	A	TO	Blk	Stl	Min	+/-
03	ELLIS, CHANCELLOR	G	5	2-6	1-5	0-0	0	0	0	1	2	0	0	0	21	17
04	LISTER, ANTIONE	G	15	4-9	1-4	6-7	1	1	2	3	0	1	1	1	35	10
14	SNEED, LEON	G	0	0-0	0-0	0-0	0	4	4	1	3	4	0	0	20	-4
15	ANDRUS, GERARD	G	10	5-12	0-0	0-0	3	4	7	3	1	1	0	3	30	1
23	PATTERSON, DEVONTE	F	21	7-16	1-2	6-8	0	8	8	3	1	2	0	0	30	10
02	WILLIAMS, DARIUS	G	2	0-2	0-1	2-2	0	1	1	3	2	0	0	0	10	5
11	COX, DEWAYNE	G	2	1-1	0-0	0-0	1	3	4	4	0	1	0	0	16	-9
12	WILLIAMS, FAITE	G	9	3-12	0-1	3-4	5	6	11	2	8	1	1	3	30	8
35	JACKSON, JONATHAN	F	1	0-2	0-0	1-2	1	0	1	0	0	0	0	1	8	-3
TEAM							0	0	0	0		3				
TOTALS			65	22-60	3-13	18-23	11	27	38	20	17	13	2	8	200	

Shooting By Period

Period	FG	FG%	3FG	3FG%	FT	FT%
1st Half	11-30	37%	2-6	33%	14-17	82%
2nd Half	11-30	37%	1-7	14%	4-6	67%
Game	22-60	36.7%	3-13	23.1%	18-23	78.3%

Deadball Rebounds: 3,2
Last FG: 2nd-00:45
Biggest Run: 8-0
Largest lead: By 10 at 2nd-00:45
Technical Fouls: #02 WILLIAMS (Contact Deadball) @ 1st - 01:14;

Game Notes:

Officials: Bharat Ramnanan, Michael Wallace, Owen Farist

Start Time: 06:23 PM ET

End Time: 09:07 PM ET

Game Duration: 2:43

Conference Game;

Score	1st	2nd	TOT
ASU	35	23	58
PVU	38	27	65

ASU led for 4:34. PVU led for 33:57.

Game was tied for 1:29.

Times tied: 2 Lead Changes: 3

Points from	ASU	PVU
In the Paint	16	28
Off Turns	11	14
2nd Chance	2	13
Fast Break	11	13
Bench	17	14

Official Box Score
Alabama St. vs Prairie View
First Half Statistics Only
February 29, 2020 at William J. Nicks Building - Prairie View



Alabama St. 35

No.	Player	S	Pts	FG	3FG	FT	OR	DR	TR	PF	A	TO	Blk	Stl	Min	+/-
00	HEATH, DJ	G	5	2-3	1-1	0-0	0	1	1	1	3	0	1	1	15	5
05	EWUOSHO, TOBI	G	0	0-1	0-1	0-0	0	0	0	2	1	1	0	0	7	-4
10	ROSS, JACOBY	G	5	1-3	0-0	3-4	0	1	1	1	4	1	0	0	14	3
11	ROGERS, AUSTIN	G	12	5-6	2-2	0-1	0	0	0	1	0	2	0	2	17	-1
35	ROBINSON, TYRESE	F	3	1-4	0-3	1-2	1	6	7	1	0	2	1	0	16	3
01	DANIELS, LEON	F	3	1-1	1-1	0-0	0	0	0	2	0	1	0	0	4	-5
02	HOLSTON, KEVIN	G	0	0-3	0-0	0-2	0	1	1	1	1	0	0	0	5	-8
04	HAMILTON, JEREMY	G	5	2-3	1-1	0-0	0	0	0	0	0	0	0	0	9	0
13	FARRAR, AJ	F	0	0-1	0-0	0-0	0	1	1	0	0	2	0	0	3	-2
14	BATTLE, BRANDON	F	0	0-0	0-0	0-0	0	0	0	0	0	0	1	0	4	-6
24	STEWART, KEVION	G	2	1-2	0-1	0-0	0	1	1	1	0	0	0	0	6	0
	TEAM						0	0	0	0	0	0				
TOTALS			35	13-27	5-10	4-9	1	11	12	10	9	9	3	3	100	

Shooting By Period

Period	FG	FG%	3FG	3FG%	FT	FT%
1st Half	13-27	48%	5-10	50%	4-9	44%
Game	21-52	40.4%	8-19	42.1%	8-17	47.1%

Deadball Rebounds: 6,5
Last FG Half: ASU 2nd-00:00

Prairie View 38

No.	Player	S	Pts	FG	3FG	FT	OR	DR	TR	PF	A	TO	Blk	Stl	Min	+/-
03	ELLIS, CHANCELLOR	G	2	1-2	0-1	0-0	0	0	0	1	1	0	0	0	10	4
04	LISTER, ANTIONE	G	15	4-7	1-3	6-7	1	0	1	2	0	1	0	1	19	3
14	SNEED, LEON	G	0	0-0	0-0	0-0	0	1	1	0	1	2	0	0	9	-3
15	ANDRUS, GERARD	G	2	1-5	0-0	0-0	0	4	4	1	1	1	0	1	15	1
23	PATTERSON, DEVONTE	F	9	2-7	1-1	4-4	0	5	5	2	0	0	0	0	11	1
02	WILLIAMS, DARIUS	G	2	0-1	0-0	2-2	0	1	1	3	0	0	0	0	5	1
11	COX, DEWAYNE	G	0	0-0	0-0	0-0	0	2	2	3	0	0	0	0	7	0
12	WILLIAMS, FAITE	G	7	3-6	0-1	1-2	4	2	6	0	4	1	0	2	17	6
35	JACKSON, JONATHAN	F	1	0-2	0-0	1-2	1	0	1	0	0	0	0	1	6	2
	TEAM						0	0	0	0	1					
TOTALS			38	11-30	2-6	14-17	6	15	21	12	7	6	0	5	100	

Shooting By Period

Period	FG	FG%	3FG	3FG%	FT	FT%
1st Half	11-30	37%	2-6	33%	14-17	82%
Game	22-60	36.7%	3-13	23.1%	18-23	78.3%

Deadball Rebounds: 3,2
Last FG Half: PVU 2nd-00:45

Game Notes:

Officials: Bharat Ramnanan, Michael Wallace, Owen Farist

Start Time: 06:23 PM ET
 End Time: 09:07 PM ET
 Game Duration: 2:43
 Conference Game;

Score	1st	2nd	TOT
ASU	35	23	58
PVU	38	27	65

Points from (This Period)	ASU	PVU
In the Paint	8	16
Off Turns	6	6
2nd Chance	0	5
Fast Break	5	8
Bench	10	10

**Official Play-By-Play
Alabama St. vs Prairie View
First Half**

February 29, 2020 at William J. Nicks Building - Prairie View



Period 1

Starters:

Alabama St.: 00 HEATH,DJ (G); 5 EWUOSHO,TOBI (G); 10 ROSS,JACOBY (G); 11 ROGERS,AUSTIN (G); 35 ROBINSON,TYRESE (F);

Prairie View: 3 ELLIS,CHANCELLOR (G); 4 LISTER,ANTIONE (G); 14 SNEED,LEON (G); 15 ANDRUS,GERARD (G); 23 PATTERSON,DEVONTE (F);

Time	VISITORS: Alabama St.	Score	Margin	HOME: Prairie View
19:46				MISSED LAYUP by ANDRUS, GERARD
19:41	REBOUND (DEF) by ROBINSON, TYRESE			
19:22	MISSED JUMPER by HEATH, DJ			
19:18				REBOUND (DEF) by ANDRUS, GERARD
19:09				TURNOVER (BADPASS) by SNEED, LEON
19:09	STEAL by ROGERS, AUSTIN			
19:01	GOOD! LAYUP by ROGERS, AUSTIN [FB/PNT]	0-2	V 2	
19:01	ASSIST by EWUOSHO, TOBI			
18:43				MISSED JUMPER by PATTERSON, DEVONTE
18:40	REBOUND (DEF) by ROBINSON, TYRESE			
18:30	GOOD! JUMPER by ROSS, JACOBY	0-4	V 4	
18:11		3-4	V 1	GOOD! 3PTR by PATTERSON, DEVONTE
18:11				ASSIST by SNEED, LEON
17:52	FOUL (OFF) by ROGERS, AUSTIN			
17:52	TURNOVER (OFFENSIVE) by ROGERS, AUSTIN			
17:32	FOUL (PERSONAL) by HEATH, DJ			
17:32		4-4	T	GOOD! FT by PATTERSON, DEVONTE
17:32		5-4	H 1	GOOD! FT by PATTERSON, DEVONTE
17:17	GOOD! JUMPER by ROBINSON, TYRESE [PNT]	5-6	V 1	
17:17	ASSIST by HEATH, DJ			
17:09				TURNOVER (LOSTBALL) by SNEED, LEON
17:09	STEAL by ROGERS, AUSTIN			
16:58	GOOD! LAYUP by ROGERS, AUSTIN [PNT]	5-8	V 3	
16:46				SUB OUT: SNEED, LEON
16:46				SUB IN: WILLIAMS, FAITE
16:25				MISSED LAYUP by PATTERSON, DEVONTE
16:21				REBOUND (OFF) by WILLIAMS, FAITE
16:19				MISSED 3PTR by ELLIS, CHANCELLOR
16:16				REBOUND (OFF) by WILLIAMS, FAITE
16:15				MISSED JUMPER by WILLIAMS, FAITE
16:15	BLOCK by HEATH, DJ			
16:07	REBOUND (DEF) by ROBINSON, TYRESE			
16:05	TURNOVER (TRAVEL) by EWUOSHO, TOBI			
16:01				MISSED LAYUP by ANDRUS, GERARD
16:01	REBOUND (DEF) by ROBINSON, TYRESE			
15:57	MISSED LAYUP by ROSS, JACOBY			
15:53				REBOUND (DEF) by PATTERSON, DEVONTE
15:39				MISSED JUMPER by ANDRUS, GERARD
15:35				REBOUND (OFF) by LISTER, ANTIONE
15:34		7-8	V 1	GOOD! LAYUP by LISTER, ANTIONE [PNT]
15:13	GOOD! 3PTR by HEATH, DJ	7-11	V 4	
15:13	ASSIST by ROSS, JACOBY			
15:02		9-11	V 2	GOOD! LAYUP by WILLIAMS, FAITE [PNT]
14:43	GOOD! LAYUP by ROGERS, AUSTIN [PNT]	9-13	V 4	
14:43	ASSIST by ROSS, JACOBY			
14:43				FOUL (PERSONAL) by ELLIS, CHANCELLOR
14:43	MISSED FT by ROGERS, AUSTIN			
14:43				REBOUND (DEF) by ANDRUS, GERARD
14:32				MISSED 3PTR by LISTER, ANTIONE
14:28				REBOUND (OFF) by WILLIAMS, FAITE
14:26		11-13	V 2	GOOD! LAYUP by WILLIAMS, FAITE [PNT]
14:21	SUB OUT: HEATH, DJ			
14:21	SUB OUT: ROSS, JACOBY			
14:21	SUB IN: DANIELS, LEON			
14:21	SUB IN: HOLSTON, KEVIN			
14:20	TURNOVER (TRAVEL) by DANIELS, LEON			
14:12		13-13	T	GOOD! JUMPER by PATTERSON, DEVONTE
14:12				ASSIST by WILLIAMS, FAITE
13:46	MISSED LAYUP by HOLSTON, KEVIN			
13:42				REBOUND (DEF) by PATTERSON, DEVONTE
13:41				TURNOVER (LOSTBALL) by LISTER, ANTIONE
13:41				SUB OUT: ELLIS, CHANCELLOR
13:41				SUB OUT: ANDRUS, GERARD
13:41				SUB IN: COX, DEWAYNE
13:41				SUB IN: SNEED, LEON
13:41	SUB OUT: ROBINSON, TYRESE			
13:41	SUB IN: BATTLE, BRANDON			
13:41	MISSED 3PTR by EWUOSHO, TOBI			
13:41				REBOUND (DEF) by PATTERSON, DEVONTE

Time	VISITORS: Alabama St.	Score	Margin	HOME: Prairie View
13:41	FOUL (PERSONAL) by EWUOSHO, TOBI			
13:41				MISSED FT by LISTER, ANTIONE
13:41				REBOUND (OFF) by TEAM
13:41		14-13	H 1	GOOD! FT by LISTER, ANTIONE [FB]
13:41		15-13	H 2	GOOD! FT by LISTER, ANTIONE [FB]
13:33	SUB OUT: EWUOSHO, TOBI			
13:33	SUB OUT: ROGERS, AUSTIN			
13:33	SUB IN: HAMILTON, JEREMY			
13:33	SUB IN: FARRAR, AJ			
13:33	MISSED JUMPER by FARRAR, AJ			
13:33				REBOUND (DEF) by PATTERSON, DEVONTE
13:33				MISSED JUMPER by PATTERSON, DEVONTE
13:33	BLOCK by BATTLE, BRANDON			
13:23	REBOUND (DEF) by TEAM			
13:18				FOUL (PERSONAL) by COX, DEWAYNE
13:18				FOUL (PERSONAL) by LISTER, ANTIONE
13:09	MISSED JUMPER by HOLSTON, KEVIN			
13:06				REBOUND (DEF) by PATTERSON, DEVONTE
12:51	FOUL (PERSONAL) by DANIELS, LEON			
12:51		16-13	H 3	GOOD! FT by LISTER, ANTIONE
12:51		17-13	H 4	GOOD! FT by LISTER, ANTIONE
12:51	FOUL (PERSONAL) by DANIELS, LEON			
12:42	SUB OUT: DANIELS, LEON			
12:42	SUB IN: STEWART, KEVION			
12:41	TURNOVER (LOSTBALL) by FARRAR, AJ			
12:41				STEAL by LISTER, ANTIONE
12:34				MISSED JUMPER by PATTERSON, DEVONTE
12:30	REBOUND (DEF) by FARRAR, AJ			
12:23				FOUL (PERSONAL) by PATTERSON, DEVONTE
12:17	TURNOVER (LOSTBALL) by FARRAR, AJ			
12:17				STEAL by WILLIAMS, FAITE
12:17				FOUL (PERSONAL) by PATTERSON, DEVONTE
11:56				TURNOVER (SHOTCLOCK) by TEAM
11:48				FOUL (PERSONAL) by COX, DEWAYNE
11:48				SUB OUT: LISTER, ANTIONE
11:48				SUB OUT: SNEED, LEON
11:48				SUB IN: WILLIAMS, DARIUS
11:48				SUB IN: ANDRUS, GERARD
11:48	SUB OUT: BATTLE, BRANDON			
11:48	SUB IN: ROBINSON, TYRESE			
11:48	MISSED JUMPER by HAMILTON, JEREMY			
11:48	REBOUND (OFF) by ROBINSON, TYRESE			
11:48				FOUL (PERSONAL) by WILLIAMS, DARIUS
11:48				SUB OUT: COX, DEWAYNE
11:48				SUB IN: SNEED, LEON
11:47	TURNOVER (LOSTBALL) by ROBINSON, TYRESE			
11:41				SUB OUT: SNEED, LEON
11:41				SUB IN: LISTER, ANTIONE
11:41	SUB OUT: HOLSTON, KEVIN			
11:41	SUB IN: HEATH, DJ			
11:40				MISSED JUMPER by LISTER, ANTIONE
11:35	REBOUND (DEF) by STEWART, KEVION			
11:19	MISSED 3PTR by STEWART, KEVION			
11:15				REBOUND (DEF) by WILLIAMS, DARIUS
10:56				MISSED JUMPER by WILLIAMS, DARIUS
10:51	REBOUND (DEF) by HEATH, DJ			
10:50	MISSED 3PTR by ROBINSON, TYRESE			
10:39				REBOUND (DEF) by WILLIAMS, FAITE
10:35				TURNOVER (LOSTBALL) by WILLIAMS, FAITE
10:35	STEAL by HEATH, DJ			
10:35	SUB OUT: HAMILTON, JEREMY			
10:35	SUB OUT: FARRAR, AJ			
10:35	SUB IN: ROSS, JACOBY			
10:35	SUB IN: ROGERS, AUSTIN			
10:35	GOOD! JUMPER by STEWART, KEVION	17-15	H 2	
10:35	ASSIST by ROSS, JACOBY			
10:33				SUB OUT: PATTERSON, DEVONTE
10:33				SUB IN: JACKSON, JONATHAN
10:26	FOUL (PERSONAL) by ROSS, JACOBY			
10:26		18-15	H 3	GOOD! FT by LISTER, ANTIONE
10:26		19-15	H 4	GOOD! FT by LISTER, ANTIONE
09:58				FOUL (PERSONAL) by WILLIAMS, DARIUS
09:58	MISSED FT by ROBINSON, TYRESE			
09:58	REBOUND (OFF) by TEAM			
09:58	GOOD! FT by ROBINSON, TYRESE	19-16	H 3	
09:28				MISSED 3PTR by WILLIAMS, FAITE
09:20				REBOUND (OFF) by JACKSON, JONATHAN
09:18	FOUL (PERSONAL) by ROBINSON, TYRESE			
09:18				MISSED FT by JACKSON, JONATHAN
09:18				REBOUND (OFF) by TEAM

Time	VISITORS: Alabama St.	Score	Margin	HOME: Prairie View
09:18		20-16	H 4	GOOD! FT by JACKSON, JONATHAN
09:11	TURNOVER (BADPASS) by ROGERS, AUSTIN			
09:11				STEAL by ANDRUS, GERARD
09:01				FOUL (OFF) by ANDRUS, GERARD
09:01				TURNOVER (OFFENSIVE) by ANDRUS, GERARD
07:37				SUB OUT: WILLIAMS, DARIUS
07:37				SUB OUT: ANDRUS, GERARD
07:37				SUB IN: ELLIS, CHANCELLOR
07:37				SUB IN: COX, DEWAYNE
07:37	MISSED 3PTR by ROBINSON, TYRESE			
07:37				REBOUND (DEF) by ANDRUS, GERARD
07:36		22-16	H 6	GOOD! JUMPER by ELLIS, CHANCELLOR
07:36				ASSIST by WILLIAMS, FAITE
07:24	GOOD! 3PTR by ROGERS, AUSTIN	22-19	H 3	
07:24	ASSIST by HEATH, DJ			
07:03				SUB OUT: JACKSON, JONATHAN
07:03				SUB IN: PATTERSON, DEVONTE
07:01				MISSED JUMPER by PATTERSON, DEVONTE
07:01	BLOCK by ROBINSON, TYRESE			
06:52	REBOUND (DEF) by TEAM			
06:52	SUB OUT: STEWART, KEVION			
06:52	SUB IN: EWUOSHO, TOBI			
06:52	TURNOVER (LOSTBALL) by ROSS, JACOBY			
06:52				STEAL by WILLIAMS, FAITE
06:51	FOUL (PERSONAL) by EWUOSHO, TOBI			
06:43		23-19	H 4	GOOD! FT by PATTERSON, DEVONTE [FB]
06:43		24-19	H 5	GOOD! FT by PATTERSON, DEVONTE [FB]
06:42				SUB OUT: ELLIS, CHANCELLOR
06:42				SUB IN: SNEED, LEON
06:26	SUB OUT: EWUOSHO, TOBI			
06:26	SUB IN: HAMILTON, JEREMY			
06:25	GOOD! JUMPER by HAMILTON, JEREMY	24-21	H 3	
06:16		26-21	H 5	GOOD! JUMPER by WILLIAMS, FAITE [PNT]
06:07	GOOD! 3PTR by HAMILTON, JEREMY	26-24	H 2	
05:35	MISSED JUMPER by ROGERS, AUSTIN			
05:35				MISSED 3PTR by LISTER, ANTIONE
05:35	REBOUND (DEF) by ROSS, JACOBY			
05:30				REBOUND (DEF) by COX, DEWAYNE
05:03				SUB OUT: PATTERSON, DEVONTE
04:58				SUB IN: ANDRUS, GERARD
04:56		28-24	H 4	GOOD! LAYUP by ANDRUS, GERARD [PNT]
04:56				ASSIST by WILLIAMS, FAITE
04:48	GOOD! JUMPER by HEATH, DJ	28-26	H 2	
04:48	ASSIST by ROSS, JACOBY			
04:38	SUB OUT: ROSS, JACOBY			
04:38	SUB IN: DANIELS, LEON			
04:35		30-26	H 4	GOOD! LAYUP by LISTER, ANTIONE [PNT]
04:35				ASSIST by WILLIAMS, FAITE
04:09	GOOD! 3PTR by DANIELS, LEON	30-29	H 1	
04:09	ASSIST by HEATH, DJ			
03:56				MISSED JUMPER by ANDRUS, GERARD
03:53	REBOUND (DEF) by ROBINSON, TYRESE			
03:28				
03:28	MISSED 3PTR by ROBINSON, TYRESE			
03:28				REBOUND (DEF) by COX, DEWAYNE
03:01				SUB OUT: COX, DEWAYNE
03:01				SUB OUT: SNEED, LEON
03:01				SUB IN: ELLIS, CHANCELLOR
03:01				SUB IN: JACKSON, JONATHAN
02:59				MISSED LAYUP by JACKSON, JONATHAN
02:56				REBOUND (OFF) by WILLIAMS, FAITE
02:55				MISSED LAYUP by WILLIAMS, FAITE
02:46	REBOUND (DEF) by TEAM			
02:29	SUB OUT: HEATH, DJ			
02:29	SUB OUT: DANIELS, LEON			
02:29	SUB OUT: ROBINSON, TYRESE			
02:29	SUB IN: HOLSTON, KEVIN			
02:29	SUB IN: ROSS, JACOBY			
02:29	SUB IN: BATTLE, BRANDON			
02:29	MISSED JUMPER by ROSS, JACOBY			
02:29				REBOUND (DEF) by ANDRUS, GERARD
02:24		33-29	H 4	GOOD! 3PTR by LISTER, ANTIONE [FB]
02:24				ASSIST by ANDRUS, GERARD
02:11	GOOD! 3PTR by ROGERS, AUSTIN	33-32	H 1	
02:11	ASSIST by HOLSTON, KEVIN			
02:07	TIMEOUT 30SEC			
02:07				SUB OUT: ELLIS, CHANCELLOR
02:07				SUB IN: COX, DEWAYNE
01:49				SUB OUT: COX, DEWAYNE
01:49				SUB IN: ELLIS, CHANCELLOR

Time	VISITORS: Alabama St.	Score	Margin	HOME: Prairie View
01:41		35-32	H 3	GOOD! LAYUP by LISTER, ANTIONE
01:41				ASSIST by ELLIS, CHANCELLOR
01:29				FOUL (PERSONAL) by LISTER, ANTIONE
01:29	MISSED FT by HOLSTON, KEVIN			
01:29	REBOUND (OFF) by TEAM			
01:29	MISSED FT by HOLSTON, KEVIN			
01:29				REBOUND (DEF) by WILLIAMS, FAITE
01:16				SUB OUT: LISTER, ANTIONE
01:16				SUB IN: WILLIAMS, DARIUS
01:14	FOUL (PERSONAL) by HOLSTON, KEVIN			
01:14		36-32	H 4	GOOD! FT by WILLIAMS, DARIUS
01:14		37-32	H 5	GOOD! FT by WILLIAMS, DARIUS
01:14				FOUL (TECH) by WILLIAMS, DARIUS
01:14	GOOD! FT by ROSS, JACOBY [FB]	37-33	H 4	
01:14	GOOD! FT by ROSS, JACOBY [FB]	37-34	H 3	
00:50	SUB OUT: BATTLE, BRANDON			
00:50	SUB IN: ROBINSON, TYRESE			
00:48	TURNOVER (BADPASS) by ROBINSON, TYRESE			
00:48				STEAL by JACKSON, JONATHAN
00:29				SUB OUT: ELLIS, CHANCELLOR
00:29				SUB IN: LISTER, ANTIONE
00:25				MISSED LAYUP by JACKSON, JONATHAN
00:20	REBOUND (DEF) by HOLSTON, KEVIN			
00:18				SUB OUT: WILLIAMS, DARIUS
00:18				SUB IN: COX, DEWAYNE
00:18				FOUL (PERSONAL) by COX, DEWAYNE
00:18	MISSED FT by ROSS, JACOBY			
00:18	REBOUND (OFF) by TEAM			
00:18	GOOD! FT by ROSS, JACOBY [FB]	37-35	H 2	
00:18				SUB OUT: COX, DEWAYNE
00:18				SUB OUT: JACKSON, JONATHAN
00:18				SUB IN: WILLIAMS, DARIUS
00:18				SUB IN: ELLIS, CHANCELLOR
00:12	SUB OUT: ROSS, JACOBY			
00:12	SUB IN: STEWART, KEVION			
00:12	FOUL (PERSONAL) by STEWART, KEVION			
00:12		38-35	H 3	GOOD! FT by WILLIAMS, FAITE [FB]
00:12				MISSED FT by WILLIAMS, FAITE
00:12	REBOUND (DEF) by ROBINSON, TYRESE			
00:06				SUB OUT: LISTER, ANTIONE
00:06				SUB IN: SNEED, LEON
00:06	MISSED JUMPER by HOLSTON, KEVIN			
00:06				REBOUND (DEF) by SNEED, LEON

Alabama St. 35, Prairie View 38

Points from (This Period)	ASU	PVU
In the Paint	8	16
Off Turns	6	6
2nd Chance	0	5
Fast Break	5	8
Bench	10	10

Official Box Score
Alabama St. vs Prairie View
Second Half Statistics Only
February 29, 2020 at William J. Nicks Building - Prairie View



Alabama St. 23

No.	Player	S	Pts	FG	3FG	FT	OR	DR	TR	PF	A	TO	Blk	Stl	Min	+/-
00	HEATH, DJ	G	5	2-5	1-2	0-0	0	0	0	0	0	3	0	0	20	-4
05	EWJOSHO, TOBI	G	9	4-8	1-2	0-3	0	4	4	1	1	0	0	1	20	-4
10	ROSS, JACOBY	G	2	1-2	0-1	0-0	0	0	0	2	3	3	0	1	10	0
11	ROGERS, AUSTIN	G	0	0-2	0-2	0-1	0	0	0	0	1	0	1	1	13	0
35	ROBINSON, TYRESE	F	0	0-3	0-0	0-0	2	6	8	1	0	1	0	0	14	-6
01	DANIELS, LEON	F	3	1-2	1-1	0-0	1	2	3	2	2	2	0	0	12	-4
02	HOLSTON, KEVIN	G	0	0-0	0-0	0-0	0	0	0	0	0	0	0	0	0	0
04	HAMILTON, JEREMY	G	2	0-0	0-0	2-2	0	0	0	1	1	0	0	0	7	-3
13	FARRAR, AJ	F	0	0-0	0-0	0-0	0	0	0	0	0	0	0	0	0	0
14	BATTLE, BRANDON	F	2	0-1	0-0	2-2	0	1	1	1	0	0	0	0	3	2
24	STEWART, KEVION	G	0	0-2	0-1	0-0	0	0	0	0	0	0	0	0	1	-1
TEAM							1	0	1	0		1				
TOTALS			23	8-25	3-9	4-8	4	13	17	8	8	10	1	3	100	

Shooting By Period

Period	FG	FG%	3FG	3FG%	FT	FT%
2nd Half	8-25	32%	3-9	33%	4-8	50%
Game	21-52	40.4%	8-19	42.1%	8-17	47.1%

Deadball Rebounds: 6,5
Last FG Half: ASU -

Prairie View 27

No.	Player	S	Pts	FG	3FG	FT	OR	DR	TR	PF	A	TO	Blk	Stl	Min	+/-
03	ELLIS, CHANCELLOR	G	3	1-4	1-4	0-0	0	0	0	0	1	0	0	0	11	13
04	LISTER, ANTIONE	G	0	0-2	0-1	0-0	0	1	1	1	0	0	1	0	16	7
14	SNEED, LEON	G	0	0-0	0-0	0-0	0	3	3	1	2	2	0	0	11	-1
15	ANDRUS, GERARD	G	8	4-7	0-0	0-0	3	0	3	2	0	0	0	2	15	0
23	PATTERSON, DEVONTE	F	12	5-9	0-1	2-4	0	3	3	1	1	2	0	0	19	9
02	WILLIAMS, DARIUS	G	0	0-1	0-1	0-0	0	0	0	0	2	0	0	0	5	4
11	COX, DEWAYNE	G	2	1-1	0-0	0-0	1	1	2	1	0	1	0	0	9	-9
12	WILLIAMS, FAITE	G	2	0-6	0-0	2-2	1	4	5	2	4	0	1	1	14	2
35	JACKSON, JONATHAN	F	0	0-0	0-0	0-0	0	0	0	0	0	0	0	0	1	-5
TEAM							0	0	0	0		2				
TOTALS			27	11-30	1-7	4-6	5	12	17	8	10	7	2	3	100	

Shooting By Period

Period	FG	FG%	3FG	3FG%	FT	FT%
2nd Half	11-30	37%	1-7	14%	4-6	67%
Game	22-60	36.7%	3-13	23.1%	18-23	78.3%

Deadball Rebounds: 3,2
Last FG Half: PVU -

Game Notes:

Officials: Bharat Ramnanan, Michael Wallace, Owen Farist

Start Time: 06:23 PM ET
 End Time: 09:07 PM ET
 Game Duration: 2:43
 Conference Game;

Score	1st	2nd	TOT
ASU	35	23	58
PVU	38	27	65

Points from (This Period)	ASU	PVU
In the Paint	8	12
Off Turns	5	8
2nd Chance	2	8
Fast Break	6	5
Bench	7	4

Official Play-By-Play
Alabama St. vs Prairie View
Second Half
February 29, 2020 at William J. Nicks Building - Prairie View



Period 2

Starters:

Alabama St.: 00 HEATH,DJ (G); 5 EWUOSHO,TOBI (G); 10 ROSS,JACOBY (G); 11 ROGERS,AUSTIN (G); 35 ROBINSON,TYRESE (F);

Prairie View: 3 ELLIS,CHANCELLOR (G); 4 LISTER,ANTIONE (G); 14 SNEED,LEON (G); 15 ANDRUS,GERARD (G); 23 PATTERSON,DEVONTE (F);

Time	VISITORS: Alabama St.	Score	Margin	HOME: Prairie View
20:00				SUB OUT: WILLIAMS, DARIUS
20:00				SUB OUT: WILLIAMS, FAITE
20:00				SUB IN: LISTER, ANTIONE
20:00				SUB IN: PATTERSON, DEVONTE
20:00	SUB OUT: HOLSTON, KEVIN			
20:00	SUB OUT: HAMILTON, JEREMY			
20:00	SUB OUT: STEWART, KEVION			
20:00	SUB IN: HEATH, DJ			
20:00	SUB IN: EWUOSHO, TOBI			
20:00	SUB IN: ROSS, JACOBY			
19:50		40-35	H 5	GOOD! JUMPER by PATTERSON, DEVONTE
19:50				ASSIST by SNEED, LEON
19:29				FOUL (PERSONAL) by LISTER, ANTIONE
19:26	TURNOVER (LOSTBALL) by HEATH, DJ			
19:17		42-35	H 7	GOOD! JUMPER by ANDRUS, GERARD
19:17				ASSIST by ELLIS, CHANCELLOR
18:59	MISSED JUMPER by HEATH, DJ			
18:56	REBOUND (OFF) by ROBINSON, TYRESE			
18:54	MISSED LAYUP by ROBINSON, TYRESE			
18:51	REBOUND (OFF) by ROBINSON, TYRESE			
18:49	TURNOVER (LOSTBALL) by ROBINSON, TYRESE			
18:49				STEAL by ANDRUS, GERARD
18:43				FOUL (OFF) by PATTERSON, DEVONTE
18:43				TURNOVER (OFFENSIVE) by PATTERSON, DEVONTE
18:37				SUB OUT: ELLIS, CHANCELLOR
18:37				SUB IN: COX, DEWAYNE
18:27	MISSED JUMPER by EWUOSHO, TOBI			
18:23				REBOUND (DEF) by PATTERSON, DEVONTE
18:22				MISSED 3PTR by LISTER, ANTIONE
18:17	REBOUND (DEF) by TEAM			
17:59	GOOD! JUMPER by ROSS, JACOBY	42-37	H 5	
17:59	ASSIST by ROGERS, AUSTIN			
17:45				TURNOVER (TRAVEL) by PATTERSON, DEVONTE
17:26	GOOD! 3PTR by EWUOSHO, TOBI	42-40	H 2	
17:26	ASSIST by ROSS, JACOBY			
17:08				TURNOVER (LOSTBALL) by COX, DEWAYNE
17:08	STEAL by ROGERS, AUSTIN			
17:00	MISSED 3PTR by ROGERS, AUSTIN			
16:57				REBOUND (DEF) by SNEED, LEON
16:44				MISSED 3PTR by PATTERSON, DEVONTE
16:40	REBOUND (DEF) by EWUOSHO, TOBI			
16:17	TURNOVER (BADPASS) by ROSS, JACOBY			
16:08				SUB OUT: COX, DEWAYNE
16:08				SUB IN: ELLIS, CHANCELLOR
16:06				MISSED 3PTR by ELLIS, CHANCELLOR
16:03	REBOUND (DEF) by EWUOSHO, TOBI			
15:57				FOUL (PERSONAL) by SNEED, LEON
15:57				
15:57	MISSED FT by EWUOSHO, TOBI			
15:57	REBOUND (OFF) by TEAM			
15:57	MISSED FT by EWUOSHO, TOBI			
15:57				REBOUND (DEF) by SNEED, LEON
15:57				TURNOVER (LOSTBALL) by SNEED, LEON
15:57	STEAL by EWUOSHO, TOBI			
15:50	MISSED 3PTR by ROSS, JACOBY			
15:46				REBOUND (DEF) by SNEED, LEON
15:44				TURNOVER (LOSTBALL) by SNEED, LEON
15:44	STEAL by ROSS, JACOBY			
15:21	MISSED JUMPER by EWUOSHO, TOBI			
15:21				BLOCK by LISTER, ANTIONE
15:12				REBOUND (DEF) by TEAM
15:11				SUB OUT: SNEED, LEON
15:11				SUB IN: COX, DEWAYNE
15:10				SUB OUT: COX, DEWAYNE
15:10				SUB IN: WILLIAMS, FAITE
14:55				MISSED JUMPER by WILLIAMS, FAITE
14:55	BLOCK by ROGERS, AUSTIN			
14:48				REBOUND (OFF) by WILLIAMS, FAITE
14:45		44-40	H 4	GOOD! JUMPER by PATTERSON, DEVONTE
14:45				ASSIST by WILLIAMS, FAITE

Time	VISITORS: Alabama St.	Score	Margin	HOME: Prairie View
14:29				SUB OUT: ELLIS, CHANCELLOR
14:29				SUB IN: COX, DEWAYNE
14:23	MISSED 3PTR by ROGERS, AUSTIN			
14:18				REBOUND (DEF) by WILLIAMS, FAITE
14:08				MISSED JUMPER by LISTER, ANTIONE
14:05	REBOUND (DEF) by EWUOSHO, TOBI			
14:01	SUB OUT: ROBINSON, TYRESE			
14:01	SUB IN: BATTLE, BRANDON			
14:01				FOUL (PERSONAL) by ANDRUS, GERARD
14:01	GOOD! FT by BATTLE, BRANDON [FB]	44-41	H 3	
14:01	GOOD! FT by BATTLE, BRANDON [FB]	44-42	H 2	
14:00				SUB OUT: COX, DEWAYNE
14:00				SUB IN: ELLIS, CHANCELLOR
14:00	SUB OUT: ROSS, JACOBY			
14:00	SUB OUT: ROGERS, AUSTIN			
14:00	SUB IN: DANIELS, LEON			
14:00	SUB IN: HAMILTON, JEREMY			
13:49	FOUL (PERSONAL) by BATTLE, BRANDON			
13:47	FOUL (PERSONAL) by HAMILTON, JEREMY			
13:34				MISSED JUMPER by PATTERSON, DEVONTE
13:31				REBOUND (OFF) by ANDRUS, GERARD
13:30		46-42	H 4	GOOD! LAYUP by ANDRUS, GERARD [PNT]
13:25	MISSED JUMPER by BATTLE, BRANDON			
13:25				BLOCK by WILLIAMS, FAITE
13:18	REBOUND (OFF) by TEAM			
13:12	MISSED JUMPER by EWUOSHO, TOBI			
13:05				REBOUND (DEF) by LISTER, ANTIONE
12:56				MISSED JUMPER by ANDRUS, GERARD
12:52	REBOUND (DEF) by BATTLE, BRANDON			
12:47				FOUL (PERSONAL) by WILLIAMS, FAITE
12:35	MISSED 3PTR by HEATH, DJ			
12:32	REBOUND (OFF) by TEAM			
12:31	GOOD! LAYUP by HEATH, DJ [PNT]	46-44	H 2	
12:31	ASSIST by HAMILTON, JEREMY			
12:12				MISSED LAYUP by PATTERSON, DEVONTE
12:06	REBOUND (DEF) by TEAM			
12:06				SUB OUT: ELLIS, CHANCELLOR
12:06				SUB IN: COX, DEWAYNE
11:49	MISSED LAYUP by HEATH, DJ			
11:45	REBOUND (OFF) by DANIELS, LEON			
11:44	TURNOVER (LOSTBALL) by DANIELS, LEON			
11:44				
11:27				SUB OUT: COX, DEWAYNE
11:27				SUB IN: ELLIS, CHANCELLOR
11:18				MISSED JUMPER by ANDRUS, GERARD
11:15	REBOUND (DEF) by DANIELS, LEON			
11:14	FOUL (OFF) by DANIELS, LEON			
11:14	TURNOVER (OFFENSIVE) by DANIELS, LEON			
11:14				SUB OUT: ANDRUS, GERARD
11:14				SUB IN: WILLIAMS, DARIUS
11:14	SUB OUT: BATTLE, BRANDON			
11:14	SUB IN: ROBINSON, TYRESE			
10:50		48-44	H 4	GOOD! JUMPER by PATTERSON, DEVONTE [PNT]
10:50				ASSIST by WILLIAMS, DARIUS
10:39	MISSED JUMPER by ROBINSON, TYRESE			
10:35				REBOUND (DEF) by WILLIAMS, FAITE
10:31		51-44	H 7	GOOD! 3PTR by ELLIS, CHANCELLOR [FB]
10:31				ASSIST by WILLIAMS, DARIUS
10:20	TIMEOUT 30SEC			
10:19				SUB OUT: ELLIS, CHANCELLOR
10:19				SUB OUT: LISTER, ANTIONE
10:19				SUB OUT: PATTERSON, DEVONTE
10:19				SUB IN: COX, DEWAYNE
10:19				SUB IN: SNEED, LEON
10:19				SUB IN: JACKSON, JONATHAN
10:08	GOOD! 3PTR by DANIELS, LEON	51-47	H 4	
10:08	ASSIST by EWUOSHO, TOBI			
09:56				MISSED 3PTR by WILLIAMS, DARIUS
09:48	REBOUND (DEF) by ROBINSON, TYRESE			
09:35	MISSED JUMPER by DANIELS, LEON			
09:31				REBOUND (DEF) by COX, DEWAYNE
09:14				MISSED JUMPER by WILLIAMS, FAITE
09:10	REBOUND (DEF) by DANIELS, LEON			
09:09				FOUL (PERSONAL) by COX, DEWAYNE
09:09	GOOD! FT by HAMILTON, JEREMY [FB]	51-48	H 3	
09:09	GOOD! FT by HAMILTON, JEREMY [FB]	51-49	H 2	
08:59				SUB OUT: WILLIAMS, FAITE
08:59				SUB OUT: JACKSON, JONATHAN
08:59				SUB IN: LISTER, ANTIONE
08:59				SUB IN: PATTERSON, DEVONTE

Time	VISITORS: Alabama St.	Score	Margin	HOME: Prairie View
08:59	FOUL (PERSONAL) by DANIELS, LEON			
08:59		52-49	H 3	GOOD! FT by PATTERSON, DEVONTE
08:59				MISSED FT by PATTERSON, DEVONTE
08:59				REBOUND (OFF) by COX, DEWAYNE
08:59		54-49	H 5	GOOD! LAYUP by COX, DEWAYNE [PNT]
08:59				ASSIST by PATTERSON, DEVONTE
08:59	SUB OUT: ROBINSON, TYRESE			
08:59	SUB IN: ROGERS, AUSTIN			
08:59	GOOD! LAYUP by EWUOSHO, TOBI [FB/PNT]	54-51	H 3	
08:59	ASSIST by DANIELS, LEON			
07:48		56-51	H 5	GOOD! LAYUP by PATTERSON, DEVONTE [PNT]
07:48				ASSIST by SNEED, LEON
07:28				SUB OUT: WILLIAMS, DARIUS
07:28				SUB IN: WILLIAMS, FAITE
07:25				
07:25	SUB OUT: DANIELS, LEON			
07:25	SUB OUT: HAMILTON, JEREMY			
07:25	SUB IN: STEWART, KEVION			
07:25	SUB IN: ROBINSON, TYRESE			
07:24	MISSED 3PTR by STEWART, KEVION			
07:14				REBOUND (DEF) by TEAM
07:08				SUB OUT: COX, DEWAYNE
07:08				SUB OUT: SNEED, LEON
07:08				SUB IN: WILLIAMS, DARIUS
07:08				SUB IN: ELLIS, CHANCELLOR
06:59				MISSED 3PTR by ELLIS, CHANCELLOR
06:59				REBOUND (OFF) by TEAM
06:53				MISSED JUMPER by WILLIAMS, FAITE
06:50	REBOUND (DEF) by ROBINSON, TYRESE			
06:34	MISSED 3PTR by EWUOSHO, TOBI			
06:30				REBOUND (DEF) by WILLIAMS, FAITE
06:26				TIMEOUT 30SEC
06:11	FOUL (PERSONAL) by ROBINSON, TYRESE			
06:11		57-51	H 6	GOOD! FT by PATTERSON, DEVONTE
06:11				MISSED FT by PATTERSON, DEVONTE
06:11	REBOUND (DEF) by ROBINSON, TYRESE			
06:11	SUB OUT: STEWART, KEVION			
06:11	SUB IN: DANIELS, LEON			
06:11	MISSED LAYUP by STEWART, KEVION			
06:11				REBOUND (DEF) by PATTERSON, DEVONTE
05:57				SUB OUT: WILLIAMS, DARIUS
05:57				SUB IN: ANDRUS, GERARD
05:36				MISSED JUMPER by WILLIAMS, FAITE
05:33				REBOUND (OFF) by ANDRUS, GERARD
05:16				TURNOVER (OTHER) by TEAM
05:16				FOUL (PERSONAL) by ANDRUS, GERARD
05:16	MISSED FT by ROGERS, AUSTIN			
05:15				REBOUND (DEF) by WILLIAMS, FAITE
05:13	FOUL (PERSONAL) by EWUOSHO, TOBI			
05:06				MISSED JUMPER by ANDRUS, GERARD
04:49	REBOUND (DEF) by ROBINSON, TYRESE			
04:33	MISSED LAYUP by ROBINSON, TYRESE			
04:28				REBOUND (DEF) by PATTERSON, DEVONTE
04:26				SUB OUT: ELLIS, CHANCELLOR
04:26				SUB OUT: LISTER, ANTIONE
04:26				SUB IN: COX, DEWAYNE
04:26				SUB IN: SNEED, LEON
04:26	SUB OUT: ROBINSON, TYRESE			
04:26	SUB IN: ROSS, JACOBY			
04:26				TURNOVER (OTHER) by TEAM
04:13	GOOD! LAYUP by EWUOSHO, TOBI [PNT]	57-53	H 4	
04:13	ASSIST by ROSS, JACOBY			
03:45				MISSED JUMPER by WILLIAMS, FAITE
03:41				REBOUND (OFF) by ANDRUS, GERARD
03:37		59-53	H 6	GOOD! LAYUP by ANDRUS, GERARD [PNT]
03:37				ASSIST by WILLIAMS, FAITE
03:31				FOUL (PERSONAL) by WILLIAMS, FAITE
03:31				
03:31	MISSED FT by EWUOSHO, TOBI			
03:31	REBOUND (OFF) by TEAM			
03:20	FOUL (OFF) by ROSS, JACOBY			
03:20	TURNOVER (OFFENSIVE) by ROSS, JACOBY			
03:20				SUB OUT: COX, DEWAYNE
03:20				SUB IN: ELLIS, CHANCELLOR
02:51				MISSED LAYUP by PATTERSON, DEVONTE
02:47	REBOUND (DEF) by EWUOSHO, TOBI			
02:23	TURNOVER (BADPASS) by HEATH, DJ			
02:23				STEAL by ANDRUS, GERARD
02:23	SUB OUT: DANIELS, LEON			
02:23	SUB IN: ROBINSON, TYRESE			

Time	VISITORS: Alabama St.	Score	Margin	HOME: Prairie View
02:03				MISSED JUMPER by WILLIAMS, FAITE
01:55	REBOUND (DEF) by ROBINSON, TYRESE			
01:39	TURNOVER (SHOTCLOCK) by TEAM			
01:39				SUB OUT: ELLIS, CHANCELLOR
01:39				SUB IN: COX, DEWAYNE
01:38	SUB OUT: ROGERS, AUSTIN			
01:38	SUB IN: DANIELS, LEON			
01:35		61-53	H 8	GOOD! JUMPER by PATTERSON, DEVONTE
01:35				ASSIST by WILLIAMS, FAITE
01:20				SUB OUT: SNEED, LEON
01:20				SUB IN: LISTER, ANTIONE
01:20	TURNOVER (LOSTBALL) by ROSS, JACOBY			
00:48				SUB OUT: COX, DEWAYNE
00:48				SUB IN: ELLIS, CHANCELLOR
00:47				MISSED 3PTR by ELLIS, CHANCELLOR
00:45	REBOUND (DEF) by ROBINSON, TYRESE			
00:45	TURNOVER (LOSTBALL) by HEATH, DJ			
00:45				STEAL by WILLIAMS, FAITE
00:45		63-53	H 10	GOOD! DUNK by ANDRUS, GERARD [FB]
00:45				ASSIST by WILLIAMS, FAITE
00:25	GOOD! 3PTR by HEATH, DJ	63-56	H 7	
00:25	ASSIST by DANIELS, LEON			
00:17	TIMEOUT TEAM			
00:11	FOUL (PERSONAL) by ROSS, JACOBY			
00:10		64-56	H 8	GOOD! FT by WILLIAMS, FAITE
00:10		65-56	H 9	GOOD! FT by WILLIAMS, FAITE
00:00				SUB OUT: ELLIS, CHANCELLOR
00:00				SUB IN: COX, DEWAYNE
00:00	GOOD! JUMPER by EWUOSHO, TOBI [PNT]	65-58	H 7	
00:00	ASSIST by ROSS, JACOBY			

Alabama St. 58, Prairie View 65

Points from (This Period)	ASU	PVU
In the Paint	8	12
Off Turns	5	8
2nd Chance	2	8
Fast Break	6	5
Bench	7	4

**Official Scoring/Possession Reference Chart
Alabama St. vs Prairie View
Period 1**

February 29, 2020 at William J. Nicks Building - Prairie View



Period 1

Starters:

Alabama St.: 00 HEATH,DJ (G); 5 EWJOSHO,TOBI (G); 10 ROSS,JACOBY (G); 11 ROGERS,AUSTIN (G); 35 ROBINSON,TYRESE (F);

Prairie View: 3 ELLIS,CHANCELLOR (G); 4 LISTER,ANTIONE (G); 14 SNEED,LEON (G); 15 ANDRUS,GERARD (G); 23 PATTERSON,DEVONTE (F);

Time	VISITORS: Alabama St.	Score	Margin	HOME: Prairie View
19:01	GOOD! LAYUP by ROGERS, AUSTIN [FB/PNT]	0-2	V 2	
18:30	GOOD! JUMPER by ROSS, JACOBY	0-4	V 4	
18:11		3-4	V 1	GOOD! 3PTR by PATTERSON, DEVONTE
17:32		4-4	T	GOOD! FT by PATTERSON, DEVONTE
17:32		5-4	H 1	GOOD! FT by PATTERSON, DEVONTE
17:17	GOOD! JUMPER by ROBINSON, TYRESE [PNT]	5-6	V 1	
16:58	GOOD! LAYUP by ROGERS, AUSTIN [PNT]	5-8	V 3	
15:34		7-8	V 1	GOOD! LAYUP by LISTER, ANTIONE [PNT]
15:13	GOOD! 3PTR by HEATH, DJ	7-11	V 4	
15:02		9-11	V 2	GOOD! LAYUP by WILLIAMS, FAITE [PNT]
14:43	GOOD! LAYUP by ROGERS, AUSTIN [PNT]	9-13	V 4	
14:26		11-13	V 2	GOOD! LAYUP by WILLIAMS, FAITE [PNT]
14:12		13-13	T	GOOD! JUMPER by PATTERSON, DEVONTE
13:41		14-13	H 1	GOOD! FT by LISTER, ANTIONE [FB]
13:41		15-13	H 2	GOOD! FT by LISTER, ANTIONE [FB]
12:51		16-13	H 3	GOOD! FT by LISTER, ANTIONE
12:51		17-13	H 4	GOOD! FT by LISTER, ANTIONE
10:35	GOOD! JUMPER by STEWART, KEVION	17-15	H 2	
10:26		18-15	H 3	GOOD! FT by LISTER, ANTIONE
10:26		19-15	H 4	GOOD! FT by LISTER, ANTIONE
09:58	GOOD! FT by ROBINSON, TYRESE	19-16	H 3	
09:18		20-16	H 4	GOOD! FT by JACKSON, JONATHAN
07:36		22-16	H 6	GOOD! JUMPER by ELLIS, CHANCELLOR
07:24	GOOD! 3PTR by ROGERS, AUSTIN	22-19	H 3	
06:43		23-19	H 4	GOOD! FT by PATTERSON, DEVONTE [FB]
06:43		24-19	H 5	GOOD! FT by PATTERSON, DEVONTE [FB]
06:25	GOOD! JUMPER by HAMILTON, JEREMY	24-21	H 3	
06:16		26-21	H 5	GOOD! JUMPER by WILLIAMS, FAITE [PNT]
06:07	GOOD! 3PTR by HAMILTON, JEREMY	26-24	H 2	
04:56		28-24	H 4	GOOD! LAYUP by ANDRUS, GERARD [PNT]
04:48	GOOD! JUMPER by HEATH, DJ	28-26	H 2	
04:35		30-26	H 4	GOOD! LAYUP by LISTER, ANTIONE [PNT]
04:09	GOOD! 3PTR by DANIELS, LEON	30-29	H 1	
02:24		33-29	H 4	GOOD! 3PTR by LISTER, ANTIONE [FB]
02:11	GOOD! 3PTR by ROGERS, AUSTIN	33-32	H 1	
01:41		35-32	H 3	GOOD! LAYUP by LISTER, ANTIONE
01:14		36-32	H 4	GOOD! FT by WILLIAMS, DARIUS
01:14		37-32	H 5	GOOD! FT by WILLIAMS, DARIUS
01:14	GOOD! FT by ROSS, JACOBY [FB]	37-33	H 4	
01:14	GOOD! FT by ROSS, JACOBY [FB]	37-34	H 3	
00:18	GOOD! FT by ROSS, JACOBY [FB]	37-35	H 2	
00:12		38-35	H 3	GOOD! FT by WILLIAMS, FAITE [FB]

Alabama St. 35, Prairie View 38

Official Scoring/Possession Reference Chart
Alabama St. vs Prairie View
Period 2
February 29, 2020 at William J. Nicks Building - Prairie View



Period 2

Starters:

Alabama St.: 00 HEATH,DJ (G); 5 EWUOSHO,TOBI (G); 10 ROSS,JACOBY (G); 11 ROGERS,AUSTIN (G); 35 ROBINSON,TYRESE (F);

Prairie View: 3 ELLIS,CHANCELLOR (G); 4 LISTER,ANTIONE (G); 14 SNEED,LEON (G); 15 ANDRUS,GERARD (G); 23 PATTERSON,DEVONTE (F);

Time	VISITORS: Alabama St.	Score	Margin	HOME: Prairie View
19:50		40-35	H 5	GOOD! JUMPER by PATTERSON, DEVONTE
19:17		42-35	H 7	GOOD! JUMPER by ANDRUS, GERARD
17:59	GOOD! JUMPER by ROSS, JACOBY	42-37	H 5	
17:26	GOOD! 3PTR by EWUOSHO, TOBI	42-40	H 2	
14:45		44-40	H 4	GOOD! JUMPER by PATTERSON, DEVONTE
14:01	GOOD! FT by BATTLE, BRANDON [FB]	44-41	H 3	
14:01	GOOD! FT by BATTLE, BRANDON [FB]	44-42	H 2	
13:30		46-42	H 4	GOOD! LAYUP by ANDRUS, GERARD [PNT]
12:31	GOOD! LAYUP by HEATH, DJ [PNT]	46-44	H 2	
10:50		48-44	H 4	GOOD! JUMPER by PATTERSON, DEVONTE [PNT]
10:31		51-44	H 7	GOOD! 3PTR by ELLIS, CHANCELLOR [FB]
10:08	GOOD! 3PTR by DANIELS, LEON	51-47	H 4	
09:09	GOOD! FT by HAMILTON, JEREMY [FB]	51-48	H 3	
09:09	GOOD! FT by HAMILTON, JEREMY [FB]	51-49	H 2	
08:59		52-49	H 3	GOOD! FT by PATTERSON, DEVONTE
08:59		54-49	H 5	GOOD! LAYUP by COX, DEWAYNE [PNT]
08:59	GOOD! LAYUP by EWUOSHO, TOBI [FB/PNT]	54-51	H 3	
07:48		56-51	H 5	GOOD! LAYUP by PATTERSON, DEVONTE [PNT]
06:11		57-51	H 6	GOOD! FT by PATTERSON, DEVONTE
04:13	GOOD! LAYUP by EWUOSHO, TOBI [PNT]	57-53	H 4	
03:37		59-53	H 6	GOOD! LAYUP by ANDRUS, GERARD [PNT]
01:35		61-53	H 8	GOOD! JUMPER by PATTERSON, DEVONTE
00:45		63-53	H 10	GOOD! DUNK by ANDRUS, GERARD [FB]
00:25	GOOD! 3PTR by HEATH, DJ	63-56	H 7	
00:10		64-56	H 8	GOOD! FT by WILLIAMS, FAITE
00:10		65-56	H 9	GOOD! FT by WILLIAMS, FAITE
00:00	GOOD! JUMPER by EWUOSHO, TOBI [PNT]	65-58	H 7	

Alabama St. 58, Prairie View 65

**Official Substitutions Log
Alabama St. vs Prairie View
Period 1**

February 29, 2020 at William J. Nicks Building - Prairie View



VISITORS: Alabama St.	Time	Score	HOME: Prairie View
00 HEATH,DJ			3 ELLIS,CHANCELLOR
5 EWUOSHO,TOBI			4 LISTER,ANTIONE
10 ROSS,JACOBY			14 SNEED,LEON
11 ROGERS,AUSTIN			15 ANDRUS,GERARD
35 ROBINSON,TYRESE			23 PATTERSON,DEVONTE
	16:46	8-5	SUB OUT: SNEED,LEON
	16:46		SUB IN: WILLIAMS,FAITE
SUB OUT: 00 HEATH,DJ	14:21	13-11	
SUB OUT: 10 ROSS,JACOBY	14:21		
SUB IN: 1 DANIELS,LEON	14:21		
SUB IN: 2 HOLSTON,KEVIN	14:21		
	13:41	13-13	SUB OUT: ELLIS,CHANCELLOR
	13:41		SUB OUT: ANDRUS,GERARD
	13:41		SUB IN: COX,DEWAYNE
	13:41		SUB IN: SNEED,LEON
SUB OUT: 35 ROBINSON,TYRESE	13:41		
SUB IN: 14 BATTLE,BRANDON	13:41		
SUB OUT: 5 EWUOSHO,TOBI	13:33	13-15	
SUB OUT: 11 ROGERS,AUSTIN	13:33		
SUB IN: 4 HAMILTON,JEREMY	13:33		
SUB IN: 13 FARRAR,AJ	13:33		
SUB OUT: 1 DANIELS,LEON	12:42	13-17	
SUB IN: 24 STEWART,KEVION	12:42		
	11:48	13-17	SUB OUT: LISTER,ANTIONE
	11:48		SUB OUT: SNEED,LEON
	11:48		SUB IN: WILLIAMS,DARIUS
	11:48		SUB IN: ANDRUS,GERARD
SUB OUT: 14 BATTLE,BRANDON	11:48		
SUB IN: 35 ROBINSON,TYRESE	11:48		
	11:48		SUB OUT: COX,DEWAYNE
	11:48		SUB IN: SNEED,LEON
	11:41	13-17	SUB OUT: SNEED,LEON
	11:41		SUB IN: LISTER,ANTIONE
SUB OUT: 2 HOLSTON,KEVIN	11:41		
SUB IN: 00 HEATH,DJ	11:41		
SUB OUT: 4 HAMILTON,JEREMY	10:35	13-17	
SUB OUT: 13 FARRAR,AJ	10:35		
SUB IN: 10 ROSS,JACOBY	10:35		
SUB IN: 11 ROGERS,AUSTIN	10:35		
	10:33	15-17	SUB OUT: PATTERSON,DEVONTE
	10:33		SUB IN: JACKSON,JONATHAN
	07:37	16-20	SUB OUT: WILLIAMS,DARIUS
	07:37		SUB OUT: ANDRUS,GERARD
	07:37		SUB IN: ELLIS,CHANCELLOR
	07:37		SUB IN: COX,DEWAYNE
	07:03	19-22	SUB OUT: JACKSON,JONATHAN
	07:03		SUB IN: PATTERSON,DEVONTE
SUB OUT: 24 STEWART,KEVION	06:52	19-22	
SUB IN: 5 EWUOSHO,TOBI	06:52		
	06:42	19-24	SUB OUT: ELLIS,CHANCELLOR
	06:42		SUB IN: SNEED,LEON
SUB OUT: 5 EWUOSHO,TOBI	06:26	19-24	
SUB IN: 4 HAMILTON,JEREMY	06:26		
	05:03	24-26	SUB OUT: PATTERSON,DEVONTE
	04:58	24-26	SUB IN: ANDRUS,GERARD
SUB OUT: 10 ROSS,JACOBY	04:38	26-28	
SUB IN: 1 DANIELS,LEON	04:38		
	03:01	29-30	SUB OUT: COX,DEWAYNE
	03:01		SUB OUT: SNEED,LEON
	03:01		SUB IN: ELLIS,CHANCELLOR
	03:01		SUB IN: JACKSON,JONATHAN
SUB OUT: 00 HEATH,DJ	02:29	29-30	
SUB OUT: 1 DANIELS,LEON	02:29		
SUB OUT: 35 ROBINSON,TYRESE	02:29		
SUB IN: 2 HOLSTON,KEVIN	02:29		
SUB IN: 10 ROSS,JACOBY	02:29		
SUB IN: 14 BATTLE,BRANDON	02:29		
	02:07	32-33	SUB OUT: ELLIS,CHANCELLOR
	02:07		SUB IN: COX,DEWAYNE
	01:49	32-33	SUB OUT: COX,DEWAYNE
	01:49		SUB IN: ELLIS,CHANCELLOR
	01:16	32-35	SUB OUT: LISTER,ANTIONE
	01:16		SUB IN: WILLIAMS,DARIUS
SUB OUT: 14 BATTLE,BRANDON	00:50	34-37	
SUB IN: 35 ROBINSON,TYRESE	00:50		

VISITORS: Alabama St.	Time	Score	HOME: Prairie View
	00:29	34-37	SUB OUT: ELLIS, CHANCELLOR
	00:29		SUB IN: LISTER, ANTIONE
	00:18	34-37	SUB OUT: WILLIAMS, DARIUS
	00:18		SUB IN: COX, DEWAYNE
	00:18		SUB OUT: COX, DEWAYNE
	00:18		SUB OUT: JACKSON, JONATHAN
	00:18		SUB IN: WILLIAMS, DARIUS
	00:18		SUB IN: ELLIS, CHANCELLOR
SUB OUT: 10 ROSS, JACOBY	00:12	35-37	
SUB IN: 24 STEWART, KEVION	00:12		
	00:06	35-38	SUB OUT: LISTER, ANTIONE
	00:06		SUB IN: SNEED, LEON

Alabama St. 35, Prairie View 38

Official Substitutions Log
Alabama St. vs Prairie View
Period 2
February 29, 2020 at William J. Nicks Building - Prairie View



VISITORS: Alabama St.	Time	Score	HOME: Prairie View
00 HEATH, DJ			3 ELLIS, CHANCELLOR
5 EWUOSHO, TOBI			4 LISTER, ANTIONE
10 ROSS, JACOBY			14 SNEED, LEON
11 ROGERS, AUSTIN			15 ANDRUS, GERARD
35 ROBINSON, TYRESE			23 PATTERSON, DEVONTE
	20:00	-	SUB OUT: WILLIAMS, DARIUS
	20:00		SUB OUT: WILLIAMS, FAITE
	20:00		SUB IN: LISTER, ANTIONE
	20:00		SUB IN: PATTERSON, DEVONTE
SUB OUT: 2 HOLSTON, KEVIN	20:00		
SUB OUT: 4 HAMILTON, JEREMY	20:00		
SUB OUT: 24 STEWART, KEVION	20:00		
SUB IN: 00 HEATH, DJ	20:00		
SUB IN: 5 EWUOSHO, TOBI	20:00		
SUB IN: 10 ROSS, JACOBY	20:00		
	18:37	35-42	SUB OUT: ELLIS, CHANCELLOR
	18:37		SUB IN: COX, DEWAYNE
	16:08	40-42	SUB OUT: COX, DEWAYNE
	16:08		SUB IN: ELLIS, CHANCELLOR
	15:11	40-42	SUB OUT: SNEED, LEON
	15:11		SUB IN: COX, DEWAYNE
	15:10	40-42	SUB OUT: COX, DEWAYNE
	15:10		SUB IN: WILLIAMS, FAITE
	14:29	40-44	SUB OUT: ELLIS, CHANCELLOR
	14:29		SUB IN: COX, DEWAYNE
SUB OUT: 35 ROBINSON, TYRESE	14:01	40-44	
SUB IN: 14 BATTLE, BRANDON	14:01		
	14:00	42-44	SUB OUT: COX, DEWAYNE
	14:00		SUB IN: ELLIS, CHANCELLOR
SUB OUT: 10 ROSS, JACOBY	14:00		
SUB OUT: 11 ROGERS, AUSTIN	14:00		
SUB IN: 1 DANIELS, LEON	14:00		
SUB IN: 4 HAMILTON, JEREMY	14:00		
	12:06	44-46	SUB OUT: ELLIS, CHANCELLOR
	12:06		SUB IN: COX, DEWAYNE
	11:27	44-46	SUB OUT: COX, DEWAYNE
	11:27		SUB IN: ELLIS, CHANCELLOR
	11:14	44-46	SUB OUT: ANDRUS, GERARD
	11:14		SUB IN: WILLIAMS, DARIUS
SUB OUT: 14 BATTLE, BRANDON	11:14		
SUB IN: 35 ROBINSON, TYRESE	11:14		
	10:19	44-51	SUB OUT: ELLIS, CHANCELLOR
	10:19		SUB OUT: LISTER, ANTIONE
	10:19		SUB OUT: PATTERSON, DEVONTE
	10:19		SUB IN: COX, DEWAYNE
	10:19		SUB IN: SNEED, LEON
	10:19		SUB IN: JACKSON, JONATHAN
	08:59	49-51	SUB OUT: WILLIAMS, FAITE
	08:59		SUB OUT: JACKSON, JONATHAN
	08:59		SUB IN: LISTER, ANTIONE
	08:59		SUB IN: PATTERSON, DEVONTE
SUB OUT: 35 ROBINSON, TYRESE	08:59		
SUB IN: 11 ROGERS, AUSTIN	08:59		
	07:28	51-56	SUB OUT: WILLIAMS, DARIUS
	07:28		SUB IN: WILLIAMS, FAITE
SUB OUT: 1 DANIELS, LEON	07:25	51-56	
SUB OUT: 4 HAMILTON, JEREMY	07:25		
SUB IN: 24 STEWART, KEVION	07:25		
SUB IN: 35 ROBINSON, TYRESE	07:25		
	07:08	51-56	SUB OUT: COX, DEWAYNE
	07:08		SUB OUT: SNEED, LEON
	07:08		SUB IN: WILLIAMS, DARIUS
	07:08		SUB IN: ELLIS, CHANCELLOR
SUB OUT: 24 STEWART, KEVION	06:11	51-57	
SUB IN: 1 DANIELS, LEON	06:11		
	05:57	51-57	SUB OUT: WILLIAMS, DARIUS
	05:57		SUB IN: ANDRUS, GERARD
	04:26	51-57	SUB OUT: ELLIS, CHANCELLOR
	04:26		SUB OUT: LISTER, ANTIONE
	04:26		SUB IN: COX, DEWAYNE
	04:26		SUB IN: SNEED, LEON
SUB OUT: 35 ROBINSON, TYRESE	04:26		
SUB IN: 10 ROSS, JACOBY	04:26		
	03:20	53-59	SUB OUT: COX, DEWAYNE
	03:20		SUB IN: ELLIS, CHANCELLOR

VISITORS: Alabama St.	Time	Score	HOME: Prairie View
SUB OUT: 1 DANIELS, LEON	02:23	53-59	
SUB IN: 35 ROBINSON, TYRESE	02:23		
	01:39	53-59	SUB OUT: ELLIS, CHANCELLOR
	01:39		SUB IN: COX, DEWAYNE
SUB OUT: 11 ROGERS, AUSTIN	01:38	53-59	
SUB IN: 1 DANIELS, LEON	01:38		
	01:20	53-61	SUB OUT: SNEED, LEON
	01:20		SUB IN: LISTER, ANTONE
	00:48	53-61	SUB OUT: COX, DEWAYNE
	00:48		SUB IN: ELLIS, CHANCELLOR
	00:00	56-65	SUB OUT: ELLIS, CHANCELLOR
	00:00		SUB IN: COX, DEWAYNE

Alabama St. 58, Prairie View 65

Official Shot Chart
Alabama St. vs Prairie View
PERIOD 1 Shots
February 29, 2020 at William J. Nicks Building - Prairie View



Prairie View

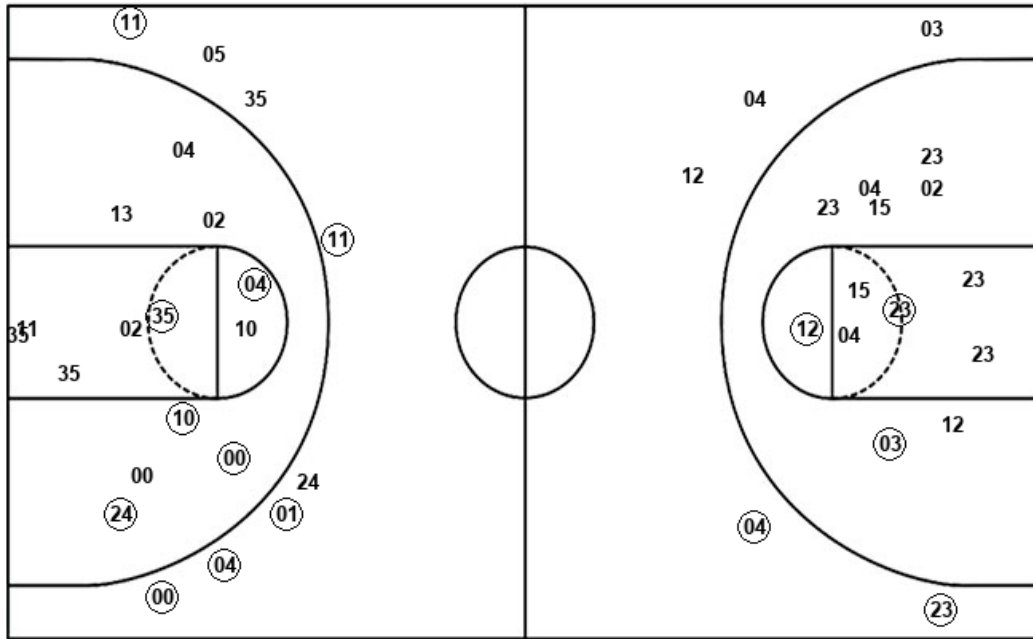
Alabama St.

Layups
 15 23 15 04 12
 12 15 04 35 12
 04 35

Layups
 11 11 10 11 02

Dunks

Dunks



PVU : Period 1	Made	Att	Pct
Layups	6	12	50.0
Dunks	0	0	0
2PT Field Goals	9	24	37.5
3PT Field Goals	2	6	33.3
Total Field Goals	11	30	36.7

ASU : Period 1	Made	Att	Pct
Layups	3	5	60.0
Dunks	0	0	0
2PT Field Goals	8	17	47.1
3PT Field Goals	5	10	50.0
Total Field Goals	13	27	48.1

Official Shot Chart
 Alabama St. vs Prairie View
 PERIOD 2 Shots
 February 29, 2020 at William J. Nicks Building - Prairie View

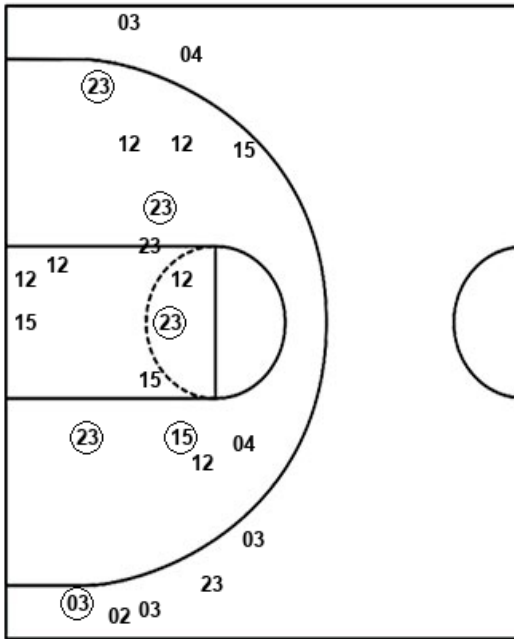


Prairie View

Alabama St.

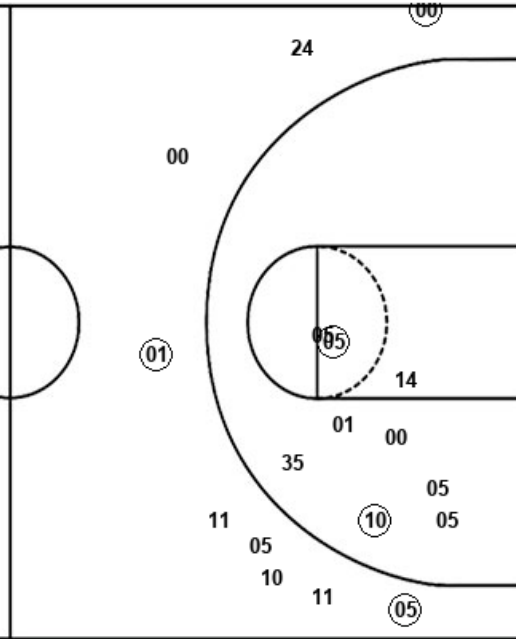
Layups
 15 23 11 23 15
 23

Dunks
 15



Layups
 35 00 00 05 24
 35 05

Dunks



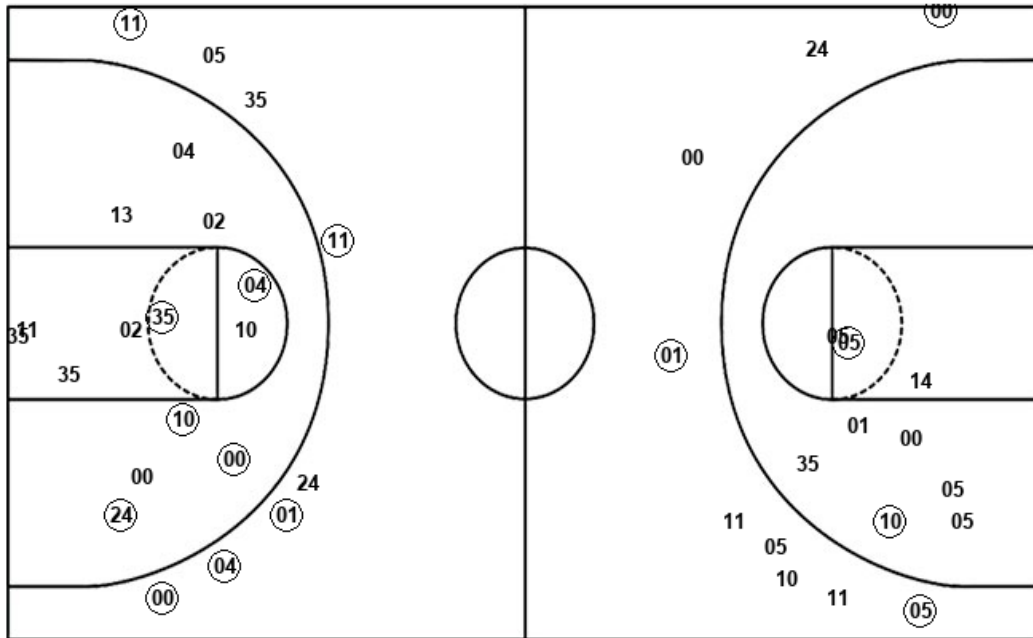
PVU : Period 2	Made	Att	Pct
Layups	4	6	66.7
Dunks	1	1	100.0
2PT Field Goals	10	23	43.5
3PT Field Goals	1	7	14.3
Total Field Goals	11	30	36.7

ASU : Period 2	Made	Att	Pct
Layups	3	7	42.9
Dunks	0	0	0
2PT Field Goals	5	16	31.3
3PT Field Goals	3	9	33.3
Total Field Goals	8	25	32.0

Official Shot Chart
Alabama St. vs Prairie View
Alabama St. Team Shots
February 29, 2020 at William J. Nicks Building - Prairie View



Layups



Layups

(11) (11) 10 (11) 02
 35 (00) 00 (05) 24
 35 (05)

Dunks

Dunks

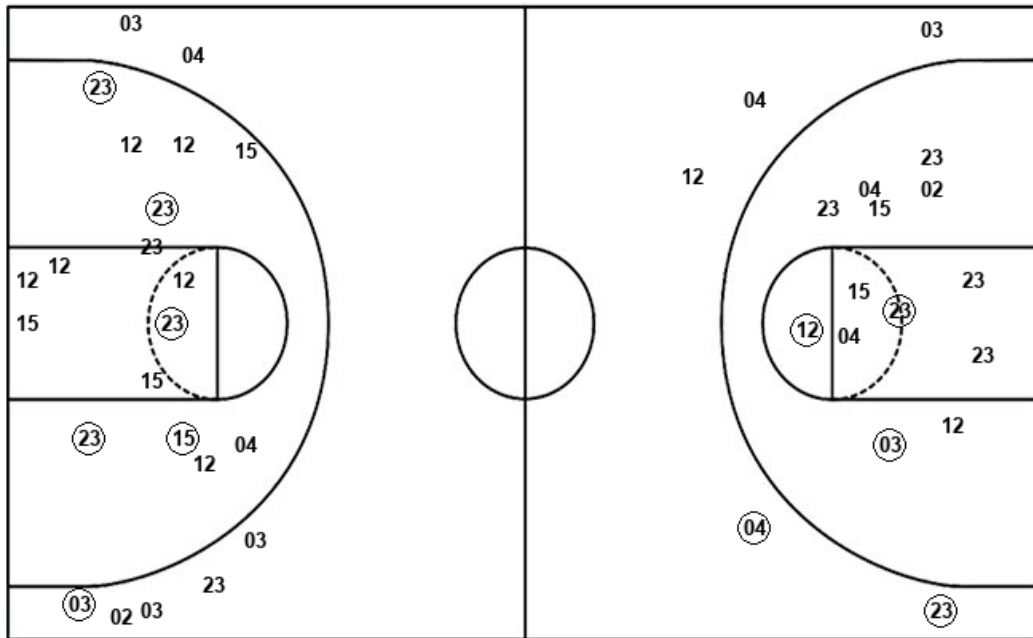
ASU : Period 1	Made	Att	Pct
Layups	3	5	60.0
Dunks	0	0	0
2PT Field Goals	8	17	47.1
3PT Field Goals	5	10	50.0
Total Field Goals	13	27	48.1

ASU : Period 2	Made	Att	Pct
Layups	3	7	42.9
Dunks	0	0	0
2PT Field Goals	5	16	31.3
3PT Field Goals	3	9	33.3
Total Field Goals	8	25	32.0

Official Shot Chart
Alabama St. vs Prairie View
Prairie View Team Shots
February 29, 2020 at William J. Nicks Building - Prairie View



Layups



Layups

15 23 15 (04) (12)
 (12) (15) (04) 35 12
 (04) 35 (15) 23 (11)
 (23) (15) 23

Dunks

Dunks

(15)

PVU : Period 1	Made	Att	Pct
Layups	6	12	50.0
Dunks	0	0	0
2PT Field Goals	9	24	37.5
3PT Field Goals	2	6	33.3
Total Field Goals	11	30	36.7

PVU : Period 2	Made	Att	Pct
Layups	4	6	66.7
Dunks	1	1	100.0
2PT Field Goals	10	23	43.5
3PT Field Goals	1	7	14.3
Total Field Goals	11	30	36.7