

FINAL SCORE



Ark.-Pine Bluff

54



Prairie View

67

January 25, 2020 • William J. Nicks Building - Prairie View

FINAL STATISTICS

Official Box Score
Ark.-Pine Bluff vs Prairie View
Game Totals -- Final Statistics
January 25, 2020 at William J. Nicks Building - Prairie View



Ark.-Pine Bluff 54

No.	Player	S	Pts	FG	3FG	FT	OR	DR	TR	PF	A	TO	Blk	Stl	Min	+/-
02	CARTER, MARQUELL	F	12	2-8	1-5	7-8	1	7	8	1	2	5	0	1	34	-8
03	BELL, MARKEDRIC	F	7	3-3	0-0	1-2	0	2	2	3	0	1	1	1	14	-7
04	MCNAIR, JORDAN	G	2	1-3	0-2	0-0	0	0	0	1	1	3	0	1	23	-14
12	BANYARD, TERRANCE	F	7	1-1	1-1	4-5	0	1	1	3	2	6	2	1	22	-10
23	MORRIS, DEQUAN	G	9	4-9	0-1	1-2	3	1	4	4	0	2	2	0	21	-5
00	STOKES, KSHUN	G	0	0-1	0-1	0-0	0	0	0	0	0	0	0	0	1	0
10	WILSON, JAMIL	G	0	0-0	0-0	0-0	0	0	0	0	0	0	0	0	2	0
14	WALLACE, MARCUS	G	8	3-7	2-4	0-0	2	3	5	1	3	0	0	3	29	-7
15	STREDIC JR, ALVIN	F	4	1-1	0-0	2-4	0	0	0	1	0	0	0	0	7	-5
24	MCDYESS, ARTAVIOUS	F	0	0-2	0-0	0-2	2	1	3	3	1	1	1	0	20	-7
25	HARALSON, ISAIAH	G	0	0-1	0-1	0-0	0	0	0	0	0	1	0	0	7	0
30	POSEY, CAMERON	G	5	2-3	1-1	0-0	0	2	2	5	1	1	0	1	19	-2
TEAM							0	0	0	0		2				
TOTALS			54	17-39	5-16	15-23	8	17	25	22	10	22	6	8	200	

Shooting By Period

Period	FG	FG%	3FG	3FG%	FT	FT%
1st Half	10-20	50%	3-9	33%	5-7	71%
2nd Half	7-19	37%	2-7	29%	10-16	63%
Game	17-39	43.6%	5-16	31.3%	15-23	65.2%

Deadball Rebounds: 2,2

Last FG: 2nd-01:50

Biggest Run: 6-0

Largest lead: By 0 at -

Technical Fouls: #03 BELL (Contact Deadball) @ 1st - 05:43;

#12 BANYARD (Double) @ 1st - 05:43; #23 MORRIS (Admin

Technical) @ 1st - 02:28; #03 BELL (Class A) @ 1st - 00:51;

#03 BELL (Flagrant 2 (Ejection)) @ 1st - 00:51;

Prairie View 67

No.	Player	S	Pts	FG	3FG	FT	OR	DR	TR	PF	A	TO	Blk	Stl	Min	+/-
00	HENRY, LENELL	F	0	0-1	0-0	0-0	1	4	5	3	0	2	0	0	20	6
04	LISTER, ANTIONE	G	2	1-5	0-3	0-0	2	0	2	1	0	2	0	0	24	8
14	SNEED, LEON	G	3	1-2	0-0	1-2	0	1	1	3	2	3	0	0	21	9
15	ANDRUS, GERARD	G	11	4-13	0-0	3-4	4	2	6	3	2	0	0	1	28	6
23	PATTERSON, DEVONTE	F	17	7-11	1-2	2-4	3	5	8	5	1	1	0	2	30	13
02	WILLIAMS, DARIUS	G	22	8-14	4-9	2-4	1	1	2	2	2	5	0	2	26	12
03	ELLIS, CHANCELLOR	G	5	1-4	1-4	2-2	0	1	1	0	1	0	0	1	16	12
11	COX, DEWAYNE	G	2	1-2	0-0	0-0	0	1	1	2	0	1	0	0	10	-2
12	WILLIAMS, FAITE	G	5	0-2	0-0	5-6	0	4	4	2	6	2	0	1	19	0
35	JACKSON, JONATHAN	F	0	0-0	0-0	0-0	0	0	0	1	0	0	0	0	5	1
TEAM							0	0	0	0		4				
TOTALS			67	23-54	6-18	15-22	11	19	30	22	14	20	0	7	200	

Shooting By Period

Period	FG	FG%	3FG	3FG%	FT	FT%
1st Half	11-29	38%	5-12	42%	8-12	67%
2nd Half	12-25	48%	1-6	17%	7-10	70%
Game	23-54	42.6%	6-18	33.3%	15-22	68.2%

Deadball Rebounds: 8,1

Last FG: 2nd-00:10

Biggest Run: 7-0

Largest lead: By 16 at 2nd-02:56

Technical Fouls: #02 WILLIAMS (Contact Deadball) @ 1st -

05:43; #23 PATTERSON (Double) @ 1st - 05:43;

Game Notes:

Officials: , ,
 Attendance: 346

Start Time: 06:36 PM ET
 End Time: 08:55 PM ET
 Game Duration: 2:19
 Conference Game;

Score	1st	2nd	TOT
UAP	28	26	54
PVU	35	32	67

UAP led for 0:00. PVU led for 39:28.

Game was tied for 0:32.

Times tied: 0 Lead Changes: 0

Points from	UAP	PVU
In the Paint	16	24
Off Turns	14	25
2nd Chance	8	15
Fast Break	13	16
Bench	17	34

Official Box Score
Ark.-Pine Bluff vs Prairie View
First Half Statistics Only
January 25, 2020 at William J. Nicks Building - Prairie View



Ark.-Pine Bluff 28

No.	Player	S	Pts	FG	3FG	FT	OR	DR	TR	PF	A	TO	Blk	Stl	Min	+/-
02	CARTER, MARQUELL	F	2	0-1	0-1	2-2	1	4	5	1	1	4	0	0	16	-6
03	BELL, MARKEDRIC	F	7	3-3	0-0	1-2	0	2	2	3	0	1	1	1	14	-7
04	MCNAIR, JORDAN	G	2	1-2	0-1	0-0	0	0	0	0	0	2	0	1	12	-7
12	BANYARD, TERRANCE	F	5	1-1	1-1	2-3	0	0	0	2	2	5	1	1	11	-5
23	MORRIS, DEQUAN	G	2	1-3	0-1	0-0	1	0	1	2	0	1	1	0	7	-4
00	STOKES, KSHUN	G	0	0-1	0-1	0-0	0	0	0	0	0	0	0	0	1	0
10	WILSON, JAMIL	G	0	0-0	0-0	0-0	0	0	0	0	0	0	0	0	0	0
14	WALLACE, MARCUS	G	5	2-4	1-2	0-0	2	2	4	1	2	0	0	2	15	-6
15	STREDIC JR, ALVIN	F	0	0-0	0-0	0-0	0	0	0	0	0	0	0	0	0	0
24	MCDYESS, ARTAVIOUS	F	0	0-1	0-0	0-0	1	0	1	0	0	0	1	0	9	-1
25	HARALSON, ISAIAH	G	0	0-1	0-1	0-0	0	0	0	0	0	1	0	0	7	0
30	POSEY, CAMERON	G	5	2-3	1-1	0-0	0	2	2	3	0	0	0	1	8	1
TEAM							0	0	0	0		2				
TOTALS			28	10-20	3-9	5-7	5	10	15	12	5	16	4	6	100	

Shooting By Period

Period	FG	FG%	3FG	3FG%	FT	FT%
1st Half	10-20	50%	3-9	33%	5-7	71%
Game	17-39	43.6%	5-16	31.3%	15-23	65.2%

Deadball Rebounds: 2,2

Last FG Half: UAP 2nd-01:50

Prairie View 35

No.	Player	S	Pts	FG	3FG	FT	OR	DR	TR	PF	A	TO	Blk	Stl	Min	+/-
00	HENRY, LENELL	F	0	0-1	0-0	0-0	0	0	0	2	0	1	0	0	8	7
04	LISTER, ANTIONE	G	0	0-2	0-1	0-0	0	0	0	0	0	2	0	0	8	9
14	SNEED, LEON	G	2	1-1	0-0	0-0	0	0	0	1	2	3	0	0	14	7
15	ANDRUS, GERARD	G	6	2-6	0-0	2-2	3	1	4	0	1	0	0	1	14	8
23	PATTERSON, DEVONTE	F	9	3-6	1-1	2-4	1	4	5	2	0	1	0	2	18	4
02	WILLIAMS, DARIUS	G	13	4-9	3-7	2-4	1	0	1	2	2	3	0	2	15	0
03	ELLIS, CHANCELLOR	G	5	1-3	1-3	2-2	0	0	0	0	0	0	0	0	7	3
11	COX, DEWAYNE	G	0	0-1	0-0	0-0	0	1	1	0	0	0	0	0	6	0
12	WILLIAMS, FAITE	G	0	0-0	0-0	0-0	0	0	0	2	0	0	0	0	5	-4
35	JACKSON, JONATHAN	F	0	0-0	0-0	0-0	0	0	0	1	0	0	0	0	3	1
TEAM							0	0	0	0		1				
TOTALS			35	11-29	5-12	8-12	5	6	11	10	5	11	0	5	100	

Shooting By Period

Period	FG	FG%	3FG	3FG%	FT	FT%
1st Half	11-29	38%	5-12	42%	8-12	67%
Game	23-54	42.6%	6-18	33.3%	15-22	68.2%

Deadball Rebounds: 8,1

Last FG Half: PVU 2nd-00:10

Game Notes:

Officials: , ,
Attendance: 346

Start Time: 06:36 PM ET
End Time: 08:55 PM ET
Game Duration: 2:19
Conference Game;

Score	1st	2nd	TOT
UAP	28	26	54
PVU	35	32	67

Points from (This Period)	UAP	PVU
In the Paint	10	10
Off Turns	5	17
2nd Chance	2	9
Fast Break	9	5
Bench	10	18

Official Play-By-Play
Ark.-Pine Bluff vs Prairie View
First Half
January 25, 2020 at William J. Nicks Building - Prairie View



Period 1

Starters:

Ark.-Pine Bluff: 2 CARTER, MARQUELL (F); 3 BELL, MARKEDRIC (F); 4 MCNAIR, JORDAN (G); 12 BANYARD, TERRANCE (F); 23 MORRIS, DEQUAN (G);

Prairie View: 00 HENRY, LENELL (F); 4 LISTER, ANTIONE (G); 14 SNEED, LEON (G); 15 ANDRUS, GERARD (G); 23 PATTERSON, DEVONTE (F);

Time	VISITORS: Ark.-Pine Bluff	Score	Margin	HOME: Prairie View
19:34				MISSED 3PTR by LISTER, ANTIONE
19:30				REBOUND (OFF) by PATTERSON, DEVONTE
19:28		2-0	H 2	GOOD! LAYUP by PATTERSON, DEVONTE [PNT]
18:58	TURNOVER (OTHER) by BANYARD, TERRANCE			
18:41				TURNOVER (LOSTBALL) by LISTER, ANTIONE
18:41	STEAL by MCNAIR, JORDAN			
18:32	TURNOVER (LOSTBALL) by BANYARD, TERRANCE			
18:15				MISSED LAYUP by ANDRUS, GERARD
18:15	BLOCK by MORRIS, DEQUAN			
18:15				REBOUND (OFF) by TEAM
18:14		4-0	H 4	GOOD! JUMPER by SNEED, LEON [PNT]
17:45	TURNOVER (LOSTBALL) by MCNAIR, JORDAN			
17:45				STEAL by PATTERSON, DEVONTE
17:39				MISSED LAYUP by LISTER, ANTIONE
17:39	BLOCK by BELL, MARKEDRIC			
17:21				REBOUND (OFF) by TEAM
17:19		6-0	H 6	GOOD! LAYUP by ANDRUS, GERARD [PNT]
17:13	GOOD! LAYUP by BELL, MARKEDRIC [FB/PNT]	6-2	H 4	
17:13	ASSIST by BANYARD, TERRANCE			
17:01				TURNOVER (BADPASS) by LISTER, ANTIONE
17:01	STEAL by BANYARD, TERRANCE			
16:48	FOUL (OFF) by BANYARD, TERRANCE			
16:48	TURNOVER (OFFENSIVE) by BANYARD, TERRANCE			
16:48	SUB OUT: BANYARD, TERRANCE			
16:48	SUB OUT: MORRIS, DEQUAN			
16:48	SUB IN: WALLACE, MARCUS			
16:48	SUB IN: MCDYESS, ARTAVIOUS			
16:31		9-2	H 7	GOOD! 3PTR by PATTERSON, DEVONTE
16:31				ASSIST by ANDRUS, GERARD
16:22				FOUL (PERSONAL) by HENRY, LENELL
16:10	GOOD! JUMPER by MCNAIR, JORDAN	9-4	H 5	
15:55				TURNOVER (LOSTBALL) by HENRY, LENELL
15:55	STEAL by BELL, MARKEDRIC			
15:49	MISSED 3PTR by WALLACE, MARCUS			
15:45				REBOUND (DEF) by PATTERSON, DEVONTE
15:35		11-4	H 7	GOOD! JUMPER by ANDRUS, GERARD
15:35				ASSIST by SNEED, LEON
15:27				FOUL (PERSONAL) by SNEED, LEON
15:27				
15:27				SUB OUT: HENRY, LENELL
15:27				SUB OUT: LISTER, ANTIONE
15:27				SUB IN: WILLIAMS, DARIUS
15:27				SUB IN: WILLIAMS, FAITE
15:20	GOOD! JUMPER by WALLACE, MARCUS	11-6	H 5	
15:11				MISSED 3PTR by WILLIAMS, DARIUS
15:07	REBOUND (DEF) by WALLACE, MARCUS			
15:02				SUB OUT: SNEED, LEON
15:02				SUB IN: COX, DEWAYNE
15:01				FOUL (PERSONAL) by WILLIAMS, FAITE
15:01	GOOD! FT by BELL, MARKEDRIC	11-7	H 4	
15:01	MISSED FT by BELL, MARKEDRIC			
15:01				REBOUND (DEF) by ANDRUS, GERARD
14:59				SUB OUT: COX, DEWAYNE
14:59				SUB OUT: ANDRUS, GERARD
14:59				SUB IN: HENRY, LENELL
14:59				SUB IN: ELLIS, CHANCELLOR
14:57				MISSED JUMPER by PATTERSON, DEVONTE
14:54	REBOUND (DEF) by BELL, MARKEDRIC			
14:44				FOUL (PERSONAL) by WILLIAMS, FAITE
14:44				SUB OUT: HENRY, LENELL
14:44				SUB OUT: ELLIS, CHANCELLOR
14:44				SUB OUT: WILLIAMS, FAITE
14:44				SUB IN: COX, DEWAYNE
14:44				SUB IN: ANDRUS, GERARD
14:44				SUB IN: JACKSON, JONATHAN
14:44	TURNOVER (LOSTBALL) by CARTER, MARQUELL			
14:30				TURNOVER (LOSTBALL) by WILLIAMS, DARIUS
14:07	MISSED JUMPER by MCDYESS, ARTAVIOUS			
14:03				REBOUND (DEF) by PATTERSON, DEVONTE
14:02				MISSED JUMPER by COX, DEWAYNE

Time	VISITORS: Ark.-Pine Bluff	Score	Margin	HOME: Prairie View
14:02	BLOCK by MCDYESS, ARTAVIOUS			
13:55	REBOUND (DEF) by BELL, MARKEDRIC			
13:40	FOUL (OFF) by CARTER, MARQUELL			
13:40	TURNOVER (OFFENSIVE) by CARTER, MARQUELL			
13:40				SUB OUT: COX, DEWAYNE
13:40				SUB IN: SNEED, LEON
13:38				TURNOVER (OTHER) by SNEED, LEON
13:19	TURNOVER (LOSTBALL) by CARTER, MARQUELL			
13:12				SUB OUT: PATTERSON, DEVONTE
13:12				SUB IN: ELLIS, CHANCELLOR
13:12	SUB OUT: CARTER, MARQUELL			
13:12	SUB IN: BANYARD, TERRANCE			
12:59		14-7	H 7	GOOD! 3PTR by WILLIAMS, DARIUS
12:59				ASSIST by SNEED, LEON
12:39	GOOD! 3PTR by WALLACE, MARCUS	14-10	H 4	
12:39	ASSIST by BANYARD, TERRANCE			
12:26		17-10	H 7	GOOD! 3PTR by ELLIS, CHANCELLOR
12:26				ASSIST by WILLIAMS, DARIUS
11:58				FOUL (PERSONAL) by JACKSON, JONATHAN
11:49	GOOD! FT by BANYARD, TERRANCE	17-11	H 6	
11:49	GOOD! FT by BANYARD, TERRANCE	17-12	H 5	
11:47	SUB OUT: BELL, MARKEDRIC			
11:47	SUB OUT: MCNAIR, JORDAN			
11:47	SUB IN: MORRIS, DEQUAN			
11:47	SUB IN: POSEY, CAMERON			
11:26				TURNOVER (SHOTCLOCK) by TEAM
11:26				SUB OUT: JACKSON, JONATHAN
11:26				SUB IN: PATTERSON, DEVONTE
11:14	FOUL (OFF) by MORRIS, DEQUAN			
11:14	TURNOVER (OFFENSIVE) by MORRIS, DEQUAN			
10:58				TURNOVER (LOSTBALL) by SNEED, LEON
10:58	STEAL by WALLACE, MARCUS			
10:44	GOOD! 3PTR by POSEY, CAMERON	17-15	H 2	
10:44	ASSIST by WALLACE, MARCUS			
10:27				MISSED LAYUP by WILLIAMS, DARIUS
10:21				REBOUND (OFF) by WILLIAMS, DARIUS
10:18		19-15	H 4	GOOD! LAYUP by PATTERSON, DEVONTE [PNT]
10:18				ASSIST by WILLIAMS, DARIUS
09:52				SUB OUT: ELLIS, CHANCELLOR
09:52				SUB IN: HENRY, LENELL
09:31	MISSED 3PTR by MORRIS, DEQUAN			
09:30	REBOUND (OFF) by MCDYESS, ARTAVIOUS			
09:15	TURNOVER (LOSTBALL) by BANYARD, TERRANCE			
09:15				STEAL by ANDRUS, GERARD
09:13				MISSED LAYUP by HENRY, LENELL
09:08				REBOUND (OFF) by ANDRUS, GERARD
09:07	FOUL (PERSONAL) by MORRIS, DEQUAN			
09:07				MISSED FT by PATTERSON, DEVONTE
09:07				REBOUND (OFF) by TEAM
09:07		20-15	H 5	GOOD! FT by PATTERSON, DEVONTE [FB]
09:07	SUB OUT: WALLACE, MARCUS			
09:07	SUB OUT: MORRIS, DEQUAN			
09:07	SUB IN: CARTER, MARQUELL			
09:07	SUB IN: HARALSON, ISAIAH			
08:57	TURNOVER (LOSTBALL) by HARALSON, ISAIAH			
08:57				STEAL by WILLIAMS, DARIUS
08:49		22-15	H 7	GOOD! LAYUP by WILLIAMS, DARIUS [PNT]
08:43	GOOD! 3PTR by BANYARD, TERRANCE [FB]	22-18	H 4	
08:34		25-18	H 7	GOOD! 3PTR by WILLIAMS, DARIUS
08:19	TURNOVER (BADPASS) by CARTER, MARQUELL			
08:19				STEAL by PATTERSON, DEVONTE
08:11				MISSED LAYUP by PATTERSON, DEVONTE
08:00	REBOUND (DEF) by CARTER, MARQUELL			
07:58				FOUL (PERSONAL) by WILLIAMS, DARIUS
07:58	GOOD! FT by CARTER, MARQUELL [FB]	25-19	H 6	
07:58	GOOD! FT by CARTER, MARQUELL [FB]	25-20	H 5	
07:58				SUB OUT: SNEED, LEON
07:58				SUB OUT: ANDRUS, GERARD
07:58				SUB IN: ELLIS, CHANCELLOR
07:58				SUB IN: WILLIAMS, FAITE
07:58	SUB OUT: MCDYESS, ARTAVIOUS			
07:58	SUB IN: BELL, MARKEDRIC			
07:56				TURNOVER (LOSTBALL) by WILLIAMS, DARIUS
07:56	STEAL by POSEY, CAMERON			
07:42				MISSED 3PTR by ELLIS, CHANCELLOR
07:42	GOOD! LAYUP by POSEY, CAMERON	25-22	H 3	
07:38	REBOUND (DEF) by CARTER, MARQUELL			
07:36	GOOD! DUNK by BELL, MARKEDRIC	25-24	H 1	
07:36	ASSIST by CARTER, MARQUELL			
07:28				MISSED LAYUP by PATTERSON, DEVONTE

Time	VISITORS: Ark.-Pine Bluff	Score	Margin	HOME: Prairie View
07:28	BLOCK by BANYARD, TERRANCE			
07:28	REBOUND (DEF) by POSEY, CAMERON			
07:28	SUB OUT: POSEY, CAMERON			
07:28	SUB IN: WALLACE, MARCUS			
07:28	TURNOVER (LOSTBALL) by BANYARD, TERRANCE			
07:28				STEAL by WILLIAMS, DARIUS
07:28				MISSED 3PTR by WILLIAMS, DARIUS
07:28	REBOUND (DEF) by CARTER, MARQUELL			
07:22		28-24	H 4	GOOD! 3PTR by WILLIAMS, DARIUS
07:22	TURNOVER (OTHER) by TEAM			
07:04				SUB OUT: WILLIAMS, DARIUS
07:04				SUB OUT: ELLIS, CHANCELLOR
07:04				SUB IN: LISTER, ANTIONE
07:04				SUB IN: COX, DEWAYNE
07:04				FOUL (PERSONAL) by HENRY, LENELL
07:04	MISSED FT by BANYARD, TERRANCE			
07:04				REBOUND (DEF) by TEAM
07:03				SUB OUT: HENRY, LENELL
07:03				SUB IN: SNEED, LEON
07:01				TURNOVER (BADPASS) by SNEED, LEON
07:01	STEAL by WALLACE, MARCUS			
06:53	MISSED 3PTR by HARALSON, ISIAAH			
06:48				REBOUND (DEF) by PATTERSON, DEVONTE
06:37				SUB OUT: LISTER, ANTIONE
06:37				SUB IN: ELLIS, CHANCELLOR
06:21				SUB OUT: WILLIAMS, FAITE
06:21				SUB IN: ANDRUS, GERARD
06:21				MISSED 3PTR by ELLIS, CHANCELLOR
06:21				REBOUND (OFF) by ANDRUS, GERARD
06:21	FOUL (PERSONAL) by WALLACE, MARCUS			
06:21				SUB OUT: COX, DEWAYNE
06:21				SUB IN: WILLIAMS, DARIUS
06:21				MISSED 3PTR by WILLIAMS, DARIUS
06:21				REBOUND (OFF) by ANDRUS, GERARD
06:21				MISSED LAYUP by ANDRUS, GERARD
06:21	REBOUND (DEF) by CARTER, MARQUELL			
05:43	SUB OUT: WALLACE, MARCUS			
05:43	SUB IN: POSEY, CAMERON			
05:43	FOUL (TECH) by BELL, MARKEDRIC			
05:43	TURNOVER (OFFENSIVE) by BELL, MARKEDRIC			
05:43				FOUL (TECH) by WILLIAMS, DARIUS
05:43				TURNOVER (OFFENSIVE) by WILLIAMS, DARIUS
05:43	FOUL (TECH) by BANYARD, TERRANCE			
05:43				FOUL (TECH) by PATTERSON, DEVONTE
05:43	FOUL (PERSONAL) by POSEY, CAMERON			
05:43		29-24	H 5	GOOD! FT by WILLIAMS, DARIUS [FB]
05:43				MISSED FT by WILLIAMS, DARIUS
05:43				REBOUND (OFF) by TEAM
05:43				MISSED FT by WILLIAMS, DARIUS
05:43	REBOUND (DEF) by POSEY, CAMERON			
05:08				SUB OUT: SNEED, LEON
05:08				SUB OUT: ANDRUS, GERARD
05:08				SUB IN: COX, DEWAYNE
05:08				SUB IN: WILLIAMS, FAITE
05:08	SUB OUT: BANYARD, TERRANCE			
05:08	SUB IN: WALLACE, MARCUS			
04:59				SUB OUT: ELLIS, CHANCELLOR
04:59				SUB IN: LISTER, ANTIONE
04:55	TURNOVER (OTHER) by TEAM			
03:53				SUB OUT: COX, DEWAYNE
03:53				SUB OUT: WILLIAMS, FAITE
03:53				SUB IN: ELLIS, CHANCELLOR
03:53				SUB IN: SNEED, LEON
03:53	SUB OUT: BELL, MARKEDRIC			
03:53	SUB OUT: HARALSON, ISIAAH			
03:53	SUB IN: MCNAIR, JORDAN			
03:53	SUB IN: MORRIS, DEQUAN			
03:52	FOUL (PERSONAL) by POSEY, CAMERON			
03:52				MISSED FT by PATTERSON, DEVONTE
03:52				REBOUND (OFF) by TEAM
03:52		30-24	H 6	GOOD! FT by PATTERSON, DEVONTE
03:44				SUB OUT: ELLIS, CHANCELLOR
03:44				SUB IN: COX, DEWAYNE
03:31	MISSED 3PTR by CARTER, MARQUELL			
03:21	REBOUND (OFF) by CARTER, MARQUELL			
03:10	MISSED JUMPER by MORRIS, DEQUAN			
03:05	REBOUND (OFF) by WALLACE, MARCUS			
02:43	MISSED LAYUP by POSEY, CAMERON			
02:39	REBOUND (OFF) by MORRIS, DEQUAN			

Time	VISITORS: Ark.-Pine Bluff	Score	Margin	HOME: Prairie View
02:33	GOOD! DUNK by MORRIS, DEQUAN [PNT]	30-26	H 4	
02:28	FOUL (TECH) by MORRIS, DEQUAN			
02:28		31-26	H 5	GOOD! FT by WILLIAMS, DARIUS [FB]
02:28				SUB OUT: PATTERSON, DEVONTE
02:28				SUB IN: ELLIS, CHANCELLOR
02:28	SUB OUT: MORRIS, DEQUAN			
02:28	SUB IN: BELL, MARKEDRIC			
02:08				SUB OUT: SNEED, LEON
02:08				SUB IN: ANDRUS, GERARD
02:08	FOUL (PERSONAL) by POSEY, CAMERON			
02:08		32-26	H 6	GOOD! FT by ANDRUS, GERARD
02:08		33-26	H 7	GOOD! FT by ANDRUS, GERARD
02:08				SUB OUT: ELLIS, CHANCELLOR
02:08				SUB IN: PATTERSON, DEVONTE
02:08	SUB OUT: POSEY, CAMERON			
02:08	SUB IN: HARALSON, ISAIAH			
02:03	MISSED 3PTR by MCNAIR, JORDAN			
01:58				REBOUND (DEF) by COX, DEWAYNE
01:49				FOUL (OFF) by PATTERSON, DEVONTE
01:49				TURNOVER (OFFENSIVE) by PATTERSON, DEVONTE
01:43	TURNOVER (LOSTBALL) by MCNAIR, JORDAN			
01:38				SUB OUT: LISTER, ANTIONE
01:38				SUB OUT: COX, DEWAYNE
01:38				SUB IN: ELLIS, CHANCELLOR
01:38				SUB IN: WILLIAMS, FAITE
00:58				MISSED JUMPER by ANDRUS, GERARD
00:54	REBOUND (DEF) by WALLACE, MARCUS			
00:52	GOOD! DUNK by BELL, MARKEDRIC [FB/PNT]	33-28	H 5	
00:52	ASSIST by WALLACE, MARCUS			
00:51	FOUL (TECH) by BELL, MARKEDRIC			
00:51		34-28	H 6	GOOD! FT by ELLIS, CHANCELLOR [FB]
00:51		35-28	H 7	GOOD! FT by ELLIS, CHANCELLOR [FB]
00:51	FOUL (TECH) by BELL, MARKEDRIC			
00:50				MISSED LAYUP by ANDRUS, GERARD
00:46	REBOUND (DEF) by TEAM			
00:45				SUB OUT: ELLIS, CHANCELLOR
00:45				SUB OUT: ANDRUS, GERARD
00:45				SUB IN: HENRY, LENELL
00:45				SUB IN: COX, DEWAYNE
00:45	SUB OUT: BELL, MARKEDRIC			
00:45	SUB IN: STOKES , KSHUN			
00:36	MISSED LAYUP by WALLACE, MARCUS			
00:33	REBOUND (OFF) by WALLACE, MARCUS			
00:30	MISSED 3PTR by STOKES , KSHUN			
00:27				REBOUND (DEF) by PATTERSON, DEVONTE
00:22				MISSED 3PTR by WILLIAMS, DARIUS
00:00	REBOUND (DEF) by TEAM			

Ark.-Pine Bluff 28, Prairie View 35

Points from (This Period)	UAP	PVU
In the Paint	10	10
Off Turns	5	17
2nd Chance	2	9
Fast Break	9	5
Bench	10	18

Official Box Score
Ark.-Pine Bluff vs Prairie View
Second Half Statistics Only
January 25, 2020 at William J. Nicks Building - Prairie View



Ark.-Pine Bluff 26

No.	Player	S	Pts	FG	3FG	FT	OR	DR	TR	PF	A	TO	Blk	Stl	Min	+/-
02	CARTER, MARQUELL	F	10	2-7	1-4	5-6	0	3	3	0	1	1	0	1	18	-2
03	BELL, MARKEDRIC	F	0	0-0	0-0	0-0	0	0	0	0	0	0	0	0	0	0
04	MCNAIR, JORDAN	G	0	0-1	0-1	0-0	0	0	0	1	1	1	0	0	11	-7
12	BANYARD, TERRANCE	F	2	0-0	0-0	2-2	0	1	1	1	0	1	1	0	10	-5
23	MORRIS, DEQUAN	G	7	3-6	0-0	1-2	2	1	3	2	0	1	1	0	14	-1
00	STOKES, KSHUN	G	0	0-0	0-0	0-0	0	0	0	0	0	0	0	0	0	0
10	WILSON, JAMIL	G	0	0-0	0-0	0-0	0	0	0	0	0	0	0	0	2	0
14	WALLACE, MARCUS	G	3	1-3	1-2	0-0	0	1	1	0	1	0	0	1	14	-1
15	STREDIC JR, ALVIN	F	4	1-1	0-0	2-4	0	0	0	1	0	0	0	0	7	-5
24	MCDYESS, ARTAVIOUS	F	0	0-1	0-0	0-2	1	1	2	3	1	1	0	0	12	-6
25	HARALSON, ISAIAH	G	0	0-0	0-0	0-0	0	0	0	0	0	0	0	0	0	0
30	POSEY, CAMERON	G	0	0-0	0-0	0-0	0	0	0	2	1	1	0	0	11	-3
TEAM							0	0	0	0		0				
TOTALS			26	7-19	2-7	10-16	3	7	10	10	5	6	2	2	100	

Shooting By Period

Period	FG	FG%	3FG	3FG%	FT	FT%
2nd Half	7-19	37%	2-7	29%	10-16	63%
Game	17-39	43.6%	5-16	31.3%	15-23	65.2%

Deadball Rebounds: 2,2
Last FG Half: UAP -

Prairie View 32

No.	Player	S	Pts	FG	3FG	FT	OR	DR	TR	PF	A	TO	Blk	Stl	Min	+/-
00	HENRY, LENELL	F	0	0-0	0-0	0-0	1	4	5	1	0	1	0	0	12	-1
04	LISTER, ANTIONE	G	2	1-3	0-2	0-0	2	0	2	1	0	0	0	0	16	-1
14	SNEED, LEON	G	1	0-1	0-0	1-2	0	1	1	2	0	0	0	0	7	2
15	ANDRUS, GERARD	G	5	2-7	0-0	1-2	1	1	2	3	1	0	0	0	14	-2
23	PATTERSON, DEVONTE	F	8	4-5	0-1	0-0	2	1	3	3	1	0	0	0	12	9
02	WILLIAMS, DARIUS	G	9	4-5	1-2	0-0	0	1	1	0	0	2	0	0	11	12
03	ELLIS, CHANCELLOR	G	0	0-1	0-1	0-0	0	1	1	0	1	0	0	1	9	9
11	COX, DEWAYNE	G	2	1-1	0-0	0-0	0	0	0	2	0	1	0	0	4	-2
12	WILLIAMS, FAITE	G	5	0-2	0-0	5-6	0	4	4	0	6	2	0	1	13	4
35	JACKSON, JONATHAN	F	0	0-0	0-0	0-0	0	0	0	0	0	0	0	0	2	0
TEAM							0	0	0	0		3				
TOTALS			32	12-25	1-6	7-10	6	13	19	12	9	9	0	2	100	

Shooting By Period

Period	FG	FG%	3FG	3FG%	FT	FT%
2nd Half	12-25	48%	1-6	17%	7-10	70%
Game	23-54	42.6%	6-18	33.3%	15-22	68.2%

Deadball Rebounds: 8,1
Last FG Half: PVU -

Game Notes:
 Officials: , ,
 Attendance: 346

Start Time: 06:36 PM ET
 End Time: 08:55 PM ET
 Game Duration: 2:19
 Conference Game;

Score	1st	2nd	TOT
UAP	28	26	54
PVU	35	32	67

Points from (This Period)	UAP	PVU
In the Paint	6	14
Off Turns	9	8
2nd Chance	6	6
Fast Break	4	11
Bench	7	16

Official Play-By-Play
Ark.-Pine Bluff vs Prairie View
Second Half
January 25, 2020 at William J. Nicks Building - Prairie View



Period 2

Starters:

Ark.-Pine Bluff: 2 CARTER, MARQUELL (F); 3 BELL, MARKEDRIC (F); 4 MCNAIR, JORDAN (G); 12 BANYARD, TERRANCE (F); 23 MORRIS, DEQUAN (G);

Prairie View: 00 HENRY, LENELL (F); 4 LISTER, ANTIONE (G); 14 SNEED, LEON (G); 15 ANDRUS, GERARD (G); 23 PATTERSON, DEVONTE (F);

Time	VISITORS: Ark.-Pine Bluff	Score	Margin	HOME: Prairie View
20:00				SUB OUT: WILLIAMS, DARIUS
20:00				SUB OUT: COX, DEWAYNE
20:00				SUB OUT: WILLIAMS, FAITE
20:00				SUB IN: LISTER, ANTIONE
20:00				SUB IN: SNEED, LEON
20:00				SUB IN: ANDRUS, GERARD
20:00	SUB OUT: STOKES , KSHUN			
20:00	SUB OUT: HARALSON, ISAIAH			
20:00	SUB IN: BANYARD, TERRANCE			
20:00	SUB IN: MORRIS, DEQUAN			
19:36				MISSED LAYUP by ANDRUS, GERARD
19:36	BLOCK by MORRIS, DEQUAN			
19:26	REBOUND (DEF) by CARTER, MARQUELL			
19:00	MISSED 3PTR by WALLACE, MARCUS			
18:56				REBOUND (DEF) by SNEED, LEON
18:52				MISSED LAYUP by SNEED, LEON
18:52	BLOCK by BANYARD, TERRANCE			
18:44	REBOUND (DEF) by BANYARD, TERRANCE			
18:44				FOUL (PERSONAL) by HENRY, LENELL
18:44	GOOD! FT by BANYARD, TERRANCE [FB]	35-29	H 6	
18:44	GOOD! FT by BANYARD, TERRANCE [FB]	35-30	H 5	
18:31				MISSED 3PTR by LISTER, ANTIONE
18:27	REBOUND (DEF) by MORRIS, DEQUAN			
18:18	MISSED 3PTR by CARTER, MARQUELL			
18:14				REBOUND (DEF) by HENRY, LENELL
18:04		37-30	H 7	GOOD! JUMPER by PATTERSON, DEVONTE
17:31				FOUL (PERSONAL) by SNEED, LEON
17:28	TURNOVER (TRAVEL) by MORRIS, DEQUAN			
16:47		39-30	H 9	GOOD! JUMPER by LISTER, ANTIONE
16:47				ASSIST by PATTERSON, DEVONTE
16:16	FOUL (OFF) by BANYARD, TERRANCE			
16:16	TURNOVER (OFFENSIVE) by BANYARD, TERRANCE			
16:08				MISSED JUMPER by ANDRUS, GERARD
16:03	REBOUND (DEF) by WALLACE, MARCUS			
16:02	MISSED LAYUP by WALLACE, MARCUS			
15:57	REBOUND (OFF) by MORRIS, DEQUAN			
15:55	GOOD! LAYUP by MORRIS, DEQUAN [PNT]	39-32	H 7	
15:48				FOUL (PERSONAL) by ANDRUS, GERARD
15:48	GOOD! FT by MORRIS, DEQUAN	39-33	H 6	
15:47				SUB OUT: ANDRUS, GERARD
15:47				SUB IN: WILLIAMS, DARIUS
15:47	SUB OUT: MCNAIR, JORDAN			
15:47	SUB OUT: BANYARD, TERRANCE			
15:47	SUB IN: WILSON , JAMIL			
15:47	SUB IN: MCDYESS, ARTAVIOUS			
15:35				TURNOVER (BADPASS) by HENRY, LENELL
15:35	STEAL by CARTER, MARQUELL			
15:25				FOUL (PERSONAL) by SNEED, LEON
15:25				
15:17	MISSED JUMPER by MORRIS, DEQUAN			
15:13				REBOUND (DEF) by HENRY, LENELL
14:56	FOUL (PERSONAL) by MCDYESS, ARTAVIOUS			
14:56				SUB OUT: LISTER, ANTIONE
14:56				SUB IN: ELLIS, CHANCELLOR
14:55		41-33	H 8	GOOD! LAYUP by PATTERSON, DEVONTE [PNT]
14:55				ASSIST by ELLIS, CHANCELLOR
14:45	GOOD! LAYUP by MORRIS, DEQUAN [PNT]	41-35	H 6	
14:45	ASSIST by MCDYESS, ARTAVIOUS			
14:23				MISSED 3PTR by WILLIAMS, DARIUS
14:19				REBOUND (OFF) by HENRY, LENELL
14:11				MISSED 3PTR by PATTERSON, DEVONTE
14:11	FOUL (PERSONAL) by MORRIS, DEQUAN			
14:07				REBOUND (OFF) by PATTERSON, DEVONTE
14:07	SUB OUT: WILSON , JAMIL			
14:07	SUB IN: MCNAIR, JORDAN			
13:57	SUB OUT: WALLACE, MARCUS			
13:57	SUB OUT: MORRIS, DEQUAN			
13:57	SUB IN: BANYARD, TERRANCE			
13:57	SUB IN: POSEY, CAMERON			
13:57		43-35	H 8	GOOD! LAYUP by WILLIAMS, DARIUS [PNT]

Time	VISITORS: Ark.-Pine Bluff	Score	Margin	HOME: Prairie View
13:44	TURNOVER (BADPASS) by MCDYESS, ARTAVIOUS			
13:44				STEAL by ELLIS, CHANCELLOR
13:26	FOUL (PERSONAL) by MCDYESS, ARTAVIOUS			
13:26				MISSED FT by SNEED, LEON
13:26				REBOUND (OFF) by TEAM
13:26		44-35	H 9	GOOD! FT by SNEED, LEON
13:26				SUB OUT: HENRY, LENELL
13:26				SUB OUT: ELLIS, CHANCELLOR
13:26				SUB OUT: SNEED, LEON
13:26				SUB IN: LISTER, ANTIONE
13:26				SUB IN: COX, DEWAYNE
13:26				SUB IN: WILLIAMS, FAITE
13:26	SUB OUT: CARTER, MARQUELL			
13:26	SUB IN: WALLACE, MARCUS			
13:24	TURNOVER (TRAVEL) by MCNAIR, JORDAN			
13:11				SUB OUT: COX, DEWAYNE
13:11				SUB IN: ELLIS, CHANCELLOR
12:49				MISSED 3PTR by ELLIS, CHANCELLOR
12:45				REBOUND (OFF) by LISTER, ANTIONE
12:36				MISSED LAYUP by WILLIAMS, FAITE
12:32				REBOUND (OFF) by PATTERSON, DEVONTE
12:28		46-35	H 11	GOOD! LAYUP by PATTERSON, DEVONTE [PNT]
12:16	MISSED 3PTR by MCNAIR, JORDAN			
12:12				REBOUND (DEF) by ELLIS, CHANCELLOR
12:09		48-35	H 13	GOOD! JUMPER by WILLIAMS, DARIUS [FB]
12:09				ASSIST by WILLIAMS, FAITE
11:57				
11:57				TIMEOUT 30SEC
11:57				SUB OUT: ELLIS, CHANCELLOR
11:57				SUB IN: COX, DEWAYNE
11:57				FOUL (OFF) by COX, DEWAYNE
11:57				TURNOVER (OFFENSIVE) by COX, DEWAYNE
11:48	TURNOVER (TRAVEL) by POSEY, CAMERON			
11:39				SUB OUT: COX, DEWAYNE
11:39				SUB IN: ELLIS, CHANCELLOR
11:39	SUB OUT: MCNAIR, JORDAN			
11:39	SUB IN: CARTER, MARQUELL			
11:37				TURNOVER (TRAVEL) by WILLIAMS, DARIUS
11:08	GOOD! JUMPER by CARTER, MARQUELL [PNT]	48-37	H 11	
11:08	ASSIST by WALLACE, MARCUS			
10:46				TURNOVER (LOSTBALL) by WILLIAMS, FAITE
10:46	STEAL by WALLACE, MARCUS			
10:38				FOUL (PERSONAL) by PATTERSON, DEVONTE
10:38	MISSED FT by MCDYESS, ARTAVIOUS			
10:38	REBOUND (OFF) by TEAM			
10:38	MISSED FT by MCDYESS, ARTAVIOUS			
10:38				REBOUND (DEF) by PATTERSON, DEVONTE
10:38				SUB OUT: LISTER, ANTIONE
10:38				SUB IN: ANDRUS, GERARD
10:21	SUB OUT: BANYARD, TERRANCE			
10:21	SUB IN: STREDIC JR, ALVIN			
10:19	FOUL (PERSONAL) by STREDIC JR, ALVIN			
10:15	FOUL (PERSONAL) by MCDYESS, ARTAVIOUS			
10:15		49-37	H 12	GOOD! FT by ANDRUS, GERARD
10:15				MISSED FT by ANDRUS, GERARD
10:15	REBOUND (DEF) by MCDYESS, ARTAVIOUS			
10:07				SUB OUT: WILLIAMS, DARIUS
10:07				SUB OUT: ELLIS, CHANCELLOR
10:07				SUB IN: LISTER, ANTIONE
10:07				SUB IN: COX, DEWAYNE
09:56	MISSED 3PTR by CARTER, MARQUELL			
09:52	REBOUND (OFF) by MCDYESS, ARTAVIOUS			
09:47				FOUL (PERSONAL) by PATTERSON, DEVONTE
09:47	GOOD! FT by STREDIC JR, ALVIN	49-38	H 11	
09:47	MISSED FT by STREDIC JR, ALVIN			
09:47				REBOUND (DEF) by WILLIAMS, FAITE
09:47				SUB OUT: COX, DEWAYNE
09:47				SUB OUT: PATTERSON, DEVONTE
09:47				SUB IN: HENRY, LENELL
09:47				SUB IN: ELLIS, CHANCELLOR
09:22				TURNOVER (SHOTCLOCK) by TEAM
09:00	GOOD! JUMPER by STREDIC JR, ALVIN	49-40	H 9	
09:00	ASSIST by CARTER, MARQUELL			
08:31				MISSED 3PTR by LISTER, ANTIONE
08:27	REBOUND (DEF) by CARTER, MARQUELL			
08:10	MISSED JUMPER by CARTER, MARQUELL			
08:05				REBOUND (DEF) by HENRY, LENELL
07:53		51-40	H 11	GOOD! JUMPER by ANDRUS, GERARD [PNT]
07:53				ASSIST by WILLIAMS, FAITE
07:46	TIMEOUT 30SEC			

Time	VISITORS: Ark.-Pine Bluff	Score	Margin	HOME: Prairie View
07:45				SUB OUT: ELLIS, CHANCELLOR
07:45				SUB IN: COX, DEWAYNE
07:45	SUB OUT: WALLACE, MARCUS			
07:45	SUB IN: MORRIS, DEQUAN			
07:36				FOUL (PERSONAL) by ANDRUS, GERARD
07:36	GOOD! FT by STREDIC JR, ALVIN	51-41	H 10	
07:36	MISSED FT by STREDIC JR, ALVIN			
07:36				REBOUND (DEF) by HENRY, LENELL
07:26				SUB OUT: LISTER, ANTIONE
07:26				SUB OUT: COX, DEWAYNE
07:26				SUB IN: WILLIAMS, DARIUS
07:26				SUB IN: ELLIS, CHANCELLOR
07:12				MISSED LAYUP by WILLIAMS, FAITE
07:08				REBOUND (OFF) by ANDRUS, GERARD
07:07				MISSED LAYUP by ANDRUS, GERARD
07:02				REBOUND (OFF) by TEAM
06:38		53-41	H 12	GOOD! JUMPER by WILLIAMS, DARIUS
06:38				ASSIST by WILLIAMS, FAITE
06:25	MISSED LAYUP by CARTER, MARQUELL			
06:19				REBOUND (DEF) by WILLIAMS, FAITE
06:17		55-41	H 14	GOOD! LAYUP by ANDRUS, GERARD [FB/PNT]
06:17				ASSIST by WILLIAMS, FAITE
05:56	GOOD! 3PTR by CARTER, MARQUELL	55-44	H 11	
05:56	ASSIST by POSEY, CAMERON			
05:53	TIMEOUT 30SEC			
05:50				MISSED JUMPER by ANDRUS, GERARD
05:45	REBOUND (DEF) by CARTER, MARQUELL			
05:44				FOUL (PERSONAL) by ANDRUS, GERARD
05:34	GOOD! FT by CARTER, MARQUELL [FB]	55-45	H 10	
05:34	GOOD! FT by CARTER, MARQUELL [FB]	55-46	H 9	
05:34				TURNOVER (OTHER) by WILLIAMS, FAITE
05:34				SUB OUT: HENRY, LENELL
05:34				SUB OUT: ELLIS, CHANCELLOR
05:34				SUB OUT: ANDRUS, GERARD
05:34				SUB IN: LISTER, ANTIONE
05:34				SUB IN: COX, DEWAYNE
05:34				SUB IN: PATTERSON, DEVONTE
05:34	TURNOVER (LOSTBALL) by CARTER, MARQUELL			
05:34				STEAL by WILLIAMS, FAITE
05:34		58-46	H 12	GOOD! 3PTR by WILLIAMS, DARIUS [FB]
05:34				ASSIST by WILLIAMS, FAITE
05:25	MISSED LAYUP by MCDYESS, ARTAVIOUS			
05:19				REBOUND (DEF) by WILLIAMS, DARIUS
04:57	SUB OUT: POSEY, CAMERON			
04:57	SUB IN: WALLACE, MARCUS			
04:55				TURNOVER (LOSTBALL) by WILLIAMS, DARIUS
04:17				SUB OUT: WILLIAMS, DARIUS
04:17				SUB IN: ANDRUS, GERARD
04:17	SUB OUT: WALLACE, MARCUS			
04:17	SUB OUT: MCDYESS, ARTAVIOUS			
04:17	SUB IN: MCNAIR, JORDAN			
04:17	SUB IN: BANYARD, TERRANCE			
04:15	FOUL (PERSONAL) by MCNAIR, JORDAN			
04:12				
03:32				SUB OUT: LISTER, ANTIONE
03:32				SUB OUT: COX, DEWAYNE
03:32				SUB IN: WILLIAMS, DARIUS
03:32				SUB IN: ELLIS, CHANCELLOR
03:29		60-46	H 14	GOOD! LAYUP by PATTERSON, DEVONTE [PNT]
03:29				ASSIST by WILLIAMS, FAITE
03:21				FOUL (PERSONAL) by PATTERSON, DEVONTE
03:20	MISSED FT by MORRIS, DEQUAN			
03:20				REBOUND (DEF) by ANDRUS, GERARD
03:20				SUB OUT: PATTERSON, DEVONTE
03:20				SUB IN: HENRY, LENELL
03:12	FOUL (PERSONAL) by MORRIS, DEQUAN			
02:56		61-46	H 15	GOOD! FT by WILLIAMS, FAITE [FB]
02:56		62-46	H 16	GOOD! FT by WILLIAMS, FAITE [FB]
02:56				SUB OUT: WILLIAMS, DARIUS
02:56				SUB OUT: ELLIS, CHANCELLOR
02:56				SUB IN: LISTER, ANTIONE
02:56				SUB IN: COX, DEWAYNE
02:56	SUB OUT: STREDIC JR, ALVIN			
02:56	SUB IN: POSEY, CAMERON			
02:54	MISSED LAYUP by MORRIS, DEQUAN			
02:45				REBOUND (DEF) by WILLIAMS, FAITE
02:28				MISSED JUMPER by ANDRUS, GERARD
02:23				REBOUND (OFF) by LISTER, ANTIONE
02:22				FOUL (PERSONAL) by LISTER, ANTIONE
02:22	MISSED FT by CARTER, MARQUELL			

Time	VISITORS: Ark.-Pine Bluff	Score	Margin	HOME: Prairie View
02:22	GOOD! FT by CARTER, MARQUELL	62-47	H 15	
02:22	REBOUND (OFF) by TEAM			
02:22	GOOD! JUMPER by MORRIS, DEQUAN	62-49	H 13	
02:22				TURNOVER (SHOTCLOCK) by TEAM
02:11				SUB OUT: HENRY, LENELL
02:11				SUB OUT: COX, DEWAYNE
02:11				SUB IN: WILLIAMS, DARIUS
02:11				SUB IN: JACKSON, JONATHAN
02:03				TURNOVER (OTHER) by TEAM
01:50	SUB OUT: BANYARD, TERRANCE			
01:50	SUB IN: WALLACE, MARCUS			
01:50	GOOD! 3PTR by WALLACE, MARCUS	62-52	H 10	
01:50	ASSIST by MCNAIR, JORDAN			
01:48	FOUL (PERSONAL) by POSEY, CAMERON			
01:47		63-52	H 11	GOOD! FT by WILLIAMS, FAITE [FB]
01:47		64-52	H 12	GOOD! FT by WILLIAMS, FAITE [FB]
00:43	MISSED JUMPER by MORRIS, DEQUAN			
00:39				REBOUND (DEF) by WILLIAMS, FAITE
00:39	FOUL (PERSONAL) by POSEY, CAMERON			
00:39				MISSED FT by WILLIAMS, FAITE
00:39				REBOUND (OFF) by TEAM
00:39		65-52	H 13	GOOD! FT by WILLIAMS, FAITE
00:37	MISSED 3PTR by CARTER, MARQUELL			
00:33	REBOUND (OFF) by MORRIS, DEQUAN			
00:28	SUB OUT: POSEY, CAMERON			
00:28	SUB IN: STOKES , KSHUN			
00:28				SUB OUT: WILLIAMS, DARIUS
00:28				SUB IN: COX, DEWAYNE
00:28				FOUL (PERSONAL) by COX, DEWAYNE
00:28	GOOD! FT by CARTER, MARQUELL	65-53	H 12	
00:28	GOOD! FT by CARTER, MARQUELL	65-54	H 11	
00:10		67-54	H 13	GOOD! LAYUP by COX, DEWAYNE [PNT]
00:10				ASSIST by ANDRUS, GERARD

Ark.-Pine Bluff 54, Prairie View 67

Points from (This Period)	UAP	PVU
In the Paint	6	14
Off Turns	9	8
2nd Chance	6	6
Fast Break	4	11
Bench	7	16

Official Scoring/Possession Reference Chart
Ark.-Pine Bluff vs Prairie View
Period 1
January 25, 2020 at William J. Nicks Building - Prairie View



Period 1

Starters:

Ark.-Pine Bluff: 2 CARTER, MARQUELL (F); 3 BELL, MARKEDRIC (F); 4 MCNAIR, JORDAN (G); 12 BANYARD, TERRANCE (F); 23 MORRIS, DEQUAN (G);

Prairie View: 00 HENRY, LENELL (F); 4 LISTER, ANTIONE (G); 14 SNEED, LEON (G); 15 ANDRUS, GERARD (G); 23 PATTERSON, DEVONTE (F);

Time	VISITORS: Ark.-Pine Bluff	Score	Margin	HOME: Prairie View
19:28		2-0	H 2	GOOD! LAYUP by PATTERSON, DEVONTE [PNT]
18:14		4-0	H 4	GOOD! JUMPER by SNEED, LEON [PNT]
17:19		6-0	H 6	GOOD! LAYUP by ANDRUS, GERARD [PNT]
17:13	GOOD! LAYUP by BELL, MARKEDRIC [FB/PNT]	6-2	H 4	
16:31		9-2	H 7	GOOD! 3PTR by PATTERSON, DEVONTE
16:10	GOOD! JUMPER by MCNAIR, JORDAN	9-4	H 5	
15:35		11-4	H 7	GOOD! JUMPER by ANDRUS, GERARD
15:20	GOOD! JUMPER by WALLACE, MARCUS	11-6	H 5	
15:01	GOOD! FT by BELL, MARKEDRIC	11-7	H 4	
12:59		14-7	H 7	GOOD! 3PTR by WILLIAMS, DARIUS
12:39	GOOD! 3PTR by WALLACE, MARCUS	14-10	H 4	
12:26		17-10	H 7	GOOD! 3PTR by ELLIS, CHANCELLOR
11:49	GOOD! FT by BANYARD, TERRANCE	17-11	H 6	
11:49	GOOD! FT by BANYARD, TERRANCE	17-12	H 5	
10:44	GOOD! 3PTR by POSEY, CAMERON	17-15	H 2	
10:18		19-15	H 4	GOOD! LAYUP by PATTERSON, DEVONTE [PNT]
09:07		20-15	H 5	GOOD! FT by PATTERSON, DEVONTE [FB]
08:49		22-15	H 7	GOOD! LAYUP by WILLIAMS, DARIUS [PNT]
08:43	GOOD! 3PTR by BANYARD, TERRANCE [FB]	22-18	H 4	
08:34		25-18	H 7	GOOD! 3PTR by WILLIAMS, DARIUS
07:58	GOOD! FT by CARTER, MARQUELL [FB]	25-19	H 6	
07:58	GOOD! FT by CARTER, MARQUELL [FB]	25-20	H 5	
07:42	GOOD! LAYUP by POSEY, CAMERON	25-22	H 3	
07:36	GOOD! DUNK by BELL, MARKEDRIC	25-24	H 1	
07:22		28-24	H 4	GOOD! 3PTR by WILLIAMS, DARIUS
05:43		29-24	H 5	GOOD! FT by WILLIAMS, DARIUS [FB]
03:52		30-24	H 6	GOOD! FT by PATTERSON, DEVONTE
02:33	GOOD! DUNK by MORRIS, DEQUAN [PNT]	30-26	H 4	
02:28		31-26	H 5	GOOD! FT by WILLIAMS, DARIUS [FB]
02:08		32-26	H 6	GOOD! FT by ANDRUS, GERARD
02:08		33-26	H 7	GOOD! FT by ANDRUS, GERARD
00:52	GOOD! DUNK by BELL, MARKEDRIC [FB/PNT]	33-28	H 5	
00:51		34-28	H 6	GOOD! FT by ELLIS, CHANCELLOR [FB]
00:51		35-28	H 7	GOOD! FT by ELLIS, CHANCELLOR [FB]

Ark.-Pine Bluff 28, Prairie View 35

Official Scoring/Possession Reference Chart
Ark.-Pine Bluff vs Prairie View
Period 2
January 25, 2020 at William J. Nicks Building - Prairie View



Period 2

Starters:

Ark.-Pine Bluff: 2 CARTER, MARQUELL (F); 3 BELL, MARKEDRIC (F); 4 MCNAIR, JORDAN (G); 12 BANYARD, TERRANCE (F); 23 MORRIS, DEQUAN (G);

Prairie View: 00 HENRY, LENELL (F); 4 LISTER, ANTIONE (G); 14 SNEED, LEON (G); 15 ANDRUS, GERARD (G); 23 PATTERSON, DEVONTE (F);

Time	VISITORS: Ark.-Pine Bluff	Score	Margin	HOME: Prairie View
18:44	GOOD! FT by BANYARD, TERRANCE [FB]	35-29	H 6	
18:44	GOOD! FT by BANYARD, TERRANCE [FB]	35-30	H 5	
18:04		37-30	H 7	GOOD! JUMPER by PATTERSON, DEVONTE
16:47		39-30	H 9	GOOD! JUMPER by LISTER, ANTIONE
15:55	GOOD! LAYUP by MORRIS, DEQUAN [PNT]	39-32	H 7	
15:48	GOOD! FT by MORRIS, DEQUAN	39-33	H 6	
14:55		41-33	H 8	GOOD! LAYUP by PATTERSON, DEVONTE [PNT]
14:45	GOOD! LAYUP by MORRIS, DEQUAN [PNT]	41-35	H 6	
13:57		43-35	H 8	GOOD! LAYUP by WILLIAMS, DARIUS [PNT]
13:26		44-35	H 9	GOOD! FT by SNEED, LEON
12:28		46-35	H 11	GOOD! LAYUP by PATTERSON, DEVONTE [PNT]
12:09		48-35	H 13	GOOD! JUMPER by WILLIAMS, DARIUS [FB]
11:08	GOOD! JUMPER by CARTER, MARQUELL [PNT]	48-37	H 11	
10:15		49-37	H 12	GOOD! FT by ANDRUS, GERARD
09:47	GOOD! FT by STREDIC JR, ALVIN	49-38	H 11	
09:00	GOOD! JUMPER by STREDIC JR, ALVIN	49-40	H 9	
07:53		51-40	H 11	GOOD! JUMPER by ANDRUS, GERARD [PNT]
07:36	GOOD! FT by STREDIC JR, ALVIN	51-41	H 10	
06:38		53-41	H 12	GOOD! JUMPER by WILLIAMS, DARIUS
06:17		55-41	H 14	GOOD! LAYUP by ANDRUS, GERARD [FB/PNT]
05:56	GOOD! 3PTR by CARTER, MARQUELL	55-44	H 11	
05:34	GOOD! FT by CARTER, MARQUELL [FB]	55-45	H 10	
05:34	GOOD! FT by CARTER, MARQUELL [FB]	55-46	H 9	
05:34		58-46	H 12	GOOD! 3PTR by WILLIAMS, DARIUS [FB]
03:29		60-46	H 14	GOOD! LAYUP by PATTERSON, DEVONTE [PNT]
02:56		61-46	H 15	GOOD! FT by WILLIAMS, FAITE [FB]
02:56		62-46	H 16	GOOD! FT by WILLIAMS, FAITE [FB]
02:22	GOOD! FT by CARTER, MARQUELL	62-47	H 15	
02:22	GOOD! JUMPER by MORRIS, DEQUAN	62-49	H 13	
01:50	GOOD! 3PTR by WALLACE, MARCUS	62-52	H 10	
01:47		63-52	H 11	GOOD! FT by WILLIAMS, FAITE [FB]
01:47		64-52	H 12	GOOD! FT by WILLIAMS, FAITE [FB]
00:39		65-52	H 13	GOOD! FT by WILLIAMS, FAITE
00:28	GOOD! FT by CARTER, MARQUELL	65-53	H 12	
00:28	GOOD! FT by CARTER, MARQUELL	65-54	H 11	
00:10		67-54	H 13	GOOD! LAYUP by COX, DEWAYNE [PNT]

Ark.-Pine Bluff 54, Prairie View 67

Official Substitutions Log
Ark.-Pine Bluff vs Prairie View
Period 1
January 25, 2020 at William J. Nicks Building - Prairie View



VISITORS: Ark.-Pine Bluff	Time	Score	HOME: Prairie View
2 CARTER, MARQUELL			00 HENRY, LENELL
3 BELL, MARKEDRIC			4 LISTER, ANTIONE
4 MCNAIR, JORDAN			14 SNEED, LEON
12 BANYARD, TERRANCE			15 ANDRUS, GERARD
23 MORRIS, DEQUAN			23 PATTERSON, DEVONTE
SUB OUT: 12 BANYARD, TERRANCE	16:48	2-6	
SUB OUT: 23 MORRIS, DEQUAN	16:48		
SUB IN: 14 WALLACE, MARCUS	16:48		
SUB IN: 24 MCDYESS, ARTAVIOUS	16:48		
	15:27	4-11	SUB OUT: HENRY, LENELL
	15:27		SUB OUT: LISTER, ANTIONE
	15:27		SUB IN: WILLIAMS, DARIUS
	15:27		SUB IN: WILLIAMS, FAITE
	15:02	6-11	SUB OUT: SNEED, LEON
	15:02		SUB IN: COX, DEWAYNE
	14:59	7-11	SUB OUT: COX, DEWAYNE
	14:59		SUB OUT: ANDRUS, GERARD
	14:59		SUB IN: HENRY, LENELL
	14:59		SUB IN: ELLIS, CHANCELLOR
	14:44	7-11	SUB OUT: HENRY, LENELL
	14:44		SUB OUT: ELLIS, CHANCELLOR
	14:44		SUB OUT: WILLIAMS, FAITE
	14:44		SUB IN: COX, DEWAYNE
	14:44		SUB IN: ANDRUS, GERARD
	14:44		SUB IN: JACKSON, JONATHAN
	13:40	7-11	SUB OUT: COX, DEWAYNE
	13:40		SUB IN: SNEED, LEON
	13:12	7-11	SUB OUT: PATTERSON, DEVONTE
	13:12		SUB IN: ELLIS, CHANCELLOR
SUB OUT: 2 CARTER, MARQUELL	13:12		
SUB IN: 12 BANYARD, TERRANCE	13:12		
SUB OUT: 3 BELL, MARKEDRIC	11:47	12-17	
SUB OUT: 4 MCNAIR, JORDAN	11:47		
SUB IN: 23 MORRIS, DEQUAN	11:47		
SUB IN: 30 POSEY, CAMERON	11:47		
	11:26	12-17	SUB OUT: JACKSON, JONATHAN
	11:26		SUB IN: PATTERSON, DEVONTE
	09:52	15-19	SUB OUT: ELLIS, CHANCELLOR
	09:52		SUB IN: HENRY, LENELL
SUB OUT: 14 WALLACE, MARCUS	09:07	15-20	
SUB OUT: 23 MORRIS, DEQUAN	09:07		
SUB IN: 2 CARTER, MARQUELL	09:07		
SUB IN: 25 HARALSON, ISAIAH	09:07		
	07:58	20-25	SUB OUT: SNEED, LEON
	07:58		SUB OUT: ANDRUS, GERARD
	07:58		SUB IN: ELLIS, CHANCELLOR
	07:58		SUB IN: WILLIAMS, FAITE
SUB OUT: 24 MCDYESS, ARTAVIOUS	07:58		
SUB IN: 3 BELL, MARKEDRIC	07:58		
SUB OUT: 30 POSEY, CAMERON	07:28	24-25	
SUB IN: 14 WALLACE, MARCUS	07:28		
	07:04	24-28	SUB OUT: WILLIAMS, DARIUS
	07:04		SUB OUT: ELLIS, CHANCELLOR
	07:04		SUB IN: LISTER, ANTIONE
	07:04		SUB IN: COX, DEWAYNE
	07:03	24-28	SUB OUT: HENRY, LENELL
	07:03		SUB IN: SNEED, LEON
	06:37	24-28	SUB OUT: LISTER, ANTIONE
	06:37		SUB IN: ELLIS, CHANCELLOR
	06:21	24-28	SUB OUT: WILLIAMS, FAITE
	06:21		SUB IN: ANDRUS, GERARD
	06:21		SUB OUT: COX, DEWAYNE
	06:21		SUB IN: WILLIAMS, DARIUS
SUB OUT: 14 WALLACE, MARCUS	05:43	24-28	
SUB IN: 30 POSEY, CAMERON	05:43		
	05:08	24-29	SUB OUT: SNEED, LEON
	05:08		SUB OUT: ANDRUS, GERARD
	05:08		SUB IN: COX, DEWAYNE
	05:08		SUB IN: WILLIAMS, FAITE
SUB OUT: 12 BANYARD, TERRANCE	05:08		
SUB IN: 14 WALLACE, MARCUS	05:08		
	04:59	24-29	SUB OUT: ELLIS, CHANCELLOR
	04:59		SUB IN: LISTER, ANTIONE
	03:53	24-29	SUB OUT: COX, DEWAYNE
	03:53		SUB OUT: WILLIAMS, FAITE

VISITORS: Ark.-Pine Bluff	Time	Score	HOME: Prairie View
	03:53		SUB IN: ELLIS, CHANCELLOR
	03:53		SUB IN: SNEED, LEON
SUB OUT: 3 BELL, MARKEDRIC	03:53		
SUB OUT: 25 HARALSON, ISAAH	03:53		
SUB IN: 4 MCNAIR, JORDAN	03:53		
SUB IN: 23 MORRIS, DEQUAN	03:53		
	03:44	24-30	SUB OUT: ELLIS, CHANCELLOR
	03:44		SUB IN: COX, DEWAYNE
	02:28	26-31	SUB OUT: PATTERSON, DEVONTE
	02:28		SUB IN: ELLIS, CHANCELLOR
SUB OUT: 23 MORRIS, DEQUAN	02:28		
SUB IN: 3 BELL, MARKEDRIC	02:28		
	02:08	26-31	SUB OUT: SNEED, LEON
	02:08		SUB IN: ANDRUS, GERARD
	02:08		SUB OUT: ELLIS, CHANCELLOR
	02:08		SUB IN: PATTERSON, DEVONTE
SUB OUT: 30 POSEY, CAMERON	02:08		
SUB IN: 25 HARALSON, ISAAH	02:08		
	01:38	26-33	SUB OUT: LISTER, ANTIONE
	01:38		SUB OUT: COX, DEWAYNE
	01:38		SUB IN: ELLIS, CHANCELLOR
	01:38		SUB IN: WILLIAMS, FAITE
	00:45	28-35	SUB OUT: ELLIS, CHANCELLOR
	00:45		SUB OUT: ANDRUS, GERARD
	00:45		SUB IN: HENRY, LENELL
	00:45		SUB IN: COX, DEWAYNE
SUB OUT: 3 BELL, MARKEDRIC	00:45		
SUB IN: 00 STOKES, KSHUN	00:45		

Ark.-Pine Bluff 28, Prairie View 35

Official Substitutions Log
Ark.-Pine Bluff vs Prairie View
Period 2
January 25, 2020 at William J. Nicks Building - Prairie View



VISITORS: Ark.-Pine Bluff	Time	Score	HOME: Prairie View
2 CARTER, MARQUELL			00 HENRY, LENELL
3 BELL, MARKEDRIC			4 LISTER, ANTIONE
4 MCNAIR, JORDAN			14 SNEED, LEON
12 BANYARD, TERRANCE			15 ANDRUS, GERARD
23 MORRIS, DEQUAN			23 PATTERSON, DEVONTE
	20:00	-	SUB OUT: WILLIAMS, DARIUS
	20:00		SUB OUT: COX, DEWAYNE
	20:00		SUB OUT: WILLIAMS, FAITE
	20:00		SUB IN: LISTER, ANTIONE
	20:00		SUB IN: SNEED, LEON
	20:00		SUB IN: ANDRUS, GERARD
SUB OUT: 00 STOKES, KSHUN	20:00		
SUB OUT: 25 HARALSON, ISAAH	20:00		
SUB IN: 12 BANYARD, TERRANCE	20:00		
SUB IN: 23 MORRIS, DEQUAN	20:00		
	15:47	33-39	SUB OUT: ANDRUS, GERARD
	15:47		SUB IN: WILLIAMS, DARIUS
SUB OUT: 4 MCNAIR, JORDAN	15:47		
SUB OUT: 12 BANYARD, TERRANCE	15:47		
SUB IN: 10 WILSON, JAMIL	15:47		
SUB IN: 24 MCDYESS, ARTAVIOUS	15:47		
	14:56	33-39	SUB OUT: LISTER, ANTIONE
	14:56		SUB IN: ELLIS, CHANCELLOR
SUB OUT: 10 WILSON, JAMIL	14:07	35-41	
SUB IN: 4 MCNAIR, JORDAN	14:07		
SUB OUT: 14 WALLACE, MARCUS	13:57	35-41	
SUB OUT: 23 MORRIS, DEQUAN	13:57		
SUB IN: 12 BANYARD, TERRANCE	13:57		
SUB IN: 30 POSEY, CAMERON	13:57		
	13:26	35-44	SUB OUT: HENRY, LENELL
	13:26		SUB OUT: ELLIS, CHANCELLOR
	13:26		SUB OUT: SNEED, LEON
	13:26		SUB IN: LISTER, ANTIONE
	13:26		SUB IN: COX, DEWAYNE
	13:26		SUB IN: WILLIAMS, FAITE
SUB OUT: 2 CARTER, MARQUELL	13:26		
SUB IN: 14 WALLACE, MARCUS	13:26		
	13:11	35-44	SUB OUT: COX, DEWAYNE
	13:11		SUB IN: ELLIS, CHANCELLOR
	11:57	35-48	SUB OUT: ELLIS, CHANCELLOR
	11:57		SUB IN: COX, DEWAYNE
	11:39	35-48	SUB OUT: COX, DEWAYNE
	11:39		SUB IN: ELLIS, CHANCELLOR
SUB OUT: 4 MCNAIR, JORDAN	11:39		
SUB IN: 2 CARTER, MARQUELL	11:39		
	10:38	37-48	SUB OUT: LISTER, ANTIONE
	10:38		SUB IN: ANDRUS, GERARD
SUB OUT: 12 BANYARD, TERRANCE	10:21	37-48	
SUB IN: 15 STREDIC, JR, ALVIN	10:21		
	10:07	37-49	SUB OUT: WILLIAMS, DARIUS
	10:07		SUB OUT: ELLIS, CHANCELLOR
	10:07		SUB IN: LISTER, ANTIONE
	10:07		SUB IN: COX, DEWAYNE
	09:47	38-49	SUB OUT: COX, DEWAYNE
	09:47		SUB OUT: PATTERSON, DEVONTE
	09:47		SUB IN: HENRY, LENELL
	09:47		SUB IN: ELLIS, CHANCELLOR
	07:45	40-51	SUB OUT: ELLIS, CHANCELLOR
	07:45		SUB IN: COX, DEWAYNE
SUB OUT: 14 WALLACE, MARCUS	07:45		
SUB IN: 23 MORRIS, DEQUAN	07:45		
	07:26	41-51	SUB OUT: LISTER, ANTIONE
	07:26		SUB OUT: COX, DEWAYNE
	07:26		SUB IN: WILLIAMS, DARIUS
	07:26		SUB IN: ELLIS, CHANCELLOR
	05:34	46-55	SUB OUT: HENRY, LENELL
	05:34		SUB OUT: ELLIS, CHANCELLOR
	05:34		SUB OUT: ANDRUS, GERARD
	05:34		SUB IN: LISTER, ANTIONE
	05:34		SUB IN: COX, DEWAYNE
	05:34		SUB IN: PATTERSON, DEVONTE
SUB OUT: 30 POSEY, CAMERON	04:57	46-58	
SUB IN: 14 WALLACE, MARCUS	04:57		
	04:17	46-58	SUB OUT: WILLIAMS, DARIUS
	04:17		SUB IN: ANDRUS, GERARD

VISITORS: Ark.-Pine Bluff	Time	Score	HOME: Prairie View
SUB OUT: 14 WALLACE, MARCUS	04:17		
SUB OUT: 24 MCDYESS, ARTAVIOUS	04:17		
SUB IN: 4 MCNAIR, JORDAN	04:17		
SUB IN: 12 BANYARD, TERRANCE	04:17		
	03:32	46-58	SUB OUT: LISTER, ANTIONE
	03:32		SUB OUT: COX, DEWAYNE
	03:32		SUB IN: WILLIAMS, DARIUS
	03:32		SUB IN: ELLIS, CHANCELLOR
	03:20	46-60	SUB OUT: PATTERSON, DEVONTE
	03:20		SUB IN: HENRY, LENELL
	02:56	46-62	SUB OUT: WILLIAMS, DARIUS
	02:56		SUB OUT: ELLIS, CHANCELLOR
	02:56		SUB IN: LISTER, ANTIONE
	02:56		SUB IN: COX, DEWAYNE
SUB OUT: 15 STREDIC JR, ALVIN	02:56		
SUB IN: 30 POSEY, CAMERON	02:56		
	02:11	49-62	SUB OUT: HENRY, LENELL
	02:11		SUB OUT: COX, DEWAYNE
	02:11		SUB IN: WILLIAMS, DARIUS
	02:11		SUB IN: JACKSON, JONATHAN
SUB OUT: 12 BANYARD, TERRANCE	01:50	49-62	
SUB IN: 14 WALLACE, MARCUS	01:50		
SUB OUT: 30 POSEY, CAMERON	00:28	52-65	
SUB IN: 00 STOKES, KSHUN	00:28		
	00:28		SUB OUT: WILLIAMS, DARIUS
	00:28		SUB IN: COX, DEWAYNE

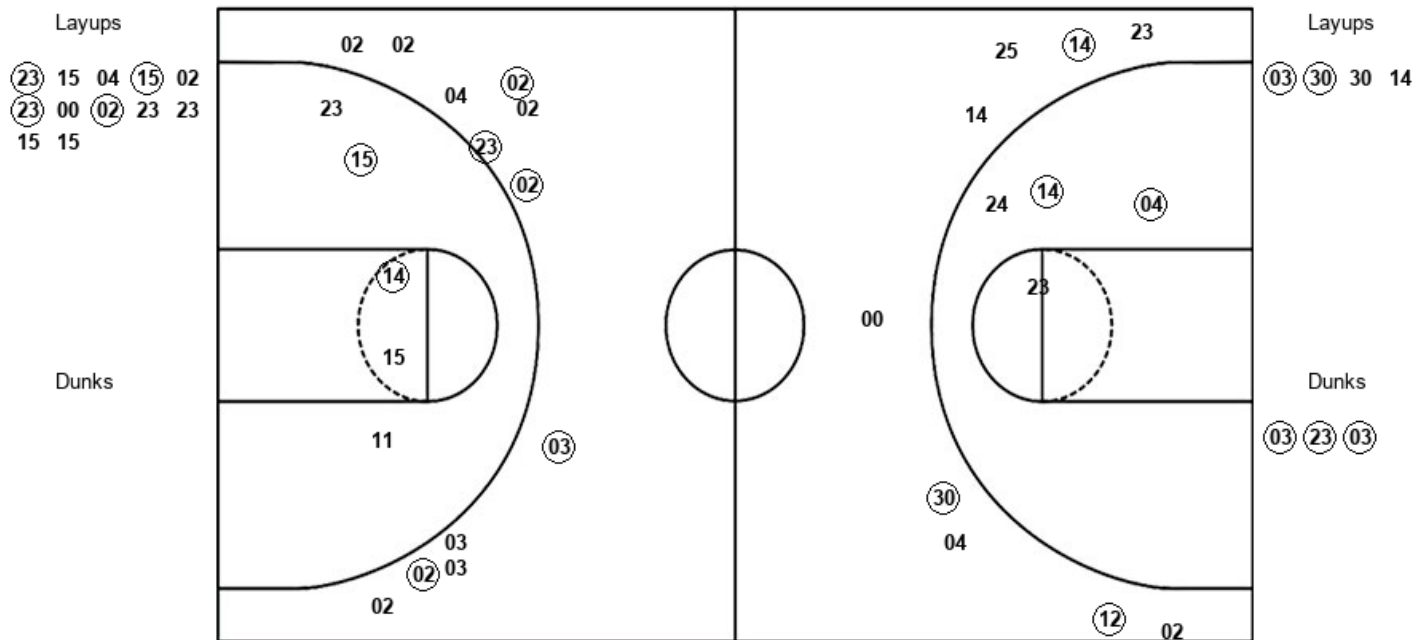
Ark.-Pine Bluff 54, Prairie View 67

Official Shot Chart
Ark.-Pine Bluff vs Prairie View
PERIOD 1 Shots
 January 25, 2020 at William J. Nicks Building - Prairie View



Prairie View

Ark.-Pine Bluff



PVU : Period 1	Made	Att	Pct
Layups	4	12	33.3
Dunks	0	0	0
2PT Field Goals	6	17	35.3
3PT Field Goals	5	12	41.7
Total Field Goals	11	29	37.9

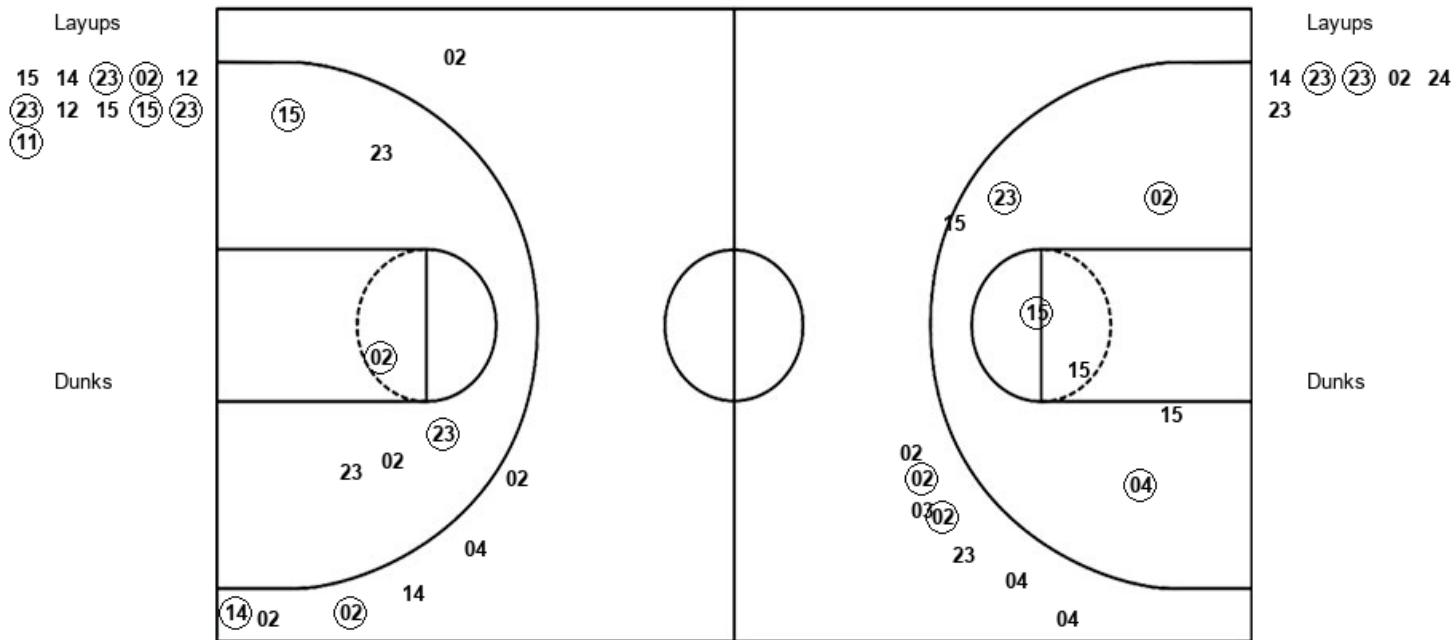
UAP : Period 1	Made	Att	Pct
Layups	2	4	50.0
Dunks	3	3	100.0
2PT Field Goals	7	11	63.6
3PT Field Goals	3	9	33.3
Total Field Goals	10	20	50.0

Official Shot Chart
Ark.-Pine Bluff vs Prairie View
PERIOD 2 Shots
 January 25, 2020 at William J. Nicks Building - Prairie View



Prairie View

Ark.-Pine Bluff



PVU : Period 2	Made	Att	Pct
Layups	6	11	54.5
Dunks	0	0	0
2PT Field Goals	11	19	57.9
3PT Field Goals	1	6	16.7
Total Field Goals	12	25	48.0

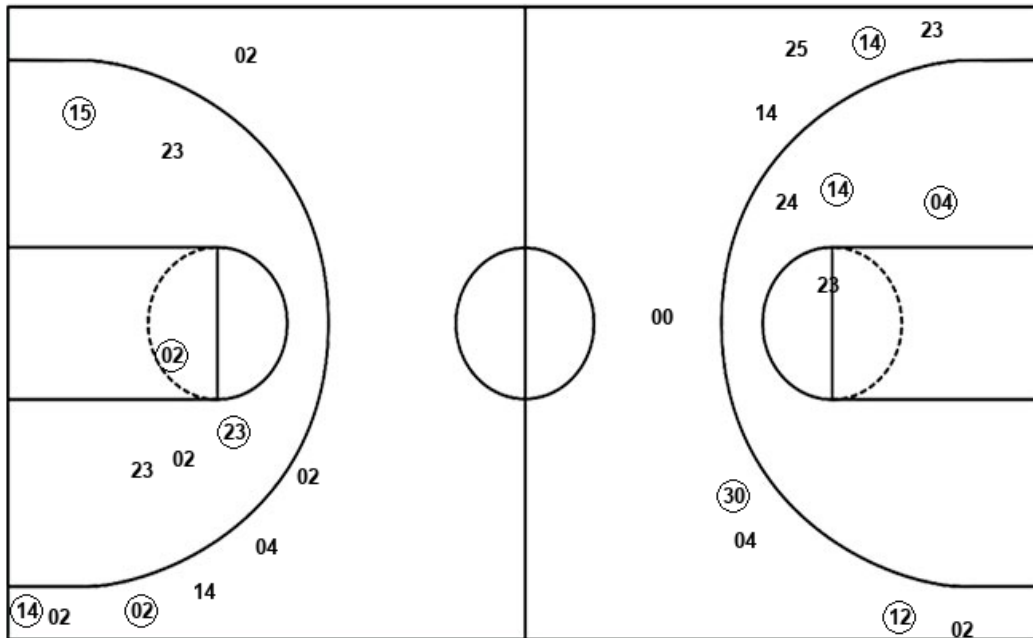
UAP : Period 2	Made	Att	Pct
Layups	2	6	33.3
Dunks	0	0	0
2PT Field Goals	5	12	41.7
3PT Field Goals	2	7	28.6
Total Field Goals	7	19	36.8

Official Shot Chart
Ark.-Pine Bluff vs Prairie View
Ark.-Pine Bluff Team Shots
January 25, 2020 at William J. Nicks Building - Prairie View



Layups

Dunks



Layups

Dunks

(03) (30) 30 14 14
 (23) (23) 02 24 23

(03) (23) (03)

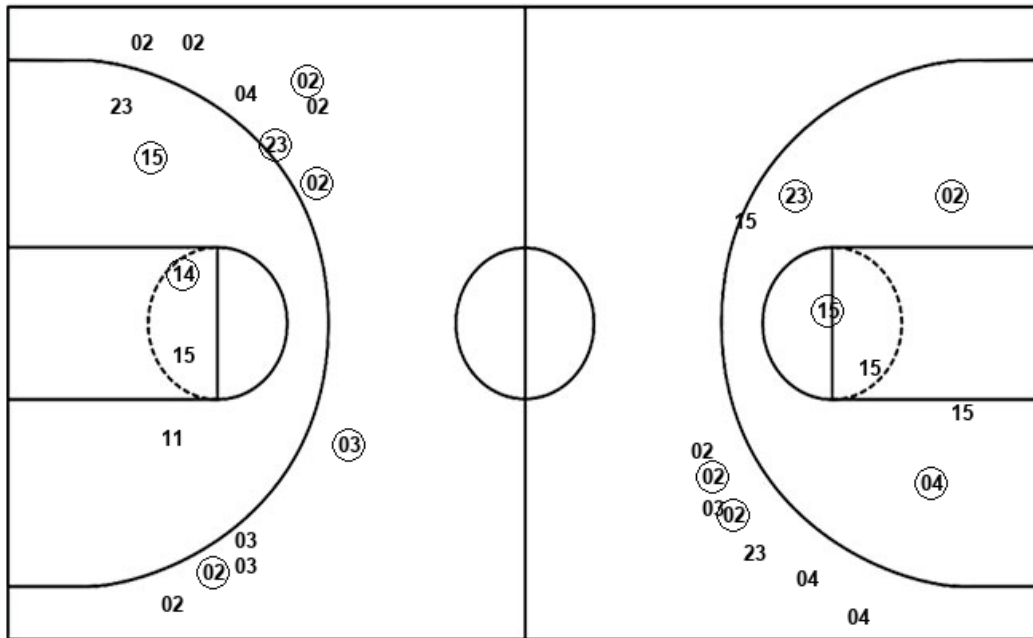
UAP : Period 1	Made	Att	Pct
Layups	2	4	50.0
Dunks	3	3	100.0
2PT Field Goals	7	11	63.6
3PT Field Goals	3	9	33.3
Total Field Goals	10	20	50.0

UAP : Period 2	Made	Att	Pct
Layups	2	6	33.3
Dunks	0	0	0
2PT Field Goals	5	12	41.7
3PT Field Goals	2	7	28.6
Total Field Goals	7	19	36.8

Official Shot Chart
Ark.-Pine Bluff vs Prairie View
 Prairie View Team Shots
 January 25, 2020 at William J. Nicks Building - Prairie View



Layups



Layups

(23) 15 04 (15) 02
 (23) 00 (02) 23 23
 15 15 15 14 (23)
 (02) 12 (23) 12 15
 (15) (23) (11)

Dunks

Dunks

PVU : Period 1	Made	Att	Pct
Layups	4	12	33.3
Dunks	0	0	0
2PT Field Goals	6	17	35.3
3PT Field Goals	5	12	41.7
Total Field Goals	11	29	37.9

PVU : Period 2	Made	Att	Pct
Layups	6	11	54.5
Dunks	0	0	0
2PT Field Goals	11	19	57.9
3PT Field Goals	1	6	16.7
Total Field Goals	12	25	48.0