

FINAL SCORE**Southern U.****54****Prairie View****64**

January 06, 2020 • William J. Nicks Building - Prairie View

FINAL STATISTICS

Official Box Score
Southern U. vs Prairie View
Game Totals -- Final Statistics
January 06, 2020 at William J. Nicks Building - Prairie View



Southern U. 54

No.	Player	S	Pts	FG	3FG	FT	OR	DR	TR	PF	A	TO	Blk	Stl	Min	+/-
01	SHIVERS, AHSANTE	G	6	1-8	1-5	3-3	1	3	4	2	0	5	0	1	24	0
05	SADDLER, JAYDEN	G	6	3-5	0-0	0-0	0	3	3	3	1	5	0	0	31	-10
12	WILLIAMS, DARIUS	F	7	3-5	0-0	1-2	3	4	7	5	1	3	0	1	31	-19
13	BRADFORD, MICAH	G	8	3-4	1-1	1-2	0	1	1	4	2	4	0	1	22	6
40	KULJUHOVIC, AMEL	F	2	1-2	0-1	0-0	1	2	3	1	3	0	0	0	21	-5
02	BURNS, DAMIREE	F	12	5-9	0-0	2-4	3	2	5	1	0	0	0	0	19	-10
03	BAGGS, SKYLER	F	2	1-2	0-0	0-0	0	1	1	0	0	0	0	0	12	10
04	ROLLINS, ISAIAH	G	4	1-1	1-1	1-2	1	0	1	1	0	0	0	0	4	-6
10	JOHNSON, DELOR	G	0	0-0	0-0	0-0	0	1	1	1	0	0	0	0	7	-8
11	BLAKE, MONTESE	G	5	1-4	1-3	2-4	0	2	2	2	0	3	0	1	19	-2
20	LEE, LAMARCUS	G	0	0-0	0-0	0-0	0	0	0	0	0	0	0	0	3	-2
21	MACK, SAMUEL	F	0	0-1	0-1	0-0	0	0	0	1	0	0	0	0	1	0
25	BROOK, BRENDON	G	2	1-3	0-2	0-0	0	0	0	0	0	1	0	0	6	-4
TEAM							1	1	2	0		1				
TOTALS			54	20-44	4-14	10-17	10	20	30	21	7	22	0	4	200	

Shooting By Period

Period	FG	FG%	3FG	3FG%	FT	FT%
1st Half	8-19	42%	2-6	33%	4-5	80%
2nd Half	12-25	48%	2-8	25%	6-12	50%
Game	20-44	45.5%	4-14	28.6%	10-17	58.8%

Deadball Rebounds: 3,2

Last FG: 2nd-00:28

Biggest Run: 7-0

Largest lead: By 2 at 1st-19:17

Technical Fouls: None.

Prairie View 64

No.	Player	S	Pts	FG	3FG	FT	OR	DR	TR	PF	A	TO	Blk	Stl	Min	+/-
00	HENRY, LENELL	F	8	3-8	0-0	2-3	4	2	6	2	0	1	2	0	30	0
04	LISTER, ANTIONE	G	4	2-3	0-0	0-0	0	2	2	2	0	0	0	2	27	-1
14	SNEED, LEON	G	6	2-3	0-0	2-2	0	2	2	3	2	3	0	0	25	4
15	ANDRUS, GERARD	G	9	4-9	0-0	1-2	1	6	7	4	0	3	0	4	30	7
23	PATTERSON, DEVONTE	F	10	4-8	0-1	2-4	2	1	3	4	3	2	0	0	25	11
02	WILLIAMS, DARIUS	G	14	2-9	1-5	9-10	0	2	2	4	2	1	0	2	24	13
03	ELLIS, CHANCELLOR	G	3	1-4	1-4	0-0	0	0	0	0	0	1	0	0	15	11
11	COX, DEWAYNE	G	4	2-2	0-0	0-0	1	0	1	0	0	0	0	2	8	-2
12	WILLIAMS, FAITE	G	6	2-3	0-1	2-3	0	1	1	0	0	1	0	0	16	7
TEAM							0	0	0	0		1				
TOTALS			64	22-49	2-11	18-24	8	16	24	19	7	13	2	10	200	

Shooting By Period

Period	FG	FG%	3FG	3FG%	FT	FT%
1st Half	13-28	46%	0-5	00%	6-7	86%
2nd Half	9-21	43%	2-6	33%	12-17	71%
Game	22-49	44.9%	2-11	18.2%	18-24	75.0%

Deadball Rebounds: 3,2

Last FG: 2nd-04:31

Biggest Run: 11-0

Largest lead: By 16 at 1st-03:41

Technical Fouls: None.

Game Notes:

Officials: Keith Kimble, Marques Pettigrew, Matthew Potter
Attendance: 1435

Start Time: 09:01 PM ET

End Time: 11:09 PM ET

Game Duration: 2:08

Conference Game;

Score	1st	2nd	TOT
SOU	22	32	54
PVU	32	32	64

SOU led for 1:40. PVU led for 36:56.

Game was tied for 1:25.

Times tied: 1 Lead Changes: 5

Points from	SOU	PVU
In the Paint	32	30
Off Turns	14	12
2nd Chance	11	14
Fast Break	14	12
Bench	25	27

Official Box Score
Southern U. vs Prairie View
First Half Statistics Only
January 06, 2020 at William J. Nicks Building - Prairie View



Southern U. 22

No.	Player	S	Pts	FG	3FG	FT	OR	DR	TR	PF	A	TO	Blk	Stl	Min	+/-
01	SHIVERS, AHSANTE	G	3	0-3	0-2	3-3	1	3	4	1	0	5	0	0	16	2
05	SADDLER, JAYDEN	G	0	0-1	0-0	0-0	0	0	0	3	0	4	0	0	15	-12
12	WILLIAMS, DARIUS	F	4	2-3	0-0	0-0	2	3	5	2	1	2	0	1	17	-8
13	BRADFORD, MICAH	G	5	2-3	1-1	0-0	0	1	1	0	1	3	0	0	11	1
40	KULJUHOVIC, AMEL	F	2	1-2	0-1	0-0	1	1	2	0	2	0	0	0	10	-7
02	BURNS, DAMIREE	F	2	1-2	0-0	0-0	0	1	1	1	0	0	0	0	8	-9
03	BAGGS, SKYLER	F	0	0-1	0-0	0-0	0	0	0	0	0	0	0	0	6	4
04	ROLLINS, ISAIAH	G	0	0-0	0-0	0-0	0	0	0	0	0	0	0	0	1	-4
10	JOHNSON, DELOR	G	0	0-0	0-0	0-0	0	0	0	0	0	0	0	0	5	-11
11	BLAKE, MONTESE	G	4	1-2	1-1	1-2	0	0	0	1	0	1	0	1	7	0
20	LEE, LAMARCUS	G	0	0-0	0-0	0-0	0	0	0	0	0	0	0	0	0	0
21	MACK, SAMUEL	F	0	0-0	0-0	0-0	0	0	0	0	0	0	0	0	0	0
25	BROOK, BRENDON	G	2	1-2	0-1	0-0	0	0	0	0	0	1	0	0	5	-6
	TEAM						0	1	1	0		0				
TOTALS			22	8-19	2-6	4-5	4	10	14	8	4	16	0	2	100	

Shooting By Period

Period	FG	FG%	3FG	3FG%	FT	FT%
1st Half	8-19	42%	2-6	33%	4-5	80%
Game	20-44	45.5%	4-14	28.6%	10-17	58.8%

Deadball Rebounds: 3,2

Last FG Half: SOU 2nd-00:28

Prairie View 32

No.	Player	S	Pts	FG	3FG	FT	OR	DR	TR	PF	A	TO	Blk	Stl	Min	+/-
00	HENRY, LENELL	F	6	2-5	0-0	2-3	3	2	5	2	0	1	1	0	14	4
04	LISTER, ANTIONE	G	4	2-3	0-0	0-0	0	1	1	0	0	0	0	2	13	4
14	SNEED, LEON	G	2	1-2	0-0	0-0	0	1	1	2	1	3	0	0	12	4
15	ANDRUS, GERARD	G	4	2-4	0-0	0-0	0	2	2	2	0	2	0	2	13	5
23	PATTERSON, DEVONTE	F	4	2-4	0-1	0-0	0	0	0	2	1	0	0	0	13	9
02	WILLIAMS, DARIUS	G	6	1-4	0-1	4-4	0	0	0	0	1	0	0	0	12	10
03	ELLIS, CHANCELLOR	G	0	0-2	0-2	0-0	0	0	0	0	0	1	0	0	8	6
11	COX, DEWAYNE	G	4	2-2	0-0	0-0	1	0	1	0	0	0	0	2	5	0
12	WILLIAMS, FAITE	G	2	1-2	0-1	0-0	0	1	1	0	0	0	0	0	10	8
	TEAM						0	0	0	0		0				
TOTALS			32	13-28	0-5	6-7	4	7	11	8	3	7	1	6	100	

Shooting By Period

Period	FG	FG%	3FG	3FG%	FT	FT%
1st Half	13-28	46%	0-5	00%	6-7	86%
Game	22-49	44.9%	2-11	18.2%	18-24	75.0%

Deadball Rebounds: 3,2

Last FG Half: PVU 2nd-04:31

Game Notes:

Officials: **Keith Kimble, Marques Pettigrew, Matthew Potter**
Attendance: **1435**

Start Time: **09:01 PM ET**
End Time: **11:09 PM ET**
Game Duration: **2:08**
Conference Game;

Score	1st	2nd	TOT
SOU	22	32	54
PVU	32	32	64

Points from (This Period)	SOU	PVU
In the Paint	12	20
Off Turns	4	12
2nd Chance	4	6
Fast Break	4	9
Bench	8	12

Official Play-By-Play
Southern U. vs Prairie View
First Half

January 06, 2020 at William J. Nicks Building - Prairie View



Period 1

Starters:

Southern U.: 1 SHIVERS,AHSANTE (G); 5 SADDLER,JAYDEN (G); 13 BRADFORD,MICAH (G); 12 WILLIAMS,DARIUS (F); 40 KULJUHOVIC,AMEL (F);

Prairie View: 00 HENRY,LENELL (F); 14 SNEED,LEON (G); 15 ANDRUS,GERARD (G); 23 PATTERSON,DEVONTE (F); 4 LISTER,ANTIONE (G);

Time	VISITORS: Southern U.	Score	Margin	HOME: Prairie View
19:40				TURNOVER (BADPASS) by SNEED, LEON
19:40	STEAL by WILLIAMS, DARIUS			
19:29	MISSED LAYUP by WILLIAMS, DARIUS			
19:24	REBOUND (OFF) by SHIVERS, AHSANTE			
19:17	GOOD! LAYUP by KULJUHOVIC, AMEL [PNT]	0-2	V 2	
19:17	ASSIST by BRADFORD, MICAH			
18:59				MISSED JUMPER by HENRY, LENELL
18:54				REBOUND (OFF) by HENRY, LENELL
18:53	FOUL (PERSONAL) by SHIVERS, AHSANTE			
18:46	FOUL (PERSONAL) by SADDLER, JAYDEN			
18:39		2-2	T	GOOD! JUMPER by PATTERSON, DEVONTE
18:24	MISSED LAYUP by SHIVERS, AHSANTE			
18:20				REBOUND (DEF) by ANDRUS, GERARD
18:17				FOUL (OFF) by SNEED, LEON
18:17				TURNOVER (OFFENSIVE) by SNEED, LEON
18:05	TURNOVER (LOSTBALL) by BRADFORD, MICAH			
18:05				STEAL by LISTER, ANTIONE
17:57		4-2	H 2	GOOD! LAYUP by LISTER, ANTIONE [FB/PNT]
17:34	GOOD! 3PTR by BRADFORD, MICAH	4-5	V 1	
17:34	ASSIST by WILLIAMS, DARIUS			
17:27				MISSED LAYUP by HENRY, LENELL
17:22	REBOUND (DEF) by BRADFORD, MICAH			
17:07	MISSED JUMPER by SADDLER, JAYDEN			
17:02	REBOUND (OFF) by KULJUHOVIC, AMEL			
16:59	MISSED 3PTR by KULJUHOVIC, AMEL			
16:54				REBOUND (DEF) by ANDRUS, GERARD
16:33		6-5	H 1	GOOD! JUMPER by ANDRUS, GERARD
16:05	MISSED 3PTR by SHIVERS, AHSANTE			
15:58	REBOUND (OFF) by WILLIAMS, DARIUS			
15:51				FOUL (PERSONAL) by SNEED, LEON
15:23	TURNOVER (TRAVEL) by SADDLER, JAYDEN			
15:10				SUB OUT: HENRY, LENELL
15:10				SUB IN: WILLIAMS, DARIUS
15:10				MISSED LAYUP by WILLIAMS, DARIUS
15:10	REBOUND (DEF) by KULJUHOVIC, AMEL			
15:07	TURNOVER (TRAVEL) by SHIVERS, AHSANTE			
15:05				SUB OUT: LISTER, ANTIONE
15:05				SUB IN: ELLIS, CHANCELLOR
14:59				MISSED LAYUP by PATTERSON, DEVONTE
14:55	REBOUND (DEF) by WILLIAMS, DARIUS			
14:37				FOUL (PERSONAL) by PATTERSON, DEVONTE
14:37	TURNOVER (LOSTBALL) by SADDLER, JAYDEN			
14:37				STEAL by ANDRUS, GERARD
14:37				MISSED JUMPER by ANDRUS, GERARD
14:37	REBOUND (DEF) by SHIVERS, AHSANTE			
14:37	GOOD! LAYUP by WILLIAMS, DARIUS [FB/PNT]	6-7	V 1	
14:37		8-7	H 1	GOOD! LAYUP by SNEED, LEON [FB/PNT]
14:31	TURNOVER (LOSTBALL) by BRADFORD, MICAH			
13:59	SUB OUT: SADDLER, JAYDEN			
13:59	SUB OUT: BRADFORD, MICAH			
13:59	SUB OUT: KULJUHOVIC, AMEL			
13:59	SUB IN: BURNS, DAMIREE			
13:59	SUB IN: BLAKE, MONTESE			
13:59	SUB IN: BROOK, BRENDON			
13:57				TURNOVER (TRAVEL) by ANDRUS, GERARD
13:48				SUB OUT: ELLIS, CHANCELLOR
13:48				SUB IN: HENRY, LENELL
13:39	TURNOVER (TRAVEL) by SHIVERS, AHSANTE			
13:35				SUB OUT: HENRY, LENELL
13:35				SUB IN: ELLIS, CHANCELLOR
13:35	SUB OUT: SHIVERS, AHSANTE			
13:35	SUB IN: ROLLINS, ISIAIAH			
13:27	FOUL (PERSONAL) by BURNS, DAMIREE			
13:27		9-7	H 2	GOOD! FT by WILLIAMS, DARIUS
13:27		10-7	H 3	GOOD! FT by WILLIAMS, DARIUS
13:26				SUB OUT: ELLIS, CHANCELLOR
13:26				SUB OUT: ANDRUS, GERARD
13:26				SUB IN: COX, DEWAYNE
13:26				SUB IN: WILLIAMS, FAITE
13:22	TURNOVER (LOSTBALL) by BLAKE, MONTESE			

Time	VISITORS: Southern U.	Score	Margin	HOME: Prairie View
13:22				STEAL by COX, DEWAYNE
13:15		12-7	H 5	GOOD! LAYUP by PATTERSON, DEVONTE [PNT]
13:15				ASSIST by SNEED, LEON
12:59	SUB OUT: ROLLINS, ISAIAH			
12:59	SUB OUT: BLAKE, MONTESE			
12:59	SUB IN: SHIVERS, AHSANTE			
12:59	SUB IN: SADDLER, JAYDEN			
12:56	TURNOVER (TRAVEL) by SADDLER, JAYDEN			
11:47				
11:41	SUB OUT: BROOK, BRENDON			
11:41	SUB IN: KULJUHOVIC, AMEL			
11:41	SUB OUT: WILLIAMS, DARIUS			
11:41	SUB IN: BROOK, BRENDON			
11:41				SUB OUT: SNEED, LEON
11:41				SUB IN: ELLIS, CHANCELLOR
11:41				MISSED 3PTR by ELLIS, CHANCELLOR
11:41	REBOUND (DEF) by TEAM			
11:41				SUB OUT: COX, DEWAYNE
11:41				SUB IN: ANDRUS, GERARD
11:38				FOUL (PERSONAL) by ANDRUS, GERARD
11:30	GOOD! LAYUP by BROOK, BRENDON [PNT]	12-9	H 3	
11:30	ASSIST by KULJUHOVIC, AMEL			
11:13		14-9	H 5	GOOD! LAYUP by WILLIAMS, DARIUS [PNT]
10:52	GOOD! LAYUP by BURNS, DAMIREE [PNT]	14-11	H 3	
10:52	ASSIST by KULJUHOVIC, AMEL			
10:22	SUB OUT: SHIVERS, AHSANTE			
10:22	SUB IN: JOHNSON, DELOR			
10:07		16-11	H 5	GOOD! LAYUP by WILLIAMS, FAITE [PNT]
09:45	TURNOVER (LOSTBALL) by BROOK, BRENDON			
09:45				STEAL by ANDRUS, GERARD
09:29		18-11	H 7	GOOD! JUMPER by ANDRUS, GERARD
08:54	MISSED 3PTR by BROOK, BRENDON			
08:48				REBOUND (DEF) by TEAM
08:48				SUB OUT: PATTERSON, DEVONTE
08:48				SUB IN: HENRY, LENELL
08:48	SUB OUT: BROOK, BRENDON			
08:48	SUB IN: BRADFORD, MICAH			
08:42				MISSED 3PTR by ELLIS, CHANCELLOR
08:42				REBOUND (OFF) by HENRY, LENELL
08:42				FOUL (OFF) by HENRY, LENELL
08:42				TURNOVER (OFFENSIVE) by HENRY, LENELL
08:37				SUB OUT: ANDRUS, GERARD
08:37				SUB IN: LISTER, ANTIONE
08:30				SUB OUT: ELLIS, CHANCELLOR
08:30				SUB IN: COX, DEWAYNE
08:22	SUB OUT: BURNS, DAMIREE			
08:22	SUB IN: WILLIAMS, DARIUS			
08:16	FOUL (PERSONAL) by SADDLER, JAYDEN			
08:16		19-11	H 8	GOOD! FT by WILLIAMS, DARIUS [FB]
08:16		20-11	H 9	GOOD! FT by WILLIAMS, DARIUS [FB]
08:11	TURNOVER (LOSTBALL) by WILLIAMS, DARIUS			
08:11				STEAL by COX, DEWAYNE
08:05		22-11	H 11	GOOD! LAYUP by COX, DEWAYNE [FB/PNT]
08:05				ASSIST by WILLIAMS, DARIUS
07:59	TIMEOUT 30SEC			
07:51	TURNOVER (TRAVEL) by BRADFORD, MICAH			
07:43				SUB OUT: COX, DEWAYNE
07:43				SUB IN: ELLIS, CHANCELLOR
07:43	SUB OUT: BRADFORD, MICAH			
07:43	SUB IN: BURNS, DAMIREE			
07:38				MISSED JUMPER by HENRY, LENELL
07:30	REBOUND (DEF) by BURNS, DAMIREE			
07:17	SUB OUT: KULJUHOVIC, AMEL			
07:17	SUB IN: SHIVERS, AHSANTE			
07:14	MISSED 3PTR by SHIVERS, AHSANTE			
07:07				REBOUND (DEF) by WILLIAMS, FAITE
07:02				MISSED 3PTR by WILLIAMS, FAITE
06:57	REBOUND (DEF) by WILLIAMS, DARIUS			
06:40	MISSED JUMPER by BURNS, DAMIREE			
06:36				REBOUND (DEF) by LISTER, ANTIONE
06:11				MISSED 3PTR by WILLIAMS, DARIUS
06:05				REBOUND (OFF) by HENRY, LENELL
06:03		24-11	H 13	GOOD! LAYUP by HENRY, LENELL [PNT]
05:58	FOUL (PERSONAL) by WILLIAMS, DARIUS			
05:39		25-11	H 14	GOOD! FT by HENRY, LENELL
05:39				SUB OUT: WILLIAMS, DARIUS
05:39				SUB OUT: ELLIS, CHANCELLOR
05:39				SUB IN: ANDRUS, GERARD
05:39				SUB IN: PATTERSON, DEVONTE
05:39	SUB OUT: BURNS, DAMIREE			

Time	VISITORS: Southern U.	Score	Margin	HOME: Prairie View
05:39	SUB OUT: JOHNSON, DELOR			
05:39	SUB IN: BAGGS, SKYLER			
05:39	SUB IN: BLAKE, MONTESE			
05:13	FOUL (OFF) by SADDLER, JAYDEN			
05:13	TURNOVER (OFFENSIVE) by SADDLER, JAYDEN			
05:10				SUB OUT: WILLIAMS, FAITE
05:10				SUB IN: SNEED, LEON
05:09				MISSED JUMPER by ANDRUS, GERARD
05:04	REBOUND (DEF) by SHIVERS, AHSANTE			
05:04	TURNOVER (TRAVEL) by SHIVERS, AHSANTE			
05:04				TURNOVER (TRAVEL) by SNEED, LEON
04:51	MISSED JUMPER by BLAKE, MONTESE			
04:47	REBOUND (OFF) by WILLIAMS, DARIUS			
04:45	GOOD! JUMPER by WILLIAMS, DARIUS [PNT]	25-13	H 12	
04:23		27-13	H 14	GOOD! JUMPER by HENRY, LENELL [PNT]
04:23				ASSIST by PATTERSON, DEVONTE
04:12	TURNOVER (LOSTBALL) by SHIVERS, AHSANTE			
04:12				STEAL by LISTER, ANTIONE
03:41		29-13	H 16	GOOD! LAYUP by LISTER, ANTIONE [PNT]
03:37				SUB OUT: HENRY, LENELL
03:37				SUB IN: COX, DEWAYNE
03:36	TURNOVER (OTHER) by SHIVERS, AHSANTE			
03:35				SUB OUT: COX, DEWAYNE
03:35				SUB IN: ELLIS, CHANCELLOR
03:35	SUB OUT: SADDLER, JAYDEN			
03:35	SUB IN: BRADFORD, MICAH			
03:33				SUB OUT: ELLIS, CHANCELLOR
03:33				SUB IN: COX, DEWAYNE
03:33				FOUL (PERSONAL) by PATTERSON, DEVONTE
03:33				SUB OUT: PATTERSON, DEVONTE
03:33				SUB IN: HENRY, LENELL
03:05	MISSED JUMPER by BRADFORD, MICAH			
03:05				BLOCK by HENRY, LENELL
03:02				REBOUND (DEF) by HENRY, LENELL
02:59				MISSED JUMPER by SNEED, LEON
02:51	REBOUND (DEF) by SHIVERS, AHSANTE			
02:50				FOUL (PERSONAL) by ANDRUS, GERARD
02:49	GOOD! FT by SHIVERS, AHSANTE	29-14	H 15	
02:49	GOOD! FT by SHIVERS, AHSANTE	29-15	H 14	
02:49	GOOD! FT by SHIVERS, AHSANTE	29-16	H 13	
02:27				SUB OUT: COX, DEWAYNE
02:27				SUB OUT: ANDRUS, GERARD
02:27				SUB IN: WILLIAMS, DARIUS
02:27				SUB IN: ELLIS, CHANCELLOR
02:25				TURNOVER (LOSTBALL) by ELLIS, CHANCELLOR
02:25	STEAL by BLAKE, MONTESE			
02:20	MISSED LAYUP by BAGGS, SKYLER			
02:15				REBOUND (DEF) by SNEED, LEON
02:02				MISSED JUMPER by LISTER, ANTIONE
01:58	REBOUND (DEF) by WILLIAMS, DARIUS			
01:41				FOUL (PERSONAL) by HENRY, LENELL
01:31	GOOD! FT by BLAKE, MONTESE	29-17	H 12	
01:31	MISSED FT by BLAKE, MONTESE			
01:31				REBOUND (DEF) by HENRY, LENELL
01:31				SUB OUT: ELLIS, CHANCELLOR
01:31				SUB IN: ANDRUS, GERARD
01:31	FOUL (PERSONAL) by BLAKE, MONTESE			
01:31		30-17	H 13	GOOD! FT by HENRY, LENELL [FB]
01:31				MISSED FT by HENRY, LENELL
01:31	REBOUND (DEF) by TEAM			
01:31				SUB OUT: SNEED, LEON
01:31				SUB OUT: ANDRUS, GERARD
01:31				SUB IN: COX, DEWAYNE
01:31				SUB IN: WILLIAMS, FAITE
01:26	GOOD! LAYUP by BRADFORD, MICAH [FB/PNT]	30-19	H 11	
00:54				MISSED JUMPER by WILLIAMS, DARIUS
00:47				REBOUND (OFF) by COX, DEWAYNE
00:37		32-19	H 13	GOOD! LAYUP by COX, DEWAYNE [PNT]
00:24	GOOD! 3PTR by BLAKE, MONTESE	32-22	H 10	
00:16				TIMEOUT 30SEC
00:16				SUB OUT: LISTER, ANTIONE
00:16				SUB OUT: COX, DEWAYNE
00:16				SUB OUT: WILLIAMS, FAITE
00:16				SUB IN: SNEED, LEON
00:16				SUB IN: ANDRUS, GERARD
00:16				SUB IN: PATTERSON, DEVONTE
00:11				TURNOVER (OTHER) by ANDRUS, GERARD
00:10				SUB OUT: ANDRUS, GERARD
00:10				SUB OUT: PATTERSON, DEVONTE
00:10				SUB IN: COX, DEWAYNE

Time	VISITORS: Southern U.	Score	Margin	HOME: Prairie View
00:10				SUB IN: WILLIAMS, FAITE
00:08	FOUL (OFF) by WILLIAMS, DARIUS			
00:08	TURNOVER (OFFENSIVE) by WILLIAMS, DARIUS			
00:02				SUB OUT: COX, DEWAYNE
00:02				SUB OUT: WILLIAMS, FAITE
00:02				SUB OUT: SNEED, LEON
00:02				SUB IN: LISTER, ANTIONE
00:02				SUB IN: ANDRUS, GERARD
00:02				SUB IN: PATTERSON, DEVONTE
00:01				MISSED 3PTR by PATTERSON, DEVONTE
00:00	REBOUND (DEF) by TEAM			

Southern U. 22, Prairie View 32

Points from (This Period)	SOU	PVU
In the Paint	12	20
Off Turns	4	12
2nd Chance	4	6
Fast Break	4	9
Bench	8	12

Official Box Score
Southern U. vs Prairie View
Second Half Statistics Only
January 06, 2020 at William J. Nicks Building - Prairie View



Southern U. 32

No.	Player	S	Pts	FG	3FG	FT	OR	DR	TR	PF	A	TO	Blk	Stl	Min	+/-
01	SHIVERS, AHSANTE	G	3	1-5	1-3	0-0	0	0	0	1	0	0	0	1	8	-2
05	SADDLER, JAYDEN	G	6	3-4	0-0	0-0	0	3	3	0	1	1	0	0	16	2
12	WILLIAMS, DARIUS	F	3	1-2	0-0	1-2	1	1	2	3	0	1	0	0	14	-11
13	BRADFORD, MICAH	G	3	1-1	0-0	1-2	0	0	0	4	1	1	0	1	11	5
40	KULJUHOVIC, AMEL	F	0	0-0	0-0	0-0	0	1	1	1	1	0	0	0	10	2
02	BURNS, DAMIREE	F	10	4-7	0-0	2-4	3	1	4	0	0	0	0	0	11	-1
03	BAGGS, SKYLER	F	2	1-1	0-0	0-0	0	1	1	0	0	0	0	0	7	6
04	ROLLINS, ISAAH	G	4	1-1	1-1	1-2	1	0	1	1	0	0	0	0	4	-2
10	JOHNSON, DELOR	G	0	0-0	0-0	0-0	0	1	1	1	0	0	0	0	2	3
11	BLAKE, MONTESE	G	1	0-2	0-2	1-2	0	2	2	1	0	2	0	0	12	-2
20	LEE, LAMARCUS	G	0	0-0	0-0	0-0	0	0	0	0	0	0	0	0	3	-2
21	MACK, SAMUEL	F	0	0-1	0-1	0-0	0	0	0	1	0	0	0	0	1	0
25	BROOK, BRENDON	G	0	0-1	0-1	0-0	0	0	0	0	0	0	0	0	1	2
TEAM							1	0	1	0		1				
TOTALS			32	12-25	2-8	6-12	6	10	16	13	3	6	0	2	100	

Shooting By Period

Period	FG	FG%	3FG	3FG%	FT	FT%
2nd Half	12-25	48%	2-8	25%	6-12	50%
Game	20-44	45.5%	4-14	28.6%	10-17	58.8%

Deadball Rebounds: 3,2

Last FG Half: SOU -

Prairie View 32

No.	Player	S	Pts	FG	3FG	FT	OR	DR	TR	PF	A	TO	Blk	Stl	Min	+/-
00	HENRY, LENELL	F	2	1-3	0-0	0-0	1	0	1	0	0	0	1	0	17	-4
04	LISTER, ANTIONE	G	0	0-0	0-0	0-0	0	1	1	2	0	0	0	0	14	-5
14	SNEED, LEON	G	4	1-1	0-0	2-2	0	1	1	1	1	0	0	0	13	0
15	ANDRUS, GERARD	G	5	2-5	0-0	1-2	1	4	5	2	0	1	0	2	18	2
23	PATTERSON, DEVONTE	F	6	2-4	0-0	2-4	2	1	3	2	2	2	0	0	12	2
02	WILLIAMS, DARIUS	G	8	1-5	1-4	5-6	0	2	2	4	1	1	0	2	12	3
03	ELLIS, CHANCELLOR	G	3	1-2	1-2	0-0	0	0	0	0	0	0	0	0	8	5
11	COX, DEWAYNE	G	0	0-0	0-0	0-0	0	0	0	0	0	0	0	0	2	-2
12	WILLIAMS, FAITE	G	4	1-1	0-0	2-3	0	0	0	0	0	1	0	0	6	-1
TEAM							0	0	0	0		1				
TOTALS			32	9-21	2-6	12-17	4	9	13	11	4	6	1	4	100	

Shooting By Period

Period	FG	FG%	3FG	3FG%	FT	FT%
2nd Half	9-21	43%	2-6	33%	12-17	71%
Game	22-49	44.9%	2-11	18.2%	18-24	75.0%

Deadball Rebounds: 3,2

Last FG Half: PVU -

Game Notes:

Officials: Keith Kimble, Marques Pettigrew, Matthew Potter
Attendance: 1435

Start Time: 09:01 PM ET
End Time: 11:09 PM ET
Game Duration: 2:08
Conference Game;

Score	1st	2nd	TOT
SOU	22	32	54
PVU	32	32	64

Points from (This Period)	SOU	PVU
In the Paint	20	10
Off Turns	10	0
2nd Chance	7	8
Fast Break	10	3
Bench	17	15

Official Play-By-Play
Southern U. vs Prairie View
Second Half

January 06, 2020 at William J. Nicks Building - Prairie View



Period 2

Starters:

Southern U.: 1 SHIVERS,AHSANTE (G); 5 SADDLER,JAYDEN (G); 13 BRADFORD,MICAH (G); 12 WILLIAMS,DARIUS (F); 40 KULJUHOVIC,AMEL (F);

Prairie View: 00 HENRY,LENELL (F); 14 SNEED,LEON (G); 15 ANDRUS,GERARD (G); 23 PATTERSON,DEVONTE (F); 4 LISTER,ANTIONE (G);

Time	VISITORS: Southern U.	Score	Margin	HOME: Prairie View
19:47	SUB OUT: BAGGS, SKYLER			
19:47	SUB OUT: BRADFORD, MICAH			
19:47	SUB IN: SADDLER, JAYDEN			
19:47	SUB IN: KULJUHOVIC, AMEL			
19:30				SUB OUT: WILLIAMS, DARIUS
19:30				SUB IN: SNEED, LEON
19:27	GOOD! 3PTR by SHIVERS, AHSANTE	32-25	H 7	
19:27	ASSIST by KULJUHOVIC, AMEL			
19:08				TURNOVER (LOSTBALL) by PATTERSON, DEVONTE
19:08	STEAL by SHIVERS, AHSANTE			
19:00				FOUL (PERSONAL) by SNEED, LEON
19:00	MISSED FT by WILLIAMS, DARIUS			
19:00	REBOUND (OFF) by TEAM			
19:00	GOOD! FT by WILLIAMS, DARIUS [FB]	32-26	H 6	
18:38		34-26	H 8	GOOD! JUMPER by HENRY, LENELL
18:38				ASSIST by PATTERSON, DEVONTE
18:01	MISSED JUMPER by SADDLER, JAYDEN			
17:55				REBOUND (DEF) by TEAM
17:40				MISSED JUMPER by HENRY, LENELL
17:35				REBOUND (OFF) by PATTERSON, DEVONTE
17:34		36-26	H 10	GOOD! LAYUP by PATTERSON, DEVONTE [PNT]
17:16	TURNOVER (LOSTBALL) by WILLIAMS, DARIUS			
17:16				STEAL by ANDRUS, GERARD
17:03	FOUL (PERSONAL) by BLAKE, MONTESE			
17:02				FOUL (OFF) by PATTERSON, DEVONTE
17:02				TURNOVER (OFFENSIVE) by PATTERSON, DEVONTE
16:43	MISSED LAYUP by SHIVERS, AHSANTE			
16:43	REBOUND (OFF) by WILLIAMS, DARIUS			
16:43	GOOD! LAYUP by WILLIAMS, DARIUS	36-28	H 8	
16:32				MISSED JUMPER by PATTERSON, DEVONTE
16:28	REBOUND (DEF) by KULJUHOVIC, AMEL			
16:10	TURNOVER (LOSTBALL) by BLAKE, MONTESE			
16:10				STEAL by ANDRUS, GERARD
16:03				MISSED LAYUP by ANDRUS, GERARD
15:59	REBOUND (DEF) by WILLIAMS, DARIUS			
15:47				
15:32	MISSED 3PTR by SHIVERS, AHSANTE			
15:27				REBOUND (DEF) by ANDRUS, GERARD
15:12		38-28	H 10	GOOD! LAYUP by ANDRUS, GERARD [PNT]
15:12				ASSIST by PATTERSON, DEVONTE
14:47	MISSED 3PTR by BLAKE, MONTESE			
14:40				REBOUND (DEF) by PATTERSON, DEVONTE
14:39	FOUL (PERSONAL) by KULJUHOVIC, AMEL			
14:39	SUB OUT: KULJUHOVIC, AMEL			
14:39	SUB IN: BURNS, DAMIREE			
14:19		40-28	H 12	GOOD! JUMPER by ANDRUS, GERARD
14:19				ASSIST by SNEED, LEON
13:57	MISSED JUMPER by WILLIAMS, DARIUS			
13:51	REBOUND (OFF) by BURNS, DAMIREE			
13:51				FOUL (PERSONAL) by PATTERSON, DEVONTE
13:51				SUB OUT: PATTERSON, DEVONTE
13:51				SUB IN: WILLIAMS, DARIUS
13:51	SUB OUT: BURNS, DAMIREE			
13:51	SUB IN: BAGGS, SKYLER			
13:51	TURNOVER (OTHER) by SADDLER, JAYDEN			
13:34	SUB OUT: SADDLER, JAYDEN			
13:34	SUB OUT: BLAKE, MONTESE			
13:34	SUB IN: ROLLINS, ISIAIAH			
13:34	SUB IN: BRADFORD, MICAH			
13:07				FOUL (OFF) by WILLIAMS, DARIUS
13:07				TURNOVER (OFFENSIVE) by WILLIAMS, DARIUS
13:07				SUB OUT: SNEED, LEON
13:07				SUB OUT: ANDRUS, GERARD
13:07				SUB IN: COX, DEWAYNE
13:07				SUB IN: WILLIAMS, FAITE
12:51	MISSED 3PTR by SHIVERS, AHSANTE			
12:47	REBOUND (OFF) by ROLLINS, ISIAIAH			
12:46	FOUL (PERSONAL) by WILLIAMS, DARIUS			
12:46				SUB OUT: COX, DEWAYNE
12:46				SUB OUT: WILLIAMS, FAITE

Time	VISITORS: Southern U.	Score	Margin	HOME: Prairie View
12:46				SUB IN: ELLIS, CHANCELLOR
12:46				SUB IN: ANDRUS, GERARD
12:46	SUB OUT: SHIVERS, AHSANTE			
12:46	SUB IN: LEE, LAMARCUS			
12:34				SUB OUT: LISTER, ANTIONE
12:34				SUB IN: WILLIAMS, FAITE
12:28				TURNOVER (OTHER) by WILLIAMS, FAITE
11:55				
11:42	GOOD! 3PTR by ROLLINS, ISAIAH	40-31	H 9	
11:42	ASSIST by BRADFORD, MICAH			
11:31		43-31	H 12	GOOD! 3PTR by ELLIS, CHANCELLOR
11:31				ASSIST by WILLIAMS, DARIUS
11:02				FOUL (PERSONAL) by WILLIAMS, DARIUS
11:02	MISSED FT by ROLLINS, ISAIAH			
11:02	REBOUND (OFF) by TEAM			
11:02	GOOD! FT by ROLLINS, ISAIAH	43-32	H 11	
10:29				MISSED 3PTR by WILLIAMS, DARIUS
10:24				REBOUND (OFF) by HENRY, LENELL
10:24	FOUL (PERSONAL) by BRADFORD, MICAH			
10:24	SUB OUT: BAGGS, SKYLER			
10:24	SUB IN: BURNS, DAMIREE			
10:21		45-32	H 13	GOOD! LAYUP by WILLIAMS, FAITE [PNT]
10:15	FOUL (PERSONAL) by ROLLINS, ISAIAH			
09:57		46-32	H 14	GOOD! FT by WILLIAMS, FAITE
09:46	TURNOVER (10SEC) by TEAM			
09:46	SUB OUT: ROLLINS, ISAIAH			
09:46	SUB OUT: LEE, LAMARCUS			
09:46	SUB IN: SADDLER, JAYDEN			
09:46	SUB IN: MACK, SAMUEL			
09:42				MISSED LAYUP by ANDRUS, GERARD
09:38	REBOUND (DEF) by SADDLER, JAYDEN			
09:28				FOUL (PERSONAL) by ANDRUS, GERARD
09:27	GOOD! JUMPER by BRADFORD, MICAH [PNT]	46-34	H 12	
09:12	FOUL (PERSONAL) by MACK, SAMUEL			
09:12				MISSED FT by WILLIAMS, FAITE
09:12				REBOUND (OFF) by TEAM
09:12		47-34	H 13	GOOD! FT by WILLIAMS, FAITE
09:12				SUB OUT: ELLIS, CHANCELLOR
09:12				SUB OUT: ANDRUS, GERARD
09:12				SUB IN: LISTER, ANTIONE
09:12				SUB IN: COX, DEWAYNE
09:02	MISSED 3PTR by MACK, SAMUEL			
08:55	REBOUND (OFF) by BURNS, DAMIREE			
08:54	GOOD! LAYUP by BURNS, DAMIREE [PNT]	47-36	H 11	
08:45		50-36	H 14	GOOD! 3PTR by WILLIAMS, DARIUS
08:32				FOUL (PERSONAL) by WILLIAMS, DARIUS
08:32	MISSED FT by BURNS, DAMIREE			
08:32	REBOUND (OFF) by TEAM			
08:29				SUB OUT: WILLIAMS, DARIUS
08:29				SUB OUT: COX, DEWAYNE
08:29				SUB OUT: WILLIAMS, FAITE
08:29				SUB IN: ELLIS, CHANCELLOR
08:29				SUB IN: SNEED, LEON
08:29				SUB IN: ANDRUS, GERARD
08:29	SUB OUT: WILLIAMS, DARIUS			
08:29	SUB OUT: MACK, SAMUEL			
08:29	SUB IN: BLAKE, MONTESE			
08:29	SUB IN: KULJUHOVIC, AMEL			
08:29				SUB OUT: ELLIS, CHANCELLOR
08:29				SUB IN: WILLIAMS, DARIUS
08:29				FOUL (PERSONAL) by WILLIAMS, DARIUS
08:29	GOOD! FT by BRADFORD, MICAH [FB]	50-37	H 13	
08:29	MISSED FT by BRADFORD, MICAH			
08:29				REBOUND (DEF) by SNEED, LEON
08:24				SUB OUT: WILLIAMS, DARIUS
08:24				SUB IN: ELLIS, CHANCELLOR
08:09				MISSED JUMPER by ANDRUS, GERARD
08:05	REBOUND (DEF) by BLAKE, MONTESE			
08:00	GOOD! JUMPER by SADDLER, JAYDEN [PNT]	50-39	H 11	
07:44				TIMEOUT 30SEC
07:32				MISSED 3PTR by ELLIS, CHANCELLOR
07:25	REBOUND (DEF) by BURNS, DAMIREE			
07:25				FOUL (PERSONAL) by ANDRUS, GERARD
07:25	MISSED FT by BURNS, DAMIREE			
07:25				REBOUND (DEF) by ANDRUS, GERARD
07:01	FOUL (PERSONAL) by BRADFORD, MICAH			
07:01		51-39	H 12	GOOD! FT by SNEED, LEON
07:01		52-39	H 13	GOOD! FT by SNEED, LEON
07:01				SUB OUT: ELLIS, CHANCELLOR
07:01				SUB OUT: ANDRUS, GERARD

Time	VISITORS: Southern U.	Score	Margin	HOME: Prairie View
07:01				SUB IN: COX, DEWAYNE
07:01				SUB IN: WILLIAMS, FAITE
06:35	MISSED LAYUP by BURNS, DAMIREE			
06:29	REBOUND (OFF) by BURNS, DAMIREE			
06:25	GOOD! LAYUP by BURNS, DAMIREE [PNT]	52-41	H 11	
06:09				MISSED JUMPER by HENRY, LENELL
06:06	REBOUND (DEF) by BLAKE, MONTESE			
06:00				FOUL (PERSONAL) by LISTER, ANTIONE
05:50	MISSED FT by BLAKE, MONTESE			
05:50	REBOUND (OFF) by TEAM			
05:50	GOOD! FT by BLAKE, MONTESE	52-42	H 10	
05:50				SUB OUT: HENRY, LENELL
05:50				SUB OUT: LISTER, ANTIONE
05:50				SUB OUT: COX, DEWAYNE
05:50				SUB OUT: WILLIAMS, FAITE
05:50				SUB IN: WILLIAMS, DARIUS
05:50				SUB IN: ELLIS, CHANCELLOR
05:50				SUB IN: ANDRUS, GERARD
05:50				SUB IN: PATTERSON, DEVONTE
05:31				MISSED 3PTR by WILLIAMS, DARIUS
05:24	REBOUND (DEF) by SADDLER, JAYDEN			
05:23	GOOD! LAYUP by BURNS, DAMIREE [FB/PNT]	52-44	H 8	
05:23	ASSIST by SADDLER, JAYDEN			
05:14	SUB OUT: KULJUHOVIC, AMEL			
05:14	SUB IN: WILLIAMS, DARIUS			
05:14	FOUL (PERSONAL) by WILLIAMS, DARIUS			
05:14		53-44	H 9	GOOD! FT by WILLIAMS, DARIUS
05:14		54-44	H 10	GOOD! FT by WILLIAMS, DARIUS
05:14				SUB OUT: WILLIAMS, DARIUS
05:14				SUB OUT: ELLIS, CHANCELLOR
05:14				SUB OUT: ANDRUS, GERARD
05:14				SUB OUT: PATTERSON, DEVONTE
05:14				SUB IN: HENRY, LENELL
05:14				SUB IN: LISTER, ANTIONE
05:14				SUB IN: COX, DEWAYNE
05:14				SUB IN: WILLIAMS, FAITE
05:08	MISSED JUMPER by BURNS, DAMIREE			
05:02				REBOUND (DEF) by LISTER, ANTIONE
05:00				SUB OUT: HENRY, LENELL
05:00				SUB OUT: LISTER, ANTIONE
05:00				SUB OUT: COX, DEWAYNE
05:00				SUB OUT: WILLIAMS, FAITE
05:00				SUB IN: WILLIAMS, DARIUS
05:00				SUB IN: ELLIS, CHANCELLOR
05:00				SUB IN: ANDRUS, GERARD
05:00				SUB IN: PATTERSON, DEVONTE
05:00	SUB OUT: BRADFORD, MICAH			
05:00	SUB IN: KULJUHOVIC, AMEL			
04:58				MISSED LAYUP by WILLIAMS, DARIUS
04:53				REBOUND (OFF) by PATTERSON, DEVONTE
04:51		56-44	H 12	GOOD! LAYUP by PATTERSON, DEVONTE [PNT]
04:42	MISSED 3PTR by BLAKE, MONTESE			
04:38				REBOUND (DEF) by ANDRUS, GERARD
04:31		58-44	H 14	GOOD! JUMPER by SNEED, LEON [PNT]
03:21	TURNOVER (LOSTBALL) by BLAKE, MONTESE			
03:21				STEAL by WILLIAMS, DARIUS
03:02				TURNOVER (BADPASS) by ANDRUS, GERARD
03:02	STEAL by BRADFORD, MICAH			
03:02				
03:02	SUB OUT: KULJUHOVIC, AMEL			
03:02	SUB IN: BRADFORD, MICAH			
03:00	GOOD! JUMPER by SADDLER, JAYDEN [PNT]	58-46	H 12	
02:56	FOUL (PERSONAL) by BRADFORD, MICAH			
02:56		59-46	H 13	GOOD! FT by WILLIAMS, DARIUS [FB]
02:56		60-46	H 14	GOOD! FT by WILLIAMS, DARIUS [FB]
02:56				SUB OUT: ELLIS, CHANCELLOR
02:56				SUB IN: LISTER, ANTIONE
02:51	TURNOVER (LOSTBALL) by BRADFORD, MICAH			
02:51				STEAL by WILLIAMS, DARIUS
02:50	SUB OUT: BLAKE, MONTESE			
02:50	SUB IN: BROOK, BRENDON			
02:50	MISSED 3PTR by BROOK, BRENDON			
02:50				REBOUND (DEF) by ANDRUS, GERARD
02:50	FOUL (PERSONAL) by WILLIAMS, DARIUS			
02:50		61-46	H 15	GOOD! FT by PATTERSON, DEVONTE [FB]
02:50				MISSED FT by PATTERSON, DEVONTE
02:50	REBOUND (DEF) by SADDLER, JAYDEN			
02:50	SUB OUT: WILLIAMS, DARIUS			
02:50	SUB IN: BAGGS, SKYLER			
02:43				SUB OUT: WILLIAMS, DARIUS

Time	VISITORS: Southern U.	Score	Margin	HOME: Prairie View
02:43				SUB IN: HENRY, LENELL
02:43				FOUL (PERSONAL) by LISTER, ANTIONE
02:43	GOOD! FT by BURNS, DAMIREE [FB]	61-47	H 14	
02:43	GOOD! FT by BURNS, DAMIREE [FB]	61-48	H 13	
02:43				SUB OUT: HENRY, LENELL
02:43				SUB IN: WILLIAMS, DARIUS
02:38				TURNOVER (OTHER) by TEAM
02:25	GOOD! JUMPER by SADDLER, JAYDEN [PNT]	61-50	H 11	
02:14	FOUL (PERSONAL) by BRADFORD, MICAH			
02:13				MISSED FT by WILLIAMS, DARIUS
02:13				REBOUND (OFF) by TEAM
02:13		62-50	H 12	GOOD! FT by WILLIAMS, DARIUS
02:13				SUB OUT: SNEED, LEON
02:13				SUB IN: HENRY, LENELL
02:13	SUB OUT: BROOK, BRENDON			
02:13	SUB IN: JOHNSON, DELOR			
02:11	GOOD! LAYUP by BAGGS, SKYLER [FB/PNT]	62-52	H 10	
00:59				MISSED 3PTR by WILLIAMS, DARIUS
00:55				REBOUND (OFF) by ANDRUS, GERARD
00:54	SUB OUT: JOHNSON, DELOR			
00:54	SUB IN: SHIVERS, AHSANTE			
00:54	FOUL (PERSONAL) by SHIVERS, AHSANTE			
00:54				MISSED FT by PATTERSON, DEVONTE
00:54				REBOUND (OFF) by TEAM
00:54		63-52	H 11	GOOD! FT by PATTERSON, DEVONTE
00:52	SUB OUT: BRADFORD, MICAH			
00:52	SUB IN: JOHNSON, DELOR			
00:51	MISSED JUMPER by SHIVERS, AHSANTE			
00:51				BLOCK by HENRY, LENELL
00:43				REBOUND (DEF) by WILLIAMS, DARIUS
00:32				MISSED LAYUP by PATTERSON, DEVONTE
00:29	REBOUND (DEF) by BAGGS, SKYLER			
00:28	GOOD! LAYUP by BURNS, DAMIREE [FB/PNT]	63-54	H 9	
00:18	FOUL (PERSONAL) by JOHNSON, DELOR			
00:18		64-54	H 10	GOOD! FT by ANDRUS, GERARD
00:18				MISSED FT by ANDRUS, GERARD
00:18	REBOUND (DEF) by JOHNSON, DELOR			
00:11	MISSED JUMPER by BURNS, DAMIREE			
00:08				REBOUND (DEF) by WILLIAMS, DARIUS

Southern U. 54, Prairie View 64

Points from (This Period)	SOU	PVU
In the Paint	20	10
Off Turns	10	0
2nd Chance	7	8
Fast Break	10	3
Bench	17	15

**Official Scoring/Possession Reference Chart
Southern U. vs Prairie View**

Period 1

January 06, 2020 at William J. Nicks Building - Prairie View



Period 1

Starters:

Southern U.: 1 SHIVERS,AHSANTE (G); 5 SADDLER,JAYDEN (G); 13 BRADFORD,MICAH (G); 12 WILLIAMS,DARIUS (F); 40 KULJUHOVIC,AMEL (F);

Prairie View: 00 HENRY,LENELL (F); 14 SNEED,LEON (G); 15 ANDRUS,GERARD (G); 23 PATTERSON,DEVONTE (F); 4 LISTER,ANTIONE (G);

Time	VISITORS: Southern U.	Score	Margin	HOME: Prairie View
19:17	GOOD! LAYUP by KULJUHOVIC, AMEL [PNT]	0-2	V 2	
18:39		2-2	T	GOOD! JUMPER by PATTERSON, DEVONTE
17:57		4-2	H 2	GOOD! LAYUP by LISTER, ANTIONE [FB/PNT]
17:34	GOOD! 3PTR by BRADFORD, MICAH	4-5	V 1	
16:33		6-5	H 1	GOOD! JUMPER by ANDRUS, GERARD
14:37	GOOD! LAYUP by WILLIAMS, DARIUS [FB/PNT]	6-7	V 1	
14:37		8-7	H 1	GOOD! LAYUP by SNEED, LEON [FB/PNT]
13:27		9-7	H 2	GOOD! FT by WILLIAMS, DARIUS
13:27		10-7	H 3	GOOD! FT by WILLIAMS, DARIUS
13:15		12-7	H 5	GOOD! LAYUP by PATTERSON, DEVONTE [PNT]
11:30	GOOD! LAYUP by BROOK, BRENDON [PNT]	12-9	H 3	
11:13		14-9	H 5	GOOD! LAYUP by WILLIAMS, DARIUS [PNT]
10:52	GOOD! LAYUP by BURNS, DAMIREE [PNT]	14-11	H 3	
10:07		16-11	H 5	GOOD! LAYUP by WILLIAMS, FAITE [PNT]
09:29		18-11	H 7	GOOD! JUMPER by ANDRUS, GERARD
08:16		19-11	H 8	GOOD! FT by WILLIAMS, DARIUS [FB]
08:16		20-11	H 9	GOOD! FT by WILLIAMS, DARIUS [FB]
08:05		22-11	H 11	GOOD! LAYUP by COX, DEWAYNE [FB/PNT]
06:03		24-11	H 13	GOOD! LAYUP by HENRY, LENELL [PNT]
05:39		25-11	H 14	GOOD! FT by HENRY, LENELL
04:45	GOOD! JUMPER by WILLIAMS, DARIUS [PNT]	25-13	H 12	
04:23		27-13	H 14	GOOD! JUMPER by HENRY, LENELL [PNT]
03:41		29-13	H 16	GOOD! LAYUP by LISTER, ANTIONE [PNT]
02:49	GOOD! FT by SHIVERS, AHSANTE	29-14	H 15	
02:49	GOOD! FT by SHIVERS, AHSANTE	29-15	H 14	
02:49	GOOD! FT by SHIVERS, AHSANTE	29-16	H 13	
01:31	GOOD! FT by BLAKE, MONTESE	29-17	H 12	
01:31		30-17	H 13	GOOD! FT by HENRY, LENELL [FB]
01:26	GOOD! LAYUP by BRADFORD, MICAH [FB/PNT]	30-19	H 11	
00:37		32-19	H 13	GOOD! LAYUP by COX, DEWAYNE [PNT]
00:24	GOOD! 3PTR by BLAKE, MONTESE	32-22	H 10	

Southern U. 22, Prairie View 32

Official Scoring/Possession Reference Chart

Southern U. vs Prairie View

Period 2

January 06, 2020 at William J. Nicks Building - Prairie View



Period 2

Starters:

Southern U.: 1 SHIVERS,AHSANTE (G); 5 SADDLER,JAYDEN (G); 13 BRADFORD,MICAH (G); 12 WILLIAMS,DARIUS (F); 40 KULJUHOVIC,AMEL (F);

Prairie View: 00 HENRY,LENELL (F); 14 SNEED,LEON (G); 15 ANDRUS,GERARD (G); 23 PATTERSON,DEVONTE (F); 4 LISTER,ANTIONE (G);

Time	VISITORS: Southern U.	Score	Margin	HOME: Prairie View
19:27	GOOD! 3PTR by SHIVERS, AHSANTE	32-25	H 7	
19:00	GOOD! FT by WILLIAMS, DARIUS [FB]	32-26	H 6	
18:38		34-26	H 8	GOOD! JUMPER by HENRY, LENELL
17:34		36-26	H 10	GOOD! LAYUP by PATTERSON, DEVONTE [PNT]
16:43	GOOD! LAYUP by WILLIAMS, DARIUS	36-28	H 8	
15:12		38-28	H 10	GOOD! LAYUP by ANDRUS, GERARD [PNT]
14:19		40-28	H 12	GOOD! JUMPER by ANDRUS, GERARD
11:42	GOOD! 3PTR by ROLLINS, ISAIAH	40-31	H 9	
11:31		43-31	H 12	GOOD! 3PTR by ELLIS, CHANCELLOR
11:02	GOOD! FT by ROLLINS, ISAIAH	43-32	H 11	
10:21		45-32	H 13	GOOD! LAYUP by WILLIAMS, FAITE [PNT]
09:57		46-32	H 14	GOOD! FT by WILLIAMS, FAITE
09:27	GOOD! JUMPER by BRADFORD, MICAH [PNT]	46-34	H 12	
09:12		47-34	H 13	GOOD! FT by WILLIAMS, FAITE
08:54	GOOD! LAYUP by BURNS, DAMIREE [PNT]	47-36	H 11	
08:45		50-36	H 14	GOOD! 3PTR by WILLIAMS, DARIUS
08:29	GOOD! FT by BRADFORD, MICAH [FB]	50-37	H 13	
08:00	GOOD! JUMPER by SADDLER, JAYDEN [PNT]	50-39	H 11	
07:01		51-39	H 12	GOOD! FT by SNEED, LEON
07:01		52-39	H 13	GOOD! FT by SNEED, LEON
06:25	GOOD! LAYUP by BURNS, DAMIREE [PNT]	52-41	H 11	
05:50	GOOD! FT by BLAKE, MONTESE	52-42	H 10	
05:23	GOOD! LAYUP by BURNS, DAMIREE [FB/PNT]	52-44	H 8	
05:14		53-44	H 9	GOOD! FT by WILLIAMS, DARIUS
05:14		54-44	H 10	GOOD! FT by WILLIAMS, DARIUS
04:51		56-44	H 12	GOOD! LAYUP by PATTERSON, DEVONTE [PNT]
04:31		58-44	H 14	GOOD! JUMPER by SNEED, LEON [PNT]
03:00	GOOD! JUMPER by SADDLER, JAYDEN [PNT]	58-46	H 12	
02:56		59-46	H 13	GOOD! FT by WILLIAMS, DARIUS [FB]
02:56		60-46	H 14	GOOD! FT by WILLIAMS, DARIUS [FB]
02:50		61-46	H 15	GOOD! FT by PATTERSON, DEVONTE [FB]
02:43	GOOD! FT by BURNS, DAMIREE [FB]	61-47	H 14	
02:43	GOOD! FT by BURNS, DAMIREE [FB]	61-48	H 13	
02:25	GOOD! JUMPER by SADDLER, JAYDEN [PNT]	61-50	H 11	
02:13		62-50	H 12	GOOD! FT by WILLIAMS, DARIUS
02:11	GOOD! LAYUP by BAGGS, SKYLER [FB/PNT]	62-52	H 10	
00:54		63-52	H 11	GOOD! FT by PATTERSON, DEVONTE
00:28	GOOD! LAYUP by BURNS, DAMIREE [FB/PNT]	63-54	H 9	
00:18		64-54	H 10	GOOD! FT by ANDRUS, GERARD

Southern U. 54, Prairie View 64

**Official Substitutions Log
Southern U. vs Prairie View
Period 1**

January 06, 2020 at William J. Nicks Building - Prairie View



VISITORS: Southern U.	Time	Score	HOME: Prairie View
1 SHIVERS,AHSANTE			00 HENRY, LENELL
5 SADDLER,JAYDEN			14 SNEED, LEON
13 BRADFORD,MICAH			15 ANDRUS, GERARD
12 WILLIAMS, DARIUS			23 PATTERSON, DEVONTE
40 KULJUHOVIC,AMEL			4 LISTER,ANTIONE
	15:10	5-6	SUB OUT: HENRY, LENELL
	15:10		SUB IN: WILLIAMS, DARIUS
	15:05	5-6	SUB OUT: LISTER,ANTIONE
	15:05		SUB IN: ELLIS, CHANCELLOR
SUB OUT: 5 SADDLER,JAYDEN	13:59	7-8	
SUB OUT: 13 BRADFORD,MICAH	13:59		
SUB OUT: 40 KULJUHOVIC,AMEL	13:59		
SUB IN: 2 BURNS,DAMIREE	13:59		
SUB IN: 11 BLAKE,MONTESE	13:59		
SUB IN: 25 BROOK,BRENDON	13:59		
	13:48	7-8	SUB OUT: ELLIS, CHANCELLOR
	13:48		SUB IN: HENRY, LENELL
	13:35	7-8	SUB OUT: HENRY, LENELL
	13:35		SUB IN: ELLIS, CHANCELLOR
SUB OUT: 1 SHIVERS,AHSANTE	13:35		
SUB IN: 4 ROLLINS,ISAIAH	13:35		
	13:26	7-10	SUB OUT: ELLIS, CHANCELLOR
	13:26		SUB OUT: ANDRUS, GERARD
	13:26		SUB IN: COX, DEWAYNE
	13:26		SUB IN: WILLIAMS, FAITE
SUB OUT: 4 ROLLINS,ISAIAH	12:59	7-12	
SUB OUT: 11 BLAKE,MONTESE	12:59		
SUB IN: 1 SHIVERS,AHSANTE	12:59		
SUB IN: 5 SADDLER,JAYDEN	12:59		
SUB OUT: 25 BROOK,BRENDON	11:41	7-12	
SUB IN: 40 KULJUHOVIC,AMEL	11:41		
SUB OUT: 12 WILLIAMS, DARIUS	11:41		
SUB IN: 25 BROOK,BRENDON	11:41		
	11:41		SUB OUT: SNEED, LEON
	11:41		SUB IN: ELLIS, CHANCELLOR
	11:41		SUB OUT: COX, DEWAYNE
	11:41		SUB IN: ANDRUS, GERARD
SUB OUT: 1 SHIVERS,AHSANTE	10:22	11-14	
SUB IN: 10 JOHNSON,DELOR	10:22		
	08:48	11-18	SUB OUT: PATTERSON, DEVONTE
	08:48		SUB IN: HENRY, LENELL
SUB OUT: 25 BROOK,BRENDON	08:48		
SUB IN: 13 BRADFORD,MICAH	08:48		
	08:37	11-18	SUB OUT: ANDRUS, GERARD
	08:37		SUB IN: LISTER,ANTIONE
	08:30	11-18	SUB OUT: ELLIS, CHANCELLOR
	08:30		SUB IN: COX, DEWAYNE
SUB OUT: 2 BURNS,DAMIREE	08:22	11-18	
SUB IN: 12 WILLIAMS, DARIUS	08:22		
	07:43	11-22	SUB OUT: COX, DEWAYNE
	07:43		SUB IN: ELLIS, CHANCELLOR
SUB OUT: 13 BRADFORD,MICAH	07:43		
SUB IN: 2 BURNS,DAMIREE	07:43		
SUB OUT: 40 KULJUHOVIC,AMEL	07:17	11-22	
SUB IN: 1 SHIVERS,AHSANTE	07:17		
	05:39	11-25	SUB OUT: WILLIAMS, DARIUS
	05:39		SUB OUT: ELLIS, CHANCELLOR
	05:39		SUB IN: ANDRUS, GERARD
	05:39		SUB IN: PATTERSON, DEVONTE
SUB OUT: 2 BURNS,DAMIREE	05:39		
SUB OUT: 10 JOHNSON,DELOR	05:39		
SUB IN: 3 BAGGS,SKYLER	05:39		
SUB IN: 11 BLAKE,MONTESE	05:39		
	05:10	11-25	SUB OUT: WILLIAMS, FAITE
	05:10		SUB IN: SNEED, LEON
	03:37	13-29	SUB OUT: HENRY, LENELL
	03:37		SUB IN: COX, DEWAYNE
	03:35	13-29	SUB OUT: COX, DEWAYNE
	03:35		SUB IN: ELLIS, CHANCELLOR
SUB OUT: 5 SADDLER,JAYDEN	03:35		
SUB IN: 13 BRADFORD,MICAH	03:35		
	03:33	13-29	SUB OUT: ELLIS, CHANCELLOR
	03:33		SUB IN: COX, DEWAYNE
	03:33		SUB OUT: PATTERSON, DEVONTE
	03:33		SUB IN: HENRY, LENELL

VISITORS: Southern U.	Time	Score	HOME: Prairie View
	02:27	16-29	SUB OUT: COX,DEWAYNE
	02:27		SUB OUT: ANDRUS,GERARD
	02:27		SUB IN: WILLIAMS,DARIUS
	02:27		SUB IN: ELLIS,CHANCELLOR
	01:31	17-29	SUB OUT: ELLIS,CHANCELLOR
	01:31		SUB IN: ANDRUS,GERARD
	01:31		SUB OUT: SNEED,LEON
	01:31		SUB OUT: ANDRUS,GERARD
	01:31		SUB IN: COX,DEWAYNE
	01:31		SUB IN: WILLIAMS,FAITE
	00:16	22-32	SUB OUT: LISTER,ANTIONE
	00:16		SUB OUT: COX,DEWAYNE
	00:16		SUB OUT: WILLIAMS,FAITE
	00:16		SUB IN: SNEED,LEON
	00:16		SUB IN: ANDRUS,GERARD
	00:16		SUB IN: PATTERSON,DEVONTE
	00:10	22-32	SUB OUT: ANDRUS,GERARD
	00:10		SUB OUT: PATTERSON,DEVONTE
	00:10		SUB IN: COX,DEWAYNE
	00:10		SUB IN: WILLIAMS,FAITE
	00:02	22-32	SUB OUT: COX,DEWAYNE
	00:02		SUB OUT: WILLIAMS,FAITE
	00:02		SUB OUT: SNEED,LEON
	00:02		SUB IN: LISTER,ANTIONE
	00:02		SUB IN: ANDRUS,GERARD
	00:02		SUB IN: PATTERSON,DEVONTE

Southern U. 22, Prairie View 32

**Official Substitutions Log
Southern U. vs Prairie View
Period 2**

January 06, 2020 at William J. Nicks Building - Prairie View



VISITORS: Southern U.	Time	Score	HOME: Prairie View
1 SHIVERS,AHSANTE			00 HENRY, LENELL
5 SADDLER,JAYDEN			14 SNEED, LEON
13 BRADFORD,MICAH			15 ANDRUS,GERARD
12 WILLIAMS,DARIUS			23 PATTERSON,DEVONTE
40 KULJUHOVIC,AMEL			4 LISTER,ANTIONE
SUB OUT: 3 BAGGS,SKYLER	19:47	-	
SUB OUT: 13 BRADFORD,MICAH	19:47		
SUB IN: 5 SADDLER,JAYDEN	19:47		
SUB IN: 40 KULJUHOVIC,AMEL	19:47		
	19:30	-	SUB OUT: WILLIAMS,DARIUS
	19:30		SUB IN: SNEED, LEON
SUB OUT: 40 KULJUHOVIC,AMEL	14:39	28-38	
SUB IN: 2 BURNS,DAMIREE	14:39		
	13:51	28-40	SUB OUT: PATTERSON,DEVONTE
	13:51		SUB IN: WILLIAMS,DARIUS
SUB OUT: 2 BURNS,DAMIREE	13:51		
SUB IN: 3 BAGGS,SKYLER	13:51		
SUB OUT: 5 SADDLER,JAYDEN	13:34	28-40	
SUB OUT: 11 BLAKE,MONTSE	13:34		
SUB IN: 4 ROLLINS,ISAIAH	13:34		
SUB IN: 13 BRADFORD,MICAH	13:34		
	13:07	28-40	SUB OUT: SNEED, LEON
	13:07		SUB OUT: ANDRUS,GERARD
	13:07		SUB IN: COX,DEWAYNE
	13:07		SUB IN: WILLIAMS,FAITE
	12:46	28-40	SUB OUT: COX,DEWAYNE
	12:46		SUB OUT: WILLIAMS,FAITE
	12:46		SUB IN: ELLIS,CHANCELLOR
	12:46		SUB IN: ANDRUS,GERARD
SUB OUT: 1 SHIVERS,AHSANTE	12:46		
SUB IN: 20 LEE,LAMARCUS	12:46		
	12:34	28-40	SUB OUT: LISTER,ANTIONE
	12:34		SUB IN: WILLIAMS,FAITE
SUB OUT: 3 BAGGS,SKYLER	10:24	32-43	
SUB IN: 2 BURNS,DAMIREE	10:24		
SUB OUT: 4 ROLLINS,ISAIAH	09:46	32-46	
SUB OUT: 20 LEE,LAMARCUS	09:46		
SUB IN: 5 SADDLER,JAYDEN	09:46		
SUB IN: 21 MACK,SAMUEL	09:46		
	09:12	34-47	SUB OUT: ELLIS,CHANCELLOR
	09:12		SUB OUT: ANDRUS,GERARD
	09:12		SUB IN: LISTER,ANTIONE
	09:12		SUB IN: COX,DEWAYNE
	08:29	36-50	SUB OUT: WILLIAMS,DARIUS
	08:29		SUB OUT: COX,DEWAYNE
	08:29		SUB OUT: WILLIAMS,FAITE
	08:29		SUB IN: ELLIS,CHANCELLOR
	08:29		SUB IN: SNEED, LEON
	08:29		SUB IN: ANDRUS,GERARD
SUB OUT: 12 WILLIAMS,DARIUS	08:29		
SUB OUT: 21 MACK,SAMUEL	08:29		
SUB IN: 11 BLAKE,MONTSE	08:29		
SUB IN: 40 KULJUHOVIC,AMEL	08:29		
	08:29		SUB OUT: ELLIS,CHANCELLOR
	08:29		SUB IN: WILLIAMS,DARIUS
	08:24	37-50	SUB OUT: WILLIAMS,DARIUS
	08:24		SUB IN: ELLIS,CHANCELLOR
	07:01	39-52	SUB OUT: ELLIS,CHANCELLOR
	07:01		SUB OUT: ANDRUS,GERARD
	07:01		SUB IN: COX,DEWAYNE
	07:01		SUB IN: WILLIAMS,FAITE
	05:50	42-52	SUB OUT: HENRY, LENELL
	05:50		SUB OUT: LISTER,ANTIONE
	05:50		SUB OUT: COX,DEWAYNE
	05:50		SUB OUT: WILLIAMS,FAITE
	05:50		SUB IN: WILLIAMS,DARIUS
	05:50		SUB IN: ELLIS,CHANCELLOR
	05:50		SUB IN: ANDRUS,GERARD
	05:50		SUB IN: PATTERSON,DEVONTE
SUB OUT: 40 KULJUHOVIC,AMEL	05:14	44-52	
SUB IN: 12 WILLIAMS,DARIUS	05:14		
	05:14		SUB OUT: WILLIAMS,DARIUS
	05:14		SUB OUT: ELLIS,CHANCELLOR
	05:14		SUB OUT: ANDRUS,GERARD
	05:14		SUB OUT: PATTERSON,DEVONTE

VISITORS: Southern U.	Time	Score	HOME: Prairie View
	05:14		SUB IN: HENRY, LENELL
	05:14		SUB IN: LISTER,ANTIONE
	05:14		SUB IN: COX,DEWAYNE
	05:14		SUB IN: WILLIAMS,FAITE
	05:00	44-54	SUB OUT: HENRY, LENELL
	05:00		SUB OUT: LISTER,ANTIONE
	05:00		SUB OUT: COX,DEWAYNE
	05:00		SUB OUT: WILLIAMS,FAITE
	05:00		SUB IN: WILLIAMS,DARIUS
	05:00		SUB IN: ELLIS,CHANCELLOR
	05:00		SUB IN: ANDRUS,GERARD
	05:00		SUB IN: PATTERSON,DEVONTE
SUB OUT: 13 BRADFORD,MICAH	05:00		
SUB IN: 40 KULJUHOVIC,AMEL	05:00		
SUB OUT: 40 KULJUHOVIC,AMEL	03:02	44-58	
SUB IN: 13 BRADFORD,MICAH	03:02		
	02:56	46-60	SUB OUT: ELLIS,CHANCELLOR
	02:56		SUB IN: LISTER,ANTIONE
SUB OUT: 11 BLAKE,MONTESE	02:50	46-60	
SUB IN: 25 BROOK,BRENDON	02:50		
SUB OUT: 12 WILLIAMS,DARIUS	02:50		
SUB IN: 3 BAGGS,SKYLER	02:50		
	02:43	46-61	SUB OUT: WILLIAMS,DARIUS
	02:43		SUB IN: HENRY, LENELL
	02:43		SUB OUT: HENRY, LENELL
	02:43		SUB IN: WILLIAMS,DARIUS
	02:13	50-62	SUB OUT: SNEED,LEON
	02:13		SUB IN: HENRY, LENELL
SUB OUT: 25 BROOK,BRENDON	02:13		
SUB IN: 10 JOHNSON,DELOR	02:13		
SUB OUT: 10 JOHNSON,DELOR	00:54	52-62	
SUB IN: 1 SHIVERS,AHSANTE	00:54		
SUB OUT: 13 BRADFORD,MICAH	00:52	52-63	
SUB IN: 10 JOHNSON,DELOR	00:52		

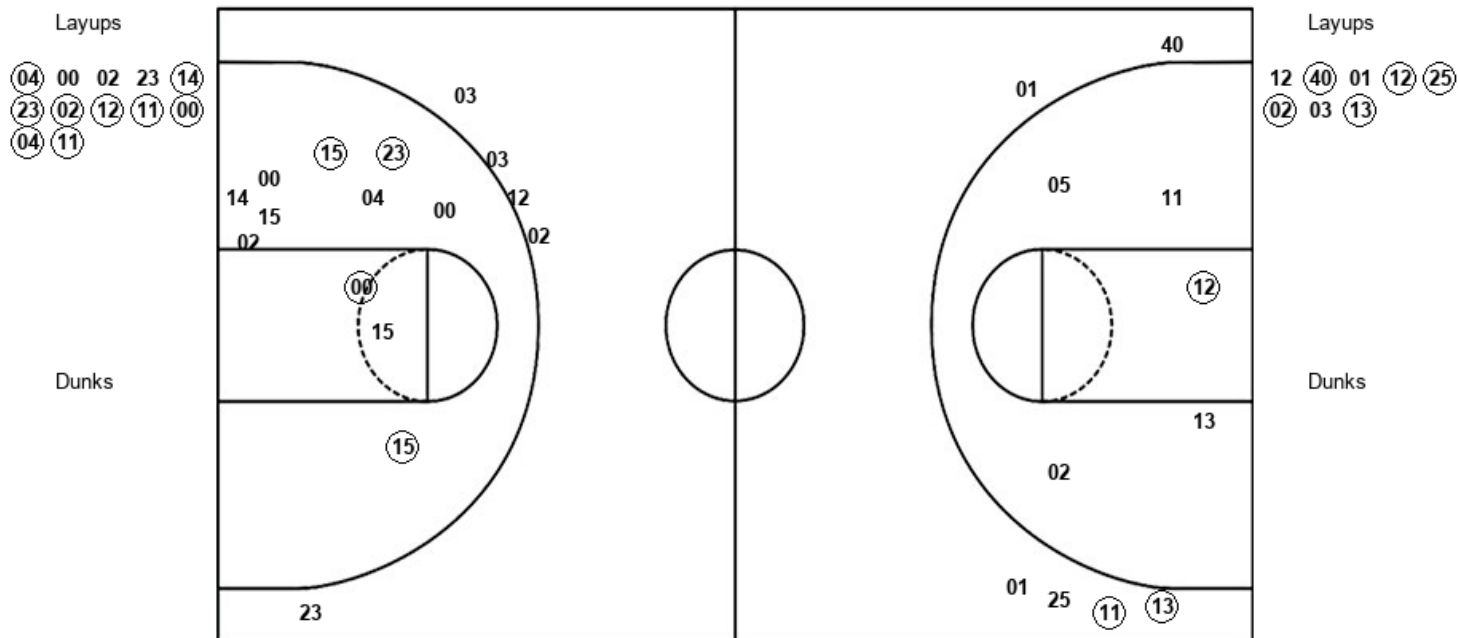
Southern U. 54, Prairie View 64

Official Shot Chart
Southern U. vs Prairie View
 PERIOD 1 Shots
 January 06, 2020 at William J. Nicks Building - Prairie View



Prairie View

Southern U.



PVU : Period 1	Made	Att	Pct
Layups	9	12	75.0
Dunks	0	0	0
2PT Field Goals	13	23	56.5
3PT Field Goals	0	5	00.0
Total Field Goals	13	28	46.4

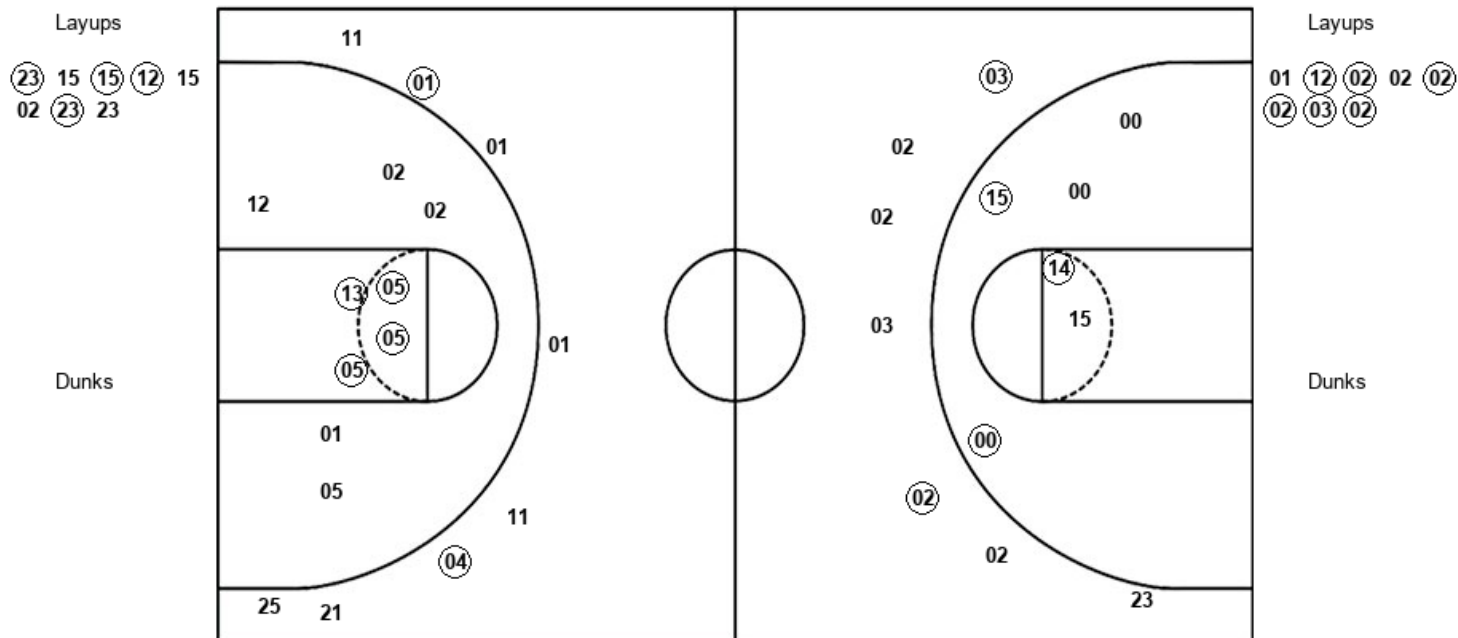
SOU : Period 1	Made	Att	Pct
Layups	5	8	62.5
Dunks	0	0	0
2PT Field Goals	6	13	46.2
3PT Field Goals	2	6	33.3
Total Field Goals	8	19	42.1

Official Shot Chart
Southern U. vs Prairie View
 PERIOD 2 Shots
 January 06, 2020 at William J. Nicks Building - Prairie View



Prairie View

Southern U.



PVU : Period 2	Made	Att	Pct
Layups	4	8	50.0
Dunks	0	0	0
2PT Field Goals	7	15	46.7
3PT Field Goals	2	6	33.3
Total Field Goals	9	21	42.9

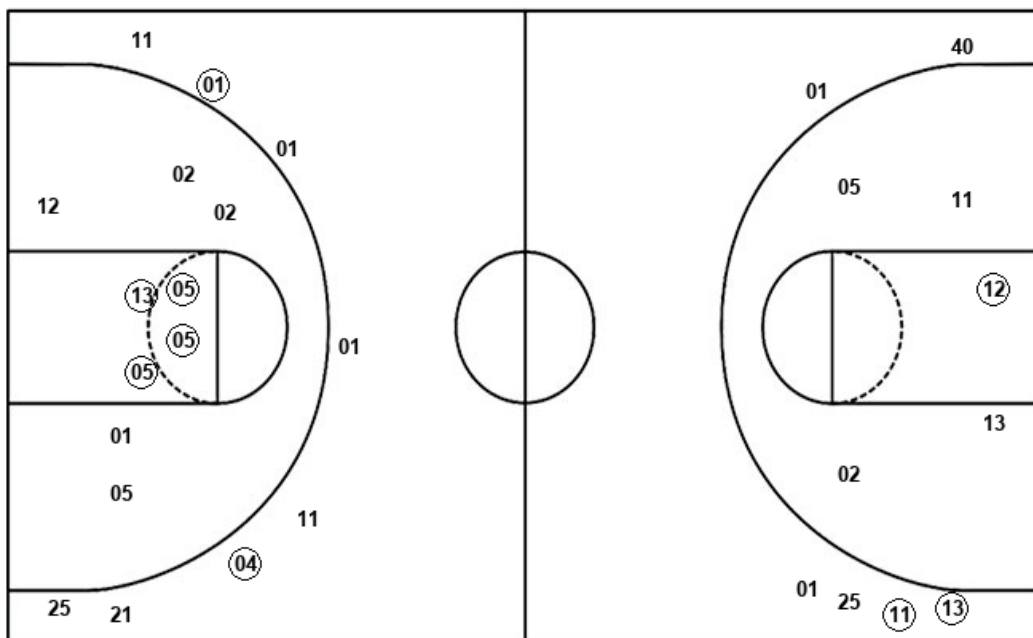
SOU : Period 2	Made	Att	Pct
Layups	6	8	75.0
Dunks	0	0	0
2PT Field Goals	10	17	58.8
3PT Field Goals	2	8	25.0
Total Field Goals	12	25	48.0

Official Shot Chart
Southern U. vs Prairie View
 Southern U. Team Shots
 January 06, 2020 at William J. Nicks Building - Prairie View



Layups

Dunks



Layups

Dunks

12 40 01 12 25
 02 03 13 01 12
 02 02 02 02 03
 02

SOU : Period 1	Made	Att	Pct
Layups	5	8	62.5
Dunks	0	0	0
2PT Field Goals	6	13	46.2
3PT Field Goals	2	6	33.3
Total Field Goals	8	19	42.1

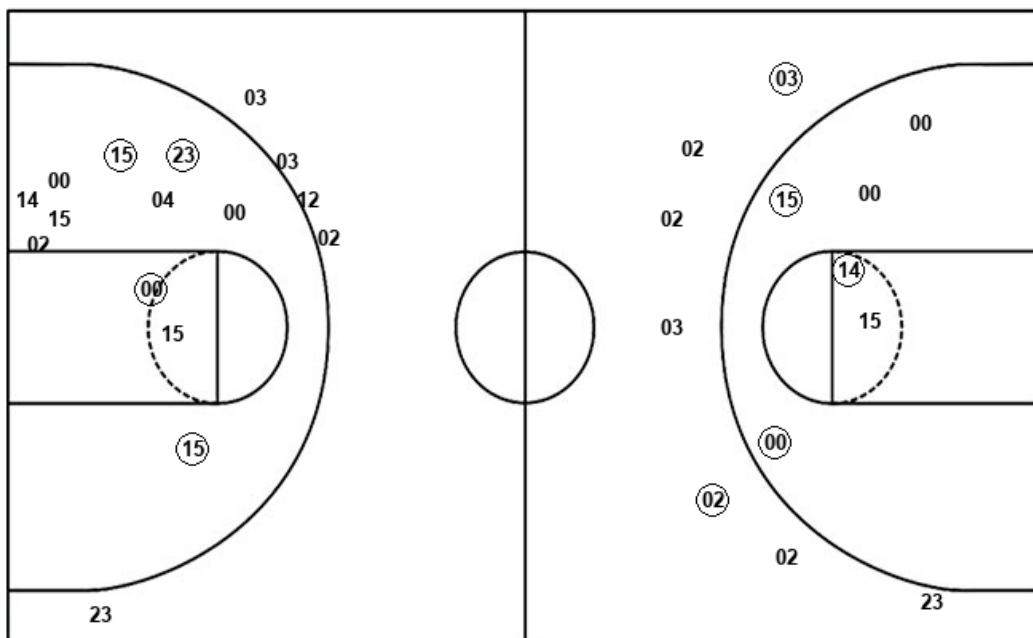
SOU : Period 2	Made	Att	Pct
Layups	6	8	75.0
Dunks	0	0	0
2PT Field Goals	10	17	58.8
3PT Field Goals	2	8	25.0
Total Field Goals	12	25	48.0

Official Shot Chart
Southern U. vs Prairie View
 Prairie View Team Shots
 January 06, 2020 at William J. Nicks Building - Prairie View



Layups

Dunks



Layups

Dunks

(04) 00 02 23 (14)
 (23) 02 (12) (11) (00)
 (04) (11) (23) 15 (15)
 (12) 15 02 (23) 23

PVU : Period 1	Made	Att	Pct
Layups	9	12	75.0
Dunks	0	0	0
2PT Field Goals	13	23	56.5
3PT Field Goals	0	5	00.0
Total Field Goals	13	28	46.4

PVU : Period 2	Made	Att	Pct
Layups	4	8	50.0
Dunks	0	0	0
2PT Field Goals	7	15	46.7
3PT Field Goals	2	6	33.3
Total Field Goals	9	21	42.9