

## FINAL SCORE



**BYU**

**50**



**Washington St.**

**67**

November 09, 2019 • Beasley Coliseum (Friel Court) - Pullman

## FINAL STATISTICS

**Official Box Score**  
**BYU vs Washington St.**  
**Game Totals -- Final Statistics**  
**November 09, 2019 at Beasley Coliseum (Friel Court) - Pullman**



**BYU 50**

No.	Player	S	Pts	FG	3FG	FT	OR	DR	TR	PF	A	TO	Blk	Stl	Min	+/-
01	DROLLINGER, BRENNIA	G	10	2-13	2-9	4-6	0	6	6	2	2	3	0	3	38	-20
05	ALBIERO, MARIA	G	0	0-8	0-2	0-0	0	4	4	5	0	1	0	0	28	-8
13	JOHNSON, PAISLEY	G	19	6-15	2-3	5-6	1	2	3	2	1	1	0	1	36	-9
22	HAMSON, SARA	C	4	1-4	0-0	2-4	4	3	7	4	0	1	1	1	22	2
33	MOODY, JASMINE	F	14	6-10	0-0	2-6	3	5	8	2	0	2	1	0	33	-5
03	SALMON, SHALAE	F	0	0-3	0-0	0-4	0	0	0	2	0	1	0	1	13	-14
11	SMILER, KAYLEE	G	0	0-0	0-0	0-0	0	0	0	0	0	0	0	0	1	-3
14	UGWU, BABALU	F	3	1-3	1-2	0-0	1	2	3	1	0	1	0	0	9	-14
15	PERRI, MALLI	F	0	0-1	0-1	0-0	0	0	0	0	0	0	0	0	1	-3
20	OTUAFI, LEILANI	G	0	0-3	0-2	0-0	1	1	2	0	4	0	0	0	15	-10
32	GLANTZ, SIGNE	F	0	0-1	0-0	0-0	1	1	2	1	0	0	0	0	4	-1
<b>TEAM</b>							1	1	2	0	1					
<b>TOTALS</b>			<b>50</b>	<b>16-61</b>	<b>5-19</b>	<b>13-26</b>	<b>12</b>	<b>25</b>	<b>37</b>	<b>19</b>	<b>7</b>	<b>11</b>	<b>2</b>	<b>6</b>	<b>199</b>	

*Shooting By Period*

Period	FG	FG%	3FG	3FG%	FT	FT%
1st Qtr	3-15	20%	1-6	17%	1-6	17%
2nd Qtr	6-14	43%	2-4	50%	1-5	20%
3rd Qtr	6-19	32%	2-4	50%	3-3	100%
4th Qtr	1-13	08%	0-5	00%	8-12	67%
1st Half	9-29	31%	3-10	30%	2-11	18%
2nd Half	7-32	22%	2-9	22%	11-15	73%
<b>Game</b>	<b>16-61</b>	<b>26.2%</b>	<b>5-19</b>	<b>26.3%</b>	<b>13-26</b>	<b>50.0%</b>

*Deadball Rebounds: 8,0*

*Last FG: 4th-05:29*

*Biggest Run: 6-0*

*Largest lead: By 2 at -*

*Technical Fouls: None.*

**Washington St. 67**

No.	Player	S	Pts	FG	3FG	FT	OR	DR	TR	PF	A	TO	Blk	Stl	Min	+/-
03	NANKERVIS, EMMA	C	0	0-3	0-0	0-0	0	2	2	2	0	2	0	0	11	-5
11	MOLINA, CHANELLE	G	13	6-14	1-5	0-0	4	4	8	4	2	3	0	1	31	7
13	LEVY, SHIR	F	2	1-2	0-0	0-0	0	3	3	1	1	0	0	0	22	6
15	MOTUGA, ULA	F	3	1-7	0-4	1-2	1	5	6	4	2	4	0	2	33	11
45	HRISTOVA, BORISLAVA	F	23	7-18	0-3	9-10	3	5	8	3	2	2	0	1	34	14
10	MUZET, JOHANNA	G	0	0-0	0-0	0-0	0	0	0	1	0	1	0	0	5	-4
20	SARVER, GRACE	G	3	1-4	1-2	0-2	1	3	4	2	0	0	0	0	17	13
33	MOLINA, CHERILYN	G	2	1-2	0-1	0-0	0	1	1	1	4	1	0	1	10	15
41	SUBASIC, JOVANA	F	15	6-9	2-3	1-2	4	7	11	1	1	1	2	0	29	22
55	MUREKATETE, BELLA	C	6	2-3	0-0	2-3	0	3	3	0	1	1	0	0	7	6
<b>TEAM</b>							2	5	7	0	0					
<b>TOTALS</b>			<b>67</b>	<b>25-62</b>	<b>4-18</b>	<b>13-19</b>	<b>15</b>	<b>38</b>	<b>53</b>	<b>19</b>	<b>13</b>	<b>15</b>	<b>2</b>	<b>5</b>	<b>199</b>	

*Shooting By Period*

Period	FG	FG%	3FG	3FG%	FT	FT%
1st Qtr	5-15	33%	0-5	00%	0-0	0%
2nd Qtr	8-14	57%	1-3	33%	4-6	67%
3rd Qtr	7-22	32%	2-6	33%	2-3	67%
4th Qtr	5-11	45%	1-4	25%	7-10	70%
1st Half	13-29	45%	1-8	13%	4-6	67%
2nd Half	12-33	36%	3-10	30%	9-13	69%
<b>Game</b>	<b>25-62</b>	<b>40.3%</b>	<b>4-18</b>	<b>22.2%</b>	<b>13-19</b>	<b>68.4%</b>

*Deadball Rebounds: 3,0*

*Last FG: 4th-00:57*

*Biggest Run: 11-0*

*Largest lead: By 18 at -*

*Technical Fouls: None.*

*Game Notes:*

*Officials: , ,  
Attendance: 717*

*Start Time: 04:03 PM ET  
End Time: 06:01 PM ET  
Game Duration: 1:58*

Score	1st	2nd	3rd	4th	TOT
BYU	8	15	17	10	<b>50</b>
WSU	10	21	18	18	<b>67</b>

**BYU led for 1:00. WSU led for 33:55.**

**Game was tied for 4:54.**

Times tied: 67      Lead Changes: 0

Points from	BYU	WSU
In the Paint	22	32
Off Turns	14	11
2nd Chance	7	12
Fast Break	3	2
Bench	3	26

**Official Box Score**  
**BYU vs Washington St.**  
**First Half Statistics Only**  
**November 09, 2019 at Beasley Coliseum (Friel Court) - Pullman**



**BYU 23**

No.	Player	S	Pts	FG	3FG	FT	OR	DR	TR	PF	A	TO	Blk	Stl	Min	+/-
01	DROLLINGER, BRENNNA	G	1	0-4	0-2	1-2	0	2	2	1	0	2	0	1	19	-13
03	SALMON, SHALAE	F	0	0-2	0-0	0-4	0	0	0	2	0	1	0	0	9	-11
05	ALBIERO, MARIA	G	0	0-4	0-1	0-0	0	2	2	2	0	1	0	0	12	-4
11	SMILER, KAYLEE	G	0	0-0	0-0	0-0	0	0	0	0	0	0	0	0	0	0
13	JOHNSON, PAISLEY	G	10	4-9	2-3	0-0	0	2	2	1	1	0	0	0	19	-4
14	UGWU, BABALU	F	3	1-2	1-2	0-0	1	1	2	1	0	1	0	0	6	-7
15	PERRI, MALLI	F	0	0-0	0-0	0-0	0	0	0	0	0	0	0	0	0	0
20	OTUAFI, LEILANI	G	0	0-3	0-2	0-0	1	1	2	0	4	0	0	0	11	-3
22	HAMSON, SARA	C	1	0-0	0-0	1-2	1	0	1	2	0	1	0	0	8	3
32	GLANTZ, SIGNE	F	0	0-0	0-0	0-0	0	0	0	0	0	0	0	0	0	0
33	MOODY, JASMINE	F	8	4-5	0-0	0-3	2	3	5	0	0	0	0	0	17	-1
	TEAM		0	0-0	0-0	0-0	0	0	0	0	0	1	0	0	0	0
<b>TOTALS</b>			<b>23</b>	<b>9-29</b>	<b>3-10</b>	<b>2-11</b>	<b>5</b>	<b>11</b>	<b>16</b>	<b>9</b>	<b>5</b>	<b>7</b>	<b>0</b>	<b>1</b>	<b>100</b>	

*Shooting By Period*

Period	FG	FG%	3FG	3FG%	FT	FT%
1st Qtr	3-15	20%	1-6	17%	1-6	17%
2nd Qtr	6-14	43%	2-4	50%	1-5	20%
1st Half	9-29	31%	3-10	30%	2-11	18%
Game	16-61	26.2%	5-19	26.3%	13-26	50.0%

Deadball Rebounds: 8,0  
 Last FG Half: BYU 2nd-01:22

**Washington St. 31**

No.	Player	S	Pts	FG	3FG	FT	OR	DR	TR	PF	A	TO	Blk	Stl	Min	+/-
03	NANKERVIS, EMMA	C	0	0-0	0-0	0-0	0	1	1	1	0	2	0	0	8	1
10	MUZET, JOHANNA	G	0	0-0	0-0	0-0	0	0	0	1	0	1	0	0	5	-4
11	MOLINA, CHANELLE	G	4	2-7	0-3	0-0	2	1	3	2	0	0	0	0	12	-2
13	LEVY, SHIR	F	2	1-1	0-0	0-0	0	2	2	1	1	0	0	0	12	5
15	MOTUGA, ULA	F	3	1-4	0-2	1-2	1	3	4	2	0	1	0	1	13	2
20	SARVER, GRACE	G	3	1-2	1-1	0-0	0	0	0	0	0	0	0	0	9	10
33	MOLINA, CHERILYN	G	2	1-2	0-1	0-0	0	1	1	1	3	1	0	0	9	10
41	SUBASIC, JOVANA	F	4	2-4	0-0	0-0	1	4	5	0	0	0	0	0	12	7
45	HRISTOVA, BORISLAVA	F	7	3-6	0-1	1-1	1	2	3	2	2	2	0	1	15	5
55	MUREKATETE, BELLA	C	6	2-3	0-0	2-3	0	3	3	0	1	1	0	0	7	6
	TEAM		0	0-0	0-0	0-0	1	2	3	0	0	0	0	0	0	0
<b>TOTALS</b>			<b>31</b>	<b>13-29</b>	<b>1-8</b>	<b>4-6</b>	<b>6</b>	<b>19</b>	<b>25</b>	<b>10</b>	<b>7</b>	<b>8</b>	<b>0</b>	<b>2</b>	<b>100</b>	

*Shooting By Period*

Period	FG	FG%	3FG	3FG%	FT	FT%
1st Qtr	5-15	33%	0-5	00%	0-0	0%
2nd Qtr	8-14	57%	1-3	33%	4-6	67%
1st Half	13-29	45%	1-8	13%	4-6	67%
Game	25-62	40.3%	4-18	22.2%	13-19	68.4%

Deadball Rebounds: 3,0  
 Last FG Half: WSU 2nd-00:21

Game Notes:

Officials: , ,  
 Attendance: 717

Start Time: 04:03 PM ET  
 End Time: 06:01 PM ET  
 Game Duration: 1:58

Score	1st	2nd	3rd	4th	TOT
BYU	8	15	17	10	<b>50</b>
WSU	10	21	18	18	<b>67</b>

Points from (This Period)	BYU	WSU
In the Paint	12	20
Off Turns	6	6
2nd Chance	6	6
Fast Break	0	0
Bench	3	15

**Official Box Score**  
**BYU vs Washington St.**  
**First Quarter Statistics Only**  
**November 09, 2019 at Beasley Coliseum (Friel Court) - Pullman**



**BYU 8**

No.	Player	S	Pts	FG	3FG	FT	OR	DR	TR	PF	A	TO	Blk	Stl	Min	+/-
01	DROLLINGER, BRENNNA	G	0	0-3	0-2	0-0	0	2	2	0	0	1	0	0	10	-3
05	ALBIERO, MARIA	G	0	0-2	0-1	0-0	0	1	1	1	0	0	0	0	7	-1
13	JOHNSON, PAISLEY	G	3	1-5	1-2	0-0	0	0	0	0	1	0	0	0	10	-2
22	HAMSON, SARA	C	1	0-0	0-0	1-2	1	0	1	1	0	1	0	0	6	-1
33	MOODY, JASMINE	F	4	2-3	0-0	0-2	2	3	5	0	0	0	0	0	10	-2
03	SALMON, SHALAE	F	0	0-1	0-0	0-2	0	0	0	0	0	0	0	0	4	-1
11	SMILER, KAYLEE	G	0	0-0	0-0	0-0	0	0	0	0	0	0	0	0	0	0
14	UGWU, BABALU	F	0	0-0	0-0	0-0	0	0	0	0	0	0	0	0	0	0
15	PERRI, MALLI	F	0	0-0	0-0	0-0	0	0	0	0	0	0	0	0	0	0
20	OTUAFI, LEILANI	G	0	0-1	0-1	0-0	0	0	0	0	1	0	0	0	3	0
32	GLANTZ, SIGNE	F	0	0-0	0-0	0-0	0	0	0	0	0	0	0	0	0	0
	TEAM						0	0	0	0		1				
<b>TOTALS</b>			<b>8</b>	<b>3-15</b>	<b>1-6</b>	<b>1-6</b>	<b>3</b>	<b>6</b>	<b>9</b>	<b>2</b>	<b>2</b>	<b>3</b>	<b>0</b>	<b>0</b>	<b>50</b>	

*Shooting By Period*

Period	FG	FG%	3FG	3FG%	FT	FT%
1st Qtr	3-15	20%	1-6	17%	1-6	17%
2nd Qtr	6-14	43%	2-4	50%	1-5	20%
1st Half	3-15	20%	1-6	17%	1-6	17%
1st Half	9-29	31%	3-10	30%	2-11	18%
Game	16-61	26.2%	5-19	26.3%	13-26	50.0%

*Deadball Rebounds: 8,0*

**Washington St. 10**

No.	Player	S	Pts	FG	3FG	FT	OR	DR	TR	PF	A	TO	Blk	Stl	Min	+/-
03	NANKERVIS, EMMA	C	0	0-0	0-0	0-0	0	1	1	1	0	2	0	0	8	1
11	MOLINA, CHANELLE	G	4	2-7	0-3	0-0	2	1	3	1	0	0	0	0	10	2
13	LEVY, SHIR	F	0	0-0	0-0	0-0	0	2	2	0	1	0	0	0	7	2
15	MOTUGA, ULA	F	2	1-3	0-1	0-0	0	3	3	1	0	1	0	0	10	2
45	HRISTOVA, BORISLAVA	F	4	2-5	0-1	0-0	1	0	1	1	1	1	0	1	10	2
10	MUZET, JOHANNA	G	0	0-0	0-0	0-0	0	0	0	1	0	1	0	0	3	0
20	SARVER, GRACE	G	0	0-0	0-0	0-0	0	0	0	0	0	0	0	0	0	0
33	MOLINA, CHERILYN	G	0	0-0	0-0	0-0	0	0	0	0	0	0	0	0	0	0
41	SUBASIC, JOVANA	F	0	0-0	0-0	0-0	0	1	1	0	0	0	0	0	2	1
55	MUREKATETE, BELLA	C	0	0-0	0-0	0-0	0	0	0	0	0	0	0	0	0	0
	TEAM						1	2	3	0		0				
<b>TOTALS</b>			<b>10</b>	<b>5-15</b>	<b>0-5</b>	<b>0-0</b>	<b>4</b>	<b>10</b>	<b>14</b>	<b>5</b>	<b>2</b>	<b>5</b>	<b>0</b>	<b>1</b>	<b>50</b>	

*Shooting By Period*

Period	FG	FG%	3FG	3FG%	FT	FT%
1st Qtr	5-15	33%	0-5	00%	0-0	0%
2nd Qtr	8-14	57%	1-3	33%	4-6	67%
1st Half	5-15	33%	0-5	00%	0-0	0%
1st Half	13-29	45%	1-8	13%	4-6	67%
Game	25-62	40.3%	4-18	22.2%	13-19	68.4%

*Deadball Rebounds: 3,0*

Game Notes:  
 Officials: , ,  
 Attendance: 717

Start Time: 04:03 PM ET  
 End Time: 06:01 PM ET  
 Game Duration: 1:58

Score	1st	2nd	3rd	4th	TOT
BYU	8	15	17	10	<b>50</b>
WSU	10	21	18	18	<b>67</b>

Points from (This Period)	BYU	WSU
In the Paint	4	8
Off Turns	5	2
2nd Chance	3	2
Fast Break	0	0
Bench	0	0

**Official Play-By-Play**  
**BYU vs Washington St.**  
**First Quarter**  
**November 09, 2019 at Beasley Coliseum (Friel Court) - Pullman**



**Period 1**

**Starters:**

**BYU:** 1 DROLLINGER, BRENNNA (G); 5 ALBIERO, MARIA (G); 13 JOHNSON, PAISLEY (G); 22 HAMSON, SARA (C); 33 MOODY, JASMINE (F);  
**Washington St.:** 3 NANKERVIS, EMMA (C); 11 MOLINA, CHANELLE (G); 13 LEVY, SHIR (F); 15 MOTUGA, ULA (F); 45 HRISTOVA, BORISLAVA (F);

Time	VISITORS: BYU	Score	Margin	HOME: Washington St.
09:43				MISSED 3PTR by MOLINA, CHANELLE
09:39	REBOUND (DEF) by DROLLINGER, BRENNNA			
09:27	MISSED JUMPER by ALBIERO, MARIA			
09:25				REBOUND (DEF) by LEVY, SHIR
09:03		2-0	H 2	GOOD! LAYUP by MOLINA, CHANELLE
09:03				ASSIST by LEVY, SHIR
08:52				FOUL (PERSONAL) by MOTUGA, ULA
08:52	MISSED FT by MOODY, JASMINE			
08:52	REBOUND (OFF) by TEAM			
08:52	MISSED FT by MOODY, JASMINE			
08:51				REBOUND (DEF) by TEAM
08:38				MISSED 3PTR by MOTUGA, ULA
08:35	REBOUND (DEF) by MOODY, JASMINE			
08:22	TURNOVER (BADPASS) by DROLLINGER, BRENNNA			
08:22				STEAL by HRISTOVA, BORISLAVA
08:17				MISSED LAYUP by HRISTOVA, BORISLAVA
08:15	REBOUND (DEF) by DROLLINGER, BRENNNA			
07:55	MISSED 3PTR by ALBIERO, MARIA			
07:52	REBOUND (OFF) by MOODY, JASMINE			
07:51	GOOD! LAYUP by MOODY, JASMINE	2-2	T	
07:31				MISSED 3PTR by HRISTOVA, BORISLAVA
07:28	REBOUND (DEF) by MOODY, JASMINE			
07:19	MISSED 3PTR by DROLLINGER, BRENNNA			
07:16				REBOUND (DEF) by TEAM
06:50				TURNOVER (LOSTBALL) by NANKERVIS, EMMA
06:38	MISSED LAYUP by JOHNSON, PAISLEY			
06:35				REBOUND (DEF) by MOTUGA, ULA
06:31				MISSED LAYUP by HRISTOVA, BORISLAVA
06:29				REBOUND (OFF) by MOLINA, CHANELLE
06:24				FOUL (PERSONAL) by MOLINA, CHANELLE
06:18	FOUL (OFF) by HAMSON, SARA			
06:18	TURNOVER (OFFENSIVE) by HAMSON, SARA			
05:58				MISSED JUMPER by MOTUGA, ULA
05:55				REBOUND (OFF) by TEAM
05:41				MISSED 3PTR by MOLINA, CHANELLE
05:38	REBOUND (DEF) by ALBIERO, MARIA			
05:33	MISSED 3PTR by DROLLINGER, BRENNNA			
05:30				REBOUND (DEF) by MOLINA, CHANELLE
05:20	FOUL (PERSONAL) by ALBIERO, MARIA			
05:20	SUB OUT: HAMSON, SARA			
05:20	SUB IN: SALMON, SHALAE			
05:09		4-2	H 2	GOOD! LAYUP by MOLINA, CHANELLE
04:52				
04:38	MISSED JUMPER by JOHNSON, PAISLEY			
04:35	REBOUND (OFF) by TEAM			
04:35	TURNOVER (SHOTCLOCK) by TEAM			
04:21		6-2	H 4	GOOD! JUMPER by HRISTOVA, BORISLAVA
04:09	MISSED LAYUP by MOODY, JASMINE			
04:05				REBOUND (DEF) by LEVY, SHIR
03:53				FOUL (OFF) by NANKERVIS, EMMA
03:53				TURNOVER (OFFENSIVE) by NANKERVIS, EMMA
03:40	GOOD! LAYUP by MOODY, JASMINE	6-4	H 2	
03:40	ASSIST by JOHNSON, PAISLEY			
03:21				TURNOVER (TRAVEL) by MOTUGA, ULA
03:21				SUB OUT: LEVY, SHIR
03:21				SUB IN: MUZET, JOHANNA
03:21	SUB OUT: ALBIERO, MARIA			
03:21	SUB IN: OTUAFI, LEILANI			
02:58	MISSED 3PTR by JOHNSON, PAISLEY			
02:54	REBOUND (OFF) by MOODY, JASMINE			
02:46				FOUL (PERSONAL) by MUZET, JOHANNA
02:46	MISSED FT by SALMON, SHALAE			
02:46	REBOUND (OFF) by TEAM			
02:46	MISSED FT by SALMON, SHALAE			
02:45				REBOUND (DEF) by MOTUGA, ULA
02:30				TURNOVER (TRAVEL) by MUZET, JOHANNA
02:18	GOOD! 3PTR by JOHNSON, PAISLEY	6-7	V 1	
02:18	ASSIST by OTUAFI, LEILANI			
02:05		8-7	H 1	GOOD! LAYUP by MOTUGA, ULA
02:05				ASSIST by HRISTOVA, BORISLAVA

Time	VISITORS: BYU	Score	Margin	HOME: Washington St.
01:46	MISSED LAYUP by SALMON, SHALAE			
01:44				REBOUND (DEF) by NANKERVIS, EMMA
01:37				TURNOVER (TRAVEL) by HRISTOVA, BORISLAVA
01:37				SUB OUT: NANKERVIS, EMMA
01:37				SUB IN: SUBASIC, JOVANA
01:37	SUB OUT: SALMON, SHALAE			
01:37	SUB IN: HAMSON, SARA			
01:08	MISSED LAYUP by JOHNSON, PAISLEY			
01:05				REBOUND (DEF) by SUBASIC, JOVANA
01:01				MISSED LAYUP by MOLINA, CHANELLE
00:55				REBOUND (OFF) by HRISTOVA, BORISLAVA
00:55		10-7	H 3	GOOD! LAYUP by HRISTOVA, BORISLAVA
00:36	MISSED 3PTR by OTUAFI, LEILANI			
00:33				REBOUND (DEF) by MOTUGA, ULA
00:25				MISSED 3PTR by MOLINA, CHANELLE
00:22				REBOUND (OFF) by MOLINA, CHANELLE
00:20				MISSED JUMPER by MOLINA, CHANELLE
00:17	REBOUND (DEF) by MOODY, JASMINE			
00:05	MISSED JUMPER by DROLLINGER, BRENNNA			
00:03	REBOUND (OFF) by HAMSON, SARA			
00:03				FOUL (PERSONAL) by HRISTOVA, BORISLAVA
00:03	SUB OUT: DROLLINGER, BRENNNA			
00:03	SUB IN: ALBIERO, MARIA			
00:03	MISSED FT by HAMSON, SARA			
00:03	REBOUND (OFF) by TEAM			
00:03	GOOD! FT by HAMSON, SARA	10-8	H 2	

### BYU 8, Washington St. 10

Points from (This Period)	BYU	WSU
In the Paint	4	8
Off Turns	5	2
2nd Chance	3	2
Fast Break	0	0
Bench	0	0

**Official Box Score**  
**BYU vs Washington St.**  
**Second Quarter Statistics Only**  
**November 09, 2019 at Beasley Coliseum (Friel Court) - Pullman**



**BYU 15**

No.	Player	S	Pts	FG	3FG	FT	OR	DR	TR	PF	A	TO	Blk	Stl	Min	+/-
01	DROLLINGER, BRENNNA	G	1	0-1	0-0	1-2	0	0	0	1	0	1	0	1	9	-10
05	ALBIERO, MARIA	G	0	0-2	0-0	0-0	0	1	1	1	0	1	0	0	5	-3
13	JOHNSON, PAISLEY	G	7	3-4	1-1	0-0	0	2	2	1	0	0	0	0	9	-2
22	HAMSON, SARA	C	0	0-0	0-0	0-0	0	0	0	1	0	0	0	0	2	4
33	MOODY, JASMINE	F	4	2-2	0-0	0-1	0	0	0	0	0	0	0	0	7	1
03	SALMON, SHALAE	F	0	0-1	0-0	0-2	0	0	0	2	0	1	0	0	5	-10
11	SMILER, KAYLEE	G	0	0-0	0-0	0-0	0	0	0	0	0	0	0	0	0	0
14	UGWU, BABALU	F	3	1-2	1-2	0-0	1	1	2	1	0	1	0	0	6	-7
15	PERRI, MALLI	F	0	0-0	0-0	0-0	0	0	0	0	0	0	0	0	0	0
20	OTUAFI, LEILANI	G	0	0-2	0-1	0-0	1	1	2	0	3	0	0	0	8	-3
32	GLANTZ, SIGNE	F	0	0-0	0-0	0-0	0	0	0	0	0	0	0	0	0	0
	TEAM						0	0	0	0		0				
<b>TOTALS</b>			<b>15</b>	<b>6-14</b>	<b>2-4</b>	<b>1-5</b>	<b>2</b>	<b>5</b>	<b>7</b>	<b>7</b>	<b>3</b>	<b>4</b>	<b>0</b>	<b>1</b>	<b>50</b>	

*Shooting By Period*

Period	FG	FG%	3FG	3FG%	FT	FT%
3rd Qtr	6-19	32%	2-4	50%	3-3	100%
4th Qtr	1-13	08%	0-5	00%	8-12	67%
2nd Half	6-14	43%	2-4	50%	1-5	20%
2nd Half	7-32	22%	2-9	22%	11-15	73%
Game	16-61	26.2%	5-19	26.3%	13-26	50.0%

*Deadball Rebounds: 8,0*

**Washington St. 21**

No.	Player	S	Pts	FG	3FG	FT	OR	DR	TR	PF	A	TO	Blk	Stl	Min	+/-
03	NANKERVIS, EMMA	C	0	0-0	0-0	0-0	0	0	0	0	0	0	0	0	0	0
11	MOLINA, CHANELLE	G	0	0-0	0-0	0-0	0	0	0	1	0	0	0	0	2	-4
13	LEVY, SHIR	F	2	1-1	0-0	0-0	0	0	0	1	0	0	0	0	5	3
15	MOTUGA, ULA	F	1	0-1	0-1	1-2	1	0	1	1	0	0	0	1	3	0
45	HRISTOVA, BORISLAVA	F	3	1-1	0-0	1-1	0	2	2	1	1	1	0	0	5	3
10	MUZET, JOHANNA	G	0	0-0	0-0	0-0	0	0	0	0	0	0	0	0	2	-4
20	SARVER, GRACE	G	3	1-2	1-1	0-0	0	0	0	0	0	0	0	0	9	10
33	MOLINA, CHERILYN	G	2	1-2	0-1	0-0	0	1	1	1	3	1	0	0	9	10
41	SUBASIC, JOVANA	F	4	2-4	0-0	0-0	1	3	4	0	0	0	0	0	10	6
55	MUREKATETE, BELLA	C	6	2-3	0-0	2-3	0	3	3	0	1	1	0	0	7	6
	TEAM						0	0	0	0		0				
<b>TOTALS</b>			<b>21</b>	<b>8-14</b>	<b>1-3</b>	<b>4-6</b>	<b>2</b>	<b>9</b>	<b>11</b>	<b>5</b>	<b>5</b>	<b>3</b>	<b>0</b>	<b>1</b>	<b>50</b>	

*Shooting By Period*

Period	FG	FG%	3FG	3FG%	FT	FT%
3rd Qtr	7-22	32%	2-6	33%	2-3	67%
4th Qtr	5-11	45%	1-4	25%	7-10	70%
2nd Half	8-14	57%	1-3	33%	4-6	67%
2nd Half	12-33	36%	3-10	30%	9-13	69%
Game	25-62	40.3%	4-18	22.2%	13-19	68.4%

*Deadball Rebounds: 3,0*

Game Notes:  
 Officials: , ,  
 Attendance: 717

Start Time: 04:03 PM ET  
 End Time: 06:01 PM ET  
 Game Duration: 1:58

Score	1st	2nd	3rd	4th	TOT
BYU	8	15	17	10	<b>50</b>
WSU	10	21	18	18	<b>67</b>

Points from (This Period)	BYU	WSU
In the Paint	8	12
Off Turns	1	4
2nd Chance	3	4
Fast Break	0	0
Bench	3	15

**Official Play-By-Play  
BYU vs Washington St.  
Second Quarter**

**November 09, 2019 at Beasley Coliseum (Friel Court) - Pullman**



**Period 2**

**Starters:**

**BYU:** 1 DROLLINGER, BRENNNA (G); 5 ALBIERO, MARIA (G); 13 JOHNSON, PAISLEY (G); 22 HAMSON, SARA (C); 33 MOODY, JASMINE (F);  
**Washington St.:** 3 NANKERVIS, EMMA (C); 11 MOLINA, CHANELLE (G); 13 LEVY, SHIR (F); 15 MOTUGA, ULA (F); 45 HRISTOVA, BORISLAVA (F);

Time	VISITORS: BYU	Score	Margin	HOME: Washington St.
09:45	GOOD! LAYUP by JOHNSON, PAISLEY	10-10	T	
09:27				MISSED 3PTR by MOTUGA, ULA
09:22	REBOUND (DEF) by JOHNSON, PAISLEY			
09:08	MISSED 3PTR by OTUAFI, LEILANI			
09:06				REBOUND (DEF) by HRISTOVA, BORISLAVA
08:50				MISSED JUMPER by SUBASIC, JOVANA
08:46	REBOUND (DEF) by OTUAFI, LEILANI			
08:30	GOOD! JUMPER by MOODY, JASMINE [PNT]	10-12	V 2	
08:30				FOUL (PERSONAL) by MOLINA, CHANELLE
08:30				SUB OUT: MUZET, JOHANNA
08:30				SUB OUT: MOLINA, CHANELLE
08:30				SUB IN: SARVER, GRACE
08:30				SUB IN: MOLINA, CHERILYN
08:30	SUB OUT: JOHNSON, PAISLEY			
08:30	SUB IN: DROLLINGER, BRENNNA			
08:29	MISSED FT by MOODY, JASMINE			
08:29				REBOUND (DEF) by HRISTOVA, BORISLAVA
08:06				MISSED 3PTR by MOLINA, CHERILYN
08:03				REBOUND (OFF) by MOTUGA, ULA
08:01	FOUL (PERSONAL) by HAMSON, SARA			
08:01	SUB OUT: HAMSON, SARA			
08:01	SUB OUT: MOODY, JASMINE			
08:01	SUB IN: SALMON, SHALAE			
08:01	SUB IN: UGWU, BABALU			
08:01		11-12	V 1	GOOD! FT by MOTUGA, ULA
08:01				MISSED FT by MOTUGA, ULA
08:00				REBOUND (OFF) by SUBASIC, JOVANA
07:43		14-12	H 2	GOOD! 3PTR by SARVER, GRACE
07:43				ASSIST by HRISTOVA, BORISLAVA
07:21	MISSED JUMPER by DROLLINGER, BRENNNA			
07:17	REBOUND (OFF) by UGWU, BABALU			
07:13	TURNOVER (LOSTBALL) by UGWU, BABALU			
07:13				STEAL by MOTUGA, ULA
07:13	SUB OUT: OTUAFI, LEILANI			
07:13	SUB IN: JOHNSON, PAISLEY			
07:00				MISSED LAYUP by SARVER, GRACE
06:58	REBOUND (DEF) by UGWU, BABALU			
06:51				FOUL (PERSONAL) by MOTUGA, ULA
06:51				SUB OUT: MOTUGA, ULA
06:51				SUB IN: MUREKATETE, BELLA
06:43	MISSED JUMPER by ALBIERO, MARIA			
06:41				REBOUND (DEF) by MUREKATETE, BELLA
06:35		16-12	H 4	GOOD! LAYUP by HRISTOVA, BORISLAVA [PNT]
06:35	FOUL (PERSONAL) by JOHNSON, PAISLEY			
06:35		17-12	H 5	GOOD! FT by HRISTOVA, BORISLAVA
06:06	MISSED JUMPER by ALBIERO, MARIA			
06:03				REBOUND (DEF) by SUBASIC, JOVANA
05:55	FOUL (PERSONAL) by DROLLINGER, BRENNNA			
05:51				MISSED LAYUP by MUREKATETE, BELLA
05:48	REBOUND (DEF) by ALBIERO, MARIA			
05:45	FOUL (OFF) by ALBIERO, MARIA			
05:45	TURNOVER (OFFENSIVE) by ALBIERO, MARIA			
05:21				FOUL (OFF) by HRISTOVA, BORISLAVA
05:21				TURNOVER (OFFENSIVE) by HRISTOVA, BORISLAVA
05:21				SUB OUT: HRISTOVA, BORISLAVA
05:21				SUB IN: LEVY, SHIR
05:21	SUB OUT: ALBIERO, MARIA			
05:21	SUB OUT: UGWU, BABALU			
05:21	SUB IN: OTUAFI, LEILANI			
05:21	SUB IN: MOODY, JASMINE			
05:16	FOUL (OFF) by SALMON, SHALAE			
05:16	TURNOVER (OFFENSIVE) by SALMON, SHALAE			
04:57		19-12	H 7	GOOD! LAYUP by MUREKATETE, BELLA
04:57				ASSIST by MOLINA, CHERILYN
04:43	TURNOVER (LOSTBALL) by DROLLINGER, BRENNNA			
04:43				
04:25		21-12	H 9	GOOD! LAYUP by SUBASIC, JOVANA
04:25				ASSIST by MOLINA, CHERILYN
04:06	GOOD! LAYUP by JOHNSON, PAISLEY	21-14	H 7	
03:45		23-14	H 9	GOOD! JUMPER by SUBASIC, JOVANA



Time	VISITORS: BYU	Score	Margin	HOME: Washington St.
03:45				ASSIST by MOLINA, CHERILYN
03:30				FOUL (PERSONAL) by LEVY, SHIR
03:30	MISSED FT by SALMON, SHALAE			
03:30	REBOUND (OFF) by TEAM			
03:29	MISSED FT by SALMON, SHALAE			
03:27	REBOUND (OFF) by OTUAFI, LEILANI			
03:25	GOOD! 3PTR by JOHNSON, PAISLEY	23-17	H 6	
03:25	ASSIST by OTUAFI, LEILANI			
03:09		25-17	H 8	GOOD! LAYUP by MOLINA, CHERILYN
02:52	MISSED LAYUP by SALMON, SHALAE			
02:52				REBOUND (DEF) by MUREKATETE, BELLA
02:52	FOUL (PERSONAL) by SALMON, SHALAE			
02:52	SUB OUT: SALMON, SHALAE			
02:52	SUB IN: UGWU, BABALU			
02:52				MISSED FT by MUREKATETE, BELLA
02:52				REBOUND (OFF) by TEAM
02:52		26-17	H 9	GOOD! FT by MUREKATETE, BELLA
02:25	MISSED LAYUP by OTUAFI, LEILANI			
02:21				REBOUND (DEF) by SUBASIC, JOVANA
02:16		28-17	H 11	GOOD! LAYUP by MUREKATETE, BELLA
02:16	FOUL (PERSONAL) by UGWU, BABALU			
02:16		29-17	H 12	GOOD! FT by MUREKATETE, BELLA
01:59	GOOD! LAYUP by MOODY, JASMINE	29-19	H 10	
01:59	ASSIST by OTUAFI, LEILANI			
01:42				MISSED JUMPER by SUBASIC, JOVANA
01:40	REBOUND (DEF) by JOHNSON, PAISLEY			
01:22	GOOD! 3PTR by UGWU, BABALU	29-22	H 7	
01:22	ASSIST by OTUAFI, LEILANI			
01:00				TURNOVER (LOSTBALL) by MOLINA, CHERILYN
01:00	STEAL by DROLLINGER, BRENNNA			
01:00				FOUL (PERSONAL) by MOLINA, CHERILYN
01:00	GOOD! FT by DROLLINGER, BRENNNA	29-23	H 6	
00:59	MISSED FT by DROLLINGER, BRENNNA			
00:59				REBOUND (DEF) by SUBASIC, JOVANA
00:48				TURNOVER (BADPASS) by MUREKATETE, BELLA
00:37	MISSED JUMPER by JOHNSON, PAISLEY			
00:33				REBOUND (DEF) by MUREKATETE, BELLA
00:21		31-23	H 8	GOOD! LAYUP by LEVY, SHIR
00:21				ASSIST by MUREKATETE, BELLA
00:01	MISSED 3PTR by UGWU, BABALU			
00:00				REBOUND (DEF) by MOLINA, CHERILYN

### BYU 23, Washington St. 31

Points from (This Period)	BYU	WSU
In the Paint	8	12
Off Turns	1	4
2nd Chance	3	4
Fast Break	0	0
Bench	3	15

**Official Box Score**  
**BYU vs Washington St.**  
**Second Half Statistics Only**  
**November 09, 2019 at Beasley Coliseum (Friel Court) - Pullman**



**BYU 27**

No.	Player	S	Pts	FG	3FG	FT	OR	DR	TR	PF	A	TO	Blk	Stl	Min	+/-
01	DROLLINGER, BRENNNA	G	9	2-9	2-7	3-4	0	4	4	1	2	1	0	2	19	-7
03	SALMON, SHALAE	F	0	0-1	0-0	0-0	0	0	0	0	0	0	0	1	4	-3
05	ALBIERO, MARIA	G	0	0-4	0-1	0-0	0	2	2	3	0	0	0	0	17	-4
11	SMILER, KAYLEE	G	0	0-0	0-0	0-0	0	0	0	0	0	0	0	0	1	-3
13	JOHNSON, PAISLEY	G	9	2-6	0-0	5-6	1	0	1	1	0	1	0	1	17	-5
14	UGWU, BABALU	F	0	0-1	0-0	0-0	0	1	1	0	0	0	0	0	4	-7
15	PERRI, MALLI	F	0	0-1	0-1	0-0	0	0	0	0	0	0	0	0	1	-3
20	OTUAFI, LEILANI	G	0	0-0	0-0	0-0	0	0	0	0	0	0	0	0	3	-7
22	HAMSON, SARA	C	3	1-4	0-0	1-2	3	3	6	2	0	0	1	1	13	-1
32	GLANTZ, SIGNE	F	0	0-1	0-0	0-0	1	1	2	1	0	0	0	0	4	-1
33	MOODY, JASMINE	F	6	2-5	0-0	2-3	1	2	3	2	0	2	1	0	15	-4
	TEAM		0	0-0	0-0	0-0	1	1	2	0	0	0	0	0	0	
<b>TOTALS</b>			<b>27</b>	<b>7-32</b>	<b>2-9</b>	<b>11-15</b>	<b>7</b>	<b>14</b>	<b>21</b>	<b>10</b>	<b>2</b>	<b>4</b>	<b>2</b>	<b>5</b>	<b>99</b>	

*Shooting By Period*

Period	FG	FG%	3FG	3FG%	FT	FT%
3rd Qtr	6-19	32%	2-4	50%	3-3	100%
4th Qtr	1-13	08%	0-5	00%	8-12	67%
2nd Half	7-32	22%	2-9	22%	11-15	73%
Game	16-61	26.2%	5-19	26.3%	13-26	50.0%

Deadball Rebounds: 8,0  
 Last FG Half: BYU 4th-05:29

**Washington St. 36**

No.	Player	S	Pts	FG	3FG	FT	OR	DR	TR	PF	A	TO	Blk	Stl	Min	+/-
03	NANKERVIS, EMMA	C	0	0-3	0-0	0-0	0	1	1	1	0	0	0	0	3	-6
10	MUZET, JOHANNA	G	0	0-0	0-0	0-0	0	0	0	0	0	0	0	0	0	0
11	MOLINA, CHANELLE	G	9	4-7	1-2	0-0	2	3	5	2	2	3	0	1	20	9
13	LEVY, SHIR	F	0	0-1	0-0	0-0	0	1	1	0	0	0	0	0	10	1
15	MOTUGA, ULA	F	0	0-3	0-2	0-0	0	2	2	2	2	3	0	1	20	9
20	SARVER, GRACE	G	0	0-2	0-1	0-2	1	3	4	2	0	0	0	0	8	3
33	MOLINA, CHERILYN	G	0	0-0	0-0	0-0	0	0	0	0	1	0	0	1	1	5
41	SUBASIC, JOVANA	F	11	4-5	2-3	1-2	3	3	6	1	1	1	2	0	17	15
45	HRISTOVA, BORISLAVA	F	16	4-12	0-2	8-9	2	3	5	1	0	0	0	0	20	9
55	MUREKATETE, BELLA	C	0	0-0	0-0	0-0	0	0	0	0	0	0	0	0	0	0
	TEAM		0	0-0	0-0	0-0	1	3	4	0	0	0	0	0	0	
<b>TOTALS</b>			<b>36</b>	<b>12-33</b>	<b>3-10</b>	<b>9-13</b>	<b>9</b>	<b>19</b>	<b>28</b>	<b>9</b>	<b>6</b>	<b>7</b>	<b>2</b>	<b>3</b>	<b>99</b>	

*Shooting By Period*

Period	FG	FG%	3FG	3FG%	FT	FT%
3rd Qtr	7-22	32%	2-6	33%	2-3	67%
4th Qtr	5-11	45%	1-4	25%	7-10	70%
2nd Half	12-33	36%	3-10	30%	9-13	69%
Game	25-62	40.3%	4-18	22.2%	13-19	68.4%

Deadball Rebounds: 3,0  
 Last FG Half: WSU 4th-00:57

Game Notes:  
 Officials: , ,  
 Attendance: 717

Start Time: 04:03 PM ET  
 End Time: 06:01 PM ET  
 Game Duration: 1:58

Score	1st	2nd	3rd	4th	TOT
BYU	8	15	17	10	50
WSU	10	21	18	18	67

Points from (This Period)	BYU	WSU
In the Paint	10	12
Off Turns	8	5
2nd Chance	1	6
Fast Break	3	2
Bench	0	11

**Official Box Score**  
**BYU vs Washington St.**  
**Third Quarter Statistics Only**  
**November 09, 2019 at Beasley Coliseum (Friel Court) - Pullman**



**BYU 27**

No.	Player	S	Pts	FG	3FG	FT	OR	DR	TR	PF	A	TO	Blk	Stl	Min	+/-
01	DROLLINGER, BRENNNA	G	8	2-5	2-4	2-2	0	3	3	0	2	0	0	1	10	-1
05	ALBIERO, MARIA	G	0	0-1	0-0	0-0	0	2	2	0	0	0	0	0	9	-1
13	JOHNSON, PAISLEY	G	2	1-4	0-0	0-0	1	0	1	1	0	1	0	0	8	0
22	HAMSON, SARA	C	2	1-4	0-0	0-0	2	1	3	1	0	0	1	1	7	0
33	MOODY, JASMINE	F	5	2-3	0-0	1-1	0	2	2	0	0	1	1	0	7	-1
03	SALMON, SHALAE	F	0	0-1	0-0	0-0	0	0	0	0	0	0	0	0	3	-1
11	SMILER, KAYLEE	G	0	0-0	0-0	0-0	0	0	0	0	0	0	0	0	0	0
14	UGWU, BABALU	F	0	0-0	0-0	0-0	0	0	0	0	0	0	0	0	0	0
15	PERRI, MALLI	F	0	0-0	0-0	0-0	0	0	0	0	0	0	0	0	0	0
20	OTUAFI, LEILANI	G	0	0-0	0-0	0-0	0	0	0	0	0	0	0	0	1	0
32	GLANTZ, SIGNE	F	0	0-1	0-0	0-0	1	1	2	1	0	0	0	0	4	-1
	TEAM						0	0	0	0		0				
<b>TOTALS</b>			<b>17</b>	<b>6-19</b>	<b>2-4</b>	<b>3-3</b>	<b>4</b>	<b>9</b>	<b>13</b>	<b>3</b>	<b>2</b>	<b>2</b>	<b>2</b>	<b>2</b>	<b>50</b>	

*Shooting By Period*

Period	FG	FG%	3FG	3FG%	FT	FT%
2nd Half	0-0	0%	0-0	0%	0-0	0%
Game	16-61	26.2%	5-19	26.3%	13-26	50.0%

*Deadball Rebounds: 8,0*

**Washington St. 36**

No.	Player	S	Pts	FG	3FG	FT	OR	DR	TR	PF	A	TO	Blk	Stl	Min	+/-
03	NANKERVIS, EMMA	C	0	0-3	0-0	0-0	0	1	1	1	0	0	0	0	3	-6
11	MOLINA, CHANELLE	G	5	2-5	1-2	0-0	2	1	3	0	2	1	0	0	10	1
13	LEVY, SHIR	F	0	0-1	0-0	0-0	0	1	1	0	0	0	0	0	10	1
15	MOTUGA, ULA	F	0	0-2	0-1	0-0	0	1	1	1	1	2	0	1	10	1
45	HRISTOVA, BORISLAVA	F	8	3-8	0-1	2-3	2	1	3	0	0	0	0	0	10	1
10	MUZET, JOHANNA	G	0	0-0	0-0	0-0	0	0	0	0	0	0	0	0	0	0
20	SARVER, GRACE	G	0	0-0	0-0	0-0	0	0	0	0	0	0	0	0	0	0
33	MOLINA, CHERILYN	G	0	0-0	0-0	0-0	0	0	0	0	0	0	0	0	0	0
41	SUBASIC, JOVANA	F	5	2-3	1-2	0-0	1	3	4	0	1	0	2	0	7	7
55	MUREKATETE, BELLA	C	0	0-0	0-0	0-0	0	0	0	0	0	0	0	0	0	0
	TEAM						1	1	2	0		0				
<b>TOTALS</b>			<b>18</b>	<b>7-22</b>	<b>2-6</b>	<b>2-3</b>	<b>6</b>	<b>9</b>	<b>15</b>	<b>2</b>	<b>4</b>	<b>3</b>	<b>2</b>	<b>1</b>	<b>50</b>	

*Shooting By Period*

Period	FG	FG%	3FG	3FG%	FT	FT%
2nd Half	0-0	0%	0-0	0%	0-0	0%
Game	25-62	40.3%	4-18	22.2%	13-19	68.4%

*Deadball Rebounds: 3,0*

Game Notes:

Officials: , ,  
Attendance: 717

Start Time: 04:03 PM ET  
End Time: 06:01 PM ET  
Game Duration: 1:58

Score	1st	2nd	3rd	4th	TOT
BYU	8	15	17	10	<b>50</b>
WSU	10	21	18	18	<b>67</b>

Points from (This Period)	BYU	WSU
In the Paint	8	4
Off Turns	5	2
2nd Chance	0	5
Fast Break	3	2
Bench	0	5

**Official Play-By-Play**  
**BYU vs Washington St.**  
**Third Quarter**  
**November 09, 2019 at Beasley Coliseum (Friel Court) - Pullman**



**Period 3**

**Starters:**

**BYU:** 1 DROLLINGER, BRENNNA (G); 5 ALBIERO, MARIA (G); 13 JOHNSON, PAISLEY (G); 22 HAMSON, SARA (C); 33 MOODY, JASMINE (F);  
**Washington St.:** 3 NANKERVIS, EMMA (C); 11 MOLINA, CHANELLE (G); 13 LEVY, SHIR (F); 15 MOTUGA, ULA (F); 45 HRISTOVA, BORISLAVA (F);

Time	VISITORS: BYU	Score	Margin	HOME: Washington St.
10:00				SUB OUT: SARVER, GRACE
10:00				SUB OUT: MOLINA, CHERILYN
10:00				SUB OUT: SUBASIC, JOVANA
10:00				SUB OUT: MUREKATETE, BELLA
10:00				SUB IN: NANKERVIS, EMMA
10:00				SUB IN: MOLINA, CHANELLE
10:00				SUB IN: MOTUGA, ULA
10:00				SUB IN: HRISTOVA, BORISLAVA
10:00	SUB OUT: UGWU, BABALU			
10:00	SUB OUT: OTUAFI, LEILANI			
10:00	SUB IN: ALBIERO, MARIA			
10:00	SUB IN: HAMSON, SARA			
09:53				MISSED JUMPER by MOLINA, CHANELLE
09:51	REBOUND (DEF) by DROLLINGER, BRENNNA			
09:46	MISSED LAYUP by DROLLINGER, BRENNNA			
09:44				REBOUND (DEF) by LEVY, SHIR
09:25				MISSED JUMPER by NANKERVIS, EMMA
09:25	BLOCK by MOODY, JASMINE			
09:20	REBOUND (DEF) by MOODY, JASMINE			
09:08	MISSED JUMPER by HAMSON, SARA			
09:05				REBOUND (DEF) by MOTUGA, ULA
08:58				MISSED LAYUP by NANKERVIS, EMMA
08:56				REBOUND (OFF) by HRISTOVA, BORISLAVA
08:48				MISSED LAYUP by LEVY, SHIR
08:48	BLOCK by HAMSON, SARA			
08:43	REBOUND (DEF) by ALBIERO, MARIA			
08:35	GOOD! JUMPER by MOODY, JASMINE [PNT]	31-25	H 6	
08:35				FOUL (PERSONAL) by NANKERVIS, EMMA
08:35	GOOD! FT by MOODY, JASMINE	31-26	H 5	
08:27				MISSED JUMPER by HRISTOVA, BORISLAVA
08:24	REBOUND (DEF) by DROLLINGER, BRENNNA			
08:21	GOOD! 3PTR by DROLLINGER, BRENNNA [FB]	31-29	H 2	
07:54				MISSED JUMPER by NANKERVIS, EMMA
07:51	REBOUND (DEF) by HAMSON, SARA			
07:34	MISSED JUMPER by JOHNSON, PAISLEY			
07:31				REBOUND (DEF) by HRISTOVA, BORISLAVA
07:21				TURNOVER (BADPASS) by MOTUGA, ULA
07:21	STEAL by HAMSON, SARA			
07:14	MISSED LAYUP by JOHNSON, PAISLEY			
07:11	REBOUND (OFF) by JOHNSON, PAISLEY			
07:09	MISSED JUMPER by JOHNSON, PAISLEY			
07:07				REBOUND (DEF) by NANKERVIS, EMMA
07:04				TIMEOUT 30SEC
07:04				SUB OUT: NANKERVIS, EMMA
07:04				SUB IN: SUBASIC, JOVANA
06:54				MISSED JUMPER by MOTUGA, ULA
06:50				REBOUND (OFF) by SUBASIC, JOVANA
06:42		34-29	H 5	GOOD! 3PTR by MOLINA, CHANELLE
06:15	MISSED 3PTR by DROLLINGER, BRENNNA			
06:12				REBOUND (DEF) by SUBASIC, JOVANA
06:07				MISSED LAYUP by HRISTOVA, BORISLAVA
06:05	REBOUND (DEF) by DROLLINGER, BRENNNA			
05:59	GOOD! LAYUP by MOODY, JASMINE	34-31	H 3	
05:59	ASSIST by DROLLINGER, BRENNNA			
05:43		36-31	H 5	GOOD! JUMPER by SUBASIC, JOVANA
05:43				ASSIST by MOTUGA, ULA
05:33	TURNOVER (BADPASS) by JOHNSON, PAISLEY			
05:33				STEAL by MOTUGA, ULA
05:28				TURNOVER (BADPASS) by MOTUGA, ULA
05:15	GOOD! LAYUP by HAMSON, SARA	36-33	H 3	
05:15	ASSIST by DROLLINGER, BRENNNA			
04:59		39-33	H 6	GOOD! 3PTR by SUBASIC, JOVANA
04:34	MISSED LAYUP by ALBIERO, MARIA			
04:29	REBOUND (OFF) by HAMSON, SARA			
04:29	MISSED LAYUP by HAMSON, SARA			
04:28				REBOUND (DEF) by MOLINA, CHANELLE
04:22		41-33	H 8	GOOD! JUMPER by HRISTOVA, BORISLAVA [FB/PNT]
04:22	FOUL (PERSONAL) by JOHNSON, PAISLEY			
04:22	SUB OUT: JOHNSON, PAISLEY			

Time	VISITORS: BYU	Score	Margin	HOME: Washington St.
04:22	SUB IN: GLANTZ, SIGNE			
04:22				
04:22		42-33	H 9	GOOD! FT by HRISTOVA, BORISLAVA
04:08	TURNOVER (OTHER) by MOODY, JASMINE			
03:57		44-33	H 11	GOOD! JUMPER by MOLINA, CHANELLE
03:57				ASSIST by SUBASIC, JOVANA
03:45	MISSED LAYUP by MOODY, JASMINE			
03:43	REBOUND (OFF) by HAMSON, SARA			
03:31	MISSED LAYUP by HAMSON, SARA			
03:29				REBOUND (DEF) by SUBASIC, JOVANA
03:19				MISSED 3PTR by SUBASIC, JOVANA
03:16				REBOUND (OFF) by MOLINA, CHANELLE
03:15				TURNOVER (BADPASS) by MOLINA, CHANELLE
03:15	STEAL by DROLLINGER, BRENNNA			
03:02	GOOD! 3PTR by DROLLINGER, BRENNNA	44-36	H 8	
02:48	FOUL (PERSONAL) by HAMSON, SARA			
02:48	SUB OUT: HAMSON, SARA			
02:48	SUB IN: SALMON, SHALAE			
02:48		45-36	H 9	GOOD! FT by HRISTOVA, BORISLAVA
02:47				MISSED FT by HRISTOVA, BORISLAVA
02:47				REBOUND (OFF) by TEAM
02:45				MISSED JUMPER by MOLINA, CHANELLE
02:42	REBOUND (DEF) by MOODY, JASMINE			
02:38				FOUL (PERSONAL) by MOTUGA, ULA
02:38	SUB OUT: MOODY, JASMINE			
02:38	SUB IN: JOHNSON, PAISLEY			
02:38	GOOD! FT by DROLLINGER, BRENNNA	45-37	H 8	
02:38	GOOD! FT by DROLLINGER, BRENNNA	45-38	H 7	
02:22				MISSED JUMPER by HRISTOVA, BORISLAVA
02:20				REBOUND (OFF) by HRISTOVA, BORISLAVA
02:16				MISSED 3PTR by MOTUGA, ULA
02:13				REBOUND (OFF) by MOLINA, CHANELLE
02:09				MISSED 3PTR by MOLINA, CHANELLE
02:05				REBOUND (OFF) by TEAM
02:05	FOUL (PERSONAL) by GLANTZ, SIGNE			
01:57		47-38	H 9	GOOD! JUMPER by HRISTOVA, BORISLAVA [PNT]
01:57				ASSIST by MOLINA, CHANELLE
01:40	MISSED LAYUP by SALMON, SHALAE			
01:40				BLOCK by SUBASIC, JOVANA
01:38				REBOUND (DEF) by SUBASIC, JOVANA
01:34				MISSED 3PTR by HRISTOVA, BORISLAVA
01:30	REBOUND (DEF) by ALBIERO, MARIA			
01:25	MISSED 3PTR by DROLLINGER, BRENNNA			
01:22				REBOUND (DEF) by TEAM
01:22	SUB OUT: ALBIERO, MARIA			
01:22	SUB IN: OTUAFI, LEILANI			
01:06				MISSED JUMPER by HRISTOVA, BORISLAVA
01:03	REBOUND (DEF) by GLANTZ, SIGNE			
00:45	GOOD! JUMPER by JOHNSON, PAISLEY [PNT]	47-40	H 7	
00:34		49-40	H 9	GOOD! JUMPER by HRISTOVA, BORISLAVA
00:34				ASSIST by MOLINA, CHANELLE
00:01	MISSED LAYUP by GLANTZ, SIGNE			
00:01				BLOCK by SUBASIC, JOVANA
00:00	REBOUND (OFF) by GLANTZ, SIGNE			

### BYU 40, Washington St. 49

Points from (This Period)	BYU	WSU
In the Paint	8	4
Off Turns	5	2
2nd Chance	0	5
Fast Break	3	2
Bench	0	5

**Official Box Score**  
**BYU vs Washington St.**  
**Fourth Quarter Statistics Only**  
**November 09, 2019 at Beasley Coliseum (Friel Court) - Pullman**



**BYU 10**

No.	Player	S	Pts	FG	3FG	FT	OR	DR	TR	PF	A	TO	Blk	Stl	Min	+/-
01	DROLLINGER, BRENNNA	G	1	0-4	0-3	1-2	0	1	1	1	0	1	0	1	9	-6
05	ALBIERO, MARIA	G	0	0-3	0-1	0-0	0	0	0	3	0	0	0	0	8	-3
13	JOHNSON, PAISLEY	G	7	1-2	0-0	5-6	0	0	0	0	0	0	0	1	9	-5
22	HAMSON, SARA	C	1	0-0	0-0	1-2	1	2	3	1	0	0	0	0	6	-1
33	MOODY, JASMINE	F	1	0-2	0-0	1-2	1	0	1	2	0	1	0	0	8	-3
03	SALMON, SHALAE	F	0	0-0	0-0	0-0	0	0	0	0	0	0	0	1	1	-2
11	SMILER, KAYLEE	G	0	0-0	0-0	0-0	0	0	0	0	0	0	0	0	1	-3
14	UGWU, BABALU	F	0	0-1	0-0	0-0	0	1	1	0	0	0	0	0	4	-7
15	PERRI, MALLI	F	0	0-1	0-1	0-0	0	0	0	0	0	0	0	0	1	-3
20	OTUAFI, LEILANI	G	0	0-0	0-0	0-0	0	0	0	0	0	0	0	0	2	-7
32	GLANTZ, SIGNE	F	0	0-0	0-0	0-0	0	0	0	0	0	0	0	0	0	0
	TEAM						1	1	2	0		0				
<b>TOTALS</b>			<b>10</b>	<b>1-13</b>	<b>0-5</b>	<b>8-12</b>	<b>3</b>	<b>5</b>	<b>8</b>	<b>7</b>	<b>0</b>	<b>2</b>	<b>0</b>	<b>3</b>	<b>49</b>	

*Shooting By Period*

Period	FG	FG%	3FG	3FG%	FT	FT%
Game	16-61	26.2%	5-19	26.3%	13-26	50.0%

Deadball Rebounds: 8,0

**Washington St. 18**

No.	Player	S	Pts	FG	3FG	FT	OR	DR	TR	PF	A	TO	Blk	Stl	Min	+/-
03	NANKERVIS, EMMA	C	0	0-0	0-0	0-0	0	0	0	0	0	0	0	0	0	0
11	MOLINA, CHANELLE	G	4	2-2	0-0	0-0	0	2	2	2	0	2	0	1	10	8
13	LEVY, SHIR	F	0	0-0	0-0	0-0	0	0	0	0	0	0	0	0	0	0
15	MOTUGA, ULA	F	0	0-1	0-1	0-0	0	1	1	1	1	1	0	0	10	8
45	HRISTOVA, BORISLAVA	F	8	1-4	0-1	6-6	0	2	2	1	0	0	0	0	10	8
10	MUZET, JOHANNA	G	0	0-0	0-0	0-0	0	0	0	0	0	0	0	0	0	0
20	SARVER, GRACE	G	0	0-2	0-1	0-2	1	3	4	2	0	0	0	0	8	3
33	MOLINA, CHERILYN	G	0	0-0	0-0	0-0	0	0	0	0	1	0	0	1	1	5
41	SUBASIC, JOVANA	F	6	2-2	1-1	1-2	2	0	2	1	0	1	0	0	10	8
55	MUREKATETE, BELLA	C	0	0-0	0-0	0-0	0	0	0	0	0	0	0	0	0	0
	TEAM						0	2	2	0		0				
<b>TOTALS</b>			<b>18</b>	<b>5-11</b>	<b>1-4</b>	<b>7-10</b>	<b>3</b>	<b>10</b>	<b>13</b>	<b>7</b>	<b>2</b>	<b>4</b>	<b>0</b>	<b>2</b>	<b>49</b>	

*Shooting By Period*

Period	FG	FG%	3FG	3FG%	FT	FT%
Game	25-62	40.3%	4-18	22.2%	13-19	68.4%

Deadball Rebounds: 3,0

Game Notes:

Officials: , ,  
Attendance: 717

Start Time: 04:03 PM ET  
End Time: 06:01 PM ET  
Game Duration: 1:58

Score	1st	2nd	3rd	4th	TOT
BYU	8	15	17	10	<b>50</b>
WSU	10	21	18	18	<b>67</b>

Points from (This Period)	BYU	WSU
In the Paint	2	8
Off Turns	3	3
2nd Chance	1	1
Fast Break	0	0
Bench	0	6

**Official Play-By-Play**  
**BYU vs Washington St.**  
**Fourth Quarter**  
**November 09, 2019 at Beasley Coliseum (Friel Court) - Pullman**



**Period 4**

**Starters:**

**BYU:** 1 DROLLINGER, BRENNIA (G); 5 ALBIERO, MARIA (G); 13 JOHNSON, PAISLEY (G); 22 HAMSON, SARA (C); 33 MOODY, JASMINE (F);

**Washington St.:** 3 NANKERVIS, EMMA (C); 11 MOLINA, CHANELLE (G); 13 LEVY, SHIR (F); 15 MOTUGA, ULA (F); 45 HRISTOVA, BORISLAVA (F);

Time	VISITORS: BYU	Score	Margin	HOME: Washington St.
10:00				SUB OUT: LEVY, SHIR
10:00				SUB IN: SARVER, GRACE
10:00	SUB OUT: GLANTZ, SIGNE			
10:00	SUB IN: UGWU, BABALU			
09:49	MISSED LAYUP by UGWU, BABALU			
09:46				REBOUND (DEF) by TEAM
09:27				TURNOVER (LOSTBALL) by SUBASIC, JOVANA
09:27	STEAL by SALMON, SHALAE			
09:18	MISSED LAYUP by DROLLINGER, BRENNIA			
09:16				REBOUND (DEF) by SARVER, GRACE
09:08		51-40	H 11	GOOD! JUMPER by MOLINA, CHANELLE [PNT]
09:02	TIMEOUT 30SEC			
09:02				
09:02	SUB OUT: SALMON, SHALAE			
09:02	SUB OUT: UGWU, BABALU			
09:02	SUB OUT: OTUAFI, LEILANI			
09:02	SUB IN: ALBIERO, MARIA			
09:02	SUB IN: HAMSON, SARA			
09:02	SUB IN: MOODY, JASMINE			
08:41	MISSED JUMPER by ALBIERO, MARIA			
08:38				REBOUND (DEF) by SARVER, GRACE
08:18				MISSED LAYUP by HRISTOVA, BORISLAVA
08:15	REBOUND (DEF) by DROLLINGER, BRENNIA			
07:52	MISSED 3PTR by DROLLINGER, BRENNIA			
07:48				REBOUND (DEF) by MOLINA, CHANELLE
07:31	FOUL (PERSONAL) by MOODY, JASMINE			
07:17	FOUL (PERSONAL) by MOODY, JASMINE			
07:17				MISSED FT by SARVER, GRACE
07:17				REBOUND (OFF) by TEAM
07:17				MISSED FT by SARVER, GRACE
07:16				REBOUND (OFF) by SUBASIC, JOVANA
07:08				MISSED 3PTR by SARVER, GRACE
07:04	REBOUND (DEF) by HAMSON, SARA			
06:50	MISSED LAYUP by MOODY, JASMINE			
06:49	REBOUND (OFF) by HAMSON, SARA			
06:49				FOUL (PERSONAL) by SARVER, GRACE
06:49	MISSED FT by HAMSON, SARA			
06:49	REBOUND (OFF) by TEAM			
06:49	GOOD! FT by HAMSON, SARA	51-41	H 10	
06:33				MISSED 3PTR by MOTUGA, ULA
06:29	REBOUND (DEF) by HAMSON, SARA			
06:24	MISSED 3PTR by DROLLINGER, BRENNIA			
06:20				REBOUND (DEF) by SARVER, GRACE
05:59				MISSED JUMPER by HRISTOVA, BORISLAVA
05:57	REBOUND (DEF) by TEAM			
05:29	GOOD! LAYUP by JOHNSON, PAISLEY	51-43	H 8	
05:06		54-43	H 11	GOOD! 3PTR by SUBASIC, JOVANA
05:06				ASSIST by MOTUGA, ULA
04:42	MISSED LAYUP by JOHNSON, PAISLEY			
04:39				REBOUND (DEF) by MOLINA, CHANELLE
04:38				TURNOVER (BADPASS) by MOLINA, CHANELLE
04:18	MISSED 3PTR by ALBIERO, MARIA			
04:16				REBOUND (DEF) by TEAM
03:52		56-43	H 13	GOOD! JUMPER by SUBASIC, JOVANA [PNT]
03:34				FOUL (PERSONAL) by SARVER, GRACE
03:34	TIMEOUT 30SEC			
03:34				FOUL (PERSONAL) by MOLINA, CHANELLE
03:34	GOOD! FT by JOHNSON, PAISLEY	56-44	H 12	
03:34	GOOD! FT by JOHNSON, PAISLEY	56-45	H 11	
03:29				TURNOVER (LOSTBALL) by MOTUGA, ULA
03:29	STEAL by JOHNSON, PAISLEY			
03:22				FOUL (PERSONAL) by SUBASIC, JOVANA
03:22	MISSED FT by MOODY, JASMINE			
03:22	REBOUND (OFF) by TEAM			
03:22	GOOD! FT by MOODY, JASMINE	56-46	H 10	
03:21	FOUL (PERSONAL) by ALBIERO, MARIA			
02:56	FOUL (PERSONAL) by HAMSON, SARA			
02:56		57-46	H 11	GOOD! FT by HRISTOVA, BORISLAVA
02:56		58-46	H 12	GOOD! FT by HRISTOVA, BORISLAVA
02:56	SUB OUT: HAMSON, SARA			

Time	VISITORS: BYU	Score	Margin	HOME: Washington St.
02:56	SUB IN: UGWU, BABALU			
02:36	MISSED LAYUP by MOODY, JASMINE			
02:33	REBOUND (OFF) by MOODY, JASMINE			
02:32	TURNOVER (LOSTBALL) by MOODY, JASMINE			
02:32				STEAL by MOLINA, CHANELLE
02:27				MISSED LAYUP by SARVER, GRACE
02:25				REBOUND (OFF) by SARVER, GRACE
02:13				MISSED 3PTR by HRISTOVA, BORISLAVA
02:11				REBOUND (OFF) by SUBASIC, JOVANA
02:11	FOUL (PERSONAL) by DROLLINGER, BRENNNA			
02:11		59-46	H 13	GOOD! FT by SUBASIC, JOVANA
02:11				MISSED FT by SUBASIC, JOVANA
02:09	REBOUND (DEF) by UGWU, BABALU			
02:02				FOUL (PERSONAL) by HRISTOVA, BORISLAVA
02:02	GOOD! FT by JOHNSON, PAISLEY	59-47	H 12	
02:02	MISSED FT by JOHNSON, PAISLEY			
02:01	REBOUND (OFF) by TEAM			
01:59	MISSED 3PTR by DROLLINGER, BRENNNA			
01:55				REBOUND (DEF) by MOTUGA, ULA
01:42				TURNOVER (LOSTBALL) by MOLINA, CHANELLE
01:42	STEAL by DROLLINGER, BRENNNA			
01:39				FOUL (PERSONAL) by MOTUGA, ULA
01:39				SUB OUT: SARVER, GRACE
01:39				SUB IN: MOLINA, CHERILYN
01:39	SUB OUT: ALBIERO, MARIA			
01:39	SUB IN: OTUAFI, LEILANI			
01:39	GOOD! FT by JOHNSON, PAISLEY	59-48	H 11	
01:39	GOOD! FT by JOHNSON, PAISLEY	59-49	H 10	
01:28		61-49	H 12	GOOD! LAYUP by HRISTOVA, BORISLAVA
01:28				ASSIST by MOLINA, CHERILYN
01:10	TURNOVER (LOSTBALL) by DROLLINGER, BRENNNA			
01:10				STEAL by MOLINA, CHERILYN
00:57		63-49	H 14	GOOD! LAYUP by MOLINA, CHANELLE
00:57	TIMEOUT TEAM			
00:57	SUB OUT: DROLLINGER, BRENNNA			
00:57	SUB OUT: JOHNSON, PAISLEY			
00:57	SUB OUT: MOODY, JASMINE			
00:57	SUB IN: ALBIERO, MARIA			
00:57	SUB IN: SMILER, KAYLEE			
00:57	SUB IN: PERRI, MALLI			
00:47	MISSED 3PTR by PERRI, MALLI			
00:44				REBOUND (DEF) by HRISTOVA, BORISLAVA
00:42	FOUL (PERSONAL) by ALBIERO, MARIA			
00:42		64-49	H 15	GOOD! FT by HRISTOVA, BORISLAVA
00:42		65-49	H 16	GOOD! FT by HRISTOVA, BORISLAVA
00:17	MISSED LAYUP by ALBIERO, MARIA			
00:16				REBOUND (DEF) by HRISTOVA, BORISLAVA
00:16	FOUL (PERSONAL) by ALBIERO, MARIA			
00:16	SUB OUT: ALBIERO, MARIA			
00:16	SUB IN: DROLLINGER, BRENNNA			
00:16		66-49	H 17	GOOD! FT by HRISTOVA, BORISLAVA
00:16		67-49	H 18	GOOD! FT by HRISTOVA, BORISLAVA
00:11				FOUL (PERSONAL) by MOLINA, CHANELLE
00:11	MISSED FT by DROLLINGER, BRENNNA			
00:11	REBOUND (OFF) by TEAM			
00:11	GOOD! FT by DROLLINGER, BRENNNA	67-50	H 17	
00:11	SUB OUT: DROLLINGER, BRENNNA			
00:11	SUB IN: GLANTZ, SIGNE			

### BYU 50, Washington St. 67

Points from (This Period)	BYU	WSU
In the Paint	2	8
Off Turns	3	3
2nd Chance	1	1
Fast Break	0	0
Bench	0	6



**Official Scoring/Possession Reference Chart**  
**BYU vs Washington St.**  
**Period 1**  
**November 09, 2019 at Beasley Coliseum (Friel Court) - Pullman**



**Period 1**

**Starters:**

**BYU:** 1 DROLLINGER, BRENNIA (G); 5 ALBIERO, MARIA (G); 13 JOHNSON, PAISLEY (G); 22 HAMSON, SARA (C); 33 MOODY, JASMINE (F);

**Washington St.:** 3 NANKERVIS, EMMA (C); 11 MOLINA, CHANELLE (G); 13 LEVY, SHIR (F); 15 MOTUGA, ULA (F); 45 HRISTOVA, BORISLAVA (F);

Time	VISITORS: BYU	Score	Margin	HOME: Washington St.
09:03		2-0	H 2	GOOD! LAYUP by MOLINA, CHANELLE
07:51	GOOD! LAYUP by MOODY, JASMINE	2-2	T	
05:09		4-2	H 2	GOOD! LAYUP by MOLINA, CHANELLE
04:21		6-2	H 4	GOOD! JUMPER by HRISTOVA, BORISLAVA
03:40	GOOD! LAYUP by MOODY, JASMINE	6-4	H 2	
02:18	GOOD! 3PTR by JOHNSON, PAISLEY	6-7	V 1	
02:05		8-7	H 1	GOOD! LAYUP by MOTUGA, ULA
00:55		10-7	H 3	GOOD! LAYUP by HRISTOVA, BORISLAVA
00:03	GOOD! FT by HAMSON, SARA	10-8	H 2	

**BYU 8, Washington St. 10**

**Official Scoring/Possession Reference Chart**  
**BYU vs Washington St.**  
**Period 2**  
**November 09, 2019 at Beasley Coliseum (Friel Court) - Pullman**



**Period 2**

**Starters:**

**BYU:** 1 DROLLINGER, BRENNNA (G); 5 ALBIERO, MARIA (G); 13 JOHNSON, PAISLEY (G); 22 HAMSON, SARA (C); 33 MOODY, JASMINE (F);

**Washington St.:** 3 NANKERVIS, EMMA (C); 11 MOLINA, CHANELLE (G); 13 LEVY, SHIR (F); 15 MOTUGA, ULA (F); 45 HRISTOVA, BORISLAVA (F);

Time	VISITORS: BYU	Score	Margin	HOME: Washington St.
09:45	GOOD! LAYUP by JOHNSON, PAISLEY	10-10	T	
08:30	GOOD! JUMPER by MOODY, JASMINE [PNT]	10-12	V 2	
08:01		11-12	V 1	GOOD! FT by MOTUGA, ULA
07:43		14-12	H 2	GOOD! 3PTR by SARVER, GRACE
06:35		16-12	H 4	GOOD! LAYUP by HRISTOVA, BORISLAVA [PNT]
06:35		17-12	H 5	GOOD! FT by HRISTOVA, BORISLAVA
04:57		19-12	H 7	GOOD! LAYUP by MUREKATETE, BELLA
04:25		21-12	H 9	GOOD! LAYUP by SUBASIC, JOVANA
04:06	GOOD! LAYUP by JOHNSON, PAISLEY	21-14	H 7	
03:45		23-14	H 9	GOOD! JUMPER by SUBASIC, JOVANA
03:25	GOOD! 3PTR by JOHNSON, PAISLEY	23-17	H 6	
03:09		25-17	H 8	GOOD! LAYUP by MOLINA, CHERILYN
02:52		26-17	H 9	GOOD! FT by MUREKATETE, BELLA
02:16		28-17	H 11	GOOD! LAYUP by MUREKATETE, BELLA
02:16		29-17	H 12	GOOD! FT by MUREKATETE, BELLA
01:59	GOOD! LAYUP by MOODY, JASMINE	29-19	H 10	
01:22	GOOD! 3PTR by UGWU, BABALU	29-22	H 7	
01:00	GOOD! FT by DROLLINGER, BRENNNA	29-23	H 6	
00:21		31-23	H 8	GOOD! LAYUP by LEVY, SHIR

**BYU 23, Washington St. 31**

**Official Scoring/Possession Reference Chart**  
**BYU vs Washington St.**  
**Period 3**  
**November 09, 2019 at Beasley Coliseum (Friel Court) - Pullman**



**Period 3**

**Starters:**

**BYU:** 1 DROLLINGER, BRENNNA (G); 5 ALBIERO, MARIA (G); 13 JOHNSON, PAISLEY (G); 22 HAMSON, SARA (C); 33 MOODY, JASMINE (F);

**Washington St.:** 3 NANKERVIS, EMMA (C); 11 MOLINA, CHANELLE (G); 13 LEVY, SHIR (F); 15 MOTUGA, ULA (F); 45 HRISTOVA, BORISLAVA (F);

Time	VISITORS: BYU	Score	Margin	HOME: Washington St.
08:35	GOOD! JUMPER by MOODY, JASMINE [PNT]	31-25	H 6	
08:35	GOOD! FT by MOODY, JASMINE	31-26	H 5	
08:21	GOOD! 3PTR by DROLLINGER, BRENNNA [FB]	31-29	H 2	
06:42		34-29	H 5	GOOD! 3PTR by MOLINA, CHANELLE
05:59	GOOD! LAYUP by MOODY, JASMINE	34-31	H 3	
05:43		36-31	H 5	GOOD! JUMPER by SUBASIC, JOVANA
05:15	GOOD! LAYUP by HAMSON, SARA	36-33	H 3	
04:59		39-33	H 6	GOOD! 3PTR by SUBASIC, JOVANA
04:22		41-33	H 8	GOOD! JUMPER by HRISTOVA, BORISLAVA [FB/PNT]
04:22		42-33	H 9	GOOD! FT by HRISTOVA, BORISLAVA
03:57		44-33	H 11	GOOD! JUMPER by MOLINA, CHANELLE
03:02	GOOD! 3PTR by DROLLINGER, BRENNNA	44-36	H 8	
02:48		45-36	H 9	GOOD! FT by HRISTOVA, BORISLAVA
02:38	GOOD! FT by DROLLINGER, BRENNNA	45-37	H 8	
02:38	GOOD! FT by DROLLINGER, BRENNNA	45-38	H 7	
01:57		47-38	H 9	GOOD! JUMPER by HRISTOVA, BORISLAVA [PNT]
00:45	GOOD! JUMPER by JOHNSON, PAISLEY [PNT]	47-40	H 7	
00:34		49-40	H 9	GOOD! JUMPER by HRISTOVA, BORISLAVA

**BYU 40, Washington St. 49**

**Official Scoring/Possession Reference Chart**  
**BYU vs Washington St.**  
**Period 4**  
**November 09, 2019 at Beasley Coliseum (Friel Court) - Pullman**



**Period 4**

**Starters:**

**BYU:** 1 DROLLINGER, BRENNIA (G); 5 ALBIERO, MARIA (G); 13 JOHNSON, PAISLEY (G); 22 HAMSON, SARA (C); 33 MOODY, JASMINE (F);

**Washington St.:** 3 NANKERVIS, EMMA (C); 11 MOLINA, CHANELLE (G); 13 LEVY, SHIR (F); 15 MOTUGA, ULA (F); 45 HRISTOVA, BORISLAVA (F);

Time	VISITORS: BYU	Score	Margin	HOME: Washington St.
09:08		51-40	H 11	GOOD! JUMPER by MOLINA, CHANELLE [PNT]
06:49	GOOD! FT by HAMSON, SARA	51-41	H 10	
05:29	GOOD! LAYUP by JOHNSON, PAISLEY	51-43	H 8	
05:06		54-43	H 11	GOOD! 3PTR by SUBASIC, JOVANA
03:52		56-43	H 13	GOOD! JUMPER by SUBASIC, JOVANA [PNT]
03:34	GOOD! FT by JOHNSON, PAISLEY	56-44	H 12	
03:34	GOOD! FT by JOHNSON, PAISLEY	56-45	H 11	
03:22	GOOD! FT by MOODY, JASMINE	56-46	H 10	
02:56		57-46	H 11	GOOD! FT by HRISTOVA, BORISLAVA
02:56		58-46	H 12	GOOD! FT by HRISTOVA, BORISLAVA
02:11		59-46	H 13	GOOD! FT by SUBASIC, JOVANA
02:02	GOOD! FT by JOHNSON, PAISLEY	59-47	H 12	
01:39	GOOD! FT by JOHNSON, PAISLEY	59-48	H 11	
01:39	GOOD! FT by JOHNSON, PAISLEY	59-49	H 10	
01:28		61-49	H 12	GOOD! LAYUP by HRISTOVA, BORISLAVA
00:57		63-49	H 14	GOOD! LAYUP by MOLINA, CHANELLE
00:42		64-49	H 15	GOOD! FT by HRISTOVA, BORISLAVA
00:42		65-49	H 16	GOOD! FT by HRISTOVA, BORISLAVA
00:16		66-49	H 17	GOOD! FT by HRISTOVA, BORISLAVA
00:16		67-49	H 18	GOOD! FT by HRISTOVA, BORISLAVA
00:11	GOOD! FT by DROLLINGER, BRENNIA	67-50	H 17	

**BYU 50, Washington St. 67**

**Official Substitutions Log**  
**BYU vs Washington St.**  
**Period 1**  
**November 09, 2019 at Beasley Coliseum (Friel Court) - Pullman**



VISITORS: BYU	Time	Score	HOME: Washington St.
1 DROLLINGER, BRENNNA			3 NANKERVIS, EMMA
5 ALBIERO, MARIA			11 MOLINA, CHANELLE
13 JOHNSON, PAISLEY			13 LEVY, SHIR
22 HAMSON, SARA			15 MOTUGA, ULA
33 MOODY, JASMINE			45 HRISTOVA, BORISLAVA
SUB OUT: 22 HAMSON, SARA	05:20	2-2	
SUB IN: 3 SALMON, SHALAE	05:20		
	03:21	4-6	SUB OUT: LEVY, SHIR
	03:21		SUB IN: MUZET, JOHANNA
SUB OUT: 5 ALBIERO, MARIA	03:21		
SUB IN: 20 OTUAFI, LEILANI	03:21		
	01:37	7-8	SUB OUT: NANKERVIS, EMMA
	01:37		SUB IN: SUBASIC, JOVANA
SUB OUT: 3 SALMON, SHALAE	01:37		
SUB IN: 22 HAMSON, SARA	01:37		
SUB OUT: 1 DROLLINGER, BRENNNA	00:03	7-10	
SUB IN: 5 ALBIERO, MARIA	00:03		

**BYU 8, Washington St. 10**

**Official Substitutions Log**  
**BYU vs Washington St.**  
**Period 2**  
**November 09, 2019 at Beasley Coliseum (Friel Court) - Pullman**



VISITORS: BYU	Time	Score	HOME: Washington St.
1 DROLLINGER,BRENNA			3 NANKERVIS,EMMA
5 ALBIERO,MARIA			11 MOLINA,CHANELLE
13 JOHNSON,PAISLEY			13 LEVY,SHIR
22 HAMSON,SARA			15 MOTUGA,ULA
33 MOODY,JASMINE			45 HRISTOVA,BORISLAVA
	08:30	12-10	SUB OUT: MUZET,JOHANNA
	08:30		SUB OUT: MOLINA,CHANELLE
	08:30		SUB IN: SARVER,GRACE
	08:30		SUB IN: MOLINA,CHERILYN
SUB OUT: 13 JOHNSON,PAISLEY	08:30		
SUB IN: 1 DROLLINGER,BRENNA	08:30		
SUB OUT: 22 HAMSON,SARA	08:01	12-10	
SUB OUT: 33 MOODY,JASMINE	08:01		
SUB IN: 3 SALMON,SHALAE	08:01		
SUB IN: 14 UGWU,BABALU	08:01		
SUB OUT: 20 OTUAFI,LEILANI	07:13	12-14	
SUB IN: 13 JOHNSON,PAISLEY	07:13		
	06:51	12-14	SUB OUT: MOTUGA,ULA
	06:51		SUB IN: MUREKATETE,BELLA
	05:21	12-17	SUB OUT: HRISTOVA,BORISLAVA
	05:21		SUB IN: LEVY,SHIR
SUB OUT: 5 ALBIERO,MARIA	05:21		
SUB OUT: 14 UGWU,BABALU	05:21		
SUB IN: 20 OTUAFI,LEILANI	05:21		
SUB IN: 33 MOODY,JASMINE	05:21		
SUB OUT: 3 SALMON,SHALAE	02:52	17-25	
SUB IN: 14 UGWU,BABALU	02:52		

**BYU 23, Washington St. 31**

**Official Substitutions Log**  
**BYU vs Washington St.**  
**Period 3**  
**November 09, 2019 at Beasley Coliseum (Friel Court) - Pullman**



VISITORS: BYU	Time	Score	HOME: Washington St.
1 DROLLINGER,BRENNA			3 NANKERVIS,EMMA
5 ALBIERO,MARIA			11 MOLINA,CHANELLE
13 JOHNSON,PAISLEY			13 LEVY,SHIR
22 HAMSON,SARA			15 MOTUGA,ULA
33 MOODY,JASMINE			45 HRISTOVA,BORISLAVA
	10:00	-	SUB OUT: SARVER,GRACE
	10:00		SUB OUT: MOLINA,CHERYLYN
	10:00		SUB OUT: SUBASIC,JOVANA
	10:00		SUB OUT: MUREKATETE,BELLA
	10:00		SUB IN: NANKERVIS,EMMA
	10:00		SUB IN: MOLINA,CHANELLE
	10:00		SUB IN: MOTUGA,ULA
	10:00		SUB IN: HRISTOVA,BORISLAVA
SUB OUT: 14 UGWU,BABALU	10:00		
SUB OUT: 20 OTUAFI,LEILANI	10:00		
SUB IN: 5 ALBIERO,MARIA	10:00		
SUB IN: 22 HAMSON,SARA	10:00		
	07:04	29-31	SUB OUT: NANKERVIS,EMMA
	07:04		SUB IN: SUBASIC,JOVANA
SUB OUT: 13 JOHNSON,PAISLEY	04:22	33-41	
SUB IN: 32 GLANTZ,SIGNE	04:22		
SUB OUT: 22 HAMSON,SARA	02:48	36-44	
SUB IN: 3 SALMON,SHALAE	02:48		
SUB OUT: 33 MOODY,JASMINE	02:38	36-45	
SUB IN: 13 JOHNSON,PAISLEY	02:38		
SUB OUT: 5 ALBIERO,MARIA	01:22	38-47	
SUB IN: 20 OTUAFI,LEILANI	01:22		

**BYU 40, Washington St. 49**

**Official Substitutions Log**  
**BYU vs Washington St.**  
**Period 4**  
**November 09, 2019 at Beasley Coliseum (Friel Court) - Pullman**



VISITORS: BYU	Time	Score	HOME: Washington St.
1 DROLLINGER,BRENNA			3 NANKERVIS,EMMA
5 ALBIERO,MARIA			11 MOLINA,CHANELLE
13 JOHNSON,PAISLEY			13 LEVY,SHIR
22 HAMSON,SARA			15 MOTUGA,ULA
33 MOODY,JASMINE			45 HRISTOVA,BORISLAVA
	10:00	-	SUB OUT: LEVY,SHIR
	10:00		SUB IN: SARVER,GRACE
SUB OUT: 32 GLANTZ,SIGNE	10:00		
SUB IN: 14 UGWU,BABALU	10:00		
SUB OUT: 3 SALMON,SHALAE	09:02	40-51	
SUB OUT: 14 UGWU,BABALU	09:02		
SUB OUT: 20 OTUAFI,LEILANI	09:02		
SUB IN: 5 ALBIERO,MARIA	09:02		
SUB IN: 22 HAMSON,SARA	09:02		
SUB IN: 33 MOODY,JASMINE	09:02		
SUB OUT: 22 HAMSON,SARA	02:56	46-58	
SUB IN: 14 UGWU,BABALU	02:56		
	01:39	47-59	SUB OUT: SARVER,GRACE
	01:39		SUB IN: MOLINA,CHERYLYN
SUB OUT: 5 ALBIERO,MARIA	01:39		
SUB IN: 20 OTUAFI,LEILANI	01:39		
SUB OUT: 1 DROLLINGER,BRENNA	00:57	49-63	
SUB OUT: 13 JOHNSON,PAISLEY	00:57		
SUB OUT: 33 MOODY,JASMINE	00:57		
SUB IN: 5 ALBIERO,MARIA	00:57		
SUB IN: 11 SMILER,KAYLEE	00:57		
SUB IN: 15 PERRI,MALLI	00:57		
SUB OUT: 5 ALBIERO,MARIA	00:16	49-65	
SUB IN: 1 DROLLINGER,BRENNA	00:16		
SUB OUT: 1 DROLLINGER,BRENNA	00:11	50-67	
SUB IN: 32 GLANTZ,SIGNE	00:11		

**BYU 50, Washington St. 67**

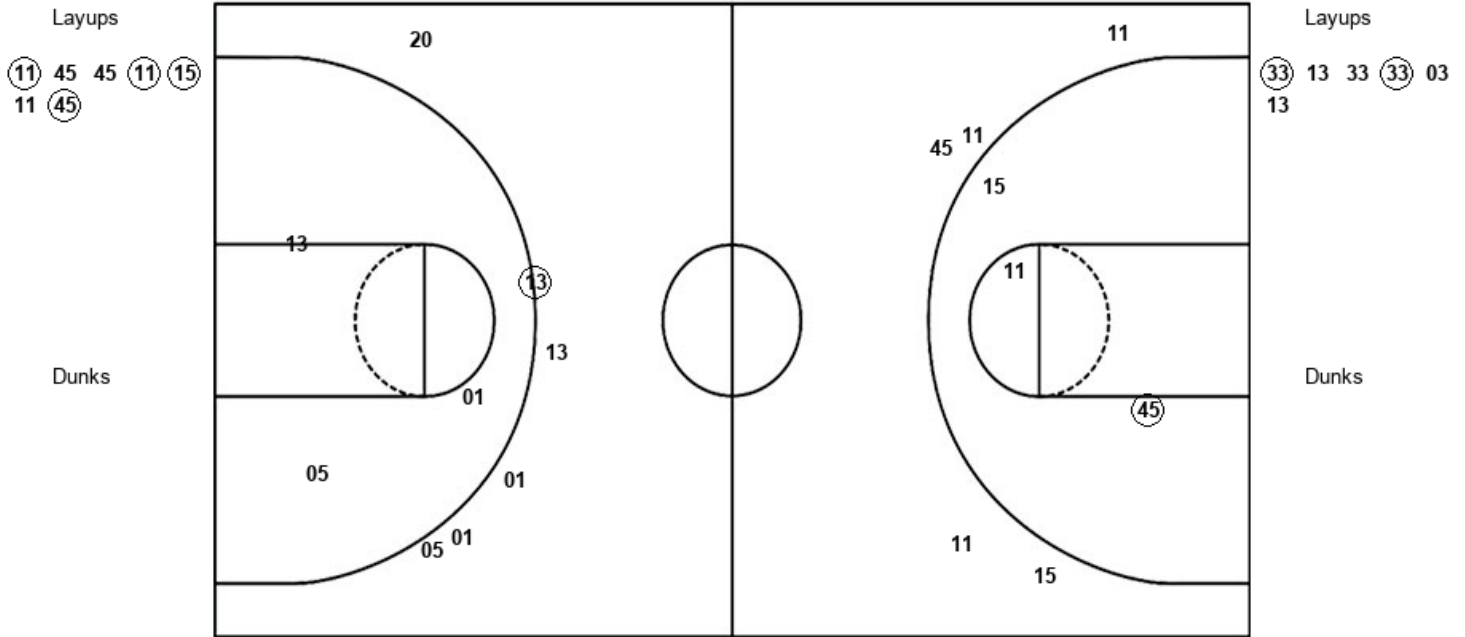


**Official Shot Chart**  
**BYU vs Washington St.**  
**PERIOD 1 Shots**  
 November 09, 2019 at Beasley Coliseum (Friel Court) - Pullman



**Washington St.**

**BYU**



WSU : Period 1	Made	Att	Pct
Layups	4	7	57.1
Dunks	0	0	0
2PT Field Goals	5	10	50.0
3PT Field Goals	0	5	00.0
<b>Total Field Goals</b>	<b>5</b>	<b>15</b>	<b>33.3</b>

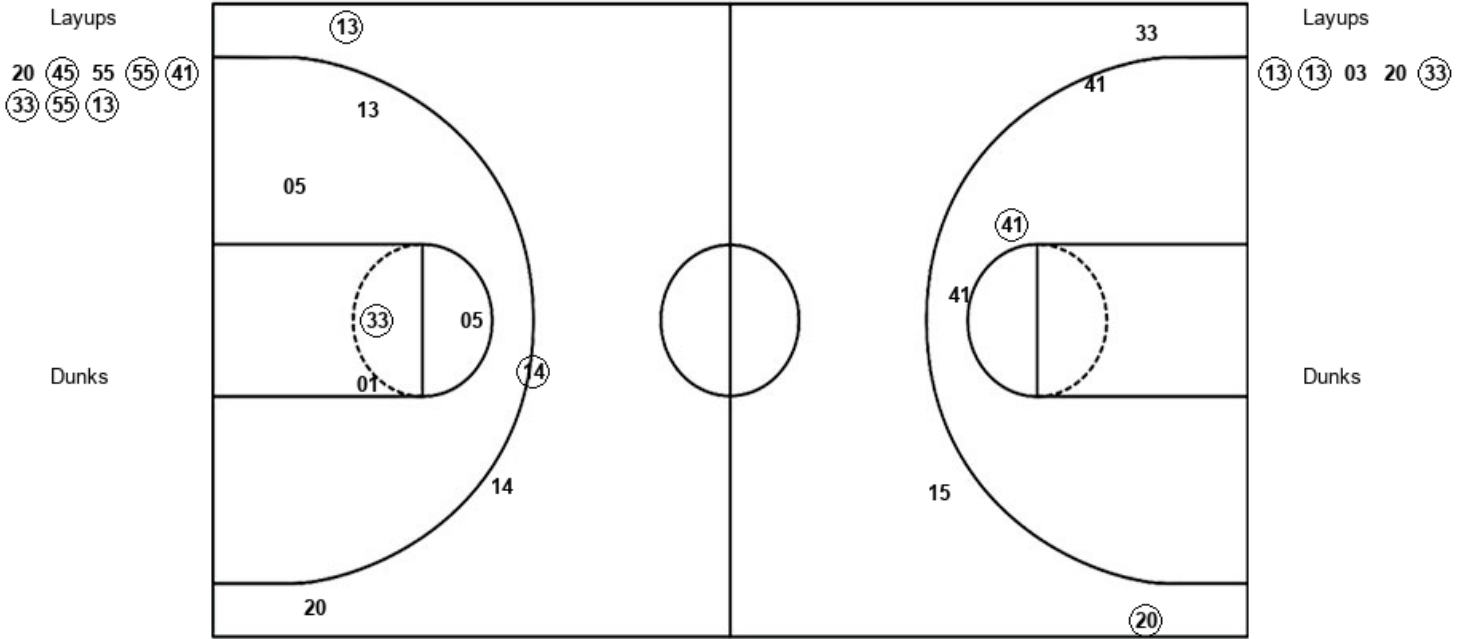
BYU : Period 1	Made	Att	Pct
Layups	2	6	33.3
Dunks	0	0	0
2PT Field Goals	2	9	22.2
3PT Field Goals	1	6	16.7
<b>Total Field Goals</b>	<b>3</b>	<b>15</b>	<b>20.0</b>

**Official Shot Chart**  
**BYU vs Washington St.**  
**PERIOD 2 Shots**  
 November 09, 2019 at Beasley Coliseum (Friel Court) - Pullman



**Washington St.**

**BYU**



<b>WSU : Period 2</b>	<b>Made</b>	<b>Att</b>	<b>Pct</b>
Layups	6	8	75.0
Dunks	0	0	0
2PT Field Goals	7	11	63.6
3PT Field Goals	1	3	33.3
<b>Total Field Goals</b>	<b>8</b>	<b>14</b>	<b>57.1</b>

<b>BYU : Period 2</b>	<b>Made</b>	<b>Att</b>	<b>Pct</b>
Layups	3	5	60.0
Dunks	0	0	0
2PT Field Goals	4	10	40.0
3PT Field Goals	2	4	50.0
<b>Total Field Goals</b>	<b>6</b>	<b>14</b>	<b>42.9</b>

**Official Shot Chart**  
**BYU vs Washington St.**  
**PERIOD 3 Shots**  
 November 09, 2019 at Beasley Coliseum (Friel Court) - Pullman



**Washington St.**

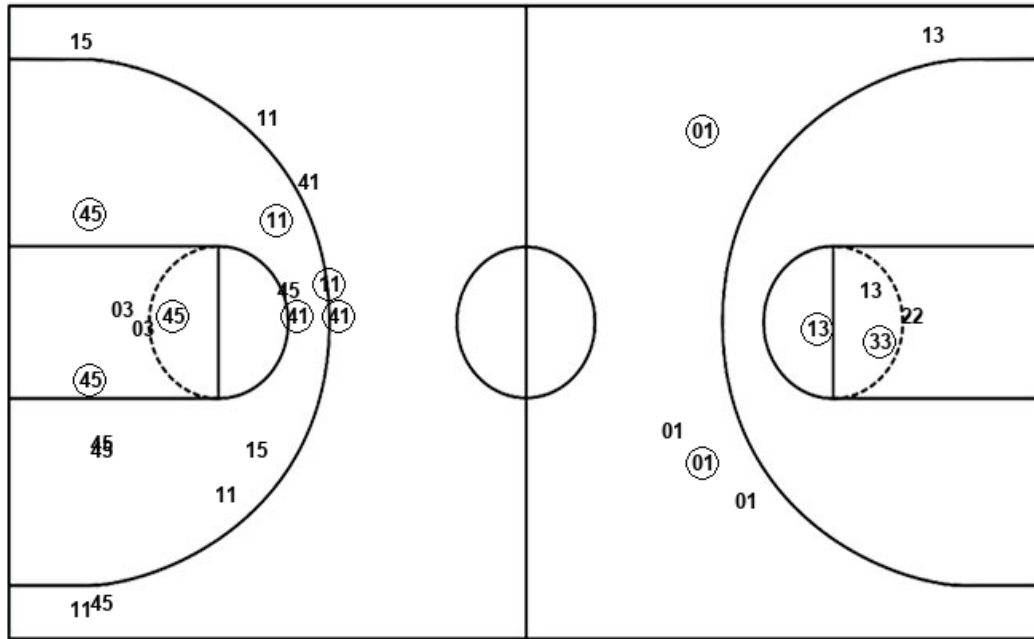
**BYU**

Layups  
03 13 45

Layups  
01 13 (33) (22) 05  
22 33 22 03 32

Dunks

Dunks



WSU : Period 3	Made	Att	Pct
Layups	0	3	00.0
Dunks	0	0	0
2PT Field Goals	5	16	31.3
3PT Field Goals	2	6	33.3
<b>Total Field Goals</b>	<b>7</b>	<b>22</b>	<b>31.8</b>

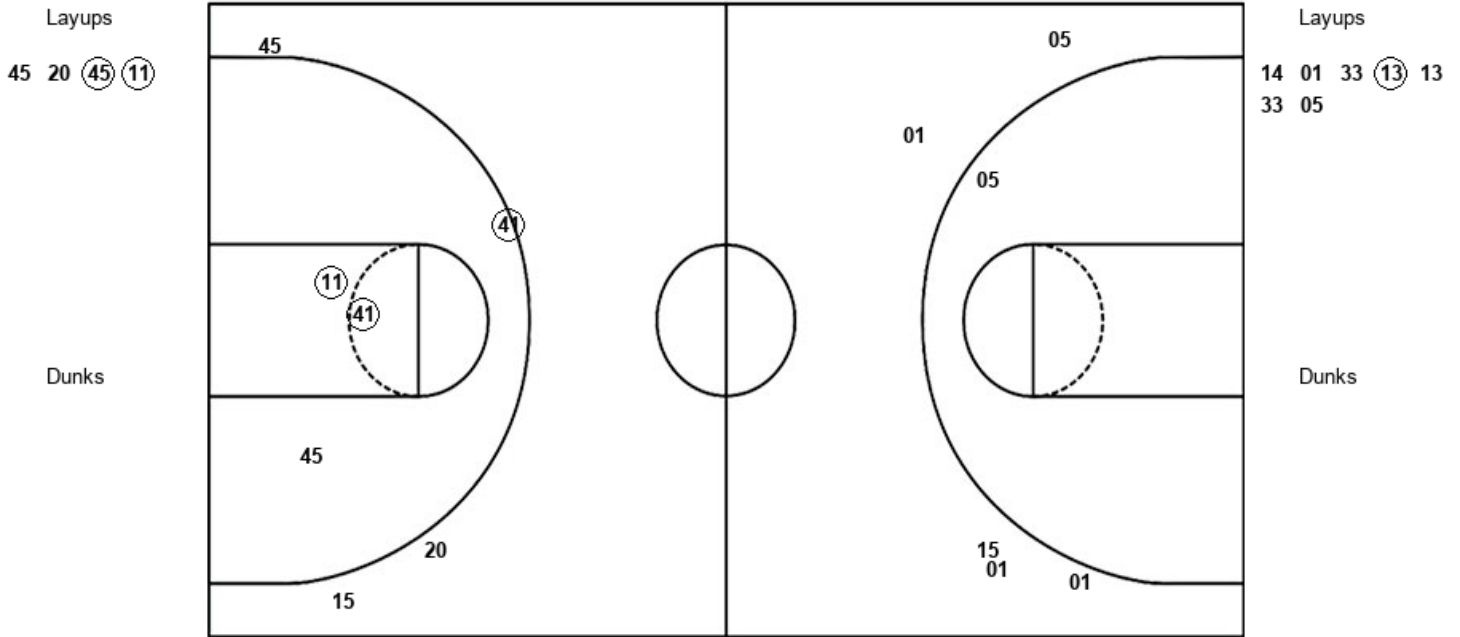
BYU : Period 3	Made	Att	Pct
Layups	2	10	20.0
Dunks	0	0	0
2PT Field Goals	4	15	26.7
3PT Field Goals	2	4	50.0
<b>Total Field Goals</b>	<b>6</b>	<b>19</b>	<b>31.6</b>

**Official Shot Chart**  
**BYU vs Washington St.**  
**PERIOD 4 Shots**  
 November 09, 2019 at Beasley Coliseum (Friel Court) - Pullman



**Washington St.**

**BYU**



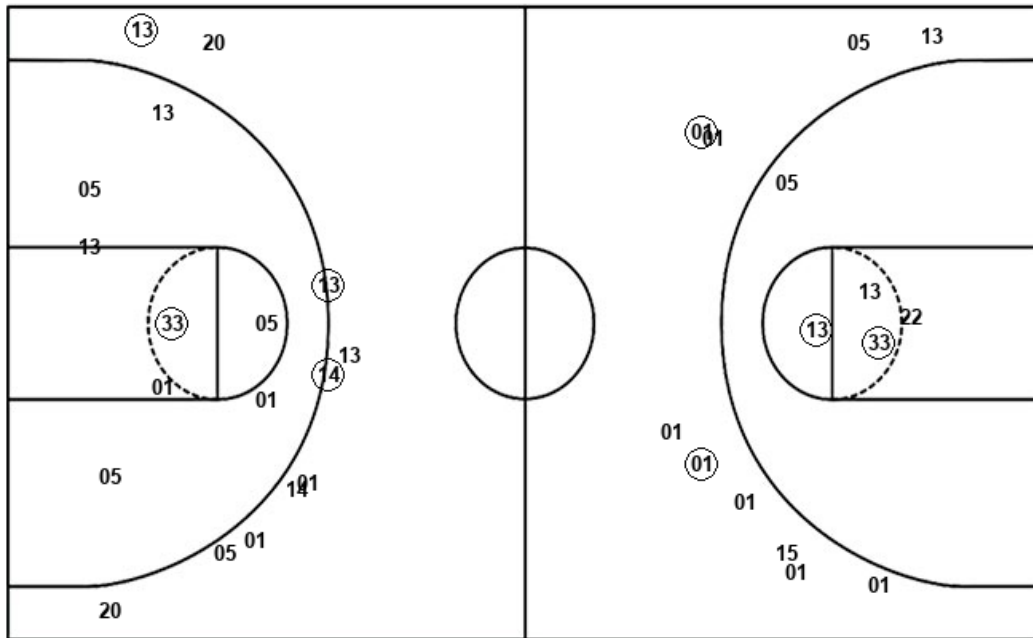
<b>WSU : Period 4</b>	<b>Made</b>	<b>Att</b>	<b>Pct</b>
Layups	2	4	50.0
Dunks	0	0	0
2PT Field Goals	4	7	57.1
3PT Field Goals	1	4	25.0
<b>Total Field Goals</b>	<b>5</b>	<b>11</b>	<b>45.5</b>

<b>BYU : Period 4</b>	<b>Made</b>	<b>Att</b>	<b>Pct</b>
Layups	1	7	14.3
Dunks	0	0	0
2PT Field Goals	1	8	12.5
3PT Field Goals	0	5	00.0
<b>Total Field Goals</b>	<b>1</b>	<b>13</b>	<b>07.7</b>

**Official Shot Chart**  
**BYU vs Washington St.**  
**BYU Team Shots**  
 November 09, 2019 at Beasley Coliseum (Friel Court) - Pullman



Layups



Layups

(33) 13 33 (33) 03  
 13 (13) (13) 03 20  
 (33) 01 13 (33) (22)  
 05 22 33 22 03  
 32 14 01 33 (13)  
 13 33 05

Dunks

Dunks

BYU : Period 1	Made	Att	Pct
Layups	2	6	33.3
Dunks	0	0	0
2PT Field Goals	2	9	22.2
3PT Field Goals	1	6	16.7
<b>Total Field Goals</b>	<b>3</b>	<b>15</b>	<b>20.0</b>

BYU : Period 3	Made	Att	Pct
Layups	2	10	20.0
Dunks	0	0	0
2PT Field Goals	4	15	26.7
3PT Field Goals	2	4	50.0
<b>Total Field Goals</b>	<b>6</b>	<b>19</b>	<b>31.6</b>

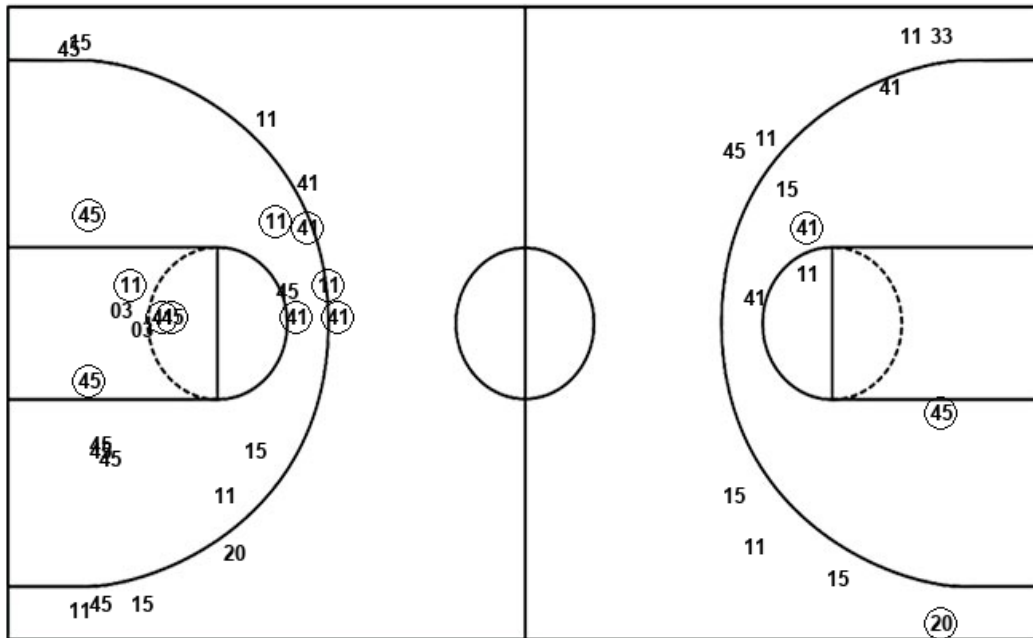
BYU : Period 2	Made	Att	Pct
Layups	3	5	60.0
Dunks	0	0	0
2PT Field Goals	4	10	40.0
3PT Field Goals	2	4	50.0
<b>Total Field Goals</b>	<b>6</b>	<b>14</b>	<b>42.9</b>

BYU : Period 4	Made	Att	Pct
Layups	1	7	14.3
Dunks	0	0	0
2PT Field Goals	1	8	12.5
3PT Field Goals	0	5	00.0
<b>Total Field Goals</b>	<b>1</b>	<b>13</b>	<b>07.7</b>

**Official Shot Chart**  
**BYU vs Washington St.**  
**Washington St. Team Shots**  
 November 09, 2019 at Beasley Coliseum (Friel Court) - Pullman



Layups



Layups

(11) 45 45 (11) (15)  
 11 (45) 20 (45) 55  
 (55) (41) (33) (55) (13)  
 03 13 45 45 20  
 (45) (11)

Dunks

Dunks

WSU : Period 1	Made	Att	Pct
Layups	4	7	57.1
Dunks	0	0	0
2PT Field Goals	5	10	50.0
3PT Field Goals	0	5	00.0
<b>Total Field Goals</b>	<b>5</b>	<b>15</b>	<b>33.3</b>

WSU : Period 3	Made	Att	Pct
Layups	0	3	00.0
Dunks	0	0	0
2PT Field Goals	5	16	31.3
3PT Field Goals	2	6	33.3
<b>Total Field Goals</b>	<b>7</b>	<b>22</b>	<b>31.8</b>

WSU : Period 2	Made	Att	Pct
Layups	6	8	75.0
Dunks	0	0	0
2PT Field Goals	7	11	63.6
3PT Field Goals	1	3	33.3
<b>Total Field Goals</b>	<b>8</b>	<b>14</b>	<b>57.1</b>

WSU : Period 4	Made	Att	Pct
Layups	2	4	50.0
Dunks	0	0	0
2PT Field Goals	4	7	57.1
3PT Field Goals	1	4	25.0
<b>Total Field Goals</b>	<b>5</b>	<b>11</b>	<b>45.5</b>