

## FINAL SCORE



**Wichita St.**

**66**

**SMU**



**62**

March 01, 2020 • Moody Coliseum (David B. Miller Court) - Dallas, Texas

## FINAL STATISTICS

**Official Box Score**  
**Wichita St. vs SMU**  
**Game Totals -- Final Statistics**  
**March 01, 2020 at Moody Coliseum (David B. Miller Court) - Dallas, Texas**



**Wichita St. 66**

No.	Player	S	Pts	FG	3FG	FT	OR	DR	TR	PF	A	TO	Blk	Stl	Min	+/-
00	DENNIS, DEXTER	G	25	9-19	7-14	0-0	3	5	8	1	2	1	0	1	38	6
02	BURTON, JAMARIUS	G	9	3-7	0-1	3-3	3	3	6	0	1	3	0	0	27	1
05	WADE, TREY	F	5	2-6	1-3	0-0	3	2	5	0	3	0	1	0	29	3
10	STEVENSON, ERIK	G	0	0-4	0-4	0-0	0	0	0	2	0	2	0	0	9	-15
21	ECHENIQUE, JAIME	C	7	2-5	0-0	3-4	3	10	13	1	1	1	4	0	30	6
01	ETIENNE, TYSON	G	6	2-9	2-9	0-0	0	2	2	1	1	0	0	1	24	8
03	GORDON, DEANTONI	F	0	0-0	0-0	0-0	0	0	0	0	0	0	0	0	3	9
44	POOR BEAR-CHANDLER, ISAI	C	0	0-0	0-0	0-0	2	1	3	1	0	0	0	1	10	-2
52	SHERFIELD, GRANT	G	14	5-10	4-5	0-0	1	1	2	3	6	2	1	1	30	4
TEAM							2	0	2	0		3				
<b>TOTALS</b>			<b>66</b>	<b>23-60</b>	<b>14-36</b>	<b>6-7</b>	<b>17</b>	<b>24</b>	<b>41</b>	<b>9</b>	<b>14</b>	<b>12</b>	<b>6</b>	<b>4</b>	<b>200</b>	

*Shooting By Period*

Period	FG	FG%	3FG	3FG%	FT	FT%
1st Half	8-31	26%	5-19	26%	3-4	75%
2nd Half	15-29	52%	9-17	53%	3-3	100%
<b>Game</b>	<b>23-60</b>	<b>38.3%</b>	<b>14-36</b>	<b>38.9%</b>	<b>6-7</b>	<b>85.7%</b>

Deadball Rebounds: 1,0  
 Last FG: 2nd-00:04  
 Biggest Run: 17-0  
 Largest lead: By 4 at 2nd-00:04  
 Technical Fouls: None.

**SMU 62**

No.	Player	S	Pts	FG	3FG	FT	OR	DR	TR	PF	A	TO	Blk	Stl	Min	+/-
00	JOLLY, TYSON	G	6	3-9	0-4	0-0	1	2	3	1	3	0	0	1	33	-9
01	HUNT, FERON	F	8	3-7	1-1	1-2	1	7	8	1	0	0	0	0	25	-3
03	DAVIS, KENDRIC	G	10	4-11	1-4	1-2	0	2	2	1	5	1	0	2	38	-6
05	BANDOU MEL, EMMANUEL	G	10	4-7	1-4	1-3	1	2	3	1	1	1	1	0	30	7
15	MIKE, ISIAHA	F	23	10-18	3-7	0-0	2	2	4	3	0	3	1	0	33	5
04	SMITH IV, CHARLES	G	0	0-0	0-0	0-0	0	1	1	0	0	0	0	0	4	8
13	WHITE, CJ	G	0	0-1	0-1	0-0	0	0	0	0	2	1	0	0	15	-12
25	CHARGOIS, ETHAN	F	5	2-5	1-3	0-0	1	3	4	1	3	0	2	0	22	-10
TEAM							3	1	4	0		0				
<b>TOTALS</b>			<b>62</b>	<b>26-58</b>	<b>7-24</b>	<b>3-7</b>	<b>9</b>	<b>20</b>	<b>29</b>	<b>8</b>	<b>14</b>	<b>6</b>	<b>4</b>	<b>3</b>	<b>200</b>	

*Shooting By Period*

Period	FG	FG%	3FG	3FG%	FT	FT%
1st Half	15-27	56%	5-14	36%	2-4	50%
2nd Half	11-31	35%	2-10	20%	1-3	33%
<b>Game</b>	<b>26-58</b>	<b>44.8%</b>	<b>7-24</b>	<b>29.2%</b>	<b>3-7</b>	<b>42.9%</b>

Deadball Rebounds: 3,0  
 Last FG: 2nd-00:48  
 Biggest Run: 10-0  
 Largest lead: By 24 at 2nd-14:48  
 Technical Fouls: None.

Game Notes:

Officials: **Doug Sirmons, Joe Lindsay, Anthony Jordan**  
 Attendance: 5483

Start Time: **04:05 PM ET**  
 End Time: **05:53 PM ET**  
 Game Duration: 1:47  
 Conference Game;

Score	1st	2nd	TOT
WSU	24	42	<b>66</b>
SMU	37	25	<b>62</b>

WSU led for 1:52. SMU led for 36:04.  
 Game was tied for 2:05.  
 Times tied: 3      Lead Changes: 7

Points from	WSU	SMU
In the Paint	18	32
Off Turns	9	11
2nd Chance	23	10
Fast Break	5	6
Bench	20	5

**Official Box Score**  
**Wichita St. vs SMU**  
**First Half Statistics Only**  
**March 01, 2020 at Moody Coliseum (David B. Miller Court) - Dallas, Texas**



**Wichita St. 24**

No.	Player	S	Pts	FG	3FG	FT	OR	DR	TR	PF	A	TO	Blk	Stl	Min	+/-
00	DENNIS, DEXTER	G	8	3-6	2-3	0-0	1	0	1	0	0	1	0	1	18	-11
02	BURTON, JAMARIUS	G	2	1-3	0-1	0-0	2	0	2	0	0	1	0	0	12	-17
05	WADE, TREY	F	0	0-4	0-2	0-0	2	0	2	0	2	0	1	0	15	-7
10	STEVENSON, ERIK	G	0	0-4	0-4	0-0	0	0	0	2	0	2	0	0	9	-15
21	ECHENIQUE, JAIME	C	3	0-2	0-0	3-4	2	5	7	1	0	1	1	0	14	-12
01	ETIENNE, TYSON	G	3	1-6	1-6	0-0	0	2	2	0	0	0	0	0	11	2
03	GORDON, DEANTONI	F	0	0-0	0-0	0-0	0	0	0	0	0	0	0	0	0	0
44	POOR BEAR-CHANDLER, ISAI	C	0	0-0	0-0	0-0	1	1	2	1	0	0	0	0	6	-1
52	SHERFIELD, GRANT	G	8	3-6	2-3	0-0	1	0	1	1	3	0	0	1	14	-4
<b>TEAM</b>							0	0	0	0		1				
<b>TOTALS</b>			<b>24</b>	<b>8-31</b>	<b>5-19</b>	<b>3-4</b>	<b>9</b>	<b>8</b>	<b>17</b>	<b>5</b>	<b>5</b>	<b>6</b>	<b>2</b>	<b>2</b>	<b>100</b>	

*Shooting By Period*

Period	FG	FG%	3FG	3FG%	FT	FT%
1st Half	8-31	26%	5-19	26%	3-4	75%
Game	23-60	38.3%	14-36	38.9%	6-7	85.7%

*Deadball Rebounds: 1,0*  
*Last FG Half: WSU 2nd-00:04*

**SMU 37**

No.	Player	S	Pts	FG	3FG	FT	OR	DR	TR	PF	A	TO	Blk	Stl	Min	+/-
00	JOLLY, TYSON	G	4	2-4	0-2	0-0	1	2	3	1	1	0	0	0	16	5
01	HUNT, FERON	F	4	1-3	1-1	1-2	0	6	6	1	0	0	0	0	16	7
03	DAVIS, KENDRIC	G	9	4-6	1-2	0-0	0	2	2	0	3	1	0	0	18	11
05	BANDOU MEL, EMMANUEL	G	8	3-5	1-3	1-2	0	1	1	0	0	1	1	0	14	12
15	MIKE, ISIAHA	F	7	3-5	1-3	0-0	0	1	1	1	0	1	1	0	15	14
04	SMITH IV, CHARLES	G	0	0-0	0-0	0-0	0	1	1	0	0	0	0	0	4	8
13	WHITE, CJ	G	0	0-1	0-1	0-0	0	0	0	0	2	1	0	0	8	3
25	CHARGOIS, ETHAN	F	5	2-3	1-2	0-0	1	2	3	1	1	0	0	0	9	5
<b>TEAM</b>							1	0	1	0		0				
<b>TOTALS</b>			<b>37</b>	<b>15-27</b>	<b>5-14</b>	<b>2-4</b>	<b>3</b>	<b>15</b>	<b>18</b>	<b>4</b>	<b>7</b>	<b>4</b>	<b>2</b>	<b>0</b>	<b>100</b>	

*Shooting By Period*

Period	FG	FG%	3FG	3FG%	FT	FT%
1st Half	15-27	56%	5-14	36%	2-4	50%
Game	26-58	44.8%	7-24	29.2%	3-7	42.9%

*Deadball Rebounds: 3,0*  
*Last FG Half: SMU 2nd-00:48*

*Game Notes:*

Officials: **Doug Sirmons, Joe Lindsay, Anthony Jordan**  
 Attendance: **5483**

Start Time: **04:05 PM ET**  
 End Time: **05:53 PM ET**  
 Game Duration: **1:47**  
 Conference Game;

Score	1st	2nd	TOT
WSU	24	42	<b>66</b>
SMU	37	25	<b>62</b>

Points from (This Period)	WSU	SMU
In the Paint	6	18
Off Turns	6	4
2nd Chance	9	8
Fast Break	3	3
Bench	11	5

**Official Play-By-Play  
Wichita St. vs SMU  
First Half**

**March 01, 2020 at Moody Coliseum (David B. Miller Court) - Dallas, Texas**



**Period 1**

**Starters:**

**Wichita St.:** 0 DENNIS,DEXTER (G); 2 BURTON,JAMARIUS (G); 5 WADE,TREY (F); 10 STEVENSON,ERIK (G); 21 ECHENIQUE,JAIME (C);  
**SMU:** 0 JOLLY,TYSON (G); 1 HUNT,FERON (F); 3 DAVIS,KENDRIC (G); 5 BANDOUMEL,EMMANUEL (G); 15 MIKE,ISIAHA (F);

Time	VISITORS: Wichita St.	Score	Margin	HOME: SMU
19:33	MISSED 3PTR by STEVENSON, ERIK			
19:29				REBOUND (DEF) by HUNT, FERON
19:20	FOUL (PERSONAL) by ECHENIQUE, JAIME			
19:20				MISSED FT by HUNT, FERON
19:20				REBOUND (OFF) by TEAM
19:20		1-0	H 1	GOOD! FT by HUNT, FERON
19:02	TURNOVER (TRAVEL) by ECHENIQUE, JAIME			
18:49		3-0	H 3	GOOD! JUMPER by JOLLY, TYSON [PNT]
18:31	TURNOVER (TRAVEL) by STEVENSON, ERIK			
18:15				FOUL (OFF) by MIKE, ISIAHA
18:15				TURNOVER (OFFENSIVE) by MIKE, ISIAHA
17:59	MISSED JUMPER by BURTON, JAMARIUS			
17:57	REBOUND (OFF) by ECHENIQUE, JAIME			
17:55				FOUL (PERSONAL) by HUNT, FERON
17:55	GOOD! FT by ECHENIQUE, JAIME	3-1	H 2	
17:55	GOOD! FT by ECHENIQUE, JAIME	3-2	H 1	
17:39				MISSED LAYUP by DAVIS, KENDRIC
17:39	BLOCK by ECHENIQUE, JAIME			
17:39				REBOUND (OFF) by TEAM
17:30		6-2	H 4	GOOD! 3PTR by MIKE, ISIAHA
17:30				ASSIST by DAVIS, KENDRIC
17:00	MISSED 3PTR by STEVENSON, ERIK			
16:56				REBOUND (DEF) by HUNT, FERON
16:49		9-2	H 7	GOOD! 3PTR by HUNT, FERON [FB]
16:49				ASSIST by DAVIS, KENDRIC
16:12	TURNOVER (SHOTCLOCK) by TEAM			
16:12	SUB OUT: BURTON, JAMARIUS			
16:12	SUB OUT: STEVENSON, ERIK			
16:12	SUB IN: ETIENNE, TYSON			
16:12	SUB IN: SHERFIELD, GRANT			
15:58				MISSED 3PTR by MIKE, ISIAHA
15:53	REBOUND (DEF) by ECHENIQUE, JAIME			
15:31	GOOD! DUNK by DENNIS, DEXTER	9-4	H 5	
15:31	ASSIST by WADE, TREY			
15:16				MISSED 3PTR by DAVIS, KENDRIC
15:12	REBOUND (DEF) by ECHENIQUE, JAIME			
15:00	MISSED 3PTR by ETIENNE, TYSON			
14:55	REBOUND (OFF) by WADE, TREY			
14:54	GOOD! 3PTR by SHERFIELD, GRANT	9-7	H 2	
14:54	ASSIST by WADE, TREY			
14:37				MISSED 3PTR by BANDOUMEL, EMMANUEL
14:33	REBOUND (DEF) by ECHENIQUE, JAIME			
14:19	MISSED 3PTR by ETIENNE, TYSON			
14:16				REBOUND (DEF) by MIKE, ISIAHA
14:12				MISSED 3PTR by BANDOUMEL, EMMANUEL
14:08				REBOUND (OFF) by JOLLY, TYSON
14:06		12-7	H 5	GOOD! 3PTR by BANDOUMEL, EMMANUEL
14:06				ASSIST by JOLLY, TYSON
13:32	MISSED JUMPER by WADE, TREY			
13:28	REBOUND (OFF) by SHERFIELD, GRANT			
13:27	MISSED LAYUP by SHERFIELD, GRANT			
13:27				BLOCK by BANDOUMEL, EMMANUEL
13:27	REBOUND (OFF) by ECHENIQUE, JAIME			
13:26	MISSED LAYUP by ECHENIQUE, JAIME			
13:23				REBOUND (DEF) by BANDOUMEL, EMMANUEL
13:14				TURNOVER (TRAVEL) by BANDOUMEL, EMMANUEL
13:14				
13:14				SUB OUT: BANDOUMEL, EMMANUEL
13:14				SUB OUT: MIKE, ISIAHA
13:14				SUB IN: WHITE, CJ
13:14				SUB IN: CHARGOIS, ETHAN
13:14	SUB OUT: ECHENIQUE, JAIME			
13:14	SUB IN: POOR BEAR-CHANDLER, ISIAHA			
12:58	MISSED 3PTR by ETIENNE, TYSON			
12:56	REBOUND (OFF) by POOR BEAR-CHANDLER, ISIAHA			
12:55				FOUL (PERSONAL) by JOLLY, TYSON
12:41	MISSED 3PTR by SHERFIELD, GRANT			
12:39	REBOUND (OFF) by DENNIS, DEXTER			
12:20	GOOD! LAYUP by SHERFIELD, GRANT	12-9	H 3	
12:05				MISSED 3PTR by WHITE, CJ

Time	VISITORS: Wichita St.	Score	Margin	HOME: SMU
12:01	REBOUND (DEF) by POOR BEAR-CHANDLER, ISAIAH			
11:52	MISSED LAYUP by WADE, TREY			
11:49				REBOUND (DEF) by HUNT, FERON
11:41				MISSED 3PTR by JOLLY, TYSON
11:36	REBOUND (DEF) by ETIENNE, TYSON			
11:33	GOOD! 3PTR by ETIENNE, TYSON [FB]	12-12	T	
11:33	ASSIST by SHERFIELD, GRANT			
11:06	FOUL (PERSONAL) by POOR BEAR-CHANDLER, ISAIAH			
11:06				SUB OUT: HUNT, FERON
11:06				SUB IN: MIKE, ISIAHA
11:06	SUB OUT: WADE, TREY			
11:06	SUB IN: BURTON, JAMARIUS			
10:54		14-12	H 2	GOOD! JUMPER by DAVIS, KENDRIC [PNT]
10:35	GOOD! 3PTR by DENNIS, DEXTER	14-15	V 1	
10:35	ASSIST by SHERFIELD, GRANT			
10:08		16-15	H 1	GOOD! JUMPER by CHARGOIS, ETHAN [PNT]
09:40	MISSED 3PTR by ETIENNE, TYSON			
09:37				REBOUND (DEF) by DAVIS, KENDRIC
09:33				TURNOVER (BADPASS) by DAVIS, KENDRIC
09:33	STEAL by SHERFIELD, GRANT			
09:27	MISSED JUMPER by DENNIS, DEXTER			
09:24	REBOUND (OFF) by BURTON, JAMARIUS			
09:23	GOOD! LAYUP by BURTON, JAMARIUS	16-17	V 1	
09:03		18-17	H 1	GOOD! LAYUP by MIKE, ISIAHA
09:03				ASSIST by CHARGOIS, ETHAN
08:41	MISSED 3PTR by ETIENNE, TYSON			
08:37				REBOUND (DEF) by CHARGOIS, ETHAN
08:25		21-17	H 4	GOOD! 3PTR by CHARGOIS, ETHAN
08:25				ASSIST by WHITE, CJ
08:05	MISSED JUMPER by SHERFIELD, GRANT			
08:03				REBOUND (DEF) by JOLLY, TYSON
07:55		23-17	H 6	GOOD! DUNK by JOLLY, TYSON
07:55				ASSIST by WHITE, CJ
07:30	TURNOVER (OTHER) by DENNIS, DEXTER			
07:30				SUB OUT: DAVIS, KENDRIC
07:30				SUB IN: BANDOUMEL, EMMANUEL
07:30	SUB OUT: ETIENNE, TYSON			
07:30	SUB OUT: POOR BEAR-CHANDLER, ISAIAH			
07:30	SUB OUT: SHERFIELD, GRANT			
07:30	SUB IN: WADE, TREY			
07:30	SUB IN: STEVENSON, ERIK			
07:30	SUB IN: ECHENIQUE, JAIME			
07:18				TURNOVER (BADPASS) by WHITE, CJ
07:18	STEAL by DENNIS, DEXTER			
07:04	MISSED 3PTR by DENNIS, DEXTER			
07:04	REBOUND (OFF) by BURTON, JAMARIUS			
07:04				BLOCK by MIKE, ISIAHA
06:56	MISSED LAYUP by ECHENIQUE, JAIME			
06:54				REBOUND (DEF) by JOLLY, TYSON
06:52				SUB OUT: JOLLY, TYSON
06:52				SUB OUT: MIKE, ISIAHA
06:52				SUB IN: HUNT, FERON
06:52				SUB IN: SMITH IV, CHARLES
06:28	FOUL (PERSONAL) by STEVENSON, ERIK			
06:28				MISSED FT by BANDOUMEL, EMMANUEL
06:28				REBOUND (OFF) by TEAM
06:28		24-17	H 7	GOOD! FT by BANDOUMEL, EMMANUEL
06:09	MISSED JUMPER by DENNIS, DEXTER			
06:07				REBOUND (DEF) by HUNT, FERON
05:59				MISSED JUMPER by HUNT, FERON
05:56				REBOUND (OFF) by CHARGOIS, ETHAN
05:47		26-17	H 9	GOOD! LAYUP by BANDOUMEL, EMMANUEL [PNT]
05:34				FOUL (PERSONAL) by CHARGOIS, ETHAN
05:34	GOOD! FT by ECHENIQUE, JAIME	26-18	H 8	
05:34				SUB OUT: WHITE, CJ
05:34				SUB IN: DAVIS, KENDRIC
05:34	SUB OUT: DENNIS, DEXTER			
05:34	SUB IN: SHERFIELD, GRANT			
05:34	MISSED FT by ECHENIQUE, JAIME			
05:33				REBOUND (DEF) by CHARGOIS, ETHAN
05:14				MISSED LAYUP by HUNT, FERON
05:14	REBOUND (DEF) by ECHENIQUE, JAIME			
05:14	BLOCK by WADE, TREY			
04:59	MISSED 3PTR by BURTON, JAMARIUS			
04:56				REBOUND (DEF) by HUNT, FERON
04:42		28-18	H 10	GOOD! JUMPER by DAVIS, KENDRIC
04:26	MISSED 3PTR by STEVENSON, ERIK			
04:21				REBOUND (DEF) by HUNT, FERON

Time	VISITORS: Wichita St.	Score	Margin	HOME: SMU
04:11				MISSED 3PTR by CHARGOIS, ETHAN
04:07	REBOUND (DEF) by ECHENIQUE, JAIME			
04:00	TURNOVER (BADPASS) by BURTON, JAMARIUS			
04:00				
04:00				SUB OUT: CHARGOIS, ETHAN
04:00				SUB IN: MIKE, ISIAHA
04:00	SUB OUT: BURTON, JAMARIUS			
04:00	SUB IN: DENNIS, DEXTER			
03:49		30-18	H 12	GOOD! DUNK by BANDOUMEL, EMMANUEL
03:49				ASSIST by DAVIS, KENDRIC
03:23	MISSED 3PTR by WADE, TREY			
03:18	REBOUND (OFF) by WADE, TREY			
03:14	MISSED 3PTR by STEVENSON, ERIK			
03:12				REBOUND (DEF) by SMITH IV, CHARLES
02:58		32-18	H 14	GOOD! LAYUP by DAVIS, KENDRIC
02:35	FOUL (OFF) by STEVENSON, ERIK			
02:35	TURNOVER (OFFENSIVE) by STEVENSON, ERIK			
02:35				SUB OUT: SMITH IV, CHARLES
02:35				SUB IN: JOLLY, TYSON
02:35	SUB OUT: STEVENSON, ERIK			
02:35	SUB IN: ETIENNE, TYSON			
02:27				MISSED 3PTR by MIKE, ISIAHA
02:23	REBOUND (DEF) by ETIENNE, TYSON			
02:10	GOOD! 3PTR by DENNIS, DEXTER	32-21	H 11	
02:10	ASSIST by SHERFIELD, GRANT			
01:45		34-21	H 13	GOOD! JUMPER by MIKE, ISIAHA
01:24	MISSED 3PTR by WADE, TREY			
01:20				REBOUND (DEF) by DAVIS, KENDRIC
01:03	FOUL (PERSONAL) by SHERFIELD, GRANT			
01:03	SUB OUT: WADE, TREY			
01:03	SUB IN: BURTON, JAMARIUS			
00:52		37-21	H 16	GOOD! 3PTR by DAVIS, KENDRIC
00:29	GOOD! 3PTR by SHERFIELD, GRANT	37-24	H 13	
00:01				MISSED 3PTR by JOLLY, TYSON
00:00				REBOUND (OFF) by TEAM

### Wichita St. 24, SMU 37

Points from (This Period)	WSU	SMU
In the Paint	6	18
Off Turns	6	4
2nd Chance	9	8
Fast Break	3	3
Bench	11	5

**Official Box Score**  
**Wichita St. vs SMU**  
**Second Half Statistics Only**  
**March 01, 2020 at Moody Coliseum (David B. Miller Court) - Dallas, Texas**



**Wichita St. 42**

No.	Player	S	Pts	FG	3FG	FT	OR	DR	TR	PF	A	TO	Blk	Stl	Min	+/-
00	DENNIS, DEXTER	G	17	6-13	5-11	0-0	2	5	7	1	2	0	0	0	20	17
02	BURTON, JAMARIUS	G	7	2-4	0-0	3-3	1	3	4	0	1	2	0	0	16	18
05	WADE, TREY	F	5	2-2	1-1	0-0	1	2	3	0	1	0	0	0	13	10
10	STEVENSON, ERIK	G	0	0-0	0-0	0-0	0	0	0	0	0	0	0	0	0	0
21	ECHENIQUE, JAIME	C	4	2-3	0-0	0-0	1	5	6	0	1	0	3	0	16	18
01	ETIENNE, TYSON	G	3	1-3	1-3	0-0	0	0	0	1	1	0	0	1	13	6
03	GORDON, DEANTONI	F	0	0-0	0-0	0-0	0	0	0	0	0	0	0	0	3	9
44	POOR BEAR-CHANDLER, ISAI	C	0	0-0	0-0	0-0	1	0	1	0	0	0	0	1	4	-1
52	SHERFIELD, GRANT	G	6	2-4	2-2	0-0	0	1	1	2	3	2	1	0	15	8
<b>TEAM</b>							2	0	2	0	2					
<b>TOTALS</b>			<b>42</b>	<b>15-29</b>	<b>9-17</b>	<b>3-3</b>	<b>8</b>	<b>16</b>	<b>24</b>	<b>4</b>	<b>9</b>	<b>6</b>	<b>4</b>	<b>2</b>	<b>100</b>	

*Shooting By Period*

Period	FG	FG%	3FG	3FG%	FT	FT%
2nd Half	15-29	52%	9-17	53%	3-3	100%
Game	23-60	38.3%	14-36	38.9%	6-7	85.7%

Deadball Rebounds: 1,0

Last FG Half: WSU -

**SMU 25**

No.	Player	S	Pts	FG	3FG	FT	OR	DR	TR	PF	A	TO	Blk	Stl	Min	+/-
00	JOLLY, TYSON	G	2	1-5	0-2	0-0	0	0	0	0	2	0	0	1	18	-14
01	HUNT, FERON	F	4	2-4	0-0	0-0	1	1	2	0	0	0	0	0	9	-10
03	DAVIS, KENDRIC	G	1	0-5	0-2	1-2	0	0	0	1	2	0	0	2	20	-17
05	BANDOU MEL, EMMANUEL	G	2	1-2	0-1	0-1	1	1	2	1	1	0	0	0	15	-5
15	MIKE, ISIAHA	F	16	7-13	2-4	0-0	2	1	3	2	0	2	0	0	18	-9
04	SMITH IV, CHARLES	G	0	0-0	0-0	0-0	0	0	0	0	0	0	0	0	0	0
13	WHITE, CJ	G	0	0-0	0-0	0-0	0	0	0	0	0	0	0	0	7	-15
25	CHARGOIS, ETHAN	F	0	0-2	0-1	0-0	0	1	1	0	2	0	2	0	13	-15
<b>TEAM</b>							2	1	3	0	0					
<b>TOTALS</b>			<b>25</b>	<b>11-31</b>	<b>2-10</b>	<b>1-3</b>	<b>6</b>	<b>5</b>	<b>11</b>	<b>4</b>	<b>7</b>	<b>2</b>	<b>2</b>	<b>3</b>	<b>100</b>	

*Shooting By Period*

Period	FG	FG%	3FG	3FG%	FT	FT%
2nd Half	11-31	35%	2-10	20%	1-3	33%
Game	26-58	44.8%	7-24	29.2%	3-7	42.9%

Deadball Rebounds: 3,0

Last FG Half: SMU -

Game Notes:

Officials: Doug Sirmons, Joe Lindsay, Anthony Jordan  
 Attendance: 5483

Start Time: 04:05 PM ET  
 End Time: 05:53 PM ET  
 Game Duration: 1:47  
 Conference Game;

Score	1st	2nd	TOT
WSU	24	42	66
SMU	37	25	62

Points from (This Period)	WSU	SMU
In the Paint	12	14
Off Turns	3	7
2nd Chance	14	2
Fast Break	2	3
Bench	9	0

**Official Play-By-Play  
Wichita St. vs SMU**



**Second Half  
March 01, 2020 at Moody Coliseum (David B. Miller Court) - Dallas, Texas**

**Period 2**

**Starters:**

**Wichita St.:** 0 DENNIS,DEXTER (G); 2 BURTON,JAMARIUS (G); 5 WADE,TREY (F); 10 STEVENSON,ERIK (G); 21 ECHENIQUE,JAIME (C);  
**SMU:** 0 JOLLY,TYSON (G); 1 HUNT,FERON (F); 3 DAVIS,KENDRIC (G); 5 BANDOUMEL,EMMANUEL (G); 15 MIKE,ISIAHA (F);

Time	VISITORS: Wichita St.	Score	Margin	HOME: SMU
19:33				MISSED LAYUP by HUNT, FERON
19:30				REBOUND (OFF) by HUNT, FERON
19:29				MISSED 3PTR by MIKE, ISIAHA
19:25	REBOUND (DEF) by BURTON, JAMARIUS			
19:22	MISSED 3PTR by DENNIS, DEXTER			
19:18				REBOUND (DEF) by MIKE, ISIAHA
18:57	FOUL (PERSONAL) by ETIENNE, TYSON			
18:57		38-24	H 14	GOOD! FT by DAVIS, KENDRIC
18:57				MISSED FT by DAVIS, KENDRIC
18:56				REBOUND (OFF) by MIKE, ISIAHA
18:48				MISSED LAYUP by JOLLY, TYSON
18:48	BLOCK by SHERFIELD, GRANT			
18:43	REBOUND (DEF) by DENNIS, DEXTER			
18:18	MISSED 3PTR by DENNIS, DEXTER			
18:14				REBOUND (DEF) by BANDOUMEL, EMMANUEL
18:09		41-24	H 17	GOOD! 3PTR by MIKE, ISIAHA
18:09				ASSIST by DAVIS, KENDRIC
17:56	TURNOVER (LOSTBALL) by BURTON, JAMARIUS			
17:56				STEAL by DAVIS, KENDRIC
17:38		43-24	H 19	GOOD! DUNK by HUNT, FERON
17:38				ASSIST by BANDOUMEL, EMMANUEL
17:09	TURNOVER (BADPASS) by SHERFIELD, GRANT			
17:09				STEAL by JOLLY, TYSON
17:00				MISSED LAYUP by MIKE, ISIAHA
17:00	BLOCK by ECHENIQUE, JAIME			
16:56	REBOUND (DEF) by DENNIS, DEXTER			
16:49	GOOD! LAYUP by BURTON, JAMARIUS	43-26	H 17	
16:49	ASSIST by DENNIS, DEXTER			
16:37				MISSED JUMPER by HUNT, FERON
16:35	REBOUND (DEF) by ECHENIQUE, JAIME			
16:30	TURNOVER (BADPASS) by BURTON, JAMARIUS			
16:30				SUB OUT: HUNT, FERON
16:30				SUB IN: CHARGOIS, ETHAN
16:30	SUB OUT: BURTON, JAMARIUS			
16:30	SUB OUT: ECHENIQUE, JAIME			
16:30	SUB IN: WADE, TREY			
16:30	SUB IN: POOR BEAR-CHANDLER, ISIAHA			
16:02		45-26	H 19	GOOD! JUMPER by MIKE, ISIAHA
15:47	MISSED 3PTR by ETIENNE, TYSON			
15:44				REBOUND (DEF) by CHARGOIS, ETHAN
15:26		47-26	H 21	GOOD! JUMPER by MIKE, ISIAHA [PNT]
15:26				ASSIST by CHARGOIS, ETHAN
14:56	TURNOVER (BADPASS) by SHERFIELD, GRANT			
14:56				STEAL by DAVIS, KENDRIC
14:48		50-26	H 24	GOOD! 3PTR by MIKE, ISIAHA [FB]
14:48				ASSIST by JOLLY, TYSON
14:32	TIMEOUT 30SEC			
14:32				
14:13	MISSED JUMPER by DENNIS, DEXTER			
14:13	REBOUND (OFF) by POOR BEAR-CHANDLER, ISIAHA			
14:13				BLOCK by CHARGOIS, ETHAN
14:08	TURNOVER (SHOTCLOCK) by TEAM			
14:08				
14:08	SUB OUT: WADE, TREY			
14:08	SUB IN: GORDON, DEANTONI			
13:53				MISSED 3PTR by CHARGOIS, ETHAN
13:49				REBOUND (OFF) by BANDOUMEL, EMMANUEL
13:39				MISSED 3PTR by BANDOUMEL, EMMANUEL
13:33	REBOUND (DEF) by DENNIS, DEXTER			
13:14	GOOD! 3PTR by ETIENNE, TYSON	50-29	H 21	
13:14	ASSIST by SHERFIELD, GRANT			
12:46				TURNOVER (BADPASS) by MIKE, ISIAHA
12:46	STEAL by POOR BEAR-CHANDLER, ISIAHA			
12:37	GOOD! 3PTR by SHERFIELD, GRANT	50-32	H 18	
12:37	ASSIST by ETIENNE, TYSON			
12:08				MISSED 3PTR by JOLLY, TYSON
12:03	REBOUND (DEF) by SHERFIELD, GRANT			
12:02				SUB OUT: BANDOUMEL, EMMANUEL
12:02				SUB OUT: MIKE, ISIAHA
12:02				SUB IN: HUNT, FERON



Time	VISITORS: Wichita St.	Score	Margin	HOME: SMU
12:02				SUB IN: WHITE, CJ
12:02	SUB OUT: POOR BEAR-CHANDLER, ISAIAH			
12:02	SUB OUT: SHERFIELD, GRANT			
12:02	SUB IN: BURTON, JAMARIUS			
12:02	SUB IN: ECHENIQUE, JAIME			
11:45	GOOD! 3PTR by DENNIS, DEXTER	50-35	H 15	
11:10				MISSED 3PTR by DAVIS, KENDRIC
11:07				REBOUND (OFF) by TEAM
11:07				
11:07	SUB OUT: GORDON, DEANTONI			
11:07	SUB IN: WADE, TREY			
10:55				MISSED JUMPER by DAVIS, KENDRIC
10:55	BLOCK by ECHENIQUE, JAIME			
10:52	REBOUND (DEF) by WADE, TREY			
10:48	MISSED LAYUP by BURTON, JAMARIUS			
10:48				BLOCK by CHARGOIS, ETHAN
10:48	REBOUND (OFF) by TEAM			
10:45	GOOD! 3PTR by DENNIS, DEXTER	50-38	H 12	
10:45	ASSIST by BURTON, JAMARIUS			
10:16				MISSED JUMPER by CHARGOIS, ETHAN
10:13	REBOUND (DEF) by ECHENIQUE, JAIME			
10:08	MISSED 3PTR by DENNIS, DEXTER			
10:04	REBOUND (OFF) by ECHENIQUE, JAIME			
10:03	GOOD! LAYUP by ECHENIQUE, JAIME	50-40	H 10	
09:50				TIMEOUT 30SEC
09:50				SUB OUT: HUNT, FERON
09:50				SUB IN: MIKE, ISIAHA
09:34				MISSED 3PTR by DAVIS, KENDRIC
09:30	REBOUND (DEF) by DENNIS, DEXTER			
09:13	MISSED JUMPER by ECHENIQUE, JAIME			
09:09	REBOUND (OFF) by TEAM			
09:09	SUB OUT: ETIENNE, TYSON			
09:09	SUB IN: SHERFIELD, GRANT			
08:59	GOOD! 3PTR by SHERFIELD, GRANT	50-43	H 7	
08:30		52-43	H 9	GOOD! DUNK by JOLLY, TYSON
08:30				ASSIST by DAVIS, KENDRIC
08:08	GOOD! 3PTR by DENNIS, DEXTER	52-46	H 6	
08:08	ASSIST by SHERFIELD, GRANT			
07:43				MISSED JUMPER by MIKE, ISIAHA
07:40	REBOUND (DEF) by ECHENIQUE, JAIME			
07:34	MISSED 3PTR by DENNIS, DEXTER			
07:31	REBOUND (OFF) by BURTON, JAMARIUS			
07:31				
07:31				SUB OUT: JOLLY, TYSON
07:31				SUB IN: BANDOUMEL, EMMANUEL
07:22	GOOD! DUNK by ECHENIQUE, JAIME	52-48	H 4	
07:22	ASSIST by SHERFIELD, GRANT			
06:49		54-48	H 6	GOOD! JUMPER by MIKE, ISIAHA
06:28	GOOD! 3PTR by DENNIS, DEXTER	54-51	H 3	
06:28	ASSIST by ECHENIQUE, JAIME			
06:00		56-51	H 5	GOOD! LAYUP by MIKE, ISIAHA
06:00				ASSIST by CHARGOIS, ETHAN
05:35	MISSED 3PTR by DENNIS, DEXTER			
05:31	REBOUND (OFF) by WADE, TREY			
05:30	GOOD! LAYUP by WADE, TREY	56-53	H 3	
05:08	FOUL (PERSONAL) by SHERFIELD, GRANT			
05:08				SUB OUT: WHITE, CJ
05:08				SUB IN: JOLLY, TYSON
05:08	SUB OUT: SHERFIELD, GRANT			
05:08	SUB IN: ETIENNE, TYSON			
04:54				MISSED JUMPER by DAVIS, KENDRIC
04:51	REBOUND (DEF) by BURTON, JAMARIUS			
04:46	MISSED 3PTR by ETIENNE, TYSON			
04:43	REBOUND (OFF) by DENNIS, DEXTER			
04:41	MISSED 3PTR by DENNIS, DEXTER			
04:37				REBOUND (DEF) by TEAM
04:11		58-53	H 5	GOOD! LAYUP by MIKE, ISIAHA [PNT]
03:46	GOOD! 3PTR by WADE, TREY	58-56	H 2	
03:46	ASSIST by DENNIS, DEXTER			
03:29				MISSED 3PTR by MIKE, ISIAHA
03:25	REBOUND (DEF) by WADE, TREY			
03:24				
03:24				SUB OUT: CHARGOIS, ETHAN
03:24				SUB IN: HUNT, FERON
03:24	SUB OUT: ETIENNE, TYSON			
03:24	SUB IN: SHERFIELD, GRANT			
03:07				FOUL (PERSONAL) by BANDOUMEL, EMMANUEL
03:07	GOOD! FT by BURTON, JAMARIUS	58-57	H 1	
03:07	GOOD! FT by BURTON, JAMARIUS	58-58	T	
02:48				MISSED JUMPER by MIKE, ISIAHA

Time	VISITORS: Wichita St.	Score	Margin	HOME: SMU
02:45	REBOUND (DEF) by DENNIS, DEXTER			
02:36	MISSED JUMPER by SHERFIELD, GRANT			
02:32				REBOUND (DEF) by HUNT, FERON
02:21		60-58	H 2	GOOD! LAYUP by HUNT, FERON
02:21				ASSIST by JOLLY, TYSON
01:51	TIMEOUT TEAM			
01:47	MISSED JUMPER by SHERFIELD, GRANT			
01:46	REBOUND (OFF) by TEAM			
01:45	TURNOVER (SHOTCLOCK) by TEAM			
01:24				MISSED JUMPER by DAVIS, KENDRIC
01:21	REBOUND (DEF) by ECHENIQUE, JAIME			
01:14	GOOD! LAYUP by BURTON, JAMARIUS	60-60	T	
01:14				FOUL (PERSONAL) by MIKE, ISIAHA
01:14	GOOD! FT by BURTON, JAMARIUS	60-61	V 1	
00:55				MISSED LAYUP by JOLLY, TYSON
00:55	BLOCK by ECHENIQUE, JAIME			
00:54				REBOUND (OFF) by TEAM
00:48		62-61	H 1	GOOD! JUMPER by BANDOUMEL, EMMANUEL [PNT]
00:48	FOUL (PERSONAL) by SHERFIELD, GRANT			
00:48				MISSED FT by BANDOUMEL, EMMANUEL
00:48	REBOUND (DEF) by BURTON, JAMARIUS			
00:39	GOOD! 3PTR by DENNIS, DEXTER	62-64	V 2	
00:39	ASSIST by WADE, TREY			
00:32				TIMEOUT TEAM
00:18				MISSED LAYUP by MIKE, ISIAHA
00:16				REBOUND (OFF) by MIKE, ISIAHA
00:15	FOUL (PERSONAL) by DENNIS, DEXTER			
00:11				MISSED 3PTR by JOLLY, TYSON
00:07	REBOUND (DEF) by ECHENIQUE, JAIME			
00:07				FOUL (PERSONAL) by MIKE, ISIAHA
00:07				TIMEOUT 30SEC
00:07	SUB OUT: WADE, TREY			
00:07	SUB IN: ETIENNE, TYSON			
00:06	MISSED LAYUP by BURTON, JAMARIUS			
00:06	REBOUND (OFF) by DENNIS, DEXTER			
00:04	GOOD! LAYUP by DENNIS, DEXTER [FB]	62-66	V 4	
00:04				TURNOVER (BADPASS) by MIKE, ISIAHA
00:04	STEAL by ETIENNE, TYSON			
00:04				FOUL (PERSONAL) by DAVIS, KENDRIC

### Wichita St. 66, SMU 62

Points from (This Period)	WSU	SMU
In the Paint	12	14
Off Turns	3	7
2nd Chance	14	2
Fast Break	2	3
Bench	9	0

**Official Scoring/Possession Reference Chart**

**Wichita St. vs SMU**

**Period 1**

**March 01, 2020 at Moody Coliseum (David B. Miller Court) - Dallas, Texas**



**Period 1**

**Starters:**

**Wichita St.:** 0 DENNIS,DEXTER (G); 2 BURTON,JAMARIUS (G); 5 WADE,TREY (F); 10 STEVENSON,ERIK (G); 21 ECHENIQUE,JAIME (C);

**SMU:** 0 JOLLY,TYSON (G); 1 HUNT,FERON (F); 3 DAVIS,KENDRIC (G); 5 BANDOUMEL,EMMANUEL (G); 15 MIKE,ISIAHA (F);

Time	VISITORS: Wichita St.	Score	Margin	HOME: SMU
19:20		1-0	H 1	GOOD! FT by HUNT, FERON
18:49		3-0	H 3	GOOD! JUMPER by JOLLY, TYSON [PNT]
17:55	GOOD! FT by ECHENIQUE, JAIME	3-1	H 2	
17:55	GOOD! FT by ECHENIQUE, JAIME	3-2	H 1	
17:30		6-2	H 4	GOOD! 3PTR by MIKE, ISIAHA
16:49		9-2	H 7	GOOD! 3PTR by HUNT, FERON [FB]
15:31	GOOD! DUNK by DENNIS, DEXTER	9-4	H 5	
14:54	GOOD! 3PTR by SHERFIELD, GRANT	9-7	H 2	
14:06		12-7	H 5	GOOD! 3PTR by BANDOUMEL, EMMANUEL
12:20	GOOD! LAYUP by SHERFIELD, GRANT	12-9	H 3	
11:33	GOOD! 3PTR by ETIENNE, TYSON [FB]	12-12	T	
10:54		14-12	H 2	GOOD! JUMPER by DAVIS, KENDRIC [PNT]
10:35	GOOD! 3PTR by DENNIS, DEXTER	14-15	V 1	
10:08		16-15	H 1	GOOD! JUMPER by CHARGOIS, ETHAN [PNT]
09:23	GOOD! LAYUP by BURTON, JAMARIUS	16-17	V 1	
09:03		18-17	H 1	GOOD! LAYUP by MIKE, ISIAHA
08:25		21-17	H 4	GOOD! 3PTR by CHARGOIS, ETHAN
07:55		23-17	H 6	GOOD! DUNK by JOLLY, TYSON
06:28		24-17	H 7	GOOD! FT by BANDOUMEL, EMMANUEL
05:47		26-17	H 9	GOOD! LAYUP by BANDOUMEL, EMMANUEL [PNT]
05:34	GOOD! FT by ECHENIQUE, JAIME	26-18	H 8	
04:42		28-18	H 10	GOOD! JUMPER by DAVIS, KENDRIC
03:49		30-18	H 12	GOOD! DUNK by BANDOUMEL, EMMANUEL
02:58		32-18	H 14	GOOD! LAYUP by DAVIS, KENDRIC
02:10	GOOD! 3PTR by DENNIS, DEXTER	32-21	H 11	
01:45		34-21	H 13	GOOD! JUMPER by MIKE, ISIAHA
00:52		37-21	H 16	GOOD! 3PTR by DAVIS, KENDRIC
00:29	GOOD! 3PTR by SHERFIELD, GRANT	37-24	H 13	

**Wichita St. 24, SMU 37**

**Official Scoring/Possession Reference Chart**

**Wichita St. vs SMU**

**Period 2**

**March 01, 2020 at Moody Coliseum (David B. Miller Court) - Dallas, Texas**



**Period 2**

**Starters:**

**Wichita St.:** 0 DENNIS,DEXTER (G); 2 BURTON,JAMARIUS (G); 5 WADE,TREY (F); 10 STEVENSON,ERIK (G); 21 ECHENIQUE,JAIME (C);  
**SMU:** 0 JOLLY,TYSON (G); 1 HUNT,FERON (F); 3 DAVIS,KENDRIC (G); 5 BANDOUMEL,EMMANUEL (G); 15 MIKE,ISIAHA (F);

Time	VISITORS: Wichita St.	Score	Margin	HOME: SMU
18:57		38-24	H 14	GOOD! FT by DAVIS, KENDRIC
18:09		41-24	H 17	GOOD! 3PTR by MIKE, ISIAHA
17:38		43-24	H 19	GOOD! DUNK by HUNT, FERON
16:49	GOOD! LAYUP by BURTON, JAMARIUS	43-26	H 17	
16:02		45-26	H 19	GOOD! JUMPER by MIKE, ISIAHA
15:26		47-26	H 21	GOOD! JUMPER by MIKE, ISIAHA [PNT]
14:48		50-26	H 24	GOOD! 3PTR by MIKE, ISIAHA [FB]
13:14	GOOD! 3PTR by ETIENNE, TYSON	50-29	H 21	
12:37	GOOD! 3PTR by SHERFIELD, GRANT	50-32	H 18	
11:45	GOOD! 3PTR by DENNIS, DEXTER	50-35	H 15	
10:45	GOOD! 3PTR by DENNIS, DEXTER	50-38	H 12	
10:03	GOOD! LAYUP by ECHENIQUE, JAIME	50-40	H 10	
08:59	GOOD! 3PTR by SHERFIELD, GRANT	50-43	H 7	
08:30		52-43	H 9	GOOD! DUNK by JOLLY, TYSON
08:08	GOOD! 3PTR by DENNIS, DEXTER	52-46	H 6	
07:22	GOOD! DUNK by ECHENIQUE, JAIME	52-48	H 4	
06:49		54-48	H 6	GOOD! JUMPER by MIKE, ISIAHA
06:28	GOOD! 3PTR by DENNIS, DEXTER	54-51	H 3	
06:00		56-51	H 5	GOOD! LAYUP by MIKE, ISIAHA
05:30	GOOD! LAYUP by WADE, TREY	56-53	H 3	
04:11		58-53	H 5	GOOD! LAYUP by MIKE, ISIAHA [PNT]
03:46	GOOD! 3PTR by WADE, TREY	58-56	H 2	
03:07	GOOD! FT by BURTON, JAMARIUS	58-57	H 1	
03:07	GOOD! FT by BURTON, JAMARIUS	58-58	T	
02:21		60-58	H 2	GOOD! LAYUP by HUNT, FERON
01:14	GOOD! LAYUP by BURTON, JAMARIUS	60-60	T	
01:14	GOOD! FT by BURTON, JAMARIUS	60-61	V 1	
00:48		62-61	H 1	GOOD! JUMPER by BANDOUMEL, EMMANUEL [PNT]
00:39	GOOD! 3PTR by DENNIS, DEXTER	62-64	V 2	
00:04	GOOD! LAYUP by DENNIS, DEXTER [FB]	62-66	V 4	

**Wichita St. 66, SMU 62**

Official Substitutions Log

Wichita St. vs SMU

Period 1

March 01, 2020 at Moody Coliseum (David B. Miller Court) - Dallas, Texas



VISITORS: Wichita St.	Time	Score	HOME: SMU
0 DENNIS,DEXTER			0 JOLLY,TYSON
2 BURTON,JAMARIUS			1 HUNT,FERON
5 WADE,TREY			3 DAVIS,KENDRIC
10 STEVENSON,ERIK			5 BANDOUMEL,EMMANUEL
21 ECHENIQUE,JAIME			15 MIKE,ISIAHA
SUB OUT: 2 BURTON,JAMARIUS	16:12	2-9	
SUB OUT: 10 STEVENSON,ERIK	16:12		
SUB IN: 1 ETIENNE,TYSON	16:12		
SUB IN: 52 SHERFIELD,GRANT	16:12		
	13:14	7-12	SUB OUT: BANDOUMEL,EMMANUEL
	13:14		SUB OUT: MIKE,ISIAHA
	13:14		SUB IN: WHITE,CJ
	13:14		SUB IN: CHARGOIS,ETHAN
SUB OUT: 21 ECHENIQUE,JAIME	13:14		
SUB IN: 44 POOR BEAR-CHANDLER,ISIAHA	13:14		
	11:06	12-12	SUB OUT: HUNT,FERON
	11:06		SUB IN: MIKE,ISIAHA
SUB OUT: 5 WADE,TREY	11:06		
SUB IN: 2 BURTON,JAMARIUS	11:06		
	07:30	17-23	SUB OUT: DAVIS,KENDRIC
	07:30		SUB IN: BANDOUMEL,EMMANUEL
SUB OUT: 1 ETIENNE,TYSON	07:30		
SUB OUT: 44 POOR BEAR-CHANDLER,ISIAHA	07:30		
SUB OUT: 52 SHERFIELD,GRANT	07:30		
SUB IN: 5 WADE,TREY	07:30		
SUB IN: 10 STEVENSON,ERIK	07:30		
SUB IN: 21 ECHENIQUE,JAIME	07:30		
	06:52	17-23	SUB OUT: JOLLY,TYSON
	06:52		SUB OUT: MIKE,ISIAHA
	06:52		SUB IN: HUNT,FERON
	06:52		SUB IN: SMITH IV,CHARLES
	05:34	18-26	SUB OUT: WHITE,CJ
	05:34		SUB IN: DAVIS,KENDRIC
SUB OUT: 0 DENNIS,DEXTER	05:34		
SUB IN: 52 SHERFIELD,GRANT	05:34		
	04:00	18-28	SUB OUT: CHARGOIS,ETHAN
	04:00		SUB IN: MIKE,ISIAHA
SUB OUT: 2 BURTON,JAMARIUS	04:00		
SUB IN: 0 DENNIS,DEXTER	04:00		
	02:35	18-32	SUB OUT: SMITH IV,CHARLES
	02:35		SUB IN: JOLLY,TYSON
SUB OUT: 10 STEVENSON,ERIK	02:35		
SUB IN: 1 ETIENNE,TYSON	02:35		
SUB OUT: 5 WADE,TREY	01:03	21-34	
SUB IN: 2 BURTON,JAMARIUS	01:03		

Wichita St. 24, SMU 37

**Official Substitutions Log  
Wichita St. vs SMU  
Period 2**

**March 01, 2020 at Moody Coliseum (David B. Miller Court) - Dallas, Texas**



VISITORS: Wichita St.	Time	Score	HOME: SMU
0 DENNIS,DEXTER			0 JOLLY,TYSON
2 BURTON,JAMARIUS			1 HUNT,FERON
5 WADE,TREY			3 DAVIS,KENDRIC
10 STEVENSON,ERIK			5 BANDOUMEL,EMMANUEL
21 ECHENIQUE,JAIME			15 MIKE,ISIAHA
	16:30	26-43	SUB OUT: HUNT,FERON
	16:30		SUB IN: CHARGOIS,ETHAN
SUB OUT: 2 BURTON,JAMARIUS	16:30		
SUB OUT: 21 ECHENIQUE,JAIME	16:30		
SUB IN: 5 WADE,TREY	16:30		
SUB IN: 44 POOR BEAR-CHANDLER,ISIAHA	16:30		
SUB OUT: 5 WADE,TREY	14:08	26-50	
SUB IN: 3 GORDON,DEANTONI	14:08		
	12:02	32-50	SUB OUT: BANDOUMEL,EMMANUEL
	12:02		SUB OUT: MIKE,ISIAHA
	12:02		SUB IN: HUNT,FERON
	12:02		SUB IN: WHITE,CJ
SUB OUT: 44 POOR BEAR-CHANDLER,ISIAHA	12:02		
SUB OUT: 52 SHERFIELD,GRANT	12:02		
SUB IN: 2 BURTON,JAMARIUS	12:02		
SUB IN: 21 ECHENIQUE,JAIME	12:02		
SUB OUT: 3 GORDON,DEANTONI	11:07	35-50	
SUB IN: 5 WADE,TREY	11:07		
	09:50	40-50	SUB OUT: HUNT,FERON
	09:50		SUB IN: MIKE,ISIAHA
SUB OUT: 1 ETIENNE,TYSON	09:09	40-50	
SUB IN: 52 SHERFIELD,GRANT	09:09		
	07:31	46-52	SUB OUT: JOLLY,TYSON
	07:31		SUB IN: BANDOUMEL,EMMANUEL
	05:08	53-56	SUB OUT: WHITE,CJ
	05:08		SUB IN: JOLLY,TYSON
SUB OUT: 52 SHERFIELD,GRANT	05:08		
SUB IN: 1 ETIENNE,TYSON	05:08		
	03:24	56-58	SUB OUT: CHARGOIS,ETHAN
	03:24		SUB IN: HUNT,FERON
SUB OUT: 1 ETIENNE,TYSON	03:24		
SUB IN: 52 SHERFIELD,GRANT	03:24		
SUB OUT: 5 WADE,TREY	00:07	64-62	
SUB IN: 1 ETIENNE,TYSON	00:07		

**Wichita St. 66, SMU 62**

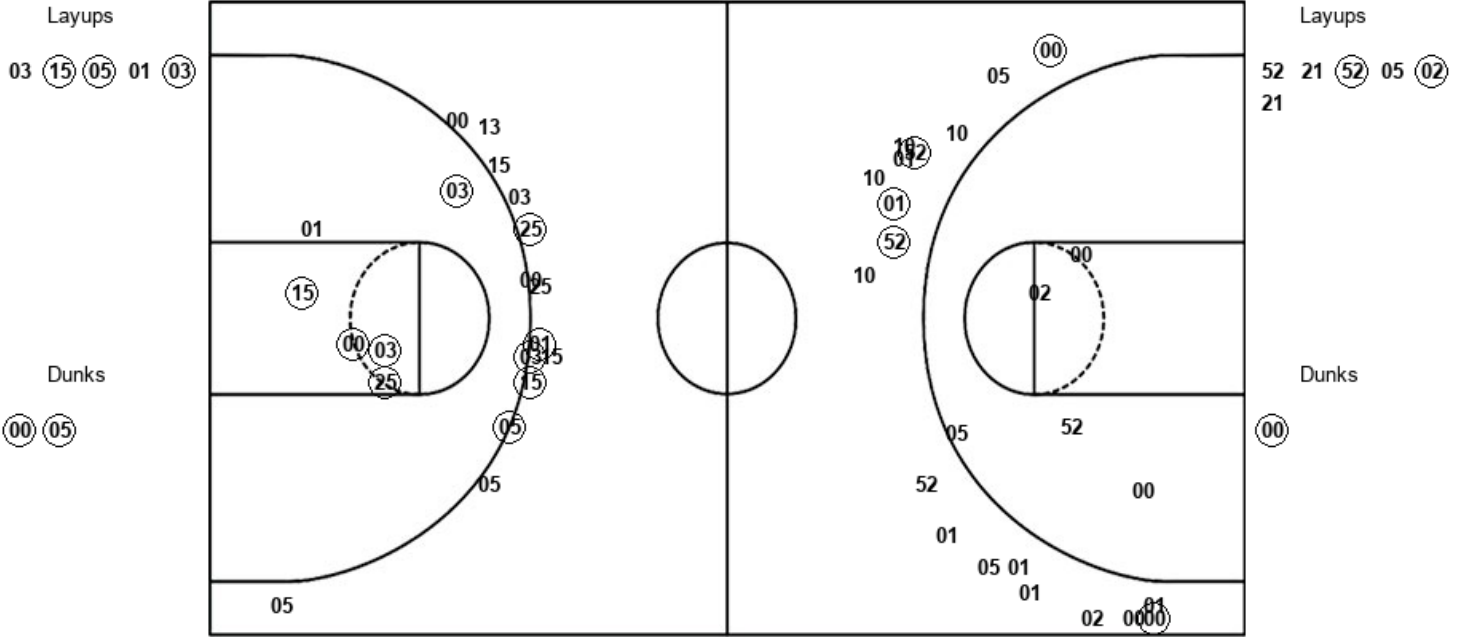
Official Shot Chart  
 Wichita St. vs SMU  
 PERIOD 1 Shots

March 01, 2020 at Moody Coliseum (David B. Miller Court) - Dallas, Texas



SMU

Wichita St.



SMU : Period 1	Made	Att	Pct
Layups	3	5	60.0
Dunks	2	2	100.0
2PT Field Goals	10	13	76.9
3PT Field Goals	5	14	35.7
<b>Total Field Goals</b>	<b>15</b>	<b>27</b>	<b>55.6</b>

WSU : Period 1	Made	Att	Pct
Layups	2	6	33.3
Dunks	1	1	100.0
2PT Field Goals	3	12	25.0
3PT Field Goals	5	19	26.3
<b>Total Field Goals</b>	<b>8</b>	<b>31</b>	<b>25.8</b>

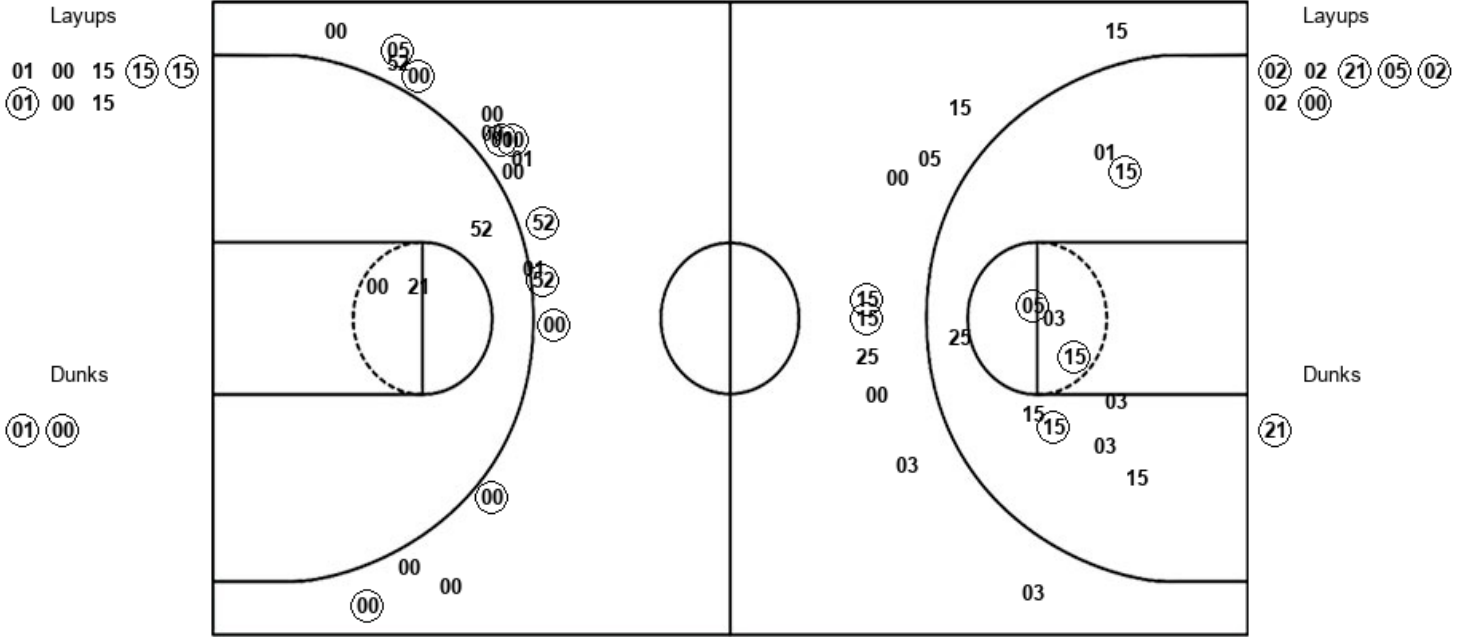
Official Shot Chart  
**Wichita St. vs SMU**  
 PERIOD 2 Shots

March 01, 2020 at Moody Coliseum (David B. Miller Court) - Dallas, Texas



**SMU**

**Wichita St.**



SMU : Period 2	Made	Att	Pct
Layups	3	8	37.5
Dunks	2	2	100.0
2PT Field Goals	9	21	42.9
3PT Field Goals	2	10	20.0
<b>Total Field Goals</b>	<b>11</b>	<b>31</b>	<b>35.5</b>

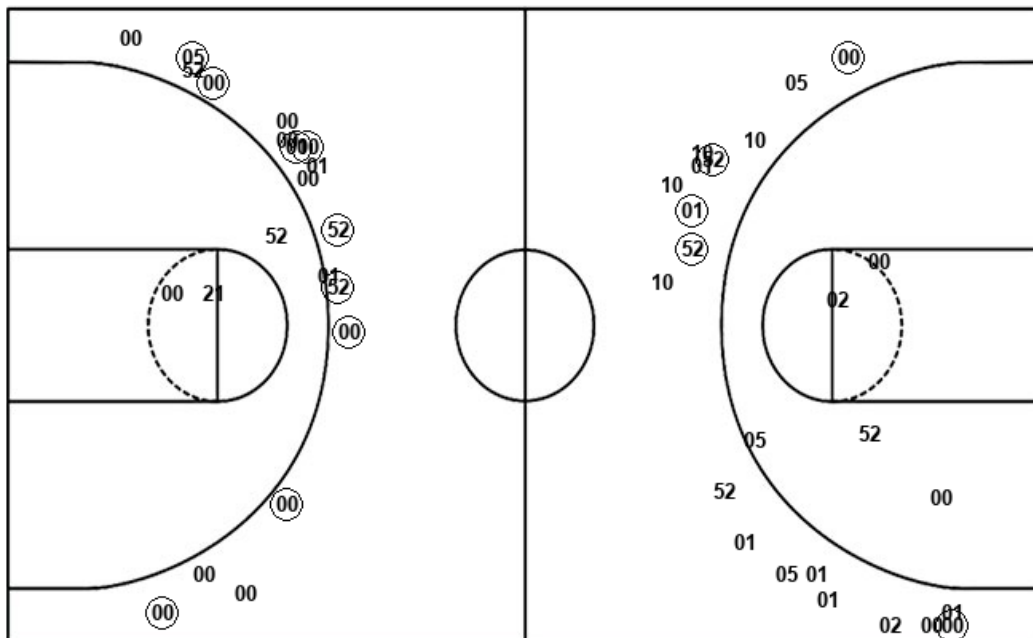
WSU : Period 2	Made	Att	Pct
Layups	5	7	71.4
Dunks	1	1	100.0
2PT Field Goals	6	12	50.0
3PT Field Goals	9	17	52.9
<b>Total Field Goals</b>	<b>15</b>	<b>29</b>	<b>51.7</b>



**Official Shot Chart**  
**Wichita St. vs SMU**  
**Wichita St. Team Shots**  
 March 01, 2020 at Moody Coliseum (David B. Miller Court) - Dallas, Texas



Layups



Layups

52 21 (52) 05 (02)  
 21 (02) 02 (21) (05)  
 (02) 02 (00)

Dunks

Dunks

(00) (21)

WSU : Period 1	Made	Att	Pct
Layups	2	6	33.3
Dunks	1	1	100.0
2PT Field Goals	3	12	25.0
3PT Field Goals	5	19	26.3
<b>Total Field Goals</b>	<b>8</b>	<b>31</b>	<b>25.8</b>

WSU : Period 2	Made	Att	Pct
Layups	5	7	71.4
Dunks	1	1	100.0
2PT Field Goals	6	12	50.0
3PT Field Goals	9	17	52.9
<b>Total Field Goals</b>	<b>15</b>	<b>29</b>	<b>51.7</b>

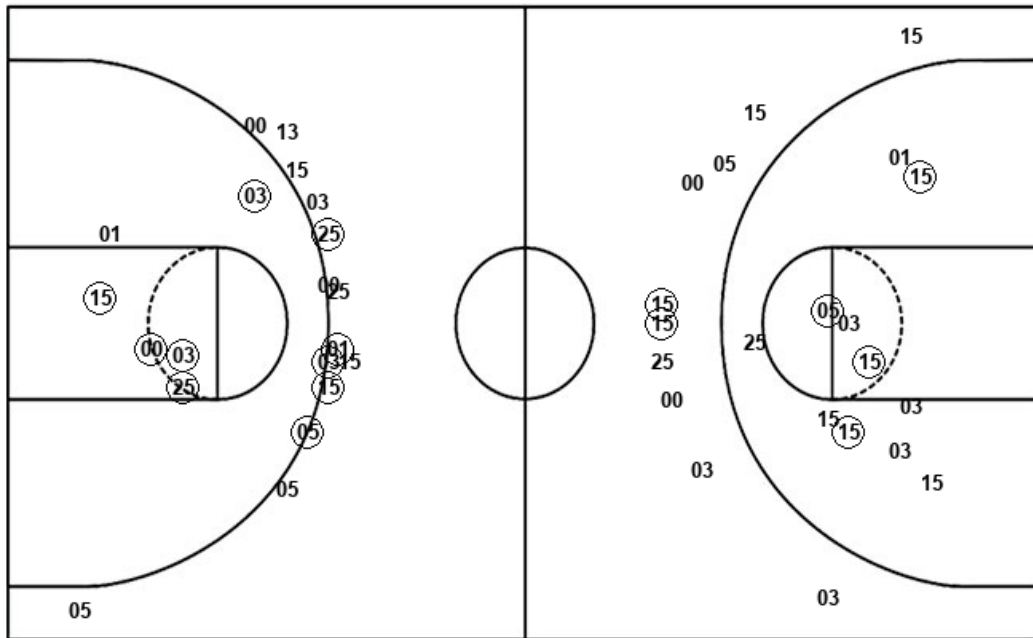
Official Shot Chart  
 Wichita St. vs SMU  
 SMU Team Shots

March 01, 2020 at Moody Coliseum (David B. Miller Court) - Dallas, Texas



Layups

Dunks



Layups

Dunks

03 (15) (05) 01 (03)  
 01 00 15 (15) (15)  
 (01) 00 15

(00) (05) (01) (00)

SMU : Period 1	Made	Att	Pct
Layups	3	5	60.0
Dunks	2	2	100.0
2PT Field Goals	10	13	76.9
3PT Field Goals	5	14	35.7
<b>Total Field Goals</b>	<b>15</b>	<b>27</b>	<b>55.6</b>

SMU : Period 2	Made	Att	Pct
Layups	3	8	37.5
Dunks	2	2	100.0
2PT Field Goals	9	21	42.9
3PT Field Goals	2	10	20.0
<b>Total Field Goals</b>	<b>11</b>	<b>31</b>	<b>35.5</b>