

FINAL SCORE

Tulane

67



SMU

82



February 01, 2020 • Moody Coliseum (David B. Miller Court) - Dallas, Texas

FINAL STATISTICS

Official Box Score
Tulane vs SMU
Game Totals -- Final Statistics
February 01, 2020 at Moody Coliseum (David B. Miller Court) - Dallas, Texas



Tulane 67

No.	Player	S	Pts	FG	3FG	FT	OR	DR	TR	PF	A	TO	Blk	Stl	Min	+/-
01	LAWSON, K.J.	F	15	6-12	3-6	0-0	0	7	7	2	1	2	0	1	38	-19
04	DAYS, NOBAL	F	0	0-1	0-0	0-0	3	1	4	1	0	0	0	0	24	-8
05	HIGHTOWER, TESHAUN	G	12	5-13	1-5	1-1	0	2	2	1	4	5	0	0	33	-9
14	THOMAS, NIC	G	20	7-16	6-11	0-0	0	2	2	2	1	0	0	1	34	-17
25	THOMPSON, CHRISTION	G	11	3-8	1-4	4-5	0	2	2	3	3	1	0	1	33	-21
00	RUSSELL JR., CHARLIE	G	2	1-1	0-0	0-0	0	0	0	0	0	0	0	0	2	2
02	WALKER, JORDAN	G	5	2-4	1-1	0-0	0	3	3	2	3	1	0	1	16	-6
12	ZHANG, KEVIN	F	0	0-2	0-1	0-0	1	1	2	0	0	0	1	1	16	-13
15	QUINN, GRANT	G	0	0-1	0-0	0-0	0	0	0	0	0	0	0	0	1	4
23	MCGEE, R.J.	G	0	0-0	0-0	0-0	0	2	2	0	0	0	0	0	1	4
32	GALIC, CAMERON	G	2	1-1	0-0	0-0	1	0	1	0	1	0	1	0	1	4
34	ZACCARDO, ALEC	G	0	0-0	0-0	0-0	0	0	0	0	0	0	0	0	1	4
TEAM							1	0	1	2		1				
TOTALS			67	25-59	12-28	5-6	6	20	26	13	13	10	2	5	200	

Shooting By Period

Period	FG	FG%	3FG	3FG%	FT	FT%
1st Half	12-26	46%	6-11	55%	1-2	50%
2nd Half	13-33	39%	6-17	35%	4-4	100%
Game	25-59	42.4%	12-28	42.9%	5-6	83.3%

Deadball Rebounds: 1,0

Last FG: 2nd-00:06

Biggest Run: 7-0

Largest lead: By 7 at 1st-16:41

Technical Fouls: #0 TEAM (Coach Technical) @ 2nd - 14:15;

#0 TEAM (Coach Technical) @ 2nd - 14:15;

SMU 82

No.	Player	S	Pts	FG	3FG	FT	OR	DR	TR	PF	A	TO	Blk	Stl	Min	+/-
00	JOLLY, TYSON	G	20	7-14	4-9	2-2	1	3	4	1	3	2	1	0	35	18
03	DAVIS, KENDRIC	G	18	7-13	0-1	4-5	0	9	9	1	13	1	0	1	35	25
05	BANDOU MEL, EMMANUEL	G	2	1-3	0-2	0-0	0	1	1	4	0	0	0	0	16	2
15	MIKE, ISIAHA	F	14	5-8	2-5	2-4	0	2	2	0	0	2	0	1	23	7
22	JASEY, ISIAH	F	2	1-3	0-0	0-0	4	1	5	2	0	1	0	0	13	2
01	HUNT, FERON	F	11	5-7	1-2	0-0	1	6	7	1	2	2	0	1	29	12
04	SMITH IV, CHARLES	G	0	0-0	0-0	0-0	1	0	1	0	0	0	0	0	4	-8
13	WHITE, CJ	G	15	5-8	5-7	0-0	0	4	4	0	2	0	0	0	29	12
20	YOUNGKIN, GRANT	G	0	0-1	0-0	0-0	0	0	0	0	0	0	0	0	1	-4
23	TABOR JR., ALEX	G	0	0-1	0-1	0-0	0	0	0	0	0	0	0	0	1	-4
25	CHARGOIS, ETHAN	F	0	0-3	0-1	0-0	2	0	2	3	1	3	0	0	13	13
TEAM							2	2	4	0		0				
TOTALS			82	31-61	12-28	8-11	11	28	39	12	21	11	1	3	200	

Shooting By Period

Period	FG	FG%	3FG	3FG%	FT	FT%
1st Half	11-27	41%	5-14	36%	1-3	33%
2nd Half	20-34	59%	7-14	50%	7-8	88%
Game	31-61	50.8%	12-28	42.9%	8-11	72.7%

Deadball Rebounds: 2,0

Last FG: 2nd-01:32

Biggest Run: 10-0

Largest lead: By 21 at 2nd-07:45

Technical Fouls: None.

Game Notes:

Officials: Kelly Self, Rodrick Dixon, Chris Ford
 Attendance: 4477

Start Time: 08:05 PM ET
 End Time: 09:56 PM ET
 Game Duration: 1:50
 Conference Game;

Score	1st	2nd	TOT
TLN	31	36	67
SMU	28	54	82

TLN led for 8:25. SMU led for 26:11.
 Game was tied for 5:24.
 Times tied: 4 Lead Changes: 9

Points from	TLN	SMU
In the Paint	14	34
Off Turns	13	14
2nd Chance	5	13
Fast Break	11	17
Bench	9	26

Official Box Score
Tulane vs SMU
First Half Statistics Only
February 01, 2020 at Moody Coliseum (David B. Miller Court) - Dallas, Texas



Tulane 31

No.	Player	S	Pts	FG	3FG	FT	OR	DR	TR	PF	A	TO	Blk	Stl	Min	+/-
01	LAWSON, K.J.	F	12	5-7	2-2	0-0	0	6	6	1	0	0	0	0	19	3
04	DAYS, NOBAL	F	0	0-0	0-0	0-0	1	0	1	0	0	0	0	0	16	5
05	HIGHTOWER, TSHAUN	G	4	2-7	0-2	0-0	0	1	1	0	4	2	0	0	18	4
14	THOMAS, NIC	G	11	4-7	3-6	0-0	0	2	2	1	0	0	0	1	18	3
25	THOMPSON, CHRISTION	G	1	0-2	0-0	1-2	0	1	1	2	1	1	0	0	14	1
00	RUSSELL JR., CHARLIE	G	0	0-0	0-0	0-0	0	0	0	0	0	0	0	0	1	-2
02	WALKER, JORDAN	G	3	1-2	1-1	0-0	0	1	1	2	2	0	0	0	9	5
12	ZHANG, KEVIN	F	0	0-1	0-0	0-0	0	0	0	0	0	0	0	1	5	-4
15	QUINN, GRANT	G	0	0-0	0-0	0-0	0	0	0	0	0	0	0	0	0	0
23	MCGEE, R.J.	G	0	0-0	0-0	0-0	0	0	0	0	0	0	0	0	0	0
32	GALIC, CAMERON	G	0	0-0	0-0	0-0	0	0	0	0	0	0	0	0	0	0
34	ZACCARDO, ALEC	G	0	0-0	0-0	0-0	0	0	0	0	0	0	0	0	0	0
	TEAM						0	0	0	0		1				
TOTALS			31	12-26	6-11	1-2	1	11	12	6	7	4	0	2	100	

Shooting By Period

Period	FG	FG%	3FG	3FG%	FT	FT%
1st Half	12-26	46%	6-11	55%	1-2	50%
Game	25-59	42.4%	12-28	42.9%	5-6	83.3%

Deadball Rebounds: 1,0
 Last FG Half: TLN 2nd-00:06

SMU 28

No.	Player	S	Pts	FG	3FG	FT	OR	DR	TR	PF	A	TO	Blk	Stl	Min	+/-
00	JOLLY, TYSON	G	6	2-5	2-4	0-0	0	1	1	0	2	1	1	0	17	-4
03	DAVIS, KENDRIC	G	6	3-7	0-1	0-0	0	4	4	0	4	0	0	0	18	-1
05	BANDOUMEL, EMMANUEL	G	2	1-3	0-2	0-0	0	0	0	2	0	0	0	0	8	-5
15	MIKE, ISIAHA	F	3	1-2	0-1	1-3	0	2	2	0	0	1	0	0	9	-14
22	JASEY, ISIAH	F	0	0-1	0-0	0-0	1	1	2	2	0	1	0	0	7	-4
01	HUNT, FERON	F	2	1-2	0-1	0-0	0	3	3	0	1	1	0	1	15	5
04	SMITH IV, CHARLES	G	0	0-0	0-0	0-0	1	0	1	0	0	0	0	0	3	-4
13	WHITE, CJ	G	9	3-4	3-4	0-0	0	1	1	0	1	0	0	0	14	5
20	YOUNGKIN, GRANT	G	0	0-0	0-0	0-0	0	0	0	0	0	0	0	0	0	0
23	TABOR JR., ALEX	G	0	0-0	0-0	0-0	0	0	0	0	0	0	0	0	0	0
25	CHARGOIS, ETHAN	F	0	0-3	0-1	0-0	2	0	2	2	0	3	0	0	9	7
	TEAM						1	1	2	0		0				
TOTALS			28	11-27	5-14	1-3	5	13	18	6	8	7	1	1	100	

Shooting By Period

Period	FG	FG%	3FG	3FG%	FT	FT%
1st Half	11-27	41%	5-14	36%	1-3	33%
Game	31-61	50.8%	12-28	42.9%	8-11	72.7%

Deadball Rebounds: 2,0
 Last FG Half: SMU 2nd-01:32

Game Notes:

Officials: Kelly Self,Rodrick Dixon,Chris Ford
 Attendance: 4477

Start Time: 08:05 PM ET
 End Time: 09:56 PM ET
 Game Duration: 1:50
 Conference Game;

Score	1st	2nd	TOT
TLN	31	36	67
SMU	28	54	82

Points from (This Period)	TLN	SMU
In the Paint	4	12
Off Turns	9	5
2nd Chance	0	3
Fast Break	3	3
Bench	3	11

**Official Play-By-Play
Tulane vs SMU
First Half**

February 01, 2020 at Moody Coliseum (David B. Miller Court) - Dallas, Texas



Period 1

Starters:

Tulane: 1 LAWSON, K.J. (F); 4 DAYS, NOBAL (F); 5 HIGHTOWER, TESHAUN (G); 14 THOMAS, NIC (G); 25 THOMPSON, CHRISTION (G);

SMU: 0 JOLLY, TYSON (G); 3 DAVIS, KENDRIC (G); 5 BANDOUMEL, EMMANUEL (G); 15 MIKE, ISIAHA (F); 22 JASEY, ISIAH (F);

Time	VISITORS: Tulane	Score	Margin	HOME: SMU
19:31				TURNOVER (LOSTBALL) by MIKE, ISIAHA
19:31	STEAL by THOMAS, NIC			
19:15	MISSED JUMPER by HIGHTOWER, TESHAUN			
19:12				REBOUND (DEF) by DAVIS, KENDRIC
19:09				MISSED 3PTR by JOLLY, TYSON
19:03	REBOUND (DEF) by THOMPSON, CHRISTION			
18:59	GOOD! 3PTR by THOMAS, NIC	0-3	V 3	
18:59	ASSIST by HIGHTOWER, TESHAUN			
18:34				MISSED 3PTR by MIKE, ISIAHA
18:32	REBOUND (DEF) by LAWSON, K.J.			
18:22	MISSED JUMPER by LAWSON, K.J.			
18:19				REBOUND (DEF) by JASEY, ISIAH
18:05				MISSED 3PTR by BANDOUMEL, EMMANUEL
17:58	REBOUND (DEF) by HIGHTOWER, TESHAUN			
17:53	GOOD! 3PTR by THOMAS, NIC	0-6	V 6	
17:53	ASSIST by HIGHTOWER, TESHAUN			
17:37		2-6	V 4	GOOD! DUNK by BANDOUMEL, EMMANUEL
17:37				ASSIST by JOLLY, TYSON
17:17	MISSED JUMPER by THOMPSON, CHRISTION			
17:17	REBOUND (OFF) by DAYS, NOBAL			
17:17				BLOCK by JOLLY, TYSON
17:16				FOUL (PERSONAL) by BANDOUMEL, EMMANUEL
17:16				SUB OUT: BANDOUMEL, EMMANUEL
17:16				SUB IN: WHITE, CJ
17:12	MISSED 3PTR by HIGHTOWER, TESHAUN			
17:10				REBOUND (DEF) by MIKE, ISIAHA
16:50				MISSED JUMPER by DAVIS, KENDRIC
16:46	REBOUND (DEF) by THOMAS, NIC			
16:41	GOOD! 3PTR by THOMAS, NIC [FB]	2-9	V 7	
16:20	FOUL (PERSONAL) by THOMAS, NIC			
16:20				SUB OUT: MIKE, ISIAHA
16:20				SUB IN: HUNT, FERON
16:04				TURNOVER (OTHER) by JOLLY, TYSON
15:56	MISSED 3PTR by THOMAS, NIC			
15:53				REBOUND (DEF) by DAVIS, KENDRIC
15:38		4-9	V 5	GOOD! LAYUP by DAVIS, KENDRIC
15:15	TURNOVER (TRAVEL) by HIGHTOWER, TESHAUN			
15:15				SUB OUT: JASEY, ISIAH
15:15				SUB IN: CHARGOIS, ETHAN
14:52		7-9	V 2	GOOD! 3PTR by JOLLY, TYSON
14:52				ASSIST by DAVIS, KENDRIC
14:22	MISSED JUMPER by LAWSON, K.J.			
14:17				REBOUND (DEF) by DAVIS, KENDRIC
14:14				MISSED 3PTR by CHARGOIS, ETHAN
14:10	REBOUND (DEF) by LAWSON, K.J.			
14:05	MISSED 3PTR by HIGHTOWER, TESHAUN			
14:02				REBOUND (DEF) by DAVIS, KENDRIC
13:57		10-9	H 1	GOOD! 3PTR by JOLLY, TYSON [FB]
13:57				ASSIST by DAVIS, KENDRIC
13:41	SUB OUT: HIGHTOWER, TESHAUN			
13:41	SUB IN: WALKER, JORDAN			
13:41	SUB OUT: DAYS, NOBAL			
13:41	SUB IN: ZHANG, KEVIN			
13:25	GOOD! JUMPER by THOMAS, NIC	10-11	V 1	
13:25	ASSIST by WALKER, JORDAN			
13:17				MISSED JUMPER by DAVIS, KENDRIC
13:15				REBOUND (OFF) by CHARGOIS, ETHAN
13:06		13-11	H 2	GOOD! 3PTR by WHITE, CJ
13:06				ASSIST by DAVIS, KENDRIC
12:39	MISSED JUMPER by THOMPSON, CHRISTION			
12:37				REBOUND (DEF) by WHITE, CJ
12:19				MISSED 3PTR by JOLLY, TYSON
12:15	REBOUND (DEF) by WALKER, JORDAN			
12:00	MISSED JUMPER by ZHANG, KEVIN			
11:58				REBOUND (DEF) by TEAM
11:57				SUB OUT: DAVIS, KENDRIC
11:57				SUB IN: BANDOUMEL, EMMANUEL
11:57	SUB OUT: LAWSON, K.J.			

Time	VISITORS: Tulane	Score	Margin	HOME: SMU
11:57	SUB OUT: THOMPSON, CHRISTION			
11:57	SUB IN: DAYS, NOBAL			
11:57	SUB IN: HIGHTOWER, TESHAUN			
11:42				TURNOVER (BADPASS) by CHARGOIS, ETHAN
11:42	STEAL by ZHANG, KEVIN			
11:18	MISSED JUMPER by WALKER, JORDAN			
11:15				REBOUND (DEF) by JOLLY, TYSON
10:56				MISSED 3PTR by BANDOUMEL, EMMANUEL
10:52				REBOUND (OFF) by CHARGOIS, ETHAN
10:52				MISSED LAYUP by CHARGOIS, ETHAN
10:49				REBOUND (OFF) by TEAM
10:48	SUB OUT: WALKER, JORDAN			
10:48	SUB OUT: ZHANG, KEVIN			
10:48	SUB IN: LAWSON, K.J.			
10:48	SUB IN: THOMPSON, CHRISTION			
10:39				MISSED LAYUP by CHARGOIS, ETHAN
10:36	REBOUND (DEF) by THOMAS, NIC			
10:22	GOOD! LAYUP by LAWSON, K.J.	13-13	T	
10:22	ASSIST by HIGHTOWER, TESHAUN			
09:54				MISSED 3PTR by HUNT, FERON
09:52	REBOUND (DEF) by LAWSON, K.J.			
09:45	MISSED 3PTR by THOMAS, NIC			
09:41				REBOUND (DEF) by HUNT, FERON
09:35	FOUL (PERSONAL) by THOMPSON, CHRISTION			
09:35				SUB OUT: JOLLY, TYSON
09:35				SUB OUT: CHARGOIS, ETHAN
09:35				SUB IN: DAVIS, KENDRIC
09:35				SUB IN: JASEY, ISIAH
09:35	SUB OUT: THOMAS, NIC			
09:35	SUB IN: WALKER, JORDAN			
09:18		15-13	H 2	GOOD! JUMPER by DAVIS, KENDRIC [PNT]
08:58	MISSED JUMPER by HIGHTOWER, TESHAUN			
08:55				REBOUND (DEF) by HUNT, FERON
08:35				FOUL (OFF) by JASEY, ISIAH
08:35				TURNOVER (OFFENSIVE) by JASEY, ISIAH
08:35				SUB OUT: HUNT, FERON
08:35				SUB OUT: WHITE, CJ
08:35				SUB IN: SMITH IV, CHARLES
08:35				SUB IN: MIKE, ISIAHA
08:24	GOOD! JUMPER by LAWSON, K.J.	15-15	T	
07:52				MISSED 3PTR by DAVIS, KENDRIC
07:50				REBOUND (OFF) by JASEY, ISIAH
07:48				MISSED JUMPER by JASEY, ISIAH
07:45	REBOUND (DEF) by LAWSON, K.J.			
07:31	MISSED LAYUP by HIGHTOWER, TESHAUN			
07:29				REBOUND (DEF) by MIKE, ISIAHA
07:20	FOUL (PERSONAL) by WALKER, JORDAN			
07:20				
07:20	SUB OUT: WALKER, JORDAN			
07:20	SUB IN: THOMAS, NIC			
07:20				MISSED FT by MIKE, ISIAHA
07:20				REBOUND (OFF) by TEAM
07:20				MISSED FT by MIKE, ISIAHA
07:20				REBOUND (OFF) by TEAM
07:20		16-15	H 1	GOOD! FT by MIKE, ISIAHA
06:56				FOUL (PERSONAL) by JASEY, ISIAH
06:56				SUB OUT: JASEY, ISIAH
06:56				SUB IN: CHARGOIS, ETHAN
06:45				FOUL (PERSONAL) by BANDOUMEL, EMMANUEL
06:45	MISSED FT by THOMPSON, CHRISTION			
06:45	REBOUND (OFF) by TEAM			
06:45				SUB OUT: BANDOUMEL, EMMANUEL
06:45				SUB OUT: MIKE, ISIAHA
06:45				SUB IN: JOLLY, TYSON
06:45				SUB IN: HUNT, FERON
06:45	GOOD! FT by THOMPSON, CHRISTION	16-16	T	
06:20				MISSED JUMPER by JOLLY, TYSON
06:15				REBOUND (OFF) by SMITH IV, CHARLES
06:00				FOUL (OFF) by CHARGOIS, ETHAN
06:00				TURNOVER (OFFENSIVE) by CHARGOIS, ETHAN
06:00	SUB OUT: DAYS, NOBAL			
06:00	SUB IN: ZHANG, KEVIN			
05:37	GOOD! JUMPER by HIGHTOWER, TESHAUN [PNT]	16-18	V 2	
05:37				SUB OUT: SMITH IV, CHARLES
05:37				SUB IN: WHITE, CJ
05:22		19-18	H 1	GOOD! 3PTR by WHITE, CJ
05:22				ASSIST by HUNT, FERON
05:04	FOUL (OFF) by THOMPSON, CHRISTION			
05:04	TURNOVER (OFFENSIVE) by THOMPSON, CHRISTION			
05:04	SUB OUT: THOMPSON, CHRISTION			

Time	VISITORS: Tulane	Score	Margin	HOME: SMU
05:04	SUB IN: RUSSELL JR., CHARLIE			
04:42		21-18	H 3	GOOD! DUNK by HUNT, FERON
04:42				ASSIST by WHITE, CJ
04:06	TURNOVER (SHOTCLOCK) by TEAM			
04:06	SUB OUT: ZHANG, KEVIN			
04:06	SUB IN: DAYS, NOBAL			
03:54				FOUL (OFF) by CHARGOIS, ETHAN
03:54				TURNOVER (OFFENSIVE) by CHARGOIS, ETHAN
03:54				
03:54				SUB OUT: CHARGOIS, ETHAN
03:54				SUB IN: MIKE, ISIAHA
03:54	SUB OUT: RUSSELL JR., CHARLIE			
03:54	SUB IN: WALKER, JORDAN			
03:27	GOOD! 3PTR by WALKER, JORDAN	21-21	T	
03:09				MISSED 3PTR by WHITE, CJ
03:05	REBOUND (DEF) by LAWSON, K.J.			
02:57	MISSED 3PTR by THOMAS, NIC			
02:53				REBOUND (DEF) by HUNT, FERON
02:49	FOUL (PERSONAL) by LAWSON, K.J.			
02:38	FOUL (PERSONAL) by WALKER, JORDAN			
02:20		23-21	H 2	
02:00	GOOD! 3PTR by LAWSON, K.J.	23-24	V 1	GOOD! JUMPER by DAVIS, KENDRIC [PNT]
02:00	ASSIST by HIGHTOWER, TESHAWN			
01:44		25-24	H 1	GOOD! JUMPER by MIKE, ISIAHA [PNT]
01:44				ASSIST by DAVIS, KENDRIC
01:32	GOOD! JUMPER by HIGHTOWER, TESHAWN	25-26	V 1	
01:21				MISSED JUMPER by DAVIS, KENDRIC
01:19	REBOUND (DEF) by LAWSON, K.J.			
01:07	GOOD! 3PTR by LAWSON, K.J.	25-29	V 4	
01:07	ASSIST by WALKER, JORDAN			
00:48		28-29	V 1	GOOD! 3PTR by WHITE, CJ
00:48				ASSIST by JOLLY, TYSON
00:44	TIMEOUT 30SEC			
00:17	TURNOVER (BADPASS) by HIGHTOWER, TESHAWN			
00:17				STEAL by HUNT, FERON
00:15				TURNOVER (DRIBBLING) by HUNT, FERON
00:15	SUB OUT: DAYS, NOBAL			
00:15	SUB IN: THOMPSON, CHRISTION			
00:00	GOOD! JUMPER by LAWSON, K.J.	28-31	V 3	
00:00	ASSIST by THOMPSON, CHRISTION			

Tulane 31, SMU 28

Points from (This Period)	TLN	SMU
In the Paint	4	12
Off Turns	9	5
2nd Chance	0	3
Fast Break	3	3
Bench	3	11

Official Box Score
Tulane vs SMU
Second Half Statistics Only
February 01, 2020 at Moody Coliseum (David B. Miller Court) - Dallas, Texas



Tulane 36

No.	Player	S	Pts	FG	3FG	FT	OR	DR	TR	PF	A	TO	Blk	Stl	Min	+/-
01	LAWSON, K.J.	F	3	1-5	1-4	0-0	0	1	1	1	1	2	0	1	19	-22
04	DAYS, NOBAL	F	0	0-1	0-0	0-0	2	1	3	1	0	0	0	0	8	-13
05	HIGHTOWER, TESHAWN	G	8	3-6	1-3	1-1	0	1	1	1	0	3	0	0	14	-13
14	THOMAS, NIC	G	9	3-9	3-5	0-0	0	0	0	1	1	0	0	0	16	-20
25	THOMPSON, CHRISTION	G	10	3-6	1-4	3-3	0	1	1	1	2	0	0	1	19	-22
00	RUSSELL JR., CHARLIE	G	2	1-1	0-0	0-0	0	0	0	0	0	0	0	0	1	4
02	WALKER, JORDAN	G	2	1-2	0-0	0-0	0	2	2	0	1	1	0	1	7	-11
12	ZHANG, KEVIN	F	0	0-1	0-1	0-0	1	1	2	0	0	0	1	0	11	-9
15	QUINN, GRANT	G	0	0-1	0-0	0-0	0	0	0	0	0	0	0	0	1	4
23	MCGEE, R.J.	G	0	0-0	0-0	0-0	0	2	2	0	0	0	0	0	1	4
32	GALIC, CAMERON	G	2	1-1	0-0	0-0	1	0	1	0	1	0	1	0	1	4
34	ZACCARDO, ALEC	G	0	0-0	0-0	0-0	0	0	0	0	0	0	0	0	1	4
TEAM							1	0	1	2						
TOTALS			36	13-33	6-17	4-4	5	9	14	7	6	6	2	3	100	

Shooting By Period

Period	FG	FG%	3FG	3FG%	FT	FT%
2nd Half	13-33	39%	6-17	35%	4-4	100%
Game	25-59	42.4%	12-28	42.9%	5-6	83.3%

Deadball Rebounds: 1,0
Last FG Half: TLN -

SMU 54

No.	Player	S	Pts	FG	3FG	FT	OR	DR	TR	PF	A	TO	Blk	Stl	Min	+/-
00	JOLLY, TYSON	G	14	5-9	2-5	2-2	1	2	3	1	1	1	0	0	18	22
03	DAVIS, KENDRIC	G	12	4-6	0-0	4-5	0	5	5	1	9	1	0	1	17	26
05	BANDOUMEL, EMMANUEL	G	0	0-0	0-0	0-0	0	1	1	2	0	0	0	0	8	7
15	MIKE, ISIAHA	F	11	4-6	2-4	1-1	0	0	0	0	0	1	0	1	14	21
22	JASEY, ISIAH	F	2	1-2	0-0	0-0	3	0	3	0	0	0	0	0	6	6
01	HUNT, FERON	F	9	4-5	1-1	0-0	1	3	4	1	1	1	0	0	15	7
04	SMITH IV, CHARLES	G	0	0-0	0-0	0-0	0	0	0	0	0	0	0	0	1	-4
13	WHITE, CJ	G	6	2-4	2-3	0-0	0	3	3	0	1	0	0	0	15	7
20	YOUNGKIN, GRANT	G	0	0-1	0-0	0-0	0	0	0	0	0	0	0	0	1	-4
23	TABOR JR., ALEX	G	0	0-1	0-1	0-0	0	0	0	0	0	0	0	0	1	-4
25	CHARGOIS, ETHAN	F	0	0-0	0-0	0-0	0	0	0	1	1	0	0	0	4	6
TEAM							1	1	2	0						
TOTALS			54	20-34	7-14	7-8	6	15	21	6	13	4	0	2	100	

Shooting By Period

Period	FG	FG%	3FG	3FG%	FT	FT%
2nd Half	20-34	59%	7-14	50%	7-8	88%
Game	31-61	50.8%	12-28	42.9%	8-11	72.7%

Deadball Rebounds: 2,0
Last FG Half: SMU -

Game Notes:

Officials: Kelly Self, Rodrick Dixon, Chris Ford
 Attendance: 4477

Start Time: 08:05 PM ET
 End Time: 09:56 PM ET
 Game Duration: 1:50
 Conference Game;

Score	1st	2nd	TOT
TLN	31	36	67
SMU	28	54	82

Points from (This Period)	TLN	SMU
In the Paint	10	22
Off Turns	4	9
2nd Chance	5	10
Fast Break	8	14
Bench	6	15

**Official Play-By-Play
Tulane vs SMU
Second Half**



February 01, 2020 at Moody Coliseum (David B. Miller Court) - Dallas, Texas

Period 2

Starters:

Tulane: 1 LAWSON, K.J. (F); 4 DAYS, NOBAL (F); 5 HIGHTOWER, TESHAUN (G); 14 THOMAS, NIC (G); 25 THOMPSON, CHRISTION (G);
SMU: 0 JOLLY, TYSON (G); 3 DAVIS, KENDRIC (G); 5 BANDOUMEL, EMMANUEL (G); 15 MIKE, ISIAHA (F); 22 JASEY, ISIAH (F);

Time	VISITORS: Tulane	Score	Margin	HOME: SMU
20:00				SUB OUT: HUNT, FERON
20:00				SUB OUT: WHITE, CJ
20:00				SUB IN: BANDOUMEL, EMMANUEL
20:00				SUB IN: JASEY, ISIAH
20:00	SUB OUT: WALKER, JORDAN			
20:00	SUB IN: DAYS, NOBAL			
19:46	MISSED 3PTR by HIGHTOWER, TESHAUN			
19:44				REBOUND (DEF) by DAVIS, KENDRIC
19:34		30-31	V 1	GOOD! JUMPER by JOLLY, TYSON [PNT]
19:34				ASSIST by DAVIS, KENDRIC
19:08	MISSED 3PTR by LAWSON, K.J.			
19:05				REBOUND (DEF) by JOLLY, TYSON
18:59		32-31	H 1	GOOD! JUMPER by DAVIS, KENDRIC
18:59	FOUL (PERSONAL) by THOMAS, NIC			
18:59		33-31	H 2	GOOD! FT by DAVIS, KENDRIC
18:43	MISSED JUMPER by THOMAS, NIC			
18:39				REBOUND (DEF) by DAVIS, KENDRIC
18:36		35-31	H 4	GOOD! DUNK by MIKE, ISIAHA [FB]
18:36				ASSIST by DAVIS, KENDRIC
18:33	TIMEOUT 30SEC			
18:33				
18:22	GOOD! 3PTR by LAWSON, K.J.	35-34	H 1	
18:22	ASSIST by THOMAS, NIC			
18:13				MISSED LAYUP by DAVIS, KENDRIC
18:11				REBOUND (OFF) by JASEY, ISIAH
18:10		37-34	H 3	GOOD! LAYUP by JASEY, ISIAH
17:45	TURNOVER (LOSTBALL) by LAWSON, K.J.			
17:45				STEAL by MIKE, ISIAHA
17:40		40-34	H 6	GOOD! 3PTR by JOLLY, TYSON [FB]
17:40				ASSIST by DAVIS, KENDRIC
17:14	MISSED JUMPER by THOMAS, NIC			
17:10	REBOUND (OFF) by DAYS, NOBAL			
17:06	GOOD! 3PTR by HIGHTOWER, TESHAUN	40-37	H 3	
17:06	ASSIST by THOMPSON, CHRISTION			
16:47		43-37	H 6	GOOD! 3PTR by MIKE, ISIAHA
16:47				ASSIST by DAVIS, KENDRIC
16:37	GOOD! 3PTR by THOMPSON, CHRISTION [FB]	43-40	H 3	
16:14				MISSED JUMPER by DAVIS, KENDRIC
16:11				REBOUND (OFF) by JASEY, ISIAH
16:11				MISSED LAYUP by JASEY, ISIAH
16:11				REBOUND (OFF) by JOLLY, TYSON
16:09	FOUL (PERSONAL) by DAYS, NOBAL			
16:09		44-40	H 4	GOOD! FT by JOLLY, TYSON
16:09	SUB OUT: DAYS, NOBAL			
16:09	SUB IN: ZHANG, KEVIN			
16:09		45-40	H 5	GOOD! FT by JOLLY, TYSON
15:57	MISSED 3PTR by ZHANG, KEVIN			
15:54				REBOUND (DEF) by BANDOUMEL, EMMANUEL
15:50		47-40	H 7	GOOD! LAYUP by MIKE, ISIAHA [FB]
15:50	FOUL (PERSONAL) by THOMPSON, CHRISTION			
15:50				
15:50				SUB OUT: JASEY, ISIAH
15:50				SUB IN: CHARGOIS, ETHAN
15:50		48-40	H 8	GOOD! FT by MIKE, ISIAHA [FB]
15:28	TURNOVER (LOSTBALL) by HIGHTOWER, TESHAUN			
15:28				STEAL by DAVIS, KENDRIC
15:04				MISSED 3PTR by JOLLY, TYSON
15:01	REBOUND (DEF) by THOMPSON, CHRISTION			
14:58	MISSED 3PTR by HIGHTOWER, TESHAUN			
14:53	REBOUND (OFF) by TEAM			
14:53				SUB OUT: BANDOUMEL, EMMANUEL
14:53				SUB OUT: MIKE, ISIAHA
14:53				SUB IN: HUNT, FERON
14:53				SUB IN: WHITE, CJ
14:53	SUB OUT: HIGHTOWER, TESHAUN			
14:53	SUB IN: WALKER, JORDAN			
14:50	MISSED JUMPER by THOMAS, NIC			
14:47				REBOUND (DEF) by JOLLY, TYSON
14:35		50-40	H 10	GOOD! LAYUP by DAVIS, KENDRIC
14:21				FOUL (PERSONAL) by CHARGOIS, ETHAN

Time	VISITORS: Tulane	Score	Margin	HOME: SMU
14:15	FOUL (OFF) by LAWSON, K.J.			
14:15	TURNOVER (OFFENSIVE) by LAWSON, K.J.			
14:15	FOUL (TECH) by TEAM			
14:15		51-40	H 11	GOOD! FT by DAVIS, KENDRIC [FB]
14:15				MISSED FT by DAVIS, KENDRIC
14:15				REBOUND (OFF) by TEAM
14:15	FOUL (TECH) by TEAM			
14:15		52-40	H 12	GOOD! FT by DAVIS, KENDRIC [FB]
14:15		53-40	H 13	GOOD! FT by DAVIS, KENDRIC [FB]
13:52				TURNOVER (BADPASS) by JOLLY, TYSON
13:52	STEAL by LAWSON, K.J.			
13:37	GOOD! JUMPER by WALKER, JORDAN	53-42	H 11	
13:22		55-42	H 13	GOOD! JUMPER by DAVIS, KENDRIC
12:58	GOOD! 3PTR by THOMAS, NIC	55-45	H 10	
12:34				MISSED JUMPER by JOLLY, TYSON
12:31	REBOUND (DEF) by WALKER, JORDAN			
12:27	MISSED JUMPER by THOMAS, NIC			
12:23	REBOUND (OFF) by ZHANG, KEVIN			
12:21	MISSED 3PTR by THOMAS, NIC			
12:18				REBOUND (DEF) by HUNT, FERON
11:52		58-45	H 13	GOOD! 3PTR by JOLLY, TYSON
11:52				ASSIST by CHARGOIS, ETHAN
11:35	TURNOVER (BADPASS) by WALKER, JORDAN			
11:35				
11:35				SUB OUT: CHARGOIS, ETHAN
11:35				SUB IN: MIKE, ISIAHA
11:35	SUB OUT: ZHANG, KEVIN			
11:35	SUB IN: DAYS, NOBAL			
11:16		60-45	H 15	GOOD! JUMPER by DAVIS, KENDRIC [PNT]
10:59	MISSED JUMPER by LAWSON, K.J.			
10:57				REBOUND (DEF) by WHITE, CJ
10:35		62-45	H 17	GOOD! DUNK by JOLLY, TYSON
10:35				ASSIST by DAVIS, KENDRIC
10:23				FOUL (PERSONAL) by HUNT, FERON
10:23	SUB OUT: THOMAS, NIC			
10:23	SUB IN: HIGHTOWER, TESHAUN			
10:04	MISSED JUMPER by DAYS, NOBAL			
10:02				REBOUND (DEF) by HUNT, FERON
09:54		65-45	H 20	GOOD! 3PTR by WHITE, CJ
09:54				ASSIST by JOLLY, TYSON
09:29	MISSED 3PTR by THOMPSON, CHRISTION			
09:27				REBOUND (DEF) by WHITE, CJ
09:23				MISSED 3PTR by MIKE, ISIAHA
09:19	REBOUND (DEF) by WALKER, JORDAN			
09:06	MISSED 3PTR by LAWSON, K.J.			
09:04				REBOUND (DEF) by HUNT, FERON
09:01				TURNOVER (BADPASS) by DAVIS, KENDRIC
09:01	STEAL by WALKER, JORDAN			
08:55	MISSED JUMPER by WALKER, JORDAN			
08:52	REBOUND (OFF) by DAYS, NOBAL			
08:49	MISSED 3PTR by LAWSON, K.J.			
08:46				REBOUND (DEF) by DAVIS, KENDRIC
08:26				MISSED 3PTR by JOLLY, TYSON
08:22	REBOUND (DEF) by DAYS, NOBAL			
08:15	GOOD! JUMPER by HIGHTOWER, TESHAUN	65-47	H 18	
08:15	ASSIST by WALKER, JORDAN			
07:45		68-47	H 21	GOOD! 3PTR by MIKE, ISIAHA
07:45				ASSIST by HUNT, FERON
07:26	GOOD! LAYUP by THOMPSON, CHRISTION	68-49	H 19	
07:26				FOUL (PERSONAL) by JOLLY, TYSON
07:26				
07:26				SUB OUT: DAVIS, KENDRIC
07:26				SUB OUT: MIKE, ISIAHA
07:26				SUB IN: BANDOUMEL, EMMANUEL
07:26				SUB IN: JASEY, ISIAH
07:26	SUB OUT: WALKER, JORDAN			
07:26	SUB OUT: DAYS, NOBAL			
07:26	SUB IN: ZHANG, KEVIN			
07:26	SUB IN: THOMAS, NIC			
07:26	GOOD! FT by THOMPSON, CHRISTION	68-50	H 18	
06:59				MISSED 3PTR by WHITE, CJ
06:56				REBOUND (OFF) by JASEY, ISIAH
06:53		70-50	H 20	GOOD! DUNK by HUNT, FERON
06:53				ASSIST by WHITE, CJ
06:40	GOOD! LAYUP by THOMPSON, CHRISTION	70-52	H 18	
06:23				MISSED 3PTR by JOLLY, TYSON
06:18	REBOUND (DEF) by LAWSON, K.J.			
06:10	GOOD! 3PTR by THOMAS, NIC [FB]	70-55	H 15	
06:10	ASSIST by LAWSON, K.J.			
05:38				TURNOVER (TRAVEL) by HUNT, FERON

Time	VISITORS: Tulane	Score	Margin	HOME: SMU
05:38				SUB OUT: JOLLY, TYSON
05:38				SUB OUT: JASEY, ISIAH
05:38				SUB IN: DAVIS, KENDRIC
05:38				SUB IN: MIKE, ISIAHA
05:29	TURNOVER (LOSTBALL) by HIGHTOWER, TESHAUN			
05:08				TURNOVER (LOSTBALL) by MIKE, ISIAHA
05:08	STEAL by THOMPSON, CHRISTION			
05:02				FOUL (PERSONAL) by BANDOUMEL, EMMANUEL
05:02	GOOD! FT by THOMPSON, CHRISTION [FB]	70-56	H 14	
05:02	GOOD! FT by THOMPSON, CHRISTION [FB]	70-57	H 13	
04:41				MISSED JUMPER by WHITE, CJ
04:35				REBOUND (OFF) by HUNT, FERON
04:35		72-57	H 15	GOOD! DUNK by HUNT, FERON
04:24				FOUL (PERSONAL) by BANDOUMEL, EMMANUEL
04:24				SUB OUT: BANDOUMEL, EMMANUEL
04:24				SUB IN: JOLLY, TYSON
04:23	GOOD! JUMPER by HIGHTOWER, TESHAUN [PNT]	72-59	H 13	
04:23				FOUL (PERSONAL) by DAVIS, KENDRIC
04:23	GOOD! FT by HIGHTOWER, TESHAUN	72-60	H 12	
04:07		74-60	H 14	GOOD! DUNK by JOLLY, TYSON
04:07				ASSIST by DAVIS, KENDRIC
03:50	MISSED 3PTR by THOMPSON, CHRISTION			
03:46				REBOUND (DEF) by TEAM
03:45				
03:27				MISSED 3PTR by MIKE, ISIAHA
03:24	REBOUND (DEF) by HIGHTOWER, TESHAUN			
03:18	FOUL (OFF) by HIGHTOWER, TESHAUN			
03:18	TURNOVER (OFFENSIVE) by HIGHTOWER, TESHAUN			
02:59		77-60	H 17	GOOD! 3PTR by WHITE, CJ
02:59				ASSIST by DAVIS, KENDRIC
02:38	GOOD! 3PTR by THOMAS, NIC	77-63	H 14	
02:38	ASSIST by THOMPSON, CHRISTION			
02:35	TIMEOUT 30SEC			
02:18				MISSED LAYUP by HUNT, FERON
02:18	BLOCK by ZHANG, KEVIN			
02:14	REBOUND (DEF) by ZHANG, KEVIN			
02:11	MISSED 3PTR by THOMAS, NIC			
02:08				REBOUND (DEF) by DAVIS, KENDRIC
01:55		79-63	H 16	GOOD! DUNK by HUNT, FERON
01:55				ASSIST by DAVIS, KENDRIC
01:39	MISSED JUMPER by HIGHTOWER, TESHAUN			
01:36				REBOUND (DEF) by DAVIS, KENDRIC
01:32		82-63	H 19	GOOD! 3PTR by HUNT, FERON [FB]
01:32				ASSIST by DAVIS, KENDRIC
01:15	MISSED 3PTR by THOMPSON, CHRISTION			
01:12				REBOUND (DEF) by WHITE, CJ
01:08				SUB OUT: DAVIS, KENDRIC
01:08				SUB OUT: MIKE, ISIAHA
01:08				SUB IN: YOUNGKIN, GRANT
01:08				SUB IN: TABOR JR., ALEX
01:08	SUB OUT: LAWSON, K.J.			
01:08	SUB OUT: HIGHTOWER, TESHAUN			
01:08	SUB OUT: ZHANG, KEVIN			
01:08	SUB OUT: THOMAS, NIC			
01:08	SUB OUT: THOMPSON, CHRISTION			
01:08	SUB IN: RUSSELL JR., CHARLIE			
01:08	SUB IN: QUINN, GRANT			
01:08	SUB IN: MCGEE, R.J.			
01:08	SUB IN: GALIC, CAMERON			
01:08	SUB IN: ZACCARDO, ALEC			
01:08				SUB OUT: JOLLY, TYSON
01:08				SUB IN: SMITH IV, CHARLES
01:08				TIMEOUT 30SEC
01:00				MISSED 3PTR by TABOR JR., ALEX
00:55	REBOUND (DEF) by MCGEE, R.J.			
00:46	GOOD! JUMPER by GALIC, CAMERON [PNT]	82-65	H 17	
00:23				MISSED JUMPER by YOUNGKIN, GRANT
00:23	BLOCK by GALIC, CAMERON			
00:19	REBOUND (DEF) by MCGEE, R.J.			
00:10	MISSED JUMPER by QUINN, GRANT			
00:07	REBOUND (OFF) by GALIC, CAMERON			
00:06	GOOD! LAYUP by RUSSELL JR., CHARLIE	82-67	H 15	
00:06	ASSIST by GALIC, CAMERON			

Tulane 67, SMU 82

Points from (This Period)	TLN	SMU
In the Paint	10	22
Off Turns	4	9
2nd Chance	5	10
Fast Break	8	14
Bench	6	15

**Official Scoring/Possession Reference Chart
Tulane vs SMU**

Period 1

February 01, 2020 at Moody Coliseum (David B. Miller Court) - Dallas, Texas



Period 1

Starters:

Tulane: 1 LAWSON, K.J. (F); 4 DAYS, NOBAL (F); 5 HIGHTOWER, TESHAWN (G); 14 THOMAS, NIC (G); 25 THOMPSON, CHRISTION (G);

SMU: 0 JOLLY, TYSON (G); 3 DAVIS, KENDRIC (G); 5 BANDOUMEL, EMMANUEL (G); 15 MIKE, ISIAHA (F); 22 JASEY, ISIAH (F);

Time	VISITORS: Tulane	Score	Margin	HOME: SMU
18:59	GOOD! 3PTR by THOMAS, NIC	0-3	V 3	
17:53	GOOD! 3PTR by THOMAS, NIC	0-6	V 6	
17:37		2-6	V 4	GOOD! DUNK by BANDOUMEL, EMMANUEL
16:41	GOOD! 3PTR by THOMAS, NIC [FB]	2-9	V 7	
15:38		4-9	V 5	GOOD! LAYUP by DAVIS, KENDRIC
14:52		7-9	V 2	GOOD! 3PTR by JOLLY, TYSON
13:57		10-9	H 1	GOOD! 3PTR by JOLLY, TYSON [FB]
13:25	GOOD! JUMPER by THOMAS, NIC	10-11	V 1	
13:06		13-11	H 2	GOOD! 3PTR by WHITE, CJ
10:22	GOOD! LAYUP by LAWSON, K.J.	13-13	T	
09:18		15-13	H 2	GOOD! JUMPER by DAVIS, KENDRIC [PNT]
08:24	GOOD! JUMPER by LAWSON, K.J.	15-15	T	
07:20		16-15	H 1	GOOD! FT by MIKE, ISIAHA
06:45	GOOD! FT by THOMPSON, CHRISTION	16-16	T	
05:37	GOOD! JUMPER by HIGHTOWER, TESHAWN [PNT]	16-18	V 2	
05:22		19-18	H 1	GOOD! 3PTR by WHITE, CJ
04:42		21-18	H 3	GOOD! DUNK by HUNT, FERON
03:27	GOOD! 3PTR by WALKER, JORDAN	21-21	T	
02:20		23-21	H 2	GOOD! JUMPER by DAVIS, KENDRIC [PNT]
02:00	GOOD! 3PTR by LAWSON, K.J.	23-24	V 1	
01:44		25-24	H 1	GOOD! JUMPER by MIKE, ISIAHA [PNT]
01:32	GOOD! JUMPER by HIGHTOWER, TESHAWN	25-26	V 1	
01:07	GOOD! 3PTR by LAWSON, K.J.	25-29	V 4	
00:48		28-29	V 1	GOOD! 3PTR by WHITE, CJ
00:00	GOOD! JUMPER by LAWSON, K.J.	28-31	V 3	

Tulane 31, SMU 28

**Official Scoring/Possession Reference Chart
Tulane vs SMU**

Period 2

February 01, 2020 at Moody Coliseum (David B. Miller Court) - Dallas, Texas



Period 2

Starters:

Tulane: 1 LAWSON, K.J. (F); 4 DAYS, NOBAL (F); 5 HIGHTOWER, TESSHAUN (G); 14 THOMAS, NIC (G); 25 THOMPSON, CHRISTION (G);

SMU: 0 JOLLY, TYSON (G); 3 DAVIS, KENDRIC (G); 5 BANDOUMEL, EMMANUEL (G); 15 MIKE, ISIAHA (F); 22 JASEY, ISIAH (F);

Time	VISITORS: Tulane	Score	Margin	HOME: SMU
19:34		30-31	V 1	GOOD! JUMPER by JOLLY, TYSON [PNT]
18:59		32-31	H 1	GOOD! JUMPER by DAVIS, KENDRIC
18:59		33-31	H 2	GOOD! FT by DAVIS, KENDRIC
18:36		35-31	H 4	GOOD! DUNK by MIKE, ISIAHA [FB]
18:22	GOOD! 3PTR by LAWSON, K.J.	35-34	H 1	
18:10		37-34	H 3	GOOD! LAYUP by JASEY, ISIAH
17:40		40-34	H 6	GOOD! 3PTR by JOLLY, TYSON [FB]
17:06	GOOD! 3PTR by HIGHTOWER, TESSHAUN	40-37	H 3	
16:47		43-37	H 6	GOOD! 3PTR by MIKE, ISIAHA
16:37	GOOD! 3PTR by THOMPSON, CHRISTION [FB]	43-40	H 3	
16:09		44-40	H 4	GOOD! FT by JOLLY, TYSON
16:09		45-40	H 5	GOOD! FT by JOLLY, TYSON
15:50		47-40	H 7	GOOD! LAYUP by MIKE, ISIAHA [FB]
15:50		48-40	H 8	GOOD! FT by MIKE, ISIAHA [FB]
14:35		50-40	H 10	GOOD! LAYUP by DAVIS, KENDRIC
14:15		51-40	H 11	GOOD! FT by DAVIS, KENDRIC [FB]
14:15		52-40	H 12	GOOD! FT by DAVIS, KENDRIC [FB]
14:15		53-40	H 13	GOOD! FT by DAVIS, KENDRIC [FB]
13:37	GOOD! JUMPER by WALKER, JORDAN	53-42	H 11	
13:22		55-42	H 13	GOOD! JUMPER by DAVIS, KENDRIC
12:58	GOOD! 3PTR by THOMAS, NIC	55-45	H 10	
11:52		58-45	H 13	GOOD! 3PTR by JOLLY, TYSON
11:16		60-45	H 15	GOOD! JUMPER by DAVIS, KENDRIC [PNT]
10:35		62-45	H 17	GOOD! DUNK by JOLLY, TYSON
09:54		65-45	H 20	GOOD! 3PTR by WHITE, CJ
08:15	GOOD! JUMPER by HIGHTOWER, TESSHAUN	65-47	H 18	
07:45		68-47	H 21	GOOD! 3PTR by MIKE, ISIAHA
07:26	GOOD! LAYUP by THOMPSON, CHRISTION	68-49	H 19	
07:26	GOOD! FT by THOMPSON, CHRISTION	68-50	H 18	
06:53		70-50	H 20	GOOD! DUNK by HUNT, FERON
06:40	GOOD! LAYUP by THOMPSON, CHRISTION	70-52	H 18	
06:10	GOOD! 3PTR by THOMAS, NIC [FB]	70-55	H 15	
05:02	GOOD! FT by THOMPSON, CHRISTION [FB]	70-56	H 14	
05:02	GOOD! FT by THOMPSON, CHRISTION [FB]	70-57	H 13	
04:35		72-57	H 15	GOOD! DUNK by HUNT, FERON
04:23	GOOD! JUMPER by HIGHTOWER, TESSHAUN [PNT]	72-59	H 13	
04:23	GOOD! FT by HIGHTOWER, TESSHAUN	72-60	H 12	
04:07		74-60	H 14	GOOD! DUNK by JOLLY, TYSON
02:59		77-60	H 17	GOOD! 3PTR by WHITE, CJ
02:38	GOOD! 3PTR by THOMAS, NIC	77-63	H 14	
01:55		79-63	H 16	GOOD! DUNK by HUNT, FERON
01:32		82-63	H 19	GOOD! 3PTR by HUNT, FERON [FB]
00:46	GOOD! JUMPER by GALIC, CAMERON [PNT]	82-65	H 17	
00:06	GOOD! LAYUP by RUSSELL JR., CHARLIE	82-67	H 15	

Tulane 67, SMU 82

**Official Substitutions Log
Tulane vs SMU
Period 1**

February 01, 2020 at Moody Coliseum (David B. Miller Court) - Dallas, Texas



VISITORS: Tulane	Time	Score	HOME: SMU
1 LAWSON,K.J.			0 JOLLY,TYSON
4 DAYS,NOBAL			3 DAVIS,KENDRIC
5 HIGHTOWER, TESHAUN			5 BANDOUMEL, EMMANUEL
14 THOMAS, NIC			15 MIKE, ISIAHA
25 THOMPSON, CHRISTION			22 JASEY, ISIAH
	17:16	6-2	SUB OUT: BANDOUMEL, EMMANUEL
	17:16		SUB IN: WHITE, CJ
	16:20	9-2	SUB OUT: MIKE, ISIAHA
	16:20		SUB IN: HUNT, FERON
	15:15	9-4	SUB OUT: JASEY, ISIAH
	15:15		SUB IN: CHARGOIS, ETHAN
SUB OUT: 5 HIGHTOWER, TESHAUN	13:41	9-10	
SUB IN: 2 WALKER, JORDAN	13:41		
SUB OUT: 4 DAYS, NOBAL	13:41		
SUB IN: 12 ZHANG, KEVIN	13:41		
	11:57	11-13	SUB OUT: DAVIS, KENDRIC
	11:57		SUB IN: BANDOUMEL, EMMANUEL
SUB OUT: 1 LAWSON, K.J.	11:57		
SUB OUT: 25 THOMPSON, CHRISTION	11:57		
SUB IN: 4 DAYS, NOBAL	11:57		
SUB IN: 5 HIGHTOWER, TESHAUN	11:57		
SUB OUT: 2 WALKER, JORDAN	10:48	11-13	
SUB OUT: 12 ZHANG, KEVIN	10:48		
SUB IN: 1 LAWSON, K.J.	10:48		
SUB IN: 25 THOMPSON, CHRISTION	10:48		
	09:35	13-13	SUB OUT: JOLLY, TYSON
	09:35		SUB OUT: CHARGOIS, ETHAN
	09:35		SUB IN: DAVIS, KENDRIC
	09:35		SUB IN: JASEY, ISIAH
SUB OUT: 14 THOMAS, NIC	09:35		
SUB IN: 2 WALKER, JORDAN	09:35		
	08:35	13-15	SUB OUT: HUNT, FERON
	08:35		SUB OUT: WHITE, CJ
	08:35		SUB IN: SMITH IV, CHARLES
	08:35		SUB IN: MIKE, ISIAHA
SUB OUT: 2 WALKER, JORDAN	07:20	15-15	
SUB IN: 14 THOMAS, NIC	07:20		
	06:56	15-16	SUB OUT: JASEY, ISIAH
	06:56		SUB IN: CHARGOIS, ETHAN
	06:45	15-16	SUB OUT: BANDOUMEL, EMMANUEL
	06:45		SUB OUT: MIKE, ISIAHA
	06:45		SUB IN: JOLLY, TYSON
	06:45		SUB IN: HUNT, FERON
SUB OUT: 4 DAYS, NOBAL	06:00	16-16	
SUB IN: 12 ZHANG, KEVIN	06:00		
	05:37	18-16	SUB OUT: SMITH IV, CHARLES
	05:37		SUB IN: WHITE, CJ
SUB OUT: 25 THOMPSON, CHRISTION	05:04	18-19	
SUB IN: 0 RUSSELL JR., CHARLIE	05:04		
SUB OUT: 12 ZHANG, KEVIN	04:06	18-21	
SUB IN: 4 DAYS, NOBAL	04:06		
	03:54	18-21	SUB OUT: CHARGOIS, ETHAN
	03:54		SUB IN: MIKE, ISIAHA
SUB OUT: 0 RUSSELL JR., CHARLIE	03:54		
SUB IN: 2 WALKER, JORDAN	03:54		
SUB OUT: 4 DAYS, NOBAL	00:15	29-28	
SUB IN: 25 THOMPSON, CHRISTION	00:15		

Tulane 31, SMU 28

**Official Substitutions Log
Tulane vs SMU
Period 2**

February 01, 2020 at Moody Coliseum (David B. Miller Court) - Dallas, Texas



VISITORS: Tulane	Time	Score	HOME: SMU
1 LAWSON, K. J.			0 JOLLY, TYSON
4 DAYS, NOBAL			3 DAVIS, KENDRIC
5 HIGHTOWER, TSHAUN			5 BANDOUMEL, EMMANUEL
14 THOMAS, NIC			15 MIKE, ISIAHA
25 THOMPSON, CHRISTION			22 JASEY, ISIAH
	20:00	-	SUB OUT: HUNT, FERON
	20:00		SUB OUT: WHITE, CJ
	20:00		SUB IN: BANDOUMEL, EMMANUEL
	20:00		SUB IN: JASEY, ISIAH
SUB OUT: 2 WALKER, JORDAN	20:00		
SUB IN: 4 DAYS, NOBAL	20:00		
SUB OUT: 4 DAYS, NOBAL	16:09	40-44	
SUB IN: 12 ZHANG, KEVIN	16:09		
	15:50	40-47	SUB OUT: JASEY, ISIAH
	15:50		SUB IN: CHARGOIS, ETHAN
	14:53	40-48	SUB OUT: BANDOUMEL, EMMANUEL
	14:53		SUB OUT: MIKE, ISIAHA
	14:53		SUB IN: HUNT, FERON
	14:53		SUB IN: WHITE, CJ
SUB OUT: 5 HIGHTOWER, TSHAUN	14:53		
SUB IN: 2 WALKER, JORDAN	14:53		
	11:35	45-58	SUB OUT: CHARGOIS, ETHAN
	11:35		SUB IN: MIKE, ISIAHA
SUB OUT: 12 ZHANG, KEVIN	11:35		
SUB IN: 4 DAYS, NOBAL	11:35		
SUB OUT: 14 THOMAS, NIC	10:23	45-62	
SUB IN: 5 HIGHTOWER, TSHAUN	10:23		
	07:26	49-68	SUB OUT: DAVIS, KENDRIC
	07:26		SUB OUT: MIKE, ISIAHA
	07:26		SUB IN: BANDOUMEL, EMMANUEL
	07:26		SUB IN: JASEY, ISIAH
SUB OUT: 2 WALKER, JORDAN	07:26		
SUB OUT: 4 DAYS, NOBAL	07:26		
SUB IN: 12 ZHANG, KEVIN	07:26		
SUB IN: 14 THOMAS, NIC	07:26		
	05:38	55-70	SUB OUT: JOLLY, TYSON
	05:38		SUB OUT: JASEY, ISIAH
	05:38		SUB IN: DAVIS, KENDRIC
	05:38		SUB IN: MIKE, ISIAHA
	04:24	57-72	SUB OUT: BANDOUMEL, EMMANUEL
	04:24		SUB IN: JOLLY, TYSON
	01:08	63-82	SUB OUT: DAVIS, KENDRIC
	01:08		SUB OUT: MIKE, ISIAHA
	01:08		SUB IN: YOUNGKIN, GRANT
	01:08		SUB IN: TABOR JR., ALEX
SUB OUT: 1 LAWSON, K. J.	01:08		
SUB OUT: 5 HIGHTOWER, TSHAUN	01:08		
SUB OUT: 12 ZHANG, KEVIN	01:08		
SUB OUT: 14 THOMAS, NIC	01:08		
SUB OUT: 25 THOMPSON, CHRISTION	01:08		
SUB IN: 0 RUSSELL JR., CHARLIE	01:08		
SUB IN: 15 QUINN, GRANT	01:08		
SUB IN: 23 MCGEE, R. J.	01:08		
SUB IN: 32 GALIC, CAMERON	01:08		
SUB IN: 34 ZACCARDO, ALEC	01:08		
	01:08		SUB OUT: JOLLY, TYSON
	01:08		SUB IN: SMITH IV, CHARLES

Tulane 67, SMU 82

Official Shot Chart
Tulane vs SMU
PERIOD 1 Shots
 February 01, 2020 at Moody Coliseum (David B. Miller Court) - Dallas, Texas



SMU

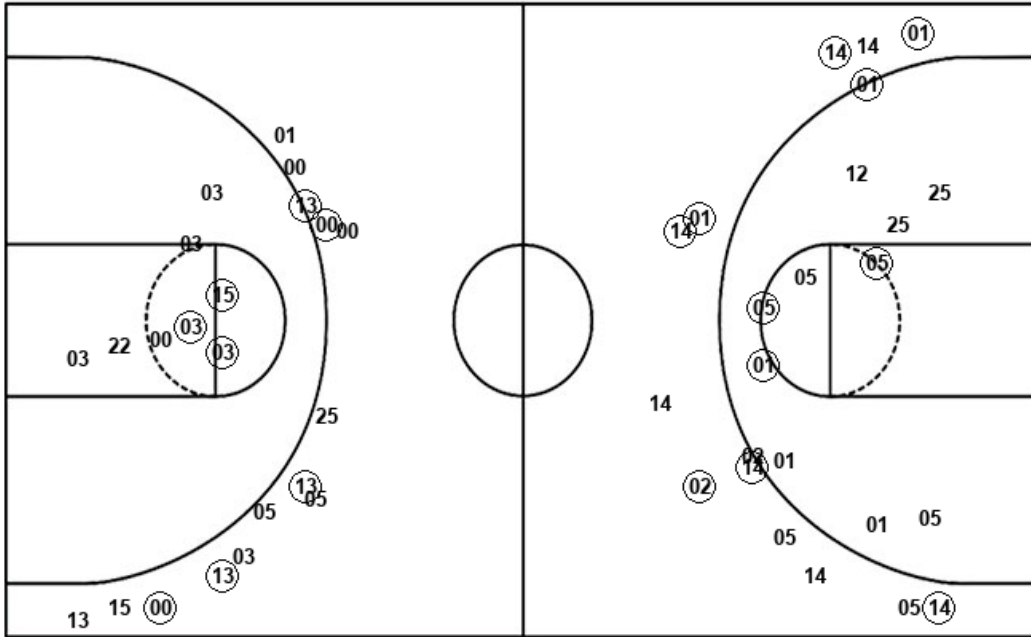
Tulane

Layups

03 25 25

Dunks

05 01



Layups

01 05

Dunks

SMU : Period 1	Made	Att	Pct
Layups	1	3	33.3
Dunks	2	2	100.0
2PT Field Goals	6	13	46.2
3PT Field Goals	5	14	35.7
Total Field Goals	11	27	40.7

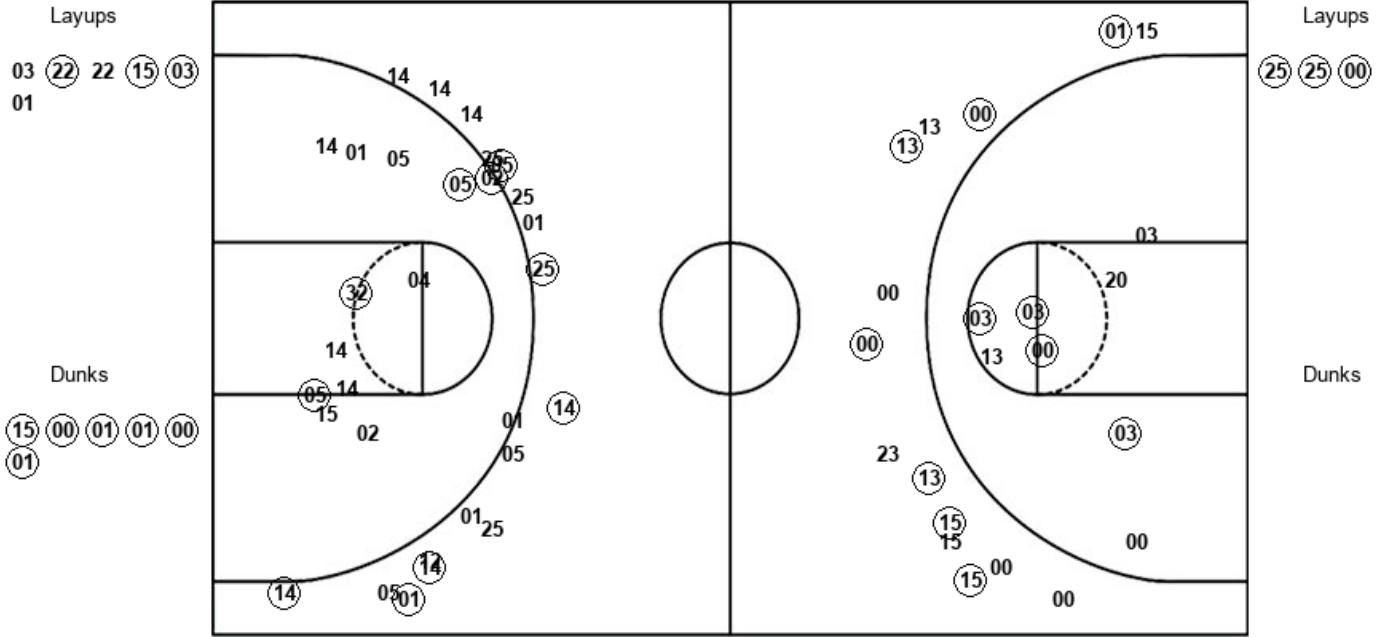
TLN : Period 1	Made	Att	Pct
Layups	1	2	50.0
Dunks	0	0	0
2PT Field Goals	6	15	40.0
3PT Field Goals	6	11	54.5
Total Field Goals	12	26	46.2

Official Shot Chart
Tulane vs SMU
PERIOD 2 Shots
 February 01, 2020 at Moody Coliseum (David B. Miller Court) - Dallas, Texas



SMU

Tulane



SMU : Period 2	Made	Att	Pct
Layups	3	6	50.0
Dunks	6	6	100.0
2PT Field Goals	13	20	65.0
3PT Field Goals	7	14	50.0
Total Field Goals	20	34	58.8

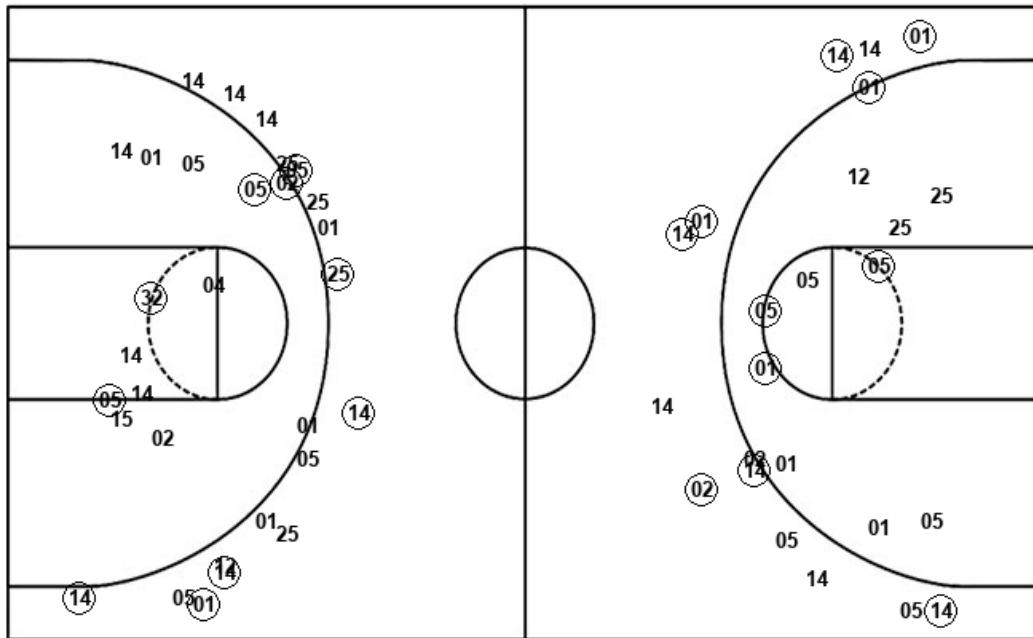
TLN : Period 2	Made	Att	Pct
Layups	3	3	100.0
Dunks	0	0	0
2PT Field Goals	7	16	43.8
3PT Field Goals	6	17	35.3
Total Field Goals	13	33	39.4

Official Shot Chart
Tulane vs SMU
Tulane Team Shots
 February 01, 2020 at Moody Coliseum (David B. Miller Court) - Dallas, Texas



Layups

Dunks



Layups

Dunks

TLN : Period 1	Made	Att	Pct
Layups	1	2	50.0
Dunks	0	0	0
2PT Field Goals	6	15	40.0
3PT Field Goals	6	11	54.5
Total Field Goals	12	26	46.2

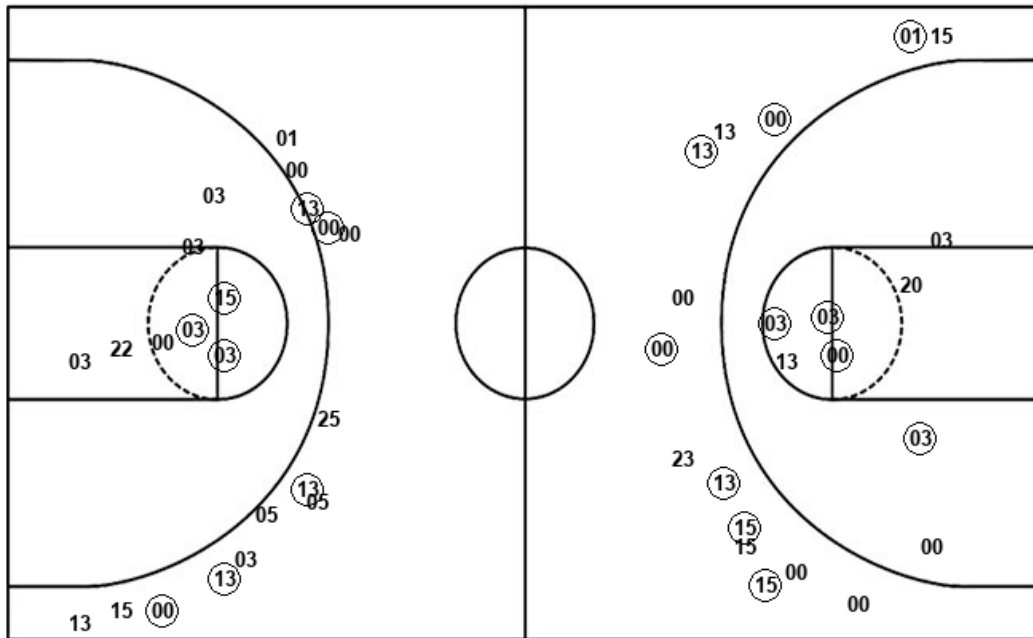
TLN : Period 2	Made	Att	Pct
Layups	3	3	100.0
Dunks	0	0	0
2PT Field Goals	7	16	43.8
3PT Field Goals	6	17	35.3
Total Field Goals	13	33	39.4

**Official Shot Chart
Tulane vs SMU
SMU Team Shots
February 01, 2020 at Moody Coliseum (David B. Miller Court) - Dallas, Texas**



Layups

Dunks



Layups

Dunks

(03) 25 25 03 (22)
22 (15) (03) 01

(05) (01) (15) (00) (01)
(01) (00) (01)

SMU : Period 1	Made	Att	Pct
Layups	1	3	33.3
Dunks	2	2	100.0
2PT Field Goals	6	13	46.2
3PT Field Goals	5	14	35.7
Total Field Goals	11	27	40.7

SMU : Period 2	Made	Att	Pct
Layups	3	6	50.0
Dunks	6	6	100.0
2PT Field Goals	13	20	65.0
3PT Field Goals	7	14	50.0
Total Field Goals	20	34	58.8