

## FINAL SCORE



**South Dakota State**

**70**



**Montana State**

**77**

December 05, 2019 • Worthington Arena - Bozeman

## FINAL STATISTICS



**Official Box Score**  
**South Dakota State vs Montana State**  
**Game Totals -- Final Statistics**  
**December 05, 2019 at Worthington Arena - Bozeman**



**South Dakota State 70**

No.	Player	S	Pts	FG	3FG	FT	OR	DR	TR	PF	A	TO	Blk	Stl	Min	+/-
00	KEY, BRANDON	G	10	2-5	2-4	4-6	1	1	2	1	5	3	0	1	36	-5
11	FREIDEL, NOAH	G	0	0-4	0-2	0-0	0	2	2	0	0	0	1	0	13	-14
32	DENTLINGER, MATT	F	6	3-7	0-0	0-2	2	4	6	1	3	1	2	1	33	-7
34	ARIANS, ALEX	G	4	2-6	0-2	0-0	0	2	2	4	1	0	1	0	17	-7
35	WILSON, DOUGLAS	F	16	7-14	0-2	2-3	2	7	9	4	2	0	0	1	36	-6
02	BUCHANAN, TRAY	G	15	5-12	0-4	5-6	3	3	6	3	0	1	0	1	27	2
03	SCHEIERMAN, BAYLOR	F	6	2-4	0-1	2-3	1	0	1	2	0	3	0	0	9	1
23	KING, OWEN	G	0	0-0	0-0	0-0	0	0	0	0	0	0	0	0	2	2
50	WINGETT, DAVID	G	13	5-10	3-5	0-0	1	3	4	2	0	1	0	2	26	-1
	TEAM						1	1	2	0		0				
<b>TOTALS</b>			<b>70</b>	<b>26-62</b>	<b>5-20</b>	<b>13-20</b>	<b>11</b>	<b>23</b>	<b>34</b>	<b>17</b>	<b>11</b>	<b>9</b>	<b>4</b>	<b>6</b>	<b>200</b>	

*Shooting By Period*

Period	FG	FG%	3FG	3FG%	FT	FT%
1st Half	16-33	48%	3-10	30%	4-6	67%
2nd Half	10-29	34%	2-10	20%	9-14	64%
<b>Game</b>	<b>26-62</b>	<b>41.9%</b>	<b>5-20</b>	<b>25.0%</b>	<b>13-20</b>	<b>65.0%</b>

Deadball Rebounds: 2.0  
 Last FG: 2nd-00:49  
 Biggest Run: 9-0  
 Largest lead: By 3 at 2-06  
 Technical Fouls: None.

**Montana State 77**

No.	Player	S	Pts	FG	3FG	FT	OR	DR	TR	PF	A	TO	Blk	Stl	Min	+/-
04	ADAMU, AMIN	G	19	8-14	1-3	2-2	0	6	6	1	2	3	2	1	35	10
05	FREY, HARALD	G	23	8-18	2-8	5-6	1	2	3	3	5	1	0	3	38	6
11	RICKETTS, LADAN	F	11	4-9	3-7	0-1	0	1	1	2	1	3	0	0	34	4
13	BELO, JUBRILE	F	9	2-3	0-0	5-5	2	4	6	4	2	2	4	0	23	19
31	KIRBY, DEVIN	C	1	0-2	0-0	1-3	3	12	15	1	3	1	1	0	33	-2
00	QUINLAN, ZEKE	F	2	1-5	0-2	0-0	1	4	5	2	0	0	0	2	13	-7
10	BELLACH, CALEB	G	0	0-0	0-0	0-0	0	0	0	0	0	0	0	0	3	2
15	PAULO, MYCHAEAL	G	10	4-4	2-2	0-0	0	0	0	1	1	2	0	1	11	4
23	FERNANDEZ, BORJA	F	2	1-2	0-1	0-0	0	1	1	2	1	0	0	1	11	-1
	TEAM						1	0	1	0		0				
<b>TOTALS</b>			<b>77</b>	<b>28-57</b>	<b>8-23</b>	<b>13-17</b>	<b>8</b>	<b>30</b>	<b>38</b>	<b>16</b>	<b>15</b>	<b>12</b>	<b>7</b>	<b>8</b>	<b>200</b>	

*Shooting By Period*

Period	FG	FG%	3FG	3FG%	FT	FT%
1st Half	17-31	55%	5-12	42%	1-3	33%
2nd Half	11-26	42%	3-11	27%	12-14	86%
<b>Game</b>	<b>28-57</b>	<b>49.1%</b>	<b>8-23</b>	<b>34.8%</b>	<b>13-17</b>	<b>76.5%</b>

Deadball Rebounds: 2.0  
 Last FG: 2nd-00:11  
 Biggest Run: 8-0  
 Largest lead: By 10 at 2-15  
 Technical Fouls: None.

Game Notes:

Officials: Kelly Pfeifer, Rob Keuneman, Mark Riggs  
 Attendance: 4877

Start Time: 10:21 PM ET  
 End Time: 12:11 AM ET  
 Game Duration: 1:50

Score	1st	2nd	TOT
SDS	39	31	70
MSU	40	37	77

SDS led for 2:55. MSU led for 34:41.  
 Game was tied for 2:25.  
 Times tied: 3      Lead Changes: 5

Points from	SDS	MSU
In the Paint	36	28
Off Turns	12	5
2nd Chance	11	7
Fast Break	11	12
Bench	34	14



**Official Box Score**  
**South Dakota State vs Montana State**  
**First Half Statistics Only**  
**December 05, 2019 at Worthington Arena - Bozeman**



### South Dakota State 39

No.	Player	S	Pts	FG	3FG	FT	OR	DR	TR	PF	A	TO	Blk	Stl	Min	+/-
00	KEY, BRANDON	G	3	1-1	1-1	0-0	0	1	1	1	3	0	0	1	18	2
11	FREIDEL, NOAH	G	0	0-2	0-1	0-0	0	2	2	0	0	0	1	0	9	-10
32	DENTLINGER, MATT	F	4	2-3	0-0	0-0	1	2	3	0	1	0	0	1	16	1
34	ARIANS, ALEX	G	2	1-4	0-2	0-0	0	0	0	2	1	0	1	0	11	-1
35	WILSON, DOUGLAS	F	12	5-9	0-1	2-3	0	4	4	1	2	0	0	1	18	1
02	BUCHANAN, TRAY	G	8	3-5	0-1	2-2	2	1	3	1	0	1	0	0	12	1
03	SCHEIERMAN, BAYLOR	F	4	2-4	0-1	0-1	0	0	0	0	0	1	0	0	7	0
23	KING, OWEN	G	0	0-0	0-0	0-0	0	0	0	0	0	0	0	0	0	0
50	WINGETT, DAVID	G	6	2-5	2-3	0-0	0	1	1	0	0	1	0	2	10	1
	TEAM						1	0	1	0		0				
<b>TOTALS</b>			<b>39</b>	<b>16-33</b>	<b>3-10</b>	<b>4-6</b>	<b>4</b>	<b>11</b>	<b>15</b>	<b>5</b>	<b>7</b>	<b>3</b>	<b>2</b>	<b>5</b>	<b>100</b>	

#### Shooting By Period

Period	FG	FG%	3FG	3FG%	FT	FT%
1st Half	16-33	48%	3-10	30%	4-6	67%
Game	26-62	41.9%	5-20	25.0%	13-20	65.0%

Deadball Rebounds: 2,0

Last FG Half: SDS 2nd-00:49

### Montana State 40

No.	Player	S	Pts	FG	3FG	FT	OR	DR	TR	PF	A	TO	Blk	Stl	Min	+/-
04	ADAMU, AMIN	G	11	5-9	1-2	0-0	0	2	2	0	1	1	2	0	16	4
05	FREY, HARALD	G	9	4-7	0-2	1-2	0	0	0	1	3	0	0	1	18	0
11	RICKETTS, LADAN	F	11	4-7	3-5	0-1	0	0	0	1	1	2	0	0	16	-1
13	BELO, JUBRILE	F	0	0-0	0-0	0-0	1	2	3	2	0	2	0	0	10	4
31	KIRBY, DEVIN	C	0	0-1	0-0	0-0	1	7	8	0	1	0	1	0	15	0
00	QUINLAN, ZEKE	F	2	1-3	0-1	0-0	1	3	4	1	0	0	0	1	8	-8
10	BELLACH, CALEB	G	0	0-0	0-0	0-0	0	0	0	0	0	0	0	0	3	2
15	PAULO, MYCHAEAL	G	5	2-2	1-1	0-0	0	0	0	0	1	1	0	1	8	-2
23	FERNANDEZ, BORJA	F	2	1-2	0-1	0-0	0	1	1	2	1	0	0	0	7	6
	TEAM						1	0	1	0		0				
<b>TOTALS</b>			<b>40</b>	<b>17-31</b>	<b>5-12</b>	<b>1-3</b>	<b>4</b>	<b>15</b>	<b>19</b>	<b>7</b>	<b>8</b>	<b>6</b>	<b>3</b>	<b>3</b>	<b>100</b>	

#### Shooting By Period

Period	FG	FG%	3FG	3FG%	FT	FT%
1st Half	17-31	55%	5-12	42%	1-3	33%
Game	28-57	49.1%	8-23	34.8%	13-17	76.5%

Deadball Rebounds: 2,0

Last FG Half: MSU 2nd-00:11

#### Game Notes:

Officials: Kelly Pfeifer, Rob Keuneman, Mark Riggs  
Attendance: 4877

Start Time: 10:21 PM ET  
End Time: 12:11 AM ET  
Game Duration: 1:50

Score	1st	2nd	TOT
SDS	39	31	70
MSU	40	37	77

Points from (This Period)	SDS	MSU
In the Paint	24	14
Off Turns	7	4
2nd Chance	6	2
Fast Break	6	3
Bench	18	9



**Official Play-By-Play**  
**South Dakota State vs Montana State**  
**First Half**  
**December 05, 2019 at Worthington Arena - Bozeman**



**Period 1**

**Starters:**

**South Dakota State:** 0 KEY, BRANDON (G); 11 FREIDEL, NOAH (G); 32 DENTLINGER, MATT (F); 34 ARIANS, ALEX (G); 35 WILSON, DOUGLAS (F);

**Montana State:** 4 ADAMU, AMIN (G); 5 FREY, HARALD (G); 11 RICKETTS, LADAN (F); 13 BELO, JUBRILE (F); 31 KIRBY, DEVIN (C);

Time	VISITORS: South Dakota State	Score	Margin	HOME: Montana State
19:49				MISSED JUMPER by ADAMU, AMIN
19:47	REBOUND (DEF) by DENTLINGER, MATT			
19:35	MISSED LAYUP by ARIANS, ALEX			
19:35	REBOUND (OFF) by DENTLINGER, MATT			
19:35				BLOCK by ADAMU, AMIN
19:19	GOOD! JUMPER by ARIANS, ALEX [PNT]	0-2	V 2	
19:06		2-2	T	GOOD! JUMPER by ADAMU, AMIN
18:47	GOOD! JUMPER by DENTLINGER, MATT [PNT]	2-4	V 2	
18:47	ASSIST by ARIANS, ALEX			
18:28		5-4	H 1	GOOD! 3PTR by ADAMU, AMIN
18:28				ASSIST by RICKETTS, LADAN
18:07	MISSED 3PTR by ARIANS, ALEX			
18:03				REBOUND (DEF) by KIRBY, DEVIN
17:57		7-4	H 3	GOOD! LAYUP by FREY, HARALD [PNT]
17:40	MISSED JUMPER by FREIDEL, NOAH			
17:37				REBOUND (DEF) by BELO, JUBRILE
17:34		10-4	H 6	GOOD! 3PTR by RICKETTS, LADAN [FB]
17:34				ASSIST by FREY, HARALD
17:07	GOOD! LAYUP by DENTLINGER, MATT	10-6	H 4	
16:48				MISSED JUMPER by RICKETTS, LADAN
16:48	BLOCK by FREIDEL, NOAH			
16:44	REBOUND (DEF) by WILSON, DOUGLAS			
16:29	MISSED 3PTR by WILSON, DOUGLAS			
16:25				REBOUND (DEF) by KIRBY, DEVIN
16:08		13-6	H 7	GOOD! 3PTR by RICKETTS, LADAN
16:08				ASSIST by KIRBY, DEVIN
15:37	MISSED JUMPER by DENTLINGER, MATT			
15:34				REBOUND (DEF) by KIRBY, DEVIN
15:28				MISSED JUMPER by KIRBY, DEVIN
15:23	REBOUND (DEF) by FREIDEL, NOAH			
15:14	GOOD! LAYUP by WILSON, DOUGLAS	13-8	H 5	
14:57				MISSED 3PTR by FREY, HARALD
14:53				REBOUND (OFF) by KIRBY, DEVIN
14:48				MISSED JUMPER by ADAMU, AMIN
14:48	BLOCK by ARIANS, ALEX			
14:45	REBOUND (DEF) by WILSON, DOUGLAS			
14:45				
14:45				SUB OUT: ADAMU, AMIN
14:45				SUB OUT: BELO, JUBRILE
14:45				SUB IN: QUINLAN, ZEKE
14:45				SUB IN: PAULO, MYCHAEAL
14:45	SUB OUT: FREIDEL, NOAH			
14:45	SUB IN: SCHEIERMAN, BAYLOR			
14:28	GOOD! LAYUP by WILSON, DOUGLAS	13-10	H 3	
14:14				MISSED 3PTR by QUINLAN, ZEKE
14:12	REBOUND (DEF) by KEY, BRANDON			
14:07	MISSED 3PTR by SCHEIERMAN, BAYLOR			
14:03				REBOUND (DEF) by KIRBY, DEVIN
13:43		16-10	H 6	GOOD! 3PTR by PAULO, MYCHAEAL
13:43				ASSIST by FREY, HARALD
13:13	MISSED 3PTR by ARIANS, ALEX			
13:09				REBOUND (DEF) by QUINLAN, ZEKE
13:05				MISSED 3PTR by RICKETTS, LADAN
13:01	REBOUND (DEF) by WILSON, DOUGLAS			
12:53	MISSED JUMPER by SCHEIERMAN, BAYLOR			
12:50				REBOUND (DEF) by KIRBY, DEVIN
12:45				TURNOVER (LOSTBALL) by PAULO, MYCHAEAL
12:45	STEAL by KEY, BRANDON			
12:39	GOOD! LAYUP by SCHEIERMAN, BAYLOR [FB/PNT]	16-12	H 4	
12:39	ASSIST by KEY, BRANDON			
12:21				TURNOVER (BADPASS) by RICKETTS, LADAN
12:21	STEAL by WILSON, DOUGLAS			
12:17	GOOD! LAYUP by WILSON, DOUGLAS [FB]	16-14	H 2	
11:55	FOUL (PERSONAL) by ARIANS, ALEX			
11:55				
11:55				SUB OUT: QUINLAN, ZEKE
11:55				SUB OUT: PAULO, MYCHAEAL
11:55				SUB OUT: KIRBY, DEVIN
11:55				SUB IN: ADAMU, AMIN
11:55				SUB IN: BELO, JUBRILE



Time	VISITORS: South Dakota State	Score	Margin	HOME: Montana State
11:55				SUB IN: FERNANDEZ, BORJA
11:55	SUB OUT: SCHEIERMAN, BAYLOR			
11:55	SUB OUT: DENTLINGER, MATT			
11:55	SUB IN: BUCHANAN, TRAY			
11:55	SUB IN: WINGETT, DAVID			
11:49		18-14	H 4	GOOD! JUMPER by FREY, HARALD
11:30	MISSED LAYUP by WILSON, DOUGLAS			
11:27				REBOUND (DEF) by FERNANDEZ, BORJA
11:20				MISSED LAYUP by FREY, HARALD
11:17				REBOUND (OFF) by BELO, JUBRILE
11:16				TURNOVER (TRAVEL) by BELO, JUBRILE
10:54	GOOD! 3PTR by WINGETT, DAVID	18-17	H 1	
10:54	ASSIST by KEY, BRANDON			
10:32				TURNOVER (LOSTBALL) by BELO, JUBRILE
10:32	STEAL by WINGETT, DAVID			
10:16	MISSED JUMPER by WINGETT, DAVID			
10:12				REBOUND (DEF) by BELO, JUBRILE
09:58	FOUL (PERSONAL) by ARIANS, ALEX			
09:58				SUB OUT: RICKETTS, LADAN
09:58				SUB IN: BELLACH, CALEB
09:48		20-17	H 3	GOOD! JUMPER by ADAMU, AMIN
09:48				ASSIST by FERNANDEZ, BORJA
09:27	GOOD! DUNK by WILSON, DOUGLAS	20-19	H 1	
09:27	ASSIST by KEY, BRANDON			
09:24	SUB OUT: ARIANS, ALEX			
09:24	SUB IN: FREIDEL, NOAH			
09:09		22-19	H 3	GOOD! JUMPER by ADAMU, AMIN [PNT]
08:58				FOUL (PERSONAL) by BELO, JUBRILE
08:58	GOOD! FT by BUCHANAN, TRAY	22-20	H 2	
08:58				SUB OUT: FREY, HARALD
08:58				SUB IN: PAULO, MYCHAEAL
08:58	SUB OUT: WILSON, DOUGLAS			
08:58	SUB IN: DENTLINGER, MATT			
08:58	GOOD! FT by BUCHANAN, TRAY	22-21	H 1	
08:58	SUB OUT: KEY, BRANDON			
08:58	SUB IN: SCHEIERMAN, BAYLOR			
08:42		24-21	H 3	GOOD! JUMPER by ADAMU, AMIN [PNT]
08:35	MISSED 3PTR by BUCHANAN, TRAY			
08:27	REBOUND (OFF) by BUCHANAN, TRAY			
08:26	GOOD! JUMPER by BUCHANAN, TRAY	24-23	H 1	
08:03		26-23	H 3	GOOD! JUMPER by PAULO, MYCHAEAL
07:43	MISSED LAYUP by BUCHANAN, TRAY			
07:43				BLOCK by ADAMU, AMIN
07:36	REBOUND (OFF) by BUCHANAN, TRAY			
07:36	GOOD! LAYUP by BUCHANAN, TRAY	26-25	H 1	
07:30		28-25	H 3	GOOD! JUMPER by FERNANDEZ, BORJA
07:30				ASSIST by PAULO, MYCHAEAL
07:14				FOUL (PERSONAL) by FERNANDEZ, BORJA
07:14				SUB OUT: BELLACH, CALEB
07:14				SUB OUT: PAULO, MYCHAEAL
07:14				SUB OUT: FERNANDEZ, BORJA
07:14				SUB IN: FREY, HARALD
07:14				SUB IN: RICKETTS, LADAN
07:14				SUB IN: KIRBY, DEVIN
07:13	GOOD! LAYUP by SCHEIERMAN, BAYLOR	28-27	H 1	
07:13				FOUL (PERSONAL) by BELO, JUBRILE
07:13				SUB OUT: BELO, JUBRILE
07:13				SUB IN: FERNANDEZ, BORJA
07:13	MISSED FT by SCHEIERMAN, BAYLOR			
07:11				REBOUND (DEF) by ADAMU, AMIN
06:59		31-27	H 4	GOOD! 3PTR by RICKETTS, LADAN
06:59				ASSIST by FREY, HARALD
06:46	TURNOVER (LOSTBALL) by BUCHANAN, TRAY			
06:46				STEAL by FREY, HARALD
06:39				MISSED 3PTR by FERNANDEZ, BORJA
06:34	REBOUND (DEF) by DENTLINGER, MATT			
06:29	MISSED LAYUP by WINGETT, DAVID			
06:29				BLOCK by KIRBY, DEVIN
06:29	REBOUND (OFF) by TEAM			
06:29	SUB OUT: SCHEIERMAN, BAYLOR			
06:29	SUB OUT: DENTLINGER, MATT			
06:29	SUB IN: KEY, BRANDON			
06:29	SUB IN: WILSON, DOUGLAS			
06:24	MISSED 3PTR by FREIDEL, NOAH			
06:21				REBOUND (DEF) by KIRBY, DEVIN
06:06	FOUL (PERSONAL) by BUCHANAN, TRAY			
06:00				MISSED 3PTR by ADAMU, AMIN
05:56	REBOUND (DEF) by FREIDEL, NOAH			
05:44	MISSED 3PTR by WINGETT, DAVID			
05:40				REBOUND (DEF) by ADAMU, AMIN



Time	VISITORS: South Dakota State	Score	Margin	HOME: Montana State
05:31		33-27	H 6	GOOD! LAYUP by RICKETTS, LADAN
05:31				ASSIST by ADAMU, AMIN
05:31	FOUL (PERSONAL) by WILSON, DOUGLAS			
05:30				MISSED FT by RICKETTS, LADAN
05:29	REBOUND (DEF) by BUCHANAN, TRAY			
05:17				FOUL (PERSONAL) by FERNANDEZ, BORJA
05:17				SUB OUT: FERNANDEZ, BORJA
05:17				SUB IN: QUINLAN, ZEKE
05:17	SUB OUT: FREIDEL, NOAH			
05:17	SUB IN: DENTLINGER, MATT			
05:01	GOOD! JUMPER by WILSON, DOUGLAS [PNT]	33-29	H 4	
04:45				FOUL (PERSONAL) by RICKETTS, LADAN
04:28				FOUL (PERSONAL) by FREY, HARALD
04:28	GOOD! FT by WILSON, DOUGLAS	33-30	H 3	
04:28	GOOD! FT by WILSON, DOUGLAS	33-31	H 2	
04:13				MISSED 3PTR by RICKETTS, LADAN
04:09				REBOUND (OFF) by QUINLAN, ZEKE
04:06		35-31	H 4	GOOD! LAYUP by QUINLAN, ZEKE
03:36	GOOD! 3PTR by WINGETT, DAVID	35-34	H 1	
03:36	ASSIST by DENTLINGER, MATT			
03:19				MISSED 3PTR by FREY, HARALD
03:15	REBOUND (DEF) by WINGETT, DAVID			
03:03	MISSED LAYUP by WILSON, DOUGLAS			
02:59				REBOUND (DEF) by QUINLAN, ZEKE
02:58				TIMEOUT 30SEC
02:58				SUB OUT: ADAMU, AMIN
02:58				SUB IN: PAULO, MYCHAEAL
02:50	FOUL (PERSONAL) by KEY, BRANDON			
02:50				MISSED FT by FREY, HARALD
02:50				REBOUND (OFF) by TEAM
02:50		36-34	H 2	GOOD! FT by FREY, HARALD
02:37	MISSED LAYUP by WILSON, DOUGLAS			
02:35				REBOUND (DEF) by QUINLAN, ZEKE
02:22				MISSED DUNK by QUINLAN, ZEKE
02:19				REBOUND (OFF) by TEAM
02:18				TURNOVER (LOSTBALL) by RICKETTS, LADAN
02:18	STEAL by WINGETT, DAVID			
02:14	TURNOVER (LOSTBALL) by WINGETT, DAVID			
02:14				STEAL by QUINLAN, ZEKE
02:04		38-34	H 4	GOOD! LAYUP by FREY, HARALD
01:34	GOOD! 3PTR by KEY, BRANDON	38-37	H 1	
01:34	ASSIST by WILSON, DOUGLAS			
01:30				SUB OUT: RICKETTS, LADAN
01:30				SUB IN: ADAMU, AMIN
01:30	SUB OUT: WINGETT, DAVID			
01:30	SUB IN: SCHEIERMAN, BAYLOR			
01:20				MISSED LAYUP by ADAMU, AMIN
01:17	REBOUND (DEF) by WILSON, DOUGLAS			
01:13	GOOD! LAYUP by BUCHANAN, TRAY [FB/PNT]	38-39	V 1	
01:13	ASSIST by WILSON, DOUGLAS			
00:44				TURNOVER (LOSTBALL) by ADAMU, AMIN
00:44	STEAL by DENTLINGER, MATT			
00:38	TURNOVER (BADPASS) by SCHEIERMAN, BAYLOR			
00:38				STEAL by PAULO, MYCHAEAL
00:18		40-39	H 1	GOOD! LAYUP by FREY, HARALD [PNT]
00:16	TIMEOUT 30SEC			
00:01				FOUL (PERSONAL) by QUINLAN, ZEKE
00:01				SUB OUT: PAULO, MYCHAEAL
00:01				SUB IN: RICKETTS, LADAN
00:00	MISSED FT by WILSON, DOUGLAS			
00:00				REBOUND (DEF) by KIRBY, DEVIN

South Dakota State 39, Montana State 40

Points from (This Period)	SDS	MSU
In the Paint	24	14
Off Turns	7	4
2nd Chance	6	2
Fast Break	6	3
Bench	18	9



**Official Box Score**  
**South Dakota State vs Montana State**  
**Second Half Statistics Only**  
**December 05, 2019 at Worthington Arena - Bozeman**



**South Dakota State 31**

No.	Player	S	Pts	FG	3FG	FT	OR	DR	TR	PF	A	TO	Blk	Stl	Min	+/-
00	KEY, BRANDON	G	7	1-4	1-3	4-6	1	0	1	0	2	3	0	0	19	-7
11	FREIDEL, NOAH	G	0	0-2	0-1	0-0	0	0	0	0	0	0	0	0	4	-4
32	DENTLINGER, MATT	F	2	1-4	0-0	0-2	1	2	3	1	2	1	2	0	18	-8
34	ARIANS, ALEX	G	2	1-2	0-0	0-0	0	2	2	2	0	0	0	0	6	-6
35	WILSON, DOUGLAS	F	4	2-5	0-1	0-0	2	3	5	3	0	0	0	0	18	-7
02	BUCHANAN, TRAY	G	7	2-7	0-3	3-4	1	2	3	2	0	0	0	1	15	1
03	SCHEIERMAN, BAYLOR	F	2	0-0	0-0	2-2	1	0	1	2	0	2	0	0	2	1
23	KING, OWEN	G	0	0-0	0-0	0-0	0	0	0	0	0	0	0	0	2	2
50	WINGETT, DAVID	G	7	3-5	1-2	0-0	1	2	3	2	0	0	0	0	16	-2
	TEAM						0	1	1	0		0				
<b>TOTALS</b>			<b>31</b>	<b>10-29</b>	<b>2-10</b>	<b>9-14</b>	<b>7</b>	<b>12</b>	<b>19</b>	<b>12</b>	<b>4</b>	<b>6</b>	<b>2</b>	<b>1</b>	<b>100</b>	

*Shooting By Period*

Period	FG	FG%	3FG	3FG%	FT	FT%
2nd Half	10-29	34%	2-10	20%	9-14	64%
Game	26-62	41.9%	5-20	25.0%	13-20	65.0%

Deadball Rebounds: 2,0

Last FG Half: SDS -

**Montana State 37**

No.	Player	S	Pts	FG	3FG	FT	OR	DR	TR	PF	A	TO	Blk	Stl	Min	+/-
04	ADAMU, AMIN	G	8	3-5	0-1	2-2	0	4	4	1	1	2	0	1	19	6
05	FREY, HARALD	G	14	4-11	2-6	4-4	1	2	3	2	2	1	0	2	20	6
11	RICKETTS, LADAN	F	0	0-2	0-2	0-0	0	1	1	1	0	1	0	0	18	5
13	BELO, JUBRILE	F	9	2-3	0-0	5-5	1	2	3	2	2	0	4	0	13	15
31	KIRBY, DEVIN	C	1	0-1	0-0	1-3	2	5	7	1	2	1	0	0	17	-2
00	QUINLAN, ZEKE	F	0	0-2	0-1	0-0	0	1	1	1	0	0	0	1	5	1
10	BELLACH, CALEB	G	0	0-0	0-0	0-0	0	0	0	0	0	0	0	0	0	0
15	PAULO, MYCHAEAL	G	5	2-2	1-1	0-0	0	0	0	1	0	1	0	0	3	6
23	FERNANDEZ, BORJA	F	0	0-0	0-0	0-0	0	0	0	0	0	0	0	1	4	-7
	TEAM						0	0	0	0		0				
<b>TOTALS</b>			<b>37</b>	<b>11-26</b>	<b>3-11</b>	<b>12-14</b>	<b>4</b>	<b>15</b>	<b>19</b>	<b>9</b>	<b>7</b>	<b>6</b>	<b>4</b>	<b>5</b>	<b>100</b>	

*Shooting By Period*

Period	FG	FG%	3FG	3FG%	FT	FT%
2nd Half	11-26	42%	3-11	27%	12-14	86%
Game	28-57	49.1%	8-23	34.8%	13-17	76.5%

Deadball Rebounds: 2,0

Last FG Half: MSU -

*Game Notes:*

Officials: Kelly Pfeifer, Rob Keuneman, Mark Riggs

Attendance: 4877

Start Time: 10:21 PM ET

End Time: 12:11 AM ET

Game Duration: 1:50

Score	1st	2nd	TOT
SDS	39	31	<b>70</b>
MSU	40	37	<b>77</b>

Points from (This Period)	SDS	MSU
In the Paint	12	14
Off Turns	5	1
2nd Chance	5	5
Fast Break	5	9
Bench	16	5



**Official Play-By-Play**  
**South Dakota State vs Montana State**  
**Second Half**  
**December 05, 2019 at Worthington Arena - Bozeman**



**Period 2**

**Starters:**

**South Dakota State:** 0 KEY, BRANDON (G); 11 FREIDEL, NOAH (G); 32 DENTLINGER, MATT (F); 34 ARIANS, ALEX (G); 35 WILSON, DOUGLAS (F);

**Montana State:** 4 ADAMU, AMIN (G); 5 FREY, HARALD (G); 11 RICKETTS, LADAN (F); 13 BELO, JUBRILE (F); 31 KIRBY, DEVIN (C);

Time	VISITORS: South Dakota State	Score	Margin	HOME: Montana State
20:00				SUB OUT: QUINLAN, ZEKE
20:00				SUB IN: BELO, JUBRILE
20:00	SUB OUT: BUCHANAN, TRAY			
20:00	SUB OUT: SCHEIERMAN, BAYLOR			
20:00	SUB IN: FREIDEL, NOAH			
20:00	SUB IN: ARIANS, ALEX			
19:49				MISSED 3PTR by RICKETTS, LADAN
19:44	REBOUND (DEF) by ARIANS, ALEX			
19:25	MISSED 3PTR by FREIDEL, NOAH			
19:21				REBOUND (DEF) by KIRBY, DEVIN
19:14		42-39	H 3	GOOD! JUMPER by ADAMU, AMIN
18:55	MISSED JUMPER by ARIANS, ALEX			
18:52				REBOUND (DEF) by ADAMU, AMIN
18:42		44-39	H 5	GOOD! LAYUP by BELO, JUBRILE [PNT]
18:42				ASSIST by KIRBY, DEVIN
18:23	MISSED JUMPER by FREIDEL, NOAH			
18:23				BLOCK by BELO, JUBRILE
18:19				REBOUND (DEF) by BELO, JUBRILE
18:00				TURNOVER (3SEC) by KIRBY, DEVIN
17:47	MISSED 3PTR by KEY, BRANDON			
17:43	REBOUND (OFF) by DENTLINGER, MATT			
17:31	MISSED JUMPER by DENTLINGER, MATT			
17:31				BLOCK by BELO, JUBRILE
17:26				REBOUND (DEF) by ADAMU, AMIN
17:23				MISSED 3PTR by FREY, HARALD
17:19				REBOUND (OFF) by FREY, HARALD
17:16		46-39	H 7	GOOD! LAYUP by FREY, HARALD
16:50	GOOD! JUMPER by ARIANS, ALEX [PNT]	46-41	H 5	
16:25				MISSED JUMPER by ADAMU, AMIN
16:22	REBOUND (DEF) by ARIANS, ALEX			
16:06	MISSED LAYUP by DENTLINGER, MATT			
16:04				REBOUND (DEF) by KIRBY, DEVIN
16:04	FOUL (PERSONAL) by WILSON, DOUGLAS			
16:03				SUB OUT: RICKETTS, LADAN
16:03				SUB OUT: KIRBY, DEVIN
16:03				SUB IN: QUINLAN, ZEKE
16:03				SUB IN: PAULO, MYCHAEAL
16:03	SUB OUT: FREIDEL, NOAH			
16:03	SUB IN: WINGETT, DAVID			
15:49		49-41	H 8	GOOD! 3PTR by FREY, HARALD
15:49				ASSIST by BELO, JUBRILE
15:33	MISSED LAYUP by WILSON, DOUGLAS			
15:30				REBOUND (DEF) by QUINLAN, ZEKE
15:26	FOUL (PERSONAL) by ARIANS, ALEX			
15:26				
15:26	SUB OUT: ARIANS, ALEX			
15:26	SUB OUT: WILSON, DOUGLAS			
15:26	SUB IN: BUCHANAN, TRAY			
15:26	SUB IN: SCHEIERMAN, BAYLOR			
15:26		50-41	H 9	GOOD! FT by BELO, JUBRILE [FB]
15:26		51-41	H 10	GOOD! FT by BELO, JUBRILE [FB]
15:26				SUB OUT: BELO, JUBRILE
15:26				SUB IN: KIRBY, DEVIN
15:03	MISSED LAYUP by KEY, BRANDON			
15:00	REBOUND (OFF) by SCHEIERMAN, BAYLOR			
15:00				FOUL (PERSONAL) by PAULO, MYCHAEAL
15:00	GOOD! FT by SCHEIERMAN, BAYLOR	51-42	H 9	
15:00	GOOD! FT by SCHEIERMAN, BAYLOR	51-43	H 8	
14:49				MISSED 3PTR by FREY, HARALD
14:45	REBOUND (DEF) by TEAM			
14:37	GOOD! LAYUP by BUCHANAN, TRAY [PNT]	51-45	H 6	
14:22				MISSED 3PTR by QUINLAN, ZEKE
14:19				REBOUND (OFF) by KIRBY, DEVIN
14:19	FOUL (PERSONAL) by SCHEIERMAN, BAYLOR			
14:19				SUB OUT: ADAMU, AMIN
14:19				SUB IN: RICKETTS, LADAN
14:18	FOUL (PERSONAL) by BUCHANAN, TRAY			
14:10				TURNOVER (OTHER) by PAULO, MYCHAEAL
14:01	MISSED 3PTR by BUCHANAN, TRAY			
13:58	REBOUND (OFF) by WINGETT, DAVID			



Time	VISITORS: South Dakota State	Score	Margin	HOME: Montana State
13:56	TURNOVER (BADPASS) by SCHEIERMAN, BAYLOR			
13:56				STEAL by FREY, HARALD
13:50				MISSED 3PTR by FREY, HARALD
13:47				REBOUND (OFF) by KIRBY, DEVIN
13:48	FOUL (PERSONAL) by SCHEIERMAN, BAYLOR			
13:48				MISSED FT by KIRBY, DEVIN
13:48				REBOUND (OFF) by TEAM
13:48				SUB OUT: PAULO, MYCHAEAL
13:48				SUB IN: ADAMU, AMIN
13:48		52-45	H 7	GOOD! FT by KIRBY, DEVIN [FB]
13:30	TURNOVER (LOSTBALL) by SCHEIERMAN, BAYLOR			
13:30				STEAL by FREY, HARALD
13:30	SUB OUT: SCHEIERMAN, BAYLOR			
13:30	SUB IN: WILSON, DOUGLAS			
13:18				TURNOVER (TRAVEL) by ADAMU, AMIN
13:18				SUB OUT: KIRBY, DEVIN
13:18				SUB IN: BELO, JUBRILE
13:04	TURNOVER (BADPASS) by KEY, BRANDON			
13:04				STEAL by QUINLAN, ZEKE
12:57				MISSED LAYUP by QUINLAN, ZEKE
12:57	BLOCK by DENTLINGER, MATT			
12:51	REBOUND (DEF) by DENTLINGER, MATT			
12:50	TURNOVER (BADPASS) by KEY, BRANDON			
12:50				STEAL by ADAMU, AMIN
12:28				MISSED LAYUP by BELO, JUBRILE
12:28	BLOCK by DENTLINGER, MATT			
12:24	REBOUND (DEF) by BUCHANAN, TRAY			
12:24				FOUL (PERSONAL) by QUINLAN, ZEKE
12:24	GOOD! FT by BUCHANAN, TRAY [FB]	52-46	H 6	
12:24	SUB OUT: KEY, BRANDON			
12:24	SUB OUT: DENTLINGER, MATT			
12:24	SUB IN: KING, OWEN			
12:24	SUB IN: ARIANS, ALEX			
12:24	GOOD! FT by BUCHANAN, TRAY [FB]	52-47	H 5	
12:00	FOUL (PERSONAL) by BUCHANAN, TRAY			
12:00				
12:00				SUB OUT: BELO, JUBRILE
12:00				SUB IN: KIRBY, DEVIN
11:41				MISSED JUMPER by FREY, HARALD
11:37	REBOUND (DEF) by WINGETT, DAVID			
11:30				FOUL (PERSONAL) by KIRBY, DEVIN
11:09	MISSED 3PTR by BUCHANAN, TRAY			
11:05				REBOUND (DEF) by KIRBY, DEVIN
10:55	FOUL (PERSONAL) by ARIANS, ALEX			
10:55	SUB OUT: ARIANS, ALEX			
10:55	SUB IN: KEY, BRANDON			
10:55		53-47	H 6	GOOD! FT by FREY, HARALD
10:55				SUB OUT: QUINLAN, ZEKE
10:55				SUB IN: BELO, JUBRILE
10:55		54-47	H 7	GOOD! FT by FREY, HARALD
10:27	GOOD! LAYUP by WILSON, DOUGLAS	54-49	H 5	
10:27	ASSIST by KEY, BRANDON			
10:04				MISSED LAYUP by KIRBY, DEVIN
10:02	REBOUND (DEF) by WILSON, DOUGLAS			
10:01				FOUL (PERSONAL) by BELO, JUBRILE
10:01	GOOD! FT by KEY, BRANDON [FB]	54-50	H 4	
10:01	SUB OUT: KING, OWEN			
10:01	SUB IN: DENTLINGER, MATT			
10:01				SUB OUT: BELO, JUBRILE
10:01				SUB IN: FERNANDEZ, BORJA
10:01	GOOD! FT by KEY, BRANDON [FB]	54-51	H 3	
09:43		57-51	H 6	GOOD! 3PTR by FREY, HARALD
09:43				ASSIST by ADAMU, AMIN
09:29	TURNOVER (LOSTBALL) by DENTLINGER, MATT			
09:29				STEAL by FERNANDEZ, BORJA
09:24				TURNOVER (TRAVEL) by ADAMU, AMIN
08:59	GOOD! JUMPER by WINGETT, DAVID	57-53	H 4	
08:36		59-53	H 6	GOOD! LAYUP by FREY, HARALD [PNT]
08:36				ASSIST by KIRBY, DEVIN
08:11	GOOD! 3PTR by WINGETT, DAVID	59-56	H 3	
08:11	ASSIST by KEY, BRANDON			
07:43				TURNOVER (LOSTBALL) by FREY, HARALD
07:43	STEAL by BUCHANAN, TRAY			
07:43				FOUL (PERSONAL) by FREY, HARALD
07:43				
07:43	MISSED FT by BUCHANAN, TRAY			
07:43	REBOUND (OFF) by TEAM			
07:43	GOOD! FT by BUCHANAN, TRAY [FB]	59-57	H 2	
07:23				MISSED JUMPER by FREY, HARALD
07:20	REBOUND (DEF) by DENTLINGER, MATT			



Time	VISITORS: South Dakota State	Score	Margin	HOME: Montana State
07:03	GOOD! 3PTR by KEY, BRANDON	59-60	V 1	
07:03	ASSIST by DENTLINGER, MATT			
06:51				FOUL (OFF) by RICKETTS, LADAN
06:51				TURNOVER (OFFENSIVE) by RICKETTS, LADAN
06:51				SUB OUT: FERNANDEZ, BORJA
06:51				SUB IN: BELO, JUBRILE
06:37	GOOD! LAYUP by DENTLINGER, MATT [PNT]	59-62	V 3	
06:30		61-62	V 1	GOOD! LAYUP by ADAMU, AMIN [FB/PNT]
05:58	MISSED JUMPER by WINGETT, DAVID			
05:55	REBOUND (OFF) by WILSON, DOUGLAS			
05:53	MISSED JUMPER by WILSON, DOUGLAS			
05:50				REBOUND (DEF) by BELO, JUBRILE
05:35		63-62	H 1	GOOD! LAYUP by BELO, JUBRILE
05:35				ASSIST by FREY, HARALD
05:35	FOUL (PERSONAL) by WINGETT, DAVID			
05:35		64-62	H 2	GOOD! FT by BELO, JUBRILE
05:11	TURNOVER (TRAVEL) by KEY, BRANDON			
04:57				MISSED 3PTR by ADAMU, AMIN
04:54	REBOUND (DEF) by WILSON, DOUGLAS			
04:48	MISSED 3PTR by BUCHANAN, TRAY			
04:46				REBOUND (DEF) by KIRBY, DEVIN
04:46	FOUL (PERSONAL) by WILSON, DOUGLAS			
04:46				MISSED FT by KIRBY, DEVIN
04:44	REBOUND (DEF) by WILSON, DOUGLAS			
04:20	GOOD! JUMPER by BUCHANAN, TRAY	64-64	T	
04:20	ASSIST by DENTLINGER, MATT			
03:51				MISSED 3PTR by FREY, HARALD
03:47				REBOUND (OFF) by BELO, JUBRILE
03:50	FOUL (PERSONAL) by DENTLINGER, MATT			
03:50				
03:50		65-64	H 1	GOOD! FT by BELO, JUBRILE
03:50		66-64	H 2	GOOD! FT by BELO, JUBRILE
03:37				FOUL (PERSONAL) by FREY, HARALD
03:37	GOOD! FT by KEY, BRANDON	66-65	H 1	
03:37	MISSED FT by KEY, BRANDON			
03:35				REBOUND (DEF) by KIRBY, DEVIN
03:19		68-65	H 3	GOOD! LAYUP by ADAMU, AMIN [PNT]
03:02	MISSED LAYUP by DENTLINGER, MATT			
03:02				BLOCK by BELO, JUBRILE
02:58	REBOUND (OFF) by KEY, BRANDON			
02:58				FOUL (PERSONAL) by ADAMU, AMIN
02:58	GOOD! FT by KEY, BRANDON	68-66	H 2	
02:58	MISSED FT by KEY, BRANDON			
02:56	REBOUND (OFF) by WILSON, DOUGLAS			
02:55	GOOD! LAYUP by WILSON, DOUGLAS	68-68	T	
02:37				MISSED 3PTR by RICKETTS, LADAN
02:34	REBOUND (DEF) by BUCHANAN, TRAY			
02:04	MISSED 3PTR by WILSON, DOUGLAS			
02:01	REBOUND (OFF) by BUCHANAN, TRAY			
02:01	MISSED LAYUP by BUCHANAN, TRAY			
02:01				BLOCK by BELO, JUBRILE
01:57				REBOUND (DEF) by FREY, HARALD
02:00	FOUL (PERSONAL) by WILSON, DOUGLAS			
02:00		69-68	H 1	GOOD! FT by FREY, HARALD [FB]
02:00		70-68	H 2	GOOD! FT by FREY, HARALD [FB]
02:00				TIMEOUT TEAM
01:52				FOUL (PERSONAL) by BELO, JUBRILE
01:52	MISSED FT by DENTLINGER, MATT			
01:52	REBOUND (OFF) by TEAM			
01:51	MISSED FT by DENTLINGER, MATT			
01:50				REBOUND (DEF) by FREY, HARALD
01:34	FOUL (PERSONAL) by WINGETT, DAVID			
01:34		71-68	H 3	GOOD! FT by ADAMU, AMIN
01:34		72-68	H 4	GOOD! FT by ADAMU, AMIN
01:34				SUB OUT: BELO, JUBRILE
01:34				SUB IN: FERNANDEZ, BORJA
01:34	TIMEOUT 30SEC			
01:24	MISSED LAYUP by BUCHANAN, TRAY			
01:19				REBOUND (DEF) by ADAMU, AMIN
01:00				MISSED LAYUP by FREY, HARALD
00:55	REBOUND (DEF) by WINGETT, DAVID			
00:49	GOOD! LAYUP by WINGETT, DAVID [PNT]	72-70	H 2	
00:49	TIMEOUT 30SEC			
00:49				SUB OUT: FERNANDEZ, BORJA
00:49				SUB OUT: KIRBY, DEVIN
00:49				SUB IN: BELO, JUBRILE
00:49				SUB IN: PAULO, MYCHAEAL
00:24		75-70	H 5	GOOD! 3PTR by PAULO, MYCHAEAL
00:24				ASSIST by FREY, HARALD
00:16	MISSED 3PTR by KEY, BRANDON			



Time	VISITORS: South Dakota State	Score	Margin	HOME: Montana State
00:15				REBOUND (DEF) by ADAMU, AMIN
00:11		77-70	H 7	GOOD! DUNK by PAULO, MYCHAEAL [FB]
00:11				ASSIST by BELO, JUBRILE
00:01	MISSED 3PTR by WINGETT, DAVID			
00:00				REBOUND (DEF) by RICKETTS, LADAN

South Dakota State 70, Montana State 77

Points from (This Period)	SDS	MSU
In the Paint	12	14
Off Turns	5	1
2nd Chance	5	5
Fast Break	5	9
Bench	16	5



**Official Scoring/Possession Reference Chart**  
**South Dakota State vs Montana State**  
**Period 1**  
**December 05, 2019 at Worthington Arena - Bozeman**



**Period 1**

**Starters:**

**South Dakota State:** 0 KEY, BRANDON (G); 11 FREIDEL, NOAH (G); 32 DENTLINGER, MATT (F); 34 ARIANS, ALEX (G); 35 WILSON, DOUGLAS (F);  
**Montana State:** 4 ADAMU, AMIN (G); 5 FREY, HARALD (G); 11 RICKETTS, LADAN (F); 13 BELO, JUBRILE (F); 31 KIRBY, DEVIN (C);

Time	VISITORS: South Dakota State	Score	Margin	HOME: Montana State
19:19	GOOD! JUMPER by ARIANS, ALEX [PNT]	0-2	V 2	
19:06		2-2	T	GOOD! JUMPER by ADAMU, AMIN
18:47	GOOD! JUMPER by DENTLINGER, MATT [PNT]	2-4	V 2	
18:28		5-4	H 1	GOOD! 3PTR by ADAMU, AMIN
17:57		7-4	H 3	GOOD! LAYUP by FREY, HARALD [PNT]
17:34		10-4	H 6	GOOD! 3PTR by RICKETTS, LADAN [FB]
17:07	GOOD! LAYUP by DENTLINGER, MATT	10-6	H 4	
16:08		13-6	H 7	GOOD! 3PTR by RICKETTS, LADAN
15:14	GOOD! LAYUP by WILSON, DOUGLAS	13-8	H 5	
14:28	GOOD! LAYUP by WILSON, DOUGLAS	13-10	H 3	
13:43		16-10	H 6	GOOD! 3PTR by PAULO, MYCHAEAL
12:39	GOOD! LAYUP by SCHEIERMAN, BAYLOR [FB/PNT]	16-12	H 4	
12:17	GOOD! LAYUP by WILSON, DOUGLAS [FB]	16-14	H 2	
11:49		18-14	H 4	GOOD! JUMPER by FREY, HARALD
10:54	GOOD! 3PTR by WINGETT, DAVID	18-17	H 1	
09:48		20-17	H 3	GOOD! JUMPER by ADAMU, AMIN
09:27	GOOD! DUNK by WILSON, DOUGLAS	20-19	H 1	
09:09		22-19	H 3	GOOD! JUMPER by ADAMU, AMIN [PNT]
08:58	GOOD! FT by BUCHANAN, TRAY	22-20	H 2	
08:58	GOOD! FT by BUCHANAN, TRAY	22-21	H 1	
08:42		24-21	H 3	GOOD! JUMPER by ADAMU, AMIN [PNT]
08:26	GOOD! JUMPER by BUCHANAN, TRAY	24-23	H 1	
08:03		26-23	H 3	GOOD! JUMPER by PAULO, MYCHAEAL
07:36	GOOD! LAYUP by BUCHANAN, TRAY	26-25	H 1	
07:30		28-25	H 3	GOOD! JUMPER by FERNANDEZ, BORJA
07:13	GOOD! LAYUP by SCHEIERMAN, BAYLOR	28-27	H 1	
06:59		31-27	H 4	GOOD! 3PTR by RICKETTS, LADAN
05:31		33-27	H 6	GOOD! LAYUP by RICKETTS, LADAN
05:01	GOOD! JUMPER by WILSON, DOUGLAS [PNT]	33-29	H 4	
04:28	GOOD! FT by WILSON, DOUGLAS	33-30	H 3	
04:28	GOOD! FT by WILSON, DOUGLAS	33-31	H 2	
04:06		35-31	H 4	GOOD! LAYUP by QUINLAN, ZEKE
03:36	GOOD! 3PTR by WINGETT, DAVID	35-34	H 1	
02:50		36-34	H 2	GOOD! FT by FREY, HARALD
02:04		38-34	H 4	GOOD! LAYUP by FREY, HARALD
01:34	GOOD! 3PTR by KEY, BRANDON	38-37	H 1	
01:13	GOOD! LAYUP by BUCHANAN, TRAY [FB/PNT]	38-39	V 1	
00:18		40-39	H 1	GOOD! LAYUP by FREY, HARALD [PNT]

**South Dakota State 39, Montana State 40**



**Official Scoring/Possession Reference Chart**  
**South Dakota State vs Montana State**  
**Period 2**  
**December 05, 2019 at Worthington Arena - Bozeman**



**Period 2**

**Starters:**

**South Dakota State:** 0 KEY, BRANDON (G); 11 FREIDEL, NOAH (G); 32 DENTLINGER, MATT (F); 34 ARIANS, ALEX (G); 35 WILSON, DOUGLAS (F);

**Montana State:** 4 ADAMU, AMIN (G); 5 FREY, HARALD (G); 11 RICKETTS, LADAN (F); 13 BELO, JUBRILE (F); 31 KIRBY, DEVIN (C);

Time	VISITORS: South Dakota State	Score	Margin	HOME: Montana State
19:14		42-39	H 3	GOOD! JUMPER by ADAMU, AMIN
18:42		44-39	H 5	GOOD! LAYUP by BELO, JUBRILE [PNT]
17:16		46-39	H 7	GOOD! LAYUP by FREY, HARALD
16:50	GOOD! JUMPER by ARIANS, ALEX [PNT]	46-41	H 5	
15:49		49-41	H 8	GOOD! 3PTR by FREY, HARALD
15:26		50-41	H 9	GOOD! FT by BELO, JUBRILE [FB]
15:26		51-41	H 10	GOOD! FT by BELO, JUBRILE [FB]
15:00	GOOD! FT by SCHEIERMAN, BAYLOR	51-42	H 9	
15:00	GOOD! FT by SCHEIERMAN, BAYLOR	51-43	H 8	
14:37	GOOD! LAYUP by BUCHANAN, TRAY [PNT]	51-45	H 6	
13:48		52-45	H 7	GOOD! FT by KIRBY, DEVIN [FB]
12:24	GOOD! FT by BUCHANAN, TRAY [FB]	52-46	H 6	
12:24	GOOD! FT by BUCHANAN, TRAY [FB]	52-47	H 5	
10:55		53-47	H 6	GOOD! FT by FREY, HARALD
10:55		54-47	H 7	GOOD! FT by FREY, HARALD
10:27	GOOD! LAYUP by WILSON, DOUGLAS	54-49	H 5	
10:01	GOOD! FT by KEY, BRANDON [FB]	54-50	H 4	
10:01	GOOD! FT by KEY, BRANDON [FB]	54-51	H 3	
09:43		57-51	H 6	GOOD! 3PTR by FREY, HARALD
08:59	GOOD! JUMPER by WINGETT, DAVID	57-53	H 4	
08:36		59-53	H 6	GOOD! LAYUP by FREY, HARALD [PNT]
08:11	GOOD! 3PTR by WINGETT, DAVID	59-56	H 3	
07:43	GOOD! FT by BUCHANAN, TRAY [FB]	59-57	H 2	
07:03	GOOD! 3PTR by KEY, BRANDON	59-60	V 1	
06:37	GOOD! LAYUP by DENTLINGER, MATT [PNT]	59-62	V 3	
06:30		61-62	V 1	GOOD! LAYUP by ADAMU, AMIN [FB/PNT]
05:35		63-62	H 1	GOOD! LAYUP by BELO, JUBRILE
05:35		64-62	H 2	GOOD! FT by BELO, JUBRILE
04:20	GOOD! JUMPER by BUCHANAN, TRAY	64-64	T	
03:50		65-64	H 1	GOOD! FT by BELO, JUBRILE
03:50		66-64	H 2	GOOD! FT by BELO, JUBRILE
03:37	GOOD! FT by KEY, BRANDON	66-65	H 1	
03:19		68-65	H 3	GOOD! LAYUP by ADAMU, AMIN [PNT]
02:58	GOOD! FT by KEY, BRANDON	68-66	H 2	
02:55	GOOD! LAYUP by WILSON, DOUGLAS	68-68	T	
02:00		69-68	H 1	GOOD! FT by FREY, HARALD [FB]
02:00		70-68	H 2	GOOD! FT by FREY, HARALD [FB]
01:34		71-68	H 3	GOOD! FT by ADAMU, AMIN
01:34		72-68	H 4	GOOD! FT by ADAMU, AMIN
00:49	GOOD! LAYUP by WINGETT, DAVID [PNT]	72-70	H 2	
00:24		75-70	H 5	GOOD! 3PTR by PAULO, MYCHAEAL
00:11		77-70	H 7	GOOD! DUNK by PAULO, MYCHAEAL [FB]

**South Dakota State 70, Montana State 77**



**Official Substitutions Log**  
**South Dakota State vs Montana State**  
**Period 1**  
**December 05, 2019 at Worthington Arena - Bozeman**



VISITORS: South Dakota State	Time	Score	HOME: Montana State
0 KEY,BRANDON			4 ADAMU,AMIN
11 FREIDEL,NOAH			5 FREY,HARALD
32 DENTLINGER,MATT			11 RICKETTS,LADAN
34 ARIANS,ALEX			13 BELO,JUBRILE
35 WILSON,DOUGLAS			31 KIRBY,DEVIN
	14:45	8-13	SUB OUT: ADAMU,AMIN
	14:45		SUB OUT: BELO,JUBRILE
	14:45		SUB IN: QUINLAN,ZEKE
	14:45		SUB IN: PAULO,MYCHAEAL
SUB OUT: 11 FREIDEL,NOAH	14:45		
SUB IN: 3 SCHEIERMAN,BAYLOR	14:45		
	11:55	14-16	SUB OUT: QUINLAN,ZEKE
	11:55		SUB OUT: PAULO,MYCHAEAL
	11:55		SUB OUT: KIRBY,DEVIN
	11:55		SUB IN: ADAMU,AMIN
	11:55		SUB IN: BELO,JUBRILE
	11:55		SUB IN: FERNANDEZ,BORJA
SUB OUT: 3 SCHEIERMAN,BAYLOR	11:55		
SUB OUT: 32 DENTLINGER,MATT	11:55		
SUB IN: 2 BUCHANAN,TRAY	11:55		
SUB IN: 50 WINGETT,DAVID	11:55		
	09:58	17-18	SUB OUT: RICKETTS,LADAN
	09:58		SUB IN: BELLACH,CALEB
SUB OUT: 34 ARIANS,ALEX	09:24	19-20	
SUB IN: 11 FREIDEL,NOAH	09:24		
	08:58	20-22	SUB OUT: FREY,HARALD
	08:58		SUB IN: PAULO,MYCHAEAL
SUB OUT: 35 WILSON,DOUGLAS	08:58		
SUB IN: 32 DENTLINGER,MATT	08:58		
SUB OUT: 0 KEY,BRANDON	08:58		
SUB IN: 3 SCHEIERMAN,BAYLOR	08:58		
	07:14	25-28	SUB OUT: BELLACH,CALEB
	07:14		SUB OUT: PAULO,MYCHAEAL
	07:14		SUB OUT: FERNANDEZ,BORJA
	07:14		SUB IN: FREY,HARALD
	07:14		SUB IN: RICKETTS,LADAN
	07:14		SUB IN: KIRBY,DEVIN
	07:13	27-28	SUB OUT: BELO,JUBRILE
	07:13		SUB IN: FERNANDEZ,BORJA
SUB OUT: 3 SCHEIERMAN,BAYLOR	06:29	27-31	
SUB OUT: 32 DENTLINGER,MATT	06:29		
SUB IN: 0 KEY,BRANDON	06:29		
SUB IN: 35 WILSON,DOUGLAS	06:29		
	05:17	27-33	SUB OUT: FERNANDEZ,BORJA
	05:17		SUB IN: QUINLAN,ZEKE
SUB OUT: 11 FREIDEL,NOAH	05:17		
SUB IN: 32 DENTLINGER,MATT	05:17		
	02:58	34-35	SUB OUT: ADAMU,AMIN
	02:58		SUB IN: PAULO,MYCHAEAL
	01:30	37-38	SUB OUT: RICKETTS,LADAN
	01:30		SUB IN: ADAMU,AMIN
SUB OUT: 50 WINGETT,DAVID	01:30		
SUB IN: 3 SCHEIERMAN,BAYLOR	01:30		
	00:01	39-40	SUB OUT: PAULO,MYCHAEAL
	00:01		SUB IN: RICKETTS,LADAN

**South Dakota State 39, Montana State 40**



**Official Substitutions Log**  
**South Dakota State vs Montana State**  
**Period 2**  
**December 05, 2019 at Worthington Arena - Bozeman**



VISITORS: South Dakota State	Time	Score	HOME: Montana State
0 KEY,BRANDON			4 ADAMU,AMIN
11 FREIDEL,NOAH			5 FREY,HARALD
32 DENTLINGER,MATT			11 RICKETTS,LADAN
34 ARIANS,ALEX			13 BELO,JUBRILE
35 WILSON,DOUGLAS			31 KIRBY,DEVIN
	20:00	-	SUB OUT: QUINLAN,ZEKE
	20:00		SUB IN: BELO,JUBRILE
SUB OUT: 2 BUCHANAN,TRAY	20:00		
SUB OUT: 3 SCHEIERMAN,BAYLOR	20:00		
SUB IN: 11 FREIDEL,NOAH	20:00		
SUB IN: 34 ARIANS,ALEX	20:00		
	16:03	41-46	SUB OUT: RICKETTS,LADAN
	16:03		SUB OUT: KIRBY,DEVIN
	16:03		SUB IN: QUINLAN,ZEKE
	16:03		SUB IN: PAULO,MYCHAEAL
SUB OUT: 11 FREIDEL,NOAH	16:03		
SUB IN: 50 WINGETT,DAVID	16:03		
SUB OUT: 34 ARIANS,ALEX	15:26	41-49	
SUB OUT: 35 WILSON,DOUGLAS	15:26		
SUB IN: 2 BUCHANAN,TRAY	15:26		
SUB IN: 3 SCHEIERMAN,BAYLOR	15:26		
	15:26		SUB OUT: BELO,JUBRILE
	15:26		SUB IN: KIRBY,DEVIN
	14:19	45-51	SUB OUT: ADAMU,AMIN
	14:19		SUB IN: RICKETTS,LADAN
	13:48	45-51	SUB OUT: PAULO,MYCHAEAL
	13:48		SUB IN: ADAMU,AMIN
SUB OUT: 3 SCHEIERMAN,BAYLOR	13:30	45-52	
SUB IN: 35 WILSON,DOUGLAS	13:30		
	13:18	45-52	SUB OUT: KIRBY,DEVIN
	13:18		SUB IN: BELO,JUBRILE
SUB OUT: 0 KEY,BRANDON	12:24	46-52	
SUB OUT: 32 DENTLINGER,MATT	12:24		
SUB IN: 23 KING,OWEN	12:24		
SUB IN: 34 ARIANS,ALEX	12:24		
	12:00	47-52	SUB OUT: BELO,JUBRILE
	12:00		SUB IN: KIRBY,DEVIN
SUB OUT: 34 ARIANS,ALEX	10:55	47-52	
SUB IN: 0 KEY,BRANDON	10:55		
	10:55		SUB OUT: QUINLAN,ZEKE
	10:55		SUB IN: BELO,JUBRILE
SUB OUT: 23 KING,OWEN	10:01	50-54	
SUB IN: 32 DENTLINGER,MATT	10:01		
	10:01		SUB OUT: BELO,JUBRILE
	10:01		SUB IN: FERNANDEZ,BORJA
	06:51	60-59	SUB OUT: FERNANDEZ,BORJA
	06:51		SUB IN: BELO,JUBRILE
	01:34	68-72	SUB OUT: BELO,JUBRILE
	01:34		SUB IN: FERNANDEZ,BORJA
	00:49	70-72	SUB OUT: FERNANDEZ,BORJA
	00:49		SUB OUT: KIRBY,DEVIN
	00:49		SUB IN: BELO,JUBRILE
	00:49		SUB IN: PAULO,MYCHAEAL

**South Dakota State 70, Montana State 77**







Official Shot Chart  
**South Dakota State vs Montana State**  
 PERIOD 2 Shots  
 December 05, 2019 at Worthington Arena - Bozeman

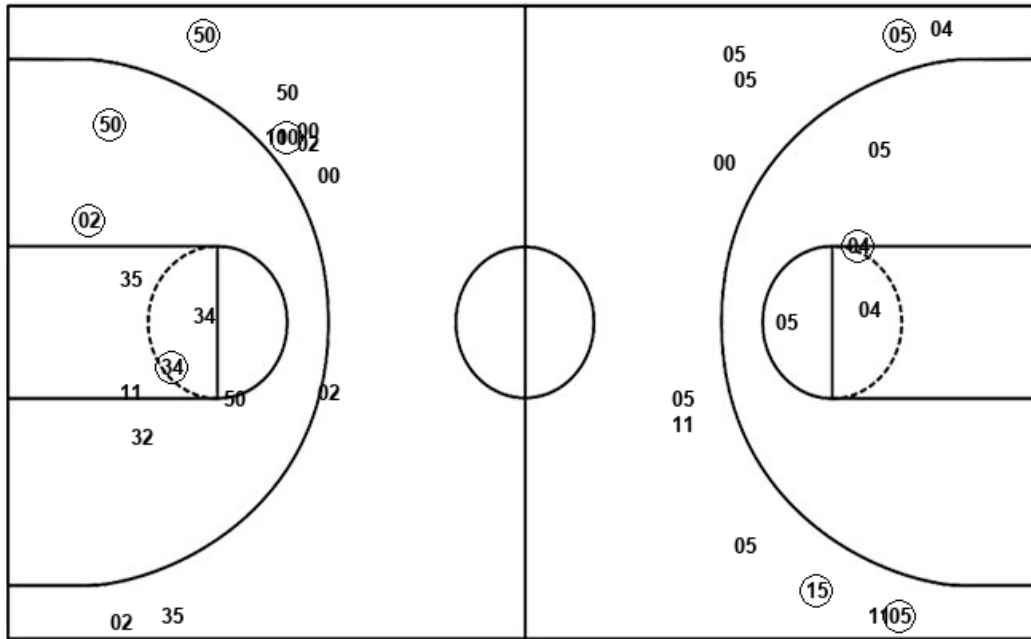


**Montana State**

**South Dakota State**

Layups  
 (13) (05) 00 13 31  
 (05) (04) (13) (04) 05

Dunks  
 (15)



Layups  
 32 35 00 (02) (35)  
 (32) 32 (35) 02 02  
 (50)

Dunks

SDS : Period 2	Made	Att	Pct
Layups	5	11	45.5
Dunks	0	0	0
2PT Field Goals	8	19	42.1
3PT Field Goals	2	10	20.0
<b>Total Field Goals</b>	<b>10</b>	<b>29</b>	<b>34.5</b>

MSU : Period 2	Made	Att	Pct
Layups	6	10	60.0
Dunks	1	1	100.0
2PT Field Goals	8	15	53.3
3PT Field Goals	3	11	27.3
<b>Total Field Goals</b>	<b>11</b>	<b>26</b>	<b>42.3</b>

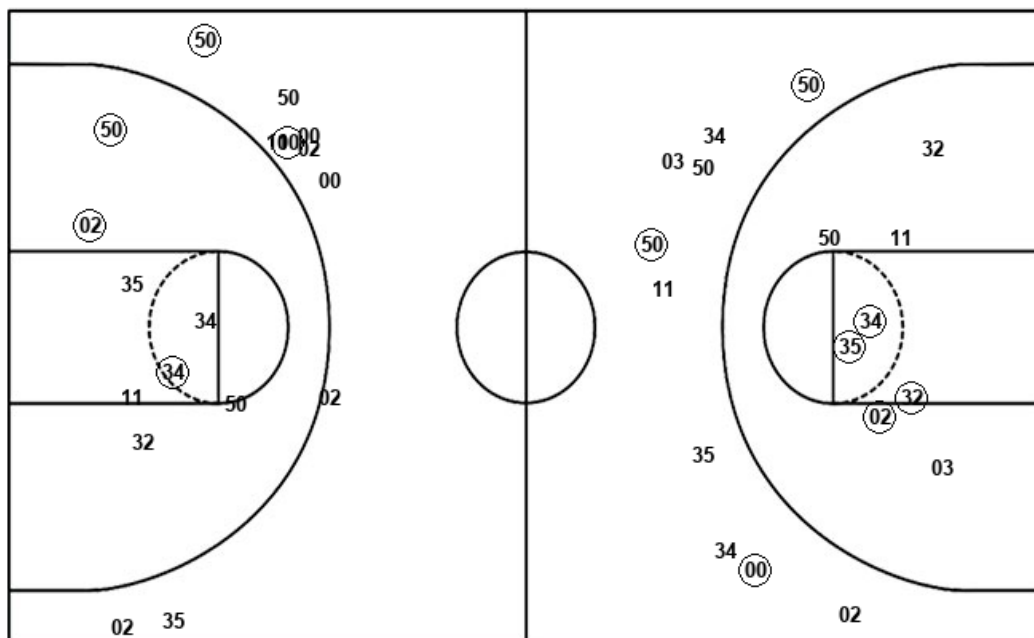


Official Shot Chart  
**South Dakota State vs Montana State**  
 South Dakota State Team Shots  
 December 05, 2019 at Worthington Arena - Bozeman



Layups

Dunks



Layups

Dunks

SDS : Period 1	Made	Att	Pct
Layups	8	14	57.1
Dunks	1	1	100.0
2PT Field Goals	13	23	56.5
3PT Field Goals	3	10	30.0
<b>Total Field Goals</b>	<b>16</b>	<b>33</b>	<b>48.5</b>

SDS : Period 2	Made	Att	Pct
Layups	5	11	45.5
Dunks	0	0	0
2PT Field Goals	8	19	42.1
3PT Field Goals	2	10	20.0
<b>Total Field Goals</b>	<b>10</b>	<b>29</b>	<b>34.5</b>

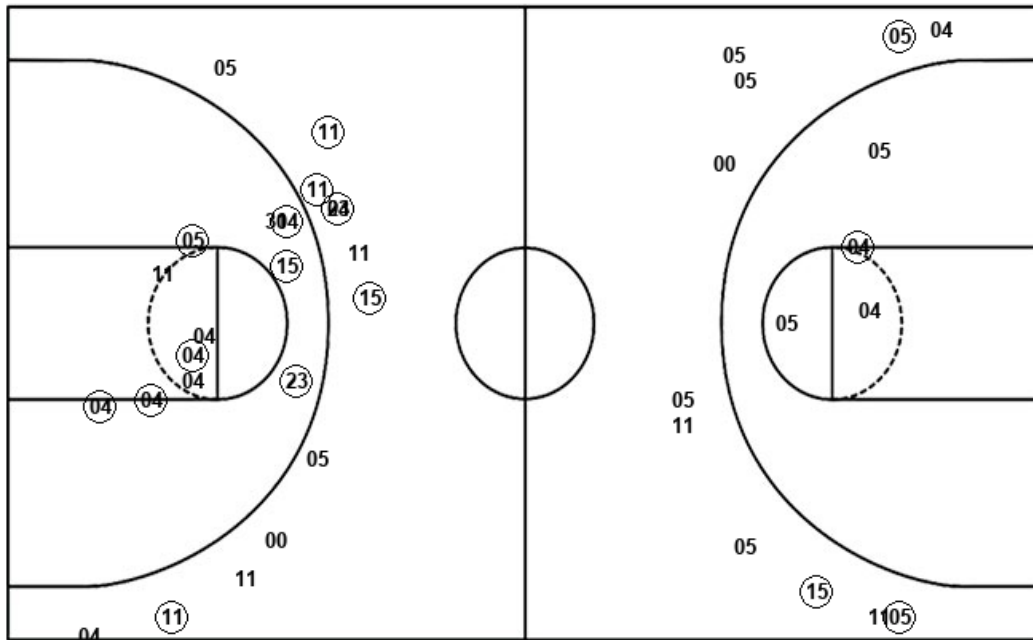


Official Shot Chart  
**South Dakota State vs Montana State**  
 Montana State Team Shots  
 December 05, 2019 at Worthington Arena - Bozeman



Layups

Dunks



Layups

Dunks

(05) 05 (11) (00) (05)  
 04 (05) (13) (05) 00  
 13 31 (05) (04) (13)  
 (04) 05

00 (15)

MSU : Period 1	Made	Att	Pct
Layups	5	7	71.4
Dunks	0	1	00.0
2PT Field Goals	12	19	63.2
3PT Field Goals	5	12	41.7
<b>Total Field Goals</b>	<b>17</b>	<b>31</b>	<b>54.8</b>

MSU : Period 2	Made	Att	Pct
Layups	6	10	60.0
Dunks	1	1	100.0
2PT Field Goals	8	15	53.3
3PT Field Goals	3	11	27.3
<b>Total Field Goals</b>	<b>11</b>	<b>26</b>	<b>42.3</b>