

FINAL SCORE



VMI

55



ETSU

61

January 11, 2020 • Freedom Hall

FINAL STATISTICS

Official Box Score
VMI vs ETSU
Game Totals -- Final Statistics
January 11, 2020 at Freedom Hall



VMI 55

No.	Player	S	Pts	FG	3FG	FT	OR	DR	TR	PF	A	TO	Blk	Stl	Min	+/-
02	GILKESON, GARRETT	G	2	1-7	0-2	0-0	1	9	10	2	3	5	0	0	35	-6
03	EVEE, TRAVIS	G	13	3-8	1-5	6-6	0	5	5	4	1	3	0	0	34	-6
10	CURFMAN, KAMDYN	G	9	3-8	3-6	0-0	0	4	4	1	1	1	0	0	29	-13
15	LEWIS, MYLES	G	4	2-3	0-0	0-0	1	4	5	1	0	3	0	0	18	-15
34	STEPHENS, JAKE	C	2	1-3	0-2	0-0	0	1	1	5	2	0	0	0	18	-4
00	TANG, LOUIS	G	5	2-5	0-1	1-1	1	1	2	0	0	1	0	1	9	0
05	PARHAM, GREG	G	12	4-10	3-5	1-1	0	2	2	2	3	2	0	1	28	8
24	MILLER, WILL	F	0	0-0	0-0	0-0	1	0	1	2	0	0	1	1	6	4
25	CREAMMER, TYLER	C	8	3-3	0-0	2-3	2	1	3	2	1	3	0	0	16	-7
30	CONWAY, SEAN	G	0	0-1	0-0	0-0	0	0	0	3	2	0	0	0	7	9
TEAM							3	1	4	0		1				
TOTALS			55	19-48	7-21	10-11	9	28	37	22	13	19	1	3	200	

Shooting By Period

Period	FG	FG%	3FG	3FG%	FT	FT%
1st Half	9-23	39%	2-10	20%	1-1	100%
2nd Half	10-25	40%	5-11	45%	9-10	90%
Game	19-48	39.6%	7-21	33.3%	10-11	90.9%

Last FG: 2nd-00:52
Largest lead: By 2 at
Technical Fouls: #0 TEAM @ 2nd - 17:50;

ETSU 61

No.	Player	S	Pts	FG	3FG	FT	OR	DR	TR	PF	A	TO	Blk	Stl	Min	+/-
03	HODGES, BO	G	3	0-6	0-2	3-4	2	2	4	5	1	3	2	1	31	3
10	GOOD, PATRICK	G	12	2-9	1-6	7-8	1	2	3	1	2	0	0	3	36	14
15	TISDALE, ISIAHAH	G	5	2-7	0-1	1-4	2	3	5	4	3	1	0	0	25	4
23	PATTERSON, VONNIE	F	11	4-5	1-1	2-3	3	3	6	4	0	0	0	1	26	9
25	N'GUESSAN, LUCAS	C	11	4-6	0-1	3-8	1	7	8	2	0	1	0	0	28	10
01	BOYD III, TRAY	G	11	3-14	3-8	2-2	2	1	3	0	2	0	1	2	23	-2
05	WILLIAMSON, DAI VIEN	G	2	1-2	0-0	0-0	0	1	1	0	2	1	0	2	20	-4
21	HUGLEY, JOE	F	6	2-3	0-1	2-2	1	0	1	1	0	2	0	0	11	-4
TEAM							0	2	2	0		0				
TOTALS			61	18-52	5-20	20-31	12	21	33	17	10	8	3	9	200	

Shooting By Period

Period	FG	FG%	3FG	3FG%	FT	FT%
1st Half	10-24	42%	3-10	30%	3-4	75%
2nd Half	8-28	29%	2-10	20%	17-27	63%
Game	18-52	34.6%	5-20	25.0%	20-31	64.5%

Last FG: 2nd-01:11
Largest lead: By 14 at
Technical Fouls: None.

Game Notes:

Officials: Michael Kolen, Glenn Tuitt, Nelson Santiago
Attendance: 4730

Start Time: 09:00 PM
Conference Game;

Score	1st	2nd	TOT
VMI	21	34	55
ETSU	26	35	61

VMI led for 2:00. ETSU led for 36:37.
Game was tied for 0:0.
Times tied: 0 Lead Changes: 0

Points from	VMI	ETSU
In the Paint	24	26
Off Turns	6	14
2nd Chance	4	10
Fast Break	7	7
Bench	25	19

Official Box Score
VMI vs ETSU
First Half Statistics Only
January 11, 2020 at Freedom Hall



VMI 21

No.	Player	S	Pts	FG	3FG	FT	OR	DR	TR	PF	A	TO	Blk	Stl	Min
02	GILKESON, GARRETT	G	0	0-0	0-0	0-0	0	3	3	0	1	2	0	0	16
03	EVEE, TRAVIS	G	2	1-5	0-4	0-0	0	3	3	2	0	1	0	0	17
10	CURFMAN, KAMDYN	G	0	0-3	0-1	0-0	0	0	0	0	1	0	0	0	11
15	LEWIS, MYLES	G	4	2-2	0-0	0-0	1	4	5	0	0	1	0	0	13
34	STEPHENS, JAKE	C	2	1-2	0-1	0-0	0	0	0	2	0	0	0	0	9
00	TANG, LOUIS	G	5	2-5	0-1	1-1	0	1	1	0	0	1	0	1	7
05	PARHAM, GREG	G	6	2-4	2-3	0-0	0	1	1	0	1	2	0	1	13
24	MILLER, WILL	F	0	0-0	0-0	0-0	1	0	1	0	0	0	1	1	4
25	CREAMMER, TYLER	C	2	1-1	0-0	0-0	1	0	1	1	0	3	0	0	7
30	CONWAY, SEAN	G	0	0-1	0-0	0-0	0	0	0	2	1	0	0	0	2
	TEAM			0-0			1	0	1	0		0			
TOTALS			21	9-23	2-10	1-1	4	12	16	7	4	10	1	3	100

Shooting By Period

Period	FG	FG%	3FG	3FG%	FT	FT%
1st Half	9-23	39%	2-10	20%	1-1	100%
Game	19-48	39.6%	7-21	33.3%	10-11	90.9%

Last FG Half: VMI 2nd-00:52

ETSU 26

No.	Player	S	Pts	FG	3FG	FT	OR	DR	TR	PF	A	TO	Blk	Stl	Min
03	HODGES, BO	G	1	0-2	0-1	1-2	1	1	2	2	0	3	1	0	16
10	GOOD, PATRICK	G	3	1-4	1-3	0-0	0	1	1	1	1	0	0	2	19
15	TISDALE, ISAIAH	G	4	2-4	0-0	0-0	0	0	0	2	1	1	0	0	9
23	PATTERSON, VONNIE	F	4	2-2	0-0	0-0	0	2	2	0	0	0	0	0	9
25	N'GUESSAN, LUCAS	C	2	1-2	0-1	0-0	1	4	5	1	0	1	0	0	12
01	BOYD III, TRAY	G	6	2-8	2-5	0-0	1	0	1	0	1	0	0	1	14
05	WILLIAMSON, DAIVIEN	G	2	1-1	0-0	0-0	0	0	0	0	2	1	0	0	13
21	HUGLEY, JOE	F	4	1-1	0-0	2-2	0	0	0	1	0	1	0	0	8
	TEAM			0-0			0	2	2	0		0			
TOTALS			26	10-24	3-10	3-4	3	10	13	7	5	7	1	3	100

Shooting By Period

Period	FG	FG%	3FG	3FG%	FT	FT%
1st Half	10-24	42%	3-10	30%	3-4	75%
Game	18-52	34.6%	5-20	25.0%	20-31	64.5%

Last FG Half: ETSU 2nd-01:11

Game Notes:

Officials: Michael Kolen, Glenn Tuitt, Nelson Santiago
 Attendance: 4730

Start Time: 09:00 PM
 Conference Game;

Score	1st	2nd	TOT
VMI	21	34	55
ETSU	26	35	61

Points from (This Period)	VMI	ETSU
In the Paint	14	14
Off Turns	6	7
2nd Chance	0	3
Fast Break	3	0
Bench	13	12

Official Play-By-Play
VMI vs ETSU
First Half
January 11, 2020 at Freedom Hall



Period 1

Starters:

VMI: 2 GILKESON, GARRETT (G); 3 EVEE, TRAVIS (G); 10 CURFMAN, KAMDYN (G); 15 LEWIS, MYLES (G); 34 STEPHENS, JAKE (C);
ETSU: 3 HODGES, BO (G); 10 GOOD, PATRICK (G); 15 TISDALE, ISAIAH (G); 23 PATTERSON, VONNIE (F); 25 N'GUESSAN, LUCAS (C);

Time	VISITORS: VMI	Score	Margin	HOME: ETSU
19:39		2-0	H 2	GOOD! LAYUP by TISDALE, ISAIAH
19:20	MISSED JUMPER by CURFMAN, KAMDYN			
19:16				REBOUND (DEF) by GOOD, PATRICK
19:03		4-0	H 4	GOOD! LAYUP by PATTERSON, VONNIE
18:34	MISSED JUMPER by CURFMAN, KAMDYN			
18:31				REBOUND (DEF) by N'GUESSAN, LUCAS
18:17				MISSED JUMPER by TISDALE, ISAIAH
18:14				REBOUND (OFF) by N'GUESSAN, LUCAS
18:02		6-0	H 6	GOOD! LAYUP by PATTERSON, VONNIE
18:02				ASSIST by TISDALE, ISAIAH
17:41	MISSED 3PTR by CURFMAN, KAMDYN			
17:38				REBOUND (DEF) by PATTERSON, VONNIE
17:31		9-0	H 9	GOOD! 3PTR by GOOD, PATRICK
17:28	TIMEOUT 30SEC			
17:28	SUB OUT: CURFMAN, KAMDYN			
17:28	SUB IN: PARHAM, GREG			
17:15	MISSED 3PTR by EVEE, TRAVIS			
17:13				REBOUND (DEF) by PATTERSON, VONNIE
16:41				MISSED JUMPER by TISDALE, ISAIAH
16:38	REBOUND (DEF) by LEWIS, MYLES			
16:14	GOOD! LAYUP by STEPHENS, JAKE	9-2	H 7	
16:14	ASSIST by PARHAM, GREG			
15:52				MISSED 3PTR by HODGES, BO
15:49	REBOUND (DEF) by EVEE, TRAVIS			
15:39	GOOD! 3PTR by PARHAM, GREG	9-5	H 4	
15:18				MISSED JUMPER by HODGES, BO [PNT]
15:15	REBOUND (DEF) by EVEE, TRAVIS			
15:07	MISSED 3PTR by STEPHENS, JAKE			
15:02	REBOUND (OFF) by LEWIS, MYLES			
15:02				FOUL by HODGES, BO
15:02	TIMEOUT MEDIA			
15:02				SUB OUT: HODGES, BO
15:02				SUB OUT: N'GUESSAN, LUCAS
15:02				SUB IN: BOYD III, TRAY
15:02				SUB IN: HUGLEY, JOE
15:02	SUB OUT: LEWIS, MYLES			
15:02	SUB OUT: STEPHENS, JAKE			
15:02	SUB IN: CREAMMER, TYLER			
15:02	SUB IN: CONWAY, SEAN			
14:55				FOUL by HUGLEY, JOE
14:52	TURNOVER by PARHAM, GREG			
14:24		11-5	H 6	GOOD! LAYUP by HUGLEY, JOE
14:24				ASSIST by GOOD, PATRICK
14:12				FOUL by TISDALE, ISAIAH
14:12				SUB OUT: GOOD, PATRICK
14:12				SUB IN: WILLIAMSON, DAIVIEN
14:06	GOOD! 3PTR by PARHAM, GREG	11-8	H 3	
14:06	ASSIST by CONWAY, SEAN			
13:42	FOUL by CONWAY, SEAN			
13:42				SUB OUT: PATTERSON, VONNIE
13:42				SUB IN: HODGES, BO
13:37	FOUL by CREAMMER, TYLER			
13:35	SUB OUT: CREAMMER, TYLER			
13:35	SUB IN: MILLER, WILL			
13:23				TURNOVER by TISDALE, ISAIAH
13:23				SUB OUT: TISDALE, ISAIAH
13:23				SUB IN: GOOD, PATRICK
13:13	MISSED JUMPER by CONWAY, SEAN			
13:10				REBOUND (DEF) by HODGES, BO
12:49				MISSED 3PTR by GOOD, PATRICK
12:45	REBOUND (DEF) by EVEE, TRAVIS			
12:43	GOOD! LAYUP by EVEE, TRAVIS	11-10	H 1	
12:34	FOUL by CONWAY, SEAN			
12:34	SUB OUT: GILKESON, GARRETT			
12:34	SUB OUT: CONWAY, SEAN			
12:34	SUB IN: CURFMAN, KAMDYN			
12:34	SUB IN: LEWIS, MYLES			
12:34	SUB OUT: EVEE, TRAVIS			
12:34	SUB IN: TANG, LOUIS			
12:15				MISSED LAYUP by BOYD III, TRAY

Time	VISITORS: VMI	Score	Margin	HOME: ETSU
12:15	BLOCK by MILLER, WILL			
12:10	REBOUND (DEF) by LEWIS, MYLES			
12:10	TURNOVER by TANG, LOUIS			
11:48				TURNOVER by HODGES, BO
11:48	STEAL by MILLER, WILL			
11:48	TIMEOUT MEDIA			
11:48				SUB OUT: HUGLEY, JOE
11:48				SUB IN: N'GUESSAN, LUCAS
11:38	MISSED 3PTR by TANG, LOUIS			
11:35				REBOUND (DEF) by TEAM
11:16		13-10	H 3	GOOD! LAYUP by WILLIAMSON, DAIVIEN
11:02	MISSED LAYUP by TANG, LOUIS			
11:02				BLOCK by HODGES, BO
10:57	REBOUND (OFF) by MILLER, WILL			
10:46	MISSED LAYUP by PARHAM, GREG [PNT]			
10:44				REBOUND (DEF) by N'GUESSAN, LUCAS
10:24				MISSED 3PTR by BOYD III, TRAY
10:20	REBOUND (DEF) by LEWIS, MYLES			
10:04	GOOD! LAYUP by LEWIS, MYLES	13-12	H 1	
09:43				MISSED JUMPER by GOOD, PATRICK
09:39	REBOUND (DEF) by LEWIS, MYLES			
09:36	GOOD! JUMPER by TANG, LOUIS [FB/PNT]	13-14	V 1	
09:36				FOUL by GOOD, PATRICK [PNT]
09:36				SUB OUT: BOYD III, TRAY
09:36				SUB IN: TISDALE, ISAIAH
09:36	SUB OUT: PARHAM, GREG			
09:36	SUB OUT: MILLER, WILL			
09:36	SUB IN: EVEE, TRAVIS			
09:36	SUB IN: STEPHENS, JAKE			
09:36	GOOD! FT by TANG, LOUIS [FB]	13-15	V 2	
09:36	SUB OUT: TANG, LOUIS			
09:36	SUB IN: GILKESON, GARRETT			
09:12	FOUL by EVEE, TRAVIS			
08:58		15-15	T	GOOD! LAYUP by TISDALE, ISAIAH
08:30	MISSED 3PTR by EVEE, TRAVIS			
08:27				REBOUND (DEF) by TEAM
08:27				SUB OUT: WILLIAMSON, DAIVIEN
08:27				SUB IN: BOYD III, TRAY
08:27	SUB OUT: CURFMAN, KAMDYN			
08:27	SUB IN: PARHAM, GREG			
08:00				MISSED JUMPER by BOYD III, TRAY
07:57				REBOUND (OFF) by HODGES, BO
07:57	FOUL by STEPHENS, JAKE			
07:57	TIMEOUT MEDIA			
07:57		16-15	H 1	GOOD! FT by HODGES, BO
07:57				MISSED FT by HODGES, BO
07:56	REBOUND (DEF) by GILKESON, GARRETT			
07:28	MISSED 3PTR by PARHAM, GREG			
07:24				REBOUND (DEF) by N'GUESSAN, LUCAS
07:06				TURNOVER by HODGES, BO [PNT]
07:06	STEAL by PARHAM, GREG			
07:00				FOUL by TISDALE, ISAIAH
07:00				SUB OUT: TISDALE, ISAIAH
07:00				SUB IN: WILLIAMSON, DAIVIEN
06:41	GOOD! LAYUP by LEWIS, MYLES [PNT]	16-17	V 1	
06:23	FOUL by EVEE, TRAVIS			
06:23	SUB OUT: STEPHENS, JAKE			
06:23	SUB IN: CREAMMER, TYLER			
06:18				MISSED 3PTR by N'GUESSAN, LUCAS
06:14				REBOUND (OFF) by BOYD III, TRAY
06:10				MISSED JUMPER by BOYD III, TRAY [PNT]
06:07	REBOUND (DEF) by PARHAM, GREG			
05:51	MISSED 3PTR by EVEE, TRAVIS			
05:49	REBOUND (OFF) by TEAM			
05:29	TURNOVER by GILKESON, GARRETT			
05:29				STEAL by GOOD, PATRICK
05:19		18-17	H 1	GOOD! LAYUP by N'GUESSAN, LUCAS
05:19				ASSIST by BOYD III, TRAY
05:00	MISSED 3PTR by EVEE, TRAVIS			
04:57				REBOUND (DEF) by N'GUESSAN, LUCAS
04:50		21-17	H 4	GOOD! 3PTR by BOYD III, TRAY
04:50				ASSIST by WILLIAMSON, DAIVIEN
04:32	TURNOVER by LEWIS, MYLES			
04:32	SUB OUT: LEWIS, MYLES			
04:32	SUB IN: CURFMAN, KAMDYN			
04:21				FOUL by N'GUESSAN, LUCAS
04:21				TURNOVER by N'GUESSAN, LUCAS
04:21				SUB OUT: HODGES, BO
04:21				SUB OUT: N'GUESSAN, LUCAS
04:21				SUB IN: HUGLEY, JOE

Time	VISITORS: VMI	Score	Margin	HOME: ETSU
04:21				SUB IN: PATTERSON, VONNIE
04:06	TURNOVER by PARHAM, GREG			
04:06	SUB OUT: GILKESON, GARRETT			
04:06	SUB IN: TANG, LOUIS			
03:48		24-17	H 7	GOOD! 3PTR by BOYD III, TRAY
03:48				ASSIST by WILLIAMSON, DAIVIEN
03:33	TURNOVER by CREAMMER, TYLER			
03:33				STEAL by BOYD III, TRAY
03:28				TURNOVER by WILLIAMSON, DAIVIEN
03:28	TIMEOUT MEDIA			
03:28	SUB OUT: PARHAM, GREG			
03:28	SUB OUT: CREAMMER, TYLER			
03:28	SUB IN: GILKESON, GARRETT			
03:28	SUB IN: STEPHENS, JAKE			
03:16	GOOD! LAYUP by TANG, LOUIS [PNT]	24-19	H 5	
03:16	ASSIST by GILKESON, GARRETT			
03:13				SUB OUT: PATTERSON, VONNIE
03:13				SUB IN: HODGES, BO
02:47	FOUL by STEPHENS, JAKE			
02:47	SUB OUT: STEPHENS, JAKE			
02:47	SUB IN: CREAMMER, TYLER			
02:47		25-19	H 6	GOOD! FT by HUGLEY, JOE
02:47		26-19	H 7	GOOD! FT by HUGLEY, JOE
02:40	TURNOVER by GILKESON, GARRETT			
02:28				MISSED 3PTR by GOOD, PATRICK
02:24	REBOUND (DEF) by GILKESON, GARRETT			
02:12	TURNOVER by CREAMMER, TYLER			
01:48				TURNOVER by HUGLEY, JOE [PNT]
01:48	STEAL by TANG, LOUIS			
01:38	GOOD! LAYUP by CREAMMER, TYLER	26-21	H 5	
01:38	ASSIST by CURFMAN, KAMDYN			
01:21				FOUL by HODGES, BO
01:21				TURNOVER by HODGES, BO
01:21				SUB OUT: HODGES, BO
01:21				SUB IN: PATTERSON, VONNIE
00:59	MISSED LAYUP by TANG, LOUIS			
00:55	REBOUND (OFF) by CREAMMER, TYLER			
00:55	TURNOVER by CREAMMER, TYLER			
00:55				STEAL by GOOD, PATRICK
00:49				MISSED 3PTR by BOYD III, TRAY
00:46	REBOUND (DEF) by TANG, LOUIS			
00:26	TURNOVER by EVEE, TRAVIS			
00:26				TIMEOUT 30SEC
00:26	SUB OUT: TANG, LOUIS			
00:26	SUB IN: LEWIS, MYLES			
00:02				MISSED 3PTR by BOYD III, TRAY
00:00	REBOUND (DEF) by GILKESON, GARRETT			

VMI 21, ETSU 26

Points from (This Period)	VMI	ETSU
In the Paint	14	14
Off Turns	6	7
2nd Chance	0	3
Fast Break	3	0
Bench	13	12

Official Box Score
VMI vs ETSU
Second Half Statistics Only
January 11, 2020 at Freedom Hall



VMI 34

No.	Player	S	Pts	FG	3FG	FT	OR	DR	TR	PF	A	TO	Blk	Stl	Min
02	GILKESON, GARRETT	G	2	1-7	0-2	0-0	1	6	7	2	2	3	0	0	19
03	EVEE, TRAVIS	G	11	2-3	1-1	6-6	0	2	2	2	1	2	0	0	17
10	CURFMAN, KAMDYN	G	9	3-5	3-5	0-0	0	4	4	1	0	1	0	0	18
15	LEWIS, MYLES	G	0	0-1	0-0	0-0	0	0	0	1	0	2	0	0	4
34	STEPHENS, JAKE	C	0	0-1	0-1	0-0	0	1	1	3	2	0	0	0	9
00	TANG, LOUIS	G	0	0-0	0-0	0-0	1	0	1	0	0	0	0	0	3
05	PARHAM, GREG	G	6	2-6	1-2	1-1	0	1	1	2	2	0	0	0	15
24	MILLER, WILL	F	0	0-0	0-0	0-0	0	0	0	2	0	0	0	0	2
25	CREAMMER, TYLER	C	6	2-2	0-0	2-3	1	1	2	1	1	0	0	0	9
30	CONWAY, SEAN	G	0	0-0	0-0	0-0	0	0	0	1	1	0	0	0	5
	TEAM			0-0			2	1	3	0		1			
TOTALS			34	10-25	5-11	9-10	5	16	21	15	9	9	0	0	100

Shooting By Period

Period	FG	FG%	3FG	3FG%	FT	FT%
2nd Half	10-25	40%	5-11	45%	9-10	90%
Game	19-48	39.6%	7-21	33.3%	10-11	90.9%

Last FG Half: VMI -

ETSU 35

No.	Player	S	Pts	FG	3FG	FT	OR	DR	TR	PF	A	TO	Blk	Stl	Min
03	HODGES, BO	G	2	0-4	0-1	2-2	1	1	2	3	1	0	1	1	15
10	GOOD, PATRICK	G	9	1-5	0-3	7-8	1	1	2	0	1	0	0	1	17
15	TISDALE, ISAIAH	G	1	0-3	0-1	1-4	2	3	5	2	2	0	0	0	16
23	PATTERSON, VONNIE	F	7	2-3	1-1	2-3	3	1	4	4	0	0	0	1	17
25	N'GUESSAN, LUCAS	C	9	3-4	0-0	3-8	0	3	3	1	0	0	0	0	16
01	BOYD III, TRAY	G	5	1-6	1-3	2-2	1	1	2	0	1	0	1	1	9
05	WILLIAMSON, DAIVIEN	G	0	0-1	0-0	0-0	0	1	1	0	0	0	0	2	7
21	HUGLEY, JOE	F	2	1-2	0-1	0-0	1	0	1	0	0	1	0	0	4
	TEAM			0-0			0	0	0	0		0			
TOTALS			35	8-28	2-10	17-27	9	11	20	10	5	1	2	6	100

Shooting By Period

Period	FG	FG%	3FG	3FG%	FT	FT%
2nd Half	8-28	29%	2-10	20%	17-27	63%
Game	18-52	34.6%	5-20	25.0%	20-31	64.5%

Last FG Half: ETSU -

Game Notes:

Officials: Michael Kolen, Glenn Tuitt, Nelson Santiago
 Attendance: 4730

Start Time: 09:00 PM
 Conference Game;

Score	1st	2nd	TOT
VMI	21	34	55
ETSU	26	35	61

Points from (This Period)	VMI	ETSU
In the Paint	10	12
Off Turns	0	7
2nd Chance	4	7
Fast Break	4	7
Bench	12	7

Official Play-By-Play
VMI vs ETSU
Second Half
January 11, 2020 at Freedom Hall



Period 2

Starters:

VMI: 2 GILKESON, GARRETT (G); 3 EVEE, TRAVIS (G); 10 CURFMAN, KAMDYN (G); 15 LEWIS, MYLES (G); 34 STEPHENS, JAKE (C);
ETSU: 3 HODGES, BO (G); 10 GOOD, PATRICK (G); 15 TISDALE, ISAIAH (G); 23 PATTERSON, VONNIE (F); 25 N'GUESSAN, LUCAS (C);

Time	VISITORS: VMI	Score	Margin	HOME: ETSU
20:00				SUB OUT: BOYD III, TRAY
20:00				SUB OUT: WILLIAMSON, DAIVIEN
20:00				SUB OUT: HUGLEY, JOE
20:00				SUB IN: HODGES, BO
20:00				SUB IN: TISDALE, ISAIAH
20:00				SUB IN: N'GUESSAN, LUCAS
20:00	SUB OUT: CREAMMER, TYLER			
20:00	SUB IN: STEPHENS, JAKE			
19:41		29-21	H 8	GOOD! 3PTR by PATTERSON, VONNIE
19:41				ASSIST by GOOD, PATRICK
19:27				FOUL by PATTERSON, VONNIE
19:20	TURNOVER by EVEE, TRAVIS			
19:20				STEAL by PATTERSON, VONNIE
19:09	FOUL by STEPHENS, JAKE			
19:09	SUB OUT: STEPHENS, JAKE			
19:09	SUB IN: CREAMMER, TYLER			
18:59		31-21	H 10	GOOD! by N'GUESSAN, LUCAS [PNT]
18:25	MISSED LAYUP by EVEE, TRAVIS			
18:22				REBOUND (DEF) by TISDALE, ISAIAH
18:14	FOUL by GILKESON, GARRETT			
18:14		32-21	H 11	GOOD! FT by HODGES, BO
18:14		33-21	H 12	GOOD! FT by HODGES, BO
18:00	TURNOVER by GILKESON, GARRETT			
18:00				STEAL by HODGES, BO
17:55				MISSED LAYUP by HODGES, BO
17:50				MISSED LAYUP by PATTERSON, VONNIE
17:50				REBOUND (OFF) by PATTERSON, VONNIE
17:50	REBOUND (DEF) by GILKESON, GARRETT			
17:50	FOUL (TECH) by TEAM			
17:50	TURNOVER by TEAM			
17:50		34-21	H 13	GOOD! FT by GOOD, PATRICK [FB]
17:50		35-21	H 14	GOOD! FT by GOOD, PATRICK [FB]
17:37	TURNOVER by LEWIS, MYLES			
17:19				MISSED LAYUP by N'GUESSAN, LUCAS
17:17	REBOUND (DEF) by CREAMMER, TYLER			
17:01	GOOD! LAYUP by CREAMMER, TYLER	35-23	H 12	
17:01	ASSIST by GILKESON, GARRETT			
16:40	FOUL by LEWIS, MYLES			
16:40				MISSED FT by TISDALE, ISAIAH
16:40				REBOUND (DEADB) by TEAM
16:40	SUB OUT: LEWIS, MYLES			
16:40	SUB IN: CONWAY, SEAN			
16:40		36-23	H 13	GOOD! FT by TISDALE, ISAIAH
16:35				FOUL by PATTERSON, VONNIE
16:17	MISSED 3PTR by CURFMAN, KAMDYN			
16:14	REBOUND (OFF) by TEAM			
16:11	GOOD! LAYUP by CREAMMER, TYLER	36-25	H 11	
16:11	ASSIST by EVEE, TRAVIS			
15:48	TIMEOUT MEDIA			
15:35				MISSED JUMPER by GOOD, PATRICK
15:32	REBOUND (DEF) by GILKESON, GARRETT			
15:08	MISSED LAYUP by GILKESON, GARRETT			
15:05				REBOUND (DEF) by HODGES, BO
14:43	FOUL by CREAMMER, TYLER [PNT]			
14:43				MISSED FT by N'GUESSAN, LUCAS
14:43				REBOUND (DEADB) by TEAM
14:43				SUB OUT: GOOD, PATRICK
14:43				SUB OUT: TISDALE, ISAIAH
14:43				SUB IN: BOYD III, TRAY
14:43				SUB IN: WILLIAMSON, DAIVIEN
14:43	SUB OUT: CURFMAN, KAMDYN			
14:43	SUB OUT: CREAMMER, TYLER			
14:43	SUB IN: PARHAM, GREG			
14:43	SUB IN: STEPHENS, JAKE			
14:43		37-25	H 12	GOOD! FT by N'GUESSAN, LUCAS
14:43				SUB OUT: N'GUESSAN, LUCAS
14:43				SUB IN: HUGLEY, JOE
14:21	GOOD! LAYUP by PARHAM, GREG	37-27	H 10	
14:21	ASSIST by STEPHENS, JAKE			
14:21				FOUL by PATTERSON, VONNIE

Time	VISITORS: VMI	Score	Margin	HOME: ETSU
14:21				SUB OUT: PATTERSON, VONNIE
14:21				SUB IN: TISDALE, ISIAIAH
14:21	GOOD! FT by PARHAM, GREG	37-28	H 9	
14:21	SUB OUT: STEPHENS, JAKE			
14:21	SUB IN: MILLER, WILL			
14:03				MISSED LAYUP by BOYD III, TRAY
14:03				REBOUND (OFF) by HUGLEY, JOE
14:03	FOUL by CONWAY, SEAN			
14:01				TURNOVER by HUGLEY, JOE
13:45	MISSED LAYUP by PARHAM, GREG			
13:45				BLOCK by BOYD III, TRAY
13:41				REBOUND (DEF) by TISDALE, ISIAIAH
13:37				MISSED 3PTR by HUGLEY, JOE
13:34	REBOUND (DEF) by EVEE, TRAVIS			
13:26				FOUL by TISDALE, ISIAIAH
13:26	GOOD! FT by EVEE, TRAVIS	37-29	H 8	
13:26				SUB OUT: BOYD III, TRAY
13:26				SUB OUT: WILLIAMSON, DAIVIEN
13:26				SUB OUT: HUGLEY, JOE
13:26				SUB IN: GOOD, PATRICK
13:26				SUB IN: PATTERSON, VONNIE
13:26				SUB IN: N'GUESSAN, LUCAS
13:26	GOOD! FT by EVEE, TRAVIS	37-30	H 7	
13:03	FOUL by MILLER, WILL			
13:03		38-30	H 8	GOOD! FT by PATTERSON, VONNIE
13:03	SUB OUT: EVEE, TRAVIS			
13:03	SUB IN: CURFMAN, KAMDYN			
13:03		39-30	H 9	GOOD! FT by PATTERSON, VONNIE
12:49	MISSED 3PTR by PARHAM, GREG			
12:47				REBOUND (DEF) by PATTERSON, VONNIE
12:47	FOUL by MILLER, WILL			
12:47	SUB OUT: CONWAY, SEAN			
12:47	SUB IN: TANG, LOUIS			
12:47				SUB OUT: HODGES, BO
12:47				SUB IN: BOYD III, TRAY
12:47	SUB OUT: MILLER, WILL			
12:47	SUB IN: STEPHENS, JAKE			
12:47				MISSED FT by PATTERSON, VONNIE [FB]
12:42	REBOUND (DEF) by GILKESON, GARRETT			
12:29	MISSED JUMPER by GILKESON, GARRETT [PNT]			
12:26				REBOUND (DEF) by TISDALE, ISIAIAH
12:17				MISSED 3PTR by TISDALE, ISIAIAH
12:14				REBOUND (OFF) by PATTERSON, VONNIE
12:13	FOUL by PARHAM, GREG			
12:13		40-30	H 10	GOOD! FT by BOYD III, TRAY
12:13		41-30	H 11	GOOD! FT by BOYD III, TRAY
11:56	GOOD! 3PTR by CURFMAN, KAMDYN	41-33	H 8	
11:56	ASSIST by PARHAM, GREG			
11:27				MISSED 3PTR by GOOD, PATRICK
11:23				REBOUND (OFF) by PATTERSON, VONNIE
11:22		43-33	H 10	GOOD! LAYUP by PATTERSON, VONNIE
11:06	GOOD! 3PTR by CURFMAN, KAMDYN	43-36	H 7	
11:06	ASSIST by STEPHENS, JAKE			
10:39				MISSED JUMPER by BOYD III, TRAY
10:36				REBOUND (OFF) by BOYD III, TRAY
10:26				MISSED 3PTR by BOYD III, TRAY
10:23				REBOUND (OFF) by TISDALE, ISIAIAH
10:20		46-36	H 10	GOOD! 3PTR by BOYD III, TRAY
10:20				ASSIST by TISDALE, ISIAIAH
10:11	MISSED LAYUP by GILKESON, GARRETT			
10:11	REBOUND (OFF) by TANG, LOUIS			
10:11				FOUL by PATTERSON, VONNIE [PNT]
10:11	TIMEOUT MEDIA			
10:11				SUB OUT: PATTERSON, VONNIE
10:11				SUB IN: HODGES, BO
10:11	SUB OUT: TANG, LOUIS			
10:11	SUB IN: EVEE, TRAVIS			
09:51	MISSED 3PTR by GILKESON, GARRETT			
09:47				REBOUND (DEF) by N'GUESSAN, LUCAS
09:25				MISSED 3PTR by BOYD III, TRAY
09:22	REBOUND (DEF) by GILKESON, GARRETT			
09:22	TURNOVER by GILKESON, GARRETT			
09:22				SUB OUT: GOOD, PATRICK
09:22				SUB IN: WILLIAMSON, DAIVIEN
09:07	FOUL by STEPHENS, JAKE [PNT]			
09:07				MISSED FT by N'GUESSAN, LUCAS
09:07				REBOUND (DEADB) by TEAM
09:07		47-36	H 11	GOOD! FT by N'GUESSAN, LUCAS
08:46	GOOD! 3PTR by CURFMAN, KAMDYN	47-39	H 8	
08:46	ASSIST by GILKESON, GARRETT			

Time	VISITORS: VMI	Score	Margin	HOME: ETSU
08:17				MISSED JUMPER by BOYD III, TRAY [PNT]
08:14	REBOUND (DEF) by STEPHENS, JAKE			
08:03	TURNOVER by EVEE, TRAVIS			
08:03				STEAL by BOYD III, TRAY
07:57				MISSED JUMPER by HODGES, BO
07:55	REBOUND (DEF) by GILKESON, GARRETT			
07:53				FOUL by TISDALE, ISIAIAH
07:53	TIMEOUT MEDIA			
07:53				SUB OUT: BOYD III, TRAY
07:53				SUB OUT: TISDALE, ISIAIAH
07:53				SUB OUT: N'GUESSAN, LUCAS
07:53				SUB IN: GOOD, PATRICK
07:53				SUB IN: HUGLEY, JOE
07:53				SUB IN: PATTERSON, VONNIE
07:53	SUB OUT: GILKESON, GARRETT			
07:53	SUB OUT: STEPHENS, JAKE			
07:53	SUB IN: LEWIS, MYLES			
07:53	SUB IN: CREAMMER, TYLER			
07:41	TURNOVER by LEWIS, MYLES			
07:41				STEAL by WILLIAMSON, DAIVIEN
07:11				MISSED 3PTR by GOOD, PATRICK
07:07	REBOUND (DEF) by PARHAM, GREG			
06:55	MISSED LAYUP by LEWIS, MYLES			
06:55				BLOCK by HODGES, BO
06:54	REBOUND (OFF) by CREAMMER, TYLER			
06:54				FOUL by HODGES, BO [PNT]
06:54	SUB OUT: LEWIS, MYLES			
06:54	SUB IN: GILKESON, GARRETT			
06:54	MISSED FT by CREAMMER, TYLER			
06:52	REBOUND (OFF) by TEAM			
06:52	SUB OUT: CREAMMER, TYLER			
06:52	SUB IN: STEPHENS, JAKE			
06:48	TURNOVER by GILKESON, GARRETT			
06:48				STEAL by WILLIAMSON, DAIVIEN
06:36		49-39	H 10	GOOD! LAYUP by HUGLEY, JOE
06:36				ASSIST by HODGES, BO
06:27	MISSED 3PTR by STEPHENS, JAKE			
06:23				REBOUND (DEF) by WILLIAMSON, DAIVIEN
06:07				MISSED JUMPER by WILLIAMSON, DAIVIEN [PNT]
06:04				REBOUND (OFF) by HODGES, BO
05:59				MISSED DUNK by HODGES, BO
05:56	REBOUND (DEF) by CURFMAN, KAMDYN			
05:55	TURNOVER by CURFMAN, KAMDYN			
05:55				STEAL by GOOD, PATRICK
05:48				MISSED 3PTR by GOOD, PATRICK
05:45				REBOUND (OFF) by GOOD, PATRICK
05:36				MISSED 3PTR by HODGES, BO
05:35	REBOUND (DEF) by TEAM			
05:35	SUB OUT: STEPHENS, JAKE			
05:35	SUB IN: CREAMMER, TYLER			
05:35				SUB OUT: HODGES, BO
05:35				SUB IN: BOYD III, TRAY
05:35				SUB OUT: HUGLEY, JOE
05:35				SUB IN: N'GUESSAN, LUCAS
05:28	TIMEOUT 30SEC			
05:28	SUB OUT: CREAMMER, TYLER			
05:28	SUB IN: STEPHENS, JAKE			
05:17	GOOD! LAYUP by EVEE, TRAVIS [PNT]	49-41	H 8	
04:50		51-41	H 10	GOOD! LAYUP by N'GUESSAN, LUCAS [PNT]
04:50				ASSIST by BOYD III, TRAY
04:33	MISSED JUMPER by GILKESON, GARRETT			
04:29				REBOUND (DEF) by N'GUESSAN, LUCAS
04:12	FOUL by STEPHENS, JAKE			
04:12	SUB OUT: STEPHENS, JAKE			
04:12	SUB IN: CREAMMER, TYLER			
04:12				MISSED FT by N'GUESSAN, LUCAS
04:12				REBOUND (DEADB) by TEAM
04:12				MISSED FT by N'GUESSAN, LUCAS
04:11	REBOUND (DEF) by CURFMAN, KAMDYN			
03:55	MISSED 3PTR by CURFMAN, KAMDYN			
03:50	REBOUND (OFF) by GILKESON, GARRETT			
03:33				FOUL by N'GUESSAN, LUCAS
03:33	TIMEOUT MEDIA			
03:33				SUB OUT: BOYD III, TRAY
03:33				SUB OUT: WILLIAMSON, DAIVIEN
03:33				SUB IN: HODGES, BO
03:33				SUB IN: TISDALE, ISIAIAH
03:33	GOOD! FT by CREAMMER, TYLER	51-42	H 9	
03:33	GOOD! FT by CREAMMER, TYLER	51-43	H 8	
03:05				MISSED JUMPER by TISDALE, ISIAIAH

Time	VISITORS: VMI	Score	Margin	HOME: ETSU
03:00	REBOUND (DEF) by EVEE, TRAVIS			
02:45	MISSED 3PTR by GILKESON, GARRETT			
02:42				
02:26		53-43	H 10	REBOUND (DEF) by N'GUESSAN, LUCAS
02:26				GOOD! LAYUP by N'GUESSAN, LUCAS
02:14	GOOD! LAYUP by GILKESON, GARRETT [PNT]	53-45	H 8	ASSIST by TISDALE, ISAIAH
02:14	ASSIST by PARHAM, GREG			
02:14	TIMEOUT 30SEC			
01:56	FOUL by EVEE, TRAVIS			
01:56				MISSED FT by TISDALE, ISAIAH
01:56				REBOUND (DEADB) by TEAM
01:56				MISSED FT by TISDALE, ISAIAH
01:55				REBOUND (OFF) by TISDALE, ISAIAH
01:52				MISSED LAYUP by TISDALE, ISAIAH
01:49	REBOUND (DEF) by CURFMAN, KAMDYN			
01:44	TIMEOUT TEAM			
01:37	GOOD! 3PTR by EVEE, TRAVIS	53-48	H 5	
01:37	ASSIST by CREAMMER, TYLER			
01:11		55-48	H 7	GOOD! JUMPER by GOOD, PATRICK [PNT]
01:09				TIMEOUT 30SEC
01:09	SUB OUT: CREAMMER, TYLER			
01:09	SUB IN: CONWAY, SEAN			
00:52	GOOD! 3PTR by PARHAM, GREG	55-51	H 4	
00:52	ASSIST by CONWAY, SEAN			
00:38				TIMEOUT 30SEC
00:38				SUB OUT: HODGES, BO
00:38				SUB OUT: TISDALE, ISAIAH
00:38				SUB IN: BOYD III, TRAY
00:38				SUB IN: WILLIAMSON, DAIVIEN
00:36	FOUL by GILKESON, GARRETT			
00:36		56-51	H 5	GOOD! FT by N'GUESSAN, LUCAS
00:36				SUB OUT: WILLIAMSON, DAIVIEN
00:36				SUB IN: TISDALE, ISAIAH
00:36				MISSED FT by N'GUESSAN, LUCAS
00:35	REBOUND (DEF) by CURFMAN, KAMDYN			
00:23	MISSED JUMPER by PARHAM, GREG			
00:21				REBOUND (DEF) by GOOD, PATRICK
00:21	FOUL by PARHAM, GREG [PNT]			
00:21		57-51	H 6	GOOD! FT by GOOD, PATRICK [FB]
00:21				SUB OUT: N'GUESSAN, LUCAS
00:21				SUB IN: HODGES, BO
00:21		58-51	H 7	GOOD! FT by GOOD, PATRICK [FB]
00:15				FOUL by HODGES, BO [PNT]
00:15	GOOD! FT by EVEE, TRAVIS [FB]	58-52	H 6	
00:15	GOOD! FT by EVEE, TRAVIS [FB]	58-53	H 5	
00:15	SUB OUT: CONWAY, SEAN			
00:15	SUB IN: LEWIS, MYLES			
00:09	FOUL by CURFMAN, KAMDYN			
00:09		59-53	H 6	GOOD! FT by GOOD, PATRICK [FB]
00:09	SUB OUT: LEWIS, MYLES			
00:09	SUB IN: CONWAY, SEAN			
00:09				MISSED FT by GOOD, PATRICK [FB]
00:07	REBOUND (DEF) by GILKESON, GARRETT			
00:03				FOUL by HODGES, BO
00:03				SUB OUT: HODGES, BO
00:03				SUB IN: WILLIAMSON, DAIVIEN
00:03	GOOD! FT by EVEE, TRAVIS [FB]	59-54	H 5	
00:03	GOOD! FT by EVEE, TRAVIS [FB]	59-55	H 4	
00:03	SUB OUT: CONWAY, SEAN			
00:03	SUB IN: TANG, LOUIS			
00:03	FOUL by EVEE, TRAVIS			
00:03		60-55	H 5	GOOD! FT by GOOD, PATRICK [FB]
00:03	SUB OUT: TANG, LOUIS			
00:03	SUB IN: CONWAY, SEAN			
00:03		61-55	H 6	GOOD! FT by GOOD, PATRICK [FB]
00:00	MISSED LAYUP by PARHAM, GREG			
00:00				REBOUND (DEF) by BOYD III, TRAY

VMI 55, ETSU 61

Points from (This Period)	VMI	ETSU
In the Paint	10	12
Off Turns	0	7
2nd Chance	4	7
Fast Break	4	7
Bench	12	7

Official Scoring/Possession Reference Chart
VMI vs ETSU
Period 1
January 11, 2020 at Freedom Hall



Period 1

Starters:

VMI: 2 GILKESON, GARRETT (G); 3 EVEE, TRAVIS (G); 10 CURFMAN, KAMDYN (G); 15 LEWIS, MYLES (G); 34 STEPHENS, JAKE (C);
ETSU: 3 HODGES, BO (G); 10 GOOD, PATRICK (G); 15 TISDALE, ISAIAH (G); 23 PATTERSON, VONNIE (F); 25 N'GUESSAN, LUCAS (C);

Time	VISITORS: VMI	Score	Margin	HOME: ETSU
19:39		2-0	H 2	GOOD! LAYUP by TISDALE, ISAIAH
19:03		4-0	H 4	GOOD! LAYUP by PATTERSON, VONNIE
18:02		6-0	H 6	GOOD! LAYUP by PATTERSON, VONNIE
17:31		9-0	H 9	GOOD! 3PTR by GOOD, PATRICK
16:14	GOOD! LAYUP by STEPHENS, JAKE	9-2	H 7	
15:39	GOOD! 3PTR by PARHAM, GREG	9-5	H 4	
14:24		11-5	H 6	GOOD! LAYUP by HUGLEY, JOE
14:06	GOOD! 3PTR by PARHAM, GREG	11-8	H 3	
12:43	GOOD! LAYUP by EVEE, TRAVIS	11-10	H 1	
11:16		13-10	H 3	GOOD! LAYUP by WILLIAMSON, DAVIEN
10:04	GOOD! LAYUP by LEWIS, MYLES	13-12	H 1	
09:36	GOOD! JUMPER by TANG, LOUIS [FB/PNT]	13-14	V 1	
09:36	GOOD! FT by TANG, LOUIS [FB]	13-15	V 2	
08:58		15-15	T	GOOD! LAYUP by TISDALE, ISAIAH
07:57		16-15	H 1	GOOD! FT by HODGES, BO
06:41	GOOD! LAYUP by LEWIS, MYLES [PNT]	16-17	V 1	
05:19		18-17	H 1	GOOD! LAYUP by N'GUESSAN, LUCAS
04:50		21-17	H 4	GOOD! 3PTR by BOYD III, TRAY
03:48		24-17	H 7	GOOD! 3PTR by BOYD III, TRAY
03:16	GOOD! LAYUP by TANG, LOUIS [PNT]	24-19	H 5	
02:47		25-19	H 6	GOOD! FT by HUGLEY, JOE
02:47		26-19	H 7	GOOD! FT by HUGLEY, JOE
01:38	GOOD! LAYUP by CREAMMER, TYLER	26-21	H 5	

VMI 21, ETSU 26

Official Scoring/Possession Reference Chart
VMI vs ETSU
Period 2
January 11, 2020 at Freedom Hall



Period 2

Starters:

VMI: 2 GILKESON, GARRETT (G); 3 EVEE, TRAVIS (G); 10 CURFMAN, KAMDYN (G); 15 LEWIS, MYLES (G); 34 STEPHENS, JAKE (C);
ETSU: 3 HODGES, BO (G); 10 GOOD, PATRICK (G); 15 TISDALE, ISAIAH (G); 23 PATTERSON, VONNIE (F); 25 N'GUESSAN, LUCAS (C);

Time	VISITORS: VMI	Score	Margin	HOME: ETSU
19:41		29-21	H 8	GOOD! 3PTR by PATTERSON, VONNIE
18:59		31-21	H 10	GOOD! by N'GUESSAN, LUCAS [PNT]
18:14		32-21	H 11	GOOD! FT by HODGES, BO
18:14		33-21	H 12	GOOD! FT by HODGES, BO
17:50		34-21	H 13	GOOD! FT by GOOD, PATRICK [FB]
17:50		35-21	H 14	GOOD! FT by GOOD, PATRICK [FB]
17:01	GOOD! LAYUP by CREAMMER, TYLER	35-23	H 12	
16:40		36-23	H 13	GOOD! FT by TISDALE, ISAIAH
16:11	GOOD! LAYUP by CREAMMER, TYLER	36-25	H 11	
14:43		37-25	H 12	GOOD! FT by N'GUESSAN, LUCAS
14:21	GOOD! LAYUP by PARHAM, GREG	37-27	H 10	
14:21	GOOD! FT by PARHAM, GREG	37-28	H 9	
13:26	GOOD! FT by EVEE, TRAVIS	37-29	H 8	
13:26	GOOD! FT by EVEE, TRAVIS	37-30	H 7	
13:03		38-30	H 8	GOOD! FT by PATTERSON, VONNIE
13:03		39-30	H 9	GOOD! FT by PATTERSON, VONNIE
12:13		40-30	H 10	GOOD! FT by BOYD III, TRAY
12:13		41-30	H 11	GOOD! FT by BOYD III, TRAY
11:56	GOOD! 3PTR by CURFMAN, KAMDYN	41-33	H 8	
11:22		43-33	H 10	GOOD! LAYUP by PATTERSON, VONNIE
11:06	GOOD! 3PTR by CURFMAN, KAMDYN	43-36	H 7	
10:20		46-36	H 10	GOOD! 3PTR by BOYD III, TRAY
09:07		47-36	H 11	GOOD! FT by N'GUESSAN, LUCAS
08:46	GOOD! 3PTR by CURFMAN, KAMDYN	47-39	H 8	
06:36		49-39	H 10	GOOD! LAYUP by HUGLEY, JOE
05:17	GOOD! LAYUP by EVEE, TRAVIS [PNT]	49-41	H 8	
04:50		51-41	H 10	GOOD! LAYUP by N'GUESSAN, LUCAS [PNT]
03:33	GOOD! FT by CREAMMER, TYLER	51-42	H 9	
03:33	GOOD! FT by CREAMMER, TYLER	51-43	H 8	
02:26		53-43	H 10	GOOD! LAYUP by N'GUESSAN, LUCAS
02:14	GOOD! LAYUP by GILKESON, GARRETT [PNT]	53-45	H 8	
01:37	GOOD! 3PTR by EVEE, TRAVIS	53-48	H 5	
01:11		55-48	H 7	GOOD! JUMPER by GOOD, PATRICK [PNT]
00:52	GOOD! 3PTR by PARHAM, GREG	55-51	H 4	
00:36		56-51	H 5	GOOD! FT by N'GUESSAN, LUCAS
00:21		57-51	H 6	GOOD! FT by GOOD, PATRICK [FB]
00:21		58-51	H 7	GOOD! FT by GOOD, PATRICK [FB]
00:15	GOOD! FT by EVEE, TRAVIS [FB]	58-52	H 6	
00:15	GOOD! FT by EVEE, TRAVIS [FB]	58-53	H 5	
00:09		59-53	H 6	GOOD! FT by GOOD, PATRICK [FB]
00:03	GOOD! FT by EVEE, TRAVIS [FB]	59-54	H 5	
00:03	GOOD! FT by EVEE, TRAVIS [FB]	59-55	H 4	
00:03		60-55	H 5	GOOD! FT by GOOD, PATRICK [FB]
00:03		61-55	H 6	GOOD! FT by GOOD, PATRICK [FB]

VMI 55, ETSU 61

**Official Substitutions Log
VMI vs ETSU
Period 1
January 11, 2020 at Freedom Hall**



VISITORS: VMI	Time	Score	HOME: ETSU
2 GILKESON,GARRETT			3 HODGES,BO
3 EVEE,TRAVIS			10 GOOD,PATRICK
10 CURFMAN,KAMDYN			15 TISDALE,ISAIHAH
15 LEWIS,MYLES			23 PATTERSON,VONNIE
34 STEPHENS,JAKE			25 N'GUESSAN,LUCAS
SUB OUT: 10 CURFMAN,KAMDYN	17:28	0-9	
SUB IN: 5 PARHAM,GREG	17:28		
	15:02	5-9	SUB OUT: HODGES,BO
	15:02		SUB OUT: N'GUESSAN,LUCAS
	15:02		SUB IN: BOYD III,TRAY
	15:02		SUB IN: HUGLEY,JOE
SUB OUT: 15 LEWIS,MYLES	15:02		
SUB OUT: 34 STEPHENS,JAKE	15:02		
SUB IN: 25 CREAMMER,TYLER	15:02		
SUB IN: 30 CONWAY,SEAN	15:02		
	14:12	5-11	SUB OUT: GOOD,PATRICK
	14:12		SUB IN: WILLIAMSON,DAIVIEN
	13:42	8-11	SUB OUT: PATTERSON,VONNIE
	13:42		SUB IN: HODGES,BO
SUB OUT: 25 CREAMMER,TYLER	13:35	8-11	
SUB IN: 24 MILLER,WILL	13:35		
	13:23	8-11	SUB OUT: TISDALE,ISAIHAH
	13:23		SUB IN: GOOD,PATRICK
SUB OUT: 2 GILKESON,GARRETT	12:34	10-11	
SUB OUT: 30 CONWAY,SEAN	12:34		
SUB IN: 10 CURFMAN,KAMDYN	12:34		
SUB IN: 15 LEWIS,MYLES	12:34		
SUB OUT: 3 EVEE,TRAVIS	12:34		
SUB IN: 0 TANG,LOUIS	12:34		
	11:48	10-11	SUB OUT: HUGLEY,JOE
	11:48		SUB IN: N'GUESSAN,LUCAS
	09:36	14-13	SUB OUT: BOYD III,TRAY
	09:36		SUB IN: TISDALE,ISAIHAH
SUB OUT: 5 PARHAM,GREG	09:36		
SUB OUT: 24 MILLER,WILL	09:36		
SUB IN: 3 EVEE,TRAVIS	09:36		
SUB IN: 34 STEPHENS,JAKE	09:36		
SUB OUT: 0 TANG,LOUIS	09:36		
SUB IN: 2 GILKESON,GARRETT	09:36		
	08:27	15-15	SUB OUT: WILLIAMSON,DAIVIEN
	08:27		SUB IN: BOYD III,TRAY
SUB OUT: 10 CURFMAN,KAMDYN	08:27		
SUB IN: 5 PARHAM,GREG	08:27		
	07:00	15-16	SUB OUT: TISDALE,ISAIHAH
	07:00		SUB IN: WILLIAMSON,DAIVIEN
SUB OUT: 34 STEPHENS,JAKE	06:23	17-16	
SUB IN: 25 CREAMMER,TYLER	06:23		
SUB OUT: 15 LEWIS,MYLES	04:32	17-21	
SUB IN: 10 CURFMAN,KAMDYN	04:32		
	04:21	17-21	SUB OUT: HODGES,BO
	04:21		SUB OUT: N'GUESSAN,LUCAS
	04:21		SUB IN: HUGLEY,JOE
	04:21		SUB IN: PATTERSON,VONNIE
SUB OUT: 2 GILKESON,GARRETT	04:06	17-21	
SUB IN: 0 TANG,LOUIS	04:06		
SUB OUT: 5 PARHAM,GREG	03:28	17-24	
SUB OUT: 25 CREAMMER,TYLER	03:28		
SUB IN: 2 GILKESON,GARRETT	03:28		
SUB IN: 34 STEPHENS,JAKE	03:28		
	03:13	19-24	SUB OUT: PATTERSON,VONNIE
	03:13		SUB IN: HODGES,BO
SUB OUT: 34 STEPHENS,JAKE	02:47	19-24	
SUB IN: 25 CREAMMER,TYLER	02:47		
	01:21	21-26	SUB OUT: HODGES,BO
	01:21		SUB IN: PATTERSON,VONNIE
SUB OUT: 0 TANG,LOUIS	00:26	21-26	
SUB IN: 15 LEWIS,MYLES	00:26		

**Official Substitutions Log
VMI vs ETSU
Period 2
January 11, 2020 at Freedom Hall**



VISITORS: VMI	Time	Score	HOME: ETSU
2 GILKESON,GARRETT			3 HODGES,BO
3 EVEE,TRAVIS			10 GOOD,PATRICK
10 CURFMAN,KAMDYN			15 TISDALE,ISAIHAH
15 LEWIS,MYLES			23 PATTERSON,VONNIE
34 STEPHENS,JAKE			25 N'GUESSAN,LUCAS
	20:00	-	SUB OUT: BOYD III,TRAY
	20:00		SUB OUT: WILLIAMSON,DAIVIEN
	20:00		SUB OUT: HUGLEY,JOE
	20:00		SUB IN: HODGES,BO
	20:00		SUB IN: TISDALE,ISAIHAH
	20:00		SUB IN: N'GUESSAN,LUCAS
SUB OUT: 25 CREAMMER, TYLER	20:00		
SUB IN: 34 STEPHENS, JAKE	20:00		
SUB OUT: 34 STEPHENS, JAKE	19:09	21-29	
SUB IN: 25 CREAMMER, TYLER	19:09		
SUB OUT: 15 LEWIS, MYLES	16:40	23-35	
SUB IN: 30 CONWAY, SEAN	16:40		
	14:43	25-36	SUB OUT: GOOD,PATRICK
	14:43		SUB OUT: TISDALE,ISAIHAH
	14:43		SUB IN: BOYD III,TRAY
	14:43		SUB IN: WILLIAMSON,DAIVIEN
SUB OUT: 10 CURFMAN, KAMDYN	14:43		
SUB OUT: 25 CREAMMER, TYLER	14:43		
SUB IN: 5 PARHAM, GREG	14:43		
SUB IN: 34 STEPHENS, JAKE	14:43		
	14:43		SUB OUT: N'GUESSAN,LUCAS
	14:43		SUB IN: HUGLEY,JOE
	14:21	27-37	SUB OUT: PATTERSON,VONNIE
	14:21		SUB IN: TISDALE,ISAIHAH
SUB OUT: 34 STEPHENS, JAKE	14:21		
SUB IN: 24 MILLER, WILL	14:21		
	13:26	29-37	SUB OUT: BOYD III,TRAY
	13:26		SUB OUT: WILLIAMSON,DAIVIEN
	13:26		SUB OUT: HUGLEY,JOE
	13:26		SUB IN: GOOD,PATRICK
	13:26		SUB IN: PATTERSON,VONNIE
	13:26		SUB IN: N'GUESSAN,LUCAS
SUB OUT: 3 EVEE, TRAVIS	13:03	30-38	
SUB IN: 10 CURFMAN, KAMDYN	13:03		
SUB OUT: 30 CONWAY, SEAN	12:47	30-39	
SUB IN: 0 TANG, LOUIS	12:47		
	12:47		SUB OUT: HODGES,BO
	12:47		SUB IN: BOYD III,TRAY
SUB OUT: 24 MILLER, WILL	12:47		
SUB IN: 34 STEPHENS, JAKE	12:47		
	10:11	36-46	SUB OUT: PATTERSON,VONNIE
	10:11		SUB IN: HODGES,BO
SUB OUT: 0 TANG, LOUIS	10:11		
SUB IN: 3 EVEE, TRAVIS	10:11		
	09:22	36-46	SUB OUT: GOOD,PATRICK
	09:22		SUB IN: WILLIAMSON,DAIVIEN
	07:53	39-47	SUB OUT: BOYD III,TRAY
	07:53		SUB OUT: TISDALE,ISAIHAH
	07:53		SUB OUT: N'GUESSAN,LUCAS
	07:53		SUB IN: GOOD,PATRICK
	07:53		SUB IN: HUGLEY,JOE
	07:53		SUB IN: PATTERSON,VONNIE
SUB OUT: 2 GILKESON,GARRETT	07:53		
SUB OUT: 34 STEPHENS, JAKE	07:53		
SUB IN: 15 LEWIS, MYLES	07:53		
SUB IN: 25 CREAMMER, TYLER	07:53		
SUB OUT: 15 LEWIS, MYLES	06:54	39-47	
SUB IN: 2 GILKESON, GARRETT	06:54		
SUB OUT: 25 CREAMMER, TYLER	06:52	39-47	
SUB IN: 34 STEPHENS, JAKE	06:52		
SUB OUT: 34 STEPHENS, JAKE	05:35	39-49	
SUB IN: 25 CREAMMER, TYLER	05:35		
	05:35		SUB OUT: HODGES,BO
	05:35		SUB IN: BOYD III,TRAY
	05:35		SUB OUT: HUGLEY,JOE
	05:35		SUB IN: N'GUESSAN,LUCAS
SUB OUT: 25 CREAMMER, TYLER	05:28	39-49	
SUB IN: 34 STEPHENS, JAKE	05:28		
SUB OUT: 34 STEPHENS, JAKE	04:12	41-51	
SUB IN: 25 CREAMMER, TYLER	04:12		

VISITORS: VMI	Time	Score	HOME: ETSU
	03:33	41-51	SUB OUT: BOYD III, TRAY
	03:33		SUB OUT: WILLIAMSON, DAIVIEN
	03:33		SUB IN: HODGES, BO
	03:33		SUB IN: TISDALE, ISAIAH
SUB OUT: 25 CREAMMER, TYLER	01:09	48-55	
SUB IN: 30 CONWAY, SEAN	01:09		
	00:38	51-55	SUB OUT: HODGES, BO
	00:38		SUB OUT: TISDALE, ISAIAH
	00:38		SUB IN: BOYD III, TRAY
	00:38		SUB IN: WILLIAMSON, DAIVIEN
	00:36	51-56	SUB OUT: WILLIAMSON, DAIVIEN
	00:36		SUB IN: TISDALE, ISAIAH
	00:21	51-57	SUB OUT: NGUESSAN, LUCAS
	00:21		SUB IN: HODGES, BO
SUB OUT: 30 CONWAY, SEAN	00:15	53-58	
SUB IN: 15 LEWIS, MYLES	00:15		
SUB OUT: 15 LEWIS, MYLES	00:09	53-59	
SUB IN: 30 CONWAY, SEAN	00:09		
	00:03	53-59	SUB OUT: HODGES, BO
	00:03		SUB IN: WILLIAMSON, DAIVIEN
SUB OUT: 30 CONWAY, SEAN	00:03		
SUB IN: 0 TANG, LOUIS	00:03		
SUB OUT: 0 TANG, LOUIS	00:03		
SUB IN: 30 CONWAY, SEAN	00:03		

VMI 55, ETSU 61

**Official Shot Chart
 VMI vs ETSU
 PERIOD 1 Shots
 January 11, 2020 at Freedom Hall**



ETSU

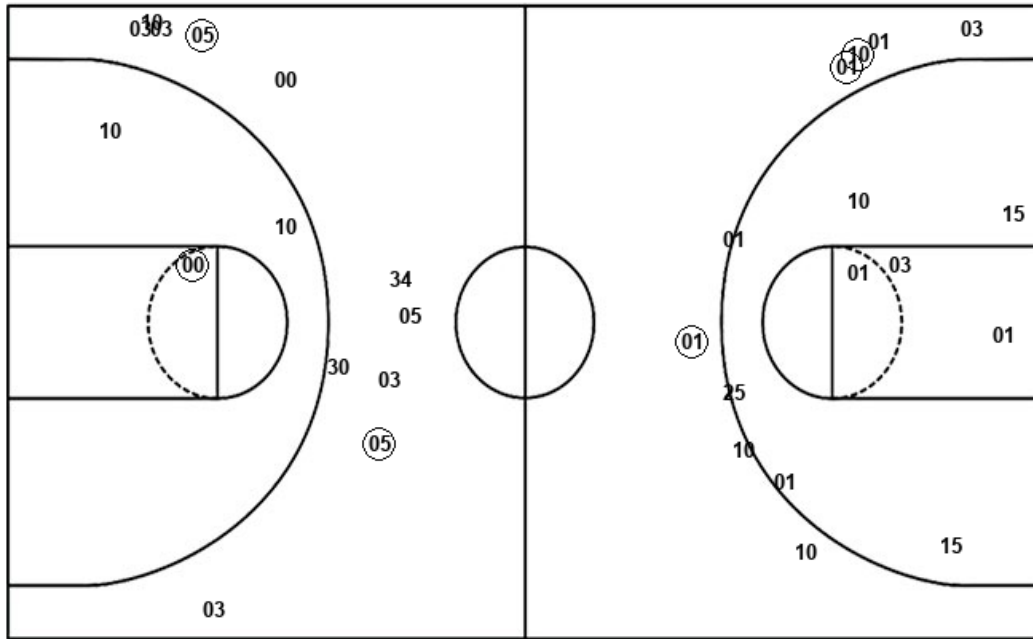
VMI

Layups
 (15) (23) (23) (21) 01
 (05) (15) (25)

Layups
 (34) (03) 00 05 (15)
 (15) (00) (25) 00

Dunks

Dunks



ETSU : Period 1	Made	Att	Pct
Layups	7	8	87.5
Dunks	0	0	0
2PT Field Goals	7	14	50.0
3PT Field Goals	3	10	30.0
Total Field Goals	10	24	41.7

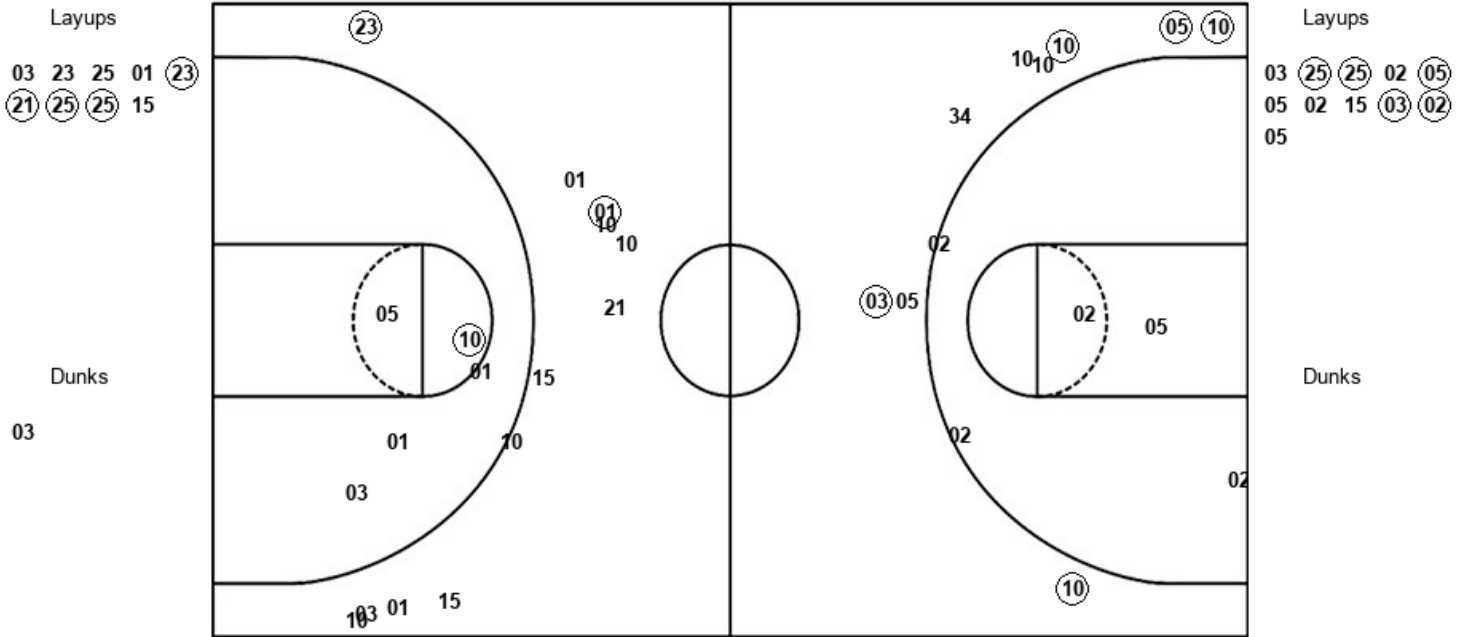
VMI : Period 1	Made	Att	Pct
Layups	6	9	66.7
Dunks	0	0	0
2PT Field Goals	7	13	53.8
3PT Field Goals	2	10	20.0
Total Field Goals	9	23	39.1

Official Shot Chart
VMI vs ETSU
PERIOD 2 Shots
 January 11, 2020 at Freedom Hall



ETSU

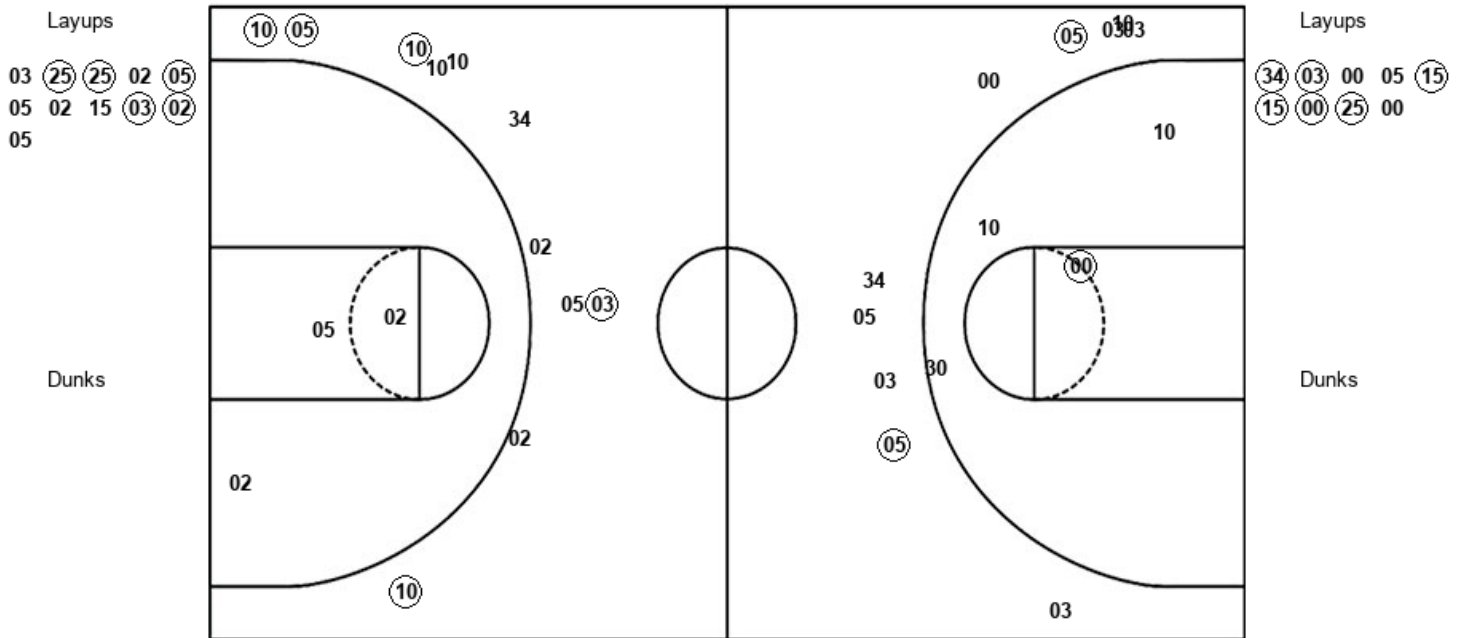
VMI



ETSU : Period 2	Made	Att	Pct
Layups	4	9	44.4
Dunks	0	1	00.0
2PT Field Goals	6	18	33.3
3PT Field Goals	2	10	20.0
Total Field Goals	8	28	28.6

VMI : Period 2	Made	Att	Pct
Layups	5	11	45.5
Dunks	0	0	0
2PT Field Goals	5	14	35.7
3PT Field Goals	5	11	45.5
Total Field Goals	10	25	40.0

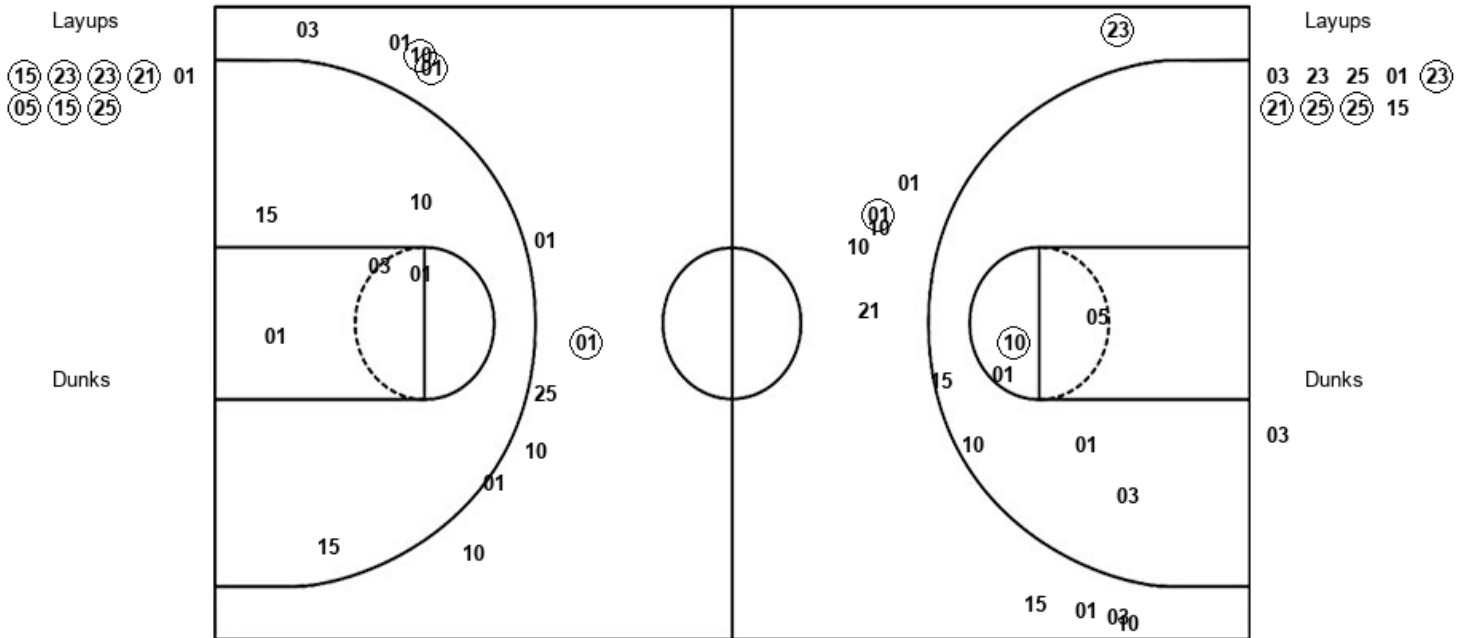
Official Shot Chart
VMI vs ETSU
 VMI Team Shots
 January 11, 2020 at Freedom Hall



VMI : Period 1	Made	Att	Pct
Layups	6	9	66.7
Dunks	0	0	0
2PT Field Goals	7	13	53.8
3PT Field Goals	2	10	20.0
Total Field Goals	9	23	39.1

VMI : Period 2	Made	Att	Pct
Layups	5	11	45.5
Dunks	0	0	0
2PT Field Goals	5	14	35.7
3PT Field Goals	5	11	45.5
Total Field Goals	10	25	40.0

Official Shot Chart
 VMI vs ETSU
 ETSU Team Shots
 January 11, 2020 at Freedom Hall



ETSU : Period 1	Made	Att	Pct
Layups	7	8	87.5
Dunks	0	0	0
2PT Field Goals	7	14	50.0
3PT Field Goals	3	10	30.0
Total Field Goals	10	24	41.7

ETSU : Period 2	Made	Att	Pct
Layups	4	9	44.4
Dunks	0	1	00.0
2PT Field Goals	6	18	33.3
3PT Field Goals	2	10	20.0
Total Field Goals	8	28	28.6