

FINAL SCORE



East Carolina

81



Tulane

67

February 08, 2020 • Avron B. Fogelman Arena in Devlin Fieldhouse - New Orleans

FINAL STATISTICS

Official Box Score
East Carolina vs Tulane
Game Totals -- Final Statistics

February 08, 2020 at Avron B. Fogelman Arena in Devlin Fieldhouse - New Orleans



East Carolina 81

No.	Player	S	Pts	FG	3FG	FT	OR	DR	TR	PF	A	TO	Blk	Stl	Min	+/-
01	GARDNER, JAYDEN	F	20	10-17	0-1	0-1	2	6	8	3	1	3	0	0	37	14
02	NEWTON, TRISTEN	G	18	7-13	1-3	3-4	2	7	9	3	4	2	0	1	36	8
11	MILES, JJ	G	3	1-3	1-3	0-0	0	0	0	3	1	0	0	1	11	3
12	ROBINSON-WHITE, TREMONT	G	8	1-2	0-0	6-6	0	3	3	3	2	3	1	1	24	21
32	COLEMAN, CHARLES	C	0	0-0	0-0	0-0	1	0	1	0	0	3	0	0	5	0
04	SUGGS, BRANDON	G	11	3-6	0-1	5-5	0	4	4	3	5	3	1	1	27	3
05	CURTIS, LOGAN	G	0	0-0	0-0	0-0	0	0	0	0	1	0	0	0	1	0
10	JACKSON, TYRIE	G	11	4-6	1-3	2-2	0	4	4	4	1	0	1	0	22	1
13	JONES, IAN	G	0	0-0	0-0	0-0	0	1	1	0	0	0	0	0	0	1
20	BARUTI, BITUMBA	G	9	3-7	0-1	3-4	3	6	9	2	3	2	0	2	33	13
24	UMSTEAD, EVAN	G	1	0-0	0-0	1-2	0	0	0	0	0	0	0	0	0	1
25	STRICKLAND, SAMSON	F	0	0-1	0-0	0-0	0	0	0	1	0	0	0	0	2	5
TEAM							2	5	7	0		0				
TOTALS			81	29-55	3-12	20-24	10	36	46	22	18	16	3	6	199	

Shooting By Period

Period	FG	FG%	3FG	3FG%	FT	FT%
1st Half	13-22	59%	2-6	33%	9-12	75%
2nd Half	16-33	48%	1-6	17%	11-12	92%
Game	29-55	52.7%	3-12	25.0%	20-24	83.3%

Deadball Rebounds: 2,0

Last FG: 2nd-01:37

Biggest Run: 9-0

Largest lead: By 15 at 2nd-01:37

Technical Fouls: None.

Tulane 67

No.	Player	S	Pts	FG	3FG	FT	OR	DR	TR	PF	A	TO	Blk	Stl	Min	+/-
01	LAWSON, K.J.	F	20	7-13	4-7	2-2	1	3	4	3	0	2	0	2	36	-16
04	DAYS, NOBAL	F	2	0-0	0-0	2-4	2	0	2	3	0	1	0	2	19	-13
05	HIGHTOWER, TESHAWN	G	3	1-9	0-5	1-4	0	2	2	1	5	4	0	1	38	-9
14	THOMAS, NIC	G	8	3-14	2-11	0-0	1	0	1	4	1	3	0	0	29	-12
25	THOMPSON, CHRISTION	G	23	8-14	0-3	7-10	2	7	9	2	6	0	0	5	39	-14
00	RUSSELL JR., CHARLIE	G	0	0-1	0-0	0-0	0	0	0	1	0	0	0	0	2	-3
02	WALKER, JORDAN	G	3	1-3	1-2	0-0	0	0	0	1	0	0	0	0	7	-2
12	ZHANG, KEVIN	F	8	3-5	2-4	0-0	1	6	7	4	1	0	0	1	20	1
13	KOKA, BUAY	C	0	0-0	0-0	0-0	0	0	0	0	0	0	0	0	1	1
15	QUINN, GRANT	G	0	0-0	0-0	0-0	0	0	0	0	0	0	0	0	0	-1
23	MCGEE, R.J.	G	0	0-1	0-1	0-0	0	0	0	1	0	0	1	0	7	-2
34	ZACCARDO, ALEC	G	0	0-1	0-1	0-0	0	0	0	1	0	0	0	0	0	0
TEAM							1	0	1	0		0				
TOTALS			67	23-61	9-34	12-20	8	18	26	21	13	10	1	11	199	

Shooting By Period

Period	FG	FG%	3FG	3FG%	FT	FT%
1st Half	10-28	36%	5-16	31%	9-13	69%
2nd Half	13-33	39%	4-18	22%	3-7	43%
Game	23-61	37.7%	9-34	26.5%	12-20	60.0%

Deadball Rebounds: 2,0

Last FG: 2nd-02:14

Biggest Run: 6-0

Largest lead: By 2 at 1st-15:19

Technical Fouls: None.

Game Notes:

Officials: Mike Nance, Chris Beaver, Keith Patterson
 Attendance: 1742

Start Time: 06:05 PM ET
 End Time: 08:06 PM ET
 Game Duration: 2:00
 Conference Game;

Score	1st	2nd	TOT
ECU	37	44	81
TLN	34	33	67

ECU led for 35:33. TLN led for 2:01.
 Game was tied for 2:09.
 Times tied: 4 Lead Changes: 6

Points from	ECU	TLN
In the Paint	44	18
Off Turns	15	14
2nd Chance	17	10
Fast Break	16	5
Bench	32	11

Official Box Score
East Carolina vs Tulane
First Half Statistics Only
February 08, 2020 at Avron B. Fogelman Arena in Devlin Fieldhouse - New Orleans



East Carolina 37

No.	Player	S	Pts	FG	3FG	FT	OR	DR	TR	PF	A	TO	Blk	Stl	Min	+/-
01	GARDNER, JAYDEN	F	12	6-8	0-1	0-1	0	5	5	2	0	3	0	0	19	1
02	NEWTON, TRISTEN	G	8	2-3	1-1	3-4	0	2	2	1	2	1	0	1	16	-3
11	MILES, JJ	G	0	0-0	0-0	0-0	0	0	0	2	0	0	0	0	2	0
12	ROBINSON-WHITE, TREMONT	G	2	1-1	0-0	0-0	0	2	2	2	2	2	1	0	13	10
32	COLEMAN, CHARLES	C	0	0-0	0-0	0-0	1	0	1	0	0	3	0	0	5	0
04	SUGGS, BRANDON	G	9	2-4	0-1	5-5	0	4	4	2	3	2	1	1	17	3
05	CURTIS, LOGAN	G	0	0-0	0-0	0-0	0	0	0	0	1	0	0	0	1	0
10	JACKSON, TYRIE	G	3	1-2	1-2	0-0	0	2	2	2	1	0	1	0	11	-1
13	JONES, IAN	G	0	0-0	0-0	0-0	0	0	0	0	0	0	0	0	0	0
20	BARUTI, BITUMBA	G	3	1-4	0-1	1-2	1	2	3	1	2	1	0	1	15	3
24	UMSTEAD, EVAN	G	0	0-0	0-0	0-0	0	0	0	0	0	0	0	0	0	0
25	STRICKLAND, SAMSON	F	0	0-0	0-0	0-0	0	0	0	0	0	0	0	0	1	2
TEAM							1	0	1	0	0	0	0	0	0	0
TOTALS			37	13-22	2-6	9-12	3	17	20	12	11	12	3	3	100	

Shooting By Period

Period	FG	FG%	3FG	3FG%	FT	FT%
1st Half	13-22	59%	2-6	33%	9-12	75%
Game	29-55	52.7%	3-12	25.0%	20-24	83.3%

Deadball Rebounds: 2,0

Last FG Half: ECU 2nd-01:37

Tulane 34

No.	Player	S	Pts	FG	3FG	FT	OR	DR	TR	PF	A	TO	Blk	Stl	Min	+/-
01	LAWSON, K.J.	F	10	4-4	2-2	0-0	0	0	0	2	0	1	0	2	17	-6
04	DAYS, NOBAL	F	2	0-0	0-0	2-4	1	0	1	2	0	1	0	1	11	-2
05	HIGHTOWER, TSHAUN	G	0	0-6	0-3	0-2	0	2	2	1	3	2	0	1	19	2
14	THOMAS, NIC	G	3	1-6	1-5	0-0	0	0	0	0	0	2	0	0	15	-6
25	THOMPSON, CHRISTION	G	13	3-6	0-2	7-7	2	5	7	0	3	0	0	3	20	-2
00	RUSSELL JR., CHARLIE	G	0	0-1	0-0	0-0	0	0	0	1	0	0	0	0	1	-2
02	WALKER, JORDAN	G	3	1-3	1-2	0-0	0	0	0	1	0	0	0	0	6	-2
12	ZHANG, KEVIN	F	3	1-2	1-2	0-0	0	1	1	3	0	0	0	0	8	1
13	KOKA, BUAY	C	0	0-0	0-0	0-0	0	0	0	0	0	0	0	0	0	1
15	QUINN, GRANT	G	0	0-0	0-0	0-0	0	0	0	0	0	0	0	0	0	0
23	MCGEE, R.J.	G	0	0-0	0-0	0-0	0	0	0	0	0	0	0	0	3	1
34	ZACCARDO, ALEC	G	0	0-0	0-0	0-0	0	0	0	0	0	0	0	0	0	0
TEAM							0	0	0	0	0	0	0	0	0	
TOTALS			34	10-28	5-16	9-13	3	8	11	10	6	6	0	7	100	

Shooting By Period

Period	FG	FG%	3FG	3FG%	FT	FT%
1st Half	10-28	36%	5-16	31%	9-13	69%
Game	23-61	37.7%	9-34	26.5%	12-20	60.0%

Deadball Rebounds: 2,0

Last FG Half: TLN 2nd-02:14

Game Notes:

Officials: Mike Nance, Chris Beaver, Keith Patterson
 Attendance: 1742

Start Time: 06:05 PM ET
 End Time: 08:06 PM ET
 Game Duration: 2:00
 Conference Game:

Score	1st	2nd	TOT
ECU	37	44	81
TLN	34	33	67

Points from (This Period)	ECU	TLN
In the Paint	18	8
Off Turns	9	11
2nd Chance	2	5
Fast Break	4	3
Bench	15	6

**Official Play-By-Play
East Carolina vs Tulane
First Half**

February 08, 2020 at Avron B. Fogelman Arena in Devlin Fieldhouse - New Orleans



Period 1

Starters:

East Carolina: 1 GARDNER, JAYDEN (F); 2 NEWTON, TRISTEN (G); 11 MILES, JJ (G); 12 ROBINSON-WHITE, TREMONT (G); 32 COLEMAN, CHARLES (C);

Tulane: 1 LAWSON, K.J. (F); 4 DAYS, NOBAL (F); 5 HIGHTOWER, TESHAUN (G); 14 THOMAS, NIC (G); 25 THOMPSON, CHRISTION (G);

Time	VISITORS: East Carolina	Score	Margin	HOME: Tulane
19:41	MISSED JUMPER by NEWTON, TRISTEN			
19:39				REBOUND (DEF) by HIGHTOWER, TESHAUN
19:18				MISSED 3PTR by HIGHTOWER, TESHAUN
19:15	REBOUND (DEF) by GARDNER, JAYDEN			
18:58	GOOD! LAYUP by ROBINSON-WHITE, TREMONT	0-2	V 2	
18:44				MISSED 3PTR by THOMAS, NIC
18:41	REBOUND (DEF) by GARDNER, JAYDEN			
18:20	TURNOVER (TRAVEL) by COLEMAN, CHARLES			
17:54	FOUL (PERSONAL) by MILES, JJ			
17:54		1-2	V 1	GOOD! FT by THOMPSON, CHRISTION
17:54		2-2	T	GOOD! FT by THOMPSON, CHRISTION
17:50	TURNOVER (BADPASS) by ROBINSON-WHITE, TREMONT			
17:50				STEAL by LAWSON, K.J.
17:39	FOUL (PERSONAL) by MILES, JJ			
17:39	SUB OUT: MILES, JJ			
17:39	SUB IN: SUGGS, BRANDON			
17:28				TURNOVER (BADPASS) by HIGHTOWER, TESHAUN
17:06	GOOD! LAYUP by GARDNER, JAYDEN	2-4	V 2	
17:06	ASSIST by SUGGS, BRANDON			
16:53	FOUL (PERSONAL) by GARDNER, JAYDEN			
16:53	SUB OUT: ROBINSON-WHITE, TREMONT			
16:53	SUB OUT: COLEMAN, CHARLES			
16:53	SUB IN: JACKSON, TYRIE			
16:53	SUB IN: BARUTI, BITUMBA			
16:37		5-4	H 1	GOOD! 3PTR by LAWSON, K.J.
16:37				ASSIST by HIGHTOWER, TESHAUN
16:21	GOOD! JUMPER by GARDNER, JAYDEN	5-6	V 1	
16:21	ASSIST by NEWTON, TRISTEN			
16:10		8-6	H 2	GOOD! 3PTR by LAWSON, K.J.
16:10				ASSIST by THOMPSON, CHRISTION
15:58	MISSED JUMPER by BARUTI, BITUMBA			
15:57	REBOUND (OFF) by TEAM			
15:57				
15:38	GOOD! JUMPER by NEWTON, TRISTEN [PNT]	8-8	T	
15:19		10-8	H 2	GOOD! JUMPER by LAWSON, K.J.
15:01				FOUL (PERSONAL) by DAYS, NOBAL
15:01	GOOD! FT by NEWTON, TRISTEN	10-9	H 1	
15:00	MISSED FT by NEWTON, TRISTEN			
14:58				REBOUND (DEF) by THOMPSON, CHRISTION
14:54	FOUL (PERSONAL) by JACKSON, TYRIE			
14:54	SUB OUT: NEWTON, TRISTEN			
14:54	SUB IN: ROBINSON-WHITE, TREMONT			
14:43				TURNOVER (DRIBBLING) by LAWSON, K.J.
14:32	GOOD! LAYUP by SUGGS, BRANDON	10-11	V 1	
14:32	ASSIST by JACKSON, TYRIE			
14:32				FOUL (PERSONAL) by DAYS, NOBAL
14:32				SUB OUT: DAYS, NOBAL
14:32				SUB IN: ZHANG, KEVIN
14:32	GOOD! FT by SUGGS, BRANDON	10-12	V 2	
14:13				MISSED 3PTR by HIGHTOWER, TESHAUN
14:10	REBOUND (DEF) by JACKSON, TYRIE			
14:05				FOUL (PERSONAL) by ZHANG, KEVIN
14:05				SUB OUT: HIGHTOWER, TESHAUN
14:05				SUB IN: WALKER, JORDAN
13:48	TURNOVER (LOSTBALL) by GARDNER, JAYDEN			
13:48				STEAL by THOMPSON, CHRISTION
13:43				MISSED 3PTR by WALKER, JORDAN
13:43	BLOCK by JACKSON, TYRIE			
13:39				REBOUND (OFF) by THOMPSON, CHRISTION
13:33				MISSED 3PTR by THOMAS, NIC
13:30	REBOUND (DEF) by BARUTI, BITUMBA			
13:22	GOOD! 3PTR by JACKSON, TYRIE	10-15	V 5	
13:22	ASSIST by ROBINSON-WHITE, TREMONT			
13:01				TURNOVER (LOSTBALL) by THOMAS, NIC
13:01	STEAL by SUGGS, BRANDON			
12:57	GOOD! LAYUP by GARDNER, JAYDEN [FB]	10-17	V 7	
12:57	ASSIST by SUGGS, BRANDON			
12:55				TIMEOUT 30SEC
12:55				SUB OUT: THOMAS, NIC
12:55				SUB IN: HIGHTOWER, TESHAUN

Time	VISITORS: East Carolina	Score	Margin	HOME: Tulane
12:55	SUB OUT: BARUTI, BITUMBA			
12:55	SUB IN: COLEMAN, CHARLES			
12:38				MISSED 3PTR by THOMPSON, CHRISTION
12:35	REBOUND (DEF) by SUGGS, BRANDON			
12:28	TURNOVER (BADPASS) by SUGGS, BRANDON			
12:09		12-17	V 5	GOOD! JUMPER by LAWSON, K.J. [PNT]
12:09				ASSIST by HIGHTOWER, TESHAUN
11:49	TURNOVER (LOSTBALL) by COLEMAN, CHARLES			
11:49				STEAL by THOMPSON, CHRISTION
11:44				MISSED 3PTR by HIGHTOWER, TESHAUN
11:40	REBOUND (DEF) by GARDNER, JAYDEN			
11:21	MISSED LAYUP by SUGGS, BRANDON			
11:18	REBOUND (OFF) by COLEMAN, CHARLES			
11:17	TURNOVER (LOSTBALL) by COLEMAN, CHARLES			
11:17				STEAL by LAWSON, K.J.
11:13				MISSED LAYUP by WALKER, JORDAN
11:13	BLOCK by ROBINSON-WHITE, TREMONT			
11:13	REBOUND (DEF) by ROBINSON-WHITE, TREMONT			
11:12				FOUL (PERSONAL) by WALKER, JORDAN
11:12				
11:12				SUB OUT: WALKER, JORDAN
11:12				SUB IN: MCGEE, R.J.
11:12	SUB OUT: JACKSON, TYRIE			
11:12	SUB OUT: COLEMAN, CHARLES			
11:12	SUB IN: NEWTON, TRISTEN			
11:12	SUB IN: BARUTI, BITUMBA			
11:01	TURNOVER (TRAVEL) by ROBINSON-WHITE, TREMONT			
10:51		14-17	V 3	GOOD! DUNK by THOMPSON, CHRISTION
10:40				FOUL (PERSONAL) by HIGHTOWER, TESHAUN
10:26				FOUL (PERSONAL) by LAWSON, K.J.
10:26	GOOD! FT by SUGGS, BRANDON	14-18	V 4	
10:26	GOOD! FT by SUGGS, BRANDON	14-19	V 5	
10:07	FOUL (PERSONAL) by ROBINSON-WHITE, TREMONT			
09:56				MISSED JUMPER by HIGHTOWER, TESHAUN
09:53	REBOUND (DEF) by SUGGS, BRANDON			
09:45	MISSED 3PTR by BARUTI, BITUMBA			
09:42				REBOUND (DEF) by HIGHTOWER, TESHAUN
09:32				MISSED LAYUP by THOMPSON, CHRISTION
09:32				REBOUND (OFF) by THOMPSON, CHRISTION
09:32		16-19	V 3	GOOD! LAYUP by THOMPSON, CHRISTION
09:32	FOUL (PERSONAL) by SUGGS, BRANDON			
09:32	SUB OUT: ROBINSON-WHITE, TREMONT			
09:32	SUB IN: JACKSON, TYRIE			
09:32		17-19	V 2	GOOD! FT by THOMPSON, CHRISTION
09:12	TURNOVER (TRAVEL) by BARUTI, BITUMBA			
08:42				MISSED JUMPER by HIGHTOWER, TESHAUN
08:39	REBOUND (DEF) by NEWTON, TRISTEN			
08:27	GOOD! LAYUP by GARDNER, JAYDEN	17-21	V 4	
08:27	ASSIST by SUGGS, BRANDON			
08:27				FOUL (PERSONAL) by ZHANG, KEVIN
08:27				SUB OUT: MCGEE, R.J.
08:27				SUB IN: THOMAS, NIC
08:26	MISSED FT by GARDNER, JAYDEN			
08:25				REBOUND (DEF) by THOMPSON, CHRISTION
08:01		20-21	V 1	GOOD! 3PTR by ZHANG, KEVIN
08:01				ASSIST by HIGHTOWER, TESHAUN
07:40	MISSED 3PTR by SUGGS, BRANDON			
07:37				REBOUND (DEF) by THOMPSON, CHRISTION
07:13				MISSED 3PTR by ZHANG, KEVIN
07:11	REBOUND (DEF) by JACKSON, TYRIE			
07:04	MISSED 3PTR by JACKSON, TYRIE			
07:00				REBOUND (DEF) by ZHANG, KEVIN
06:50	FOUL (PERSONAL) by JACKSON, TYRIE			
06:50				
06:50				SUB OUT: LAWSON, K.J.
06:50				SUB IN: RUSSELL JR., CHARLIE
06:50	SUB OUT: GARDNER, JAYDEN			
06:50	SUB OUT: JACKSON, TYRIE			
06:50	SUB IN: ROBINSON-WHITE, TREMONT			
06:50	SUB IN: STRICKLAND, SAMSON			
06:50		21-21	T	GOOD! FT by THOMPSON, CHRISTION
06:50		22-21	H 1	GOOD! FT by THOMPSON, CHRISTION
06:24				FOUL (PERSONAL) by ZHANG, KEVIN
06:24	GOOD! FT by NEWTON, TRISTEN	22-22	T	
06:24				
06:24				SUB OUT: ZHANG, KEVIN
06:24				SUB IN: LAWSON, K.J.
06:24	GOOD! FT by NEWTON, TRISTEN	22-23	V 1	
06:06				TURNOVER (LOSTBALL) by THOMAS, NIC
06:06	STEAL by BARUTI, BITUMBA			
06:02	GOOD! LAYUP by SUGGS, BRANDON [FB]	22-25	V 3	

Time	VISITORS: East Carolina	Score	Margin	HOME: Tulane
06:02	ASSIST by BARUTI, BITUMBA			
05:55				MISSED LAYUP by RUSSELL JR., CHARLIE
05:53	REBOUND (DEF) by SUGGS, BRANDON			
05:53				FOUL (PERSONAL) by RUSSELL JR., CHARLIE
05:53				SUB OUT: RUSSELL JR., CHARLIE
05:53				SUB IN: DAYS, NOBAL
05:53	SUB OUT: STRICKLAND, SAMSON			
05:53	SUB IN: GARDNER, JAYDEN			
05:53	GOOD! FT by SUGGS, BRANDON	22-26	V 4	
05:53	GOOD! FT by SUGGS, BRANDON	22-27	V 5	
05:34				MISSED LAYUP by THOMAS, NIC
05:34	BLOCK by SUGGS, BRANDON			
05:30	REBOUND (DEF) by GARDNER, JAYDEN			
05:27	FOUL (OFF) by NEWTON, TRISTEN			
05:27	TURNOVER (OFFENSIVE) by NEWTON, TRISTEN			
05:14				MISSED 3PTR by THOMPSON, CHRISTION
05:12	REBOUND (DEF) by ROBINSON-WHITE, TREMONT			
05:04	MISSED LAYUP by BARUTI, BITUMBA			
05:01	REBOUND (OFF) by BARUTI, BITUMBA			
05:00	MISSED 3PTR by GARDNER, JAYDEN			
04:57				REBOUND (DEF) by THOMPSON, CHRISTION
04:40				TURNOVER (BADPASS) by HIGHTOWER, TESHAWN
04:40	STEAL by NEWTON, TRISTEN			
04:33	TURNOVER (LOSTBALL) by GARDNER, JAYDEN			
04:33				STEAL by THOMPSON, CHRISTION
04:28		25-27	V 2	GOOD! 3PTR by THOMAS, NIC [FB]
04:28				ASSIST by THOMPSON, CHRISTION
04:03	GOOD! LAYUP by BARUTI, BITUMBA	25-29	V 4	
04:03	ASSIST by ROBINSON-WHITE, TREMONT			
03:29				MISSED JUMPER by HIGHTOWER, TESHAWN
03:25	REBOUND (DEF) by SUGGS, BRANDON			
03:24	TURNOVER (BADPASS) by SUGGS, BRANDON			
03:24				STEAL by DAYS, NOBAL
03:18				MISSED 3PTR by THOMAS, NIC
03:16	REBOUND (DEF) by NEWTON, TRISTEN			
02:55				FOUL (PERSONAL) by LAWSON, K.J.
02:55				SUB OUT: THOMPSON, CHRISTION
02:55				SUB IN: WALKER, JORDAN
02:55	MISSED FT by BARUTI, BITUMBA			
02:55	REBOUND (OFF) by TEAM			
02:55	GOOD! FT by BARUTI, BITUMBA	25-30	V 5	
02:43				MISSED 3PTR by THOMAS, NIC
02:42				REBOUND (OFF) by DAYS, NOBAL
02:42	FOUL (PERSONAL) by ROBINSON-WHITE, TREMONT			
02:42				SUB OUT: LAWSON, K.J.
02:42				SUB IN: THOMPSON, CHRISTION
02:42	SUB OUT: ROBINSON-WHITE, TREMONT			
02:42	SUB IN: JACKSON, TYRIE			
02:42		26-30	V 4	GOOD! FT by DAYS, NOBAL
02:42		27-30	V 3	GOOD! FT by DAYS, NOBAL
02:31	TIMEOUT 30SEC			
02:19	GOOD! JUMPER by GARDNER, JAYDEN	27-32	V 5	
02:19	ASSIST by NEWTON, TRISTEN			
02:04				TURNOVER (LOSTBALL) by DAYS, NOBAL
01:37	TURNOVER (BADPASS) by GARDNER, JAYDEN			
01:37				STEAL by HIGHTOWER, TESHAWN
01:26		29-32	V 3	GOOD! LAYUP by THOMPSON, CHRISTION
01:09	MISSED JUMPER by GARDNER, JAYDEN			
01:06				REBOUND (DEF) by THOMPSON, CHRISTION
01:03	FOUL (PERSONAL) by SUGGS, BRANDON			
01:03				MISSED FT by HIGHTOWER, TESHAWN
01:03				REBOUND (OFF) by TEAM
01:03	SUB OUT: SUGGS, BRANDON			
01:03	SUB IN: CURTIS, LOGAN			
01:02				MISSED FT by HIGHTOWER, TESHAWN
01:01	REBOUND (DEF) by BARUTI, BITUMBA			
00:46	GOOD! 3PTR by NEWTON, TRISTEN	29-35	V 6	
00:46	ASSIST by CURTIS, LOGAN			
00:25		32-35	V 3	GOOD! 3PTR by WALKER, JORDAN
00:25				ASSIST by THOMPSON, CHRISTION
00:25	FOUL (PERSONAL) by BARUTI, BITUMBA			
00:25				MISSED FT by DAYS, NOBAL
00:25				REBOUND (OFF) by TEAM
00:25				SUB OUT: THOMAS, NIC
00:25				SUB IN: RUSSELL JR., CHARLIE
00:24				MISSED FT by DAYS, NOBAL
00:23	REBOUND (DEF) by GARDNER, JAYDEN			
00:09	GOOD! LAYUP by GARDNER, JAYDEN	32-37	V 5	
00:09	ASSIST by BARUTI, BITUMBA			

Time	VISITORS: East Carolina	Score	Margin	HOME: Tulane
00:01	FOUL (PERSONAL) by GARDNER, JAYDEN			
00:01		33-37	V 4	GOOD! FT by THOMPSON, CHRISTION
00:01				SUB OUT: DAYS, NOBAL
00:01				SUB IN: KOKA, BUAY
00:01		34-37	V 3	GOOD! FT by THOMPSON, CHRISTION

East Carolina 37, Tulane 34

Points from (This Period)	ECU	TLN
In the Paint	18	8
Off Turns	9	11
2nd Chance	2	5
Fast Break	4	3
Bench	15	6

Official Box Score
East Carolina vs Tulane
Second Half Statistics Only
February 08, 2020 at Avron B. Fogelman Arena in Devlin Fieldhouse - New Orleans



East Carolina 44

No.	Player	S	Pts	FG	3FG	FT	OR	DR	TR	PF	A	TO	Blk	Stl	Min	+/-
01	GARDNER, JAYDEN	F	8	4-9	0-0	0-0	2	1	3	1	1	0	0	0	18	13
02	NEWTON, TRISTEN	G	10	5-10	0-2	0-0	2	5	7	2	2	1	0	0	20	11
11	MILES, JJ	G	3	1-3	1-3	0-0	0	0	0	1	1	0	0	1	9	3
12	ROBINSON-WHITE, TREMONT	G	6	0-1	0-0	6-6	0	1	1	1	0	1	0	1	11	11
32	COLEMAN, CHARLES	C	0	0-0	0-0	0-0	0	0	0	0	0	0	0	0	0	0
04	SUGGS, BRANDON	G	2	1-2	0-0	0-0	0	0	0	1	2	1	0	0	10	0
05	CURTIS, LOGAN	G	0	0-0	0-0	0-0	0	0	0	0	0	0	0	0	0	0
10	JACKSON, TYRIE	G	8	3-4	0-1	2-2	0	2	2	2	0	0	0	0	11	2
13	JONES, IAN	G	0	0-0	0-0	0-0	0	1	1	0	0	0	0	0	0	1
20	BARUTI, BITUMBA	G	6	2-3	0-0	2-2	2	4	6	1	1	1	0	1	17	10
24	UMSTEAD, EVAN	G	1	0-0	0-0	1-2	0	0	0	0	0	0	0	0	0	1
25	STRICKLAND, SAMSON	F	0	0-1	0-0	0-0	0	0	0	1	0	0	0	0	2	3
TEAM							1	5	6	0		0				
TOTALS			44	16-33	1-6	11-12	7	19	26	10	7	4	0	3	99	

Shooting By Period

Period	FG	FG%	3FG	3FG%	FT	FT%
2nd Half	16-33	48%	1-6	17%	11-12	92%
Game	29-55	52.7%	3-12	25.0%	20-24	83.3%

Deadball Rebounds: 2,0
Last FG Half: ECU -

Tulane 33

No.	Player	S	Pts	FG	3FG	FT	OR	DR	TR	PF	A	TO	Blk	Stl	Min	+/-
01	LAWSON, K.J.	F	10	3-9	2-5	2-2	1	3	4	1	0	1	0	0	19	-10
04	DAYS, NOBAL	F	0	0-0	0-0	0-0	1	0	1	1	0	0	0	1	8	-11
05	HIGHTOWER, TESHAWN	G	3	1-3	0-2	1-2	0	0	0	0	2	2	0	0	19	-11
14	THOMAS, NIC	G	5	2-8	1-6	0-0	1	0	1	4	1	1	0	0	14	-6
25	THOMPSON, CHRISTION	G	10	5-8	0-1	0-3	0	2	2	2	3	0	0	2	19	-12
00	RUSSELL JR., CHARLIE	G	0	0-0	0-0	0-0	0	0	0	0	0	0	0	0	0	-1
02	WALKER, JORDAN	G	0	0-0	0-0	0-0	0	0	0	0	0	0	0	0	2	0
12	ZHANG, KEVIN	F	5	2-3	1-2	0-0	1	5	6	1	1	0	0	1	12	0
13	KOKA, BUAY	C	0	0-0	0-0	0-0	0	0	0	0	0	0	0	0	0	0
15	QUINN, GRANT	G	0	0-0	0-0	0-0	0	0	0	0	0	0	0	0	0	-1
23	MCGEE, R.J.	G	0	0-1	0-1	0-0	0	0	0	1	0	0	1	0	4	-3
34	ZACCARDO, ALEC	G	0	0-1	0-1	0-0	0	0	0	1	0	0	0	0	0	0
TEAM							1	0	1	0		0				
TOTALS			33	13-33	4-18	3-7	5	10	15	11	7	4	1	4	99	

Shooting By Period

Period	FG	FG%	3FG	3FG%	FT	FT%
2nd Half	13-33	39%	4-18	22%	3-7	43%
Game	23-61	37.7%	9-34	26.5%	12-20	60.0%

Deadball Rebounds: 2,0
Last FG Half: TLN -

Game Notes:

Officials: Mike Nance, Chris Beaver, Keith Patterson
 Attendance: 1742

Start Time: 06:05 PM ET
 End Time: 08:06 PM ET
 Game Duration: 2:00
 Conference Game;

Score	1st	2nd	TOT
ECU	37	44	81
TLN	34	33	67

Points from (This Period)	ECU	TLN
In the Paint	26	10
Off Turns	6	3
2nd Chance	15	5
Fast Break	12	2
Bench	17	5

**Official Play-By-Play
East Carolina vs Tulane
Second Half**

February 08, 2020 at Avron B. Fogelman Arena in Devlin Fieldhouse - New Orleans



Period 2

Starters:

East Carolina: 1 GARDNER, JAYDEN (F); 2 NEWTON, TRISTEN (G); 11 MILES, JJ (G); 12 ROBINSON-WHITE, TREMONT (G); 32 COLEMAN, CHARLES (C);
Tulane: 1 LAWSON, K.J. (F); 4 DAYS, NOBAL (F); 5 HIGHTOWER, TESHAUN (G); 14 THOMAS, NIC (G); 25 THOMPSON, CHRISTION (G);

Time	VISITORS: East Carolina	Score	Margin	HOME: Tulane
20:00				SUB OUT: RUSSELL JR., CHARLIE
20:00				SUB OUT: WALKER, JORDAN
20:00				SUB OUT: KOKA, BUAY
20:00				SUB IN: LAWSON, K.J.
20:00				SUB IN: DAYS, NOBAL
20:00				SUB IN: THOMAS, NIC
20:00	SUB OUT: CURTIS, LOGAN			
20:00	SUB OUT: JACKSON, TYRIE			
20:00	SUB IN: MILES, JJ			
20:00	SUB IN: ROBINSON-WHITE, TREMONT			
19:45		36-37	V 1	GOOD! JUMPER by THOMPSON, CHRISTION
19:28	MISSED LAYUP by GARDNER, JAYDEN			
19:27	REBOUND (OFF) by TEAM			
19:10				FOUL (PERSONAL) by THOMAS, NIC
18:54	GOOD! 3PTR by MILES, JJ	36-40	V 4	
18:54	ASSIST by BARUTI, BITUMBA			
18:33	FOUL (PERSONAL) by ROBINSON-WHITE, TREMONT			
18:33	SUB OUT: ROBINSON-WHITE, TREMONT			
18:33	SUB IN: SUGGS, BRANDON			
18:27				MISSED JUMPER by LAWSON, K.J.
18:23	REBOUND (DEF) by NEWTON, TRISTEN			
18:20	GOOD! JUMPER by BARUTI, BITUMBA [FB]	36-42	V 6	
18:20	ASSIST by NEWTON, TRISTEN			
18:05				TURNOVER (LOSTBALL) by HIGHTOWER, TESHAUN
18:05	STEAL by MILES, JJ			
17:49				FOUL (PERSONAL) by THOMAS, NIC
17:39	MISSED 3PTR by MILES, JJ			
17:36	REBOUND (OFF) by BARUTI, BITUMBA			
17:23	GOOD! JUMPER by GARDNER, JAYDEN [PNT]	36-44	V 8	
17:12		38-44	V 6	GOOD! JUMPER by THOMPSON, CHRISTION
16:53	GOOD! JUMPER by GARDNER, JAYDEN	38-46	V 8	
16:53	ASSIST by MILES, JJ			
16:39				MISSED 3PTR by THOMAS, NIC
16:36	REBOUND (DEF) by TEAM			
16:36				SUB OUT: DAYS, NOBAL
16:36				SUB OUT: THOMAS, NIC
16:36				SUB IN: WALKER, JORDAN
16:36				SUB IN: ZHANG, KEVIN
16:36	SUB OUT: BARUTI, BITUMBA			
16:36	SUB IN: STRICKLAND, SAMSON			
16:22	MISSED LAYUP by STRICKLAND, SAMSON			
16:20	REBOUND (OFF) by NEWTON, TRISTEN			
16:19	GOOD! JUMPER by NEWTON, TRISTEN	38-48	V 10	
16:07		40-48	V 8	GOOD! LAYUP by THOMPSON, CHRISTION
16:07	FOUL (PERSONAL) by SUGGS, BRANDON			
16:07	SUB OUT: SUGGS, BRANDON			
16:07	SUB IN: JACKSON, TYRIE			
16:06				MISSED FT by THOMPSON, CHRISTION
16:04	REBOUND (DEF) by NEWTON, TRISTEN			
15:48	GOOD! LAYUP by NEWTON, TRISTEN	40-50	V 10	
15:35	FOUL (PERSONAL) by STRICKLAND, SAMSON			
15:35				SUB OUT: WALKER, JORDAN
15:35				SUB IN: MCGEE, R.J.
15:35	SUB OUT: STRICKLAND, SAMSON			
15:35	SUB IN: BARUTI, BITUMBA			
15:31				MISSED 3PTR by MCGEE, R.J.
15:28				REBOUND (OFF) by LAWSON, K.J.
15:19				MISSED 3PTR by ZHANG, KEVIN
15:16	REBOUND (DEF) by JACKSON, TYRIE			
15:04	MISSED 3PTR by JACKSON, TYRIE			
15:01				REBOUND (DEF) by ZHANG, KEVIN
14:52		42-50	V 8	GOOD! JUMPER by ZHANG, KEVIN
14:52				ASSIST by HIGHTOWER, TESHAUN
14:29	MISSED LAYUP by GARDNER, JAYDEN			
14:24	REBOUND (OFF) by BARUTI, BITUMBA			
14:24	GOOD! LAYUP by BARUTI, BITUMBA	42-52	V 10	
14:09				MISSED 3PTR by LAWSON, K.J.
14:05	REBOUND (DEF) by NEWTON, TRISTEN			
14:01	MISSED 3PTR by MILES, JJ			

Time	VISITORS: East Carolina	Score	Margin	HOME: Tulane
13:59				REBOUND (DEF) by ZHANG, KEVIN
13:59	FOUL (PERSONAL) by GARDNER, JAYDEN			
13:46		44-52	V 8	GOOD! JUMPER by LAWSON, K.J.
13:46				ASSIST by THOMPSON, CHRISTION
13:37	MISSED LAYUP by NEWTON, TRISTEN			
13:37				BLOCK by MCGEE, R.J.
13:37	REBOUND (OFF) by GARDNER, JAYDEN			
13:37	GOOD! LAYUP by GARDNER, JAYDEN	44-54	V 10	
13:35	TIMEOUT 30SEC			
13:35				SUB OUT: MCGEE, R.J.
13:35				SUB IN: THOMAS, NIC
13:35	SUB OUT: GARDNER, JAYDEN			
13:35	SUB IN: SUGGS, BRANDON			
13:09		47-54	V 7	GOOD! 3PTR by LAWSON, K.J.
13:09				ASSIST by THOMPSON, CHRISTION
12:40	MISSED JUMPER by BARUTI, BITUMBA			
12:37				REBOUND (DEF) by THOMPSON, CHRISTION
12:33				MISSED 3PTR by THOMAS, NIC
12:31				REBOUND (OFF) by ZHANG, KEVIN
12:23	FOUL (PERSONAL) by BARUTI, BITUMBA			
12:23	SUB OUT: BARUTI, BITUMBA			
12:23	SUB IN: GARDNER, JAYDEN			
12:17		50-54	V 4	GOOD! 3PTR by ZHANG, KEVIN
12:17				ASSIST by THOMPSON, CHRISTION
11:56	TURNOVER (BADPASS) by SUGGS, BRANDON			
11:56				STEAL by ZHANG, KEVIN
11:51				MISSED 3PTR by HIGHTOWER, TESHAWN
11:49	REBOUND (DEF) by TEAM			
11:47				
11:22	MISSED LAYUP by SUGGS, BRANDON			
11:17	REBOUND (OFF) by NEWTON, TRISTEN			
11:17	GOOD! LAYUP by NEWTON, TRISTEN	50-56	V 6	
11:07	FOUL (PERSONAL) by MILES, JJ			
11:07	SUB OUT: MILES, JJ			
11:07	SUB IN: BARUTI, BITUMBA			
11:05		53-56	V 3	GOOD! 3PTR by THOMAS, NIC
11:05				ASSIST by HIGHTOWER, TESHAWN
10:43	TURNOVER (BADPASS) by NEWTON, TRISTEN			
10:43				STEAL by THOMPSON, CHRISTION
10:38				MISSED 3PTR by THOMAS, NIC
10:34	REBOUND (DEF) by TEAM			
10:34	SUB OUT: JACKSON, TYRIE			
10:34	SUB IN: ROBINSON-WHITE, TREMONT			
10:16				FOUL (PERSONAL) by THOMAS, NIC
10:01	GOOD! LAYUP by SUGGS, BRANDON	53-58	V 5	
10:01	ASSIST by NEWTON, TRISTEN			
09:38				MISSED 3PTR by THOMPSON, CHRISTION
09:35	REBOUND (DEF) by BARUTI, BITUMBA			
09:22	MISSED JUMPER by NEWTON, TRISTEN			
09:19				REBOUND (DEF) by ZHANG, KEVIN
09:12		55-58	V 3	GOOD! LAYUP by THOMPSON, CHRISTION
09:12				TIMEOUT 30SEC
08:57	MISSED 3PTR by NEWTON, TRISTEN			
08:54				REBOUND (DEF) by ZHANG, KEVIN
08:47				TURNOVER (BADPASS) by HIGHTOWER, TESHAWN
08:47	STEAL by BARUTI, BITUMBA			
08:41	GOOD! LAYUP by NEWTON, TRISTEN [FB]	55-60	V 5	
08:41	ASSIST by SUGGS, BRANDON			
08:17				FOUL (OFF) by LAWSON, K.J.
08:17				TURNOVER (OFFENSIVE) by LAWSON, K.J.
07:52				FOUL (PERSONAL) by ZHANG, KEVIN
07:52				
07:52				SUB OUT: ZHANG, KEVIN
07:52				SUB IN: DAYS, NOBAL
07:52	GOOD! FT by ROBINSON-WHITE, TREMONT	55-61	V 6	
07:52	GOOD! FT by ROBINSON-WHITE, TREMONT	55-62	V 7	
07:40				MISSED 3PTR by THOMAS, NIC
07:36	REBOUND (DEF) by BARUTI, BITUMBA			
07:35	TURNOVER (LOSTBALL) by BARUTI, BITUMBA			
07:35				STEAL by THOMPSON, CHRISTION
07:21				MISSED JUMPER by THOMPSON, CHRISTION
07:19				REBOUND (OFF) by DAYS, NOBAL
07:14		58-62	V 4	GOOD! 3PTR by LAWSON, K.J.
07:14				ASSIST by THOMAS, NIC
06:42	GOOD! LAYUP by NEWTON, TRISTEN	58-64	V 6	
06:42	ASSIST by SUGGS, BRANDON			
06:22				MISSED JUMPER by LAWSON, K.J.
06:19	REBOUND (DEF) by NEWTON, TRISTEN			
05:58	MISSED LAYUP by GARDNER, JAYDEN			

Time	VISITORS: East Carolina	Score	Margin	HOME: Tulane
05:56				REBOUND (DEF) by LAWSON, K.J.
05:53	FOUL (PERSONAL) by NEWTON, TRISTEN			
05:53	SUB OUT: SUGGS, BRANDON			
05:53	SUB IN: JACKSON, TYRIE			
05:52				MISSED FT by THOMPSON, CHRISTION
05:50	REBOUND (DEF) by NEWTON, TRISTEN			
05:42	MISSED 3PTR by NEWTON, TRISTEN			
05:38				REBOUND (DEF) by LAWSON, K.J.
05:30	FOUL (PERSONAL) by NEWTON, TRISTEN			
05:30		59-64	V 5	GOOD! FT by HIGHTOWER, TESHAUN
05:29				MISSED FT by HIGHTOWER, TESHAUN
05:28				REBOUND (OFF) by TEAM
05:25				MISSED 3PTR by HIGHTOWER, TESHAUN
05:24	REBOUND (DEF) by TEAM			
05:03	MISSED JUMPER by GARDNER, JAYDEN			
05:01				REBOUND (DEF) by THOMPSON, CHRISTION
04:54				MISSED LAYUP by THOMAS, NIC
04:50				REBOUND (OFF) by THOMAS, NIC
04:50		61-64	V 3	GOOD! LAYUP by THOMAS, NIC
04:45	GOOD! LAYUP by JACKSON, TYRIE [FB]	61-66	V 5	
04:45				FOUL (PERSONAL) by DAYS, NOBAL
04:45	GOOD! FT by JACKSON, TYRIE [FB]	61-67	V 6	
04:32				MISSED LAYUP by THOMPSON, CHRISTION
04:31	REBOUND (DEF) by TEAM			
04:06	TURNOVER (BADPASS) by ROBINSON-WHITE, TREMONT			
04:06				STEAL by DAYS, NOBAL
03:58				MISSED JUMPER by LAWSON, K.J.
03:55	REBOUND (DEF) by JACKSON, TYRIE			
03:52	GOOD! LAYUP by JACKSON, TYRIE [FB]	61-69	V 8	
03:52				FOUL (PERSONAL) by THOMPSON, CHRISTION
03:52				
03:52				SUB OUT: DAYS, NOBAL
03:52				SUB IN: ZHANG, KEVIN
03:52	GOOD! FT by JACKSON, TYRIE [FB]	61-70	V 9	
03:34		63-70	V 7	GOOD! DUNK by HIGHTOWER, TESHAUN
03:34				ASSIST by ZHANG, KEVIN
03:12	MISSED JUMPER by GARDNER, JAYDEN			
03:09				REBOUND (DEF) by ZHANG, KEVIN
03:01				TURNOVER (LOSTBALL) by THOMAS, NIC
03:01	STEAL by ROBINSON-WHITE, TREMONT			
03:01				FOUL (PERSONAL) by THOMAS, NIC
03:01	GOOD! FT by ROBINSON-WHITE, TREMONT	63-71	V 8	
03:01	GOOD! FT by ROBINSON-WHITE, TREMONT	63-72	V 9	
02:48				MISSED 3PTR by THOMAS, NIC
02:45	REBOUND (DEF) by BARUTI, BITUMBA			
02:45				FOUL (PERSONAL) by THOMPSON, CHRISTION
02:45	GOOD! FT by BARUTI, BITUMBA	63-73	V 10	
02:45	GOOD! FT by BARUTI, BITUMBA	63-74	V 11	
02:38	FOUL (PERSONAL) by JACKSON, TYRIE			
02:38				SUB OUT: ZHANG, KEVIN
02:38				SUB OUT: THOMAS, NIC
02:38				SUB IN: DAYS, NOBAL
02:38				SUB IN: MCGEE, R.J.
02:37				MISSED FT by THOMPSON, CHRISTION
02:34	REBOUND (DEF) by GARDNER, JAYDEN			
02:31	GOOD! LAYUP by JACKSON, TYRIE [FB]	63-76	V 13	
02:31	ASSIST by GARDNER, JAYDEN			
02:22				MISSED 3PTR by LAWSON, K.J.
02:21				FOUL (PERSONAL) by MCGEE, R.J.
02:21	GOOD! FT by ROBINSON-WHITE, TREMONT	63-77	V 14	
02:21				SUB OUT: DAYS, NOBAL
02:21				SUB IN: ZHANG, KEVIN
02:21	GOOD! FT by ROBINSON-WHITE, TREMONT	63-78	V 15	
02:20	REBOUND (DEF) by ROBINSON-WHITE, TREMONT			
02:14		65-78	V 13	GOOD! LAYUP by THOMPSON, CHRISTION [FB]
01:41	MISSED LAYUP by NEWTON, TRISTEN			
01:37	REBOUND (OFF) by GARDNER, JAYDEN			
01:37	GOOD! LAYUP by GARDNER, JAYDEN	65-80	V 15	
01:18				MISSED 3PTR by LAWSON, K.J.
01:15	REBOUND (DEF) by BARUTI, BITUMBA			
01:08				SUB OUT: THOMPSON, CHRISTION
01:08				SUB IN: WALKER, JORDAN
00:46	MISSED LAYUP by ROBINSON-WHITE, TREMONT			
00:46				REBOUND (DEF) by LAWSON, K.J.
00:45	FOUL (PERSONAL) by JACKSON, TYRIE			
00:45		66-80	V 14	GOOD! FT by LAWSON, K.J.
00:45				SUB OUT: HIGHTOWER, TESHAUN
00:45				SUB OUT: ZHANG, KEVIN
00:45				SUB IN: KOKA, BUAY
00:45				SUB IN: ZACCARDO, ALEC

Time	VISITORS: East Carolina	Score	Margin	HOME: Tulane
00:45		67-80	V 13	GOOD! FT by LAWSON, K.J.
00:45				SUB OUT: LAWSON, K.J.
00:45				SUB IN: RUSSELL JR., CHARLIE
00:45	SUB OUT: GARDNER, JAYDEN			
00:45	SUB OUT: JACKSON, TYRIE			
00:45	SUB OUT: ROBINSON-WHITE, TREMONT			
00:45	SUB IN: JONES, IAN			
00:45	SUB IN: UMSTEAD, EVAN			
00:45	SUB IN: STRICKLAND, SAMSON			
00:29				FOUL (PERSONAL) by ZACCARDO, ALEC
00:29	MISSED FT by UMSTEAD, EVAN			
00:29	REBOUND (OFF) by TEAM			
00:29				SUB OUT: WALKER, JORDAN
00:29				SUB IN: QUINN, GRANT
00:29	GOOD! FT by UMSTEAD, EVAN	67-81	V 14	
00:21				MISSED 3PTR by ZACCARDO, ALEC
00:17	REBOUND (DEF) by JONES, IAN			

East Carolina 81, Tulane 67

Points from (This Period)	ECU	TLN
In the Paint	26	10
Off Turns	6	3
2nd Chance	15	5
Fast Break	12	2
Bench	17	5

**Official Scoring/Possession Reference Chart
East Carolina vs Tulane
Period 1**

February 08, 2020 at Avron B. Fogelman Arena in Devlin Fieldhouse - New Orleans



Period 1

Starters:

East Carolina: 1 GARDNER, JAYDEN (F); 2 NEWTON, TRISTEN (G); 11 MILES, JJ (G); 12 ROBINSON-WHITE, TREMONT (G); 32 COLEMAN, CHARLES (C);
Tulane: 1 LAWSON, K.J. (F); 4 DAYS, NOBAL (F); 5 HIGHTOWER, TESHAWN (G); 14 THOMAS, NIC (G); 25 THOMPSON, CHRISTION (G);

Time	VISITORS: East Carolina	Score	Margin	HOME: Tulane
18:58	GOOD! LAYUP by ROBINSON-WHITE, TREMONT	0-2	V 2	
17:54		1-2	V 1	GOOD! FT by THOMPSON, CHRISTION
17:54		2-2	T	GOOD! FT by THOMPSON, CHRISTION
17:06	GOOD! LAYUP by GARDNER, JAYDEN	2-4	V 2	
16:37		5-4	H 1	GOOD! 3PTR by LAWSON, K.J.
16:21	GOOD! JUMPER by GARDNER, JAYDEN	5-6	V 1	
16:10		8-6	H 2	GOOD! 3PTR by LAWSON, K.J.
15:38	GOOD! JUMPER by NEWTON, TRISTEN [PNT]	8-8	T	
15:19		10-8	H 2	GOOD! JUMPER by LAWSON, K.J.
15:01	GOOD! FT by NEWTON, TRISTEN	10-9	H 1	
14:32	GOOD! LAYUP by SUGGS, BRANDON	10-11	V 1	
14:32	GOOD! FT by SUGGS, BRANDON	10-12	V 2	
13:22	GOOD! 3PTR by JACKSON, TYRIE	10-15	V 5	
12:57	GOOD! LAYUP by GARDNER, JAYDEN [FB]	10-17	V 7	
12:09		12-17	V 5	GOOD! JUMPER by LAWSON, K.J. [PNT]
10:51		14-17	V 3	GOOD! DUNK by THOMPSON, CHRISTION
10:26	GOOD! FT by SUGGS, BRANDON	14-18	V 4	
10:26	GOOD! FT by SUGGS, BRANDON	14-19	V 5	
09:32		16-19	V 3	GOOD! LAYUP by THOMPSON, CHRISTION
09:32		17-19	V 2	GOOD! FT by THOMPSON, CHRISTION
08:27	GOOD! LAYUP by GARDNER, JAYDEN	17-21	V 4	
08:01		20-21	V 1	GOOD! 3PTR by ZHANG, KEVIN
06:50		21-21	T	GOOD! FT by THOMPSON, CHRISTION
06:50		22-21	H 1	GOOD! FT by THOMPSON, CHRISTION
06:24	GOOD! FT by NEWTON, TRISTEN	22-22	T	
06:24	GOOD! FT by NEWTON, TRISTEN	22-23	V 1	
06:02	GOOD! LAYUP by SUGGS, BRANDON [FB]	22-25	V 3	
05:53	GOOD! FT by SUGGS, BRANDON	22-26	V 4	
05:53	GOOD! FT by SUGGS, BRANDON	22-27	V 5	
04:28		25-27	V 2	GOOD! 3PTR by THOMAS, NIC [FB]
04:03	GOOD! LAYUP by BARUTI, BITUMBA	25-29	V 4	
02:55	GOOD! FT by BARUTI, BITUMBA	25-30	V 5	
02:42		26-30	V 4	GOOD! FT by DAYS, NOBAL
02:42		27-30	V 3	GOOD! FT by DAYS, NOBAL
02:19	GOOD! JUMPER by GARDNER, JAYDEN	27-32	V 5	
01:26		29-32	V 3	GOOD! LAYUP by THOMPSON, CHRISTION
00:46	GOOD! 3PTR by NEWTON, TRISTEN	29-35	V 6	
00:25		32-35	V 3	GOOD! 3PTR by WALKER, JORDAN
00:09	GOOD! LAYUP by GARDNER, JAYDEN	32-37	V 5	
00:01		33-37	V 4	GOOD! FT by THOMPSON, CHRISTION
00:01		34-37	V 3	GOOD! FT by THOMPSON, CHRISTION

East Carolina 37, Tulane 34

**Official Scoring/Possession Reference Chart
East Carolina vs Tulane
Period 2**

February 08, 2020 at Avron B. Fogelman Arena in Devlin Fieldhouse - New Orleans



Period 2

Starters:

East Carolina: 1 GARDNER, JAYDEN (F); 2 NEWTON, TRISTEN (G); 11 MILES, JJ (G); 12 ROBINSON-WHITE, TREMONT (G); 32 COLEMAN, CHARLES (C);

Tulane: 1 LAWSON, K.J. (F); 4 DAYS, NOBAL (F); 5 HIGHTOWER, TESHAUN (G); 14 THOMAS, NIC (G); 25 THOMPSON, CHRISTION (G);

Time	VISITORS: East Carolina	Score	Margin	HOME: Tulane
19:45		36-37	V 1	GOOD! JUMPER by THOMPSON, CHRISTION
18:54	GOOD! 3PTR by MILES, JJ	36-40	V 4	
18:20	GOOD! JUMPER by BARUTI, BITUMBA [FB]	36-42	V 6	
17:23	GOOD! JUMPER by GARDNER, JAYDEN [PNT]	36-44	V 8	
17:12		38-44	V 6	GOOD! JUMPER by THOMPSON, CHRISTION
16:53	GOOD! JUMPER by GARDNER, JAYDEN	38-46	V 8	
16:19	GOOD! JUMPER by NEWTON, TRISTEN	38-48	V 10	
16:07		40-48	V 8	GOOD! LAYUP by THOMPSON, CHRISTION
15:48	GOOD! LAYUP by NEWTON, TRISTEN	40-50	V 10	
14:52		42-50	V 8	GOOD! JUMPER by ZHANG, KEVIN
14:24	GOOD! LAYUP by BARUTI, BITUMBA	42-52	V 10	
13:46		44-52	V 8	GOOD! JUMPER by LAWSON, K.J.
13:37	GOOD! LAYUP by GARDNER, JAYDEN	44-54	V 10	
13:09		47-54	V 7	GOOD! 3PTR by LAWSON, K.J.
12:17		50-54	V 4	GOOD! 3PTR by ZHANG, KEVIN
11:17	GOOD! LAYUP by NEWTON, TRISTEN	50-56	V 6	
11:05		53-56	V 3	GOOD! 3PTR by THOMAS, NIC
10:01	GOOD! LAYUP by SUGGS, BRANDON	53-58	V 5	
09:12		55-58	V 3	GOOD! LAYUP by THOMPSON, CHRISTION
08:41	GOOD! LAYUP by NEWTON, TRISTEN [FB]	55-60	V 5	
07:52	GOOD! FT by ROBINSON-WHITE, TREMONT	55-61	V 6	
07:52	GOOD! FT by ROBINSON-WHITE, TREMONT	55-62	V 7	
07:14		58-62	V 4	GOOD! 3PTR by LAWSON, K.J.
06:42	GOOD! LAYUP by NEWTON, TRISTEN	58-64	V 6	
05:30		59-64	V 5	GOOD! FT by HIGHTOWER, TESHAUN
04:50		61-64	V 3	GOOD! LAYUP by THOMAS, NIC
04:45	GOOD! LAYUP by JACKSON, TYRIE [FB]	61-66	V 5	
04:45	GOOD! FT by JACKSON, TYRIE [FB]	61-67	V 6	
03:52	GOOD! LAYUP by JACKSON, TYRIE [FB]	61-69	V 8	
03:52	GOOD! FT by JACKSON, TYRIE [FB]	61-70	V 9	
03:34		63-70	V 7	GOOD! DUNK by HIGHTOWER, TESHAUN
03:01	GOOD! FT by ROBINSON-WHITE, TREMONT	63-71	V 8	
03:01	GOOD! FT by ROBINSON-WHITE, TREMONT	63-72	V 9	
02:45	GOOD! FT by BARUTI, BITUMBA	63-73	V 10	
02:45	GOOD! FT by BARUTI, BITUMBA	63-74	V 11	
02:31	GOOD! LAYUP by JACKSON, TYRIE [FB]	63-76	V 13	
02:21	GOOD! FT by ROBINSON-WHITE, TREMONT	63-77	V 14	
02:21	GOOD! FT by ROBINSON-WHITE, TREMONT	63-78	V 15	
02:14		65-78	V 13	GOOD! LAYUP by THOMPSON, CHRISTION [FB]
01:37	GOOD! LAYUP by GARDNER, JAYDEN	65-80	V 15	
00:45		66-80	V 14	GOOD! FT by LAWSON, K.J.
00:45		67-80	V 13	GOOD! FT by LAWSON, K.J.
00:29	GOOD! FT by UMSTEAD, EVAN	67-81	V 14	

East Carolina 81, Tulane 67

**Official Substitutions Log
East Carolina vs Tulane
Period 1**

February 08, 2020 at Avron B. Fogelman Arena in Devlin Fieldhouse - New Orleans



VISITORS: East Carolina	Time	Score	HOME: Tulane
1 GARDNER, JAYDEN			1 LAWSON, K. J.
2 NEWTON, TRISTEN			4 DAYS, NOBAL
11 MILES, JJ			5 HIGHTOWER, TESHAUN
12 ROBINSON-WHITE, TREMONT			14 THOMAS, NIC
32 COLEMAN, CHARLES			25 THOMPSON, CHRISTION
SUB OUT: 11 MILES, JJ	17:39	2-2	
SUB IN: 4 SUGGS, BRANDON	17:39		
SUB OUT: 12 ROBINSON-WHITE, TREMONT	16:53	4-2	
SUB OUT: 32 COLEMAN, CHARLES	16:53		
SUB IN: 10 JACKSON, TYRIE	16:53		
SUB IN: 20 BARUTI, BITUMBA	16:53		
SUB OUT: 2 NEWTON, TRISTEN	14:54	9-10	
SUB IN: 12 ROBINSON-WHITE, TREMONT	14:54		
	14:32	11-10	SUB OUT: DAYS, NOBAL
	14:32		SUB IN: ZHANG, KEVIN
	14:05	12-10	SUB OUT: HIGHTOWER, TESHAUN
	14:05		SUB IN: WALKER, JORDAN
	12:55	17-10	SUB OUT: THOMAS, NIC
	12:55		SUB IN: HIGHTOWER, TESHAUN
SUB OUT: 20 BARUTI, BITUMBA	12:55		
SUB IN: 32 COLEMAN, CHARLES	12:55		
	11:12	17-12	SUB OUT: WALKER, JORDAN
	11:12		SUB IN: MCGEE, R. J.
SUB OUT: 10 JACKSON, TYRIE	11:12		
SUB OUT: 32 COLEMAN, CHARLES	11:12		
SUB IN: 2 NEWTON, TRISTEN	11:12		
SUB IN: 20 BARUTI, BITUMBA	11:12		
SUB OUT: 12 ROBINSON-WHITE, TREMONT	09:32	19-16	
SUB IN: 10 JACKSON, TYRIE	09:32		
	08:27	21-17	SUB OUT: MCGEE, R. J.
	08:27		SUB IN: THOMAS, NIC
	06:50	21-20	SUB OUT: LAWSON, K. J.
	06:50		SUB IN: RUSSELL JR., CHARLIE
SUB OUT: 1 GARDNER, JAYDEN	06:50		
SUB OUT: 10 JACKSON, TYRIE	06:50		
SUB IN: 12 ROBINSON-WHITE, TREMONT	06:50		
SUB IN: 25 STRICKLAND, SAMSON	06:50		
	06:24	22-22	SUB OUT: ZHANG, KEVIN
	06:24		SUB IN: LAWSON, K. J.
	05:53	25-22	SUB OUT: RUSSELL JR., CHARLIE
	05:53		SUB IN: DAYS, NOBAL
SUB OUT: 25 STRICKLAND, SAMSON	05:53		
SUB IN: 1 GARDNER, JAYDEN	05:53		
	02:55	29-25	SUB OUT: THOMPSON, CHRISTION
	02:55		SUB IN: WALKER, JORDAN
	02:42	30-25	SUB OUT: LAWSON, K. J.
	02:42		SUB IN: THOMPSON, CHRISTION
SUB OUT: 12 ROBINSON-WHITE, TREMONT	02:42		
SUB IN: 10 JACKSON, TYRIE	02:42		
SUB OUT: 4 SUGGS, BRANDON	01:03	32-29	
SUB IN: 5 CURTIS, LOGAN	01:03		
	00:25	35-32	SUB OUT: THOMAS, NIC
	00:25		SUB IN: RUSSELL JR., CHARLIE
	00:01	37-33	SUB OUT: DAYS, NOBAL
	00:01		SUB IN: KOKA, BUAY

East Carolina 37, Tulane 34

**Official Substitutions Log
East Carolina vs Tulane
Period 2**

February 08, 2020 at Avron B. Fogelman Arena in Devlin Fieldhouse - New Orleans



VISITORS: East Carolina	Time	Score	HOME: Tulane
1 GARDNER, JAYDEN			1 LAWSON, K. J.
2 NEWTON, TRISTEN			4 DAYS, NOBAL
11 MILES, JJ			5 HIGHTOWER, TESHAWN
12 ROBINSON-WHITE, TREMONT			14 THOMAS, NIC
32 COLEMAN, CHARLES			25 THOMPSON, CHRISTION
	20:00	-	SUB OUT: RUSSELL JR., CHARLIE
	20:00		SUB OUT: WALKER, JORDAN
	20:00		SUB OUT: KOKA, BUAY
	20:00		SUB IN: LAWSON, K. J.
	20:00		SUB IN: DAYS, NOBAL
	20:00		SUB IN: THOMAS, NIC
SUB OUT: 5 CURTIS, LOGAN	20:00		
SUB OUT: 10 JACKSON, TYRIE	20:00		
SUB IN: 11 MILES, JJ	20:00		
SUB IN: 12 ROBINSON-WHITE, TREMONT	20:00		
SUB OUT: 12 ROBINSON-WHITE, TREMONT	18:33	40-36	
SUB IN: 4 SUGGS, BRANDON	18:33		
	16:36	46-38	SUB OUT: DAYS, NOBAL
	16:36		SUB OUT: THOMAS, NIC
	16:36		SUB IN: WALKER, JORDAN
	16:36		SUB IN: ZHANG, KEVIN
SUB OUT: 20 BARUTI, BITUMBA	16:36		
SUB IN: 25 STRICKLAND, SAMSON	16:36		
SUB OUT: 4 SUGGS, BRANDON	16:07	48-40	
SUB IN: 10 JACKSON, TYRIE	16:07		
	15:35	50-40	SUB OUT: WALKER, JORDAN
	15:35		SUB IN: MCGEE, R. J.
SUB OUT: 25 STRICKLAND, SAMSON	15:35		
SUB IN: 20 BARUTI, BITUMBA	15:35		
	13:35	54-44	SUB OUT: MCGEE, R. J.
	13:35		SUB IN: THOMAS, NIC
SUB OUT: 1 GARDNER, JAYDEN	13:35		
SUB IN: 4 SUGGS, BRANDON	13:35		
SUB OUT: 20 BARUTI, BITUMBA	12:23	54-47	
SUB IN: 1 GARDNER, JAYDEN	12:23		
SUB OUT: 11 MILES, JJ	11:07	56-50	
SUB IN: 20 BARUTI, BITUMBA	11:07		
SUB OUT: 10 JACKSON, TYRIE	10:34	56-53	
SUB IN: 12 ROBINSON-WHITE, TREMONT	10:34		
	07:52	60-55	SUB OUT: ZHANG, KEVIN
	07:52		SUB IN: DAYS, NOBAL
SUB OUT: 4 SUGGS, BRANDON	05:53	64-58	
SUB IN: 10 JACKSON, TYRIE	05:53		
	03:52	69-61	SUB OUT: DAYS, NOBAL
	03:52		SUB IN: ZHANG, KEVIN
	02:38	74-63	SUB OUT: ZHANG, KEVIN
	02:38		SUB OUT: THOMAS, NIC
	02:38		SUB IN: DAYS, NOBAL
	02:38		SUB IN: MCGEE, R. J.
	02:21	77-63	SUB OUT: DAYS, NOBAL
	02:21		SUB IN: ZHANG, KEVIN
	01:08	80-65	SUB OUT: THOMPSON, CHRISTION
	01:08		SUB IN: WALKER, JORDAN
	00:45	80-66	SUB OUT: HIGHTOWER, TESHAWN
	00:45		SUB OUT: ZHANG, KEVIN
	00:45		SUB IN: KOKA, BUAY
	00:45		SUB IN: ZACCARDO, ALEC
	00:45		SUB OUT: LAWSON, K. J.
	00:45		SUB IN: RUSSELL JR., CHARLIE
SUB OUT: 1 GARDNER, JAYDEN	00:45		
SUB OUT: 10 JACKSON, TYRIE	00:45		
SUB OUT: 12 ROBINSON-WHITE, TREMONT	00:45		
SUB IN: 13 JONES, IAN	00:45		
SUB IN: 24 UMSTEAD, EVAN	00:45		
SUB IN: 25 STRICKLAND, SAMSON	00:45		
	00:29	80-67	SUB OUT: WALKER, JORDAN
	00:29		SUB IN: QUINN, GRANT

East Carolina 81, Tulane 67

Official Shot Chart
 East Carolina vs Tulane
 PERIOD 1 Shots

February 08, 2020 at Avron B. Fogelman Arena in Devlin Fieldhouse - New Orleans

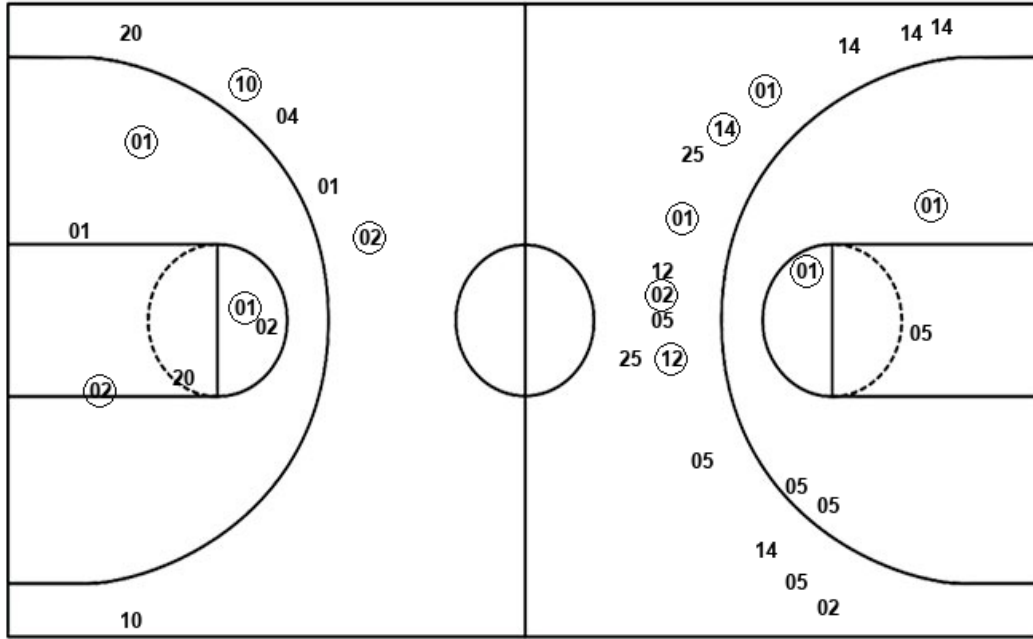


Tulane

East Carolina

Layups
 02 25 (25) 00 14
 (25)

Dunks
 (25)



Layups
 (12) (01) (04) (01) 04
 (01) (04) 20 (20) (01)

Dunks

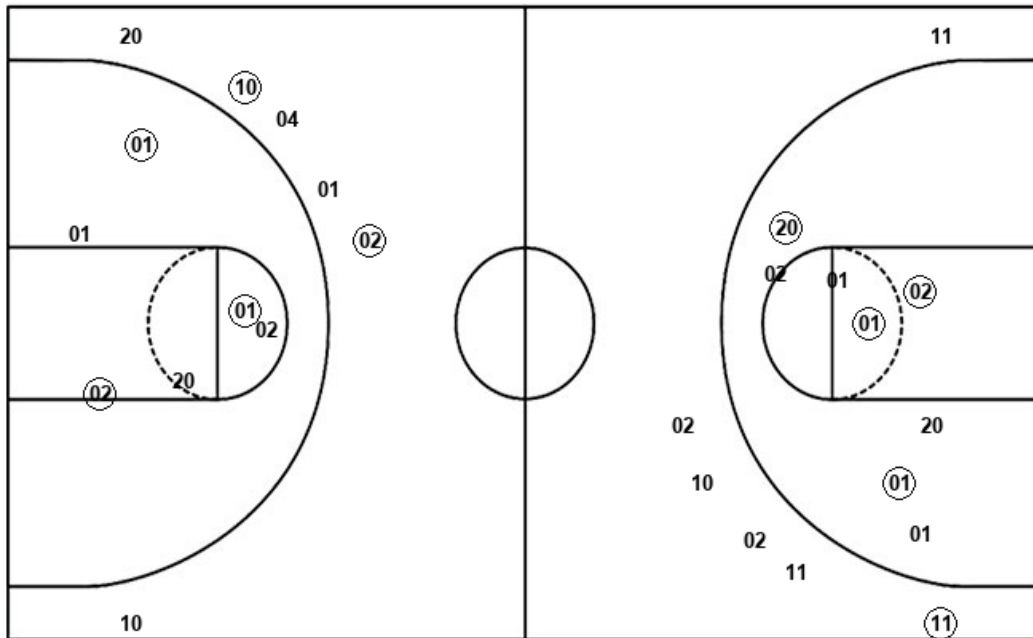
TLN : Period 1	Made	Att	Pct
Layups	2	6	33.3
Dunks	1	1	100.0
2PT Field Goals	5	12	41.7
3PT Field Goals	5	16	31.3
Total Field Goals	10	28	35.7

ECU : Period 1	Made	Att	Pct
Layups	8	10	80.0
Dunks	0	0	0
2PT Field Goals	11	16	68.8
3PT Field Goals	2	6	33.3
Total Field Goals	13	22	59.1

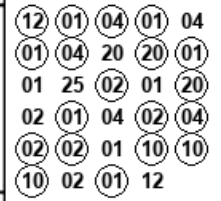
Official Shot Chart
East Carolina vs Tulane
East Carolina Team Shots
 February 08, 2020 at Avron B. Fogelman Arena in Devlin Fieldhouse - New Orleans



Layups



Layups



Dunks

Dunks

ECU : Period 1	Made	Att	Pct
Layups	8	10	80.0
Dunks	0	0	0
2PT Field Goals	11	16	68.8
3PT Field Goals	2	6	33.3
Total Field Goals	13	22	59.1

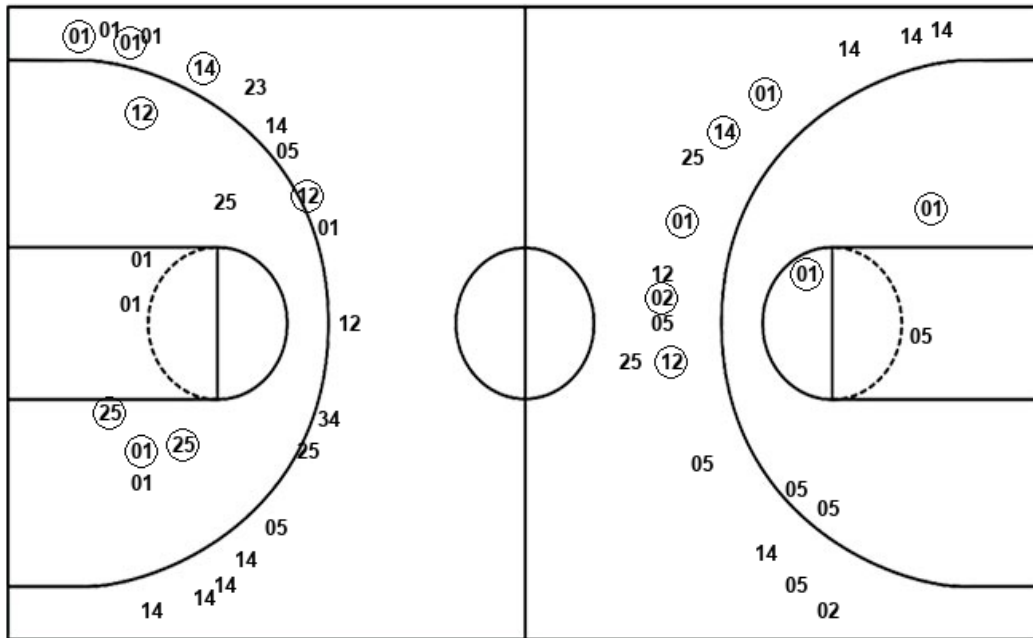
ECU : Period 2	Made	Att	Pct
Layups	11	19	57.9
Dunks	0	0	0
2PT Field Goals	15	27	55.6
3PT Field Goals	1	6	16.7
Total Field Goals	16	33	48.5

**Official Shot Chart
East Carolina vs Tulane
Tulane Team Shots**

February 08, 2020 at Avron B. Fogelman Arena in Devlin Fieldhouse - New Orleans



Layups



Layups

Dunks

Dunks

TLN : Period 1	Made	Att	Pct
Layups	2	6	33.3
Dunks	1	1	100.0
2PT Field Goals	5	12	41.7
3PT Field Goals	5	16	31.3
Total Field Goals	10	28	35.7

TLN : Period 2	Made	Att	Pct
Layups	4	6	66.7
Dunks	1	1	100.0
2PT Field Goals	9	15	60.0
3PT Field Goals	4	18	22.2
Total Field Goals	13	33	39.4