

FINAL SCORE



UNCW

57



Delaware

61

March 07, 2020 • Bob Carpenter Center - Newark

FINAL STATISTICS

Official Box Score
UNCW vs Delaware
Game Totals -- Final Statistics
March 07, 2020 at Bob Carpenter Center - Newark



UNCW 57

No.	Player	S	Pts	FG	3FG	FT	OR	DR	TR	PF	A	TO	Blk	Stl	Min	+/-
02	CRISP, MORIAH	G	2	1-5	0-3	0-0	1	2	3	1	2	2	0	0	40	-5
05	SMITH, GIGI	G	18	6-14	2-6	4-5	2	8	10	2	1	4	0	1	37	-7
10	VASON, AHYIONA	G	9	4-8	1-2	0-2	2	5	7	2	0	5	0	1	25	5
13	SUGGS, LACEY	G	24	7-12	1-2	9-10	0	4	4	2	1	3	1	0	39	-2
32	OBUSEK, CAROL-ANNE	F	2	1-6	0-0	0-0	1	6	7	4	0	2	0	0	20	-9
01	POWELL, PAIGE	F	2	1-3	0-0	0-0	2	5	7	5	1	0	0	0	13	4
04	MUNOZ, JESSICA	F	0	0-4	0-1	0-0	0	0	0	1	1	1	0	0	13	1
14	TATE, TIMBER	G	0	0-2	0-2	0-0	0	1	1	0	1	0	0	0	11	-9
22	THYBULLE, ZHANEIA	G	0	0-0	0-0	0-0	0	0	0	1	0	0	0	0	3	2
TEAM							1	4	5	0		1				
TOTALS			57	20-54	4-16	13-17	9	35	44	18	7	18	1	2	200	

Shooting By Period

Period	FG	FG%	3FG	3FG%	FT	FT%
1st Qtr	4-16	25%	1-5	20%	2-2	100%
2nd Qtr	4-13	31%	1-2	50%	1-2	50%
3rd Qtr	7-12	58%	1-5	20%	4-4	100%
4th Qtr	5-13	38%	1-4	25%	6-9	67%
1st Half	8-29	28%	2-7	29%	3-4	75%
2nd Half	12-25	48%	2-9	22%	10-13	77%
Game	20-54	37.0%	4-16	25.0%	13-17	76.5%

Deadball Rebounds: 3,0

Last FG: 4th-00:26

Biggest Run: 5-0

Largest lead: By 6 at 4th-05:59

Technical Fouls: None.

Delaware 61

No.	Player	S	Pts	FG	3FG	FT	OR	DR	TR	PF	A	TO	Blk	Stl	Min	+/-
02	GONZALES, ABBY	G	3	1-3	0-2	1-2	0	0	0	3	4	0	0	1	23	-8
20	DICKEY, JASMINE	G	10	5-14	0-0	0-1	2	2	4	3	1	1	0	2	33	7
22	DEFREESE, SAMONE	F	14	7-14	0-5	0-0	0	6	6	2	2	4	0	2	36	7
25	LAWRENCE, REBECCA	F	0	0-5	0-2	0-0	0	1	1	3	0	0	0	0	12	-8
33	ENABOSI, NICOLE	F	21	8-14	0-0	5-9	4	11	15	2	3	1	0	1	40	5
04	MCBRIDE, PARIS	G	6	2-5	0-2	2-2	0	2	2	2	6	0	0	2	25	8
10	JOHNSON, TEE	G	0	0-2	0-0	0-0	0	0	0	1	1	1	0	0	10	-1
12	OLEARY, LIZZIE	F	0	0-2	0-1	0-0	0	2	2	1	0	0	0	0	4	-3
30	SHAW, KAYLA	G	7	3-6	1-4	0-0	1	0	1	2	0	0	0	0	18	13
TEAM							0	2	2	0		0				
TOTALS			61	26-65	1-16	8-14	7	26	33	19	17	7	0	8	200	

Shooting By Period

Period	FG	FG%	3FG	3FG%	FT	FT%
1st Qtr	3-14	21%	0-3	00%	1-4	25%
2nd Qtr	7-18	39%	1-5	20%	0-0	0%
3rd Qtr	7-17	41%	0-4	00%	3-4	75%
4th Qtr	9-16	56%	0-4	00%	4-6	67%
1st Half	10-32	31%	1-8	13%	1-4	25%
2nd Half	16-33	48%	0-8	00%	7-10	70%
Game	26-65	40.0%	1-16	06.3%	8-14	57.1%

Deadball Rebounds: 3,0

Last FG: 4th-00:29

Biggest Run: 9-0

Largest lead: By 4 at 4th-00:07

Technical Fouls: None.

Game Notes:

Officials: Ken Kelly, Carmen Portorreal, Mark Behrens
Attendance: 1275

Start Time: 01:05 PM ET
End Time: 03:03 PM ET
Game Duration: 1:58

Score	1st	2nd	3rd	4th	TOT
NCW	11	10	19	17	57
Del	7	15	17	22	61

NCW led for 21:42. Del led for 13:22.
Game was tied for 4:56.
Times tied: 7 Lead Changes: 17

Points from	NCW	Del
In the Paint	30	40
Off Turns	4	11
2nd Chance	5	4
Fast Break	8	10
Bench	2	13

Official Box Score
UNCW vs Delaware
First Half Statistics Only
March 07, 2020 at Bob Carpenter Center - Newark



UNCW 21

No.	Player	S	Pts	FG	3FG	FT	OR	DR	TR	PF	A	TO	Blk	Stl	Min	+/-
01	POWELL, PAIGE	F	0	0-1	0-0	0-0	2	2	4	2	0	0	0	0	5	2
02	CRISP, MORIAH	G	2	1-3	0-1	0-0	0	2	2	0	1	1	0	0	20	-2
04	MUNOZ, JESSICA	F	0	0-2	0-0	0-0	0	0	0	1	1	0	0	0	6	-2
05	SMITH, GIGI	G	7	3-9	1-3	0-0	1	5	6	1	0	0	0	1	19	-1
10	VASON, AHYIONA	G	2	1-4	0-1	0-0	0	1	1	0	0	3	0	1	11	0
13	SUGGS, LACEY	G	8	2-5	1-2	3-4	0	2	2	0	0	1	0	0	19	1
14	TATE, TIMBER	G	0	0-0	0-0	0-0	0	0	0	0	0	0	0	0	2	-2
22	THYBULLE, ZHANEIA	G	0	0-0	0-0	0-0	0	0	0	0	0	0	0	0	3	2
32	OBUSEK, CAROL-ANNE	F	2	1-5	0-0	0-0	0	3	3	3	0	2	0	0	15	-3
	TEAM		0	0-0	0-0	0-0	1	2	3	0	0	0	0	0	0	
TOTALS			21	8-29	2-7	3-4	4	17	21	7	2	7	0	2	100	

Shooting By Period

Period	FG	FG%	3FG	3FG%	FT	FT%
1st Qtr	4-16	25%	1-5	20%	2-2	100%
2nd Qtr	4-13	31%	1-2	50%	1-2	50%
1st Half	8-29	28%	2-7	29%	3-4	75%
Game	20-54	37.0%	4-16	25.0%	13-17	76.5%

Deadball Rebounds: 3,0

Last FG Half: NCW 2nd-00:27

Delaware 22

No.	Player	S	Pts	FG	3FG	FT	OR	DR	TR	PF	A	TO	Blk	Stl	Min	+/-
02	GONZALES, ABBY	G	2	1-3	0-2	0-0	0	0	0	0	1	0	0	0	12	-5
04	MCBRIDE, PARIS	G	4	2-4	0-1	0-0	0	2	2	0	2	0	0	2	11	4
10	JOHNSON, TEE	G	0	0-0	0-0	0-0	0	0	0	0	0	1	0	0	4	-2
12	OLEARY, LIZZIE	F	0	0-2	0-1	0-0	0	2	2	1	0	0	0	0	4	-3
20	DICKEY, JASMINE	G	2	1-6	0-0	0-0	2	2	4	1	0	0	0	0	17	3
22	DEFREESE, SAMONE	F	0	0-4	0-2	0-0	0	4	4	1	1	3	0	0	16	4
25	LAWRENCE, REBECCA	F	0	0-3	0-1	0-0	0	0	0	2	0	0	0	0	6	-3
30	SHAW, KAYLA	G	7	3-3	1-1	0-0	1	0	1	0	0	0	0	0	9	5
33	ENABOSI, NICOLE	F	7	3-7	0-0	1-4	3	6	9	2	0	1	0	1	20	2
	TEAM		0	0-0	0-0	0-0	0	1	1	0	0	0	0	0	0	
TOTALS			22	10-32	1-8	1-4	6	17	23	7	4	5	0	3	100	

Shooting By Period

Period	FG	FG%	3FG	3FG%	FT	FT%
1st Qtr	3-14	21%	0-3	00%	1-4	25%
2nd Qtr	7-18	39%	1-5	20%	0-0	0%
1st Half	10-32	31%	1-8	13%	1-4	25%
Game	26-65	40.0%	1-16	06.3%	8-14	57.1%

Deadball Rebounds: 3,0

Last FG Half: Del 2nd-00:13

Game Notes:

Officials: Ken Kelly, Carmen Portorreal, Mark Behrens
Attendance: 1275

Start Time: 01:05 PM ET
End Time: 03:03 PM ET
Game Duration: 1:58

Score	1st	2nd	3rd	4th	TOT
NCW	11	10	19	17	57
Del	7	15	17	22	61

Points from (This Period)	NCW	Del
In the Paint	12	12
Off Turns	2	2
2nd Chance	2	2
Fast Break	2	6
Bench	0	11

Official Box Score
UNCW vs Delaware
First Quarter Statistics Only
March 07, 2020 at Bob Carpenter Center - Newark



UNCW 11

No.	Player	S	Pts	FG	3FG	FT	OR	DR	TR	PF	A	TO	Blk	Stl	Min	+/-
02	CRISP, MORIAH	G	0	0-1	0-1	0-0	0	1	1	0	0	1	0	0	10	4
05	SMITH, GIGI	G	7	3-5	1-3	0-0	1	3	4	1	0	0	0	1	9	4
10	VASON, AHYIONA	G	0	0-2	0-0	0-0	0	0	0	0	0	1	0	0	5	4
13	SUGGS, LACEY	G	2	0-2	0-1	2-2	0	2	2	0	0	0	0	0	10	4
32	OBUSEK, CAROL-ANNE	F	2	1-4	0-0	0-0	0	2	2	1	0	1	0	0	6	3
01	POWELL, PAIGE	F	0	0-1	0-0	0-0	2	1	3	1	0	0	0	0	4	1
04	MUNOZ, JESSICA	F	0	0-1	0-0	0-0	0	0	0	1	1	0	0	0	5	0
14	TATE, TIMBER	G	0	0-0	0-0	0-0	0	0	0	0	0	0	0	0	1	0
22	THYBULLE, ZHANEIA	G	0	0-0	0-0	0-0	0	0	0	0	0	0	0	0	0	0
	TEAM						1	1	2	0		0				
TOTALS			11	4-16	1-5	2-2	4	10	14	4	1	3	0	1	50	

Shooting By Period

Period	FG	FG%	3FG	3FG%	FT	FT%
1st Qtr	4-16	25%	1-5	20%	2-2	100%
2nd Qtr	4-13	31%	1-2	50%	1-2	50%
1st Half	4-16	25%	1-5	20%	2-2	100%
1st Half	8-29	28%	2-7	29%	3-4	75%
Game	20-54	37.0%	4-16	25.0%	13-17	76.5%

Deadball Rebounds: 3,0

Delaware 7

No.	Player	S	Pts	FG	3FG	FT	OR	DR	TR	PF	A	TO	Blk	Stl	Min	+/-
02	GONZALES, ABBY	G	2	1-2	0-1	0-0	0	0	0	0	0	0	0	0	9	-4
20	DICKEY, JASMINE	G	2	1-4	0-0	0-0	1	0	1	1	0	0	0	0	10	-4
22	DEFREESE, SAMONE	F	0	0-2	0-0	0-0	0	2	2	1	1	2	0	0	9	-3
25	LAWRENCE, REBECCA	F	0	0-3	0-1	0-0	0	0	0	2	0	0	0	0	6	-2
33	ENABOSI, NICOLE	F	3	1-2	0-0	1-4	0	3	3	1	0	0	0	0	10	-4
04	MCBRIDE, PARIS	G	0	0-0	0-0	0-0	0	1	1	0	0	0	0	1	4	-2
10	JOHNSON, TEE	G	0	0-0	0-0	0-0	0	0	0	0	0	0	0	0	0	0
12	OLEARY, LIZZIE	F	0	0-1	0-1	0-0	0	1	1	0	0	0	0	0	1	-1
30	SHAW, KAYLA	G	0	0-0	0-0	0-0	1	0	1	0	0	0	0	0	1	0
	TEAM						0	1	1	0		0				
TOTALS			7	3-14	0-3	1-4	2	8	10	5	1	2	0	1	50	

Shooting By Period

Period	FG	FG%	3FG	3FG%	FT	FT%
1st Qtr	3-14	21%	0-3	00%	1-4	25%
2nd Qtr	7-18	39%	1-5	20%	0-0	0%
1st Half	3-14	21%	0-3	00%	1-4	25%
1st Half	10-32	31%	1-8	13%	1-4	25%
Game	26-65	40.0%	1-16	06.3%	8-14	57.1%

Deadball Rebounds: 3,0

Game Notes:

Officials: Ken Kelly, Carmen Portorreal, Mark Behrens
Attendance: 1275

Start Time: 01:05 PM ET
End Time: 03:03 PM ET
Game Duration: 1:58

Score	1st	2nd	3rd	4th	TOT
NCW	11	10	19	17	57
Del	7	15	17	22	61

Points from (This Period)	NCW	Del
In the Paint	6	4
Off Turns	2	0
2nd Chance	2	2
Fast Break	2	2
Bench	0	0

Official Play-By-Play
UNCW vs Delaware
First Quarter
March 07, 2020 at Bob Carpenter Center - Newark



Period 1

Starters:

UNCW: 2 CRISP, MORIAH (G); 5 SMITH, GIGI (G); 10 VASON, AHYIONA (G); 13 SUGGS, LACEY (G); 32 OBUSEK, CAROL-ANNE (F);

Delaware: 2 GONZALES, ABBY (G); 20 DICKEY, JASMINE (G); 22 DEFREESE, SAMONE (F); 25 LAWRENCE, REBECCA (F); 33 ENABOSI, NICOLE (F);

Time	VISITORS: UNCW	Score	Margin	HOME: Delaware
09:44				MISSED 3PTR by LAWRENCE, REBECCA
09:32	REBOUND (DEF) by OBUSEK, CAROL-ANNE			
09:16	MISSED 3PTR by SMITH, GIGI			
09:13				REBOUND (DEF) by TEAM
09:07				MISSED JUMPER by DEFREESE, SAMONE
09:03	REBOUND (DEF) by SUGGS, LACEY			
08:59	MISSED JUMPER by VASON, AHYIONA			
08:56				REBOUND (DEF) by ENABOSI, NICOLE
08:53	FOUL (PERSONAL) by SMITH, GIGI			
08:32				MISSED JUMPER by LAWRENCE, REBECCA
08:27	REBOUND (DEF) by CRISP, MORIAH			
08:01	TURNOVER (TRAVEL) by VASON, AHYIONA			
07:45				MISSED LAYUP by ENABOSI, NICOLE
07:40	REBOUND (DEF) by SMITH, GIGI			
07:31	MISSED 3PTR by SUGGS, LACEY			
07:30	REBOUND (OFF) by TEAM			
07:30				FOUL (PERSONAL) by ENABOSI, NICOLE
07:28	TURNOVER (TRAVEL) by OBUSEK, CAROL-ANNE			
07:19				MISSED JUMPER by DICKEY, JASMINE
07:16	REBOUND (DEF) by SMITH, GIGI			
07:12	MISSED LAYUP by VASON, AHYIONA			
07:09				REBOUND (DEF) by ENABOSI, NICOLE
06:59				MISSED JUMPER by LAWRENCE, REBECCA
06:56	REBOUND (DEF) by SMITH, GIGI			
06:29	MISSED JUMPER by OBUSEK, CAROL-ANNE			
06:25	REBOUND (OFF) by SMITH, GIGI			
06:25	GOOD! LAYUP by SMITH, GIGI	0-2	V 2	
06:19				TURNOVER (BADPASS) by DEFREESE, SAMONE
06:19	STEAL by SMITH, GIGI			
06:14	GOOD! LAYUP by SMITH, GIGI [FB/PNT]	0-4	V 4	
05:59	FOUL (PERSONAL) by OBUSEK, CAROL-ANNE			
05:59				MISSED FT by ENABOSI, NICOLE
05:59				REBOUND (OFF) by TEAM
05:59				MISSED FT by ENABOSI, NICOLE
05:58	REBOUND (DEF) by OBUSEK, CAROL-ANNE			
05:40	MISSED JUMPER by OBUSEK, CAROL-ANNE			
05:37				REBOUND (DEF) by ENABOSI, NICOLE
05:23				MISSED JUMPER by DEFREESE, SAMONE
05:19				REBOUND (OFF) by DICKEY, JASMINE
05:19				MISSED LAYUP by DICKEY, JASMINE
05:19	REBOUND (DEF) by TEAM			
05:19				FOUL (PERSONAL) by LAWRENCE, REBECCA
05:19	SUB OUT: VASON, AHYIONA			
05:19	SUB OUT: OBUSEK, CAROL-ANNE			
05:19	SUB IN: POWELL, PAIGE			
05:19	SUB IN: MUNOZ, JESSICA			
05:06	MISSED LAYUP by SUGGS, LACEY			
05:02	REBOUND (OFF) by POWELL, PAIGE			
04:59	MISSED 3PTR by CRISP, MORIAH			
04:55				REBOUND (DEF) by DEFREESE, SAMONE
04:39		2-4	V 2	GOOD! JUMPER by GONZALES, ABBY
04:17				FOUL (PERSONAL) by LAWRENCE, REBECCA
04:17				
04:17				SUB OUT: LAWRENCE, REBECCA
04:17				SUB IN: MCBRIDE, PARIS
03:57	TURNOVER (BADPASS) by CRISP, MORIAH			
03:57				STEAL by MCBRIDE, PARIS
03:47				MISSED JUMPER by DICKEY, JASMINE
03:44	REBOUND (DEF) by SUGGS, LACEY			
03:27	GOOD! 3PTR by SMITH, GIGI	2-7	V 5	
03:27	ASSIST by MUNOZ, JESSICA			
03:04	FOUL (PERSONAL) by POWELL, PAIGE			
02:58				MISSED 3PTR by GONZALES, ABBY
02:55	REBOUND (DEF) by POWELL, PAIGE			
02:34	MISSED 3PTR by SMITH, GIGI			
02:31				REBOUND (DEF) by MCBRIDE, PARIS
02:29				FOUL (OFF) by DEFREESE, SAMONE
02:29				TURNOVER (OFFENSIVE) by DEFREESE, SAMONE
02:04	MISSED JUMPER by MUNOZ, JESSICA			
02:02	REBOUND (OFF) by POWELL, PAIGE			

Time	VISITORS: UNCW	Score	Margin	HOME: Delaware
02:01	MISSED LAYUP by POWELL, PAIGE			
01:58				REBOUND (DEF) by DEFREESE, SAMONE
01:55		4-7	V 3	GOOD! LAYUP by DICKEY, JASMINE [FB]
01:55				ASSIST by DEFREESE, SAMONE
01:26				FOUL (PERSONAL) by DICKEY, JASMINE
01:26				SUB OUT: DEFREESE, SAMONE
01:26				SUB IN: OLEARY, LIZZIE
01:26	GOOD! FT by SUGGS, LACEY	4-8	V 4	
01:26	GOOD! FT by SUGGS, LACEY	4-9	V 5	
01:13	FOUL (PERSONAL) by MUNOZ, JESSICA			
01:13	SUB OUT: POWELL, PAIGE			
01:13	SUB IN: OBUSEK, CAROL-ANNE			
01:13				MISSED FT by ENABOSI, NICOLE
01:13				REBOUND (OFF) by TEAM
01:13		5-9	V 4	GOOD! FT by ENABOSI, NICOLE
01:13				SUB OUT: GONZALES, ABBY
01:13				SUB IN: SHAW, KAYLA
01:13	SUB OUT: SMITH, GIGI			
01:13	SUB IN: TATE, TIMBER			
00:45	MISSED JUMPER by OBUSEK, CAROL-ANNE			
00:42				REBOUND (DEF) by OLEARY, LIZZIE
00:36				MISSED 3PTR by OLEARY, LIZZIE
00:33				REBOUND (OFF) by SHAW, KAYLA
00:30		7-9	V 2	GOOD! LAYUP by ENABOSI, NICOLE
00:04	GOOD! JUMPER by OBUSEK, CAROL-ANNE [PNT]	7-11	V 4	

UNCW 11, Delaware 7

Points from (This Period)	NCW	Del
In the Paint	6	4
Off Turns	2	0
2nd Chance	2	2
Fast Break	2	2
Bench	0	0

Official Box Score
UNCW vs Delaware
Second Quarter Statistics Only
March 07, 2020 at Bob Carpenter Center - Newark



UNCW 10

No.	Player	S	Pts	FG	3FG	FT	OR	DR	TR	PF	A	TO	Blk	Stl	Min	+/-
02	CRISP, MORIAH	G	2	1-2	0-0	0-0	0	1	1	0	1	0	0	0	10	-6
05	SMITH, GIGI	G	0	0-4	0-0	0-0	0	2	2	0	0	0	0	0	10	-5
10	VASON, AHYIONA	G	2	1-2	0-1	0-0	0	1	1	0	0	2	0	1	6	-4
13	SUGGS, LACEY	G	6	2-3	1-1	1-2	0	0	0	0	0	1	0	0	9	-3
32	OBUSEK, CAROL-ANNE	F	0	0-1	0-0	0-0	0	1	1	2	0	1	0	0	9	-6
01	POWELL, PAIGE	F	0	0-0	0-0	0-0	0	1	1	1	0	0	0	0	1	1
04	MUNOZ, JESSICA	F	0	0-1	0-0	0-0	0	0	0	0	0	0	0	0	1	-2
14	TATE, TIMBER	G	0	0-0	0-0	0-0	0	0	0	0	0	0	0	0	1	-2
22	THYBULLE, ZHANEIA	G	0	0-0	0-0	0-0	0	0	0	0	0	0	0	0	3	2
	TEAM						0	1	1	0		0				
TOTALS			10	4-13	1-2	1-2	0	7	7	3	1	4	0	1	50	

Shooting By Period

Period	FG	FG%	3FG	3FG%	FT	FT%
3rd Qtr	7-12	58%	1-5	20%	4-4	100%
4th Qtr	5-13	38%	1-4	25%	6-9	67%
2nd Half	4-13	31%	1-2	50%	1-2	50%
2nd Half	12-25	48%	2-9	22%	10-13	77%
Game	20-54	37.0%	4-16	25.0%	13-17	76.5%

Deadball Rebounds: 3,0

Delaware 15

No.	Player	S	Pts	FG	3FG	FT	OR	DR	TR	PF	A	TO	Blk	Stl	Min	+/-
02	GONZALES, ABBY	G	0	0-1	0-1	0-0	0	0	0	0	1	0	0	0	3	-1
20	DICKEY, JASMINE	G	0	0-2	0-0	0-0	1	2	3	0	0	0	0	0	7	7
22	DEFREESE, SAMONE	F	0	0-2	0-2	0-0	0	2	2	0	0	1	0	0	7	7
25	LAWRENCE, REBECCA	F	0	0-0	0-0	0-0	0	0	0	0	0	0	0	0	0	-1
33	ENABOSI, NICOLE	F	4	2-5	0-0	0-0	3	3	6	1	0	1	0	1	10	6
04	MCBRIDE, PARIS	G	4	2-4	0-1	0-0	0	1	1	0	2	0	0	1	7	6
10	JOHNSON, TEE	G	0	0-0	0-0	0-0	0	0	0	0	0	1	0	0	4	-2
12	OLEARY, LIZZIE	F	0	0-1	0-0	0-0	0	1	1	1	0	0	0	0	3	-2
30	SHAW, KAYLA	G	7	3-3	1-1	0-0	0	0	0	0	0	0	0	0	8	5
	TEAM						0	0	0	0		0				
TOTALS			15	7-18	1-5	0-0	4	9	13	2	3	3	0	2	50	

Shooting By Period

Period	FG	FG%	3FG	3FG%	FT	FT%
3rd Qtr	7-17	41%	0-4	00%	3-4	75%
4th Qtr	9-16	56%	0-4	00%	4-6	67%
2nd Half	7-18	39%	1-5	20%	0-0	0%
2nd Half	16-33	48%	0-8	00%	7-10	70%
Game	26-65	40.0%	1-16	06.3%	8-14	57.1%

Deadball Rebounds: 3,0

Game Notes:

Officials: Ken Kelly, Carmen Portorreal, Mark Behrens
Attendance: 1275

Start Time: 01:05 PM ET
End Time: 03:03 PM ET
Game Duration: 1:58

Score	1st	2nd	3rd	4th	TOT
NCW	11	10	19	17	57
Del	7	15	17	22	61

Points from (This Period)	NCW	Del
In the Paint	6	8
Off Turns	0	2
2nd Chance	0	0
Fast Break	0	4
Bench	0	11

Official Play-By-Play
UNCW vs Delaware
Second Quarter
March 07, 2020 at Bob Carpenter Center - Newark



Period 2

Starters:

UNCW: 2 CRISP, MORIAH (G); 5 SMITH, GIGI (G); 10 VASON, AHYIONA (G); 13 SUGGS, LACEY (G); 32 OBUSEK, CAROL-ANNE (F);

Delaware: 2 GONZALES, ABBY (G); 20 DICKEY, JASMINE (G); 22 DEFREESE, SAMONE (F); 25 LAWRENCE, REBECCA (F); 33 ENABOSI, NICOLE (F);

Time	VISITORS: UNCW	Score	Margin	HOME: Delaware
10:00				SUB OUT: OLEARY, LIZZIE
10:00				SUB IN: DEFREESE, SAMONE
10:00	SUB OUT: SUGGS, LACEY			
10:00	SUB IN: SMITH, GIGI			
09:44	MISSED JUMPER by SMITH, GIGI			
09:39				REBOUND (DEF) by DICKEY, JASMINE
09:31		9-11	V 2	GOOD! JUMPER by SHAW, KAYLA
09:09	MISSED LAYUP by MUNOZ, JESSICA			
09:06				REBOUND (DEF) by ENABOSI, NICOLE
09:05	SUB OUT: MUNOZ, JESSICA			
09:05	SUB OUT: TATE, TIMBER			
09:05	SUB IN: VASON, AHYIONA			
09:05	SUB IN: SUGGS, LACEY			
08:58				MISSED 3PTR by MCBRIDE, PARIS
08:55	REBOUND (DEF) by OBUSEK, CAROL-ANNE			
08:36	MISSED LAYUP by SMITH, GIGI			
08:33				REBOUND (DEF) by MCBRIDE, PARIS
08:31		11-11	T	GOOD! LAYUP by SHAW, KAYLA [FB]
08:31				ASSIST by MCBRIDE, PARIS
08:03	GOOD! LAYUP by SUGGS, LACEY	11-13	V 2	
07:44				MISSED 3PTR by DEFREESE, SAMONE
07:40				REBOUND (OFF) by DICKEY, JASMINE
07:40				MISSED LAYUP by DICKEY, JASMINE
07:36				REBOUND (OFF) by ENABOSI, NICOLE
07:36				MISSED LAYUP by ENABOSI, NICOLE
07:33				REBOUND (OFF) by ENABOSI, NICOLE
07:32				MISSED JUMPER by DICKEY, JASMINE
07:30	REBOUND (DEF) by SMITH, GIGI			
07:09	MISSED LAYUP by SMITH, GIGI			
07:06				REBOUND (DEF) by DEFREESE, SAMONE
07:02				MISSED LAYUP by MCBRIDE, PARIS
06:58				REBOUND (OFF) by ENABOSI, NICOLE
06:57				TURNOVER (LOSTBALL) by ENABOSI, NICOLE
06:57	STEAL by VASON, AHYIONA			
06:48	TURNOVER (LOSTBALL) by SUGGS, LACEY			
06:48				STEAL by ENABOSI, NICOLE
06:30				MISSED 3PTR by DEFREESE, SAMONE
06:28	REBOUND (DEF) by CRISP, MORIAH			
06:24	MISSED JUMPER by SUGGS, LACEY			
06:22				REBOUND (DEF) by DEFREESE, SAMONE
06:07		14-13	H 1	GOOD! 3PTR by SHAW, KAYLA
06:07				ASSIST by MCBRIDE, PARIS
05:40	GOOD! LAYUP by CRISP, MORIAH	14-15	V 1	
05:12		16-15	H 1	GOOD! JUMPER by MCBRIDE, PARIS
04:49	TURNOVER (BADPASS) by VASON, AHYIONA			
04:49				STEAL by MCBRIDE, PARIS
04:45		18-15	H 3	GOOD! LAYUP by MCBRIDE, PARIS [FB]
04:22				FOUL (PERSONAL) by ENABOSI, NICOLE
04:22				
04:22				SUB OUT: MCBRIDE, PARIS
04:22				SUB OUT: DICKEY, JASMINE
04:22				SUB OUT: DEFREESE, SAMONE
04:22				SUB OUT: ENABOSI, NICOLE
04:22				SUB IN: GONZALES, ABBY
04:22				SUB IN: JOHNSON, TEE
04:22				SUB IN: OLEARY, LIZZIE
04:22				SUB IN: LAWRENCE, REBECCA
04:22	SUB OUT: CRISP, MORIAH			
04:22	SUB OUT: OBUSEK, CAROL-ANNE			
04:22	SUB IN: POWELL, PAIGE			
04:22	SUB IN: THYBULLE, ZHANEIA			
04:22	MISSED FT by SUGGS, LACEY			
04:22	REBOUND (OFF) by TEAM			
04:22	GOOD! FT by SUGGS, LACEY	18-16	H 2	
04:08	FOUL (PERSONAL) by POWELL, PAIGE			
04:08	SUB OUT: POWELL, PAIGE			
04:08	SUB IN: OBUSEK, CAROL-ANNE			
04:03				MISSED LAYUP by OLEARY, LIZZIE
04:00	REBOUND (DEF) by VASON, AHYIONA			
03:58	TURNOVER (BADPASS) by VASON, AHYIONA			

Time	VISITORS: UNCW	Score	Margin	HOME: Delaware
03:58				SUB OUT: LAWRENCE, REBECCA
03:58				SUB IN: ENABOSI, NICOLE
03:58	SUB OUT: VASON, AHYIONA			
03:58	SUB IN: CRISP, MORIAH			
03:31				MISSED 3PTR by GONZALES, ABBY
03:27	REBOUND (DEF) by TEAM			
03:27				FOUL (PERSONAL) by OLEARY, LIZZIE
03:27				SUB OUT: GONZALES, ABBY
03:27				SUB IN: MCBRIDE, PARIS
03:14	MISSED LAYUP by CRISP, MORIAH			
03:12				REBOUND (DEF) by OLEARY, LIZZIE
03:12	FOUL (PERSONAL) by OBUSEK, CAROL-ANNE			
02:51		20-16	H 4	GOOD! LAYUP by ENABOSI, NICOLE [PNT]
02:33	MISSED JUMPER by SMITH, GIGI			
02:30				REBOUND (DEF) by ENABOSI, NICOLE
02:18				MISSED JUMPER by ENABOSI, NICOLE
02:16	REBOUND (DEF) by SMITH, GIGI			
02:05	GOOD! 3PTR by SUGGS, LACEY	20-19	H 1	
02:05	ASSIST by CRISP, MORIAH			
01:47				TURNOVER (TRAVEL) by JOHNSON, TEE
01:47				SUB OUT: MCBRIDE, PARIS
01:47				SUB OUT: OLEARY, LIZZIE
01:47				SUB OUT: SHAW, KAYLA
01:47				SUB IN: GONZALES, ABBY
01:47				SUB IN: DICKEY, JASMINE
01:47				SUB IN: DEFREESE, SAMONE
01:30	MISSED JUMPER by OBUSEK, CAROL-ANNE			
01:27				REBOUND (DEF) by DICKEY, JASMINE
01:19				TURNOVER (BADPASS) by DEFREESE, SAMONE
01:19	SUB OUT: THYBULLE, ZHANEIA			
01:19	SUB IN: VASON, AHYIONA			
01:09	FOUL (OFF) by OBUSEK, CAROL-ANNE			
01:09	TURNOVER (OFFENSIVE) by OBUSEK, CAROL-ANNE			
01:09	SUB OUT: OBUSEK, CAROL-ANNE			
01:09	SUB IN: POWELL, PAIGE			
00:50				MISSED LAYUP by ENABOSI, NICOLE
00:47	REBOUND (DEF) by POWELL, PAIGE			
00:27	GOOD! LAYUP by VASON, AHYIONA	20-21	V 1	
00:13		22-21	H 1	GOOD! LAYUP by ENABOSI, NICOLE [PNT]
00:13				ASSIST by GONZALES, ABBY
00:03	MISSED 3PTR by VASON, AHYIONA			
00:00				REBOUND (DEF) by ENABOSI, NICOLE

UNCW 21, Delaware 22

Points from (This Period)	NCW	Del
In the Paint	6	8
Off Turns	0	2
2nd Chance	0	0
Fast Break	0	4
Bench	0	11

Official Box Score
UNCW vs Delaware
Second Half Statistics Only
March 07, 2020 at Bob Carpenter Center - Newark



UNCW 36

No.	Player	S	Pts	FG	3FG	FT	OR	DR	TR	PF	A	TO	Blk	Stl	Min	+/-
01	POWELL, PAIGE	F	2	1-2	0-0	0-0	0	3	3	3	1	0	0	0	8	2
02	CRISP, MORIAH	G	0	0-2	0-2	0-0	1	0	1	1	1	1	0	0	20	-3
04	MUNOZ, JESSICA	F	0	0-2	0-1	0-0	0	0	0	0	0	1	0	0	6	3
05	SMITH, GIGI	G	11	3-5	1-3	4-5	1	3	4	1	1	4	0	0	18	-6
10	VASON, AHYIONA	G	7	3-4	1-1	0-2	2	4	6	2	0	2	0	0	14	5
13	SUGGS, LACEY	G	16	5-7	0-0	6-6	0	2	2	2	1	2	1	0	20	-3
14	TATE, TIMBER	G	0	0-2	0-2	0-0	0	1	1	0	1	0	0	0	8	-7
22	THYBULLE, ZHANEIA	G	0	0-0	0-0	0-0	0	0	0	1	0	0	0	0	0	0
32	OBUSEK, CAROL-ANNE	F	0	0-1	0-0	0-0	1	3	4	1	0	0	0	0	5	-6
	TEAM		0	0-0	0-0	0-0	0	2	2	0	0	1	0	0	0	
TOTALS			36	12-25	2-9	10-13	5	18	23	11	5	11	1	0	100	

Shooting By Period

Period	FG	FG%	3FG	3FG%	FT	FT%
3rd Qtr	7-12	58%	1-5	20%	4-4	100%
4th Qtr	5-13	38%	1-4	25%	6-9	67%
2nd Half	12-25	48%	2-9	22%	10-13	77%
Game	20-54	37.0%	4-16	25.0%	13-17	76.5%

Deadball Rebounds: 3,0
Last FG Half: NCW 4th-00:26

Delaware 39

No.	Player	S	Pts	FG	3FG	FT	OR	DR	TR	PF	A	TO	Blk	Stl	Min	+/-
02	GONZALES, ABBY	G	1	0-0	0-0	1-2	0	0	0	3	3	0	0	1	11	-3
04	MCBRIDE, PARIS	G	2	0-1	0-1	2-2	0	0	0	2	4	0	0	0	14	4
10	JOHNSON, TEE	G	0	0-2	0-0	0-0	0	0	0	1	1	0	0	0	5	1
12	OLEARY, LIZZIE	F	0	0-0	0-0	0-0	0	0	0	0	0	0	0	0	0	0
20	DICKEY, JASMINE	G	8	4-8	0-0	0-1	0	0	0	2	1	1	0	2	15	4
22	DEFREESE, SAMONE	F	14	7-10	0-3	0-0	0	2	2	1	1	1	0	2	20	3
25	LAWRENCE, REBECCA	F	0	0-2	0-1	0-0	0	1	1	1	0	0	0	0	6	-5
30	SHAW, KAYLA	G	0	0-3	0-3	0-0	0	0	0	2	0	0	0	0	9	8
33	ENABOSI, NICOLE	F	14	5-7	0-0	4-5	1	5	6	0	3	0	0	0	20	3
	TEAM		0	0-0	0-0	0-0	0	1	1	0	0	0	0	0	0	
TOTALS			39	16-33	0-8	7-10	1	9	10	12	13	2	0	5	100	

Shooting By Period

Period	FG	FG%	3FG	3FG%	FT	FT%
3rd Qtr	7-17	41%	0-4	00%	3-4	75%
4th Qtr	9-16	56%	0-4	00%	4-6	67%
2nd Half	16-33	48%	0-8	00%	7-10	70%
Game	26-65	40.0%	1-16	06.3%	8-14	57.1%

Deadball Rebounds: 3,0
Last FG Half: Del 4th-00:29

Game Notes:

Officials: Ken Kelly, Carmen Portorreal, Mark Behrens
Attendance: 1275

Start Time: 01:05 PM ET
End Time: 03:03 PM ET
Game Duration: 1:58

Score	1st	2nd	3rd	4th	TOT
NCW	11	10	19	17	57
Del	7	15	17	22	61

Points from (This Period)	NCW	Del
In the Paint	18	28
Off Turns	2	9
2nd Chance	3	2
Fast Break	6	4
Bench	2	2

Official Box Score
UNCW vs Delaware
Third Quarter Statistics Only
March 07, 2020 at Bob Carpenter Center - Newark



UNCW 36

No.	Player	S	Pts	FG	3FG	FT	OR	DR	TR	PF	A	TO	Blk	Stl	Min	+/-
02	CRISP, MORIAH	G	0	0-2	0-2	0-0	1	0	1	0	0	1	0	0	10	2
05	SMITH, GIGI	G	3	1-2	0-1	1-1	1	3	4	1	0	2	0	0	8	-1
10	VASON, AHYIONA	G	5	2-2	1-1	0-0	0	2	2	1	0	1	0	0	8	1
13	SUGGS, LACEY	G	9	3-3	0-0	3-3	0	1	1	0	1	1	1	0	10	2
32	OBUSEK, CAROL-ANNE	F	0	0-0	0-0	0-0	0	1	1	1	0	0	0	0	2	-4
01	POWELL, PAIGE	F	2	1-2	0-0	0-0	0	3	3	2	1	0	0	0	7	4
04	MUNOZ, JESSICA	F	0	0-0	0-0	0-0	0	0	0	0	0	1	0	0	1	2
14	TATE, TIMBER	G	0	0-1	0-1	0-0	0	0	0	0	1	0	0	0	4	4
22	THYBULLE, ZHANEIA	G	0	0-0	0-0	0-0	0	0	0	0	0	0	0	0	0	0
	TEAM						0	1	1	0		1				
TOTALS			19	7-12	1-5	4-4	2	11	13	5	3	7	1	0	50	

Shooting By Period

Period	FG	FG%	3FG	3FG%	FT	FT%
2nd Half	0-0	0%	0-0	0%	0-0	0%
Game	20-54	37.0%	4-16	25.0%	13-17	76.5%

Deadball Rebounds: 3,0

Delaware 39

No.	Player	S	Pts	FG	3FG	FT	OR	DR	TR	PF	A	TO	Blk	Stl	Min	+/-
02	GONZALES, ABBY	G	0	0-0	0-0	0-0	0	0	0	1	2	0	0	1	6	-3
20	DICKEY, JASMINE	G	4	2-4	0-0	0-1	0	0	0	1	0	1	0	1	8	-4
22	DEFREESE, SAMONE	F	4	2-3	0-1	0-0	0	1	1	0	1	0	0	2	10	-2
25	LAWRENCE, REBECCA	F	0	0-1	0-1	0-0	0	0	0	1	0	0	0	0	3	-2
33	ENABOSI, NICOLE	F	9	3-5	0-0	3-3	0	2	2	0	1	0	0	0	10	-2
04	MCBRIDE, PARIS	G	0	0-0	0-0	0-0	0	0	0	0	1	0	0	0	4	1
10	JOHNSON, TEE	G	0	0-2	0-0	0-0	0	0	0	0	1	0	0	0	3	-1
12	OLEARY, LIZZIE	F	0	0-0	0-0	0-0	0	0	0	0	0	0	0	0	0	0
30	SHAW, KAYLA	G	0	0-2	0-2	0-0	0	0	0	2	0	0	0	0	6	3
	TEAM						0	0	0	0		0				
TOTALS			17	7-17	0-4	3-4	0	3	3	5	6	1	0	4	50	

Shooting By Period

Period	FG	FG%	3FG	3FG%	FT	FT%
2nd Half	0-0	0%	0-0	0%	0-0	0%
Game	26-65	40.0%	1-16	06.3%	8-14	57.1%

Deadball Rebounds: 3,0

Game Notes:

Officials: Ken Kelly, Carmen Portorreal, Mark Behrens
Attendance: 1275

Start Time: 01:05 PM ET
End Time: 03:03 PM ET
Game Duration: 1:58

Score	1st	2nd	3rd	4th	TOT
NCW	11	10	19	17	57
Del	7	15	17	22	61

Points from (This Period)	NCW	Del
In the Paint	10	12
Off Turns	2	6
2nd Chance	3	0
Fast Break	4	4
Bench	2	0

Official Play-By-Play
UNCW vs Delaware
Third Quarter
March 07, 2020 at Bob Carpenter Center - Newark



Period 3

Starters:

UNCW: 2 CRISP, MORIAH (G); 5 SMITH, GIGI (G); 10 VASON, AHYIONA (G); 13 SUGGS, LACEY (G); 32 OBUSEK, CAROL-ANNE (F);

Delaware: 2 GONZALES, ABBY (G); 20 DICKEY, JASMINE (G); 22 DEFREESE, SAMONE (F); 25 LAWRENCE, REBECCA (F); 33 ENABOSI, NICOLE (F);

Time	VISITORS: UNCW	Score	Margin	HOME: Delaware
10:00				SUB OUT: JOHNSON, TEE
10:00				SUB IN: LAWRENCE, REBECCA
09:41				TURNOVER (TRAVEL) by DICKEY, JASMINE
09:21	GOOD! JUMPER by POWELL, PAIGE [PNT]	22-23	V 1	
09:02				MISSED JUMPER by DICKEY, JASMINE
08:58	REBOUND (DEF) by VASON, AHYIONA			
08:54	GOOD! LAYUP by VASON, AHYIONA [FB]	22-25	V 3	
08:47	FOUL (PERSONAL) by SMITH, GIGI			
08:47				SUB OUT: DICKEY, JASMINE
08:47				SUB IN: SHAW, KAYLA
08:36		24-25	V 1	GOOD! JUMPER by ENABOSI, NICOLE
08:36				ASSIST by GONZALES, ABBY
08:20				FOUL (PERSONAL) by LAWRENCE, REBECCA
08:20				SUB OUT: LAWRENCE, REBECCA
08:20				SUB IN: DICKEY, JASMINE
08:09	GOOD! JUMPER by SUGGS, LACEY	24-27	V 3	
07:57	FOUL (PERSONAL) by POWELL, PAIGE			
07:44				MISSED LAYUP by ENABOSI, NICOLE
07:41	REBOUND (DEF) by POWELL, PAIGE			
07:37	MISSED 3PTR by CRISP, MORIAH			
07:34				REBOUND (DEF) by DEFREESE, SAMONE
07:29				MISSED 3PTR by SHAW, KAYLA
07:29	BLOCK by SUGGS, LACEY			
07:23	REBOUND (DEF) by SMITH, GIGI			
07:09	MISSED JUMPER by POWELL, PAIGE			
07:05				REBOUND (DEF) by ENABOSI, NICOLE
07:00		26-27	V 1	GOOD! LAYUP by DEFREESE, SAMONE
07:00				ASSIST by GONZALES, ABBY
06:41	MISSED 3PTR by SMITH, GIGI			
06:38	REBOUND (OFF) by CRISP, MORIAH			
06:31	TURNOVER (LOSTBALL) by SMITH, GIGI			
06:31				STEAL by DEFREESE, SAMONE
06:24				MISSED LAYUP by DICKEY, JASMINE
06:21	REBOUND (DEF) by SMITH, GIGI			
06:01	TURNOVER (BADPASS) by SMITH, GIGI			
06:01				SUB OUT: GONZALES, ABBY
06:01				SUB IN: MCBRIDE, PARIS
06:01	SUB OUT: POWELL, PAIGE			
06:01	SUB IN: OBUSEK, CAROL-ANNE			
05:50				MISSED LAYUP by ENABOSI, NICOLE
05:49	REBOUND (DEF) by OBUSEK, CAROL-ANNE			
05:33	TURNOVER (LOSTBALL) by SUGGS, LACEY			
05:33				STEAL by DICKEY, JASMINE
05:27		28-27	H 1	GOOD! LAYUP by DICKEY, JASMINE [FB/PNT]
05:27				ASSIST by MCBRIDE, PARIS
05:27	FOUL (PERSONAL) by VASON, AHYIONA			
05:27				SUB OUT: SHAW, KAYLA
05:27				SUB IN: JOHNSON, TEE
05:27				MISSED FT by DICKEY, JASMINE
05:26	REBOUND (DEF) by SUGGS, LACEY			
05:14	MISSED 3PTR by CRISP, MORIAH			
05:10				REBOUND (DEF) by ENABOSI, NICOLE
05:02		30-27	H 3	GOOD! LAYUP by DICKEY, JASMINE [PNT]
05:02				ASSIST by JOHNSON, TEE
04:25	TURNOVER (SHOTCLOCK) by TEAM			
04:25	SUB OUT: SMITH, GIGI			
04:25	SUB OUT: OBUSEK, CAROL-ANNE			
04:25	SUB IN: POWELL, PAIGE			
04:25	SUB IN: TATE, TIMBER			
04:10				MISSED LAYUP by JOHNSON, TEE
04:07	REBOUND (DEF) by POWELL, PAIGE			
04:04	GOOD! LAYUP by SUGGS, LACEY [FB]	30-29	H 1	
04:04	ASSIST by POWELL, PAIGE			
03:49				MISSED 3PTR by DEFREESE, SAMONE
03:46	REBOUND (DEF) by VASON, AHYIONA			
03:25	GOOD! 3PTR by VASON, AHYIONA	30-32	V 2	
03:25	ASSIST by SUGGS, LACEY			
02:49				MISSED JUMPER by JOHNSON, TEE
02:46	REBOUND (DEF) by POWELL, PAIGE			
02:45	TURNOVER (BADPASS) by CRISP, MORIAH			

Time	VISITORS: UNCW	Score	Margin	HOME: Delaware
02:45				STEAL by DEFREESE, SAMONE
02:39		32-32	T	GOOD! LAYUP by ENABOSI, NICOLE [FB]
02:39				ASSIST by DEFREESE, SAMONE
02:23	TURNOVER (BADPASS) by VASON, AHYIONA			
02:23				SUB OUT: MCBRIDE, PARIS
02:23				SUB OUT: JOHNSON, TEE
02:23				SUB IN: GONZALES, ABBY
02:23				SUB IN: SHAW, KAYLA
02:23	SUB OUT: VASON, AHYIONA			
02:23	SUB IN: SMITH, GIGI			
02:13		34-32	H 2	GOOD! LAYUP by DEFREESE, SAMONE
02:13				ASSIST by ENABOSI, NICOLE
01:50	GOOD! LAYUP by SUGGS, LACEY	34-34	T	
01:50	ASSIST by TATE, TIMBER			
01:50				FOUL (PERSONAL) by GONZALES, ABBY
01:50	GOOD! FT by SUGGS, LACEY	34-35	V 1	
01:38		36-35	H 1	GOOD! LAYUP by ENABOSI, NICOLE
01:38	FOUL (PERSONAL) by POWELL, PAIGE			
01:38	SUB OUT: POWELL, PAIGE			
01:38	SUB IN: OBUSEK, CAROL-ANNE			
01:38		37-35	H 2	GOOD! FT by ENABOSI, NICOLE
01:26	MISSED 3PTR by TATE, TIMBER			
01:25	REBOUND (OFF) by SMITH, GIGI			
01:25	GOOD! LAYUP by SMITH, GIGI	37-37	T	
01:25				FOUL (PERSONAL) by DICKEY, JASMINE
01:25	GOOD! FT by SMITH, GIGI	37-38	V 1	
01:06	FOUL (PERSONAL) by OBUSEK, CAROL-ANNE			
01:06				SUB OUT: DICKEY, JASMINE
01:06				SUB IN: LAWRENCE, REBECCA
01:06		38-38	T	GOOD! FT by ENABOSI, NICOLE
01:06		39-38	H 1	GOOD! FT by ENABOSI, NICOLE
01:06	SUB OUT: OBUSEK, CAROL-ANNE			
01:06	SUB IN: MUNOZ, JESSICA			
00:48	TURNOVER (BADPASS) by MUNOZ, JESSICA			
00:48				STEAL by GONZALES, ABBY
00:42				MISSED 3PTR by SHAW, KAYLA
00:42	REBOUND (DEF) by TEAM			
00:21				FOUL (PERSONAL) by SHAW, KAYLA
00:20				FOUL (PERSONAL) by SHAW, KAYLA
00:20	GOOD! FT by SUGGS, LACEY	39-39	T	
00:20	GOOD! FT by SUGGS, LACEY	39-40	V 1	
00:02				MISSED 3PTR by LAWRENCE, REBECCA
00:02	REBOUND (DEF) by SMITH, GIGI			

UNCW 40, Delaware 39

Points from (This Period)	NCW	Del
In the Paint	10	12
Off Turns	2	6
2nd Chance	3	0
Fast Break	4	4
Bench	2	0

Official Box Score
UNCW vs Delaware
Fourth Quarter Statistics Only
March 07, 2020 at Bob Carpenter Center - Newark



UNCW 17

No.	Player	S	Pts	FG	3FG	FT	OR	DR	TR	PF	A	TO	Blk	Stl	Min	+/-
02	CRISP, MORIAH	G	0	0-0	0-0	0-0	0	0	0	1	1	0	0	0	10	-5
05	SMITH, GIGI	G	8	2-3	1-2	3-4	0	0	0	0	1	2	0	0	10	-5
10	VASON, AHYIONA	G	2	1-2	0-0	0-2	2	2	4	1	0	1	0	0	6	4
13	SUGGS, LACEY	G	7	2-4	0-0	3-3	0	1	1	2	0	1	0	0	10	-5
32	OBUSEK, CAROL-ANNE	F	0	0-1	0-0	0-0	1	2	3	0	0	0	0	0	3	-2
01	POWELL, PAIGE	F	0	0-0	0-0	0-0	0	0	0	1	0	0	0	0	1	-2
04	MUNOZ, JESSICA	F	0	0-2	0-1	0-0	0	0	0	0	0	0	0	0	5	1
14	TATE, TIMBER	G	0	0-1	0-1	0-0	0	1	1	0	0	0	0	0	4	-11
22	THYBULLE, ZHANEIA	G	0	0-0	0-0	0-0	0	0	0	1	0	0	0	0	0	0
	TEAM						0	1	1	0		0				
TOTALS			17	5-13	1-4	6-9	3	7	10	6	2	4	0	0	50	

Shooting By Period

Period	FG	FG%	3FG	3FG%	FT	FT%
Game	20-54	37.0%	4-16	25.0%	13-17	76.5%

Deadball Rebounds: 3,0

Delaware 22

No.	Player	S	Pts	FG	3FG	FT	OR	DR	TR	PF	A	TO	Blk	Stl	Min	+/-
02	GONZALES, ABBY	G	1	0-0	0-0	1-2	0	0	0	2	1	0	0	0	5	0
20	DICKEY, JASMINE	G	4	2-4	0-0	0-0	0	0	0	1	1	0	0	1	7	8
22	DEFREESE, SAMONE	F	10	5-7	0-2	0-0	0	1	1	1	0	1	0	0	10	5
25	LAWRENCE, REBECCA	F	0	0-1	0-0	0-0	0	1	1	0	0	0	0	0	3	-3
33	ENABOSI, NICOLE	F	5	2-2	0-0	1-2	1	3	4	0	2	0	0	0	10	5
04	MCBRIDE, PARIS	G	2	0-1	0-1	2-2	0	0	0	2	3	0	0	0	10	3
10	JOHNSON, TEE	G	0	0-0	0-0	0-0	0	0	0	1	0	0	0	0	2	2
12	OLEARY, LIZZIE	F	0	0-0	0-0	0-0	0	0	0	0	0	0	0	0	0	0
30	SHAW, KAYLA	G	0	0-1	0-1	0-0	0	0	0	0	0	0	0	0	3	5
	TEAM						0	1	1	0		0				
TOTALS			22	9-16	0-4	4-6	1	6	7	7	7	1	0	1	50	

Shooting By Period

Period	FG	FG%	3FG	3FG%	FT	FT%
Game	26-65	40.0%	1-16	06.3%	8-14	57.1%

Deadball Rebounds: 3,0

Game Notes:

Officials: Ken Kelly, Carmen Portorreal, Mark Behrens
Attendance: 1275

Start Time: 01:05 PM ET
End Time: 03:03 PM ET
Game Duration: 1:58

Score	1st	2nd	3rd	4th	TOT
NCW	11	10	19	17	57
Del	7	15	17	22	61

Points from (This Period)	NCW	Del
In the Paint	8	16
Off Turns	0	3
2nd Chance	0	2
Fast Break	2	0
Bench	0	2

Official Play-By-Play
UNCW vs Delaware
Fourth Quarter
March 07, 2020 at Bob Carpenter Center - Newark



Period 4

Starters:

UNCW: 2 CRISP, MORIAH (G); 5 SMITH, GIGI (G); 10 VASON, AHYIONA (G); 13 SUGGS, LACEY (G); 32 OBUSEK, CAROL-ANNE (F);

Delaware: 2 GONZALES, ABBY (G); 20 DICKEY, JASMINE (G); 22 DEFREESE, SAMONE (F); 25 LAWRENCE, REBECCA (F); 33 ENABOSI, NICOLE (F);

Time	VISITORS: UNCW	Score	Margin	HOME: Delaware
09:51		41-40	H 1	GOOD! LAYUP by DEFREESE, SAMONE
09:42				SUB OUT: SHAW, KAYLA
09:42				SUB IN: MCBRIDE, PARIS
09:31	GOOD! LAYUP by SMITH, GIGI	41-42	V 1	
09:09				MISSED 3PTR by DEFREESE, SAMONE
09:07	REBOUND (DEF) by TATE, TIMBER			
08:54				FOUL (PERSONAL) by MCBRIDE, PARIS
08:54	SUB OUT: TATE, TIMBER			
08:54	SUB IN: VASON, AHYIONA			
08:53	GOOD! LAYUP by SUGGS, LACEY	41-44	V 3	
08:53	ASSIST by SMITH, GIGI			
08:53				FOUL (PERSONAL) by GONZALES, ABBY
08:53	GOOD! FT by SUGGS, LACEY	41-45	V 4	
08:42		43-45	V 2	GOOD! LAYUP by DEFREESE, SAMONE
08:42				ASSIST by ENABOSI, NICOLE
08:22	MISSED LAYUP by SUGGS, LACEY			
08:20				REBOUND (DEF) by LAWRENCE, REBECCA
08:17	FOUL (PERSONAL) by CRISP, MORIAH			
08:11	FOUL (PERSONAL) by SUGGS, LACEY			
08:05				MISSED JUMPER by LAWRENCE, REBECCA
08:03	REBOUND (DEF) by TEAM			
08:03				FOUL (PERSONAL) by MCBRIDE, PARIS
07:46	GOOD! LAYUP by SUGGS, LACEY	43-47	V 4	
07:30				MISSED 3PTR by DEFREESE, SAMONE
07:28	REBOUND (DEF) by VASON, AHYIONA			
07:14				FOUL (PERSONAL) by DEFREESE, SAMONE
07:14				SUB OUT: LAWRENCE, REBECCA
07:14				SUB IN: DICKEY, JASMINE
07:14	GOOD! FT by SUGGS, LACEY	43-48	V 5	
07:14				TIMEOUT 30SEC
07:14				SUB OUT: GONZALES, ABBY
07:14				SUB IN: SHAW, KAYLA
07:14	GOOD! FT by SUGGS, LACEY	43-49	V 6	
07:01		45-49	V 4	GOOD! LAYUP by ENABOSI, NICOLE
06:31	TURNOVER (OTHER) by VASON, AHYIONA			
06:06				MISSED 3PTR by SHAW, KAYLA
06:03	REBOUND (DEF) by VASON, AHYIONA			
05:59	GOOD! LAYUP by VASON, AHYIONA [FB]	45-51	V 6	
05:50	FOUL (PERSONAL) by SUGGS, LACEY			
05:50	SUB OUT: VASON, AHYIONA			
05:50	SUB IN: TATE, TIMBER			
05:48		47-51	V 4	GOOD! LAYUP by DEFREESE, SAMONE
05:48				ASSIST by MCBRIDE, PARIS
05:31	MISSED 3PTR by MUNOZ, JESSICA			
05:28				REBOUND (DEF) by DEFREESE, SAMONE
05:23				MISSED LAYUP by DICKEY, JASMINE
05:20				REBOUND (OFF) by ENABOSI, NICOLE
05:19		49-51	V 2	GOOD! LAYUP by DEFREESE, SAMONE
05:19				ASSIST by ENABOSI, NICOLE
04:55	MISSED JUMPER by MUNOZ, JESSICA			
04:52				REBOUND (DEF) by ENABOSI, NICOLE
04:37				TURNOVER (LOSTBALL) by DEFREESE, SAMONE
04:37				
04:37				SUB OUT: SHAW, KAYLA
04:37				SUB IN: JOHNSON, TEE
04:37	SUB OUT: MUNOZ, JESSICA			
04:37	SUB IN: POWELL, PAIGE			
04:14	TURNOVER (LOSTBALL) by SUGGS, LACEY			
04:14				STEAL by DICKEY, JASMINE
04:02		51-51	T	GOOD! LAYUP by DEFREESE, SAMONE
04:02				ASSIST by MCBRIDE, PARIS
03:46	TURNOVER (LOSTBALL) by SMITH, GIGI			
03:46				SUB OUT: JOHNSON, TEE
03:46				SUB IN: GONZALES, ABBY
03:35	FOUL (PERSONAL) by POWELL, PAIGE			
03:35				SUB OUT: GONZALES, ABBY
03:35				SUB IN: JOHNSON, TEE
03:35	SUB OUT: POWELL, PAIGE			
03:35	SUB IN: OBUSEK, CAROL-ANNE			
03:35		52-51	H 1	GOOD! FT by ENABOSI, NICOLE

Time	VISITORS: UNCW	Score	Margin	HOME: Delaware
03:35				MISSED FT by ENABOSI, NICOLE
03:35	REBOUND (DEF) by OBUSEK, CAROL-ANNE			
03:35	MISSED 3PTR by TATE, TIMBER			
03:35				REBOUND (DEF) by ENABOSI, NICOLE
03:03		54-51	H 3	GOOD! LAYUP by ENABOSI, NICOLE
03:03				ASSIST by DICKEY, JASMINE
02:51	TIMEOUT TEAM			
02:51	SUB OUT: TATE, TIMBER			
02:51	SUB IN: VASON, AHYIONA			
02:32				FOUL (PERSONAL) by JOHNSON, TEE
02:32				SUB OUT: JOHNSON, TEE
02:32				SUB IN: GONZALES, ABBY
02:32	MISSED FT by SMITH, GIGI			
02:32	REBOUND (OFF) by TEAM			
02:32	GOOD! FT by SMITH, GIGI	54-52	H 2	
02:06				MISSED LAYUP by DICKEY, JASMINE
02:03	REBOUND (DEF) by OBUSEK, CAROL-ANNE			
01:46	TURNOVER (TRAVEL) by SMITH, GIGI			
01:25				MISSED 3PTR by MCBRIDE, PARIS
01:22	REBOUND (DEF) by SUGGS, LACEY			
01:13	TIMEOUT 30SEC			
01:07	MISSED LAYUP by VASON, AHYIONA			
01:04				REBOUND (DEF) by ENABOSI, NICOLE
00:58		56-52	H 4	GOOD! JUMPER by DICKEY, JASMINE
00:58				ASSIST by MCBRIDE, PARIS
00:48				FOUL (PERSONAL) by GONZALES, ABBY
00:48	GOOD! FT by SMITH, GIGI	56-53	H 3	
00:48	GOOD! FT by SMITH, GIGI	56-54	H 2	
00:48				TIMEOUT 30SEC
00:29		58-54	H 4	GOOD! LAYUP by DICKEY, JASMINE
00:29				ASSIST by GONZALES, ABBY
00:29	TIMEOUT 30SEC			
00:29				SUB OUT: GONZALES, ABBY
00:29				SUB IN: JOHNSON, TEE
00:26	GOOD! 3PTR by SMITH, GIGI	58-57	H 1	
00:26	ASSIST by CRISP, MORIAH			
00:26				TIMEOUT 30SEC
00:26				SUB OUT: JOHNSON, TEE
00:26				SUB IN: GONZALES, ABBY
00:26	SUB OUT: OBUSEK, CAROL-ANNE			
00:26	SUB IN: THYBULLE, ZHANEIA			
00:25	FOUL (PERSONAL) by VASON, AHYIONA			
00:25	SUB OUT: THYBULLE, ZHANEIA			
00:25	SUB IN: OBUSEK, CAROL-ANNE			
00:25				MISSED FT by GONZALES, ABBY
00:25				REBOUND (OFF) by TEAM
00:25		59-57	H 2	GOOD! FT by GONZALES, ABBY
00:25				SUB OUT: GONZALES, ABBY
00:25				SUB IN: JOHNSON, TEE
00:25	TIMEOUT 30SEC			
00:10	MISSED LAYUP by SUGGS, LACEY			
00:07	REBOUND (OFF) by OBUSEK, CAROL-ANNE			
00:07	MISSED LAYUP by OBUSEK, CAROL-ANNE			
00:07	REBOUND (OFF) by VASON, AHYIONA			
00:07				FOUL (PERSONAL) by DICKEY, JASMINE
00:07	MISSED FT by VASON, AHYIONA			
00:07	REBOUND (OFF) by TEAM			
00:07	MISSED FT by VASON, AHYIONA			
00:07				REBOUND (DEF) by TEAM
00:07				TIMEOUT TEAM
00:07				SUB OUT: JOHNSON, TEE
00:07				SUB IN: GONZALES, ABBY
00:07	SUB OUT: OBUSEK, CAROL-ANNE			
00:07	SUB IN: THYBULLE, ZHANEIA			
00:07	FOUL (PERSONAL) by THYBULLE, ZHANEIA			
00:07	SUB OUT: THYBULLE, ZHANEIA			
00:07	SUB IN: TATE, TIMBER			
00:07		60-57	H 3	GOOD! FT by MCBRIDE, PARIS
00:07		61-57	H 4	GOOD! FT by MCBRIDE, PARIS
00:00	MISSED 3PTR by SMITH, GIGI			
00:00	REBOUND (OFF) by VASON, AHYIONA			

UNCW 57, Delaware 61

Points from (This Period)	NCW	Del
In the Paint	8	16
Off Turns	0	3
2nd Chance	0	2
Fast Break	2	0
Bench	0	2

Official Scoring/Possession Reference Chart
UNCW vs Delaware
Period 1
March 07, 2020 at Bob Carpenter Center - Newark



Period 1

Starters:

UNCW: 2 CRISP, MORIAH (G); 5 SMITH, GIGI (G); 10 VASON, AHYIONA (G); 13 SUGGS, LACEY (G); 32 OBUSEK, CAROL-ANNE (F);

Delaware: 2 GONZALES, ABBY (G); 20 DICKEY, JASMINE (G); 22 DEFREESE, SAMONE (F); 25 LAWRENCE, REBECCA (F); 33 ENABOSI, NICOLE (F);

Time	VISITORS: UNCW	Score	Margin	HOME: Delaware
06:25	GOOD! LAYUP by SMITH, GIGI	0-2	V 2	
06:14	GOOD! LAYUP by SMITH, GIGI [FB/PNT]	0-4	V 4	
04:39		2-4	V 2	GOOD! JUMPER by GONZALES, ABBY
03:27	GOOD! 3PTR by SMITH, GIGI	2-7	V 5	
01:55		4-7	V 3	GOOD! LAYUP by DICKEY, JASMINE [FB]
01:26	GOOD! FT by SUGGS, LACEY	4-8	V 4	
01:26	GOOD! FT by SUGGS, LACEY	4-9	V 5	
01:13		5-9	V 4	GOOD! FT by ENABOSI, NICOLE
00:30		7-9	V 2	GOOD! LAYUP by ENABOSI, NICOLE
00:04	GOOD! JUMPER by OBUSEK, CAROL-ANNE [PNT]	7-11	V 4	

UNCW 11, Delaware 7

Official Scoring/Possession Reference Chart
UNCW vs Delaware
Period 2
March 07, 2020 at Bob Carpenter Center - Newark



Period 2

Starters:

UNCW: 2 CRISP, MORIAH (G); 5 SMITH, GIGI (G); 10 VASON, AHYIONA (G); 13 SUGGS, LACEY (G); 32 OBUSEK, CAROL-ANNE (F);

Delaware: 2 GONZALES, ABBY (G); 20 DICKEY, JASMINE (G); 22 DEFREESE, SAMONE (F); 25 LAWRENCE, REBECCA (F); 33 ENABOSI, NICOLE (F);

Time	VISITORS: UNCW	Score	Margin	HOME: Delaware
09:31		9-11	V 2	GOOD! JUMPER by SHAW, KAYLA
08:31		11-11	T	GOOD! LAYUP by SHAW, KAYLA [FB]
08:03	GOOD! LAYUP by SUGGS, LACEY	11-13	V 2	
06:07		14-13	H 1	GOOD! 3PTR by SHAW, KAYLA
05:40	GOOD! LAYUP by CRISP, MORIAH	14-15	V 1	
05:12		16-15	H 1	GOOD! JUMPER by MCBRIDE, PARIS
04:45		18-15	H 3	GOOD! LAYUP by MCBRIDE, PARIS [FB]
04:22	GOOD! FT by SUGGS, LACEY	18-16	H 2	
02:51		20-16	H 4	GOOD! LAYUP by ENABOSI, NICOLE [PNT]
02:05	GOOD! 3PTR by SUGGS, LACEY	20-19	H 1	
00:27	GOOD! LAYUP by VASON, AHYIONA	20-21	V 1	
00:13		22-21	H 1	GOOD! LAYUP by ENABOSI, NICOLE [PNT]

UNCW 21, Delaware 22

Official Scoring/Possession Reference Chart
UNCW vs Delaware
Period 3
March 07, 2020 at Bob Carpenter Center - Newark



Period 3

Starters:

UNCW: 2 CRISP, MORIAH (G); 5 SMITH, GIGI (G); 10 VASON, AHYIONA (G); 13 SUGGS, LACEY (G); 32 OBUSEK, CAROL-ANNE (F);

Delaware: 2 GONZALES, ABBY (G); 20 DICKEY, JASMINE (G); 22 DEFREESE, SAMONE (F); 25 LAWRENCE, REBECCA (F); 33 ENABOSI, NICOLE (F);

Time	VISITORS: UNCW	Score	Margin	HOME: Delaware
09:21	GOOD! JUMPER by POWELL, PAIGE [PNT]	22-23	V 1	
08:54	GOOD! LAYUP by VASON, AHYIONA [FB]	22-25	V 3	
08:36		24-25	V 1	GOOD! JUMPER by ENABOSI, NICOLE
08:09	GOOD! JUMPER by SUGGS, LACEY	24-27	V 3	
07:00		26-27	V 1	GOOD! LAYUP by DEFREESE, SAMONE
05:27		28-27	H 1	GOOD! LAYUP by DICKEY, JASMINE [FB/PNT]
05:02		30-27	H 3	GOOD! LAYUP by DICKEY, JASMINE [PNT]
04:04	GOOD! LAYUP by SUGGS, LACEY [FB]	30-29	H 1	
03:25	GOOD! 3PTR by VASON, AHYIONA	30-32	V 2	
02:39		32-32	T	GOOD! LAYUP by ENABOSI, NICOLE [FB]
02:13		34-32	H 2	GOOD! LAYUP by DEFREESE, SAMONE
01:50	GOOD! LAYUP by SUGGS, LACEY	34-34	T	
01:50	GOOD! FT by SUGGS, LACEY	34-35	V 1	
01:38		36-35	H 1	GOOD! LAYUP by ENABOSI, NICOLE
01:38		37-35	H 2	GOOD! FT by ENABOSI, NICOLE
01:25	GOOD! LAYUP by SMITH, GIGI	37-37	T	
01:25	GOOD! FT by SMITH, GIGI	37-38	V 1	
01:06		38-38	T	GOOD! FT by ENABOSI, NICOLE
01:06		39-38	H 1	GOOD! FT by ENABOSI, NICOLE
00:20	GOOD! FT by SUGGS, LACEY	39-39	T	
00:20	GOOD! FT by SUGGS, LACEY	39-40	V 1	

UNCW 40, Delaware 39

Official Scoring/Possession Reference Chart
UNCW vs Delaware
Period 4
March 07, 2020 at Bob Carpenter Center - Newark



Period 4

Starters:

UNCW: 2 CRISP, MORIAH (G); 5 SMITH, GIGI (G); 10 VASON, AHYIONA (G); 13 SUGGS, LACEY (G); 32 OBUSEK, CAROL-ANNE (F);

Delaware: 2 GONZALES, ABBY (G); 20 DICKEY, JASMINE (G); 22 DEFREESE, SAMONE (F); 25 LAWRENCE, REBECCA (F); 33 ENABOSI, NICOLE (F);

Time	VISITORS: UNCW	Score	Margin	HOME: Delaware
09:51		41-40	H 1	GOOD! LAYUP by DEFREESE, SAMONE
09:31	GOOD! LAYUP by SMITH, GIGI	41-42	V 1	
08:53	GOOD! LAYUP by SUGGS, LACEY	41-44	V 3	
08:53	GOOD! FT by SUGGS, LACEY	41-45	V 4	
08:42		43-45	V 2	GOOD! LAYUP by DEFREESE, SAMONE
07:46	GOOD! LAYUP by SUGGS, LACEY	43-47	V 4	
07:14	GOOD! FT by SUGGS, LACEY	43-48	V 5	
07:14	GOOD! FT by SUGGS, LACEY	43-49	V 6	
07:01		45-49	V 4	GOOD! LAYUP by ENABOSI, NICOLE
05:59	GOOD! LAYUP by VASON, AHYIONA [FB]	45-51	V 6	
05:48		47-51	V 4	GOOD! LAYUP by DEFREESE, SAMONE
05:19		49-51	V 2	GOOD! LAYUP by DEFREESE, SAMONE
04:02		51-51	T	GOOD! LAYUP by DEFREESE, SAMONE
03:35		52-51	H 1	GOOD! FT by ENABOSI, NICOLE
03:03		54-51	H 3	GOOD! LAYUP by ENABOSI, NICOLE
02:32	GOOD! FT by SMITH, GIGI	54-52	H 2	
00:58		56-52	H 4	GOOD! JUMPER by DICKEY, JASMINE
00:48	GOOD! FT by SMITH, GIGI	56-53	H 3	
00:48	GOOD! FT by SMITH, GIGI	56-54	H 2	
00:29		58-54	H 4	GOOD! LAYUP by DICKEY, JASMINE
00:26	GOOD! 3PTR by SMITH, GIGI	58-57	H 1	
00:25		59-57	H 2	GOOD! FT by GONZALES, ABBY
00:07		60-57	H 3	GOOD! FT by MCBRIDE, PARIS
00:07		61-57	H 4	GOOD! FT by MCBRIDE, PARIS

UNCW 57, Delaware 61

Official Substitutions Log
UNCW vs Delaware
Period 1
March 07, 2020 at Bob Carpenter Center - Newark



VISITORS: UNCW	Time	Score	HOME: Delaware
2 CRISP, MORIAH			2 GONZALES, ABBY
5 SMITH, GIGI			20 DICKEY, JASMINE
10 VASON, AHYIONA			22 DEFREESE, SAMONE
13 SUGGS, LACEY			25 LAWRENCE, REBECCA
32 OBUSEK, CAROL-ANNE			33 ENABOSI, NICOLE
SUB OUT: 10 VASON, AHYIONA	05:19	4-0	
SUB OUT: 32 OBUSEK, CAROL-ANNE	05:19		
SUB IN: 1 POWELL, PAIGE	05:19		
SUB IN: 4 MUNOZ, JESSICA	05:19		
	04:17	4-2	SUB OUT: LAWRENCE, REBECCA
	04:17		SUB IN: MCBRIDE, PARIS
	01:26	7-4	SUB OUT: DEFREESE, SAMONE
	01:26		SUB IN: OLEARY, LIZZIE
SUB OUT: 1 POWELL, PAIGE	01:13	9-4	
SUB IN: 32 OBUSEK, CAROL-ANNE	01:13		
	01:13		SUB OUT: GONZALES, ABBY
	01:13		SUB IN: SHAW, KAYLA
SUB OUT: 5 SMITH, GIGI	01:13		
SUB IN: 14 TATE, TIMBER	01:13		

UNCW 11, Delaware 7

Official Substitutions Log
UNCW vs Delaware
Period 2
March 07, 2020 at Bob Carpenter Center - Newark



VISITORS: UNCW	Time	Score	HOME: Delaware
2 CRISP, MORIAH			2 GONZALES, ABBY
5 SMITH, GIGI			20 DICKEY, JASMINE
10 VASON, AHYIONA			22 DEFREESE, SAMONE
13 SUGGS, LACEY			25 LAWRENCE, REBECCA
32 OBUSEK, CAROL-ANNE			33 ENABOSI, NICOLE
	10:00	-	SUB OUT: OLEARY, LIZZIE
	10:00		SUB IN: DEFREESE, SAMONE
SUB OUT: 13 SUGGS, LACEY	10:00		
SUB IN: 5 SMITH, GIGI	10:00		
SUB OUT: 4 MUNOZ, JESSICA	09:05	11-9	
SUB OUT: 14 TATE, TIMBER	09:05		
SUB IN: 10 VASON, AHYIONA	09:05		
SUB IN: 13 SUGGS, LACEY	09:05		
	04:22	15-18	SUB OUT: MCBRIDE, PARIS
	04:22		SUB OUT: DICKEY, JASMINE
	04:22		SUB OUT: DEFREESE, SAMONE
	04:22		SUB OUT: ENABOSI, NICOLE
	04:22		SUB IN: GONZALES, ABBY
	04:22		SUB IN: JOHNSON, TEE
	04:22		SUB IN: OLEARY, LIZZIE
	04:22		SUB IN: LAWRENCE, REBECCA
SUB OUT: 2 CRISP, MORIAH	04:22		
SUB OUT: 32 OBUSEK, CAROL-ANNE	04:22		
SUB IN: 1 POWELL, PAIGE	04:22		
SUB IN: 22 THYBULLE, ZHANEIA	04:22		
SUB OUT: 1 POWELL, PAIGE	04:08	16-18	
SUB IN: 32 OBUSEK, CAROL-ANNE	04:08		
	03:58	16-18	SUB OUT: LAWRENCE, REBECCA
	03:58		SUB IN: ENABOSI, NICOLE
SUB OUT: 10 VASON, AHYIONA	03:58		
SUB IN: 2 CRISP, MORIAH	03:58		
	03:27	16-18	SUB OUT: GONZALES, ABBY
	03:27		SUB IN: MCBRIDE, PARIS
	01:47	19-20	SUB OUT: MCBRIDE, PARIS
	01:47		SUB OUT: OLEARY, LIZZIE
	01:47		SUB OUT: SHAW, KAYLA
	01:47		SUB IN: GONZALES, ABBY
	01:47		SUB IN: DICKEY, JASMINE
	01:47		SUB IN: DEFREESE, SAMONE
SUB OUT: 22 THYBULLE, ZHANEIA	01:19	19-20	
SUB IN: 10 VASON, AHYIONA	01:19		
SUB OUT: 32 OBUSEK, CAROL-ANNE	01:09	19-20	
SUB IN: 1 POWELL, PAIGE	01:09		

UNCW 21, Delaware 22

Official Substitutions Log
UNCW vs Delaware
Period 3
March 07, 2020 at Bob Carpenter Center - Newark



VISITORS: UNCW	Time	Score	HOME: Delaware
2 CRISP, MORIAH			2 GONZALES, ABBY
5 SMITH, GIGI			20 DICKEY, JASMINE
10 VASON, AHYIONA			22 DEFRESE, SAMONE
13 SUGGS, LACEY			25 LAWRENCE, REBECCA
32 OBUSEK, CAROL-ANNE			33 ENABOSI, NICOLE
	10:00	-	SUB OUT: JOHNSON, TEE
	10:00		SUB IN: LAWRENCE, REBECCA
	08:47	25-22	SUB OUT: DICKEY, JASMINE
	08:47		SUB IN: SHAW, KAYLA
	08:20	25-24	SUB OUT: LAWRENCE, REBECCA
	08:20		SUB IN: DICKEY, JASMINE
	06:01	27-26	SUB OUT: GONZALES, ABBY
	06:01		SUB IN: MCBRIDE, PARIS
SUB OUT: 1 POWELL, PAIGE	06:01		
SUB IN: 32 OBUSEK, CAROL-ANNE	06:01		
	05:27	27-28	SUB OUT: SHAW, KAYLA
	05:27		SUB IN: JOHNSON, TEE
SUB OUT: 5 SMITH, GIGI	04:25	27-30	
SUB OUT: 32 OBUSEK, CAROL-ANNE	04:25		
SUB IN: 1 POWELL, PAIGE	04:25		
SUB IN: 14 TATE, TIMBER	04:25		
	02:23	32-32	SUB OUT: MCBRIDE, PARIS
	02:23		SUB OUT: JOHNSON, TEE
	02:23		SUB IN: GONZALES, ABBY
	02:23		SUB IN: SHAW, KAYLA
SUB OUT: 10 VASON, AHYIONA	02:23		
SUB IN: 5 SMITH, GIGI	02:23		
SUB OUT: 1 POWELL, PAIGE	01:38	35-36	
SUB IN: 32 OBUSEK, CAROL-ANNE	01:38		
	01:06	38-37	SUB OUT: DICKEY, JASMINE
	01:06		SUB IN: LAWRENCE, REBECCA
SUB OUT: 32 OBUSEK, CAROL-ANNE	01:06		
SUB IN: 4 MUNOZ, JESSICA	01:06		

UNCW 40, Delaware 39

Official Substitutions Log
UNCW vs Delaware
Period 4
March 07, 2020 at Bob Carpenter Center - Newark



VISITORS: UNCW	Time	Score	HOME: Delaware
2 CRISP, MORIAH			2 GONZALES, ABBY
5 SMITH, GIGI			20 DICKEY, JASMINE
10 VASON, AHYIONA			22 DEFREESE, SAMONE
13 SUGGS, LACEY			25 LAWRENCE, REBECCA
32 OBUSEK, CAROL-ANNE			33 ENABOSI, NICOLE
	09:42	40-41	SUB OUT: SHAW, KAYLA
	09:42		SUB IN: MCBRIDE, PARIS
SUB OUT: 14 TATE, TIMBER	08:54	42-41	
SUB IN: 10 VASON, AHYIONA	08:54		
	07:14	47-43	SUB OUT: LAWRENCE, REBECCA
	07:14		SUB IN: DICKEY, JASMINE
	07:14		SUB OUT: GONZALES, ABBY
	07:14		SUB IN: SHAW, KAYLA
SUB OUT: 10 VASON, AHYIONA	05:50	51-45	
SUB IN: 14 TATE, TIMBER	05:50		
	04:37	51-49	SUB OUT: SHAW, KAYLA
	04:37		SUB IN: JOHNSON, TEE
SUB OUT: 4 MUNOZ, JESSICA	04:37		
SUB IN: 1 POWELL, PAIGE	04:37		
	03:46	51-51	SUB OUT: JOHNSON, TEE
	03:46		SUB IN: GONZALES, ABBY
	03:35	51-51	SUB OUT: GONZALES, ABBY
	03:35		SUB IN: JOHNSON, TEE
SUB OUT: 1 POWELL, PAIGE	03:35		
SUB IN: 32 OBUSEK, CAROL-ANNE	03:35		
SUB OUT: 14 TATE, TIMBER	02:51	51-54	
SUB IN: 10 VASON, AHYIONA	02:51		
	02:32	51-54	SUB OUT: JOHNSON, TEE
	02:32		SUB IN: GONZALES, ABBY
	00:29	54-58	SUB OUT: GONZALES, ABBY
	00:29		SUB IN: JOHNSON, TEE
	00:26	57-58	SUB OUT: JOHNSON, TEE
	00:26		SUB IN: GONZALES, ABBY
SUB OUT: 32 OBUSEK, CAROL-ANNE	00:26		
SUB IN: 22 THYBULLE, ZHANEIA	00:26		
SUB OUT: 22 THYBULLE, ZHANEIA	00:25	57-58	
SUB IN: 32 OBUSEK, CAROL-ANNE	00:25		
	00:25		SUB OUT: GONZALES, ABBY
	00:25		SUB IN: JOHNSON, TEE
	00:07	57-59	SUB OUT: JOHNSON, TEE
	00:07		SUB IN: GONZALES, ABBY
SUB OUT: 32 OBUSEK, CAROL-ANNE	00:07		
SUB IN: 22 THYBULLE, ZHANEIA	00:07		
SUB OUT: 22 THYBULLE, ZHANEIA	00:07		
SUB IN: 14 TATE, TIMBER	00:07		

UNCW 57, Delaware 61

Official Shot Chart
UNCW vs Delaware
 PERIOD 1 Shots
 March 07, 2020 at Bob Carpenter Center - Newark

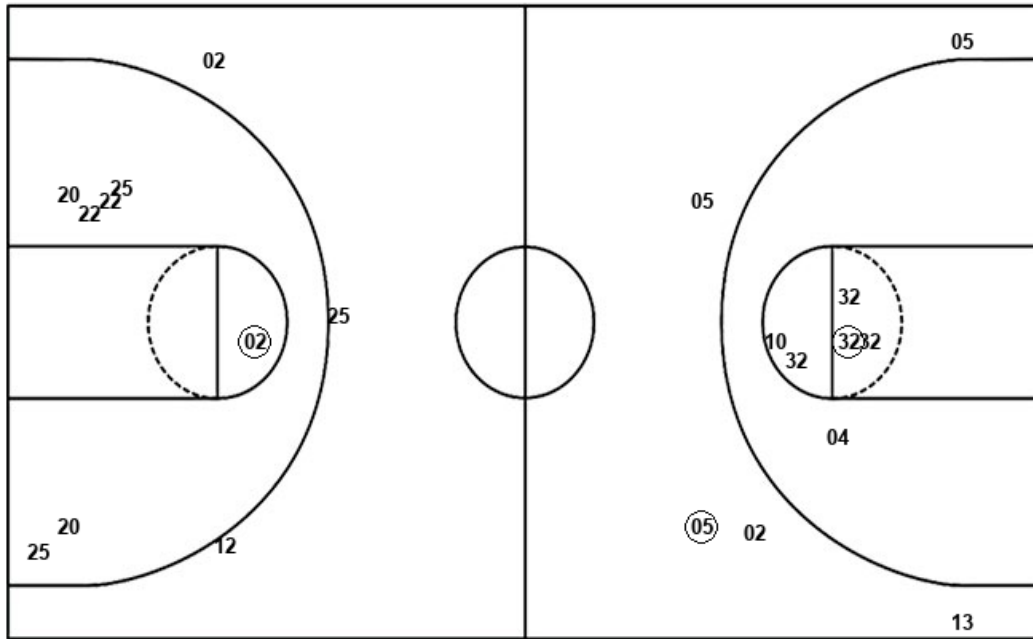


Delaware

UNCW

Layups
 33 20 (20) (33)

Dunks



Layups
 10 (05) (05) 13 01

Dunks

Del : Period 1	Made	Att	Pct
Layups	2	4	50.0
Dunks	0	0	0
2PT Field Goals	3	11	27.3
3PT Field Goals	0	3	00.0
Total Field Goals	3	14	21.4

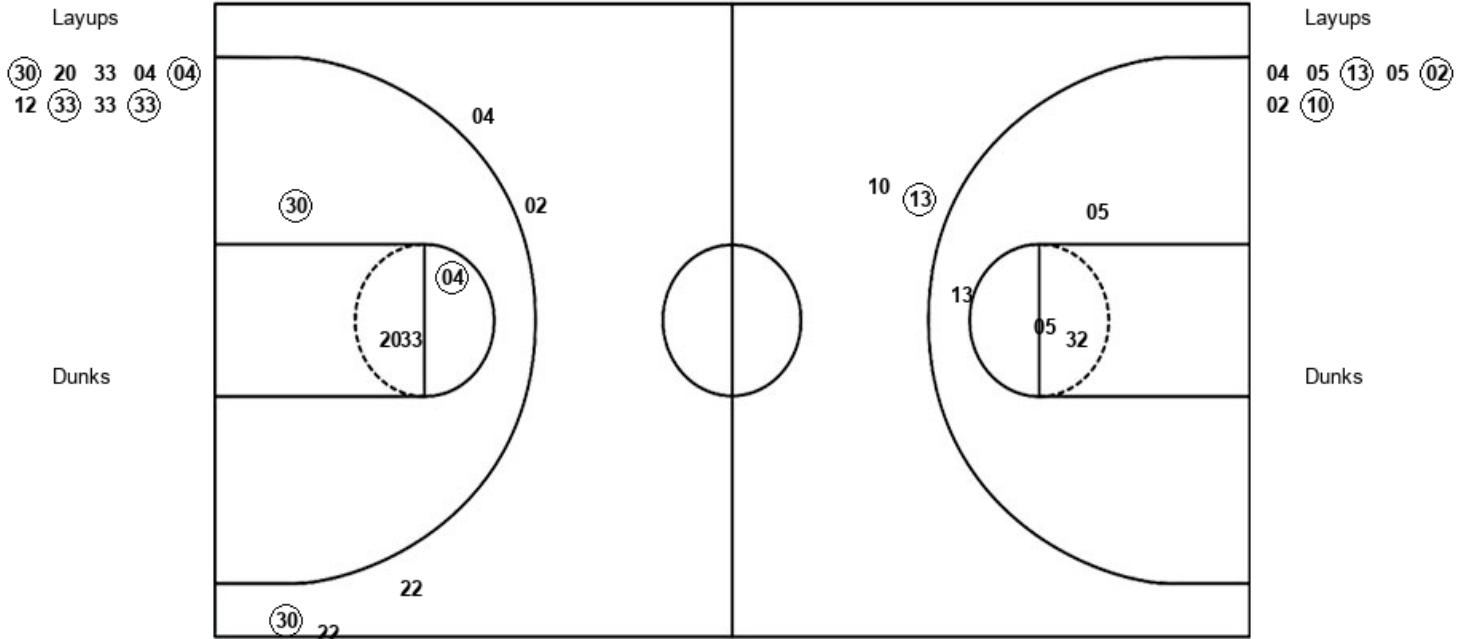
NCW : Period 1	Made	Att	Pct
Layups	2	5	40.0
Dunks	0	0	0
2PT Field Goals	3	11	27.3
3PT Field Goals	1	5	20.0
Total Field Goals	4	16	25.0

Official Shot Chart
UNCW vs Delaware
 PERIOD 2 Shots
 March 07, 2020 at Bob Carpenter Center - Newark



Delaware

UNCW



Del : Period 2	Made	Att	Pct
Layups	4	9	44.4
Dunks	0	0	0
2PT Field Goals	6	13	46.2
3PT Field Goals	1	5	20.0
Total Field Goals	7	18	38.9

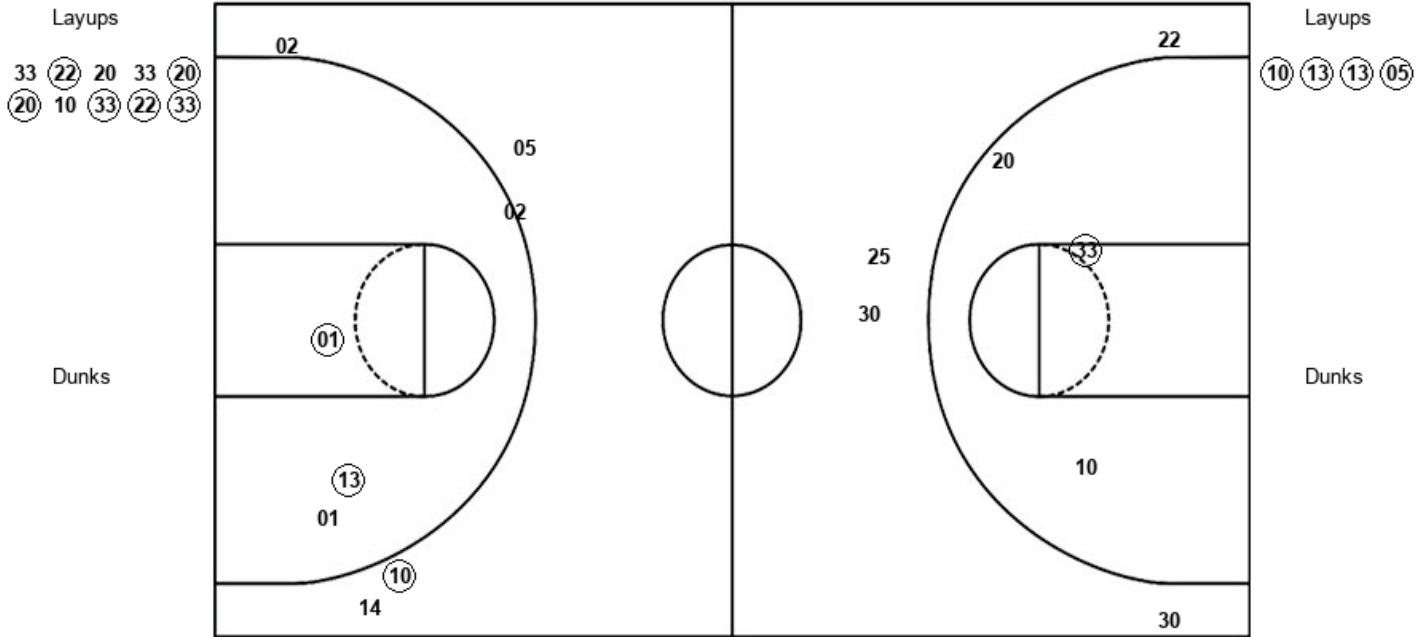
NCW : Period 2	Made	Att	Pct
Layups	3	7	42.9
Dunks	0	0	0
2PT Field Goals	3	11	27.3
3PT Field Goals	1	2	50.0
Total Field Goals	4	13	30.8

Official Shot Chart
UNCW vs Delaware
 PERIOD 3 Shots
 March 07, 2020 at Bob Carpenter Center - Newark



Delaware

UNCW



Del : Period 3	Made	Att	Pct
Layups	6	10	60.0
Dunks	0	0	0
2PT Field Goals	7	13	53.8
3PT Field Goals	0	4	00.0
Total Field Goals	7	17	41.2

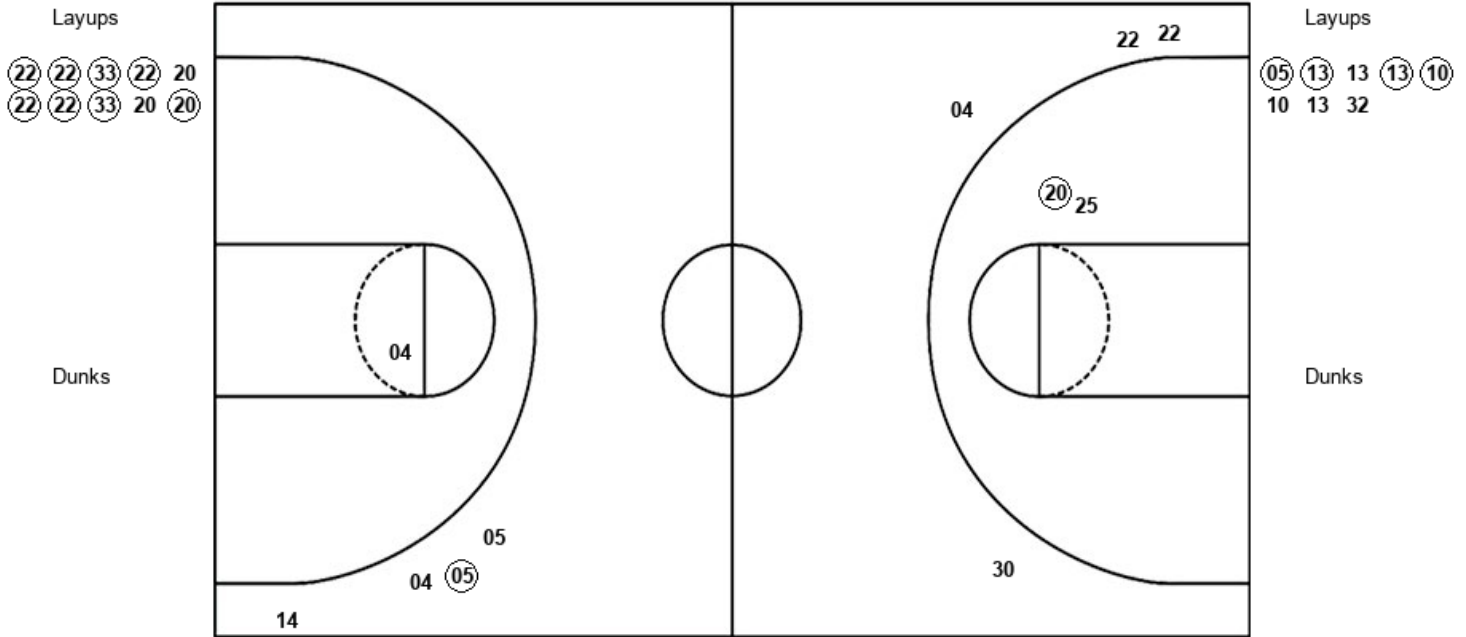
NCW : Period 3	Made	Att	Pct
Layups	4	4	100.0
Dunks	0	0	0
2PT Field Goals	6	7	85.7
3PT Field Goals	1	5	20.0
Total Field Goals	7	12	58.3

Official Shot Chart
UNCW vs Delaware
PERIOD 4 Shots
 March 07, 2020 at Bob Carpenter Center - Newark



Delaware

UNCW



Del : Period 4	Made	Att	Pct
Layups	8	10	80.0
Dunks	0	0	0
2PT Field Goals	9	12	75.0
3PT Field Goals	0	4	00.0
Total Field Goals	9	16	56.3

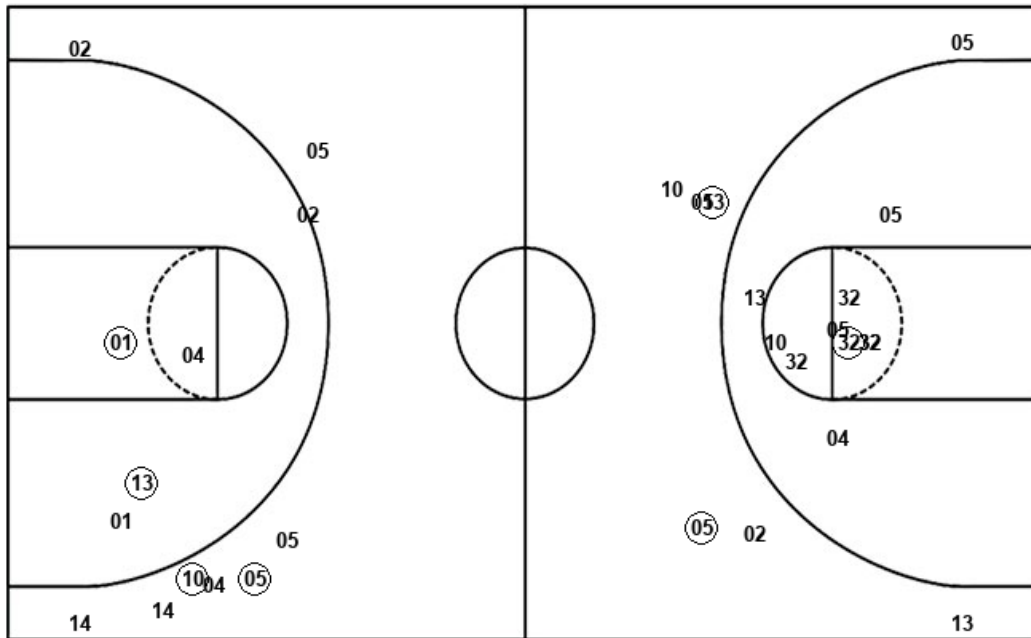
NCW : Period 4	Made	Att	Pct
Layups	4	8	50.0
Dunks	0	0	0
2PT Field Goals	4	9	44.4
3PT Field Goals	1	4	25.0
Total Field Goals	5	13	38.5

Official Shot Chart
UNCW vs Delaware
UNCW Team Shots
 March 07, 2020 at Bob Carpenter Center - Newark



Layups

Dunks



Layups

Dunks

10 05 05 13 01
 04 05 13 05 02
 02 10 10 13 13
 05 05 13 13 13
 10 10 13 32

NCW : Period 1	Made	Att	Pct
Layups	2	5	40.0
Dunks	0	0	0
2PT Field Goals	3	11	27.3
3PT Field Goals	1	5	20.0
Total Field Goals	4	16	25.0

NCW : Period 3	Made	Att	Pct
Layups	4	4	100.0
Dunks	0	0	0
2PT Field Goals	6	7	85.7
3PT Field Goals	1	5	20.0
Total Field Goals	7	12	58.3

NCW : Period 2	Made	Att	Pct
Layups	3	7	42.9
Dunks	0	0	0
2PT Field Goals	3	11	27.3
3PT Field Goals	1	2	50.0
Total Field Goals	4	13	30.8

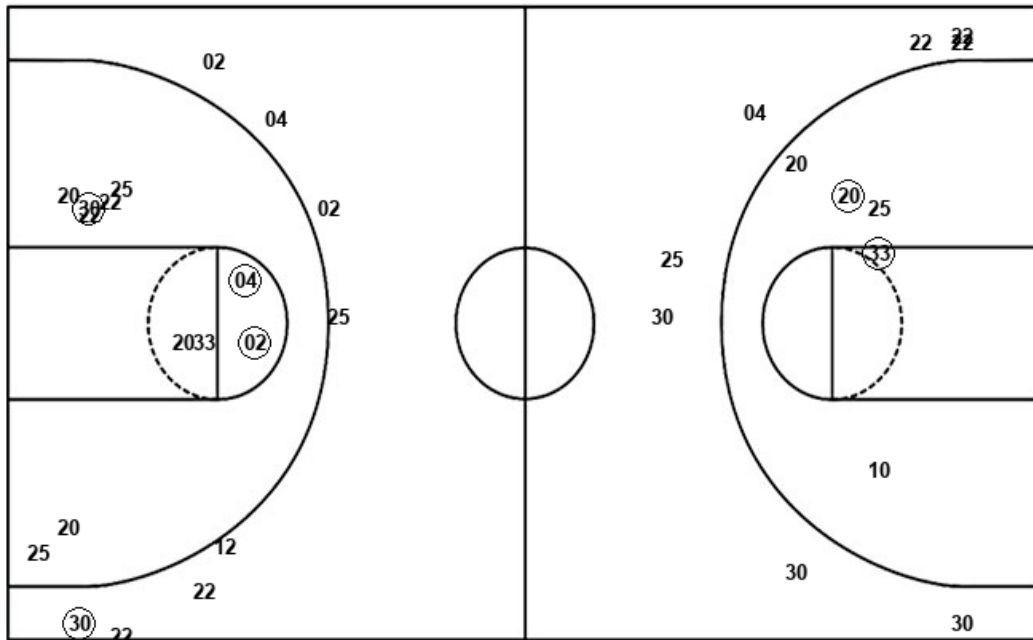
NCW : Period 4	Made	Att	Pct
Layups	4	8	50.0
Dunks	0	0	0
2PT Field Goals	4	9	44.4
3PT Field Goals	1	4	25.0
Total Field Goals	5	13	38.5

Official Shot Chart
UNCW vs Delaware
 Delaware Team Shots
 March 07, 2020 at Bob Carpenter Center - Newark



Layups

Dunks



Layups

Dunks

33 20 (20) (33) (30)
 20 33 04 (04) 12
 (33) 33 (33) 33 (22)
 20 33 (20) (20) 10
 (33) (22) (33) (22) (22)
 (33) (22) 20 (22) (22)
 (33) 20 (20)

Del : Period 1	Made	Att	Pct
Layups	2	4	50.0
Dunks	0	0	0
2PT Field Goals	3	11	27.3
3PT Field Goals	0	3	00.0
Total Field Goals	3	14	21.4

Del : Period 3	Made	Att	Pct
Layups	6	10	60.0
Dunks	0	0	0
2PT Field Goals	7	13	53.8
3PT Field Goals	0	4	00.0
Total Field Goals	7	17	41.2

Del : Period 2	Made	Att	Pct
Layups	4	9	44.4
Dunks	0	0	0
2PT Field Goals	6	13	46.2
3PT Field Goals	1	5	20.0
Total Field Goals	7	18	38.9

Del : Period 4	Made	Att	Pct
Layups	8	10	80.0
Dunks	0	0	0
2PT Field Goals	9	12	75.0
3PT Field Goals	0	4	00.0
Total Field Goals	9	16	56.3