

FINAL SCORE**James Madison****60****Delaware****39**

January 31, 2020 • Bob Carpenter Center - Newark

FINAL STATISTICS

Official Box Score
James Madison vs Delaware
Game Totals -- Final Statistics
January 31, 2020 at Bob Carpenter Center - Newark



James Madison 60

No.	Player	S	Pts	FG	3FG	FT	OR	DR	TR	PF	A	TO	Blk	Stl	Min	+/-
03	SMALLS, KAMIAH	G	18	5-10	2-5	6-8	1	11	12	1	2	1	1	2	30	10
15	BARRIER, LEXIE	G	14	6-12	2-6	0-0	0	3	3	2	1	3	1	1	32	15
30	JEFFERSON, KIKI	G	6	1-6	1-3	3-4	3	1	4	2	3	2	1	0	26	21
31	COOPER-WILLIAMS, KAYLA	C	2	1-2	0-0	0-0	2	5	7	2	0	1	3	0	25	17
55	BENITEZ, JACKIE	G	14	5-13	2-6	2-2	0	2	2	1	2	4	1	5	34	25
00	OPPENHEIMER, NIKKI	G	0	0-0	0-0	0-0	0	0	0	0	0	0	0	0	1	0
02	CARODINE, JAYLIN	G	0	0-2	0-0	0-0	0	0	0	0	2	1	0	0	11	6
04	GREEN, MADISON	G	0	0-1	0-1	0-0	0	2	2	3	1	3	0	1	13	12
14	MARCISZEWSKI, ELEANORE	G	0	0-1	0-0	0-0	0	0	0	0	0	0	0	0	1	0
21	TUCKER, RAYNE	F	5	2-2	0-0	1-2	3	3	6	2	0	2	0	1	21	5
42	MERRITT, DEVON	F	1	0-1	0-0	1-2	0	0	0	0	0	0	0	0	7	-6
	TEAM						0	5	5	0		0				
TOTALS			60	20-50	7-21	13-18	9	32	41	13	11	17	7	10	200	

Shooting By Period

Period	FG	FG%	3FG	3FG%	FT	FT%
1st Qtr	9-17	53%	3-9	33%	0-0	0%
2nd Qtr	4-12	33%	1-4	25%	5-6	83%
3rd Qtr	4-9	44%	1-5	20%	2-4	50%
4th Qtr	3-12	25%	2-3	67%	6-8	75%
1st Half	13-29	45%	4-13	31%	5-6	83%
2nd Half	7-21	33%	3-8	38%	8-12	67%
Game	20-50	40.0%	7-21	33.3%	13-18	72.2%

Deadball Rebounds: 3,0

Last FG: 4th-01:42

Biggest Run: 9-0

Largest lead: By 21 at 4th-01:42

Technical Fouls: None.

Delaware 39

No.	Player	S	Pts	FG	3FG	FT	OR	DR	TR	PF	A	TO	Blk	Stl	Min	+/-
02	GONZALES, ABBY	G	7	3-12	1-6	0-0	0	2	2	0	2	2	0	1	31	-23
20	DICKEY, JASMINE	G	8	4-20	0-0	0-2	4	11	15	3	3	3	0	1	37	-13
22	DEFREESE, SAMONE	F	4	2-4	0-1	0-0	4	1	5	2	0	1	0	0	18	-15
30	SHAW, KAYLA	G	5	2-9	1-7	0-0	0	1	1	2	2	0	0	0	28	-18
33	ENABOSI, NICOLE	F	7	1-6	0-0	5-5	5	1	6	4	0	4	1	0	25	-13
03	WADE, BRYNN	F	0	0-0	0-0	0-0	0	1	1	0	0	1	1	0	9	-12
04	MCBRIDE, PARIS	G	2	1-3	0-1	0-0	0	0	0	1	0	1	0	1	11	1
10	JOHNSON, TEE	G	2	1-11	0-0	0-2	4	1	5	3	0	4	0	3	16	-7
12	OLEARY, LIZZIE	F	4	2-6	0-1	0-0	0	1	1	5	2	0	0	1	20	5
25	LAWRENCE, REBECCA	F	0	0-1	0-0	0-0	1	0	1	0	0	0	1	1	5	-10
	TEAM						8	4	12	0		1				
TOTALS			39	16-72	2-16	5-9	26	23	49	20	9	17	3	8	200	

Shooting By Period

Period	FG	FG%	3FG	3FG%	FT	FT%
1st Qtr	5-16	31%	2-4	50%	2-2	100%
2nd Qtr	5-19	26%	0-5	00%	0-0	0%
3rd Qtr	3-20	15%	0-2	00%	2-4	50%
4th Qtr	3-17	18%	0-5	00%	1-3	33%
1st Half	10-35	29%	2-9	22%	2-2	100%
2nd Half	6-37	16%	0-7	00%	3-7	43%
Game	16-72	22.2%	2-16	12.5%	5-9	55.6%

Deadball Rebounds: 2,0

Last FG: 4th-03:49

Biggest Run: 7-0

Largest lead: By 3 at 1st-09:54

Technical Fouls: None.

Game Notes:

Officials: Thomas Danaher, Geraldine Smith, Carmen Portorreal

Start Time: 07:00 PM ET

Conference Game;

Score	1st	2nd	3rd	4th	TOT
JMU	21	14	11	14	60
Del	14	10	8	7	39

JMU led for 39:01. Del led for 0:53.

Game was tied for 0:06.

Times tied: 0 Lead Changes: 1

Points from	JMU	Del
In the Paint	16	20
Off Turns	14	12
2nd Chance	11	10
Fast Break	6	4
Bench	6	8

Official Box Score
James Madison vs Delaware
First Half Statistics Only
January 31, 2020 at Bob Carpenter Center - Newark



James Madison 35

No.	Player	S	Pts	FG	3FG	FT	OR	DR	TR	PF	A	TO	Blk	Stl	Min	+/-
00	OPPENHEIMER, NIKKI	G	0	0-0	0-0	0-0	0	0	0	0	0	0	0	0	0	0
02	CARODINE, JAYLIN	G	0	0-2	0-0	0-0	0	0	0	0	1	0	0	0	5	4
03	SMALLS, KAMIAH	G	10	3-5	2-3	2-2	1	6	7	0	1	1	1	0	15	7
04	GREEN, MADISON	G	0	0-1	0-1	0-0	0	1	1	2	1	0	0	1	7	2
14	MARCISZEWSKI, ELEANORE	G	0	0-0	0-0	0-0	0	0	0	0	0	0	0	0	0	0
15	BARRIER, LEXIE	G	9	4-6	1-3	0-0	0	1	1	0	1	1	1	1	15	9
21	TUCKER, RAYNE	F	4	2-2	0-0	0-0	2	1	3	1	0	1	0	0	11	3
30	JEFFERSON, KIKI	G	3	1-3	1-3	0-0	1	0	1	0	2	0	0	0	13	11
31	COOPER-WILLIAMS, KAYLA	C	2	1-2	0-0	0-0	1	3	4	0	0	1	0	0	13	8
42	MERRITT, DEVON	F	1	0-1	0-0	1-2	0	0	0	0	0	0	0	0	4	-2
55	BENITEZ, JACKIE	G	6	2-7	0-3	2-2	0	1	1	1	1	3	0	3	17	13
	TEAM		0	0-0	0-0	0-0	0	1	1	0	0	0	0	0	0	0
TOTALS			35	13-29	4-13	5-6	5	14	19	4	7	7	2	5	100	

Shooting By Period

Period	FG	FG%	3FG	3FG%	FT	FT%
1st Qtr	9-17	53%	3-9	33%	0-0	0%
2nd Qtr	4-12	33%	1-4	25%	5-6	83%
1st Half	13-29	45%	4-13	31%	5-6	83%
Game	20-50	40.0%	7-21	33.3%	13-18	72.2%

Deadball Rebounds: 3,0

Last FG Half: JMU 2nd-02:16

Delaware 24

No.	Player	S	Pts	FG	3FG	FT	OR	DR	TR	PF	A	TO	Blk	Stl	Min	+/-
02	GONZALES, ABBY	G	7	3-6	1-3	0-0	0	1	1	0	2	1	0	1	19	-9
03	WADE, BRYNN	F	0	0-0	0-0	0-0	0	0	0	0	0	0	0	0	5	-5
04	MCBRIDE, PARIS	G	0	0-0	0-0	0-0	0	0	0	0	0	1	0	0	3	-3
10	JOHNSON, TEE	G	0	0-5	0-0	0-0	1	1	2	1	0	1	0	0	7	3
12	OLEARY, LIZZIE	F	2	1-4	0-1	0-0	0	0	0	1	0	0	0	1	9	0
20	DICKEY, JASMINE	G	6	3-10	0-0	0-0	3	5	8	1	1	1	0	1	20	-11
22	DEFREESE, SAMONE	F	2	1-2	0-1	0-0	0	0	0	2	0	1	0	0	8	-9
25	LAWRENCE, REBECCA	F	0	0-0	0-0	0-0	1	0	1	0	0	0	1	0	2	-2
30	SHAW, KAYLA	G	5	2-6	1-4	0-0	0	1	1	1	2	0	0	0	13	-10
33	ENABOSI, NICOLE	F	2	0-2	0-0	2-2	4	1	5	2	0	3	1	0	13	-9
	TEAM		0	0-0	0-0	0-0	2	2	4	0	0	1	0	0	0	0
TOTALS			24	10-35	2-9	2-2	11	11	22	8	5	9	2	3	100	

Shooting By Period

Period	FG	FG%	3FG	3FG%	FT	FT%
1st Qtr	5-16	31%	2-4	50%	2-2	100%
2nd Qtr	5-19	26%	0-5	00%	0-0	0%
1st Half	10-35	29%	2-9	22%	2-2	100%
Game	16-72	22.2%	2-16	12.5%	5-9	55.6%

Deadball Rebounds: 2,0

Last FG Half: Del 2nd-02:36

Game Notes:

Officials: Thomas Danaher, Geraldine Smith, Carmen Portorreal

Start Time: 07:00 PM ET

Conference Game;

Score	1st	2nd	3rd	4th	TOT
JMU	21	14	11	14	60
Del	14	10	8	7	39

Points from (This Period)	JMU	Del
In the Paint	12	10
Off Turns	4	8
2nd Chance	5	6
Fast Break	4	4
Bench	5	2

Official Box Score
James Madison vs Delaware
First Quarter Statistics Only
January 31, 2020 at Bob Carpenter Center - Newark



James Madison 21

No.	Player	S	Pts	FG	3FG	FT	OR	DR	TR	PF	A	TO	Blk	Stl	Min	+/-
03	SMALLS, KAMIAH	G	3	1-2	1-2	0-0	1	2	3	0	1	0	1	0	7	5
15	BARRIER, LEXIE	G	9	4-4	1-1	0-0	0	1	1	0	1	1	1	1	9	5
30	JEFFERSON, KIKI	G	3	1-2	1-2	0-0	1	0	1	0	2	0	0	0	8	9
31	COOPER-WILLIAMS, KAYLA	C	2	1-1	0-0	0-0	0	2	2	0	0	0	0	0	6	7
55	BENITEZ, JACKIE	G	2	1-4	0-3	0-0	0	1	1	1	1	2	0	2	7	9
00	OPPENHEIMER, NIKKI	G	0	0-0	0-0	0-0	0	0	0	0	0	0	0	0	0	0
02	CARODINE, JAYLIN	G	0	0-1	0-0	0-0	0	0	0	0	1	0	0	0	3	2
04	GREEN, MADISON	G	0	0-1	0-1	0-0	0	0	0	1	1	0	0	1	5	0
14	MARCISZEWSKI, ELEANORE	G	0	0-0	0-0	0-0	0	0	0	0	0	0	0	0	0	0
21	TUCKER, RAYNE	F	2	1-1	0-0	0-0	1	1	2	1	0	0	0	0	4	0
42	MERRITT, DEVON	F	0	0-1	0-0	0-0	0	0	0	0	0	0	0	0	1	-2
	TEAM						0	1	1	0		0				
TOTALS			21	9-17	3-9	0-0	3	8	11	3	7	3	2	4	50	

Shooting By Period

Period	FG	FG%	3FG	3FG%	FT	FT%
1st Qtr	9-17	53%	3-9	33%	0-0	0%
2nd Qtr	4-12	33%	1-4	25%	5-6	83%
1st Half	9-17	53%	3-9	33%	0-0	0%
1st Half	13-29	45%	4-13	31%	5-6	83%
Game	20-50	40.0%	7-21	33.3%	13-18	72.2%

Deadball Rebounds: 3,0

Delaware 14

No.	Player	S	Pts	FG	3FG	FT	OR	DR	TR	PF	A	TO	Blk	Stl	Min	+/-
02	GONZALES, ABBY	G	5	2-2	1-1	0-0	0	0	0	0	1	1	0	0	10	-7
20	DICKEY, JASMINE	G	0	0-2	0-0	0-0	0	3	3	0	1	1	0	1	10	-7
22	DEFREESE, SAMONE	F	2	1-2	0-1	0-0	0	0	0	2	0	1	0	0	8	-9
30	SHAW, KAYLA	G	3	1-3	1-2	0-0	0	0	0	0	2	0	0	0	7	-7
33	ENABOSI, NICOLE	F	2	0-1	0-0	2-2	1	0	1	1	0	1	1	0	9	-9
03	WADE, BRYNN	F	0	0-0	0-0	0-0	0	0	0	0	0	0	0	0	0	0
04	MCBRIDE, PARIS	G	0	0-0	0-0	0-0	0	0	0	0	0	0	0	0	0	0
10	JOHNSON, TEE	G	0	0-5	0-0	0-0	1	1	2	0	0	0	0	0	5	2
12	OLEARY, LIZZIE	F	2	1-1	0-0	0-0	0	0	0	0	0	0	0	0	1	2
25	LAWRENCE, REBECCA	F	0	0-0	0-0	0-0	0	0	0	0	0	0	0	0	0	0
	TEAM						1	1	2	0		0				
TOTALS			14	5-16	2-4	2-2	3	5	8	3	4	4	1	1	50	

Shooting By Period

Period	FG	FG%	3FG	3FG%	FT	FT%
1st Qtr	5-16	31%	2-4	50%	2-2	100%
2nd Qtr	5-19	26%	0-5	00%	0-0	0%
1st Half	5-16	31%	2-4	50%	2-2	100%
1st Half	10-35	29%	2-9	22%	2-2	100%
Game	16-72	22.2%	2-16	12.5%	5-9	55.6%

Deadball Rebounds: 2,0

Game Notes:

Officials: Thomas Danaher, Geraldine Smith, Carmen Portorreal

Start Time: 07:00 PM ET

Conference Game;

Score	1st	2nd	3rd	4th	TOT
JMU	21	14	11	14	60
Del	14	10	8	7	39

Points from (This Period)	JMU	Del
In the Paint	6	2
Off Turns	4	4
2nd Chance	3	0
Fast Break	2	2
Bench	2	2

Official Play-By-Play
James Madison vs Delaware
First Quarter
January 31, 2020 at Bob Carpenter Center - Newark



Period 1

Starters:

James Madison: 3 SMALLS,KAMIAH (G); 15 BARRIER,LEXIE (G); 30 JEFFERSON,KIKI (G); 31 COOPER-WILLIAMS,KAYLA (C); 55 BENITEZ,JACKIE (G);

Delaware: 2 GONZALES,ABBY (G); 20 DICKEY,JASMINE (G); 22 DEFREESE,SAMONE (F); 30 SHAW,KAYLA (G); 33 ENABOSI,NICOLE (F);

Time	VISITORS: James Madison	Score	Margin	HOME: Delaware
09:54		3-0	H 3	GOOD! 3PTR by GONZALES, ABBY
09:54				ASSIST by SHAW, KAYLA
09:29	GOOD! JUMPER by BARRIER, LEXIE	3-2	H 1	
09:29	ASSIST by BENITEZ, JACKIE			
09:15				MISSED JUMPER by SHAW, KAYLA
09:15	BLOCK by SMALLS, KAMIAH			
09:10	REBOUND (DEF) by SMALLS, KAMIAH			
09:01	GOOD! 3PTR by SMALLS, KAMIAH	3-5	V 2	
08:44				MISSED JUMPER by ENABOSI, NICOLE
08:38	REBOUND (DEF) by TEAM			
08:38				FOUL (PERSONAL) by DEFREESE, SAMONE
08:30	GOOD! LAYUP by BARRIER, LEXIE	3-7	V 4	
08:30	ASSIST by SMALLS, KAMIAH			
08:10				MISSED JUMPER by DICKEY, JASMINE
08:05	REBOUND (DEF) by SMALLS, KAMIAH			
08:00	MISSED 3PTR by BENITEZ, JACKIE			
07:55				REBOUND (DEF) by DICKEY, JASMINE
07:40				MISSED 3PTR by SHAW, KAYLA
07:36	REBOUND (DEF) by BARRIER, LEXIE			
07:29	GOOD! JUMPER by COOPER-WILLIAMS, KAYLA	3-9	V 6	
07:29	ASSIST by BARRIER, LEXIE			
07:18				TURNOVER (BADPASS) by GONZALES, ABBY
07:18	STEAL by BENITEZ, JACKIE			
07:05	TURNOVER (TRAVEL) by BARRIER, LEXIE			
07:00		5-9	V 4	GOOD! JUMPER by DEFREESE, SAMONE
07:00				ASSIST by DICKEY, JASMINE
06:29	MISSED 3PTR by BENITEZ, JACKIE			
06:26	REBOUND (OFF) by JEFFERSON, KIKI			
06:25	GOOD! 3PTR by BARRIER, LEXIE	5-12	V 7	
06:25	ASSIST by JEFFERSON, KIKI			
05:58				TURNOVER (BADPASS) by DEFREESE, SAMONE
05:58	STEAL by BENITEZ, JACKIE			
05:56	GOOD! LAYUP by BENITEZ, JACKIE [FB]	5-14	V 9	
05:55				
05:55	SUB OUT: JEFFERSON, KIKI			
05:55	SUB OUT: COOPER-WILLIAMS, KAYLA			
05:55	SUB IN: GREEN, MADISON			
05:55	SUB IN: TUCKER, RAYNE			
05:44				TURNOVER (LOSTBALL) by DICKEY, JASMINE
05:44	STEAL by GREEN, MADISON			
05:38	MISSED 3PTR by SMALLS, KAMIAH			
05:35	REBOUND (OFF) by TUCKER, RAYNE			
05:21	MISSED 3PTR by BENITEZ, JACKIE			
05:17	REBOUND (OFF) by SMALLS, KAMIAH			
05:12	TURNOVER (BADPASS) by BENITEZ, JACKIE			
05:12				STEAL by DICKEY, JASMINE
05:05	FOUL (PERSONAL) by TUCKER, RAYNE			
05:05				SUB OUT: SHAW, KAYLA
05:05				SUB IN: JOHNSON, TEE
05:05		6-14	V 8	GOOD! FT by ENABOSI, NICOLE [FB]
05:05		7-14	V 7	GOOD! FT by ENABOSI, NICOLE [FB]
04:36	MISSED 3PTR by GREEN, MADISON			
04:32				REBOUND (DEF) by DICKEY, JASMINE
04:13				MISSED 3PTR by DEFREESE, SAMONE
04:10				REBOUND (OFF) by JOHNSON, TEE
03:56	FOUL (PERSONAL) by GREEN, MADISON			
03:56	SUB OUT: BARRIER, LEXIE			
03:56	SUB IN: CARODINE, JAYLIN			
03:56	SUB OUT: SMALLS, KAMIAH			
03:56	SUB IN: JEFFERSON, KIKI			
03:54				MISSED JUMPER by JOHNSON, TEE
03:50				REBOUND (OFF) by ENABOSI, NICOLE
03:47				MISSED JUMPER by JOHNSON, TEE
03:44	REBOUND (DEF) by TUCKER, RAYNE			
03:34	GOOD! LAYUP by TUCKER, RAYNE	7-16	V 9	
03:34	ASSIST by JEFFERSON, KIKI			
03:16				MISSED JUMPER by JOHNSON, TEE
03:13	REBOUND (DEF) by BENITEZ, JACKIE			
02:52	FOUL (OFF) by BENITEZ, JACKIE			
02:52	TURNOVER (OFFENSIVE) by BENITEZ, JACKIE			

Time	VISITORS: James Madison	Score	Margin	HOME: Delaware
02:52	SUB OUT: BENITEZ, JACKIE			
02:52	SUB IN: BARRIER, LEXIE			
02:23				TURNOVER (LOSTBALL) by ENABOSI, NICOLE
02:23	STEAL by BARRIER, LEXIE			
02:19				FOUL (PERSONAL) by DEFREESE, SAMONE
02:19				SUB OUT: DEFREESE, SAMONE
02:19				SUB IN: SHAW, KAYLA
02:19	SUB OUT: TUCKER, RAYNE			
02:19	SUB IN: COOPER-WILLIAMS, KAYLA			
02:10				FOUL (PERSONAL) by ENABOSI, NICOLE
02:07	GOOD! JUMPER by BARRIER, LEXIE	7-18	V 11	
02:07	ASSIST by GREEN, MADISON			
01:59		9-18	V 9	GOOD! JUMPER by GONZALES, ABBY [PNT]
01:49	GOOD! 3PTR by JEFFERSON, KIKI	9-21	V 12	
01:49	ASSIST by CARODINE, JAYLIN			
01:39		12-21	V 9	GOOD! 3PTR by SHAW, KAYLA
01:39				ASSIST by GONZALES, ABBY
01:20	MISSED LAYUP by CARODINE, JAYLIN			
01:20				BLOCK by ENABOSI, NICOLE
01:20				REBOUND (DEF) by TEAM
01:20				SUB OUT: ENABOSI, NICOLE
01:20				SUB IN: OLEARY, LIZZIE
01:20	SUB OUT: CARODINE, JAYLIN			
01:20	SUB OUT: GREEN, MADISON			
01:20	SUB IN: SMALLS, KAMIAH			
01:20	SUB IN: MERRITT, DEVON			
01:01		14-21	V 7	GOOD! JUMPER by OLEARY, LIZZIE
01:01				ASSIST by SHAW, KAYLA
00:48	MISSED JUMPER by MERRITT, DEVON			
00:45				REBOUND (DEF) by JOHNSON, TEE
00:31				MISSED LAYUP by JOHNSON, TEE
00:31	BLOCK by BARRIER, LEXIE			
00:28				REBOUND (OFF) by TEAM
00:24				MISSED JUMPER by DICKEY, JASMINE
00:21	REBOUND (DEF) by COOPER-WILLIAMS, KAYLA			
00:12	MISSED 3PTR by JEFFERSON, KIKI			
00:10				REBOUND (DEF) by DICKEY, JASMINE
00:02				MISSED JUMPER by JOHNSON, TEE
00:00	REBOUND (DEF) by COOPER-WILLIAMS, KAYLA			

James Madison 21, Delaware 14

Points from (This Period)	JMU	Del
In the Paint	6	2
Off Turns	4	4
2nd Chance	3	0
Fast Break	2	2
Bench	2	2

Official Box Score
James Madison vs Delaware
Second Quarter Statistics Only
January 31, 2020 at Bob Carpenter Center - Newark



James Madison 14

No.	Player	S	Pts	FG	3FG	FT	OR	DR	TR	PF	A	TO	Blk	Stl	Min	+/-
03	SMALLS, KAMIAH	G	7	2-3	1-1	2-2	0	4	4	0	0	1	0	0	8	2
15	BARRIER, LEXIE	G	0	0-2	0-2	0-0	0	0	0	0	0	0	0	0	6	4
30	JEFFERSON, KIKI	G	0	0-1	0-1	0-0	0	0	0	0	0	0	0	0	5	2
31	COOPER-WILLIAMS, KAYLA	C	0	0-1	0-0	0-0	1	1	2	0	0	1	0	0	7	1
55	BENITEZ, JACKIE	G	4	1-3	0-0	2-2	0	0	0	0	0	1	0	1	10	4
00	OPPENHEIMER, NIKKI	G	0	0-0	0-0	0-0	0	0	0	0	0	0	0	0	0	0
02	CARODINE, JAYLIN	G	0	0-1	0-0	0-0	0	0	0	0	0	0	0	0	2	2
04	GREEN, MADISON	G	0	0-0	0-0	0-0	0	1	1	1	0	0	0	0	2	2
14	MARCISZEWSKI, ELEANORE	G	0	0-0	0-0	0-0	0	0	0	0	0	0	0	0	0	0
21	TUCKER, RAYNE	F	2	1-1	0-0	0-0	1	0	1	0	0	1	0	0	7	3
42	MERRITT, DEVON	F	1	0-0	0-0	1-2	0	0	0	0	0	0	0	0	3	0
	TEAM						0	0	0	0		0				
TOTALS			14	4-12	1-4	5-6	2	6	8	1	0	4	0	1	50	

Shooting By Period

Period	FG	FG%	3FG	3FG%	FT	FT%
3rd Qtr	4-9	44%	1-5	20%	2-4	50%
4th Qtr	3-12	25%	2-3	67%	6-8	75%
2nd Half	4-12	33%	1-4	25%	5-6	83%
2nd Half	7-21	33%	3-8	38%	8-12	67%
Game	20-50	40.0%	7-21	33.3%	13-18	72.2%

Deadball Rebounds: 3,0

Delaware 10

No.	Player	S	Pts	FG	3FG	FT	OR	DR	TR	PF	A	TO	Blk	Stl	Min	+/-
02	GONZALES, ABBY	G	2	1-4	0-2	0-0	0	1	1	0	1	0	0	1	9	-2
20	DICKEY, JASMINE	G	6	3-8	0-0	0-0	3	2	5	1	0	0	0	0	10	-4
22	DEFREESE, SAMONE	F	0	0-0	0-0	0-0	0	0	0	0	0	0	0	0	0	0
30	SHAW, KAYLA	G	2	1-3	0-2	0-0	0	1	1	1	0	0	0	0	6	-3
33	ENABOSI, NICOLE	F	0	0-1	0-0	0-0	3	1	4	1	0	2	0	0	4	0
03	WADE, BRYNN	F	0	0-0	0-0	0-0	0	0	0	0	0	0	0	0	5	-5
04	MCBRIDE, PARIS	G	0	0-0	0-0	0-0	0	0	0	0	0	1	0	0	3	-3
10	JOHNSON, TEE	G	0	0-0	0-0	0-0	0	0	0	1	0	1	0	0	2	1
12	OLEARY, LIZZIE	F	0	0-3	0-1	0-0	0	0	0	1	0	0	0	1	8	-2
25	LAWRENCE, REBECCA	F	0	0-0	0-0	0-0	1	0	1	0	0	0	1	0	2	-2
	TEAM						1	1	2	0		1				
TOTALS			10	5-19	0-5	0-0	8	6	14	5	1	5	1	2	50	

Shooting By Period

Period	FG	FG%	3FG	3FG%	FT	FT%
3rd Qtr	3-20	15%	0-2	00%	2-4	50%
4th Qtr	3-17	18%	0-5	00%	1-3	33%
2nd Half	5-19	26%	0-5	00%	0-0	0%
2nd Half	6-37	16%	0-7	00%	3-7	43%
Game	16-72	22.2%	2-16	12.5%	5-9	55.6%

Deadball Rebounds: 2,0

Game Notes:

Officials: Thomas Danaher, Geraldine Smith, Carmen Portorreal

Start Time: 07:00 PM ET

Conference Game;

Score	1st	2nd	3rd	4th	TOT
JMU	21	14	11	14	60
Del	14	10	8	7	39

Points from (This Period)	JMU	Del
In the Paint	6	8
Off Turns	0	4
2nd Chance	2	6
Fast Break	2	2
Bench	3	0

Official Play-By-Play
James Madison vs Delaware
Second Quarter
January 31, 2020 at Bob Carpenter Center - Newark



Period 2

Starters:

James Madison: 3 SMALLS,KAMIAH (G); 15 BARRIER,LEXIE (G); 30 JEFFERSON,KIKI (G); 31 COOPER-WILLIAMS,KAYLA (C); 55 BENITEZ,JACKIE (G);

Delaware: 2 GONZALES,ABBY (G); 20 DICKEY,JASMINE (G); 22 DEFREES,SAMONE (F); 30 SHAW,KAYLA (G); 33 ENABOSI,NICOLE (F);

Time	VISITORS: James Madison	Score	Margin	HOME: Delaware
10:00	SUB OUT: JEFFERSON, KIKI			
10:00	SUB IN: BENITEZ, JACKIE			
09:41	TURNOVER (BADPASS) by COOPER-WILLIAMS, KAYLA			
09:41				STEAL by GONZALES, ABBY
09:35		16-21	V 5	GOOD! LAYUP by GONZALES, ABBY [FB]
09:14				FOUL (PERSONAL) by OLEARY, LIZZIE
09:10				FOUL (PERSONAL) by DICKEY, JASMINE
09:10	MISSED FT by MERRITT, DEVON			
09:10	REBOUND (OFF) by TEAM			
09:10	GOOD! FT by MERRITT, DEVON	16-22	V 6	
09:10				SUB OUT: JOHNSON, TEE
09:10				SUB IN: ENABOSI, NICOLE
09:10	SUB OUT: BARRIER, LEXIE			
09:10	SUB OUT: MERRITT, DEVON			
09:10	SUB IN: TUCKER, RAYNE			
09:10	SUB IN: JEFFERSON, KIKI			
08:59				TURNOVER (LOSTBALL) by ENABOSI, NICOLE
08:49	TURNOVER (LOSTBALL) by SMALLS, KAMIAH			
08:36				MISSED 3PTR by GONZALES, ABBY
08:33				REBOUND (OFF) by ENABOSI, NICOLE
08:21				MISSED 3PTR by SHAW, KAYLA
08:18	REBOUND (DEF) by SMALLS, KAMIAH			
08:07	GOOD! LAYUP by SMALLS, KAMIAH [PNT]	16-24	V 8	
07:49				MISSED JUMPER by OLEARY, LIZZIE
07:46				REBOUND (OFF) by DICKEY, JASMINE
07:46				MISSED LAYUP by DICKEY, JASMINE
07:43				REBOUND (OFF) by ENABOSI, NICOLE
07:42				TURNOVER (LOSTBALL) by ENABOSI, NICOLE
07:42	STEAL by BENITEZ, JACKIE			
07:41	TURNOVER (DRIBBLING) by BENITEZ, JACKIE			
07:26				MISSED 3PTR by OLEARY, LIZZIE
07:23	REBOUND (DEF) by COOPER-WILLIAMS, KAYLA			
07:18	MISSED 3PTR by JEFFERSON, KIKI			
07:13	REBOUND (OFF) by COOPER-WILLIAMS, KAYLA			
06:58	MISSED JUMPER by BENITEZ, JACKIE			
06:55				REBOUND (DEF) by ENABOSI, NICOLE
06:38				MISSED JUMPER by ENABOSI, NICOLE
06:36	REBOUND (DEF) by SMALLS, KAMIAH			
06:28	MISSED JUMPER by SMALLS, KAMIAH			
06:24				REBOUND (DEF) by SHAW, KAYLA
06:18		18-24	V 6	GOOD! JUMPER by SHAW, KAYLA
06:18				ASSIST by GONZALES, ABBY
05:59	GOOD! JUMPER by BENITEZ, JACKIE [PNT]	18-26	V 8	
05:39				MISSED JUMPER by DICKEY, JASMINE
05:36				REBOUND (OFF) by ENABOSI, NICOLE
05:34				MISSED JUMPER by OLEARY, LIZZIE
05:31				REBOUND (OFF) by DICKEY, JASMINE
05:30		20-26	V 6	GOOD! LAYUP by DICKEY, JASMINE [PNT]
05:12				FOUL (PERSONAL) by ENABOSI, NICOLE
05:12				SUB OUT: GONZALES, ABBY
05:12				SUB OUT: OLEARY, LIZZIE
05:12				SUB OUT: ENABOSI, NICOLE
05:12				SUB IN: WADE, BRYNN
05:12				SUB IN: MCBRIDE, PARIS
05:12				SUB IN: LAWRENCE, REBECCA
05:12	SUB OUT: TUCKER, RAYNE			
05:12	SUB OUT: JEFFERSON, KIKI			
05:12	SUB OUT: COOPER-WILLIAMS, KAYLA			
05:12	SUB IN: CARODINE, JAYLIN			
05:12	SUB IN: GREEN, MADISON			
05:12	SUB IN: BARRIER, LEXIE			
05:07				FOUL (PERSONAL) by SHAW, KAYLA
05:07	SUB OUT: SMALLS, KAMIAH			
05:07	SUB IN: TUCKER, RAYNE			
05:07	GOOD! FT by BENITEZ, JACKIE	20-27	V 7	
05:07	GOOD! FT by BENITEZ, JACKIE	20-28	V 8	
04:52				MISSED JUMPER by DICKEY, JASMINE
04:49	REBOUND (DEF) by GREEN, MADISON			
04:33	MISSED LAYUP by CARODINE, JAYLIN			
04:33				BLOCK by LAWRENCE, REBECCA

Time	VISITORS: James Madison	Score	Margin	HOME: Delaware
04:31				
04:31				SUB OUT: SHAW, KAYLA
04:31				SUB IN: GONZALES, ABBY
04:27				REBOUND (DEF) by TEAM
04:16				MISSED 3PTR by GONZALES, ABBY
04:13				REBOUND (OFF) by DICKEY, JASMINE
04:12		22-28	V 6	GOOD! JUMPER by DICKEY, JASMINE [PNT]
03:44	MISSED LAYUP by BENITEZ, JACKIE			
03:41	REBOUND (OFF) by TUCKER, RAYNE			
03:41	GOOD! LAYUP by TUCKER, RAYNE	22-30	V 8	
03:28	FOUL (PERSONAL) by GREEN, MADISON			
03:28	SUB OUT: CARODINE, JAYLIN			
03:28	SUB OUT: GREEN, MADISON			
03:28	SUB IN: SMALLS, KAMIAH			
03:28	SUB IN: MERRITT, DEVON			
03:26				MISSED JUMPER by DICKEY, JASMINE
03:23				REBOUND (OFF) by LAWRENCE, REBECCA
03:09				TURNOVER (SHOTCLOCK) by TEAM
03:01	TURNOVER (BADPASS) by TUCKER, RAYNE			
03:01				STEAL by OLEARY, LIZZIE
02:56				MISSED JUMPER by GONZALES, ABBY
02:52				REBOUND (OFF) by TEAM
02:51				SUB OUT: LAWRENCE, REBECCA
02:51				SUB IN: OLEARY, LIZZIE
02:36		24-30	V 6	GOOD! JUMPER by DICKEY, JASMINE [PNT]
02:16	GOOD! 3PTR by SMALLS, KAMIAH	24-33	V 9	
01:58				TURNOVER (TRAVEL) by MCBRIDE, PARIS
01:58				SUB OUT: MCBRIDE, PARIS
01:58				SUB IN: JOHNSON, TEE
01:58	SUB OUT: TUCKER, RAYNE			
01:58	SUB IN: COOPER-WILLIAMS, KAYLA			
01:36	MISSED JUMPER by COOPER-WILLIAMS, KAYLA			
01:32				REBOUND (DEF) by GONZALES, ABBY
01:24				TURNOVER (TRAVEL) by JOHNSON, TEE
01:24	SUB OUT: MERRITT, DEVON			
01:24	SUB IN: JEFFERSON, KIKI			
01:06	MISSED 3PTR by BARRIER, LEXIE			
01:02				REBOUND (DEF) by DICKEY, JASMINE
00:47				MISSED JUMPER by DICKEY, JASMINE
00:45	REBOUND (DEF) by SMALLS, KAMIAH			
00:45				FOUL (PERSONAL) by JOHNSON, TEE
00:45				SUB OUT: JOHNSON, TEE
00:45				SUB IN: SHAW, KAYLA
00:45	GOOD! FT by SMALLS, KAMIAH [FB]	24-34	V 10	
00:45	GOOD! FT by SMALLS, KAMIAH [FB]	24-35	V 11	
00:31				MISSED 3PTR by SHAW, KAYLA
00:28	REBOUND (DEF) by SMALLS, KAMIAH			
00:00	MISSED 3PTR by BARRIER, LEXIE			
00:00				REBOUND (DEF) by DICKEY, JASMINE

James Madison 35, Delaware 24

Points from (This Period)	JMU	Del
In the Paint	6	8
Off Turns	0	4
2nd Chance	2	6
Fast Break	2	2
Bench	3	0

Official Box Score
James Madison vs Delaware
Second Half Statistics Only
January 31, 2020 at Bob Carpenter Center - Newark



James Madison 25

No.	Player	S	Pts	FG	3FG	FT	OR	DR	TR	PF	A	TO	Blk	Stl	Min	+/-
00	OPPENHEIMER, NIKKI	G	0	0-0	0-0	0-0	0	0	0	0	0	0	0	0	1	0
02	CARODINE, JAYLIN	G	0	0-0	0-0	0-0	0	0	0	0	1	1	0	0	6	2
03	SMALLS, KAMIAH	G	8	2-5	0-2	4-6	0	5	5	1	1	0	0	2	14	3
04	GREEN, MADISON	G	0	0-0	0-0	0-0	0	1	1	1	0	3	0	0	6	10
14	MARCISZEWSKI, ELEANORE	G	0	0-1	0-0	0-0	0	0	0	0	0	0	0	0	1	0
15	BARRIER, LEXIE	G	5	2-6	1-3	0-0	0	2	2	2	0	2	0	0	17	6
21	TUCKER, RAYNE	F	1	0-0	0-0	1-2	1	2	3	1	0	1	0	1	10	2
30	JEFFERSON, KIKI	G	3	0-3	0-0	3-4	2	1	3	2	1	2	1	0	12	10
31	COOPER-WILLIAMS, KAYLA	C	0	0-0	0-0	0-0	1	2	3	2	0	0	3	0	12	9
42	MERRITT, DEVON	F	0	0-0	0-0	0-0	0	0	0	0	0	0	0	0	2	-4
55	BENITEZ, JACKIE	G	8	3-6	2-3	0-0	0	1	1	0	1	1	1	2	17	12
	TEAM		0	0-0	0-0	0-0	0	4	4	0	0	0	0	0	0	
TOTALS			25	7-21	3-8	8-12	4	18	22	9	4	10	5	5	100	

Shooting By Period

Period	FG	FG%	3FG	3FG%	FT	FT%
3rd Qtr	4-9	44%	1-5	20%	2-4	50%
4th Qtr	3-12	25%	2-3	67%	6-8	75%
2nd Half	7-21	33%	3-8	38%	8-12	67%
Game	20-50	40.0%	7-21	33.3%	13-18	72.2%

Deadball Rebounds: 3,0

Last FG Half: JMU 4th-01:42

Delaware 15

No.	Player	S	Pts	FG	3FG	FT	OR	DR	TR	PF	A	TO	Blk	Stl	Min	+/-
02	GONZALES, ABBY	G	0	0-6	0-3	0-0	0	1	1	0	0	1	0	0	12	-14
03	WADE, BRYNN	F	0	0-0	0-0	0-0	0	1	1	0	0	1	1	0	4	-7
04	MCBRIDE, PARIS	G	2	1-3	0-1	0-0	0	0	0	1	0	0	0	1	8	4
10	JOHNSON, TEE	G	2	1-6	0-0	0-2	3	0	3	2	0	3	0	3	8	-10
12	OLEARY, LIZZIE	F	2	1-2	0-0	0-0	0	1	1	4	2	0	0	0	11	5
20	DICKEY, JASMINE	G	2	1-10	0-0	0-2	1	6	7	2	2	2	0	0	17	-2
22	DEFREESE, SAMONE	F	2	1-2	0-0	0-0	4	1	5	0	0	0	0	0	10	-6
25	LAWRENCE, REBECCA	F	0	0-1	0-0	0-0	0	0	0	0	0	0	0	1	3	-8
30	SHAW, KAYLA	G	0	0-3	0-3	0-0	0	0	0	1	0	0	0	0	15	-8
33	ENABOSI, NICOLE	F	5	1-4	0-0	3-3	1	0	1	2	0	1	0	0	12	-4
	TEAM		0	0-0	0-0	0-0	6	2	8	0	0	0	0	0	0	
TOTALS			15	6-37	0-7	3-7	15	12	27	12	4	8	1	5	100	

Shooting By Period

Period	FG	FG%	3FG	3FG%	FT	FT%
3rd Qtr	3-20	15%	0-2	00%	2-4	50%
4th Qtr	3-17	18%	0-5	00%	1-3	33%
2nd Half	6-37	16%	0-7	00%	3-7	43%
Game	16-72	22.2%	2-16	12.5%	5-9	55.6%

Deadball Rebounds: 2,0

Last FG Half: Del 4th-03:49

Game Notes:

Officials: Thomas Danaher, Geraldine Smith, Carmen Portorreal

Start Time: 07:00 PM ET

Conference Game;

Score	1st	2nd	3rd	4th	TOT
JMU	21	14	11	14	60
Del	14	10	8	7	39

Points from (This Period)	JMU	Del
In the Paint	4	10
Off Turns	10	4
2nd Chance	6	4
Fast Break	2	0
Bench	1	6

Official Box Score
James Madison vs Delaware
Third Quarter Statistics Only
January 31, 2020 at Bob Carpenter Center - Newark



James Madison 25

No.	Player	S	Pts	FG	3FG	FT	OR	DR	TR	PF	A	TO	Blk	Stl	Min	+/-
03	SMALLS, KAMIAH	G	6	2-4	0-2	2-4	0	3	3	0	0	0	0	1	8	3
15	BARRIER, LEXIE	G	5	2-4	1-3	0-0	0	2	2	2	0	2	0	0	10	3
30	JEFFERSON, KIKI	G	0	0-1	0-0	0-0	1	0	1	1	0	1	1	0	5	4
31	COOPER-WILLIAMS, KAYLA	C	0	0-0	0-0	0-0	0	1	1	1	0	0	2	0	6	9
55	BENITEZ, JACKIE	G	0	0-0	0-0	0-0	0	1	1	0	1	1	0	1	8	5
00	OPPENHEIMER, NIKKI	G	0	0-0	0-0	0-0	0	0	0	0	0	0	0	0	0	0
02	CARODINE, JAYLIN	G	0	0-0	0-0	0-0	0	0	0	0	0	1	0	0	3	-2
04	GREEN, MADISON	G	0	0-0	0-0	0-0	0	1	1	1	0	1	0	0	2	3
14	MARCISZEWSKI, ELEANORE	G	0	0-0	0-0	0-0	0	0	0	0	0	0	0	0	0	0
21	TUCKER, RAYNE	F	0	0-0	0-0	0-0	0	1	1	1	0	1	0	0	5	-6
42	MERRITT, DEVON	F	0	0-0	0-0	0-0	0	0	0	0	0	0	0	0	2	-4
	TEAM						0	0	0	0		0				
TOTALS			11	4-9	1-5	2-4	1	9	10	6	1	7	3	2	50	

Shooting By Period

Period	FG	FG%	3FG	3FG%	FT	FT%
2nd Half	0-0	0%	0-0	0%	0-0	0%
Game	20-50	40.0%	7-21	33.3%	13-18	72.2%

Deadball Rebounds: 3,0

Delaware 15

No.	Player	S	Pts	FG	3FG	FT	OR	DR	TR	PF	A	TO	Blk	Stl	Min	+/-
02	GONZALES, ABBY	G	0	0-3	0-2	0-0	0	1	1	0	0	1	0	0	7	-6
20	DICKEY, JASMINE	G	2	1-6	0-0	0-2	1	2	3	1	1	2	0	0	10	-3
22	DEFREESE, SAMONE	F	0	0-0	0-0	0-0	2	1	3	0	0	0	0	0	5	-7
30	SHAW, KAYLA	G	0	0-0	0-0	0-0	0	0	0	0	0	0	0	0	5	-1
33	ENABOSI, NICOLE	F	2	0-3	0-0	2-2	0	0	0	1	0	0	0	0	8	-1
03	WADE, BRYNN	F	0	0-0	0-0	0-0	0	0	0	0	0	0	0	0	0	0
04	MCBRIDE, PARIS	G	0	0-0	0-0	0-0	0	0	0	0	0	0	0	1	3	3
10	JOHNSON, TEE	G	2	1-6	0-0	0-0	3	0	3	1	0	1	0	2	5	-2
12	OLEARY, LIZZIE	F	2	1-2	0-0	0-0	0	1	1	2	1	0	0	0	7	2
25	LAWRENCE, REBECCA	F	0	0-0	0-0	0-0	0	0	0	0	0	0	0	0	0	0
	TEAM						3	0	3	0		0				
TOTALS			8	3-20	0-2	2-4	9	5	14	5	2	4	0	3	50	

Shooting By Period

Period	FG	FG%	3FG	3FG%	FT	FT%
2nd Half	0-0	0%	0-0	0%	0-0	0%
Game	16-72	22.2%	2-16	12.5%	5-9	55.6%

Deadball Rebounds: 2,0

Game Notes:

Officials: Thomas Danaher, Geraldine Smith, Carmen Portorreal

Start Time: 07:00 PM ET

Conference Game;

Score	1st	2nd	3rd	4th	TOT
JMU	21	14	11	14	60
Del	14	10	8	7	39

Points from (This Period)	JMU	Del
In the Paint	4	4
Off Turns	2	4
2nd Chance	3	2
Fast Break	0	0
Bench	0	4

Official Play-By-Play
James Madison vs Delaware
Third Quarter
January 31, 2020 at Bob Carpenter Center - Newark



Period 3

Starters:

James Madison: 3 SMALLS,KAMIAH (G); 15 BARRIER,LEXIE (G); 30 JEFFERSON,KIKI (G); 31 COOPER-WILLIAMS,KAYLA (C); 55 BENITEZ,JACKIE (G);
Delaware: 2 GONZALES,ABBY (G); 20 DICKEY,JASMINE (G); 22 DEFREESE,SAMONE (F); 30 SHAW,KAYLA (G); 33 ENABOSI,NICOLE (F);

Time	VISITORS: James Madison	Score	Margin	HOME: Delaware
10:00				SUB OUT: WADE, BRYNN
10:00				SUB OUT: OLEARY, LIZZIE
10:00				SUB IN: DEFREESE, SAMONE
10:00				SUB IN: ENABOSI, NICOLE
09:46				TURNOVER (TRAVEL) by GONZALES, ABBY
09:27	GOOD! JUMPER by SMALLS, KAMIAH	24-37	V 13	
09:06				MISSED JUMPER by DICKEY, JASMINE
09:04				REBOUND (OFF) by TEAM
09:04	FOUL (PERSONAL) by JEFFERSON, KIKI			
09:03	FOUL (PERSONAL) by BARRIER, LEXIE			
09:03				MISSED FT by DICKEY, JASMINE
09:03				REBOUND (OFF) by TEAM
09:03				MISSED FT by DICKEY, JASMINE
09:03	REBOUND (DEF) by BARRIER, LEXIE			
08:45	GOOD! JUMPER by SMALLS, KAMIAH [PNT]	24-39	V 15	
08:27	FOUL (PERSONAL) by COOPER-WILLIAMS, KAYLA			
08:27				SUB OUT: SHAW, KAYLA
08:27				SUB IN: JOHNSON, TEE
08:27		25-39	V 14	GOOD! FT by ENABOSI, NICOLE
08:27		26-39	V 13	GOOD! FT by ENABOSI, NICOLE
08:12	MISSED 3PTR by BARRIER, LEXIE			
08:09	REBOUND (OFF) by JEFFERSON, KIKI			
08:07	GOOD! 3PTR by BARRIER, LEXIE	26-42	V 16	
08:07	ASSIST by BENITEZ, JACKIE			
07:47				MISSED LAYUP by ENABOSI, NICOLE
07:47	BLOCK by COOPER-WILLIAMS, KAYLA			
07:43	REBOUND (DEF) by BENITEZ, JACKIE			
07:33	MISSED 3PTR by SMALLS, KAMIAH			
07:29				REBOUND (DEF) by GONZALES, ABBY
07:14				MISSED 3PTR by GONZALES, ABBY
07:09				REBOUND (OFF) by JOHNSON, TEE
07:05				MISSED JUMPER by ENABOSI, NICOLE
07:02	REBOUND (DEF) by COOPER-WILLIAMS, KAYLA			
06:52				SUB OUT: DEFREESE, SAMONE
06:52				SUB IN: OLEARY, LIZZIE
06:52	SUB OUT: JEFFERSON, KIKI			
06:52	SUB IN: GREEN, MADISON			
06:45	GOOD! LAYUP by BARRIER, LEXIE	26-44	V 18	
06:28				MISSED JUMPER by OLEARY, LIZZIE
06:25	REBOUND (DEF) by SMALLS, KAMIAH			
06:13				FOUL (PERSONAL) by ENABOSI, NICOLE
06:13				SUB OUT: ENABOSI, NICOLE
06:13				SUB IN: DEFREESE, SAMONE
06:13	MISSED FT by SMALLS, KAMIAH			
06:13	REBOUND (OFF) by TEAM			
06:13	GOOD! FT by SMALLS, KAMIAH	26-45	V 19	
06:13	SUB OUT: SMALLS, KAMIAH			
06:13	SUB IN: CARODINE, JAYLIN			
05:57				MISSED LAYUP by JOHNSON, TEE
05:57	BLOCK by COOPER-WILLIAMS, KAYLA			
05:55				FOUL (OFF) by DICKEY, JASMINE
05:55				TIMEOUT TEAM
05:55				TURNOVER (OFFENSIVE) by DICKEY, JASMINE
05:53				REBOUND (OFF) by DICKEY, JASMINE
05:53	TURNOVER (BADPASS) by CARODINE, JAYLIN			
05:53				STEAL by JOHNSON, TEE
05:48				MISSED LAYUP by JOHNSON, TEE
05:42	REBOUND (DEF) by GREEN, MADISON			
05:42				FOUL (PERSONAL) by JOHNSON, TEE
05:38	TURNOVER (OTHER) by GREEN, MADISON			
05:17				MISSED JUMPER by DICKEY, JASMINE
05:14				REBOUND (OFF) by DEFREESE, SAMONE
05:13				MISSED JUMPER by JOHNSON, TEE
05:10				REBOUND (OFF) by DEFREESE, SAMONE
05:01				MISSED JUMPER by DICKEY, JASMINE
04:56				REBOUND (OFF) by JOHNSON, TEE
04:56	FOUL (PERSONAL) by GREEN, MADISON			
04:56	SUB OUT: GREEN, MADISON			
04:56	SUB OUT: COOPER-WILLIAMS, KAYLA			
04:56	SUB IN: TUCKER, RAYNE			

Time	VISITORS: James Madison	Score	Margin	HOME: Delaware
04:56	SUB IN: JEFFERSON, KIKI			
04:48				MISSED JUMPER by DICKEY, JASMINE
04:48				REBOUND (OFF) by TEAM
04:48				
04:42				SUB OUT: DEFREESE, SAMONE
04:42				SUB IN: ENABOSI, NICOLE
04:42	SUB OUT: BENITEZ, JACKIE			
04:42	SUB IN: SMALLS, KAMIAH			
04:37				MISSED JUMPER by JOHNSON, TEE
04:37	BLOCK by JEFFERSON, KIKI			
04:29				REBOUND (OFF) by TEAM
04:25		28-45	V 17	GOOD! JUMPER by JOHNSON, TEE
04:25				ASSIST by OLEARY, LIZZIE
04:16	MISSED LAYUP by JEFFERSON, KIKI			
04:10				REBOUND (DEF) by DICKEY, JASMINE
04:00				MISSED JUMPER by JOHNSON, TEE
03:57				REBOUND (OFF) by JOHNSON, TEE
03:54				MISSED 3PTR by GONZALES, ABBY
03:51	REBOUND (DEF) by SMALLS, KAMIAH			
03:42	MISSED 3PTR by SMALLS, KAMIAH			
03:38				REBOUND (DEF) by OLEARY, LIZZIE
03:18				MISSED JUMPER by GONZALES, ABBY
03:16	REBOUND (DEF) by TUCKER, RAYNE			
03:02	TURNOVER (BADPASS) by JEFFERSON, KIKI			
03:02				STEAL by JOHNSON, TEE
03:00				TURNOVER (LOSTBALL) by JOHNSON, TEE
03:00	STEAL by SMALLS, KAMIAH			
03:00				FOUL (PERSONAL) by OLEARY, LIZZIE
03:00				SUB OUT: GONZALES, ABBY
03:00				SUB OUT: JOHNSON, TEE
03:00				SUB IN: MCBRIDE, PARIS
03:00				SUB IN: SHAW, KAYLA
03:00	SUB OUT: CARODINE, JAYLIN			
03:00	SUB OUT: JEFFERSON, KIKI			
03:00	SUB IN: MERRITT, DEVON			
03:00	SUB IN: BENITEZ, JACKIE			
02:50	FOUL (OFF) by TUCKER, RAYNE			
02:50	TURNOVER (OFFENSIVE) by TUCKER, RAYNE			
02:34		30-45	V 15	GOOD! LAYUP by DICKEY, JASMINE [PNT]
02:15	TURNOVER (BADPASS) by BARRIER, LEXIE			
02:15				STEAL by MCBRIDE, PARIS
01:49				TURNOVER (BADPASS) by DICKEY, JASMINE
01:49	STEAL by BENITEZ, JACKIE			
01:46	TURNOVER (OTHER) by BENITEZ, JACKIE			
01:32				MISSED LAYUP by ENABOSI, NICOLE
01:29	REBOUND (DEF) by SMALLS, KAMIAH			
01:22	MISSED 3PTR by BARRIER, LEXIE			
01:19				REBOUND (DEF) by DICKEY, JASMINE
00:59		32-45	V 13	GOOD! JUMPER by OLEARY, LIZZIE [PNT]
00:59				ASSIST by DICKEY, JASMINE
00:40	FOUL (OFF) by BARRIER, LEXIE			
00:40	TURNOVER (OFFENSIVE) by BARRIER, LEXIE			
00:40				SUB OUT: ENABOSI, NICOLE
00:40				SUB IN: DEFREESE, SAMONE
00:40	SUB OUT: MERRITT, DEVON			
00:40	SUB IN: COOPER-WILLIAMS, KAYLA			
00:26				MISSED JUMPER by DICKEY, JASMINE
00:24	REBOUND (DEF) by BARRIER, LEXIE			
00:02				FOUL (PERSONAL) by OLEARY, LIZZIE
00:02	SUB OUT: TUCKER, RAYNE			
00:02	SUB IN: JEFFERSON, KIKI			
00:02	GOOD! FT by SMALLS, KAMIAH	32-46	V 14	
00:02	MISSED FT by SMALLS, KAMIAH			
00:00				REBOUND (DEF) by DEFREESE, SAMONE

James Madison 46, Delaware 32

Points from (This Period)	JMU	Del
In the Paint	4	4
Off Turns	2	4
2nd Chance	3	2
Fast Break	0	0
Bench	0	4

Official Box Score
James Madison vs Delaware
Fourth Quarter Statistics Only
January 31, 2020 at Bob Carpenter Center - Newark



James Madison 14

No.	Player	S	Pts	FG	3FG	FT	OR	DR	TR	PF	A	TO	Blk	Stl	Min	+/-
03	SMALLS, KAMIAH	G	2	0-1	0-0	2-2	0	2	2	1	1	0	0	1	6	0
15	BARRIER, LEXIE	G	0	0-2	0-0	0-0	0	0	0	0	0	0	0	0	7	3
30	JEFFERSON, KIKI	G	3	0-2	0-0	3-4	1	1	2	1	1	1	0	0	7	6
31	COOPER-WILLIAMS, KAYLA	C	0	0-0	0-0	0-0	1	1	2	1	0	0	1	0	6	0
55	BENITEZ, JACKIE	G	8	3-6	2-3	0-0	0	0	0	0	0	0	1	1	9	7
00	OPPENHEIMER, NIKKI	G	0	0-0	0-0	0-0	0	0	0	0	0	0	0	0	1	0
02	CARODINE, JAYLIN	G	0	0-0	0-0	0-0	0	0	0	0	1	0	0	0	3	4
04	GREEN, MADISON	G	0	0-0	0-0	0-0	0	0	0	0	0	2	0	0	4	7
14	MARCISZEWSKI, ELEANORE	G	0	0-1	0-0	0-0	0	0	0	0	0	0	0	0	1	0
21	TUCKER, RAYNE	F	1	0-0	0-0	1-2	1	1	2	0	0	0	0	1	5	8
42	MERRITT, DEVON	F	0	0-0	0-0	0-0	0	0	0	0	0	0	0	0	0	0
	TEAM						0	4	4	0		0				
TOTALS			14	3-12	2-3	6-8	3	9	12	3	3	3	2	3	50	

Shooting By Period

Period	FG	FG%	3FG	3FG%	FT	FT%
Game	20-50	40.0%	7-21	33.3%	13-18	72.2%

Deadball Rebounds: 3,0

Delaware 7

No.	Player	S	Pts	FG	3FG	FT	OR	DR	TR	PF	A	TO	Blk	Stl	Min	+/-
02	GONZALES, ABBY	G	0	0-3	0-1	0-0	0	0	0	0	0	0	0	0	5	-8
20	DICKEY, JASMINE	G	0	0-4	0-0	0-0	0	4	4	1	1	0	0	0	7	1
22	DEFREESE, SAMONE	F	2	1-2	0-0	0-0	2	0	2	0	0	0	0	0	5	1
30	SHAW, KAYLA	G	0	0-3	0-3	0-0	0	0	0	1	0	0	0	0	10	-7
33	ENABOSI, NICOLE	F	3	1-1	0-0	1-1	1	0	1	1	0	1	0	0	4	-3
03	WADE, BRYNN	F	0	0-0	0-0	0-0	0	1	1	0	0	1	1	0	4	-7
04	MCBRIDE, PARIS	G	2	1-3	0-1	0-0	0	0	0	1	0	0	0	0	5	1
10	JOHNSON, TEE	G	0	0-0	0-0	0-2	0	0	0	1	0	2	0	1	3	-8
12	OLEARY, LIZZIE	F	0	0-0	0-0	0-0	0	0	0	2	1	0	0	0	4	3
25	LAWRENCE, REBECCA	F	0	0-1	0-0	0-0	0	0	0	0	0	0	0	1	3	-8
	TEAM						3	2	5	0		0				
TOTALS			7	3-17	0-5	1-3	6	7	13	7	2	4	1	2	50	

Shooting By Period

Period	FG	FG%	3FG	3FG%	FT	FT%
Game	16-72	22.2%	2-16	12.5%	5-9	55.6%

Deadball Rebounds: 2,0

Game Notes:

Officials: Thomas Danaher, Geraldine Smith, Carmen Portorreal

Start Time: 07:00 PM ET

Conference Game;

Score	1st	2nd	3rd	4th	TOT
JMU	21	14	11	14	60
Del	14	10	8	7	39

Points from (This Period)	JMU	Del
In the Paint	0	6
Off Turns	8	0
2nd Chance	3	2
Fast Break	2	0
Bench	1	2

Official Play-By-Play
James Madison vs Delaware
Fourth Quarter
January 31, 2020 at Bob Carpenter Center - Newark



Period 4

Starters:

James Madison: 3 SMALLS,KAMIAH (G); 15 BARRIER,LEXIE (G); 30 JEFFERSON,KIKI (G); 31 COOPER-WILLIAMS,KAYLA (C); 55 BENITEZ,JACKIE (G);

Delaware: 2 GONZALES,ABBY (G); 20 DICKEY,JASMINE (G); 22 DEFREESE,SAMONE (F); 30 SHAW,KAYLA (G); 33 ENABOSI,NICOLE (F);

Time	VISITORS: James Madison	Score	Margin	HOME: Delaware
09:48				FOUL (PERSONAL) by MCBRIDE, PARIS
09:42	MISSED JUMPER by BENITEZ, JACKIE			
09:39	REBOUND (OFF) by COOPER-WILLIAMS, KAYLA			
09:33	MISSED JUMPER by BENITEZ, JACKIE			
09:30				REBOUND (DEF) by DICKEY, JASMINE
09:04				MISSED 3PTR by SHAW, KAYLA
09:04	BLOCK by BENITEZ, JACKIE			
09:04				REBOUND (OFF) by TEAM
08:57				MISSED 3PTR by MCBRIDE, PARIS
08:53	REBOUND (DEF) by SMALLS, KAMIAH			
08:48	MISSED 3PTR by BENITEZ, JACKIE			
08:45				REBOUND (DEF) by DICKEY, JASMINE
08:29	FOUL (PERSONAL) by SMALLS, KAMIAH			
08:15		34-46	V 12	GOOD! LAYUP by MCBRIDE, PARIS
08:15				ASSIST by OLEARY, LIZZIE
07:56	MISSED JUMPER by BARRIER, LEXIE			
07:53				REBOUND (DEF) by DICKEY, JASMINE
07:38				MISSED JUMPER by DICKEY, JASMINE
07:34				REBOUND (OFF) by DEFREESE, SAMONE
07:34		36-46	V 10	GOOD! LAYUP by DEFREESE, SAMONE
07:28	TIMEOUT 30SEC			
07:28				SUB OUT: OLEARY, LIZZIE
07:28				SUB IN: ENABOSI, NICOLE
07:28	SUB OUT: SMALLS, KAMIAH			
07:28	SUB OUT: BARRIER, LEXIE			
07:28	SUB IN: CARODINE, JAYLIN			
07:28	SUB IN: GREEN, MADISON			
07:24	TURNOVER (DRIBBLING) by GREEN, MADISON			
06:53				MISSED JUMPER by DICKEY, JASMINE
06:53				REBOUND (OFF) by DEFREESE, SAMONE
06:48				MISSED JUMPER by DEFREESE, SAMONE
06:48				REBOUND (OFF) by TEAM
06:35				MISSED JUMPER by MCBRIDE, PARIS
06:35	REBOUND (DEF) by TEAM			
06:35				FOUL (PERSONAL) by DICKEY, JASMINE
06:35	SUB OUT: CARODINE, JAYLIN			
06:35	SUB IN: BARRIER, LEXIE			
06:18	GOOD! 3PTR by BENITEZ, JACKIE	36-49	V 13	
06:18	ASSIST by JEFFERSON, KIKI			
06:03				MISSED 3PTR by SHAW, KAYLA
06:03	BLOCK by COOPER-WILLIAMS, KAYLA			
06:00				SUB OUT: MCBRIDE, PARIS
06:00				SUB IN: GONZALES, ABBY
05:58				REBOUND (OFF) by ENABOSI, NICOLE
05:47				MISSED LAYUP by GONZALES, ABBY
05:40	REBOUND (DEF) by SMALLS, KAMIAH			
05:26	SUB OUT: GREEN, MADISON			
05:26	SUB IN: SMALLS, KAMIAH			
05:23	MISSED LAYUP by JEFFERSON, KIKI			
05:20				REBOUND (DEF) by TEAM
05:20				SUB OUT: DEFREESE, SAMONE
05:20				SUB IN: OLEARY, LIZZIE
05:20	SUB OUT: JEFFERSON, KIKI			
05:20	SUB IN: TUCKER, RAYNE			
05:19				MISSED JUMPER by DICKEY, JASMINE
05:16				REBOUND (OFF) by TEAM
05:07				MISSED 3PTR by GONZALES, ABBY
05:04	REBOUND (DEF) by COOPER-WILLIAMS, KAYLA			
04:39	MISSED JUMPER by SMALLS, KAMIAH			
04:37				FOUL (PERSONAL) by OLEARY, LIZZIE
04:37	GOOD! FT by TUCKER, RAYNE	36-50	V 14	
04:37	MISSED FT by TUCKER, RAYNE			
04:37				REBOUND (DEF) by TEAM
04:36	REBOUND (OFF) by TUCKER, RAYNE			
04:23				MISSED JUMPER by DICKEY, JASMINE
04:21	REBOUND (DEF) by TUCKER, RAYNE			
04:08				FOUL (PERSONAL) by OLEARY, LIZZIE
04:08				SUB OUT: OLEARY, LIZZIE
04:08				SUB IN: WADE, BRYNN
04:08	GOOD! JUMPER by BENITEZ, JACKIE	36-52	V 16	

Time	VISITORS: James Madison	Score	Margin	HOME: Delaware
04:08	ASSIST by SMALLS, KAMIAH			
03:49		38-52	V 14	GOOD! LAYUP by ENABOSI, NICOLE
03:49				ASSIST by DICKEY, JASMINE
03:49	FOUL (PERSONAL) by COOPER-WILLIAMS, KAYLA			
03:49	SUB OUT: COOPER-WILLIAMS, KAYLA			
03:49	SUB IN: JEFFERSON, KIKI			
03:49		39-52	V 13	GOOD! FT by ENABOSI, NICOLE
03:30	MISSED JUMPER by BARRIER, LEXIE			
03:27				REBOUND (DEF) by DICKEY, JASMINE
03:13				TURNOVER (LOSTBALL) by ENABOSI, NICOLE
03:13	STEAL by BENITEZ, JACKIE			
03:09	MISSED JUMPER by JEFFERSON, KIKI			
03:09				BLOCK by WADE, BRYNN
03:08	REBOUND (OFF) by JEFFERSON, KIKI			
03:07				FOUL (PERSONAL) by ENABOSI, NICOLE
03:05	GOOD! FT by JEFFERSON, KIKI	39-53	V 14	
03:05	GOOD! FT by JEFFERSON, KIKI	39-54	V 15	
02:56				SUB OUT: DICKEY, JASMINE
02:56				SUB OUT: ENABOSI, NICOLE
02:56				SUB IN: JOHNSON, TEE
02:56				SUB IN: LAWRENCE, REBECCA
02:50				TURNOVER (LOSTBALL) by JOHNSON, TEE
02:50	STEAL by SMALLS, KAMIAH			
02:47				FOUL (PERSONAL) by JOHNSON, TEE
02:47	GOOD! FT by SMALLS, KAMIAH [FB]	39-55	V 16	
02:47	GOOD! FT by SMALLS, KAMIAH [FB]	39-56	V 17	
02:47	SUB OUT: SMALLS, KAMIAH			
02:47	SUB IN: GREEN, MADISON			
02:33				TURNOVER (BADPASS) by JOHNSON, TEE
02:33	SUB OUT: BARRIER, LEXIE			
02:33	SUB IN: CARODINE, JAYLIN			
02:23				FOUL (PERSONAL) by SHAW, KAYLA
02:23	MISSED FT by JEFFERSON, KIKI			
02:23	REBOUND (OFF) by TEAM			
02:23	GOOD! FT by JEFFERSON, KIKI	39-57	V 18	
02:07				TURNOVER (BADPASS) by WADE, BRYNN
02:07	STEAL by TUCKER, RAYNE			
01:42	GOOD! 3PTR by BENITEZ, JACKIE	39-60	V 21	
01:42	ASSIST by CARODINE, JAYLIN			
01:18				MISSED JUMPER by GONZALES, ABBY
01:15	REBOUND (DEF) by JEFFERSON, KIKI			
01:12	TURNOVER (LOSTBALL) by JEFFERSON, KIKI			
01:12				STEAL by JOHNSON, TEE
01:12	FOUL (PERSONAL) by JEFFERSON, KIKI			
01:12				MISSED FT by JOHNSON, TEE
01:12				REBOUND (OFF) by TEAM
01:12				SUB OUT: GONZALES, ABBY
01:12				SUB IN: MCBRIDE, PARIS
01:12	SUB OUT: JEFFERSON, KIKI			
01:12	SUB OUT: BENITEZ, JACKIE			
01:12	SUB IN: OPPENHEIMER, NIKKI			
01:12	SUB IN: MARCISZEWSKI, ELEANORE			
01:12				MISSED FT by JOHNSON, TEE
01:12	REBOUND (DEF) by TEAM			
01:00	TURNOVER (LOSTBALL) by GREEN, MADISON			
01:00				STEAL by LAWRENCE, REBECCA
00:46				MISSED JUMPER by LAWRENCE, REBECCA
00:42	REBOUND (DEF) by TEAM			
00:11	MISSED LAYUP by MARCISZEWSKI, ELEANORE			
00:08				REBOUND (DEF) by WADE, BRYNN
00:00				MISSED 3PTR by SHAW, KAYLA
00:00	REBOUND (DEF) by TEAM			

James Madison 60, Delaware 39

Points from (This Period)	JMU	Del
In the Paint	0	6
Off Turns	8	0
2nd Chance	3	2
Fast Break	2	0
Bench	1	2

Official Scoring/Possession Reference Chart
James Madison vs Delaware
Period 1
January 31, 2020 at Bob Carpenter Center - Newark



Period 1

Starters:

James Madison: 3 SMALLS,KAMIAH (G); 15 BARRIER,LEXIE (G); 30 JEFFERSON,KIKI (G); 31 COOPER-WILLIAMS,KAYLA (C); 55 BENITEZ,JACKIE (G);

Delaware: 2 GONZALES,ABBY (G); 20 DICKEY,JASMINE (G); 22 DEFREESE,SAMONE (F); 30 SHAW,KAYLA (G); 33 ENABOSI,NICOLE (F);

Time	VISITORS: James Madison	Score	Margin	HOME: Delaware
09:54		3-0	H 3	GOOD! 3PTR by GONZALES, ABBY
09:29	GOOD! JUMPER by BARRIER, LEXIE	3-2	H 1	
09:01	GOOD! 3PTR by SMALLS, KAMIAH	3-5	V 2	
08:30	GOOD! LAYUP by BARRIER, LEXIE	3-7	V 4	
07:29	GOOD! JUMPER by COOPER-WILLIAMS, KAYLA	3-9	V 6	
07:00		5-9	V 4	GOOD! JUMPER by DEFREESE, SAMONE
06:25	GOOD! 3PTR by BARRIER, LEXIE	5-12	V 7	
05:56	GOOD! LAYUP by BENITEZ, JACKIE [FB]	5-14	V 9	
05:05		6-14	V 8	GOOD! FT by ENABOSI, NICOLE [FB]
05:05		7-14	V 7	GOOD! FT by ENABOSI, NICOLE [FB]
03:34	GOOD! LAYUP by TUCKER, RAYNE	7-16	V 9	
02:07	GOOD! JUMPER by BARRIER, LEXIE	7-18	V 11	
01:59		9-18	V 9	GOOD! JUMPER by GONZALES, ABBY [PNT]
01:49	GOOD! 3PTR by JEFFERSON, KIKI	9-21	V 12	
01:39		12-21	V 9	GOOD! 3PTR by SHAW, KAYLA
01:01		14-21	V 7	GOOD! JUMPER by OLEARY, LIZZIE

James Madison 21, Delaware 14

Official Scoring/Possession Reference Chart
James Madison vs Delaware
Period 2
January 31, 2020 at Bob Carpenter Center - Newark



Period 2

Starters:

James Madison: 3 SMALLS,KAMIAH (G); 15 BARRIER,LEXIE (G); 30 JEFFERSON,KIKI (G); 31 COOPER-WILLIAMS,KAYLA (C); 55 BENITEZ,JACKIE (G);

Delaware: 2 GONZALES,ABBY (G); 20 DICKEY,JASMINE (G); 22 DEFREESE,SAMONE (F); 30 SHAW,KAYLA (G); 33 ENABOSI,NICOLE (F);

Time	VISITORS: James Madison	Score	Margin	HOME: Delaware
09:35		16-21	V 5	GOOD! LAYUP by GONZALES, ABBY [FB]
09:10	GOOD! FT by MERRITT, DEVON	16-22	V 6	
08:07	GOOD! LAYUP by SMALLS, KAMIAH [PNT]	16-24	V 8	
06:18		18-24	V 6	GOOD! JUMPER by SHAW, KAYLA
05:59	GOOD! JUMPER by BENITEZ, JACKIE [PNT]	18-26	V 8	
05:30		20-26	V 6	GOOD! LAYUP by DICKEY, JASMINE [PNT]
05:07	GOOD! FT by BENITEZ, JACKIE	20-27	V 7	
05:07	GOOD! FT by BENITEZ, JACKIE	20-28	V 8	
04:12		22-28	V 6	GOOD! JUMPER by DICKEY, JASMINE [PNT]
03:41	GOOD! LAYUP by TUCKER, RAYNE	22-30	V 8	
02:36		24-30	V 6	GOOD! JUMPER by DICKEY, JASMINE [PNT]
02:16	GOOD! 3PTR by SMALLS, KAMIAH	24-33	V 9	
00:45	GOOD! FT by SMALLS, KAMIAH [FB]	24-34	V 10	
00:45	GOOD! FT by SMALLS, KAMIAH [FB]	24-35	V 11	

James Madison 35, Delaware 24

Official Scoring/Possession Reference Chart
James Madison vs Delaware
Period 3
January 31, 2020 at Bob Carpenter Center - Newark



Period 3

Starters:

James Madison: 3 SMALLS,KAMIAH (G); 15 BARRIER,LEXIE (G); 30 JEFFERSON,KIKI (G); 31 COOPER-WILLIAMS,KAYLA (C); 55 BENITEZ,JACKIE (G);

Delaware: 2 GONZALES,ABBY (G); 20 DICKEY,JASMINE (G); 22 DEFREESE,SAMONE (F); 30 SHAW,KAYLA (G); 33 ENABOSI,NICOLE (F);

Time	VISITORS: James Madison	Score	Margin	HOME: Delaware
09:27	GOOD! JUMPER by SMALLS, KAMIAH	24-37	V 13	
08:45	GOOD! JUMPER by SMALLS, KAMIAH [PNT]	24-39	V 15	
08:27		25-39	V 14	GOOD! FT by ENABOSI, NICOLE
08:27		26-39	V 13	GOOD! FT by ENABOSI, NICOLE
08:07	GOOD! 3PTR by BARRIER, LEXIE	26-42	V 16	
06:45	GOOD! LAYUP by BARRIER, LEXIE	26-44	V 18	
06:13	GOOD! FT by SMALLS, KAMIAH	26-45	V 19	
04:25		28-45	V 17	GOOD! JUMPER by JOHNSON, TEE
02:34		30-45	V 15	GOOD! LAYUP by DICKEY, JASMINE [PNT]
00:59		32-45	V 13	GOOD! JUMPER by OLEARY, LIZZIE [PNT]
00:02	GOOD! FT by SMALLS, KAMIAH	32-46	V 14	

James Madison 46, Delaware 32

Official Scoring/Possession Reference Chart
James Madison vs Delaware
Period 4
January 31, 2020 at Bob Carpenter Center - Newark



Period 4

Starters:

James Madison: 3 SMALLS,KAMIAH (G); 15 BARRIER,LEXIE (G); 30 JEFFERSON,KIKI (G); 31 COOPER-WILLIAMS,KAYLA (C); 55 BENITEZ,JACKIE (G);

Delaware: 2 GONZALES,ABBY (G); 20 DICKEY,JASMINE (G); 22 DEFREESE,SAMONE (F); 30 SHAW,KAYLA (G); 33 ENABOSI,NICOLE (F);

Time	VISITORS: James Madison	Score	Margin	HOME: Delaware
08:15		34-46	V 12	GOOD! LAYUP by MCBRIDE, PARIS
07:34		36-46	V 10	GOOD! LAYUP by DEFREESE, SAMONE
06:18	GOOD! 3PTR by BENITEZ, JACKIE	36-49	V 13	
04:37	GOOD! FT by TUCKER, RAYNE	36-50	V 14	
04:08	GOOD! JUMPER by BENITEZ, JACKIE	36-52	V 16	
03:49		38-52	V 14	GOOD! LAYUP by ENABOSI, NICOLE
03:49		39-52	V 13	GOOD! FT by ENABOSI, NICOLE
03:05	GOOD! FT by JEFFERSON, KIKI	39-53	V 14	
03:05	GOOD! FT by JEFFERSON, KIKI	39-54	V 15	
02:47	GOOD! FT by SMALLS, KAMIAH [FB]	39-55	V 16	
02:47	GOOD! FT by SMALLS, KAMIAH [FB]	39-56	V 17	
02:23	GOOD! FT by JEFFERSON, KIKI	39-57	V 18	
01:42	GOOD! 3PTR by BENITEZ, JACKIE	39-60	V 21	

James Madison 60, Delaware 39

Official Substitutions Log
James Madison vs Delaware
Period 1
January 31, 2020 at Bob Carpenter Center - Newark



VISITORS: James Madison	Time	Score	HOME: Delaware
3 SMALLS,KAMIAH			2 GONZALES,ABBY
15 BARRIER,LEXIE			20 DICKEY,JASMINE
30 JEFFERSON,KIKI			22 DEFREESE,SAMONE
31 COOPER-WILLIAMS,KAYLA			30 SHAW,KAYLA
55 BENITEZ,JACKIE			33 ENABOSI,NICOLE
SUB OUT: 30 JEFFERSON,KIKI	05:55	14-5	
SUB OUT: 31 COOPER-WILLIAMS,KAYLA	05:55		
SUB IN: 4 GREEN,MADISON	05:55		
SUB IN: 21 TUCKER,RAYNE	05:55		
	05:05	14-5	SUB OUT: SHAW,KAYLA
	05:05		SUB IN: JOHNSON,TEE
SUB OUT: 15 BARRIER,LEXIE	03:56	14-7	
SUB IN: 2 CARODINE,JAYLIN	03:56		
SUB OUT: 3 SMALLS,KAMIAH	03:56		
SUB IN: 30 JEFFERSON,KIKI	03:56		
SUB OUT: 55 BENITEZ,JACKIE	02:52	16-7	
SUB IN: 15 BARRIER,LEXIE	02:52		
	02:19	16-7	SUB OUT: DEFREESE,SAMONE
	02:19		SUB IN: SHAW,KAYLA
SUB OUT: 21 TUCKER,RAYNE	02:19		
SUB IN: 31 COOPER-WILLIAMS,KAYLA	02:19		
	01:20	21-12	SUB OUT: ENABOSI,NICOLE
	01:20		SUB IN: OLEARY,LIZZIE
SUB OUT: 2 CARODINE,JAYLIN	01:20		
SUB OUT: 4 GREEN,MADISON	01:20		
SUB IN: 3 SMALLS,KAMIAH	01:20		
SUB IN: 42 MERRITT,DEVON	01:20		

James Madison 21, Delaware 14

Official Substitutions Log
James Madison vs Delaware
Period 2
January 31, 2020 at Bob Carpenter Center - Newark



VISITORS: James Madison	Time	Score	HOME: Delaware
3 SMALLS,KAMIAH			2 GONZALES,ABBY
15 BARRIER,LEXIE			20 DICKEY,JASMINE
30 JEFFERSON,KIKI			22 DEFREESE,SAMONE
31 COOPER-WILLIAMS,KAYLA			30 SHAW,KAYLA
55 BENITEZ,JACKIE			33 ENABOSI,NICOLE
SUB OUT: 30 JEFFERSON,KIKI	10:00	-	
SUB IN: 55 BENITEZ,JACKIE	10:00		
	09:10	22-16	SUB OUT: JOHNSON,TEE
	09:10		SUB IN: ENABOSI,NICOLE
	09:10		
SUB OUT: 15 BARRIER,LEXIE	09:10		
SUB OUT: 42 MERRITT,DEVON	09:10		
SUB IN: 21 TUCKER,RAYNE	09:10		
SUB IN: 30 JEFFERSON,KIKI	09:10		
	05:12	26-20	SUB OUT: GONZALES,ABBY
	05:12		SUB OUT: OLEARY,LIZZIE
	05:12		SUB OUT: ENABOSI,NICOLE
	05:12		SUB IN: WADE,BRYNN
	05:12		SUB IN: MCBRIDE,PARIS
	05:12		SUB IN: LAWRENCE,REBECCA
SUB OUT: 21 TUCKER,RAYNE	05:12		
SUB OUT: 30 JEFFERSON,KIKI	05:12		
SUB OUT: 31 COOPER-WILLIAMS,KAYLA	05:12		
SUB IN: 2 CARODINE,JAYLIN	05:12		
SUB IN: 4 GREEN,MADISON	05:12		
SUB IN: 15 BARRIER,LEXIE	05:12		
SUB OUT: 3 SMALLS,KAMIAH	05:07	26-20	
SUB IN: 21 TUCKER,RAYNE	05:07		
	04:31	28-20	SUB OUT: SHAW,KAYLA
	04:31		SUB IN: GONZALES,ABBY
SUB OUT: 2 CARODINE,JAYLIN	03:28	30-22	
SUB OUT: 4 GREEN,MADISON	03:28		
SUB IN: 3 SMALLS,KAMIAH	03:28		
SUB IN: 42 MERRITT,DEVON	03:28		
	02:51	30-22	SUB OUT: LAWRENCE,REBECCA
	02:51		SUB IN: OLEARY,LIZZIE
	01:58	33-24	SUB OUT: MCBRIDE,PARIS
	01:58		SUB IN: JOHNSON,TEE
SUB OUT: 21 TUCKER,RAYNE	01:58		
SUB IN: 31 COOPER-WILLIAMS,KAYLA	01:58		
SUB OUT: 42 MERRITT,DEVON	01:24	33-24	
SUB IN: 30 JEFFERSON,KIKI	01:24		
	00:45	33-24	SUB OUT: JOHNSON,TEE
	00:45		SUB IN: SHAW,KAYLA

James Madison 35, Delaware 24

Official Substitutions Log
James Madison vs Delaware
Period 3
January 31, 2020 at Bob Carpenter Center - Newark



VISITORS: James Madison	Time	Score	HOME: Delaware
3 SMALLS,KAMIAH			2 GONZALES,ABBY
15 BARRIER,LEXIE			20 DICKEY,JASMINE
30 JEFFERSON,KIKI			22 DEFREESE,SAMONE
31 COOPER-WILLIAMS,KAYLA			30 SHAW,KAYLA
55 BENITEZ,JACKIE			33 ENABOSI,NICOLE
	10:00	-	SUB OUT: WADE,BRYNN
	10:00		SUB OUT: OLEARY,LIZZIE
	10:00		SUB IN: DEFREESE,SAMONE
	10:00		SUB IN: ENABOSI,NICOLE
	08:27	39-24	SUB OUT: SHAW,KAYLA
	08:27		SUB IN: JOHNSON,TEE
	06:52	42-26	SUB OUT: DEFREESE,SAMONE
	06:52		SUB IN: OLEARY,LIZZIE
SUB OUT: 30 JEFFERSON,KIKI	06:52		
SUB IN: 4 GREEN,MADISON	06:52		
	06:13	44-26	SUB OUT: ENABOSI,NICOLE
	06:13		SUB IN: DEFREESE,SAMONE
SUB OUT: 3 SMALLS,KAMIAH	06:13		
SUB IN: 2 CARODINE,JAYLIN	06:13		
SUB OUT: 4 GREEN,MADISON	04:56	45-26	
SUB OUT: 31 COOPER-WILLIAMS,KAYLA	04:56		
SUB IN: 21 TUCKER,RAYNE	04:56		
SUB IN: 30 JEFFERSON,KIKI	04:56		
	04:42	45-26	SUB OUT: DEFREESE,SAMONE
	04:42		SUB IN: ENABOSI,NICOLE
SUB OUT: 55 BENITEZ,JACKIE	04:42		
SUB IN: 3 SMALLS,KAMIAH	04:42		
	03:00	45-28	SUB OUT: GONZALES,ABBY
	03:00		SUB OUT: JOHNSON,TEE
	03:00		SUB IN: MCBRIDE,PARIS
	03:00		SUB IN: SHAW,KAYLA
SUB OUT: 2 CARODINE,JAYLIN	03:00		
SUB OUT: 30 JEFFERSON,KIKI	03:00		
SUB IN: 42 MERRITT,DEVON	03:00		
SUB IN: 55 BENITEZ,JACKIE	03:00		
	00:40	45-32	SUB OUT: ENABOSI,NICOLE
	00:40		SUB IN: DEFREESE,SAMONE
SUB OUT: 42 MERRITT,DEVON	00:40		
SUB IN: 31 COOPER-WILLIAMS,KAYLA	00:40		
SUB OUT: 21 TUCKER,RAYNE	00:02	45-32	
SUB IN: 30 JEFFERSON,KIKI	00:02		

James Madison 46, Delaware 32

Official Substitutions Log
James Madison vs Delaware
Period 4
January 31, 2020 at Bob Carpenter Center - Newark



VISITORS: James Madison	Time	Score	HOME: Delaware
3 SMALLS,KAMIAH			2 GONZALES,ABBY
15 BARRIER,LEXIE			20 DICKEY,JASMINE
30 JEFFERSON,KIKI			22 DEFREESE,SAMONE
31 COOPER-WILLIAMS,KAYLA			30 SHAW,KAYLA
55 BENITEZ,JACKIE			33 ENABOSI,NICOLE
	07:28	46-36	SUB OUT: OLEARY,LIZZIE
	07:28		SUB IN: ENABOSI,NICOLE
SUB OUT: 3 SMALLS,KAMIAH	07:28		
SUB OUT: 15 BARRIER,LEXIE	07:28		
SUB IN: 2 CARODINE,JAYLIN	07:28		
SUB IN: 4 GREEN,MADISON	07:28		
SUB OUT: 2 CARODINE,JAYLIN	06:35	46-36	
SUB IN: 15 BARRIER,LEXIE	06:35		
	06:00	49-36	SUB OUT: MCBRIDE,PARIS
	06:00		SUB IN: GONZALES,ABBY
SUB OUT: 4 GREEN,MADISON	05:26	49-36	
SUB IN: 3 SMALLS,KAMIAH	05:26		
	05:20	49-36	SUB OUT: DEFREESE,SAMONE
	05:20		SUB IN: OLEARY,LIZZIE
SUB OUT: 30 JEFFERSON,KIKI	05:20		
SUB IN: 21 TUCKER,RAYNE	05:20		
	04:08	50-36	SUB OUT: OLEARY,LIZZIE
	04:08		SUB IN: WADE,BRYNN
SUB OUT: 31 COOPER-WILLIAMS,KAYLA	03:49	52-38	
SUB IN: 30 JEFFERSON,KIKI	03:49		
	02:56	54-39	SUB OUT: DICKEY,JASMINE
	02:56		SUB OUT: ENABOSI,NICOLE
	02:56		SUB IN: JOHNSON,TEE
	02:56		SUB IN: LAWRENCE,REBECCA
SUB OUT: 3 SMALLS,KAMIAH	02:47	56-39	
SUB IN: 4 GREEN,MADISON	02:47		
SUB OUT: 15 BARRIER,LEXIE	02:33	56-39	
SUB IN: 2 CARODINE,JAYLIN	02:33		
	01:12	60-39	SUB OUT: GONZALES,ABBY
	01:12		SUB IN: MCBRIDE,PARIS
SUB OUT: 30 JEFFERSON,KIKI	01:12		
SUB OUT: 55 BENITEZ,JACKIE	01:12		
SUB IN: 00 OPPENHEIMER,NIKKI	01:12		
SUB IN: 14 MARCISZEWSKI,ELEANORE	01:12		

James Madison 60, Delaware 39

Official Shot Chart
James Madison vs Delaware
 PERIOD 1 Shots
 January 31, 2020 at Bob Carpenter Center - Newark

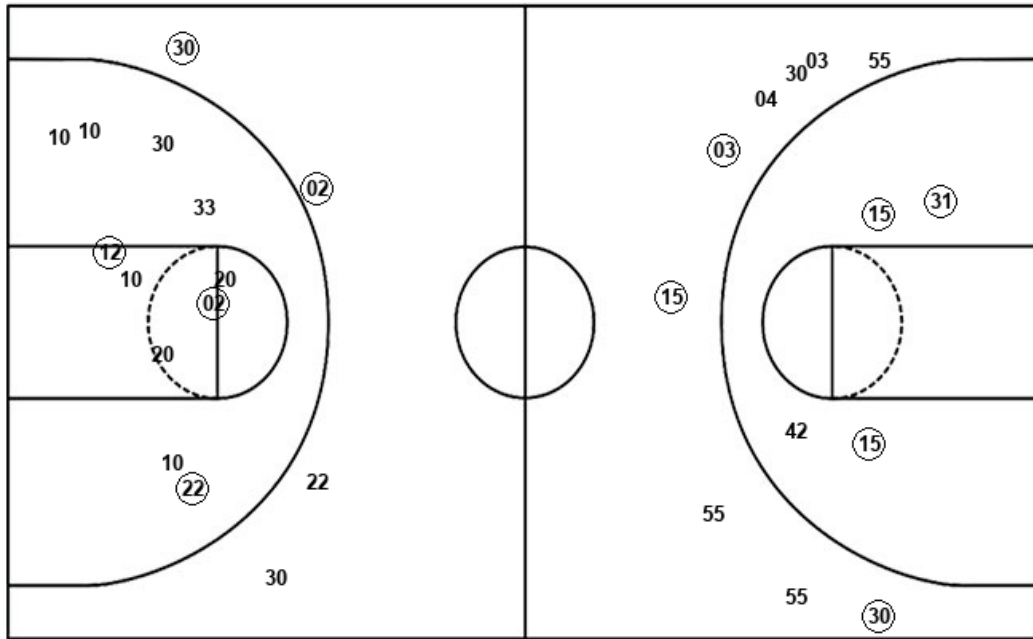


Delaware

James Madison

Layups
10

Dunks



Layups

Dunks

Del : Period 1	Made	Att	Pct
Layups	0	1	00.0
Dunks	0	0	0
2PT Field Goals	3	12	25.0
3PT Field Goals	2	4	50.0
Total Field Goals	5	16	31.3

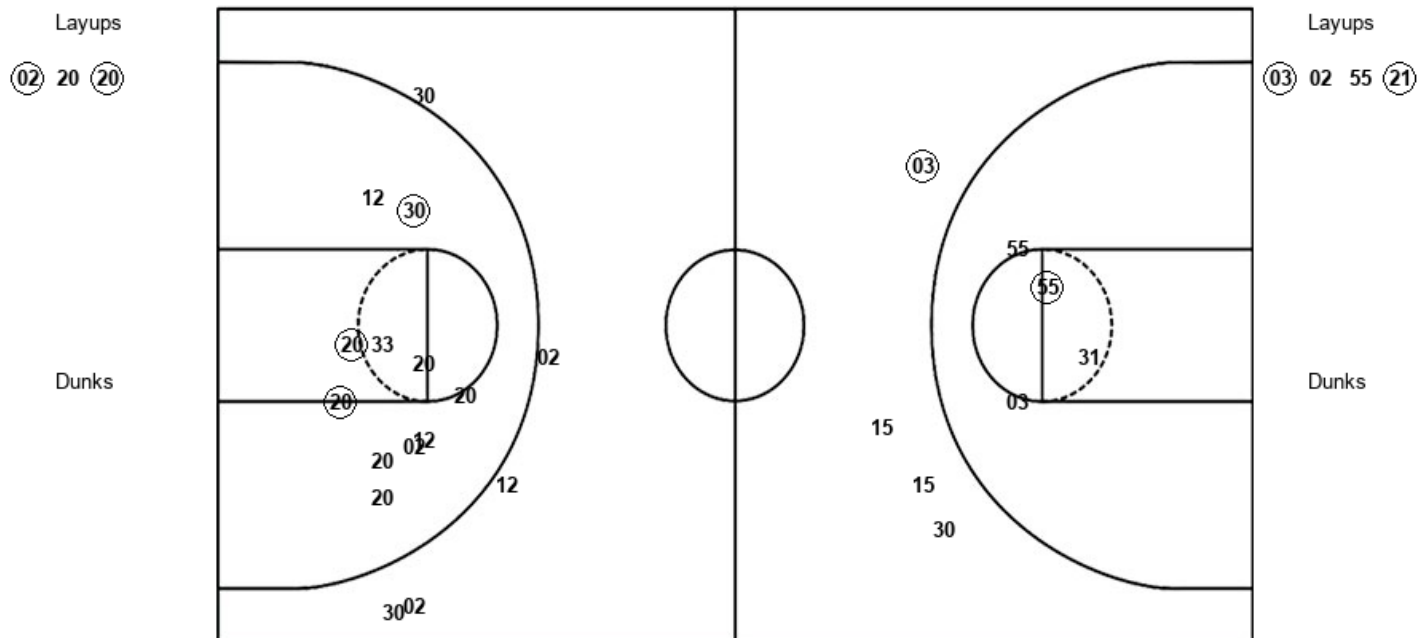
JMU : Period 1	Made	Att	Pct
Layups	3	4	75.0
Dunks	0	0	0
2PT Field Goals	6	8	75.0
3PT Field Goals	3	9	33.3
Total Field Goals	9	17	52.9

Official Shot Chart
James Madison vs Delaware
 PERIOD 2 Shots
 January 31, 2020 at Bob Carpenter Center - Newark



Delaware

James Madison



Del : Period 2	Made	Att	Pct
Layups	2	3	66.7
Dunks	0	0	0
2PT Field Goals	5	14	35.7
3PT Field Goals	0	5	00.0
Total Field Goals	5	19	26.3

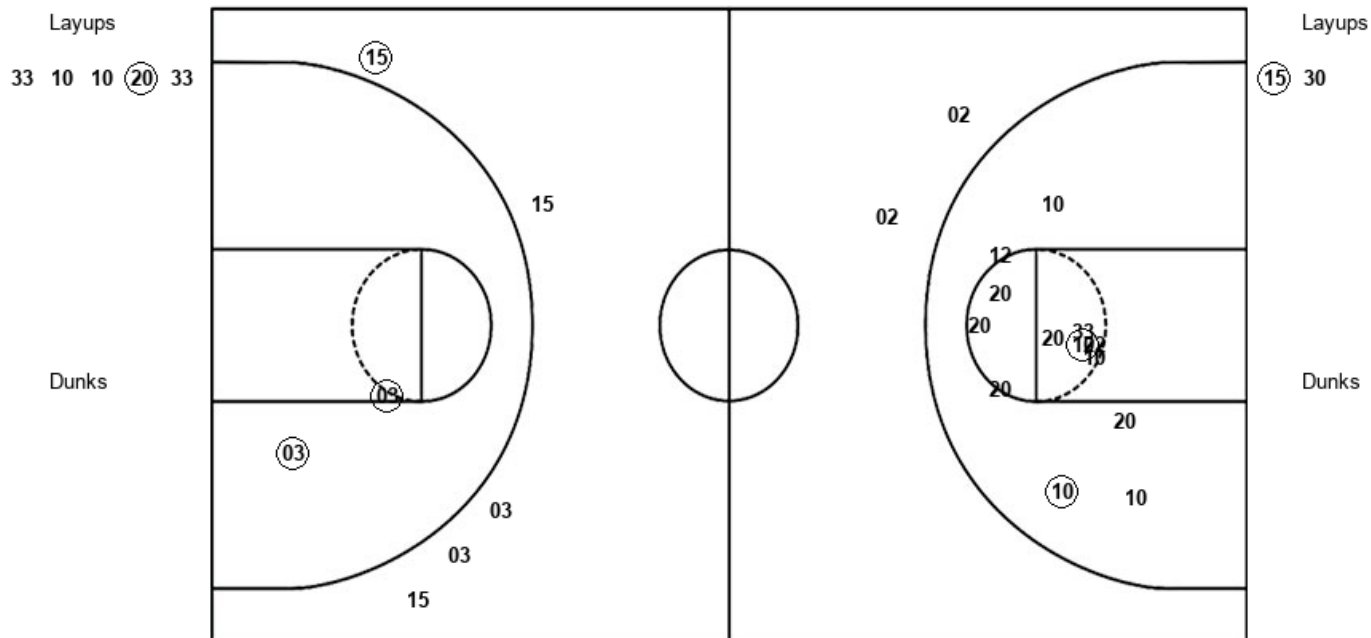
JMU : Period 2	Made	Att	Pct
Layups	2	4	50.0
Dunks	0	0	0
2PT Field Goals	3	8	37.5
3PT Field Goals	1	4	25.0
Total Field Goals	4	12	33.3

Official Shot Chart
James Madison vs Delaware
 PERIOD 3 Shots
 January 31, 2020 at Bob Carpenter Center - Newark



Delaware

James Madison



Del : Period 3	Made	Att	Pct
Layups	1	5	20.0
Dunks	0	0	0
2PT Field Goals	3	18	16.7
3PT Field Goals	0	2	00.0
Total Field Goals	3	20	15.0

JMU : Period 3	Made	Att	Pct
Layups	1	2	50.0
Dunks	0	0	0
2PT Field Goals	3	4	75.0
3PT Field Goals	1	5	20.0
Total Field Goals	4	9	44.4

Official Shot Chart
James Madison vs Delaware
 PERIOD 4 Shots
 January 31, 2020 at Bob Carpenter Center - Newark

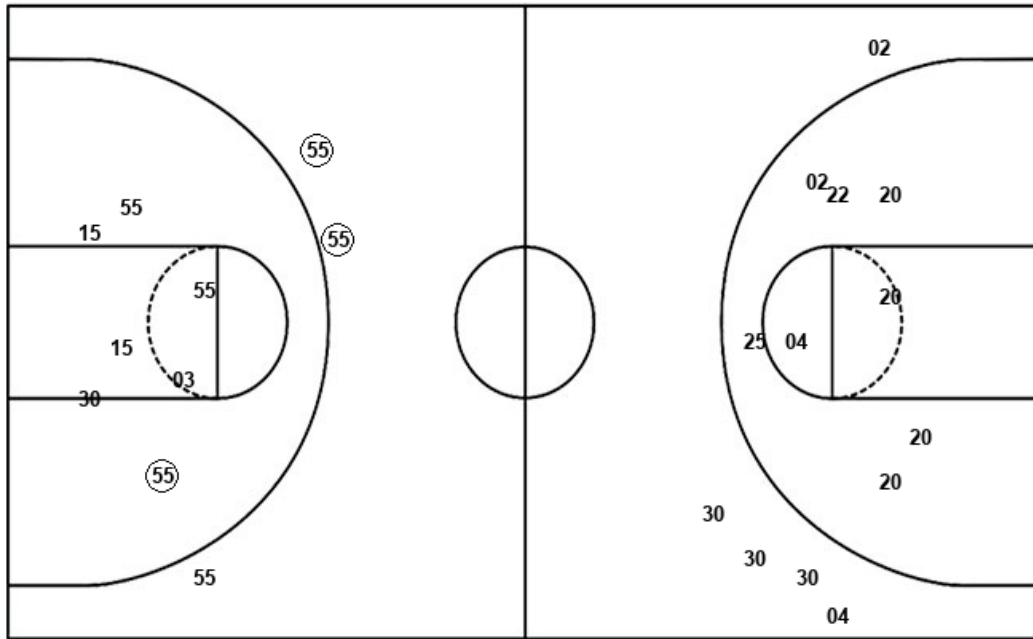


Delaware

James Madison

Layups
 04 22 02 33

Dunks



Layups

30 14

Dunks

Del : Period 4	Made	Att	Pct
Layups	3	4	75.0
Dunks	0	0	0
2PT Field Goals	3	12	25.0
3PT Field Goals	0	5	00.0
Total Field Goals	3	17	17.6

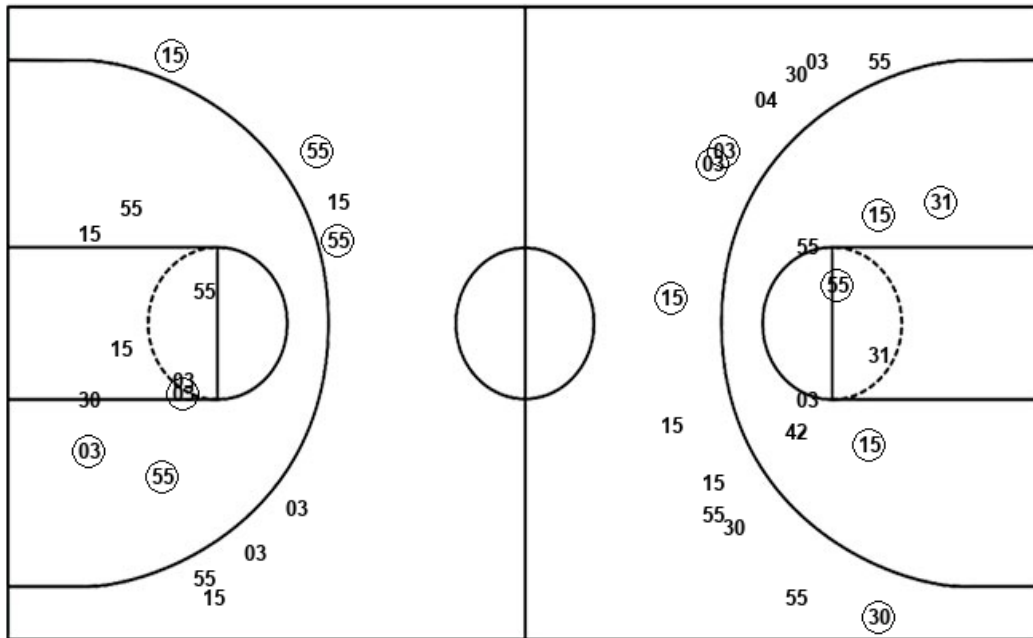
JMU : Period 4	Made	Att	Pct
Layups	0	2	00.0
Dunks	0	0	0
2PT Field Goals	1	9	11.1
3PT Field Goals	2	3	66.7
Total Field Goals	3	12	25.0

Official Shot Chart
James Madison vs Delaware
James Madison Team Shots
January 31, 2020 at Bob Carpenter Center - Newark



Layups

Dunks



Layups

Dunks

JMU : Period 1	Made	Att	Pct
Layups	3	4	75.0
Dunks	0	0	0
2PT Field Goals	6	8	75.0
3PT Field Goals	3	9	33.3
Total Field Goals	9	17	52.9

JMU : Period 3	Made	Att	Pct
Layups	1	2	50.0
Dunks	0	0	0
2PT Field Goals	3	4	75.0
3PT Field Goals	1	5	20.0
Total Field Goals	4	9	44.4

JMU : Period 2	Made	Att	Pct
Layups	2	4	50.0
Dunks	0	0	0
2PT Field Goals	3	8	37.5
3PT Field Goals	1	4	25.0
Total Field Goals	4	12	33.3

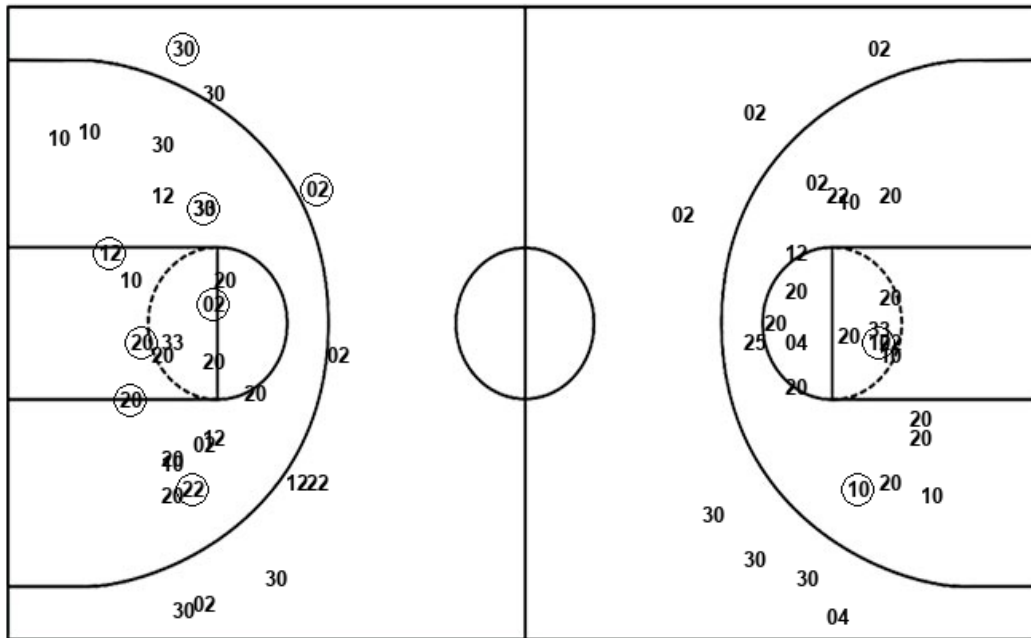
JMU : Period 4	Made	Att	Pct
Layups	0	2	00.0
Dunks	0	0	0
2PT Field Goals	1	9	11.1
3PT Field Goals	2	3	66.7
Total Field Goals	3	12	25.0

Official Shot Chart
James Madison vs Delaware
Delaware Team Shots
January 31, 2020 at Bob Carpenter Center - Newark



Layups

Dunks



Layups

Dunks

Del : Period 1	Made	Att	Pct
Layups	0	1	00.0
Dunks	0	0	0
2PT Field Goals	3	12	25.0
3PT Field Goals	2	4	50.0
Total Field Goals	5	16	31.3

Del : Period 3	Made	Att	Pct
Layups	1	5	20.0
Dunks	0	0	0
2PT Field Goals	3	18	16.7
3PT Field Goals	0	2	00.0
Total Field Goals	3	20	15.0

Del : Period 2	Made	Att	Pct
Layups	2	3	66.7
Dunks	0	0	0
2PT Field Goals	5	14	35.7
3PT Field Goals	0	5	00.0
Total Field Goals	5	19	26.3

Del : Period 4	Made	Att	Pct
Layups	3	4	75.0
Dunks	0	0	0
2PT Field Goals	3	12	25.0
3PT Field Goals	0	5	00.0
Total Field Goals	3	17	17.6