

## FINAL SCORE

**North Texas**

**66**



**Rice**

**69**



February 20, 2020 • Tudor Fieldhouse - Houston

## FINAL STATISTICS

**Official Box Score**  
**North Texas vs Rice**  
**Game Totals -- Final Statistics**  
**February 20, 2020 at Tudor Fieldhouse - Houston**



**North Texas 66**

No.	Player	S	Pts	FG	3FG	FT	OR	DR	TR	PF	A	TO	Blk	Stl	Min	+/-
03	BOYD, N'YAH	G	7	3-13	0-3	1-2	1	4	5	1	4	2	0	3	32	-11
04	JACKSON, JAZION	G	13	6-8	0-0	1-3	3	2	5	3	1	3	0	2	35	4
23	THOMPSON, RANDI	G	7	3-7	1-3	0-0	1	1	2	5	2	3	0	3	20	11
41	TOWNLEY, MADI	F	9	4-11	0-0	1-4	1	0	1	1	1	0	0	2	29	10
42	GEORGE, ANISHA	C	20	8-12	0-0	4-8	4	4	8	4	0	2	1	1	30	8
02	JONES, SUMMER	G	3	1-2	1-1	0-0	0	0	0	0	1	3	0	1	18	-21
11	SHEPHERD, CHARLENE	F	7	3-5	0-0	1-2	4	2	6	3	1	2	0	0	11	-12
24	MIMS, TRENA	G	0	0-2	0-1	0-0	0	2	2	2	2	1	0	0	26	-4
TEAM								2	2	4	0	0				
<b>TOTALS</b>			<b>66</b>	<b>28-60</b>	<b>2-8</b>	<b>8-19</b>	<b>16</b>	<b>17</b>	<b>33</b>	<b>19</b>	<b>12</b>	<b>16</b>	<b>1</b>	<b>12</b>	<b>200</b>	

*Shooting By Period*

Period	FG	FG%	3FG	3FG%	FT	FT%
1st Qtr	9-20	45%	0-2	00%	1-1	100%
2nd Qtr	7-11	64%	2-3	67%	2-6	33%
3rd Qtr	5-11	45%	0-1	00%	1-2	50%
4th Qtr	7-18	39%	0-2	00%	4-10	40%
1st Half	16-31	52%	2-5	40%	3-7	43%
2nd Half	12-29	41%	0-3	00%	5-12	42%
<b>Game</b>	<b>28-60</b>	<b>46.7%</b>	<b>2-8</b>	<b>25.0%</b>	<b>8-19</b>	<b>42.1%</b>

*Deadball Rebounds: 5,0*  
*Last FG: 4th-00:23*  
*Biggest Run: 14-0*  
*Largest lead: By 13 at 2nd-01:48*  
*Technical Fouls: None.*

**Rice 69**

No.	Player	S	Pts	FG	3FG	FT	OR	DR	TR	PF	A	TO	Blk	Stl	Min	+/-
02	WIGGINS, SYDNE	G	12	3-9	1-5	5-9	0	1	1	2	1	0	1	1	36	4
10	SMITH, JASMINE	G	4	1-3	1-2	1-2	0	2	2	3	1	4	0	2	31	-6
13	OGWUMIKE, ERICA	G	33	10-20	1-4	12-13	5	7	12	2	4	3	0	3	38	4
15	SCHWARTZ, LAUREN	F	10	4-6	0-0	2-2	0	6	6	2	1	5	0	0	39	4
25	ELLIG, KENDALL	F	2	1-1	0-0	0-0	1	0	1	3	0	2	0	0	13	-7
03	CROSTHWAIT, KATELYN	G	0	0-1	0-1	0-0	0	2	2	0	2	1	0	0	10	1
05	JACKSON, DESTINY	G	0	0-0	0-0	0-0	0	0	0	0	0	0	0	0	6	6
22	AUSTIN, ASHLEE	F	0	0-0	0-0	0-0	0	0	0	1	0	1	0	0	1	-1
23	CHRISMAN, ALEXAH	C	8	4-6	0-0	0-0	1	2	3	0	0	1	1	1	25	12
24	ALAO, TEMI	F	0	0-0	0-0	0-0	0	0	0	1	0	0	0	0	1	-2
TEAM								1	2	3	0	0				
<b>TOTALS</b>			<b>69</b>	<b>23-46</b>	<b>3-12</b>	<b>20-26</b>	<b>8</b>	<b>22</b>	<b>30</b>	<b>14</b>	<b>9</b>	<b>17</b>	<b>2</b>	<b>7</b>	<b>200</b>	

*Shooting By Period*

Period	FG	FG%	3FG	3FG%	FT	FT%
1st Qtr	8-14	57%	0-1	00%	4-5	80%
2nd Qtr	3-10	30%	0-4	00%	0-2	00%
3rd Qtr	5-12	42%	1-4	25%	9-10	90%
4th Qtr	7-10	70%	2-3	67%	7-9	78%
1st Half	11-24	46%	0-5	00%	4-7	57%
2nd Half	12-22	55%	3-7	43%	16-19	84%
<b>Game</b>	<b>23-46</b>	<b>50.0%</b>	<b>3-12</b>	<b>25.0%</b>	<b>20-26</b>	<b>76.9%</b>

*Deadball Rebounds: 4,0*  
*Last FG: 4th-02:07*  
*Biggest Run: 9-0*  
*Largest lead: By 8 at 4th-03:21*  
*Technical Fouls: None.*

*Game Notes:*

Officials: Scott Yarbrough, Neonta Williams, Kelly Broomfield  
 Attendance: 766

Start Time: 08:01 PM ET  
 End Time: 09:58 PM ET  
 Game Duration: 1:57  
 Conference Game;

Score	1st	2nd	3rd	4th	TOT
UNT	19	18	11	18	<b>66</b>
RIC	20	6	20	23	<b>69</b>

UNT led for 26:51. RIC led for 10:02.  
 Game was tied for 3:08.  
 Times tied: 5      Lead Changes: 9

Points from	UNT	RIC
In the Paint	44	36
Off Turns	21	18
2nd Chance	12	11
Fast Break	10	24
Bench	10	8

**Official Box Score**  
**North Texas vs Rice**  
**First Half Statistics Only**  
**February 20, 2020 at Tudor Fieldhouse - Houston**



**North Texas 37**

No.	Player	S	Pts	FG	3FG	FT	OR	DR	TR	PF	A	TO	Blk	Stl	Min	+/-
02	JONES, SUMMER	G	3	1-1	1-1	0-0	0	0	0	0	1	3	0	1	9	0
03	BOYD, N'YAH	G	4	2-7	0-1	0-0	0	1	1	0	3	0	0	3	15	4
04	JACKSON, JAZION	G	4	2-3	0-0	0-0	2	1	3	0	1	1	0	1	18	13
11	SHEPHERD, CHARLENE	F	0	0-1	0-0	0-0	1	2	3	1	0	1	0	0	3	-4
23	THOMPSON, RANDI	G	7	3-5	1-2	0-0	0	1	1	1	1	1	0	1	9	9
24	MIMS, TRENA	G	0	0-2	0-1	0-0	0	1	1	0	2	1	0	0	11	2
41	TOWNLEY, MADI	F	7	3-5	0-0	1-4	1	0	1	0	1	0	0	1	17	16
42	GEORGE, ANISHA	C	12	5-7	0-0	2-3	2	3	5	2	0	0	0	1	19	15
	TEAM		0	0-0	0-0	0-0	2	0	2	0	0	0	0	0	0	0
<b>TOTALS</b>			<b>37</b>	<b>16-31</b>	<b>2-5</b>	<b>3-7</b>	<b>8</b>	<b>9</b>	<b>17</b>	<b>4</b>	<b>9</b>	<b>7</b>	<b>0</b>	<b>8</b>	<b>100</b>	

*Shooting By Period*

Period	FG	FG%	3FG	3FG%	FT	FT%
1st Qtr	9-20	45%	0-2	00%	1-1	100%
2nd Qtr	7-11	64%	2-3	67%	2-6	33%
1st Half	16-31	52%	2-5	40%	3-7	43%
Game	28-60	46.7%	2-8	25.0%	8-19	42.1%

*Deadball Rebounds: 5,0*  
*Last FG Half: UNT 2nd-01:48*

**Rice 26**

No.	Player	S	Pts	FG	3FG	FT	OR	DR	TR	PF	A	TO	Blk	Stl	Min	+/-
02	WIGGINS, SYDNE	G	2	1-5	0-2	0-2	0	1	1	0	0	0	0	0	17	-8
03	CROSTHWAIT, KATELYN	G	0	0-1	0-1	0-0	0	2	2	0	1	1	0	0	7	-3
05	JACKSON, DESTINY	G	0	0-0	0-0	0-0	0	0	0	0	0	0	0	0	0	0
10	SMITH, JASMINE	G	0	0-2	0-1	0-0	0	1	1	1	0	2	0	1	16	-14
13	OGWUMIKE, ERICA	G	12	5-9	0-1	2-3	3	1	4	1	2	3	0	1	19	-8
15	SCHWARTZ, LAUREN	F	6	2-3	0-0	2-2	0	3	3	0	0	2	0	0	19	-10
22	AUSTIN, ASHLEE	F	0	0-0	0-0	0-0	0	0	0	1	0	1	0	0	1	-1
23	CHRISMAN, ALEXAH	C	4	2-3	0-0	0-0	1	1	2	0	0	1	0	1	12	1
24	ALAO, TEMI	F	0	0-0	0-0	0-0	0	0	0	1	0	0	0	0	1	-2
25	ELLIG, KENDALL	F	2	1-1	0-0	0-0	1	0	1	2	0	1	0	0	7	-10
	TEAM		0	0-0	0-0	0-0	0	0	0	0	0	0	0	0	0	0
<b>TOTALS</b>			<b>26</b>	<b>11-24</b>	<b>0-5</b>	<b>4-7</b>	<b>5</b>	<b>9</b>	<b>14</b>	<b>6</b>	<b>3</b>	<b>11</b>	<b>0</b>	<b>3</b>	<b>100</b>	

*Shooting By Period*

Period	FG	FG%	3FG	3FG%	FT	FT%
1st Qtr	8-14	57%	0-1	00%	4-5	80%
2nd Qtr	3-10	30%	0-4	00%	0-2	00%
1st Half	11-24	46%	0-5	00%	4-7	57%
Game	23-46	50.0%	3-12	25.0%	20-26	76.9%

*Deadball Rebounds: 4,0*  
*Last FG Half: RIC 2nd-00:02*

Game Notes:

Officials: **Scott Yarbrough, Neonta Williams, Kelly Broomfield**  
Attendance: **766**

Start Time: **08:01 PM ET**  
End Time: **09:58 PM ET**  
Game Duration: **1:57**  
Conference Game;

Score	1st	2nd	3rd	4th	TOT
UNT	19	18	11	18	<b>66</b>
RIC	20	6	20	23	<b>69</b>

Points from (This Period)	UNT	RIC
In the Paint	24	20
Off Turns	18	6
2nd Chance	7	7
Fast Break	7	4
Bench	3	4

**Official Box Score**  
**North Texas vs Rice**  
**First Quarter Statistics Only**  
**February 20, 2020 at Tudor Fieldhouse - Houston**



**North Texas 19**

No.	Player	S	Pts	FG	3FG	FT	OR	DR	TR	PF	A	TO	Blk	Stl	Min	+/-
03	BOYD, N'YAH	G	0	0-4	0-1	0-0	0	1	1	0	1	0	0	1	10	-1
04	JACKSON, JAZION	G	4	2-3	0-0	0-0	2	0	2	0	1	0	0	1	8	1
23	THOMPSON, RANDI	G	4	2-3	0-1	0-0	0	0	0	1	1	0	0	1	6	6
41	TOWNLEY, MADI	F	4	2-3	0-0	0-0	0	0	0	0	0	0	0	0	7	4
42	GEORGE, ANISHA	C	7	3-5	0-0	1-1	2	1	3	1	0	0	0	0	9	1
02	JONES, SUMMER	G	0	0-0	0-0	0-0	0	0	0	0	0	2	0	0	4	-7
11	SHEPHERD, CHARLENE	F	0	0-1	0-0	0-0	1	1	2	1	0	1	0	0	2	-2
24	MIMS, TRENA	G	0	0-1	0-0	0-0	0	0	0	0	1	1	0	0	4	-7
<b>TEAM</b>							1	0	1	0						
<b>TOTALS</b>			<b>19</b>	<b>9-20</b>	<b>0-2</b>	<b>1-1</b>	<b>6</b>	<b>3</b>	<b>9</b>	<b>3</b>	<b>4</b>	<b>4</b>	<b>0</b>	<b>3</b>	<b>50</b>	

*Shooting By Period*

Period	FG	FG%	3FG	3FG%	FT	FT%
1st Qtr	9-20	45%	0-2	00%	1-1	100%
2nd Qtr	7-11	64%	2-3	67%	2-6	33%
1st Half	9-20	45%	0-2	00%	1-1	100%
1st Half	16-31	52%	2-5	40%	3-7	43%
Game	28-60	46.7%	2-8	25.0%	8-19	42.1%

*Deadball Rebounds: 5,0*

**Rice 20**

No.	Player	S	Pts	FG	3FG	FT	OR	DR	TR	PF	A	TO	Blk	Stl	Min	+/-
02	WIGGINS, SYDNE	G	2	1-3	0-0	0-0	0	0	0	0	0	0	0	0	10	1
10	SMITH, JASMINE	G	0	0-0	0-0	0-0	0	1	1	0	0	1	0	0	8	-4
13	OGWUMIKE, ERICA	G	12	5-8	0-1	2-3	2	0	2	0	1	1	0	1	10	1
15	SCHWARTZ, LAUREN	F	4	1-2	0-0	2-2	0	2	2	0	0	1	0	0	10	1
25	ELLIG, KENDALL	F	2	1-1	0-0	0-0	1	0	1	1	0	1	0	0	5	-6
03	CROSTHWAIT, KATELYN	G	0	0-0	0-0	0-0	0	2	2	0	0	0	0	0	2	5
05	JACKSON, DESTINY	G	0	0-0	0-0	0-0	0	0	0	0	0	0	0	0	0	0
22	AUSTIN, ASHLEE	F	0	0-0	0-0	0-0	0	0	0	0	0	0	0	0	0	0
23	CHRISMAN, ALEXAH	C	0	0-0	0-0	0-0	0	0	0	0	0	0	0	1	5	7
24	ALAO, TEMI	F	0	0-0	0-0	0-0	0	0	0	0	0	0	0	0	0	0
<b>TEAM</b>							0	0	0	0						
<b>TOTALS</b>			<b>20</b>	<b>8-14</b>	<b>0-1</b>	<b>4-5</b>	<b>3</b>	<b>5</b>	<b>8</b>	<b>1</b>	<b>1</b>	<b>4</b>	<b>0</b>	<b>2</b>	<b>50</b>	

*Shooting By Period*

Period	FG	FG%	3FG	3FG%	FT	FT%
1st Qtr	8-14	57%	0-1	00%	4-5	80%
2nd Qtr	3-10	30%	0-4	00%	0-2	00%
1st Half	8-14	57%	0-1	00%	4-5	80%
1st Half	11-24	46%	0-5	00%	4-7	57%
Game	23-46	50.0%	3-12	25.0%	20-26	76.9%

*Deadball Rebounds: 4,0*

*Game Notes:*

Officials: **Scott Yarbrough, Neonta Williams, Kelly Broomfield**  
 Attendance: **766**

Start Time: **08:01 PM ET**  
 End Time: **09:58 PM ET**  
 Game Duration: **1:57**  
 Conference Game;

Score	1st	2nd	3rd	4th	TOT
UNT	19	18	11	18	<b>66</b>
RIC	20	6	20	23	<b>69</b>

Points from (This Period)	UNT	RIC
In the Paint	18	14
Off Turns	8	4
2nd Chance	6	7
Fast Break	2	4
Bench	0	0

**Official Play-By-Play**  
**North Texas vs Rice**  
**First Quarter**  
**February 20, 2020 at Tudor Fieldhouse - Houston**



**Period 1**

**Starters:**

**North Texas:** 3 BOYD, N'YAH (G); 4 JACKSON, JAZION (G); 23 THOMPSON, RANDI (G); 41 TOWNLEY, MADI (F); 42 GEORGE, ANISHA (C);  
**Rice:** 2 WIGGINS, SYDNE (G); 10 SMITH, JASMINE (G); 13 OGWUMIKE, ERICA (G); 15 SCHWARTZ, LAUREN (F); 25 ELLIG, KENDALL (F);

Time	VISITORS: North Texas	Score	Margin	HOME: Rice
09:44	MISSED JUMPER by TOWNLEY, MADI			
09:40	REBOUND (OFF) by JACKSON, JAZION			
09:25	MISSED JUMPER by GEORGE, ANISHA			
09:22	REBOUND (OFF) by JACKSON, JAZION			
09:21	GOOD! LAYUP by JACKSON, JAZION	0-2	V 2	
08:53				MISSED LAYUP by OGWUMIKE, ERICA
08:49				REBOUND (OFF) by OGWUMIKE, ERICA
08:48		2-2	T	GOOD! LAYUP by OGWUMIKE, ERICA
08:37	MISSED 3PTR by THOMPSON, RANDI			
08:33				REBOUND (DEF) by SMITH, JASMINE
08:30	FOUL (PERSONAL) by GEORGE, ANISHA			
08:30		3-2	H 1	GOOD! FT by SCHWARTZ, LAUREN [FB]
08:30		4-2	H 2	GOOD! FT by SCHWARTZ, LAUREN [FB]
08:21	MISSED JUMPER by BOYD, N'YAH			
08:21	REBOUND (OFF) by TEAM			
08:13	GOOD! JUMPER by TOWNLEY, MADI [PNT]	4-4	T	
07:46				TURNOVER (BADPASS) by ELLIG, KENDALL
07:46	STEAL by THOMPSON, RANDI			
07:38	MISSED 3PTR by BOYD, N'YAH			
07:35	REBOUND (OFF) by GEORGE, ANISHA			
07:34	GOOD! LAYUP by GEORGE, ANISHA	4-6	V 2	
07:28		6-6	T	GOOD! LAYUP by SCHWARTZ, LAUREN
07:12	MISSED LAYUP by JACKSON, JAZION			
07:09	REBOUND (OFF) by GEORGE, ANISHA			
07:08	MISSED LAYUP by GEORGE, ANISHA			
07:05				REBOUND (DEF) by SCHWARTZ, LAUREN
06:43				MISSED JUMPER by WIGGINS, SYDNE
06:40	REBOUND (DEF) by GEORGE, ANISHA			
06:37	GOOD! JUMPER by THOMPSON, RANDI [PNT]	6-8	V 2	
06:25				MISSED JUMPER by OGWUMIKE, ERICA
06:22				REBOUND (OFF) by ELLIG, KENDALL
06:21		8-8	T	GOOD! LAYUP by ELLIG, KENDALL
06:16	GOOD! LAYUP by GEORGE, ANISHA	8-10	V 2	
06:16	ASSIST by BOYD, N'YAH			
06:16				FOUL (PERSONAL) by ELLIG, KENDALL
06:16	GOOD! FT by GEORGE, ANISHA	8-11	V 3	
05:54				TURNOVER (LOSTBALL) by OGWUMIKE, ERICA
05:54	STEAL by BOYD, N'YAH			
05:49	GOOD! LAYUP by JACKSON, JAZION	8-13	V 5	
05:49	ASSIST by THOMPSON, RANDI			
05:13				TURNOVER (LOSTBALL) by SMITH, JASMINE
05:13	STEAL by JACKSON, JAZION			
05:07	GOOD! LAYUP by THOMPSON, RANDI [FB]	8-15	V 7	
05:07	ASSIST by JACKSON, JAZION			
04:35	FOUL (PERSONAL) by THOMPSON, RANDI			
04:35				SUB OUT: ELLIG, KENDALL
04:35				SUB IN: CHRISMAN, ALEXAH
04:35				
04:35				MISSED FT by OGWUMIKE, ERICA
04:35				REBOUND (OFF) by TEAM
04:35		9-15	V 6	GOOD! FT by OGWUMIKE, ERICA
04:35	GOOD! JUMPER by TOWNLEY, MADI [PNT]	9-17	V 8	
04:03		11-17	V 6	GOOD! JUMPER by OGWUMIKE, ERICA
04:03	SUB OUT: JACKSON, JAZION			
04:03	SUB OUT: THOMPSON, RANDI			
04:03	SUB OUT: GEORGE, ANISHA			
04:03	SUB IN: JONES, SUMMER			
04:03	SUB IN: SHEPHERD, CHARLENE			
04:03	SUB IN: MIMS, TRENA			
04:03	TURNOVER (TRAVEL) by MIMS, TRENA			
03:19				MISSED 3PTR by OGWUMIKE, ERICA
03:12	REBOUND (DEF) by SHEPHERD, CHARLENE			
03:11	TURNOVER (LOSTBALL) by SHEPHERD, CHARLENE			
03:00		13-17	V 4	GOOD! LAYUP by OGWUMIKE, ERICA
02:47	MISSED LAYUP by MIMS, TRENA			
02:44	REBOUND (OFF) by SHEPHERD, CHARLENE			
02:44	MISSED JUMPER by SHEPHERD, CHARLENE			
02:40				REBOUND (DEF) by SCHWARTZ, LAUREN
02:38				TURNOVER (LOSTBALL) by SCHWARTZ, LAUREN
02:38	SUB OUT: TOWNLEY, MADI			

Time	VISITORS: North Texas	Score	Margin	HOME: Rice
02:38	SUB IN: GEORGE, ANISHA			
02:31	GOOD! LAYUP by GEORGE, ANISHA	13-19	V 6	
02:31	ASSIST by MIMS, TRENA			
02:09				MISSED JUMPER by WIGGINS, SYDNE
02:08				REBOUND (OFF) by OGWUMIKE, ERICA
02:08		15-19	V 4	GOOD! LAYUP by OGWUMIKE, ERICA
02:08	FOUL (PERSONAL) by SHEPHERD, CHARLENE			
02:08				SUB OUT: SMITH, JASMINE
02:08				SUB IN: CROSTHWAIT, KATELYN
02:08	SUB OUT: SHEPHERD, CHARLENE			
02:08	SUB IN: JACKSON, JAZION			
02:08		16-19	V 3	GOOD! FT by OGWUMIKE, ERICA
01:53	TURNOVER (BADPASS) by JONES, SUMMER			
01:53				STEAL by CHRISMAN, ALEXAH
01:37				MISSED LAYUP by SCHWARTZ, LAUREN
01:27	REBOUND (DEF) by BOYD, N'YAH			
01:26	MISSED LAYUP by BOYD, N'YAH			
01:23				REBOUND (DEF) by CROSTHWAIT, KATELYN
01:05		18-19	V 1	GOOD! LAYUP by OGWUMIKE, ERICA
00:43	TURNOVER (BADPASS) by JONES, SUMMER			
00:43				STEAL by OGWUMIKE, ERICA
00:38		20-19	H 1	GOOD! LAYUP by WIGGINS, SYDNE [FB]
00:38				ASSIST by OGWUMIKE, ERICA
00:08	MISSED LAYUP by BOYD, N'YAH			
00:05				REBOUND (DEF) by CROSTHWAIT, KATELYN

### North Texas 19, Rice 20

Points from (This Period)	UNT	RIC
In the Paint	18	14
Off Turns	8	4
2nd Chance	6	7
Fast Break	2	4
Bench	0	0

**Official Box Score**  
**North Texas vs Rice**  
**Second Quarter Statistics Only**  
**February 20, 2020 at Tudor Fieldhouse - Houston**



**North Texas 18**

No.	Player	S	Pts	FG	3FG	FT	OR	DR	TR	PF	A	TO	Blk	Stl	Min	+/-
03	BOYD, N'YAH	G	4	2-3	0-0	0-0	0	0	0	0	2	0	0	2	5	5
04	JACKSON, JAZION	G	0	0-0	0-0	0-0	0	1	1	0	0	1	0	0	10	12
23	THOMPSON, RANDI	G	3	1-2	1-1	0-0	0	1	1	0	0	1	0	0	3	3
41	TOWNLEY, MADI	F	3	1-2	0-0	1-4	1	0	1	0	1	0	0	1	10	12
42	GEORGE, ANISHA	C	5	2-2	0-0	1-2	0	2	2	1	0	0	0	1	10	14
02	JONES, SUMMER	G	3	1-1	1-1	0-0	0	0	0	0	1	1	0	1	5	7
11	SHEPHERD, CHARLENE	F	0	0-0	0-0	0-0	0	1	1	0	0	0	0	0	1	-2
24	MIMS, TRENA	G	0	0-1	0-1	0-0	0	1	1	0	1	0	0	0	7	9
	TEAM						1	0	1	0		0				
<b>TOTALS</b>			<b>18</b>	<b>7-11</b>	<b>2-3</b>	<b>2-6</b>	<b>2</b>	<b>6</b>	<b>8</b>	<b>1</b>	<b>5</b>	<b>3</b>	<b>0</b>	<b>5</b>	<b>50</b>	

*Shooting By Period*

Period	FG	FG%	3FG	3FG%	FT	FT%
3rd Qtr	5-11	45%	0-1	00%	1-2	50%
4th Qtr	7-18	39%	0-2	00%	4-10	40%
2nd Half	7-11	64%	2-3	67%	2-6	33%
2nd Half	12-29	41%	0-3	00%	5-12	42%
Game	28-60	46.7%	2-8	25.0%	8-19	42.1%

*Deadball Rebounds: 5,0*

**Rice 6**

No.	Player	S	Pts	FG	3FG	FT	OR	DR	TR	PF	A	TO	Blk	Stl	Min	+/-
02	WIGGINS, SYDNE	G	0	0-2	0-2	0-2	0	1	1	0	0	0	0	0	7	-9
10	SMITH, JASMINE	G	0	0-2	0-1	0-0	0	0	0	1	0	1	0	1	8	-10
13	OGWUMIKE, ERICA	G	0	0-1	0-0	0-0	1	1	2	1	1	2	0	0	9	-9
15	SCHWARTZ, LAUREN	F	2	1-1	0-0	0-0	0	1	1	0	0	1	0	0	9	-11
25	ELLIG, KENDALL	F	0	0-0	0-0	0-0	0	0	0	1	0	0	0	0	2	-4
03	CROSTHWAIT, KATELYN	G	0	0-1	0-1	0-0	0	0	0	0	1	1	0	0	5	-8
05	JACKSON, DESTINY	G	0	0-0	0-0	0-0	0	0	0	0	0	0	0	0	0	0
22	AUSTIN, ASHLEE	F	0	0-0	0-0	0-0	0	0	0	1	0	1	0	0	1	-1
23	CHRISMAN, ALEXAH	C	4	2-3	0-0	0-0	1	1	2	0	0	1	0	0	7	-6
24	ALAO, TEMI	F	0	0-0	0-0	0-0	0	0	0	1	0	0	0	0	1	-2
	TEAM						0	0	0	0		0				
<b>TOTALS</b>			<b>6</b>	<b>3-10</b>	<b>0-4</b>	<b>0-2</b>	<b>2</b>	<b>4</b>	<b>6</b>	<b>5</b>	<b>2</b>	<b>7</b>	<b>0</b>	<b>1</b>	<b>50</b>	

*Shooting By Period*

Period	FG	FG%	3FG	3FG%	FT	FT%
3rd Qtr	5-12	42%	1-4	25%	9-10	90%
4th Qtr	7-10	70%	2-3	67%	7-9	78%
2nd Half	3-10	30%	0-4	00%	0-2	00%
2nd Half	12-22	55%	3-7	43%	16-19	84%
Game	23-46	50.0%	3-12	25.0%	20-26	76.9%

*Deadball Rebounds: 4,0*

*Game Notes:*

Officials: **Scott Yarbrough, Neonta Williams, Kelly Broomfield**  
 Attendance: **766**

Start Time: **08:01 PM ET**  
 End Time: **09:58 PM ET**  
 Game Duration: **1:57**  
 Conference Game;

Score	1st	2nd	3rd	4th	TOT
UNT	19	18	11	18	<b>66</b>
RIC	20	6	20	23	<b>69</b>

Points from (This Period)	UNT	RIC
In the Paint	6	6
Off Turns	10	2
2nd Chance	1	0
Fast Break	5	0
Bench	3	4

**Official Play-By-Play**  
**North Texas vs Rice**  
**Second Quarter**  
**February 20, 2020 at Tudor Fieldhouse - Houston**



**Period 2**

**Starters:**

**North Texas:** 3 BOYD, N'YAH (G); 4 JACKSON, JAZION (G); 23 THOMPSON, RANDI (G); 41 TOWNLEY, MADI (F); 42 GEORGE, ANISHA (C);  
**Rice:** 2 WIGGINS, SYDNE (G); 10 SMITH, JASMINE (G); 13 OGWUMIKE, ERICA (G); 15 SCHWARTZ, LAUREN (F); 25 ELLIG, KENDALL (F);

Time	VISITORS: North Texas	Score	Margin	HOME: Rice
10:00	SUB OUT: JONES, SUMMER			
10:00	SUB IN: TOWNLEY, MADI			
09:33				MISSED 3PTR by CROSTHWAIT, KATELYN
09:31				REBOUND (OFF) by CHRISMAN, ALEXAH
09:30				TURNOVER (LOSTBALL) by CHRISMAN, ALEXAH
09:30	STEAL by BOYD, N'YAH			
09:26	GOOD! LAYUP by BOYD, N'YAH [FB]	20-21	V 1	
08:56		22-21	H 1	GOOD! LAYUP by CHRISMAN, ALEXAH [PNT]
08:56				ASSIST by CROSTHWAIT, KATELYN
08:47	GOOD! LAYUP by GEORGE, ANISHA	22-23	V 1	
08:47	ASSIST by BOYD, N'YAH			
08:28				MISSED 3PTR by WIGGINS, SYDNE
08:27	REBOUND (DEF) by MIMS, TRENA			
08:09				SUB OUT: WIGGINS, SYDNE
08:09				SUB IN: SMITH, JASMINE
08:09	SUB OUT: MIMS, TRENA			
08:09	SUB IN: THOMPSON, RANDI			
08:03	TURNOVER (TRAVEL) by THOMPSON, RANDI			
07:41				TURNOVER (LOSTBALL) by OGWUMIKE, ERICA
07:41	STEAL by BOYD, N'YAH			
07:37	MISSED JUMPER by THOMPSON, RANDI			
07:35				REBOUND (DEF) by SCHWARTZ, LAUREN
07:27				MISSED 3PTR by SMITH, JASMINE
07:24	REBOUND (DEF) by THOMPSON, RANDI			
07:09	MISSED LAYUP by BOYD, N'YAH			
07:06				REBOUND (DEF) by CHRISMAN, ALEXAH
06:46		24-23	H 1	GOOD! LAYUP by SCHWARTZ, LAUREN
06:28	GOOD! 3PTR by THOMPSON, RANDI	24-26	V 2	
06:28	ASSIST by BOYD, N'YAH			
06:06				MISSED JUMPER by CHRISMAN, ALEXAH
06:02	REBOUND (DEF) by GEORGE, ANISHA			
05:44	GOOD! JUMPER by BOYD, N'YAH	24-28	V 4	
05:28				TURNOVER (BADPASS) by SCHWARTZ, LAUREN
05:28				SUB OUT: OGWUMIKE, ERICA
05:28				SUB OUT: CHRISMAN, ALEXAH
05:28				SUB IN: WIGGINS, SYDNE
05:28				SUB IN: ELLIG, KENDALL
05:28	SUB OUT: BOYD, N'YAH			
05:28	SUB OUT: THOMPSON, RANDI			
05:28	SUB IN: JONES, SUMMER			
05:28	SUB IN: MIMS, TRENA			
05:24	GOOD! 3PTR by JONES, SUMMER	24-31	V 7	
05:24	ASSIST by TOWNLEY, MADI			
04:54				TURNOVER (OTHER) by CROSTHWAIT, KATELYN
04:54				
04:54				SUB OUT: SCHWARTZ, LAUREN
04:54				SUB IN: AUSTIN, ASHLEE
04:36	TURNOVER (LOSTBALL) by JACKSON, JAZION			
04:36				SUB OUT: CROSTHWAIT, KATELYN
04:36				SUB IN: OGWUMIKE, ERICA
04:15				TURNOVER (LOSTBALL) by SMITH, JASMINE
04:15	STEAL by JONES, SUMMER			
03:53	MISSED JUMPER by TOWNLEY, MADI			
03:52	REBOUND (OFF) by TOWNLEY, MADI			
03:52				FOUL (PERSONAL) by AUSTIN, ASHLEE
03:52	GOOD! FT by TOWNLEY, MADI	24-32	V 8	
03:52	MISSED FT by TOWNLEY, MADI			
03:52	REBOUND (OFF) by TEAM			
03:50				FOUL (PERSONAL) by ELLIG, KENDALL
03:50				SUB OUT: ELLIG, KENDALL
03:50				SUB IN: ALAO, TEMI
03:45				FOUL (PERSONAL) by ALAO, TEMI
03:45	MISSED FT by TOWNLEY, MADI			
03:45	REBOUND (OFF) by TEAM			
03:44	MISSED FT by TOWNLEY, MADI			
03:43				REBOUND (DEF) by WIGGINS, SYDNE
03:29				TURNOVER (BADPASS) by AUSTIN, ASHLEE
03:29	STEAL by TOWNLEY, MADI			
03:25				FOUL (PERSONAL) by SMITH, JASMINE
03:25				SUB IN: SCHWARTZ, LAUREN



Time	VISITORS: North Texas	Score	Margin	HOME: Rice
03:25				SUB OUT: AUSTIN, ASHLEE
03:13	GOOD! JUMPER by TOWNLEY, MADI	24-34	V 10	
03:13	ASSIST by JONES, SUMMER			
02:32				MISSED JUMPER by SMITH, JASMINE
02:30				REBOUND (OFF) by OGWUMIKE, ERICA
02:27				MISSED 3PTR by WIGGINS, SYDNE
02:24	REBOUND (DEF) by GEORGE, ANISHA			
02:24				FOUL (PERSONAL) by OGWUMIKE, ERICA
02:24				SUB OUT: ALAO, TEMI
02:24				SUB IN: CHRISMAN, ALEXAH
02:24	MISSED FT by GEORGE, ANISHA			
02:24	REBOUND (OFF) by TEAM			
02:24	GOOD! FT by GEORGE, ANISHA [FB]	24-35	V 11	
01:54				TURNOVER (LOSTBALL) by OGWUMIKE, ERICA
01:54	STEAL by GEORGE, ANISHA			
01:48	GOOD! LAYUP by GEORGE, ANISHA [FB]	24-37	V 13	
01:48	ASSIST by MIMS, TRENA			
01:30				MISSED LAYUP by OGWUMIKE, ERICA
01:26	REBOUND (DEF) by JACKSON, JAZION			
00:59	MISSED 3PTR by MIMS, TRENA			
00:56				REBOUND (DEF) by OGWUMIKE, ERICA
00:29	FOUL (PERSONAL) by GEORGE, ANISHA			
00:29				MISSED FT by WIGGINS, SYDNE
00:29				REBOUND (OFF) by TEAM
00:29				MISSED FT by WIGGINS, SYDNE
00:29	REBOUND (DEF) by SHEPHERD, CHARLENE			
00:29	SUB OUT: GEORGE, ANISHA			
00:29	SUB IN: SHEPHERD, CHARLENE			
00:23	TURNOVER (BADPASS) by JONES, SUMMER			
00:23				STEAL by SMITH, JASMINE
00:02		26-37	V 11	GOOD! LAYUP by CHRISMAN, ALEXAH
00:02				ASSIST by OGWUMIKE, ERICA

### North Texas 37, Rice 26

Points from (This Period)	UNT	RIC
In the Paint	6	6
Off Turns	10	2
2nd Chance	1	0
Fast Break	5	0
Bench	3	4

**Official Box Score  
North Texas vs Rice  
Second Half Statistics Only  
February 20, 2020 at Tudor Fieldhouse - Houston**



**North Texas 29**

No.	Player	S	Pts	FG	3FG	FT	OR	DR	TR	PF	A	TO	Blk	Stl	Min	+/-
02	JONES, SUMMER	G	0	0-1	0-0	0-0	0	0	0	0	0	0	0	0	8	-21
03	BOYD, N'YAH	G	3	1-6	0-2	1-2	1	3	4	1	1	2	0	0	18	-15
04	JACKSON, JAZION	G	9	4-5	0-0	1-3	1	1	2	3	0	2	0	1	17	-9
11	SHEPHERD, CHARLENE	F	7	3-4	0-0	1-2	3	0	3	2	1	1	0	0	9	-8
23	THOMPSON, RANDI	G	0	0-2	0-1	0-0	1	0	1	4	1	2	0	2	11	2
24	MIMS, TRENA	G	0	0-0	0-0	0-0	0	1	1	2	0	0	0	0	16	-6
41	TOWNLEY, MADI	F	2	1-6	0-0	0-0	0	0	0	1	0	0	0	1	11	-6
42	GEORGE, ANISHA	C	8	3-5	0-0	2-5	2	1	3	2	0	2	1	0	11	-7
	TEAM		0	0-0	0-0	0-0	0	2	2	0	0	0	0	0	0	0
<b>TOTALS</b>			<b>29</b>	<b>12-29</b>	<b>0-3</b>	<b>5-12</b>	<b>8</b>	<b>8</b>	<b>16</b>	<b>15</b>	<b>3</b>	<b>9</b>	<b>1</b>	<b>4</b>	<b>100</b>	

*Shooting By Period*

Period	FG	FG%	3FG	3FG%	FT	FT%
3rd Qtr	5-11	45%	0-1	00%	1-2	50%
4th Qtr	7-18	39%	0-2	00%	4-10	40%
2nd Half	12-29	41%	0-3	00%	5-12	42%
Game	28-60	46.7%	2-8	25.0%	8-19	42.1%

*Deadball Rebounds: 5,0  
Last FG Half: UNT 4th-00:23*

**Rice 43**

No.	Player	S	Pts	FG	3FG	FT	OR	DR	TR	PF	A	TO	Blk	Stl	Min	+/-
02	WIGGINS, SYDNE	G	10	2-4	1-3	5-7	0	0	0	2	1	0	1	1	19	12
03	CROSTHWAIT, KATELYN	G	0	0-0	0-0	0-0	0	0	0	0	1	0	0	0	2	4
05	JACKSON, DESTINY	G	0	0-0	0-0	0-0	0	0	0	0	0	0	0	0	6	6
10	SMITH, JASMINE	G	4	1-1	1-1	1-2	0	1	1	2	1	2	0	1	14	8
13	OGWUMIKE, ERICA	G	21	5-11	1-3	10-10	2	6	8	1	2	0	0	2	19	12
15	SCHWARTZ, LAUREN	F	4	2-3	0-0	0-0	0	3	3	2	1	3	0	0	20	14
22	AUSTIN, ASHLEE	F	0	0-0	0-0	0-0	0	0	0	0	0	0	0	0	0	0
23	CHRISMAN, ALEXAH	C	4	2-3	0-0	0-0	0	1	1	0	0	0	1	0	14	11
24	ALAO, TEMI	F	0	0-0	0-0	0-0	0	0	0	0	0	0	0	0	0	0
25	ELLIG, KENDALL	F	0	0-0	0-0	0-0	0	0	0	1	0	1	0	0	6	3
	TEAM		0	0-0	0-0	0-0	1	2	3	0	0	0	0	0	0	0
<b>TOTALS</b>			<b>43</b>	<b>12-22</b>	<b>3-7</b>	<b>16-19</b>	<b>3</b>	<b>13</b>	<b>16</b>	<b>8</b>	<b>6</b>	<b>6</b>	<b>2</b>	<b>4</b>	<b>100</b>	

*Shooting By Period*

Period	FG	FG%	3FG	3FG%	FT	FT%
3rd Qtr	5-12	42%	1-4	25%	9-10	90%
4th Qtr	7-10	70%	2-3	67%	7-9	78%
2nd Half	12-22	55%	3-7	43%	16-19	84%
Game	23-46	50.0%	3-12	25.0%	20-26	76.9%

*Deadball Rebounds: 4,0  
Last FG Half: RIC 4th-02:07*

*Game Notes:*

*Officials: Scott Yarbrough, Neonta Williams, Kelly Broomfield  
Attendance: 766*

*Start Time: 08:01 PM ET  
End Time: 09:58 PM ET  
Game Duration: 1:57  
Conference Game;*

Score	1st	2nd	3rd	4th	TOT
UNT	19	18	11	18	<b>66</b>
RIC	20	6	20	23	<b>69</b>

Points from (This Period)	UNT	RIC
In the Paint	20	16
Off Turns	3	12
2nd Chance	5	4
Fast Break	3	20
Bench	7	4

**Official Box Score**  
**North Texas vs Rice**  
**Third Quarter Statistics Only**  
**February 20, 2020 at Tudor Fieldhouse - Houston**



**North Texas 29**

No.	Player	S	Pts	FG	3FG	FT	OR	DR	TR	PF	A	TO	Blk	Stl	Min	+/-
03	BOYD, N'YAH	G	3	1-2	0-0	1-2	0	2	2	1	0	2	0	0	10	-9
04	JACKSON, JAZION	G	4	2-2	0-0	0-0	1	0	1	2	0	2	0	0	10	-9
23	THOMPSON, RANDI	G	0	0-1	0-1	0-0	0	0	0	2	1	1	0	0	8	0
41	TOWNLEY, MADI	F	2	1-4	0-0	0-0	0	0	0	1	0	0	0	1	8	-1
42	GEORGE, ANISHA	C	2	1-1	0-0	0-0	0	1	1	1	0	1	0	0	3	-5
02	JONES, SUMMER	G	0	0-0	0-0	0-0	0	0	0	0	0	0	0	0	2	-9
11	SHEPHERD, CHARLENE	F	0	0-1	0-0	0-0	1	0	1	0	0	1	0	0	2	-8
24	MIMS, TRENA	G	0	0-0	0-0	0-0	0	0	0	0	0	0	0	0	7	-4
	TEAM						0	2	2	0		0				
<b>TOTALS</b>			<b>11</b>	<b>5-11</b>	<b>0-1</b>	<b>1-2</b>	<b>2</b>	<b>5</b>	<b>7</b>	<b>7</b>	<b>1</b>	<b>7</b>	<b>0</b>	<b>1</b>	<b>50</b>	

*Shooting By Period*

Period	FG	FG%	3FG	3FG%	FT	FT%
2nd Half	0-0	0%	0-0	0%	0-0	0%
Game	28-60	46.7%	2-8	25.0%	8-19	42.1%

*Deadball Rebounds: 5,0*

**Rice 43**

No.	Player	S	Pts	FG	3FG	FT	OR	DR	TR	PF	A	TO	Blk	Stl	Min	+/-
02	WIGGINS, SYDNE	G	4	1-2	1-2	1-2	0	0	0	0	0	0	0	1	10	9
10	SMITH, JASMINE	G	0	0-0	0-0	0-0	0	0	0	0	0	1	0	1	5	3
13	OGWUMIKE, ERICA	G	12	2-6	0-2	8-8	1	4	5	0	1	0	0	2	10	9
15	SCHWARTZ, LAUREN	F	4	2-3	0-0	0-0	0	1	1	0	0	0	0	0	10	9
25	ELIG, KENDALL	F	0	0-0	0-0	0-0	0	0	0	1	0	1	0	0	6	3
03	CROSTHWAIT, KATELYN	G	0	0-0	0-0	0-0	0	0	0	0	0	0	0	0	0	0
05	JACKSON, DESTINY	G	0	0-0	0-0	0-0	0	0	0	0	0	0	0	0	5	6
22	AUSTIN, ASHLEE	F	0	0-0	0-0	0-0	0	0	0	0	0	0	0	0	0	0
23	CHRISMAN, ALEXAH	C	0	0-1	0-0	0-0	0	0	0	0	0	0	1	0	4	6
24	ALAO, TEMI	F	0	0-0	0-0	0-0	0	0	0	0	0	0	0	0	0	0
	TEAM						1	0	1	0		0				
<b>TOTALS</b>			<b>20</b>	<b>5-12</b>	<b>1-4</b>	<b>9-10</b>	<b>2</b>	<b>5</b>	<b>7</b>	<b>1</b>	<b>1</b>	<b>2</b>	<b>1</b>	<b>4</b>	<b>50</b>	

*Shooting By Period*

Period	FG	FG%	3FG	3FG%	FT	FT%
2nd Half	0-0	0%	0-0	0%	0-0	0%
Game	23-46	50.0%	3-12	25.0%	20-26	76.9%

*Deadball Rebounds: 4,0*

Game Notes:

Officials: **Scott Yarbrough, Neonta Williams, Kelly Broomfield**  
Attendance: **766**

Start Time: **08:01 PM ET**  
End Time: **09:58 PM ET**  
Game Duration: **1:57**  
Conference Game;

Score	1st	2nd	3rd	4th	TOT
UNT	19	18	11	18	<b>66</b>
RIC	20	6	20	23	<b>69</b>

Points from (This Period)	UNT	RIC
In the Paint	8	8
Off Turns	2	10
2nd Chance	2	2
Fast Break	0	13
Bench	0	0

**Official By-By-Play**  
**North Texas vs Rice**  
**Third Quarter**  
**February 20, 2020 at Tudor Fieldhouse - Houston**



**Period 3**

**Starters:**

**North Texas:** 3 BOYD, N'YAH (G); 4 JACKSON, JAZION (G); 23 THOMPSON, RANDI (G); 41 TOWNLEY, MADI (F); 42 GEORGE, ANISHA (C);  
**Rice:** 2 WIGGINS, SYDNE (G); 10 SMITH, JASMINE (G); 13 OGWUMIKE, ERICA (G); 15 SCHWARTZ, LAUREN (F); 25 ELLIG, KENDALL (F);

Time	VISITORS: North Texas	Score	Margin	HOME: Rice
10:00				SUB OUT: CHRISMAN, ALEXAH
10:00				SUB IN: ELLIG, KENDALL
10:00	SUB OUT: JONES, SUMMER			
10:00	SUB OUT: MIMS, TRENA			
10:00	SUB OUT: SHEPHERD, CHARLENE			
10:00	SUB IN: BOYD, N'YAH			
10:00	SUB IN: THOMPSON, RANDI			
10:00	SUB IN: GEORGE, ANISHA			
09:47				MISSED 3PTR by OGWUMIKE, ERICA
09:41	REBOUND (DEF) by BOYD, N'YAH			
09:40	TURNOVER (BADPASS) by BOYD, N'YAH			
09:34				MISSED LAYUP by OGWUMIKE, ERICA
09:32				REBOUND (OFF) by OGWUMIKE, ERICA
09:32	FOUL (PERSONAL) by TOWNLEY, MADI			
09:32		27-37	V 10	GOOD! FT by OGWUMIKE, ERICA [FB]
09:32		28-37	V 9	GOOD! FT by OGWUMIKE, ERICA [FB]
09:07	MISSED 3PTR by THOMPSON, RANDI			
09:04				REBOUND (DEF) by OGWUMIKE, ERICA
09:04	FOUL (PERSONAL) by BOYD, N'YAH			
08:37				MISSED JUMPER by SCHWARTZ, LAUREN
08:33	REBOUND (DEF) by BOYD, N'YAH			
08:32	TURNOVER (BADPASS) by BOYD, N'YAH			
08:32				STEAL by SMITH, JASMINE
08:26		30-37	V 7	GOOD! LAYUP by SCHWARTZ, LAUREN [FB]
08:07	MISSED JUMPER by TOWNLEY, MADI			
08:05				REBOUND (DEF) by OGWUMIKE, ERICA
07:59		33-37	V 4	GOOD! 3PTR by WIGGINS, SYDNE [FB]
07:59				ASSIST by OGWUMIKE, ERICA
07:58	TIMEOUT 30SEC			
07:31	GOOD! LAYUP by GEORGE, ANISHA [PNT]	33-39	V 6	
07:24				TURNOVER (LOSTBALL) by SMITH, JASMINE
07:24	STEAL by TOWNLEY, MADI			
07:21	TURNOVER (TRAVEL) by THOMPSON, RANDI			
07:00				MISSED LAYUP by OGWUMIKE, ERICA
07:00	REBOUND (DEF) by GEORGE, ANISHA			
06:55	FOUL (OFF) by GEORGE, ANISHA			
06:55	TURNOVER (OFFENSIVE) by GEORGE, ANISHA			
06:36	SUB OUT: GEORGE, ANISHA			
06:36	SUB IN: MIMS, TRENA			
06:27		35-39	V 4	GOOD! JUMPER by OGWUMIKE, ERICA [PNT]
06:27	GOOD! JUMPER by JACKSON, JAZION [PNT]	35-41	V 6	
05:45				TURNOVER (BADPASS) by ELLIG, KENDALL
05:17	GOOD! JUMPER by BOYD, N'YAH	35-43	V 8	
04:55	FOUL (PERSONAL) by THOMPSON, RANDI			
04:55				SUB OUT: SMITH, JASMINE
04:55				SUB IN: JACKSON, DESTINY
04:55		36-43	V 7	GOOD! FT by OGWUMIKE, ERICA
04:55		37-43	V 6	GOOD! FT by OGWUMIKE, ERICA
04:28	GOOD! JUMPER by TOWNLEY, MADI [PNT]	37-45	V 8	
04:28	ASSIST by THOMPSON, RANDI			
03:53				MISSED 3PTR by OGWUMIKE, ERICA
03:53	REBOUND (DEF) by TEAM			
03:35				FOUL (PERSONAL) by ELLIG, KENDALL
03:35				SUB OUT: ELLIG, KENDALL
03:35				SUB IN: CHRISMAN, ALEXAH
03:35	GOOD! FT by BOYD, N'YAH	37-46	V 9	
03:35	MISSED FT by BOYD, N'YAH			
03:33				REBOUND (DEF) by OGWUMIKE, ERICA
03:05				MISSED JUMPER by CHRISMAN, ALEXAH
03:05	REBOUND (DEF) by TEAM			
02:37	MISSED JUMPER by TOWNLEY, MADI			
02:33	REBOUND (OFF) by JACKSON, JAZION			
02:32	GOOD! LAYUP by JACKSON, JAZION	37-48	V 11	
02:09	FOUL (PERSONAL) by THOMPSON, RANDI			
02:09	SUB OUT: THOMPSON, RANDI			
02:09	SUB IN: JONES, SUMMER			
02:09				MISSED FT by WIGGINS, SYDNE
02:09				REBOUND (OFF) by TEAM
02:09		38-48	V 10	GOOD! FT by WIGGINS, SYDNE

Time	VISITORS: North Texas	Score	Margin	HOME: Rice
01:40	MISSED JUMPER by TOWNLEY, MADI			
01:38				REBOUND (DEF) by OGWUMIKE, ERICA
01:37	FOUL (PERSONAL) by JACKSON, JAZION			
01:37	SUB OUT: TOWNLEY, MADI			
01:37	SUB IN: SHEPHERD, CHARLENE			
01:37		39-48	V 9	GOOD! FT by OGWUMIKE, ERICA [FB]
01:37		40-48	V 8	GOOD! FT by OGWUMIKE, ERICA [FB]
01:24	TURNOVER (BADPASS) by JACKSON, JAZION			
01:24				STEAL by OGWUMIKE, ERICA
01:20		42-48	V 6	GOOD! LAYUP by OGWUMIKE, ERICA [FB]
01:02	MISSED LAYUP by BOYD, N'YAH			
01:02				BLOCK by CHRISMAN, ALEXAH
00:54				REBOUND (DEF) by SCHWARTZ, LAUREN
00:40		44-48	V 4	GOOD! LAYUP by SCHWARTZ, LAUREN
00:19	TURNOVER (LOSTBALL) by JACKSON, JAZION			
00:19				STEAL by OGWUMIKE, ERICA
00:16	FOUL (PERSONAL) by JACKSON, JAZION			
00:16		45-48	V 3	GOOD! FT by OGWUMIKE, ERICA [FB]
00:16		46-48	V 2	GOOD! FT by OGWUMIKE, ERICA [FB]
00:03	MISSED LAYUP by SHEPHERD, CHARLENE			
00:00	REBOUND (OFF) by SHEPHERD, CHARLENE			
00:00	TURNOVER (LOSTBALL) by SHEPHERD, CHARLENE			
00:00				STEAL by WIGGINS, SYDNE
00:00				MISSED 3PTR by WIGGINS, SYDNE
00:00				REBOUND (OFF) by TEAM

### North Texas 48, Rice 46

Points from (This Period)	UNT	RIC
In the Paint	8	8
Off Turns	2	10
2nd Chance	2	2
Fast Break	0	13
Bench	0	0

**Official Box Score**  
**North Texas vs Rice**  
**Fourth Quarter Statistics Only**  
**February 20, 2020 at Tudor Fieldhouse - Houston**



**North Texas 18**

No.	Player	S	Pts	FG	3FG	FT	OR	DR	TR	PF	A	TO	Blk	Stl	Min	+/-
03	BOYD, N'YAH	G	0	0-4	0-2	0-0	1	1	2	0	1	0	0	0	8	-6
04	JACKSON, JAZION	G	5	2-3	0-0	1-3	0	1	1	1	0	0	0	1	7	0
23	THOMPSON, RANDI	G	0	0-1	0-0	0-0	1	0	1	2	0	1	0	2	3	2
41	TOWNLEY, MADI	F	0	0-2	0-0	0-0	0	0	0	0	0	0	0	0	3	-5
42	GEORGE, ANISHA	C	6	2-4	0-0	2-5	2	0	2	1	0	1	1	0	8	-2
02	JONES, SUMMER	G	0	0-1	0-0	0-0	0	0	0	0	0	0	0	0	6	-12
11	SHEPHERD, CHARLENE	F	7	3-3	0-0	1-2	2	0	2	2	1	0	0	0	7	0
24	MIMS, TRENA	G	0	0-0	0-0	0-0	0	1	1	2	0	0	0	0	9	-2
	TEAM						0	0	0	0		0				
<b>TOTALS</b>			<b>18</b>	<b>7-18</b>	<b>0-2</b>	<b>4-10</b>	<b>6</b>	<b>3</b>	<b>9</b>	<b>8</b>	<b>2</b>	<b>2</b>	<b>1</b>	<b>3</b>	<b>50</b>	

*Shooting By Period*

Period	FG	FG%	3FG	3FG%	FT	FT%
Game	28-60	46.7%	2-8	25.0%	8-19	42.1%

*Deadball Rebounds: 5,0*

**Rice 23**

No.	Player	S	Pts	FG	3FG	FT	OR	DR	TR	PF	A	TO	Blk	Stl	Min	+/-
02	WIGGINS, SYDNE	G	6	1-2	0-1	4-5	0	0	0	2	1	0	1	0	9	3
10	SMITH, JASMINE	G	4	1-1	1-1	1-2	0	1	1	2	1	1	0	0	9	5
13	OGWUMIKE, ERICA	G	9	3-5	1-1	2-2	1	2	3	1	1	0	0	0	9	3
15	SCHWARTZ, LAUREN	F	0	0-0	0-0	0-0	0	2	2	2	1	3	0	0	10	5
25	ELLIG, KENDALL	F	0	0-0	0-0	0-0	0	0	0	0	0	0	0	0	0	0
03	CROSTHWAIT, KATELYN	G	0	0-0	0-0	0-0	0	0	0	0	1	0	0	0	2	4
05	JACKSON, DESTINY	G	0	0-0	0-0	0-0	0	0	0	0	0	0	0	0	1	0
22	AUSTIN, ASHLEE	F	0	0-0	0-0	0-0	0	0	0	0	0	0	0	0	0	0
23	CHRISMAN, ALEXAH	C	4	2-2	0-0	0-0	0	1	1	0	0	0	0	0	10	5
24	ALAO, TEMI	F	0	0-0	0-0	0-0	0	0	0	0	0	0	0	0	0	0
	TEAM						0	2	2	0		0				
<b>TOTALS</b>			<b>23</b>	<b>7-10</b>	<b>2-3</b>	<b>7-9</b>	<b>1</b>	<b>8</b>	<b>9</b>	<b>7</b>	<b>5</b>	<b>4</b>	<b>1</b>	<b>0</b>	<b>50</b>	

*Shooting By Period*

Period	FG	FG%	3FG	3FG%	FT	FT%
Game	23-46	50.0%	3-12	25.0%	20-26	76.9%

*Deadball Rebounds: 4,0*

Game Notes:

Officials: Scott Yarbrough, Neonta Williams, Kelly Broomfield  
 Attendance: 766

Start Time: 08:01 PM ET  
 End Time: 09:58 PM ET  
 Game Duration: 1:57  
 Conference Game;

Score	1st	2nd	3rd	4th	TOT
UNT	19	18	11	18	<b>66</b>
RIC	20	6	20	23	<b>69</b>

Points from (This Period)	UNT	RIC
In the Paint	12	8
Off Turns	1	2
2nd Chance	3	2
Fast Break	3	7
Bench	7	4

**Official Play-By-Play**  
**North Texas vs Rice**  
**Fourth Quarter**  
**February 20, 2020 at Tudor Fieldhouse - Houston**



**Period 4**

**Starters:**

**North Texas:** 3 BOYD, N'YAH (G); 4 JACKSON, JAZION (G); 23 THOMPSON, RANDI (G); 41 TOWNLEY, MADI (F); 42 GEORGE, ANISHA (C);  
**Rice:** 2 WIGGINS, SYDNE (G); 10 SMITH, JASMINE (G); 13 OGWUMIKE, ERICA (G); 15 SCHWARTZ, LAUREN (F); 25 ELLIG, KENDALL (F);

Time	VISITORS: North Texas	Score	Margin	HOME: Rice
10:00	SUB OUT: SHEPHERD, CHARLENE			
10:00	SUB OUT: MIMS, TRENA			
10:00	SUB IN: THOMPSON, RANDI			
10:00	SUB IN: GEORGE, ANISHA			
09:36	MISSED JUMPER by BOYD, N'YAH			
09:33				REBOUND (DEF) by OGWUMIKE, ERICA
09:25				TURNOVER (LOSTBALL) by SCHWARTZ, LAUREN
09:25	STEAL by THOMPSON, RANDI			
09:21				FOUL (PERSONAL) by OGWUMIKE, ERICA
09:21				SUB OUT: JACKSON, DESTINY
09:21				SUB IN: SMITH, JASMINE
09:21	GOOD! FT by GEORGE, ANISHA [FB]	46-49	V 3	
09:21	MISSED FT by GEORGE, ANISHA			
09:21				REBOUND (DEF) by SCHWARTZ, LAUREN
09:21				MISSED 3PTR by WIGGINS, SYDNE
09:21	REBOUND (DEF) by BOYD, N'YAH			
09:21	MISSED JUMPER by BOYD, N'YAH			
09:21				REBOUND (DEF) by SCHWARTZ, LAUREN
09:20		48-49	V 1	GOOD! LAYUP by WIGGINS, SYDNE [FB]
09:20				ASSIST by SCHWARTZ, LAUREN
09:15	FOUL (PERSONAL) by THOMPSON, RANDI			
08:52				SUB OUT: OGWUMIKE, ERICA
08:52				SUB IN: CROSTHWAIT, KATELYN
08:52	SUB OUT: THOMPSON, RANDI			
08:52	SUB IN: MIMS, TRENA			
08:52		49-49	T	GOOD! FT by WIGGINS, SYDNE [FB]
08:16	GOOD! LAYUP by GEORGE, ANISHA	49-51	V 2	
08:05		52-51	H 1	GOOD! 3PTR by SMITH, JASMINE
08:05				ASSIST by CROSTHWAIT, KATELYN
07:38				FOUL (PERSONAL) by WIGGINS, SYDNE
07:38				SUB OUT: WIGGINS, SYDNE
07:38				SUB IN: OGWUMIKE, ERICA
07:38	MISSED FT by JACKSON, JAZION			
07:38	REBOUND (OFF) by TEAM			
07:38	MISSED FT by JACKSON, JAZION			
07:37				REBOUND (DEF) by TEAM
07:37	TIMEOUT 30SEC			
07:37	SUB OUT: JACKSON, JAZION			
07:37	SUB IN: TOWNLEY, MADI			
07:24				MISSED LAYUP by OGWUMIKE, ERICA
07:24	BLOCK by GEORGE, ANISHA			
07:24				REBOUND (OFF) by OGWUMIKE, ERICA
07:24	FOUL (PERSONAL) by MIMS, TRENA			
07:24		53-51	H 2	GOOD! FT by OGWUMIKE, ERICA
07:24		54-51	H 3	GOOD! FT by OGWUMIKE, ERICA
07:07	FOUL (OFF) by GEORGE, ANISHA			
07:07	TURNOVER (OFFENSIVE) by GEORGE, ANISHA			
06:36				TURNOVER (OTHER) by SCHWARTZ, LAUREN
06:36				SUB OUT: CROSTHWAIT, KATELYN
06:36				SUB IN: WIGGINS, SYDNE
06:36	SUB OUT: GEORGE, ANISHA			
06:36	SUB IN: SHEPHERD, CHARLENE			
06:17	MISSED JUMPER by TOWNLEY, MADI			
06:14	REBOUND (OFF) by SHEPHERD, CHARLENE			
06:13	MISSED 3PTR by BOYD, N'YAH			
06:12				REBOUND (DEF) by TEAM
05:49		57-51	H 6	GOOD! 3PTR by OGWUMIKE, ERICA
05:49				ASSIST by WIGGINS, SYDNE
05:24	GOOD! JUMPER by SHEPHERD, CHARLENE [PNT]	57-53	H 4	
05:04		59-53	H 6	GOOD! LAYUP by CHRISMAN, ALEXAH
05:04				ASSIST by SMITH, JASMINE
04:45	MISSED JUMPER by TOWNLEY, MADI			
04:44	REBOUND (OFF) by BOYD, N'YAH			
04:44				FOUL (PERSONAL) by SCHWARTZ, LAUREN
04:44	SUB OUT: BOYD, N'YAH			
04:44	SUB OUT: TOWNLEY, MADI			
04:44	SUB IN: JACKSON, JAZION			
04:44	SUB IN: GEORGE, ANISHA			
04:36	MISSED JUMPER by JONES, SUMMER			
04:33				REBOUND (DEF) by CHRISMAN, ALEXAH

Time	VISITORS: North Texas	Score	Margin	HOME: Rice
04:18		61-53	H 8	GOOD! JUMPER by OGWUMIKE, ERICA
04:12	TIMEOUT TEAM			
04:12	SUB OUT: JONES, SUMMER			
04:12	SUB IN: THOMPSON, RANDI			
04:03	MISSED JUMPER by THOMPSON, RANDI			
03:58	REBOUND (OFF) by THOMPSON, RANDI			
03:55	GOOD! LAYUP by SHEPHERD, CHARLENE [PNT]	61-55	H 6	
03:42	FOUL (PERSONAL) by SHEPHERD, CHARLENE			
03:21		63-55	H 8	GOOD! LAYUP by OGWUMIKE, ERICA
03:04	GOOD! JUMPER by JACKSON, JAZION [PNT]	63-57	H 6	
03:04				FOUL (PERSONAL) by SMITH, JASMINE
03:04	GOOD! FT by JACKSON, JAZION	63-58	H 5	
02:35				TURNOVER (LOSTBALL) by SCHWARTZ, LAUREN
02:35	STEAL by THOMPSON, RANDI			
02:30	FOUL (OFF) by THOMPSON, RANDI			
02:30	TURNOVER (OFFENSIVE) by THOMPSON, RANDI			
02:30	SUB OUT: THOMPSON, RANDI			
02:30	SUB IN: BOYD, NYAH			
02:07		65-58	H 7	GOOD! LAYUP by CHRISMAN, ALEXAH
02:07				ASSIST by OGWUMIKE, ERICA
01:45	GOOD! LAYUP by GEORGE, ANISHA [PNT]	65-60	H 5	
01:45	ASSIST by SHEPHERD, CHARLENE			
01:45				FOUL (PERSONAL) by WIGGINS, SYDNE
01:45	GOOD! FT by GEORGE, ANISHA	65-61	H 4	
01:19				TURNOVER (LOSTBALL) by SMITH, JASMINE
01:19	STEAL by JACKSON, JAZION			
01:14	MISSED LAYUP by JACKSON, JAZION			
01:11	REBOUND (OFF) by GEORGE, ANISHA			
01:10	MISSED LAYUP by GEORGE, ANISHA			
01:06	REBOUND (OFF) by GEORGE, ANISHA			
01:06	MISSED LAYUP by GEORGE, ANISHA			
01:05	FOUL (PERSONAL) by SHEPHERD, CHARLENE			
01:05		66-61	H 5	GOOD! FT by SMITH, JASMINE [FB]
01:05				MISSED FT by SMITH, JASMINE
01:05	REBOUND (DEF) by JACKSON, JAZION			
01:02				REBOUND (DEF) by SMITH, JASMINE
00:56	GOOD! JUMPER by JACKSON, JAZION	66-63	H 3	
00:27				MISSED LAYUP by OGWUMIKE, ERICA
00:24	REBOUND (DEF) by MIMS, TRENA			
00:23	GOOD! LAYUP by SHEPHERD, CHARLENE [FB]	66-65	H 1	
00:23	ASSIST by BOYD, NYAH			
00:23	TIMEOUT 30SEC			
00:23				TIMEOUT 30SEC
00:23				TIMEOUT 30SEC
00:21	FOUL (PERSONAL) by JACKSON, JAZION			
00:21	SUB IN: JONES, SUMMER			
00:21				MISSED FT by WIGGINS, SYDNE
00:21				REBOUND (OFF) by TEAM
00:21		67-65	H 2	GOOD! FT by WIGGINS, SYDNE [FB]
00:21	SUB OUT: MIMS, TRENA			
00:11				FOUL (PERSONAL) by SCHWARTZ, LAUREN
00:11	MISSED FT by GEORGE, ANISHA			
00:11	REBOUND (OFF) by TEAM			
00:11	MISSED FT by GEORGE, ANISHA			
00:11	REBOUND (OFF) by SHEPHERD, CHARLENE			
00:09				FOUL (PERSONAL) by SMITH, JASMINE
00:09	MISSED FT by SHEPHERD, CHARLENE			
00:09	GOOD! FT by SHEPHERD, CHARLENE	67-66	H 1	
00:09				TIMEOUT 30SEC
00:09	REBOUND (OFF) by TEAM			
00:09	SUB OUT: JONES, SUMMER			
00:09	SUB IN: MIMS, TRENA			
00:08	FOUL (PERSONAL) by MIMS, TRENA			
00:08		68-66	H 2	GOOD! FT by WIGGINS, SYDNE [FB]
00:08		69-66	H 3	GOOD! FT by WIGGINS, SYDNE [FB]
00:08	SUB OUT: MIMS, TRENA			
00:08	SUB IN: JONES, SUMMER			
00:01	MISSED 3PTR by BOYD, NYAH			
00:01				BLOCK by WIGGINS, SYDNE
00:01				REBOUND (DEF) by OGWUMIKE, ERICA

### North Texas 66, Rice 69

Points from (This Period)	UNT	RIC
In the Paint	12	8
Off Turns	1	2
2nd Chance	3	2
Fast Break	3	7
Bench	7	4





**Official Scoring/Possession Reference Chart  
North Texas vs Rice  
Period 1  
February 20, 2020 at Tudor Fieldhouse - Houston**



**Period 1**

**Starters:**

**North Texas:** 3 BOYD,N'YAH (G); 4 JACKSON,JAZION (G); 23 THOMPSON,RANDI (G); 41 TOWNLEY,MADI (F); 42 GEORGE,ANISHA (C);  
**Rice:** 2 WIGGINS,SYDNE (G); 10 SMITH,JASMINE (G); 13 OGWUMIKE,ERICA (G); 15 SCHWARTZ,LAUREN (F); 25 ELLIG,KENDALL (F);

Time	VISITORS: North Texas	Score	Margin	HOME: Rice
09:21	GOOD! LAYUP by JACKSON, JAZION	0-2	V 2	
08:48		2-2	T	GOOD! LAYUP by OGWUMIKE, ERICA
08:30		3-2	H 1	GOOD! FT by SCHWARTZ, LAUREN [FB]
08:30		4-2	H 2	GOOD! FT by SCHWARTZ, LAUREN [FB]
08:13	GOOD! JUMPER by TOWNLEY, MADI [PNT]	4-4	T	
07:34	GOOD! LAYUP by GEORGE, ANISHA	4-6	V 2	
07:28		6-6	T	GOOD! LAYUP by SCHWARTZ, LAUREN
06:37	GOOD! JUMPER by THOMPSON, RANDI [PNT]	6-8	V 2	
06:21		8-8	T	GOOD! LAYUP by ELLIG, KENDALL
06:16	GOOD! LAYUP by GEORGE, ANISHA	8-10	V 2	
06:16	GOOD! FT by GEORGE, ANISHA	8-11	V 3	
05:49	GOOD! LAYUP by JACKSON, JAZION	8-13	V 5	
05:07	GOOD! LAYUP by THOMPSON, RANDI [FB]	8-15	V 7	
04:35		9-15	V 6	GOOD! FT by OGWUMIKE, ERICA
04:35	GOOD! JUMPER by TOWNLEY, MADI [PNT]	9-17	V 8	
04:03		11-17	V 6	GOOD! JUMPER by OGWUMIKE, ERICA
03:00		13-17	V 4	GOOD! LAYUP by OGWUMIKE, ERICA
02:31	GOOD! LAYUP by GEORGE, ANISHA	13-19	V 6	
02:08		15-19	V 4	GOOD! LAYUP by OGWUMIKE, ERICA
02:08		16-19	V 3	GOOD! FT by OGWUMIKE, ERICA
01:05		18-19	V 1	GOOD! LAYUP by OGWUMIKE, ERICA
00:38		20-19	H 1	GOOD! LAYUP by WIGGINS, SYDNE [FB]

**North Texas 19, Rice 20**

**Official Scoring/Possession Reference Chart  
North Texas vs Rice  
Period 2  
February 20, 2020 at Tudor Fieldhouse - Houston**



**Period 2**

**Starters:**

**North Texas:** 3 BOYD, N'YAH (G); 4 JACKSON, JAZION (G); 23 THOMPSON, RANDI (G); 41 TOWNLEY, MADI (F); 42 GEORGE, ANISHA (C);  
**Rice:** 2 WIGGINS, SYDNE (G); 10 SMITH, JASMINE (G); 13 OGWUMIKE, ERICA (G); 15 SCHWARTZ, LAUREN (F); 25 ELLIG, KENDALL (F);

Time	VISITORS: North Texas	Score	Margin	HOME: Rice
09:26	GOOD! LAYUP by BOYD, N'YAH [FB]	20-21	V 1	
08:56		22-21	H 1	GOOD! LAYUP by CHRISMAN, ALEXAH [PNT]
08:47	GOOD! LAYUP by GEORGE, ANISHA	22-23	V 1	
06:46		24-23	H 1	GOOD! LAYUP by SCHWARTZ, LAUREN
06:28	GOOD! 3PTR by THOMPSON, RANDI	24-26	V 2	
05:44	GOOD! JUMPER by BOYD, N'YAH	24-28	V 4	
05:24	GOOD! 3PTR by JONES, SUMMER	24-31	V 7	
03:52	GOOD! FT by TOWNLEY, MADI	24-32	V 8	
03:13	GOOD! JUMPER by TOWNLEY, MADI	24-34	V 10	
02:24	GOOD! FT by GEORGE, ANISHA [FB]	24-35	V 11	
01:48	GOOD! LAYUP by GEORGE, ANISHA [FB]	24-37	V 13	
00:02		26-37	V 11	GOOD! LAYUP by CHRISMAN, ALEXAH

**North Texas 37, Rice 26**

**Official Scoring/Possession Reference Chart**  
**North Texas vs Rice**  
**Period 3**  
**February 20, 2020 at Tudor Fieldhouse - Houston**



**Period 3**

**Starters:**

**North Texas:** 3 BOYD,N'YAH (G); 4 JACKSON,JAZION (G); 23 THOMPSON,RANDI (G); 41 TOWNLEY,MADI (F); 42 GEORGE,ANISHA (C);  
**Rice:** 2 WIGGINS,SYDNE (G); 10 SMITH,JASMINE (G); 13 OGWUMIKE,ERICA (G); 15 SCHWARTZ,LAUREN (F); 25 ELLIG,KENDALL (F);

Time	VISITORS: North Texas	Score	Margin	HOME: Rice
09:32		27-37	V 10	GOOD! FT by OGWUMIKE, ERICA [FB]
09:32		28-37	V 9	GOOD! FT by OGWUMIKE, ERICA [FB]
08:26		30-37	V 7	GOOD! LAYUP by SCHWARTZ, LAUREN [FB]
07:59		33-37	V 4	GOOD! 3PTR by WIGGINS, SYDNE [FB]
07:31	GOOD! LAYUP by GEORGE, ANISHA [PNT]	33-39	V 6	
06:27		35-39	V 4	GOOD! JUMPER by OGWUMIKE, ERICA [PNT]
06:27	GOOD! JUMPER by JACKSON, JAZION [PNT]	35-41	V 6	
05:17	GOOD! JUMPER by BOYD, N'YAH	35-43	V 8	
04:55		36-43	V 7	GOOD! FT by OGWUMIKE, ERICA
04:55		37-43	V 6	GOOD! FT by OGWUMIKE, ERICA
04:28	GOOD! JUMPER by TOWNLEY, MADI [PNT]	37-45	V 8	
03:35	GOOD! FT by BOYD, N'YAH	37-46	V 9	
02:32	GOOD! LAYUP by JACKSON, JAZION	37-48	V 11	
02:09		38-48	V 10	GOOD! FT by WIGGINS, SYDNE
01:37		39-48	V 9	GOOD! FT by OGWUMIKE, ERICA [FB]
01:37		40-48	V 8	GOOD! FT by OGWUMIKE, ERICA [FB]
01:20		42-48	V 6	GOOD! LAYUP by OGWUMIKE, ERICA [FB]
00:40		44-48	V 4	GOOD! LAYUP by SCHWARTZ, LAUREN
00:16		45-48	V 3	GOOD! FT by OGWUMIKE, ERICA [FB]
00:16		46-48	V 2	GOOD! FT by OGWUMIKE, ERICA [FB]

**North Texas 48, Rice 46**

**Official Scoring/Possession Reference Chart**  
**North Texas vs Rice**  
**Period 4**  
**February 20, 2020 at Tudor Fieldhouse - Houston**



**Period 4**

**Starters:**

**North Texas:** 3 BOYD,N'YAH (G); 4 JACKSON,JAZION (G); 23 THOMPSON,RANDI (G); 41 TOWNLEY,MADI (F); 42 GEORGE,ANISHA (C);  
**Rice:** 2 WIGGINS,SYDNE (G); 10 SMITH,JASMINE (G); 13 OGWUMIKE,ERICA (G); 15 SCHWARTZ,LAUREN (F); 25 ELLIG,KENDALL (F);

Time	VISITORS: North Texas	Score	Margin	HOME: Rice
09:21	GOOD! FT by GEORGE, ANISHA [FB]	46-49	V 3	
09:20		48-49	V 1	GOOD! LAYUP by WIGGINS, SYDNE [FB]
08:52		49-49	T	GOOD! FT by WIGGINS, SYDNE [FB]
08:16	GOOD! LAYUP by GEORGE, ANISHA	49-51	V 2	
08:05		52-51	H 1	GOOD! 3PTR by SMITH, JASMINE
07:24		53-51	H 2	GOOD! FT by OGWUMIKE, ERICA
07:24		54-51	H 3	GOOD! FT by OGWUMIKE, ERICA
05:49		57-51	H 6	GOOD! 3PTR by OGWUMIKE, ERICA
05:24	GOOD! JUMPER by SHEPHERD, CHARLENE [PNT]	57-53	H 4	
05:04		59-53	H 6	GOOD! LAYUP by CHRISMAN, ALEXAH
04:18		61-53	H 8	GOOD! JUMPER by OGWUMIKE, ERICA
03:55	GOOD! LAYUP by SHEPHERD, CHARLENE [PNT]	61-55	H 6	
03:21		63-55	H 8	GOOD! LAYUP by OGWUMIKE, ERICA
03:04	GOOD! JUMPER by JACKSON, JAZION [PNT]	63-57	H 6	
03:04	GOOD! FT by JACKSON, JAZION	63-58	H 5	
02:07		65-58	H 7	GOOD! LAYUP by CHRISMAN, ALEXAH
01:45	GOOD! LAYUP by GEORGE, ANISHA [PNT]	65-60	H 5	
01:45	GOOD! FT by GEORGE, ANISHA	65-61	H 4	
01:05		66-61	H 5	GOOD! FT by SMITH, JASMINE [FB]
00:56	GOOD! JUMPER by JACKSON, JAZION	66-63	H 3	
00:23	GOOD! LAYUP by SHEPHERD, CHARLENE [FB]	66-65	H 1	
00:21		67-65	H 2	GOOD! FT by WIGGINS, SYDNE [FB]
00:09	GOOD! FT by SHEPHERD, CHARLENE	67-66	H 1	
00:08		68-66	H 2	GOOD! FT by WIGGINS, SYDNE [FB]
00:08		69-66	H 3	GOOD! FT by WIGGINS, SYDNE [FB]

**North Texas 66, Rice 69**

**Official Substitutions Log  
North Texas vs Rice  
Period 1  
February 20, 2020 at Tudor Fieldhouse - Houston**



VISITORS: North Texas	Time	Score	HOME: Rice
3 BOYD,N'YAH			2 WIGGINS,SYDNE
4 JACKSON,JAZION			10 SMITH,JASMINE
23 THOMPSON,RANDI			13 OGWUMIKE,ERICA
41 TOWNLEY,MADI			15 SCHWARTZ,LAUREN
42 GEORGE,ANISHA			25 ELLIG,KENDALL
	04:35	15-8	SUB OUT: ELLIG,KENDALL
	04:35		SUB IN: CHRISMAN,ALEXAH
SUB OUT: 4 JACKSON,JAZION	04:03	17-11	
SUB OUT: 23 THOMPSON,RANDI	04:03		
SUB OUT: 42 GEORGE,ANISHA	04:03		
SUB IN: 2 JONES,SUMMER	04:03		
SUB IN: 11 SHEPHERD,CHARLENE	04:03		
SUB IN: 24 MIMS,TRENA	04:03		
SUB OUT: 41 TOWNLEY,MADI	02:38	17-13	
SUB IN: 42 GEORGE,ANISHA	02:38		
	02:08	19-15	SUB OUT: SMITH,JASMINE
	02:08		SUB IN: CROSTHWAIT,KATELYN
SUB OUT: 11 SHEPHERD,CHARLENE	02:08		
SUB IN: 4 JACKSON,JAZION	02:08		

**North Texas 19, Rice 20**

**Official Substitutions Log**  
**North Texas vs Rice**  
**Period 2**  
**February 20, 2020 at Tudor Fieldhouse - Houston**



VISITORS: North Texas	Time	Score	HOME: Rice
3 BOYD,N'YAH			2 WIGGINS,SYDNE
4 JACKSON,JAZION			10 SMITH,JASMINE
23 THOMPSON,RANDI			13 OGWUMIKE,ERICA
41 TOWNLEY,MADI			15 SCHWARTZ,LAUREN
42 GEORGE,ANISHA			25 ELLIG,KENDALL
SUB OUT: 2 JONES,SUMMER	10:00	-	
SUB IN: 41 TOWNLEY,MADI	10:00		
	08:09	23-22	SUB OUT: WIGGINS,SYDNE
	08:09		SUB IN: SMITH,JASMINE
SUB OUT: 24 MIMS,TRENA	08:09		
SUB IN: 23 THOMPSON,RANDI	08:09		
	05:28	28-24	SUB OUT: OGWUMIKE,ERICA
	05:28		SUB OUT: CHRISMAN,ALEXAH
	05:28		SUB IN: WIGGINS,SYDNE
	05:28		SUB IN: ELLIG,KENDALL
SUB OUT: 3 BOYD,N'YAH	05:28		
SUB OUT: 23 THOMPSON,RANDI	05:28		
SUB IN: 2 JONES,SUMMER	05:28		
SUB IN: 24 MIMS,TRENA	05:28		
	04:54	31-24	SUB OUT: SCHWARTZ,LAUREN
	04:54		SUB IN: AUSTIN,ASHLEE
	04:36	31-24	SUB OUT: CROSTHWAIT,KATELYN
	04:36		SUB IN: OGWUMIKE,ERICA
	03:50	32-24	SUB OUT: ELLIG,KENDALL
	03:50		SUB IN: ALAO,TEMI
	03:25	32-24	SUB IN: SCHWARTZ,LAUREN
	03:25		SUB OUT: AUSTIN,ASHLEE
	02:24	34-24	SUB OUT: ALAO,TEMI
	02:24		SUB IN: CHRISMAN,ALEXAH
SUB OUT: 42 GEORGE,ANISHA	00:29	37-24	
SUB IN: 11 SHEPHERD,CHARLENE	00:29		

**North Texas 37, Rice 26**

**Official Substitutions Log  
North Texas vs Rice  
Period 3  
February 20, 2020 at Tudor Fieldhouse - Houston**



<b>VISITORS: North Texas</b>	<b>Time</b>	<b>Score</b>	<b>HOME: Rice</b>
3 BOYD,N'YAH			2 WIGGINS,SYDNE
4 JACKSON,JAZION			10 SMITH,JASMINE
23 THOMPSON,RANDI			13 OGWUMIKE,ERICA
41 TOWNLEY,MADI			15 SCHWARTZ,LAUREN
42 GEORGE,ANISHA			25 ELLIG,KENDALL
	10:00	-	SUB OUT: CHRISMAN,ALEXAH
	10:00		SUB IN: ELLIG,KENDALL
SUB OUT: 2 JONES,SUMMER	10:00		
SUB OUT: 24 MIMS,TRENA	10:00		
SUB OUT: 11 SHEPHERD,CHARLENE	10:00		
SUB IN: 3 BOYD,N'YAH	10:00		
SUB IN: 23 THOMPSON,RANDI	10:00		
SUB IN: 42 GEORGE,ANISHA	10:00		
SUB OUT: 42 GEORGE,ANISHA	06:36	39-33	
SUB IN: 24 MIMS,TRENA	06:36		
	04:55	43-35	SUB OUT: SMITH,JASMINE
	04:55		SUB IN: JACKSON,DESTINY
	03:35	45-37	SUB OUT: ELLIG,KENDALL
	03:35		SUB IN: CHRISMAN,ALEXAH
SUB OUT: 23 THOMPSON,RANDI	02:09	48-37	
SUB IN: 2 JONES,SUMMER	02:09		
SUB OUT: 41 TOWNLEY,MADI	01:37	48-38	
SUB IN: 11 SHEPHERD,CHARLENE	01:37		

**North Texas 48, Rice 46**



**Official Substitutions Log  
North Texas vs Rice  
Period 4  
February 20, 2020 at Tudor Fieldhouse - Houston**



<b>VISITORS: North Texas</b>	<b>Time</b>	<b>Score</b>	<b>HOME: Rice</b>
3 BOYD,N'YAH			2 WIGGINS,SYDNE
4 JACKSON,JAZION			10 SMITH,JASMINE
23 THOMPSON,RANDI			13 OGWUMIKE,ERICA
41 TOWNLEY,MADI			15 SCHWARTZ,LAUREN
42 GEORGE,ANISHA			25 ELLIG,KENDALL
SUB OUT: 11 SHEPHERD,CHARLENE	10:00	-	
SUB OUT: 24 MIMS,TRENA	10:00		
SUB IN: 23 THOMPSON,RANDI	10:00		
SUB IN: 42 GEORGE,ANISHA	10:00		
	09:21	-	SUB OUT: JACKSON,DESTINY
	09:21		SUB IN: SMITH,JASMINE
	08:52	49-48	SUB OUT: OGWUMIKE,ERICA
	08:52		SUB IN: CROSTHWAIT,KATELYN
SUB OUT: 23 THOMPSON,RANDI	08:52		
SUB IN: 24 MIMS,TRENA	08:52		
	07:38	51-52	SUB OUT: WIGGINS,SYDNE
	07:38		SUB IN: OGWUMIKE,ERICA
SUB OUT: 4 JACKSON,JAZION	07:37	51-52	
SUB IN: 41 TOWNLEY,MADI	07:37		
	06:36	51-54	SUB OUT: CROSTHWAIT,KATELYN
	06:36		SUB IN: WIGGINS,SYDNE
SUB OUT: 42 GEORGE,ANISHA	06:36		
SUB IN: 11 SHEPHERD,CHARLENE	06:36		
SUB OUT: 3 BOYD,N'YAH	04:44	53-59	
SUB OUT: 41 TOWNLEY,MADI	04:44		
SUB IN: 4 JACKSON,JAZION	04:44		
SUB IN: 42 GEORGE,ANISHA	04:44		
SUB OUT: 2 JONES,SUMMER	04:12	53-61	
SUB IN: 23 THOMPSON,RANDI	04:12		
SUB OUT: 23 THOMPSON,RANDI	02:30	58-63	
SUB IN: 3 BOYD,N'YAH	02:30		
SUB IN: 2 JONES,SUMMER	00:21	65-66	
SUB OUT: 24 MIMS,TRENA	00:21		
SUB OUT: 2 JONES,SUMMER	00:09	66-67	
SUB IN: 24 MIMS,TRENA	00:09		
SUB OUT: 24 MIMS,TRENA	00:08	66-69	
SUB IN: 2 JONES,SUMMER	00:08		

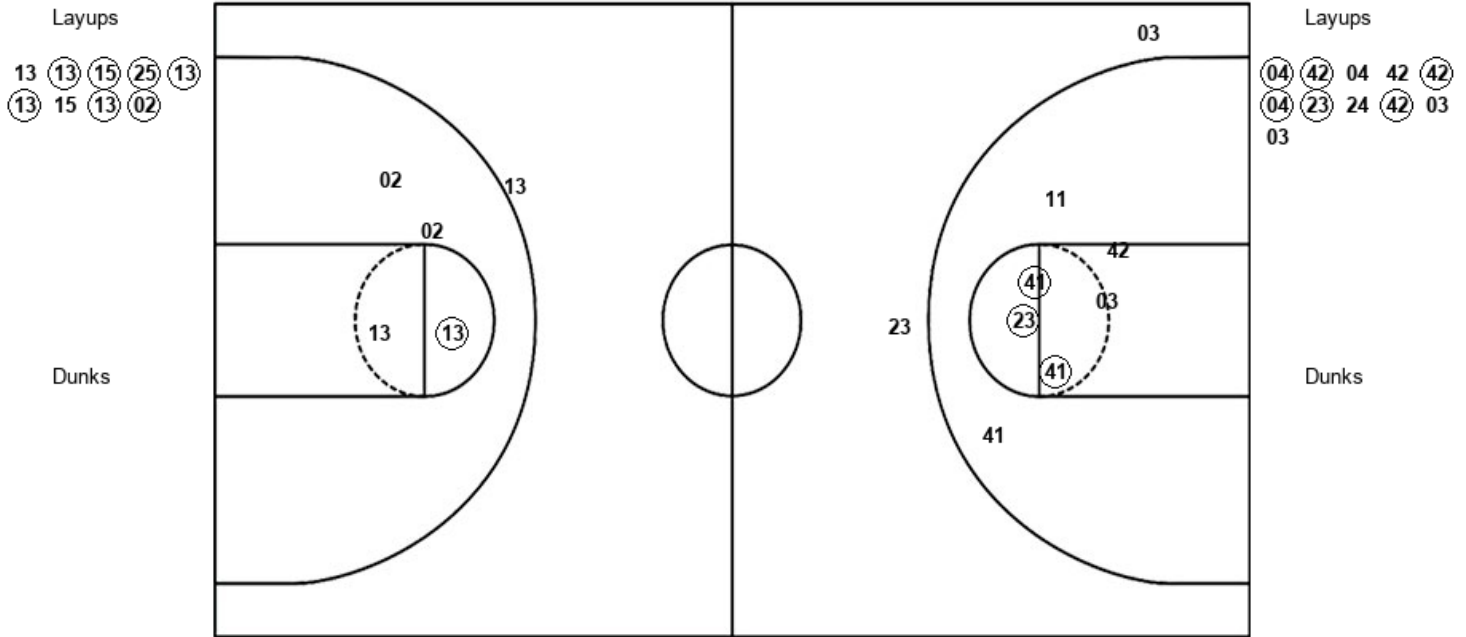
**North Texas 66, Rice 69**

**Official Shot Chart**  
**North Texas vs Rice**  
**PERIOD 1 Shots**  
**February 20, 2020 at Tudor Fieldhouse - Houston**



**Rice**

**North Texas**



<b>RIC : Period 1</b>	<b>Made</b>	<b>Att</b>	<b>Pct</b>
Layups	7	9	77.8
Dunks	0	0	0
2PT Field Goals	8	13	61.5
3PT Field Goals	0	1	00.0
<b>Total Field Goals</b>	<b>8</b>	<b>14</b>	<b>57.1</b>

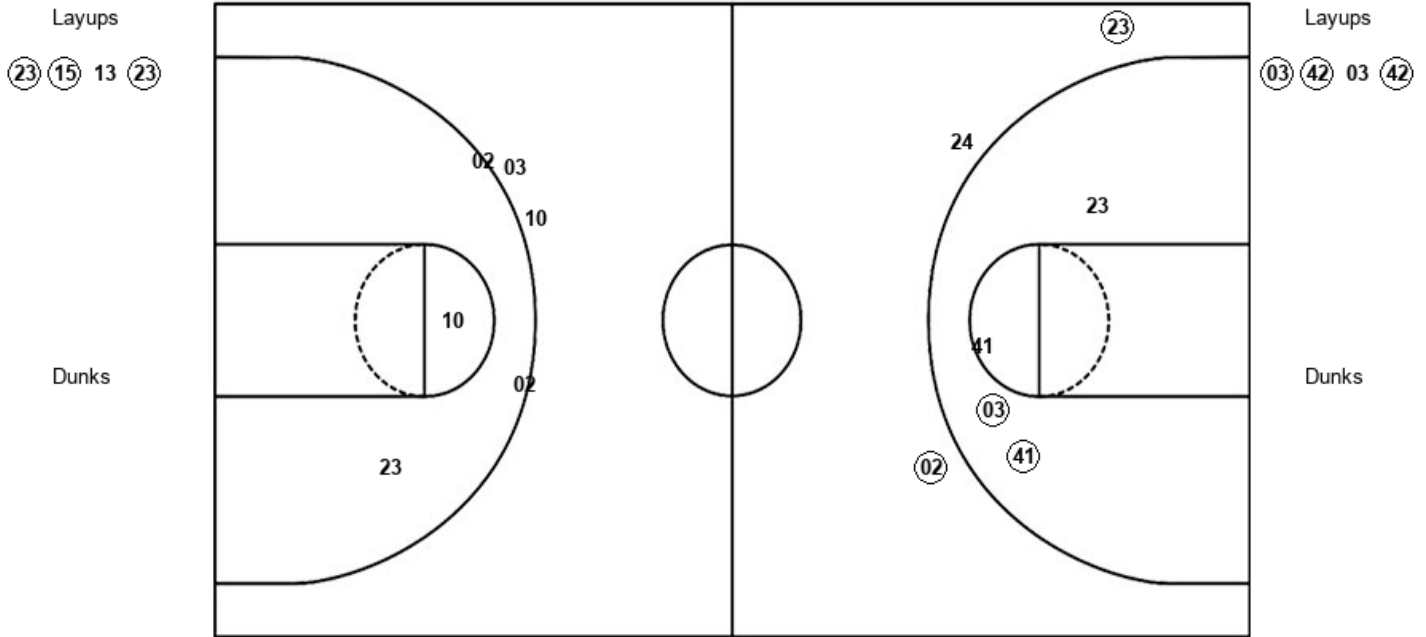
<b>UNT : Period 1</b>	<b>Made</b>	<b>Att</b>	<b>Pct</b>
Layups	6	11	54.5
Dunks	0	0	0
2PT Field Goals	9	18	50.0
3PT Field Goals	0	2	00.0
<b>Total Field Goals</b>	<b>9</b>	<b>20</b>	<b>45.0</b>

**Official Shot Chart**  
**North Texas vs Rice**  
**PERIOD 2 Shots**  
**February 20, 2020 at Tudor Fieldhouse - Houston**



**Rice**

**North Texas**



<b>RIC : Period 2</b>	<b>Made</b>	<b>Att</b>	<b>Pct</b>
Layups	3	4	75.0
Dunks	0	0	0
2PT Field Goals	3	6	50.0
3PT Field Goals	0	4	00.0
<b>Total Field Goals</b>	<b>3</b>	<b>10</b>	<b>30.0</b>

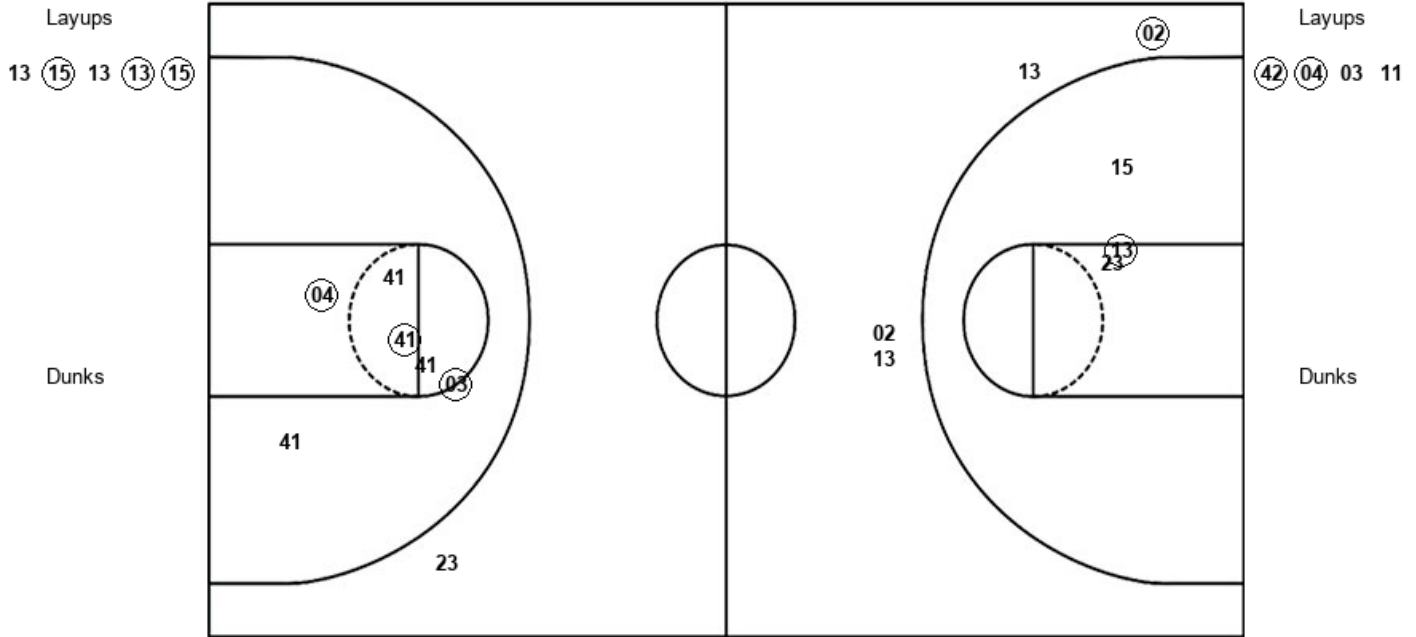
<b>UNT : Period 2</b>	<b>Made</b>	<b>Att</b>	<b>Pct</b>
Layups	3	4	75.0
Dunks	0	0	0
2PT Field Goals	5	8	62.5
3PT Field Goals	2	3	66.7
<b>Total Field Goals</b>	<b>7</b>	<b>11</b>	<b>63.6</b>

**Official Shot Chart**  
**North Texas vs Rice**  
**PERIOD 3 Shots**  
**February 20, 2020 at Tudor Fieldhouse - Houston**



**Rice**

**North Texas**



<b>RIC : Period 3</b>	<b>Made</b>	<b>Att</b>	<b>Pct</b>
Layups	3	5	60.0
Dunks	0	0	0
2PT Field Goals	4	8	50.0
3PT Field Goals	1	4	25.0
<b>Total Field Goals</b>	<b>5</b>	<b>12</b>	<b>41.7</b>

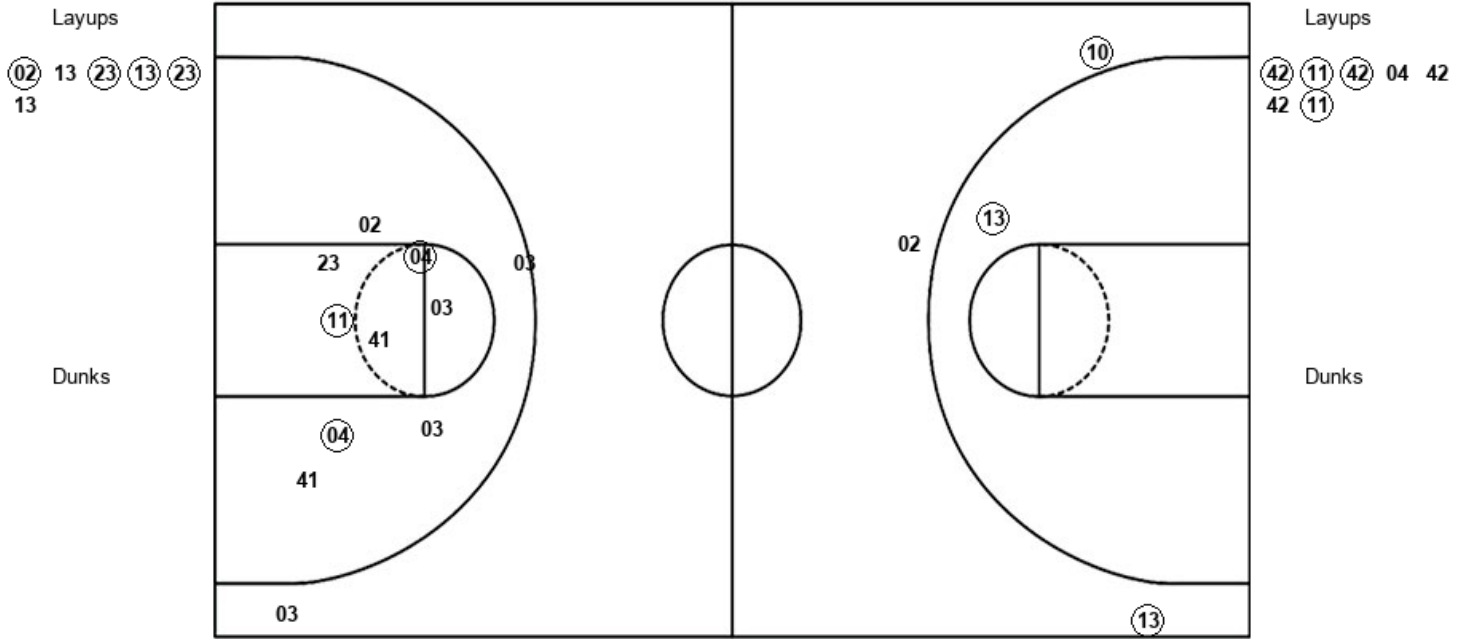
<b>UNT : Period 3</b>	<b>Made</b>	<b>Att</b>	<b>Pct</b>
Layups	2	4	50.0
Dunks	0	0	0
2PT Field Goals	5	10	50.0
3PT Field Goals	0	1	00.0
<b>Total Field Goals</b>	<b>5</b>	<b>11</b>	<b>45.5</b>

**Official Shot Chart**  
**North Texas vs Rice**  
**PERIOD 4 Shots**  
**February 20, 2020 at Tudor Fieldhouse - Houston**



**Rice**

**North Texas**



<b>RIC : Period 4</b>	<b>Made</b>	<b>Att</b>	<b>Pct</b>
Layups	4	6	66.7
Dunks	0	0	0
2PT Field Goals	5	7	71.4
3PT Field Goals	2	3	66.7
<b>Total Field Goals</b>	<b>7</b>	<b>10</b>	<b>70.0</b>

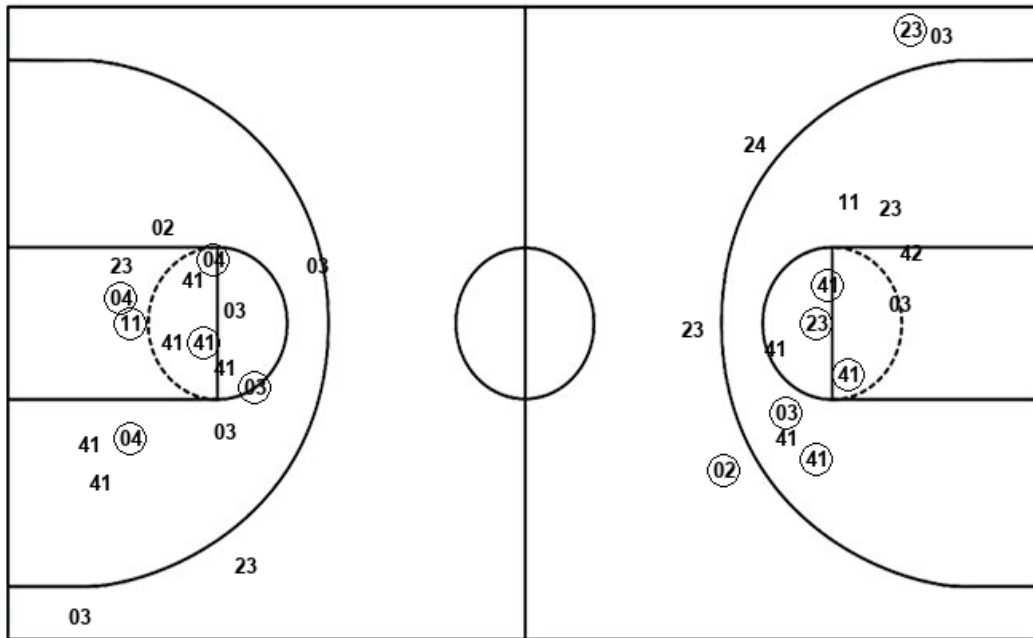
<b>UNT : Period 4</b>	<b>Made</b>	<b>Att</b>	<b>Pct</b>
Layups	4	7	57.1
Dunks	0	0	0
2PT Field Goals	7	16	43.8
3PT Field Goals	0	2	00.0
<b>Total Field Goals</b>	<b>7</b>	<b>18</b>	<b>38.9</b>

**Official Shot Chart**  
**North Texas vs Rice**  
**North Texas Team Shots**  
**February 20, 2020 at Tudor Fieldhouse - Houston**



Layups

Dunks



Layups

Dunks

- (04) (42) 04 42 (42)
- (04) (23) 24 (42) 03
- 03 (03) (42) 03 (42)
- (42) (04) 03 11 (42)
- (11) (42) 04 42 42
- (11)

UNT : Period 1	Made	Att	Pct
Layups	6	11	54.5
Dunks	0	0	0
2PT Field Goals	9	18	50.0
3PT Field Goals	0	2	00.0
<b>Total Field Goals</b>	<b>9</b>	<b>20</b>	<b>45.0</b>

UNT : Period 3	Made	Att	Pct
Layups	2	4	50.0
Dunks	0	0	0
2PT Field Goals	5	10	50.0
3PT Field Goals	0	1	00.0
<b>Total Field Goals</b>	<b>5</b>	<b>11</b>	<b>45.5</b>

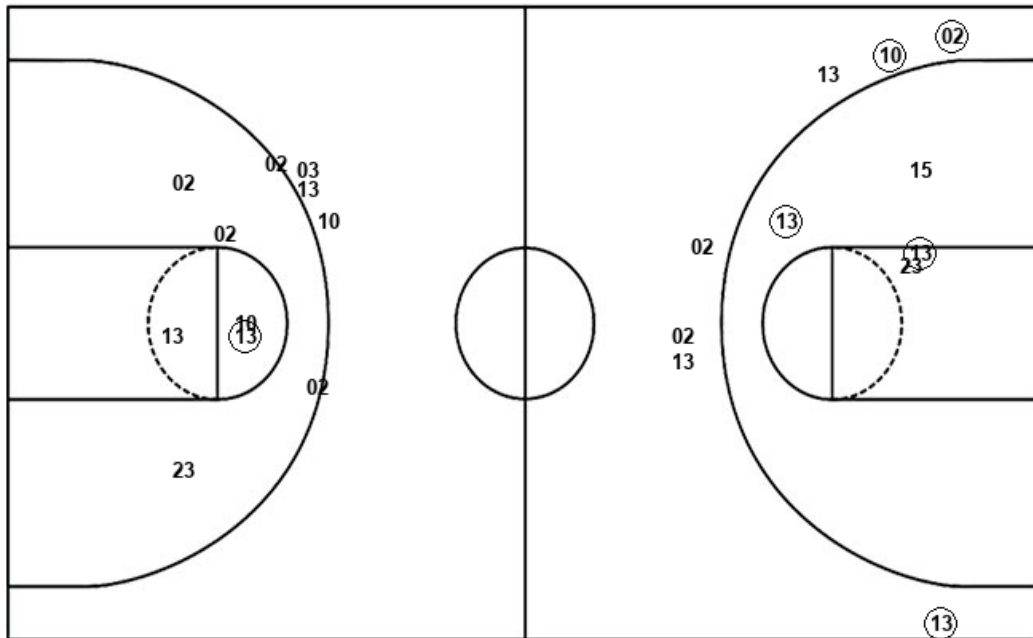
UNT : Period 2	Made	Att	Pct
Layups	3	4	75.0
Dunks	0	0	0
2PT Field Goals	5	8	62.5
3PT Field Goals	2	3	66.7
<b>Total Field Goals</b>	<b>7</b>	<b>11</b>	<b>63.6</b>

UNT : Period 4	Made	Att	Pct
Layups	4	7	57.1
Dunks	0	0	0
2PT Field Goals	7	16	43.8
3PT Field Goals	0	2	00.0
<b>Total Field Goals</b>	<b>7</b>	<b>18</b>	<b>38.9</b>

**Official Shot Chart**  
**North Texas vs Rice**  
**Rice Team Shots**  
**February 20, 2020 at Tudor Fieldhouse - Houston**



Layups



Layups

- 13 (13) (15) (25) (13)
- (13) 15 (13) (02) (23)
- (15) 13 (23) 13 (15)
- 13 (13) (15) (02) 13
- (23) (13) (23) 13

Dunks

Dunks

RIC : Period 1	Made	Att	Pct
Layups	7	9	77.8
Dunks	0	0	0
2PT Field Goals	8	13	61.5
3PT Field Goals	0	1	00.0
<b>Total Field Goals</b>	<b>8</b>	<b>14</b>	<b>57.1</b>

RIC : Period 2	Made	Att	Pct
Layups	3	4	75.0
Dunks	0	0	0
2PT Field Goals	3	6	50.0
3PT Field Goals	0	4	00.0
<b>Total Field Goals</b>	<b>3</b>	<b>10</b>	<b>30.0</b>

RIC : Period 3	Made	Att	Pct
Layups	3	5	60.0
Dunks	0	0	0
2PT Field Goals	4	8	50.0
3PT Field Goals	1	4	25.0
<b>Total Field Goals</b>	<b>5</b>	<b>12</b>	<b>41.7</b>

RIC : Period 4	Made	Att	Pct
Layups	4	6	66.7
Dunks	0	0	0
2PT Field Goals	5	7	71.4
3PT Field Goals	2	3	66.7
<b>Total Field Goals</b>	<b>7</b>	<b>10</b>	<b>70.0</b>