

FINAL SCORE



Marshall

43



Rice

81

January 02, 2020 • Tudor Fieldhouse - Houston

FINAL STATISTICS

Official Box Score
Marshall vs Rice
Game Totals -- Final Statistics
January 02, 2020 at Tudor Fieldhouse - Houston



Marshall 43

No.	Player	S	Pts	FG	3FG	FT	OR	DR	TR	PF	A	TO	Blk	Stl	Min	+/-
02	MAYO, KRISTEN	G	5	1-9	1-4	2-2	0	1	1	1	1	1	0	2	29	-32
10	SAINTIGENE, ASHLEY	F	10	5-7	0-0	0-1	3	0	3	2	0	3	2	2	18	-18
15	CONGLETON, DAZHA	G	13	3-10	0-3	7-11	1	2	3	1	0	2	0	3	22	-19
20	PEARSON, TAYLOR	F	5	2-9	1-3	0-0	3	1	4	3	0	1	0	0	18	-27
22	BROOKS, KHADAIJIA	G	3	1-4	1-2	0-0	0	0	0	1	0	1	0	1	17	-19
00	SIVILS, KIA	G	0	0-2	0-0	0-0	2	0	2	1	0	1	0	1	15	-10
04	WHEELER, SAVANNAH	G	2	1-7	0-4	0-0	0	0	0	1	2	1	0	0	27	-21
05	CLEMONS, PRINCESS	G	3	1-5	1-2	0-0	0	6	6	0	0	1	1	0	20	-24
21	TONEY, BRIANNA	F	2	1-1	0-0	0-0	0	0	0	0	0	0	0	0	2	4
23	JOHNSON, ALEXIS	F	0	0-0	0-0	0-0	1	1	2	0	1	0	0	0	3	4
32	SHY, PAIGE	G	0	0-1	0-1	0-0	0	3	3	2	0	2	0	1	13	-11
34	ROPER, LORELEI	F	0	0-4	0-1	0-0	3	1	4	0	0	2	0	0	15	-17
TEAM							3	1	4	0		0				
TOTALS			43	15-59	4-20	9-14	16	16	32	12	4	15	3	10	200	

Shooting By Period

Period	FG	FG%	3FG	3FG%	FT	FT%
1st Qtr	4-17	24%	1-5	20%	2-2	100%
2nd Qtr	1-12	08%	1-7	14%	0-0	0%
3rd Qtr	6-15	40%	2-5	40%	0-1	00%
4th Qtr	4-15	27%	0-3	00%	7-11	64%
1st Half	5-29	17%	2-12	17%	2-2	100%
2nd Half	10-30	33%	2-8	25%	7-12	58%
Game	15-59	25.4%	4-20	20.0%	9-14	64.3%

Deadball Rebounds: 1,0

Last FG: 4th-00:35

Biggest Run: 5-0

Largest lead: By 0 at 1st-09:17

Technical Fouls: None.

Rice 81

No.	Player	S	Pts	FG	3FG	FT	OR	DR	TR	PF	A	TO	Blk	Stl	Min	+/-
02	WIGGINS, SYDNE	G	11	4-6	2-3	1-1	0	1	1	1	3	1	0	2	22	24
10	SMITH, JASMINE	G	4	2-4	0-2	0-0	0	2	2	1	4	3	1	1	22	26
13	OGWUMIKE, ERICA	G	14	7-17	0-3	0-0	6	6	12	0	1	1	1	0	27	32
15	SCHWARTZ, LAUREN	F	6	2-4	0-1	2-2	2	4	6	0	1	0	1	1	26	33
32	MULKEY, NANCY	C	10	4-9	0-0	2-2	3	4	7	0	2	0	1	1	15	20
03	CROSTHWAIT, KATELYN	G	10	4-8	2-4	0-0	1	6	7	0	0	1	0	0	22	18
05	JACKSON, DESTINY	G	7	3-4	1-2	0-0	1	1	2	4	2	0	0	1	14	5
11	SWAYZE, HAYLEE	G	3	1-2	1-2	0-0	0	0	0	0	0	0	0	0	10	10
12	BELLAMY, INDIA	F	2	1-3	0-1	0-0	0	3	3	1	0	2	0	1	9	5
21	MCCURRY, ARIANNA	C	0	0-1	0-0	0-0	1	0	1	4	1	2	0	0	8	1
22	AUSTIN, ASHLEE	F	8	3-4	1-2	1-1	0	1	1	2	2	2	0	0	9	-1
24	ALAO, TEMI	F	4	2-2	0-0	0-3	0	0	0	0	2	0	0	0	10	16
25	ELLIG, KENDALL	F	2	1-2	0-0	0-0	1	0	1	2	0	2	0	0	8	1
TEAM							3	4	7	0		0				
TOTALS			81	34-66	7-20	6-9	18	32	50	15	18	14	4	7	200	

Shooting By Period

Period	FG	FG%	3FG	3FG%	FT	FT%
1st Qtr	9-22	41%	1-6	17%	1-1	100%
2nd Qtr	8-17	47%	1-3	33%	0-0	0%
3rd Qtr	9-12	75%	3-5	60%	5-8	63%
4th Qtr	8-15	53%	2-6	33%	0-0	0%
1st Half	17-39	44%	2-9	22%	1-1	100%
2nd Half	17-27	63%	5-11	45%	5-8	63%
Game	34-66	51.5%	7-20	35.0%	6-9	66.7%

Deadball Rebounds: 1,0

Last FG: 4th-01:23

Biggest Run: 18-0

Largest lead: By 43 at 4th-01:23

Technical Fouls: None.

Game Notes:

Officials: Travis Jones, Kelly Broomfield, Katrina Lyles
Attendance: 513

Start Time: 08:06 PM ET
End Time: 09:41 PM ET
Game Duration: 1:34
Conference Game;

Score	1st	2nd	3rd	4th	TOT
MAR	11	3	14	15	43
RIC	20	17	26	18	81

MAR led for 0:00. RIC led for 39:32.
Game was tied for 0:28.
Times tied: 1 Lead Changes: 0

Points from	MAR	RIC
In the Paint	20	52
Off Turns	5	17
2nd Chance	6	12
Fast Break	4	8
Bench	7	36

Official Box Score
Marshall vs Rice
First Half Statistics Only
January 02, 2020 at Tudor Fieldhouse - Houston



Marshall 14

No.	Player	S	Pts	FG	3FG	FT	OR	DR	TR	PF	A	TO	Blk	Stl	Min	+/-
00	SIVILS, KIA	G	0	0-2	0-0	0-0	2	0	2	0	0	1	0	1	10	-7
02	MAYO, KRISTEN	G	5	1-5	1-3	2-2	0	0	0	1	1	1	0	1	14	-17
04	WHEELER, SAVANNAH	G	2	1-4	0-2	0-0	0	0	0	0	1	0	0	0	16	-11
05	CLEMONS, PRINCESS	G	3	1-4	1-2	0-0	0	3	3	0	0	1	1	0	11	-7
10	SAINTIGENE, ASHLEY	F	4	2-3	0-0	0-0	2	0	2	0	0	1	2	1	8	-9
15	CONGLETON, DAZHA	G	0	0-2	0-1	0-0	1	0	1	0	0	2	0	1	8	-16
20	PEARSON, TAYLOR	F	0	0-3	0-2	0-0	2	1	3	2	0	1	0	0	8	-16
21	TONEY, BRIANNA	F	0	0-0	0-0	0-0	0	0	0	0	0	0	0	0	0	0
22	BROOKS, KHADAIJIA	G	0	0-2	0-0	0-0	0	0	0	1	0	1	0	0	10	-16
23	JOHNSON, ALEXIS	F	0	0-0	0-0	0-0	0	0	0	0	0	0	0	0	0	0
32	SHY, PAIGE	G	0	0-1	0-1	0-0	0	2	2	0	0	0	0	0	6	-6
34	ROPER, LORELEI	F	0	0-3	0-1	0-0	2	1	3	0	0	2	0	0	9	-10
	TEAM		0	0-0	0-0	0-0	2	1	3	0	0	0	0	0	0	0
	TOTALS		14	5-29	2-12	2-2	11	8	19	4	2	10	3	4	100	

Shooting By Period

Period	FG	FG%	3FG	3FG%	FT	FT%
1st Qtr	4-17	24%	1-5	20%	2-2	100%
2nd Qtr	1-12	08%	1-7	14%	0-0	0%
1st Half	5-29	17%	2-12	17%	2-2	100%
Game	15-59	25.4%	4-20	20.0%	9-14	64.3%

Deadball Rebounds: 1,0
 Last FG Half: MAR 2nd-09:28

Rice 37

No.	Player	S	Pts	FG	3FG	FT	OR	DR	TR	PF	A	TO	Blk	Stl	Min	+/-
02	WIGGINS, SYDNE	G	8	3-4	1-1	1-1	0	0	0	1	2	1	0	2	16	22
03	CROSTHWAIT, KATELYN	G	3	1-1	1-1	0-0	0	1	1	0	0	0	0	0	11	7
05	JACKSON, DESTINY	G	0	0-1	0-1	0-0	0	0	0	0	0	0	0	0	1	-1
10	SMITH, JASMINE	G	4	2-4	0-2	0-0	0	1	1	1	2	1	0	1	14	17
11	SWAYZE, HAYLEE	G	0	0-0	0-0	0-0	0	0	0	0	0	0	0	0	0	0
12	BELLAMY, INDIA	F	0	0-0	0-0	0-0	0	0	0	0	0	0	0	0	0	0
13	OGWUMIKE, ERICA	G	8	4-14	0-3	0-0	6	4	10	0	0	1	1	0	19	23
15	SCHWARTZ, LAUREN	F	4	2-4	0-1	0-0	2	3	5	0	1	0	1	0	19	24
21	MCCURRY, ARIANNA	C	0	0-0	0-0	0-0	0	0	0	0	0	0	0	0	0	0
22	AUSTIN, ASHLEE	F	0	0-0	0-0	0-0	0	0	0	0	0	0	0	0	0	0
24	ALAO, TEMI	F	0	0-0	0-0	0-0	0	0	0	0	0	0	0	0	0	0
25	ELDIG, KENDALL	F	2	1-2	0-0	0-0	1	0	1	1	0	2	0	0	7	6
32	MULKEY, NANCY	C	8	4-9	0-0	0-0	3	3	6	0	2	0	1	1	13	17
	TEAM		0	0-0	0-0	0-0	2	1	3	0	0	0	0	0	0	0
	TOTALS		37	17-39	2-9	1-1	14	13	27	3	7	5	3	4	100	

Shooting By Period

Period	FG	FG%	3FG	3FG%	FT	FT%
1st Qtr	9-22	41%	1-6	17%	1-1	100%
2nd Qtr	8-17	47%	1-3	33%	0-0	0%
1st Half	17-39	44%	2-9	22%	1-1	100%
Game	34-66	51.5%	7-20	35.0%	6-9	66.7%

Deadball Rebounds: 1,0
 Last FG Half: RIC 2nd-01:35

Game Notes:

Officials: Travis Jones, Kelly Broomfield, Katrina Lyles
 Attendance: 513

Start Time: 08:06 PM ET
 End Time: 09:41 PM ET
 Game Duration: 1:34
 Conference Game;

Score	1st	2nd	3rd	4th	TOT
MAR	11	3	14	15	43
RIC	20	17	26	18	81

Points from (This Period)	MAR	RIC
In the Paint	4	28
Off Turns	2	12
2nd Chance	2	10
Fast Break	0	4
Bench	5	5

Official Box Score
Marshall vs Rice
First Quarter Statistics Only
January 02, 2020 at Tudor Fieldhouse - Houston



Marshall 11

No.	Player	S	Pts	FG	3FG	FT	OR	DR	TR	PF	A	TO	Blk	Stl	Min	+/-
02	MAYO, KRISTEN	G	5	1-4	1-2	2-2	0	0	0	0	1	0	0	0	10	-9
10	SAINTIGENE, ASHLEY	F	4	2-2	0-0	0-0	1	0	1	0	0	0	1	1	5	-1
15	CONGLETON, DAZHA	G	0	0-2	0-1	0-0	1	0	1	0	0	2	0	1	5	-8
20	PEARSON, TAYLOR	F	0	0-1	0-1	0-0	0	1	1	2	0	1	0	0	4	-10
22	BROOKS, KHADAJIA	G	0	0-1	0-0	0-0	0	0	0	1	0	1	0	0	6	-8
00	SIVILS, KIA	G	0	0-1	0-0	0-0	2	0	2	0	0	1	0	1	4	-1
04	WHEELER, SAVANNAH	G	2	1-2	0-0	0-0	0	0	0	0	1	0	0	0	9	-5
05	CLEMONS, PRINCESS	G	0	0-2	0-1	0-0	0	2	2	0	0	0	0	0	5	-1
21	TONEY, BRIANNA	F	0	0-0	0-0	0-0	0	0	0	0	0	0	0	0	0	0
23	JOHNSON, ALEXIS	F	0	0-0	0-0	0-0	0	0	0	0	0	0	0	0	0	0
32	SHY, PAIGE	G	0	0-0	0-0	0-0	0	0	0	0	0	0	0	0	0	0
34	ROPER, LORELEI	F	0	0-2	0-0	0-0	2	1	3	0	0	1	0	0	2	-2
TEAM							1	0	1	0						
TOTALS			11	4-17	1-5	2-2	7	4	11	3	2	6	1	3	50	

Shooting By Period

Period	FG	FG%	3FG	3FG%	FT	FT%
1st Qtr	4-17	24%	1-5	20%	2-2	100%
2nd Qtr	1-12	08%	1-7	14%	0-0	0%
1st Half	4-17	24%	1-5	20%	2-2	100%
1st Half	5-29	17%	2-12	17%	2-2	100%
Game	15-59	25.4%	4-20	20.0%	9-14	64.3%

Deadball Rebounds: 1,0

Rice 20

No.	Player	S	Pts	FG	3FG	FT	OR	DR	TR	PF	A	TO	Blk	Stl	Min	+/-
02	WIGGINS, SYDNE	G	6	2-2	1-1	1-1	0	0	0	0	0	0	0	1	6	8
10	SMITH, JASMINE	G	2	1-3	0-2	0-0	0	1	1	1	1	1	0	1	10	9
13	OGWUMIKE, ERICA	G	2	1-7	0-2	0-0	3	1	4	0	0	1	1	0	10	9
15	SCHWARTZ, LAUREN	F	2	1-2	0-1	0-0	0	2	2	0	0	0	0	0	10	9
32	MULKEY, NANCY	C	8	4-7	0-0	0-0	3	2	5	0	2	0	1	0	7	11
03	CROSTHWAIT, KATELYN	G	0	0-0	0-0	0-0	0	0	0	0	0	0	0	0	4	1
05	JACKSON, DESTINY	G	0	0-0	0-0	0-0	0	0	0	0	0	0	0	0	0	0
11	SWAYZE, HAYLEE	G	0	0-0	0-0	0-0	0	0	0	0	0	0	0	0	0	0
12	BELLAMY, INDIA	F	0	0-0	0-0	0-0	0	0	0	0	0	0	0	0	0	0
21	MCCURRY, ARIANNA	C	0	0-0	0-0	0-0	0	0	0	0	0	0	0	0	0	0
22	AUSTIN, ASHLEE	F	0	0-0	0-0	0-0	0	0	0	0	0	0	0	0	0	0
24	ALAO, TEMI	F	0	0-0	0-0	0-0	0	0	0	0	0	0	0	0	0	0
25	ELLIG, KENDALL	F	0	0-1	0-0	0-0	1	0	1	0	0	2	0	0	3	-2
TEAM							2	0	2	0						
TOTALS			20	9-22	1-6	1-1	9	6	15	1	3	4	2	2	50	

Shooting By Period

Period	FG	FG%	3FG	3FG%	FT	FT%
1st Qtr	9-22	41%	1-6	17%	1-1	100%
2nd Qtr	8-17	47%	1-3	33%	0-0	0%
1st Half	9-22	41%	1-6	17%	1-1	100%
1st Half	17-39	44%	2-9	22%	1-1	100%
Game	34-66	51.5%	7-20	35.0%	6-9	66.7%

Deadball Rebounds: 1,0

Game Notes:

Officials: Travis Jones, Kelly Broomfield, Katrina Lyles
Attendance: 513

Start Time: 08:06 PM ET
End Time: 09:41 PM ET
Game Duration: 1:34
Conference Game;

Score	1st	2nd	3rd	4th	TOT
MAR	11	3	14	15	43
RIC	20	17	26	18	81

Points from (This Period)	MAR	RIC
In the Paint	4	16
Off Turns	2	8
2nd Chance	2	8
Fast Break	0	0
Bench	2	0

**Official Play-By-Play
Marshall vs Rice
First Quarter
January 02, 2020 at Tudor Fieldhouse - Houston**



Period 1

Starters:

Marshall: 2 MAYO, KRISTEN (G); 10 SAINTIGENE, ASHLEY (F); 15 CONGLETON, DAZHA (G); 20 PEARSON, TAYLOR (F); 22 BROOKS, KHADAIJIA (G);

Rice: 2 WIGGINS, SYDNE (G); 10 SMITH, JASMINE (G); 13 OGWUMIKE, ERICA (G); 15 SCHWARTZ, LAUREN (F); 32 MULKEY, NANCY (C);

Time	VISITORS: Marshall	Score	Margin	HOME: Rice
09:48				MISSED 3PTR by OGWUMIKE, ERICA
09:44				REBOUND (OFF) by MULKEY, NANCY
09:43		2-0	H 2	GOOD! LAYUP by MULKEY, NANCY
09:23	MISSED 3PTR by PEARSON, TAYLOR			
09:18	REBOUND (OFF) by SAINTIGENE, ASHLEY			
09:17	GOOD! LAYUP by SAINTIGENE, ASHLEY	2-2	T	
09:06		4-2	H 2	GOOD! LAYUP by SCHWARTZ, LAUREN
08:50	MISSED JUMPER by BROOKS, KHADAIJIA			
08:47				REBOUND (DEF) by MULKEY, NANCY
08:42		6-2	H 4	GOOD! LAYUP by WIGGINS, SYDNE
08:42	FOUL (PERSONAL) by BROOKS, KHADAIJIA			
08:42	TIMEOUT 30SEC			
08:42	SUB OUT: SAINTIGENE, ASHLEY			
08:42	SUB IN: WHEELER, SAVANNAH			
08:42		7-2	H 5	GOOD! FT by WIGGINS, SYDNE
08:32	FOUL (OFF) by PEARSON, TAYLOR			
08:32	TURNOVER (OFFENSIVE) by PEARSON, TAYLOR			
08:15				MISSED LAYUP by MULKEY, NANCY
08:10	REBOUND (DEF) by PEARSON, TAYLOR			
08:09	TURNOVER (LOSTBALL) by CONGLETON, DAZHA			
08:09				STEAL by WIGGINS, SYDNE
08:02		9-2	H 7	GOOD! LAYUP by OGWUMIKE, ERICA
08:02				ASSIST by MULKEY, NANCY
07:52				FOUL (PERSONAL) by SMITH, JASMINE
07:52	GOOD! FT by MAYO, KRISTEN	9-3	H 6	
07:52	GOOD! FT by MAYO, KRISTEN	9-4	H 5	
07:34		12-4	H 8	GOOD! 3PTR by WIGGINS, SYDNE
07:34				ASSIST by MULKEY, NANCY
07:12	TURNOVER (TRAVEL) by BROOKS, KHADAIJIA			
06:55				MISSED LAYUP by MULKEY, NANCY
06:51				REBOUND (OFF) by MULKEY, NANCY
06:50		14-4	H 10	GOOD! LAYUP by MULKEY, NANCY
06:38	MISSED 3PTR by CONGLETON, DAZHA			
06:35				REBOUND (DEF) by MULKEY, NANCY
06:11	FOUL (PERSONAL) by PEARSON, TAYLOR			
06:11				SUB OUT: MULKEY, NANCY
06:11				SUB IN: ELLIG, KENDALL
06:11	SUB OUT: PEARSON, TAYLOR			
06:11	SUB IN: SAINTIGENE, ASHLEY			
05:59				MISSED 3PTR by SMITH, JASMINE
05:56				REBOUND (OFF) by OGWUMIKE, ERICA
05:49				TURNOVER (LOSTBALL) by ELLIG, KENDALL
05:49	STEAL by CONGLETON, DAZHA			
05:43	MISSED JUMPER by CONGLETON, DAZHA			
05:40	REBOUND (OFF) by CONGLETON, DAZHA			
05:39	TURNOVER (LOSTBALL) by CONGLETON, DAZHA			
05:39				STEAL by SMITH, JASMINE
05:34				TURNOVER (LOSTBALL) by SMITH, JASMINE
05:34	STEAL by SAINTIGENE, ASHLEY			
05:28	GOOD! JUMPER by WHEELER, SAVANNAH	14-6	H 8	
05:20				MISSED LAYUP by ELLIG, KENDALL
05:17				REBOUND (OFF) by TEAM
05:17	SUB OUT: CONGLETON, DAZHA			
05:17	SUB IN: CLEMONS, PRINCESS			
05:00		16-6	H 10	GOOD! LAYUP by SMITH, JASMINE
04:45	GOOD! JUMPER by SAINTIGENE, ASHLEY [PNT]	16-8	H 8	
04:45	ASSIST by MAYO, KRISTEN			
04:21				MISSED JUMPER by OGWUMIKE, ERICA
04:21	BLOCK by SAINTIGENE, ASHLEY			
04:20				REBOUND (OFF) by TEAM
04:13				MISSED 3PTR by OGWUMIKE, ERICA
04:10	REBOUND (DEF) by CLEMONS, PRINCESS			
03:56	MISSED JUMPER by MAYO, KRISTEN			
03:52				REBOUND (DEF) by OGWUMIKE, ERICA
03:44				MISSED LAYUP by OGWUMIKE, ERICA
03:41				REBOUND (OFF) by ELLIG, KENDALL
03:40				TURNOVER (LOSTBALL) by ELLIG, KENDALL
03:40				SUB OUT: WIGGINS, SYDNE
03:40				SUB OUT: ELLIG, KENDALL
03:40				SUB IN: CROSTHWAIT, KATELYN

Time	VISITORS: Marshall	Score	Margin	HOME: Rice
03:40				SUB IN: MULKEY, NANCY
03:40	SUB OUT: BROOKS, KHADAJIA			
03:40	SUB IN: SIVILS, KIA			
03:28	MISSED JUMPER by WHEELER, SAVANNAH			
03:24				REBOUND (DEF) by SMITH, JASMINE
03:17				MISSED 3PTR by SMITH, JASMINE
03:13	REBOUND (DEF) by CLEMONS, PRINCESS			
03:10	TURNOVER (LOSTBALL) by SIVILS, KIA			
02:53				MISSED 3PTR by SCHWARTZ, LAUREN
02:49				REBOUND (OFF) by MULKEY, NANCY
02:48		18-8	H 10	GOOD! JUMPER by MULKEY, NANCY [PNT]
02:35	GOOD! 3PTR by MAYO, KRISTEN	18-11	H 7	
02:35	ASSIST by WHEELER, SAVANNAH			
02:26				MISSED LAYUP by OGWUMIKE, ERICA
02:23				REBOUND (OFF) by OGWUMIKE, ERICA
02:22				TURNOVER (LOSTBALL) by OGWUMIKE, ERICA
02:22	STEAL by SIVILS, KIA			
02:22	SUB OUT: SAINTIGENE, ASHLEY			
02:22	SUB IN: ROPER, LORELEI			
02:05	MISSED JUMPER by MAYO, KRISTEN			
02:05				BLOCK by MULKEY, NANCY
02:04	REBOUND (OFF) by TEAM			
01:58	MISSED 3PTR by MAYO, KRISTEN			
01:53	REBOUND (OFF) by SIVILS, KIA			
01:47	MISSED LAYUP by ROPER, LORELEI			
01:44	REBOUND (OFF) by ROPER, LORELEI			
01:43	TURNOVER (LOSTBALL) by ROPER, LORELEI			
01:30		20-11	H 9	GOOD! LAYUP by MULKEY, NANCY
01:30				ASSIST by SMITH, JASMINE
01:08	MISSED LAYUP by SIVILS, KIA			
01:05	REBOUND (OFF) by SIVILS, KIA			
01:00	MISSED 3PTR by CLEMONS, PRINCESS			
00:56	REBOUND (OFF) by ROPER, LORELEI			
00:39	MISSED JUMPER by CLEMONS, PRINCESS			
00:39				REBOUND (DEF) by SCHWARTZ, LAUREN
00:39				BLOCK by OGWUMIKE, ERICA
00:19				MISSED JUMPER by MULKEY, NANCY
00:16				REBOUND (OFF) by OGWUMIKE, ERICA
00:15				MISSED LAYUP by OGWUMIKE, ERICA
00:12	REBOUND (DEF) by ROPER, LORELEI			
00:00	MISSED JUMPER by ROPER, LORELEI			
00:00				REBOUND (DEF) by SCHWARTZ, LAUREN

Marshall 11, Rice 20

Points from (This Period)	MAR	RIC
In the Paint	4	16
Off Turns	2	8
2nd Chance	2	8
Fast Break	0	0
Bench	2	0

Official Box Score
Marshall vs Rice
Second Quarter Statistics Only
January 02, 2020 at Tudor Fieldhouse - Houston



Marshall 3

No.	Player	S	Pts	FG	3FG	FT	OR	DR	TR	PF	A	TO	Blk	Stl	Min	+/-
02	MAYO, KRISTEN	G	0	0-1	0-1	0-0	0	0	0	1	0	1	0	1	4	-8
10	SAINTIGENE, ASHLEY	F	0	0-1	0-0	0-0	1	0	1	0	0	1	1	0	3	-8
15	CONGLETON, DAZHA	G	0	0-0	0-0	0-0	0	0	0	0	0	0	0	0	3	-8
20	PEARSON, TAYLOR	F	0	0-2	0-1	0-0	2	0	2	0	0	0	0	0	4	-6
22	BROOKS, KHADAJIA	G	0	0-1	0-0	0-0	0	0	0	0	0	0	0	0	4	-8
00	SIVILS, KIA	G	0	0-1	0-0	0-0	0	0	0	0	0	0	0	0	6	-6
04	WHEELER, SAVANNAH	G	0	0-2	0-2	0-0	0	0	0	0	0	0	0	0	7	-6
05	CLEMONS, PRINCESS	G	3	1-2	1-1	0-0	0	1	1	0	0	1	1	0	6	-6
21	TONEY, BRIANNA	F	0	0-0	0-0	0-0	0	0	0	0	0	0	0	0	0	0
23	JOHNSON, ALEXIS	F	0	0-0	0-0	0-0	0	0	0	0	0	0	0	0	0	0
32	SHY, PAIGE	G	0	0-1	0-1	0-0	0	2	2	0	0	0	0	0	6	-6
34	ROPER, LORELEI	F	0	0-1	0-1	0-0	0	0	0	0	0	1	0	0	7	-8
	TEAM						1	1	2	0		0				
	TOTALS		3	1-12	1-7	0-0	4	4	8	1	0	4	2	1	50	

Shooting By Period

Period	FG	FG%	3FG	3FG%	FT	FT%
3rd Qtr	6-15	40%	2-5	40%	0-1	00%
4th Qtr	4-15	27%	0-3	00%	7-11	64%
2nd Half	1-12	08%	1-7	14%	0-0	0%
2nd Half	10-30	33%	2-8	25%	7-12	58%
Game	15-59	25.4%	4-20	20.0%	9-14	64.3%

Deadball Rebounds: 1,0

Rice 17

No.	Player	S	Pts	FG	3FG	FT	OR	DR	TR	PF	A	TO	Blk	Stl	Min	+/-
02	WIGGINS, SYDNE	G	2	1-2	0-0	0-0	0	0	0	1	2	1	0	1	10	14
10	SMITH, JASMINE	G	2	1-1	0-0	0-0	0	0	0	0	1	0	0	0	4	8
13	OGWUMIKE, ERICA	G	6	3-7	0-1	0-0	3	3	6	0	0	0	0	0	9	14
15	SCHWARTZ, LAUREN	F	2	1-2	0-0	0-0	2	1	3	0	1	0	1	0	9	15
32	MULKEY, NANCY	C	0	0-2	0-0	0-0	0	1	1	0	0	0	0	1	6	6
03	CROSTHWAIT, KATELYN	G	3	1-1	1-1	0-0	0	1	1	0	0	0	0	0	7	6
05	JACKSON, DESTINY	G	0	0-1	0-1	0-0	0	0	0	0	0	0	0	0	1	-1
11	SWAYZE, HAYLEE	G	0	0-0	0-0	0-0	0	0	0	0	0	0	0	0	0	0
12	BELLAMY, INDIA	F	0	0-0	0-0	0-0	0	0	0	0	0	0	0	0	0	0
21	MCCURRY, ARIANNA	C	0	0-0	0-0	0-0	0	0	0	0	0	0	0	0	0	0
22	AUSTIN, ASHLEE	F	0	0-0	0-0	0-0	0	0	0	0	0	0	0	0	0	0
24	ALAO, TEMI	F	0	0-0	0-0	0-0	0	0	0	0	0	0	0	0	0	0
25	ELLIG, KENDALL	F	2	1-1	0-0	0-0	0	0	0	1	0	0	0	0	4	8
	TEAM						0	1	1	0		0				
	TOTALS		17	8-17	1-3	0-0	5	7	12	2	4	1	1	2	50	

Shooting By Period

Period	FG	FG%	3FG	3FG%	FT	FT%
3rd Qtr	9-12	75%	3-5	60%	5-8	63%
4th Qtr	8-15	53%	2-6	33%	0-0	0%
2nd Half	8-17	47%	1-3	33%	0-0	0%
2nd Half	17-27	63%	5-11	45%	5-8	63%
Game	34-66	51.5%	7-20	35.0%	6-9	66.7%

Deadball Rebounds: 1,0

Game Notes:

Officials: Travis Jones, Kelly Broomfield, Katrina Lyles
Attendance: 513

Start Time: 08:06 PM ET
End Time: 09:41 PM ET
Game Duration: 1:34
Conference Game;

Score	1st	2nd	3rd	4th	TOT
MAR	11	3	14	15	43
RIC	20	17	26	18	81

Points from (This Period)	MAR	RIC
In the Paint	0	12
Off Turns	0	4
2nd Chance	0	2
Fast Break	0	4
Bench	3	5

Official Play-By-Play
Marshall vs Rice
Second Quarter
January 02, 2020 at Tudor Fieldhouse - Houston



Period 2

Starters:

Marshall: 2 MAYO, KRISTEN (G); 10 SAINTIGENE, ASHLEY (F); 15 CONGLETON, DAZHA (G); 20 PEARSON, TAYLOR (F); 22 BROOKS, KHADAJIA (G);

Rice: 2 WIGGINS, SYDNE (G); 10 SMITH, JASMINE (G); 13 OGWUMIKE, ERICA (G); 15 SCHWARTZ, LAUREN (F); 32 MULKEY, NANCY (C);

Time	VISITORS: Marshall	Score	Margin	HOME: Rice
10:00				SUB OUT: SMITH, JASMINE
10:00				SUB OUT: SCHWARTZ, LAUREN
10:00				SUB IN: WIGGINS, SYDNE
10:00				SUB IN: JACKSON, DESTINY
10:00	SUB OUT: MAYO, KRISTEN			
10:00	SUB IN: SHY, PAIGE			
09:46		22-11	H 11	GOOD! JUMPER by WIGGINS, SYDNE
09:28	GOOD! 3PTR by CLEMONS, PRINCESS	22-14	H 8	
08:54				MISSED 3PTR by JACKSON, DESTINY
08:54	BLOCK by CLEMONS, PRINCESS			
08:53	REBOUND (DEF) by TEAM			
08:42	MISSED JUMPER by CLEMONS, PRINCESS			
08:41	REBOUND (OFF) by TEAM			
08:41				SUB OUT: JACKSON, DESTINY
08:41				SUB IN: SCHWARTZ, LAUREN
08:35	MISSED 3PTR by WHEELER, SAVANNAH			
08:31				REBOUND (DEF) by CROSTHWAIT, KATELYN
08:07				MISSED LAYUP by OGWUMIKE, ERICA
08:04				REBOUND (OFF) by OGWUMIKE, ERICA
08:03		24-14	H 10	GOOD! LAYUP by OGWUMIKE, ERICA
07:34	TURNOVER (BADPASS) by ROPER, LORELEI			
07:17				MISSED JUMPER by MULKEY, NANCY
07:14	REBOUND (DEF) by CLEMONS, PRINCESS			
06:49	MISSED LAYUP by SIVILS, KIA			
06:46				REBOUND (DEF) by OGWUMIKE, ERICA
06:26		27-14	H 13	GOOD! 3PTR by CROSTHWAIT, KATELYN
06:26				ASSIST by WIGGINS, SYDNE
05:57	TURNOVER (BADPASS) by CLEMONS, PRINCESS			
05:57				STEAL by MULKEY, NANCY
05:44				MISSED JUMPER by MULKEY, NANCY
05:41				REBOUND (OFF) by OGWUMIKE, ERICA
05:40				MISSED LAYUP by OGWUMIKE, ERICA
05:38				REBOUND (OFF) by SCHWARTZ, LAUREN
05:37				MISSED LAYUP by SCHWARTZ, LAUREN
05:34				REBOUND (OFF) by SCHWARTZ, LAUREN
05:18				MISSED 3PTR by OGWUMIKE, ERICA
05:15	REBOUND (DEF) by SHY, PAIGE			
04:59	MISSED 3PTR by WHEELER, SAVANNAH			
04:56				REBOUND (DEF) by MULKEY, NANCY
04:41				MISSED JUMPER by WIGGINS, SYDNE
04:35	REBOUND (DEF) by SHY, PAIGE			
04:07	MISSED 3PTR by ROPER, LORELEI			
04:07				BLOCK by SCHWARTZ, LAUREN
04:07				REBOUND (DEF) by SCHWARTZ, LAUREN
04:07		29-14	H 15	GOOD! LAYUP by SCHWARTZ, LAUREN [FB]
04:07	TIMEOUT 30SEC			
04:07				SUB OUT: OGWUMIKE, ERICA
04:07				SUB OUT: MULKEY, NANCY
04:07				SUB IN: SMITH, JASMINE
04:07				SUB IN: ELLIG, KENDALL
04:07	SUB OUT: SIVILS, KIA			
04:07	SUB OUT: WHEELER, SAVANNAH			
04:07	SUB OUT: CLEMONS, PRINCESS			
04:07	SUB IN: MAYO, KRISTEN			
04:07	SUB IN: CONGLETON, DAZHA			
04:07	SUB IN: PEARSON, TAYLOR			
03:49	MISSED 3PTR by SHY, PAIGE			
03:47	REBOUND (OFF) by PEARSON, TAYLOR			
03:47				FOUL (PERSONAL) by ELLIG, KENDALL
03:47	SUB OUT: SHY, PAIGE			
03:47	SUB IN: BROOKS, KHADAJIA			
03:28	SUB OUT: PEARSON, TAYLOR			
03:28	SUB IN: SAINTIGENE, ASHLEY			
03:28	MISSED LAYUP by SAINTIGENE, ASHLEY			
03:28				REBOUND (DEF) by TEAM
03:28				SUB OUT: CROSTHWAIT, KATELYN
03:28				SUB IN: OGWUMIKE, ERICA
03:18		31-14	H 17	GOOD! LAYUP by SMITH, JASMINE
03:06	SUB OUT: ROPER, LORELEI			
03:06	SUB IN: PEARSON, TAYLOR			

Time	VISITORS: Marshall	Score	Margin	HOME: Rice
03:03	MISSED 3PTR by PEARSON, TAYLOR			
03:00				REBOUND (DEF) by OGWUMIKE, ERICA
02:54		33-14	H 19	GOOD! LAYUP by OGWUMIKE, ERICA
02:54				ASSIST by SMITH, JASMINE
02:29	FOUL (OFF) by MAYO, KRISTEN			
02:29	TURNOVER (OFFENSIVE) by MAYO, KRISTEN			
02:18		35-14	H 21	GOOD! LAYUP by ELLIG, KENDALL
02:18				ASSIST by SCHWARTZ, LAUREN
02:01	MISSED JUMPER by BROOKS, KHADAIJIA			
01:58	REBOUND (OFF) by SAINTIGENE, ASHLEY			
01:55	MISSED 3PTR by MAYO, KRISTEN			
01:51	REBOUND (OFF) by PEARSON, TAYLOR			
01:40	TURNOVER (LOSTBALL) by SAINTIGENE, ASHLEY			
01:40				STEAL by WIGGINS, SYDNE
01:35		37-14	H 23	GOOD! LAYUP by OGWUMIKE, ERICA [FB]
01:35				ASSIST by WIGGINS, SYDNE
01:22	SUB OUT: CONGLETON, DAZHA			
01:22	SUB IN: WHEELER, SAVANNAH			
01:07				FOUL (PERSONAL) by WIGGINS, SYDNE
00:51	MISSED LAYUP by PEARSON, TAYLOR			
00:48				REBOUND (DEF) by OGWUMIKE, ERICA
00:43				MISSED LAYUP by OGWUMIKE, ERICA
00:43	BLOCK by SAINTIGENE, ASHLEY			
00:36				REBOUND (OFF) by OGWUMIKE, ERICA
00:23				TURNOVER (LOSTBALL) by WIGGINS, SYDNE
00:23	STEAL by MAYO, KRISTEN			

Marshall 14, Rice 37

Points from (This Period)	MAR	RIC
In the Paint	0	12
Off Turns	0	4
2nd Chance	0	2
Fast Break	0	4
Bench	3	5

Official Box Score
Marshall vs Rice
Second Half Statistics Only
January 02, 2020 at Tudor Fieldhouse - Houston



Marshall 29

No.	Player	S	Pts	FG	3FG	FT	OR	DR	TR	PF	A	TO	Blk	Stl	Min	+/-
00	SIVILS, KIA	G	0	0-0	0-0	0-0	0	0	0	1	0	0	0	0	5	-3
02	MAYO, KRISTEN	G	0	0-4	0-1	0-0	0	1	1	0	0	0	0	1	14	-15
04	WHEELER, SAVANNAH	G	0	0-3	0-2	0-0	0	0	0	1	1	1	0	0	11	-10
05	CLEMONS, PRINCESS	G	0	0-1	0-0	0-0	0	3	3	0	0	0	0	0	9	-17
10	SAINTIGENE, ASHLEY	F	6	3-4	0-0	0-1	1	0	1	2	0	2	0	1	9	-9
15	CONGLETON, DAZHA	G	13	3-8	0-2	7-11	0	2	2	1	0	0	0	2	15	-3
20	PEARSON, TAYLOR	F	5	2-6	1-1	0-0	1	0	1	1	0	0	0	0	10	-11
21	TONEY, BRIANNA	F	2	1-1	0-0	0-0	0	0	0	0	0	0	0	0	2	4
22	BROOKS, KHADAIJIA	G	3	1-2	1-2	0-0	0	0	0	0	0	0	0	1	7	-3
23	JOHNSON, ALEXIS	F	0	0-0	0-0	0-0	1	1	2	0	1	0	0	0	3	4
32	SHY, PAIGE	G	0	0-0	0-0	0-0	0	1	1	2	0	2	0	1	7	-5
34	ROPER, LORELEI	F	0	0-1	0-0	0-0	1	0	1	0	0	0	0	0	5	-7
	TEAM		0	0-0	0-0	0-0	1	0	1	0	0	0	0	0	0	0
	TOTALS		29	10-30	2-8	7-12	5	8	13	8	2	5	0	6	100	

Shooting By Period

Period	FG	FG%	3FG	3FG%	FT	FT%
3rd Qtr	6-15	40%	2-5	40%	0-1	00%
4th Qtr	4-15	27%	0-3	00%	7-11	64%
2nd Half	10-30	33%	2-8	25%	7-12	58%
Game	15-59	25.4%	4-20	20.0%	9-14	64.3%

Deadball Rebounds: 1,0
Last FG Half: MAR 4th-00:35

Rice 44

No.	Player	S	Pts	FG	3FG	FT	OR	DR	TR	PF	A	TO	Blk	Stl	Min	+/-
02	WIGGINS, SYDNE	G	3	1-2	1-2	0-0	0	1	1	0	1	0	0	0	5	2
03	CROSTHWAIT, KATELYN	G	7	3-7	1-3	0-0	1	5	6	0	0	1	0	0	12	11
05	JACKSON, DESTINY	G	7	3-3	1-1	0-0	1	1	2	4	2	0	0	1	13	6
10	SMITH, JASMINE	G	0	0-0	0-0	0-0	0	1	1	0	2	2	1	0	7	9
11	SWAYZE, HAYLEE	G	3	1-2	1-2	0-0	0	0	0	0	0	0	0	0	10	10
12	BELLAMY, INDIA	F	2	1-3	0-1	0-0	0	3	3	1	0	2	0	1	9	5
13	OGWUMIKE, ERICA	G	6	3-3	0-0	0-0	0	2	2	0	1	0	0	0	7	9
15	SCHWARTZ, LAUREN	F	2	0-0	0-0	2-2	0	1	1	0	0	0	0	1	7	9
21	MCCURRY, ARIANNA	C	0	0-1	0-0	0-0	1	0	1	4	1	2	0	0	8	1
22	AUSTIN, ASHLEE	F	8	3-4	1-2	1-1	0	1	1	2	2	2	0	0	10	-1
24	ALAO, TEMI	F	4	2-2	0-0	0-3	0	0	0	0	2	0	0	0	9	16
25	ELLIG, KENDALL	F	0	0-0	0-0	0-0	0	0	0	1	0	0	0	0	1	-5
32	MULKEY, NANCY	C	2	0-0	0-0	2-2	0	1	1	0	0	0	0	0	2	3
	TEAM		0	0-0	0-0	0-0	1	3	4	0	0	0	0	0	0	0
	TOTALS		44	17-27	5-11	5-8	4	19	23	12	11	9	1	3	100	

Shooting By Period

Period	FG	FG%	3FG	3FG%	FT	FT%
3rd Qtr	9-12	75%	3-5	60%	5-8	63%
4th Qtr	8-15	53%	2-6	33%	0-0	0%
2nd Half	17-27	63%	5-11	45%	5-8	63%
Game	34-66	51.5%	7-20	35.0%	6-9	66.7%

Deadball Rebounds: 1,0
Last FG Half: RIC 4th-01:23

Game Notes:

Officials: Travis Jones, Kelly Broomfield, Katrina Lyles
 Attendance: 513

Start Time: 08:06 PM ET
 End Time: 09:41 PM ET
 Game Duration: 1:34
 Conference Game;

Score	1st	2nd	3rd	4th	TOT
MAR	11	3	14	15	43
RIC	20	17	26	18	81

Points from (This Period)	MAR	RIC
In the Paint	16	24
Off Turns	3	5
2nd Chance	4	2
Fast Break	4	4
Bench	2	31

Official Box Score
Marshall vs Rice
Third Quarter Statistics Only
January 02, 2020 at Tudor Fieldhouse - Houston



Marshall 29

No.	Player	S	Pts	FG	3FG	FT	OR	DR	TR	PF	A	TO	Blk	Stl	Min	+/-
02	MAYO, KRISTEN	G	0	0-1	0-0	0-0	0	0	0	0	0	0	0	0	8	-9
10	SAINTIGENE, ASHLEY	F	6	3-4	0-0	0-1	1	0	1	2	0	2	0	1	7	-9
15	CONGLETON, DAZHA	G	0	0-2	0-2	0-0	0	1	1	1	0	0	0	1	5	0
20	PEARSON, TAYLOR	F	5	2-5	1-1	0-0	1	0	1	0	0	0	0	0	7	-9
22	BROOKS, KHADAIJIA	G	3	1-2	1-2	0-0	0	0	0	0	0	0	0	1	7	-3
00	SIVILS, KIA	G	0	0-0	0-0	0-0	0	0	0	0	0	0	0	0	3	-3
04	WHEELER, SAVANNAH	G	0	0-1	0-0	0-0	0	0	0	1	1	1	0	0	5	-12
05	CLEMONS, PRINCESS	G	0	0-0	0-0	0-0	0	3	3	0	0	0	0	0	5	-12
21	TONEY, BRIANNA	F	0	0-0	0-0	0-0	0	0	0	0	0	0	0	0	0	0
23	JOHNSON, ALEXIS	F	0	0-0	0-0	0-0	0	0	0	0	0	0	0	0	0	0
32	SHY, PAIGE	G	0	0-0	0-0	0-0	0	0	0	2	0	1	0	0	2	-3
34	ROPER, LORELEI	F	0	0-0	0-0	0-0	0	0	0	0	0	0	0	0	0	0
	TEAM						0	0	0	0		0				
	TOTALS		14	6-15	2-5	0-1	2	4	6	6	1	4	0	3	50	

Shooting By Period

Period	FG	FG%	3FG	3FG%	FT	FT%
2nd Half	0-0	0%	0-0	0%	0-0	0%
Game	15-59	25.4%	4-20	20.0%	9-14	64.3%

Deadball Rebounds: 1,0

Rice 44

No.	Player	S	Pts	FG	3FG	FT	OR	DR	TR	PF	A	TO	Blk	Stl	Min	+/-
02	WIGGINS, SYDNE	G	3	1-2	1-2	0-0	0	1	1	0	1	0	0	0	5	2
10	SMITH, JASMINE	G	0	0-0	0-0	0-0	0	1	1	0	2	2	1	0	7	9
13	OGWUMIKE, ERICA	G	6	3-3	0-0	0-0	0	2	2	0	1	0	0	0	7	9
15	SCHWARTZ, LAUREN	F	2	0-0	0-0	2-2	0	1	1	0	0	0	0	1	7	9
32	MULKEY, NANCY	C	2	0-0	0-0	2-2	0	1	1	0	0	0	0	0	2	3
03	CROSTHWAIT, KATELYN	G	3	1-1	1-1	0-0	0	1	1	0	0	0	0	0	5	10
05	JACKSON, DESTINY	G	0	0-0	0-0	0-0	0	0	0	1	1	0	0	1	3	3
11	SWAYZE, HAYLEE	G	0	0-0	0-0	0-0	0	0	0	0	0	0	0	0	3	3
12	BELLAMY, INDIA	F	0	0-0	0-0	0-0	0	0	0	0	0	0	0	0	0	0
21	MCCURRY, ARIANNA	C	0	0-1	0-0	0-0	1	0	1	0	0	0	0	0	1	0
22	AUSTIN, ASHLEE	F	6	2-3	1-2	1-1	0	0	0	1	0	1	0	0	3	3
24	ALAO, TEMI	F	4	2-2	0-0	0-3	0	0	0	0	2	0	0	0	6	14
25	ELLIG, KENDALL	F	0	0-0	0-0	0-0	0	0	0	1	0	0	0	0	1	-5
	TEAM						0	1	1	0		0				
	TOTALS		26	9-12	3-5	5-8	1	8	9	3	7	3	1	2	50	

Shooting By Period

Period	FG	FG%	3FG	3FG%	FT	FT%
2nd Half	0-0	0%	0-0	0%	0-0	0%
Game	34-66	51.5%	7-20	35.0%	6-9	66.7%

Deadball Rebounds: 1,0

Game Notes:

Officials: Travis Jones, Kelly Broomfield, Katrina Lyles
 Attendance: 513

Start Time: 08:06 PM ET
 End Time: 09:41 PM ET
 Game Duration: 1:34
 Conference Game;

Score	1st	2nd	3rd	4th	TOT
MAR	11	3	14	15	43
RIC	20	17	26	18	81

Points from (This Period)	MAR	RIC
In the Paint	8	12
Off Turns	0	5
2nd Chance	2	0
Fast Break	0	4
Bench	0	13

Official Play-By-Play
Marshall vs Rice
Third Quarter
January 02, 2020 at Tudor Fieldhouse - Houston



Period 3

Starters:

Marshall: 2 MAYO, KRISTEN (G); 10 SAINTIGENE, ASHLEY (F); 15 CONGLETON, DAZHA (G); 20 PEARSON, TAYLOR (F); 22 BROOKS, KHADAJIA (G);

Rice: 2 WIGGINS, SYDNE (G); 10 SMITH, JASMINE (G); 13 OGWUMIKE, ERICA (G); 15 SCHWARTZ, LAUREN (F); 32 MULKEY, NANCY (C);

Time	VISITORS: Marshall	Score	Margin	HOME: Rice
10:00				SUB OUT: ELLIG, KENDALL
10:00				SUB IN: MULKEY, NANCY
10:00	SUB OUT: WHEELER, SAVANNAH			
10:00	SUB IN: CONGLETON, DAZHA			
09:43	MISSED 3PTR by CONGLETON, DAZHA			
09:43				REBOUND (DEF) by MULKEY, NANCY
09:43				BLOCK by SMITH, JASMINE
09:32		40-14	H 26	GOOD! 3PTR by WIGGINS, SYDNE
09:14	MISSED LAYUP by SAINTIGENE, ASHLEY			
09:11	REBOUND (OFF) by SAINTIGENE, ASHLEY			
09:10	GOOD! LAYUP by SAINTIGENE, ASHLEY	40-16	H 24	
08:53				TURNOVER (BADPASS) by SMITH, JASMINE
08:53	STEAL by SAINTIGENE, ASHLEY			
08:23	MISSED 3PTR by CONGLETON, DAZHA			
08:19				REBOUND (DEF) by TEAM
07:54	FOUL (PERSONAL) by CONGLETON, DAZHA			
07:54		41-16	H 25	GOOD! FT by MULKEY, NANCY
07:54		42-16	H 26	GOOD! FT by MULKEY, NANCY
07:54				SUB OUT: MULKEY, NANCY
07:54				SUB IN: ELLIG, KENDALL
07:39	GOOD! 3PTR by PEARSON, TAYLOR	42-19	H 23	
07:29				MISSED 3PTR by WIGGINS, SYDNE
07:26	REBOUND (DEF) by CONGLETON, DAZHA			
07:00	GOOD! LAYUP by SAINTIGENE, ASHLEY	42-21	H 21	
07:00				FOUL (PERSONAL) by ELLIG, KENDALL
07:00				SUB OUT: ELLIG, KENDALL
07:00				SUB IN: ALAO, TEMI
07:00	MISSED FT by SAINTIGENE, ASHLEY			
07:00	REBOUND (OFF) by PEARSON, TAYLOR			
06:59	MISSED JUMPER by PEARSON, TAYLOR			
06:56				REBOUND (DEF) by OGWUMIKE, ERICA
06:42		44-21	H 23	GOOD! LAYUP by OGWUMIKE, ERICA
06:42				ASSIST by ALAO, TEMI
06:19	MISSED LAYUP by PEARSON, TAYLOR			
06:15				REBOUND (DEF) by WIGGINS, SYDNE
06:13		46-21	H 25	GOOD! LAYUP by OGWUMIKE, ERICA [FB]
06:13				ASSIST by WIGGINS, SYDNE
05:50	GOOD! JUMPER by SAINTIGENE, ASHLEY [PNT]	46-23	H 23	
05:31				TURNOVER (LOSTBALL) by SMITH, JASMINE
05:31	STEAL by CONGLETON, DAZHA			
05:26	TURNOVER (LOSTBALL) by SAINTIGENE, ASHLEY			
05:26				STEAL by SCHWARTZ, LAUREN
05:20	SUB OUT: CONGLETON, DAZHA			
05:20	SUB OUT: BROOKS, KHADAJIA			
05:20	SUB IN: WHEELER, SAVANNAH			
05:20	SUB IN: CLEMONS, PRINCESS			
05:10		48-23	H 25	GOOD! LAYUP by ALAO, TEMI
05:10				ASSIST by OGWUMIKE, ERICA
05:10	FOUL (PERSONAL) by SAINTIGENE, ASHLEY			
05:10				MISSED FT by ALAO, TEMI
05:09	REBOUND (DEF) by CLEMONS, PRINCESS			
04:40	MISSED LAYUP by PEARSON, TAYLOR			
04:37				REBOUND (DEF) by OGWUMIKE, ERICA
04:34	FOUL (PERSONAL) by WHEELER, SAVANNAH			
04:34				SUB OUT: WIGGINS, SYDNE
04:34				SUB IN: CROSTHWAIT, KATELYN
04:34		49-23	H 26	GOOD! FT by SCHWARTZ, LAUREN
04:34		50-23	H 27	GOOD! FT by SCHWARTZ, LAUREN
04:19	GOOD! LAYUP by PEARSON, TAYLOR	50-25	H 25	
03:53		53-25	H 28	GOOD! 3PTR by CROSTHWAIT, KATELYN
03:53				ASSIST by ALAO, TEMI
03:33	MISSED JUMPER by WHEELER, SAVANNAH			
03:30				REBOUND (DEF) by SMITH, JASMINE
03:26		55-25	H 30	GOOD! LAYUP by OGWUMIKE, ERICA [FB]
03:26				ASSIST by SMITH, JASMINE
03:01	MISSED JUMPER by MAYO, KRISTEN			
02:56				REBOUND (DEF) by SCHWARTZ, LAUREN
02:53		57-25	H 32	GOOD! LAYUP by ALAO, TEMI
02:53				ASSIST by SMITH, JASMINE

Time	VISITORS: Marshall	Score	Margin	HOME: Rice
02:34	FOUL (OFF) by SAINTIGENE, ASHLEY			
02:34	TURNOVER (OFFENSIVE) by SAINTIGENE, ASHLEY			
02:34				SUB OUT: SMITH, JASMINE
02:34				SUB OUT: OGWUMIKE, ERICA
02:34				SUB OUT: SCHWARTZ, LAUREN
02:34				SUB IN: JACKSON, DESTINY
02:34				SUB IN: SWAYZE, HAYLEE
02:34				SUB IN: AUSTIN, ASHLEE
02:34	SUB OUT: SAINTIGENE, ASHLEY			
02:34	SUB OUT: PEARSON, TAYLOR			
02:34	SUB IN: SIVILS, KIA			
02:34	SUB IN: BROOKS, KHADAIJIA			
02:30		60-25	H 35	GOOD! 3PTR by AUSTIN, ASHLEE
02:30				ASSIST by JACKSON, DESTINY
02:12	GOOD! 3PTR by BROOKS, KHADAIJIA	60-28	H 32	
02:12	ASSIST by WHEELER, SAVANNAH			
01:56				TURNOVER (LOSTBALL) by AUSTIN, ASHLEE
01:56	STEAL by BROOKS, KHADAIJIA			
01:37	TURNOVER (LOSTBALL) by WHEELER, SAVANNAH			
01:37	SUB OUT: MAYO, KRISTEN			
01:37	SUB IN: SHY, PAIGE			
01:20	FOUL (PERSONAL) by SHY, PAIGE			
01:14				MISSED FT by ALAO, TEMI
01:14				REBOUND (OFF) by TEAM
01:14				MISSED FT by ALAO, TEMI
01:11	REBOUND (DEF) by CLEMONS, PRINCESS			
01:07				FOUL (PERSONAL) by AUSTIN, ASHLEE
01:03	MISSED 3PTR by BROOKS, KHADAIJIA			
00:59				REBOUND (DEF) by CROSTHWAIT, KATELYN
00:54		62-28	H 34	GOOD! LAYUP by AUSTIN, ASHLEE
00:54	FOUL (PERSONAL) by SHY, PAIGE			
00:54		63-28	H 35	GOOD! FT by AUSTIN, ASHLEE
00:41				FOUL (PERSONAL) by JACKSON, DESTINY
00:41				SUB OUT: ALAO, TEMI
00:41				SUB IN: MCCURRY, ARIANNA
00:27	TURNOVER (LOSTBALL) by SHY, PAIGE			
00:27				STEAL by JACKSON, DESTINY
00:06				MISSED 3PTR by AUSTIN, ASHLEE
00:03				REBOUND (OFF) by MCCURRY, ARIANNA
00:02				MISSED LAYUP by MCCURRY, ARIANNA
00:00	REBOUND (DEF) by CLEMONS, PRINCESS			

Marshall 28, Rice 63

Points from (This Period)	MAR	RIC
In the Paint	8	12
Off Turns	0	5
2nd Chance	2	0
Fast Break	0	4
Bench	0	13

Official Box Score
Marshall vs Rice
Fourth Quarter Statistics Only
January 02, 2020 at Tudor Fieldhouse - Houston



Marshall 15

No.	Player	S	Pts	FG	3FG	FT	OR	DR	TR	PF	A	TO	Blk	Stl	Min	+/-
02	MAYO, KRISTEN	G	0	0-3	0-1	0-0	0	1	1	0	0	0	0	1	6	-6
10	SAINTIGENE, ASHLEY	F	0	0-0	0-0	0-0	0	0	0	0	0	0	0	0	2	0
15	CONGLETON, DAZHA	G	13	3-6	0-0	7-11	0	1	1	0	0	0	0	1	10	-3
20	PEARSON, TAYLOR	F	0	0-1	0-0	0-0	0	0	0	1	0	0	0	0	3	-2
22	BROOKS, KHADAJIA	G	0	0-0	0-0	0-0	0	0	0	0	0	0	0	0	0	0
00	SIVILS, KIA	G	0	0-0	0-0	0-0	0	0	0	1	0	0	0	0	2	0
04	WHEELER, SAVANNAH	G	0	0-2	0-2	0-0	0	0	0	0	0	0	0	0	6	2
05	CLEMONS, PRINCESS	G	0	0-1	0-0	0-0	0	0	0	0	0	0	0	0	4	-5
21	TONEY, BRIANNA	F	2	1-1	0-0	0-0	0	0	0	0	0	0	0	0	2	4
23	JOHNSON, ALEXIS	F	0	0-0	0-0	0-0	1	1	2	0	1	0	0	0	3	4
32	SHY, PAIGE	G	0	0-0	0-0	0-0	0	1	1	0	0	1	0	1	5	-2
34	ROPER, LORELEI	F	0	0-1	0-0	0-0	1	0	1	0	0	0	0	0	5	-7
TEAM							1	0	1	0	0	0	0	0	0	0
TOTALS			15	4-15	0-3	7-11	3	4	7	2	1	1	0	3	50	

Shooting By Period

Period	FG	FG%	3FG	3FG%	FT	FT%	Deadball Rebounds: 1,0
Game	15-59	25.4%	4-20	20.0%	9-14	64.3%	

Rice 18

No.	Player	S	Pts	FG	3FG	FT	OR	DR	TR	PF	A	TO	Blk	Stl	Min	+/-
02	WIGGINS, SYDNE	G	0	0-0	0-0	0-0	0	0	0	0	0	0	0	0	0	0
10	SMITH, JASMINE	G	0	0-0	0-0	0-0	0	0	0	0	0	0	0	0	0	0
13	OGWUMIKE, ERICA	G	0	0-0	0-0	0-0	0	0	0	0	0	0	0	0	0	0
15	SCHWARTZ, LAUREN	F	0	0-0	0-0	0-0	0	0	0	0	0	0	0	0	0	0
32	MULKEY, NANCY	C	0	0-0	0-0	0-0	0	0	0	0	0	0	0	0	0	0
03	CROSTHWAIT, KATELYN	G	4	2-6	0-2	0-0	1	4	5	0	0	1	0	0	7	1
05	JACKSON, DESTINY	G	7	3-3	1-1	0-0	1	1	2	3	1	0	0	0	10	3
11	SWAYZE, HAYLEE	G	3	1-2	1-2	0-0	0	0	0	0	0	0	0	0	7	7
12	BELLAMY, INDIA	F	2	1-3	0-1	0-0	0	3	3	1	0	2	0	1	9	5
21	MCCURRY, ARIANNA	C	0	0-0	0-0	0-0	0	0	0	4	1	2	0	0	7	1
22	AUSTIN, ASHLEE	F	2	1-1	0-0	0-0	0	1	1	1	2	1	0	0	7	-4
24	ALAO, TEMI	F	0	0-0	0-0	0-0	0	0	0	0	0	0	0	0	3	2
25	ELLIG, KENDALL	F	0	0-0	0-0	0-0	0	0	0	0	0	0	0	0	0	0
TEAM							1	2	3	0	0	0	0	0	0	
TOTALS			18	8-15	2-6	0-0	3	11	14	9	4	6	0	1	50	

Shooting By Period

Period	FG	FG%	3FG	3FG%	FT	FT%	Deadball Rebounds: 1,0
Game	34-66	51.5%	7-20	35.0%	6-9	66.7%	

Game Notes:

Officials: Travis Jones, Kelly Broomfield, Katrina Lyles
 Attendance: 513

Start Time: 08:06 PM ET
 End Time: 09:41 PM ET
 Game Duration: 1:34
 Conference Game;

Score	1st	2nd	3rd	4th	TOT
MAR	11	3	14	15	43
RIC	20	17	26	18	81

Points from (This Period)	MAR	RIC
In the Paint	8	12
Off Turns	3	0
2nd Chance	2	2
Fast Break	4	0
Bench	2	18

**Official Play-By-Play
Marshall vs Rice
Fourth Quarter
January 02, 2020 at Tudor Fieldhouse - Houston**



Period 4

Starters:

Marshall: 2 MAYO, KRISTEN (G); 10 SAINTIGENE, ASHLEY (F); 15 CONGLETON, DAZHA (G); 20 PEARSON, TAYLOR (F); 22 BROOKS, KHADAIJIA (G);

Rice: 2 WIGGINS, SYDNE (G); 10 SMITH, JASMINE (G); 13 OGWUMIKE, ERICA (G); 15 SCHWARTZ, LAUREN (F); 32 MULKEY, NANCY (C);

Time	VISITORS: Marshall	Score	Margin	HOME: Rice
10:00	SUB OUT: WHEELER, SAVANNAH			
10:00	SUB OUT: BROOKS, KHADAIJIA			
10:00	SUB IN: SAINTIGENE, ASHLEY			
10:00	SUB IN: CONGLETON, DAZHA			
09:42				FOUL (PERSONAL) by JACKSON, DESTINY
09:42	MISSED FT by CONGLETON, DAZHA			
09:42	REBOUND (OFF) by TEAM			
09:42	MISSED FT by CONGLETON, DAZHA			
09:41				REBOUND (DEF) by CROSTHWAIT, KATELYN
09:27				TURNOVER (LOSTBALL) by CROSTHWAIT, KATELYN
09:27	STEAL by CONGLETON, DAZHA			
09:21				FOUL (PERSONAL) by MCCURRY, ARIANNA
09:21	GOOD! FT by CONGLETON, DAZHA [FB]	63-29	H 34	
09:21	GOOD! FT by CONGLETON, DAZHA [FB]	63-30	H 33	
09:21				SUB OUT: AUSTIN, ASHLEE
09:10		66-30	H 36	SUB IN: BELLAMY, INDIA
08:55				GOOD! 3PTR by JACKSON, DESTINY
08:55	GOOD! FT by CONGLETON, DAZHA	66-31	H 35	FOUL (PERSONAL) by BELLAMY, INDIA
08:55	MISSED FT by CONGLETON, DAZHA			
08:54				REBOUND (DEF) by CROSTHWAIT, KATELYN
08:47	FOUL (PERSONAL) by SIVILS, KIA			
08:32				TURNOVER (BADPASS) by BELLAMY, INDIA
08:32	STEAL by SHY, PAIGE			
08:17	MISSED JUMPER by CONGLETON, DAZHA			
08:15				REBOUND (DEF) by TEAM
07:59				MISSED 3PTR by BELLAMY, INDIA
07:56	REBOUND (DEF) by SHY, PAIGE			
07:53	TURNOVER (LOSTBALL) by SHY, PAIGE			
07:53				STEAL by BELLAMY, INDIA
07:37				FOUL (OFF) by MCCURRY, ARIANNA
07:37				TURNOVER (OFFENSIVE) by MCCURRY, ARIANNA
07:37	SUB OUT: SIVILS, KIA			
07:37	SUB OUT: SAINTIGENE, ASHLEY			
07:37	SUB IN: MAYO, KRISTEN			
07:37	SUB IN: ROPER, LORELEI			
07:23	MISSED JUMPER by ROPER, LORELEI			
07:20				REBOUND (DEF) by CROSTHWAIT, KATELYN
07:17		68-31	H 37	GOOD! JUMPER by CROSTHWAIT, KATELYN [PNT]
07:00	MISSED 3PTR by MAYO, KRISTEN			
06:57				REBOUND (DEF) by BELLAMY, INDIA
06:33		71-31	H 40	GOOD! 3PTR by SWAYZE, HAYLEE
06:33				ASSIST by MCCURRY, ARIANNA
06:11	MISSED LAYUP by CLEMONS, PRINCESS			
06:09	REBOUND (OFF) by TEAM			
06:09				SUB OUT: CROSTHWAIT, KATELYN
06:09				SUB OUT: MCCURRY, ARIANNA
06:09				SUB IN: AUSTIN, ASHLEE
06:09				SUB IN: ALAO, TEMI
06:09	SUB OUT: CLEMONS, PRINCESS			
06:09	SUB OUT: SHY, PAIGE			
06:09	SUB IN: WHEELER, SAVANNAH			
06:09	SUB IN: PEARSON, TAYLOR			
06:08	GOOD! LAYUP by CONGLETON, DAZHA	71-33	H 38	
05:46	FOUL (PERSONAL) by PEARSON, TAYLOR			
05:27		73-33	H 40	GOOD! LAYUP by AUSTIN, ASHLEE
05:27				ASSIST by JACKSON, DESTINY
05:05				FOUL (PERSONAL) by JACKSON, DESTINY
05:05	GOOD! FT by CONGLETON, DAZHA	73-34	H 39	
05:05	GOOD! FT by CONGLETON, DAZHA	73-35	H 38	
04:55		75-35	H 40	GOOD! LAYUP by JACKSON, DESTINY
04:55				ASSIST by AUSTIN, ASHLEE
04:34	MISSED JUMPER by PEARSON, TAYLOR			
04:31				REBOUND (DEF) by BELLAMY, INDIA
04:12		77-35	H 42	GOOD! LAYUP by BELLAMY, INDIA
04:12				ASSIST by AUSTIN, ASHLEE
03:51	GOOD! LAYUP by CONGLETON, DAZHA	77-37	H 40	
03:33		79-37	H 42	GOOD! LAYUP by JACKSON, DESTINY
03:18	MISSED 3PTR by WHEELER, SAVANNAH			
03:15				REBOUND (DEF) by AUSTIN, ASHLEE

Time	VISITORS: Marshall	Score	Margin	HOME: Rice
03:08				MISSED 3PTR by SWAYZE, HAYLEE
03:06				REBOUND (OFF) by TEAM
03:06				
03:06	SUB OUT: PEARSON, TAYLOR			
03:06	SUB IN: JOHNSON, ALEXIS			
03:06				SUB OUT: BELLAMY, INDIA
03:06				SUB IN: CROSTHWAIT, KATELYN
03:00				MISSED JUMPER by CROSTHWAIT, KATELYN
02:58				REBOUND (OFF) by JACKSON, DESTINY
02:58				SUB OUT: SWAYZE, HAYLEE
02:58				SUB OUT: ALAO, TEMI
02:58				SUB IN: BELLAMY, INDIA
02:58				SUB IN: MCCURRY, ARIANNA
02:49				MISSED 3PTR by CROSTHWAIT, KATELYN
02:45	REBOUND (DEF) by MAYO, KRISTEN			
02:41	MISSED 3PTR by WHEELER, SAVANNAH			
02:36	REBOUND (OFF) by ROPER, LORELEI			
02:33	MISSED JUMPER by CONGLETON, DAZHA			
02:31				REBOUND (DEF) by BELLAMY, INDIA
02:29				TURNOVER (BADPASS) by BELLAMY, INDIA
02:29	STEAL by MAYO, KRISTEN			
02:24	MISSED JUMPER by MAYO, KRISTEN			
02:23				REBOUND (DEF) by TEAM
02:10	SUB OUT: ROPER, LORELEI			
02:10	SUB IN: TONEY, BRIANNA			
02:10				FOUL (OFF) by AUSTIN, ASHLEE
02:10				TURNOVER (OFFENSIVE) by AUSTIN, ASHLEE
02:00				FOUL (PERSONAL) by MCCURRY, ARIANNA
02:00	GOOD! FT by CONGLETON, DAZHA	79-38	H 41	
02:00	MISSED FT by CONGLETON, DAZHA			
01:58				REBOUND (DEF) by CROSTHWAIT, KATELYN
01:28				MISSED LAYUP by CROSTHWAIT, KATELYN
01:24				REBOUND (OFF) by CROSTHWAIT, KATELYN
01:23		81-38	H 43	GOOD! LAYUP by CROSTHWAIT, KATELYN [PNT]
01:19	MISSED JUMPER by MAYO, KRISTEN			
01:16				REBOUND (DEF) by JACKSON, DESTINY
01:15				MISSED 3PTR by CROSTHWAIT, KATELYN
01:10	REBOUND (DEF) by CONGLETON, DAZHA			
01:09	GOOD! LAYUP by CONGLETON, DAZHA [PNT]	81-40	H 41	
01:09				FOUL (PERSONAL) by JACKSON, DESTINY
01:09	SUB OUT: MAYO, KRISTEN			
01:09	SUB IN: SHY, PAIGE			
01:09	GOOD! FT by CONGLETON, DAZHA	81-41	H 40	
00:43				MISSED JUMPER by BELLAMY, INDIA
00:38	REBOUND (DEF) by JOHNSON, ALEXIS			
00:35	GOOD! LAYUP by TONEY, BRIANNA [FB]	81-43	H 38	
00:35	ASSIST by JOHNSON, ALEXIS			
00:08				FOUL (OFF) by MCCURRY, ARIANNA
00:08				TURNOVER (OFFENSIVE) by MCCURRY, ARIANNA
00:01	MISSED LAYUP by CONGLETON, DAZHA			
00:00	REBOUND (OFF) by JOHNSON, ALEXIS			

Marshall 43, Rice 81

Points from (This Period)	MAR	RIC
In the Paint	8	12
Off Turns	3	0
2nd Chance	2	2
Fast Break	4	0
Bench	2	18

Official Scoring/Possession Reference Chart
Marshall vs Rice
Period 1
January 02, 2020 at Tudor Fieldhouse - Houston



Period 1

Starters:

Marshall: 2 MAYO, KRISTEN (G); 10 SAINTIGENE, ASHLEY (F); 15 CONGLETON, DAZHA (G); 20 PEARSON, TAYLOR (F); 22 BROOKS, KHADAJIA (G);
Rice: 2 WIGGINS, SYDNE (G); 10 SMITH, JASMINE (G); 13 OGWUMIKE, ERICA (G); 15 SCHWARTZ, LAUREN (F); 32 MULKEY, NANCY (C);

Time	VISITORS: Marshall	Score	Margin	HOME: Rice
09:43		2-0	H 2	GOOD! LAYUP by MULKEY, NANCY
09:17	GOOD! LAYUP by SAINTIGENE, ASHLEY	2-2	T	
09:06		4-2	H 2	GOOD! LAYUP by SCHWARTZ, LAUREN
08:42		6-2	H 4	GOOD! LAYUP by WIGGINS, SYDNE
08:42		7-2	H 5	GOOD! FT by WIGGINS, SYDNE
08:02		9-2	H 7	GOOD! LAYUP by OGWUMIKE, ERICA
07:52	GOOD! FT by MAYO, KRISTEN	9-3	H 6	
07:52	GOOD! FT by MAYO, KRISTEN	9-4	H 5	
07:34		12-4	H 8	GOOD! 3PTR by WIGGINS, SYDNE
06:50		14-4	H 10	GOOD! LAYUP by MULKEY, NANCY
05:28	GOOD! JUMPER by WHEELER, SAVANNAH	14-6	H 8	
05:00		16-6	H 10	GOOD! LAYUP by SMITH, JASMINE
04:45	GOOD! JUMPER by SAINTIGENE, ASHLEY [PNT]	16-8	H 8	
02:48		18-8	H 10	GOOD! JUMPER by MULKEY, NANCY [PNT]
02:35	GOOD! 3PTR by MAYO, KRISTEN	18-11	H 7	
01:30		20-11	H 9	GOOD! LAYUP by MULKEY, NANCY

Marshall 11, Rice 20

Official Scoring/Possession Reference Chart
Marshall vs Rice
Period 2
January 02, 2020 at Tudor Fieldhouse - Houston



Period 2

Starters:

Marshall: 2 MAYO, KRISTEN (G); 10 SAINTIGENE, ASHLEY (F); 15 CONGLETON, DAZHA (G); 20 PEARSON, TAYLOR (F); 22 BROOKS, KHADAJIA (G);
Rice: 2 WIGGINS, SYDNE (G); 10 SMITH, JASMINE (G); 13 OGWUMIKE, ERICA (G); 15 SCHWARTZ, LAUREN (F); 32 MULKEY, NANCY (C);

Time	VISITORS: Marshall	Score	Margin	HOME: Rice
09:46		22-11	H 11	GOOD! JUMPER by WIGGINS, SYDNE
09:28	GOOD! 3PTR by CLEMONS, PRINCESS	22-14	H 8	
08:03		24-14	H 10	GOOD! LAYUP by OGWUMIKE, ERICA
06:26		27-14	H 13	GOOD! 3PTR by CROSTHWAIT, KATELYN
04:07		29-14	H 15	GOOD! LAYUP by SCHWARTZ, LAUREN [FB]
03:18		31-14	H 17	GOOD! LAYUP by SMITH, JASMINE
02:54		33-14	H 19	GOOD! LAYUP by OGWUMIKE, ERICA
02:18		35-14	H 21	GOOD! LAYUP by ELLIG, KENDALL
01:35		37-14	H 23	GOOD! LAYUP by OGWUMIKE, ERICA [FB]

Marshall 14, Rice 37

Official Scoring/Possession Reference Chart
Marshall vs Rice
Period 3
January 02, 2020 at Tudor Fieldhouse - Houston



Period 3

Starters:

Marshall: 2 MAYO, KRISTEN (G); 10 SAINTIGENE, ASHLEY (F); 15 CONGLETON, DAZHA (G); 20 PEARSON, TAYLOR (F); 22 BROOKS, KHADAIJIA (G);
Rice: 2 WIGGINS, SYDNE (G); 10 SMITH, JASMINE (G); 13 OGWUMIKE, ERICA (G); 15 SCHWARTZ, LAUREN (F); 32 MULKEY, NANCY (C);

Time	VISITORS: Marshall	Score	Margin	HOME: Rice
09:32		40-14	H 26	GOOD! 3PTR by WIGGINS, SYDNE
09:10	GOOD! LAYUP by SAINTIGENE, ASHLEY	40-16	H 24	
07:54		41-16	H 25	GOOD! FT by MULKEY, NANCY
07:54		42-16	H 26	GOOD! FT by MULKEY, NANCY
07:39	GOOD! 3PTR by PEARSON, TAYLOR	42-19	H 23	
07:00	GOOD! LAYUP by SAINTIGENE, ASHLEY	42-21	H 21	
06:42		44-21	H 23	GOOD! LAYUP by OGWUMIKE, ERICA
06:13		46-21	H 25	GOOD! LAYUP by OGWUMIKE, ERICA [FB]
05:50	GOOD! JUMPER by SAINTIGENE, ASHLEY [PNT]	46-23	H 23	
05:10		48-23	H 25	GOOD! LAYUP by ALAO, TEMI
04:34		49-23	H 26	GOOD! FT by SCHWARTZ, LAUREN
04:34		50-23	H 27	GOOD! FT by SCHWARTZ, LAUREN
04:19	GOOD! LAYUP by PEARSON, TAYLOR	50-25	H 25	
03:53		53-25	H 28	GOOD! 3PTR by CROSTHWAIT, KATELYN
03:26		55-25	H 30	GOOD! LAYUP by OGWUMIKE, ERICA [FB]
02:53		57-25	H 32	GOOD! LAYUP by ALAO, TEMI
02:30		60-25	H 35	GOOD! 3PTR by AUSTIN, ASHLEE
02:12	GOOD! 3PTR by BROOKS, KHADAIJIA	60-28	H 32	
00:54		62-28	H 34	GOOD! LAYUP by AUSTIN, ASHLEE
00:54		63-28	H 35	GOOD! FT by AUSTIN, ASHLEE

Marshall 28, Rice 63

Official Scoring/Possession Reference Chart
Marshall vs Rice
Period 4
January 02, 2020 at Tudor Fieldhouse - Houston



Period 4

Starters:

Marshall: 2 MAYO, KRISTEN (G); 10 SAINTIGENE, ASHLEY (F); 15 CONGLETON, DAZHA (G); 20 PEARSON, TAYLOR (F); 22 BROOKS, KHADAJIA (G);
Rice: 2 WIGGINS, SYDNE (G); 10 SMITH, JASMINE (G); 13 OGWUMIKE, ERICA (G); 15 SCHWARTZ, LAUREN (F); 32 MULKEY, NANCY (C);

Time	VISITORS: Marshall	Score	Margin	HOME: Rice
09:21	GOOD! FT by CONGLETON, DAZHA [FB]	63-29	H 34	
09:21	GOOD! FT by CONGLETON, DAZHA [FB]	63-30	H 33	
09:10		66-30	H 36	GOOD! 3PTR by JACKSON, DESTINY
08:55	GOOD! FT by CONGLETON, DAZHA	66-31	H 35	
07:17		68-31	H 37	GOOD! JUMPER by CROSTHWAIT, KATELYN [PNT]
06:33		71-31	H 40	GOOD! 3PTR by SWAYZE, HAYLEE
06:08	GOOD! LAYUP by CONGLETON, DAZHA	71-33	H 38	
05:27		73-33	H 40	GOOD! LAYUP by AUSTIN, ASHLEE
05:05	GOOD! FT by CONGLETON, DAZHA	73-34	H 39	
05:05	GOOD! FT by CONGLETON, DAZHA	73-35	H 38	
04:55		75-35	H 40	GOOD! LAYUP by JACKSON, DESTINY
04:12		77-35	H 42	GOOD! LAYUP by BELLAMY, INDIA
03:51	GOOD! LAYUP by CONGLETON, DAZHA	77-37	H 40	
03:33		79-37	H 42	GOOD! LAYUP by JACKSON, DESTINY
02:00	GOOD! FT by CONGLETON, DAZHA	79-38	H 41	
01:23		81-38	H 43	GOOD! LAYUP by CROSTHWAIT, KATELYN [PNT]
01:09	GOOD! LAYUP by CONGLETON, DAZHA [PNT]	81-40	H 41	
01:09	GOOD! FT by CONGLETON, DAZHA	81-41	H 40	
00:35	GOOD! LAYUP by TONEY, BRIANNA [FB]	81-43	H 38	

Marshall 43, Rice 81

Official Substitutions Log
Marshall vs Rice
Period 1
January 02, 2020 at Tudor Fieldhouse - Houston



VISITORS: Marshall	Time	Score	HOME: Rice
2 MAYO, KRISTEN			2 WIGGINS, SYDNE
10 SAINTIGENE, ASHLEY			10 SMITH, JASMINE
15 CONGLETON, DAZHA			13 OGWUMIKE, ERICA
20 PEARSON, TAYLOR			15 SCHWARTZ, LAUREN
22 BROOKS, KHADAIJIA			32 MULKEY, NANCY
SUB OUT: 10 SAINTIGENE, ASHLEY	08:42	2-6	
SUB IN: 4 WHEELER, SAVANNAH	08:42		
	06:11	4-14	SUB OUT: MULKEY, NANCY
	06:11		SUB IN: ELLIG, KENDALL
SUB OUT: 20 PEARSON, TAYLOR	06:11		
SUB IN: 10 SAINTIGENE, ASHLEY	06:11		
SUB OUT: 15 CONGLETON, DAZHA	05:17	6-14	
SUB IN: 5 CLEMONS, PRINCESS	05:17		
	03:40	8-16	SUB OUT: WIGGINS, SYDNE
	03:40		SUB OUT: ELLIG, KENDALL
	03:40		SUB IN: CROSTHWAIT, KATELYN
	03:40		SUB IN: MULKEY, NANCY
SUB OUT: 22 BROOKS, KHADAIJIA	03:40		
SUB IN: 00 SIVILS, KIA	03:40		
SUB OUT: 10 SAINTIGENE, ASHLEY	02:22	11-18	
SUB IN: 34 ROPER, LORELEI	02:22		

Marshall 11, Rice 20

Official Substitutions Log
Marshall vs Rice
Period 2
January 02, 2020 at Tudor Fieldhouse - Houston



VISITORS: Marshall	Time	Score	HOME: Rice
2 MAYO, KRISTEN			2 WIGGINS, SYDNE
10 SAINTIGENE, ASHLEY			10 SMITH, JASMINE
15 CONGLETON, DAZHA			13 OGWUMIKE, ERICA
20 PEARSON, TAYLOR			15 SCHWARTZ, LAUREN
22 BROOKS, KHADAIJIA			32 MULKEY, NANCY
	10:00	-	SUB OUT: SMITH, JASMINE
	10:00		SUB OUT: SCHWARTZ, LAUREN
	10:00		SUB IN: WIGGINS, SYDNE
	10:00		SUB IN: JACKSON, DESTINY
SUB OUT: 2 MAYO, KRISTEN	10:00		
SUB IN: 32 SHY, PAIGE	10:00		
	08:41	14-22	SUB OUT: JACKSON, DESTINY
	08:41		SUB IN: SCHWARTZ, LAUREN
	04:07	14-29	SUB OUT: OGWUMIKE, ERICA
	04:07		SUB OUT: MULKEY, NANCY
	04:07		SUB IN: SMITH, JASMINE
	04:07		SUB IN: ELLIG, KENDALL
SUB OUT: 00 SIVILS, KIA	04:07		
SUB OUT: 4 WHEELER, SAVANNAH	04:07		
SUB OUT: 5 CLEMONS, PRINCESS	04:07		
SUB IN: 2 MAYO, KRISTEN	04:07		
SUB IN: 15 CONGLETON, DAZHA	04:07		
SUB IN: 20 PEARSON, TAYLOR	04:07		
SUB OUT: 32 SHY, PAIGE	03:47	14-29	
SUB IN: 22 BROOKS, KHADAIJIA	03:47		
SUB OUT: 20 PEARSON, TAYLOR	03:28	14-29	
SUB IN: 10 SAINTIGENE, ASHLEY	03:28		
	03:28		SUB OUT: CROSTHWAIT, KATELYN
	03:28		SUB IN: OGWUMIKE, ERICA
SUB OUT: 34 ROPER, LORELEI	03:06	14-31	
SUB IN: 20 PEARSON, TAYLOR	03:06		
SUB OUT: 15 CONGLETON, DAZHA	01:22	14-37	
SUB IN: 4 WHEELER, SAVANNAH	01:22		

Marshall 14, Rice 37

Official Substitutions Log
Marshall vs Rice
Period 3
January 02, 2020 at Tudor Fieldhouse - Houston



VISITORS: Marshall	Time	Score	HOME: Rice
2 MAYO, KRISTEN			2 WIGGINS, SYDNE
10 SAINTIGENE, ASHLEY			10 SMITH, JASMINE
15 CONGLETON, DAZHA			13 OGWUMIKE, ERICA
20 PEARSON, TAYLOR			15 SCHWARTZ, LAUREN
22 BROOKS, KHADAIJIA			32 MULKEY, NANCY
	10:00	-	SUB OUT: ELLIG, KENDALL
	10:00		SUB IN: MULKEY, NANCY
SUB OUT: 4 WHEELER, SAVANNAH	10:00		
SUB IN: 15 CONGLETON, DAZHA	10:00		
	07:54	16-42	SUB OUT: MULKEY, NANCY
	07:54		SUB IN: ELLIG, KENDALL
	07:00	21-42	SUB OUT: ELLIG, KENDALL
	07:00		SUB IN: ALAO, TEMI
SUB OUT: 15 CONGLETON, DAZHA	05:20	23-46	
SUB OUT: 22 BROOKS, KHADAIJIA	05:20		
SUB IN: 4 WHEELER, SAVANNAH	05:20		
SUB IN: 5 CLEMONS, PRINCESS	05:20		
	04:34	23-48	SUB OUT: WIGGINS, SYDNE
	04:34		SUB IN: CROSTHWAIT, KATELYN
	02:34	25-57	SUB OUT: SMITH, JASMINE
	02:34		SUB OUT: OGWUMIKE, ERICA
	02:34		SUB OUT: SCHWARTZ, LAUREN
	02:34		SUB IN: JACKSON, DESTINY
	02:34		SUB IN: SWAYZE, HAYLEE
	02:34		SUB IN: AUSTIN, ASHLEE
SUB OUT: 10 SAINTIGENE, ASHLEY	02:34		
SUB OUT: 20 PEARSON, TAYLOR	02:34		
SUB IN: 00 SIVILS, KIA	02:34		
SUB IN: 22 BROOKS, KHADAIJIA	02:34		
SUB OUT: 2 MAYO, KRISTEN	01:37	28-60	
SUB IN: 32 SHY, PAIGE	01:37		
	00:41	28-63	SUB OUT: ALAO, TEMI
	00:41		SUB IN: MCCURRY, ARIANNA

Marshall 28, Rice 63

Official Substitutions Log
Marshall vs Rice
Period 4
January 02, 2020 at Tudor Fieldhouse - Houston



VISITORS: Marshall	Time	Score	HOME: Rice
2 MAYO, KRISTEN			2 WIGGINS, SYDNE
10 SAINTIGENE, ASHLEY			10 SMITH, JASMINE
15 CONGLETON, DAZHA			13 OGWUMIKE, ERICA
20 PEARSON, TAYLOR			15 SCHWARTZ, LAUREN
22 BROOKS, KHADAIJIA			32 MULKEY, NANCY
SUB OUT: 4 WHEELER, SAVANNAH	10:00	-	
SUB OUT: 22 BROOKS, KHADAIJIA	10:00		
SUB IN: 10 SAINTIGENE, ASHLEY	10:00		
SUB IN: 15 CONGLETON, DAZHA	10:00		
	09:21	30-63	SUB OUT: AUSTIN, ASHLEE
	09:21		SUB IN: BELLAMY, INDIA
SUB OUT: 00 SIVILS, KIA	07:37	31-66	
SUB OUT: 10 SAINTIGENE, ASHLEY	07:37		
SUB IN: 2 MAYO, KRISTEN	07:37		
SUB IN: 34 ROPER, LORELEI	07:37		
	06:09	31-71	SUB OUT: CROSTHWAIT, KATELYN
	06:09		SUB OUT: MCCURRY, ARIANNA
	06:09		SUB IN: AUSTIN, ASHLEE
	06:09		SUB IN: ALAO, TEMI
SUB OUT: 5 CLEMONS, PRINCESS	06:09		
SUB OUT: 32 SHY, PAIGE	06:09		
SUB IN: 4 WHEELER, SAVANNAH	06:09		
SUB IN: 20 PEARSON, TAYLOR	06:09		
SUB OUT: 20 PEARSON, TAYLOR	03:06	37-79	
SUB IN: 23 JOHNSON, ALEXIS	03:06		
	03:06		SUB OUT: BELLAMY, INDIA
	03:06		SUB IN: CROSTHWAIT, KATELYN
	02:58	37-79	SUB OUT: SWAYZE, HAYLEE
	02:58		SUB OUT: ALAO, TEMI
	02:58		SUB IN: BELLAMY, INDIA
	02:58		SUB IN: MCCURRY, ARIANNA
SUB OUT: 34 ROPER, LORELEI	02:10	37-79	
SUB IN: 21 TONEY, BRIANNA	02:10		
SUB OUT: 2 MAYO, KRISTEN	01:09	40-81	
SUB IN: 32 SHY, PAIGE	01:09		

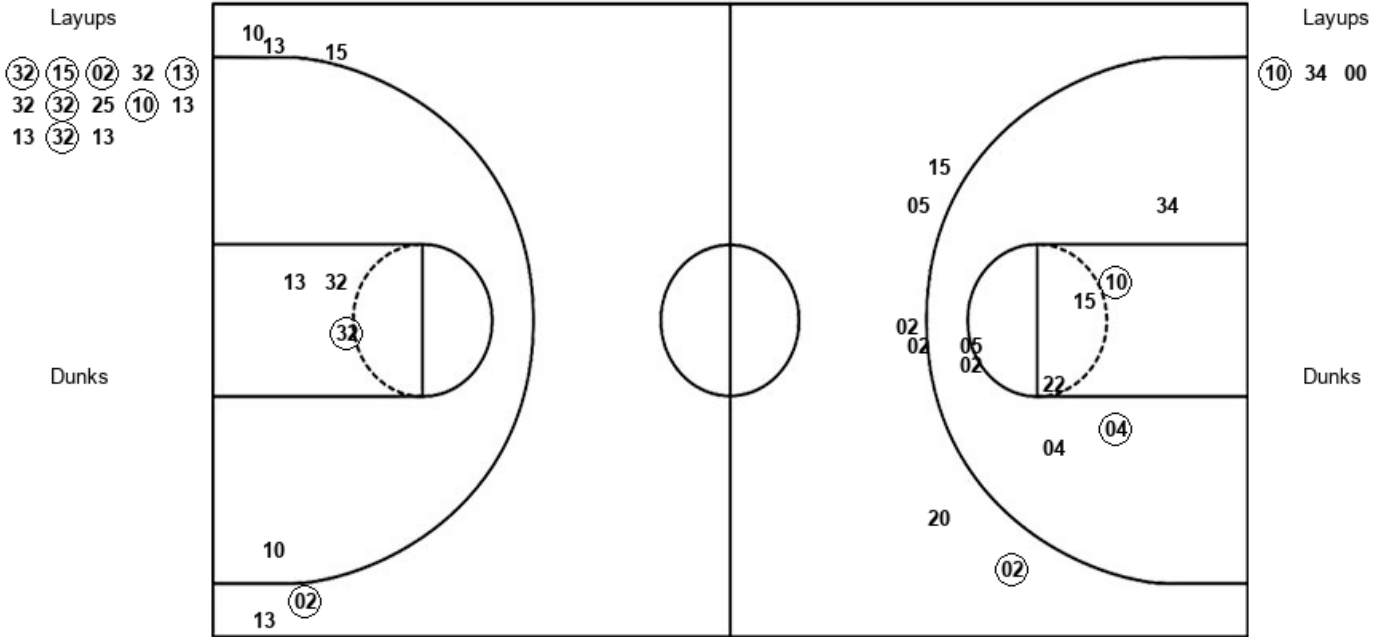
Marshall 43, Rice 81

Official Shot Chart
Marshall vs Rice
PERIOD 1 Shots
 January 02, 2020 at Tudor Fieldhouse - Houston



Rice

Marshall



RIC : Period 1	Made	Att	Pct
Layups	7	13	53.8
Dunks	0	0	0
2PT Field Goals	8	16	50.0
3PT Field Goals	1	6	16.7
Total Field Goals	9	22	40.9

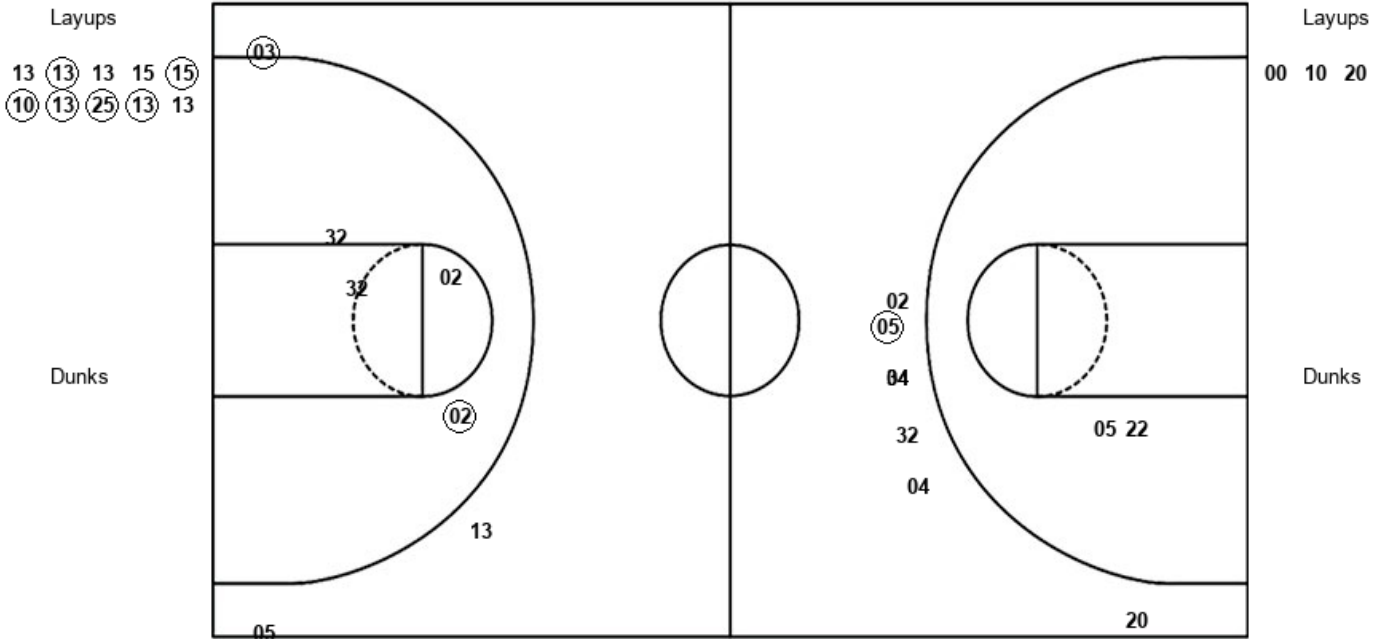
MAR : Period 1	Made	Att	Pct
Layups	1	3	33.3
Dunks	0	0	0
2PT Field Goals	3	12	25.0
3PT Field Goals	1	5	20.0
Total Field Goals	4	17	23.5

Official Shot Chart
Marshall vs Rice
 PERIOD 2 Shots
 January 02, 2020 at Tudor Fieldhouse - Houston



Rice

Marshall



RIC : Period 2	Made	Att	Pct
Layups	6	10	60.0
Dunks	0	0	0
2PT Field Goals	7	14	50.0
3PT Field Goals	1	3	33.3
Total Field Goals	8	17	47.1

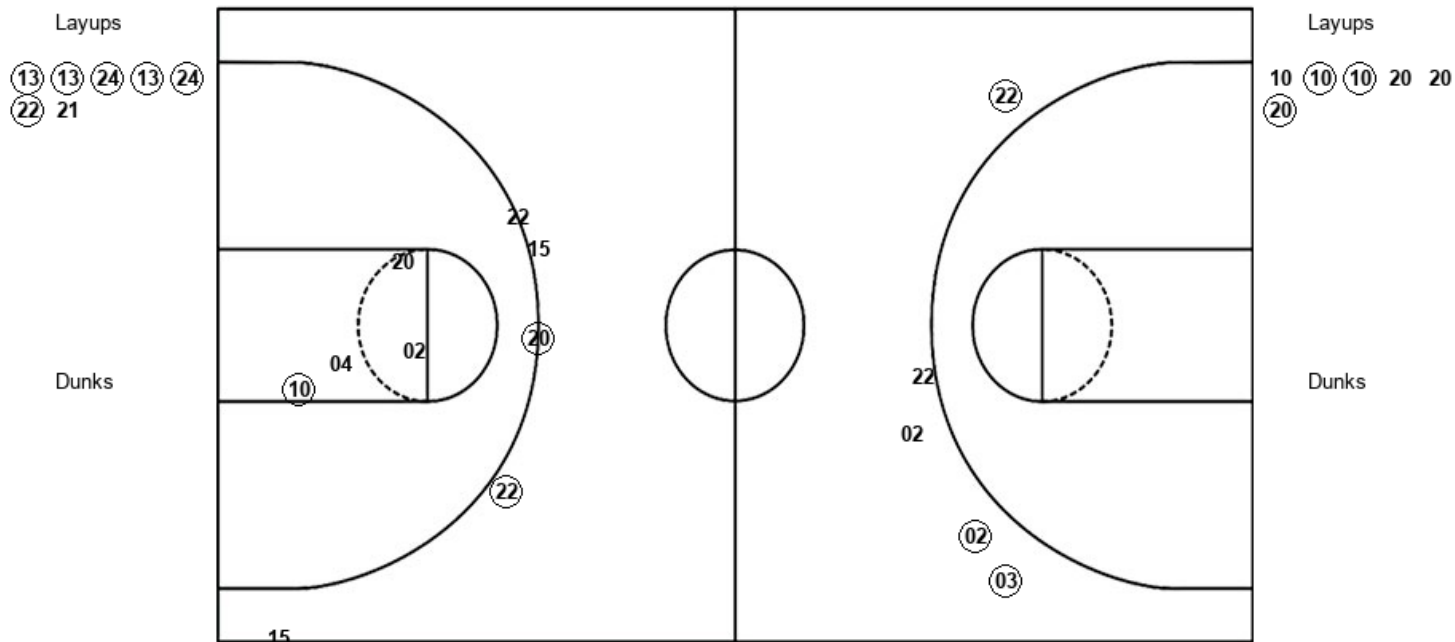
MAR : Period 2	Made	Att	Pct
Layups	0	3	00.0
Dunks	0	0	0
2PT Field Goals	0	5	00.0
3PT Field Goals	1	7	14.3
Total Field Goals	1	12	08.3

Official Shot Chart
Marshall vs Rice
PERIOD 3 Shots
 January 02, 2020 at Tudor Fieldhouse - Houston



Rice

Marshall



RIC : Period 3	Made	Att	Pct
Layups	6	7	85.7
Dunks	0	0	0
2PT Field Goals	6	7	85.7
3PT Field Goals	3	5	60.0
Total Field Goals	9	12	75.0

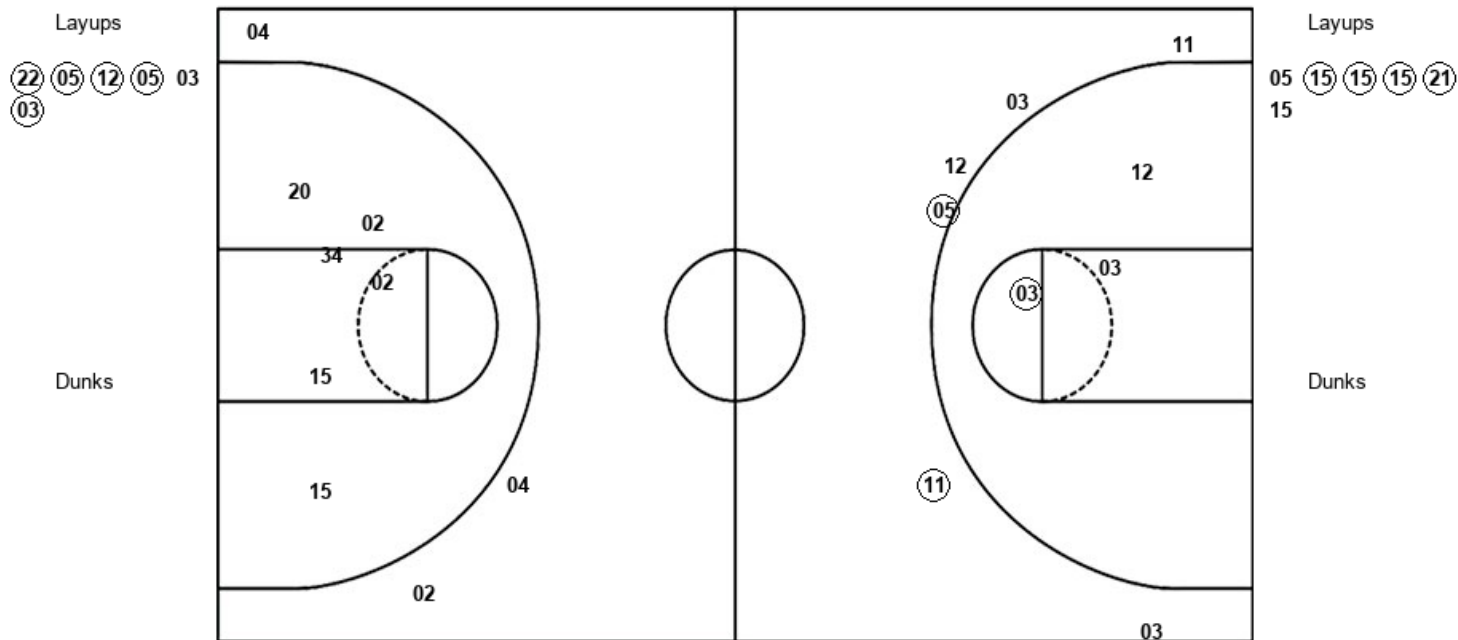
MAR : Period 3	Made	Att	Pct
Layups	3	6	50.0
Dunks	0	0	0
2PT Field Goals	4	10	40.0
3PT Field Goals	2	5	40.0
Total Field Goals	6	15	40.0

Official Shot Chart
Marshall vs Rice
PERIOD 4 Shots
 January 02, 2020 at Tudor Fieldhouse - Houston



Rice

Marshall



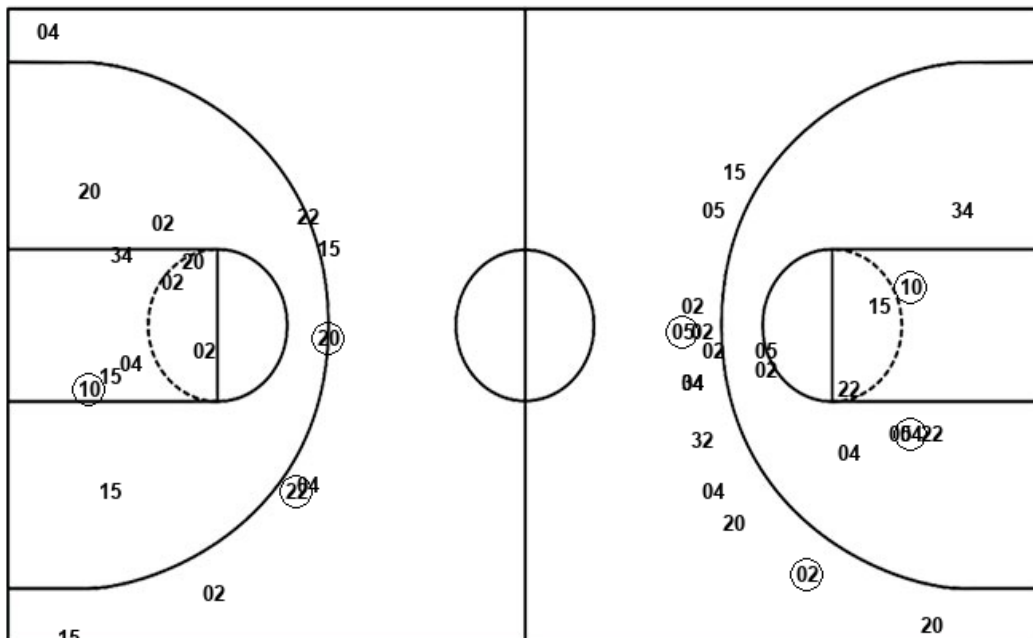
RIC : Period 4	Made	Att	Pct
Layups	5	6	83.3
Dunks	0	0	0
2PT Field Goals	6	9	66.7
3PT Field Goals	2	6	33.3
Total Field Goals	8	15	53.3

MAR : Period 4	Made	Att	Pct
Layups	4	6	66.7
Dunks	0	0	0
2PT Field Goals	4	12	33.3
3PT Field Goals	0	3	00.0
Total Field Goals	4	15	26.7

Official Shot Chart
Marshall vs Rice
Marshall Team Shots
 January 02, 2020 at Tudor Fieldhouse - Houston



Layups



Layups

10	34	00	00	10
20	10	10	10	20
20	20	05	15	15
15	21	15		

Dunks

Dunks

MAR : Period 1	Made	Att	Pct
Layups	1	3	33.3
Dunks	0	0	0
2PT Field Goals	3	12	25.0
3PT Field Goals	1	5	20.0
Total Field Goals	4	17	23.5

MAR : Period 2	Made	Att	Pct
Layups	0	3	00.0
Dunks	0	0	0
2PT Field Goals	0	5	00.0
3PT Field Goals	1	7	14.3
Total Field Goals	1	12	08.3

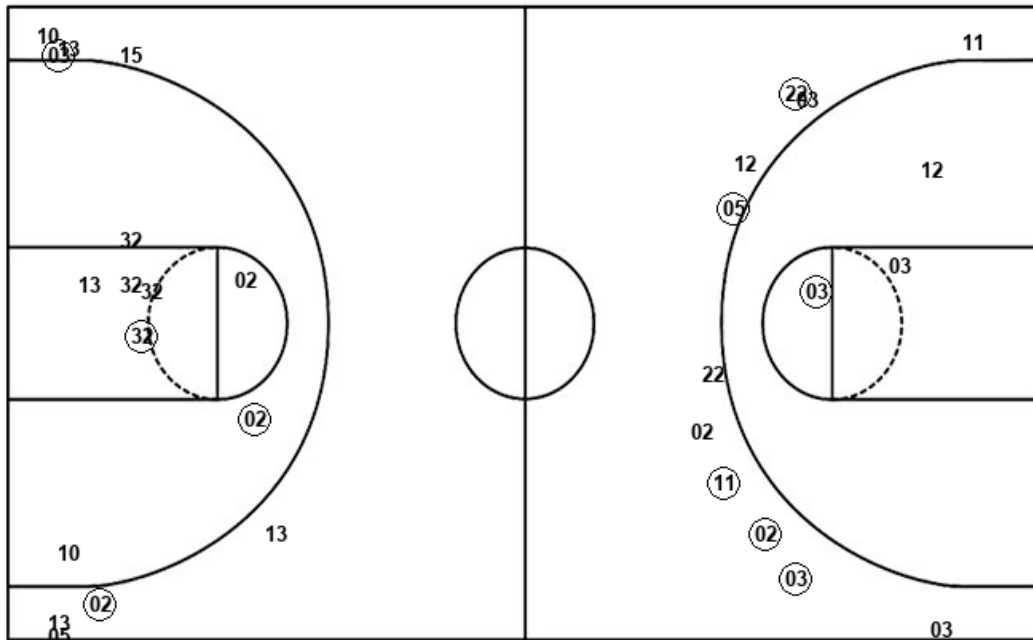
MAR : Period 3	Made	Att	Pct
Layups	3	6	50.0
Dunks	0	0	0
2PT Field Goals	4	10	40.0
3PT Field Goals	2	5	40.0
Total Field Goals	6	15	40.0

MAR : Period 4	Made	Att	Pct
Layups	4	6	66.7
Dunks	0	0	0
2PT Field Goals	4	12	33.3
3PT Field Goals	0	3	00.0
Total Field Goals	4	15	26.7

Official Shot Chart
Marshall vs Rice
 Rice Team Shots
 January 02, 2020 at Tudor Fieldhouse - Houston



Layups



Layups

32	15	02	32	13
32	32	25	10	13
13	32	13	13	13
13	15	15	10	13
25	13	13	13	13
24	13	24	22	21
22	05	12	05	03
03				

Dunks

Dunks

RIC : Period 1	Made	Att	Pct
Layups	7	13	53.8
Dunks	0	0	0
2PT Field Goals	8	16	50.0
3PT Field Goals	1	6	16.7
Total Field Goals	9	22	40.9

RIC : Period 2	Made	Att	Pct
Layups	6	10	60.0
Dunks	0	0	0
2PT Field Goals	7	14	50.0
3PT Field Goals	1	3	33.3
Total Field Goals	8	17	47.1

RIC : Period 3	Made	Att	Pct
Layups	6	7	85.7
Dunks	0	0	0
2PT Field Goals	6	7	85.7
3PT Field Goals	3	5	60.0
Total Field Goals	9	12	75.0

RIC : Period 4	Made	Att	Pct
Layups	5	6	83.3
Dunks	0	0	0
2PT Field Goals	6	9	66.7
3PT Field Goals	2	6	33.3
Total Field Goals	8	15	53.3