

FINAL SCORE



Prairie View

55



Rice

77

December 15, 2019 • Tudor Fieldhouse - Houston

FINAL STATISTICS

Official Box Score
Prairie View vs Rice
Game Totals -- Final Statistics
December 15, 2019 at Tudor Fieldhouse - Houston



Prairie View 55

No.	Player	S	Pts	FG	3FG	FT	OR	DR	TR	PF	A	TO	Blk	Stl	Min	+/-
01	PETERS, BERNESHA	G	16	6-17	2-8	2-2	1	1	2	4	2	0	0	2	30	-13
11	ROSENTAL, DIANA	G	11	5-9	0-0	1-3	1	0	1	3	0	3	0	2	24	-9
12	NEWMAN, DOMINIQUE	G	5	2-6	1-4	0-2	1	2	3	4	2	1	0	0	16	-15
20	WILLIAMS, KE'ASIA	F	4	2-4	0-1	0-0	0	3	3	3	0	0	2	0	29	-16
23	PAUL, KENNEDY	F	9	3-14	1-5	2-2	1	3	4	1	1	2	1	0	30	-9
02	PEREZ, TATYANA	G	0	0-2	0-1	0-0	0	2	2	3	0	0	0	0	12	-16
04	TOLBERT, KEAYNNA	G	4	1-1	1-1	1-2	0	0	0	1	0	0	0	2	7	8
05	MARTIN, JADAH	G	2	1-4	0-0	0-0	1	0	1	0	1	1	0	0	7	0
10	GREEN, KENNEDI	G	0	0-2	0-0	0-0	1	0	1	1	1	1	0	0	12	-11
14	HEARD, KENNEDI	F	0	0-2	0-0	0-0	0	3	3	2	1	0	0	1	15	-15
22	WILLIAMS, RACHEL	F	4	0-0	0-0	4-4	0	0	0	2	0	0	0	0	4	2
32	COBB, JHYRAH	F	0	0-1	0-0	0-0	0	1	1	1	0	0	0	0	3	-2
40	CAMPBELL, MARIAH	F	0	0-2	0-0	0-0	0	0	0	1	0	2	0	0	11	-14
	TEAM						4	1	5	0		0				
TOTALS			55	20-64	5-20	10-15	10	16	26	26	8	10	3	7	200	

Shooting By Period

Period	FG	FG%	3FG	3FG%	FT	FT%
1st Qtr	2-17	12%	0-5	00%	0-0	0%
2nd Qtr	5-16	31%	2-6	33%	0-0	0%
3rd Qtr	7-15	47%	1-4	25%	4-4	100%
4th Qtr	6-16	38%	2-5	40%	6-11	55%
1st Half	7-33	21%	2-11	18%	0-0	0%
2nd Half	13-31	42%	3-9	33%	10-15	67%
Game	20-64	31.3%	5-20	25.0%	10-15	66.7%

Deadball Rebounds: 3.0
Last FG: 4th-00:32
Biggest Run: 9-0
Largest lead: By 0 at -
Technical Fouls: None.

Rice 77

No.	Player	S	Pts	FG	3FG	FT	OR	DR	TR	PF	A	TO	Blk	Stl	Min	+/-
02	WIGGINS, SYDNE	G	5	2-5	1-2	0-2	2	3	5	4	3	1	1	0	29	14
10	SMITH, JASMINE	G	5	1-4	0-1	3-4	0	4	4	0	1	3	1	0	29	21
13	OGWUMIKE, ERICA	G	25	7-8	0-1	11-16	2	12	14	4	3	3	0	1	29	18
15	SCHWARTZ, LAUREN	F	10	4-8	0-3	2-2	0	4	4	4	3	1	0	1	21	19
32	MULKEY, NANCY	C	11	4-6	0-0	3-4	1	1	2	1	0	1	1	0	17	9
03	CROSTHWAIT, KATELYN	G	3	1-2	1-1	0-0	0	2	2	1	1	1	0	0	7	-2
05	JACKSON, DESTINY	G	8	2-5	0-2	4-4	1	2	3	1	0	2	0	0	17	7
11	SWAYZE, HAYLEE	G	0	0-1	0-1	0-0	0	2	2	0	1	1	1	0	8	1
12	BELLAMY, INDIA	F	2	0-0	0-0	2-2	0	2	2	0	1	1	1	0	12	7
21	MCCURRY, ARIANNA	C	4	2-2	0-0	0-0	0	0	0	1	1	0	0	0	3	0
22	AUSTIN, ASHLEE	F	1	0-1	0-1	1-2	1	1	2	0	0	1	0	1	9	3
23	CHRISMAN, ALEXAH	C	0	0-2	0-0	0-0	1	0	1	0	0	0	0	0	3	-1
24	ALAO, TEMI	F	3	1-1	0-0	1-3	1	1	2	1	0	1	0	1	4	3
25	ELLIG, KENDALL	F	0	0-0	0-0	0-0	0	0	0	2	0	1	0	0	13	11
	TEAM						2	1	3	0		1				
TOTALS			77	24-45	2-12	27-39	11	35	46	19	14	18	5	4	200	

Shooting By Period

Period	FG	FG%	3FG	3FG%	FT	FT%
1st Qtr	6-16	38%	1-6	17%	7-12	58%
2nd Qtr	4-8	50%	0-2	00%	8-8	100%
3rd Qtr	5-10	50%	0-2	00%	7-12	58%
4th Qtr	9-11	82%	1-2	50%	5-7	71%
1st Half	10-24	42%	1-8	13%	15-20	75%
2nd Half	14-21	67%	1-4	25%	12-19	63%
Game	24-45	53.3%	2-12	16.7%	27-39	69.2%

Deadball Rebounds: 6.0
Last FG: 4th-01:44
Biggest Run: 14-0
Largest lead: By 31 at 4-01
Technical Fouls: None.

Game Notes:

Officials: Travis Jones, Chris Saucedo, Demoya Williams
 Attendance: 1124

Start Time: 03:06 PM ET
 End Time: 05:02 PM ET
 Game Duration: 1:56

Score	1st	2nd	3rd	4th	TOT
PRV	4	12	19	20	55
Ric	20	16	17	24	77

PRV led for 0:00. Ric led for 39:50.
 Game was tied for 0:10.
 Times tied: 0 Lead Changes: 0

Points from	PRV	Ric
In the Paint	6	38
Off Turns	20	14
2nd Chance	11	13
Fast Break	1	18
Bench	10	21

Official Box Score
Prairie View vs Rice
First Half Statistics Only
December 15, 2019 at Tudor Fieldhouse - Houston



Prairie View 16

No.	Player	S	Pts	FG	3FG	FT	OR	DR	TR	PF	A	TO	Blk	Stl	Min	+/-
01	PETERS, BERNESHA	G	7	3-8	1-4	0-0	1	1	2	2	0	0	0	0	17	-13
02	PEREZ, TATYANA	G	0	0-2	0-1	0-0	0	2	2	2	0	0	0	0	6	-7
04	TOLBERT, KEAYNNA	G	0	0-0	0-0	0-0	0	0	0	0	0	0	0	0	1	1
05	MARTIN, JADAH	G	0	0-1	0-0	0-0	0	0	0	0	0	1	0	0	3	-2
10	GREEN, KENNEDI	G	0	0-2	0-0	0-0	1	0	1	1	0	0	0	0	6	-6
11	ROSENTAL, DIANA	G	0	0-2	0-0	0-0	1	0	1	2	0	1	0	0	7	-13
12	NEWMAN, DOMINIQUE	G	5	2-6	1-4	0-0	0	2	2	4	2	1	0	0	14	-11
14	HEARD, KENNEDI	F	0	0-1	0-0	0-0	0	2	2	0	1	0	0	1	10	-16
20	WILLIAMS, KE'ASIA	F	2	1-3	0-1	0-0	0	0	0	0	0	0	1	0	12	-17
22	WILLIAMS, RACHEL	F	0	0-0	0-0	0-0	0	0	0	0	0	0	0	0	0	0
23	PAUL, KENNEDY	F	2	1-5	0-1	0-0	1	1	2	1	0	0	0	0	15	-7
32	COBB, JHYRAH	F	0	0-1	0-0	0-0	0	1	1	1	0	0	0	0	3	-2
40	CAMPBELL, MARIAH	F	0	0-2	0-0	0-0	0	0	0	0	0	1	0	0	6	-7
	TEAM		0	0-0	0-0	0-0	1	1	2	0	0	0	0	0	0	0
TOTALS			16	7-33	2-11	0-0	5	10	15	13	3	4	1	1	100	

Shooting By Period

Period	FG	FG%	3FG	3FG%	FT	FT%
1st Qtr	2-17	12%	0-5	00%	0-0	0%
2nd Qtr	5-16	31%	2-6	33%	0-0	0%
1st Half	7-33	21%	2-11	18%	0-0	0%
Game	20-64	31.3%	5-20	25.0%	10-15	66.7%

Deadball Rebounds: 3,0
Last FG Half: PRV 2nd-00:00

Rice 36

No.	Player	S	Pts	FG	3FG	FT	OR	DR	TR	PF	A	TO	Blk	Stl	Min	+/-
02	WIGGINS, SYDNE	G	3	1-4	1-2	0-2	1	3	4	2	2	0	0	0	15	14
03	CROSTHWAIT, KATELYN	G	0	0-0	0-0	0-0	0	0	0	1	0	1	0	0	1	-4
05	JACKSON, DESTINY	G	2	0-3	0-2	2-2	1	1	2	1	0	0	0	0	8	4
10	SMITH, JASMINE	G	4	1-3	0-1	2-2	0	3	3	0	1	1	1	0	19	22
11	SWAYZE, HAYLEE	G	0	0-0	0-0	0-0	0	1	1	0	0	0	0	0	2	0
12	BELLAMY, INDIA	F	0	0-0	0-0	0-0	0	1	1	0	0	0	1	0	6	4
13	OGWUMIKE, ERICA	G	17	4-5	0-1	9-12	2	8	10	1	1	1	0	1	18	20
15	SCHWARTZ, LAUREN	F	6	2-4	0-2	2-2	0	2	2	2	2	0	0	1	11	20
21	MCCURRY, ARIANNA	C	0	0-0	0-0	0-0	0	0	0	0	0	0	0	0	0	0
22	AUSTIN, ASHLEE	F	0	0-0	0-0	0-0	0	0	0	0	0	0	0	0	0	0
23	CHRISMAN, ALEXAH	C	0	0-2	0-0	0-0	1	0	1	0	0	0	0	0	2	2
24	ALAO, TEMI	F	0	0-0	0-0	0-0	0	0	0	0	0	0	0	0	0	0
25	ELLIG, KENDALL	F	0	0-0	0-0	0-0	0	0	0	0	0	0	0	0	10	8
32	MULKEY, NANCY	C	4	2-3	0-0	0-0	0	0	0	1	0	1	1	0	9	10
	TEAM		0	0-0	0-0	0-0	1	1	2	0	0	0	0	0	0	0
TOTALS			36	10-24	1-8	15-20	6	20	26	8	6	4	3	2	100	

Shooting By Period

Period	FG	FG%	3FG	3FG%	FT	FT%
1st Qtr	6-16	38%	1-6	17%	7-12	58%
2nd Qtr	4-8	50%	0-2	00%	8-8	100%
1st Half	10-24	42%	1-8	13%	15-20	75%
Game	24-45	53.3%	2-12	16.7%	27-39	69.2%

Deadball Rebounds: 6,0
Last FG Half: Ric 2nd-03:06

Game Notes:

Officials: Travis Jones, Chris Saucedo, Demoya Williams
 Attendance: 1124

Start Time: 03:06 PM ET
 End Time: 05:02 PM ET
 Game Duration: 1:56

Score	1st	2nd	3rd	4th	TOT
PRV	4	12	19	20	55
Ric	20	16	17	24	77

Points from (This Period)	PRV	Ric
In the Paint	2	16
Off Turns	4	7
2nd Chance	5	9
Fast Break	0	5
Bench	0	2

Official Box Score
Prairie View vs Rice
First Quarter Statistics Only
December 15, 2019 at Tudor Fieldhouse - Houston



Prairie View 4

No.	Player	S	Pts	FG	3FG	FT	OR	DR	TR	PF	A	TO	Blk	Stl	Min	+/-
01	PETERS, BERNESHA	G	0	0-3	0-2	0-0	0	0	0	2	0	0	0	0	8	-11
11	ROSENTAL, DIANA	G	0	0-0	0-0	0-0	0	0	0	1	0	1	0	0	5	-9
12	NEWMAN, DOMINIQUE	G	2	1-2	0-1	0-0	0	2	2	2	1	1	0	0	7	-13
20	WILLIAMS, KE'ASIA	F	0	0-1	0-0	0-0	0	0	0	0	0	0	0	0	7	-13
23	PAUL, KENNEDY	F	2	1-4	0-1	0-0	1	1	2	0	0	0	0	0	9	-9
02	PEREZ, TATYANA	G	0	0-2	0-1	0-0	0	2	2	2	0	0	0	0	3	-1
04	TOLBERT, KEAYNNA	G	0	0-0	0-0	0-0	0	0	0	0	0	0	0	0	0	0
05	MARTIN, JADAH	G	0	0-1	0-0	0-0	0	0	0	0	0	0	0	0	2	0
10	GREEN, KENNEDI	G	0	0-2	0-0	0-0	0	0	0	1	0	0	0	0	2	-5
14	HEARD, KENNEDI	F	0	0-1	0-0	0-0	0	2	2	0	1	0	0	0	6	-12
22	WILLIAMS, RACHEL	F	0	0-0	0-0	0-0	0	0	0	0	0	0	0	0	0	0
32	COBB, JHYRAH	F	0	0-0	0-0	0-0	0	1	1	0	0	0	0	0	0	0
40	CAMPBELL, MARIAH	F	0	0-1	0-0	0-0	0	0	0	0	0	0	0	0	1	-7
	TEAM						0	0	0	0	0	0	0	0		
TOTALS			4	2-17	0-5	0-0	1	8	9	8	2	2	0	0	50	

Shooting By Period

Period	FG	FG%	3FG	3FG%	FT	FT%
1st Qtr	2-17	12%	0-5	00%	0-0	0%
2nd Qtr	5-16	31%	2-6	33%	0-0	0%
1st Half	2-17	12%	0-5	00%	0-0	0%
1st Half	7-33	21%	2-11	18%	0-0	0%
Game	20-64	31.3%	5-20	25.0%	10-15	66.7%

Deadball Rebounds: 3,0

Rice 20

No.	Player	S	Pts	FG	3FG	FT	OR	DR	TR	PF	A	TO	Blk	Stl	Min	+/-
02	WIGGINS, SYDNE	G	3	1-4	1-2	0-2	1	2	3	1	2	0	0	0	9	14
10	SMITH, JASMINE	G	2	0-2	0-1	2-2	0	3	3	0	0	0	1	0	9	18
13	OGWUMIKE, ERICA	G	9	2-2	0-0	5-8	2	4	6	0	1	0	0	1	8	16
15	SCHWARTZ, LAUREN	F	4	2-3	0-1	0-0	0	2	2	0	1	0	0	0	8	16
32	MULKEY, NANCY	C	2	1-2	0-0	0-0	0	0	0	1	0	1	1	0	6	8
03	CROSTHWAIT, KATELYN	G	0	0-0	0-0	0-0	0	0	0	0	0	0	0	0	0	0
05	JACKSON, DESTINY	G	0	0-3	0-2	0-0	1	1	2	1	0	0	0	0	4	0
11	SWAYZE, HAYLEE	G	0	0-0	0-0	0-0	0	1	1	0	0	0	0	0	2	0
12	BELLAMY, INDIA	F	0	0-0	0-0	0-0	0	0	0	0	0	0	0	0	0	0
21	MCCURRY, ARIANNA	C	0	0-0	0-0	0-0	0	0	0	0	0	0	0	0	0	0
22	AUSTIN, ASHLEE	F	0	0-0	0-0	0-0	0	0	0	0	0	0	0	0	0	0
23	CHRISMAN, ALEXAH	C	0	0-0	0-0	0-0	0	0	0	0	0	0	0	0	0	0
24	ALAO, TEMI	F	0	0-0	0-0	0-0	0	0	0	0	0	0	0	0	0	0
25	ELLIG, KENDALL	F	0	0-0	0-0	0-0	0	0	0	0	0	0	0	0	4	8
	TEAM						0	0	0	0	0	0	0	0		
TOTALS			20	6-16	1-6	7-12	4	13	17	3	4	1	2	1	50	

Shooting By Period

Period	FG	FG%	3FG	3FG%	FT	FT%
1st Qtr	6-16	38%	1-6	17%	7-12	58%
2nd Qtr	4-8	50%	0-2	00%	8-8	100%
1st Half	6-16	38%	1-6	17%	7-12	58%
1st Half	10-24	42%	1-8	13%	15-20	75%
Game	24-45	53.3%	2-12	16.7%	27-39	69.2%

Deadball Rebounds: 6,0

Game Notes:

Officials: Travis Jones, Chris Saucedo, Demoya Williams
Attendance: 1124

Start Time: 03:06 PM ET
End Time: 05:02 PM ET
Game Duration: 1:56

Score	1st	2nd	3rd	4th	TOT
PRV	4	12	19	20	55
Ric	20	16	17	24	77

Points from (This Period)	PRV	Ric
In the Paint	2	8
Off Turns	2	3
2nd Chance	0	7
Fast Break	0	5
Bench	0	0

Official Play-By-Play
Prairie View vs Rice
First Quarter
December 15, 2019 at Tudor Fieldhouse - Houston



Period 1

Starters:

Prairie View: 1 PETERS, BERNESHA (G); 11 ROSENTAL, DIANA (G); 12 NEWMAN, DOMINIQUE (G); 20 WILLIAMS, KE'ASIA (F); 23 PAUL, KENNEDY (F);
Rice: 2 WIGGINS, SYDNE (G); 10 SMITH, JASMINE (G); 13 OGWUMIKE, ERICA (G); 15 SCHWARTZ, LAUREN (F); 32 MULKEY, NANCY (C);

Time	VISITORS: Prairie View	Score	Margin	HOME: Rice
09:50		2-0	H 2	GOOD! LAYUP by OGWUMIKE, ERICA
09:50				ASSIST by SCHWARTZ, LAUREN
09:41	MISSED 3PTR by PAUL, KENNEDY			
09:37				REBOUND (DEF) by OGWUMIKE, ERICA
09:29				MISSED LAYUP by WIGGINS, SYDNE
09:24				REBOUND (OFF) by WIGGINS, SYDNE
09:20		4-0	H 4	GOOD! JUMPER by MULKEY, NANCY
09:20				ASSIST by WIGGINS, SYDNE
09:04	MISSED JUMPER by WILLIAMS, KE'ASIA			
09:00				REBOUND (DEF) by OGWUMIKE, ERICA
08:45				FOUL (OFF) by MULKEY, NANCY
08:45				TURNOVER (OFFENSIVE) by MULKEY, NANCY
08:44	SUB OUT: WILLIAMS, KE'ASIA			
08:44	SUB IN: HEARD, KENNEDI			
08:32	GOOD! LAYUP by NEWMAN, DOMINIQUE	4-2	H 2	
08:32	ASSIST by HEARD, KENNEDI			
08:21				MISSED 3PTR by SCHWARTZ, LAUREN
08:17				REBOUND (OFF) by OGWUMIKE, ERICA
08:16		6-2	H 4	GOOD! LAYUP by OGWUMIKE, ERICA
08:11	MISSED LAYUP by PETERS, BERNESHA			
08:07				REBOUND (DEF) by OGWUMIKE, ERICA
07:59				MISSED 3PTR by SMITH, JASMINE
07:55	REBOUND (DEF) by HEARD, KENNEDI			
07:29	MISSED 3PTR by PETERS, BERNESHA			
07:25				REBOUND (DEF) by OGWUMIKE, ERICA
07:20		8-2	H 6	GOOD! LAYUP by SCHWARTZ, LAUREN
07:08	FOUL (OFF) by NEWMAN, DOMINIQUE			
07:08	TURNOVER (OFFENSIVE) by NEWMAN, DOMINIQUE			
07:08	SUB OUT: NEWMAN, DOMINIQUE			
07:08	SUB IN: PEREZ, TATYANA			
07:00	FOUL (PERSONAL) by PEREZ, TATYANA			
07:00				SUB OUT: MULKEY, NANCY
07:00				SUB IN: ELLIG, KENDALL
07:00				MISSED FT by OGWUMIKE, ERICA
07:00				REBOUND (OFF) by TEAM
07:00		9-2	H 7	GOOD! FT by OGWUMIKE, ERICA [FB]
06:46	MISSED 3PTR by PEREZ, TATYANA			
06:42				REBOUND (DEF) by SCHWARTZ, LAUREN
06:39	FOUL (PERSONAL) by PETERS, BERNESHA			
06:32	FOUL (PERSONAL) by PEREZ, TATYANA			
06:32				MISSED FT by OGWUMIKE, ERICA
06:32				REBOUND (OFF) by TEAM
06:32				MISSED FT by OGWUMIKE, ERICA
06:31	REBOUND (DEF) by HEARD, KENNEDI			
06:09	TURNOVER (LOSTBALL) by ROSENTAL, DIANA			
06:09				STEAL by OGWUMIKE, ERICA
06:06	FOUL (PERSONAL) by ROSENTAL, DIANA			
06:06	SUB OUT: PEREZ, TATYANA			
06:06	SUB IN: WILLIAMS, KE'ASIA			
06:06		10-2	H 8	GOOD! FT by OGWUMIKE, ERICA [FB]
06:06		11-2	H 9	GOOD! FT by OGWUMIKE, ERICA [FB]
05:53	MISSED JUMPER by HEARD, KENNEDI			
05:47				REBOUND (DEF) by WIGGINS, SYDNE
05:20				MISSED JUMPER by SMITH, JASMINE
05:16				REBOUND (OFF) by OGWUMIKE, ERICA
05:16	SUB OUT: PETERS, BERNESHA			
05:16	SUB OUT: ROSENTAL, DIANA			
05:16	SUB OUT: PAUL, KENNEDY			
05:16	SUB IN: GREEN, KENNEDI			
05:16	SUB IN: NEWMAN, DOMINIQUE			
05:16	SUB IN: CAMPBELL, MARIAH			
04:55		14-2	H 12	GOOD! 3PTR by WIGGINS, SYDNE
04:55				ASSIST by OGWUMIKE, ERICA
04:29	MISSED JUMPER by CAMPBELL, MARIAH			
04:25				REBOUND (DEF) by SMITH, JASMINE
04:21		16-2	H 14	GOOD! LAYUP by SCHWARTZ, LAUREN
04:21				ASSIST by WIGGINS, SYDNE
04:18	TIMEOUT 30SEC			
03:56	MISSED JUMPER by GREEN, KENNEDI			
03:56				BLOCK by SMITH, JASMINE

Time	VISITORS: Prairie View	Score	Margin	HOME: Rice
03:55				REBOUND (DEF) by SMITH, JASMINE
03:56	FOUL (PERSONAL) by GREEN, KENNEDI			
03:56		17-2	H 15	GOOD! FT by SMITH, JASMINE [FB]
03:56		18-2	H 16	GOOD! FT by SMITH, JASMINE [FB]
03:55				SUB OUT: SMITH, JASMINE
03:55				SUB IN: JACKSON, DESTINY
03:55	SUB OUT: CAMPBELL, MARIAH			
03:55	SUB IN: PAUL, KENNEDY			
03:46	GOOD! JUMPER by PAUL, KENNEDY	18-4	H 14	
03:46	ASSIST by NEWMAN, DOMINIQUE			
03:27				SUB OUT: ELLIG, KENDALL
03:27				SUB IN: MULKEY, NANCY
03:10				MISSED JUMPER by JACKSON, DESTINY
03:05	REBOUND (DEF) by NEWMAN, DOMINIQUE			
02:54	MISSED JUMPER by GREEN, KENNEDI			
02:51				REBOUND (DEF) by JACKSON, DESTINY
02:48				SUB OUT: WIGGINS, SYDNE
02:48				SUB IN: SMITH, JASMINE
02:48	SUB OUT: GREEN, KENNEDI			
02:48	SUB IN: PETERS, BERNESHA			
02:24	FOUL (PERSONAL) by PETERS, BERNESHA			
02:24		19-4	H 15	GOOD! FT by OGWUMIKE, ERICA
02:24		20-4	H 16	GOOD! FT by OGWUMIKE, ERICA
02:24	SUB OUT: HEARD, KENNEDI			
02:24	SUB IN: PEREZ, TATYANA			
01:58				FOUL (PERSONAL) by JACKSON, DESTINY
01:59				SUB OUT: OGWUMIKE, ERICA
01:59				SUB IN: WIGGINS, SYDNE
01:56	MISSED JUMPER by PAUL, KENNEDY			
01:56				BLOCK by MULKEY, NANCY
01:47				REBOUND (DEF) by SCHWARTZ, LAUREN
01:46				MISSED JUMPER by WIGGINS, SYDNE
01:38	REBOUND (DEF) by NEWMAN, DOMINIQUE			
01:38	MISSED 3PTR by NEWMAN, DOMINIQUE			
01:38				REBOUND (DEF) by WIGGINS, SYDNE
01:38	FOUL (PERSONAL) by NEWMAN, DOMINIQUE			
01:38				SUB OUT: SCHWARTZ, LAUREN
01:38				SUB IN: SWAYZE, HAYLEE
01:38	SUB OUT: NEWMAN, DOMINIQUE			
01:38	SUB IN: MARTIN, JADAH			
01:38				MISSED FT by WIGGINS, SYDNE
01:38				REBOUND (OFF) by TEAM
01:38				MISSED FT by WIGGINS, SYDNE
01:33	REBOUND (DEF) by PAUL, KENNEDY			
01:28	MISSED 3PTR by PETERS, BERNESHA			
01:24				REBOUND (DEF) by SWAYZE, HAYLEE
01:08				MISSED 3PTR by JACKSON, DESTINY
01:05	REBOUND (DEF) by PEREZ, TATYANA			
00:57	MISSED JUMPER by PEREZ, TATYANA			
00:52				REBOUND (DEF) by SMITH, JASMINE
00:45				MISSED 3PTR by JACKSON, DESTINY
00:41				REBOUND (OFF) by JACKSON, DESTINY
00:30				MISSED JUMPER by MULKEY, NANCY
00:30	REBOUND (DEF) by PEREZ, TATYANA			
00:29				FOUL (PERSONAL) by WIGGINS, SYDNE
00:12	MISSED JUMPER by MARTIN, JADAH			
00:08	REBOUND (OFF) by PAUL, KENNEDY			
00:07	MISSED LAYUP by PAUL, KENNEDY			
00:08	SUB OUT: PAUL, KENNEDY			
00:08	SUB IN: COBB, JHYRAH			
00:00				MISSED 3PTR by WIGGINS, SYDNE
00:00	REBOUND (DEF) by COBB, JHYRAH			

Prairie View 4, Rice 20

Points from (This Period)	PRV	Ric
In the Paint	2	8
Off Turns	2	3
2nd Chance	0	7
Fast Break	0	5
Bench	0	0

Official Box Score
Prairie View vs Rice
Second Quarter Statistics Only
December 15, 2019 at Tudor Fieldhouse - Houston



Prairie View 12

No.	Player	S	Pts	FG	3FG	FT	OR	DR	TR	PF	A	TO	Blk	Stl	Min	+/-
01	PETERS, BERNESHA	G	7	3-5	1-2	0-0	1	1	2	0	0	0	0	0	9	-2
11	ROSENTAL, DIANA	G	0	0-2	0-0	0-0	1	0	1	1	0	0	0	0	2	-4
12	NEWMAN, DOMINIQUE	G	3	1-4	1-3	0-0	0	0	0	2	1	0	0	0	7	2
20	WILLIAMS, KE'ASIA	F	2	1-2	0-1	0-0	0	0	0	0	0	0	1	0	5	-4
23	PAUL, KENNEDY	F	0	0-1	0-0	0-0	0	0	0	1	0	0	0	0	6	2
02	PEREZ, TATYANA	G	0	0-0	0-0	0-0	0	0	0	0	0	0	0	0	3	-6
04	TOLBERT, KEAYNNA	G	0	0-0	0-0	0-0	0	0	0	0	0	0	0	0	1	1
05	MARTIN, JADAH	G	0	0-0	0-0	0-0	0	0	0	0	0	1	0	0	1	-2
10	GREEN, KENNEDI	G	0	0-0	0-0	0-0	1	0	1	0	0	0	0	0	4	-1
14	HEARD, KENNEDI	F	0	0-0	0-0	0-0	0	0	0	0	0	0	0	1	4	-4
22	WILLIAMS, RACHEL	F	0	0-0	0-0	0-0	0	0	0	0	0	0	0	0	0	0
32	COBB, JHYRAH	F	0	0-1	0-0	0-0	0	0	0	1	0	0	0	0	3	-2
40	CAMPBELL, MARIAH	F	0	0-1	0-0	0-0	0	0	0	0	0	1	0	0	5	0
	TEAM						1	1	2	0		0				
TOTALS			12	5-16	2-6	0-0	4	2	6	5	1	2	1	1	50	

Shooting By Period

Period	FG	FG%	3FG	3FG%	FT	FT%
3rd Qtr	7-15	47%	1-4	25%	4-4	100%
4th Qtr	6-16	38%	2-5	40%	6-11	55%
2nd Half	5-16	31%	2-6	33%	0-0	0%
2nd Half	13-31	42%	3-9	33%	10-15	67%
Game	20-64	31.3%	5-20	25.0%	10-15	66.7%

Deadball Rebounds: 3,0

Rice 16

No.	Player	S	Pts	FG	3FG	FT	OR	DR	TR	PF	A	TO	Blk	Stl	Min	+/-
02	WIGGINS, SYDNE	G	0	0-0	0-0	0-0	0	1	1	1	0	0	0	0	6	0
10	SMITH, JASMINE	G	2	1-1	0-0	0-0	0	0	0	0	1	1	0	0	10	4
13	OGWUMIKE, ERICA	G	8	2-3	0-1	4-4	0	4	4	1	0	1	0	0	10	4
15	SCHWARTZ, LAUREN	F	2	0-1	0-1	2-2	0	0	0	2	1	0	0	1	3	4
32	MULKEY, NANCY	C	2	1-1	0-0	0-0	0	0	0	0	0	0	0	0	3	2
03	CROSTHWAIT, KATELYN	G	0	0-0	0-0	0-0	0	0	0	1	0	1	0	0	1	-4
05	JACKSON, DESTINY	G	2	0-0	0-0	2-2	0	0	0	0	0	0	0	0	4	4
11	SWAYZE, HAYLEE	G	0	0-0	0-0	0-0	0	0	0	0	0	0	0	0	0	0
12	BELLAMY, INDIA	F	0	0-0	0-0	0-0	0	1	1	0	0	0	1	0	6	4
21	MCCURRY, ARIANNA	C	0	0-0	0-0	0-0	0	0	0	0	0	0	0	0	0	0
22	AUSTIN, ASHLEE	F	0	0-0	0-0	0-0	0	0	0	0	0	0	0	0	0	0
23	CHRISMAN, ALEXAH	C	0	0-2	0-0	0-0	1	0	1	0	0	0	0	0	2	2
24	ALAO, TEMI	F	0	0-0	0-0	0-0	0	0	0	0	0	0	0	0	0	0
25	ELLIG, KENDALL	F	0	0-0	0-0	0-0	0	0	0	0	0	0	0	0	6	0
	TEAM						1	1	2	0		0				
TOTALS			16	4-8	0-2	8-8	2	7	9	5	2	3	1	1	50	

Shooting By Period

Period	FG	FG%	3FG	3FG%	FT	FT%
3rd Qtr	5-10	50%	0-2	00%	7-12	58%
4th Qtr	9-11	82%	1-2	50%	5-7	71%
2nd Half	4-8	50%	0-2	00%	8-8	100%
2nd Half	14-21	67%	1-4	25%	12-19	63%
Game	24-45	53.3%	2-12	16.7%	27-39	69.2%

Deadball Rebounds: 6,0

Game Notes:

Officials: Travis Jones, Chris Saucedo, Demoya Williams
 Attendance: 1124

Start Time: 03:06 PM ET
 End Time: 05:02 PM ET
 Game Duration: 1:56

Score	1st	2nd	3rd	4th	TOT
PRV	4	12	19	20	55
Ric	20	16	17	24	77

Points from (This Period)	PRV	Ric
In the Paint	0	8
Off Turns	2	4
2nd Chance	5	2
Fast Break	0	0
Bench	0	2

**Official By-By-Play
Prairie View vs Rice
Second Quarter
December 15, 2019 at Tudor Fieldhouse - Houston**



Period 2

Starters:

Prairie View: 1 PETERS, BERNESHA (G); 11 ROSENAL, DIANA (G); 12 NEWMAN, DOMINIQUE (G); 20 WILLIAMS, KE'ASIA (F); 23 PAUL, KENNEDY (F);
Rice: 2 WIGGINS, SYDNE (G); 10 SMITH, JASMINE (G); 13 OGWUMIKE, ERICA (G); 15 SCHWARTZ, LAUREN (F); 32 MULKEY, NANCY (C);

Time	VISITORS: Prairie View	Score	Margin	HOME: Rice
10:00				SUB OUT: JACKSON, DESTINY
10:00				SUB OUT: SWAYZE, HAYLEE
10:00				SUB IN: OGWUMIKE, ERICA
10:00				SUB IN: SCHWARTZ, LAUREN
09:44	TURNOVER (BADPASS) by MARTIN, JADAH			
09:44				STEAL by SCHWARTZ, LAUREN
09:37		22-4	H 18	GOOD! LAYUP by OGWUMIKE, ERICA
09:37				ASSIST by SMITH, JASMINE
09:23				FOUL (PERSONAL) by SCHWARTZ, LAUREN
09:23	SUB OUT: PEREZ, TATYANA			
09:23	SUB OUT: MARTIN, JADAH			
09:23	SUB IN: ROSENAL, DIANA			
09:23	SUB IN: HEARD, KENNEDI			
09:04	MISSED 3PTR by PETERS, BERNESHA			
09:01				REBOUND (DEF) by OGWUMIKE, ERICA
08:55	SUB OUT: ROSENAL, DIANA			
08:55	SUB IN: NEWMAN, DOMINIQUE			
08:38				MISSED 3PTR by SCHWARTZ, LAUREN
08:37	REBOUND (DEF) by TEAM			
08:19	GOOD! JUMPER by WILLIAMS, KE'ASIA	22-6	H 16	
08:19	ASSIST by NEWMAN, DOMINIQUE			
08:03		24-6	H 18	GOOD! LAYUP by MULKEY, NANCY
08:03				ASSIST by SCHWARTZ, LAUREN
07:40	MISSED JUMPER by COBB, JHYRAH			
07:37				REBOUND (DEF) by WIGGINS, SYDNE
07:29	FOUL (PERSONAL) by COBB, JHYRAH			
07:29				SUB OUT: MULKEY, NANCY
07:29				SUB IN: ELLIG, KENDALL
07:29	SUB OUT: HEARD, KENNEDI			
07:29	SUB OUT: WILLIAMS, KE'ASIA			
07:29	SUB OUT: COBB, JHYRAH			
07:29	SUB IN: TOLBERT, KEAYNNA			
07:29	SUB IN: PAUL, KENNEDY			
07:29	SUB IN: CAMPBELL, MARIAH			
07:29		25-6	H 19	GOOD! FT by SCHWARTZ, LAUREN
07:29		26-6	H 20	GOOD! FT by SCHWARTZ, LAUREN
07:10				SUB OUT: SMITH, JASMINE
07:10				SUB IN: CROSTHWAIT, KATELYN
06:59	MISSED JUMPER by PETERS, BERNESHA			
06:56	REBOUND (OFF) by PETERS, BERNESHA			
06:57				FOUL (PERSONAL) by SCHWARTZ, LAUREN
06:57				SUB OUT: SCHWARTZ, LAUREN
06:57				SUB IN: SMITH, JASMINE
06:42	GOOD! 3PTR by NEWMAN, DOMINIQUE	26-9	H 17	
06:24	FOUL (PERSONAL) by PAUL, KENNEDY			
06:24	SUB OUT: TOLBERT, KEAYNNA			
06:24	SUB IN: GREEN, KENNEDI			
06:24		27-9	H 18	GOOD! FT by OGWUMIKE, ERICA
06:24		28-9	H 19	GOOD! FT by OGWUMIKE, ERICA
06:00	GOOD! 3PTR by PETERS, BERNESHA	28-12	H 16	
05:41				FOUL (OFF) by CROSTHWAIT, KATELYN
05:41				TURNOVER (OFFENSIVE) by CROSTHWAIT, KATELYN
05:41				SUB OUT: CROSTHWAIT, KATELYN
05:41				SUB IN: BELLAMY, INDIA
05:29	MISSED JUMPER by PAUL, KENNEDY			
05:25	REBOUND (OFF) by TEAM			
05:09	MISSED 3PTR by NEWMAN, DOMINIQUE			
05:01	REBOUND (OFF) by GREEN, KENNEDI			
04:51	GOOD! JUMPER by PETERS, BERNESHA	28-14	H 14	
04:33		30-14	H 16	GOOD! JUMPER by SMITH, JASMINE [PNT]
04:10				FOUL (PERSONAL) by WIGGINS, SYDNE
04:10				
04:10				SUB OUT: WIGGINS, SYDNE
04:10				SUB IN: JACKSON, DESTINY
03:57	MISSED JUMPER by CAMPBELL, MARIAH			
03:53				REBOUND (DEF) by OGWUMIKE, ERICA
03:37				TURNOVER (BADPASS) by SMITH, JASMINE
03:37	STEAL by HEARD, KENNEDI			
03:23	SUB OUT: PAUL, KENNEDY			
03:23	SUB IN: HEARD, KENNEDI			

Time	VISITORS: Prairie View	Score	Margin	HOME: Rice
03:22	TURNOVER (BADPASS) by CAMPBELL, MARIAH			
03:19	SUB OUT: PETERS, BERNESHA			
03:19	SUB OUT: NEWMAN, DOMINIQUE			
03:19	SUB IN: PEREZ, TATYANA			
03:19	SUB IN: ROSENAL, DIANA			
03:06		32-14	H 18	GOOD! LAYUP by OGWUMIKE, ERICA
02:51	MISSED JUMPER by ROSENAL, DIANA			
02:51				BLOCK by BELLAMY, INDIA
02:45	REBOUND (OFF) by ROSENAL, DIANA			
02:45	MISSED JUMPER by ROSENAL, DIANA			
02:45				REBOUND (DEF) by BELLAMY, INDIA
02:42				FOUL (OFF) by OGWUMIKE, ERICA
02:42				TURNOVER (OFFENSIVE) by OGWUMIKE, ERICA
02:42	SUB OUT: CAMPBELL, MARIAH			
02:42	SUB IN: WILLIAMS, KE'ASIA			
02:21	MISSED 3PTR by WILLIAMS, KE'ASIA			
02:15				REBOUND (DEF) by TEAM
01:59	FOUL (PERSONAL) by ROSENAL, DIANA			
01:59				SUB OUT: ELLIG, KENDALL
01:59				SUB IN: CHRISMAN, ALEXAH
01:59	SUB OUT: GREEN, KENNEDI			
01:59	SUB IN: PETERS, BERNESHA			
01:59		33-14	H 19	GOOD! FT by JACKSON, DESTINY
01:59		34-14	H 20	GOOD! FT by JACKSON, DESTINY
01:59	SUB OUT: ROSENAL, DIANA			
01:59	SUB IN: NEWMAN, DOMINIQUE			
01:38	MISSED 3PTR by NEWMAN, DOMINIQUE			
01:35				REBOUND (DEF) by OGWUMIKE, ERICA
01:26	SUB OUT: HEARD, KENNEDI			
01:26	SUB IN: PAUL, KENNEDI			
01:11				MISSED 3PTR by OGWUMIKE, ERICA
01:07	REBOUND (DEF) by PETERS, BERNESHA			
01:04	MISSED JUMPER by NEWMAN, DOMINIQUE			
00:59				REBOUND (DEF) by OGWUMIKE, ERICA
00:50	FOUL (PERSONAL) by NEWMAN, DOMINIQUE			
00:33				MISSED LAYUP by CHRISMAN, ALEXAH
00:32				REBOUND (OFF) by CHRISMAN, ALEXAH
00:32				MISSED JUMPER by CHRISMAN, ALEXAH
00:32	BLOCK by WILLIAMS, KE'ASIA			
00:32				REBOUND (OFF) by TEAM
00:32	SUB OUT: PEREZ, TATYANA			
00:32	SUB IN: ROSENAL, DIANA			
00:21	FOUL (PERSONAL) by NEWMAN, DOMINIQUE			
00:21	SUB OUT: NEWMAN, DOMINIQUE			
00:21	SUB IN: TOLBERT, KEAYNNA			
00:21		35-14	H 21	GOOD! FT by OGWUMIKE, ERICA
00:21		36-14	H 22	GOOD! FT by OGWUMIKE, ERICA
00:00	GOOD! JUMPER by PETERS, BERNESHA	36-16	H 20	

Prairie View 16, Rice 36

Points from (This Period)	PRV	Ric
In the Paint	0	8
Off Turns	2	4
2nd Chance	5	2
Fast Break	0	0
Bench	0	2

Official Box Score
Prairie View vs Rice
Second Half Statistics Only
December 15, 2019 at Tudor Fieldhouse - Houston



Prairie View 39

No.	Player	S	Pts	FG	3FG	FT	OR	DR	TR	PF	A	TO	Blk	Stl	Min	+/-
01	PETERS, BERNESHA	G	9	3-9	1-4	2-2	0	0	0	2	2	0	0	2	14	0
02	PEREZ, TATYANA	G	0	0-0	0-0	0-0	0	0	0	1	0	0	0	0	5	-9
04	TOLBERT, KEAYNNA	G	4	1-1	1-1	1-2	0	0	0	1	0	0	0	2	6	7
05	MARTIN, JADAH	G	2	1-3	0-0	0-0	1	0	1	0	1	0	0	0	5	2
10	GREEN, KENNEDI	G	0	0-0	0-0	0-0	0	0	0	0	1	1	0	0	5	-5
11	ROSENTAL, DIANA	G	11	5-7	0-0	1-3	0	0	0	1	0	2	0	2	17	4
12	NEWMAN, DOMINIQUE	G	0	0-0	0-0	0-2	1	0	1	0	0	0	0	0	2	-4
14	HEARD, KENNEDI	F	0	0-1	0-0	0-0	0	1	1	2	0	0	0	0	5	1
20	WILLIAMS, KE'ASIA	F	2	1-1	0-0	0-0	0	3	3	3	0	0	1	0	16	1
22	WILLIAMS, RACHEL	F	4	0-0	0-0	4-4	0	0	0	2	0	0	0	0	4	2
23	PAUL, KENNEDY	F	7	2-9	1-4	2-2	0	2	2	0	1	2	1	0	15	-2
32	COBB, JHYRAH	F	0	0-0	0-0	0-0	0	0	0	0	0	0	0	0	0	0
40	CAMPBELL, MARIAH	F	0	0-0	0-0	0-0	0	0	0	1	0	1	0	0	6	-7
	TEAM		0	0-0	0-0	0-0	3	0	3	0	0	0	0	0	0	0
	TOTALS		39	13-31	3-9	10-15	5	6	11	13	5	6	2	6	100	

Shooting By Period

Period	FG	FG%	3FG	3FG%	FT	FT%
3rd Qtr	7-15	47%	1-4	25%	4-4	100%
4th Qtr	6-16	38%	2-5	40%	6-11	55%
2nd Half	13-31	42%	3-9	33%	10-15	67%
Game	20-64	31.3%	5-20	25.0%	10-15	66.7%

Deadball Rebounds: 3,0
Last FG Half: PRV 4th-00:32

Rice 41

No.	Player	S	Pts	FG	3FG	FT	OR	DR	TR	PF	A	TO	Blk	Stl	Min	+/-
02	WIGGINS, SYDNE	G	2	1-1	0-0	0-0	1	0	1	2	1	1	1	0	14	0
03	CROSTHWAIT, KATELYN	G	3	1-2	1-1	0-0	0	2	2	0	1	0	0	0	5	2
05	JACKSON, DESTINY	G	6	2-2	0-0	2-2	0	1	1	0	0	2	0	0	9	3
10	SMITH, JASMINE	G	1	0-1	0-0	1-2	0	1	1	0	0	2	0	0	11	-1
11	SWAYZE, HAYLEE	G	0	0-1	0-1	0-0	0	1	1	0	1	1	1	0	6	1
12	BELLAMY, INDIA	F	2	0-0	0-0	2-2	0	1	1	0	1	1	0	0	6	3
13	OGWUMIKE, ERICA	G	8	3-3	0-0	2-4	0	4	4	3	2	2	0	0	11	-2
15	SCHWARTZ, LAUREN	F	4	2-4	0-1	0-0	0	2	2	2	1	1	0	0	10	-1
21	MCCURRY, ARIANNA	C	4	2-2	0-0	0-0	0	0	0	1	1	0	0	0	3	0
22	AUSTIN, ASHLEE	F	1	0-1	0-1	1-2	1	1	2	0	0	1	0	1	9	3
23	CHRISMAN, ALEXAH	C	0	0-0	0-0	0-0	0	0	0	0	0	0	0	0	1	-3
24	ALAO, TEMI	F	3	1-1	0-0	1-3	1	1	2	1	0	1	0	1	4	3
25	ELLIG, KENDALL	F	0	0-0	0-0	0-0	0	0	0	2	0	1	0	0	4	3
32	MULKEY, NANCY	C	7	2-3	0-0	3-4	1	1	2	0	0	0	0	0	8	-1
	TEAM		0	0-0	0-0	0-0	1	0	1	0	0	1	0	0	0	0
	TOTALS		41	14-21	1-4	12-19	5	15	20	11	8	14	2	2	100	

Shooting By Period

Period	FG	FG%	3FG	3FG%	FT	FT%
3rd Qtr	5-10	50%	0-2	00%	7-12	58%
4th Qtr	9-11	82%	1-2	50%	5-7	71%
2nd Half	14-21	67%	1-4	25%	12-19	63%
Game	24-45	53.3%	2-12	16.7%	27-39	69.2%

Deadball Rebounds: 6,0
Last FG Half: Ric 4th-01:44

Game Notes:

Officials: Travis Jones, Chris Saucedo, Demoya Williams
Attendance: 1124

Start Time: 03:06 PM ET
End Time: 05:02 PM ET
Game Duration: 1:56

Score	1st	2nd	3rd	4th	TOT
PRV	4	12	19	20	55
Ric	20	16	17	24	77

Points from (This Period)	PRV	Ric
In the Paint	4	22
Off Turns	16	7
2nd Chance	6	4
Fast Break	1	13
Bench	10	19

Official Box Score
Prairie View vs Rice
Third Quarter Statistics Only
December 15, 2019 at Tudor Fieldhouse - Houston



Prairie View 39

No.	Player	S	Pts	FG	3FG	FT	OR	DR	TR	PF	A	TO	Blk	Stl	Min	+/-
01	PETERS, BERNESHA	G	2	1-4	0-1	0-0	0	0	0	2	1	0	0	1	8	3
11	ROSENAL, DIANA	G	6	3-4	0-0	0-0	0	0	0	0	0	1	0	1	8	4
12	NEWMAN, DOMINIQUE	G	0	0-0	0-0	0-0	0	0	0	0	0	0	0	0	0	0
20	WILLIAMS, KE'ASIA	F	0	0-0	0-0	0-0	0	2	2	1	0	0	0	0	8	1
23	PAUL, KENNEDY	F	7	2-4	1-3	2-2	0	0	0	0	1	1	1	0	6	4
02	PEREZ, TATYANA	G	0	0-0	0-0	0-0	0	0	0	1	0	0	0	0	2	-1
04	TOLBERT, KEAYNNA	G	0	0-0	0-0	0-0	0	0	0	0	0	0	0	0	2	-1
05	MARTIN, JADAH	G	2	1-2	0-0	0-0	1	0	1	0	0	0	0	0	1	3
10	GREEN, KENNEDI	G	0	0-0	0-0	0-0	0	0	0	0	1	0	0	0	3	-1
14	HEARD, KENNEDI	F	0	0-1	0-0	0-0	0	1	1	2	0	0	0	0	5	1
22	WILLIAMS, RACHEL	F	2	0-0	0-0	2-2	0	0	0	1	0	0	0	0	3	0
32	COBB, JHYRAH	F	0	0-0	0-0	0-0	0	0	0	0	0	0	0	0	0	0
40	CAMPBELL, MARIAH	F	0	0-0	0-0	0-0	0	0	0	1	0	0	0	0	4	-3
	TEAM						0	0	0	0		0				
	TOTALS		19	7-15	1-4	4-4	1	3	4	8	3	2	1	2	50	

Shooting By Period

Period	FG	FG%	3FG	3FG%	FT	FT%
2nd Half	0-0	0%	0-0	0%	0-0	0%
Game	20-64	31.3%	5-20	25.0%	10-15	66.7%

Deadball Rebounds: 3,0

Rice 41

No.	Player	S	Pts	FG	3FG	FT	OR	DR	TR	PF	A	TO	Blk	Stl	Min	+/-
02	WIGGINS, SYDNE	G	2	1-1	0-0	0-0	1	0	1	0	0	0	0	0	9	-4
10	SMITH, JASMINE	G	1	0-1	0-0	1-2	0	1	1	0	0	2	0	0	8	-2
13	OGWUMIKE, ERICA	G	8	3-3	0-0	2-4	0	4	4	1	2	2	0	0	9	1
15	SCHWARTZ, LAUREN	F	0	0-2	0-1	0-0	0	1	1	0	0	0	0	0	6	-2
32	MULKEY, NANCY	C	3	1-2	0-0	1-2	1	1	2	0	0	0	0	0	5	-2
03	CROSTHWAIT, KATELYN	G	0	0-0	0-0	0-0	0	0	0	0	0	0	0	0	0	0
05	JACKSON, DESTINY	G	2	0-0	0-0	2-2	0	0	0	0	0	0	0	0	2	0
11	SWAYZE, HAYLEE	G	0	0-0	0-0	0-0	0	0	0	0	0	0	0	0	1	-1
12	BELLAMY, INDIA	F	0	0-0	0-0	0-0	0	0	0	0	0	0	0	0	0	0
21	MCCURRY, ARIANNA	C	0	0-0	0-0	0-0	0	0	0	0	0	0	0	0	0	0
22	AUSTIN, ASHLEE	F	1	0-1	0-1	1-2	1	0	1	0	0	1	0	1	6	0
23	CHRISMAN, ALEXAH	C	0	0-0	0-0	0-0	0	0	0	0	0	0	0	0	1	-3
24	ALAO, TEMI	F	0	0-0	0-0	0-0	0	0	0	0	0	0	0	0	0	0
25	ELLIG, KENDALL	F	0	0-0	0-0	0-0	0	0	0	2	0	1	0	0	4	3
	TEAM						1	0	1	0		0				
	TOTALS		17	5-10	0-2	7-12	4	7	11	3	2	6	0	1	50	

Shooting By Period

Period	FG	FG%	3FG	3FG%	FT	FT%
2nd Half	0-0	0%	0-0	0%	0-0	0%
Game	24-45	53.3%	2-12	16.7%	27-39	69.2%

Deadball Rebounds: 6,0

Game Notes:

Officials: Travis Jones, Chris Saucedo, Demoya Williams
Attendance: 1124

Start Time: 03:06 PM ET
End Time: 05:02 PM ET
Game Duration: 1:56

Score	1st	2nd	3rd	4th	TOT
PRV	4	12	19	20	55
Ric	20	16	17	24	77

Points from (This Period)	PRV	Ric
In the Paint	2	8
Off Turns	6	3
2nd Chance	2	2
Fast Break	0	4
Bench	4	3

Official Play-By-Play
Prairie View vs Rice
Third Quarter
December 15, 2019 at Tudor Fieldhouse - Houston



Period 3

Starters:

Prairie View: 1 PETERS, BERNESHA (G); 11 ROSENAL, DIANA (G); 12 NEWMAN, DOMINIQUE (G); 20 WILLIAMS, KE'ASIA (F); 23 PAUL, KENNEDY (F);
Rice: 2 WIGGINS, SYDNE (G); 10 SMITH, JASMINE (G); 13 OGWUMIKE, ERICA (G); 15 SCHWARTZ, LAUREN (F); 32 MULKEY, NANCY (C);

Time	VISITORS: Prairie View	Score	Margin	HOME: Rice
10:00				SUB OUT: JACKSON, DESTINY
10:00				SUB OUT: BELLAMY, INDIA
10:00				SUB OUT: CHRISMAN, ALEXAH
10:00				SUB IN: WIGGINS, SYDNE
10:00				SUB IN: SCHWARTZ, LAUREN
10:00				SUB IN: MULKEY, NANCY
10:00	SUB OUT: TOLBERT, KEAYNNA			
10:00	SUB IN: HEARD, KENNEDI			
09:44	MISSED JUMPER by HEARD, KENNEDI			
09:41				REBOUND (DEF) by OGWUMIKE, ERICA
09:39				TURNOVER (TRAVEL) by SMITH, JASMINE
09:24	GOOD! JUMPER by ROSENAL, DIANA	36-18	H 18	
09:24	ASSIST by PAUL, KENNEDY			
09:11				MISSED LAYUP by SCHWARTZ, LAUREN
09:11	BLOCK by PAUL, KENNEDY			
09:11				REBOUND (OFF) by TEAM
09:10	SUB OUT: PAUL, KENNEDY			
09:10	SUB IN: CAMPBELL, MARIAH			
09:08				MISSED 3PTR by SCHWARTZ, LAUREN
09:03				REBOUND (OFF) by WIGGINS, SYDNE
08:46	FOUL (PERSONAL) by WILLIAMS, KE'ASIA			
08:46		37-18	H 19	GOOD! FT by OGWUMIKE, ERICA
08:46				MISSED FT by OGWUMIKE, ERICA
08:43	REBOUND (DEF) by WILLIAMS, KE'ASIA			
08:26	MISSED JUMPER by ROSENAL, DIANA			
08:23				REBOUND (DEF) by OGWUMIKE, ERICA
08:04				TURNOVER (BADPASS) by OGWUMIKE, ERICA
08:04	STEAL by PETERS, BERNESHA			
07:38	MISSED 3PTR by PETERS, BERNESHA			
07:35				REBOUND (DEF) by SMITH, JASMINE
07:30		39-18	H 21	GOOD! LAYUP by WIGGINS, SYDNE [FB/PNT]
07:30				ASSIST by OGWUMIKE, ERICA
07:15	GOOD! JUMPER by ROSENAL, DIANA	39-20	H 19	
06:54				SUB OUT: SCHWARTZ, LAUREN
06:54				SUB IN: SWAYZE, HAYLEE
06:54	SUB OUT: HEARD, KENNEDI			
06:54	SUB OUT: CAMPBELL, MARIAH			
06:54	SUB IN: GREEN, KENNEDI			
06:54	SUB IN: WILLIAMS, RACHEL			
06:49		41-20	H 21	GOOD! JUMPER by MULKEY, NANCY [PNT]
06:49				ASSIST by OGWUMIKE, ERICA
06:20	GOOD! JUMPER by PETERS, BERNESHA	41-22	H 19	
06:01				MISSED JUMPER by SMITH, JASMINE
06:00				REBOUND (OFF) by MULKEY, NANCY
06:00	FOUL (PERSONAL) by WILLIAMS, RACHEL			
06:00				MISSED FT by MULKEY, NANCY
06:00				REBOUND (OFF) by TEAM
06:00		42-22	H 20	GOOD! FT by MULKEY, NANCY
05:39				FOUL (PERSONAL) by OGWUMIKE, ERICA
05:39	SUB OUT: WILLIAMS, KE'ASIA			
05:39	SUB IN: PAUL, KENNEDY			
05:39	GOOD! FT by WILLIAMS, RACHEL	42-23	H 19	
05:39	GOOD! FT by WILLIAMS, RACHEL	42-24	H 18	
05:39				SUB OUT: SWAYZE, HAYLEE
05:39				SUB IN: AUSTIN, ASHLEE
05:23				MISSED JUMPER by MULKEY, NANCY
05:19				REBOUND (OFF) by AUSTIN, ASHLEE
05:18				TURNOVER (BADPASS) by SMITH, JASMINE
05:18	SUB OUT: GREEN, KENNEDI			
05:18	SUB IN: TOLBERT, KEAYNNA			
04:59	MISSED JUMPER by PETERS, BERNESHA			
04:56				REBOUND (DEF) by MULKEY, NANCY
04:56				SUB OUT: MULKEY, NANCY
04:56				SUB IN: ELLIG, KENDALL
04:56	SUB OUT: WILLIAMS, RACHEL			
04:56	SUB IN: WILLIAMS, KE'ASIA			
04:56	SUB OUT: WILLIAMS, KE'ASIA			
04:56	SUB IN: WILLIAMS, RACHEL			
04:54				TURNOVER (BADPASS) by ELLIG, KENDALL

Time	VISITORS: Prairie View	Score	Margin	HOME: Rice
04:54	STEAL by ROSENTAL, DIANA			
04:53	TURNOVER (DRIBBLING) by ROSENTAL, DIANA			
04:22		44-24	H 20	GOOD! JUMPER by OGWUMIKE, ERICA [PNT]
04:01	GOOD! 3PTR by PAUL, KENNEDY	44-27	H 17	
04:01	ASSIST by PETERS, BERNESHA			
03:43		46-27	H 19	GOOD! JUMPER by OGWUMIKE, ERICA
03:43	FOUL (PERSONAL) by PETERS, BERNESHA			
03:43	SUB OUT: TOLBERT, KEAYNNA			
03:43	SUB OUT: WILLIAMS, RACHEL			
03:43	SUB IN: HEARD, KENNEDI			
03:43	SUB IN: WILLIAMS, KE'ASIA			
03:43				MISSED FT by OGWUMIKE, ERICA
03:42	REBOUND (DEF) by HEARD, KENNEDI			
03:42				FOUL (PERSONAL) by ELLIG, KENDALL
03:14	MISSED JUMPER by PETERS, BERNESHA			
03:11				REBOUND (DEF) by OGWUMIKE, ERICA
02:56	FOUL (PERSONAL) by HEARD, KENNEDI			
02:56	SUB OUT: ROSENTAL, DIANA			
02:56	SUB IN: GREEN, KENNEDI			
02:50				MISSED 3PTR by AUSTIN, ASHLEE
02:46	REBOUND (DEF) by WILLIAMS, KE'ASIA			
02:38	MISSED 3PTR by PAUL, KENNEDY			
02:34				REBOUND (DEF) by OGWUMIKE, ERICA
02:25				TURNOVER (BADPASS) by OGWUMIKE, ERICA
02:25	SUB OUT: HEARD, KENNEDI			
02:25	SUB IN: CAMPBELL, MARIAH			
02:25				SUB OUT: WIGGINS, SYDNE
02:25				SUB IN: SCHWARTZ, LAUREN
02:12	GOOD! JUMPER by PAUL, KENNEDY	46-29	H 17	
02:12	ASSIST by GREEN, KENNEDI			
02:10	FOUL (PERSONAL) by PETERS, BERNESHA			
02:10	SUB OUT: PETERS, BERNESHA			
02:10	SUB IN: PEREZ, TATYANA			
02:10				MISSED FT by SMITH, JASMINE
02:10				REBOUND (OFF) by TEAM
02:10		47-29	H 18	GOOD! FT by SMITH, JASMINE [FB]
02:10				SUB OUT: SMITH, JASMINE
02:10				SUB IN: JACKSON, DESTINY
01:49	MISSED 3PTR by PAUL, KENNEDY			
01:45				REBOUND (DEF) by SCHWARTZ, LAUREN
01:27		49-29	H 20	GOOD! LAYUP by OGWUMIKE, ERICA
01:27	FOUL (PERSONAL) by CAMPBELL, MARIAH			
01:27		50-29	H 21	GOOD! FT by OGWUMIKE, ERICA
01:04				FOUL (PERSONAL) by ELLIG, KENDALL
01:04				SUB OUT: OGWUMIKE, ERICA
01:04				SUB IN: WIGGINS, SYDNE
01:04	SUB OUT: GREEN, KENNEDI			
01:04	SUB OUT: CAMPBELL, MARIAH			
01:04	SUB IN: MARTIN, JADAH			
01:04	SUB IN: HEARD, KENNEDI			
01:04				SUB OUT: ELLIG, KENDALL
01:04				SUB IN: CHRISMAN, ALEXAH
01:04	GOOD! FT by PAUL, KENNEDY	50-30	H 20	
01:04	GOOD! FT by PAUL, KENNEDY	50-31	H 19	
00:54	FOUL (PERSONAL) by PEREZ, TATYANA			
00:54		51-31	H 20	GOOD! FT by JACKSON, DESTINY
00:54		52-31	H 21	GOOD! FT by JACKSON, DESTINY
00:42	TURNOVER (BADPASS) by PAUL, KENNEDY			
00:42				STEAL by AUSTIN, ASHLEE
00:39	FOUL (PERSONAL) by HEARD, KENNEDI			
00:39	SUB OUT: HEARD, KENNEDI			
00:39	SUB IN: ROSENTAL, DIANA			
00:39				MISSED FT by AUSTIN, ASHLEE
00:39				REBOUND (OFF) by TEAM
00:39		53-31	H 22	GOOD! FT by AUSTIN, ASHLEE [FB]
00:32	MISSED JUMPER by MARTIN, JADAH			
00:29	REBOUND (OFF) by MARTIN, JADAH			
00:28	GOOD! LAYUP by MARTIN, JADAH	53-33	H 20	
00:14				TURNOVER (BADPASS) by AUSTIN, ASHLEE
00:01	GOOD! JUMPER by ROSENTAL, DIANA	53-35	H 18	

Prairie View 35, Rice 53

Points from (This Period)	PRV	Ric
In the Paint	2	8
Off Turns	6	3
2nd Chance	2	2
Fast Break	0	4
Bench	4	3

Official Box Score
Prairie View vs Rice
Fourth Quarter Statistics Only
December 15, 2019 at Tudor Fieldhouse - Houston



Prairie View 20

No.	Player	S	Pts	FG	3FG	FT	OR	DR	TR	PF	A	TO	Blk	Stl	Min	+/-
01	PETERS, BERNESHA	G	7	2-5	1-3	2-2	0	0	0	0	1	0	0	1	6	-3
11	ROSENTAL, DIANA	G	5	2-3	0-0	1-3	0	0	0	1	0	1	0	1	9	0
12	NEWMAN, DOMINIQUE	G	0	0-0	0-0	0-2	1	0	1	0	0	0	0	0	2	-4
20	WILLIAMS, KE'ASIA	F	2	1-1	0-0	0-0	0	1	1	2	0	0	1	0	8	0
23	PAUL, KENNEDY	F	0	0-5	0-1	0-0	0	2	2	0	0	1	0	0	9	-6
02	PEREZ, TATYANA	G	0	0-0	0-0	0-0	0	0	0	0	0	0	0	0	3	-8
04	TOLBERT, KEAYNNA	G	4	1-1	1-1	1-2	0	0	0	1	0	0	0	2	4	8
05	MARTIN, JADAH	G	0	0-1	0-0	0-0	0	0	0	0	1	0	0	0	4	-1
10	GREEN, KENNEDI	G	0	0-0	0-0	0-0	0	0	0	0	0	1	0	0	2	-4
14	HEARD, KENNEDI	F	0	0-0	0-0	0-0	0	0	0	0	0	0	0	0	0	0
22	WILLIAMS, RACHEL	F	2	0-0	0-0	2-2	0	0	0	1	0	0	0	0	1	2
32	COBB, JHYRAH	F	0	0-0	0-0	0-0	0	0	0	0	0	0	0	0	0	0
40	CAMPBELL, MARIAH	F	0	0-0	0-0	0-0	0	0	0	0	0	1	0	0	2	-4
	TEAM						3	0	3	0		0				
TOTALS			20	6-16	2-5	6-11	4	3	7	5	2	4	1	4	50	

Shooting By Period

Period	FG	FG%	3FG	3FG%	FT	FT%
Game	20-64	31.3%	5-20	25.0%	10-15	66.7%

Deadball Rebounds: 3,0

Rice 24

No.	Player	S	Pts	FG	3FG	FT	OR	DR	TR	PF	A	TO	Blk	Stl	Min	+/-
02	WIGGINS, SYDNE	G	0	0-0	0-0	0-0	0	0	0	2	1	1	1	0	5	4
10	SMITH, JASMINE	G	0	0-0	0-0	0-0	0	0	0	0	0	0	0	0	3	1
13	OGWUMIKE, ERICA	G	0	0-0	0-0	0-0	0	0	0	2	0	0	0	0	2	-3
15	SCHWARTZ, LAUREN	F	4	2-2	0-0	0-0	0	1	1	2	1	1	0	0	4	1
32	MULKEY, NANCY	C	4	1-1	0-0	2-2	0	0	0	0	0	0	0	0	3	1
03	CROSTHWAIT, KATELYN	G	3	1-2	1-1	0-0	0	2	2	0	1	0	0	0	5	2
05	JACKSON, DESTINY	G	4	2-2	0-0	0-0	0	1	1	0	0	2	0	0	7	3
11	SWAYZE, HAYLEE	G	0	0-1	0-1	0-0	0	1	1	0	1	1	1	0	5	2
12	BELLAMY, INDIA	F	2	0-0	0-0	2-2	0	1	1	0	1	1	0	0	6	3
21	MCCURRY, ARIANNA	C	4	2-2	0-0	0-0	0	0	0	1	1	0	0	0	3	0
22	AUSTIN, ASHLEE	F	0	0-0	0-0	0-0	0	1	1	0	0	0	0	0	3	3
23	CHRISMAN, ALEXAH	C	0	0-0	0-0	0-0	0	0	0	0	0	0	0	0	0	0
24	ALAO, TEMI	F	3	1-1	0-0	1-3	1	1	2	1	0	1	0	1	4	3
25	ELLIG, KENDALL	F	0	0-0	0-0	0-0	0	0	0	0	0	0	0	0	0	0
	TEAM						0	0	0	0		1				
TOTALS			24	9-11	1-2	5-7	1	8	9	8	6	8	2	1	50	

Shooting By Period

Period	FG	FG%	3FG	3FG%	FT	FT%
Game	24-45	53.3%	2-12	16.7%	27-39	69.2%

Deadball Rebounds: 6,0

Game Notes:

Officials: Travis Jones, Chris Saucedo, Demoya Williams
 Attendance: 1124

Start Time: 03:06 PM ET
 End Time: 05:02 PM ET
 Game Duration: 1:56

Score	1st	2nd	3rd	4th	TOT
PRV	4	12	19	20	55
Ric	20	16	17	24	77

Points from (This Period)	PRV	Ric
In the Paint	2	14
Off Turns	10	4
2nd Chance	4	2
Fast Break	1	9
Bench	6	16

**Official Play-By-Play
Prairie View vs Rice
Fourth Quarter
December 15, 2019 at Tudor Fieldhouse - Houston**



Period 4

Starters:

Prairie View: 1 PETERS, BERNESHA (G); 11 ROSENTAL, DIANA (G); 12 NEWMAN, DOMINIQUE (G); 20 WILLIAMS, KE'ASIA (F); 23 PAUL, KENNEDY (F);
Rice: 2 WIGGINS, SYDNE (G); 10 SMITH, JASMINE (G); 13 OGWUMIKE, ERICA (G); 15 SCHWARTZ, LAUREN (F); 32 MULKEY, NANCY (C);

Time	VISITORS: Prairie View	Score	Margin	HOME: Rice
09:59				SUB OUT: JACKSON, DESTINY
09:59				SUB OUT: AUSTIN, ASHLEE
09:59				SUB OUT: CHRISMAN, ALEXAH
09:59				SUB IN: SMITH, JASMINE
09:59				SUB IN: OGWUMIKE, ERICA
09:59				SUB IN: MULKEY, NANCY
09:59	SUB OUT: PEREZ, TATYANA			
09:59	SUB IN: TOLBERT, KEAYNNA			
09:51	GOOD! JUMPER by WILLIAMS, KE'ASIA	53-37	H 16	
09:32		55-37	H 18	GOOD! LAYUP by MULKEY, NANCY
09:32				ASSIST by WIGGINS, SYDNE
09:10				FOUL (PERSONAL) by OGWUMIKE, ERICA
09:10	MISSED FT by ROSENTAL, DIANA			
09:10	REBOUND (OFF) by TEAM			
09:10	GOOD! FT by ROSENTAL, DIANA	55-38	H 17	
08:46				TURNOVER (BADPASS) by WIGGINS, SYDNE
08:46	STEAL by TOLBERT, KEAYNNA			
08:38	MISSED JUMPER by ROSENTAL, DIANA			
08:38				BLOCK by WIGGINS, SYDNE
08:38	REBOUND (OFF) by TEAM			
08:21	GOOD! JUMPER by ROSENTAL, DIANA	55-40	H 15	
08:21	ASSIST by MARTIN, JADAH			
08:21				FOUL (PERSONAL) by OGWUMIKE, ERICA
08:21				SUB OUT: OGWUMIKE, ERICA
08:21				SUB IN: AUSTIN, ASHLEE
08:18	MISSED FT by ROSENTAL, DIANA			
08:21	MISSED JUMPER by MARTIN, JADAH			
08:19				REBOUND (DEF) by SCHWARTZ, LAUREN
08:18	REBOUND (OFF) by TEAM			
07:49	FOUL (PERSONAL) by TOLBERT, KEAYNNA			
07:49	SUB OUT: MARTIN, JADAH			
07:49	SUB IN: PETERS, BERNESHA			
07:49	SUB OUT: TOLBERT, KEAYNNA			
07:49	SUB IN: NEWMAN, DOMINIQUE			
07:49		56-40	H 16	GOOD! FT by MULKEY, NANCY
07:49		57-40	H 17	GOOD! FT by MULKEY, NANCY
07:36				FOUL (PERSONAL) by SCHWARTZ, LAUREN
07:23				FOUL (PERSONAL) by WIGGINS, SYDNE
07:23	MISSED FT by NEWMAN, DOMINIQUE			
07:23	REBOUND (OFF) by TEAM			
07:22	MISSED FT by NEWMAN, DOMINIQUE			
07:20				REBOUND (DEF) by AUSTIN, ASHLEE
07:16		59-40	H 19	GOOD! LAYUP by SCHWARTZ, LAUREN [FB]
07:13	SUB OUT: PAUL, KENNEDY			
07:13	SUB IN: WILLIAMS, RACHEL			
07:06	FOUL (OFF) by ROSENTAL, DIANA			
07:06	TURNOVER (OFFENSIVE) by ROSENTAL, DIANA			
07:06				SUB OUT: SMITH, JASMINE
07:06				SUB IN: JACKSON, DESTINY
07:06				SUB OUT: MULKEY, NANCY
07:06				SUB IN: ALAO, TEMI
07:02				TURNOVER (LOSTBALL) by SCHWARTZ, LAUREN
07:02	STEAL by PETERS, BERNESHA			
06:48	MISSED 3PTR by PETERS, BERNESHA			
06:43	REBOUND (OFF) by NEWMAN, DOMINIQUE			
06:41				FOUL (PERSONAL) by WIGGINS, SYDNE
06:41				TURNOVER (LOSTBALL) by JACKSON, DESTINY
06:41	STEAL by ROSENTAL, DIANA			
06:33				FOUL (PERSONAL) by SCHWARTZ, LAUREN
06:33	GOOD! FT by PETERS, BERNESHA	59-43	H 16	
06:33	GOOD! FT by PETERS, BERNESHA	59-44	H 15	
06:33	SUB OUT: ROSENTAL, DIANA			
06:33	SUB IN: PEREZ, TATYANA			
06:29		61-44	H 17	GOOD! LAYUP by ALAO, TEMI [FB]
06:29				ASSIST by SCHWARTZ, LAUREN
06:29	FOUL (PERSONAL) by WILLIAMS, RACHEL			
06:29	SUB OUT: WILLIAMS, RACHEL			
06:29	SUB IN: PAUL, KENNEDY			
06:29				MISSED FT by ALAO, TEMI
06:27	REBOUND (DEF) by WILLIAMS, KE'ASIA			

Time	VISITORS: Prairie View	Score	Margin	HOME: Rice
06:23	MISSED 3PTR by PETERS, BERNESHA			
06:19				REBOUND (DEF) by ALAO, TEMI
06:16		63-44	H 19	GOOD! LAYUP by SCHWARTZ, LAUREN [FB/PNT]
05:58	MISSED JUMPER by PAUL, KENNEDY			
05:54				REBOUND (DEF) by JACKSON, DESTINY
05:51	FOUL (PERSONAL) by WILLIAMS, KE'ASIA			
05:51				SUB OUT: SCHWARTZ, LAUREN
05:51				SUB OUT: AUSTIN, ASHLEE
05:51				SUB IN: SWAYZE, HAYLEE
05:51				SUB IN: BELLAMY, INDIA
05:51	SUB OUT: PETERS, BERNESHA			
05:51	SUB OUT: NEWMAN, DOMINIQUE			
05:51	SUB OUT: WILLIAMS, KE'ASIA			
05:51	SUB IN: MARTIN, JADAH			
05:51	SUB IN: ROSENTAL, DIANA			
05:51	SUB IN: CAMPBELL, MARIAH			
05:51		64-44	H 20	GOOD! FT by ALAO, TEMI [FB]
05:51				MISSED FT by ALAO, TEMI
05:49	REBOUND (DEF) by PAUL, KENNEDY			
05:36	TURNOVER (BADPASS) by PAUL, KENNEDY			
05:36				STEAL by ALAO, TEMI
05:24				SUB OUT: SWAYZE, HAYLEE
05:24				SUB IN: CROSTHWAIT, KATELYN
05:23				MISSED JUMPER by CROSTHWAIT, KATELYN
05:19				REBOUND (OFF) by ALAO, TEMI
05:12		66-44	H 22	GOOD! JUMPER by JACKSON, DESTINY
05:02				SUB OUT: WIGGINS, SYDNE
05:02				SUB IN: SWAYZE, HAYLEE
04:51	GOOD! JUMPER by ROSENTAL, DIANA	66-46	H 20	
04:30		69-46	H 23	GOOD! 3PTR by CROSTHWAIT, KATELYN
04:30				ASSIST by SWAYZE, HAYLEE
04:09	TURNOVER (BADPASS) by CAMPBELL, MARIAH			
04:09				
06:41	GOOD! FT by WILLIAMS, RACHEL	59-41	H 18	
06:41	GOOD! FT by WILLIAMS, RACHEL	59-42	H 17	
04:09	SUB OUT: MARTIN, JADAH			
04:09	SUB OUT: CAMPBELL, MARIAH			
04:09	SUB IN: PETERS, BERNESHA			
04:09	SUB IN: WILLIAMS, KE'ASIA			
04:04				TURNOVER (BADPASS) by BELLAMY, INDIA
04:04	SUB OUT: PEREZ, TATYANA			
04:04	SUB IN: GREEN, KENNEDI			
03:56	MISSED 3PTR by PAUL, KENNEDY			
03:53				REBOUND (DEF) by SWAYZE, HAYLEE
03:45				FOUL (OFF) by ALAO, TEMI
03:45				TURNOVER (OFFENSIVE) by ALAO, TEMI
03:45				SUB OUT: ALAO, TEMI
03:45				SUB IN: MCCURRY, ARIANNA
03:17	TURNOVER (BADPASS) by GREEN, KENNEDI			
02:56		71-46	H 25	GOOD! LAYUP by JACKSON, DESTINY
02:56				ASSIST by MCCURRY, ARIANNA
02:43	MISSED JUMPER by PAUL, KENNEDY			
02:40				REBOUND (DEF) by CROSTHWAIT, KATELYN
02:35		73-46	H 27	GOOD! LAYUP by MCCURRY, ARIANNA
02:35				ASSIST by BELLAMY, INDIA
02:10	MISSED JUMPER by PAUL, KENNEDY			
02:10				BLOCK by SWAYZE, HAYLEE
02:09	REBOUND (OFF) by TEAM			
02:08	MISSED JUMPER by PAUL, KENNEDY			
02:07				REBOUND (DEF) by BELLAMY, INDIA
02:07	FOUL (PERSONAL) by WILLIAMS, KE'ASIA			
02:07	SUB OUT: GREEN, KENNEDI			
02:07	SUB IN: TOLBERT, KEAYNNA			
02:07		74-46	H 28	GOOD! FT by BELLAMY, INDIA [FB]
02:07		75-46	H 29	GOOD! FT by BELLAMY, INDIA [FB]
01:51	MISSED LAYUP by PETERS, BERNESHA			
01:48				REBOUND (DEF) by CROSTHWAIT, KATELYN
01:44		77-46	H 31	GOOD! JUMPER by MCCURRY, ARIANNA [PNT]
01:44				ASSIST by CROSTHWAIT, KATELYN
01:36	GOOD! 3PTR by TOLBERT, KEAYNNA	77-49	H 28	
01:36	ASSIST by PETERS, BERNESHA			
01:03				MISSED 3PTR by SWAYZE, HAYLEE
01:03	BLOCK by WILLIAMS, KE'ASIA			
00:57	REBOUND (DEF) by PAUL, KENNEDY			
00:53	GOOD! JUMPER by PETERS, BERNESHA	77-51	H 26	
00:52				TURNOVER (BADPASS) by SWAYZE, HAYLEE
00:32	GOOD! 3PTR by PETERS, BERNESHA	77-54	H 23	
00:30				TURNOVER (BADPASS) by JACKSON, DESTINY
00:30	STEAL by TOLBERT, KEAYNNA			
00:30				FOUL (PERSONAL) by MCCURRY, ARIANNA

Time	VISITORS: Prairie View	Score	Margin	HOME: Rice
00:30				SUB OUT: SWAYZE, HAYLEE
00:30				SUB OUT: MCCURRY, ARIANNA
00:30				SUB IN: AUSTIN, ASHLEE
00:30				SUB IN: ALAO, TEMI
00:30	MISSED FT by TOLBERT, KEAYNNA			
00:30	REBOUND (OFF) by TEAM			
00:30	GOOD! FT by TOLBERT, KEAYNNA [FB]	77-55	H 22	
00:00				TURNOVER (SHOTCLOCK) by TEAM

Prairie View 55, Rice 77

Points from (This Period)	PRV	Ric
In the Paint	2	14
Off Turns	10	4
2nd Chance	4	2
Fast Break	1	9
Bench	6	16

Official Scoring/Possession Reference Chart
Prairie View vs Rice
Period 1
December 15, 2019 at Tudor Fieldhouse - Houston



Period 1

Starters:

Prairie View: 1 PETERS, BERNESHA (G); 11 ROSENTAL, DIANA (G); 12 NEWMAN, DOMINIQUE (G); 20 WILLIAMS, KE'ASIA (F); 23 PAUL, KENNEDY (F);
Rice: 2 WIGGINS, SYDNE (G); 10 SMITH, JASMINE (G); 13 OGWUMIKE, ERICA (G); 15 SCHWARTZ, LAUREN (F); 32 MULKEY, NANCY (C);

Time	VISITORS: Prairie View	Score	Margin	HOME: Rice
09:50		2-0	H 2	GOOD! LAYUP by OGWUMIKE, ERICA
09:20		4-0	H 4	GOOD! JUMPER by MULKEY, NANCY
08:32	GOOD! LAYUP by NEWMAN, DOMINIQUE	4-2	H 2	
08:16		6-2	H 4	GOOD! LAYUP by OGWUMIKE, ERICA
07:20		8-2	H 6	GOOD! LAYUP by SCHWARTZ, LAUREN
07:00		9-2	H 7	GOOD! FT by OGWUMIKE, ERICA [FB]
06:06		10-2	H 8	GOOD! FT by OGWUMIKE, ERICA [FB]
06:06		11-2	H 9	GOOD! FT by OGWUMIKE, ERICA [FB]
04:55		14-2	H 12	GOOD! 3PTR by WIGGINS, SYDNE
04:21		16-2	H 14	GOOD! LAYUP by SCHWARTZ, LAUREN
03:56		17-2	H 15	GOOD! FT by SMITH, JASMINE [FB]
03:56		18-2	H 16	GOOD! FT by SMITH, JASMINE [FB]
03:46	GOOD! JUMPER by PAUL, KENNEDY	18-4	H 14	
02:24		19-4	H 15	GOOD! FT by OGWUMIKE, ERICA
02:24		20-4	H 16	GOOD! FT by OGWUMIKE, ERICA

Prairie View 4, Rice 20

**Official Scoring/Possession Reference Chart
 Prairie View vs Rice
 Period 2
 December 15, 2019 at Tudor Fieldhouse - Houston**



Period 2

Starters:

Prairie View: 1 PETERS, BERNESHA (G); 11 ROSENTAL, DIANA (G); 12 NEWMAN, DOMINIQUE (G); 20 WILLIAMS, KE'ASIA (F); 23 PAUL, KENNEDY (F);
Rice: 2 WIGGINS, SYDNE (G); 10 SMITH, JASMINE (G); 13 OGWUMIKE, ERICA (G); 15 SCHWARTZ, LAUREN (F); 32 MULKEY, NANCY (C);

Time	VISITORS: Prairie View	Score	Margin	HOME: Rice
09:37		22-4	H 18	GOOD! LAYUP by OGWUMIKE, ERICA
08:19	GOOD! JUMPER by WILLIAMS, KE'ASIA	22-6	H 16	
08:03		24-6	H 18	GOOD! LAYUP by MULKEY, NANCY
07:29		25-6	H 19	GOOD! FT by SCHWARTZ, LAUREN
07:29		26-6	H 20	GOOD! FT by SCHWARTZ, LAUREN
06:42	GOOD! 3PTR by NEWMAN, DOMINIQUE	26-9	H 17	
06:24		27-9	H 18	GOOD! FT by OGWUMIKE, ERICA
06:24		28-9	H 19	GOOD! FT by OGWUMIKE, ERICA
06:00	GOOD! 3PTR by PETERS, BERNESHA	28-12	H 16	
04:51	GOOD! JUMPER by PETERS, BERNESHA	28-14	H 14	
04:33		30-14	H 16	GOOD! JUMPER by SMITH, JASMINE [PNT]
03:06		32-14	H 18	GOOD! LAYUP by OGWUMIKE, ERICA
01:59		33-14	H 19	GOOD! FT by JACKSON, DESTINY
01:59		34-14	H 20	GOOD! FT by JACKSON, DESTINY
00:21		35-14	H 21	GOOD! FT by OGWUMIKE, ERICA
00:21		36-14	H 22	GOOD! FT by OGWUMIKE, ERICA
00:00	GOOD! JUMPER by PETERS, BERNESHA	36-16	H 20	

Prairie View 16, Rice 36

**Official Scoring/Possession Reference Chart
 Prairie View vs Rice
 Period 3
 December 15, 2019 at Tudor Fieldhouse - Houston**



Period 3

Starters:

Prairie View: 1 PETERS, BERNESHA (G); 11 ROSENTAL, DIANA (G); 12 NEWMAN, DOMINIQUE (G); 20 WILLIAMS, KE'ASIA (F); 23 PAUL, KENNEDY (F);
Rice: 2 WIGGINS, SYDNE (G); 10 SMITH, JASMINE (G); 13 OGWUMIKE, ERICA (G); 15 SCHWARTZ, LAUREN (F); 32 MULKEY, NANCY (C);

Time	VISITORS: Prairie View	Score	Margin	HOME: Rice
09:24	GOOD! JUMPER by ROSENTAL, DIANA	36-18	H 18	
08:46		37-18	H 19	GOOD! FT by OGWUMIKE, ERICA
07:30		39-18	H 21	GOOD! LAYUP by WIGGINS, SYDNE [FB/PNT]
07:15	GOOD! JUMPER by ROSENTAL, DIANA	39-20	H 19	
06:49		41-20	H 21	GOOD! JUMPER by MULKEY, NANCY [PNT]
06:20	GOOD! JUMPER by PETERS, BERNESHA	41-22	H 19	
06:00		42-22	H 20	GOOD! FT by MULKEY, NANCY
05:39	GOOD! FT by WILLIAMS, RACHEL	42-23	H 19	
05:39	GOOD! FT by WILLIAMS, RACHEL	42-24	H 18	
04:22		44-24	H 20	GOOD! JUMPER by OGWUMIKE, ERICA [PNT]
04:01	GOOD! 3PTR by PAUL, KENNEDY	44-27	H 17	
03:43		46-27	H 19	GOOD! JUMPER by OGWUMIKE, ERICA
02:12	GOOD! JUMPER by PAUL, KENNEDY	46-29	H 17	
02:10		47-29	H 18	GOOD! FT by SMITH, JASMINE [FB]
01:27		49-29	H 20	GOOD! LAYUP by OGWUMIKE, ERICA
01:27		50-29	H 21	GOOD! FT by OGWUMIKE, ERICA
01:04	GOOD! FT by PAUL, KENNEDY	50-30	H 20	
01:04	GOOD! FT by PAUL, KENNEDY	50-31	H 19	
00:54		51-31	H 20	GOOD! FT by JACKSON, DESTINY
00:54		52-31	H 21	GOOD! FT by JACKSON, DESTINY
00:39		53-31	H 22	GOOD! FT by AUSTIN, ASHLEE [FB]
00:28	GOOD! LAYUP by MARTIN, JADAH	53-33	H 20	
00:01	GOOD! JUMPER by ROSENTAL, DIANA	53-35	H 18	

Prairie View 35, Rice 53

Official Scoring/Possession Reference Chart
Prairie View vs Rice
Period 4
December 15, 2019 at Tudor Fieldhouse - Houston



Period 4

Starters:

Prairie View: 1 PETERS, BERNESHA (G); 11 ROSENAL, DIANA (G); 12 NEWMAN, DOMINIQUE (G); 20 WILLIAMS, KE'ASIA (F); 23 PAUL, KENNEDY (F);
Rice: 2 WIGGINS, SYDNE (G); 10 SMITH, JASMINE (G); 13 OGWUMIKE, ERICA (G); 15 SCHWARTZ, LAUREN (F); 32 MULKEY, NANCY (C);

Time	VISITORS: Prairie View	Score	Margin	HOME: Rice
09:51	GOOD! JUMPER by WILLIAMS, KE'ASIA	53-37	H 16	
09:32		55-37	H 18	GOOD! LAYUP by MULKEY, NANCY
09:10	GOOD! FT by ROSENAL, DIANA	55-38	H 17	
08:21	GOOD! JUMPER by ROSENAL, DIANA	55-40	H 15	
07:49		56-40	H 16	GOOD! FT by MULKEY, NANCY
07:49		57-40	H 17	GOOD! FT by MULKEY, NANCY
07:16		59-40	H 19	GOOD! LAYUP by SCHWARTZ, LAUREN [FB]
06:33	GOOD! FT by PETERS, BERNESHA	59-43	H 16	
06:33	GOOD! FT by PETERS, BERNESHA	59-44	H 15	
06:29		61-44	H 17	GOOD! LAYUP by ALAO, TEMI [FB]
06:16		63-44	H 19	GOOD! LAYUP by SCHWARTZ, LAUREN [FB/PNT]
05:51		64-44	H 20	GOOD! FT by ALAO, TEMI [FB]
05:12		66-44	H 22	GOOD! JUMPER by JACKSON, DESTINY
04:51	GOOD! JUMPER by ROSENAL, DIANA	66-46	H 20	
04:30		69-46	H 23	GOOD! 3PTR by CROSTHWAIT, KATELYN
06:41	GOOD! FT by WILLIAMS, RACHEL	59-41	H 18	
06:41	GOOD! FT by WILLIAMS, RACHEL	59-42	H 17	
02:56		71-46	H 25	GOOD! LAYUP by JACKSON, DESTINY
02:35		73-46	H 27	GOOD! LAYUP by MCCURRY, ARIANNA
02:07		74-46	H 28	GOOD! FT by BELLAMY, INDIA [FB]
02:07		75-46	H 29	GOOD! FT by BELLAMY, INDIA [FB]
01:44		77-46	H 31	GOOD! JUMPER by MCCURRY, ARIANNA [PNT]
01:36	GOOD! 3PTR by TOLBERT, KEAYNNA	77-49	H 28	
00:53	GOOD! JUMPER by PETERS, BERNESHA	77-51	H 26	
00:32	GOOD! 3PTR by PETERS, BERNESHA	77-54	H 23	
00:30	GOOD! FT by TOLBERT, KEAYNNA [FB]	77-55	H 22	

Prairie View 55, Rice 77

**Official Substitutions Log
 Prairie View vs Rice
 Period 1
 December 15, 2019 at Tudor Fieldhouse - Houston**



VISITORS: Prairie View	Time	Score	HOME: Rice
1 PETERS, BERNESHA			2 WIGGINS, SYDNE
11 ROSENTAL, DIANA			10 SMITH, JASMINE
12 NEWMAN, DOMINIQUE			13 OGWUMIKE, ERICA
20 WILLIAMS, KE'ASIA			15 SCHWARTZ, LAUREN
23 PAUL, KENNEDY			32 MULKEY, NANCY
SUB OUT: 20 WILLIAMS, KE'ASIA	08:44	0-4	
SUB IN: 14 HEARD, KENNEDI	08:44		
SUB OUT: 12 NEWMAN, DOMINIQUE	07:08	2-8	
SUB IN: 2 PEREZ, TATYANA	07:08		
	07:00	2-8	SUB OUT: MULKEY, NANCY
	07:00		SUB IN: ELLIG, KENDALL
SUB OUT: 2 PEREZ, TATYANA	06:06	2-9	
SUB IN: 20 WILLIAMS, KE'ASIA	06:06		
SUB OUT: 1 PETERS, BERNESHA	05:16	2-11	
SUB OUT: 11 ROSENTAL, DIANA	05:16		
SUB OUT: 23 PAUL, KENNEDY	05:16		
SUB IN: 10 GREEN, KENNEDI	05:16		
SUB IN: 12 NEWMAN, DOMINIQUE	05:16		
SUB IN: 40 CAMPBELL, MARIAH	05:16		
	03:55	2-18	SUB OUT: SMITH, JASMINE
	03:55		SUB IN: JACKSON, DESTINY
SUB OUT: 40 CAMPBELL, MARIAH	03:55		
SUB IN: 23 PAUL, KENNEDY	03:55		
	03:27	4-18	SUB OUT: ELLIG, KENDALL
	03:27		SUB IN: MULKEY, NANCY
	02:48	4-18	SUB OUT: WIGGINS, SYDNE
	02:48		SUB IN: SMITH, JASMINE
SUB OUT: 10 GREEN, KENNEDI	02:48		
SUB IN: 1 PETERS, BERNESHA	02:48		
SUB OUT: 14 HEARD, KENNEDI	02:24	4-20	
SUB IN: 2 PEREZ, TATYANA	02:24		
	01:59	4-20	SUB OUT: OGWUMIKE, ERICA
	01:59		SUB IN: WIGGINS, SYDNE
	01:38	4-20	SUB OUT: SCHWARTZ, LAUREN
	01:38		SUB IN: SWAYZE, HAYLEE
SUB OUT: 12 NEWMAN, DOMINIQUE	01:38		
SUB IN: 5 MARTIN, JADAH	01:38		
SUB OUT: 23 PAUL, KENNEDY	00:08	4-20	
SUB IN: 32 COBB, JHYRAH	00:08		

Prairie View 4, Rice 20

**Official Substitutions Log
 Prairie View vs Rice
 Period 2
 December 15, 2019 at Tudor Fieldhouse - Houston**



VISITORS: Prairie View	Time	Score	HOME: Rice
1 PETERS, BERNESHA			2 WIGGINS, SYDNE
11 ROSENTAL, DIANA			10 SMITH, JASMINE
12 NEWMAN, DOMINIQUE			13 OGWUMIKE, ERICA
20 WILLIAMS, KE'ASIA			15 SCHWARTZ, LAUREN
23 PAUL, KENNEDY			32 MULKEY, NANCY
	10:00	-	SUB OUT: JACKSON, DESTINY
	10:00		SUB OUT: SWAYZE, HAYLEE
	10:00		SUB IN: OGWUMIKE, ERICA
	10:00		SUB IN: SCHWARTZ, LAUREN
SUB OUT: 2 PEREZ, TATYANA	09:23	4-22	
SUB OUT: 5 MARTIN, JADAH	09:23		
SUB IN: 11 ROSENTAL, DIANA	09:23		
SUB IN: 14 HEARD, KENNEDI	09:23		
SUB OUT: 11 ROSENTAL, DIANA	08:55	4-22	
SUB IN: 12 NEWMAN, DOMINIQUE	08:55		
	07:29	6-24	SUB OUT: MULKEY, NANCY
	07:29		SUB IN: ELLIG, KENDALL
SUB OUT: 14 HEARD, KENNEDI	07:29		
SUB OUT: 20 WILLIAMS, KE'ASIA	07:29		
SUB OUT: 32 COBB, JHYRAH	07:29		
SUB IN: 4 TOLBERT, KEAYNNA	07:29		
SUB IN: 23 PAUL, KENNEDY	07:29		
SUB IN: 40 CAMPBELL, MARIAH	07:29		
	07:10	6-26	SUB OUT: SMITH, JASMINE
	07:10		SUB IN: CROSTHWAIT, KATELYN
	06:57	6-26	SUB OUT: SCHWARTZ, LAUREN
	06:57		SUB IN: SMITH, JASMINE
SUB OUT: 4 TOLBERT, KEAYNNA	06:24	9-26	
SUB IN: 10 GREEN, KENNEDI	06:24		
	05:41	12-28	SUB OUT: CROSTHWAIT, KATELYN
	05:41		SUB IN: BELLAMY, INDIA
	04:10	14-30	SUB OUT: WIGGINS, SYDNE
	04:10		SUB IN: JACKSON, DESTINY
SUB OUT: 23 PAUL, KENNEDY	03:23	14-30	
SUB IN: 14 HEARD, KENNEDI	03:23		
SUB OUT: 1 PETERS, BERNESHA	03:19	14-30	
SUB OUT: 12 NEWMAN, DOMINIQUE	03:19		
SUB IN: 2 PEREZ, TATYANA	03:19		
SUB IN: 11 ROSENTAL, DIANA	03:19		
SUB OUT: 40 CAMPBELL, MARIAH	02:42	14-32	
SUB IN: 20 WILLIAMS, KE'ASIA	02:42		
	01:59	14-32	SUB OUT: ELLIG, KENDALL
	01:59		SUB IN: CHRISMAN, ALEXAH
SUB OUT: 10 GREEN, KENNEDI	01:59		
SUB IN: 1 PETERS, BERNESHA	01:59		
SUB OUT: 11 ROSENTAL, DIANA	01:59		
SUB IN: 12 NEWMAN, DOMINIQUE	01:59		
SUB OUT: 14 HEARD, KENNEDI	01:26	14-34	
SUB IN: 23 PAUL, KENNEDY	01:26		
SUB OUT: 2 PEREZ, TATYANA	00:32	14-34	
SUB IN: 11 ROSENTAL, DIANA	00:32		
SUB OUT: 12 NEWMAN, DOMINIQUE	00:21	14-34	
SUB IN: 4 TOLBERT, KEAYNNA	00:21		

Prairie View 16, Rice 36

**Official Substitutions Log
Prairie View vs Rice
Period 3
December 15, 2019 at Tudor Fieldhouse - Houston**



VISITORS: Prairie View	Time	Score	HOME: Rice
1 PETERS, BERNESHA			2 WIGGINS, SYDNE
11 ROSENTAL, DIANA			10 SMITH, JASMINE
12 NEWMAN, DOMINIQUE			13 OGWUMIKE, ERICA
20 WILLIAMS, KE'ASIA			15 SCHWARTZ, LAUREN
23 PAUL, KENNEDY			32 MULKEY, NANCY
	10:00	-	SUB OUT: JACKSON, DESTINY
	10:00		SUB OUT: BELLAMY, INDIA
	10:00		SUB OUT: CHRISMAN, ALEXAH
	10:00		SUB IN: WIGGINS, SYDNE
	10:00		SUB IN: SCHWARTZ, LAUREN
	10:00		SUB IN: MULKEY, NANCY
SUB OUT: 4 TOLBERT, KEAYNNA	10:00		
SUB IN: 14 HEARD, KENNEDI	10:00		
SUB OUT: 23 PAUL, KENNEDY	09:10	18-36	
SUB IN: 40 CAMPBELL, MARIAH	09:10		
	06:54	20-39	SUB OUT: SCHWARTZ, LAUREN
	06:54		SUB IN: SWAYZE, HAYLEE
SUB OUT: 14 HEARD, KENNEDI	06:54		
SUB OUT: 40 CAMPBELL, MARIAH	06:54		
SUB IN: 10 GREEN, KENNEDI	06:54		
SUB IN: 22 WILLIAMS, RACHEL	06:54		
SUB OUT: 20 WILLIAMS, KE'ASIA	05:39	22-42	
SUB IN: 23 PAUL, KENNEDY	05:39		
	05:39		SUB OUT: SWAYZE, HAYLEE
	05:39		SUB IN: AUSTIN, ASHLEE
SUB OUT: 10 GREEN, KENNEDI	05:18	24-42	
SUB IN: 4 TOLBERT, KEAYNNA	05:18		
	04:56	24-42	SUB OUT: MULKEY, NANCY
	04:56		SUB IN: ELLIG, KENDALL
SUB OUT: 22 WILLIAMS, RACHEL	04:56		
SUB IN: 20 WILLIAMS, KE'ASIA	04:56		
SUB OUT: 20 WILLIAMS, KE'ASIA	04:56		
SUB IN: 22 WILLIAMS, RACHEL	04:56		
SUB OUT: 4 TOLBERT, KEAYNNA	03:43	27-46	
SUB OUT: 22 WILLIAMS, RACHEL	03:43		
SUB IN: 14 HEARD, KENNEDI	03:43		
SUB IN: 20 WILLIAMS, KE'ASIA	03:43		
SUB OUT: 11 ROSENTAL, DIANA	02:56	27-46	
SUB IN: 10 GREEN, KENNEDI	02:56		
SUB OUT: 14 HEARD, KENNEDI	02:25	27-46	
SUB IN: 40 CAMPBELL, MARIAH	02:25		
	02:25		SUB OUT: WIGGINS, SYDNE
	02:25		SUB IN: SCHWARTZ, LAUREN
SUB OUT: 1 PETERS, BERNESHA	02:10	29-46	
SUB IN: 2 PEREZ, TATYANA	02:10		
	02:10		SUB OUT: SMITH, JASMINE
	02:10		SUB IN: JACKSON, DESTINY
	01:04	29-50	SUB OUT: OGWUMIKE, ERICA
	01:04		SUB IN: WIGGINS, SYDNE
SUB OUT: 10 GREEN, KENNEDI	01:04		
SUB OUT: 40 CAMPBELL, MARIAH	01:04		
SUB IN: 5 MARTIN, JADAH	01:04		
SUB IN: 14 HEARD, KENNEDI	01:04		
	01:04		SUB OUT: ELLIG, KENDALL
	01:04		SUB IN: CHRISMAN, ALEXAH
SUB OUT: 14 HEARD, KENNEDI	00:39	31-52	
SUB IN: 11 ROSENTAL, DIANA	00:39		

Prairie View 35, Rice 53

Official Substitutions Log
Prairie View vs Rice
Period 4
December 15, 2019 at Tudor Fieldhouse - Houston



VISITORS: Prairie View	Time	Score	HOME: Rice
1 PETERS, BERNESHA			2 WIGGINS, SYDNE
11 ROSENTAL, DIANA			10 SMITH, JASMINE
12 NEWMAN, DOMINIQUE			13 OGWUMIKE, ERICA
20 WILLIAMS, KE'ASIA			15 SCHWARTZ, LAUREN
23 PAUL, KENNEDY			32 MULKEY, NANCY
	09:59	-	SUB OUT: JACKSON, DESTINY
	09:59		SUB OUT: AUSTIN, ASHLEE
	09:59		SUB OUT: CHRISMAN, ALEXAH
	09:59		SUB IN: SMITH, JASMINE
	09:59		SUB IN: OGWUMIKE, ERICA
	09:59		SUB IN: MULKEY, NANCY
SUB OUT: 2 PEREZ, TATYANA	09:59		
SUB IN: 4 TOLBERT, KEAYNNA	09:59		
	08:21	40-55	SUB OUT: OGWUMIKE, ERICA
	08:21		SUB IN: AUSTIN, ASHLEE
SUB OUT: 5 MARTIN, JADAH	07:49	40-55	
SUB IN: 1 PETERS, BERNESHA	07:49		
SUB OUT: 4 TOLBERT, KEAYNNA	07:49		
SUB IN: 12 NEWMAN, DOMINIQUE	07:49		
SUB OUT: 23 PAUL, KENNEDY	07:13	40-59	
SUB IN: 22 WILLIAMS, RACHEL	07:13		
	07:06	40-59	SUB OUT: SMITH, JASMINE
	07:06		SUB IN: JACKSON, DESTINY
	07:06		SUB OUT: MULKEY, NANCY
	07:06		SUB IN: ALAO, TEMI
SUB OUT: 11 ROSENTAL, DIANA	06:33	44-59	
SUB IN: 2 PEREZ, TATYANA	06:33		
SUB OUT: 22 WILLIAMS, RACHEL	06:29	44-61	
SUB IN: 23 PAUL, KENNEDY	06:29		
	05:51	44-63	SUB OUT: SCHWARTZ, LAUREN
	05:51		SUB OUT: AUSTIN, ASHLEE
	05:51		SUB IN: SWAYZE, HAYLEE
	05:51		SUB IN: BELLAMY, INDIA
SUB OUT: 1 PETERS, BERNESHA	05:51		
SUB OUT: 12 NEWMAN, DOMINIQUE	05:51		
SUB OUT: 20 WILLIAMS, KE'ASIA	05:51		
SUB IN: 5 MARTIN, JADAH	05:51		
SUB IN: 11 ROSENTAL, DIANA	05:51		
SUB IN: 40 CAMPBELL, MARIAH	05:51		
	05:24	44-64	SUB OUT: SWAYZE, HAYLEE
	05:24		SUB IN: CROSTHWAIT, KATELYN
	05:02	44-66	SUB OUT: WIGGINS, SYDNE
	05:02		SUB IN: SWAYZE, HAYLEE
SUB OUT: 5 MARTIN, JADAH	04:09	42-59	
SUB OUT: 40 CAMPBELL, MARIAH	04:09		
SUB IN: 1 PETERS, BERNESHA	04:09		
SUB IN: 20 WILLIAMS, KE'ASIA	04:09		
SUB OUT: 2 PEREZ, TATYANA	04:04	42-59	
SUB IN: 10 GREEN, KENNEDI	04:04		
	03:45	42-59	SUB OUT: ALAO, TEMI
	03:45		SUB IN: MCCURRY, ARIANNA
SUB OUT: 10 GREEN, KENNEDI	02:07	46-73	
SUB IN: 4 TOLBERT, KEAYNNA	02:07		
	00:30	54-77	SUB OUT: SWAYZE, HAYLEE
	00:30		SUB OUT: MCCURRY, ARIANNA
	00:30		SUB IN: AUSTIN, ASHLEE
	00:30		SUB IN: ALAO, TEMI

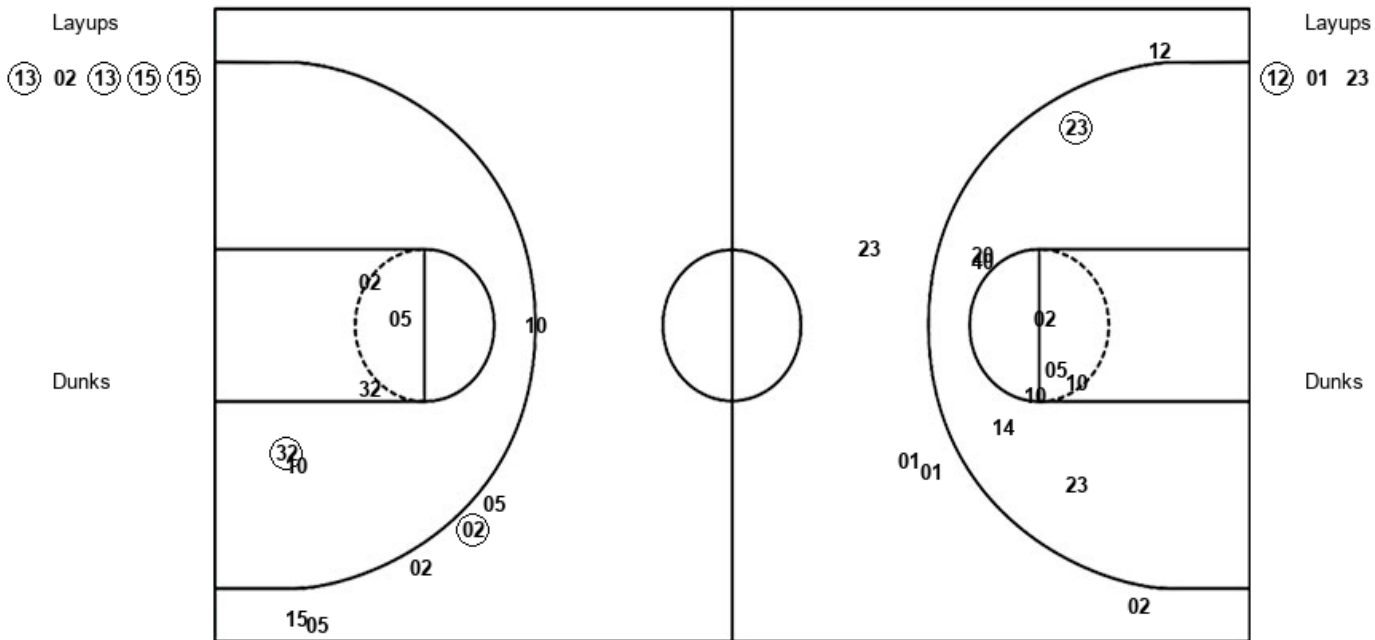
Prairie View 55, Rice 77

Official Shot Chart
Prairie View vs Rice
PERIOD 1 Shots
 December 15, 2019 at Tudor Fieldhouse - Houston



Rice

Prairie View



Ric : Period 1	Made	Att	Pct
Layups	4	5	80.0
Dunks	0	0	0
2PT Field Goals	5	10	50.0
3PT Field Goals	1	6	16.7
Total Field Goals	6	16	37.5

PRV : Period 1	Made	Att	Pct
Layups	1	3	33.3
Dunks	0	0	0
2PT Field Goals	2	12	16.7
3PT Field Goals	0	5	00.0
Total Field Goals	2	17	11.8

Official Shot Chart
Prairie View vs Rice
PERIOD 2 Shots
 December 15, 2019 at Tudor Fieldhouse - Houston



Rice

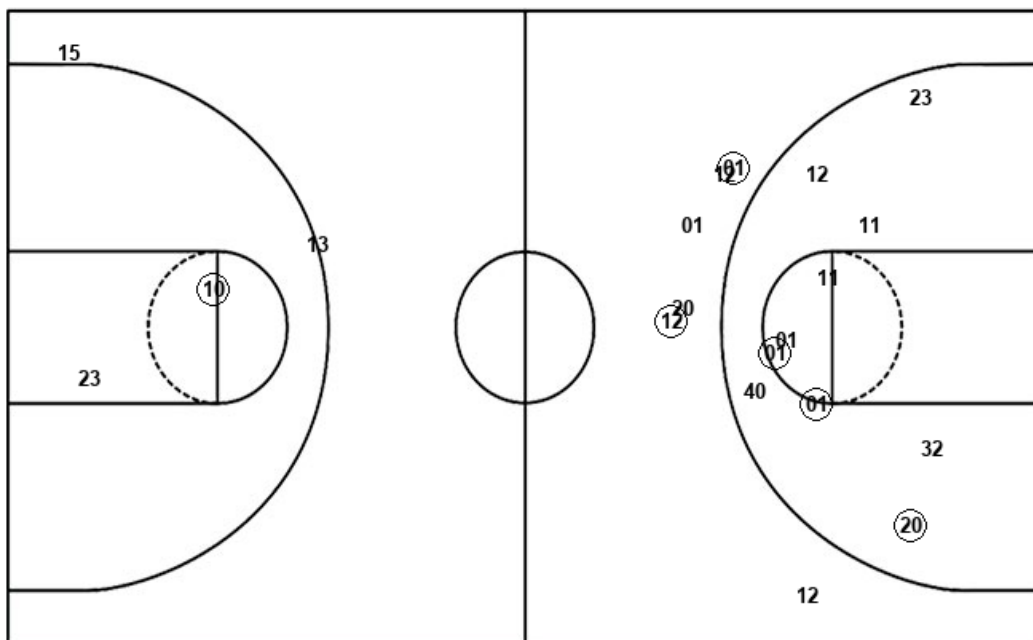
Prairie View

Layups
 13 32 13 23

Layups

Dunks

Dunks



Ric : Period 2	Made	Att	Pct
Layups	3	4	75.0
Dunks	0	0	0
2PT Field Goals	4	6	66.7
3PT Field Goals	0	2	00.0
Total Field Goals	4	8	50.0

PRV : Period 2	Made	Att	Pct
Layups	0	0	0
Dunks	0	0	0
2PT Field Goals	3	10	30.0
3PT Field Goals	2	6	33.3
Total Field Goals	5	16	31.3

Official Shot Chart
Prairie View vs Rice
PERIOD 3 Shots
 December 15, 2019 at Tudor Fieldhouse - Houston



Rice

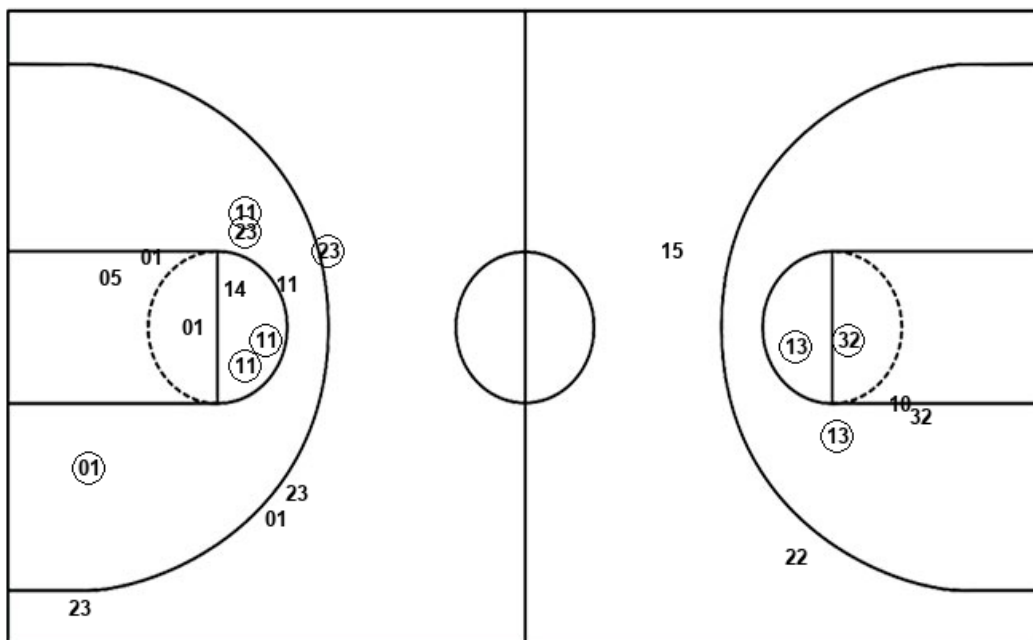
Prairie View

Layups
15 (02) (13)

Layups

Dunks

Dunks



Ric : Period 3	Made	Att	Pct
Layups	2	3	66.7
Dunks	0	0	0
2PT Field Goals	5	8	62.5
3PT Field Goals	0	2	00.0
Total Field Goals	5	10	50.0

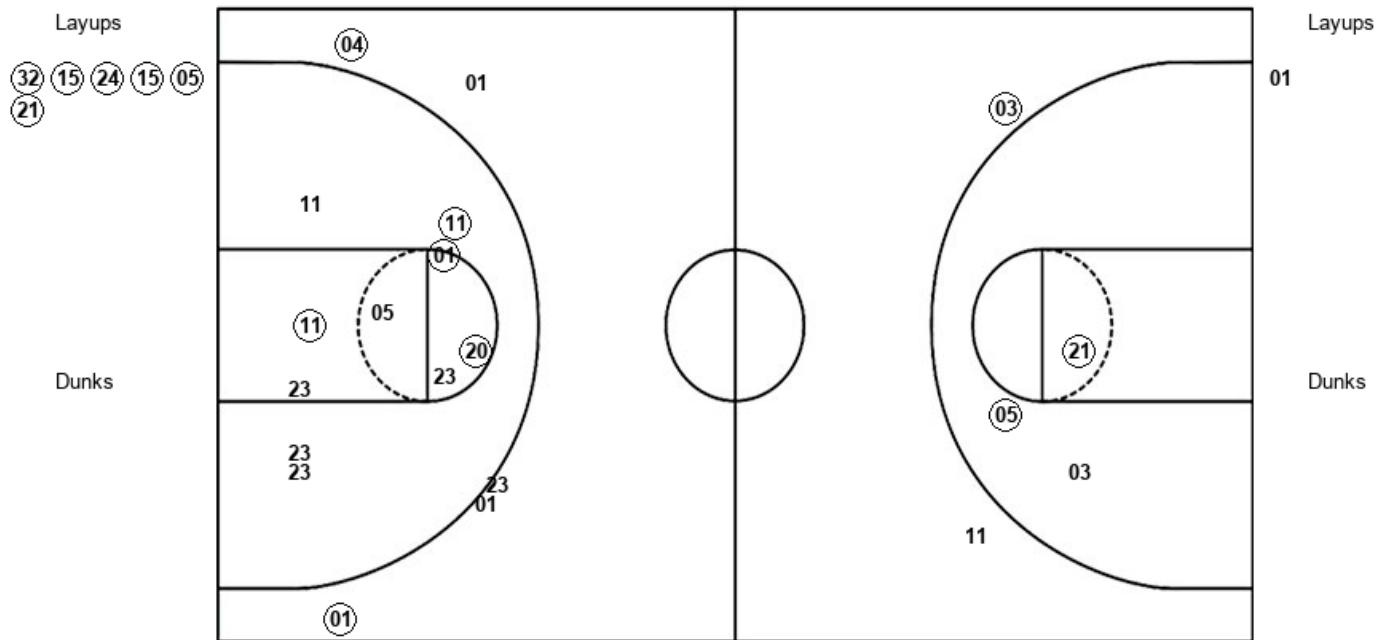
PRV : Period 3	Made	Att	Pct
Layups	1	1	100.0
Dunks	0	0	0
2PT Field Goals	6	11	54.5
3PT Field Goals	1	4	25.0
Total Field Goals	7	15	46.7

Official Shot Chart
Prairie View vs Rice
PERIOD 4 Shots
 December 15, 2019 at Tudor Fieldhouse - Houston



Rice

Prairie View



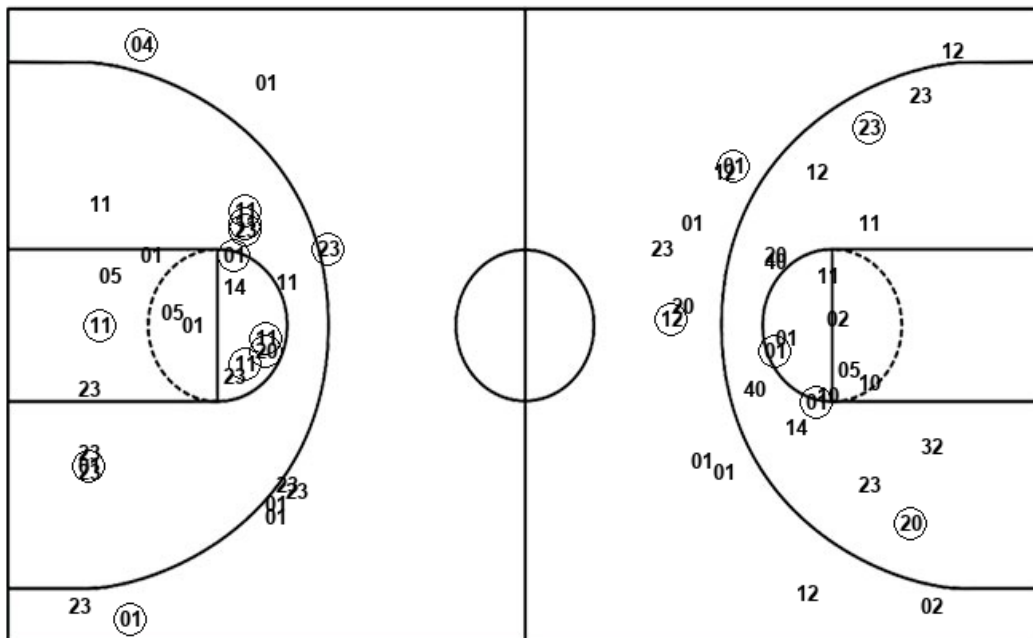
Ric : Period 4	Made	Att	Pct
Layups	6	6	100.0
Dunks	0	0	0
2PT Field Goals	8	9	88.9
3PT Field Goals	1	2	50.0
Total Field Goals	9	11	81.8

PRV : Period 4	Made	Att	Pct
Layups	0	1	00.0
Dunks	0	0	0
2PT Field Goals	4	11	36.4
3PT Field Goals	2	5	40.0
Total Field Goals	6	16	37.5

Official Shot Chart
Prairie View vs Rice
Prairie View Team Shots
December 15, 2019 at Tudor Fieldhouse - Houston



Layups



Layups

Dunks

Dunks

PRV : Period 1	Made	Att	Pct
Layups	1	3	33.3
Dunks	0	0	0
2PT Field Goals	2	12	16.7
3PT Field Goals	0	5	00.0
Total Field Goals	2	17	11.8

PRV : Period 2	Made	Att	Pct
Layups	0	0	0
Dunks	0	0	0
2PT Field Goals	3	10	30.0
3PT Field Goals	2	6	33.3
Total Field Goals	5	16	31.3

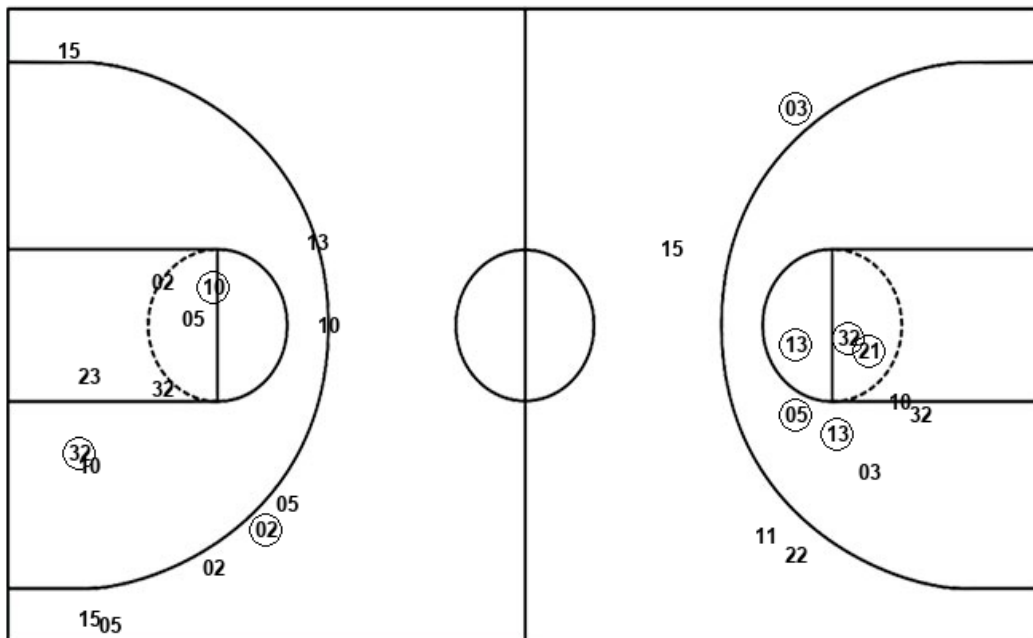
PRV : Period 3	Made	Att	Pct
Layups	1	1	100.0
Dunks	0	0	0
2PT Field Goals	6	11	54.5
3PT Field Goals	1	4	25.0
Total Field Goals	7	15	46.7

PRV : Period 4	Made	Att	Pct
Layups	0	1	00.0
Dunks	0	0	0
2PT Field Goals	4	11	36.4
3PT Field Goals	2	5	40.0
Total Field Goals	6	16	37.5

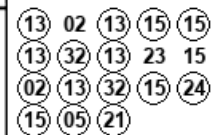
Official Shot Chart
Prairie View vs Rice
Rice Team Shots
December 15, 2019 at Tudor Fieldhouse - Houston



Layups



Layups



Dunks

Dunks

Ric : Period 1	Made	Att	Pct
Layups	4	5	80.0
Dunks	0	0	0
2PT Field Goals	5	10	50.0
3PT Field Goals	1	6	16.7
Total Field Goals	6	16	37.5

Ric : Period 2	Made	Att	Pct
Layups	3	4	75.0
Dunks	0	0	0
2PT Field Goals	4	6	66.7
3PT Field Goals	0	2	00.0
Total Field Goals	4	8	50.0

Ric : Period 3	Made	Att	Pct
Layups	2	3	66.7
Dunks	0	0	0
2PT Field Goals	5	8	62.5
3PT Field Goals	0	2	00.0
Total Field Goals	5	10	50.0

Ric : Period 4	Made	Att	Pct
Layups	6	6	100.0
Dunks	0	0	0
2PT Field Goals	8	9	88.9
3PT Field Goals	1	2	50.0
Total Field Goals	9	11	81.8