

FINAL SCORE



Eckerd

74



Rollins

66

January 18, 2020 • Alfond Sports Center - Winter Park

FINAL STATISTICS

Official Box Score
Eckerd vs Rollins
Game Totals -- Final Statistics
January 18, 2020 at Alford Sports Center - Winter Park



Eckerd 74

No.	Player	S	Pts	FG	3FG	FT	OR	DR	TR	PF	A	TO	Blk	Stl	Min	+/-
04	LARRANAGA, ENERITZ	G	19	6-10	3-6	4-5	2	0	2	1	4	3	0	1	30	18
05	KUEHNE, MIKAYLA	F	15	6-8	1-3	2-3	0	1	1	2	1	1	0	1	31	24
11	LOLL, OCTAVIA	G	13	5-11	0-1	3-5	0	3	3	2	5	0	0	1	36	10
20	WHITEYE, ABBY	G	15	4-12	3-9	4-5	2	5	7	1	1	0	0	3	36	16
22	RICHARDS, ZOE	C	3	1-8	0-2	1-2	2	3	5	2	2	3	0	0	24	6
10	JUDAY, BROOKE	G	3	1-2	1-2	0-0	0	0	0	0	0	1	0	1	8	-15
12	PRICE, MAYA	C	4	2-7	0-2	0-0	2	3	5	1	0	1	1	1	24	-10
14	IBERN, MAR	F	2	0-2	0-1	2-2	1	1	2	0	0	0	0	1	8	-3
21	GRANLUND, CLARA	G	0	0-0	0-0	0-0	0	0	0	0	0	0	0	0	3	-6
TEAM							3	3	6	0		0				
TOTALS			74	25-60	8-26	16-22	12	19	31	9	13	9	1	9	200	

Shooting By Period

Period	FG	FG%	3FG	3FG%	FT	FT%
1st Qtr	7-15	47%	2-4	50%	3-6	50%
2nd Qtr	3-17	18%	1-10	10%	4-5	80%
3rd Qtr	8-16	50%	4-9	44%	2-2	100%
4th Qtr	7-12	58%	1-3	33%	7-9	78%
1st Half	10-32	31%	3-14	21%	7-11	64%
2nd Half	15-28	54%	5-12	42%	9-11	82%
Game	25-60	41.7%	8-26	30.8%	16-22	72.7%

Deadball Rebounds: 4.0

Last FG: 4th-02:05

Biggest Run: 11-0

Largest lead: By 16 at 4th-02:05

Technical Fouls: None.

Rollins 66

No.	Player	S	Pts	FG	3FG	FT	OR	DR	TR	PF	A	TO	Blk	Stl	Min	+/-
04	HARRISON, JAYLYN	G	19	6-10	5-6	2-2	0	2	2	3	4	2	1	1	28	3
21	DANIELS, DENISE	G	6	3-6	0-0	0-0	0	2	2	1	3	2	1	1	24	-2
22	LIA, RACHEL	G	7	2-5	1-2	2-2	1	0	1	2	2	2	0	2	23	-2
23	SHARPE, PARIS	F	7	3-5	0-0	1-2	0	3	3	2	0	4	2	1	20	-12
34	ROSSER, TIANNA	F	4	1-5	0-1	2-2	5	4	9	1	2	0	2	0	26	3
00	MARTINEZ-TORO, YARI	G	8	3-7	2-5	0-0	1	6	7	2	6	4	1	1	24	-1
05	NEWSOME, ASIA	G	6	3-5	0-0	0-0	0	0	0	1	0	2	0	0	8	-7
11	JABLONSKI, RACHEL	G	3	1-6	1-5	0-0	2	2	4	3	2	0	0	0	20	-4
12	KEITHS, ANGEL	F	0	0-0	0-0	0-0	0	0	0	0	0	0	0	0	3	2
13	PLUVIOSE, TANIYAH	F	3	1-3	1-1	0-0	1	2	3	2	1	1	1	1	19	-12
24	TASSENT, YOKE	G	3	1-3	1-2	0-0	0	0	0	1	0	0	0	0	3	-3
33	LASARTE GARCIA, SILVIA	F	0	0-0	0-0	0-0	0	1	1	0	1	1	0	0	2	-5
TEAM							2	3	5	0		2				
TOTALS			66	24-55	11-22	7-8	12	25	37	18	21	20	8	7	200	

Shooting By Period

Period	FG	FG%	3FG	3FG%	FT	FT%
1st Qtr	5-9	56%	1-1	100%	2-2	100%
2nd Qtr	8-17	47%	4-6	67%	0-0	0%
3rd Qtr	5-11	45%	1-3	33%	4-4	100%
4th Qtr	6-18	33%	5-12	42%	1-2	50%
1st Half	13-26	50%	5-7	71%	2-2	100%
2nd Half	11-29	38%	6-15	40%	5-6	83%
Game	24-55	43.6%	11-22	50.0%	7-8	87.5%

Deadball Rebounds: 1.0

Last FG: 4th-00:18

Biggest Run: 11-0

Largest lead: By 9 at 2nd-02:14

Technical Fouls: None.

Game Notes:

Officials: Brandon Appel, Jellisse Oliver, Courtney Styfurak

Attendance: 287

Start Time: 01:59 PM ET

End Time: 03:36 PM ET

Game Duration: 1:36

Conference Game;

Score	1st	2nd	3rd	4th	TOT
ECK	19	11	22	22	74
ROL	13	20	15	18	66

ECK led for 32:29. ROL led for 5:58.

Game was tied for 1:29.

Times tied: 2 Lead Changes: 4

Points from	ECK	ROL
In the Paint	32	10
Off Turns	27	7
2nd Chance	6	19
Fast Break	9	12
Bench	9	23

Official Box Score
Eckerd vs Rollins
First Half Statistics Only
January 18, 2020 at Alford Sports Center - Winter Park



Eckerd 30

No.	Player	S	Pts	FG	3FG	FT	OR	DR	TR	PF	A	TO	Blk	Stl	Min	+/-
04	LARRANAGA, ENERITZ	G	3	1-2	0-1	1-2	0	0	0	0	1	1	0	1	12	2
05	KUEHNE, MIKAYLA	F	3	1-2	0-1	1-2	0	0	0	1	1	0	0	0	14	7
10	JUDAY, BROOKE	G	3	1-2	1-2	0-0	0	0	0	0	0	0	0	1	6	-10
11	LOLL, OCTAVIA	G	4	2-6	0-1	0-0	0	0	0	1	2	0	0	0	16	-1
12	PRICE, MAYA	C	2	1-2	0-1	0-0	1	2	3	0	0	1	1	1	13	-9
14	IBERN, MAR	F	0	0-2	0-1	0-0	0	0	0	0	0	0	0	1	5	3
20	WHITEYE, ABBY	G	12	3-9	2-6	4-5	1	3	4	0	1	0	0	1	19	-1
21	GRANLUND, CLARA	G	0	0-0	0-0	0-0	0	0	0	0	0	0	0	0	0	0
22	RICHARDS, ZOE	C	3	1-7	0-1	1-2	2	1	3	1	1	2	0	0	15	-6
	TEAM		0	0-0	0-0	0-0	2	2	4	0	0	0	0	0	0	
TOTALS			30	10-32	3-14	7-11	6	8	14	3	6	4	1	5	100	

Shooting By Period

Period	FG	FG%	3FG	3FG%	FT	FT%
1st Qtr	7-15	47%	2-4	50%	3-6	50%
2nd Qtr	3-17	18%	1-10	10%	4-5	80%
1st Half	10-32	31%	3-14	21%	7-11	64%
Game	25-60	41.7%	8-26	30.8%	16-22	72.7%

Deadball Rebounds: 4,0

Last FG Half: ECK 2nd-00:23

Rollins 33

No.	Player	S	Pts	FG	3FG	FT	OR	DR	TR	PF	A	TO	Blk	Stl	Min	+/-
00	MARTINEZ-TORO, YARI	G	5	2-2	1-1	0-0	0	3	3	1	4	3	0	1	13	5
04	HARRISON, JAYLYN	G	5	1-2	1-1	2-2	0	1	1	1	2	1	1	0	13	7
05	NEWSOME, ASIA	G	6	3-3	0-0	0-0	0	0	0	1	0	2	0	0	4	-1
11	JABLONSKI, RACHEL	G	0	0-0	0-0	0-0	1	1	2	1	1	0	0	0	10	-5
12	KEITHS, ANGEL	F	0	0-0	0-0	0-0	0	0	0	0	0	0	0	0	3	2
13	PLUVIOSE, TANIYAH	F	3	1-2	1-1	0-0	0	1	1	1	1	0	0	1	11	-4
21	DANIELS, DENISE	G	2	1-3	0-0	0-0	0	1	1	0	1	1	0	0	9	7
22	LIA, RACHEL	G	5	2-4	1-1	0-0	1	0	1	0	1	2	0	0	10	6
23	SHARPE, PARIS	F	2	1-3	0-0	0-0	0	3	3	2	0	2	0	1	10	1
24	TASSENT, YOKE	G	3	1-3	1-2	0-0	0	0	0	1	0	0	0	0	3	-3
33	LASARTE GARCIA, SILVIA	F	0	0-0	0-0	0-0	0	1	1	0	1	1	0	0	2	-5
34	ROSSER, TIANNA	F	2	1-4	0-1	0-0	1	4	5	1	1	0	2	0	12	5
	TEAM		0	0-0	0-0	0-0	1	2	3	0	0	0	0	0	0	
TOTALS			33	13-26	5-7	2-2	4	17	21	9	12	12	3	3	100	

Shooting By Period

Period	FG	FG%	3FG	3FG%	FT	FT%
1st Qtr	5-9	56%	1-1	100%	2-2	100%
2nd Qtr	8-17	47%	4-6	67%	0-0	0%
1st Half	13-26	50%	5-7	71%	2-2	100%
Game	24-55	43.6%	11-22	50.0%	7-8	87.5%

Deadball Rebounds: 1,0

Last FG Half: ROL 2nd-02:14

Game Notes:

Officials: Brandon Appel, Jellisse Oliver, Courtney Styfurak
Attendance: 287

Start Time: 01:59 PM ET

End Time: 03:36 PM ET

Game Duration: 1:36

Conference Game;

Score	1st	2nd	3rd	4th	TOT
ECK	19	11	22	22	74
ROL	13	20	15	18	66

Points from (This Period)	ECK	ROL
In the Paint	14	4
Off Turns	12	4
2nd Chance	1	5
Fast Break	2	8
Bench	5	17

Official Box Score
Eckerd vs Rollins
First Quarter Statistics Only
January 18, 2020 at Alford Sports Center - Winter Park



Eckerd 19

No.	Player	S	Pts	FG	3FG	FT	OR	DR	TR	PF	A	TO	Blk	Stl	Min	+/-
04	LARRANAGA, ENERITZ	G	3	1-1	0-0	1-2	0	0	0	0	1	1	0	1	8	1
05	KUEHNE, MIKAYLA	F	2	1-1	0-0	0-0	0	0	0	0	0	0	0	0	10	6
11	LOLL, OCTAVIA	G	2	1-3	0-0	0-0	0	0	0	1	2	0	0	0	6	8
20	WHITEYE, ABBY	G	9	3-4	2-3	1-2	0	1	1	0	0	0	0	0	10	6
22	RICHARDS, ZOE	C	1	0-4	0-0	1-2	2	1	3	1	1	1	0	0	7	6
10	JUDAY, BROOKE	G	0	0-0	0-0	0-0	0	0	0	0	0	0	0	0	0	0
12	PRICE, MAYA	C	2	1-1	0-0	0-0	1	1	2	0	0	0	0	0	6	-2
14	IBERN, MAR	F	0	0-1	0-1	0-0	0	0	0	0	0	0	0	1	2	5
21	GRANLUND, CLARA	G	0	0-0	0-0	0-0	0	0	0	0	0	0	0	0	0	0
	TEAM						0	0	0	0		0				
TOTALS			19	7-15	2-4	3-6	3	3	6	2	4	2	0	2	50	

Shooting By Period

Period	FG	FG%	3FG	3FG%	FT	FT%
1st Qtr	7-15	47%	2-4	50%	3-6	50%
2nd Qtr	3-17	18%	1-10	10%	4-5	80%
1st Half	7-15	47%	2-4	50%	3-6	50%
1st Half	10-32	31%	3-14	21%	7-11	64%
Game	25-60	41.7%	8-26	30.8%	16-22	72.7%

Deadball Rebounds: 4,0

Rollins 13

No.	Player	S	Pts	FG	3FG	FT	OR	DR	TR	PF	A	TO	Blk	Stl	Min	+/-
04	HARRISON, JAYLYN	G	2	0-0	0-0	2-2	0	0	0	0	1	1	1	0	7	-3
21	DANIELS, DENISE	G	0	0-0	0-0	0-0	0	0	0	0	1	1	0	0	5	-1
22	LIA, RACHEL	G	0	0-2	0-0	0-0	0	0	0	0	0	1	0	0	4	-4
23	SHARPE, PARIS	F	2	1-3	0-0	0-0	0	1	1	1	0	2	0	1	8	-1
34	ROSSER, TIANNA	F	0	0-0	0-0	0-0	0	1	1	1	0	0	1	0	4	-2
00	MARTINEZ-TORO, YARI	G	2	1-1	0-0	0-0	0	2	2	1	1	1	0	1	6	-2
05	NEWSOME, ASIA	G	4	2-2	0-0	0-0	0	0	0	1	0	1	0	0	3	-3
11	JABLONSKI, RACHEL	G	0	0-0	0-0	0-0	1	0	1	0	1	0	0	0	6	-4
12	KEITHS, ANGEL	F	0	0-0	0-0	0-0	0	0	0	0	0	0	0	0	0	0
13	PLUVIOSE, TANIYAH	F	3	1-1	1-1	0-0	0	0	0	0	0	0	0	0	5	-5
24	TASSENT, YOKE	G	0	0-0	0-0	0-0	0	0	0	0	0	0	0	0	0	0
33	LASARTE GARCIA, SILVIA	F	0	0-0	0-0	0-0	0	1	1	0	1	1	0	0	2	-5
	TEAM						0	1	1	0		0				
TOTALS			13	5-9	1-1	2-2	1	6	7	4	5	8	2	2	50	

Shooting By Period

Period	FG	FG%	3FG	3FG%	FT	FT%
1st Qtr	5-9	56%	1-1	100%	2-2	100%
2nd Qtr	8-17	47%	4-6	67%	0-0	0%
1st Half	5-9	56%	1-1	100%	2-2	100%
1st Half	13-26	50%	5-7	71%	2-2	100%
Game	24-55	43.6%	11-22	50.0%	7-8	87.5%

Deadball Rebounds: 1,0

Game Notes:

Officials: Brandon Appel, Jellisse Oliver, Courtney Styfurak
Attendance: 287

Start Time: 01:59 PM ET

End Time: 03:36 PM ET

Game Duration: 1:36

Conference Game;

Score	1st	2nd	3rd	4th	TOT
ECK	19	11	22	22	74
ROL	13	20	15	18	66

Points from (This Period)	ECK	ROL
In the Paint	10	2
Off Turns	10	2
2nd Chance	1	2
Fast Break	1	2
Bench	2	9

Official Play-By-Play
Eckerd vs Rollins
First Quarter
January 18, 2020 at Alford Sports Center - Winter Park



Period 1

Starters:

Eckerd: 4 LARRANAGA,ENERITZ (G); 5 KUEHNE,MIKAYLA (F); 11 LOLL,OCTAVIA (G); 20 WHITEYE,ABBY (G); 22 RICHARDS,ZOE (C);

Rollins: 4 HARRISON,JAYLYN (G); 21 DANIELS,DENISE (G); 22 LIA,RACHEL (G); 23 SHARPE,PARIS (F); 34 ROSSER,TIANNA (F);

Time	VISITORS: Eckerd	Score	Margin	HOME: Rollins
09:33				TURNOVER (LOSTBALL) by SHARPE, PARIS
09:33	STEAL by LARRANAGA, ENERITZ			
09:16	GOOD! 3PTR by WHITEYE, ABBY	0-3	V 3	
09:16	ASSIST by LARRANAGA, ENERITZ			
08:55				MISSED JUMPER by LIA, RACHEL
08:51	REBOUND (DEF) by RICHARDS, ZOE			
08:36	MISSED JUMPER by LOLL, OCTAVIA			
08:34				REBOUND (DEF) by TEAM
08:14	FOUL (PERSONAL) by LOLL, OCTAVIA			
08:14	SUB OUT: LOLL, OCTAVIA			
08:14	SUB IN: PRICE, MAYA			
08:14		1-3	V 2	GOOD! FT by HARRISON, JAYLYN
08:14		2-3	V 1	GOOD! FT by HARRISON, JAYLYN
08:03				FOUL (PERSONAL) by ROSSER, TIANNA
08:03	MISSED FT by LARRANAGA, ENERITZ			
08:03	REBOUND (OFF) by TEAM			
08:03	GOOD! FT by LARRANAGA, ENERITZ	2-4	V 2	
07:31				TURNOVER (BADPASS) by SHARPE, PARIS
07:21	TURNOVER (BADPASS) by RICHARDS, ZOE			
07:21				STEAL by SHARPE, PARIS
07:10				TURNOVER (BADPASS) by LIA, RACHEL
06:50	GOOD! LAYUP by LARRANAGA, ENERITZ	2-6	V 4	
06:39				MISSED JUMPER by LIA, RACHEL
06:35	REBOUND (DEF) by PRICE, MAYA			
06:26	MISSED LAYUP by RICHARDS, ZOE			
06:25				REBOUND (DEF) by ROSSER, TIANNA
06:25	FOUL (PERSONAL) by RICHARDS, ZOE			
06:25				SUB OUT: LIA, RACHEL
06:25				SUB IN: MARTINEZ-TORO, YARI
05:55		4-6	V 2	GOOD! JUMPER by MARTINEZ-TORO, YARI
05:55				ASSIST by DANIELS, DENISE
05:41	MISSED JUMPER by RICHARDS, ZOE			
05:41				BLOCK by ROSSER, TIANNA
05:41	REBOUND (OFF) by RICHARDS, ZOE			
05:41				FOUL (PERSONAL) by SHARPE, PARIS
05:41				SUB OUT: ROSSER, TIANNA
05:41				SUB IN: JABLONSKI, RACHEL
05:41	MISSED FT by RICHARDS, ZOE			
05:41	REBOUND (OFF) by TEAM			
05:41	GOOD! FT by RICHARDS, ZOE	4-7	V 3	
05:11		6-7	V 1	GOOD! JUMPER by SHARPE, PARIS
05:11				ASSIST by HARRISON, JAYLYN
04:56	MISSED JUMPER by RICHARDS, ZOE			
04:56				BLOCK by HARRISON, JAYLYN
04:51	REBOUND (OFF) by RICHARDS, ZOE			
04:50	MISSED LAYUP by RICHARDS, ZOE			
04:47				REBOUND (DEF) by SHARPE, PARIS
04:43				TURNOVER (TRAVEL) by DANIELS, DENISE
04:43				
04:43				SUB OUT: DANIELS, DENISE
04:43				SUB IN: PLUVIOSE, TANIYAH
04:43	SUB OUT: RICHARDS, ZOE			
04:43	SUB IN: LOLL, OCTAVIA			
04:29	MISSED 3PTR by WHITEYE, ABBY			
04:25	REBOUND (OFF) by PRICE, MAYA			
04:16	MISSED LAYUP by LOLL, OCTAVIA			
04:11				REBOUND (DEF) by MARTINEZ-TORO, YARI
04:02				MISSED JUMPER by SHARPE, PARIS
03:58	REBOUND (DEF) by WHITEYE, ABBY			
03:34	GOOD! LAYUP by KUEHNE, MIKAYLA [PNT]	6-9	V 3	
03:27				TURNOVER (BADPASS) by HARRISON, JAYLYN
03:27				SUB OUT: HARRISON, JAYLYN
03:27				SUB IN: NEWSOME, ASIA
03:15	GOOD! JUMPER by PRICE, MAYA [PNT]	6-11	V 5	
03:15	ASSIST by LOLL, OCTAVIA			
02:47				MISSED JUMPER by SHARPE, PARIS
02:44				REBOUND (OFF) by JABLONSKI, RACHEL
02:43		8-11	V 3	GOOD! JUMPER by NEWSOME, ASIA
02:43				ASSIST by JABLONSKI, RACHEL
02:33	TURNOVER (BADPASS) by LARRANAGA, ENERITZ			

Time	VISITORS: Eckerd	Score	Margin	HOME: Rollins
02:33				STEAL by MARTINEZ-TORO, YARI
02:26		10-11	V 1	GOOD! LAYUP by NEWSOME, ASIA [FB]
02:26				ASSIST by MARTINEZ-TORO, YARI
02:09				SUB OUT: SHARPE, PARIS
02:09				SUB IN: LASARTE GARCIA, SILVIA
02:09	SUB OUT: LARRANAGA, ENERITZ			
02:09	SUB OUT: PRICE, MAYA			
02:09	SUB IN: IBERN, MAR			
02:09	SUB IN: RICHARDS, ZOE			
01:57	GOOD! 3PTR by WHITEYE, ABBY	10-14	V 4	
01:57	ASSIST by LOLL, OCTAVIA			
01:37				TURNOVER (BADPASS) by LASARTE GARCIA, SILVIA
01:37	STEAL by IBERN, MAR			
01:33				FOUL (PERSONAL) by NEWSOME, ASIA
01:33	GOOD! FT by WHITEYE, ABBY [FB]	10-15	V 5	
01:33	MISSED FT by WHITEYE, ABBY			
01:32				REBOUND (DEF) by LASARTE GARCIA, SILVIA
01:26				TURNOVER (BADPASS) by NEWSOME, ASIA
01:07	MISSED 3PTR by IBERN, MAR			
01:03				REBOUND (DEF) by MARTINEZ-TORO, YARI
00:55				FOUL (OFF) by MARTINEZ-TORO, YARI
00:55				TURNOVER (OFFENSIVE) by MARTINEZ-TORO, YARI
00:43	GOOD! LAYUP by WHITEYE, ABBY [PNT]	10-17	V 7	
00:43	ASSIST by RICHARDS, ZOE			
00:18		13-17	V 4	GOOD! 3PTR by PLUVIOSE, TANIYAH
00:18				ASSIST by LASARTE GARCIA, SILVIA
00:04	GOOD! LAYUP by LOLL, OCTAVIA	13-19	V 6	

Eckerd 19, Rollins 13

Points from (This Period)	ECK	ROL
In the Paint	10	2
Off Turns	10	2
2nd Chance	1	2
Fast Break	1	2
Bench	2	9

Official Box Score
Eckerd vs Rollins
Second Quarter Statistics Only
January 18, 2020 at Alford Sports Center - Winter Park



Eckerd 11

No.	Player	S	Pts	FG	3FG	FT	OR	DR	TR	PF	A	TO	Blk	Stl	Min	+/-
04	LARRANAGA, ENERITZ	G	0	0-1	0-1	0-0	0	0	0	0	0	0	0	0	4	1
05	KUEHNE, MIKAYLA	F	1	0-1	0-1	1-2	0	0	0	1	1	0	0	0	4	1
11	LOLL, OCTAVIA	G	2	1-3	0-1	0-0	0	0	0	0	0	0	0	0	10	-9
20	WHITEYE, ABBY	G	3	0-5	0-3	3-3	1	2	3	0	1	0	0	1	9	-7
22	RICHARDS, ZOE	C	2	1-3	0-1	0-0	0	0	0	0	0	1	0	0	8	-12
10	JUDAY, BROOKE	G	3	1-2	1-2	0-0	0	0	0	0	0	0	0	1	6	-10
12	PRICE, MAYA	C	0	0-1	0-1	0-0	0	1	1	0	0	1	1	1	7	-7
14	IBERN, MAR	F	0	0-1	0-0	0-0	0	0	0	0	0	0	0	0	3	-2
21	GRANLUND, CLARA	G	0	0-0	0-0	0-0	0	0	0	0	0	0	0	0	0	0
	TEAM						2	2	4	0		0				
TOTALS			11	3-17	1-10	4-5	3	5	8	1	2	2	1	3	50	

Shooting By Period

Period	FG	FG%	3FG	3FG%	FT	FT%
3rd Qtr	8-16	50%	4-9	44%	2-2	100%
4th Qtr	7-12	58%	1-3	33%	7-9	78%
2nd Half	3-17	18%	1-10	10%	4-5	80%
2nd Half	15-28	54%	5-12	42%	9-11	82%
Game	25-60	41.7%	8-26	30.8%	16-22	72.7%

Deadball Rebounds: 4,0

Rollins 20

No.	Player	S	Pts	FG	3FG	FT	OR	DR	TR	PF	A	TO	Blk	Stl	Min	+/-
04	HARRISON, JAYLYN	G	3	1-2	1-1	0-0	0	1	1	1	1	0	0	0	6	10
21	DANIELS, DENISE	G	2	1-3	0-0	0-0	0	1	1	0	0	0	0	0	4	8
22	LIA, RACHEL	G	5	2-2	1-1	0-0	1	0	1	0	1	1	0	0	6	10
23	SHARPE, PARIS	F	0	0-0	0-0	0-0	0	2	2	1	0	0	0	0	2	2
34	ROSSER, TIANNA	F	2	1-4	0-1	0-0	1	3	4	0	1	0	1	0	8	7
00	MARTINEZ-TORO, YARI	G	3	1-1	1-1	0-0	0	1	1	0	3	2	0	0	7	7
05	NEWSOME, ASIA	G	2	1-1	0-0	0-0	0	0	0	0	0	1	0	0	1	2
11	JABLONSKI, RACHEL	G	0	0-0	0-0	0-0	0	1	1	1	0	0	0	0	4	-1
12	KEITHS, ANGEL	F	0	0-0	0-0	0-0	0	0	0	0	0	0	0	0	3	2
13	PLUVIOSE, TANIYAH	F	0	0-1	0-0	0-0	0	1	1	1	1	0	0	1	6	1
24	TASSENT, YOKE	G	3	1-3	1-2	0-0	0	0	0	1	0	0	0	0	3	-3
33	LASARTE GARCIA, SILVIA	F	0	0-0	0-0	0-0	0	0	0	0	0	0	0	0	0	0
	TEAM						1	1	2	0		0				
TOTALS			20	8-17	4-6	0-0	3	11	14	5	7	4	1	1	50	

Shooting By Period

Period	FG	FG%	3FG	3FG%	FT	FT%
3rd Qtr	5-11	45%	1-3	33%	4-4	100%
4th Qtr	6-18	33%	5-12	42%	1-2	50%
2nd Half	8-17	47%	4-6	67%	0-0	0%
2nd Half	11-29	38%	6-15	40%	5-6	83%
Game	24-55	43.6%	11-22	50.0%	7-8	87.5%

Deadball Rebounds: 1,0

Game Notes:

Officials: Brandon Appel, Jellisse Oliver, Courtney Styfura
Attendance: 287

Start Time: 01:59 PM ET

End Time: 03:36 PM ET

Game Duration: 1:36

Conference Game;

Score	1st	2nd	3rd	4th	TOT
ECK	19	11	22	22	74
ROL	13	20	15	18	66

Points from (This Period)	ECK	ROL
In the Paint	4	2
Off Turns	2	2
2nd Chance	0	3
Fast Break	1	6
Bench	3	8

Official Play-By-Play
Eckerd vs Rollins
Second Quarter
January 18, 2020 at Alford Sports Center - Winter Park



Period 2

Starters:

Eckerd: 4 LARRANAGA,ENERITZ (G); 5 KUEHNE,MIKAYLA (F); 11 LOLL,OCTAVIA (G); 20 WHITEYE,ABBY (G); 22 RICHARDS,ZOE (C);

Rollins: 4 HARRISON,JAYLYN (G); 21 DANIELS,DENISE (G); 22 LIA,RACHEL (G); 23 SHARPE,PARIS (F); 34 ROSSER,TIANNA (F);

Time	VISITORS: Eckerd	Score	Margin	HOME: Rollins
10:00				SUB OUT: MARTINEZ-TORO, YARI
10:00				SUB OUT: NEWSOME, ASIA
10:00				SUB OUT: JABLONSKI, RACHEL
10:00				SUB OUT: LASARTE GARCIA, SILVIA
10:00				SUB IN: HARRISON, JAYLYN
10:00				SUB IN: KEITHS, ANGEL
10:00				SUB IN: LIA, RACHEL
10:00				SUB IN: ROSSER, TIANNA
10:00	SUB OUT: KUEHNE, MIKAYLA			
10:00	SUB IN: JUDAY, BROOKE			
09:47	TURNOVER (TRAVEL) by RICHARDS, ZOE			
09:22		15-19	V 4	GOOD! JUMPER by ROSSER, TIANNA
09:22				ASSIST by PLUVIOSE, TANIYAH
09:02	MISSED 3PTR by WHITEYE, ABBY			
08:59				REBOUND (DEF) by PLUVIOSE, TANIYAH
08:45		17-19	V 2	GOOD! LAYUP by LIA, RACHEL
08:23	GOOD! LAYUP by RICHARDS, ZOE [PNT]	17-21	V 4	
07:58				MISSED 3PTR by ROSSER, TIANNA
07:56				REBOUND (OFF) by LIA, RACHEL
07:45				MISSED JUMPER by ROSSER, TIANNA
07:43	REBOUND (DEF) by WHITEYE, ABBY			
07:37	MISSED JUMPER by IBERN, MAR			
07:37				BLOCK by ROSSER, TIANNA
07:29				REBOUND (DEF) by ROSSER, TIANNA
07:29				MISSED JUMPER by HARRISON, JAYLYN
07:29	REBOUND (DEF) by TEAM			
07:29				SUB OUT: KEITHS, ANGEL
07:29				SUB OUT: PLUVIOSE, TANIYAH
07:29				SUB IN: MARTINEZ-TORO, YARI
07:29				SUB IN: DANIELS, DENISE
07:29	SUB OUT: IBERN, MAR			
07:29	SUB IN: PRICE, MAYA			
06:58	MISSED 3PTR by PRICE, MAYA			
06:54				REBOUND (DEF) by ROSSER, TIANNA
06:42		20-21	V 1	GOOD! 3PTR by HARRISON, JAYLYN
06:42				ASSIST by LIA, RACHEL
06:26	MISSED 3PTR by WHITEYE, ABBY			
06:23	REBOUND (OFF) by TEAM			
06:23				FOUL (PERSONAL) by HARRISON, JAYLYN
06:07	MISSED 3PTR by JUDAY, BROOKE			
06:03	REBOUND (OFF) by WHITEYE, ABBY			
06:03	MISSED JUMPER by WHITEYE, ABBY			
06:03				REBOUND (DEF) by TEAM
05:45		22-21	H 1	GOOD! JUMPER by DANIELS, DENISE
05:45				ASSIST by MARTINEZ-TORO, YARI
05:26	MISSED JUMPER by WHITEYE, ABBY			
05:23				REBOUND (DEF) by MARTINEZ-TORO, YARI
05:17				MISSED LAYUP by DANIELS, DENISE
05:14	REBOUND (DEF) by WHITEYE, ABBY			
05:09	GOOD! 3PTR by JUDAY, BROOKE	22-24	V 2	
05:09	ASSIST by WHITEYE, ABBY			
04:41				MISSED JUMPER by DANIELS, DENISE
04:38				REBOUND (OFF) by ROSSER, TIANNA
04:34		25-24	H 1	GOOD! 3PTR by MARTINEZ-TORO, YARI
04:34				ASSIST by ROSSER, TIANNA
04:14	MISSED 3PTR by RICHARDS, ZOE			
04:10				REBOUND (DEF) by DANIELS, DENISE
04:05				TURNOVER (BADPASS) by LIA, RACHEL
04:05	STEAL by JUDAY, BROOKE			
03:59	MISSED LAYUP by LOLL, OCTAVIA			
03:55				REBOUND (DEF) by HARRISON, JAYLYN
03:51		28-24	H 4	GOOD! 3PTR by LIA, RACHEL [FB]
03:51				ASSIST by HARRISON, JAYLYN
03:45	TIMEOUT 30SEC			
03:45				
03:44				SUB OUT: HARRISON, JAYLYN
03:44				SUB OUT: DANIELS, DENISE
03:44				SUB OUT: LIA, RACHEL
03:44				SUB OUT: ROSSER, TIANNA
03:44				SUB IN: NEWSOME, ASIA

Time	VISITORS: Eckerd	Score	Margin	HOME: Rollins
03:44				SUB IN: JABLONSKI, RACHEL
03:44				SUB IN: PLUVIOSE, TANIYAH
03:44				SUB IN: SHARPE, PARIS
03:44	SUB OUT: JUDAY, BROOKE			
03:44	SUB OUT: WHITEYE, ABBY			
03:44	SUB IN: LARRANAGA, ENERITZ			
03:44	SUB IN: KUEHNE, MIKAYLA			
03:28	MISSED 3PTR by LARRANAGA, ENERITZ			
03:24				REBOUND (DEF) by JABLONSKI, RACHEL
03:17				TURNOVER (BADPASS) by NEWSOME, ASIA
03:17	STEAL by PRICE, MAYA			
03:06	MISSED JUMPER by RICHARDS, ZOE			
03:02				REBOUND (DEF) by SHARPE, PARIS
02:56		30-24	H 6	GOOD! JUMPER by NEWSOME, ASIA
02:56				ASSIST by MARTINEZ-TORO, YARI
02:31	MISSED 3PTR by LOLL, OCTAVIA			
02:30	REBOUND (OFF) by TEAM			
02:30				FOUL (PERSONAL) by PLUVIOSE, TANIYAH
02:30				SUB OUT: NEWSOME, ASIA
02:30				SUB IN: TASSENT, YOKE
02:30	SUB OUT: RICHARDS, ZOE			
02:30	SUB IN: WHITEYE, ABBY			
02:22	MISSED 3PTR by KUEHNE, MIKAYLA			
02:19				REBOUND (DEF) by SHARPE, PARIS
02:14		33-24	H 9	GOOD! 3PTR by TASSENT, YOKE [FB]
02:14				ASSIST by MARTINEZ-TORO, YARI
02:01				FOUL (PERSONAL) by JABLONSKI, RACHEL
02:01	GOOD! FT by WHITEYE, ABBY	33-25	H 8	
02:01	GOOD! FT by WHITEYE, ABBY	33-26	H 7	
02:01	GOOD! FT by WHITEYE, ABBY	33-27	H 6	
01:49				MISSED JUMPER by PLUVIOSE, TANIYAH
01:49	BLOCK by PRICE, MAYA			
01:45	REBOUND (DEF) by PRICE, MAYA			
01:43	TURNOVER (BADPASS) by PRICE, MAYA			
01:43				STEAL by PLUVIOSE, TANIYAH
01:40	FOUL (PERSONAL) by KUEHNE, MIKAYLA			
01:36				TURNOVER (BADPASS) by MARTINEZ-TORO, YARI
01:36	STEAL by WHITEYE, ABBY			
01:36				FOUL (PERSONAL) by SHARPE, PARIS
01:36				SUB OUT: SHARPE, PARIS
01:36				SUB IN: ROSSER, TIANNA
01:12	MISSED 3PTR by WHITEYE, ABBY			
01:09				REBOUND (DEF) by ROSSER, TIANNA
00:56				MISSED 3PTR by TASSENT, YOKE
00:53				REBOUND (OFF) by TEAM
00:42				MISSED JUMPER by ROSSER, TIANNA
00:40	REBOUND (DEF) by TEAM			
00:40				FOUL (PERSONAL) by TASSENT, YOKE
00:40	MISSED FT by KUEHNE, MIKAYLA			
00:40	REBOUND (OFF) by TEAM			
00:40	GOOD! FT by KUEHNE, MIKAYLA [FB]	33-28	H 5	
00:30				TURNOVER (OTHER) by MARTINEZ-TORO, YARI
00:23	GOOD! JUMPER by LOLL, OCTAVIA [PNT]	33-30	H 3	
00:23	ASSIST by KUEHNE, MIKAYLA			
00:17				TIMEOUT 30SEC
00:00				MISSED JUMPER by TASSENT, YOKE
00:00				REBOUND (OFF) by TEAM

Eckerd 30, Rollins 33

Points from (This Period)	ECK	ROL
In the Paint	4	2
Off Turns	2	2
2nd Chance	0	3
Fast Break	1	6
Bench	3	8

Official Box Score
Eckerd vs Rollins
Second Half Statistics Only
January 18, 2020 at Alford Sports Center - Winter Park



Eckerd 44

No.	Player	S	Pts	FG	3FG	FT	OR	DR	TR	PF	A	TO	Blk	Stl	Min	+/-
04	LARRANAGA, ENERITZ	G	16	5-8	3-5	3-3	2	0	2	1	3	2	0	0	19	16
05	KUEHNE, MIKAYLA	F	12	5-6	1-2	1-1	0	1	1	1	0	1	0	1	17	17
10	JUDAY, BROOKE	G	0	0-0	0-0	0-0	0	0	0	0	0	1	0	0	1	-5
11	LOLL, OCTAVIA	G	9	3-5	0-0	3-5	0	3	3	1	3	0	0	1	20	11
12	PRICE, MAYA	C	2	1-5	0-1	0-0	1	1	2	1	0	0	0	0	10	-1
14	IBERN, MAR	F	2	0-0	0-0	2-2	1	1	2	0	0	0	0	0	3	-6
20	WHITEYE, ABBY	G	3	1-3	1-3	0-0	1	2	3	1	0	0	0	2	17	17
21	GRANLUND, CLARA	G	0	0-0	0-0	0-0	0	0	0	0	0	0	0	0	3	-6
22	RICHARDS, ZOE	C	0	0-1	0-1	0-0	0	2	2	1	1	1	0	0	10	12
	TEAM		0	0-0	0-0	0-0	1	1	2	0	0	0	0	0	0	
TOTALS			44	15-28	5-12	9-11	6	11	17	6	7	5	0	4	100	

Shooting By Period

Period	FG	FG%	3FG	3FG%	FT	FT%
3rd Qtr	8-16	50%	4-9	44%	2-2	100%
4th Qtr	7-12	58%	1-3	33%	7-9	78%
2nd Half	15-28	54%	5-12	42%	9-11	82%
Game	25-60	41.7%	8-26	30.8%	16-22	72.7%

Deadball Rebounds: 4,0

Last FG Half: ECK 4th-02:05

Rollins 33

No.	Player	S	Pts	FG	3FG	FT	OR	DR	TR	PF	A	TO	Blk	Stl	Min	+/-
00	MARTINEZ-TORO, YARI	G	3	1-5	1-4	0-0	1	3	4	1	2	1	1	0	10	-6
04	HARRISON, JAYLYN	G	14	5-8	4-5	0-0	0	1	1	2	2	1	0	1	15	-4
05	NEWSOME, ASIA	G	0	0-2	0-0	0-0	0	0	0	0	0	0	0	0	4	-6
11	JABLONSKI, RACHEL	G	3	1-6	1-5	0-0	1	1	2	2	1	0	0	0	11	1
12	KEITHS, ANGEL	F	0	0-0	0-0	0-0	0	0	0	0	0	0	0	0	0	0
13	PLUVIOSE, TANIYAH	F	0	0-1	0-0	0-0	1	1	2	1	0	1	1	0	8	-8
21	DANIELS, DENISE	G	4	2-3	0-0	0-0	0	1	1	1	2	1	1	1	15	-9
22	LIA, RACHEL	G	2	0-1	0-1	2-2	0	0	0	2	1	0	0	2	13	-8
23	SHARPE, PARIS	F	5	2-2	0-0	1-2	0	0	0	0	0	2	2	0	10	-13
24	TASSENT, YOKE	G	0	0-0	0-0	0-0	0	0	0	0	0	0	0	0	0	0
33	LASARTE GARCIA, SILVIA	F	0	0-0	0-0	0-0	0	0	0	0	0	0	0	0	0	0
34	ROSSER, TIANNA	F	2	0-1	0-0	2-2	4	0	4	0	1	0	0	0	14	-2
	TEAM		0	0-0	0-0	0-0	1	1	2	0	0	2	0	0	0	
TOTALS			33	11-29	6-15	5-6	8	8	16	9	9	8	5	4	100	

Shooting By Period

Period	FG	FG%	3FG	3FG%	FT	FT%
3rd Qtr	5-11	45%	1-3	33%	4-4	100%
4th Qtr	6-18	33%	5-12	42%	1-2	50%
2nd Half	11-29	38%	6-15	40%	5-6	83%
Game	24-55	43.6%	11-22	50.0%	7-8	87.5%

Deadball Rebounds: 1,0

Last FG Half: ROL 4th-00:18

Game Notes:

Officials: **Brandon Appel, Jellise Oliver, Courtney Styfurak**
Attendance: **287**

Start Time: **01:59 PM ET**

End Time: **03:36 PM ET**

Game Duration: **1:36**

Conference Game;

Score	1st	2nd	3rd	4th	TOT
ECK	19	11	22	22	74
ROL	13	20	15	18	66

Points from (This Period)	ECK	ROL
In the Paint	18	6
Off Turns	15	3
2nd Chance	5	14
Fast Break	7	4
Bench	4	6

Official Box Score
Eckerd vs Rollins
Third Quarter Statistics Only
January 18, 2020 at Alford Sports Center - Winter Park



Eckerd 44

No.	Player	S	Pts	FG	3FG	FT	OR	DR	TR	PF	A	TO	Blk	Stl	Min	+/-
04	LARRANAGA, ENERITZ	G	11	3-6	3-5	2-2	1	0	1	1	1	1	0	0	10	7
05	KUEHNE, MIKAYLA	F	4	2-3	0-1	0-0	0	0	0	0	0	0	0	1	10	7
11	LOLL, OCTAVIA	G	4	2-2	0-0	0-0	0	1	1	0	2	0	0	0	10	7
20	WHITEYE, ABBY	G	3	1-3	1-3	0-0	1	0	1	1	0	0	0	2	10	7
22	RICHARDS, ZOE	C	0	0-0	0-0	0-0	0	2	2	1	1	0	0	0	6	6
10	JUDAY, BROOKE	G	0	0-0	0-0	0-0	0	0	0	0	0	0	0	0	0	0
12	PRICE, MAYA	C	0	0-2	0-0	0-0	1	0	1	0	0	0	0	0	4	1
14	IBERN, MAR	F	0	0-0	0-0	0-0	0	0	0	0	0	0	0	0	0	0
21	GRANLUND, CLARA	G	0	0-0	0-0	0-0	0	0	0	0	0	0	0	0	0	0
	TEAM						1	0	1	0		0				
TOTALS			22	8-16	4-9	2-2	4	3	7	3	4	1	0	3	50	

Shooting By Period

Period	FG	FG%	3FG	3FG%	FT	FT%
2nd Half	0-0	0%	0-0	0%	0-0	0%
Game	25-60	41.7%	8-26	30.8%	16-22	72.7%

Deadball Rebounds: 4,0

Rollins 33

No.	Player	S	Pts	FG	3FG	FT	OR	DR	TR	PF	A	TO	Blk	Stl	Min	+/-
04	HARRISON, JAYLYN	G	5	2-3	1-1	0-0	0	1	1	0	1	0	0	1	8	-3
21	DANIELS, DENISE	G	2	1-1	0-0	0-0	0	0	0	0	2	1	1	0	8	-8
22	LIA, RACHEL	G	2	0-0	0-0	2-2	0	0	0	2	0	0	0	0	6	1
23	SHARPE, PARIS	F	4	2-2	0-0	0-0	0	0	0	0	0	2	1	0	7	-10
34	ROSSER, TIANNA	F	2	0-1	0-0	2-2	1	0	1	0	0	0	0	0	7	-1
00	MARTINEZ-TORO, YARI	G	0	0-1	0-0	0-0	0	0	0	0	0	1	0	0	4	-8
05	NEWSOME, ASIA	G	0	0-0	0-0	0-0	0	0	0	0	0	0	0	0	0	0
11	JABLONSKI, RACHEL	G	0	0-2	0-2	0-0	0	1	1	0	1	0	0	0	5	-1
12	KEITHS, ANGEL	F	0	0-0	0-0	0-0	0	0	0	0	0	0	0	0	0	0
13	PLUVIOSE, TANIYAH	F	0	0-1	0-0	0-0	1	1	2	0	0	0	0	0	5	-5
24	TASSENT, YOKE	G	0	0-0	0-0	0-0	0	0	0	0	0	0	0	0	0	0
33	LASARTE GARCIA, SILVIA	F	0	0-0	0-0	0-0	0	0	0	0	0	0	0	0	0	0
	TEAM						1	1	2	0		0				
TOTALS			15	5-11	1-3	4-4	3	4	7	2	4	4	2	1	50	

Shooting By Period

Period	FG	FG%	3FG	3FG%	FT	FT%
2nd Half	0-0	0%	0-0	0%	0-0	0%
Game	24-55	43.6%	11-22	50.0%	7-8	87.5%

Deadball Rebounds: 1,0

Game Notes:

Officials: **Brandon Appel, Jellisse Oliver, Courtney Styfurak**
Attendance: **287**

Start Time: **01:59 PM ET**

End Time: **03:36 PM ET**

Game Duration: **1:36**

Conference Game;

Score	1st	2nd	3rd	4th	TOT
ECK	19	11	22	22	74
ROL	13	20	15	18	66

Points from (This Period)	ECK	ROL
In the Paint	6	4
Off Turns	7	0
2nd Chance	2	5
Fast Break	2	4
Bench	0	0

Official Play-By-Play
Eckerd vs Rollins
Third Quarter
January 18, 2020 at Alford Sports Center - Winter Park



Period 3

Starters:

Eckerd: 4 LARRANAGA,ENERITZ (G); 5 KUEHNE,MIKAYLA (F); 11 LOLL,OCTAVIA (G); 20 WHITEYE,ABBY (G); 22 RICHARDS,ZOE (C);

Rollins: 4 HARRISON,JAYLYN (G); 21 DANIELS,DENISE (G); 22 LIA,RACHEL (G); 23 SHARPE,PARIS (F); 34 ROSSER,TIANNA (F);

Time	VISITORS: Eckerd	Score	Margin	HOME: Rollins
10:00				SUB OUT: MARTINEZ-TORO, YARI
10:00				SUB OUT: JABLONSKI, RACHEL
10:00				SUB OUT: PLUVIOSE, TANIYAH
10:00				SUB OUT: TASSENT, YOKE
10:00				SUB IN: HARRISON, JAYLYN
10:00				SUB IN: DANIELS, DENISE
10:00				SUB IN: LIA, RACHEL
10:00				SUB IN: SHARPE, PARIS
10:00	SUB OUT: PRICE, MAYA			
10:00	SUB IN: RICHARDS, ZOE			
09:53				FOUL (PERSONAL) by LIA, RACHEL
09:53	GOOD! FT by LARRANAGA, ENERITZ	33-31	H 2	
09:53	GOOD! FT by LARRANAGA, ENERITZ	33-32	H 1	
09:26				MISSED JUMPER by ROSSER, TIANNA
09:23	REBOUND (DEF) by RICHARDS, ZOE			
09:12	GOOD! 3PTR by LARRANAGA, ENERITZ	33-35	V 2	
09:12	ASSIST by LOLL, OCTAVIA			
08:57		35-35	T	GOOD! JUMPER by SHARPE, PARIS
08:57				ASSIST by DANIELS, DENISE
08:27	GOOD! LAYUP by KUEHNE, MIKAYLA	35-37	V 2	
07:59	FOUL (PERSONAL) by RICHARDS, ZOE			
07:59		36-37	V 1	GOOD! FT by ROSSER, TIANNA
07:59		37-37	T	GOOD! FT by ROSSER, TIANNA
07:44	GOOD! 3PTR by LARRANAGA, ENERITZ	37-40	V 3	
07:44	ASSIST by RICHARDS, ZOE			
07:02				TURNOVER (BADPASS) by DANIELS, DENISE
07:02	STEAL by WHITEYE, ABBY			
06:56	MISSED 3PTR by LARRANAGA, ENERITZ			
06:56	REBOUND (OFF) by WHITEYE, ABBY			
06:56				FOUL (PERSONAL) by LIA, RACHEL
06:38	MISSED 3PTR by LARRANAGA, ENERITZ			
06:38				BLOCK by DANIELS, DENISE
06:28				REBOUND (DEF) by HARRISON, JAYLYN
06:27		39-40	V 1	GOOD! LAYUP by DANIELS, DENISE [FB]
06:27				ASSIST by HARRISON, JAYLYN
06:17	TURNOVER (BADPASS) by LARRANAGA, ENERITZ			
06:17				STEAL by HARRISON, JAYLYN
05:51				TURNOVER (LOSTBALL) by SHARPE, PARIS
05:49				SUB OUT: LIA, RACHEL
05:49				SUB OUT: ROSSER, TIANNA
05:49				SUB IN: MARTINEZ-TORO, YARI
05:49				SUB IN: PLUVIOSE, TANIYAH
05:38	MISSED 3PTR by WHITEYE, ABBY			
05:37	REBOUND (OFF) by LARRANAGA, ENERITZ			
05:35	GOOD! LAYUP by LOLL, OCTAVIA	39-42	V 3	
05:26				MISSED JUMPER by HARRISON, JAYLYN
05:26	REBOUND (DEF) by RICHARDS, ZOE			
04:45	MISSED JUMPER by LARRANAGA, ENERITZ			
04:45				BLOCK by SHARPE, PARIS
04:45				REBOUND (DEF) by TEAM
04:40				
04:40				SUB OUT: HARRISON, JAYLYN
04:40				SUB IN: JABLONSKI, RACHEL
04:22				TURNOVER (LOSTBALL) by SHARPE, PARIS
04:22	STEAL by WHITEYE, ABBY			
04:22	SUB OUT: RICHARDS, ZOE			
04:22	SUB IN: PRICE, MAYA			
04:00	GOOD! 3PTR by LARRANAGA, ENERITZ	39-45	V 6	
04:00	ASSIST by LOLL, OCTAVIA			
03:43		41-45	V 4	GOOD! LAYUP by SHARPE, PARIS
03:43				ASSIST by DANIELS, DENISE
03:33	GOOD! 3PTR by WHITEYE, ABBY	41-48	V 7	
03:33	ASSIST by LARRANAGA, ENERITZ			
03:09				MISSED JUMPER by MARTINEZ-TORO, YARI
03:04	REBOUND (DEF) by LOLL, OCTAVIA			
03:00	MISSED 3PTR by WHITEYE, ABBY			
02:56	REBOUND (OFF) by PRICE, MAYA			
02:55	MISSED LAYUP by PRICE, MAYA			
02:54	REBOUND (OFF) by TEAM			
02:54				SUB OUT: DANIELS, DENISE

Time	VISITORS: Eckerd	Score	Margin	HOME: Rollins
02:54				SUB OUT: SHARPE, PARIS
02:54				SUB IN: HARRISON, JAYLYN
02:54				SUB IN: ROSSER, TIANNA
02:41	MISSED 3PTR by KUEHNE, MIKAYLA			
02:39				REBOUND (DEF) by PLUVIOSE, TANIYAH
02:39	FOUL (PERSONAL) by WHITEYE, ABBY			
02:22				TURNOVER (BADPASS) by MARTINEZ-TORO, YARI
02:22	STEAL by KUEHNE, MIKAYLA			
02:17	GOOD! JUMPER by KUEHNE, MIKAYLA [FB]	41-50	V 9	
02:14				TIMEOUT 30SEC
02:14				
02:14				SUB OUT: MARTINEZ-TORO, YARI
02:14				SUB IN: LIA, RACHEL
01:46				MISSED 3PTR by JABLONSKI, RACHEL
01:39				REBOUND (OFF) by ROSSER, TIANNA
01:23		44-50	V 6	GOOD! 3PTR by HARRISON, JAYLYN
01:23				ASSIST by JABLONSKI, RACHEL
00:57	MISSED JUMPER by PRICE, MAYA			
00:52				REBOUND (DEF) by JABLONSKI, RACHEL
00:49				MISSED 3PTR by JABLONSKI, RACHEL
00:46				REBOUND (OFF) by PLUVIOSE, TANIYAH
00:45				MISSED LAYUP by PLUVIOSE, TANIYAH
00:45				REBOUND (OFF) by TEAM
00:45				SUB OUT: PLUVIOSE, TANIYAH
00:45				SUB IN: DANIELS, DENISE
00:30	FOUL (PERSONAL) by LARRANAGA, ENERITZ			
00:30		45-50	V 5	GOOD! FT by LIA, RACHEL
00:30		46-50	V 4	GOOD! FT by LIA, RACHEL
00:08	GOOD! LAYUP by LOLL, OCTAVIA [PNT]	46-52	V 6	
00:00		48-52	V 4	GOOD! JUMPER by HARRISON, JAYLYN [FB]

Eckerd 52, Rollins 48

Points from (This Period)	ECK	ROL
In the Paint	6	4
Off Turns	7	0
2nd Chance	2	5
Fast Break	2	4
Bench	0	0

Official Box Score
Eckerd vs Rollins
Fourth Quarter Statistics Only
January 18, 2020 at Alford Sports Center - Winter Park



Eckerd 22

No.	Player	S	Pts	FG	3FG	FT	OR	DR	TR	PF	A	TO	Blk	Stl	Min	+/-
04	LARRANAGA, ENERITZ	G	5	2-2	0-0	1-1	1	0	1	0	2	1	0	0	9	9
05	KUEHNE, MIKAYLA	F	8	3-3	1-1	1-1	0	1	1	1	0	1	0	0	7	10
11	LOLL, OCTAVIA	G	5	1-3	0-0	3-5	0	2	2	1	1	0	0	1	10	4
20	WHITEYE, ABBY	G	0	0-0	0-0	0-0	0	2	2	0	0	0	0	0	7	10
22	RICHARDS, ZOE	C	0	0-1	0-1	0-0	0	0	0	0	0	1	0	0	4	6
10	JUDAY, BROOKE	G	0	0-0	0-0	0-0	0	0	0	0	0	1	0	0	1	-5
12	PRICE, MAYA	C	2	1-3	0-1	0-0	0	1	1	1	0	0	0	0	6	-2
14	IBERN, MAR	F	2	0-0	0-0	2-2	1	1	2	0	0	0	0	0	3	-6
21	GRANLUND, CLARA	G	0	0-0	0-0	0-0	0	0	0	0	0	0	0	0	3	-6
	TEAM						0	1	1	0		0				
TOTALS			22	7-12	1-3	7-9	2	8	10	3	3	4	0	1	50	

Shooting By Period

Period	FG	FG%	3FG	3FG%	FT	FT%
Game	25-60	41.7%	8-26	30.8%	16-22	72.7%

Deadball Rebounds: 4,0

Rollins 18

No.	Player	S	Pts	FG	3FG	FT	OR	DR	TR	PF	A	TO	Blk	Stl	Min	+/-
04	HARRISON, JAYLYN	G	9	3-5	3-4	0-0	0	0	0	2	1	1	0	0	7	-1
21	DANIELS, DENISE	G	2	1-2	0-0	0-0	0	1	1	1	0	0	0	1	7	-1
22	LIA, RACHEL	G	0	0-1	0-1	0-0	0	0	0	0	1	0	0	2	7	-9
23	SHARPE, PARIS	F	1	0-0	0-0	1-2	0	0	0	0	0	0	1	0	3	-3
34	ROSSER, TIANNA	F	0	0-0	0-0	0-0	3	0	3	0	1	0	0	0	7	-1
00	MARTINEZ-TORO, YARI	G	3	1-4	1-4	0-0	1	3	4	1	2	0	1	0	6	2
05	NEWSOME, ASIA	G	0	0-2	0-0	0-0	0	0	0	0	0	0	0	0	4	-6
11	JABLONSKI, RACHEL	G	3	1-4	1-3	0-0	1	0	1	2	0	0	0	0	6	2
12	KEITHS, ANGEL	F	0	0-0	0-0	0-0	0	0	0	0	0	0	0	0	0	0
13	PLUVIOSE, TANIYAH	F	0	0-0	0-0	0-0	0	0	0	1	0	1	1	0	3	-3
24	TASSENT, YOKE	G	0	0-0	0-0	0-0	0	0	0	0	0	0	0	0	0	0
33	LASARTE GARCIA, SILVIA	F	0	0-0	0-0	0-0	0	0	0	0	0	0	0	0	0	0
	TEAM						0	0	0	0		2				
TOTALS			18	6-18	5-12	1-2	5	4	9	7	5	4	3	3	50	

Shooting By Period

Period	FG	FG%	3FG	3FG%	FT	FT%
Game	24-55	43.6%	11-22	50.0%	7-8	87.5%

Deadball Rebounds: 1,0

Game Notes:

Officials: **Brandon Appel, Jellisse Oliver, Courtney Styfurak**
Attendance: **287**

Start Time: **01:59 PM ET**
End Time: **03:36 PM ET**
Game Duration: **1:36**
Conference Game;

Score	1st	2nd	3rd	4th	TOT
ECK	19	11	22	22	74
ROL	13	20	15	18	66

Points from (This Period)	ECK	ROL
In the Paint	12	2
Off Turns	8	3
2nd Chance	3	9
Fast Break	5	0
Bench	4	6

Official Play-By-Play
Eckerd vs Rollins
Fourth Quarter
January 18, 2020 at Alford Sports Center - Winter Park



Period 4

Starters:

Eckerd: 4 LARRANAGA,ENERITZ (G); 5 KUEHNE,MIKAYLA (F); 11 LOLL,OCTAVIA (G); 20 WHITEYE,ABBY (G); 22 RICHARDS,ZOE (C);

Rollins: 4 HARRISON,JAYLYN (G); 21 DANIELS,DENISE (G); 22 LIA,RACHEL (G); 23 SHARPE,PARIS (F); 34 ROSSER,TIANNA (F);

Time	VISITORS: Eckerd	Score	Margin	HOME: Rollins
10:00				SUB OUT: JABLONSKI, RACHEL
10:00				SUB IN: NEWSOME, ASIA
10:00	SUB OUT: PRICE, MAYA			
10:00	SUB IN: RICHARDS, ZOE			
09:33				MISSED JUMPER by NEWSOME, ASIA
09:30	REBOUND (DEF) by LOLL, OCTAVIA			
09:09	TURNOVER (TRAVEL) by RICHARDS, ZOE			
08:51	FOUL (PERSONAL) by KUEHNE, MIKAYLA			
08:38				TURNOVER (BADPASS) by HARRISON, JAYLYN
08:27	MISSED 3PTR by RICHARDS, ZOE			
08:23	REBOUND (OFF) by LARRANAGA, ENERITZ			
08:15	GOOD! LAYUP by LARRANAGA, ENERITZ [PNT]	48-54	V 6	
08:15				FOUL (PERSONAL) by HARRISON, JAYLYN
08:15	GOOD! FT by LARRANAGA, ENERITZ	48-55	V 7	
08:07	FOUL (PERSONAL) by LOLL, OCTAVIA			
07:48		50-55	V 5	GOOD! LAYUP by DANIELS, DENISE
07:48				ASSIST by LIA, RACHEL
07:32	GOOD! LAYUP by LOLL, OCTAVIA [PNT]	50-57	V 7	
07:32				FOUL (PERSONAL) by HARRISON, JAYLYN
07:32	GOOD! FT by LOLL, OCTAVIA	50-58	V 8	
07:12				MISSED JUMPER by NEWSOME, ASIA
07:09	REBOUND (DEF) by LOLL, OCTAVIA			
07:03	GOOD! JUMPER by KUEHNE, MIKAYLA [FB]	50-60	V 10	
07:03	ASSIST by LARRANAGA, ENERITZ			
06:33				MISSED JUMPER by HARRISON, JAYLYN
06:30				REBOUND (OFF) by ROSSER, TIANNA
06:29				MISSED 3PTR by LIA, RACHEL
06:27	REBOUND (DEF) by TEAM			
06:27				SUB OUT: NEWSOME, ASIA
06:27				SUB OUT: ROSSER, TIANNA
06:27				SUB IN: MARTINEZ-TORO, YARI
06:27				SUB IN: SHARPE, PARIS
06:27	SUB OUT: RICHARDS, ZOE			
06:27	SUB IN: PRICE, MAYA			
06:09	TURNOVER (LOSTBALL) by LARRANAGA, ENERITZ			
06:09				STEAL by LIA, RACHEL
06:02				MISSED JUMPER by DANIELS, DENISE
05:59	REBOUND (DEF) by WHITEYE, ABBY			
05:52	MISSED JUMPER by PRICE, MAYA			
05:52				BLOCK by SHARPE, PARIS
05:45				REBOUND (DEF) by MARTINEZ-TORO, YARI
05:43	FOUL (PERSONAL) by PRICE, MAYA			
05:43				SUB OUT: HARRISON, JAYLYN
05:43				SUB OUT: DANIELS, DENISE
05:43				SUB IN: JABLONSKI, RACHEL
05:43				SUB IN: PLUVIOSE, TANIYAH
05:43		51-60	V 9	GOOD! FT by SHARPE, PARIS
05:43				MISSED FT by SHARPE, PARIS
05:40	REBOUND (DEF) by WHITEYE, ABBY			
05:34	GOOD! LAYUP by PRICE, MAYA	51-62	V 11	
05:34	ASSIST by LARRANAGA, ENERITZ			
05:13				MISSED 3PTR by MARTINEZ-TORO, YARI
05:08				REBOUND (OFF) by JABLONSKI, RACHEL
04:55				TURNOVER (BADPASS) by PLUVIOSE, TANIYAH
04:55	STEAL by LOLL, OCTAVIA			
04:51	MISSED JUMPER by LOLL, OCTAVIA			
04:51				BLOCK by PLUVIOSE, TANIYAH
04:39				REBOUND (DEF) by MARTINEZ-TORO, YARI
04:38				MISSED 3PTR by JABLONSKI, RACHEL
04:35				REBOUND (OFF) by MARTINEZ-TORO, YARI
04:34		54-62	V 8	GOOD! 3PTR by MARTINEZ-TORO, YARI
04:27	TIMEOUT 30SEC			
04:27				
04:19	GOOD! 3PTR by KUEHNE, MIKAYLA	54-65	V 11	
04:19	ASSIST by LOLL, OCTAVIA			
03:59				MISSED 3PTR by MARTINEZ-TORO, YARI
03:55	REBOUND (DEF) by KUEHNE, MIKAYLA			
03:53	TURNOVER (BADPASS) by KUEHNE, MIKAYLA			
03:53				STEAL by LIA, RACHEL
03:21				TURNOVER (SHOTCLOCK) by TEAM

Time	VISITORS: Eckerd	Score	Margin	HOME: Rollins
03:07	GOOD! LAYUP by KUEHNE, MIKAYLA [PNT]	54-67	V 13	
03:07				FOUL (PERSONAL) by PLUVIOSE, TANIYAH
03:07				SUB OUT: PLUVIOSE, TANIYAH
03:07				SUB OUT: LIA, RACHEL
03:07				SUB OUT: SHARPE, PARIS
03:07				SUB IN: HARRISON, JAYLYN
03:07				SUB IN: DANIELS, DENISE
03:07				SUB IN: ROSSER, TIANNA
03:07	GOOD! FT by KUEHNE, MIKAYLA	54-68	V 14	
03:07	SUB OUT: KUEHNE, MIKAYLA			
03:07	SUB IN: IBERN, MAR			
02:35				TURNOVER (SHOTCLOCK) by TEAM
02:35				FOUL (PERSONAL) by DANIELS, DENISE
02:35	SUB OUT: WHITEYE, ABBY			
02:35	SUB IN: GRANLUND, CLARA			
02:05	GOOD! LAYUP by LARRANAGA, ENERITZ [PNT]	54-70	V 16	
01:54		57-70	V 13	GOOD! 3PTR by JABLONSKI, RACHEL
01:54				ASSIST by HARRISON, JAYLYN
01:32	MISSED 3PTR by PRICE, MAYA			
01:28				REBOUND (DEF) by MARTINEZ-TORO, YARI
01:21				MISSED 3PTR by HARRISON, JAYLYN
01:18	REBOUND (DEF) by IBERN, MAR			
01:18				FOUL (PERSONAL) by JABLONSKI, RACHEL
01:18	SUB OUT: LARRANAGA, ENERITZ			
01:18	SUB IN: JUDAY, BROOKE			
01:18	GOOD! FT by IBERN, MAR [FB]	57-71	V 14	
01:18	GOOD! FT by IBERN, MAR [FB]	57-72	V 15	
01:11				MISSED 3PTR by JABLONSKI, RACHEL
01:08				REBOUND (OFF) by ROSSER, TIANNA
01:05		60-72	V 12	GOOD! 3PTR by HARRISON, JAYLYN
01:05				ASSIST by ROSSER, TIANNA
00:44				FOUL (PERSONAL) by MARTINEZ-TORO, YARI
00:44	GOOD! FT by LOLL, OCTAVIA	60-73	V 13	
00:44	MISSED FT by LOLL, OCTAVIA			
00:41	REBOUND (OFF) by IBERN, MAR			
00:39	MISSED JUMPER by LOLL, OCTAVIA			
00:39				BLOCK by MARTINEZ-TORO, YARI
00:34				REBOUND (DEF) by DANIELS, DENISE
00:31		63-73	V 10	GOOD! 3PTR by HARRISON, JAYLYN
00:31				ASSIST by MARTINEZ-TORO, YARI
00:31	TIMEOUT 30SEC			
00:29	TURNOVER (BADPASS) by JUDAY, BROOKE			
00:29				STEAL by DANIELS, DENISE
00:24				MISSED 3PTR by MARTINEZ-TORO, YARI
00:18				REBOUND (OFF) by ROSSER, TIANNA
00:18		66-73	V 7	GOOD! 3PTR by HARRISON, JAYLYN
00:18				ASSIST by MARTINEZ-TORO, YARI
00:16				FOUL (PERSONAL) by JABLONSKI, RACHEL
00:16	MISSED FT by LOLL, OCTAVIA			
00:16	REBOUND (OFF) by TEAM			
00:16	GOOD! FT by LOLL, OCTAVIA [FB]	66-74	V 8	
00:07				MISSED JUMPER by JABLONSKI, RACHEL
00:04	REBOUND (DEF) by PRICE, MAYA			

Eckerd 74, Rollins 66

Points from (This Period)	ECK	ROL
In the Paint	12	2
Off Turns	8	3
2nd Chance	3	9
Fast Break	5	0
Bench	4	6

Official Scoring/Possession Reference Chart
Eckerd vs Rollins
Period 1
January 18, 2020 at Alford Sports Center - Winter Park



Period 1

Starters:

Eckerd: 4 LARRANAGA,ENERITZ (G); 5 KUEHNE,MIKAYLA (F); 11 LOLL,OCTAVIA (G); 20 WHITEYE,ABBY (G); 22 RICHARDS,ZOE (C);

Rollins: 4 HARRISON,JAYLYN (G); 21 DANIELS,DENISE (G); 22 LIA,RACHEL (G); 23 SHARPE,PARIS (F); 34 ROSSER,TIANNA (F);

Time	VISITORS: Eckerd	Score	Margin	HOME: Rollins
09:16	GOOD! 3PTR by WHITEYE, ABBY	0-3	V 3	
08:14		1-3	V 2	GOOD! FT by HARRISON, JAYLYN
08:14		2-3	V 1	GOOD! FT by HARRISON, JAYLYN
08:03	GOOD! FT by LARRANAGA, ENERITZ	2-4	V 2	
06:50	GOOD! LAYUP by LARRANAGA, ENERITZ	2-6	V 4	
05:55		4-6	V 2	GOOD! JUMPER by MARTINEZ-TORO, YARI
05:41	GOOD! FT by RICHARDS, ZOE	4-7	V 3	
05:11		6-7	V 1	GOOD! JUMPER by SHARPE, PARIS
03:34	GOOD! LAYUP by KUEHNE, MIKAYLA [PNT]	6-9	V 3	
03:15	GOOD! JUMPER by PRICE, MAYA [PNT]	6-11	V 5	
02:43		8-11	V 3	GOOD! JUMPER by NEWSOME, ASIA
02:26		10-11	V 1	GOOD! LAYUP by NEWSOME, ASIA [FB]
01:57	GOOD! 3PTR by WHITEYE, ABBY	10-14	V 4	
01:33	GOOD! FT by WHITEYE, ABBY [FB]	10-15	V 5	
00:43	GOOD! LAYUP by WHITEYE, ABBY [PNT]	10-17	V 7	
00:18		13-17	V 4	GOOD! 3PTR by PLUVIOSE, TANIYAH
00:04	GOOD! LAYUP by LOLL, OCTAVIA	13-19	V 6	

Eckerd 19, Rollins 13

Official Scoring/Possession Reference Chart
Eckerd vs Rollins
Period 2
January 18, 2020 at Alford Sports Center - Winter Park



Period 2

Starters:

Eckerd: 4 LARRANAGA, ENERITZ (G); 5 KUEHNE, MIKAYLA (F); 11 LOLL, OCTAVIA (G); 20 WHITEYE, ABBY (G); 22 RICHARDS, ZOE (C);

Rollins: 4 HARRISON, JAYLYN (G); 21 DANIELS, DENISE (G); 22 LIA, RACHEL (G); 23 SHARPE, PARIS (F); 34 ROSSER, TIANNA (F);

Time	VISITORS: Eckerd	Score	Margin	HOME: Rollins
09:22		15-19	V 4	GOOD! JUMPER by ROSSER, TIANNA
08:45		17-19	V 2	GOOD! LAYUP by LIA, RACHEL
08:23	GOOD! LAYUP by RICHARDS, ZOE [PNT]	17-21	V 4	
06:42		20-21	V 1	GOOD! 3PTR by HARRISON, JAYLYN
05:45		22-21	H 1	GOOD! JUMPER by DANIELS, DENISE
05:09	GOOD! 3PTR by JUDAY, BROOKE	22-24	V 2	
04:34		25-24	H 1	GOOD! 3PTR by MARTINEZ-TORO, YARI
03:51		28-24	H 4	GOOD! 3PTR by LIA, RACHEL [FB]
02:56		30-24	H 6	GOOD! JUMPER by NEWSOME, ASIA
02:14		33-24	H 9	GOOD! 3PTR by TASSENT, YOKE [FB]
02:01	GOOD! FT by WHITEYE, ABBY	33-25	H 8	
02:01	GOOD! FT by WHITEYE, ABBY	33-26	H 7	
02:01	GOOD! FT by WHITEYE, ABBY	33-27	H 6	
00:40	GOOD! FT by KUEHNE, MIKAYLA [FB]	33-28	H 5	
00:23	GOOD! JUMPER by LOLL, OCTAVIA [PNT]	33-30	H 3	

Eckerd 30, Rollins 33

Official Scoring/Possession Reference Chart
Eckerd vs Rollins
Period 3
January 18, 2020 at Alford Sports Center - Winter Park



Period 3

Starters:

Eckerd: 4 LARRANAGA, ENERITZ (G); 5 KUEHNE, MIKAYLA (F); 11 LOLL, OCTAVIA (G); 20 WHITEYE, ABBY (G); 22 RICHARDS, ZOE (C);

Rollins: 4 HARRISON, JAYLYN (G); 21 DANIELS, DENISE (G); 22 LIA, RACHEL (G); 23 SHARPE, PARIS (F); 34 ROSSER, TIANNA (F);

Time	VISITORS: Eckerd	Score	Margin	HOME: Rollins
09:53	GOOD! FT by LARRANAGA, ENERITZ	33-31	H 2	
09:53	GOOD! FT by LARRANAGA, ENERITZ	33-32	H 1	
09:12	GOOD! 3PTR by LARRANAGA, ENERITZ	33-35	V 2	
08:57		35-35	T	GOOD! JUMPER by SHARPE, PARIS
08:27	GOOD! LAYUP by KUEHNE, MIKAYLA	35-37	V 2	
07:59		36-37	V 1	GOOD! FT by ROSSER, TIANNA
07:59		37-37	T	GOOD! FT by ROSSER, TIANNA
07:44	GOOD! 3PTR by LARRANAGA, ENERITZ	37-40	V 3	
06:27		39-40	V 1	GOOD! LAYUP by DANIELS, DENISE [FB]
05:35	GOOD! LAYUP by LOLL, OCTAVIA	39-42	V 3	
04:00	GOOD! 3PTR by LARRANAGA, ENERITZ	39-45	V 6	
03:43		41-45	V 4	GOOD! LAYUP by SHARPE, PARIS
03:33	GOOD! 3PTR by WHITEYE, ABBY	41-48	V 7	
02:17	GOOD! JUMPER by KUEHNE, MIKAYLA [FB]	41-50	V 9	
01:23		44-50	V 6	GOOD! 3PTR by HARRISON, JAYLYN
00:30		45-50	V 5	GOOD! FT by LIA, RACHEL
00:30		46-50	V 4	GOOD! FT by LIA, RACHEL
00:08	GOOD! LAYUP by LOLL, OCTAVIA [PNT]	46-52	V 6	
00:00		48-52	V 4	GOOD! JUMPER by HARRISON, JAYLYN [FB]

Eckerd 52, Rollins 48

Official Scoring/Possession Reference Chart
Eckerd vs Rollins
Period 4
January 18, 2020 at Alford Sports Center - Winter Park



Period 4

Starters:

Eckerd: 4 LARRANAGA,ENERITZ (G); 5 KUEHNE,MIKAYLA (F); 11 LOLL,OCTAVIA (G); 20 WHITEYE,ABBY (G); 22 RICHARDS,ZOE (C);

Rollins: 4 HARRISON,JAYLYN (G); 21 DANIELS,DENISE (G); 22 LIA,RACHEL (G); 23 SHARPE,PARIS (F); 34 ROSSER,TIANNA (F);

Time	VISITORS: Eckerd	Score	Margin	HOME: Rollins
08:15	GOOD! LAYUP by LARRANAGA, ENERITZ [PNT]	48-54	V 6	
08:15	GOOD! FT by LARRANAGA, ENERITZ	48-55	V 7	
07:48		50-55	V 5	GOOD! LAYUP by DANIELS, DENISE
07:32	GOOD! LAYUP by LOLL, OCTAVIA [PNT]	50-57	V 7	
07:32	GOOD! FT by LOLL, OCTAVIA	50-58	V 8	
07:03	GOOD! JUMPER by KUEHNE, MIKAYLA [FB]	50-60	V 10	
05:43		51-60	V 9	GOOD! FT by SHARPE, PARIS
05:34	GOOD! LAYUP by PRICE, MAYA	51-62	V 11	
04:34		54-62	V 8	GOOD! 3PTR by MARTINEZ-TORO, YARI
04:19	GOOD! 3PTR by KUEHNE, MIKAYLA	54-65	V 11	
03:07	GOOD! LAYUP by KUEHNE, MIKAYLA [PNT]	54-67	V 13	
03:07	GOOD! FT by KUEHNE, MIKAYLA	54-68	V 14	
02:05	GOOD! LAYUP by LARRANAGA, ENERITZ [PNT]	54-70	V 16	
01:54		57-70	V 13	GOOD! 3PTR by JABLONSKI, RACHEL
01:18	GOOD! FT by IBERN, MAR [FB]	57-71	V 14	
01:18	GOOD! FT by IBERN, MAR [FB]	57-72	V 15	
01:05		60-72	V 12	GOOD! 3PTR by HARRISON, JAYLYN
00:44	GOOD! FT by LOLL, OCTAVIA	60-73	V 13	
00:31		63-73	V 10	GOOD! 3PTR by HARRISON, JAYLYN
00:18		66-73	V 7	GOOD! 3PTR by HARRISON, JAYLYN
00:16	GOOD! FT by LOLL, OCTAVIA [FB]	66-74	V 8	

Eckerd 74, Rollins 66

Official Substitutions Log
Eckerd vs Rollins
Period 1
January 18, 2020 at Alford Sports Center - Winter Park



VISITORS: Eckerd	Time	Score	HOME: Rollins
4 LARRANAGA,ENERITZ			4 HARRISON,JAYLYN
5 KUEHNE,MIKAYLA			21 DANIELS,DENISE
11 LOLL,OCTAVIA			22 LIA,RACHEL
20 WHITEYE,ABBY			23 SHARPE,PARIS
22 RICHARDS,ZOE			34 ROSSER,TIANNA
SUB OUT: 11 LOLL,OCTAVIA	08:14	3-0	
SUB IN: 12 PRICE,MAYA	08:14		
	06:25	6-2	SUB OUT: LIA,RACHEL
	06:25		SUB IN: MARTINEZ-TORO,YARI
	05:41	6-4	SUB OUT: ROSSER,TIANNA
	05:41		SUB IN: JABLONSKI,RACHEL
	04:43	7-6	SUB OUT: DANIELS,DENISE
	04:43		SUB IN: PLUVIOSE,TANIYAH
SUB OUT: 22 RICHARDS,ZOE	04:43		
SUB IN: 11 LOLL,OCTAVIA	04:43		
	03:27	9-6	SUB OUT: HARRISON,JAYLYN
	03:27		SUB IN: NEWSOME,ASIA
	02:09	11-10	SUB OUT: SHARPE,PARIS
	02:09		SUB IN: LASARTE GARCIA,SILVIA
SUB OUT: 4 LARRANAGA,ENERITZ	02:09		
SUB OUT: 12 PRICE,MAYA	02:09		
SUB IN: 14 IBERN,MAR	02:09		
SUB IN: 22 RICHARDS,ZOE	02:09		

Eckerd 19, Rollins 13

Official Substitutions Log
Eckerd vs Rollins
Period 2
January 18, 2020 at Alford Sports Center - Winter Park



VISITORS: Eckerd	Time	Score	HOME: Rollins
4 LARRANAGA,ENERITZ			4 HARRISON,JAYLYN
5 KUEHNE,MIKAYLA			21 DANIELS,DENISE
11 LOLL,OCTAVIA			22 LIA,RACHEL
20 WHITEYE,ABBY			23 SHARPE,PARIS
22 RICHARDS,ZOE			34 ROSSER,TIANNA
	10:00	-	SUB OUT: MARTINEZ-TORO,YARI
	10:00		SUB OUT: NEWSOME,ASIA
	10:00		SUB OUT: JABLONSKI,RACHEL
	10:00		SUB OUT: LASARTE GARCIA,SILVIA
	10:00		SUB IN: HARRISON,JAYLYN
	10:00		SUB IN: KEITHS,ANGEL
	10:00		SUB IN: LIA,RACHEL
	10:00		SUB IN: ROSSER,TIANNA
SUB OUT: 5 KUEHNE,MIKAYLA	10:00		
SUB IN: 10 JUDAY,BROOKE	10:00		
	07:29	21-17	SUB OUT: KEITHS,ANGEL
	07:29		SUB OUT: PLUVIOSE,TANIYAH
	07:29		SUB IN: MARTINEZ-TORO,YARI
	07:29		SUB IN: DANIELS,DENISE
SUB OUT: 14 IBERN,MAR	07:29		
SUB IN: 12 PRICE,MAYA	07:29		
	03:44	24-28	SUB OUT: HARRISON,JAYLYN
	03:44		SUB OUT: DANIELS,DENISE
	03:44		SUB OUT: LIA,RACHEL
	03:44		SUB OUT: ROSSER,TIANNA
	03:44		SUB IN: NEWSOME,ASIA
	03:44		SUB IN: JABLONSKI,RACHEL
	03:44		SUB IN: PLUVIOSE,TANIYAH
	03:44		SUB IN: SHARPE,PARIS
SUB OUT: 10 JUDAY,BROOKE	03:44		
SUB OUT: 20 WHITEYE,ABBY	03:44		
SUB IN: 4 LARRANAGA,ENERITZ	03:44		
SUB IN: 5 KUEHNE,MIKAYLA	03:44		
	02:30	24-30	SUB OUT: NEWSOME,ASIA
	02:30		SUB IN: TASSENT,YOKE
SUB OUT: 22 RICHARDS,ZOE	02:30		
SUB IN: 20 WHITEYE,ABBY	02:30		
	01:36	27-33	SUB OUT: SHARPE,PARIS
	01:36		SUB IN: ROSSER,TIANNA

Eckerd 30, Rollins 33

Official Substitutions Log
Eckerd vs Rollins
Period 3
January 18, 2020 at Alford Sports Center - Winter Park



VISITORS: Eckerd	Time	Score	HOME: Rollins
4 LARRANAGA,ENERITZ			4 HARRISON,JAYLYN
5 KUEHNE,MIKAYLA			21 DANIELS,DENISE
11 LOLL,OCTAVIA			22 LIA,RACHEL
20 WHITEYE,ABBY			23 SHARPE,PARIS
22 RICHARDS,ZOE			34 ROSSER,TIANNA
	10:00	-	SUB OUT: MARTINEZ-TORO,YARI
	10:00		SUB OUT: JABLONSKI,RACHEL
	10:00		SUB OUT: PLUVIOSE,TANIYAH
	10:00		SUB OUT: TASSENT,YOKE
	10:00		SUB IN: HARRISON,JAYLYN
	10:00		SUB IN: DANIELS,DENISE
	10:00		SUB IN: LIA,RACHEL
	10:00		SUB IN: SHARPE,PARIS
SUB OUT: 12 PRICE,MAYA	10:00		
SUB IN: 22 RICHARDS,ZOE	10:00		
	05:49	40-39	SUB OUT: LIA,RACHEL
	05:49		SUB OUT: ROSSER,TIANNA
	05:49		SUB IN: MARTINEZ-TORO,YARI
	05:49		SUB IN: PLUVIOSE,TANIYAH
	04:40	42-39	SUB OUT: HARRISON,JAYLYN
	04:40		SUB IN: JABLONSKI,RACHEL
SUB OUT: 22 RICHARDS,ZOE	04:22	42-39	
SUB IN: 12 PRICE,MAYA	04:22		
	02:54	48-41	SUB OUT: DANIELS,DENISE
	02:54		SUB OUT: SHARPE,PARIS
	02:54		SUB IN: HARRISON,JAYLYN
	02:54		SUB IN: ROSSER,TIANNA
	02:14	50-41	SUB OUT: MARTINEZ-TORO,YARI
	02:14		SUB IN: LIA,RACHEL
	00:45	50-44	SUB OUT: PLUVIOSE,TANIYAH
	00:45		SUB IN: DANIELS,DENISE

Eckerd 52, Rollins 48

Official Substitutions Log
Eckerd vs Rollins
Period 4
January 18, 2020 at Alford Sports Center - Winter Park



VISITORS: Eckerd	Time	Score	HOME: Rollins
4 LARRANAGA,ENERITZ			4 HARRISON,JAYLYN
5 KUEHNE,MIKAYLA			21 DANIELS,DENISE
11 LOLL,OCTAVIA			22 LIA,RACHEL
20 WHITEYE,ABBY			23 SHARPE,PARIS
22 RICHARDS,ZOE			34 ROSSER,TIANNA
	10:00	-	SUB OUT: JABLONSKI,RACHEL
	10:00		SUB IN: NEWSOME,ASIA
SUB OUT: 12 PRICE,MAYA	10:00		
SUB IN: 22 RICHARDS,ZOE	10:00		
	06:27	60-50	SUB OUT: NEWSOME,ASIA
	06:27		SUB OUT: ROSSER,TIANNA
	06:27		SUB IN: MARTINEZ-TORO,YARI
	06:27		SUB IN: SHARPE,PARIS
SUB OUT: 22 RICHARDS,ZOE	06:27		
SUB IN: 12 PRICE,MAYA	06:27		
	05:43	60-50	SUB OUT: HARRISON,JAYLYN
	05:43		SUB OUT: DANIELS,DENISE
	05:43		SUB IN: JABLONSKI,RACHEL
	05:43		SUB IN: PLUVIOSE,TANIYAH
	03:07	67-54	SUB OUT: PLUVIOSE,TANIYAH
	03:07		SUB OUT: LIA,RACHEL
	03:07		SUB OUT: SHARPE,PARIS
	03:07		SUB IN: HARRISON,JAYLYN
	03:07		SUB IN: DANIELS,DENISE
	03:07		SUB IN: ROSSER,TIANNA
SUB OUT: 5 KUEHNE,MIKAYLA	03:07		
SUB IN: 14 IBERN,MAR	03:07		
SUB OUT: 20 WHITEYE,ABBY	02:35	68-54	
SUB IN: 21 GRANLUND,CLARA	02:35		
SUB OUT: 4 LARRANAGA,ENERITZ	01:18	70-57	
SUB IN: 10 JUDAY,BROOKE	01:18		

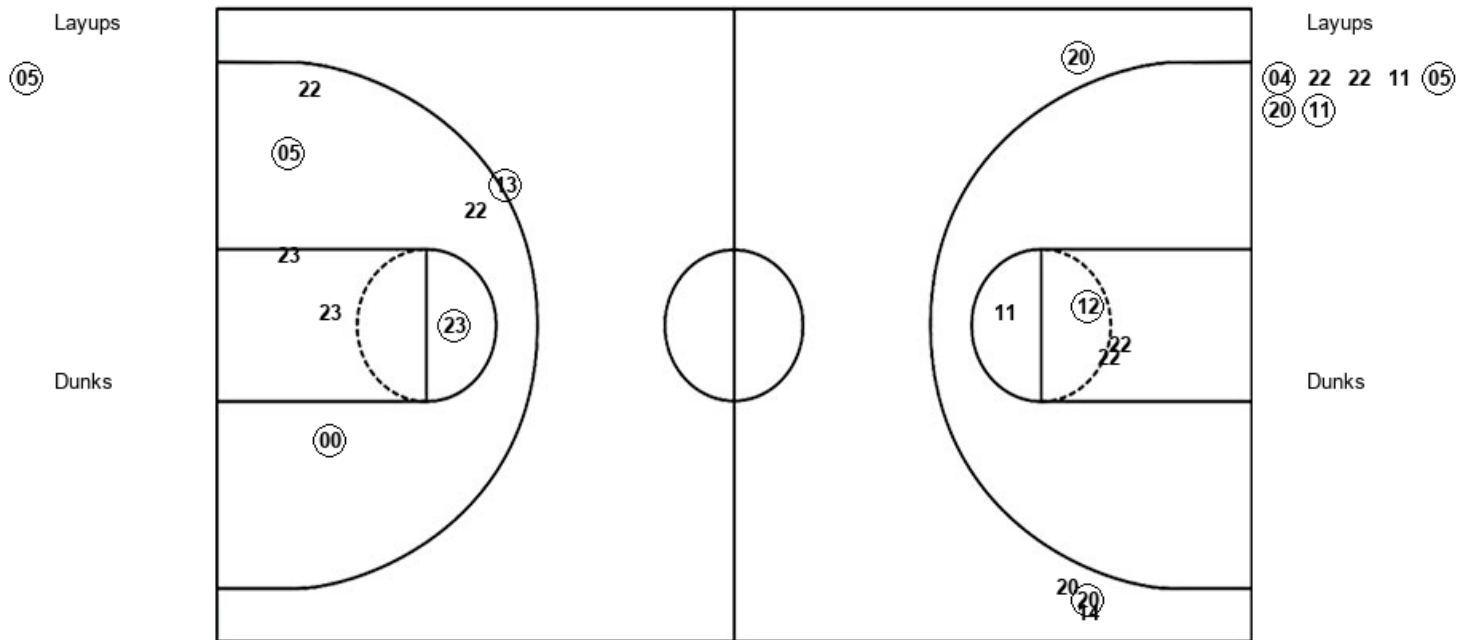
Eckerd 74, Rollins 66

Official Shot Chart
Eckerd vs Rollins
 PERIOD 1 Shots
 January 18, 2020 at Alford Sports Center - Winter Park



Rollins

Eckerd



ROL : Period 1	Made	Att	Pct
Layups	1	1	100.0
Dunks	0	0	0
2PT Field Goals	4	8	50.0
3PT Field Goals	1	1	100.0
Total Field Goals	5	9	55.6

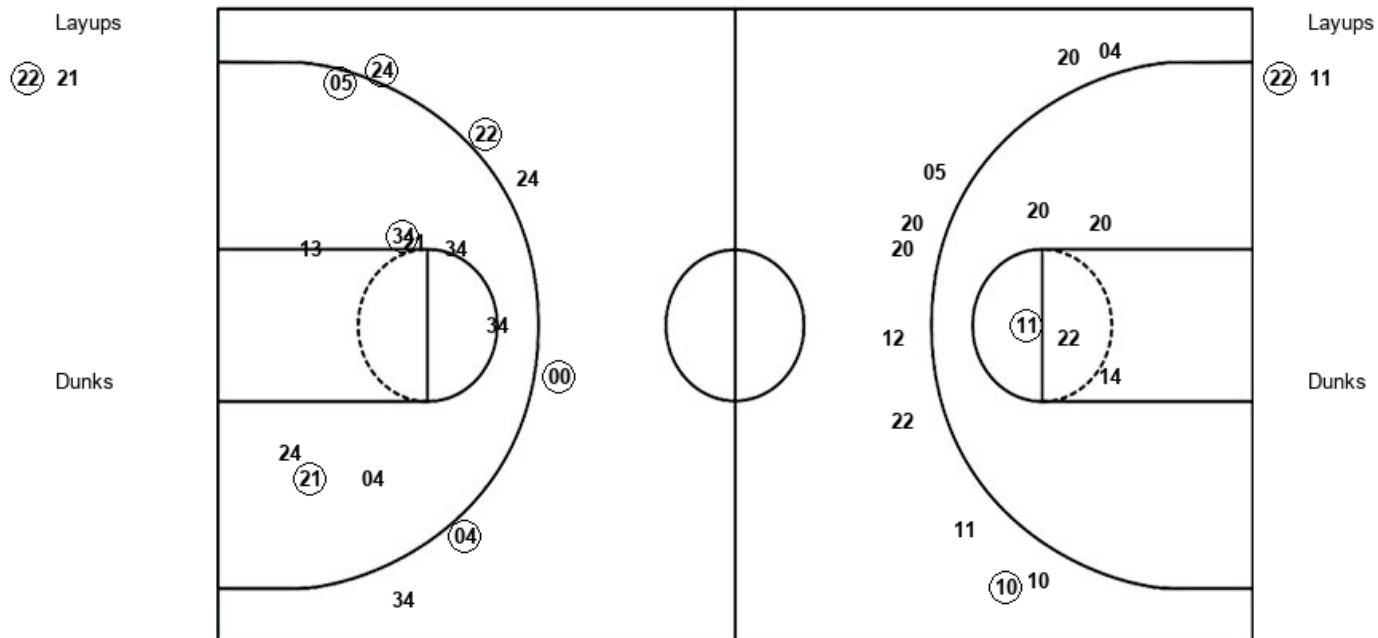
ECK : Period 1	Made	Att	Pct
Layups	4	7	57.1
Dunks	0	0	0
2PT Field Goals	5	11	45.5
3PT Field Goals	2	4	50.0
Total Field Goals	7	15	46.7

Official Shot Chart
Eckerd vs Rollins
 PERIOD 2 Shots
 January 18, 2020 at Alford Sports Center - Winter Park



Rollins

Eckerd



ROL : Period 2	Made	Att	Pct
Layups	1	2	50.0
Dunks	0	0	0
2PT Field Goals	4	11	36.4
3PT Field Goals	4	6	66.7
Total Field Goals	8	17	47.1

ECK : Period 2	Made	Att	Pct
Layups	1	2	50.0
Dunks	0	0	0
2PT Field Goals	2	7	28.6
3PT Field Goals	1	10	10.0
Total Field Goals	3	17	17.6

Official Shot Chart
Eckerd vs Rollins
 PERIOD 3 Shots
 January 18, 2020 at Alford Sports Center - Winter Park

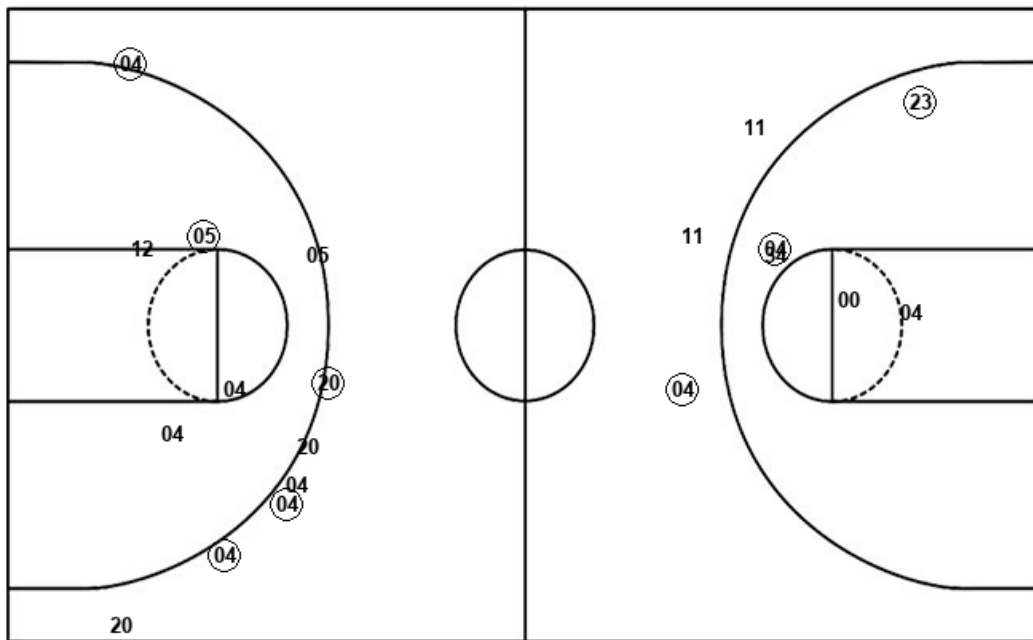


Rollins

Eckerd

Layups
 (21) (23) 13

Dunks



ROL : Period 3	Made	Att	Pct
Layups	2	3	66.7
Dunks	0	0	0
2PT Field Goals	4	8	50.0
3PT Field Goals	1	3	33.3
Total Field Goals	5	11	45.5

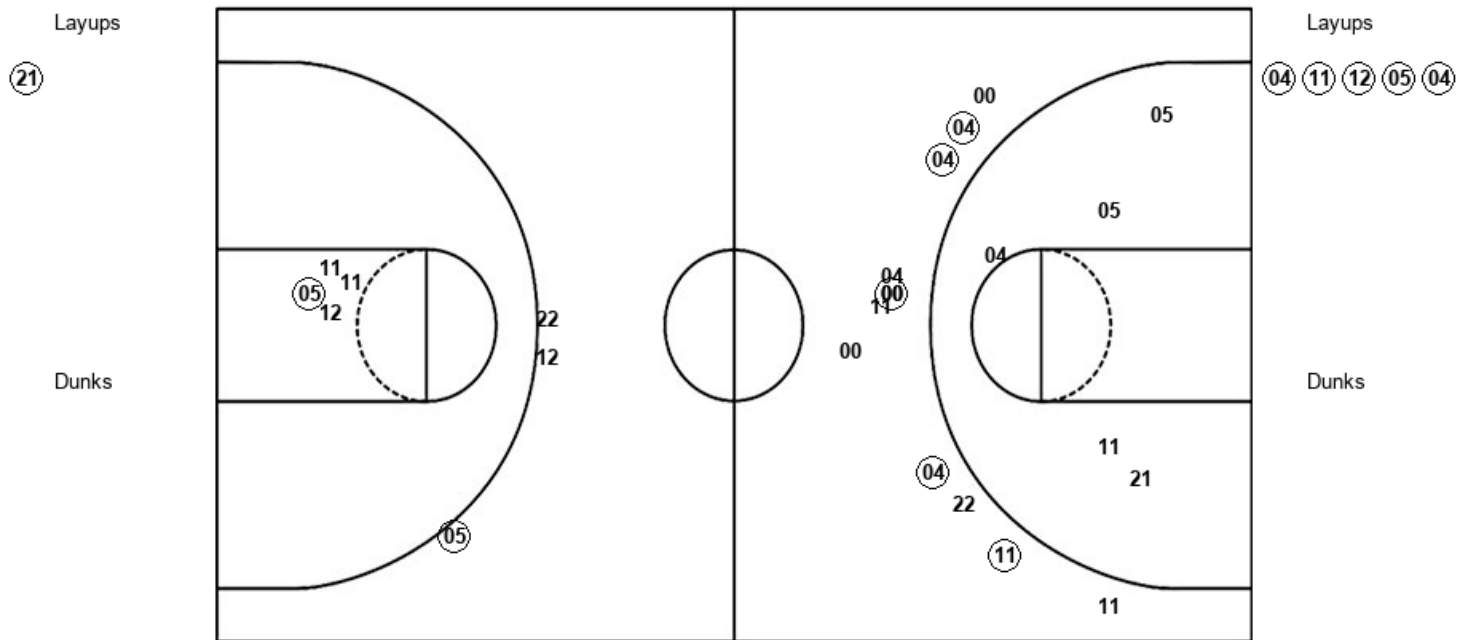
ECK : Period 3	Made	Att	Pct
Layups	3	4	75.0
Dunks	0	0	0
2PT Field Goals	4	7	57.1
3PT Field Goals	4	9	44.4
Total Field Goals	8	16	50.0

Official Shot Chart
Eckerd vs Rollins
 PERIOD 4 Shots
 January 18, 2020 at Alford Sports Center - Winter Park



Rollins

Eckerd



ROL : Period 4	Made	Att	Pct
Layups	1	1	100.0
Dunks	0	0	0
2PT Field Goals	1	6	16.7
3PT Field Goals	5	12	41.7
Total Field Goals	6	18	33.3

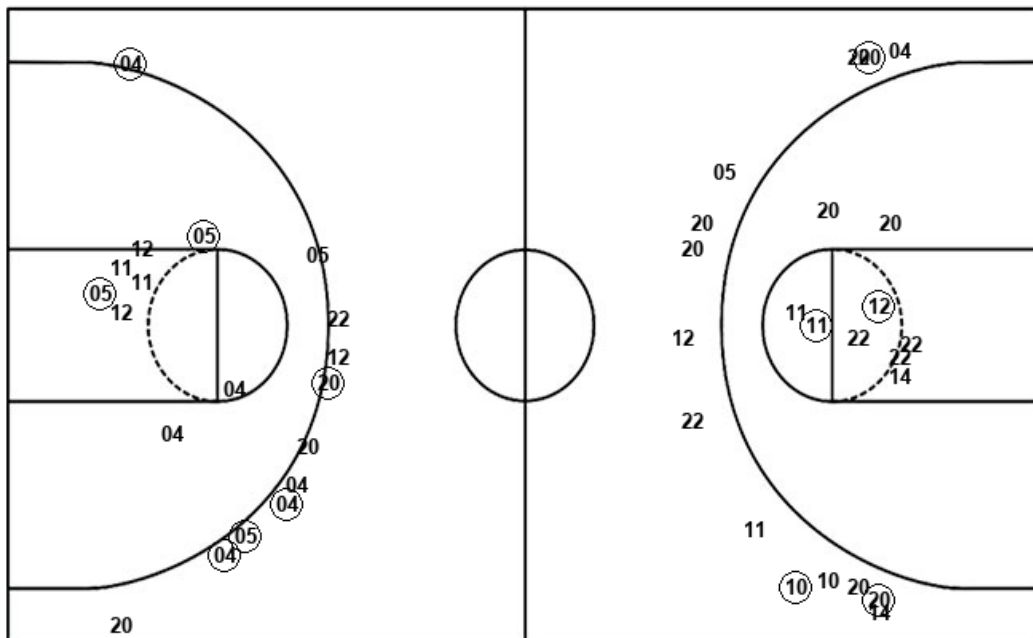
ECK : Period 4	Made	Att	Pct
Layups	5	5	100.0
Dunks	0	0	0
2PT Field Goals	6	9	66.7
3PT Field Goals	1	3	33.3
Total Field Goals	7	12	58.3

Official Shot Chart
Eckerd vs Rollins
Eckerd Team Shots
January 18, 2020 at Alford Sports Center - Winter Park



Layups

Dunks



Layups

Dunks

(04) 22 22 11 (05)
 (20) (11) (22) 11 (05)
 (11) 12 (11) (04) (11)
 (12) (05) (04)

ECK : Period 1	Made	Att	Pct
Layups	4	7	57.1
Dunks	0	0	0
2PT Field Goals	5	11	45.5
3PT Field Goals	2	4	50.0
Total Field Goals	7	15	46.7

ECK : Period 3	Made	Att	Pct
Layups	3	4	75.0
Dunks	0	0	0
2PT Field Goals	4	7	57.1
3PT Field Goals	4	9	44.4
Total Field Goals	8	16	50.0

ECK : Period 2	Made	Att	Pct
Layups	1	2	50.0
Dunks	0	0	0
2PT Field Goals	2	7	28.6
3PT Field Goals	1	10	10.0
Total Field Goals	3	17	17.6

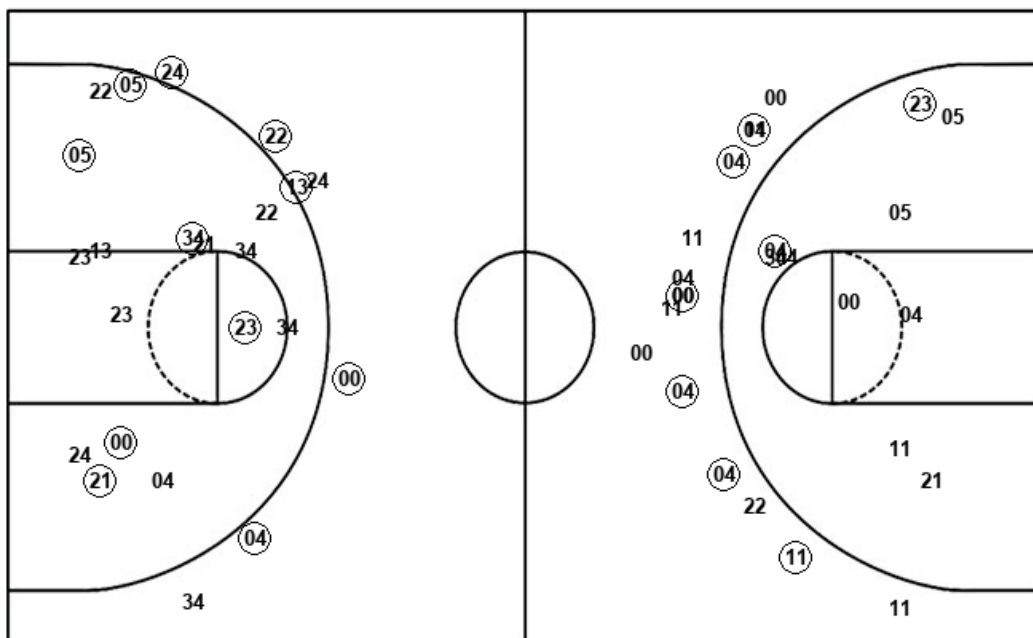
ECK : Period 4	Made	Att	Pct
Layups	5	5	100.0
Dunks	0	0	0
2PT Field Goals	6	9	66.7
3PT Field Goals	1	3	33.3
Total Field Goals	7	12	58.3

Official Shot Chart
Eckerd vs Rollins
 Rollins Team Shots
 January 18, 2020 at Alford Sports Center - Winter Park



Layups

Dunks



Layups

Dunks

ROL : Period 1	Made	Att	Pct
Layups	1	1	100.0
Dunks	0	0	0
2PT Field Goals	4	8	50.0
3PT Field Goals	1	1	100.0
Total Field Goals	5	9	55.6

ROL : Period 3	Made	Att	Pct
Layups	2	3	66.7
Dunks	0	0	0
2PT Field Goals	4	8	50.0
3PT Field Goals	1	3	33.3
Total Field Goals	5	11	45.5

ROL : Period 2	Made	Att	Pct
Layups	1	2	50.0
Dunks	0	0	0
2PT Field Goals	4	11	36.4
3PT Field Goals	4	6	66.7
Total Field Goals	8	17	47.1

ROL : Period 4	Made	Att	Pct
Layups	1	1	100.0
Dunks	0	0	0
2PT Field Goals	1	6	16.7
3PT Field Goals	5	12	41.7
Total Field Goals	6	18	33.3