

## FINAL SCORE



**Saint Leo**

**62**



**Rollins**

**76**

January 02, 2020 • Alford Sports Center - Winter Park

## FINAL STATISTICS

**Official Box Score**  
**Saint Leo vs Rollins**  
**Game Totals -- Final Statistics**  
**January 02, 2020 at Alford Sports Center - Winter Park**



**Saint Leo 62**

No.	Player	S	Pts	FG	3FG	FT	OR	DR	TR	PF	A	TO	Blk	Stl	Min	+/-			
00	ULRICH, AMANDA	G	12	3-12	1-3	5-6	0	3	3	2	0	4	0	2	32	-17			
10	O'SHAUGHNESSY, CASEY	G	11	5-6	1-1	0-0	0	2	2	3	2	2	0	1	26	-14			
22	BUTTON, ALEX	F	17	5-11	2-4	5-6	0	4	4	0	1	1	0	0	37	-15			
23	GALLAGHER, ALANI	F	15	4-11	0-0	7-12	4	7	11	1	1	2	4	0	38	-10			
33	BRIERLEY, GINA	G	7	3-8	1-4	0-2	2	3	5	3	1	3	0	1	31	-7			
04	QUIGLEY, SUMMER	F	0	0-0	0-0	0-0	1	1	2	0	0	0	0	0	5	-5			
12	MOON, MONTIA	G	0	0-0	0-0	0-0	0	0	0	1	0	0	0	0	4	2			
13	SANTIAGO, LENISE	G	0	0-1	0-0	0-0	0	0	0	1	0	0	0	0	5	-4			
15	SHASH, TAMARA	F	0	0-0	0-0	0-0	0	0	0	0	0	0	0	0	1	-2			
21	ZEITSIFF, ABBY	G	0	0-1	0-1	0-0	0	0	0	0	0	1	0	0	6	0			
32	ROBINSON, NINA	F	0	0-2	0-0	0-0	1	0	1	3	0	0	0	0	14	2			
<b>TEAM</b>																			
<b>TOTALS</b>							<b>62</b>	<b>20-52</b>	<b>5-13</b>	<b>17-26</b>	<b>9</b>	<b>24</b>	<b>33</b>	<b>14</b>	<b>5</b>	<b>13</b>	<b>4</b>	<b>4</b>	<b>198</b>

*Shooting By Period*

Period	FG	FG%	3FG	3FG%	FT	FT%
1st Qtr	8-15	53%	3-4	75%	0-2	00%
2nd Qtr	4-12	33%	1-4	25%	3-5	60%
3rd Qtr	4-11	36%	0-2	00%	7-8	88%
4th Qtr	4-14	29%	1-3	33%	7-11	64%
1st Half	12-27	44%	4-8	50%	3-7	43%
2nd Half	8-25	32%	1-5	20%	14-19	74%
<b>Game</b>	<b>20-52</b>	<b>38.5%</b>	<b>5-13</b>	<b>38.5%</b>	<b>17-26</b>	<b>65.4%</b>

*Deadball Rebounds: 4,0*  
*Last FG: 4th-05:02*  
*Biggest Run: 8-0*  
*Largest lead: By 4 at 2nd-09:14*  
*Technical Fouls: None.*

**Rollins 76**

No.	Player	S	Pts	FG	3FG	FT	OR	DR	TR	PF	A	TO	Blk	Stl	Min	+/-			
04	HARRISON, JAYLYN	G	6	2-12	1-8	1-2	1	4	5	3	2	1	0	1	27	20			
21	DANIELS, DENISE	G	10	5-12	0-0	0-0	8	4	12	3	2	1	0	0	26	15			
22	LIA, RACHEL	G	10	5-15	0-0	0-0	2	2	4	3	3	2	0	4	26	17			
23	SHARPE, PARIS	F	14	7-15	0-0	0-0	6	5	11	5	1	1	2	1	20	9			
34	ROSSER, TIANNA	F	20	8-13	0-1	4-4	11	5	16	2	2	0	1	0	29	20			
00	MARTINEZ-TORO, YARI	G	2	1-7	0-1	0-0	0	3	3	0	1	1	0	1	16	-2			
02	HALL, CHANDLER	F	1	0-0	0-0	1-2	0	0	0	0	0	0	0	0	0	0			
05	NEWSOME, ASIA	G	4	1-8	0-0	2-2	0	0	0	1	2	1	0	2	20	-2			
11	JABLONSKI, RACHEL	G	7	2-6	0-3	3-4	3	2	5	0	2	0	2	0	18	3			
13	PLUVIOSE, TANIYAH	F	0	0-0	0-0	0-0	1	1	2	2	0	0	0	0	5	-2			
24	TASSENT, YOKE	G	0	0-0	0-0	0-0	0	0	0	0	0	0	0	0	2	-2			
33	LASARTE GARCIA, SILVIA	F	2	1-4	0-0	0-0	1	1	2	4	0	0	0	0	9	-6			
<b>TEAM</b>																			
<b>TOTALS</b>							<b>76</b>	<b>32-92</b>	<b>1-13</b>	<b>11-14</b>	<b>37</b>	<b>28</b>	<b>65</b>	<b>23</b>	<b>15</b>	<b>7</b>	<b>5</b>	<b>9</b>	<b>198</b>

*Shooting By Period*

Period	FG	FG%	3FG	3FG%	FT	FT%
1st Qtr	7-27	26%	0-5	00%	1-1	100%
2nd Qtr	6-24	25%	1-4	25%	3-4	75%
3rd Qtr	9-21	43%	0-2	00%	1-1	100%
4th Qtr	10-20	50%	0-2	00%	6-8	75%
1st Half	13-51	25%	1-9	11%	4-5	80%
2nd Half	19-41	46%	0-4	00%	7-9	78%
<b>Game</b>	<b>32-92</b>	<b>34.8%</b>	<b>1-13</b>	<b>07.7%</b>	<b>11-14</b>	<b>78.6%</b>

*Deadball Rebounds: 2,0*  
*Last FG: 4th-00:35*  
*Biggest Run: 7-0*  
*Largest lead: By 14 at 4th-00:35*  
*Technical Fouls: None.*

Game Notes:

Officials: Ron Ledington, Courtney Styfurak, Greg Metzger  
 Attendance: 218

Start Time: 05:30 PM ET  
 End Time: 07:16 PM ET  
 Game Duration: 1:46  
 Conference Game;

Score	1st	2nd	3rd	4th	TOT
SLU	19	12	15	16	<b>62</b>
ROL	15	16	19	26	<b>76</b>

SLU led for 5:06. ROL led for 27:12.  
 Game was tied for 7:16.  
 Times tied: 11      Lead Changes: 5

Points from	SLU	ROL
In the Paint	26	50
Off Turns	7	10
2nd Chance	15	37
Fast Break	12	11
Bench	0	16

**Official Box Score**  
**Saint Leo vs Rollins**  
**First Half Statistics Only**  
**January 02, 2020 at Alford Sports Center - Winter Park**



**Saint Leo 31**

No.	Player	S	Pts	FG	3FG	FT	OR	DR	TR	PF	A	TO	Blk	Stl	Min	+/-
00	ULRICH, AMANDA	G	3	1-7	1-2	0-0	0	0	0	1	0	1	0	0	13	-5
04	QUIGLEY, SUMMER	F	0	0-0	0-0	0-0	1	1	2	0	0	0	0	0	5	-5
10	O'SHAUGHNESSY, CASEY	G	9	4-4	1-1	0-0	0	1	1	1	1	2	0	0	13	-2
12	MOON, MONTIA	G	0	0-0	0-0	0-0	0	0	0	0	0	0	0	0	2	2
13	SANTIAGO, LENISE	G	0	0-0	0-0	0-0	0	0	0	0	0	0	0	0	0	0
15	SHASH, TAMARA	F	0	0-0	0-0	0-0	0	0	0	0	0	0	0	0	0	-1
21	ZEITSIFF, ABBY	G	0	0-1	0-1	0-0	0	0	0	0	0	1	0	0	5	2
22	BUTTON, ALEX	F	7	2-5	1-2	2-2	0	2	2	0	1	1	0	0	18	-1
23	GALLAGHER, ALANI	F	5	2-5	0-0	1-3	2	6	8	1	1	1	3	0	19	1
32	ROBINSON, NINA	F	0	0-1	0-0	0-0	1	0	1	2	0	0	0	0	10	4
33	BRIERLEY, GINA	G	7	3-4	1-2	0-2	1	1	2	2	1	2	0	1	13	5
	TEAM		0	0-0	0-0	0-0	1	4	5	0	0	0	0	0	0	0
<b>TOTALS</b>			<b>31</b>	<b>12-27</b>	<b>4-8</b>	<b>3-7</b>	<b>6</b>	<b>15</b>	<b>21</b>	<b>7</b>	<b>4</b>	<b>8</b>	<b>3</b>	<b>1</b>	<b>100</b>	

*Shooting By Period*

Period	FG	FG%	3FG	3FG%	FT	FT%
1st Qtr	8-15	53%	3-4	75%	0-2	00%
2nd Qtr	4-12	33%	1-4	25%	3-5	60%
1st Half	12-27	44%	4-8	50%	3-7	43%
Game	20-52	38.5%	5-13	38.5%	17-26	65.4%

*Deadball Rebounds: 4,0*  
*Last FG Half: SLU 2nd-01:11*

**Rollins 31**

No.	Player	S	Pts	FG	3FG	FT	OR	DR	TR	PF	A	TO	Blk	Stl	Min	+/-
00	MARTINEZ-TORO, YARI	G	0	0-4	0-1	0-0	0	1	1	0	0	0	0	1	8	-6
02	HALL, CHANDLER	F	1	0-0	0-0	1-2	0	0	0	0	0	0	0	0	0	0
04	HARRISON, JAYLYN	G	5	2-7	1-4	0-0	0	3	3	2	0	0	0	1	9	8
05	NEWSOME, ASIA	G	4	1-5	0-0	2-2	0	0	0	0	0	0	0	1	13	0
11	JABLONSKI, RACHEL	G	2	1-5	0-3	0-0	2	0	2	0	1	0	1	0	8	-7
13	PLUIOSE, TANIYAH	F	0	0-0	0-0	0-0	1	1	2	2	0	0	0	0	5	-2
21	DANIELS, DENISE	G	2	1-6	0-0	0-0	3	1	4	2	1	1	0	0	9	6
22	LIA, RACHEL	G	6	3-10	0-0	0-0	1	0	1	1	2	1	0	2	15	5
23	SHARPE, PARIS	F	4	2-5	0-0	0-0	5	1	6	2	1	1	0	1	7	0
24	TASSENT, YOKE	G	0	0-0	0-0	0-0	0	0	0	0	0	0	0	0	2	-2
33	LASARTE GARCIA, SILVIA	F	2	1-4	0-0	0-0	1	1	2	1	0	0	0	0	8	-3
34	ROSSER, TIANNA	F	5	2-5	0-1	1-1	6	2	8	1	1	0	0	0	14	1
	TEAM		0	0-0	0-0	0-0	4	1	5	0	0	0	0	0	0	0
<b>TOTALS</b>			<b>31</b>	<b>13-51</b>	<b>1-9</b>	<b>4-5</b>	<b>23</b>	<b>11</b>	<b>34</b>	<b>11</b>	<b>6</b>	<b>3</b>	<b>1</b>	<b>6</b>	<b>100</b>	

*Shooting By Period*

Period	FG	FG%	3FG	3FG%	FT	FT%
1st Qtr	7-27	26%	0-5	00%	1-1	100%
2nd Qtr	6-24	25%	1-4	25%	3-4	75%
1st Half	13-51	25%	1-9	11%	4-5	80%
Game	32-92	34.8%	1-13	07.7%	11-14	78.6%

*Deadball Rebounds: 2,0*  
*Last FG Half: ROL 2nd-02:40*

*Game Notes:*

Officials: Ron Ledington, Courtney Styfurak, Greg Metzger  
 Attendance: 218

Start Time: 05:30 PM ET  
 End Time: 07:16 PM ET  
 Game Duration: 1:46  
 Conference Game;

Score	1st	2nd	3rd	4th	TOT
SLU	19	12	15	16	<b>62</b>
ROL	15	16	19	26	<b>76</b>

Points from (This Period)	SLU	ROL
In the Paint	14	18
Off Turns	2	4
2nd Chance	10	16
Fast Break	3	4
Bench	0	9

**Official Box Score**  
**Saint Leo vs Rollins**  
**First Quarter Statistics Only**  
**January 02, 2020 at Alford Sports Center - Winter Park**



**Saint Leo 19**

No.	Player	S	Pts	FG	3FG	FT	OR	DR	TR	PF	A	TO	Blk	Stl	Min	+/-
00	ULRICH, AMANDA	G	3	1-3	1-1	0-0	0	0	0	0	0	1	0	0	9	2
10	O'SHAUGHNESSY, CASEY	G	9	4-4	1-1	0-0	0	1	1	1	0	0	0	0	9	4
22	BUTTON, ALEX	F	0	0-2	0-0	0-0	0	1	1	0	1	0	0	0	8	2
23	GALLAGHER, ALANI	F	0	0-2	0-0	0-0	1	1	2	0	1	0	2	0	9	4
33	BRIERLEY, GINA	G	7	3-4	1-2	0-2	1	1	2	1	1	2	0	1	10	4
04	QUIGLEY, SUMMER	F	0	0-0	0-0	0-0	0	0	0	0	0	0	0	0	0	0
12	MOON, MONTIA	G	0	0-0	0-0	0-0	0	0	0	0	0	0	0	0	0	0
13	SANTIAGO, LENISE	G	0	0-0	0-0	0-0	0	0	0	0	0	0	0	0	0	0
15	SHASH, TAMARA	F	0	0-0	0-0	0-0	0	0	0	0	0	0	0	0	0	0
21	ZEITSIFF, ABBY	G	0	0-0	0-0	0-0	0	0	0	0	0	0	0	0	0	0
32	ROBINSON, NINA	F	0	0-0	0-0	0-0	1	0	1	0	0	0	0	0	5	4
	TEAM						1	2	3	0		0				
<b>TOTALS</b>			<b>19</b>	<b>8-15</b>	<b>3-4</b>	<b>0-2</b>	<b>4</b>	<b>6</b>	<b>10</b>	<b>2</b>	<b>3</b>	<b>3</b>	<b>2</b>	<b>1</b>	<b>50</b>	

*Shooting By Period*

Period	FG	FG%	3FG	3FG%	FT	FT%
1st Qtr	8-15	53%	3-4	75%	0-2	00%
2nd Qtr	4-12	33%	1-4	25%	3-5	60%
1st Half	8-15	53%	3-4	75%	0-2	00%
1st Half	12-27	44%	4-8	50%	3-7	43%
Game	20-52	38.5%	5-13	38.5%	17-26	65.4%

*Deadball Rebounds: 4,0*

**Rollins 15**

No.	Player	S	Pts	FG	3FG	FT	OR	DR	TR	PF	A	TO	Blk	Stl	Min	+/-
04	HARRISON, JAYLYN	G	0	0-2	0-2	0-0	0	2	2	1	0	0	0	0	5	2
21	DANIELS, DENISE	G	2	1-6	0-0	0-0	2	0	2	1	1	0	0	0	6	0
22	LIA, RACHEL	G	4	2-4	0-0	0-0	1	0	1	0	1	1	0	0	7	0
23	SHARPE, PARIS	F	2	1-4	0-0	0-0	4	1	5	1	1	1	0	1	6	0
34	ROSSER, TIANNA	F	3	1-3	0-1	1-1	3	0	3	1	0	0	0	0	8	-2
00	MARTINEZ-TORO, YARI	G	0	0-2	0-1	0-0	0	0	0	0	0	0	0	1	4	-4
02	HALL, CHANDLER	F	0	0-0	0-0	0-0	0	0	0	0	0	0	0	0	0	0
05	NEWSOME, ASIA	G	0	0-0	0-0	0-0	0	0	0	0	0	0	0	1	5	-6
11	JABLONSKI, RACHEL	G	2	1-3	0-1	0-0	1	0	1	0	1	0	1	0	5	-6
13	PLUVIOSE, TANIYAH	F	0	0-0	0-0	0-0	0	0	0	0	0	0	0	0	0	0
24	TASSENT, YOKE	G	0	0-0	0-0	0-0	0	0	0	0	0	0	0	0	0	0
33	LASARTE GARCIA, SILVIA	F	2	1-3	0-0	0-0	0	1	1	1	0	0	0	0	4	-4
	TEAM						3	0	3	0		0				
<b>TOTALS</b>			<b>15</b>	<b>7-27</b>	<b>0-5</b>	<b>1-1</b>	<b>14</b>	<b>4</b>	<b>18</b>	<b>5</b>	<b>4</b>	<b>2</b>	<b>1</b>	<b>3</b>	<b>50</b>	

*Shooting By Period*

Period	FG	FG%	3FG	3FG%	FT	FT%
1st Qtr	7-27	26%	0-5	00%	1-1	100%
2nd Qtr	6-24	25%	1-4	25%	3-4	75%
1st Half	7-27	26%	0-5	00%	1-1	100%
1st Half	13-51	25%	1-9	11%	4-5	80%
Game	32-92	34.8%	1-13	07.7%	11-14	78.6%

*Deadball Rebounds: 2,0*

Game Notes:

Officials: Ron Ledington, Courtney Styfurak, Greg Metzger  
 Attendance: 218

Start Time: 05:30 PM ET  
 End Time: 07:16 PM ET  
 Game Duration: 1:46  
 Conference Game;

Score	1st	2nd	3rd	4th	TOT
SLU	19	12	15	16	<b>62</b>
ROL	15	16	19	26	<b>76</b>

Points from (This Period)	SLU	ROL
In the Paint	10	10
Off Turns	2	2
2nd Chance	8	9
Fast Break	0	0
Bench	0	4

**Official Play-By-Play**  
**Saint Leo vs Rollins**  
**First Quarter**  
**January 02, 2020 at Alford Sports Center - Winter Park**



**Period 1**

**Starters:**

**Saint Leo:** 00 ULRICH, AMANDA (G); 10 O'SHAUGHNESSY, CASEY (G); 22 BUTTON, ALEX (F); 23 GALLAGHER, ALANI (F); 33 BRIERLEY, GINA (G);  
**Rollins:** 4 HARRISON, JAYLYN (G); 21 DANIELS, DENISE (G); 22 LIA, RACHEL (G); 23 SHARPE, PARIS (F); 34 ROSSER, TIANNA (F);

Time	VISITORS: Saint Leo	Score	Margin	HOME: Rollins
09:52				TURNOVER (BADPASS) by LIA, RACHEL
09:52	STEAL by BRIERLEY, GINA			
09:30	GOOD! LAYUP by O'SHAUGHNESSY, CASEY	0-2	V 2	
09:17				MISSED 3PTR by ROSSER, TIANNA
09:14				REBOUND (OFF) by SHARPE, PARIS
09:13		2-2	T	GOOD! LAYUP by DANIELS, DENISE
09:13				ASSIST by SHARPE, PARIS
08:57				FOUL (PERSONAL) by HARRISON, JAYLYN
08:42				FOUL (PERSONAL) by ROSSER, TIANNA
08:27	TURNOVER (LOSTBALL) by BRIERLEY, GINA			
08:27				STEAL by SHARPE, PARIS
08:16				MISSED 3PTR by HARRISON, JAYLYN
08:13	REBOUND (DEF) by TEAM			
08:13				FOUL (PERSONAL) by DANIELS, DENISE
07:57	MISSED LAYUP by BUTTON, ALEX			
07:53				REBOUND (DEF) by HARRISON, JAYLYN
07:49				MISSED LAYUP by DANIELS, DENISE
07:45				REBOUND (OFF) by SHARPE, PARIS
07:36				MISSED JUMPER by DANIELS, DENISE
07:32				REBOUND (OFF) by ROSSER, TIANNA
07:31				MISSED LAYUP by DANIELS, DENISE
07:26				REBOUND (OFF) by DANIELS, DENISE
07:11				MISSED JUMPER by ROSSER, TIANNA
07:08				REBOUND (OFF) by DANIELS, DENISE
07:07				MISSED LAYUP by DANIELS, DENISE
07:03				REBOUND (OFF) by LIA, RACHEL
07:02				MISSED LAYUP by LIA, RACHEL
07:02	BLOCK by GALLAGHER, ALANI			
07:02				REBOUND (OFF) by TEAM
06:51		4-2	H 2	GOOD! LAYUP by SHARPE, PARIS
06:51				ASSIST by LIA, RACHEL
06:26	MISSED LAYUP by ULRICH, AMANDA			
06:23	REBOUND (OFF) by BRIERLEY, GINA			
06:22	GOOD! LAYUP by BRIERLEY, GINA	4-4	T	
06:13		6-4	H 2	GOOD! JUMPER by LIA, RACHEL [PNT]
06:03	GOOD! LAYUP by BRIERLEY, GINA	6-6	T	
05:56				MISSED JUMPER by LIA, RACHEL
05:52				REBOUND (OFF) by SHARPE, PARIS
05:49				MISSED 3PTR by HARRISON, JAYLYN
05:47				REBOUND (OFF) by ROSSER, TIANNA
05:47		8-6	H 2	GOOD! LAYUP by ROSSER, TIANNA
05:47	FOUL (PERSONAL) by O'SHAUGHNESSY, CASEY			
05:47				SUB OUT: HARRISON, JAYLYN
05:47				SUB OUT: DANIELS, DENISE
05:47				SUB OUT: SHARPE, PARIS
05:47				SUB IN: NEWSOME, ASIA
05:47				SUB IN: JABLONSKI, RACHEL
05:47				SUB IN: LASARTE GARCIA, SILVIA
05:47		9-6	H 3	GOOD! FT by ROSSER, TIANNA
05:26	GOOD! 3PTR by BRIERLEY, GINA	9-9	T	
05:04				MISSED 3PTR by JABLONSKI, RACHEL
05:01				REBOUND (OFF) by TEAM
05:01	SUB OUT: GALLAGHER, ALANI			
05:01	SUB IN: ROBINSON, NINA			
04:56		11-9	H 2	GOOD! JUMPER by LIA, RACHEL [PNT]
04:36	GOOD! LAYUP by O'SHAUGHNESSY, CASEY	11-11	T	
04:36	ASSIST by BUTTON, ALEX			
04:19				MISSED JUMPER by LASARTE GARCIA, SILVIA
04:17	REBOUND (DEF) by BUTTON, ALEX			
04:17				FOUL (PERSONAL) by LASARTE GARCIA, SILVIA
04:17				
04:17				SUB OUT: LIA, RACHEL
04:17				SUB OUT: ROSSER, TIANNA
04:17				SUB IN: MARTINEZ-TORO, YARI
04:17				SUB IN: DANIELS, DENISE
04:17	SUB OUT: BUTTON, ALEX			
04:17	SUB IN: GALLAGHER, ALANI			
04:08	TURNOVER (BADPASS) by ULRICH, AMANDA			
04:08				STEAL by MARTINEZ-TORO, YARI
04:00		13-11	H 2	GOOD! JUMPER by LASARTE GARCIA, SILVIA

Time	VISITORS: Saint Leo	Score	Margin	HOME: Rollins
04:00				ASSIST by JABLONSKI, RACHEL
03:52	MISSED LAYUP by GALLAGHER, ALANI			
03:47				REBOUND (DEF) by LASARTE GARCIA, SILVIA
03:42		15-11	H 4	GOOD! JUMPER by JABLONSKI, RACHEL
03:42				ASSIST by DANIELS, DENISE
03:34	TURNOVER (BADPASS) by BRIERLEY, GINA			
03:34				STEAL by NEWSOME, ASIA
03:34	FOUL (PERSONAL) by BRIERLEY, GINA			
03:24				MISSED JUMPER by MARTINEZ-TORO, YARI
03:20				REBOUND (OFF) by JABLONSKI, RACHEL
03:13				MISSED LAYUP by LASARTE GARCIA, SILVIA
03:09	REBOUND (DEF) by GALLAGHER, ALANI			
03:06	MISSED LAYUP by ULRICH, AMANDA			
03:06				BLOCK by JABLONSKI, RACHEL
03:06	REBOUND (OFF) by TEAM			
02:42	GOOD! 3PTR by O'SHAUGHNESSY, CASEY	15-14	H 1	
02:42	ASSIST by BRIERLEY, GINA			
02:21				MISSED LAYUP by DANIELS, DENISE
02:18	REBOUND (DEF) by O'SHAUGHNESSY, CASEY			
02:14	MISSED 3PTR by BRIERLEY, GINA			
02:11	REBOUND (OFF) by GALLAGHER, ALANI			
02:09	GOOD! 3PTR by ULRICH, AMANDA	15-17	V 2	
02:09	ASSIST by GALLAGHER, ALANI			
02:06				TIMEOUT 30SEC
02:06				SUB OUT: DANIELS, DENISE
02:06				SUB OUT: LASARTE GARCIA, SILVIA
02:06				SUB IN: SHARPE, PARIS
02:06				SUB IN: ROSSER, TIANNA
02:06	SUB OUT: ULRICH, AMANDA			
02:06	SUB IN: BUTTON, ALEX			
01:49				MISSED 3PTR by MARTINEZ-TORO, YARI
01:45				REBOUND (OFF) by ROSSER, TIANNA
01:38				MISSED LAYUP by JABLONSKI, RACHEL
01:38	REBOUND (DEF) by BRIERLEY, GINA			
01:38	BLOCK by GALLAGHER, ALANI			
01:22	GOOD! LAYUP by O'SHAUGHNESSY, CASEY	15-19	V 4	
01:06				MISSED LAYUP by SHARPE, PARIS
01:05				REBOUND (OFF) by TEAM
01:05				SUB OUT: JABLONSKI, RACHEL
01:05				SUB IN: LIA, RACHEL
01:05	SUB OUT: O'SHAUGHNESSY, CASEY			
01:05	SUB IN: ULRICH, AMANDA			
01:05				SUB OUT: NEWSOME, ASIA
01:05				SUB IN: HARRISON, JAYLYN
01:03				TURNOVER (LOSTBALL) by SHARPE, PARIS
00:54				FOUL (PERSONAL) by SHARPE, PARIS
00:54	MISSED FT by BRIERLEY, GINA			
00:54	REBOUND (OFF) by TEAM			
00:54	MISSED FT by BRIERLEY, GINA			
00:49				REBOUND (DEF) by HARRISON, JAYLYN
00:41				MISSED LAYUP by SHARPE, PARIS
00:38				REBOUND (OFF) by SHARPE, PARIS
00:37				MISSED LAYUP by SHARPE, PARIS
00:37	REBOUND (DEF) by TEAM			
00:26	MISSED JUMPER by GALLAGHER, ALANI			
00:25	REBOUND (OFF) by ROBINSON, NINA			
00:07	MISSED JUMPER by BUTTON, ALEX			
00:03				REBOUND (DEF) by SHARPE, PARIS

### Saint Leo 19, Rollins 15

Points from (This Period)	SLU	ROL
In the Paint	10	10
Off Turns	2	2
2nd Chance	8	9
Fast Break	0	0
Bench	0	4

**Official Box Score**  
**Saint Leo vs Rollins**  
**Second Quarter Statistics Only**  
**January 02, 2020 at Alford Sports Center - Winter Park**



**Saint Leo 12**

No.	Player	S	Pts	FG	3FG	FT	OR	DR	TR	PF	A	TO	Blk	Stl	Min	+/-
00	ULRICH, AMANDA	G	0	0-4	0-1	0-0	0	0	0	1	0	0	0	0	4	-7
10	O'SHAUGHNESSY, CASEY	G	0	0-0	0-0	0-0	0	0	0	0	1	2	0	0	4	-6
22	BUTTON, ALEX	F	7	2-3	1-2	2-2	0	1	1	0	0	1	0	0	10	-3
23	GALLAGHER, ALANI	F	5	2-3	0-0	1-3	1	5	6	1	0	1	1	0	10	-3
33	BRIERLEY, GINA	G	0	0-0	0-0	0-0	0	0	0	1	0	0	0	0	3	1
04	QUIGLEY, SUMMER	F	0	0-0	0-0	0-0	1	1	2	0	0	0	0	0	5	-5
12	MOON, MONTIA	G	0	0-0	0-0	0-0	0	0	0	0	0	0	0	0	2	2
13	SANTIAGO, LENISE	G	0	0-0	0-0	0-0	0	0	0	0	0	0	0	0	0	0
15	SHASH, TAMARA	F	0	0-0	0-0	0-0	0	0	0	0	0	0	0	0	0	-1
21	ZEITSIFF, ABBY	G	0	0-1	0-1	0-0	0	0	0	0	0	1	0	0	5	2
32	ROBINSON, NINA	F	0	0-1	0-0	0-0	0	0	0	2	0	0	0	0	5	0
	TEAM						0	2	2	0		0				
<b>TOTALS</b>			<b>12</b>	<b>4-12</b>	<b>1-4</b>	<b>3-5</b>	<b>2</b>	<b>9</b>	<b>11</b>	<b>5</b>	<b>1</b>	<b>5</b>	<b>1</b>	<b>0</b>	<b>50</b>	

*Shooting By Period*

Period	FG	FG%	3FG	3FG%	FT	FT%
3rd Qtr	4-11	36%	0-2	00%	7-8	88%
4th Qtr	4-14	29%	1-3	33%	7-11	64%
2nd Half	4-12	33%	1-4	25%	3-5	60%
2nd Half	8-25	32%	1-5	20%	14-19	74%
Game	20-52	38.5%	5-13	38.5%	17-26	65.4%

*Deadball Rebounds: 4,0*

**Rollins 16**

No.	Player	S	Pts	FG	3FG	FT	OR	DR	TR	PF	A	TO	Blk	Stl	Min	+/-
04	HARRISON, JAYLYN	G	5	2-5	1-2	0-0	0	1	1	1	0	0	0	1	4	6
21	DANIELS, DENISE	G	0	0-0	0-0	0-0	1	1	2	1	0	1	0	0	3	6
22	LIA, RACHEL	G	2	1-6	0-0	0-0	0	0	0	1	1	0	0	2	8	5
23	SHARPE, PARIS	F	2	1-1	0-0	0-0	1	0	1	1	0	0	0	0	1	0
34	ROSSER, TIANNA	F	2	1-2	0-0	0-0	3	2	5	0	1	0	0	0	6	3
00	MARTINEZ-TORO, YARI	G	0	0-2	0-0	0-0	0	1	1	0	0	0	0	0	4	-2
02	HALL, CHANDLER	F	1	0-0	0-0	1-2	0	0	0	0	0	0	0	0	0	0
05	NEWSOME, ASIA	G	4	1-5	0-0	2-2	0	0	0	0	0	0	0	0	8	6
11	JABLONSKI, RACHEL	G	0	0-2	0-2	0-0	1	0	1	0	0	0	0	0	3	-1
13	PLUVIOSE, TANIYAH	F	0	0-0	0-0	0-0	1	1	2	2	0	0	0	0	5	-2
24	TASSENT, YOKE	G	0	0-0	0-0	0-0	0	0	0	0	0	0	0	0	2	-2
33	LASARTE GARCIA, SILVIA	F	0	0-1	0-0	0-0	1	0	1	0	0	0	0	0	4	1
	TEAM						1	1	2	0		0				
<b>TOTALS</b>			<b>16</b>	<b>6-24</b>	<b>1-4</b>	<b>3-4</b>	<b>9</b>	<b>7</b>	<b>16</b>	<b>6</b>	<b>2</b>	<b>1</b>	<b>0</b>	<b>3</b>	<b>50</b>	

*Shooting By Period*

Period	FG	FG%	3FG	3FG%	FT	FT%
3rd Qtr	9-21	43%	0-2	00%	1-1	100%
4th Qtr	10-20	50%	0-2	00%	6-8	75%
2nd Half	6-24	25%	1-4	25%	3-4	75%
2nd Half	19-41	46%	0-4	00%	7-9	78%
Game	32-92	34.8%	1-13	07.7%	11-14	78.6%

*Deadball Rebounds: 2,0*

*Game Notes:*

Officials: Ron Ledington, Courtney Styfurak, Greg Metzger  
 Attendance: 218

Start Time: 05:30 PM ET  
 End Time: 07:16 PM ET  
 Game Duration: 1:46  
 Conference Game;

Score	1st	2nd	3rd	4th	TOT
SLU	19	12	15	16	<b>62</b>
ROL	15	16	19	26	<b>76</b>

Points from (This Period)	SLU	ROL
In the Paint	4	8
Off Turns	0	2
2nd Chance	2	7
Fast Break	3	4
Bench	0	5

**Official Play-By-Play**  
**Saint Leo vs Rollins**  
**Second Quarter**  
**January 02, 2020 at Alford Sports Center - Winter Park**



**Period 2**

**Starters:**

**Saint Leo:** 00 ULRICH, AMANDA (G); 10 O'SHAUGHNESSY, CASEY (G); 22 BUTTON, ALEX (F); 23 GALLAGHER, ALANI (F); 33 BRIERLEY, GINA (G);  
**Rollins:** 4 HARRISON, JAYLYN (G); 21 DANIELS, DENISE (G); 22 LIA, RACHEL (G); 23 SHARPE, PARIS (F); 34 ROSSER, TIANNA (F);

Time	VISITORS: Saint Leo	Score	Margin	HOME: Rollins
10:00				SUB OUT: MARTINEZ-TORO, YARI
10:00				SUB IN: NEWSOME, ASIA
10:00	SUB OUT: ROBINSON, NINA			
10:00	SUB OUT: BRIERLEY, GINA			
10:00	SUB IN: QUIGLEY, SUMMER			
10:00	SUB IN: O'SHAUGHNESSY, CASEY			
09:40				MISSED LAYUP by LIA, RACHEL
09:37				REBOUND (OFF) by ROSSER, TIANNA
09:31				MISSED JUMPER by HARRISON, JAYLYN
09:27				REBOUND (OFF) by SHARPE, PARIS
09:27		17-19	V 2	GOOD! LAYUP by SHARPE, PARIS
09:14	GOOD! LAYUP by GALLAGHER, ALANI	17-21	V 4	
09:13				FOUL (PERSONAL) by SHARPE, PARIS
09:13				SUB OUT: SHARPE, PARIS
09:13				SUB IN: DANIELS, DENISE
09:12	MISSED FT by GALLAGHER, ALANI			
09:12				REBOUND (DEF) by ROSSER, TIANNA
09:03				MISSED JUMPER by NEWSOME, ASIA
09:00	REBOUND (DEF) by QUIGLEY, SUMMER			
08:55	MISSED LAYUP by GALLAGHER, ALANI			
08:51	REBOUND (OFF) by QUIGLEY, SUMMER			
08:35	MISSED JUMPER by ULRICH, AMANDA			
08:30				REBOUND (DEF) by HARRISON, JAYLYN
08:26				MISSED JUMPER by LIA, RACHEL
08:22	REBOUND (DEF) by BUTTON, ALEX			
08:18	TURNOVER (BADPASS) by BUTTON, ALEX			
08:18				STEAL by LIA, RACHEL
08:12		19-21	V 2	GOOD! JUMPER by HARRISON, JAYLYN [FB]
08:12				ASSIST by LIA, RACHEL
07:59	MISSED LAYUP by ULRICH, AMANDA			
07:56				REBOUND (DEF) by DANIELS, DENISE
07:46		22-21	H 1	GOOD! 3PTR by HARRISON, JAYLYN
07:46				ASSIST by ROSSER, TIANNA
07:28	MISSED LAYUP by ULRICH, AMANDA			
07:25				REBOUND (DEF) by ROSSER, TIANNA
07:20				MISSED LAYUP by NEWSOME, ASIA
07:18				REBOUND (OFF) by ROSSER, TIANNA
07:18		24-21	H 3	GOOD! LAYUP by ROSSER, TIANNA [PNT]
07:18	TIMEOUT 30SEC			
07:18				
07:18				SUB OUT: LIA, RACHEL
07:18				SUB OUT: ROSSER, TIANNA
07:18				SUB IN: JABLONSKI, RACHEL
07:18				SUB IN: LASARTE GARCIA, SILVIA
07:18	SUB OUT: ULRICH, AMANDA			
07:18	SUB OUT: QUIGLEY, SUMMER			
07:18	SUB IN: ROBINSON, NINA			
07:18	SUB IN: BRIERLEY, GINA			
07:03	TURNOVER (LOSTBALL) by O'SHAUGHNESSY, CASEY			
06:53				MISSED 3PTR by JABLONSKI, RACHEL
06:49				REBOUND (OFF) by DANIELS, DENISE
06:46				MISSED 3PTR by HARRISON, JAYLYN
06:43				REBOUND (OFF) by JABLONSKI, RACHEL
06:39				FOUL (OFF) by DANIELS, DENISE
06:39				TURNOVER (OFFENSIVE) by DANIELS, DENISE
06:33	TURNOVER (LOSTBALL) by O'SHAUGHNESSY, CASEY			
06:33				STEAL by HARRISON, JAYLYN
06:28				MISSED JUMPER by HARRISON, JAYLYN
06:25	REBOUND (DEF) by GALLAGHER, ALANI			
06:21	GOOD! 3PTR by BUTTON, ALEX [FB]	24-24	T	
06:21	ASSIST by O'SHAUGHNESSY, CASEY			
06:12				MISSED JUMPER by NEWSOME, ASIA
06:09				REBOUND (OFF) by LASARTE GARCIA, SILVIA
05:52		26-24	H 2	GOOD! LAYUP by NEWSOME, ASIA [PNT]
05:44				FOUL (PERSONAL) by HARRISON, JAYLYN
05:43				SUB OUT: HARRISON, JAYLYN
05:43				SUB OUT: DANIELS, DENISE
05:43				SUB IN: PLUVIOSE, TANIYAH
05:43				SUB IN: LIA, RACHEL
05:43	SUB OUT: O'SHAUGHNESSY, CASEY			



Time	VISITORS: Saint Leo	Score	Margin	HOME: Rollins
05:43	SUB IN: ZEITSIFF, ABBY			
05:22	TURNOVER (BADPASS) by GALLAGHER, ALANI			
05:22				STEAL by LIA, RACHEL
05:07	FOUL (PERSONAL) by ROBINSON, NINA			
05:00				MISSED JUMPER by LIA, RACHEL
04:59	REBOUND (DEF) by TEAM			
04:35	MISSED 3PTR by ZEITSIFF, ABBY			
04:31				REBOUND (DEF) by PLUVIOSE, TANIYAH
04:09				MISSED JUMPER by LASARTE GARCIA, SILVIA
04:08				REBOUND (OFF) by PLUVIOSE, TANIYAH
04:08	FOUL (PERSONAL) by GALLAGHER, ALANI			
04:06	FOUL (PERSONAL) by BRIERLEY, GINA			
04:06	SUB OUT: BRIERLEY, GINA			
04:06	SUB IN: ULRICH, AMANDA			
04:01				MISSED 3PTR by JABLONSKI, RACHEL
03:59	REBOUND (DEF) by TEAM			
03:59				SUB OUT: JABLONSKI, RACHEL
03:59				SUB IN: MARTINEZ-TORO, YARI
03:46	MISSED LAYUP by ROBINSON, NINA			
03:42				REBOUND (DEF) by MARTINEZ-TORO, YARI
03:40	FOUL (PERSONAL) by ULRICH, AMANDA			
03:40		27-24	H 3	GOOD! FT by NEWSOME, ASIA [FB]
03:40		28-24	H 4	GOOD! FT by NEWSOME, ASIA [FB]
03:36				FOUL (PERSONAL) by PLUVIOSE, TANIYAH
03:36				SUB OUT: LASARTE GARCIA, SILVIA
03:36				SUB IN: ROSSER, TIANNA
03:17				FOUL (PERSONAL) by LIA, RACHEL
03:17	GOOD! FT by BUTTON, ALEX	28-25	H 3	
03:17	GOOD! FT by BUTTON, ALEX	28-26	H 2	
03:03				MISSED JUMPER by MARTINEZ-TORO, YARI
02:59	REBOUND (DEF) by GALLAGHER, ALANI			
02:55	MISSED 3PTR by BUTTON, ALEX			
02:52	REBOUND (OFF) by GALLAGHER, ALANI			
02:51	GOOD! LAYUP by GALLAGHER, ALANI	28-28	T	
02:40		30-28	H 2	GOOD! LAYUP by LIA, RACHEL [PNT]
02:23	MISSED 3PTR by ULRICH, AMANDA			
02:20				REBOUND (DEF) by TEAM
02:20				SUB OUT: LIA, RACHEL
02:20				SUB IN: TASSENT, YOKE
02:20	SUB OUT: ULRICH, AMANDA			
02:20	SUB OUT: ROBINSON, NINA			
02:20	SUB IN: QUIGLEY, SUMMER			
02:20	SUB IN: MOON, MONTIA			
02:08				MISSED JUMPER by NEWSOME, ASIA
02:08	BLOCK by GALLAGHER, ALANI			
02:03	REBOUND (DEF) by GALLAGHER, ALANI			
01:39	TURNOVER (LOSTBALL) by ZEITSIFF, ABBY			
01:39				SUB OUT: NEWSOME, ASIA
01:39				SUB IN: LIA, RACHEL
01:25				MISSED JUMPER by LIA, RACHEL
01:21	REBOUND (DEF) by GALLAGHER, ALANI			
01:11	GOOD! JUMPER by BUTTON, ALEX	30-30	T	
00:36				MISSED JUMPER by MARTINEZ-TORO, YARI
00:33	REBOUND (DEF) by GALLAGHER, ALANI			
00:26				FOUL (PERSONAL) by PLUVIOSE, TANIYAH
00:26				SUB OUT: PLUVIOSE, TANIYAH
00:26				SUB IN: HALL, CHANDLER
00:26	SUB OUT: ZEITSIFF, ABBY			
00:26	SUB IN: SANTIAGO, LENISE			
00:26	MISSED FT by GALLAGHER, ALANI			
00:26	REBOUND (OFF) by TEAM			
00:26	GOOD! FT by GALLAGHER, ALANI	30-31	V 1	
00:04				MISSED LAYUP by LIA, RACHEL
00:02				REBOUND (OFF) by ROSSER, TIANNA
00:01				MISSED LAYUP by ROSSER, TIANNA
00:01				REBOUND (OFF) by TEAM
00:01	SUB OUT: BUTTON, ALEX			
00:01	SUB OUT: GALLAGHER, ALANI			
00:01	SUB IN: SHASH, TAMARA			
00:01	SUB IN: ROBINSON, NINA			
00:00	FOUL (PERSONAL) by ROBINSON, NINA			
00:00				MISSED FT by HALL, CHANDLER
00:00				REBOUND (OFF) by TEAM
00:00		31-31	T	GOOD! FT by HALL, CHANDLER

### Saint Leo 31, Rollins 31

<b>Points from (This Period)</b>	<b>SLU</b>	<b>ROL</b>
In the Paint	4	8
Off Turns	0	2
2nd Chance	2	7
Fast Break	3	4
Bench	0	5

**Official Box Score**  
**Saint Leo vs Rollins**  
**Second Half Statistics Only**  
**January 02, 2020 at Alford Sports Center - Winter Park**



**Saint Leo 31**

No.	Player	S	Pts	FG	3FG	FT	OR	DR	TR	PF	A	TO	Blk	Stl	Min	+/-
00	ULRICH, AMANDA	G	9	2-5	0-1	5-6	0	3	3	1	0	3	0	2	18	-12
04	QUIGLEY, SUMMER	F	0	0-0	0-0	0-0	0	0	0	0	0	0	0	0	0	0
10	O'SHAUGHNESSY, CASEY	G	2	1-2	0-0	0-0	0	1	1	2	1	0	0	1	13	-12
12	MOON, MONTIA	G	0	0-0	0-0	0-0	0	0	0	1	0	0	0	0	1	0
13	SANTIAGO, LENISE	G	0	0-1	0-0	0-0	0	0	0	1	0	0	0	0	5	-4
15	SHASH, TAMARA	F	0	0-0	0-0	0-0	0	0	0	0	0	0	0	0	1	-1
21	ZEITSIFF, ABBY	G	0	0-0	0-0	0-0	0	0	0	0	0	0	0	0	1	-2
22	BUTTON, ALEX	F	10	3-6	1-2	3-4	0	2	2	0	0	0	0	0	20	-14
23	GALLAGHER, ALANI	F	10	2-6	0-0	6-9	2	1	3	0	0	1	1	0	18	-11
32	ROBINSON, NINA	F	0	0-1	0-0	0-0	0	0	0	1	0	0	0	0	4	-2
33	BRIERLEY, GINA	G	0	0-4	0-2	0-0	1	2	3	1	0	1	0	0	18	-12
	TEAM		0	0-0	0-0	0-0	0	0	0	0	0	0	0	0	0	0
<b>TOTALS</b>			<b>31</b>	<b>8-25</b>	<b>1-5</b>	<b>14-19</b>	<b>3</b>	<b>9</b>	<b>12</b>	<b>7</b>	<b>1</b>	<b>5</b>	<b>1</b>	<b>3</b>	<b>98</b>	

*Shooting By Period*

Period	FG	FG%	3FG	3FG%	FT	FT%
3rd Qtr	4-11	36%	0-2	00%	7-8	88%
4th Qtr	4-14	29%	1-3	33%	7-11	64%
2nd Half	8-25	32%	1-5	20%	14-19	74%
Game	20-52	38.5%	5-13	38.5%	17-26	65.4%

*Deadball Rebounds: 4,0*  
*Last FG Half: SLU 4th-05:02*

**Rollins 45**

No.	Player	S	Pts	FG	3FG	FT	OR	DR	TR	PF	A	TO	Blk	Stl	Min	+/-
00	MARTINEZ-TORO, YARI	G	2	1-3	0-0	0-0	0	2	2	0	1	1	0	0	8	4
02	HALL, CHANDLER	F	0	0-0	0-0	0-0	0	0	0	0	0	0	0	0	0	0
04	HARRISON, JAYLYN	G	1	0-5	0-4	1-2	1	1	2	1	2	1	0	0	18	12
05	NEWSOME, ASIA	G	0	0-3	0-0	0-0	0	0	0	1	2	1	0	1	7	-2
11	JABLONSKI, RACHEL	G	5	1-1	0-0	3-4	1	2	3	0	1	0	1	0	10	10
13	PLUVIOSE, TANIYAH	F	0	0-0	0-0	0-0	0	0	0	0	0	0	0	0	0	0
21	DANIELS, DENISE	G	8	4-6	0-0	0-0	5	3	8	1	1	0	0	0	16	9
22	LIA, RACHEL	G	4	2-5	0-0	0-0	1	2	3	2	1	1	0	2	12	12
23	SHARPE, PARIS	F	10	5-10	0-0	0-0	1	4	5	3	0	0	2	0	13	9
24	TASSENT, YOKE	G	0	0-0	0-0	0-0	0	0	0	0	0	0	0	0	0	0
33	LASARTE GARCIA, SILVIA	F	0	0-0	0-0	0-0	0	0	0	3	0	0	0	0	1	-3
34	ROSSER, TIANNA	F	15	6-8	0-0	3-3	5	3	8	1	1	0	1	0	14	19
	TEAM		0	0-0	0-0	0-0	0	0	0	0	0	0	0	0	0	0
<b>TOTALS</b>			<b>45</b>	<b>19-41</b>	<b>0-4</b>	<b>7-9</b>	<b>14</b>	<b>17</b>	<b>31</b>	<b>12</b>	<b>9</b>	<b>4</b>	<b>4</b>	<b>3</b>	<b>98</b>	

*Shooting By Period*

Period	FG	FG%	3FG	3FG%	FT	FT%
3rd Qtr	9-21	43%	0-2	00%	1-1	100%
4th Qtr	10-20	50%	0-2	00%	6-8	75%
2nd Half	19-41	46%	0-4	00%	7-9	78%
Game	32-92	34.8%	1-13	07.7%	11-14	78.6%

*Deadball Rebounds: 2,0*  
*Last FG Half: ROL 4th-00:35*

Game Notes:

Officials: Ron Ledington, Courtney Styfurak, Greg Metzger  
 Attendance: 218

Start Time: 05:30 PM ET  
 End Time: 07:16 PM ET  
 Game Duration: 1:46  
 Conference Game;

Score	1st	2nd	3rd	4th	TOT
SLU	19	12	15	16	<b>62</b>
ROL	15	16	19	26	<b>76</b>

Points from (This Period)	SLU	ROL
In the Paint	12	32
Off Turns	5	6
2nd Chance	5	21
Fast Break	9	7
Bench	0	7

**Official Box Score**  
**Saint Leo vs Rollins**  
**Third Quarter Statistics Only**  
**January 02, 2020 at Alford Sports Center - Winter Park**



**Saint Leo 31**

No.	Player	S	Pts	FG	3FG	FT	OR	DR	TR	PF	A	TO	Blk	Stl	Min	+/-
00	ULRICH, AMANDA	G	8	2-2	0-0	4-4	0	3	3	0	0	2	0	0	10	-4
10	O'SHAUGHNESSY, CASEY	G	0	0-0	0-0	0-0	0	0	0	0	0	0	0	0	4	-2
22	BUTTON, ALEX	F	5	1-1	0-0	3-4	0	2	2	0	0	0	0	0	10	-4
23	GALLAGHER, ALANI	F	2	1-3	0-0	0-0	0	0	0	0	0	0	1	0	10	-4
33	BRIERLEY, GINA	G	0	0-3	0-2	0-0	1	0	1	0	0	0	0	0	10	-4
04	QUIGLEY, SUMMER	F	0	0-0	0-0	0-0	0	0	0	0	0	0	0	0	0	0
12	MOON, MONTIA	G	0	0-0	0-0	0-0	0	0	0	0	0	0	0	0	0	0
13	SANTIAGO, LENISE	G	0	0-1	0-0	0-0	0	0	0	1	0	0	0	0	4	-2
15	SHASH, TAMARA	F	0	0-0	0-0	0-0	0	0	0	0	0	0	0	0	0	0
21	ZEITSIFF, ABBY	G	0	0-0	0-0	0-0	0	0	0	0	0	0	0	0	0	0
32	ROBINSON, NINA	F	0	0-1	0-0	0-0	0	0	0	0	0	0	0	0	2	0
	TEAM						0	0	0	0	0	0	0	0		
<b>TOTALS</b>			<b>15</b>	<b>4-11</b>	<b>0-2</b>	<b>7-8</b>	<b>1</b>	<b>5</b>	<b>6</b>	<b>1</b>	<b>0</b>	<b>2</b>	<b>1</b>	<b>0</b>	<b>50</b>	

*Shooting By Period*

Period	FG	FG%	3FG	3FG%	FT	FT%
2nd Half	0-0	0%	0-0	0%	0-0	0%
Game	20-52	38.5%	5-13	38.5%	17-26	65.4%

*Deadball Rebounds: 4,0*

**Rollins 45**

No.	Player	S	Pts	FG	3FG	FT	OR	DR	TR	PF	A	TO	Blk	Stl	Min	+/-
04	HARRISON, JAYLYN	G	0	0-3	0-2	0-0	0	0	0	0	1	0	0	0	10	4
21	DANIELS, DENISE	G	2	1-2	0-0	0-0	4	0	4	0	0	0	0	0	8	4
22	LIA, RACHEL	G	0	0-0	0-0	0-0	0	2	2	0	1	0	0	1	4	2
23	SHARPE, PARIS	F	10	5-8	0-0	0-0	1	1	2	1	0	0	0	0	9	7
34	ROSSER, TIANNA	F	5	2-4	0-0	1-1	2	2	4	0	1	0	1	0	7	6
00	MARTINEZ-TORO, YARI	G	2	1-3	0-0	0-0	0	1	1	0	1	1	0	0	6	2
02	HALL, CHANDLER	F	0	0-0	0-0	0-0	0	0	0	0	0	0	0	0	0	0
05	NEWSOME, ASIA	G	0	0-1	0-0	0-0	0	0	0	1	1	0	0	0	5	-2
11	JABLONSKI, RACHEL	G	0	0-0	0-0	0-0	0	0	0	0	0	0	0	0	0	0
13	PLUVIOSE, TANIYAH	F	0	0-0	0-0	0-0	0	0	0	0	0	0	0	0	0	0
24	TASSENT, YOKE	G	0	0-0	0-0	0-0	0	0	0	0	0	0	0	0	0	0
33	LASARTE GARCIA, SILVIA	F	0	0-0	0-0	0-0	0	0	0	3	0	0	0	0	1	-3
	TEAM						0	0	0	0	0	0	0	0		
<b>TOTALS</b>			<b>19</b>	<b>9-21</b>	<b>0-2</b>	<b>1-1</b>	<b>7</b>	<b>6</b>	<b>13</b>	<b>5</b>	<b>5</b>	<b>1</b>	<b>1</b>	<b>1</b>	<b>50</b>	

*Shooting By Period*

Period	FG	FG%	3FG	3FG%	FT	FT%
2nd Half	0-0	0%	0-0	0%	0-0	0%
Game	32-92	34.8%	1-13	07.7%	11-14	78.6%

*Deadball Rebounds: 2,0*

*Game Notes:*

Officials: Ron Ledington, Courtney Styfurak, Greg Metzger  
 Attendance: 218

Start Time: 05:30 PM ET  
 End Time: 07:16 PM ET  
 Game Duration: 1:46  
 Conference Game;

Score	1st	2nd	3rd	4th	TOT
SLU	19	12	15	16	<b>62</b>
ROL	15	16	19	26	<b>76</b>

Points from (This Period)	SLU	ROL
In the Paint	8	16
Off Turns	0	4
2nd Chance	2	11
Fast Break	7	0
Bench	0	2

**Official Play-By-Play**  
**Saint Leo vs Rollins**  
**Third Quarter**  
**January 02, 2020 at Alford Sports Center - Winter Park**



**Period 3**

**Starters:**

**Saint Leo:** 00 ULRICH,AMANDA (G); 10 O'SHAUGHNESSY,CASEY (G); 22 BUTTON,ALEX (F); 23 GALLAGHER,ALANI (F); 33 BRIERLEY,GINA (G);  
**Rollins:** 4 HARRISON,JAYLYN (G); 21 DANIELS,DENISE (G); 22 LIA,RACHEL (G); 23 SHARPE,PARIS (F); 34 ROSSER,TIANNA (F);

Time	VISITORS: Saint Leo	Score	Margin	HOME: Rollins
10:00				SUB OUT: MARTINEZ-TORO, YARI
10:00				SUB OUT: HALL, CHANDLER
10:00				SUB OUT: TASSENT, YOKE
10:00				SUB IN: HARRISON, JAYLYN
10:00				SUB IN: DANIELS, DENISE
10:00				SUB IN: SHARPE, PARIS
10:00	SUB OUT: QUIGLEY, SUMMER			
10:00	SUB OUT: MOON, MONTIA			
10:00	SUB OUT: SANTIAGO, LENISE			
10:00	SUB OUT: SHASH, TAMARA			
10:00	SUB OUT: ROBINSON, NINA			
10:00	SUB IN: ULRICH, AMANDA			
10:00	SUB IN: O'SHAUGHNESSY, CASEY			
10:00	SUB IN: BUTTON, ALEX			
10:00	SUB IN: GALLAGHER, ALANI			
10:00	SUB IN: BRIERLEY, GINA			
09:46	TURNOVER (LOSTBALL) by ULRICH, AMANDA			
09:46				STEAL by LIA, RACHEL
09:28		33-31	H 2	GOOD! LAYUP by SHARPE, PARIS
09:28				ASSIST by HARRISON, JAYLYN
09:07	MISSED LAYUP by GALLAGHER, ALANI			
09:03				REBOUND (DEF) by ROSSER, TIANNA
08:59				MISSED JUMPER by ROSSER, TIANNA
08:54	REBOUND (DEF) by BUTTON, ALEX			
08:47	GOOD! LAYUP by BUTTON, ALEX	33-33	T	
08:31				MISSED LAYUP by HARRISON, JAYLYN
08:31				REBOUND (OFF) by DANIELS, DENISE
08:31	BLOCK by GALLAGHER, ALANI			
08:15		35-33	H 2	GOOD! LAYUP by DANIELS, DENISE [PNT]
08:15				ASSIST by LIA, RACHEL
07:59	MISSED JUMPER by GALLAGHER, ALANI			
07:55				REBOUND (DEF) by LIA, RACHEL
07:49				MISSED 3PTR by HARRISON, JAYLYN
07:45				REBOUND (OFF) by SHARPE, PARIS
07:45		37-33	H 4	GOOD! LAYUP by SHARPE, PARIS
07:31	GOOD! JUMPER by GALLAGHER, ALANI [PNT]	37-35	H 2	
07:08				MISSED LAYUP by SHARPE, PARIS
07:06	REBOUND (DEF) by ULRICH, AMANDA			
07:01	GOOD! LAYUP by ULRICH, AMANDA [FB]	37-37	T	
06:42				MISSED LAYUP by SHARPE, PARIS
06:37				REBOUND (OFF) by ROSSER, TIANNA
06:37		39-37	H 2	GOOD! LAYUP by ROSSER, TIANNA
06:22	MISSED JUMPER by BRIERLEY, GINA			
06:19				REBOUND (DEF) by LIA, RACHEL
06:10				SUB OUT: LIA, RACHEL
06:10				SUB IN: MARTINEZ-TORO, YARI
06:10	SUB OUT: O'SHAUGHNESSY, CASEY			
06:10	SUB IN: SANTIAGO, LENISE			
05:57		41-37	H 4	GOOD! JUMPER by SHARPE, PARIS [PNT]
05:57				ASSIST by ROSSER, TIANNA
05:29	MISSED LAYUP by SANTIAGO, LENISE			
05:29				BLOCK by ROSSER, TIANNA
05:23				REBOUND (DEF) by ROSSER, TIANNA
05:16				MISSED LAYUP by SHARPE, PARIS
05:15				REBOUND (OFF) by ROSSER, TIANNA
05:15		43-37	H 6	GOOD! LAYUP by ROSSER, TIANNA
05:15	FOUL (PERSONAL) by SANTIAGO, LENISE			
05:15				SUB OUT: SHARPE, PARIS
05:15				SUB IN: LASARTE GARCIA, SILVIA
05:15		44-37	H 7	GOOD! FT by ROSSER, TIANNA
05:06				FOUL (PERSONAL) by LASARTE GARCIA, SILVIA
05:06	MISSED FT by BUTTON, ALEX			
05:06	REBOUND (OFF) by TEAM			
05:06	GOOD! FT by BUTTON, ALEX [FB]	44-38	H 6	
04:48				MISSED JUMPER by DANIELS, DENISE
04:45	REBOUND (DEF) by BUTTON, ALEX			
04:40				FOUL (PERSONAL) by LASARTE GARCIA, SILVIA
04:40				
04:40				SUB OUT: ROSSER, TIANNA
04:40				SUB IN: NEWSOME, ASIA

Time	VISITORS: Saint Leo	Score	Margin	HOME: Rollins
04:40	GOOD! FT by BUTTON, ALEX [FB]	44-39	H 5	
04:40	GOOD! FT by BUTTON, ALEX [FB]	44-40	H 4	
04:20		46-40	H 6	GOOD! JUMPER by MARTINEZ-TORO, YARI
04:02				FOUL (PERSONAL) by LASARTE GARCIA, SILVIA
04:02	GOOD! FT by ULRICH, AMANDA	46-41	H 5	
04:02	GOOD! FT by ULRICH, AMANDA	46-42	H 4	
04:02				SUB OUT: LASARTE GARCIA, SILVIA
04:02				SUB IN: SHARPE, PARIS
03:48				MISSED JUMPER by NEWSOME, ASIA
03:44				REBOUND (OFF) by DANIELS, DENISE
03:42				MISSED 3PTR by HARRISON, JAYLYN
03:39				REBOUND (OFF) by DANIELS, DENISE
03:23				MISSED JUMPER by MARTINEZ-TORO, YARI
03:20	REBOUND (DEF) by ULRICH, AMANDA			
03:18	TURNOVER (BADPASS) by ULRICH, AMANDA			
02:50				MISSED LAYUP by MARTINEZ-TORO, YARI
02:47				REBOUND (OFF) by DANIELS, DENISE
02:39		48-42	H 6	GOOD! LAYUP by SHARPE, PARIS [PNT]
02:39				ASSIST by NEWSOME, ASIA
02:19	MISSED 3PTR by BRIERLEY, GINA			
02:14	REBOUND (OFF) by BRIERLEY, GINA			
02:09	GOOD! LAYUP by ULRICH, AMANDA	48-44	H 4	
02:08	TIMEOUT 30SEC			
02:08				SUB OUT: DANIELS, DENISE
02:08				SUB IN: ROSSER, TIANNA
02:08	SUB OUT: SANTIAGO, LENISE			
02:08	SUB IN: ROBINSON, NINA			
01:44				TURNOVER (TRAVEL) by MARTINEZ-TORO, YARI
01:16	MISSED 3PTR by BRIERLEY, GINA			
01:13				REBOUND (DEF) by MARTINEZ-TORO, YARI
00:47		50-44	H 6	GOOD! LAYUP by SHARPE, PARIS
00:47				ASSIST by MARTINEZ-TORO, YARI
00:25				FOUL (PERSONAL) by SHARPE, PARIS
00:23	MISSED JUMPER by ROBINSON, NINA			
00:19				REBOUND (DEF) by SHARPE, PARIS
00:01				MISSED JUMPER by ROSSER, TIANNA
00:00	REBOUND (DEF) by ULRICH, AMANDA			
00:00				FOUL (PERSONAL) by NEWSOME, ASIA
00:00	GOOD! FT by ULRICH, AMANDA [FB]	50-45	H 5	
00:00	GOOD! FT by ULRICH, AMANDA [FB]	50-46	H 4	

### Saint Leo 46, Rollins 50

Points from (This Period)	SLU	ROL
In the Paint	8	16
Off Turns	0	4
2nd Chance	2	11
Fast Break	7	0
Bench	0	2

**Official Box Score**  
**Saint Leo vs Rollins**  
**Fourth Quarter Statistics Only**  
**January 02, 2020 at Alford Sports Center - Winter Park**



**Saint Leo 16**

No.	Player	S	Pts	FG	3FG	FT	OR	DR	TR	PF	A	TO	Blk	Stl	Min	+/-
00	ULRICH, AMANDA	G	1	0-3	0-1	1-2	0	0	0	1	0	1	0	2	8	-8
10	O'SHAUGHNESSY, CASEY	G	2	1-2	0-0	0-0	0	1	1	2	1	0	0	1	9	-10
22	BUTTON, ALEX	F	5	2-5	1-2	0-0	0	0	0	0	0	0	0	0	10	-10
23	GALLAGHER, ALANI	F	8	1-3	0-0	6-9	2	1	3	0	0	1	0	0	8	-7
33	BRIERLEY, GINA	G	0	0-1	0-0	0-0	0	2	2	1	0	1	0	0	8	-8
04	QUIGLEY, SUMMER	F	0	0-0	0-0	0-0	0	0	0	0	0	0	0	0	0	0
12	MOON, MONTIA	G	0	0-0	0-0	0-0	0	0	0	1	0	0	0	0	1	0
13	SANTIAGO, LENISE	G	0	0-0	0-0	0-0	0	0	0	0	0	0	0	0	1	-2
15	SHASH, TAMARA	F	0	0-0	0-0	0-0	0	0	0	0	0	0	0	0	1	-1
21	ZEITSIFF, ABBY	G	0	0-0	0-0	0-0	0	0	0	0	0	0	0	0	1	-2
32	ROBINSON, NINA	F	0	0-0	0-0	0-0	0	0	0	1	0	0	0	0	2	-2
	TEAM						0	0	0	0		0				
<b>TOTALS</b>			<b>16</b>	<b>4-14</b>	<b>1-3</b>	<b>7-11</b>	<b>2</b>	<b>4</b>	<b>6</b>	<b>6</b>	<b>1</b>	<b>3</b>	<b>0</b>	<b>3</b>	<b>48</b>	

*Shooting By Period*

Period	FG	FG%	3FG	3FG%	FT	FT%
Game	20-52	38.5%	5-13	38.5%	17-26	65.4%

*Deadball Rebounds: 4,0*

**Rollins 26**

No.	Player	S	Pts	FG	3FG	FT	OR	DR	TR	PF	A	TO	Blk	Stl	Min	+/-
04	HARRISON, JAYLYN	G	1	0-2	0-2	1-2	1	1	2	1	1	1	0	0	8	8
21	DANIELS, DENISE	G	6	3-4	0-0	0-0	1	3	4	1	1	0	0	0	8	5
22	LIA, RACHEL	G	4	2-5	0-0	0-0	1	0	1	2	0	1	0	1	8	10
23	SHARPE, PARIS	F	0	0-2	0-0	0-0	0	3	3	2	0	0	2	0	4	2
34	ROSSER, TIANNA	F	10	4-4	0-0	2-2	3	1	4	1	0	0	0	0	7	13
00	MARTINEZ-TORO, YARI	G	0	0-0	0-0	0-0	0	1	1	0	0	0	0	0	2	2
02	HALL, CHANDLER	F	0	0-0	0-0	0-0	0	0	0	0	0	0	0	0	0	0
05	NEWSOME, ASIA	G	0	0-2	0-0	0-0	0	0	0	0	1	1	0	1	2	0
11	JABLONSKI, RACHEL	G	5	1-1	0-0	3-4	1	2	3	0	1	0	1	0	10	10
13	PLUVIOSE, TANIYAH	F	0	0-0	0-0	0-0	0	0	0	0	0	0	0	0	0	0
24	TASSENT, YOKE	G	0	0-0	0-0	0-0	0	0	0	0	0	0	0	0	0	0
33	LASARTE GARCIA, SILVIA	F	0	0-0	0-0	0-0	0	0	0	0	0	0	0	0	0	0
	TEAM						0	0	0	0		0				
<b>TOTALS</b>			<b>26</b>	<b>10-20</b>	<b>0-2</b>	<b>6-8</b>	<b>7</b>	<b>11</b>	<b>18</b>	<b>7</b>	<b>4</b>	<b>3</b>	<b>3</b>	<b>2</b>	<b>48</b>	

*Shooting By Period*

Period	FG	FG%	3FG	3FG%	FT	FT%
Game	32-92	34.8%	1-13	07.7%	11-14	78.6%

*Deadball Rebounds: 2,0*

**Game Notes:**

Officials: Ron Ledington, Courtney Styfurak, Greg Metzger  
 Attendance: 218

Start Time: 05:30 PM ET  
 End Time: 07:16 PM ET  
 Game Duration: 1:46  
 Conference Game;

Score	1st	2nd	3rd	4th	TOT
SLU	19	12	15	16	<b>62</b>
ROL	15	16	19	26	<b>76</b>

Points from (This Period)	SLU	ROL
In the Paint	4	16
Off Turns	5	2
2nd Chance	3	10
Fast Break	2	7
Bench	0	5

**Official Play-By-Play**  
**Saint Leo vs Rollins**  
**Fourth Quarter**  
**January 02, 2020 at Alford Sports Center - Winter Park**



**Period 4**

**Starters:**

**Saint Leo:** 00 ULRICH, AMANDA (G); 10 O'SHAUGHNESSY, CASEY (G); 22 BUTTON, ALEX (F); 23 GALLAGHER, ALANI (F); 33 BRIERLEY, GINA (G);  
**Rollins:** 4 HARRISON, JAYLYN (G); 21 DANIELS, DENISE (G); 22 LIA, RACHEL (G); 23 SHARPE, PARIS (F); 34 ROSSER, TIANNA (F);

Time	VISITORS: Saint Leo	Score	Margin	HOME: Rollins
10:00				SUB OUT: HARRISON, JAYLYN
10:00				SUB OUT: NEWSOME, ASIA
10:00				SUB OUT: SHARPE, PARIS
10:00				SUB IN: JABLONSKI, RACHEL
10:00				SUB IN: DANIELS, DENISE
10:00				SUB IN: LIA, RACHEL
10:00	SUB OUT: BRIERLEY, GINA			
10:00	SUB IN: O'SHAUGHNESSY, CASEY			
09:42				FOUL (PERSONAL) by ROSSER, TIANNA
09:42	GOOD! FT by GALLAGHER, ALANI	50-47	H 3	
09:42	MISSED FT by GALLAGHER, ALANI			
09:41				REBOUND (DEF) by DANIELS, DENISE
09:29		52-47	H 5	GOOD! LAYUP by ROSSER, TIANNA
09:29				ASSIST by DANIELS, DENISE
09:01	MISSED 3PTR by ULRICH, AMANDA			
08:58				REBOUND (DEF) by MARTINEZ-TORO, YARI
08:54	FOUL (PERSONAL) by ROBINSON, NINA			
08:54				MISSED FT by JABLONSKI, RACHEL
08:54				REBOUND (OFF) by TEAM
08:54		53-47	H 6	GOOD! FT by JABLONSKI, RACHEL [FB]
08:51	TURNOVER (BADPASS) by ULRICH, AMANDA			
08:51	SUB OUT: ULRICH, AMANDA			
08:51	SUB IN: MOON, MONTIA			
08:29				MISSED JUMPER by LIA, RACHEL
08:25	REBOUND (DEF) by O'SHAUGHNESSY, CASEY			
08:19	GOOD! JUMPER by O'SHAUGHNESSY, CASEY	53-49	H 4	
08:04		55-49	H 6	GOOD! JUMPER by JABLONSKI, RACHEL
08:00				FOUL (PERSONAL) by LIA, RACHEL
08:00				SUB OUT: MARTINEZ-TORO, YARI
08:00				SUB IN: HARRISON, JAYLYN
08:00	SUB OUT: MOON, MONTIA			
08:00	SUB OUT: ROBINSON, NINA			
08:00	SUB IN: ULRICH, AMANDA			
08:00	SUB IN: BRIERLEY, GINA			
07:39	GOOD! LAYUP by BUTTON, ALEX [PNT]	55-51	H 4	
07:27	FOUL (PERSONAL) by O'SHAUGHNESSY, CASEY			
07:19				MISSED JUMPER by LIA, RACHEL
07:16				REBOUND (OFF) by ROSSER, TIANNA
07:15		57-51	H 6	GOOD! LAYUP by ROSSER, TIANNA
07:09	TURNOVER (LOSTBALL) by BRIERLEY, GINA			
07:09				STEAL by LIA, RACHEL
06:59				MISSED 3PTR by HARRISON, JAYLYN
06:55				REBOUND (OFF) by HARRISON, JAYLYN
06:55				SUB OUT: ROSSER, TIANNA
06:55				SUB IN: SHARPE, PARIS
06:47				MISSED JUMPER by DANIELS, DENISE
06:44	REBOUND (DEF) by GALLAGHER, ALANI			
06:37	MISSED LAYUP by BUTTON, ALEX			
06:37				BLOCK by SHARPE, PARIS
06:37	REBOUND (OFF) by GALLAGHER, ALANI			
06:37				FOUL (PERSONAL) by LIA, RACHEL
06:37	GOOD! FT by GALLAGHER, ALANI	57-52	H 5	
06:37	GOOD! FT by GALLAGHER, ALANI	57-53	H 4	
06:37				SUB OUT: LIA, RACHEL
06:37				SUB IN: NEWSOME, ASIA
06:29				TURNOVER (BADPASS) by NEWSOME, ASIA
06:29	STEAL by O'SHAUGHNESSY, CASEY			
06:15	GOOD! LAYUP by GALLAGHER, ALANI [PNT]	57-55	H 2	
06:15				FOUL (PERSONAL) by SHARPE, PARIS
06:15				SUB OUT: SHARPE, PARIS
06:15				SUB IN: ROSSER, TIANNA
06:15	GOOD! FT by GALLAGHER, ALANI	57-56	H 1	
05:59		59-56	H 3	GOOD! LAYUP by DANIELS, DENISE
05:59				ASSIST by NEWSOME, ASIA
05:51	TURNOVER (LOSTBALL) by GALLAGHER, ALANI			
05:51				STEAL by NEWSOME, ASIA
05:45				MISSED LAYUP by NEWSOME, ASIA
05:41				REBOUND (OFF) by DANIELS, DENISE
05:40		61-56	H 5	GOOD! LAYUP by DANIELS, DENISE
05:35	MISSED JUMPER by BUTTON, ALEX			



Time	VISITORS: Saint Leo	Score	Margin	HOME: Rollins
05:35				BLOCK by JABLONSKI, RACHEL
05:27				REBOUND (DEF) by HARRISON, JAYLYN
05:27		63-56	H 7	GOOD! LAYUP by DANIELS, DENISE [FB/PNT]
05:27				ASSIST by HARRISON, JAYLYN
05:02	GOOD! 3PTR by BUTTON, ALEX	63-59	H 4	
05:02	ASSIST by O'SHAUGHNESSY, CASEY			
04:52				MISSED JUMPER by NEWSOME, ASIA
04:49	REBOUND (DEF) by BRIERLEY, GINA			
04:45				FOUL (PERSONAL) by DANIELS, DENISE
04:45				
04:45				SUB OUT: NEWSOME, ASIA
04:45				SUB OUT: DANIELS, DENISE
04:45				SUB IN: LIA, RACHEL
04:45				SUB IN: SHARPE, PARIS
04:45	MISSED FT by GALLAGHER, ALANI			
04:45	REBOUND (OFF) by TEAM			
04:45	GOOD! FT by GALLAGHER, ALANI [FB]	63-60	H 3	
04:30				MISSED LAYUP by SHARPE, PARIS
04:26				REBOUND (OFF) by ROSSER, TIANNA
04:26		65-60	H 5	GOOD! LAYUP by ROSSER, TIANNA
04:05	MISSED JUMPER by BRIERLEY, GINA			
04:01				REBOUND (DEF) by ROSSER, TIANNA
03:58		67-60	H 7	GOOD! LAYUP by LIA, RACHEL [FB]
03:44	MISSED LAYUP by GALLAGHER, ALANI			
03:39				REBOUND (DEF) by SHARPE, PARIS
03:37	SUB OUT: O'SHAUGHNESSY, CASEY			
03:37	SUB IN: MOON, MONTIA			
03:16				MISSED LAYUP by SHARPE, PARIS
03:13				REBOUND (OFF) by JABLONSKI, RACHEL
03:11				MISSED 3PTR by HARRISON, JAYLYN
03:09				REBOUND (OFF) by ROSSER, TIANNA
03:09	FOUL (PERSONAL) by MOON, MONTIA			
03:09	SUB OUT: MOON, MONTIA			
03:09	SUB IN: O'SHAUGHNESSY, CASEY			
03:09		68-60	H 8	GOOD! FT by ROSSER, TIANNA
03:09		69-60	H 9	GOOD! FT by ROSSER, TIANNA
03:09				SUB OUT: ROSSER, TIANNA
03:09				SUB IN: DANIELS, DENISE
02:49	MISSED LAYUP by GALLAGHER, ALANI			
02:49				BLOCK by SHARPE, PARIS
02:41				REBOUND (DEF) by SHARPE, PARIS
02:24	FOUL (PERSONAL) by O'SHAUGHNESSY, CASEY			
02:21				TURNOVER (BADPASS) by LIA, RACHEL
02:21	STEAL by ULRICH, AMANDA			
02:18				FOUL (PERSONAL) by HARRISON, JAYLYN
02:18	SUB OUT: GALLAGHER, ALANI			
02:18	SUB IN: SHASH, TAMARA			
02:18	GOOD! FT by ULRICH, AMANDA [FB]	69-61	H 8	
02:17	MISSED FT by ULRICH, AMANDA			
02:16				REBOUND (DEF) by SHARPE, PARIS
02:07		71-61	H 10	GOOD! JUMPER by LIA, RACHEL
02:07				ASSIST by JABLONSKI, RACHEL
01:47	MISSED LAYUP by ULRICH, AMANDA			
01:44				REBOUND (DEF) by JABLONSKI, RACHEL
01:40				TURNOVER (LOSTBALL) by HARRISON, JAYLYN
01:40	STEAL by ULRICH, AMANDA			
01:40	SUB OUT: SHASH, TAMARA			
01:40	SUB IN: GALLAGHER, ALANI			
01:27	MISSED 3PTR by BUTTON, ALEX			
01:24	REBOUND (OFF) by GALLAGHER, ALANI			
01:24				FOUL (PERSONAL) by SHARPE, PARIS
01:24				SUB OUT: SHARPE, PARIS
01:24				SUB IN: ROSSER, TIANNA
01:24	GOOD! FT by GALLAGHER, ALANI	71-62	H 9	
01:24	MISSED FT by GALLAGHER, ALANI			
01:23				REBOUND (DEF) by DANIELS, DENISE
01:14	FOUL (PERSONAL) by BRIERLEY, GINA			
01:14		72-62	H 10	GOOD! FT by HARRISON, JAYLYN
01:14				MISSED FT by HARRISON, JAYLYN
01:13	REBOUND (DEF) by BRIERLEY, GINA			
01:07	MISSED LAYUP by ULRICH, AMANDA			
01:05				REBOUND (DEF) by JABLONSKI, RACHEL
01:05	FOUL (UNSPORTSMANLIKE) by ULRICH, AMANDA			
01:05		73-62	H 11	GOOD! FT by JABLONSKI, RACHEL [FB]
01:05		74-62	H 12	GOOD! FT by JABLONSKI, RACHEL [FB]
01:05	SUB OUT: ULRICH, AMANDA			
01:05	SUB OUT: GALLAGHER, ALANI			
01:05	SUB IN: SANTIAGO, LENISE			
01:05	SUB IN: ZEITSIFF, ABBY			
00:38				MISSED LAYUP by LIA, RACHEL

Time	VISITORS: Saint Leo	Score	Margin	HOME: Rollins
00:35				REBOUND (OFF) by LIA, RACHEL
00:35		76-62	H 14	GOOD! LAYUP by ROSSER, TIANNA
00:29	MISSED LAYUP by O'SHAUGHNESSY, CASEY			
00:26				REBOUND (DEF) by DANIELS, DENISE

**Saint Leo 62, Rollins 76**

Points from (This Period)	SLU	ROL
In the Paint	4	16
Off Turns	5	2
2nd Chance	3	10
Fast Break	2	7
Bench	0	5

**Official Scoring/Possession Reference Chart**  
**Saint Leo vs Rollins**  
**Period 1**  
**January 02, 2020 at Alford Sports Center - Winter Park**



**Period 1**

**Starters:**

**Saint Leo:** 00 ULRICH, AMANDA (G); 10 O'SHAUGHNESSY, CASEY (G); 22 BUTTON, ALEX (F); 23 GALLAGHER, ALANI (F); 33 BRIERLEY, GINA (G);  
**Rollins:** 4 HARRISON, JAYLYN (G); 21 DANIELS, DENISE (G); 22 LIA, RACHEL (G); 23 SHARPE, PARIS (F); 34 ROSSER, TIANNA (F);

Time	VISITORS: Saint Leo	Score	Margin	HOME: Rollins
09:30	GOOD! LAYUP by O'SHAUGHNESSY, CASEY	0-2	V 2	
09:13		2-2	T	GOOD! LAYUP by DANIELS, DENISE
06:51		4-2	H 2	GOOD! LAYUP by SHARPE, PARIS
06:22	GOOD! LAYUP by BRIERLEY, GINA	4-4	T	
06:13		6-4	H 2	GOOD! JUMPER by LIA, RACHEL [PNT]
06:03	GOOD! LAYUP by BRIERLEY, GINA	6-6	T	
05:47		8-6	H 2	GOOD! LAYUP by ROSSER, TIANNA
05:47		9-6	H 3	GOOD! FT by ROSSER, TIANNA
05:26	GOOD! 3PTR by BRIERLEY, GINA	9-9	T	
04:56		11-9	H 2	GOOD! JUMPER by LIA, RACHEL [PNT]
04:36	GOOD! LAYUP by O'SHAUGHNESSY, CASEY	11-11	T	
04:00		13-11	H 2	GOOD! JUMPER by LASARTE GARCIA, SILVIA
03:42		15-11	H 4	GOOD! JUMPER by JABLONSKI, RACHEL
02:42	GOOD! 3PTR by O'SHAUGHNESSY, CASEY	15-14	H 1	
02:09	GOOD! 3PTR by ULRICH, AMANDA	15-17	V 2	
01:22	GOOD! LAYUP by O'SHAUGHNESSY, CASEY	15-19	V 4	

**Saint Leo 19, Rollins 15**

**Official Scoring/Possession Reference Chart**  
**Saint Leo vs Rollins**  
**Period 2**  
**January 02, 2020 at Alford Sports Center - Winter Park**



**Period 2**

**Starters:**

**Saint Leo:** 00 ULRICH,AMANDA (G); 10 O'SHAUGHNESSY,CASEY (G); 22 BUTTON,ALEX (F); 23 GALLAGHER,ALANI (F); 33 BRIERLEY,GINA (G);  
**Rollins:** 4 HARRISON,JAYLYN (G); 21 DANIELS,DENISE (G); 22 LIA,RACHEL (G); 23 SHARPE,PARIS (F); 34 ROSSER,TIANNA (F);

Time	VISITORS: Saint Leo	Score	Margin	HOME: Rollins
09:27		17-19	V 2	GOOD! LAYUP by SHARPE, PARIS
09:14	GOOD! LAYUP by GALLAGHER, ALANI	17-21	V 4	
08:12		19-21	V 2	GOOD! JUMPER by HARRISON, JAYLYN [FB]
07:46		22-21	H 1	GOOD! 3PTR by HARRISON, JAYLYN
07:18		24-21	H 3	GOOD! LAYUP by ROSSER, TIANNA [PNT]
06:21	GOOD! 3PTR by BUTTON, ALEX [FB]	24-24	T	
05:52		26-24	H 2	GOOD! LAYUP by NEWSOME, ASIA [PNT]
03:40		27-24	H 3	GOOD! FT by NEWSOME, ASIA [FB]
03:40		28-24	H 4	GOOD! FT by NEWSOME, ASIA [FB]
03:17	GOOD! FT by BUTTON, ALEX	28-25	H 3	
03:17	GOOD! FT by BUTTON, ALEX	28-26	H 2	
02:51	GOOD! LAYUP by GALLAGHER, ALANI	28-28	T	
02:40		30-28	H 2	GOOD! LAYUP by LIA, RACHEL [PNT]
01:11	GOOD! JUMPER by BUTTON, ALEX	30-30	T	
00:26	GOOD! FT by GALLAGHER, ALANI	30-31	V 1	
00:00		31-31	T	GOOD! FT by HALL, CHANDLER

**Saint Leo 31, Rollins 31**

**Official Scoring/Possession Reference Chart**  
**Saint Leo vs Rollins**  
**Period 3**  
**January 02, 2020 at Alford Sports Center - Winter Park**



**Period 3**

**Starters:**

**Saint Leo:** 00 ULRICH, AMANDA (G); 10 O'SHAUGHNESSY, CASEY (G); 22 BUTTON, ALEX (F); 23 GALLAGHER, ALANI (F); 33 BRIERLEY, GINA (G);  
**Rollins:** 4 HARRISON, JAYLYN (G); 21 DANIELS, DENISE (G); 22 LIA, RACHEL (G); 23 SHARPE, PARIS (F); 34 ROSSER, TIANNA (F);

Time	VISITORS: Saint Leo	Score	Margin	HOME: Rollins
09:28		33-31	H 2	GOOD! LAYUP by SHARPE, PARIS
08:47	GOOD! LAYUP by BUTTON, ALEX	33-33	T	
08:15		35-33	H 2	GOOD! LAYUP by DANIELS, DENISE [PNT]
07:45		37-33	H 4	GOOD! LAYUP by SHARPE, PARIS
07:31	GOOD! JUMPER by GALLAGHER, ALANI [PNT]	37-35	H 2	
07:01	GOOD! LAYUP by ULRICH, AMANDA [FB]	37-37	T	
06:37		39-37	H 2	GOOD! LAYUP by ROSSER, TIANNA
05:57		41-37	H 4	GOOD! JUMPER by SHARPE, PARIS [PNT]
05:15		43-37	H 6	GOOD! LAYUP by ROSSER, TIANNA
05:15		44-37	H 7	GOOD! FT by ROSSER, TIANNA
05:06	GOOD! FT by BUTTON, ALEX [FB]	44-38	H 6	
04:40	GOOD! FT by BUTTON, ALEX [FB]	44-39	H 5	
04:40	GOOD! FT by BUTTON, ALEX [FB]	44-40	H 4	
04:20		46-40	H 6	GOOD! JUMPER by MARTINEZ-TORO, YARI
04:02	GOOD! FT by ULRICH, AMANDA	46-41	H 5	
04:02	GOOD! FT by ULRICH, AMANDA	46-42	H 4	
02:39		48-42	H 6	GOOD! LAYUP by SHARPE, PARIS [PNT]
02:09	GOOD! LAYUP by ULRICH, AMANDA	48-44	H 4	
00:47		50-44	H 6	GOOD! LAYUP by SHARPE, PARIS
00:00	GOOD! FT by ULRICH, AMANDA [FB]	50-45	H 5	
00:00	GOOD! FT by ULRICH, AMANDA [FB]	50-46	H 4	

**Saint Leo 46, Rollins 50**

**Official Scoring/Possession Reference Chart**  
**Saint Leo vs Rollins**  
**Period 4**  
**January 02, 2020 at Alford Sports Center - Winter Park**



**Period 4**

**Starters:**

**Saint Leo:** 00 ULRICH,AMANDA (G); 10 O'SHAUGHNESSY,CASEY (G); 22 BUTTON,ALEX (F); 23 GALLAGHER,ALANI (F); 33 BRIERLEY,GINA (G);  
**Rollins:** 4 HARRISON,JAYLYN (G); 21 DANIELS,DENISE (G); 22 LIA,RACHEL (G); 23 SHARPE,PARIS (F); 34 ROSSER,TIANNA (F);

Time	VISITORS: Saint Leo	Score	Margin	HOME: Rollins
09:42	GOOD! FT by GALLAGHER, ALANI	50-47	H 3	
09:29		52-47	H 5	GOOD! LAYUP by ROSSER, TIANNA
08:54		53-47	H 6	GOOD! FT by JABLONSKI, RACHEL [FB]
08:19	GOOD! JUMPER by O'SHAUGHNESSY, CASEY	53-49	H 4	
08:04		55-49	H 6	GOOD! JUMPER by JABLONSKI, RACHEL
07:39	GOOD! LAYUP by BUTTON, ALEX [PNT]	55-51	H 4	
07:15		57-51	H 6	GOOD! LAYUP by ROSSER, TIANNA
06:37	GOOD! FT by GALLAGHER, ALANI	57-52	H 5	
06:37	GOOD! FT by GALLAGHER, ALANI	57-53	H 4	
06:15	GOOD! LAYUP by GALLAGHER, ALANI [PNT]	57-55	H 2	
06:15	GOOD! FT by GALLAGHER, ALANI	57-56	H 1	
05:59		59-56	H 3	GOOD! LAYUP by DANIELS, DENISE
05:40		61-56	H 5	GOOD! LAYUP by DANIELS, DENISE
05:27		63-56	H 7	GOOD! LAYUP by DANIELS, DENISE [FB/PNT]
05:02	GOOD! 3PTR by BUTTON, ALEX	63-59	H 4	
04:45	GOOD! FT by GALLAGHER, ALANI [FB]	63-60	H 3	
04:26		65-60	H 5	GOOD! LAYUP by ROSSER, TIANNA
03:58		67-60	H 7	GOOD! LAYUP by LIA, RACHEL [FB]
03:09		68-60	H 8	GOOD! FT by ROSSER, TIANNA
03:09		69-60	H 9	GOOD! FT by ROSSER, TIANNA
02:18	GOOD! FT by ULRICH, AMANDA [FB]	69-61	H 8	
02:07		71-61	H 10	GOOD! JUMPER by LIA, RACHEL
01:24	GOOD! FT by GALLAGHER, ALANI	71-62	H 9	
01:14		72-62	H 10	GOOD! FT by HARRISON, JAYLYN
01:05		73-62	H 11	GOOD! FT by JABLONSKI, RACHEL [FB]
01:05		74-62	H 12	GOOD! FT by JABLONSKI, RACHEL [FB]
00:35		76-62	H 14	GOOD! LAYUP by ROSSER, TIANNA

**Saint Leo 62, Rollins 76**

**Official Substitutions Log**  
**Saint Leo vs Rollins**  
**Period 1**  
**January 02, 2020 at Alford Sports Center - Winter Park**



VISITORS: Saint Leo	Time	Score	HOME: Rollins
00 ULRICH,AMANDA			4 HARRISON,JAYLYN
10 O'SHAUGHNESSY,CASEY			21 DANIELS,DENISE
22 BUTTON,ALEX			22 LIA,RACHEL
23 GALLAGHER,ALANI			23 SHARPE,PARIS
33 BRIERLEY,GINA			34 ROSSER,TIANNA
	05:47	6-8	SUB OUT: HARRISON,JAYLYN
	05:47		SUB OUT: DANIELS,DENISE
	05:47		SUB OUT: SHARPE,PARIS
	05:47		SUB IN: NEWSOME,ASIA
	05:47		SUB IN: JABLONSKI,RACHEL
	05:47		SUB IN: LASARTE GARCIA,SILVIA
SUB OUT: 23 GALLAGHER,ALANI	05:01	9-9	
SUB IN: 32 ROBINSON,NINA	05:01		
	04:17	11-11	SUB OUT: LIA,RACHEL
	04:17		SUB OUT: ROSSER,TIANNA
	04:17		SUB IN: MARTINEZ-TORO,YARI
	04:17		SUB IN: DANIELS,DENISE
SUB OUT: 22 BUTTON,ALEX	04:17		
SUB IN: 23 GALLAGHER,ALANI	04:17		
	02:06	17-15	SUB OUT: DANIELS,DENISE
	02:06		SUB OUT: LASARTE GARCIA,SILVIA
	02:06		SUB IN: SHARPE,PARIS
	02:06		SUB IN: ROSSER,TIANNA
SUB OUT: 00 ULRICH,AMANDA	02:06		
SUB IN: 22 BUTTON,ALEX	02:06		
	01:05	19-15	SUB OUT: JABLONSKI,RACHEL
	01:05		SUB IN: LIA,RACHEL
SUB OUT: 10 O'SHAUGHNESSY,CASEY	01:05		
SUB IN: 00 ULRICH,AMANDA	01:05		
	01:05		SUB OUT: NEWSOME,ASIA
	01:05		SUB IN: HARRISON,JAYLYN

**Saint Leo 19, Rollins 15**

**Official Substitutions Log**  
**Saint Leo vs Rollins**  
**Period 2**  
**January 02, 2020 at Alford Sports Center - Winter Park**



VISITORS: Saint Leo	Time	Score	HOME: Rollins
00 ULRICH,AMANDA			4 HARRISON,JAYLYN
10 O'SHAUGHNESSY,CASEY			21 DANIELS,DENISE
22 BUTTON,ALEX			22 LIA,RACHEL
23 GALLAGHER,ALANI			23 SHARPE,PARIS
33 BRIERLEY,GINA			34 ROSSER,TIANNA
	10:00	-	SUB OUT: MARTINEZ-TORO,YARI
	10:00		SUB IN: NEWSOME,ASIA
SUB OUT: 32 ROBINSON,NINA	10:00		
SUB OUT: 33 BRIERLEY,GINA	10:00		
SUB IN: 4 QUIGLEY,SUMMER	10:00		
SUB IN: 10 O'SHAUGHNESSY,CASEY	10:00		
	09:13	21-17	SUB OUT: SHARPE,PARIS
	09:13		SUB IN: DANIELS,DENISE
	07:18	21-24	SUB OUT: LIA,RACHEL
	07:18		SUB OUT: ROSSER,TIANNA
	07:18		SUB IN: JABLONSKI,RACHEL
	07:18		SUB IN: LASARTE GARCIA,SILVIA
SUB OUT: 00 ULRICH,AMANDA	07:18		
SUB OUT: 4 QUIGLEY,SUMMER	07:18		
SUB IN: 32 ROBINSON,NINA	07:18		
SUB IN: 33 BRIERLEY,GINA	07:18		
	05:43	24-26	SUB OUT: HARRISON,JAYLYN
	05:43		SUB OUT: DANIELS,DENISE
	05:43		SUB IN: PLUVIOSE,TANIYAH
	05:43		SUB IN: LIA,RACHEL
SUB OUT: 10 O'SHAUGHNESSY,CASEY	05:43		
SUB IN: 21 ZEITSIFF,ABBY	05:43		
SUB OUT: 33 BRIERLEY,GINA	04:06	24-26	
SUB IN: 00 ULRICH,AMANDA	04:06		
	03:59	24-26	SUB OUT: JABLONSKI,RACHEL
	03:59		SUB IN: MARTINEZ-TORO,YARI
	03:36	24-28	SUB OUT: LASARTE GARCIA,SILVIA
	03:36		SUB IN: ROSSER,TIANNA
	02:20	28-30	SUB OUT: LIA,RACHEL
	02:20		SUB IN: TASSENT,YOKE
SUB OUT: 00 ULRICH,AMANDA	02:20		
SUB OUT: 32 ROBINSON,NINA	02:20		
SUB IN: 4 QUIGLEY,SUMMER	02:20		
SUB IN: 12 MOON,MONTIA	02:20		
	01:39	28-30	SUB OUT: NEWSOME,ASIA
	01:39		SUB IN: LIA,RACHEL
	00:26	30-30	SUB OUT: PLUVIOSE,TANIYAH
	00:26		SUB IN: HALL,CHANDLER
SUB OUT: 21 ZEITSIFF,ABBY	00:26		
SUB IN: 13 SANTIAGO,LENISE	00:26		
SUB OUT: 22 BUTTON,ALEX	00:01	31-30	
SUB OUT: 23 GALLAGHER,ALANI	00:01		
SUB IN: 15 SHASH,TAMARA	00:01		
SUB IN: 32 ROBINSON,NINA	00:01		

**Saint Leo 31, Rollins 31**



**Official Substitutions Log**  
**Saint Leo vs Rollins**  
**Period 3**  
**January 02, 2020 at Alford Sports Center - Winter Park**



<b>VISITORS: Saint Leo</b>	<b>Time</b>	<b>Score</b>	<b>HOME: Rollins</b>
00 ULRICH,AMANDA			4 HARRISON,JAYLYN
10 O'SHAUGHNESSY,CASEY			21 DANIELS,DENISE
22 BUTTON,ALEX			22 LIA,RACHEL
23 GALLAGHER,ALANI			23 SHARPE,PARIS
33 BRIERLEY,GINA			34 ROSSER,TIANNA
	10:00	-	SUB OUT: MARTINEZ-TORO,YARI
	10:00		SUB OUT: HALL,CHANDLER
	10:00		SUB OUT: TASSENT,YOKE
	10:00		SUB IN: HARRISON,JAYLYN
	10:00		SUB IN: DANIELS,DENISE
	10:00		SUB IN: SHARPE,PARIS
SUB OUT: 4 QUIGLEY,SUMMER	10:00		
SUB OUT: 12 MOON,MONTIA	10:00		
SUB OUT: 13 SANTIAGO,LENISE	10:00		
SUB OUT: 15 SHASH,TAMARA	10:00		
SUB OUT: 32 ROBINSON,NINA	10:00		
SUB IN: 00 ULRICH,AMANDA	10:00		
SUB IN: 10 O'SHAUGHNESSY,CASEY	10:00		
SUB IN: 22 BUTTON,ALEX	10:00		
SUB IN: 23 GALLAGHER,ALANI	10:00		
SUB IN: 33 BRIERLEY,GINA	10:00		
	06:10	37-39	SUB OUT: LIA,RACHEL
	06:10		SUB IN: MARTINEZ-TORO,YARI
SUB OUT: 10 O'SHAUGHNESSY,CASEY	06:10		
SUB IN: 13 SANTIAGO,LENISE	06:10		
	05:15	37-43	SUB OUT: SHARPE,PARIS
	05:15		SUB IN: LASARTE GARCIA,SILVIA
	04:40	38-44	SUB OUT: ROSSER,TIANNA
	04:40		SUB IN: NEWSOME,ASIA
	04:02	42-46	SUB OUT: LASARTE GARCIA,SILVIA
	04:02		SUB IN: SHARPE,PARIS
	02:08	44-48	SUB OUT: DANIELS,DENISE
	02:08		SUB IN: ROSSER,TIANNA
SUB OUT: 13 SANTIAGO,LENISE	02:08		
SUB IN: 32 ROBINSON,NINA	02:08		

**Saint Leo 46, Rollins 50**

**Official Substitutions Log**  
**Saint Leo vs Rollins**  
**Period 4**  
**January 02, 2020 at Alford Sports Center - Winter Park**



VISITORS: Saint Leo	Time	Score	HOME: Rollins
00 ULRICH,AMANDA			4 HARRISON,JAYLYN
10 O'SHAUGHNESSY,CASEY			21 DANIELS,DENISE
22 BUTTON,ALEX			22 LIA,RACHEL
23 GALLAGHER,ALANI			23 SHARPE,PARIS
33 BRIERLEY,GINA			34 ROSSER,TIANNA
	10:00	-	SUB OUT: HARRISON,JAYLYN
	10:00		SUB OUT: NEWSOME,ASIA
	10:00		SUB OUT: SHARPE,PARIS
	10:00		SUB IN: JABLONSKI,RACHEL
	10:00		SUB IN: DANIELS,DENISE
	10:00		SUB IN: LIA,RACHEL
SUB OUT: 33 BRIERLEY,GINA	10:00		
SUB IN: 10 O'SHAUGHNESSY,CASEY	10:00		
SUB OUT: 00 ULRICH,AMANDA	08:51	47-53	
SUB IN: 12 MOON,MONTIA	08:51		
	08:00	49-55	SUB OUT: MARTINEZ-TORO,YARI
	08:00		SUB IN: HARRISON,JAYLYN
SUB OUT: 12 MOON,MONTIA	08:00		
SUB OUT: 32 ROBINSON,NINA	08:00		
SUB IN: 00 ULRICH,AMANDA	08:00		
SUB IN: 33 BRIERLEY,GINA	08:00		
	06:55	51-57	SUB OUT: ROSSER,TIANNA
	06:55		SUB IN: SHARPE,PARIS
	06:37	53-57	SUB OUT: LIA,RACHEL
	06:37		SUB IN: NEWSOME,ASIA
	06:15	55-57	SUB OUT: SHARPE,PARIS
	06:15		SUB IN: ROSSER,TIANNA
	04:45	59-63	SUB OUT: NEWSOME,ASIA
	04:45		SUB OUT: DANIELS,DENISE
	04:45		SUB IN: LIA,RACHEL
	04:45		SUB IN: SHARPE,PARIS
SUB OUT: 10 O'SHAUGHNESSY,CASEY	03:37	60-67	
SUB IN: 12 MOON,MONTIA	03:37		
SUB OUT: 12 MOON,MONTIA	03:09	60-67	
SUB IN: 10 O'SHAUGHNESSY,CASEY	03:09		
	03:09		SUB OUT: ROSSER,TIANNA
	03:09		SUB IN: DANIELS,DENISE
SUB OUT: 23 GALLAGHER,ALANI	02:18	60-69	
SUB IN: 15 SHASH,TAMARA	02:18		
SUB OUT: 15 SHASH,TAMARA	01:40	61-71	
SUB IN: 23 GALLAGHER,ALANI	01:40		
	01:24	61-71	SUB OUT: SHARPE,PARIS
	01:24		SUB IN: ROSSER,TIANNA
SUB OUT: 00 ULRICH,AMANDA	01:05	62-74	
SUB OUT: 23 GALLAGHER,ALANI	01:05		
SUB IN: 13 SANTIAGO,LENISE	01:05		
SUB IN: 21 ZEITSIFF,ABBY	01:05		

**Saint Leo 62, Rollins 76**

**Official Shot Chart**  
**Saint Leo vs Rollins**  
**PERIOD 1 Shots**  
 January 02, 2020 at Alford Sports Center - Winter Park



**Rollins**

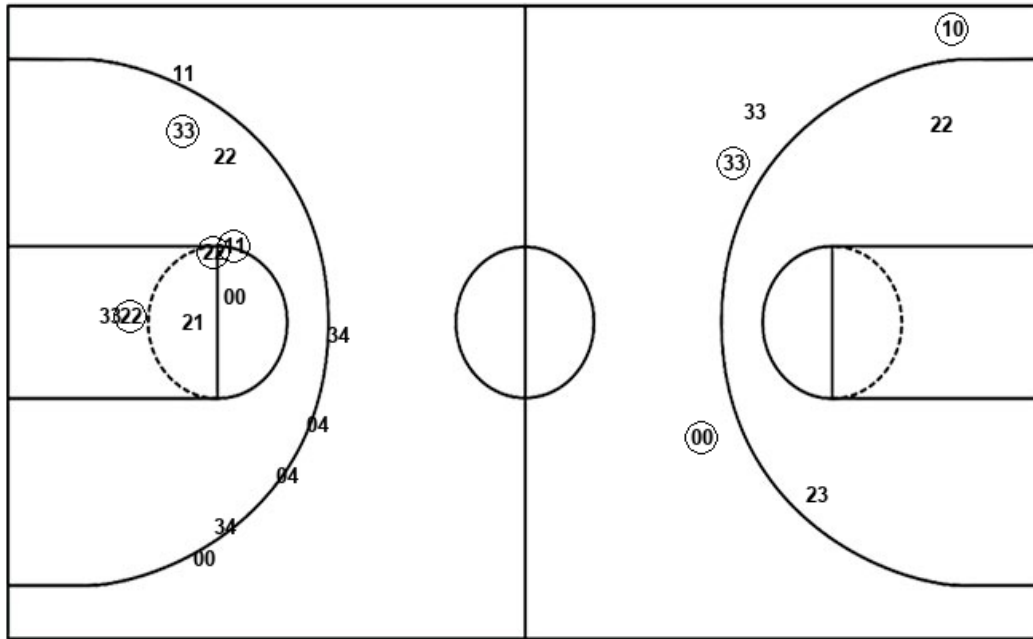
**Saint Leo**

Layups  
 (21) 21 21 21 22  
 (23) (34) 33 21 11  
 23 23 23

Layups  
 (10) 22 00 (33) (33)  
 (10) 23 00 (10)

Dunks

Dunks



ROL : Period 1	Made	Att	Pct
Layups	3	13	23.1
Dunks	0	0	0
2PT Field Goals	7	22	31.8
3PT Field Goals	0	5	00.0
<b>Total Field Goals</b>	<b>7</b>	<b>27</b>	<b>25.9</b>

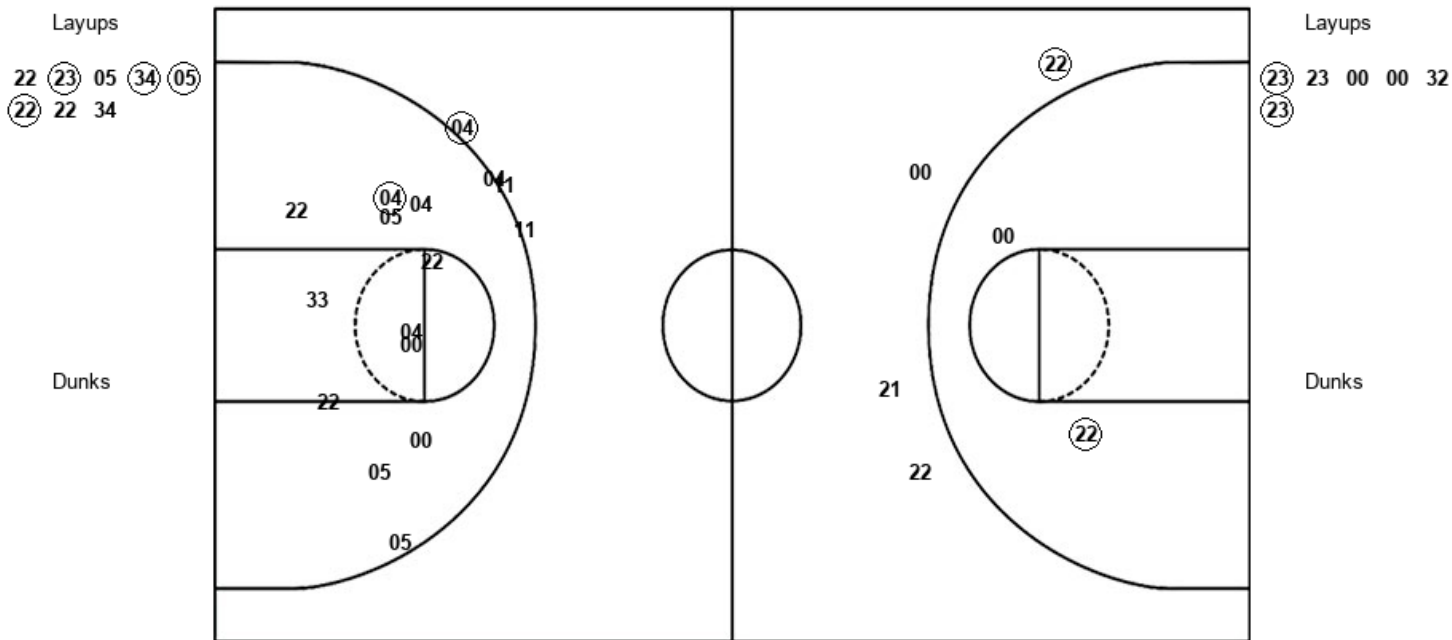
SLU : Period 1	Made	Att	Pct
Layups	5	9	55.6
Dunks	0	0	0
2PT Field Goals	5	11	45.5
3PT Field Goals	3	4	75.0
<b>Total Field Goals</b>	<b>8</b>	<b>15</b>	<b>53.3</b>

**Official Shot Chart**  
**Saint Leo vs Rollins**  
**PERIOD 2 Shots**  
 January 02, 2020 at Alford Sports Center - Winter Park



**Rollins**

**Saint Leo**



ROL : Period 2	Made	Att	Pct
Layups	4	8	50.0
Dunks	0	0	0
2PT Field Goals	5	20	25.0
3PT Field Goals	1	4	25.0
<b>Total Field Goals</b>	<b>6</b>	<b>24</b>	<b>25.0</b>

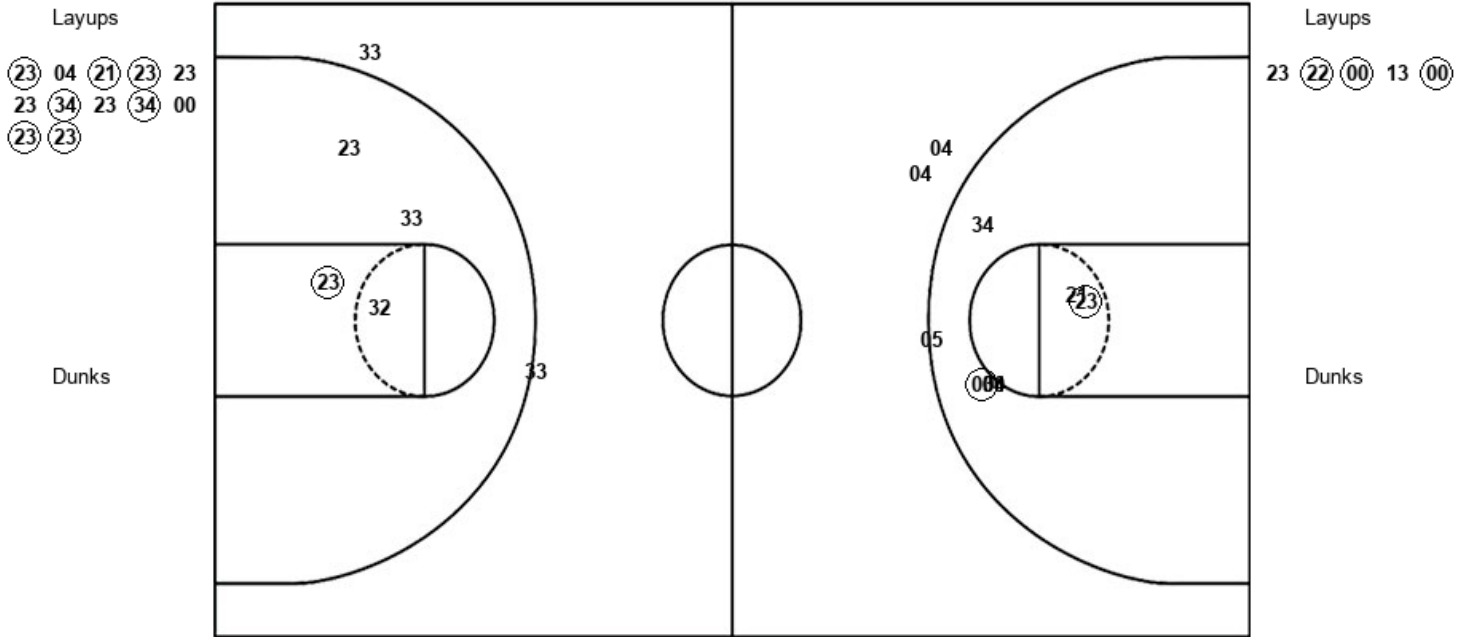
SLU : Period 2	Made	Att	Pct
Layups	2	6	33.3
Dunks	0	0	0
2PT Field Goals	3	8	37.5
3PT Field Goals	1	4	25.0
<b>Total Field Goals</b>	<b>4</b>	<b>12</b>	<b>33.3</b>

**Official Shot Chart**  
**Saint Leo vs Rollins**  
**PERIOD 3 Shots**  
 January 02, 2020 at Alford Sports Center - Winter Park



**Rollins**

**Saint Leo**



ROL : Period 3	Made	Att	Pct
Layups	7	12	58.3
Dunks	0	0	0
2PT Field Goals	9	19	47.4
3PT Field Goals	0	2	00.0
<b>Total Field Goals</b>	<b>9</b>	<b>21</b>	<b>42.9</b>

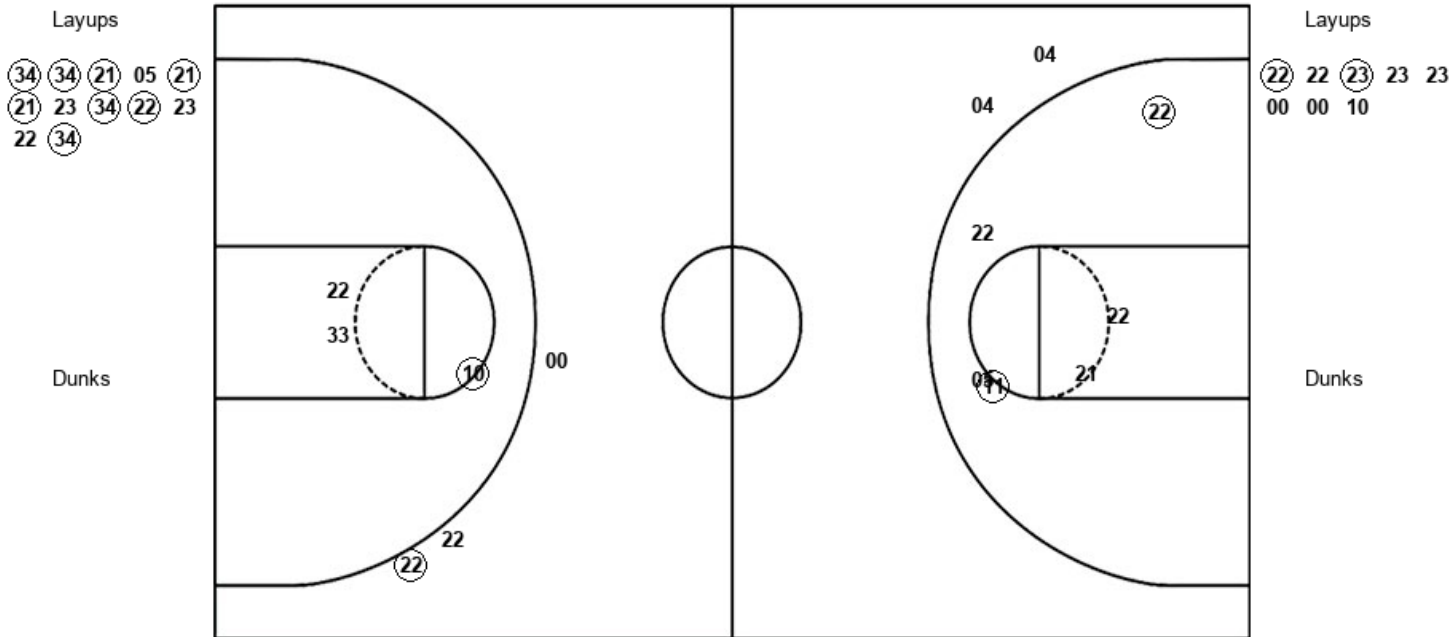
SLU : Period 3	Made	Att	Pct
Layups	3	5	60.0
Dunks	0	0	0
2PT Field Goals	4	9	44.4
3PT Field Goals	0	2	00.0
<b>Total Field Goals</b>	<b>4</b>	<b>11</b>	<b>36.4</b>

**Official Shot Chart**  
**Saint Leo vs Rollins**  
**PERIOD 4 Shots**  
 January 02, 2020 at Alford Sports Center - Winter Park



**Rollins**

**Saint Leo**



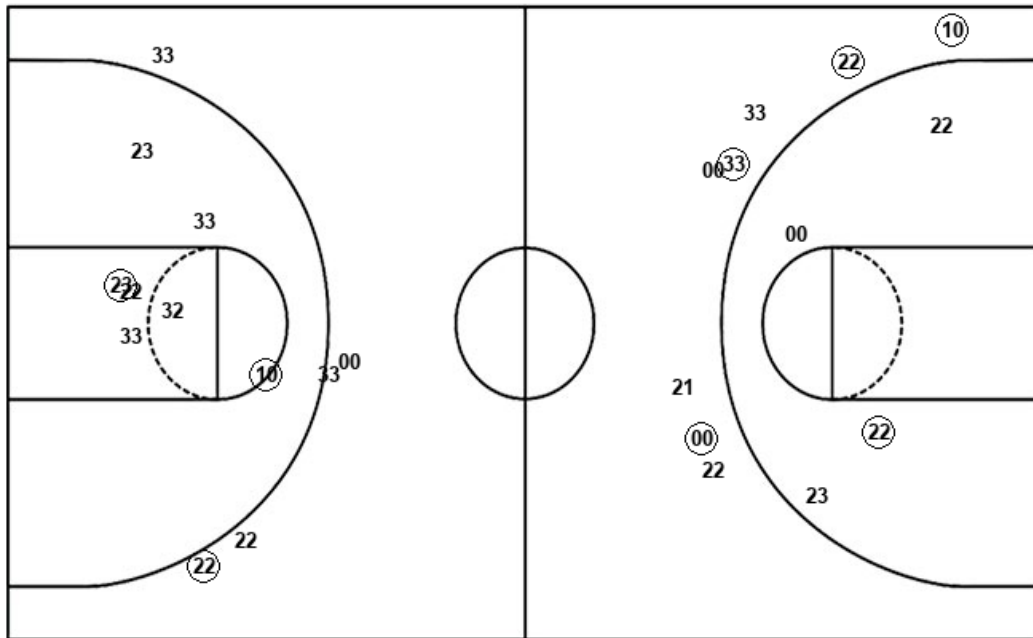
ROL : Period 4	Made	Att	Pct
Layups	8	12	66.7
Dunks	0	0	0
2PT Field Goals	10	18	55.6
3PT Field Goals	0	2	00.0
<b>Total Field Goals</b>	<b>10</b>	<b>20</b>	<b>50.0</b>

SLU : Period 4	Made	Att	Pct
Layups	2	8	25.0
Dunks	0	0	0
2PT Field Goals	3	11	27.3
3PT Field Goals	1	3	33.3
<b>Total Field Goals</b>	<b>4</b>	<b>14</b>	<b>28.6</b>

**Official Shot Chart**  
**Saint Leo vs Rollins**  
**Saint Leo Team Shots**  
 January 02, 2020 at Alford Sports Center - Winter Park



Layups



Layups

(10)	22	00	(33)	(33)
(10)	23	00	(10)	(23)
23	00	00	32	(23)
23	(22)	(00)	13	(00)
(22)	22	(23)	23	23
00	00	10		

Dunks

Dunks

SLU : Period 1	Made	Att	Pct
Layups	5	9	55.6
Dunks	0	0	0
2PT Field Goals	5	11	45.5
3PT Field Goals	3	4	75.0
<b>Total Field Goals</b>	<b>8</b>	<b>15</b>	<b>53.3</b>

SLU : Period 2	Made	Att	Pct
Layups	2	6	33.3
Dunks	0	0	0
2PT Field Goals	3	8	37.5
3PT Field Goals	1	4	25.0
<b>Total Field Goals</b>	<b>4</b>	<b>12</b>	<b>33.3</b>

SLU : Period 3	Made	Att	Pct
Layups	3	5	60.0
Dunks	0	0	0
2PT Field Goals	4	9	44.4
3PT Field Goals	0	2	00.0
<b>Total Field Goals</b>	<b>4</b>	<b>11</b>	<b>36.4</b>

SLU : Period 4	Made	Att	Pct
Layups	2	8	25.0
Dunks	0	0	0
2PT Field Goals	3	11	27.3
3PT Field Goals	1	3	33.3
<b>Total Field Goals</b>	<b>4</b>	<b>14</b>	<b>28.6</b>

