

## FINAL SCORE

**Embry-Riddle (FL)**

**66**



**Rollins**

**61**



December 04, 2019 • Alfond Sports Center - Winter Park

## FINAL STATISTICS

**Official Box Score**  
**Embry-Riddle (FL) vs Rollins**  
**Game Totals -- Final Statistics**  
**December 04, 2019 at Alford Sports Center - Winter Park**



### Embry-Riddle (FL) 66

No.	Player	S	Pts	FG	3FG	FT	OR	DR	TR	PF	A	TO	Blk	Stl	Min	+/-
03	BISCHOFF, SHELBY	G	9	3-10	3-8	0-0	0	1	1	1	2	4	0	1	28	11
05	MURRAY, RACHEL	G	8	2-3	2-2	2-2	0	2	2	2	2	1	0	0	25	6
15	JONES, SARAH	G	9	3-7	1-2	2-2	2	1	3	0	1	3	0	1	22	4
24	JONES, SYDNEY	F	2	1-5	0-0	0-0	1	2	3	1	0	2	0	1	18	9
32	TUCKER, NICOLE	G	19	5-10	0-3	9-9	1	9	10	2	5	5	0	4	38	5
02	SUGRUE, MACEE	G	3	1-4	1-4	0-0	1	0	1	2	0	2	0	0	21	1
10	JONES, IMANI	F	9	3-6	0-0	3-4	0	0	0	4	1	2	0	1	19	-1
21	BALABYEKKUBO, KETURAH	G	7	2-4	1-3	2-2	3	2	5	2	0	2	0	2	22	-3
33	SAVAGE, JESSICA	G	0	0-0	0-0	0-0	0	0	0	2	0	0	0	0	6	-5
42	FALL, AISSATOU	C	0	0-0	0-0	0-0	0	0	0	0	0	0	0	0	1	-2
TEAM							2	3	5	0		2				
<b>TOTALS</b>			<b>66</b>	<b>20-49</b>	<b>8-22</b>	<b>18-19</b>	<b>10</b>	<b>20</b>	<b>30</b>	<b>16</b>	<b>11</b>	<b>23</b>	<b>0</b>	<b>10</b>	<b>200</b>	

#### Shooting By Period

Period	FG	FG%	3FG	3FG%	FT	FT%
1st Qtr	6-11	55%	1-1	100%	0-0	0%
2nd Qtr	4-16	25%	3-10	30%	0-0	0%
3rd Qtr	6-10	60%	3-5	60%	4-5	80%
4th Qtr	4-12	33%	1-6	17%	14-14	100%
1st Half	10-27	37%	4-11	36%	0-0	0%
2nd Half	10-22	45%	4-11	36%	18-19	95%
<b>Game</b>	<b>20-49</b>	<b>40.8%</b>	<b>8-22</b>	<b>36.4%</b>	<b>18-19</b>	<b>94.7%</b>

Deadball Rebounds: 0,0

Last FG: 4th-04:07

Biggest Run: 12-0

Largest lead: By 6 at 4-03

Technical Fouls: None.

### Rollins 61

No.	Player	S	Pts	FG	3FG	FT	OR	DR	TR	PF	A	TO	Blk	Stl	Min	+/-
00	MARTINEZ-TORO, YARI	G	7	3-6	1-3	0-0	0	1	1	1	2	3	0	0	20	-14
04	HARRISON, JAYLYN	G	9	3-15	2-9	1-2	0	3	3	3	2	2	0	3	28	-11
11	JABLONSKI, RACHEL	G	0	0-2	0-2	0-2	0	2	2	4	2	3	0	2	16	-16
21	DANIELS, DENISE	G	6	2-7	0-0	2-2	2	2	4	4	2	3	0	1	20	-20
34	ROSSER, TIANNA	F	0	0-1	0-0	0-0	3	0	3	1	0	0	0	1	14	-16
05	NEWSOME, ASIA	G	7	3-7	0-2	1-5	5	1	6	3	2	3	0	1	24	8
12	KEITHS, ANGEL	F	0	0-0	0-0	0-0	0	0	0	0	0	0	0	0	3	-5
13	PLUVIOSE, TANIYAH	F	9	4-7	0-0	1-1	2	1	3	1	1	0	0	2	18	13
22	LIA, RACHEL	G	9	4-9	0-2	1-2	1	4	5	3	3	2	1	2	27	13
23	SHARPE, PARIS	F	9	3-5	0-0	3-3	3	3	6	3	0	4	0	1	21	9
24	TASSENTE, YOKE	G	3	1-1	1-1	0-0	0	0	0	0	0	2	0	0	2	8
33	LASARTE GARCIA, SILVIA	F	2	1-1	0-0	0-0	0	0	0	1	0	0	0	0	6	6
TEAM							4	3	7	0		0				
<b>TOTALS</b>			<b>61</b>	<b>24-61</b>	<b>4-19</b>	<b>9-17</b>	<b>20</b>	<b>20</b>	<b>40</b>	<b>24</b>	<b>14</b>	<b>22</b>	<b>1</b>	<b>13</b>	<b>200</b>	

#### Shooting By Period

Period	FG	FG%	3FG	3FG%	FT	FT%
1st Qtr	7-16	44%	1-6	17%	1-1	100%
2nd Qtr	7-14	50%	2-5	40%	4-4	100%
3rd Qtr	6-14	43%	1-3	33%	0-2	00%
4th Qtr	4-17	24%	0-5	00%	4-10	40%
1st Half	14-30	47%	3-11	27%	5-5	100%
2nd Half	10-31	32%	1-8	13%	4-12	33%
<b>Game</b>	<b>24-61</b>	<b>39.3%</b>	<b>4-19</b>	<b>21.1%</b>	<b>9-17</b>	<b>52.9%</b>

Deadball Rebounds: 5,0

Last FG: 4th-00:19

Biggest Run: 14-0

Largest lead: By 12 at 2-00

Technical Fouls: None.

#### Game Notes:

Officials: Xiomara Cruz, Krystle Apellaniz, Reatha Johnson  
Attendance: 273

Start Time: 05:29 PM ET

End Time: 07:25 PM ET

Game Duration: 1:55

Conference Game;

Score	1st	2nd	3rd	4th	TOT
E-R	13	11	19	23	<b>66</b>
ROL	16	20	13	12	<b>61</b>

E-R led for 8:47. ROL led for 29:47.

Game was tied for 1:26.

Times tied: 3      Lead Changes: 2

Points from	E-R	ROL
In the Paint	24	22
Off Turns	20	22
2nd Chance	9	14
Fast Break	13	9
Bench	19	39

**Official Box Score**  
**Embry-Riddle (FL) vs Rollins**  
**First Half Statistics Only**  
**December 04, 2019 at Alford Sports Center - Winter Park**



### Embry-Riddle (FL) 24

No.	Player	S	Pts	FG	3FG	FT	OR	DR	TR	PF	A	TO	Blk	Stl	Min	+/-
02	SUGRUE, MACEE	G	0	0-0	0-0	0-0	0	0	0	0	0	2	0	0	12	-5
03	BISCHOFF, SHELBY	G	9	3-8	3-7	0-0	0	0	0	1	1	1	0	1	14	-1
05	MURRAY, RACHEL	G	0	0-1	0-0	0-0	0	1	1	0	1	1	0	0	9	-10
10	JONES, IMANI	F	0	0-1	0-0	0-0	0	0	0	2	1	1	0	0	8	-13
15	JONES, SARAH	G	4	2-6	0-1	0-0	1	1	2	0	1	0	0	1	13	-4
21	BALABYEKKUBO, KETURAH	G	5	2-3	1-2	0-0	0	1	1	0	0	2	0	1	10	-12
24	JONES, SYDNEY	F	2	1-4	0-0	0-0	1	1	2	1	0	1	0	1	12	3
32	TUCKER, NICOLE	G	4	2-4	0-1	0-0	1	3	4	2	3	4	0	2	18	-12
33	SAVAGE, JESSICA	G	0	0-0	0-0	0-0	0	0	0	1	0	0	0	0	3	-4
42	FALL, AISSATOU	C	0	0-0	0-0	0-0	0	0	0	0	0	0	0	0	1	-2
	TEAM		0	0-0	0-0	0-0	1	2	3	0	0	1	0	0	0	
<b>TOTALS</b>			<b>24</b>	<b>10-27</b>	<b>4-11</b>	<b>0-0</b>	<b>4</b>	<b>9</b>	<b>13</b>	<b>7</b>	<b>7</b>	<b>13</b>	<b>0</b>	<b>6</b>	<b>100</b>	

#### Shooting By Period

Period	FG	FG%	3FG	3FG%	FT	FT%
1st Qtr	6-11	55%	1-1	100%	0-0	0%
2nd Qtr	4-16	25%	3-10	30%	0-0	0%
1st Half	10-27	37%	4-11	36%	0-0	0%
Game	20-49	40.8%	8-22	36.4%	18-19	94.7%

Deadball Rebounds: 0,0

Last FG Half: E-R 2nd-03:59

### Rollins 36

No.	Player	S	Pts	FG	3FG	FT	OR	DR	TR	PF	A	TO	Blk	Stl	Min	+/-
00	MARTINEZ-TORO, YARI	G	5	2-3	1-2	0-0	0	0	0	0	1	2	0	0	10	-3
04	HARRISON, JAYLYN	G	3	1-5	1-3	0-0	0	1	1	0	1	1	0	1	10	3
05	NEWSOME, ASIA	G	2	1-3	0-1	0-0	2	0	2	1	2	0	0	1	10	15
11	JABLONSKI, RACHEL	G	0	0-2	0-2	0-0	0	2	2	2	1	3	0	1	10	-6
12	KEITHS, ANGEL	F	0	0-0	0-0	0-0	0	0	0	0	0	0	0	0	3	-5
13	PLUVIOSE, TANIYAH	F	4	2-2	0-0	0-0	1	1	2	0	1	0	0	1	8	21
21	DANIELS, DENISE	G	4	1-4	0-0	2-2	2	2	4	0	2	1	0	0	9	-7
22	LIA, RACHEL	G	6	3-6	0-2	0-0	0	4	4	2	3	1	1	1	15	22
23	SHARPE, PARIS	F	7	2-2	0-0	3-3	0	2	2	0	0	0	0	0	8	13
24	TASSENT, YOKE	G	3	1-1	1-1	0-0	0	0	0	0	0	2	0	0	2	8
33	LASARTE GARCIA, SILVIA	F	2	1-1	0-0	0-0	0	0	0	1	0	0	0	0	6	6
34	ROSSER, TIANNA	F	0	0-1	0-0	0-0	1	0	1	0	0	0	0	1	8	-7
	TEAM		0	0-0	0-0	0-0	1	1	2	0	0	0	0	0	0	
<b>TOTALS</b>			<b>36</b>	<b>14-30</b>	<b>3-11</b>	<b>5-5</b>	<b>7</b>	<b>13</b>	<b>20</b>	<b>6</b>	<b>11</b>	<b>10</b>	<b>1</b>	<b>6</b>	<b>100</b>	

#### Shooting By Period

Period	FG	FG%	3FG	3FG%	FT	FT%
1st Qtr	7-16	44%	1-6	17%	1-1	100%
2nd Qtr	7-14	50%	2-5	40%	4-4	100%
1st Half	14-30	47%	3-11	27%	5-5	100%
Game	24-61	39.3%	4-19	21.1%	9-17	52.9%

Deadball Rebounds: 5,0

Last FG Half: ROL 2nd-00:24

#### Game Notes:

Officials: Xiomara Cruz, Krystle Apellaniz, Reatha Johnson  
Attendance: 273

Start Time: 05:29 PM ET  
End Time: 07:25 PM ET  
Game Duration: 1:55  
Conference Game;

Score	1st	2nd	3rd	4th	TOT
E-R	13	11	19	23	<b>66</b>
ROL	16	20	13	12	<b>61</b>

Points from (This Period)	E-R	ROL
In the Paint	12	8
Off Turns	11	16
2nd Chance	2	8
Fast Break	7	0
Bench	5	24

**Official Box Score**  
**Embry-Riddle (FL) vs Rollins**  
**First Quarter Statistics Only**  
**December 04, 2019 at Alford Sports Center - Winter Park**



### Embry-Riddle (FL) 13

No.	Player	S	Pts	FG	3FG	FT	OR	DR	TR	PF	A	TO	Blk	Stl	Min	+/-
03	BISCHOFF, SHELBY	G	3	1-1	1-1	0-0	0	0	0	0	1	0	0	1	5	6
05	MURRAY, RACHEL	G	0	0-1	0-0	0-0	0	1	1	0	1	1	0	0	6	-6
15	JONES, SARAH	G	4	2-4	0-0	0-0	0	1	1	0	1	0	0	1	8	1
24	JONES, SYDNEY	F	2	1-3	0-0	0-0	1	0	1	1	0	0	0	1	6	6
32	TUCKER, NICOLE	G	4	2-2	0-0	0-0	1	1	2	1	1	4	0	1	10	-3
02	SUGRUE, MACEE	G	0	0-0	0-0	0-0	0	0	0	0	0	1	0	0	7	-4
10	JONES, IMANI	F	0	0-0	0-0	0-0	0	0	0	1	0	1	0	0	4	-9
21	BALABYEKKUBO, KETURAH	G	0	0-0	0-0	0-0	0	0	0	0	0	2	0	1	4	-6
33	SAVAGE, JESSICA	G	0	0-0	0-0	0-0	0	0	0	0	0	0	0	0	0	0
42	FALL, AISSATOU	C	0	0-0	0-0	0-0	0	0	0	0	0	0	0	0	0	0
TEAM							0	1	1	0		0				
<b>TOTALS</b>			<b>13</b>	<b>6-11</b>	<b>1-1</b>	<b>0-0</b>	<b>2</b>	<b>4</b>	<b>6</b>	<b>3</b>	<b>4</b>	<b>9</b>	<b>0</b>	<b>5</b>	<b>50</b>	

#### Shooting By Period

Period	FG	FG%	3FG	3FG%	FT	FT%
1st Qtr	6-11	55%	1-1	100%	0-0	0%
2nd Qtr	4-16	25%	3-10	30%	0-0	0%
1st Half	6-11	55%	1-1	100%	0-0	0%
1st Half	10-27	37%	4-11	36%	0-0	0%
Game	20-49	40.8%	8-22	36.4%	18-19	94.7%

Deadball Rebounds: 0,0

### Rollins 16

No.	Player	S	Pts	FG	3FG	FT	OR	DR	TR	PF	A	TO	Blk	Stl	Min	+/-
00	MARTINEZ-TORO, YARI	G	0	0-0	0-0	0-0	0	0	0	0	0	2	0	0	4	-9
04	HARRISON, JAYLYN	G	0	0-2	0-2	0-0	0	0	0	0	1	0	0	1	5	-2
11	JABLONSKI, RACHEL	G	0	0-1	0-1	0-0	0	0	0	1	0	2	0	1	5	-11
21	DANIELS, DENISE	G	0	0-1	0-0	0-0	0	0	0	0	0	1	0	0	3	-11
34	ROSSER, TIANNA	F	0	0-1	0-0	0-0	1	0	1	0	0	0	0	0	6	-7
05	NEWSOME, ASIA	G	2	1-2	0-0	0-0	2	0	2	1	1	0	0	0	5	14
12	KEITHS, ANGEL	F	0	0-0	0-0	0-0	0	0	0	0	0	0	0	0	3	-5
13	PLUVIOSE, TANIYAH	F	2	1-1	0-0	0-0	1	1	2	0	1	0	0	1	5	14
22	LIA, RACHEL	G	4	2-5	0-2	0-0	0	2	2	1	3	0	0	1	7	14
23	SHARPE, PARIS	F	5	2-2	0-0	1-1	0	0	0	0	0	0	0	0	4	10
24	TASSENT, YOKE	G	3	1-1	1-1	0-0	0	0	0	0	0	2	0	0	2	8
33	LASARTE GARCIA, SILVIA	F	0	0-0	0-0	0-0	0	0	0	0	0	0	0	0	0	0
TEAM							1	0	1	0		0				
<b>TOTALS</b>			<b>16</b>	<b>7-16</b>	<b>1-6</b>	<b>1-1</b>	<b>5</b>	<b>3</b>	<b>8</b>	<b>3</b>	<b>6</b>	<b>7</b>	<b>0</b>	<b>4</b>	<b>50</b>	

#### Shooting By Period

Period	FG	FG%	3FG	3FG%	FT	FT%
1st Qtr	7-16	44%	1-6	17%	1-1	100%
2nd Qtr	7-14	50%	2-5	40%	4-4	100%
1st Half	7-16	44%	1-6	17%	1-1	100%
1st Half	14-30	47%	3-11	27%	5-5	100%
Game	24-61	39.3%	4-19	21.1%	9-17	52.9%

Deadball Rebounds: 5,0

#### Game Notes:

Officials: **Xiomara Cruz, Krystle Apellaniz, Reatha Johnson**  
Attendance: 273

Start Time: **05:29 PM ET**  
End Time: **07:25 PM ET**  
Game Duration: **1:55**  
Conference Game;

Score	1st	2nd	3rd	4th	TOT
E-R	13	11	19	23	<b>66</b>
ROL	16	20	13	12	<b>61</b>

Points from (This Period)	E-R	ROL
In the Paint	10	6
Off Turns	8	11
2nd Chance	2	4
Fast Break	5	0
Bench	0	16

**Official Play-By-Play**  
**Embry-Riddle (FL) vs Rollins**  
**First Quarter**

**December 04, 2019 at Alford Sports Center - Winter Park**



**Period 1**

**Starters:**

**Embry-Riddle (FL):** 3 BISCHOFF, SHELBY (G); 5 MURRAY, RACHEL (G); 15 JONES, SARAH (G); 24 JONES, SYDNEY (F); 32 TUCKER, NICOLE (G);  
**Rollins:** 0 MARTINEZ-TORO, YARI (G); 4 HARRISON, JAYLYN (G); 11 JABLONSKI, RACHEL (G); 21 DANIELS, DENISE (G); 34 ROSSER, TIANNA (F);

Time	VISITORS: Embry-Riddle (FL)	Score	Margin	HOME: Rollins
09:51				MISSED 3PTR by JABLONSKI, RACHEL
09:47	REBOUND (DEF) by JONES, SARAH			
09:31	GOOD! LAYUP by JONES, SARAH	0-2	V 2	
09:31	ASSIST by TUCKER, NICOLE			
09:18				TURNOVER (BADPASS) by DANIELS, DENISE
09:18	STEAL by JONES, SARAH			
09:14	MISSED JUMPER by JONES, SARAH			
09:10	REBOUND (OFF) by TUCKER, NICOLE			
09:00	GOOD! LAYUP by TUCKER, NICOLE	0-4	V 4	
09:00	ASSIST by MURRAY, RACHEL			
08:37				TURNOVER (LOSTBALL) by MARTINEZ-TORO, YARI
08:37	STEAL by JONES, SYDNEY			
08:32	GOOD! LAYUP by JONES, SYDNEY [FB/PNT]	0-6	V 6	
08:15				MISSED 3PTR by HARRISON, JAYLYN
08:13	REBOUND (DEF) by TEAM			
08:13				FOUL (PERSONAL) by JABLONSKI, RACHEL
08:12				SUB OUT: MARTINEZ-TORO, YARI
08:12				SUB OUT: HARRISON, JAYLYN
08:12				SUB OUT: JABLONSKI, RACHEL
08:12				SUB OUT: DANIELS, DENISE
08:12				SUB OUT: ROSSER, TIANNA
08:12				SUB IN: NEWSOME, ASIA
08:12				SUB IN: PLUVIOSE, TANIYAH
08:12				SUB IN: LIA, RACHEL
08:12				SUB IN: SHARPE, PARIS
08:12				SUB IN: TASSENT, YOKE
08:11				FOUL (PERSONAL) by LIA, RACHEL
07:47	MISSED JUMPER by JONES, SARAH			
07:44	REBOUND (OFF) by JONES, SYDNEY			
07:37	MISSED LAYUP by JONES, SYDNEY			
07:34				REBOUND (DEF) by PLUVIOSE, TANIYAH
07:28		2-6	V 4	GOOD! LAYUP by SHARPE, PARIS [PNT]
07:28				ASSIST by NEWSOME, ASIA
07:28	FOUL (PERSONAL) by JONES, SYDNEY			
07:28		3-6	V 3	GOOD! FT by SHARPE, PARIS
07:23	TURNOVER (TRAVEL) by MURRAY, RACHEL			
07:05		5-6	V 1	GOOD! LAYUP by SHARPE, PARIS
07:05				ASSIST by LIA, RACHEL
06:56	TURNOVER (TRAVEL) by TUCKER, NICOLE			
06:56	SUB OUT: BISCHOFF, SHELBY			
06:56	SUB OUT: JONES, SYDNEY			
06:56	SUB IN: SUGRUE, MACEE			
06:56	SUB IN: JONES, IMANI			
06:42		8-6	H 2	GOOD! 3PTR by TASSENT, YOKE
06:42				ASSIST by PLUVIOSE, TANIYAH
06:32	TURNOVER (BADPASS) by JONES, IMANI			
06:32				STEAL by LIA, RACHEL
06:15				MISSED LAYUP by NEWSOME, ASIA
06:14				REBOUND (OFF) by TEAM
06:14	SUB OUT: MURRAY, RACHEL			
06:14	SUB IN: BALABYEKKUBO, KETURAH			
06:11				TURNOVER (BADPASS) by TASSENT, YOKE
06:11	STEAL by BALABYEKKUBO, KETURAH			
05:57	TURNOVER (TRAVEL) by BALABYEKKUBO, KETURAH			
05:50				TURNOVER (TRAVEL) by TASSENT, YOKE
05:50				SUB OUT: TASSENT, YOKE
05:50				SUB IN: HARRISON, JAYLYN
05:29	TURNOVER (BADPASS) by TUCKER, NICOLE			
05:29				STEAL by HARRISON, JAYLYN
05:24	FOUL (PERSONAL) by JONES, IMANI			
05:15				MISSED 3PTR by LIA, RACHEL
05:12				REBOUND (OFF) by NEWSOME, ASIA
05:01				MISSED 3PTR by HARRISON, JAYLYN
04:56				REBOUND (OFF) by NEWSOME, ASIA
04:45		10-6	H 4	GOOD! JUMPER by LIA, RACHEL
04:45				ASSIST by HARRISON, JAYLYN
04:33	TURNOVER (TRAVEL) by SUGRUE, MACEE			
04:32				
04:32				SUB OUT: SHARPE, PARIS
04:32				SUB IN: ROSSER, TIANNA

Time	VISITORS: Embry-Riddle (FL)	Score	Margin	HOME: Rollins
04:32	SUB OUT: JONES, SARAH			
04:32	SUB IN: MURRAY, RACHEL			
04:22		12-6	H 6	GOOD! LAYUP by PLUVIOSE, TANIYAH
04:22				ASSIST by LIA, RACHEL
04:05	TURNOVER (LOSTBALL) by TUCKER, NICOLE			
04:05				STEAL by PLUVIOSE, TANIYAH
04:00				MISSED JUMPER by LIA, RACHEL
03:58				REBOUND (OFF) by ROSSER, TIANNA
03:56				MISSED LAYUP by ROSSER, TIANNA
03:52				REBOUND (OFF) by PLUVIOSE, TANIYAH
03:45		14-6	H 8	GOOD! JUMPER by NEWSOME, ASIA
03:45				ASSIST by LIA, RACHEL
03:34	MISSED JUMPER by MURRAY, RACHEL			
03:30				REBOUND (DEF) by LIA, RACHEL
03:06				MISSED 3PTR by LIA, RACHEL
03:01	REBOUND (DEF) by MURRAY, RACHEL			
02:46				FOUL (PERSONAL) by NEWSOME, ASIA
02:46				SUB OUT: HARRISON, JAYLYN
02:46				SUB OUT: NEWSOME, ASIA
02:46				SUB OUT: PLUVIOSE, TANIYAH
02:46				SUB OUT: LIA, RACHEL
02:46				SUB IN: MARTINEZ-TORO, YARI
02:46				SUB IN: JABLONSKI, RACHEL
02:46				SUB IN: KEITHS, ANGEL
02:46				SUB IN: DANIELS, DENISE
02:46	SUB OUT: MURRAY, RACHEL			
02:46	SUB OUT: JONES, IMANI			
02:46	SUB IN: JONES, SARAH			
02:46	SUB IN: JONES, SYDNEY			
02:41	TURNOVER (TRAVEL) by BALABYEKKUBO, KETURAH			
02:18	FOUL (PERSONAL) by TUCKER, NICOLE			
02:18	SUB OUT: BALABYEKKUBO, KETURAH			
02:18	SUB IN: BISCHOFF, SHELBY			
02:16				TURNOVER (BADPASS) by MARTINEZ-TORO, YARI
02:16	STEAL by BISCHOFF, SHELBY			
01:59	GOOD! LAYUP by JONES, SARAH [PNT]	14-8	H 6	
01:59	ASSIST by BISCHOFF, SHELBY			
01:31				MISSED LAYUP by DANIELS, DENISE
01:28	REBOUND (DEF) by TUCKER, NICOLE			
01:23	GOOD! 3PTR by BISCHOFF, SHELBY [FB]	14-11	H 3	
01:23	ASSIST by JONES, SARAH			
01:15				SUB OUT: DANIELS, DENISE
01:15				SUB IN: LIA, RACHEL
01:06		16-11	H 5	GOOD! JUMPER by LIA, RACHEL
00:54	MISSED JUMPER by JONES, SYDNEY			
00:51				REBOUND (DEF) by LIA, RACHEL
00:32				TURNOVER (LOSTBALL) by JABLONSKI, RACHEL
00:32	STEAL by TUCKER, NICOLE			
00:28	TURNOVER (BADPASS) by TUCKER, NICOLE			
00:28				STEAL by JABLONSKI, RACHEL
00:20				TURNOVER (BADPASS) by JABLONSKI, RACHEL
00:19				SUB OUT: MARTINEZ-TORO, YARI
00:19				SUB IN: HARRISON, JAYLYN
00:09	GOOD! LAYUP by TUCKER, NICOLE [PNT]	16-13	H 3	

Embry-Riddle (FL) 13, Rollins 16

Points from (This Period)	E-R	ROL
In the Paint	10	6
Off Turns	8	11
2nd Chance	2	4
Fast Break	5	0
Bench	0	16

**Official Box Score**  
**Embry-Riddle (FL) vs Rollins**  
**Second Quarter Statistics Only**  
**December 04, 2019 at Alford Sports Center - Winter Park**



### Embry-Riddle (FL) 11

No.	Player	S	Pts	FG	3FG	FT	OR	DR	TR	PF	A	TO	Blk	Stl	Min	+/-
03	BISCHOFF, SHELBY	G	6	2-7	2-6	0-0	0	0	0	1	0	1	0	0	9	-7
05	MURRAY, RACHEL	G	0	0-0	0-0	0-0	0	0	0	0	0	0	0	0	3	-4
15	JONES, SARAH	G	0	0-2	0-1	0-0	1	0	1	0	0	0	0	0	5	-5
24	JONES, SYDNEY	F	0	0-1	0-0	0-0	0	1	1	0	0	1	0	0	6	-3
32	TUCKER, NICOLE	G	0	0-2	0-1	0-0	0	2	2	1	2	0	0	1	8	-9
02	SUGRUE, MACEE	G	0	0-0	0-0	0-0	0	0	0	0	0	1	0	0	5	-1
10	JONES, IMANI	F	0	0-1	0-0	0-0	0	0	0	1	1	0	0	0	4	-4
21	BALABYEKKUBO, KETURAH	G	5	2-3	1-2	0-0	0	1	1	0	0	0	0	0	6	-6
33	SAVAGE, JESSICA	G	0	0-0	0-0	0-0	0	0	0	1	0	0	0	0	3	-4
42	FALL, AISSATOU	C	0	0-0	0-0	0-0	0	0	0	0	0	0	0	0	1	-2
TEAM							1	1	2	0		1				
<b>TOTALS</b>			<b>11</b>	<b>4-16</b>	<b>3-10</b>	<b>0-0</b>	<b>2</b>	<b>5</b>	<b>7</b>	<b>4</b>	<b>3</b>	<b>4</b>	<b>0</b>	<b>1</b>	<b>50</b>	

#### Shooting By Period

Period	FG	FG%	3FG	3FG%	FT	FT%
3rd Qtr	6-10	60%	3-5	60%	4-5	80%
4th Qtr	4-12	33%	1-6	17%	14-14	100%
2nd Half	4-16	25%	3-10	30%	0-0	0%
2nd Half	10-22	45%	4-11	36%	18-19	95%
Game	20-49	40.8%	8-22	36.4%	18-19	94.7%

Deadball Rebounds: 0,0

### Rollins 20

No.	Player	S	Pts	FG	3FG	FT	OR	DR	TR	PF	A	TO	Blk	Stl	Min	+/-
00	MARTINEZ-TORO, YARI	G	5	2-3	1-2	0-0	0	0	0	0	1	0	0	0	6	6
04	HARRISON, JAYLYN	G	3	1-3	1-1	0-0	0	1	1	0	0	1	0	0	5	5
11	JABLONSKI, RACHEL	G	0	0-1	0-1	0-0	0	2	2	1	1	1	0	0	5	5
21	DANIELS, DENISE	G	4	1-3	0-0	2-2	2	2	4	0	2	0	0	0	6	4
34	ROSSER, TIANNA	F	0	0-0	0-0	0-0	0	0	0	0	0	0	0	1	2	0
05	NEWSOME, ASIA	G	0	0-1	0-1	0-0	0	0	0	0	1	0	0	1	5	1
12	KEITHS, ANGEL	F	0	0-0	0-0	0-0	0	0	0	0	0	0	0	0	0	0
13	PLUVIOSE, TANIYAH	F	2	1-1	0-0	0-0	0	0	0	0	0	0	0	0	3	7
22	LIA, RACHEL	G	2	1-1	0-0	0-0	0	2	2	1	0	1	1	0	8	8
23	SHARPE, PARIS	F	2	0-0	0-0	2-2	0	2	2	0	0	0	0	0	4	3
24	TASSENT, YOKE	G	0	0-0	0-0	0-0	0	0	0	0	0	0	0	0	0	0
33	LASARTE GARCIA, SILVIA	F	2	1-1	0-0	0-0	0	0	0	1	0	0	0	0	6	6
TEAM							0	1	1	0		0				
<b>TOTALS</b>			<b>20</b>	<b>7-14</b>	<b>2-5</b>	<b>4-4</b>	<b>2</b>	<b>10</b>	<b>12</b>	<b>3</b>	<b>5</b>	<b>3</b>	<b>1</b>	<b>2</b>	<b>50</b>	

#### Shooting By Period

Period	FG	FG%	3FG	3FG%	FT	FT%
3rd Qtr	6-14	43%	1-3	33%	0-2	00%
4th Qtr	4-17	24%	0-5	00%	4-10	40%
2nd Half	7-14	50%	2-5	40%	4-4	100%
2nd Half	10-31	32%	1-8	13%	4-12	33%
Game	24-61	39.3%	4-19	21.1%	9-17	52.9%

Deadball Rebounds: 5,0

#### Game Notes:

Officials: **Xiomara Cruz, Krystle Apellaniz, Reatha Johnson**  
Attendance: 273

Start Time: **05:29 PM ET**  
End Time: **07:25 PM ET**  
Game Duration: **1:55**  
Conference Game;

Score	1st	2nd	3rd	4th	TOT
E-R	13	11	19	23	<b>66</b>
ROL	16	20	13	12	<b>61</b>

Points from (This Period)	E-R	ROL
In the Paint	2	2
Off Turns	3	5
2nd Chance	0	4
Fast Break	2	0
Bench	5	8

**Official Play-By-Play**  
**Embry-Riddle (FL) vs Rollins**  
**Second Quarter**  
**December 04, 2019 at Alford Sports Center - Winter Park**



**Period 2**

**Starters:**

**Embry-Riddle (FL):** 3 BISCHOFF, SHELBY (G); 5 MURRAY, RACHEL (G); 15 JONES, SARAH (G); 24 JONES, SYDNEY (F); 32 TUCKER, NICOLE (G);  
**Rollins:** 0 MARTINEZ-TORO, YARI (G); 4 HARRISON, JAYLYN (G); 11 JABLONSKI, RACHEL (G); 21 DANIELS, DENISE (G); 34 ROSSER, TIANNA (F);

Time	VISITORS: Embry-Riddle (FL)	Score	Margin	HOME: Rollins
10:00				SUB OUT: KEITHS, ANGEL
10:00				SUB IN: SHARPE, PARIS
10:00	SUB OUT: SUGRUE, MACEE			
10:00	SUB OUT: JONES, SYDNEY			
10:00	SUB OUT: TUCKER, NICOLE			
10:00	SUB IN: MURRAY, RACHEL			
10:00	SUB IN: JONES, IMANI			
10:00	SUB IN: SAVAGE, JESSICA			
09:46	TURNOVER (BADPASS) by BISCHOFF, SHELBY			
09:46				STEAL by ROSSER, TIANNA
09:29				TURNOVER (BADPASS) by HARRISON, JAYLYN
09:14	GOOD! 3PTR by BISCHOFF, SHELBY	16-16	T	
09:14	ASSIST by JONES, IMANI			
08:50		19-16	H 3	GOOD! 3PTR by HARRISON, JAYLYN
08:50				ASSIST by JABLONSKI, RACHEL
08:24	MISSED LAYUP by JONES, IMANI			
08:23				REBOUND (DEF) by SHARPE, PARIS
08:23	FOUL (PERSONAL) by JONES, IMANI			
08:23				SUB OUT: ROSSER, TIANNA
08:23				SUB IN: DANIELS, DENISE
08:23	SUB OUT: JONES, IMANI			
08:23	SUB IN: TUCKER, NICOLE			
08:10	FOUL (PERSONAL) by SAVAGE, JESSICA			
08:10		20-16	H 4	GOOD! FT by SHARPE, PARIS
08:10		21-16	H 5	GOOD! FT by SHARPE, PARIS
08:00	MISSED 3PTR by BISCHOFF, SHELBY			
08:00				BLOCK by LIA, RACHEL
07:54				REBOUND (DEF) by JABLONSKI, RACHEL
07:41				TURNOVER (BADPASS) by LIA, RACHEL
07:41	STEAL by TUCKER, NICOLE			
07:30	MISSED JUMPER by BISCHOFF, SHELBY			
07:26				REBOUND (DEF) by SHARPE, PARIS
07:14				MISSED 3PTR by JABLONSKI, RACHEL
07:10	REBOUND (DEF) by TUCKER, NICOLE			
07:03	MISSED 3PTR by BISCHOFF, SHELBY			
06:59				REBOUND (DEF) by JABLONSKI, RACHEL
06:53				MISSED JUMPER by HARRISON, JAYLYN
06:51				REBOUND (OFF) by DANIELS, DENISE
06:51	FOUL (PERSONAL) by BISCHOFF, SHELBY			
06:51				SUB OUT: LIA, RACHEL
06:51				SUB IN: NEWSOME, ASIA
06:51	SUB OUT: MURRAY, RACHEL			
06:51	SUB OUT: SAVAGE, JESSICA			
06:51	SUB IN: SUGRUE, MACEE			
06:51	SUB IN: JONES, SYDNEY			
06:51		22-16	H 6	GOOD! FT by DANIELS, DENISE
06:51		23-16	H 7	GOOD! FT by DANIELS, DENISE
06:40	MISSED 3PTR by JONES, SARAH			
06:36				REBOUND (DEF) by HARRISON, JAYLYN
06:30				MISSED JUMPER by HARRISON, JAYLYN
06:27				REBOUND (OFF) by DANIELS, DENISE
06:27		25-16	H 9	GOOD! LAYUP by DANIELS, DENISE [PNT]
06:09	GOOD! 3PTR by BISCHOFF, SHELBY	25-19	H 6	
06:09	ASSIST by TUCKER, NICOLE			
05:54				FOUL (OFF) by JABLONSKI, RACHEL
05:54				TURNOVER (OFFENSIVE) by JABLONSKI, RACHEL
05:54				SUB OUT: HARRISON, JAYLYN
05:54				SUB OUT: JABLONSKI, RACHEL
05:54				SUB OUT: SHARPE, PARIS
05:54				SUB IN: MARTINEZ-TORO, YARI
05:54				SUB IN: LIA, RACHEL
05:54				SUB IN: LASARTE GARCIA, SILVIA
05:54	SUB OUT: JONES, SARAH			
05:54	SUB IN: BALABYEKKUBO, KETURAH			
05:45	MISSED JUMPER by JONES, SYDNEY			
05:40				REBOUND (DEF) by LIA, RACHEL
05:28				MISSED JUMPER by DANIELS, DENISE
05:25	REBOUND (DEF) by TUCKER, NICOLE			
05:21	GOOD! LAYUP by BALABYEKKUBO, KETURAH [FB/PNT]	25-21	H 4	
04:54		27-21	H 6	GOOD! JUMPER by LIA, RACHEL



Time	VISITORS: Embry-Riddle (FL)	Score	Margin	HOME: Rollins
04:54				ASSIST by DANIELS, DENISE
04:40	MISSED 3PTR by BISCHOFF, SHELBY			
04:35				REBOUND (DEF) by DANIELS, DENISE
04:16				MISSED JUMPER by DANIELS, DENISE
04:13	REBOUND (DEF) by BALABYEKKUBO, KETURAH			
03:59	GOOD! 3PTR by BALABYEKKUBO, KETURAH	27-24	H 3	
03:59	ASSIST by TUCKER, NICOLE			
03:36		29-24	H 5	GOOD! JUMPER by LASARTE GARCIA, SILVIA
03:36				ASSIST by DANIELS, DENISE
03:19	TURNOVER (LOSTBALL) by SUGRUE, MACEE			
03:19				STEAL by NEWSOME, ASIA
03:19				
03:19				SUB OUT: DANIELS, DENISE
03:19				SUB IN: PLUVIOSE, TANIYAH
03:00				MISSED 3PTR by NEWSOME, ASIA
02:57	REBOUND (DEF) by JONES, SYDNEY			
02:54	TURNOVER (TRAVEL) by JONES, SYDNEY			
02:35		32-24	H 8	GOOD! 3PTR by MARTINEZ-TORO, YARI
02:35				ASSIST by NEWSOME, ASIA
02:01	TURNOVER (SHOTCLOCK) by TEAM			
02:01				SUB OUT: NEWSOME, ASIA
02:01				SUB IN: JABLONSKI, RACHEL
02:01	SUB OUT: SUGRUE, MACEE			
02:01	SUB IN: JONES, IMANI			
01:47		34-24	H 10	GOOD! JUMPER by MARTINEZ-TORO, YARI
01:35	MISSED 3PTR by BALABYEKKUBO, KETURAH			
01:33				REBOUND (DEF) by LIA, RACHEL
01:14				MISSED 3PTR by MARTINEZ-TORO, YARI
01:13	REBOUND (DEF) by TEAM			
01:13	SUB OUT: BISCHOFF, SHELBY			
01:13	SUB IN: JONES, SARAH			
01:05				FOUL (PERSONAL) by LIA, RACHEL
00:51	MISSED 3PTR by TUCKER, NICOLE			
00:48	REBOUND (OFF) by JONES, SARAH			
00:48	MISSED LAYUP by JONES, SARAH			
00:48	REBOUND (OFF) by TEAM			
00:48				SUB OUT: LIA, RACHEL
00:48				SUB IN: DANIELS, DENISE
00:46	MISSED JUMPER by TUCKER, NICOLE			
00:42				REBOUND (DEF) by DANIELS, DENISE
00:40				TIMEOUT 30SEC
00:40				SUB OUT: JABLONSKI, RACHEL
00:40				SUB IN: HARRISON, JAYLYN
00:40	SUB OUT: JONES, SYDNEY			
00:40	SUB IN: FALL, AISSATOU			
00:24		36-24	H 12	GOOD! JUMPER by PLUVIOSE, TANIYAH
00:24				ASSIST by MARTINEZ-TORO, YARI
00:07				FOUL (PERSONAL) by LASARTE GARCIA, SILVIA
00:02	MISSED 3PTR by BISCHOFF, SHELBY			
00:00				REBOUND (DEF) by TEAM
00:00	FOUL (PERSONAL) by TUCKER, NICOLE			
00:02	SUB OUT: FALL, AISSATOU			
00:02	SUB IN: BISCHOFF, SHELBY			

Embry-Riddle (FL) 24, Rollins 36

Points from (This Period)	E-R	ROL
In the Paint	2	2
Off Turns	3	5
2nd Chance	0	4
Fast Break	2	0
Bench	5	8

**Official Box Score**  
**Embry-Riddle (FL) vs Rollins**  
**Second Half Statistics Only**  
**December 04, 2019 at Alford Sports Center - Winter Park**



### Embry-Riddle (FL) 42

No.	Player	S	Pts	FG	3FG	FT	OR	DR	TR	PF	A	TO	Blk	Stl	Min	+/-
02	SUGRUE, MACEE	G	3	1-4	1-4	0-0	1	0	1	2	0	0	0	0	9	6
03	BISCHOFF, SHELBY	G	0	0-2	0-1	0-0	0	1	1	0	1	3	0	0	14	12
05	MURRAY, RACHEL	G	8	2-2	2-2	2-2	0	1	1	2	1	0	0	0	17	16
10	JONES, IMANI	F	9	3-5	0-0	3-4	0	0	0	2	0	1	0	1	11	12
15	JONES, SARAH	G	5	1-1	1-1	2-2	1	0	1	0	0	3	0	0	8	8
21	BALABYEKKUBO, KETURAH	G	2	0-1	0-1	2-2	3	1	4	2	0	0	0	1	12	9
24	JONES, SYDNEY	F	0	0-1	0-0	0-0	0	1	1	0	0	1	0	0	6	6
32	TUCKER, NICOLE	G	15	3-6	0-2	9-9	0	6	6	0	2	1	0	2	20	17
33	SAVAGE, JESSICA	G	0	0-0	0-0	0-0	0	0	0	1	0	0	0	0	3	-1
42	FALL, AISSATOU	C	0	0-0	0-0	0-0	0	0	0	0	0	0	0	0	0	0
	TEAM		0	0-0	0-0	0-0	1	1	2	0	0	1	0	0	0	
<b>TOTALS</b>			<b>42</b>	<b>10-22</b>	<b>4-11</b>	<b>18-19</b>	<b>6</b>	<b>11</b>	<b>17</b>	<b>9</b>	<b>4</b>	<b>10</b>	<b>0</b>	<b>4</b>	<b>100</b>	

#### Shooting By Period

Period	FG	FG%	3FG	3FG%	FT	FT%
3rd Qtr	6-10	60%	3-5	60%	4-5	80%
4th Qtr	4-12	33%	1-6	17%	14-14	100%
2nd Half	10-22	45%	4-11	36%	18-19	95%
Game	20-49	40.8%	8-22	36.4%	18-19	94.7%

Deadball Rebounds: 0,0

Last FG Half: E-R 4th-04:07

### Rollins 25

No.	Player	S	Pts	FG	3FG	FT	OR	DR	TR	PF	A	TO	Blk	Stl	Min	+/-
00	MARTINEZ-TORO, YARI	G	2	1-3	0-1	0-0	0	1	1	1	1	1	0	0	11	-11
04	HARRISON, JAYLYN	G	6	2-10	1-6	1-2	0	2	2	3	1	1	0	2	18	-14
05	NEWSOME, ASIA	G	5	2-4	0-1	1-5	3	1	4	2	0	3	0	0	14	-7
11	JABLONSKI, RACHEL	G	0	0-0	0-0	0-2	0	0	0	2	1	0	0	1	6	-10
12	KEITHS, ANGEL	F	0	0-0	0-0	0-0	0	0	0	0	0	0	0	0	0	0
13	PLUVIOSE, TANIYAH	F	5	2-5	0-0	1-1	1	0	1	1	0	0	0	1	9	-8
21	DANIELS, DENISE	G	2	1-3	0-0	0-0	0	0	0	4	0	2	0	1	11	-13
22	LIA, RACHEL	G	3	1-3	0-0	1-2	1	0	1	1	0	1	0	1	12	-9
23	SHARPE, PARIS	F	2	1-3	0-0	0-0	3	1	4	3	0	4	0	1	14	-4
24	TASSENT, YOKE	G	0	0-0	0-0	0-0	0	0	0	0	0	0	0	0	0	0
33	LASARTE GARCIA, SILVIA	F	0	0-0	0-0	0-0	0	0	0	0	0	0	0	0	0	0
34	ROSSER, TIANNA	F	0	0-0	0-0	0-0	2	0	2	1	0	0	0	0	6	-9
	TEAM		0	0-0	0-0	0-0	3	2	5	0	0	0	0	0	0	
<b>TOTALS</b>			<b>25</b>	<b>10-31</b>	<b>1-8</b>	<b>4-12</b>	<b>13</b>	<b>7</b>	<b>20</b>	<b>18</b>	<b>3</b>	<b>12</b>	<b>0</b>	<b>7</b>	<b>100</b>	

#### Shooting By Period

Period	FG	FG%	3FG	3FG%	FT	FT%
3rd Qtr	6-14	43%	1-3	33%	0-2	00%
4th Qtr	4-17	24%	0-5	00%	4-10	40%
2nd Half	10-31	32%	1-8	13%	4-12	33%
Game	24-61	39.3%	4-19	21.1%	9-17	52.9%

Deadball Rebounds: 5,0

Last FG Half: ROL 4th-00:19

#### Game Notes:

Officials: Xiomara Cruz, Krystle Apellaniz, Reatha Johnson

Attendance: 273

Start Time: 05:29 PM ET

End Time: 07:25 PM ET

Game Duration: 1:55

Conference Game;

Score	1st	2nd	3rd	4th	TOT
E-R	13	11	19	23	<b>66</b>
ROL	16	20	13	12	<b>61</b>

Points from (This Period)	E-R	ROL
In the Paint	12	14
Off Turns	9	6
2nd Chance	7	6
Fast Break	6	9
Bench	14	15

**Official Box Score**  
**Embry-Riddle (FL) vs Rollins**  
**Third Quarter Statistics Only**  
**December 04, 2019 at Alford Sports Center - Winter Park**



### Embry-Riddle (FL) 42

No.	Player	S	Pts	FG	3FG	FT	OR	DR	TR	PF	A	TO	Blk	Stl	Min	+/-
03	BISCHOFF, SHELBY	G	0	0-2	0-1	0-0	0	0	0	0	1	2	0	0	9	4
05	MURRAY, RACHEL	G	3	1-1	1-1	0-0	0	1	1	1	1	0	0	0	7	5
15	JONES, SARAH	G	3	1-1	1-1	0-0	0	0	0	0	0	2	0	0	6	4
24	JONES, SYDNEY	F	0	0-0	0-0	0-0	0	0	0	0	0	1	0	0	4	2
32	TUCKER, NICOLE	G	8	2-3	0-1	4-4	0	2	2	0	1	1	0	0	10	6
02	SUGRUE, MACEE	G	3	1-1	1-1	0-0	1	0	1	1	0	0	0	0	4	3
10	JONES, IMANI	F	2	1-2	0-0	0-1	0	0	0	0	0	0	0	1	3	5
21	BALABYEKKUBO, KETURAH	G	0	0-0	0-0	0-0	0	0	0	0	0	0	0	0	4	2
33	SAVAGE, JESSICA	G	0	0-0	0-0	0-0	0	0	0	1	0	0	0	0	3	-1
42	FALL, AISSATOU	C	0	0-0	0-0	0-0	0	0	0	0	0	0	0	0	0	0
TEAM							0	0	0	0		0				
<b>TOTALS</b>			<b>19</b>	<b>6-10</b>	<b>3-5</b>	<b>4-5</b>	<b>1</b>	<b>3</b>	<b>4</b>	<b>3</b>	<b>3</b>	<b>6</b>	<b>0</b>	<b>1</b>	<b>50</b>	

#### Shooting By Period

Period	FG	FG%	3FG	3FG%	FT	FT%
2nd Half	0-0	0%	0-0	0%	0-0	0%
Game	20-49	40.8%	8-22	36.4%	18-19	94.7%

Deadball Rebounds: 0,0

### Rollins 25

No.	Player	S	Pts	FG	3FG	FT	OR	DR	TR	PF	A	TO	Blk	Stl	Min	+/-
00	MARTINEZ-TORO, YARI	G	2	1-2	0-1	0-0	0	1	1	1	1	1	0	0	8	-7
04	HARRISON, JAYLYN	G	5	2-5	1-2	0-0	0	1	1	1	1	0	0	1	8	-3
11	JABLONSKI, RACHEL	G	0	0-0	0-0	0-2	0	0	0	2	1	0	0	1	6	-10
21	DANIELS, DENISE	G	0	0-1	0-0	0-0	0	0	0	2	0	1	0	1	4	-5
34	ROSSER, TIANNA	F	0	0-0	0-0	0-0	1	0	1	0	0	0	0	0	4	-5
05	NEWSOME, ASIA	G	0	0-0	0-0	0-0	0	0	0	0	0	2	0	0	4	4
12	KEITHS, ANGEL	F	0	0-0	0-0	0-0	0	0	0	0	0	0	0	0	0	0
13	PLUVIOSE, TANIYAH	F	2	1-3	0-0	0-0	1	0	1	0	0	0	0	1	6	-1
22	LIA, RACHEL	G	2	1-1	0-0	0-0	0	0	0	0	0	1	0	0	5	-2
23	SHARPE, PARIS	F	2	1-2	0-0	0-0	1	0	1	1	0	2	0	0	7	-1
24	TASSENT, YOKE	G	0	0-0	0-0	0-0	0	0	0	0	0	0	0	0	0	0
33	LASARTE GARCIA, SILVIA	F	0	0-0	0-0	0-0	0	0	0	0	0	0	0	0	0	0
TEAM							2	2	4	0		0				
<b>TOTALS</b>			<b>13</b>	<b>6-14</b>	<b>1-3</b>	<b>0-2</b>	<b>5</b>	<b>4</b>	<b>9</b>	<b>7</b>	<b>3</b>	<b>7</b>	<b>0</b>	<b>4</b>	<b>50</b>	

#### Shooting By Period

Period	FG	FG%	3FG	3FG%	FT	FT%
2nd Half	0-0	0%	0-0	0%	0-0	0%
Game	24-61	39.3%	4-19	21.1%	9-17	52.9%

Deadball Rebounds: 5,0

#### Game Notes:

Officials: Xiomara Cruz, Krystle Apellaniz, Reatha Johnson  
Attendance: 273

Start Time: 05:29 PM ET

End Time: 07:25 PM ET

Game Duration: 1:55

Conference Game;

Score	1st	2nd	3rd	4th	TOT
E-R	13	11	19	23	<b>66</b>
ROL	16	20	13	12	<b>61</b>

Points from (This Period)	E-R	ROL
In the Paint	6	6
Off Turns	5	4
2nd Chance	0	2
Fast Break	0	4
Bench	5	6

**Official Play-By-Play**  
**Embry-Riddle (FL) vs Rollins**  
**Third Quarter**  
**December 04, 2019 at Alford Sports Center - Winter Park**



**Period 3**

**Starters:**

**Embry-Riddle (FL):** 3 BISCHOFF, SHELBY (G); 5 MURRAY, RACHEL (G); 15 JONES, SARAH (G); 24 JONES, SYDNEY (F); 32 TUCKER, NICOLE (G);

**Rollins:** 0 MARTINEZ-TORO, YARI (G); 4 HARRISON, JAYLYN (G); 11 JABLONSKI, RACHEL (G); 21 DANIELS, DENISE (G); 34 ROSSER, TIANNA (F);

Time	VISITORS: Embry-Riddle (FL)	Score	Margin	HOME: Rollins
10:00				SUB OUT: PLUVIOSE, TANIYAH
10:00				SUB OUT: LASARTE GARCIA, SILVIA
10:00				SUB IN: JABLONSKI, RACHEL
10:00				SUB IN: ROSSER, TIANNA
10:00	SUB OUT: JONES, IMANI			
10:00	SUB OUT: BALABYEKKUBO, KETURAH			
10:00	SUB IN: MURRAY, RACHEL			
10:00	SUB IN: JONES, SYDNEY			
09:36				FOUL (PERSONAL) by JABLONSKI, RACHEL
09:28	GOOD! 3PTR by JONES, SARAH	36-27	H 9	
09:28	ASSIST by BISCHOFF, SHELBY			
08:50				MISSED JUMPER by HARRISON, JAYLYN
08:45				REBOUND (OFF) by ROSSER, TIANNA
08:42				MISSED JUMPER by DANIELS, DENISE
08:36	REBOUND (DEF) by MURRAY, RACHEL			
08:35				FOUL (PERSONAL) by HARRISON, JAYLYN
08:26				FOUL (PERSONAL) by DANIELS, DENISE
08:26	GOOD! FT by TUCKER, NICOLE	36-28	H 8	
08:26	GOOD! FT by TUCKER, NICOLE	36-29	H 7	
08:11				TURNOVER (LOSTBALL) by MARTINEZ-TORO, YARI
07:50	TURNOVER (LOSTBALL) by JONES, SARAH			
07:50				STEAL by DANIELS, DENISE
07:45				FOUL (OFF) by DANIELS, DENISE
07:45				TURNOVER (OFFENSIVE) by DANIELS, DENISE
07:42	TURNOVER (BADPASS) by BISCHOFF, SHELBY			
07:42				STEAL by HARRISON, JAYLYN
07:37		38-29	H 9	GOOD! LAYUP by HARRISON, JAYLYN [FB]
07:22				FOUL (PERSONAL) by MARTINEZ-TORO, YARI
07:22				SUB OUT: DANIELS, DENISE
07:22				SUB IN: PLUVIOSE, TANIYAH
07:22	GOOD! FT by TUCKER, NICOLE	38-30	H 8	
07:22	GOOD! FT by TUCKER, NICOLE	38-31	H 7	
07:22				SUB OUT: JABLONSKI, RACHEL
07:22				SUB IN: NEWSOME, ASIA
07:01		40-31	H 9	GOOD! JUMPER by MARTINEZ-TORO, YARI
06:45	GOOD! LAYUP by TUCKER, NICOLE	40-33	H 7	
06:30				SUB OUT: ROSSER, TIANNA
06:30				SUB IN: SHARPE, PARIS
06:20		43-33	H 10	GOOD! 3PTR by HARRISON, JAYLYN
06:20				ASSIST by MARTINEZ-TORO, YARI
06:05	TURNOVER (LOSTBALL) by JONES, SYDNEY			
06:05	SUB OUT: JONES, SYDNEY			
06:05	SUB IN: SAVAGE, JESSICA			
05:58				TURNOVER (LOSTBALL) by NEWSOME, ASIA
05:41	TURNOVER (TRAVEL) by JONES, SARAH			
05:41				SUB OUT: MARTINEZ-TORO, YARI
05:41				SUB IN: LIA, RACHEL
05:12				TURNOVER (LOSTBALL) by NEWSOME, ASIA
05:12	SUB OUT: JONES, SARAH			
05:12	SUB IN: BALABYEKKUBO, KETURAH			
05:00	GOOD! 3PTR by MURRAY, RACHEL	43-36	H 7	
05:00	ASSIST by TUCKER, NICOLE			
04:48		45-36	H 9	GOOD! JUMPER by LIA, RACHEL
04:48				ASSIST by HARRISON, JAYLYN
04:29	MISSED JUMPER by BISCHOFF, SHELBY			
04:28				REBOUND (DEF) by TEAM
04:26				
04:26	SUB OUT: MURRAY, RACHEL			
04:26	SUB IN: SUGRUE, MACEE			
04:05				MISSED JUMPER by SHARPE, PARIS
04:04				REBOUND (OFF) by TEAM
04:04	FOUL (PERSONAL) by SAVAGE, JESSICA			
03:51				MISSED 3PTR by HARRISON, JAYLYN
03:48				REBOUND (OFF) by PLUVIOSE, TANIYAH
03:47				MISSED LAYUP by PLUVIOSE, TANIYAH
03:41				REBOUND (OFF) by SHARPE, PARIS
03:41		47-36	H 11	GOOD! LAYUP by SHARPE, PARIS
03:29	MISSED 3PTR by BISCHOFF, SHELBY			
03:27				REBOUND (DEF) by TEAM
03:27				SUB OUT: HARRISON, JAYLYN

Time	VISITORS: Embry-Riddle (FL)	Score	Margin	HOME: Rollins
03:27				SUB IN: JABLONSKI, RACHEL
03:27	SUB OUT: SAVAGE, JESSICA			
03:27	SUB IN: JONES, IMANI			
03:21				TURNOVER (LOSTBALL) by LIA, RACHEL
03:21				SUB OUT: NEWSOME, ASIA
03:21				SUB IN: MARTINEZ-TORO, YARI
03:10	MISSED JUMPER by JONES, IMANI			
03:06	REBOUND (OFF) by SUGRUE, MACEE			
02:50	TURNOVER (BADPASS) by BISCHOFF, SHELBY			
02:50				STEAL by PLUVIOSE, TANIYAH
02:32				MISSED 3PTR by MARTINEZ-TORO, YARI
02:28	REBOUND (DEF) by TUCKER, NICOLE			
02:23	GOOD! 3PTR by SUGRUE, MACEE	47-39	H 8	
01:57				MISSED LAYUP by PLUVIOSE, TANIYAH
01:54	REBOUND (DEF) by TUCKER, NICOLE			
01:53	TURNOVER (BADPASS) by TUCKER, NICOLE			
01:53				STEAL by JABLONSKI, RACHEL
01:49		49-39	H 10	GOOD! LAYUP by PLUVIOSE, TANIYAH [FB/PNT]
01:49				ASSIST by JABLONSKI, RACHEL
01:23	GOOD! LAYUP by TUCKER, NICOLE [PNT]	49-41	H 8	
01:04	FOUL (PERSONAL) by SUGRUE, MACEE			
01:04				SUB OUT: PLUVIOSE, TANIYAH
01:04				SUB OUT: LIA, RACHEL
01:04				SUB IN: HARRISON, JAYLYN
01:04				SUB IN: DANIELS, DENISE
01:04	SUB OUT: BISCHOFF, SHELBY			
01:04	SUB OUT: BALABYEKKUBO, KETURAH			
01:04	SUB IN: MURRAY, RACHEL			
01:04	SUB IN: JONES, SARAH			
01:04				MISSED FT by JABLONSKI, RACHEL
01:04				REBOUND (OFF) by TEAM
01:03				MISSED FT by JABLONSKI, RACHEL
01:02				REBOUND (OFF) by TEAM
00:52				TURNOVER (BADPASS) by SHARPE, PARIS
00:52	STEAL by JONES, IMANI			
00:36	MISSED 3PTR by TUCKER, NICOLE			
00:33				REBOUND (DEF) by MARTINEZ-TORO, YARI
00:33	FOUL (PERSONAL) by MURRAY, RACHEL			
00:17				FOUL (OFF) by SHARPE, PARIS
00:17				TURNOVER (OFFENSIVE) by SHARPE, PARIS
00:05	GOOD! LAYUP by JONES, IMANI [PNT]	49-43	H 6	
00:05	ASSIST by MURRAY, RACHEL			
00:05				FOUL (PERSONAL) by JABLONSKI, RACHEL
00:04	MISSED FT by JONES, IMANI			
00:03				REBOUND (DEF) by HARRISON, JAYLYN
00:00				MISSED LAYUP by HARRISON, JAYLYN
00:00				REBOUND (OFF) by TEAM

Embry-Riddle (FL) 43, Rollins 49

Points from (This Period)	E-R	ROL
In the Paint	6	6
Off Turns	5	4
2nd Chance	0	2
Fast Break	0	4
Bench	5	6

**Official Box Score**  
**Embry-Riddle (FL) vs Rollins**  
**Fourth Quarter Statistics Only**  
**December 04, 2019 at Alford Sports Center - Winter Park**



### Embry-Riddle (FL) 23

No.	Player	S	Pts	FG	3FG	FT	OR	DR	TR	PF	A	TO	Blk	Stl	Min	+/-
03	BISCHOFF, SHELBY	G	0	0-0	0-0	0-0	0	1	1	0	0	1	0	0	5	8
05	MURRAY, RACHEL	G	5	1-1	1-1	2-2	0	0	0	1	0	0	0	0	10	11
15	JONES, SARAH	G	2	0-0	0-0	2-2	1	0	1	0	0	1	0	0	2	4
24	JONES, SYDNEY	F	0	0-1	0-0	0-0	0	1	1	0	0	0	0	0	2	4
32	TUCKER, NICOLE	G	7	1-3	0-1	5-5	0	4	4	0	1	0	0	2	10	11
02	SUGRUE, MACEE	G	0	0-3	0-3	0-0	0	0	0	1	0	0	0	0	5	3
10	JONES, IMANI	F	7	2-3	0-0	3-3	0	0	0	2	0	1	0	0	8	7
21	BALABYEKKUBO, KETURAH	G	2	0-1	0-1	2-2	3	1	4	2	0	0	0	1	8	7
33	SAVAGE, JESSICA	G	0	0-0	0-0	0-0	0	0	0	0	0	0	0	0	0	0
42	FALL, AISSATOU	C	0	0-0	0-0	0-0	0	0	0	0	0	0	0	0	0	0
TEAM							1	1	2	0		1				
<b>TOTALS</b>			<b>23</b>	<b>4-12</b>	<b>1-6</b>	<b>14-14</b>	<b>5</b>	<b>8</b>	<b>13</b>	<b>6</b>	<b>1</b>	<b>4</b>	<b>0</b>	<b>3</b>	<b>50</b>	

#### Shooting By Period

Period	FG	FG%	3FG	3FG%	FT	FT%
Game	20-49	40.8%	8-22	36.4%	18-19	94.7%

Deadball Rebounds: 0,0

### Rollins 12

No.	Player	S	Pts	FG	3FG	FT	OR	DR	TR	PF	A	TO	Blk	Stl	Min	+/-
00	MARTINEZ-TORO, YARI	G	0	0-1	0-0	0-0	0	0	0	0	0	0	0	0	3	-4
04	HARRISON, JAYLYN	G	1	0-5	0-4	1-2	0	1	1	2	0	1	0	1	10	-11
11	JABLONSKI, RACHEL	G	0	0-0	0-0	0-0	0	0	0	0	0	0	0	0	0	0
21	DANIELS, DENISE	G	2	1-2	0-0	0-0	0	0	0	2	0	1	0	0	7	-8
34	ROSSER, TIANNA	F	0	0-0	0-0	0-0	1	0	1	1	0	0	0	0	2	-4
05	NEWSOME, ASIA	G	5	2-4	0-1	1-5	3	1	4	2	0	1	0	0	10	-11
12	KEITHS, ANGEL	F	0	0-0	0-0	0-0	0	0	0	0	0	0	0	0	0	0
13	PLUVIOSE, TANIYAH	F	3	1-2	0-0	1-1	0	0	0	1	0	0	0	0	3	-7
22	LIA, RACHEL	G	1	0-2	0-0	1-2	1	0	1	1	0	0	0	1	7	-7
23	SHARPE, PARIS	F	0	0-1	0-0	0-0	2	1	3	2	0	2	0	1	7	-3
24	TASSENT, YOKE	G	0	0-0	0-0	0-0	0	0	0	0	0	0	0	0	0	0
33	LASARTE GARCIA, SILVIA	F	0	0-0	0-0	0-0	0	0	0	0	0	0	0	0	0	0
TEAM							1	0	1	0		0				
<b>TOTALS</b>			<b>12</b>	<b>4-17</b>	<b>0-5</b>	<b>4-10</b>	<b>8</b>	<b>3</b>	<b>11</b>	<b>11</b>	<b>0</b>	<b>5</b>	<b>0</b>	<b>3</b>	<b>50</b>	

#### Shooting By Period

Period	FG	FG%	3FG	3FG%	FT	FT%
Game	24-61	39.3%	4-19	21.1%	9-17	52.9%

Deadball Rebounds: 5,0

#### Game Notes:

Officials: **Xiomara Cruz, Krystle Apellaniz, Reatha Johnson**  
Attendance: **273**

Start Time: **05:29 PM ET**

End Time: **07:25 PM ET**

Game Duration: **1:55**

Conference Game;

Score	1st	2nd	3rd	4th	TOT
E-R	13	11	19	23	<b>66</b>
ROL	16	20	13	12	<b>61</b>

Points from (This Period)	E-R	ROL
In the Paint	6	8
Off Turns	4	2
2nd Chance	7	4
Fast Break	6	5
Bench	9	9

**Official Play-By-Play  
Embry-Riddle (FL) vs Rollins  
Fourth Quarter**

**December 04, 2019 at Alford Sports Center - Winter Park**



**Period 4**

**Starters:**

**Embry-Riddle (FL):** 3 BISCHOFF, SHELBY (G); 5 MURRAY, RACHEL (G); 15 JONES, SARAH (G); 24 JONES, SYDNEY (F); 32 TUCKER, NICOLE (G);

**Rollins:** 0 MARTINEZ-TORO, YARI (G); 4 HARRISON, JAYLYN (G); 11 JABLONSKI, RACHEL (G); 21 DANIELS, DENISE (G); 34 ROSSER, TIANNA (F);

Time	VISITORS: Embry-Riddle (FL)	Score	Margin	HOME: Rollins
10:00				SUB OUT: MARTINEZ-TORO, YARI
10:00				SUB OUT: JABLONSKI, RACHEL
10:00				SUB OUT: SHARPE, PARIS
10:00				SUB IN: NEWSOME, ASIA
10:00				SUB IN: LIA, RACHEL
10:00				SUB IN: ROSSER, TIANNA
10:00	SUB OUT: SUGRUE, MACEE			
10:00	SUB OUT: JONES, IMANI			
10:00	SUB IN: BISCHOFF, SHELBY			
10:00	SUB IN: JONES, SYDNEY			
09:38				MISSED LAYUP by HARRISON, JAYLYN
09:37	REBOUND (DEF) by JONES, SYDNEY			
09:37				FOUL (PERSONAL) by ROSSER, TIANNA
09:09	TURNOVER (LOSTBALL) by JONES, SARAH			
09:09				STEAL by LIA, RACHEL
09:03				MISSED 3PTR by NEWSOME, ASIA
08:59				REBOUND (OFF) by ROSSER, TIANNA
08:44				MISSED LAYUP by LIA, RACHEL
08:41	REBOUND (DEF) by TUCKER, NICOLE			
08:20	MISSED LAYUP by JONES, SYDNEY			
08:19	REBOUND (OFF) by JONES, SARAH			
08:19				FOUL (PERSONAL) by HARRISON, JAYLYN
08:19	GOOD! FT by JONES, SARAH	49-44	H 5	
08:19	GOOD! FT by JONES, SARAH	49-45	H 4	
07:53				MISSED LAYUP by DANIELS, DENISE
07:50	REBOUND (DEF) by BISCHOFF, SHELBY			
07:32	GOOD! LAYUP by TUCKER, NICOLE	49-47	H 2	
07:32				FOUL (PERSONAL) by DANIELS, DENISE
07:32				SUB OUT: DANIELS, DENISE
07:32				SUB OUT: LIA, RACHEL
07:32				SUB OUT: ROSSER, TIANNA
07:32				SUB IN: MARTINEZ-TORO, YARI
07:32				SUB IN: PLUVIOSE, TANIYAH
07:32				SUB IN: SHARPE, PARIS
07:32	SUB OUT: JONES, SARAH			
07:32	SUB OUT: JONES, SYDNEY			
07:32	SUB IN: JONES, IMANI			
07:32	SUB IN: BALABYEKKUBO, KETURAH			
07:32	GOOD! FT by TUCKER, NICOLE	49-48	H 1	
07:07				MISSED 3PTR by HARRISON, JAYLYN
07:04	REBOUND (DEF) by TUCKER, NICOLE			
06:58				FOUL (PERSONAL) by NEWSOME, ASIA
06:45	MISSED 3PTR by TUCKER, NICOLE			
06:40	REBOUND (OFF) by BALABYEKKUBO, KETURAH			
06:39				
06:39	TIMEOUT 30SEC			
06:31	GOOD! 3PTR by MURRAY, RACHEL	49-51	V 2	
06:31	ASSIST by TUCKER, NICOLE			
06:12				MISSED LAYUP by NEWSOME, ASIA
06:10				REBOUND (OFF) by NEWSOME, ASIA
06:09		51-51	T	GOOD! LAYUP by NEWSOME, ASIA
05:48	MISSED 3PTR by BALABYEKKUBO, KETURAH			
05:46	REBOUND (OFF) by TEAM			
05:46				FOUL (PERSONAL) by PLUVIOSE, TANIYAH
05:46	GOOD! FT by BALABYEKKUBO, KETURAH	51-52	V 1	
05:46	GOOD! FT by BALABYEKKUBO, KETURAH	51-53	V 2	
05:28				MISSED JUMPER by PLUVIOSE, TANIYAH
05:26	REBOUND (DEF) by BALABYEKKUBO, KETURAH			
05:13	TURNOVER (BADPASS) by BISCHOFF, SHELBY			
05:13				STEAL by SHARPE, PARIS
05:00				MISSED JUMPER by MARTINEZ-TORO, YARI
04:58				REBOUND (OFF) by TEAM
04:58				SUB OUT: MARTINEZ-TORO, YARI
04:58				SUB OUT: PLUVIOSE, TANIYAH
04:58				SUB IN: DANIELS, DENISE
04:58				SUB IN: LIA, RACHEL
04:58				
04:58	SUB OUT: BISCHOFF, SHELBY			
04:58	SUB IN: SUGRUE, MACEE			
04:43		53-53	T	GOOD! LAYUP by NEWSOME, ASIA [PNT]

Time	VISITORS: Embry-Riddle (FL)	Score	Margin	HOME: Rollins
04:43	FOUL (PERSONAL) by MURRAY, RACHEL			
04:42				MISSED FT by NEWSOME, ASIA
04:40	REBOUND (DEF) by TUCKER, NICOLE			
04:33	GOOD! LAYUP by JONES, IMANI	53-55	V 2	
04:33				FOUL (PERSONAL) by SHARPE, PARIS
04:33	GOOD! FT by JONES, IMANI	53-56	V 3	
04:24				TURNOVER (TRAVEL) by DANIELS, DENISE
04:07	GOOD! LAYUP by JONES, IMANI	53-58	V 5	
03:58				TURNOVER (BADPASS) by HARRISON, JAYLYN
03:58	STEAL by BALABYEKKUBO, KETURAH			
03:51	TIMEOUT 30SEC			
03:45	MISSED 3PTR by SUGRUE, MACEE			
03:42	REBOUND (OFF) by BALABYEKKUBO, KETURAH			
03:22	MISSED 3PTR by SUGRUE, MACEE			
03:19				REBOUND (DEF) by HARRISON, JAYLYN
03:17	FOUL (PERSONAL) by BALABYEKKUBO, KETURAH			
03:17				MISSED FT by HARRISON, JAYLYN
03:17				REBOUND (OFF) by TEAM
03:17		54-58	V 4	GOOD! FT by HARRISON, JAYLYN [FB]
03:07				MISSED JUMPER by LIA, RACHEL
03:03				REBOUND (OFF) by LIA, RACHEL
03:02				MISSED LAYUP by SHARPE, PARIS
03:02	REBOUND (DEF) by TUCKER, NICOLE			
03:02				FOUL (PERSONAL) by DANIELS, DENISE
03:02	GOOD! FT by TUCKER, NICOLE [FB]	54-59	V 5	
03:02	GOOD! FT by TUCKER, NICOLE [FB]	54-60	V 6	
02:39	FOUL (PERSONAL) by JONES, IMANI			
02:39				MISSED FT by LIA, RACHEL
02:39				REBOUND (OFF) by TEAM
02:39		55-60	V 5	GOOD! FT by LIA, RACHEL
02:23		57-60	V 3	GOOD! LAYUP by DANIELS, DENISE
02:18	TIMEOUT 30SEC			
02:07	TURNOVER (10SEC) by TEAM			
01:54				MISSED 3PTR by HARRISON, JAYLYN
01:51				REBOUND (OFF) by NEWSOME, ASIA
01:51	FOUL (PERSONAL) by SUGRUE, MACEE			
01:51				MISSED FT by NEWSOME, ASIA
01:51				REBOUND (OFF) by TEAM
01:50				MISSED FT by NEWSOME, ASIA
01:49				REBOUND (OFF) by SHARPE, PARIS
01:46				TURNOVER (LOSTBALL) by SHARPE, PARIS
01:46	STEAL by TUCKER, NICOLE			
01:30	MISSED LAYUP by JONES, IMANI			
01:27				REBOUND (DEF) by SHARPE, PARIS
01:15				FOUL (OFF) by SHARPE, PARIS
01:15				TURNOVER (OFFENSIVE) by SHARPE, PARIS
00:49	MISSED 3PTR by SUGRUE, MACEE			
00:45	REBOUND (OFF) by BALABYEKKUBO, KETURAH			
00:39	MISSED JUMPER by TUCKER, NICOLE			
00:36				REBOUND (DEF) by NEWSOME, ASIA
00:36	FOUL (PERSONAL) by BALABYEKKUBO, KETURAH			
00:36		58-60	V 2	GOOD! FT by NEWSOME, ASIA [FB]
00:36				MISSED FT by NEWSOME, ASIA
00:35				REBOUND (OFF) by SHARPE, PARIS
00:35				TIMEOUT TEAM
00:28				MISSED 3PTR by HARRISON, JAYLYN
00:24	REBOUND (DEF) by TEAM			
00:24	TIMEOUT TEAM			
00:25				SUB OUT: DANIELS, DENISE
00:25				SUB IN: PLUVIOSE, TANIYAH
00:24				FOUL (PERSONAL) by LIA, RACHEL
00:24	GOOD! FT by TUCKER, NICOLE [FB]	58-61	V 3	
00:24	GOOD! FT by TUCKER, NICOLE [FB]	58-62	V 4	
00:24				TIMEOUT 30SEC
00:19		60-62	V 2	GOOD! LAYUP by PLUVIOSE, TANIYAH [FB]
00:19	FOUL (PERSONAL) by JONES, IMANI			
00:19		61-62	V 1	GOOD! FT by PLUVIOSE, TANIYAH [FB]
00:19				SUB OUT: SHARPE, PARIS
00:19				SUB IN: DANIELS, DENISE
00:18				FOUL (PERSONAL) by HARRISON, JAYLYN
00:18	GOOD! FT by MURRAY, RACHEL [FB]	61-63	V 2	
00:18	GOOD! FT by MURRAY, RACHEL [FB]	61-64	V 3	
00:09				MISSED 3PTR by HARRISON, JAYLYN
00:04				REBOUND (OFF) by NEWSOME, ASIA
00:04				TURNOVER (LOSTBALL) by NEWSOME, ASIA
00:04	STEAL by TUCKER, NICOLE			
00:03				FOUL (PERSONAL) by NEWSOME, ASIA
00:03	GOOD! FT by JONES, IMANI	61-65	V 4	
00:03	GOOD! FT by JONES, IMANI	61-66	V 5	
02:36	TURNOVER (BADPASS) by JONES, IMANI			



Time	VISITORS: Embry-Riddle (FL)	Score	Margin	HOME: Rollins
02:36				STEAL by HARRISON, JAYLYN

Embry-Riddle (FL) 66, Rollins 61

Points from (This Period)	E-R	ROL
In the Paint	6	8
Off Turns	4	2
2nd Chance	7	4
Fast Break	6	5
Bench	9	9

**Official Scoring/Possession Reference Chart**  
**Embry-Riddle (FL) vs Rollins**  
**Period 1**  
**December 04, 2019 at Alford Sports Center - Winter Park**



**Period 1**

**Starters:**

**Embry-Riddle (FL):** 3 BISCHOFF, SHELBY (G); 5 MURRAY, RACHEL (G); 15 JONES, SARAH (G); 24 JONES, SYDNEY (F); 32 TUCKER, NICOLE (G);  
**Rollins:** 0 MARTINEZ-TORO, YARI (G); 4 HARRISON, JAYLYN (G); 11 JABLONSKI, RACHEL (G); 21 DANIELS, DENISE (G); 34 ROSSER, TIANNA (F);

Time	VISITORS: Embry-Riddle (FL)	Score	Margin	HOME: Rollins
09:31	GOOD! LAYUP by JONES, SARAH	0-2	V 2	
09:00	GOOD! LAYUP by TUCKER, NICOLE	0-4	V 4	
08:32	GOOD! LAYUP by JONES, SYDNEY [FB/PNT]	0-6	V 6	
07:28		2-6	V 4	GOOD! LAYUP by SHARPE, PARIS [PNT]
07:28		3-6	V 3	GOOD! FT by SHARPE, PARIS
07:05		5-6	V 1	GOOD! LAYUP by SHARPE, PARIS
06:42		8-6	H 2	GOOD! 3PTR by TASSENT, YOKE
04:45		10-6	H 4	GOOD! JUMPER by LIA, RACHEL
04:22		12-6	H 6	GOOD! LAYUP by PLUVIOSE, TANIYAH
03:45		14-6	H 8	GOOD! JUMPER by NEWSOME, ASIA
01:59	GOOD! LAYUP by JONES, SARAH [PNT]	14-8	H 6	
01:23	GOOD! 3PTR by BISCHOFF, SHELBY [FB]	14-11	H 3	
01:06		16-11	H 5	GOOD! JUMPER by LIA, RACHEL
00:09	GOOD! LAYUP by TUCKER, NICOLE [PNT]	16-13	H 3	

**Embry-Riddle (FL) 13, Rollins 16**

**Official Scoring/Possession Reference Chart**  
**Embry-Riddle (FL) vs Rollins**  
**Period 2**  
**December 04, 2019 at Alford Sports Center - Winter Park**



**Period 2**

**Starters:**

**Embry-Riddle (FL):** 3 BISCHOFF, SHELBY (G); 5 MURRAY, RACHEL (G); 15 JONES, SARAH (G); 24 JONES, SYDNEY (F); 32 TUCKER, NICOLE (G);  
**Rollins:** 0 MARTINEZ-TORO, YARI (G); 4 HARRISON, JAYLYN (G); 11 JABLONSKI, RACHEL (G); 21 DANIELS, DENISE (G); 34 ROSSER, TIANNA (F);

Time	VISITORS: Embry-Riddle (FL)	Score	Margin	HOME: Rollins
09:14	GOOD! 3PTR by BISCHOFF, SHELBY	16-16	T	
08:50		19-16	H 3	GOOD! 3PTR by HARRISON, JAYLYN
08:10		20-16	H 4	GOOD! FT by SHARPE, PARIS
08:10		21-16	H 5	GOOD! FT by SHARPE, PARIS
06:51		22-16	H 6	GOOD! FT by DANIELS, DENISE
06:51		23-16	H 7	GOOD! FT by DANIELS, DENISE
06:27		25-16	H 9	GOOD! LAYUP by DANIELS, DENISE [PNT]
06:09	GOOD! 3PTR by BISCHOFF, SHELBY	25-19	H 6	
05:21	GOOD! LAYUP by BALABYEKKUBO, KETURAH [FB/PNT]	25-21	H 4	
04:54		27-21	H 6	GOOD! JUMPER by LIA, RACHEL
03:59	GOOD! 3PTR by BALABYEKKUBO, KETURAH	27-24	H 3	
03:36		29-24	H 5	GOOD! JUMPER by LASARTE GARCIA, SILVIA
02:35		32-24	H 8	GOOD! 3PTR by MARTINEZ-TORO, YARI
01:47		34-24	H 10	GOOD! JUMPER by MARTINEZ-TORO, YARI
00:24		36-24	H 12	GOOD! JUMPER by PLUVIOSE, TANIYAH

**Embry-Riddle (FL) 24, Rollins 36**

**Official Scoring/Possession Reference Chart**  
**Embry-Riddle (FL) vs Rollins**  
**Period 3**  
**December 04, 2019 at Alford Sports Center - Winter Park**



**Period 3**

**Starters:**

**Embry-Riddle (FL):** 3 BISCHOFF, SHELBY (G); 5 MURRAY, RACHEL (G); 15 JONES, SARAH (G); 24 JONES, SYDNEY (F); 32 TUCKER, NICOLE (G);  
**Rollins:** 0 MARTINEZ-TORO, YARI (G); 4 HARRISON, JAYLYN (G); 11 JABLONSKI, RACHEL (G); 21 DANIELS, DENISE (G); 34 ROSSER, TIANNA (F);

Time	VISITORS: Embry-Riddle (FL)	Score	Margin	HOME: Rollins
09:28	GOOD! 3PTR by JONES, SARAH	36-27	H 9	
08:26	GOOD! FT by TUCKER, NICOLE	36-28	H 8	
08:26	GOOD! FT by TUCKER, NICOLE	36-29	H 7	
07:37		38-29	H 9	GOOD! LAYUP by HARRISON, JAYLYN [FB]
07:22	GOOD! FT by TUCKER, NICOLE	38-30	H 8	
07:22	GOOD! FT by TUCKER, NICOLE	38-31	H 7	
07:01		40-31	H 9	GOOD! JUMPER by MARTINEZ-TORO, YARI
06:45	GOOD! LAYUP by TUCKER, NICOLE	40-33	H 7	
06:20		43-33	H 10	GOOD! 3PTR by HARRISON, JAYLYN
05:00	GOOD! 3PTR by MURRAY, RACHEL	43-36	H 7	
04:48		45-36	H 9	GOOD! JUMPER by LIA, RACHEL
03:41		47-36	H 11	GOOD! LAYUP by SHARPE, PARIS
02:23	GOOD! 3PTR by SUGRUE, MACEE	47-39	H 8	
01:49		49-39	H 10	GOOD! LAYUP by PLUVIOSE, TANIYAH [FB/PNT]
01:23	GOOD! LAYUP by TUCKER, NICOLE [PNT]	49-41	H 8	
00:05	GOOD! LAYUP by JONES, IMANI [PNT]	49-43	H 6	

**Embry-Riddle (FL) 43, Rollins 49**

**Official Scoring/Possession Reference Chart**  
**Embry-Riddle (FL) vs Rollins**  
**Period 4**

**December 04, 2019 at Alford Sports Center - Winter Park**



**Period 4**

**Starters:**

**Embry-Riddle (FL):** 3 BISCHOFF, SHELBY (G); 5 MURRAY, RACHEL (G); 15 JONES, SARAH (G); 24 JONES, SYDNEY (F); 32 TUCKER, NICOLE (G);  
**Rollins:** 0 MARTINEZ-TORO, YARI (G); 4 HARRISON, JAYLYN (G); 11 JABLONSKI, RACHEL (G); 21 DANIELS, DENISE (G); 34 ROSSER, TIANNA (F);

Time	VISITORS: Embry-Riddle (FL)	Score	Margin	HOME: Rollins
08:19	GOOD! FT by JONES, SARAH	49-44	H 5	
08:19	GOOD! FT by JONES, SARAH	49-45	H 4	
07:32	GOOD! LAYUP by TUCKER, NICOLE	49-47	H 2	
07:32	GOOD! FT by TUCKER, NICOLE	49-48	H 1	
06:31	GOOD! 3PTR by MURRAY, RACHEL	49-51	V 2	
06:09		51-51	T	GOOD! LAYUP by NEWSOME, ASIA
05:46	GOOD! FT by BALABYEKKUBO, KETURAH	51-52	V 1	
05:46	GOOD! FT by BALABYEKKUBO, KETURAH	51-53	V 2	
04:43		53-53	T	GOOD! LAYUP by NEWSOME, ASIA [PNT]
04:33	GOOD! LAYUP by JONES, IMANI	53-55	V 2	
04:33	GOOD! FT by JONES, IMANI	53-56	V 3	
04:07	GOOD! LAYUP by JONES, IMANI	53-58	V 5	
03:17		54-58	V 4	GOOD! FT by HARRISON, JAYLYN [FB]
03:02	GOOD! FT by TUCKER, NICOLE [FB]	54-59	V 5	
03:02	GOOD! FT by TUCKER, NICOLE [FB]	54-60	V 6	
02:39		55-60	V 5	GOOD! FT by LIA, RACHEL
02:23		57-60	V 3	GOOD! LAYUP by DANIELS, DENISE
00:36		58-60	V 2	GOOD! FT by NEWSOME, ASIA [FB]
00:24	GOOD! FT by TUCKER, NICOLE [FB]	58-61	V 3	
00:24	GOOD! FT by TUCKER, NICOLE [FB]	58-62	V 4	
00:19		60-62	V 2	GOOD! LAYUP by PLUVIOSE, TANIYAH [FB]
00:19		61-62	V 1	GOOD! FT by PLUVIOSE, TANIYAH [FB]
00:18	GOOD! FT by MURRAY, RACHEL [FB]	61-63	V 2	
00:18	GOOD! FT by MURRAY, RACHEL [FB]	61-64	V 3	
00:03	GOOD! FT by JONES, IMANI	61-65	V 4	
00:03	GOOD! FT by JONES, IMANI	61-66	V 5	

**Embry-Riddle (FL) 66, Rollins 61**

**Official Substitutions Log**  
**Embry-Riddle (FL) vs Rollins**  
**Period 1**

**December 04, 2019 at Alford Sports Center - Winter Park**



VISITORS: Embry-Riddle (FL)	Time	Score	HOME: Rollins
3 BISCHOFF,SHELBY			0 MARTINEZ-TORO,YARI
5 MURRAY,RACHEL			4 HARRISON,JAYLYN
15 JONES,SARAH			11 JABLONSKI,RACHEL
24 JONES,SYDNEY			21 DANIELS,DENISE
32 TUCKER,NICOLE			34 ROSSER,TIANNA
	08:12	6-0	SUB OUT: MARTINEZ-TORO,YARI
	08:12		SUB OUT: HARRISON,JAYLYN
	08:12		SUB OUT: JABLONSKI,RACHEL
	08:12		SUB OUT: DANIELS,DENISE
	08:12		SUB OUT: ROSSER,TIANNA
	08:12		SUB IN: NEWSOME,ASIA
	08:12		SUB IN: PLUVIOSE,TANIYAH
	08:12		SUB IN: LIA,RACHEL
	08:12		SUB IN: SHARPE,PARIS
	08:12		SUB IN: TASSENT,YOKE
SUB OUT: 3 BISCHOFF,SHELBY	06:56	6-5	
SUB OUT: 24 JONES,SYDNEY	06:56		
SUB IN: 2 SUGRUE,MACCEE	06:56		
SUB IN: 10 JONES,IMANI	06:56		
SUB OUT: 5 MURRAY,RACHEL	06:14	6-8	
SUB IN: 21 BALABYEKKUBO,KETURAH	06:14		
	05:50	6-8	SUB OUT: TASSENT,YOKE
	05:50		SUB IN: HARRISON,JAYLYN
	04:32	6-10	SUB OUT: SHARPE,PARIS
	04:32		SUB IN: ROSSER,TIANNA
SUB OUT: 15 JONES,SARAH	04:32		
SUB IN: 5 MURRAY,RACHEL	04:32		
	02:46	6-14	SUB OUT: HARRISON,JAYLYN
	02:46		SUB OUT: NEWSOME,ASIA
	02:46		SUB OUT: PLUVIOSE,TANIYAH
	02:46		SUB OUT: LIA,RACHEL
	02:46		SUB IN: MARTINEZ-TORO,YARI
	02:46		SUB IN: JABLONSKI,RACHEL
	02:46		SUB IN: KEITHS,ANGEL
	02:46		SUB IN: DANIELS,DENISE
SUB OUT: 5 MURRAY,RACHEL	02:46		
SUB OUT: 10 JONES,IMANI	02:46		
SUB IN: 15 JONES,SARAH	02:46		
SUB IN: 24 JONES,SYDNEY	02:46		
SUB OUT: 21 BALABYEKKUBO,KETURAH	02:18	6-14	
SUB IN: 3 BISCHOFF,SHELBY	02:18		
	01:15	11-14	SUB OUT: DANIELS,DENISE
	01:15		SUB IN: LIA,RACHEL
	00:19	11-16	SUB OUT: MARTINEZ-TORO,YARI
	00:19		SUB IN: HARRISON,JAYLYN

**Embry-Riddle (FL) 13, Rollins 16**

**Official Substitutions Log**  
**Embry-Riddle (FL) vs Rollins**  
**Period 2**

**December 04, 2019 at Alford Sports Center - Winter Park**



VISITORS: Embry-Riddle (FL)	Time	Score	HOME: Rollins
3 BISCHOFF, SHELBY			0 MARTINEZ-TORO, YARI
5 MURRAY, RACHEL			4 HARRISON, JAYLYN
15 JONES, SARAH			11 JABLONSKI, RACHEL
24 JONES, SYDNEY			21 DANIELS, DENISE
32 TUCKER, NICOLE			34 ROSSER, TIANNA
	10:00	-	SUB OUT: KEITHS, ANGEL
	10:00		SUB IN: SHARPE, PARIS
SUB OUT: 2 SUGRUE, MACEE	10:00		
SUB OUT: 24 JONES, SYDNEY	10:00		
SUB OUT: 32 TUCKER, NICOLE	10:00		
SUB IN: 5 MURRAY, RACHEL	10:00		
SUB IN: 10 JONES, IMANI	10:00		
SUB IN: 33 SAVAGE, JESSICA	10:00		
	08:23	16-19	SUB OUT: ROSSER, TIANNA
	08:23		SUB IN: DANIELS, DENISE
SUB OUT: 10 JONES, IMANI	08:23		
SUB IN: 32 TUCKER, NICOLE	08:23		
	06:51	16-21	SUB OUT: LIA, RACHEL
	06:51		SUB IN: NEWSOME, ASIA
SUB OUT: 5 MURRAY, RACHEL	06:51		
SUB OUT: 33 SAVAGE, JESSICA	06:51		
SUB IN: 2 SUGRUE, MACEE	06:51		
SUB IN: 24 JONES, SYDNEY	06:51		
	05:54	19-25	SUB OUT: HARRISON, JAYLYN
	05:54		SUB OUT: JABLONSKI, RACHEL
	05:54		SUB OUT: SHARPE, PARIS
	05:54		SUB IN: MARTINEZ-TORO, YARI
	05:54		SUB IN: LIA, RACHEL
	05:54		SUB IN: LASARTE GARCIA, SILVIA
SUB OUT: 15 JONES, SARAH	05:54		
SUB IN: 21 BALABYEKKUBO, KETURAH	05:54		
	03:19	24-29	SUB OUT: DANIELS, DENISE
	03:19		SUB IN: PLUVIOSE, TANIYAH
	02:01	24-32	SUB OUT: NEWSOME, ASIA
	02:01		SUB IN: JABLONSKI, RACHEL
SUB OUT: 2 SUGRUE, MACEE	02:01		
SUB IN: 10 JONES, IMANI	02:01		
SUB OUT: 3 BISCHOFF, SHELBY	01:13	24-34	
SUB IN: 15 JONES, SARAH	01:13		
	00:48	24-34	SUB OUT: LIA, RACHEL
	00:48		SUB IN: DANIELS, DENISE
	00:40	24-34	SUB OUT: JABLONSKI, RACHEL
	00:40		SUB IN: HARRISON, JAYLYN
SUB OUT: 24 JONES, SYDNEY	00:40		
SUB IN: 42 FALL, AISSATOU	00:40		
SUB OUT: 42 FALL, AISSATOU	00:02	24-36	
SUB IN: 3 BISCHOFF, SHELBY	00:02		

**Embry-Riddle (FL) 24, Rollins 36**

**Official Substitutions Log**  
**Embry-Riddle (FL) vs Rollins**  
**Period 3**

**December 04, 2019 at Alford Sports Center - Winter Park**



VISITORS: Embry-Riddle (FL)	Time	Score	HOME: Rollins
3 BISCHOFF, SHELBY			0 MARTINEZ-TORO, YARI
5 MURRAY, RACHEL			4 HARRISON, JAYLYN
15 JONES, SARAH			11 JABLONSKI, RACHEL
24 JONES, SYDNEY			21 DANIELS, DENISE
32 TUCKER, NICOLE			34 ROSSER, TIANNA
	10:00	-	SUB OUT: PLUVIOSE, TANIYAH
	10:00		SUB OUT: LASARTE GARCIA, SILVIA
	10:00		SUB IN: JABLONSKI, RACHEL
	10:00		SUB IN: ROSSER, TIANNA
SUB OUT: 10 JONES, IMANI	10:00		
SUB OUT: 21 BALABYEKKUBO, KETURAH	10:00		
SUB IN: 5 MURRAY, RACHEL	10:00		
SUB IN: 24 JONES, SYDNEY	10:00		
	07:22	29-38	SUB OUT: DANIELS, DENISE
	07:22		SUB IN: PLUVIOSE, TANIYAH
	07:22		SUB OUT: JABLONSKI, RACHEL
	07:22		SUB IN: NEWSOME, ASIA
	06:30	33-40	SUB OUT: ROSSER, TIANNA
	06:30		SUB IN: SHARPE, PARIS
SUB OUT: 24 JONES, SYDNEY	06:05	33-43	
SUB IN: 33 SAVAGE, JESSICA	06:05		
	05:41	33-43	SUB OUT: MARTINEZ-TORO, YARI
	05:41		SUB IN: LIA, RACHEL
SUB OUT: 15 JONES, SARAH	05:12	33-43	
SUB IN: 21 BALABYEKKUBO, KETURAH	05:12		
SUB OUT: 5 MURRAY, RACHEL	04:26	36-45	
SUB IN: 2 SUGRUE, MACEE	04:26		
	03:27	36-47	SUB OUT: HARRISON, JAYLYN
	03:27		SUB IN: JABLONSKI, RACHEL
SUB OUT: 33 SAVAGE, JESSICA	03:27		
SUB IN: 10 JONES, IMANI	03:27		
	03:21	36-47	SUB OUT: NEWSOME, ASIA
	03:21		SUB IN: MARTINEZ-TORO, YARI
	01:04	41-49	SUB OUT: PLUVIOSE, TANIYAH
	01:04		SUB OUT: LIA, RACHEL
	01:04		SUB IN: HARRISON, JAYLYN
	01:04		SUB IN: DANIELS, DENISE
SUB OUT: 3 BISCHOFF, SHELBY	01:04		
SUB OUT: 21 BALABYEKKUBO, KETURAH	01:04		
SUB IN: 5 MURRAY, RACHEL	01:04		
SUB IN: 15 JONES, SARAH	01:04		

**Embry-Riddle (FL) 43, Rollins 49**



**Official Substitutions Log  
Embry-Riddle (FL) vs Rollins  
Period 4**

**December 04, 2019 at Alford Sports Center - Winter Park**



VISITORS: Embry-Riddle (FL)	Time	Score	HOME: Rollins
3 BISCHOFF,SHELBY			0 MARTINEZ-TORO,YARI
5 MURRAY,RACHEL			4 HARRISON,JAYLYN
15 JONES,SARAH			11 JABLONSKI,RACHEL
24 JONES,SYDNEY			21 DANIELS,DENISE
32 TUCKER,NICOLE			34 ROSSER,TIANNA
	10:00	-	SUB OUT: MARTINEZ-TORO,YARI
	10:00		SUB OUT: JABLONSKI,RACHEL
	10:00		SUB OUT: SHARPE,PARIS
	10:00		SUB IN: NEWSOME,ASIA
	10:00		SUB IN: LIA,RACHEL
	10:00		SUB IN: ROSSER,TIANNA
SUB OUT: 2 SUGRUE,MACEE	10:00		
SUB OUT: 10 JONES,IMANI	10:00		
SUB IN: 3 BISCHOFF,SHELBY	10:00		
SUB IN: 24 JONES,SYDNEY	10:00		
	07:32	47-49	SUB OUT: DANIELS,DENISE
	07:32		SUB OUT: LIA,RACHEL
	07:32		SUB OUT: ROSSER,TIANNA
	07:32		SUB IN: MARTINEZ-TORO,YARI
	07:32		SUB IN: PLUVIOSE,TANIYAH
	07:32		SUB IN: SHARPE,PARIS
SUB OUT: 15 JONES,SARAH	07:32		
SUB OUT: 24 JONES,SYDNEY	07:32		
SUB IN: 10 JONES,IMANI	07:32		
SUB IN: 21 BALABYEKKUBO,KETURAH	07:32		
	04:58	53-51	SUB OUT: MARTINEZ-TORO,YARI
	04:58		SUB OUT: PLUVIOSE,TANIYAH
	04:58		SUB IN: DANIELS,DENISE
	04:58		SUB IN: LIA,RACHEL
SUB OUT: 3 BISCHOFF,SHELBY	04:58		
SUB IN: 2 SUGRUE,MACEE	04:58		
	00:25	60-58	SUB OUT: DANIELS,DENISE
	00:25		SUB IN: PLUVIOSE,TANIYAH
	00:19	62-61	SUB OUT: SHARPE,PARIS
	00:19		SUB IN: DANIELS,DENISE

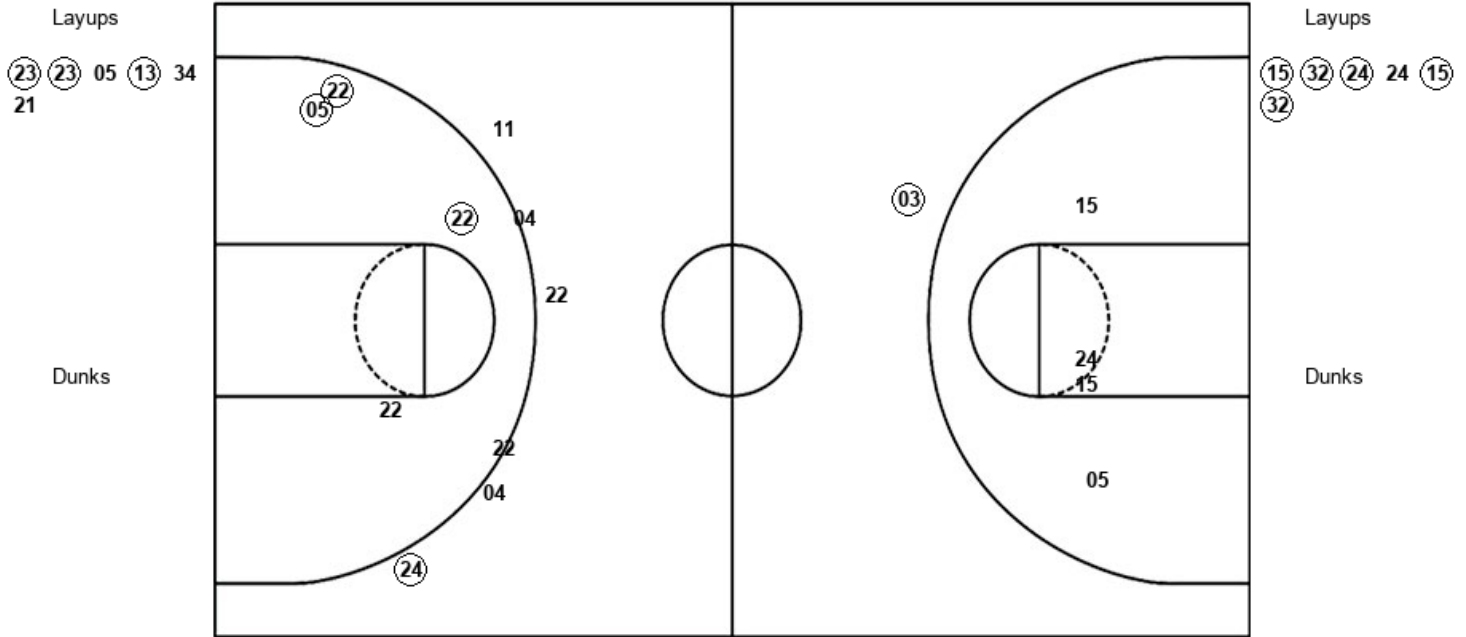
**Embry-Riddle (FL) 66, Rollins 61**

Official Shot Chart  
**Embry-Riddle (FL) vs Rollins**  
 PERIOD 1 Shots  
 December 04, 2019 at Alford Sports Center - Winter Park



**Rollins**

**Embry-Riddle (FL)**



ROL : Period 1	Made	Att	Pct
Layups	3	6	50.0
Dunks	0	0	0
2PT Field Goals	6	10	60.0
3PT Field Goals	1	6	16.7
<b>Total Field Goals</b>	<b>7</b>	<b>16</b>	<b>43.8</b>

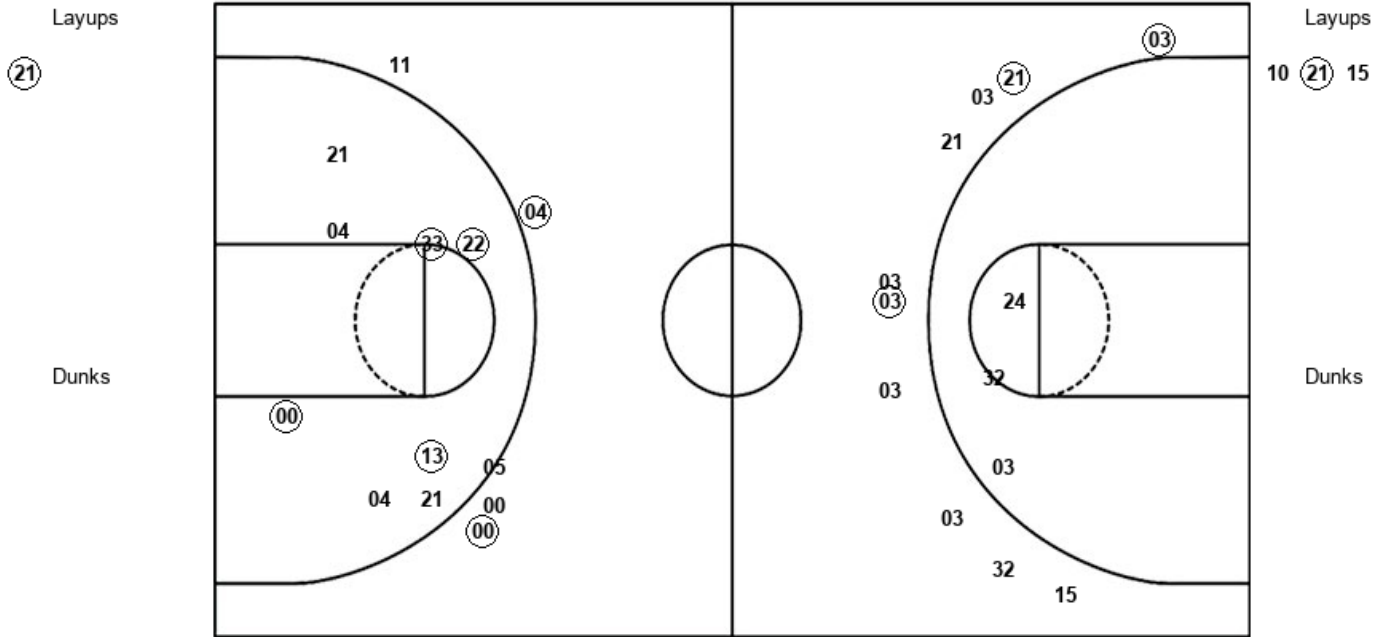
E-R : Period 1	Made	Att	Pct
Layups	5	6	83.3
Dunks	0	0	0
2PT Field Goals	5	10	50.0
3PT Field Goals	1	1	100.0
<b>Total Field Goals</b>	<b>6</b>	<b>11</b>	<b>54.5</b>

Official Shot Chart  
**Embry-Riddle (FL) vs Rollins**  
 PERIOD 2 Shots  
 December 04, 2019 at Alford Sports Center - Winter Park



**Rollins**

**Embry-Riddle (FL)**



ROL : Period 2	Made	Att	Pct
Layups	1	1	100.0
Dunks	0	0	0
2PT Field Goals	5	9	55.6
3PT Field Goals	2	5	40.0
<b>Total Field Goals</b>	<b>7</b>	<b>14</b>	<b>50.0</b>

E-R : Period 2	Made	Att	Pct
Layups	1	3	33.3
Dunks	0	0	0
2PT Field Goals	1	6	16.7
3PT Field Goals	3	10	30.0
<b>Total Field Goals</b>	<b>4</b>	<b>16</b>	<b>25.0</b>

Official Shot Chart  
**Embry-Riddle (FL) vs Rollins**  
 PERIOD 3 Shots  
 December 04, 2019 at Alford Sports Center - Winter Park

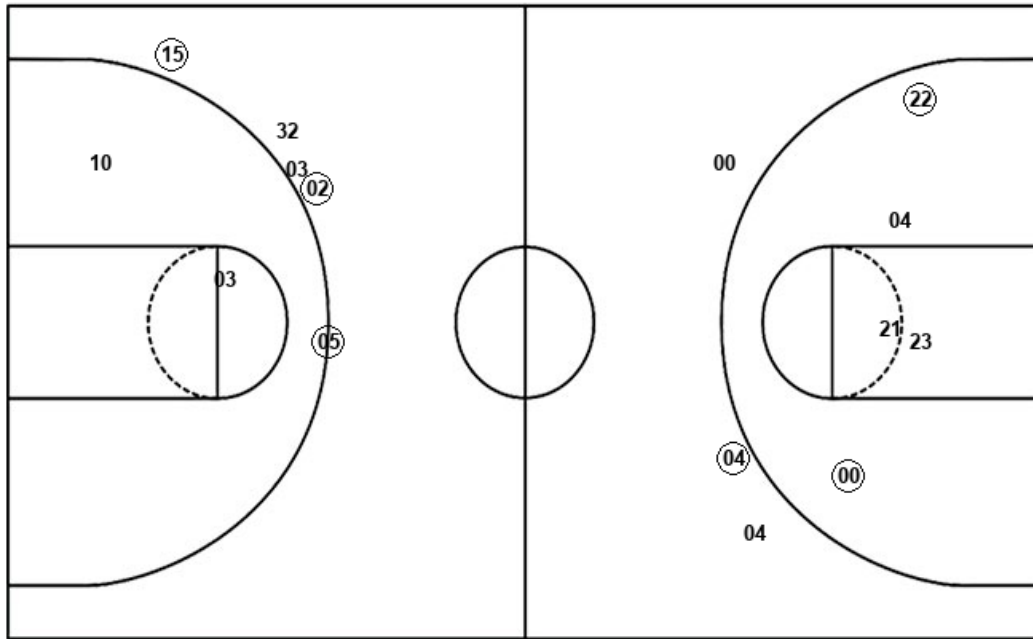


**Rollins**

**Embry-Riddle (FL)**

Layups  
 04 13 23 13 13  
 04

Dunks



Layups  
 32 32 10

Dunks

ROL : Period 3	Made	Att	Pct
Layups	3	6	50.0
Dunks	0	0	0
2PT Field Goals	5	11	45.5
3PT Field Goals	1	3	33.3
<b>Total Field Goals</b>	<b>6</b>	<b>14</b>	<b>42.9</b>

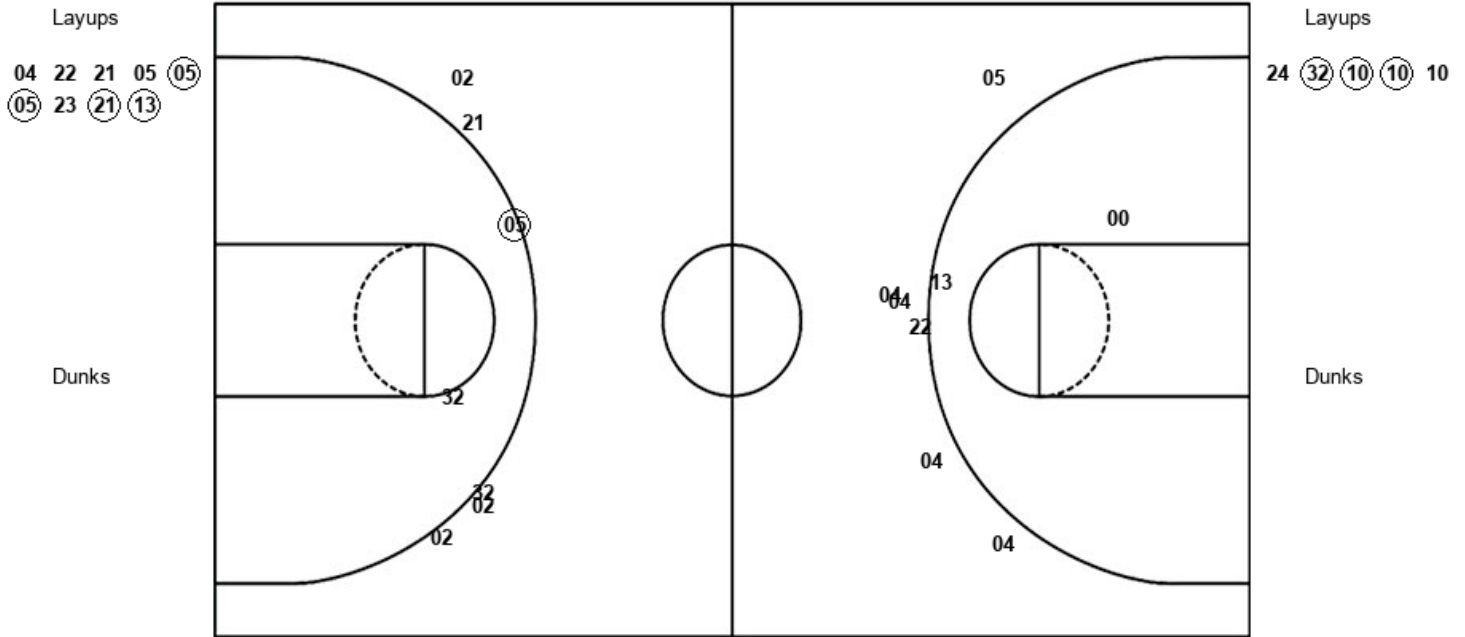
E-R : Period 3	Made	Att	Pct
Layups	3	3	100.0
Dunks	0	0	0
2PT Field Goals	3	5	60.0
3PT Field Goals	3	5	60.0
<b>Total Field Goals</b>	<b>6</b>	<b>10</b>	<b>60.0</b>

Official Shot Chart  
**Embry-Riddle (FL) vs Rollins**  
 PERIOD 4 Shots  
 December 04, 2019 at Alford Sports Center - Winter Park



**Rollins**

**Embry-Riddle (FL)**



ROL : Period 4	Made	Att	Pct
Layups	4	9	44.4
Dunks	0	0	0
2PT Field Goals	4	12	33.3
3PT Field Goals	0	5	00.0
<b>Total Field Goals</b>	<b>4</b>	<b>17</b>	<b>23.5</b>

E-R : Period 4	Made	Att	Pct
Layups	3	5	60.0
Dunks	0	0	0
2PT Field Goals	3	6	50.0
3PT Field Goals	1	6	16.7
<b>Total Field Goals</b>	<b>4</b>	<b>12</b>	<b>33.3</b>

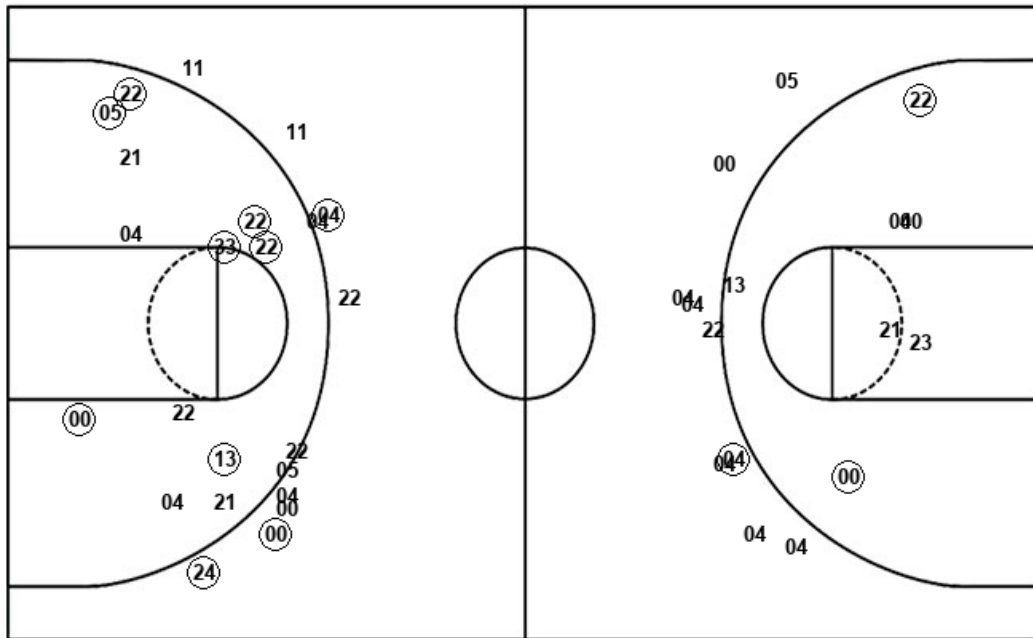


**Official Shot Chart**  
**Embry-Riddle (FL) vs Rollins**  
**Rollins Team Shots**  
**December 04, 2019 at Alford Sports Center - Winter Park**



Layups

Dunks



Layups

Dunks

(23) (23) 05 (13) 34  
 21 (21) (04) 13 (23)  
 13 (13) 04 04 22  
 21 05 (05) (05) 23  
 (21) (13)

ROL : Period 1	Made	Att	Pct
Layups	3	6	50.0
Dunks	0	0	0
2PT Field Goals	6	10	60.0
3PT Field Goals	1	6	16.7
<b>Total Field Goals</b>	<b>7</b>	<b>16</b>	<b>43.8</b>

ROL : Period 3	Made	Att	Pct
Layups	3	6	50.0
Dunks	0	0	0
2PT Field Goals	5	11	45.5
3PT Field Goals	1	3	33.3
<b>Total Field Goals</b>	<b>6</b>	<b>14</b>	<b>42.9</b>

ROL : Period 2	Made	Att	Pct
Layups	1	1	100.0
Dunks	0	0	0
2PT Field Goals	5	9	55.6
3PT Field Goals	2	5	40.0
<b>Total Field Goals</b>	<b>7</b>	<b>14</b>	<b>50.0</b>

ROL : Period 4	Made	Att	Pct
Layups	4	9	44.4
Dunks	0	0	0
2PT Field Goals	4	12	33.3
3PT Field Goals	0	5	00.0
<b>Total Field Goals</b>	<b>4</b>	<b>17</b>	<b>23.5</b>