

FINAL SCORE



Nova Southeastern

89



Rollins

85

February 05, 2020 • Alfond Sports Center - Winter Park

FINAL STATISTICS

Official Box Score
Nova Southeastern vs Rollins
Game Totals -- Final Statistics
February 05, 2020 at Alford Sports Center - Winter Park



Nova Southeastern 89

No.	Player	S	Pts	FG	3FG	FT	OR	DR	TR	PF	A	TO	Blk	Stl	Min	+/-
02	SMITH, NICK	G	9	3-8	1-5	2-3	1	4	5	2	8	2	0	1	40	4
05	MATTHEWS, MARK	F	18	8-16	0-1	2-2	2	9	11	1	7	3	2	1	35	3
12	WEIR, MATT	G	0	0-1	0-1	0-0	0	0	0	0	0	0	0	0	3	-1
13	SUNAHARA, RJ	F	25	12-15	0-0	1-4	6	2	8	2	3	1	2	1	32	6
15	KOLSTAD, MIKKEL	G	18	4-8	4-7	6-6	0	3	3	4	3	0	0	0	29	18
00	ZINACH, CONNOR	F	2	0-3	0-0	2-2	1	0	1	2	0	1	0	0	7	-5
14	MARANVILLE, JAKE	G	5	2-6	1-3	0-0	1	1	2	2	2	0	0	1	21	-1
21	PUISIS, EDDIE	G	11	4-8	3-7	0-0	1	3	4	2	0	2	0	1	27	-8
23	HUNTER, SHANE	F	1	0-1	0-0	1-2	1	0	1	1	0	0	0	1	6	4
	TEAM						2	1	3	0		1				
TOTALS			89	33-66	9-24	14-19	15	23	38	16	23	10	4	6	200	

Shooting By Period

Period	FG	FG%	3FG	3FG%	FT	FT%
1st Half	17-36	47%	4-15	27%	5-6	83%
2nd Half	16-30	53%	5-9	56%	9-13	69%
Game	33-66	50.0%	9-24	37.5%	14-19	73.7%

Deadball Rebounds: 1,0

Last FG: 2nd-01:26

Biggest Run: 8-0

Largest lead: By 8 at 2nd-07:27

Technical Fouls: None.

Rollins 85

No.	Player	S	Pts	FG	3FG	FT	OR	DR	TR	PF	A	TO	Blk	Stl	Min	+/-
02	MCKIM, CONNOR	G	18	7-13	3-8	1-1	1	3	4	2	7	1	0	1	37	-2
03	MARION, KYLE	G	7	3-6	1-3	0-0	1	1	2	0	2	1	0	0	20	-1
12	CLUXTON, BROOKS	F	7	3-7	0-0	1-4	2	2	4	3	2	2	0	1	24	8
20	RECIO, TREVOR	F	9	4-6	0-1	1-1	3	6	9	4	4	2	3	1	34	-1
21	BONNER, JAKOBI	G	22	9-14	2-3	2-3	2	4	6	1	0	1	0	0	33	7
00	YENOR, HUTTON	G	10	3-8	2-6	2-2	1	1	2	4	0	2	1	1	22	-14
01	ERICKSON, WILL	F	0	0-1	0-0	0-0	0	1	1	0	0	2	1	0	4	-3
04	ENECHIONYIA, CHU	F	0	0-0	0-0	0-0	0	0	0	0	0	0	0	0	0	-1
05	GUMM, DAYTON	G	12	3-10	0-2	6-6	1	2	3	2	2	1	0	1	26	-13
	TEAM						1	2	3	0		0				
TOTALS			85	32-65	8-23	13-17	12	22	34	16	17	12	5	5	200	

Shooting By Period

Period	FG	FG%	3FG	3FG%	FT	FT%
1st Half	14-30	47%	5-10	50%	6-9	67%
2nd Half	18-35	51%	3-13	23%	7-8	88%
Game	32-65	49.2%	8-23	34.8%	13-17	76.5%

Deadball Rebounds: 2,0

Last FG: 2nd-00:07

Biggest Run: 6-0

Largest lead: By 7 at 1st-10:26

Technical Fouls: None.

Game Notes:

Officials: Jeff Pon, Josue Nieves, Adam James
Attendance: 213

Start Time: 08:10 PM ET

End Time: 09:59 PM ET

Game Duration: 1:49

Conference Game;

Score	1st	2nd	TOT
NSU	43	46	89
ROL	39	46	85

NSU led for 23:26. ROL led for 11:02.

Game was tied for 5:32.

Times tied: 10 Lead Changes: 10

Points from	NSU	ROL
In the Paint	40	40
Off Turns	17	14
2nd Chance	11	20
Fast Break	23	21
Bench	19	22

Official Box Score
Nova Southeastern vs Rollins
First Half Statistics Only
February 05, 2020 at Alford Sports Center - Winter Park



Nova Southeastern 43

No.	Player	S	Pts	FG	3FG	FT	OR	DR	TR	PF	A	TO	Blk	Stl	Min	+/-
02	SMITH, NICK	G	6	2-4	0-2	2-2	0	1	1	1	4	1	0	1	20	4
05	MATTHEWS, MARK	F	8	4-7	0-1	0-0	2	6	8	0	4	1	1	1	16	6
12	WEIR, MATT	G	0	0-1	0-1	0-0	0	0	0	0	0	0	0	0	3	-1
13	SUNAHARA, RJ	F	12	6-7	0-0	0-0	2	1	3	1	1	0	1	1	12	6
15	KOLSTAD, MIKKEL	G	3	1-4	1-3	0-0	0	2	2	1	2	0	0	0	14	13
00	ZINACH, CONNOR	F	2	0-3	0-0	2-2	1	0	1	2	0	1	0	0	7	-5
14	MARANVILLE, JAKE	G	5	2-5	1-3	0-0	0	0	0	1	2	0	0	1	11	-4
21	PUISIS, EDDIE	G	6	2-5	2-5	0-0	0	2	2	1	0	0	0	0	12	0
23	HUNTER, SHANE	F	1	0-0	0-0	1-2	0	0	0	1	0	0	0	1	6	1
	TEAM						2	0	2	0		0				
TOTALS			43	17-36	4-15	5-6	7	12	19	8	13	3	2	5	100	

Shooting By Period

Period	FG	FG%	3FG	3FG%	FT	FT%
1st Half	17-36	47%	4-15	27%	5-6	83%
Game	33-66	50.0%	9-24	37.5%	14-19	73.7%

Deadball Rebounds: 1,0

Last FG Half: NSU 2nd-01:26

Rollins 39

No.	Player	S	Pts	FG	3FG	FT	OR	DR	TR	PF	A	TO	Blk	Stl	Min	+/-
02	MCKIM, CONNOR	G	11	4-6	3-5	0-0	0	1	1	0	3	0	0	0	17	-2
03	MARION, KYLE	G	4	2-4	0-1	0-0	1	1	2	0	2	0	0	0	13	2
12	CLUXTON, BROOKS	F	1	0-3	0-0	1-4	0	2	2	2	1	2	0	0	13	1
20	RECIO, TREVOR	F	9	4-5	0-0	1-1	3	4	7	1	2	1	2	0	16	0
21	BONNER, JAKOBI	G	7	3-5	1-1	0-0	1	1	2	0	0	0	0	0	16	0
00	YENOR, HUTTON	G	5	1-3	1-2	2-2	0	0	0	2	0	1	0	1	11	-9
01	ERICKSON, WILL	F	0	0-1	0-0	0-0	0	1	1	0	0	2	1	0	4	-3
04	ENECHIONYIA, CHU	F	0	0-0	0-0	0-0	0	0	0	0	0	0	0	0	0	0
05	GUMM, DAYTON	G	2	0-3	0-1	2-2	0	1	1	0	1	1	0	0	11	-9
	TEAM						0	2	2	0		0				
TOTALS			39	14-30	5-10	6-9	5	13	18	5	9	7	3	1	100	

Shooting By Period

Period	FG	FG%	3FG	3FG%	FT	FT%
1st Half	14-30	47%	5-10	50%	6-9	67%
Game	32-65	49.2%	8-23	34.8%	13-17	76.5%

Deadball Rebounds: 2,0

Last FG Half: ROL 2nd-00:07

Game Notes:

Officials: Jeff Pon, Josue Nieves, Adam James
Attendance: 213

Start Time: 08:10 PM ET
End Time: 09:59 PM ET
Game Duration: 1:49
Conference Game;

Score	1st	2nd	TOT
NSU	43	46	89
ROL	39	46	85

Points from (This Period)	NSU	ROL
In the Paint	18	14
Off Turns	9	3
2nd Chance	4	8
Fast Break	13	12
Bench	14	7

Official Play-By-Play
Nova Southeastern vs Rollins
First Half
February 05, 2020 at Alford Sports Center - Winter Park



Period 1

Starters:

Nova Southeastern: 2 SMITH, NICK (G); 5 MATTHEWS, MARK (F); 12 WEIR, MATT (G); 13 SUNAHARA, RJ (F); 15 KOLSTAD, MIKKEL (G);
Rollins: 2 MCKIM, CONNOR (G); 3 MARION, KYLE (G); 12 CLUXTON, BROOKS (F); 20 RECIO, TREVOR (F); 21 BONNER, JAKOBI (G);

Time	VISITORS: Nova Southeastern	Score	Margin	HOME: Rollins
19:32				MISSED LAYUP by CLUXTON, BROOKS
19:32	BLOCK by MATTHEWS, MARK			
19:27	REBOUND (DEF) by MATTHEWS, MARK			
19:17	MISSED 3PTR by MATTHEWS, MARK			
19:12	REBOUND (OFF) by SUNAHARA, RJ			
19:11	MISSED LAYUP by SUNAHARA, RJ			
19:06	REBOUND (OFF) by MATTHEWS, MARK			
19:06	GOOD! LAYUP by MATTHEWS, MARK	0-2	V 2	
18:34				MISSED LAYUP by CLUXTON, BROOKS
18:31	REBOUND (DEF) by MATTHEWS, MARK			
18:26	MISSED 3PTR by SMITH, NICK			
18:23				REBOUND (DEF) by CLUXTON, BROOKS
18:14		3-2	H 1	GOOD! 3PTR by MCKIM, CONNOR
18:14				ASSIST by MARION, KYLE
17:52	MISSED 3PTR by WEIR, MATT			
17:47				REBOUND (DEF) by BONNER, JAKOBI
17:45				MISSED LAYUP by BONNER, JAKOBI
17:42	REBOUND (DEF) by KOLSTAD, MIKKEL			
17:37	GOOD! LAYUP by MATTHEWS, MARK [FB]	3-4	V 1	
17:37	ASSIST by SMITH, NICK			
17:03				MISSED 3PTR by MARION, KYLE
16:58				REBOUND (OFF) by RECIO, TREVOR
16:57				MISSED LAYUP by RECIO, TREVOR
16:55				REBOUND (OFF) by RECIO, TREVOR
16:55		5-4	H 1	GOOD! JUMPER by RECIO, TREVOR
16:55	FOUL (PERSONAL) by SUNAHARA, RJ			
16:55	SUB OUT: MATTHEWS, MARK			
16:55	SUB OUT: WEIR, MATT			
16:55	SUB OUT: SUNAHARA, RJ			
16:55	SUB OUT: KOLSTAD, MIKKEL			
16:55	SUB IN: ZINAICH, CONNOR			
16:55	SUB IN: MARANVILLE, JAKE			
16:55	SUB IN: PUISIS, EDDIE			
16:55	SUB IN: HUNTER, SHANE			
16:55		6-4	H 2	GOOD! FT by RECIO, TREVOR
16:45				FOUL (PERSONAL) by CLUXTON, BROOKS
16:45	GOOD! FT by HUNTER, SHANE	6-5	H 1	
16:45	MISSED FT by HUNTER, SHANE			
16:43				REBOUND (DEF) by RECIO, TREVOR
16:14		8-5	H 3	GOOD! LAYUP by MARION, KYLE
16:00	GOOD! 3PTR by PUISIS, EDDIE	8-8	T	
16:00	ASSIST by SMITH, NICK			
15:22		10-8	H 2	GOOD! LAYUP by BONNER, JAKOBI
15:15				
15:15				SUB OUT: MCKIM, CONNOR
15:15				SUB OUT: CLUXTON, BROOKS
15:15				SUB IN: YENOR, HUTTON
15:15				SUB IN: GUMM, DAYTON
15:15	TURNOVER (BADPASS) by SMITH, NICK			
14:48				MISSED JUMPER by MARION, KYLE
14:45				REBOUND (OFF) by BONNER, JAKOBI
14:32		13-8	H 5	GOOD! 3PTR by BONNER, JAKOBI
14:32				ASSIST by MARION, KYLE
14:26	FOUL (OFF) by ZINAICH, CONNOR			
14:26	TURNOVER (OFFENSIVE) by ZINAICH, CONNOR			
14:26	SUB OUT: ZINAICH, CONNOR			
14:26	SUB OUT: MARANVILLE, JAKE			
14:26	SUB IN: MATTHEWS, MARK			
14:26	SUB IN: KOLSTAD, MIKKEL			
14:17				TURNOVER (BADPASS) by YENOR, HUTTON
14:17	STEAL by HUNTER, SHANE			
14:09	GOOD! 3PTR by PUISIS, EDDIE [FB]	13-11	H 2	
14:09	ASSIST by KOLSTAD, MIKKEL			
13:33	FOUL (PERSONAL) by HUNTER, SHANE			
13:33		14-11	H 3	GOOD! FT by GUMM, DAYTON
13:33				SUB OUT: RECIO, TREVOR
13:33				SUB OUT: BONNER, JAKOBI
13:33				SUB IN: MCKIM, CONNOR
13:33				SUB IN: CLUXTON, BROOKS
13:33		15-11	H 4	GOOD! FT by GUMM, DAYTON

Time	VISITORS: Nova Southeastern	Score	Margin	HOME: Rollins
13:16	GOOD! JUMPER by MATTHEWS, MARK	15-13	H 2	
13:16	ASSIST by SMITH, NICK			
13:09	SUB OUT: HUNTER, SHANE			
13:09	SUB IN: SUNAHARA, RJ			
13:09				SUB OUT: MARION, KYLE
13:09				SUB IN: ERICKSON, WILL
13:05				TURNOVER (BADPASS) by ERICKSON, WILL
12:54	GOOD! JUMPER by MATTHEWS, MARK	15-15	T	
12:54	ASSIST by SUNAHARA, RJ			
12:27				MISSED JUMPER by ERICKSON, WILL
12:23	REBOUND (DEF) by MATTHEWS, MARK			
12:18	MISSED 3PTR by PUISIS, EDDIE			
12:15				REBOUND (DEF) by TEAM
12:15				TIMEOUT 30SEC
12:15				
12:12	FOUL (PERSONAL) by KOLSTAD, MIKKEL			
12:00	FOUL (PERSONAL) by PUISIS, EDDIE			
12:00		16-15	H 1	GOOD! FT by YENOR, HUTTON
12:00		17-15	H 2	GOOD! FT by YENOR, HUTTON
11:40	GOOD! DUNK by SUNAHARA, RJ	17-17	T	
11:40	ASSIST by SMITH, NICK			
11:33		20-17	H 3	GOOD! 3PTR by MCKIM, CONNOR [FB]
11:33				ASSIST by CLUXTON, BROOKS
11:20				FOUL (PERSONAL) by YENOR, HUTTON
11:20	GOOD! FT by SMITH, NICK	20-18	H 2	
11:20				SUB OUT: ERICKSON, WILL
11:20				SUB OUT: CLUXTON, BROOKS
11:20				SUB IN: RECIO, TREVOR
11:20				SUB IN: BONNER, JAKOBI
11:20	SUB OUT: PUISIS, EDDIE			
11:20	SUB IN: MARANVILLE, JAKE			
11:20	GOOD! FT by SMITH, NICK	20-19	H 1	
11:00		23-19	H 4	GOOD! 3PTR by YENOR, HUTTON
11:00				ASSIST by MCKIM, CONNOR
10:37				FOUL (PERSONAL) by YENOR, HUTTON
10:35	MISSED 3PTR by KOLSTAD, MIKKEL			
10:30				REBOUND (DEF) by GUMM, DAYTON
10:26		26-19	H 7	GOOD! 3PTR by MCKIM, CONNOR [FB]
10:26				ASSIST by GUMM, DAYTON
10:10	GOOD! 3PTR by KOLSTAD, MIKKEL	26-22	H 4	
10:02	FOUL (PERSONAL) by SMITH, NICK			
09:45				MISSED LAYUP by BONNER, JAKOBI
09:42				REBOUND (OFF) by RECIO, TREVOR
09:41		28-22	H 6	GOOD! LAYUP by RECIO, TREVOR
09:22	GOOD! 3PTR by MARANVILLE, JAKE	28-25	H 3	
09:22	ASSIST by MATTHEWS, MARK			
09:11		30-25	H 5	GOOD! LAYUP by MCKIM, CONNOR [FB]
09:11				ASSIST by RECIO, TREVOR
08:58	MISSED JUMPER by MATTHEWS, MARK			
08:55				REBOUND (DEF) by RECIO, TREVOR
08:46				MISSED 3PTR by MCKIM, CONNOR
08:42	REBOUND (DEF) by MATTHEWS, MARK			
08:36	GOOD! LAYUP by SUNAHARA, RJ	30-27	H 3	
08:36	ASSIST by MATTHEWS, MARK			
08:26				MISSED JUMPER by GUMM, DAYTON
08:23	REBOUND (DEF) by KOLSTAD, MIKKEL			
08:18	GOOD! LAYUP by SUNAHARA, RJ [FB]	30-29	H 1	
08:18	ASSIST by MARANVILLE, JAKE			
08:09				TURNOVER (BADPASS) by GUMM, DAYTON
08:09	STEAL by SUNAHARA, RJ			
08:05	GOOD! LAYUP by MARANVILLE, JAKE [FB]	30-31	V 1	
08:05	ASSIST by MATTHEWS, MARK			
08:05				TIMEOUT 30SEC
08:05				
08:05				SUB OUT: YENOR, HUTTON
08:05				SUB OUT: GUMM, DAYTON
08:05				SUB IN: MARION, KYLE
08:05				SUB IN: CLUXTON, BROOKS
08:05	SUB OUT: MATTHEWS, MARK			
08:05	SUB IN: HUNTER, SHANE			
07:55				MISSED LAYUP by CLUXTON, BROOKS
07:49	REBOUND (DEF) by SUNAHARA, RJ			
07:38	MISSED 3PTR by MARANVILLE, JAKE			
07:35	REBOUND (OFF) by SUNAHARA, RJ			
07:35	GOOD! LAYUP by SUNAHARA, RJ	30-33	V 3	
07:14				TURNOVER (BADPASS) by RECIO, TREVOR
07:14	STEAL by MARANVILLE, JAKE			
07:09	MISSED LAYUP by MARANVILLE, JAKE			
07:09				REBOUND (DEF) by MARION, KYLE
07:09				BLOCK by RECIO, TREVOR

Time	VISITORS: Nova Southeastern	Score	Margin	HOME: Rollins
06:49				TURNOVER (LOSTBALL) by CLUXTON, BROOKS
06:49	STEAL by SMITH, NICK			
06:31	MISSED 3PTR by KOLSTAD, MIKKEL			
06:27				REBOUND (DEF) by RECIO, TREVOR
06:19	FOUL (PERSONAL) by MARANVILLE, JAKE			
06:19				MISSED FT by CLUXTON, BROOKS
06:19				REBOUND (OFF) by TEAM
06:19	SUB OUT: SUNAHARA, RJ			
06:19	SUB OUT: KOLSTAD, MIKKEL			
06:19	SUB OUT: HUNTER, SHANE			
06:19	SUB IN: ZINAICH, CONNOR			
06:19	SUB IN: MATTHEWS, MARK			
06:19	SUB IN: PUISIS, EDDIE			
06:19		31-33	V 2	GOOD! FT by CLUXTON, BROOKS
05:59	MISSED JUMPER by MATTHEWS, MARK			
05:53	REBOUND (OFF) by ZINAICH, CONNOR			
05:53	MISSED JUMPER by ZINAICH, CONNOR			
05:49				REBOUND (DEF) by CLUXTON, BROOKS
05:46				MISSED 3PTR by MCKIM, CONNOR
05:43	REBOUND (DEF) by PUISIS, EDDIE			
05:35	MISSED JUMPER by ZINAICH, CONNOR			
05:32				REBOUND (DEF) by RECIO, TREVOR
05:12		33-33	T	GOOD! JUMPER by BONNER, JAKOBI
04:57	MISSED 3PTR by SMITH, NICK			
04:56				REBOUND (DEF) by TEAM
04:55				TURNOVER (BADPASS) by CLUXTON, BROOKS
04:43	MISSED 3PTR by PUISIS, EDDIE			
04:40				REBOUND (DEF) by MCKIM, CONNOR
04:38		35-33	H 2	GOOD! DUNK by RECIO, TREVOR [FB]
04:38				ASSIST by MCKIM, CONNOR
04:29	GOOD! JUMPER by SMITH, NICK	35-35	T	
04:29	ASSIST by MARANVILLE, JAKE			
04:09		37-35	H 2	GOOD! LAYUP by MARION, KYLE [PNT]
04:09				ASSIST by RECIO, TREVOR
03:53	MISSED 3PTR by PUISIS, EDDIE			
03:50	REBOUND (OFF) by MATTHEWS, MARK			
03:50				FOUL (PERSONAL) by RECIO, TREVOR
03:50				
03:50				SUB OUT: MCKIM, CONNOR
03:50				SUB OUT: RECIO, TREVOR
03:50				SUB OUT: BONNER, JAKOBI
03:50				SUB IN: YENOR, HUTTON
03:50				SUB IN: ERICKSON, WILL
03:50				SUB IN: GUMM, DAYTON
03:39	MISSED 3PTR by MARANVILLE, JAKE			
03:36				REBOUND (DEF) by ERICKSON, WILL
03:16	FOUL (PERSONAL) by ZINAICH, CONNOR			
03:16				MISSED FT by CLUXTON, BROOKS
03:16				REBOUND (OFF) by TEAM
03:15				MISSED FT by CLUXTON, BROOKS
03:13				REBOUND (OFF) by MARION, KYLE
03:11				MISSED 3PTR by GUMM, DAYTON
03:08	REBOUND (DEF) by MATTHEWS, MARK			
02:44	MISSED LAYUP by ZINAICH, CONNOR			
02:44				BLOCK by ERICKSON, WILL
02:44	REBOUND (OFF) by TEAM			
02:44	SUB OUT: MARANVILLE, JAKE			
02:44	SUB IN: KOLSTAD, MIKKEL			
02:42	TURNOVER (LOSTBALL) by MATTHEWS, MARK			
02:42				STEAL by YENOR, HUTTON
02:37				MISSED LAYUP by GUMM, DAYTON
02:34	REBOUND (DEF) by MATTHEWS, MARK			
02:32	GOOD! JUMPER by SMITH, NICK [FB]	37-37	T	
02:09				TURNOVER (BADPASS) by ERICKSON, WILL
02:09	STEAL by MATTHEWS, MARK			
02:03				FOUL (PERSONAL) by CLUXTON, BROOKS
02:03	GOOD! FT by ZINAICH, CONNOR [FB]	37-38	V 1	
02:03				SUB OUT: ERICKSON, WILL
02:03				SUB OUT: MARION, KYLE
02:03				SUB OUT: CLUXTON, BROOKS
02:03				SUB IN: MCKIM, CONNOR
02:03				SUB IN: RECIO, TREVOR
02:03				SUB IN: BONNER, JAKOBI
02:03	GOOD! FT by ZINAICH, CONNOR [FB]	37-39	V 2	
02:03	SUB OUT: ZINAICH, CONNOR			
02:03	SUB IN: SUNAHARA, RJ			
01:52		39-39	T	GOOD! DUNK by RECIO, TREVOR [FB/PNT]
01:52				ASSIST by MCKIM, CONNOR
01:35	GOOD! LAYUP by SUNAHARA, RJ	39-41	V 2	
01:35	ASSIST by MATTHEWS, MARK			

Time	VISITORS: Nova Southeastern	Score	Margin	HOME: Rollins
01:04				MISSED JUMPER by YENOR, HUTTON
01:01	REBOUND (DEF) by SMITH, NICK			
00:55	GOOD! LAYUP by SUNAHARA, RJ	39-43	V 4	
00:55	ASSIST by KOLSTAD, MIKKEL			
00:27				MISSED 3PTR by YENOR, HUTTON
00:27	BLOCK by SUNAHARA, RJ			
00:21	REBOUND (DEF) by PUISIS, EDDIE			
00:18	TIMEOUT 30SEC			
00:18				SUB OUT: YENOR, HUTTON
00:18				SUB IN: ENECHIONYIA, CHU
00:00	MISSED LAYUP by KOLSTAD, MIKKEL			
00:00				BLOCK by RECIO, TREVOR
00:00	REBOUND (OFF) by TEAM			

Nova Southeastern 43, Rollins 39

Points from (This Period)	NSU	ROL
In the Paint	18	14
Off Turns	9	3
2nd Chance	4	8
Fast Break	13	12
Bench	14	7

Official Box Score
Nova Southeastern vs Rollins
Second Half Statistics Only
February 05, 2020 at Alford Sports Center - Winter Park



Nova Southeastern 46

No.	Player	S	Pts	FG	3FG	FT	OR	DR	TR	PF	A	TO	Blk	Stl	Min	+/-
02	SMITH, NICK	G	3	1-4	1-3	0-1	1	3	4	1	4	1	0	0	20	0
05	MATTHEWS, MARK	F	10	4-9	0-0	2-2	0	3	3	1	3	2	1	0	19	-3
12	WEIR, MATT	G	0	0-0	0-0	0-0	0	0	0	0	0	0	0	0	0	0
13	SUNAHARA, RJ	F	13	6-8	0-0	1-4	4	1	5	1	2	1	1	0	20	0
15	KOLSTAD, MIKKEL	G	15	3-4	3-4	6-6	0	1	1	3	1	0	0	0	15	5
00	ZINACH, CONNOR	F	0	0-0	0-0	0-0	0	0	0	0	0	0	0	0	0	0
14	MARANVILLE, JAKE	G	0	0-1	0-0	0-0	1	1	2	1	0	0	0	0	10	3
21	PUISIS, EDDIE	G	5	2-3	1-2	0-0	1	1	2	1	0	2	0	1	15	-8
23	HUNTER, SHANE	F	0	0-1	0-0	0-0	1	0	1	0	0	0	0	0	1	3
	TEAM						0	1	1	0		1				
TOTALS			46	16-30	5-9	9-13	8	11	19	8	10	7	2	1	100	

Shooting By Period

Period	FG	FG%	3FG	3FG%	FT	FT%
2nd Half	16-30	53%	5-9	56%	9-13	69%
Game	33-66	50.0%	9-24	37.5%	14-19	73.7%

Deadball Rebounds: 1,0

Last FG Half: NSU -

Rollins 46

No.	Player	S	Pts	FG	3FG	FT	OR	DR	TR	PF	A	TO	Blk	Stl	Min	+/-
02	MCKIM, CONNOR	G	7	3-7	0-3	1-1	1	2	3	2	4	1	0	1	20	0
03	MARION, KYLE	G	3	1-2	1-2	0-0	0	0	0	0	0	1	0	0	7	-3
12	CLUXTON, BROOKS	F	6	3-4	0-0	0-0	2	0	2	1	1	0	0	1	11	7
20	RECIO, TREVOR	F	0	0-1	0-1	0-0	0	2	2	3	2	1	1	1	18	-1
21	BONNER, JAKOBI	G	15	6-9	1-2	2-3	1	3	4	1	0	1	0	0	17	7
00	YENOR, HUTTON	G	5	2-5	1-4	0-0	1	1	2	2	0	1	1	0	11	-5
01	ERICKSON, WILL	F	0	0-0	0-0	0-0	0	0	0	0	0	0	0	0	0	0
04	ENECHIONYIA, CHU	F	0	0-0	0-0	0-0	0	0	0	0	0	0	0	0	0	-1
05	GUMM, DAYTON	G	10	3-7	0-1	4-4	1	1	2	2	1	0	0	1	15	-4
	TEAM						1	0	1	0		0				
TOTALS			46	18-35	3-13	7-8	7	9	16	11	8	5	2	4	100	

Shooting By Period

Period	FG	FG%	3FG	3FG%	FT	FT%
2nd Half	18-35	51%	3-13	23%	7-8	88%
Game	32-65	49.2%	8-23	34.8%	13-17	76.5%

Deadball Rebounds: 2,0

Last FG Half: ROL -

Game Notes:

Officials: **Jeff Pon, Josue Nieves, Adam James**
Attendance: **213**

Start Time: **08:10 PM ET**

End Time: **09:59 PM ET**

Game Duration: **1:49**

Conference Game;

Score	1st	2nd	TOT
NSU	43	46	89
ROL	39	46	85

Points from (This Period)	NSU	ROL
In the Paint	22	26
Off Turns	8	11
2nd Chance	7	12
Fast Break	10	9
Bench	5	15

Official Play-By-Play
Nova Southeastern vs Rollins
Second Half
February 05, 2020 at Alford Sports Center - Winter Park



Period 2

Starters:

Nova Southeastern: 2 SMITH,NICK (G); 5 MATTHEWS,MARK (F); 12 WEIR,MATT (G); 13 SUNAHARA,RJ (F); 15 KOLSTAD,MIKKEL (G);
Rollins: 2 MCKIM,CONNOR (G); 3 MARION,KYLE (G); 12 CLUXTON,BROOKS (F); 20 RECIO,TREVOR (F); 21 BONNER,JAKOBI (G);

Time	VISITORS: Nova Southeastern	Score	Margin	HOME: Rollins
20:00				SUB OUT: ENECHIONYA, CHU
20:00				SUB OUT: GUMM, DAYTON
20:00				SUB IN: MARION, KYLE
20:00				SUB IN: CLUXTON, BROOKS
19:39	MISSED 3PTR by KOLSTAD, MIKKEL			
19:33	REBOUND (OFF) by SUNAHARA, RJ			
19:33	MISSED LAYUP by SUNAHARA, RJ			
19:30	REBOUND (OFF) by SMITH, NICK			
19:28	GOOD! LAYUP by SUNAHARA, RJ	39-45	V 6	
19:01	FOUL (PERSONAL) by MATTHEWS, MARK			
18:43				MISSED 3PTR by RECIO, TREVOR
18:38	REBOUND (DEF) by SMITH, NICK			
18:31	GOOD! DUNK by SUNAHARA, RJ	39-47	V 8	
18:31	ASSIST by MATTHEWS, MARK			
17:57				MISSED 3PTR by MARION, KYLE
17:51				REBOUND (OFF) by CLUXTON, BROOKS
17:38		42-47	V 5	GOOD! 3PTR by BONNER, JAKOBI
17:38				ASSIST by CLUXTON, BROOKS
17:12	MISSED LAYUP by MATTHEWS, MARK			
17:10				REBOUND (DEF) by RECIO, TREVOR
17:05				MISSED LAYUP by BONNER, JAKOBI
17:01				REBOUND (OFF) by CLUXTON, BROOKS
17:01		44-47	V 3	GOOD! LAYUP by CLUXTON, BROOKS
16:56	GOOD! LAYUP by SUNAHARA, RJ [FB]	44-49	V 5	
16:56	ASSIST by MATTHEWS, MARK			
16:32		46-49	V 3	GOOD! JUMPER by BONNER, JAKOBI
16:32				ASSIST by MCKIM, CONNOR
16:22	MISSED 3PTR by PUISIS, EDDIE			
16:18				REBOUND (DEF) by MCKIM, CONNOR
16:07		48-49	V 1	GOOD! LAYUP by MCKIM, CONNOR
16:07				ASSIST by RECIO, TREVOR
15:48	MISSED 3PTR by SMITH, NICK			
15:44	REBOUND (OFF) by PUISIS, EDDIE			
15:44	GOOD! LAYUP by PUISIS, EDDIE	48-51	V 3	
15:19		51-51	T	GOOD! 3PTR by MARION, KYLE
15:19				ASSIST by RECIO, TREVOR
15:15	TURNOVER (TRAVEL) by MATTHEWS, MARK			
15:14				
15:14				SUB OUT: MARION, KYLE
15:14				SUB OUT: RECIO, TREVOR
15:14				SUB IN: YENOR, HUTTON
15:14				SUB IN: GUMM, DAYTON
15:14	SUB OUT: KOLSTAD, MIKKEL			
15:14	SUB IN: MARANVILLE, JAKE			
14:53		53-51	H 2	GOOD! LAYUP by CLUXTON, BROOKS
14:53				ASSIST by MCKIM, CONNOR
14:46	GOOD! LAYUP by SUNAHARA, RJ [FB]	53-53	T	
14:15				MISSED 3PTR by YENOR, HUTTON
14:11	REBOUND (DEF) by SMITH, NICK			
14:07	MISSED LAYUP by SUNAHARA, RJ			
14:03	REBOUND (OFF) by SUNAHARA, RJ			
14:03	GOOD! LAYUP by SUNAHARA, RJ	53-55	V 2	
13:39		55-55	T	GOOD! LAYUP by CLUXTON, BROOKS
13:39				ASSIST by MCKIM, CONNOR
13:33	MISSED LAYUP by MARANVILLE, JAKE			
13:33				BLOCK by YENOR, HUTTON
13:29		57-55	H 2	GOOD! LAYUP by BONNER, JAKOBI [FB]
13:29	FOUL (PERSONAL) by SUNAHARA, RJ			
13:29				SUB OUT: CLUXTON, BROOKS
13:29				SUB IN: RECIO, TREVOR
13:29	SUB OUT: PUISIS, EDDIE			
13:29	SUB IN: KOLSTAD, MIKKEL			
13:29				MISSED FT by BONNER, JAKOBI
13:26	REBOUND (DEF) by MATTHEWS, MARK			
13:24				REBOUND (DEF) by BONNER, JAKOBI
13:14	MISSED LAYUP by MATTHEWS, MARK			
13:14				BLOCK by RECIO, TREVOR
13:08				REBOUND (DEF) by YENOR, HUTTON
12:56				MISSED 3PTR by BONNER, JAKOBI
12:52	REBOUND (DEF) by KOLSTAD, MIKKEL			

Time	VISITORS: Nova Southeastern	Score	Margin	HOME: Rollins
12:44	MISSED JUMPER by MATTHEWS, MARK			
12:41	REBOUND (OFF) by MARANVILLE, JAKE			
12:31	MISSED LAYUP by MATTHEWS, MARK			
12:30	REBOUND (OFF) by SUNAHARA, RJ			
12:30				FOUL (PERSONAL) by GUMM, DAYTON
12:30	MISSED FT by SUNAHARA, RJ			
12:30	REBOUND (OFF) by TEAM			
12:30				SUB OUT: BONNER, JAKOBI
12:30				SUB IN: MARION, KYLE
12:30	SUB OUT: MATTHEWS, MARK			
12:30	SUB IN: HUNTER, SHANE			
12:29	MISSED FT by SUNAHARA, RJ			
12:28	REBOUND (OFF) by HUNTER, SHANE			
12:26	MISSED JUMPER by HUNTER, SHANE			
12:26				REBOUND (DEF) by RECIO, TREVOR
12:24				FOUL (OFF) by RECIO, TREVOR
12:24				TURNOVER (OFFENSIVE) by RECIO, TREVOR
12:08	GOOD! 3PTR by KOLSTAD, MIKKEL	57-58	V 1	
12:08	ASSIST by SMITH, NICK			
11:42				TURNOVER (BADPASS) by MARION, KYLE
11:42	SUB OUT: HUNTER, SHANE			
11:42	SUB IN: MATTHEWS, MARK			
11:11	GOOD! 3PTR by KOLSTAD, MIKKEL	57-61	V 4	
11:11	ASSIST by MATTHEWS, MARK			
10:49		59-61	V 2	GOOD! JUMPER by GUMM, DAYTON [PNT]
10:29	GOOD! 3PTR by KOLSTAD, MIKKEL	59-64	V 5	
10:29	ASSIST by SMITH, NICK			
10:13	FOUL (PERSONAL) by KOLSTAD, MIKKEL			
10:04				MISSED 3PTR by YENOR, HUTTON
10:00	REBOUND (DEF) by MATTHEWS, MARK			
09:56				SUB OUT: MARION, KYLE
09:56				SUB IN: BONNER, JAKOBI
09:40	MISSED JUMPER by MATTHEWS, MARK			
09:36				REBOUND (DEF) by BONNER, JAKOBI
09:10				MISSED JUMPER by BONNER, JAKOBI
09:06	REBOUND (DEF) by SUNAHARA, RJ			
08:57	GOOD! LAYUP by MATTHEWS, MARK	59-66	V 7	
08:57	ASSIST by KOLSTAD, MIKKEL			
08:29	FOUL (PERSONAL) by KOLSTAD, MIKKEL			
08:29		60-66	V 6	GOOD! FT by BONNER, JAKOBI
08:29				SUB OUT: YENOR, HUTTON
08:29				SUB IN: CLUXTON, BROOKS
08:29	SUB OUT: KOLSTAD, MIKKEL			
08:29	SUB IN: PUISIS, EDDIE			
08:29		61-66	V 5	GOOD! FT by BONNER, JAKOBI
08:15	GOOD! JUMPER by MATTHEWS, MARK [PNT]	61-68	V 7	
07:56				MISSED 3PTR by MCKIM, CONNOR
07:52				REBOUND (OFF) by GUMM, DAYTON
07:51				MISSED LAYUP by GUMM, DAYTON
07:41	REBOUND (DEF) by PUISIS, EDDIE			
07:32	MISSED 3PTR by SMITH, NICK			
07:28	REBOUND (OFF) by SUNAHARA, RJ			
07:28				FOUL (PERSONAL) by CLUXTON, BROOKS
07:27				
07:27	GOOD! FT by SUNAHARA, RJ	61-69	V 8	
07:27	MISSED FT by SUNAHARA, RJ			
07:26				REBOUND (DEF) by BONNER, JAKOBI
07:07				TURNOVER (LOSTBALL) by BONNER, JAKOBI
07:07	STEAL by PUISIS, EDDIE			
07:02	TURNOVER (LOSTBALL) by PUISIS, EDDIE			
07:02				STEAL by RECIO, TREVOR
06:50				MISSED LAYUP by CLUXTON, BROOKS
06:50	BLOCK by SUNAHARA, RJ			
06:45	REBOUND (DEF) by SMITH, NICK			
06:38	TURNOVER (BADPASS) by PUISIS, EDDIE			
06:38				STEAL by GUMM, DAYTON
06:34				MISSED LAYUP by GUMM, DAYTON
06:34				REBOUND (OFF) by MCKIM, CONNOR
06:34		63-69	V 6	GOOD! LAYUP by MCKIM, CONNOR [FB]
06:34	FOUL (PERSONAL) by MARANVILLE, JAKE			
06:34		64-69	V 5	GOOD! FT by MCKIM, CONNOR [FB]
06:24	TURNOVER (LOSTBALL) by MATTHEWS, MARK			
06:24				STEAL by CLUXTON, BROOKS
06:06				MISSED 3PTR by GUMM, DAYTON
06:02				REBOUND (OFF) by BONNER, JAKOBI
05:56		66-69	V 3	GOOD! JUMPER by MCKIM, CONNOR
05:28	MISSED JUMPER by SMITH, NICK			
05:24				REBOUND (DEF) by MCKIM, CONNOR
05:21				FOUL (OFF) by MCKIM, CONNOR
05:21				TURNOVER (OFFENSIVE) by MCKIM, CONNOR

Time	VISITORS: Nova Southeastern	Score	Margin	HOME: Rollins
05:21	SUB OUT: MARANVILLE, JAKE			
05:21	SUB IN: KOLSTAD, MIKKEL			
05:19	GOOD! LAYUP by SUNAHARA, RJ	66-71	V 5	
05:19	ASSIST by SMITH, NICK			
05:08	FOUL (PERSONAL) by SMITH, NICK			
05:03				MISSED LAYUP by GUMM, DAYTON
05:02	REBOUND (DEF) by TEAM			
04:50	TURNOVER (BADPASS) by SMITH, NICK			
04:50				STEAL by MCKIM, CONNOR
04:27				MISSED LAYUP by MCKIM, CONNOR
04:27	BLOCK by MATTHEWS, MARK			
04:27				REBOUND (OFF) by TEAM
04:26		68-71	V 3	GOOD! DUNK by GUMM, DAYTON
04:26				ASSIST by MCKIM, CONNOR
04:26				SUB OUT: CLUXTON, BROOKS
04:26				SUB IN: YENOR, HUTTON
04:01	GOOD! LAYUP by MATTHEWS, MARK	68-73	V 5	
04:01	ASSIST by SUNAHARA, RJ			
03:40				MISSED 3PTR by MCKIM, CONNOR
03:38				REBOUND (OFF) by YENOR, HUTTON
03:38				FOUL (OFF) by YENOR, HUTTON
03:38				TURNOVER (OFFENSIVE) by YENOR, HUTTON
03:38				
03:09	TURNOVER (TRAVEL) by SUNAHARA, RJ			
02:55	FOUL (PERSONAL) by PUISIS, EDDIE			
02:55		69-73	V 4	GOOD! FT by GUMM, DAYTON
02:55		70-73	V 3	GOOD! FT by GUMM, DAYTON
02:36	GOOD! LAYUP by MATTHEWS, MARK	70-75	V 5	
02:15		72-75	V 3	GOOD! LAYUP by YENOR, HUTTON
02:03	GOOD! 3PTR by PUISIS, EDDIE	72-78	V 6	
02:03	ASSIST by SMITH, NICK			
01:54		75-78	V 3	GOOD! 3PTR by YENOR, HUTTON
01:54				ASSIST by GUMM, DAYTON
01:51				TIMEOUT 30SEC
01:51				
01:26	GOOD! 3PTR by SMITH, NICK	75-81	V 6	
01:26	ASSIST by SUNAHARA, RJ			
01:10		77-81	V 4	GOOD! LAYUP by GUMM, DAYTON
00:58	TURNOVER (10SEC) by TEAM			
00:50				MISSED 3PTR by YENOR, HUTTON
00:47	REBOUND (DEF) by MATTHEWS, MARK			
00:47				FOUL (PERSONAL) by RECIO, TREVOR
00:47	TIMEOUT 30SEC			
00:42				FOUL (PERSONAL) by GUMM, DAYTON
00:42	MISSED FT by SMITH, NICK			
00:40				REBOUND (DEF) by GUMM, DAYTON
00:33		79-81	V 2	GOOD! LAYUP by BONNER, JAKOBI
00:32				TIMEOUT TEAM
00:32				FOUL (PERSONAL) by YENOR, HUTTON
00:32	GOOD! FT by KOLSTAD, MIKKEL [FB]	79-82	V 3	
00:32	GOOD! FT by KOLSTAD, MIKKEL [FB]	79-83	V 4	
00:32	TIMEOUT 30SEC			
00:22		81-83	V 2	GOOD! LAYUP by BONNER, JAKOBI
00:21				FOUL (PERSONAL) by RECIO, TREVOR
00:21	GOOD! FT by MATTHEWS, MARK	81-84	V 3	
00:21	GOOD! FT by MATTHEWS, MARK	81-85	V 4	
00:14	FOUL (PERSONAL) by KOLSTAD, MIKKEL			
00:14		82-85	V 3	GOOD! FT by GUMM, DAYTON [FB]
00:14		83-85	V 2	GOOD! FT by GUMM, DAYTON [FB]
00:14				SUB OUT: RECIO, TREVOR
00:14				SUB IN: ENECHIONYIA, CHU
00:13				FOUL (PERSONAL) by BONNER, JAKOBI
00:13	GOOD! FT by KOLSTAD, MIKKEL [FB]	83-86	V 3	
00:13				SUB OUT: ENECHIONYIA, CHU
00:13				SUB IN: RECIO, TREVOR
00:13	GOOD! FT by KOLSTAD, MIKKEL [FB]	83-87	V 4	
00:07		85-87	V 2	GOOD! LAYUP by BONNER, JAKOBI [FB]
00:06				FOUL (PERSONAL) by MCKIM, CONNOR
00:06	GOOD! FT by KOLSTAD, MIKKEL [FB]	85-88	V 3	
00:06	GOOD! FT by KOLSTAD, MIKKEL [FB]	85-89	V 4	
00:02				MISSED 3PTR by MCKIM, CONNOR
00:02	SUB OUT: PUISIS, EDDIE			
00:02	SUB IN: MARANVILLE, JAKE			
00:00	REBOUND (DEF) by MARANVILLE, JAKE			

Nova Southeastern 89, Rollins 85

Points from (This Period)	NSU	ROL
In the Paint	22	26
Off Turns	8	11
2nd Chance	7	12
Fast Break	10	9
Bench	5	15

**Official Scoring/Possession Reference Chart
Nova Southeastern vs Rollins**

Period 1

February 05, 2020 at Alford Sports Center - Winter Park



Period 1

Starters:

Nova Southeastern: 2 SMITH,NICK (G); 5 MATTHEWS,MARK (F); 12 WEIR,MATT (G); 13 SUNAHARA,RJ (F); 15 KOLSTAD,MIKKEL (G);

Rollins: 2 MCKIM,CONNOR (G); 3 MARION,KYLE (G); 12 CLUXTON,BROOKS (F); 20 RECIO,TREVOR (F); 21 BONNER,JAKOBI (G);

Time	VISITORS: Nova Southeastern	Score	Margin	HOME: Rollins
19:06	GOOD! LAYUP by MATTHEWS, MARK	0-2	V 2	
18:14		3-2	H 1	GOOD! 3PTR by MCKIM, CONNOR
17:37	GOOD! LAYUP by MATTHEWS, MARK [FB]	3-4	V 1	
16:55		5-4	H 1	GOOD! JUMPER by RECIO, TREVOR
16:55		6-4	H 2	GOOD! FT by RECIO, TREVOR
16:45	GOOD! FT by HUNTER, SHANE	6-5	H 1	
16:14		8-5	H 3	GOOD! LAYUP by MARION, KYLE
16:00	GOOD! 3PTR by PUISIS, EDDIE	8-8	T	
15:22		10-8	H 2	GOOD! LAYUP by BONNER, JAKOBI
14:32		13-8	H 5	GOOD! 3PTR by BONNER, JAKOBI
14:09	GOOD! 3PTR by PUISIS, EDDIE [FB]	13-11	H 2	
13:33		14-11	H 3	GOOD! FT by GUMM, DAYTON
13:33		15-11	H 4	GOOD! FT by GUMM, DAYTON
13:16	GOOD! JUMPER by MATTHEWS, MARK	15-13	H 2	
12:54	GOOD! JUMPER by MATTHEWS, MARK	15-15	T	
12:00		16-15	H 1	GOOD! FT by YENOR, HUTTON
12:00		17-15	H 2	GOOD! FT by YENOR, HUTTON
11:40	GOOD! DUNK by SUNAHARA, RJ	17-17	T	
11:33		20-17	H 3	GOOD! 3PTR by MCKIM, CONNOR [FB]
11:20	GOOD! FT by SMITH, NICK	20-18	H 2	
11:20	GOOD! FT by SMITH, NICK	20-19	H 1	
11:00		23-19	H 4	GOOD! 3PTR by YENOR, HUTTON
10:26		26-19	H 7	GOOD! 3PTR by MCKIM, CONNOR [FB]
10:10	GOOD! 3PTR by KOLSTAD, MIKKEL	26-22	H 4	
09:41		28-22	H 6	GOOD! LAYUP by RECIO, TREVOR
09:22	GOOD! 3PTR by MARANVILLE, JAKE	28-25	H 3	
09:11		30-25	H 5	GOOD! LAYUP by MCKIM, CONNOR [FB]
08:36	GOOD! LAYUP by SUNAHARA, RJ	30-27	H 3	
08:18	GOOD! LAYUP by SUNAHARA, RJ [FB]	30-29	H 1	
08:05	GOOD! LAYUP by MARANVILLE, JAKE [FB]	30-31	V 1	
07:35	GOOD! LAYUP by SUNAHARA, RJ	30-33	V 3	
06:19		31-33	V 2	GOOD! FT by CLUXTON, BROOKS
05:12		33-33	T	GOOD! JUMPER by BONNER, JAKOBI
04:38		35-33	H 2	GOOD! DUNK by RECIO, TREVOR [FB]
04:29	GOOD! JUMPER by SMITH, NICK	35-35	T	
04:09		37-35	H 2	GOOD! LAYUP by MARION, KYLE [PNT]
02:32	GOOD! JUMPER by SMITH, NICK [FB]	37-37	T	
02:03	GOOD! FT by ZINAICH, CONNOR [FB]	37-38	V 1	
02:03	GOOD! FT by ZINAICH, CONNOR [FB]	37-39	V 2	
01:52		39-39	T	GOOD! DUNK by RECIO, TREVOR [FB/PNT]
01:35	GOOD! LAYUP by SUNAHARA, RJ	39-41	V 2	
00:55	GOOD! LAYUP by SUNAHARA, RJ	39-43	V 4	

Nova Southeastern 43, Rollins 39

Official Scoring/Possession Reference Chart
Nova Southeastern vs Rollins
Period 2
February 05, 2020 at Alford Sports Center - Winter Park



Period 2

Starters:

Nova Southeastern: 2 SMITH,NICK (G); 5 MATTHEWS,MARK (F); 12 WEIR,MATT (G); 13 SUNAHARA,RJ (F); 15 KOLSTAD,MIKKEL (G);
Rollins: 2 MCKIM,CONNOR (G); 3 MARION,KYLE (G); 12 CLUXTON,BROOKS (F); 20 RECIO,TREVOR (F); 21 BONNER,JAKOBI (G);

Time	VISITORS: Nova Southeastern	Score	Margin	HOME: Rollins
19:28	GOOD! LAYUP by SUNAHARA, RJ	39-45	V 6	
18:31	GOOD! DUNK by SUNAHARA, RJ	39-47	V 8	
17:38		42-47	V 5	GOOD! 3PTR by BONNER, JAKOBI
17:01		44-47	V 3	GOOD! LAYUP by CLUXTON, BROOKS
16:56	GOOD! LAYUP by SUNAHARA, RJ [FB]	44-49	V 5	
16:32		46-49	V 3	GOOD! JUMPER by BONNER, JAKOBI
16:07		48-49	V 1	GOOD! LAYUP by MCKIM, CONNOR
15:44	GOOD! LAYUP by PUISIS, EDDIE	48-51	V 3	
15:19		51-51	T	GOOD! 3PTR by MARION, KYLE
14:53		53-51	H 2	GOOD! LAYUP by CLUXTON, BROOKS
14:46	GOOD! LAYUP by SUNAHARA, RJ [FB]	53-53	T	
14:03	GOOD! LAYUP by SUNAHARA, RJ	53-55	V 2	
13:39		55-55	T	GOOD! LAYUP by CLUXTON, BROOKS
13:29		57-55	H 2	GOOD! LAYUP by BONNER, JAKOBI [FB]
12:08	GOOD! 3PTR by KOLSTAD, MIKKEL	57-58	V 1	
11:11	GOOD! 3PTR by KOLSTAD, MIKKEL	57-61	V 4	
10:49		59-61	V 2	GOOD! JUMPER by GUMM, DAYTON [PNT]
10:29	GOOD! 3PTR by KOLSTAD, MIKKEL	59-64	V 5	
08:57	GOOD! LAYUP by MATTHEWS, MARK	59-66	V 7	
08:29		60-66	V 6	GOOD! FT by BONNER, JAKOBI
08:29		61-66	V 5	GOOD! FT by BONNER, JAKOBI
08:15	GOOD! JUMPER by MATTHEWS, MARK [PNT]	61-68	V 7	
07:27	GOOD! FT by SUNAHARA, RJ	61-69	V 8	
06:34		63-69	V 6	GOOD! LAYUP by MCKIM, CONNOR [FB]
06:34		64-69	V 5	GOOD! FT by MCKIM, CONNOR [FB]
05:56		66-69	V 3	GOOD! JUMPER by MCKIM, CONNOR
05:19	GOOD! LAYUP by SUNAHARA, RJ	66-71	V 5	
04:26		68-71	V 3	GOOD! DUNK by GUMM, DAYTON
04:01	GOOD! LAYUP by MATTHEWS, MARK	68-73	V 5	
02:55		69-73	V 4	GOOD! FT by GUMM, DAYTON
02:55		70-73	V 3	GOOD! FT by GUMM, DAYTON
02:36	GOOD! LAYUP by MATTHEWS, MARK	70-75	V 5	
02:15		72-75	V 3	GOOD! LAYUP by YENOR, HUTTON
02:03	GOOD! 3PTR by PUISIS, EDDIE	72-78	V 6	
01:54		75-78	V 3	GOOD! 3PTR by YENOR, HUTTON
01:26	GOOD! 3PTR by SMITH, NICK	75-81	V 6	
01:10		77-81	V 4	GOOD! LAYUP by GUMM, DAYTON
00:33		79-81	V 2	GOOD! LAYUP by BONNER, JAKOBI
00:32	GOOD! FT by KOLSTAD, MIKKEL [FB]	79-82	V 3	
00:32	GOOD! FT by KOLSTAD, MIKKEL [FB]	79-83	V 4	
00:22		81-83	V 2	GOOD! LAYUP by BONNER, JAKOBI
00:21	GOOD! FT by MATTHEWS, MARK	81-84	V 3	
00:21	GOOD! FT by MATTHEWS, MARK	81-85	V 4	
00:14		82-85	V 3	GOOD! FT by GUMM, DAYTON [FB]
00:14		83-85	V 2	GOOD! FT by GUMM, DAYTON [FB]
00:13	GOOD! FT by KOLSTAD, MIKKEL [FB]	83-86	V 3	
00:13	GOOD! FT by KOLSTAD, MIKKEL [FB]	83-87	V 4	
00:07		85-87	V 2	GOOD! LAYUP by BONNER, JAKOBI [FB]
00:06	GOOD! FT by KOLSTAD, MIKKEL [FB]	85-88	V 3	
00:06	GOOD! FT by KOLSTAD, MIKKEL [FB]	85-89	V 4	

Nova Southeastern 89, Rollins 85

**Official Substitutions Log
Nova Southeastern vs Rollins
Period 1**

February 05, 2020 at Alford Sports Center - Winter Park



VISITORS: Nova Southeastern	Time	Score	HOME: Rollins
2 SMITH,NICK			2 MCKIM,CONNOR
5 MATTHEWS,MARK			3 MARION,KYLE
12 WEIR,MATT			12 CLUXTON,BROOKS
13 SUNAHARA,RJ			20 RECIO,TREVOR
15 KOLSTAD,MIKKEL			21 BONNER,JAKOBI
SUB OUT: 5 MATTHEWS,MARK	16:55	4-5	
SUB OUT: 12 WEIR,MATT	16:55		
SUB OUT: 13 SUNAHARA,RJ	16:55		
SUB OUT: 15 KOLSTAD,MIKKEL	16:55		
SUB IN: 0 ZINAICH,CONNOR	16:55		
SUB IN: 14 MARANVILLE,JAKE	16:55		
SUB IN: 21 PUISIS,EDDIE	16:55		
SUB IN: 23 HUNTER,SHANE	16:55		
	15:15	8-10	SUB OUT: MCKIM,CONNOR
	15:15		SUB OUT: CLUXTON,BROOKS
	15:15		SUB IN: YENOR,HUTTON
	15:15		SUB IN: GUMM,DAYTON
SUB OUT: 0 ZINAICH,CONNOR	14:26	8-13	
SUB OUT: 14 MARANVILLE,JAKE	14:26		
SUB IN: 5 MATTHEWS,MARK	14:26		
SUB IN: 15 KOLSTAD,MIKKEL	14:26		
	13:33	11-14	SUB OUT: RECIO,TREVOR
	13:33		SUB OUT: BONNER,JAKOBI
	13:33		SUB IN: MCKIM,CONNOR
	13:33		SUB IN: CLUXTON,BROOKS
SUB OUT: 23 HUNTER,SHANE	13:09	13-15	
SUB IN: 13 SUNAHARA,RJ	13:09		
	13:09		SUB OUT: MARION,KYLE
	13:09		SUB IN: ERICKSON,WILL
	11:20	18-20	SUB OUT: ERICKSON,WILL
	11:20		SUB OUT: CLUXTON,BROOKS
	11:20		SUB IN: RECIO,TREVOR
	11:20		SUB IN: BONNER,JAKOBI
SUB OUT: 21 PUISIS,EDDIE	11:20		
SUB IN: 14 MARANVILLE,JAKE	11:20		
	08:05	31-30	SUB OUT: YENOR,HUTTON
	08:05		SUB OUT: GUMM,DAYTON
	08:05		SUB IN: MARION,KYLE
	08:05		SUB IN: CLUXTON,BROOKS
SUB OUT: 5 MATTHEWS,MARK	08:05		
SUB IN: 23 HUNTER,SHANE	08:05		
SUB OUT: 13 SUNAHARA,RJ	06:19	33-30	
SUB OUT: 15 KOLSTAD,MIKKEL	06:19		
SUB OUT: 23 HUNTER,SHANE	06:19		
SUB IN: 0 ZINAICH,CONNOR	06:19		
SUB IN: 5 MATTHEWS,MARK	06:19		
SUB IN: 21 PUISIS,EDDIE	06:19		
	03:50	35-37	SUB OUT: MCKIM,CONNOR
	03:50		SUB OUT: RECIO,TREVOR
	03:50		SUB OUT: BONNER,JAKOBI
	03:50		SUB IN: YENOR,HUTTON
	03:50		SUB IN: ERICKSON,WILL
	03:50		SUB IN: GUMM,DAYTON
SUB OUT: 14 MARANVILLE,JAKE	02:44	35-37	
SUB IN: 15 KOLSTAD,MIKKEL	02:44		
	02:03	38-37	SUB OUT: ERICKSON,WILL
	02:03		SUB OUT: MARION,KYLE
	02:03		SUB OUT: CLUXTON,BROOKS
	02:03		SUB IN: MCKIM,CONNOR
	02:03		SUB IN: RECIO,TREVOR
	02:03		SUB IN: BONNER,JAKOBI
SUB OUT: 0 ZINAICH,CONNOR	02:03		
SUB IN: 13 SUNAHARA,RJ	02:03		
	00:18	43-39	SUB OUT: YENOR,HUTTON
	00:18		SUB IN: ENECHIONYIA,CHU

Nova Southeastern 43, Rollins 39

Official Substitutions Log
Nova Southeastern vs Rollins
Period 2
February 05, 2020 at Alford Sports Center - Winter Park



VISITORS: Nova Southeastern	Time	Score	HOME: Rollins
2 SMITH,NICK			2 MCKIM,CONNOR
5 MATTHEWS,MARK			3 MARION,KYLE
12 WEIR,MATT			12 CLUXTON,BROOKS
13 SUNAHARA,RJ			20 RECIO,TREVOR
15 KOLSTAD,MIKKEL			21 BONNER,JAKOBI
	20:00	-	SUB OUT: ENECHIONYIA,CHU
	20:00		SUB OUT: GUMM,DAYTON
	20:00		SUB IN: MARION,KYLE
	20:00		SUB IN: CLUXTON,BROOKS
	15:14	51-51	SUB OUT: MARION,KYLE
	15:14		SUB OUT: RECIO,TREVOR
	15:14		SUB IN: YENOR,HUTTON
	15:14		SUB IN: GUMM,DAYTON
SUB OUT: 15 KOLSTAD,MIKKEL	15:14		
SUB IN: 14 MARANVILLE,JAKE	15:14		
	13:29	55-57	SUB OUT: CLUXTON,BROOKS
	13:29		SUB IN: RECIO,TREVOR
SUB OUT: 21 PUISIS,EDDIE	13:29		
SUB IN: 15 KOLSTAD,MIKKEL	13:29		
	12:30	55-57	SUB OUT: BONNER,JAKOBI
	12:30		SUB IN: MARION,KYLE
SUB OUT: 5 MATTHEWS,MARK	12:30		
SUB IN: 23 HUNTER,SHANE	12:30		
SUB OUT: 23 HUNTER,SHANE	11:42	58-57	
SUB IN: 5 MATTHEWS,MARK	11:42		
	09:56	64-59	SUB OUT: MARION,KYLE
	09:56		SUB IN: BONNER,JAKOBI
	08:29	66-60	SUB OUT: YENOR,HUTTON
	08:29		SUB IN: CLUXTON,BROOKS
SUB OUT: 15 KOLSTAD,MIKKEL	08:29		
SUB IN: 21 PUISIS,EDDIE	08:29		
SUB OUT: 14 MARANVILLE,JAKE	05:21	69-66	
SUB IN: 15 KOLSTAD,MIKKEL	05:21		
	04:26	71-68	SUB OUT: CLUXTON,BROOKS
	04:26		SUB IN: YENOR,HUTTON
	00:14	85-83	SUB OUT: RECIO,TREVOR
	00:14		SUB IN: ENECHIONYIA,CHU
	00:13	86-83	SUB OUT: ENECHIONYIA,CHU
	00:13		SUB IN: RECIO,TREVOR
SUB OUT: 21 PUISIS,EDDIE	00:02	89-85	
SUB IN: 14 MARANVILLE,JAKE	00:02		

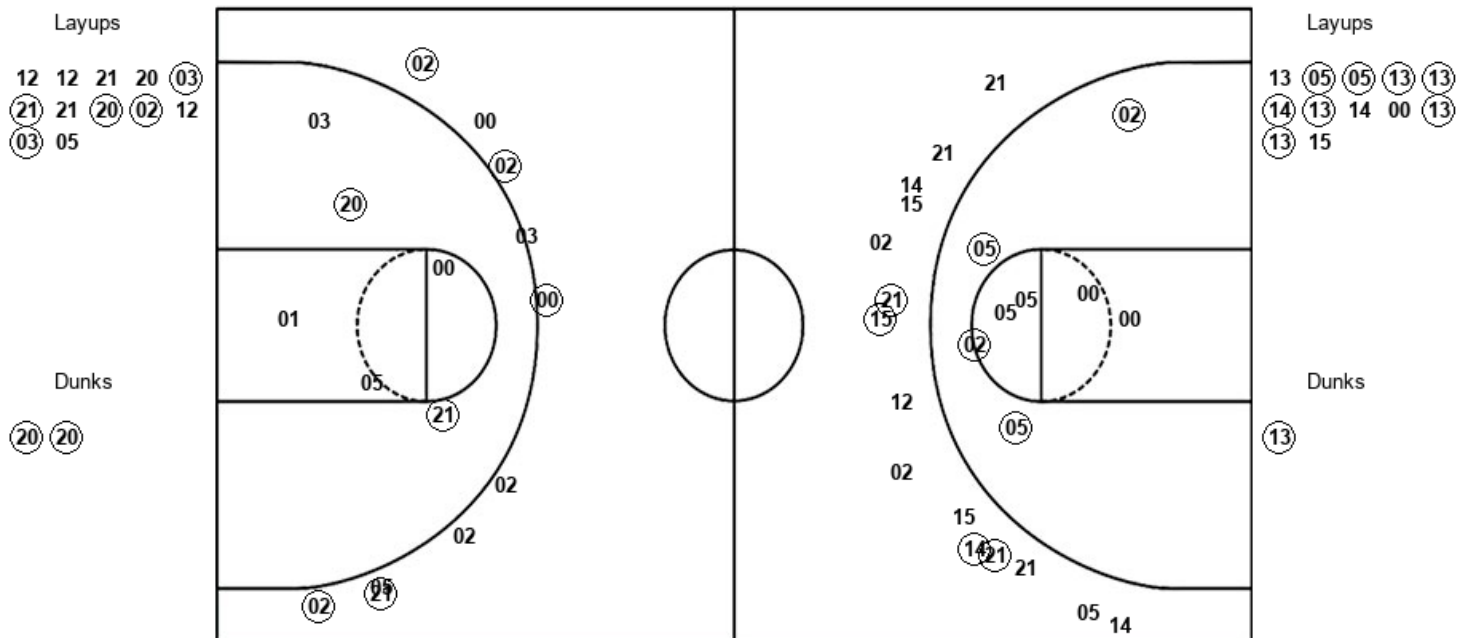
Nova Southeastern 89, Rollins 85

Official Shot Chart
Nova Southeastern vs Rollins
 PERIOD 1 Shots
 February 05, 2020 at Alford Sports Center - Winter Park



Rollins

Nova Southeastern



ROL : Period 1	Made	Att	Pct
Layups	5	12	41.7
Dunks	2	2	100.0
2PT Field Goals	9	20	45.0
3PT Field Goals	5	10	50.0
Total Field Goals	14	30	46.7

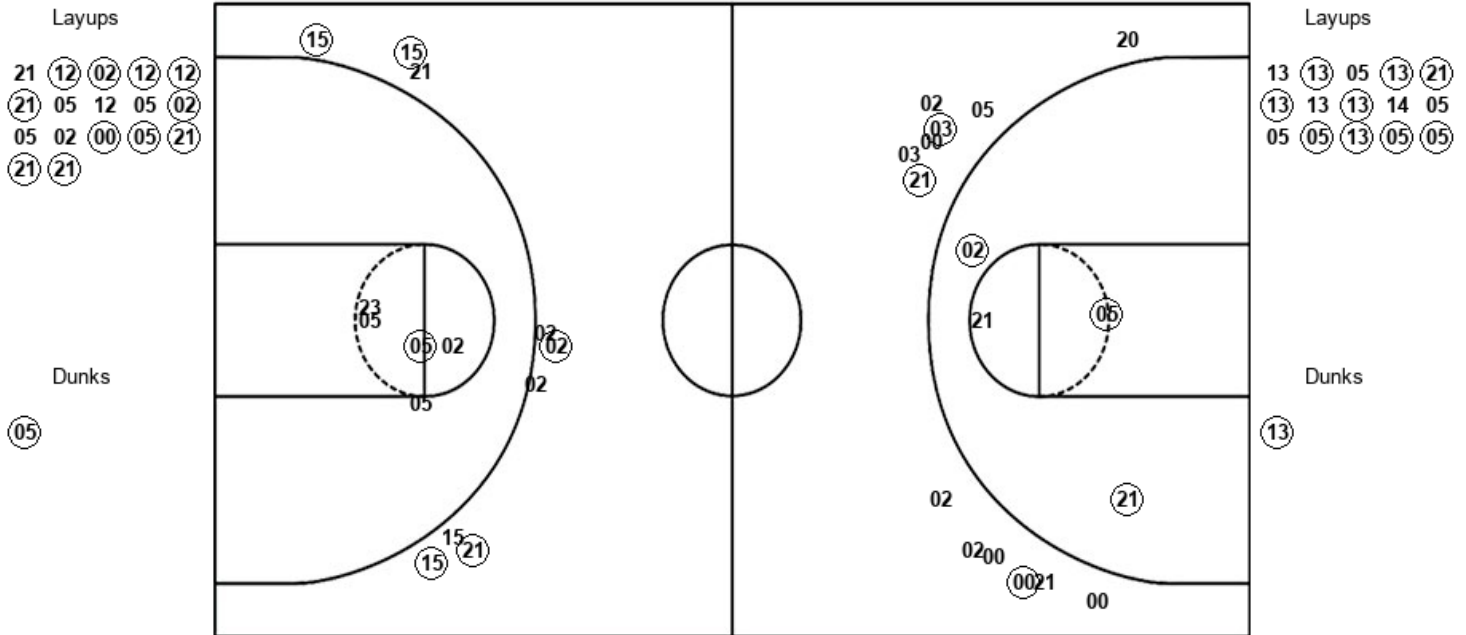
NSU : Period 1	Made	Att	Pct
Layups	8	12	66.7
Dunks	1	1	100.0
2PT Field Goals	13	21	61.9
3PT Field Goals	4	15	26.7
Total Field Goals	17	36	47.2

Official Shot Chart
Nova Southeastern vs Rollins
 PERIOD 2 Shots
 February 05, 2020 at Alford Sports Center - Winter Park



Rollins

Nova Southeastern



ROL : Period 2	Made	Att	Pct
Layups	11	17	64.7
Dunks	1	1	100.0
2PT Field Goals	15	22	68.2
3PT Field Goals	3	13	23.1
Total Field Goals	18	35	51.4

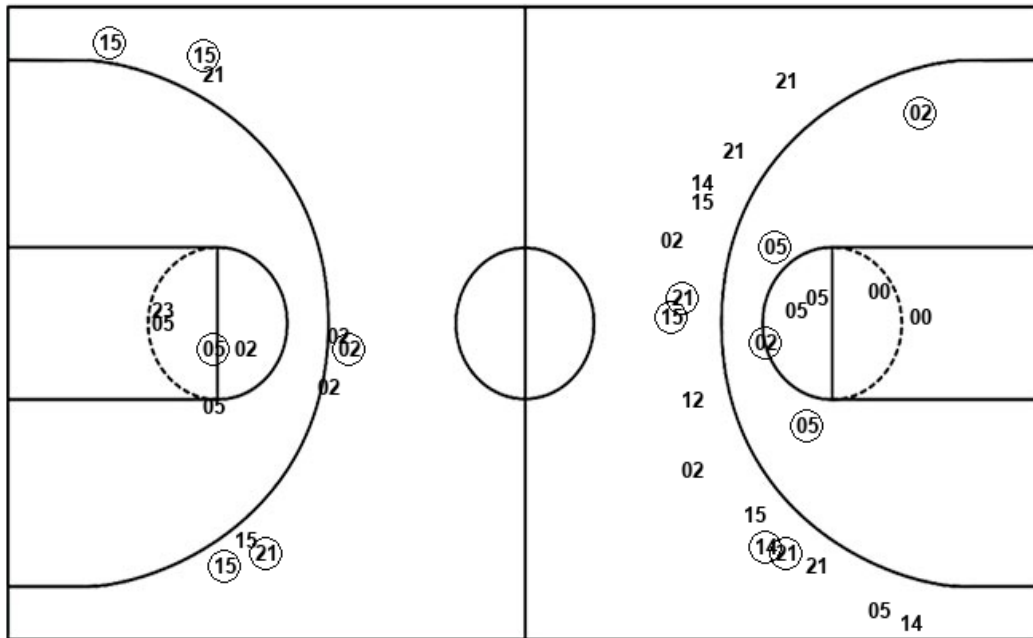
NSU : Period 2	Made	Att	Pct
Layups	9	15	60.0
Dunks	1	1	100.0
2PT Field Goals	11	21	52.4
3PT Field Goals	5	9	55.6
Total Field Goals	16	30	53.3

Official Shot Chart
Nova Southeastern vs Rollins
 Nova Southeastern Team Shots
 February 05, 2020 at Alford Sports Center - Winter Park



Layups

Dunks



Layups

Dunks

NSU : Period 1	Made	Att	Pct
Layups	8	12	66.7
Dunks	1	1	100.0
2PT Field Goals	13	21	61.9
3PT Field Goals	4	15	26.7
Total Field Goals	17	36	47.2

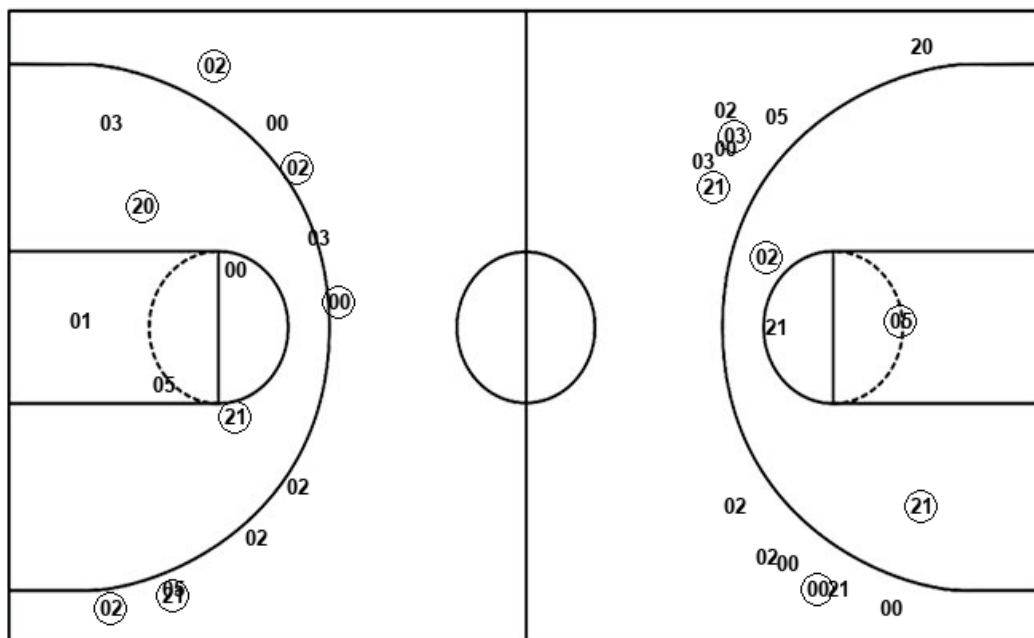
NSU : Period 2	Made	Att	Pct
Layups	9	15	60.0
Dunks	1	1	100.0
2PT Field Goals	11	21	52.4
3PT Field Goals	5	9	55.6
Total Field Goals	16	30	53.3

Official Shot Chart
Nova Southeastern vs Rollins
 Rollins Team Shots
 February 05, 2020 at Alford Sports Center - Winter Park



Layups

Dunks



Layups

12 12 21 20 (03)
 (21) 21 (20) (02) 12
 (03) 05 21 (12) (02)
 (12) (12) (21) 05 12
 05 (02) 05 02 (00)
 (05) (21) (21) (21)

Dunks

(20) (20) (05)

ROL : Period 1	Made	Att	Pct
Layups	5	12	41.7
Dunks	2	2	100.0
2PT Field Goals	9	20	45.0
3PT Field Goals	5	10	50.0
Total Field Goals	14	30	46.7

ROL : Period 2	Made	Att	Pct
Layups	11	17	64.7
Dunks	1	1	100.0
2PT Field Goals	15	22	68.2
3PT Field Goals	3	13	23.1
Total Field Goals	18	35	51.4