

## FINAL SCORE



**Missouri**

**45**



**Mississippi St.**

**72**

January 14, 2020 • Humphrey Coliseum - Starkville, MS

## FINAL STATISTICS



**Official Box Score**  
**Missouri vs Mississippi St.**  
**Game Totals -- Final Statistics**  
**January 14, 2020 at Humphrey Coliseum - Starkville, MS**



**Missouri 45**

No.	Player	S	Pts	FG	3FG	FT	OR	DR	TR	PF	A	TO	Blk	Stl	Min	+/-
05	SMITH, MITCHELL	F	2	1-7	0-5	0-0	1	2	3	3	0	3	0	1	27	-19
12	SMITH, DRU	G	2	1-5	0-2	0-0	2	2	4	1	3	4	1	3	32	-32
13	SMITH, MARK	G	8	3-6	2-5	0-1	0	3	3	1	1	0	0	1	25	-21
14	NIKKO, REED	F	6	2-3	0-0	2-2	1	1	2	3	1	1	0	0	22	-21
24	BROWN, KOBE	F	14	4-8	2-4	4-6	3	1	4	1	0	2	0	0	20	-17
00	WATSON, TORRENCE	G	0	0-5	0-4	0-0	0	1	1	0	0	1	0	0	17	-8
01	PINSON, XAVIER	G	0	0-4	0-3	0-0	0	0	0	0	3	2	0	1	21	-18
02	JACKSON, TRAY	F	0	0-0	0-0	0-0	0	0	0	2	0	1	0	0	1	0
04	PICKETT, JAVON	G	9	4-8	1-1	0-0	0	2	2	4	1	5	1	1	19	-8
10	YERKES, EVAN	G	0	0-1	0-1	0-0	0	1	1	0	1	0	0	0	5	4
15	OKONGO, AXEL	F	0	0-0	0-0	0-0	0	0	0	0	0	0	0	0	3	-3
25	FORD, BROOKS	G	0	0-0	0-0	0-0	0	0	0	0	0	0	0	0	1	4
42	BRAUN, PARKER	F	4	2-2	0-0	0-1	0	1	1	0	0	0	1	1	5	4
	TEAM						2	1	3	0		0				
<b>TOTALS</b>			<b>45</b>	<b>17-49</b>	<b>5-25</b>	<b>6-10</b>	<b>9</b>	<b>15</b>	<b>24</b>	<b>15</b>	<b>10</b>	<b>19</b>	<b>3</b>	<b>8</b>	<b>198</b>	

*Shooting By Period*

Period	FG	FG%	3FG	3FG%	FT	FT%
1st Half	8-23	35%	2-10	20%	2-2	100%
2nd Half	9-26	35%	3-15	20%	4-8	50%
<b>Game</b>	<b>17-49</b>	<b>34.7%</b>	<b>5-25</b>	<b>20.0%</b>	<b>6-10</b>	<b>60.0%</b>

*Deadball Rebounds: 0,0*

*Last FG: 2nd-01:01*

*Biggest Run: 4-0*

*Largest lead: By 0 at -*

*Technical Fouls: None.*

**Mississippi St. 72**

No.	Player	S	Pts	FG	3FG	FT	OR	DR	TR	PF	A	TO	Blk	Stl	Min	+/-
00	WEATHERSPOON, NICK	G	11	4-7	1-1	2-2	1	0	1	0	4	4	0	1	28	22
01	PERRY, REGGIE	F	23	9-13	2-5	3-3	1	9	10	0	0	2	1	0	28	25
03	STEWART JR., D.J.	G	0	0-3	0-1	0-0	0	1	1	2	2	1	0	1	23	23
12	WOODARD II, ROBERT	G	9	4-6	1-1	0-0	2	3	5	1	1	3	2	2	29	18
24	ADO, ABDUL	F	6	3-4	0-0	0-0	3	1	4	3	1	1	1	0	23	28
02	KING, ELIAS	F	2	1-1	0-0	0-0	0	1	1	0	0	0	0	0	4	-3
04	BUTTS, DEVIN	G	0	0-2	0-0	0-0	1	0	1	1	0	0	0	0	4	-3
05	MOLINAR, IVERSON	G	4	2-3	0-0	0-0	0	1	1	3	1	1	0	1	21	10
15	ODURO, PRINCE	F	2	1-2	0-0	0-0	0	2	2	2	0	1	1	0	5	4
20	STORM, MITCHELL	F	0	0-0	0-0	0-0	0	0	0	1	0	0	0	0	1	-4
23	CARTER, TYSON	G	15	6-12	1-4	2-2	0	4	4	2	7	1	1	3	28	22
30	JUNKIN, ANDREW	F	0	0-0	0-0	0-0	0	0	0	0	0	0	0	0	1	-4
32	POST, QUINTEN	F	0	0-2	0-1	0-0	0	3	3	0	1	0	0	0	4	-3
	TEAM						2	1	3	0		1				
<b>TOTALS</b>			<b>72</b>	<b>30-55</b>	<b>5-13</b>	<b>7-7</b>	<b>10</b>	<b>26</b>	<b>36</b>	<b>15</b>	<b>17</b>	<b>15</b>	<b>6</b>	<b>8</b>	<b>198</b>	

*Shooting By Period*

Period	FG	FG%	3FG	3FG%	FT	FT%
1st Half	17-28	61%	3-8	38%	3-3	100%
2nd Half	13-27	48%	2-5	40%	4-4	100%
<b>Game</b>	<b>30-55</b>	<b>54.5%</b>	<b>5-13</b>	<b>38.5%</b>	<b>7-7</b>	<b>100.0%</b>

*Deadball Rebounds: 0,1*

*Last FG: 2nd-02:21*

*Biggest Run: 10-0*

*Largest lead: By 32 at 2nd-04:54*

*Technical Fouls: None.*

Game Notes:

Officials: Joe Lindsay, Anthony Jordan, Todd Austin  
Attendance: 5904

Start Time: 09:05 PM ET  
End Time: 11:07 PM ET  
Game Duration: 2:01  
Conference Game;

Score	1st	2nd	TOT
MIZ	20	25	45
MST	40	32	72

MIZ led for 0:00. MST led for 39:06.  
Game was tied for 0:32.  
Times tied: 0      Lead Changes: 0

Points from	MIZ	MST
In the Paint	24	38
Off Turns	11	22
2nd Chance	6	8
Fast Break	8	14
Bench	13	23



**Official Box Score**  
**Missouri vs Mississippi St.**  
**First Half Statistics Only**  
**January 14, 2020 at Humphrey Coliseum - Starkville, MS**



### Missouri 20

No.	Player	S	Pts	FG	3FG	FT	OR	DR	TR	PF	A	TO	Blk	Stl	Min	+/-
05	SMITH, MITCHELL	F	2	1-5	0-3	0-0	1	0	1	1	0	2	0	0	14	-11
12	SMITH, DRU	G	0	0-3	0-2	0-0	1	1	2	1	0	3	0	1	18	-21
13	SMITH, MARK	G	3	1-1	1-1	0-0	0	1	1	0	1	0	0	0	13	-12
14	NIKKO, REED	F	2	1-1	0-0	0-0	1	1	2	2	1	1	0	0	10	-18
24	BROWN, KOBE	F	7	2-4	1-1	2-2	2	1	3	1	0	2	0	0	9	-10
00	WATSON, TORRENCE	G	0	0-3	0-3	0-0	0	0	0	0	0	0	0	0	5	-7
01	PINSON, XAVIER	G	0	0-0	0-0	0-0	0	0	0	0	1	2	0	1	13	-7
02	JACKSON, TRAY	F	0	0-0	0-0	0-0	0	0	0	2	0	1	0	0	1	0
04	PICKETT, JAVON	G	6	3-6	0-0	0-0	0	2	2	2	1	2	1	1	14	-11
10	YERKES, EVAN	G	0	0-0	0-0	0-0	0	0	0	0	0	0	0	0	0	0
15	OKONGO, AXEL	F	0	0-0	0-0	0-0	0	0	0	0	0	0	0	0	3	-3
25	FORD, BROOKS	G	0	0-0	0-0	0-0	0	0	0	0	0	0	0	0	0	0
42	BRAUN, PARKER	F	0	0-0	0-0	0-0	0	0	0	0	0	0	0	0	0	0
	TEAM						2	0	2	0		0				
<b>TOTALS</b>			<b>20</b>	<b>8-23</b>	<b>2-10</b>	<b>2-2</b>	<b>7</b>	<b>6</b>	<b>13</b>	<b>9</b>	<b>4</b>	<b>13</b>	<b>1</b>	<b>3</b>	<b>100</b>	

*Shooting By Period*

Period	FG	FG%	3FG	3FG%	FT	FT%
1st Half	8-23	35%	2-10	20%	2-2	100%
Game	17-49	34.7%	5-25	20.0%	6-10	60.0%

Deadball Rebounds: 0,0

Last FG Half: MIZ 2nd-01:01

### Mississippi St. 40

No.	Player	S	Pts	FG	3FG	FT	OR	DR	TR	PF	A	TO	Blk	Stl	Min	+/-
00	WEATHERSPOON, NICK	G	9	3-4	1-1	2-2	0	0	0	0	3	1	0	1	16	19
01	PERRY, REGGIE	F	12	5-8	1-3	1-1	1	2	3	0	0	1	0	0	14	15
03	STEWART JR., D.J.	G	0	0-1	0-1	0-0	0	0	0	2	0	0	0	1	13	16
12	WOODARD II, ROBERT	G	7	3-3	1-1	0-0	1	2	3	0	1	1	2	1	17	15
24	ADO, ABDUL	F	6	3-3	0-0	0-0	2	0	2	2	0	1	0	0	12	16
02	KING, ELIAS	F	0	0-0	0-0	0-0	0	0	0	0	0	0	0	0	0	0
04	BUTTS, DEVIN	G	0	0-0	0-0	0-0	0	0	0	0	0	0	0	0	0	0
05	MOLINAR, IVERSON	G	2	1-2	0-0	0-0	0	0	0	0	0	0	0	1	10	5
15	ODURO, PRINCE	F	0	0-1	0-0	0-0	0	0	0	1	0	1	1	0	3	3
20	STORM, MITCHELL	F	0	0-0	0-0	0-0	0	0	0	0	0	0	0	0	0	0
23	CARTER, TYSON	G	4	2-6	0-2	0-0	0	2	2	1	3	1	1	1	14	11
30	JUNKIN, ANDREW	F	0	0-0	0-0	0-0	0	0	0	0	0	0	0	0	0	0
32	POST, QUINTEN	F	0	0-0	0-0	0-0	0	0	0	0	0	0	0	0	0	0
	TEAM						1	1	2	0		1				
<b>TOTALS</b>			<b>40</b>	<b>17-28</b>	<b>3-8</b>	<b>3-3</b>	<b>5</b>	<b>7</b>	<b>12</b>	<b>6</b>	<b>9</b>	<b>7</b>	<b>4</b>	<b>5</b>	<b>100</b>	

*Shooting By Period*

Period	FG	FG%	3FG	3FG%	FT	FT%
1st Half	17-28	61%	3-8	38%	3-3	100%
Game	30-55	54.5%	5-13	38.5%	7-7	100.0%

Deadball Rebounds: 0,1

Last FG Half: MST 2nd-02:21

*Game Notes:*

Officials: Joe Lindsay, Anthony Jordan, Todd Austin  
Attendance: 5904

Start Time: 09:05 PM ET  
End Time: 11:07 PM ET  
Game Duration: 2:01  
Conference Game;

Score	1st	2nd	TOT
MIZ	20	25	45
MST	40	32	72

Points from (This Period)	MIZ	MST
In the Paint	12	20
Off Turns	4	18
2nd Chance	6	4
Fast Break	2	8
Bench	6	6



**Official Play-By-Play  
Missouri vs Mississippi St.  
First Half**

**January 14, 2020 at Humphrey Coliseum - Starkville, MS**



**Period 1**

**Starters:**

**Missouri:** 5 SMITH, MITCHELL (F); 12 SMITH, DRU (G); 13 SMITH, MARK (G); 14 NIKKO, REED (F); 24 BROWN, KOBE (F);

**Mississippi St.:** 0 WEATHERSPOON, NICK (G); 1 PERRY, REGGIE (F); 3 STEWART JR., D.J. (G); 12 WOODARD II, ROBERT (G); 24 ADO, ABDUL (F);

Time	VISITORS: Missouri	Score	Margin	HOME: Mississippi St.
19:28		2-0	H 2	GOOD! JUMPER by ADO, ABDUL [PNT]
19:01	TURNOVER (BADPASS) by BROWN, KOBE			
19:01				STEAL by WOODARD II, ROBERT
18:54		4-0	H 4	GOOD! JUMPER by WOODARD II, ROBERT
18:54				ASSIST by WEATHERSPOON, NICK
18:30	TURNOVER (BADPASS) by SMITH, DRU			
18:17	FOUL (PERSONAL) by NIKKO, REED			
18:17	SUB OUT: BROWN, KOBE			
18:17	SUB IN: PICKETT, JAVON			
18:15				MISSED JUMPER by PERRY, REGGIE
18:13	REBOUND (DEF) by NIKKO, REED			
18:13				FOUL (PERSONAL) by ADO, ABDUL
18:00	MISSED JUMPER by SMITH, MITCHELL			
17:59				REBOUND (DEF) by PERRY, REGGIE
17:59	FOUL (PERSONAL) by SMITH, MITCHELL			
17:44		6-0	H 6	GOOD! LAYUP by ADO, ABDUL [PNT]
17:44				ASSIST by WOODARD II, ROBERT
17:16	TURNOVER (BADPASS) by SMITH, DRU			
17:16				STEAL by STEWART JR., D.J.
17:10		8-0	H 8	GOOD! LAYUP by PERRY, REGGIE [FB/PNT]
17:06	TIMEOUT 30SEC			
16:45	MISSED JUMPER by PICKETT, JAVON			
16:41				REBOUND (DEF) by PERRY, REGGIE
16:12				TURNOVER (SHOTCLOCK) by TEAM
16:12	SUB OUT: SMITH, DRU			
16:12	SUB OUT: NIKKO, REED			
16:12	SUB IN: PINSON, XAVIER			
16:12	SUB IN: BROWN, KOBE			
15:52	TURNOVER (LOSTBALL) by SMITH, MITCHELL			
15:52				
15:52				SUB OUT: ADO, ABDUL
15:52				SUB IN: CARTER, TYSON
15:24		10-0	H 10	GOOD! LAYUP by PERRY, REGGIE
15:24				ASSIST by WEATHERSPOON, NICK
15:06	GOOD! 3PTR by BROWN, KOBE	10-3	H 7	
15:06	ASSIST by SMITH, MARK			
14:41				TURNOVER (LOSTBALL) by CARTER, TYSON
14:36	TURNOVER (BADPASS) by PINSON, XAVIER			
14:36	SUB OUT: SMITH, MARK			
14:36	SUB IN: WATSON, TORRENCE			
14:36	SUB OUT: PICKETT, JAVON			
14:36	SUB IN: SMITH, DRU			
14:36	SUB OUT: SMITH, MITCHELL			
14:36	SUB IN: NIKKO, REED			
14:15		12-3	H 9	GOOD! JUMPER by CARTER, TYSON
13:52	MISSED 3PTR by WATSON, TORRENCE			
13:52				REBOUND (DEF) by WOODARD II, ROBERT
13:52	FOUL (PERSONAL) by BROWN, KOBE			
13:52				SUB OUT: PERRY, REGGIE
13:52				SUB OUT: STEWART JR., D.J.
13:52				SUB IN: MOLINAR, IVERSON
13:52				SUB IN: ADO, ABDUL
13:35				MISSED 3PTR by CARTER, TYSON
13:31	REBOUND (DEF) by BROWN, KOBE			
13:03	MISSED LAYUP by BROWN, KOBE			
13:03				REBOUND (DEF) by TEAM
13:03				BLOCK by WOODARD II, ROBERT
12:43		14-3	H 11	GOOD! LAYUP by WOODARD II, ROBERT [PNT]
12:38	MISSED 3PTR by WATSON, TORRENCE			
12:36				REBOUND (DEF) by TEAM
12:36				SUB OUT: WEATHERSPOON, NICK
12:36				SUB IN: STEWART JR., D.J.
12:36	SUB OUT: WATSON, TORRENCE			
12:36	SUB OUT: BROWN, KOBE			
12:36	SUB IN: PICKETT, JAVON			
12:36	SUB IN: SMITH, MITCHELL			
12:19				MISSED JUMPER by CARTER, TYSON
12:16	REBOUND (DEF) by SMITH, DRU			
12:01	TURNOVER (BADPASS) by SMITH, MITCHELL			
12:01				STEAL by MOLINAR, IVERSON



Time	VISITORS: Missouri	Score	Margin	HOME: Mississippi St.
11:57		16-3	H 13	GOOD! DUNK by MOLINAR, IVERSON [FB]
11:41	MISSED 3PTR by SMITH, MITCHELL			
11:34	REBOUND (OFF) by NIKKO, REED			
11:34	GOOD! DUNK by NIKKO, REED	16-5	H 11	
11:06		19-5	H 14	GOOD! 3PTR by WOODARD II, ROBERT
11:06				ASSIST by STEWART JR., D.J.
10:45	GOOD! LAYUP by PICKETT, JAVON [PNT]	19-7	H 12	
10:45	ASSIST by NIKKO, REED			
10:09				TURNOVER (LOSTBALL) by WOODARD II, ROBERT
10:09	STEAL by PICKETT, JAVON			
09:57	MISSED 3PTR by SMITH, DRU			
09:55	REBOUND (OFF) by TEAM			
09:55				
09:55				SUB OUT: WOODARD II, ROBERT
09:55				SUB IN: PERRY, REGGIE
09:55	SUB OUT: PINSON, XAVIER			
09:55	SUB OUT: NIKKO, REED			
09:55	SUB IN: JACKSON, TRAY			
09:55	SUB IN: SMITH, MARK			
09:52	FOUL (OFF) by JACKSON, TRAY			
09:52	TURNOVER (OFFENSIVE) by JACKSON, TRAY			
09:31				TURNOVER (TRAVEL) by PERRY, REGGIE
09:05	MISSED LAYUP by PICKETT, JAVON			
09:02	REBOUND (OFF) by SMITH, MITCHELL			
09:02	GOOD! LAYUP by SMITH, MITCHELL	19-9	H 10	
08:48		21-9	H 12	GOOD! LAYUP by PERRY, REGGIE [PNT]
08:48				ASSIST by CARTER, TYSON
08:48	FOUL (PERSONAL) by JACKSON, TRAY			
08:48				SUB OUT: MOLINAR, IVERSON
08:48				SUB IN: WEATHERSPOON, NICK
08:48	SUB OUT: JACKSON, TRAY			
08:48	SUB IN: NIKKO, REED			
08:48		22-9	H 13	GOOD! FT by PERRY, REGGIE
08:34	MISSED 3PTR by SMITH, MITCHELL			
08:30	REBOUND (OFF) by SMITH, DRU			
08:29	MISSED 3PTR by SMITH, MITCHELL			
08:25				REBOUND (DEF) by CARTER, TYSON
08:23		24-9	H 15	GOOD! DUNK by PERRY, REGGIE [FB]
08:23				ASSIST by CARTER, TYSON
08:12				FOUL (PERSONAL) by STEWART JR., D.J.
08:00	MISSED JUMPER by SMITH, DRU			
08:00				BLOCK by CARTER, TYSON
07:59	REBOUND (OFF) by TEAM			
07:59				
07:59	SUB OUT: SMITH, MARK			
07:59	SUB IN: WATSON, TORRENCE			
07:52	TURNOVER (BADPASS) by NIKKO, REED			
07:38				MISSED 3PTR by PERRY, REGGIE
07:34				REBOUND (OFF) by TEAM
07:30				MISSED JUMPER by CARTER, TYSON
07:27				REBOUND (OFF) by ADO, ABDUL
07:27		26-9	H 17	GOOD! LAYUP by ADO, ABDUL
07:11	MISSED 3PTR by WATSON, TORRENCE			
07:08				REBOUND (DEF) by CARTER, TYSON
07:03				MISSED 3PTR by STEWART JR., D.J.
07:01				REBOUND (OFF) by PERRY, REGGIE
07:01	FOUL (PERSONAL) by NIKKO, REED			
07:01				SUB OUT: CARTER, TYSON
07:01				SUB IN: WOODARD II, ROBERT
07:01	SUB OUT: SMITH, MITCHELL			
07:01	SUB OUT: NIKKO, REED			
07:01	SUB IN: OKONGO, AXEL			
07:01	SUB IN: BROWN, KOBE			
06:45				MISSED JUMPER by WEATHERSPOON, NICK
06:42				REBOUND (OFF) by ADO, ABDUL
06:29				FOUL (OFF) by ADO, ABDUL
06:29				TURNOVER (OFFENSIVE) by ADO, ABDUL
06:29				SUB OUT: ADO, ABDUL
06:29				SUB IN: ODURO, PRINCE
06:19	FOUL (OFF) by SMITH, DRU			
06:19	TURNOVER (OFFENSIVE) by SMITH, DRU			
06:19	SUB OUT: WATSON, TORRENCE			
06:19	SUB IN: PINSON, XAVIER			
05:53				TURNOVER (BADPASS) by WEATHERSPOON, NICK
05:53	STEAL by PINSON, XAVIER			
05:48	GOOD! DUNK by BROWN, KOBE [FB]	26-11	H 15	
05:48	ASSIST by PICKETT, JAVON			
05:27		29-11	H 18	GOOD! 3PTR by WEATHERSPOON, NICK
05:27				ASSIST by STEWART JR., D.J.
05:18				FOUL (PERSONAL) by STEWART JR., D.J.



Time	VISITORS: Missouri	Score	Margin	HOME: Mississippi St.
05:18				SUB OUT: PERRY, REGGIE
05:18				SUB OUT: STEWART JR., D.J.
05:18				SUB IN: MOLINAR, IVERSON
05:18				SUB IN: CARTER, TYSON
05:18	SUB OUT: PICKETT, JAVON			
05:18	SUB IN: SMITH, MARK			
05:07	TURNOVER (BADPASS) by PINSON, XAVIER			
04:47				TURNOVER (BADPASS) by ODURO, PRINCE
04:47	STEAL by SMITH, DRU			
04:39	TURNOVER (LOSTBALL) by BROWN, KOBE			
04:39				STEAL by CARTER, TYSON
04:27				MISSED JUMPER by ODURO, PRINCE
04:24				REBOUND (OFF) by WOODARD II, ROBERT
04:04		31-11	H 20	GOOD! JUMPER by WEATHERSPOON, NICK
03:48	MISSED 3PTR by SMITH, DRU			
03:44	REBOUND (OFF) by BROWN, KOBE			
03:43	MISSED JUMPER by BROWN, KOBE			
03:43				BLOCK by ODURO, PRINCE
03:42	REBOUND (OFF) by BROWN, KOBE			
03:42				FOUL (PERSONAL) by ODURO, PRINCE
03:42				
03:42				SUB OUT: ODURO, PRINCE
03:42				SUB IN: PERRY, REGGIE
03:42	SUB OUT: OKONGO, AXEL			
03:42	SUB IN: SMITH, MITCHELL			
03:42	GOOD! FT by BROWN, KOBE	31-12	H 19	
03:42	GOOD! FT by BROWN, KOBE	31-13	H 18	
03:42	SUB OUT: BROWN, KOBE			
03:42	SUB IN: PICKETT, JAVON			
03:13				MISSED LAYUP by MOLINAR, IVERSON
03:13	BLOCK by PICKETT, JAVON			
03:08	REBOUND (DEF) by PICKETT, JAVON			
03:07	TURNOVER (BADPASS) by PICKETT, JAVON			
03:07				STEAL by WEATHERSPOON, NICK
03:04	FOUL (PERSONAL) by PICKETT, JAVON			
03:04		32-13	H 19	GOOD! FT by WEATHERSPOON, NICK [FB]
03:04		33-13	H 20	GOOD! FT by WEATHERSPOON, NICK [FB]
02:43	GOOD! LAYUP by PICKETT, JAVON	33-15	H 18	
02:12				MISSED 3PTR by CARTER, TYSON
02:07	REBOUND (DEF) by SMITH, MARK			
02:04				FOUL (PERSONAL) by CARTER, TYSON
01:54	GOOD! LAYUP by PICKETT, JAVON	33-17	H 16	
01:36		36-17	H 19	GOOD! 3PTR by PERRY, REGGIE
01:36				ASSIST by CARTER, TYSON
01:22	MISSED JUMPER by PICKETT, JAVON			
01:22				BLOCK by WOODARD II, ROBERT
01:18				REBOUND (DEF) by WOODARD II, ROBERT
01:04				MISSED 3PTR by PERRY, REGGIE
00:58	REBOUND (DEF) by PICKETT, JAVON			
00:56	FOUL (OFF) by PICKETT, JAVON			
00:56	TURNOVER (OFFENSIVE) by PICKETT, JAVON			
00:56	SUB OUT: PICKETT, JAVON			
00:56	SUB IN: WATSON, TORRENCE			
00:42		38-17	H 21	GOOD! LAYUP by CARTER, TYSON [PNT]
00:42				ASSIST by WEATHERSPOON, NICK
00:25	GOOD! 3PTR by SMITH, MARK	38-20	H 18	
00:25	ASSIST by PINSON, XAVIER			
00:13				TIMEOUT 30SEC
00:13	SUB OUT: SMITH, MITCHELL			
00:13	SUB IN: BROWN, KOBE			
00:03		40-20	H 20	GOOD! JUMPER by WEATHERSPOON, NICK

Missouri 20, Mississippi St. 40

Points from (This Period)	MIZ	MST
In the Paint	12	20
Off Turns	4	18
2nd Chance	6	4
Fast Break	2	8
Bench	6	6



**Official Box Score**  
**Missouri vs Mississippi St.**  
**Second Half Statistics Only**  
**January 14, 2020 at Humphrey Coliseum - Starkville, MS**



### Missouri 25

No.	Player	S	Pts	FG	3FG	FT	OR	DR	TR	PF	A	TO	Blk	Stl	Min	+/-
05	SMITH, MITCHELL	F	0	0-2	0-2	0-0	0	2	2	2	0	1	0	1	12	-8
12	SMITH, DRU	G	2	1-2	0-0	0-0	1	1	2	0	3	1	1	2	13	-11
13	SMITH, MARK	G	5	2-5	1-4	0-1	0	2	2	1	0	0	0	1	13	-9
14	NIKKO, REED	F	4	1-2	0-0	2-2	0	0	0	1	0	0	0	0	11	-3
24	BROWN, KOBE	F	7	2-4	1-3	2-4	1	0	1	0	0	0	0	0	11	-7
00	WATSON, TORRENCE	G	0	0-2	0-1	0-0	0	1	1	0	0	1	0	0	13	-1
01	PINSON, XAVIER	G	0	0-4	0-3	0-0	0	0	0	0	2	0	0	0	9	-11
02	JACKSON, TRAY	F	0	0-0	0-0	0-0	0	0	0	0	0	0	0	0	0	0
04	PICKETT, JAVON	G	3	1-2	1-1	0-0	0	0	0	2	0	3	0	0	5	3
10	YERKES, EVAN	G	0	0-1	0-1	0-0	0	1	1	0	1	0	0	0	5	4
15	OKONGO, AXEL	F	0	0-0	0-0	0-0	0	0	0	0	0	0	0	0	0	0
25	FORD, BROOKS	G	0	0-0	0-0	0-0	0	0	0	0	0	0	0	0	1	4
42	BRAUN, PARKER	F	4	2-2	0-0	0-1	0	1	1	0	0	0	1	1	5	4
	TEAM						0	1	1	0		0				
<b>TOTALS</b>			<b>25</b>	<b>9-26</b>	<b>3-15</b>	<b>4-8</b>	<b>2</b>	<b>9</b>	<b>11</b>	<b>6</b>	<b>6</b>	<b>6</b>	<b>2</b>	<b>5</b>	<b>98</b>	

*Shooting By Period*

Period	FG	FG%	3FG	3FG%	FT	FT%
2nd Half	9-26	35%	3-15	20%	4-8	50%
Game	17-49	34.7%	5-25	20.0%	6-10	60.0%

Deadball Rebounds: 0,0

Last FG Half: MIZ -

### Mississippi St. 32

No.	Player	S	Pts	FG	3FG	FT	OR	DR	TR	PF	A	TO	Blk	Stl	Min	+/-
00	WEATHERSPOON, NICK	G	2	1-3	0-0	0-0	1	0	1	0	1	3	0	0	12	3
01	PERRY, REGGIE	F	11	4-5	1-2	2-2	0	7	7	0	0	1	1	0	14	10
03	STEWART JR., D.J.	G	0	0-2	0-0	0-0	0	1	1	0	0	1	0	0	9	7
12	WOODARD II, ROBERT	G	2	1-3	0-0	0-0	1	1	2	1	0	2	0	1	12	3
24	ADO, ABDUL	F	0	0-1	0-0	0-0	1	1	2	1	1	0	1	0	12	12
02	KING, ELIAS	F	2	1-1	0-0	0-0	0	1	1	0	0	0	0	0	4	-3
04	BUTTS, DEVIN	G	0	0-2	0-0	0-0	1	0	1	1	0	0	0	0	4	-3
05	MOLINAR, IVERSON	G	2	1-1	0-0	0-0	0	1	1	3	1	1	0	0	11	5
15	ODURO, PRINCE	F	2	1-1	0-0	0-0	0	2	2	1	0	0	0	0	2	1
20	STORM, MITCHELL	F	0	0-0	0-0	0-0	0	0	0	1	0	0	0	0	1	-4
23	CARTER, TYSON	G	11	4-6	1-2	2-2	0	2	2	1	4	0	0	2	13	11
30	JUNKIN, ANDREW	F	0	0-0	0-0	0-0	0	0	0	0	0	0	0	0	1	-4
32	POST, QUINTEN	F	0	0-2	0-1	0-0	0	3	3	0	1	0	0	0	4	-3
	TEAM						1	0	1	0		0				
<b>TOTALS</b>			<b>32</b>	<b>13-27</b>	<b>2-5</b>	<b>4-4</b>	<b>5</b>	<b>19</b>	<b>24</b>	<b>9</b>	<b>8</b>	<b>8</b>	<b>2</b>	<b>3</b>	<b>98</b>	

*Shooting By Period*

Period	FG	FG%	3FG	3FG%	FT	FT%
2nd Half	13-27	48%	2-5	40%	4-4	100%
Game	30-55	54.5%	5-13	38.5%	7-7	100.0%

Deadball Rebounds: 0,1

Last FG Half: MST -

Game Notes:

Officials: Joe Lindsay, Anthony Jordan, Todd Austin  
Attendance: 5904

Start Time: 09:05 PM ET  
End Time: 11:07 PM ET  
Game Duration: 2:01  
Conference Game;

Score	1st	2nd	TOT
MIZ	20	25	45
MST	40	32	72

Points from (This Period)	MIZ	MST
In the Paint	12	18
Off Turns	7	4
2nd Chance	0	4
Fast Break	6	6
Bench	7	17



**Official Play-By-Play**  
**Missouri vs Mississippi St.**  
**Second Half**

**January 14, 2020 at Humphrey Coliseum - Starkville, MS**



**Period 2**

**Starters:**

**Missouri:** 5 SMITH, MITCHELL (F); 12 SMITH, DRU (G); 13 SMITH, MARK (G); 14 NIKKO, REED (F); 24 BROWN, KOBE (F);

**Mississippi St.:** 0 WEATHERSPOON, NICK (G); 1 PERRY, REGGIE (F); 3 STEWART JR., D.J. (G); 12 WOODARD II, ROBERT (G); 24 ADO, ABDUL (F);

Time	VISITORS: Missouri	Score	Margin	HOME: Mississippi St.
20:00	SUB OUT: BROWN, KOBE			
20:00	SUB IN: PICKETT, JAVON			
20:00	SUB OUT: WATSON, TORRENCE			
20:00	SUB OUT: PINSON, XAVIER			
20:00	SUB IN: SMITH, MITCHELL			
20:00	SUB IN: NIKKO, REED			
19:34	GOOD! 3PTR by PICKETT, JAVON	40-23	H 17	
19:34	ASSIST by SMITH, DRU			
19:04	FOUL (PERSONAL) by SMITH, MITCHELL			
19:04				SUB OUT: MOLINAR, IVERSON
19:04				SUB OUT: CARTER, TYSON
19:04				SUB IN: STEWART JR., D.J.
19:04				SUB IN: ADO, ABDUL
19:04		41-23	H 18	GOOD! FT by PERRY, REGGIE
19:04		42-23	H 19	GOOD! FT by PERRY, REGGIE
18:55	TURNOVER (BADPASS) by SMITH, MITCHELL			
18:43	FOUL (PERSONAL) by PICKETT, JAVON			
18:35				MISSED JUMPER by STEWART JR., D.J.
18:31	REBOUND (DEF) by SMITH, DRU			
18:16	MISSED JUMPER by PICKETT, JAVON			
18:14				REBOUND (DEF) by PERRY, REGGIE
18:07				MISSED LAYUP by WOODARD II, ROBERT
18:03				REBOUND (OFF) by WOODARD II, ROBERT
18:02				TURNOVER (LOSTBALL) by WOODARD II, ROBERT
18:02	STEAL by SMITH, MARK			
17:56	GOOD! LAYUP by SMITH, DRU [FB/PNT]	42-25	H 17	
17:32				TURNOVER (BADPASS) by STEWART JR., D.J.
17:32	STEAL by SMITH, DRU			
17:26	MISSED 3PTR by SMITH, MARK			
17:23				REBOUND (DEF) by PERRY, REGGIE
17:06				MISSED JUMPER by STEWART JR., D.J.
17:03	REBOUND (DEF) by SMITH, MARK			
16:56	TURNOVER (TRAVEL) by PICKETT, JAVON			
16:56	SUB OUT: PICKETT, JAVON			
16:56	SUB IN: WATSON, TORRENCE			
16:32				TURNOVER (LOSTBALL) by WEATHERSPOON, NICK
16:32	STEAL by SMITH, DRU			
16:27				FOUL (PERSONAL) by ADO, ABDUL
16:27	GOOD! FT by NIKKO, REED [FB]	42-26	H 16	
16:27				SUB OUT: ADO, ABDUL
16:27				SUB IN: CARTER, TYSON
16:27	GOOD! FT by NIKKO, REED [FB]	42-27	H 15	
16:15				MISSED JUMPER by WEATHERSPOON, NICK
16:15	BLOCK by SMITH, DRU			
16:15				REBOUND (OFF) by TEAM
16:15	SUB OUT: SMITH, MARK			
16:15	SUB OUT: NIKKO, REED			
16:15	SUB IN: PICKETT, JAVON			
16:15	SUB IN: BROWN, KOBE			
16:00		44-27	H 17	GOOD! DUNK by WOODARD II, ROBERT
16:00				ASSIST by WEATHERSPOON, NICK
15:45	GOOD! DUNK by BROWN, KOBE	44-29	H 15	
15:45	ASSIST by SMITH, DRU			
15:12				MISSED 3PTR by PERRY, REGGIE
15:09	REBOUND (DEF) by SMITH, MITCHELL			
15:09				
15:09	SUB OUT: PICKETT, JAVON			
15:09	SUB IN: PINSON, XAVIER			
14:59	MISSED LAYUP by SMITH, DRU			
14:59				BLOCK by PERRY, REGGIE
14:55				REBOUND (DEF) by STEWART JR., D.J.
14:55				TURNOVER (TRAVEL) by WEATHERSPOON, NICK
14:38	MISSED 3PTR by BROWN, KOBE			
14:34				REBOUND (DEF) by PERRY, REGGIE
14:16		46-29	H 17	GOOD! LAYUP by PERRY, REGGIE [PNT]
13:59				FOUL (PERSONAL) by WOODARD II, ROBERT
13:59				SUB OUT: STEWART JR., D.J.
13:59				SUB IN: MOLINAR, IVERSON
13:59	SUB OUT: SMITH, MITCHELL			
13:59	SUB OUT: SMITH, DRU			



Time	VISITORS: Missouri	Score	Margin	HOME: Mississippi St.
13:59	SUB IN: SMITH, MARK			
13:59	SUB IN: NIKKO, REED			
13:51	MISSED JUMPER by PINSON, XAVIER			
13:48				REBOUND (DEF) by PERRY, REGGIE
13:25				MISSED JUMPER by WEATHERSPOON, NICK
13:22	REBOUND (DEF) by SMITH, MARK			
13:06				SUB OUT: PERRY, REGGIE
13:06				SUB IN: ADO, ABDUL
12:58	GOOD! DUNK by NIKKO, REED	46-31	H 15	
12:58	ASSIST by PINSON, XAVIER			
12:29		48-31	H 17	GOOD! JUMPER by CARTER, TYSON
12:13				FOUL (PERSONAL) by MOLINAR, IVERSON
12:13	SUB OUT: WATSON, TORRENCE			
12:13	SUB OUT: PINSON, XAVIER			
12:13	SUB OUT: BROWN, KOBE			
12:13	SUB IN: PICKETT, JAVON			
12:13	SUB IN: SMITH, MITCHELL			
12:13	SUB IN: SMITH, DRU			
11:58	TURNOVER (BADPASS) by PICKETT, JAVON			
11:58				STEAL by WOODARD II, ROBERT
11:53				TURNOVER (BADPASS) by WOODARD II, ROBERT
11:53				
11:41	MISSED 3PTR by SMITH, MARK			
11:38				REBOUND (DEF) by MOLINAR, IVERSON
11:11				MISSED LAYUP by ADO, ABDUL
11:05	REBOUND (DEF) by SMITH, MITCHELL			
11:01	FOUL (OFF) by PICKETT, JAVON			
11:01	TURNOVER (OFFENSIVE) by PICKETT, JAVON			
11:01				SUB OUT: WEATHERSPOON, NICK
11:01				SUB OUT: WOODARD II, ROBERT
11:01				SUB IN: PERRY, REGGIE
11:01				SUB IN: STEWART JR., D.J.
11:01	SUB OUT: PICKETT, JAVON			
11:01	SUB IN: WATSON, TORRENCE			
10:42				MISSED JUMPER by CARTER, TYSON
10:40	REBOUND (DEF) by TEAM			
10:14	MISSED JUMPER by WATSON, TORRENCE			
10:14				BLOCK by ADO, ABDUL
10:10				REBOUND (DEF) by PERRY, REGGIE
09:49	SUB OUT: WATSON, TORRENCE			
09:49	SUB OUT: SMITH, MITCHELL			
09:49	SUB IN: PINSON, XAVIER			
09:49	SUB IN: BROWN, KOBE			
09:48		51-31	H 20	GOOD! 3PTR by CARTER, TYSON
09:48				ASSIST by ADO, ABDUL
09:33	MISSED 3PTR by BROWN, KOBE			
09:29				REBOUND (DEF) by CARTER, TYSON
09:02		54-31	H 23	GOOD! 3PTR by PERRY, REGGIE
09:02				ASSIST by CARTER, TYSON
08:45	GOOD! 3PTR by SMITH, MARK	54-34	H 20	
08:45	ASSIST by SMITH, DRU			
08:43	TIMEOUT 30SEC			
08:43	SUB OUT: NIKKO, REED			
08:43	SUB IN: SMITH, MITCHELL			
08:18	FOUL (PERSONAL) by SMITH, MITCHELL			
08:17		56-34	H 22	GOOD! LAYUP by CARTER, TYSON
08:17				ASSIST by MOLINAR, IVERSON
08:06	MISSED 3PTR by SMITH, MITCHELL			
08:01	REBOUND (OFF) by BROWN, KOBE			
07:58	MISSED 3PTR by PINSON, XAVIER			
07:54				REBOUND (DEF) by ADO, ABDUL
07:48		58-34	H 24	GOOD! DUNK by PERRY, REGGIE
07:48				ASSIST by CARTER, TYSON
07:28	MISSED 3PTR by SMITH, MARK			
07:25	REBOUND (OFF) by SMITH, DRU			
07:23	MISSED 3PTR by PINSON, XAVIER			
07:20				REBOUND (DEF) by PERRY, REGGIE
07:16		60-34	H 26	GOOD! LAYUP by MOLINAR, IVERSON [FB]
07:16				ASSIST by CARTER, TYSON
07:16	TIMEOUT 30SEC			
07:16				
07:16	SUB OUT: PINSON, XAVIER			
07:16	SUB OUT: BROWN, KOBE			
07:16	SUB IN: WATSON, TORRENCE			
07:16	SUB IN: NIKKO, REED			
07:02	MISSED 3PTR by SMITH, MITCHELL			
06:59				REBOUND (DEF) by CARTER, TYSON
06:49				TURNOVER (BADPASS) by PERRY, REGGIE
06:49	STEAL by SMITH, MITCHELL			
06:45	GOOD! LAYUP by SMITH, MARK [FB/PNT]	60-36	H 24	



Time	VISITORS: Missouri	Score	Margin	HOME: Mississippi St.
06:45				FOUL (PERSONAL) by MOLINAR, IVERSON
06:45				SUB OUT: STEWART JR., D.J.
06:45				SUB OUT: MOLINAR, IVERSON
06:45				SUB IN: WEATHERSPOON, NICK
06:45				SUB IN: WOODARD II, ROBERT
06:45	MISSED FT by SMITH, MARK			
06:45				REBOUND (DEF) by PERRY, REGGIE
06:19				MISSED 3PTR by CARTER, TYSON
06:18				REBOUND (OFF) by ADO, ABDUL
06:18	FOUL (PERSONAL) by NIKKO, REED			
06:16				MISSED JUMPER by WOODARD II, ROBERT
06:11				REBOUND (OFF) by WEATHERSPOON, NICK
06:11		62-36	H 26	GOOD! LAYUP by WEATHERSPOON, NICK
05:58	TURNOVER (BADPASS) by WATSON, TORRENCE			
05:58				STEAL by CARTER, TYSON
05:51		64-36	H 28	GOOD! LAYUP by PERRY, REGGIE [FB]
05:51				ASSIST by CARTER, TYSON
05:37	MISSED JUMPER by NIKKO, REED			
05:33				REBOUND (DEF) by WOODARD II, ROBERT
05:13		66-36	H 30	GOOD! JUMPER by CARTER, TYSON
05:00	TURNOVER (BADPASS) by SMITH, DRU			
05:00				STEAL by CARTER, TYSON
04:54	FOUL (PERSONAL) by SMITH, MARK			
04:54		67-36	H 31	GOOD! FT by CARTER, TYSON [FB]
04:54	SUB OUT: SMITH, MITCHELL			
04:54	SUB OUT: SMITH, DRU			
04:54	SUB OUT: SMITH, MARK			
04:54	SUB OUT: NIKKO, REED			
04:54	SUB IN: PINSON, XAVIER			
04:54	SUB IN: YERKES, EVAN			
04:54	SUB IN: BROWN, KOBE			
04:54	SUB IN: BRAUN, PARKER			
04:54		68-36	H 32	GOOD! FT by CARTER, TYSON [FB]
04:44	GOOD! LAYUP by BRAUN, PARKER	68-38	H 30	
04:04				TURNOVER (BADPASS) by WEATHERSPOON, NICK
04:04	STEAL by BRAUN, PARKER			
03:58				FOUL (PERSONAL) by CARTER, TYSON
03:58				
03:58				SUB OUT: WEATHERSPOON, NICK
03:58				SUB OUT: PERRY, REGGIE
03:58				SUB OUT: WOODARD II, ROBERT
03:58				SUB OUT: CARTER, TYSON
03:58				SUB OUT: ADO, ABDUL
03:58				SUB IN: KING, ELIAS
03:58				SUB IN: BUTTS, DEVIN
03:58				SUB IN: MOLINAR, IVERSON
03:58				SUB IN: ODURO, PRINCE
03:58				SUB IN: POST, QUINTEN
03:48	MISSED 3PTR by PINSON, XAVIER			
03:44				REBOUND (DEF) by ODURO, PRINCE
03:34				MISSED JUMPER by BUTTS, DEVIN
03:31	REBOUND (DEF) by BRAUN, PARKER			
03:14				FOUL (PERSONAL) by ODURO, PRINCE
03:14	GOOD! FT by BROWN, KOBE	68-39	H 29	
03:14	MISSED FT by BROWN, KOBE			
03:14				REBOUND (DEF) by POST, QUINTEN
02:48		70-39	H 31	GOOD! LAYUP by ODURO, PRINCE
02:38	GOOD! LAYUP by BRAUN, PARKER [PNT]	70-41	H 29	
02:38	ASSIST by PINSON, XAVIER			
02:38				FOUL (PERSONAL) by BUTTS, DEVIN
02:38	MISSED FT by BRAUN, PARKER			
02:38				REBOUND (DEF) by ODURO, PRINCE
02:21		72-41	H 31	GOOD! LAYUP by KING, ELIAS
02:21				ASSIST by POST, QUINTEN
02:07	MISSED 3PTR by YERKES, EVAN			
02:04				REBOUND (DEF) by POST, QUINTEN
01:50				FOUL (OFF) by MOLINAR, IVERSON
01:50				TURNOVER (OFFENSIVE) by MOLINAR, IVERSON
01:50	SUB OUT: PINSON, XAVIER			
01:50	SUB IN: FORD, BROOKS			
01:37				SUB OUT: MOLINAR, IVERSON
01:37				SUB IN: STORM, MITCHELL
01:31				FOUL (PERSONAL) by STORM, MITCHELL
01:31				SUB OUT: ODURO, PRINCE
01:31				SUB IN: JUNKIN, ANDREW
01:31	GOOD! FT by BROWN, KOBE	72-42	H 30	
01:31	MISSED FT by BROWN, KOBE			
01:30				REBOUND (DEF) by POST, QUINTEN
01:17				MISSED LAYUP by POST, QUINTEN
01:17	BLOCK by BRAUN, PARKER			



Time	VISITORS: Missouri	Score	Margin	HOME: Mississippi St.
01:12	REBOUND (DEF) by YERKES, EVAN			
01:01	GOOD! 3PTR by BROWN, KOBE	72-45	H 27	
01:01	ASSIST by YERKES, EVAN			
00:49				MISSED JUMPER by BUTTS, DEVIN
00:46				REBOUND (OFF) by BUTTS, DEVIN
00:34				MISSED 3PTR by POST, QUINTEN
00:29	REBOUND (DEF) by WATSON, TORRENCE			
00:25	MISSED 3PTR by WATSON, TORRENCE			
00:22				REBOUND (DEF) by KING, ELIAS

Missouri 45, Mississippi St. 72

Points from (This Period)	MIZ	MST
In the Paint	12	18
Off Turns	7	4
2nd Chance	0	4
Fast Break	6	6
Bench	7	17



**Official Scoring/Possession Reference Chart**  
**Missouri vs Mississippi St.**

**Period 1**

**January 14, 2020 at Humphrey Coliseum - Starkville, MS**



**Period 1**

**Starters:**

**Missouri:** 5 SMITH, MITCHELL (F); 12 SMITH, DRU (G); 13 SMITH, MARK (G); 14 NIKKO, REED (F); 24 BROWN, KOBE (F);

**Mississippi St.:** 0 WEATHERSPOON, NICK (G); 1 PERRY, REGGIE (F); 3 STEWART JR., D.J. (G); 12 WOODARD II, ROBERT (G); 24 ADO, ABDUL (F);

Time	VISITORS: Missouri	Score	Margin	HOME: Mississippi St.
19:28		2-0	H 2	GOOD! JUMPER by ADO, ABDUL [PNT]
18:54		4-0	H 4	GOOD! JUMPER by WOODARD II, ROBERT
17:44		6-0	H 6	GOOD! LAYUP by ADO, ABDUL [PNT]
17:10		8-0	H 8	GOOD! LAYUP by PERRY, REGGIE [FB/PNT]
15:24		10-0	H 10	GOOD! LAYUP by PERRY, REGGIE
15:06	GOOD! 3PTR by BROWN, KOBE	10-3	H 7	
14:15		12-3	H 9	GOOD! JUMPER by CARTER, TYSON
12:43		14-3	H 11	GOOD! LAYUP by WOODARD II, ROBERT [PNT]
11:57		16-3	H 13	GOOD! DUNK by MOLINAR, IVERSON [FB]
11:34	GOOD! DUNK by NIKKO, REED	16-5	H 11	
11:06		19-5	H 14	GOOD! 3PTR by WOODARD II, ROBERT
10:45	GOOD! LAYUP by PICKETT, JAVON [PNT]	19-7	H 12	
09:02	GOOD! LAYUP by SMITH, MITCHELL	19-9	H 10	
08:48		21-9	H 12	GOOD! LAYUP by PERRY, REGGIE [PNT]
08:48		22-9	H 13	GOOD! FT by PERRY, REGGIE
08:23		24-9	H 15	GOOD! DUNK by PERRY, REGGIE [FB]
07:27		26-9	H 17	GOOD! LAYUP by ADO, ABDUL
05:48	GOOD! DUNK by BROWN, KOBE [FB]	26-11	H 15	
05:27		29-11	H 18	GOOD! 3PTR by WEATHERSPOON, NICK
04:04		31-11	H 20	GOOD! JUMPER by WEATHERSPOON, NICK
03:42	GOOD! FT by BROWN, KOBE	31-12	H 19	
03:42	GOOD! FT by BROWN, KOBE	31-13	H 18	
03:04		32-13	H 19	GOOD! FT by WEATHERSPOON, NICK [FB]
03:04		33-13	H 20	GOOD! FT by WEATHERSPOON, NICK [FB]
02:43	GOOD! LAYUP by PICKETT, JAVON	33-15	H 18	
01:54	GOOD! LAYUP by PICKETT, JAVON	33-17	H 16	
01:36		36-17	H 19	GOOD! 3PTR by PERRY, REGGIE
00:42		38-17	H 21	GOOD! LAYUP by CARTER, TYSON [PNT]
00:25	GOOD! 3PTR by SMITH, MARK	38-20	H 18	
00:03		40-20	H 20	GOOD! JUMPER by WEATHERSPOON, NICK

**Missouri 20, Mississippi St. 40**



**Official Scoring/Possession Reference Chart**  
**Missouri vs Mississippi St.**  
**Period 2**  
**January 14, 2020 at Humphrey Coliseum - Starkville, MS**



**Period 2**

**Starters:**

**Missouri:** 5 SMITH, MITCHELL (F); 12 SMITH, DRU (G); 13 SMITH, MARK (G); 14 NIKKO, REED (F); 24 BROWN, KOBE (F);

**Mississippi St.:** 0 WEATHERSPOON, NICK (G); 1 PERRY, REGGIE (F); 3 STEWART JR., D.J. (G); 12 WOODARD II, ROBERT (G); 24 ADO, ABDUL (F);

Time	VISITORS: Missouri	Score	Margin	HOME: Mississippi St.
19:34	GOOD! 3PTR by PICKETT, JAVON	40-23	H 17	
19:04		41-23	H 18	GOOD! FT by PERRY, REGGIE
19:04		42-23	H 19	GOOD! FT by PERRY, REGGIE
17:56	GOOD! LAYUP by SMITH, DRU [FB/PNT]	42-25	H 17	
16:27	GOOD! FT by NIKKO, REED [FB]	42-26	H 16	
16:27	GOOD! FT by NIKKO, REED [FB]	42-27	H 15	
16:00		44-27	H 17	GOOD! DUNK by WOODARD II, ROBERT
15:45	GOOD! DUNK by BROWN, KOBE	44-29	H 15	
14:16		46-29	H 17	GOOD! LAYUP by PERRY, REGGIE [PNT]
12:58	GOOD! DUNK by NIKKO, REED	46-31	H 15	
12:29		48-31	H 17	GOOD! JUMPER by CARTER, TYSON
09:48		51-31	H 20	GOOD! 3PTR by CARTER, TYSON
09:02		54-31	H 23	GOOD! 3PTR by PERRY, REGGIE
08:45	GOOD! 3PTR by SMITH, MARK	54-34	H 20	
08:17		56-34	H 22	GOOD! LAYUP by CARTER, TYSON
07:48		58-34	H 24	GOOD! DUNK by PERRY, REGGIE
07:16		60-34	H 26	GOOD! LAYUP by MOLINAR, IVERSON [FB]
06:45	GOOD! LAYUP by SMITH, MARK [FB/PNT]	60-36	H 24	
06:11		62-36	H 26	GOOD! LAYUP by WEATHERSPOON, NICK
05:51		64-36	H 28	GOOD! LAYUP by PERRY, REGGIE [FB]
05:13		66-36	H 30	GOOD! JUMPER by CARTER, TYSON
04:54		67-36	H 31	GOOD! FT by CARTER, TYSON [FB]
04:54		68-36	H 32	GOOD! FT by CARTER, TYSON [FB]
04:44	GOOD! LAYUP by BRAUN, PARKER	68-38	H 30	
03:14	GOOD! FT by BROWN, KOBE	68-39	H 29	
02:48		70-39	H 31	GOOD! LAYUP by ODURO, PRINCE
02:38	GOOD! LAYUP by BRAUN, PARKER [PNT]	70-41	H 29	
02:21		72-41	H 31	GOOD! LAYUP by KING, ELIAS
01:31	GOOD! FT by BROWN, KOBE	72-42	H 30	
01:01	GOOD! 3PTR by BROWN, KOBE	72-45	H 27	

**Missouri 45, Mississippi St. 72**



**Official Substitutions Log  
Missouri vs Mississippi St.  
Period 1**

**January 14, 2020 at Humphrey Coliseum - Starkville, MS**



<b>VISITORS: Missouri</b>	<b>Time</b>	<b>Score</b>	<b>HOME: Mississippi St.</b>
5 SMITH, MITCHELL			0 WEATHERSPOON, NICK
12 SMITH, DRU			1 PERRY, REGGIE
13 SMITH, MARK			3 STEWART JR., D.J.
14 NIKKO, REED			12 WOODARD II, ROBERT
24 BROWN, KOBE			24 ADO, ABDUL
SUB OUT: 24 BROWN, KOBE	18:17	0-4	
SUB IN: 4 PICKETT, JAVON	18:17		
SUB OUT: 12 SMITH, DRU	16:12	0-8	
SUB OUT: 14 NIKKO, REED	16:12		
SUB IN: 1 PINSON, XAVIER	16:12		
SUB IN: 24 BROWN, KOBE	16:12		
	15:52	0-8	SUB OUT: ADO, ABDUL
	15:52		SUB IN: CARTER, TYSON
SUB OUT: 13 SMITH, MARK	14:36	3-10	
SUB IN: 00 WATSON, TORRENCE	14:36		
SUB OUT: 4 PICKETT, JAVON	14:36		
SUB IN: 12 SMITH, DRU	14:36		
SUB OUT: 5 SMITH, MITCHELL	14:36		
SUB IN: 14 NIKKO, REED	14:36		
	13:52	3-12	SUB OUT: PERRY, REGGIE
	13:52		SUB OUT: STEWART JR., D.J.
	13:52		SUB IN: MOLINAR, IVERSON
	13:52		SUB IN: ADO, ABDUL
	12:36	3-14	SUB OUT: WEATHERSPOON, NICK
	12:36		SUB IN: STEWART JR., D.J.
SUB OUT: 00 WATSON, TORRENCE	12:36		
SUB OUT: 24 BROWN, KOBE	12:36		
SUB IN: 4 PICKETT, JAVON	12:36		
SUB IN: 5 SMITH, MITCHELL	12:36		
	09:55	7-19	SUB OUT: WOODARD II, ROBERT
	09:55		SUB IN: PERRY, REGGIE
SUB OUT: 1 PINSON, XAVIER	09:55		
SUB OUT: 14 NIKKO, REED	09:55		
SUB IN: 2 JACKSON, TRAY	09:55		
SUB IN: 13 SMITH, MARK	09:55		
	08:48	9-21	SUB OUT: MOLINAR, IVERSON
	08:48		SUB IN: WEATHERSPOON, NICK
SUB OUT: 2 JACKSON, TRAY	08:48		
SUB IN: 14 NIKKO, REED	08:48		
SUB OUT: 13 SMITH, MARK	07:59	9-24	
SUB IN: 00 WATSON, TORRENCE	07:59		
	07:01	9-26	SUB OUT: CARTER, TYSON
	07:01		SUB IN: WOODARD II, ROBERT
SUB OUT: 5 SMITH, MITCHELL	07:01		
SUB OUT: 14 NIKKO, REED	07:01		
SUB IN: 15 OKONGO, AXEL	07:01		
SUB IN: 24 BROWN, KOBE	07:01		
	06:29	9-26	SUB OUT: ADO, ABDUL
	06:29		SUB IN: ODURO, PRINCE
SUB OUT: 00 WATSON, TORRENCE	06:19	9-26	
SUB IN: 1 PINSON, XAVIER	06:19		
	05:18	11-29	SUB OUT: PERRY, REGGIE
	05:18		SUB OUT: STEWART JR., D.J.
	05:18		SUB IN: MOLINAR, IVERSON
	05:18		SUB IN: CARTER, TYSON
SUB OUT: 4 PICKETT, JAVON	05:18		
SUB IN: 13 SMITH, MARK	05:18		
	03:42	11-31	SUB OUT: ODURO, PRINCE
	03:42		SUB IN: PERRY, REGGIE
SUB OUT: 15 OKONGO, AXEL	03:42		
SUB IN: 5 SMITH, MITCHELL	03:42		
SUB OUT: 24 BROWN, KOBE	03:42		
SUB IN: 4 PICKETT, JAVON	03:42		
SUB OUT: 4 PICKETT, JAVON	00:56	17-36	
SUB IN: 00 WATSON, TORRENCE	00:56		
SUB OUT: 5 SMITH, MITCHELL	00:13	20-38	
SUB IN: 24 BROWN, KOBE	00:13		

**Missouri 20, Mississippi St. 40**



**Official Substitutions Log  
Missouri vs Mississippi St.  
Period 2**

**January 14, 2020 at Humphrey Coliseum - Starkville, MS**



VISITORS: Missouri	Time	Score	HOME: Mississippi St.
5 SMITH, MITCHELL			0 WEATHERSPOON, NICK
12 SMITH, DRU			1 PERRY, REGGIE
13 SMITH, MARK			3 STEWART JR., D.J.
14 NIKKO, REED			12 WOODARD II, ROBERT
24 BROWN, KOBE			24 ADO, ABDUL
SUB OUT: 24 BROWN, KOBE	20:00	-	
SUB IN: 4 PICKETT, JAVON	20:00		
SUB OUT: 00 WATSON, TORRENCE	20:00		
SUB OUT: 1 PINSON, XAVIER	20:00		
SUB IN: 5 SMITH, MITCHELL	20:00		
SUB IN: 14 NIKKO, REED	20:00		
	19:04	23-40	SUB OUT: MOLINAR, IVERSON
	19:04		SUB OUT: CARTER, TYSON
	19:04		SUB IN: STEWART JR., D.J.
	19:04		SUB IN: ADO, ABDUL
SUB OUT: 4 PICKETT, JAVON	16:56	25-42	
SUB IN: 00 WATSON, TORRENCE	16:56		
	16:27	26-42	SUB OUT: ADO, ABDUL
	16:27		SUB IN: CARTER, TYSON
SUB OUT: 13 SMITH, MARK	16:15	27-42	
SUB OUT: 14 NIKKO, REED	16:15		
SUB IN: 4 PICKETT, JAVON	16:15		
SUB IN: 24 BROWN, KOBE	16:15		
SUB OUT: 4 PICKETT, JAVON	15:09	29-44	
SUB IN: 1 PINSON, XAVIER	15:09		
	13:59	29-46	SUB OUT: STEWART JR., D.J.
	13:59		SUB IN: MOLINAR, IVERSON
SUB OUT: 5 SMITH, MITCHELL	13:59		
SUB OUT: 12 SMITH, DRU	13:59		
SUB IN: 13 SMITH, MARK	13:59		
SUB IN: 14 NIKKO, REED	13:59		
	13:06	29-46	SUB OUT: PERRY, REGGIE
	13:06		SUB IN: ADO, ABDUL
SUB OUT: 00 WATSON, TORRENCE	12:13	31-48	
SUB OUT: 1 PINSON, XAVIER	12:13		
SUB OUT: 24 BROWN, KOBE	12:13		
SUB IN: 4 PICKETT, JAVON	12:13		
SUB IN: 5 SMITH, MITCHELL	12:13		
SUB IN: 12 SMITH, DRU	12:13		
	11:01	31-48	SUB OUT: WEATHERSPOON, NICK
	11:01		SUB OUT: WOODARD II, ROBERT
	11:01		SUB IN: PERRY, REGGIE
	11:01		SUB IN: STEWART JR., D.J.
SUB OUT: 4 PICKETT, JAVON	11:01		
SUB IN: 00 WATSON, TORRENCE	11:01		
SUB OUT: 00 WATSON, TORRENCE	09:49	31-48	
SUB OUT: 5 SMITH, MITCHELL	09:49		
SUB IN: 1 PINSON, XAVIER	09:49		
SUB IN: 24 BROWN, KOBE	09:49		
SUB OUT: 14 NIKKO, REED	08:43	34-54	
SUB IN: 5 SMITH, MITCHELL	08:43		
SUB OUT: 1 PINSON, XAVIER	07:16	34-60	
SUB OUT: 24 BROWN, KOBE	07:16		
SUB IN: 00 WATSON, TORRENCE	07:16		
SUB IN: 14 NIKKO, REED	07:16		
	06:45	36-60	SUB OUT: STEWART JR., D.J.
	06:45		SUB OUT: MOLINAR, IVERSON
	06:45		SUB IN: WEATHERSPOON, NICK
	06:45		SUB IN: WOODARD II, ROBERT
SUB OUT: 5 SMITH, MITCHELL	04:54	36-67	
SUB OUT: 12 SMITH, DRU	04:54		
SUB OUT: 13 SMITH, MARK	04:54		
SUB OUT: 14 NIKKO, REED	04:54		
SUB IN: 1 PINSON, XAVIER	04:54		
SUB IN: 10 YERKES, EVAN	04:54		
SUB IN: 24 BROWN, KOBE	04:54		
SUB IN: 42 BRAUN, PARKER	04:54		
	03:58	38-68	SUB OUT: WEATHERSPOON, NICK
	03:58		SUB OUT: PERRY, REGGIE
	03:58		SUB OUT: WOODARD II, ROBERT
	03:58		SUB OUT: CARTER, TYSON
	03:58		SUB OUT: ADO, ABDUL
	03:58		SUB IN: KING, ELIAS
	03:58		SUB IN: BUTTS, DEVIN
	03:58		SUB IN: MOLINAR, IVERSON



VISITORS: Missouri		Time	Score	HOME: Mississippi St.
		03:58		SUB IN: ODURO, PRINCE
		03:58		SUB IN: POST, QUINTEN
SUB OUT: 1 PINSON, XAVIER		01:50	41-72	
SUB IN: 25 FORD, BROOKS		01:50		
		01:37	41-72	SUB OUT: MOLINAR, IVERSON
		01:37		SUB IN: STORM, MITCHELL
		01:31	41-72	SUB OUT: ODURO, PRINCE
		01:31		SUB IN: JUNKIN, ANDREW

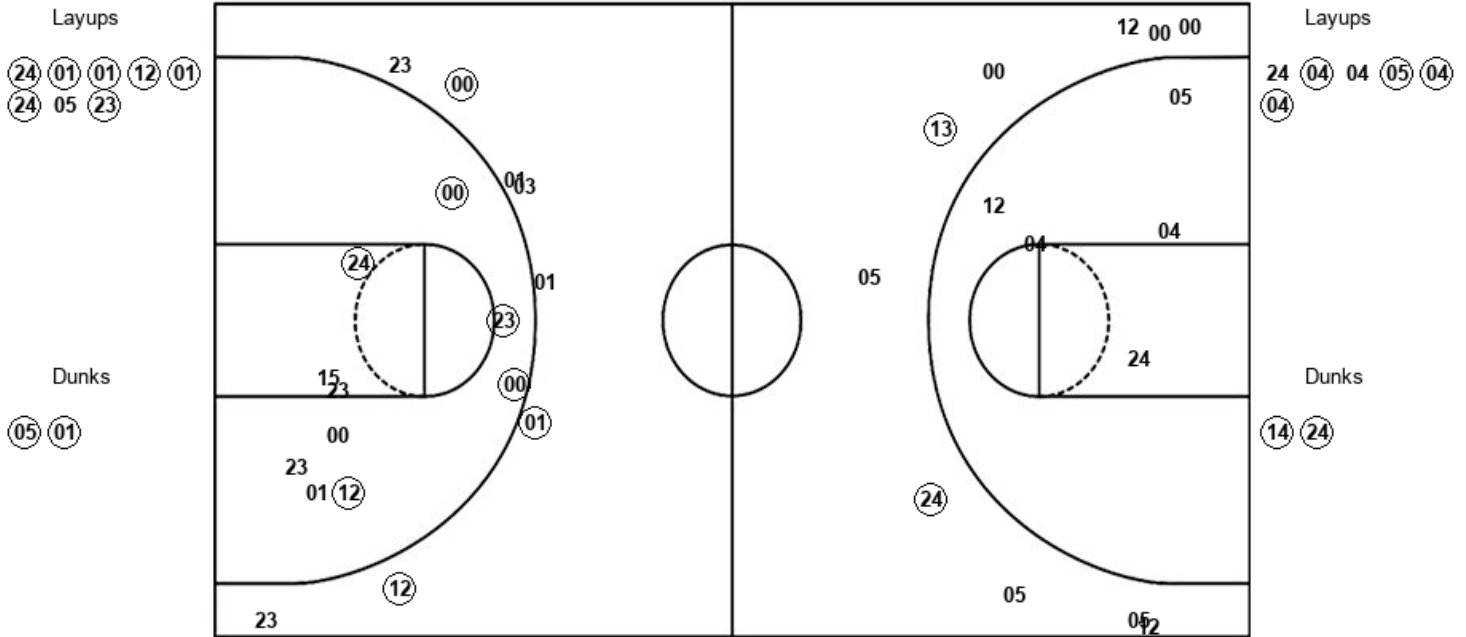
Missouri 45, Mississippi St. 72



**January 14, 2020 at Humphrey Coliseum - Starkville, MS**



## Missouri



MST : Period 1	Made	Att	Pct
Layups	7	8	87.5
Dunks	2	2	100.0
2PT Field Goals	14	20	70.0
3PT Field Goals	3	8	37.5
<b>Total Field Goals</b>	<b>17</b>	<b>28</b>	<b>60.7</b>

MIZ : Period 1	Made	Att	Pct
Layups	4	6	66.7
Dunks	2	2	100.0
2PT Field Goals	6	13	46.2
3PT Field Goals	2	10	20.0
<b>Total Field Goals</b>	<b>8</b>	<b>23</b>	<b>34.8</b>



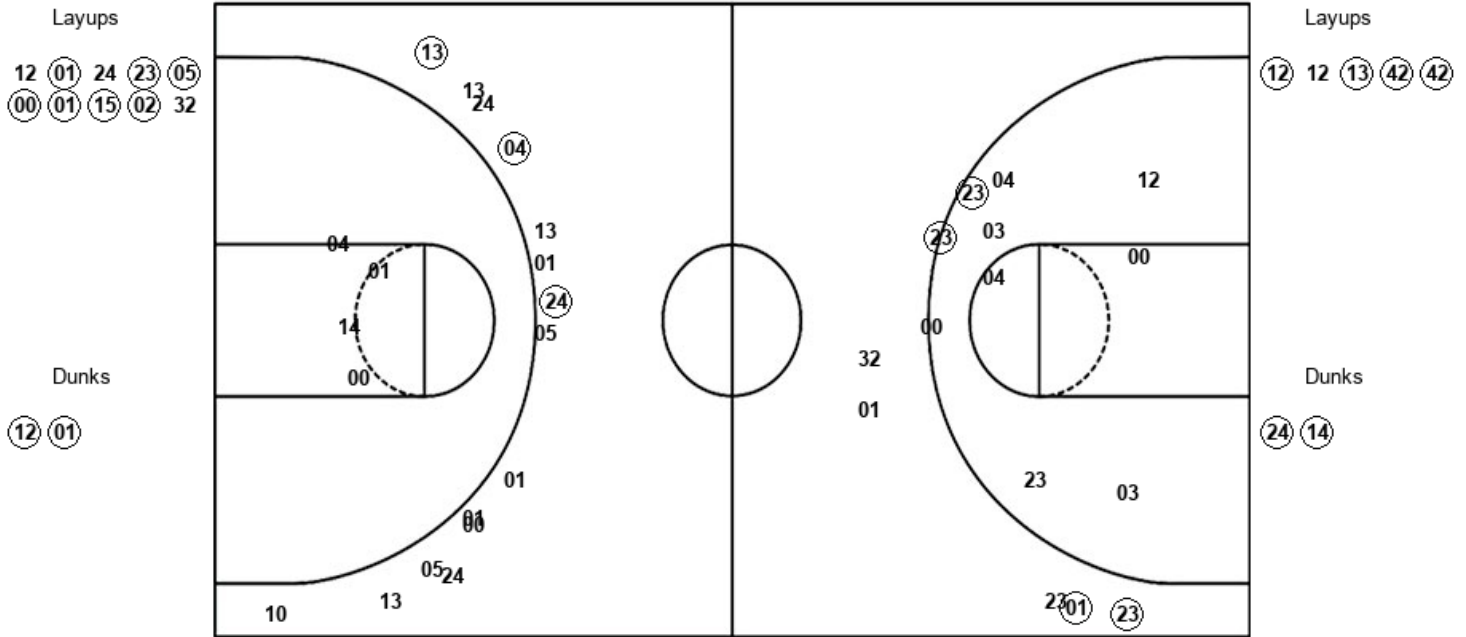
Official Shot Chart  
Missouri vs Mississippi St.  
PERIOD 2 Shots

January 14, 2020 at Humphrey Coliseum - Starkville, MS



Mississippi St.

Missouri



MST : Period 2	Made	Att	Pct
Layups	7	10	70.0
Dunks	2	2	100.0
2PT Field Goals	11	22	50.0
3PT Field Goals	2	5	40.0
<b>Total Field Goals</b>	<b>13</b>	<b>27</b>	<b>48.1</b>

MIZ : Period 2	Made	Att	Pct
Layups	4	5	80.0
Dunks	2	2	100.0
2PT Field Goals	6	11	54.5
3PT Field Goals	3	15	20.0
<b>Total Field Goals</b>	<b>9</b>	<b>26</b>	<b>34.6</b>

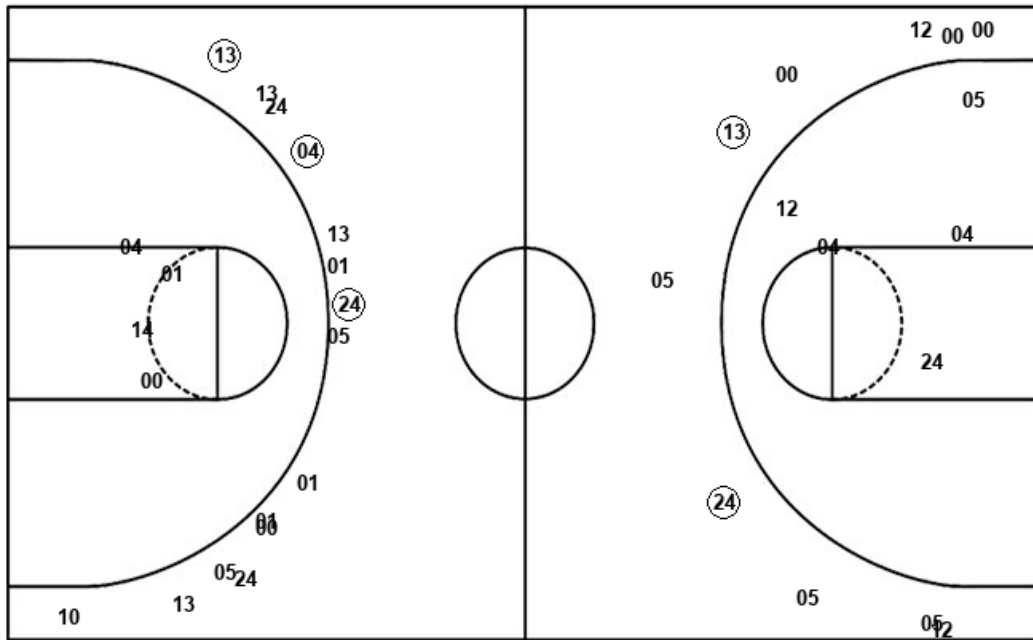


Official Shot Chart  
**Missouri vs Mississippi St.**  
 Missouri Team Shots  
 January 14, 2020 at Humphrey Coliseum - Starkville, MS



Layups

Dunks



Layups

Dunks

MIZ : Period 1	Made	Att	Pct
Layups	4	6	66.7
Dunks	2	2	100.0
2PT Field Goals	6	13	46.2
3PT Field Goals	2	10	20.0
<b>Total Field Goals</b>	<b>8</b>	<b>23</b>	<b>34.8</b>

MIZ : Period 2	Made	Att	Pct
Layups	4	5	80.0
Dunks	2	2	100.0
2PT Field Goals	6	11	54.5
3PT Field Goals	3	15	20.0
<b>Total Field Goals</b>	<b>9</b>	<b>26</b>	<b>34.6</b>

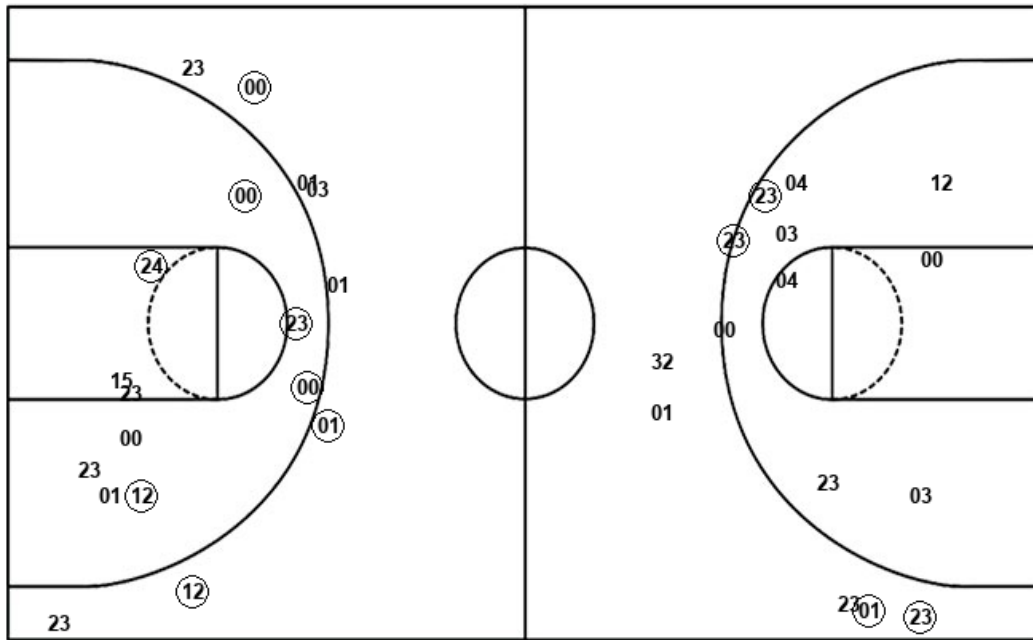


Official Shot Chart  
**Missouri vs Mississippi St.**  
Mississippi St. Team Shots  
January 14, 2020 at Humphrey Coliseum - Starkville, MS



Layups

Dunks



Layups

Dunks

MST : Period 1	Made	Att	Pct
Layups	7	8	87.5
Dunks	2	2	100.0
2PT Field Goals	14	20	70.0
3PT Field Goals	3	8	37.5
<b>Total Field Goals</b>	<b>17</b>	<b>28</b>	<b>60.7</b>

MST : Period 2	Made	Att	Pct
Layups	7	10	70.0
Dunks	2	2	100.0
2PT Field Goals	11	22	50.0
3PT Field Goals	2	5	40.0
<b>Total Field Goals</b>	<b>13</b>	<b>27</b>	<b>48.1</b>