

FINAL SCORE



La.-Monroe

45



Mississippi St.

62

November 14, 2019 • Humphrey Coliseum - Starkville

FINAL STATISTICS

Official Box Score
La.-Monroe vs Mississippi St.
Game Totals -- Final Statistics
November 14, 2019 at Humphrey Coliseum - Starkville



La.-Monroe 45

No.	Player	S	Pts	FG	3FG	FT	OR	DR	TR	PF	A	TO	Blk	Stl	Min	+/-
00	EFRETUEI, CHRIS	C	10	4-6	0-0	2-6	3	3	6	2	0	3	1	1	23	-23
02	ERTEL, MICHAEL	G	10	4-14	1-5	1-2	0	0	0	2	2	2	0	0	35	-14
03	WILLIAMS, JD	G	14	5-12	4-6	0-0	1	7	8	3	1	3	0	0	38	-13
05	WHITE, TYREE	F	1	0-6	0-4	1-2	0	2	2	2	3	3	1	0	27	-16
23	WHITE, YOURY	F	0	0-2	0-0	0-0	2	1	3	3	0	0	0	0	15	-13
13	HODGE, JALEN	G	0	0-0	0-0	0-0	0	0	0	0	0	0	0	0	5	-3
14	IFEJEH, ELIJAH	F	6	3-8	0-0	0-2	3	1	4	5	2	2	0	1	20	-1
15	NICHOLAS, JOSH	G	2	1-1	0-0	0-0	1	1	2	1	0	1	0	0	6	-6
22	BERNARD, D'ANDRE	F	0	0-1	0-1	0-0	0	2	2	3	1	2	0	2	13	-2
24	TRAORE, DADOU	C	2	1-1	0-0	0-0	1	3	4	2	0	1	0	0	17	6
TEAM							0	1	1	0		0				
TOTALS			45	18-51	5-16	4-12	11	21	32	23	9	17	2	4	200	

Shooting By Period

Period	FG	FG%	3FG	3FG%	FT	FT%
1st Half	10-24	42%	3-6	50%	1-4	25%
2nd Half	8-27	30%	2-10	20%	3-8	38%
Game	18-51	35.3%	5-16	31.3%	4-12	33.3%

Deadball Rebounds: 2,1
Last FG: 2nd-00:23
Biggest Run: 8-0
Largest lead: By 0 at 2-00
Technical Fouls: None.

Mississippi St. 62

No.	Player	S	Pts	FG	3FG	FT	OR	DR	TR	PF	A	TO	Blk	Stl	Min	+/-
01	PERRY, REGGIE	F	14	4-10	1-3	5-10	5	9	14	4	3	2	0	2	29	20
05	MOLINAR, IVERSON	G	10	3-5	0-1	4-4	1	1	2	1	1	2	0	0	27	10
12	WOODARD II, ROBERT	G	13	5-10	1-3	2-2	1	6	7	1	2	0	0	2	32	18
23	CARTER, TYSON	G	6	2-9	0-2	2-2	0	0	0	4	4	0	0	2	28	22
24	ADO, ABDUL	F	6	2-4	0-0	2-4	3	4	7	3	1	2	4	0	31	23
02	KING, ELIAS	F	0	0-0	0-0	0-0	0	0	0	0	0	0	0	0	2	-4
03	STEWART, D.J.	G	10	4-6	1-2	1-2	0	2	2	0	0	2	0	1	27	11
04	BUTTS, DEVIN	G	0	0-2	0-0	0-0	1	0	1	0	0	1	0	0	2	-4
15	ODURO, PRINCE	F	1	0-0	0-0	1-4	0	1	1	2	0	0	0	0	6	-4
22	FEAZELL, KEYSHAWN	F	2	0-3	0-1	2-2	0	2	2	3	0	4	0	0	13	-3
32	POST, QUINTEN	F	0	0-0	0-0	0-0	0	0	0	0	0	0	0	0	2	-4
TEAM							2	3	5	0		1				
TOTALS			62	20-49	3-12	19-30	13	28	41	18	11	14	4	7	200	

Shooting By Period

Period	FG	FG%	3FG	3FG%	FT	FT%
1st Half	13-30	43%	2-5	40%	11-15	73%
2nd Half	7-19	37%	1-7	14%	8-15	53%
Game	20-49	40.8%	3-12	25.0%	19-30	63.3%

Deadball Rebounds: 5,0
Last FG: 2nd-03:30
Biggest Run: 8-0
Largest lead: By 21 at -
Technical Fouls: None.

Game Notes:

Officials: Anthony Jordan, Mike Nance, Chris Ford
 Attendance: 5582

Start Time: 07:01 PM ET
 End Time: 09:01 PM ET
 Game Duration: 2:00

Score	1st	2nd	TOT
ULM	24	21	45
MSU	39	23	62

ULM led for 0:00. MSU led for 38:56.
 Game was tied for 1:01.
 Times tied: 61 Lead Changes: 0

Points from	ULM	MSU
In the Paint	22	24
Off Turns	11	23
2nd Chance	7	15
Fast Break	0	17
Bench	10	13

Official Box Score
La.-Monroe vs Mississippi St.
First Half Statistics Only
November 14, 2019 at Humphrey Coliseum - Starkville



La.-Monroe 24

No.	Player	S	Pts	FG	3FG	FT	OR	DR	TR	PF	A	TO	Blk	Stl	Min	+/-
00	EFRETUEI, CHRIS	C	7	3-4	0-0	1-2	1	1	2	0	0	2	1	0	11	-14
02	ERTEL, MICHAEL	G	5	2-6	1-3	0-0	0	0	0	2	1	1	0	0	18	-8
03	WILLIAMS, JD	G	8	3-5	2-2	0-0	0	4	4	2	1	2	0	0	18	-11
05	WHITE, TYREE	F	0	0-1	0-1	0-0	0	0	0	1	2	2	0	0	12	-10
23	WHITE, YOURY	F	0	0-1	0-0	0-0	1	1	2	2	0	0	0	0	7	-12
13	HODGE, JALEN	G	0	0-0	0-0	0-0	0	0	0	0	0	0	0	0	2	-7
14	IFEJEH, ELIJAH	F	4	2-7	0-0	0-2	2	1	3	2	2	0	0	1	13	-3
15	NICHOLAS, JOSH	G	0	0-0	0-0	0-0	0	0	0	0	0	1	0	0	2	-4
22	BERNARD, D'ANDRE	F	0	0-0	0-0	0-0	0	1	1	2	0	0	0	0	8	-5
24	TRAORE, DADOU	C	0	0-0	0-0	0-0	0	1	1	1	0	0	0	0	9	-1
TEAM							0	0	0	0		0				
TOTALS			24	10-24	3-6	1-4	4	9	13	12	6	8	1	1	100	

Shooting By Period

Period	FG	FG%	3FG	3FG%	FT	FT%
1st Half	10-24	42%	3-6	50%	1-4	25%
Game	18-51	35.3%	5-16	31.3%	4-12	33.3%

Deadball Rebounds: 2,1
 Last FG Half: ULM 2nd-00:23

Mississippi St. 39

No.	Player	S	Pts	FG	3FG	FT	OR	DR	TR	PF	A	TO	Blk	Stl	Min	+/-
01	PERRY, REGGIE	F	10	3-7	1-2	3-6	5	4	9	1	1	1	0	2	16	18
05	MOLINAR, IVERSON	G	6	1-1	0-0	4-4	0	0	0	0	1	1	0	0	11	11
12	WOODARD II, ROBERT	G	7	3-6	1-1	0-0	1	3	4	0	2	0	0	1	16	14
23	CARTER, TYSON	G	6	2-7	0-1	2-2	0	0	0	1	3	0	0	0	19	17
24	ADO, ABDUL	F	5	2-4	0-0	1-2	2	2	4	1	1	0	2	0	17	16
02	KING, ELIAS	F	0	0-0	0-0	0-0	0	0	0	0	0	0	0	0	0	0
03	STEWART, D.J.	G	5	2-2	0-0	1-1	0	0	0	0	0	1	0	0	13	5
04	BUTTS, DEVIN	G	0	0-0	0-0	0-0	0	0	0	0	0	0	0	0	0	0
15	ODURO, PRINCE	F	0	0-0	0-0	0-0	0	0	0	2	0	0	0	0	3	-1
22	FEAZELL, KEYSHAWN	F	0	0-3	0-1	0-0	0	0	0	2	0	1	0	0	5	-5
32	POST, QUINTEN	F	0	0-0	0-0	0-0	0	0	0	0	0	0	0	0	0	0
TEAM							2	2	4	0		0				
TOTALS			39	13-30	2-5	11-15	10	11	21	7	8	4	2	3	100	

Shooting By Period

Period	FG	FG%	3FG	3FG%	FT	FT%
1st Half	13-30	43%	2-5	40%	11-15	73%
Game	20-49	40.8%	3-12	25.0%	19-30	63.3%

Deadball Rebounds: 5,0
 Last FG Half: MSU 2nd-03:30

Game Notes:

Officials: Anthony Jordan, Mike Nance, Chris Ford
 Attendance: 5582

Start Time: 07:01 PM ET
 End Time: 09:01 PM ET
 Game Duration: 2:00

Score	1st	2nd	TOT
ULM	24	21	45
MSU	39	23	62

Points from (This Period)	ULM	MSU
In the Paint	12	14
Off Turns	3	11
2nd Chance	3	13
Fast Break	0	8
Bench	4	5

Official Play-By-Play
La.-Monroe vs Mississippi St.
First Half
November 14, 2019 at Humphrey Coliseum - Starkville



Period 1

Starters:

La.-Monroe: 0 EFRETUEI,CHRIS (C); 2 ERTEL,MICHAEL (G); 3 WILLIAMS,JD (G); 5 WHITE,TYREE (F); 23 WHITE,YOURY (F);

Mississippi St.: 1 PERRY,REGGIE (F); 5 MOLINAR,IVERSON (G); 12 WOODARD II,ROBERT (G); 23 CARTER,TYSON (G); 24 ADO,ABDUL (F);

Time	VISITORS: La.-Monroe	Score	Margin	HOME: Mississippi St.
19:37		2-0	H 2	GOOD! JUMPER by CARTER, TYSON
19:15	GOOD! JUMPER by EFRETUEI, CHRIS [PNT]	2-2	T	
18:59				MISSED JUMPER by CARTER, TYSON
18:54				REBOUND (OFF) by PERRY, REGGIE
18:37		5-2	H 3	GOOD! 3PTR by PERRY, REGGIE
18:37				ASSIST by CARTER, TYSON
18:12	TURNOVER (TRAVEL) by WHITE, TYREE			
19:37				ASSIST by ADO, ABDUL
18:02		7-2	H 5	GOOD! JUMPER by MOLINAR, IVERSON [PNT]
17:41	MISSED JUMPER by ERTEL, MICHAEL			
17:38				REBOUND (DEF) by WOODARD II, ROBERT
17:27				MISSED JUMPER by ADO, ABDUL
17:27				REBOUND (OFF) by PERRY, REGGIE
17:27	FOUL (PERSONAL) by WHITE, YOURY			
17:25				MISSED JUMPER by WOODARD II, ROBERT
17:22	REBOUND (DEF) by WHITE, YOURY			
17:00	MISSED JUMPER by WHITE, YOURY			
16:58				REBOUND (DEF) by TEAM
16:37				MISSED JUMPER by ADO, ABDUL
16:33	REBOUND (DEF) by WILLIAMS, JD			
16:12	TURNOVER (LOSTBALL) by WHITE, TYREE			
16:12				STEAL by WOODARD II, ROBERT
16:07		9-2	H 7	GOOD! DUNK by PERRY, REGGIE [FB]
16:07				ASSIST by WOODARD II, ROBERT
16:07	TIMEOUT 30SEC			
16:07	SUB OUT: EFRETUEI, CHRIS			
16:07	SUB OUT: WHITE, TYREE			
16:07	SUB OUT: WHITE, YOURY			
16:07	SUB IN: IFEJEH, ELIJAH			
16:07	SUB IN: BERNARD, D'ANDRE			
16:07	SUB IN: TRAORE, DADOU			
15:56	MISSED JUMPER by IFEJEH, ELIJAH			
15:56				BLOCK by ADO, ABDUL
15:50				REBOUND (DEF) by ADO, ABDUL
15:50	FOUL (PERSONAL) by ERTEL, MICHAEL			
15:35	FOUL (PERSONAL) by BERNARD, D'ANDRE			
15:25				MISSED 3PTR by CARTER, TYSON
15:18				REBOUND (OFF) by PERRY, REGGIE
15:18				MISSED LAYUP by PERRY, REGGIE
15:17	REBOUND (DEF) by IFEJEH, ELIJAH			
15:12	TURNOVER (BADPASS) by WILLIAMS, JD			
15:12				STEAL by PERRY, REGGIE
15:05				TURNOVER (LOSTBALL) by MOLINAR, IVERSON
15:05	STEAL by IFEJEH, ELIJAH			
14:42				FOUL (PERSONAL) by PERRY, REGGIE
14:42	MISSED FT by IFEJEH, ELIJAH			
14:42	REBOUND (OFF) by TEAM			
14:42				SUB OUT: PERRY, REGGIE
14:42				SUB OUT: MOLINAR, IVERSON
14:42				SUB IN: STEWART, D.J.
14:42				SUB IN: FEAZELL, KEYSAWN
14:42	MISSED FT by IFEJEH, ELIJAH			
14:41				REBOUND (DEF) by WOODARD II, ROBERT
14:24				FOUL (OFF) by FEAZELL, KEYSAWN
14:24				TURNOVER (OFFENSIVE) by FEAZELL, KEYSAWN
13:55	GOOD! 3PTR by WILLIAMS, JD	9-5	H 4	
13:55	ASSIST by ERTEL, MICHAEL			
13:30				MISSED 3PTR by FEAZELL, KEYSAWN
13:26	REBOUND (DEF) by WILLIAMS, JD			
13:03				FOUL (PERSONAL) by FEAZELL, KEYSAWN
12:45	GOOD! JUMPER by ERTEL, MICHAEL	9-7	H 2	
12:36		11-7	H 4	GOOD! DUNK by ADO, ABDUL
12:36				ASSIST by WOODARD II, ROBERT
12:21	TURNOVER (TRAVEL) by ERTEL, MICHAEL			
12:13	FOUL (PERSONAL) by BERNARD, D'ANDRE			
12:13	SUB OUT: BERNARD, D'ANDRE			
12:13	SUB OUT: TRAORE, DADOU			
12:13	SUB IN: EFRETUEI, CHRIS			
12:13	SUB IN: WHITE, TYREE			

Time	VISITORS: La.-Monroe	Score	Margin	HOME: Mississippi St.
12:07				MISSED JUMPER by FEAZELL, KEYSHAWN
12:04				REBOUND (OFF) by WOODARD II, ROBERT
12:02		13-7	H 6	GOOD! JUMPER by WOODARD II, ROBERT
11:40	GOOD! LAYUP by WILLIAMS, JD [PNT]	13-9	H 4	
11:40	ASSIST by IFEJEH, ELIJAH			
11:21				MISSED JUMPER by WOODARD II, ROBERT
11:18	REBOUND (DEF) by EFRETUEI, CHRIS			
11:11	TURNOVER (LOSTBALL) by EFRETUEI, CHRIS			
11:11				SUB OUT: WOODARD II, ROBERT
11:11				SUB OUT: CARTER, TYSON
11:11				SUB OUT: ADO, ABDUL
11:11				SUB IN: PERRY, REGGIE
11:11				SUB IN: MOLINAR, IVERSON
11:11				SUB IN: ODURO, PRINCE
10:43				MISSED JUMPER by FEAZELL, KEYSHAWN
10:43	BLOCK by EFRETUEI, CHRIS			
10:42				REBOUND (OFF) by TEAM
10:42				MISSED JUMPER by PERRY, REGGIE
10:33	REBOUND (DEF) by TEAM			
10:25	GOOD! DUNK by IFEJEH, ELIJAH	13-11	H 2	
10:25	ASSIST by WHITE, TYREE			
10:01				SUB OUT: FEAZELL, KEYSHAWN
10:01				SUB IN: CARTER, TYSON
09:50	FOUL (PERSONAL) by IFEJEH, ELIJAH			
09:50		14-11	H 3	GOOD! FT by PERRY, REGGIE
09:48				MISSED FT by PERRY, REGGIE
09:48	REBOUND (DEF) by WILLIAMS, JD			
09:48				FOUL (PERSONAL) by ODURO, PRINCE
09:36	GOOD! LAYUP by IFEJEH, ELIJAH	14-13	H 1	
09:36	ASSIST by WHITE, TYREE			
09:18				TURNOVER (BADPASS) by PERRY, REGGIE
09:03	MISSED JUMPER by EFRETUEI, CHRIS			
09:00				REBOUND (DEF) by PERRY, REGGIE
08:55		16-13	H 3	GOOD! LAYUP by CARTER, TYSON [FB]
08:32	MISSED JUMPER by WILLIAMS, JD			
08:32	REBOUND (OFF) by EFRETUEI, CHRIS			
08:32				FOUL (PERSONAL) by ODURO, PRINCE
08:32				SUB OUT: MOLINAR, IVERSON
08:32				SUB OUT: ODURO, PRINCE
08:32				SUB IN: WOODARD II, ROBERT
08:32				SUB IN: ADO, ABDUL
08:32	SUB OUT: EFRETUEI, CHRIS			
08:32	SUB IN: TRAORE, DADOU			
08:15	MISSED 3PTR by WHITE, TYREE			
08:10				REBOUND (DEF) by PERRY, REGGIE
08:05		18-13	H 5	GOOD! JUMPER by STEWART, D.J.
08:05				ASSIST by PERRY, REGGIE
08:04	FOUL (PERSONAL) by WHITE, TYREE			
08:04		19-13	H 6	GOOD! FT by STEWART, D.J.
07:46	MISSED JUMPER by ERTEL, MICHAEL			
07:40	REBOUND (OFF) by IFEJEH, ELIJAH			
07:40	MISSED LAYUP by IFEJEH, ELIJAH			
07:39				REBOUND (DEF) by WOODARD II, ROBERT
07:37				TURNOVER (TRAVEL) by STEWART, D.J.
07:37				
07:37	SUB OUT: IFEJEH, ELIJAH			
07:37	SUB IN: WHITE, YOURY			
07:13				FOUL (PERSONAL) by CARTER, TYSON
07:00	TURNOVER (TRAVEL) by WILLIAMS, JD			
06:47				MISSED JUMPER by WOODARD II, ROBERT
06:40				REBOUND (OFF) by PERRY, REGGIE
06:40		21-13	H 8	GOOD! LAYUP by PERRY, REGGIE
06:28	MISSED 3PTR by ERTEL, MICHAEL			
06:25	REBOUND (OFF) by WHITE, YOURY			
06:07	MISSED 3PTR by ERTEL, MICHAEL			
06:05				REBOUND (DEF) by TEAM
06:05	SUB OUT: WHITE, YOURY			
06:05	SUB IN: IFEJEH, ELIJAH			
05:45				MISSED 3PTR by PERRY, REGGIE
05:43				REBOUND (OFF) by ADO, ABDUL
05:43	FOUL (PERSONAL) by TRAORE, DADOU			
05:43		22-13	H 9	GOOD! FT by ADO, ABDUL
05:43				MISSED FT by ADO, ABDUL
05:43	REBOUND (DEF) by WILLIAMS, JD			
05:14	GOOD! 3PTR by ERTEL, MICHAEL	22-16	H 6	
05:14	ASSIST by WILLIAMS, JD			
05:03				MISSED JUMPER by CARTER, TYSON
04:59	REBOUND (DEF) by TRAORE, DADOU			
04:39	MISSED JUMPER by WILLIAMS, JD			

Time	VISITORS: La.-Monroe	Score	Margin	HOME: Mississippi St.
04:36				REBOUND (DEF) by PERRY, REGGIE
04:34		24-16	H 8	GOOD! DUNK by STEWART, D.J. [FB]
04:34				ASSIST by CARTER, TYSON
04:10	MISSED JUMPER by IFEJEH, ELIJAH			
04:07	REBOUND (OFF) by IFEJEH, ELIJAH			
04:00	GOOD! 3PTR by WILLIAMS, JD	24-19	H 5	
04:00	ASSIST by IFEJEH, ELIJAH			
03:47				MISSED LAYUP by CARTER, TYSON
03:45				REBOUND (OFF) by ADO, ABDUL
03:45		26-19	H 7	GOOD! LAYUP by ADO, ABDUL
03:45	TIMEOUT 30SEC			
03:45				
03:45				SUB OUT: STEWART, D.J.
03:45				SUB IN: MOLINAR, IVERSON
03:45	SUB OUT: WHITE, TYREE			
03:45	SUB OUT: TRAORE, DADOU			
03:45	SUB IN: EFRETUEI, CHRIS			
03:45	SUB IN: BERNARD, D'ANDRE			
03:27	GOOD! JUMPER by EFRETUEI, CHRIS [PNT]	26-21	H 5	
03:16	FOUL (PERSONAL) by ERTEL, MICHAEL			
03:16		27-21	H 6	GOOD! FT by MOLINAR, IVERSON
03:16		28-21	H 7	GOOD! FT by MOLINAR, IVERSON
02:58	MISSED JUMPER by IFEJEH, ELIJAH			
02:58				BLOCK by ADO, ABDUL
02:52				REBOUND (DEF) by ADO, ABDUL
02:47				MISSED JUMPER by PERRY, REGGIE
02:46				REBOUND (OFF) by TEAM
02:46		30-21	H 9	GOOD! JUMPER by WOODARD II, ROBERT
02:46				ASSIST by MOLINAR, IVERSON
02:25				FOUL (PERSONAL) by ADO, ABDUL
02:25	MISSED FT by EFRETUEI, CHRIS			
02:25	REBOUND (OFF) by TEAM			
02:25	GOOD! FT by EFRETUEI, CHRIS	30-22	H 8	
02:25	SUB OUT: ERTEL, MICHAEL			
02:25	SUB IN: HODGE, JALEN			
02:15	FOUL (PERSONAL) by WILLIAMS, JD			
02:15		31-22	H 9	GOOD! FT by CARTER, TYSON
02:15		32-22	H 10	GOOD! FT by CARTER, TYSON
02:15				SUB OUT: WOODARD II, ROBERT
02:15				SUB IN: STEWART, D.J.
01:54	TURNOVER (BADPASS) by EFRETUEI, CHRIS			
01:54				STEAL by PERRY, REGGIE
01:52	FOUL (PERSONAL) by WILLIAMS, JD			
01:52		33-22	H 11	GOOD! FT by MOLINAR, IVERSON [FB]
01:52	SUB OUT: WILLIAMS, JD			
01:52	SUB IN: NICHOLAS, JOSH			
01:52		34-22	H 12	GOOD! FT by MOLINAR, IVERSON [FB]
01:36	MISSED JUMPER by IFEJEH, ELIJAH			
01:34				REBOUND (DEF) by PERRY, REGGIE
01:29				MISSED JUMPER by CARTER, TYSON
01:29				REBOUND (OFF) by PERRY, REGGIE
01:29	FOUL (PERSONAL) by IFEJEH, ELIJAH			
01:29				MISSED FT by PERRY, REGGIE
01:29				REBOUND (OFF) by TEAM
01:29	SUB OUT: IFEJEH, ELIJAH			
01:29	SUB IN: WHITE, YOURY			
01:29		35-22	H 13	GOOD! FT by PERRY, REGGIE
01:09	TURNOVER (LOSTBALL) by NICHOLAS, JOSH			
00:45	FOUL (PERSONAL) by WHITE, YOURY			
00:45		36-22	H 14	GOOD! FT by PERRY, REGGIE
00:45				MISSED FT by PERRY, REGGIE
00:45	REBOUND (DEF) by BERNARD, D'ANDRE			
00:32	GOOD! JUMPER by EFRETUEI, CHRIS [PNT]	36-24	H 12	
00:28				SUB OUT: PERRY, REGGIE
00:28				SUB IN: WOODARD II, ROBERT
00:28				SUB OUT: MOLINAR, IVERSON
00:28				SUB IN: PERRY, REGGIE
00:28				TIMEOUT 30SEC
00:05		39-24	H 15	GOOD! 3PTR by WOODARD II, ROBERT
00:05				ASSIST by CARTER, TYSON

La.-Monroe 24, Mississippi St. 39

Points from (This Period)	ULM	MSU
In the Paint	12	14
Off Turns	3	11
2nd Chance	3	13
Fast Break	0	8
Bench	4	5

Official Box Score
La.-Monroe vs Mississippi St.
Second Half Statistics Only
November 14, 2019 at Humphrey Coliseum - Starkville



La.-Monroe 21

No.	Player	S	Pts	FG	3FG	FT	OR	DR	TR	PF	A	TO	Blk	Stl	Min	+/-
00	EFRETUEI, CHRIS	C	3	1-2	0-0	1-4	2	2	4	2	0	1	0	1	12	-9
02	ERTEL, MICHAEL	G	5	2-8	0-2	1-2	0	0	0	0	1	1	0	0	18	-6
03	WILLIAMS, JD	G	6	2-7	2-4	0-0	1	3	4	1	0	1	0	0	20	-2
05	WHITE, TYREE	F	1	0-5	0-3	1-2	0	2	2	1	1	1	1	0	15	-6
23	WHITE, YOURY	F	0	0-1	0-0	0-0	1	0	1	1	0	0	0	0	8	-1
13	HODGE, JALEN	G	0	0-0	0-0	0-0	0	0	0	0	0	0	0	0	2	4
14	IFEJEH, ELIJAH	F	2	1-1	0-0	0-0	1	0	1	3	0	2	0	0	7	2
15	NICHOLAS, JOSH	G	2	1-1	0-0	0-0	1	1	2	1	0	0	0	0	4	-2
22	BERNARD, D'ANDRE	F	0	0-1	0-1	0-0	0	1	1	1	1	2	0	2	6	3
24	TRAORE, DADOU	C	2	1-1	0-0	0-0	1	2	3	1	0	1	0	0	8	7
TEAM							0	1	1	0						
TOTALS			21	8-27	2-10	3-8	7	12	19	11	3	9	1	3	100	

Shooting By Period

Period	FG	FG%	3FG	3FG%	FT	FT%
2nd Half	8-27	30%	2-10	20%	3-8	38%
Game	18-51	35.3%	5-16	31.3%	4-12	33.3%

Deadball Rebounds: 2,1

Last FG Half: ULM -

Mississippi St. 23

No.	Player	S	Pts	FG	3FG	FT	OR	DR	TR	PF	A	TO	Blk	Stl	Min	+/-
01	PERRY, REGGIE	F	4	1-3	0-1	2-4	0	5	5	3	2	1	0	0	13	2
05	MOLINAR, IVERSON	G	4	2-4	0-1	0-0	1	1	2	1	0	1	0	0	16	-1
12	WOODARD II, ROBERT	G	6	2-4	0-2	2-2	0	3	3	1	0	0	0	1	16	4
23	CARTER, TYSON	G	0	0-2	0-1	0-0	0	0	0	3	1	0	0	2	10	5
24	ADO, ABDUL	F	1	0-0	0-0	1-2	1	2	3	2	0	2	2	0	14	7
02	KING, ELIAS	F	0	0-0	0-0	0-0	0	0	0	0	0	0	0	0	2	-4
03	STEWART, D.J.	G	5	2-4	1-2	0-1	0	2	2	0	0	1	0	1	13	6
04	BUTTS, DEVIN	G	0	0-2	0-0	0-0	1	0	1	0	0	1	0	0	2	-4
15	ODURO, PRINCE	F	1	0-0	0-0	1-4	0	1	1	0	0	0	0	0	3	-3
22	FEAZELL, KEYSHAWN	F	2	0-0	0-0	2-2	0	2	2	1	0	3	0	0	8	2
32	POST, QUINTEN	F	0	0-0	0-0	0-0	0	0	0	0	0	0	0	0	2	-4
TEAM							0	1	1	0						
TOTALS			23	7-19	1-7	8-15	3	17	20	11	3	10	2	4	100	

Shooting By Period

Period	FG	FG%	3FG	3FG%	FT	FT%
2nd Half	7-19	37%	1-7	14%	8-15	53%
Game	20-49	40.8%	3-12	25.0%	19-30	63.3%

Deadball Rebounds: 5,0

Last FG Half: MSU -

Game Notes:

Officials: **Anthony Jordan, Mike Nance, Chris Ford**

Attendance: **5582**

Start Time: **07:01 PM ET**

End Time: **09:01 PM ET**

Game Duration: **2:00**

Score	1st	2nd	TOT
ULM	24	21	45
MSU	39	23	62

Points from (This Period)	ULM	MSU
In the Paint	10	10
Off Turns	8	12
2nd Chance	4	2
Fast Break	0	9
Bench	6	8

Official Play-By-Play
La.-Monroe vs Mississippi St.
Second Half
November 14, 2019 at Humphrey Coliseum - Starkville



Period 2

Starters:

La.-Monroe: 0 EFRETUEI, CHRIS (C); 2 ERTEL, MICHAEL (G); 3 WILLIAMS, JD (G); 5 WHITE, TYREE (F); 23 WHITE, YOURY (F);
Mississippi St.: 1 PERRY, REGGIE (F); 5 MOLINAR, IVERSON (G); 12 WOODARD II, ROBERT (G); 23 CARTER, TYSON (G); 24 ADO, ABDUL (F);

Time	VISITORS: La.-Monroe	Score	Margin	HOME: Mississippi St.
20:00				SUB OUT: STEWART, D.J.
20:00				SUB IN: MOLINAR, IVERSON
20:00	SUB OUT: HODGE, JALEN			
20:00	SUB OUT: NICHOLAS, JOSH			
20:00	SUB OUT: BERNARD, D'ANDRE			
20:00	SUB IN: ERTEL, MICHAEL			
20:00	SUB IN: WILLIAMS, JD			
20:00	SUB IN: WHITE, TYREE			
19:41	MISSED JUMPER by WILLIAMS, JD			
19:38				REBOUND (DEF) by PERRY, REGGIE
19:19	FOUL (PERSONAL) by EFRETUEI, CHRIS			
19:19				MISSED FT by ADO, ABDUL
19:19				REBOUND (OFF) by TEAM
19:19		40-24	H 16	GOOD! FT by ADO, ABDUL
19:06	GOOD! 3PTR by WILLIAMS, JD	40-27	H 13	
19:06	ASSIST by ERTEL, MICHAEL			
18:46				MISSED 3PTR by PERRY, REGGIE
18:41	REBOUND (DEF) by WILLIAMS, JD			
18:31	TURNOVER (TRAVEL) by EFRETUEI, CHRIS			
18:13		42-27	H 15	GOOD! JUMPER by PERRY, REGGIE [PNT]
17:49	MISSED DUNK by WHITE, TYREE			
17:45	REBOUND (OFF) by WHITE, YOURY			
17:44	MISSED JUMPER by WHITE, YOURY			
17:44				BLOCK by ADO, ABDUL
17:40				REBOUND (DEF) by PERRY, REGGIE
17:39		44-27	H 17	GOOD! LAYUP by WOODARD II, ROBERT [FB]
17:39				ASSIST by PERRY, REGGIE
17:11	MISSED 3PTR by WILLIAMS, JD			
17:06	REBOUND (OFF) by EFRETUEI, CHRIS			
17:00	GOOD! LAYUP by ERTEL, MICHAEL [PNT]	44-29	H 15	
16:41				TURNOVER (BADPASS) by PERRY, REGGIE
16:41	STEAL by EFRETUEI, CHRIS			
16:30	MISSED JUMPER by EFRETUEI, CHRIS			
16:27				REBOUND (DEF) by WOODARD II, ROBERT
16:21				MISSED 3PTR by MOLINAR, IVERSON
16:18				REBOUND (OFF) by ADO, ABDUL
16:18				SUB OUT: PERRY, REGGIE
16:18				SUB IN: FEAZELL, KEYSHAWN
16:18	SUB OUT: EFRETUEI, CHRIS			
16:18	SUB IN: TRAORE, DADOU			
16:16				MISSED 3PTR by WOODARD II, ROBERT
16:13	REBOUND (DEF) by TRAORE, DADOU			
16:00	MISSED 3PTR by WHITE, TYREE			
15:54				REBOUND (DEF) by MOLINAR, IVERSON
15:35				TURNOVER (TRAVEL) by ADO, ABDUL
15:35				
15:35				SUB OUT: MOLINAR, IVERSON
15:35				SUB IN: STEWART, D.J.
15:35	SUB OUT: WHITE, TYREE			
15:35	SUB OUT: WHITE, YOURY			
15:35	SUB IN: IFEJEH, ELIJAH			
15:35	SUB IN: BERNARD, D'ANDRE			
15:21	TURNOVER (BADPASS) by BERNARD, D'ANDRE			
15:21				STEAL by CARTER, TYSON
15:17		46-29	H 17	GOOD! LAYUP by WOODARD II, ROBERT [FB]
15:17				ASSIST by CARTER, TYSON
14:58	GOOD! JUMPER by ERTEL, MICHAEL [PNT]	46-31	H 15	
14:29				MISSED JUMPER by CARTER, TYSON
14:26	REBOUND (DEF) by BERNARD, D'ANDRE			
14:19				FOUL (PERSONAL) by CARTER, TYSON
14:19	GOOD! FT by ERTEL, MICHAEL	46-32	H 14	
14:19				SUB OUT: ADO, ABDUL
14:19				SUB IN: PERRY, REGGIE
14:19	MISSED FT by ERTEL, MICHAEL			
14:17				REBOUND (DEF) by PERRY, REGGIE
13:59				MISSED 3PTR by CARTER, TYSON
13:56	REBOUND (DEF) by TRAORE, DADOU			
13:56				FOUL (PERSONAL) by PERRY, REGGIE
13:49				FOUL (PERSONAL) by CARTER, TYSON
13:49				SUB OUT: CARTER, TYSON

Time	VISITORS: La.-Monroe	Score	Margin	HOME: Mississippi St.
13:49				SUB IN: MOLINAR, IVERSON
13:41	MISSED JUMPER by ERTEL, MICHAEL			
13:41	REBOUND (OFF) by IFEJEH, ELIJAH			
13:41				FOUL (PERSONAL) by FEAZELL, KEYSHAWN
13:27	MISSED JUMPER by ERTEL, MICHAEL			
13:24				REBOUND (DEF) by WOODARD II, ROBERT
13:10				TURNOVER (LOSTBALL) by MOLINAR, IVERSON
13:10	STEAL by BERNARD, D'ANDRE			
13:01				FOUL (PERSONAL) by WOODARD II, ROBERT
12:48	FOUL (OFF) by TRAORE, DADOU			
12:48	TURNOVER (OFFENSIVE) by TRAORE, DADOU			
12:25				TURNOVER (BADPASS) by FEAZELL, KEYSHAWN
12:25	STEAL by BERNARD, D'ANDRE			
11:59	GOOD! JUMPER by IFEJEH, ELIJAH [PNT]	46-34	H 12	
11:43				MISSED JUMPER by PERRY, REGGIE
11:39	REBOUND (DEF) by WILLIAMS, JD			
11:30	MISSED 3PTR by BERNARD, D'ANDRE			
11:27				REBOUND (DEF) by FEAZELL, KEYSHAWN
11:27				TURNOVER (TRAVEL) by FEAZELL, KEYSHAWN
11:27				SUB OUT: FEAZELL, KEYSHAWN
11:27				SUB IN: ADO, ABDUL
11:13	GOOD! 3PTR by WILLIAMS, JD	46-37	H 9	
11:13	ASSIST by BERNARD, D'ANDRE			
10:54				MISSED JUMPER by MOLINAR, IVERSON
10:49				REBOUND (OFF) by MOLINAR, IVERSON
10:49		48-37	H 11	GOOD! LAYUP by MOLINAR, IVERSON
10:27	FOUL (OFF) by IFEJEH, ELIJAH			
10:27	TURNOVER (OFFENSIVE) by IFEJEH, ELIJAH			
10:16	FOUL (PERSONAL) by IFEJEH, ELIJAH			
10:16				MISSED FT by PERRY, REGGIE
10:16				REBOUND (OFF) by TEAM
10:16	SUB OUT: IFEJEH, ELIJAH			
10:16	SUB IN: WHITE, TYREE			
10:16		49-37	H 12	GOOD! FT by PERRY, REGGIE
10:16	SUB OUT: TRAORE, DADOU			
10:16	SUB IN: EFRETUEI, CHRIS			
10:01	TURNOVER (LOSTBALL) by BERNARD, D'ANDRE			
10:01				STEAL by WOODARD II, ROBERT
09:57	FOUL (PERSONAL) by BERNARD, D'ANDRE			
09:57				MISSED FT by PERRY, REGGIE
09:57				REBOUND (OFF) by TEAM
09:57	SUB OUT: BERNARD, D'ANDRE			
09:57	SUB IN: WHITE, YOURY			
09:57		50-37	H 13	GOOD! FT by PERRY, REGGIE [FB]
09:43				FOUL (PERSONAL) by MOLINAR, IVERSON
09:30	MISSED 3PTR by ERTEL, MICHAEL			
09:27				REBOUND (DEF) by PERRY, REGGIE
09:17				MISSED 3PTR by WOODARD II, ROBERT
09:13	REBOUND (DEF) by EFRETUEI, CHRIS			
09:13				FOUL (PERSONAL) by PERRY, REGGIE
09:13				SUB OUT: PERRY, REGGIE
09:13				SUB OUT: WOODARD II, ROBERT
09:13				SUB IN: FEAZELL, KEYSHAWN
09:13				SUB IN: CARTER, TYSON
09:13	MISSED FT by EFRETUEI, CHRIS			
09:10				REBOUND (DEF) by ADO, ABDUL
08:48		52-37	H 15	GOOD! JUMPER by STEWART, D.J.
08:27				FOUL (PERSONAL) by ADO, ABDUL
08:26	MISSED FT by EFRETUEI, CHRIS			
08:26				REBOUND (DEF) by ADO, ABDUL
08:26	FOUL (PERSONAL) by WHITE, YOURY			
08:07				TURNOVER (TRAVEL) by FEAZELL, KEYSHAWN
07:54				FOUL (PERSONAL) by CARTER, TYSON
07:54				SUB OUT: CARTER, TYSON
07:54				SUB IN: WOODARD II, ROBERT
07:54	GOOD! FT by WHITE, TYREE	52-38	H 14	
07:54	MISSED FT by WHITE, TYREE			
07:53				REBOUND (DEF) by STEWART, D.J.
07:30				SUB OUT: FEAZELL, KEYSHAWN
07:30				SUB IN: PERRY, REGGIE
07:30				FOUL (OFF) by ADO, ABDUL
07:30				TURNOVER (OFFENSIVE) by ADO, ABDUL
07:18	MISSED JUMPER by WILLIAMS, JD			
07:15				REBOUND (DEF) by PERRY, REGGIE
07:01				MISSED JUMPER by STEWART, D.J.
07:00	REBOUND (DEF) by TEAM			
06:42	GOOD! JUMPER by EFRETUEI, CHRIS	52-40	H 12	
06:18		54-40	H 14	GOOD! JUMPER by MOLINAR, IVERSON [PNT]

Time	VISITORS: La.-Monroe	Score	Margin	HOME: Mississippi St.
05:54				FOUL (PERSONAL) by PERRY, REGGIE
05:54	GOOD! FT by EFRETUEI, CHRIS	54-41	H 13	
05:54				SUB OUT: PERRY, REGGIE
05:54				SUB IN: FEAZELL, KEYSHAWN
05:54	SUB OUT: WHITE, YOURY			
05:54	SUB IN: IFEJEH, ELIJAH			
05:54	MISSED FT by EFRETUEI, CHRIS			
05:52				REBOUND (DEF) by WOODARD II, ROBERT
05:25				TURNOVER (SHOTCLOCK) by TEAM
05:11	TURNOVER (LOSTBALL) by IFEJEH, ELIJAH			
04:56				TURNOVER (BADPASS) by STEWART, D.J.
04:56				TIMEOUT 30SEC
04:56				
04:39	TURNOVER (BADPASS) by WILLIAMS, JD			
04:39				STEAL by STEWART, D.J.
04:37	FOUL (PERSONAL) by WILLIAMS, JD			
04:37		55-41	H 14	GOOD! FT by WOODARD II, ROBERT [FB]
04:37		56-41	H 15	GOOD! FT by WOODARD II, ROBERT [FB]
04:20	MISSED 3PTR by WHITE, TYREE			
04:19				REBOUND (DEF) by FEAZELL, KEYSHAWN
04:19	FOUL (PERSONAL) by IFEJEH, ELIJAH			
04:19	SUB OUT: IFEJEH, ELIJAH			
04:19	SUB IN: NICHOLAS, JOSH			
04:19		57-41	H 16	GOOD! FT by FEAZELL, KEYSHAWN [FB]
04:19		58-41	H 17	GOOD! FT by FEAZELL, KEYSHAWN [FB]
04:19				SUB OUT: MOLINAR, IVERSON
04:19				SUB OUT: FEAZELL, KEYSHAWN
04:19				SUB IN: PERRY, REGGIE
04:19				SUB IN: CARTER, TYSON
04:03	MISSED 3PTR by ERTEL, MICHAEL			
03:58	REBOUND (OFF) by EFRETUEI, CHRIS			
03:50	TURNOVER (BADPASS) by ERTEL, MICHAEL			
03:50				
03:30		61-41	H 20	GOOD! 3PTR by STEWART, D.J.
03:30				ASSIST by PERRY, REGGIE
03:12	MISSED JUMPER by WHITE, TYREE			
03:12				BLOCK by ADO, ABDUL
03:06	REBOUND (OFF) by WILLIAMS, JD			
03:04	MISSED JUMPER by ERTEL, MICHAEL			
03:04				REBOUND (DEF) by STEWART, D.J.
03:04	FOUL (PERSONAL) by WHITE, TYREE			
03:04				SUB OUT: ADO, ABDUL
03:04				SUB IN: ODURO, PRINCE
03:04				MISSED FT by STEWART, D.J.
03:03	REBOUND (DEF) by EFRETUEI, CHRIS			
02:52	MISSED JUMPER by ERTEL, MICHAEL			
02:50				REBOUND (DEF) by TEAM
02:31				MISSED 3PTR by STEWART, D.J.
02:27	REBOUND (DEF) by WHITE, TYREE			
02:26	TURNOVER (BADPASS) by WHITE, TYREE			
02:26				STEAL by CARTER, TYSON
02:13	FOUL (PERSONAL) by EFRETUEI, CHRIS			
02:13		62-41	H 21	GOOD! FT by ODURO, PRINCE
02:13				SUB OUT: STEWART, D.J.
02:13				SUB OUT: WOODARD II, ROBERT
02:13				SUB OUT: CARTER, TYSON
02:13				SUB IN: KING, ELIAS
02:13				SUB IN: BUTTS, DEVIN
02:13				SUB IN: MOLINAR, IVERSON
02:13	SUB OUT: ERTEL, MICHAEL			
02:13	SUB IN: HODGE, JALEN			
02:13				MISSED FT by ODURO, PRINCE
02:13	REBOUND (DEF) by WHITE, TYREE			
02:04	MISSED 3PTR by WILLIAMS, JD			
01:59				REBOUND (DEF) by ODURO, PRINCE
01:59				TIMEOUT 30SEC
01:59				SUB OUT: PERRY, REGGIE
01:59				SUB IN: POST, QUINTEN
01:59	SUB OUT: EFRETUEI, CHRIS			
01:59	SUB IN: TRAORE, DADOU			
01:38				MISSED JUMPER by BUTTS, DEVIN
01:38	BLOCK by WHITE, TYREE			
01:34				REBOUND (OFF) by BUTTS, DEVIN
01:34				TURNOVER (LOSTBALL) by BUTTS, DEVIN
01:21	MISSED 3PTR by WHITE, TYREE			
01:16	REBOUND (OFF) by TRAORE, DADOU			
01:09	GOOD! LAYUP by NICHOLAS, JOSH	62-43	H 19	
00:42	FOUL (PERSONAL) by NICHOLAS, JOSH			
00:42				MISSED FT by ODURO, PRINCE
00:42				REBOUND (OFF) by TEAM

Time	VISITORS: La.-Monroe	Score	Margin	HOME: Mississippi St.
00:41				MISSED FT by ODURO, PRINCE
00:39	REBOUND (DEF) by WILLIAMS, JD			
00:23	GOOD! DUNK by TRAORE, DADOU	62-45	H 17	
00:23	ASSIST by WHITE, TYREE			
00:13				MISSED JUMPER by BUTTS, DEVIN
00:08	REBOUND (DEF) by NICHOLAS, JOSH			
00:06	MISSED JUMPER by WILLIAMS, JD			
00:03	REBOUND (OFF) by NICHOLAS, JOSH			

La.-Monroe 45, Mississippi St. 62

Points from (This Period)	ULM	MSU
In the Paint	10	10
Off Turns	8	12
2nd Chance	4	2
Fast Break	0	9
Bench	6	8

Official Scoring/Possession Reference Chart
La.-Monroe vs Mississippi St.
Period 1
November 14, 2019 at Humphrey Coliseum - Starkville



Period 1

Starters:

La.-Monroe: 0 EFRETUEI, CHRIS (C); 2 ERTEL, MICHAEL (G); 3 WILLIAMS, JD (G); 5 WHITE, TYREE (F); 23 WHITE, YOURY (F);
Mississippi St.: 1 PERRY, REGGIE (F); 5 MOLINAR, IVERSON (G); 12 WOODARD II, ROBERT (G); 23 CARTER, TYSON (G); 24 ADO, ABDUL (F);

Time	VISITORS: La.-Monroe	Score	Margin	HOME: Mississippi St.
19:37		2-0	H 2	GOOD! JUMPER by CARTER, TYSON
19:15	GOOD! JUMPER by EFRETUEI, CHRIS [PNT]	2-2	T	
18:37		5-2	H 3	GOOD! 3PTR by PERRY, REGGIE
18:02		7-2	H 5	GOOD! JUMPER by MOLINAR, IVERSON [PNT]
16:07		9-2	H 7	GOOD! DUNK by PERRY, REGGIE [FB]
13:55	GOOD! 3PTR by WILLIAMS, JD	9-5	H 4	
12:45	GOOD! JUMPER by ERTEL, MICHAEL	9-7	H 2	
12:36		11-7	H 4	GOOD! DUNK by ADO, ABDUL
12:02		13-7	H 6	GOOD! JUMPER by WOODARD II, ROBERT
11:40	GOOD! LAYUP by WILLIAMS, JD [PNT]	13-9	H 4	
10:25	GOOD! DUNK by IFEJEH, ELIJAH	13-11	H 2	
09:50		14-11	H 3	GOOD! FT by PERRY, REGGIE
09:36	GOOD! LAYUP by IFEJEH, ELIJAH	14-13	H 1	
08:55		16-13	H 3	GOOD! LAYUP by CARTER, TYSON [FB]
08:05		18-13	H 5	GOOD! JUMPER by STEWART, D.J.
08:04		19-13	H 6	GOOD! FT by STEWART, D.J.
06:40		21-13	H 8	GOOD! LAYUP by PERRY, REGGIE
05:43		22-13	H 9	GOOD! FT by ADO, ABDUL
05:14	GOOD! 3PTR by ERTEL, MICHAEL	22-16	H 6	
04:34		24-16	H 8	GOOD! DUNK by STEWART, D.J. [FB]
04:00	GOOD! 3PTR by WILLIAMS, JD	24-19	H 5	
03:45		26-19	H 7	GOOD! LAYUP by ADO, ABDUL
03:27	GOOD! JUMPER by EFRETUEI, CHRIS [PNT]	26-21	H 5	
03:16		27-21	H 6	GOOD! FT by MOLINAR, IVERSON
03:16		28-21	H 7	GOOD! FT by MOLINAR, IVERSON
02:46		30-21	H 9	GOOD! JUMPER by WOODARD II, ROBERT
02:25	GOOD! FT by EFRETUEI, CHRIS	30-22	H 8	
02:15		31-22	H 9	GOOD! FT by CARTER, TYSON
02:15		32-22	H 10	GOOD! FT by CARTER, TYSON
01:52		33-22	H 11	GOOD! FT by MOLINAR, IVERSON [FB]
01:52		34-22	H 12	GOOD! FT by MOLINAR, IVERSON [FB]
01:29		35-22	H 13	GOOD! FT by PERRY, REGGIE
00:45		36-22	H 14	GOOD! FT by PERRY, REGGIE
00:32	GOOD! JUMPER by EFRETUEI, CHRIS [PNT]	36-24	H 12	
00:05		39-24	H 15	GOOD! 3PTR by WOODARD II, ROBERT

La.-Monroe 24, Mississippi St. 39

Official Scoring/Possession Reference Chart
La.-Monroe vs Mississippi St.
Period 2
November 14, 2019 at Humphrey Coliseum - Starkville



Period 2

Starters:

La.-Monroe: 0 EFRETUEI, CHRIS (C); 2 ERTEL, MICHAEL (G); 3 WILLIAMS, JD (G); 5 WHITE, TYREE (F); 23 WHITE, YOURY (F);

Mississippi St.: 1 PERRY, REGGIE (F); 5 MOLINAR, IVERSON (G); 12 WOODARD II, ROBERT (G); 23 CARTER, TYSON (G); 24 ADO, ABDUL (F);

Time	VISITORS: La.-Monroe	Score	Margin	HOME: Mississippi St.
19:19		40-24	H 16	GOOD! FT by ADO, ABDUL
19:06	GOOD! 3PTR by WILLIAMS, JD	40-27	H 13	
18:13		42-27	H 15	GOOD! JUMPER by PERRY, REGGIE [PNT]
17:39		44-27	H 17	GOOD! LAYUP by WOODARD II, ROBERT [FB]
17:00	GOOD! LAYUP by ERTEL, MICHAEL [PNT]	44-29	H 15	
15:17		46-29	H 17	GOOD! LAYUP by WOODARD II, ROBERT [FB]
14:58	GOOD! JUMPER by ERTEL, MICHAEL [PNT]	46-31	H 15	
14:19	GOOD! FT by ERTEL, MICHAEL	46-32	H 14	
11:59	GOOD! JUMPER by IFEJEH, ELIJAH [PNT]	46-34	H 12	
11:13	GOOD! 3PTR by WILLIAMS, JD	46-37	H 9	
10:49		48-37	H 11	GOOD! LAYUP by MOLINAR, IVERSON
10:16		49-37	H 12	GOOD! FT by PERRY, REGGIE
09:57		50-37	H 13	GOOD! FT by PERRY, REGGIE [FB]
08:48		52-37	H 15	GOOD! JUMPER by STEWART, D.J.
07:54	GOOD! FT by WHITE, TYREE	52-38	H 14	
06:42	GOOD! JUMPER by EFRETUEI, CHRIS	52-40	H 12	
06:18		54-40	H 14	GOOD! JUMPER by MOLINAR, IVERSON [PNT]
05:54	GOOD! FT by EFRETUEI, CHRIS	54-41	H 13	
04:37		55-41	H 14	GOOD! FT by WOODARD II, ROBERT [FB]
04:37		56-41	H 15	GOOD! FT by WOODARD II, ROBERT [FB]
04:19		57-41	H 16	GOOD! FT by FEAZELL, KEYSHAWN [FB]
04:19		58-41	H 17	GOOD! FT by FEAZELL, KEYSHAWN [FB]
03:30		61-41	H 20	GOOD! 3PTR by STEWART, D.J.
02:13		62-41	H 21	GOOD! FT by ODURO, PRINCE
01:09	GOOD! LAYUP by NICHOLAS, JOSH	62-43	H 19	
00:23	GOOD! DUNK by TRAORE, DADOU	62-45	H 17	

La.-Monroe 45, Mississippi St. 62

Official Substitutions Log
La.-Monroe vs Mississippi St.
Period 1
November 14, 2019 at Humphrey Coliseum - Starkville



VISITORS: La.-Monroe	Time	Score	HOME: Mississippi St.
0 EFRETUEI, CHRIS			1 PERRY, REGGIE
2 ERTEL, MICHAEL			5 MOLINAR, IVERSON
3 WILLIAMS, JD			12 WOODARD II, ROBERT
5 WHITE, TYREE			23 CARTER, TYSON
23 WHITE, YOURY			24 ADO, ABDUL
SUB OUT: 0 EFRETUEI, CHRIS	16:07	2-9	
SUB OUT: 5 WHITE, TYREE	16:07		
SUB OUT: 23 WHITE, YOURY	16:07		
SUB IN: 14 IFEJEH, ELIJAH	16:07		
SUB IN: 22 BERNARD, D'ANDRE	16:07		
SUB IN: 24 TRAORE, DADOU	16:07		
	14:42	2-9	SUB OUT: PERRY, REGGIE
	14:42		SUB OUT: MOLINAR, IVERSON
	14:42		SUB IN: STEWART, D.J.
	14:42		SUB IN: FEAZELL, KEYSAWN
SUB OUT: 22 BERNARD, D'ANDRE	12:13	7-11	
SUB OUT: 24 TRAORE, DADOU	12:13		
SUB IN: 0 EFRETUEI, CHRIS	12:13		
SUB IN: 5 WHITE, TYREE	12:13		
	11:11	9-13	SUB OUT: WOODARD II, ROBERT
	11:11		SUB OUT: CARTER, TYSON
	11:11		SUB OUT: ADO, ABDUL
	11:11		SUB IN: PERRY, REGGIE
	11:11		SUB IN: MOLINAR, IVERSON
	11:11		SUB IN: ODURO, PRINCE
	10:01	11-13	SUB OUT: FEAZELL, KEYSAWN
	10:01		SUB IN: CARTER, TYSON
	08:32	13-16	SUB OUT: MOLINAR, IVERSON
	08:32		SUB OUT: ODURO, PRINCE
	08:32		SUB IN: WOODARD II, ROBERT
	08:32		SUB IN: ADO, ABDUL
SUB OUT: 0 EFRETUEI, CHRIS	08:32		
SUB IN: 24 TRAORE, DADOU	08:32		
SUB OUT: 14 IFEJEH, ELIJAH	07:37	13-19	
SUB IN: 23 WHITE, YOURY	07:37		
SUB OUT: 23 WHITE, YOURY	06:05	13-21	
SUB IN: 14 IFEJEH, ELIJAH	06:05		
	03:45	19-26	SUB OUT: STEWART, D.J.
	03:45		SUB IN: MOLINAR, IVERSON
SUB OUT: 5 WHITE, TYREE	03:45		
SUB OUT: 24 TRAORE, DADOU	03:45		
SUB IN: 0 EFRETUEI, CHRIS	03:45		
SUB IN: 22 BERNARD, D'ANDRE	03:45		
SUB OUT: 2 ERTEL, MICHAEL	02:25	22-30	
SUB IN: 13 HODGE, JALEN	02:25		
	02:15	22-32	SUB OUT: WOODARD II, ROBERT
	02:15		SUB IN: STEWART, D.J.
SUB OUT: 3 WILLIAMS, JD	01:52	22-33	
SUB IN: 15 NICHOLAS, JOSH	01:52		
SUB OUT: 14 IFEJEH, ELIJAH	01:29	22-34	
SUB IN: 23 WHITE, YOURY	01:29		
	00:28	24-36	SUB OUT: PERRY, REGGIE
	00:28		SUB IN: WOODARD II, ROBERT
	00:28		SUB OUT: MOLINAR, IVERSON
	00:28		SUB IN: PERRY, REGGIE

La.-Monroe 24, Mississippi St. 39

Official Substitutions Log
La.-Monroe vs Mississippi St.
Period 2
November 14, 2019 at Humphrey Coliseum - Starkville



VISITORS: La.-Monroe	Time	Score	HOME: Mississippi St.
0 EFRETUEI, CHRIS			1 PERRY, REGGIE
2 ERTEL, MICHAEL			5 MOLINAR, IVERSON
3 WILLIAMS, JD			12 WOODARD II, ROBERT
5 WHITE, TYREE			23 CARTER, TYSON
23 WHITE, YOURY			24 ADO, ABDUL
	20:00	-	SUB OUT: STEWART, D.J.
	20:00		SUB IN: MOLINAR, IVERSON
SUB OUT: 13 HODGE, JALEN	20:00		
SUB OUT: 15 NICHOLAS, JOSH	20:00		
SUB OUT: 22 BERNARD, D'ANDRE	20:00		
SUB IN: 2 ERTEL, MICHAEL	20:00		
SUB IN: 3 WILLIAMS, JD	20:00		
SUB IN: 5 WHITE, TYREE	20:00		
	16:18	29-44	SUB OUT: PERRY, REGGIE
	16:18		SUB IN: FEAZELL, KEYSAWN
SUB OUT: 0 EFRETUEI, CHRIS	16:18		
SUB IN: 24 TRAORE, DADOU	16:18		
	15:35	29-44	SUB OUT: MOLINAR, IVERSON
	15:35		SUB IN: STEWART, D.J.
SUB OUT: 5 WHITE, TYREE	15:35		
SUB OUT: 23 WHITE, YOURY	15:35		
SUB IN: 14 IFEJEH, ELIJAH	15:35		
SUB IN: 22 BERNARD, D'ANDRE	15:35		
	14:19	32-46	SUB OUT: ADO, ABDUL
	14:19		SUB IN: PERRY, REGGIE
	13:49	32-46	SUB OUT: CARTER, TYSON
	13:49		SUB IN: MOLINAR, IVERSON
	11:27	34-46	SUB OUT: FEAZELL, KEYSAWN
	11:27		SUB IN: ADO, ABDUL
SUB OUT: 14 IFEJEH, ELIJAH	10:16	37-48	
SUB IN: 5 WHITE, TYREE	10:16		
SUB OUT: 24 TRAORE, DADOU	10:16		
SUB IN: 0 EFRETUEI, CHRIS	10:16		
SUB OUT: 22 BERNARD, D'ANDRE	09:57	37-49	
SUB IN: 23 WHITE, YOURY	09:57		
	09:13	37-50	SUB OUT: PERRY, REGGIE
	09:13		SUB OUT: WOODARD II, ROBERT
	09:13		SUB IN: FEAZELL, KEYSAWN
	09:13		SUB IN: CARTER, TYSON
	07:54	37-52	SUB OUT: CARTER, TYSON
	07:54		SUB IN: WOODARD II, ROBERT
	07:30	38-52	SUB OUT: FEAZELL, KEYSAWN
	07:30		SUB IN: PERRY, REGGIE
	05:54	41-54	SUB OUT: PERRY, REGGIE
	05:54		SUB IN: FEAZELL, KEYSAWN
SUB OUT: 23 WHITE, YOURY	05:54		
SUB IN: 14 IFEJEH, ELIJAH	05:54		
SUB OUT: 14 IFEJEH, ELIJAH	04:19	41-56	
SUB IN: 15 NICHOLAS, JOSH	04:19		
	04:19		SUB OUT: MOLINAR, IVERSON
	04:19		SUB OUT: FEAZELL, KEYSAWN
	04:19		SUB IN: PERRY, REGGIE
	04:19		SUB IN: CARTER, TYSON
	03:04	41-61	SUB OUT: ADO, ABDUL
	03:04		SUB IN: ODURO, PRINCE
	02:13	41-62	SUB OUT: STEWART, D.J.
	02:13		SUB OUT: WOODARD II, ROBERT
	02:13		SUB OUT: CARTER, TYSON
	02:13		SUB IN: KING, ELIAS
	02:13		SUB IN: BUTTS, DEVIN
	02:13		SUB IN: MOLINAR, IVERSON
SUB OUT: 2 ERTEL, MICHAEL	02:13		
SUB IN: 13 HODGE, JALEN	02:13		
	01:59	41-62	SUB OUT: PERRY, REGGIE
	01:59		SUB IN: POST, QUINTEN
SUB OUT: 0 EFRETUEI, CHRIS	01:59		
SUB IN: 24 TRAORE, DADOU	01:59		

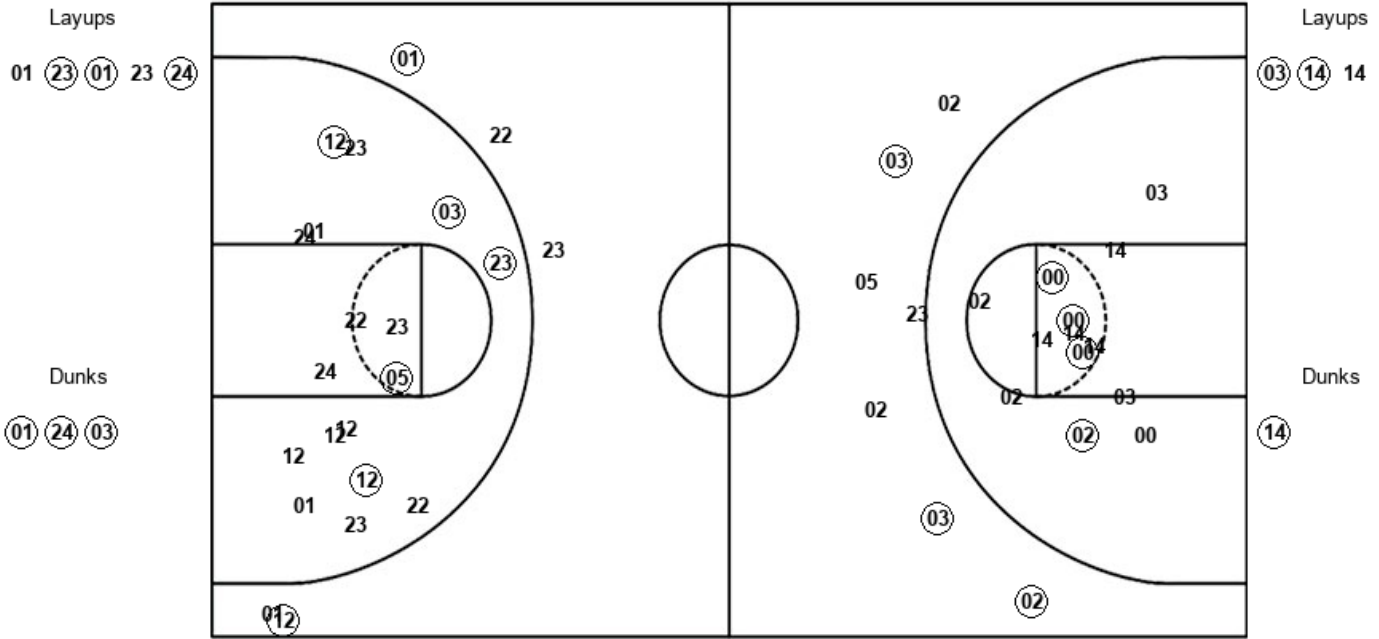
La.-Monroe 45, Mississippi St. 62

Official Shot Chart
La.-Monroe vs Mississippi St.
PERIOD 1 Shots
 November 14, 2019 at Humphrey Coliseum - Starkville



Mississippi St.

La.-Monroe



MSU : Period 1	Made	Att	Pct
Layups	3	5	60.0
Dunks	3	3	100.0
2PT Field Goals	11	25	44.0
3PT Field Goals	2	5	40.0
Total Field Goals	13	30	43.3

ULM : Period 1	Made	Att	Pct
Layups	2	3	66.7
Dunks	1	1	100.0
2PT Field Goals	7	18	38.9
3PT Field Goals	3	6	50.0
Total Field Goals	10	24	41.7

Official Shot Chart
La.-Monroe vs Mississippi St.
 PERIOD 2 Shots
 November 14, 2019 at Humphrey Coliseum - Starkville



Mississippi St.

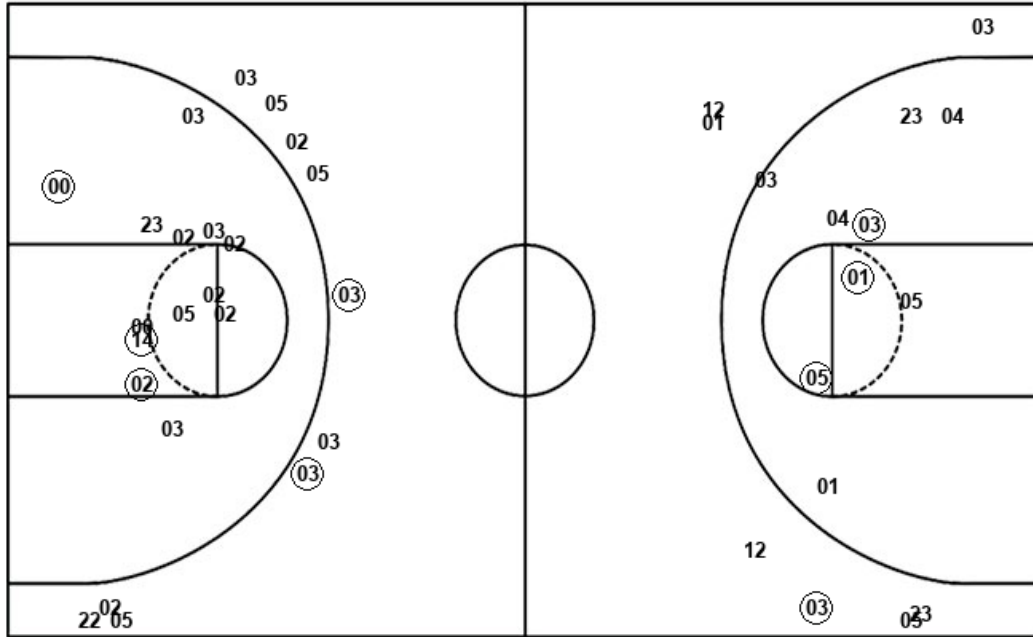
La.-Monroe

Layups
 (12) (12) (05)

Layups
 (02) (15)

Dunks

Dunks



MSU : Period 2	Made	Att	Pct
Layups	3	3	100.0
Dunks	0	0	0
2PT Field Goals	6	12	50.0
3PT Field Goals	1	7	14.3
Total Field Goals	7	19	36.8

ULM : Period 2	Made	Att	Pct
Layups	2	2	100.0
Dunks	1	2	50.0
2PT Field Goals	6	17	35.3
3PT Field Goals	2	10	20.0
Total Field Goals	8	27	29.6

Official Shot Chart
 La.-Monroe vs Mississippi St.
 La.-Monroe Team Shots
 November 14, 2019 at Humphrey Coliseum - Starkville

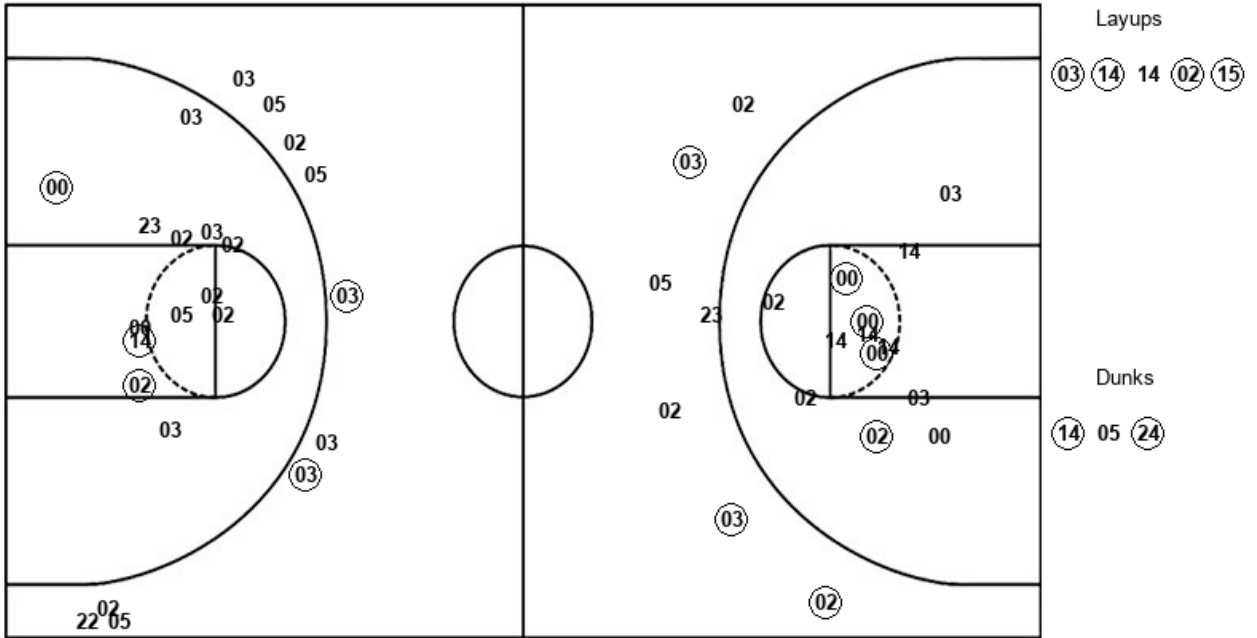


Layups

Layups

Dunks

Dunks



ULM : Period 1	Made	Att	Pct
Layups	2	3	66.7
Dunks	1	1	100.0
2PT Field Goals	7	18	38.9
3PT Field Goals	3	6	50.0
Total Field Goals	10	24	41.7

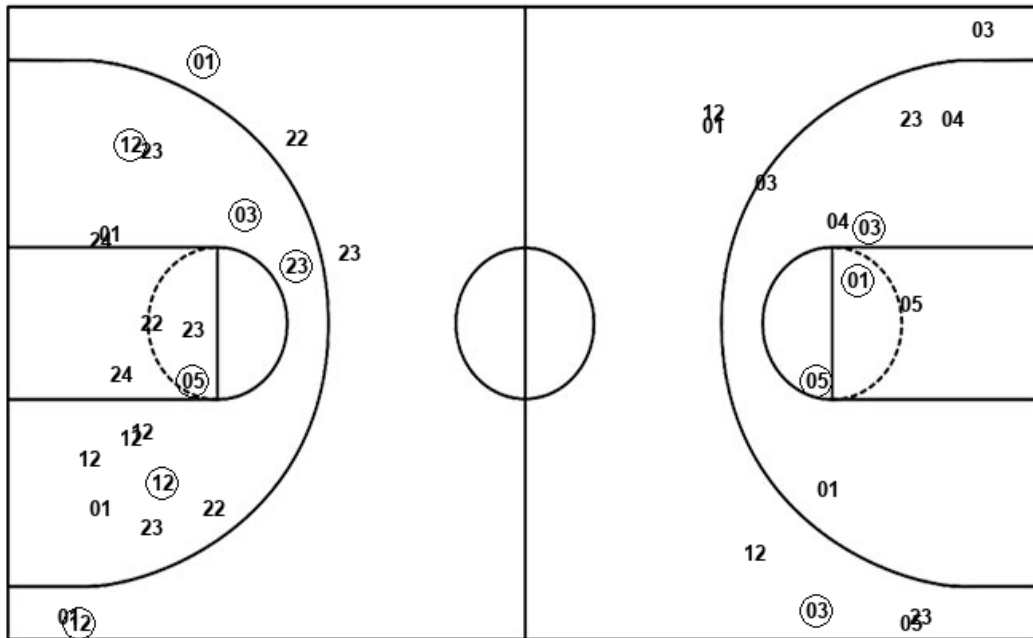
ULM : Period 2	Made	Att	Pct
Layups	2	2	100.0
Dunks	1	2	50.0
2PT Field Goals	6	17	35.3
3PT Field Goals	2	10	20.0
Total Field Goals	8	27	29.6

Official Shot Chart
La.-Monroe vs Mississippi St.
Mississippi St. Team Shots
November 14, 2019 at Humphrey Coliseum - Starkville



Layups

Dunks



Layups

Dunks

MSU : Period 1	Made	Att	Pct
Layups	3	5	60.0
Dunks	3	3	100.0
2PT Field Goals	11	25	44.0
3PT Field Goals	2	5	40.0
Total Field Goals	13	30	43.3

MSU : Period 2	Made	Att	Pct
Layups	3	3	100.0
Dunks	0	0	0
2PT Field Goals	6	12	50.0
3PT Field Goals	1	7	14.3
Total Field Goals	7	19	36.8