

FINAL SCORE

Southeast Missouri

61



Saint Louis

76



December 03, 2019 • Chaifetz Arena - St. Louis, Mo.

FINAL STATISTICS

Official Box Score
Southeast Missouri vs Saint Louis
Game Totals -- Final Statistics
December 03, 2019 at Chaifetz Arena - St. Louis, Mo.



Southeast Missouri 61

No.	Player	S	Pts	FG	3FG	FT	OR	DR	TR	PF	A	TO	Blk	Stl	Min	+/-
02	SHEPHARD, CARRIE	G	23	8-17	5-8	2-2	0	3	3	1	4	4	0	0	35	-20
10	PRUITT, TAELOUR	G	14	4-11	0-4	6-7	3	1	4	4	6	2	0	3	32	-7
13	HARSHBERGER, JESSIE	G	14	6-11	2-5	0-0	0	3	3	1	2	1	0	2	29	-8
32	GARDENER, DENISHA	F	3	1-2	0-0	1-4	5	2	7	3	0	2	0	3	21	-4
34	BUSSARD, SOPHIE	G	2	0-8	0-2	2-2	2	3	5	1	2	3	0	0	30	-10
01	ALLEN, KENNEDI	F	1	0-0	0-0	1-2	0	1	1	1	0	0	2	0	12	-6
03	SCOTT, ROSHALA	G	0	0-4	0-1	0-0	2	2	4	0	0	2	0	2	17	-8
12	HANCOCK, SOPHIA	F	0	0-0	0-0	0-0	1	0	1	0	0	0	0	0	1	2
23	TAYLOR, JOCELYN	F	2	1-3	0-1	0-0	1	0	1	3	0	2	1	1	14	-11
40	SAINE, LATRESE	F	2	1-3	0-0	0-0	0	1	1	3	0	0	0	0	8	-6
55	AKORO, CELESTE	C	0	0-0	0-0	0-2	1	0	1	0	0	0	0	0	2	3
TEAM							0	1	1	0		0				
TOTALS			61	21-59	7-21	12-19	15	17	32	17	14	16	3	11	199	

Shooting By Period

Period	FG	FG%	3FG	3FG%	FT	FT%
1st Qtr	7-17	41%	1-5	20%	2-2	100%
2nd Qtr	6-15	40%	4-8	50%	0-0	0%
3rd Qtr	6-13	46%	2-4	50%	4-6	67%
4th Qtr	2-14	14%	0-4	00%	6-11	55%
1st Half	13-32	41%	5-13	38%	2-2	100%
2nd Half	8-27	30%	2-8	25%	10-17	59%
Game	21-59	35.6%	7-21	33.3%	12-19	63.2%

Deadball Rebounds: 4,1
Last FG: 4th-01:21
Biggest Run: 7-0
Largest lead: By 1 at 1-09
Technical Fouls: None.

Saint Louis 76

No.	Player	S	Pts	FG	3FG	FT	OR	DR	TR	PF	A	TO	Blk	Stl	Min	+/-
02	HARBISON, CIAJA	G	19	6-8	2-3	5-6	0	0	0	1	5	3	0	3	36	20
22	KENT, RACHEL	F	17	4-14	4-8	5-6	2	3	5	2	1	2	1	1	38	20
32	CLARK, MYIA	G	6	2-6	2-3	0-0	0	2	2	1	2	3	0	1	30	18
34	WILKEN, KENDRA	F	16	6-9	1-1	3-4	2	6	8	0	4	3	0	1	30	12
42	FLOWERS, BROOKE	F	13	5-7	0-0	3-5	2	12	14	4	3	2	3	1	31	24
01	RICE, CHLOE	G	0	0-0	0-0	0-0	0	0	0	0	0	1	0	0	4	-1
05	MIKKELSEN, VICTORIA	F	0	0-0	0-0	0-0	0	0	0	0	0	0	0	0	2	-5
10	DOSETT, HANNAH	G	0	0-1	0-1	0-0	0	0	0	2	0	0	0	0	4	-5
11	MARTINEZ, JULIA	G	0	0-0	0-0	0-0	0	0	0	2	1	3	0	0	6	-2
30	HUGHES, LAURYN	G	2	1-1	0-0	0-0	0	0	0	1	0	0	0	0	2	-5
35	SMITH TRAORE, MYRIAMA	F	3	1-4	0-0	1-1	4	1	5	1	1	1	0	0	17	-1
TEAM							0	2	2	0		0				
TOTALS			76	25-50	9-16	17-22	10	26	36	14	17	18	4	7	199	

Shooting By Period

Period	FG	FG%	3FG	3FG%	FT	FT%
1st Qtr	8-14	57%	3-4	75%	4-5	80%
2nd Qtr	8-14	57%	4-6	67%	2-2	100%
3rd Qtr	5-13	38%	1-4	25%	6-9	67%
4th Qtr	4-9	44%	1-2	50%	5-6	83%
1st Half	16-28	57%	7-10	70%	6-7	86%
2nd Half	9-22	41%	2-6	33%	11-15	73%
Game	25-50	50.0%	9-16	56.3%	17-22	77.3%

Deadball Rebounds: 2,0
Last FG: 4th-01:06
Biggest Run: 12-0
Largest lead: By 20 at 4-02
Technical Fouls: None.

Game Notes:

Officials: **Bruce Morris, Maggie Tieman, Nykesha Thompson**
 Attendance: **352**

Start Time: **08:01 PM ET**
 End Time: **09:41 PM ET**
 Game Duration: **1:40**

Score	1st	2nd	3rd	4th	TOT
SMS	17	16	18	10	61
SLU	23	22	17	14	76

SMS led for 1:49. SLU led for 37:48.
Game was tied for 0:15.
 Times tied: **0** Lead Changes: **2**

Points from	SMS	SLU
In the Paint	20	28
Off Turns	19	20
2nd Chance	6	10
Fast Break	6	4
Bench	5	5

Official Box Score
Southeast Missouri vs Saint Louis
First Half Statistics Only
December 03, 2019 at Chaifetz Arena - St. Louis, Mo.



Southeast Missouri 33

No.	Player	S	Pts	FG	3FG	FT	OR	DR	TR	PF	A	TO	Blk	Stl	Min	+/-
02	SHEPHARD, CARRIE	G	15	6-10	3-5	0-0	0	2	2	0	3	3	0	0	20	-12
03	SCOTT, ROSHALA	G	0	0-1	0-0	0-0	1	1	2	0	0	1	0	1	10	-5
10	PRUITT, TAELOUR	G	6	2-6	0-3	2-2	1	0	1	2	4	1	0	2	16	-11
12	HANCOCK, SOPHIA	F	0	0-0	0-0	0-0	0	0	0	0	0	0	0	0	0	0
13	HARSHBERGER, JESSIE	G	10	4-5	2-3	0-0	0	2	2	1	0	1	0	0	14	-5
23	TAYLOR, JOCELYN	F	0	0-2	0-1	0-0	1	0	1	1	0	1	1	0	6	-7
32	GARDENER, DENISHA	F	0	0-1	0-0	0-0	3	1	4	0	0	1	0	2	13	-5
34	BUSSARD, SOPHIE	G	0	0-4	0-1	0-0	0	1	1	1	2	1	0	0	15	-8
40	SAINE, LATRESE	F	2	1-3	0-0	0-0	0	0	0	2	0	0	0	0	3	-3
55	AKORO, CELESTE	C	0	0-0	0-0	0-0	0	0	0	0	0	0	0	0	0	0
01	ALLEN, KENNEDI	F	0	0-0	0-0	0-0	0	0	0	0	0	0	0	0	4	-4
	TEAM		0	0-0	0-0	0-0	0	0	0	0	0	0	0	0	0	0
TOTALS			33	13-32	5-13	2-2	6	7	13	7	9	9	1	5	100	

Shooting By Period

Period	FG	FG%	3FG	3FG%	FT	FT%
1st Qtr	7-17	41%	1-5	20%	2-2	100%
2nd Qtr	6-15	40%	4-8	50%	0-0	0%
1st Half	13-32	41%	5-13	38%	2-2	100%
Game	21-59	35.6%	7-21	33.3%	12-19	63.2%

Deadball Rebounds: 4,1
Last FG Half: SMS 2nd-00:01

Saint Louis 45

No.	Player	S	Pts	FG	3FG	FT	OR	DR	TR	PF	A	TO	Blk	Stl	Min	+/-
01	RICE, CHLOE	G	0	0-0	0-0	0-0	0	0	0	0	0	1	0	0	3	1
02	HARBISON, CIAJA	G	9	3-4	1-2	2-2	0	0	0	0	4	1	0	1	18	12
05	MIKKELSEN, VICTORIA	F	0	0-0	0-0	0-0	0	0	0	0	0	0	0	0	0	0
10	DOSETT, HANNAH	G	0	0-0	0-0	0-0	0	0	0	0	0	0	0	0	1	0
11	MARTINEZ, JULIA	G	0	0-0	0-0	0-0	0	0	0	0	0	1	0	0	2	0
22	KENT, RACHEL	F	9	3-8	3-5	0-0	1	3	4	0	0	2	1	0	20	12
30	HUGHES, LAURYN	G	0	0-0	0-0	0-0	0	0	0	0	0	0	0	0	0	0
32	CLARK, MYIA	G	6	2-3	2-2	0-0	0	1	1	1	2	2	0	1	16	11
34	WILKEN, KENDRA	F	9	3-5	1-1	2-2	2	2	4	0	3	1	0	0	17	6
35	SMITH TRAORE, MYRIAMA	F	0	0-1	0-0	0-0	1	0	1	1	0	0	0	0	7	2
42	FLOWERS, BROOKE	F	12	5-7	0-0	2-3	2	6	8	1	2	2	1	0	16	16
	TEAM		0	0-0	0-0	0-0	0	1	1	0	0	0	0	0	0	0
TOTALS			45	16-28	7-10	6-7	6	13	19	3	11	10	2	2	100	

Shooting By Period

Period	FG	FG%	3FG	3FG%	FT	FT%
1st Qtr	8-14	57%	3-4	75%	4-5	80%
2nd Qtr	8-14	57%	4-6	67%	2-2	100%
1st Half	16-28	57%	7-10	70%	6-7	86%
Game	25-50	50.0%	9-16	56.3%	17-22	77.3%

Deadball Rebounds: 2,0
Last FG Half: SLU 2nd-00:21

Game Notes:

Officials: **Bruce Morris, Maggie Tieman, Nykesha Thompson**
 Attendance: **352**

Start Time: **08:01 PM ET**
 End Time: **09:41 PM ET**
 Game Duration: **1:40**

Score	1st	2nd	3rd	4th	TOT
SMS	17	16	18	10	61
SLU	23	22	17	14	76

Points from (This Period)	SMS	SLU
In the Paint	10	16
Off Turns	12	13
2nd Chance	2	9
Fast Break	0	2
Bench	2	0

Official Box Score
Southeast Missouri vs Saint Louis
First Quarter Statistics Only
December 03, 2019 at Chaifetz Arena - St. Louis, Mo.



Southeast Missouri 17

No.	Player	S	Pts	FG	3FG	FT	OR	DR	TR	PF	A	TO	Blk	Stl	Min	+/-
02	SHEPHARD, CARRIE	G	9	4-6	1-2	0-0	0	1	1	0	1	0	0	0	10	-6
10	PRUITT, TAELOUR	G	4	1-4	0-2	2-2	1	0	1	1	3	0	0	2	10	-6
13	HARSHBERGER, JESSIE	G	2	1-1	0-0	0-0	0	0	0	0	0	0	0	0	7	-3
32	GARDENER, DENISHA	F	0	0-0	0-0	0-0	0	1	1	0	0	1	0	1	7	-3
34	BUSSARD, SOPHIE	G	0	0-1	0-0	0-0	0	1	1	1	1	1	0	0	6	-3
01	ALLEN, KENNEDI	F	0	0-0	0-0	0-0	0	0	0	0	0	0	0	0	0	0
03	SCOTT, ROSHALA	G	0	0-1	0-0	0-0	1	0	1	0	0	0	0	0	4	-3
12	HANCOCK, SOPHIA	F	0	0-0	0-0	0-0	0	0	0	0	0	0	0	0	0	0
23	TAYLOR, JOCELYN	F	0	0-1	0-1	0-0	1	0	1	0	0	0	0	0	3	-3
40	SAINE, LATRESE	F	2	1-3	0-0	0-0	0	0	0	2	0	0	0	0	3	-3
55	AKORO, CELESTE	C	0	0-0	0-0	0-0	0	0	0	0	0	0	0	0	0	0
	TEAM						0	0	0	0		0				
TOTALS			17	7-17	1-5	2-2	3	3	6	4	5	2	0	3	50	

Shooting By Period

Period	FG	FG%	3FG	3FG%	FT	FT%
1st Qtr	7-17	41%	1-5	20%	2-2	100%
2nd Qtr	6-15	40%	4-8	50%	0-0	0%
1st Half	7-17	41%	1-5	20%	2-2	100%
1st Half	13-32	41%	5-13	38%	2-2	100%
Game	21-59	35.6%	7-21	33.3%	12-19	63.2%

Deadball Rebounds: 4,1

Saint Louis 23

No.	Player	S	Pts	FG	3FG	FT	OR	DR	TR	PF	A	TO	Blk	Stl	Min	+/-
02	HARBISON, CIAJA	G	5	2-2	1-1	0-0	0	0	0	0	2	1	0	0	8	6
22	KENT, RACHEL	F	3	1-4	1-2	0-0	1	2	3	0	0	0	0	0	10	6
32	CLARK, MYIA	G	3	1-1	1-1	0-0	0	1	1	0	2	2	0	0	9	6
34	WILKEN, KENDRA	F	4	1-2	0-0	2-2	2	1	3	0	1	0	0	0	8	3
42	FLOWERS, BROOKE	F	8	3-4	0-0	2-3	1	3	4	1	0	1	1	0	8	8
01	RICE, CHLOE	G	0	0-0	0-0	0-0	0	0	0	0	0	0	0	0	0	0
05	MIKKELSEN, VICTORIA	F	0	0-0	0-0	0-0	0	0	0	0	0	0	0	0	0	0
10	DOSETT, HANNAH	G	0	0-0	0-0	0-0	0	0	0	0	0	0	0	0	1	0
11	MARTINEZ, JULIA	G	0	0-0	0-0	0-0	0	0	0	0	0	1	0	0	2	0
30	HUGHES, LAURYN	G	0	0-0	0-0	0-0	0	0	0	0	0	0	0	0	0	0
35	SMITH TRAORE, MYRIAMA	F	0	0-1	0-0	0-0	0	0	0	1	0	0	0	0	4	1
	TEAM						0	0	0	0		0				
TOTALS			23	8-14	3-4	4-5	4	7	11	2	5	5	1	0	50	

Shooting By Period

Period	FG	FG%	3FG	3FG%	FT	FT%
1st Qtr	8-14	57%	3-4	75%	4-5	80%
2nd Qtr	8-14	57%	4-6	67%	2-2	100%
1st Half	8-14	57%	3-4	75%	4-5	80%
1st Half	16-28	57%	7-10	70%	6-7	86%
Game	25-50	50.0%	9-16	56.3%	17-22	77.3%

Deadball Rebounds: 2,0

Game Notes:

Officials: **Bruce Morris, Maggie Tieman, Nykesha Thompson**
 Attendance: **352**

Start Time: **08:01 PM ET**
 End Time: **09:41 PM ET**
 Game Duration: **1:40**

Score	1st	2nd	3rd	4th	TOT
SMS	17	16	18	10	61
SLU	23	22	17	14	76

Points from (This Period)	SMS	SLU
In the Paint	8	8
Off Turns	4	5
2nd Chance	2	7
Fast Break	0	0
Bench	2	0

Official By-By-Play
Southeast Missouri vs Saint Louis
First Quarter
December 03, 2019 at Chaifetz Arena - St. Louis, Mo.



Period 1

Starters:

Southeast Missouri: 2 SHEPHARD, CARRIE (G); 10 PRUITT, TAELOUR (G); 13 HARSHBERGER, JESSIE (G); 32 GARDENER, DENISHA (F); 34 BUSSARD, SOPHIE (G);
Saint Louis: 2 HARBISON, CIAJA (G); 22 KENT, RACHEL (F); 32 CLARK, MYIA (G); 34 WILKEN, KENDRA (F); 42 FLOWERS, BROOKE (F);

Time	VISITORS: Southeast Missouri	Score	Margin	HOME: Saint Louis
09:45	FOUL (PERSONAL) by BUSSARD, SOPHIE			
09:45		1-0	H 1	GOOD! FT by WILKEN, KENDRA
09:45		2-0	H 2	GOOD! FT by WILKEN, KENDRA
09:36	GOOD! 3PTR by SHEPHARD, CARRIE	2-3	V 1	
09:36	ASSIST by BUSSARD, SOPHIE			
09:19				MISSED JUMPER by KENT, RACHEL
09:16	REBOUND (DEF) by SHEPHARD, CARRIE			
09:01	MISSED JUMPER by BUSSARD, SOPHIE			
08:59				REBOUND (DEF) by WILKEN, KENDRA
08:45				MISSED JUMPER by FLOWERS, BROOKE
08:43	REBOUND (DEF) by GARDENER, DENISHA			
08:19	MISSED 3PTR by PRUITT, TAELOUR			
08:16				REBOUND (DEF) by FLOWERS, BROOKE
08:01	FOUL (PERSONAL) by PRUITT, TAELOUR			
07:55				MISSED 3PTR by KENT, RACHEL
07:51				REBOUND (OFF) by WILKEN, KENDRA
07:50				MISSED LAYUP by WILKEN, KENDRA
07:48				REBOUND (OFF) by FLOWERS, BROOKE
07:47		4-3	H 1	GOOD! LAYUP by FLOWERS, BROOKE
07:31	TURNOVER (LOSTBALL) by GARDENER, DENISHA			
07:10		7-3	H 4	GOOD! 3PTR by HARBISON, CIAJA
07:10				ASSIST by CLARK, MYIA
06:51	GOOD! JUMPER by HARSHBERGER, JESSIE	7-5	H 2	
06:51	ASSIST by SHEPHARD, CARRIE			
06:38		10-5	H 5	GOOD! 3PTR by CLARK, MYIA
06:38				ASSIST by HARBISON, CIAJA
06:15	GOOD! LAYUP by SHEPHARD, CARRIE [PNT]	10-7	H 3	
06:15	ASSIST by PRUITT, TAELOUR			
05:50				TURNOVER (BADPASS) by CLARK, MYIA
05:50	STEAL by PRUITT, TAELOUR			
05:45	MISSED 3PTR by SHEPHARD, CARRIE			
05:42				REBOUND (DEF) by FLOWERS, BROOKE
05:31				MISSED JUMPER by KENT, RACHEL
05:28	REBOUND (DEF) by BUSSARD, SOPHIE			
05:20	GOOD! LAYUP by PRUITT, TAELOUR	10-9	H 1	
04:52		12-9	H 3	GOOD! LAYUP by FLOWERS, BROOKE
04:52				ASSIST by WILKEN, KENDRA
04:41	TURNOVER (LOSTBALL) by BUSSARD, SOPHIE			
04:41				
04:41	SUB OUT: HARSHBERGER, JESSIE			
04:41	SUB OUT: GARDENER, DENISHA			
04:41	SUB OUT: BUSSARD, SOPHIE			
04:41	SUB IN: SCOTT, ROSHALA			
04:41	SUB IN: TAYLOR, JOCELYN			
04:41	SUB IN: SAINÉ, LATRESE			
04:25		14-9	H 5	GOOD! JUMPER by HARBISON, CIAJA
04:10	MISSED JUMPER by SAINÉ, LATRESE			
04:10				BLOCK by FLOWERS, BROOKE
04:06	REBOUND (OFF) by TAYLOR, JOCELYN			
04:02	MISSED 3PTR by TAYLOR, JOCELYN			
03:59				REBOUND (DEF) by CLARK, MYIA
03:47				FOUL (OFF) by FLOWERS, BROOKE
03:47				TURNOVER (OFFENSIVE) by FLOWERS, BROOKE
03:47				SUB OUT: WILKEN, KENDRA
03:47				SUB IN: SMITH TRAORE, MYRIAMA
03:35	MISSED LAYUP by SCOTT, ROSHALA			
03:33	REBOUND (OFF) by SCOTT, ROSHALA			
03:28	MISSED JUMPER by SAINÉ, LATRESE			
03:26				REBOUND (DEF) by FLOWERS, BROOKE
03:13		16-9	H 7	GOOD! LAYUP by FLOWERS, BROOKE
03:13				ASSIST by CLARK, MYIA
03:13	FOUL (PERSONAL) by SAINÉ, LATRESE			
03:13				MISSED FT by FLOWERS, BROOKE
03:13				REBOUND (OFF) by KENT, RACHEL
03:05		19-9	H 10	GOOD! 3PTR by KENT, RACHEL
03:05				ASSIST by HARBISON, CIAJA
02:46	GOOD! JUMPER by SHEPHARD, CARRIE	19-11	H 8	
02:46	ASSIST by PRUITT, TAELOUR			
02:28				TURNOVER (BADPASS) by HARBISON, CIAJA
02:28	STEAL by PRUITT, TAELOUR			

Time	VISITORS: Southeast Missouri	Score	Margin	HOME: Saint Louis
02:23	MISSED 3PTR by PRUITT, TAELOUR			
02:18	REBOUND (OFF) by PRUITT, TAELOUR			
02:16	GOOD! LAYUP by SAINE, LATRESE	19-13	H 6	
02:16	ASSIST by PRUITT, TAELOUR			
01:50	FOUL (PERSONAL) by SAINE, LATRESE			
01:50				SUB OUT: HARBISON, CIAJA
01:50				SUB IN: MARTINEZ, JULIA
01:50	SUB OUT: SCOTT, ROSHALA			
01:50	SUB OUT: SAINE, LATRESE			
01:50	SUB IN: GARDENER, DENISHA			
01:50	SUB IN: BUSSARD, SOPHIE			
01:50		20-13	H 7	GOOD! FT by FLOWERS, BROOKE
01:50		21-13	H 8	GOOD! FT by FLOWERS, BROOKE
01:50				SUB OUT: FLOWERS, BROOKE
01:50				SUB IN: WILKEN, KENDRA
01:36	GOOD! JUMPER by SHEPHARD, CARRIE [PNT]	21-15	H 6	
01:20				TURNOVER (LOSTBALL) by CLARK, MYIA
01:20				SUB OUT: CLARK, MYIA
01:20				SUB IN: DOSSETT, HANNAH
01:20	SUB OUT: TAYLOR, JOCELYN			
01:20	SUB IN: HARSHBERGER, JESSIE			
00:57	MISSED JUMPER by SHEPHARD, CARRIE			
00:53				REBOUND (DEF) by KENT, RACHEL
00:46				TURNOVER (BADPASS) by MARTINEZ, JULIA
00:46	STEAL by GARDENER, DENISHA			
00:39				FOUL (PERSONAL) by SMITH TRAORE, MYRIAMA
00:39	SUB OUT: BUSSARD, SOPHIE			
00:39	SUB IN: SCOTT, ROSHALA			
00:39	GOOD! FT by PRUITT, TAELOUR	21-16	H 5	
00:39	GOOD! FT by PRUITT, TAELOUR	21-17	H 4	
00:22				MISSED JUMPER by SMITH TRAORE, MYRIAMA
00:18				REBOUND (OFF) by WILKEN, KENDRA
00:17		23-17	H 6	GOOD! LAYUP by WILKEN, KENDRA
00:04	MISSED JUMPER by PRUITT, TAELOUR			
00:02				REBOUND (DEF) by KENT, RACHEL

Southeast Missouri 17, Saint Louis 23

Points from (This Period)	SMS	SLU
In the Paint	8	8
Off Turns	4	5
2nd Chance	2	7
Fast Break	0	0
Bench	2	0

Official Box Score
Southeast Missouri vs Saint Louis
Second Quarter Statistics Only
December 03, 2019 at Chaifetz Arena - St. Louis, Mo.



Southeast Missouri 16

No.	Player	S	Pts	FG	3FG	FT	OR	DR	TR	PF	A	TO	Blk	Stl	Min	+/-
02	SHEPHARD, CARRIE	G	6	2-4	2-3	0-0	0	1	1	0	2	3	0	0	10	-6
10	PRUITT, TAELOUR	G	2	1-2	0-1	0-0	0	0	0	1	1	1	0	0	6	-5
13	HARSHBERGER, JESSIE	G	8	3-4	2-3	0-0	0	2	2	1	0	1	0	0	7	-2
32	GARDENER, DENISHA	F	0	0-1	0-0	0-0	3	0	3	0	0	0	0	1	6	-2
34	BUSSARD, SOPHIE	G	0	0-3	0-1	0-0	0	0	0	0	1	0	0	0	9	-5
01	ALLEN, KENNEDI	F	0	0-0	0-0	0-0	0	0	0	0	0	0	0	0	4	-4
03	SCOTT, ROSHALA	G	0	0-0	0-0	0-0	0	1	1	0	0	1	0	1	6	-2
12	HANCOCK, SOPHIA	F	0	0-0	0-0	0-0	0	0	0	0	0	0	0	0	0	0
23	TAYLOR, JOCELYN	F	0	0-1	0-0	0-0	0	0	0	1	0	1	1	0	3	-4
40	SAINE, LATRESE	F	0	0-0	0-0	0-0	0	0	0	0	0	0	0	0	0	0
55	AKORO, CELESTE	C	0	0-0	0-0	0-0	0	0	0	0	0	0	0	0	0	0
	TEAM						0	0	0	0		0				
TOTALS			16	6-15	4-8	0-0	3	4	7	3	4	7	1	2	50	

Shooting By Period

Period	FG	FG%	3FG	3FG%	FT	FT%
3rd Qtr	6-13	46%	2-4	50%	4-6	67%
4th Qtr	2-14	14%	0-4	00%	6-11	55%
2nd Half	6-15	40%	4-8	50%	0-0	0%
2nd Half	8-27	30%	2-8	25%	10-17	59%
Game	21-59	35.6%	7-21	33.3%	12-19	63.2%

Deadball Rebounds: 4,1

Saint Louis 22

No.	Player	S	Pts	FG	3FG	FT	OR	DR	TR	PF	A	TO	Blk	Stl	Min	+/-
02	HARBISON, CIAJA	G	4	1-2	0-1	2-2	0	0	0	0	2	0	0	1	10	6
22	KENT, RACHEL	F	6	2-4	2-3	0-0	0	1	1	0	0	2	1	0	10	6
32	CLARK, MYIA	G	3	1-2	1-1	0-0	0	0	0	1	0	0	0	1	7	5
34	WILKEN, KENDRA	F	5	2-3	1-1	0-0	0	1	1	0	2	1	0	0	9	3
42	FLOWERS, BROOKE	F	4	2-3	0-0	0-0	1	3	4	0	2	1	0	0	8	8
01	RICE, CHLOE	G	0	0-0	0-0	0-0	0	0	0	0	0	1	0	0	3	1
05	MIKKELSEN, VICTORIA	F	0	0-0	0-0	0-0	0	0	0	0	0	0	0	0	0	0
10	DOSETT, HANNAH	G	0	0-0	0-0	0-0	0	0	0	0	0	0	0	0	0	0
11	MARTINEZ, JULIA	G	0	0-0	0-0	0-0	0	0	0	0	0	0	0	0	0	0
30	HUGHES, LAURYN	G	0	0-0	0-0	0-0	0	0	0	0	0	0	0	0	0	0
35	SMITH TRAORE, MYRIAMA	F	0	0-0	0-0	0-0	1	0	1	0	0	0	0	0	3	1
	TEAM						0	1	1	0		0				
TOTALS			22	8-14	4-6	2-2	2	6	8	1	6	5	1	2	50	

Shooting By Period

Period	FG	FG%	3FG	3FG%	FT	FT%
3rd Qtr	5-13	38%	1-4	25%	6-9	67%
4th Qtr	4-9	44%	1-2	50%	5-6	83%
2nd Half	8-14	57%	4-6	67%	2-2	100%
2nd Half	9-22	41%	2-6	33%	11-15	73%
Game	25-50	50.0%	9-16	56.3%	17-22	77.3%

Deadball Rebounds: 2,0

Game Notes:

Officials: **Bruce Morris, Maggie Tieman, Nykesha Thompson**
 Attendance: **352**

Start Time: **08:01 PM ET**
 End Time: **09:41 PM ET**
 Game Duration: **1:40**

Score	1st	2nd	3rd	4th	TOT
SMS	17	16	18	10	61
SLU	23	22	17	14	76

Points from (This Period)	SMS	SLU
In the Paint	2	8
Off Turns	8	8
2nd Chance	0	2
Fast Break	0	2
Bench	0	0

Official By-By-Play
Southeast Missouri vs Saint Louis
Second Quarter
December 03, 2019 at Chaifetz Arena - St. Louis, Mo.



Period 2

Starters:

Southeast Missouri: 2 SHEPHARD, CARRIE (G); 10 PRUITT, TAELOUR (G); 13 HARSHBERGER, JESSIE (G); 32 GARDENER, DENISHA (F); 34 BUSSARD, SOPHIE (G);
Saint Louis: 2 HARBISON, CIAJA (G); 22 KENT, RACHEL (F); 32 CLARK, MYIA (G); 34 WILKEN, KENDRA (F); 42 FLOWERS, BROOKE (F);

Time	VISITORS: Southeast Missouri	Score	Margin	HOME: Saint Louis
10:00				SUB OUT: DOSSETT, HANNAH
10:00				SUB OUT: MARTINEZ, JULIA
10:00				SUB OUT: SMITH TRAORE, MYRIAMA
10:00				SUB IN: HARBISON, CIAJA
10:00				SUB IN: CLARK, MYIA
10:00				SUB IN: FLOWERS, BROOKE
09:46	TURNOVER (TRAVEL) by SHEPHARD, CARRIE			
09:31				MISSED LAYUP by CLARK, MYIA
09:27	REBOUND (DEF) by SCOTT, ROSHALA			
09:06	GOOD! LAYUP by PRUITT, TAELOUR	23-19	H 4	
08:51		26-19	H 7	GOOD! 3PTR by KENT, RACHEL
08:51				ASSIST by HARBISON, CIAJA
08:31	TURNOVER (TRAVEL) by SCOTT, ROSHALA			
08:31	SUB OUT: PRUITT, TAELOUR			
08:31	SUB IN: BUSSARD, SOPHIE			
08:18		28-19	H 9	GOOD! LAYUP by WILKEN, KENDRA
08:02	MISSED 3PTR by HARSHBERGER, JESSIE			
07:59	REBOUND (OFF) by GARDENER, DENISHA			
07:55	MISSED JUMPER by GARDENER, DENISHA			
07:51				REBOUND (DEF) by FLOWERS, BROOKE
07:45		30-19	H 11	GOOD! LAYUP by HARBISON, CIAJA [FB]
07:45				ASSIST by FLOWERS, BROOKE
07:44	TIMEOUT 30SEC			
07:44				
07:44	SUB OUT: SCOTT, ROSHALA			
07:44	SUB OUT: HARSHBERGER, JESSIE			
07:44	SUB OUT: GARDENER, DENISHA			
07:44	SUB IN: ALLEN, KENNEDI			
07:44	SUB IN: PRUITT, TAELOUR			
07:44	SUB IN: TAYLOR, JOCELYN			
07:27	TURNOVER (LOSTBALL) by SHEPHARD, CARRIE			
07:27				STEAL by CLARK, MYIA
07:13		33-19	H 14	GOOD! 3PTR by CLARK, MYIA
07:13				ASSIST by WILKEN, KENDRA
06:42	MISSED LAYUP by TAYLOR, JOCELYN			
06:40				REBOUND (DEF) by FLOWERS, BROOKE
06:35	FOUL (PERSONAL) by PRUITT, TAELOUR			
06:35		34-19	H 15	GOOD! FT by HARBISON, CIAJA
06:35		35-19	H 16	GOOD! FT by HARBISON, CIAJA
06:28	GOOD! 3PTR by SHEPHARD, CARRIE	35-22	H 13	
06:28	ASSIST by PRUITT, TAELOUR			
06:14				MISSED LAYUP by FLOWERS, BROOKE
06:14	BLOCK by TAYLOR, JOCELYN			
06:12				REBOUND (OFF) by FLOWERS, BROOKE
06:10		37-22	H 15	GOOD! LAYUP by FLOWERS, BROOKE
05:59				FOUL (PERSONAL) by CLARK, MYIA
05:59	SUB OUT: TAYLOR, JOCELYN			
05:59	SUB IN: HARSHBERGER, JESSIE			
05:56	MISSED JUMPER by SHEPHARD, CARRIE			
05:54				REBOUND (DEF) by WILKEN, KENDRA
05:41				TURNOVER (TRAVEL) by FLOWERS, BROOKE
05:27	GOOD! 3PTR by HARSHBERGER, JESSIE	37-25	H 12	
05:27	ASSIST by SHEPHARD, CARRIE			
05:12				MISSED JUMPER by WILKEN, KENDRA
05:09	REBOUND (DEF) by HARSHBERGER, JESSIE			
05:06	TURNOVER (BADPASS) by SHEPHARD, CARRIE			
05:06				SUB OUT: CLARK, MYIA
05:06				SUB OUT: WILKEN, KENDRA
05:06				SUB IN: RICE, CHLOE
05:06				SUB IN: SMITH TRAORE, MYRIAMA
04:45				MISSED 3PTR by KENT, RACHEL
04:42	REBOUND (DEF) by HARSHBERGER, JESSIE			
04:39	TURNOVER (BADPASS) by PRUITT, TAELOUR			
04:24		40-25	H 15	GOOD! 3PTR by KENT, RACHEL
04:24				ASSIST by FLOWERS, BROOKE
04:14	MISSED JUMPER by BUSSARD, SOPHIE			
04:10				REBOUND (DEF) by KENT, RACHEL
04:07				MISSED JUMPER by KENT, RACHEL
04:03				REBOUND (OFF) by SMITH TRAORE, MYRIAMA
04:02				MISSED 3PTR by HARBISON, CIAJA

Time	VISITORS: Southeast Missouri	Score	Margin	HOME: Saint Louis
03:58	REBOUND (DEF) by SHEPHARD, CARRIE			
03:40	MISSED 3PTR by PRUITT, TAELOUR			
03:37				REBOUND (DEF) by TEAM
03:37	SUB OUT: SHEPHARD, CARRIE			
03:37	SUB IN: SCOTT, ROSHALA			
03:37				SUB OUT: FLOWERS, BROOKE
03:37				SUB IN: WILKEN, KENDRA
03:37	SUB OUT: ALLEN, KENNED			
03:37	SUB OUT: HARSHBERGER, JESSIE			
03:37	SUB IN: TAYLOR, JOCELYN			
03:37	SUB IN: GARDENER, DENISHA			
03:18				TURNOVER (BADPASS) by KENT, RACHEL
03:18	STEAL by GARDENER, DENISHA			
03:08	TURNOVER (LOSTBALL) by TAYLOR, JOCELYN			
03:08				STEAL by HARBISON, CIAJA
03:07	FOUL (PERSONAL) by TAYLOR, JOCELYN			
03:07	SUB OUT: PRUITT, TAELOUR			
03:07	SUB IN: SHEPHARD, CARRIE			
02:50				TURNOVER (DRIBBLING) by KENT, RACHEL
02:50	SUB OUT: TAYLOR, JOCELYN			
02:50	SUB IN: HARSHBERGER, JESSIE			
02:31	GOOD! JUMPER by HARSHBERGER, JESSIE	40-27	H 13	
02:31	ASSIST by SHEPHARD, CARRIE			
02:14				TURNOVER (BADPASS) by RICE, CHLOE
02:14	STEAL by SCOTT, ROSHALA			
02:08	MISSED 3PTR by BUSSARD, SOPHIE			
02:05	REBOUND (OFF) by GARDENER, DENISHA			
02:04	MISSED 3PTR by SHEPHARD, CARRIE			
02:02	REBOUND (OFF) by GARDENER, DENISHA			
01:51	FOUL (OFF) by HARSHBERGER, JESSIE			
01:51	TURNOVER (OFFENSIVE) by HARSHBERGER, JESSIE			
01:51				SUB OUT: RICE, CHLOE
01:51				SUB OUT: SMITH TRAORE, MYRIAMA
01:51				SUB IN: CLARK, MYIA
01:51				SUB IN: FLOWERS, BROOKE
01:36				TURNOVER (TRAVEL) by WILKEN, KENDRA
01:11	GOOD! 3PTR by HARSHBERGER, JESSIE	40-30	H 10	
01:11	ASSIST by BUSSARD, SOPHIE			
00:50		42-30	H 12	GOOD! LAYUP by FLOWERS, BROOKE
00:50				ASSIST by WILKEN, KENDRA
00:39	MISSED JUMPER by BUSSARD, SOPHIE			
00:39				BLOCK by KENT, RACHEL
00:37				REBOUND (DEF) by FLOWERS, BROOKE
00:21		45-30	H 15	GOOD! 3PTR by WILKEN, KENDRA
00:21				ASSIST by HARBISON, CIAJA
00:01	GOOD! 3PTR by SHEPHARD, CARRIE	45-33	H 12	

Southeast Missouri 33, Saint Louis 45

Points from (This Period)	SMS	SLU
In the Paint	2	8
Off Turns	8	8
2nd Chance	0	2
Fast Break	0	2
Bench	0	0

Official Box Score
Southeast Missouri vs Saint Louis
Second Half Statistics Only
December 03, 2019 at Chaifetz Arena - St. Louis, Mo.



Southeast Missouri 28

No.	Player	S	Pts	FG	3FG	FT	OR	DR	TR	PF	A	TO	Blk	Stl	Min	+/-
02	SHEPHARD, CARRIE	G	8	2-7	2-3	2-2	0	1	1	1	1	1	0	0	16	-8
03	SCOTT, ROSHALA	G	0	0-3	0-1	0-0	1	1	2	0	0	1	0	1	8	-3
10	PRUITT, TAELOUR	G	8	2-5	0-1	4-5	2	1	3	2	2	1	0	1	16	4
12	HANCOCK, SOPHIA	F	0	0-0	0-0	0-0	1	0	1	0	0	0	0	0	1	2
13	HARSHBERGER, JESSIE	G	4	2-6	0-2	0-0	0	1	1	0	2	0	0	2	15	-3
23	TAYLOR, JOCELYN	F	2	1-1	0-0	0-0	0	0	0	2	0	1	0	1	8	-4
32	GARDENER, DENISHA	F	3	1-1	0-0	1-4	2	1	3	3	0	1	0	1	9	1
34	BUSSARD, SOPHIE	G	2	0-4	0-1	2-2	2	2	4	0	0	2	0	0	15	-2
40	SAINE, LATRESE	F	0	0-0	0-0	0-0	0	1	1	1	0	0	0	0	5	-3
55	AKORO, CELESTE	C	0	0-0	0-0	0-2	1	0	1	0	0	0	0	0	2	3
01	ALLEN, KENNEDI	F	1	0-0	0-0	1-2	0	1	1	1	0	0	2	0	7	-2
	TEAM		0	0-0	0-0	0-0	0	1	1	0	0	0	0	0	0	
TOTALS			28	8-27	2-8	10-17	9	10	19	10	5	7	2	6	99	

Shooting By Period

Period	FG	FG%	3FG	3FG%	FT	FT%
3rd Qtr	6-13	46%	2-4	50%	4-6	67%
4th Qtr	2-14	14%	0-4	00%	6-11	55%
2nd Half	8-27	30%	2-8	25%	10-17	59%
Game	21-59	35.6%	7-21	33.3%	12-19	63.2%

Deadball Rebounds: 4,1
Last FG Half: SMS 4th-01:21

Saint Louis 31

No.	Player	S	Pts	FG	3FG	FT	OR	DR	TR	PF	A	TO	Blk	Stl	Min	+/-
01	RICE, CHLOE	G	0	0-0	0-0	0-0	0	0	0	0	0	0	0	0	1	-2
02	HARBISON, CIAJA	G	10	3-4	1-1	3-4	0	0	0	1	1	2	0	2	18	8
05	MIKKELSEN, VICTORIA	F	0	0-0	0-0	0-0	0	0	0	0	0	0	0	0	2	-5
10	DOSSETT, HANNAH	G	0	0-1	0-1	0-0	0	0	0	2	0	0	0	0	2	-5
11	MARTINEZ, JULIA	G	0	0-0	0-0	0-0	0	0	0	2	1	2	0	0	5	-2
22	KENT, RACHEL	F	8	1-6	1-3	5-6	1	0	1	2	1	0	0	1	18	8
30	HUGHES, LAURYN	G	2	1-1	0-0	0-0	0	0	0	1	0	0	0	0	2	-5
32	CLARK, MYIA	G	0	0-3	0-1	0-0	0	1	1	0	0	1	0	0	14	7
34	WILKEN, KENDRA	F	7	3-4	0-0	1-2	0	4	4	0	1	2	0	1	13	6
35	SMITH TRAORE, MYRIAMA	F	3	1-3	0-0	1-1	3	1	4	0	1	1	0	0	9	-3
42	FLOWERS, BROOKE	F	1	0-0	0-0	1-2	0	6	6	3	1	0	2	1	14	8
	TEAM		0	0-0	0-0	0-0	0	1	1	0	0	0	0	0	0	
TOTALS			31	9-22	2-6	11-15	4	13	17	11	6	8	2	5	99	

Shooting By Period

Period	FG	FG%	3FG	3FG%	FT	FT%
3rd Qtr	5-13	38%	1-4	25%	6-9	67%
4th Qtr	4-9	44%	1-2	50%	5-6	83%
2nd Half	9-22	41%	2-6	33%	11-15	73%
Game	25-50	50.0%	9-16	56.3%	17-22	77.3%

Deadball Rebounds: 2,0
Last FG Half: SLU 4th-01:06

Game Notes:

Officials: **Bruce Morris, Maggie Tieman, Nykesha Thompson**
 Attendance: **352**

Start Time: **08:01 PM ET**
 End Time: **09:41 PM ET**
 Game Duration: **1:40**

Score	1st	2nd	3rd	4th	TOT
SMS	17	16	18	10	61
SLU	23	22	17	14	76

Points from (This Period)	SMS	SLU
In the Paint	10	12
Off Turns	7	7
2nd Chance	4	1
Fast Break	6	2
Bench	3	5

Official Box Score
Southeast Missouri vs Saint Louis
Third Quarter Statistics Only
December 03, 2019 at Chaifetz Arena - St. Louis, Mo.



Southeast Missouri 28

No.	Player	S	Pts	FG	3FG	FT	OR	DR	TR	PF	A	TO	Blk	Stl	Min	+/-
02	SHEPHARD, CARRIE	G	8	2-4	2-2	2-2	0	1	1	1	1	0	0	0	10	1
10	PRUITT, TAELOUR	G	2	0-1	0-0	2-2	2	1	3	1	2	0	0	0	8	6
13	HARSHBERGER, JESSIE	G	4	2-4	0-0	0-0	0	1	1	0	2	0	0	0	8	5
32	GARDENER, DENISHA	F	2	1-1	0-0	0-2	0	0	0	3	0	1	0	1	6	6
34	BUSSARD, SOPHIE	G	0	0-1	0-1	0-0	0	2	2	0	0	2	0	0	7	0
01	ALLEN, KENNEDI	F	0	0-0	0-0	0-0	0	0	0	0	0	0	2	0	1	-1
03	SCOTT, ROSHALA	G	0	0-1	0-1	0-0	0	0	0	0	0	1	0	0	2	-5
12	HANCOCK, SOPHIA	F	0	0-0	0-0	0-0	0	0	0	0	0	0	0	0	0	0
23	TAYLOR, JOCELYN	F	2	1-1	0-0	0-0	0	0	0	0	0	0	0	1	5	-3
40	SAINE, LATRESE	F	0	0-0	0-0	0-0	0	1	1	1	0	0	0	0	3	-4
55	AKORO, CELESTE	C	0	0-0	0-0	0-0	0	0	0	0	0	0	0	0	0	0
	TEAM						0	1	1	0		0				
TOTALS			18	6-13	2-4	4-6	2	7	9	6	5	4	2	2	50	

Shooting By Period

Period	FG	FG%	3FG	3FG%	FT	FT%
2nd Half	0-0	0%	0-0	0%	0-0	0%
Game	21-59	35.6%	7-21	33.3%	12-19	63.2%

Deadball Rebounds: 4,1

Saint Louis 31

No.	Player	S	Pts	FG	3FG	FT	OR	DR	TR	PF	A	TO	Blk	Stl	Min	+/-
02	HARBISON, CIAJA	G	3	1-2	0-0	1-2	0	0	0	1	1	2	0	1	10	-1
22	KENT, RACHEL	F	5	1-4	1-3	2-2	1	0	1	2	0	0	0	0	10	-1
32	CLARK, MYIA	G	0	0-3	0-1	0-0	0	0	0	0	0	1	0	0	10	-1
34	WILKEN, KENDRA	F	5	2-3	0-0	1-2	0	2	2	0	0	0	0	0	7	-2
42	FLOWERS, BROOKE	F	1	0-0	0-0	1-2	0	4	4	1	1	0	2	1	8	-1
01	RICE, CHLOE	G	0	0-0	0-0	0-0	0	0	0	0	0	0	0	0	0	0
05	MIKKELSEN, VICTORIA	F	0	0-0	0-0	0-0	0	0	0	0	0	0	0	0	0	0
10	DOSETT, HANNAH	G	0	0-0	0-0	0-0	0	0	0	0	0	0	0	0	0	0
11	MARTINEZ, JULIA	G	0	0-0	0-0	0-0	0	0	0	0	0	0	0	0	0	0
30	HUGHES, LAURYN	G	0	0-0	0-0	0-0	0	0	0	0	0	0	0	0	0	0
35	SMITH TRAORE, MYRIAMA	F	3	1-1	0-0	1-1	1	0	1	0	1	0	0	0	4	1
	TEAM						0	0	0	0		0				
TOTALS			17	5-13	1-4	6-9	2	6	8	4	3	3	2	2	50	

Shooting By Period

Period	FG	FG%	3FG	3FG%	FT	FT%
2nd Half	0-0	0%	0-0	0%	0-0	0%
Game	25-50	50.0%	9-16	56.3%	17-22	77.3%

Deadball Rebounds: 2,0

Game Notes:

Officials: **Bruce Morris, Maggie Tieman, Nykesha Thompson**
 Attendance: **352**

Start Time: **08:01 PM ET**
 End Time: **09:41 PM ET**
 Game Duration: **1:40**

Score	1st	2nd	3rd	4th	TOT
SMS	17	16	18	10	61
SLU	23	22	17	14	76

Points from (This Period)	SMS	SLU
In the Paint	6	8
Off Turns	4	3
2nd Chance	3	1
Fast Break	4	2
Bench	2	3

Official Play-By-Play
Southeast Missouri vs Saint Louis
Third Quarter
December 03, 2019 at Chaifetz Arena - St. Louis, Mo.



Period 3

Starters:

Southeast Missouri: 2 SHEPHARD, CARRIE (G); 10 PRUITT, TAELOUR (G); 13 HARSHBERGER, JESSIE (G); 32 GARDENER, DENISHA (F); 34 BUSSARD, SOPHIE (G);
Saint Louis: 2 HARBISON, CIAJA (G); 22 KENT, RACHEL (F); 32 CLARK, MYIA (G); 34 WILKEN, KENDRA (F); 42 FLOWERS, BROOKE (F);

Time	VISITORS: Southeast Missouri	Score	Margin	HOME: Saint Louis
10:00	SUB OUT: SCOTT, ROSHALA			
10:00	SUB IN: PRUITT, TAELOUR			
09:48	MISSED LAYUP by PRUITT, TAELOUR			
09:45				REBOUND (DEF) by FLOWERS, BROOKE
09:20				MISSED JUMPER by HARBISON, CIAJA
09:17	REBOUND (DEF) by BUSSARD, SOPHIE			
09:12	GOOD! LAYUP by HARSHBERGER, JESSIE [FB]	45-35	H 10	
09:12	ASSIST by PRUITT, TAELOUR			
08:55				MISSED 3PTR by KENT, RACHEL
08:52	REBOUND (DEF) by BUSSARD, SOPHIE			
08:47	MISSED JUMPER by HARSHBERGER, JESSIE			
08:44	REBOUND (OFF) by PRUITT, TAELOUR			
08:38	MISSED LAYUP by HARSHBERGER, JESSIE			
08:38				BLOCK by FLOWERS, BROOKE
08:36				REBOUND (DEF) by FLOWERS, BROOKE
08:12				MISSED 3PTR by CLARK, MYIA
08:09	REBOUND (DEF) by HARSHBERGER, JESSIE			
08:01	GOOD! LAYUP by GARDENER, DENISHA [FB]	45-37	H 8	
08:01	ASSIST by SHEPHARD, CARRIE			
08:00				TIMEOUT 30SEC
08:00				
07:40		47-37	H 10	GOOD! LAYUP by WILKEN, KENDRA [PNT]
07:25	FOUL (OFF) by GARDENER, DENISHA			
07:25	TURNOVER (OFFENSIVE) by GARDENER, DENISHA			
06:53				TURNOVER (LOSTBALL) by CLARK, MYIA
06:53	STEAL by GARDENER, DENISHA			
06:49				FOUL (PERSONAL) by KENT, RACHEL
06:49	GOOD! FT by PRUITT, TAELOUR	47-38	H 9	
06:49	GOOD! FT by PRUITT, TAELOUR	47-39	H 8	
06:32	FOUL (PERSONAL) by GARDENER, DENISHA			
06:32				MISSED FT by WILKEN, KENDRA
06:32				REBOUND (OFF) by TEAM
06:32		48-39	H 9	GOOD! FT by WILKEN, KENDRA
06:32	SUB OUT: GARDENER, DENISHA			
06:32	SUB IN: SAINÉ, LATRESE			
06:16	MISSED JUMPER by SHEPHARD, CARRIE			
06:16				REBOUND (DEF) by FLOWERS, BROOKE
06:16				BLOCK by FLOWERS, BROOKE
05:55		50-39	H 11	GOOD! LAYUP by WILKEN, KENDRA
05:55				ASSIST by FLOWERS, BROOKE
05:39	GOOD! 3PTR by SHEPHARD, CARRIE	50-42	H 8	
05:39	ASSIST by HARSHBERGER, JESSIE			
05:18				MISSED JUMPER by CLARK, MYIA
05:15	REBOUND (DEF) by SAINÉ, LATRESE			
05:09	MISSED 3PTR by BUSSARD, SOPHIE			
05:06				REBOUND (DEF) by WILKEN, KENDRA
05:03	FOUL (PERSONAL) by PRUITT, TAELOUR			
05:03	SUB OUT: PRUITT, TAELOUR			
05:03	SUB OUT: HARSHBERGER, JESSIE			
05:03	SUB IN: SCOTT, ROSHALA			
05:03	SUB IN: TAYLOR, JOCELYN			
05:03		51-42	H 9	GOOD! FT by KENT, RACHEL
05:03		52-42	H 10	GOOD! FT by KENT, RACHEL
04:49	MISSED 3PTR by SCOTT, ROSHALA			
04:45				REBOUND (DEF) by FLOWERS, BROOKE
04:36				MISSED LAYUP by WILKEN, KENDRA
04:34	REBOUND (DEF) by SHEPHARD, CARRIE			
04:29	TURNOVER (TRAVEL) by BUSSARD, SOPHIE			
04:29				SUB OUT: WILKEN, KENDRA
04:29				SUB IN: SMITH TRAORE, MYRIAMA
04:19				TURNOVER (LOSTBALL) by HARBISON, CIAJA
04:19	STEAL by TAYLOR, JOCELYN			
04:15				FOUL (PERSONAL) by HARBISON, CIAJA
04:10	TURNOVER (BADPASS) by SCOTT, ROSHALA			
04:10				STEAL by HARBISON, CIAJA
04:06		54-42	H 12	GOOD! LAYUP by HARBISON, CIAJA [FB]
03:37	TURNOVER (BADPASS) by BUSSARD, SOPHIE			
03:37				STEAL by FLOWERS, BROOKE
03:22	FOUL (PERSONAL) by SAINÉ, LATRESE			

Time	VISITORS: Southeast Missouri	Score	Margin	HOME: Saint Louis
03:22	SUB OUT: BUSSARD, SOPHIE			
03:22	SUB IN: HARSHBERGER, JESSIE			
03:22		55-42	H 13	GOOD! FT by FLOWERS, BROOKE
03:22				MISSED FT by FLOWERS, BROOKE
03:20				REBOUND (OFF) by SMITH TRAORE, MYRIAMA
03:06	FOUL (PERSONAL) by SHEPHARD, CARRIE			
03:06	SUB OUT: SCOTT, ROSHALA			
03:06	SUB OUT: SAINÉ, LATRESE			
03:06	SUB IN: PRUITT, TAELOUR			
03:06	SUB IN: GARDENER, DENISHA			
03:06				MISSED FT by HARBISON, CIAJA
03:06				REBOUND (OFF) by TEAM
03:06		56-42	H 14	GOOD! FT by HARBISON, CIAJA
02:39				FOUL (PERSONAL) by FLOWERS, BROOKE
02:39	MISSED FT by GARDENER, DENISHA			
02:39	REBOUND (OFF) by TEAM			
02:39	MISSED FT by GARDENER, DENISHA			
02:37	REBOUND (OFF) by PRUITT, TAELOUR			
02:32	GOOD! 3PTR by SHEPHARD, CARRIE	56-45	H 11	
02:17				MISSED 3PTR by KENT, RACHEL
02:11	REBOUND (DEF) by PRUITT, TAELOUR			
02:02	GOOD! JUMPER by HARSHBERGER, JESSIE	56-47	H 9	
02:02	ASSIST by PRUITT, TAELOUR			
01:41		58-47	H 11	GOOD! JUMPER by SMITH TRAORE, MYRIAMA [PNT]
01:41				ASSIST by HARBISON, CIAJA
01:41	FOUL (PERSONAL) by GARDENER, DENISHA			
01:41				SUB OUT: FLOWERS, BROOKE
01:41				SUB IN: WILKEN, KENDRA
01:41		59-47	H 12	GOOD! FT by SMITH TRAORE, MYRIAMA
01:29				FOUL (PERSONAL) by KENT, RACHEL
01:29	GOOD! FT by SHEPHARD, CARRIE	59-48	H 11	
01:29	GOOD! FT by SHEPHARD, CARRIE	59-49	H 10	
01:04				TURNOVER (TRAVEL) by HARBISON, CIAJA
01:04	SUB OUT: GARDENER, DENISHA			
01:04	SUB IN: ALLEN, KENNEDI			
00:50	GOOD! LAYUP by TAYLOR, JOCELYN [PNT]	59-51	H 8	
00:50	ASSIST by HARSHBERGER, JESSIE			
00:36		62-51	H 11	GOOD! 3PTR by KENT, RACHEL
00:36				ASSIST by SMITH TRAORE, MYRIAMA
00:08	MISSED JUMPER by SHEPHARD, CARRIE			
00:03				REBOUND (DEF) by WILKEN, KENDRA
00:03				MISSED LAYUP by CLARK, MYIA
00:03	BLOCK by ALLEN, KENNEDI			
00:02				REBOUND (OFF) by KENT, RACHEL
00:02				MISSED LAYUP by KENT, RACHEL
00:02	BLOCK by ALLEN, KENNEDI			
00:01	REBOUND (DEF) by TEAM			

Southeast Missouri 51, Saint Louis 62

Points from (This Period)	SMS	SLU
In the Paint	6	8
Off Turns	4	3
2nd Chance	3	1
Fast Break	4	2
Bench	2	3

Official Box Score
Southeast Missouri vs Saint Louis
Fourth Quarter Statistics Only
December 03, 2019 at Chaifetz Arena - St. Louis, Mo.



Southeast Missouri 10

No.	Player	S	Pts	FG	3FG	FT	OR	DR	TR	PF	A	TO	Blk	Stl	Min	+/-
02	SHEPHARD, CARRIE	G	0	0-3	0-1	0-0	0	0	0	0	0	1	0	0	6	-9
10	PRUITT, TAELOUR	G	6	2-4	0-1	2-3	0	0	0	1	0	1	0	1	8	-2
13	HARSHBERGER, JESSIE	G	0	0-2	0-2	0-0	0	0	0	0	0	0	0	2	7	-8
32	GARDENER, DENISHA	F	1	0-0	0-0	1-2	2	1	3	0	0	0	0	0	3	-5
34	BUSSARD, SOPHIE	G	2	0-3	0-0	2-2	2	0	2	0	0	0	0	0	8	-2
01	ALLEN, KENNEDI	F	1	0-0	0-0	1-2	0	1	1	1	0	0	0	0	6	-1
03	SCOTT, ROSHALA	G	0	0-2	0-0	0-0	1	1	2	0	0	0	0	1	6	2
12	HANCOCK, SOPHIA	F	0	0-0	0-0	0-0	1	0	1	0	0	0	0	0	1	2
23	TAYLOR, JOCELYN	F	0	0-0	0-0	0-0	0	0	0	2	0	1	0	0	3	-1
40	SAINÉ, LATRESE	F	0	0-0	0-0	0-0	0	0	0	0	0	0	0	0	2	1
55	AKORO, CELESTE	C	0	0-0	0-0	0-2	1	0	1	0	0	0	0	0	2	3
	TEAM						0	0	0	0		0				
TOTALS			10	2-14	0-4	6-11	7	3	10	4	0	3	0	4	49	

Shooting By Period

Period	FG	FG%	3FG	3FG%	FT	FT%
Game	21-59	35.6%	7-21	33.3%	12-19	63.2%

Deadball Rebounds: 4,1

Saint Louis 14

No.	Player	S	Pts	FG	3FG	FT	OR	DR	TR	PF	A	TO	Blk	Stl	Min	+/-
02	HARBISON, CIAJA	G	7	2-2	1-1	2-2	0	0	0	0	0	0	0	1	8	9
22	KENT, RACHEL	F	3	0-2	0-0	3-4	0	0	0	0	1	0	0	1	8	9
32	CLARK, MYIA	G	0	0-0	0-0	0-0	0	1	1	0	0	0	0	0	4	8
34	WILKEN, KENDRA	F	2	1-1	0-0	0-0	0	2	2	0	1	2	0	1	6	8
42	FLOWERS, BROOKE	F	0	0-0	0-0	0-0	0	2	2	2	0	0	0	0	6	9
01	RICE, CHLOE	G	0	0-0	0-0	0-0	0	0	0	0	0	0	0	0	1	-2
05	MIKKELSEN, VICTORIA	F	0	0-0	0-0	0-0	0	0	0	0	0	0	0	0	2	-5
10	DOSETT, HANNAH	G	0	0-1	0-1	0-0	0	0	0	2	0	0	0	0	2	-5
11	MARTINEZ, JULIA	G	0	0-0	0-0	0-0	0	0	0	2	1	2	0	0	5	-2
30	HUGHES, LAURYN	G	2	1-1	0-0	0-0	0	0	0	1	0	0	0	0	2	-5
35	SMITH TRAORE, MYRIAMA	F	0	0-2	0-0	0-0	2	1	3	0	0	1	0	0	5	-4
	TEAM						0	1	1	0		0				
TOTALS			14	4-9	1-2	5-6	2	7	9	7	3	5	0	3	49	

Shooting By Period

Period	FG	FG%	3FG	3FG%	FT	FT%
Game	25-50	50.0%	9-16	56.3%	17-22	77.3%

Deadball Rebounds: 2,0

Game Notes:

Officials: Bruce Morris, Maggie Tieman, Nykesha Thompson
 Attendance: 352

Start Time: 08:01 PM ET
 End Time: 09:41 PM ET
 Game Duration: 1:40

Score	1st	2nd	3rd	4th	TOT
SMS	17	16	18	10	61
SLU	23	22	17	14	76

Points from (This Period)	SMS	SLU
In the Paint	4	4
Off Turns	3	4
2nd Chance	1	0
Fast Break	2	0
Bench	1	2

Official By-By-Play
Southeast Missouri vs Saint Louis
Fourth Quarter
December 03, 2019 at Chaifetz Arena - St. Louis, Mo.



Period 4

Starters:

Southeast Missouri: 2 SHEPHARD, CARRIE (G); 10 PRUITT, TAELOUR (G); 13 HARSHBERGER, JESSIE (G); 32 GARDENER, DENISHA (F); 34 BUSSARD, SOPHIE (G);

Saint Louis: 2 HARBISON, CIAJA (G); 22 KENT, RACHEL (F); 32 CLARK, MYIA (G); 34 WILKEN, KENDRA (F); 42 FLOWERS, BROOKE (F);

Time	VISITORS: Southeast Missouri	Score	Margin	HOME: Saint Louis
10:00				SUB OUT: SMITH TRAORE, MYRIAMA
10:00				SUB IN: FLOWERS, BROOKE
09:48				TURNOVER (BADPASS) by WILKEN, KENDRA
09:48	STEAL by HARSHBERGER, JESSIE			
09:25	MISSED LAYUP by SHEPHARD, CARRIE			
09:24				REBOUND (DEF) by FLOWERS, BROOKE
09:24	FOUL (PERSONAL) by TAYLOR, JOCELYN			
09:09		64-51	H 13	GOOD! JUMPER by WILKEN, KENDRA
09:09				ASSIST by KENT, RACHEL
08:39	TURNOVER (LOSTBALL) by PRUITT, TAELOUR			
08:39				STEAL by WILKEN, KENDRA
08:16	FOUL (PERSONAL) by TAYLOR, JOCELYN			
08:16	SUB OUT: ALLEN, KENNEDI			
08:16	SUB OUT: TAYLOR, JOCELYN			
08:16	SUB IN: GARDENER, DENISHA			
08:16	SUB IN: BUSSARD, SOPHIE			
08:16		65-51	H 14	GOOD! FT by HARBISON, CIAJA
08:16		66-51	H 15	GOOD! FT by HARBISON, CIAJA
08:13	TIMEOUT 30SEC			
08:13				
07:58	MISSED 3PTR by SHEPHARD, CARRIE			
07:55	REBOUND (OFF) by BUSSARD, SOPHIE			
07:53	MISSED 3PTR by HARSHBERGER, JESSIE			
07:50				REBOUND (DEF) by FLOWERS, BROOKE
07:26	FOUL (PERSONAL) by PRUITT, TAELOUR			
07:26		67-51	H 16	GOOD! FT by KENT, RACHEL
07:26				MISSED FT by KENT, RACHEL
07:24	REBOUND (DEF) by GARDENER, DENISHA			
07:00	MISSED JUMPER by SHEPHARD, CARRIE			
06:58				REBOUND (DEF) by CLARK, MYIA
06:43				TURNOVER (TRAVEL) by WILKEN, KENDRA
06:43	SUB OUT: PRUITT, TAELOUR			
06:43	SUB IN: SCOTT, ROSHALA			
06:25	MISSED 3PTR by HARSHBERGER, JESSIE			
06:21	REBOUND (OFF) by GARDENER, DENISHA			
06:04	MISSED JUMPER by BUSSARD, SOPHIE			
06:01	REBOUND (OFF) by SCOTT, ROSHALA			
06:01	MISSED LAYUP by SCOTT, ROSHALA			
05:59				REBOUND (DEF) by WILKEN, KENDRA
05:45		70-51	H 19	GOOD! 3PTR by HARBISON, CIAJA
05:45				ASSIST by WILKEN, KENDRA
05:38	MISSED JUMPER by BUSSARD, SOPHIE			
05:36	REBOUND (OFF) by GARDENER, DENISHA			
05:35				FOUL (PERSONAL) by FLOWERS, BROOKE
05:35				SUB OUT: CLARK, MYIA
05:35				SUB OUT: WILKEN, KENDRA
05:35				SUB IN: MARTINEZ, JULIA
05:35				SUB IN: SMITH TRAORE, MYRIAMA
05:35	SUB OUT: SCOTT, ROSHALA			
05:35	SUB IN: TAYLOR, JOCELYN			
05:35	MISSED FT by GARDENER, DENISHA			
05:35	REBOUND (OFF) by TEAM			
05:35	GOOD! FT by GARDENER, DENISHA	70-52	H 18	
05:35	SUB OUT: GARDENER, DENISHA			
05:35	SUB IN: ALLEN, KENNEDI			
05:11				MISSED JUMPER by KENT, RACHEL
05:07	REBOUND (DEF) by ALLEN, KENNEDI			
04:55	TURNOVER (BADPASS) by TAYLOR, JOCELYN			
04:55				STEAL by KENT, RACHEL
04:36				TURNOVER (BADPASS) by MARTINEZ, JULIA
04:36	STEAL by HARSHBERGER, JESSIE			
04:33	TURNOVER (BADPASS) by SHEPHARD, CARRIE			
04:33				STEAL by HARBISON, CIAJA
04:30	FOUL (PERSONAL) by ALLEN, KENNEDI			
04:30	SUB OUT: TAYLOR, JOCELYN			
04:30	SUB IN: PRUITT, TAELOUR			
04:30		71-52	H 19	GOOD! FT by KENT, RACHEL
04:30		72-52	H 20	GOOD! FT by KENT, RACHEL
04:30	SUB OUT: SHEPHARD, CARRIE			
04:30	SUB IN: SCOTT, ROSHALA			

Time	VISITORS: Southeast Missouri	Score	Margin	HOME: Saint Louis
04:05				FOUL (PERSONAL) by FLOWERS, BROOKE
04:05				SUB OUT: FLOWERS, BROOKE
04:05				SUB IN: WILKEN, KENDRA
04:05	GOOD! FT by ALLEN, KENNEDI	72-53	H 19	
04:05	MISSED FT by ALLEN, KENNEDI			
04:03				REBOUND (DEF) by WILKEN, KENDRA
03:48				MISSED LAYUP by SMITH TRAORE, MYRIAMA
03:46				REBOUND (OFF) by SMITH TRAORE, MYRIAMA
03:27				MISSED JUMPER by KENT, RACHEL
03:26	REBOUND (DEF) by TEAM			
03:26	SUB OUT: HARSHBERGER, JESSIE			
03:26	SUB IN: SAINÉ, LATRESE			
03:05				FOUL (PERSONAL) by MARTINEZ, JULIA
03:05	MISSED FT by PRUITT, TAELOUR			
03:05	REBOUND (OFF) by TEAM			
03:05	GOOD! FT by PRUITT, TAELOUR	72-54	H 18	
02:39		74-54	H 20	GOOD! JUMPER by HARBISON, CIAJA [PNT]
02:23				FOUL (PERSONAL) by MARTINEZ, JULIA
02:23				SUB OUT: HARBISON, CIAJA
02:23				SUB OUT: KENT, RACHEL
02:23				SUB OUT: WILKEN, KENDRA
02:23				SUB IN: MIKKELSEN, VICTORIA
02:23				SUB IN: DOSSETT, HANNAH
02:23				SUB IN: HUGHES, LAURYN
02:20	MISSED JUMPER by SCOTT, ROSHALA			
02:18				REBOUND (DEF) by SMITH TRAORE, MYRIAMA
01:55				TURNOVER (LOSTBALL) by MARTINEZ, JULIA
01:55	STEAL by PRUITT, TAELOUR			
01:50	GOOD! LAYUP by PRUITT, TAELOUR [FB/PNT]	74-56	H 18	
01:50				FOUL (PERSONAL) by DOSSETT, HANNAH
01:50	SUB OUT: SAINÉ, LATRESE			
01:50	SUB IN: AKORO, CELESTE			
01:50	GOOD! FT by PRUITT, TAELOUR	74-57	H 17	
01:33				MISSED JUMPER by SMITH TRAORE, MYRIAMA
01:31	REBOUND (DEF) by SCOTT, ROSHALA			
01:21	GOOD! LAYUP by PRUITT, TAELOUR [PNT]	74-59	H 15	
01:06		76-59	H 17	GOOD! JUMPER by HUGHES, LAURYN
01:06				ASSIST by MARTINEZ, JULIA
00:58	TIMEOUT 30SEC			
00:58				SUB OUT: MARTINEZ, JULIA
00:58				SUB IN: RICE, CHLOE
00:58	SUB OUT: ALLEN, KENNEDI			
00:58	SUB IN: HANCOCK, SOPHIA			
00:50				FOUL (PERSONAL) by DOSSETT, HANNAH
00:50	GOOD! FT by BUSSARD, SOPHIE	76-60	H 16	
00:50	GOOD! FT by BUSSARD, SOPHIE	76-61	H 15	
00:36				MISSED 3PTR by DOSSETT, HANNAH
00:32				REBOUND (OFF) by SMITH TRAORE, MYRIAMA
00:32				TURNOVER (BADPASS) by SMITH TRAORE, MYRIAMA
00:32	STEAL by SCOTT, ROSHALA			
00:30				FOUL (PERSONAL) by HUGHES, LAURYN
00:30	MISSED FT by AKORO, CELESTE			
00:30	REBOUND (OFF) by TEAM			
00:30	MISSED FT by AKORO, CELESTE			
00:27	REBOUND (OFF) by AKORO, CELESTE			
00:19	MISSED LAYUP by PRUITT, TAELOUR			
00:17	REBOUND (OFF) by BUSSARD, SOPHIE			
00:15	MISSED LAYUP by BUSSARD, SOPHIE			
00:13	REBOUND (OFF) by HANCOCK, SOPHIA			
00:11	MISSED 3PTR by PRUITT, TAELOUR			
00:09				REBOUND (DEF) by TEAM

Southeast Missouri 61, Saint Louis 76

Points from (This Period)	SMS	SLU
In the Paint	4	4
Off Turns	3	4
2nd Chance	1	0
Fast Break	2	0
Bench	1	2

Official Scoring/Possession Reference Chart
Southeast Missouri vs Saint Louis
Period 1
December 03, 2019 at Chaifetz Arena - St. Louis, Mo.



Period 1

Starters:

Southeast Missouri: 2 SHEPHARD, CARRIE (G); 10 PRUITT, TAELOUR (G); 13 HARSHBERGER, JESSIE (G); 32 GARDENER, DENISHA (F); 34 BUSSARD, SOPHIE (G);
Saint Louis: 2 HARBISON, CIAJA (G); 22 KENT, RACHEL (F); 32 CLARK, MYIA (G); 34 WILKEN, KENDRA (F); 42 FLOWERS, BROOKE (F);

Time	VISITORS: Southeast Missouri	Score	Margin	HOME: Saint Louis
09:45		1-0	H 1	GOOD! FT by WILKEN, KENDRA
09:45		2-0	H 2	GOOD! FT by WILKEN, KENDRA
09:36	GOOD! 3PTR by SHEPHARD, CARRIE	2-3	V 1	
07:47		4-3	H 1	GOOD! LAYUP by FLOWERS, BROOKE
07:10		7-3	H 4	GOOD! 3PTR by HARBISON, CIAJA
06:51	GOOD! JUMPER by HARSHBERGER, JESSIE	7-5	H 2	
06:38		10-5	H 5	GOOD! 3PTR by CLARK, MYIA
06:15	GOOD! LAYUP by SHEPHARD, CARRIE [PNT]	10-7	H 3	
05:20	GOOD! LAYUP by PRUITT, TAELOUR	10-9	H 1	
04:52		12-9	H 3	GOOD! LAYUP by FLOWERS, BROOKE
04:25		14-9	H 5	GOOD! JUMPER by HARBISON, CIAJA
03:13		16-9	H 7	GOOD! LAYUP by FLOWERS, BROOKE
03:05		19-9	H 10	GOOD! 3PTR by KENT, RACHEL
02:46	GOOD! JUMPER by SHEPHARD, CARRIE	19-11	H 8	
02:16	GOOD! LAYUP by SAINÉ, LATRESE	19-13	H 6	
01:50		20-13	H 7	GOOD! FT by FLOWERS, BROOKE
01:50		21-13	H 8	GOOD! FT by FLOWERS, BROOKE
01:36	GOOD! JUMPER by SHEPHARD, CARRIE [PNT]	21-15	H 6	
00:39	GOOD! FT by PRUITT, TAELOUR	21-16	H 5	
00:39	GOOD! FT by PRUITT, TAELOUR	21-17	H 4	
00:17		23-17	H 6	GOOD! LAYUP by WILKEN, KENDRA

Southeast Missouri 17, Saint Louis 23

Official Scoring/Possession Reference Chart
Southeast Missouri vs Saint Louis
Period 2
December 03, 2019 at Chaifetz Arena - St. Louis, Mo.



Period 2

Starters:

Southeast Missouri: 2 SHEPHARD,CARRIE (G); 10 PRUITT,TAELOUR (G); 13 HARSHBERGER,JESSIE (G); 32 GARDENER,DENISHA (F); 34 BUSSARD,SOPHIE (G);
Saint Louis: 2 HARBISON,CIAJA (G); 22 KENT,RACHEL (F); 32 CLARK,MYIA (G); 34 WILKEN,KENDRA (F); 42 FLOWERS,BROOKE (F);

Time	VISITORS: Southeast Missouri	Score	Margin	HOME: Saint Louis
09:06	GOOD! LAYUP by PRUITT, TAELOUR	23-19	H 4	
08:51		26-19	H 7	GOOD! 3PTR by KENT, RACHEL
08:18		28-19	H 9	GOOD! LAYUP by WILKEN, KENDRA
07:45		30-19	H 11	GOOD! LAYUP by HARBISON, CIAJA [FB]
07:13		33-19	H 14	GOOD! 3PTR by CLARK, MYIA
06:35		34-19	H 15	GOOD! FT by HARBISON, CIAJA
06:35		35-19	H 16	GOOD! FT by HARBISON, CIAJA
06:28	GOOD! 3PTR by SHEPHARD, CARRIE	35-22	H 13	
06:10		37-22	H 15	GOOD! LAYUP by FLOWERS, BROOKE
05:27	GOOD! 3PTR by HARSHBERGER, JESSIE	37-25	H 12	
04:24		40-25	H 15	GOOD! 3PTR by KENT, RACHEL
02:31	GOOD! JUMPER by HARSHBERGER, JESSIE	40-27	H 13	
01:11	GOOD! 3PTR by HARSHBERGER, JESSIE	40-30	H 10	
00:50		42-30	H 12	GOOD! LAYUP by FLOWERS, BROOKE
00:21		45-30	H 15	GOOD! 3PTR by WILKEN, KENDRA
00:01	GOOD! 3PTR by SHEPHARD, CARRIE	45-33	H 12	

Southeast Missouri 33, Saint Louis 45

Official Scoring/Possession Reference Chart
Southeast Missouri vs Saint Louis
Period 3
December 03, 2019 at Chaifetz Arena - St. Louis, Mo.



Period 3

Starters:

Southeast Missouri: 2 SHEPHARD,CARRIE (G); 10 PRUITT,TAELOUR (G); 13 HARSHBERGER,JESSIE (G); 32 GARDENER,DENISHA (F); 34 BUSSARD,SOPHIE (G);
Saint Louis: 2 HARBISON,CIAJA (G); 22 KENT,RACHEL (F); 32 CLARK,MYIA (G); 34 WILKEN,KENDRA (F); 42 FLOWERS,BROOKE (F);

Time	VISITORS: Southeast Missouri	Score	Margin	HOME: Saint Louis
09:12	GOOD! LAYUP by HARSHBERGER, JESSIE [FB]	45-35	H 10	
08:01	GOOD! LAYUP by GARDENER, DENISHA [FB]	45-37	H 8	
07:40		47-37	H 10	GOOD! LAYUP by WILKEN, KENDRA [PNT]
06:49	GOOD! FT by PRUITT, TAELOUR	47-38	H 9	
06:49	GOOD! FT by PRUITT, TAELOUR	47-39	H 8	
06:32		48-39	H 9	GOOD! FT by WILKEN, KENDRA
05:55		50-39	H 11	GOOD! LAYUP by WILKEN, KENDRA
05:39	GOOD! 3PTR by SHEPHARD, CARRIE	50-42	H 8	
05:03		51-42	H 9	GOOD! FT by KENT, RACHEL
05:03		52-42	H 10	GOOD! FT by KENT, RACHEL
04:06		54-42	H 12	GOOD! LAYUP by HARBISON, CIAJA [FB]
03:22		55-42	H 13	GOOD! FT by FLOWERS, BROOKE
03:06		56-42	H 14	GOOD! FT by HARBISON, CIAJA
02:32	GOOD! 3PTR by SHEPHARD, CARRIE	56-45	H 11	
02:02	GOOD! JUMPER by HARSHBERGER, JESSIE	56-47	H 9	
01:41		58-47	H 11	GOOD! JUMPER by SMITH TRAORE, MYRIAMA [PNT]
01:41		59-47	H 12	GOOD! FT by SMITH TRAORE, MYRIAMA
01:29	GOOD! FT by SHEPHARD, CARRIE	59-48	H 11	
01:29	GOOD! FT by SHEPHARD, CARRIE	59-49	H 10	
00:50	GOOD! LAYUP by TAYLOR, JOCELYN [PNT]	59-51	H 8	
00:36		62-51	H 11	GOOD! 3PTR by KENT, RACHEL

Southeast Missouri 51, Saint Louis 62

Official Scoring/Possession Reference Chart
Southeast Missouri vs Saint Louis
Period 4
December 03, 2019 at Chaifetz Arena - St. Louis, Mo.



Period 4

Starters:

Southeast Missouri: 2 SHEPHARD, CARRIE (G); 10 PRUITT, TAELOUR (G); 13 HARSHBERGER, JESSIE (G); 32 GARDENER, DENISHA (F); 34 BUSSARD, SOPHIE (G);
Saint Louis: 2 HARBISON, CIAJA (G); 22 KENT, RACHEL (F); 32 CLARK, MYIA (G); 34 WILKEN, KENDRA (F); 42 FLOWERS, BROOKE (F);

Time	VISITORS: Southeast Missouri	Score	Margin	HOME: Saint Louis
09:09		64-51	H 13	GOOD! JUMPER by WILKEN, KENDRA
08:16		65-51	H 14	GOOD! FT by HARBISON, CIAJA
08:16		66-51	H 15	GOOD! FT by HARBISON, CIAJA
07:26		67-51	H 16	GOOD! FT by KENT, RACHEL
05:45		70-51	H 19	GOOD! 3PTR by HARBISON, CIAJA
05:35	GOOD! FT by GARDENER, DENISHA	70-52	H 18	
04:30		71-52	H 19	GOOD! FT by KENT, RACHEL
04:30		72-52	H 20	GOOD! FT by KENT, RACHEL
04:05	GOOD! FT by ALLEN, KENNEDI	72-53	H 19	
03:05	GOOD! FT by PRUITT, TAELOUR	72-54	H 18	
02:39		74-54	H 20	GOOD! JUMPER by HARBISON, CIAJA [PNT]
01:50	GOOD! LAYUP by PRUITT, TAELOUR [FB/PNT]	74-56	H 18	
01:50	GOOD! FT by PRUITT, TAELOUR	74-57	H 17	
01:21	GOOD! LAYUP by PRUITT, TAELOUR [PNT]	74-59	H 15	
01:06		76-59	H 17	GOOD! JUMPER by HUGHES, LAURYN
00:50	GOOD! FT by BUSSARD, SOPHIE	76-60	H 16	
00:50	GOOD! FT by BUSSARD, SOPHIE	76-61	H 15	

Southeast Missouri 61, Saint Louis 76

Official Substitutions Log
Southeast Missouri vs Saint Louis
Period 1
December 03, 2019 at Chaifetz Arena - St. Louis, Mo.



VISITORS: Southeast Missouri	Time	Score	HOME: Saint Louis
2 SHEPHARD, CARRIE			2 HARBISON, CIAJA
10 PRUITT, TAELOUR			22 KENT, RACHEL
13 HARSHBERGER, JESSIE			32 CLARK, MYIA
32 GARDENER, DENISHA			34 WILKEN, KENDRA
34 BUSSARD, SOPHIE			42 FLOWERS, BROOKE
SUB OUT: 13 HARSHBERGER, JESSIE	04:41	9-12	
SUB OUT: 32 GARDENER, DENISHA	04:41		
SUB OUT: 34 BUSSARD, SOPHIE	04:41		
SUB IN: 3 SCOTT, ROSHALA	04:41		
SUB IN: 23 TAYLOR, JOCELYN	04:41		
SUB IN: 40 SAINÉ, LATRESE	04:41		
	03:47	9-14	SUB OUT: WILKEN, KENDRA
	03:47		SUB IN: SMITH TRAORE, MYRIAMA
	01:50	13-19	SUB OUT: HARBISON, CIAJA
	01:50		SUB IN: MARTINEZ, JULIA
SUB OUT: 3 SCOTT, ROSHALA	01:50		
SUB OUT: 40 SAINÉ, LATRESE	01:50		
SUB IN: 32 GARDENER, DENISHA	01:50		
SUB IN: 34 BUSSARD, SOPHIE	01:50		
	01:50		SUB OUT: FLOWERS, BROOKE
	01:50		SUB IN: WILKEN, KENDRA
	01:20	15-21	SUB OUT: CLARK, MYIA
	01:20		SUB IN: DOSSETT, HANNAH
SUB OUT: 23 TAYLOR, JOCELYN	01:20		
SUB IN: 13 HARSHBERGER, JESSIE	01:20		
SUB OUT: 34 BUSSARD, SOPHIE	00:39	15-21	
SUB IN: 3 SCOTT, ROSHALA	00:39		

Southeast Missouri 17, Saint Louis 23

Official Substitutions Log
Southeast Missouri vs Saint Louis
Period 2
December 03, 2019 at Chaifetz Arena - St. Louis, Mo.



VISITORS: Southeast Missouri	Time	Score	HOME: Saint Louis
2 SHEPHARD, CARRIE			2 HARBISON, CIAJA
10 PRUITT, TAELOUR			22 KENT, RACHEL
13 HARSHBERGER, JESSIE			32 CLARK, MYIA
32 GARDENER, DENISHA			34 WILKEN, KENDRA
34 BUSSARD, SOPHIE			42 FLOWERS, BROOKE
	10:00	-	SUB OUT: DOSSETT, HANNAH
	10:00		SUB OUT: MARTINEZ, JULIA
	10:00		SUB OUT: SMITH TRAORE, MYRIAMA
	10:00		SUB IN: HARBISON, CIAJA
	10:00		SUB IN: CLARK, MYIA
	10:00		SUB IN: FLOWERS, BROOKE
SUB OUT: 10 PRUITT, TAELOUR	08:31	19-26	
SUB IN: 34 BUSSARD, SOPHIE	08:31		
SUB OUT: 3 SCOTT, ROSHALA	07:44	19-30	
SUB OUT: 13 HARSHBERGER, JESSIE	07:44		
SUB OUT: 32 GARDENER, DENISHA	07:44		
SUB IN: 1 ALLEN, KENNEDI	07:44		
SUB IN: 10 PRUITT, TAELOUR	07:44		
SUB IN: 23 TAYLOR, JOCELYN	07:44		
SUB OUT: 23 TAYLOR, JOCELYN	05:59	22-37	
SUB IN: 13 HARSHBERGER, JESSIE	05:59		
	05:06	25-37	SUB OUT: CLARK, MYIA
	05:06		SUB OUT: WILKEN, KENDRA
	05:06		SUB IN: RICE, CHLOE
	05:06		SUB IN: SMITH TRAORE, MYRIAMA
SUB OUT: 2 SHEPHARD, CARRIE	03:37	25-40	
SUB IN: 3 SCOTT, ROSHALA	03:37		
	03:37		SUB OUT: FLOWERS, BROOKE
	03:37		SUB IN: WILKEN, KENDRA
SUB OUT: 1 ALLEN, KENNEDI	03:37		
SUB OUT: 13 HARSHBERGER, JESSIE	03:37		
SUB IN: 23 TAYLOR, JOCELYN	03:37		
SUB IN: 32 GARDENER, DENISHA	03:37		
SUB OUT: 10 PRUITT, TAELOUR	03:07	25-40	
SUB IN: 2 SHEPHARD, CARRIE	03:07		
SUB OUT: 23 TAYLOR, JOCELYN	02:50	25-40	
SUB IN: 13 HARSHBERGER, JESSIE	02:50		
	01:51	27-40	SUB OUT: RICE, CHLOE
	01:51		SUB OUT: SMITH TRAORE, MYRIAMA
	01:51		SUB IN: CLARK, MYIA
	01:51		SUB IN: FLOWERS, BROOKE

Southeast Missouri 33, Saint Louis 45

Official Substitutions Log
Southeast Missouri vs Saint Louis
Period 3
December 03, 2019 at Chaifetz Arena - St. Louis, Mo.



VISITORS: Southeast Missouri	Time	Score	HOME: Saint Louis
2 SHEPHARD, CARRIE			2 HARBISON, CIAJA
10 PRUITT, TAELOUR			22 KENT, RACHEL
13 HARSHBERGER, JESSIE			32 CLARK, MYIA
32 GARDENER, DENISHA			34 WILKEN, KENDRA
34 BUSSARD, SOPHIE			42 FLOWERS, BROOKE
SUB OUT: 3 SCOTT, ROSHALA	10:00	-	
SUB IN: 10 PRUITT, TAELOUR	10:00		
SUB OUT: 32 GARDENER, DENISHA	06:32	39-48	
SUB IN: 40 SAINÉ, LATRESE	06:32		
SUB OUT: 10 PRUITT, TAELOUR	05:03	42-50	
SUB OUT: 13 HARSHBERGER, JESSIE	05:03		
SUB IN: 3 SCOTT, ROSHALA	05:03		
SUB IN: 23 TAYLOR, JOCELYN	05:03		
	04:29	42-52	SUB OUT: WILKEN, KENDRA
	04:29		SUB IN: SMITH TRAORE, MYRIAMA
SUB OUT: 34 BUSSARD, SOPHIE	03:22	42-54	
SUB IN: 13 HARSHBERGER, JESSIE	03:22		
SUB OUT: 3 SCOTT, ROSHALA	03:06	42-55	
SUB OUT: 40 SAINÉ, LATRESE	03:06		
SUB IN: 10 PRUITT, TAELOUR	03:06		
SUB IN: 32 GARDENER, DENISHA	03:06		
	01:41	47-58	SUB OUT: FLOWERS, BROOKE
	01:41		SUB IN: WILKEN, KENDRA
SUB OUT: 32 GARDENER, DENISHA	01:04	49-59	
SUB IN: 1 ALLEN, KENNEDI	01:04		

Southeast Missouri 51, Saint Louis 62

Official Substitutions Log
Southeast Missouri vs Saint Louis
Period 4
December 03, 2019 at Chaifetz Arena - St. Louis, Mo.



VISITORS: Southeast Missouri	Time	Score	HOME: Saint Louis
2 SHEPHARD,CARRIE			2 HARBISON,CIAJA
10 PRUITT,TAELOUR			22 KENT,RACHEL
13 HARSHBERGER,JESSIE			32 CLARK,MYIA
32 GARDENER,DENISHA			34 WILKEN,KENDRA
34 BUSSARD,SOPHIE			42 FLOWERS,BROOKE
	10:00	-	SUB OUT: SMITH TRAORE,MYRIAMA
	10:00		SUB IN: FLOWERS,BROOKE
SUB OUT: 1 ALLEN,KENNEDI	08:16	51-64	
SUB OUT: 23 TAYLOR,JOCELYN	08:16		
SUB IN: 32 GARDENER,DENISHA	08:16		
SUB IN: 34 BUSSARD,SOPHIE	08:16		
SUB OUT: 10 PRUITT,TAELOUR	06:43	51-67	
SUB IN: 3 SCOTT,ROSHALA	06:43		
	05:35	51-70	SUB OUT: CLARK,MYIA
	05:35		SUB OUT: WILKEN,KENDRA
	05:35		SUB IN: MARTINEZ,JULIA
	05:35		SUB IN: SMITH TRAORE,MYRIAMA
SUB OUT: 3 SCOTT,ROSHALA	05:35		
SUB IN: 23 TAYLOR,JOCELYN	05:35		
SUB OUT: 32 GARDENER,DENISHA	05:35		
SUB IN: 1 ALLEN,KENNEDI	05:35		
SUB OUT: 23 TAYLOR,JOCELYN	04:30	52-70	
SUB IN: 10 PRUITT,TAELOUR	04:30		
SUB OUT: 2 SHEPHARD,CARRIE	04:30		
SUB IN: 3 SCOTT,ROSHALA	04:30		
	04:05	52-72	SUB OUT: FLOWERS,BROOKE
	04:05		SUB IN: WILKEN,KENDRA
SUB OUT: 13 HARSHBERGER,JESSIE	03:26	53-72	
SUB IN: 40 SAINÉ,LATRESE	03:26		
	02:23	54-74	SUB OUT: HARBISON,CIAJA
	02:23		SUB OUT: KENT,RACHEL
	02:23		SUB OUT: WILKEN,KENDRA
	02:23		SUB IN: MIKKELSEN,VICTORIA
	02:23		SUB IN: DOSSETT,HANNAH
	02:23		SUB IN: HUGHES,LAURYN
SUB OUT: 40 SAINÉ,LATRESE	01:50	56-74	
SUB IN: 55 AKORO,CELESTE	01:50		
	00:58	59-76	SUB OUT: MARTINEZ,JULIA
	00:58		SUB IN: RICE,CHLOE
SUB OUT: 1 ALLEN,KENNEDI	00:58		
SUB IN: 12 HANCOCK,SOPHIA	00:58		

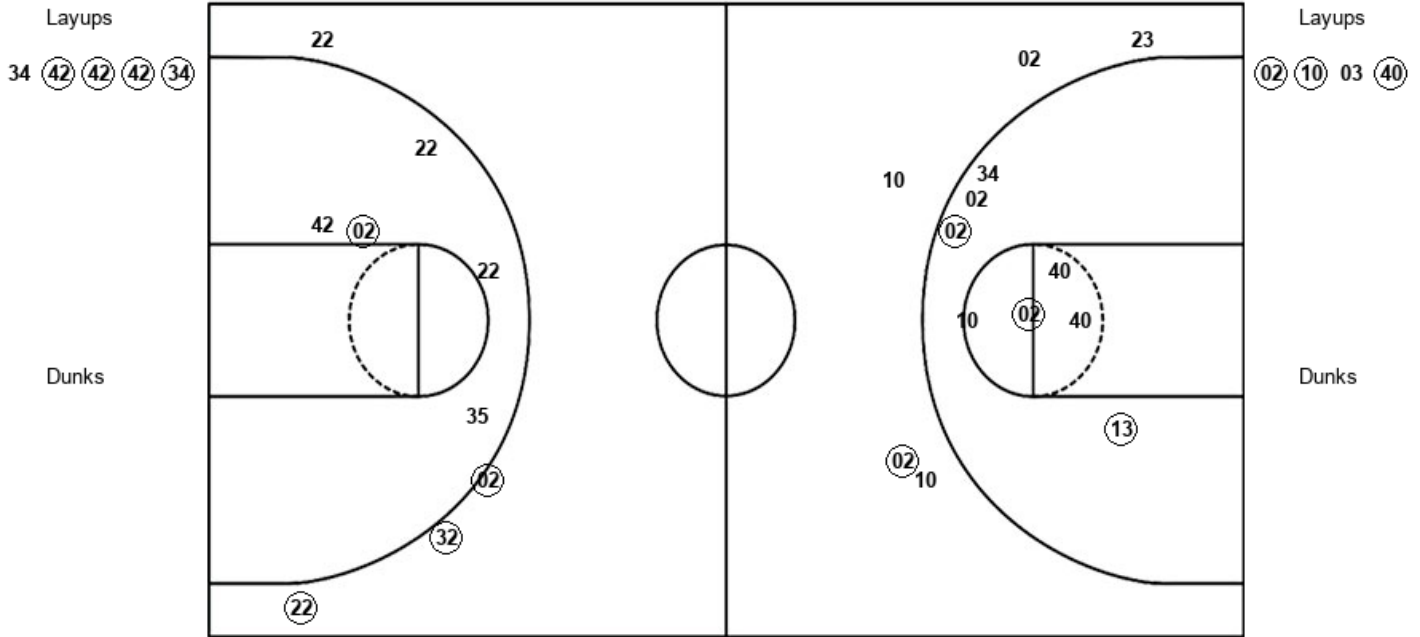
Southeast Missouri 61, Saint Louis 76

Official Shot Chart
Southeast Missouri vs Saint Louis
PERIOD 1 Shots
 December 03, 2019 at Chaifetz Arena - St. Louis, Mo.



Saint Louis

Southeast Missouri



SLU : Period 1	Made	Att	Pct
Layups	4	5	80.0
Dunks	0	0	0
2PT Field Goals	5	10	50.0
3PT Field Goals	3	4	75.0
Total Field Goals	8	14	57.1

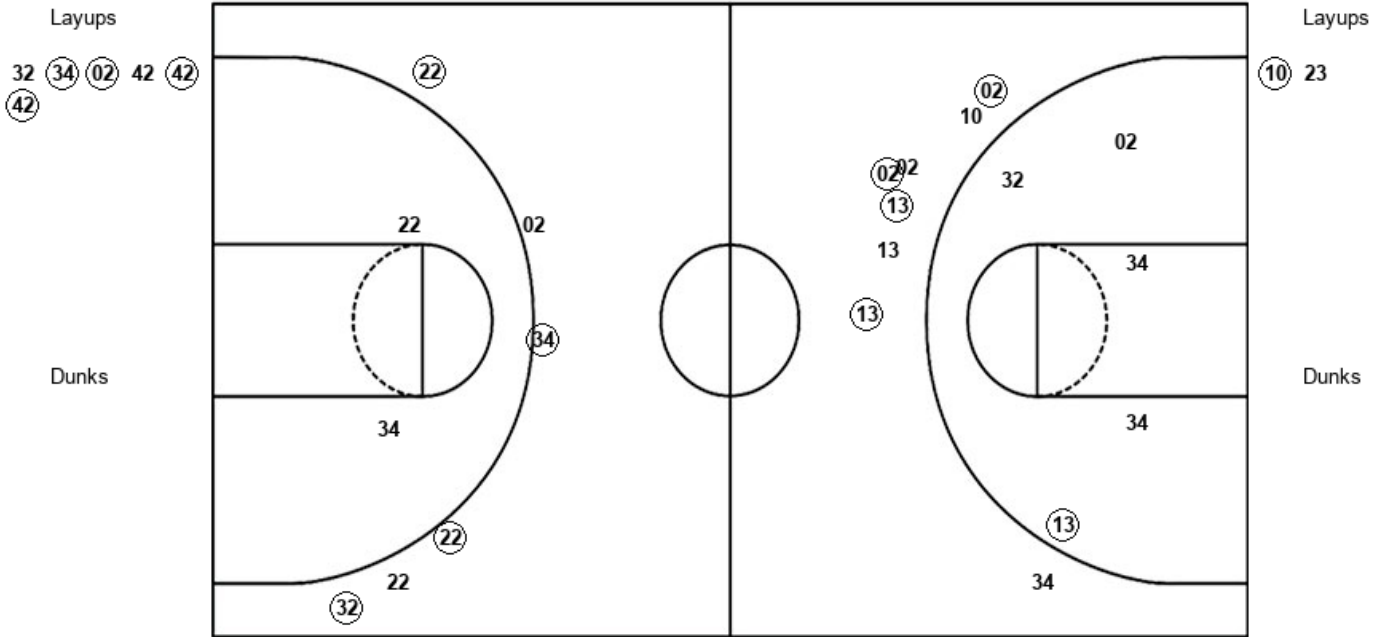
SMS : Period 1	Made	Att	Pct
Layups	3	4	75.0
Dunks	0	0	0
2PT Field Goals	6	12	50.0
3PT Field Goals	1	5	20.0
Total Field Goals	7	17	41.2

Official Shot Chart
Southeast Missouri vs Saint Louis
PERIOD 2 Shots
 December 03, 2019 at Chaifetz Arena - St. Louis, Mo.



Saint Louis

Southeast Missouri



SLU : Period 2	Made	Att	Pct
Layups	4	6	66.7
Dunks	0	0	0
2PT Field Goals	4	8	50.0
3PT Field Goals	4	6	66.7
Total Field Goals	8	14	57.1

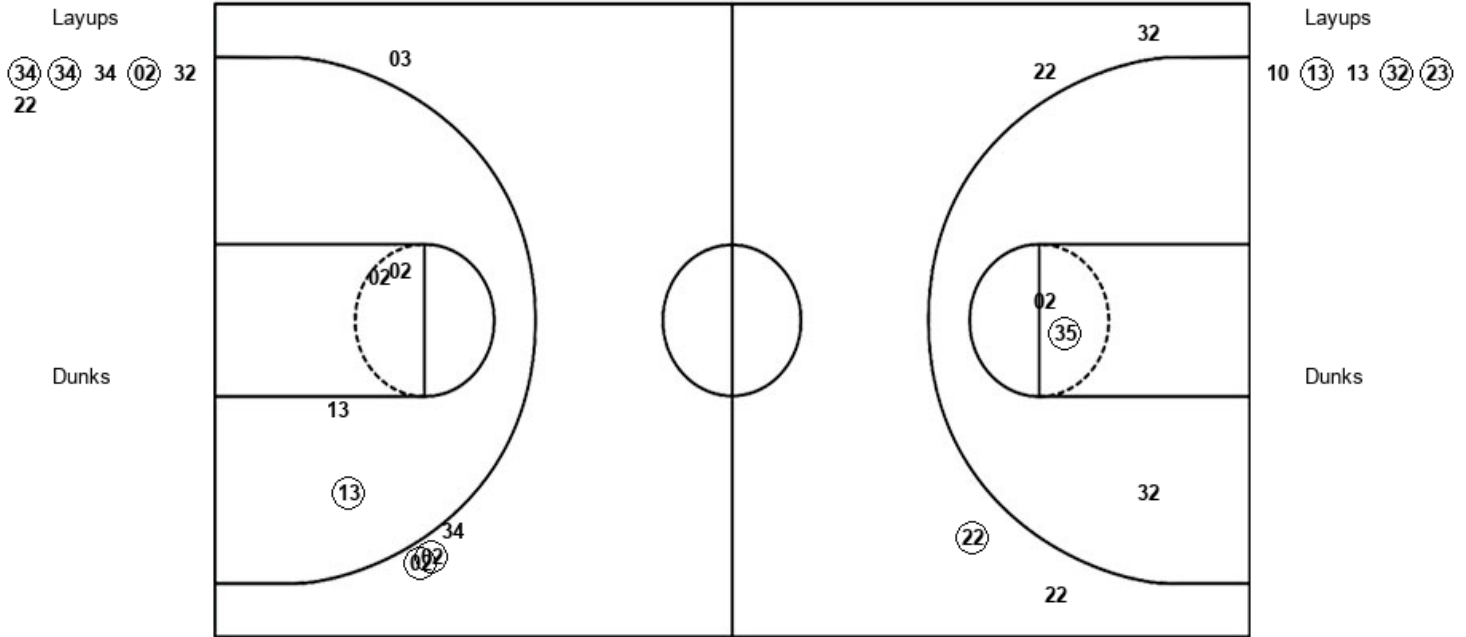
SMS : Period 2	Made	Att	Pct
Layups	1	2	50.0
Dunks	0	0	0
2PT Field Goals	2	7	28.6
3PT Field Goals	4	8	50.0
Total Field Goals	6	15	40.0

Official Shot Chart
Southeast Missouri vs Saint Louis
PERIOD 3 Shots
 December 03, 2019 at Chaifetz Arena - St. Louis, Mo.



Saint Louis

Southeast Missouri



SLU : Period 3	Made	Att	Pct
Layups	3	6	50.0
Dunks	0	0	0
2PT Field Goals	4	9	44.4
3PT Field Goals	1	4	25.0
Total Field Goals	5	13	38.5

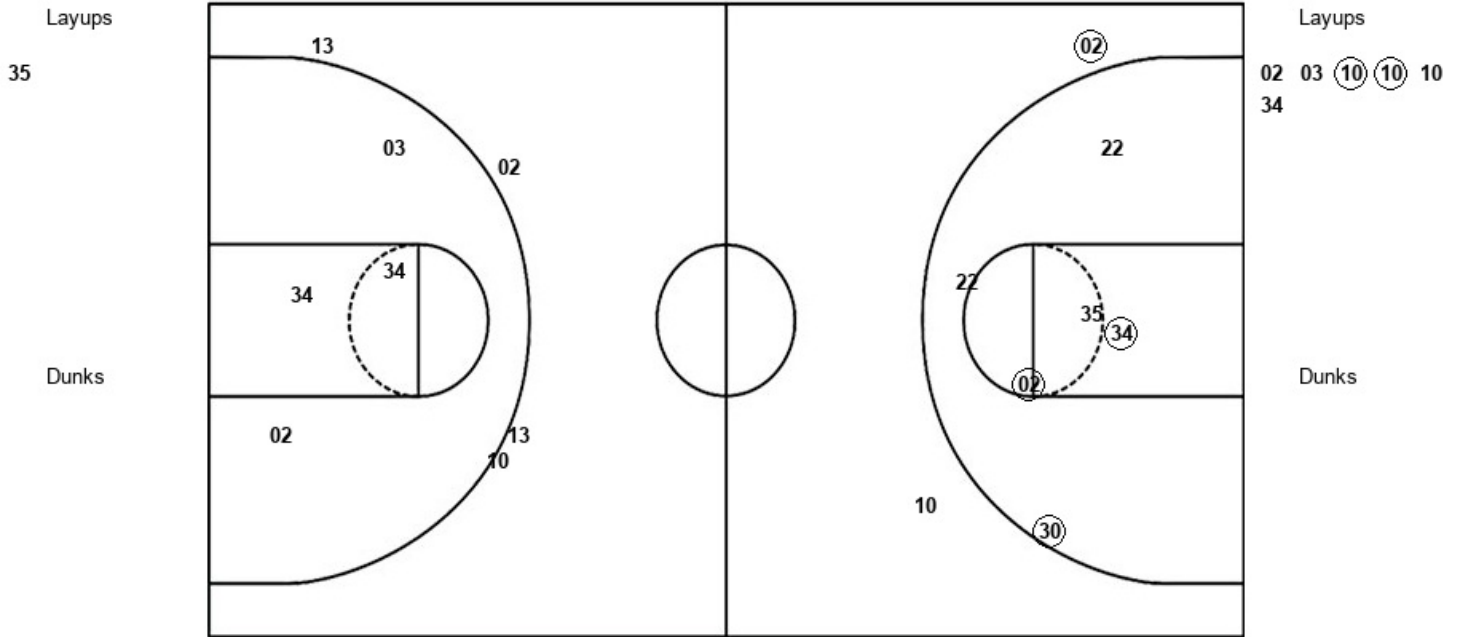
SMS : Period 3	Made	Att	Pct
Layups	3	5	60.0
Dunks	0	0	0
2PT Field Goals	4	9	44.4
3PT Field Goals	2	4	50.0
Total Field Goals	6	13	46.2

Official Shot Chart
Southeast Missouri vs Saint Louis
PERIOD 4 Shots
 December 03, 2019 at Chaifetz Arena - St. Louis, Mo.



Saint Louis

Southeast Missouri



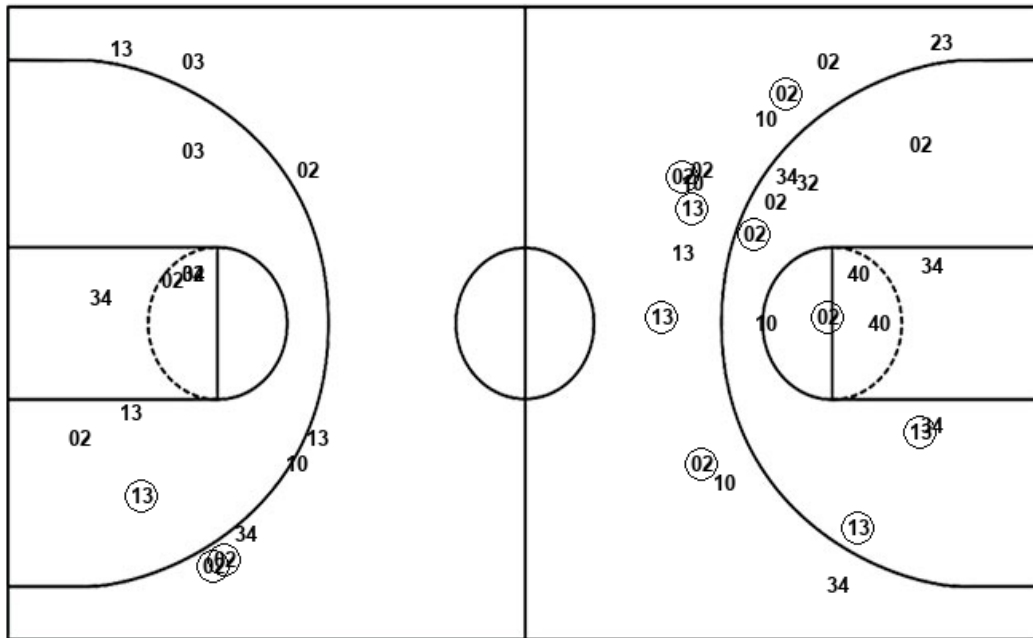
SLU : Period 4	Made	Att	Pct
Layups	0	1	00.0
Dunks	0	0	0
2PT Field Goals	3	7	42.9
3PT Field Goals	1	2	50.0
Total Field Goals	4	9	44.4

SMS : Period 4	Made	Att	Pct
Layups	2	6	33.3
Dunks	0	0	0
2PT Field Goals	2	10	20.0
3PT Field Goals	0	4	00.0
Total Field Goals	2	14	14.3

Official Shot Chart
Southeast Missouri vs Saint Louis
Southeast Missouri Team Shots
December 03, 2019 at Chaifetz Arena - St. Louis, Mo.



Layups



Layups

02 10 03 40 10
 23 10 13 13 32
 23 02 03 10 10
 10 34

Dunks

Dunks

SMS : Period 1	Made	Att	Pct
Layups	3	4	75.0
Dunks	0	0	0
2PT Field Goals	6	12	50.0
3PT Field Goals	1	5	20.0
Total Field Goals	7	17	41.2

SMS : Period 2	Made	Att	Pct
Layups	1	2	50.0
Dunks	0	0	0
2PT Field Goals	2	7	28.6
3PT Field Goals	4	8	50.0
Total Field Goals	6	15	40.0

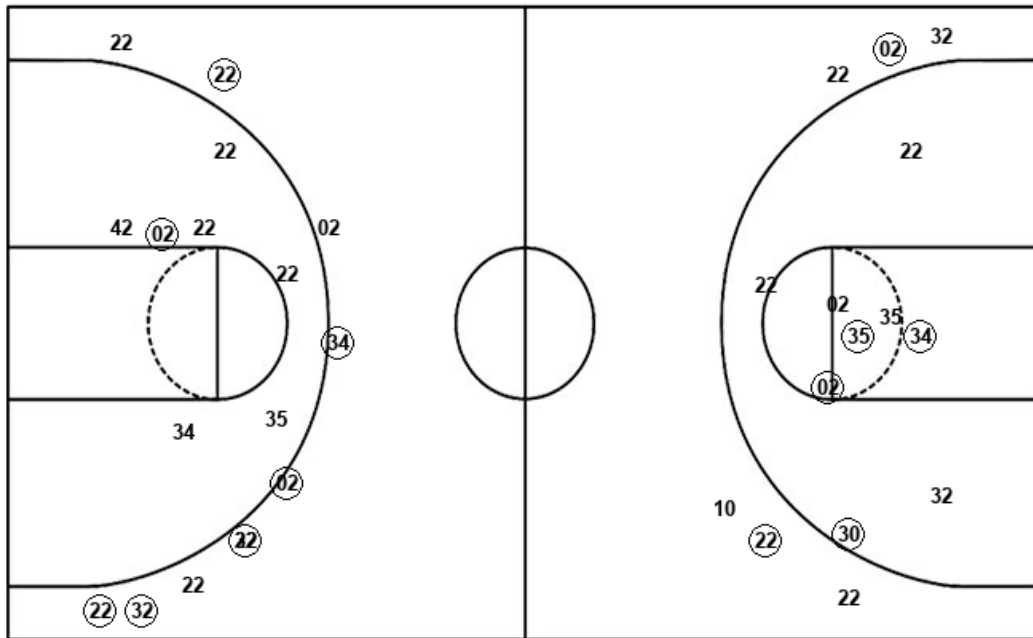
SMS : Period 3	Made	Att	Pct
Layups	3	5	60.0
Dunks	0	0	0
2PT Field Goals	4	9	44.4
3PT Field Goals	2	4	50.0
Total Field Goals	6	13	46.2

SMS : Period 4	Made	Att	Pct
Layups	2	6	33.3
Dunks	0	0	0
2PT Field Goals	2	10	20.0
3PT Field Goals	0	4	00.0
Total Field Goals	2	14	14.3

Official Shot Chart
Southeast Missouri vs Saint Louis
Saint Louis Team Shots
 December 03, 2019 at Chaifetz Arena - St. Louis, Mo.



Layups



Layups

34 (42) (42) (42) (34)
 32 (34) (02) 42 (42)
 (42) (34) (34) 34 (02)
 32 22 35

Dunks

Dunks

SLU : Period 1	Made	Att	Pct
Layups	4	5	80.0
Dunks	0	0	0
2PT Field Goals	5	10	50.0
3PT Field Goals	3	4	75.0
Total Field Goals	8	14	57.1

SLU : Period 3	Made	Att	Pct
Layups	3	6	50.0
Dunks	0	0	0
2PT Field Goals	4	9	44.4
3PT Field Goals	1	4	25.0
Total Field Goals	5	13	38.5

SLU : Period 2	Made	Att	Pct
Layups	4	6	66.7
Dunks	0	0	0
2PT Field Goals	4	8	50.0
3PT Field Goals	4	6	66.7
Total Field Goals	8	14	57.1

SLU : Period 4	Made	Att	Pct
Layups	0	1	00.0
Dunks	0	0	0
2PT Field Goals	3	7	42.9
3PT Field Goals	1	2	50.0
Total Field Goals	4	9	44.4