

**FINAL SCORE**

**Incarnate Word**

**60**



**Seattle U**

**81**



December 03, 2019 • Redhawk Center - Seattle, WA

**FINAL STATISTICS**

**Official Box Score**  
**Incarnate Word vs Seattle U**  
**Game Totals -- Final Statistics**  
**December 03, 2019 at Redhawk Center - Seattle, WA**



**Incarnate Word 60**

No.	Player	S	Pts	FG	3FG	FT	OR	DR	TR	PF	A	TO	Blk	Stl	Min	+/-
00	MURRAY, DWIGHT	G	7	3-6	1-2	0-0	0	4	4	0	2	1	0	0	29	-14
02	WILLIS, KEASTON	G	14	4-8	2-6	4-4	1	1	2	2	0	0	0	0	8	-10
03	LUTZ, DREW	G	0	0-4	0-3	0-0	1	0	1	2	3	0	0	1	21	-11
12	ENE, AUGUSTINE	G	6	2-6	1-4	1-2	1	1	2	1	1	2	1	2	20	-15
33	MISZKIEWICZ, VINCENT	*	2	0-3	0-0	2-2	0	3	3	3	1	2	0	1	16	-11
04	VAN VLERAH, DEREK	F	4	2-7	0-4	0-0	0	2	2	1	0	0	0	1	20	-14
05	SWABY, BRANDON	G	8	2-2	1-1	3-6	0	1	1	0	0	0	0	1	8	3
15	LARSSON, MARCUS	F	6	1-3	0-0	4-8	0	1	1	3	0	1	0	1	18	-3
20	TAYLOR, MORGAN	G	9	4-8	0-2	1-2	0	0	0	3	0	0	0	1	13	-7
21	SATO, COREY	F	0	0-0	0-0	0-0	0	1	1	3	0	0	0	0	10	-5
24	DAVIS, BRYCE	F	2	1-3	0-0	0-0	0	0	0	2	0	1	0	0	6	-4
25	BALENTINE, DES	G	2	1-3	0-0	0-0	1	1	2	1	1	1	0	1	15	-7
<b>TEAM</b>							0	0	0	0		0				
<b>TOTALS</b>			<b>60</b>	<b>20-53</b>	<b>5-22</b>	<b>15-24</b>	<b>4</b>	<b>15</b>	<b>19</b>	<b>21</b>	<b>8</b>	<b>8</b>	<b>1</b>	<b>9</b>	<b>184</b>	

*Shooting By Period*

Period	FG	FG%	3FG	3FG%	FT	FT%
1st Half	9-27	33%	3-14	21%	7-8	88%
2nd Half	11-26	42%	2-8	25%	8-16	50%
<b>Game</b>	<b>20-53</b>	<b>37.7%</b>	<b>5-22</b>	<b>22.7%</b>	<b>15-24</b>	<b>62.5%</b>

Deadball Rebounds: 4,1  
 Last FG: 2nd-00:02  
 Biggest Run: 8-0  
 Largest lead: By 3 at 1-11  
 Technical Fouls: None.

**Seattle U 81**

No.	Player	S	Pts	FG	3FG	FT	OR	DR	TR	PF	A	TO	Blk	Stl	Min	+/-
01	CARTER, MYLES	F	5	1-6	0-1	3-4	1	3	4	4	1	2	2	0	19	9
11	GRIGSBY, RILEY	G	22	6-9	3-5	7-7	4	6	10	3	0	3	1	2	31	20
13	MEANS, MORGAN	G	13	3-5	1-3	6-6	2	3	5	2	4	2	0	3	32	25
23	BROWN, TERRELL	G	14	5-14	1-2	3-4	2	8	10	1	5	0	0	1	29	21
24	JONES, DELANTE	G	7	2-6	1-3	2-2	1	1	2	1	1	3	0	0	21	15
00	ECONOMOU, RIP	G	2	1-3	0-2	0-0	0	2	2	0	0	1	0	0	6	-2
02	HOPKINS, TREY'VON	G	1	0-1	0-1	1-2	0	1	1	3	0	0	0	0	5	0
10	NETTLES, AARON	G	3	1-2	1-2	0-0	0	1	1	0	0	1	0	0	10	5
12	DA CAMPO, MATTIA	G	2	1-1	0-0	0-0	2	1	3	1	0	2	0	0	16	15
21	DALLAS, JORDAN	C	7	1-3	0-2	5-5	1	4	5	3	1	1	0	0	17	8
33	HAUGE, MIKKEL	G	0	0-1	0-0	0-0	0	0	0	1	0	0	0	0	3	-4
34	HUNDAL, ANAND	F	5	2-4	0-1	1-1	2	1	3	2	0	0	0	0	9	-2
35	PINSKUS, DOVY	F	0	0-0	0-0	0-0	0	1	1	0	0	1	0	0	3	-5
<b>TEAM</b>							1	1	2	0		0				
<b>TOTALS</b>			<b>81</b>	<b>23-55</b>	<b>7-22</b>	<b>28-31</b>	<b>16</b>	<b>33</b>	<b>49</b>	<b>21</b>	<b>12</b>	<b>16</b>	<b>3</b>	<b>6</b>	<b>200</b>	

*Shooting By Period*

Period	FG	FG%	3FG	3FG%	FT	FT%
1st Half	16-28	57%	7-12	58%	8-9	89%
2nd Half	7-27	26%	0-10	00%	20-22	91%
<b>Game</b>	<b>23-55</b>	<b>41.8%</b>	<b>7-22</b>	<b>31.8%</b>	<b>28-31</b>	<b>90.3%</b>

Deadball Rebounds: 3,1  
 Last FG: 2nd-03:16  
 Biggest Run: 12-0  
 Largest lead: By 28 at 2-08  
 Technical Fouls: None.

*Game Notes:*

Officials: Tony Padilla, Kelly Pfeifer, Bob Staffen  
 Attendance: 820

Start Time: 10:07 PM ET  
 End Time: 12:06 AM ET  
 Game Duration: 1:59

Score	1st	2nd	TOT
UIW	28	32	60
SU	47	34	81

UIW led for 0:44. SU led for 37:44.  
 Game was tied for 1:32.  
 Times tied: 4      Lead Changes: 2

Points from	UIW	SU
In the Paint	20	26
Off Turns	18	15
2nd Chance	8	13
Fast Break	14	5
Bench	31	20

**Official Box Score**  
**Incarnate Word vs Seattle U**  
**First Half Statistics Only**  
**December 03, 2019 at Redhawk Center - Seattle, WA**



**Incarnate Word 28**

No.	Player	S	Pts	FG	3FG	FT	OR	DR	TR	PF	A	TO	Blk	Stl	Min	+/-
00	MURRAY, DWIGHT	G	5	2-2	1-1	0-0	0	1	1	0	0	0	0	0	12	-8
02	WILLIS, KEASTON	G	10	3-6	2-5	2-2	1	1	2	1	0	0	0	0	8	-10
03	LUTZ, DREW	G	0	0-4	0-3	0-0	0	0	0	2	1	0	0	0	15	-16
12	ENE, AUGUSTINE	G	3	1-3	0-2	1-2	1	0	1	1	1	1	0	2	15	-13
33	MISZKIEWICZ, VINCENT	*	2	0-3	0-0	2-2	0	2	2	1	1	1	0	1	12	-16
04	VAN VLERAH, DEREK	F	2	1-4	0-2	0-0	0	0	0	0	0	0	0	0	9	-13
05	SWABY, BRANDON	G	0	0-0	0-0	0-0	0	0	0	0	0	0	0	0	0	0
15	LARSSON, MARCUS	F	4	1-1	0-0	2-2	0	0	0	1	0	1	0	0	8	-3
20	TAYLOR, MORGAN	G	2	1-2	0-1	0-0	0	0	0	1	0	0	0	0	4	-7
21	SATO, COREY	F	0	0-0	0-0	0-0	0	1	1	1	0	0	0	0	8	-2
24	DAVIS, BRYCE	F	0	0-0	0-0	0-0	0	0	0	0	0	0	0	0	0	0
25	BALENTINE, DES	G	0	0-2	0-0	0-0	1	0	1	0	1	1	0	1	7	-4
TEAM							0	0	0	0	0	0				
<b>TOTALS</b>			<b>28</b>	<b>9-27</b>	<b>3-14</b>	<b>7-8</b>	<b>3</b>	<b>5</b>	<b>8</b>	<b>8</b>	<b>4</b>	<b>4</b>	<b>0</b>	<b>4</b>	<b>97</b>	

*Shooting By Period*

Period	FG	FG%	3FG	3FG%	FT	FT%
1st Half	9-27	33%	3-14	21%	7-8	88%
Game	20-53	37.7%	5-22	22.7%	15-24	62.5%

Deadball Rebounds: 4,1

Last FG Half: UIW 2nd-00:02

**Seattle U 47**

No.	Player	S	Pts	FG	3FG	FT	OR	DR	TR	PF	A	TO	Blk	Stl	Min	+/-
01	CARTER, MYLES	F	3	1-3	0-1	1-2	0	0	0	2	1	2	2	0	11	8
11	GRIGSBY, RILEY	G	15	5-7	3-4	2-2	2	2	4	1	0	1	1	1	16	18
13	MEANS, MORGAN	G	7	2-3	1-2	2-2	1	3	4	1	4	0	0	2	18	18
23	BROWN, TERRELL	G	7	3-8	1-2	0-0	1	6	7	1	5	0	0	0	19	17
24	JONES, DELANTE	G	5	2-2	1-1	0-0	0	1	1	0	1	2	0	0	12	13
00	ECONOMOU, RIP	G	0	0-0	0-0	0-0	0	0	0	0	0	0	0	0	0	0
02	HOPKINS, TREY'VON	G	0	0-0	0-0	0-0	0	0	0	0	0	0	0	0	0	0
10	NETTLES, AARON	G	3	1-1	1-1	0-0	0	1	1	0	0	1	0	0	6	3
12	DA CAMPO, MATTIA	G	0	0-0	0-0	0-0	1	0	1	1	0	0	0	0	8	12
21	DALLAS, JORDAN	C	5	1-2	0-1	3-3	0	2	2	2	0	1	0	0	8	5
33	HAUGE, MIKKEL	G	0	0-0	0-0	0-0	0	0	0	0	0	0	0	0	0	0
34	HUNDAL, ANAND	F	2	1-2	0-0	0-0	1	0	1	0	0	0	0	0	2	1
35	PINSKUS, DOVY	F	0	0-0	0-0	0-0	0	0	0	0	0	0	0	0	0	0
TEAM							0	0	0	0	0	0				
<b>TOTALS</b>			<b>47</b>	<b>16-28</b>	<b>7-12</b>	<b>8-9</b>	<b>6</b>	<b>15</b>	<b>21</b>	<b>8</b>	<b>11</b>	<b>7</b>	<b>3</b>	<b>3</b>	<b>100</b>	

*Shooting By Period*

Period	FG	FG%	3FG	3FG%	FT	FT%
1st Half	16-28	57%	7-12	58%	8-9	89%
Game	23-55	41.8%	7-22	31.8%	28-31	90.3%

Deadball Rebounds: 3,1

Last FG Half: SU 2nd-03:16

Game Notes:

Officials: Tony Padilla, Kelly Pfeifer, Bob Staffen  
 Attendance: 820

Start Time: 10:07 PM ET  
 End Time: 12:06 AM ET  
 Game Duration: 1:59

Score	1st	2nd	TOT
UIW	28	32	60
SU	47	34	81

Points from (This Period)	UIW	SU
In the Paint	6	18
Off Turns	6	9
2nd Chance	5	4
Fast Break	0	4
Bench	8	10

**Official Play-By-Play**  
**Incarnate Word vs Seattle U**  
**First Half**  
**December 03, 2019 at Redhawk Center - Seattle, WA**



**Period 1**

**Starters:**

**Incarnate Word:** 00 MURRAY, DWIGHT (G); 2 WILLIS, KEASTON (G); 3 LUTZ, DREW (G); 12 ENE, AUGUSTINE (G); 33 MISZKIEWICZ, VINCENT;  
**Seattle U:** 1 CARTER, MYLES (F); 11 GRIGSBY, RILEY (G); 13 MEANS, MORGAN (G); 23 BROWN, TERRELL (G); 24 JONES, DELANTE (G);

Time	VISITORS: Incarnate Word	Score	Margin	HOME: Seattle U
19:38		2-0	H 2	GOOD! LAYUP by GRIGSBY, RILEY
19:14				FOUL (PERSONAL) by CARTER, MYLES
19:14	GOOD! FT by MISZKIEWICZ, VINCENT	2-1	H 1	
19:14	GOOD! FT by MISZKIEWICZ, VINCENT	2-2	T	
19:03		4-2	H 2	GOOD! JUMPER by GRIGSBY, RILEY [PNT]
19:03				ASSIST by MEANS, MORGAN
18:36	TURNOVER (LOSTBALL) by MISZKIEWICZ, VINCENT			
18:36				STEAL by MEANS, MORGAN
18:23		7-2	H 5	GOOD! 3PTR by JONES, DELANTE
18:23				ASSIST by MEANS, MORGAN
17:59	MISSED 3PTR by WILLIS, KEASTON			
17:55	REBOUND (OFF) by ENE, AUGUSTINE			
17:53	GOOD! 3PTR by MURRAY, DWIGHT	7-5	H 2	
17:53	ASSIST by ENE, AUGUSTINE			
17:41				MISSED LAYUP by BROWN, TERRELL
17:36	REBOUND (DEF) by WILLIS, KEASTON			
17:25	GOOD! LAYUP by WILLIS, KEASTON [PNT]	7-7	T	
17:25	ASSIST by MISZKIEWICZ, VINCENT			
17:13		9-7	H 2	GOOD! LAYUP by BROWN, TERRELL
16:55	MISSED LAYUP by MISZKIEWICZ, VINCENT			
16:55				BLOCK by CARTER, MYLES
16:48				REBOUND (DEF) by BROWN, TERRELL
16:45		12-7	H 5	GOOD! 3PTR by MEANS, MORGAN
16:45				ASSIST by BROWN, TERRELL
16:23	GOOD! 3PTR by WILLIS, KEASTON	12-10	H 2	
16:08				MISSED LAYUP by CARTER, MYLES
16:04	REBOUND (DEF) by MISZKIEWICZ, VINCENT			
15:50	MISSED LAYUP by MISZKIEWICZ, VINCENT			
15:47				REBOUND (DEF) by MEANS, MORGAN
15:42		15-10	H 5	GOOD! 3PTR by GRIGSBY, RILEY
15:42				ASSIST by MEANS, MORGAN
15:23				FOUL (PERSONAL) by MEANS, MORGAN
15:23				
15:23	SUB OUT: WILLIS, KEASTON			
15:23	SUB IN: SATO, COREY			
15:15	MISSED 3PTR by LUTZ, DREW			
15:13				REBOUND (DEF) by GRIGSBY, RILEY
15:01				TURNOVER (TRAVEL) by JONES, DELANTE
15:01				SUB OUT: CARTER, MYLES
15:01				SUB IN: DALLAS, JORDAN
14:35	MISSED LAYUP by MISZKIEWICZ, VINCENT			
14:32				REBOUND (DEF) by GRIGSBY, RILEY
14:27	FOUL (PERSONAL) by SATO, COREY			
14:27	SUB OUT: MISZKIEWICZ, VINCENT			
14:27	SUB IN: LARSSON, MARCUS			
14:20				MISSED LAYUP by BROWN, TERRELL
14:16				REBOUND (OFF) by GRIGSBY, RILEY
14:08				TURNOVER (BADPASS) by GRIGSBY, RILEY
14:08	STEAL by ENE, AUGUSTINE			
13:36	MISSED 3PTR by ENE, AUGUSTINE			
13:33				REBOUND (DEF) by BROWN, TERRELL
13:26				MISSED 3PTR by GRIGSBY, RILEY
13:20	REBOUND (DEF) by MURRAY, DWIGHT			
13:20				FOUL (PERSONAL) by DALLAS, JORDAN
13:14				SUB OUT: GRIGSBY, RILEY
13:14				SUB OUT: JONES, DELANTE
13:14				SUB IN: CARTER, MYLES
13:14				SUB IN: NETTLES, AARON
13:14	SUB OUT: LUTZ, DREW			
13:14	SUB IN: BALENTINE, DES			
13:08	GOOD! JUMPER by ENE, AUGUSTINE [PNT]	15-12	H 3	
12:47				TURNOVER (TRAVEL) by NETTLES, AARON
12:33	GOOD! JUMPER by LARSSON, MARCUS [PNT]	15-14	H 1	
12:33	ASSIST by BALENTINE, DES			
12:16				TURNOVER (LOSTBALL) by CARTER, MYLES
12:16	STEAL by BALENTINE, DES			
12:00				FOUL (PERSONAL) by BROWN, TERRELL
12:00	GOOD! FT by LARSSON, MARCUS	15-15	T	
12:00				SUB OUT: DALLAS, JORDAN
12:00				SUB IN: DA CAMPO, MATTIA

Time	VISITORS: Incarnate Word	Score	Margin	HOME: Seattle U
12:00	GOOD! FT by LARSSON, MARCUS	15-16	V 1	
11:52				MISSED 3PTR by MEANS, MORGAN
11:47	REBOUND (DEF) by TEAM			
11:47				
11:27	GOOD! JUMPER by MURRAY, DWIGHT	15-18	V 3	
11:16		18-18	T	GOOD! 3PTR by BROWN, TERRELL
10:43	MISSED JUMPER by BALENTINE, DES			
10:40				REBOUND (DEF) by BROWN, TERRELL
10:29		21-18	H 3	GOOD! 3PTR by NETTLES, AARON
10:29				ASSIST by CARTER, MYLES
10:07	TURNOVER (LOSTBALL) by LARSSON, MARCUS			
10:07				STEAL by MEANS, MORGAN
10:03		23-18	H 5	GOOD! LAYUP by MEANS, MORGAN [FB]
09:41	TURNOVER (BADPASS) by ENE, AUGUSTINE			
09:41				SUB OUT: DA CAMPO, MATTIA
09:41				SUB IN: HOPKINS, TREYVON
09:41				SUB OUT: HOPKINS, TREYVON
09:41				SUB IN: DA CAMPO, MATTIA
09:41	SUB OUT: ENE, AUGUSTINE			
09:41	SUB OUT: SATO, COREY			
09:41	SUB IN: WILLIS, KEASTON			
09:41	SUB IN: VAN VLERAH, DEREK			
09:36		25-18	H 7	GOOD! DUNK by CARTER, MYLES
09:36				ASSIST by BROWN, TERRELL
09:09	GOOD! JUMPER by VAN VLERAH, DEREK	25-20	H 5	
08:53	FOUL (PERSONAL) by LARSSON, MARCUS			
08:53		26-20	H 6	GOOD! FT by CARTER, MYLES
08:53				SUB OUT: BROWN, TERRELL
08:53				SUB IN: GRIGSBY, RILEY
08:53	SUB OUT: MURRAY, DWIGHT			
08:53	SUB OUT: LARSSON, MARCUS			
08:53	SUB IN: LUTZ, DREW			
08:53	SUB IN: MISZKIEWICZ, VINCENT			
08:53				MISSED FT by CARTER, MYLES
08:53				REBOUND (OFF) by DA CAMPO, MATTIA
08:38	FOUL (PERSONAL) by WILLIS, KEASTON			
08:24				MISSED 3PTR by CARTER, MYLES
08:21				REBOUND (OFF) by MEANS, MORGAN
08:20	FOUL (PERSONAL) by LUTZ, DREW			
08:20		27-20	H 7	GOOD! FT by MEANS, MORGAN
08:20		28-20	H 8	GOOD! FT by MEANS, MORGAN
07:59				FOUL (PERSONAL) by DA CAMPO, MATTIA
07:59				
07:59				SUB OUT: MEANS, MORGAN
07:59				SUB IN: BROWN, TERRELL
07:45	MISSED JUMPER by BALENTINE, DES			
07:45				BLOCK by CARTER, MYLES
07:38	REBOUND (OFF) by BALENTINE, DES			
07:37	MISSED JUMPER by VAN VLERAH, DEREK			
07:35				REBOUND (DEF) by NETTLES, AARON
07:30				FOUL (OFF) by CARTER, MYLES
07:30				TURNOVER (OFFENSIVE) by CARTER, MYLES
07:30				SUB OUT: CARTER, MYLES
07:30				SUB OUT: NETTLES, AARON
07:30				SUB IN: DALLAS, JORDAN
07:30				SUB IN: JONES, DELANTE
07:11	MISSED 3PTR by WILLIS, KEASTON			
07:07				REBOUND (DEF) by BROWN, TERRELL
07:01				MISSED JUMPER by BROWN, TERRELL
06:59	REBOUND (DEF) by MISZKIEWICZ, VINCENT			
06:58	SUB OUT: VAN VLERAH, DEREK			
06:58	SUB IN: ENE, AUGUSTINE			
06:34	TURNOVER (LOSTBALL) by BALENTINE, DES			
06:34				STEAL by GRIGSBY, RILEY
06:28	FOUL (PERSONAL) by ENE, AUGUSTINE			
06:28		29-20	H 9	GOOD! FT by GRIGSBY, RILEY [FB]
06:28				SUB OUT: DA CAMPO, MATTIA
06:28				SUB IN: MEANS, MORGAN
06:28	SUB OUT: BALENTINE, DES			
06:28		30-20	H 10	GOOD! FT by GRIGSBY, RILEY [FB]
06:09	MISSED 3PTR by LUTZ, DREW			
06:06				REBOUND (DEF) by MEANS, MORGAN
06:00	FOUL (PERSONAL) by TAYLOR, MORGAN			
06:00	SUB IN: TAYLOR, MORGAN			
05:53		32-20	H 12	GOOD! LAYUP by DALLAS, JORDAN
05:53				ASSIST by BROWN, TERRELL
05:53	FOUL (PERSONAL) by LUTZ, DREW			
05:53		33-20	H 13	GOOD! FT by DALLAS, JORDAN
05:30	GOOD! JUMPER by TAYLOR, MORGAN	33-22	H 11	
05:01		35-22	H 13	GOOD! LAYUP by JONES, DELANTE [PNT]

Time	VISITORS: Incarnate Word	Score	Margin	HOME: Seattle U
05:01				ASSIST by BROWN, TERRELL
04:47	MISSED 3PTR by ENE, AUGUSTINE			
04:43				REBOUND (DEF) by JONES, DELANTE
04:41				TURNOVER (BADPASS) by JONES, DELANTE
04:41	STEAL by ENE, AUGUSTINE			
04:35	MISSED 3PTR by WILLIS, KEASTON			
04:31	REBOUND (OFF) by WILLIS, KEASTON			
04:31				FOUL (PERSONAL) by DALLAS, JORDAN
04:31	GOOD! FT by WILLIS, KEASTON	35-23	H 12	
04:31	GOOD! FT by WILLIS, KEASTON	35-24	H 11	
04:05		38-24	H 14	GOOD! 3PTR by GRIGSBY, RILEY
04:05				ASSIST by JONES, DELANTE
03:50				FOUL (PERSONAL) by GRIGSBY, RILEY
03:50				
03:50	GOOD! FT by ENE, AUGUSTINE	38-25	H 13	
03:50	MISSED FT by ENE, AUGUSTINE			
03:49				REBOUND (DEF) by DALLAS, JORDAN
03:30		41-25	H 16	GOOD! 3PTR by GRIGSBY, RILEY
03:30				ASSIST by MEANS, MORGAN
02:58	MISSED 3PTR by TAYLOR, MORGAN			
02:55				REBOUND (DEF) by DALLAS, JORDAN
02:47				MISSED 3PTR by DALLAS, JORDAN
02:44				REBOUND (OFF) by GRIGSBY, RILEY
02:42				TURNOVER (LOSTBALL) by DALLAS, JORDAN
02:42	STEAL by MISZKIEWICZ, VINCENT			
02:42				SUB OUT: JONES, DELANTE
02:42				SUB IN: DA CAMPO, MATTIA
02:42	SUB OUT: ENE, AUGUSTINE			
02:42	SUB IN: VAN VLERAH, DEREK			
02:21	MISSED 3PTR by VAN VLERAH, DEREK			
02:17				REBOUND (DEF) by MEANS, MORGAN
02:02	FOUL (PERSONAL) by MISZKIEWICZ, VINCENT			
02:02		42-25	H 17	GOOD! FT by DALLAS, JORDAN
02:02	SUB OUT: TAYLOR, MORGAN			
02:02	SUB OUT: MISZKIEWICZ, VINCENT			
02:02	SUB IN: LARSSON, MARCUS			
02:02	SUB IN: SATO, COREY			
02:02		43-25	H 18	GOOD! FT by DALLAS, JORDAN
02:02				SUB OUT: DALLAS, JORDAN
02:02				SUB IN: HUNDAL, ANAND
01:43	MISSED LAYUP by LUTZ, DREW			
01:43				BLOCK by GRIGSBY, RILEY
01:37				REBOUND (DEF) by BROWN, TERRELL
01:35		45-25	H 20	GOOD! LAYUP by HUNDAL, ANAND
01:35				ASSIST by BROWN, TERRELL
01:19	GOOD! 3PTR by WILLIS, KEASTON	45-28	H 17	
01:19	ASSIST by LUTZ, DREW			
01:03				MISSED LAYUP by GRIGSBY, RILEY
00:57	REBOUND (DEF) by SATO, COREY			
00:52	MISSED 3PTR by LUTZ, DREW			
00:49				REBOUND (DEF) by TEAM
00:49	TIMEOUT 30SEC			
00:49	SUB OUT: LUTZ, DREW			
00:49	SUB IN: MURRAY, DWIGHT			
00:40				MISSED JUMPER by BROWN, TERRELL
00:36				REBOUND (OFF) by BROWN, TERRELL
00:35		47-28	H 19	GOOD! LAYUP by BROWN, TERRELL
00:26	MISSED 3PTR by VAN VLERAH, DEREK			
00:22				REBOUND (DEF) by BROWN, TERRELL
00:02				MISSED 3PTR by BROWN, TERRELL
00:00				REBOUND (OFF) by HUNDAL, ANAND
00:00				MISSED JUMPER by HUNDAL, ANAND
00:00				REBOUND (OFF) by TEAM

### Incarnate Word 28, Seattle U 47

Points from (This Period)	UIW	SU
In the Paint	6	18
Off Turns	6	9
2nd Chance	5	4
Fast Break	0	4
Bench	8	10

**Official Box Score**  
**Incarnate Word vs Seattle U**  
**Second Half Statistics Only**  
**December 03, 2019 at Redhawk Center - Seattle, WA**



**Incarnate Word 32**

No.	Player	S	Pts	FG	3FG	FT	OR	DR	TR	PF	A	TO	Blk	Stl	Min	+/-
00	MURRAY, DWIGHT	G	2	1-4	0-1	0-0	0	3	3	0	2	1	0	0	17	-6
02	WILLIS, KEASTON	G	4	1-2	0-1	2-2	0	0	0	1	0	0	0	0	0	0
03	LUTZ, DREW	G	0	0-0	0-0	0-0	1	0	1	0	2	0	0	1	6	5
12	ENE, AUGUSTINE	G	3	1-3	1-2	0-0	0	1	1	0	0	1	1	0	5	-2
33	MISZKIEWICZ, VINCENT	*	0	0-0	0-0	0-0	0	1	1	2	0	1	0	0	3	5
04	VAN VLERAH, DEREK	F	2	1-3	0-2	0-0	0	2	2	1	0	0	0	1	11	-1
05	SWABY, BRANDON	G	8	2-2	1-1	3-6	0	1	1	0	0	0	0	1	8	3
15	LARSSON, MARCUS	F	2	0-2	0-0	2-6	0	1	1	2	0	0	0	1	11	0
20	TAYLOR, MORGAN	G	7	3-6	0-1	1-2	0	0	0	2	0	0	0	1	9	0
21	SATO, COREY	F	0	0-0	0-0	0-0	0	0	0	2	0	0	0	0	2	-3
24	DAVIS, BRYCE	F	2	1-3	0-0	0-0	0	0	0	2	0	1	0	0	6	-4
25	BALENTINE, DES	G	2	1-1	0-0	0-0	0	1	1	1	0	0	0	0	8	-3
	TEAM						0	0	0	0	0	0				
<b>TOTALS</b>			<b>32</b>	<b>11-26</b>	<b>2-8</b>	<b>8-16</b>	<b>1</b>	<b>10</b>	<b>11</b>	<b>13</b>	<b>4</b>	<b>4</b>	<b>1</b>	<b>5</b>	<b>86</b>	

*Shooting By Period*

Period	FG	FG%	3FG	3FG%	FT	FT%
2nd Half	11-26	42%	2-8	25%	8-16	50%
Game	20-53	37.7%	5-22	22.7%	15-24	62.5%

*Deadball Rebounds: 4,1*  
*Last FG Half: UIW -*

**Seattle U 34**

No.	Player	S	Pts	FG	3FG	FT	OR	DR	TR	PF	A	TO	Blk	Stl	Min	+/-
01	CARTER, MYLES	F	2	0-3	0-0	2-2	1	3	4	2	0	0	0	0	8	1
11	GRIGSBY, RILEY	G	7	1-2	0-1	5-5	2	4	6	2	0	2	0	1	15	2
13	MEANS, MORGAN	G	6	1-2	0-1	4-4	1	0	1	1	0	2	0	1	14	7
23	BROWN, TERRELL	G	7	2-6	0-0	3-4	1	2	3	0	0	0	0	1	10	4
24	JONES, DELANTE	G	2	0-4	0-2	2-2	1	0	1	1	0	1	0	0	9	2
00	ECONOMOU, RIP	G	2	1-3	0-2	0-0	0	2	2	0	0	1	0	0	6	-2
02	HOPKINS, TREYVON	G	1	0-1	0-1	1-2	0	1	1	3	0	0	0	0	5	0
10	NETTLES, AARON	G	0	0-1	0-1	0-0	0	0	0	0	0	0	0	0	4	2
12	DA CAMPO, MATTIA	G	2	1-1	0-0	0-0	1	1	2	0	0	2	0	0	7	3
21	DALLAS, JORDAN	C	2	0-1	0-1	2-2	1	2	3	1	1	0	0	0	8	3
33	HAUGE, MIKKEL	G	0	0-1	0-0	0-0	0	0	0	1	0	0	0	0	3	-4
34	HUNDAL, ANAND	F	3	1-2	0-1	1-1	1	1	2	2	0	0	0	0	7	-3
35	PINSKUS, DOVY	F	0	0-0	0-0	0-0	0	1	1	0	0	1	0	0	3	-5
	TEAM						1	1	2	0	0	0				
<b>TOTALS</b>			<b>34</b>	<b>7-27</b>	<b>0-10</b>	<b>20-22</b>	<b>10</b>	<b>18</b>	<b>28</b>	<b>13</b>	<b>1</b>	<b>9</b>	<b>0</b>	<b>3</b>	<b>100</b>	

*Shooting By Period*

Period	FG	FG%	3FG	3FG%	FT	FT%
2nd Half	7-27	26%	0-10	00%	20-22	91%
Game	23-55	41.8%	7-22	31.8%	28-31	90.3%

*Deadball Rebounds: 3,1*  
*Last FG Half: SU -*

Game Notes:

Officials: Tony Padilla, Kelly Pfeifer, Bob Staffen  
Attendance: 820

Start Time: 10:07 PM ET  
End Time: 12:06 AM ET  
Game Duration: 1:59

Score	1st	2nd	TOT
UIW	28	32	60
SU	47	34	81

Points from (This Period)	UIW	SU
In the Paint	14	8
Off Turns	12	6
2nd Chance	3	9
Fast Break	14	1
Bench	23	10

**Official Play-By-Play**  
**Incarnate Word vs Seattle U**  
**Second Half**  
**December 03, 2019 at Redhawk Center - Seattle, WA**



**Period 2**

**Starters:**

**Incarnate Word:** 00 MURRAY, DWIGHT (G); 2 WILLIS, KEASTON (G); 3 LUTZ, DREW (G); 12 ENE, AUGUSTINE (G); 33 MISZKIEWICZ, VINCENT;  
**Seattle U:** 1 CARTER, MYLES (F); 11 GRIGSBY, RILEY (G); 13 MEANS, MORGAN (G); 23 BROWN, TERRELL (G); 24 JONES, DELANTE (G);

Time	VISITORS: Incarnate Word	Score	Margin	HOME: Seattle U
06:28	SUB IN: VAN VLERAH, DEREK			
06:00	SUB OUT: WILLIS, KEASTON			
19:40				SUB OUT: DA CAMPO, MATTIA
19:40				SUB OUT: HUNDAL, ANAND
19:40				SUB IN: CARTER, MYLES
19:40				SUB IN: JONES, DELANTE
19:40	SUB OUT: VAN VLERAH, DEREK			
19:40	SUB OUT: LARSSON, MARCUS			
19:40	SUB OUT: SATO, COREY			
19:40	SUB IN: LUTZ, DREW			
19:40	SUB IN: ENE, AUGUSTINE			
19:40	SUB IN: MISZKIEWICZ, VINCENT			
19:38				MISSED LAYUP by BROWN, TERRELL
19:33	REBOUND (DEF) by MISZKIEWICZ, VINCENT			
19:32				FOUL (PERSONAL) by GRIGSBY, RILEY
19:31	GOOD! FT by WILLIS, KEASTON [FB]	47-29	H 18	
19:31	GOOD! FT by WILLIS, KEASTON [FB]	47-30	H 17	
19:25				MISSED JUMPER by CARTER, MYLES
19:23				REBOUND (OFF) by JONES, DELANTE
19:15				FOUL (OFF) by MEANS, MORGAN
19:15				TURNOVER (OFFENSIVE) by MEANS, MORGAN
18:51	GOOD! 3PTR by ENE, AUGUSTINE	47-33	H 14	
18:51	ASSIST by MURRAY, DWIGHT			
18:37				MISSED JUMPER by BROWN, TERRELL
18:33	REBOUND (DEF) by ENE, AUGUSTINE			
18:27	GOOD! JUMPER by MURRAY, DWIGHT	47-35	H 12	
18:13		49-35	H 14	GOOD! LAYUP by BROWN, TERRELL
17:55	MISSED JUMPER by ENE, AUGUSTINE			
17:52				REBOUND (DEF) by BROWN, TERRELL
17:46	FOUL (PERSONAL) by WILLIS, KEASTON			
17:45				MISSED FT by BROWN, TERRELL
17:45				REBOUND (OFF) by TEAM
17:45		50-35	H 15	GOOD! FT by BROWN, TERRELL
17:34	TURNOVER (LOSTBALL) by MURRAY, DWIGHT			
17:34				STEAL by BROWN, TERRELL
17:29				MISSED LAYUP by BROWN, TERRELL
17:26				REBOUND (OFF) by CARTER, MYLES
17:25				MISSED LAYUP by CARTER, MYLES
17:21				REBOUND (OFF) by GRIGSBY, RILEY
17:21	FOUL (PERSONAL) by MISZKIEWICZ, VINCENT			
17:21		51-35	H 16	GOOD! FT by GRIGSBY, RILEY
17:21		52-35	H 17	GOOD! FT by GRIGSBY, RILEY
17:21				TIMEOUT 30SEC
17:21				
17:03	TURNOVER (LOSTBALL) by MISZKIEWICZ, VINCENT			
17:03				STEAL by MEANS, MORGAN
16:47	FOUL (PERSONAL) by MISZKIEWICZ, VINCENT			
16:45		53-35	H 18	GOOD! FT by JONES, DELANTE
16:45	SUB OUT: LUTZ, DREW			
16:45	SUB OUT: MISZKIEWICZ, VINCENT			
16:45	SUB IN: DAVIS, BRYCE			
16:45	SUB IN: BALENTINE, DES			
16:45		54-35	H 19	GOOD! FT by JONES, DELANTE
16:30				FOUL (PERSONAL) by CARTER, MYLES
16:22	MISSED 3PTR by ENE, AUGUSTINE			
16:20				REBOUND (DEF) by TEAM
16:08				MISSED 3PTR by JONES, DELANTE
16:05	REBOUND (DEF) by MURRAY, DWIGHT			
16:02	MISSED LAYUP by DAVIS, BRYCE			
15:59				REBOUND (DEF) by CARTER, MYLES
15:53				TURNOVER (LOSTBALL) by MEANS, MORGAN
15:53				
15:37	TURNOVER (LOSTBALL) by DAVIS, BRYCE			
15:37				STEAL by GRIGSBY, RILEY
15:30				MISSED LAYUP by BROWN, TERRELL
15:30	BLOCK by ENE, AUGUSTINE			
15:25	REBOUND (DEF) by BALENTINE, DES			
15:18	TURNOVER (DRIBBLING) by ENE, AUGUSTINE			
15:07	FOUL (PERSONAL) by DAVIS, BRYCE			
15:05		55-35	H 20	GOOD! FT by GRIGSBY, RILEY



Time	VISITORS: Incarnate Word	Score	Margin	HOME: Seattle U
15:05		56-35	H 21	GOOD! FT by GRIGSBY, RILEY
14:51	MISSED JUMPER by DAVIS, BRYCE			
14:47				REBOUND (DEF) by BROWN, TERRELL
14:32				FOUL (OFF) by JONES, DELANTE
14:32				TURNOVER (OFFENSIVE) by JONES, DELANTE
14:19	MISSED JUMPER by MURRAY, DWIGHT			
14:16				REBOUND (DEF) by GRIGSBY, RILEY
14:13				SUB OUT: CARTER, MYLES
14:13				SUB OUT: JONES, DELANTE
14:13				SUB IN: NETTLES, AARON
14:13				SUB IN: DALLAS, JORDAN
14:13	SUB OUT: ENE, AUGUSTINE			
14:13	SUB IN: SATO, COREY			
13:59		58-35	H 23	GOOD! LAYUP by GRIGSBY, RILEY
13:59	FOUL (PERSONAL) by SATO, COREY			
13:59		59-35	H 24	GOOD! FT by GRIGSBY, RILEY
13:38	GOOD! LAYUP by DAVIS, BRYCE	59-37	H 22	
13:23				MISSED 3PTR by DALLAS, JORDAN
13:18				REBOUND (OFF) by BROWN, TERRELL
13:17		61-37	H 24	GOOD! LAYUP by BROWN, TERRELL
12:45	MISSED 3PTR by MURRAY, DWIGHT			
12:41				REBOUND (DEF) by GRIGSBY, RILEY
12:41	FOUL (PERSONAL) by SATO, COREY			
12:41				SUB OUT: MEANS, MORGAN
12:41				SUB IN: CARTER, MYLES
12:41	SUB OUT: SATO, COREY			
12:41	SUB IN: VAN VLERAH, DEREK			
12:29				MISSED 3PTR by NETTLES, AARON
12:25	REBOUND (DEF) by MURRAY, DWIGHT			
12:17				FOUL (PERSONAL) by DALLAS, JORDAN
12:17				SUB OUT: DALLAS, JORDAN
12:17				SUB IN: HUNDAL, ANAND
12:03	GOOD! JUMPER by BALENTINE, DES [PNT]	61-39	H 22	
11:47				MISSED 3PTR by GRIGSBY, RILEY
11:44	REBOUND (DEF) by MURRAY, DWIGHT			
11:41	GOOD! LAYUP by WILLIS, KEASTON [FB]	61-41	H 20	
11:41	ASSIST by MURRAY, DWIGHT			
11:23	FOUL (PERSONAL) by BALENTINE, DES			
11:23				
11:23		62-41	H 21	GOOD! FT by BROWN, TERRELL
11:23		63-41	H 22	GOOD! FT by BROWN, TERRELL
10:53	MISSED 3PTR by VAN VLERAH, DEREK			
10:50				REBOUND (DEF) by CARTER, MYLES
10:35	FOUL (PERSONAL) by DAVIS, BRYCE			
10:35	SUB OUT: DAVIS, BRYCE			
10:35	SUB IN: LARSSON, MARCUS			
10:35		64-41	H 23	GOOD! FT by CARTER, MYLES
10:35		65-41	H 24	GOOD! FT by CARTER, MYLES
10:17				FOUL (PERSONAL) by HUNDAL, ANAND
10:16	GOOD! FT by LARSSON, MARCUS	65-42	H 23	
10:16	SUB OUT: BALENTINE, DES			
10:16	SUB IN: TAYLOR, MORGAN			
10:16	MISSED FT by LARSSON, MARCUS			
10:16				REBOUND (DEF) by CARTER, MYLES
09:55				MISSED LAYUP by CARTER, MYLES
09:52	REBOUND (DEF) by VAN VLERAH, DEREK			
09:47				FOUL (PERSONAL) by CARTER, MYLES
09:47	MISSED FT by LARSSON, MARCUS			
09:47	REBOUND (OFF) by TEAM			
09:47				SUB OUT: CARTER, MYLES
09:47				SUB OUT: NETTLES, AARON
09:47				SUB OUT: BROWN, TERRELL
09:47				SUB IN: DA CAMPO, MATTIA
09:47				SUB IN: MEANS, MORGAN
09:47				SUB IN: JONES, DELANTE
09:47	MISSED FT by LARSSON, MARCUS			
09:47				REBOUND (DEF) by GRIGSBY, RILEY
09:31		67-42	H 25	GOOD! JUMPER by DA CAMPO, MATTIA
09:05	MISSED LAYUP by LARSSON, MARCUS			
09:01				REBOUND (DEF) by HUNDAL, ANAND
08:35				MISSED 3PTR by HUNDAL, ANAND
08:32				REBOUND (OFF) by HUNDAL, ANAND
08:30		69-42	H 27	GOOD! LAYUP by HUNDAL, ANAND
08:28	FOUL (PERSONAL) by TAYLOR, MORGAN			
08:28		70-42	H 28	GOOD! FT by HUNDAL, ANAND
08:28	SUB OUT: VAN VLERAH, DEREK			
08:28	SUB IN: MISZKIEWICZ, VINCENT			
08:28				TIMEOUT TEAM
08:10	GOOD! JUMPER by TAYLOR, MORGAN	70-44	H 26	
08:02				TURNOVER (LOSTBALL) by GRIGSBY, RILEY

Time	VISITORS: Incarnate Word	Score	Margin	HOME: Seattle U
08:02	STEAL by TAYLOR, MORGAN			
07:58	GOOD! LAYUP by TAYLOR, MORGAN [FB]	70-46	H 24	
07:57				FOUL (PERSONAL) by GRIGSBY, RILEY
07:57	SUB OUT: LARSSON, MARCUS			
07:57	SUB OUT: MISZKIEWICZ, VINCENT			
07:57	SUB IN: VAN VLERAH, DEREK			
07:57	SUB IN: SWABY, BRANDON			
07:57	GOOD! FT by TAYLOR, MORGAN [FB]	70-47	H 23	
07:57				
07:53				TIMEOUT 30SEC
07:53	SUB OUT: VAN VLERAH, DEREK			
07:53	SUB IN: LARSSON, MARCUS			
07:38				MISSED 3PTR by MEANS, MORGAN
07:33				REBOUND (OFF) by MEANS, MORGAN
07:27				MISSED JUMPER by JONES, DELANTE
07:22				REBOUND (OFF) by TEAM
07:13				MISSED 3PTR by JONES, DELANTE
07:08				REBOUND (OFF) by GRIGSBY, RILEY
06:49				MISSED JUMPER by JONES, DELANTE
06:46				REBOUND (OFF) by DA CAMPO, MATTIA
06:46				TURNOVER (TRAVEL) by DA CAMPO, MATTIA
06:34	MISSED 3PTR by WILLIS, KEASTON			
06:31				REBOUND (DEF) by DA CAMPO, MATTIA
06:17				SUB OUT: JONES, DELANTE
06:17				SUB IN: ECONOMOU, RIP
06:17	SUB OUT: WILLIS, KEASTON			
06:17	SUB IN: VAN VLERAH, DEREK			
06:13				TURNOVER (BADPASS) by GRIGSBY, RILEY
06:13	STEAL by LARSSON, MARCUS			
06:08	GOOD! LAYUP by TAYLOR, MORGAN [FB]	70-49	H 21	
06:07				FOUL (PERSONAL) by HUNDAL, ANAND
06:07				SUB OUT: HUNDAL, ANAND
06:07				SUB IN: DALLAS, JORDAN
06:07	MISSED FT by TAYLOR, MORGAN			
06:05				REBOUND (DEF) by DALLAS, JORDAN
05:51	FOUL (PERSONAL) by VAN VLERAH, DEREK			
05:51		71-49	H 22	GOOD! FT by MEANS, MORGAN
05:51		72-49	H 23	GOOD! FT by MEANS, MORGAN
05:35	MISSED JUMPER by TAYLOR, MORGAN			
05:32				REBOUND (DEF) by GRIGSBY, RILEY
05:16				TURNOVER (LOSTBALL) by DA CAMPO, MATTIA
05:16	STEAL by VAN VLERAH, DEREK			
05:11	GOOD! LAYUP by VAN VLERAH, DEREK [FB]	72-51	H 21	
04:54				SUB OUT: GRIGSBY, RILEY
04:54				SUB IN: HOPKINS, TREYVON
04:44		74-51	H 23	GOOD! JUMPER by MEANS, MORGAN
04:19	MISSED 3PTR by TAYLOR, MORGAN			
04:13				REBOUND (DEF) by DALLAS, JORDAN
04:10	FOUL (PERSONAL) by TAYLOR, MORGAN			
04:10		75-51	H 24	GOOD! FT by MEANS, MORGAN
04:10		76-51	H 25	GOOD! FT by MEANS, MORGAN
03:52	MISSED JUMPER by MURRAY, DWIGHT			
03:48				REBOUND (DEF) by ECONOMOU, RIP
03:38				MISSED 3PTR by ECONOMOU, RIP
03:34	REBOUND (DEF) by LARSSON, MARCUS			
03:22				FOUL (PERSONAL) by HOPKINS, TREYVON
03:22				
03:22				SUB OUT: MEANS, MORGAN
03:22				SUB IN: HAUGE, MIKKEL
03:22	SUB OUT: MURRAY, DWIGHT			
03:22	SUB IN: LUTZ, DREW			
03:22	MISSED FT by SWABY, BRANDON			
03:22	REBOUND (OFF) by TEAM			
03:22	GOOD! FT by SWABY, BRANDON	76-52	H 24	
03:21				MISSED 3PTR by HOPKINS, TREYVON
03:17				REBOUND (OFF) by DALLAS, JORDAN
03:16		78-52	H 26	GOOD! JUMPER by ECONOMOU, RIP
03:16				ASSIST by DALLAS, JORDAN
02:46				FOUL (PERSONAL) by HOPKINS, TREYVON
02:46	MISSED FT by SWABY, BRANDON			
02:46	REBOUND (OFF) by TEAM			
02:46				SUB OUT: DA CAMPO, MATTIA
02:46				SUB IN: PINSKUS, DOVY
02:46	GOOD! FT by SWABY, BRANDON	78-53	H 25	
02:36				MISSED LAYUP by HAUGE, MIKKEL
02:34	REBOUND (DEF) by SWABY, BRANDON			
02:17	MISSED LAYUP by TAYLOR, MORGAN			
02:14				REBOUND (DEF) by PINSKUS, DOVY
02:07				TURNOVER (LOSTBALL) by PINSKUS, DOVY
02:07	STEAL by LUTZ, DREW			

Time	VISITORS: Incarnate Word	Score	Margin	HOME: Seattle U
02:02	GOOD! LAYUP by SWABY, BRANDON [FB]	78-55	H 23	
02:02	ASSIST by LUTZ, DREW			
01:48				MISSED 3PTR by ECONOMOU, RIP
01:44	REBOUND (DEF) by VAN VLERAH, DEREK			
01:20				FOUL (PERSONAL) by HOPKINS, TREY'VON
01:19	MISSED FT by LARSSON, MARCUS			
01:19	REBOUND (OFF) by TEAM			
01:19	SUB OUT: TAYLOR, MORGAN			
01:19	SUB IN: BALENTINE, DES			
01:19	GOOD! FT by LARSSON, MARCUS	78-56	H 22	
01:14	FOUL (PERSONAL) by LARSSON, MARCUS			
01:14				MISSED FT by HOPKINS, TREY'VON
01:14				REBOUND (OFF) by TEAM
01:14		79-56	H 23	GOOD! FT by HOPKINS, TREY'VON [FB]
00:57	MISSED JUMPER by LARSSON, MARCUS			
00:54				REBOUND (DEF) by ECONOMOU, RIP
00:50				TURNOVER (LOSTBALL) by ECONOMOU, RIP
00:50	STEAL by SWABY, BRANDON			
00:49				FOUL (PERSONAL) by HAUGE, MIKKEL
00:49	GOOD! FT by SWABY, BRANDON [FB]	79-57	H 22	
00:49	MISSED FT by SWABY, BRANDON			
00:48				REBOUND (DEF) by HOPKINS, TREY'VON
00:24	FOUL (PERSONAL) by LARSSON, MARCUS			
00:23		80-57	H 23	GOOD! FT by DALLAS, JORDAN
00:23		81-57	H 24	GOOD! FT by DALLAS, JORDAN
00:08	MISSED 3PTR by VAN VLERAH, DEREK			
00:05	REBOUND (OFF) by LUTZ, DREW			
00:02	GOOD! 3PTR by SWABY, BRANDON	81-60	H 21	
00:02	ASSIST by LUTZ, DREW			

### Incarnate Word 60, Seattle U 81

Points from (This Period)	UIW	SU
In the Paint	14	8
Off Turns	12	6
2nd Chance	3	9
Fast Break	14	1
Bench	23	10

**Official Scoring/Possession Reference Chart  
Incarnate Word vs Seattle U  
Period 1  
December 03, 2019 at Redhawk Center - Seattle, WA**



**Period 1**

**Starters:**

**Incarnate Word:** 00 MURRAY, DWIGHT (G); 2 WILLIS, KEASTON (G); 3 LUTZ, DREW (G); 12 ENE, AUGUSTINE (G); 33 MISZKIEWICZ, VINCENT;  
**Seattle U:** 1 CARTER, MYLES (F); 11 GRIGSBY, RILEY (G); 13 MEANS, MORGAN (G); 23 BROWN, TERRELL (G); 24 JONES, DELANTE (G);

Time	VISITORS: Incarnate Word	Score	Margin	HOME: Seattle U
19:38		2-0	H 2	GOOD! LAYUP by GRIGSBY, RILEY
19:14	GOOD! FT by MISZKIEWICZ, VINCENT	2-1	H 1	
19:14	GOOD! FT by MISZKIEWICZ, VINCENT	2-2	T	
19:03		4-2	H 2	GOOD! JUMPER by GRIGSBY, RILEY [PNT]
18:23		7-2	H 5	GOOD! 3PTR by JONES, DELANTE
17:53	GOOD! 3PTR by MURRAY, DWIGHT	7-5	H 2	
17:25	GOOD! LAYUP by WILLIS, KEASTON [PNT]	7-7	T	
17:13		9-7	H 2	GOOD! LAYUP by BROWN, TERRELL
16:45		12-7	H 5	GOOD! 3PTR by MEANS, MORGAN
16:23	GOOD! 3PTR by WILLIS, KEASTON	12-10	H 2	
15:42		15-10	H 5	GOOD! 3PTR by GRIGSBY, RILEY
13:08	GOOD! JUMPER by ENE, AUGUSTINE [PNT]	15-12	H 3	
12:33	GOOD! JUMPER by LARSSON, MARCUS [PNT]	15-14	H 1	
12:00	GOOD! FT by LARSSON, MARCUS	15-15	T	
12:00	GOOD! FT by LARSSON, MARCUS	15-16	V 1	
11:27	GOOD! JUMPER by MURRAY, DWIGHT	15-18	V 3	
11:16		18-18	T	GOOD! 3PTR by BROWN, TERRELL
10:29		21-18	H 3	GOOD! 3PTR by NETTLES, AARON
10:03		23-18	H 5	GOOD! LAYUP by MEANS, MORGAN [FB]
09:36		25-18	H 7	GOOD! DUNK by CARTER, MYLES
09:09	GOOD! JUMPER by VAN VLERAH, DEREK	25-20	H 5	
08:53		26-20	H 6	GOOD! FT by CARTER, MYLES
08:20		27-20	H 7	GOOD! FT by MEANS, MORGAN
08:20		28-20	H 8	GOOD! FT by MEANS, MORGAN
06:28		29-20	H 9	GOOD! FT by GRIGSBY, RILEY [FB]
06:28		30-20	H 10	GOOD! FT by GRIGSBY, RILEY [FB]
05:53		32-20	H 12	GOOD! LAYUP by DALLAS, JORDAN
05:53		33-20	H 13	GOOD! FT by DALLAS, JORDAN
05:30	GOOD! JUMPER by TAYLOR, MORGAN	33-22	H 11	
05:01		35-22	H 13	GOOD! LAYUP by JONES, DELANTE [PNT]
04:31	GOOD! FT by WILLIS, KEASTON	35-23	H 12	
04:31	GOOD! FT by WILLIS, KEASTON	35-24	H 11	
04:05		38-24	H 14	GOOD! 3PTR by GRIGSBY, RILEY
03:50	GOOD! FT by ENE, AUGUSTINE	38-25	H 13	
03:30		41-25	H 16	GOOD! 3PTR by GRIGSBY, RILEY
02:02		42-25	H 17	GOOD! FT by DALLAS, JORDAN
02:02		43-25	H 18	GOOD! FT by DALLAS, JORDAN
01:35		45-25	H 20	GOOD! LAYUP by HUNDAL, ANAND
01:19	GOOD! 3PTR by WILLIS, KEASTON	45-28	H 17	
00:35		47-28	H 19	GOOD! LAYUP by BROWN, TERRELL

**Incarnate Word 28, Seattle U 47**

**Official Scoring/Possession Reference Chart  
Incarnate Word vs Seattle U  
Period 2  
December 03, 2019 at Redhawk Center - Seattle, WA**



**Period 2**

**Starters:**

**Incarnate Word:** 00 MURRAY, DWIGHT (G); 2 WILLIS, KEASTON (G); 3 LUTZ, DREW (G); 12 ENE, AUGUSTINE (G); 33 MISZKIEWICZ, VINCENT;  
**Seattle U:** 1 CARTER, MYLES (F); 11 GRIGSBY, RILEY (G); 13 MEANS, MORGAN (G); 23 BROWN, TERRELL (G); 24 JONES, DELANTE (G);

Time	VISITORS: Incarnate Word	Score	Margin	HOME: Seattle U
19:31	GOOD! FT by WILLIS, KEASTON [FB]	47-29	H 18	
19:31	GOOD! FT by WILLIS, KEASTON [FB]	47-30	H 17	
18:51	GOOD! 3PTR by ENE, AUGUSTINE	47-33	H 14	
18:27	GOOD! JUMPER by MURRAY, DWIGHT	47-35	H 12	
18:13		49-35	H 14	GOOD! LAYUP by BROWN, TERRELL
17:45		50-35	H 15	GOOD! FT by BROWN, TERRELL
17:21		51-35	H 16	GOOD! FT by GRIGSBY, RILEY
17:21		52-35	H 17	GOOD! FT by GRIGSBY, RILEY
16:45		53-35	H 18	GOOD! FT by JONES, DELANTE
16:45		54-35	H 19	GOOD! FT by JONES, DELANTE
15:05		55-35	H 20	GOOD! FT by GRIGSBY, RILEY
15:05		56-35	H 21	GOOD! FT by GRIGSBY, RILEY
13:59		58-35	H 23	GOOD! LAYUP by GRIGSBY, RILEY
13:59		59-35	H 24	GOOD! FT by GRIGSBY, RILEY
13:38	GOOD! LAYUP by DAVIS, BRYCE	59-37	H 22	
13:17		61-37	H 24	GOOD! LAYUP by BROWN, TERRELL
12:03	GOOD! JUMPER by BALENTINE, DES [PNT]	61-39	H 22	
11:41	GOOD! LAYUP by WILLIS, KEASTON [FB]	61-41	H 20	
11:23		62-41	H 21	GOOD! FT by BROWN, TERRELL
11:23		63-41	H 22	GOOD! FT by BROWN, TERRELL
10:35		64-41	H 23	GOOD! FT by CARTER, MYLES
10:35		65-41	H 24	GOOD! FT by CARTER, MYLES
10:16	GOOD! FT by LARSSON, MARCUS	65-42	H 23	
09:31		67-42	H 25	GOOD! JUMPER by DA CAMPO, MATTIA
08:30		69-42	H 27	GOOD! LAYUP by HUNDAL, ANAND
08:28		70-42	H 28	GOOD! FT by HUNDAL, ANAND
08:10	GOOD! JUMPER by TAYLOR, MORGAN	70-44	H 26	
07:58	GOOD! LAYUP by TAYLOR, MORGAN [FB]	70-46	H 24	
07:57	GOOD! FT by TAYLOR, MORGAN [FB]	70-47	H 23	
06:08	GOOD! LAYUP by TAYLOR, MORGAN [FB]	70-49	H 21	
05:51		71-49	H 22	GOOD! FT by MEANS, MORGAN
05:51		72-49	H 23	GOOD! FT by MEANS, MORGAN
05:11	GOOD! LAYUP by VAN VLERAH, DEREK [FB]	72-51	H 21	
04:44		74-51	H 23	GOOD! JUMPER by MEANS, MORGAN
04:10		75-51	H 24	GOOD! FT by MEANS, MORGAN
04:10		76-51	H 25	GOOD! FT by MEANS, MORGAN
03:22	GOOD! FT by SWABY, BRANDON	76-52	H 24	
03:16		78-52	H 26	GOOD! JUMPER by ECONOMOU, RIP
02:46	GOOD! FT by SWABY, BRANDON	78-53	H 25	
02:02	GOOD! LAYUP by SWABY, BRANDON [FB]	78-55	H 23	
01:19	GOOD! FT by LARSSON, MARCUS	78-56	H 22	
01:14		79-56	H 23	GOOD! FT by HOPKINS, TREY'VON [FB]
00:49	GOOD! FT by SWABY, BRANDON [FB]	79-57	H 22	
00:23		80-57	H 23	GOOD! FT by DALLAS, JORDAN
00:23		81-57	H 24	GOOD! FT by DALLAS, JORDAN
00:02	GOOD! 3PTR by SWABY, BRANDON	81-60	H 21	

**Incarnate Word 60, Seattle U 81**

**Official Substitutions Log  
Incarnate Word vs Seattle U  
Period 1  
December 03, 2019 at Redhawk Center - Seattle, WA**



VISITORS: Incarnate Word	Time	Score	HOME: Seattle U
00 MURRAY, DWIGHT			1 CARTER, MYLES
2 WILLIS, KEASTON			11 GRIGSBY, RILEY
3 LUTZ, DREW			13 MEANS, MORGAN
12 ENE, AUGUSTINE			23 BROWN, TERRELL
33 MISZKIEWICZ, VINCENT			24 JONES, DELANTE
SUB OUT: 2 WILLIS, KEASTON	15:23	10-15	
SUB IN: 21 SATO, COREY	15:23		
	15:01	10-15	SUB OUT: CARTER, MYLES
	15:01		SUB IN: DALLAS, JORDAN
SUB OUT: 33 MISZKIEWICZ, VINCENT	14:27	10-15	
SUB IN: 15 LARSSON, MARCUS	14:27		
	13:14	10-15	SUB OUT: GRIGSBY, RILEY
	13:14		SUB OUT: JONES, DELANTE
	13:14		SUB IN: CARTER, MYLES
	13:14		SUB IN: NETTLES, AARON
SUB OUT: 3 LUTZ, DREW	13:14		
SUB IN: 25 BALENTINE, DES	13:14		
	12:00	15-15	SUB OUT: DALLAS, JORDAN
	12:00		SUB IN: DA CAMPO, MATTIA
	09:41	18-23	SUB OUT: DA CAMPO, MATTIA
	09:41		SUB IN: HOPKINS, TREYVON
	09:41		SUB OUT: HOPKINS, TREYVON
	09:41		SUB IN: DA CAMPO, MATTIA
SUB OUT: 12 ENE, AUGUSTINE	09:41		
SUB OUT: 21 SATO, COREY	09:41		
SUB IN: 2 WILLIS, KEASTON	09:41		
SUB IN: 4 VAN VLERAH, DEREK	09:41		
	08:53	20-26	SUB OUT: BROWN, TERRELL
	08:53		SUB IN: GRIGSBY, RILEY
SUB OUT: 00 MURRAY, DWIGHT	08:53		
SUB OUT: 15 LARSSON, MARCUS	08:53		
SUB IN: 3 LUTZ, DREW	08:53		
SUB IN: 33 MISZKIEWICZ, VINCENT	08:53		
	07:59	20-28	SUB OUT: MEANS, MORGAN
	07:59		SUB IN: BROWN, TERRELL
	07:30	20-28	SUB OUT: CARTER, MYLES
	07:30		SUB OUT: NETTLES, AARON
	07:30		SUB IN: DALLAS, JORDAN
	07:30		SUB IN: JONES, DELANTE
SUB OUT: 4 VAN VLERAH, DEREK	06:58	20-28	
SUB IN: 12 ENE, AUGUSTINE	06:58		
	06:28	20-29	SUB OUT: DA CAMPO, MATTIA
	06:28		SUB IN: MEANS, MORGAN
SUB OUT: 25 BALENTINE, DES	06:28		
SUB IN: 20 TAYLOR, MORGAN	06:00	20-30	
	02:42	25-41	SUB OUT: JONES, DELANTE
	02:42		SUB IN: DA CAMPO, MATTIA
SUB OUT: 12 ENE, AUGUSTINE	02:42		
SUB IN: 4 VAN VLERAH, DEREK	02:42		
SUB OUT: 20 TAYLOR, MORGAN	02:02	25-42	
SUB OUT: 33 MISZKIEWICZ, VINCENT	02:02		
SUB IN: 15 LARSSON, MARCUS	02:02		
SUB IN: 21 SATO, COREY	02:02		
	02:02		SUB OUT: DALLAS, JORDAN
	02:02		SUB IN: HUNDAL, ANAND
SUB OUT: 3 LUTZ, DREW	00:49	28-45	
SUB IN: 00 MURRAY, DWIGHT	00:49		

**Incarnate Word 28, Seattle U 47**

**Official Substitutions Log  
Incarnate Word vs Seattle U  
Period 2  
December 03, 2019 at Redhawk Center - Seattle, WA**



VISITORS: Incarnate Word	Time	Score	HOME: Seattle U
00 MURRAY, DWIGHT			1 CARTER, MYLES
2 WILLIS, KEASTON			11 GRIGSBY, RILEY
3 LUTZ, DREW			13 MEANS, MORGAN
12 ENE, AUGUSTINE			23 BROWN, TERRELL
33 MISZKIEWICZ, VINCENT			24 JONES, DELANTE
SUB IN: 4 VAN VLERAH, DEREK	06:28	-	
SUB OUT: 2 WILLIS, KEASTON	06:00	-	
	19:40	-	SUB OUT: DA CAMPO, MATTIA
	19:40		SUB OUT: HUNDAL, ANAND
	19:40		SUB IN: CARTER, MYLES
	19:40		SUB IN: JONES, DELANTE
SUB OUT: 4 VAN VLERAH, DEREK	19:40		
SUB OUT: 15 LARSSON, MARCUS	19:40		
SUB OUT: 21 SATO, COREY	19:40		
SUB IN: 3 LUTZ, DREW	19:40		
SUB IN: 12 ENE, AUGUSTINE	19:40		
SUB IN: 33 MISZKIEWICZ, VINCENT	19:40		
SUB OUT: 3 LUTZ, DREW	16:45	35-53	
SUB OUT: 33 MISZKIEWICZ, VINCENT	16:45		
SUB IN: 24 DAVIS, BRYCE	16:45		
SUB IN: 25 BALENTINE, DES	16:45		
	14:13	35-56	SUB OUT: CARTER, MYLES
	14:13		SUB OUT: JONES, DELANTE
	14:13		SUB IN: NETTLES, AARON
	14:13		SUB IN: DALLAS, JORDAN
SUB OUT: 12 ENE, AUGUSTINE	14:13		
SUB IN: 21 SATO, COREY	14:13		
	12:41	37-61	SUB OUT: MEANS, MORGAN
	12:41		SUB IN: CARTER, MYLES
SUB OUT: 21 SATO, COREY	12:41		
SUB IN: 4 VAN VLERAH, DEREK	12:41		
	12:17	37-61	SUB OUT: DALLAS, JORDAN
	12:17		SUB IN: HUNDAL, ANAND
SUB OUT: 24 DAVIS, BRYCE	10:35	41-63	
SUB IN: 15 LARSSON, MARCUS	10:35		
SUB OUT: 25 BALENTINE, DES	10:16	42-65	
SUB IN: 20 TAYLOR, MORGAN	10:16		
	09:47	42-65	SUB OUT: CARTER, MYLES
	09:47		SUB OUT: NETTLES, AARON
	09:47		SUB OUT: BROWN, TERRELL
	09:47		SUB IN: DA CAMPO, MATTIA
	09:47		SUB IN: MEANS, MORGAN
	09:47		SUB IN: JONES, DELANTE
SUB OUT: 4 VAN VLERAH, DEREK	08:28	42-70	
SUB IN: 33 MISZKIEWICZ, VINCENT	08:28		
SUB OUT: 15 LARSSON, MARCUS	07:57	46-70	
SUB OUT: 33 MISZKIEWICZ, VINCENT	07:57		
SUB IN: 4 VAN VLERAH, DEREK	07:57		
SUB IN: 5 SWABY, BRANDON	07:57		
SUB OUT: 4 VAN VLERAH, DEREK	07:53	47-70	
SUB IN: 15 LARSSON, MARCUS	07:53		
	06:17	47-70	SUB OUT: JONES, DELANTE
	06:17		SUB IN: ECONOMOU, RIP
SUB OUT: 2 WILLIS, KEASTON	06:17		
SUB IN: 4 VAN VLERAH, DEREK	06:17		
	06:07	49-70	SUB OUT: HUNDAL, ANAND
	06:07		SUB IN: DALLAS, JORDAN
	04:54	51-72	SUB OUT: GRIGSBY, RILEY
	04:54		SUB IN: HOPKINS, TREY VON
	03:22	51-76	SUB OUT: MEANS, MORGAN
	03:22		SUB IN: HAUGE, MIKKEL
SUB OUT: 00 MURRAY, DWIGHT	03:22		
SUB IN: 3 LUTZ, DREW	03:22		
	02:46	52-78	SUB OUT: DA CAMPO, MATTIA
	02:46		SUB IN: PINSKUS, DOVY
SUB OUT: 20 TAYLOR, MORGAN	01:19	55-78	
SUB IN: 25 BALENTINE, DES	01:19		

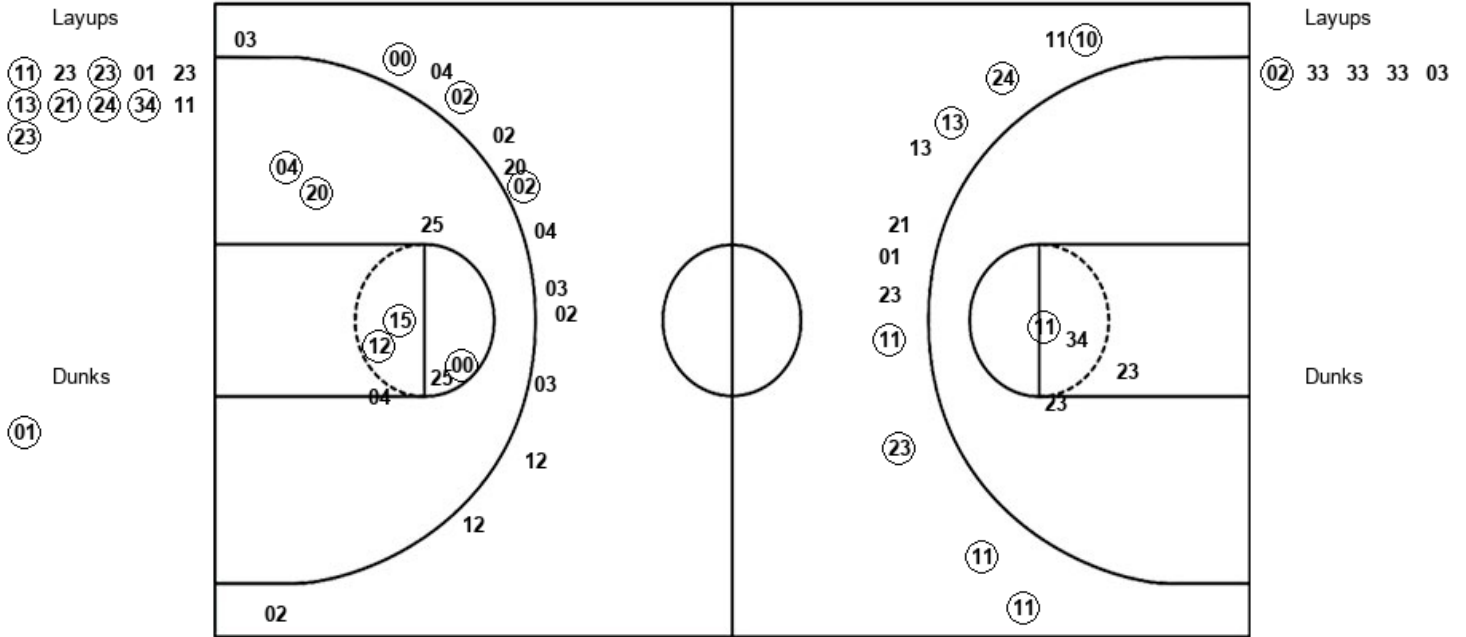
**Incarnate Word 60, Seattle U 81**

**Official Shot Chart**  
**Incarinate Word vs Seattle U**  
**PERIOD 1 Shots**  
 December 03, 2019 at Redhawk Center - Seattle, WA



**Seattle U**

**Incarinate Word**



SU : Period 1	Made	Att	Pct
Layups	7	11	63.6
Dunks	1	1	100.0
2PT Field Goals	9	16	56.3
3PT Field Goals	7	12	58.3
<b>Total Field Goals</b>	<b>16</b>	<b>28</b>	<b>57.1</b>

UIW : Period 1	Made	Att	Pct
Layups	1	5	20.0
Dunks	0	0	0
2PT Field Goals	6	13	46.2
3PT Field Goals	3	14	21.4
<b>Total Field Goals</b>	<b>9</b>	<b>27</b>	<b>33.3</b>



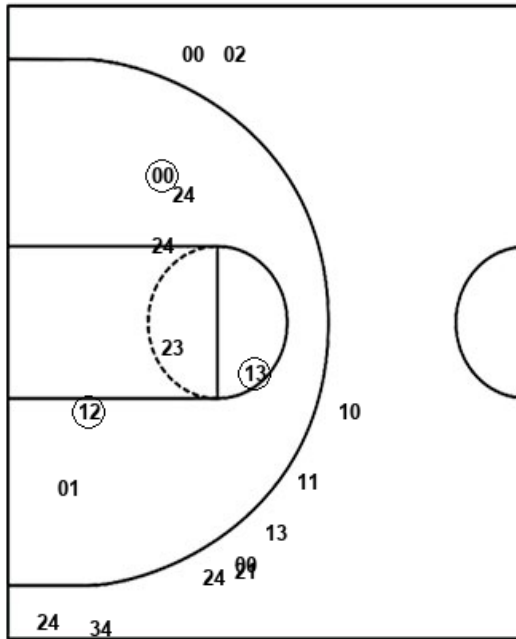
**Official Shot Chart**  
**Incarnate Word vs Seattle U**  
**PERIOD 2 Shots**  
 December 03, 2019 at Redhawk Center - Seattle, WA



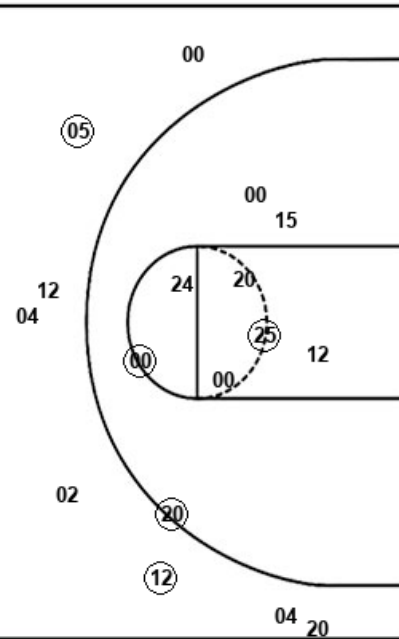
**Seattle U**

**Incarnate Word**

Layups  
 23 (23) 23 01 23  
 (11) (23) 01 (34) 33



Layups  
 24 (24) (02) 15 (20)  
 (20) (04) 20 (05)



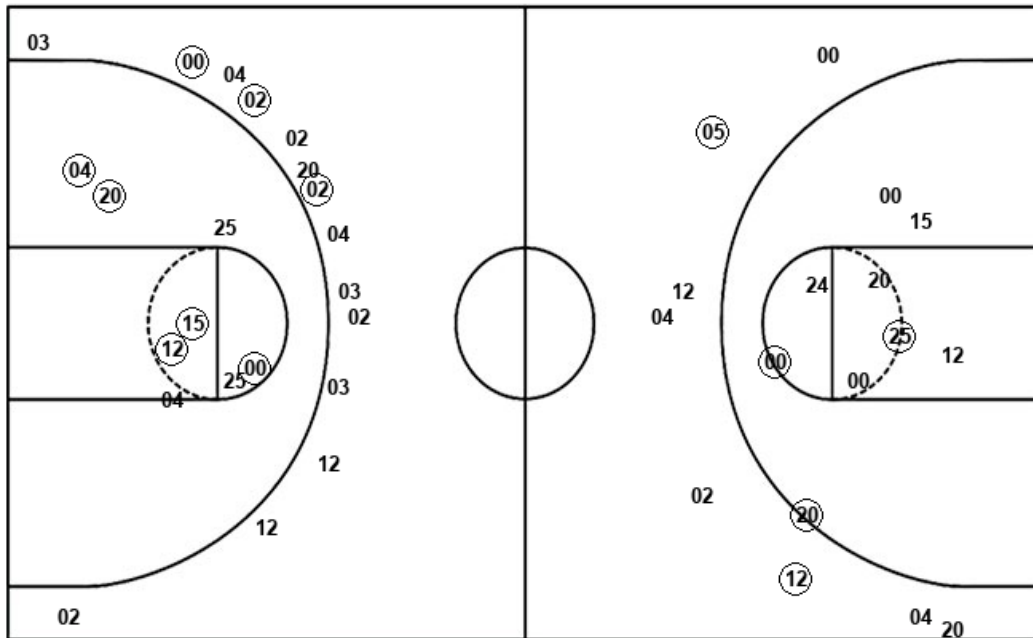
SU : Period 2	Made	Att	Pct
Layups	4	10	40.0
Dunks	0	0	0
2PT Field Goals	7	17	41.2
3PT Field Goals	0	10	00.0
<b>Total Field Goals</b>	<b>7</b>	<b>27</b>	<b>25.9</b>

UIW : Period 2	Made	Att	Pct
Layups	6	9	66.7
Dunks	0	0	0
2PT Field Goals	9	18	50.0
3PT Field Goals	2	8	25.0
<b>Total Field Goals</b>	<b>11</b>	<b>26</b>	<b>42.3</b>

**Official Shot Chart**  
**Incarnate Word vs Seattle U**  
 Incarnate Word Team Shots  
 December 03, 2019 at Redhawk Center - Seattle, WA



Layups



Layups

(02) 33 33 33 03  
 24 (24) (02) 15 (20)  
 (20) (04) 20 (05)

Dunks

Dunks

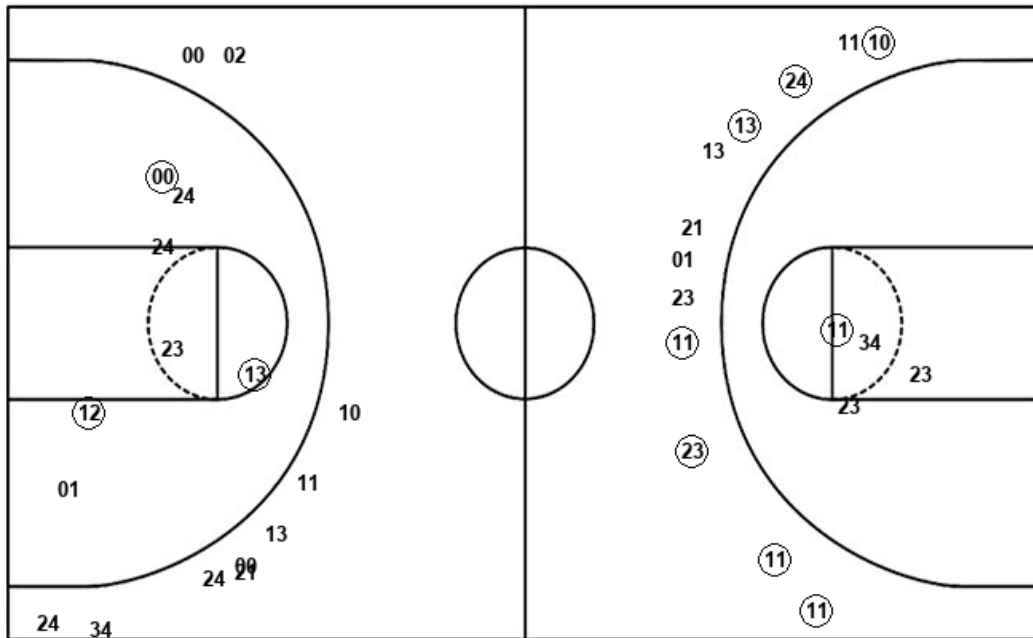
UIW : Period 1	Made	Att	Pct
Layups	1	5	20.0
Dunks	0	0	0
2PT Field Goals	6	13	46.2
3PT Field Goals	3	14	21.4
<b>Total Field Goals</b>	<b>9</b>	<b>27</b>	<b>33.3</b>

UIW : Period 2	Made	Att	Pct
Layups	6	9	66.7
Dunks	0	0	0
2PT Field Goals	9	18	50.0
3PT Field Goals	2	8	25.0
<b>Total Field Goals</b>	<b>11</b>	<b>26</b>	<b>42.3</b>

**Official Shot Chart**  
**Incarnate Word vs Seattle U**  
**Seattle U Team Shots**  
 December 03, 2019 at Redhawk Center - Seattle, WA



Layups



Layups

(11) 23 (23) 01 23  
 (13) (21) (24) (34) 11  
 (23) 23 (23) 23 01  
 23 (11) (23) 01 (34)  
 33

Dunks

Dunks

(01)

SU : Period 1	Made	Att	Pct
Layups	7	11	63.6
Dunks	1	1	100.0
2PT Field Goals	9	16	56.3
3PT Field Goals	7	12	58.3
<b>Total Field Goals</b>	<b>16</b>	<b>28</b>	<b>57.1</b>

SU : Period 2	Made	Att	Pct
Layups	4	10	40.0
Dunks	0	0	0
2PT Field Goals	7	17	41.2
3PT Field Goals	0	10	00.0
<b>Total Field Goals</b>	<b>7</b>	<b>27</b>	<b>25.9</b>