

FINAL SCORE**Pacific Lutheran****64****Seattle U****98****November 05, 2019 • Redhawk Center - Seattle****FINAL STATISTICS**

Official Box Score
Pacific Lutheran vs Seattle U
Game Totals -- Final Statistics
November 05, 2019 at Redhawk Center - Seattle



Pacific Lutheran 64

No.	Player	S	Pts	FG	3FG	FT	OR	DR	TR	PF	A	TO	Blk	Stl	Min	+/-
00	BINGHAM, JACOB	G	5	2-3	1-2	0-0	0	1	1	0	0	2	0	0	19	-22
01	WILLIAMS, KELTON	G	7	2-9	0-1	3-4	2	1	3	1	1	1	0	1	26	-23
05	THOMAS, JORDAN	G	6	3-15	0-2	0-0	1	4	5	2	2	2	1	1	21	-17
24	GEIGER, CONOR	G	5	0-6	0-3	5-6	2	2	4	3	0	2	0	0	21	-17
32	KINGMA, LEIGHTON	F	10	4-7	0-2	2-2	0	2	2	1	1	0	0	1	21	-15
02	WEDLOW, NOLAN	G	2	0-0	0-0	2-2	0	0	0	0	1	0	0	0	4	-3
03	UYEHARA, BLAKE	G	5	2-3	1-1	0-0	0	1	1	2	0	1	0	0	11	-14
04	PEET, GRAYSON	G	3	1-1	1-1	0-0	0	0	0	0	0	0	0	0	2	1
10	WORLEY, LUKE	G	1	0-0	0-0	1-2	1	0	1	3	0	1	0	0	11	-19
11	GUIERREZ-OROZCO, NASSE	F	5	2-5	1-3	0-0	1	1	2	0	0	0	0	0	9	-6
12	GAREY, TREY	G	0	0-1	0-0	0-0	0	0	0	0	0	0	0	0	3	-4
20	HALL, SETH	G	6	3-6	0-1	0-0	1	0	1	0	1	1	0	0	12	-14
22	MCCURDY, SEAN	F	6	2-2	2-2	0-0	0	0	0	3	1	2	0	0	8	-11
23	WILLIAMS, BRETT	G	0	0-0	0-0	0-0	0	0	0	2	1	0	0	0	9	2
30	MCCONNELL, DYLAN	F	3	1-5	1-2	0-0	0	0	0	1	3	1	0	0	13	-14
33	VERK, BAILEY	C	0	0-1	0-0	0-0	0	0	0	0	0	0	0	0	5	3
40	JAMES, KYLE	F	0	0-0	0-0	0-0	0	0	0	1	0	1	0	1	3	3
	TEAM						5	0	5	0		0				
TOTALS			64	22-64	7-20	13-16	13	12	25	19	11	14	1	4	200	

Shooting By Period

Period	FG	FG%	3FG	3FG%	FT	FT%
1st Half	9-31	29%	2-9	22%	3-4	75%
2nd Half	13-33	39%	5-11	45%	10-12	83%
Game	22-64	34.4%	7-20	35.0%	13-16	81.3%

Deadball Rebounds: 1,2
 Last FG: 2nd-01:22
 Biggest Run: 7-0
 Largest lead: By 0 at 2-01
 Technical Fouls: None.

Seattle U 98

No.	Player	S	Pts	FG	3FG	FT	OR	DR	TR	PF	A	TO	Blk	Stl	Min	+/-
00	ECONOMOU, RIP	G	7	3-9	1-7	0-0	0	2	2	2	0	0	0	3	26	20
01	CARTER, MYLES	F	9	3-4	0-1	3-4	1	5	6	1	0	2	1	0	18	24
02	HOPKINS, TREYVON	G	11	5-10	0-4	1-2	2	1	3	3	0	1	0	1	27	20
23	BROWN, TERRELL	G	16	8-10	0-1	0-1	0	8	8	1	9	2	0	1	21	30
24	JONES, DELANTE	G	15	5-8	3-5	2-4	1	0	1	3	1	2	0	0	21	22
10	NETTLES, AARON	G	5	2-8	1-5	0-0	1	1	2	2	2	0	0	0	19	11
12	DA CAMPO, MATTIA	G	8	4-6	0-0	0-0	4	3	7	2	2	1	0	0	18	20
21	DALLAS, JORDAN	C	10	3-4	2-3	2-2	1	4	5	0	0	0	1	0	20	4
33	HAUGE, MIKKEL	G	7	2-2	1-1	2-2	0	1	1	0	2	1	0	0	9	6
34	HUNDAL, ANAND	F	6	2-4	0-1	2-2	3	0	3	0	0	0	0	0	12	11
35	PINSKUS, DOVY	F	4	1-2	0-0	2-2	0	1	1	0	1	0	1	0	8	2
	TEAM						2	2	4	0		0				
TOTALS			98	38-67	8-28	14-19	15	28	43	14	17	9	3	5	200	

Shooting By Period

Period	FG	FG%	3FG	3FG%	FT	FT%
1st Half	19-34	56%	4-13	31%	5-9	56%
2nd Half	19-33	58%	4-15	27%	9-10	90%
Game	38-67	56.7%	8-28	28.6%	14-19	73.7%

Deadball Rebounds: 5,3
 Last FG: 2nd-01:02
 Biggest Run: 14-0
 Largest lead: By 39 at -
 Technical Fouls: #01 CARTER (Class B) @ 2nd - 17:57;

Game Notes:

Officials: **Nate Harris, Levon Zakarian, Derek Anganes**
 Attendance: **828**

Start Time: **10:07 PM ET**
 End Time: **12:07 AM ET**
 Game Duration: **2:00**

Score	1st	2nd	TOT
PLU	23	41	64
SU	47	51	98

PLU led for 0:00. SU led for 39:04.
 Game was tied for 0:57.
 Times tied: **87** Lead Changes: **0**

Points from	PLU	SU
In the Paint	26	50
Off Turns	4	16
2nd Chance	16	26
Fast Break	6	15
Bench	31	40

Official Box Score
Pacific Lutheran vs Seattle U
First Half Statistics Only
November 05, 2019 at Redhawk Center - Seattle



Pacific Lutheran 23

No.	Player	S	Pts	FG	3FG	FT	OR	DR	TR	PF	A	TO	Blk	Stl	Min	+/-
00	BINGHAM, JACOB	G	0	0-0	0-0	0-0	0	0	0	0	0	1	0	0	8	-16
01	WILLIAMS, KELTON	G	3	1-5	0-0	1-2	0	1	1	1	0	1	0	1	17	-17
05	THOMAS, JORDAN	G	2	1-8	0-1	0-0	0	2	2	2	2	2	1	1	12	-9
24	GEIGER, CONOR	G	2	0-3	0-3	2-2	1	2	3	2	0	1	0	0	12	-15
32	KINGMA, LEIGHTON	F	6	3-5	0-2	0-0	0	2	2	1	1	0	0	1	15	-12
02	WEDLOW, NOLAN	G	0	0-0	0-0	0-0	0	0	0	0	0	0	0	0	1	-6
03	UYEHARA, BLAKE	G	0	0-0	0-0	0-0	0	0	0	1	0	1	0	0	3	-7
04	PEET, GRAYSON	G	0	0-0	0-0	0-0	0	0	0	0	0	0	0	0	0	0
10	WORLEY, LUKE	G	0	0-0	0-0	0-0	0	0	0	0	0	0	0	0	6	-9
11	GUIRTERREZ-OROZCO, NASSE	F	0	0-0	0-0	0-0	0	0	0	0	0	0	0	0	0	0
12	GAREY, TREY	G	0	0-1	0-0	0-0	0	0	0	0	0	0	0	0	3	-4
20	HALL, SETH	G	4	2-4	0-0	0-0	1	0	1	0	0	1	0	0	6	-9
22	MCCURDY, SEAN	F	3	1-1	1-1	0-0	0	0	0	1	0	1	0	0	4	-6
23	WILLIAMS, BRETT	G	0	0-0	0-0	0-0	0	0	0	1	0	0	0	0	6	-1
30	MCCONNELL, DYLAN	F	3	1-4	1-2	0-0	0	0	0	0	1	0	0	0	6	-9
33	VERK, BAILEY	C	0	0-0	0-0	0-0	0	0	0	0	0	0	0	0	1	0
40	JAMES, KYLE	F	0	0-0	0-0	0-0	0	0	0	0	0	0	0	0	0	0
TEAM							3	0	3	0		0				
TOTALS			23	9-31	2-9	3-4	5	7	12	9	4	8	1	3	100	

Shooting By Period

Period	FG	FG%	3FG	3FG%	FT	FT%
1st Half	9-31	29%	2-9	22%	3-4	75%
Game	22-64	34.4%	7-20	35.0%	13-16	81.3%

Deadball Rebounds: 1,2

Last FG Half: PLU 2nd-01:22

Seattle U 47

No.	Player	S	Pts	FG	3FG	FT	OR	DR	TR	PF	A	TO	Blk	Stl	Min	+/-
00	ECONOMOU, RIP	G	5	2-5	1-4	0-0	0	2	2	0	0	0	0	2	13	22
01	CARTER, MYLES	F	9	3-4	0-1	3-4	1	5	6	1	0	1	1	0	16	20
02	HOPKINS, TREYVON	G	0	0-2	0-2	0-0	1	1	2	0	0	0	0	1	14	16
23	BROWN, TERRELL	G	14	7-7	0-0	0-1	0	4	4	0	5	2	0	1	14	25
24	JONES, DELANTE	G	13	4-6	3-4	2-4	1	0	1	1	1	1	0	0	17	22
10	NETTLES, AARON	G	2	1-4	0-1	0-0	1	0	1	2	1	0	0	0	7	1
12	DA CAMPO, MATTIA	G	4	2-4	0-0	0-0	3	1	4	0	1	1	0	0	7	8
21	DALLAS, JORDAN	C	0	0-1	0-1	0-0	0	1	1	0	0	0	1	0	4	2
33	HAUGE, MIKKEL	G	0	0-0	0-0	0-0	0	0	0	0	0	0	0	0	1	2
34	HUNDAL, ANAND	F	0	0-0	0-0	0-0	0	0	0	0	0	0	0	0	4	6
35	PINKUS, DOVY	F	0	0-1	0-0	0-0	0	0	0	0	0	0	1	0	1	-4
TEAM							2	2	4	0		0				
TOTALS			47	19-34	4-13	5-9	9	16	25	4	8	5	3	4	100	

Shooting By Period

Period	FG	FG%	3FG	3FG%	FT	FT%
1st Half	19-34	56%	4-13	31%	5-9	56%
Game	38-67	56.7%	8-28	28.6%	14-19	73.7%

Deadball Rebounds: 5,3

Last FG Half: SU 2nd-01:02

Game Notes:

Officials: Nate Harris, Levon Zakarian, Derek Anganes

Attendance: 828

Start Time: 10:07 PM ET

End Time: 12:07 AM ET

Game Duration: 2:00

Score	1st	2nd	TOT
PLU	23	41	64
SU	47	51	98

Points from (This Period)	PLU	SU
In the Paint	14	24
Off Turns	2	10
2nd Chance	5	12
Fast Break	0	7
Bench	10	6

Official Play-By-Play
Pacific Lutheran vs Seattle U
First Half
November 05, 2019 at Redhawk Center - Seattle



Period 1

Starters:

Pacific Lutheran: 00 BINGHAM, JACOB (G); 24 GEIGER, CONOR (G); 32 KINGMA, LEIGHTON (F); 1 WILLIAMS, KELTON (G); 5 THOMAS, JORDAN (G);
Seattle U: 0 ECONOMOU, RIP (G); 1 CARTER, MYLES (F); 2 HOPKINS, TREY'VON (G); 23 BROWN, TERRELL (G); 24 JONES, DELANTE (G);

Time	VISITORS: Pacific Lutheran	Score	Margin	HOME: Seattle U
19:50				MISSED JUMPER by JONES, DELANTE
19:46	REBOUND (DEF) by TEAM			
19:38	MISSED LAYUP by THOMAS, JORDAN			
19:34				REBOUND (DEF) by BROWN, TERRELL
19:03		2-0	H 2	GOOD! LAYUP by BROWN, TERRELL [PNT]
18:37	MISSED 3PTR by GEIGER, CONOR			
18:32	REBOUND (OFF) by TEAM			
18:27	TURNOVER (BADPASS) by BINGHAM, JACOB			
18:27				STEAL by ECONOMOU, RIP
17:52	MISSED JUMPER by THOMAS, JORDAN			
17:52				BLOCK by CARTER, MYLES
17:52	REBOUND (OFF) by TEAM			
17:52	MISSED 3PTR by KINGMA, LEIGHTON			
17:52				REBOUND (DEF) by HOPKINS, TREY'VON
17:52				MISSED 3PTR by ECONOMOU, RIP
17:49				REBOUND (OFF) by TEAM
17:23		7-0	H 7	GOOD! 3PTR by JONES, DELANTE
17:23				ASSIST by BROWN, TERRELL
16:58	GOOD! LAYUP by KINGMA, LEIGHTON [PNT]	7-2	H 5	
16:58	ASSIST by THOMAS, JORDAN			
16:44				MISSED 3PTR by JONES, DELANTE
16:40				REBOUND (OFF) by CARTER, MYLES
16:38	FOUL (PERSONAL) by GEIGER, CONOR			
16:38				MISSED FT by CARTER, MYLES
16:38				REBOUND (OFF) by TEAM
16:38		8-2	H 6	GOOD! FT by CARTER, MYLES
16:36				FOUL (PERSONAL) by JONES, DELANTE
16:28	MISSED 3PTR by THOMAS, JORDAN			
16:21				REBOUND (DEF) by ECONOMOU, RIP
16:18		10-2	H 8	GOOD! JUMPER by BROWN, TERRELL [PNT]
16:03	MISSED 3PTR by KINGMA, LEIGHTON			
15:58				REBOUND (DEF) by ECONOMOU, RIP
15:56				TURNOVER (LOSTBALL) by BROWN, TERRELL
17:52		4-2	H 2	GOOD! DUNK by CARTER, MYLES
15:43	MISSED JUMPER by HALL, SETH			
15:37				REBOUND (DEF) by CARTER, MYLES
15:33		12-2	H 10	GOOD! JUMPER by BROWN, TERRELL
15:14	SUB OUT: THOMAS, JORDAN			
15:14	SUB OUT: KINGMA, LEIGHTON			
15:14	SUB IN: WEDLOW, NOLAN			
15:14	SUB IN: WILLIAMS, BRETT			
15:13	TURNOVER (LOSTBALL) by HALL, SETH			
15:03		14-2	H 12	GOOD! JUMPER by ECONOMOU, RIP [PNT]
14:41	TURNOVER (BADPASS) by GEIGER, CONOR			
14:41				STEAL by BROWN, TERRELL
14:34		16-2	H 14	GOOD! LAYUP by BROWN, TERRELL [FB]
14:18	MISSED LAYUP by THOMAS, JORDAN			
14:14				REBOUND (DEF) by BROWN, TERRELL
14:11		18-2	H 16	GOOD! LAYUP by JONES, DELANTE [FB/PNT]
14:11				ASSIST by BROWN, TERRELL
14:02	SUB OUT: BINGHAM, JACOB			
14:02	SUB OUT: WEDLOW, NOLAN			
14:02	SUB OUT: WILLIAMS, BRETT			
14:02	SUB IN: THOMAS, JORDAN			
14:02	SUB IN: HALL, SETH			
14:02	SUB IN: KINGMA, LEIGHTON			
14:02	SUB OUT: THOMAS, JORDAN			
14:02	SUB OUT: GEIGER, CONOR			
14:02	SUB IN: WORLEY, LUKE			
14:02	SUB IN: MCCONNELL, DYLAN			
13:39	MISSED JUMPER by WILLIAMS, KELTON			
13:36				REBOUND (DEF) by BROWN, TERRELL
13:31		21-2	H 19	GOOD! 3PTR by JONES, DELANTE
13:31				ASSIST by BROWN, TERRELL
13:06	MISSED 3PTR by MCCONNELL, DYLAN			
13:02	REBOUND (OFF) by HALL, SETH			
13:02	GOOD! LAYUP by HALL, SETH	21-4	H 17	
12:47				TURNOVER (BADPASS) by BROWN, TERRELL
12:47	STEAL by KINGMA, LEIGHTON			
12:41	TURNOVER (BADPASS) by WILLIAMS, KELTON			

Time	VISITORS: Pacific Lutheran	Score	Margin	HOME: Seattle U
12:41				STEAL by HOPKINS, TREY'VON
12:33				MISSED 3PTR by ECONOMOU, RIP
12:29				REBOUND (OFF) by JONES, DELANTE
12:28		23-4	H 19	GOOD! DUNK by CARTER, MYLES
12:28				ASSIST by JONES, DELANTE
12:10	GOOD! 3PTR by MCCONNELL, DYLAN	23-7	H 16	
12:10	ASSIST by KINGMA, LEIGHTON			
11:53		26-7	H 19	GOOD! 3PTR by ECONOMOU, RIP
11:53				ASSIST by BROWN, TERRELL
11:37	MISSED JUMPER by WILLIAMS, KELTON			
11:33				REBOUND (DEF) by CARTER, MYLES
11:25				MISSED 3PTR by HOPKINS, TREY'VON
11:21	REBOUND (DEF) by KINGMA, LEIGHTON			
11:03	MISSED LAYUP by HALL, SETH			
10:59				REBOUND (DEF) by CARTER, MYLES
10:52		28-7	H 21	GOOD! DUNK by CARTER, MYLES
10:52				ASSIST by BROWN, TERRELL
10:30	MISSED JUMPER by MCCONNELL, DYLAN			
10:25				REBOUND (DEF) by BROWN, TERRELL
10:20				SUB OUT: ECONOMOU, RIP
10:20				SUB OUT: HOPKINS, TREY'VON
10:20				SUB OUT: BROWN, TERRELL
10:20				SUB IN: NETTLES, AARON
10:20				SUB IN: DA CAMPO, MATTIA
10:20				SUB IN: HUNDAL, ANAND
10:20	SUB OUT: WILLIAMS, KELTON			
10:20	SUB OUT: KINGMA, LEIGHTON			
10:20	SUB IN: UYEHARA, BLAKE			
10:20	SUB IN: MCCURDY, SEAN			
10:09		31-7	H 24	GOOD! 3PTR by JONES, DELANTE
10:09				ASSIST by DA CAMPO, MATTIA
09:59	GOOD! 3PTR by MCCURDY, SEAN	31-10	H 21	
09:59	ASSIST by MCCONNELL, DYLAN			
09:44	FOUL (PERSONAL) by MCCURDY, SEAN			
09:39		33-10	H 23	GOOD! LAYUP by DA CAMPO, MATTIA
09:18	GOOD! LAYUP by HALL, SETH	33-12	H 21	
09:06		35-12	H 23	GOOD! JUMPER by NETTLES, AARON
08:42	MISSED JUMPER by MCCONNELL, DYLAN			
08:40				REBOUND (DEF) by CARTER, MYLES
08:33		37-12	H 25	GOOD! JUMPER by DA CAMPO, MATTIA [PNT]
08:33				ASSIST by NETTLES, AARON
08:27	SUB OUT: WORLEY, LUKE			
08:27	SUB OUT: HALL, SETH			
08:27	SUB OUT: MCCONNELL, DYLAN			
08:27	SUB IN: THOMAS, JORDAN			
08:27	SUB IN: GAREY, TREY			
08:27	SUB IN: GEIGER, CONOR			
08:21	TURNOVER (DRIBBLING) by MCCURDY, SEAN			
08:21				SUB OUT: CARTER, MYLES
08:21				SUB IN: BROWN, TERRELL
08:11		39-12	H 27	GOOD! JUMPER by BROWN, TERRELL [PNT]
07:58	FOUL (OFF) by UYEHARA, BLAKE			
07:58	TURNOVER (OFFENSIVE) by UYEHARA, BLAKE			
07:57				
07:51				SUB OUT: JONES, DELANTE
07:51				SUB IN: DALLAS, JORDAN
07:48				MISSED LAYUP by NETTLES, AARON
07:45				REBOUND (OFF) by DA CAMPO, MATTIA
07:44				MISSED JUMPER by DA CAMPO, MATTIA
07:39				REBOUND (OFF) by NETTLES, AARON
07:36				MISSED 3PTR by DALLAS, JORDAN
07:32				REBOUND (OFF) by DA CAMPO, MATTIA
07:26		41-12	H 29	GOOD! JUMPER by BROWN, TERRELL
07:08				FOUL (PERSONAL) by NETTLES, AARON
07:07	GOOD! FT by GEIGER, CONOR	41-13	H 28	
07:07	SUB OUT: UYEHARA, BLAKE			
07:07	SUB IN: WILLIAMS, KELTON			
07:07	GOOD! FT by GEIGER, CONOR	41-14	H 27	
06:59				MISSED LAYUP by NETTLES, AARON
06:51				REBOUND (OFF) by TEAM
06:50				SUB OUT: HUNDAL, ANAND
06:50				SUB IN: ECONOMOU, RIP
06:50	SUB OUT: MCCURDY, SEAN			
06:50	SUB IN: KINGMA, LEIGHTON			
06:50				SUB OUT: NETTLES, AARON
06:50				SUB IN: HAUGE, MIKKEL
06:35		43-14	H 29	GOOD! JUMPER by BROWN, TERRELL [PNT]
06:22	MISSED JUMPER by WILLIAMS, KELTON			
06:18				REBOUND (DEF) by DALLAS, JORDAN
06:03				MISSED LAYUP by DA CAMPO, MATTIA

Time	VISITORS: Pacific Lutheran	Score	Margin	HOME: Seattle U
06:03	BLOCK by THOMAS, JORDAN			
05:57	REBOUND (DEF) by GEIGER, CONOR			
05:55	MISSED LAYUP by GAREY, TREY			
05:55				BLOCK by DALLAS, JORDAN
05:53				REBOUND (DEF) by TEAM
05:42	FOUL (PERSONAL) by WILLIAMS, KELTON			
05:42				SUB OUT: BROWN, TERRELL
05:42				SUB OUT: HAUGE, MIKKEL
05:42				SUB IN: NETTLES, AARON
05:42				SUB IN: JONES, DELANTE
05:32	FOUL (PERSONAL) by THOMAS, JORDAN			
05:25				TURNOVER (LOSTBALL) by JONES, DELANTE
05:25	STEAL by THOMAS, JORDAN			
05:12	TURNOVER (TRAVEL) by THOMAS, JORDAN			
05:12	SUB OUT: GAREY, TREY			
05:12	SUB IN: WILLIAMS, BRETT			
05:03				MISSED 3PTR by ECONOMOU, RIP
04:58	REBOUND (DEF) by WILLIAMS, KELTON			
04:49	TURNOVER (LOSTBALL) by THOMAS, JORDAN			
04:49				STEAL by ECONOMOU, RIP
04:47				SUB OUT: DA CAMPO, MATTIA
04:47				SUB OUT: DALLAS, JORDAN
04:47				SUB IN: CARTER, MYLES
04:47				SUB IN: HOPKINS, TREYVON
04:31	MISSED 3PTR by GEIGER, CONOR			
04:22				REBOUND (DEF) by TEAM
04:12	FOUL (PERSONAL) by KINGMA, LEIGHTON			
04:11				MISSED FT by JONES, DELANTE
04:11				REBOUND (OFF) by TEAM
04:11		44-14	H 30	GOOD! FT by JONES, DELANTE
03:54	MISSED 3PTR by GEIGER, CONOR			
03:47	REBOUND (OFF) by GEIGER, CONOR			
03:41	GOOD! LAYUP by KINGMA, LEIGHTON	44-16	H 28	
03:41	ASSIST by THOMAS, JORDAN			
03:22				TURNOVER (TRAVEL) by CARTER, MYLES
03:22				
13:31	TIMEOUT 30SEC			
03:22				SUB OUT: ECONOMOU, RIP
03:22				SUB IN: PINSKUS, DOVY
03:11	GOOD! LAYUP by KINGMA, LEIGHTON	44-18	H 26	
02:59				MISSED 3PTR by NETTLES, AARON
02:55	REBOUND (DEF) by THOMAS, JORDAN			
02:55				FOUL (PERSONAL) by CARTER, MYLES
02:41	GOOD! LAYUP by THOMAS, JORDAN	44-20	H 24	
02:22				MISSED LAYUP by PINSKUS, DOVY
02:19	REBOUND (DEF) by GEIGER, CONOR			
02:14	MISSED LAYUP by THOMAS, JORDAN			
02:14				BLOCK by PINSKUS, DOVY
02:11	REBOUND (OFF) by TEAM			
02:06				FOUL (PERSONAL) by NETTLES, AARON
02:04	MISSED FT by WILLIAMS, KELTON			
02:04	REBOUND (OFF) by TEAM			
02:04				SUB OUT: NETTLES, AARON
02:04				SUB IN: BROWN, TERRELL
02:04	GOOD! FT by WILLIAMS, KELTON	44-21	H 23	
01:57	FOUL (PERSONAL) by GEIGER, CONOR			
01:56		45-21	H 24	GOOD! FT by JONES, DELANTE [FB]
01:56				SUB OUT: PINSKUS, DOVY
01:56				SUB IN: DA CAMPO, MATTIA
01:56	SUB OUT: GEIGER, CONOR			
01:56	SUB IN: BINGHAM, JACOB			
01:56				MISSED FT by JONES, DELANTE
01:56	REBOUND (DEF) by KINGMA, LEIGHTON			
01:37	MISSED LAYUP by THOMAS, JORDAN			
01:33				REBOUND (DEF) by CARTER, MYLES
01:27				MISSED 3PTR by HOPKINS, TREYVON
01:23	REBOUND (DEF) by THOMAS, JORDAN			
01:15	MISSED LAYUP by THOMAS, JORDAN			
01:12				REBOUND (DEF) by DA CAMPO, MATTIA
01:11				TURNOVER (LOSTBALL) by DA CAMPO, MATTIA
01:11	STEAL by WILLIAMS, KELTON			
01:06	MISSED LAYUP by WILLIAMS, KELTON			
01:05				REBOUND (DEF) by TEAM
01:05	FOUL (PERSONAL) by THOMAS, JORDAN			
01:05				SUB OUT: JONES, DELANTE
01:05				SUB IN: DALLAS, JORDAN
01:05				MISSED FT by BROWN, TERRELL
01:05				REBOUND (OFF) by HOPKINS, TREYVON
01:05	FOUL (PERSONAL) by WILLIAMS, BRETT			
00:55	SUB OUT: THOMAS, JORDAN			

Time	VISITORS: Pacific Lutheran	Score	Margin	HOME: Seattle U
00:55	SUB IN: VERK, BAILEY			
00:55		46-21	H 25	GOOD! FT by CARTER, MYLES [FB]
00:55		47-21	H 26	GOOD! FT by CARTER, MYLES [FB]
00:25	GOOD! JUMPER by WILLIAMS, KELTON [PNT]	47-23	H 24	
00:02				MISSED 3PTR by CARTER, MYLES
00:00				REBOUND (OFF) by DA CAMPO, MATTIA

Pacific Lutheran 23, Seattle U 47

Points from (This Period)	PLU	SU
In the Paint	14	24
Off Turns	2	10
2nd Chance	5	12
Fast Break	0	7
Bench	10	6

Official Box Score
Pacific Lutheran vs Seattle U
Second Half Statistics Only
November 05, 2019 at Redhawk Center - Seattle



Pacific Lutheran 41

No.	Player	S	Pts	FG	3FG	FT	OR	DR	TR	PF	A	TO	Blk	Stl	Min	+/-
00	BINGHAM, JACOB	G	5	2-3	1-2	0-0	0	1	1	0	0	1	0	0	11	-6
01	WILLIAMS, KELTON	G	4	1-4	0-1	2-2	2	0	2	0	1	0	0	0	9	-6
05	THOMAS, JORDAN	G	4	2-7	0-1	0-0	1	2	3	0	0	0	0	0	9	-8
24	GEIGER, CONOR	G	3	0-3	0-0	3-4	1	0	1	1	0	1	0	0	9	-2
32	KINGMA, LEIGHTON	F	4	1-2	0-0	2-2	0	0	0	0	0	0	0	0	6	-3
02	WEDLOW, NOLAN	G	2	0-0	0-0	2-2	0	0	0	0	1	0	0	0	3	3
03	UYEHARA, BLAKE	G	5	2-3	1-1	0-0	0	1	1	1	0	0	0	0	8	-7
04	PEET, GRAYSON	G	3	1-1	1-1	0-0	0	0	0	0	0	0	0	0	2	1
10	WORLEY, LUKE	G	1	0-0	0-0	1-2	1	0	1	3	0	1	0	0	6	-10
11	GUITERREZ-OROZCO, NASSE	F	5	2-5	1-3	0-0	1	1	2	0	0	0	0	0	9	-6
12	GAREY, TREY	G	0	0-0	0-0	0-0	0	0	0	0	0	0	0	0	0	0
20	HALL, SETH	G	2	1-2	0-1	0-0	0	0	0	0	1	0	0	0	7	-5
22	MCCURDY, SEAN	F	3	1-1	1-1	0-0	0	0	0	2	1	1	0	0	5	-5
23	WILLIAMS, BRETT	G	0	0-0	0-0	0-0	0	0	0	1	1	0	0	0	3	3
30	MCCONNELL, DYLAN	F	0	0-1	0-0	0-0	0	0	0	1	2	1	0	0	7	-5
33	VERK, BAILEY	C	0	0-1	0-0	0-0	0	0	0	0	0	0	0	0	4	3
40	JAMES, KYLE	F	0	0-0	0-0	0-0	0	0	0	1	0	1	0	1	3	3
TEAM							2	0	2	0		0				
TOTALS			41	13-33	5-11	10-12	8	5	13	10	7	6	0	1	100	

Shooting By Period

Period	FG	FG%	3FG	3FG%	FT	FT%
2nd Half	13-33	39%	5-11	45%	10-12	83%
Game	22-64	34.4%	7-20	35.0%	13-16	81.3%

Deadball Rebounds: 1,2

Last FG Half: PLU -

Seattle U 51

No.	Player	S	Pts	FG	3FG	FT	OR	DR	TR	PF	A	TO	Blk	Stl	Min	+/-
00	ECONOMOU, RIP	G	2	1-4	0-3	0-0	0	0	0	2	0	0	0	1	13	-2
01	CARTER, MYLES	F	0	0-0	0-0	0-0	0	0	0	0	0	1	0	0	2	4
02	HOPKINS, TREYVON	G	11	5-8	0-2	1-2	1	0	1	3	0	1	0	0	12	4
23	BROWN, TERRELL	G	2	1-3	0-1	0-0	0	4	4	1	4	0	0	0	7	5
24	JONES, DELANTE	G	2	1-2	0-1	0-0	0	0	0	2	0	1	0	0	4	0
10	NETTLES, AARON	G	3	1-4	1-4	0-0	0	1	1	0	1	0	0	0	12	10
12	DA CAMPO, MATTIA	G	4	2-2	0-0	0-0	1	2	3	2	1	0	0	0	11	12
21	DALLAS, JORDAN	C	10	3-3	2-2	2-2	1	3	4	0	0	0	0	0	16	2
33	HAUGE, MIKKEL	G	7	2-2	1-1	2-2	0	1	1	0	2	1	0	0	8	4
34	HUNDAL, ANAND	F	6	2-4	0-1	2-2	3	0	3	0	0	0	0	0	8	5
35	PINSKUS, DOVY	F	4	1-1	0-0	2-2	0	1	1	0	1	0	0	0	7	6
TEAM							0	0	0	0		0				
TOTALS			51	19-33	4-15	9-10	6	12	18	10	9	4	0	1	100	

Shooting By Period

Period	FG	FG%	3FG	3FG%	FT	FT%
2nd Half	19-33	58%	4-15	27%	9-10	90%
Game	38-67	56.7%	8-28	28.6%	14-19	73.7%

Deadball Rebounds: 5,3

Last FG Half: SU -

Game Notes:

Officials: **Nate Harris, Levon Zakarian, Derek Anganes**

Attendance: **828**

Start Time: **10:07 PM ET**

End Time: **12:07 AM ET**

Game Duration: **2:00**

Score	1st	2nd	TOT
PLU	23	41	64
SU	47	51	98

Points from (This Period)	PLU	SU
In the Paint	12	26
Off Turns	2	6
2nd Chance	11	14
Fast Break	6	8
Bench	21	34

Official Play-By-Play
Pacific Lutheran vs Seattle U
Second Half
November 05, 2019 at Redhawk Center - Seattle



Period 2

Starters:

Pacific Lutheran: 00 BINGHAM, JACOB (G); 24 GEIGER, CONOR (G); 32 KINGMA, LEIGHTON (F); 1 WILLIAMS, KELTON (G); 5 THOMAS, JORDAN (G);
Seattle U: 0 ECONOMOU, RIP (G); 1 CARTER, MYLES (F); 2 HOPKINS, TREY'VON (G); 23 BROWN, TERRELL (G); 24 JONES, DELANTE (G);

Time	VISITORS: Pacific Lutheran	Score	Margin	HOME: Seattle U
15:33				
10:09				
20:00				SUB OUT: DA CAMPO, MATTIA
20:00				SUB OUT: DALLAS, JORDAN
20:00				SUB IN: ECONOMOU, RIP
20:00				SUB IN: JONES, DELANTE
20:00	SUB OUT: WILLIAMS, BRETT			
20:00	SUB OUT: VERK, BAILEY			
20:00	SUB IN: THOMAS, JORDAN			
20:00	SUB IN: GEIGER, CONOR			
19:49	MISSED 3PTR by BINGHAM, JACOB			
19:45				REBOUND (DEF) by BROWN, TERRELL
19:37				MISSED 3PTR by JONES, DELANTE
19:32	REBOUND (DEF) by THOMAS, JORDAN			
19:28	GOOD! LAYUP by THOMAS, JORDAN	47-25	H 22	
19:21				TURNOVER (BADPASS) by CARTER, MYLES
19:14	MISSED LAYUP by WILLIAMS, KELTON			
19:10	REBOUND (OFF) by TEAM			
18:56	TURNOVER (BADPASS) by GEIGER, CONOR			
18:56				STEAL by ECONOMOU, RIP
18:45		49-25	H 24	GOOD! JUMPER by JONES, DELANTE [PNT]
18:45				ASSIST by BROWN, TERRELL
18:24	MISSED LAYUP by THOMAS, JORDAN			
18:21				REBOUND (DEF) by BROWN, TERRELL
18:18		51-25	H 26	GOOD! DUNK by HOPKINS, TREY'VON [FB]
18:18				ASSIST by BROWN, TERRELL
18:10	MISSED LAYUP by THOMAS, JORDAN			
18:05				REBOUND (DEF) by BROWN, TERRELL
18:03		53-25	H 28	GOOD! LAYUP by BROWN, TERRELL [FB]
17:57				FOUL (TECH) by CARTER, MYLES
17:57				SUB OUT: CARTER, MYLES
17:57				SUB IN: DALLAS, JORDAN
17:57	GOOD! FT by KINGMA, LEIGHTON [FB]	53-26	H 27	
17:44				FOUL (PERSONAL) by HOPKINS, TREY'VON
17:36	MISSED LAYUP by GEIGER, CONOR			
17:36	REBOUND (OFF) by TEAM			
17:36				FOUL (PERSONAL) by BROWN, TERRELL
17:36	GOOD! LAYUP by KINGMA, LEIGHTON	53-28	H 25	
17:36				FOUL (PERSONAL) by JONES, DELANTE
17:36	GOOD! FT by KINGMA, LEIGHTON	53-29	H 24	
17:32				TURNOVER (TRAVEL) by JONES, DELANTE
17:19	GOOD! JUMPER by BINGHAM, JACOB [PNT]	53-31	H 22	
17:05				MISSED 3PTR by BROWN, TERRELL
17:01				REBOUND (OFF) by TEAM
16:59		56-31	H 25	GOOD! 3PTR by DALLAS, JORDAN
16:59				ASSIST by BROWN, TERRELL
16:26	MISSED JUMPER by WILLIAMS, KELTON			
16:23	REBOUND (OFF) by THOMAS, JORDAN			
16:21	MISSED LAYUP by KINGMA, LEIGHTON			
16:15	REBOUND (OFF) by WILLIAMS, KELTON			
16:07				FOUL (PERSONAL) by JONES, DELANTE
16:07	GOOD! FT by WILLIAMS, KELTON	56-32	H 24	
16:07				SUB OUT: JONES, DELANTE
16:07				SUB IN: DA CAMPO, MATTIA
16:07	GOOD! FT by WILLIAMS, KELTON	56-33	H 23	
16:00	FOUL (PERSONAL) by GEIGER, CONOR			
15:59		57-33	H 24	GOOD! FT by DALLAS, JORDAN [FB]
15:59		58-33	H 25	GOOD! FT by DALLAS, JORDAN [FB]
15:59	MISSED 3PTR by WILLIAMS, KELTON			
15:59	REBOUND (OFF) by GEIGER, CONOR			
15:59	MISSED LAYUP by GEIGER, CONOR			
15:49				REBOUND (DEF) by TEAM
15:43				
15:31				MISSED 3PTR by ECONOMOU, RIP
15:26	REBOUND (DEF) by BINGHAM, JACOB			
15:23	TURNOVER (BADPASS) by BINGHAM, JACOB			
15:18				SUB OUT: ECONOMOU, RIP
15:18				SUB IN: NETTLES, AARON
15:13				MISSED 3PTR by NETTLES, AARON
15:06	REBOUND (DEF) by TEAM			

Time	VISITORS: Pacific Lutheran	Score	Margin	HOME: Seattle U
14:43				FOUL (PERSONAL) by HOPKINS, TREY'VON
14:26	MISSED LAYUP by THOMAS, JORDAN			
14:23				REBOUND (DEF) by DALLAS, JORDAN
14:16		60-33	H 27	GOOD! LAYUP by DALLAS, JORDAN
14:16				ASSIST by BROWN, TERRELL
13:58	MISSED JUMPER by GEIGER, CONOR			
13:53				REBOUND (DEF) by DALLAS, JORDAN
13:53				SUB OUT: HOPKINS, TREY'VON
13:53				SUB IN: ECONOMOU, RIP
13:53	SUB OUT: BINGHAM, JACOB			
13:53	SUB OUT: WILLIAMS, KELTON			
13:53	SUB OUT: KINGMA, LEIGHTON			
13:53	SUB IN: UYEHARA, BLAKE			
13:53	SUB IN: GUITERREZ-OROZCO, NASSEEN			
13:53	SUB IN: HALL, SETH			
13:47				FOUL (PERSONAL) by ECONOMOU, RIP
13:35				FOUL (PERSONAL) by DA CAMPO, MATTIA
13:35	GOOD! FT by GEIGER, CONOR	60-34	H 26	
13:35	MISSED FT by GEIGER, CONOR			
13:35				REBOUND (DEF) by BROWN, TERRELL
13:29				MISSED LAYUP by BROWN, TERRELL
13:25				REBOUND (OFF) by DA CAMPO, MATTIA
13:20		63-34	H 29	GOOD! 3PTR by DALLAS, JORDAN
13:20				ASSIST by NETTLES, AARON
13:14				
13:07				SUB OUT: BROWN, TERRELL
13:07				SUB IN: HOPKINS, TREY'VON
12:59				FOUL (PERSONAL) by HOPKINS, TREY'VON
12:59	SUB OUT: THOMAS, JORDAN			
12:59	SUB IN: MCCONNELL, DYLAN			
12:59	GOOD! FT by GEIGER, CONOR	63-35	H 28	
12:59	GOOD! FT by GEIGER, CONOR	63-36	H 27	
12:42	FOUL (PERSONAL) by MCCONNELL, DYLAN			
12:39				MISSED 3PTR by ECONOMOU, RIP
12:35	REBOUND (DEF) by UYEHARA, BLAKE			
12:27	TURNOVER (TRAVEL) by MCCONNELL, DYLAN			
12:19				MISSED JUMPER by HOPKINS, TREY'VON
12:16				REBOUND (OFF) by HOPKINS, TREY'VON
12:14		65-36	H 29	GOOD! LAYUP by HOPKINS, TREY'VON
11:58	GOOD! LAYUP by HALL, SETH	65-38	H 27	
11:58	ASSIST by MCCONNELL, DYLAN			
11:44				MISSED 3PTR by HOPKINS, TREY'VON
11:39	REBOUND (DEF) by GUITERREZ-OROZCO, NASSEEN			
11:24	GOOD! 3PTR by UYEHARA, BLAKE	65-41	H 24	
11:24	ASSIST by MCCONNELL, DYLAN			
11:09		67-41	H 26	GOOD! JUMPER by HOPKINS, TREY'VON [PNT]
11:09				
11:09				SUB OUT: ECONOMOU, RIP
11:09				SUB IN: HUNDAL, ANAND
11:09	SUB OUT: GEIGER, CONOR			
11:09	SUB IN: WORLEY, LUKE			
10:55	GOOD! LAYUP by GUITERREZ-OROZCO, NASSEEN	67-43	H 24	
10:55	ASSIST by HALL, SETH			
10:42		69-43	H 26	GOOD! DUNK by HOPKINS, TREY'VON
10:19	TURNOVER (LOSTBALL) by WORLEY, LUKE			
10:13	FOUL (PERSONAL) by WORLEY, LUKE			
10:06	FOUL (PERSONAL) by WORLEY, LUKE			
09:51	FOUL (PERSONAL) by UYEHARA, BLAKE			
09:39				MISSED 3PTR by NETTLES, AARON
09:35				REBOUND (OFF) by HUNDAL, ANAND
09:18				MISSED 3PTR by HOPKINS, TREY'VON
09:13				REBOUND (OFF) by HUNDAL, ANAND
08:55		71-43	H 28	GOOD! JUMPER by HUNDAL, ANAND
08:42	MISSED 3PTR by HALL, SETH			
08:38				REBOUND (DEF) by DALLAS, JORDAN
08:32				TURNOVER (TRAVEL) by HOPKINS, TREY'VON
08:21	MISSED LAYUP by MCCONNELL, DYLAN			
08:18				REBOUND (DEF) by DA CAMPO, MATTIA
08:08		73-43	H 30	GOOD! LAYUP by HOPKINS, TREY'VON [PNT]
07:50	MISSED 3PTR by GUITERREZ-OROZCO, NASSEEN			
07:47	REBOUND (OFF) by WORLEY, LUKE			
07:47				FOUL (PERSONAL) by DA CAMPO, MATTIA
07:47				
07:47				SUB OUT: HOPKINS, TREY'VON
07:47				SUB OUT: DALLAS, JORDAN
07:47				SUB IN: HAUGE, MIKKEL
07:47				SUB IN: PINSKUS, DOVY
07:47	SUB OUT: GUITERREZ-OROZCO, NASSEEN			
07:47	SUB IN: MCCURDY, SEAN			
07:47	TIMEOUT 30SEC			

Time	VISITORS: Pacific Lutheran	Score	Margin	HOME: Seattle U
07:47	GOOD! FT by WORLEY, LUKE	73-44	H 29	
07:47	MISSED FT by WORLEY, LUKE			
07:47				REBOUND (DEF) by DA CAMPO, MATTIA
07:38		76-44	H 32	GOOD! 3PTR by HAUGE, MIKKEL
07:38				ASSIST by DA CAMPO, MATTIA
07:25	TURNOVER (TRAVEL) by MCCURDY, SEAN			
07:20	FOUL (PERSONAL) by MCCURDY, SEAN			
07:20	SUB OUT: HALL, SETH			
07:20	SUB IN: BINGHAM, JACOB			
07:10		78-44	H 34	GOOD! LAYUP by DA CAMPO, MATTIA
06:58	MISSED LAYUP by UYEHARA, BLAKE			
06:55				REBOUND (DEF) by PINSKUS, DOVY
06:49		80-44	H 36	GOOD! LAYUP by HUNDAL, ANAND
06:49				ASSIST by HAUGE, MIKKEL
06:35	GOOD! JUMPER by UYEHARA, BLAKE	80-46	H 34	
06:08				MISSED 3PTR by NETTLES, AARON
06:04				REBOUND (OFF) by TEAM
06:04				SUB OUT: HUNDAL, ANAND
06:04				SUB IN: DALLAS, JORDAN
06:04	SUB OUT: UYEHARA, BLAKE			
06:04	SUB OUT: MCCURDY, SEAN			
06:04	SUB OUT: MCCONNELL, DYLAN			
06:04	SUB IN: WILLIAMS, KELTON			
06:04	SUB IN: THOMAS, JORDAN			
06:04	SUB IN: GUITERREZ-OROZCO, NASSEEN			
05:56		82-46	H 36	GOOD! LAYUP by DA CAMPO, MATTIA [PNT]
05:40	MISSED LAYUP by THOMAS, JORDAN			
05:37				REBOUND (DEF) by HAUGE, MIKKEL
05:32	FOUL (PERSONAL) by WORLEY, LUKE			
05:32				SUB OUT: DA CAMPO, MATTIA
05:32				SUB IN: ECONOMOU, RIP
05:32	SUB OUT: WORLEY, LUKE			
05:32	SUB IN: MCCURDY, SEAN			
05:32		83-46	H 37	GOOD! FT by PINSKUS, DOVY [FB]
05:32		84-46	H 38	GOOD! FT by PINSKUS, DOVY [FB]
05:17	MISSED LAYUP by GUITERREZ-OROZCO, NASSEEN			
05:16	REBOUND (OFF) by GUITERREZ-OROZCO, NASSEEN			
05:11	GOOD! LAYUP by THOMAS, JORDAN [PNT]	84-48	H 36	
04:54		87-48	H 39	GOOD! 3PTR by NETTLES, AARON
04:54				ASSIST by PINSKUS, DOVY
04:39	MISSED 3PTR by THOMAS, JORDAN			
04:33				REBOUND (DEF) by NETTLES, AARON
04:28				MISSED 3PTR by ECONOMOU, RIP
04:24	REBOUND (DEF) by THOMAS, JORDAN			
04:21	GOOD! 3PTR by GUITERREZ-OROZCO, NASSEEN [FB]	87-51	H 36	
04:21	ASSIST by MCCURDY, SEAN			
04:00	FOUL (PERSONAL) by MCCURDY, SEAN			
04:00		88-51	H 37	GOOD! FT by HAUGE, MIKKEL
04:00				SUB OUT: PINSKUS, DOVY
04:00				SUB IN: HUNDAL, ANAND
04:00	SUB OUT: THOMAS, JORDAN			
04:00	SUB IN: VERK, BAILEY			
04:00		89-51	H 38	GOOD! FT by HAUGE, MIKKEL
03:44	MISSED 3PTR by GUITERREZ-OROZCO, NASSEEN			
03:41	REBOUND (OFF) by WILLIAMS, KELTON			
03:40	GOOD! 3PTR by MCCURDY, SEAN	89-54	H 35	
03:40	ASSIST by WILLIAMS, KELTON			
03:25		91-54	H 37	GOOD! LAYUP by HAUGE, MIKKEL
03:15	GOOD! JUMPER by WILLIAMS, KELTON	91-56	H 35	
03:10				
03:05				SUB OUT: NETTLES, AARON
03:05				SUB IN: PINSKUS, DOVY
03:02				MISSED 3PTR by HUNDAL, ANAND
02:59				REBOUND (OFF) by DALLAS, JORDAN
02:57				MISSED LAYUP by HUNDAL, ANAND
02:54				REBOUND (OFF) by HUNDAL, ANAND
02:54	FOUL (PERSONAL) by JAMES, KYLE			
02:54		92-56	H 36	GOOD! FT by HUNDAL, ANAND
02:54		93-56	H 37	GOOD! FT by HUNDAL, ANAND
02:43	SUB OUT: WILLIAMS, KELTON			
02:43	SUB OUT: GUITERREZ-OROZCO, NASSEEN			
02:43	SUB OUT: MCCURDY, SEAN			
02:43	SUB IN: WEDLOW, NOLAN			
02:43	SUB IN: WILLIAMS, BRETT			
02:43	SUB IN: JAMES, KYLE			
02:41	GOOD! 3PTR by BINGHAM, JACOB	93-59	H 34	
02:41	ASSIST by WILLIAMS, BRETT			
02:12		95-59	H 36	GOOD! DUNK by PINSKUS, DOVY
02:12				ASSIST by HAUGE, MIKKEL
02:04				FOUL (PERSONAL) by ECONOMOU, RIP

Time	VISITORS: Pacific Lutheran	Score	Margin	HOME: Seattle U
02:04	GOOD! FT by WEDLOW, NOLAN [FB]	95-60	H 35	
02:04				SUB OUT: HUNDAL, ANAND
02:04				SUB IN: HOPKINS, TREY'VON
02:04	SUB OUT: BINGHAM, JACOB			
02:04	SUB IN: PEET, GRAYSON			
02:04	GOOD! FT by WEDLOW, NOLAN [FB]	95-61	H 34	
01:49	FOUL (PERSONAL) by WILLIAMS, BRETT			
01:49				MISSED FT by HOPKINS, TREY'VON
01:49				REBOUND (OFF) by TEAM
01:49		96-61	H 35	GOOD! FT by HOPKINS, TREY'VON
01:24				SUB OUT: HOPKINS, TREY'VON
01:24				SUB IN: HUNDAL, ANAND
01:22	GOOD! 3PTR by PEET, GRAYSON	96-64	H 32	
01:22	ASSIST by WEDLOW, NOLAN			
01:02		98-64	H 34	GOOD! JUMPER by ECONOMOU, RIP
00:42	MISSED JUMPER by VERK, BAILEY			
00:38				REBOUND (DEF) by TEAM
00:22				TURNOVER (LOSTBALL) by HAUGE, MIKKEL
00:22	STEAL by JAMES, KYLE			
00:15	TURNOVER (TRAVEL) by JAMES, KYLE			

Pacific Lutheran 64, Seattle U 98

Points from (This Period)	PLU	SU
In the Paint	12	26
Off Turns	2	6
2nd Chance	11	14
Fast Break	6	8
Bench	21	34

Official Scoring/Possession Reference Chart
Pacific Lutheran vs Seattle U
Period 1
November 05, 2019 at Redhawk Center - Seattle



Period 1

Starters:

Pacific Lutheran: 00 BINGHAM, JACOB (G); 24 GEIGER, CONOR (G); 32 KINGMA, LEIGHTON (F); 1 WILLIAMS, KELTON (G); 5 THOMAS, JORDAN (G);
Seattle U: 0 ECONOMOU, RIP (G); 1 CARTER, MYLES (F); 2 HOPKINS, TREYVON (G); 23 BROWN, TERRELL (G); 24 JONES, DELANTE (G);

Time	VISITORS: Pacific Lutheran	Score	Margin	HOME: Seattle U
19:03		2-0	H 2	GOOD! LAYUP by BROWN, TERRELL [PNT]
17:23		7-0	H 7	GOOD! 3PTR by JONES, DELANTE
16:58	GOOD! LAYUP by KINGMA, LEIGHTON [PNT]	7-2	H 5	
16:38		8-2	H 6	GOOD! FT by CARTER, MYLES
16:18		10-2	H 8	GOOD! JUMPER by BROWN, TERRELL [PNT]
17:52		4-2	H 2	GOOD! DUNK by CARTER, MYLES
15:33		12-2	H 10	GOOD! JUMPER by BROWN, TERRELL
15:03		14-2	H 12	GOOD! JUMPER by ECONOMOU, RIP [PNT]
14:34		16-2	H 14	GOOD! LAYUP by BROWN, TERRELL [FB]
14:11		18-2	H 16	GOOD! LAYUP by JONES, DELANTE [FB/PNT]
13:31		21-2	H 19	GOOD! 3PTR by JONES, DELANTE
13:02	GOOD! LAYUP by HALL, SETH	21-4	H 17	
12:28		23-4	H 19	GOOD! DUNK by CARTER, MYLES
12:10	GOOD! 3PTR by MCCONNELL, DYLAN	23-7	H 16	
11:53		26-7	H 19	GOOD! 3PTR by ECONOMOU, RIP
10:52		28-7	H 21	GOOD! DUNK by CARTER, MYLES
10:09		31-7	H 24	GOOD! 3PTR by JONES, DELANTE
09:59	GOOD! 3PTR by MCCURDY, SEAN	31-10	H 21	
09:39		33-10	H 23	GOOD! LAYUP by DA CAMPO, MATTIA
09:18	GOOD! LAYUP by HALL, SETH	33-12	H 21	
09:06		35-12	H 23	GOOD! JUMPER by NETTLES, AARON
08:33		37-12	H 25	GOOD! JUMPER by DA CAMPO, MATTIA [PNT]
08:11		39-12	H 27	GOOD! JUMPER by BROWN, TERRELL [PNT]
07:26		41-12	H 29	GOOD! JUMPER by BROWN, TERRELL
07:07	GOOD! FT by GEIGER, CONOR	41-13	H 28	
07:07	GOOD! FT by GEIGER, CONOR	41-14	H 27	
06:35		43-14	H 29	GOOD! JUMPER by BROWN, TERRELL [PNT]
04:11		44-14	H 30	GOOD! FT by JONES, DELANTE
03:41	GOOD! LAYUP by KINGMA, LEIGHTON	44-16	H 28	
03:11	GOOD! LAYUP by KINGMA, LEIGHTON	44-18	H 26	
02:41	GOOD! LAYUP by THOMAS, JORDAN	44-20	H 24	
02:04	GOOD! FT by WILLIAMS, KELTON	44-21	H 23	
01:56		45-21	H 24	GOOD! FT by JONES, DELANTE [FB]
00:55		46-21	H 25	GOOD! FT by CARTER, MYLES [FB]
00:55		47-21	H 26	GOOD! FT by CARTER, MYLES [FB]
00:25	GOOD! JUMPER by WILLIAMS, KELTON [PNT]	47-23	H 24	

Pacific Lutheran 23, Seattle U 47

Official Scoring/Possession Reference Chart
Pacific Lutheran vs Seattle U
Period 2
November 05, 2019 at Redhawk Center - Seattle



Period 2

Starters:

Pacific Lutheran: 00 BINGHAM, JACOB (G); 24 GEIGER, CONOR (G); 32 KINGMA, LEIGHTON (F); 1 WILLIAMS, KELTON (G); 5 THOMAS, JORDAN (G);
Seattle U: 0 ECONOMOU, RIP (G); 1 CARTER, MYLES (F); 2 HOPKINS, TREYVON (G); 23 BROWN, TERRELL (G); 24 JONES, DELANTE (G);

Time	VISITORS: Pacific Lutheran	Score	Margin	HOME: Seattle U
19:28	GOOD! LAYUP by THOMAS, JORDAN	47-25	H 22	
18:45		49-25	H 24	GOOD! JUMPER by JONES, DELANTE [PNT]
18:18		51-25	H 26	GOOD! DUNK by HOPKINS, TREYVON [FB]
18:03		53-25	H 28	GOOD! LAYUP by BROWN, TERRELL [FB]
17:57	GOOD! FT by KINGMA, LEIGHTON [FB]	53-26	H 27	
17:36	GOOD! LAYUP by KINGMA, LEIGHTON	53-28	H 25	
17:36	GOOD! FT by KINGMA, LEIGHTON	53-29	H 24	
17:19	GOOD! JUMPER by BINGHAM, JACOB [PNT]	53-31	H 22	
16:59		56-31	H 25	GOOD! 3PTR by DALLAS, JORDAN
16:07	GOOD! FT by WILLIAMS, KELTON	56-32	H 24	
16:07	GOOD! FT by WILLIAMS, KELTON	56-33	H 23	
15:59		57-33	H 24	GOOD! FT by DALLAS, JORDAN [FB]
15:59		58-33	H 25	GOOD! FT by DALLAS, JORDAN [FB]
14:16		60-33	H 27	GOOD! LAYUP by DALLAS, JORDAN
13:35	GOOD! FT by GEIGER, CONOR	60-34	H 26	
13:20		63-34	H 29	GOOD! 3PTR by DALLAS, JORDAN
12:59	GOOD! FT by GEIGER, CONOR	63-35	H 28	
12:59	GOOD! FT by GEIGER, CONOR	63-36	H 27	
12:14		65-36	H 29	GOOD! LAYUP by HOPKINS, TREYVON
11:58	GOOD! LAYUP by HALL, SETH	65-38	H 27	
11:24	GOOD! 3PTR by UYEHARA, BLAKE	65-41	H 24	
11:09		67-41	H 26	GOOD! JUMPER by HOPKINS, TREYVON [PNT]
10:55	GOOD! LAYUP by GUITERREZ-OROZCO, NASSEEN	67-43	H 24	
10:42		69-43	H 26	GOOD! DUNK by HOPKINS, TREYVON
08:55		71-43	H 28	GOOD! JUMPER by HUNDAL, ANAND
08:08		73-43	H 30	GOOD! LAYUP by HOPKINS, TREYVON [PNT]
07:47	GOOD! FT by WORLEY, LUKE	73-44	H 29	
07:38		76-44	H 32	GOOD! 3PTR by HAUGE, MIKKEL
07:10		78-44	H 34	GOOD! LAYUP by DA CAMPO, MATTIA
06:49		80-44	H 36	GOOD! LAYUP by HUNDAL, ANAND
06:35	GOOD! JUMPER by UYEHARA, BLAKE	80-46	H 34	
05:56		82-46	H 36	GOOD! LAYUP by DA CAMPO, MATTIA [PNT]
05:32		83-46	H 37	GOOD! FT by PINSKUS, DOVY [FB]
05:32		84-46	H 38	GOOD! FT by PINSKUS, DOVY [FB]
05:11	GOOD! LAYUP by THOMAS, JORDAN [PNT]	84-48	H 36	
04:54		87-48	H 39	GOOD! 3PTR by NETTLES, AARON
04:21	GOOD! 3PTR by GUITERREZ-OROZCO, NASSEEN [FB]	87-51	H 36	
04:00		88-51	H 37	GOOD! FT by HAUGE, MIKKEL
04:00		89-51	H 38	GOOD! FT by HAUGE, MIKKEL
03:40	GOOD! 3PTR by MCCURDY, SEAN	89-54	H 35	
03:25		91-54	H 37	GOOD! LAYUP by HAUGE, MIKKEL
03:15	GOOD! JUMPER by WILLIAMS, KELTON	91-56	H 35	
02:54		92-56	H 36	GOOD! FT by HUNDAL, ANAND
02:54		93-56	H 37	GOOD! FT by HUNDAL, ANAND
02:41	GOOD! 3PTR by BINGHAM, JACOB	93-59	H 34	
02:12		95-59	H 36	GOOD! DUNK by PINSKUS, DOVY
02:04	GOOD! FT by WEDLOW, NOLAN [FB]	95-60	H 35	
02:04	GOOD! FT by WEDLOW, NOLAN [FB]	95-61	H 34	
01:49		96-61	H 35	GOOD! FT by HOPKINS, TREYVON
01:22	GOOD! 3PTR by PEET, GRAYSON	96-64	H 32	
01:02		98-64	H 34	GOOD! JUMPER by ECONOMOU, RIP

Official Substitutions Log
Pacific Lutheran vs Seattle U
Period 1
November 05, 2019 at Redhawk Center - Seattle



VISITORS: Pacific Lutheran	Time	Score	HOME: Seattle U
00 BINGHAM, JACOB			0 ECONOMOU, RIP
24 GEIGER, CONOR			1 CARTER, MYLES
32 KINGMA, LEIGHTON			2 HOPKINS, TREY VON
1 WILLIAMS, KELTON			23 BROWN, TERRELL
5 THOMAS, JORDAN			24 JONES, DELANTE
SUB OUT: 5 THOMAS, JORDAN	15:14	2-12	
SUB OUT: 32 KINGMA, LEIGHTON	15:14		
SUB IN: 2 WEDLOW, NOLAN	15:14		
SUB IN: 23 WILLIAMS, BRETT	15:14		
SUB OUT: 00 BINGHAM, JACOB	14:02	2-18	
SUB OUT: 2 WEDLOW, NOLAN	14:02		
SUB OUT: 23 WILLIAMS, BRETT	14:02		
SUB IN: 5 THOMAS, JORDAN	14:02		
SUB IN: 20 HALL, SETH	14:02		
SUB IN: 32 KINGMA, LEIGHTON	14:02		
SUB OUT: 5 THOMAS, JORDAN	14:02		
SUB OUT: 24 GEIGER, CONOR	14:02		
SUB IN: 10 WORLEY, LUKE	14:02		
SUB IN: 30 MCCONNELL, DYLAN	14:02		
	10:20	7-28	SUB OUT: ECONOMOU, RIP
	10:20		SUB OUT: HOPKINS, TREY VON
	10:20		SUB OUT: BROWN, TERRELL
	10:20		SUB IN: NETTLES, AARON
	10:20		SUB IN: DA CAMPO, MATTIA
	10:20		SUB IN: HUNDAL, ANAND
SUB OUT: 1 WILLIAMS, KELTON	10:20		
SUB OUT: 32 KINGMA, LEIGHTON	10:20		
SUB IN: 3 UYEHARA, BLAKE	10:20		
SUB IN: 22 MCCURDY, SEAN	10:20		
SUB OUT: 10 WORLEY, LUKE	08:27	12-37	
SUB OUT: 20 HALL, SETH	08:27		
SUB OUT: 30 MCCONNELL, DYLAN	08:27		
SUB IN: 5 THOMAS, JORDAN	08:27		
SUB IN: 12 GAREY, TREY	08:27		
SUB IN: 24 GEIGER, CONOR	08:27		
	08:21	12-37	SUB OUT: CARTER, MYLES
	08:21		SUB IN: BROWN, TERRELL
	07:51	12-39	SUB OUT: JONES, DELANTE
	07:51		SUB IN: DALLAS, JORDAN
SUB OUT: 3 UYEHARA, BLAKE	07:07	13-41	
SUB IN: 1 WILLIAMS, KELTON	07:07		
	06:50	14-41	SUB OUT: HUNDAL, ANAND
	06:50		SUB IN: ECONOMOU, RIP
SUB OUT: 22 MCCURDY, SEAN	06:50		
SUB IN: 32 KINGMA, LEIGHTON	06:50		
	06:50		SUB OUT: NETTLES, AARON
	06:50		SUB IN: HAUGE, MIKKEL
	05:42	14-43	SUB OUT: BROWN, TERRELL
	05:42		SUB OUT: HAUGE, MIKKEL
	05:42		SUB IN: NETTLES, AARON
	05:42		SUB IN: JONES, DELANTE
SUB OUT: 12 GAREY, TREY	05:12	14-43	
SUB IN: 23 WILLIAMS, BRETT	05:12		
	04:47	14-43	SUB OUT: DA CAMPO, MATTIA
	04:47		SUB OUT: DALLAS, JORDAN
	04:47		SUB IN: CARTER, MYLES
	04:47		SUB IN: HOPKINS, TREY VON
	03:22	16-44	SUB OUT: ECONOMOU, RIP
	03:22		SUB IN: PINSKUS, DOVY
	02:04	20-44	SUB OUT: NETTLES, AARON
	02:04		SUB IN: BROWN, TERRELL
	01:56	21-45	SUB OUT: PINSKUS, DOVY
	01:56		SUB IN: DA CAMPO, MATTIA
SUB OUT: 24 GEIGER, CONOR	01:56		
SUB IN: 00 BINGHAM, JACOB	01:56		
	01:05	21-45	SUB OUT: JONES, DELANTE
	01:05		SUB IN: DALLAS, JORDAN
SUB OUT: 5 THOMAS, JORDAN	00:55	21-45	
SUB IN: 33 VERK, BAILEY	00:55		

Official Substitutions Log
Pacific Lutheran vs Seattle U
Period 2
November 05, 2019 at Redhawk Center - Seattle



VISITORS: Pacific Lutheran	Time	Score	HOME: Seattle U
00 BINGHAM, JACOB			0 ECONOMOU, RIP
24 GEIGER, CONOR			1 CARTER, MYLES
32 KINGMA, LEIGHTON			2 HOPKINS, TREYVON
1 WILLIAMS, KELTON			23 BROWN, TERRELL
5 THOMAS, JORDAN			24 JONES, DELANTE
	20:00	-	SUB OUT: DA CAMPO, MATTIA
	20:00		SUB OUT: DALLAS, JORDAN
	20:00		SUB IN: ECONOMOU, RIP
	20:00		SUB IN: JONES, DELANTE
SUB OUT: 23 WILLIAMS, BRETT	20:00		
SUB OUT: 33 VERK, BAILEY	20:00		
SUB IN: 5 THOMAS, JORDAN	20:00		
SUB IN: 24 GEIGER, CONOR	20:00		
	17:57	25-53	SUB OUT: CARTER, MYLES
	17:57		SUB IN: DALLAS, JORDAN
	16:07	32-56	SUB OUT: JONES, DELANTE
	16:07		SUB IN: DA CAMPO, MATTIA
	15:18	33-58	SUB OUT: ECONOMOU, RIP
	15:18		SUB IN: NETTLES, AARON
	13:53	33-60	SUB OUT: HOPKINS, TREYVON
	13:53		SUB IN: ECONOMOU, RIP
SUB OUT: 00 BINGHAM, JACOB	13:53		
SUB OUT: 1 WILLIAMS, KELTON	13:53		
SUB OUT: 32 KINGMA, LEIGHTON	13:53		
SUB IN: 3 UYEHARA, BLAKE	13:53		
SUB IN: 11 GUITERREZ-OROZCO, NASSEEN	13:53		
SUB IN: 20 HALL, SETH	13:53		
	13:07	34-63	SUB OUT: BROWN, TERRELL
	13:07		SUB IN: HOPKINS, TREYVON
SUB OUT: 5 THOMAS, JORDAN	12:59	34-63	
SUB IN: 30 MCCONNELL, DYLAN	12:59		
	11:09	41-67	SUB OUT: ECONOMOU, RIP
	11:09		SUB IN: HUNDAL, ANAND
SUB OUT: 24 GEIGER, CONOR	11:09		
SUB IN: 10 WORLEY, LUKE	11:09		
	07:47	43-73	SUB OUT: HOPKINS, TREYVON
	07:47		SUB OUT: DALLAS, JORDAN
	07:47		SUB IN: HAUGE, MIKKEL
	07:47		SUB IN: PINSKUS, DOVY
SUB OUT: 11 GUITERREZ-OROZCO, NASSEEN	07:47		
SUB IN: 22 MCCURDY, SEAN	07:47		
SUB OUT: 20 HALL, SETH	07:20	44-76	
SUB IN: 00 BINGHAM, JACOB	07:20		
	06:04	46-80	SUB OUT: HUNDAL, ANAND
	06:04		SUB IN: DALLAS, JORDAN
SUB OUT: 3 UYEHARA, BLAKE	06:04		
SUB OUT: 22 MCCURDY, SEAN	06:04		
SUB OUT: 30 MCCONNELL, DYLAN	06:04		
SUB IN: 1 WILLIAMS, KELTON	06:04		
SUB IN: 5 THOMAS, JORDAN	06:04		
SUB IN: 11 GUITERREZ-OROZCO, NASSEEN	06:04		
	05:32	46-82	SUB OUT: DA CAMPO, MATTIA
	05:32		SUB IN: ECONOMOU, RIP
SUB OUT: 10 WORLEY, LUKE	05:32		
SUB IN: 22 MCCURDY, SEAN	05:32		
	04:00	51-88	SUB OUT: PINSKUS, DOVY
	04:00		SUB IN: HUNDAL, ANAND
SUB OUT: 5 THOMAS, JORDAN	04:00		
SUB IN: 33 VERK, BAILEY	04:00		
	03:05	56-91	SUB OUT: NETTLES, AARON
	03:05		SUB IN: PINSKUS, DOVY
SUB OUT: 1 WILLIAMS, KELTON	02:43	56-93	
SUB OUT: 11 GUITERREZ-OROZCO, NASSEEN	02:43		
SUB OUT: 22 MCCURDY, SEAN	02:43		
SUB IN: 2 WEDLOW, NOLAN	02:43		
SUB IN: 23 WILLIAMS, BRETT	02:43		
SUB IN: 40 JAMES, KYLE	02:43		
	02:04	60-95	SUB OUT: HUNDAL, ANAND
	02:04		SUB IN: HOPKINS, TREYVON
SUB OUT: 00 BINGHAM, JACOB	02:04		
SUB IN: 4 PEET, GRAYSON	02:04		
	01:24	61-96	SUB OUT: HOPKINS, TREYVON
	01:24		SUB IN: HUNDAL, ANAND

Official Shot Chart
Pacific Lutheran vs Seattle U
 PERIOD 1 Shots
 November 05, 2019 at Redhawk Center - Seattle

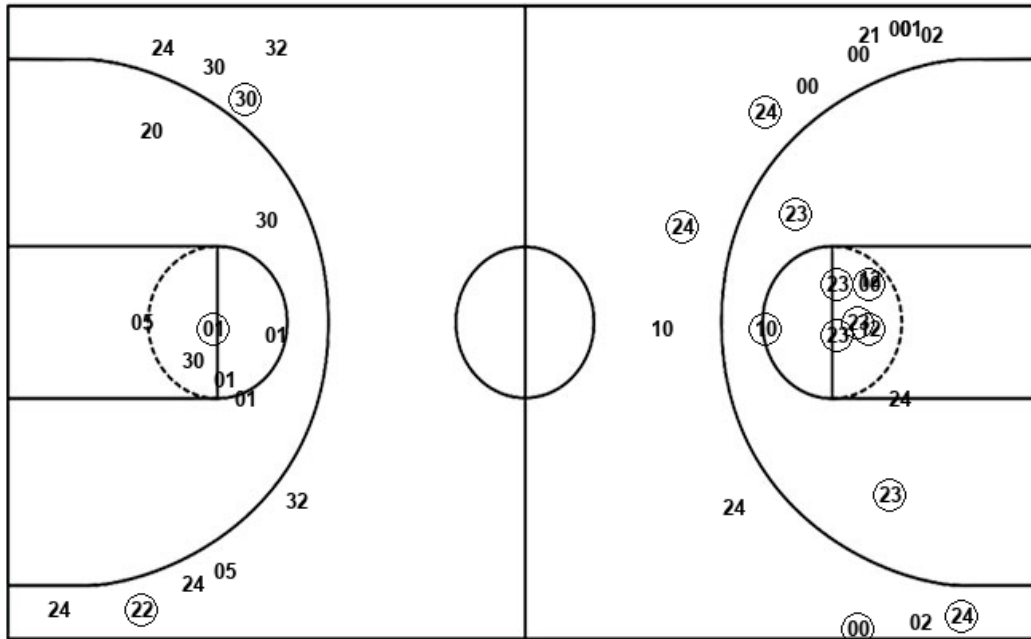


Seattle U

Pacific Lutheran

Layups
 (23) (23) (24) (12) 10
 10 12 35

Dunks
 (01) (01) (01)



Layups
 05 (32) 05 (20) 20
 (20) 12 (32) (32) (05)
 05 05 05 01

Dunks

SU : Period 1	Made	Att	Pct
Layups	4	8	50.0
Dunks	3	3	100.0
2PT Field Goals	15	21	71.4
3PT Field Goals	4	13	30.8
Total Field Goals	19	34	55.9

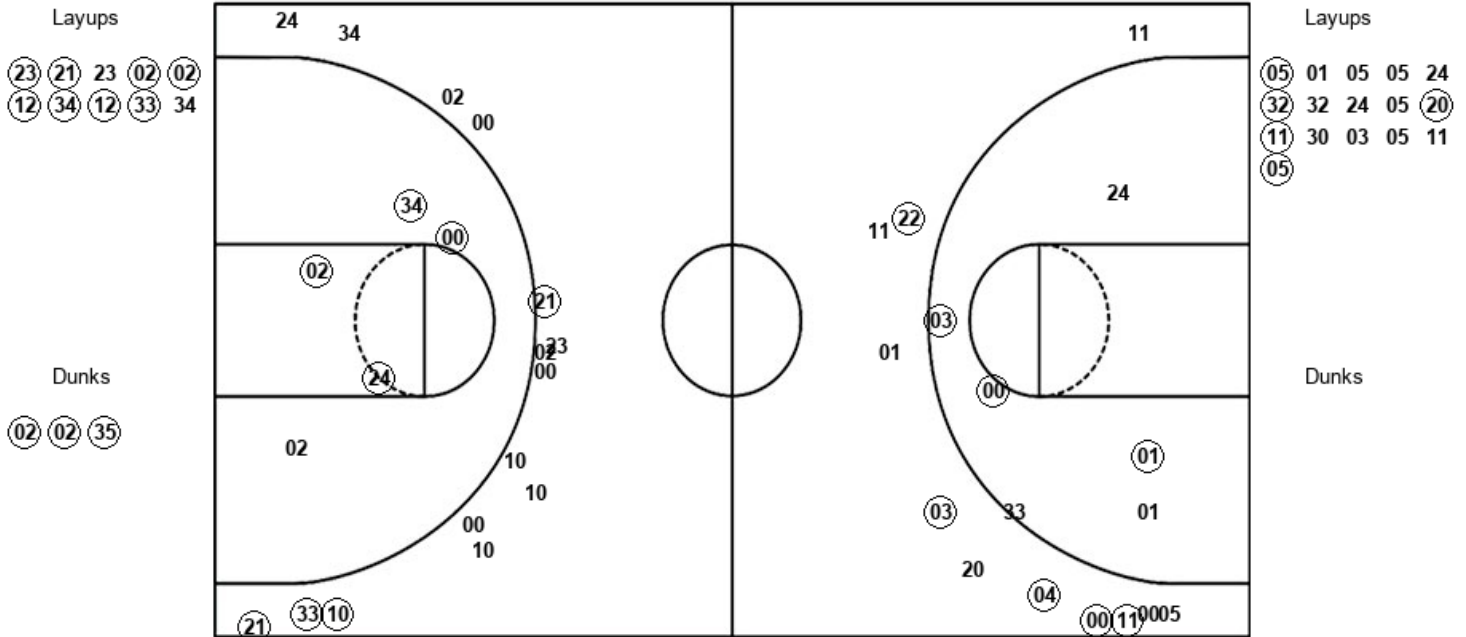
PLU : Period 1	Made	Att	Pct
Layups	6	14	42.9
Dunks	0	0	0
2PT Field Goals	7	22	31.8
3PT Field Goals	2	9	22.2
Total Field Goals	9	31	29.0

Official Shot Chart
Pacific Lutheran vs Seattle U
 PERIOD 2 Shots
 November 05, 2019 at Redhawk Center - Seattle



Seattle U

Pacific Lutheran



SU : Period 2	Made	Att	Pct
Layups	8	10	80.0
Dunks	3	3	100.0
2PT Field Goals	15	18	83.3
3PT Field Goals	4	15	26.7
Total Field Goals	19	33	57.6

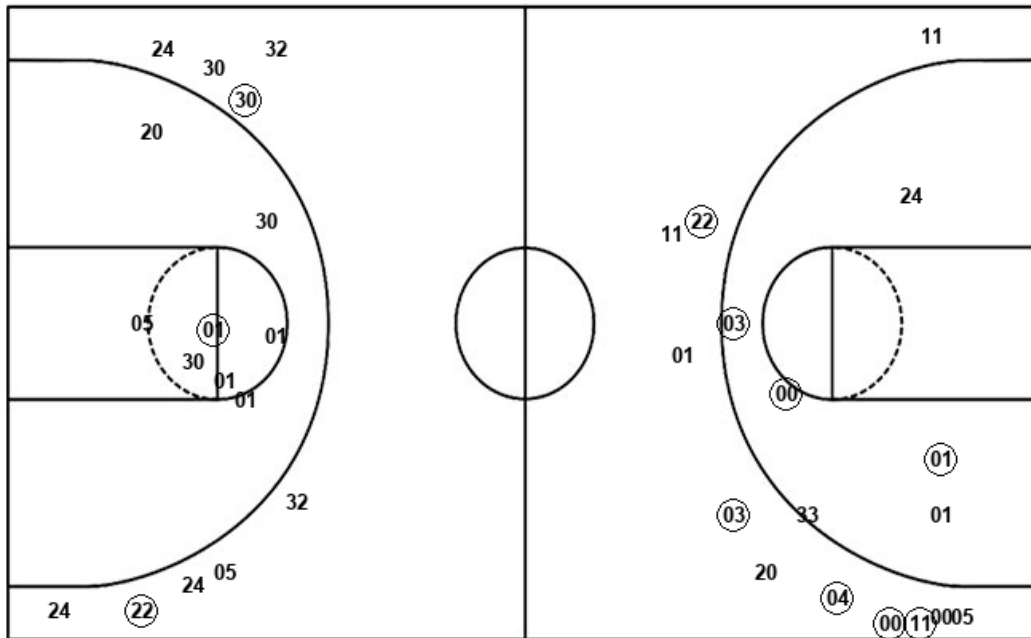
PLU : Period 2	Made	Att	Pct
Layups	5	16	31.3
Dunks	0	0	0
2PT Field Goals	8	22	36.4
3PT Field Goals	5	11	45.5
Total Field Goals	13	33	39.4

Official Shot Chart
Pacific Lutheran vs Seattle U
 Pacific Lutheran Team Shots
 November 05, 2019 at Redhawk Center - Seattle



Layups

Dunks



PLU : Period 1	Made	Att	Pct
Layups	6	14	42.9
Dunks	0	0	0
2PT Field Goals	7	22	31.8
3PT Field Goals	2	9	22.2
Total Field Goals	9	31	29.0

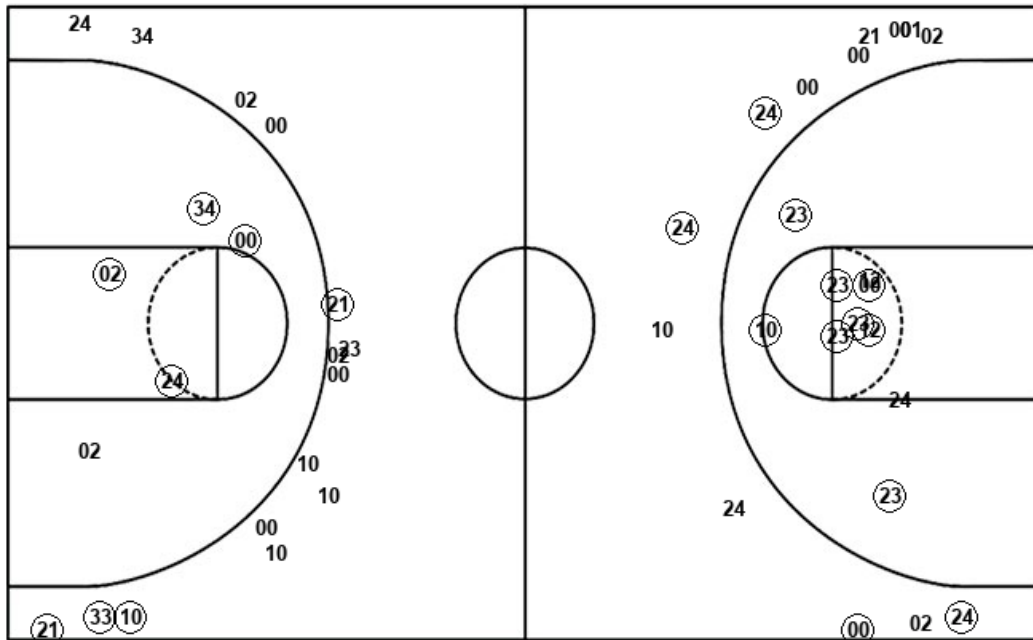
PLU : Period 2	Made	Att	Pct
Layups	5	16	31.3
Dunks	0	0	0
2PT Field Goals	8	22	36.4
3PT Field Goals	5	11	45.5
Total Field Goals	13	33	39.4

Official Shot Chart
 Pacific Lutheran vs Seattle U
 Seattle U Team Shots
 November 05, 2019 at Redhawk Center - Seattle



Layups

Dunks



Layups

Dunks

(23) (23) (24) (12) 10
 10 12 35 (23) (21)
 23 (02) (02) (12) (34)
 (12) (33) 34

(01) (01) (01) (02) (02)
 (35)

SU : Period 1	Made	Att	Pct
Layups	4	8	50.0
Dunks	3	3	100.0
2PT Field Goals	15	21	71.4
3PT Field Goals	4	13	30.8
Total Field Goals	19	34	55.9

SU : Period 2	Made	Att	Pct
Layups	8	10	80.0
Dunks	3	3	100.0
2PT Field Goals	15	18	83.3
3PT Field Goals	4	15	26.7
Total Field Goals	19	33	57.6