

**FINAL SCORE****James Madison****67****William Mary****53**

March 07, 2020 • Kaplan Arena (Kaplan Arena) - Williamsburg

**FINAL STATISTICS**

**Official Box Score**  
**James Madison vs William Mary**  
**Game Totals -- Final Statistics**  
**March 07, 2020 at Kaplan Arena (Kaplan Arena) - Williamsburg**



### James Madison 67

No.	Player	S	Pts	FG	3FG	FT	OR	DR	TR	PF	A	TO	Blk	Stl	Min	+/-
03	SMALLS, KAMIAH	G	10	3-10	1-4	3-4	1	3	4	2	2	1	0	1	25	5
15	BARRIER, LEXIE	G	4	2-10	0-1	0-2	1	3	4	3	1	0	1	0	25	12
30	JEFFERSON, KIKI	G	15	5-8	1-1	4-4	3	4	7	1	4	0	1	2	29	24
31	COOPER-WILLIAMS, KAYLA	C	7	3-3	0-0	1-1	2	5	7	3	0	0	0	0	19	17
55	BENITEZ, JACKIE	G	16	6-13	2-8	2-2	0	1	1	3	1	0	1	2	37	16
00	OPPENHEIMER, NIKKI	G	0	0-0	0-0	0-0	0	0	0	1	0	0	0	0	1	0
02	CARODINE, JAYLIN	G	2	1-3	0-0	0-0	3	2	5	2	0	1	0	0	14	-9
04	GREEN, MADISON	G	9	2-7	0-3	5-8	0	4	4	2	3	2	0	1	22	4
21	TUCKER, RAYNE	F	3	1-2	0-0	1-1	0	2	2	3	0	1	2	0	20	-1
42	MERRITT, DEVON	F	1	0-2	0-0	1-2	0	1	1	1	1	1	1	1	10	2
TEAM							3	3	6	0		0				
<b>TOTALS</b>			<b>67</b>	<b>23-58</b>	<b>4-17</b>	<b>17-24</b>	<b>13</b>	<b>28</b>	<b>41</b>	<b>21</b>	<b>12</b>	<b>6</b>	<b>6</b>	<b>7</b>	<b>200</b>	

#### Shooting By Period

Period	FG	FG%	3FG	3FG%	FT	FT%
1st Qtr	4-17	24%	0-7	00%	4-5	80%
2nd Qtr	5-12	42%	2-3	67%	7-10	70%
3rd Qtr	8-16	50%	1-3	33%	2-5	40%
4th Qtr	6-13	46%	1-4	25%	4-4	100%
1st Half	9-29	31%	2-10	20%	11-15	73%
2nd Half	14-29	48%	2-7	29%	6-9	67%
<b>Game</b>	<b>23-58</b>	<b>39.7%</b>	<b>4-17</b>	<b>23.5%</b>	<b>17-24</b>	<b>70.8%</b>

Deadball Rebounds: 3,0

Last FG: 4th-01:39

Biggest Run: 9-0

Largest lead: By 14 at 4th-01:39

Technical Fouls: None.

### William Mary 53

No.	Player	S	Pts	FG	3FG	FT	OR	DR	TR	PF	A	TO	Blk	Stl	Min	+/-
03	TAYLOR, ASHLEY	G	0	0-2	0-2	0-0	0	0	0	2	0	0	0	0	4	-4
10	HODGSON, EVA	G	20	5-12	1-2	9-10	0	2	2	3	2	2	1	0	39	-15
11	POLLARD, NYLA	G	2	0-5	0-3	2-2	1	3	4	2	1	1	0	1	31	-13
25	ROGERS, GABBY	C	2	1-6	0-0	0-0	1	3	4	0	1	2	0	0	20	-8
30	REYNOLDS, VICTORIA	F	18	4-11	2-4	8-10	2	6	8	2	1	1	0	2	39	-12
01	WAGNER, SYDNEY	G	3	1-3	1-3	0-0	0	1	1	4	0	1	0	0	14	1
05	GILLIAM, CHANIQUA	G	0	0-0	0-0	0-0	0	0	0	1	0	0	0	0	3	-4
20	BELLAMY, BRE	F	5	2-8	1-3	0-0	3	5	8	2	3	3	1	1	31	-7
21	EICHNER, BAILEY	F	3	1-3	0-0	1-2	1	4	5	3	1	1	0	0	20	-8
TEAM							1	2	3	0		2				
<b>TOTALS</b>			<b>53</b>	<b>14-50</b>	<b>5-17</b>	<b>20-24</b>	<b>9</b>	<b>26</b>	<b>35</b>	<b>19</b>	<b>9</b>	<b>13</b>	<b>2</b>	<b>4</b>	<b>200</b>	

#### Shooting By Period

Period	FG	FG%	3FG	3FG%	FT	FT%
1st Qtr	5-11	45%	3-6	50%	5-6	83%
2nd Qtr	3-14	21%	0-4	00%	4-4	100%
3rd Qtr	2-12	17%	0-3	00%	8-10	80%
4th Qtr	4-13	31%	2-4	50%	3-4	75%
1st Half	8-25	32%	3-10	30%	9-10	90%
2nd Half	6-25	24%	2-7	29%	11-14	79%
<b>Game</b>	<b>14-50</b>	<b>28.0%</b>	<b>5-17</b>	<b>29.4%</b>	<b>20-24</b>	<b>83.3%</b>

Deadball Rebounds: 3,0

Last FG: 4th-05:52

Biggest Run: 7-0

Largest lead: By 8 at 2nd-08:35

Technical Fouls: None.

#### Game Notes:

Officials: Daryl Humphrey, Mark Hardcastle, Dan Outlaw

Attendance: 752

Start Time: 02:05 PM ET

End Time: 03:57 PM ET

Game Duration: 1:51

Conference Game;

Score	1st	2nd	3rd	4th	TOT
JMU	12	19	19	17	67
WM	18	10	12	13	53

JMU led for 29:10. WM led for 7:32.

Game was tied for 3:19.

Times tied: 6 Lead Changes: 2

Points from	JMU	WM
In the Paint	34	16
Off Turns	9	4
2nd Chance	13	9
Fast Break	4	8
Bench	15	11

**Official Box Score**  
**James Madison vs William Mary**  
**First Half Statistics Only**  
**March 07, 2020 at Kaplan Arena (Kaplan Arena) - Williamsburg**



### James Madison 31

No.	Player	S	Pts	FG	3FG	FT	OR	DR	TR	PF	A	TO	Blk	Stl	Min	+/-
00	OPPENHEIMER, NIKKI	G	0	0-0	0-0	0-0	0	0	0	0	0	0	0	0	0	0
02	CARODINE, JAYLIN	G	0	0-1	0-0	0-0	1	1	2	1	0	0	0	0	9	-6
03	SMALLS, KAMIAH	G	2	1-6	0-2	0-0	0	0	0	2	0	1	0	0	8	-1
04	GREEN, MADISON	G	7	1-3	0-1	5-6	0	3	3	1	1	2	0	1	14	1
15	BARRIER, LEXIE	G	0	0-4	0-0	0-2	1	1	2	1	1	0	0	0	14	5
21	TUCKER, RAYNE	F	3	1-2	0-0	1-1	0	2	2	2	0	1	2	0	13	-1
30	JEFFERSON, KIKI	G	11	4-5	1-1	2-2	2	1	3	0	1	0	0	2	15	10
31	COOPER-WILLIAMS, KAYLA	C	2	1-1	0-0	0-0	2	1	3	2	0	0	0	0	4	4
42	MERRITT, DEVON	F	1	0-0	0-0	1-2	0	1	1	0	0	1	1	1	5	-1
55	BENITEZ, JACKIE	G	5	1-7	1-6	2-2	0	1	1	0	1	0	1	2	18	4
	TEAM		0	0-0	0-0	0-0	0	2	2	0	0	0	0	0	0	
<b>TOTALS</b>			<b>31</b>	<b>9-29</b>	<b>2-10</b>	<b>11-15</b>	<b>6</b>	<b>13</b>	<b>19</b>	<b>9</b>	<b>4</b>	<b>5</b>	<b>4</b>	<b>6</b>	<b>100</b>	

#### Shooting By Period

Period	FG	FG%	3FG	3FG%	FT	FT%
1st Qtr	4-17	24%	0-7	00%	4-5	80%
2nd Qtr	5-12	42%	2-3	67%	7-10	70%
1st Half	9-29	31%	2-10	20%	11-15	73%
Game	23-58	39.7%	4-17	23.5%	17-24	70.8%

Deadball Rebounds: 3,0

Last FG Half: JMU 2nd-03:13

### William Mary 28

No.	Player	S	Pts	FG	3FG	FT	OR	DR	TR	PF	A	TO	Blk	Stl	Min	+/-
01	WAGNER, SYDNEY	G	3	1-2	1-2	0-0	0	1	1	3	0	1	0	0	9	4
03	TAYLOR, ASHLEY	G	0	0-1	0-1	0-0	0	0	0	2	0	0	0	0	3	-4
05	GILLIAM, CHANIQWA	G	0	0-0	0-0	0-0	0	0	0	1	0	0	0	0	2	-4
10	HODGSON, EVA	G	11	3-6	1-1	4-4	0	2	2	0	0	1	1	0	19	-4
11	POLLARD, NYLA	G	0	0-1	0-1	0-0	0	0	0	2	0	0	0	1	11	-2
20	BELLAMY, BRE	F	0	0-3	0-2	0-0	1	3	4	0	3	2	1	1	15	1
21	EICHNER, BAILEY	F	0	0-1	0-0	0-0	1	3	4	1	1	1	0	0	11	-1
25	ROGERS, GABBY	C	2	1-3	0-0	0-0	1	1	2	0	0	2	0	0	10	-4
30	REYNOLDS, VICTORIA	F	12	3-8	1-3	5-6	1	6	7	2	1	1	0	1	19	-1
	TEAM		0	0-0	0-0	0-0	0	0	0	0	0	1	0	0	0	
<b>TOTALS</b>			<b>28</b>	<b>8-25</b>	<b>3-10</b>	<b>9-10</b>	<b>4</b>	<b>16</b>	<b>20</b>	<b>11</b>	<b>5</b>	<b>9</b>	<b>2</b>	<b>3</b>	<b>100</b>	

#### Shooting By Period

Period	FG	FG%	3FG	3FG%	FT	FT%
1st Qtr	5-11	45%	3-6	50%	5-6	83%
2nd Qtr	3-14	21%	0-4	00%	4-4	100%
1st Half	8-25	32%	3-10	30%	9-10	90%
Game	14-50	28.0%	5-17	29.4%	20-24	83.3%

Deadball Rebounds: 3,0

Last FG Half: WM 2nd-01:52

#### Game Notes:

Officials: Daryl Humphrey, Mark Hardcastle, Dan Outlaw  
Attendance: 752

Start Time: 02:05 PM ET

End Time: 03:57 PM ET

Game Duration: 1:51

Conference Game;

Score	1st	2nd	3rd	4th	TOT
JMU	12	19	19	17	67
WM	18	10	12	13	53

Points from (This Period)	JMU	WM
In the Paint	12	8
Off Turns	7	4
2nd Chance	9	3
Fast Break	4	8
Bench	11	3

**Official Box Score**  
**James Madison vs William Mary**  
**First Quarter Statistics Only**  
**March 07, 2020 at Kaplan Arena (Kaplan Arena) - Williamsburg**



### James Madison 12

No.	Player	S	Pts	FG	3FG	FT	OR	DR	TR	PF	A	TO	Blk	Stl	Min	+/-
03	SMALLS, KAMIAH	G	2	1-5	0-2	0-0	0	0	0	1	0	0	0	0	7	-1
15	BARRIER, LEXIE	G	0	0-1	0-0	0-0	0	0	0	1	0	0	0	0	6	3
30	JEFFERSON, KIKI	G	0	0-1	0-0	0-0	1	1	2	0	1	0	0	2	7	-1
31	COOPER-WILLIAMS, KAYLA	C	2	1-1	0-0	0-0	2	1	3	2	0	0	0	0	4	4
55	BENITEZ, JACKIE	G	2	0-4	0-4	2-2	0	0	0	0	1	0	0	1	8	-5
00	OPPENHEIMER, NIKKI	G	0	0-0	0-0	0-0	0	0	0	0	0	0	0	0	0	0
02	CARODINE, JAYLIN	G	0	0-1	0-0	0-0	0	0	0	1	0	0	0	0	4	-9
04	GREEN, MADISON	G	2	1-3	0-1	0-0	0	1	1	1	0	0	0	1	6	-10
21	TUCKER, RAYNE	F	3	1-1	0-0	1-1	0	0	0	0	0	1	1	0	6	-10
42	MERRITT, DEVON	F	1	0-0	0-0	1-2	0	0	0	0	0	0	0	0	2	-1
TEAM							0	2	2	0		0				
<b>TOTALS</b>			<b>12</b>	<b>4-17</b>	<b>0-7</b>	<b>4-5</b>	<b>3</b>	<b>5</b>	<b>8</b>	<b>6</b>	<b>2</b>	<b>1</b>	<b>1</b>	<b>4</b>	<b>50</b>	

#### Shooting By Period

Period	FG	FG%	3FG	3FG%	FT	FT%
1st Qtr	4-17	24%	0-7	00%	4-5	80%
2nd Qtr	5-12	42%	2-3	67%	7-10	70%
1st Half	4-17	24%	0-7	00%	4-5	80%
1st Half	9-29	31%	2-10	20%	11-15	73%
Game	23-58	39.7%	4-17	23.5%	17-24	70.8%

Deadball Rebounds: 3,0

### William Mary 18

No.	Player	S	Pts	FG	3FG	FT	OR	DR	TR	PF	A	TO	Blk	Stl	Min	+/-
03	TAYLOR, ASHLEY	G	0	0-1	0-1	0-0	0	0	0	2	0	0	0	0	3	-4
10	HODGSON, EVA	G	7	2-2	1-1	2-2	0	2	2	0	0	0	1	0	9	5
11	POLLARD, NYLA	G	0	0-1	0-1	0-0	0	0	0	1	0	0	0	0	8	1
25	ROGERS, GABBY	C	0	0-2	0-0	0-0	0	1	1	0	0	1	0	0	4	-3
30	REYNOLDS, VICTORIA	F	8	2-4	1-2	3-4	0	6	6	0	0	1	0	0	10	6
01	WAGNER, SYDNEY	G	3	1-1	1-1	0-0	0	0	0	0	0	0	0	0	3	6
05	GILLIAM, CHANIQWA	G	0	0-0	0-0	0-0	0	0	0	1	0	0	0	0	1	1
20	BELLAMY, BRE	F	0	0-0	0-0	0-0	1	0	1	0	2	1	1	0	6	9
21	EICHNER, BAILEY	F	0	0-0	0-0	0-0	0	2	2	1	1	1	0	0	6	9
TEAM							0	0	0	0		1				
<b>TOTALS</b>			<b>18</b>	<b>5-11</b>	<b>3-6</b>	<b>5-6</b>	<b>1</b>	<b>11</b>	<b>12</b>	<b>5</b>	<b>3</b>	<b>5</b>	<b>2</b>	<b>0</b>	<b>50</b>	

#### Shooting By Period

Period	FG	FG%	3FG	3FG%	FT	FT%
1st Qtr	5-11	45%	3-6	50%	5-6	83%
2nd Qtr	3-14	21%	0-4	00%	4-4	100%
1st Half	5-11	45%	3-6	50%	5-6	83%
1st Half	8-25	32%	3-10	30%	9-10	90%
Game	14-50	28.0%	5-17	29.4%	20-24	83.3%

Deadball Rebounds: 3,0

#### Game Notes:

Officials: Daryl Humphrey, Mark Hardcastle, Dan Outlaw  
Attendance: 752

Start Time: 02:05 PM ET  
End Time: 03:57 PM ET  
Game Duration: 1:51  
Conference Game;

Score	1st	2nd	3rd	4th	TOT
JMU	12	19	19	17	67
WM	18	10	12	13	53

Points from (This Period)	JMU	WM
In the Paint	8	4
Off Turns	0	0
2nd Chance	4	3
Fast Break	2	4
Bench	6	3

**Official Play-By-Play**  
**James Madison vs William Mary**  
**First Quarter**

**March 07, 2020 at Kaplan Arena (Kaplan Arena) - Williamsburg**



**Period 1**

**Starters:**

**James Madison:** 3 SMALLS,KAMIAH (G); 15 BARRIER,LEXIE (G); 30 JEFFERSON,KIKI (G); 31 COOPER-WILLIAMS,KAYLA (C); 55 BENITEZ,JACKIE (G);  
**William Mary:** 3 TAYLOR,ASHLEY (G); 10 HODGSON,EVA (G); 11 POLLARD,NYLA (G); 25 ROGERS,GABBY (C); 30 REYNOLDS,VICTORIA (F);

Time	VISITORS: James Madison	Score	Margin	HOME: William Mary
09:53				FOUL (PERSONAL) by TAYLOR, ASHLEY
09:50				FOUL (PERSONAL) by TAYLOR, ASHLEY
09:50	GOOD! FT by BENITEZ, JACKIE	0-1	V 1	
09:50	GOOD! FT by BENITEZ, JACKIE	0-2	V 2	
09:27				TURNOVER (LOSTBALL) by ROGERS, GABBY
09:27	STEAL by JEFFERSON, KIKI			
09:13	MISSED 3PTR by SMALLS, KAMIAH			
09:08				REBOUND (DEF) by ROGERS, GABBY
09:02		2-2	T	GOOD! LAYUP by HODGSON, EVA
08:49	MISSED 3PTR by BENITEZ, JACKIE			
08:42	REBOUND (OFF) by COOPER-WILLIAMS, KAYLA			
08:42	GOOD! LAYUP by COOPER-WILLIAMS, KAYLA	2-4	V 2	
08:25				MISSED 3PTR by TAYLOR, ASHLEY
08:23	REBOUND (DEF) by TEAM			
08:12	MISSED 3PTR by BENITEZ, JACKIE			
08:07	REBOUND (OFF) by COOPER-WILLIAMS, KAYLA			
08:04	MISSED 3PTR by BENITEZ, JACKIE			
08:02				REBOUND (DEF) by REYNOLDS, VICTORIA
08:02	FOUL (PERSONAL) by COOPER-WILLIAMS, KAYLA			
07:44	FOUL (PERSONAL) by SMALLS, KAMIAH			
07:31				MISSED JUMPER by ROGERS, GABBY
07:27	REBOUND (DEF) by COOPER-WILLIAMS, KAYLA			
07:19	MISSED LAYUP by SMALLS, KAMIAH			
07:15	REBOUND (OFF) by JEFFERSON, KIKI			
07:14	GOOD! LAYUP by SMALLS, KAMIAH	2-6	V 4	
07:14	ASSIST by JEFFERSON, KIKI			
06:43				MISSED LAYUP by ROGERS, GABBY
06:43				REBOUND (OFF) by TEAM
06:43				TURNOVER (SHOTCLOCK) by TEAM
06:43				SUB OUT: TAYLOR, ASHLEY
06:43				SUB OUT: ROGERS, GABBY
06:43				SUB IN: BELLAMY, BRE
06:43				SUB IN: EICHNER, BAILEY
06:27	MISSED 3PTR by BENITEZ, JACKIE			
06:24				REBOUND (DEF) by HODGSON, EVA
06:17				MISSED 3PTR by POLLARD, NYLA
06:14	REBOUND (DEF) by JEFFERSON, KIKI			
06:06	MISSED 3PTR by SMALLS, KAMIAH			
06:02				REBOUND (DEF) by EICHNER, BAILEY
05:49				TURNOVER (BADPASS) by BELLAMY, BRE
05:49	STEAL by BENITEZ, JACKIE			
05:35	MISSED LAYUP by SMALLS, KAMIAH			
05:35				BLOCK by BELLAMY, BRE
05:35				REBOUND (DEF) by EICHNER, BAILEY
05:35	FOUL (PERSONAL) by COOPER-WILLIAMS, KAYLA			
05:35	SUB OUT: BARRIER, LEXIE			
05:35	SUB OUT: JEFFERSON, KIKI			
05:35	SUB OUT: COOPER-WILLIAMS, KAYLA			
05:35	SUB IN: CARODINE, JAYLIN			
05:35	SUB IN: GREEN, MADISON			
05:35	SUB IN: TUCKER, RAYNE			
05:18		4-6	V 2	GOOD! JUMPER by REYNOLDS, VICTORIA [PNT]
04:57	MISSED LAYUP by CARODINE, JAYLIN			
04:54				REBOUND (DEF) by REYNOLDS, VICTORIA
04:52	FOUL (PERSONAL) by GREEN, MADISON			
04:52		5-6	V 1	GOOD! FT by HODGSON, EVA [FB]
04:52		6-6	T	GOOD! FT by HODGSON, EVA [FB]
04:26	GOOD! LAYUP by TUCKER, RAYNE	6-8	V 2	
04:26	ASSIST by BENITEZ, JACKIE			
04:26				FOUL (PERSONAL) by EICHNER, BAILEY
04:26	GOOD! FT by TUCKER, RAYNE	6-9	V 3	
03:57		9-9	T	GOOD! 3PTR by REYNOLDS, VICTORIA
03:57				ASSIST by EICHNER, BAILEY
03:35	TURNOVER (TRAVEL) by TUCKER, RAYNE			
03:33	SUB OUT: SMALLS, KAMIAH			
03:33	SUB IN: JEFFERSON, KIKI			
03:20				TURNOVER (LOSTBALL) by REYNOLDS, VICTORIA
03:20	STEAL by GREEN, MADISON			
03:13	MISSED LAYUP by JEFFERSON, KIKI			

Time	VISITORS: James Madison	Score	Margin	HOME: William Mary
03:12				REBOUND (DEF) by REYNOLDS, VICTORIA
03:12				SUB OUT: POLLARD, NYLA
03:12				SUB IN: WAGNER, SYDNEY
02:59	FOUL (PERSONAL) by CARODINE, JAYLIN			
02:59		10-9	H 1	GOOD! FT by REYNOLDS, VICTORIA
02:58				MISSED FT by REYNOLDS, VICTORIA
02:57				REBOUND (OFF) by BELLAMY, BRE
02:55		13-9	H 4	GOOD! 3PTR by HODGSON, EVA
02:55				ASSIST by BELLAMY, BRE
02:41	MISSED 3PTR by GREEN, MADISON			
02:37				REBOUND (DEF) by HODGSON, EVA
02:10				MISSED JUMPER by REYNOLDS, VICTORIA
02:10	BLOCK by TUCKER, RAYNE			
02:06	REBOUND (DEF) by GREEN, MADISON			
02:02	GOOD! LAYUP by GREEN, MADISON [FB]	13-11	H 2	
01:45		16-11	H 5	GOOD! 3PTR by WAGNER, SYDNEY
01:45				ASSIST by BELLAMY, BRE
01:42	TIMEOUT 30SEC			
01:42	SUB OUT: CARODINE, JAYLIN			
01:42	SUB OUT: BENITEZ, JACKIE			
01:42	SUB IN: BARRIER, LEXIE			
01:42	SUB IN: MERRITT, DEVON			
01:18	MISSED JUMPER by GREEN, MADISON			
01:18				BLOCK by HODGSON, EVA
01:14				REBOUND (DEF) by REYNOLDS, VICTORIA
01:06				SUB OUT: HODGSON, EVA
01:06				SUB OUT: BELLAMY, BRE
01:06				SUB IN: GILLIAM, CHANIQWA
01:06				SUB IN: POLLARD, NYLA
00:55				TURNOVER (LOSTBALL) by EICHNER, BAILEY
00:55	STEAL by JEFFERSON, KIKI			
00:50				FOUL (PERSONAL) by GILLIAM, CHANIQWA
00:50				SUB OUT: EICHNER, BAILEY
00:50				SUB IN: ROGERS, GABBY
00:50	SUB OUT: JEFFERSON, KIKI			
00:50	SUB IN: SMALLS, KAMIAH			
00:42	MISSED JUMPER by BARRIER, LEXIE			
00:39				REBOUND (DEF) by REYNOLDS, VICTORIA
00:37	FOUL (PERSONAL) by BARRIER, LEXIE			
00:37		17-11	H 6	GOOD! FT by REYNOLDS, VICTORIA [FB]
00:37		18-11	H 7	GOOD! FT by REYNOLDS, VICTORIA [FB]
00:29				FOUL (PERSONAL) by POLLARD, NYLA
00:29	GOOD! FT by MERRITT, DEVON	18-12	H 6	
00:29	MISSED FT by MERRITT, DEVON			
00:27				REBOUND (DEF) by REYNOLDS, VICTORIA
00:02				MISSED 3PTR by REYNOLDS, VICTORIA
00:01	REBOUND (DEF) by TEAM			

James Madison 12, William Mary 18

Points from (This Period)	JMU	WM
In the Paint	8	4
Off Turns	0	0
2nd Chance	4	3
Fast Break	2	4
Bench	6	3

**Official Box Score**  
**James Madison vs William Mary**  
**Second Quarter Statistics Only**  
**March 07, 2020 at Kaplan Arena (Kaplan Arena) - Williamsburg**



### James Madison 19

No.	Player	S	Pts	FG	3FG	FT	OR	DR	TR	PF	A	TO	Blk	Stl	Min	+/-
03	SMALLS, KAMIAH	G	0	0-1	0-0	0-0	0	0	0	1	0	1	0	0	1	0
15	BARRIER, LEXIE	G	0	0-3	0-0	0-2	1	1	2	0	1	0	0	0	8	2
30	JEFFERSON, KIKI	G	11	4-4	1-1	2-2	1	0	1	0	0	0	0	0	8	11
31	COOPER-WILLIAMS, KAYLA	C	0	0-0	0-0	0-0	0	0	0	0	0	0	0	0	0	0
55	BENITEZ, JACKIE	G	3	1-3	1-2	0-0	0	1	1	0	0	0	1	1	10	9
00	OPPENHEIMER, NIKKI	G	0	0-0	0-0	0-0	0	0	0	0	0	0	0	0	0	0
02	CARODINE, JAYLIN	G	0	0-0	0-0	0-0	1	1	2	0	0	0	0	0	5	3
04	GREEN, MADISON	G	5	0-0	0-0	5-6	0	2	2	0	1	2	0	0	8	11
21	TUCKER, RAYNE	F	0	0-1	0-0	0-0	0	2	2	2	0	0	1	0	7	9
42	MERRITT, DEVON	F	0	0-0	0-0	0-0	0	1	1	0	0	1	1	1	3	0
TEAM							0	0	0	0		0				
<b>TOTALS</b>			<b>19</b>	<b>5-12</b>	<b>2-3</b>	<b>7-10</b>	<b>3</b>	<b>8</b>	<b>11</b>	<b>3</b>	<b>2</b>	<b>4</b>	<b>3</b>	<b>2</b>	<b>50</b>	

#### Shooting By Period

Period	FG	FG%	3FG	3FG%	FT	FT%
3rd Qtr	8-16	50%	1-3	33%	2-5	40%
4th Qtr	6-13	46%	1-4	25%	4-4	100%
2nd Half	5-12	42%	2-3	67%	7-10	70%
2nd Half	14-29	48%	2-7	29%	6-9	67%
Game	23-58	39.7%	4-17	23.5%	17-24	70.8%

Deadball Rebounds: 3,0

### William Mary 10

No.	Player	S	Pts	FG	3FG	FT	OR	DR	TR	PF	A	TO	Blk	Stl	Min	+/-
03	TAYLOR, ASHLEY	G	0	0-0	0-0	0-0	0	0	0	0	0	0	0	0	0	0
10	HODGSON, EVA	G	4	1-4	0-0	2-2	0	0	0	0	0	1	0	0	10	-9
11	POLLARD, NYLA	G	0	0-0	0-0	0-0	0	0	0	1	0	0	0	1	3	-3
25	ROGERS, GABBY	C	2	1-1	0-0	0-0	1	0	1	0	0	1	0	0	6	-1
30	REYNOLDS, VICTORIA	F	4	1-4	0-1	2-2	1	0	1	2	1	0	0	1	9	-7
01	WAGNER, SYDNEY	G	0	0-1	0-1	0-0	0	1	1	3	0	1	0	0	6	-2
05	GILLIAM, CHANIQWA	G	0	0-0	0-0	0-0	0	0	0	0	0	0	0	0	1	-5
20	BELLAMY, BRE	F	0	0-3	0-2	0-0	0	3	3	0	1	1	0	1	9	-8
21	EICHNER, BAILEY	F	0	0-1	0-0	0-0	1	1	2	0	0	0	0	0	5	-10
TEAM							0	0	0	0		0				
<b>TOTALS</b>			<b>10</b>	<b>3-14</b>	<b>0-4</b>	<b>4-4</b>	<b>3</b>	<b>5</b>	<b>8</b>	<b>6</b>	<b>2</b>	<b>4</b>	<b>0</b>	<b>3</b>	<b>50</b>	

#### Shooting By Period

Period	FG	FG%	3FG	3FG%	FT	FT%
3rd Qtr	2-12	17%	0-3	00%	8-10	80%
4th Qtr	4-13	31%	2-4	50%	3-4	75%
2nd Half	3-14	21%	0-4	00%	4-4	100%
2nd Half	6-25	24%	2-7	29%	11-14	79%
Game	14-50	28.0%	5-17	29.4%	20-24	83.3%

Deadball Rebounds: 3,0

#### Game Notes:

Officials: Daryl Humphrey, Mark Hardcastle, Dan Outlaw  
Attendance: 752

Start Time: 02:05 PM ET  
End Time: 03:57 PM ET  
Game Duration: 1:51  
Conference Game;

Score	1st	2nd	3rd	4th	TOT
JMU	12	19	19	17	<b>67</b>
WM	18	10	12	13	<b>53</b>

Points from (This Period)	JMU	WM
In the Paint	4	4
Off Turns	7	4
2nd Chance	5	0
Fast Break	2	4
Bench	5	0

**Official Play-By-Play**  
**James Madison vs William Mary**  
**Second Quarter**  
**March 07, 2020 at Kaplan Arena (Kaplan Arena) - Williamsburg**



**Period 2**

**Starters:**

**James Madison:** 3 SMALLS,KAMIAH (G); 15 BARRIER,LEXIE (G); 30 JEFFERSON,KIKI (G); 31 COOPER-WILLIAMS,KAYLA (C); 55 BENITEZ,JACKIE (G);  
**William Mary:** 3 TAYLOR,ASHLEY (G); 10 HODGSON,EVA (G); 11 POLLARD,NYLA (G); 25 ROGERS,GABBY (C); 30 REYNOLDS,VICTORIA (F);

Time	VISITORS: James Madison	Score	Margin	HOME: William Mary
10:00				SUB OUT: WAGNER, SYDNEY
10:00				SUB OUT: GILLIAM, CHANIQWA
10:00				SUB IN: HODGSON, EVA
10:00				SUB IN: BELLAMY, BRE
10:00	SUB OUT: TUCKER, RAYNE			
10:00	SUB IN: BENITEZ, JACKIE			
09:38	MISSED JUMPER by SMALLS, KAMIAH			
09:35				REBOUND (DEF) by BELLAMY, BRE
09:30				MISSED LAYUP by HODGSON, EVA
09:26	REBOUND (DEF) by MERRITT, DEVON			
09:19	FOUL (OFF) by SMALLS, KAMIAH			
09:19	TURNOVER (OFFENSIVE) by SMALLS, KAMIAH			
09:19	SUB OUT: SMALLS, KAMIAH			
09:19	SUB IN: JEFFERSON, KIKI			
09:00				MISSED LAYUP by BELLAMY, BRE
09:00	BLOCK by MERRITT, DEVON			
08:55				REBOUND (OFF) by ROGERS, GABBY
08:54				TURNOVER (LOSTBALL) by ROGERS, GABBY
08:54	STEAL by MERRITT, DEVON			
08:45	TURNOVER (LOSTBALL) by MERRITT, DEVON			
08:45				STEAL by POLLARD, NYLA
08:35		20-12	H 8	GOOD! JUMPER by ROGERS, GABBY
08:35				ASSIST by REYNOLDS, VICTORIA
08:20	GOOD! LAYUP by JEFFERSON, KIKI [PNT]	20-14	H 6	
08:03				TURNOVER (3SEC) by BELLAMY, BRE
08:03	SUB OUT: MERRITT, DEVON			
08:03	SUB IN: TUCKER, RAYNE			
07:51	MISSED JUMPER by BARRIER, LEXIE			
07:47	REBOUND (OFF) by BARRIER, LEXIE			
07:38	GOOD! 3PTR by JEFFERSON, KIKI	20-17	H 3	
07:38	ASSIST by BARRIER, LEXIE			
07:19				MISSED JUMPER by HODGSON, EVA
07:19	BLOCK by BENITEZ, JACKIE			
07:14	REBOUND (DEF) by BARRIER, LEXIE			
07:01				FOUL (PERSONAL) by POLLARD, NYLA
07:01				SUB OUT: POLLARD, NYLA
07:01				SUB OUT: ROGERS, GABBY
07:01				SUB IN: WAGNER, SYDNEY
07:01				SUB IN: EICHNER, BAILEY
07:01	GOOD! FT by GREEN, MADISON	20-18	H 2	
07:01	GOOD! FT by GREEN, MADISON	20-19	H 1	
06:30				MISSED JUMPER by REYNOLDS, VICTORIA
06:27	REBOUND (DEF) by TUCKER, RAYNE			
06:19				FOUL (PERSONAL) by REYNOLDS, VICTORIA
06:19	MISSED FT by GREEN, MADISON			
06:19	REBOUND (OFF) by TEAM			
06:19	GOOD! FT by GREEN, MADISON	20-20	T	
05:55				MISSED LAYUP by EICHNER, BAILEY
05:55	BLOCK by TUCKER, RAYNE			
05:52	REBOUND (DEF) by BENITEZ, JACKIE			
05:50	TURNOVER (LOSTBALL) by GREEN, MADISON			
05:50				STEAL by REYNOLDS, VICTORIA
05:46		22-20	H 2	GOOD! LAYUP by REYNOLDS, VICTORIA [FB]
05:24	MISSED LAYUP by BARRIER, LEXIE			
05:21				REBOUND (DEF) by EICHNER, BAILEY
05:02				MISSED 3PTR by REYNOLDS, VICTORIA
04:57	REBOUND (DEF) by GREEN, MADISON			
04:54				FOUL (PERSONAL) by WAGNER, SYDNEY
04:54				
04:54				SUB OUT: WAGNER, SYDNEY
04:54				SUB IN: GILLIAM, CHANIQWA
04:54	SUB OUT: BARRIER, LEXIE			
04:54	SUB IN: CARODINE, JAYLIN			
04:54	GOOD! FT by GREEN, MADISON	22-21	H 1	
04:54	GOOD! FT by GREEN, MADISON	22-22	T	
04:36				MISSED JUMPER by HODGSON, EVA
04:32	REBOUND (DEF) by TUCKER, RAYNE			
04:24	GOOD! LAYUP by JEFFERSON, KIKI [PNT]	22-24	V 2	
04:06	FOUL (PERSONAL) by TUCKER, RAYNE			
04:06				SUB OUT: BELLAMY, BRE



Time	VISITORS: James Madison	Score	Margin	HOME: William Mary
04:06				SUB IN: WAGNER, SYDNEY
04:06		23-24	V 1	GOOD! FT by REYNOLDS, VICTORIA
04:06		24-24	T	GOOD! FT by REYNOLDS, VICTORIA
03:44	GOOD! 3PTR by BENITEZ, JACKIE	24-27	V 3	
03:44	ASSIST by GREEN, MADISON			
03:29				TURNOVER (LOSTBALL) by HODGSON, EVA
03:29	STEAL by BENITEZ, JACKIE			
03:29				SUB OUT: GILLIAM, CHANIQWA
03:29				SUB IN: BELLAMY, BRE
03:18	MISSED JUMPER by BENITEZ, JACKIE			
03:14	REBOUND (OFF) by JEFFERSON, KIKI			
03:13	GOOD! JUMPER by JEFFERSON, KIKI	24-29	V 5	
02:54				MISSED 3PTR by WAGNER, SYDNEY
02:49				REBOUND (OFF) by REYNOLDS, VICTORIA
02:49				MISSED LAYUP by REYNOLDS, VICTORIA
02:47	REBOUND (DEF) by GREEN, MADISON			
02:46	TURNOVER (LOSTBALL) by GREEN, MADISON			
02:46				STEAL by BELLAMY, BRE
02:46				SUB OUT: EICHNER, BAILEY
02:46				SUB IN: ROGERS, GABBY
02:46	SUB OUT: GREEN, MADISON			
02:46	SUB IN: BARRIER, LEXIE			
02:32				MISSED 3PTR by BELLAMY, BRE
02:27	REBOUND (DEF) by CARODINE, JAYLIN			
02:19	MISSED JUMPER by BARRIER, LEXIE			
02:15	REBOUND (OFF) by CARODINE, JAYLIN			
01:59	MISSED JUMPER by TUCKER, RAYNE			
01:56				REBOUND (DEF) by BELLAMY, BRE
01:52		26-29	V 3	GOOD! JUMPER by HODGSON, EVA [FB/PNT]
01:52				ASSIST by BELLAMY, BRE
01:22	MISSED 3PTR by BENITEZ, JACKIE			
01:18				REBOUND (DEF) by BELLAMY, BRE
01:08	FOUL (PERSONAL) by TUCKER, RAYNE			
01:08	SUB OUT: TUCKER, RAYNE			
01:08	SUB OUT: JEFFERSON, KIKI			
01:08	SUB IN: GREEN, MADISON			
01:08	SUB IN: MERRITT, DEVON			
01:08		27-29	V 2	GOOD! FT by HODGSON, EVA
01:08		28-29	V 1	GOOD! FT by HODGSON, EVA
00:43				FOUL (PERSONAL) by REYNOLDS, VICTORIA
00:43				SUB OUT: REYNOLDS, VICTORIA
00:43				SUB IN: EICHNER, BAILEY
00:43	MISSED FT by BARRIER, LEXIE			
00:43	REBOUND (OFF) by TEAM			
00:43	MISSED FT by BARRIER, LEXIE			
00:42				REBOUND (DEF) by WAGNER, SYDNEY
00:26				MISSED 3PTR by BELLAMY, BRE
00:25				REBOUND (OFF) by EICHNER, BAILEY
00:06				FOUL (OFF) by WAGNER, SYDNEY
00:06				TURNOVER (OFFENSIVE) by WAGNER, SYDNEY
00:06	SUB OUT: CARODINE, JAYLIN			
00:06	SUB IN: JEFFERSON, KIKI			
00:02				FOUL (PERSONAL) by WAGNER, SYDNEY
00:02				SUB OUT: WAGNER, SYDNEY
00:02				SUB IN: GILLIAM, CHANIQWA
00:02	SUB OUT: BARRIER, LEXIE			
00:02	SUB IN: CARODINE, JAYLIN			
00:02	GOOD! FT by JEFFERSON, KIKI [FB]	28-30	V 2	
00:02	GOOD! FT by JEFFERSON, KIKI [FB]	28-31	V 3	

James Madison 31, William Mary 28

Points from (This Period)	JMU	WM
In the Paint	4	4
Off Turns	7	4
2nd Chance	5	0
Fast Break	2	4
Bench	5	0

**Official Box Score**  
**James Madison vs William Mary**  
**Second Half Statistics Only**  
**March 07, 2020 at Kaplan Arena (Kaplan Arena) - Williamsburg**



**James Madison 36**

No.	Player	S	Pts	FG	3FG	FT	OR	DR	TR	PF	A	TO	Blk	Stl	Min	+/-
00	OPPENHEIMER, NIKKI	G	0	0-0	0-0	0-0	0	0	0	1	0	0	0	0	1	0
02	CARODINE, JAYLIN	G	2	1-2	0-0	0-0	2	1	3	1	0	1	0	0	5	-3
03	SMALLS, KAMIAH	G	8	2-4	1-2	3-4	1	3	4	0	2	0	0	1	17	6
04	GREEN, MADISON	G	2	1-4	0-2	0-2	0	1	1	1	2	0	0	0	8	3
15	BARRIER, LEXIE	G	4	2-6	0-1	0-0	0	2	2	2	0	0	1	0	12	7
21	TUCKER, RAYNE	F	0	0-0	0-0	0-0	0	0	0	1	0	0	0	0	8	0
30	JEFFERSON, KIKI	G	4	1-3	0-0	2-2	1	3	4	1	3	0	1	0	13	14
31	COOPER-WILLIAMS, KAYLA	C	5	2-2	0-0	1-1	0	4	4	1	0	0	0	0	14	13
42	MERRITT, DEVON	F	0	0-2	0-0	0-0	0	0	0	1	1	0	0	0	5	3
55	BENITEZ, JACKIE	G	11	5-6	1-2	0-0	0	0	0	3	0	0	0	0	18	12
	TEAM		0	0-0	0-0	0-0	3	1	4	0	0	0	0	0	0	0
<b>TOTALS</b>			<b>36</b>	<b>14-29</b>	<b>2-7</b>	<b>6-9</b>	<b>7</b>	<b>15</b>	<b>22</b>	<b>12</b>	<b>8</b>	<b>1</b>	<b>2</b>	<b>1</b>	<b>100</b>	

*Shooting By Period*

Period	FG	FG%	3FG	3FG%	FT	FT%
3rd Qtr	8-16	50%	1-3	33%	2-5	40%
4th Qtr	6-13	46%	1-4	25%	4-4	100%
2nd Half	14-29	48%	2-7	29%	6-9	67%
Game	23-58	39.7%	4-17	23.5%	17-24	70.8%

*Deadball Rebounds: 3,0*

*Last FG Half: JMU 4th-01:39*

**William Mary 25**

No.	Player	S	Pts	FG	3FG	FT	OR	DR	TR	PF	A	TO	Blk	Stl	Min	+/-
01	WAGNER, SYDNEY	G	0	0-1	0-1	0-0	0	0	0	1	0	0	0	0	5	-3
03	TAYLOR, ASHLEY	G	0	0-1	0-1	0-0	0	0	0	0	0	0	0	0	1	0
05	GILLIAM, CHANIQUA	G	0	0-0	0-0	0-0	0	0	0	0	0	0	0	0	0	0
10	HODGSON, EVA	G	9	2-6	0-1	5-6	0	0	0	3	2	1	0	0	20	-11
11	POLLARD, NYLA	G	2	0-4	0-2	2-2	1	3	4	0	1	1	0	0	20	-11
20	BELLAMY, BRE	F	5	2-5	1-1	0-0	2	2	4	2	0	1	0	0	16	-8
21	EICHNER, BAILEY	F	3	1-2	0-0	1-2	0	1	1	2	0	0	0	0	9	-7
25	ROGERS, GABBY	C	0	0-3	0-0	0-0	0	2	2	0	1	0	0	0	11	-4
30	REYNOLDS, VICTORIA	F	6	1-3	1-1	3-4	1	0	1	0	0	0	0	1	19	-11
	TEAM		0	0-0	0-0	0-0	1	2	3	0	0	1	0	0	0	0
<b>TOTALS</b>			<b>25</b>	<b>6-25</b>	<b>2-7</b>	<b>11-14</b>	<b>5</b>	<b>10</b>	<b>15</b>	<b>8</b>	<b>4</b>	<b>4</b>	<b>0</b>	<b>1</b>	<b>100</b>	

*Shooting By Period*

Period	FG	FG%	3FG	3FG%	FT	FT%
3rd Qtr	2-12	17%	0-3	00%	8-10	80%
4th Qtr	4-13	31%	2-4	50%	3-4	75%
2nd Half	6-25	24%	2-7	29%	11-14	79%
Game	14-50	28.0%	5-17	29.4%	20-24	83.3%

*Deadball Rebounds: 3,0*

*Last FG Half: WM 4th-05:52*

*Game Notes:*

Officials: Daryl Humphrey, Mark Hardcastle, Dan Outlaw  
Attendance: 752

Start Time: 02:05 PM ET

End Time: 03:57 PM ET

Game Duration: 1:51

Conference Game;

Score	1st	2nd	3rd	4th	TOT
JMU	12	19	19	17	<b>67</b>
WM	18	10	12	13	<b>53</b>

Points from (This Period)	JMU	WM
In the Paint	22	8
Off Turns	2	0
2nd Chance	4	6
Fast Break	0	0
Bench	4	8

**Official Box Score**  
**James Madison vs William Mary**  
**Third Quarter Statistics Only**  
**March 07, 2020 at Kaplan Arena (Kaplan Arena) - Williamsburg**



### James Madison 36

No.	Player	S	Pts	FG	3FG	FT	OR	DR	TR	PF	A	TO	Blk	Stl	Min	+/-
03	SMALLS, KAMIAH	G	6	2-3	1-1	1-2	1	3	4	0	1	0	0	1	10	7
15	BARRIER, LEXIE	G	2	1-2	0-0	0-0	0	0	0	2	0	0	0	0	4	2
30	JEFFERSON, KIKI	G	0	0-1	0-0	0-0	0	1	1	1	3	0	1	0	7	10
31	COOPER-WILLIAMS, KAYLA	C	5	2-2	0-0	1-1	0	1	1	1	0	0	0	0	5	9
55	BENITEZ, JACKIE	G	4	2-2	0-0	0-0	0	0	0	2	0	0	0	0	9	8
00	OPPENHEIMER, NIKKI	G	0	0-0	0-0	0-0	0	0	0	0	0	0	0	0	0	0
02	CARODINE, JAYLIN	G	2	1-2	0-0	0-0	2	1	3	1	0	1	0	0	4	-3
04	GREEN, MADISON	G	0	0-3	0-2	0-2	0	0	0	1	2	0	0	0	4	-4
21	TUCKER, RAYNE	F	0	0-0	0-0	0-0	0	0	0	0	0	0	0	0	5	-1
42	MERRITT, DEVON	F	0	0-1	0-0	0-0	0	0	0	0	1	0	0	0	2	7
TEAM							2	1	3	0		0				
<b>TOTALS</b>			<b>19</b>	<b>8-16</b>	<b>1-3</b>	<b>2-5</b>	<b>5</b>	<b>7</b>	<b>12</b>	<b>8</b>	<b>7</b>	<b>1</b>	<b>1</b>	<b>1</b>	<b>50</b>	

*Shooting By Period*

Period	FG	FG%	3FG	3FG%	FT	FT%
2nd Half	0-0	0%	0-0	0%	0-0	0%
Game	23-58	39.7%	4-17	23.5%	17-24	70.8%

*Deadball Rebounds: 3,0*

### William Mary 25

No.	Player	S	Pts	FG	3FG	FT	OR	DR	TR	PF	A	TO	Blk	Stl	Min	+/-
03	TAYLOR, ASHLEY	G	0	0-0	0-0	0-0	0	0	0	0	0	0	0	0	0	0
10	HODGSON, EVA	G	4	0-2	0-1	4-4	0	0	0	3	1	0	0	0	10	-7
11	POLLARD, NYLA	G	0	0-4	0-2	0-0	0	2	2	0	1	1	0	0	10	-7
25	ROGERS, GABBY	C	0	0-2	0-0	0-0	0	1	1	0	0	0	0	0	5	-1
30	REYNOLDS, VICTORIA	F	3	0-1	0-0	3-4	1	0	1	0	0	0	0	1	10	-7
01	WAGNER, SYDNEY	G	0	0-0	0-0	0-0	0	0	0	0	0	0	0	0	1	-4
05	GILLIAM, CHANIQWA	G	0	0-0	0-0	0-0	0	0	0	0	0	0	0	0	0	0
20	BELLAMY, BRE	F	2	1-2	0-0	0-0	1	1	2	2	0	1	0	0	9	-3
21	EICHNER, BAILEY	F	3	1-1	0-0	1-2	0	1	1	1	0	0	0	0	5	-6
TEAM							1	0	1	0		1				
<b>TOTALS</b>			<b>12</b>	<b>2-12</b>	<b>0-3</b>	<b>8-10</b>	<b>3</b>	<b>5</b>	<b>8</b>	<b>6</b>	<b>2</b>	<b>3</b>	<b>0</b>	<b>1</b>	<b>50</b>	

*Shooting By Period*

Period	FG	FG%	3FG	3FG%	FT	FT%
2nd Half	0-0	0%	0-0	0%	0-0	0%
Game	14-50	28.0%	5-17	29.4%	20-24	83.3%

*Deadball Rebounds: 3,0*

*Game Notes:*

Officials: Daryl Humphrey, Mark Hardcastle, Dan Outlaw  
Attendance: 752

Start Time: 02:05 PM ET  
End Time: 03:57 PM ET  
Game Duration: 1:51  
Conference Game;

Score	1st	2nd	3rd	4th	TOT
JMU	12	19	19	17	<b>67</b>
WM	18	10	12	13	<b>53</b>

Points from (This Period)	JMU	WM
In the Paint	14	4
Off Turns	2	0
2nd Chance	2	3
Fast Break	0	0
Bench	2	5

**Official Play-By-Play**  
**James Madison vs William Mary**  
**Third Quarter**

**March 07, 2020 at Kaplan Arena (Kaplan Arena) - Williamsburg**



**Period 3**

**Starters:**

**James Madison:** 3 SMALLS,KAMIAH (G); 15 BARRIER,LEXIE (G); 30 JEFFERSON,KIKI (G); 31 COOPER-WILLIAMS,KAYLA (C); 55 BENITEZ,JACKIE (G);

**William Mary:** 3 TAYLOR,ASHLEY (G); 10 HODGSON,EVA (G); 11 POLLARD,NYLA (G); 25 ROGERS,GABBY (C); 30 REYNOLDS,VICTORIA (F);

Time	VISITORS: James Madison	Score	Margin	HOME: William Mary
10:00				SUB OUT: GILLIAM, CHANIQWA
10:00				SUB OUT: EICHNER, BAILEY
10:00				SUB IN: POLLARD, NYLA
10:00				SUB IN: REYNOLDS, VICTORIA
10:00	SUB OUT: CARODINE, JAYLIN			
10:00	SUB OUT: GREEN, MADISON			
10:00	SUB OUT: MERRITT, DEVON			
10:00	SUB IN: SMALLS, KAMIAH			
10:00	SUB IN: BARRIER, LEXIE			
10:00	SUB IN: COOPER-WILLIAMS, KAYLA			
09:45				TURNOVER (BADPASS) by POLLARD, NYLA
09:45	STEAL by SMALLS, KAMIAH			
09:31	MISSED JUMPER by JEFFERSON, KIKI			
09:27				REBOUND (DEF) by POLLARD, NYLA
09:12				MISSED LAYUP by ROGERS, GABBY
09:05	REBOUND (DEF) by SMALLS, KAMIAH			
09:02	GOOD! LAYUP by BARRIER, LEXIE [PNT]	28-33	V 5	
09:02	ASSIST by SMALLS, KAMIAH			
08:46				MISSED JUMPER by ROGERS, GABBY
08:42	REBOUND (DEF) by JEFFERSON, KIKI			
08:19	MISSED JUMPER by SMALLS, KAMIAH			
08:18				REBOUND (DEF) by ROGERS, GABBY
08:18	FOUL (PERSONAL) by COOPER-WILLIAMS, KAYLA			
08:18	SUB OUT: COOPER-WILLIAMS, KAYLA			
08:18	SUB IN: TUCKER, RAYNE			
08:05				MISSED LAYUP by POLLARD, NYLA
08:02	REBOUND (DEF) by SMALLS, KAMIAH			
07:50	GOOD! LAYUP by BENITEZ, JACKIE	28-35	V 7	
07:50	ASSIST by JEFFERSON, KIKI			
07:24	FOUL (PERSONAL) by JEFFERSON, KIKI			
07:24		29-35	V 6	GOOD! FT by REYNOLDS, VICTORIA
07:24		30-35	V 5	GOOD! FT by REYNOLDS, VICTORIA
06:57	MISSED LAYUP by BARRIER, LEXIE			
06:56				REBOUND (DEF) by POLLARD, NYLA
06:56	FOUL (PERSONAL) by BARRIER, LEXIE			
06:27	FOUL (PERSONAL) by BARRIER, LEXIE			
06:27	SUB OUT: BARRIER, LEXIE			
06:27	SUB OUT: JEFFERSON, KIKI			
06:27	SUB IN: CARODINE, JAYLIN			
06:27	SUB IN: GREEN, MADISON			
06:27		31-35	V 4	GOOD! FT by REYNOLDS, VICTORIA
06:27				MISSED FT by REYNOLDS, VICTORIA
06:23	REBOUND (DEF) by CARODINE, JAYLIN			
06:05				FOUL (PERSONAL) by HODGSON, EVA
05:58	MISSED 3PTR by GREEN, MADISON			
05:57	REBOUND (OFF) by TEAM			
05:57				FOUL (PERSONAL) by BELLAMY, BRE
05:48	GOOD! LAYUP by BENITEZ, JACKIE	31-37	V 6	
05:29	FOUL (PERSONAL) by BENITEZ, JACKIE			
05:29		32-37	V 5	GOOD! FT by HODGSON, EVA
05:29		33-37	V 4	GOOD! FT by HODGSON, EVA
05:29				SUB OUT: ROGERS, GABBY
05:29				SUB IN: EICHNER, BAILEY
05:16	GOOD! LAYUP by CARODINE, JAYLIN	33-39	V 6	
05:16	ASSIST by GREEN, MADISON			
05:03	FOUL (PERSONAL) by BENITEZ, JACKIE			
05:03		34-39	V 5	GOOD! FT by HODGSON, EVA
05:03		35-39	V 4	GOOD! FT by HODGSON, EVA
04:50				FOUL (PERSONAL) by HODGSON, EVA
04:50				
04:47	GOOD! LAYUP by SMALLS, KAMIAH	35-41	V 6	
04:47	ASSIST by GREEN, MADISON			
04:27		37-41	V 4	GOOD! LAYUP by BELLAMY, BRE
04:27				ASSIST by POLLARD, NYLA
04:05	MISSED JUMPER by GREEN, MADISON			
04:01				REBOUND (DEF) by EICHNER, BAILEY
03:50				MISSED 3PTR by POLLARD, NYLA
03:46				REBOUND (OFF) by BELLAMY, BRE
03:44				MISSED 3PTR by HODGSON, EVA
03:40				REBOUND (OFF) by REYNOLDS, VICTORIA

Time	VISITORS: James Madison	Score	Margin	HOME: William Mary
03:36		39-41	V 2	GOOD! LAYUP by EICHNER, BAILEY
03:36				ASSIST by HODGSON, EVA
03:36	FOUL (PERSONAL) by CARODINE, JAYLIN			
03:36	SUB OUT: TUCKER, RAYNE			
03:36	SUB OUT: BENITEZ, JACKIE			
03:36	SUB IN: JEFFERSON, KIKI			
03:36	SUB IN: COOPER-WILLIAMS, KAYLA			
03:36		40-41	V 1	GOOD! FT by EICHNER, BAILEY
03:19	MISSED 3PTR by GREEN, MADISON			
03:17	REBOUND (OFF) by TEAM			
02:58				FOUL (PERSONAL) by BELLAMY, BRE
02:58	MISSED FT by GREEN, MADISON			
02:58	REBOUND (OFF) by TEAM			
02:58	MISSED FT by GREEN, MADISON			
02:56	REBOUND (OFF) by CARODINE, JAYLIN			
02:55	TURNOVER (LOSTBALL) by CARODINE, JAYLIN			
02:55				STEAL by REYNOLDS, VICTORIA
02:46				MISSED LAYUP by POLLARD, NYLA
02:46	BLOCK by JEFFERSON, KIKI			
02:46				REBOUND (OFF) by TEAM
02:33	FOUL (PERSONAL) by GREEN, MADISON			
02:33	SUB OUT: CARODINE, JAYLIN			
02:33	SUB IN: MERRITT, DEVON			
02:33				MISSED FT by EICHNER, BAILEY
02:33				REBOUND (OFF) by TEAM
02:33				TURNOVER (LANEVIOLATION) by BELLAMY, BRE
02:33	SUB OUT: GREEN, MADISON			
02:33	SUB IN: BENITEZ, JACKIE			
02:27	GOOD! LAYUP by COOPER-WILLIAMS, KAYLA [PNT]	40-43	V 3	
02:27	ASSIST by MERRITT, DEVON			
01:54				MISSED LAYUP by BELLAMY, BRE
01:54				REBOUND (OFF) by TEAM
01:54				TURNOVER (SHOTCLOCK) by TEAM
01:40	MISSED JUMPER by MERRITT, DEVON			
01:36				REBOUND (DEF) by BELLAMY, BRE
01:17				MISSED LAYUP by HODGSON, EVA
01:17	REBOUND (DEF) by TEAM			
01:05	GOOD! 3PTR by SMALLS, KAMIAH	40-46	V 6	
01:05	ASSIST by JEFFERSON, KIKI			
00:43				MISSED LAYUP by REYNOLDS, VICTORIA
00:43	REBOUND (DEF) by COOPER-WILLIAMS, KAYLA			
00:42				SUB OUT: BELLAMY, BRE
00:42				SUB IN: WAGNER, SYDNEY
00:25	GOOD! LAYUP by COOPER-WILLIAMS, KAYLA	40-48	V 8	
00:25	ASSIST by JEFFERSON, KIKI			
00:25				FOUL (PERSONAL) by EICHNER, BAILEY
00:25	SUB OUT: MERRITT, DEVON			
00:25	SUB IN: TUCKER, RAYNE			
00:25	GOOD! FT by COOPER-WILLIAMS, KAYLA	40-49	V 9	
00:25	SUB OUT: COOPER-WILLIAMS, KAYLA			
00:25	SUB IN: CARODINE, JAYLIN			
00:06				MISSED 3PTR by POLLARD, NYLA
00:04	REBOUND (DEF) by SMALLS, KAMIAH			
00:04				FOUL (PERSONAL) by HODGSON, EVA
00:04	GOOD! FT by SMALLS, KAMIAH	40-50	V 10	
00:04	MISSED FT by SMALLS, KAMIAH			
00:03	REBOUND (OFF) by CARODINE, JAYLIN			
00:03	MISSED LAYUP by CARODINE, JAYLIN			
00:03	REBOUND (OFF) by SMALLS, KAMIAH			

James Madison 50, William Mary 40

Points from (This Period)	JMU	WM
In the Paint	14	4
Off Turns	2	0
2nd Chance	2	3
Fast Break	0	0
Bench	2	5

**Official Box Score**  
**James Madison vs William Mary**  
**Fourth Quarter Statistics Only**  
**March 07, 2020 at Kaplan Arena (Kaplan Arena) - Williamsburg**



### James Madison 17

No.	Player	S	Pts	FG	3FG	FT	OR	DR	TR	PF	A	TO	Blk	Stl	Min	+/-
03	SMALLS, KAMIAH	G	2	0-1	0-1	2-2	0	0	0	0	1	0	0	0	7	-1
15	BARRIER, LEXIE	G	2	1-4	0-1	0-0	0	2	2	0	0	0	1	0	8	5
30	JEFFERSON, KIKI	G	4	1-2	0-0	2-2	1	2	3	0	0	0	0	0	6	4
31	COOPER-WILLIAMS, KAYLA	C	0	0-0	0-0	0-0	0	3	3	0	0	0	0	0	9	4
55	BENITEZ, JACKIE	G	7	3-4	1-2	0-0	0	0	0	1	0	0	0	0	9	4
00	OPPENHEIMER, NIKKI	G	0	0-0	0-0	0-0	0	0	0	1	0	0	0	0	1	0
02	CARODINE, JAYLIN	G	0	0-0	0-0	0-0	0	0	0	0	0	0	0	0	1	0
04	GREEN, MADISON	G	2	1-1	0-0	0-0	0	1	1	0	0	0	0	0	4	7
21	TUCKER, RAYNE	F	0	0-0	0-0	0-0	0	0	0	1	0	0	0	0	3	1
42	MERRITT, DEVON	F	0	0-1	0-0	0-0	0	0	0	1	0	0	0	0	3	-4
TEAM							1	0	1	0		0				
<b>TOTALS</b>			<b>17</b>	<b>6-13</b>	<b>1-4</b>	<b>4-4</b>	<b>2</b>	<b>8</b>	<b>10</b>	<b>4</b>	<b>1</b>	<b>0</b>	<b>1</b>	<b>0</b>	<b>50</b>	

*Shooting By Period*

Period	FG	FG%	3FG	3FG%	FT	FT%
Game	23-58	39.7%	4-17	23.5%	17-24	70.8%

*Deadball Rebounds: 3,0*

### William Mary 13

No.	Player	S	Pts	FG	3FG	FT	OR	DR	TR	PF	A	TO	Blk	Stl	Min	+/-
03	TAYLOR, ASHLEY	G	0	0-1	0-1	0-0	0	0	0	0	0	0	0	0	1	0
10	HODGSON, EVA	G	5	2-4	0-0	1-2	0	0	0	0	1	1	0	0	10	-4
11	POLLARD, NYLA	G	2	0-0	0-0	2-2	1	1	2	0	0	0	0	0	10	-4
25	ROGERS, GABBY	C	0	0-1	0-0	0-0	0	1	1	0	1	0	0	0	6	-3
30	REYNOLDS, VICTORIA	F	3	1-2	1-1	0-0	0	0	0	0	0	0	0	0	9	-4
01	WAGNER, SYDNEY	G	0	0-1	0-1	0-0	0	0	0	1	0	0	0	0	4	1
05	GILLIAM, CHANIQWA	G	0	0-0	0-0	0-0	0	0	0	0	0	0	0	0	0	0
20	BELLAMY, BRE	F	3	1-3	1-1	0-0	1	1	2	0	0	0	0	0	7	-5
21	EICHNER, BAILEY	F	0	0-1	0-0	0-0	0	0	0	1	0	0	0	0	4	-1
TEAM							0	2	2	0		0				
<b>TOTALS</b>			<b>13</b>	<b>4-13</b>	<b>2-4</b>	<b>3-4</b>	<b>2</b>	<b>5</b>	<b>7</b>	<b>2</b>	<b>2</b>	<b>1</b>	<b>0</b>	<b>0</b>	<b>50</b>	

*Shooting By Period*

Period	FG	FG%	3FG	3FG%	FT	FT%
Game	14-50	28.0%	5-17	29.4%	20-24	83.3%

*Deadball Rebounds: 3,0*

Game Notes:

Officials: Daryl Humphrey, Mark Hardcastle, Dan Outlaw  
Attendance: 752

Start Time: 02:05 PM ET

End Time: 03:57 PM ET

Game Duration: 1:51

Conference Game;

Score	1st	2nd	3rd	4th	TOT
JMU	12	19	19	17	<b>67</b>
WM	18	10	12	13	<b>53</b>

Points from (This Period)	JMU	WM
In the Paint	8	4
Off Turns	0	0
2nd Chance	2	3
Fast Break	0	0
Bench	2	3

**Official Play-By-Play**  
**James Madison vs William Mary**  
**Fourth Quarter**  
**March 07, 2020 at Kaplan Arena (Kaplan Arena) - Williamsburg**



**Period 4**

**Starters:**

**James Madison:** 3 SMALLS,KAMIAH (G); 15 BARRIER,LEXIE (G); 30 JEFFERSON,KIKI (G); 31 COOPER-WILLIAMS,KAYLA (C); 55 BENITEZ,JACKIE (G);  
**William Mary:** 3 TAYLOR,ASHLEY (G); 10 HODGSON,EVA (G); 11 POLLARD,NYLA (G); 25 ROGERS,GABBY (C); 30 REYNOLDS,VICTORIA (F);

Time	VISITORS: James Madison	Score	Margin	HOME: William Mary
10:00	SUB OUT: CARODINE, JAYLIN			
10:00	SUB IN: COOPER-WILLIAMS, KAYLA			
09:24				MISSED 3PTR by WAGNER, SYDNEY
09:20				REBOUND (OFF) by POLLARD, NYLA
09:11		43-50	V 7	GOOD! 3PTR by REYNOLDS, VICTORIA
09:11				ASSIST by HODGSON, EVA
08:55				FOUL (PERSONAL) by WAGNER, SYDNEY
08:55				SUB OUT: WAGNER, SYDNEY
08:55				SUB IN: BELLAMY, BRE
08:55	GOOD! FT by JEFFERSON, KIKI	43-51	V 8	
08:55	GOOD! FT by JEFFERSON, KIKI	43-52	V 9	
08:43				MISSED LAYUP by EICHNER, BAILEY
08:40	REBOUND (DEF) by JEFFERSON, KIKI			
08:27				FOUL (PERSONAL) by EICHNER, BAILEY
08:27				SUB OUT: EICHNER, BAILEY
08:27				SUB IN: ROGERS, GABBY
08:27	GOOD! FT by SMALLS, KAMIAH	43-53	V 10	
08:27	GOOD! FT by SMALLS, KAMIAH	43-54	V 11	
08:11	FOUL (PERSONAL) by TUCKER, RAYNE			
08:11	SUB OUT: TUCKER, RAYNE			
08:11	SUB IN: MERRITT, DEVON			
08:11		44-54	V 10	GOOD! FT by POLLARD, NYLA
08:11		45-54	V 9	GOOD! FT by POLLARD, NYLA
08:11	SUB OUT: JEFFERSON, KIKI			
08:11	SUB IN: BARRIER, LEXIE			
07:46	GOOD! LAYUP by BENITEZ, JACKIE [PNT]	45-56	V 11	
07:40				TURNOVER (BADPASS) by HODGSON, EVA
07:25	MISSED 3PTR by BARRIER, LEXIE			
07:24				REBOUND (DEF) by POLLARD, NYLA
07:24	FOUL (PERSONAL) by MERRITT, DEVON			
07:11		47-56	V 9	GOOD! LAYUP by HODGSON, EVA
06:41	MISSED JUMPER by MERRITT, DEVON			
06:37				REBOUND (DEF) by BELLAMY, BRE
06:30		49-56	V 7	GOOD! JUMPER by HODGSON, EVA [PNT]
06:10	GOOD! 3PTR by BENITEZ, JACKIE	49-59	V 10	
06:10	ASSIST by SMALLS, KAMIAH			
05:52		52-59	V 7	GOOD! 3PTR by BELLAMY, BRE
05:52				ASSIST by ROGERS, GABBY
05:20	MISSED 3PTR by SMALLS, KAMIAH			
05:16	REBOUND (OFF) by TEAM			
05:16	SUB OUT: SMALLS, KAMIAH			
05:16	SUB OUT: MERRITT, DEVON			
05:16	SUB IN: GREEN, MADISON			
05:16	SUB IN: JEFFERSON, KIKI			
05:03	MISSED LAYUP by BARRIER, LEXIE			
04:59	REBOUND (OFF) by JEFFERSON, KIKI			
04:59	GOOD! LAYUP by JEFFERSON, KIKI	52-61	V 9	
04:41	FOUL (PERSONAL) by BENITEZ, JACKIE			
04:41				
04:41		53-61	V 8	GOOD! FT by HODGSON, EVA
04:41				MISSED FT by HODGSON, EVA
04:37	REBOUND (DEF) by JEFFERSON, KIKI			
04:23	GOOD! LAYUP by BENITEZ, JACKIE	53-63	V 10	
03:57				MISSED LAYUP by HODGSON, EVA
03:54	REBOUND (DEF) by COOPER-WILLIAMS, KAYLA			
03:41	GOOD! LAYUP by GREEN, MADISON [PNT]	53-65	V 12	
03:25				MISSED JUMPER by ROGERS, GABBY
03:22	REBOUND (DEF) by COOPER-WILLIAMS, KAYLA			
03:00	MISSED LAYUP by JEFFERSON, KIKI			
02:55				REBOUND (DEF) by ROGERS, GABBY
02:47				MISSED LAYUP by BELLAMY, BRE
02:41				REBOUND (OFF) by BELLAMY, BRE
02:41				MISSED LAYUP by BELLAMY, BRE
02:41	REBOUND (DEF) by BARRIER, LEXIE			
02:36	TIMEOUT 30SEC			
02:36				SUB OUT: BELLAMY, BRE
02:36				SUB OUT: ROGERS, GABBY
02:36				SUB IN: WAGNER, SYDNEY
02:36				SUB IN: EICHNER, BAILEY
02:36	SUB OUT: JEFFERSON, KIKI			

Time	VISITORS: James Madison	Score	Margin	HOME: William Mary
02:36	SUB IN: SMALLS, KAMIAH			
02:18	MISSED JUMPER by BARRIER, LEXIE			
02:18				
02:05				REBOUND (DEF) by TEAM
02:05				MISSED LAYUP by HODGSON, EVA
02:00	BLOCK by BARRIER, LEXIE			
02:00	REBOUND (DEF) by BARRIER, LEXIE			
01:39	GOOD! JUMPER by BARRIER, LEXIE	53-67	V 14	
01:28				
01:28				TIMEOUT 30SEC
01:28	SUB OUT: GREEN, MADISON			
01:28	SUB IN: JEFFERSON, KIKI			
01:09				
01:09				MISSED LAYUP by REYNOLDS, VICTORIA
01:06	REBOUND (DEF) by COOPER-WILLIAMS, KAYLA			
00:42	MISSED 3PTR by BENITEZ, JACKIE			
00:40				
00:40				REBOUND (DEF) by TEAM
00:40				SUB OUT: REYNOLDS, VICTORIA
00:40				SUB IN: TAYLOR, ASHLEY
00:40	SUB OUT: SMALLS, KAMIAH			
00:40	SUB OUT: BARRIER, LEXIE			
00:40	SUB OUT: COOPER-WILLIAMS, KAYLA			
00:40	SUB OUT: BENITEZ, JACKIE			
00:40	SUB IN: OPPENHEIMER, NIKKI			
00:40	SUB IN: CARODINE, JAYLIN			
00:40	SUB IN: GREEN, MADISON			
00:40	SUB IN: TUCKER, RAYNE			
00:31	FOUL (PERSONAL) by OPPENHEIMER, NIKKI			
00:19				
00:19				MISSED 3PTR by TAYLOR, ASHLEY
00:15	REBOUND (DEF) by GREEN, MADISON			
00:11				
00:11				SUB OUT: TAYLOR, ASHLEY
00:11				SUB IN: BELLAMY, BRE

James Madison 67, William Mary 53

Points from (This Period)	JMU	WM
In the Paint	8	4
Off Turns	0	0
2nd Chance	2	3
Fast Break	0	0
Bench	2	3



**Official Scoring/Possession Reference Chart**  
**James Madison vs William Mary**  
**Period 1**  
**March 07, 2020 at Kaplan Arena (Kaplan Arena) - Williamsburg**



**Period 1**

**Starters:**

**James Madison:** 3 SMALLS,KAMIAH (G); 15 BARRIER,LEXIE (G); 30 JEFFERSON,KIKI (G); 31 COOPER-WILLIAMS,KAYLA (C); 55 BENITEZ,JACKIE (G);

**William Mary:** 3 TAYLOR,ASHLEY (G); 10 HODGSON,EVA (G); 11 POLLARD,NYLA (G); 25 ROGERS,GABBY (C); 30 REYNOLDS,VICTORIA (F);

Time	VISITORS: James Madison	Score	Margin	HOME: William Mary
09:50	GOOD! FT by BENITEZ, JACKIE	0-1	V 1	
09:50	GOOD! FT by BENITEZ, JACKIE	0-2	V 2	
09:02		2-2	T	GOOD! LAYUP by HODGSON, EVA
08:42	GOOD! LAYUP by COOPER-WILLIAMS, KAYLA	2-4	V 2	
07:14	GOOD! LAYUP by SMALLS, KAMIAH	2-6	V 4	
05:18		4-6	V 2	GOOD! JUMPER by REYNOLDS, VICTORIA [PNT]
04:52		5-6	V 1	GOOD! FT by HODGSON, EVA [FB]
04:52		6-6	T	GOOD! FT by HODGSON, EVA [FB]
04:26	GOOD! LAYUP by TUCKER, RAYNE	6-8	V 2	
04:26	GOOD! FT by TUCKER, RAYNE	6-9	V 3	
03:57		9-9	T	GOOD! 3PTR by REYNOLDS, VICTORIA
02:59		10-9	H 1	GOOD! FT by REYNOLDS, VICTORIA
02:55		13-9	H 4	GOOD! 3PTR by HODGSON, EVA
02:02	GOOD! LAYUP by GREEN, MADISON [FB]	13-11	H 2	
01:45		16-11	H 5	GOOD! 3PTR by WAGNER, SYDNEY
00:37		17-11	H 6	GOOD! FT by REYNOLDS, VICTORIA [FB]
00:37		18-11	H 7	GOOD! FT by REYNOLDS, VICTORIA [FB]
00:29	GOOD! FT by MERRITT, DEVON	18-12	H 6	

**James Madison 12, William Mary 18**

**Official Scoring/Possession Reference Chart**  
**James Madison vs William Mary**  
**Period 2**  
**March 07, 2020 at Kaplan Arena (Kaplan Arena) - Williamsburg**



**Period 2**

**Starters:**

**James Madison:** 3 SMALLS,KAMIAH (G); 15 BARRIER,LEXIE (G); 30 JEFFERSON,KIKI (G); 31 COOPER-WILLIAMS,KAYLA (C); 55 BENITEZ,JACKIE (G);

**William Mary:** 3 TAYLOR,ASHLEY (G); 10 HODGSON,EVA (G); 11 POLLARD,NYLA (G); 25 ROGERS,GABBY (C); 30 REYNOLDS,VICTORIA (F);

Time	VISITORS: James Madison	Score	Margin	HOME: William Mary
08:35		20-12	H 8	GOOD! JUMPER by ROGERS, GABBY
08:20	GOOD! LAYUP by JEFFERSON, KIKI [PNT]	20-14	H 6	
07:38	GOOD! 3PTR by JEFFERSON, KIKI	20-17	H 3	
07:01	GOOD! FT by GREEN, MADISON	20-18	H 2	
07:01	GOOD! FT by GREEN, MADISON	20-19	H 1	
06:19	GOOD! FT by GREEN, MADISON	20-20	T	
05:46		22-20	H 2	GOOD! LAYUP by REYNOLDS, VICTORIA [FB]
04:54	GOOD! FT by GREEN, MADISON	22-21	H 1	
04:54	GOOD! FT by GREEN, MADISON	22-22	T	
04:24	GOOD! LAYUP by JEFFERSON, KIKI [PNT]	22-24	V 2	
04:06		23-24	V 1	GOOD! FT by REYNOLDS, VICTORIA
04:06		24-24	T	GOOD! FT by REYNOLDS, VICTORIA
03:44	GOOD! 3PTR by BENITEZ, JACKIE	24-27	V 3	
03:13	GOOD! JUMPER by JEFFERSON, KIKI	24-29	V 5	
01:52		26-29	V 3	GOOD! JUMPER by HODGSON, EVA [FB/PNT]
01:08		27-29	V 2	GOOD! FT by HODGSON, EVA
01:08		28-29	V 1	GOOD! FT by HODGSON, EVA
00:02	GOOD! FT by JEFFERSON, KIKI [FB]	28-30	V 2	
00:02	GOOD! FT by JEFFERSON, KIKI [FB]	28-31	V 3	

**James Madison 31, William Mary 28**

**Official Scoring/Possession Reference Chart**  
**James Madison vs William Mary**  
**Period 3**  
**March 07, 2020 at Kaplan Arena (Kaplan Arena) - Williamsburg**



**Period 3**

**Starters:**

**James Madison:** 3 SMALLS,KAMIAH (G); 15 BARRIER,LEXIE (G); 30 JEFFERSON,KIKI (G); 31 COOPER-WILLIAMS,KAYLA (C); 55 BENITEZ,JACKIE (G);

**William Mary:** 3 TAYLOR,ASHLEY (G); 10 HODGSON,EVA (G); 11 POLLARD,NYLA (G); 25 ROGERS,GABBY (C); 30 REYNOLDS,VICTORIA (F);

Time	VISITORS: James Madison	Score	Margin	HOME: William Mary
09:02	GOOD! LAYUP by BARRIER, LEXIE [PNT]	28-33	V 5	
07:50	GOOD! LAYUP by BENITEZ, JACKIE	28-35	V 7	
07:24		29-35	V 6	GOOD! FT by REYNOLDS, VICTORIA
07:24		30-35	V 5	GOOD! FT by REYNOLDS, VICTORIA
06:27		31-35	V 4	GOOD! FT by REYNOLDS, VICTORIA
05:48	GOOD! LAYUP by BENITEZ, JACKIE	31-37	V 6	
05:29		32-37	V 5	GOOD! FT by HODGSON, EVA
05:29		33-37	V 4	GOOD! FT by HODGSON, EVA
05:16	GOOD! LAYUP by CARODINE, JAYLIN	33-39	V 6	
05:03		34-39	V 5	GOOD! FT by HODGSON, EVA
05:03		35-39	V 4	GOOD! FT by HODGSON, EVA
04:47	GOOD! LAYUP by SMALLS, KAMIAH	35-41	V 6	
04:27		37-41	V 4	GOOD! LAYUP by BELLAMY, BRE
03:36		39-41	V 2	GOOD! LAYUP by EICHNER, BAILEY
03:36		40-41	V 1	GOOD! FT by EICHNER, BAILEY
02:27	GOOD! LAYUP by COOPER-WILLIAMS, KAYLA [PNT]	40-43	V 3	
01:05	GOOD! 3PTR by SMALLS, KAMIAH	40-46	V 6	
00:25	GOOD! LAYUP by COOPER-WILLIAMS, KAYLA	40-48	V 8	
00:25	GOOD! FT by COOPER-WILLIAMS, KAYLA	40-49	V 9	
00:04	GOOD! FT by SMALLS, KAMIAH	40-50	V 10	

**James Madison 50, William Mary 40**

**Official Scoring/Possession Reference Chart**  
**James Madison vs William Mary**  
**Period 4**  
**March 07, 2020 at Kaplan Arena (Kaplan Arena) - Williamsburg**



**Period 4**

**Starters:**

**James Madison:** 3 SMALLS,KAMIAH (G); 15 BARRIER,LEXIE (G); 30 JEFFERSON,KIKI (G); 31 COOPER-WILLIAMS,KAYLA (C); 55 BENITEZ,JACKIE (G);

**William Mary:** 3 TAYLOR,ASHLEY (G); 10 HODGSON,EVA (G); 11 POLLARD,NYLA (G); 25 ROGERS,GABBY (C); 30 REYNOLDS,VICTORIA (F);

Time	VISITORS: James Madison	Score	Margin	HOME: William Mary
09:11		43-50	V 7	GOOD! 3PTR by REYNOLDS, VICTORIA
08:55	GOOD! FT by JEFFERSON, KIKI	43-51	V 8	
08:55	GOOD! FT by JEFFERSON, KIKI	43-52	V 9	
08:27	GOOD! FT by SMALLS, KAMIAH	43-53	V 10	
08:27	GOOD! FT by SMALLS, KAMIAH	43-54	V 11	
08:11		44-54	V 10	GOOD! FT by POLLARD, NYLA
08:11		45-54	V 9	GOOD! FT by POLLARD, NYLA
07:46	GOOD! LAYUP by BENITEZ, JACKIE [PNT]	45-56	V 11	
07:11		47-56	V 9	GOOD! LAYUP by HODGSON, EVA
06:30		49-56	V 7	GOOD! JUMPER by HODGSON, EVA [PNT]
06:10	GOOD! 3PTR by BENITEZ, JACKIE	49-59	V 10	
05:52		52-59	V 7	GOOD! 3PTR by BELLAMY, BRE
04:59	GOOD! LAYUP by JEFFERSON, KIKI	52-61	V 9	
04:41		53-61	V 8	GOOD! FT by HODGSON, EVA
04:23	GOOD! LAYUP by BENITEZ, JACKIE	53-63	V 10	
03:41	GOOD! LAYUP by GREEN, MADISON [PNT]	53-65	V 12	
01:39	GOOD! JUMPER by BARRIER, LEXIE	53-67	V 14	

**James Madison 67, William Mary 53**

**Official Substitutions Log**  
**James Madison vs William Mary**  
**Period 1**  
**March 07, 2020 at Kaplan Arena (Kaplan Arena) - Williamsburg**



<b>VISITORS: James Madison</b>	<b>Time</b>	<b>Score</b>	<b>HOME: William Mary</b>
3 SMALLS,KAMIAH			3 TAYLOR,ASHLEY
15 BARRIER,LEXIE			10 HODGSON,EVA
30 JEFFERSON,KIKI			11 POLLARD,NYLA
31 COOPER-WILLIAMS,KAYLA			25 ROGERS,GABBY
55 BENITEZ,JACKIE			30 REYNOLDS,VICTORIA
	06:43	6-2	SUB OUT: TAYLOR,ASHLEY
	06:43		SUB OUT: ROGERS,GABBY
	06:43		SUB IN: BELLAMY,BRE
	06:43		SUB IN: EICHNER,BAILEY
SUB OUT: 15 BARRIER,LEXIE	05:35	6-2	
SUB OUT: 30 JEFFERSON,KIKI	05:35		
SUB OUT: 31 COOPER-WILLIAMS,KAYLA	05:35		
SUB IN: 2 CARODINE,JAYLIN	05:35		
SUB IN: 4 GREEN,MADISON	05:35		
SUB IN: 21 TUCKER,RAYNE	05:35		
SUB OUT: 3 SMALLS,KAMIAH	03:33	9-9	
SUB IN: 30 JEFFERSON,KIKI	03:33		
	03:12	9-9	SUB OUT: POLLARD,NYLA
	03:12		SUB IN: WAGNER,SYDNEY
SUB OUT: 2 CARODINE,JAYLIN	01:42	11-16	
SUB OUT: 55 BENITEZ,JACKIE	01:42		
SUB IN: 15 BARRIER,LEXIE	01:42		
SUB IN: 42 MERRITT,DEVON	01:42		
	01:06	11-16	SUB OUT: HODGSON,EVA
	01:06		SUB OUT: BELLAMY,BRE
	01:06		SUB IN: GILLIAM,CHANIQWA
	01:06		SUB IN: POLLARD,NYLA
	00:50	11-16	SUB OUT: EICHNER,BAILEY
	00:50		SUB IN: ROGERS,GABBY
SUB OUT: 30 JEFFERSON,KIKI	00:50		
SUB IN: 3 SMALLS,KAMIAH	00:50		

**James Madison 12, William Mary 18**

**Official Substitutions Log**  
**James Madison vs William Mary**  
**Period 2**  
**March 07, 2020 at Kaplan Arena (Kaplan Arena) - Williamsburg**



VISITORS: James Madison	Time	Score	HOME: William Mary
3 SMALLS,KAMIAH			3 TAYLOR,ASHLEY
15 BARRIER,LEXIE			10 HODGSON,EVA
30 JEFFERSON,KIKI			11 POLLARD,NYLA
31 COOPER-WILLIAMS,KAYLA			25 ROGERS,GABBY
55 BENITEZ,JACKIE			30 REYNOLDS,VICTORIA
	10:00	-	SUB OUT: WAGNER,SYDNEY
	10:00		SUB OUT: GILLIAM,CHANIQWA
	10:00		SUB IN: HODGSON,EVA
	10:00		SUB IN: BELLAMY,BRE
SUB OUT: 21 TUCKER,RAYNE	10:00		
SUB IN: 55 BENITEZ,JACKIE	10:00		
SUB OUT: 3 SMALLS,KAMIAH	09:19	-	
SUB IN: 30 JEFFERSON,KIKI	09:19		
SUB OUT: 42 MERRITT,DEVON	08:03	14-20	
SUB IN: 21 TUCKER,RAYNE	08:03		
	07:01	17-20	SUB OUT: POLLARD,NYLA
	07:01		SUB OUT: ROGERS,GABBY
	07:01		SUB IN: WAGNER,SYDNEY
	07:01		SUB IN: EICHNER,BAILEY
	04:54	20-22	SUB OUT: WAGNER,SYDNEY
	04:54		SUB IN: GILLIAM,CHANIQWA
SUB OUT: 15 BARRIER,LEXIE	04:54		
SUB IN: 2 CARODINE,JAYLIN	04:54		
	04:06	24-22	SUB OUT: BELLAMY,BRE
	04:06		SUB IN: WAGNER,SYDNEY
	03:29	27-24	SUB OUT: GILLIAM,CHANIQWA
	03:29		SUB IN: BELLAMY,BRE
	02:46	29-24	SUB OUT: EICHNER,BAILEY
	02:46		SUB IN: ROGERS,GABBY
SUB OUT: 4 GREEN,MADISON	02:46		
SUB IN: 15 BARRIER,LEXIE	02:46		
SUB OUT: 21 TUCKER,RAYNE	01:08	29-26	
SUB OUT: 30 JEFFERSON,KIKI	01:08		
SUB IN: 4 GREEN,MADISON	01:08		
SUB IN: 42 MERRITT,DEVON	01:08		
	00:43	29-28	SUB OUT: REYNOLDS,VICTORIA
	00:43		SUB IN: EICHNER,BAILEY
SUB OUT: 2 CARODINE,JAYLIN	00:06	29-28	
SUB IN: 30 JEFFERSON,KIKI	00:06		
	00:02	29-28	SUB OUT: WAGNER,SYDNEY
	00:02		SUB IN: GILLIAM,CHANIQWA
SUB OUT: 15 BARRIER,LEXIE	00:02		
SUB IN: 2 CARODINE,JAYLIN	00:02		

**James Madison 31, William Mary 28**

**Official Substitutions Log**  
**James Madison vs William Mary**  
**Period 3**  
**March 07, 2020 at Kaplan Arena (Kaplan Arena) - Williamsburg**



VISITORS: James Madison	Time	Score	HOME: William Mary
3 SMALLS,KAMIAH			3 TAYLOR,ASHLEY
15 BARRIER,LEXIE			10 HODGSON,EVA
30 JEFFERSON,KIKI			11 POLLARD,NYLA
31 COOPER-WILLIAMS,KAYLA			25 ROGERS,GABBY
55 BENITEZ,JACKIE			30 REYNOLDS,VICTORIA
	10:00	-	SUB OUT: GILLIAM,CHANIQWA
	10:00		SUB OUT: EICHNER,BAILEY
	10:00		SUB IN: POLLARD,NYLA
	10:00		SUB IN: REYNOLDS,VICTORIA
SUB OUT: 2 CARODINE,JAYLIN	10:00		
SUB OUT: 4 GREEN,MADISON	10:00		
SUB OUT: 42 MERRITT,DEVON	10:00		
SUB IN: 3 SMALLS,KAMIAH	10:00		
SUB IN: 15 BARRIER,LEXIE	10:00		
SUB IN: 31 COOPER-WILLIAMS,KAYLA	10:00		
SUB OUT: 31 COOPER-WILLIAMS,KAYLA	08:18	33-28	
SUB IN: 21 TUCKER,RAYNE	08:18		
SUB OUT: 15 BARRIER,LEXIE	06:27	35-30	
SUB OUT: 30 JEFFERSON,KIKI	06:27		
SUB IN: 2 CARODINE,JAYLIN	06:27		
SUB IN: 4 GREEN,MADISON	06:27		
	05:29	37-33	SUB OUT: ROGERS,GABBY
	05:29		SUB IN: EICHNER,BAILEY
SUB OUT: 21 TUCKER,RAYNE	03:36	41-39	
SUB OUT: 55 BENITEZ,JACKIE	03:36		
SUB IN: 30 JEFFERSON,KIKI	03:36		
SUB IN: 31 COOPER-WILLIAMS,KAYLA	03:36		
SUB OUT: 2 CARODINE,JAYLIN	02:33	41-40	
SUB IN: 42 MERRITT,DEVON	02:33		
SUB OUT: 4 GREEN,MADISON	02:33		
SUB IN: 55 BENITEZ,JACKIE	02:33		
	00:42	46-40	SUB OUT: BELLAMY,BRE
	00:42		SUB IN: WAGNER,SYDNEY
SUB OUT: 42 MERRITT,DEVON	00:25	48-40	
SUB IN: 21 TUCKER,RAYNE	00:25		
SUB OUT: 31 COOPER-WILLIAMS,KAYLA	00:25		
SUB IN: 2 CARODINE,JAYLIN	00:25		

**James Madison 50, William Mary 40**

**Official Substitutions Log**  
**James Madison vs William Mary**  
**Period 4**  
**March 07, 2020 at Kaplan Arena (Kaplan Arena) - Williamsburg**



VISITORS: James Madison	Time	Score	HOME: William Mary
3 SMALLS,KAMIAH			3 TAYLOR,ASHLEY
15 BARRIER,LEXIE			10 HODGSON,EVA
30 JEFFERSON,KIKI			11 POLLARD,NYLA
31 COOPER-WILLIAMS,KAYLA			25 ROGERS,GABBY
55 BENITEZ,JACKIE			30 REYNOLDS,VICTORIA
SUB OUT: 2 CARODINE,JAYLIN	10:00	-	
SUB IN: 31 COOPER-WILLIAMS,KAYLA	10:00		
	08:55	50-43	SUB OUT: WAGNER,SYDNEY
	08:55		SUB IN: BELLAMY,BRE
	08:27	52-43	SUB OUT: EICHNER,BAILEY
	08:27		SUB IN: ROGERS,GABBY
SUB OUT: 21 TUCKER,RAYNE	08:11	54-43	
SUB IN: 42 MERRITT,DEVON	08:11		
SUB OUT: 30 JEFFERSON,KIKI	08:11		
SUB IN: 15 BARRIER,LEXIE	08:11		
SUB OUT: 3 SMALLS,KAMIAH	05:16	59-52	
SUB OUT: 42 MERRITT,DEVON	05:16		
SUB IN: 4 GREEN,MADISON	05:16		
SUB IN: 30 JEFFERSON,KIKI	05:16		
	02:36	65-53	SUB OUT: BELLAMY,BRE
	02:36		SUB OUT: ROGERS,GABBY
	02:36		SUB IN: WAGNER,SYDNEY
	02:36		SUB IN: EICHNER,BAILEY
SUB OUT: 30 JEFFERSON,KIKI	02:36		
SUB IN: 3 SMALLS,KAMIAH	02:36		
SUB OUT: 4 GREEN,MADISON	01:28	67-53	
SUB IN: 30 JEFFERSON,KIKI	01:28		
	00:40	67-53	SUB OUT: REYNOLDS,VICTORIA
	00:40		SUB IN: TAYLOR,ASHLEY
SUB OUT: 3 SMALLS,KAMIAH	00:40		
SUB OUT: 15 BARRIER,LEXIE	00:40		
SUB OUT: 31 COOPER-WILLIAMS,KAYLA	00:40		
SUB OUT: 55 BENITEZ,JACKIE	00:40		
SUB IN: 0 OPPENHEIMER,NIKKI	00:40		
SUB IN: 2 CARODINE,JAYLIN	00:40		
SUB IN: 4 GREEN,MADISON	00:40		
SUB IN: 21 TUCKER,RAYNE	00:40		
	00:11	67-53	SUB OUT: TAYLOR,ASHLEY
	00:11		SUB IN: BELLAMY,BRE

**James Madison 67, William Mary 53**

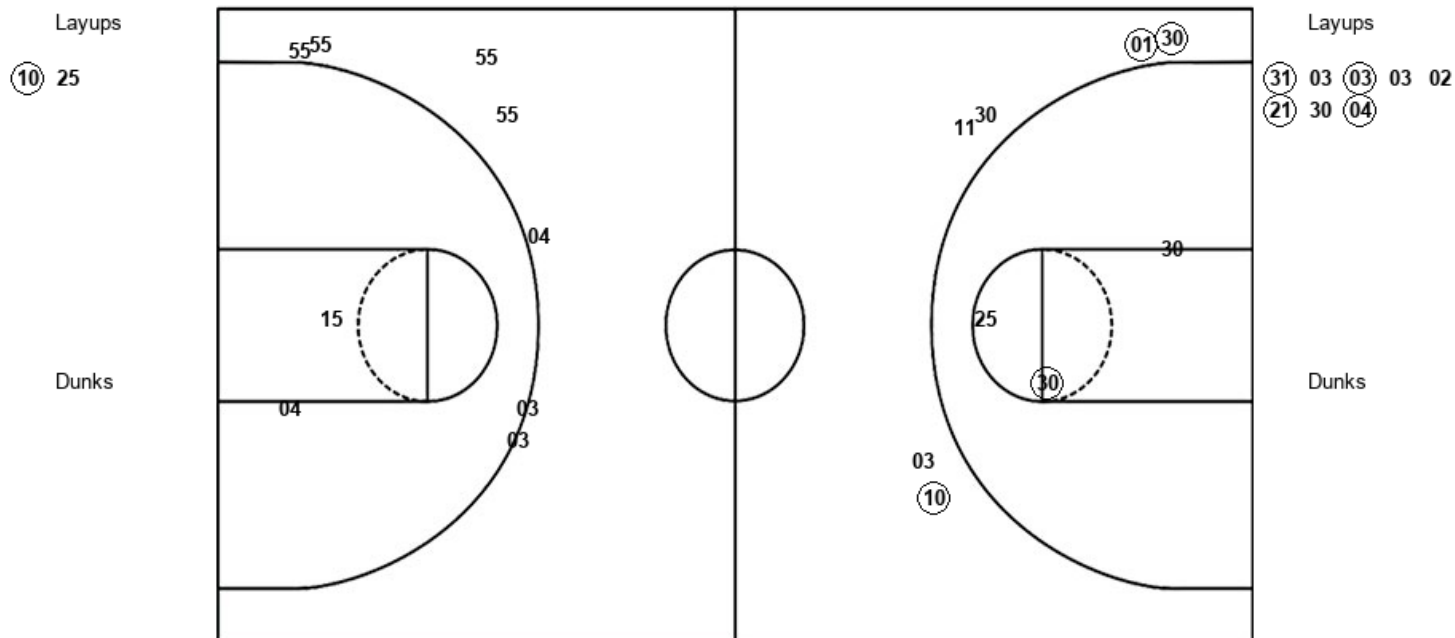


Official Shot Chart  
**James Madison vs William Mary**  
 PERIOD 1 Shots  
 March 07, 2020 at Kaplan Arena (Kaplan Arena) - Williamsburg



**William Mary**

**James Madison**



WM : Period 1	Made	Att	Pct
Layups	1	2	50.0
Dunks	0	0	0
2PT Field Goals	2	5	40.0
3PT Field Goals	3	6	50.0
<b>Total Field Goals</b>	<b>5</b>	<b>11</b>	<b>45.5</b>

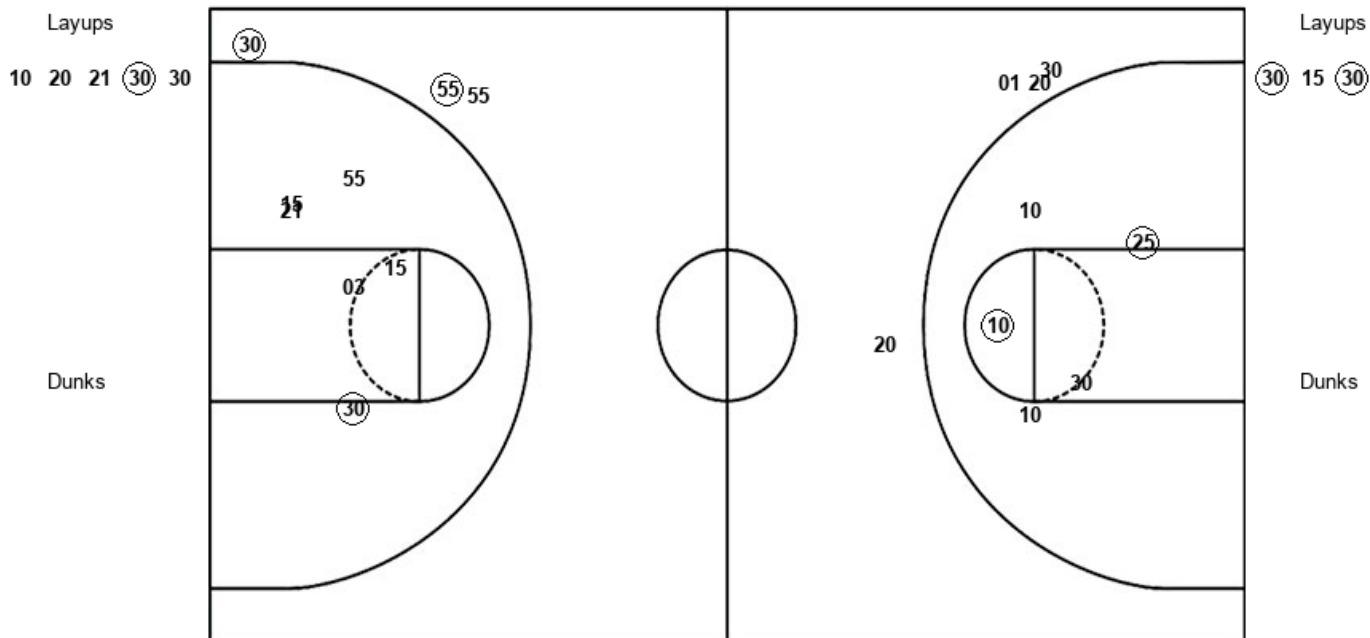
JMU : Period 1	Made	Att	Pct
Layups	4	8	50.0
Dunks	0	0	0
2PT Field Goals	4	10	40.0
3PT Field Goals	0	7	00.0
<b>Total Field Goals</b>	<b>4</b>	<b>17</b>	<b>23.5</b>

Official Shot Chart  
**James Madison vs William Mary**  
 PERIOD 2 Shots  
 March 07, 2020 at Kaplan Arena (Kaplan Arena) - Williamsburg



**William Mary**

**James Madison**



WM : Period 2	Made	Att	Pct
Layups	1	5	20.0
Dunks	0	0	0
2PT Field Goals	3	10	30.0
3PT Field Goals	0	4	00.0
<b>Total Field Goals</b>	<b>3</b>	<b>14</b>	<b>21.4</b>

JMU : Period 2	Made	Att	Pct
Layups	2	3	66.7
Dunks	0	0	0
2PT Field Goals	3	9	33.3
3PT Field Goals	2	3	66.7
<b>Total Field Goals</b>	<b>5</b>	<b>12</b>	<b>41.7</b>

Official Shot Chart  
**James Madison vs William Mary**  
 PERIOD 3 Shots  
 March 07, 2020 at Kaplan Arena (Kaplan Arena) - Williamsburg

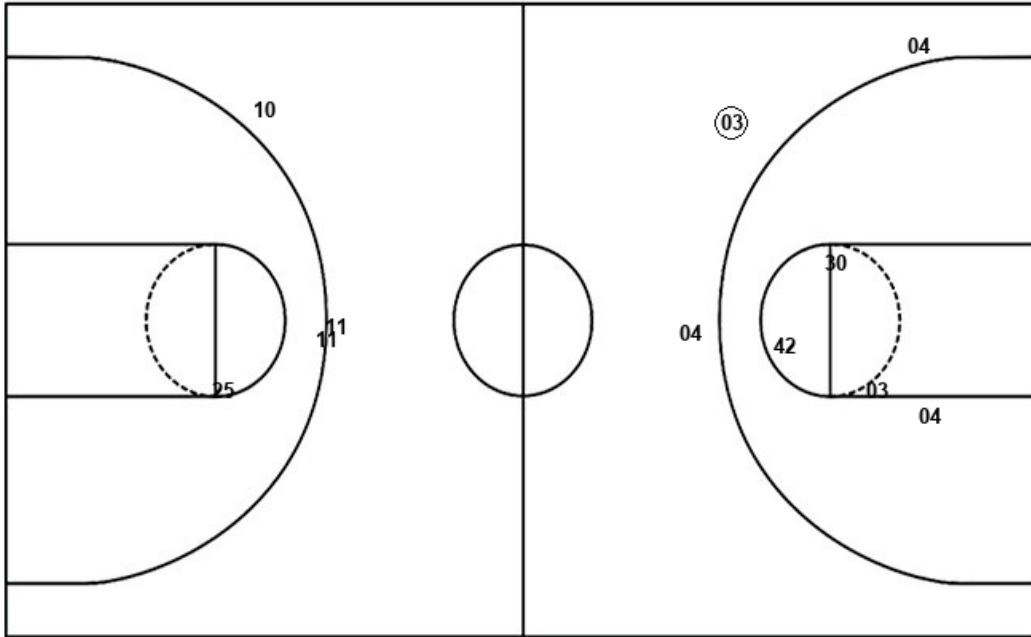


**William Mary**

**James Madison**

Layups  
 25 11 (20) (21) 11  
 20 10 30

Dunks



Layups  
 (15) (55) 15 (55) (02)  
 (03) (31) (31) 02

Dunks

WM : Period 3	Made	Att	Pct
Layups	2	8	25.0
Dunks	0	0	0
2PT Field Goals	2	9	22.2
3PT Field Goals	0	3	00.0
<b>Total Field Goals</b>	<b>2</b>	<b>12</b>	<b>16.7</b>

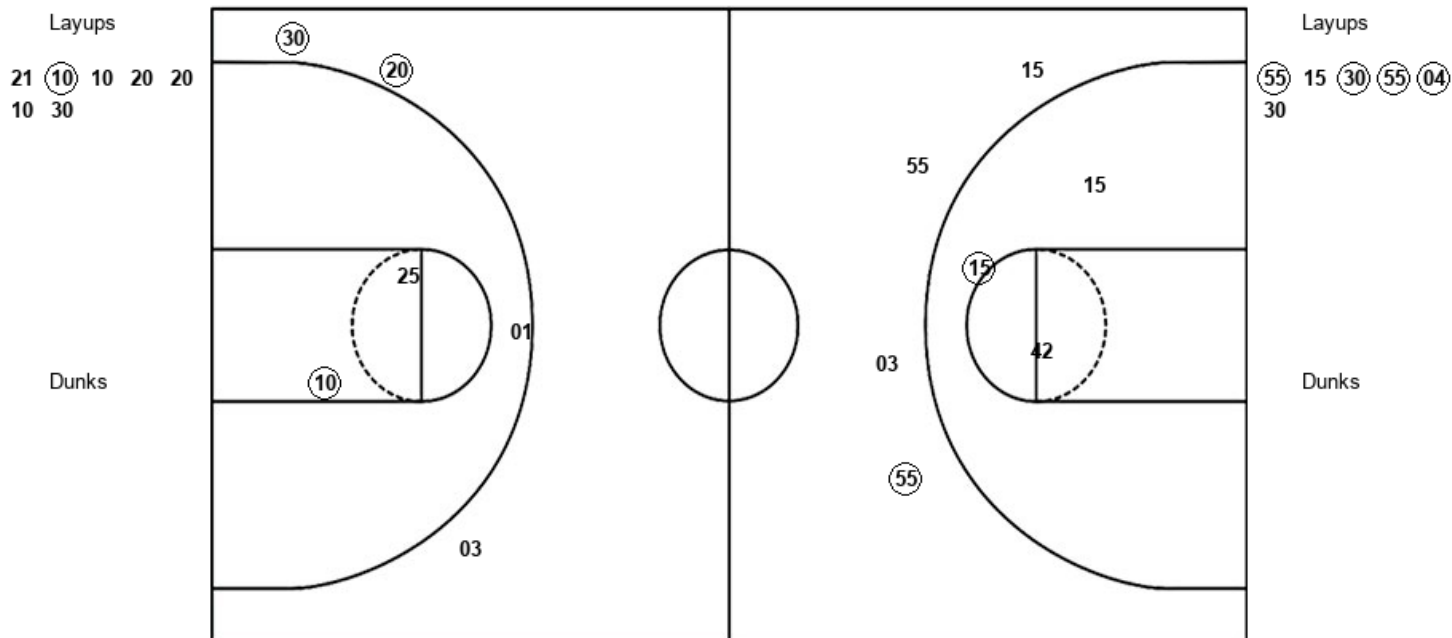
JMU : Period 3	Made	Att	Pct
Layups	7	9	77.8
Dunks	0	0	0
2PT Field Goals	7	13	53.8
3PT Field Goals	1	3	33.3
<b>Total Field Goals</b>	<b>8</b>	<b>16</b>	<b>50.0</b>

Official Shot Chart  
**James Madison vs William Mary**  
 PERIOD 4 Shots  
 March 07, 2020 at Kaplan Arena (Kaplan Arena) - Williamsburg



**William Mary**

**James Madison**



WM : Period 4	Made	Att	Pct
Layups	1	7	14.3
Dunks	0	0	0
2PT Field Goals	2	9	22.2
3PT Field Goals	2	4	50.0
<b>Total Field Goals</b>	<b>4</b>	<b>13</b>	<b>30.8</b>

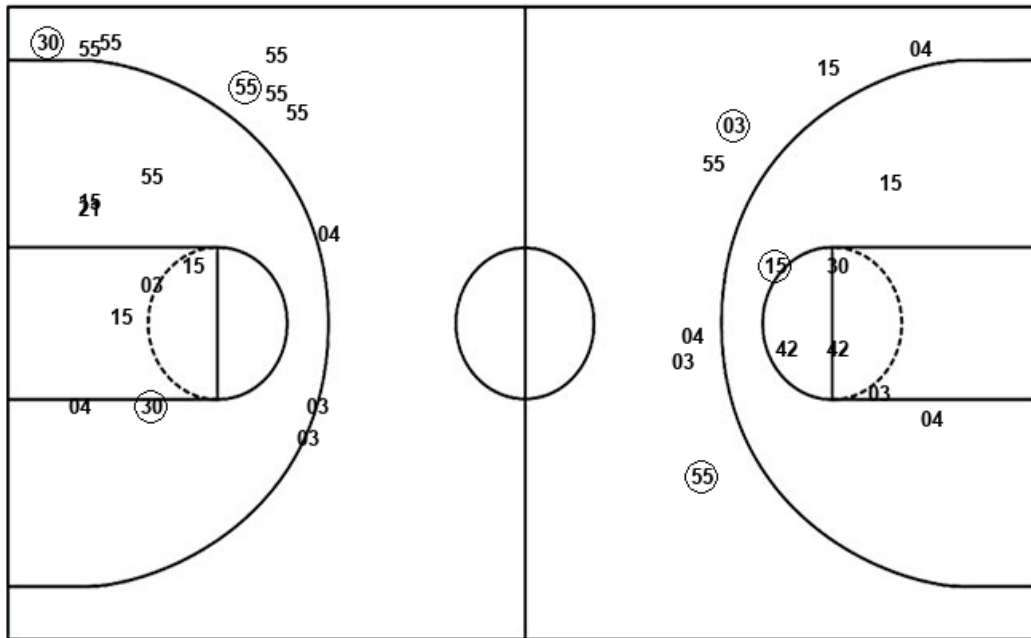
JMU : Period 4	Made	Att	Pct
Layups	4	6	66.7
Dunks	0	0	0
2PT Field Goals	5	9	55.6
3PT Field Goals	1	4	25.0
<b>Total Field Goals</b>	<b>6</b>	<b>13</b>	<b>46.2</b>

Official Shot Chart  
**James Madison vs William Mary**  
 James Madison Team Shots  
 March 07, 2020 at Kaplan Arena (Kaplan Arena) - Williamsburg



Layups

Dunks



Layups

Dunks

JMU : Period 1	Made	Att	Pct
Layups	4	8	50.0
Dunks	0	0	0
2PT Field Goals	4	10	40.0
3PT Field Goals	0	7	00.0
<b>Total Field Goals</b>	<b>4</b>	<b>17</b>	<b>23.5</b>

JMU : Period 3	Made	Att	Pct
Layups	7	9	77.8
Dunks	0	0	0
2PT Field Goals	7	13	53.8
3PT Field Goals	1	3	33.3
<b>Total Field Goals</b>	<b>8</b>	<b>16</b>	<b>50.0</b>

JMU : Period 2	Made	Att	Pct
Layups	2	3	66.7
Dunks	0	0	0
2PT Field Goals	3	9	33.3
3PT Field Goals	2	3	66.7
<b>Total Field Goals</b>	<b>5</b>	<b>12</b>	<b>41.7</b>

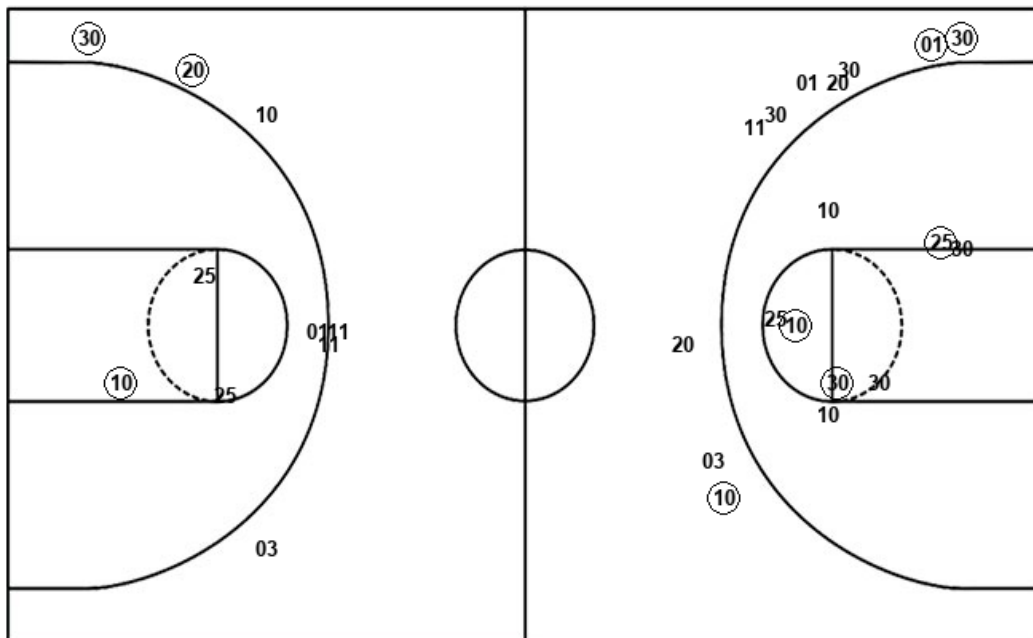
JMU : Period 4	Made	Att	Pct
Layups	4	6	66.7
Dunks	0	0	0
2PT Field Goals	5	9	55.6
3PT Field Goals	1	4	25.0
<b>Total Field Goals</b>	<b>6</b>	<b>13</b>	<b>46.2</b>

Official Shot Chart  
**James Madison vs William Mary**  
 William Mary Team Shots  
 March 07, 2020 at Kaplan Arena (Kaplan Arena) - Williamsburg



Layups

Dunks



Layups

Dunks

(10)	25	10	20	21
(30)	30	25	11	(20)
(21)	11	20	10	30
21	(10)	10	20	20
10	30			

WM : Period 1	Made	Att	Pct
Layups	1	2	50.0
Dunks	0	0	0
2PT Field Goals	2	5	40.0
3PT Field Goals	3	6	50.0
<b>Total Field Goals</b>	<b>5</b>	<b>11</b>	<b>45.5</b>

WM : Period 3	Made	Att	Pct
Layups	2	8	25.0
Dunks	0	0	0
2PT Field Goals	2	9	22.2
3PT Field Goals	0	3	00.0
<b>Total Field Goals</b>	<b>2</b>	<b>12</b>	<b>16.7</b>

WM : Period 2	Made	Att	Pct
Layups	1	5	20.0
Dunks	0	0	0
2PT Field Goals	3	10	30.0
3PT Field Goals	0	4	00.0
<b>Total Field Goals</b>	<b>3</b>	<b>14</b>	<b>21.4</b>

WM : Period 4	Made	Att	Pct
Layups	1	7	14.3
Dunks	0	0	0
2PT Field Goals	2	9	22.2
3PT Field Goals	2	4	50.0
<b>Total Field Goals</b>	<b>4</b>	<b>13</b>	<b>30.8</b>