

FINAL SCORE



Towson

62



William Mary

66

March 05, 2020 • Kaplan Arena (Kaplan Arena) - Williamsburg

FINAL STATISTICS

Official Box Score
Towson vs William Mary
Game Totals -- Final Statistics
March 05, 2020 at Kaplan Arena (Kaplan Arena) - Williamsburg



Towson 62

No.	Player	S	Pts	FG	3FG	FT	OR	DR	TR	PF	A	TO	Blk	Stl	Min	+/-
01	MAYO, NUKIYA	F	19	8-14	0-2	3-5	2	3	5	3	2	4	1	0	33	-8
11	MURRAY, QIERRA	G	8	4-13	0-1	0-1	0	4	4	0	7	7	1	2	40	-4
21	JETER, KIONNA	G	13	6-14	1-4	0-0	2	5	7	3	3	5	1	7	38	-5
23	SMITH, SHAVONNE	G	0	0-3	0-1	0-0	1	0	1	2	1	0	0	0	10	-14
32	HOLDER, RYAN	G	8	4-7	0-0	0-0	1	1	2	2	1	1	1	1	29	-3
05	BARBOUR, RAYNA	G	0	0-0	0-0	0-0	0	0	0	0	0	1	0	0	1	-4
13	SCHWARTAU, WIEBKE	C	0	0-0	0-0	0-0	0	0	0	0	0	0	0	0	1	-2
15	GRAY, MARIAH	G	0	0-0	0-0	0-0	0	2	2	0	0	0	0	0	2	-4
20	JOHNSON-MATTHEWS, MYKA	G	6	2-2	2-2	0-0	0	0	0	3	0	0	0	0	14	15
22	WRIGHT, LAKAITLIN	C	8	4-6	0-0	0-0	1	6	7	4	2	4	2	1	24	9
24	BORGOSZ, TESS	F	0	0-1	0-0	0-0	0	0	0	0	0	2	0	0	7	0
TEAM							2	0	2	0		0				
TOTALS			62	28-60	3-10	3-6	9	21	30	17	16	24	6	11	200	

Shooting By Period

Period	FG	FG%	3FG	3FG%	FT	FT%
1st Qtr	6-12	50%	0-0	0%	0-1	00%
2nd Qtr	5-17	29%	1-5	20%	2-2	100%
3rd Qtr	8-15	53%	1-3	33%	1-3	33%
4th Qtr	9-16	56%	1-2	50%	0-0	0%
1st Half	11-29	38%	1-5	20%	2-3	67%
2nd Half	17-31	55%	2-5	40%	1-3	33%
Game	28-60	46.7%	3-10	30.0%	3-6	50.0%

Deadball Rebounds: 1,0

Last FG: 4th-00:51

Biggest Run: 7-0

Largest lead: By 0 at -

Technical Fouls: None.

William Mary 66

No.	Player	S	Pts	FG	3FG	FT	OR	DR	TR	PF	A	TO	Blk	Stl	Min	+/-
10	HODGSON, EVA	G	27	9-19	3-7	6-7	3	3	6	1	2	6	2	2	40	4
11	POLLARD, NYLA	G	7	2-4	1-2	2-2	0	2	2	1	5	4	0	4	35	5
20	BELLAMY, BRE	F	4	2-5	0-0	0-0	1	2	3	1	0	2	1	0	25	6
25	ROGERS, GABBY	C	4	2-6	0-0	0-0	1	6	7	2	0	3	0	0	24	-7
30	REYNOLDS, VICTORIA	F	19	7-14	0-2	5-6	1	6	7	1	4	3	2	4	39	4
01	WAGNER, SYDNEY	G	4	2-7	0-3	0-0	0	1	1	2	3	1	0	1	21	-3
15	KRAUSE, EMMA	F	0	0-0	0-0	0-0	0	2	2	1	0	2	0	0	7	4
21	EICHNER, BAILEY	F	1	0-0	0-0	1-2	1	2	3	4	2	0	0	0	9	7
TEAM							2	1	3	0		2				
TOTALS			66	24-55	4-14	14-17	9	25	34	13	16	23	5	11	200	

Shooting By Period

Period	FG	FG%	3FG	3FG%	FT	FT%
1st Qtr	4-9	44%	1-3	33%	5-6	83%
2nd Qtr	9-20	45%	1-3	33%	0-0	0%
3rd Qtr	6-12	50%	2-6	33%	6-7	86%
4th Qtr	5-14	36%	0-2	00%	3-4	75%
1st Half	13-29	45%	2-6	33%	5-6	83%
2nd Half	11-26	42%	2-8	25%	9-11	82%
Game	24-55	43.6%	4-14	28.6%	14-17	82.4%

Deadball Rebounds: 4,0

Last FG: 4th-02:57

Biggest Run: 7-0

Largest lead: By 15 at 4th-07:52

Technical Fouls: None.

Game Notes:

Officials: Kevin Dillard, Mark Behrens, Kristi Mosley
Attendance: 731

Start Time: 07:07 PM ET

End Time: 09:03 PM ET

Game Duration: 1:56

Conference Game;

Score	1st	2nd	3rd	4th	TOT
TOW	12	13	18	19	62
WM	14	19	20	13	66

TOW led for 0:00. WM led for 39:14.

Game was tied for 0:46.

Times tied: 0 Lead Changes: 0

Points from	TOW	WM
In the Paint	44	34
Off Turns	22	19
2nd Chance	4	11
Fast Break	12	18
Bench	14	5

Official Box Score
Towson vs William Mary
First Half Statistics Only
March 05, 2020 at Kaplan Arena (Kaplan Arena) - Williamsburg



Towson 25

No.	Player	S	Pts	FG	3FG	FT	OR	DR	TR	PF	A	TO	Blk	Stl	Min	+/-
01	MAYO, NUKIYA	F	10	4-8	0-2	2-2	1	2	3	2	0	3	1	0	18	-6
05	BARBOUR, RAYNA	G	0	0-0	0-0	0-0	0	0	0	0	0	1	0	0	1	-4
11	MURRAY, QIERRA	G	4	2-5	0-0	0-1	0	1	1	0	1	4	1	1	20	-8
13	SCHWARTAU, WIEBKE	C	0	0-0	0-0	0-0	0	0	0	0	0	0	0	0	1	-2
15	GRAY, MARIAH	G	0	0-0	0-0	0-0	0	2	2	0	0	0	0	0	2	-4
20	JOHNSON-MATTHEWS, MYKA	G	0	0-0	0-0	0-0	0	0	0	0	0	0	0	0	0	0
21	JETER, KIONNA	G	9	4-9	1-3	0-0	0	2	2	0	1	0	1	3	20	-8
22	WRIGHT, LAKAITLIN	C	0	0-2	0-0	0-0	1	3	4	2	2	3	2	1	11	3
23	SMITH, SHAVONNE	G	0	0-2	0-0	0-0	1	0	1	1	1	0	0	0	10	-7
24	BORGOSZ, TESS	F	0	0-1	0-0	0-0	0	0	0	0	0	2	0	0	7	-1
32	HOLDER, RYAN	G	2	1-2	0-0	0-0	1	0	1	2	0	0	0	0	11	-3
	TEAM		0	0-0	0-0	0-0	2	0	2	0	0	0	0	0	0	0
TOTALS			25	11-29	1-5	2-3	6	10	16	7	5	13	5	5	100	

Shooting By Period

Period	FG	FG%	3FG	3FG%	FT	FT%
1st Qtr	6-12	50%	0-0	0%	0-1	00%
2nd Qtr	5-17	29%	1-5	20%	2-2	100%
1st Half	11-29	38%	1-5	20%	2-3	67%
Game	28-60	46.7%	3-10	30.0%	3-6	50.0%

Deadball Rebounds: 1,0
Last FG Half: TOW 2nd-01:22

William Mary 33

No.	Player	S	Pts	FG	3FG	FT	OR	DR	TR	PF	A	TO	Blk	Stl	Min	+/-
01	WAGNER, SYDNEY	G	2	1-4	0-1	0-0	0	0	0	2	1	0	0	1	10	-1
10	HODGSON, EVA	G	10	3-7	1-3	3-4	1	2	3	0	2	3	1	1	20	8
11	POLLARD, NYLA	G	5	2-4	1-2	0-0	0	2	2	0	2	1	0	3	17	9
15	KRAUSE, EMMA	F	0	0-0	0-0	0-0	0	2	2	1	0	2	0	0	7	4
20	BELLAMY, BRE	F	4	2-5	0-0	0-0	1	1	2	1	0	1	1	0	15	8
21	EICHNER, BAILEY	F	0	0-0	0-0	0-0	0	1	1	2	1	0	0	0	3	-1
25	ROGERS, GABBY	C	2	1-3	0-0	0-0	0	3	3	2	0	3	0	0	10	5
30	REYNOLDS, VICTORIA	F	10	4-6	0-0	2-2	1	1	2	0	2	0	2	1	19	8
	TEAM		0	0-0	0-0	0-0	2	1	3	0	0	2	0	0	0	0
TOTALS			33	13-29	2-6	5-6	5	13	18	8	8	12	4	6	100	

Shooting By Period

Period	FG	FG%	3FG	3FG%	FT	FT%
1st Qtr	4-9	44%	1-3	33%	5-6	83%
2nd Qtr	9-20	45%	1-3	33%	0-0	0%
1st Half	13-29	45%	2-6	33%	5-6	83%
Game	24-55	43.6%	4-14	28.6%	14-17	82.4%

Deadball Rebounds: 4,0
Last FG Half: WM 2nd-00:03

Game Notes:

Officials: Kevin Dillard, Mark Behrens, Kristi Mosley
 Attendance: 731

Start Time: 07:07 PM ET
 End Time: 09:03 PM ET
 Game Duration: 1:56
 Conference Game;

Score	1st	2nd	3rd	4th	TOT
TOW	12	13	18	19	62
WM	14	19	20	13	66

Points from (This Period)	TOW	WM
In the Paint	18	20
Off Turns	14	11
2nd Chance	4	9
Fast Break	4	9
Bench	0	2

Official Box Score
Towson vs William Mary
First Quarter Statistics Only
March 05, 2020 at Kaplan Arena (Kaplan Arena) - Williamsburg



Towson 12

No.	Player	S	Pts	FG	3FG	FT	OR	DR	TR	PF	A	TO	Blk	Stl	Min	+/-
01	MAYO, NUKIYA	F	6	3-4	0-0	0-0	0	1	1	1	0	3	0	0	10	-2
11	MURRAY, QIERRA	G	2	1-2	0-0	0-1	0	0	0	0	0	2	0	1	10	-2
21	JETER, KIONNA	G	2	1-2	0-0	0-0	0	0	0	0	0	0	1	0	10	-2
23	SMITH, SHAVONNE	G	0	0-1	0-0	0-0	1	0	1	1	0	0	0	0	5	-6
32	HOLDER, RYAN	G	2	1-2	0-0	0-0	1	0	1	2	0	0	0	0	7	-2
05	BARBOUR, RAYNA	G	0	0-0	0-0	0-0	0	0	0	0	0	0	0	0	0	0
13	SCHWARTAU, WIEBKE	C	0	0-0	0-0	0-0	0	0	0	0	0	0	0	0	0	0
15	GRAY, MARIAH	G	0	0-0	0-0	0-0	0	0	0	0	0	0	0	0	0	0
20	JOHNSON-MATTHEWS, MYKA	G	0	0-0	0-0	0-0	0	0	0	0	0	0	0	0	0	0
22	WRIGHT, LAKAITLIN	C	0	0-1	0-0	0-0	0	1	1	0	2	3	1	1	6	2
24	BORGOSZ, TESS	F	0	0-0	0-0	0-0	0	0	0	0	0	0	0	0	2	2
	TEAM						1	0	1	0		0				
TOTALS			12	6-12	0-0	0-1	3	2	5	4	2	8	2	2	50	

Shooting By Period

Period	FG	FG%	3FG	3FG%	FT	FT%
1st Qtr	6-12	50%	0-0	0%	0-1	00%
2nd Qtr	5-17	29%	1-5	20%	2-2	100%
1st Half	6-12	50%	0-0	0%	0-1	00%
1st Half	11-29	38%	1-5	20%	2-3	67%
Game	28-60	46.7%	3-10	30.0%	3-6	50.0%

Deadball Rebounds: 1,0

William Mary 14

No.	Player	S	Pts	FG	3FG	FT	OR	DR	TR	PF	A	TO	Blk	Stl	Min	+/-
10	HODGSON, EVA	G	8	2-3	1-2	3-4	0	1	1	0	0	2	1	1	10	2
11	POLLARD, NYLA	G	0	0-0	0-0	0-0	0	1	1	0	1	1	0	2	10	2
20	BELLAMY, BRE	F	0	0-1	0-0	0-0	0	0	0	0	0	1	0	0	6	4
25	ROGERS, GABBY	C	2	1-3	0-0	0-0	0	0	0	1	0	3	0	0	7	3
30	REYNOLDS, VICTORIA	F	2	0-0	0-0	2-2	0	1	1	0	0	0	2	0	9	2
01	WAGNER, SYDNEY	G	2	1-2	0-1	0-0	0	0	0	1	0	0	0	1	5	-2
15	KRAUSE, EMMA	F	0	0-0	0-0	0-0	0	0	0	0	0	0	0	0	0	0
21	EICHNER, BAILEY	F	0	0-0	0-0	0-0	0	1	1	2	1	0	0	0	3	-1
	TEAM						2	0	2	0		2				
TOTALS			14	4-9	1-3	5-6	2	4	6	4	2	9	3	4	50	

Shooting By Period

Period	FG	FG%	3FG	3FG%	FT	FT%
1st Qtr	4-9	44%	1-3	33%	5-6	83%
2nd Qtr	9-20	45%	1-3	33%	0-0	0%
1st Half	4-9	44%	1-3	33%	5-6	83%
1st Half	13-29	45%	2-6	33%	5-6	83%
Game	24-55	43.6%	4-14	28.6%	14-17	82.4%

Deadball Rebounds: 4,0

Game Notes:

Officials: Kevin Dillard, Mark Behrens, Kristi Mosley
Attendance: 731

Start Time: 07:07 PM ET
End Time: 09:03 PM ET
Game Duration: 1:56
Conference Game;

Score	1st	2nd	3rd	4th	TOT
TOW	12	13	18	19	62
WM	14	19	20	13	66

Points from (This Period)	TOW	WM
In the Paint	10	4
Off Turns	10	7
2nd Chance	2	5
Fast Break	0	5
Bench	0	2

Official Play-By-Play
Towson vs William Mary
First Quarter
March 05, 2020 at Kaplan Arena (Kaplan Arena) - Williamsburg



Period 1

Starters:

Towson: 1 MAYO, NUKIYA (F); 11 MURRAY, QIERRA (G); 21 JETER, KIONNA (G); 23 SMITH, SHAVONNE (G); 32 HOLDER, RYAN (G);

William Mary: 10 HODGSON, EVA (G); 11 POLLARD, NYLA (G); 20 BELLAMY, BRE (F); 25 ROGERS, GABBY (C); 30 REYNOLDS, VICTORIA (F);

Time	VISITORS: Towson	Score	Margin	HOME: William Mary
09:36	MISSED JUMPER by JETER, KIONNA			
09:32	REBOUND (OFF) by SMITH, SHAVONNE			
09:17	TURNOVER (BADPASS) by MAYO, NUKIYA			
09:17				STEAL by POLLARD, NYLA
09:14	FOUL (PERSONAL) by HOLDER, RYAN			
09:14		1-0	H 1	GOOD! FT by REYNOLDS, VICTORIA
09:14		2-0	H 2	GOOD! FT by REYNOLDS, VICTORIA
08:51	MISSED LAYUP by SMITH, SHAVONNE			
08:51				BLOCK by REYNOLDS, VICTORIA
08:46				REBOUND (DEF) by REYNOLDS, VICTORIA
08:37		4-0	H 4	GOOD! JUMPER by ROGERS, GABBY
08:37				ASSIST by POLLARD, NYLA
08:04	TURNOVER (LOSTBALL) by MURRAY, QIERRA			
08:04				STEAL by HODGSON, EVA
07:59		6-0	H 6	GOOD! LAYUP by HODGSON, EVA [FB]
07:59	FOUL (PERSONAL) by SMITH, SHAVONNE			
07:59	SUB OUT: SMITH, SHAVONNE			
07:59	SUB IN: WRIGHT, LAKAITLIN			
07:59		7-0	H 7	GOOD! FT by HODGSON, EVA [FB]
07:38	TURNOVER (TRAVEL) by WRIGHT, LAKAITLIN			
07:09				TURNOVER (BADPASS) by ROGERS, GABBY
06:55	GOOD! LAYUP by MAYO, NUKIYA	7-2	H 5	
06:55	ASSIST by WRIGHT, LAKAITLIN			
06:48				FOUL (OFF) by ROGERS, GABBY
06:48				TURNOVER (OFFENSIVE) by ROGERS, GABBY
06:48				SUB OUT: ROGERS, GABBY
06:48				SUB IN: EICHNER, BAILEY
06:30	GOOD! JUMPER by MAYO, NUKIYA	7-4	H 3	
06:30	ASSIST by WRIGHT, LAKAITLIN			
06:20				MISSED LAYUP by BELLAMY, BRE
06:20	BLOCK by JETER, KIONNA			
06:20				REBOUND (OFF) by TEAM
06:16		10-4	H 6	GOOD! 3PTR by HODGSON, EVA
06:16				ASSIST by EICHNER, BAILEY
06:04	MISSED LAYUP by WRIGHT, LAKAITLIN			
06:04				BLOCK by REYNOLDS, VICTORIA
06:00				REBOUND (DEF) by EICHNER, BAILEY
05:45				TURNOVER (LOSTBALL) by HODGSON, EVA
05:45	STEAL by MURRAY, QIERRA			
05:37				FOUL (PERSONAL) by EICHNER, BAILEY
05:30	MISSED LAYUP by MAYO, NUKIYA			
05:30	REBOUND (OFF) by TEAM			
05:25	MISSED LAYUP by HOLDER, RYAN			
05:25				BLOCK by HODGSON, EVA
05:19	REBOUND (OFF) by HOLDER, RYAN			
05:19	GOOD! LAYUP by HOLDER, RYAN	10-6	H 4	
05:14				TURNOVER (LOSTBALL) by BELLAMY, BRE
05:14				SUB OUT: REYNOLDS, VICTORIA
05:14				SUB IN: WAGNER, SYDNEY
04:56	TURNOVER (3SEC) by WRIGHT, LAKAITLIN			
04:56				
04:27				MISSED 3PTR by HODGSON, EVA
04:25				REBOUND (OFF) by TEAM
04:25				TURNOVER (SHOTCLOCK) by TEAM
04:10				FOUL (PERSONAL) by EICHNER, BAILEY
04:10				SUB OUT: BELLAMY, BRE
04:10				SUB OUT: EICHNER, BAILEY
04:10				SUB IN: ROGERS, GABBY
04:10				SUB IN: REYNOLDS, VICTORIA
04:09	TURNOVER (BADPASS) by MURRAY, QIERRA			
04:09				STEAL by POLLARD, NYLA
03:38				TURNOVER (SHOTCLOCK) by TEAM
03:17	GOOD! LAYUP by MAYO, NUKIYA	10-8	H 2	
03:05				MISSED JUMPER by ROGERS, GABBY
03:05	BLOCK by WRIGHT, LAKAITLIN			
03:05				REBOUND (OFF) by TEAM
02:57	FOUL (PERSONAL) by HOLDER, RYAN			
02:57	SUB OUT: HOLDER, RYAN			
02:57	SUB IN: SMITH, SHAVONNE			
02:57		11-8	H 3	GOOD! FT by HODGSON, EVA

Time	VISITORS: Towson	Score	Margin	HOME: William Mary
02:57				MISSED FT by HODGSON, EVA
02:57				REBOUND (OFF) by TEAM
02:57		12-8	H 4	GOOD! FT by HODGSON, EVA
02:34	GOOD! JUMPER by JETER, KIONNA	12-10	H 2	
02:16				TURNOVER (BADPASS) by POLLARD, NYLA
02:16	STEAL by WRIGHT, LAKAITLIN			
02:09	MISSED JUMPER by MURRAY, QIERRA			
02:05				REBOUND (DEF) by HODGSON, EVA
02:00				MISSED JUMPER by ROGERS, GABBY
01:56	REBOUND (DEF) by WRIGHT, LAKAITLIN			
01:55	TURNOVER (BADPASS) by WRIGHT, LAKAITLIN			
01:55				STEAL by WAGNER, SYDNEY
01:49		14-10	H 4	GOOD! JUMPER by WAGNER, SYDNEY [FB/PNT]
01:33	TURNOVER (TRAVEL) by MAYO, NUKIYA			
01:33	SUB OUT: WRIGHT, LAKAITLIN			
01:33	SUB IN: BORGOSZ, TESS			
01:17				TURNOVER (TRAVEL) by HODGSON, EVA
00:56	FOUL (OFF) by MAYO, NUKIYA			
00:56	TURNOVER (OFFENSIVE) by MAYO, NUKIYA			
00:45				TURNOVER (TRAVEL) by ROGERS, GABBY
00:23	GOOD! JUMPER by MURRAY, QIERRA [PNT]	14-12	H 2	
00:23				FOUL (PERSONAL) by WAGNER, SYDNEY
00:23				SUB OUT: ROGERS, GABBY
00:23				SUB IN: KRAUSE, EMMA
00:23	MISSED FT by MURRAY, QIERRA			
00:21				REBOUND (DEF) by POLLARD, NYLA
00:00				MISSED 3PTR by WAGNER, SYDNEY
00:00	REBOUND (DEF) by MAYO, NUKIYA			

Towson 12, William Mary 14

Points from (This Period)	TOW	WM
In the Paint	10	4
Off Turns	10	7
2nd Chance	2	5
Fast Break	0	5
Bench	0	2

Official Box Score
Towson vs William Mary
Second Quarter Statistics Only
March 05, 2020 at Kaplan Arena (Kaplan Arena) - Williamsburg



Towson 13

No.	Player	S	Pts	FG	3FG	FT	OR	DR	TR	PF	A	TO	Blk	Stl	Min	+/-
01	MAYO, NUKIYA	F	4	1-4	0-2	2-2	1	1	2	1	0	0	1	0	8	-4
11	MURRAY, QIERRA	G	2	1-3	0-0	0-0	0	1	1	0	1	2	1	0	10	-6
21	JETER, KIONNA	G	7	3-7	1-3	0-0	0	2	2	0	1	0	0	3	10	-6
23	SMITH, SHAVONNE	G	0	0-1	0-0	0-0	0	0	0	0	1	0	0	0	5	-1
32	HOLDER, RYAN	G	0	0-0	0-0	0-0	0	0	0	0	0	0	0	0	4	-1
05	BARBOUR, RAYNA	G	0	0-0	0-0	0-0	0	0	0	0	0	1	0	0	1	-4
13	SCHWARTAU, WIEBKE	C	0	0-0	0-0	0-0	0	0	0	0	0	0	0	0	1	-2
15	GRAY, MARIAH	G	0	0-0	0-0	0-0	0	2	2	0	0	0	0	0	2	-4
20	JOHNSON-MATTHEWS, MYKA	G	0	0-0	0-0	0-0	0	0	0	0	0	0	0	0	0	0
22	WRIGHT, LAKAITLIN	C	0	0-1	0-0	0-0	1	2	3	2	0	0	1	0	5	1
24	BORGOSZ, TESS	F	0	0-1	0-0	0-0	0	0	0	0	0	2	0	0	5	-3
	TEAM						1	0	1	0		0				
TOTALS			13	5-17	1-5	2-2	3	8	11	3	3	5	3	3	50	

Shooting By Period

Period	FG	FG%	3FG	3FG%	FT	FT%
3rd Qtr	8-15	53%	1-3	33%	1-3	33%
4th Qtr	9-16	56%	1-2	50%	0-0	0%
2nd Half	5-17	29%	1-5	20%	2-2	100%
2nd Half	17-31	55%	2-5	40%	1-3	33%
Game	28-60	46.7%	3-10	30.0%	3-6	50.0%

Deadball Rebounds: 1,0

William Mary 19

No.	Player	S	Pts	FG	3FG	FT	OR	DR	TR	PF	A	TO	Blk	Stl	Min	+/-
10	HODGSON, EVA	G	2	1-4	0-1	0-0	1	1	2	0	2	1	0	0	10	6
11	POLLARD, NYLA	G	5	2-4	1-2	0-0	0	1	1	0	1	0	0	1	7	7
20	BELLAMY, BRE	F	4	2-4	0-0	0-0	1	1	2	1	0	0	1	0	9	4
25	ROGERS, GABBY	C	0	0-0	0-0	0-0	0	3	3	1	0	0	0	0	3	2
30	REYNOLDS, VICTORIA	F	8	4-6	0-0	0-0	1	0	1	0	2	0	0	1	10	6
01	WAGNER, SYDNEY	G	0	0-2	0-0	0-0	0	0	0	1	1	0	0	0	5	1
15	KRAUSE, EMMA	F	0	0-0	0-0	0-0	0	2	2	1	0	2	0	0	7	4
21	EICHNER, BAILEY	F	0	0-0	0-0	0-0	0	0	0	0	0	0	0	0	0	0
	TEAM						0	1	1	0		0				
TOTALS			19	9-20	1-3	0-0	3	9	12	4	6	3	1	2	50	

Shooting By Period

Period	FG	FG%	3FG	3FG%	FT	FT%
3rd Qtr	6-12	50%	2-6	33%	6-7	86%
4th Qtr	5-14	36%	0-2	00%	3-4	75%
2nd Half	9-20	45%	1-3	33%	0-0	0%
2nd Half	11-26	42%	2-8	25%	9-11	82%
Game	24-55	43.6%	4-14	28.6%	14-17	82.4%

Deadball Rebounds: 4,0

Game Notes:

Officials: Kevin Dillard, Mark Behrens, Kristi Mosley
 Attendance: 731

Start Time: 07:07 PM ET
 End Time: 09:03 PM ET
 Game Duration: 1:56
 Conference Game;

Score	1st	2nd	3rd	4th	TOT
TOW	12	13	18	19	62
WM	14	19	20	13	66

Points from (This Period)	TOW	WM
In the Paint	8	16
Off Turns	4	4
2nd Chance	2	4
Fast Break	4	4
Bench	0	0

Official Play-By-Play
Towson vs William Mary
Second Quarter
March 05, 2020 at Kaplan Arena (Kaplan Arena) - Williamsburg



Period 2

Starters:

Towson: 1 MAYO, NUKIYA (F); 11 MURRAY, QIERRA (G); 21 JETER, KIONNA (G); 23 SMITH, SHAVONNE (G); 32 HOLDER, RYAN (G);

William Mary: 10 HODGSON, EVA (G); 11 POLLARD, NYLA (G); 20 BELLAMY, BRE (F); 25 ROGERS, GABBY (C); 30 REYNOLDS, VICTORIA (F);

Time	VISITORS: Towson	Score	Margin	HOME: William Mary
10:00	SUB OUT: SMITH, SHAVONNE			
10:00	SUB IN: BARBOUR, RAYNA			
09:45		16-12	H 4	GOOD! LAYUP by REYNOLDS, VICTORIA
09:45				ASSIST by HODGSON, EVA
09:22	MISSED JUMPER by MAYO, NUKIYA			
09:22				REBOUND (DEF) by TEAM
09:21	TURNOVER (LOSTBALL) by BARBOUR, RAYNA			
09:17				SUB OUT: POLLARD, NYLA
09:17				SUB IN: BELLAMY, BRE
09:15		18-12	H 6	GOOD! LAYUP by BELLAMY, BRE
09:15				ASSIST by WAGNER, SYDNEY
08:49	TURNOVER (3SEC) by BORGOSZ, TESS			
08:49	SUB OUT: BARBOUR, RAYNA			
08:49	SUB IN: SMITH, SHAVONNE			
08:39				MISSED JUMPER by WAGNER, SYDNEY
08:36	REBOUND (DEF) by MAYO, NUKIYA			
08:27	MISSED LAYUP by BORGOSZ, TESS			
08:24				REBOUND (DEF) by HODGSON, EVA
08:21		20-12	H 8	GOOD! LAYUP by REYNOLDS, VICTORIA [FB]
08:21				ASSIST by HODGSON, EVA
08:05	MISSED 3PTR by MAYO, NUKIYA			
08:01				REBOUND (DEF) by BELLAMY, BRE
07:54				MISSED JUMPER by REYNOLDS, VICTORIA
07:47	REBOUND (DEF) by JETER, KIONNA			
07:43	GOOD! LAYUP by MURRAY, QIERRA	20-14	H 6	
07:43	ASSIST by JETER, KIONNA			
07:24		22-14	H 8	GOOD! LAYUP by HODGSON, EVA [PNT]
07:24				ASSIST by REYNOLDS, VICTORIA
07:01	GOOD! 3PTR by JETER, KIONNA	22-17	H 5	
07:01	ASSIST by SMITH, SHAVONNE			
06:44	FOUL (PERSONAL) by MAYO, NUKIYA			
06:44	SUB OUT: MAYO, NUKIYA			
06:44	SUB IN: WRIGHT, LAKAITLIN			
06:34				TURNOVER (BADPASS) by KRAUSE, EMMA
06:34	STEAL by JETER, KIONNA			
06:29	GOOD! LAYUP by JETER, KIONNA [FB]	22-19	H 3	
06:16	FOUL (PERSONAL) by WRIGHT, LAKAITLIN			
06:16				SUB OUT: KRAUSE, EMMA
06:16				SUB IN: ROGERS, GABBY
06:16	SUB OUT: BORGOSZ, TESS			
06:16	SUB IN: GRAY, MARIAH			
06:10				MISSED JUMPER by WAGNER, SYDNEY
06:06	REBOUND (DEF) by GRAY, MARIAH			
06:02	MISSED JUMPER by JETER, KIONNA			
06:00				REBOUND (DEF) by ROGERS, GABBY
06:00	FOUL (PERSONAL) by WRIGHT, LAKAITLIN			
06:00				SUB OUT: WAGNER, SYDNEY
06:00				SUB IN: POLLARD, NYLA
06:00	SUB OUT: WRIGHT, LAKAITLIN			
06:00	SUB IN: SCHWARTAU, WIEBKE			
05:48		24-19	H 5	GOOD! JUMPER by REYNOLDS, VICTORIA
05:48				ASSIST by POLLARD, NYLA
05:36	MISSED JUMPER by SMITH, SHAVONNE			
05:31				REBOUND (DEF) by ROGERS, GABBY
05:18				MISSED JUMPER by BELLAMY, BRE
05:15	REBOUND (DEF) by GRAY, MARIAH			
05:07	MISSED 3PTR by JETER, KIONNA			
05:06	REBOUND (OFF) by TEAM			
05:06	SUB OUT: SCHWARTAU, WIEBKE			
05:06	SUB IN: BORGOSZ, TESS			
04:50	TURNOVER (BADPASS) by MURRAY, QIERRA			
04:50				STEAL by POLLARD, NYLA
04:44		26-19	H 7	GOOD! LAYUP by POLLARD, NYLA [FB]
04:19	TURNOVER (3SEC) by BORGOSZ, TESS			
04:15				
04:15	SUB OUT: GRAY, MARIAH			
04:15	SUB OUT: SMITH, SHAVONNE			
04:15	SUB OUT: BORGOSZ, TESS			
04:15	SUB IN: MAYO, NUKIYA			
04:15	SUB IN: WRIGHT, LAKAITLIN			

Time	VISITORS: Towson	Score	Margin	HOME: William Mary
04:15	SUB IN: HOLDER, RYAN			
04:04				TURNOVER (BADPASS) by HODGSON, EVA
04:04	STEAL by JETER, KIONNA			
04:00	GOOD! LAYUP by JETER, KIONNA [FB]	26-21	H 5	
03:42				MISSED LAYUP by BELLAMY, BRE
03:42	BLOCK by WRIGHT, LAKAITLIN			
03:42	REBOUND (DEF) by JETER, KIONNA			
03:42				FOUL (PERSONAL) by BELLAMY, BRE
03:28	MISSED 3PTR by JETER, KIONNA			
03:23				REBOUND (DEF) by ROGERS, GABBY
03:17				MISSED LAYUP by HODGSON, EVA
03:17	REBOUND (DEF) by WRIGHT, LAKAITLIN			
03:17				FOUL (PERSONAL) by ROGERS, GABBY
03:17				SUB OUT: BELLAMY, BRE
03:17				SUB OUT: ROGERS, GABBY
03:17				SUB IN: WAGNER, SYDNEY
03:17				SUB IN: KRAUSE, EMMA
03:06	MISSED JUMPER by WRIGHT, LAKAITLIN			
03:02				REBOUND (DEF) by KRAUSE, EMMA
02:58				TURNOVER (BADPASS) by KRAUSE, EMMA
02:58	STEAL by JETER, KIONNA			
02:45	MISSED JUMPER by MURRAY, QIERRA			
02:45	REBOUND (OFF) by WRIGHT, LAKAITLIN			
02:45				FOUL (PERSONAL) by WAGNER, SYDNEY
02:45				SUB OUT: WAGNER, SYDNEY
02:45				SUB IN: BELLAMY, BRE
02:41	MISSED 3PTR by MAYO, NUKIYA			
02:37				REBOUND (DEF) by KRAUSE, EMMA
02:18		29-21	H 8	GOOD! 3PTR by POLLARD, NYLA
02:18				ASSIST by REYNOLDS, VICTORIA
01:50	MISSED JUMPER by JETER, KIONNA			
01:47	REBOUND (OFF) by MAYO, NUKIYA			
01:47				FOUL (PERSONAL) by KRAUSE, EMMA
01:47	GOOD! FT by MAYO, NUKIYA	29-22	H 7	
01:47	GOOD! FT by MAYO, NUKIYA	29-23	H 6	
01:36				MISSED 3PTR by HODGSON, EVA
01:32				REBOUND (OFF) by HODGSON, EVA
01:30				MISSED LAYUP by HODGSON, EVA
01:28	REBOUND (DEF) by WRIGHT, LAKAITLIN			
01:22	GOOD! LAYUP by MAYO, NUKIYA	29-25	H 4	
01:22	ASSIST by MURRAY, QIERRA			
01:08				MISSED 3PTR by POLLARD, NYLA
01:05				REBOUND (OFF) by BELLAMY, BRE
01:03		31-25	H 6	GOOD! LAYUP by BELLAMY, BRE
00:53	TURNOVER (BADPASS) by MURRAY, QIERRA			
00:53				STEAL by REYNOLDS, VICTORIA
00:49				MISSED LAYUP by POLLARD, NYLA
00:49	REBOUND (DEF) by MURRAY, QIERRA			
00:49	BLOCK by MURRAY, QIERRA			
00:30	MISSED LAYUP by MURRAY, QIERRA			
00:30				BLOCK by BELLAMY, BRE
00:25				REBOUND (DEF) by POLLARD, NYLA
00:04				MISSED LAYUP by REYNOLDS, VICTORIA
00:04	BLOCK by MAYO, NUKIYA			
00:03				REBOUND (OFF) by REYNOLDS, VICTORIA
00:03		33-25	H 8	GOOD! LAYUP by REYNOLDS, VICTORIA

Towson 25, William Mary 33

Points from (This Period)	TOW	WM
In the Paint	8	16
Off Turns	4	4
2nd Chance	2	4
Fast Break	4	4
Bench	0	0

Official Box Score
Towson vs William Mary
Second Half Statistics Only
March 05, 2020 at Kaplan Arena (Kaplan Arena) - Williamsburg



Towson 37

No.	Player	S	Pts	FG	3FG	FT	OR	DR	TR	PF	A	TO	Blk	Stl	Min	+/-
01	MAYO, NUKIYA	F	9	4-6	0-0	1-3	1	1	2	1	2	1	0	0	16	-2
05	BARBOUR, RAYNA	G	0	0-0	0-0	0-0	0	0	0	0	0	0	0	0	0	0
11	MURRAY, QIERRA	G	4	2-8	0-1	0-0	0	3	3	0	6	3	0	1	20	4
13	SCHWARTAU, WIEBKE	C	0	0-0	0-0	0-0	0	0	0	0	0	0	0	0	0	0
15	GRAY, MARIAH	G	0	0-0	0-0	0-0	0	0	0	0	0	0	0	0	0	0
20	JOHNSON-MATTHEWS, MYKA	G	6	2-2	2-2	0-0	0	0	0	3	0	0	0	0	13	15
21	JETER, KIONNA	G	4	2-5	0-1	0-0	2	3	5	3	2	5	0	4	18	3
22	WRIGHT, LAKAITLIN	C	8	4-4	0-0	0-0	0	3	3	2	0	1	0	0	12	6
23	SMITH, SHAVONNE	G	0	0-1	0-1	0-0	0	0	0	1	0	0	0	0	1	-7
24	BORGOSZ, TESS	F	0	0-0	0-0	0-0	0	0	0	0	0	0	0	0	1	1
32	HOLDER, RYAN	G	6	3-5	0-0	0-0	0	1	1	0	1	1	1	1	18	0
	TEAM		0	0-0	0-0	0-0	0	0	0	0	0	0	0	0	0	0
TOTALS			37	17-31	2-5	1-3	3	11	14	10	11	11	1	6	100	

Shooting By Period

Period	FG	FG%	3FG	3FG%	FT	FT%
3rd Qtr	8-15	53%	1-3	33%	1-3	33%
4th Qtr	9-16	56%	1-2	50%	0-0	0%
2nd Half	17-31	55%	2-5	40%	1-3	33%
Game	28-60	46.7%	3-10	30.0%	3-6	50.0%

Deadball Rebounds: 1,0
Last FG Half: TOW 4th-00:51

William Mary 33

No.	Player	S	Pts	FG	3FG	FT	OR	DR	TR	PF	A	TO	Blk	Stl	Min	+/-
01	WAGNER, SYDNEY	G	2	1-3	0-2	0-0	0	1	1	0	2	1	0	0	11	-2
10	HODGSON, EVA	G	17	6-12	2-4	3-3	2	1	3	1	0	3	1	1	20	-4
11	POLLARD, NYLA	G	2	0-0	0-0	2-2	0	0	0	1	3	3	0	1	18	-4
15	KRAUSE, EMMA	F	0	0-0	0-0	0-0	0	0	0	0	0	0	0	0	0	0
20	BELLAMY, BRE	F	0	0-0	0-0	0-0	0	1	1	0	0	1	0	0	11	-2
21	EICHNER, BAILEY	F	1	0-0	0-0	1-2	1	1	2	2	1	0	0	0	6	8
25	ROGERS, GABBY	C	2	1-3	0-0	0-0	1	3	4	0	0	0	0	0	14	-12
30	REYNOLDS, VICTORIA	F	9	3-8	0-2	3-4	0	5	5	1	2	3	0	3	20	-4
	TEAM		0	0-0	0-0	0-0	0	0	0	0	0	0	0	0	0	0
TOTALS			33	11-26	2-8	9-11	4	12	16	5	8	11	1	5	100	

Shooting By Period

Period	FG	FG%	3FG	3FG%	FT	FT%
3rd Qtr	6-12	50%	2-6	33%	6-7	86%
4th Qtr	5-14	36%	0-2	00%	3-4	75%
2nd Half	11-26	42%	2-8	25%	9-11	82%
Game	24-55	43.6%	4-14	28.6%	14-17	82.4%

Deadball Rebounds: 4,0
Last FG Half: WM 4th-02:57

Game Notes:

Officials: Kevin Dillard, Mark Behrens, Kristi Mosley
 Attendance: 731

Start Time: 07:07 PM ET
 End Time: 09:03 PM ET
 Game Duration: 1:56
 Conference Game;

Score	1st	2nd	3rd	4th	TOT
TOW	12	13	18	19	62
WM	14	19	20	13	66

Points from (This Period)	TOW	WM
In the Paint	26	14
Off Turns	8	8
2nd Chance	0	2
Fast Break	8	9
Bench	14	3

Official Box Score
Towson vs William Mary
Third Quarter Statistics Only
March 05, 2020 at Kaplan Arena (Kaplan Arena) - Williamsburg



Towson 37

No.	Player	S	Pts	FG	3FG	FT	OR	DR	TR	PF	A	TO	Blk	Stl	Min	+/-
01	MAYO, NUKIYA	F	5	2-3	0-0	1-3	0	0	0	1	1	1	0	0	7	-4
11	MURRAY, QIERRA	G	0	0-3	0-0	0-0	0	2	2	0	4	1	0	1	10	-2
21	JETER, KIONNA	G	0	0-2	0-1	0-0	1	2	3	1	1	1	0	0	10	-2
23	SMITH, SHAVONNE	G	0	0-1	0-1	0-0	0	0	0	1	0	0	0	0	1	-7
32	HOLDER, RYAN	G	4	2-2	0-0	0-0	0	0	0	0	0	1	1	0	10	-2
05	BARBOUR, RAYNA	G	0	0-0	0-0	0-0	0	0	0	0	0	0	0	0	0	0
13	SCHWARTAU, WIEBKE	C	0	0-0	0-0	0-0	0	0	0	0	0	0	0	0	0	0
15	GRAY, MARIAH	G	0	0-0	0-0	0-0	0	0	0	0	0	0	0	0	0	0
20	JOHNSON-MATTHEWS, MYKA	G	3	1-1	1-1	0-0	0	0	0	1	0	0	0	0	5	5
22	WRIGHT, LAKAITLIN	C	6	3-3	0-0	0-0	0	1	1	1	0	0	0	0	7	2
24	BORGOSZ, TESS	F	0	0-0	0-0	0-0	0	0	0	0	0	0	0	0	0	0
	TEAM						0	0	0	0		0				
TOTALS			18	8-15	1-3	1-3	1	5	6	5	6	4	1	1	50	

Shooting By Period

Period	FG	FG%	3FG	3FG%	FT	FT%
2nd Half	0-0	0%	0-0	0%	0-0	0%
Game	28-60	46.7%	3-10	30.0%	3-6	50.0%

Deadball Rebounds: 1,0

William Mary 33

No.	Player	S	Pts	FG	3FG	FT	OR	DR	TR	PF	A	TO	Blk	Stl	Min	+/-
10	HODGSON, EVA	G	13	4-5	2-3	3-3	0	0	0	0	0	0	0	0	10	2
11	POLLARD, NYLA	G	2	0-0	0-0	2-2	0	0	0	0	2	0	0	0	8	2
20	BELLAMY, BRE	F	0	0-0	0-0	0-0	0	1	1	0	0	1	0	0	7	4
25	ROGERS, GABBY	C	0	0-1	0-0	0-0	1	1	2	0	0	0	0	0	7	-3
30	REYNOLDS, VICTORIA	F	3	1-4	0-2	1-2	0	4	4	1	1	3	0	1	10	2
01	WAGNER, SYDNEY	G	2	1-2	0-1	0-0	0	0	0	0	1	0	0	0	5	-2
15	KRAUSE, EMMA	F	0	0-0	0-0	0-0	0	0	0	0	0	0	0	0	0	0
21	EICHNER, BAILEY	F	0	0-0	0-0	0-0	0	1	1	1	0	0	0	0	3	5
	TEAM						0	0	0	0		0				
TOTALS			20	6-12	2-6	6-7	1	7	8	2	4	4	0	1	50	

Shooting By Period

Period	FG	FG%	3FG	3FG%	FT	FT%
2nd Half	0-0	0%	0-0	0%	0-0	0%
Game	24-55	43.6%	4-14	28.6%	14-17	82.4%

Deadball Rebounds: 4,0

Game Notes:

Officials: Kevin Dillard, Mark Behrens, Kristi Mosley
 Attendance: 731

Start Time: 07:07 PM ET
 End Time: 09:03 PM ET
 Game Duration: 1:56
 Conference Game;

Score	1st	2nd	3rd	4th	TOT
TOW	12	13	18	19	62
WM	14	19	20	13	66

Points from (This Period)	TOW	WM
In the Paint	12	4
Off Turns	2	3
2nd Chance	0	1
Fast Break	2	5
Bench	9	2

Official Play-By-Play
Towson vs William Mary
Third Quarter
March 05, 2020 at Kaplan Arena (Kaplan Arena) - Williamsburg



Period 3

Starters:

Towson: 1 MAYO, NUKIYA (F); 11 MURRAY, QIERRA (G); 21 JETER, KIONNA (G); 23 SMITH, SHAVONNE (G); 32 HOLDER, RYAN (G);

William Mary: 10 HODGSON, EVA (G); 11 POLLARD, NYLA (G); 20 BELLAMY, BRE (F); 25 ROGERS, GABBY (C); 30 REYNOLDS, VICTORIA (F);

Time	VISITORS: Towson	Score	Margin	HOME: William Mary
10:00				SUB OUT: KRAUSE, EMMA
10:00				SUB IN: ROGERS, GABBY
10:00	SUB OUT: WRIGHT, LAKAITLIN			
10:00	SUB IN: SMITH, SHAVONNE			
10:00	SUB OUT: SMITH, SHAVONNE			
10:00	SUB IN: WRIGHT, LAKAITLIN			
09:41	TURNOVER (TRAVEL) by MURRAY, QIERRA			
09:25				MISSED JUMPER by ROGERS, GABBY
09:21	REBOUND (DEF) by JETER, KIONNA			
08:57	TURNOVER (TRAVEL) by MAYO, NUKIYA			
08:42				TURNOVER (TRAVEL) by BELLAMY, BRE
08:23	MISSED JUMPER by JETER, KIONNA			
08:20				REBOUND (DEF) by BELLAMY, BRE
08:17	FOUL (PERSONAL) by JETER, KIONNA			
08:17		34-25	H 9	GOOD! FT by POLLARD, NYLA [FB]
08:17		35-25	H 10	GOOD! FT by POLLARD, NYLA [FB]
08:07	MISSED JUMPER by MAYO, NUKIYA			
08:04				REBOUND (DEF) by ROGERS, GABBY
08:00				MISSED 3PTR by REYNOLDS, VICTORIA
07:57	REBOUND (DEF) by MURRAY, QIERRA			
07:56	GOOD! LAYUP by HOLDER, RYAN [FB]	35-27	H 8	
07:56	ASSIST by MURRAY, QIERRA			
07:31		38-27	H 11	GOOD! 3PTR by HODGSON, EVA
07:31				ASSIST by POLLARD, NYLA
07:14	GOOD! LAYUP by WRIGHT, LAKAITLIN	38-29	H 9	
07:14	ASSIST by JETER, KIONNA			
06:50				TURNOVER (TRAVEL) by REYNOLDS, VICTORIA
06:26	GOOD! LAYUP by WRIGHT, LAKAITLIN	38-31	H 7	
06:26	ASSIST by MAYO, NUKIYA			
06:14	FOUL (PERSONAL) by WRIGHT, LAKAITLIN			
06:14				SUB OUT: ROGERS, GABBY
06:14				SUB IN: EICHNER, BAILEY
06:14	SUB OUT: WRIGHT, LAKAITLIN			
06:14	SUB IN: SMITH, SHAVONNE			
06:14		39-31	H 8	GOOD! FT by HODGSON, EVA
06:14		40-31	H 9	GOOD! FT by HODGSON, EVA
06:05	TURNOVER (BADPASS) by HOLDER, RYAN			
06:05				STEAL by REYNOLDS, VICTORIA
06:02		42-31	H 11	GOOD! LAYUP by HODGSON, EVA [FB]
06:02				ASSIST by REYNOLDS, VICTORIA
06:02	FOUL (PERSONAL) by SMITH, SHAVONNE			
06:02		43-31	H 12	GOOD! FT by HODGSON, EVA [FB]
05:45	MISSED 3PTR by SMITH, SHAVONNE			
05:38				REBOUND (DEF) by REYNOLDS, VICTORIA
05:33				TURNOVER (LOSTBALL) by REYNOLDS, VICTORIA
05:33	STEAL by MURRAY, QIERRA			
05:28	MISSED JUMPER by MURRAY, QIERRA			
05:24				REBOUND (DEF) by REYNOLDS, VICTORIA
05:23		45-31	H 14	GOOD! LAYUP by REYNOLDS, VICTORIA
05:22	TIMEOUT 30SEC			
05:22	SUB OUT: SMITH, SHAVONNE			
05:22	SUB IN: JOHNSON-MATTHEWS, MYKA			
05:11	GOOD! LAYUP by MAYO, NUKIYA	45-33	H 12	
04:59	FOUL (PERSONAL) by JOHNSON-MATTHEWS, MYKA			
04:59				SUB OUT: BELLAMY, BRE
04:59				SUB IN: WAGNER, SYDNEY
04:47				MISSED 3PTR by WAGNER, SYDNEY
04:44	REBOUND (DEF) by MURRAY, QIERRA			
04:34				FOUL (PERSONAL) by EICHNER, BAILEY
04:34				SUB OUT: EICHNER, BAILEY
04:34				SUB IN: ROGERS, GABBY
04:34	MISSED FT by MAYO, NUKIYA			
04:34	REBOUND (OFF) by TEAM			
04:34	GOOD! FT by MAYO, NUKIYA	45-34	H 11	
04:09		47-34	H 13	GOOD! JUMPER by HODGSON, EVA
04:09				ASSIST by POLLARD, NYLA
03:54	GOOD! JUMPER by MAYO, NUKIYA [PNT]	47-36	H 11	
03:54				FOUL (PERSONAL) by REYNOLDS, VICTORIA
03:54	MISSED FT by MAYO, NUKIYA			

Time	VISITORS: Towson	Score	Margin	HOME: William Mary
03:52				REBOUND (DEF) by REYNOLDS, VICTORIA
03:25				MISSED JUMPER by REYNOLDS, VICTORIA
03:25	BLOCK by HOLDER, RYAN			
03:24				REBOUND (OFF) by ROGERS, GABBY
03:24	SUB OUT: JOHNSON-MATTHEWS, MYKA			
03:24	SUB IN: WRIGHT, LAKAITLIN			
03:19	FOUL (PERSONAL) by MAYO, NUKIYA			
03:19				MISSED FT by REYNOLDS, VICTORIA
03:19				REBOUND (OFF) by TEAM
03:19		48-36	H 12	GOOD! FT by REYNOLDS, VICTORIA
03:19	SUB OUT: MAYO, NUKIYA			
03:19	SUB IN: JOHNSON-MATTHEWS, MYKA			
03:00	GOOD! 3PTR by JOHNSON-MATTHEWS, MYKA	48-39	H 9	
03:00	ASSIST by MURRAY, QIERRA			
02:42				MISSED 3PTR by REYNOLDS, VICTORIA
02:39	REBOUND (DEF) by WRIGHT, LAKAITLIN			
02:33	MISSED JUMPER by MURRAY, QIERRA			
02:28	REBOUND (OFF) by JETER, KIONNA			
02:14	MISSED 3PTR by JETER, KIONNA			
02:09				REBOUND (DEF) by REYNOLDS, VICTORIA
02:05		51-39	H 12	GOOD! 3PTR by HODGSON, EVA
02:05				ASSIST by WAGNER, SYDNEY
01:47	GOOD! JUMPER by HOLDER, RYAN	51-41	H 10	
01:47	ASSIST by MURRAY, QIERRA			
01:33				TURNOVER (TRAVEL) by REYNOLDS, VICTORIA
01:33				SUB OUT: POLLARD, NYLA
01:33				SUB OUT: ROGERS, GABBY
01:33				SUB IN: BELLAMY, BRE
01:33				SUB IN: EICHNER, BAILEY
01:17	MISSED JUMPER by MURRAY, QIERRA			
01:14				REBOUND (DEF) by EICHNER, BAILEY
01:07		53-41	H 12	GOOD! JUMPER by WAGNER, SYDNEY
00:37	GOOD! LAYUP by WRIGHT, LAKAITLIN	53-43	H 10	
00:37	ASSIST by MURRAY, QIERRA			
00:10				MISSED 3PTR by HODGSON, EVA
00:07	REBOUND (DEF) by JETER, KIONNA			
00:04	TURNOVER (BADPASS) by JETER, KIONNA			

Towson 43, William Mary 53

Points from (This Period)	TOW	WM
In the Paint	12	4
Off Turns	2	3
2nd Chance	0	1
Fast Break	2	5
Bench	9	2

Official Box Score
Towson vs William Mary
Fourth Quarter Statistics Only
March 05, 2020 at Kaplan Arena (Kaplan Arena) - Williamsburg



Towson 19

No.	Player	S	Pts	FG	3FG	FT	OR	DR	TR	PF	A	TO	Blk	Stl	Min	+/-
01	MAYO, NUKIYA	F	4	2-3	0-0	0-0	1	1	2	0	1	0	0	0	9	2
11	MURRAY, QIERRA	G	4	2-5	0-1	0-0	0	1	1	0	2	2	0	0	10	6
21	JETER, KIONNA	G	4	2-3	0-0	0-0	1	1	2	2	1	4	0	4	8	5
23	SMITH, SHAVONNE	G	0	0-0	0-0	0-0	0	0	0	0	0	0	0	0	0	0
32	HOLDER, RYAN	G	2	1-3	0-0	0-0	0	1	1	0	1	0	0	1	8	2
05	BARBOUR, RAYNA	G	0	0-0	0-0	0-0	0	0	0	0	0	0	0	0	0	0
13	SCHWARTAU, WIEBKE	C	0	0-0	0-0	0-0	0	0	0	0	0	0	0	0	0	0
15	GRAY, MARIAH	G	0	0-0	0-0	0-0	0	0	0	0	0	0	0	0	0	0
20	JOHNSON-MATTHEWS, MYKA	G	3	1-1	1-1	0-0	0	0	0	2	0	0	0	0	8	10
22	WRIGHT, LAKAITLIN	C	2	1-1	0-0	0-0	0	2	2	1	0	1	0	0	5	4
24	BORGOSZ, TESS	F	0	0-0	0-0	0-0	0	0	0	0	0	0	0	0	1	1
	TEAM						0	0	0	0		0				
TOTALS			19	9-16	1-2	0-0	2	6	8	5	5	7	0	5	50	

Shooting By Period

Period	FG	FG%	3FG	3FG%	FT	FT%
Game	28-60	46.7%	3-10	30.0%	3-6	50.0%

Deadball Rebounds: 1,0

William Mary 13

No.	Player	S	Pts	FG	3FG	FT	OR	DR	TR	PF	A	TO	Blk	Stl	Min	+/-
10	HODGSON, EVA	G	4	2-7	0-1	0-0	2	1	3	1	0	3	1	1	10	-6
11	POLLARD, NYLA	G	0	0-0	0-0	0-0	0	0	0	1	1	3	0	1	10	-6
20	BELLAMY, BRE	F	0	0-0	0-0	0-0	0	0	0	0	0	0	0	0	4	-6
25	ROGERS, GABBY	C	2	1-2	0-0	0-0	0	2	2	0	0	0	0	0	7	-9
30	REYNOLDS, VICTORIA	F	6	2-4	0-0	2-2	0	1	1	0	1	0	0	2	10	-6
01	WAGNER, SYDNEY	G	0	0-1	0-1	0-0	0	1	1	0	1	1	0	0	6	0
15	KRAUSE, EMMA	F	0	0-0	0-0	0-0	0	0	0	0	0	0	0	0	0	0
21	EICHNER, BAILEY	F	1	0-0	0-0	1-2	1	0	1	1	1	0	0	0	3	3
	TEAM						0	0	0	0		0				
TOTALS			13	5-14	0-2	3-4	3	5	8	3	4	7	1	4	50	

Shooting By Period

Period	FG	FG%	3FG	3FG%	FT	FT%
Game	24-55	43.6%	4-14	28.6%	14-17	82.4%

Deadball Rebounds: 4,0

Game Notes:

Officials: Kevin Dillard, Mark Behrens, Kristi Mosley
 Attendance: 731

Start Time: 07:07 PM ET
 End Time: 09:03 PM ET
 Game Duration: 1:56
 Conference Game;

Score	1st	2nd	3rd	4th	TOT
TOW	12	13	18	19	62
WM	14	19	20	13	66

Points from (This Period)	TOW	WM
In the Paint	14	10
Off Turns	6	5
2nd Chance	0	1
Fast Break	6	4
Bench	5	1

Official Play-By-Play
Towson vs William Mary
Fourth Quarter
March 05, 2020 at Kaplan Arena (Kaplan Arena) - Williamsburg



Period 4

Starters:

Towson: 1 MAYO, NUKIYA (F); 11 MURRAY, QIERRA (G); 21 JETER, KIONNA (G); 23 SMITH, SHAVONNE (G); 32 HOLDER, RYAN (G);

William Mary: 10 HODGSON, EVA (G); 11 POLLARD, NYLA (G); 20 BELLAMY, BRE (F); 25 ROGERS, GABBY (C); 30 REYNOLDS, VICTORIA (F);

Time	VISITORS: Towson	Score	Margin	HOME: William Mary
10:00				SUB OUT: BELLAMY, BRE
10:00				SUB IN: POLLARD, NYLA
10:00	SUB OUT: JOHNSON-MATTHEWS, MYKA			
10:00	SUB IN: MAYO, NUKIYA			
09:47	TURNOVER (LOSTBALL) by JETER, KIONNA			
09:47				STEAL by POLLARD, NYLA
09:19		55-43	H 12	GOOD! LAYUP by REYNOLDS, VICTORIA
09:19				ASSIST by EICHNER, BAILEY
09:10	TURNOVER (BADPASS) by JETER, KIONNA			
09:10				STEAL by HODGSON, EVA
08:47				MISSED 3PTR by WAGNER, SYDNEY
08:44				REBOUND (OFF) by HODGSON, EVA
08:43				MISSED LAYUP by HODGSON, EVA
08:40	REBOUND (DEF) by JETER, KIONNA			
08:37	MISSED 3PTR by MURRAY, QIERRA			
08:34				REBOUND (DEF) by REYNOLDS, VICTORIA
08:31		57-43	H 14	GOOD! LAYUP by HODGSON, EVA [FB]
08:31				ASSIST by REYNOLDS, VICTORIA
08:25	TIMEOUT 30SEC			
08:25	SUB OUT: JETER, KIONNA			
08:25	SUB IN: JOHNSON-MATTHEWS, MYKA			
08:15	TURNOVER (BADPASS) by WRIGHT, LAKAITLIN			
07:54				MISSED JUMPER by HODGSON, EVA
07:52				REBOUND (OFF) by EICHNER, BAILEY
07:52	FOUL (PERSONAL) by WRIGHT, LAKAITLIN			
07:52	SUB OUT: WRIGHT, LAKAITLIN			
07:52	SUB IN: BORGOSZ, TESS			
07:52				MISSED FT by EICHNER, BAILEY
07:52				REBOUND (OFF) by TEAM
07:52		58-43	H 15	GOOD! FT by EICHNER, BAILEY
07:46				FOUL (PERSONAL) by EICHNER, BAILEY
07:35	GOOD! LAYUP by MAYO, NUKIYA [PNT]	58-45	H 13	
07:35	ASSIST by HOLDER, RYAN			
07:09				MISSED JUMPER by HODGSON, EVA
07:06	REBOUND (DEF) by HOLDER, RYAN			
06:57	MISSED JUMPER by MURRAY, QIERRA			
06:53				REBOUND (DEF) by WAGNER, SYDNEY
06:49				TURNOVER (LOSTBALL) by WAGNER, SYDNEY
06:49	STEAL by HOLDER, RYAN			
06:49				SUB OUT: WAGNER, SYDNEY
06:49				SUB OUT: EICHNER, BAILEY
06:49				SUB IN: BELLAMY, BRE
06:49				SUB IN: ROGERS, GABBY
06:49	SUB OUT: BORGOSZ, TESS			
06:49	SUB IN: JETER, KIONNA			
06:36	GOOD! JUMPER by MAYO, NUKIYA [PNT]	58-47	H 11	
06:36	ASSIST by MURRAY, QIERRA			
06:20		60-47	H 13	GOOD! LAYUP by REYNOLDS, VICTORIA
06:20				ASSIST by POLLARD, NYLA
06:01	GOOD! 3PTR by JOHNSON-MATTHEWS, MYKA	60-50	H 10	
06:01	ASSIST by MAYO, NUKIYA			
05:51				TURNOVER (LOSTBALL) by HODGSON, EVA
05:51	STEAL by JETER, KIONNA			
05:46	MISSED LAYUP by JETER, KIONNA			
05:41	REBOUND (OFF) by JETER, KIONNA			
05:36	MISSED LAYUP by HOLDER, RYAN			
05:36				BLOCK by HODGSON, EVA
05:34				REBOUND (DEF) by ROGERS, GABBY
05:34				TIMEOUT 30SEC
05:34	SUB OUT: HOLDER, RYAN			
05:34	SUB IN: WRIGHT, LAKAITLIN			
05:08	FOUL (PERSONAL) by JETER, KIONNA			
05:04				FOUL (OFF) by HODGSON, EVA
05:04				TURNOVER (OFFENSIVE) by HODGSON, EVA
04:42	GOOD! LAYUP by WRIGHT, LAKAITLIN [PNT]	60-52	H 8	
04:28				MISSED 3PTR by HODGSON, EVA
04:25	REBOUND (DEF) by WRIGHT, LAKAITLIN			
04:17	GOOD! JUMPER by MURRAY, QIERRA [PNT]	60-54	H 6	
03:53				MISSED JUMPER by ROGERS, GABBY
03:47				MISSED LAYUP by HODGSON, EVA

Time	VISITORS: Towson	Score	Margin	HOME: William Mary
03:47				REBOUND (OFF) by HODGSON, EVA
03:47	REBOUND (DEF) by MURRAY, QIERRA			
03:44				FOUL (PERSONAL) by POLLARD, NYLA
03:44				SUB OUT: BELLAMY, BRE
03:44				SUB IN: WAGNER, SYDNEY
03:44	SUB OUT: WRIGHT, LAKAITLIN			
03:44	SUB IN: HOLDER, RYAN			
03:40	MISSED LAYUP by HOLDER, RYAN			
03:35	REBOUND (OFF) by MAYO, NUKIYA			
03:35	MISSED LAYUP by MAYO, NUKIYA			
03:34				REBOUND (DEF) by HODGSON, EVA
03:30		62-54	H 8	GOOD! LAYUP by ROGERS, GABBY [FB]
03:30				ASSIST by WAGNER, SYDNEY
03:20	GOOD! LAYUP by JETER, KIONNA [FB]	62-56	H 6	
03:20	ASSIST by MURRAY, QIERRA			
02:57		64-56	H 8	GOOD! JUMPER by HODGSON, EVA [PNT]
02:48	MISSED JUMPER by MURRAY, QIERRA			
02:44				REBOUND (DEF) by ROGERS, GABBY
02:44	SUB IN: WRIGHT, LAKAITLIN			
02:44	SUB OUT: MAYO, NUKIYA			
02:19				MISSED JUMPER by REYNOLDS, VICTORIA
02:15	REBOUND (DEF) by WRIGHT, LAKAITLIN			
02:10	GOOD! LAYUP by HOLDER, RYAN	64-58	H 6	
02:10	ASSIST by JETER, KIONNA			
01:46				TURNOVER (BADPASS) by POLLARD, NYLA
01:46	STEAL by JETER, KIONNA			
01:41	GOOD! JUMPER by JETER, KIONNA [FB]	64-60	H 4	
01:31				TURNOVER (LOSTBALL) by POLLARD, NYLA
01:31	STEAL by JETER, KIONNA			
01:31				SUB OUT: WAGNER, SYDNEY
01:31				SUB IN: BELLAMY, BRE
01:31	SUB OUT: HOLDER, RYAN			
01:31	SUB IN: MAYO, NUKIYA			
01:23	TURNOVER (BADPASS) by MURRAY, QIERRA			
01:23				STEAL by REYNOLDS, VICTORIA
01:23	FOUL (PERSONAL) by JOHNSON-MATTHEWS, MYKA			
01:23				SUB OUT: BELLAMY, BRE
01:23				SUB IN: WAGNER, SYDNEY
01:15	SUB OUT: WRIGHT, LAKAITLIN			
01:15	SUB IN: HOLDER, RYAN			
00:58				MISSED JUMPER by REYNOLDS, VICTORIA
00:54	REBOUND (DEF) by MAYO, NUKIYA			
00:51	GOOD! LAYUP by MURRAY, QIERRA [FB]	64-62	H 2	
00:45				TURNOVER (BADPASS) by POLLARD, NYLA
00:45	STEAL by JETER, KIONNA			
00:45	TURNOVER (LOSTBALL) by JETER, KIONNA			
00:41				TIMEOUT 30SEC
00:24				TURNOVER (LOSTBALL) by HODGSON, EVA
00:24	TIMEOUT 30SEC			
00:24				SUB OUT: WAGNER, SYDNEY
00:24				SUB IN: BELLAMY, BRE
00:12	TIMEOUT TEAM			
00:04	TURNOVER (BADPASS) by JETER, KIONNA			
00:04				TIMEOUT 30SEC
00:04				SUB OUT: BELLAMY, BRE
00:04				SUB IN: WAGNER, SYDNEY
00:03	FOUL (PERSONAL) by JOHNSON-MATTHEWS, MYKA			
00:02	FOUL (PERSONAL) by JETER, KIONNA			
00:02		65-62	H 3	GOOD! FT by REYNOLDS, VICTORIA
00:02				SUB OUT: WAGNER, SYDNEY
00:02				SUB IN: BELLAMY, BRE
00:02		66-62	H 4	GOOD! FT by REYNOLDS, VICTORIA
00:02				TIMEOUT TEAM
00:02	SUB OUT: JOHNSON-MATTHEWS, MYKA			
00:02	SUB IN: WRIGHT, LAKAITLIN			
00:00	TURNOVER (LOSTBALL) by MURRAY, QIERRA			
00:00				STEAL by REYNOLDS, VICTORIA

Towson 62, William Mary 66

Points from (This Period)	TOW	WM
In the Paint	14	10
Off Turns	6	5
2nd Chance	0	1
Fast Break	6	4
Bench	5	1

Official Scoring/Possession Reference Chart
Towson vs William Mary
Period 1
March 05, 2020 at Kaplan Arena (Kaplan Arena) - Williamsburg



Period 1

Starters:

Towson: 1 MAYO, NUKIYA (F); 11 MURRAY, QIERRA (G); 21 JETER, KIONNA (G); 23 SMITH, SHAVONNE (G); 32 HOLDER, RYAN (G);

William Mary: 10 HODGSON, EVA (G); 11 POLLARD, NYLA (G); 20 BELLAMY, BRE (F); 25 ROGERS, GABBY (C); 30 REYNOLDS, VICTORIA (F);

Time	VISITORS: Towson	Score	Margin	HOME: William Mary
09:14		1-0	H 1	GOOD! FT by REYNOLDS, VICTORIA
09:14		2-0	H 2	GOOD! FT by REYNOLDS, VICTORIA
08:37		4-0	H 4	GOOD! JUMPER by ROGERS, GABBY
07:59		6-0	H 6	GOOD! LAYUP by HODGSON, EVA [FB]
07:59		7-0	H 7	GOOD! FT by HODGSON, EVA [FB]
06:55	GOOD! LAYUP by MAYO, NUKIYA	7-2	H 5	
06:30	GOOD! JUMPER by MAYO, NUKIYA	7-4	H 3	
06:16		10-4	H 6	GOOD! 3PTR by HODGSON, EVA
05:19	GOOD! LAYUP by HOLDER, RYAN	10-6	H 4	
03:17	GOOD! LAYUP by MAYO, NUKIYA	10-8	H 2	
02:57		11-8	H 3	GOOD! FT by HODGSON, EVA
02:57		12-8	H 4	GOOD! FT by HODGSON, EVA
02:34	GOOD! JUMPER by JETER, KIONNA	12-10	H 2	
01:49		14-10	H 4	GOOD! JUMPER by WAGNER, SYDNEY [FB/PNT]
00:23	GOOD! JUMPER by MURRAY, QIERRA [PNT]	14-12	H 2	

Towson 12, William Mary 14

Official Scoring/Possession Reference Chart
Towson vs William Mary
Period 2
March 05, 2020 at Kaplan Arena (Kaplan Arena) - Williamsburg



Period 2

Starters:

Towson: 1 MAYO, NUKIYA (F); 11 MURRAY, QIERRA (G); 21 JETER, KIONNA (G); 23 SMITH, SHAVONNE (G); 32 HOLDER, RYAN (G);

William Mary: 10 HODGSON, EVA (G); 11 POLLARD, NYLA (G); 20 BELLAMY, BRE (F); 25 ROGERS, GABBY (C); 30 REYNOLDS, VICTORIA (F);

Time	VISITORS: Towson	Score	Margin	HOME: William Mary
09:45		16-12	H 4	GOOD! LAYUP by REYNOLDS, VICTORIA
09:15		18-12	H 6	GOOD! LAYUP by BELLAMY, BRE
08:21		20-12	H 8	GOOD! LAYUP by REYNOLDS, VICTORIA [FB]
07:43	GOOD! LAYUP by MURRAY, QIERRA	20-14	H 6	
07:24		22-14	H 8	GOOD! LAYUP by HODGSON, EVA [PNT]
07:01	GOOD! 3PTR by JETER, KIONNA	22-17	H 5	
06:29	GOOD! LAYUP by JETER, KIONNA [FB]	22-19	H 3	
05:48		24-19	H 5	GOOD! JUMPER by REYNOLDS, VICTORIA
04:44		26-19	H 7	GOOD! LAYUP by POLLARD, NYLA [FB]
04:00	GOOD! LAYUP by JETER, KIONNA [FB]	26-21	H 5	
02:18		29-21	H 8	GOOD! 3PTR by POLLARD, NYLA
01:47	GOOD! FT by MAYO, NUKIYA	29-22	H 7	
01:47	GOOD! FT by MAYO, NUKIYA	29-23	H 6	
01:22	GOOD! LAYUP by MAYO, NUKIYA	29-25	H 4	
01:03		31-25	H 6	GOOD! LAYUP by BELLAMY, BRE
00:03		33-25	H 8	GOOD! LAYUP by REYNOLDS, VICTORIA

Towson 25, William Mary 33

Official Scoring/Possession Reference Chart
Towson vs William Mary
Period 3
March 05, 2020 at Kaplan Arena (Kaplan Arena) - Williamsburg



Period 3

Starters:

Towson: 1 MAYO, NUKIYA (F); 11 MURRAY, QIERRA (G); 21 JETER, KIONNA (G); 23 SMITH, SHAVONNE (G); 32 HOLDER, RYAN (G);

William Mary: 10 HODGSON, EVA (G); 11 POLLARD, NYLA (G); 20 BELLAMY, BRE (F); 25 ROGERS, GABBY (C); 30 REYNOLDS, VICTORIA (F);

Time	VISITORS: Towson	Score	Margin	HOME: William Mary
08:17		34-25	H 9	GOOD! FT by POLLARD, NYLA [FB]
08:17		35-25	H 10	GOOD! FT by POLLARD, NYLA [FB]
07:56	GOOD! LAYUP by HOLDER, RYAN [FB]	35-27	H 8	
07:31		38-27	H 11	GOOD! 3PTR by HODGSON, EVA
07:14	GOOD! LAYUP by WRIGHT, LAKAITLIN	38-29	H 9	
06:26	GOOD! LAYUP by WRIGHT, LAKAITLIN	38-31	H 7	
06:14		39-31	H 8	GOOD! FT by HODGSON, EVA
06:14		40-31	H 9	GOOD! FT by HODGSON, EVA
06:02		42-31	H 11	GOOD! LAYUP by HODGSON, EVA [FB]
06:02		43-31	H 12	GOOD! FT by HODGSON, EVA [FB]
05:23		45-31	H 14	GOOD! LAYUP by REYNOLDS, VICTORIA
05:11	GOOD! LAYUP by MAYO, NUKIYA	45-33	H 12	
04:34	GOOD! FT by MAYO, NUKIYA	45-34	H 11	
04:09		47-34	H 13	GOOD! JUMPER by HODGSON, EVA
03:54	GOOD! JUMPER by MAYO, NUKIYA [PNT]	47-36	H 11	
03:19		48-36	H 12	GOOD! FT by REYNOLDS, VICTORIA
03:00	GOOD! 3PTR by JOHNSON-MATTHEWS, MYKA	48-39	H 9	
02:05		51-39	H 12	GOOD! 3PTR by HODGSON, EVA
01:47	GOOD! JUMPER by HOLDER, RYAN	51-41	H 10	
01:07		53-41	H 12	GOOD! JUMPER by WAGNER, SYDNEY
00:37	GOOD! LAYUP by WRIGHT, LAKAITLIN	53-43	H 10	

Towson 43, William Mary 53

Official Scoring/Possession Reference Chart
Towson vs William Mary
Period 4
March 05, 2020 at Kaplan Arena (Kaplan Arena) - Williamsburg



Period 4

Starters:

Towson: 1 MAYO, NUKIYA (F); 11 MURRAY, QIERRA (G); 21 JETER, KIONNA (G); 23 SMITH, SHAVONNE (G); 32 HOLDER, RYAN (G);

William Mary: 10 HODGSON, EVA (G); 11 POLLARD, NYLA (G); 20 BELLAMY, BRE (F); 25 ROGERS, GABBY (C); 30 REYNOLDS, VICTORIA (F);

Time	VISITORS: Towson	Score	Margin	HOME: William Mary
09:19		55-43	H 12	GOOD! LAYUP by REYNOLDS, VICTORIA
08:31		57-43	H 14	GOOD! LAYUP by HODGSON, EVA [FB]
07:52		58-43	H 15	GOOD! FT by EICHNER, BAILEY
07:35	GOOD! LAYUP by MAYO, NUKIYA [PNT]	58-45	H 13	
06:36	GOOD! JUMPER by MAYO, NUKIYA [PNT]	58-47	H 11	
06:20		60-47	H 13	GOOD! LAYUP by REYNOLDS, VICTORIA
06:01	GOOD! 3PTR by JOHNSON-MATTHEWS, MYKA	60-50	H 10	
04:42	GOOD! LAYUP by WRIGHT, LAKAITLIN [PNT]	60-52	H 8	
04:17	GOOD! JUMPER by MURRAY, QIERRA [PNT]	60-54	H 6	
03:30		62-54	H 8	GOOD! LAYUP by ROGERS, GABBY [FB]
03:20	GOOD! LAYUP by JETER, KIONNA [FB]	62-56	H 6	
02:57		64-56	H 8	GOOD! JUMPER by HODGSON, EVA [PNT]
02:10	GOOD! LAYUP by HOLDER, RYAN	64-58	H 6	
01:41	GOOD! JUMPER by JETER, KIONNA [FB]	64-60	H 4	
00:51	GOOD! LAYUP by MURRAY, QIERRA [FB]	64-62	H 2	
00:02		65-62	H 3	GOOD! FT by REYNOLDS, VICTORIA
00:02		66-62	H 4	GOOD! FT by REYNOLDS, VICTORIA

Towson 62, William Mary 66

Official Substitutions Log
Towson vs William Mary
Period 1
March 05, 2020 at Kaplan Arena (Kaplan Arena) - Williamsburg



VISITORS: Towson	Time	Score	HOME: William Mary
1 MAYO, NUKIYA			10 HODGSON, EVA
11 MURRAY, QIERRA			11 POLLARD, NYLA
21 JETER, KIONNA			20 BELLAMY, BRE
23 SMITH, SHAVONNE			25 ROGERS, GABBY
32 HOLDER, RYAN			30 REYNOLDS, VICTORIA
SUB OUT: 23 SMITH, SHAVONNE	07:59	0-6	
SUB IN: 22 WRIGHT, LAKAITLIN	07:59		
	06:48	2-7	SUB OUT: ROGERS, GABBY
	06:48		SUB IN: EICHNER, BAILEY
	05:14	6-10	SUB OUT: REYNOLDS, VICTORIA
	05:14		SUB IN: WAGNER, SYDNEY
	04:10	6-10	SUB OUT: BELLAMY, BRE
	04:10		SUB OUT: EICHNER, BAILEY
	04:10		SUB IN: ROGERS, GABBY
	04:10		SUB IN: REYNOLDS, VICTORIA
SUB OUT: 32 HOLDER, RYAN	02:57	8-10	
SUB IN: 23 SMITH, SHAVONNE	02:57		
SUB OUT: 22 WRIGHT, LAKAITLIN	01:33	10-14	
SUB IN: 24 BORGOSZ, TESS	01:33		
	00:23	12-14	SUB OUT: ROGERS, GABBY
	00:23		SUB IN: KRAUSE, EMMA

Towson 12, William Mary 14

Official Substitutions Log
Towson vs William Mary
Period 2
March 05, 2020 at Kaplan Arena (Kaplan Arena) - Williamsburg



VISITORS: Towson	Time	Score	HOME: William Mary
1 MAYO, NUKIYA			10 HODGSON, EVA
11 MURRAY, QIERRA			11 POLLARD, NYLA
21 JETER, KIONNA			20 BELLAMY, BRE
23 SMITH, SHAVONNE			25 ROGERS, GABBY
32 HOLDER, RYAN			30 REYNOLDS, VICTORIA
SUB OUT: 23 SMITH, SHAVONNE	10:00	-	
SUB IN: 5 BARBOUR, RAYNA	10:00		
	09:17	12-16	SUB OUT: POLLARD, NYLA
	09:17		SUB IN: BELLAMY, BRE
SUB OUT: 5 BARBOUR, RAYNA	08:49	12-18	
SUB IN: 23 SMITH, SHAVONNE	08:49		
SUB OUT: 1 MAYO, NUKIYA	06:44	17-22	
SUB IN: 22 WRIGHT, LAKAITLIN	06:44		
	06:16	19-22	SUB OUT: KRAUSE, EMMA
	06:16		SUB IN: ROGERS, GABBY
SUB OUT: 24 BORGOSZ, TESS	06:16		
SUB IN: 15 GRAY, MARIAH	06:16		
	06:00	19-22	SUB OUT: WAGNER, SYDNEY
	06:00		SUB IN: POLLARD, NYLA
SUB OUT: 22 WRIGHT, LAKAITLIN	06:00		
SUB IN: 13 SCHWARTAU, WIEBKE	06:00		
SUB OUT: 13 SCHWARTAU, WIEBKE	05:06	19-24	
SUB IN: 24 BORGOSZ, TESS	05:06		
SUB OUT: 15 GRAY, MARIAH	04:15	19-26	
SUB OUT: 23 SMITH, SHAVONNE	04:15		
SUB OUT: 24 BORGOSZ, TESS	04:15		
SUB IN: 1 MAYO, NUKIYA	04:15		
SUB IN: 22 WRIGHT, LAKAITLIN	04:15		
SUB IN: 32 HOLDER, RYAN	04:15		
	03:17	21-26	SUB OUT: BELLAMY, BRE
	03:17		SUB OUT: ROGERS, GABBY
	03:17		SUB IN: WAGNER, SYDNEY
	03:17		SUB IN: KRAUSE, EMMA
	02:45	21-26	SUB OUT: WAGNER, SYDNEY
	02:45		SUB IN: BELLAMY, BRE

Towson 25, William Mary 33

Official Substitutions Log
Towson vs William Mary
Period 3
March 05, 2020 at Kaplan Arena (Kaplan Arena) - Williamsburg



VISITORS: Towson	Time	Score	HOME: William Mary
1 MAYO,NUKIYA			10 HODGSON,EVA
11 MURRAY,QIERRA			11 POLLARD,NYLA
21 JETER,KIONNA			20 BELLAMY,BRE
23 SMITH,SHAVONNE			25 ROGERS,GABBY
32 HOLDER,RYAN			30 REYNOLDS,VICTORIA
	10:00	-	SUB OUT: KRAUSE,EMMA
	10:00		SUB IN: ROGERS,GABBY
SUB OUT: 22 WRIGHT,LAKAITLIN	10:00		
SUB IN: 23 SMITH,SHAVONNE	10:00		
SUB OUT: 23 SMITH,SHAVONNE	10:00		
SUB IN: 22 WRIGHT,LAKAITLIN	10:00		
	06:14	31-38	SUB OUT: ROGERS,GABBY
	06:14		SUB IN: EICHNER,BAILEY
SUB OUT: 22 WRIGHT,LAKAITLIN	06:14		
SUB IN: 23 SMITH,SHAVONNE	06:14		
SUB OUT: 23 SMITH,SHAVONNE	05:22	31-45	
SUB IN: 20 JOHNSON-MATTHEWS,MYKA	05:22		
	04:59	33-45	SUB OUT: BELLAMY,BRE
	04:59		SUB IN: WAGNER,SYDNEY
	04:34	33-45	SUB OUT: EICHNER,BAILEY
	04:34		SUB IN: ROGERS,GABBY
SUB OUT: 20 JOHNSON-MATTHEWS,MYKA	03:24	36-47	
SUB IN: 22 WRIGHT,LAKAITLIN	03:24		
SUB OUT: 1 MAYO,NUKIYA	03:19	36-48	
SUB IN: 20 JOHNSON-MATTHEWS,MYKA	03:19		
	01:33	41-51	SUB OUT: POLLARD,NYLA
	01:33		SUB OUT: ROGERS,GABBY
	01:33		SUB IN: BELLAMY,BRE
	01:33		SUB IN: EICHNER,BAILEY

Towson 43, William Mary 53

Official Substitutions Log
Towson vs William Mary
Period 4
March 05, 2020 at Kaplan Arena (Kaplan Arena) - Williamsburg



VISITORS: Towson	Time	Score	HOME: William Mary
1 MAYO,NUKIYA			10 HODGSON,EVA
11 MURRAY,QIERRA			11 POLLARD,NYLA
21 JETER,KIONNA			20 BELLAMY,BRE
23 SMITH,SHAVONNE			25 ROGERS,GABBY
32 HOLDER,RYAN			30 REYNOLDS,VICTORIA
	10:00	-	SUB OUT: BELLAMY,BRE
	10:00		SUB IN: POLLARD,NYLA
SUB OUT: 20 JOHNSON-MATTHEWS,MYKA	10:00		
SUB IN: 1 MAYO,NUKIYA	10:00		
SUB OUT: 21 JETER,KIONNA	08:25	43-57	
SUB IN: 20 JOHNSON-MATTHEWS,MYKA	08:25		
SUB OUT: 22 WRIGHT,LAKAITLIN	07:52	43-57	
SUB IN: 24 BORGOSZ,TESS	07:52		
	06:49	45-58	SUB OUT: WAGNER,SYDNEY
	06:49		SUB OUT: EICHNER,BAILEY
	06:49		SUB IN: BELLAMY,BRE
	06:49		SUB IN: ROGERS,GABBY
SUB OUT: 24 BORGOSZ,TESS	06:49		
SUB IN: 21 JETER,KIONNA	06:49		
SUB OUT: 32 HOLDER,RYAN	05:34	50-60	
SUB IN: 22 WRIGHT,LAKAITLIN	05:34		
	03:44	54-60	SUB OUT: BELLAMY,BRE
	03:44		SUB IN: WAGNER,SYDNEY
SUB OUT: 22 WRIGHT,LAKAITLIN	03:44		
SUB IN: 32 HOLDER,RYAN	03:44		
SUB IN: 22 WRIGHT,LAKAITLIN	02:44	56-64	
SUB OUT: 1 MAYO,NUKIYA	02:44		
	01:31	60-64	SUB OUT: WAGNER,SYDNEY
	01:31		SUB IN: BELLAMY,BRE
SUB OUT: 32 HOLDER,RYAN	01:31		
SUB IN: 1 MAYO,NUKIYA	01:31		
	01:23	60-64	SUB OUT: BELLAMY,BRE
	01:23		SUB IN: WAGNER,SYDNEY
SUB OUT: 22 WRIGHT,LAKAITLIN	01:15	60-64	
SUB IN: 32 HOLDER,RYAN	01:15		
	00:24	62-64	SUB OUT: WAGNER,SYDNEY
	00:24		SUB IN: BELLAMY,BRE
	00:04	62-64	SUB OUT: BELLAMY,BRE
	00:04		SUB IN: WAGNER,SYDNEY
	00:02	62-65	SUB OUT: WAGNER,SYDNEY
	00:02		SUB IN: BELLAMY,BRE
SUB OUT: 20 JOHNSON-MATTHEWS,MYKA	00:02		
SUB IN: 22 WRIGHT,LAKAITLIN	00:02		

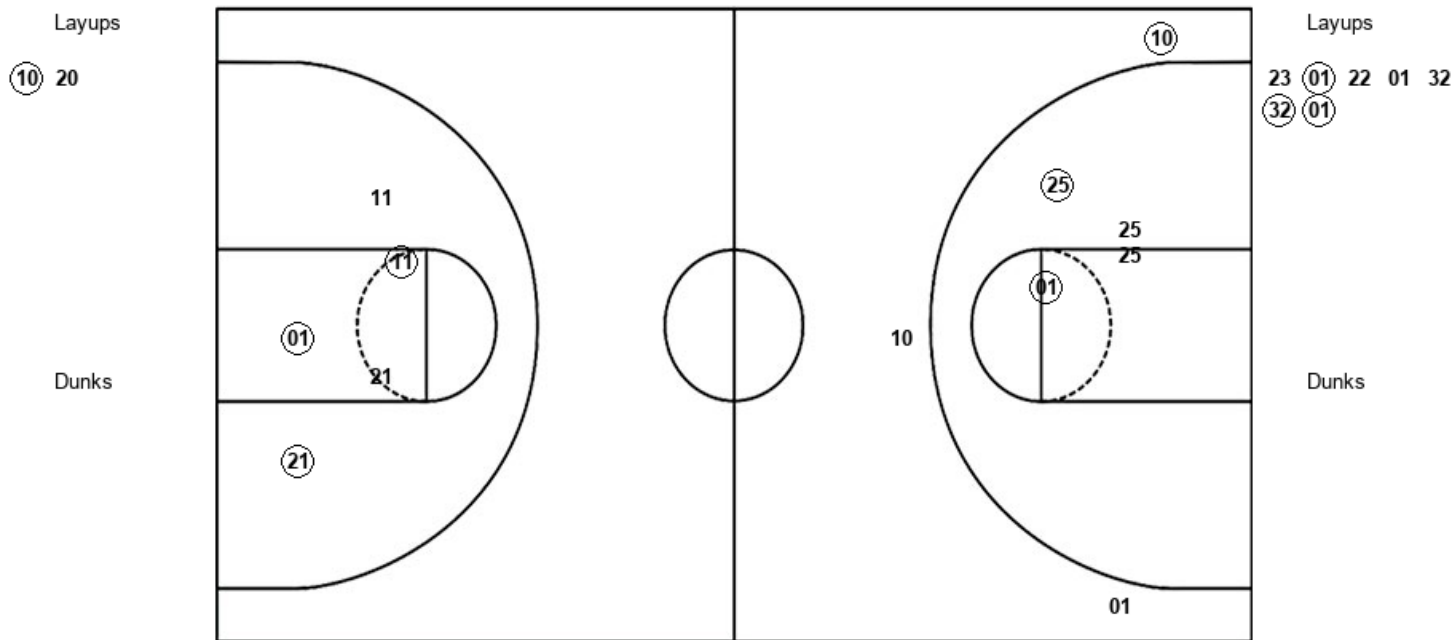
Towson 62, William Mary 66

Official Shot Chart
Towson vs William Mary
 PERIOD 1 Shots
 March 05, 2020 at Kaplan Arena (Kaplan Arena) - Williamsburg



William Mary

Towson



WM : Period 1	Made	Att	Pct
Layups	1	2	50.0
Dunks	0	0	0
2PT Field Goals	3	6	50.0
3PT Field Goals	1	3	33.3
Total Field Goals	4	9	44.4

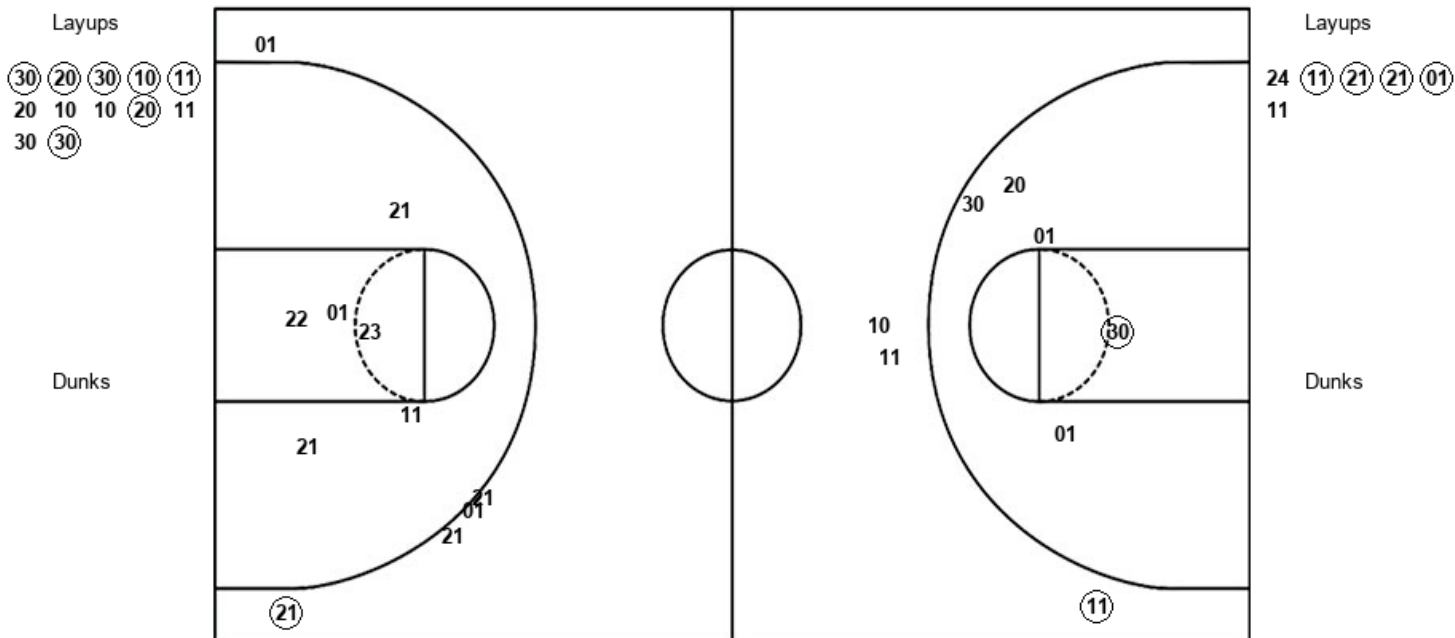
TOW : Period 1	Made	Att	Pct
Layups	3	7	42.9
Dunks	0	0	0
2PT Field Goals	6	12	50.0
3PT Field Goals	0	0	0
Total Field Goals	6	12	50.0

Official Shot Chart
Towson vs William Mary
PERIOD 2 Shots
 March 05, 2020 at Kaplan Arena (Kaplan Arena) - Williamsburg



William Mary

Towson



WM : Period 2	Made	Att	Pct
Layups	7	12	58.3
Dunks	0	0	0
2PT Field Goals	8	17	47.1
3PT Field Goals	1	3	33.3
Total Field Goals	9	20	45.0

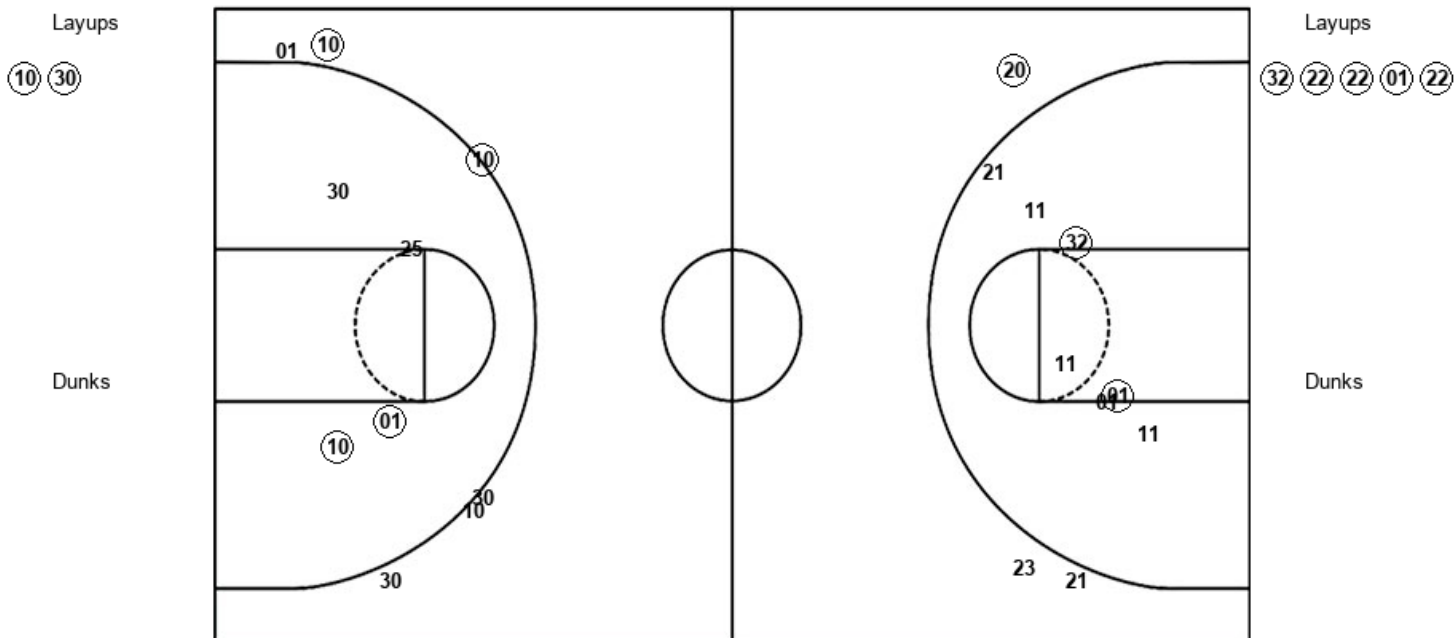
TOW : Period 2	Made	Att	Pct
Layups	4	6	66.7
Dunks	0	0	0
2PT Field Goals	4	12	33.3
3PT Field Goals	1	5	20.0
Total Field Goals	5	17	29.4

Official Shot Chart
Towson vs William Mary
 PERIOD 3 Shots
 March 05, 2020 at Kaplan Arena (Kaplan Arena) - Williamsburg



William Mary

Towson



WM : Period 3	Made	Att	Pct
Layups	2	2	100.0
Dunks	0	0	0
2PT Field Goals	4	6	66.7
3PT Field Goals	2	6	33.3
Total Field Goals	6	12	50.0

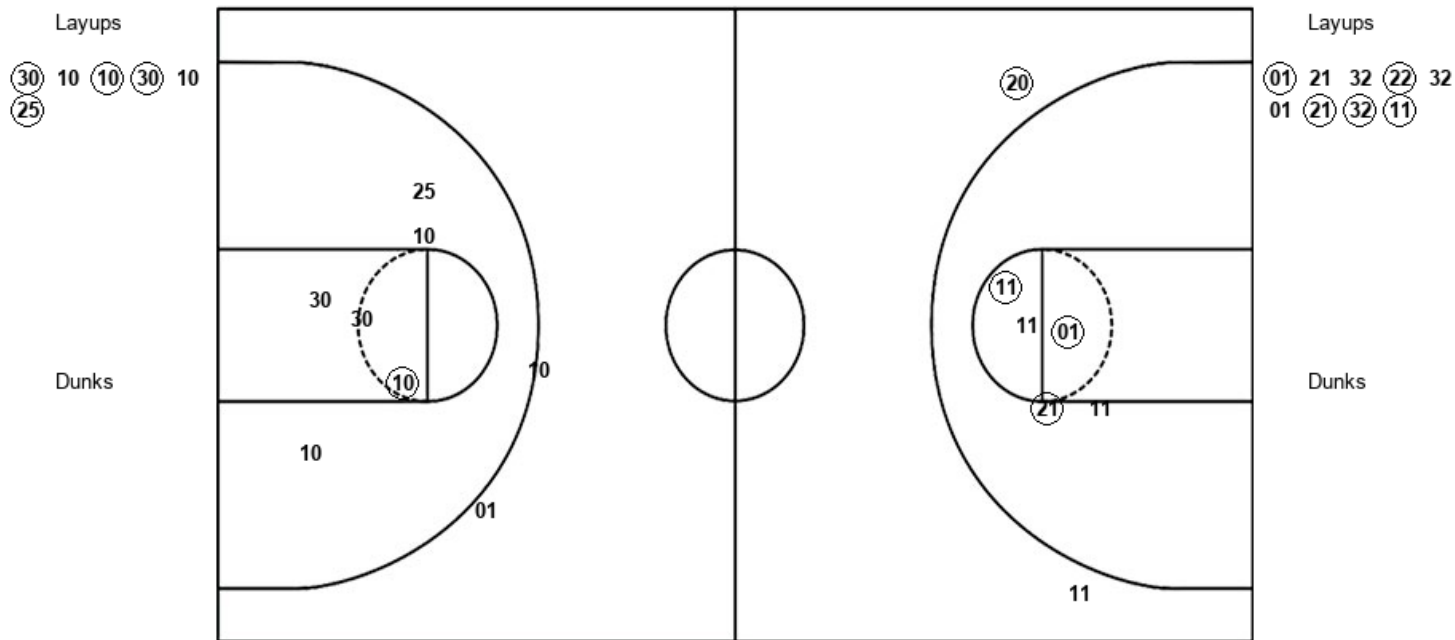
TOW : Period 3	Made	Att	Pct
Layups	5	5	100.0
Dunks	0	0	0
2PT Field Goals	7	12	58.3
3PT Field Goals	1	3	33.3
Total Field Goals	8	15	53.3

Official Shot Chart
Towson vs William Mary
PERIOD 4 Shots
 March 05, 2020 at Kaplan Arena (Kaplan Arena) - Williamsburg



William Mary

Towson



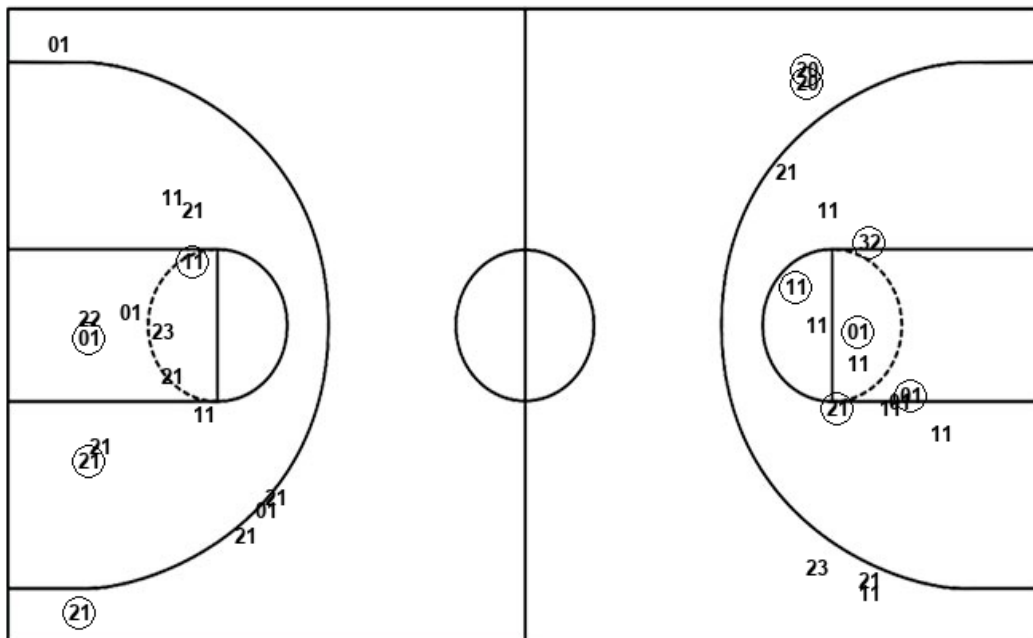
WM : Period 4	Made	Att	Pct
Layups	4	6	66.7
Dunks	0	0	0
2PT Field Goals	5	12	41.7
3PT Field Goals	0	2	00.0
Total Field Goals	5	14	35.7

TOW : Period 4	Made	Att	Pct
Layups	5	9	55.6
Dunks	0	0	0
2PT Field Goals	8	14	57.1
3PT Field Goals	1	2	50.0
Total Field Goals	9	16	56.3

Official Shot Chart
Towson vs William Mary
Towson Team Shots
March 05, 2020 at Kaplan Arena (Kaplan Arena) - Williamsburg



Layups



Layups

23 (01) 22 01 32
 (32) (01) 24 (11) (21)
 (21) (01) 11 (32) (22)
 (22) (01) (22) (01) 21
 32 (22) 32 01 (21)
 (32) (11)

Dunks

Dunks

TOW : Period 1	Made	Att	Pct
Layups	3	7	42.9
Dunks	0	0	0
2PT Field Goals	6	12	50.0
3PT Field Goals	0	0	0
Total Field Goals	6	12	50.0

TOW : Period 2	Made	Att	Pct
Layups	4	6	66.7
Dunks	0	0	0
2PT Field Goals	4	12	33.3
3PT Field Goals	1	5	20.0
Total Field Goals	5	17	29.4

TOW : Period 3	Made	Att	Pct
Layups	5	5	100.0
Dunks	0	0	0
2PT Field Goals	7	12	58.3
3PT Field Goals	1	3	33.3
Total Field Goals	8	15	53.3

TOW : Period 4	Made	Att	Pct
Layups	5	9	55.6
Dunks	0	0	0
2PT Field Goals	8	14	57.1
3PT Field Goals	1	2	50.0
Total Field Goals	9	16	56.3

