

## FINAL SCORE



**Elon**

**61**



**William Mary**

**74**

February 28, 2020 • Kaplan Arena (Kaplan Arena) - Williamsburg, Va.

## FINAL STATISTICS

**Official Box Score**  
**Elon vs William Mary**  
**Game Totals -- Final Statistics**  
**February 28, 2020 at Kaplan Arena (Kaplan Arena) - Williamsburg, Va.**



**Elon 61**

No.	Player	S	Pts	FG	3FG	FT	OR	DR	TR	PF	A	TO	Blk	Stl	Min	+/-
00	PERPIGNAN, BRIE	G	14	5-14	0-3	4-4	2	3	5	3	4	1	0	0	32	-21
01	GRAVES, JADA	G	6	2-4	0-1	2-3	4	2	6	5	0	3	0	3	22	-1
02	LILES, KAYLA	G	5	2-8	0-2	1-2	1	2	3	2	1	1	1	1	26	-17
10	MUNFORD, SAADIA	G	4	0-9	0-3	4-4	2	3	5	3	3	3	0	0	27	-15
21	COLON, ARIEL	G	6	3-12	0-0	0-0	1	4	5	4	0	1	0	0	27	-2
13	POWELL, JAYLIN	F	21	7-9	3-4	4-4	2	4	6	3	1	1	0	0	27	-6
23	NANCE, ARIANA	G	0	0-0	0-0	0-0	0	1	1	1	0	2	0	0	12	-9
24	JOHNSON, MAYA	F	2	1-1	0-0	0-0	0	0	0	3	0	1	0	0	14	-2
30	TRAORE, TYJA	F	0	0-0	0-0	0-0	0	0	0	0	0	0	0	1	2	5
52	RYAN, MICAELA	F	3	1-3	1-3	0-0	0	0	0	2	0	1	2	1	12	3
TEAM							1	2	3	0		1				
<b>TOTALS</b>			<b>61</b>	<b>21-60</b>	<b>4-16</b>	<b>15-17</b>	<b>13</b>	<b>21</b>	<b>34</b>	<b>26</b>	<b>9</b>	<b>15</b>	<b>3</b>	<b>6</b>	<b>199</b>	

*Shooting By Period*

Period	FG	FG%	3FG	3FG%	FT	FT%
1st Qtr	4-16	25%	0-3	00%	4-4	100%
2nd Qtr	4-15	27%	1-4	25%	7-7	100%
3rd Qtr	5-13	38%	1-4	25%	4-6	67%
4th Qtr	8-16	50%	2-5	40%	0-0	0%
1st Half	8-31	26%	1-7	14%	11-11	100%
2nd Half	13-29	45%	3-9	33%	4-6	67%
<b>Game</b>	<b>21-60</b>	<b>35.0%</b>	<b>4-16</b>	<b>25.0%</b>	<b>15-17</b>	<b>88.2%</b>

*Deadball Rebounds: 0,0*  
*Last FG: 4th-00:19*  
*Biggest Run: 10-0*  
*Largest lead: By 0 at 1st-05:18*  
*Technical Fouls: None.*

**William Mary 74**

No.	Player	S	Pts	FG	3FG	FT	OR	DR	TR	PF	A	TO	Blk	Stl	Min	+/-
10	HODGSON, EVA	G	27	8-14	1-4	10-11	1	4	5	2	2	3	3	2	37	16
11	POLLARD, NYLA	G	4	1-5	1-2	1-2	0	1	1	4	2	2	1	0	32	10
20	BELLAMY, BRE	F	4	2-4	0-0	0-0	0	1	1	0	0	3	2	1	22	9
25	ROGERS, GABBY	C	0	0-1	0-0	0-0	0	5	5	3	2	0	0	0	20	-1
30	REYNOLDS, VICTORIA	F	20	6-10	0-1	8-9	1	2	3	2	2	3	3	2	35	15
01	WAGNER, SYDNEY	G	11	3-9	1-5	4-4	0	3	3	2	1	1	0	0	29	4
05	GILLIAM, CHANIQWA	G	3	1-1	1-1	0-0	0	0	0	3	0	0	0	0	4	-2
21	EICHNER, BAILEY	F	5	2-3	0-0	1-2	1	8	9	2	3	0	0	0	20	14
TEAM							1	4	5	0		1				
<b>TOTALS</b>			<b>74</b>	<b>23-47</b>	<b>4-13</b>	<b>24-28</b>	<b>4</b>	<b>28</b>	<b>32</b>	<b>18</b>	<b>12</b>	<b>13</b>	<b>9</b>	<b>5</b>	<b>199</b>	

*Shooting By Period*

Period	FG	FG%	3FG	3FG%	FT	FT%
1st Qtr	7-16	44%	3-5	60%	6-6	100%
2nd Qtr	7-12	58%	1-3	33%	2-2	100%
3rd Qtr	4-12	33%	0-4	00%	2-4	50%
4th Qtr	5-7	71%	0-1	00%	14-16	88%
1st Half	14-28	50%	4-8	50%	8-8	100%
2nd Half	9-19	47%	0-5	00%	16-20	80%
<b>Game</b>	<b>23-47</b>	<b>48.9%</b>	<b>4-13</b>	<b>30.8%</b>	<b>24-28</b>	<b>85.7%</b>

*Deadball Rebounds: 3,0*  
*Last FG: 4th-01:14*  
*Biggest Run: 9-0*  
*Largest lead: By 17 at 2nd-01:48*  
*Technical Fouls: None.*

*Game Notes:*

Officials: Norma Jones, Mark Hardcastle, Hillary Harwell  
 Attendance: 795

Start Time: 07:06 PM ET  
 End Time: 08:59 PM ET  
 Game Duration: 1:53  
 Conference Game;

Score	1st	2nd	3rd	4th	TOT
PHX	12	16	15	18	61
WM	23	17	10	24	74

PHX led for 0:00. WM led for 39:20.  
 Game was tied for 0:33.  
 Times tied: 1      Lead Changes: 0

Points from	PHX	WM
In the Paint	28	36
Off Turns	16	20
2nd Chance	10	3
Fast Break	4	14
Bench	26	19

**Official Box Score**  
**Elon vs William Mary**  
**First Half Statistics Only**  
**February 28, 2020 at Kaplan Arena (Kaplan Arena) - Williamsburg, Va.**



**Elon 28**

No.	Player	S	Pts	FG	3FG	FT	OR	DR	TR	PF	A	TO	Blk	Stl	Min	+/-
00	PERPIGNAN, BRIE	G	8	2-8	0-2	4-4	2	0	2	0	0	1	0	0	14	-19
01	GRAVES, JADA	G	5	2-2	0-0	1-1	3	1	4	2	0	0	0	0	13	-1
02	LILES, KAYLA	G	0	0-5	0-2	0-0	0	0	0	1	1	0	0	0	12	-15
10	MUNFORD, SAADIA	G	4	0-6	0-2	4-4	1	3	4	2	1	3	0	0	14	-8
13	POWELL, JAYLIN	F	8	3-4	0-0	2-2	2	4	6	0	1	0	0	0	12	-10
21	COLON, ARIEL	G	0	0-5	0-0	0-0	1	2	3	1	0	0	0	0	13	0
23	NANCE, ARIANA	G	0	0-0	0-0	0-0	0	0	0	0	0	1	0	0	5	-8
24	JOHNSON, MAYA	F	0	0-0	0-0	0-0	0	0	0	2	0	1	0	0	7	-10
30	TRAORE, TYJA	F	0	0-0	0-0	0-0	0	0	0	0	0	0	0	1	2	5
52	RYAN, MICAELA	F	3	1-1	1-1	0-0	0	0	0	1	0	1	2	1	8	6
	TEAM		0	0-0	0-0	0-0	0	2	2	0	0	0	0	0	0	0
<b>TOTALS</b>			<b>28</b>	<b>8-31</b>	<b>1-7</b>	<b>11-11</b>	<b>9</b>	<b>12</b>	<b>21</b>	<b>9</b>	<b>3</b>	<b>7</b>	<b>2</b>	<b>2</b>	<b>100</b>	

*Shooting By Period*

Period	FG	FG%	3FG	3FG%	FT	FT%
1st Qtr	4-16	25%	0-3	00%	4-4	100%
2nd Qtr	4-15	27%	1-4	25%	7-7	100%
1st Half	8-31	26%	1-7	14%	11-11	100%
Game	21-60	35.0%	4-16	25.0%	15-17	88.2%

*Deadball Rebounds: 0,0*

*Last FG Half: PHX 2nd-00:51*

**William Mary 40**

No.	Player	S	Pts	FG	3FG	FT	OR	DR	TR	PF	A	TO	Blk	Stl	Min	+/-
01	WAGNER, SYDNEY	G	7	2-6	1-3	2-2	0	0	0	1	1	0	0	0	17	9
05	GILLIAM, CHANIQWA	G	3	1-1	1-1	0-0	0	0	0	3	0	0	0	0	5	-2
10	HODGSON, EVA	G	12	4-7	1-2	3-3	1	2	3	2	2	1	2	0	17	15
11	POLLARD, NYLA	G	3	1-4	1-1	0-0	0	0	0	0	2	1	1	0	17	7
20	BELLAMY, BRE	F	2	1-2	0-0	0-0	0	1	1	0	0	0	2	1	10	5
21	EICHNER, BAILEY	F	4	2-2	0-0	0-0	1	5	6	1	1	0	0	0	10	10
25	ROGERS, GABBY	C	0	0-1	0-0	0-0	0	4	4	1	2	0	0	0	10	2
30	REYNOLDS, VICTORIA	F	9	3-5	0-1	3-3	0	1	1	1	2	1	0	2	15	14
	TEAM		0	0-0	0-0	0-0	0	1	1	0	0	1	0	0	0	0
<b>TOTALS</b>			<b>40</b>	<b>14-28</b>	<b>4-8</b>	<b>8-8</b>	<b>2</b>	<b>14</b>	<b>16</b>	<b>9</b>	<b>10</b>	<b>4</b>	<b>5</b>	<b>3</b>	<b>100</b>	

*Shooting By Period*

Period	FG	FG%	3FG	3FG%	FT	FT%
1st Qtr	7-16	44%	3-5	60%	6-6	100%
2nd Qtr	7-12	58%	1-3	33%	2-2	100%
1st Half	14-28	50%	4-8	50%	8-8	100%
Game	23-47	48.9%	4-13	30.8%	24-28	85.7%

*Deadball Rebounds: 3,0*

*Last FG Half: WM 2nd-01:48*

Game Notes:

Officials: **Norma Jones, Mark Hardcastle, Hillary Harwell**  
 Attendance: **795**

Start Time: **07:06 PM ET**  
 End Time: **08:59 PM ET**  
 Game Duration: **1:53**  
 Conference Game;

Score	1st	2nd	3rd	4th	TOT
PHX	12	16	15	18	<b>61</b>
WM	23	17	10	24	<b>74</b>

Points from (This Period)	PHX	WM
In the Paint	10	20
Off Turns	7	10
2nd Chance	10	0
Fast Break	2	12
Bench	11	14

**Official Box Score**  
**Elon vs William Mary**  
**First Quarter Statistics Only**  
**February 28, 2020 at Kaplan Arena (Kaplan Arena) - Williamsburg, Va.**



**Elon 12**

No.	Player	S	Pts	FG	3FG	FT	OR	DR	TR	PF	A	TO	Blk	Stl	Min	+/-
00	PERPIGNAN, BRIE	G	4	1-5	0-1	2-2	2	0	2	0	0	1	0	0	8	-8
01	GRAVES, JADA	G	0	0-0	0-0	0-0	2	0	2	1	0	0	0	0	7	-7
02	LILES, KAYLA	G	0	0-1	0-0	0-0	0	0	0	1	1	0	0	0	7	-6
10	MUNFORD, SAADIA	G	2	0-4	0-2	2-2	1	2	3	1	0	3	0	0	7	-12
21	COLON, ARIEL	G	0	0-3	0-0	0-0	0	2	2	0	0	0	0	0	8	-8
13	POWELL, JAYLIN	F	6	3-3	0-0	0-0	1	2	3	0	0	0	0	0	5	-6
23	NANCE, ARIANA	G	0	0-0	0-0	0-0	0	0	0	0	0	0	0	0	2	-3
24	JOHNSON, MAYA	F	0	0-0	0-0	0-0	0	0	0	2	0	1	0	0	2	-3
30	TRAORE, TYJA	F	0	0-0	0-0	0-0	0	0	0	0	0	0	0	0	0	0
52	RYAN, MICAELA	F	0	0-0	0-0	0-0	0	0	0	1	0	0	2	0	4	-2
TEAM							0	2	2	0		0				
<b>TOTALS</b>			<b>12</b>	<b>4-16</b>	<b>0-3</b>	<b>4-4</b>	<b>6</b>	<b>8</b>	<b>14</b>	<b>6</b>	<b>1</b>	<b>5</b>	<b>2</b>	<b>0</b>	<b>50</b>	

*Shooting By Period*

Period	FG	FG%	3FG	3FG%	FT	FT%
1st Qtr	4-16	25%	0-3	00%	4-4	100%
2nd Qtr	4-15	27%	1-4	25%	7-7	100%
1st Half	4-16	25%	0-3	00%	4-4	100%
1st Half	8-31	26%	1-7	14%	11-11	100%
Game	21-60	35.0%	4-16	25.0%	15-17	88.2%

*Deadball Rebounds: 0,0*

**William Mary 23**

No.	Player	S	Pts	FG	3FG	FT	OR	DR	TR	PF	A	TO	Blk	Stl	Min	+/-
10	HODGSON, EVA	G	7	2-4	0-1	3-3	0	1	1	0	1	0	2	0	10	11
11	POLLARD, NYLA	G	3	1-4	1-1	0-0	0	0	0	0	1	0	0	0	10	11
20	BELLAMY, BRE	F	0	0-1	0-0	0-0	0	1	1	0	0	0	2	0	6	3
25	ROGERS, GABBY	C	0	0-1	0-0	0-0	0	2	2	1	1	0	0	0	5	2
30	REYNOLDS, VICTORIA	F	5	2-4	0-1	1-1	0	0	0	1	1	0	0	1	6	10
01	WAGNER, SYDNEY	G	5	1-1	1-1	2-2	0	0	0	1	1	0	0	0	7	8
05	GILLIAM, CHANIQWA	G	3	1-1	1-1	0-0	0	0	0	0	0	0	0	0	2	1
21	EICHNER, BAILEY	F	0	0-0	0-0	0-0	1	1	2	1	1	0	0	0	5	9
TEAM							0	1	1	0		0				
<b>TOTALS</b>			<b>23</b>	<b>7-16</b>	<b>3-5</b>	<b>6-6</b>	<b>1</b>	<b>6</b>	<b>7</b>	<b>4</b>	<b>6</b>	<b>0</b>	<b>4</b>	<b>1</b>	<b>50</b>	

*Shooting By Period*

Period	FG	FG%	3FG	3FG%	FT	FT%
1st Qtr	7-16	44%	3-5	60%	6-6	100%
2nd Qtr	7-12	58%	1-3	33%	2-2	100%
1st Half	7-16	44%	3-5	60%	6-6	100%
1st Half	14-28	50%	4-8	50%	8-8	100%
Game	23-47	48.9%	4-13	30.8%	24-28	85.7%

*Deadball Rebounds: 3,0*

*Game Notes:*

Officials: Norma Jones, Mark Hardcastle, Hillary Harwell  
 Attendance: 795

Start Time: 07:06 PM ET  
 End Time: 08:59 PM ET  
 Game Duration: 1:53  
 Conference Game;

Score	1st	2nd	3rd	4th	TOT
PHX	12	16	15	18	<b>61</b>
WM	23	17	10	24	<b>74</b>

**Points from (This Period)**

	PHX	WM
In the Paint	6	8
Off Turns	0	8
2nd Chance	6	0
Fast Break	0	8
Bench	6	8

**Official Play-By-Play  
Elon vs William Mary  
First Quarter**

**February 28, 2020 at Kaplan Arena (Kaplan Arena) - Williamsburg, Va.**



**Period 1**

**Starters:**

**Elon:** 0 PERPIGNAN, BRIE (G); 1 GRAVES, JADA (G); 2 LILES, KAYLA (G); 10 MUNFORD, SAADIA (G); 21 COLON, ARIEL (G);

**William Mary:** 10 HODGSON, EVA (G); 11 POLLARD, NYLA (G); 20 BELLAMY, BRE (F); 25 ROGERS, GABBY (C); 30 REYNOLDS, VICTORIA (F);

Time	VISITORS: Elon	Score	Margin	HOME: William Mary
09:48		2-0	H 2	GOOD! JUMPER by REYNOLDS, VICTORIA [PNT]
09:48				ASSIST by HODGSON, EVA
09:37	MISSED JUMPER by PERPIGNAN, BRIE			
09:32	REBOUND (OFF) by GRAVES, JADA			
09:24	TURNOVER (BADPASS) by MUNFORD, SAADIA			
09:11		4-0	H 4	GOOD! JUMPER by HODGSON, EVA [PNT]
09:01	MISSED JUMPER by COLON, ARIEL			
08:56				REBOUND (DEF) by ROGERS, GABBY
08:48				MISSED LAYUP by REYNOLDS, VICTORIA
08:45	REBOUND (DEF) by COLON, ARIEL			
08:32	MISSED 3PTR by PERPIGNAN, BRIE			
08:31	REBOUND (OFF) by GRAVES, JADA			
08:31				FOUL (PERSONAL) by REYNOLDS, VICTORIA
08:21	GOOD! LAYUP by PERPIGNAN, BRIE	4-2	H 2	
08:04				MISSED LAYUP by POLLARD, NYLA
08:00	REBOUND (DEF) by COLON, ARIEL			
07:59	MISSED LAYUP by COLON, ARIEL			
07:59				BLOCK by BELLAMY, BRE
07:59				REBOUND (DEF) by TEAM
07:59				SUB OUT: REYNOLDS, VICTORIA
07:59				SUB IN: WAGNER, SYDNEY
07:43	FOUL (PERSONAL) by LILES, KAYLA			
07:43		5-2	H 3	GOOD! FT by HODGSON, EVA
07:43		6-2	H 4	GOOD! FT by HODGSON, EVA
07:31	TURNOVER (BADPASS) by MUNFORD, SAADIA			
07:17				MISSED LAYUP by ROGERS, GABBY
07:17	REBOUND (DEF) by TEAM			
07:03	MISSED JUMPER by LILES, KAYLA			
07:00				REBOUND (DEF) by HODGSON, EVA
06:58	FOUL (PERSONAL) by MUNFORD, SAADIA			
06:58	SUB OUT: MUNFORD, SAADIA			
06:58	SUB IN: POWELL, JAYLIN			
06:58		7-2	H 5	GOOD! FT by WAGNER, SYDNEY [FB]
06:58		8-2	H 6	GOOD! FT by WAGNER, SYDNEY [FB]
06:40	GOOD! LAYUP by POWELL, JAYLIN	8-4	H 4	
06:40	ASSIST by LILES, KAYLA			
06:23				MISSED LAYUP by BELLAMY, BRE
06:20	REBOUND (DEF) by POWELL, JAYLIN			
06:13	GOOD! LAYUP by POWELL, JAYLIN	8-6	H 2	
05:43	FOUL (PERSONAL) by GRAVES, JADA			
05:43				SUB OUT: BELLAMY, BRE
05:43				SUB IN: REYNOLDS, VICTORIA
05:43	SUB OUT: PERPIGNAN, BRIE			
05:43	SUB OUT: GRAVES, JADA			
05:43	SUB OUT: LILES, KAYLA			
05:43	SUB OUT: COLON, ARIEL			
05:43	SUB IN: MUNFORD, SAADIA			
05:43	SUB IN: NANCE, ARIANA			
05:43	SUB IN: JOHNSON, MAYA			
05:43	SUB IN: RYAN, MICAELA			
05:38				MISSED JUMPER by POLLARD, NYLA
05:38	BLOCK by RYAN, MICAELA			
05:33	REBOUND (DEF) by POWELL, JAYLIN			
05:18	MISSED LAYUP by MUNFORD, SAADIA			
05:18	REBOUND (OFF) by MUNFORD, SAADIA			
05:18				FOUL (PERSONAL) by ROGERS, GABBY
05:18	GOOD! FT by MUNFORD, SAADIA	8-7	H 1	
05:18	GOOD! FT by MUNFORD, SAADIA	8-8	T	
05:10				MISSED LAYUP by POLLARD, NYLA
05:10	BLOCK by RYAN, MICAELA			
05:05	REBOUND (DEF) by MUNFORD, SAADIA			
05:02	MISSED LAYUP by MUNFORD, SAADIA			
04:58				REBOUND (DEF) by ROGERS, GABBY
04:57		10-8	H 2	GOOD! LAYUP by HODGSON, EVA [FB]
04:57				ASSIST by ROGERS, GABBY
04:57	FOUL (PERSONAL) by RYAN, MICAELA			
04:57				SUB OUT: ROGERS, GABBY
04:57				SUB IN: EICHNER, BAILEY
04:57	SUB OUT: RYAN, MICAELA			

Time	VISITORS: Elon	Score	Margin	HOME: William Mary
04:57	SUB IN: LILES, KAYLA			
04:57		11-8	H 3	GOOD! FT by HODGSON, EVA [FB]
04:35	TURNOVER (BADPASS) by MUNFORD, SAADIA			
04:14				MISSED JUMPER by HODGSON, EVA
04:10				REBOUND (OFF) by EICHNER, BAILEY
04:06				MISSED 3PTR by HODGSON, EVA
04:03	REBOUND (DEF) by MUNFORD, SAADIA			
03:47	FOUL (OFF) by JOHNSON, MAYA			
03:47	TURNOVER (OFFENSIVE) by JOHNSON, MAYA			
03:30		13-8	H 5	GOOD! LAYUP by REYNOLDS, VICTORIA
03:30				ASSIST by POLLARD, NYLA
03:30	FOUL (PERSONAL) by JOHNSON, MAYA			
03:30	SUB OUT: LILES, KAYLA			
03:30	SUB OUT: NANCE, ARIANA			
03:30	SUB OUT: JOHNSON, MAYA			
03:30	SUB IN: PERPIGNAN, BRIE			
03:30	SUB IN: GRAVES, JADA			
03:30	SUB IN: COLON, ARIEL			
03:30		14-8	H 6	GOOD! FT by REYNOLDS, VICTORIA
03:18	MISSED 3PTR by MUNFORD, SAADIA			
03:15	REBOUND (OFF) by POWELL, JAYLIN			
03:06	TURNOVER (BADPASS) by PERPIGNAN, BRIE			
03:06				STEAL by REYNOLDS, VICTORIA
03:02		17-8	H 9	GOOD! 3PTR by WAGNER, SYDNEY [FB]
03:02				ASSIST by REYNOLDS, VICTORIA
02:54	TIMEOUT 30SEC			
02:54	SUB OUT: POWELL, JAYLIN			
02:54	SUB IN: RYAN, MICAELA			
02:34				FOUL (PERSONAL) by EICHNER, BAILEY
02:34	GOOD! FT by PERPIGNAN, BRIE	17-9	H 8	
02:34	GOOD! FT by PERPIGNAN, BRIE	17-10	H 7	
02:18		20-10	H 10	GOOD! 3PTR by POLLARD, NYLA
02:18				ASSIST by WAGNER, SYDNEY
01:47	MISSED 3PTR by MUNFORD, SAADIA			
01:44				REBOUND (DEF) by EICHNER, BAILEY
01:32				MISSED 3PTR by REYNOLDS, VICTORIA
01:31	REBOUND (DEF) by TEAM			
01:31				SUB OUT: HODGSON, EVA
01:31				SUB OUT: REYNOLDS, VICTORIA
01:31				SUB IN: GILLIAM, CHANIQWA
01:31				SUB IN: BELLAMY, BRE
01:31	SUB OUT: MUNFORD, SAADIA			
01:31	SUB IN: LILES, KAYLA			
01:15				FOUL (PERSONAL) by WAGNER, SYDNEY
01:15				SUB OUT: WAGNER, SYDNEY
01:15				SUB IN: HODGSON, EVA
01:15	SUB OUT: GRAVES, JADA			
01:15	SUB IN: POWELL, JAYLIN			
01:08	MISSED LAYUP by COLON, ARIEL			
01:08				BLOCK by HODGSON, EVA
01:04	REBOUND (OFF) by PERPIGNAN, BRIE			
00:49	GOOD! JUMPER by POWELL, JAYLIN	20-12	H 8	
00:29		23-12	H 11	GOOD! 3PTR by GILLIAM, CHANIQWA
00:29				ASSIST by EICHNER, BAILEY
00:00	MISSED LAYUP by PERPIGNAN, BRIE			
00:00				BLOCK by BELLAMY, BRE
00:00	MISSED LAYUP by PERPIGNAN, BRIE			
00:00	REBOUND (OFF) by PERPIGNAN, BRIE			
00:00				BLOCK by HODGSON, EVA
00:00				REBOUND (DEF) by BELLAMY, BRE

### Elon 12, William Mary 23

Points from (This Period)	PHX	WM
In the Paint	6	8
Off Turns	0	8
2nd Chance	6	0
Fast Break	0	8
Bench	6	8

**Official Box Score**  
**Elon vs William Mary**  
**Second Quarter Statistics Only**  
**February 28, 2020 at Kaplan Arena (Kaplan Arena) - Williamsburg, Va.**



**Elon 16**

No.	Player	S	Pts	FG	3FG	FT	OR	DR	TR	PF	A	TO	Blk	Stl	Min	+/-
00	PERPIGNAN, BRIE	G	4	1-3	0-1	2-2	0	0	0	0	0	0	0	0	6	-11
01	GRAVES, JADA	G	5	2-2	0-0	1-1	1	1	2	1	0	0	0	0	6	6
02	LILES, KAYLA	G	0	0-4	0-2	0-0	0	0	0	0	0	0	0	0	5	-9
10	MUNFORD, SAADIA	G	2	0-2	0-0	2-2	0	1	1	1	1	0	0	0	7	4
21	COLON, ARIEL	G	0	0-2	0-0	0-0	1	0	1	1	0	0	0	0	5	8
13	POWELL, JAYLIN	F	2	0-1	0-0	2-2	1	2	3	0	1	0	0	0	7	-4
23	NANCE, ARIANA	G	0	0-0	0-0	0-0	0	0	0	0	0	1	0	0	3	-5
24	JOHNSON, MAYA	F	0	0-0	0-0	0-0	0	0	0	0	0	0	0	0	5	-7
30	TRAORE, TYJA	F	0	0-0	0-0	0-0	0	0	0	0	0	0	0	1	2	5
52	RYAN, MICAELA	F	3	1-1	1-1	0-0	0	0	0	0	0	1	0	1	4	8
TEAM							0	0	0	0	0	0	0	0	0	0
<b>TOTALS</b>			<b>16</b>	<b>4-15</b>	<b>1-4</b>	<b>7-7</b>	<b>3</b>	<b>4</b>	<b>7</b>	<b>3</b>	<b>2</b>	<b>2</b>	<b>0</b>	<b>2</b>	<b>50</b>	

*Shooting By Period*

Period	FG	FG%	3FG	3FG%	FT	FT%
3rd Qtr	5-13	38%	1-4	25%	4-6	67%
4th Qtr	8-16	50%	2-5	40%	0-0	0%
2nd Half	4-15	27%	1-4	25%	7-7	100%
2nd Half	13-29	45%	3-9	33%	4-6	67%
Game	21-60	35.0%	4-16	25.0%	15-17	88.2%

*Deadball Rebounds: 0,0*

**William Mary 17**

No.	Player	S	Pts	FG	3FG	FT	OR	DR	TR	PF	A	TO	Blk	Stl	Min	+/-
10	HODGSON, EVA	G	5	2-3	1-1	0-0	1	1	2	2	1	1	0	0	7	4
11	POLLARD, NYLA	G	0	0-0	0-0	0-0	0	0	0	0	1	1	1	0	7	-4
20	BELLAMY, BRE	F	2	1-1	0-0	0-0	0	0	0	0	0	0	0	1	4	2
25	ROGERS, GABBY	C	0	0-0	0-0	0-0	0	2	2	0	1	0	0	0	5	0
30	REYNOLDS, VICTORIA	F	4	1-1	0-0	2-2	0	1	1	0	1	1	0	1	9	4
01	WAGNER, SYDNEY	G	2	1-5	0-2	0-0	0	0	0	0	0	0	0	0	10	1
05	GILLIAM, CHANIQWA	G	0	0-0	0-0	0-0	0	0	0	3	0	0	0	0	3	-3
21	EICHNER, BAILEY	F	4	2-2	0-0	0-0	0	4	4	0	0	0	0	0	5	1
TEAM							0	0	0	0	1	0	0	0	0	
<b>TOTALS</b>			<b>17</b>	<b>7-12</b>	<b>1-3</b>	<b>2-2</b>	<b>1</b>	<b>8</b>	<b>9</b>	<b>5</b>	<b>4</b>	<b>4</b>	<b>1</b>	<b>2</b>	<b>50</b>	

*Shooting By Period*

Period	FG	FG%	3FG	3FG%	FT	FT%
3rd Qtr	4-12	33%	0-4	00%	2-4	50%
4th Qtr	5-7	71%	0-1	00%	14-16	88%
2nd Half	7-12	58%	1-3	33%	2-2	100%
2nd Half	9-19	47%	0-5	00%	16-20	80%
Game	23-47	48.9%	4-13	30.8%	24-28	85.7%

*Deadball Rebounds: 3,0*

*Game Notes:*

Officials: **Norma Jones, Mark Hardcastle, Hillary Harwell**  
 Attendance: **795**

Start Time: **07:06 PM ET**  
 End Time: **08:59 PM ET**  
 Game Duration: **1:53**  
 Conference Game;

Score	1st	2nd	3rd	4th	TOT
PHX	12	16	15	18	<b>61</b>
WM	23	17	10	24	<b>74</b>

Points from (This Period)	PHX	WM
In the Paint	4	12
Off Turns	7	2
2nd Chance	4	0
Fast Break	2	4
Bench	5	6

**Official Play-By-Play  
Elon vs William Mary  
Second Quarter**

**February 28, 2020 at Kaplan Arena (Kaplan Arena) - Williamsburg, Va.**



**Period 2**

**Starters:**

**Elon:** 0 PERPIGNAN, BRIE (G); 1 GRAVES, JADA (G); 2 LILES, KAYLA (G); 10 MUNFORD, SAADIA (G); 21 COLON, ARIEL (G);

**William Mary:** 10 HODGSON, EVA (G); 11 POLLARD, NYLA (G); 20 BELLAMY, BRE (F); 25 ROGERS, GABBY (C); 30 REYNOLDS, VICTORIA (F);

Time	VISITORS: Elon	Score	Margin	HOME: William Mary
10:00				SUB OUT: EICHNER, BAILEY
10:00				SUB IN: ROGERS, GABBY
10:00	SUB OUT: COLON, ARIEL			
10:00	SUB OUT: RYAN, MICAELA			
10:00	SUB IN: NANCE, ARIANA			
10:00	SUB IN: JOHNSON, MAYA			
09:46	MISSED 3PTR by LILES, KAYLA			
09:44	REBOUND (OFF) by POWELL, JAYLIN			
09:44				FOUL (PERSONAL) by GILLIAM, CHANIQWA
09:44				SUB OUT: GILLIAM, CHANIQWA
09:44				SUB OUT: POLLARD, NYLA
09:44				SUB IN: WAGNER, SYDNEY
09:44				SUB IN: REYNOLDS, VICTORIA
09:44	GOOD! FT by POWELL, JAYLIN	23-13	H 10	
09:44	GOOD! FT by POWELL, JAYLIN	23-14	H 9	
09:17				MISSED LAYUP by WAGNER, SYDNEY
09:14	REBOUND (DEF) by POWELL, JAYLIN			
09:10	MISSED 3PTR by PERPIGNAN, BRIE			
09:06				REBOUND (DEF) by HODGSON, EVA
08:52		26-14	H 12	GOOD! 3PTR by HODGSON, EVA
08:52				ASSIST by ROGERS, GABBY
08:24	TURNOVER (LOSTBALL) by NANCE, ARIANA			
08:24				STEAL by BELLAMY, BRE
08:18		28-14	H 14	GOOD! LAYUP by BELLAMY, BRE [FB]
07:57	MISSED JUMPER by POWELL, JAYLIN			
07:54				REBOUND (DEF) by REYNOLDS, VICTORIA
07:50		30-14	H 16	GOOD! LAYUP by WAGNER, SYDNEY [FB]
07:50				ASSIST by HODGSON, EVA
07:31	GOOD! JUMPER by PERPIGNAN, BRIE	30-16	H 14	
07:31	ASSIST by POWELL, JAYLIN			
07:14		32-16	H 16	GOOD! JUMPER by HODGSON, EVA [PNT]
06:54	MISSED LAYUP by PERPIGNAN, BRIE			
06:51				REBOUND (DEF) by ROGERS, GABBY
06:39				FOUL (OFF) by HODGSON, EVA
06:39				TURNOVER (OFFENSIVE) by HODGSON, EVA
06:39				SUB OUT: BELLAMY, BRE
06:39				SUB OUT: ROGERS, GABBY
06:39				SUB IN: POLLARD, NYLA
06:39				SUB IN: EICHNER, BAILEY
06:39	SUB OUT: PERPIGNAN, BRIE			
06:39	SUB OUT: LILES, KAYLA			
06:39	SUB OUT: POWELL, JAYLIN			
06:39	SUB OUT: NANCE, ARIANA			
06:39	SUB OUT: JOHNSON, MAYA			
06:39	SUB IN: GRAVES, JADA			
06:39	SUB IN: MUNFORD, SAADIA			
06:39	SUB IN: COLON, ARIEL			
06:39	SUB IN: TRAORE, TYJA			
06:39	SUB IN: RYAN, MICAELA			
06:20	TURNOVER (BADPASS) by RYAN, MICAELA			
06:20				STEAL by REYNOLDS, VICTORIA
06:04				TURNOVER (LOSTBALL) by REYNOLDS, VICTORIA
06:04	STEAL by TRAORE, TYJA			
05:48	MISSED LAYUP by MUNFORD, SAADIA			
05:44	REBOUND (OFF) by COLON, ARIEL			
05:43	MISSED LAYUP by COLON, ARIEL			
05:38	REBOUND (OFF) by GRAVES, JADA			
05:38	GOOD! LAYUP by GRAVES, JADA	32-18	H 14	
05:17				MISSED 3PTR by WAGNER, SYDNEY
05:14	REBOUND (DEF) by MUNFORD, SAADIA			
05:08	GOOD! 3PTR by RYAN, MICAELA	32-21	H 11	
05:08	ASSIST by MUNFORD, SAADIA			
04:48	FOUL (PERSONAL) by COLON, ARIEL			
04:48				
04:48	SUB OUT: COLON, ARIEL			
04:48	SUB OUT: TRAORE, TYJA			
04:48	SUB OUT: RYAN, MICAELA			
04:48	SUB IN: PERPIGNAN, BRIE			
04:48	SUB IN: LILES, KAYLA			
04:48	SUB IN: POWELL, JAYLIN			



Time	VISITORS: Elon	Score	Margin	HOME: William Mary
04:48		33-21	H 12	GOOD! FT by REYNOLDS, VICTORIA
04:48		34-21	H 13	GOOD! FT by REYNOLDS, VICTORIA
04:26	MISSED LAYUP by LILES, KAYLA			
04:26				BLOCK by POLLARD, NYLA
04:22				REBOUND (DEF) by EICHNER, BAILEY
04:15		36-21	H 15	GOOD! LAYUP by EICHNER, BAILEY
04:15				ASSIST by POLLARD, NYLA
03:53	MISSED JUMPER by LILES, KAYLA			
03:48				REBOUND (DEF) by EICHNER, BAILEY
03:33				MISSED LAYUP by HODGSON, EVA
03:30	REBOUND (DEF) by POWELL, JAYLIN			
03:24	MISSED 3PTR by LILES, KAYLA			
03:21				REBOUND (DEF) by EICHNER, BAILEY
03:21	FOUL (PERSONAL) by GRAVES, JADA			
03:21	SUB OUT: LILES, KAYLA			
03:21	SUB OUT: POWELL, JAYLIN			
03:21	SUB IN: COLON, ARIEL			
03:21	SUB IN: JOHNSON, MAYA			
03:05	FOUL (PERSONAL) by MUNFORD, SAADIA			
02:49				MISSED 3PTR by WAGNER, SYDNEY
02:46				REBOUND (OFF) by HODGSON, EVA
02:38				MISSED JUMPER by WAGNER, SYDNEY
02:34	REBOUND (DEF) by GRAVES, JADA			
02:32				FOUL (PERSONAL) by HODGSON, EVA
02:32				SUB OUT: HODGSON, EVA
02:32				SUB IN: GILLIAM, CHANIQWA
02:32	SUB OUT: GRAVES, JADA			
02:32	SUB IN: RYAN, MICAELA			
02:32	GOOD! FT by PERPIGNAN, BRIE [FB]	36-22	H 14	
02:32	GOOD! FT by PERPIGNAN, BRIE [FB]	36-23	H 13	
02:17		38-23	H 15	GOOD! JUMPER by REYNOLDS, VICTORIA [PNT]
02:03	MISSED LAYUP by MUNFORD, SAADIA			
02:00				REBOUND (DEF) by EICHNER, BAILEY
01:48		40-23	H 17	GOOD! LAYUP by EICHNER, BAILEY
01:48				ASSIST by REYNOLDS, VICTORIA
01:47	TIMEOUT 30SEC			
01:45				SUB OUT: EICHNER, BAILEY
01:45				SUB IN: ROGERS, GABBY
01:45	SUB OUT: PERPIGNAN, BRIE			
01:45	SUB OUT: JOHNSON, MAYA			
01:45	SUB IN: GRAVES, JADA			
01:45	SUB IN: POWELL, JAYLIN			
01:35	MISSED JUMPER by COLON, ARIEL			
01:32				REBOUND (DEF) by ROGERS, GABBY
01:10				TURNOVER (BADPASS) by POLLARD, NYLA
01:10	STEAL by RYAN, MICAELA			
00:51	GOOD! LAYUP by GRAVES, JADA	40-25	H 15	
00:51				FOUL (PERSONAL) by GILLIAM, CHANIQWA
00:51				SUB OUT: REYNOLDS, VICTORIA
00:51				SUB IN: BELLAMY, BRE
00:51	GOOD! FT by GRAVES, JADA	40-26	H 14	
00:19				TURNOVER (SHOTCLOCK) by TEAM
00:05				FOUL (PERSONAL) by GILLIAM, CHANIQWA
00:05	GOOD! FT by MUNFORD, SAADIA	40-27	H 13	
00:05	GOOD! FT by MUNFORD, SAADIA	40-28	H 12	
00:05	SUB OUT: MUNFORD, SAADIA			
00:05	SUB OUT: RYAN, MICAELA			
00:05	SUB IN: PERPIGNAN, BRIE			
00:05	SUB IN: LILES, KAYLA			

### Elon 28, William Mary 40

Points from (This Period)	PHX	WM
In the Paint	4	12
Off Turns	7	2
2nd Chance	4	0
Fast Break	2	4
Bench	5	6

**Official Box Score**  
**Elon vs William Mary**  
**Second Half Statistics Only**  
**February 28, 2020 at Kaplan Arena (Kaplan Arena) - Williamsburg, Va.**



**Elon 33**

No.	Player	S	Pts	FG	3FG	FT	OR	DR	TR	PF	A	TO	Blk	Stl	Min	+/-
00	PERPIGNAN, BRIE	G	6	3-6	0-1	0-0	0	3	3	3	4	0	0	0	18	-2
01	GRAVES, JADA	G	1	0-2	0-1	1-2	1	1	2	3	0	3	0	3	10	0
02	LILES, KAYLA	G	5	2-3	0-0	1-2	1	2	3	1	0	1	1	1	14	-2
10	MUNFORD, SAADIA	G	0	0-3	0-1	0-0	1	0	1	1	2	0	0	0	14	-7
13	POWELL, JAYLIN	F	13	4-5	3-4	2-2	0	0	0	3	0	1	0	0	14	4
21	COLON, ARIEL	G	6	3-7	0-0	0-0	0	2	2	3	0	1	0	0	14	-2
23	NANCE, ARIANA	G	0	0-0	0-0	0-0	0	1	1	1	0	1	0	0	6	-1
24	JOHNSON, MAYA	F	2	1-1	0-0	0-0	0	0	0	1	0	0	0	0	7	8
30	TRAORE, TYJA	F	0	0-0	0-0	0-0	0	0	0	0	0	0	0	0	0	0
52	RYAN, MICAELA	F	0	0-2	0-2	0-0	0	0	0	1	0	0	0	0	4	-3
	TEAM		0	0-0	0-0	0-0	1	0	1	0	0	1	0	0	0	0
<b>TOTALS</b>			<b>33</b>	<b>13-29</b>	<b>3-9</b>	<b>4-6</b>	<b>4</b>	<b>9</b>	<b>13</b>	<b>17</b>	<b>6</b>	<b>8</b>	<b>1</b>	<b>4</b>	<b>99</b>	

*Shooting By Period*

Period	FG	FG%	3FG	3FG%	FT	FT%
3rd Qtr	5-13	38%	1-4	25%	4-6	67%
4th Qtr	8-16	50%	2-5	40%	0-0	0%
2nd Half	13-29	45%	3-9	33%	4-6	67%
Game	21-60	35.0%	4-16	25.0%	15-17	88.2%

Deadball Rebounds: 0,0  
 Last FG Half: PHX 4th-00:19

**William Mary 34**

No.	Player	S	Pts	FG	3FG	FT	OR	DR	TR	PF	A	TO	Blk	Stl	Min	+/-
01	WAGNER, SYDNEY	G	4	1-3	0-2	2-2	0	3	3	1	0	1	0	0	12	-5
05	GILLIAM, CHANIQWA	G	0	0-0	0-0	0-0	0	0	0	0	0	0	0	0	0	0
10	HODGSON, EVA	G	15	4-7	0-2	7-8	0	2	2	0	0	2	1	2	20	1
11	POLLARD, NYLA	G	1	0-1	0-1	1-2	0	1	1	4	0	1	0	0	16	3
20	BELLAMY, BRE	F	2	1-2	0-0	0-0	0	0	0	0	0	3	0	0	12	4
21	EICHNER, BAILEY	F	1	0-1	0-0	1-2	0	3	3	1	2	0	0	0	10	4
25	ROGERS, GABBY	C	0	0-0	0-0	0-0	0	1	1	2	0	0	0	0	10	-3
30	REYNOLDS, VICTORIA	F	11	3-5	0-0	5-6	1	1	2	1	0	2	3	0	20	1
	TEAM		0	0-0	0-0	0-0	1	3	4	0	0	0	0	0	0	0
<b>TOTALS</b>			<b>34</b>	<b>9-19</b>	<b>0-5</b>	<b>16-20</b>	<b>2</b>	<b>14</b>	<b>16</b>	<b>9</b>	<b>2</b>	<b>9</b>	<b>4</b>	<b>2</b>	<b>99</b>	

*Shooting By Period*

Period	FG	FG%	3FG	3FG%	FT	FT%
3rd Qtr	4-12	33%	0-4	00%	2-4	50%
4th Qtr	5-7	71%	0-1	00%	14-16	88%
2nd Half	9-19	47%	0-5	00%	16-20	80%
Game	23-47	48.9%	4-13	30.8%	24-28	85.7%

Deadball Rebounds: 3,0  
 Last FG Half: WM 4th-01:14

Game Notes:

Officials: Norma Jones, Mark Hardcastle, Hillary Harwell  
 Attendance: 795

Start Time: 07:06 PM ET  
 End Time: 08:59 PM ET  
 Game Duration: 1:53  
 Conference Game;

Score	1st	2nd	3rd	4th	TOT
PHX	12	16	15	18	61
WM	23	17	10	24	74

Points from (This Period)	PHX	WM
In the Paint	18	16
Off Turns	9	10
2nd Chance	0	3
Fast Break	2	2
Bench	15	5

**Official Box Score**  
**Elon vs William Mary**  
**Third Quarter Statistics Only**  
**February 28, 2020 at Kaplan Arena (Kaplan Arena) - Williamsburg, Va.**



**Elon 33**

No.	Player	S	Pts	FG	3FG	FT	OR	DR	TR	PF	A	TO	Blk	Stl	Min	+/-
00	PERPIGNAN, BRIE	G	4	2-2	0-0	0-0	0	3	3	1	2	0	0	0	9	2
01	GRAVES, JADA	G	1	0-1	0-0	1-2	1	1	2	1	0	1	0	0	5	-1
02	LILES, KAYLA	G	1	0-1	0-0	1-2	0	2	2	0	0	1	1	1	7	7
10	MUNFORD, SAADIA	G	0	0-3	0-1	0-0	0	0	0	0	0	0	0	0	8	-2
21	COLON, ARIEL	G	2	1-2	0-0	0-0	0	1	1	2	0	0	0	0	7	3
13	POWELL, JAYLIN	F	5	1-2	1-2	2-2	0	0	0	1	0	1	0	0	6	8
23	NANCE, ARIANA	G	0	0-0	0-0	0-0	0	0	0	0	0	0	0	0	1	-1
24	JOHNSON, MAYA	F	2	1-1	0-0	0-0	0	0	0	0	0	0	0	0	6	10
30	TRAORE, TYJA	F	0	0-0	0-0	0-0	0	0	0	0	0	0	0	0	0	0
52	RYAN, MICAELA	F	0	0-1	0-1	0-0	0	0	0	1	0	0	0	0	2	-1
TEAM								1	0	1	0	0				
<b>TOTALS</b>			<b>15</b>	<b>5-13</b>	<b>1-4</b>	<b>4-6</b>	<b>2</b>	<b>7</b>	<b>9</b>	<b>6</b>	<b>2</b>	<b>3</b>	<b>1</b>	<b>1</b>	<b>50</b>	

*Shooting By Period*

Period	FG	FG%	3FG	3FG%	FT	FT%
2nd Half	0-0	0%	0-0	0%	0-0	0%
Game	21-60	35.0%	4-16	25.0%	15-17	88.2%

*Deadball Rebounds: 0,0*

**William Mary 34**

No.	Player	S	Pts	FG	3FG	FT	OR	DR	TR	PF	A	TO	Blk	Stl	Min	+/-
10	HODGSON, EVA	G	4	2-5	0-2	0-0	0	1	1	0	0	0	1	1	10	-5
11	POLLARD, NYLA	G	0	0-0	0-0	0-0	0	1	1	3	0	0	0	0	6	-3
20	BELLAMY, BRE	F	2	1-2	0-0	0-0	0	0	0	0	0	2	0	0	8	0
25	ROGERS, GABBY	C	0	0-0	0-0	0-0	0	1	1	1	0	0	0	0	6	-3
30	REYNOLDS, VICTORIA	F	3	1-2	0-0	1-2	1	0	1	1	0	2	2	0	10	-5
01	WAGNER, SYDNEY	G	0	0-2	0-2	0-0	0	2	2	1	0	1	0	0	7	-7
05	GILLIAM, CHANIQWA	G	0	0-0	0-0	0-0	0	0	0	0	0	0	0	0	0	0
21	EICHNER, BAILEY	F	1	0-1	0-0	1-2	0	2	2	1	1	0	0	0	4	-2
TEAM								1	1	2	0	0				
<b>TOTALS</b>			<b>10</b>	<b>4-12</b>	<b>0-4</b>	<b>2-4</b>	<b>2</b>	<b>8</b>	<b>10</b>	<b>7</b>	<b>1</b>	<b>5</b>	<b>3</b>	<b>1</b>	<b>50</b>	

*Shooting By Period*

Period	FG	FG%	3FG	3FG%	FT	FT%
2nd Half	0-0	0%	0-0	0%	0-0	0%
Game	23-47	48.9%	4-13	30.8%	24-28	85.7%

*Deadball Rebounds: 3,0*

Game Notes:

Officials: **Norma Jones, Mark Hardcastle, Hillary Harwell**  
 Attendance: **795**

Start Time: **07:06 PM ET**  
 End Time: **08:59 PM ET**  
 Game Duration: **1:53**  
 Conference Game;

Score	1st	2nd	3rd	4th	TOT
PHX	12	16	15	18	<b>61</b>
WM	23	17	10	24	<b>74</b>

Points from (This Period)	PHX	WM
In the Paint	8	8
Off Turns	7	2
2nd Chance	0	3
Fast Break	0	0
Bench	7	1

**Official Play-By-Play  
Elon vs William Mary  
Third Quarter**

**February 28, 2020 at Kaplan Arena (Kaplan Arena) - Williamsburg, Va.**



**Period 3**

**Starters:**

**Elon:** 0 PERPIGNAN, BRIE (G); 1 GRAVES, JADA (G); 2 LILES, KAYLA (G); 10 MUNFORD, SAADIA (G); 21 COLON, ARIEL (G);

**William Mary:** 10 HODGSON, EVA (G); 11 POLLARD, NYLA (G); 20 BELLAMY, BRE (F); 25 ROGERS, GABBY (C); 30 REYNOLDS, VICTORIA (F);

Time	VISITORS: Elon	Score	Margin	HOME: William Mary
10:00				SUB OUT: WAGNER, SYDNEY
10:00				SUB OUT: GILLIAM, CHANIQWA
10:00				SUB IN: HODGSON, EVA
10:00				SUB IN: REYNOLDS, VICTORIA
10:00	SUB OUT: POWELL, JAYLIN			
10:00	SUB IN: MUNFORD, SAADIA			
09:33		42-28	H 14	GOOD! LAYUP by HODGSON, EVA
09:15	TURNOVER (TRAVEL) by LILES, KAYLA			
08:57				MISSED LAYUP by REYNOLDS, VICTORIA
08:56	REBOUND (DEF) by COLON, ARIEL			
08:43	MISSED 3PTR by MUNFORD, SAADIA			
08:39				REBOUND (DEF) by ROGERS, GABBY
08:16				TURNOVER (LOSTBALL) by BELLAMY, BRE
08:16	SUB OUT: LILES, KAYLA			
08:16	SUB IN: POWELL, JAYLIN			
08:05	FOUL (OFF) by GRAVES, JADA			
08:05	TURNOVER (OFFENSIVE) by GRAVES, JADA			
07:52		44-28	H 16	GOOD! LAYUP by HODGSON, EVA [PNT]
07:24				FOUL (PERSONAL) by POLLARD, NYLA
07:24	SUB OUT: GRAVES, JADA			
07:24	SUB OUT: MUNFORD, SAADIA			
07:24	SUB IN: LILES, KAYLA			
07:24	SUB IN: JOHNSON, MAYA			
07:19	GOOD! JUMPER by COLON, ARIEL [PNT]	44-30	H 14	
06:56				MISSED LAYUP by BELLAMY, BRE
06:52	REBOUND (DEF) by LILES, KAYLA			
06:50	MISSED LAYUP by LILES, KAYLA			
06:50				BLOCK by REYNOLDS, VICTORIA
06:49				REBOUND (DEF) by POLLARD, NYLA
06:49	FOUL (PERSONAL) by COLON, ARIEL			
06:49				SUB OUT: BELLAMY, BRE
06:49				SUB IN: WAGNER, SYDNEY
06:38				TURNOVER (BADPASS) by REYNOLDS, VICTORIA
06:25	GOOD! LAYUP by JOHNSON, MAYA [PNT]	44-32	H 12	
06:25	ASSIST by PERPIGNAN, BRIE			
06:05				FOUL (OFF) by REYNOLDS, VICTORIA
06:05				TURNOVER (OFFENSIVE) by REYNOLDS, VICTORIA
05:46	GOOD! 3PTR by POWELL, JAYLIN	44-35	H 9	
05:46	ASSIST by PERPIGNAN, BRIE			
05:19				MISSED 3PTR by HODGSON, EVA
05:16	REBOUND (DEF) by LILES, KAYLA			
04:56				FOUL (PERSONAL) by POLLARD, NYLA
04:56				
04:56	SUB OUT: PERPIGNAN, BRIE			
04:56	SUB OUT: COLON, ARIEL			
04:56	SUB IN: GRAVES, JADA			
04:56	SUB IN: MUNFORD, SAADIA			
04:48	TURNOVER (LOSTBALL) by POWELL, JAYLIN			
04:48				STEAL by HODGSON, EVA
04:30				MISSED LAYUP by HODGSON, EVA
04:28	REBOUND (DEF) by GRAVES, JADA			
04:23				FOUL (PERSONAL) by ROGERS, GABBY
04:23				SUB OUT: ROGERS, GABBY
04:23				SUB IN: EICHNER, BAILEY
04:23				FOUL (PERSONAL) by POLLARD, NYLA
04:23				SUB OUT: POLLARD, NYLA
04:23				SUB IN: BELLAMY, BRE
04:23	GOOD! FT by POWELL, JAYLIN	44-36	H 8	
04:23	GOOD! FT by POWELL, JAYLIN	44-37	H 7	
04:09				TURNOVER (BADPASS) by BELLAMY, BRE
03:47				FOUL (PERSONAL) by EICHNER, BAILEY
03:47	GOOD! FT by GRAVES, JADA	44-38	H 6	
03:46	MISSED FT by GRAVES, JADA			
03:45				REBOUND (DEF) by WAGNER, SYDNEY
03:32	FOUL (PERSONAL) by POWELL, JAYLIN			
03:32	SUB OUT: GRAVES, JADA			
03:32	SUB OUT: LILES, KAYLA			
03:32	SUB IN: PERPIGNAN, BRIE			
03:32	SUB IN: COLON, ARIEL			
03:28				MISSED 3PTR by WAGNER, SYDNEY

Time	VISITORS: Elon	Score	Margin	HOME: William Mary
03:25	REBOUND (DEF) by PERPIGNAN, BRIE			
03:19	MISSED 3PTR by POWELL, JAYLIN			
03:15				REBOUND (DEF) by HODGSON, EVA
03:05		46-38	H 8	GOOD! LAYUP by BELLAMY, BRE
03:05				ASSIST by EICHNER, BAILEY
02:43	MISSED JUMPER by COLON, ARIEL			
02:39				REBOUND (DEF) by EICHNER, BAILEY
02:27				MISSED 3PTR by HODGSON, EVA
02:23	REBOUND (DEF) by PERPIGNAN, BRIE			
02:11	GOOD! LAYUP by PERPIGNAN, BRIE [PNT]	46-40	H 6	
01:51	FOUL (PERSONAL) by COLON, ARIEL			
01:51	SUB OUT: POWELL, JAYLIN			
01:51	SUB OUT: JOHNSON, MAYA			
01:51	SUB IN: GRAVES, JADA			
01:51	SUB IN: LILES, KAYLA			
01:46				MISSED LAYUP by EICHNER, BAILEY
01:46	BLOCK by LILES, KAYLA			
01:46				REBOUND (OFF) by TEAM
01:46	SUB OUT: COLON, ARIEL			
01:46	SUB IN: RYAN, MICAELA			
01:38	FOUL (PERSONAL) by PERPIGNAN, BRIE			
01:38		47-40	H 7	GOOD! FT by REYNOLDS, VICTORIA
01:38				MISSED FT by REYNOLDS, VICTORIA
01:35	REBOUND (DEF) by PERPIGNAN, BRIE			
01:11	MISSED 3PTR by RYAN, MICAELA			
01:07	REBOUND (OFF) by GRAVES, JADA			
01:06	MISSED LAYUP by GRAVES, JADA			
01:02				REBOUND (DEF) by WAGNER, SYDNEY
01:02				TURNOVER (LOSTBALL) by WAGNER, SYDNEY
01:02	STEAL by LILES, KAYLA			
01:02				FOUL (PERSONAL) by WAGNER, SYDNEY
01:02	GOOD! FT by LILES, KAYLA	47-41	H 6	
01:02	MISSED FT by LILES, KAYLA			
01:02				REBOUND (DEF) by EICHNER, BAILEY
01:02	FOUL (PERSONAL) by RYAN, MICAELA			
01:02	SUB OUT: GRAVES, JADA			
01:02	SUB IN: NANCE, ARIANA			
01:02				MISSED FT by EICHNER, BAILEY
01:02				REBOUND (OFF) by TEAM
01:02		48-41	H 7	GOOD! FT by EICHNER, BAILEY
00:45	GOOD! JUMPER by PERPIGNAN, BRIE [PNT]	48-43	H 5	
00:24				MISSED 3PTR by WAGNER, SYDNEY
00:20				REBOUND (OFF) by REYNOLDS, VICTORIA
00:19		50-43	H 7	GOOD! LAYUP by REYNOLDS, VICTORIA
00:03	MISSED LAYUP by MUNFORD, SAADIA			
00:03				BLOCK by REYNOLDS, VICTORIA
00:03	REBOUND (OFF) by TEAM			
00:01	MISSED LAYUP by MUNFORD, SAADIA			
00:01				BLOCK by HODGSON, EVA
00:01				REBOUND (DEF) by TEAM

Elon 43, William Mary 50

Points from (This Period)	PHX	WM
In the Paint	8	8
Off Turns	7	2
2nd Chance	0	3
Fast Break	0	0
Bench	7	1

**Official Box Score**  
**Elon vs William Mary**  
**Fourth Quarter Statistics Only**  
**February 28, 2020 at Kaplan Arena (Kaplan Arena) - Williamsburg, Va.**



**Elon 18**

No.	Player	S	Pts	FG	3FG	FT	OR	DR	TR	PF	A	TO	Blk	Stl	Min	+/-
00	PERPIGNAN, BRIE	G	2	1-4	0-1	0-0	0	0	0	2	2	0	0	0	9	-4
01	GRAVES, JADA	G	0	0-1	0-1	0-0	0	0	0	2	0	2	0	3	5	1
02	LILES, KAYLA	G	4	2-2	0-0	0-0	1	0	1	1	0	0	0	0	7	-9
10	MUNFORD, SAADIA	G	0	0-0	0-0	0-0	1	0	1	1	2	0	0	0	6	-5
21	COLON, ARIEL	G	4	2-5	0-0	0-0	0	1	1	1	0	1	0	0	7	-5
13	POWELL, JAYLIN	F	8	3-3	2-2	0-0	0	0	0	2	0	0	0	0	8	-4
23	NANCE, ARIANA	G	0	0-0	0-0	0-0	0	1	1	1	0	1	0	0	5	0
24	JOHNSON, MAYA	F	0	0-0	0-0	0-0	0	0	0	1	0	0	0	0	1	-2
30	TRAORE, TYJA	F	0	0-0	0-0	0-0	0	0	0	0	0	0	0	0	0	0
52	RYAN, MICAELA	F	0	0-1	0-1	0-0	0	0	0	0	0	0	0	0	2	-2
TEAM							0	0	0	0		1				
<b>TOTALS</b>			<b>18</b>	<b>8-16</b>	<b>2-5</b>	<b>0-0</b>	<b>2</b>	<b>2</b>	<b>4</b>	<b>11</b>	<b>4</b>	<b>5</b>	<b>0</b>	<b>3</b>	<b>49</b>	

*Shooting By Period*

Period	FG	FG%	3FG	3FG%	FT	FT%
Game	21-60	35.0%	4-16	25.0%	15-17	88.2%

*Deadball Rebounds: 0,0*

**William Mary 24**

No.	Player	S	Pts	FG	3FG	FT	OR	DR	TR	PF	A	TO	Blk	Stl	Min	+/-
10	HODGSON, EVA	G	11	2-2	0-0	7-8	0	1	1	0	0	2	0	1	10	6
11	POLLARD, NYLA	G	1	0-1	0-1	1-2	0	0	0	1	0	1	0	0	10	6
20	BELLAMY, BRE	F	0	0-0	0-0	0-0	0	0	0	0	0	1	0	0	4	4
25	ROGERS, GABBY	C	0	0-0	0-0	0-0	0	0	0	1	0	0	0	0	4	0
30	REYNOLDS, VICTORIA	F	8	2-3	0-0	4-4	0	1	1	0	0	0	1	0	10	6
01	WAGNER, SYDNEY	G	4	1-1	0-0	2-2	0	1	1	0	0	0	0	0	5	2
05	GILLIAM, CHANIQWA	G	0	0-0	0-0	0-0	0	0	0	0	0	0	0	0	0	0
21	EICHNER, BAILEY	F	0	0-0	0-0	0-0	0	1	1	0	1	0	0	0	6	6
TEAM							0	2	2	0		0				
<b>TOTALS</b>			<b>24</b>	<b>5-7</b>	<b>0-1</b>	<b>14-16</b>	<b>0</b>	<b>6</b>	<b>6</b>	<b>2</b>	<b>1</b>	<b>4</b>	<b>1</b>	<b>1</b>	<b>49</b>	

*Shooting By Period*

Period	FG	FG%	3FG	3FG%	FT	FT%
Game	23-47	48.9%	4-13	30.8%	24-28	85.7%

*Deadball Rebounds: 3,0*

Game Notes:

Officials: Norma Jones, Mark Hardcastle, Hillary Harwell  
 Attendance: 795

Start Time: 07:06 PM ET  
 End Time: 08:59 PM ET  
 Game Duration: 1:53  
 Conference Game;

Score	1st	2nd	3rd	4th	TOT
PHX	12	16	15	18	<b>61</b>
WM	23	17	10	24	<b>74</b>

Points from (This Period)	PHX	WM
In the Paint	10	8
Off Turns	2	8
2nd Chance	0	0
Fast Break	2	2
Bench	8	4

**Official Play-By-Play  
Elon vs William Mary  
Fourth Quarter**

**February 28, 2020 at Kaplan Arena (Kaplan Arena) - Williamsburg, Va.**



**Period 4**

**Starters:**

**Elon:** 0 PERPIGNAN, BRIE (G); 1 GRAVES, JADA (G); 2 LILES, KAYLA (G); 10 MUNFORD, SAADIA (G); 21 COLON, ARIEL (G);

**William Mary:** 10 HODGSON, EVA (G); 11 POLLARD, NYLA (G); 20 BELLAMY, BRE (F); 25 ROGERS, GABBY (C); 30 REYNOLDS, VICTORIA (F);

Time	VISITORS: Elon	Score	Margin	HOME: William Mary
10:00				SUB OUT: WAGNER, SYDNEY
10:00				SUB IN: POLLARD, NYLA
10:00	SUB OUT: NANCE, ARIANA			
10:00	SUB OUT: RYAN, MICAELA			
10:00	SUB IN: GRAVES, JADA			
10:00	SUB IN: COLON, ARIEL			
09:53				TURNOVER (BADPASS) by HODGSON, EVA
09:53	STEAL by GRAVES, JADA			
09:50	TURNOVER (TRAVEL) by GRAVES, JADA			
09:32		52-43	H 9	GOOD! JUMPER by HODGSON, EVA
09:05	MISSED JUMPER by COLON, ARIEL			
09:01	REBOUND (OFF) by LILES, KAYLA			
08:45	MISSED 3PTR by PERPIGNAN, BRIE			
08:45				BLOCK by REYNOLDS, VICTORIA
08:44				REBOUND (DEF) by TEAM
08:30	FOUL (PERSONAL) by LILES, KAYLA			
08:30	SUB OUT: MUNFORD, SAADIA			
08:30	SUB IN: POWELL, JAYLIN			
08:30		53-43	H 10	GOOD! FT by REYNOLDS, VICTORIA
08:30		54-43	H 11	GOOD! FT by REYNOLDS, VICTORIA
08:02	TURNOVER (LOSTBALL) by COLON, ARIEL			
08:02				STEAL by HODGSON, EVA
08:02	FOUL (PERSONAL) by COLON, ARIEL			
07:52		56-43	H 13	GOOD! LAYUP by REYNOLDS, VICTORIA
07:52				ASSIST by EICHNER, BAILEY
07:33	MISSED 3PTR by GRAVES, JADA			
07:29				REBOUND (DEF) by HODGSON, EVA
07:13				TURNOVER (BADPASS) by BELLAMY, BRE
07:13	SUB OUT: COLON, ARIEL			
07:13	SUB IN: MUNFORD, SAADIA			
07:05	GOOD! JUMPER by LILES, KAYLA [FB/PNT]	56-45	H 11	
07:05	ASSIST by MUNFORD, SAADIA			
06:47				TURNOVER (BADPASS) by POLLARD, NYLA
06:47	STEAL by GRAVES, JADA			
06:42	MISSED LAYUP by PERPIGNAN, BRIE			
06:39	REBOUND (OFF) by MUNFORD, SAADIA			
06:21	TURNOVER (SHOTCLOCK) by TEAM			
06:21				SUB OUT: BELLAMY, BRE
06:21				SUB OUT: EICHNER, BAILEY
06:21				SUB IN: WAGNER, SYDNEY
06:21				SUB IN: ROGERS, GABBY
06:08				TURNOVER (BADPASS) by HODGSON, EVA
06:08	STEAL by GRAVES, JADA			
06:04	FOUL (OFF) by GRAVES, JADA			
06:04	TURNOVER (OFFENSIVE) by GRAVES, JADA			
06:04	SUB OUT: PERPIGNAN, BRIE			
06:04	SUB IN: JOHNSON, MAYA			
06:04	SUB OUT: GRAVES, JADA			
06:04	SUB IN: COLON, ARIEL			
05:48	FOUL (PERSONAL) by JOHNSON, MAYA			
05:41		58-45	H 13	GOOD! LAYUP by WAGNER, SYDNEY
05:18	MISSED LAYUP by COLON, ARIEL			
05:15				REBOUND (DEF) by REYNOLDS, VICTORIA
05:02	FOUL (PERSONAL) by POWELL, JAYLIN			
05:02	SUB OUT: COLON, ARIEL			
05:02	SUB OUT: JOHNSON, MAYA			
05:02	SUB IN: PERPIGNAN, BRIE			
05:02	SUB IN: NANCE, ARIANA			
05:02				MISSED FT by HODGSON, EVA
05:02				REBOUND (OFF) by TEAM
05:02		59-45	H 14	GOOD! FT by HODGSON, EVA
04:39	GOOD! JUMPER by LILES, KAYLA	59-47	H 12	
04:39	ASSIST by PERPIGNAN, BRIE			
04:24	FOUL (PERSONAL) by NANCE, ARIANA			
04:24				
04:24		60-47	H 13	GOOD! FT by HODGSON, EVA
04:24		61-47	H 14	GOOD! FT by HODGSON, EVA
04:10				FOUL (PERSONAL) by ROGERS, GABBY
04:04	MISSED LAYUP by PERPIGNAN, BRIE			
04:03				REBOUND (DEF) by WAGNER, SYDNEY

Time	VISITORS: Elon	Score	Margin	HOME: William Mary
04:03	FOUL (PERSONAL) by MUNFORD, SAADIA			
04:03		62-47	H 15	GOOD! FT by WAGNER, SYDNEY
04:03		63-47	H 16	GOOD! FT by WAGNER, SYDNEY
03:50	GOOD! LAYUP by POWELL, JAYLIN	63-49	H 14	
03:50	ASSIST by MUNFORD, SAADIA			
03:22		65-49	H 16	GOOD! LAYUP by REYNOLDS, VICTORIA
03:11				FOUL (PERSONAL) by POLLARD, NYLA
03:11	SUB OUT: LILES, KAYLA			
03:11	SUB OUT: MUNFORD, SAADIA			
03:11	SUB IN: GRAVES, JADA			
03:11	SUB IN: COLON, ARIEL			
03:05	GOOD! LAYUP by COLON, ARIEL	65-51	H 14	
02:36				MISSED JUMPER by REYNOLDS, VICTORIA
02:32	REBOUND (DEF) by NANCE, ARIANA			
02:25	GOOD! 3PTR by POWELL, JAYLIN	65-54	H 11	
02:25	ASSIST by PERPIGNAN, BRIE			
02:19				TIMEOUT 30SEC
02:19				SUB OUT: ROGERS, GABBY
02:19				SUB IN: EICHNER, BAILEY
02:15	FOUL (PERSONAL) by GRAVES, JADA			
02:15				SUB OUT: WAGNER, SYDNEY
02:15				SUB IN: BELLAMY, BRE
02:15	SUB OUT: GRAVES, JADA			
02:15	SUB IN: RYAN, MICAELA			
02:15				MISSED FT by POLLARD, NYLA
02:15				REBOUND (OFF) by TEAM
02:15		66-54	H 12	GOOD! FT by POLLARD, NYLA
02:06	GOOD! LAYUP by PERPIGNAN, BRIE	66-56	H 10	
02:04	FOUL (PERSONAL) by PERPIGNAN, BRIE			
02:02		67-56	H 11	GOOD! FT by HODGSON, EVA
02:02		68-56	H 12	GOOD! FT by HODGSON, EVA
01:49	GOOD! 3PTR by POWELL, JAYLIN	68-59	H 9	
01:42	FOUL (PERSONAL) by POWELL, JAYLIN			
01:42		69-59	H 10	GOOD! FT by REYNOLDS, VICTORIA [FB]
01:42		70-59	H 11	GOOD! FT by REYNOLDS, VICTORIA [FB]
01:29	TURNOVER (DRIBBLING) by NANCE, ARIANA			
01:29				SUB OUT: BELLAMY, BRE
01:29				SUB IN: WAGNER, SYDNEY
01:14		72-59	H 13	GOOD! LAYUP by HODGSON, EVA
00:58	MISSED 3PTR by RYAN, MICAELA			
00:54				REBOUND (DEF) by EICHNER, BAILEY
00:30				MISSED 3PTR by POLLARD, NYLA
00:26	REBOUND (DEF) by COLON, ARIEL			
00:19	GOOD! JUMPER by COLON, ARIEL [PNT]	72-61	H 11	
00:18				TIMEOUT 30SEC
00:18	FOUL (PERSONAL) by PERPIGNAN, BRIE			
00:18		73-61	H 12	GOOD! FT by HODGSON, EVA
00:18		74-61	H 13	GOOD! FT by HODGSON, EVA
00:08	MISSED LAYUP by COLON, ARIEL			
00:07				REBOUND (DEF) by TEAM

Elon 61, William Mary 74

Points from (This Period)	PHX	WM
In the Paint	10	8
Off Turns	2	8
2nd Chance	0	0
Fast Break	2	2
Bench	8	4



**Official Scoring/Possession Reference Chart**  
**Elon vs William Mary**  
**Period 1**  
**February 28, 2020 at Kaplan Arena (Kaplan Arena) - Williamsburg, Va.**



**Period 1**

**Starters:**

**Elon:** 0 PERPIGNAN, BRIE (G); 1 GRAVES, JADA (G); 2 LILES, KAYLA (G); 10 MUNFORD, SAADIA (G); 21 COLON, ARIEL (G);

**William Mary:** 10 HODGSON, EVA (G); 11 POLLARD, NYLA (G); 20 BELLAMY, BRE (F); 25 ROGERS, GABBY (C); 30 REYNOLDS, VICTORIA (F);

Time	VISITORS: Elon	Score	Margin	HOME: William Mary
09:48		2-0	H 2	GOOD! JUMPER by REYNOLDS, VICTORIA [PNT]
09:11		4-0	H 4	GOOD! JUMPER by HODGSON, EVA [PNT]
08:21	GOOD! LAYUP by PERPIGNAN, BRIE	4-2	H 2	
07:43		5-2	H 3	GOOD! FT by HODGSON, EVA
07:43		6-2	H 4	GOOD! FT by HODGSON, EVA
06:58		7-2	H 5	GOOD! FT by WAGNER, SYDNEY [FB]
06:58		8-2	H 6	GOOD! FT by WAGNER, SYDNEY [FB]
06:40	GOOD! LAYUP by POWELL, JAYLIN	8-4	H 4	
06:13	GOOD! LAYUP by POWELL, JAYLIN	8-6	H 2	
05:18	GOOD! FT by MUNFORD, SAADIA	8-7	H 1	
05:18	GOOD! FT by MUNFORD, SAADIA	8-8	T	
04:57		10-8	H 2	GOOD! LAYUP by HODGSON, EVA [FB]
04:57		11-8	H 3	GOOD! FT by HODGSON, EVA [FB]
03:30		13-8	H 5	GOOD! LAYUP by REYNOLDS, VICTORIA
03:30		14-8	H 6	GOOD! FT by REYNOLDS, VICTORIA
03:02		17-8	H 9	GOOD! 3PTR by WAGNER, SYDNEY [FB]
02:34	GOOD! FT by PERPIGNAN, BRIE	17-9	H 8	
02:34	GOOD! FT by PERPIGNAN, BRIE	17-10	H 7	
02:18		20-10	H 10	GOOD! 3PTR by POLLARD, NYLA
00:49	GOOD! JUMPER by POWELL, JAYLIN	20-12	H 8	
00:29		23-12	H 11	GOOD! 3PTR by GILLIAM, CHANIQWA

**Elon 12, William Mary 23**

**Official Scoring/Possession Reference Chart**  
**Elon vs William Mary**  
**Period 2**  
**February 28, 2020 at Kaplan Arena (Kaplan Arena) - Williamsburg, Va.**



**Period 2**

**Starters:**

**Elon:** 0 PERPIGNAN, BRIE (G); 1 GRAVES, JADA (G); 2 LILES, KAYLA (G); 10 MUNFORD, SAADIA (G); 21 COLON, ARIEL (G);

**William Mary:** 10 HODGSON, EVA (G); 11 POLLARD, NYLA (G); 20 BELLAMY, BRE (F); 25 ROGERS, GABBY (C); 30 REYNOLDS, VICTORIA (F);

Time	VISITORS: Elon	Score	Margin	HOME: William Mary
09:44	GOOD! FT by POWELL, JAYLIN	23-13	H 10	
09:44	GOOD! FT by POWELL, JAYLIN	23-14	H 9	
08:52		26-14	H 12	GOOD! 3PTR by HODGSON, EVA
08:18		28-14	H 14	GOOD! LAYUP by BELLAMY, BRE [FB]
07:50		30-14	H 16	GOOD! LAYUP by WAGNER, SYDNEY [FB]
07:31	GOOD! JUMPER by PERPIGNAN, BRIE	30-16	H 14	
07:14		32-16	H 16	GOOD! JUMPER by HODGSON, EVA [PNT]
05:38	GOOD! LAYUP by GRAVES, JADA	32-18	H 14	
05:08	GOOD! 3PTR by RYAN, MICAELA	32-21	H 11	
04:48		33-21	H 12	GOOD! FT by REYNOLDS, VICTORIA
04:48		34-21	H 13	GOOD! FT by REYNOLDS, VICTORIA
04:15		36-21	H 15	GOOD! LAYUP by EICHNER, BAILEY
02:32	GOOD! FT by PERPIGNAN, BRIE [FB]	36-22	H 14	
02:32	GOOD! FT by PERPIGNAN, BRIE [FB]	36-23	H 13	
02:17		38-23	H 15	GOOD! JUMPER by REYNOLDS, VICTORIA [PNT]
01:48		40-23	H 17	GOOD! LAYUP by EICHNER, BAILEY
00:51	GOOD! LAYUP by GRAVES, JADA	40-25	H 15	
00:51	GOOD! FT by GRAVES, JADA	40-26	H 14	
00:05	GOOD! FT by MUNFORD, SAADIA	40-27	H 13	
00:05	GOOD! FT by MUNFORD, SAADIA	40-28	H 12	

**Elon 28, William Mary 40**

**Official Scoring/Possession Reference Chart**  
**Elon vs William Mary**  
**Period 3**  
**February 28, 2020 at Kaplan Arena (Kaplan Arena) - Williamsburg, Va.**



**Period 3**

**Starters:**

**Elon:** 0 PERPIGNAN, BRIE (G); 1 GRAVES, JADA (G); 2 LILES, KAYLA (G); 10 MUNFORD, SAADIA (G); 21 COLON, ARIEL (G);

**William Mary:** 10 HODGSON, EVA (G); 11 POLLARD, NYLA (G); 20 BELLAMY, BRE (F); 25 ROGERS, GABBY (C); 30 REYNOLDS, VICTORIA (F);

Time	VISITORS: Elon	Score	Margin	HOME: William Mary
09:33		42-28	H 14	GOOD! LAYUP by HODGSON, EVA
07:52		44-28	H 16	GOOD! LAYUP by HODGSON, EVA [PNT]
07:19	GOOD! JUMPER by COLON, ARIEL [PNT]	44-30	H 14	
06:25	GOOD! LAYUP by JOHNSON, MAYA [PNT]	44-32	H 12	
05:46	GOOD! 3PTR by POWELL, JAYLIN	44-35	H 9	
04:23	GOOD! FT by POWELL, JAYLIN	44-36	H 8	
04:23	GOOD! FT by POWELL, JAYLIN	44-37	H 7	
03:47	GOOD! FT by GRAVES, JADA	44-38	H 6	
03:05		46-38	H 8	GOOD! LAYUP by BELLAMY, BRE
02:11	GOOD! LAYUP by PERPIGNAN, BRIE [PNT]	46-40	H 6	
01:38		47-40	H 7	GOOD! FT by REYNOLDS, VICTORIA
01:02	GOOD! FT by LILES, KAYLA	47-41	H 6	
01:02		48-41	H 7	GOOD! FT by EICHNER, BAILEY
00:45	GOOD! JUMPER by PERPIGNAN, BRIE [PNT]	48-43	H 5	
00:19		50-43	H 7	GOOD! LAYUP by REYNOLDS, VICTORIA

**Elon 43, William Mary 50**

**Official Scoring/Possession Reference Chart  
Elon vs William Mary  
Period 4**



**February 28, 2020 at Kaplan Arena (Kaplan Arena) - Williamsburg, Va.**

**Period 4**

**Starters:**

**Elon:** 0 PERPIGNAN,BRIE (G); 1 GRAVES,JADA (G); 2 LILES,KAYLA (G); 10 MUNFORD,SAADIA (G); 21 COLON,ARIEL (G);

**William Mary:** 10 HODGSON,EVA (G); 11 POLLARD,NYLA (G); 20 BELLAMY,BRE (F); 25 ROGERS,GABBY (C); 30 REYNOLDS,VICTORIA (F);

Time	VISITORS: Elon	Score	Margin	HOME: William Mary
09:32		52-43	H 9	GOOD! JUMPER by HODGSON, EVA
08:30		53-43	H 10	GOOD! FT by REYNOLDS, VICTORIA
08:30		54-43	H 11	GOOD! FT by REYNOLDS, VICTORIA
07:52		56-43	H 13	GOOD! LAYUP by REYNOLDS, VICTORIA
07:05	GOOD! JUMPER by LILES, KAYLA [FB/PNT]	56-45	H 11	
05:41		58-45	H 13	GOOD! LAYUP by WAGNER, SYDNEY
05:02		59-45	H 14	GOOD! FT by HODGSON, EVA
04:39	GOOD! JUMPER by LILES, KAYLA	59-47	H 12	
04:24		60-47	H 13	GOOD! FT by HODGSON, EVA
04:24		61-47	H 14	GOOD! FT by HODGSON, EVA
04:03		62-47	H 15	GOOD! FT by WAGNER, SYDNEY
04:03		63-47	H 16	GOOD! FT by WAGNER, SYDNEY
03:50	GOOD! LAYUP by POWELL, JAYLIN	63-49	H 14	
03:22		65-49	H 16	GOOD! LAYUP by REYNOLDS, VICTORIA
03:05	GOOD! LAYUP by COLON, ARIEL	65-51	H 14	
02:25	GOOD! 3PTR by POWELL, JAYLIN	65-54	H 11	
02:15		66-54	H 12	GOOD! FT by POLLARD, NYLA
02:06	GOOD! LAYUP by PERPIGNAN, BRIE	66-56	H 10	
02:02		67-56	H 11	GOOD! FT by HODGSON, EVA
02:02		68-56	H 12	GOOD! FT by HODGSON, EVA
01:49	GOOD! 3PTR by POWELL, JAYLIN	68-59	H 9	
01:42		69-59	H 10	GOOD! FT by REYNOLDS, VICTORIA [FB]
01:42		70-59	H 11	GOOD! FT by REYNOLDS, VICTORIA [FB]
01:14		72-59	H 13	GOOD! LAYUP by HODGSON, EVA
00:19	GOOD! JUMPER by COLON, ARIEL [PNT]	72-61	H 11	
00:18		73-61	H 12	GOOD! FT by HODGSON, EVA
00:18		74-61	H 13	GOOD! FT by HODGSON, EVA

**Elon 61, William Mary 74**

**Official Substitutions Log**  
**Elon vs William Mary**  
**Period 1**  
**February 28, 2020 at Kaplan Arena (Kaplan Arena) - Williamsburg, Va.**



VISITORS: <b>Elon</b>	Time	Score	HOME: <b>William Mary</b>
0 PERPIGNAN,BRIE			10 HODGSON,EVA
1 GRAVES,JADA			11 POLLARD,NYLA
2 LILES,KAYLA			20 BELLAMY,BRE
10 MUNFORD,SAADIA			25 ROGERS,GABBY
21 COLON,ARIEL			30 REYNOLDS,VICTORIA
	07:59	2-4	SUB OUT: REYNOLDS,VICTORIA
	07:59		SUB IN: WAGNER,SYDNEY
SUB OUT: 10 MUNFORD,SAADIA	06:58	2-6	
SUB IN: 13 POWELL,JAYLIN	06:58		
	05:43	6-8	SUB OUT: BELLAMY,BRE
	05:43		SUB IN: REYNOLDS,VICTORIA
SUB OUT: 0 PERPIGNAN,BRIE	05:43		
SUB OUT: 1 GRAVES,JADA	05:43		
SUB OUT: 2 LILES,KAYLA	05:43		
SUB OUT: 21 COLON,ARIEL	05:43		
SUB IN: 10 MUNFORD,SAADIA	05:43		
SUB IN: 23 NANCE,ARIANA	05:43		
SUB IN: 24 JOHNSON,MAYA	05:43		
SUB IN: 52 RYAN,MICAELA	05:43		
	04:57	8-10	SUB OUT: ROGERS,GABBY
	04:57		SUB IN: EICHNER,BAILEY
SUB OUT: 52 RYAN,MICAELA	04:57		
SUB IN: 2 LILES,KAYLA	04:57		
SUB OUT: 2 LILES,KAYLA	03:30	8-13	
SUB OUT: 23 NANCE,ARIANA	03:30		
SUB OUT: 24 JOHNSON,MAYA	03:30		
SUB IN: 0 PERPIGNAN,BRIE	03:30		
SUB IN: 1 GRAVES,JADA	03:30		
SUB IN: 21 COLON,ARIEL	03:30		
SUB OUT: 13 POWELL,JAYLIN	02:54	8-17	
SUB IN: 52 RYAN,MICAELA	02:54		
	01:31	10-20	SUB OUT: HODGSON,EVA
	01:31		SUB OUT: REYNOLDS,VICTORIA
	01:31		SUB IN: GILLIAM,CHANIQWA
	01:31		SUB IN: BELLAMY,BRE
SUB OUT: 10 MUNFORD,SAADIA	01:31		
SUB IN: 2 LILES,KAYLA	01:31		
	01:15	10-20	SUB OUT: WAGNER,SYDNEY
	01:15		SUB IN: HODGSON,EVA
SUB OUT: 1 GRAVES,JADA	01:15		
SUB IN: 13 POWELL,JAYLIN	01:15		

**Elon 12, William Mary 23**

**Official Substitutions Log**  
**Elon vs William Mary**  
**Period 2**  
**February 28, 2020 at Kaplan Arena (Kaplan Arena) - Williamsburg, Va.**



VISITORS: <b>Elon</b>	Time	Score	HOME: <b>William Mary</b>
0 PERPIGNAN,BRIE			10 HODGSON,EVA
1 GRAVES,JADA			11 POLLARD,NYLA
2 LILES,KAYLA			20 BELLAMY,BRE
10 MUNFORD,SAADIA			25 ROGERS,GABBY
21 COLON,ARIEL			30 REYNOLDS,VICTORIA
	10:00	-	SUB OUT: EICHNER,BAILEY
	10:00		SUB IN: ROGERS,GABBY
SUB OUT: 21 COLON,ARIEL	10:00		
SUB OUT: 52 RYAN,MICHAELA	10:00		
SUB IN: 23 NANCE,ARIANA	10:00		
SUB IN: 24 JOHNSON,MAYA	10:00		
	09:44	-	SUB OUT: GILLIAM,CHANIQWA
	09:44		SUB OUT: POLLARD,NYLA
	09:44		SUB IN: WAGNER,SYDNEY
	09:44		SUB IN: REYNOLDS,VICTORIA
	06:39	16-32	SUB OUT: BELLAMY,BRE
	06:39		SUB OUT: ROGERS,GABBY
	06:39		SUB IN: POLLARD,NYLA
	06:39		SUB IN: EICHNER,BAILEY
SUB OUT: 0 PERPIGNAN,BRIE	06:39		
SUB OUT: 2 LILES,KAYLA	06:39		
SUB OUT: 13 POWELL,JAYLIN	06:39		
SUB OUT: 23 NANCE,ARIANA	06:39		
SUB OUT: 24 JOHNSON,MAYA	06:39		
SUB IN: 1 GRAVES,JADA	06:39		
SUB IN: 10 MUNFORD,SAADIA	06:39		
SUB IN: 21 COLON,ARIEL	06:39		
SUB IN: 30 TRAORE,TYJA	06:39		
SUB IN: 52 RYAN,MICHAELA	06:39		
SUB OUT: 21 COLON,ARIEL	04:48	21-32	
SUB OUT: 30 TRAORE,TYJA	04:48		
SUB OUT: 52 RYAN,MICHAELA	04:48		
SUB IN: 0 PERPIGNAN,BRIE	04:48		
SUB IN: 2 LILES,KAYLA	04:48		
SUB IN: 13 POWELL,JAYLIN	04:48		
SUB OUT: 2 LILES,KAYLA	03:21	21-36	
SUB OUT: 13 POWELL,JAYLIN	03:21		
SUB IN: 21 COLON,ARIEL	03:21		
SUB IN: 24 JOHNSON,MAYA	03:21		
	02:32	21-36	SUB OUT: HODGSON,EVA
	02:32		SUB IN: GILLIAM,CHANIQWA
SUB OUT: 1 GRAVES,JADA	02:32		
SUB IN: 52 RYAN,MICHAELA	02:32		
	01:45	23-40	SUB OUT: EICHNER,BAILEY
	01:45		SUB IN: ROGERS,GABBY
SUB OUT: 0 PERPIGNAN,BRIE	01:45		
SUB OUT: 24 JOHNSON,MAYA	01:45		
SUB IN: 1 GRAVES,JADA	01:45		
SUB IN: 13 POWELL,JAYLIN	01:45		
	00:51	25-40	SUB OUT: REYNOLDS,VICTORIA
	00:51		SUB IN: BELLAMY,BRE
SUB OUT: 10 MUNFORD,SAADIA	00:05	28-40	
SUB OUT: 52 RYAN,MICHAELA	00:05		
SUB IN: 0 PERPIGNAN,BRIE	00:05		
SUB IN: 2 LILES,KAYLA	00:05		

**Elon 28, William Mary 40**

**Official Substitutions Log**  
**Elon vs William Mary**  
**Period 3**  
**February 28, 2020 at Kaplan Arena (Kaplan Arena) - Williamsburg, Va.**



VISITORS: <b>Elon</b>	Time	Score	HOME: <b>William Mary</b>
0 PERPIGNAN,BRIE			10 HODGSON,EVA
1 GRAVES,JADA			11 POLLARD,NYLA
2 LILES,KAYLA			20 BELLAMY,BRE
10 MUNFORD,SAADIA			25 ROGERS,GABBY
21 COLON,ARIEL			30 REYNOLDS,VICTORIA
	10:00	-	SUB OUT: WAGNER,SYDNEY
	10:00		SUB OUT: GILLIAM,CHANIQWA
	10:00		SUB IN: HODGSON,EVA
	10:00		SUB IN: REYNOLDS,VICTORIA
SUB OUT: 13 POWELL,JAYLIN	10:00		
SUB IN: 10 MUNFORD,SAADIA	10:00		
SUB OUT: 2 LILES,KAYLA	08:16	28-42	
SUB IN: 13 POWELL,JAYLIN	08:16		
SUB OUT: 1 GRAVES,JADA	07:24	28-44	
SUB OUT: 10 MUNFORD,SAADIA	07:24		
SUB IN: 2 LILES,KAYLA	07:24		
SUB IN: 24 JOHNSON,MAYA	07:24		
	06:49	30-44	SUB OUT: BELLAMY,BRE
	06:49		SUB IN: WAGNER,SYDNEY
SUB OUT: 0 PERPIGNAN,BRIE	04:56	35-44	
SUB OUT: 21 COLON,ARIEL	04:56		
SUB IN: 1 GRAVES,JADA	04:56		
SUB IN: 10 MUNFORD,SAADIA	04:56		
	04:23	35-44	SUB OUT: ROGERS,GABBY
	04:23		SUB IN: EICHNER,BAILEY
	04:23		SUB OUT: POLLARD,NYLA
	04:23		SUB IN: BELLAMY,BRE
SUB OUT: 1 GRAVES,JADA	03:32	38-44	
SUB OUT: 2 LILES,KAYLA	03:32		
SUB IN: 0 PERPIGNAN,BRIE	03:32		
SUB IN: 21 COLON,ARIEL	03:32		
SUB OUT: 13 POWELL,JAYLIN	01:51	40-46	
SUB OUT: 24 JOHNSON,MAYA	01:51		
SUB IN: 1 GRAVES,JADA	01:51		
SUB IN: 2 LILES,KAYLA	01:51		
SUB OUT: 21 COLON,ARIEL	01:46	40-46	
SUB IN: 52 RYAN,MICAELA	01:46		
SUB OUT: 1 GRAVES,JADA	01:02	41-47	
SUB IN: 23 NANCE,ARIANA	01:02		

**Elon 43, William Mary 50**

**Official Substitutions Log**  
**Elon vs William Mary**  
**Period 4**  
**February 28, 2020 at Kaplan Arena (Kaplan Arena) - Williamsburg, Va.**



VISITORS: <b>Elon</b>	Time	Score	HOME: <b>William Mary</b>
0 PERPIGNAN,BRIE			10 HODGSON,EVA
1 GRAVES,JADA			11 POLLARD,NYLA
2 LILES,KAYLA			20 BELLAMY,BRE
10 MUNFORD,SAADIA			25 ROGERS,GABBY
21 COLON,ARIEL			30 REYNOLDS,VICTORIA
	10:00	-	SUB OUT: WAGNER,SYDNEY
	10:00		SUB IN: POLLARD,NYLA
SUB OUT: 23 NANCE,ARIANA	10:00		
SUB OUT: 52 RYAN,MICAELA	10:00		
SUB IN: 1 GRAVES,JADA	10:00		
SUB IN: 21 COLON,ARIEL	10:00		
SUB OUT: 10 MUNFORD,SAADIA	08:30	43-52	
SUB IN: 13 POWELL,JAYLIN	08:30		
SUB OUT: 21 COLON,ARIEL	07:13	43-56	
SUB IN: 10 MUNFORD,SAADIA	07:13		
	06:21	45-56	SUB OUT: BELLAMY,BRE
	06:21		SUB OUT: EICHNER,BAILEY
	06:21		SUB IN: WAGNER,SYDNEY
	06:21		SUB IN: ROGERS,GABBY
SUB OUT: 0 PERPIGNAN,BRIE	06:04	45-56	
SUB IN: 24 JOHNSON,MAYA	06:04		
SUB OUT: 1 GRAVES,JADA	06:04		
SUB IN: 21 COLON,ARIEL	06:04		
SUB OUT: 21 COLON,ARIEL	05:02	45-58	
SUB OUT: 24 JOHNSON,MAYA	05:02		
SUB IN: 0 PERPIGNAN,BRIE	05:02		
SUB IN: 23 NANCE,ARIANA	05:02		
SUB OUT: 2 LILES,KAYLA	03:11	49-65	
SUB OUT: 10 MUNFORD,SAADIA	03:11		
SUB IN: 1 GRAVES,JADA	03:11		
SUB IN: 21 COLON,ARIEL	03:11		
	02:19	54-65	SUB OUT: ROGERS,GABBY
	02:19		SUB IN: EICHNER,BAILEY
	02:15	54-65	SUB OUT: WAGNER,SYDNEY
	02:15		SUB IN: BELLAMY,BRE
SUB OUT: 1 GRAVES,JADA	02:15		
SUB IN: 52 RYAN,MICAELA	02:15		
	01:29	59-70	SUB OUT: BELLAMY,BRE
	01:29		SUB IN: WAGNER,SYDNEY

**Elon 61, William Mary 74**

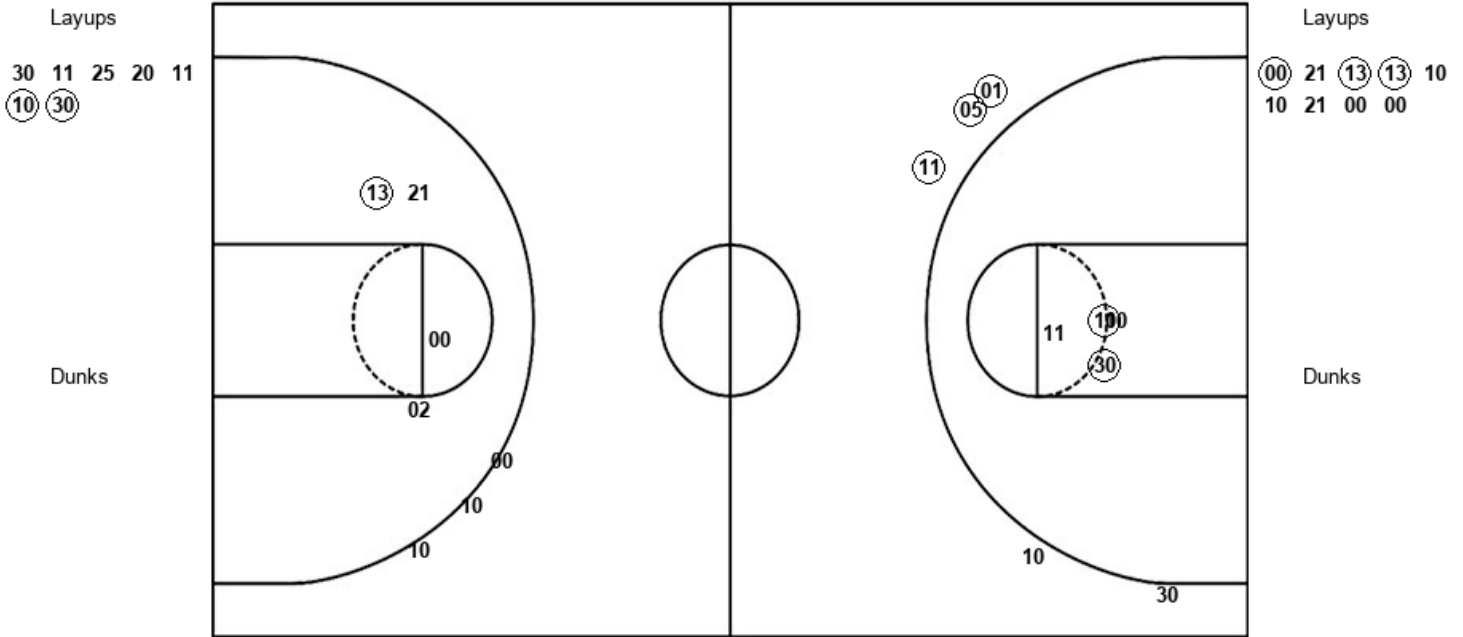


**Official Shot Chart**  
**Elon vs William Mary**  
**PERIOD 1 Shots**  
 February 28, 2020 at Kaplan Arena (Kaplan Arena) - Williamsburg, Va.



**William Mary**

**Elon**



WM : Period 1	Made	Att	Pct
Layups	2	7	28.6
Dunks	0	0	0
2PT Field Goals	4	11	36.4
3PT Field Goals	3	5	60.0
<b>Total Field Goals</b>	<b>7</b>	<b>16</b>	<b>43.8</b>

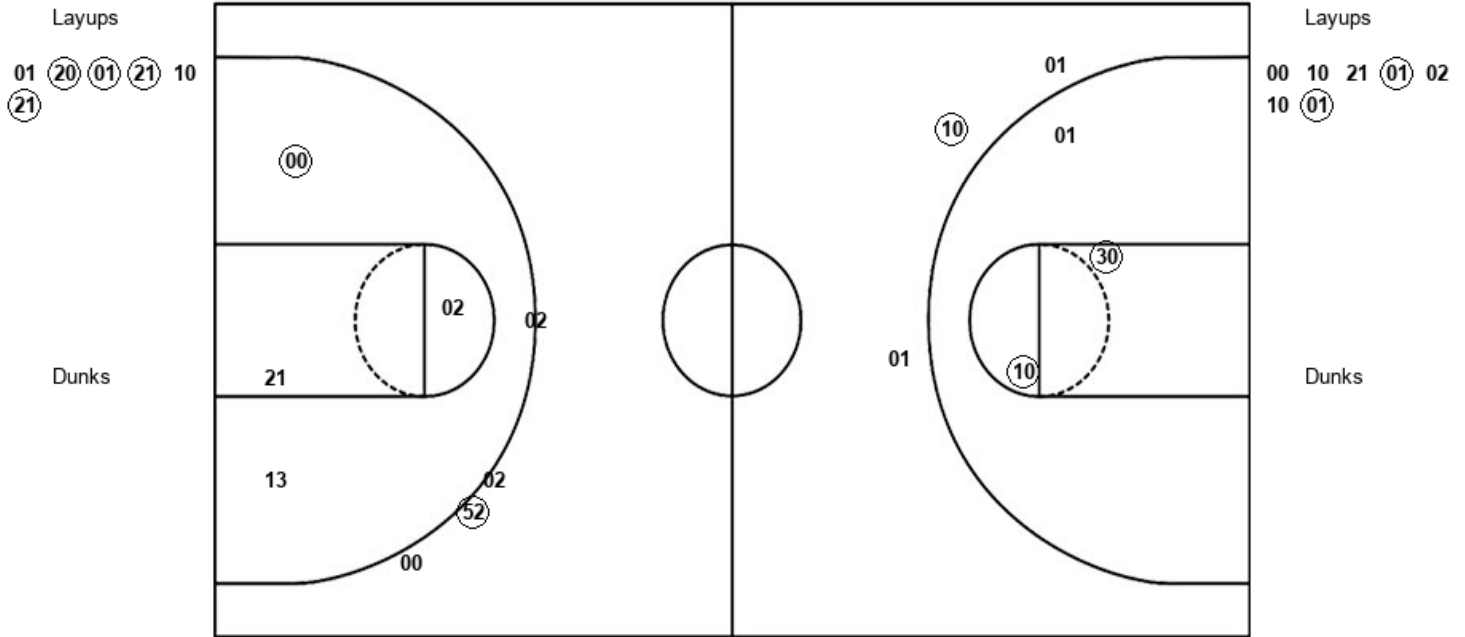
PHX : Period 1	Made	Att	Pct
Layups	3	9	33.3
Dunks	0	0	0
2PT Field Goals	4	13	30.8
3PT Field Goals	0	3	00.0
<b>Total Field Goals</b>	<b>4</b>	<b>16</b>	<b>25.0</b>

**Official Shot Chart**  
**Elon vs William Mary**  
**PERIOD 2 Shots**  
 February 28, 2020 at Kaplan Arena (Kaplan Arena) - Williamsburg, Va.



**William Mary**

**Elon**



WM : Period 2	Made	Att	Pct
Layups	4	6	66.7
Dunks	0	0	0
2PT Field Goals	6	9	66.7
3PT Field Goals	1	3	33.3
<b>Total Field Goals</b>	<b>7</b>	<b>12</b>	<b>58.3</b>

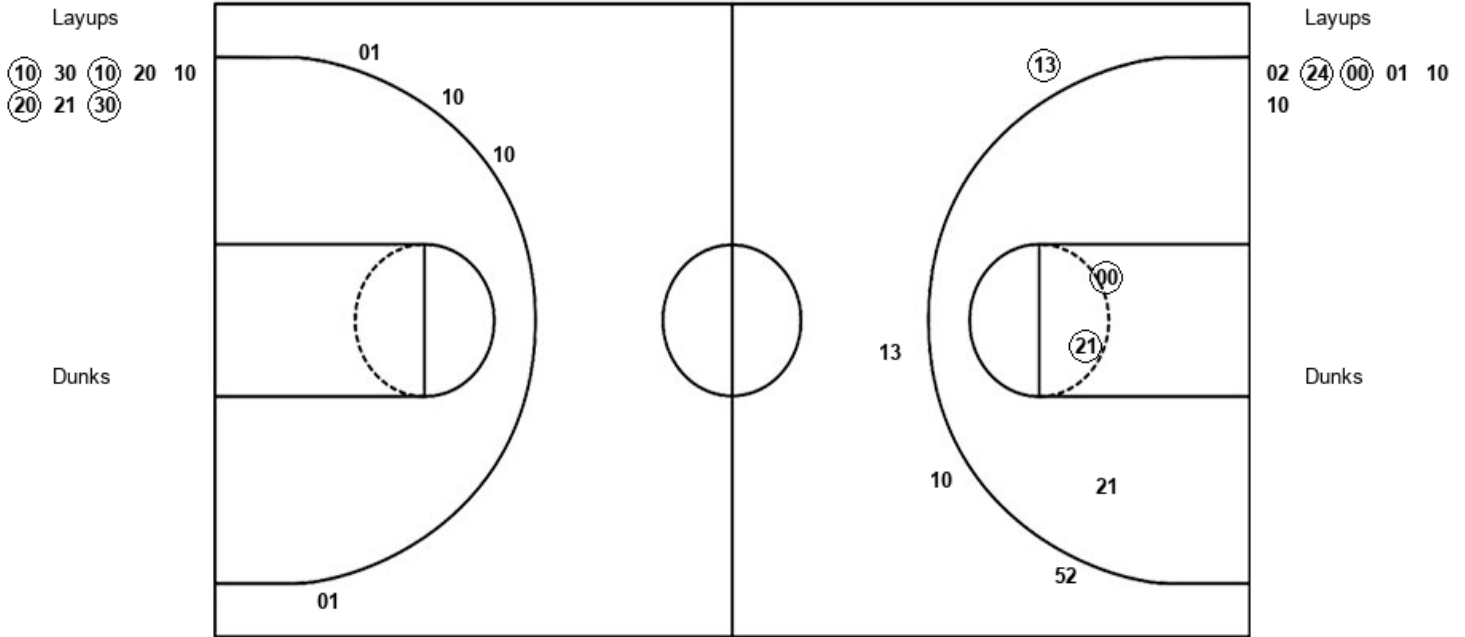
PHX : Period 2	Made	Att	Pct
Layups	2	7	28.6
Dunks	0	0	0
2PT Field Goals	3	11	27.3
3PT Field Goals	1	4	25.0
<b>Total Field Goals</b>	<b>4</b>	<b>15</b>	<b>26.7</b>

**Official Shot Chart**  
**Elon vs William Mary**  
**PERIOD 3 Shots**  
 February 28, 2020 at Kaplan Arena (Kaplan Arena) - Williamsburg, Va.



**William Mary**

**Elon**



WM : Period 3	Made	Att	Pct
Layups	4	8	50.0
Dunks	0	0	0
2PT Field Goals	4	8	50.0
3PT Field Goals	0	4	00.0
<b>Total Field Goals</b>	<b>4</b>	<b>12</b>	<b>33.3</b>

PHX : Period 3	Made	Att	Pct
Layups	2	6	33.3
Dunks	0	0	0
2PT Field Goals	4	9	44.4
3PT Field Goals	1	4	25.0
<b>Total Field Goals</b>	<b>5</b>	<b>13</b>	<b>38.5</b>

**Official Shot Chart**  
**Elon vs William Mary**  
**PERIOD 4 Shots**  
 February 28, 2020 at Kaplan Arena (Kaplan Arena) - Williamsburg, Va.



**William Mary**

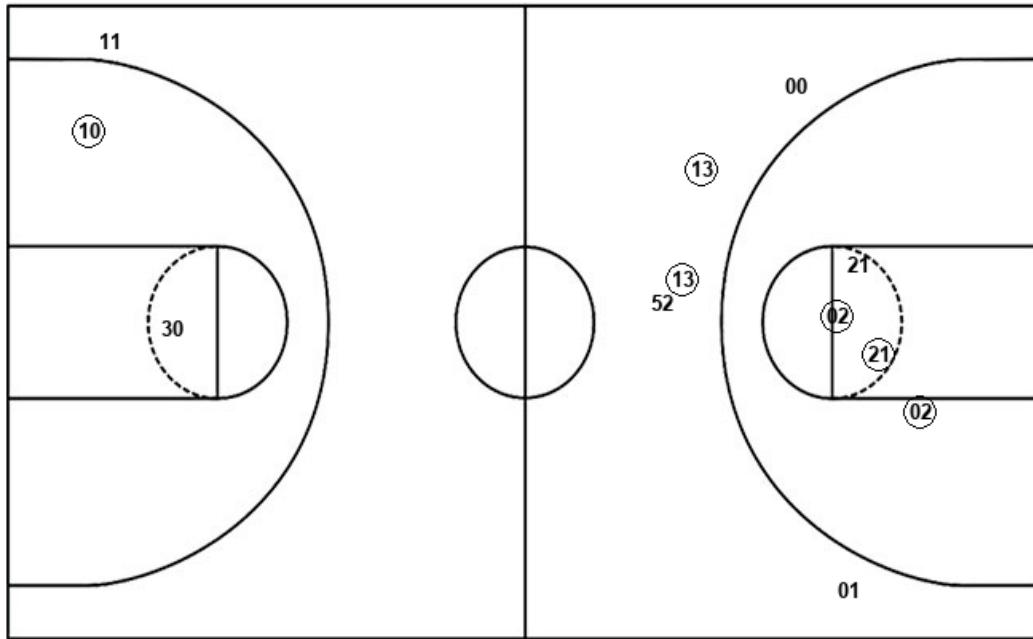
**Elon**

Layups  
 (30) (01) (30) (10)

Layups  
 00 21 00 (13) (21)  
 (00) 21

Dunks

Dunks



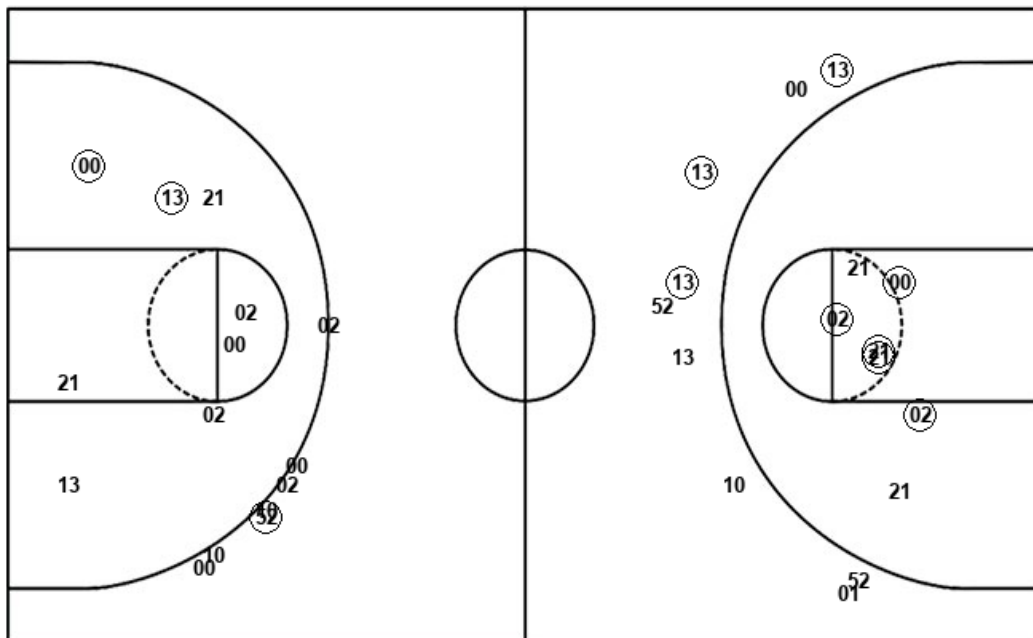
WM : Period 4	Made	Att	Pct
Layups	4	4	100.0
Dunks	0	0	0
2PT Field Goals	5	6	83.3
3PT Field Goals	0	1	00.0
<b>Total Field Goals</b>	<b>5</b>	<b>7</b>	<b>71.4</b>

PHX : Period 4	Made	Att	Pct
Layups	3	7	42.9
Dunks	0	0	0
2PT Field Goals	6	11	54.5
3PT Field Goals	2	5	40.0
<b>Total Field Goals</b>	<b>8</b>	<b>16</b>	<b>50.0</b>

**Official Shot Chart**  
**Elon vs William Mary**  
**Elon Team Shots**  
 February 28, 2020 at Kaplan Arena (Kaplan Arena) - Williamsburg, Va.



Layups



Layups

00	21	13	13	10
10	21	00	00	00
10	21	01	02	10
01	02	24	00	01
10	10	00	21	00
13	21	00	21	

Dunks

Dunks

PHX : Period 1	Made	Att	Pct
Layups	3	9	33.3
Dunks	0	0	0
2PT Field Goals	4	13	30.8
3PT Field Goals	0	3	00.0
<b>Total Field Goals</b>	<b>4</b>	<b>16</b>	<b>25.0</b>

PHX : Period 2	Made	Att	Pct
Layups	2	7	28.6
Dunks	0	0	0
2PT Field Goals	3	11	27.3
3PT Field Goals	1	4	25.0
<b>Total Field Goals</b>	<b>4</b>	<b>15</b>	<b>26.7</b>

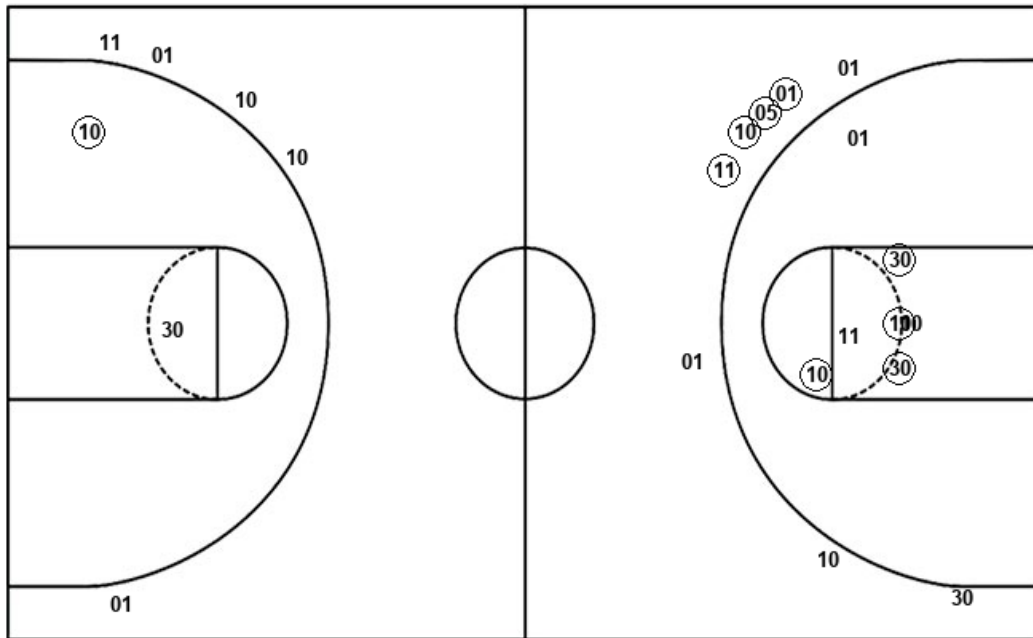
PHX : Period 3	Made	Att	Pct
Layups	2	6	33.3
Dunks	0	0	0
2PT Field Goals	4	9	44.4
3PT Field Goals	1	4	25.0
<b>Total Field Goals</b>	<b>5</b>	<b>13</b>	<b>38.5</b>

PHX : Period 4	Made	Att	Pct
Layups	3	7	42.9
Dunks	0	0	0
2PT Field Goals	6	11	54.5
3PT Field Goals	2	5	40.0
<b>Total Field Goals</b>	<b>8</b>	<b>16</b>	<b>50.0</b>

**Official Shot Chart**  
**Elon vs William Mary**  
**William Mary Team Shots**  
 February 28, 2020 at Kaplan Arena (Kaplan Arena) - Williamsburg, Va.



Layups



Layups

30	11	25	20	11
10	30	01	20	01
21	10	21	10	30
10	20	10	20	21
30	30	01	30	10

Dunks

Dunks

WM : Period 1	Made	Att	Pct
Layups	2	7	28.6
Dunks	0	0	0
2PT Field Goals	4	11	36.4
3PT Field Goals	3	5	60.0
<b>Total Field Goals</b>	<b>7</b>	<b>16</b>	<b>43.8</b>

WM : Period 3	Made	Att	Pct
Layups	4	8	50.0
Dunks	0	0	0
2PT Field Goals	4	8	50.0
3PT Field Goals	0	4	00.0
<b>Total Field Goals</b>	<b>4</b>	<b>12</b>	<b>33.3</b>

WM : Period 2	Made	Att	Pct
Layups	4	6	66.7
Dunks	0	0	0
2PT Field Goals	6	9	66.7
3PT Field Goals	1	3	33.3
<b>Total Field Goals</b>	<b>7</b>	<b>12</b>	<b>58.3</b>

WM : Period 4	Made	Att	Pct
Layups	4	4	100.0
Dunks	0	0	0
2PT Field Goals	5	6	83.3
3PT Field Goals	0	1	00.0
<b>Total Field Goals</b>	<b>5</b>	<b>7</b>	<b>71.4</b>